



LINCOLN COUNTY SCHOOL DISTRICT

Dr. Majalise Tolan
Superintendent

District Office | Teaching & Learning Center
1212 NE Fogarty Street, Newport, OR 97365
PO Box 1110, Newport, OR 97365
T 541-265-9211 | F 541-265-3059
www.lincoln.k12.or.us

Board of Directors NOTICE OF A BOARD MEETING Lincoln County School District Business Meeting of the Board

Date	Tuesday, August 12, 2025
Time	6:30 PM
Place	Teaching & Learning Center, 1212 NE Fogarty Street, Newport, OR 97365

The Lincoln County School District Board of Directors has scheduled a Lincoln County School District Business Meeting of the Board of the Board beginning at 6:30 PM.

Public comment will only be heard if a specific public comment time is designated on the agenda. Not all meetings of the Board have public comment.

If you are a member of the community and wish to speak before the Board, please email the following information to eddie.symington@lincoln.k12.or.us by **12:00 pm on the business day prior to the meeting: Name, address and phone number (optional), and topic.** Once your request is received, you will be contacted with details regarding making the comment during the meeting. Public comment cards will also be available at the door and must be completed and given to the Board Secretary. All public comment will follow Board Policy BDDH – “Public Comment at Board Meetings.”

The session will be streamed and can be accessed by visiting our [website](#).

The agenda is attached.

The meeting location is accessible to persons with disabilities. A request for an interpreter for the hearing impaired or for other accommodations for persons with disabilities should be made at least 48 hours before the meeting.

THIS NOTICE SATISFIES THE REQUIREMENTS OF ORS 192.630, 192.640 AND 332.045.

For further information or to request accommodations, please contact:
Eddie Symington, Assistant to the Superintendent and School Board
Lincoln County School District | 1212 NE Fogarty | Newport, OR 97365

LINCOLN COUNTY SCHOOL DISTRICT
Board of Directors – Lincoln County School District Business Meeting of the
Board
Tuesday, August 12, 2025 - 6:30 PM
Teaching & Learning Center, 1212 NE Fogarty Street, Newport, OR 97365

Agenda

1. Call to Order & Reading of Land Acknowledgment
2. Roll Call- Establishment of a quorum
3. Introductions
4. Communications
 - 4.a. Written
 - 4.b. From the Audience (This time is reserved for public comment on topics published on the Board's agenda)
 - 4.c. Recognition
5. Consultant Reports/Staff Reports/Student Reports
 - 5.a. Financial Report
 - 5.a.1. Monthly Financial Report

Lincoln County School District
2025-26 Monthly Comparison - General Fund Projected to Actual
July 2025

REVENUES	Projected**	Actual	Actual Compared to Projected	Comments
LOCAL SOURCES:				
Current year's levy			-	*
Prior years' taxes	4,491		(4,491)	*
Interest on Investments	34,325	205,418	171,093	Interest not yet Segregated
Fees Charged to Grants			-	Varies based on actual expense
Rentals			-	
Contributions			-	
Other Local Income	13,421	39,654	26,233	
INTERMEDIATE SOURCES:				
ESD - Severe Disability Support			-	
County School Fund			-	*
Other, Hvy Eq Rent Tax, etc			-	
STATE SOURCES:				
SSF- Current Year	3,832,054	3,696,772	(135,282)	*
SSF- Prior Year			-	*
Common School Fund			-	*
State Timber			-	*
Unrestricted Grants			-	*
FEDERAL SOURCES:				
Federal Forest Fees			-	
Foster Care Transport Reimb			-	
OTHER RESOURCES:				
Interfund Transfer			-	
Sale of Assets/Ins Proceeds			-	
Beginning Fund Balance	13,924,568	13,573,746	(350,822)	
Total Monthly Revenue	17,808,859	17,515,589	(293,270)	
EXPENDITURES				
Salaries (100)	554,950	643,949	88,999	
Employee benefits (200)	295,748	269,489	(26,259)	
Purchased services (300)	1,069,773	1,318,821	249,048	
Supplies (400)	132,111	102,433	(29,678)	
Capital outlay (500)	18,324		(18,324)	
Insurance/Other (600)	1,002,551	1,204,466	201,915	
Interfund Transfers (700)			-	
Contingency (800)				
Unappropriated Funds (800)				
Total Monthly Expenditures	3,073,457	3,539,158	465,701	

*Indicates SSF formula revenue -- excesses are returned to the State

** Projections based on budget and average % received/expended during same time period over past 8 years

Lincoln County School District
 2025-26 General Fund - Purchased Services Monthly Comparison
 July 2025

	July	Aug	Sept	Oct	Nov	Dec	Jan	Feb	March	April	May	June	YTD Total
Prof Instruction Svcs	400												400
Cleaning Services	195,560												195,560
Repairs & Maint	45,180												45,180
Rentals	1,615												1,615
Utilities	134												134
Transportation	77												77
Travel	1,862												1,862
Telephone													-
Postage	2,042												2,042
Advertising	115												115
Printing & Binding	4,147												4,147
Data Lines													-
Charter School Pmts	1,027,152												1,027,152
Tuition													-
Audit Services													-
Legal Services													-
Architect/Engr Svcs													-
Neg/Labor Consltg													-
Managemnt Svcs													-
Data/Tech Svcs													-
Election Services													-
Other Gen Prof Svcs	40,537												40,537
Total	1,318,821	-	-	-	-	-	-	-	-	-	-	-	1,318,821

For Reference

Only:

Less Transportation	(77)	-	-	-	-	-	-	-	-	-	-	-	-
Charter Sch Pmts	(1,027,152)	-	-	-	-	-	-	-	-	-	-	-	-

Purchased Services	291,593	-	-	-	-	-	-	-	-	-	-	-	A
---------------------------	----------------	---	---	---	---	---	---	---	---	---	---	---	----------

Notes:

A: Removing Transportation & Charter Payments with their irregular payment patterns from the totals smooths the monthly totals for comparison purposes. For Reference Only.

LINCOLN COUNTY SCHOOL DISTRICT

	Budget	Encumb'd	YTD Actual	Remaining
Special Revenues & Grants (200-285 & 900-994)				
Revenues:				
Local	2,644,752		100	2,644,652
Intermediate				
State	4,226,536			4,226,536
Federal	8,116,673			8,116,673
Fund Tfrs/Asset Sales				0
Beg. Fund Balance *	2,946,543		2,336,745	609,798
Total Revenues	17,934,504		2,336,845	15,597,659
Expenditures:				
Instruction	5,390,737	2,471,754	16,894	2,902,089
Support Services	7,811,049	1,623,032	47,404	6,140,614
Enterprise	883,134	283,688	6,916	592,530
Facilities Acq & Const	3,849,584			3,849,584
End Fund Bal/Tfrs				0
Total Expenditures	17,934,504	4,378,473	71,214	13,484,817
Fund Balance			2,265,631	***
Indigenous Peoples (286)				
Revenues:				
Local				
Fund Tfrs/Asset Sales				0
Beg. Fund Balance *	86,279		186,279	(100,000)
Total Revenues	86,279	0	186,279	(100,000)
Expenditures:				
Instruction	86,279	17,680		68,599
Support Services				0
End Fund Balance				0
Total Expenditures	86,279	17,680	0	68,599
Fund Balance			186,279	
Less Encumbered			17,680	
Available for Expenditure			168,599	
Musical Instruments (287)				
Revenues:				
Transfers				0
Beg. Fund Balance *	433,661		533,656	(99,995)
Total Revenues	433,661		533,656	(99,995)
Expenditures:				
Instruction	393,000			393,000
Support Services	40,661			40,661
End Fund Balance				0
Total Expenditures	433,661	0	0	433,661
Fund Balance			533,656	
Less Encumbered			0	
Available for Expenditure			533,656	

* Beginning Fund Balances are Unaudited

** Fund Balances do NOT include encumbered expenditures

*** Reimbursement Basis Grants, revenue received after funds expended, negative or low fund balance is normal

2025-26 SPECIAL REVENUE FUNDS FINANCIAL STATEMENTS -UNAUDITED

	Budget	Encumb'd	YTD Actual	Remaining
Pre-School Promise (288)				
Revenues:				
State	563,400			563,400
Beg. Fund Balance*			0	0
Total Revenues	563,400		0	563,400
Expenditures:				
Instruction	528,104	315,763		212,341
Support Services	35,296	12,772	1,161	21,363
Enterprise				0
Facilities Acq & Const				
End Fund Balance				
Total Expenditures	563,400	328,535	1,161	233,704
Fund Balance			(1,161)	***
Student Investment Account (289/989)				
Revenues:				
State	5,571,216			5,571,216
Beg. Fund Balance*			0	0
Total Revenues	5,571,216		0	5,571,216
Expenditures:				
Instruction	2,539,308	1,706,626		832,682
Support Services	2,776,748	2,131,188	13,974	631,586
Enterprise	255,160			255,160
Facilities Acq & Const				0
End Fund Balance				
Total Expenditures	5,571,216	3,837,814	13,974	1,719,428
Fund Balance			(13,974)	***
Curriculum (290)				
Revenues:				
Local	80,000			80,000
Transfers	500,000			500,000
Beg. Fund Balance*	4,440,952		4,889,395	(448,443)
Total Revenues	5,020,952		4,889,395	131,557
Expenditures:				
Instruction	1,098,000	48,940	385,179	663,881
Support Services				0
Contingency	4,922,952			4,922,952
End Fund Balance				
Total Expenditures	6,020,952	48,940	385,179	5,586,833
Fund Balance			4,504,216	
Less Encumbered			0	
Available for Expenditure			4,504,216	

	Budget	Encumb'd	YTD Actual	Remaining
Small Schools Grant (291) WHS & Toledo Jr/Sr HS				
Revenues:				
Local				0
State	72,519			72,519
Beg. Fund Balance *	205,142		180,422	24,720
Total Revenues	277,661		180,422	97,239
Expenditures:				
Instruction	180,216			180,216
Support Services	24,926	6,300		18,626
Enterprise				0
Facilities Acq & Const				
Conting/End Fund Bal	72,519			72,519
Total Expenditures	277,661	6,300	0	271,361
Fund Balance			180,422	
Less Encumbered			6,300	
Available for Expenditure			174,122	
High School Success (292)				
Revenues:				
State	1,552,634			1,552,634
Beg. Fund Balance *			0	0
Total Revenues	1,552,634		0	1,552,634
Expenditures:				
Instruction	783,030	384,533	2,083	396,414
Support Services	769,604	362,892		406,712
Facilities Acq & Const				0
End Fund Balance				
Total Expenditures	1,552,634	747,425	2,083	803,126
Fund Balance			(2,083)	***
Building Maintenance (293)				
Revenues:				
Local	50,000		232	49,768
State				
Federal				
Fund Tfrs/Asset Sales				0
Beg. Fund Balance *	2,185,005		2,188,861	(3,856)
Total Revenues	2,235,005		2,189,093	45,912
Expenditures:				
Instruction	375,000			375,000
Support Services	675,000	6,330	37,030	631,640
Enterprise				
Facilities Acq & Const	1,185,005	504	24,544	1,159,958
End Fund Bal/Tfrs				
Total Expenditures	2,235,005	6,834	61,573	2,166,598
Fund Balance			2,127,520	
Less Encumbered			6,834	
Available for Expenditure			2,120,686	

LINCOLN COUNTY SCHOOL DISTRICT

	Budget	Encumb'd	YTD Actual	Remaining
Food Services (294)				
Revenues:				
Local	269,150		20	269,130
State	125,000		2,305	122,695
Federal	3,326,636			3,326,636
Fund Tfrs/Asset Sales				0
Beg. Fund Balance *	100,000		233,332	(133,332)
Total Revenues	3,820,786		235,657	3,585,129
Expenditures:				
Instruction	68,210	91,039	7,930	(30,758)
Support Services	37,724	34,394	3,127	203
Enterprise	3,714,852	123,372	19,245	3,572,234
Facilities Acq & Const				0
End Fund Balance				0
Total Expenditures	3,820,786	248,805	30,302	3,541,679
Fund Balance			205,356	***

Student Activities (295)				
Revenues:				
Local	1,380,723		8,540	1,372,183
Beg. Fund Balance *	1,500,000		1,286,555	213,445
Total Revenues	2,880,723		1,295,095	1,585,628
Expenditures:				
Instruction	1,500,723	22,814	179	1,477,730
Support Services	110,000			110,000
Enterprise	100,000			100,000
Contingency	1,170,000			1,170,000
Total Expenditures	2,880,723	22,814	179	2,857,730
Fund Balance			1,294,916	
Less Encumbered			22,814	
Available for Expenditure			1,272,102	

Outdoor School for All (296)				
Revenues:				
State	327,689			327,689
Total Revenues	327,689		0	327,689
Expenditures:				
Instruction	306,018			306,018
Support Services	21,671			21,671
Total Expenditures	327,689	0	0	327,689
Fund Balance			0	***

ODE Facilities Grants (297)				
Revenues:				
State Sources				0
Total Revenues	0	0	0	0
Expenditures:				
Support Services				0
Total Expenditures	0	0	0	0
Fund Balance				

* Beginning Fund Balances are Unaudited

** Fund Balances do NOT include encumbered expenditures

*** Reimbursement Basis Grants, revenue received after funds expended, negative or low fund balance is normal

2025-26 SPECIAL REVENUE FUNDS FINANCIAL STATEMENTS -UNAUDITED

	Budget	Encumb'd	YTD Actual	Remaining
Technology (298)				
Revenues:				
Local	20,515			20,350
Federal			165	
Transfers	500,000			500,000
Beg. Fund Balance*	4,475,000		4,218,788	256,212
Total Revenues	4,995,515		4,218,953	776,562
Expenditures:				
Instruction	334,000			334,000
Support Services	463,989	64,159	14,286	385,544
Contingency	1,000,000			1,000,000
End Fund Balance	3,197,526			3,197,526
Total Expenditures	4,995,515	64,159	14,286	4,917,070
Fund Balance			4,204,667	
Less Encumbered			64,159	
Available for Expenditure			4,140,508	

Vehicle Replacement (299)				
Revenues:				
Local	128,500			128,500
Sale of Assets				0
Beg. Fund Balance *	96,557		121,884	(25,327)
Total Revenues	225,057		121,884	103,173
Expenditures:				
Support Services	225,057		55,348	169,709
End Fund Balance				
Total Expenditures	225,057	0	55,348	169,709
Fund Balance			66,536	
Less Encumbered			0	
Available for Expenditure			66,536	

PERS Bonds Debt Service (320)				
Revenues:				
Local	4,850,636		89,665	4,760,971
Beg. Fund Balance *	7,162,566		8,810,481	(1,647,915)
Total Revenues	12,013,202		8,900,146	3,113,056
Expenditures:				
Debt Service	6,167,240			6,167,240
End Fund Balance	5,845,962			5,845,962
Total Expenditures	12,013,202	0	0	12,013,202
Fund Balance			8,900,146	

GO Bonds Debt Service (330 & 331)				
Revenues:				
Local	6,179,420			6,179,420
Transfers	6,695,000			6,695,000
Beg. Fund Balance *	8,862,585		9,444,607	(582,022)
Total Revenues	21,737,005		9,444,607	12,292,398
Expenditures:				
Debt Service	15,042,000			15,042,000
Transfers	6,695,000			6,695,000
End Fund Balance				0
Total Expenditures	21,737,000	0	0	21,737,000
Fund Balance	7		9,444,607	

	Budget	Encumb'd	YTD Actual	Remaining
Capital Construction Fund (405)				
Revenues:				
Local	620,000			620,000
Beg. Fund Balance *	1,944,505		1,868,313	76,192
Total Revenues	2,564,505		1,868,313	696,192
Expenditures:				
Support Services	510,000	42,999		467,001
Facilities Acq & Const	2,054,505	722,324	5,757	1,326,424
End Fund Balance				
Total Expenditures	2,564,505	765,323	5,757	1,793,425
Fund Balance			1,862,556	
Less Encumbered			765,323	
Available for Expenditure			1,097,233	

Future Property Purchases Reserve (420)				
Revenues:				
Local	25,000			25,000
Fund Tfrs/Asset Sales				
Beg. Fund Balance *	1,156,355		1,178,110	(21,755)
Total Revenues	1,181,355		1,178,110	3,245
Expenditures:				
Facilities Acq & Const	1,181,350			1,181,350
Total Expenditures	1,181,350			1,181,350
Fund Balance			1,178,110	

Dental/Vision Self Insurance (610)				
Revenues:				
Local	1,011,583		12,694	998,889
Beg. Fund Balance *	1,356,628		1,331,229	25,399
Total Revenues	2,368,211		1,343,923	1,024,288
Expenditures:				
Support Services	988,107		83,289	904,818
Contingency	1,380,104			1,380,104
Total Expenditures	2,368,211		83,289	2,284,922
Fund Balance			1,260,634	
Less Encumbered			0	
Available for Expenditure			1,260,634	

District Medical Group HRA (620)				
Revenues:				
Local	910,000		4,153	905,847
Beg. Fund Balance	3,217,270		3,426,177	(208,907)
Total Revenues	4,127,270		3,430,330	696,940
Expenditures:				
Support Services	1,114,655		49,092	1,065,563
End Fund Balance	3,012,615			3,012,615
Total Expenditures	4,127,270	0	49,092	4,078,178
Fund Balance			3,381,238	
Less Encumbered			0	
Available for Expenditure			3,381,238	

LINCOLN COUNTY SCHOOL DISTRICT
Bills & Claims Over \$25,000 - All Funds
2024-25 Fiscal Year
JUNE 2025

Date	Payee	Description	Amount
6/6/2025	WRIGHT PUBLIC AFFAIRS LLC	BOND COMMUNICATIONS CONSULTANT	\$ 52,637.93
6/6/2025	SEIDLITZ EDUCATION	PROFESSIONAL DEVELOPMENT -ELL	\$ 109,400.00
6/6/2025	OREGON COAST COMMUNITY COLLEGE	WELDING, NURSING, CS, EARLY COLLEGE & DUAL CR	\$ 144,305.00
6/6/2025	SODEXO, INC & AFFILIATES (CUST)	CUSTODIAL CONTRACT 24-25	\$ 192,332.49
6/13/2025	MANCHESTER GRAND HYATT HOTEL	AVID-STAFF DEVELOPMENT	\$ 66,363.00
6/13/2025	LATHAM CENTERS, INC.	TUITION-SPECIAL ED OUT OF STATE PLACEMENT	\$ 29,727.76
6/13/2025	COYLE OUTSIDE LLC	OUTDOOR SCHOOL-TAFT ELEMENTARY	\$ 33,484.00
6/13/2025	EDDYVILLE CHARTER SCHOOL	24-25 SSF PAYMENTS	\$ 29,953.90
6/13/2025	FIRST STUDENT, INC.	STUDENT TRANSPORTATION	\$ 657,261.84
6/17/2025	STAGECRAFT INDUSTRIES, INC	BOND - STAGE CURTAIN & INSTALLATION	\$ 43,389.00
6/20/2025	UNIVERSITY OF WEST FLORIDA	GROW YOUR OWN - TUITION	\$ 27,000.00
6/20/2025	SUTTLE LAKE CAMP	OUTDOOR SCHOOL-NMS	\$ 37,914.00
6/20/2025	SODEXO, INC & AFFILIATES (CAFE)	MONTHLY CONTRACT SERVICES	\$ 324,316.54
6/20/2025	SAVVAS LEARNING COMPANY LLC	SCIENCE CURRICULUM	\$ 110,850.64
6/20/2025	EDDYVILLE CHARTER SCHOOL	TIMBER PROCEEDS - CLEARING PROPERTY	\$ 30,841.95
6/27/2025	BUILDERS FIRST SOURCE	BOND-CVH ROOFING	\$ 39,775.00
6/27/2025	SILETZ VALLEY CHARTER SCHOOL	TITLE I REIMBURSEMENT	\$ 62,102.57

LINCOLN COUNTY SCHOOL DISTRICT
Bills & Claims Over \$25,000 - All Funds
2024-25 Fiscal Year
JULY 2025

Date	Payee	Description	Amount
7/3/2025	EDDYVILLE CHARTER SCHOOL	SIA & TITLE VI REIMBURSEMENT	\$ 63,274.87
7/3/2025	SILETZ VALLEY CHARTER SCHOOL	21ST CLC & TITLE I REIMBURSEMENT	\$ 41,224.85
7/10/2025	NORTHWEST TEXTBOOK DEPOSITORY	READING CURRICULUM	\$ 997,882.35
7/10/2025	LATHAM CENTERS, INC.	MONTHLY TUITUION-OUT OF STATE SPECIAL ED	\$ 28,768.80
7/10/2025	EDNETICS	CLOUD NETWORK SOFTWARE	\$ 27,534.78
7/10/2025	APPTEGY INC	WEBSITE & COMMUNICATION SOFTWARE	\$ 42,510.00
7/11/2025	DELL MARKETING, LP	STUDENT CHROMEBOOKS	\$ 241,717.87
7/11/2025	FIRST STUDENT, INC.	STUDENT TRANSPORTATION	\$ 325,239.93
7/11/2025	SILETZ VALLEY CHARTER SCHOOL	CSI/TSI & TITLE I REIMBURSEMENT	\$ 80,779.85
7/18/2025	SODEXO, INC & AFFILIATES (CAFE)	MONTHLY CONTRACT SERVICES	\$ 146,522.42
7/18/2025	BUILDERS FIRST SOURCE	BOND-ROOFING FOR CVH	\$ 30,004.80
7/25/2025	FIRST STUDENT, INC.	STUDENT TRANSPORTATION	\$ 39,038.41

LINCOLN COUNTY SCHOOL DISTRICT
Bills & Claims Over \$25,000 - All Funds
2025-26 Fiscal Year
JULY 2025

Date	Payee	Description	Amount
7/1/2025	NORTHSIDE FORD TRUCK SALES	TRANSIT CARGO VAN - COURIER	\$ 55,347.63
7/10/2025	PACE	25-26 PROPERTY & LIABILITY INSURANCE	\$ 1,090,552.00
7/18/2025	SODEXO, INC & AFFILIATES (CUST)	MONTHLY CONTRACT SERVICES	\$ 197,294.67
7/30/2025	EDDYVILLE CHARTER SCHOOL	25-26 SSF PAYMENTS-JULY (DOUBLE PMT)	\$ 549,736.59
7/30/2025	SILETZ VALLEY CHARTER SCHOOL	25-26 SSF PAYMENTS-JULY (DOUBLE PMT)	\$ 452,162.27
7/31/2025	WISEWOODWORKS & DESIGN LLC	GYM FLOOR REFINISHING	\$ 34,204.80
7/31/2025	STUTZMAN & KROPF CONTR. INC	BOND-REMOVAL OF ROOF LABOR-CVH	\$ 43,394.40
7/31/2025	RK CONSTRUCTION	CONCRETE RETAINING WALL-NHS	\$ 38,550.00
7/31/2025	OREGON ABATEMENT LLC	BOND-TAES CARPET REMOVAL AND DISPOSAL	\$ 59,870.00
7/31/2025	JERRY PRATER CONSTRUCTION, INC	BOND-ROOFING LABOR-CVH	\$ 104,793.00
7/31/2025	DISCOVERY EDUCATION INC	CURRICULUM-ELEMENTARY SCIENCE	\$ 385,179.00
7/31/2025	COPELAND LUMBER YARDS, INC	ROOFING AND BUILDING MATERIALS	\$ 35,582.49
7/31/2025	CARPET ONE FLOOR & HOME	BOND-CARPET FOR TAHS, SCE, TAES, TOES	\$ 52,708.98
7/31/2025	BROWN & BROWN NORTHWEST	25/26 SVC FEE, EXCESS CYBER & SAM COVERAGE	\$ 136,719.00

**LINCOLN COUNTY SCHOOL DISTRICT
INVESTMENT REPORT
July 31, 2025**

Oregon State Treasury - Local Government Investment Pool	
Beginning Balance	\$ 40,009,685
Additions	3,324,670
Reductions	4,843,852
Ending Balance	\$ 38,490,503

Oregon State Treasury - Local Government Investment Pool - 2002 PERS Bonds	
Beginning Balance	\$ 90,139
Additions	491,640
Reductions	0
Ending Balance	\$ 581,780

Oregon State Treasury - Local Government Investment Pool - 2003 PERS Bonds	
Beginning Balance	\$ 101,132
Additions	559,977
Reductions	0
Ending Balance	\$ 661,109

Oregon Coast Bank - Money Market Account	
Beginning Balance	\$ 9,814,821
Additions	7,047,266
Reductions	4,250,000
Ending Balance	\$ 12,612,087

Oregon Coast Bank - 9 Month Time CD (Fund 331 QSCB Sinking Fund)	
3.94%	
Beginning Balance	\$ 1,881,199
Additions	
Reductions	-
Ending Balance	\$ 1,881,199

Monthly Totals	
Beginning Balance	\$ 51,896,977
Additions	\$ 11,423,553
Reductions	\$ 9,093,852
Ending Balance	\$ 54,226,677

<u>Interest Rates</u>	<u>May</u>	<u>Jun</u>	<u>July</u>
LGIP	4.60%	4.60%	4.60%
Oregon Coast Bank	4.65%	4.65%	4.65%

5.b. First Student Report (Written)

Lincoln County School District Board Meeting General Session, August 12, 2025

Date: August 7, 2025

Dear: LCSD School Board & Transportation Leadership,

We're pleased to provide you with an update on activities at our location. This month's report includes the status of driver staffing and overall updates on your student transportation services. With the new school year comes a fresh new look. I hope you enjoy this version of the report. Your feedback is always welcome.



Driver staffing

We are working diligently to increase the applicant flow through recruiting campaigns.

- FY 26 Wages: \$22.45 – \$27.91
- Hiring Bonuses of \$3500 for CDL S/P endorsed drivers
- Hiring Bonuses of \$2000 for non-CDL S/P endorsed drivers
- Paid Training
- \$500 Employee Referral Bonus

The data on the left represents driver availability and route count based on student registrations and drivers intentions to return. At this point we anticipate that we will need at least two OOT drivers to cover start-up routes. Note that this data will change as we get closer to school start.



Recruiting

Our recruiting efforts have been successful. Since the end of SY 24/25, we received approximately 50 applications. We currently have 20 candidates in the pipeline at varying stages. As candidates complete their training and receive their qualifications, OOT drivers will be dismissed to their home locations. Depending on the success rate of current candidates, we hope to bring back combined routes to lower student load counts and route lengths.

We encountered a few hiring issues due to the closure of South Beach Security and Samaritan Health currently not providing DOT Physical & Pre-employment Drug Screening services. We have found alternative ways to move candidates through the federal and state requirements

Route Count	56
GenEd	35
SpEd	12
Type 10	9
Driver Staffing Goal	63
Drivers Assigned to a Route	56
Cover Drivers	6
Borrowed Drivers	0
Total Drivers On Hand	40
<small>Excluding staff or borrowed drivers</small>	
CDL	42
Type 10	8
Casual Drivers (limited route availability)	(8)
Over/(Short) for Route Coverage	-6
Drivers in Training/Testing	6
Apps as of 08/08/2025	8
Permit Pending	6
Total # in Training (Classroom)	3
Behind-the-Wheel Training	3
Leave/Unavailable	0



Customer issues/ resolutions

- **Driver Shortage:**
 - We anticipate the addition of several drivers over the next two months, which will help with driver shortage.
 - FirstAlt is an opportunity that can help us with the transportation of students in various programs (HELP, MV) and students with special needs. A meeting with Dr. Tolan and Rich Belloni is set for 08/15/2025 to discuss this option to help with high student load counts and route lengths.



Noteworthy Successes

- This summer, our recruiting efforts have led to record high numbers of applications. We will work diligently with our team to provide hiring experience that is pleasant and successful for everyone who chooses to become a vital part of our community.
- Our wonderful technicians have completed the preventative and annual maintenance on the entire fleet. Cameras and radios are being tested to make sure they are ready for the new school year.
- Our LCSD Fleet is getting older, and we are starting to replace vehicles that are aging out. This summer we received three brand-new Type 20 vehicles and one brand-new Type C bus with Wheelchair Lift. We are currently in the process of getting these vehicles state legal for student transportation.
- With the promotion of Brenda Porter from Dispatcher to Location Safety Manager, we needed to hire a new dispatcher. I am proud to share that we were able to hire from within. Jason Caldwell has been using the summer to learn about coordinating trips, routing and driver management. He is doing great, and I am sure that he will continue to prove his worth as a member of operations.



Technology Updates

- **First Planning Solutions** – Routing Specialists – Already in place.
- **R2X**- Route Change Request Tool- Utilized by district staff to request changes to a student's scheduled pick-up or drop-off location/time.
- **First View District Dashboard and Parent Tracking App**- During the summer, FirstView was upgraded. Users of the old platform were notified about the upgrade and how to switch over to the new dashboard that has become more intuitive and user friendly. As we get closer to route completion, parents will receive detailed instructions on how to switch to the updated ParentApp. As always, we will be available to help with any issues that may arise.
- **Driver Hub** – Driver turn-by-turn directions and onboard job aid.



Routing updates

- After a few technical adjustments to data transfer from Synergy to Versatrans, student registrations are populating in our routing system, and our routers are in full swing of assigning students to their transportation plans.

- This year, Vince Dye was able to add multiple columns for parents to list authorized persons, so our transportation team can quickly assist drivers with identifying whether a person is allowed to pick up a student from the bus. This adds a layer of protection for our students and our employees.



Latest news

- First Student launched the HALO Transportation Platform. Watch the video [here](#), or read more at Ed Tech Innovation Hub [here](#).
- First Student surpasses 5 million miles driven in electric school buses. Watch the video [here](#), or read more at School Bus Fleet magazine [here](#)



Important dates

- 08/13/2025-Chili Cook-off in Toledo. An employee favorite: cooking and savoring good food!
- 08/18/2025-First Student Kick-off Meeting. Starts at 9:00AM
- 08/19-29/2025-Bus Olympics: Employees complete composites, training & dry-runs.
- 08/25/2025-**SVS & ECS School Start**
- 09/02/2025-LCSD School Start

5.c. Custodial Services Report



SODEXO & LINCOLN COUNTY SCHOOL DISTRICT

END OF THE MONTH REPORT- CUSTODIAL

SUMMER 2025

SUMMER HIGHLIGHTS

- Bond passing???? What did that look like for custodial??
- Summer School
- Modified schedules
- Note worthy: CVH, Sam Case & Newport Middle school.












CHALLENGES

Project planning around FM and Data projects.

The Heat in some areas! (long dry times)

Supporting school staff while staying on projects to complete school by Sept. 1st

SAFETY

 Injuries/Incidents: 1 for July & Aug. YTD 5 (1 non-recordable, 2 recordable and 2 medical emergency)



Loss Time: 0



Safe Schools: will be completed by end of August.



3 Checks for Safety: 1.)- Do I know how to perform the task? 2.) Do I have the correct tools/PPE? 3.) Is my environment safe? (answer No to any of these questions then stop and call a manager!)



Monthly Safety training: proper lifting techniques

5.d. Food Services Report (Written)

5.e. Nutrition Services Report

THE MONTHLY FEED - JULY/AUGUST 2025

jamie.nicholson@lincoln.k12.or.us
 sara.gibson@lincoln.k12.or.us
 patty.graves@lincoln.k12.or.us
 rebecca.smith@lincoln.k12.or.us



Community Partners Make a Difference

Renee Johnson, founder of the nonprofit Grow Lincoln County, has been in the background supporting our garden program for over 5 years. With her support and knowledge, LCSD Nutrition Services has successfully been awarded grants and received much needed supplies for our school gardens. This summer, Renee secured funding for six paid student intern positions and two support staff to work beside our own Garden Coordinator Sara Gibson. These students have a passion for horticulture and are learning real, hands-on life skills they can use in the future. Pictured below is the build site located at Toledo Jr/Sr high where a high tunnel greenhouse is under construction for year round growing of fresh produce for our school meals! This will also double as an outdoor classroom for both middle and high school students.



growlincolncounty.org



Interns: Aurora, Betty, Braxton, Gwynn, Ivy, and Justin.
 Staff: Corrina and Scott



25/26 LCSD CEP Data

Site Name	Total Identified Students	Total students	Identified Student Percentage (ISP)	Individual Site's Free Claiming Percentage
Crestview Heights School	156	251	62.15%	99.44%
Eddyville Charter School	89	203	43.84%	70.14%
Newport High School	279	636	43.87%	70.19%
Newport Middle School	215	416	51.68%	82.69%
Oceanlake Elementary	150	233	64.38%	100.00%
Sam Case Elementary	213	357	59.66%	95.46%
Taft Elementary School	289	455	63.52%	100.00%
Taft High School	427	740	57.70%	92.32%
Toledo Elementary School	195	316	61.71%	98.74%
Toledo Senior High School	144	266	54.14%	86.62%
Waldport High School	147	278	52.88%	84.61%
Yaquina View Elementary	170	265	64.15%	100.00%
District Wide	2474	4416	56.02%	89.63%

Total identified students = students participating in SNAP, McKinney Vento, Migrant, Medicaid or in Foster care.

Total students = school enrollment as of 04/01/2025

ISP = The % of directly identified students in each school

Claiming % = additional representation for those who are unable/will not to apply for benefits (1.6%)

Free Student Meals Continue for the 2025-26 School Year

Qualifying for the Community Eligibility Program (CEP) **allows all LCSD students one free breakfast and lunch each school day regardless of income.**

District eligibility is determined by identifying the number of students participating in SNAP, McKinney Vento, Migrant, Medicaid or Foster Care programs and adding 1.6% for those who are eligible but did not apply for those benefits. (See table on the left)

Benefits of CEP

- Free breakfast and lunch for **all** LCSD students
- Area Childcare Centers qualify for food programs
- After school program food program eligibility
- Free summer meal eligibility
- Expanded Summer EBT eligibility for families

WHAT'S GROWING ON? -LCSD SCHOOL GARDENS-

Did you know we have our own garden fairy? Some have seen her, many have not. She flutters in quietly in the early hours of the day before most even roll out of bed. She spreads her magic and makes our garden spaces beautiful and

gathers all the yummy things students have been growing. She hauls them all to our kitchens and stores them away for future school lunches that all will enjoy. Next time you are out and about, take a look and you might just catch a glimpse.

Leann Graves-AKA the garden fairy



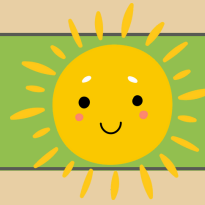
DaNoble House Waldport, OR

For the summer of 2025, LCSD partnered with DaNoble house in south county to help provide free meals to kids. Not only does this help keep our staff employed and kids get free breakfast and lunch over the summer months, but DaNoble house hired four youth support staff to help run the program.

Thank you DaNoble House staff for all you do for your community and your support to fight food insecurity!



Our FSMC partners represented Oregon Sodexo at the annual OASBO conference in Bend showing off the cool things we are doing in school lunch at LCSD.



Q: Why did the sun go to school?
A: To get a little brighter.

Save the date! October 11th 11-6

GARLICPALOOZA



Location - Toledo Memorial Field

Free language assistance, auxiliary aids, and/or accommodations are available upon request. Meal accommodations can also be made to support medical needs as well as some preferential dietary needs.

Please contact your school, Nutrition Services, or email jamie.nicholson@lincoln.k12.or.us

@lcsdschoolgardens

@Lincoln County Oregon School Gardens

- 6. Board Reports
- 7. Superintendent's Report
 - 7.a. Siletz Valley Charter School Update
 - 7.b. Continuous Improvement Reporting

**LCSD Continuous Improvement Plan Data Tracking
September 2025**

Academics

- All students will achieve and stay engaged in learning so that each school will increase and maintain the percentage of students at or above benchmark by 5% each year in reading for the next three years and each school will increase and maintain the percentage of students at or above benchmark by 10% each year in math for the next three years.
- Each LCSD high school will improve its 9th-grade on-track data and four-year cohort graduation by 3% each year or reach and maintain 90% over the next three years.

Acadience/ iReady Reading	K	1	2	3	4	5	6	7	8
iReady Math	K	1	2	3	4	5	6	7	8
9th Grade On Track			Graduation Projection			Dual Credit		AP/IB	
3rd Grade Reading SBAC			8th Grade Math SBAC			11th Grade ELA SBAC		11th Grade Math SBAC	

Wellness and Belonging

- Schools will meet the mental and emotional needs of students and families as demonstrated by a 5% increase in regular attendance each year for the next three years or the maintenance of 90% regular attendance (regular attendance is defined as 90% of the students attending 90% of the time each year).

Kindergarten Attendance		District Attendance		Exclusions		
------------------------------------	--	--------------------------------	--	-------------------	--	--

Community Connection

- LCSD will build strong relationships with families and the community as demonstrated by surveys indicating that 75% of staff, students and community members are satisfied with LCSD programs, practices and support.

Family Night Attendance		Conference Attendance		Survey Results		
------------------------------------	--	----------------------------------	--	---------------------------	--	--

LCSD Continuous Improvement Plan Data Tracking

Acadience Reading:	K-6 Updated after district benchmarking is complete
iReady Reading:	7-8 Updated after district benchmarking is complete
iReady Math:	K-8 Updated after district benchmarking is complete
9th Grade-on-Track:	Pulled on the 5th of each month for updating from BAG report
Graduation Projection:	Pulled on the 5th of each month for enrolled Seniors.
AP/IB:	% of students earning HS credit Updated after each Semester
Dual Credit:	% of students earning college credit Updated after each Semester
SBAC Scores:	Annually updated
Kindergarten Attendance:	Updated when the monthly attendance report is released
District Attendance:	Updated when the monthly attendance report is released
Exclusions:	Pulled on the 5th of each month Out-of-school suspensions
Family Night Attendance:	% of LCSD students represented at at least one family night (Numbers submitted should reflect the annual count after each event, only counting families once per year.
Conference Attendance:	% of students who were represented at Fall Conferences % of students who were represented at Spring Conferences
Survey Results:	PBiS Family School Climate Survey updated on the conference cycle

Board Presentations:

Board presentations will include an administrator, teacher, and student demonstrating the work being done to move the dial on one of these data points.

7.c. Cell Phone Policy

Lincoln County School District

Code: **JFCEB**
Adopted: 7/22/14
Revised/Readopted: 6/14/16 (Effective 7/01/16)
Orig. Code(s): JFCEB

1st
Read
8/12/25

Personal Electronic Devices and Social Media** (Student may possess a personal electronic device with certain restrictions)

Student possession or use of personal electronic devices on district property, in district facilities during the school day and while the student is in attendance at district-sponsored activities may be permitted subject to the limitations set forth in this policy and consistent with any additional school rules as may be established by the principal and approved by the superintendent.

A “personal electronic device (PED)” is a device that is capable of electronically communicating, sending, receiving, storing, recording, reproducing and/or displaying information and data.

“Independent communication” means communication that does not require assistance or interpretation by an individual who is not part of the communication but that may require the use or assistance of an electronic device.

Personal electronic devices shall be turned off during instructional or class time or at any other time where such use of the device would cause a disruption of school activities or violate school rules. Personal electronic devices must not be displayed in plain view during prohibited times of use. Devices which have the capability to take photographs or record video or audio shall not be used for such purposes ~~while on district property or while a student is engaged in district-sponsored activities, unless as expressly authorized in advance by the principal or designee.~~ ^{→ during the school day.} Computers, tablets, iPads or similar devices brought to school will be restricted to academic activities and independent communications.

^{Hold over from B.Y.O.D.} ~~If the district implements a curriculum that uses technology, students may be allowed to use their own personal electronic devices to access the curriculum. Students who are allowed to use their own devices to access the curriculum will be granted access to any application or electronic materials when they are available to students who do not use their own devices, or provided free of charge to students who do not use their own devices, for curriculum.~~

A process for responding to a student’s request to use a personal electronic device, including an appeal ^{for a student’s individual needs or a specific educational outcome (e.g. special education, 504, translation, medical).} process if the request is denied, will be provided.

The district will not be liable for personal electronic devices brought to district property and district-sponsored activities.

Students may not access social media websites using district equipment, while on district property or at district-sponsored activities unless the access is approved by a district representative. The district will not be liable for information or comments posted by students on social media websites.

~~Exceptions to the prohibitions set forth in this policy may be made for health, safety or emergency reasons with prior principal or designee approval or when use is provided for in a student’s individualized education program (IEP).~~

Students are subject to disciplinary action up to and including expulsion for using a personal electronic device in any manner that is academically dishonest, ^{or} illegal, ~~or violates the terms of this policy~~¹. A referral to law enforcement officials may also be made. Personal electronic devices brought to district property or used in violation of this policy are subject to confiscation and will be released to the student's parent or property owner, as appropriate.

The superintendent shall ensure that the Board's policy and any subsequent school rules developed by building administrators are reviewed and approved in advance to ensure consistency with this policy and that pertinent provisions of policy and school rules are communicated to staff, students and parents through building handbooks and other means.

END OF POLICY

Legal Reference(s):

[ORS 332.107](#)

[ORS 336.840](#)

Copyrights, 17 U.S.C. §§ 101- 1332; 19 C.F.R. Part 133 (2006).

OSBA citation to be added for Executive order.

¹The taking, disseminating, transferring or sharing of obscene, pornographic or otherwise illegal images or photographs, whether by electronic data transfer or otherwise (commonly called texting, sexting, emailing, etc.) may constitute a crime under state and/or federal law. Any person taking, disseminating, transferring or sharing obscene, pornographic or otherwise illegal images or photographs will be reported to law enforcement and/or other appropriate state or federal agencies.

1st Read
8/12/25

Lincoln County School District

Code: JFCEB-AR
Revised/Reviewed: 8/12/14; 6/14/16 (Effective
7/01/16)
Orig. Code(s): JFCEB-AR

Personal Electronic Devices and Social Media

Students may use and possess personal electronic devices on district grounds subject to the following:

1. Personal electronic devices shall not be used in a manner that disrupts the educational process, school programs or activities, or in a manner that violates law, Board policy, administrative regulation or school rules;
2. Personal electronic devices shall be turned off ^{and stored, as determined by building procedures, during the school day.} during instructional or class time or at any other time ~~where such use of the device would cause a disruption of school activities or violate school rules. The building principal or designee may authorize the use of personal electronic devices for health or safety reasons, or in the event of an emergency situation that involves imminent physical danger. Personal electronic devices may be used during the student's lunch break and between classes if authorized by the school principal and/or allowed by school rules. They may not be used at any time in the proximity of any class, school activity or event that may be in session or in progress during these times;~~
3. Devices which have the capability to take photographs or record video or audio shall not be used for such purposes while on district property or while a student is engaged in district-sponsored activities, unless as expressly authorized in advance by the principal or designee;
4. The district will not be liable for loss, theft or damage to personal electronic devices brought to district property or school-sponsored events;
5. Personal electronic devices must not be displayed in plain view during prohibited times of use;
6. Personal electronic devices may be used as academic tools during the school day ~~if authorized by the building principal or designee, if permission is received from the student's teacher, or if provided as a part of a student's individualized education plan (IEP);~~ ^{for a student's individual needs or a specific educational outcome (e.g. special education, 504, translation).}
7. The use of personal electronic devices in any manner that is academically dishonest, contributes to academic dishonesty is strictly prohibited;
8. The use of personal electronic devices in any manner that would violate the confidentiality or privacy rights of another individual is strictly prohibited;
9. Students shall comply with any additional school rules as established by the building principal and classroom rules as approved by the building principal concerning the appropriate use of personal electronic devices;

10. Personal electronic devices used in violation of law, Board policy, administrative regulation or approved school rules will be confiscated, turned into school administration or their designee, and released to the student, parent or property owner, as appropriate;
11. Personal electronic devices used in violation of law, Board policy, administrative regulation or approved school rules may result in disciplinary action up to and including expulsion. A referral to law enforcement officials may also be made;

~~12. Teachers may authorize or deny student use of personal electronic devices as necessary for academic and curricular needs for classes under their supervision;~~

12.13. Student requests to use a personal electronic device shall be made directly to their classroom teacher(s). If denied, students may appeal to their building principal. If the student is not satisfied with the principal's decision, they may appeal the decision using the procedures outlined in Lincoln County School District policy KL-AR (Public Complaints).

for a student's individual needs or a specific educational outcome (e.g. special education, 504, translation, medical)

8. Adoption of the Consent Calendar

8.a. Minutes of the Board

8.b. Human Resources

8.b.1. Personnel Action

Board Agenda — August 12, 2025 — Personnel Action

Licensed Hire (s):

Arlen Pedersen	CTE/Newport High
David West	Grade 6/Taft Elem

Classified Hire (s):

Kim Aughenbaugh	Bond Finance Manager/Compass Center
Anthony Avila	Special Education Teaching Asst II/Taft Elementary
Jason Davis	Information & Records Clerk III-Educational Tutor/Waldport High
MaryAnn Fiscus	Bond Clerk/Compass Center
Haley Hessman	Instructional Assistant/Yaquina View
Jadyn Pope	Special Education Teaching Asst II/Newport High

Coach Hire (s):

Orrin Wallace	Football/Newport Middle School
Kristin Savage	Volleyball/Toledo Jr-Sr High School

Resignation(s):

Crista Adovnik	Kindergarten Teacher Oceanlake	Resignation 8/24/2018 – 6/30/2025
Sabrina Delugach	Grade 6 Teacher Taft Elementary	Resignation 11/1/2021 – 6/30/2025
Barbara Fischer	21 st Century Site Coordinator Crestview Heights	Resignation 10/17/2022 – 6/30/2025

Sarah Gibbs	Music Teacher Toledo Elementary	Resignation 8/28/2020 – 6/30/2025
Nan Hall	Title Teaching Assistant Toledo Elementary	Resignation 9/11/2024 – 6/30/2025
Jesus Hernandez	Advocate Compass Center	Resignation 10/27/2014 – 6/30/2025
Shannon Jones	Special Education Teaching Asst II Newport High School	Resignation 8/30/2024 – 6/30/2025
Kristyna Orlando	21 st Century Teaching Asst Waldport High	Resignation 10/25/2022 – 6/30/2025
Angel Schafer	Health Services Advocate Taft 7-12	Termination 9/3/2019 – 7/8/2025
Heather Sprague	Health Services Advocate Taft 7-12	Resignation 1/6/2025 – 6/30/2025
Heather Wyant	Early Childhood Teaching Asst Crestview Heights	Resignation 9/3/2021 – 6/30/2025

8.c.Policy

8.c.1. Policy Update - KGC/GBK, JFCG/JFCH/JFCI

New policy

KGC/GBK

*= included
new
policy*
Lincoln County School District

Code: **GBK/JFCG/KGC**

Adopted: 10/25/05

Revised/Readopted: 8/12/14; 6/14/16 (Effective 7/01/16)

Orig. Code(s): **GBK/JFCG/KGC**

Prohibited Use, Possession, Sale or Distribution of Tobacco Products and Inhalant Delivery Systems

**take away student language*
The Board ~~recognizes its responsibility to promote the health, welfare and safety of students, staff and others on district property and at school-sponsored activities.~~ The Board ~~wishes to establish~~ a school and working environment that is free of smoke, aerosols and vapors containing inhalants. Student possession, use, distribution or sale of tobacco products or inhalant delivery systems, including any smoking or use of an inhalant delivery device, on district premises, at school-sponsored activities on or off district premises, in district-owned, rented or leased vehicles, on all district grounds, including parking lots or otherwise, while a student is under the jurisdiction of the district, is prohibited. *now in policy JFCG only*

- ✓ Use, distribution or sale of tobacco products or inhalant delivery systems by staff on district property, including parking lots, at district-sponsored events, in district-owned, rented or leased vehicles or otherwise while on duty on or off district premises is prohibited. ✓ Use, distribution or sale of tobacco products or inhalant delivery systems by others on district property, in district vehicles or at district sponsored events on or off district premises, on all district grounds, including parking lots, is prohibited.
- ✓ Staff and/or all others authorized to use any private vehicle to transport district students to school-sponsored activities are prohibited from using tobacco products or inhalant delivery systems in those vehicles while students are under their care.
- ✓ For the purpose of this policy, “tobacco products” is defined to include, but not limited to, any lighted or unlighted cigarette, cigar, pipe, bidi, clove cigarette, and any other smoking product, spit tobacco, also known as smokeless, dip, chew or snuff, in any form. This does not include FDA-approved tobacco products or other therapy products used for the purpose of cessation.
- ✓ For the purpose of this policy “inhalant delivery system” means a device that can be used to deliver nicotine or cannabinoids in the form of a vapor or aerosol to a person inhaling from the device or a component of a device; or a substance in any form sold for the purpose of being vaporized or aerosolized by a device whether the component or substance is sold or not sold separately. This does not include USFDA-approved tobacco products or other therapy products marked and sold solely for the approved purpose.

*needed?
del
icy
25
hik
lude
this*
Replicas or imitations of tobacco products and inhalant delivery systems are prohibited on district grounds (e.g., candy cigarettes, vaporizers, etc.).

Clothing, bags, hats and other personal items used by staff ~~and students~~ to display, promote or advertise tobacco or inhalant delivery system products are prohibited on all district grounds, including parking lots, at school-sponsored activities or in district vehicles. Advertising is prohibited in all school-sponsored publications in all school buildings, on district grounds, including parking lots, and at all school-sponsored

✓ events. District acceptance of gifts or funds from the tobacco products and inhalant delivery systems industries is similarly prohibited. The district will not contract with other public or private alternative schools that allow student use of tobacco products or inhalant delivery systems on campus.

★ Student violations of this policy will lead to disciplinary action up to and including expulsion. Students may also be subject to removal from any or all extracurricular activities and/or denial or forfeiture of school honors or privileges (e.g., valedictorian, salutatorian, student body, class or club office positions, field trips, senior trip, prom, etc.). School and/or community service may be required. A referral to law enforcement may be made. Parents shall be notified of all violations involving their student and action taken by the school.

When considering disciplinary action for a child with disabilities, the district must follow the requirements of Board policy JGDA/JGEA - Discipline of Students with Disabilities, including those involving functional behavioral assessment, change of placement, manifestation determination, and an interim alternative educational setting.

✓ Staff violations of this policy will lead to disciplinary action up to and including dismissal.

✓ Violations by others will result in appropriate sanctions as determined and imposed by the superintendent or the Board.

✓ Information about community resources and/or cessation programs to help staff and students ^{may} will be provided.

★ The district will promote cessation resources and other positive alternatives to discipline. Tobacco use cessation programs may be established at district schools. Attendance or completion of tobacco use cessation programs by students may be allowed as a substitute to, or as a part of student discipline for possession, use, distribution or sale of tobacco products or inhalant delivery systems at the discretion of the building principal. Attendance at cessation programs not offered by the district is voluntary and related costs are the individual responsibility of the staff member, student and his/her parent and private health-care system.

As part of the district's tobacco use prevention activities, the superintendent shall ensure that tobacco use instructional programs as recommended by the Oregon Department of Human Services, Health Services, Tobacco Prevention and Education Program and the Oregon Department of Education are an integral part of its drug and alcohol prevention curriculum. Programs must be integrated within the health education program and age- and developmentally-appropriate instruction provided at every level, pre-kindergarten through grade 12, with particular emphasis on grades six through eight. It is the expectation of the Board that prevention concepts will be integrated into the instruction of other subject areas as practicable.

Staff responsible for teaching prevention will be encouraged to collaborate with agencies and groups that conduct prevention education and to participate in ongoing professional development activities that provide basic knowledge about the effects of use of tobacco products, effective instructional techniques and program-specific activities.

*new policy
lets same
re
not
same
language*

The superintendent shall consult with local officials to promote enforcement of law that prohibits the use or possession of tobacco products or inhalant delivery systems by minors on or off district grounds.

This policy shall be enforced at all times. The superintendent will develop administrative regulations as necessary to implement this policy, including provisions for notification of the district's policy, through such means as student/parent and staff handbooks, newsletters, inclusion on school event programs, signs at appropriate locations; disciplinary consequences; and procedures for filing and handling complaints about violations of the district's policy.

The superintendent shall ensure that the district's prevention program, policies, curricula, training and cessation programs are evaluated at regular intervals. The input of students, staff, parents and others from the community will be encouraged.

END OF POLICY

Legal Reference(s):

ORS 167.400
ORS 332.107
ORS 336.222
ORS 336.227
ORS 339.240
ORS 339.250

ORS 339.883
ORS 431.840
ORS 433.835 to- 433.990

OAR 581-021-0050 to -0075
OAR 581-021-0110

OAR 581-022-0413
OAR 581-053-0230(9)(s)
OAR 581-053-0330(1)(m)
OAR 581-053-0430(12)
OAR 581-053-0531(11)
OAR 581-053-0630

Pro-Children Act of 1994, 20 U.S.C. §§ 6081-6084 (2006).

Cross Reference(s):

JFCG/KGC/GBK - Prohibited Use, Possession, Sale or Distribution of Tobacco Products and Inhalant Delivery Systems
KGC/GBK/JFCG - Prohibited Use, Possession, Sale or Distribution of Tobacco Products and Inhalant Delivery Systems

OSBA Model Sample Policy

Code: KGC/GBK
Adopted:

Prohibited Use, Distribution or Sale of Tobacco Products and Inhalant Delivery Systems (Version 2)

The Board establishes a school and working environment that is free of smoke, aerosols and vapors containing inhalants. The use, distribution or sale of tobacco products or inhalant delivery systems by staff on district property, including parking lots, at district-sponsored events, in district-owned, rented or leased vehicles or otherwise while on duty on or off district premises is prohibited. Use, distribution or sale of tobacco products or inhalant delivery systems by all others on district property, in district vehicles or at district-sponsored events, on or off district premises, on all district grounds, including parking lots, is prohibited. Staff and/or all others authorized to use any private vehicle to transport district students to school-sponsored activities are prohibited from using tobacco products or inhalant delivery systems in those vehicles while students are under their care.

For the purpose of this policy, “tobacco products” is defined to include, but not limited to, any lighted or unlighted cigarette, cigar, pipe, bidi, clove cigarette, and any other smoking product, spit tobacco, also known as smokeless, dip, chew or snuff in any form. This does not include products that are USFDA-approved for sale as a tobacco cessation product or for any other therapeutic purpose, if marketed and sold solely for the approved purpose.

For the purpose of this policy “inhalant delivery system” means a device that can be used to deliver nicotine or cannabinoids in the form of a vapor or aerosol to a person inhaling from the device or a component of a device; or a substance in any form sold for the purpose of being vaporized or aerosolized by a device whether the component or substance is sold or not sold separately. This does not include products that are USFDA-approved for sale as a tobacco cessation product or for any other therapeutic purpose, if marketed and sold solely for the approved purpose.

Clothing, bags, hats and other personal items used by staff to display, promote or advertise tobacco products or inhalant delivery systems are prohibited on all district grounds, including parking lots, at school-sponsored activities or in district vehicles. Advertising is prohibited in all district- or school-sponsored publications, in all school buildings, on district grounds, including parking lots, and at all school-sponsored events. District acceptance of gifts or funds from the tobacco products and inhalant delivery system industries is similarly prohibited. [The district will not contract with other public or private alternative schools that allow the use of tobacco products or inhalant delivery systems on campus.] Staff violations of this policy will lead to disciplinary action up to and including dismissal.

Violations by all others will result in appropriate sanctions as determined and imposed by the superintendent or the Board.

Information about community resources and/or cessation programs to help staff [will] [may] be provided.

The superintendent shall consult with local officials to promote enforcement of law that prohibits the use or possession of tobacco products or inhalant delivery systems by persons under 21 years of age on or off district grounds or at district-sponsored activities.

This policy shall be enforced at all times. The superintendent will develop guidelines as necessary to implement this policy, including provisions for notification of the district's policy, through such means as staff handbooks, newsletters, inclusion on school event programs, signs at appropriate locations; disciplinary consequences; and procedures for filing and handling complaints about violations of the district's policy.

END OF POLICY

Legal Reference(s):

[ORS 332.107](#)
[ORS 336.227](#)
[ORS 339.883](#)
[ORS 431A.175](#)

[ORS 433.835 to -433.990](#)
[OAR 581-021-0110](#)
[OAR 581-053-0015](#)

[OAR 581-053-0230\(9\)\(s\)](#)
[OAR 581-053-0330\(1\)\(m\)](#)
[OAR 581-053-0430\(12\)](#)
[OAR 581-053-0531\(11\)](#)

Pro-Children Act of 1994, 20 U.S.C. §§ 6081-6084 (2012).

Lincoln County School District

Code: JFCH
Adopted: 6/14/16 (Effective 7/01/16)

Alcohol

Paragraph #1 ✓ Consumption, possession or sale of any alcoholic beverage on or about the school premises or at any school-sponsored activity is prohibited.

P#2 ✓ Violation of this policy may result in suspension or expulsion. ✓ Violations occurring at times other than during school hours or school activities on school property may be referred to the proper law enforcement agencies.

don't have his notice District administrators acting on reasonable suspicion may request that students participate in a Breathalyzer screening for alcohol at school or prior to or during a school-sponsored event. If a student refuses, he/she may be subject to school discipline and/or referral to law enforcement officials.

no, its not The consequences for student use, possession or distribution of a controlled substance and/or a dangerous drug or an imitation controlled substance or possession of "drug paraphernalia" are included in the Student Code of Conduct.

END OF POLICY

Legal Reference(s):

ORS 332.107
ORS 336.067
ORS 336.222
ORS 336.227
ORS 339.240

ORS 339.250
OAR 581-021-0050 to -0075
OAR 581-021-0110
OAR 581-022-0413
OAR 581-053-0230(9)(t)

OAR 581-053-0330(1)(n),(o)
OAR 581-053-0430(13),(14)
OAR 581-053-0531(12),(13)
OAR 581-053-0630

Safe and Drug-Free Schools and Communities Act, 20 U.S.C. §§ 7101-7117 (2006).

Cross Reference(s):

JFCI - Substance/Drug Abuse



Lincoln County School District

Code: JFCI
Adopted: 6/14/16 (Effective 7/01/16)

Substance/Drug Abuse**

P#1 ✓
Substance abuse or the possession, use, sale or supply of any unlawful drug, including drug paraphernalia, or any substance purported to be an unlawful drug on or near the district premises or at any school-sponsored activity is prohibited.

The following definitions apply to this policy:

Missing seems OK
“Substance abuse” means the use of any chemical or chemical compound which releases vapors or fumes or substance not otherwise excepted by law, Board policy or administrative regulation, which is toxic, corrosive, an irritant, a strong sensitizer, flammable, combustible, generates or is used to generate pressure, if such chemical or chemical compound, substance or mixture of substances is used in a manner that may cause intoxication, inebriation, stupefaction, personal injury or illness when induced by any means into the human body.

P#10 ✓
An “unlawful drug” means any drug as defined by the Controlled Substances Act including, but not limited to, marijuana, cocaine, opiates, amphetamines and phencyclidine (PCP). As used in this policy, an unlawful drug also means possession, use, sale or supply of prescription and nonprescription drugs in violation of Board policy ~~JHCD - Nonprescription Medication, JHCDA - Prescription Medication~~ and any accompanying administrative regulations.

is this needed?
“Drug paraphernalia” means all equipment, products and materials of any kind which are marketed for the use or designed for the use in manufacturing, compounding, producing, processing, preparing, analyzing, packaging, storing, containing, concealing, injecting, ingesting, inhaling or otherwise inducing a controlled substance or intoxicant into the human body.

P#2 ✓
If possession or use occurred on school grounds or while participating in school-sponsored activities, students will be subject to discipline up to and including expulsion. If possession or use occurred near school grounds, disciplinary action may include removal from any or all extracurricular activities and/or forfeiture of any school honors or privileges (e.g., valedictorian, salutatorian, student body, class or club office positions, senior trip, prom, etc.). Appropriate health and law enforcement agencies may be involved in at least a consultative and investigative capacity. Parents will be notified.

we never do this
District administrators acting on reasonable suspicion may request that students participate in a Breathalyzer screening for alcohol at school or prior to or during a school-sponsored event. If a student refuses, he/she may be subject to school discipline and/or referral to law enforcement officials.

Unlawful delivery of a controlled substance to a student or minor within 1,000 feet of school property is a Class A felony as provided by ORS 475.904.

END OF POLICY

Legal Reference(s):

[ORS 161.605](#)
[ORS 161.625](#)
[ORS 332.107](#)
[ORS 336.067](#)
[ORS 336.222](#)
[ORS 336.227](#)
[ORS 339.240](#)

[ORS 339.250](#)
[ORS Chapter 475](#)

[OAR 581-021-0050 to -0075](#)
[OAR 581-021-0110](#)
[OAR 581-022-0413](#)

[OAR 581-053-0230\(9\)\(s\),\(t\)](#)
[OAR 581-053-0330\(1\)\(n\),\(o\)](#)
[OAR 581-053-0430\(13\),\(14\)](#)
[OAR 581-053-0531\(12\),\(13\)](#)
[OAR 581-053-0630](#)
[OAR 584-020-0040](#)

Controlled Substances Act, 21 U.S.C. § 812; Schedules of Controlled Substances, 21 C.F.R. §§ 1308.11 - 1308.15 (2006).
Safe and Drug-Free Schools and Communities Act, 20 U.S.C. §§ 7101-7117 (2006).

Cross Reference(s):

JFCH - Alcohol

Lincoln County School District

Code: JFCG/KGC/GBK
Adopted: 10/25/05
Revised/Readopted: 8/12/14; 6/14/16 (Effective 7/01/16)
Orig. Code(s): JFCG/KGC/GBK

Prohibited Use, Possession, Sale or Distribution of Tobacco Products and Inhalant Delivery Systems

not in code Policy
~~The Board recognizes its responsibility to promote the health, welfare and safety of students, staff and others on district property and at school-sponsored activities. The Board wishes to establish a school and working environment that is free of smoke, aerosols and vapors containing inhalants.~~ Student possession, use, distribution or sale of tobacco products or inhalant delivery systems, including any smoking or use of an inhalant delivery device, on district premises, at school-sponsored activities on or off district premises, in district-owned, rented or leased vehicles, on all district grounds, including parking lots or otherwise, while a student is under the jurisdiction of the district, is prohibited.

Staff language
Use, distribution or sale of tobacco products or inhalant delivery systems by staff on district property, including parking lots, at district-sponsored events, in district-owned, rented or leased vehicles or otherwise while on duty on or off district premises is prohibited. Use, distribution or sale of tobacco products or inhalant delivery systems by others on district property, in district vehicles or at district sponsored events on or off district premises, on all district grounds, including parking lots, is prohibited. Staff and/or all others authorized to use any private vehicle to transport district students to school-sponsored activities are prohibited from using tobacco products or inhalant delivery systems in those vehicles while students are under their care.

✓ For the purpose of this policy, "tobacco products" is defined to include, but not limited to, any lighted or unlighted cigarette, cigar, pipe, bidi, clove cigarette, and any other smoking product, spit tobacco, also known as smokeless, dip, chew or snuff, in any form. This does not include FDA-approved tobacco products or other therapy products used for the purpose of cessation.

✓ For the purpose of this policy "inhalant delivery system" means a device that can be used to deliver nicotine or cannabinoids in the form of a vapor or aerosol to a person inhaling from the device or a component of a device; or a substance in any form sold for the purpose of being vaporized or aerosolized by a device whether the component or substance is sold or not sold separately. This does not include USFDA-approved tobacco products or other therapy products marked and sold solely for the approved purpose.

✓ Replicas or imitations of tobacco products and inhalant delivery systems are prohibited on district grounds (e.g., candy cigarettes, vaporizers, etc.).

✓ Clothing, bags, hats and other personal items used by staff and students to display, promote or advertise tobacco or inhalant delivery system products are prohibited on all district grounds, including parking lots, at school-sponsored activities or in district vehicles. ~~Advertising is prohibited in all school-sponsored publications in all school buildings, on district grounds, including parking lots, and at all school-sponsored events. District acceptance of gifts or funds from the tobacco products and inhalant delivery systems~~

community language

~~industries is similarly prohibited. The district will not contract with other public or private alternative schools that allow student use of tobacco products or inhalant delivery systems on campus.~~

✓ Student violations of this policy will lead to disciplinary action up to and including expulsion. Students may also be subject to removal from any or all extracurricular activities and/or denial or forfeiture of school honors or privileges (e.g., valedictorian, salutatorian, student body, class or club office positions, field trips, senior trip, prom, etc.). School and/or community service may be required. A referral to law enforcement may be made. Parents shall be notified of all violations involving their student and action taken by the school.

~~When considering disciplinary action for a child with disabilities, the district must follow the requirements of Board policy JGDA/JGEA - Discipline of Students with Disabilities, including those involving functional behavioral assessment, change of placement, manifestation determination, and an interim alternative educational setting.~~

~~Staff violations of this policy will lead to disciplinary action up to and including dismissal.~~ *Staff language*

~~Violations by others will result in appropriate sanctions as determined and imposed by the superintendent or the Board.~~ *community language*

Information about community resources and/or cessation programs to help staff and students will be provided.

The district will promote cessation resources and other positive alternatives to discipline. Tobacco use cessation programs may be established at district schools. Attendance or completion of tobacco use cessation programs by students may be allowed as a substitute to, or as a part of student discipline for possession, use, distribution or sale of tobacco products or inhalant delivery systems at the discretion of the building principal. Attendance at cessation programs not offered by the district is voluntary and related costs are the individual responsibility of the staff member, student and his/her parent and private health-care system.

~~As part of the district's tobacco use prevention activities, the superintendent shall ensure that tobacco use instructional programs as recommended by the Oregon Department of Human Services, Health Services, Tobacco Prevention and Education Program and the Oregon Department of Education are an integral part of its drug and alcohol prevention curriculum. Programs must be integrated within the health education program and age- and developmentally-appropriate instruction provided at every level, pre-kindergarten through grade 12, with particular emphasis on grades six through eight. It is the expectation of the Board that prevention concepts will be integrated into the instruction of other subject areas as practicable.~~

~~Staff responsible for teaching prevention will be encouraged to collaborate with agencies and groups that conduct prevention education and to participate in ongoing professional development activities that provide basic knowledge about the effects of use of tobacco products, effective instructional techniques and program-specific activities.~~

~~The superintendent shall consult with local officials to promote enforcement of law that prohibits the use or possession of tobacco products or inhalant delivery systems by minors on or off district grounds.~~

this is general discipline procedures not included in model policy

not in model policy; this is part of curriculum not discipline

*at in model
policy*

This policy shall be enforced at all times. The superintendent will develop administrative regulations as necessary to implement this policy, including provisions for notification of the district's policy, through such means as student/parent and staff handbooks, newsletters, inclusion on school event programs, signs at appropriate locations; disciplinary consequences; and procedures for filing and handling complaints about violations of the district's policy.

The superintendent shall ensure that the district's prevention program, policies, curricula, training and cessation programs are evaluated at regular intervals. The input of students, staff, parents and others from the community will be encouraged.

END OF POLICY

Legal Reference(s):

[ORS 167.400](#)
[ORS 332.107](#)
[ORS 336.222](#)
[ORS 336.227](#)
[ORS 339.240](#)
[ORS 339.250](#)

[ORS 339.883](#)
[ORS 431.840](#)
[ORS 433.835 to- 433.990](#)

[OAR 581-021-0050 to -0075](#)
[OAR 581-021-0110](#)

[OAR 581-022-0413](#)
[OAR 581-053-0230\(9\)\(s\)](#)
[OAR 581-053-0330\(1\)\(m\)](#)
[OAR 581-053-0430\(12\)](#)
[OAR 581-053-0531\(11\)](#)
[OAR 581-053-0630](#)

Pro-Children Act of 1994, 20 U.S.C. §§ 6081-6084 (2006).

Cross Reference(s):

GBK/JFCG/KGC - Prohibited Use, Possession, Sale or Distribution of Tobacco Products and Inhalant Delivery Systems
KGC/GBK/JFCG - Prohibited Use, Possession, Sale or Distribution of Tobacco Products and Inhalant Delivery Systems

8.c.2. Policy Update - First Read - GCBC/GDBC

Lincoln County School District

Code: GCBC/GDBC
Adopted: 7/09/02
Revised/Readopted: 6/14/16 (Effective 7/01/16)
Orig. Code(s): GCBC/GDBC

District Paid Insurance Coverage

District paid insurance coverage for employees will begin the first day of the month after a complete payroll is run on the individual. If an employee is not full-time, their insurance will be prorated as per the working agreement.

District paid insurance coverage for any person leaving the employment of the district shall end on the last day of the month or the date specified on the insurance contract, following the month in which the employee receives his/her final check, ~~except for those teachers who retire under the provisions of Article 24 of the current agreement between the Lincoln County Education Association and the Lincoln County School District Board of Directors.~~

District-paid insurance coverage for any employee on an unpaid leave of absence, other than an OFLA, ~~or~~ FMLA leave, ~~or~~ PLO shall end on the last day of the month in which the unpaid leave begins, and will be reinstated on the first of the month immediately following the employee's return to work.

Employees eligible for insurance benefits at the close of the school year and who have been rehired by the district for eligible employment the following year will be considered eligible during the interim.

The superintendent will develop administrative regulations, as necessary, to implement this policy.

END OF POLICY

Legal Reference(s):

[ORS 332.507](#)

Consolidated Omnibus Budget Reconciliation Act of 1985, 29 U.S.C. §§ 1161-1169 (2006).
Employee Retirement Income Security Act of 1974, 29 U.S. C. §§ 1001-1461.
Tanner v. OHSU, 157 Or. App. 502 (1998).

9. Action Items

9.a. Facilities & Maintenance/Transportation/Food Services

9.a.1. Architect and Engineering

**LINCOLN COUNTY SCHOOL DISTRICT
REGULAR BOARD MEETING AGENDA
08/12/2025**

TOPIC: Architectural and Engineering

PREPARED BY: Annette Brooks-Flatt

WILL BE PRESENTED BY: Rich Belloni

TYPE OF ITEM: Consent Information Discussion Decision

DESCRIPTION OF AGENDA ITEM:

Lincoln County School District sought Proposals from Oregon Registered Architects to provide architectural and engineering services related to miscellaneous projects involving new construction, and the renovation and maintenance of existing educational facilities in Lincoln City, Newport, Toledo, Waldport, Oregon.

Architect Committee interviewed
Oh Planning+Design, Architecture
Pivot Architecture
Integrus Architect
Glas Architects

Not interview
Arkitek Design & Architecture
Crow/Cray & Associates Inc.

The Architect Committee recommends hiring Glas Architects.
Appeal 7-Day Process will beginning on July 23, 2025
Architect Committee will ask the School Board to vote on the award on 8/12/202

SUPERINTENDENT'S RECOMMENDATION:

ADDITIONAL MATERIAL Attached: Yes No Available: Yes No

9.a.2. Sole Source Vendor

Single Source Vendor

Advertised in the Daily Journal Commerce (DJC) 7/11/2025

Huser Integrated Technologies – Access Control

ORS 125-247-0275(2)(a)

Compatibility. The efficient utilization of existing Supplies and Services requires the acquisition of compatible Supplies and Services from only one source. For example, compatibility may be implicated when: Supplies are required to directly interface with or attach to equipment of the same manufacturer and no other manufacturer's Supplies will correctly interface with existing equipment; or when Services such as maintenance, warranty, project management, or systems integration are required to interface or integrate with existing Supplies and Services

1) exemption is unlikely to encourage favoritism; and

2) will result in substantial cost savings to the district (or other public benefits e.g., efficiency, unique expertise, or public safety)

Smeed Communications Services – Phones/Intercom

ORS 125-247-0275(2)(a)

Compatibility. The efficient utilization of existing Supplies and Services requires the acquisition of compatible Supplies and Services from only one source. For example, compatibility may be implicated when: Supplies are required to directly interface with or attach to equipment of the same manufacturer and no other manufacturer's Supplies will correctly interface with existing equipment; or when Services such as maintenance, warranty, project management, or systems integration are required to interface or integrate with existing Supplies and Services

1) exemption is unlikely to encourage favoritism; and

2) will result in substantial cost savings to the district (or other public benefits e.g., efficiency, unique expertise, or public safety)

Synergy Security Solutions – Fire & Security

ORS 125-247-0275(2)(a)

Compatibility. The efficient utilization of existing Supplies and Services requires the acquisition of compatible Supplies and Services from only one source. For example, compatibility may be implicated when: Supplies are required to directly interface with or attach to equipment of the same manufacturer and no other manufacturer's Supplies will correctly interface with existing equipment; or when Services such as maintenance, warranty, project management, or systems integration are required to interface or integrate with existing Supplies and Services

- 1) exemption is unlikely to encourage favoritism; and
- 2) will result in substantial cost savings to the district (or other public benefits e.g., efficiency, unique expertise, or public safety)

Omlid & Swinney Fire Protection & Security – Fire Suppression

ORS 125-247-0275(2)(a)

Compatibility. The efficient utilization of existing Supplies and Services requires the acquisition of compatible Supplies and Services from only one source. For example, compatibility may be implicated when: Supplies are required to directly interface with or attach to equipment of the same manufacturer and no other manufacturer's Supplies will correctly interface with existing equipment; or when Services such as maintenance, warranty, project management, or systems integration are required to interface or integrate with existing Supplies and Services

- 1) exemption is unlikely to encourage favoritism; and
- 2) will result in substantial cost savings to the district (or other public benefits e.g., efficiency, unique expertise, or public safety)

Clima-Tech – HVAC Controls

ORS 125-247-0275(2)(a)

Compatibility. The efficient utilization of existing Supplies and Services requires the acquisition of compatible Supplies and Services from only one source. For example, compatibility may be implicated when: Supplies are required to directly interface with or attach to equipment of the same manufacturer and no other manufacturer's Supplies will correctly interface with existing equipment; or when Services such as maintenance, warranty, project management, or systems integration are required to interface or integrate with existing Supplies and Services

- 1) exemption is unlikely to encourage favoritism; and
- 2) will result in substantial cost savings to the district (or other public benefits e.g., efficiency, unique expertise, or public safety)

Oregon Lock & Access, Inc – Medco Locks & Keys

ORS 125-247-0275(2)(a)

Compatibility. The efficient utilization of existing Supplies and Services requires the acquisition of compatible Supplies and Services from only one source. For example, compatibility may be implicated when: Supplies are required to directly interface with or attach to equipment of the same manufacturer and no other manufacturer's Supplies will correctly interface with existing equipment; or when Services such as maintenance, warranty, project management, or systems integration are required to interface or integrate with existing Supplies and Services

- 1) exemption is unlikely to encourage favoritism; and
- 2) will result in substantial cost savings to the district (or other public benefits e.g., efficiency, unique expertise, or public safety)

UltraSonic Inc. – Sound Systems

ORS 125-247-0275(2)(d)

Other findings that support the conclusion that Supplies and Services are available from

only one source may include but are not limited to considerations of: unique design, availability, geographic location, exclusive authorized representative, cost of conversion, and warranty services.

1) exemption is unlikely to encourage favoritism; and

2) will result in substantial cost savings to the district (or other public benefits e.g., efficiency, unique expertise, or public safety)

Tom Stevenson Boiler Repair, I – Boiler and Boiler Repair

ORS 125-247-0275(2)(d)

Other findings that support the conclusion that Supplies and Services are available from only one source may include but are not limited to considerations of: unique design, availability, geographic location, exclusive authorized representative, cost of conversion, and warranty services.

1) exemption is unlikely to encourage favoritism; and

2) will result in substantial cost savings to the district (or other public benefits e.g., efficiency, unique expertise, or public safety)

9.b. Technology

9.b.1. Verkada (Camera System) Hardware, Licensure, & Warranty
Purchase

Company Name: Lincoln County School District
 Contact: Joshua Bates
 Email: joshua.bates@lincoln.k12.or.us
 Phone: (541) 265-3231



Account Executive: Collin Hughes
 9200 SE Sunnybrook Blvd., Suite 300 - Clackamas OR, 97015 - 503.513.9979
 Toll Free 800.881.0962 - Order Fax 888.729.0997

Line Item	Part Number	Description	Qty.	Unit Sale Price	Ext. Sale Price
<u>Lincoln County School District - Verkada Rollout (3YR)</u>					
<i>Priced Per Contract: OETC-21B-Camera&Video-Verkada</i>					
<i>This quote is for an initial 3 year agreement with an option to renew licensing for a 10 year term at the end of the initial 3 year term. Total cost for the solution outlined in this solution and the additional 10 year term is guaranteed not to exceed \$1,500,000.</i>					
1		(Qty.24) Verkada CD63 Outdoor Dome Camera w/ 3YR Capacity Increase License			\$43,055.04
2		(Qty.22) Verkada CD63 Indoor Dome Camera w/ 3YR Capacity Increase License			\$35,955.92
3		(Qty.1) Verkada CB62-TE Outdoor Bullet Camera w/ 3YR Capacity Increase License			\$1,953.57
4		(Qty.40) Verkada CD53 Indoor Dome Camera w/ 3YR Capacity Increase License			\$55,798.00
5		(Qty.18) Verkada CD53-E Outdoor Dome Camera w/ 3YR Capacity Increase License			\$27,982.08
6		(Qty.1) Verkada CD62-E Outdoor Dome Camera w/ 3YR Capacity Increase License			\$1,793.96
7		(Qty.1) Verkada CB62-E Outdoor Bullet Camera w/ 3YR Capacity Increase License			\$1,873.77
8		(Qty.120) Verkada CM42 Indoor Mini Dome Camera w/ 3YR Capacity Increase License			\$119,512.80
9		(Qty.2) Verkada CD52 Indoor Dome Camera w/ 3YR Capacity Increase License			\$2,789.90
10		(Qty.65) Verkada CM41-E Outdoor Mini Dome Camera w/ 3YR Capacity Increase License			\$80,297.75
11		(Qty.29) Verkada CF83-E Outdoor Fisheye Camera w/ 3YR Capacity Increase License			\$54,339.33
12		(Qty.17) Verkada CH52-E Outdoor Multisensor Camera w/ 3YR Capacity Increase License			\$71,196.51
13		(Qty.126) Verkada CY53-E Outdoor Two-Camera Multisensor w/ 3YR Capacity Increase License			\$321,563.34
			68		

Line Item	Part Number	Description	Qty.	Unit Sale Price	Ext. Sale Price
14		(Qty.1) Verkada GW31 Wi-Fi Outdoor Gateway w/ 3YR Capacity Increase License			\$1,090.90
15		(Qty.62) Verkada Arm Mount			\$4,898.00
16		(Qty.57) Verkada Corner Mount			\$9,247.11
17		(Qty.15) Verkada Pendant Cap Mount			\$776.25
18		(Qty.1) Verkada Large Arm Mount			\$129.62
19		(Qty.2) Verkada Mini Pendant Cap Mount			\$128.80
20		(Qty.2) Verkada Square Junction Box Mount			\$145.10
21		(Qty.2) Verkada Pendant Cap Mount			\$112.50
22		(Qty.44) Verkada Two-Camera Multisensor Pendant			\$3,909.84
23		(Qty.11) Verkada Angle Mount, 30 deg			\$1,336.17
		Shipping Estimate (Ground):			\$0.00
		<u>GRAND TOTAL:</u>			<u>\$839,886.26</u>

Line Item	Part Number	Description	Qty.	Unit Sale Price	Ext. Sale Price
Solution Line Item Detail:					
<u>(Qty.24) Verkada CD63 Outdoor Dome Camera w/ 3YR Capacity Increase License</u>					
24	CD63-512E-HW	CD63-E Outdoor Dome Camera, 512GB, 30 Days Max	24	\$1,355.84	\$32,540.16
25	LIC-CAM-3Y-CAP	3-Year Camera License, Capacity Increase	24	\$438.12	\$10,514.88
<u>Subtotal</u>					<u>\$43,055.04</u>
<u>(Qty.22) Verkada CD63 Indoor Dome Camera w/ 3YR Capacity Increase License</u>					
26	CD63-512-HW	CD63 Indoor Dome Camera, 512GB, 30 Days Max	22	\$1,196.24	\$26,317.28
27	LIC-CAM-3Y-CAP	3-Year Camera License, Capacity Increase	22	\$438.12	\$9,638.64
<u>Subtotal</u>					<u>\$35,955.92</u>
<u>(Qty.1) Verkada CB62-TE Outdoor Bullet Camera w/ 3YR Capacity Increase License</u>					
28	CB62-512TE-HW	CB62-TE Outdoor Bullet Camera, 512GB, 30 Days Max	1	\$1,515.45	\$1,515.45
29	LIC-CAM-3Y-CAP	3-Year Camera License, Capacity Increase	1	\$438.12	\$438.12
<u>Subtotal</u>					<u>\$1,953.57</u>
<u>(Qty.40) Verkada CD53 Indoor Dome Camera w/ 3YR Capacity Increase License</u>					
30	CD53-256-HW	CD53 Indoor Dome Camera, 256GB, 30 Days Max	40	\$956.83	\$38,273.20
31	LIC-CAM-3Y-CAP	3-Year Camera License, Capacity Increase	40	\$438.12	\$17,524.80
<u>Subtotal</u>					<u>\$55,798.00</u>
<u>(Qty.18) Verkada CD53-E Outdoor Dome Camera w/ 3YR Capacity Increase License</u>					
32	CD53-256E-HW	CD53-E Outdoor Dome Camera, 256GB, 30 Days Max	18	\$1,116.44	\$20,095.92
33	LIC-CAM-3Y-CAP	3-Year Camera License, Capacity Increase	18	\$438.12	\$7,886.16
<u>Subtotal</u>					<u>\$27,982.08</u>

Line Item	Part Number	Description	Qty.	Unit Sale Price	Ext. Sale Price
<u>(Qty.1) Verkada CD62-E Outdoor Dome Camera w/ 3YR Capacity Increase License</u>					
34	CD62-30E-HW	CD62-E Outdoor Dome Camera, 512GB, 30 Days Max	1	\$1,355.84	\$1,355.84
35	LIC-CAM-3Y-CAP	3-Year Camera License, Capacity Increase	1	\$438.12	\$438.12
<u>Subtotal</u>					<u>\$1,793.96</u>
<u>(Qty.1) Verkada CB62-E Outdoor Bullet Camera w/ 3YR Capacity Increase License</u>					
36	CB62-512E-HW	CB62-E Outdoor Bullet Camera, 512GB, 30 Days Max	1	\$1,435.65	\$1,435.65
37	LIC-CAM-3Y-CAP	3-Year Camera License, Capacity Increase	1	\$438.12	\$438.12
<u>Subtotal</u>					<u>\$1,873.77</u>
<u>(Qty.120) Verkada CM42 Indoor Mini Dome Camera w/ 3YR Capacity Increase License</u>					
38	CM42-256-HW	CM42 Indoor Mini Dome Camera, 256GB, 30 Days Max	120	\$557.82	\$66,938.40
39	LIC-CAM-3Y-CAP	3-Year Camera License, Capacity Increase	120	\$438.12	\$52,574.40
<u>Subtotal</u>					<u>\$119,512.80</u>
<u>(Qty.2) Verkada CD52 Indoor Dome Camera w/ 3YR Capacity Increase License</u>					
40	CD52-256-HW	CD52 Indoor Dome Camera, 256GB, 30 Days Max	2	\$956.83	\$1,913.66
41	LIC-CAM-3Y-CAP	3-Year Camera License, Capacity Increase	2	\$438.12	\$876.24
<u>Subtotal</u>					<u>\$2,789.90</u>
<u>(Qty.65) Verkada CM41-E Outdoor Mini Dome Camera w/ 3YR Capacity Increase License</u>					
42	CM41-30E-HW	CM41-E Outdoor Mini Dome Camera, 128GB, 30 Days Max	65	\$797.23	\$51,819.95
43	LIC-CAM-3Y-CAP	3-Year Camera License, Capacity Increase	65	\$438.12	\$28,477.80
<u>Subtotal</u>					<u>\$80,297.75</u>
<u>(Qty.29) Verkada CF83-E Outdoor Fisheye Camera w/ 3YR Capacity Increase License</u>					

Line Item	Part Number	Description	Qty.	Unit Sale Price	Ext. Sale Price
44	CF83-512E-HW	CF83-E Outdoor Fisheye Camera, 512GB, 30 Days Max	29	\$1,435.65	\$41,633.85
45	LIC-CAM-3Y-CAP	3-Year Camera License, Capacity Increase	29	\$438.12	\$12,705.48
<u>Subtotal</u>					<u>\$54,339.33</u>
<u>(Qty.17) Verkada CH52-E Outdoor Multisensor Camera w/ 3YR Capacity Increase License</u>					
46	CH52-1TBE-HW	CH52-E Outdoor Multisensor Camera, 1TB, 30 Days Max	17	\$2,872.09	\$48,825.53
47	LIC-CAM-MLT4-3Y-CAP	3-Year Four-Camera Multisensor License, Capacity Increase	17	\$1,315.94	\$22,370.98
<u>Subtotal</u>					<u>\$71,196.51</u>
<u>(Qty.126) Verkada CY53-E Outdoor Two-Camera Multisensor w/ 3YR Capacity Increase License</u>					
48	CY53-512E-HW	CY53-E Outdoor Two-Camera Multisensor, 512GB, 30 Days Max	126	\$1,754.86	\$221,112.36
49	LIC-CAM-MLT2-3Y-CAP	3-Year Two-Camera Multisensor License, Capacity Increase	126	\$797.23	\$100,450.98
<u>Subtotal</u>					<u>\$321,563.34</u>
<u>(Qty.1) Verkada GW31 Wi-Fi Outdoor Gateway w/ 3YR Capacity Increase License</u>					
50	GW31-E-HW	GW31 Wi-Fi Gateway, Outdoor, 802.11ax	1	\$797.23	\$797.23
51	LIC-GW-3Y-CAP	3-Year Wi-Fi Gateway License, Capacity Increase	1	\$222.65	\$222.65
52	ACC-ADAP-54V-NA	AC/DC Adapter, 54V, NA Type B Plug	1	\$71.02	\$71.02
<u>Subtotal</u>					<u>\$1,090.90</u>
<u>(Qty.62) Verkada Arm Mount</u>					
53	ACC-MNT-ARM-1	Arm Mount	62	\$79.00	\$4,898.00
<u>Subtotal</u>					<u>\$4,898.00</u>
<u>(Qty.57) Verkada Corner Mount</u>					
54	ACC-MNT-CORNER-1	Comer Mount	57	\$162.23	\$9,247.11
<u>Subtotal</u>					<u>\$9,247.11</u>
<u>(Qty.15) Verkada Pendant Cap Mount</u>					

Line Item	Part Number	Description	Qty.	Unit Sale Price	Ext. Sale Price
55	ACC-MNT-PEND-1	Pendant Cap Mount	15	\$56.25	\$776.25
		<u>Subtotal</u>			<u>\$776.25</u>
		<u>(Qty.1) Verkada Large Arm Mount</u>			
56	ACC-MNT-XLARM-1	Large Arm Mount (PTZ)	1	\$129.62	\$129.62
		<u>Subtotal</u>			<u>\$129.62</u>
		<u>(Qty.2) Verkada Mini Pendant Cap Mount</u>			
57	ACC-MNT-MPEND-1	Mini Pendant Cap Mount	2	\$64.40	\$128.80
		<u>Subtotal</u>			<u>\$128.80</u>
		<u>(Qty.2) Verkada Square Junction Box Mount</u>			
58	ACC-MNT-SJBOX-1	Square Junction Box Mount	2	\$72.55	\$145.10
		<u>Subtotal</u>			<u>\$145.10</u>
		<u>(Qty.2) Verkada Pendant Cap Mount</u>			
59	ACC-MNT-8	Pendant Cap Mount	2	\$56.25	\$112.50
		<u>Subtotal</u>			<u>\$112.50</u>
		<u>(Qty.44) Verkada Two-Camera Multisensor Pendant</u>			
60	ACC-MNT-YPEND-1	Two-Camera Multisensor Pendant Cap	44	\$88.86	\$3,909.84
		<u>Subtotal</u>			<u>\$3,909.84</u>
		<u>(Qty.11) Verkada Angle Mount, 30 deg</u>			
61	ACC-MNT-ANGLE-1	Angle Mount, 30 deg	11	\$121.47	\$1,336.17
		<u>Subtotal</u>			<u>\$1,336.17</u>
		Prepared by: <u>Anna Leupold</u>			
		Please contact the person listed above at Structured for any questions regarding this quotation.			

Line Item	Part Number	Description	Qty.	Unit Sale Price	Ext. Sale Price
<p><u>Notes:</u></p> <p>1. Client acknowledges and agrees that the by signing this quotation, issuing a purchase order referencing this quotation, or otherwise accessing or utilizing the solution outlined in this quotation that the Structured Communication Systems, Inc. Standard Terms and Conditions, which can be found at http://www.structured.com/terms/, apply to this and all quotations. Further, the Client acknowledges and agrees that the use, title, interest, rights and warranties associated with the solution outlined in this quotation are governed by the applicable manufacturer end-user license agreement, software license agreement, subscription agreement, warranty terms and/or maintenance/support contract.</p> <p>2. Prices do not include shipping charges. All shipping charges are FOB origin and will be added at time of invoice. Prices do not include Sales Tax. Sales tax rates are an estimate and are subject to change. Rates are dictated by the state into which the solution is being shipped. Freight may be taxable, depending upon state regulations. Please note that pricing outlined in this quotation does not include tariffs or any other international or national tax or duty (if any) that may be levied against some or all of the products by the applicable manufacturer at the time of procurement by Structured for the benefit of the Client. As such, any such tariffs, taxes or duties are the sole responsibility of the Client and will be passed through by Structured to the Client at the time of invoicing.</p> <p>3. Net 20 day terms are available with approved credit. Structured will accept pre-payment or Visa/MasterCard without approved credit; please note that all credit card transaction will also incur a three percent (3%) transaction fee. All quotes and proposals are calculated using US Dollars.</p> <p>4. Quotes are valid for 30 days. Structured reserves the right to adjust prices at any time according to manufacturer price changes or material changes in circumstances that affect the scope of services proposed herein. In the event that the expiration date has been exceeded, please contact your Account Representative for an updated quote.</p> <p>5. Remit To Address: 9200 SE Sunnybrook Blvd., Suite 300, Clackamas OR, 97015</p> <p>This quotation contains information that is privileged and confidential. The information contained in this quotation is intended only for use of the person to whom it is addressed. If the reader of this quotation is not (1) the intended recipient or (2) the employee or agent responsible to deliver it to the intended recipient, you are hereby notified that any dissemination, distribution or copying of this communication is strictly prohibited.</p>					

WHEN PLACING YOUR ORDER, PLEASE FAX OR EMAIL TO: 888-729-0997 or orders@structured.com

Please fill out all of the below information to ensure that your order is processed as efficiently as possible.

Signature: _____ Date: _____

Shipping Address:

Billing Address:

Street:

City, ST Zip:

Contact:

Phone:

Email:

Preferred Shipping Method: Ground _____ 2nd Day _____ Overnight _____

Date Needed:

Customer Reference / Purchase Order Number: _____

Bridging People, Business & Technology

Ask us about our high-quality Internet Security, Connectivity, Storage and Access Offerings...



Thank you for choosing CDW. We have received your quote.

QUOTE CONFIRMATION

JOSHUA BATES,

Thank you for considering CDW•G for your technology needs. The details of your quote are below. **If you are an eProcurement or single sign on customer, please log into your system to access the CDW site.** You can search for your quote to retrieve and transfer back into your system for processing.

For all other customers, click below to convert your quote to an order.

This quote is subject to CDW's Third Party Cloud Services Order Form Terms and Conditions set forth at <https://www.cdwg.com/content/cdwg/en/terms-conditions/third-party-cloud-services-order-form-terms-and-conditions-.html>

Convert Quote to Order

QUOTE #	QUOTE DATE	QUOTE REFERENCE	CUSTOMER #	GRAND TOTAL
PMQQ310	7/10/2025	VERKADA 3 YEAR	0772447	\$839,940.80

QUOTE DETAILS

ITEM	QTY	CDW#	UNIT PRICE	EXT. PRICE
Verkada Arm Mount for Cameras Mfg. Part#: ACC-MNT-ARM-1 Contract: Oregon IT Hardware VAR Contract (5603)	62	7914674	\$79.00	\$4,898.00
Verkada CD63-E - network surveillance camera - dome Mfg. Part#: CD63-512E-HW Contract: Oregon IT Hardware VAR Contract (5603)	24	8157020	\$1,357.00	\$32,568.00
Verkada CH52-E - network panoramic camera - dome Mfg. Part#: CH52-1TBE-HW Contract: Oregon IT Hardware VAR Contract (5603)	17	7243301	\$2,868.00	\$48,756.00
Verkada Bullet Series CB62-TE - network surveillance camera - bullet - with Mfg. Part#: CB62-512TE-HW Contract: Oregon IT Hardware VAR Contract (5603)	1	7348714	\$1,517.00	\$1,517.00
Verkada Dome Series CD53 - network surveillance camera - dome - with 30 day Mfg. Part#: CD53-256-HW Contract: Oregon IT Hardware VAR Contract (5603)	40	8263908	\$957.00	\$38,280.00
Verkada Dome Series CD53-E - network surveillance camera - dome - with 30 d Mfg. Part#: CD53-256E-HW Contract: Oregon IT Hardware VAR Contract (5603)	18	8263969	\$1,117.00	\$20,106.00
75				
Verkada Dome Series CD62-E - network surveillance camera - dome - with 30 d Mfg. Part#: CD62-30E-HW	1	6705645	\$1,357.00	\$1,357.00

QUOTE DETAILS (CONT.)

Contract: Oregon IT Hardware VAR Contract (5603)

[Verkada Bullet Series CB62-E - network surveillance camera - bullet - with](#) 1 7355371 \$1,437.00 \$1,437.00

Mfg. Part#: CB62-512E-HW

Contract: Oregon IT Hardware VAR Contract (5603)

[Verkada Corner Mount for Dome,Bullet,Mini Series Fisheye PTZ Camera - White](#) 57 7561697 \$158.70 \$9,045.90

Mfg. Part#: ACC-MNT-CORNER-1

Contract: Oregon IT Hardware VAR Contract (5603)

[Verkada ACC-MNT-PEND-1 - camera pendant cap - standard](#) 15 8095788 \$55.20 \$828.00

Mfg. Part#: ACC-MNT-PEND-1

Contract: Oregon IT Hardware VAR Contract (5603)

[Verkada Large Arm Mount for Dome Series and Multisensor PTZ Camera - White](#) 1 7558294 \$127.00 \$127.00

Mfg. Part#: ACC-MNT-XLARM-1

Contract: Oregon IT Hardware VAR Contract (5603)

[Verkada CM42 Indoor Mini Dome Camera](#) 120 7485364 \$558.00 \$66,960.00

Mfg. Part#: CM42-256-HW

Contract: Oregon IT Hardware VAR Contract (5603)

[Verkada Multisensor Series CY53-E - network surveillance camera - dome](#) 126 8377911 \$1,756.00 \$221,256.00

Mfg. Part#: CY53-512E-HW

Contract: Oregon IT Hardware VAR Contract (5603)

[Verkada ACC-MNT-PEND-1 - camera pendant cap - standard](#) 44 8381288 \$87.00 \$3,828.00

Mfg. Part#: ACC-MNT-YPEND-1

Contract: Oregon IT Hardware VAR Contract (5603)

[Verkada Mini Series CM41-E - network surveillance camera - dome - with 30 d](#) 65 6442043 \$798.00 \$51,870.00

Mfg. Part#: CM41-30E-HW

Contract: Oregon IT Hardware VAR Contract (5603)

[Verkada CF83-E - network surveillance camera - fisheye - with 30 days of st](#) 29 8091753 \$1,437.00 \$41,673.00

Mfg. Part#: CF83-512E-HW

Contract: Oregon IT Hardware VAR Contract (5603)

[Verkada ACC-MNT-ANGLE-1 - camera dome angle mount](#) 11 8092066 \$119.00 \$1,309.00

Mfg. Part#: ACC-MNT-ANGLE-1

Contract: Oregon IT Hardware VAR Contract (5603)

[Verkada CD63 - network surveillance camera - dome - with 30 days onboard st](#) 22 8151956 \$1,197.00 \$26,334.00

Mfg. Part#: CD63-512-HW

Contract: Oregon IT Hardware VAR Contract (5603)

[Verkada Pendant Cap Mount for Mini Series Camera - White](#) 2 7558545 \$62.00 \$124.00

Mfg. Part#: ACC-MNT-MPEND-1

Contract: Oregon IT Hardware VAR Contract (5603)

76

QUOTE DETAILS (CONT.)

Verkada Square Junction Box for Bullet and Mini Series Camera	2	7841354	\$70.75	\$141.50
Mfg. Part#: ACC-MNT-SJBOX-1 Contract: Oregon IT Hardware VAR Contract (5603)				
Verkada CD52 - network surveillance camera - dome - with 30 days onboard st	2	6806702	\$957.00	\$1,914.00
Mfg. Part#: CD52-256-HW Contract: Oregon IT Hardware VAR Contract (5603)				
Verkada ACC-MNT-PEND-1 - camera pendant cap - standard	2	8095788	\$55.20	\$110.40
Mfg. Part#: ACC-MNT-PEND-1 Contract: Oregon IT Hardware VAR Contract (5603)				
VERKADA GW31 WIFI GATEWAY OUTDR	1	8266529	\$798.00	\$798.00
Mfg. Part#: GW31-E-HW Contract: Oregon IT Hardware VAR Contract (5603)				
Verkada 54V AC DC Barrel Jack Power Adapter for Indoor Cellular Gateway - N	1	7906493	\$70.00	\$70.00
Mfg. Part#: ACC-ADAP-54V-NA Contract: Oregon IT Hardware VAR Contract (5603)				
Verkada Video Security Cloud License Capacity Increase - camera license (3	323	8262069	\$438.00	\$141,474.00
Mfg. Part#: LIC-CAM-3Y-CAP Electronic distribution - NO MEDIA Contract: Oregon IT Hardware VAR Contract (5603)				
Verkada Video Security Cloud License Two-Camera Multisensor Capacity Increa	126	8378054	\$798.00	\$100,548.00
Mfg. Part#: LIC-CAM-MLT2-3Y-CAP Electronic distribution - NO MEDIA Contract: Oregon IT Hardware VAR Contract (5603)				
Verkada Video Security Cloud License Four-Camera Multisensor Capacity Incre	17	8377656	\$1,317.00	\$22,389.00
Mfg. Part#: LIC-CAM-MLT4-3Y-CAP Electronic distribution - NO MEDIA Contract: Oregon IT Hardware VAR Contract (5603)				
Verkada Wi-Fi Gateway Capacity Increase - subscription license (3 years) -	1	8271493	\$222.00	\$222.00
Mfg. Part#: LIC-GW-3Y-CAP Electronic distribution - NO MEDIA Contract: Oregon IT Hardware VAR Contract (5603)				

****total cost of the project including this phase for \$839,940.80, along with the 10 Year Renewal at the 3 year mark will be at or below \$1.5M****

These services are considered Third Party Services, and this purchase is subject to CDW's [Third Party Cloud Services Terms and Conditions](#), unless you have a written agreement with CDW covering your purchase of products and services, in which case this purchase is subject to such other written agreement.

The third-party Service Provider will provide these services directly to you pursuant to the Service Provider's standard terms and conditions or such other terms as agreed upon directly between you and the Service Provider. The Service Provider, not CDW, will be responsible to you for

delivery and performance of these services. Except as otherwise set forth in the Service Provider's agreement, these services are non-cancellable, and all fees are non-refundable.

SUBTOTAL	\$839,940.80
SHIPPING	\$0.00
SALES TAX	\$0.00
GRAND TOTAL	\$839,940.80

PURCHASER BILLING INFO	DELIVER TO
Billing Address: LINCOLN COUNTY SCHOOL DISTRICT ACCOUNTS PAYABL PO BOX 1110 NEWPORT, OR 97365-0088 Phone: (541) 265-9211 Payment Terms: NET 30 Days-Govt/Ed	Shipping Address: LCSO TEACHING AND LEARNING CENTER TECH DEPT 1212 NE FOGARTY ST NEWPORT, OR 97365-2025 Phone: (541) 574-5838 Shipping Method: DROP SHIP-GROUND
	Please remit payments to: CDW Government 75 Remittance Drive Suite 1515 Chicago, IL 60675-1515



Sales Contact Info

Ashley Bruser | (877) 698-5228 | ashlbru@cdwg.com

Need Help?



My Account



Support



Call 800.800.4239

[About Us](#) | [Privacy Policy](#) | [Terms and Conditions](#)

This order is subject to CDW's Terms and Conditions of Sales and Service Projects at

<http://www.cdwg.com/content/terms-conditions/product-sales.aspx>

For more information, contact a CDW account manager.

© 2025 CDW•G LLC, 200 N. Milwaukee Avenue, Vernon Hills, IL 60061 | 800.808.4239

9.c. Board

9.c.1. Declaration of Vacancy - Zones 3 and 5 of Budget Committee

Budget Committee Resignation

1 message

Woods

Fri, Aug 1, 2025 at 9:08 AM

To: Eddie symington <Eddie.symington@lincoln.k12.or.us>

Good morning, Eddie.

I want to resign from position on the the LCSD Budget Committee effective immediately.

Please let me know if there is anything else I need to do besides this.

Thank you, I appreciate it.

Mary.

9.c.2. Sports Co-Op Agreement - Girls Soccer with Siletz & Toledo Jr/Sr

10. Items of Information & Discussion

10.a. Facilities & Maintenance/Transportation/Food Services

10.a.1. YV Seismic Architect

**LINCOLN COUNTY SCHOOL DISTRICT
REGULAR BOARD MEETING AGENDA
8/12/2025**

TOPIC: YV Seismic Architect

PREPARED BY: Annette Brooks-Flatt

WILL BE PRESENTED BY: Rich Belloni

TYPE OF ITEM: Consent Information Discussion Decision

DESCRIPTION OF AGENDA ITEM:

Lincoln County School District requested Proposals for Architects and Engineering for Yaquina View seismic part 2.

Proposals were as follows:
ZCS Architect

As only bidder, Facilities & Maintenance is recommends to hire ZCS Architects.
Appeal 7-day process will begin September 10, 2025
Facilities and Maintenance will ask the School Board to vote on the award on September 9, 2025

SUPERINTENDENT'S RECOMMENDATION:

ADDITIONAL MATERIAL Attached: Yes No Available: Yes No

10.a.2. CET Rate Increases

Issue: Indexing of School Construction Tax Limits

Statute Reference: ORS 320.170

Last Updated: 7/14/2025

Background:

Passed in 2007, SB 1036 allowed school districts to impose a tax on new construction measured by the square footage of improvements (affordable housing, public buildings, agricultural buildings, hospitals, private schools, and religious facilities are exempt). SB 1036 defined and required revenues to be used for capital improvements. Construction taxes imposed by a school district must be collected by a local government, local service district, special government body, state agency or state official that issues a permit for structural improvements regulated by the state building code. An intergovernmental agreement with local governments collecting the tax is required and collection expenses are limited to 4% of tax revenue. DCBS is allowed to establish an administration fee of .25% of tax revenue. School districts with construction tax revenue are required to develop long-term facility plans. Construction taxes may be used for repayment of capital improvement debt.

Tax Limit Calculations:

SB 1036 set tax rate limits of \$1 per square foot for residential use and \$0.50 for nonresidential use, along with a \$25,000 tax limit on nonresidential properties. Beginning in 2009, tax rates were indexed to inflation using the Engineering News-Record Construction Cost Index. As prescribed in statute, DOR is responsible for updating tax rate limits and notifying affected districts. To notify affected districts DOR has partnered with Department of Education who receives updated limit calculations from DOR and notifies the affected districts.

Tax rate limits by fiscal year:

Fiscal Year	2023-24	2024-25	2025-26	2026-27
Residential*	1.56	1.63	1.67	1.70
Non-Residential*	0.78	0.82	0.84	0.85
Non-Residential Max	39,100	40,800	41,800	42,400
* Dollars per square foot				

10.b. Board

10.b.1. Public Comment (This time is reserved for general public comment to the Board)

10.c. Other

10.c.1. Meeting Takeaways

10.c.2. Reminders/Announcements

10.d. Adjournment

Board Goals 2024-2029

GOAL ONE: Lincoln County School District will establish and meet high expectations for student achievement.

GOAL TWO: Lincoln County School District will create equitable, diverse, inclusive, and accessible learning environments across the district within a framework of excellence in education.

GOAL THREE: LCSD will provide for the long term health and welfare of our facilities and finances, focusing on accessibility, technological innovation, and purposeful utilization.

GOAL FOUR: Lincoln County School District will strengthen community relationships through communication and engagement with staff, students, families, and community partners.

Lincoln County School District Equity Team Land Acknowledgement Statement

We ask that you take a moment to stop what you are doing, to listen to these words as we recognize the land that we currently inhabit. No matter where each of us is physically located in Lincoln County, we must understand that we are on traditional homelands and unceded territories of indigenous peoples. Where we live in Lincoln County, these are the ancestral homelands for the Confederated Tribes of Siletz Indians.

Lincoln County School District acknowledges the Confederated Tribes of Siletz Indians that consists of over 30 bands originating from Northern California to Southern Washington. The Confederated Tribes of Siletz Indians currently occupy and manage 9,310 acres located here in Lincoln County but is a mere fraction of their original 1855 1.1 million-acre Siletz coastal reservation. We must remember the people of the Confederated Tribes of Siletz Indians are and will forever be the first stewards of this land, water, and fish.

We acknowledge and recognize the continued sovereignty of the Confederated Tribes of Siletz Indians and honor their ancestral homelands. We are committed to bringing awareness to their history and the existence of the Confederated Tribes of Siletz Indians since time immemorial.

NON-DISCRIMINATION: Lincoln County Schools do not discriminate nor tolerate discrimination on the basis of an individual's race, color, religion, sex, sexual orientation, national origin, disability, gender identity, marital status or age or because of the race, color, religion, sex, sexual orientation, national origin, disability, gender identity, marital status or age of any other persons with whom the individual associates.