

# NOTICE

**NOTICE IS HEREBY GIVEN** of a meeting of the Corvallis School District Board of Directors.

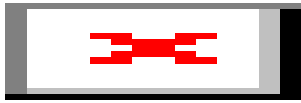
<b>Date &amp; Time</b>	<b>Meeting Type</b>	<b>Location</b>	<b>Agenda</b>
Monday, January 28, 2013 6:30 PM	Regular	District Office Board Room, 1555 SW 35th Street, Corvallis, OR 97333	See attached.

*Accessibility: To request accommodations for board meetings, please contact Kim Nelson at 541-757-5841 or [kim.nelson@corvallis.k12.or.us](mailto:kim.nelson@corvallis.k12.or.us) at least 48 hours before the meeting.*

*If you would like to watch live-streaming of the School Board meeting, please navigate to the District's YouTube channel: <https://www.youtube.com/channel/UC9Jtpte5dmilZI9kySBJbVQ?> A recording of the meeting will also be posted to that channel.*

**POSTED:** Corvallis School District Administration Building  
Hans Boyle, Education Editor, Gazette Times (Via Email)

**For more information, please contact Kim Nelson at 541-757-5841 or at [kimberly.nelson@corvallis.k12.or.us](mailto:kimberly.nelson@corvallis.k12.or.us)**



Monday, January 28, 2013  
6:30 PM

**AGENDA**  
Work Session of the  
**BOARD OF DIRECTORS**  
Corvallis School District 509J

Meeting Details: Monday, January 28, 2013, 6:30 PM in the District Office Board Room,  
1555 SW 35th Street, Corvallis, OR 97333.

*If you would like to watch live-streaming of the School Board meeting, please navigate to the District's YouTube channel: <https://www.youtube.com/channel/UC9Jtpte5dmilZI9kySBJbVQ?> A recording of the meeting will also be posted to that channel.*

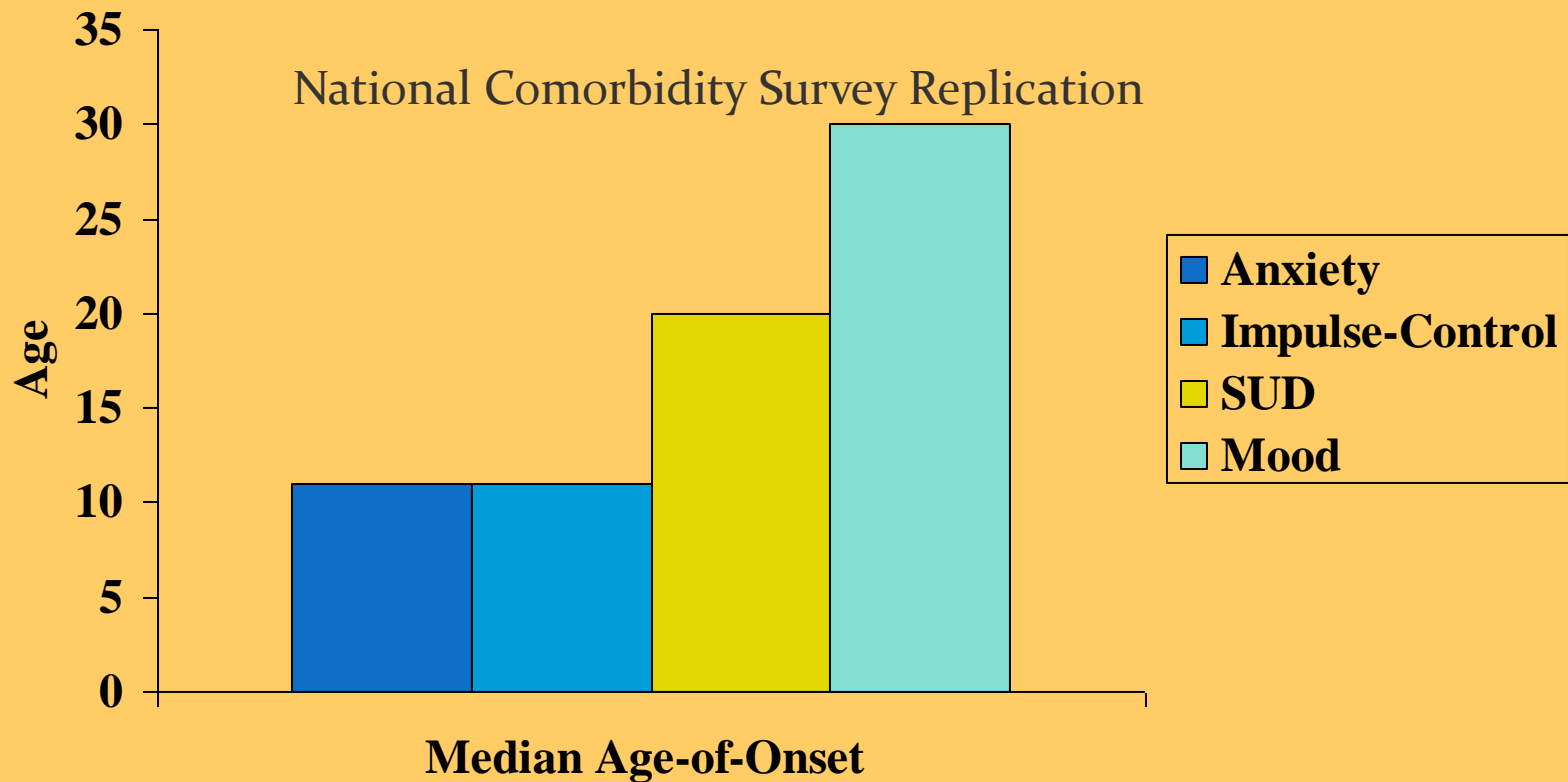
- I. CALL TO ORDER AND ROLL CALL
- II. PLEDGE OF ALLEGIANCE
- III. SPECIAL REPORTS
  - III.A. Mental Health Services For Youth

# Mental Health Care for Children and Adolescents

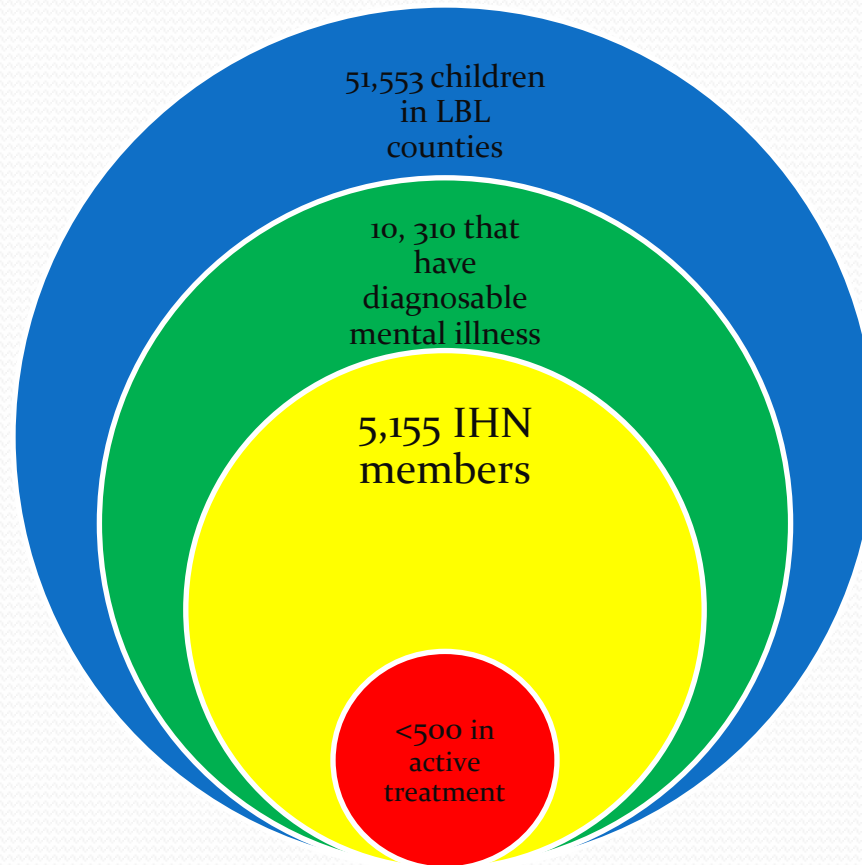


# Median Age-of-Onset of DSM-IV Disorders

50% of all lifetime disorders start by age 14  
75% of all lifetime disorders start by age 24



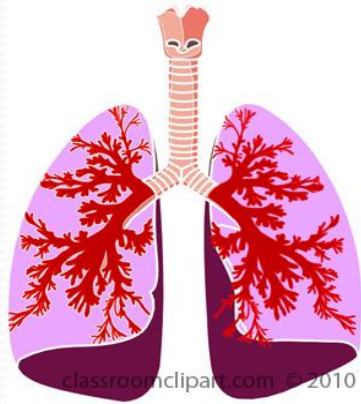
# Our Current System of Care For Children in Linn, Benton, and Lincoln Counties



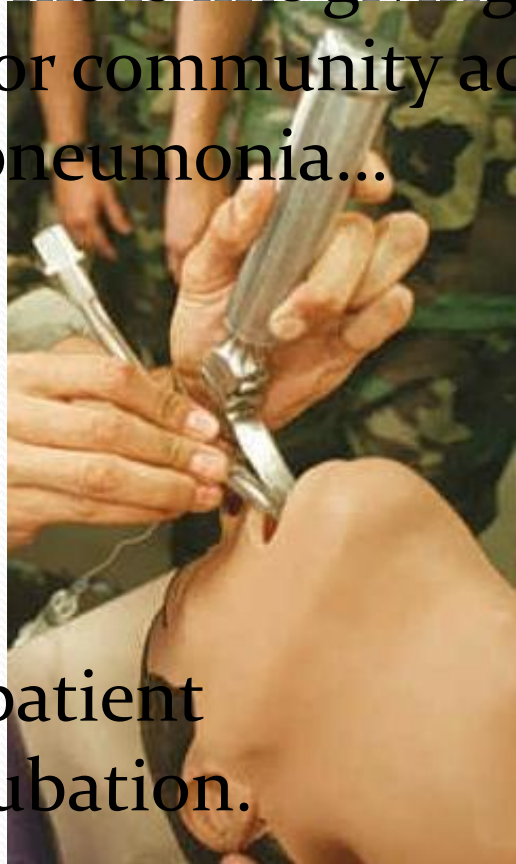
# Why so few?

We have chosen to ration the limited resources based loosely on severity, so to be treated, a patient must be “bad enough.”

This has created a system that provides the most expensive care to the fewest patients.



This is like giving antibiotics  
for community acquired  
pneumonia...



Only if the patient  
requires intubation.

# What does the ideal system look like?

- Screening
  - Where the kids are, not where we want them to be
- Intervention at lowest level of cost and illness
  - Nip mental illness in the bud
- Outcomes based
  - Patient improves or treatment approach changes
- Addresses lack of resources in the system
  - Child Psychiatry fellowship
  - Developing shared community projects
  - Developing capacity in intermediate levels of treatment
  - extending

# How Do We Get There From Here?

- Partnership across community agencies
- School-based screening and intervention
- Primary Care Based Screening and Intervention
- Develop capacity in the system
- Develop intermediate care options
- Better crisis intervention
- Unified Treatment

# How Can the Schools Get Involved?

School based screening and intervention

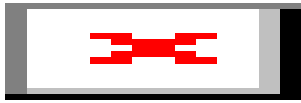
- currently requires “opt in”
- Sara Gelser has filed a bill to allow for opt –out – just like vision, dental, hearing, scoliosis
  - getting warm reception on both sides and with advocates
  - could be as early as fall
- Pilot project with Lebanon schools rolling out this spring

# How Can Schools Get Involved?

- Better education for teachers and personnel
  - How can Samaritan help?

# How Can Schools Get Involved?

- IEP process and supports
- Let's work together to get the job done right
  - Better outcomes for kids
  - Better outcomes for peers
  - Better jobs for teachers



III.B. School Resource Deputy Services From Benton County

III.C. Achievement Compact Advisory Committee

K-12 / ESD Achievement Compact  
Corvallis SD - 1901

College and Career Ready: Are students completing high school ready for college or career?										
	9th graders of 2006-07	Dis-advantaged	9th graders of 2007-08	Dis-advantaged	9th graders of 2008-09	Dis-advantaged	9th graders of 2009-10	Dis-advantaged	9th graders of 2012-13**	Dis-advantaged
4-Year Graduation Rate	72%	55%	70%	54%	?	?	77%	60%	86%	75%
5-Year Graduation Rate	74%	58%			?	?	79%	63%	88%	78%
5-Year Completion Rate	83%	74%			86%	79%	89%	82%	95%	91%
Post-Secondary Enrollment	75%	61%			78%	66%	81%	71%		
Earning 9+ College Credits										

Disadvantaged is aggregate of disadvantaged student groups (details on pp. 2-4)

Gray shaded boxes are district-provided projections and goals \*\*2012-13 goals are optional

Progression: Are students making sufficient progress toward college and career readiness?										
	2009-10 All	Dis-advantaged	2010-11 All	Dis-advantaged	2011-12 All	*Dis-advantaged	2012-13 Goal All	Dis-advantaged	4-Year Goal (2015-16)**	Dis-advantaged
Ready for School	Kindergarten readiness assessment under development									
3rd Gr. Reading Proficiency	***68%	***53%	***69%	***55%	85%	75%	88%	78%	95%	87%
3rd Gr. Math Proficiency	***52%	***37%	71%	58%	72%	53%	77%	63%	86%	73%
6th Grade On-Track	92%	89%	85%	81%	90%	83%	93%	86%	95%	95%
9th Grade On-Track										

\*Estimate based on most recent available data \*\*2016 Goals are optional \*\*\*Adjusted to reflect 2011-12 Cut Scores

Equity: Are students succeeding across all buildings and populations?										
	2009-10	2010-11		2011-12		2012-13 Goal		4-Year Goal (2015-16)**		
Priority & Focus Schools*	NA	NA		NA		NA		NA		
DISAGGREGATED DATA AND GOALS FOR EACH DISADVANTAGED STUDENT GROUP LISTED ON PP 2-4										

\*Prior to 2012-13, school in federal AYP "Need Improvement" status \*\*4-year Goals are optional

Local Priorities: What other measures reflect key priorities in the district? (optional, up to 3)										
	2011-12	Dis-advantaged	2012-13	Dis-advantaged	2013-14	Dis-advantaged	2014-15	Dis-advantaged	4-Year Goal**	Dis-advantaged
8th Grade ACT Explore			Baseline	Baseline						
9th Grade Algebra Completion	?	?		?						

\*\*4-year Goal optional

Investment: What is the public investment in the district? (does not include capital investments)										
	2010-11	2011-12*	2012-13*	2012-13 QEM recommended						
Formula Revenue	\$43,467,993	\$44,389,421	\$44,471,568	\$59,972,929	District Share					
Local Revenue not passed through formula	\$10,836,990				District Official					
Federal Revenue	\$7,024,380									
State Grants not passed through formula	\$187,479									

The tan fields are optional. Districts will fill the blue fields with their targets, the gray fields with estimates of current/past data (if available).

OEIB Chief Education Officer

K-12 / ESD Achievement Compact  
Corvallis SD - 1901

Equity: Are students succeeding across all populations?									
9th Graders of 2006-07									
	Economically Disadvantaged	Limited English Proficient	Students with Disabilities	Black (not of Hispanic origin)	Hispanic origin	American Indian / Alaska Native	Pacific Islander	Asian	TAG (not included in aggregate)
4-Year Graduation Rate	55%	68%	34%	67%	62%	*		87%	90%
5-Year Graduation Rate	60%	69%	40%	62%	64%	*		89%	90%
5-Year Completion Rate	72%	72%	63%	77%	75%	*		89%	95%
Earning 9+ College Credits									
Post-Secondary Enrollment	58%	64%	37%	67%	64%	*		82%	91%
2009-10									
*3rd Gr. Reading Proficiency	48%	30%	42%	86%	29%	*	-	85%	92%
*3rd Gr. Math Proficiency	36%	28%	32%	57%	22%	*	-	73%	86%
6th Grade On-Track	87%	91%	86%	71%	91%	*	-	>95%	93%
9th Grade On-Track									

\*Adjusted to reflect 2011-12 Cut Scores

9th Graders of 2007-08									
	Economically Disadvantaged	Limited English Proficient	Students with Disabilities	Black (not of Hispanic origin)	Hispanic origin	American Indian / Alaska Native	Pacific Islander	Asian	TAG (not included in aggregate)
4-Year Graduation Rate	51%	51%	52%	56%	57%	*		64%	90%
5-Year Graduation Rate									
5-Year Completion Rate									
Earning 9+ College Credits									
Post-Secondary Enrollment									
2010-11									
*3rd Gr. Reading Proficiency	51%	33%	55%	*	46%	*	*	70%	>95%
3rd Gr. Math Proficiency	52%	48%	59%	*	58%	*	*	75%	>95%
6th Grade On-Track	77%	>95%	84%	*	87%	*	>95%	>95%	92%

\*Adjusted to reflect 2011-12 Cut Scores

The tan fields are optional. Districts will fill the blue fields with their targets, the gray fields with estimates of current/past data (if available).

K-12 / ESD Achievement Compact  
Corvallis SD - 1901

9th Graders of 2008-09									
	Economically Disadvantaged	Limited English Proficient	Students with Disabilities	Black (not of Hispanic origin)	Hispanic origin	American Indian / Alaska Native	Pacific Islander	Asian	TAG (not included in aggregate)
9th Grade On-Track									
4-Year Graduation Rate									
5-Year Graduation Rate									
5-Year Completion Rate									
Earning 9+ College Credits									
Post-Secondary Enrollment									
2011-12									
3rd Gr. Reading Proficiency	69%	51%	54%	86%	61%	67%	*	>95%	>95%
3rd Gr. Math Proficiency	49%	33%	52%	71%	33%	17%	*	>95%	93%
6th Grade On-Track	83%	90%	78%	86%	85%	86%	>95%	>95%	90%
9th Grade On-Track									

9th Graders of 2009-10 Goals									
	Economically Disadvantaged	Limited English Proficient	Students with Disabilities	Black (not of Hispanic origin)	Hispanic origin	American Indian / Alaska Native	Pacific Islander	Asian	TAG (not included in aggregate)
4-Year Graduation Rate	53%	53%	55%	58%	59%	*	*	65%	91%
5-Year Graduation Rate	65%	74%	44%	66%	68%	*	*	91%	91%
5-Year Completion Rate	77%	77%	70%	82%	80%	*	*	91%	>95%
Earning 9+ College Credits									
Post-Secondary Enrollment	62%	69%	41%	71%	68%	*	*	84%	92%
2012-13									
3rd Gr. Reading Proficiency	74%	56%	59%	89%	66%	72%	*	>95%	>95%
3rd Gr. Math Proficiency	62%	58%	64%	76%	63%	27%	*	>95%	>95%
6th Grade On-Track	86%	>95%	87%	89%	90%	89%	>95%	>95%	93%
9th Grade On-Track									

\*Adjusted to reflect 2011-12 Cut Scores

The tan fields are optional. Districts will fill the blue fields with their targets, the gray fields with estimates of current/past data (if available).

K-12 / ESD Achievement Compact  
Corvallis SD - 1901

9th Graders of 2012-13 (Optional 4-Year Goals)									
	Economically Disadvantaged	Limited English Proficient	Students with Disabilities	Black (not of Hispanic origin)	Hispanic origin	American Indian / Alaska Native	Pacific Islander	Asian	TAG (not included in aggregate)
4-Year Graduation Rate									
5-Year Graduation Rate									
5-Year Completion Rate									
Earning 9+ College Credits									
Post-Secondary Enrollment									
<b>2015-16</b>									
3rd Gr. Reading Proficiency	85%	71%	74%	95%	79%	83%	*	95%	95%
3rd Gr. Math Proficiency	72%	68%	79%	85%	78%	57%	*	95%	95%
6th Grade On-Track	95%	95%	95%	95%	95%	95%	95%	95%	95%
9th Grade On-Track									

\*Adjusted to reflect 2011-12 Cut Scores

The tan fields are optional. Districts will fill the blue fields with their targets, the gray fields with estimates of current/past data (if available).

Final K-12 / ESD Achievement Compact Template  
January 2013

<b>College and Career Ready: Are students completing high school ready for college or career?</b>										
	9th graders of 2007-08	Dis-advantaged	9th graders of 2008-09	Dis-advantaged	9th graders of 2009-10	Dis-advantaged	9th graders of 2010-11	Dis-advantaged	9th graders of 2013-14**	Dis-advantaged
4-Year Cohort Graduation										
5-Year Completion										
Post-Secondary Enrollment										
Earning 9+ College Credits										

Disadvantaged is aggregate of disadvantaged student groups (details on pp. 2-4)

Gray shaded boxes are district-provided projections and goals

<b>Progression: Are students making sufficient progress toward college and career readiness?</b>										
	2010-11 All	Dis-advantaged	2011-12 All	Dis-advantaged	2012-13 All*	Dis-advantaged	2013-14 Goal All	Dis-advantaged	4-Year Goal (2016-17)**	Dis-advantaged
Kinder Readiness Participation										
3rd Gr. Read. Proficiency										
5th Gr. Math Proficiency										
6th Gr. Chronic Absence										
8th Gr. Math Proficiency										
9th Grade Credits Earned										
9th Grade Chronic Absence										

\*Estimate based on most recent available data \*\*2017 goals are optional

<b>Equity: Are students succeeding across all buildings and populations?</b>										
	2010-11	2011-12	2012-13	2013-14 Goal	4-Year Goal (2016-17)**					
Priority & Focus Buildings*										
DISAGGREGATED DATA AND GOALS FOR EACH DISADVANTAGED STUDENT GROUP LISTED ON PP 2-4										

\*Prior to 2012-13, school in federal AYP "Need Improvement" status \*\*4-year Goals are optional

<b>Local Priorities: What other measures reflect key priorities in the district? (optional, up to 3)</b>										
	Year	Dis-advantaged	Year	Dis-advantaged	Year	Dis-advantaged	1-Year Goal	Dis-advantaged	4-Year Goal**	Dis-advantaged

\*\*4-year Goal optional

<b>Investment: What is the public investment in the district? (does not include capital investments)</b>										
	2011-12	2012-13*	2013-14*	2013-14 QEM calculation of District Share						
Formula Revenue										
Local Revenue not passed through formula										
Federal Revenue										
State Grants not passed through formula										

\_\_\_\_\_  
District Official  
  
\_\_\_\_\_  
OEIB Chief Education Officer

NOTE: The gray fields for current and past data are optional, as are the tan fields for local priorities. Districts should fill in the blue fields with their targets, provided student counts are six or more.



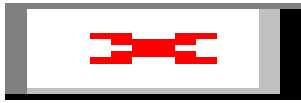


Final K-12 / ESD Achievement Compact Template  
April 4, 2012

3rd Gr. Reading Proficiency									
5th Gr. Math Proficiency									
6th Grade Chronic Absence									
8th Gr. Math Prof.									
9th Grade Credits Earned									
9th Grade Attendance									

9th Graders of 2013-14 (Optional 4-Year Goals)									
	Economically Disadvantaged	Limited English Proficient	Students with Disabilities	Black (not of Hispanic origin)	Hispanic origin	American Indian / Alaska Native	Pacific Islander	Asian (not included in aggregate)	TAG (not included in aggregate)
4-Year Graduation Rate									
5-Year Completion Rate									
Earning 9+ College Credits									
Post-Secondary Enrollment									
<b>2015-16 results</b>									
Kinder Readiness Participation									
3rd Gr. Reading Proficiency									
5th Gr. Math Proficiency									
6th Grade Chronic Absence									
8th Gr. Math Prof.									
9th Grade Credits Earned									
9th Grade Attendance									

NOTE: The gray and tan fields are optional. Districts should fill in the blue fields with their targets, provided that the student counts are six or more.



#### IV. SCHOOL CALENDARS: 2013-14 AND 2014-15

Corvallis School District 509J  
Board of Directors

**BOARD MEETING DATE: January 28, 2013**

**FOR INFORMATION**

**SUBJECT: 2013-14 and 2014-15 School Calendars**

---

**Issue:**

The District needs to prepare a school calendar for the 2013-14 school year. To allow parents, staff and the community to be able to plan ahead with key calendar dates district staff will be proposing a two year calendar, 2013-14 and 2014-15.

A draft calendar was sent out to staff and parents requesting feedback about conference dates, staff development dates and preference of days for PLC time. We received feedback from 134 staff members and almost 300 parents. Based on the feedback received the district wants to spend some time researching different ways to offer conferences so kids are not out of school three days in a row and better ways to offer staff development so it occurs on a more regular basis. We also received feedback requesting that the district align all levels for PLC time, with the preferred day on Friday. District staff needs to research if we can make this happen with the schools' schedules and busing. Contractual obligations and required instructional time will also be taken into account when planning dates for conferences, staff development and PLC time.

However, even though district staff needs time to work on the some of the calendar dates, we will propose key dates so family, staff and community can plan ahead. The key dates are the first day of school, Thanksgiving, winter and spring breaks.

	2013-14 School Calendar	2014-15 School Calendar
First day of school	September 4, 2013	September 3, 2014
Thanksgiving break	November 27-29, 2013	TBD
Winter break	December 23, 2013 – January 3, 2014	December 22, 2014 – January 2, 2015
Spring break	March 24-28, 2014	March 23-27, 2015
Last day of school	Likely to be week of June 9th	Likely to be week of June 8th

**Involvement:**

Assistant Superintendent Kevin Bogatin and Human Resources Director Jennifer Duvall have gathered feedback from principals, staff and parents. Information will be gathered from the transportation company and from other agency partners about after school opportunities for elementary and middle school students for early release.

**Recommendation:**

Staff recommends that the Board adopt the proposed key dates for the 2013-14 and 2014-15 school calendar proposal at a future meeting.

---

**CONTACT PERSON: Jennifer Duvall**

# Corvallis School District School Calendar

**2013-2014**

**Only Key Dates Noted**

**DRAFT**

## JULY 2013

S	M	T	W	T	F	S
	1	2	3	4	5	6
7	8	9	10	11	12	13
14	15	16	17	18	19	20
21	22	23	24	25	26	27
28	29	30	31			

## AUGUST 2013

S	M	T	W	T	F	S
				1	2	3
4	5	6	7	8	9	10
11	12	13	14	15	16	17
18	19	20	21	22	23	24
25	26	27	28	29	30	31

## SEPTEMBER 2013

S	M	T	W	T	F	S
1	H	P	F	5	6	7
8	9	10	11	12	13	14
15	16	17	18	19	20	21
22	23	24	25	26	27	28
29	30					

## OCTOBER 2013

S	M	T	W	T	F	S
		1	2	3	4	5
6	7	8	9	10	D	12
13	14	15	16	17	18	19
20	21	22	23	24	25	26
27	28	29	30	31		

## NOVEMBER 2013

S	M	T	W	T	F	S
					1	2
3	4	5	6	7	8	9
10	H	12	13	14	15	16
17	18	19	20	21	22	23
24	25	26	N	H	N	30

## DECEMBER 2013

S	M	T	W	T	F	S
1	2	3	4	5	6	7
8	9	10	11	12	13	14
15	16	17	18	19	20	21
22	N	N	N	N	N	28
29	N	N				

## JANUARY 2014

S	M	T	W	T	F	S
			H	N	N	4
5	6	7	8	9	10	11
12	13	14	15	16	17	18
19	N	21	22	23	24	25
26	27	28	29	30	31	

## FEBRUARY 2014

S	M	T	W	T	F	S
						1
2	3	4	5	6	7	8
9	10	11	12	13	14	15
16	N/M	18	19	20	21	22
23	24	25	26	27	28	

## MARCH 2014

S	M	T	W	T	F	S
						1
2	3	4	5	6	7	8
9	10	11	12	13	14	15
16	17	18	19	20	21	22
23	N	N	N	N	N	29
30	31					

## APRIL 2014

S	M	T	W	T	F	S
		1	2	3	4	5
6	7	8	9	10	11	12
13	14	15	16	17	18	19
20	21	22	23	24	25	26
27	28	29	30			

## MAY 2014

S	M	T	W	T	F	S
				1	2	3
4	5	6	7	8	9	10
11	12	13	14	15	16	17
18	19	20	21	22	23	24
25	H	27	28	29	30	31

## JUNE 2014

S	M	T	W	T	F	S
1	2	3	4	5	6	7
8	9	10	11	12	13	14
15	16	17	18	19	20	21
22	23	24	25	26	27	28
29	30					

**KEY**

- H/N No School: Non Contract or Holiday
- D No School: Professional Development
- P No School: Teacher Prep

First day of school - September 4

# Corvallis School District School Calendar

**2014-2015**

**Only Key Dates Noted**

**DRAFT**

**JULY 2014**

S	M	T	W	T	F	S
		1	2	3	4	5
6	7	8	9	10	11	12
13	14	15	16	17	18	19
20	21	22	23	24	25	26
27	28	29	30	31		

**AUGUST 2014**

S	M	T	W	T	F	S
					1	2
3	4	5	6	7	8	9
10	11	12	13	14	15	16
17	18	19	20	21	22	23
24	25	26	27	28	29	30
31						

**SEPTEMBER 2014**

S	M	T	W	T	F	S
	<b>H</b>	<b>P</b>	3	4	5	6
7	8	9	10	11	12	13
14	15	16	17	18	19	20
21	22	23	24	25	26	27
28	29	30				

**OCTOBER 2014**

S	M	T	W	T	F	S
			1	2	3	4
5	6	7	8	9	10	11
12	13	14	15	16	17	18
19	20	21	22	23	24	25
26	27	28	29	30	31	

**NOVEMBER 2014**

S	M	T	W	T	F	S
						1
2	3	4	5	6	7	8
9	10	<b>H</b>	12	13	14	15
16	17	18	19	20	21	22
23	24	25	26	<b>H</b>	<b>N</b>	29
30						

**DECEMBER 2014**

S	M	T	W	T	F	S
	1	2	3	4	5	6
7	8	9	10	11	12	13
14	15	16	17	18	19	20
21	<b>N</b>	<b>N</b>	<b>N</b>	<b>N</b>	<b>N</b>	27
28	<b>N</b>	<b>N</b>	<b>N</b>			

**JANUARY 2015**

S	M	T	W	T	F	S
				<b>H</b>	<b>N</b>	3
4	5	6	7	8	9	10
11	12	13	14	15	16	17
18	<b>N</b>	20	21	22	23	24
25	26	27	28	29	30	31

**FEBRUARY 2015**

S	M	T	W	T	F	S
	1	2	3	4	5	6
7	8	9	10	11	12	13
14	15	<b>16</b>	17	18	19	20
21	22	23	24	25	26	27
28	29	30				

**MARCH 2015**

S	M	T	W	T	F	S
	1	2	3	4	5	6
7	8	9	10	11	12	13
14	15	16	17	18	19	20
21	22	<b>N</b>	<b>N</b>	<b>N</b>	<b>N</b>	<b>N</b>
28	29	30	31			

**APRIL 2015**

S	M	T	W	T	F	S
			1	2	3	4
5	6	7	8	9	10	11
12	13	14	15	16	17	18
19	20	21	22	23	24	25
26	27	28	29	30		

**MAY 2015**

S	M	T	W	T	F	S
					1	2
3	4	5	6	7	8	9
10	11	12	13	14	15	16
17	18	19	20	21	22	23
24	<b>H</b>	26	27	28	29	30
31						

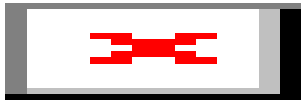
**JUNE 2015**

S	M	T	W	T	F	S
	1	2	3	4	5	6
7	8	9	10	11	12	13
14	15	16	17	18	19	20
21	22	23	24	25	26	27
28	29	30				

**KEY**

- H/N No School: Non Contract or Holiday
- D No School: Professional Development
- P No School: Teacher Prep

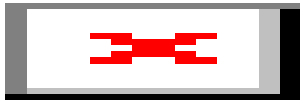
First day of school - September 3



- V. EXECUTIVE SESSION - The Board will meet in Executive session at 5:15 p.m. under ORS 192.660(2)(d) - To consult with persons designated for labor negotiations.
- VI. ADJOURNMENT

\*All times are approximate.

*Note: The Chair of the Board may alter the order of business as they deem proper and necessary.*



Agendas – Agendas and supporting materials are available online at <https://v3.boardbook.org/Public/PublicHome.aspx?ak=1000829> a few days before each School Board meeting. For more information, please contact Kim Nelson at [kimberly.nelson@corvallis.k12.or.us](mailto:kimberly.nelson@corvallis.k12.or.us).

Communication With The School Board – Communication with the Board can be made by telephone, letter, e-mail and public testimony. Letters may be addressed to individual Board members or the Board as a whole and sent to 1555 SW 35<sup>th</sup> Street, Corvallis, OR 97333. E-mail may be sent to [schoolboard@corvallis.k12.or.us](mailto:schoolboard@corvallis.k12.or.us) and will be sent to all board members simultaneously as well as to key District Office staff. For more information, please contact Kim Nelson at [kimberly.nelson@corvallis.k12.or.us](mailto:kimberly.nelson@corvallis.k12.or.us).

Consolidated Action Agenda – The purpose of the consolidated action agenda is to expedite action on routine agenda items. All agenda items that are not held for discussion at the request of a Board member or staff member will be approved/accepted as written as part of the consolidated motion. Items designated or held for discussion will be acted upon individually.

Public Comment –  
Guidelines are at: <https://www.csd509j.net/about-us/school-board/provide-input-and-be-informed/>

Executive Session – Permissible purposes of Executive Sessions include: ORS 192.660(2)(a) – Employment of Public Officers, Employees and Agents; ORS 192.660(2)(b) – Discipline of Public Officers and Employees; ORS 192.660(2)(d) – Labor Negotiator Consultations; ORS 192.660(2)(e) – Real Property Transactions; ORS 192.660(2)(f) – Exempt Public Records; ORS 192.660(2)(h) – Legal Counsel; ORS 192.660(2)(i) – Performance Evaluations of Public Officers and Employees; ORS 192.660(2)(j) – Public Investments.

Grievance Process - ORS 192.705  
Grievances alleging a violation by a governing body of provisions in Public Meetings Law may be submitted in writing to Kim Nelson at [kim.nelson@corvallis.k12.or.us](mailto:kim.nelson@corvallis.k12.or.us) or submitted between 8:00 am – 5:00 pm Monday through Friday at 1555 SW 35<sup>th</sup> Street, Corvallis, OR 97333. Additional information is available on the district website.

<b>SCHOOL BOARD MEMBERS</b>			
Judah Largent	541-231-8415	Terese Jones, Co-Vice Chair	541-230-1673
Sami Al-Abdrabbuh	541-283-6611	Shauna Tominey, Co-Vice Chair	541-829-8411
Chris Hawkins	541-602-2045	Luhui Whitebear, Chair	541-714.3305
Bernie Wang	541-704-7298		

<b>EXECUTIVE STAFF MEMBERS</b>	
Ryan Noss, Superintendent	541-757-5841
Melissa Harder, Assistant Superintendent / Human Resources Director	541-766-4857
Lauren Wolfe, Finance Director	541-757-5874
Byron Bethards, Student Growth & Experience Director	541-757-5470
Kim Patten, Operations Director	541-757-3849
Kim Nelson, Executive Assistant to the Superintendent; Board Secretary	541-757-5841