



Robbinsdale Area Schools School Board Meeting Agenda

Monday, October 17, 2011 at 8:45 PM

Work Session

Education Service Center Boardroom, 4148 Winnetka Avenue North,
New Hope, Minnesota

-
1. The School Board will hear an update on the West Metro Education Program 2
Presenter: Helen Bassett
Time: 8:45 p.m. or after regular meeting



WEST METRO EDUCATION PROGRAM
An integration district focused on student success

10 South 10th Street
Minneapolis, Minnesota 55403
612-752-7201
612-752-7206 fax
www.wmep.k12.mn.us

Dr. Daniel L. Jett, Superintendent

West Metro
Education
Program
Members

Brooklyn
Center

Columbia
Heights

Eden Prairie

Edina

Hopkins

Minneapolis

Richfield

Robbinsdale

St. Anthony-
New Brighton

St. Louis Park

Wayzata

Draft Strategic Plan

and

Background Information

October, 2011

WMEP Mission

DRAFT

Our Core Purpose with Distinction

West Metro Education Program's mission is to build our collective capacity to achieve educational excellence and racial equity.

We will serve our 100,000+ students and staff through regional leadership, collaboration, commitment and mutual support.

WMEP Vision

DRAFT

What We Intend to Create

To live out our Mission Statement by creating and engaging in Programs and Services of:

- Regional Equity Leadership
 - Preferred resource for research of the linkage of race / poverty / mobility and learning at the District / school / grade levels
 - Preferred resource for community and district conversations about race, poverty and equity in education
 - Preferred resource for equity advocacy and legislative action in the State of MN
- FAIR Schools
 - Arts schools with an integration lens for students and staff providing learning performance which is "above the race and income demographics" with instructional and cultural practices studied and transferred to member districts
- Staff Development
 - Valued and utilized resource for member district staff in professional development around issues of race and equity integrated with member district professional development
 - Provided at the individual and network levels including teacher cohorts and principals and in a variety of formats and modes
- Student Programs
 - Valued and utilized resource for students across member districts which is proven effective around student learning and engagement in equity in learning, living, athletics and activities
- Choice is Yours (delegated to Superintendents for further research and development)

WMEP Overall Strategic Directions

DRAFT

Focused Allocation of Our Resources

- A. Increase the regional and district capacity for deep listening and dialogue
- B. Increase the knowledge and awareness basis for:
 - District strengths and weaknesses
 - Data, research and analysis
 - Design /scaffolding of programs and services
- C. Increase recognition and appreciation for the differences between districts providing for easier "pull" of services and value
- D. Increase the level and quality of collaboration within WMEP and across member districts and communities
- E. Increase WMEP message specificity, focus and intentionality in a comprehensive and clear manner understood by a broad array of stakeholders

WMEP Strategic Plan
REGIONAL EQUITY LEADERSHIP

Vision

- Preferred resource for research of the linkage of race / poverty / mobility and learning at the District / school / grade levels
- Preferred resource for community and district conversations about race, poverty and equity in education
- Preferred resource for equity advocacy and legislative action in the State of MN

**2011 - 2013
Work Plan**

- Build data and research capacity into learning/instruction/engagement across student race, gender, income and housing type beginning in 2011/2012 SY
- Develop and pilot an approach for community conversations on learning and equity based on research above in at least 3 districts in 2012/2013 SY
- Board development of legislative platform and develop more influence in partnership with public education associations and lobbyists

**2011 Current
Reality**

- Little capacity for research into learning/instruction/engagement across student race, gender, income and housing type
- Need for a constructive and inclusive approach to district and community conversations which are scaleable and teachable
- Limited regional and State level presence in advocacy and legislative change

WMEP Strategic Plan
FAIR SCHOOLS

Vision

- Arts schools with an integration lens for students and staff providing learning performance which is “above the race and income demographics” with instructional and cultural practices studied and transferred to member districts

**2011 - 2013
Work Plan**

- Realignment of staff, prioritization, initiatives and expectations to FAIR School Vision
- Realignment of professional development and HR practices to FAIR School Vision
- Design and implementation of performance targets and measurement tools (VisionCards) and the capacity development needed
- Development of data and documentation of curriculum, instruction and engagement practices and evidence leading to increased learning
- Development of structures and practices to share learning and practices with member districts

**2011 Current
Reality**

- FAIR schools currently provide learning performance at or above average member districts with slightly smaller achievement gap
- WMEP student demographics are at the average of the member districts and are well integrated
- Little attention has been paid to transferring of curriculum, instruction and engagement practices to member districts
- FAIR schools offer programming unique for many districts and comparable to some districts
- Member districts do not need FAIR schools for capacity reasons

WMEP Strategic Plan
PROFESSIONAL DEVELOPMENT

Vision

- Valued and utilized resource for professional development on issues of race and equity integrated with member district professional development
- Provided at the individual and network levels including teacher cohorts and principals and in a variety of formats and modes

**2011 - 2013
Work Plan**

- Identify, innovate and deliver professional development proven to be effective in advancing the WMEP Mission
- Develop an assessment and feedback system for professional learning and application
- Offer Professional Development in multiple formats and delivery methodologies

**2011 Current
Reality**

- Staff development training comes from a variety of sources yet there is a perception that the Cultural Collaborative courses are largely dominated by PEG
- Many districts utilize current Staff Development offerings while some do not
- Professional development is not integrated into member district professional development
- Professional development is largely an in-person, classroom experience

WMEP Strategic Plan
STUDENT PROGRAMS

Vision

- Valued and utilized resource for students across member districts which is proven effective around student learning and engagement in equity in learning, living, athletics and activities

**2011 - 2013
Work Plan**

- Evaluate each program for value, alignment and effectiveness
- Assess the needs of our member districts and students for such programs

**2011 Current
Reality**

- Programs include Elder Wisdom Children Song, Dare 2 Be Real, Underground Railroad, Student Learning Grants, Elite Academy, Summer Scholars Institute, CPEO
- About 2,300 students participate annually and varies widely across member districts
- Member districts have limited understanding of current program

WMEP Strategic Plan
CHOICE IS YOURS

Vision

- Redefine the CIY Program in the 2011 - 2012 SY

**2011 - 2013
Work Plan**

- WMEP superintendent to provide a recommendation for the JPB and obtain feedback and key transition steps, if needed, from member district superintendents
- WMEP JBP to assess the key issues, parameters and funding elements of CIY
- Develop a Vision for the program and key transitions, if any, needed to best meet the needs of students and member districts

**2011 Current
Reality**

- Many districts do not need CIY Program for racial diversity
- CIY is not legally mandated
- 2,000 MPS students leave the district for other member districts

West Metro Education Program (WMEP) Joint Powers District #6069

Background Information

A Brief History of WMEP

The West Metro Education Program (WMEP) was originally formed in the mid 1990's, partially as a result of Minnesota's adoption of a new Desegregation Rule at about that same time. The rule specified under which conditions schools and/or school districts would be considered as racially identifiable/racially isolated, respectively (basically, a 20% variance in the enrollments of students of color between contiguous school districts or a school as compared to same grade level schools in a single district). Under the former circumstance, those contiguous districts were and are required to develop a joint plan intended to support the success of all students in their districts.

Since Minneapolis Public Schools' students of color enrollment was 20% higher than all eight of its contiguous school districts (Brooklyn Center, Columbia Heights, Edina, Hopkins, Richfield, Robbinsdale, St. Louis Park, and St. Anthony/New Brighton), it was required to develop desegregation plans with each of them, OR, as provided in the Desegregation Rule, all of those districts could jointly form a single collaborative to accomplish their goals. The eight suburban districts and the Minneapolis district did just that, and WMEP is the resulting collaborative organization that was formed.

The Joint Powers Agreement that formalized this arrangement was ratified by all nine of the school districts' school boards and it remains in effect today. That agreement also allowed for voluntary membership of non-contiguous school districts and in the mid to late 1990's, Wayzata and then Eden Prairie school districts were also formally added to the Joint Powers Agreement by formal votes of their school boards and of the other WMEP member districts.

Please see Attachment 1A for a timeline of WMEP's initial development through 2005 and Attachment A for a map that depicts the WMEP member districts.

WMEP's Governance

WMEP's governing board is known as the Joint Powers Board (JPB) and it is comprised of 11 members, one from each member district, and a non-voting superintendent that meet monthly. This board has the same general powers, authority, and responsibilities as do the school boards of Independent School Districts with one exception. The Joint Powers Board does not have the authority to

levy revenue via property taxes. In all other respects, however, the JPB operates as do other school boards in Minnesota.

In addition to a JPB, there is a WMEP Partner Advisory Group (PAG) comprised of one staff person from each member district selected by their superintendents. This group meets monthly to advise the WMEP superintendent and the JPB about programming, offerings, etc. This is a very important and valuable group to WMEP's work and they provide us with evaluative feedback on program offerings and serve as a think tank for new ideas.

Finally, a WMEP Superintendents' Advisory group meets with the WMEP superintendent monthly to discuss big picture ideas and to check in about WMEP's operations, finances, etc. This group is advisory only since all policies, procedures, budgets, etc., are voted on and approved by the WMEP Joint Powers Board at their regularly scheduled meetings.

Please see Attachment B for a list of current WMEP Joint Powers Board (JPB) members, Partner Advisory Group (PAG) members, and member district superintendents.

WMEP's Finances

(Please see Attachment C for a chart illustrating various aspects of WMEP's finances as it pertains to its member districts. WMEP's Approved 2011-12 Operating Budget can be found at www.wmep.k12.mn.us under Joint Powers Board, Joint Powers Board Meeting Packets 2010-2011, June 2011 Action Items, Action Item #4.)

WMEP's annual budget is in the \$11M to \$13M range annually depending on school enrollment, grants, etc.

Revenue is from three sources:

- Integration Revenue
- School Tuition
- Grants/Federal

Details about Integration Revenue

Integration Revenue is authorized by the Minnesota Legislature and has been available to WMEP member districts and other qualifying Minnesota school districts since the mid 1990's. The amount has varied but it is always based on a per pupil amount that is 70% state aid and 30% local levy. In total, WMEP member

districts collectively receive approximately \$26M annually in integration revenue of which about \$1.3M is sent to WMEP and approximately \$24.5M is retained in member districts for their local use.

In a fairly recent event, the focus for the use of integration revenue was modified by the Minnesota Legislature in 2009 to specifically identify the closing of the racial achievement gap as a significant intended outcome for the use of that revenue.

WMEP member districts annually send to WMEP for its operations the amount of \$19 per pupil based on each of their enrollments. This amount is determined by WMEP Joint Powers Board action as part of the annual budget approval process.

The exceptions to this are Minneapolis which sends \$0 to WMEP, and Brooklyn Center which in the past has sent funds to WMEP but the JPB board has exempted any payment from Brooklyn Center while it is in statutory operating debt.

Currently all districts send these funds to WMEP from the Integration Revenue they receive. There is no requirement that they use Integration Revenue for this purpose and should that funding change in the future, WMEP could operate as usual with member districts deciding to fund it from whatever revenue sources they had available and that they wanted to use for this purpose.

The current \$19 per pupil is the lowest amount WMEP's member districts have sent to WMEP while the highest amount sent, about six years ago, was \$46 per pupil.

WMEP has steadily brought down the amount in two major ways which are:

- 1. The discontinuation of a staff development partnership with the National Urban Alliance (NUA). This partnership was very popular and at the same time it was costly.**

It was phased out over a several year period but WMEP has retained some of the NUA consultants for WMEP's Cultural Collaborative program in which the consultants present day long workshops for member district administrators, teachers, and staff.

- 2. The second thing WMEP did to reduce costs was to significantly "skinny down" administrative costs by doing two things. First, have one principal responsible for both WMEP magnet schools. Thus, WMEP has three school administrators for the two schools; one Principal for both schools and an Associate Principal for each school. Second, WMEP contracted out most of the district office administrative services such as business, human resources, etc. Please see Attachment D for the current Organizational Chart for WMEP.**

Thus, the WMEP superintendent is responsible for all administrative areas of operations including business, human resources, food service, facilities, and teaching and learning.

There are several non-licensed staff who assist the superintendent with those areas but he remains the go to person for all of them including being the interface with WMEP's contractors in business and food service.

WMEP's Uses of Integration Revenue

WMEP uses integration revenue to:

1. Support the Cultural Collaborative staff development program, a series of about 30 different one or two day workshops primarily for professional staff. Annually there are approximately 1,700 teacher/administrator participants from member districts.
2. Support the district operations (district office, Joint Powers Board, etc.). Generally, WMEP uses integration revenue to support about 20% of district operations and school tuition revenue provides the other 80%.
3. Provide student programs for member districts such as Dare2B Real, Elders' Wisdom Children's Song, etc. (details of these programs are available if interested).
4. Provide membership for all staff in all member districts to The Science House at the Science Museum of Minnesota.
5. Provide direct services to member districts with 6 weeks of summer school for elementary and middle school students (3 weeks at FAIR School Crystal and 3 weeks at FAIR School Downtown). This program is specifically for students who reside in member districts. It is a way to expose families to the schools and at the same time provide valuable service to families.

Approximately 2,300 students are directly served annually in all of the student learning programs.

WMEP's Member District Magnet School Tuition

WMEP member districts send funding to WMEP for each student attending the magnet schools from their districts. That includes all of the basic aid and other aids and levies that the member districts receive to support the students in their districts.

The rationale for the member districts' decision is based on the philosophical belief that the WMEP magnet schools are, in fact, an extension of each of their own

districts (WMEP schools are listed on all of our member district web sites as are all of the other schools in the districts) and therefore their students who attend them should have the same financial resources behind them as the students who attend their in-district schools.

Prior to the 2009-10 school year, that funding was supplemented by several hundred thousand dollars of Integration Revenue. However, beginning with the 2010-11 school year and continuing, based on a four year plan that the Joint Powers Board had previously put into place, the WMEP magnet schools moved to complete self-sufficient funding and no Integration Revenue at all is now used to directly support the schools. They operate fully on school tuition, grants, etc.

Please see Attachment E for current member district tuition amounts per student enrolled in WMEP magnet schools.

To reach that point of financial self-sufficiency based primarily on tuition revenue, WMEP has:

- 1. Re-themed our downtown school into an Arts Magnet school;**
- 2. Reconfigured grade levels for the downtown school; and,**
- 3. Taken the recruitment and enrollment of students in WMEP magnet schools from member districts. As a result, enrollment is currently strong enough for this model to work. When basic state aid increases, WMEP tuition increases by the same amount and if any member districts pass increases in their per pupil property levies, WMEP receives that increase as well.**

WMEP believes that with strong enrollment, this model for the magnet schools can sustain itself without Integration Revenue. The overall plan is to have FAIR School Downtown be a school of 600 students with the following grade levels: K-3 and 9-12; and for FAIR School Crystal to have 560 students in grades 4-8.

This arrangement provides families with a full K-12 option of attendance at WMEP schools that includes both a suburban and an urban experience and each school "feeds" the other at grades 4 and 9 which serves families and WMEP well.

The following WMEP member districts usually use all of the seats allocated to their districts in WMEP magnet schools each year and WMEP conducts a computerized random lottery to select new students and to create a waiting list for each of the following districts:

**Minneapolis
Robbinsdale
Columbia Heights
Brooklyn Center**

**Hopkins
Richfield
St. Louis Park**

The following WMEP member districts always use some, but not all, of the seats allocated to their districts in WMEP magnet schools each year and no lottery is necessary. These member districts' unused seats are available for non-member district students based on an agreement by their resident district's superintendent to pay WMEP's non-member district tuition rate:

St. Anthony
Wayzata
Edina
Eden Prairie

Please see Attachment F which depicts WMEP's current enrollment by school and by sending district as of October 1, 2011, at FAIR School Crystal and FAIR School Downtown. Included in Attachment F is a comparison of the characteristics of the students attending WMEP magnet schools and the student population of its member districts.

Below are some additional facts about students currently enrolled at WMEP magnet schools:

**Fast Facts about Student Enrollment at
WMEP's FAIR School Downtown and FAIR School Crystal
as of October 3, 2011**

Enrollment: Total both schools: 1,063
Crystal: 550 Downtown: 513

Racial Mix of Students: Total: 53% non-white, 47% white
Crystal: 44/56% non-white/white
Downtown: 64/36% non-white/white

Special Education: Total: 11%
Crystal: 9% Downtown: 13%

Free/Reduced Meals: Total: 42%
Crystal: 27% Downtown: 57%

Member District enrollment: Total both schools: 962
Crystal: 487 Downtown: 475

Non-Member Dist. Enrollment: Total both schools: 111
Crystal: 63 Downtown: 48

% Member/Non-Member: Total both schools: 90/10
Crystal: 89/11 Downtown: 93/07

Largest Member Dist. Enrollment: Minneapolis: 435
Crystal: 200 Downtown: 235

Largest Non-Member Enrollment: Osseo: 67
Crystal: 43 Downtown: 24

Number of Districts Represented: Total: 28
Member Districts: 11 Non-Member Districts: 17

Largest Cohorts: Total: 118/Grade 6: Crystal
Crystal: 118/Grade 6 Downtown: 87/Grade 9

The Choice Is Yours (CIY)

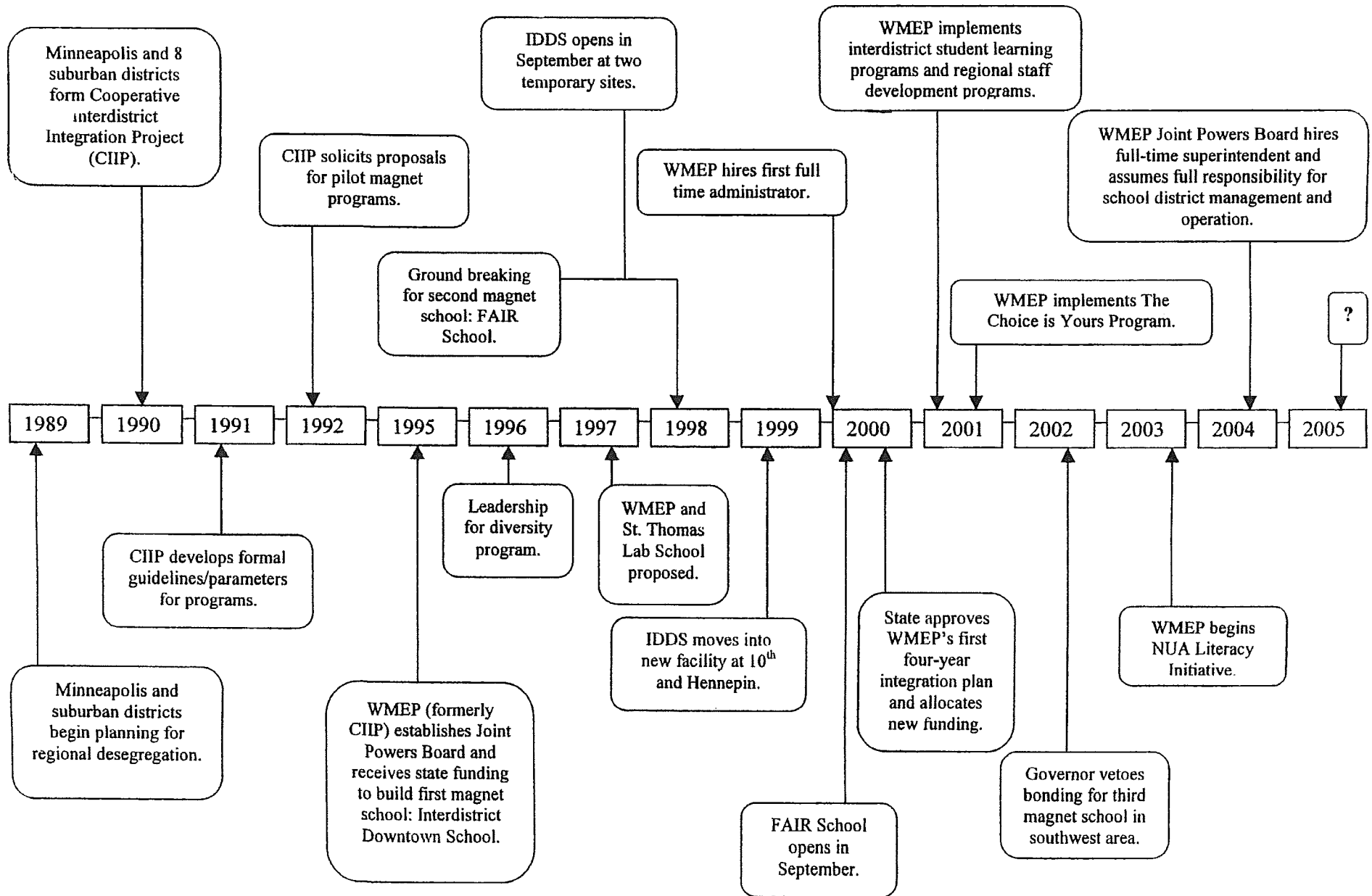
The Choice is Yours (CIY) is a program that operates under the auspices of WMEP and its member districts (with the exception of Brooklyn Center). It provides the opportunity for Minneapolis students who qualify for free or reduced price meals to attend suburban schools of their choice with transportation provided by the state of Minnesota. WMEP provides oversight and support for the program via funding from a federal Voluntary Public School Choice grant; however, WMEP's member districts receive direct funding for the students attending their schools and for associated transportation costs directly from the state of Minnesota. WMEP has no role in that process. Currently the program has over 2,000 participating students in grades K-12.

Please see Attachment G for detailed information about the history of this program and the 2010-2011 end of year enrollment by grade and member district.

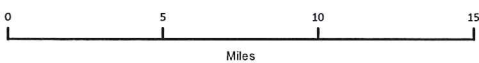
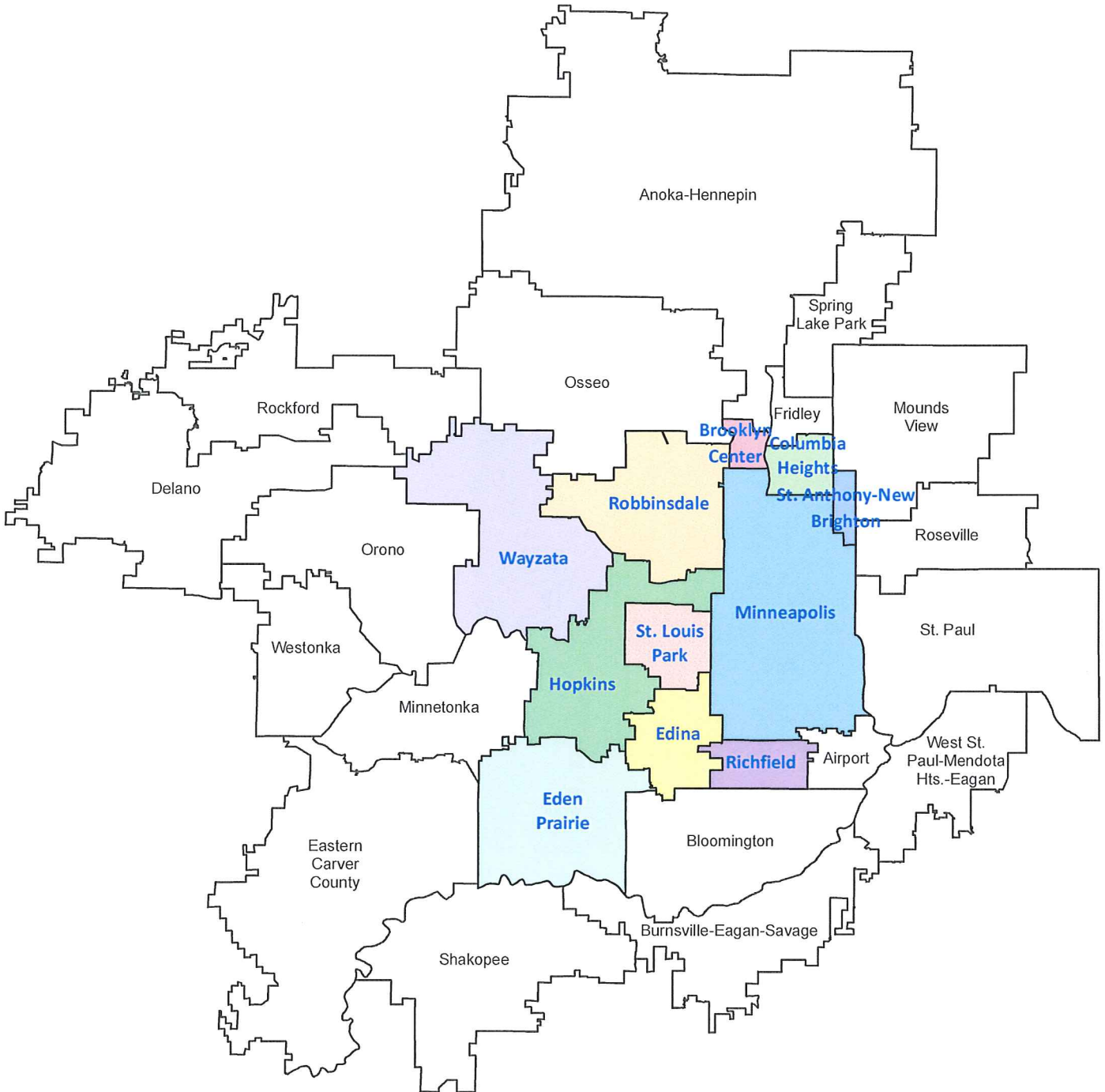
FOR FURTHER INFORMATION CONTACT:

**DR. DANIEL L. JETT, SUPERINTENDENT
WEST METRO EDUCATION PROGRAM
612.752.7202
DANIEL_JETT@WMEP.K12.MN.US**

Historical Timeline West Metro Education Program (WMEP) Joint Powers School District 6069



West Metro Area Education Program (WMEP) Joint Powers School District 6069 and surrounding Metro Area School Districts



Source: Minnesota Department of Education, Information Technologies Division. The School District boundary on this map does not represent a legal boundary of the District. Please contact your County Auditor to obtain an accurate legal description.

Project: M0164 Date: October, 2010
File: c:\ArcGIS_Projects\M0164\ArcGIS\Integration_Districts saf\IT

WMEP
Joint Powers Board Members
2011

Arnie Benifield
BROOKLYN CENTER

Tom Flood
RICHFIELD

Missy Lee
COLUMBIA HEIGHTS

Helen Bassett, *Board Chair*
ROBBINSDALE

Holly Parker
EDEN PRAIRIE

Jane Eckert
ST. ANTHONY/
NEW BRIGHTON

Cathy Cella, *Clerk*
EDINA

Julie Sweitzer
ST. LOUIS PARK

Irma McIntosh Coleman,
Treasurer
HOPKINS

Pat Gleason, *Vice Chair*
WAYZATA

Carla Bates
MINNEAPOLIS

WMEP Partners Advisory Group

**PAG Members
2010-2011**

Duane Berkas – Columbia Heights

Nanette Missaghi – Eden Prairie

Stephen West – Eden Prairie

Mary Manderfeld – Edina

Dr. Stanley Brown – Hopkins

James Burroughs – Minneapolis

Tyrize Cox – Minneapolis

Diane Cowdery – Pacific Educational Group, Inc.

Kate Trewick – Richfield

Kenneth Turner – Robbinsdale

Stephanie Crosby – Robbinsdale

Renee Corneille – St. Anthony/ New Brighton

Debra Bowers – St. Louis Park

Gabriel Lofton – Wayzata

Anthony Galloway – WMEP

Dr. Daniel Jett – WMEP

Jill Scholtz – WMEP

Rie Gilsdorf – WMEP

WMEP
Member District Superintendents
2011

Keith Lester
BROOKLYN CENTER

Robert Slotterback
RICHFIELD

Kathy Kelly
COLUMBIA HEIGHTS

Aldo Sicoli
ROBBINSDALE

Janet Pladson (*Interim*)
EDEN PRAIRIE

Barbara Zakrajsek (*Interim*)
ST. ANTHONY/
NEW BRIGHTON

Ric Dressen
EDINA

Debra Bowers
ST. LOUIS PARK

John Schultz
HOPKINS

Chace Anderson
WAYZATA

Bernadeia Johnson
MINNEAPOLIS

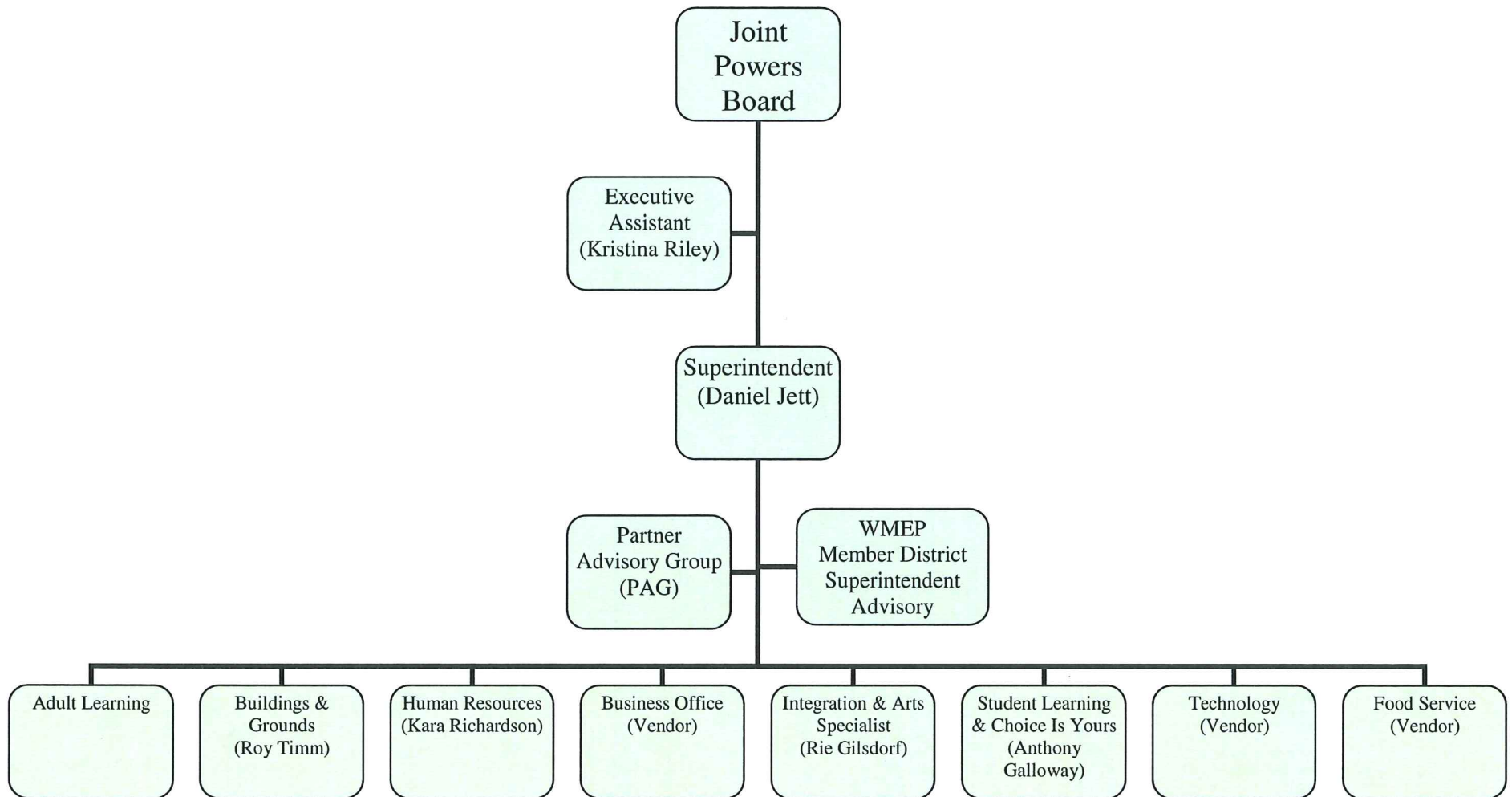
Fiscal Implication of WMEP Membership by Member District 2009-10

District	Summer School		Cultural Collaborative			
	Participants	Value	Participants	Value	Substitute Reimbursement to District	Total Cultural Collaborative Value
Brooklyn Center	18	\$ 3,960	2	\$ 375	\$ -	\$ 375
Columbia Heights	87	19,139	50	9,367	9,230	18,597
Eden Prairie	129	28,379	197	36,908	15,434	52,342
Edina	93	20,459	164	30,725	7,600	38,325
Hopkins	124	27,279	211	39,531	27,317	66,848
Minneapolis	252	55,438	45	8,431	-	8,431
Richfield	23	5,060	151	28,290	30,618	58,908
Robbinsdale	186	40,918	218	40,842	31,811	72,653
St. Anthony/New Brighton	75	16,499	4	749	500	1,249
St. Louis Park	18	3,960	141	26,416	29,919	56,335
Wayzata	215	47,298	135	25,292	2,700	27,992
Non-Member Districts	7	1,540	142			
WMEP	N/A		64			
Total Participants	1227		1524			
Total Cost	\$ 269,930		\$ 285,521		\$ 155,129	\$ 440,650
Cost per Participant	\$ 219.99		\$ 187.35			
District	Equity		Student Learning		TOTAL DIRECT VALUE TO DISTRICTS	
	Participants	Value	Participants	Value		
Brooklyn Center	0	\$ -	1	\$ 149	\$ 4,484	
Columbia Heights	0	-	146	21,779	59,516	
Eden Prairie	350	16,033	13	1,939	98,694	
Edina	0	-	77	11,486	70,271	
Hopkins	146	6,688	21	3,133	103,948	
Minneapolis	4	183	168	25,061	89,113	
Richfield	189	8,658	1	149	72,775	
Robbinsdale	368	16,858	107	15,961	146,391	
St. Anthony/NB	0	-	97	14,470	32,218	
St. Louis Park	299	13,697	106	15,812	89,804	
Wayzata	0	-	113	16,856	92,147	
WMEP	40	1,832	198	29,536		
Total Participants	1,396		1048			
Total Cost	\$ 63,950		\$ 156,332		\$ 859,360	
Cost per Participant	\$ 45.81		\$ 149.17			

Fiscal Implication of WMEP Membership by Member District 2009-10

District	Choice Is Yours					Integration Revenue				
	Participants (a)	CIY \$ Per Student	Total CIY \$ (b)	CIY Grant Revenue	Total CIY Value	Total Received (a)	Cost of WMEP Membership	% Paid to WMEP	Value of Int. Revenue Kept in Districts	% Kept in Districts
Brooklyn Center	0	\$ -	\$ -	\$ -	\$ -	\$ 225,066	\$ 25,000	11.1%	\$ 200,066	88.9%
Columbia Heights	284	7,003.92	1,989,114	35,973	2,025,087	417,960	63,143	15.1%	354,817	84.9%
Eden Prairie	61	8,386.31	511,565	8,583	520,148	1,037,741	214,316	20.7%	823,425	79.3%
Edina	143	5,931.02	848,136	22,699	870,835	758,319	176,096	23.2%	582,223	76.8%
Hopkins	290	7,184.60	2,083,535	41,681	2,125,216	1,083,984	163,669	15.1%	920,315	84.9%
Minneapolis	-	-	-	-	-	18,144,466	-	0.0%	18,144,466	100.0%
Richfield	90	8,918.46	802,661	17,655	820,316	597,221	90,952	15.2%	506,269	84.8%
Robbinsdale	384	7,012.13	2,692,658	61,593	2,754,251	1,812,637	280,150	15.5%	1,532,487	84.5%
St. Anthony/New B	123	8,380.47	1,030,798	13,519	1,044,317	172,026	37,544	21.8%	134,482	78.2%
St. Louis Park	268	6,881.37	1,844,208	32,389	1,876,597	638,393	94,027	14.7%	544,366	85.3%
Wayzata	198	7,361.67	1,457,610	31,726	1,489,336	1,510,000	219,788	14.6%	1,290,212	85.4%
Total	1,841		\$ 13,260,285	\$ 265,818	\$ 13,526,103	\$ 26,397,813	\$ 1,364,685	5.2%	\$ 25,033,128	94.8%
(a) Source MDE										
(b) The revenue for students participating in Choice Is Yours program follows the students to the district they attend.										
(c) Cost of Tuition for Students includes compensatory revenue.										
(All other data from WMEP)										
WMEP Magnet Schools										
District	Participants (ADM/WADM)	Tuition Per (WADM)	Cost of Tuition for Students (c)							
Brooklyn Center	11.6/13.5	\$ 5,659	\$ 76,508							
Columbia Heights	38.0/45.0	6,276	282,653							
Eden Prairie	45.0/51.5	6,439	331,295							
Edina	24.7/27.9	6,758	188,419							
Hopkins	85.0/96.7	6,596	637,972							
Minneapolis	435.0/509.2	6,411	3,264,369							
Richfield	50.0/58.3	6,468	377,005							
Robbinsdale	155.0/178.0	6,173	1,098,655							
St. Anthony/New B	8.0/9.7	5,491	53,154							
St. Louis Park	47.6/55.29	6,604	365,122							
Wayzata	66.0/75.9	6,686	507,752							
Total			\$ 7,182,903							

**WEST METRO EDUCATION PROGRAM
Organizational Chart
January 2011**



Preliminary General Fund Tuition Rates FY12

Tuition Rate Calculation

Basic State Aid	\$ 5,124.00	(b) line 51
Transp	<u>(248.75)</u>	(b) line 85
Net	\$ 4,875.25	

Source	see above	(c) Line 28	(b) Line 53	(b) Line 93	(b) Line 271	(b) Line 103	(b) Line 266	(b) Line 136	(b) Line 239	(d) Line 283	(b) Line 276	WMEP Tuition Per AMCPU	
Dist #	District	Basic	Integra	Gifted	Capital	Refer	Rev Conv	Equity	Trans Allow	Endowment	Safe Schools	Pension Adj	
286	Brooklyn Center	\$ 4,875.25	\$ 129.00	\$ 12.00	\$ 197.39	\$ 203.12	\$ (3.35)	\$ 162.85	\$ 13.88	\$ 28.64	\$ 30.00	\$ (21.84)	\$ 5,626.94
	13 Columbia Height	4,875.25	110.00	12.00	218.03	1,019.72	(3.46)	107.40	-	28.64	30.00	(46.55)	6,351.03
272	Eden Prairie	4,875.25	110.00	12.00	196.00	1,204.84	(7.62)	94.36	5.26	28.64	30.00	(33.16)	6,515.57
273	Edina	4,875.25	110.00	12.00	210.62	1,585.22	(13.07)	67.57	-	28.64	30.00	(29.09)	6,877.14
270	Hopkins	4,875.25	110.00	12.00	210.45	1,702.27	(153.60)	46.00	-	28.64	30.00	(60.07)	6,800.94
	1 Minneapolis (a)	4,721.53	480.00	12.00	211.32	1,698.33	(30.32)	46.00	176.04	28.64	30.00	35.79	7,409.33
280	Richfield	4,875.25	110.00	12.00	219.64	1,272.13	(28.70)	89.63	-	28.64	30.00	(49.43)	6,559.16
281	Robbinsdale	4,875.25	110.00	12.00	215.02	1,530.20	(3.79)	71.45	17.51	28.64	30.00	(54.27)	6,832.01
282	St Anthony	4,875.25	110.00	12.00	217.78	940.48	(743.54)	112.99	2.78	28.64	30.00	(31.26)	5,555.12
283	St Louis Park	4,875.25	110.00	12.00	218.58	1,795.31	(211.15)	46.00	20.73	28.64	30.00	(40.63)	6,884.73
284	Wayzata	4,875.25	110.00	12.00	202.32	1,478.63	(11.28)	75.08	1.12	28.64	30.00	(25.58)	6,776.18
	Non-members												7,600.00
	high	4,875.25	480.00	12.00	219.64	1,795.31	(3.35)	162.85	176.04	28.64	30.00	35.79	7,409.33
	low	4,721.53	110.00	12.00	196.00	203.12	(743.54)	46.00	-	28.64	30.00	(60.07)	5,555.12
	average	4,861.28	145.36	12.00	210.65	1,311.84	(109.99)	83.58	21.57	28.64	30.00	(32.37)	6,562.56

Non-member tuition rate=highest member district rounded up to nearest hundred plus \$100 or \$7,600 for FY12

- (a) 3% of Basic holdback (\$153.72) is retained by Minneapolis
- (b) Source - FY12 What If - 3/23/2011
- (c) Source - FY 10-11 Aid Entitlement/Integration Revenue Report - 1/29/11 - subtracting \$19 paid in aid to WMEP
- (d) Source -2010 Payable 2011 Levy Limitation and Certification Report -11/12/10

WMEP General Fund Estimated Tuition Revenue By School FY12

FAIR - DOWNTOWN

<u>Dist #</u> <u>District</u>	<u>FY12 Placements</u>		<u>Tuition Rate</u>	<u>Tuition Revenue</u>
	<u>ADM</u>	<u>WADM</u>		
286 Brooklyn Center	13.0	16.1	\$ 5,626.94	\$ 90,312.39
013 Columbia Heights	20.0	21.9	6,351.03	139,220.93
272 Eden Prairie	28.0	32.9	6,515.57	214,225.43
273 Edina	13.0	15.5	6,877.14	106,918.90
270 Hopkins	41.0	43.9	6,800.94	298,731.29
001 Minneapolis	229.0	268.9	7,409.33	1,992,072.46
280 Richfield	25.0	28.3	6,559.16	185,696.38
281 Robbinsdale	76.0	88.7	6,832.01	605,855.81
282 St Anthony	5.0	5.8	5,555.12	31,997.49
283 St Louis Park	30.0	34.0	6,884.73	234,411.29
284 Wayzata	25.0	28.0	6,776.18	189,922.77
Non Members	47.0	54.8	7,600.00	416,616.80
Additional Placements	0.0	0.0		-
Total FY11	552.0	638.8		\$ 4,505,981.94

Average per ADM	\$8,163
Average per WADM	\$7,054

FAIR - CRYSTAL

<u>Dist #</u> <u>District</u>	<u>FY12 Placements</u>		<u>Tuition Rate</u>	<u>Tuition Revenue</u>
	<u>ADM</u>	<u>WADM</u>		
286 Brooklyn Center	9.0	10.3	\$ 5,626.94	\$ 57,732.40
013 Columbia Heights	17.0	19.2	6,351.03	122,066.80
272 Eden Prairie	38.0	44.8	6,515.57	292,158.16
273 Edina	28.0	31.8	6,877.14	218,968.14
270 Hopkins	38.0	44.1	6,800.94	300,057.47
001 Minneapolis	206.0	240.2	7,409.33	1,779,721.07
280 Richfield	15.0	18.3	6,559.16	120,032.63
281 Robbinsdale	68.0	80.5	6,832.01	549,840.16
282 St Anthony	6.0	7.3	5,555.12	40,663.48
283 St Louis Park	17.0	20.4	6,884.73	140,586.19
284 Wayzata	41.0	46.8	6,776.18	317,260.75
Non-Members	67.0	77.3	7,600.00	587,176.00
Additional Placements	0.0	0.0		-
Total FY10	550.0	641.1		\$ 4,526,263.24

Average per ADM	\$8,230
Average per WADM	\$7,060

FAIR School (Downtown.Crystal)

2011-12 Enrollment 10/3/2011

District	Downtown												Crystal					Totals												
	K	1	2	3	5	6	7	8	9	10	11	12	Current DT Enroll	SPED	Free/Reduced	ELL	Ethnicity	4	5	6	7	8	Current Crysta Enroll	SPED	Free/Reduced	ELL	Ethnicity	Combined Downtown & Crystal Total	Allocation	Open
Brooklyn Center #286	0	1	0	0	1	1	2	0	4	1	0	1	11	2	5			2	2	2	2	1	9	1	4			20	9+8=17	over 3
Columbia Heights #13	3	1	0	2	1	0	0	0	1	2	3	0	13		10			8	1	4	2	2	17	3	7			30	19+17=36	5
Eden Prairie #272	3	2	3	1	2	1	4	2	5	3	3	1	30	8	12			5	7	4	7	9	32	5	6			62	55+52=107	45
Edina #273	3	0	0	1	0	0	0	2	5	1	2	2	16	4	5			3	5	11	4	5	28	2	4			44	40+37=77	33
Hopkins #270	3	4	2	1	0	3	3	5	7	1	2	2	33	7	14			8	7	11	11	6	43	2	7			76	41+38=79	3
Minneapolis #001	23	17	16	24	13	19	19	10	36	17	20	17	231	19	150			28	55	33	41	46	203	14	57			434	235+200=435	1
Richfield #280	1	7	3	1	1	1	2	2	2	3	3	2	28	4	19			2	5	2	5	5	19	2	6			47	26+24=50	3
Robbinsdale #281	8	4	7	5	2	3	5	8	11	7	4	1	65	10	35			12	9	20	17	18	76	6	28			141	74+69=143	2
St. Anthony/New Brighton #282	1	1	0	0	0	0	0	0	0	0	1	0	3		1			1	2	1	1	2	7		2			10	6+5=11	1
St. Louis Park #283	2	1	3	2	2	3	3	1	6	0	1	0	24	4	14			2	1	4	7	2	16	1	6			40	24+22=46	6
Wayzata #284	2	1	4	3	0	0	2	0	3	5	1	0	21	6	7			6	6	7	6	12	37	5	7			58	55+51=106	48
Member District Totals	49	39	8	40	2	1	0	0	0	0	40	26	475	64			77	100	99	103	108	487	41				962			
NON-MEMBER DISTRICTS																														
Anoka #11					1								1															1		
Bloomington #271																		2	2				4		1			4		
Burnsville/Eagan/Savage #191	1												1		1													1		
Centennial #12										1			1		1													1		
Chisago Lakes #2144																		1					1	1				1		
Forest Lake #831																								1						
Fridley #14					1		1				1		3	1	2					1			1					4		
River Grove Heights #199																				1			1	2		2		2		
Minnetonka #276			1	1						1	1		4	1						2	1	1	4	1				8		

District	Downtown												Crystal					Totals													
	K	1	2	3	5	6	7	8	9	10	11	12	Current DT Enroll	SPED	Free/Reduced	ELL	Ethnicity	4	5	6	7	8	Current Crysta Enroll	SPED	Free/Reduced	ELL	Ethnicity	Combined Downtown & Crystal Total	Allocation	Open	
Member Districts																															
Moundsview #621													1								1	1	1	3					4		
New Prague #721																						1	1								
Osseo #279	5	3	1	0	1	0	1	2	4	3	4	0	24	1	12			9	8	13	9	4	43	4	13			67			
Prior Lake/Savage #719					1								1	1													1				
St Francis #15																	1					1					1				
St Paul #625											1		1	1						1	1	2					3				
White Bear Lake #624										1			1	1													1				
Princeton #477																						1	1	1			1				
non-member District																															
Totals	6	3	2	1	4	0	2	3	7	5	5	0	38				12	11	19	13	8	63	8				101				
Total	5	42	0	41	6	1	2	3	7	5	45	26	513	67	291		89	1	8	6	6	550	49	150			1063				
ELL																1									3						
Free/Reduce %														57	%										27	%	41%				
Ethnicity																															
Non-white	38	33	26	26	16	28	30	18	42	24	30	17	328			64%	47	47	51	55	41	241				44%					
White	17	9	14	15	10	3	12	15	45	21	15	9	185			36%	42	64	67	61	75	309				56%					

**West Metro Education Program & Member Districts
Student Demographic Data
2010-2011**

Districts	Total Enrollment	% White	% None White	% SPED	% FRL	% ELL
Minneapolis	34336	32%	68%	16%	64%	21%
Columbia Heights	2991	33%	67%	14%	72%	26%
Hopkins	7280	64%	36%	11%	35%	7%
Eden Prairie	9744	73%	27%	10%	18%	6%
Edina	8295	84%	16%	9%	8%	3%
Richfield	4129	33%	67%	13%	63%	31%
Robbinsdale	12036	52%	48%	13%	45%	11%
SANB	1794	78%	22%	8%	20%	5%
St. Louis Park	4450	62%	38%	13%	34%	9%
Wayzata	10464	77%	23%	8%	14%	2%
Brooklyn Center	2311	34%	66%	14%	68%	14%
WMEP (2011-2012)	1063	47%	53%	11%	46%	2%
Member Districts (Combined)	97830	52%	48%	13%	43%	13%

West Metro Education Program
Joint Powers Board Choice is Yours Policy Planning Meeting

October 13, 2010

Introduction:

The Choice is Yours (CIY) program has existed as part of the WMEP program since CIY's beginning in the year 2000. WMEP's involvement in CIY was unplanned by the WMEP Joint Powers Board at the time and CIY was created to partially settle an educational adequacy lawsuit brought by the NAACP in 1995 against the Minnesota Department of Education, representing the state of Minnesota. At the time of the NAACP/MDE lawsuit settlement, WMEP was busy with many new cooperative ventures including the construction and occupancy of its new Inter-District Downtown School (now known as FAIR School Downtown) as well as the pending completion and occupancy of its almost completed FAIR school in Crystal, MN (now known as FAIR School Crystal).

WMEP member districts were invited to participate in the settlement discussions although WMEP and its member districts (except for Minneapolis Public Schools) had no direct involvement with the lawsuit in any way. WMEP and its member districts were simply willing and convenient vehicles to assist the parties in the settlement of their dispute.

The CIY program that resulted from the settlement agreement, and that which was operated by WMEP, was only a portion of the total settlement agreement. Other portions of the settlement agreement specifically applied only to the Minneapolis Public Schools. In the WMEP context, though, the CIY name is normally used to identify the portion of the program operated by WMEP and its member districts. Its name in the beginning was the Suburban Choice is Yours Program. That name differentiated it from other components of the Choice is Yours Program that operated internally between and among the schools in the Minneapolis Public School System.

For the purpose of this discussion, the use of the term Choice is Yours or CIY, will only pertain to what was formerly known as the Suburban Choice is Yours Program and not to any internal choice program operating within the Minneapolis Public Schools.

At the time of the settlement agreement in 2000, WMEP was comprised of 10 member districts with Eden Prairie joining subsequent to that agreement. In addition and in accordance with the terms of the settlement agreement, Brooklyn Center did not participate in the Suburban Choice is Yours Program

since it's student population that qualified for the Federal meal program exceeded 50%. Thus, the Suburban Choice is Yours Program involved students from Minneapolis whose families qualified for federal meal assistance attending schools in eight WMEP suburban school districts (St. Anthony/New Brighton, Columbia Heights, Robbinsdale, Wayzata, Edina, Hopkins, St. Louis Park, and Richfield).

The Choice Is Yours Under the Court Approved Settlement Agreement:

The goal of the program when operated under the court settlement was to provide the opportunity for "up to 2,000 Minneapolis students whose families qualified for the Federal meal program, at 500 students per year for four years," to attend public schools in the eight suburban school districts identified above. The state of Minnesota agreed to underwrite all of the costs to transport CIY participating students to and from school daily. In addition, the state of Minnesota, applied funding from a federal Voluntary Public School Choice (VPSC) grant to support the CIY and other related programs.

Since all of the suburban school districts that received Suburban Choice is Yours students were members of WMEP, it became the named entity to operate the program, in partnership with the Minneapolis Public Schools, the Minnesota Department of Education, and Parent Information Centers (PIC), that were created and funded to provide information to parents about their options to educate their children, especially the option for them to enroll their children in suburban school districts.

All per pupil funding for CIY eligible Minneapolis students who attended suburban schools flowed directly from the State of Minnesota to those districts without being handled by or accounted for by WMEP. That funding included basic state aid and other aids/levies as identified solely by the Minnesota Department of Education.

Similarly, transportation for students in the program was provided to and from schools in the suburbs by those suburban school districts that then directly billed the state for reimbursement of those transportation costs. The state made reimbursement directly to the districts without the funds ever being handled by or accounted for by WMEP.

Voluntary Public School Choice grant funds mentioned above, in amounts that have varied from approximately \$350,000 to \$550,000 annually, flowed directly to WMEP which retained approximately \$120,000 to employ a person who coordinated the support work for CIY students among the participating suburban member districts and to print and distribute brochures and other information pieces for families.

The remainder of the funds, approximately \$230,000 to \$430,000 annually, was redistributed directly to the participating WMEP member districts in proportion to the percent of total CIY participants that were enrolled in each district e.g. a district with 10% of all CIY enrollees received 10% of the available Voluntary Public School Choice grant funds for each year.

Thus, although WMEP was the named entity that "operated" CIY, it was somewhat of a misnomer in a practical sense. During the period 2000 -01 through the 2003-04 school years, the court approved settlement agreement governed the operation of the program and the funding for it flowed as indicated above. Therefore, the WMEP Joint Powers Board had little or no direct control over its policies and procedures and likely could not have affected any changes to it without seeking approval from the court.

That changed in the 2004-05 school year.

The Choice is Yours Program since 2004:

What changed in the Suburban Choice is Yours program in July of 2004 is that the original court approved settlement agreement that created the program and that set its operational parameters expired without comment from the court or from any of the parties to the settlement agreement. It was at that point that the control of the CIY program's policies and procedures transferred, without ceremony or any special notation, to the WMEP Joint Powers Board.

That same month, July 2004, WMEP submitted to the Minnesota Department of Education its 2004-08 4-year Desegregation Plan that was subsequently approved by MDE. That plan included the continued operation of the Suburban Choice is Yours program under the identical policies and procedures as had controlled the previous four years of its operation under the court approved settlement agreement. The only changes made to its operations and procedures were to eliminate all references to court, settlement agreement, and requirements for various reporting requirements. All other aspects of the daily operation of the program remain unchanged.

The funding streams and flow through remained the same; the transportation arrangement remained the same; and the eligibility and day to day operation remained the same as they had been under the court approved settlement agreement. Such is the case today in 2010. The program remains unchanged from its inception, although conditions in member districts have changed, some slightly and others significantly.

One intermittent and worrisome change that has occurred is in the area of reimbursement of member districts by MDE for CIY transportation costs.

THE 'CHOICE IS YOURS' PROGRAM

END OF YEAR 2010/11

BY GRADE & BY DISTRICT

School															
District	K	1	2	3	4	5	6	7	8	9	10	11	12	Total	
Richfield	0	0	0	0	0	1	2	1	1	26	25	23	22	101	
Edina	0	6	8	14	5	15	15	7	19	15	15	20	21	160	
St Louis Park	8	13	18	14	18	18	18	21	25	36	31	40	24	284	
Hopkins	4	12	15	11	20	22	29	36	42	33	42	26	23	315	
Robbinsdale	10	19	25	30	42	34	38	42	49	52	71	64	39	515	
Wayzata	3	3	12	10	12	17	13	19	23	21	20	16	8	177	
Columbia Hts	24	20	21	27	26	25	22	23	31	37	33	37	26	352	
St Anthony	4	4	8	9	2	10	8	16	18	13	26	17	16	151	
Eden Prairie	3	1	9	6	7	2	5	5	8	8	8	8	4	74	
Totals	56	78	116	121	132	144	150	170	216	241	271	251	183	2129	