

John Bergs
Activities Director
Margot Hansen
Director of Teaching & Learning
Jeff Heine
Buildings & Grounds Director



Chuck Keller
Business Director
Angie Kahle
Student Support Services Director
Dorothy Koller
Community Education Director

SPECIAL BOARD MEETING & BOARD WORK SESSION
District Office, 130 South Willow Street, Belle Plaine, MN 56011
7:00 PM Monday, June 10, 2013

Our mission is to pursue excellence in academics, programming, and the social and emotional development of our students. Fostering a culture of kindness, inclusion, and pride in ourselves, our school, and our community.

1. Board Work Session

1. Projected 2013-2014 Budget:

Mr. Chuck Keller

2. Special Board Meeting

1. Revise Debt Service Fund Budget for 2012-2013:

Mr. Chuck Keller

2. Potential Real Estate Transaction:

Dr. Smith

3. Enhanced Learning Initiative Proposal:

Dr. Smith

2

3. Adjourn

Board Clerk

Date



Tigers Enhanced Learning Initiative

Vision

- Digital literacy is the ability of all members of the school community to use information and communication technologies as a seamlessly integrated part of learning. Members will be able to find, evaluate, create, and communicate information requiring both cognitive and technical skills. Upon graduation, students will be able to learn effectively and live productively in an increasingly global and digital world.

Mission

- As an educational community, our mission is to change the way that mobile devices, social media, online learning environments and other technologies have been traditionally seen and used so that they become effective instructional, observation and communication tools in our district.
-

What is the Tigers Enhanced Learning Initiative?

- The main focus of the TELI is to transform learning for our 21st Century students by incorporating technology into the everyday teaching and learning practices in a 1-to-1 environment. These practices will focus on collaboration, communication, creation and sharing of new learning.

What is 1-to-1 digital learning?

- A learning environment where technology is immersed and embedded and utilized consistently, where there is one computing device issued to every student.

Why are we implementing the Tigers Enhanced Learning Initiative?

- Our TELI and its 1-to-1 component will allow students the opportunity for authentic experiences to develop skills and strategies for using emerging tools that they will need to be prepared to achieve success after graduating from Belle Plaine Schools.
- Utilizing a 1-to-1 digital learning program will enhance face-to-face learning experiences, increase student engagement, empower students to become self-motivated learners, and foster students' positive digital citizenship skills.
- Teachers in 1-to-1 learning environments are enabled to become more impactful facilitators of learning through the use and access to new and varied ways of assessing student understanding.
- The 1-to-1 digital learning program also enables educators to more effectively engage different types of learners due to the vast resources for researching, writing, creating, collaborating, synthesizing, presenting, communicating, and publishing that are inherently in the hands of the learner.

Why will we utilize 1-to-1 mobile devices for students?

- Individual devices provides each student with a personal learning tool that can be adapted to various courses and learning experiences.
- Implementing a 1-to-1 mobile device model benefits students by having a "one stop shop" for course resources (curriculum materials) and school management tools (i.e., digital workflow platforms, class organizers, calendars/planners)

- The 1-to-1 roll out allows for each subject area and grade level to begin the phased in process of moving towards adoption and implementation of digital curriculum via the SAMR Model
- The 1-to-1 mobile device model will result in system-wide implementation of digital workflow between students and teachers. Digital workflow is quickly becoming the norm within middle and secondary school environments, colleges and the business world.

How we will implement the Tigers Enhanced Learning Initiative

- We will create a systemic plan to ensure that the Tigers Enhanced Learning Initiative is viable, sustainable and adaptable.
- We will follow a systemic plan for implementing complex change in our organization, including the elements of leadership, curriculum, professional development, assessment, infrastructure and support, and financial sustainability.
- Our plan will include a 3 year phased in implementation timeline that will go into effect during the 2013-2014 school year which will provide 1-to-1 mobile devices for all teaching staff and students in grades 7-12, and add grades 3-6 in 2014-15. Grades K-2 will be added in 2014-15 with a classroom cart bases storage system.
- We will create a 3 year sustainable initiative funding strategy that will mirror the technology lease cycle with a systemic plan to reallocate existing resources as we transition away from traditional paper-based resources and materials and adopt digital instructional materials.
- We will continue to expand and build our wireless network and technology infrastructure to be fully capable of supporting the enterprise level demands of a mobile digital learning program.

Preparing teachers for the Tigers Enhanced Learning Initiative

- District 716 is committed to expanding our professional development opportunities and support for technology integration to assist teachers as they transform their instruction and move beyond merely using digital tools as substitutes for traditional methods.
- Professional development opportunities will be provided via a core cohort of Technology Vanguard Team members to be trained on training practices and then plan and implement regular, measured trainings for the staff in each building.
- Job-embedded support for professional development and support for teachers will focus on technology integration and utilizing mobile devices for student learning. The emphasis will be on best practices for utilizing mobile devices and creating/delivering instructional materials and pedagogies that can apply to and enhance student learning.
- Our Technology Boot Camp will shift emphasis from traditional substitution based technology integration to working towards modification and redefinition elements of the SAMR Model.
- Professional development via attendance at area exemplary 1-to-1 schools, conferences such as the Innovation Zone, TIES, 1-to-1 Summits, etc... will be encouraged. Cooperative sharing of ideas and methodologies by way of venues such as Google Hangouts, WebEx-es, Chat and other formal and informal methods of staff from participating multi-district cooperatives will be explored and implemented.

Preparing students and parents for the Tigers Enhanced Learning Initiative

- On-site orientation sessions will be provided to instruct students and parents in the basic operation, care, and maintenance of student mobile devices, and inform them about the principles of proper digital citizenship.
- Video, print and web-based tutorials for using mobile devices, learning management systems, and internet-based tools will be created to assist students and parents in their use of student mobile devices for academic achievement.

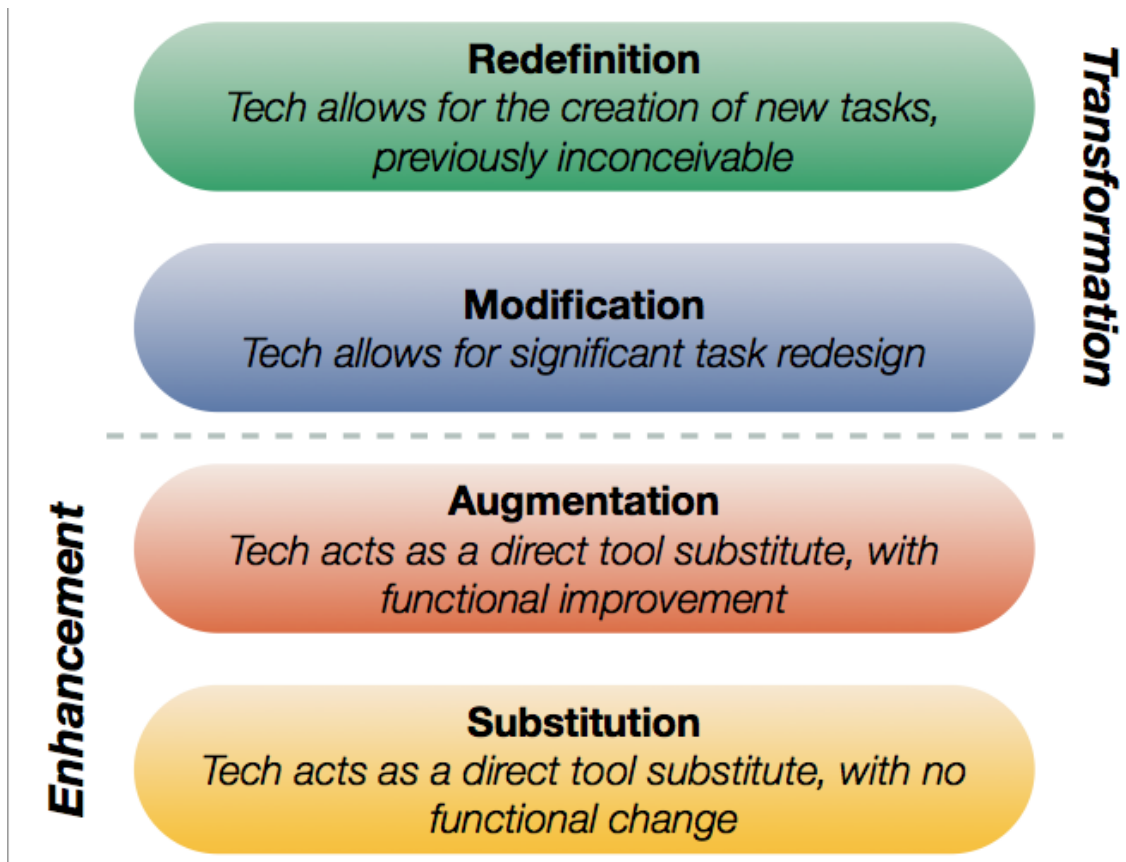
Communicating to stakeholders about the Tigers Enhanced Learning Initiative

- We will create a communication plan that utilizes staff and other stakeholders to ensure our vision and purpose for the Tigers Enhanced Learning Initiative is communicated clearly and accurately.
- We will promote our vision and plans to the TELI via the web site, District social media, through other school communications, and through regional media.
- Presentations to parent groups, school groups, and community groups will also be utilized to promote the vision and plans for the TELI.

Measuring the impact of the Tigers Enhanced Learning Initiative

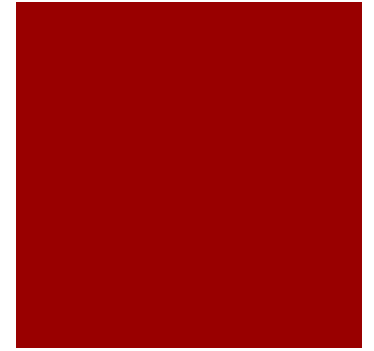
- We will conduct pre-and-post teacher assessments for technology integration proficiency.
- We will conduct stakeholder surveys on the use and impact of technology on student learning.
- We will track student achievement and other data using local indicators, standardized test data, and college and work readiness assessment data.

SAMR





Enhanced Learning
Initiative Proposal



**“Expecting Excellence
from
Everyone, Every Day!”**

District Mission, Core Values and Vision



- Adopted in Spring, 2012

- Mission Statement –

“Expecting Excellence from Everyone, Every Day!”

- Core Values

- Drivers of our Words and Actions as a District

- Vision

- What We Intend to Create by 2016

District Mission, **Core Values** and Vision



■ Core Values

- **L**EARNER'S FIRST – Student's diversity and needs drive decisions & actions
- **E**XCELLENCE – High expectations for all and intentional innovative effort for continuous improvement
- **A**CCOUNTABILITY – Ownership of our individual and collective actions and decisions while being responsive to results
- **R**ESPECT – Display pride for self & others in the schools and community through thoughts and actions
- **N**URTURE – Safe and supportive learning environment focused on individual needs

District Mission, Core Values and **Vision**



■ Vision

- Our district, working in partnership with all families and the community, is a learning organization of engaged, motivated and high achieving lifelong learners who experience daily our
- Community Culture of Engagement through:
 - Recognizing who we are and embracing who we may become
 - Collaboration and communication
- Sustainability for Excellence and Engagement through:
 - Effective management of human, financial & physical resources
 - *Innovative and integrated use of technology*

District Mission, Core Values and **Vision**



■ Vision

- Our district, working in partnership with all families and the community, is a learning organization of engaged, motivated and high achieving lifelong learners who experience daily our
- Academic Excellence through:
 - *Personalized learning and differentiated programming*
 - Switching our focus from teaching to learning
 - Alignment of rigorous, guaranteed and viable curriculum

What do we expect from our students?



- To be engaged in their learning
- To be conscientious about a learning plan that ensures that they are college/career ready by graduation
- That they develop 21st Century Learning skills including Critical thinking and problem solving, Communication, Collaboration, and Creativity & innovation

Proposal



- **Embark upon an Enhanced Learning Initiative that will focus on these key areas:**
 - Increased student engagement, learning and achievement
 - Increased student fluency in 21st century skills
 - Personalized learning experiences for students
 - Enhanced learning experiences and accessibility for all students
 - Extended learning beyond the classroom and beyond the school day
 - Embedded use of data to inform learning and instruction

Process



- **The Enhanced Learning Initiative that will be based on a foundation of three key components:**
 - **Develop a key group of educators who will be trained in the use of technology to be key resources in their respective buildings. This team, the Technology Vanguard Team, will consist of approximately 20 individuals – administrators, teachers and paraprofessionals.**
 - **Acquire a desktop computer and a tablet device for all teachers in the district for delivery this fall. The desktop computer will replace current teacher workstation computers that will be re-appropriated to upgrade our labs.**
 - **Begin the process of a student 1-1 initiative by acquiring a tablet device for all students in grades 7-12 beginning this fall.**

What are our expectations with regard to Digital Literacy?



- District 716 Digital Literacy Vision Statement:
 - *Digital literacy is the ability of all members of the school community to use information and communication technologies as a seamlessly integrated part of learning. Members will be able to find, evaluate, create, and communicate information requiring both cognitive and technical skills. Upon graduation, students will be able to learn effectively and live productively in an increasingly global and digital world. (developed by Technology Vanguard Team)*

How will we prepare our educators for this learning model and teaching shift?

The S.A.M.R. Model

Redefinition

Technology allows for the creation of new tasks, previously inconceivable

Modification

Technology allows for significant task redesign

Augmentation

Technology acts as a direct tool substitute, with functional improvement

Substitution

Technology acts as a direct tool substitute, with no functional change

Transformation

Enhancement

Investment in the Proposal



- Initial capital expenditures are expected to be approximately \$670,000 for the JH-SH in FY14. The purchase will include:
 - 125 ipads (32GB) for all teaching staff for preK – grade 12
 - 750 ipads (16GB) for all students in grades 7-12
 - 125 desktop computers for all teachers K-12
 - 60 Google ChromeBooks for classroom checkout/library use
 - Additional infrastructure backbone at 7-12 building to ensure that additional load may be handled (\$50,000)
- Purchase will be made through a 3 year lease with annual payments of approximately \$230,000 per year
 - Annual payment will be offset by \$40,000 deducted from our annual technology budget resulting in an annual payment of app. \$190,000

Investment in the Proposal



- Capital expenditures are expected to be approximately \$315,000 for Oak Crest in FY15. The purchase will include:
 - 520 ipads (16GB) for all students in grades 3-6
 - Additional infrastructure backbone at Oak Crest building to ensure that additional load may be handled (\$25,000)
- Purchase will be made through a 2 year lease with annual payments of approximately \$160,000 per year

Investment in the Proposal



- Capital expenditures are expected to be approximately \$175,000 for Chatfield in FY16. The purchase will include:
 - 420 ipad minis (16GB) for all students in grades K-2
 - Additional infrastructure backbone at Chatfield building to ensure that additional load may be handled (\$20,000)
- Purchase will be made through a 3 year lease with annual payments of approximately \$60,000 per year

Investment in the Proposal

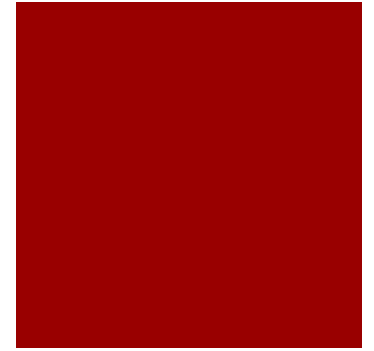
Total Investment in Enhanced Learning Initiative			
	2013-14	2014-15	2015-16
Grades 7-12 plus Teacher Stations	\$ 230,000	\$ 230,000	\$ 230,000
Grades 3-6		\$ 160,000	\$ 160,000
Grades K-2			\$ 60,000
Annual Tech Budget	\$ 45,000	\$ 45,000	\$ 45,000
	\$ 275,000	\$ 435,000	\$ 495,000
Current Annual Tech Budget	\$ 85,000	\$ 85,000	\$ 85,000
Net Annual Cost for ELI	\$ 190,000	\$ 350,000	\$ 410,000

Other



- **Timeline of 1 to 1 for elementary students?**
 - Proposal is for Oak Crest to have 1 to 1 iPads in fall of 2014
 - Proposal is for Chatfield to have cart based iPad minis in fall of 2015
- **Funding over a period of time – where is it coming from?**
 - For 2013-14, funding will come from general fund fund balance. (\$185,000 from fund balance)
 - Beginning in 14-15, we will allocate ADEDK revenue that was approved by legislature to help offset costs of this initiative. Currently estimated to be \$275,000 leaving net cost of \$70,000 for FY15 and \$130,000 for FY16.
 - We will look from within our current operating budget to fund the rest of this initiative – textbooks, paper/copier costs, etc.

Evaluation of three year Initiative



- How will we evaluate this system change over time
 - Assessments and Educational Outcomes
 - Qualitative Information from Key Stakeholders
 - Artifacts of Student Learning
 - Action Research Projects

Why iPads as a learning tool?

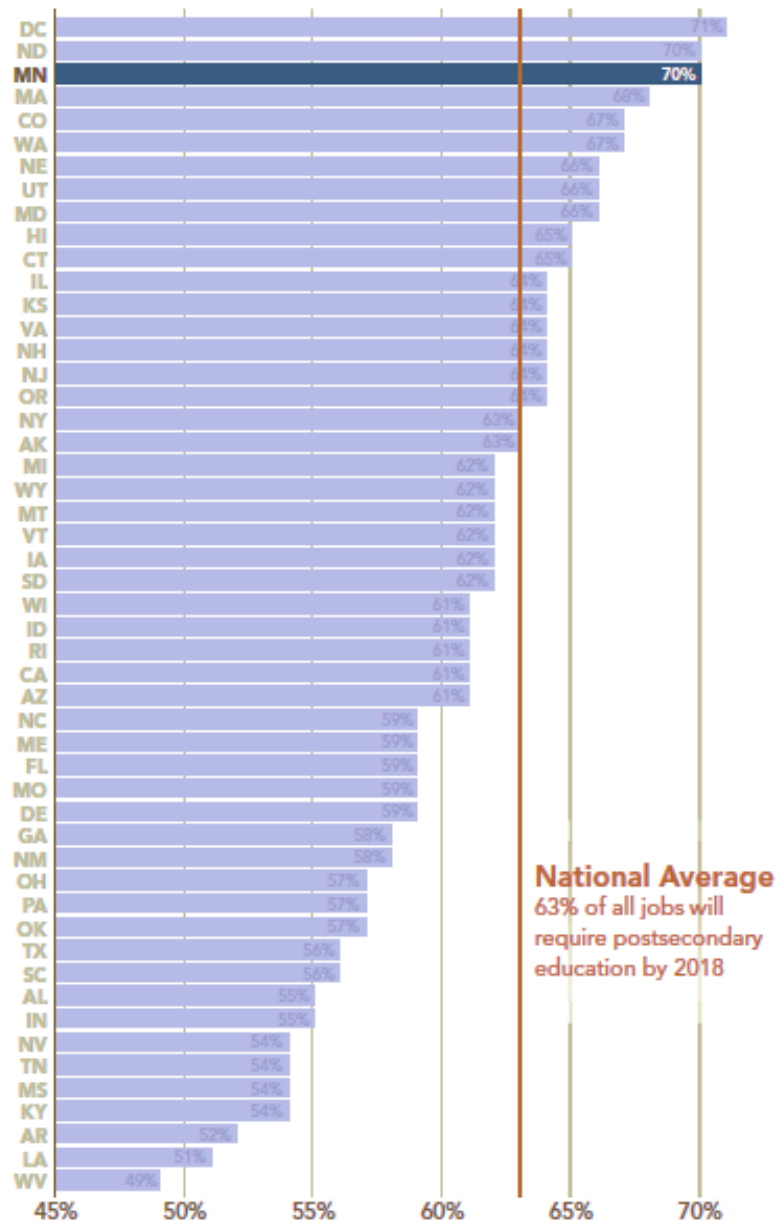


- iPads as a learning tool, help to provide an environment more conducive to personalized learning.
- iPads and digital content have been positioned to enable, engage and excite learners in a new agile and mobile space.
- iPads allow for contextual learning experiences.
- iPads are a great conduit to a world of learning opportunities.
- iPads deliver a rich and relevant cadre of educational apps specifically targeted to learning and teaching.
- iPads form factor, battery life, iOS, camera and apps provides for an anytime, anywhere personal learning studio. . . a science lab literacy tool, research station, history archive, language lab, art canvas, music studio, video editing suite & library.

Questions?



Percentage of jobs in 2018 that will require a postsecondary education, by state.



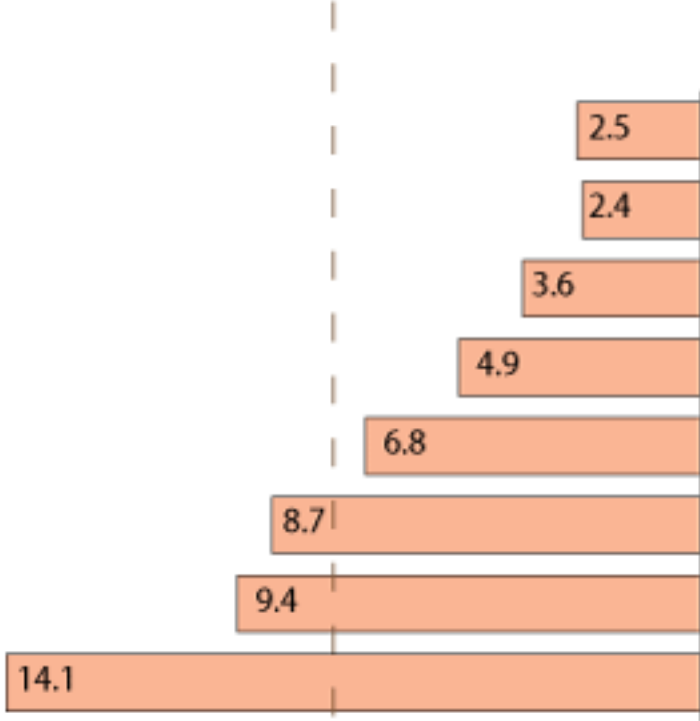
National Average
63% of all jobs will
require postsecondary
education by 2018





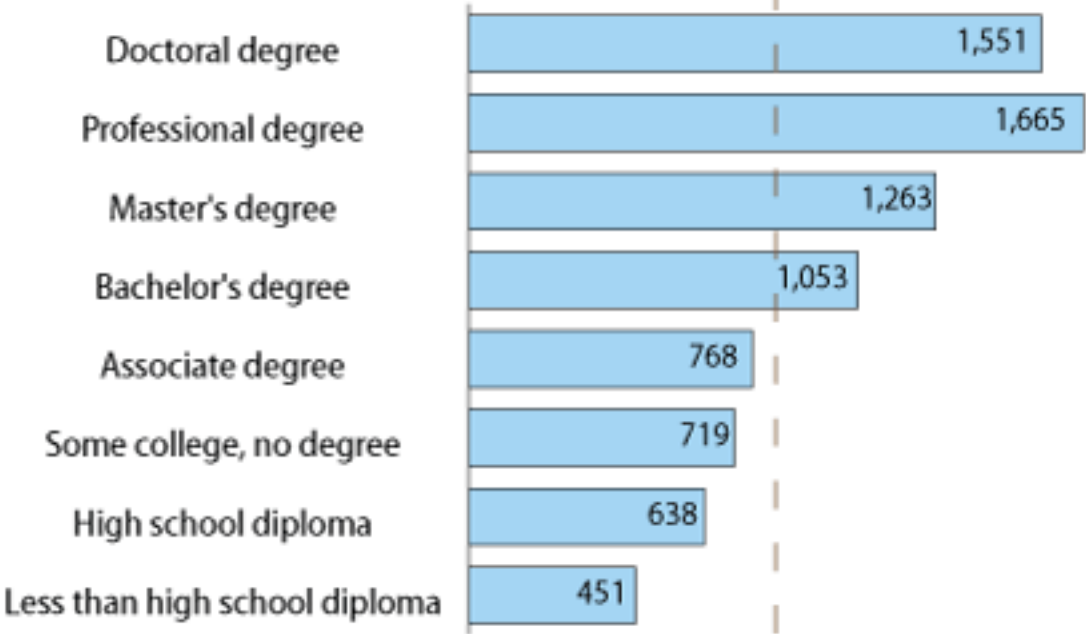
Education Pays

Unemployment rate in 2011 (in %)



Average: 7.6%

Median weekly earnings in 2011 (in \$)



Average: \$797

Source: Bureau of Labor Statistics, Current Population Survey