

John Bergs
Activities Director
Margot Hansen
Director of Teaching & Learning
Jeff Heine
Buildings & Grounds Director



Chuck Keller
Business Director
Angie Kahle
Student Support Services Director
Dorothy Koller
Community Education Director

REGULAR BOARD MEETING
District Office, 130 South Willow Street, Belle Plaine, MN 56011
6:00 PM Monday, January 28, 2013

Our mission is to pursue excellence in academics, programming, and the social and emotional development of our students. Fostering a culture of kindness, inclusion, and pride in ourselves, our school, and our community.

1. Call to Order:

2. Acknowledgment of Visitors and Special Presentations:

1. <u>Community Services Action Plan Presentation:</u>	Community Services Director Nelson Ladd	<u>3</u>
2. <u>Principal's Report on Vision Card B - Core Process of Teaching and Learning:</u>	Principals Kim DeWitte, Liann Hanson, & Dave Kreft	<u>6</u>

3. Other Items as Brought Before the Board & Consideration of Agenda:

4. Consensus Items:

1. <u>Previous Board Meeting Minutes:</u>	<u>8</u>
2. <u>Approve Monthly Expenditures:</u>	<u>14</u>

3. Personnel:

4. Student Enrollment:

5. Donations:

5. Discussion Items:

1. <u>Superintendent Update:</u>	Dr. Smith
2. <u>Board Member Reports:</u>	Board Members

3. <u>Building Administrator Reports:</u>	Building Administrators	<u>31</u>
--	-------------------------	------------------

6. Action Items:

1. <u>Approve Board Committee Assignments for 2013:</u>	Dr. Kelly Smith	<u>35</u>
--	-----------------	------------------

2. <u>Approve 2013-2014 Calendar:</u>	Dr. Kelly Smith	<u>36</u>
--	-----------------	------------------

3. <u>Approve 2012-2013 Seniority List:</u>	Dr. Kelly Smith	<u>37</u>
--	-----------------	------------------

4. <u>Approve Pay Equity Report for FY13:</u>	Dr. Kelly Smith	<u>42</u>
--	-----------------	------------------

5. <u>Approve 2013-2014 Budget Assumptions:</u>	Dr. Kelly Smith	<u>44</u>
--	-----------------	------------------

6. <u>Staffing Recommendations for 2013-2014:</u>	Dr. Kelly Smith	<u>45</u>
--	-----------------	------------------

7. <u>Proposed Safety/Security Modifications to District Buildings:</u>	Dr. Kelly Smith	
--	-----------------	--

7. Upcoming Meetings:

8. <u>Adjourn:</u>		
---------------------------	--	--

Board Clerk

Date

COMMUNITY EDUCATION VISIONARY WORKSHOP

STRENGTHS

Continue to expand on strengths

WEAKNESSES

Staffing needs: School Age Care Coordinator, Recreation Coordinator

Marketing: Social Media: r-school, face book, web page

Inventory: start an inventory process (Spring '13)

Involvement: Coaches back ground checks (Spring '13)

Coaches Clinic (BB/SB LL Spring '13)

Periodic Analysis: Class-Activity-Program Evaluations

OPPORTUNITIES

Associations: Meet with and review expectations (Facility Use Agreement)

Technology: Use Social Media (Marketing)

Program: Needs Assessment (Periodic Analysis)

Centralized Calendar: r-school

THREATS

Trends: Needs Assessment

COMMUNITY EDUCATION VISIONARY WORKSHOP

STRENGTHS

Fees:

- affordable
- reasonably priced

Facility:

- Quality
- Tiger Park (baseball fields-good condition)
- Heritage Park
- Gyms
- Oak Crest (nice gym)
- use of facilities

Staff:

- Friendly
- easy to work with

Volunteers

Participation:

- High level of interest
- Parents are passionate-Pride
- Growth in participants(numbers)

Program Diversity:

- Variety of Programs
- Offerings
- Theater
- Trips
- Variety of offerings by season
- Learned Skills/Lessons

Associations/Booster Clubs:

- Baseball
- Basketball
- Softball
- Football (HS Booster)
- Wrestling (HS Booster)
- JO Volleyball (National)

Pool

- Swimming
- Training
- Lifeguard

WEAKNESSES

How can we minimize our weaknesses?

Identify specific staffing needs:

- support staff
- reassign responsibilities (to other programs)

Facilities

Equipment

Enhance Marketing

Technology:

- increase communication

Inventory

Involvement:

- welcoming committee
- recruitment of volunteers and coaches
- coaches background checks

Periodic Analysis:

- internal/external
- survey

Building Program Ownership – increase involvement

- decrease the perception that a small % “owns the program
- balance competitive environment with involvement for everyone
- fairness for all

Develop Future Director Replacement Process

Fees:

- make sure fees are at an adequate level to support new/current programs
- at the same time remaining affordable
- analysis of fees along with program involvement
- scholarships

OPPORTUNITIES

Associations:

- partnerships
- shadow successes
- sharing coaches for training

Participation:

- better marketing
- use technology to increase visibility
- communicate programs available

Program:

- needs analysis

Facilities

Associations

Participation

Program(s)

Centralized Calendar

THREATS

Failure to adapt to trends:

- economics
- changing demographics
- other Communities/competition

Strateaic Area: Core Process of Teaching & Learning

District Vision Card B: *Align the work of adults to continuously improve personalized instruction and responsiveness to meet our students' unique and varied learning needs.*

MEASURES	LEVEL 1 INTERVENTION 1.0 – 1.9	LEVEL 2 HIGH CONCERN 2.0 – 2.9	LEVEL 3 BASELINE 3.0 – 3.9	LEVEL 4 PROGRESSING 4.0–4.9	LEVEL 5 VISION 5.0 +	SCORE	TREND LINE
High Quality Learning Targets at Varying Levels of Complexity	2012-13 < 75% of classrooms	75-79% of classrooms	80-84% of classrooms	85-90% of classrooms	> 90% of classrooms	TBD	
Student-Friendly Communication of Learning Targets, the Success Criteria and the Activities to Achieve	2012-13 < 75% of classrooms	75-79% of classrooms	80-84% of classrooms	85-90% of classrooms	> 90% of classrooms	TBD	
Alignment of Daily Targets to Grade Level Power Benchmarks	2012-13 < 75% of classrooms	75-79% of classrooms	80-84% of classrooms	85-90% of classrooms	> 90% of classrooms	TBD	
Uses and Analyzes Assessments for Learning Aligned to Learning Targets on a Daily Basis	2012-13 < 75% of classrooms	75-79% of classrooms	80-84% of classrooms	85-90% of classrooms	> 90% of classrooms	TBD	
Provides Student with Feedback which is Descriptive, Constructive, Frequent and Immediate	2012-13 < 75% of classrooms	75-79% of classrooms	80-84% of classrooms	85-90% of classrooms	> 90% of classrooms	TBD	
Evidence of an Assessment for Learning was Present During Walk-Through	2012-13 < 75% of classrooms	75-79% of classrooms	80-84% of classrooms	85-90% of classrooms	> 90% of classrooms		
Authentic Instruction: <ul style="list-style-type: none"> · Higher order thinking skills · Connection to the world beyond the classroom · Substantive conversations 	2012-13 < 75% of classrooms are assessed in professional rounds to be effectively applying the 3 elements of Authentic Instruction	75-79% of classrooms are assessed in professional rounds to be effectively applying the 3 elements of Authentic Instruction	80-84% of classrooms are assessed in professional rounds to be effectively applying the 3 elements of Authentic Instruction	85-90% of classrooms are assessed in professional rounds to be effectively applying the 3 elements of Authentic Instruction	> 90% of classrooms are assessed in professional rounds to be effectively applying the 3 elements of Authentic Instruction	TBD	

MEASURES	LEVEL 1 INTERVENTION 1.0 – 1.9	LEVEL 2 CONCERN 2.0 – 2.9	LEVEL 3 BASELINE 3.0 – 3.9	LEVEL 4 PROGRESSING 4.0-4.9	LEVEL 5 VISION 5.0 +	SCORE	TREND LINE
Differentiated Classroom: <i>Instructional strategies, flexible groupings and lesson complexity</i> <ul style="list-style-type: none"> · Varied ongoing assessments · Lessons of varying complexity · Varied learning experiences · Flexible groupings · Higher order thinking skills · Varied instructional strategies · Culturally competent responses with students 	2012-13 < 60% of observed classrooms demonstrate Level 1 performance on the Differentiated Classroom	66-69% of observed classrooms demonstrate Level 1 performance on the Differentiated Classroom	70-79% of observed classrooms demonstrate Level 1 performance on the Differentiated Classroom	80-89% of observed classrooms demonstrate Level 1 performance on the Differentiated Classroom	> 90% of observed classrooms demonstrate Level 1 performance on the Differentiated Classroom	TBD	
Meaning Relationships with Students <ul style="list-style-type: none"> · Recognize and respond to social and emotional needs of students · Affirmation of learning and cognitive styles · Exhibit competency in interacting across cultures 	< 75% of classrooms are assessed in professional rounds to be effectively applying the 3 elements of Meaningful Relationships	75-79% of classrooms are assessed in professional rounds to be effectively applying the 3 elements of Meaningful Relationships	2012-13 < 80-84% of classrooms are assessed in professional rounds to be effectively applying the 3 elements of Meaningful Relationships	85-90% of classrooms are assessed in professional rounds to be effectively applying the 3 elements of Meaningful Relationships	> 90% of classrooms are assessed in professional rounds to be effectively applying the 3 elements of Meaningful Relationships	TBD	
System of Interventions	< 55% of all students in Tier 1 and 2	55-65% of all students in Tier 1 and 2	2012-13 66-75% of all students in Tier 1 and 2	76-85% of all students in Tier 1 and 2	> 85% of all students in Tier 1 and 2	TBD	
Continuous Incline in Number of Students Entering a Gifted/Talented Program	2012-13 < 1% increase across school and grade levels	1% increase across school and grade levels	2-3% increase across school and grade levels	3-4% increase across school and grade levels	2012-13 > 5% increase across school and grade levels		
Continuous Decline in Number of Students Requiring Interventions; Grading Period to Grading Period	< 5% decline across school and grade levels	5-9% decline across school and grade levels	2012-13 10-14% decline across school and grade levels	15-20% decline across school and grade levels	> 20% decline across school and grade levels	TBD	
1x/week General Communication with Parents <i>(Class Newsletter, Email, Friday File, etc.)</i>	2012-13 < 75% of classrooms	75-79% of classrooms	80-84% of classrooms	85-90% of classrooms	> 90% of classrooms	TBD	
6x/year Personal Connection with Parents Communicating Feedback on Individual Student Progress	2012-13 < 75% of classrooms	75-79% of classrooms	80-84% of classrooms	85-90% of classrooms	> 90% of classrooms	TBD	

Preliminary Minutes of Regular Board Meeting

MINUTES WILL NOT BE APPROVED UNTIL THE NEXT BOARD MEETING

The School Board of Belle Plaine Public Schools

A Regular Board Meeting of the Board of Trustees of Belle Plaine Public Schools was held Monday, December 17, 2012, beginning at 6:00 PM in the District Service Center.

1. Call to Order:

The regular monthly meeting of the Belle Plaine School Board was called to order by Chairperson Lenz on Monday, December 17, 2012 at 6:01 pm at the District Center Board Meeting Room with the following members present: Nagel, Steinhagen, Daly, Ludvik, Lenz, Bigaouette and Supt. Smith.

2. Acknowledgment of Visitors and Special Presentations:

Chairperson Lenz asked for a brief moment of silence in remembrance of the victims at Sandy Hook Elementary School. He then asked if visitors wish to be placed on the Agenda and no one indicated a desire to speak with the board.

2. 1. Belle Plaine Choir Ensemble:

One of our high school choral ensembles will be at the meeting to perform two songs for our entertainment. We will allow the students to perform whenever they arrive as they have a concert this evening at 7 p.m. and must return to the high school.

At late notice, the choir ensemble was unable to make it to the meeting.

2. 2. Area Legislators:

Representative Kelby Woodard and Senator Kevin Dahle were present to discuss the upcoming session and some of the initiatives that they see as priorities. Rep. Woodard is from Belle Plaine and Sen. Dahle is from Northfield. Both legislators answered questions from the board at the completion of their comments.

Presenter: Rep. Woodard and Sen. Dahle

2. 3. Brad Lundell, Ex. Director of Schools for Equity in Education:

Ex. Director Brad Lundell presented some information about the Schools for Equity (SEE) organization and their legislative platform. School funding equity and adequacy have long been the major pillars of SEE and continues to be the same this year. Mr. Lundell provided specific examples of how the SEE proposals would benefit districts such as Belle Plaine.

Presenter: Brad Lundell

3. Other Items as Brought Before the Board & Consideration of Agenda:

Chairperson will ask if there are any items that need to be brought before the board and for consideration of the Agenda.

Motion by Daly and second by Ludvik to approve the agenda as presented. Motion carried unanimously.

4. Consensus Items:

If any board member has concerns about the adoption of the following consensus items, please acknowledge the chairperson prior to the final vote. If there are no concerns, these items will

be voted on as a group.

4. 1. Previous Board Meeting Minutes:

Enclosed are the November 26, 2012 Regular Board Meeting minutes for your review and adoption.

4. 2. Personnel:

Approve the hire of Linda Trondson as a Tier III Paraprofessional at Oak Crest Elementary beginning on December 17, 2012 at \$11.20/hour.

4. 3. Approve Monthly Expenditures:

At the board finance meeting, expenditures for the month of December were reviewed. Administration recommends approval of the December, 2012 disbursements totaling \$694,652.91. This includes hand payables of \$140,203.27 and electronic payments of \$441,866.21.

4. 4. Donations:

Accepted with sincere thanks and gratitude a donation from Belle Plaine PTO in the amount of \$299.00 to benefit the Gifted and Talented Program's News Bowl.

Accepted with appreciation a donation from Minnesota Valley Electric Cooperative in the amount of \$1044.01 for the FFA program.

Motion by Daly and second by Ludvik to approve all of the above consensus items.

Motion carried unanimously.

5. **Discussion Items:**

5. 1. Superintendent Update:

Superintendent Smith will provide updates on the current school activities during the last week of school prior to the break. He briefly addressed the board about continuous review of safety mechanisms and procedures at all of our schools.

Presenter: Dr. Smith

5. 2. Board Member Reports:

There were no board member reports from other meetings.

5. 3. Building Administrator Reports:

Building administrators have been asked to submit monthly updates to the school board regarding current happenings and issues within their buildings/areas. Please see attachments for information on what is happening in each of their buildings.

6. **Action Items:**

6. 1. Approve the Payable 2013 Levy:

We are required to approve our Payable 2013 levy and submit the signed copy to our home county auditor and to the MN Dept. of Education prior to December 28th.

Administration recommends approval of the Payable 2013 levy in the total amount of \$4,449,120.14. This amount reflects an increase of \$19,326.38 or .44% over last year's levy.

Presenter: Dr. Smith

Motion by Bigaouette and second by Nagel to approve the Payable 2013 Levy. Motion carried, 4-2.

6. 2. Approve FY12 School District Audit:

At our previous meeting, Joel Stencel, auditor with the firm Eide Bailly, had presented

information concerning our FY12 audit. A complete copy of the audit is attached to this agenda for your review. Overall, we saw an increase in our fund balance positions in most funds. The administration recommends approval of the FY12 financial audit.

Presenter: Dr. Smith

Motion by Nagel and second by Daly to approve the FY12 financial audit as presented.

Motion carried unanimously.

6. 3. Policy Review:

Along with five previously approved policies - 521, 522, 524, 526 and 531 – to be reviewed against current revisions provided by MSBA, a copy of a proposed Food Service Account policy for the district has been included in your packet. Administration recommends approval of the policy revisions for 521, 522, 524, 526 and 531.

The food service policy is ready for a final reading with the modifications that were discussed at our work session. Administration recommends approval of this final reading for this policy.

Copies of the current MSBA version and our current version have been attached for comparative purposes.

Presenter: Dr. Smith

Motion by Ludvik and second by Bigaouette to approve the first reading of revised policies 521, 522, 524, 526 and 531. Motion carried unanimously.

Motion by Ludvik and second by Nagel to approve the final reading of Policy 715 – Food Service Account. Motion carried unanimously.

6. 4. Set Date for School Board Organizational Meeting:

Each year the school board needs to meet in an organizational meeting to re-establish the board chair, vice-chair, clerk and treasurer whose terms are all one year. It is recommended that the Organizational Meeting for the Belle Plaine School Board be held on Monday, January 7, 2013 at 6 p.m. in the District Center Board Room.

Presenter: Dr. Smith

Motion by Daly and second by Bigaouette to approve the date and time for the School Board Organizational Meeting. Motion carried unanimously.

7. Upcoming Meetings:

Monday, January 07, 6:00 p.m. School Board Organizational Meeting

Monday, January 14, 1:00 p.m. School Board/Administration Planning Retreat at Kingsway Retirement Center

Th/Fr, January 17-18 MSBA Leadership Conference at Mpls Convention Center

Monday, January 21, 6:00 p.m. Curriculum Advisory Council Meeting

Monday, January 28, 5:30 p.m. Finance Committee

6:00 p.m. School Board Regular Meeting

8. Adjourn:

Motion by Nagel and second by Daly to adjourn at 7:03 pm. Motion carried unanimously.

Minutes of Organizational Board Meeting

The School Board of Belle Plaine Public Schools

An Organizational Board Meeting of the School Board of Belle Plaine Public Schools was held Monday, January 7, 2013, beginning at 6:00 PM in the District Service Center.

1. Call to Order:

The organization school board meeting of the Belle Plaine School Board was called to order by Chairperson Lenz on Monday, January 7, 2013 at 6:02 pm at the District Center Board Meeting Room with the following members present: Lenz, Nagel, Steinhagen, Daly, Bigaouette, Ludvik, Business Manager Keller and Supt. Smith.

2. Election of 2013 School Board Officials:

Nominations are in order for the following positions: Chairperson, Vice Chairperson, Clerk and Treasurer. Chair Lenz will ask for nominations (3) times from the floor. After the selection of the chairperson, the rest of the meeting will be the responsibility of the newly elected chairperson.

2. 1. Chair

Nagel nominated Matt Lenz for the position of Chair. After calling three times for nominations, the Chair called for a vote on the nomination (6-0). Lenz was elected as Chair.

2. 2. Vice-Chair

Daly nominated Matt Bigaouette for the position of Vice-Chair. After calling three times for nominations, the Chair called for a vote on the nomination (6-0). Bigaouette was elected as Vice-Chair.

2. 3. Clerk

Bigaouette nominated Mike Daly for the position of Clerk. After calling three times for nominations, the Chair called for a vote on the nomination (6-0). Daly was elected as Clerk.

2. 4. Treasurer

Daly nominated Gary Steinhagen for the position of Treasurer. After calling three times for nominations, the Chair called for a vote on the nomination (6-0). Steinhagen was elected as Treasurer.

3. Acknowledgment of Visitors:

The newly elected Chairperson asked visitors if any wished to make any comments.

4. Other Items as Brought Before the Board & Consideration of Agenda:

Chairperson will ask if there are any items that need to be brought before the board and for consideration of the Agenda.

Motion by Daly and second by Nagel to approve the agenda as presented. Motion carried unanimously.

5. Consensus Items:

5. 1. 2013 Official Depository

As per past practice, there is a need to designate an official depository each year. It is recommend that the State Bank of Belle Plaine be named as the official depository of all

district funds for the 2013 year. In addition, Corner Stone State Bank and the MN School District Liquid Asset Fund shall be designated as school district depositories.

5. 2. Official Newspaper

As per past practice, it is recommended to designate the Belle Plaine Herald as the official district newspaper during the 2013 year.

5. 3. ISD #716 Authorization Resolution

As per past practice, it is necessary to officially authorize the district signers as submitted, i.e. Board Chairperson, Clerk, Treasurer, and designees Business Manager and Supt. (Refer to attachment 5.3.)

5. 4. Establish Mileage Reimbursement

Establish mileage reimbursement rate at IRS rate (2013 rate is currently \$.565/mile)

5. 5. Personnel

Accept with regret the resignation of Meghan Skluzacek as an Oak Crest Paraprofessional effective December 4, 2012.

Approve maternity leave for Katie Graff, Chatfield PE Teacher, beginning approximately April 1, 2013 through May 3, 2013.

Approve maternity leave for Amy Endres, Oak Crest Teacher, beginning approximately March 7, 2013 through April 18, 2013.

Approve maternity leave for Lori Robin Banks, Oak Crest Teacher, beginning approximately April 11, 2013 through June 5, 2013.

Approve the hire of Robin Larson as a long term substitute teacher at Chatfield Elementary from February 6, 2013 through March 22, 2013 to cover Laura Nelson's maternity leave.

Approved the hire of Helen Lehtinen as a long term paraprofessional substitute at Oak Crest from December 21, 2012 through June 4, 2013.

5. 6. Student Enrollment

Approve two New Prague residents entering Kindergarten in the fall to enroll in Belle Plaine for the 2013-14 school year.

Approve a Belle Plaine resident entering Kindergarten in the fall to attend Jordan Schools for the 2013-14 school year.

5. 7. Donations

Accepted with sincere thanks and gratitude a donation from Lifetouch in the amount of \$334.00 to benefit programs at Oak Crest.

Accepted with appreciation a grant from MVEC in the amount of \$557.00 to cover busing expenses for the 5th grade trip to Stepping Stones Theater.

Accepted with sincere thanks and gratitude a donation from GiveMN.org (Belle Plaine School's site) a donation in the amount of \$199.06.

Accepted with appreciation a donation in the amount of \$3,675.00 from the Belle Plaine Chamber of Commerce of which \$175.00 will go to the Boys/Girls Cross Country team for their help with the Scenic By-way Half Marathon and the balance to be used by various activity groups.

Motion by Bigaouette and second by Daly to approve the above consensus items. Motion carried unanimously.

6. Discussion Items:

6. 1. Superintendent Update

Supt. Smith will update the board on the following: Board Planning Retreat on Monday, January 14, January 16-18 MSBA Conference & SEE's legislative efforts for changes in

the general education funding formula. A brief SEE video was shown depicting the differences between high property wealth districts and low property wealth districts such as Belle Plaine.

7. Action Items:

7. 1. 2013 Regular Board Meeting Dates

Board meeting dates during the current year were on the 4th Mondays. Administration recommends that the board establish two meeting dates per month – the 2nd and 4th Mondays. The first meeting each month is proposed to be a work session dealing with current issues such as curriculum, testing, budget or policy. The second meeting each month would be the full business meeting of the board. Note that no work session is scheduled for July. Board Meetings will begin at 6 p.m. with Finance Committee Meetings starting at 5:30 p.m. all months except June, July and August when they will begin one hour later. Please see attached schedule.

Motion by Daly and second by Nagel to approve the 2013 Regular Board Meeting Dates. Motion carried unanimously.

7. 2. Organizational Structure

There is an annual need to adopt the organizational structure for the district. Previously assigned board committees are included. Supt. Smith will discuss the responsibilities of each of the committee assignments and members may request preferences for committee assignments. If changes in committee assignments are desired, approval for all committee assignments will come back for action at the regular meeting on January 28th. Organizational chart is attached for your review.

Motion by Bigaouette and second by Daly to table the discussion on the Organizational Structure. Motion carried unanimously.

7. 3. Board Member Compensation

Compensation has remained at the following levels for the past eight years: \$1200 annual stipend for all board members; \$200 for Chair; \$150 for Vice Chair, Clerk & Treasurer; Chief Negotiators \$150; Special Meetings \$50; All Day Meetings \$100. Should these levels be increased and if so, what recommendations are there for new rates?

Motion by Steinhagen to raise the annual stipend to \$1,500. Motion failed due to lack of a second.

Motion by Daly and second by Bigaouette to maintain the Board Member Compensation structure as is. Motion carried unanimously.

8. Upcoming Meetings:

January 14: 1 p.m. Board and Administration Planning Retreat

January 16-18: MSBA Leadership Conference

January 28: 5:30 p.m. Finance Committee

6:00 p.m. Regular Board Meeting

February 11: 6:00 p.m. Board Work Session

9. Adjourn:

Motion by Daly and second by Bigaouette to adjourn at 6:32 pm. Motion carried unanimously.

December 2012 Pcard

Card Holder	Transaction ID	Transaction Date	Processing Date	Statement Date	Account Number	Merchant Name	Transaction Amount
KREFT DAVID	302277116	11/29/2012	11/29/2012	12/27/2012	5550 0800 0110 9045	Amazon.com	23.53
DEWITTE KIMBERLY	302158502	11/27/2012	11/28/2012	12/27/2012	5550 0800 0110 9052	SOLUTION TREE INC	67.90
DENZER TRICIA	302736754	12/4/2012	12/4/2012	12/27/2012	5550 0800 0110 9060	NCS PEARSON	135.00
DENZER TRICIA	303299196	12/8/2012	12/10/2012	12/27/2012	5550 0800 0110 9060	RADISSON HOTEL ROSEVIL	133.25
DENZER TRICIA	304114212	12/18/2012	12/19/2012	12/27/2012	5550 0800 0110 9060	SSI*SCHOOL SPECIALTY	112.09
DENZER TRICIA	304114213	12/14/2012	12/19/2012	12/27/2012	5550 0800 0110 9060	PRO ED INC	111.10
DENZER TRICIA	304355372	12/20/2012	12/21/2012	12/27/2012	5550 0800 0110 9060	THE MEDI-KID CO INC	51.00
DENZER TRICIA	304355373	12/21/2012	12/21/2012	12/27/2012	5550 0800 0110 9060	SSI*SCHOOL SPECIALTY	(8.90)
DENZER TRICIA	304355374	12/21/2012	12/21/2012	12/27/2012	5550 0800 0110 9060	SSI*SCHOOL SPECIALTY	(35.60)
HIGH SCHOOL BELLE PLAINE	302158504	11/26/2012	11/28/2012	12/27/2012	5550 0800 0112 0711	PAYPAL *USATESTPREP	300.00
HIGH SCHOOL BELLE PLAINE	302158505	11/27/2012	11/28/2012	12/27/2012	5550 0800 0112 0711	Amazon Video On Demand	9.99
HIGH SCHOOL BELLE PLAINE	302736761	12/4/2012	12/4/2012	12/27/2012	5550 0800 0112 0711	Amazon.com	27.97
HIGH SCHOOL BELLE PLAINE	302858017	12/3/2012	12/5/2012	12/27/2012	5550 0800 0112 0711	PAYPAL *TERRAINCOGN	32.00
HIGH SCHOOL BELLE PLAINE	303596805	12/11/2012	12/13/2012	12/27/2012	5550 0800 0112 0711	BARNES & NOBLE #2048	47.85
HIGH SCHOOL BELLE PLAINE	303906439	12/16/2012	12/17/2012	12/27/2012	5550 0800 0112 0711	TARGET 00002204	105.79
HIGH SCHOOL BELLE PLAINE	303906440	12/14/2012	12/17/2012	12/27/2012	5550 0800 0112 0711	MULLER FAMILY THEATRES	74.25
HIGH SCHOOL BELLE PLAINE	304012928	12/17/2012	12/18/2012	12/27/2012	5550 0800 0112 0711	MARBLES THE BRAIN STOR	24.99
HIGH SCHOOL BELLE PLAINE	304220476	12/19/2012	12/20/2012	12/27/2012	5550 0800 0112 0711	THE READING WAREHOUSE	68.53
HIGH SCHOOL BELLE PLAINE	304355385	12/21/2012	12/21/2012	12/27/2012	5550 0800 0112 0711	OFFICEMAX CT*IN#525398	393.55
HIGH SCHOOL BELLE PLAINE	304355386	12/21/2012	12/21/2012	12/27/2012	5550 0800 0112 0711	ISTE CONFERENCE	344.00
HIGH SCHOOL BELLE PLAINE	304355387	12/19/2012	12/21/2012	12/27/2012	5550 0800 0112 0711	EDHELPER	55.98
DAVIS KRIS	302441653	11/28/2012	11/30/2012	12/27/2012	5550 0800 0112 5405	METRO SALES INC	4,536.96
DAVIS KRIS	302441654	11/29/2012	11/30/2012	12/27/2012	5550 0800 0112 5405	METRO SALES INC	3,598.61
DAVIS KRIS	302973123	12/5/2012	12/6/2012	12/27/2012	5550 0800 0112 5405	WM EZPAY	165.04
DAVIS KRIS	302973124	12/5/2012	12/6/2012	12/27/2012	5550 0800 0112 5405	WM EZPAY	668.15
DAVIS KRIS	302973125	12/5/2012	12/6/2012	12/27/2012	5550 0800 0112 5405	WM EZPAY	689.20
DAVIS KRIS	302973126	12/5/2012	12/6/2012	12/27/2012	5550 0800 0112 5405	WM EZPAY	291.26
DAVIS KRIS	303113434	12/6/2012	12/7/2012	12/27/2012	5550 0800 0112 5405	METRO SALES INC	811.77
ORR CAROL HANNON	302973120	12/6/2012	12/6/2012	12/27/2012	5550 0800 0096 3038	DBC*BLICK ART MATERIAL	632.64
HEINE JEFF	302158491	11/26/2012	11/28/2012	12/27/2012	5550 0800 0069 0110	SHAKOPEE PIZZA RANCH	31.05
HEINE JEFF	302158492	11/26/2012	11/28/2012	12/27/2012	5550 0800 0069 0110	LORING RAMP #113	8.00
HEINE JEFF	302158493	11/27/2012	11/28/2012	12/27/2012	5550 0800 0069 0110	SHERWIN WILLIAMS #3169	104.07
HEINE JEFF	302158494	11/26/2012	11/28/2012	12/27/2012	5550 0800 0069 0110	AUCTION MASTERS	522.31
HEINE JEFF	302609417	12/1/2012	12/3/2012	12/27/2012	5550 0800 0069 0110	NORWEX USA INC.	108.97
HEINE JEFF	302736739	12/3/2012	12/4/2012	12/27/2012	5550 0800 0069 0110	MENARDS BURNSVILLE	210.97
HEINE JEFF	302858008	12/3/2012	12/5/2012	12/27/2012	5550 0800 0069 0110	NORTHERN TOOL EQUIPMNT	403.82
HEINE JEFF	302973114	12/4/2012	12/6/2012	12/27/2012	5550 0800 0069 0110	CENEX CONVENIE07038920	37.66
HEINE JEFF	302973115	12/5/2012	12/6/2012	12/27/2012	5550 0800 0069 0110	WW GRAINGER	281.07
HEINE JEFF	303113427	12/6/2012	12/7/2012	12/27/2012	5550 0800 0069 0110	AUCTION MASTERS	82.15
HEINE JEFF	303738536	12/14/2012	12/14/2012	12/27/2012	5550 0800 0069 0110	SCHLAGE LINK	5.31
HEINE JEFF	303906427	12/14/2012	12/17/2012	12/27/2012	5550 0800 0069 0110	DEBS EMBROIDERY BUSINE	962.15

December 2012 Pcard

Card Holder	Transaction ID	Transaction Date	Processing Date	Statement Date	Account Number	Merchant Name	Transaction Amount
HEINE JEFF	304220465	12/18/2012	12/20/2012	12/27/2012	5550 0800 0069 0110	CENEX CONVENIE07038920	265.93
HEINE JEFF	304355363	12/20/2012	12/21/2012	12/27/2012	5550 0800 0069 0110	MENARDS MANKATO	506.05
HEINE JEFF	304355364	12/20/2012	12/21/2012	12/27/2012	5550 0800 0069 0110	C&S SUPPLY TRUE VALUE	149.99
HEINE JEFF	304518266	12/22/2012	12/24/2012	12/27/2012	5550 0800 0069 0110	C&S SUPPLY TRUE VALUE	89.99
SMITH KELLY	304518267	12/22/2012	12/24/2012	12/27/2012	5550 0800 0069 0144	SUNCOUNTR	357.60
SMITH KELLY	304518268	12/22/2012	12/24/2012	12/27/2012	5550 0800 0069 0144	SOUTHWES	186.60
SMITH KELLY	304518269	12/22/2012	12/24/2012	12/27/2012	5550 0800 0069 0144	SOUTHWES	186.60
SMITH KELLY	304518270	12/22/2012	12/24/2012	12/27/2012	5550 0800 0069 0144	SOUTHWES	20.00
WICK KEN	302441647	11/29/2012	11/30/2012	12/27/2012	5550 0800 0105 3979	B & H PHOTO-VIDEO.COM	241.50
WICK KEN	302441648	11/29/2012	11/30/2012	12/27/2012	5550 0800 0105 3979	APL*APPLEONLINESTOREUS	495.00
WICK KEN	302441649	11/29/2012	11/30/2012	12/27/2012	5550 0800 0105 3979	APL*APPLEONLINESTOREUS	1,995.00
WICK KEN	302441650	11/30/2012	11/30/2012	12/27/2012	5550 0800 0105 3979	AMAZON MKTPLACE PMTS	19.99
WICK KEN	303113430	12/7/2012	12/7/2012	12/27/2012	5550 0800 0105 3979	APL*APPLEONLINESTOREUS	49.95
WICK KEN	303299195	12/8/2012	12/10/2012	12/27/2012	5550 0800 0105 3979	DRI*TELESTREAM	30.99
WICK KEN	303738541	12/14/2012	12/14/2012	12/27/2012	5550 0800 0105 3979	ETECH PARTS LLC	138.58
MATHIOWETZ BRUCE	302158500	11/27/2012	11/28/2012	12/27/2012	5550 0800 0081 8612	RINEHART TAXIDERMY IN	125.95
MATHIOWETZ BRUCE	302441642	11/29/2012	11/30/2012	12/27/2012	5550 0800 0081 8612	MCKENZIE TAXIDERMY	83.60
MATHIOWETZ BRUCE	302609418	11/30/2012	12/3/2012	12/27/2012	5550 0800 0081 8612	MCKENZIE TAXIDERMY	12.44
MATHIOWETZ BRUCE	303299191	12/7/2012	12/10/2012	12/27/2012	5550 0800 0081 8612	MAGNETO POWER	53.24
MATHIOWETZ BRUCE	303906428	12/16/2012	12/17/2012	12/27/2012	5550 0800 0081 8612	COBORN S #2038	76.19
MATHIOWETZ BRUCE	303906429	12/15/2012	12/17/2012	12/27/2012	5550 0800 0081 8612	MENARDS BURNSVILLE	53.14
MATHIOWETZ BRUCE	304355366	12/21/2012	12/21/2012	12/27/2012	5550 0800 0081 8612	BEST BUY 00014639	249.99
DEUTSCH JOE	303596800	12/12/2012	12/13/2012	12/27/2012	5550 0800 0081 8646	ROC*ROCKLER WDWRK HDWE	(11.27)
DEUTSCH JOE	303738538	12/13/2012	12/14/2012	12/27/2012	5550 0800 0081 8646	SSI*SCHOOL SPECIALTY	(174.98)
DEUTSCH JOE	303738539	12/13/2012	12/14/2012	12/27/2012	5550 0800 0081 8646	SSI*SCHOOL SPECIALTY	163.71
ANDERSON DOUG	302158501	11/26/2012	11/28/2012	12/27/2012	5550 0800 0083 7026	SAMS INTERNET	572.17
ANDERSON DOUG	302858010	12/4/2012	12/5/2012	12/27/2012	5550 0800 0083 7026	KERNEL CONCESSION SUPP	79.90
ANDERSON DOUG	302858011	12/4/2012	12/5/2012	12/27/2012	5550 0800 0083 7026	PIZZA PLUS	37.50
ANDERSON DOUG	302858012	12/4/2012	12/5/2012	12/27/2012	5550 0800 0083 7026	H HERMEL CO	427.51
ANDERSON DOUG	302973118	12/4/2012	12/6/2012	12/27/2012	5550 0800 0083 7026	KWIK TRIP 33000003301	4.58
ANDERSON DOUG	302973119	12/4/2012	12/6/2012	12/27/2012	5550 0800 0083 7026	RUCKS MEAT PROCESSING	33.34
ANDERSON DOUG	303299192	12/7/2012	12/10/2012	12/27/2012	5550 0800 0083 7026	PIZZA PLUS	23.50
ANDERSON DOUG	303299193	12/7/2012	12/10/2012	12/27/2012	5550 0800 0083 7026	PIZZA PLUS	23.50
ANDERSON DOUG	303397458	12/10/2012	12/11/2012	12/27/2012	5550 0800 0083 7026	SAMS CLUB#6311	69.16
ANDERSON DOUG	303738540	12/13/2012	12/14/2012	12/27/2012	5550 0800 0083 7026	KWIK TRIP 33000003301	3.68
ANDERSON DOUG	303906430	12/13/2012	12/17/2012	12/27/2012	5550 0800 0083 7026	PIZZA PLUS	23.50
ANDERSON DOUG	303906431	12/13/2012	12/17/2012	12/27/2012	5550 0800 0083 7026	PIZZA PLUS	23.50
ANDERSON DOUG	304114209	12/18/2012	12/19/2012	12/27/2012	5550 0800 0083 7026	PIZZA PLUS	33.00
ANDERSON DOUG	304114210	12/18/2012	12/19/2012	12/27/2012	5550 0800 0083 7026	PIZZA PLUS	33.00
ANDERSON DOUG	304220468	12/18/2012	12/20/2012	12/27/2012	5550 0800 0083 7026	KWIK TRIP 33000003301	4.95
ANDERSON DOUG	304220469	12/18/2012	12/20/2012	12/27/2012	5550 0800 0083 7026	RUCKS MEAT PROCESSING	94.12

December 2012 Pcard

Card Holder	Transaction ID	Transaction Date	Processing Date	Statement Date	Account Number	Merchant Name	Transaction Amount
ANDERSON DOUG	304220470	12/19/2012	12/20/2012	12/27/2012	5550 0800 0083 7026	H HERMEL CO	172.97
ANDERSON DOUG	304355367	12/20/2012	12/21/2012	12/27/2012	5550 0800 0083 7026	KWIK TRIP 33000003301	3.96
ANDERSON DOUG	304355368	12/20/2012	12/21/2012	12/27/2012	5550 0800 0083 7026	PIZZA PLUS	33.00
ANDERSON DOUG	304355369	12/20/2012	12/21/2012	12/27/2012	5550 0800 0083 7026	PIZZA PLUS	33.00
ANDERSON DOUG	304355370	12/20/2012	12/21/2012	12/27/2012	5550 0800 0083 7026	RUCKS MEAT PROCESSING	32.96
ANDERSON DOUG	304518271	12/21/2012	12/24/2012	12/27/2012	5550 0800 0083 7026	PIZZA PLUS	33.00
ANDERSON DOUG	304518272	12/21/2012	12/24/2012	12/27/2012	5550 0800 0083 7026	PIZZA PLUS	33.00
ANDERSON DOUG	304604958	12/26/2012	12/27/2012	12/27/2012	5550 0800 0083 7026	KERNEL CONCESSION SUPP	88.50
GROTBERG CAREN	302277115	11/28/2012	11/29/2012	12/27/2012	5550 0800 0094 2701	COBORN S SUPERSTORE	9.17
GROTBERG CAREN	302441643	11/29/2012	11/30/2012	12/27/2012	5550 0800 0094 2701	COBORN S SUPERSTORE	5.87
GROTBERG CAREN	303494737	12/11/2012	12/12/2012	12/27/2012	5550 0800 0094 2701	COBORN S SUPERSTORE	12.38
GROTBERG CAREN	304355371	12/19/2012	12/21/2012	12/27/2012	5550 0800 0094 2701	HAAN CRAFTS	373.16
KELLER CHUCK	302858013	11/26/2012	12/5/2012	12/27/2012	5550 0800 0098 6393	SECURITY METRICS	275.93
KELLER CHUCK	303596801	12/11/2012	12/13/2012	12/27/2012	5550 0800 0098 6393	VERIZON WRLS MYACCT VW	1,100.27
KELLER CHUCK	303596802	12/12/2012	12/13/2012	12/27/2012	5550 0800 0098 6393	SMARTSIGN	225.00
KELLER CHUCK	304114211	12/18/2012	12/19/2012	12/27/2012	5550 0800 0098 6393	USPS 26073001733418328	45.00
BENSON RACHEL	302441646	11/29/2012	11/30/2012	12/27/2012	5550 0800 0101 4906	COBORN S SUPERSTORE	18.93
BENSON RACHEL	303299194	12/7/2012	12/10/2012	12/27/2012	5550 0800 0101 4906	MN ZOO TARS	142.00
ACTIVITIES BELLE P	302277117	11/26/2012	11/29/2012	12/27/2012	5550 0800 0111 6198	EASTBAY	80.65
ACTIVITIES BELLE P	302277118	11/27/2012	11/29/2012	12/27/2012	5550 0800 0111 6198	KORNEY BOARD INC	27.40
ACTIVITIES BELLE P	303906432	12/15/2012	12/17/2012	12/27/2012	5550 0800 0111 6198	MCDONALD S F2805	83.36
ACTIVITIES BELLE P	303906433	12/14/2012	12/17/2012	12/27/2012	5550 0800 0111 6198	ARBY S #596 00059675	129.83
ACTIVITIES BELLE P	303906434	12/14/2012	12/17/2012	12/27/2012	5550 0800 0111 6198	JIMMY S PIZZA	140.00
ACTIVITIES BELLE P	303906435	12/15/2012	12/17/2012	12/27/2012	5550 0800 0111 6198	SUPERAMERICA 4213	30.11
ACTIVITIES BELLE P	303906436	12/15/2012	12/17/2012	12/27/2012	5550 0800 0111 6198	SUPERAMERICA 4213	60.10
ACTIVITIES BELLE P	303906437	12/15/2012	12/17/2012	12/27/2012	5550 0800 0111 6198	COUNTRY INN BENSON	639.48
ACTIVITIES BELLE P	304012926	12/15/2012	12/18/2012	12/27/2012	5550 0800 0111 6198	WHISTLE STOP DINER	200.00
ACTIVITIES BELLE P	304220471	12/18/2012	12/20/2012	12/27/2012	5550 0800 0111 6198	EASTBAY	43.53
ACTIVITIES BELLE P	304355375	12/21/2012	12/21/2012	12/27/2012	5550 0800 0111 6198	COBORN S SUPERSTORE	42.48
ACTIVITIES BELLE P	304518273	12/21/2012	12/24/2012	12/27/2012	5550 0800 0111 6198	AFTON ALPS TICKETING	584.00
ACTIVITIES BELLE P	304518274	12/21/2012	12/24/2012	12/27/2012	5550 0800 0111 6198	AFTON ALPS MOTO	855.00
SPARBY MINDY	302441641	11/28/2012	11/30/2012	12/27/2012	5550 0800 0081 8588	HAPPY CHEF RESTAURANT	14.31
SPARBY MINDY	302858009	12/4/2012	12/5/2012	12/27/2012	5550 0800 0081 8588	CROWN AWARDS INC	103.50
SPARBY MINDY	303738537	12/12/2012	12/14/2012	12/27/2012	5550 0800 0081 8588	NYA PIZZA RANCH	8.50
SPARBY MINDY	304355365	12/21/2012	12/21/2012	12/27/2012	5550 0800 0081 8588	CROWN AWARDS INC	72.80
SD BELLE PLAINE	302158503	11/27/2012	11/28/2012	12/27/2012	5550 0800 0112 0687	USPS 26073001733418328	9.25
SD BELLE PLAINE	302277119	11/28/2012	11/29/2012	12/27/2012	5550 0800 0112 0687	COBORN S SUPERSTORE	19.56
SD BELLE PLAINE	302441652	11/30/2012	11/30/2012	12/27/2012	5550 0800 0112 0687	USPS 26073001733418328	3.40
SD BELLE PLAINE	302858016	12/4/2012	12/5/2012	12/27/2012	5550 0800 0112 0687	USPS 26073001733418328	13.65
SD BELLE PLAINE	302973122	12/5/2012	12/6/2012	12/27/2012	5550 0800 0112 0687	TPC*GOPHER	119.10
SD BELLE PLAINE	303397462	12/10/2012	12/11/2012	12/27/2012	5550 0800 0112 0687	SAMS CLUB#6311	263.33

December 2012 Pcard

Card Holder	Transaction ID	Transaction Date	Processing Date	Statement Date	Account Number	Merchant Name	Transaction Amount
SD BELLE PLAINE	303596803	12/12/2012	12/13/2012	12/27/2012	5550 0800 0112 0687	USPS 26073001733418328	3.60
SD BELLE PLAINE	303596804	12/11/2012	12/13/2012	12/27/2012	5550 0800 0112 0687	PLYMOUTH PLAYHOUSE	100.00
SD BELLE PLAINE	303738546	12/13/2012	12/14/2012	12/27/2012	5550 0800 0112 0687	USPS 26073001733418328	8.50
SD BELLE PLAINE	303738547	12/14/2012	12/14/2012	12/27/2012	5550 0800 0112 0687	USPS 26073001733418328	21.70
SD BELLE PLAINE	304012927	12/17/2012	12/18/2012	12/27/2012	5550 0800 0112 0687	COBORN S SUPERSTORE	25.61
SD BELLE PLAINE	304114214	12/18/2012	12/19/2012	12/27/2012	5550 0800 0112 0687	USPS 26073001733418328	5.17
SD BELLE PLAINE	304114215	12/18/2012	12/19/2012	12/27/2012	5550 0800 0112 0687	USPS 26073001733418328	1.43
SD BELLE PLAINE	304220474	12/19/2012	12/20/2012	12/27/2012	5550 0800 0112 0687	USPS 26073001733418328	8.50
SD BELLE PLAINE	304220475	12/19/2012	12/20/2012	12/27/2012	5550 0800 0112 0687	STAPLES ADVANTAGE	307.16
SD BELLE PLAINE	304355379	12/20/2012	12/21/2012	12/27/2012	5550 0800 0112 0687	USPS 26073001733418328	3.10
SD BELLE PLAINE	304355380	12/21/2012	12/21/2012	12/27/2012	5550 0800 0112 0687	USPS 26073001733418328	5.20
COMM ED BELLE PLAINE	302158495	11/26/2012	11/28/2012	12/27/2012	5550 0800 0069 0219	COBORN S SUPERSTORE	(17.13)
COMM ED BELLE PLAINE	302158496	11/27/2012	11/28/2012	12/27/2012	5550 0800 0069 0219	TARGET 00012724	8.15
COMM ED BELLE PLAINE	302158497	11/27/2012	11/28/2012	12/27/2012	5550 0800 0069 0219	OFFICE MAX	15.58
COMM ED BELLE PLAINE	302158498	11/27/2012	11/28/2012	12/27/2012	5550 0800 0069 0219	PARTY CITY 1033	37.29
COMM ED BELLE PLAINE	302158499	11/27/2012	11/28/2012	12/27/2012	5550 0800 0069 0219	MICHAELS #3747	42.24
COMM ED BELLE PLAINE	302973116	12/4/2012	12/6/2012	12/27/2012	5550 0800 0069 0219	BARNES & NOBLE #2004	(15.96)
COMM ED BELLE PLAINE	302973117	12/4/2012	12/6/2012	12/27/2012	5550 0800 0069 0219	SCHOLASTIC INC. KEY 22	788.22
COMM ED BELLE PLAINE	303113428	12/6/2012	12/7/2012	12/27/2012	5550 0800 0069 0219	USPS 26073001733418328	21.55
COMM ED BELLE PLAINE	303113429	12/6/2012	12/7/2012	12/27/2012	5550 0800 0069 0219	CITY OF HOPKINS ART CE	30.00
COMM ED BELLE PLAINE	304114208	12/17/2012	12/19/2012	12/27/2012	5550 0800 0069 0219	SCHOLASTIC INC. KEY 22	27.70
COMM ED BELLE PLAINE	304220466	12/18/2012	12/20/2012	12/27/2012	5550 0800 0069 0219	OFFICE MAX	(15.58)
COMM ED BELLE PLAINE	304220467	12/19/2012	12/20/2012	12/27/2012	5550 0800 0069 0219	MICHAELS #3739	(23.98)
ELEMENTARY CHATFIELD	304114216	12/18/2012	12/19/2012	12/27/2012	5550 0800 0112 0703	TARGET 00012724	20.31
ELEMENTARY CHATFIELD	304355381	12/20/2012	12/21/2012	12/27/2012	5550 0800 0112 0703	TARGET 00018333	24.22
ELEMENTARY CHATFIELD	304355382	12/20/2012	12/21/2012	12/27/2012	5550 0800 0112 0703	PESI CMI	379.98
ELEMENTARY CHATFIELD	304355383	12/21/2012	12/21/2012	12/27/2012	5550 0800 0112 0703	DRAPHIX/TEACHER DIRECT	77.22
ELEMENTARY CHATFIELD	304355384	12/20/2012	12/21/2012	12/27/2012	5550 0800 0112 0703	ANNIE S CATERING	84.40
ELEMENTARY OAK CREST	302441651	11/29/2012	11/30/2012	12/27/2012	5550 0800 0112 0471	THE ORIGINS PROGRAM	179.00
ELEMENTARY OAK CREST	302858014	12/5/2012	12/5/2012	12/27/2012	5550 0800 0112 0471	HMCO *BOOKS	815.82
ELEMENTARY OAK CREST	302858015	12/5/2012	12/5/2012	12/27/2012	5550 0800 0112 0471	HMCO *BOOKS	(871.94)
ELEMENTARY OAK CREST	302973121	12/5/2012	12/6/2012	12/27/2012	5550 0800 0112 0471	COBORN S SUPERSTORE	85.74
ELEMENTARY OAK CREST	303113431	12/7/2012	12/7/2012	12/27/2012	5550 0800 0112 0471	COBORN S SUPERSTORE	17.05
ELEMENTARY OAK CREST	303113432	12/6/2012	12/7/2012	12/27/2012	5550 0800 0112 0471	SSI*SCHOOL SPECIALTY	62.81
ELEMENTARY OAK CREST	303113433	12/5/2012	12/7/2012	12/27/2012	5550 0800 0112 0471	WILLIAM V MACGILL & CO	153.53
ELEMENTARY OAK CREST	303299197	12/9/2012	12/10/2012	12/27/2012	5550 0800 0112 0471	TARGET 00020461	19.13
ELEMENTARY OAK CREST	303299198	12/9/2012	12/10/2012	12/27/2012	5550 0800 0112 0471	TARGET 00020461	61.16
ELEMENTARY OAK CREST	303397460	12/9/2012	12/11/2012	12/27/2012	5550 0800 0112 0471	DOLRTREE 1383 00013839	45.00
ELEMENTARY OAK CREST	303397461	12/9/2012	12/11/2012	12/27/2012	5550 0800 0112 0471	DOLRTREE 1383 00013839	20.00
ELEMENTARY OAK CREST	303494738	12/11/2012	12/12/2012	12/27/2012	5550 0800 0112 0471	COBORN S SUPERSTORE	230.40
ELEMENTARY OAK CREST	303494739	12/11/2012	12/12/2012	12/27/2012	5550 0800 0112 0471	TARGET 00018333	28.59

December 2012 Pcard

Card Holder	Transaction ID	Transaction Date	Processing Date	Statement Date	Account Number	Merchant Name	Transaction Amount
ELEMENTARY OAK CREST	303494740	12/11/2012	12/12/2012	12/27/2012	5550 0800 0112 0471	RGS*REALLY GOOD STUFF	107.21
ELEMENTARY OAK CREST	303738542	12/13/2012	12/14/2012	12/27/2012	5550 0800 0112 0471	LIFETOUCH NSS CORPORAT	2,549.48
ELEMENTARY OAK CREST	303738543	12/13/2012	12/14/2012	12/27/2012	5550 0800 0112 0471	SSI*SCHOOL SPECIALTY	59.61
ELEMENTARY OAK CREST	303738544	12/13/2012	12/14/2012	12/27/2012	5550 0800 0112 0471	SSI*SCHOOL SPECIALTY	93.86
ELEMENTARY OAK CREST	303738545	12/13/2012	12/14/2012	12/27/2012	5550 0800 0112 0471	SSI*SCHOOL SPECIALTY	26.43
ELEMENTARY OAK CREST	303906438	12/14/2012	12/17/2012	12/27/2012	5550 0800 0112 0471	MMEA	110.00
ELEMENTARY OAK CREST	304220472	12/18/2012	12/20/2012	12/27/2012	5550 0800 0112 0471	DOMINO S 7300	80.43
ELEMENTARY OAK CREST	304220473	12/19/2012	12/20/2012	12/27/2012	5550 0800 0112 0471	SSI*SCHOOL SPECIALTY	1,107.60
ELEMENTARY OAK CREST	304355376	12/20/2012	12/21/2012	12/27/2012	5550 0800 0112 0471	COBORN S SUPERSTORE	78.79
ELEMENTARY OAK CREST	304355377	12/19/2012	12/21/2012	12/27/2012	5550 0800 0112 0471	SCHOLASTIC INC. KEY 6	171.72
ELEMENTARY OAK CREST	304355378	12/20/2012	12/21/2012	12/27/2012	5550 0800 0112 0471	NEWS BOWL	299.00
ELEMENTARY OAK CREST	304518275	12/24/2012	12/24/2012	12/27/2012	5550 0800 0112 0471	AMAZON MKTPLACE PMTS	99.71
ELEMENTARY OAK CREST	304604959	12/26/2012	12/27/2012	12/27/2012	5550 0800 0112 0471	Amazon.com	15.56
HANSON LIANN	302441644	11/29/2012	11/30/2012	12/27/2012	5550 0800 0094 2727	BARNES&NOBLE*COM	(4.62)
HANSON LIANN	302441645	11/29/2012	11/30/2012	12/27/2012	5550 0800 0094 2727	BARNES&NOBLE*COM	(24.62)
HANSON LIANN	303397459	12/10/2012	12/11/2012	12/27/2012	5550 0800 0094 2727	ACP DIRECT	418.70

Total	37,268.89
--------------	------------------

Belle Plaine Public Schools Pre Payment Report

GrpCode	Rcd	W9	Vendor	Batch	Voucher	Inv No	Gross Amount	Disc Amt	Net Payment	Inv Date	Due Date	Disc Date
1	3753	N	AG POWER ENTEPRISES INC	V30701	37408	446210	74.37	0.00	74.37	01/17/2013	01/17/2013	01/17/2013
							Check Amount:		\$74.37			
1	4589	N	BANC OF AMERICA LEASING	V30701	37419	44	8,256.74	0.00	8,256.74	01/17/2013	01/17/2013	01/17/2013
							Check Amount:		\$8,256.74			
1	1125	N	BELLE PLAINE HERALD	V30701	37423	13568	29.75	0.00	29.75	01/17/2013	01/17/2013	01/17/2013
							Check Amount:		\$29.75			
1	2329	N	BLUE CROSS BLUE SHIELD of MN	V30701	37428	YR024-PB 2	285.00	0.00	285.00	01/17/2013	01/17/2013	01/17/2013
							Check Amount:		\$285.00			
1	1227	N	CARVER-SCOTT EDUCATIONAL CO	V30701	37524	10630	12,038.64	0.00	12,038.64	01/23/2013	01/23/2013	01/23/2013
1	1227	N	CARVER-SCOTT EDUCATIONAL CO	V30701	37422	10665	2,730.00	0.00	2,730.00	01/17/2013	01/17/2013	01/17/2013
1	1227	N	CARVER-SCOTT EDUCATIONAL CO	V30701	37542	10736	30,216.88	0.00	30,216.88	01/23/2013	01/23/2013	01/23/2013
1	1227	N	CARVER-SCOTT EDUCATIONAL CO	V30701	37523	10663	29,063.76	0.00	29,063.76	01/23/2013	01/23/2013	01/23/2013
							Check Amount:		\$74,049.28			
1	5927	N	CENTER FOR MENTORING & INDU	V30701	37529	01182013	940.00	0.00	940.00	01/23/2013	01/23/2013	01/23/2013
							Check Amount:		\$940.00			
1	3876	N	CENTERPOINT ENERGY SERVICE	V30701	37537	2545182	5,816.30	0.00	5,816.30	01/23/2013	01/23/2013	01/23/2013
1	3876	N	CENTERPOINT ENERGY SERVICE	V30701	37536	2545252	2,700.61	0.00	2,700.61	01/23/2013	01/23/2013	01/23/2013
1	3876	N	CENTERPOINT ENERGY SERVICE	V30701	37535	2545242	3,970.65	0.00	3,970.65	01/23/2013	01/23/2013	01/23/2013
							Check Amount:		\$12,487.56			
1	1304	N	CULLIGAN	V30701	37401	147X01814405	283.50	0.00	283.50	01/17/2013	01/17/2013	01/17/2013
							Check Amount:		\$283.50			
1	5896	N	DAWN HARRIS	V30701	37265	12184	30.00	0.00	30.00	01/03/2013	01/03/2013	01/03/2013
							Check Amount:		\$30.00			
1	4565	N	DE LAGE LANDEN	V30701	37430	16472254	418.00	0.00	418.00	01/17/2013	01/17/2013	01/17/2013
							Check Amount:		\$418.00			
1	3393	N	DEPT OF HEALTH	V30701	37456	12219	45.00	0.00	45.00	01/21/2013	01/21/2013	01/21/2013
							Check Amount:		\$45.00			
1	3662	N	DISTRIBUTED WEBSITE CORP	V30701	37531	14202	250.00	0.00	250.00	01/23/2013	01/23/2013	01/23/2013
							Check Amount:		\$250.00			
1	5579	N	EDUCATORS BENEFIT CONSULTA	V30701	37420	16659	200.00	0.00	200.00	01/04/2013	01/04/2013	01/04/2013
							Check Amount:		\$200.00			

Belle Plaine Public Schools Pre Payment Report

GrpCode	Rcd	W9	Vendor	Batch	Voucher	Inv No	Gross Amount	Disc Amt	Net Payment	Inv Date	Due Date	Disc Date
1	3553	N	EIDE BAILLY LLP	V30701	37426	E100010013	13,600.00	0.00	13,600.00	01/17/2013	01/17/2013	01/17/2013
							Check Amount:		\$13,600.00			
1	4404	N	ELISE'S KLOTHES PATCH	V30701	37396	1695	4.38	0.00	4.38	01/17/2013	01/17/2013	01/17/2013
							Check Amount:		\$4.38			
1	3249	N	GATCHELL IMAGING PRODUCTS	V30701	37399	20460	225.49	0.00	225.49	01/17/2013	01/17/2013	01/17/2013
							Check Amount:		\$225.49			
1	1521	N	GREEN LIGHTS	V30701	37409	12-6105	1,549.51	0.00	1,549.51	01/17/2013	01/17/2013	01/17/2013
							Check Amount:		\$1,549.51			
1	1528	N	GROTH MUSIC	V30701	37387	2002891	57.00	0.00	57.00	01/17/2013	01/17/2013	01/17/2013
1	1528	N	GROTH MUSIC	V30701	37388	1994839	32.39	0.00	32.39	01/17/2013	01/17/2013	01/17/2013
1	1528	N	GROTH MUSIC	V30701	37386	2002314	27.85	0.00	27.85	01/17/2013	01/17/2013	01/17/2013
1	1528	N	GROTH MUSIC	V30701	37385	1995989	2.99	0.00	2.99	01/17/2013	01/17/2013	01/17/2013
1	1528	N	GROTH MUSIC	V30701	37389	2002496	49.87	0.00	49.87	01/17/2013	01/17/2013	01/17/2013
1	1528	N	GROTH MUSIC	V30701	37384	1993691	4.27	0.00	4.27	01/17/2013	01/17/2013	01/17/2013
							Check Amount:		\$174.37			
1	3278	N	HUMERATECH	V30701	37533	121723	1,146.65	0.00	1,146.65	01/23/2013	01/23/2013	01/23/2013
							Check Amount:		\$1,146.65			
1	5921	N	INSTITUTIONS SERVICES, INC	V30701	37405	224042	17,999.00	0.00	17,999.00	01/17/2013	01/17/2013	01/17/2013
							Check Amount:		\$17,999.00			
1	3120	N	KENNEDY & GRAVEN	V30701	37424	111673	307.80	0.00	307.80	01/17/2013	01/17/2013	01/17/2013
							Check Amount:		\$307.80			
1	4444	N	KINGSWAY RETIREMENT CENTER	V30701	37525	118	298.02	0.00	298.02	01/23/2013	01/23/2013	01/23/2013
							Check Amount:		\$298.02			
1	4843	N	KRIS ANN KRAUSE	V30701	37454	12225	1,011.50	0.00	1,011.50	01/21/2013	01/21/2013	01/21/2013
							Check Amount:		\$1,011.50			
1	5396	N	KRISTIN VOSS	V30701	37268	12182	20.00	0.00	20.00	01/03/2013	01/03/2013	01/03/2013
							Check Amount:		\$20.00			
1	5341	N	MCDOWELL AGENCY INC	V30701	37427	39507	64.60	0.00	64.60	01/17/2013	01/17/2013	01/17/2013
1	5341	N	MCDOWELL AGENCY INC	V30701	37421	39174	78.65	0.00	78.65	01/17/2013	01/17/2013	01/17/2013
							Check Amount:		\$143.25			

**Belle Plaine Public Schools
Pre Payment Report**

GrpCode	Rcd	W9	Vendor	Batch	Voucher	Inv No	Gross Amount	Disc Amt	Net Payment	Inv Date	Due Date	Disc Date	
1	3069	1	N	MCGRAW Hill Companies	V30701	37402	71128690001	731.42	0.00	731.42	01/17/2013	01/17/2013	01/17/2013
								Check Amount:		\$731.42			
1	4012		N	MEDCO	V30701	37403	41611854	288.09	0.00	288.09	01/17/2013	01/17/2013	01/17/2013
								Check Amount:		\$288.09			
1	4145		N	MEDICAREBLUE RX	V30701	37522	YM0570SG	313.50	0.00	313.50	01/23/2013	01/23/2013	01/23/2013
								Check Amount:		\$313.50			
1	5397		N	MEGAN VOSS	V30701	37267	12181	20.00	0.00	20.00	01/03/2013	01/03/2013	01/03/2013
								Check Amount:		\$20.00			
1	1813		N	METRO ATHLETIC SUPPLY	V30701	37264	146137/146134	995.00	0.00	995.00	01/03/2013	01/03/2013	01/03/2013
								Check Amount:		\$995.00			
1	1858		N	MN DEPT OF LABOR	V30701	37407	ABR003149I	50.00	0.00	50.00	01/17/2013	01/17/2013	01/17/2013
								Check Amount:		\$50.00			
1	3979		N	MRCI MANKATO	V30701	37527	F57394	120.00	0.00	120.00	01/23/2013	01/23/2013	01/23/2013
								Check Amount:		\$120.00			
1	2647		N	MSU - MANKATO	V30701	37526	00719009	4,000.00	0.00	4,000.00	01/23/2013	01/23/2013	01/23/2013
								Check Amount:		\$4,000.00			
1	1889		N	MULTILINGUAL WORD INC	V30701	37398	112812-604	118.00	0.00	118.00	01/17/2013	01/17/2013	01/17/2013
								Check Amount:		\$118.00			
1	1696		N	NELSON LADD	V30701	37455	12218	13.23	0.00	13.23	01/21/2013	01/21/2013	01/21/2013
								Check Amount:		\$13.23			
1	1917		N	NICKLASSON ATHLETIC CO	V30701	37404	15615	1,132.70	0.00	1,132.70	01/17/2013	01/17/2013	01/17/2013
								Check Amount:		\$1,132.70			
1	5895		N	OLIVIA MEGER	V30701	37269	12183	30.00	0.00	30.00	01/03/2013	01/03/2013	01/03/2013
								Check Amount:		\$30.00			
1	1953		N	PANDY ANDERSON	V30701	37263	12175	7.84	0.00	7.84	01/03/2013	01/03/2013	01/03/2013
								Check Amount:		\$7.84			
1	2001		N	PROGRESSIVE PRINTING	V30701	37425	20120593	170.00	0.00	170.00	01/17/2013	01/17/2013	01/17/2013
								Check Amount:		\$170.00			
1	2030		N	REGION V	V30701	37429	8345	5,071.50	0.00	5,071.50	01/17/2013	01/17/2013	01/17/2013
								Check Amount:		\$5,071.50			

Belle Plaine Public Schools Pre Payment Report

GrpCode	Rcd	W9	Vendor	Batch	Voucher	Inv No	Gross Amount	Disc Amt	Net Payment	Inv Date	Due Date	Disc Date
1	2067	N	SCHMITT MUSIC COMPANY	V30701	37390	124479000	27.81	0.00	27.81	01/17/2013	01/17/2013	01/17/2013
1	2067	N	SCHMITT MUSIC COMPANY	V30701	37395	124530583	42.90	0.00	42.90	01/17/2013	01/17/2013	01/17/2013
1	2067	N	SCHMITT MUSIC COMPANY	V30701	37394	124560133	44.00	0.00	44.00	01/17/2013	01/17/2013	01/17/2013
1	2067	N	SCHMITT MUSIC COMPANY	V30701	37393	124531941	12.72	0.00	12.72	01/17/2013	01/17/2013	01/17/2013
1	2067	N	SCHMITT MUSIC COMPANY	V30701	37392	124446778	22.91	0.00	22.91	01/17/2013	01/17/2013	01/17/2013
1	2067	N	SCHMITT MUSIC COMPANY	V30701	37391	124528827	17.34	0.00	17.34	01/17/2013	01/17/2013	01/17/2013
							Check Amount:		\$167.68			
1	2083	N	SCOTT COUNTY	V30701	37406	IN 10699	740.30	0.00	740.30	01/17/2013	01/17/2013	01/17/2013
							Check Amount:		\$740.30			
1	2137	N	SOUTH CENTRAL ECSU	V30701	37415	13561	1,525.39	0.00	1,525.39	01/17/2013	01/17/2013	01/17/2013
1	2137	N	SOUTH CENTRAL ECSU	V30701	37414	13537	1,155.15	0.00	1,155.15	01/17/2013	01/17/2013	01/17/2013
							Check Amount:		\$2,680.54			
1	3287	N	SPARETIME INVESTMENT GROUP	V30701	37413	1320	915.00	0.00	915.00	01/17/2013	01/17/2013	01/17/2013
1	3287	N	SPARETIME INVESTMENT GROUP	V30701	37412	1317	577.50	0.00	577.50	01/17/2013	01/17/2013	01/17/2013
1	3287	N	SPARETIME INVESTMENT GROUP	V30701	37411	1315	130.00	0.00	130.00	01/17/2013	01/17/2013	01/17/2013
1	3287	N	SPARETIME INVESTMENT GROUP	V30701	37410	1314	631.25	0.00	631.25	01/17/2013	01/17/2013	01/17/2013
							Check Amount:		\$2,253.75			
1	4622	N	STAPLES ADVANTAGE	V30701	37532	3190126037	8,480.00	0.00	8,480.00	01/23/2013	01/23/2013	01/23/2013
							Check Amount:		\$8,480.00			
1	2153	N	STASNEY ELECTRIC LLC	V30701	37400	25617	14,885.14	0.00	14,885.14	01/17/2013	01/17/2013	01/17/2013
							Check Amount:		\$14,885.14			
1	2157	N	STEFFEN HARDWARE	V30701	37416	DECEMBER	97.05	0.00	97.05	01/17/2013	01/17/2013	01/17/2013
							Check Amount:		\$97.05			
1	2164	N	STIER TRANSPORTATION SERVIC	V30701	37313	13003	181.95	0.00	181.95	01/10/2013	01/10/2013	01/10/2013
							Check Amount:		\$181.95			
1	4582	N	TAHER - BELLE PLAINE SCHOOLS	V30701	37418	10	440.00	0.00	440.00	01/17/2013	01/17/2013	01/17/2013
1	4582	N	TAHER - BELLE PLAINE SCHOOLS	V30701	37538	12	40.00	0.00	40.00	01/23/2013	01/23/2013	01/23/2013
							Check Amount:		\$480.00			
1	2188	N	TAHER INC	V30701	37417	0036282-IN	55,365.34	0.00	55,365.34	01/17/2013	01/17/2013	01/17/2013
							Check Amount:		\$55,365.34			
1	5897	N	TAYLOR KRUGER	V30701	37266	12185	30.00	0.00	30.00	01/03/2013	01/03/2013	01/03/2013
							Check Amount:		\$30.00			

Belle Plaine Public Schools Pre Payment Report

GrpCode	Rcd	W9	Vendor	Batch	Voucher	Inv No	Gross Amount	Disc Amt	Net Payment	Inv Date	Due Date	Disc Date
1	2326	N	YOUTH FRONTIERS INC	V30701	37528	9304	1,290.00	0.00	1,290.00	01/23/2013	01/23/2013	01/23/2013
							Check Amount:		\$1,290.00			
							Report Total:		\$233,542.20			

*Does not meet minimum amount
**Exceeds maximum amount

Hand Pays

Batch	Co	Pmt No	Bank	Check No	Pay Type	Grp	Code	Vendor	Print	Recon	Pay Date	Void	Curr	Amount	
P20901	0716	27108	SBC	53640	CH	1	2067	SCHMITT MUSIC COMPANY	Y	N	12/17/2012	Y	USD	-45.38	
P20901	0716	27108	SBC	53640	CH	1	2067	SCHMITT MUSIC COMPANY	Y	N	12/17/2012	Y	USD	-10.39	
P30502	0716	28919	SBC	54466	CH	1	5188	AMY JOHNSTON	Y	N	12/17/2012	Y	USD	-25.00	
P30602	0716	29217	SBC	54600	CH	1	1874	MNGWL	Y	N	1/11/2013	Y	USD	-150.00	
P306p2	0716	29453	SBC	54677	CH	1	1123	BELLE PLAINE ED ASSOC	Y	N	12/20/2012	N	USD	4,129.99	
P306p2	0716	29454	SBC	54678	CH	1	1134	BELLE PLAINE SCHOOL	Y	N	12/20/2012	N	USD	3,624.83	
P306p2	0716	29455	SBC	54679	CH	1	1178	BPESPA	Y	N	12/20/2012	N	USD	822.27	
P30702	0716	29523	SBC	54680	CH	1	3876	CENTERPOINT ENERGY SERVICES	Y	N	12/26/2012	N	USD	2,349.79	
P30702	0716	29523	SBC	54680	CH	1	3876	CENTERPOINT ENERGY SERVICES	Y	N	12/26/2012	N	USD	1,951.08	
P30702	0716	29523	SBC	54680	CH	1	3876	CENTERPOINT ENERGY SERVICES	Y	N	12/26/2012	N	USD	3,399.42	
P30702	0716	29513	SBC	54681	CH	1	1257	CHRIS NEISEN	Y	N	12/26/2012	N	USD	108.00	
P30702	0716	29514	SBC	54682	CH	1	1326	DARYL SANBORN	Y	N	12/26/2012	N	USD	108.00	
P30702	0716	29525	SBC	54683	CH	1	4565	DE LAGE LANDEN	Y	N	12/26/2012	N	USD	418.00	
P30702	0716	29520	SBC	54684	CH	1	3249	GATCHELL IMAGING PRODUCTS	Y	N	12/26/2012	N	USD	415.92	
P30702	0716	29528	SBC	54685	CH	1	5498	GLENN MOEDE	Y	N	12/26/2012	N	USD	108.00	
P30702	0716	29512	SBC	54686	CH	1	1202	JANIS BUESGENS	Y	N	12/26/2012	N	USD	11.66	
P30702	0716	29519	SBC	54687	CH	1	2681	JULIE MINER	Y	N	12/26/2012	N	USD	105.00	
P30702	0716	29522	SBC	54688	CH	1	3853	KELLY VOURLOS	Y	N	12/26/2012	N	USD	63.83	
P30702	0716	29524	SBC	54689	CH	1	4145	MEDICAREBLUE RX	Y	N	12/26/2012	N	USD	313.50	
P30702	0716	29527	SBC	54690	CH	1	5486	MIKE GEARMAN	Y	N	12/26/2012	N	USD	107.00	
P30702	0716	29526	SBC	54691	CH	1	5091	MINDY SPARBY	Y	N	12/26/2012	N	USD	350.01	
P30702	0716	29518	SBC	54692	CH	1	2647	MSU - MANKATO	Y	N	12/26/2012	N	USD	50.00	
P30702	0716	29515	SBC	54693	CH	1	1963	PAT O'MALLEY	Y	N	12/26/2012	N	USD	108.00	
P30702	0716	29521	SBC	54694	CH	1	3380	RENEE MALECHA	Y	N	12/26/2012	N	USD	12.27	
P30702	0716	29516	SBC	54695	CH	1	2049	RON HAMANN	Y	N	12/26/2012	N	USD	108.00	
P30702	0716	29517	SBC	54696	CH	1	2235	TIM LITFIN	Y	N	12/26/2012	N	USD	107.00	
P30702	0716	29529	SBC	54697	CH	1	5537	TOM RYAN	Y	N	12/26/2012	N	USD	108.00	
P30702	0716	29538	SBC	54698	CH	1	2561	ANN KAHLE	Y	N	1/3/2013	0	N	USD	105.00
P30702	0716	29536	SBC	54699	CH	1	1217	RANDALL CARLSON	Y	N	1/3/2013	0	N	USD	12.00
P30702	0716	29537	SBC	54700	CH	1	2070	SCHOLASTIC BOOK FAIRS	Y	N	1/3/2013	0	N	USD	213.59
P30702	0716	29539	SBC	54701	CH	1	5898	UNIVERSITY OF MINNESOTA	Y	N	1/3/2013	0	N	USD	4,060.00
P307p1	0716	29549	SBC	54702	CH	1	1123	BELLE PLAINE ED ASSOC	Y	N	1/4/2013	0	N	USD	4,129.99
P307p1	0716	29550	SBC	54703	CH	1	1134	BELLE PLAINE SCHOOL	Y	N	1/4/2013	0	N	USD	3,624.83
P307p1	0716	29551	SBC	54704	CH	1	1178	BPESPA	Y	N	1/4/2013	0	N	USD	823.85

Hand Pays

Batch	Co	Pmt No	Bank	Check No	Pay Type	Grp	Code	Vendor	Print	Recon	Pay Date	Void	Curr	Amount
P307p1	0716	29552	SBC	54705	CH	1	1753	MADISON NATIONAL LIFE	Y	N	1/4/2013	OC N	USD	390.00
P307p1	0716	29552	SBC	54705	CH	1	1753	MADISON NATIONAL LIFE	Y	N	1/4/2013	OC N	USD	1,326.00
P307p1	0716	29553	SBC	54706	CH	1	1836	NCPERS MINNESOTA	Y	N	1/4/2013	OC N	USD	16.00
P307p1	0716	29554	SBC	54707	CH	1	5360	Reliance Standard Life	Y	N	1/4/2013	OC N	USD	1,089.92
P30702	0716	29555	SBC	54708	CH	1	3219	CASH	Y	N	1/4/2013	OC N	USD	1,100.00
P30702	0716	29560	SBC	54709	CH	1	1262	CITY OF BELLE PLAINE	Y	N	1/8/2013	OC N	USD	225.00
P30702	0716	29561	SBC	54710	CH	1	1812	MESPA	Y	N	1/8/2013	OC N	USD	350.00
P30702	0716	29562	SBC	54711	CH	1	1021	AIM ELECTRONICS	Y	N	1/10/2013	C N	USD	14,650.00
P30702	0716	29580	SBC	54712	CH	1	5903	ANGELA GRYSKIEWICZ	Y	N	1/10/2013	C N	USD	88.00
P30702	0716	29585	SBC	54713	CH	1	5908	ASHLEY ARTMANN	Y	N	1/10/2013	C N	USD	44.00
P30702	0716	29567	SBC	54714	CH	1	3219	CASH	Y	N	1/10/2013	C N	USD	1,100.00
P30702	0716	29574	SBC	54715	CH	1	5491	CHASKA/CHANHASSEN COMM ED	Y	N	1/10/2013	C N	USD	100.00
P30702	0716	29570	SBC	54716	CH	1	4251	CHUCK THAYER	Y	N	1/10/2013	C N	USD	107.00
P30702	0716	29583	SBC	54717	CH	1	5906	EMILY SCHIESL	Y	N	1/10/2013	C N	USD	88.00
P30702	0716	29579	SBC	54718	CH	1	5902	GREG EWING	Y	N	1/10/2013	C N	USD	115.00
P30702	0716	29576	SBC	54719	CH	1	5899	Greg Skillestad	Y	N	1/10/2013	C N	USD	300.00
P30702	0716	29568	SBC	54720	CH	1	3493	JACK SHUNEMAN	Y	N	1/10/2013	C N	USD	18.32
P30702	0716	29584	SBC	54721	CH	1	5907	JILL THIESFEID	Y	N	1/10/2013	C N	USD	88.00
P30702	0716	29571	SBC	54722	CH	1	5058	KIM MEYER	Y	N	1/10/2013	C N	USD	88.00
P30702	0716	29578	SBC	54723	CH	1	5901	LAURA HENNEN	Y	N	1/10/2013	C N	USD	30.00
P30702	0716	29577	SBC	54724	CH	1	5900	LSH BASKETBALL BOOSTERS	Y	N	1/10/2013	C N	USD	50.00
P30702	0716	29563	SBC	54725	CH	1	1748	MAAE	Y	N	1/10/2013	C N	USD	85.00
P30702	0716	29575	SBC	54726	CH	1	5543	MARISSA LEESE	Y	N	1/10/2013	C N	USD	44.00
P30702	0716	29564	SBC	54727	CH	1	1812	MESPA	Y	N	1/10/2013	C N	USD	350.00
P30702	0716	29581	SBC	54728	CH	1	5904	MISTI HINES	Y	N	1/10/2013	C N	USD	88.00
P30702	0716	29569	SBC	54729	CH	1	4250	PETER THALDORF	Y	N	1/10/2013	C N	USD	107.00
P30702	0716	29565	SBC	54730	CH	1	1992	PRAIRIE TRUCKING INC	Y	N	1/10/2013	C N	USD	32,646.94
P30702	0716	29572	SBC	54731	CH	1	5063	STACY ABEL	Y	N	1/10/2013	C N	USD	116.00
P30702	0716	29566	SBC	54732	CH	1	2164	STIER TRANSPORTATION SERVICES	Y	N	1/10/2013	C N	USD	62,537.98
P30702	0716	29582	SBC	54733	CH	1	5905	TAMMY HINES	Y	N	1/10/2013	C N	USD	88.00
P30702	0716	29573	SBC	54734	CH	1	5093	TUMBLEWEED PRESS	Y	N	1/10/2013	C N	USD	399.00
P30702	0716	29594	SBC	54735	CH	1	5826	BELLE PLAINE FFA	Y	N	1/11/2013	C N	USD	400.00
P30702	0716	29594	SBC	54735	CH	1	5826	BELLE PLAINE FFA	Y	N	1/11/2013	C N	USD	100.00
P30702	0716	29595	SBC	54736	CH	1	5909	JEFF WILLS	Y	N	1/11/2013	C N	USD	107.00

Hand Pays

Batch	Co	Pmt No	Bank	Check No	Pay Type	Grp	Code	Vendor	Print	Recon	Pay Date	Void	Curr	Amount
P30702	0716	29596	SBC	54737	CH	1	5910	MARSHALL BEHRENS	Y	N	1/11/2013	C N	USD	107.00
P30702	0716	29593	SBC	54738	CH	1	1874	MNGWL	Y	N	1/11/2013	C N	USD	150.00
P30702	0716	29623	SBC	54739	CH	1	1262	CITY OF BELLE PLAINE	Y	N	1/14/2013	C N	USD	150.00
P30702	0716	29624	SBC	54740	CH	1	3964	MATH MASTERS OF MN	Y	N	1/14/2013	C N	USD	255.00
P30702	0716	29625	SBC	54741	CH	1	4293	MIKE LANGLAIS	Y	N	1/14/2013	C N	USD	115.00
P307p2	0716	29664	SBC	54742	CH	1	1123	BELLE PLAINE ED ASSOC	Y	N	1/18/2013	C N	USD	4,129.99
P307p2	0716	29665	SBC	54743	CH	1	1134	BELLE PLAINE SCHOOL	Y	N	1/18/2013	C N	USD	3,852.11
P307p2	0716	29666	SBC	54744	CH	1	1178	BPESPA	Y	N	1/18/2013	C N	USD	831.82
P30702	0716	29680	SBC	54745	CH	1	5922	BRANDON RABENHORST	Y	N	1/18/2013	C N	USD	107.00
P30702	0716	29683	SBC	54746	CH	1	5925	BRIAN SPANOVICH	Y	N	1/18/2013	C N	USD	79.00
P30702	0716	29668	SBC	54747	CH	1	1346	DEBBIE FOGARTY	Y	N	1/18/2013	C N	USD	75.00
P30702	0716	29669	SBC	54748	CH	1	1359	DENNIS STRONG	Y	N	1/18/2013	C N	USD	79.00
P30702	0716	29679	SBC	54749	CH	1	5911	EDEN PRAIRIE SCHOOLS	Y	N	1/18/2013	C N	USD	110.00
P30702	0716	29677	SBC	54750	CH	1	5636	JAMF SOFTWARE LLC	Y	N	1/18/2013	C N	USD	540.00
P30702	0716	29670	SBC	54751	CH	1	1618	JANESVILLE WALDORF SCHOOL	Y	N	1/18/2013	C N	USD	175.00
P30702	0716	29684	SBC	54752	CH	1	5926	JERRY PODRATZ	Y	N	1/18/2013	C N	USD	79.00
P30702	0716	29675	SBC	54753	CH	1	4918	MARY JANE O'BRIEN	Y	N	1/18/2013	C N	USD	50.00
P30702	0716	29676	SBC	54754	CH	1	5486	MIKE GEARMAN	Y	N	1/18/2013	C N	USD	125.00
P30702	0716	29682	SBC	54755	CH	1	5924	MIKE LEVERSON	Y	N	1/18/2013	C N	USD	107.00
P30702	0716	29671	SBC	54756	CH	1	2016	RANDY SAMES	Y	N	1/18/2013	C N	USD	107.00
P30702	0716	29681	SBC	54757	CH	1	5923	SHAWN ERICKSON	Y	N	1/18/2013	C N	USD	107.00
P30702	0716	29672	SBC	54758	CH	1	2235	TIM LITFIN	Y	N	1/18/2013	C N	USD	125.00
P30702	0716	29674	SBC	54759	CH	1	4297	TNT AUDIO INC	Y	N	1/18/2013	C N	USD	600.00
P30702	0716	29678	SBC	54760	CH	1	5801	TRI-CITY UNITED PUBLIC SCHOOL	Y	N	1/18/2013	C N	USD	50.00
P30702	0716	29678	SBC	54760	CH	1	5801	TRI-CITY UNITED PUBLIC SCHOOL	Y	N	1/18/2013	C N	USD	50.00
P30702	0716	29673	SBC	54761	CH	1	2293	WATERTOWN MAYER HIGH SCHOO	Y	N	1/18/2013	C N	USD	50.00
P30702	0716	29691	SBC	54762	CH	1	5188	AMY JOHNSTON	Y	N	1/22/2013	C N	USD	50.00
P30702	0716	29689	SBC	54763	CH	1	3138	BOND TRUST SERVICES CORP	Y	N	1/22/2013	C N	USD	163,889.38
P30702	0716	29689	SBC	54763	CH	1	3138	BOND TRUST SERVICES CORP	Y	N	1/22/2013	C N	USD	65,000.00
P30702	0716	29689	SBC	54763	CH	1	3138	BOND TRUST SERVICES CORP	Y	N	1/22/2013	C N	USD	1,480,606.25
P30702	0716	29689	SBC	54763	CH	1	3138	BOND TRUST SERVICES CORP	Y	N	1/22/2013	C N	USD	94,671.25
P30702	0716	29689	SBC	54763	CH	1	3138	BOND TRUST SERVICES CORP	Y	N	1/22/2013	C N	USD	450.00
P30702	0716	29689	SBC	54763	CH	1	3138	BOND TRUST SERVICES CORP	Y	N	1/22/2013	C N	USD	450.00
P30702	0716	29689	SBC	54763	CH	1	3138	BOND TRUST SERVICES CORP	Y	N	1/22/2013	C N	USD	450.00

Hand Pays

Batch	Co	Pmt No	Bank	Check No	Pay Type	Grp	Code	Vendor	Print	Recon	Pay Date	Void	Curr	Amount
P30702	0716	29690	SBC	54764	CH	1	4628	LOREE HEINKEL	Y	N	1/22/2013	C N	USD	321.32
P30702	0716	29688	SBC	54765	CH	1	2272	US BANK	Y	N	1/22/2013	C N	USD	482,428.13
P30702	0716	29694	SBC	54766	CH	1	5932	CHRISTIAN ANDERSON	Y	N	1/23/2013	C N	USD	108.00
P30702	0716	29692	SBC	54767	CH	1	2530	JOHN ISTA	Y	N	1/23/2013	C N	USD	107.00
P30702	0716	29693	SBC	54768	CH	1	5931	NAOMI BARRINGER	Y	N	1/23/2013	C N	USD	400.00
P30702	0716	29695	SBC	54769	CH	1	1227	CARVER-SCOTT EDUCATIONAL CO	Y	N	1/24/2013	C N	USD	383.36

Total

\$ 2,451,570.83

Wires

Batch	Co	Pmt No	Bank	Check No	Pay Type	Grp	Code	Vendor	Print	Recon	Pay Date	Void	Curr	Amount	
P30602	0716	29240	SBC		WX	1	2336	XCEL ENERGY	N	N	12/13/2012	N	USD	5,879.65	
P30602	0716	29240	SBC		WX	1	2336	XCEL ENERGY	N	N	12/13/2012	N	USD	5,301.94	
P30602	0716	29240	SBC		WX	1	2336	XCEL ENERGY	N	N	12/13/2012	N	USD	3,215.34	
P30602	0716	29240	SBC		WX	1	2336	XCEL ENERGY	N	N	12/13/2012	N	USD	303.47	
P30602	0716	29241	SBC		WX	1	3414	CENTERPOINT ENERGY	N	N	12/13/2012	N	USD	1,025.20	
P30602	0716	29241	SBC		WX	1	3414	CENTERPOINT ENERGY	N	N	12/13/2012	N	USD	206.13	
P30602	0716	29241	SBC		WX	1	3414	CENTERPOINT ENERGY	N	N	12/13/2012	N	USD	159.64	
P30602	0716	29241	SBC		WX	1	3414	CENTERPOINT ENERGY	N	N	12/13/2012	N	USD	156.39	
P306p2	0716	29445	SBC		WX	1	1873	MN.TEACHERS RETIRE.ASSOC	N	N	12/20/2012	N	USD	35,631.22	
P306p2	0716	29446	SBC		WX	1	1977	PERA	N	N	12/20/2012	N	USD	9,086.05	
P306p2	0716	29447	SBC		WX	1	2330	FEDERAL	N	N	12/20/2012	N	USD	24,969.42	
P306p2	0716	29447	SBC		WX	1	2330	FEDERAL	N	N	12/20/2012	N	USD	9,577.30	
P306p2	0716	29447	SBC		WX	1	2330	FEDERAL	N	N	12/20/2012	N	USD	33,752.38	
P306p2	0716	29448	SBC		WX	1	2331	STATE OF MINNESOTA	N	N	12/20/2012	N	USD	11,552.78	
P306p2	0716	29449	SBC		WX	1	2581	MN CHILD SUPPORT CENTER	N	N	12/20/2012	N	USD	545.00	
P306p2	0716	29450	SBC		WX	1	2735	MII LIFE - VEBA/HSA	N	N	12/20/2012	N	USD	-600.00	
P306p2	0716	29450	SBC		WX	1	2735	MII LIFE - VEBA/HSA	N	N	12/20/2012	N	USD	1,364.51	
P306p2	0716	29451	SBC		WX	1	5277	Preferred One	N	N	12/20/2012	N	USD	96,922.85	
P306p2	0716	29451	SBC		WX	1	5277	Preferred One	N	N	12/20/2012	N	USD	30,111.01	
P306p2	0716	29452	SBC		WX	1	5579	EDUCATORS BENEFIT CONSULTANTS	N	N	12/20/2012	N	USD	1,054.28	
P306p2	0716	29452	SBC		WX	1	5579	EDUCATORS BENEFIT CONSULTANTS	N	N	12/20/2012	N	USD	100.00	
P306p2	0716	29452	SBC		WX	1	5579	EDUCATORS BENEFIT CONSULTANTS	N	N	12/20/2012	N	USD	1,708.34	
P306p2	0716	29452	SBC		WX	1	5579	EDUCATORS BENEFIT CONSULTANTS	N	N	12/20/2012	N	USD	100.00	
P306p2	0716	29452	SBC		WX	1	5579	EDUCATORS BENEFIT CONSULTANTS	N	N	12/20/2012	N	USD	1,565.00	
P306p2	0716	29452	SBC		WX	1	5579	EDUCATORS BENEFIT CONSULTANTS	N	N	12/20/2012	N	USD	4,778.54	
P306p2	0716	29452	SBC		WX	1	5579	EDUCATORS BENEFIT CONSULTANTS	N	N	12/20/2012	N	USD	511.12	
P306p2	0716	29452	SBC		WX	1	5579	EDUCATORS BENEFIT CONSULTANTS	N	N	12/20/2012	N	USD	1,818.18	
P307p1	0716	29541	SBC		WX	1	1555	HEALTH PARTNERS	Y	N	1/4/2013	0	Y	USD	10,570.50
P307p1	0716	29541	SBC		WX	1	1555	HEALTH PARTNERS	Y	N	1/15/2013	0	Y	USD	-10,570.50
P307p1	0716	29542	SBC		WX	1	1873	MN.TEACHERS RETIRE.ASSOC	N	N	1/4/2013	0	N	USD	35,949.36
P307p1	0716	29543	SBC		WX	1	1977	PERA	N	N	1/4/2013	0	N	USD	10,144.43
P307p1	0716	29544	SBC		WX	1	2330	FEDERAL	N	N	1/4/2013	0	N	USD	25,269.33
P307p1	0716	29544	SBC		WX	1	2330	FEDERAL	N	N	1/4/2013	0	N	USD	9,486.72
P307p1	0716	29544	SBC		WX	1	2330	FEDERAL	N	N	1/4/2013	0	N	USD	40,563.42
P307p1	0716	29545	SBC		WX	1	2331	STATE OF MINNESOTA	N	N	1/4/2013	0	N	USD	11,659.92
P307p1	0716	29546	SBC		WX	1	2581	MN CHILD SUPPORT CENTER	N	N	1/4/2013	0	N	USD	545.00

Wires

Batch	Co	Pmt No	Bank	Check No	Pay Type	Grp	Code	Vendor	Print	Recon	Pay Date	Void	Curr	Amount	
P307p1	0716	29547	SBC		WX	1	2735	MII LIFE - VEBA/HSA	N	N	1/4/2013	0	N	USD	5,189.51
P307p1	0716	29548	SBC		WX	1	5579	EDUCATORS BENEFIT CONSULTANTS	N	N	1/4/2013	0	N	USD	1,062.28
P307p1	0716	29548	SBC		WX	1	5579	EDUCATORS BENEFIT CONSULTANTS	N	N	1/4/2013	0	N	USD	100.00
P307p1	0716	29548	SBC		WX	1	5579	EDUCATORS BENEFIT CONSULTANTS	N	N	1/4/2013	0	N	USD	1,708.34
P307p1	0716	29548	SBC		WX	1	5579	EDUCATORS BENEFIT CONSULTANTS	N	N	1/4/2013	0	N	USD	100.00
P307p1	0716	29548	SBC		WX	1	5579	EDUCATORS BENEFIT CONSULTANTS	N	N	1/4/2013	0	N	USD	1,565.00
P307p1	0716	29548	SBC		WX	1	5579	EDUCATORS BENEFIT CONSULTANTS	N	N	1/4/2013	0	N	USD	4,728.54
P307p1	0716	29548	SBC		WX	1	5579	EDUCATORS BENEFIT CONSULTANTS	N	N	1/4/2013	0	N	USD	612.38
P307p1	0716	29548	SBC		WX	1	5579	EDUCATORS BENEFIT CONSULTANTS	N	N	1/4/2013	0	N	USD	1,818.18
P30702	0716	29556	SBC		WX	1	1262	CITY OF BELLE PLAINE	N	N	1/8/2013	0	N	USD	3.00
P30702	0716	29556	SBC		WX	1	1262	CITY OF BELLE PLAINE	N	N	1/8/2013	0	N	USD	26.77
P30702	0716	29556	SBC		WX	1	1262	CITY OF BELLE PLAINE	N	N	1/8/2013	0	N	USD	129.75
P30702	0716	29556	SBC		WX	1	1262	CITY OF BELLE PLAINE	N	N	1/8/2013	0	N	USD	266.71
P30702	0716	29556	SBC		WX	1	1262	CITY OF BELLE PLAINE	N	N	1/8/2013	0	N	USD	603.32
P30702	0716	29556	SBC		WX	1	1262	CITY OF BELLE PLAINE	N	N	1/8/2013	0	N	USD	975.10
P30702	0716	29557	SBC		WX	1	1486	FRONTIER	N	N	1/8/2013	0	N	USD	89.77
P30702	0716	29557	SBC		WX	1	1486	FRONTIER	N	N	1/8/2013	0	N	USD	1,743.00
P30702	0716	29557	SBC		WX	1	1486	FRONTIER	N	N	1/8/2013	0	N	USD	95.87
P30702	0716	29557	SBC		WX	1	1486	FRONTIER	N	N	1/8/2013	0	N	USD	161.19
P30702	0716	29558	SBC		WX	1	2336	XCEL ENERGY	N	N	1/8/2013	0	N	USD	973.67
P30702	0716	29559	SBC		WX	1	3206	SELECTACCOUNT	N	N	1/8/2013	0	N	USD	252.54
P307p1	0716	29626	SBC		WX	1	1555	HEALTH PARTNERS	N	N	1/15/2013		N	USD	10,570.50
P307p1	0716	29626	SBC		WX	1	1555	HEALTH PARTNERS	N	N	1/15/2013		N	USD	-75.69
P307p2	0716	29656	SBC		WX	1	1873	MN.TEACHERS RETIRE.ASSOC	N	N	1/18/2013		N	USD	33,937.78
P307p2	0716	29657	SBC		WX	1	1977	PERA	N	N	1/18/2013		N	USD	7,815.09
P307p2	0716	29658	SBC		WX	1	2330	FEDERAL	N	N	1/18/2013		N	USD	22,690.77
P307p2	0716	29658	SBC		WX	1	2330	FEDERAL	N	N	1/18/2013		N	USD	8,539.48
P307p2	0716	29658	SBC		WX	1	2330	FEDERAL	N	N	1/18/2013		N	USD	36,513.40
P307p2	0716	29659	SBC		WX	1	2331	STATE OF MINNESOTA	N	N	1/18/2013		N	USD	10,516.82
P307p2	0716	29660	SBC		WX	1	2581	MN CHILD SUPPORT CENTER	N	N	1/18/2013		N	USD	545.00
P307p2	0716	29661	SBC		WX	1	2735	MII LIFE - VEBA/HSA	N	N	1/18/2013		N	USD	1,489.51
P307p2	0716	29662	SBC		WX	1	5277	Preferred One	N	N	1/18/2013		N	USD	96,457.69
P307p2	0716	29662	SBC		WX	1	5277	Preferred One	N	N	1/18/2013		N	USD	-142.66
P307p2	0716	29662	SBC		WX	1	5277	Preferred One	N	N	1/18/2013		N	USD	31,658.24
P307p2	0716	29663	SBC		WX	1	5579	EDUCATORS BENEFIT CONSULTANTS	N	N	1/18/2013		N	USD	1,062.28
P307p2	0716	29663	SBC		WX	1	5579	EDUCATORS BENEFIT CONSULTANTS	N	N	1/18/2013		N	USD	100.00

Wires

Batch	Co	Pmt No	Bank	Check No	Pay Type	Grp	Code	Vendor	Print	Recon	Pay Date	Void	Curr	Amount
P307p2	0716	29663	SBC		WX	1	5579	EDUCATORS BENEFIT CONSULTANTS	N	N	1/18/2013	C N	USD	1,708.34
P307p2	0716	29663	SBC		WX	1	5579	EDUCATORS BENEFIT CONSULTANTS	N	N	1/18/2013	C N	USD	100.00
P307p2	0716	29663	SBC		WX	1	5579	EDUCATORS BENEFIT CONSULTANTS	N	N	1/18/2013	C N	USD	1,565.00
P307p2	0716	29663	SBC		WX	1	5579	EDUCATORS BENEFIT CONSULTANTS	N	N	1/18/2013	C N	USD	4,678.54
P307p2	0716	29663	SBC		WX	1	5579	EDUCATORS BENEFIT CONSULTANTS	N	N	1/18/2013	C N	USD	612.38
P307p2	0716	29663	SBC		WX	1	5579	EDUCATORS BENEFIT CONSULTANTS	N	N	1/18/2013	C N	USD	1,818.18
P30702	0716	29685	SBC		WX	1	1262	CITY OF BELLE PLAINE	N	N	1/22/2013	C N	USD	3.00
P30702	0716	29685	SBC		WX	1	1262	CITY OF BELLE PLAINE	N	N	1/22/2013	C N	USD	26.77
P30702	0716	29685	SBC		WX	1	1262	CITY OF BELLE PLAINE	N	N	1/22/2013	C N	USD	112.74
P30702	0716	29685	SBC		WX	1	1262	CITY OF BELLE PLAINE	N	N	1/22/2013	C N	USD	266.71
P30702	0716	29685	SBC		WX	1	1262	CITY OF BELLE PLAINE	N	N	1/22/2013	C N	USD	628.16
P30702	0716	29685	SBC		WX	1	1262	CITY OF BELLE PLAINE	N	N	1/22/2013	C N	USD	926.66
P30702	0716	29686	SBC		WX	1	2336	XCEL ENERGY	N	N	1/22/2013	C N	USD	0.00
P30702	0716	29686	SBC		WX	1	2336	XCEL ENERGY	N	N	1/22/2013	C N	USD	4,955.85
P30702	0716	29686	SBC		WX	1	2336	XCEL ENERGY	N	N	1/22/2013	C N	USD	6,497.67
P30702	0716	29686	SBC		WX	1	2336	XCEL ENERGY	N	N	1/22/2013	C N	USD	217.00
P30702	0716	29686	SBC		WX	1	2336	XCEL ENERGY	N	N	1/22/2013	C N	USD	853.48
P30702	0716	29687	SBC		WX	1	3414	CENTERPOINT ENERGY	N	N	1/22/2013	C N	USD	1,969.28
P30702	0716	29687	SBC		WX	1	3414	CENTERPOINT ENERGY	N	N	1/22/2013	C N	USD	170.16
P30702	0716	29687	SBC		WX	1	3414	CENTERPOINT ENERGY	N	N	1/22/2013	C N	USD	187.55
P30702	0716	29687	SBC		WX	1	3414	CENTERPOINT ENERGY	N	N	1/22/2013	C N	USD	219.92
<hr/>														
PCARD														
Payroll 12/20/2012														
Payroll 1/04/2013														
Payroll 1/18/2013														
<hr/>														
Total														
\$ 1,437,874.08														

Board Report
January 28th, 2013
Oak Crest Elementary
Liann Hanson

Appreciation:

- **5th Grade Student Survey** The 5th grade students participated in the MN Student Survey the week of January 14th. Thanks to the teachers for taking time out of their schedule to help gather this valuable information!
- **District RTI Meeting** Our district RTI meeting met on Tuesday, January 15th for our regularly scheduled meeting. We discussed our actions steps around the system of interventions (including schedule) and any ideas to make it better.
- **Writer's Round Table** We have our Writer's Round Table on Wednesday January 16th at 11:30 AM in the 5th/6th grade science lab.
- **Language Arts Curriculum Review** We did our first round of Language Arts Curriculum review as a K-6 entity. It took place here at Oak Crest in the 5th/6th grade science lab on Wednesday, January 16th from 12:00-3:30.
- **Spelling Bee** We had our Oak Crest Spelling Bee on Thursday, January 17th at 1:45 PM! Thanks to Marty for putting this together!
- **Teacher Evaluation Workshop** I attended the second session of the Teacher Evaluation Workshop through MESPA on Friday, January 18th. Great information!

Acceleration:

- **Instructional Mentoring** Carol, Nicole, Michelle, and I will be attending an Instructional Mentoring workshop on January 23rd and 24th. I am excited to see how it fits with the upcoming MN Teacher Evaluation Statute.
- **SOE** The School of Excellence Committee will meet on Friday, January 25th to look at the survey results from both staff and parents. We are excited to look at the information.
- **Teacher Evaluation** Kelly, Jerold, and I will be attending the second session of the Teacher Evaluation workshop in Mankato. We hope there will be new information since the election!
- **Lockdown Drill** Our first lockdown drill since the CT tragedy went well. All students and staff did a nice job!

Anticipation:

- **I LOVE TO READ MONTH** February is I Love to Read Month! The Oak Crest Committee is working on activities for our students to participate in that promote reading during this month. We already have an author visit planned for our school!
- **Evaluations** All classified staff is scheduled for this first round of evaluations for the month of January and February. They also have a second one in May and June.
- **MESPA** I will be attending the annual MESPA convention February 6th-8th in Bloomington.
- **Parent/Teacher Conferences** We are looking forward to our second set of Parent/Teacher conferences on February 11th and 14th.
- **End of Trimester** The end of our Trimester is on Friday, March 1st.

Board Report
December 17, 2012
Chatfield Elementary
Kimberly DeWitte

Appreciation:

- The PTO organization sponsored the WINTER DANCE party at Oak Crest on Friday, January 25 for all students and families in grades K-6.
- The PLC leadership team led the staff through some professional development to learn about interventions, what is important to remember as we move forward, to celebrate the good things we are doing, and to give the staff an opportunity to have a voice and share their thoughts and ideas.
- Rita Iverson has revamped the Early Childhood screening system. There is now a button on the school website that will guide families through the registration process. This form then goes directly to Rita and Rita then contacts the family to further arrange the appointment.

Acceleration:

- PLC: K- This team is planning their formative assessments for regrouping their students for math intervention time and unpacking Common Core literacy standards and benchmarks. 1st-Continuing to look at reading and creating the power benchmarks. They are also putting their power benchmarks into a template so they can visually see what the students should be able to do, the level of thinking, and vocabulary and questioning concepts needed to be successful. 2nd-Continually looking at data to form new groups for Tiger Time and looking at the assessments to see if all of the power benchmarks will be covered by then end of the year. Sped-Learning how to administer a new assessment to their students and also working on individual assessments. Specialists-continuing to work on scope and sequence.
- The Early Childhood PLC members are starting to look at the standards and pulling out the power benchmarks and developing common assessments.
- The Literacy Team went to visit Forest Hills Elementary in Eden Prairie and brought back some wonderful information about their literacy model. The team will continue to talk about their findings, how that information fits into the Chatfield model, and how all of this information ties in with the District RtI team.

Anticipation:

- Chatfield will have an all school morning meeting on February 1. We will be kicking off our I Love To Read Month. Our theme for the month is Presidential. We have 4 fabulous guest readers joining us throughout the month (Dr. Smith, Mr. Vicital, Mr. Pingalore, and Mr. Ben Stier). The staff will be wearing their READ shirts on Wednesdays and we will also be having a door decoration contest!
- The Early Childhood Team is currently working on revamping their website to make it more user friendly for families and to connect it to Chatfield's site.

Dave Kreft
Jr.-Sr. High Principal
Liann Hanson
Oak Crest Elementary Principal
Kim DeWitte
Chatfield Elementary Principal
Tricia Denzer
Special Services Director



Superintendent Kelly D. Smith, Ed. D.

Chuck Keller
Business Manager
Jeff Heine
Buildings & Grounds Director
Nelson Ladd
Community Services Director
Mindy Sparby
Activities Director & JH-SH Dean

January 22, 2013

Celebration

- The Junior High Student Council under the direction of Mr. Hennen is doing the Pennies for Patients Drive to raise money for Leukemia and Lymphoma Society. It's the 7th grade vs. the 8th grade and the winning grade level get's a special prize. TBD...
- Jack Winders and Kaitlyn Zurn are our 2013 BPHS Triple A winners.
- Jacob Hartmann and Mikhayla Clausen are our 2013 BPHS Excel award winners.

Acceleration

- Mr. Hartmann, Mr. Jacobson and the One Act Play cast is preparing for Sub-Sections, January 26th. They are doing the production "Ridiculous by Proxy". If you haven't seen it I encourage you to stop by the PAC after school.
- Second semester is off and running!
- Our custodial staff continues to work tirelessly as we seem to have activities going on 7 days a week! Special thanks for their efforts!

Anticipation

- Snow Fest week is February 4th-9th. The Student Council is planning the week's events and NHS will be putting on a badminton tournament on Monday of that week.
- Winter tournaments are just around the corner. February is the big push to get some big wins going into seeding meetings and tournaments.
- February 25th will be the Spring Sport Eligibility meeting.

**Belle Plaine High School
School Board Report
Submitted by Dave Kreft
January 23, 2012 Board Meeting**

Appreciation:

- We have reached the halfway mark of the year. We have seen alterations to the way we do business. Staff is to be commended for the following:
 - Consistently engaging in adult conversation to best meet the needs of our students
 - PLCs being the avenue with which we have the conversations. Staff has addressed needs identified by their colleagues and by administration.
 - Identifying areas of professional growth and having adult dialogue on how to keep improving their craft. Staff are gaining a comfortable level in being observed and observing others.
 - Learning how to best utilize our high school RTI person and using our I (intervention) Team to discuss students we have various concerns over.
 - Continued efforts to ensure learning vs. teaching (JH Zap, learning targets, power standards)
 - Engaging in skill building staff meetings on a monthly basis
 - Having our focus and daily life being altered by the new concerns over student safety
 - Beginning to articulate power standards and learning targets in student friendly terms
- The junior high is seeing positive results from the ZAP program. With our first group being fully immersed in it (7th grade), we have had zero students qualify for summer school. We have work to do in our other grade levels, but the success of this program can be a model for systems we implement in the future.
- Problem solving is strength of our staff as a whole. As we consider scheduling changes for next year, the conversations center around doing what is best for our students, not on what is convenient for our adults.

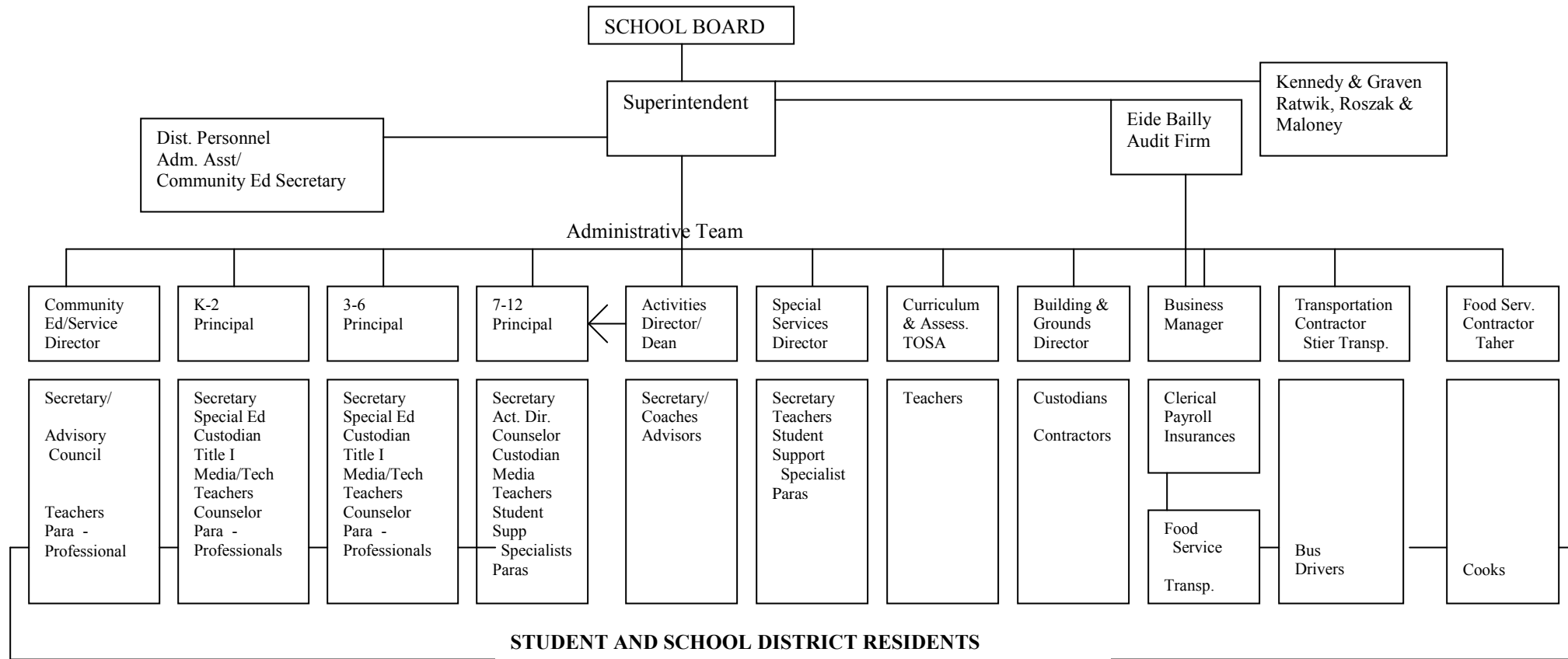
Acceleration:

- All teaching staff is now trained on how to implement learning targets. At our last staff meeting we all completed a reading on how to create learning targets and the benefit of them. There was agreement on the fact that learning targets bring great clarity to our work for staff and students.
- The information from Lt. Col. Grossman has generated discussions on immediate procedures we can utilize. Part of the presentation detailed what educators can do to assist young people. Teachers and coaches are using his “detox” message to improve educational focus and to build team morale. A desire for a systematic approach to the TV and video game “detox” has been mentioned. Staff also became aware of telltale signs of students who need immediate attention.

Anticipation:

- Planning for next year is beginning in earnest. We need to push registration timelines back a bit as we discover staffing changes for next year. Pushing back deadlines is worth the impact it can have on students.
- The MN Student Survey will be conducted in early February for the grades designated by the state. Data will be made available at a future date.
- In early February I will be interviewing randomly selected students to discuss the strengths and areas of concern in our school. The Principal’s Advisory Committee will have about 6 representatives per grade and results will be shared with the staff.

2013 BELLE PLAINE SCHOOL DISTRICT ORGANIZATIONAL PLAN



STUDENT AND SCHOOL DISTRICT RESIDENTS

STAFFING

Superintendent
 Business Manager
 Chatfield Elementary Principal
 Oak Crest Elementary Principal
 Junior-Senior High Principal
 Special Services Director
 Curriculum & Assessment TOSA
 Community Ed. Director
 Activities Director/Dean
 Technology Director
 Building & Grounds Director
 Food Service Contractor

PERSON

Dr. Kelly Smith
 Chuck Keller
 Kim DeWitte
 Dr. Liann Hanson
 David Kreft
 Tricia Denzer
 Carol Lagergren
 Nelson Ladd
 Mindy Sparby
 Ken Wick
 Jeff Heine
 Taher/Carrie Donovan

LOCATION

District Office
 District Office
 Chatfield Elem. School
 Oak Crest Elem. School
 Jr.-Sr. High School
 District Center
 Jr./Sr. High School
 District Center
 Jr./Sr. High School
 Jr./Sr. High School
 Jr./Sr. High School
 Elementary School

SUPPORT

Kris Davis, Administrative Assistant
 Amy Franck, Payroll/Human Resource, Kris Davis, Accounts Payable
 Patti Edberg, Chatfield Elementary Secretary
 Janis Buesgens, Oak Crest Elementary Secretary
 Jill Leonard, Jr.-Sr. High Secretary
 Barb Loomis, Special Services Secretary
 Teri Kiewatt, Student Data (MARSS) Specialist/Activity Funds
 Pandey Anderson, Community Service Secretary, Kris Davis, Adm. Asst.
 Jane Claggett, Activities Secretary
 Lindsay Sawatzky, Information Technology Specialist
 Kris Davis, Adm. Asst., Chuck Keller, Business Manager
 Kris Davis, Adm. Asst., Chuck Keller, Business Manager

SCHOOL BOARD COMMITTEE APPOINTMENTS

MSHSL Rep - Matt Lenz, Alt. Kelly Smith
 Community Services – Mike Daly, Matt Lenz, Mike Ludvik & Kelly Smith
 Administration Salaries – Entire Board
 Non-Licensed Salaries – Matt Bigaouette, Judy Nagel & Mike Ludvik
 Licensed Salaries –Mike Daly, Gary Steinhagen & Matt Lenz
 MRVSEC- Judy Nagel, Alt. Kelly Smith
 Transportation – Matt Bigaouette & Gary Steinhagen
 Wellness – Matt Lenz
 Academic and Curriculum Advisory – Judy Nagel & Mike Ludvik

Legislative & School for Equity In Education (SEE) – Mike Daly, Mike Ludvik & Kelly Smith
 Meet and Confer – Entire Board
 Insurance Committee – Mike Daly, Matt Bigaouette & Kelly Smith
 Finance Committee – Committee of the Whole
 Bldg & Grounds – Judy Nagel, Matt Bigaouette & Gary Steinhagen
 Carver Scott Educational Coop. – Judy Nagel, Alt. Kelly Smith
 District Technology Committee –Matt Lenz & Mike Ludvik
 Public Relations – Judy Nagel, Gary Steinhagen & Mike Daly



Independent School District No. 716

http://www.belleplaine.k12.mn.us
 District Calendar 2013-2014 Draft
 Draft --Option B--

District Contact Information

District Office: (952) 873-2400
 Chatfield Elementary: (952) 873-2401
 Oak Crest Elementary: (952) 873-

Jul-13

M	T	W	T	F
1	2	3	4	5
8	9	10	11	12
15	16	17	18	19
22	23	24	25	26
29	30	31		

Jan-14

M	T	W	T	F
		1	2	3
6	7	8	9	10
13	14	15	16	17
20	21	22	23	24
27	28	29	30	31

- No School (Holiday)
- No School (Teacher Workshop Day)
- Inservice Early Dismissal - School ends at 12:15
- Parent-Teacher Conferences
- End of Quarter or Trimester

Aug-13

M	T	W	T	F
			1	2
5	6	7	8	9
12	13	14	15	16
19	20	21	22	23
26	27	28	29	30

Feb-14

M	T	W	T	F
3	4	5	6	7
10	11	12	13	14
17	18	19	20	21
24	25	26	27	28

August
 23, 26-29 8-23 New Teachers: 8/26-29 Workshop

Sep-13

M	T	W	T	F
2	3	4	5	6
9	10	11	12	13
16	17	18	19	20
23	24	25	26	27
30				

Mar-14

M	T	W	T	F
3	4	5	6	7
10	11	12	13	14
17	18	19	20	21
24	25	26	27	28
31				

September
 2 No School - Labor Day
 3 School Begins 7-12
 3,4 K-6 Conferences 12-8:00 pm
 5 School Begins K-6

Oct. 2013

M	T	W	T	F
	1	2	3	4
7	8	9	10	11
14	15	16	17	18
21	22	23	24	25
28	29	30	31	

Apr-14

M	T	W	T	F
	1	2	3	4
7	8	9	10	11
14	15	16	17	18
21	22	23	24	25
28	29	30		

October
 4 Students released at 12:15 pm - Teacher workshop
 17,18 No School Education MN Conference

Nov-13

M	T	W	T	F
				1
4	5	6	7	8
11	12	13	14	15
18	19	20	21	22
25	26	27	28	29

May-14

M	T	W	T	F
			1	2
5	6	7	8	9
12	13	14	15	16
19	20	21	22	23
26	27	28	29	30

November
 1 End 1st Quarter
 4 No School - Teacher Workshop
 21,25 7-12 Parent Teacher Conferences
 26 Students released at 12:15 pm - Teacher workshop
 26 End 1st Trimester
 27-29 No School - Thanksgiving Break

Dec-13

M	T	W	T	F
2	3	4	5	6
9	10	11	12	13
16	17	18	19	20
23	24	25	26	27
30	31			

Jun-14

M	T	W	T	F
2	3	4	5	6
9	10	11	12	13
16	17	18	19	20
23	24	25	26	27

December
 3,5 K-6 Parent Teacher Conferences
 23-31 No School - Holiday Break

January
 1 No School - Holiday Break
 2 School Resumes
 17 End 2nd Q/1st Semester
 20 No School - Martin Luther King Jr. Day - Teacher Workshop

February
 14 Students released at 12:15 pm - Teacher workshop
 17 No School - President's Day
 24,27 7-12 Parent Teacher Conferences

March
 7 End 2nd trimester
 14 Students released at 12:15 pm - Teacher workshop
 17,20 K-6 Parent Teacher Conferences
 21 End 3rd Quarter
 24-28 No School - Spring Break

April
 18 No School
 21 Teacher Workshop

May
 26 No School - Memorial Day

June
 5 Last student day, end of 4th Quarter/3rd trimester
 6 Teacher workshop
 8 Graduation

Student Contact Day Summary

Quarter Summary		Trimester Summary	
1st Quarter	42	1st Trimester	58
2nd Quarter	43	2nd Trimester	60
3rd Quarter	43	3rd Trimester	56
4th Quarter	46		
Total	174	Total	174

8 teacher workshop days
 2 days allotted for parent-teacher conferences

Total teacher days: 184

**Belle Plaine School District
2012-13 Licensed Teacher Seniority List**

	Last Name, First Name	Date of Hire/ (bd approved)	Area of Licensure	Expiration Date	File Folder Number	District Area of Service	Probation Year **
1	Perkins, Rebecca	August 24, 1972	7-12 English-Language Arts	2014	203448	Secondary Language Arts	
			K-12 Librarian	2014			
			K-12 Media Generalist	2014			
2	Goulson, Daryl	May 5, 1980	Earth Science	2015	256569	Secondary Science	
			Life Science	2015			
3	Noah, Lyle	July 7, 1980	Social Studies All	2014	249105	Secondary Social Studies	
			Physical Education	2014			
4	Hannon-Orr, Carol	August 24, 1981	K-12 Visual Arts	2013	271441	Secondary Art	
5	Schultz, Carol	September 19, 1983	1-6 Elementary Education	2014	247981	Title I	
6	Hanna, Cheri	August 5, 1985	1-6 Elementary Education	2013	197080	Special Education	
			K-12 Emotional Behavioral Disorders	2013			
			K-12 Learning Disabilities	2013			
			K-12 Mild to Moderate Mentally HDCP	2013			
			K-12 Moderate to Severe Mentally HDCP	2013			
			High School Teacher Coor Work Exp. Disadvantaged	2013			
			High School Teacher Coor Work Exp. HDCP	2013			
7	Eischens, Janel	August 5, 1985	1-6 Elementary Education	2015	285751	Elementary Education	
8	Lagergren, Carol	August 5, 1985	1-6 Elementary Education	2017	299122	Curriculum & Assessment TOSA	
			K-12 Principal	2017			
9	LaJeunesse, Kristen	September 3, 1985	1-6 Elementary Education	2016	290991	Elementary Education	
			K-12 Learning Disabilities	2016			
			K-12 Mild to Moderate Mentally HDCP	2016			
10	Carlson, Randy	June 9, 1986	Mathematics	2017	262322	Secondary Mathematics	
11	Foust, Richard	August 27, 1990	7-12 Life Science	2013	321797	Secondary Science	
12	Lane, Andrew	August 12, 1991	1-6 Elementary Education	2016	234322	Elementary Education	
			Drivers Education	2016			
13	Bremseth, Jan	August 12, 1992	1-6 Elementary Education	2013	269425	Elementary Education	
14	Green, Laurie	June 21, 1993	Consumer & Homemaking	2015	286927	Secondary Guidance Counselor	
			Secondary Guidance & Counseling	2015			
15	Stier, M. Susan	August 2, 1993	Mathematics	2015	305315	Secondary Mathematics	
16	Murphy, Cerisse	September 7, 1993	1-6 Elementary Education	2013	334582	Elementary Education	
17	Stevens, Traci	June 12, 1994	7-12 Spanish	2016	350189	Secondary Foreign Language	
			K-12 Bilingual/Bicultural Education	2016	350189		
18	Beardsley, David	July 18, 1994	Social Studies All	2017	342730	Special Education	
			K-12 Emotional Behavioral Disorders	2017			
			K-12 Learning Disabilities	2017			
19	Fraser, Donald	July 18, 1994	1-6 Elementary Education	2014	335758	Elementary Education	
			Drivers Education 7-12	2014			
20	Simones, Rose	July 28, 1995	1-6 Elementary Education	2016	351430	Elementary Education	
21	Brandt, Gloria	July 28, 1997	Pre K Family Ed/Early Childhood Educator	2013	298653	Elementary Education	
			Pre K-6 Elementary Education	2013			
22	Amundson, M. Ellen	July 28, 1997	7-12 Mathematics	2013	331047	Elementary Physical Education	
			K-12 Physical Education	2013			

**Belle Plaine School District
2012-13 Licensed Teacher Seniority List**

	Last Name, First Name	Date of Hire/ (bd approved)	Area of Licensure	Expiration Date	File Folder Number	District Area of Service	Probation Year **
23	Hartmann, Martha	July 27, 1998	1-6 Elementary Education	2013	252213	Gifted Education	
24	Bergs, John	May 24, 1999	K-12 Physical Education	2013	365331	Secondary Physical Education	
			Drivers Education 7-12	2013			
25	Stolee, Amy	June 28, 1999	1-6 Elementary Education	2017	340825	Elementary Education	
26	McDonald, Melanie	June 28, 1999	K-12 Instr (Band/Orch) and Classroom Music	2016	377742	Elementary Music	
27	Fogarty, Melanie	June 28, 1999	K-6 Elementary Education	2017	356178	Elementary Education	
28	Hartmann, Anthony	July 26, 1999	1-6 Elementary Education	2015	375490	Elementary Education	
			Drivers Education 7-12	2015			
29	Gwozdziwicz, Kimberly	July 26, 1999	Pre K-6 Elementary Education	2014	366124	Elementary Education	
30	Grotberg, Caren	July 26, 1999	7-12 Home Economics - Full Time	2016	249087	Secondary Family Consumer Science	
			K-12 English as a Second Language	2016		District ESL	
			High School Consumer and Homemaking Occupation	2016			
			High School Family Life Education	2016			
31	Stauffacher, Jerold	May 8, 2000	Business Education-All	2014	361585	Secondary Business Education	
32	Schroeder, Steven	May 8, 2000	Life Sciences	2014	297649	Secondary Science	
33	Von Bank, Anthony	June 26, 2000	English/Language Arts	2016	389209	Secondary Language Arts	
34	Mathiowetz, Bruce	July 24, 2000	Vocational Agriculture	2015	347678	Secondary Agriculture	
			Teacher-Coord Ag Co-op Prog/NonFarm	2015			
			5-12 Technology	2015			
35	Hitchen, Sara	August 28, 2000	K-6 Elementary Education	2014	369261	Elementary Education	
36	Fahey, Amy	August 28, 2000	K-6 Elementary Education	2015	390672	Elementary Education	
37	Gerres, Megan	June 25, 2001	K-6 Elementary Education	2014	368024	Elementary Education	
38	Schmidt, Courtney	August 27, 2001	1-6 Elementary Education	2013	344534	Elementary Education	
			K-12 Mild to Moderate Mentally HDPC	2013			
39	Banks, Lori Robin	August 27, 2001	1-6 Elementary Education	2016	396642	Elementary Art	
			K-12 Visual Arts	2016			
40	Treml, Lisa D.	January 27, 2003	K-12 School Counselor	2017	406900	Elementary Counselor	
41	Kruschke, Jeanine	June 16, 2003	K-12 Instr (Band/Orch) and Classroom Music	2017	385907	Secondary Instrumental Music	
42	Mollenhauer, Lynn	June 16, 2003	1-6 Elementary Education	2014	204243	Elementary Technology	
43	Brueske, Melissa	June 23, 2003	Pre-Kindergarten	2013	406559	Elementary Education	
			K-6 Elementary Education	2013			
44	Jacobson, Allison	May 24, 2004	English/Language Arts	2015	371646	Secondary Language Arts	
45	Geller, Sara	June 14, 2004	K-12 Physical Education	2013	408377	Secondary Physical Education	
			Pre K-12 Developmental/Adapted Phy Ed	2013	408377		
46	Keller, Gwen	June 14, 2004	Pre K-12 Educ. Speech/Language Pathologist	2014	417748	Speech Pathologist	
47	Jacobson, Peter	June 14, 2004	English/Language Arts	2015	371460	K-12 Media Specialist	
			K-12 Media Specialist	2015			
48	Greisen, Marci	August 26, 2004	1-6 Elementary Education	2016	394370	Elementary Education	
49	Johnston, Justin	April 25, 2005	7-12 Social Studies - All	2017	396217	Secondary Social Studies	
			K-12 Principal				
50	Service, Jenae	May 2, 2005	K-6 Elementary Education	2015	421645	Special Education	
			K-12 English as a Second Language	2015			
			K-12 Learning Disabilities	2015			

**Belle Plaine School District
2012-13 Licensed Teacher Seniority List**

	Last Name, First Name	Date of Hire/ (bd approved)	Area of Licensure	Expiration Date	File Folder Number	District Area of Service	Probation Year **
			K-12 Emotional Behavior Disorders	2015			
			B-6 Early Childhood Special Education	2015			
51	Voigt, Megan	May 2, 2005	K-6 Elementary Education	2014	419366	Elementary Education	
			5-8 Communication Arts/Literature	2014			
			5-8 Mathematics	2014			
52	Werner, Jarod	May 2, 2005	K-6 Elementary Education	2015	421141	Elementary Education	
			5-8 Science	2015			
53	Pederson, Bradley	May 23, 2005	9-12 Chemistry	2015	423191	Secondary Science	
			9-12 Physics	2015			
54	Laurent, Janelle	June 27, 2005	K-6 Elementary Education	2015	423678	Elementary Education	
			Pre-Primary Ages 3-K	2015			
55	Kalal, Angela	June 27, 2005	K-6 Elementary Education	2015	422918	Elementary Education	
			5-8 Mathematics	2015	422918		
56	Wick, Kenneth	June 27, 2005	K-8 Keyboard for Computer Application	2014	304050	Technology Coordinator	
			7-12 Social Studies-All	2014			
57	Miller, Mitch	August 28, 2006	7-12 Spanish	2016	350236	Secondary Math	
			7-12 Mathematics	2016			
58	Endres, Amy	August 28, 2006	1-6 Elementary Education	2016	396197	Elementary Education	
59	Kubes, Mary Beth	August 28, 2006	K-6 Elementary Education	2014	415711	Elementary Education	
			5-8 Mathematics	2014			
60	Benson, Rachel	April 23, 2007	K-12 Learning Disabilities	2017	436209	Special Education	
			K-12 Developmental Disabilities	2017			
61	Wellner, John	May 29, 2007	5-12 Social Studies-All	2013	409773	Secondary Social Studies	
62	Deutsch, Joe	May 29, 2007	5-12 Technology	2017	430192	Secondary Industrial Technology	
63	Bristlin, Jodi	May 29, 2007	K-12 Mild to Moderate Mentally HDPC	2013	336296	Special Education	
			K-12 Moderate to Severe Mentally HDPC	2013			
64	Nelson, Ross	June 25, 2007	5-12 Social Studies-All	2016	430264	Secondary Social Studies	
65	Kerkow, Rachelle	July 23, 2007	Pre K-12 Public School Nurse	2017	438350	School Nurse	
66	Schultz, Pat	August 27, 2007	K-12 Physical Education	2016	428162	Secondary Health & Physical Education	
			5-12 Health Education	2016			
67	Vorlous, Kelly	August 27, 2007	Pre K-12 School Social Worker	2017	437206	Secondary Social Worker	
68	Rahn, Jason	August 27, 2007	B-Age 6 Early Childhood Special Education	2017	412436	Early Childhood Special Education	
69	Smith, Adam	May 1, 2008	7-12 Mathematics	2015	389440	Secondary Mathematics	
70	Otto, Josh	May 1, 2008	5-12 Business	2013	431438	Secondary Technology	
71	Volek, Abbigail	May 27, 2008	B-Age 6 Early Childhood Special Education	2016	430024	Elementary Education	
			B-Grade 3 Early Childhood Education	2016			
72	Ranweiler, Christa	May 27, 2008	K-6 Elementary Education	2016	430047	Elementary Education	
			Age 3-K Pre-Primary	2016			
73	Carlson, Shawn	May 27, 2008	B-Grade 3 Early Childhood Education	2015	423227	Elementary Education	
74	Kammerlander, Deb	May 27, 2008	High School Consumer and Homemaking/Family Life	2017	386782	Secondary Family & Consumer Science	
			* Placed on ULA in May, 2011				

**Belle Plaine School District
2012-13 Licensed Teacher Seniority List**

	Last Name, First Name	Date of Hire/ (bd approved)	Area of Licensure	Expiration Date	File Folder Number	District Area of Service	Probation Year **
75	Miller, Kami	July 28, 2008	K-6 Elementary Education	2013	440906	Elementary Education	
			5-8 Communication Arts/Literature	2013			
76	Hennen, Matt	July 28, 2008	5-12 Communication Arts/Literature	2014	414301	Secondary Language Arts	
77	Piampiano, Carey	December 22, 2008	K-6 Elementary Education	2014	443881	Special Education	
			K-12 Learning Disabilities	2017			
78	Kienlen, Christina	March 23, 2009	Pre K-12 Speech -Language Pathologist	2014	448550	Speech Pathologist	
79	Kahle, Angie	April 23, 2009	K-12 Emotional Behavior Disorders	2015	375008	Special Education	
			K-12 Learning Disabilities	2015			
80	Engel, Andrea	April 23, 2009	K-12 Developmental Disabilities	2014	447924	Special Education	
81	Moore, Stephanie	May 26, 2009	K-6 Elementary Education	2016	426344	Elementary Education	
			Age 3-K Pre-Primary	2016			
82	Otto, Bethany	May 26, 2009	5-8 Science	2017	430173	Secondary Science	
			9-12 Life Science	2017			
83	Adrian, Kelly	May 26, 2009	K-6 Elementary Education	2015	445601	Elementary Education	
84	Hanson, Melissa	May 26, 2009	5-12 Mathematics	2016	429357	Secondary Mathematics	
85	Trocko, Kristine	June 22, 2009	K-6 Elementary Education	2017	438014	Elementary Education	
			5-8 Mathematics	2017			
			Age 3-K Pre-Primary	2017			
86	Eaton, Carmen	June 22, 2009	K-12 Emotional Behavior Disorders	2014	441526	Special Education	
			K-12 Learning Disabilities	2014			
			K-12 Developmental Disabilities	2016			
87	Gorton, Cheryl	June 22, 2009	K-12 Vocal and Classroom Music	2016	445997	Secondary Vocal Music	
88	Wallert, Jill	August 24, 2009	1-6 Elementary Education	2013	361835	Special Education/RtI	
			K-12 Mild to Moderate Mentally HDCCP	2013			
89	Sparby, Melinda	March 22, 2010	K-12 Health Education	2015	371697	JH Dean/Activities Director	
			K-12 Physical Education	2015			
90	<i>Studer, Ann</i>	<i>May 24, 2010</i>	<i>Pre K-12 Speech -Language Pathologist</i>	<i>2015</i>	<i>455377</i>	<i>Speech Pathologist</i>	<i>3/3</i>
91	<i>Earney, Chelsey</i>	<i>June 28, 2010</i>	<i>K-12 Physical Education</i>	<i>2015</i>	<i>455359</i>	<i>Elementary Physical Education</i>	<i>3/3</i>
			<i>5-12 Health Education</i>	<i>2015</i>			
92	<i>Garvey, John</i>	<i>July 26, 2010</i>	<i>5-12 Social Studies-All</i>	<i>2016</i>	<i>427801</i>	<i>Secondary Social Studies</i>	<i>3/3</i>
93	<i>Berg, Emily</i>	<i>October 25, 2010</i>	<i>K-6 Elementary Education</i>	<i>2015</i>	<i>443302</i>	<i>Response to Intervention (RtI)</i>	<i>3/3</i>
94	<i>Provancha, Jill</i>	<i>October 25, 2010</i>	<i>K-6 Elementary Education</i>	<i>2014</i>	<i>439736</i>	<i>Response to Intervention (RtI)</i>	<i>3/3</i>
95	<i>Zimanske, Katie</i>	<i>April 26, 2011</i>	<i>K-12 Learning Disabilities</i>	<i>2015</i>	<i>451743</i>	<i>Special Education</i>	<i>2/3</i>
			<i>K-12 Developmental Disabilities</i>	<i>2015</i>			
96	Nelson, Laura	May 23, 2011	K-6 Elementary Education	2015	423401	Elementary Education	
			Age 3-K Pre-Primary	2015			
97	<i>Audette, Luke</i>	<i>May 23, 2011</i>	<i>5-12 Mathematics</i>	<i>2014</i>	<i>445717</i>	<i>Secondary Math</i>	<i>2/3</i>
98	<i>Morreim, Jill</i>	<i>May 23, 2011</i>	<i>5-12 Communication Arts/Literature</i>	<i>2016</i>	<i>452332</i>	<i>Secondary Language Arts</i>	<i>2/3</i>
99	Hanson, Liann	May 23, 2011	K-12 Principal	2014	454880	Oak Crest Principal	
			District Superintendent	2014			
100	Jungwirth, Jennifer	June 27, 2011	K-12 Instr (Band/Orch) and Classroom Music	2013	442049	Elementary Music	
101	<i>Poshkoff, Nicole</i>	<i>June 27, 2011</i>	<i>K-6 Elementary Education</i>	<i>2015</i>	<i>450914</i>	<i>Elementary Education</i>	<i>2/3</i>
102	<i>Gaikowski, Brandon</i>	<i>June 27, 2011</i>	<i>K-6 Elementary Education</i>	<i>2016</i>	<i>461651</i>	<i>Elementary Education</i>	<i>2/3</i>

**Belle Plaine School District
2012-13 Licensed Teacher Seniority List**

	Last Name, First Name	Date of Hire/ (bd approved)	Area of Licensure	Expiration Date	File Folder Number	District Area of Service	Probation Year **
			<i>Age 3-K Pre-Primary</i>	<i>2016</i>			
103	<i>Bungarden, Sara</i>	<i>June 27, 2011</i>	<i>K-6 Elementary Education</i>	<i>2016</i>	<i>428608</i>	<i>Response to Intervention (RtI)</i>	<i>2/3</i>
			<i>5-8 Social Studies - All</i>	<i>2016</i>			
104	<i>Stowe, Tim</i>	<i>August 22, 2011</i>	<i>K-6 Elementary Education</i>	<i>2016</i>	<i>430567</i>	<i>Elementary Education</i>	<i>2/3</i>
			<i>5-8 Social Studies - All</i>	<i>2016</i>			
105	<i>Smith, Alicia</i>	<i>August 22, 2011</i>	<i>K-6 Elementary Education</i>	<i>2015</i>	<i>453090</i>	<i>Elementary Education</i>	<i>2/3</i>
			<i>Age 3-K Pre-Primary</i>	<i>2015</i>			
106	<i>Waller, Erik</i>	<i>August 22, 2011</i>	<i>K-6 Elementary Education</i>	<i>2014</i>	<i>449239</i>	<i>Elementary Education</i>	<i>2/3</i>
			<i>5-8 Social Studies - All</i>	<i>2014</i>			
107	<i>Cantrell, Lori</i>	<i>November 28, 2011</i>	<i>K-12 Emotional Behavior Disorders</i>	<i>2017</i>	<i>435723</i>	<i>Special Education</i>	
			<i>K-12 Learning Disabilities</i>	<i>2017</i>			
108	<i>Grabow, Jennifer</i>	<i>March 22, 2012</i>	<i>Birth to Age 6 Early Childhood Special Education</i>	<i>2017</i>	<i>463673</i>	<i>B-3 Special Education</i>	<i>1/3</i>
109	<i>Kreft, David</i>	<i>April 23, 2012</i>	<i>K-12 Principal</i>	<i>2015</i>	<i>390177</i>	<i>JH-SH Principal</i>	<i>1</i>
			<i>5-12 Social Studies - All</i>	<i>2015</i>			
110	<i>Wilmoth, Heather</i>	<i>April 23, 2012</i>	<i>PreK-12 School Psychologist</i>	<i>2013</i>	<i>466524</i>	<i>School Psychologist</i>	<i>1/3</i>
111	<i>Nolan, Julene</i>	<i>April 23, 2012</i>	<i>PreK-12 School Psychologist</i>	<i>2013</i>	<i>468441</i>	<i>School Psychologist</i>	<i>1/3</i>
112	<i>DeWitte, Kimberly</i>	<i>May 14, 2012</i>	<i>K-12 Principal</i>	<i>2014</i>	<i>415270</i>	<i>Chatfield Principal</i>	<i>1</i>
			<i>K-6 Elementary Education</i>	<i>2015</i>			
			<i>K-12 English as a Second Language</i>	<i>2015</i>			
			<i>Age 3-K Pre-Primary</i>	<i>2015</i>			
113	<i>Nelson, Natalie</i>	<i>May 14, 2012</i>	<i>5-12 Communication Arts/Literature</i>	<i>2014</i>	<i>448483</i>	<i>HS Language Arts</i>	<i>1/3</i>
			<i>K-12 Reading</i>	<i>2014</i>			
114	<i>Graff, Katie</i>	<i>May 29, 2012</i>	<i>K-12 Physical Education</i>	<i>2015</i>	<i>451853</i>	<i>Elementary Physical Education</i>	<i>1/3</i>
			<i>5-12 Health Education</i>	<i>2015</i>			
			<i>PreK-Adult Short Call Substitute</i>	<i>2015</i>			
115	<i>Denzer, Tricia</i>	<i>June 25, 2012</i>	<i>Director of Special Services</i>	<i>2017</i>	<i>360978</i>	<i>Director of Special Services</i>	<i>1</i>
			<i>7-12 Social Studies - All</i>	<i>2017</i>			
			<i>K-12 Emotional Behavior Disorders</i>	<i>2017</i>			
			<i>K-12 Principal</i>	<i>2017</i>			
116	<i>Lothspeich, Brittany</i>	<i>June 25, 2012</i>	<i>K-12 School Counselor</i>	<i>2017</i>	<i>469456</i>	<i>Elementary Counselor</i>	<i>1/3</i>
117	<i>Cariveau, Jennifer</i>	<i>June 25, 2012</i>	<i>K-6 Elementary Education</i>	<i>2017</i>	<i>391744</i>	<i>Elementary Education</i>	<i>1/3</i>
			<i>PreK Pre-Kindergarten</i>	<i>2017</i>			
118	<i>Zwick, Nicholas</i>	<i>June 25, 2012</i>	<i>K-6 Elementary Education</i>	<i>2016</i>	<i>462003</i>	<i>Elementary Education</i>	<i>1/3</i>
119	<i>Wilson, Laura</i>	<i>November 26, 2012</i>	<i>K-12 English as a Second Language</i>	<i>2016</i>	<i>462841</i>	<i>Elementary ELL</i>	<i>1/3</i>
**	<i>Italicized employees are still probationary.</i>						

Pay Equity Implementation Form

Information entered on this page is not saved until you click "sign and submit." This page may be printed and shared with your governing body for approval. After you receive approval, you will need to come back to this page, complete the necessary information, then click "sign and submit."

Part A: Jurisdiction Identification

Jurisdiction: ISD No. 716 - Belle Plaine
130 South Willow Street
Belle Plaine

Jurisdiction Type: ISD - School

Table with 4 columns: Name, Title, Phone, Email. Row 1: Amy Franck, Payroll/HR, 952-873-2419, afranck@belleplaine.k12.mn.us

Part B: Official Verification

1. The job evaluation system used measured skill, effort responsibility and working conditions and the same system was used for all classes of employees.

The system used

was: Consultant's System (specify)

Describe:(*less than 240 characters)

Springsted Incorporated

2. Health Insurance benefits for male and female classes of comparable value have been evaluated and

There is no difference and female classes are not at a disadvantage.

3. An official notice has been posted at:

130 South Willow Street Belle Plaine, MN (prominent location) (*less than 60 characters)

informing employees that the Pay equity Implementation Report has been filed and is available to employees upon request. A copy of the notice has been sent to each exclusive representative, if any, and also to the public library.

The report was approved by:

Belle Plaine ISD 716 School Board (governing body) (*less than 60 characters)

Matt Lenz (chief elected official)(*less than 60 characters)

Board Chairman (title) (*less than 60 characters)

Checking this box indicates the following:

- signature of chief elected official
approval by governing body
all information is complete and accurate, and
all employees over which the jurisdiction has final budgetary authority are included

Part C: Total Payroll

7,792,545.64 is the annual payroll for the calendar year just ended December 31.

Compliance Report

Jurisdiction: ISD No. 716 - Belle Plaine
130 South Willow Street

Report Year: 2013
Case: 1 - 2013 DATA (Private (Jur Only))

Belle Plaine MN 56011

Contact: Amy Franck

Phone: (952) 873-2419

E-Mail: afranck@belleplaine.k12.mn.us

The statistical analysis, salary range and exceptional service pay test results are shown below. Part I is general information from your pay equity report data. Parts II, III and IV give you the test results.

For more detail on each test, refer to the Guide to Pay Equity Compliance and Computer Reports.

I. GENERAL JOB CLASS INFORMATION

	Male Classes	Female Classes	Balanced Classes	All Job Classes
# Job Classes	8	14	2	24
# Employees	18	59	116	193
Avg. Max Monthly Pay per employee	4,263.89	2,974.95		4,439.69

II. STATISTICAL ANALYSIS TEST

A. Underpayment Ratio = 87.50 *

	Male Classes	Female Classes
a. # At or above Predicted Pay	3	4
b. # Below Predicted Pay	5	10
c. TOTAL	8	14
d. % Below Predicted Pay (b divided by c = d)	62.50	71.43

*(Result is % of male classes below predicted pay divided by % of female classes below predicted pay.)

B. T-test Results

Degrees of Freedom (DF) = 75	Value of T = 2.667
------------------------------	--------------------

a. Avg. diff. in pay from predicted pay for male jobs = \$11

b. Avg. diff. in pay from predicted pay for female jobs = (\$336)

III. SALARY RANGE TEST = 90.91 (Result is A divided by B)

A. Avg. # of years to max salary for male jobs = 6.67

B. Avg. # of years to max salary for female jobs = 7.33

IV. EXCEPTIONAL SERVICE PAY TEST = 85.71 (Result is B divided by A)

A. % of male classes receiving ESP 25.00 *

B. % of female classes receiving ESP 21.43

*(If 20% or less, test result will be 0.00)

**Belle Plaine Public Schools
Independent School District #716**

Financial Projection Assumptions for FY14

Proposed: January 14, 2013

Revised:

Approved:

1. Enrollment:
Kindergarten = **145** for '13-14 and **135** each year thereafter
Total enrollment for next year pre-K through grade 12 = 1,635
2. School District fund balance reserve goal is 10%.
3. General Education Revenue increase will be 1% next year to \$5,276; 1% for 14-15 to \$5,329 and 0% for the next 3 years.
4. Literacy Aid will continue in FY14 with an approximate allocation of \$90,000
5. Referendum amount = \$610,000.
6. Special Education aid will increase by 0% for each of the next 5 years.
7. Statutory requirement for Staff Development Revenue of 2% (approximately \$181,000) is waived by the legislature for the next year. District will allocate \$50,000 toward staff development for each of the next five years with a current fund balance of \$89,802.
8. Salary/ benefits for all employees will increase 1.0% next year and beyond.
9. All health insurance district costs will increase at 2% for next year and 0% into the future.
10. Special Education tuition costs will not increase for each of the next 5 years.
11. Textbook expenses will remain at \$100,000 & will increase 0% annually over the next 4 years. (Possible annual increase due to area of curriculum review)
12. Technology expenses are at \$100,000 & will increase 0% annually over the next 4 years.
13. 403(b) expenses will increase at 5% per year for each of the next 5 years.
14. All other expenses will increase at 2% per year for each of the next 5 years.
15. New teachers added will cost the district an average of \$52,000 + \$1,000 per year.
16. Staffing Ratio is turned off in FPM over duration of projections.

Suggestions/Proposals for Staffing Changes for 2013-2014 And Future by Superintendent

Hire additional teachers for Kindergarten and grade 5 to address class size issues with larger incoming classes.

Hire additional teacher for 1st grade to lower class size below 20.

Hire additional .17 Art and .75 Physical Education teachers to cover additional prep time needed due to increasing sections and to cover for change in use of counselor for Chatfield Elementary. Chatfield currently uses the counselor as part of the specialist rotation that has significantly limited to the ability to meet with students and families on an individual basis.

Hire additional 1.0 FTE Math teacher for 7-12 to alleviate class size in our area of lowest academic performance at the high school.

Hire additional vocal music teacher to assist with large enrollment at JH-SH and with additional sections at Chatfield/Oak Crest.

Hire additional media specialist to allow further work on technology integration at all schools. Proposal would have one media specialist covering Oak Crest and the second position would cover Chatfield and the JH-SH.

Hire additional general education para to assist with K & 1 at Chatfield Elementary.

Two hires are needed to replace retiring teacher in JH science and elementary technology. Elementary tech specialist may be replaced with a STEM (science, technology, engineering & math) teacher to provide an increased focus on STEM. (Additional media specialist staffing may handle some of the tech responsibilities.)

Future staffing possibilities:

- Additional support for our pre-school programming
- Additional need for language arts, social studies and science due to changing course requirements/student number.
- Change administrative structure at 7-12 by hiring full time 7-12 Dean (or Assistant Principal) and move 7-12 Activities Director to full time.