

Yellow Medicine East ISD 2190 School Board Meeting Agenda



Monday, December 10, 2018 at 6:00 PM
Regular Meeting
YME Board Room - # 113

Our Mission Is: To provide a caring environment of high expectations that prepares every student for a successful future and instills the value of learning.

1. Call the Meeting to Order
2. Pledge of Allegiance
3. Roll Call of Board Members
4. Approval of Agenda
5. Reading of the YME Mission Statement
6. Public Address to the Board of Education
7. FY18 Audit Report - Hoffman & Brobst, PLLP 3
 1. Approval of FY18 Audit Report
8. Truth in Taxation Hearing 4
 1. Budget & Levy Information - FY18 & FY19 - LeeAnn Boushek, Finance Officer 5
 2. Approval of Levy Certification
9. Consent Agenda
 1. Regular Business
 1. Approval of Regular Meeting Minutes - November 13, 2018 44
 2. Approval of Payment for Claims 46
 3. Approval of Finance Report 63
 4. Approval of Enrollment Report 64
10. Reports
 1. Special Reports
 1. Science Club - Youth Energy Summit (YES) - Steve Petrich & Students
 2. District Report - Rich Schneider - Superintendent 66
 3. Bert Raney Elementary Report - Lisa Hansen, Principal 67
 4. YME MS/HS Report - Ryan Luft, Principal 69
 5. Written Reports Submitted

11. Old Business	
12. New Business	
1. Personnel Items	
1. Leave Requests & Resignations	
1. Leave of Absence Request - Food Service - Kari Staab	71
2. Leave of Absence Request - BRE Administrative Assistant - Liz DeBlieck	72
3. Resignation - Bert Raney Elementary Paraprofessional - Pam Weber	73
4. Resignation - JH Football Coach & JH Track Coach - Pete Scheffler	74
2. New Hires	
1. Long-Term Substitute - BRE Administrative Assistant - Nicolle Kotek	
2. Long-Term Substitute - BRE Administrative Assistant - Janie Ator	
3. Employment - Junior High Football Coach - Evan Fagen	
4. Volunteer - Boys Basketball Coach - Adam Savariego	
5. Volunteer - Assistant Knowledge Bowl Coach - Chris Jensen	
6. Volunteer - Girls Basketball Coach - Bruce Hartwig	
2. Resolution Establishing a Combined Polling Place for School District Elections Not Held in Conjunction with a Statewide Election	75
3. Resolution Directing the Administration to Make Recommendations on the Reduction of Programs and Positions due to Declining Enrollment	77
4. Approval of Indian Policies and Procedures - 2018-2019	79
5. Minnesota School Employees Association Contract	
13. Policy Update	
14. Correspondence	
1. Safety Committee Meeting Notes - November 15, 2018	84
2. Amendment to Lease Agreement with Martin Marietta	85
15. Upcoming Events	
1. Early Dismissal - Staff Development - December 19, 2018 - 2:30 pm	
2. Early Dismissal - Christmas Break - December 21, 2018 - 1:00 pm	
3. No School - Christmas Break - December 24, 2018 - January 1, 2019	
4. Early Dismissal - Staff Development - January 9, 2018 - 2:30 pm	
5. School Board Meeting - January 14, 2019 - Board Room - 6:00 pm	
6. MSBA Leadership Conference - January 17-18, 2019	
16. Closed Session For Negotiation Purposes	
17. Adjournment	

Yellow Medicine East, ISD 2190

BOARD OF EDUCATION - AGENDA ANALYSIS

AGENDA ITEM: 7.1
MEETING DATE: December 10, 2018
SUBJECT: Audit Report

BOARD ACTION:
Required
Information
Scheduled Report

BACKGROUND/RATIONALE:

An audit is designed to examine the school's financial statements by a knowledgeable and experienced independent auditor. The result of this examination is a report by the auditor that attests to the fairness of presentation of the financial statements and related disclosures. The results of the audit must be accepted by the end of the calendar year.

LeeAnn Boshek has worked very carefully with the auditor and should be commended for her role in ensuring that our district has received a positive audit report. Some areas will be continual problems for us and due to the size of our district and the relatively low number of employees, we cannot address all of their recommendations.

PRESENTER(S):
Superintendent Schneider

COMMITTEE:
Full Board of Education

SUPERINTENDENT RECOMMENDATION:
I recommend accepting the audit as submitted.

Yellow Medicine East, ISD 2190

BOARD OF EDUCATION - AGENDA ANALYSIS

AGENDA ITEM: 8.1
MEETING DATE: December 10, 2018
SUBJECT: Truth in Taxation Hearing

BOARD ACTION:
Required **X**
Information
Scheduled Report

BACKGROUND/RATIONALE:

Minnesota's Truth in Taxation Law requires school districts, cities and counties to provide a "Truth in Taxation" public hearing before adopting a tax levy for the following year. This hearing is normally held in late November or early December. This hearing includes a presentation about the current budget and proposed tax levies.

LeeAnn Boshek has assembled a presentation about the trends of past years and the levies and anticipated expenditures for the coming year.

At the end of her presentation, a resolution will be necessary as she has outlined on the slide:

Whereas, pursuant to Minnesota Statutes, the School Board of ISD 2190 is authorized to make the following proposed tax levies for general purposes:

General Fund	1,361,070.33
Community Service	146,964.65
<u>Debt Service/OPEB Debt Service</u>	<u>1,045,344.27</u>
Total Proposed Tax Levy	2,553,379.25

Now Therefore, be it resolve by the school board of ISD2190 that the levy to be levied in 2018 to be collected in 2019 is set at \$2,553,379.25. The clerk of ISD 2190 school Board is authorized to certify the proposed levy to the County Auditor of Yellow Medicine County.

PLEASE NOTE: Any taxpayer can set up an appointment to review their property tax statements with LeeAnn (preferably) or I. You are also encouraged to bring your own statement along with you to the meeting if you have questions and they can be addressed after the meeting.

PRESENTER(S):
Superintendent Schneider

COMMITTEE:
Full Board of Education

SUPERINTENDENT RECOMMENDATION:
I recommend passing the resolution to levy accordingly.

Yellow Medicine East ISD #2190

Truth in Taxation 2018 Pay 2019 Levy

December 10, 2018

Yellow Medicine East Board Room

presented at

Regular School Board Meeting

6:00 p.m.

Tax Hearing Presentation

State law requires that schools present:

- Information on the current year budget and actual revenue and expenses for the prior year
- Information on the proposed property tax levy
- The percentage change over the prior year
- Specific purposes and reasons for any increases
- And, offer the public an opportunity to comment and ask questions

School Levy vs. Budget Cycle

- Unlike cities and counties, a school district does not set its budgets when setting the tax levy.

- **Property Tax Levy**

- Final levy is set in December
- Property taxes are levied on a calendar year basis

- **Budget**

- Next year's preliminary budget is approved in June, six months after levy is set
- School fiscal year is July 1 through June 30
- Revisions will be completed later in the fiscal year for current year final budget

School Funding

School funding is highly regulated by the state

- **State sets** formulas which determine revenue; most school revenue is based on state specified amounts per pupil
- **State sets** tax policy for local schools
- **State sets** maximum authorized property tax levy (districts can levy less but not more than amount authorized by the state, unless approved by the voters)
- **State authorizes** school board permission to present referendums for operating and capital needs to voters

∞

Tax Levy-Budget Relationship

- Tax levy is based on many state-determined formulas plus voter approved referendums
- Some changes in tax levies are revenue neutral, offset by reductions or increases in state aid
- An increase in school taxes does not correlate to an equal increase in the expenditure budget

Levy/Budget Cycle

For school districts the budget year begins:

July 1st and coincides with the school year. The budget year ends June 30th.

The 2019 tax levy provides revenue for the 2019-2020 school fiscal year. The preliminary budget for FY2020 will be adopted in June 2019.

Budget Information

- Because approval of the budget lags behind certification of the tax levy by six months, only the current 2018-19 school year budget information and prior year 2017-18 actual financial results will be presented at this hearing.

Budget Information

- All school district budgets are divided into separate funds, based on purposes of revenue, as required by law
- For our district there are 7 active funds:

- **General Fund**
- **Food Service Fund**
- **Community Service Fund**
- **Debt Service Fund**
- **Trust and Agency Fund**
- **OPEB Revocable Trust Fund**
- **OPEB Debt Service Fund**

GENERAL FUND (Levy,Federal,State,Misc. Local Revenue)

Accounts for most daily operating costs.

INSTRUCTION / MAINTENANCE

- Classroom Instruction
- Extra-Curricular Activities
- Utilities, supplies, maintenance

TRANSPORTATION OPERATIONS

- Transportation of Students

CAPITAL EXPENDITURES

- Long Term Facility Maintenance (LTFM)
 - Includes Health & Safety, Deferred Maintenance, Accessibility
- Safe Schools
- Buildings

Equipment Development

FOOD SERVICE State, Federal, Local Revenues (No Levy)

- Accounts for School Lunch & Breakfast Programs
- Snack programs, Ala Carte

COMMUNITY SERVICE (Levy, State, Local Revenues)

- Accounts for the “Lifelong Learning” Programs.
- Levy is based on :*
 - a) Adult population of the District
(7,006 - 2010 Census)*
 - b) Early childhood levy is based on the number
of children 0-4 years old in the district on 9-1-
18 (355)*
- Adult Continuing Education
- Early Childhood Family Education Classes
- School and Community Sponsored Recreation Programs
- Senior Citizen’s Programs

FUND 7 DEBT SERVICE FUND (Levy and other)

- Accounts for Principal and Interest Payments on long term debt (bonds for facilities).

FUND 9 AGENCY FUND (No Levy)

- Funds received, held and expended as directed by outside sources. This fund does not have revenue or expense budgets. Funds are accounted for in general ledger accounts. Usually donated funds.

FUND 25 OPEB Revocable Trust Fund (No Levy)

- Other Post Employment Benefits -Accounts for resources set aside and held in a revocable trust arrangement for post employment benefits for retirees. (Currently funded with bonds issued in 2009-10).

FUND 47 OPEB Debt Service Fund (Levy)

- Activity to record levy proceeds and the repayment of the OPEB bonds accounted for in this fund.

2017-18 Actual Revenues & Expenditures

Fund	FY 2018 Beginning Fund Balances	FY 2018 Actual Revenues and Transfers In	FY 2018 Actual Expenditures and Transfers Out	June 30, 2018 Actual Fund Balances
General Fund/Restricted	\$ 292,139	\$ 1,028,934	\$ 1,062,185	\$ 258,888
General Fund/Other	\$ 2,626,131	\$ 8,629,035	\$ 8,943,776	\$ 2,311,390
Food Service Fund	\$ 9,453	\$ 429,852	\$ 426,462	\$ 12,843
Community Service Fund	\$ 156,748	\$ 453,266	\$ 382,538	\$ 227,476
Debt Service Fund	\$ 110,253	\$ 1,260,138	\$ 1,190,453	\$ 179,938
*OPEB Revocable Trust Fund	\$ 548,110	\$ 86,897	\$ 183,172	\$ 451,835
*OPEB Debt Service Fund	\$ 39,478	\$ 192,890	\$ 191,758	\$ 40,610
Total - All Funds	\$ 3,782,312	\$ 12,081,012	\$ 12,380,344	\$ 3,482,980

2018-19 Projected Revenues & Expenditures

Fund	June 30, 2018 Actual Fund Balances	FY 2019 Budget Revenues and Transfers In	FY 2019 Budget Expenditures and Transfers Out	June 30, 2019 Projected Fund Balances
General Fund/Restricted	\$ 258,888	\$ 1,010,532	\$ 994,278	\$ 275,142
General Fund/Other	\$ 2,311,390	\$ 8,618,730	\$ 9,009,471	\$ 1,920,649
Food Service Fund	\$ 12,843	\$ 432,671	\$ 432,671	\$ 12,843
Community Service Fund	\$ 227,476	\$ 403,384	\$ 373,255	\$ 257,605
Debt Service Fund	\$ 179,938	\$ 1,198,053	\$ 1,167,370	\$ 210,621
*OPEB Revocable Trust Fund	\$ 451,835	\$ 78,500	\$ 168,008	\$ 362,327
*OPEB Debt Service Fund	\$ 40,610	\$ 189,971	\$ 191,458	\$ 39,123
Total - All Funds	\$ 3,482,980	\$ 11,931,841	\$ 12,336,511	\$ 3,078,310

YME 2018-19 Preliminary Budget by Revenue Source and Expenditure Category

Category	General	Food Service	Community Ed.	Debt Service	OPEB Trust	OPEB Debt Svc.	Total Revenue Budget	Percent of All Revenue
Local Taxes/Levy/Credits	\$1,391,717	0	\$172,884	\$893,950	0	\$189,271	\$2,647,822	22.19%
Misc. Local Rev./Transfers In	\$291,673	\$187,071	\$188,800	\$ 4,000	\$ 78,500	\$ 700	\$750,744	6.29%
State	\$7,615,420	\$24,400	\$41,700	\$ -	0	\$ -	\$7,681,520	64.38%
Federal	\$330,452	\$221,200	\$0	\$300,103	0		\$851,755	7.14%
TOTALS	\$9,629,262	\$432,671	\$403,384	\$1,198,053	\$78,500	\$189,971	\$11,931,841	100.00%

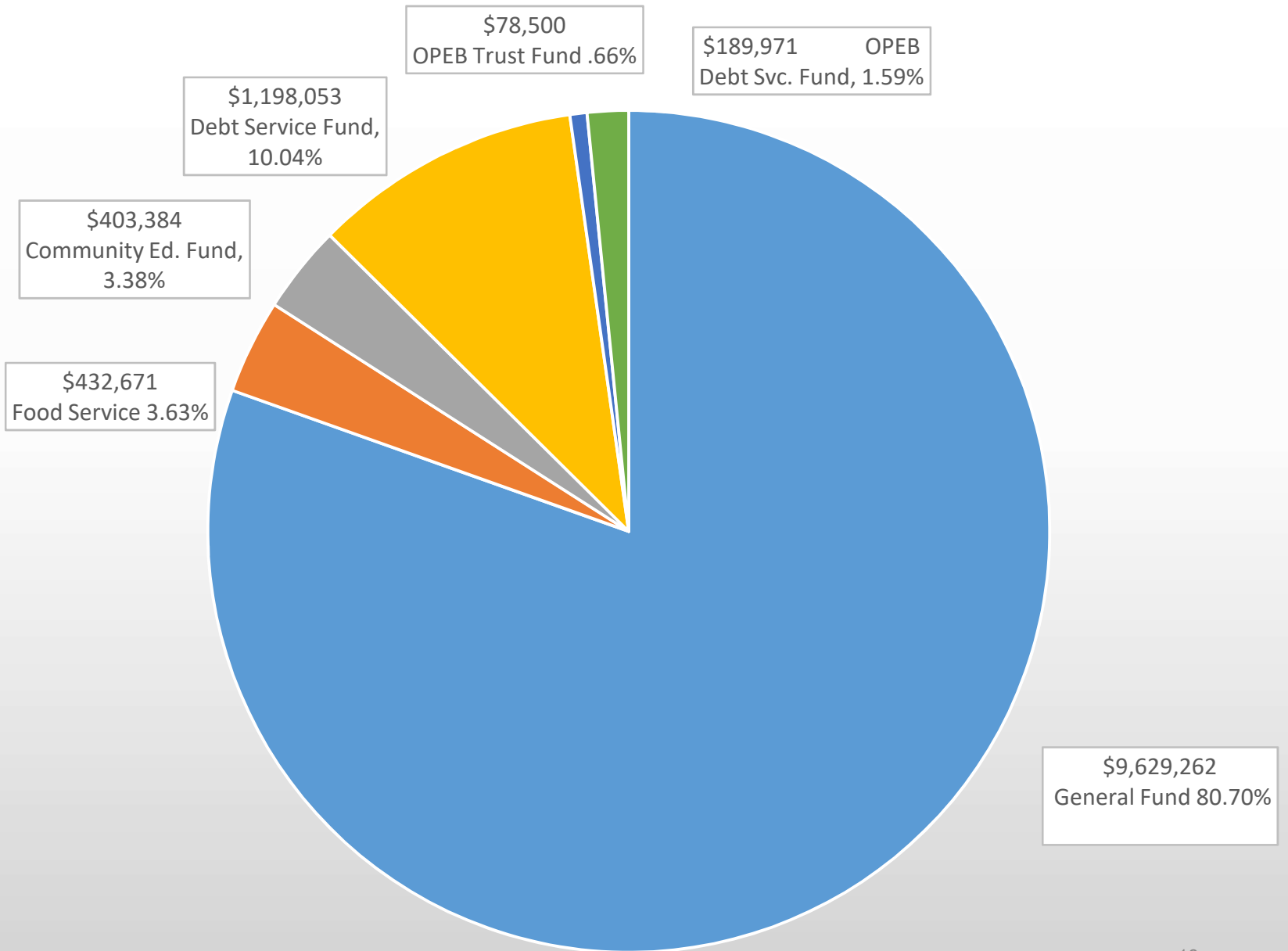
EXPENSES	General	Food Service	Community Ed.	Debt Service	OPEB Trust	OPEB Debt Svc.	Total Expenditure Budget	Percent of All Expenditures
**Salaries/ Benefits	\$7,496,281	\$200,821	\$255,125	0	\$168,008	0	\$8,120,235	65.82%
Purchased Services	\$1,561,328	\$4,500	\$74,330	0	0	0	\$1,640,158	13.30%
Supplies/Misc./Transfers	\$477,976	\$227,350	\$41,800	0	0	0	\$747,126	6.06%
Capital/Health & Safety/Defrd. Maint.	\$468,164	0	2000	0	0	0	\$470,164	3.81%
Long Term Debt		0	0	\$1,167,370	0	\$191,458	\$1,358,828	11.01%
TOTALS	\$10,003,749	\$432,671	\$373,255	\$1,167,370	\$168,008	\$191,458	\$12,336,511	100.00%

BUDGET BALANCE	(\$374,487)	\$0	\$30,129	\$30,683	(\$89,508)	(\$1,487)	(\$404,670)
-----------------------	--------------------	------------	-----------------	-----------------	-------------------	------------------	--------------------

** Includes payment to Minnesota Valley Cooperative Center for Special Education salaries & benefits contract with YME.

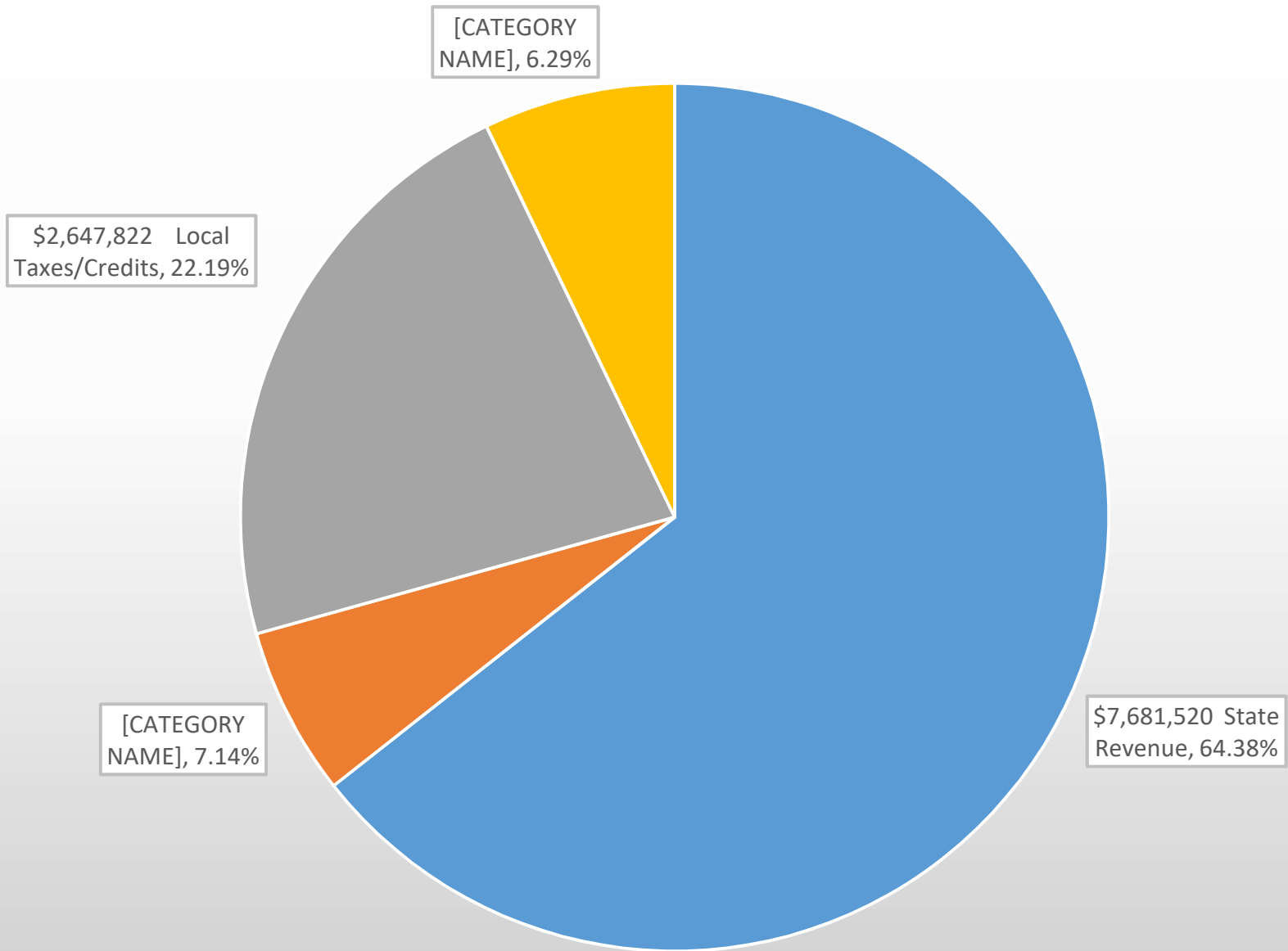
Percent by Fund	General	Food Service	Community Ed.	Debt Service	OPEB Trust	OPEB Debt Svc.	Totals
Revenue %	80.70%	3.63%	3.38%	10.04%	0.66%	1.59%	100.00%
Expense %	81.09%	3.51%	3.03%	9.46%	1.36%	1.55%	100.00%

2018-19 Revenue Budget by Fund \$11,931,841

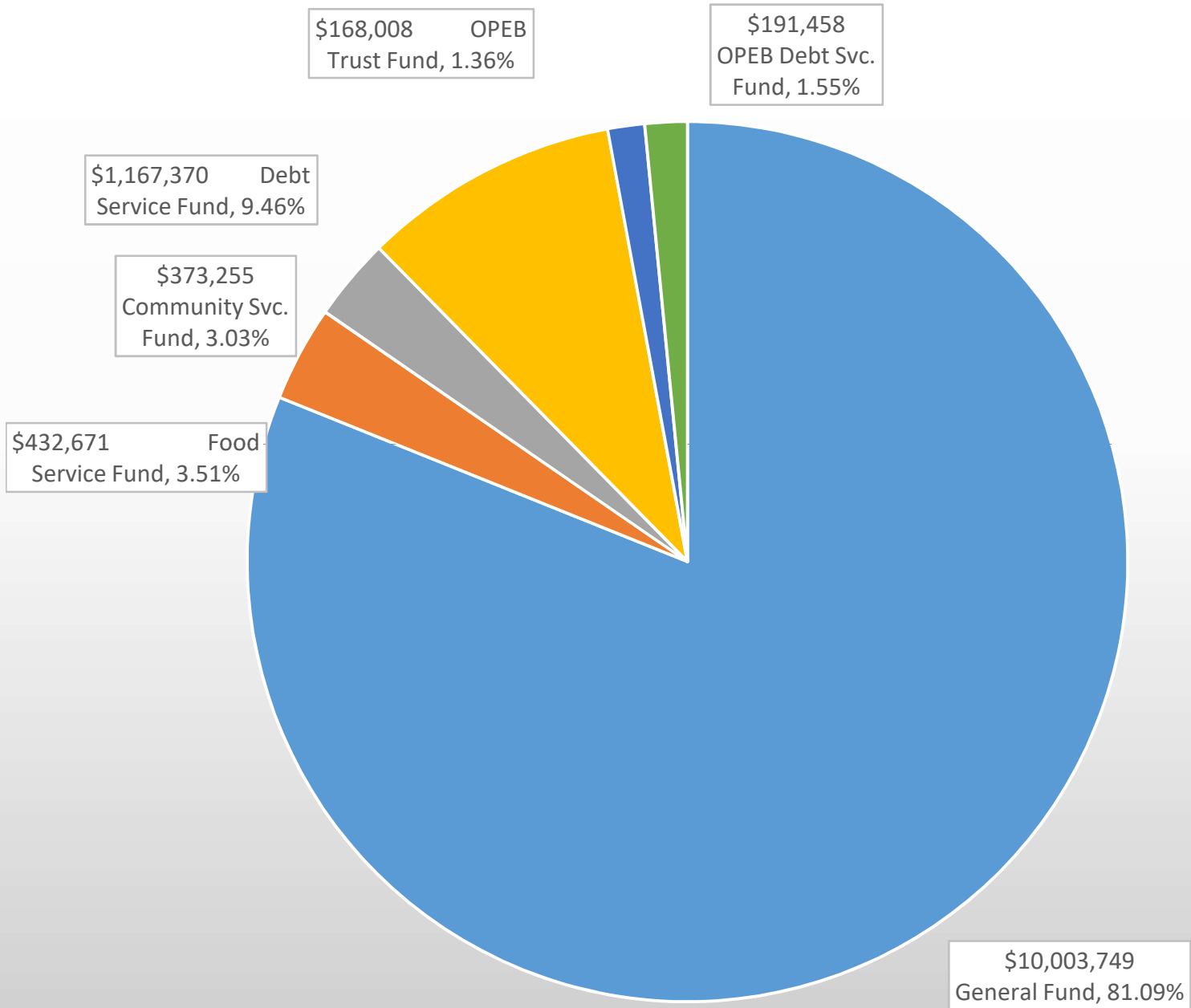


20

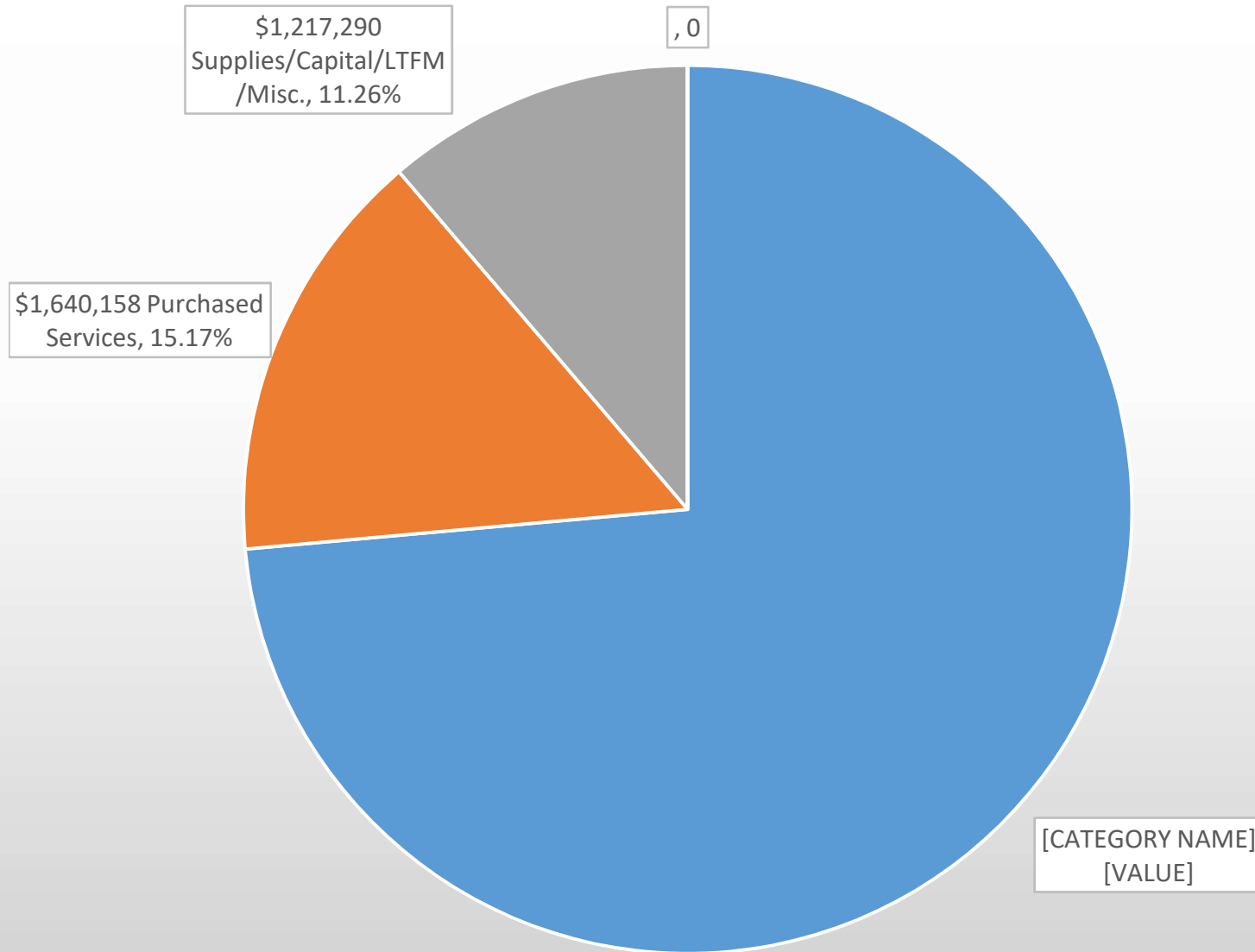
2018-19 Revenue Budget by Category \$11,931,841



2018-19 Expenditure Budget by Fund \$12,336,511



2018-19 Operating Fund Expense Budgets \$10,809,675
General/Food Service/Community Ed.



Property Tax Background

- Every owner of taxable property pays property taxes for the various “taxing jurisdictions” (county, city or township, school district, special districts) in which the property is located.
- Each taxing jurisdiction sets its own tax levy, often based on limits set in state law.
- Each county sends out bills, collects taxes from property owners, and distributes funds back to other taxing jurisdictions.

Proposed Levy Payable in 2019

Schedule of events in approval of District's

2018 (Payable 2019) tax levy:

- September 7: Dept. of Education prepared and distributed first draft of levy limit worksheets setting maximum authorized levy as permitted by law
- September 10: School board approved proposed levy amounts (set maximum allowed)
- Mid-November: Each county mailed "Proposed Property Tax Statements" to all property owners
- December 10: Public hearing on proposed levy held by YME School Board as required by law (during regular 6:00 p.m. school board meeting)
- Following hearing school board will certify final levy amounts

Overview of Proposed Levy Payable in 2019

- The total 2019 proposed property tax levy for all funds will decrease from Pay 2018, by 1.586% or \$47,142.07.
- Law requires that school districts explain the reasons for any major changes in the levy.

Tax Levy 2018 Payable 2019

Levy Description	Pay 19 Final	Pay 18 Final	Difference
Miscellaneous/Abatement	148.44	648.04	(499.60)
Integration & Achievement	28,168.98	25,635.49	2,533.49
Career Technical Levy	60,447.94	60,447.94	-
Referendum	746,156.93	739,244.09	6,912.84
Local Optional/Equity Revenue (LOR)	255,812.38	253,317.45	2,494.93
Reemployment	(4,908.47)	(11,937.30)	7,028.83
Q Comp	-	-	-
Leases (KCC)	12,708.00	17,890.00	(5,182.00)
Facilities & Equip Bond Adjust.	(203,444.00)	(204,606.00)	1,162.00
<i>Unreserved Sub-Total</i>	895,090.20	880,639.71	14,450.49
Operating Capital	155,739.98	143,026.22	12,713.76
Safe Schools	25,808.76	27,086.40	(1,277.64)
Long Term Facility Maintenance (new)	284,431.39	288,964.74	(4,533.35)
Total General fund (01)	1,361,070.33	1,339,717.07	21,353.26
Levy Description	Pay 19 Final	Pay 18 Final	Difference
Other	30.34	79.10	(48.76)
Early Childhood Family Ed. (Under 5 Pop. 355)	43,754.33	54,347.10	(10,592.77)
Pool	45,240.36	59,517.78	(14,277.42)
Community Education (District Population 7006)	57,939.62	57,939.62	-
Total Community Education (04)	146,964.65	171,883.60	(24,918.95)

Tax Levy 2018 Payable 2019 (Cont'd)

Levy Description	Pay 19 Final	Pay 18 Final	Difference
Abatement	162.03	498.38	(336.35)
2014 Alternative Facilities (2010-12 Project)	95,666.00	95,398.23	267.77
2010 Alternative Facilities (2010-12 Project) QZABS	557,720.81	592,446.85	(34,726.04)
2010 Capital Bonds (2010-12 Energy/Capital) QZABS	203,444.00	204,606.00	(1,162.00)
2009 OPEB Bonds	188,351.43	189,971.19	(1,619.76)
Total Debt Redemption (07,47)	1,045,344.27	1,082,920.65	(37,576.38)
Grand Total Levy	2,553,379.25	2,594,521.32	(41,142.07)
			-
Total General fund	1,361,070.33	1,339,717.07	21,353.26
Total Community Education	146,964.65	171,883.60	(24,918.95)
Total Debt Redemption	1,045,344.27	1,082,920.65	(37,576.38)
Grand Total Levy (Increase)	2,553,379.25	2,594,521.32	(41,142.07)
General Fund Percent	53.305%	51.636%	1.594%
Community Ed. Percent	5.755%	6.625%	-14.498%
Debt Redemption Percent	40.940%	41.739%	-3.439%
Total Percent Change	100.000%	100.000%	-1.586%
<i>Q Comp (Alternative Compensation) not include in final levy.</i>	66,263.19	66,972.36	

Referendum Information

Levy Authority Subject to LOR (Local Optional Revenue) Reduction:

2010 Operating Referendum

First Year Pay 2012 :

Total \$524.61

Minus LOR \$424.00

Net Levy \$100.61

Last Year: 2020 Pay 2021 (For fiscal year 2022)

Levy Authority Not Subject to LOR:

2015 Operating Referendum

First Year Pay 2016 \$1,168.76 (with inflationary factor):

Current Levy \$1,251.01

Last Year: 2024 Pay 2025 (For fiscal year 2026)

Total Referendum Levy: \$1,351.63

General Fund Levy Changes

- Category: **Voter Approved Referendum \$746,156.93**
- Change: + \$6,912.84
- Reason for increase:
 - Inflationary factor
 - APU (Adjusted Pupil Units)
 - Prior year adjustments based on actual

General Fund Levy Changes

- Category: Local Optional/Equity Revenue (LOR) \$255,812.38
- Change: **\$2,494.93**
- Reason for increase:
 - LOR is \$424/APU that was formerly classified as referendum revenue. Total voter approved referendum revenue (aid and levy) is decreased by the same amount.

General Fund Levy Changes

- **Career Technical (Ag, FACS, Ind. Tech.) \$60,447.94**

State formula equals 35% of Career Technical 2018-19 estimated expenditures. Remained the same.

- **Unemployment \$-4,908.47**

Levy is based on unemployment estimates for FY2020 plus prior year levy adjusted by actual expenditures in previous year. The pay 2019 levy increase is due to lower than anticipated expenditures in 2017-18. Negative levy is less than Pay 2018 negative levy. Increased \$7,028.83.

General Fund Levy Changes

- **Integration & Achievement** **\$28,168.98**
Levy is 30% of total revenue and state share is 70%. Revenue is calculated including a FY2018 adjustment for actual expenditures plus anticipated FY2019 expenditures. Revenue based on APU and state formula. Increase of \$2,533.49.
- **Lease** **\$12,708.00**
KCC - Levy is adjusted to actual cost annually from previous year. Decrease of -\$5,182.00. (Maximum of \$24,000 levy)

General Fund Levy Changes

- **Facilities & Equipment Bond Adjustment** **\$ -203,444.00**

Reduction to General Fund levy offsets Debt Service levy for 2010 capital facilities bond. Will be levied through taxes payable 2024. Last payment is February 2025. 100 % Levy. Change in levy increase of \$1,162.00.

- **Operating Capital** **\$155,739.98**

For buildings and equipment. Based on building age and APU. Levy and state aid and prior year adjustment for actual APU. Increase of \$12,713.76. (State aid is decreasing approximately - \$5,399.16 for a net variance of \$7,314.60)

- **Safe Schools** **\$25,808.76**

For security of buildings. 100% Levy. Based on \$36 per APU. Decrease of -\$1,277.64. (student numbers and prior year adjustments)

General Fund Levy Changes

- Category: Long Term Facilities and Equipment Maintenance (LTFM) \$284,431.39
 - \$380 per APU for health & safety and deferred maintenance of facilities
 - Current levy adjusted by previous year revenue based on APU
 - Decreased -\$4,533.35

Community Education Levy Changes

- **Early Childhood Family Education (ECFE)** **\$43,754.33**
For education of the district's pre-school children. September 2018 census 355. Per pupil revenue PPU \$145.18. State aid portion approximately \$7,696.95. Levy decrease of -\$10,592.77. Total net variance of -\$2,896.82.
- **Pool** **\$45,240.36**
Levy based on actual deficit from previous fiscal year (2017-18). Levied on previous ISD 892 (Clarkfield) property. Decrease of -\$14,277.42.
- **Community Education** **\$57,939.62**
Based on 2010 census of 7006 district residents. No change.

Debt Service Levy Changes

- **OPEB Bonds** **\$188,351.43**
Levy of Other Post Employment Benefits (OPEB) for retirees (including current employee benefits when retired). Also pays for retiree implicit expense in operating funds. Based on required actuarial study. Bonds issued in 2009-10. Will be levied through taxes payable 2024. Decrease of \$1,619.76.
- **Alternative Facilities Bonds** **\$ 653,386.81**
Bonds issued for the 2010 through 2012 facilities project. \$8,260,000 bond issued in 2010 to be levied through taxes payable 2025 and bond of \$730,000 issued in January of 2014 to be levied through taxes payable 2023. Decrease of -\$34,458.27. Includes fund balance reduction by MDE (MN Dept. of Education) calculation of \$49,092.19.
- **Capital Facilities Bond** **\$203,444.00**
\$2,485,000 bond issued in 2010 for facilities project to be levied through taxes payable 2024. Amount is offset by the same amount of decrease to the general fund levy. Decrease of -\$1,162.00.

Reduction to Maximum Levy Allowed

Alternative Teacher Compensation (Q Comp)

Included in the maximum levy allowed is \$66,263.19 for Q Comp. This is 35% of the total calculated revenue. This will not be included in the final amount thereby reducing the levy against the taxpayers.

The remaining 65% Q Comp revenue is received from the state.

Levy Comparison Summary Proposed Final 2019 to Final 2018

Levy Description	Pay 19 Final	Pay 18 Final	Difference
Total General fund	1,361,070.33	1,339,717.07	21,353.26
Total Community Education	146,964.65	171,883.60	(24,918.95)
Total Debt Redemption	1,045,344.27	1,082,920.65	(37,576.38)
Grand Total Levy (Increase)	2,553,379.25	2,594,521.32	(41,142.07)
General Fund Percent	53.305%	51.636%	1.594%
Community Ed. Percent	5.756%	6.625%	-14.498%
Debt Redemption Percent	40.940%	41.739%	-3.439%
Total Percent Change	100.000%	100.000%	-1.586%
<i>Q Comp (Alternative Compensation) not included in final levies</i>	66,263.19	66,972.36	

Subtotals by Category

• Voter Approved	\$746,156.93
• Referendum	
• (Doesn't include Local Optional Revenue)	
• Other	\$1,807,222.32
• Set by state	
• Allowed by law	
Total (Without Q Comp)	\$2,553,379.25

Factors Causing Changes From Pay 2018 to Pay 2019 Levy

- **Many factors can cause the tax bill for an individual property to increase or decrease from year to year:**
 - Changes in value of the individual property
 - Changes in the total value of all property in the district
 - Increases or decreases in levy amounts caused by changes in state funding formulas, local needs and costs, voter-approved referendums, student numbers, and other factors

Whereas, Pursuant to Minnesota Statutes the School Board of Independent School District No. 2190 is authorized to make the following proposed tax levies for general purposes:

General Fund	\$1,361,070.33
Community Service	\$ 146,964.65
<u>Debt Service/OPEB Debt. Svc.</u>	<u>\$1,045,344.27</u>
Total Proposed Tax levy	\$2,553,379.25

Now Therefore, Be it resolved by the School Board of Independent School District No. 2190 that the levy to be levied in 2018 to be collected in 2019 is set at \$2,553,379.25. The clerk of ISD 2190 School Board is authorized to certify the proposed levy to the County Auditor of Yellow Medicine County.

QUESTIONS?



**YELLOW MEDICINE EAST ISD #2190
SCHOOL BOARD MEETING MINUTES
TUESDAY, NOVEMBER 13, 2018 – 6:00 PM
YME BOARD ROOM**

Chair Dawn Odegard called the meeting to order.

The Pledge of Allegiance was recited.

Roll Call of Board Members Present: Susan Bones, Amanda Lecy, Dawn Odegard, Sharon Rupp, Steve Rupp

Members Absent: Jeremy Corner

Staff/Public Present: Deb Beckler, LeeAnn Boushek, Lisa Hansen, Jeremy LeBlanc, Ryan Luft, Rich Schneider, Denise Streich, Ron Winter, Nicole Zempel

Motion by Susan Bones, second by Sharon Rupp, and carried unanimously, to approve the agenda for the meeting.

Sharon Rupp read the YME Mission Statement.

The opportunity to publicly address the Board received no response.

Motion by Steve Rupp, second by Amanda Lecy, and carried, to approve the consent agenda items as follows:

- October 8, 2018 meeting minutes.
- payment for claims in the amount of \$485,815.20 with checks numbered 21278-21439 and wire transfers in the amount of \$258,429.56 numbered 201800101-201800115.
- finance report, as submitted.
- enrollment report, as submitted.

Superintendent Schneider, assisted by Principals Hansen and Luft, reviewed the World's Best Workforce plan from 2017-2018. The public presentation of the plan will be on November 27 in the Little Theater at 5:00 pm.

Sonja Pederson joined the meeting.

Principal Hansen presented a video of kindergarten students rotating classrooms while learning letters and shared the variety of activities taking place at BRE during American Education Week.

Principal Luft reported that plans for the CTE course Industrial Construction Methods, made possible in-part by a collaboration with Fagen Inc., are well underway, shared that the Veteran's Day program held at the Fagen Fighters Museum was a success and that class registration for next year is being worked on.

Written reports submitted:

Community Education Annual Report - 2017-2018

Technology Committee Meeting Minutes - October 9, 2018

Motion by Sonja Pederson, second by Susan Bones and carried unanimously by roll call vote, to adopt a resolution canvassing the results of the November 6, 2018 General Election of School Board Members. Those elected to 4-year terms, beginning on January 7, 2019, are Sharon Rupp, Jeremy LeBlanc, Ron Winter.

Motion by Sharon Rupp, second by Steve Rupp, and carried to approve new hires, as follows:

- long-term substitute teacher - MS/HS English - Pete Scheffler.

Motion by Susan Bones, second by Steve Rupp, and carried to approve the following resignation:

- BRE Special Education Paraprofessional - Tiffany Tennis - Effective December 21, 2018.

Board members were encouraged to attend the MN School Boards Association Leadership Conference on January 17-18, 2019 at the Minneapolis Convention Center.

Board members discussed increasing the hourly rate of pay for non-certified substitute staff by \$1.00.

Motion by Sonja Pederson, second by Susan Bones, and carried to raise the hourly rate of pay for non-certified substitute staff to \$11 per hour, effective immediately.

Motion by Sharon Rupp, second by Amanda Lecy, and carried to approve student attendance at the Minnesota Indian Education Association Conference on November 13-18, 2018.

The Policy Committee met on November 5, 2018 and discussed a process to monitor, track and update policies.. The committee will meet again on February 5, 2019. Several policies will need to be approved at the February board meeting.

Correspondence items included information on the Phase I & II Trainings offered by MSBA.

Upcoming Events:

Health & Safety Committee Meeting - November 15, 2018 - 3:10 - Board Room

Negotiation Session with MSEA - November 19, 2018 - 4:30 pm

Early Dismissal - Staff Development - November 21, 2018 - 2:30 pm

No School - Thanksgiving Break - November 22 & 23, 2018

World's Best Workforce Meeting - November 27, 2018 - Little Theater- 5:00 pm

Early Dismissal - Staff Development - December 5, 2018 - 2:30 pm

Board Meeting & Truth in Taxation Hearing - December 10, 2018 - Board Room - 6:00 pm

Early Dismissal - Staff Development - December 19, 2018 - 2:30 pm

Early Dismissal - Christmas Break - December 21, 2018 - 1:00 pm

No School - Christmas Break - December 24, 2018 - January 1, 2019

Early Dismissal - Staff Development - January 9, 2019 - 2:30 pm

Board Meeting - January 14, 2019 - Board Room - 6:00 pm

MSBA Leadership Conference - January 17-18, 2019 - Minneapolis

End of 2nd Quarter - January 18, 2019

No School - Staff Development - January 21 & 22, 2019

Motion by Sharon Rupp, second by Amanda Lecy to enter in Executive Session - Closed Meeting.

The meeting was re-opened and adjourned by Dawn Odegard.

CHECK NUMBER	CHECK VENDOR	CHECK DATE	AMOUNT
21440	AMERICAN FAMILY LIFE ASSURANCE	11/26/2018	459.90
21441	AMERITAS LIFE INSURANCE CORP.	11/26/2018	528.16
21442	BBE SCHOOLS	11/26/2018	150.00
21443	BOLD BOOSTER CLUB	11/26/2018	200.00
21444	DELTA DENTAL	11/26/2018	6,438.05
21445	LAC QUI PARLE VALLEY ISD 2853	11/26/2018	200.00
21446	MACCRAY SCHOOLS	11/26/2018	150.00
21447	MADISON NATIONAL LIFE	11/26/2018	1,967.21
21448	MONTEVIDEO SCHOOL DISTRICT 129	11/26/2018	75.00
21449	MSEA	11/26/2018	828.04
21450	154200 HEALTH SMART	11/26/2018	64.00
21451	RENVILLE COUNTY WEST	11/26/2018	100.00
21452	ROCORI HIGH SCHOOL	11/26/2018	300.00
21453	SCHULTE, TREVOR	11/26/2018	400.00
21454	SELECT ACCOUNT	11/26/2018	4,608.19
21455	SKATETIME SCHOOL PROGRAMS	11/26/2018	2,610.00
21456	EDUCATION MINNESOTA YME	11/26/2018	3,140.73
21457	ACME TOOLS	12/10/2018	132.93
21458	ACT	12/10/2018	663.00
21459	ADVOCATE TRIBUNE	12/10/2018	90.20
21460	ADVOCATE TRIBUNE	12/10/2018	390.05
21461	ALICE TRAINING INST.	12/10/2018	595.00
21462	ALICE TRAINING INST.	12/10/2018	595.00
21465	ALMICH'S MARKET	12/10/2018	1,896.65
21466	AMERICAN WELDING AND GAS, INC.	12/10/2018	1,095.09
21470	BENNETT & BENNETT INC.	12/10/2018	80,773.70
21471	BENSON LAUNDRY	12/10/2018	43.60
21472	BERGESON, KAIA	12/10/2018	450.94
21473	BORCH'S INC.	12/10/2018	2,823.70
21474	BOTTGE, MARJ	12/10/2018	28.51
21476	CANON FINANCIAL SERVICES	12/10/2018	1,364.92
21477	CENEX CREDIT CARD	12/10/2018	462.08
21478	CHANHASSEN DINNER THEATRES	12/10/2018	2,148.90
21479	CHIPPEWA COUNTY AUDITOR	12/10/2018	213.47
21480	CHROMEBOOKPARTS.COM	12/10/2018	19.99
21484	CITIZENS ALLIANCE BANK	12/10/2018	3,241.97
21486	CITY OF GRANITE FALLS	12/10/2018	13,228.88
21487	CITY OF GRANITE FALLS	12/10/2018	5,763.18
21488	CLARKFIELD AREA CHARTER SCHOOL	12/10/2018	40.00
21489	CORNER, SKYLER	12/10/2018	196.60
21490	DAVE'S ELECTRIC CO	12/10/2018	664.57
21491	DAWSON-BOYD SCHOOL #378	12/10/2018	871.32
21492	DEAN FOODS NORTH CENTRAL, INC.	12/10/2018	2,582.80
21493	DEMCO, INC.	12/10/2018	105.10
21494	DIRTY DOG PRODUCTIONS	12/10/2018	36.81
21495	EMC INSURANCE COMPANIES	12/10/2018	9,076.39
21496	ENGESSER, AMBER	12/10/2018	64.97
21497	EPEMA, TIM	12/10/2018	175.00
21498	FARMERS UNION OIL CO.	12/10/2018	7.13
21499	GRAND AFFAIR	12/10/2018	65.00
21500	GRANITE FALLS AUTO PARTS	12/10/2018	211.55
21501	GRANITE FALLS OFFICIALS ASSOC.	12/10/2018	200.00
21502	GRAPHIC EDGE	12/10/2018	182.80
21503	GREAT PLAINS NATURAL GAS CO	12/10/2018	9,394.15
21504	HANSEN, LISA	12/10/2018	243.36
21505	HANSEN, SCOTT	12/10/2018	84.00

CHECK NUMBER	CHECK VENDOR	CHECK DATE	AMOUNT
21506	HDL	12/10/2018	144.50
21507	HEARTLAND AUDIO INC.	12/10/2018	1,556.40
21508	HENDERSON, ROBIN	12/10/2018	86.30
21509	HILLYARD/HUTCHINSON	12/10/2018	2,557.84
21510	HOBY	12/10/2018	1,075.00
21511	HOLDAHL	12/10/2018	22.98
21513	INNOVATIVE OFFICE SOLUTIONS LLC	12/10/2018	534.66
21514	ISCORP	12/10/2018	195.50
21515	TAMARA ISFELD	12/10/2018	74.81
21516	IVERSON, JEFFREY	12/10/2018	296.39
21517	JIMMY'S PIZZA	12/10/2018	44.35
21518	KILOWATT COMMUNITY CENTER	12/10/2018	1,185.00
21519	LEARNING A-Z	12/10/2018	219.90
21521	LOFFLER	12/10/2018	3,427.97
21522	LOUWAGIE, KEISHA	12/10/2018	35.93
21523	LUFT, RYAN	12/10/2018	474.12
21524	MACKIN ED RESOURCES	12/10/2018	202.50
21525	MASSP	12/10/2018	375.00
21526	MCEA	12/10/2018	538.00
21527	MINNESOTA ELEVATOR TOTAL ELEVATOR SOLUTIONS	12/10/2018	360.13
21528	MN FEED DISTRIBUTORS	12/10/2018	264.60
21529	MN RIVER VALLEY EDUCATION DIST	12/10/2018	14,429.27
21530	MINNESOTA SCHOOL BOARD ASSOC.	12/10/2018	440.00
21531	MOBYMAX	12/10/2018	49.00
21532	MUSIC STREET	12/10/2018	114.35
21533	MVCC	12/10/2018	152,241.92
21534	OLSON SANITATION INC.	12/10/2018	877.50
21535	PAN-O-GOLD BAKING CO.	12/10/2018	486.35
21536	PASLAWSKI, LOUANN	12/10/2018	30.23
21537	J.W. PEPPER & SON INC.	12/10/2018	167.48
21538	PLUMBING & HEATING OF WILLMAR	12/10/2018	1,052.86
21539	PRAIRIE'S EDGE CASINO RESORT	12/10/2018	120.00
21540	RAUTH, CHIP	12/10/2018	75.00
21541	REINHART INST FOODS	12/10/2018	15,633.97
21542	RILEY BUS SERVICE, INC.	12/10/2018	1,700.00
21543	ROCKLER	12/10/2018	91.55
21544	RTS	12/10/2018	141.35
21545	SAWMILL	12/10/2018	231.12
21546	SCHNEIDER, RICHARD	12/10/2018	120.00
21547	SCHRUPP, KATHRYN	12/10/2018	40.83
21548	SOUTHWEST MN STATE UNIVERSITY	12/10/2018	16,000.00
21549	SPEH, EMILEE	12/10/2018	393.00
21550	STAAB, FRANCIS	12/10/2018	120.00
21551	SUTER, JACOB	12/10/2018	21.94
21552	SW/WC SERVICE COOP - MARSHALL	12/10/2018	7,281.56
21553	TEACHING STRATEGIES	12/10/2018	514.65
21554	TENSEN, ASHLEY	12/10/2018	150.00
21555	TONGEN, TARA	12/10/2018	46.96
21557	TRUE VALUE-GF/MONTE	12/10/2018	459.19
21558	XCEL ENERGY	12/10/2018	33.07
21562	YME SCHOOLS-ADM	12/10/2018	1,921.50
21563	YME-FOOD SERVICE	12/10/2018	1,040.65
201800116	FEDERAL TAX WITHHOLDING	11/21/2018	92,490.88
201800117	MN TEACHERS RETIREMENT ASSOC.	11/21/2018	41,510.65
201800118	PUBLIC EMPLOYEES RETIREMENT	11/21/2018	19,052.50
201800119	STATE TAX WITHHOLDING	11/21/2018	15,002.00

CHECK		CHECK	
NUMBER	VENDOR	DATE	AMOUNT
201800120	SW/WC SVC. COOP - HEALTH INS.	11/21/2018	41,760.14
201800121	MN REVENUE	11/21/2018	124.26
201800122	VOYA INSTITUTIONAL TRUST	11/21/2018	15,082.65
201800123	SW/WC SVC. COOP - HEALTH INS.	11/20/2018	5,438.00
201800124	SW/WC SVC. COOP - HEALTH INS.	11/20/2018	16,965.96
201800125	SW/WC SVC. COOP - HEALTH INS.	11/20/2018	298.50
201800126	SW/WC SVC. COOP - HEALTH INS.	11/20/2018	1,074.50
201800127	SW/WC SVC. COOP - HEALTH INS.	11/26/2018	1,114.90
		Totals for BNK02	642,054.71
		Totals for checks	642,054.71

FUND SUMMARY

<u>FUND</u>	<u>DESCRIPTION</u>	<u>BALANCE SHEET</u>	<u>REVENUE</u>	<u>EXPENSE</u>	<u>TOTAL</u>
01	GENERAL FUND	245,261.36	-2.45	343,033.44	588,292.35
02	FOOD SERVICE	7,965.51	0.00	18,956.19	26,921.70
04	COMMUNITY SERVICE	9,855.40	0.00	8,991.20	18,846.60
25	REVOCABLE TRUST (FY10)	0.00	0.00	7,994.06	7,994.06
***	Fund Summary Totals ***	263,082.27	-2.45	378,974.89	642,054.71

***** End of report *****

Check Nbr	Vendor Name	Check Date	Invoice Number	Invoice Desc	PO Number	Invoice Amount	Check Amount
21457	ACME TOOLS	12/10/2018	6071875		0	18.99	132.93
01 E	300 361 000 830 433			VOCATIONAL WEIDAUER/VOCATIONAL PROGRAMS/INDIVIDUAL INST		18.99	
			614041		0	37.98	
01 E	300 361 000 830 433			VOCATIONAL WEIDAUER/VOCATIONAL PROGRAMS/INDIVIDUAL INST		37.98	
			6204915		0	75.96	
01 E	300 361 000 830 433			VOCATIONAL WEIDAUER/VOCATIONAL PROGRAMS/INDIVIDUAL INST		75.96	
21458	ACT	12/10/2018	32090984	PRE-ACT PREP	0	663.00	663.00
01 E	300 710 000 000 461			COUNSELING/GUIDANCE/000/STANDARDZED TESTS/000		663.00	
21459	ADVOCATE TRIBUNE	12/10/2018	1	shrek	0	90.20	90.20
01 E	300 298 236 000 401			EXTRACURRICULAR ACTIVITIES/000/GENERAL SUPPLIES/MUSICAL		90.20	
21460	ADVOCATE TRIBUNE	12/10/2018	104035-01	legals	0	375.05	390.05
01 E	005 010 000 000 380			BOARD OF EDUCATION/000/PRINTING/ADVERTISING/000		375.05	
			119178-01	community ed-ecfe	0	15.00	
04 E	500 580 000 325 380			EARLY CHILDHOOD AND FAM ED/EARLY CHILDHOOD AND FAMILY E		15.00	
21461	ALICE TRAINING INST.	12/10/2018	38647	RYAN LUFT	0	595.00	595.00
01 E	300 640 000 316 367			STAFF DEVELOPMENT/STAFF DEVELOPMENT/TRAVEL-PROFESS DEVE		595.00	
21462	ALICE TRAINING INST.	12/10/2018	E7869	LISA HANSEN	0	595.00	595.00
01 E	100 640 000 316 366			STAFF DEVELOPMENT/STAFF DEVELOPMENT/TRAVEL-SCHOOL BUSIN		595.00	
21463	Vendor Continued Void	12/10/2018					0.00
21464	Vendor Continued Void	12/10/2018					0.00
21465	ALMICH'S MARKET	12/10/2018	1		0	39.92	1,896.65
01 L	230 43			GENERAL FUND/DEFERRED REVENUE/TARGET \$ MS/HS		39.92	
			110		0	104.74	
02 E	005 770 000 701 490			FOOD SERVICES/SCHOOL LUNCH/FOOD/000		104.74	
			111		0	1,159.36	
01 E	300 331 000 830 490			FAMILY LIFE SCIENCE (VOC)/VOCATIONAL PROGRAMS/FOOD/000		1,159.36	
			2		0	141.12	
01 E	350 250 000 000 490			FAMILY CONSUMER SCIENCE/000/FOOD/000		141.12	
			22	misc.	0	4.48	
01 E	300 260 000 000 430			NATURAL SCIENCES/000/SUPPLIES/000		4.48	
			222		0	4.59	
02 E	005 770 000 701 495			FOOD SERVICES/SCHOOL LUNCH/MILK/000		4.59	
			3		0	37.49	
01 L	230 43			GENERAL FUND/DEFERRED REVENUE/TARGET \$ MS/HS		37.49	
			4		0	14.07	
04 E	500 590 000 321 401			OTHER COMMUNITY SERVICES/COMMUNITY EDUCATION/GENERAL SU		14.07	
			4444		0	4.59	
02 E	005 770 000 705 495			FOOD SERVICES/BREAKFAST/MILK/000		4.59	
			5		0	4.37	
01 E	350 260 000 000 430			NATURAL SCIENCES/000/SUPPLIES/000		4.37	
			5555		0	29.90	
02 E	005 770 104 707 490			FOOD SERVICES/ALA CARTE/OTHER/FOOD/FOOD ORDERED ONLY/CA		29.90	
			6	musical	0	53.75	
01 E	300 298 236 000 401			EXTRACURRICULAR ACTIVITIES/000/GENERAL SUPPLIES/MUSICAL		53.75	
			7		0	12.24	
01 E	300 260 000 000 430			NATURAL SCIENCES/000/SUPPLIES/000		12.24	
			8	school readiness	0	286.03	
04 E	500 582 000 344 490			LEARNING READINESS/LEARNING READINESS/FOOD/000		286.03	

Check Nbr	Vendor Name	Check Date	Invoice Number	Invoice Desc	PO Number	Invoice Amount	Check Amount
21466	AMERICAN WELDING AND GAS, INC.	12/10/2018	1		0	811.14	1,095.09
01 E 300 301 501 830 433				AG EDUCATION (VOCATIONAL)/VOCATIONAL PROGRAMS/INDIVIDUA		811.14	
			11	AG	0	283.95	
01 E 300 301 501 830 433				AG EDUCATION (VOCATIONAL)/VOCATIONAL PROGRAMS/INDIVIDUA		283.95	
21467	Vendor Continued Void	12/10/2018					0.00
21468	Vendor Continued Void	12/10/2018					0.00
21469	Vendor Continued Void	12/10/2018					0.00
21470	BENNETT & BENNETT INC.	12/10/2018	1	REGULAR ROUTES	0	57,198.68	80,773.70
01 E 005 760 000 720 360				PUPIL TRANSPORTATION/REGULAR TO AND FROM SCHOOL/TRANSP		57,198.68	
			10	MID DAY PLS SHUTTLE	0	212.22	
01 E 005 760 000 720 360				PUPIL TRANSPORTATION/REGULAR TO AND FROM SCHOOL/TRANSP		212.22	
			100	spec needs route	0	4,867.98	
01 E 300 258 233 000 370				MUSIC/000/RENTALS AND LEASES/INSTRUMENTAL MUSIC		4,867.98	
			101	career fair	0	120.95	
01 E 005 760 000 714 360				PUPIL TRANSPORTATION/INTEGRATION BUSSING/TRANSPORTATION		120.95	
			11	BAND TRAILER	0	30.00	
01 E 300 258 233 000 370				MUSIC/000/RENTALS AND LEASES/INSTRUMENTAL MUSIC		30.00	
			11000	BOWLING	0	78.36	
01 E 005 760 000 725 360				PUPIL TRANSPORTATION/BETWEEN SCHOOLS/TRANSPORTATION CON		78.36	
			15355	ART CONF	0	159.71	
01 E 300 212 000 733 360				ART/TRANSPORTATION/NON-AUTHORIZED/TRANSPORTATION CONTRA		159.71	
			15356	FACS TRIP	0	95.44	
01 E 300 331 000 733 360				FAMILY LIFE SCIENCE (VOC)/TRANSPORTATION/NON-AUTHORIZED		95.44	
			15357	cc	0	361.69	
01 E 300 292 226 733 360				BOYS/GIRLS ATHLETICS/TRANSPORTATION/NON-AUTHORIZED/TRAN		361.69	
			15358	2nd grade field trip	0	28.09	
01 E 100 203 000 733 360				ELEMENTARY GENERAL ED./TRANSPORTATION/NON-AUTHORIZED/TR		28.09	
			15359	5th grade	0	30.62	
01 E 100 203 000 733 360				ELEMENTARY GENERAL ED./TRANSPORTATION/NON-AUTHORIZED/TR		30.62	
			15360	QUARRY	0	30.62	
01 E 100 203 000 733 360				ELEMENTARY GENERAL ED./TRANSPORTATION/NON-AUTHORIZED/TR		30.62	
			15362	art with rcw	0	627.84	
01 E 005 760 000 714 360				PUPIL TRANSPORTATION/INTEGRATION BUSSING/TRANSPORTATION		627.84	
			15370	JH BBB	0	75.67	
01 E 350 294 213 733 360				BOYS ATHLETICS/TRANSPORTATION/NON-AUTHORIZED/TRANSPORTA		75.67	
			15371	gbb	0	157.79	
01 E 300 296 213 733 360				GIRLS ATHLETICS/TRANSPORTATION/NON-AUTHORIZED/TRANSPORT		157.79	
			15374	JH BB	0	134.43	
01 E 350 294 213 733 360				BOYS ATHLETICS/TRANSPORTATION/NON-AUTHORIZED/TRANSPORTA		134.43	
			2	OUT OF DISTRICT	0	2,294.25	
01 E 005 760 000 713 360				PUPIL TRANSPORTATION/OPEN ENROLLMENT/TRANSPORTATION CON		2,294.25	
			3	CLKFD SHUTTLE	0	1,319.36	
01 E 005 760 000 720 360				PUPIL TRANSPORTATION/REGULAR TO AND FROM SCHOOL/TRANSP		1,319.36	
			5	BELVIEW SHUTTLE	0	2,660.00	
01 E 005 760 000 720 360				PUPIL TRANSPORTATION/REGULAR TO AND FROM SCHOOL/TRANSP		2,660.00	
			6	SACRED SHUTTLE	0	2,660.00	
01 E 005 760 000 720 360				PUPIL TRANSPORTATION/REGULAR TO AND FROM SCHOOL/TRANSP		2,660.00	

Check Nbr	Vendor Name	Check Date	Invoice Number	Invoice Desc	PO Number	Invoice Amount	Check Amount
01 E 005 760 000 720 360			7	SHUTTLE PUPIL TRANSPORTATION/REGULAR TO AND FROM SCHOOL/TRANSP	0	2,520.00 2,520.00	
01 E 005 760 000 720 360			8	MINNEOTA SHUTTLE PUPIL TRANSPORTATION/REGULAR TO AND FROM SCHOOL/TRANSP	0	2,450.00 2,450.00	
01 E 005 760 000 720 360			9	PRE SCHOOL SHUTTLE PUPIL TRANSPORTATION/REGULAR TO AND FROM SCHOOL/TRANSP	0	2,660.00 2,660.00	
21471 BENSON LAUNDRY		12/10/2018	1		0	43.60	43.60
02 E 005 770 000 701 382				FOOD SERVICES/SCHOOL LUNCH/LAUNDRY AND DRY CLEANING/000		43.60	
21472 BERGESON, KAIA		12/10/2018	1	Grant\$- 3 sewing machines	0	450.94	450.94
01 E 300 250 000 000 430				FAMILY CONSUMER SCIENCE/000/SUPPLIES/000		450.94	
21473 BORCH'S INC.		12/10/2018	AAU003460	BACKPACKS RESALE	0	1,665.00	2,823.70
01 L 230 20				GENERAL FUND/DEFERRED REVENUE/ACTIVITIES/ATHLETIC (COKE		1,665.00	
01 E 300 294 213 000 401			AAU003462		0	1,158.70	
01 E 300 296 213 000 401				BOYS ATHLETICS/000/GENERAL SUPPLIES/BASKETBALL		401.50	
01 E 350 294 213 000 401				GIRLS ATHLETICS/000/GENERAL SUPPLIES/BASKETBALL		217.20	
01 E 350 294 221 000 401				BOYS ATHLETICS/000/GENERAL SUPPLIES/BASKETBALL		190.00	
01 E 350 296 213 000 401				BOYS ATHLETICS/000/GENERAL SUPPLIES/WRESTLING		160.00	
01 E 350 296 213 000 401				GIRLS ATHLETICS/000/GENERAL SUPPLIES/BASKETBALL		190.00	
21474 MARJ BOTTGE		12/10/2018	1		0	28.51	28.51
04 E 500 590 000 321 401				OTHER COMMUNITY SERVICES/COMMUNITY EDUCATION/GENERAL SU		28.51	
21475 Vendor Continued Void		12/10/2018					0.00
21476 CANON FINANCIAL SERVICES		12/10/2018	1	COPIER LEASE	0	68.25	1,364.92
01 E 005 020 290 302 580				SUPERINTENDENT'S OFFICE/CAPITAL OUTLAY/CAPITAL LEASE PR		68.25	
01 E 100 203 290 302 580			10	BRE ELEMENTARY GENERAL ED./CAPITAL OUTLAY/CAPITAL LEASE PRI	0	307.11 307.11	
01 E 100 203 290 302 580			2		0	307.11 307.11	
01 E 350 211 290 302 580			20	MS SECONDARY EDUCATION GENERAL/CAPITAL OUTLAY/CAPITAL LEAS	0	131.62 131.62	
01 E 005 020 290 302 580			21	DISTRICT OFFICE SUPERINTENDENT'S OFFICE/CAPITAL OUTLAY/CAPITAL LEASE PR	0	68.25 68.25	
01 E 300 211 290 302 580			3		0	175.48 175.48	
01 E 350 211 290 302 580			4		0	131.62 131.62	
01 E 300 211 290 302 580			44	HS SECONDARY EDUCATION GENERAL/CAPITAL OUTLAY/CAPITAL LEAS	0	175.48 175.48	
21477 CENEX CREDIT CARD		12/10/2018	1		0	140.82	462.08
01 E 005 810 191 000 442				OPERATIONS AND MAINTENANCE/000/GAS & OIL/OUTSIDE MAINT		140.82	
01 E 005 810 193 000 442			2		0	314.13 314.13	
01 E 300 301 501 830 433			5		0	7.13 7.13	
21478 CHANHASSEN DINNER THEATRES		12/10/2018	1	MAMA MIA	0	325.00	2,148.90
04 E 500 505 000 321 450				COMMUNITY EDUCATION GENERAL/COMMUNITY EDUCATION/MATERIA		325.00	
04 E 500 505 000 321 450			3	HOLIDAY INN	0	1,823.90 1,823.90	
				COMMUNITY EDUCATION GENERAL/COMMUNITY EDUCATION/MATERIA			

Check Nbr	Vendor Name	Check Date	Invoice Number	Invoice Desc	PO Number	Invoice Amount	Check Amount
21479	CHIPPEWA COUNTY AUDITOR	12/10/2018	1	TAX NOTICES	0	213.47	213.47
01 E 005 010 000 000 401				BOARD OF EDUCATION/000/GENERAL SUPPLIES/000		213.47	
21480	CHROMEBOOKPARTS.COM	12/10/2018	20846	POWER ADAPTER	0	19.99	19.99
01 E 005 630 199 000 401				TECHNOLOGY INSTRUCTIONAL/000/GENERAL SUPPLIES/TECHNOLOG		19.99	
21481	Vendor Continued Void	12/10/2018					0.00
21482	Vendor Continued Void	12/10/2018					0.00
21483	Vendor Continued Void	12/10/2018					0.00
21484	CITIZENS ALLIANCE BANK	12/10/2018	1	TEACHERS PAY	0	5.00	3,241.97
01 E 300 220 000 000 430				ENGLISH/000/SUPPLIES/000		5.00	
04 E 500 590 156 321 401			12	amazon	0	31.10	
				OTHER COMMUNITY SERVICES/COMMUNITY EDUCATION/GENERAL SU		31.10	
01 E 005 010 000 000 401			14	AMAZON	0	144.75	
				BOARD OF EDUCATION/000/GENERAL SUPPLIES/000		144.75	
01 E 300 298 236 000 401			15	UPS	0	81.80	
				EXTRACURRICULAR ACTIVITIES/000/GENERAL SUPPLIES/MUSICAL		81.80	
01 E 300 298 236 000 401			16	UPS MUSICAL	0	11.58	
				EXTRACURRICULAR ACTIVITIES/000/GENERAL SUPPLIES/MUSICAL		11.58	
01 E 100 640 000 316 305			17	TIES	0	890.00	
				STAFF DEVELOPMENT/STAFF DEVELOPMENT/PROFESSIONAL FEES/0		890.00	
04 E 500 505 000 321 450			18	BURNSVILLE	0	1,203.00	
				COMMUNITY EDUCATION GENERAL/COMMUNITY EDUCATION/MATERIA		1,203.00	
01 E 005 020 000 000 329			19	UPS QZABS	0	10.72	
				SUPERINTENDENT'S OFFICE/000/POSTAGE AND EXPRESS/000		10.72	
01 E 005 020 000 000 329			20	"	0	10.72	
				SUPERINTENDENT'S OFFICE/000/POSTAGE AND EXPRESS/000		10.72	
01 E 005 630 199 000 401			21	AMAZON	0	12.99	
				TECHNOLOGY INSTRUCTIONAL/000/GENERAL SUPPLIES/TECHNOLOG		12.99	
01 E 300 298 237 000 401			22	YAYA	0	34.01	
				EXTRACURRICULAR ACTIVITIES/000/GENERAL SUPPLIES/ONE ACT		34.01	
01 E 100 640 000 316 401			23	AMAZON	0	24.53	
				STAFF DEVELOPMENT/STAFF DEVELOPMENT/GENERAL SUPPLIES/00		24.53	
01 E 300 298 237 000 401			24	amazon	0	99.48	
				EXTRACURRICULAR ACTIVITIES/000/GENERAL SUPPLIES/ONE ACT		99.48	
01 E 300 298 236 000 401			26	AMAZON	0	4.49	
				EXTRACURRICULAR ACTIVITIES/000/GENERAL SUPPLIES/MUSICAL		4.49	
01 E 100 790 162 000 430			28	COLORFUL IMAGES	0	17.98	
				OTHER PUPIL SUPPORT SERVICES/000/SUPPLIES/ESTATE DONATI		17.98	
01 E 100 203 000 000 430			29	AMAZON	0	274.09	
				ELEMENTARY GENERAL ED./000/SUPPLIES/000		274.09	
01 L 230 33			3	AMAZON	0	17.76	
				GENERAL FUND/DEFERRED REVENUE/BERT RANEY ACTIVITY ACCOU		17.76	
01 E 100 203 000 000 430			30	amazon	0	32.32	
				ELEMENTARY GENERAL ED./000/SUPPLIES/000		32.32	
01 L 230 33			31	AMAZON	0	25.32	
				GENERAL FUND/DEFERRED REVENUE/BERT RANEY ACTIVITY ACCOU		25.32	
01 E 350 211 000 000 401			4	AMAZON	0	73.85	
				SECONDARY EDUCATION GENERAL/000/GENERAL SUPPLIES/000		73.85	

Check Nbr	Vendor Name	Check Date	Invoice Number	Invoice Desc	PO Number	Invoice Amount	Check Amount
01 E 350 294 221 000 369			6	9TH GR LEAGUE FEE BOYS ATHLETICS/000/PARTICIPATION FEES/WRESTLING	0	155.87 155.87	
01 L 230 33			7	AMAZON GENERAL FUND/DEFERRED REVENUE/BERT RANEY ACTIVITY ACCOU	0	14.86 14.86	
01 E 100 640 000 316 401			8	AMAZON STAFF DEVELOPMENT/STAFF DEVELOPMENT/GENERAL SUPPLIES/00	0	10.87 10.87	
01 L 230 33			9	AMAZON GENERAL FUND/DEFERRED REVENUE/BERT RANEY ACTIVITY ACCOU	0	54.88 54.88	
21485 Vendor Continued Void		12/10/2018					0.00
21486 CITY OF GRANITE FALLS		12/10/2018	1	BR WATER OPERATIONS AND MAINTENANCE/000/UTILITY SERVICES/SEWER-W	0	760.72 760.72	13,228.88
01 E 005 810 183 000 330			2	BR ELEC OPERATIONS AND MAINTENANCE/000/UTILITY SERVICES/ELECTRI	0	3,006.65 3,006.65	
01 E 005 810 183 000 330			3	HS WATER-SEWER OPERATIONS AND MAINTENANCE/000/UTILITY SERVICES/SEWER-W	0	818.46 818.46	
01 E 005 810 184 000 330			4	HS ELECTRICITY OPERATIONS AND MAINTENANCE/000/UTILITY SERVICES/ELECTRI	0	8,180.86 8,180.86	
01 E 005 810 184 000 330			5	TRACK OPERATIONS AND MAINTENANCE/000/UTILITY SERVICES/ELECTRI	0	15.89 15.89	
01 E 300 361 000 000 330			6	CARPENTRY VOCATIONAL WEIDAUER/000/UTILITY SERVICES/000	0	15.00 15.00	
01 E 005 810 191 000 330			7	om OPERATIONS AND MAINTENANCE/000/UTILITY SERVICES/OUTSIDE	0	431.30 431.30	
21487 CITY OF GRANITE FALLS		12/10/2018	6107	SRO OTHER PUPIL SUPPORT SERVICES/SAFE SCHOOLS/PROFESSIONAL	0	5,763.18 2,666.67	5,763.18
01 E 005 790 600 342 305				OTHER PUPIL SUPPORT SERVICES/000/PROFESSIONAL FEES/SCHO		3,096.51	
21488 CLARKFIELD AREA CHARTER SCHOOL		12/10/2018	1	DOWN CHRISTMAS LANE RENT	0	40.00	40.00
04 E 500 505 000 321 450				COMMUNITY EDUCATION GENERAL/COMMUNITY EDUCATION/MATERIA		40.00	
21489 SKYLER CORNER		12/10/2018	1	dance explosion	0	196.60	196.60
04 E 500 505 000 321 305				COMMUNITY EDUCATION GENERAL/COMMUNITY EDUCATION/PROFESS		196.60	
21490 DAVE'S ELECTRIC CO		12/10/2018	149164	water	0	7.25	664.57
02 E 005 770 000 701 490				FOOD SERVICES/SCHOOL LUNCH/FOOD/000		7.25	
01 E 005 810 000 000 410			149257	2 shafts	0	657.32	
				OPERATIONS AND MAINTENANCE/000/CUST/REPAIR SUPPLIES/000		657.32	
21491 DAWSON-BOYD SCHOOL #378		12/10/2018	1	extended school year July-Aug 2018	0	528.84	871.32
01 E 100 401 000 740 396				SPEECH/STATE FUNDED SPECIAL ED/DUE TO SCHOOLS STAFF/000		528.84	
01 E 300 218 000 388 369			10	KNOWLEDGE BOWL GIFTED & TALENTED/TAG (06)/PARTICIPATION FEES/000	0	40.00 40.00	
01 E 100 401 000 740 366			2	MILEAGE SPEECH/STATE FUNDED SPECIAL ED/TRAVEL-SCHOOL BUSINESS/0	0	302.48 302.48	
21492 DEAN FOODS NORTH CENTRAL, INC.		12/10/2018	1		0	1,677.03	2,582.80
02 E 005 770 000 701 495				FOOD SERVICES/SCHOOL LUNCH/MILK/000		1,677.03	
02 E 005 770 000 703 495			22	kdgtn	0	136.34	
				FOOD SERVICES/SPECIAL MILK/MILK/000		136.34	
02 E 005 770 000 705 495			333		0	472.77	
				FOOD SERVICES/BREAKFAST/MILK/000		472.77	

Check Nbr	Vendor Name	Check Date	Invoice Number	Invoice Desc	PO Number	Invoice Amount	Check Amount
02 E	005 770 104 707 495		444	FOOD SERVICES/ALA CARTE/OTHER/MILK/FOOD ORDERED ONLY/CA	0	296.66	296.66
21493	DEMCO, INC.	12/10/2018	6495188	EDUCATIONAL MEDIA/LIBRARY/000/GENERAL SUPPLIES/000	0	105.10	105.10
01 E	300 620 000 000 401			EDUCATIONAL MEDIA/LIBRARY/000/GENERAL SUPPLIES/000		52.55	
01 E	350 620 000 000 401			EDUCATIONAL MEDIA/LIBRARY/000/GENERAL SUPPLIES/000		52.55	
21494	DIRTY DOG PRODUCTIONS	12/10/2018	5093	DANCE MUSIC	0	36.81	36.81
01 E	300 296 228 000 401			GIRLS ATHLETICS/000/GENERAL SUPPLIES/DANCELINE		36.81	
21495	EMC INSURANCE COMPANIES	12/10/2018	1	INSURANCE	0	9,076.39	9,076.39
01 E	005 940 000 000 340			PROPERTY AND OTHER INSURANCE/000/INSURANCE/000		9,076.39	
21496	AMBER E ENGESSER	12/10/2018	1	SUPPLIES FOR PM	0	64.97	64.97
01 E	300 790 388 000 899			OTHER PUPIL SUPPORT SERVICES/000/MISCELLANEOUS EXPENSE/		64.97	
21497	TIM EPEMA	12/10/2018	1	WRESTLING	0	175.00	175.00
01 E	300 294 221 000 401			BOYS ATHLETICS/000/GENERAL SUPPLIES/WRESTLING		175.00	
21498	FARMERS UNION OIL CO.	12/10/2018	1	OPERATIONS AND MAINTENANCE/000/GAS & OIL/000	0	7.13	7.13
01 E	005 810 000 000 442					7.13	
21499	GRAND AFFAIR	12/10/2018	4207-47	PLANTER	0	65.00	65.00
01 L	230 33			GENERAL FUND/DEFERRED REVENUE/BERT RANEY ACTIVITY ACCOU		65.00	
21500	GRANITE FALLS AUTO PARTS	12/10/2018	1	OPERATIONS AND MAINTENANCE/000/CUST/REPAIR SUPPLIES/OUT	0	134.11	211.55
01 E	005 810 191 000 410					134.11	
01 E	005 810 193 000 401		3	OPERATIONS AND MAINTENANCE/000/GENERAL SUPPLIES/CAR EXP	0	77.44	77.44
21501	GRANITE FALLS OFFICIALS ASSOC.	12/10/2018	1	BOYS ATHLETICS/000/PROFESSIONAL FEES/BASKETBALL	0	200.00	200.00
01 E	350 294 213 000 305					200.00	
21502	GRAPHIC EDGE	12/10/2018	1275968	DANCE	0	182.80	182.80
04 E	500 505 000 321 450			COMMUNITY EDUCATION GENERAL/COMMUNITY EDUCATION/MATERIA		182.80	
21503	GREAT PLAINS NATURAL GAS CO	12/10/2018	1	BRE	0	2,772.01	9,394.15
01 E	005 810 000 000 440			OPERATIONS AND MAINTENANCE/000/FUEL FOR BUILDINGS/000		2,772.01	
01 E	005 810 000 000 440		2	OPERATIONS AND MAINTENANCE/000/FUEL FOR BUILDINGS/000	0	6,517.36	6,517.36
01 E	005 810 191 000 440		3	OPERATIONS AND MAINTENANCE/000/FUEL FOR BUILDINGS/OUTSI	0	104.78	104.78
21504	HANSEN, LISA	12/10/2018	1	CELL PHONE	0	120.00	243.36
01 E	100 050 000 000 320			PRINCIPAL'S OFFICE/000/COMMUNICATIONAL SERVICES/000		120.00	
01 E	100 050 000 000 899		10	PRINCIPAL'S OFFICE/000/MISCELLANEOUS EXPENSE/000	0	51.15	51.15
01 E	100 640 000 316 367		11	STAFF DEVELOPMENT/STAFF DEVELOPMENT/TRAVEL-PROFESS DEVE	0	40.05	40.05
01 E	100 203 362 000 899		111	ELEMENTARY GENERAL ED./000/MISCELLANEOUS EXPENSE/HEALTH	0	28.91	28.91
01 L	230 33		2	GENERAL FUND/DEFERRED REVENUE/BERT RANEY ACTIVITY ACCOU	0	3.25	3.25
21505	SCOTT HANSEN	12/10/2018	1	ART DAY	0	84.00	84.00
01 E	005 790 000 313 430			OTHER PUPIL SUPPORT SERVICES/ACHIEVEMENT & INTEGRATION		84.00	
21506	HDL	12/10/2018	60031	VOCATIONAL WEIDAUER/VOCATIONAL PROGRAMS/INDIVIDUAL INST	0	144.50	144.50
01 E	300 361 000 830 433			INDUSTRIAL EDUCATION/000/INDIVIDUAL INST SUPPLIES/000		108.39	
01 E	350 255 000 000 433					36.11	
21507	HEARTLAND AUDIO INC.	12/10/2018	2050	elem pa panel repair	0	1,556.40	1,556.40

Check Nbr	Vendor Name	Check Date	Invoice Number	Invoice Desc	PO Number	Invoice Amount	Check Amount
01 E 005 810 000 000 350				OPERATIONS AND MAINTENANCE/000/REPAIRS AND MAINTENANCE		1,556.40	
21508 HENDERSON, ROBIN		12/10/2018	1		0	21.33	86.30
01 E 005 790 000 313 430				OTHER PUPIL SUPPORT SERVICES/ACHIEVEMENT & INTEGRATION		21.33	
			10		0	64.97	
01 E 005 605 000 313 366				GENERAL INSTRUCTIONAL SUPPORT/ACHIEVEMENT & INTEGRATION		64.97	
21509 HILLYARD/HUTCHINSON		12/10/2018	603230493		0	2,099.36	2,557.84
01 E 005 810 000 000 410				OPERATIONS AND MAINTENANCE/000/CUST/REPAIR SUPPLIES/000		2,099.36	
			700356880		0	490.68	
01 E 005 810 000 000 410				OPERATIONS AND MAINTENANCE/000/CUST/REPAIR SUPPLIES/000		490.68	
			700356880-	returning	0	-32.20	
01 E 005 810 000 000 410				OPERATIONS AND MAINTENANCE/000/CUST/REPAIR SUPPLIES/000		-32.20	
21510 HOBY		12/10/2018	149131	registration	0	225.00	1,075.00
01 L 230 44				GENERAL FUND/DEFERRED REVENUE/MS/HS KIWANIS		225.00	
			149140	registration	0	425.00	
01 L 230 44				GENERAL FUND/DEFERRED REVENUE/MS/HS KIWANIS		425.00	
			152196	registration	0	425.00	
01 L 230 44				GENERAL FUND/DEFERRED REVENUE/MS/HS KIWANIS		425.00	
21511 HOLDAHL		12/10/2018	PL01116991-001		0	22.98	22.98
01 E 300 361 000 830 433				VOCATIONAL WEIDAUER/VOCATIONAL PROGRAMS/INDIVIDUAL INST		22.98	
21512 Vendor Continued Void		12/10/2018					0.00
21513 INNOVATIVE OFFICE SOLUTIONS LL		12/10/2018	01		0	7.79	534.66
01 E 005 020 000 000 401				SUPERINTENDENT'S OFFICE/000/GENERAL SUPPLIES/000		7.79	
			2279012		0	43.41	
01 E 100 203 000 000 430				ELEMENTARY GENERAL ED./000/SUPPLIES/000		43.41	
			2288775		0	76.99	
01 E 300 211 000 000 433				SECONDARY EDUCATION GENERAL/000/INDIVIDUAL INST SUPPLIE		76.99	
			2288775-		0	76.98	
01 E 350 211 000 000 433				SECONDARY EDUCATION GENERAL/000/INDIVIDUAL INST SUPPLIE		76.98	
			2288829		0	34.56	
01 E 005 020 000 000 401				SUPERINTENDENT'S OFFICE/000/GENERAL SUPPLIES/000		34.56	
			2290495		0	21.88	
01 E 005 020 000 000 401				SUPERINTENDENT'S OFFICE/000/GENERAL SUPPLIES/000		21.88	
			2296262		0	101.92	
01 E 100 203 000 000 430				ELEMENTARY GENERAL ED./000/SUPPLIES/000		101.92	
			2313564		0	37.12	
01 E 100 216 000 401 401				TITLE I - PART A/TITLE I/GENERAL SUPPLIES/000		37.12	
			2313564-		0	46.02	
01 E 100 203 000 000 430				ELEMENTARY GENERAL ED./000/SUPPLIES/000		46.02	
			2313986		0	87.99	
01 E 100 203 000 000 430				ELEMENTARY GENERAL ED./000/SUPPLIES/000		87.99	
21514 ISCORP		12/10/2018	696171	SKYWARD FINANCE	0	195.50	195.50
01 E 005 110 000 000 350				ACCOUNTING OFFICE/000/REPAIRS AND MAINTENANCE SVCS/000		195.50	
21515 TAMARA ISFELD		12/10/2018	1	one act play	0	74.81	74.81
01 E 300 298 237 000 401				EXTRACURRICULAR ACTIVITIES/000/GENERAL SUPPLIES/ONE ACT		74.81	
21516 JEFFREY IVERSON		12/10/2018	1	ACDA CONVENTION	0	296.39	296.39
01 E 300 640 000 316 367				STAFF DEVELOPMENT/STAFF DEVELOPMENT/TRAVEL-PROFESS DEVE		296.39	
21517 JIMMY'S PIZZA		12/10/2018	1	DIST ADV COUNCIL	0	44.35	44.35

Check Nbr	Vendor Name	Check Date	Invoice Number	Invoice Desc	PO Number	Invoice Amount	Check Amount
				MTG 11-27-18			
01 E 005 010 000 000 899				BOARD OF EDUCATION/000/MISCELLANEOUS EXPENSE/000		44.35	
21518	KILOWATT COMMUNITY CENTER	12/10/2018	1	testing	0	190.00	1,185.00
01 E 300 211 000 000 370				SECONDARY EDUCATION GENERAL/000/RENTALS AND LEASES/000		190.00	
			2	sr center	0	65.00	
04 E 500 590 000 321 370				OTHER COMMUNITY SERVICES/COMMUNITY EDUCATION/RENTALS AN		65.00	
			3	GBB	0	400.00	
01 E 300 292 000 000 370				BOYS/GIRLS ATHLETICS/000/RENTALS AND LEASES/000		400.00	
			4	MS FUNDAY	0	430.00	
01 E 350 211 000 000 370				SECONDARY EDUCATION GENERAL/000/RENTALS AND LEASES/000		430.00	
			5	PE	0	100.00	
01 E 300 211 000 000 370				SECONDARY EDUCATION GENERAL/000/RENTALS AND LEASES/000		100.00	
21519	LEARNING A-Z	12/10/2018	2048534	online renewal	0	219.90	219.90
01 E 100 216 000 401 405				TITLE I - PART A/TITLE I/SOFTWARE ETC/000		219.90	
21520	Vendor Continued Void	12/10/2018					0.00
21521	LOFFLER	12/10/2018	2958470		0	1,000.00	3,427.97
01 E 005 020 290 302 580				SUPERINTENDENT'S OFFICE/CAPITAL OUTLAY/CAPITAL LEASE PR		250.00	
01 E 300 211 290 302 580				SECONDARY EDUCATION GENERAL/CAPITAL OUTLAY/CAPITAL LEAS		500.00	
01 E 350 211 290 302 580				SECONDARY EDUCATION GENERAL/CAPITAL OUTLAY/CAPITAL LEAS		250.00	
			2958471		0	750.00	
01 E 100 203 290 302 580				ELEMENTARY GENERAL ED./CAPITAL OUTLAY/CAPITAL LEASE PRI		750.00	
			2969392-	COPIERS/PRINTERS	0	140.45	
01 E 100 203 290 000 350				ELEMENTARY GENERAL ED./000/REPAIRS AND MAINTENANCE SVCS		10.14	
01 E 300 211 290 000 350				SECONDARY EDUCATION GENERAL/000/REPAIRS AND MAINTENANCE		9.77	
01 E 300 257 290 000 430				COMPUTER TECHNOLOGY/000/SUPPLIES/FOR COPIERS		102.97	
02 E 005 770 290 000 401				FOOD SERVICES/000/GENERAL SUPPLIES/FOR COPIERS		17.57	
			2977355144	BRE BOOK ROOM	0	192.57	
01 E 100 203 290 000 350				ELEMENTARY GENERAL ED./000/REPAIRS AND MAINTENANCE SVCS		192.57	
			2977355145	MS HS LIBRARY	0	299.43	
01 E 300 211 290 000 350				SECONDARY EDUCATION GENERAL/000/REPAIRS AND MAINTENANCE		299.43	
			2977355148	DO	0	84.89	
01 E 005 020 290 000 350				SUPERINTENDENT'S OFFICE/000/REPAIRS AND MAINTENANCE SVC		84.89	
			2977355149	MS/HS OFFICE	0	288.90	
01 E 300 211 290 000 350				SECONDARY EDUCATION GENERAL/000/REPAIRS AND MAINTENANCE		288.90	
			2977355150	MS/HS SPED ROOM	0	127.55	
01 E 300 211 290 000 350				SECONDARY EDUCATION GENERAL/000/REPAIRS AND MAINTENANCE		127.55	
			2977355156	BRE OFFICE	0	544.18	
01 E 100 203 290 000 350				ELEMENTARY GENERAL ED./000/REPAIRS AND MAINTENANCE SVCS		544.18	
21522	KEISHA LOUWAGIE	12/10/2018	1		0	35.93	35.93
04 E 500 580 000 325 430				EARLY CHILDHOOD AND FAM ED/EARLY CHILDHOOD AND FAMILY E		35.93	
21523	RYAN C LUFT	12/10/2018	1	CELL PHONE	0	120.00	474.12
01 E 300 050 000 000 320				PRINCIPAL'S OFFICE/000/COMMUNICATIONAL SERVICES/000		120.00	
			2	CASEY'S	0	21.35	
01 L 230 43				GENERAL FUND/DEFERRED REVENUE/TARGET \$ MS/HS		21.35	
			3		0	332.77	
01 E 300 640 000 316 367				STAFF DEVELOPMENT/STAFF DEVELOPMENT/TRAVEL-PROFESS DEVE		332.77	
21524	MACKIN ED RESOURCES	12/10/2018	1		0	98.62	202.50
01 E 100 790 162 000 530				OTHER PUPIL SUPPORT SERVICES/000/EQUIPMENT PURCHASES/ES		98.62	
			558484		0	47.98	

Check Nbr	Vendor Name	Check Date	Invoice Number	Invoice Desc	PO Number	Invoice Amount	Check Amount
01 E 100 790 162 000 530				OTHER PUPIL SUPPORT SERVICES/000/EQUIPMENT PURCHASES/ES		47.98	
			559589		0	55.90	
01 E 100 790 162 000 530				OTHER PUPIL SUPPORT SERVICES/000/EQUIPMENT PURCHASES/ES		55.90	
21525 MASSP		12/10/2018	1		0	375.00	375.00
01 E 300 640 000 316 367				STAFF DEVELOPMENT/STAFF DEVELOPMENT/TRAVEL-PROFESS DEVE		375.00	
21526 MCEA		12/10/2018	1	membership renewal	0	538.00	538.00
04 E 500 505 000 321 820				COMMUNITY EDUCATION GENERAL/COMMUNITY EDUCATION/DUES &		538.00	
21527 MINNESOTA ELEVATOR TOTAL ELEVA		12/10/2018	778727	inspection	0	360.13	360.13
01 E 005 865 000 347 305				LONG TERM FACILITY MAINT./PHYSICAL HAZARD CONTROL/PROFE		360.13	
21528 MN FEED DISTRIBUTORS		12/10/2018	223172	salt	0	264.60	264.60
01 E 005 810 191 000 410				OPERATIONS AND MAINTENANCE/000/CUST/REPAIR SUPPLIES/OUT		264.60	
21529 MN RIVER VALLEY EDUCATION DIST		12/10/2018	1	comm ed	0	125.00	14,429.27
01 E 005 105 129 310 391				ADMINISTRATIVE SUPPORT/COOPERATIVE/MN SCH DIST - REIMBU		125.00	
			2	board	0	5.56	
01 E 005 105 129 310 391				ADMINISTRATIVE SUPPORT/COOPERATIVE/MN SCH DIST - REIMBU		5.56	
			3		0	5,299.66	
01 E 005 640 129 316 391				STAFF DEVELOPMENT/STAFF DEVELOPMENT/MN SCH DIST - REIMB		5,299.66	
			4	mrved	0	2,158.18	
01 E 005 105 129 310 391				ADMINISTRATIVE SUPPORT/COOPERATIVE/MN SCH DIST - REIMBU		2,158.18	
			5	alc main.	0	2,850.76	
01 E 610 211 129 310 370				SECONDARY EDUCATION GENERAL/COOPERATIVE/RENTALS AND LEA		2,850.76	
			7	tech -fiber lease	0	3,990.11	
01 E 005 630 129 310 391				TECHNOLOGY INSTRUCTIONAL/COOPERATIVE/MN SCH DIST - REIM		3,990.11	
21530 MINNESOTA SCHOOL BOARD ASSOC.		12/10/2018	2118519V121	PHASE 1 WKSHP	0	440.00	440.00
01 E 005 010 000 000 367				BOARD OF EDUCATION/000/TRAVEL-PROFESS DEVELOPMENT/000		440.00	
21531 MOBYMAX		12/10/2018	132674		0	49.00	49.00
01 E 100 216 000 401 405				TITLE I - PART A/TITLE I/SOFTWARE ETC/000		49.00	
21532 MUSIC STREET		12/10/2018	77842		0	3.40	114.35
01 E 300 258 233 000 450				MUSIC/000/MATERIALS PURCH FOR RESALE/INSTRUMENTAL MUSIC		3.40	
			78237		0	7.95	
01 E 300 258 233 000 430				MUSIC/000/SUPPLIES/INSTRUMENTAL MUSIC		7.95	
			78239		0	39.00	
01 E 300 258 233 000 450				MUSIC/000/MATERIALS PURCH FOR RESALE/INSTRUMENTAL MUSIC		39.00	
			78240		0	40.00	
01 E 300 258 233 000 450				MUSIC/000/MATERIALS PURCH FOR RESALE/INSTRUMENTAL MUSIC		40.00	
			78421		0	24.00	
01 E 300 258 233 000 350				MUSIC/000/REPAIRS AND MAINTENANCE SVCS/INSTRUMENTAL MUS		24.00	
21533 MVCC		12/10/2018	december	sped contract	0	152,241.92	152,241.92
01 E 005 420 978 740 396				SPECIAL EDUCATIONAL GENERAL/STATE FUNDED SPECIAL ED/DUE		152,241.92	
21534 OLSON SANITATION INC.		12/10/2018	2097		0	877.50	877.50
01 E 005 810 000 000 330				OPERATIONS AND MAINTENANCE/000/UTILITY SERVICES/000		877.50	
21535 PAN-O-GOLD BAKING CO.		12/10/2018	1		0	486.35	486.35
02 E 005 770 000 701 490				FOOD SERVICES/SCHOOL LUNCH/FOOD/000		486.35	
21536 LOUANN R PASLAWSKI		12/10/2018	1	crates	0	30.23	30.23
01 E 100 203 000 000 430				ELEMENTARY GENERAL ED./000/SUPPLIES/000		30.23	
21537 J.W. PEPPER & SON INC.		12/10/2018	11E17797		0	159.44	167.48

Check Nbr	Vendor Name	Check Date	Invoice Number	Invoice Desc	PO Number	Invoice Amount	Check Amount
01 E 300 258 233 000 430				MUSIC/000/SUPPLIES/INSTRUMENTAL MUSIC		159.44	
			11E19739		0	8.04	
01 E 300 258 231 000 430				MUSIC/000/SUPPLIES/VOCAL MUSIC		8.04	
21538	PLUMBING & HEATING OF WILLMAR	12/10/2018	25225	water heater repair- required by state	0	1,052.86	1,052.86
01 E 005 810 000 000 350				OPERATIONS AND MAINTENANCE/000/REPAIRS AND MAINTENANCE		1,052.86	
21539	PRAIRIE'S EDGE CASINO RESORT	12/10/2018	1	youth frontier day	0	120.00	120.00
01 E 005 790 000 313 430				OTHER PUPIL SUPPORT SERVICES/ACHIEVEMENT & INTEGRATION		120.00	
21540	RAUTH, CHIP	12/10/2018	105668	dance	0	75.00	75.00
01 E 300 296 228 000 401				GIRLS ATHLETICS/000/GENERAL SUPPLIES/DANCELINE		75.00	
21541	REINHART INST FOODS	12/10/2018	1		0	15,646.76	15,633.97
02 E 005 770 000 701 401				FOOD SERVICES/SCHOOL LUNCH/GENERAL SUPPLIES/000		1,097.33	
02 E 005 770 000 701 490				FOOD SERVICES/SCHOOL LUNCH/FOOD/000		10,941.26	
02 E 005 770 000 705 490				FOOD SERVICES/BREAKFAST/FOOD/000		2,151.28	
02 E 005 770 104 707 490				FOOD SERVICES/ALA CARTE/OTHER/FOOD/FOOD ORDERED ONLY/CA		1,456.89	
			111	adj.	0	-12.79	
02 E 005 770 000 701 490				FOOD SERVICES/SCHOOL LUNCH/FOOD/000		-12.79	
21542	RILEY BUS SERVICE, INC.	12/10/2018	1	chanhassen	0	825.00	1,700.00
04 E 500 505 000 321 450				COMMUNITY EDUCATION GENERAL/COMMUNITY EDUCATION/MATERIA		825.00	
			2	church basement ladies	0	875.00	
04 E 500 505 000 321 450				COMMUNITY EDUCATION GENERAL/COMMUNITY EDUCATION/MATERIA		875.00	
21543	ROCKLER	12/10/2018	5661749		0	16.78	91.55
01 E 350 255 000 000 433				INDUSTRIAL EDUCATION/000/INDIVIDUAL INST SUPPLIES/000		16.78	
			5661749-		0	16.79	
01 E 300 361 000 830 433				VOCATIONAL WEIDAUER/VOCATIONAL PROGRAMS/INDIVIDUAL INST		16.79	
			5672093		0	28.99	
01 E 300 361 000 830 433				VOCATIONAL WEIDAUER/VOCATIONAL PROGRAMS/INDIVIDUAL INST		28.99	
			5672093-		0	28.99	
01 E 350 255 000 000 430				INDUSTRIAL EDUCATION/000/SUPPLIES/000		28.99	
21544	RTS	12/10/2018	1		0	141.35	141.35
01 E 005 810 000 000 320				OPERATIONS AND MAINTENANCE/000/COMMUNICATIONAL SERVICES		141.35	
21545	SAWMILL	12/10/2018	1		0	5.98	231.12
01 E 300 361 000 830 433				VOCATIONAL WEIDAUER/VOCATIONAL PROGRAMS/INDIVIDUAL INST		5.98	
			2		0	194.61	
01 E 300 301 501 830 433				AG EDUCATION (VOCATIONAL)/VOCATIONAL PROGRAMS/INDIVIDUA		194.61	
			3	STEAM DAY	0	30.53	
01 E 005 790 000 313 430				OTHER PUPIL SUPPORT SERVICES/ACHIEVEMENT & INTEGRATION		30.53	
21546	RICHARD A SCHNEIDER	12/10/2018	1	CELL PHONE REIMB.	0	120.00	120.00
01 E 005 020 000 000 320				SUPERINTENDENT'S OFFICE/000/COMMUNICATIONAL SERVICES/00		120.00	
21547	KATHRYN SCHRUPP	12/10/2018	1	SHOES	0	40.83	40.83
02 E 005 770 126 701 401				FOOD SERVICES/SCHOOL LUNCH/GENERAL SUPPLIES/DRESS PER C		40.83	
21548	SOUTHWEST MN STATE UNIVERSITY	12/10/2018	206399	college now	0	16,000.00	16,000.00
01 E 300 200 000 000 394				PSEO/ONLINE/000/PAYMENTS TO OTHER AGENCIES/000		16,000.00	
21549	EMILEE SPEH	12/10/2018	1	dance explosion	0	393.00	393.00
04 E 500 505 000 321 305				COMMUNITY EDUCATION GENERAL/COMMUNITY EDUCATION/PROFESS		393.00	
21550	STAAB, FRANCIS	12/10/2018	1	CELL PHONE	0	120.00	120.00

Check Nbr	Vendor Name	Check Date	Invoice Number	Invoice Desc	PO Number	Invoice Amount	Check Amount
01 E 005 810 810 000 320				OPERATIONS AND MAINTENANCE/000/COMMUNICATIONAL SERVICES		120.00	
21551	JACOB B SUTER	12/10/2018	1	science supplies	0	21.94	21.94
01 E 300 260 000 000 430				NATURAL SCIENCES/000/SUPPLIES/000		21.94	
21552	SW/WC SERVICE COOP - MARSHALL	12/10/2018	59300		0	121.50	7,281.56
01 E 300 399 000 000 530				VOCATIONAL GENERAL/000/EQUIPMENT PURCHASES/000		121.50	
01 E 100 218 000 388 369			59331	young artist	0	122.00	
				GIFTED & TALENTED/TAG (06)/PARTICIPATION FEES/000		122.00	
01 E 005 630 000 000 305			59477	tech support	0	6,334.25	
				TECHNOLOGY INSTRUCTIONAL/000/PROFESSIONAL FEES/000		6,334.25	
01 E 005 108 000 000 305			59477-	tech support	0	703.81	
				TECHNOLOGY ADMINISTRATIVE/000/PROFESSIONAL FEES/000		703.81	
21553	TEACHING STRATEGIES	12/10/2018	538691	assessment	0	514.65	514.65
04 E 500 582 000 344 430				portfolio			
				LEARNING READINESS/LEARNING READINESS/SUPPLIES/000		514.65	
21554	ASHLEY TENSEN	12/10/2018	1	chromebook	0	150.00	150.00
01 E 100 640 000 316 305				training			
				STAFF DEVELOPMENT/STAFF DEVELOPMENT/PROFESSIONAL FEES/0		150.00	
21555	TARA L TONGEN	12/10/2018	1	snacks	0	46.96	46.96
04 E 500 582 000 344 490				LEARNING READINESS/LEARNING READINESS/FOOD/000		46.96	
21556	Vendor Continued Void	12/10/2018					0.00
21557	TRUE VALUE-GF/MONTE	12/10/2018	2	autos	0	28.96	459.19
01 E 005 810 193 000 401				OPERATIONS AND MAINTENANCE/000/GENERAL SUPPLIES/CAR EXP		28.96	
01 E 005 810 193 000 401			3	om	0	54.41	
				OPERATIONS AND MAINTENANCE/000/GENERAL SUPPLIES/CAR EXP		54.41	
01 E 300 298 236 000 401			4	musical	0	31.15	
				EXTRACURRICULAR ACTIVITIES/000/GENERAL SUPPLIES/MUSICAL		31.15	
04 E 500 590 000 321 401			406943	sr center	0	93.00	
				OTHER COMMUNITY SERVICES/COMMUNITY EDUCATION/GENERAL SU		93.00	
01 E 300 301 501 830 433			5	ag	0	88.86	
				AG EDUCATION (VOCATIONAL)/VOCATIONAL PROGRAMS/INDIVIDUA		88.86	
01 E 005 810 000 000 410			6	im	0	111.69	
				OPERATIONS AND MAINTENANCE/000/CUST/REPAIR SUPPLIES/000		111.69	
01 E 005 790 000 313 430			7	steam day	0	51.12	
				OTHER PUPIL SUPPORT SERVICES/ACHIEVEMENT & INTEGRATION		51.12	
21558	XCEL ENERGY	12/10/2018	1		0	8.78	33.07
01 E 005 810 184 000 330				OPERATIONS AND MAINTENANCE/000/UTILITY SERVICES/ELECTRI		8.78	
01 E 005 810 184 000 330			2		0	24.29	
				OPERATIONS AND MAINTENANCE/000/UTILITY SERVICES/ELECTRI		24.29	
21559	Vendor Continued Void	12/10/2018					0.00
21560	Vendor Continued Void	12/10/2018					0.00
21561	Vendor Continued Void	12/10/2018					0.00
21562	YME SCHOOLS-ADM	12/10/2018	1	INTEREST	0	-2.45	1,921.50
01 R 005 000 000 000 092				DISTRICT WIDE/000/INVESTMENT EARNINGS/000		-2.45	
01 L 230 43			7640	casey's	0	59.97	
				GENERAL FUND/DEFERRED REVENUE/TARGET \$ MS/HS		59.97	
01 L 230 33			7641	CASEY'S	0	19.98	
				GENERAL FUND/DEFERRED REVENUE/BERT RANEY ACTIVITY ACCOU		19.98	
01 E 300 298 236 000 188			7642	SUE TOLLEFSON	0	40.00	
				EXTRACURRICULAR ACTIVITIES/000/NON CERT EVENT WORKERS/M		40.00	

Check Nbr	Vendor Name	Check Date	Invoice Number	Invoice Desc	PO Number	Invoice Amount	Check Amount
01 E 300 298 236 000 188			7643	AMBER KNAPPER EXTRACURRICULAR ACTIVITIES/000/NON CERT EVENT WORKERS/M	0	20.00	20.00
04 E 500 505 000 321 450			7644	CINDY ANDERSON COMMUNITY EDUCATION GENERAL/COMMUNITY EDUCATION/MATERIA	0	150.00	150.00
04 E 500 505 000 321 450			7645	PRAIRIE RUNNERS COMMUNITY EDUCATION GENERAL/COMMUNITY EDUCATION/MATERIA	0	200.00	200.00
04 E 500 505 000 321 450			7646	BORCHS COMMUNITY EDUCATION GENERAL/COMMUNITY EDUCATION/MATERIA	0	68.00	68.00
01 E 300 294 221 000 369			7647	BBE HS BOYS ATHLETICS/000/PARTICIPATION FEES/WRESTLING	0	250.00	200.00
01 E 350 294 221 000 369				BOYS ATHLETICS/000/PARTICIPATION FEES/WRESTLING			50.00
01 E 300 294 221 000 369			7649	REBECCA MILLER BOYS ATHLETICS/000/PARTICIPATION FEES/WRESTLING	0	231.00	231.00
01 E 300 296 213 000 305			7650	KEVIN DEBOER GIRLS ATHLETICS/000/PROFESSIONAL FEES/BASKETBALL	0	90.00	90.00
01 E 300 296 213 000 305			7651	STEVE VERKINDEREN GIRLS ATHLETICS/000/PROFESSIONAL FEES/BASKETBALL	0	90.00	90.00
01 E 300 296 213 000 305			7652	SCOTT BEEKMAN GIRLS ATHLETICS/000/PROFESSIONAL FEES/BASKETBALL	0	90.00	90.00
01 E 300 296 213 000 305			7653	JEFF GLADIS GIRLS ATHLETICS/000/PROFESSIONAL FEES/BASKETBALL	0	90.00	90.00
01 E 300 296 213 000 305			7654	DIANE KOCKELMAN GIRLS ATHLETICS/000/PROFESSIONAL FEES/BASKETBALL	0	90.00	90.00
01 E 300 296 213 000 305			7655	CINDY NORLAND GIRLS ATHLETICS/000/PROFESSIONAL FEES/BASKETBALL	0	90.00	90.00
01 E 300 294 213 000 305			7656	JAMES REED BOYS ATHLETICS/000/PROFESSIONAL FEES/BASKETBALL	0	90.00	90.00
01 E 300 294 213 000 305			7657	LEE WEBKOWSKI BOYS ATHLETICS/000/PROFESSIONAL FEES/BASKETBALL	0	90.00	90.00
01 E 300 294 213 000 305			7658	BRENT WHERRY BOYS ATHLETICS/000/PROFESSIONAL FEES/BASKETBALL	0	90.00	90.00
01 E 300 640 000 316 367			7659	MN BOARD OF SCHOOL ADMIN. STAFF DEVELOPMENT/STAFF DEVELOPMENT/TRAVEL-PROFESS DEVE	0	75.00	37.50
01 E 350 640 000 316 367				STAFF DEVELOPMENT/STAFF DEVELOPMENT/TRAVEL-PROFESS DEVE			37.50
21563 YME-FOOD SERVICE		12/10/2018	11	preschool snacks	0	1,040.65	1,040.65
04 E 500 582 000 344 490				LEARNING READINESS/LEARNING READINESS/FOOD/000			1,040.65

107 Computer Check(s) For a Total of 369,920.49

	0	Manual	Checks For a Total of	0.00
	0	Wire Transfer	Checks For a Total of	0.00
	0	ACH	Checks For a Total of	0.00
	107	Computer	Checks For a Total of	369,920.49
Total For	107	Manual, Wire Tran, ACH & Computer	Checks	369,920.49
Less	0	Voided	Checks For a Total of	0.00
			Net Amount	369,920.49

FUND SUMMARY

Fund	Description	Balance Sheet	Revenue	Expense	Total
01	GENERAL FUND	3,099.78	-2.45	338,875.77	341,973.10
02	FOOD SERVICE	0.00	0.00	18,956.19	18,956.19
04	COMMUNITY SERVICE	0.00	0.00	8,991.20	8,991.20

Yellow Medicine East #2190

**Board Report
December 10, 2018**

Ending
12/7/2018

2018-19 By Fund	Original 2018-19	Year to Date Expenditures	Budget Balance	Percent Expended	For Comparison	
					2017-18 YTD Exp.	2017-18 YTD %
General	10,003,749	3,671,420	6,332,329	36.70%	3,868,395	38.25%
Food Service	432,671	129,423	303,248	29.91%	141,198	31.49%
Community Service	373,255	113,750	259,505	30.48%	118,103	27.40%
Debt Red.	1,167,370	173,260	994,110	14.84%	192,951	16.19%
OPEB Trust	168,008	47,764	120,244	28.43%	50,268	22.27%
OPEB Debt Service	191,458	28,204	163,254	14.73%	31,104	16.17%
Total	12,336,511	4,163,821	8,172,690	33.75%	4,402,018	34.93%

Year to date amounts include current month's accounts payables plus previous month's payroll.

Salaries % expended to date (approximately)

Contracted July-June Supt/Finance/Maint/Comm Ed	41.67%
Contracted August-July Principals/Fd Svc Director	33.33%
Contracted Sept-August Teachers/Nurse	25.00%
12 Month Non-certified Secretaries	41.67%
12 Month Non-certified Custodians	36.00%
9 Month non-Certified Assistants/Cooks	26.00%

Liquid Asset Fund

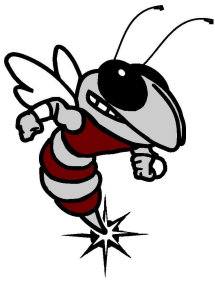
Month End Cash Invested \$3,486,794.64 General Closing Market Value
11/30/2018

Electronic Fund Transfers/ACH Transfers/LAF Checks

		From	To
11-6&7/18	\$ 432.43	rSchool Fees	LAF rSchool
11/15/2018	\$ 300,000.00	Board Accounts Payable	LAF Citizen's Alliance Bank
11/21/2018	\$ -	Payroll (F&M Bank)	LAF F&M Bank
11/21/2018	\$ 290,000.00	Payroll (Direct Deposit)	LAF Granite Falls Bank
11/21/2018	\$ -	Board Accounts Payable	LAF Citizen's Alliance Bank
	\$ -	Sales Tax	LAF Mn. Dept. of Revenue
	\$ -	PERA Trust (OPEB)	OPEB Trust LAF

Trust Fund (PERA) OPEB \$456,280.75 Ending **12/7/2018**

Enrollment Trends	17-18	16-17	15-16	14-15	13-14
September	732	739	768	810	803
October	726	728	765	800	801
November	723	725	757	795	796
December	717	727	754	794	796
January					
February					
March					
April					
May					
June					



YELLOW MEDICINE EAST – ISD 2190

Serving Clarkfield, Echo, Granite Falls, Hanley Falls, Hazel Run, Upper Sioux Community

Rich Schneider, Superintendent
450 9th Avenue – Granite Falls, MN 56241
Phone: 320-564-4081 – Fax: 320-564-4781

Board Notes

December 10, 2018

MSEA Agreement: We had some misinterpretation of the contract. They assumed that an increase in benefits was for each year and we calculated it for an increase just in the first year of the contract.

MSBA Phase I Training: Sharon Rupp, Jeremy Corner, Ron Winter, & I attended the MSBA Phase I training in Marshall on December 4. I felt it was very valuable. We are trying to see if we (Jeremy, Ron & I) are all able to attend the Phase II training before the MSBA conference in January.

Industrial Construction Methods Class Agreement: Our attorney, Kevin Rupp has drafted a preliminary agreement between Fagen, Inc. and all schools involved in the CTEC Collaboration (YME, RCW, Montevideo, MacCray, and Lakeview). We continue to work out details. Much of the confusion comes from combining the differences and varying expectations due to our different perspectives (education versus business). Areas that seem confusing include the necessity for criminal background checks for their employees similar to our expectation of volunteers or chaperones.

Active Shooter Training: On December 26 and 27, Eric Dickman will be using our buildings to conduct active shooter training with the law enforcement agencies including the Yellow Medicine County Sheriff's Department and the Granite Falls Police Department. This is advantageous to both the law enforcement and the school because it helps familiarize them with the layout of our schools and gives them practice in our buildings. We are looking to coordinate joint training for the fall of 2019 with our staff members.

Food Service Inspection: The kitchen received all positive results from their kitchen inspection back in September. Kudos to Cheryl Christensen and the rest of the food service staff.

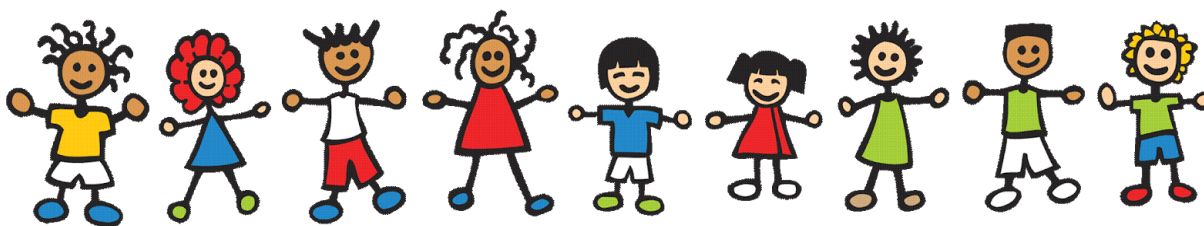
Meet and Confer: This meeting was cancelled at the request of EM-YME due to a lack of substantial materials. I have continued to meet with the leadership on a monthly basis in order to ensure we have open lines of communication.

Holiday Office Hours: Most offices will have intermittent coverage due to varying schedules, but we will advertise that we are closed. I will be out of the office for the week of Christmas but will return on December 31. If people leave an urgent message, it will be handled accordingly.

Committee Assignments: Please consider your preferences for committee assignments for January's organization meeting.

Upcoming Committee meetings:

- January 22 - Buildings & Grounds Committee Meeting
- January 29 - Finance Committee Meeting
- February 5 - Policy Committee Meeting



Bert Raney Elementary Board Report

December 2018

Mrs. Hansen, Elementary Principal

BRE - Current Enrollment

	8/16	8/17	5/18	7/18	8/18	9/18	10/18	11/18	12/18	1/19	2/19
K	44	47	47	47	39	40	40	40	39		
1st	56	43	44	44	49	48	48	48	48		
2nd	51	58	59	59	44	43	43	42	41		
3rd	66	53	52	52	61	59	59	59	59		
4th	54	67	63	63	54	53	53	53	53		
5th	55	53	54	54	66	63	63	63	63		
Total	326	321	319	319	313	306	306	305	303		

Bert Raney Elementary School Activities

5th Grade - As part of BRE's "What I Want to be When I Grow Up" day that was held on Friday, November 16th, 5th grade teachers invited parents to share information on their careers. Between the three 5th grade classrooms, there were approximately 12 parents who visited the classrooms. Some of the careers discussed included: insurance agent, construction engineer, business owner, mechanic, blacksmith, payload driver, pharmacist, doctor, county employee, & corrections officer.

4th Grade - 4th grade parents were invited to participate and learn during a 30 minute scavenger hunt with their child. Students demonstrated how to use their Chromebooks and online programs that are used in classrooms.

3rd Grade - 3rd graders are busy completing their multiplication chapters in math and are moving into division. In Science, they are starting their solar system unit. One of the classes recently buddied up with a younger class for literacy activities.

2nd Grade - Students in 2nd grade recently visited Henry Hill Apartments, where they made Santa decorations with the residents. The students also enjoyed a snack and beverage and talked with the residents about what Christmas was like when they were growing up. The residents got to enjoy listening to the 2nd graders singing "We Wish You a Merry Christmas".

1st Grade - 1st grade students recently participated in a Stone Soup activity which began with an interactive read aloud for students, that included learning about the main idea of a story and an author's purpose. Guests were invited, the tables were set, the food was prepared, and proper manners and table conversations were practiced.

Kindergarten - In November the kindergarten students were working on firming up and becoming consistent with letters, sounds, and sight words. Numerous parent involvement activities have been happening in the kindergarten classrooms which include but are not limited to: inviting parents in to see a play, mystery readers, and coming in for a turkey snack and a story.

Other BRE Happenings:

- BRE is currently planning holiday activities for the week of December 17th and staff are busy getting ready for the annual BRE Staff Variety Show which will be held on Friday, December 22nd.
- Students recently concluded their rollerskating unit with Mrs. Grey, who has reported that over 400 adults came in to assist or watch rollerskating.
- BRE students, under the direction of Mrs. Grey, are enjoying swimming at the KCC, which will conclude on 12/13.
- 5th grade students have been participating in the Hour of Code program last week and also this week. They will spend a minimum of one hour learning concepts related to computer programming/coding.
- K-4 music students are learning about the Nutcracker ballet. They are working on active listening and movement activities that go along with the music by Tchaikovsky.

SMART Goal: The percentage of students in grades 1-5 at grade level on the Star Reading Assessment, will increase 5% from spring 2018 to spring 2019.

SMART Goal: 76% or more of students in grades 1-5 will be at or above grade level on the Star Math Assessment from spring 2018 to spring 2019.

Additional Goal: By May of 2019, Bert Raney Elementary staff will have access to resources and training relative to the needs of children in poverty, trauma and mental health, 3 or more times during the 2018-19 school year.

YME Middle/High School Board Report

December 2018 ~ 2019

Goals for the MS/HS for 2018/2019

- *SMART Goal: The percentage of students in grades 6-10 at grade level on the Star Reading assessment, will increase 5% from spring 2018 to spring 2019.*
- *SMART Goal: The percentage of students in grades 6-10 at grade level on the Star Math assessment, will increase 5% from spring 2018 to spring 2019.*

Areas of Focus

- *Best Practice Instruction: Reading and writing strategies used across the curriculum/content area*
- *Safe Schools: Emergency Crisis Plan*
- *Mental Health: Working with students of trauma*
- *Staff will complete one curriculum map for one class by the end of the school year*

Student Led Conferences ~ was held from 5:00 pm to 8:00 pm on November 15th and 20th. We had over 77% of our families attending this session. Our goal this year is 80 percent attendance by parents and students. I believe this is a move in the right direction for our students and families to be more involved in our student's learning. We had very positive feedback from the parents that attended. We will be looking at scheduling our Winter/Spring conferences during the month of March. This conference will be a quick check-in on progress and also focus on scheduling classes for the 2019 ~ 2020 school year.

Buzz Club ~ Is Back, and Better Than Ever! ~ Robyn Aslesen and Julie Butterbrodt will be hosting Buzz Club for students in grades 6 ~ 8 in the library after school starting on December 10, 2018. It will be available from 3:00 pm to 4:00 pm Monday ~ Thursday. Parents need to complete paperwork before they can begin. At this time, transportation is not provided as it was tied to another grant opportunity.

Student Council Events ~ Here is a listing of all the fun activities our Student Council has planned for the month of December!

- Every Friday in December, students should wear their ugly Christmas sweaters!
- Penny War will begin Monday, December 10th and run through Friday, December 14. Students will take on the teachers in a battle. If the students win, they will receive a fun day on the morning of December 21st. If the teachers win.....(that prize is yet to be determined!). More to come next week on the Penny War!
- Candy Gram sales will begin Monday, December 10th and run through Friday, December 14th. They will be delivered December 20th. More information will be coming for this activity!
- Student council wants to have a competition for dress up days leading up to Christmas break. Here are the days:
 - Monday, December 17 - Wear your favorite Christmas jammies!
 - Tuesday, December 18th - Wear your favorite Christmas socks!
 - Wednesday, December 19th - Wear red and/or green
 - Thursday, December 20th - Whiteout

- Friday, December 21st - Ugly sweater
- Santa Bingo will take place Thursday, December 20th!

MELT and District Staff Development ~ On January 21st, our staff will be heading to Lac qui Parle Valley High School for our annual MRVED MELT staff development day. Registration will begin soon. Early indicators show that staff will have over 30 different sessions offered to them every hour throughout the day. This is truly a great day learning for our staff. On January 23rd, 2018 we have a full day of staff development scheduled. We are working on narrowing down what we will be working on during this time.

11-28-18

I have missed work because of my illness. Have to have Surgery, Thursday NOV 29, 2018. They are taking out my Right Ovary or maybe a full hysterectomy depending on what they find. I will be out anywhere from 2 to 6 weeks depending on what type of Surgery I have.

Kaci Staab

12.10.18 have board approve a medical leave.

Kaci will provide us with a note from her dr. post surgery when she knows more about her recovery time. Tina 11/28/18

TO: Mr. Rich Schneider
Mrs. Lisa Hansen
YME School Board Members

FROM: Liz DeBlieck

DATE: 11/9/18

RE: Leave Request

As you are aware, I was diagnosed with cancer in February 2016 and have worked hard to fight this battle. After consulting with my family and doctors, I have decided the time has come when I need to formally request a leave of absence. This has been a very difficult decision as I love working for BRE and the district has been so supportive of me during this process.

At this time, I would like my leave to be effective November 22, 2018.

Thank you for your consideration in this matter. If you need anything further from me, please let me know.

Sincerely,



Liz DeBlieck

• Leave began on November 15, 2018



11-16-18



Denise Streich <dstreich@isd2190.org>

Fwd: Resignation

1 message

Tara Miller <tmiller@isd2190.org>
To: Denise Streich <dstreich@isd2190.org>

Wed, Dec 5, 2018 at 1:08 PM

----- Forwarded message -----
From: **Pam Weber** <pweber@isd2190.org>
Date: Thu, Nov 29, 2018 at 7:43 PM
Subject: Resignation
To: Lisa Hansen <lhansen@isd2190.org>

Lisa,
I regret to inform you that with my grandson needing daycare, I will need to resign December 1st, 2018 to assist with his daycare.
Thank you for all of your support and I am really going to miss everyone at the school.
Sincerely,
Pam Weber



Tim Knapper <knapper@isd2190.org>

info

1 message

Pete Scheffler <pscheffler@isd2190.org>

Thu, Nov 15, 2018 at 7:22 AM

To: Tim Knapper <knapper@isd2190.org>

Tim, I am sending you this as notification that I am resigning from my jr high football position. This past season went pretty well, although we didn't have the success on the field that we anticipated. I think the jr high football coaching positions are currently in a pretty stable spot, and this is the right time for me to get out. A while back you asked if I thought having a 'head' jr high coach was a good idea. I thought about that as we went through the season. I actually think that's a great idea and would recommend Justin if you decide to go in that direction. I know some other area schools use that model.

I know you are already short track coaches, and you'll hate me for this, but I also would like to resign my jr high track position. A couple things in my life have recently changed. As I originally planned this school year, I envisioned my total school work load being 30 days teaching as I covered a fall maternity, and coaching the two jr high sports. That's now changed, as I am already committed to teaching a minimum of 100 days covering for maternity leaves this school year, with more possibly still coming. We are also taking over the Gaffaney lawn mowing empire starting in the spring which is going to take a lot of time.

Thanks!,

Pete

Yellow Medicine East, ISD 2190

BOARD OF EDUCATION - AGENDA ANALYSIS

AGENDA ITEM: 12.2
MEETING DATE: December 10, 2018
SUBJECT: Resolution Combining Polling Places for Special Elections

BOARD ACTION:
Required X
Information
Scheduled Report

BACKGROUND/RATIONALE:

Minnesota Statute requires all special elections, non-election dates, to declare if there will be a combined polling location. Past decisions beginning with the 2015 Levy Election, was to combine polling locations at the KCC in Granite Falls.

If the board does not pass the resolution, annually, the election will be held in ALL of the polling locations that would be open during a regular election. This would significantly increase expenses for poll judges, poll workers, voting machines and machine programming for each polling location. The number of polling locations would include all of the community halls, township halls, and miscellaneous locations. It would also be problematic to find election personnel as required.

Although we may not have an election in 2019, this resolution ensures we can conduct the election while maintaining fiscal responsibility.

PRESENTER(S):
Superintendent Schneider

COMMITTEE:
Full Board of Education

SUPERINTENDENT RECOMMENDATION:
I recommend passing the resolution as provided.

Yellow Medicine East, ISD 2190

BOARD OF EDUCATION - AGENDA ANALYSIS

AGENDA ITEM: 12.3
MEETING DATE: December 10, 2018
SUBJECT: Resolution Direction the Administration to Make Recommendations on the Reduction of Programs and Positions due to Declining Enrollment

BOARD ACTION:
Required X
Information
Scheduled Report

BACKGROUND/RATIONALE:

This action is regularly scheduled in order to meet statutory timelines for termination and Unrequested Leave of Absence (ULA) of personnel. There are two factors that would trigger the termination or ULA are: a) declining enrollment and b) fiscal condition of the district.

The audit of Fiscal Year ending June 30, 2017 indicate the district is financially sound at this time but appears to be trending towards declining enrollment as evidenced by the monthly enrollment reports. Since the fiscal condition of the district is directly affected by the number of students and the number of employees in the district, flexibility is necessary.

The number of students anticipated for the 2019-2020 school year, and thereafter are not fully understood nor can they be completely predicted. Discussions and analysis of budgets along with establishing priorities will be done through committee and administrative meetings. It may be necessary to reduce the number of employees in order to maintain the fiscal health of Yellow Medicine East, ISD 2190 but it is too soon to know for sure.

This action allows for that time for consideration and recommendation(s).

PRESENTER(S):
Superintendent Schneider

COMMITTEE:
Full Board of Education

SUPERINTENDENT RECOMMENDATION:
I recommend passing the resolution as provided.

Member _____ introduced the following resolution and moved its adoption:

**RESOLUTION DIRECTING THE ADMINISTRATION
TO MAKE RECOMMENDATIONS FOR REDUCTIONS
IN PROGRAMS AND POSITIONS AND REASONS
THEREFORE.**

WHEREAS, the financial condition of the school district dictates that the school board must reduce expenditures immediately, and

WHEREAS, there has been a reduction in student enrollment, and,

WHEREAS, this reduction in expenditure and decrease in student enrollment must include discontinuance of positions and discontinuance or curtailment of programs, and

WHEREAS, a determination must be made as to which teachers' contracts must be terminated and not renewed and which teachers may be placed on unrequested leave of absence without pay or fringe benefits in effecting discontinuance of positions,

BE IT RESOLVED, by the School Board of Independent School District No. 2190, as follows:

That the School Board hereby directs the Superintendent of Schools and administration to consider the discontinuance of programs or positions to effectuate economies in the school district and reduce expenditures and, as a result of a reduction in enrollment, make recommendations to the school board for the discontinuance of programs, curtailment of programs, discontinuance of positions or curtailment of positions.

The motion for the adoption of the foregoing resolution was duly seconded by Member _____ and upon vote being taken thereon, the following

voted in favor thereof:

and the following voted against the same:

whereupon said resolution was declared duly passed and adopted/rejected.

December 10, 2018

Yellow Medicine East, ISD 2190

BOARD OF EDUCATION - AGENDA ANALYSIS

AGENDA ITEM: 12.4
MEETING DATE: December 10, 2018
SUBJECT: Annual Approval of the Indian Policies & Procedures

BOARD ACTION:
Required
Information
Scheduled Report

BACKGROUND/RATIONALE:

Annually, the YME Indian Policies and Procedures are updated. Berta Bjerkeset, Sue Bones, and I met with the Upper Sioux Parent Advisory Council to discuss any changes or updates. The discussion mainly centered around the best means of communicating between the school and the parents/guardians along with the data that will be shared. Berta will present later in the spring with some of the data she has collected and analyzed.

Committee minutes along with these policies and procedures will be posted on our school website.

PRESENTER(S):
Superintendent Schneider & Berta Bjerkeset

COMMITTEE:
Full Board of Education

SUPERINTENDENT RECOMMENDATION:
I recommend approving these policies and procedures as written.

Yellow Medicine East Independent School District 2190

2018-2019 School Year

INDIAN POLICIES AND PROCEDURES (IPPs)

It is the intent of the Yellow Medicine East Independent School District that all Native American children of school age have equal access to all programs, services, and activities offered within the school district. To this end, Yellow Medicine East, School District 2190, will consult with local tribal officials and parents of Native children in the planning and development of Indian Policies and Procedures (IPP's), general education programs, and activities. These policies and procedures will be reviewed annually and revisions will be made within 90 days of the determination that requirements are not being adequately met.

ATTESTATIONS

The Yellow Medicine East Independent School District attests that it has established Indian Policies and Procedures (IPP's) as required in section 7004 of the Impact Aid law for any children claimed who reside on eligible Indian lands. The IPP's have been adequately disseminated to the tribe.

The Yellow Medicine East Independent School District attests that it has provided a copy of written responses to comments, concerns and recommendations received from tribal leaders and parents of Native children through the Indian policies and procedures consultation process and disseminated these responses to tribal leaders and parents of Indian children prior to the submission of the Impact Aid application.

POLICIES AND PROCEDURES:

The following Indian policies and procedures become effective upon school board approval.

POLICY (1): Local Education Agency, Yellow Medicine East ISD 2190 will disseminate relevant applications, evaluations, program plans and information related to the LEA's education program and activities with sufficient advance notice to allow tribes and parents of Native children the opportunity to review and make recommendations. [34 CFR222.94 (a)(I)]

PROCEDURE 1:

The Yellow Medicine East Independent School District will disseminate information and seek timely input regarding the following programs of its overall educational programming (including, but not limited to): Title I, Part A, Title VI, Part A, subpart 1, Title VII- Impact Aid Programs, and/or the Johnson O'Malley Program.

The completed applications, evaluations, and program planning will be made available to parents of Native children, Tribal officials and the Parent Advisory Committee at the Tribal Offices in a prepared summary and disseminated by Upper Sioux Community newsletter and posted on the Yellow Mediat least 10 days in advance of public hearings to afford all interested parties the opportunity to review the documents with sufficient time to provide thoughtful input at the public meetings. These hearings will be

publicly advertised by local newspaper notification, and publication in the Upper Sioux Community Newsletter, to allow all interested parties to attend. In addition, representatives from the District and Parent Advisory Committee will schedule meetings with the Board of Trustees to seek input.

Parents of Native children, tribal officials, the Parent Advisory Committee and any other interested persons can review assessment data to help develop or modify educational programs and services allowing for the participation of Native students on an equal basis in the district.

Policy (2): The Yellow Medicine East School District will provide an opportunity for the Upper Sioux Community and parents of Native children to provide their views on the District's educational program and activities, including recommendations on the needs of their children and on how the District may help those children realize the benefits of the educational programs and activities. [34CFR222.94(a)(2)]

- (i) Notify tribes and the parents of Native children of the opportunity to submit comments and recommendations, considering the tribe's preference for method of communication, and
- (ii) Modify the method of and time for soliciting Native views, if necessary, to ensure the maximum participation of tribes and parents of Native children.

PROCEDURE 2:

A. The Parent Advisory Committee of the Yellow Medicine East ISD 2190 is scheduled to meet monthly for the purpose of addressing comments and concerns of parents of Native children regarding the District's educational programs and activities. The meetings are open to the public allowing for tribal officials as well as parents of Native children the opportunity to submit comments and recommendations for consideration.

B. A school board representative volunteers to act as another connection between the PAC and the LEA . This representation allows for the discussion of the needs of the students and ideas to be brought forward to both the Parent Advisory Committee as well as the school board.

C. At each of the school board monthly school board meetings, a section of time is set aside for public address to the board of education. This is a time to offer comments and suggestions regarding programming for Native students. In addition, public hearings are scheduled which are specifically devoted to addressing questions regarding federal programs. Based upon suggestions, preferred methods of communication as well as ways to maximize participation from tribal officials as well as parents of Native children will be seriously considered.

D. Information will be included in the new student enrollment packet regarding opportunities to provide input pertaining to Indian Education programming within the District.

E. The District will schedule meetings as needed with the Upper Sioux Community to discuss ongoing programming goals. These will take place at least two times per year.

Policy (3): The Yellow Medicine East ISD 2190 will annually assess the extent to which Native students are participating on an equal basis with non-Native students in the district's educational programs and activities. [34 CFR 222.94(a)(2)]

- (i) At the public meeting, share relevant information related to Native children's participation in the LEA's educational program and activities with tribes and parents of Native children; and

(ii) Allow tribes and parents of Native children the opportunity and time to review and comment on whether Native children participate on an equal basis with non-Native children. Notification is given 10 days prior to the public meeting to allow for parents of Native children to provide input.

PROCEDURE 3:

Yellow Medicine East ISD 2190 will take the following measures to annually assess the extent to which Native children participate on an equal basis with non-Native children in the district's education program and activities.

- A. Yellow Medicine East will monitor Native student participation in academic and co-curricular activities.
- B. School district officials will review school data to assess the extent of Native children's participation in the district's educational programs on an equal basis.
- C. Yellow Medicine East will share its assessment of district funding, Native participation, related academic achievements and other related data with the parents of Native children and tribal officials at the public hearing.
- D. Parents of Native children, tribal officials and other interested parties may express their views on participation through direct communications with the school district, Upper Sioux Community Board of Trustees education representative, at any school board meeting or to the Parent Advisory Committee.

Policy(4): Yellow Medicine East ISD 2190 will modify the IPP's if necessary based upon the results of any assessment or input described in this document.[34CRF222.949a0940]

PROCEDURE 4:

The Parent Advisory Committee shall review the effectiveness of the district's methods of gathering the input of Native parents and tribal members, review the suggestions that were implemented, permit Native parents and tribal officials to suggest more effective ways of communicating their views. If necessary, the Parent Advisory Committee shall make recommendations to the school board in writing to modify its policies and procedures.

Yellow Medicine East ISD 2190 will hold a school board meeting no later than 90 days after receiving a written notification to modify policies and procedures if the Parent Advisory Committee indicates, in writing, such modification is necessary. Implementation date would be decided at that meeting.

Yellow Medicine East ISD 2190 will notify parents of Native children and tribal officials of any changes to the Indian Policies and Procedures within 90 days by mail.

Policy (5): Yellow Medicine East ISD 2190 will respond at least annually in writing to written comments and recommendations made by tribes or the Parent Advisory Committee prior to the submission of the IPP's by the LEA. [34CRF222.94(a)(5)]

PROCEDURE 5:

Yellow Medicine East ISD 2190 will at least annually respond in writing to written comments and recommendations made by the Parent Advisory Committee or tribal officials and disseminate the

responses to all parties by a posting at the tribal office prior to the submission of the IPP's by the district.

Policy (6): Yellow Medicine East ISD 2190 will provide a copy of the Indian Policies and Procedures annually to the Upper Sioux Community. [34CRF222.94(a)(6)].

PROCEDURE 6:

Annually, not to exceed 30 days after school board approval, Yellow Medicine East ISD 2190 will provide by mail to the tribal board for posting at the tribal office, a copy of the current IPP's to the Upper Sioux Community.

Yellow Medicine East ISD 2190 School Board Approval Date

Signature of Board Member



Safety Committee Minutes

1 message

Rich Schneider <rschneider@isd2190.org>

Thu, Nov 15, 2018 at 7:08 PM

To: All Bert Raney Staff <allbert@isd2190.org>, All District Staff <alldistrict@isd2190.org>, YME MS/HS <YME_MS_HS@isd2190.org>

Below are the minutes from today's safety meeting. Let me know if you have any questions.

1. Procedures or methods to report concerns:
 - a. Safety concerns should be reported directly to building level principals who will speak to building custodian(s). If it is not able to be resolved, the principal will speak to Francis Staab.
2. Safe Schools Training - Denise Streich will check the list to ensure everyone is in compliance
3. AED/CPR Training - rescheduled to next meeting
4. Meeting Schedule - quarterly after school
5. Lead in Water Testing - Elementary building testing is done and the results will be posted on our website. No problems were reported.
6. Radon Testing - going to be proactive by beginning the testing for radon despite there being no legal requirement for schools
7. Other Training - rescheduled to next meeting
8. Wiping down desks, tables, doorknobs, etc. to slow the spread of flu, illness, etc.
 - a. Custodians will try to wipe down desks, etc. on a biweekly basis especially at the elementary. MS/HS students could be asked to wipe down rooms during study halls or advisory periods.
 - b. Disinfectant wipes should be used specifically for desks, doorknobs, etc. (not keyboards)
 - c. Mr. Luft will check with tech on what could be used to wipe down keyboards and devices. May be especially crucial with shared devices.
9. OSHA 300 claims - 4 claims were submitted at YME (all were injury related and no remedies were needed)
10. Individual concerns from staff members
 - a. BRE Playground: Not enough rocks under equipment and rocks ending up on the tar causing a hazard for other games. Additional or new material? Generally, add rock once per year, will monitor and see if more is needed. Encourage students not to kick the rocks out of the area. Monitoring this is a big challenge for a school with this much traffic. Supervisors are asked to monitor student behavior also.
 - b. Snow removal in BRE North Lot: Snow was previously blown onto the west end of the lot creating a sheet of ice. The problem was corrected last year, but confirming it will not happen this year. Will continue to monitor the situation but finding places to put the snow where there is sufficient sunlight to keep clear is a challenge. Will apply salt/sand as possible but unfortunately, we cannot control all of these issues. Staff members are encouraged to use main entrances when entering the building as all paths may not be clear before students arrive.
 - c. Gym Bleachers - Safety concerns are due to the middle aisle of the bleachers. Last year it was recommended to add handrails and step downs with an estimated cost of 16,000. Other options include replacing bleachers which is cost-prohibitive at this point.
 - d. Tennis Courts - The tennis courts have a tripping hazard due to the replacement of a water main and the resulting repair. The cost is split between the city of GF & YME. Tim will get an estimate for replacement of courts at KCC but expect it to be around 300,000. Built in 1999, may not be able to host tennis meets in the future if it is not rectified.

--

Rich Schneider
Superintendent
Yellow Medicine East ISD 2190

450 9th Avenue
Granite Falls, MN 56241

Yellow Medicine East, ISD 2190

BOARD OF EDUCATION - AGENDA ANALYSIS

AGENDA ITEM: 14.2
MEETING DATE: December 10, 2018
SUBJECT: Martin Marietta Lease

BOARD ACTION:
Required
Information **X**
Scheduled Report

BACKGROUND/RATIONALE:

We had a lease which allowed use of land owned by Martin Marietta for an outdoor classroom (apple trees, native plant plot, walking paths, driving range, etc.). They are selling a portion (24.83 acres) north of the dike road which was not used by the school (as outlined in attached email and lease). We will maintain access to the land south of the dike road which is the portion that we most frequently use. I signed the lease agreement already because it had a 30 day severability & mutual consent clause which gave us no other alternative. You can see from the map that we still have access to our area used for driving and our plots.

PRESENTER(S):
Superintendent Schneider

COMMITTEE:
Full Board of Education

SUPERINTENDENT RECOMMENDATION:
This is for information purposes only. No action is necessary.



Denise Streich <dstreich@isd2190.org>

Martin Marietta Lease

Don Maroney <Don.Maroney@martinmarietta.com>
To: Denise Streich <dstreich@isd2190.org>

Wed, Nov 28, 2018 at 10:40 AM

Denise, thank you for your help. The lease for the area the school uses as an outdoor classroom is attached, along with the proposed amendment omitting 24.83 acres located north of the Dike Road, which is being sold. The remainder of the leased premises, south of the Dike Road, will remain available for your use. As far as I know the school district never made us of the land north of the road so I doubt this change is of concern. Please have the Superintendent review and sign the Amendment and return it to me. Please call if you have any questions. Thank you.

Donald Maroney

Land Manager | Alden District

Martin Marietta

17243 County Hwy D-20, Alden, IA 50006
t. (515) 859-3423 m. (515) 689-1703 f. (515-859-3315)
e. don.maroney@martinmarietta.com
www.martinmarietta.com

2 attachments

 **YMQ Public Shools Lease100109.pdf**
562K

 **YM Schools First Amendment to Lease 11282918 KG.pdf**
58K

**FIRST AMENDMENT TO
LEASE AGREEMENT**

This First Amendment (this "Amendment") to Lease Agreement made effective DEC 5, 2018 (the "Effective Date"), by and between MARTIN MARIETTA MATERIALS, INC., a North Carolina corporation licensed to do business in the State of Minnesota ("Lessor"), and YELLOW MEDICINE EAST INDEPENDENT SCHOOL DISTRICT NO. 2190, a political subdivision of the State of Minnesota ("Lessee")

WHEREAS, Owner and Lessee entered into a Lease Agreement dated October 12, 2009, for a certain tract of land situated in Yellow Medicine County, Minnesota, as described therein (the "Lease"), and

WHEREAS, the parties desire to amend the Lease as provided herein.

NOW, THEREFORE, the parties intending to be legally bound hereby, covenant and agree as follows:

Legal Description. Exhibit A of the Lease is amended to provide that all of the property north of Dike Road is removed from the Lease by saving and excepting the following property from the legal description on Exhibit A;

LAND DESCRIPTION

That part of the Northeast Quarter of the Northwest Quarter (NE1/4 NW1/4) and part of the Northwest Quarter of the Northeast Quarter (NW1/4 NE1/4) of Section Thirty-three (33), Township One hundred sixteen (116) North, Range Thirty-nine (39) West, Yellow Medicine County, Minnesota, described as follows:

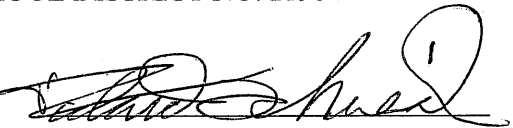
Beginning at the northeast corner of the Northwest Quarter (NW1/4) of said Section Thirty-three (33); thence South 88 degrees 33 minutes 19 seconds West, assumed bearing along the north line of said Northwest Quarter (NW1/4), a distance of 764.15 feet to the northeasterly right of way boundary of Dike Road; thence continuing South 88 degrees 33 minutes 19 seconds West, along said north line, a distance of 98.27 feet to a point on the center line of said Dike Road; thence South 68 degrees 40 minutes 30 seconds East, along said center line, a distance of 25.81 feet; thence South 73 degrees 27 minutes 42 seconds East, along said center line, a distance of 67.13 feet; thence along a nontangential curve concave to the northeast, along said center line, having an arc length of 83.96 feet, radius of 636.98 feet and a chord bearing of South 79 degrees 46 minutes 09 seconds East; thence along a tangential curve concave to the southwest, along said center line, having an arc length of 145.32 feet, radius of 256.25 feet, and a chord bearing of South 67 degrees 43 minutes 25 seconds East; thence South 51 degrees 42 minutes 22 seconds East, along said center line, a distance of 271.67 feet; thence along a tangential curve concave to the northeast, along said center line, having an arc length of 195.13 feet, radius of 555.50 feet, and a chord bearing of South 61 degrees 42 minutes 48 seconds East; thence South 71 degrees 43 minutes 58 seconds East, along said center line, a distance of 1601.72 feet to a point on the east line of the Northwest Quarter of the Northeast Quarter (NW1/4 NE1/4) of said Section; thence North 01 degrees 32 minutes 04 seconds West, along said east line, a distance of 915.06 feet to the northeast corner of said Northwest Quarter of the Northeast Quarter (NW1/4 NE1/4); thence South 88 degrees 33 minutes 19 seconds West, along the north line of the Northeast Quarter (NE1/4) of said Section, a distance of 1321.65 feet to the point of beginning.

Said tract contains 24.83 acres more or less and is subject to any easements of record.

IN WITNESS WHEREOF, the parties hereto have executed this Amendment as of the date first set forth above.

YELLOW MEDICINE EAST INDEPENDENT
SCHOOL DISTRICT NO. 2190

MARTIN MARIETTA MATERIALS, INC.

By: 

By: 

Name: Richard Schneider
Please Print

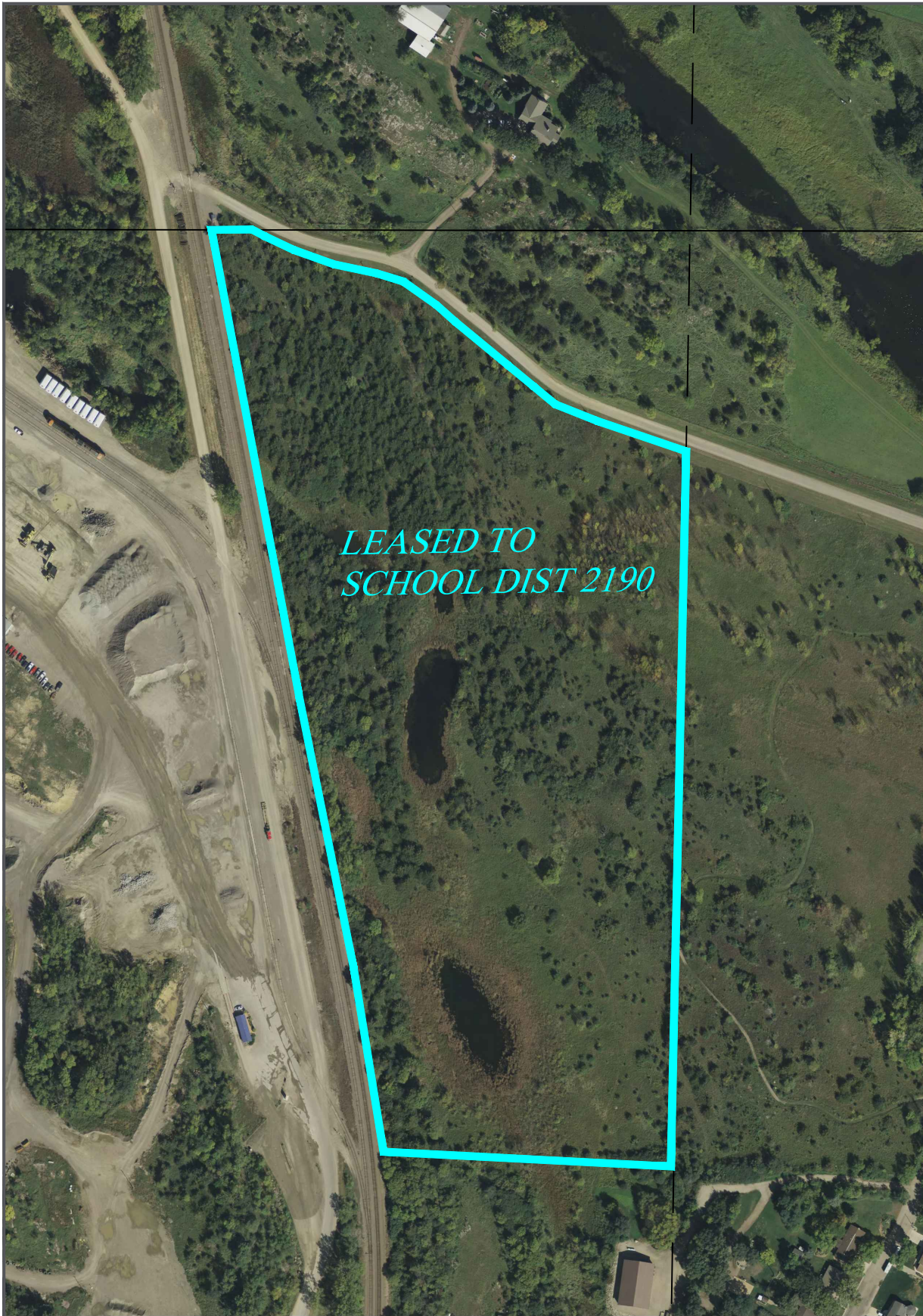
Name: WILLIAM J GAHAN
Please Print

Title: Superintendent

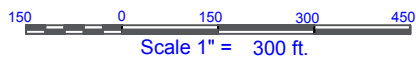
Title: MIDWEST DIV. PRES.


Date: 11/29/18

Date: 12/5/18



*LEASED TO
SCHOOL DIST 2190*



11252 AURORA AVENUE DES MOINES, IOWA 50322 (515)254-0030		QUARRY: YELLOW MEDICINE QY Loc. No. 34103	
		STATE: MN	DRAWING NAME: LEASED TO SCHOOL DIST. 2190
DRAWING FILE NAME: JA	COUNTY: YELLOW MEDICINE	PHOTO FRAME: FRAME# XXX	
TIFF FILE NAME: EA	DATE: 12/07/18	PHOTO DATE: 2017	
	DWN BY: DPM	SCALE: 1" = 300'	
	CHK BY:		