

Yellow Medicine East ISD 2190 School Board Meeting Agenda



Monday, May 14, 2012 at 5:00 PM
Regular Meeting
YME Board Room - East Wing - Room # 113

1. Call to Order	3
2. Approval of Agenda	
3. Approval of April 20, 2012 Meeting Minutes	6
4. Opportunity for Citizens to Speak	
5. Special Reports	
A. Robotics/Lego League Program Report - A. Holt, A. Hoernemann, E. Halverson	7
6. Board & Committee Reports	
A. Negotiations Committee	
B. Finance Committee	13
C. Buildings & Grounds Committee	
D. Policy Committee	
7. Reports	
A. Enrollment Report	14
B. Finance Report	15
C. Bert Raney Elementary Report - J. Kennedy	
D. YME High School Report - K. Norell	
E. Superintendent Report - A. Stoeckman	17
8. Policy Update	
A. Second Reading & Adoption - 100 Series Policies - School District	
B. Second Reading & Adoption - 200 Series Policies - School Board	
C. Second Reading & Adoption - 300 Series Policies - Administration	
9. Action Items	
A. Approval of Bills for Payment	18
B. Resolution Relating to the Termination and Nonrenewal of Probationary Teacher - R. Haakenson	40
C. Resolution Relating to the Termination and Nonrenewal of Probationary	

Teacher - M. Rheinheimer	
D. Approval of Revised 2011-2012 Budget	
E. Approval of 2012-2014 MSEA Contract	
F. Resolution - Provide Student Teaching Experiences for Students from SMSU	41
G. Renewal of Membership with MSHSL for 2012-2013 School Year	
H. Addendum to Membership Agreement with the SW/WC Service Cooperative - Special Education Services for 2012-2013	43
I. Addendum to Membership Agreement with SW/WC Service Cooperative - Behavior Analyst Services for 2012-2013	45
J. Authorization to Sell the Student Built House	
K. Call for Bids to Provide Milk & Milk Products for the 2012-2013 School Year	
L. Call for Bids to Provide Bread & Bread Products for the 2012-2013 School Year	
M. Increase Activity Fees - Athletic & Non-Athletic	
N. Memorandum of Understanding - Retirement Language - D. Strand	46
O. Adoption of the Read Well By 3rd Grade Literacy Plan	47
10. Personnel Items	
A. Discontinuation of JOBZ Money Paraprofessional - Z. Koepke	
B. Resignation - Elementary Paraprofessional - C. Juarez	60
C. Resignation - Elementary Paraprofessional - D. Dreier	61
D. Resignation - Elementary Teacher - Z. Reishus	62
E. Resignation - K-5 Art Teacher - K. Lewandowski	63
F. Resignation - High School Teacher - S. Vetsch	64
G. Leave of Absence Request - M. DeKam	
H. Custodial Staff - T. Renslow	
11. Discussion Items	
A. MACCRAY/RCW Wrestling Request	
B. RCW Football Request	65
12. Upcoming Events	
A. School Improvement Committee Meeting - May 21, 2012 - Board Room - 5:30 pm	
B. Baccalaureate - May 23, 2012 - Auditorium - 7:00 pm	
C. Upper Sioux Graduation - May 25, 2012 - Upper Sioux Community - 5:00 pm	
D. YME Commencement Ceremony - June 1, 2012 - Espeland Gym - 7:00 pm	
E. School Board Meeting - June 11, 2012 - Board Room - 7:00 pm	
F. Surplus Items Auction - June 21, 2012 - Clarkfield Site	

13. Adjourn

YELLOW MEDICINE EAST PUBLIC SCHOOLS

Independent School District 2190

To: YME School Board Members
From: Allen Stoeckman, Superintendent
Date: May 11, 2012
RE: Board Meeting – May 14, 2012

The agenda notes for the May 14, 2012 Board meeting are as follows.

Supporting exhibits are posted on BoardBook. Please let Denise know if you will be unable to attend.

- | Item | Description |
|------|---|
| 1. | Call to Order |
| 2. | Approval of Agenda |
| 4. | Approval of April 20, 2012 Meeting Minutes |
| 4. | Opportunity for Citizens to Speak |
| 5. | Special Reports |
| A. | Robotics/Lego League Program Report – A. Holt, A. Hoermenann, E. Halverson
<i>Andy, Amy & Elaine, and perhaps some students. will be in attendance to report on the Robotics/Lego League program at YME.</i> |
| 6. | Board & Committee Reports |
| A. | Negotiations Committee, <i>Supervisory/Confidential Group wishes to negotiate.</i> |
| B. | Finance Committee, <i>no report at this time.</i> |
| C. | Buildings & Grounds Committee, <i>Surplus Auction rescheduled to Thursday, June 21.</i> |
| D. | Policy Committee <i>met May 7 and began review of annual policies on harassment, bullying, discipline, Internet, and new policies on attendance and health/safety.</i> |
| 7. | Reports |
| A. | Enrollment Report |
| B. | Finance Report |
| C. | Bert Raney Elementary Report – J. Kennedy |
| D. | YME High School Report – K. Norell |
| E. | Superintendent Report – A. Stoeckman |
| 8. | Policy Update |
| | <i>Policies can be reviewed in BoardBook under the April 9 2012 meeting information. Recommend approval of the second reading and adoption of the 100, 200 & 300 series policies.</i> |
| A. | Second Reading & Adoption – 100 Series Policies – School District |
| B. | Second Reading & Adoption – 200 Series Policies – School Board |
| C. | Second Reading & Adoption – 300 Series Policies - Administration |
| 9. | Action Items |

- A. Approval of Bills for Payment
 - B. Resolution Relating to the Termination and Nonrenewal of Probationary Teacher – R. Haakenson
Mr. Haakenson, a part-time PE teacher, was paid by Jobs \$ which expire September 30. Recommend approval.
 - C. Resolution Relating to the Termination and Nonrenewal of Probationary Teacher – M. Rheinheimer
Ms. Rheinheimer, a part-time math interventionist, was paid by Jobs \$ which expire September 30. Recommend approval.
 - D. Approval of Revised 2011-2012 Budget
The budget revisions were reviewed at the work session on May 7th. Recommend approval.
 - E. Approval of 2012-2014 MSEA Contract
Changes to note: 45 cent/hour increase year 1 and 40 cent/hour increase year 2, health insurance increase of \$100 each year, Memorandum of Understanding to prorate benefits if 12 month employees are reduced. Recommend approval.
 - F. Resolution – Provide Student Teaching Experiences for Students from SMSU
The student teacher agreement is posted on BoardBook. Recommend approval.
 - G. Renewal of Membership with MSHSL for 2012-2013 School Year
Recommend approval.
 - H. Addendum to Membership Agreement with the SW/WC Service Cooperative – Special Education Services for 2012-2013
The addendum is posted on BoardBook. This service provides support for the autism program. Recommend approval.
 - I. Addendum to Membership Agreement with SW/WC Service Cooperative – Behavior Analyst Services for 2012-2013
The addendum is posted on BoardBook. This service provides support to teachers needing intervention ideas in the classroom. Recommend approval.
 - J. Authorization to Sell the Student Built House
The house is near completion and ready to be sold! Recommend approval.
 - K. Call for Bids to Provide Milk & Milk Products for the 2012-2013 School Year
Bids will be solicited from a list of vendors. Recommend approval.
 - L. Call for Bids to Provide Bread & Bread Products for the 2012-2013 School Year
Bids will be solicited from a list of vendors. Recommend approval.
 - M. Increase Activity Fees – Athletic & Non-Athletic
This was discussed at the Work Session. Tim Knapper will be in attendance to answer questions. Approximate increase in revenue would be \$12,000-\$17,000. Recommend approval.
 - N. Memorandum of Understanding – Retirement Language – D. Strand
See BoardBook for the addendum agreed to in 2008 and the addendum language that is up for approval.
10. Personnel Items
- A. Discontinuation of JOBZ Money Paraprofessional – Z. Koepke
Mr. Koepke served as a math tutor to grades 7-10, was paid by Jobs \$ which expire September 30. Recommend approval.
 - B. Resignation – Elementary Paraprofessional – C. Juarez
Claudia Juarez has resigned her elementary paraprofessional position. Recommend approval.
 - C. Resignation – Elementary Paraprofessional – D. Dreier

DeeDee Dreier has resigned her elementary paraprofessional position. Recommend approval.

- D. Resignation – Elementary Teacher – Z. Reishus
ZeeAnn Reishus accepted the early retirement incentive and has resigned her elementary teaching position. Recommend approval.
- E. Resignation – K-5 Art Teacher – K. Lewandowski
Katie Lewandowski has resigned her K-5 art teaching position that is paid by the Fagen Foundation. Recommend approval.
- F. Resignation – High School Teacher – S. Vetsch
Sue Vetsch accepted the early retirement incentive and has resigned her high school teaching position. Recommend approval.
- G. Leave of Absence Request – M. Dekam
Megan works in our food service department and is requesting a child care leave of absence. Recommend approval.
- H. Custodial Staff – T. Renslow
Francis is recommending the employment of Ted Renslow. Recommend approval.

11. Discussion Items

- A. MACCRAY/RCW Wrestling Request
- B. RCW Football Request

12. Upcoming Events

- A. School Improvement Committee Meeting – May 21, 2012 – Board Room – 5:30 pm
- B. Baccalaureate – May 23, 2012 – Auditorium – 7:00 pm
- C. Upper Sioux Graduation – May 25, 2012 – Upper Sioux Community – 5:00 p,
- D. YME Commencement Ceremony – June 1, 2012 – Espeland Gym – 7:00 pm
- E. School Board Meeting – June 11, 2012 – Board Room 7:00 pm
- F. Surplus Items Auction – June 21, 2012 – Clarkfield Site

13. Adjourn

YELLOW MEDICINE EAST ISD #2190
SCHOOL BOARD MEETING MINUTES – SPECIAL MEETING
FRIDAY, APRIL 20, 2012 – 8:00 am
YME BOARD ROOM

Board Members Present: Jane Hagert, Dawn Odegard, Tim Opdahl, Steve Rupp, Grant Velde, Shelly Weir, Steve Zumhofe

Community / Staff Members Present: LeeAnn Boushek, Jean Feldman, Kathy Preuss, Ken Rupp, Al Stoeckman, Denise Streich, Kathy Velde

Chairman Velde called the meeting to order.

Motion by Opdahl, second by Wier and carried to approve the agenda for the meeting.

Motion by Opdahl, second by Zumhofe and carried to approve the minutes from the April 9, 2012 Board meeting.

The opportunity for citizens to speak received no response.

Members of the Policy Committee scheduled a meeting for May 2, 2012 at 4:00 pm.

Grant Velde shared information from a recent Buildings & Grounds Committee meeting held regarding air quality issues in the 6th grade classrooms. He indicated that tests will be completed and a remedy will be determined.

Tim Opdahl shared that the Negotiations Committee met with representatives from MSEA and that an agreement was reached. He reviewed the details of the agreement.

Jane Hagert reviewed the notes from a recent Finance Committee meeting. She indicated that it is a working document and not a final decision.

Motion by Zumhofe, second by Rupp and carried to approve a one-time retirement incentive of \$20,000 to current EM-YME staff members, as presented.

Motion by Rupp, second by Hagert and carried to approve the retirement of Eric Martilla, custodian, effective April 30, 2012.

Motion by Opdahl, second by Weir and carried to approve the retirement of Sherri Smith, paraprofessional, effective May 31, 2012.

Upcoming Events

- Principal Interviews – April 25 & 26, 2012 – YME Board Room – 5:00 pm
- YME HS Prom – May 5, 2012 – Grand March – YME Auditorium – 6:30pm
- School Board Work Session – May 7, 2012 – YME Board Room – 7:30 pm
- School Board Meeting – May 14, 2012 – YME Board Room – 5:00 pm

The meeting was adjourned by Chairman Velde.

YME FIRST Robotics: Spring 2012 Update



How we received the team:

Team 3212 was previously operated through the Montevideo School District. They cut the program, so we had the opportunity to take it over. We received a lot of parts and pieces from previous year's kit of parts, as well as the major sponsorship from Pentair. Pentair covered the \$5,000 dollar entry fee for the FIRST organization. www.pentair.com "Water Solutions"

How it works:

Teams attend a Kick-off. At this kick-off you receive a kit of parts, as well as the challenge for your robot. You have roughly six weeks to build a robot, and then you have to seal it off until the regional competitions. You can attend one or more regional competitions, potentially moving on to championships. The time outside of the build session is spent training, practicing, and researching as well as raising funds and getting prepared/organized.

Potential Schedule for Next Year:

November & December:

Tuesday and Thursday: 3:00-5:30

January & February:

Monday, Tuesday, Thursday: 3:00-7:30

Saturday: 8:30-12:30

Build Session times will be extended/added as needed.

March-October:

As needed: Fundraising, Regional Competitions

Contributors:

This year Pentair paid our entry fee. (\$5,000)

Fagen provided a few supplies: Safety goggles, notepads, spare wiring

MN West let us use their facilities.

A special Thanks to Paul Hoernemann, David Bartels, and Galen Beckler for all of their hard work, use of tools, creative solutions. Also a thanks to the families of team members for contributions of snacks and meals for build sessions and flexibility in scheduling.

Goals for Next Year:

- Become more adept with programming
- Include offensive aspects in robot
- More efficient and effective organization of team and build sessions
- Increase # of team members
- Increase Sponsorships
- Increase Fundraising

How we would accomplish those goals:

-Become more adept with programming:

Student and Mentor training, research, practice

-Include offensive aspects in robot

This year's robot was geared mainly for defensive (pushing, blocking, interfering), as well as balancing and acquiring the balls on the ramps. Next year's would include an offensive aspect, such as shooting the balls, though it will be a different challenge next year. This would be accomplished through more in-depth and thorough understanding of robotics and what has worked in the challenges, as long as a division of the team dedicated to the offensive aspects.

-More efficient and effective organization of team and build sessions

Team members would have more specific tasks and responsibilities, while continuing to work together and share responsibilities when needed.

Team organization ideas:

- Captains
- Programming
- Electrical
- Build Leaders-Frame, Offensive, Defensive
- SPIRIT: Everything else: t-shirts, banners, buttons, organization, snacks/meals, etc.
- Research/Safety/Rules

Competition Organization:

- Pit Crew
- Drive Team
- Data/Public Relations/Media
- SPIRIT
- Safety Officer

-Increase # of team members

Recruitment of new team members.

-Increase Sponsorships

Develop relationships with local businesses and build support for team.

-Increase Fundraising

We are currently working on exploring options for fundraising. Some things being explored include recycling glossy paper and newspaper, as well as exploring other options, such as a meat raffle. Other things being explored include selling FIRST bulbs, Community Education Options, and also some of the more traditional school program fundraising options.

Some Successes and Celebrations:

The "Black Viper" was able to compete in all 9 of its scheduled matches.

Official standings landed us in 36th out of 65 teams.

Our team members were in an overwhelming new environment, faced with huge challenges, and performed amazingly, and were successful.

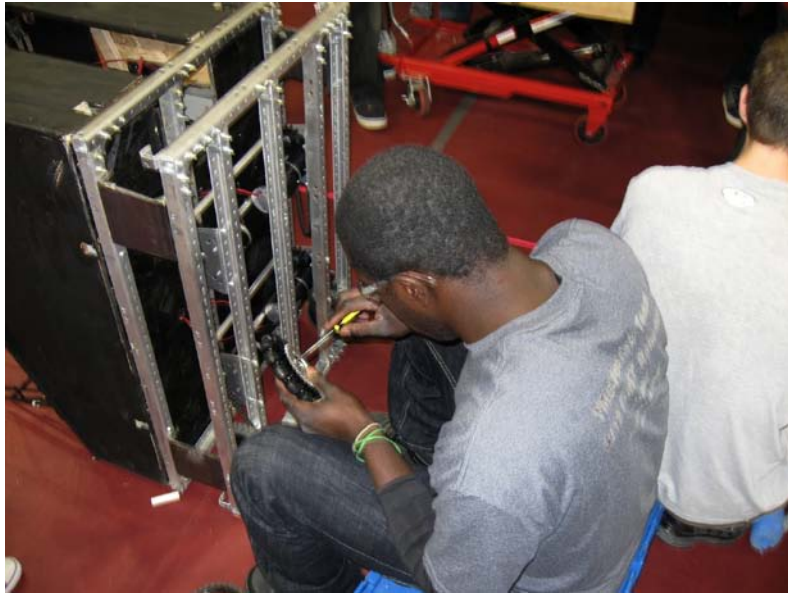
Additional Information and Resources:

www.usfirst.org

www.mnfirstregional.org

YouTube: Many videos - FIRST Robotics, FRC, Rebound Rumble 2012 (searches)





YME NXT FIRST Lego League- School Board Update
Coaches Amy Hoernemann and Elaine Halverson
May 14, 2012



What is FIRST Lego League?

FIRST represents For Inspiration and Recognition of Science and Technology. This organization presents a new challenge to teams each year. The unique and great thing about this organization is that they have found a way to incorporate cooperation into a competition. They actually have created a term for it, called “coopertition”. Last year’s theme was called Body Forward and centered around biomedical engineering. This year’s theme was called Food Factor and was centered around contamination of our food.

There are 2 main parts of the challenge.

The first is a research project, where the kids need to come up with an innovative solution to a problem they have research regarding their topic.

In Food Factor- they researched disease caused by cooking with cracked eggs, and their solution was a hand held scanner that could be used to check for cracks in eggs.



The second is a table where they are to design an autonomous robot to accomplish certain challenges that are presented.

How the Team Started and Where We Are Now:

Two years ago Elaine and I decided to try starting a team. We went into the adventure with the idea that we would choose a team that would commit for 2 years, so we could all learn together what the competition would be like. We went to some trainings, and tried to simulate a competition at the end with the help of local people. We learned a lot, and shared our results with friends and families.

Last year we actually entered a regional competition and worked through a real season, which starts before school and ends in December. The competition was held in Elk River with about 35 teams attending, with 14-15 in each division. Each team was judged on 4 main areas. The Robot game, Research Project, Teamwork and Technical judging. In our division we placed 7th out of 14.

What's next?

We are excited to start a collaboration with the Robotics team to start raising money to cover more of the cost that families had to contribute.

We are in the process of choosing next year's team, because we will start before the school year begins. The interest is high, but the team can have a maximum of 10 students. That is a large team when you consider we only have one robot and how well elementary aged children like to share.

We would like to advance our programming skills and keep working on how to be more of a team.



YELLOW MEDICINE EAST – ISD 2190



Originated from Finance Committee Meeting April 16, 2012

FY 2013 Budget Reductions Ideas

Administration

Updated May 14

- New secondary principal (beginning vs. experienced)	\$8,000	\$11,300	
- Superintendent reduction (share or replace part-time)	\$50,000		\$11,300

Office/Supervisory

- Elem 216 day admin assistant reduced to 7.5 hrs	\$3,200	\$2,100	
- Elem and MS/HS admin assistants reduced to 11/12		\$6,400	
- District Office accounting reduced to 11/12	\$4,600	\$3,850	
- Com ED/AD Office assistant reduced to 11/12	\$4,000	\$3,400	
(Admin/supervisory/custodial reduced 4 days in July)	\$7,000	\$9,100	\$24,850

Paraprofessionals

- Reduce 2 positions (no grade level paras at grades 5-6)	\$60,000	\$39,000	
- Reduce secondary media paraprofessional	\$25,000	\$25,000	\$64,000

Non Nons

- 504 position cut to half-time	\$15,000	\$15,000	
- Am In Liaisons cut days so both are 174 days	\$4,000	\$4,000	\$19,000

Non Instructional

- Clarkfield building operations	\$60,000	\$30,000	
- Supplies	\$40,000	\$40,000	
- Staff Development	\$30,000	\$30,000	
- Bussing (out of district & routes)	\$8,000	\$8,000	\$108,000

Teaching/Licensed

- Business (tenured)	\$75,000	\$75,000	
- English (probationary)	\$36,000	\$18,000 (0.5 FTE)	
- Elementary retirement	\$83,000	\$70,000	
- Social Studies (probationary)	\$41,000	\$20,500 (0.5 FTE)	
- Counselor (tenured)	\$25,000	\$25,000	
- Secondary retirement		\$25,000	\$233,500

Total \$578,800 \$460,650

Down the Road

- Reduce one school board position	\$1,000		
- Merge YME and MVCC	\$15,000		
- Retirements in 1-3 years of teachers and office staff			
3 Teachers	\$225,000 replacing 3 @ \$41,000 nets	\$102,000	
2 Office	\$114,000 replacing 1 @ \$35,000 nets	\$79,000	
Total		\$197,000	

YELLOW MEDICINE EAST ENROLLMENT UPDATE 2011-2012

	SEPTEMBER			OCTOBER			NOVEMBER			DECEMBER			JANUARY		
	BRE	HS	ENR	BRE	HS	ENR	BRE	HS	ENR	BRE	HS	ENR	BRE	HS	ENR
Kindergarten	57			56			53			53			53		
First Grade	69			69			68			65			65		
Second Grade	53			53			54			51			51		
Third Grade	56			56			55			55			56		
Fourth Grade	48			49			50			47			47		
Fifth Grade	48			47			48			48			48		
Sixth Grade	72			72			72			72			72		
	403			402			400			391			392		
Seventh Grade		61			63			62			62			62	
Eighth Grade		54			56			55			55			55	
Ninth Grade		88			89			88			87			87	
Tenth Grade		70			71			70			70			69	
Eleventh Grade		72			70			70			69			69	
Twelfth Grade		80			81			79			79			79	
	425			430			424			422			421		
K-12 TOTAL	828			832			824			813			813		

	FEBRUARY			MARCH			APRIL			MAY			LAST DAY OF SCHOOL		
	BRE	HS	ENR	BRE	HS	ENR	BRE	HS	ENR	BRE	HS	ENR	BRE	HS	ENR
Kindergarten	55			54			54			54					
First Grade	65			65			65			64					
Second Grade	51			52			52			51					
Third Grade	56			55			55			55					
Fourth Grade	47			45			45			46					
Fifth Grade	48			49			49			47					
Sixth Grade	72			69			69			69					
	394			389			389			386			0		
Seventh Grade		64			64			64			63				
Eighth Grade		55			55			55			54				
Ninth Grade		88			91			88			87				
Tenth Grade		69			70			70			69				
Eleventh Grade		68			68			67			67				
Twelfth Grade		82			80			80			81				
	426			428			424			421			0		
K-12 TOTAL	820			817			813			807			0		

**Yellow Medicine East #2190
Board Report
May-12**

2011-12	Original	Year to Date	Budget Balance	Percent	2010-11
By Fund	2011-12	Expenditures		Expended	YTD Expended
					On Original Budget
General	9,142,494	7,398,231	1,744,263	80.92%	80.60%
Food Service	375,215	322,986	52,229	86.08%	69.12%
Community Service	326,926	228,511	98,415	69.90%	69.88%
Debt Redemption	75,145	75,076	69	99.91%	99.91%
Debt Red. (Constr. Bonds)	1,083,420	1,082,420	1,000	99.91%	100.00%
OPEB Trust	111,600	115,586	-3,986	103.57%	142.58%
OPEB Debt Service	189,745	189,195	550	99.71%	99.92%
Sub-total	11,304,545	9,412,004	1,892,541	83.26%	
Building Project (Fund 06)	1,637,995	1,637,995	0		8,848,707
Total	12,942,540	11,049,999	1,892,541		Bldg Expense Includes FY10 & FY11

Year to date amounts include current month's accounts payables plus previous month's payroll.

Building Project Budget to equal amount expended (per Board budget approval June 2011)

Building Project expended to date: \$10,486,702

Salaries % expended to date (approximately)

Contracted July-June	Supt/Finance/Maint/Comm Ed	83.33%
Contracted August-July	Principals	75.00%
Contracted Sept-August	Teachers/Fd Svc Supv/Nurses	66.67%
12 Month Non-certified	Secretaries	83.33%
12 Month Non-certified	Custodians	78.00%
9 Month Non-certified	Assistants/Cooks	80.00%

Liquid Asset Fund/Citizen's Alliance Money Market (Investments)

4/31/2012

Month End Cash Invested	\$1,423,674.12	General Closing Market Value
Construction Account (QZABS 8.26 Mil)	\$170,102.54	Facilities Project
Capital/Energy Bonds (QZABS 2.485 Mil)	\$19,130.93	Facilities Project

Electronic Fund Transfers/LAF Checks

			From	To
4/4/2012	\$ 1,159.97	Xcel Energy	F&M	Xcel
3/12/2012	\$ 64.50	RevTrak Fees	LAF	Revtrak
4/11/2012	\$ 225,000.00	Board Accounts Payable	LAF	GF Bank
4/18/2012	\$ 124,000.00	Board Accounts Payable	LAF	GF Bank
	\$ -	Payroll (F&M Bank)	LAF	F&M Bank
4/20/2012	\$ 320,428.75	Payroll (GF Bank direct deposits)	LAF	GF Bank
4/24/2012	\$ 75,000.00	Board Accounts Payable (Payroll Bills)	LAF	GF Bank
4/25/2012	\$ 50,000.00	Alt. Facilities Transfer (Money Mkt Acct)	Citizens	LAF
	\$ -	Energy/Capital Transfer (Money Mkt Acct)	Citizens	LAF

Trust Fund (PERA) OPEB \$1,696,375.89 Ending 4/31/2012

**Yellow Medicine East #2190
Board Report
May-12**

2011-12	Revised Budgets	Year to Date	Budget Balance	Percent	2010-11
By Fund	2011-12	Expenditures		Expended	YTD Expended
					On Revised Budget
General	9,481,703	7,398,231	2,083,472	78.03%	79.19%
Food Service	393,065	322,986	70,079	82.17%	73.01%
Community Service	349,956	228,511	121,445	65.30%	69.42%
Debt Redemption	75,145	75,076	69	99.91%	99.91%
Debt Red. (Constr. Bonds)	1,083,420	1,082,420	1,000	99.91%	99.72%
OPEB Trust	186,300	115,586	70,714	62.04%	83.38%
OPEB Debt Service	189,745	189,195	550	99.71%	99.92%
Sub-total	11,759,334	9,412,004	2,347,330	80.04%	
Building Project (Fund 06)	1,637,995	1,637,995	0		8,848,707
Total	13,397,329	11,049,999	2,347,330		Bldg Expense Includes FY10 & FY11

Year to date amounts include current month's accounts payables plus previous month's payroll.

Building Project Budget to equal amount expended (per Board budget approval June 2011)

Building Project expended to date: \$10,486,702

Salaries % expended to date (approximately)

Contracted July-June	Supt/Finance/Maint/Comm Ed	83.33%
Contracted August-July	Principals	75.00%
Contracted Sept-August	Teachers/Fd Svc Supv/Nurses	66.67%
12 Month Non-certified	Secretaries	83.33%
12 Month Non-certified	Custodians	78.00%
9 Month Non-certified	Assistants/Cooks	80.00%

Liquid Asset Fund/Citizen's Alliance Money Market (Investments)

4/31/2012

Month End Cash Invested	\$1,423,674.12	General Closing Market Value
Contruccion Account (QZABS 8.26 Mil)	\$170,102.54	Facilities Project
Capital/Energy Bonds (QZABS 2.485 Mil)	\$19,130.93	Facilities Project

Electronic Fund Transfers/LAF Checks

			From	To
4/4/2012	\$ 1,159.97	Xcel Energy	F&M	Xcel
3/12/2012	\$ 64.50	RevTrak Fees	LAF	Revtrak
4/11/2012	\$ 225,000.00	Board Accounts Payable	LAF	GF Bank
4/18/2012	\$ 124,000.00	Board Accounts Payable	LAF	GF Bank
	\$ -	Payroll (F&M Bank)	LAF	F&M Bank
4/20/2012	\$ 320,428.75	Payroll (GF Bank direct deposits)	LAF	GF Bank
4/24/2012	\$ 75,000.00	Board Accounts Payable (Payroll Bills)	LAF	GF Bank
4/25/2012	\$ 50,000.00	Alt. Facilities Transfer (Money Mkt Acct)	Citizens	LAF
	\$ -	Energy/Capital Transfer (Money Mkt Acct)	Citizens	LAF

Trust Fund (PERA) OPEB \$1,696,375.89 Ending 4/31/2012

Yellow Medicine East - ISD 2190

Superintendent Report

May 14, 2012

- The grade 6-12 principal position has not been filled. Craig Peterson from Warren, MN declined the offer stating the compensation package was not enough for him to make the move. The position has been re-posted until Thursday, May 17. Past applicants have been notified of the re-posting should they wish to be reconsidered. Screening will be done on Friday, May 18 with interviews scheduled for the following week.
- The Food Service fund currently has accounts which total \$16,000 overdue. Phone calls, letters, and payment charts have been attempted with families to collect past due balances. A policy needs to be established with support from the Board that can be implemented next year. Val Wensauer is contacting neighboring districts to get sample policies regarding overdue accounts. Also, because of USDA regulations our prices will need to be adjusted. This will be a topic of discussion at the June Board meeting.
- YME is the recipient of a Minnesota Department of Transportation Safe Routes to School Planning Grant which is a joint effort between the school district and the City of Granite Falls. During the upcoming school year a committee with representatives from the city and school district will plan safe routes for walking and biking to school. Infrastructure grants could follow to make physical changes on these routes.
- Looking down the road and the funding challenges our district will be facing due to declining enrollment, I would recommend the consideration of increasing our excess levy in 2014.

Check Nbr	Vendor Name	Check Date	Invoice Number	Invoice Desc	PO Number	Invoice Amount	Check Amount
256	KRANZ CONSTRUCTION	05/14/2012	2022		0	450.00	450.00
06 E 300 855 850 366 520				ALTERNATIVE FACILITIES/INDOOR AIR QUALITY/BUILDING CONS		450.00	
257	RYER PLUMBING INC.	05/14/2012	6445		0	2,369.00	2,369.00
06 E 300 855 850 366 520				ALTERNATIVE FACILITIES/INDOOR AIR QUALITY/BUILDING CONS		2,369.00	
			2	Computer	Check(s) For a Total of		2,819.00

	0	Manual	Checks For a Total of	0.00
	0	Wire Transfer	Checks For a Total of	0.00
	0	ACH	Checks For a Total of	0.00
	2	Computer	Checks For a Total of	2,819.00
Total For	2	Manual, Wire Tran, ACH & Computer	Checks	2,819.00
Less	0	Voided	Checks For a Total of	0.00
			Net Amount	2,819.00

FUND SUMMARY

Fund	Description	Balance Sheet	Revenue	Expense	Total
06	CONSTRUCTION/BUILDING FUND	0.00	0.00	2,819.00	2,819.00

Check Nbr	Vendor Name	Check Date	Invoice Number	Invoice Desc	PO Number	Invoice Amount	Check Amount
13093	ADVOCATE TRIBUNE	05/14/2012	1	legals	0	391.10	1,405.71
01 E 005 010 000 000 380				BOARD OF EDUCATION//PRINTING/ADVERTISING/		391.10	
			2	athletic cert.	0	195.00	
01 E 300 292 000 000 899				BOYS/GIRLS ATHLETICS//MISCELLANEOUS EXPENSE/		195.00	
			3		0	120.08	
01 E 300 298 000 000 899				EXTRACURRICULAR ACTIVITIES//MISCELLANEOUS EXPENSE/		120.08	
			4		0	11.30	
04 E 500 590 000 321 329				OTHER COMMUNITY SERVICES/COMMUNITY EDUCATION/POSTAGE AN		11.30	
			5		0	688.23	
04 E 500 505 000 321 380				COMMUNITY EDUCATION GENERAL/COMMUNITY EDUCATION/PRINTIN		688.23	
13094	AMERICAN WELDING AND GAS	05/14/2012	1730435		0	9.80	9.80
01 E 300 301 501 830 433				AG EDUCATION (VOCATIONAL)/VOCATIONAL PROGRAMS/INDIVIDUA		9.80	
13095	APPLE COMPUTER	05/14/2012	9992058740		0	290.00	290.00
01 E 005 211 731 315 305				SECONDARY EDUCATION GENERAL/INTEGRATION/PROFESSIONAL FE		290.00	
13096	ARAMARK CAMPUS DINING	05/14/2012	1162676257	jrs	0	396.00	396.00
01 E 005 211 731 315 305				SECONDARY EDUCATION GENERAL/INTEGRATION/PROFESSIONAL FE		396.00	
13097	ATS PROJECT SUCCESS	05/14/2012	SES 1112-2		0	521.88	521.88
01 E 100 216 640 401 303				TITLE I - PART A/TITLE I/FED SUB AWARD UNDER \$25,000/ST		521.88	
13098	AWARD EMBLEM MFG CO	05/14/2012	370091		178	90.11	90.11
01 E 300 258 233 000 430				MUSIC//SUPPLIES/INSTRUMENTAL MUSIC		45.06	
01 E 300 258 233 000 450				MUSIC//MATERIALS PURCH FOR RESALE/INSTRUMENTAL MUSIC		45.05	
13099	ROBBIN R BENDEL	05/14/2012	1		0	41.59	41.59
04 E 500 590 157 321 366				OTHER COMMUNITY SERVICES/COMMUNITY EDUCATION/TRAVEL-SCH		41.59	
13100	Vendor Continued Void	05/14/2012					0.00
13101	Vendor Continued Void	05/14/2012					0.00
13102	Vendor Continued Void	05/14/2012					0.00
13103	BENNETT & BENNETT INC.	05/14/2012	1	REGULAR ROUTES	0	56,154.94	84,109.07
01 E 005 760 000 720 361				PUPIL TRANSPORTATION/REGULAR TO AND FROM SCHOOL/BUS CON		56,154.94	
			11	AFTER SCHOOL	0	437.76	
01 E 005 760 000 728 361				PUPIL TRANSPORTATION/TO BOARD AND LODGING FACILITY/BUS		437.76	
			12	BELVIEW trips	0	2,555.61	
01 E 005 760 000 728 361				PUPIL TRANSPORTATION/TO BOARD AND LODGING FACILITY/BUS		2,555.61	
			2	FUEL	0	8,477.23	
01 E 005 760 000 720 361				PUPIL TRANSPORTATION/REGULAR TO AND FROM SCHOOL/BUS CON		8,477.23	
			211	ag in the classroom	0	106.98	
01 E 100 203 000 733 361				ELEMENTARY GENERAL ED./TRANSPORTATION/NON-AUTHORIZED/BU		106.98	
			3	CLKFD. SHUTTLE	0	1,212.96	
01 E 005 760 000 720 361				PUPIL TRANSPORTATION/REGULAR TO AND FROM SCHOOL/BUS CON		1,212.96	
			32	BAND	0	228.95	
01 E 300 258 233 733 361				MUSIC/TRANSPORTATION/NON-AUTHORIZED/BUS CONTR. (XWKD TO		228.95	
			33	TRACK	0	559.41	
01 E 300 292 219 733 361				BOYS/GIRLS ATHLETICS/TRANSPORTATION/NON-AUTHORIZED/BUS		559.41	
			34	GOLF	0	426.96	
01 E 300 292 225 733 361				BOYS/GIRLS ATHLETICS/TRANSPORTATION/NON-AUTHORIZED/BUS		426.96	
			35	BOYS TENNIS	0	593.99	
01 E 300 294 224 733 361				BOYS ATHLETICS/TRANSPORTATION/NON-AUTHORIZED/BUS CONTR.		593.99	
			36	BASEBALL	0	1,072.94	
01 E 300 294 215 733 361				BOYS ATHLETICS/TRANSPORTATION/NON-AUTHORIZED/BUS CONTR.		1,072.94	

Check Nbr	Vendor Name	Check Date	Invoice Number	Invoice Desc	PO Number	Invoice Amount	Check Amount
01 E 300 296 210 733 361			38	SOFTBALL GIRLS ATHLETICS/TRANSPORTATION/NON-AUTHORIZED/BUS CONTR	0	616.04 616.04	
01 E 005 760 000 713 361			4	OUT OF DISTRICT PUPIL TRANSPORTATION/OPEN ENROLLMENT/BUS CONTR. (XWKD T	0	3,554.52 3,554.52	
01 E 300 298 501 733 361			41	FFA EXTRACURRICULAR ACTIVITIES/TRANSPORTATION/NON-AUTHORIZE	0	914.29 914.29	
01 E 300 211 000 733 361			42	CREATIVE FOODS SECONDARY EDUCATION GENERAL/TRANSPORTATION/NON-AUTHORIZ	0	135.00 135.00	
01 E 005 211 735 315 360			43	INT. SECONDARY EDUCATION GENERAL/INTEGRATION/CONTRACTORS (NO	0	126.20 126.20	
01 E 300 298 501 733 361			45	BROOKINGS AG EXTRACURRICULAR ACTIVITIES/TRANSPORTATION/NON-AUTHORIZE	0	322.64 322.64	
01 E 300 211 000 733 361			46	BROOKINGS- SCIENCE SECONDARY EDUCATION GENERAL/TRANSPORTATION/NON-AUTHORIZ	0	291.87 291.87	
01 E 005 211 731 315 360			48	LOWER SIOUX SECONDARY EDUCATION GENERAL/INTEGRATION/CONTRACTORS (NO	0	659.85 659.85	
01 E 005 211 732 315 360			49	ART DAY SECONDARY EDUCATION GENERAL/INTEGRATION/CONTRACTORS (NO	0	157.34 157.34	
01 E 005 760 000 717 361			5	ATHLETIC SHUTTLE PUPIL TRANSPORTATION/LATE ACTIVITY BUS/BUS CONTR. (XWKD	0	478.80 478.80	
01 E 005 203 734 315 305			50	GRADE 3&4 ELEMENTARY GENERAL ED./INTEGRATION/PROFESSIONAL FEES/IN	0	311.58 311.58	
01 E 005 760 000 723 361			6	SPECIAL NEEDS PUPIL TRANSPORTATION/HANDICAPPED/BUS CONTR. (XWKD TO 36	0	3,583.21 3,583.21	
01 E 005 760 000 723 361			8	prairieland shuttle PUPIL TRANSPORTATION/HANDICAPPED/BUS CONTR. (XWKD TO 36	0	1,100.00 1,100.00	
01 E 300 258 233 000 370			9	band rent MUSIC//RENTALS AND LEASES/INSTRUMENTAL MUSIC	0	30.00 30.00	
13104 BILL'S ELECTRIC 01 E 005 810 000 000 410		05/14/2012	1	OPERATIONS AND MAINTENANCE//CUST/REPAIR SUPPLIES/	0	289.88 289.88	289.88
13105 BORCH'S INC. 01 E 300 296 210 000 401		05/14/2012	"	SOFTBALL GIRLS ATHLETICS//GENERAL SUPPLIES/SOFTBALL	0	22.97 22.97	72.72
01 E 300 292 219 000 401			AAF197729-AT02	TRACK BOYS/GIRLS ATHLETICS//GENERAL SUPPLIES/TRACK	0	49.75 49.75	
13106 CASEY'S 01 E 300 361 000 830 433		05/14/2012	1	CARPENTRY/VOCATIONAL PROGRAMS/INDIVIDUAL INST SUPPLIES/	0	100.72 100.72	100.72
13107 CENEX CREDIT CARD 01 E 005 810 193 000 442		05/14/2012	1	DR ED OPERATIONS AND MAINTENANCE//GAS & OIL/CAR EXPENSES	0	6.89 6.89	1,049.31
01 E 005 810 193 000 442			2	APRIL DR. ED OPERATIONS AND MAINTENANCE//GAS & OIL/CAR EXPENSES	0	50.81 50.81	
01 E 005 810 193 000 442			3	OPERATIONS AND MAINTENANCE//GAS & OIL/CAR EXPENSES	0	991.61 991.61	
13108 CENTURY LINK 01 E 610 050 000 000 320		05/14/2012	1	PRINCIPAL'S OFFICE//COMMUNICATIONAL SERVICES/	0	44.16 44.16	242.02
01 E 025 810 000 000 320			2	OPERATIONS AND MAINTENANCE//COMMUNICATIONAL SERVICES/	0	197.86 197.86	

Check Nbr	Vendor Name	Check Date	Invoice Number	Invoice Desc	PO Number	Invoice Amount	Check Amount
13109	Vendor Continued Void	05/14/2012					0.00
13110	CITY OF GRANITE FALLS	05/14/2012	1	BR WATER/SEWER	0	3,255.70	12,746.63
01 E 005 810 183 000 330				OPERATIONS AND MAINTENANCE//UTILITY SERVICES/SEWER-WATE		3,255.70	
			2	BR ELECTRICITY	0	588.94	
01 E 005 810 184 000 330				OPERATIONS AND MAINTENANCE//UTILITY SERVICES/ELECTRICIT		588.94	
			3	HS WATER/SEWER	0	1,091.29	
01 E 005 810 183 000 330				OPERATIONS AND MAINTENANCE//UTILITY SERVICES/SEWER-WATE		1,091.29	
			4	HS ELECTRICITY	0	7,691.41	
01 E 005 810 184 000 330				OPERATIONS AND MAINTENANCE//UTILITY SERVICES/ELECTRICIT		7,691.41	
			5	TRACK	0	24.00	
01 E 005 810 184 000 330				OPERATIONS AND MAINTENANCE//UTILITY SERVICES/ELECTRICIT		24.00	
			6	CARPENTRY	0	19.79	
01 E 300 361 000 000 330				CARPENTRY//UTILITY SERVICES/		19.79	
			8	OUTSIDE MAINTENANCE	0	75.50	
01 E 005 810 191 000 330				OPERATIONS AND MAINTENANCE//UTILITY SERVICES/OUTSIDE MA		75.50	
13111	CLARKFIELD HARDWARE	05/14/2012	82279	SOFTBALL	0	57.99	57.99
01 E 300 296 210 000 899				GIRLS ATHLETICS//MISCELLANEOUS EXPENSE/SOFTBALL		57.99	
13112	CLINICARE CORPORATION	05/14/2012	227755	TUITION- FEBRUARY	0	2,786.20	5,711.71
01 E 998 420 000 000 392				SPECIAL EDUCATIONAL GENERAL//OUT OF STATE TUITION/		2,786.20	
			230977	TUITION- MARCH	0	2,925.51	
01 E 998 420 000 000 392				SPECIAL EDUCATIONAL GENERAL//OUT OF STATE TUITION/		2,925.51	
13113	FERN CLOUD	05/14/2012	1	ART DAY	0	63.89	63.89
01 E 005 212 732 315 433				ART/INTEGRATION/INDIVIDUAL INST SUPPLIES/INTEGRATION GO		63.89	
13114	CONSUMERS COOPERATIVE OIL CO.	05/14/2012	1		0	68.63	68.63
01 E 005 810 193 000 442				OPERATIONS AND MAINTENANCE//GAS & OIL/CAR EXPENSES		68.63	
13115	COUNTRYSIDE PUBLIC HEALTH	05/14/2012	1		0	50.00	297.98
01 E 005 860 000 347 590				HEALTH & SAFETY EQUIP/PHYSICAL HAZARD CONTROL/OTHER CAP		50.00	
			5506	HS SCHOOL INSPECTION	0	165.32	
02 E 005 770 000 701 350				FOOD SERVICES/SCHOOL LUNCH/REPAIRS AND MAINTENANCE SVCS		165.32	
			5547	ELEM- SCHOOL INSP.	0	82.66	
02 E 005 770 000 701 350				FOOD SERVICES/SCHOOL LUNCH/REPAIRS AND MAINTENANCE SVCS		82.66	
13116	CULLIGAN	05/14/2012	1		0	49.90	74.85
01 E 025 810 183 000 330				OPERATIONS AND MAINTENANCE//UTILITY SERVICES/SEWER-WATE		49.90	
			APRIL		0	24.95	
01 E 025 810 183 000 330				OPERATIONS AND MAINTENANCE//UTILITY SERVICES/SEWER-WATE		24.95	
13117	DAKTRONICS, INC.	05/14/2012	6502856	WILL BE REIM. 2/3	0	25,695.00	25,695.00
01 L 230 90				GENERAL FUND/DEFERRED REVENUE/ACTIVITY/ATHLETICS \$		25,695.00	
13118	DAVE'S ELECTRIC CO	05/14/2012	108262	REPAIR PUMP	0	133.74	194.04
01 E 300 301 501 830 433				AG EDUCATION (VOCATIONAL)/VOCATIONAL PROGRAMS/INDIVIDUA		133.74	
			108326	WATER	0	60.30	
02 E 005 770 000 701 490				FOOD SERVICES/SCHOOL LUNCH/FOOD/		60.30	
13119	DAWSON-BOYD SCHOOL #378	05/14/2012	1	ART DAY	0	337.10	337.10
01 E 005 212 732 315 305				ART/INTEGRATION/PROFESSIONAL FEES/INTEGRATION GOAL #2		337.10	
13120	DEAN FOODS NORTH CENTRAL, INC.	05/14/2012	1		0	3,602.97	3,602.97
02 E 005 770 000 701 495				FOOD SERVICES/SCHOOL LUNCH/MILK/		2,610.14	
02 E 005 770 000 705 490				FOOD SERVICES/BREAKFAST/FOOD/		70.45	

Check Nbr	Vendor Name	Check Date	Invoice Number	Invoice Desc	PO Number	Invoice Amount	Check Amount
02 E 005 770 000 705 495				FOOD SERVICES/BREAKFAST/MILK/		922.38	
13121	DEPT. OF EMPLOYMENT & ECONOMIC	05/14/2012	7977689	2012 QTR 1 UNEMPLOYMENT	0	486.60	486.60
01 E 300 211 000 000 280				SECONDARY EDUCATION GENERAL//UNEMPLOYMENT COMPENSATION/		486.60	
13122	CLARICE DIETEN	05/14/2012	1	ROSEMALING	0	15.00	15.00
01 E 005 212 732 315 433				ART/INTEGRATION/INDIVIDUAL INST SUPPLIES/INTEGRATION GO		15.00	
13123	DYRDAHL LUMBER & CONSTRUCTION	05/14/2012	1	HOUSE	0	994.95	1,023.85
01 E 300 361 000 000 433				CARPENTRY//INDIVIDUAL INST SUPPLIES/		994.95	
			2	HOUSE	0	28.90	
01 E 300 361 000 000 433				CARPENTRY//INDIVIDUAL INST SUPPLIES/		28.90	
13124	EAP CONSULTANTS	05/14/2012	1	MONTHLY SERVICE FEE	0	210.60	210.60
01 L 230 92				GENERAL FUND/DEFERRED REVENUE/WELLNESS \$		210.60	
13125	Vendor Continued Void	05/14/2012					0.00
13126	ECONOMART	05/14/2012	1	FACS	0	861.84	1,559.63
01 E 300 331 000 830 433				VOCATIONAL HOME EC/VOCATIONAL PROGRAMS/INDIVIDUAL INST		861.84	
			10	BAGS	0	40.00	
04 E 500 505 000 321 450				COMMUNITY EDUCATION GENERAL/COMMUNITY EDUCATION/MATERIA		40.00	
			2	9TH GR RETREAT	0	31.88	
01 E 300 710 000 000 401				COUNSELING/GUIDANCE//GENERAL SUPPLIES/		31.88	
			20		0	15.96	
09 L 230 27				TRUST FUND/DEFERRED REVENUE/SENIOR CITIZENS ADVOCACY		15.96	
			3		0	26.95	
01 L 230 43				GENERAL FUND/DEFERRED REVENUE/SR HIGH PROJECTS		26.95	
			4	PROJ RESP.	0	75.24	
01 E 005 203 734 315 305				ELEMENTARY GENERAL ED./INTEGRATION/PROFESSIONAL FEES/IN		75.24	
			5	FOOD SERVICE	0	49.55	
02 E 005 770 000 701 490				FOOD SERVICES/SCHOOL LUNCH/FOOD/		49.55	
			6	2ND GRADE	0	286.61	
01 E 100 203 372 000 899				ELEMENTARY GENERAL ED./MISCELLANEOUS EXPENSE/SNACKS-2N		286.61	
			7	HEALTH FAIR	0	157.33	
09 L 230 27				TRUST FUND/DEFERRED REVENUE/SENIOR CITIZENS ADVOCACY		157.33	
			8	SR CENTER	0	14.27	
04 E 500 590 000 321 401				OTHER COMMUNITY SERVICES/COMMUNITY EDUCATION/GENERAL SU		14.27	
13127	EDUCATION TRUST INC.	05/14/2012	11-1195		0	1,758.91	1,758.91
01 E 005 640 735 315 305				STAFF DEVELOPMENT/INTEGRATION/PROFESSIONAL FEES/INTEGRA		1,758.91	
13128	EHLERS AND ASSOCIATES INC	05/14/2012	62919	DISCLOSURE REPORTING	0	2,078.76	2,078.76
01 E 005 010 000 000 305				BOARD OF EDUCATION//PROFESSIONAL FEES/		2,078.76	
13129	ENCHANTED LEARNING, LLC	05/14/2012	120416-1214180		0	125.00	125.00
01 E 100 050 000 000 899				PRINCIPAL'S OFFICE//MISCELLANEOUS EXPENSE/		125.00	
13130	EPA AUDIO VISUAL	05/14/2012	177963		0	108.00	108.00
01 E 300 258 233 000 430				MUSIC//SUPPLIES/INSTRUMENTAL MUSIC		108.00	
13131	FILTRATION SYSTEMS INC.	05/14/2012	46836	FILTERS	0	1,456.28	1,456.28
01 E 005 810 000 000 410				OPERATIONS AND MAINTENANCE//CUST/REPAIR SUPPLIES/		1,456.28	
13132	FORD JAMES	05/14/2012	1	TRACK MEDALS	0	468.75	468.75
01 E 300 292 219 000 401				BOYS/GIRLS ATHLETICS//GENERAL SUPPLIES/TRACK		468.75	
13133	FRONTIER TELEPHONE	05/14/2012	1		0	177.33	177.33

Check Nbr	Vendor Name	Check Date	Invoice Number	Invoice Desc	PO Number	Invoice Amount	Check Amount
01 E 025 810 000 000 320				OPERATIONS AND MAINTENANCE//COMMUNICATIONAL SERVICES/		177.33	
13134 PEGGY A FURSHONG		05/14/2012	1	CRAFT CLASS	0	64.00	64.00
04 E 500 505 000 321 305				COMMUNITY EDUCATION GENERAL/COMMUNITY EDUCATION/PROFESS		64.00	
13135 GOOGLE, INC.		05/14/2012	1633662		0	15.58	15.58
01 E 200 612 199 000 401				TECHNOLOGY//GENERAL SUPPLIES/KAREN MCCOY		15.58	
13136 GRANITE FALLS AUTO PARTS		05/14/2012	205359		0	8.49	8.49
01 E 300 301 501 830 433				AG EDUCATION (VOCATIONAL)/VOCATIONAL PROGRAMS/INDIVIDUA		8.49	
13137 GRANITE RUN GOLF CLUB		05/14/2012	1046	USE OF FACILITIES	0	500.00	500.00
01 E 300 292 225 000 370				BOYS/GIRLS ATHLETICS//RENTALS AND LEASES/GOLF		500.00	
13138 GRANITE FALLS SUPER MOTEL		05/14/2012	1503	PRAIRIE FIRE	0	400.30	800.60
01 L 230 01				THEATRE			
				GENERAL FUND/DEFERRED REVENUE/ARTS COUNCIL		400.30	
			1504	PRAIRIE FIRE	0	400.30	
01 L 230 01				THEATRE			
				GENERAL FUND/DEFERRED REVENUE/ARTS COUNCIL		400.30	
13139 GREAT PLAINS NATURAL GAS CO		05/14/2012	1	CLKFD	0	233.54	2,313.93
01 E 025 810 000 000 440				OPERATIONS AND MAINTENANCE//FUEL FOR BUILDINGS/		233.54	
			2	HS	0	1,474.83	
01 E 005 810 000 000 440				OPERATIONS AND MAINTENANCE//FUEL FOR BUILDINGS/		1,474.83	
			3	BR	0	571.90	
01 E 005 810 000 000 440				OPERATIONS AND MAINTENANCE//FUEL FOR BUILDINGS/		571.90	
			4	MAINT.	0	33.66	
01 E 005 810 191 000 440				OPERATIONS AND MAINTENANCE//FUEL FOR BUILDINGS/OUTSIDE		33.66	
13140 GRINDER ESPRESSO CAFE/GIFTS		05/14/2012	1	SR. CAREGIVERS	0	12.90	12.90
04 E 500 590 157 321 401				OTHER COMMUNITY SERVICES/COMMUNITY EDUCATION/GENERAL SU		12.90	
13141 GUERTIN, DAVID		05/14/2012	1	RANGE BALLS	0	10.00	10.00
01 E 300 292 225 000 401				BOYS/GIRLS ATHLETICS//GENERAL SUPPLIES/GOLF		10.00	
13142 HAAN CRAFTS		05/14/2012	176070		0	185.75	185.75
01 E 300 331 000 830 433				VOCATIONAL HOME EC/VOCATIONAL PROGRAMS/INDIVIDUAL INST		185.75	
13143 HEINEMANN PUBLISHING		05/14/2012	6034083		0	60.00	60.00
01 E 100 640 000 306 401				STAFF DEVELOPMENT/STAFF DEV. 50% SITE/GENERAL SUPPLIES/		60.00	
13144 HENDERSON, ROBIN		05/14/2012	1	CULTURE DAY	0	225.94	419.52
01 E 005 211 731 315 305				SECONDARY EDUCATION GENERAL/INTEGRATION/PROFESSIONAL FE		225.94	
			10		0	60.06	
01 E 005 790 000 315 366				OTHER PUPIL SUPPORT SERVICES/INTEGRATION/TRAVEL-SCHOOL		60.06	
			2	PROJECT RESPECT	0	94.70	
01 E 005 203 734 315 305				ELEMENTARY GENERAL ED./INTEGRATION/PROFESSIONAL FEES/IN		94.70	
			3	DAKOTA PROJECT	0	38.82	
01 E 005 203 734 315 305				ELEMENTARY GENERAL ED./INTEGRATION/PROFESSIONAL FEES/IN		38.82	
13145 XIONG HERR		05/14/2012	1	INTERPRETING	0	242.07	242.07
01 E 200 420 000 419 358				SPECIAL EDUCATIONAL GENERAL/94-142 FEDERAL/INTERPRETERS		242.07	
13146 HILLYARD/HUTCHINSON		05/14/2012	600188122		0	175.33	3,722.21
01 E 005 810 000 000 410				OPERATIONS AND MAINTENANCE//CUST/REPAIR SUPPLIES/		175.33	
			600192050		0	2,418.85	
01 E 005 810 000 000 410				OPERATIONS AND MAINTENANCE//CUST/REPAIR SUPPLIES/		2,418.85	
			600200865		0	188.68	
02 E 005 770 000 701 401				FOOD SERVICES/SCHOOL LUNCH/GENERAL SUPPLIES/		188.68	

Check Nbr	Vendor Name	Check Date	Invoice Number	Invoice Desc	PO Number	Invoice Amount	Check Amount
01 E 005 810 000 000 410			600230231	OPERATIONS AND MAINTENANCE//CUST/REPAIR SUPPLIES/	0	754.43	754.43
02 E 005 770 000 701 401			600230235	FOOD SERVICES/SCHOOL LUNCH/GENERAL SUPPLIES/	0	184.92	184.92
13147 ANDREW HOLT		05/14/2012	fy11	re-issue #15793 (lost)	0	122.40	122.40
01 E 300 211 130 317 366				SECONDARY EDUCATION GENERAL/COMPENSATORY/TRAVEL-SCHOOL		122.40	
13148 IKON OFFICE SOLUTIONS		05/14/2012	1033974884		0	200.00	480.00
01 E 300 211 000 000 430				SECONDARY EDUCATION GENERAL//SUPPLIES/		200.00	
01 E 300 211 000 000 430			1033974885	SECONDARY EDUCATION GENERAL//SUPPLIES/	0	56.00	56.00
01 E 300 211 000 000 430			1034012878	SECONDARY EDUCATION GENERAL//SUPPLIES/	0	224.00	224.00
13149 INK SPOT		05/14/2012	11022		0	231.00	231.00
01 E 300 211 000 000 430				SECONDARY EDUCATION GENERAL//SUPPLIES/		231.00	
13150 INNOVATIVE OFFICE SOLUTIONS		05/14/2012	35181		0	177.61	177.61
01 E 300 211 000 000 430				SECONDARY EDUCATION GENERAL//SUPPLIES/		177.61	
13151 ISCORP		05/14/2012	1	skyward finance	0	195.50	195.50
01 E 005 110 000 000 350				ACCOUNTING OFFICE//REPAIRS AND MAINTENANCE SVCS/		195.50	
13152 JEFFREY IVERSON		05/14/2012	1	PROGRAM COVERS	0	51.36	95.34
01 E 300 258 231 000 430				MUSIC//SUPPLIES/VOCAL MUSIC		51.36	
01 E 300 258 231 000 430			2	BLANK CDS	0	43.98	43.98
01 E 300 258 231 000 430				MUSIC//SUPPLIES/VOCAL MUSIC		43.98	
13153 KILOWATT COMMUNITY CENTER		05/14/2012	1	jh softball	0	100.00	631.00
01 E 300 298 000 000 370				EXTRACURRICULAR ACTIVITIES//RENTALS AND LEASES/		100.00	
01 E 300 298 000 000 370			2	TRACK	0	108.00	108.00
01 E 300 298 000 000 370				EXTRACURRICULAR ACTIVITIES//RENTALS AND LEASES/		108.00	
01 E 300 298 000 000 370			3	TENNIS	0	200.00	200.00
01 E 300 298 000 000 370				EXTRACURRICULAR ACTIVITIES//RENTALS AND LEASES/		200.00	
04 E 500 505 000 321 370			4	ELEM WRESTLING	0	223.00	223.00
04 E 500 505 000 321 370				COMMUNITY EDUCATION GENERAL/COMMUNITY EDUCATION/RENTALS		223.00	
13154 KLOCKIT		05/14/2012	665610		0	68.69	68.69
01 E 300 255 000 000 450				INDUSTRIAL EDUCATION//MATERIALS PURCH FOR RESALE/		68.69	
13155 KLUKSDAL, DALLAS		05/14/2012	1		0	75.00	75.00
01 E 300 258 233 000 350				MUSIC//REPAIRS AND MAINTENANCE SVCS/INSTRUMENTAL MUSIC		75.00	
13156 KNAPPER, TIMOTHY		05/14/2012	1		0	26.03	289.44
04 E 500 505 000 321 366				COMMUNITY EDUCATION GENERAL/COMMUNITY EDUCATION/TRAVEL-		26.03	
01 E 300 298 000 000 366			2	EXTRACURRICULAR ACTIVITIES//TRAVEL-SCHOOL BUSINESS/	0	263.41	263.41
01 E 300 298 000 000 366				EXTRACURRICULAR ACTIVITIES//TRAVEL-SCHOOL BUSINESS/		263.41	
13157 KORTHUIS JEWELRY		05/14/2012	5601		0	52.00	52.00
01 E 300 258 233 000 430				MUSIC//SUPPLIES/INSTRUMENTAL MUSIC		52.00	
13158 KRANZ CONSTRUCTION		05/14/2012	2021	DOOR BY BAND ROOM	0	2,150.00	2,150.00
01 E 005 850 000 302 522				FACILITIES/CAPITAL OUTLAY/BUILDING IMPROVEMENTS/		2,150.00	
13159 KVAM, PEGGY		05/14/2012	1		0	91.00	91.00
01 E 100 640 000 306 367				STAFF DEVELOPMENT/STAFF DEV. 50% SITE/TRAVEL-PROFESS DE		91.00	
13160 SHEILA LAVOIE		05/14/2012	1	APRIL 2012	0	1,349.76	1,349.76
01 E 005 760 000 728 361				PUPIL TRANSPORTATION/TO BOARD AND LODGING FACILITY/BUS		1,349.76	

Check Nbr	Vendor Name	Check Date	Invoice Number	Invoice Desc	PO Number	Invoice Amount	Check Amount
13161	KATIE M LEWANDOWSKI	05/14/2012	1	MOSAIC PROJECT	0	114.10	218.58
01 E 100 212 000 000 430				ART//SUPPLIES/		114.10	
			2	MOSAIC PROJECT	0	73.07	
01 L 230 33				GENERAL FUND/DEFERRED REVENUE/BERT RANEY ACTIVITY ACCOU		73.07	
			3	STAFF DEV. PROJECT	0	31.41	
01 L 230 92				GENERAL FUND/DEFERRED REVENUE/WELLNESS \$		31.41	
13162	LIFETOUCH	05/14/2012	I459255		0	585.42	585.42
01 L 230 33				GENERAL FUND/DEFERRED REVENUE/BERT RANEY ACTIVITY ACCOU		585.42	
13163	MINNESOTA ELEVATOR, INC.	05/14/2012	242616	INSPECTION	0	319.84	319.84
01 E 005 860 000 347 590				HEALTH & SAFETY EQUIP/PHYSICAL HAZARD CONTROL/OTHER CAP		319.84	
13164	MINNESOTA HISTORIAL SOCIETY	05/14/2012	286039	balance due	0	45.00	45.00
01 L 230 43				GENERAL FUND/DEFERRED REVENUE/SR HIGH PROJECTS		45.00	
13165	MUSIC MART	05/14/2012	720254		0	129.86	161.29
01 E 300 258 233 000 430				MUSIC//SUPPLIES/INSTRUMENTAL MUSIC		129.86	
			722358		0	31.43	
01 E 300 258 231 000 430				MUSIC//SUPPLIES/VOCAL MUSIC		31.43	
13166	MUSIC STREET	05/14/2012	1		0	32.25	32.25
01 E 300 258 233 000 350				MUSIC//REPAIRS AND MAINTENANCE SVCS/INSTRUMENTAL MUSIC		32.25	
13167	MUSIC THEATRE INTERNATIONAL	05/14/2012	929236-999		0	25.00	25.00
01 E 300 298 236 000 898				EXTRACURRICULAR ACTIVITIES//SCHOLARSHIPS/FORENSICS		25.00	
13168	MVCC	05/14/2012	1		0	124,000.00	124,000.00
01 E 200 420 000 740 396				SPECIAL EDUCATIONAL GENERAL/STATE FUNDED SPECIAL ED/DUE		124,000.00	
13169	MVTV	05/14/2012	1	MAINT. INTERNET TECHNOLOGY//PROFESSIONAL FEES/KAREN MCCOY	0	47.95	47.95
01 E 200 612 199 000 305						47.95	
13170	NASCO	05/14/2012	858707		0	267.60	267.60
01 E 300 260 000 000 430				NATURAL SCIENCES//SUPPLIES/		267.60	
13171	NELSEN'S CLEANERS & LAUNDERERS	05/14/2012	1		0	21.55	21.55
02 E 005 770 000 701 382				FOOD SERVICES/SCHOOL LUNCH/LAUNDRY AND DRY CLEANING/		21.55	
13172	NEON NEEDLES	05/14/2012	3987	ROBOTICS	0	272.00	272.00
01 E 300 292 000 000 899				BOYS/GIRLS ATHLETICS//MISCELLANEOUS EXPENSE/		272.00	
13173	NEW DOMINION SCHOOL	05/14/2012	8492-3348	APRIL	0	2,588.16	2,588.16
01 E 998 408 000 740 393				EMOTION/BEHAVIORAL DISORDER/STATE FUNDED SPECIAL ED/SPE		2,588.16	
13174	NEWMIND GROUPS INC.	05/14/2012	104363		98	1,796.00	1,796.00
01 E 300 211 319 510 530				SECONDARY EDUCATION GENERAL/TITLE IX/EQUIPMENT PURCHASE		1,796.00	
13175	OFFICE MAX CONTRACT INC.	05/14/2012	113658	PAPER	0	115.50	403.17
01 E 100 203 000 000 430				ELEMENTARY GENERAL ED.//SUPPLIES/		57.75	
01 E 300 211 000 000 430				SECONDARY EDUCATION GENERAL//SUPPLIES/		57.75	
			255260	PAPER	97	115.50	
01 E 100 203 000 000 430				ELEMENTARY GENERAL ED.//SUPPLIES/		57.75	
01 E 300 211 000 000 430				SECONDARY EDUCATION GENERAL//SUPPLIES/		57.75	
			345084		0	28.50	
01 E 005 810 000 000 410				OPERATIONS AND MAINTENANCE//CUST/REPAIR SUPPLIES/		28.50	
			345084-		0	143.67	
01 E 005 110 000 000 401				ACCOUNTING OFFICE//GENERAL SUPPLIES/		143.67	
13176	OLSON SANITATION INC.	05/14/2012	2097		0	50.00	504.91
01 E 025 810 000 000 330				OPERATIONS AND MAINTENANCE//UTILITY SERVICES/		50.00	
			2097-		0	454.91	

Check Nbr	Vendor Name	Check Date	Invoice Number	Invoice Desc	PO Number	Invoice Amount	Check Amount
01 E 005 810 000 000 330				OPERATIONS AND MAINTENANCE//UTILITY SERVICES/		454.91	
13177	PAN-O-GOLD BAKING CO.	05/14/2012	1		0	1,012.99	1,012.99
02 E 005 770 000 701 490				FOOD SERVICES/SCHOOL LUNCH/FOOD/		785.37	
02 E 005 770 000 705 490				FOOD SERVICES/BREAKFAST/FOOD/		227.62	
13178	PAR PIPING & FABRICATION INC	05/14/2012	6127		0	22.08	694.48
01 E 300 301 501 000 450				AG EDUCATION (VOCATIONAL)//MATERIALS PURCH FOR RESALE/V		22.08	
01 E 300 301 501 000 433			6127-	AG EDUCATION (VOCATIONAL)//INDIVIDUAL INST SUPPLIES/VOC	0	672.40	672.40
13179	PICHT'S BODY SHOP, INC.	05/14/2012	9541	WHEEL COVER	0	85.78	85.78
01 E 005 810 193 000 401				OPERATIONS AND MAINTENANCE//GENERAL SUPPLIES/CAR EXPENS		85.78	
13180	PITNEY BOWES	05/14/2012	454116-AP12	POSTAGE METER	0	1,042.35	1,042.35
01 E 005 020 000 000 370				RENT			
				SUPERINTENDENT'S OFFICE//RENTALS AND LEASES/		1,042.35	
13181	PLANK ROAD PUBLISHING, INC.	05/14/2012	12-040427		0	30.45	30.45
01 L 230 36				GENERAL FUND/DEFERRED REVENUE/MUSIC-BERT RANEY		30.45	
13182	PRAIRIE FIRE THEATRE	05/14/2012	1	2013 RESIDENCY	0	400.00	400.00
01 L 230 01				DEPOSIT-JACK & THE BEANSTOCK			
				GENERAL FUND/DEFERRED REVENUE/ARTS COUNCIL		400.00	
13183	PRESIDENT'S CHALLENGE	05/14/2012	56241		0	90.00	90.00
01 E 100 203 408 000 430				ELEMENTARY GENERAL ED.//SUPPLIES/ELEM PHY ED		90.00	
13184	QUILL CORPORATION	05/14/2012	2667867		0	136.07	237.80
04 E 500 590 156 321 401				OTHER COMMUNITY SERVICES/COMMUNITY EDUCATION/GENERAL SU		136.07	
04 E 500 590 156 321 401			2669337		0	17.09	
				OTHER COMMUNITY SERVICES/COMMUNITY EDUCATION/GENERAL SU		17.09	
04 E 500 590 156 321 401			2725261		0	1.56	
				OTHER COMMUNITY SERVICES/COMMUNITY EDUCATION/GENERAL SU		1.56	
04 E 500 590 156 321 401			43270782		0	83.08	
				OTHER COMMUNITY SERVICES/COMMUNITY EDUCATION/GENERAL SU		83.08	
13185	RATWICK, ROSZAK & MALONEY, P.A	05/14/2012	49925	LEGAL	0	3,741.59	3,741.59
01 E 005 150 000 000 305				LEGAL SERVICES//PROFESSIONAL FEES/		3,741.59	
13186	REINHART INST FOODS	05/14/2012	1		0	12,818.34	12,818.34
02 E 005 770 000 701 401				FOOD SERVICES/SCHOOL LUNCH/GENERAL SUPPLIES/		602.86	
02 E 005 770 000 701 490				FOOD SERVICES/SCHOOL LUNCH/FOOD/		10,003.53	
02 E 005 770 000 705 490				FOOD SERVICES/BREAKFAST/FOOD/		2,211.95	
13187	REISHUS, ZEE ANNE	05/14/2012	1		0	15.00	15.00
01 E 100 050 000 000 899				PRINCIPAL'S OFFICE//MISCELLANEOUS EXPENSE/		15.00	
13188	RICOH USA INC	05/14/2012	1	1/25 TO 4/24	0	638.38	864.00
01 E 300 211 000 000 350				MAINT.			
				SECONDARY EDUCATION GENERAL//REPAIRS AND MAINTENANCE SV		638.38	
01 E 300 211 000 000 350			2	4/25 TO 7/24 BASE	0	225.62	225.62
				SECONDARY EDUCATION GENERAL//REPAIRS AND MAINTENANCE SV		225.62	
13189	RILEY BUS SERVICE, INC.	05/14/2012	8803	PLYMOUTH	0	724.50	724.50
04 E 500 505 000 321 450				COMMUNITY EDUCATION GENERAL/COMMUNITY EDUCATION/MATERIA		724.50	
13190	RIVARD'S TURF & FORAGE	05/14/2012	18829	SEED	96	2,459.98	2,459.98
01 E 005 810 191 000 410				OPERATIONS AND MAINTENANCE//CUST/REPAIR SUPPLIES/OUTSID		2,459.98	
13191	RTS	05/14/2012	1	CLKFD	0	1.04	144.43
01 E 025 810 000 000 320				OPERATIONS AND MAINTENANCE//COMMUNICATIONAL SERVICES/		1.04	
			2	GF	0	143.39	

Check Nbr	Vendor Name	Check Date	Invoice Number	Invoice Desc	PO Number	Invoice Amount	Check Amount
01 E 005 810 000 000 320				OPERATIONS AND MAINTENANCE//COMMUNICATIONAL SERVICES/		143.39	
13192 RUTLEDGE DENINE		05/14/2012	1		0	158.51	158.51
01 E 300 211 130 317 366				SECONDARY EDUCATION GENERAL/COMPENSATORY/TRAVEL-SCHOOL		158.51	
13193 SAWMILL		05/14/2012	1		0	62.46	909.83
01 E 005 810 191 000 410				OPERATIONS AND MAINTENANCE//CUST/REPAIR SUPPLIES/OUTSID		62.46	
			2		0	426.07	
01 E 300 255 000 000 430				INDUSTRIAL EDUCATION//SUPPLIES/		426.07	
			3		0	10.59	
01 E 300 255 000 000 450				INDUSTRIAL EDUCATION//MATERIALS PURCH FOR RESALE/		10.59	
			4	house	0	255.65	
01 E 300 361 000 000 433				CARPENTRY//INDIVIDUAL INST SUPPLIES/		255.65	
			5		0	155.06	
01 E 300 301 501 830 433				AG EDUCATION (VOCATIONAL)/VOCATIONAL PROGRAMS/INDIVIDUA		155.06	
13194 SCANTRON CORPORATION		05/14/2012	3058297		0	841.16	841.16
01 E 300 211 000 000 430				SECONDARY EDUCATION GENERAL//SUPPLIES/		841.16	
13195 SCHWAAB, INC.		05/14/2012	c22277	stampers	0	180.00	180.00
01 E 005 110 000 000 401				ACCOUNTING OFFICE//GENERAL SUPPLIES/		180.00	
13196 SMITH, SHERRY		05/14/2012	1	PBIS	0	3.59	3.59
01 E 100 050 000 000 899				PRINCIPAL'S OFFICE//MISCELLANEOUS EXPENSE/		3.59	
13197 SOUTHWEST WHOLESALE		05/14/2012	1		0	3,790.18	3,790.18
02 E 005 770 000 701 401				FOOD SERVICES/SCHOOL LUNCH/GENERAL SUPPLIES/		269.27	
02 E 005 770 000 701 490				FOOD SERVICES/SCHOOL LUNCH/FOOD/		2,680.96	
02 E 005 770 000 705 490				FOOD SERVICES/BREAKFAST/FOOD/		839.95	
13198 SPECIAL SYSTEMS INC.		05/14/2012	32060	WIRE REPAIR	0	352.50	590.97
01 E 005 860 000 363 530				HEALTH & SAFETY EQUIP/FIRE SAFETY/EQUIPMENT PURCHASES/		352.50	
			32063	STROBE- HORN	0	238.47	
01 E 005 860 000 363 530				HEALTH & SAFETY EQUIP/FIRE SAFETY/EQUIPMENT PURCHASES/		238.47	
13199 STATE OF MN PUBLIC SAFETY		05/14/2012	8701200062011	m-47597	0	25.00	25.00
01 E 005 810 000 000 350				OPERATIONS AND MAINTENANCE//REPAIRS AND MAINTENANCE SVC		25.00	
13200 ALLEN L STOECKMAN		05/14/2012	1		0	288.02	288.02
01 E 005 020 000 000 366				SUPERINTENDENT'S OFFICE//TRAVEL-SCHOOL BUSINESS/		288.02	
13201 SUBWAY		05/14/2012	1		0	35.00	98.00
01 E 005 203 734 315 305				ELEMENTARY GENERAL ED./INTEGRATION/PROFESSIONAL FEES/IN		35.00	
			10		0	63.00	
01 E 005 211 731 315 305				SECONDARY EDUCATION GENERAL/INTEGRATION/PROFESSIONAL FE		63.00	
13202 SW/WC SERVICE COOP - MARSHALL		05/14/2012	1	tech	0	75.00	295.00
01 E 200 612 199 000 366				TECHNOLOGY//TRAVEL-SCHOOL BUSINESS/KAREN MCCOY		75.00	
			162	CULINARY	0	220.00	
01 E 300 331 000 830 433				VOCATIONAL HOME EC/VOCATIONAL PROGRAMS/INDIVIDUAL INST		220.00	
13203 TEACHER'S DISCOVERY		05/14/2012	W014072101015		171	190.37	190.37
01 E 005 211 731 315 305				SECONDARY EDUCATION GENERAL/INTEGRATION/PROFESSIONAL FE		190.37	
13204 TECH CHECK		05/14/2012	20111		0	24.00	48.00
01 E 200 612 199 000 401				TECHNOLOGY//GENERAL SUPPLIES/KAREN MCCOY		24.00	
			20204		0	24.00	
01 E 200 612 199 000 401				TECHNOLOGY//GENERAL SUPPLIES/KAREN MCCOY		24.00	
13205 TRANS-MISSISSIPPI BIOLOGICAL		05/14/2012	85949		0	169.27	169.27
01 E 100 203 405 000 430				ELEMENTARY GENERAL ED./SUPPLIES/5TH GRADE		169.27	

Check Nbr	Vendor Name	Check Date	Invoice Number	Invoice Desc	PO Number	Invoice Amount	Check Amount
13206	TRUE VALUE-GF/MONTE	05/14/2012	1	AG	0	85.80	426.07
01 E 300 301 501 830 433				AG EDUCATION (VOCATIONAL)/VOCATIONAL PROGRAMS/INDIVIDUA		85.80	
			2	OM	0	134.59	
01 E 005 810 191 000 410				OPERATIONS AND MAINTENANCE//CUST/REPAIR SUPPLIES/OUTSID		134.59	
			3	IM	0	18.70	
01 E 005 810 000 000 410				OPERATIONS AND MAINTENANCE//CUST/REPAIR SUPPLIES/		18.70	
			5		0	157.99	
04 E 500 505 000 321 450				COMMUNITY EDUCATION GENERAL/COMMUNITY EDUCATION/MATERIA		157.99	
			6	IT	0	28.99	
01 E 300 255 000 000 450				INDUSTRIAL EDUCATION//MATERIALS PURCH FOR RESALE/		28.99	
13207	US MATH RECOVERY COUNCIL	05/14/2012	12-166	PROF. DEV.	0	7,960.00	7,960.00
01 E 100 216 640 401 303				TITLE I - PART A/TITLE I/FED SUB AWARD UNDER \$25,000/ST		7,960.00	
13208	Vendor Continued Void	05/14/2012					0.00
13209	VISA	05/14/2012	1	ARAMART- ROBOTICS	0	155.10	1,986.60
01 E 300 298 194 000 379				EXTRACURRICULAR ACTIVITIES//STATE EXPENSES/ROBOTICS (FY		155.10	
			10	PAPER DIRECT	0	51.98	
01 E 300 211 165 000 899				SECONDARY EDUCATION GENERAL//MISCELLANEOUS EXPENSE/GRAD		51.98	
			11	REDLIN CENTER	0	45.90	
01 E 005 010 000 000 899				BOARD OF EDUCATION//MISCELLANEOUS EXPENSE/		45.90	
			12	CROWNE PLAZA -	0	390.80	
01 E 300 298 501 000 379				FFA		390.80	
				EXTRACURRICULAR ACTIVITIES//STATE EXPENSES/VOC AG		390.80	
			15	ELEM ACT	0	-132.00	
01 L 230 33				GENERAL FUND/DEFERRED REVENUE/BERT RANEY ACTIVITY ACCOU		-132.00	
			2	COMFORT SUITES	0	1,172.60	
01 E 300 298 194 000 379				(ROBOTICS)		1,172.60	
				EXTRACURRICULAR ACTIVITIES//STATE EXPENSES/ROBOTICS (FY		1,172.60	
			3	AMAZON (LIBRARY	0	71.60	
01 E 005 640 000 308 401				SOFTWARE)		71.60	
				STAFF DEVELOPMENT/STAFF DEV. 25% DIST. WIDE/GENERAL SUP		71.60	
			4	MN STEM NETWORK	0	49.00	
01 E 005 020 000 000 367				SUPERINTENDENT'S OFFICE//TRAVEL-PROFESS DEVELOPMENT/		49.00	
			5	UPS	0	21.71	
01 E 300 211 000 000 329				SECONDARY EDUCATION GENERAL//POSTAGE AND EXPRESS/		21.71	
			6	VERIZON -KL	0	20.00	
01 E 200 612 199 000 401				TECHNOLOGY//GENERAL SUPPLIES/KAREN MCCOY		20.00	
			7	VERIZON-AS	0	20.00	
01 E 005 020 000 000 899				SUPERINTENDENT'S OFFICE//MISCELLANEOUS EXPENSE/		20.00	
			8	VERIZON-TK	0	20.00	
04 E 500 505 000 321 899				COMMUNITY EDUCATION GENERAL/COMMUNITY EDUCATION/MISCELL		20.00	
			9	MARKERS INC	0	99.91	
01 E 300 298 000 000 899				EXTRACURRICULAR ACTIVITIES//MISCELLANEOUS EXPENSE/		99.91	
13210	VALERIE WENSAUER	05/14/2012	1		0	27.30	27.30
02 E 005 770 000 701 366				FOOD SERVICES/SCHOOL LUNCH/TRAVEL-SCHOOL BUSINESS/		27.30	
13211	WEST CENTRAL TAE KWON DO	05/14/2012	1	APRIL	0	576.00	1,152.00
04 E 500 505 000 321 305				COMMUNITY EDUCATION GENERAL/COMMUNITY EDUCATION/PROFESS		576.00	
			may		0	576.00	
04 E 500 505 000 321 305				COMMUNITY EDUCATION GENERAL/COMMUNITY EDUCATION/PROFESS		576.00	

Check Nbr	Vendor Name	Check Date	Invoice Number	Invoice Desc	PO Number	Invoice Amount	Check Amount
13212	WILLIE'S KORNER STORE	05/14/2012	607801	NEWSPAPER	0	633.75	633.75
01 E 300 620 000 000 489				EDUCATIONAL MEDIA/LIBRARY//PERIODICAL/NEWSPAPERS/		633.75	
13213	XCEL ENERGY	05/14/2012	1		0	31.61	31.61
01 E 025 810 184 000 330				OPERATIONS AND MAINTENANCE//UTILITY SERVICES/ELECTRICIT		31.61	
13214	YMC ABSTRACT COMPANY, INC.	05/14/2012	j121104-1	abstracts	0	712.00	712.00
01 E 005 010 000 000 899				BOARD OF EDUCATION//MISCELLANEOUS EXPENSE/		712.00	
13215	YME SCHOOL ACTIVITY ACCOUNT	05/14/2012	1	REVTRAK-YEARBOOK	0	240.00	372.00
01 E 300 298 216 000 899				EXTRACURRICULAR ACTIVITIES//MISCELLANEOUS EXPENSE/FLO-T		240.00	
			2	VISA- ELEM	0	132.00	
01 L 230 33				GENERAL FUND/DEFERRED REVENUE/BERT RANEY ACTIVITY ACCOU		132.00	
13216	Vendor Continued Void	05/14/2012					0.00
13217	Vendor Continued Void	05/14/2012					0.00
13218	Vendor Continued Void	05/14/2012					0.00
13219	Vendor Continued Void	05/14/2012					0.00
13220	Vendor Continued Void	05/14/2012					0.00
13221	Vendor Continued Void	05/14/2012					0.00
13222	Vendor Continued Void	05/14/2012					0.00
13223	Vendor Continued Void	05/14/2012					0.00
13224	Vendor Continued Void	05/14/2012					0.00
13225	Vendor Continued Void	05/14/2012					0.00
13226	Vendor Continued Void	05/14/2012					0.00
13227	YME SCHOOLS-ADM	05/14/2012	13280	VOID NORA GUERRA	0	-100.00	8,755.77
01 L 230 92				GENERAL FUND/DEFERRED REVENUE/WELLNESS \$		-100.00	
			13344	mike gordt	0	165.00	
01 E 300 294 215 000 319				BOYS ATHLETICS//OTHER PERSONAL SERVICES/BASEBALL		165.00	
			13345	WALMART	0	52.32	
01 E 300 294 224 000 401				BOYS ATHLETICS//GENERAL SUPPLIES/TENNIS		52.32	
			13347	SLEEPY EYE	0	90.00	
01 E 300 294 224 000 401				BOYS ATHLETICS//GENERAL SUPPLIES/TENNIS		90.00	
			13348	BOLD HS	0	65.00	
01 E 300 294 224 000 401				BOYS ATHLETICS//GENERAL SUPPLIES/TENNIS		65.00	
			13349	LAKEVIEW HS	0	75.00	
01 E 300 294 224 000 401				BOYS ATHLETICS//GENERAL SUPPLIES/TENNIS		75.00	
			13350	BOLD HS	0	65.00	
01 E 300 294 224 000 401				BOYS ATHLETICS//GENERAL SUPPLIES/TENNIS		65.00	
			13351	MARSHALL HS	0	100.00	
01 E 300 294 224 000 401				BOYS ATHLETICS//GENERAL SUPPLIES/TENNIS		100.00	
			13352	MARSHALL HS	0	50.00	
01 E 300 292 225 000 369				BOYS/GIRLS ATHLETICS//PARTICIPATION FEES/GOLF		50.00	
			13355	VALLEYFAIR	0	246.00	
01 E 300 298 216 000 899				EXTRACURRICULAR ACTIVITIES//MISCELLANEOUS EXPENSE/FLO-T		246.00	
			13356	MSU- MANKATO	0	20.00	
01 E 300 298 216 000 899				EXTRACURRICULAR ACTIVITIES//MISCELLANEOUS EXPENSE/FLO-T		20.00	
			13357	ART CHRISTLE	0	165.00	
01 E 300 294 215 000 319				BOYS ATHLETICS//OTHER PERSONAL SERVICES/BASEBALL		165.00	
			13358	TIM BESEMAN	0	165.00	
01 E 300 294 215 000 319				BOYS ATHLETICS//OTHER PERSONAL SERVICES/BASEBALL		165.00	
			13359	PAUL HAMRE	0	165.00	
01 E 300 296 210 000 319				GIRLS ATHLETICS//OTHER PERSONAL SERVICES/SOFTBALL		165.00	
			13360	STEVE JOHNSON	0	165.00	
01 E 300 296 210 000 319				GIRLS ATHLETICS//OTHER PERSONAL SERVICES/SOFTBALL		165.00	

Check Nbr	Vendor Name	Check Date	Invoice Number	Invoice Desc	PO Number	Invoice Amount	Check Amount
04 E 500 505 000 321 305			13361	JERRY HAMMER COMMUNITY EDUCATION GENERAL/COMMUNITY EDUCATION/PROFESS	0	252.00 252.00	
04 R 500 000 000 321 050			13362	RUTH JOHNSON COMMUNITY EDUCATION/FEES FROM PATRONS/	0	58.00 58.00	
04 R 500 000 000 321 050			13363	SHIRLEY FORMO COMMUNITY EDUCATION/FEES FROM PATRONS/	0	58.00 58.00	
01 L 230 92			13364	NORA GUERRA GENERAL FUND/DEFERRED REVENUE/WELLNESS \$	0	100.00 100.00	
01 E 300 298 216 000 899			13365	MN WEST EXTRACURRICULAR ACTIVITIES//MISCELLANEOUS EXPENSE/FLO-T	0	20.00 20.00	
01 E 300 294 215 000 319			13366	SCOTT HINDLE BOYS ATHLETICS//OTHER PERSONAL SERVICES/BASEBALL	0	175.00 175.00	
01 E 300 296 210 000 319			13367	MIKE GORDT GIRLS ATHLETICS//OTHER PERSONAL SERVICES/SOFTBALL	0	165.00 165.00	
01 E 300 296 210 000 319			13368	TOM JACOBSON GIRLS ATHLETICS//OTHER PERSONAL SERVICES/SOFTBALL	0	165.00 165.00	
01 E 300 292 219 000 369			13369	MACCRAY TRACK BOYS/GIRLS ATHLETICS//PARTICIPATION FEES/TRACK	0	75.00 75.00	
04 E 500 505 000 321 305			13371	ASHLEY REFSLAND COMMUNITY EDUCATION GENERAL/COMMUNITY EDUCATION/PROFESS	0	415.00 415.00	
04 E 500 505 000 321 305			13372	KYLIE JANS COMMUNITY EDUCATION GENERAL/COMMUNITY EDUCATION/PROFESS	0	250.00 250.00	
04 E 500 505 000 321 305			13373	JANESSA HOFFMAN COMMUNITY EDUCATION GENERAL/COMMUNITY EDUCATION/PROFESS	0	250.00 250.00	
04 E 500 505 000 321 305			13374	BEAANN HAGERT COMMUNITY EDUCATION GENERAL/COMMUNITY EDUCATION/PROFESS	0	235.00 235.00	
04 E 500 505 000 321 305			13375	EMILY BAKER COMMUNITY EDUCATION GENERAL/COMMUNITY EDUCATION/PROFESS	0	60.00 60.00	
04 E 500 505 000 321 305			13376	RILEY ANDERSON COMMUNITY EDUCATION GENERAL/COMMUNITY EDUCATION/PROFESS	0	25.00 25.00	
04 E 500 505 000 321 305			13377	CORIANN DAHLAGER COMMUNITY EDUCATION GENERAL/COMMUNITY EDUCATION/PROFESS	0	200.00 200.00	
01 E 300 292 219 000 369			13378	MACCRAY HS BOYS/GIRLS ATHLETICS//PARTICIPATION FEES/TRACK	0	75.00 75.00	
01 E 300 292 225 000 369			13379	BENSON HS BOYS/GIRLS ATHLETICS//PARTICIPATION FEES/GOLF	0	60.00 60.00	
01 E 300 294 215 000 319			13380	MIKE SWAN BOYS ATHLETICS//OTHER PERSONAL SERVICES/BASEBALL	0	165.00 165.00	
01 E 300 296 210 000 319			13381	BILL BOHN GIRLS ATHLETICS//OTHER PERSONAL SERVICES/SOFTBALL	0	165.00 165.00	
01 E 300 296 210 000 319			13382	MARK FRANK GIRLS ATHLETICS//OTHER PERSONAL SERVICES/SOFTBALL	0	165.00 165.00	
04 E 500 505 000 321 450			13383	AARP COMMUNITY EDUCATION GENERAL/COMMUNITY EDUCATION/MATERIA	0	270.00 270.00	
01 E 300 790 388 000 899			13384	RIDGEWATER COLLEGE OTHER PUPIL SUPPORT SERVICES//MISCELLANEOUS EXPENSE/KID	0	40.00 40.00	

Check Nbr	Vendor Name	Check Date	Invoice Number	Invoice Desc	PO Number	Invoice Amount	Check Amount
01 E 300 292 219 000 186			13385	KATELYN SJURSETH BOYS/GIRLS ATHLETICS//EXTRA-CURRICULAR WORKERS/TRACK	0	25.00 25.00	
01 E 300 292 219 000 186			13386	LINDSEY BENDIX BOYS/GIRLS ATHLETICS//EXTRA-CURRICULAR WORKERS/TRACK	0	25.00 25.00	
01 E 300 292 219 000 186			13387	MERDITH RUPP BOYS/GIRLS ATHLETICS//EXTRA-CURRICULAR WORKERS/TRACK	0	25.00 25.00	
01 E 300 292 219 000 319			13388	GARY SIMS BOYS/GIRLS ATHLETICS//OTHER PERSONAL SERVICES/TRACK	0	130.00 130.00	
01 E 300 298 000 000 899			13389	MSHSL EXTRACURRICULAR ACTIVITIES//MISCELLANEOUS EXPENSE/	0	20.00 20.00	
01 E 300 298 216 000 899			13390	MSU- MANKATO ADM. EXTRACURRICULAR ACTIVITIES//MISCELLANEOUS EXPENSE/FLO-T	0	20.00 20.00	
01 E 300 790 388 000 899			13391	JOSTENS OTHER PUPIL SUPPORT SERVICES//MISCELLANEOUS EXPENSE/KID	0	37.45 37.45	
01 E 300 292 219 000 369			13392	MARSHALL HS BOYS/GIRLS ATHLETICS//PARTICIPATION FEES/TRACK	0	50.00 50.00	
01 E 300 292 219 000 369			13393	BENSON HS BOYS/GIRLS ATHLETICS//PARTICIPATION FEES/TRACK	0	75.00 75.00	
01 E 300 292 219 000 369			13394	ACGC BOYS/GIRLS ATHLETICS//PARTICIPATION FEES/TRACK	0	60.00 60.00	
01 E 300 296 210 000 319			13395	VANCE GULLICKSON GIRLS ATHLETICS//OTHER PERSONAL SERVICES/SOFTBALL	0	320.00 320.00	
01 E 300 296 210 000 319			13396	KEN DUNN GIRLS ATHLETICS//OTHER PERSONAL SERVICES/SOFTBALL	0	165.00 165.00	
01 E 300 296 210 000 319			13397	SCOTT HINDLE GIRLS ATHLETICS//OTHER PERSONAL SERVICES/SOFTBALL	0	170.00 170.00	
01 L 230 43			13398	PIZZA RANCH GENERAL FUND/DEFERRED REVENUE/SR HIGH PROJECTS	0	696.00 696.00	
01 L 230 43			13399	MN HISTORICAL SOCIETY GENERAL FUND/DEFERRED REVENUE/SR HIGH PROJECTS	0	345.00 345.00	
01 E 005 203 734 315 305			13400	DENAH SMITH ELEMENTARY GENERAL ED./INTEGRATION/PROFESSIONAL FEES/IN	0	200.00 200.00	
01 E 005 203 734 315 305			13401	WENDY ROSS ELEMENTARY GENERAL ED./INTEGRATION/PROFESSIONAL FEES/IN	0	200.00 200.00	
01 E 005 203 734 315 305			13402	DAWN CHASE ELEMENTARY GENERAL ED./INTEGRATION/PROFESSIONAL FEES/IN	0	200.00 200.00	
01 E 005 203 734 315 305			13403	WALTER LABATTE ELEMENTARY GENERAL ED./INTEGRATION/PROFESSIONAL FEES/IN	0	200.00 200.00	
01 E 005 211 731 315 305			13404	MINERVA HERNANDEZ SECONDARY EDUCATION GENERAL/INTEGRATION/PROFESSIONAL FE	0	100.00 100.00	
01 L 230 33			13405	HERITAGE VILLAGE GENERAL FUND/DEFERRED REVENUE/BERT RANEY ACTIVITY ACCOU	0	256.00 256.00	
01 E 300 292 219 000 319			13406	GARY SIMS BOYS/GIRLS ATHLETICS//OTHER PERSONAL SERVICES/TRACK	0	130.00 130.00	
01 E 300 292 219 000 186			13407	ZACH SVOBODNY BOYS/GIRLS ATHLETICS//EXTRA-CURRICULAR WORKERS/TRACK	0	25.00 25.00	

Check Nbr	Vendor Name	Check Date	Invoice Number	Invoice Desc	PO Number	Invoice Amount	Check Amount
01 E 300 292 219 000 186			13408	LINDSEY BENDIX BOYS/GIRLS ATHLETICS//EXTRA-CURRICULAR WORKERS/TRACK	0	25.00	25.00
01 E 300 292 219 000 186			13409	KATELYN SJURSETH BOYS/GIRLS ATHLETICS//EXTRA-CURRICULAR WORKERS/TRACK	0	25.00	25.00
01 E 300 292 219 000 186			13410	MEREDITH RUPP BOYS/GIRLS ATHLETICS//EXTRA-CURRICULAR WORKERS/TRACK	0	25.00	25.00
01 E 300 292 219 000 186			13411	SCOTT RASMUSSEN BOYS/GIRLS ATHLETICS//EXTRA-CURRICULAR WORKERS/TRACK	0	25.00	25.00
01 E 300 292 219 000 186			13412	MINDY ROKUSEK BOYS/GIRLS ATHLETICS//EXTRA-CURRICULAR WORKERS/TRACK	0	25.00	25.00
01 E 300 292 219 000 186			13413	AMY TONGEN BOYS/GIRLS ATHLETICS//EXTRA-CURRICULAR WORKERS/TRACK	0	25.00	25.00
01 E 300 292 219 000 186			13414	EMILY BAKER BOYS/GIRLS ATHLETICS//EXTRA-CURRICULAR WORKERS/TRACK	0	25.00	25.00
01 E 300 292 219 000 186			13415	DANI AUS BOYS/GIRLS ATHLETICS//EXTRA-CURRICULAR WORKERS/TRACK	0	25.00	25.00
01 E 300 292 219 000 186			13416	AZALLA MAGANA BOYS/GIRLS ATHLETICS//EXTRA-CURRICULAR WORKERS/TRACK	0	25.00	25.00
01 E 300 292 219 000 186			13417	KAREN JACOBSON BOYS/GIRLS ATHLETICS//EXTRA-CURRICULAR WORKERS/TRACK	0	25.00	25.00
01 E 300 292 219 000 186			13418	JOEY HEGLUND BOYS/GIRLS ATHLETICS//EXTRA-CURRICULAR WORKERS/TRACK	0	25.00	25.00
01 E 300 292 219 000 186			13419	MARK HENDERSON BOYS/GIRLS ATHLETICS//EXTRA-CURRICULAR WORKERS/TRACK	0	50.00	50.00
01 E 300 292 219 000 186			13420	DAVE NORDAUNE BOYS/GIRLS ATHLETICS//EXTRA-CURRICULAR WORKERS/TRACK	0	25.00	25.00
13228	YME BOARD ACCOUNT	05/14/2012	1	KID CHANGE FOR FACS	0	22.00	141.00
01 E 300 790 388 000 899				OTHER PUPIL SUPPORT SERVICES//MISCELLANEOUS EXPENSE/KID		22.00	
01 E 300 790 388 000 899			2	KID CHANGE FOR SPORTS	0	105.00	
01 E 300 790 388 000 899				OTHER PUPIL SUPPORT SERVICES//MISCELLANEOUS EXPENSE/KID		105.00	
01 E 300 790 388 000 899			3	KID CHANGE FOR IT	0	14.00	
01 E 300 790 388 000 899				OTHER PUPIL SUPPORT SERVICES//MISCELLANEOUS EXPENSE/KID		14.00	
13229	Vendor Continued Void	05/14/2012					0.00
13230	YME-FOOD SERVICE	05/14/2012	1	B DAY TREATS	0	14.35	665.36
01 L 230 33				GENERAL FUND/DEFERRED REVENUE/BERT RANEY ACTIVITY ACCOU		14.35	
01 L 230 33			10	ag in classroom	0	13.40	
01 L 230 33				GENERAL FUND/DEFERRED REVENUE/BERT RANEY ACTIVITY ACCOU		13.40	
01 E 005 211 731 315 305			12	7/8 field trip	0	36.85	
01 E 005 211 731 315 305				SECONDARY EDUCATION GENERAL/INTEGRATION/PROFESSIONAL FE		36.85	
01 E 005 211 731 315 305			13	2nd gr kcc	0	20.65	
01 E 005 211 731 315 305				SECONDARY EDUCATION GENERAL/INTEGRATION/PROFESSIONAL FE		20.65	
01 E 005 203 734 315 305			15	3/4 TO DAWSON	0	23.45	
01 E 005 203 734 315 305				ELEMENTARY GENERAL ED./INTEGRATION/PROFESSIONAL FEES/IN		23.45	
01 E 100 203 000 000 899			2	NL	0	60.30	
01 E 100 203 000 000 899				ELEMENTARY GENERAL ED.//MISCELLANEOUS EXPENSE/		60.30	
			3	SCHOOL READINESS	0	361.55	

Check Nbr	Vendor Name	Check Date	Invoice Number	Invoice Desc	PO Number	Invoice Amount	Check Amount
04 E	500 582 000 344 430			LEARNING READINESS/LEARNING READINESS/SUPPLIES/		361.55	
09 L	230 27		4	HEALTH FAIR	0	109.31	
				TRUST FUND/DEFERRED REVENUE/SENIOR CITIZENS ADVOCACY		109.31	
01 E	005 640 000 308 401		5	MEETING	0	25.50	
				STAFF DEVELOPMENT/STAFF DEV. 25% DIST. WIDE/GENERAL SUP		25.50	
			138	Computer	Check(s) For a Total of		347,403.87

	0	Manual	Checks For a Total of	0.00
	0	Wire Transfer	Checks For a Total of	0.00
	0	ACH	Checks For a Total of	0.00
	138	Computer	Checks For a Total of	347,403.87
Total For	138	Manual, Wire Tran, ACH & Computer	Checks	347,403.87
Less	0	Voided	Checks For a Total of	0.00
			Net Amount	347,403.87

FUND SUMMARY

Fund	Description	Balance Sheet	Revenue	Expense	Total
01	GENERAL FUND	29,223.25	0.00	290,045.10	319,268.35
02	FOOD SERVICE	0.00	0.00	22,004.76	22,004.76
04	COMMUNITY SERVICE	0.00	116.00	5,732.16	5,848.16
09	TRUST FUND	282.60	0.00	0.00	282.60

CHECK	CHECK		AMOUNT	SB
NUMBER	DATE	VENDOR		
000000256		KRANZ CONSTRUCTION	450.00	
000000257		RYER PLUMBING INC.	2,369.00	
Totals for 05/14/2012			2,819.00	
Totals for BNK00			2,819.00	
000013079		AMERICAN FAMILY LIFE ASSURANCE	340.94	
000013080		AMERITAS LIFE INSURANCE CORP.	434.57	
000013081		INTERNAL REVENUE SERVICE	187.00	
000013083		MADISON NATIONAL LIFE	2,472.49	
000013084		MCDOWELL AGENCY, INC.	8.00	
000013085		MSEA	1,042.04	
000013086		154200 NCPERS MN	80.00	
000013087		PPL- LEGAL SHIELD	25.90	
000013088		PRINCIPAL MUTUAL LIFE	6,880.34	
000013089		SCHULTE, TREVOR	400.00	
000013090		SELECT ACCOUNT	2,482.00	
000013091		SW/WC SVC. COOP - HEALTH INS.	50,243.11	
000013092		Y.M.E.E.A.	3,326.77	
201100107		ING SERVICE CENTER	16,037.14	
201100108		FEDERAL TAX WITHHOLDING	96,554.43	
201100109		MN TEACHERS RETIREMENT ASSOC.	37,899.20	
201100110		PUBLIC EMPLOYEES RETIREMENT	16,805.03	
201100111		STATE TAX WITHHOLDING	17,410.64	
Totals for 04/23/2012			252,629.60	
000013093		ADVOCATE TRIBUNE	1,405.71	
000013094		AMERICAN WELDING AND GAS	9.80	
000013095		APPLE COMPUTER	290.00	
000013096		ARAMARK CAMPUS DINING	396.00	
000013097		ATS PROJECT SUCCESS	521.88	
000013098		AWARD EMBLEM MFG CO	90.11	
000013099		BENDEL, ROBBIN	41.59	
000013103		BENNETT & BENNETT INC.	84,109.07	
000013104		BILL'S ELECTRIC	289.88	
000013105		BORCH'S INC.	72.72	
000013106		CASEY'S	100.72	
000013107		CENEX CREDIT CARD	1,049.31	
000013108		CENTURY LINK	242.02	
000013110		CITY OF GRANITE FALLS	12,746.63	
000013111		CLARKFIELD HARDWARE	57.99	
000013112		CLINICARE CORPORATION	5,711.71	
000013113		CLOUD, FERN	63.89	
000013114		CONSUMERS COOPERATIVE OIL CO.	68.63	
000013115		COUNTRYSIDE PUBLIC HEALTH	297.98	
000013116		CULLIGAN	74.85	
000013117		DAKTRONICS, INC.	25,695.00	
000013118		DAVE'S ELECTRIC CO	194.04	
000013119		DAWSON-BOYD SCHOOL #378	337.10	
000013120		DEAN FOODS NORTH CENTRAL, INC.	3,602.97	
000013121		DEPT. OF EMPLOYMENT & ECONOMIC DEVELOPMENT	486.60	
000013122		DIETEN, CLARICE	15.00	
000013123		DYRDAHL LUMBER & CONSTRUCTION	1,023.85	
000013124		EAP CONSULTANTS	210.60	
000013126		ECONOMART	1,559.63	
000013127		EDUCATION TRUST INC.	1,758.91	

CHECK CHECK			
NUMBER	DATE	VENDOR	AMOUNT SB
000013128		EHLERS AND ASSOCIATES INC	2,078.76
000013129		ENCHANTED LEARNING, LLC	125.00
000013130		EPA AUDIO VISUAL	108.00
000013131		FILTRATION SYSTEMS INC.	1,456.28
000013132		FORD JAMES	468.75
000013133		FRONTIER TELEPHONE	177.33
000013134		FURSHONG, PEGGY	64.00
000013135		GOOGLE, INC.	15.58
000013136		GRANITE FALLS AUTO PARTS	8.49
000013137		GRANITE RUN GOLF CLUB	500.00
000013138		GRANITE FALLS SUPER MOTEL	800.60
000013139		GREAT PLAINS NATURAL GAS CO	2,313.93
000013140		GRINDER ESPRESSO CAFE/GIFTS	12.90
000013141		GUERTIN, DAVID	10.00
000013142		HAAN CRAFTS	185.75
000013143		HEINEMANN PUBLISHING	60.00
000013144		HENDERSON, ROBIN	419.52
000013145		HERR, XIONG	242.07
000013146		HILLYARD/HUTCHINSON	3,722.21
000013147		HOLT, ANDREW	122.40
000013148		IKON OFFICE SOLUTIONS	480.00
000013149		INK SPOT	231.00
000013150		INNOVATIVE OFFICE SOLUTIONS	177.61
000013151		ISCORP	195.50
000013152		IVERSON, JEFFREY	95.34
000013153		KILOWATT COMMUNITY CENTER	631.00
000013154		KLOCKIT	68.69
000013155		KLUKSDAL, DALLAS	75.00
000013156		KNAPPER, TIMOTHY	289.44
000013157		KORTHUIS JEWELRY	52.00
000013158		KRANZ CONSTRUCTION	2,150.00
000013159		KVAM, PEGGY	91.00
000013160		LAVOIE, SHEILA	1,349.76
000013161		LEWANDOWSKI, KATIE	218.58
000013162		LIFETOUCH	585.42
000013163		MINNESOTA ELEVATOR, INC.	319.84
000013164		MINNESOTA HISTORIAL SOCIETY	45.00
000013165		MUSIC MART	161.29
000013166		MUSIC STREET	32.25
000013167		MUSIC THEATRE INTERNATIONAL	25.00
000013168		MVCC	124,000.00
000013169		MVTV	47.95
000013170		NASCO	267.60
000013171		NELSEN'S CLEANERS & LAUNDERERS	21.55
000013172		NEON NEEDLES	272.00
000013173		NEW DOMINION SCHOOL	2,588.16
000013174		NEWMIND GROUPS INC.	1,796.00
000013175		OFFICE MAX CONTRACT INC.	403.17
000013176		OLSON SANITATION INC.	504.91
000013177		PAN-O-GOLD BAKING CO.	1,012.99
000013178		PAR PIPING & FABRICATION INC	694.48
000013179		PICHT'S BODY SHOP, INC.	85.78
000013180		PITNEY BOWES	1,042.35
000013181		PLANK ROAD PUBLISHING, INC.	30.45
000013182		PRAIRIE FIRE THEATRE	400.00
000013183		PRESIDENT'S CHALLENGE	90.00

CHECK CHECK			
NUMBER	DATE	VENDOR	AMOUNT SB
000013184		QUILL CORPORATION	237.80
000013185		RATWICK, ROSZAK & MALONEY, P.A	3,741.59
000013186		REINHART INST FOODS	12,818.34
000013187		REISHUS, ZEE ANNE	15.00
000013188		RICOH USA INC	864.00
000013189		RILEY BUS SERVICE, INC.	724.50
000013190		RIVARD'S TURF & FORAGE	2,459.98
000013191		RTS	144.43
000013192		RUTLEDGE DENINE	158.51
000013193		SAWMILL	909.83
000013194		SCANTRON CORPORATION	841.16
000013195		SCHWAAB, INC.	180.00
000013196		SMITH, SHERRY	3.59
000013197		SOUTHWEST WHOLESALE	3,790.18
000013198		SPECIAL SYSTEMS INC.	590.97
000013199		STATE OF MN PUBLIC SAFETY	25.00
000013200		STOECKMAN, ALLEN	288.02
000013201		SUBWAY	98.00
000013202		SW/WC SERVICE COOP - MARSHALL	295.00
000013203		TEACHER'S DISCOVERY	190.37
000013204		TECH CHECK	48.00
000013205		TRANS-MISSISSIPPI BIOLOGICAL	169.27
000013206		TRUE VALUE-GF/MONTE	426.07
000013207		US MATH RECOVERY COUNCIL	7,960.00
000013209		VISA	1,986.60
000013210		WENSAUER, VALERIE	27.30
000013211		WEST CENTRAL TAE KWON DO	1,152.00
000013212		WILLIE'S KORNER STORE	633.75
000013213		XCEL ENERGY	31.61
000013214		YMC ABSTRACT COMPANY, INC.	712.00
000013215		YME SCHOOL ACTIVITY ACCOUNT	372.00
000013227		YME SCHOOLS-ADM	8,755.77
000013228		YME BOARD ACCOUNT	141.00
000013230		YME-FOOD SERVICE	665.36
		Totals for 05/14/2012	347,403.87
		Totals for BNK05	600,033.47
		Totals for checks	602,852.47

FUND SUMMARY

<u>FUND</u>	<u>DESCRIPTION</u>	<u>BALANCE SHEET</u>	<u>REVENUE</u>	<u>EXPENSE</u>	<u>TOTAL</u>
01	GENERAL FUND	256,931.21	0.00	290,594.57	547,525.78
02	FOOD SERVICE	6,115.72	0.00	22,004.76	28,120.48
04	COMMUNITY SERVICE	8,224.41	116.00	5,732.16	14,072.57
06	CONSTRUCTION/BUILDING FUND	0.00	0.00	2,819.00	2,819.00
09	TRUST FUND	282.60	0.00	0.00	282.60
25	REVOCABLE TRUST (FY10)	0.00	0.00	10,032.04	10,032.04
*** Fund Summary Totals ***		271,553.94	116.00	331,182.53	602,852.47

***** End of report *****

Member [redacted] introduced the following resolution and moved its adoption:

**RESOLUTION RELATING TO THE TERMINATION AND NONRENEWAL
OF THE TEACHING CONTRACT OF [redacted],
A PROBATIONARY TEACHER.**

WHEREAS, [redacted] is a probationary teacher in Independent School District No. 2190.

BE IT RESOLVED, by the School Board of Independent School District No. 2190, that pursuant to Minnesota Statutes 122A.40, Subdivision 5, that the teaching contract of [redacted], a probationary teacher in Independent School District No. 2190, is hereby terminated at the close of the current 2011-2012 school year.

BE IT FURTHER RESOLVED that written notice be sent to said teacher regarding termination and non-renewal of his/her contract as provided by law, and that said notice shall be in substantially the following form:

NOTICE OF TERMINATION AND NON-RENEWAL

NAME
ADDRESS
CITY, STATE ZIP

Dear NAME,

You are hereby notified that at a regular meeting of the School Board of Independent School District No. 2190 held on May 14, 2012, a resolution was adopted by a majority roll call vote to terminate your contract effective at the end of the current school year and not to renew your contract for the 2012-2013 school year. Said action of the board is taken pursuant to M.S. 122A.40, Subdivision 5.

You may officially request that the school board give its reasons for the non-renewal of your teaching contract. For your information, however, this action is taken because of the financial condition of the School District due to a decrease in enrollment.

Respectfully,

SCHOOL BOARD OF
INDEPENDENT SCHOOL DISTRICT NO. 2190
YELLOW MEDICINE EAST

Dawn Odegard, Clerk

The motion for the adoption of the foregoing resolution was duly seconded by [redacted]

and upon vote being taken thereon, the following voted in favor thereof: [redacted]

and the following voted against the same: [redacted]

whereupon said resolution was declared duly passed and adopted.

RESOLUTION OF SCHOOL DISTRICT

Be it Resolved, that this school district entered into an agreement with the State of Minnesota, MnSCU, for the purpose of providing student teaching experiences for students from Southwest Minnesota State University.

Be it Resolved, that the chairman and the clerk be and they hereby are authorized to execute such agreement:

CERTIFICATION

State of Minnesota

County of **Yellow Medicine**

I hereby certify that the foregoing Resolution is a true and correct copy of this resolution adopted by the board of **Yellow Medicine East School District, No. 2190** of **Yellow Medicine** County, at a duly authorized meeting thereof held on the _____ day of _____, 20____, as shown by the minutes of said meeting.

Clerk

(SEAL)

Minnesota State Colleges & Universities System
Southwest Minnesota State University
STUDENT TEACHER AGREEMENT

Yellow Medicine East School District, No. 2190, of Yellow Medicine County, Granite Falls, MN, Minnesota, agrees with the State of Minnesota, acting through the Minnesota State College and University System, as follows:

During the school years beginning August 2012 and ending July 2015, Southwest Minnesota State University agrees to pay at a rate, not to exceed \$10.00 per semester credit hour for each student teacher placed in the Yellow Medicine East School District located in Granite Falls, MN, Minnesota.

The school district agrees to supply to the student teacher opportunity to work in a teaching-learning situation cooperatively with teachers certified at standards equal or superior to the regulations of the State of Minnesota during the student teaching assignment.

Yellow Medicine East School District, No. 2190
of Yellow Medicine County, Minnesota.

By _____

Chairman

By _____

Clerk

Recommended for approval

Southwest Minnesota State University

By _____

Provost

ADDENDUM I
TO MEMBERSHIP AGREEMENT
SPECIAL EDUCATION SERVICES
2012-2013
Yellow Medicine East

This Addendum to the Membership Agreement supplements the Membership Agreement made by the parties hereto and by their acceptance of the terms thereof the parties have agreed to the following additional terms, covenants and responsibilities:

1. **Subscription.** The School hereby subscribes to the SC's Special Education Services (the "Services"), specifically subscribing to those Services indicated at Section 12 below. As noted at Section 12, the Services are classified as either "Direct Services" or "Administrative Services". As used herein, the phrase "Administrative Services" shall include Special Education Director, and Special Education Coordinator services. The School hereby agrees and acknowledges that the timelines governing its ability to withdraw from such Services depends upon this classification.
2. **Term.** The SC shall provide the Services to the School from August 15 through June 15 during the Initial Term (as defined below) and shall continue to provide such services from August 15 through June 15 during each Extended Term (as defined below) in which this Addendum is in effect.
3. **Administrative Services: Automatic Renewal; Timeline for Withdrawal.** Notwithstanding any provisions in the Membership Agreement to the contrary, the parties' obligations regarding the School's subscription to Administrative Services shall commence on the Effective Date set forth in the Membership Agreement and shall continue for a period of twenty-four (24) months (the "Administrative Services Initial Term"). The provisions of this Addendum shall thereafter automatically and continuously renew from year to year (each, an "Extended Term") unless the School provides the SC with a minimum of twelve (12) months notice of the School's intent to discontinue its subscription to the Administrative Services by delivering to the SC a written notice of such intent (referred to as "Notice of Intent to Withdraw from Administrative Services") to the SC on or before June 30 (the "Administrative Services Withdrawal Deadline"). If such Notice of Intent to Withdraw from Administrative Services is timely executed and delivered to the SC, such Notice will be effective as of June 30 of the following fiscal year. If not timely delivered, the School agrees and acknowledges that it shall be obligated to pay all fees for previously subscribed-to Administrative Services for the next Extended Term.
4. **Direct Services: Automatic Renewal; Timeline for Withdrawal.** Notwithstanding any provision in the Membership Agreement or this Addendum to the contrary, the parties' obligations regarding the School's subscription to Direct Services shall commence on the Effective Date set forth in the Membership Agreement and shall continue for a period of twelve (12) months (the "Direct Services Initial Term"). The provision of this Addendum shall thereafter automatically and continuously renew from year to year (each, an "Extended Term") unless the School provides the SC with written notice of its intent to discontinue its subscription to any Direct Service (referred to as "Notice of Withdrawal from Direct Service") on or before March 1 (the "Direct Service Withdrawal Deadline"). If such Notice of Withdrawal from Direct Service is timely executed and delivered to the SC, such Notice will be effective as of June 30 of the fiscal year in which it was delivered. If not timely delivered, the School agrees and acknowledges that it shall be obligated to pay all fees for previously subscribed-to Direct Services for the next Extended Term.
5. **Payment.** In exchange for the SC's agreement to provide the subscribed-for services, the School acknowledges and agrees that it shall remit payment for the "TOTAL LOCAL ADDENDUM PRICE" set forth at Page 2 to this Addendum. Notwithstanding any provision to the contrary in the Membership Agreement, the School shall remit payment to the SC in three equal installments, one of each which is due on or before August 15, October 15, and February 15 during the Initial and any Extended Term of the Membership Agreement. The School further agrees to pay a late payment charge at the rate of one and one half (1-1/2) percent per month, or at the maximum late payment charge permitted by applicable law, whichever is less, on any unpaid amount for each calendar month (or fraction thereof) that such payment is late.
6. **Capitalized Terms.** Unless otherwise defined in this Addendum, all capitalized terms shall have the same meaning ascribed to such terms in the Membership Agreement.
7. The SC agrees to provide all necessary personnel (contingent upon availability), materials, or equipment required to fulfill its obligations under this Addendum without causing the School to incur costs or charges in excess of the TOTAL ADDENDUM PRICE set forth below. The SC further agrees to pay all transportation expenses for required service personnel without additional cost or charge to the School.

8. Required SC service personnel who are funded at the lower "Single District Rate" level shall be entitled to receive all of the rights and benefits of personnel who are funded at the "Full Service Rate".
9. The dates and times for the furnishing of the services and materials at issue in this Addendum shall be arranged in advance by mutual agreement between the parties.
10. The SC will exercise its best efforts to provide to the School the services of those professionals specifically contracted for. However, the School recognizes that the availability of required SC personnel may change.
11. All performance reviews of required service personnel shall be conducted by the SC's Directors of Special Education and shall be in accordance with the policies and procedures established by the SC.
12. **Services.** The School hereby agrees to subscribe to those services indicated below:

<u>Direct Services:</u> (includes office/prep time)	<u>Days</u>	-----FUNDING SOURCE-----				<u>Local Total</u>
		<u>Federal Part B Total</u>	<u>Days</u>	<u>Federal Part F Total</u>	<u>Days</u>	
School Psychologist Services _____	_____	_____	_____	_____	_____	_____
Speech/Language Pathologist Services _____	_____	_____	_____	_____	_____	_____
Counselor/Social Worker Services _____	_____	_____	_____	_____	_____	_____
Teacher of the Visually Impaired Services _____	_____	_____	_____	\$.00	_____	_____
ECSE Teacher Services						
Teacher of the Deaf/Hard of Hearing Svcs.						
Occupational Therapy Services						
Physical Therapy Services				\$.00		
ECSE Coordination Services						
Autism Support Services		\$.00		\$.00		\$3,331.42
Special Education Resource Library				\$.00		\$.00
<u>Administrative Services:</u>						
Special Education Administrative Services						
TOTAL ADDENDUM PRICE		\$.00		\$.00		\$3,331.42

SC MEMBER SCHOOL DISTRICT NO. 2190
Granite Falls, MINNESOTA

SW/WC SERVICE COOPERATIVE

BY: _____
(Chairperson)

(Clerk)

(Date)

BY: _____
(Chairperson)

(Clerk)

(Date)

ADDENDUM L
TO MEMBERSHIP AGREEMENT
BEHAVIOR ANALYST SERVICES
2012-2013

Yellow Medicine East

The parties have executed the Membership Agreement and by their acceptance of the terms thereof have agreed to the following additional terms, covenants and responsibilities:

1. The School has chosen to subscribe to Behavior Analyst Services (the "Services").
2. **Term.** The SC shall provide the Services to the School from August 15 through June 30 during the Initial Term of the Membership Agreement and shall continue to provide the Services from August 15 through June 30 during each Extended Term of the Membership Agreement until such time as the School provides the SC with written notice of its intent to withdraw from or reduce the Services pursuant to the terms of the Membership Agreement.
3. **Payment.** In exchange for the SC's agreement to provide the Services, the School acknowledges and agrees that it shall remit payment for the "TOTAL ADDENDUM PRICE" set forth below. Notwithstanding any provision to the contrary in the Membership Agreement, the School shall remit payment to the SC in three equal installments, one of each which is due on or before August 15, October 15, and February 15 during the Initial and any Extended Term of the Membership Agreement. The School further agrees to pay a late payment charge at the rate of one and one half (1-1/2) percent per month, or at the maximum late payment charge permitted by applicable law, whichever is less, on any unpaid amount for each calendar month (or fraction thereof) that such payment is late.
4. The SC agrees to provide all necessary personnel (contingent upon availability), materials, or equipment required to fulfill its obligations under this Addendum without causing the School to incur costs or charges in excess of the TOTAL ADDENDUM PRICE set forth below. The SC further agrees to pay all transportation expenses for required service personnel without additional cost or charge to the School.
5. The dates and times for the furnishing of the services and materials at issue in this Addendum shall be arranged in advance by mutual agreement between the parties.
6. In consideration for such services, the School agrees to pay to the SC the package cost as calculated below. Please identify the number of days that you wish to contract for:

TOTAL ADDENDUM PRICE = _____ Days of Behavior Analyst @ \$635 per day = \$_____

Note: Days which are not contracted in advance may be purchased at a cost of \$755 per day. Non-contracted days are not guaranteed deliverable.

SC MEMBER SCHOOL DISTRICT NO. 2190,
Granite Falls, MINNESOTA

SW/WC SERVICE COOPERATIVE

BY: _____
(Chairperson)

BY: _____
(Chairperson)

(Clerk)

(Clerk)

(Date)

(Date)

Addendum to the Superintendents Contract December 2008

Whereas the Yellow Medicine East School District Board of Directors, of Independent School District #2190, has agreed to negotiate a retirement addendum to the Yellow Medicine East Superintendent's Contract, this addendum is drafted to specify the components of that agreement. Upon the Superintendent's retirement:

1. Upon retirement, the Superintendent will receive a monthly contribution towards District insurance plans selected by the Superintendent. He will remain eligible to receive this monthly benefit until the earlier of becoming eligible for Medicare or reaching a maximum of \$80,000.00 in premiums paid by the District. These insurance premiums will be paid only for policies available under the District's pool.
2. The superintendent shall be provided with a one-time payment of \$17,000.00 of which the maximum amount allowable shall be placed in the Superintendent's 403 (b) plan. Any excess dollars will be paid out as a cash settlement.
3. The Superintendent continues to be eligible to receive other retirement benefits as described in the current Superintendents contract. These relate to the District 403 (b) maximum match and reimbursement for unused vacation days.

Amendment to Retirement Addendum May 7, 2012 Clarified Proposal

1. If the retired Superintendent drops health insurance coverage with the district due to mandatory coverage with an outside employer and at a later date becomes ineligible for health insurance coverage prior to becoming eligible for Medicare, the district will reimburse him for an outside single plan beginning with the date of ineligibility with the outside employer until the earlier of becoming eligible for Medicare or reaching the maximum allowed for insurance benefits as outlined in the retirement addendum. The district will reimburse the retiree for the outside health insurance plan until becoming eligible for Medicare for the actual amount paid by him for a single health insurance premium not to exceed the premium amount of the lowest deductible (highest single premium) offered by the district. The retired Superintendent will continue to receive dental and life insurance until age 70.
2. However, should the retired Superintendent be covered by an outside employer's health insurance plan at the time the leave of absence for the retired Superintendent's wife expires and she retires and is drawing TRA, the District will use the retired Superintendent's negotiated benefit to provide health insurance coverage only for her until she becomes eligible for Medicare. The retired Superintendent will continue to receive dental and life insurance until age 70. The amount will not exceed the maximum amount allowed for insurance benefits as outlined in the retirement addendum.

District 2190, Yellow medicine east public schools
Local Literacy plan

Approved May 14, 2012 by Yellow Medicine East's Board of Education

The purpose of this literacy plan is to ensure that ALL students will achieve grade-level proficiency and read well by Grade 3.

Literacy Plan Summary:

Our district is currently using a combination of the basal program Journeys and the balanced literacy approach to teach reading in kindergarten through grade 3. Included in this program are: whole group instruction, guided reading, read aloud, shared reading and independent reading. To enhance this curriculum, our district has an elementary library with a variety of fiction and nonfiction reading materials, covering a wide range of reading levels. Our district also has a leveled bookroom as a resource for teachers to obtain materials for small group or individualized reading instruction. Each classroom also has their own reading center where students can enjoy books and other resources selected by their classroom teacher. All K-3 students receive classroom instruction in literacy for a minimum of 120 minutes each day. Relevant technology engages students in meaningful learning activities. A variety of technologies have been integrated into the curriculum and instruction to meet the needs of the district's diverse learners. The district also uses the Accelerated Reader (AR) program, a computerized program that tests literal reading comprehension. Students select books at their reading level, read independently or with a partner and take an independent comprehension test on the computer. Each book is worth a certain number of points based on its length and reading level.

All students in grades K-3 are given the Measures of Academic Progress (MAP) screening/benchmarking assessment three times throughout the course of the year in fall, winter, and spring. Using this data, along with data from Developmental Reading Assessment (DRA), Words Their Way inventories, and Observational Survey in 1st grade (OS), struggling and at-risk students are identified and referred for interventions. Specific interventions are based on further assessments through Fountas and Pinnell Benchmark (LLI) assessment, Developmental Reading Assessment-Word Analysis, Words Their Way inventories, and the Phonemic Awareness Intervention Inventory. The interventions are implemented through the collaborative efforts of the classroom teacher and other specialists. Each student's progress is monitored regularly every two weeks and if the intervention selected is not working, another intervention is selected and implemented. Students not responding to these interventions are referred for special education services. Parents are kept informed of their child's progress at every step of the process.

The goal of the Yellow Medicine East district is to assure that all learners successfully achieve the Minnesota K-12 Academic Standards in English Language Arts (2010) for their grade level. The standards are aligned with the district's curriculum and a map is in place to ensure that the standards are taught within the time available.

Specific information is included in the K-3 Literacy Plan that follows this summary. For those who are interested in learning more about Yellow Medicine East’s literacy program, please contact: Jodi Kennedy at (320) 564-4082 or jkennedy@isd2190.org.

Literacy Plan Goals and Objectives:

Overarching Goal: All students will read at grade-level by Grade 3 as determined by the Reading Minnesota Comprehensive Assessments (MCAs).

Objectives:

Each year educators will review and disaggregate reading data at grade levels K, 1, 2, & 3. Proficiency, growth, and trend data will be analyzed and used to set specific learning targets for each child and for each cohort of students. Pre-K data will be accessed and utilized, when available.

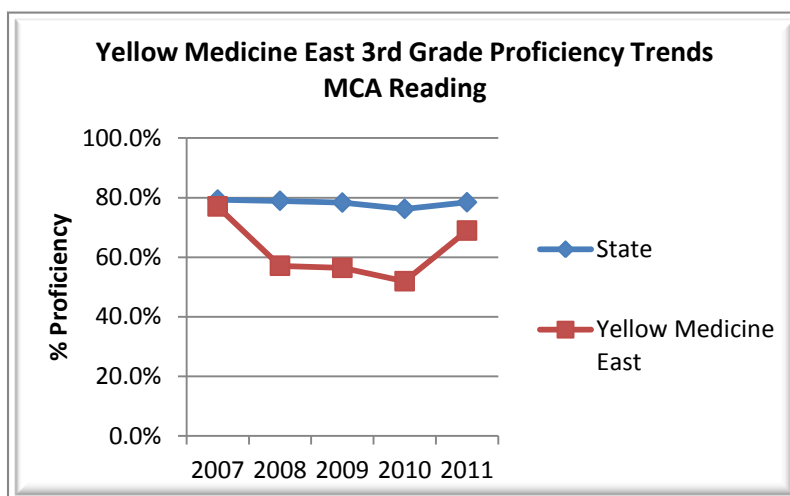
The Elementary Literacy Team reviews, annually, the effectiveness of current pedagogical practices including core instruction, differentiation, remediation, and intervention.

Curriculum resources will be aligned to the most current standards. Standards will be prioritized and pacing guides developed.

Formative assessments will be used to modify instruction and to identify students who are not on pace to meet proficiency. Students not on track will follow the local intervention plan.

Professional Learning Communities will be implemented to analyze the effectiveness of current literacy practices. Special attention will be paid to achievement gaps. Best practices will be shared.

Extended day and/or extended year programs will be utilized to provide targeted assistance to help struggling and at-risk students achieve grade-level proficiency.



Assessments:

Measures of Academic Progress (MAP) are used as benchmark assessments. They are adaptive tests used to measure student growth. The 2011 NWEA RIT Scale Norms provide growth and status norms in the following content areas: Reading, Language Usage, Mathematics, General Science, and Science Concepts and Processes. The RIT scores for each grade level in Reading and Language Usage are listed in the following charts:

2011 Reading Status Norms (RIT Values)			
Grade	Beginning-of-Year Mean	Middle-of-Year Mean	End-of-Year Mean
K	142.5	151.0	157.7
1	160.3	170.7	176.9
2	175.9	183.6	189.6
3	189.9	194.6	199.2
4	199.8	203.2	206.7
5	207.1	209.8	212.3
6	212.3	214.3	216.4
7	216.3	218.2	219.7
8	219.3	221.2	222.4
9	221.4	221.9	222.9
10	223.2	223.4	223.8
11	223.4	223.5	223.7

2011 Language Usage Status Norms (RIT Values)			
Grade	Beginning-of-Year Mean	Middle-of-Year Mean	End-of-Year Mean
2	175.4	185.3	190.0
3	191.1	196.5	200.3
4	200.9	204.4	207.0
5	208.0	211.0	212.9
6	212.3	214.4	216.2
7	215.8	217.3	218.7
8	218.7	220.2	221.3
9	220.6	221.0	221.8
10	221.9	222.2	222.7
11	222.1	222.7	223.3

Students who do not meet the target score as listed above will undergo a diagnostic assessment to determine specific skill deficit(s) in one of the five strands of reading, using one or more of the following research-based assessments: Developmental Reading Assessment (DRA), Fountas and Pinnell, curriculum based pre- and post-tests, intervention based pre- and post-tests, individual reading inventories.

The following table denotes the grade-level correlation between Reading Recovery, Fountas and Pinnell, DRA, Basal Equivalent, and Lexile Levels:

Grade Level	Reading Recovery	Fountas-Pinnell Guided Reading	DRA	Basal Equivalent	Lexile Levels
Kindergarten	A & B	A	A	Readiness	
	1		1		
	2	B	2	PrePrimer 1	
Grade 1	3	C	3	PrePrimer 2	
	4		4		
	5	D	6	Preprimer 3	
	6		6		
	7	E	8	Primer	
	8		8		
	9	F	10	Grade 1	
	10		10		
	11	G	12	200-299	
	12		12		
	13	H	14	Grade 2	
	14		14		
15	I	16	Grade 2		
16		16			
Grade 2	18	J & K	20	Grade 2	300-399
	20	L & M	28		400-499
Grade 3	22	N	30	Grade 3	500-599
			34		
	24	O & P	38		600-699
Grade 4	26	Q / R / S	40	Grade 4	700-799
Grade 5	28	T / U / V	44	Grade 5	800-899
Grade 6	30	W / X / Y		Grade 6	900-999
Grade 7	32	Z		Grade 7	1000-1100
Grade 8	34	Z		Grade 8	

Based on these diagnostic assessments, instruction and interventions will be matched to the student’s needs in one or more of the five pillars of reading (phonemic awareness, phonics, fluency, vocabulary, and comprehension).

Within 10 days, following the assessment results, parents will receive a letter informing them of the assessment, results of the assessment, and supports, interventions and further diagnostic assessments that will be used to help their child meet the reading goals for their grade level. Parents will be invited in to visit about their child’s educational needs and ask any questions they may have. A list of potential supports that the parent can use to assist the child in achieving

grade-level proficiency will be provided to the parent. A complete outline of the parent communication and involvement process is listed in the section below.

Progress monitoring data will be collected bi-weekly and analyzed on a monthly basis. The following process will be used:

- A. Examine the student chart after 4-6 data points have been plotted and a trend line has been generated.
- B. Change the intervention or choose a new intervention if a student has 4 data points clearly and consistently below the aim line.
- C. Continue the intervention until the student meets the grade-level benchmark if the student has 4 data points on or above the aim line.
- D. Refer the student to the problem-solving team if the student has 4 data points below the goal line for the second intervention.
- E. Discontinue the intervention when the student has met the grade level benchmark. Exit criteria: 3-4 data points above the aim line with one data point at or above the next benchmark target.
- F. Continue progress monitoring at least three times following the discontinuation of intervention to assure that progress has been maintained.

Entrance criteria is based on a triangulation of assessment data with classroom teacher input. When the student scores three to four data points above the aim/goal line with one data point at or above the next benchmark target, the student will be exited from the supplemental intervention services.

Parent Communication and Involvement:

The district has developed a parent communication letter that will communicate the state-identified grade-level standards and how their child is progressing toward meeting these standards. The letter will include the core literacy instructional practices and the intervention supports that are used with students who are not on track to achieve benchmark targets that reflect grade-level content standards.

Students, who are not meeting benchmark targets as indicated by the previously described assessment process, will be diagnosed for specific skill deficits using one or more of the following assessments: DRA, Fountas and Pinnell, curriculum based pre- and post-tests, intervention based pre- and post-tests, individual reading inventories.

Based on these diagnostic assessments, interventions will be matched to the student's needs in one or more of the five pillars of reading (phonemic awareness, phonics, fluency, vocabulary, and comprehension).

The purpose of providing additional time on task, through these intensive interventions, is to effectively accelerate student achievement to match grade level expectations.

Parent Communication plan:

1. Beginning of the year in pre-school (fall packet) there will be an explanation of the core literacy instructional practices and the multi-level systems of support as implemented in the district. This will include an explanation of entrance and exit criteria for students needing interventions, assessments used, data collected, problem-solving practices used when indicated by diagnostic and progress monitoring data, and classroom supports used with all students. (Handout)
2. Assessment results will be provided to parents within 10 days.
3. Parents of students who need supplemental instruction will be informed by the district that their student is receiving these services and invited in for a conference with the student's teacher.
4. Additional explanation of the literacy program and supports will occur in October or November during fall parent/teacher conferences.
5. Parents of students receiving interventions will receive monthly progress reports.
6. All parents will receive a parent letter at least three times a year with suggestions on how to help strengthen their child's literacy skills, based on the results of their diagnostic assessments.

The following are resources and tools, based on the five pillars of reading, for parents, caregivers, and/or community members to use in support of literacy practices at home:


Phonemic awareness: Reading stories, poems, nursery rhymes to your child.

Phonics: Reading stories, poems, nursery rhymes to your child.

Fluency: Reading stories, poems, nursery rhymes to your child.

Vocabulary: Reading stories, poems, nursery rhymes to your child.

Comprehension: Reading stories, poems, nursery rhymes to your child and having them retell the events that happened.

- <http://www.starfall.com/>
- <http://www.professorgarfield.org/Phonemics/farmintr02.html>
- <http://www.btcactus.org/tools4teachers.cfm?subpage=354859>
- <http://www.abcya.com/>
- <http://www.tumblebooks.com>
- Five Pillars of Reading Literacy Video 

Professional Development:

The Yellow Medicine East District has 4 hours/month available for Professional Development. Based on student performance data, the District has determined comprehension/small group instruction will be the Reading/Literacy Professional Development focus for the 2012-2013 school year.

Professional Development is provided through:

- Grade-Level Common Planning Time
- Monthly Grade-Level Meetings
- Bi-Weekly Literacy Tuesday Talks addressing various comprehension strategies
- Professional Learning Communities (PLCs)
- Regional Professional Development
- Peer Coaching/Mentoring
- Basal Training from Company Representative
- Outside Resources/Consultants
- Elementary Literacy Team

The Yellow Medicine East district is a member of the Minnesota River Valley Education District (MRVED). The eight districts of the MRVED collaborate on curriculum review and development and professional development. There is a six year Curriculum Review and Development cycle that is adhered to by member districts (see attached). The purpose of the best practices meetings are as follows:

- Prepare the Best Practice team members to lead the curriculum review and development process in their district.
 - Mapping of standards
 - K-12 alignment of standards
 - Tasks as listed on the review cycle
 - Data driven instruction
 - Development of assessments
- Encourage professional networking with educators from other districts and look for opportunities to collaborate.
- Read and discuss current research to increase student achievement in the content area.
- Learn about new instructional strategies and /or technology along with approaches for classroom implementation.
- Capitalize on opportunities to bring in specialists.

MRVED Staff assist districts with both horizontal and vertical alignment of curriculum, as well as the development of pacing guides.

Beginning in the fall of 2012, the MRVED districts will have four common professional development days each year. These days will allow for focused work on disaggregating and using data to plan instruction, aligning curriculum to current state standards, assuring mastery of the standards at the appropriate cognitive levels, and providing content specific learning opportunities based on the needs of the member districts.

Annually, in August, a data-mine will be held. Data will be disaggregated and analyzed. Results will be shared with the district staff development team, who will then create SMART student goals and offer Professional Development opportunities designed to address the needs identified by the data.

Multi-Tiered Systems of Support:

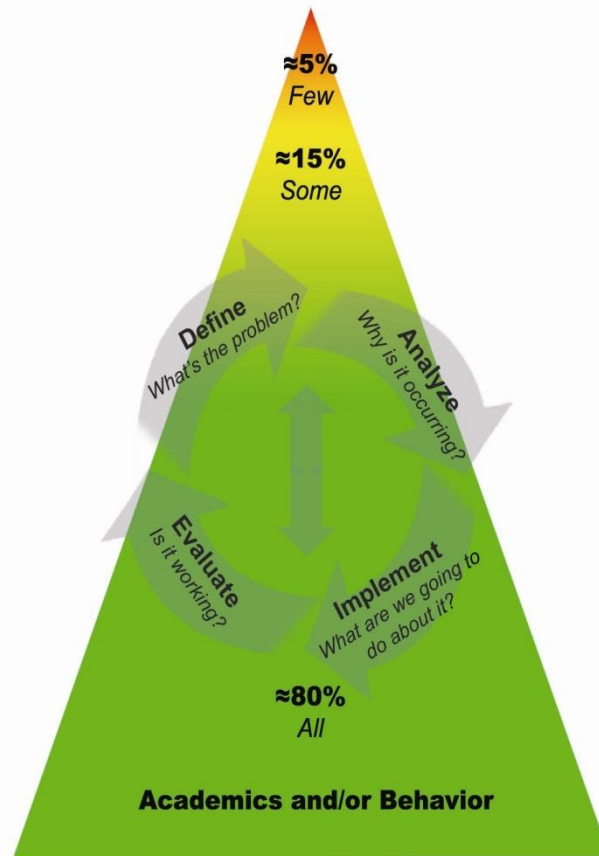
A Model of School Supports and the Problem Solving Process

ACADEMIC SYSTEMS

Tier 3: Intensive, Individual Interventions *Students who need individualized interventions.*

Tier 2: Targeted Group Interventions *Students who need more support in addition to the core curriculum.*

Tier 1: Core Curriculum *All students, including students who require curricular enhancements for acceleration.*



The first level of support occurs in the classroom with core instruction delivered by the classroom teacher using the district's reading curriculum. Teachers differentiate instruction in small groups according to the needs of their diverse learners.

Based on screening and diagnostic assessments, the second level of support identifies students not meeting grade-level targets who are, then, provided supplemental reading interventions according to their skill deficit(s).

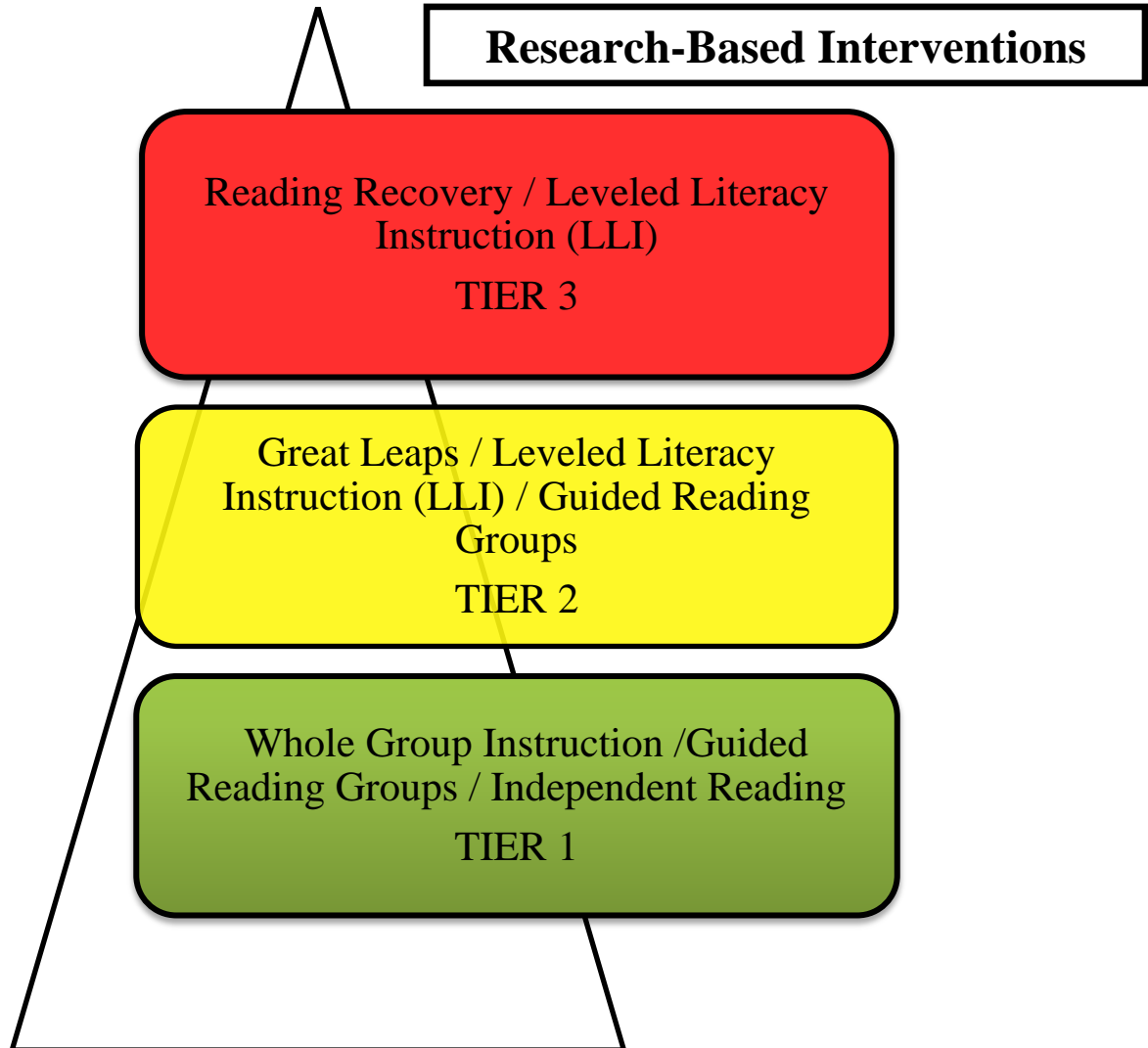
Students not responding well to the interventions provided at the second level are referred to and receive the most intensive and individualized level of support. Students receiving Special Education services are included at this level.

The Multi-tiered systems of support can be traced to the work on data-based decision making by Deno and Mirkin (1977) and the US Department of Education's report *A Nation at Risk* (1983). The framework is a systematic use of assessment data to efficiently allocate resources to improve learning for all students (Burns and VanDerHeyden, 2006). A meta-analysis of research found that multi-tiered systems of support led to improved outcomes such as fewer children referred to and placed into special education programs. Additionally, results included higher achievement scores and reduced behavioral difficulties

among all students (Burns, Appleton, and Stehouwer, 2005). Children at-risk for reading failure also demonstrated improved reading skills (Marston, Muyskens, Lau, Canter, 2003; Tilly, 2003).

Scientifically-Based Reading Instruction:

The scientifically-based reading curriculum Yellow Medicine East uses is Journeys which has been aligned with the Minnesota Academic Standards in English Language Arts (2010). Small group instruction is used to differentiate for our diverse learners.



English Learners and Other Diverse Populations:

The district currently assesses all English Learners using the World-Class Instructional Design and Assessment (WIDA) assessments (W-APT and ACCESS).

W-APT stands for the WIDA-ACCESS Placement Test. It is an English language proficiency "screener" test given to incoming students who may be designated as English Learners, typically administered only to new students. It assists educators with programmatic placement decisions such as identification and placement of ELs. The W-APT is one component of WIDA's comprehensive assessment system.

Assessing Comprehension and Communication in English State-to-State for English Learners (ACCESS for ELs) is a secure, large-scale English language proficiency assessment given to Kindergarten through 12th graders who have been identified as English Learners (ELs). It is given annually in Minnesota beginning in the 2011-2012 school year to monitor students' progress in acquiring academic English.

W-APT and ACCESS for ELs test items are written from the model performance indicators of WIDA's five English Language Proficiency (ELP) standards:

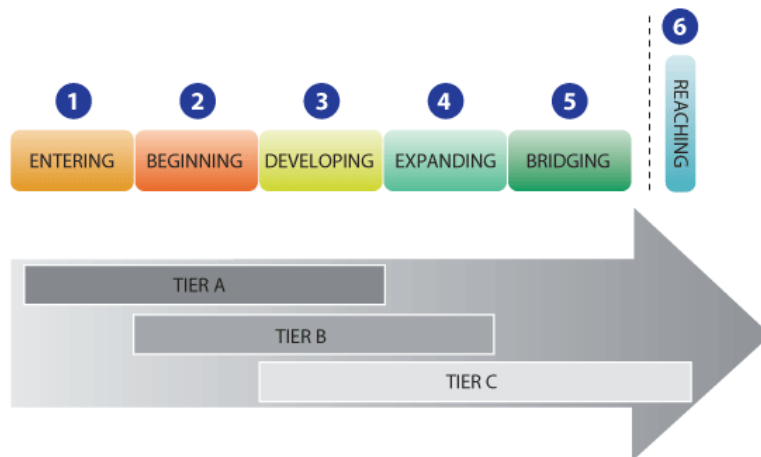
- Social & Instructional Language
- Language of Language Arts
- Language of Mathematics
- Language of Science
- Language of Social Studies

Test forms are divided into five grade-level clusters:

- Kindergarten
- Grades 1-2
- Grades 3-5
- Grades 6-8
- Grades 9-12

Each form of the W-APT test assesses the four language domains of Listening, Speaking, Reading, and Writing.

Within each grade-level cluster (except Kindergarten), ACCESS for ELs consists of three forms: Tier A (beginning), Tier B (intermediate), and Tier C (advanced). This keeps the test shorter and more appropriately targets each student's range of language skills.



Based on the W-APT and ACCESS assessments, students who qualify for ESL support will receive the intervention of focused language skill development from a licensed ESL teacher, in addition to the core instruction.

This district has 26 English Learners, 71 American Indian, 44 Hispanic, 4 Asian, and 4 Black students. Based on these demographics, resources will be allocated and professional development will be determined by the Leadership Team annually.

Instructional materials will be analyzed for its culturally appropriate content and purchased during the district's curriculum cycle for core subjects. EL curriculum materials and interventions, used to develop language skills, will be updated as-needed or developed on-site.

Training / Coaching / Resources available for all school staff:

- Integration Activities: EXCEL After-school programming, cultural liaisons (American Indian, Hispanic), Cultural Diversity training/speakers, Cross-district collaboration

The W-APT and ACCESS assessments are used specifically with ELs. These assessments are used in conjunction with the previously mentioned assessments administered to the entire student body: AIMSweb, Fountas and Pinnell, DRA, MAP, and MCAs. The disaggregated data compiled from each of those assessments will be used to improve programs, strengthen core instruction, and accelerate the acquisition of oral language and literacy skills of ELs. The Leadership Team is responsible for accessing, analyzing, interpreting, and applying the disaggregated data.

In regard to Professional development, the MRVED plans and facilitates five workshops throughout the year for teachers who work with ELs. Each district sends their ESL instructor(s) and depending on the content of the day, other teachers. Paraprofessionals attend three trainings per year. These workshops follow the previously mentioned MRVED Best Practices format. This format breaks the day into two parts: one part of the day is focused on professional development, which will build the capacity of the workshop participants. Each year ESL instructors develop a list of potential topics that are identified as areas of need through looking at student data.

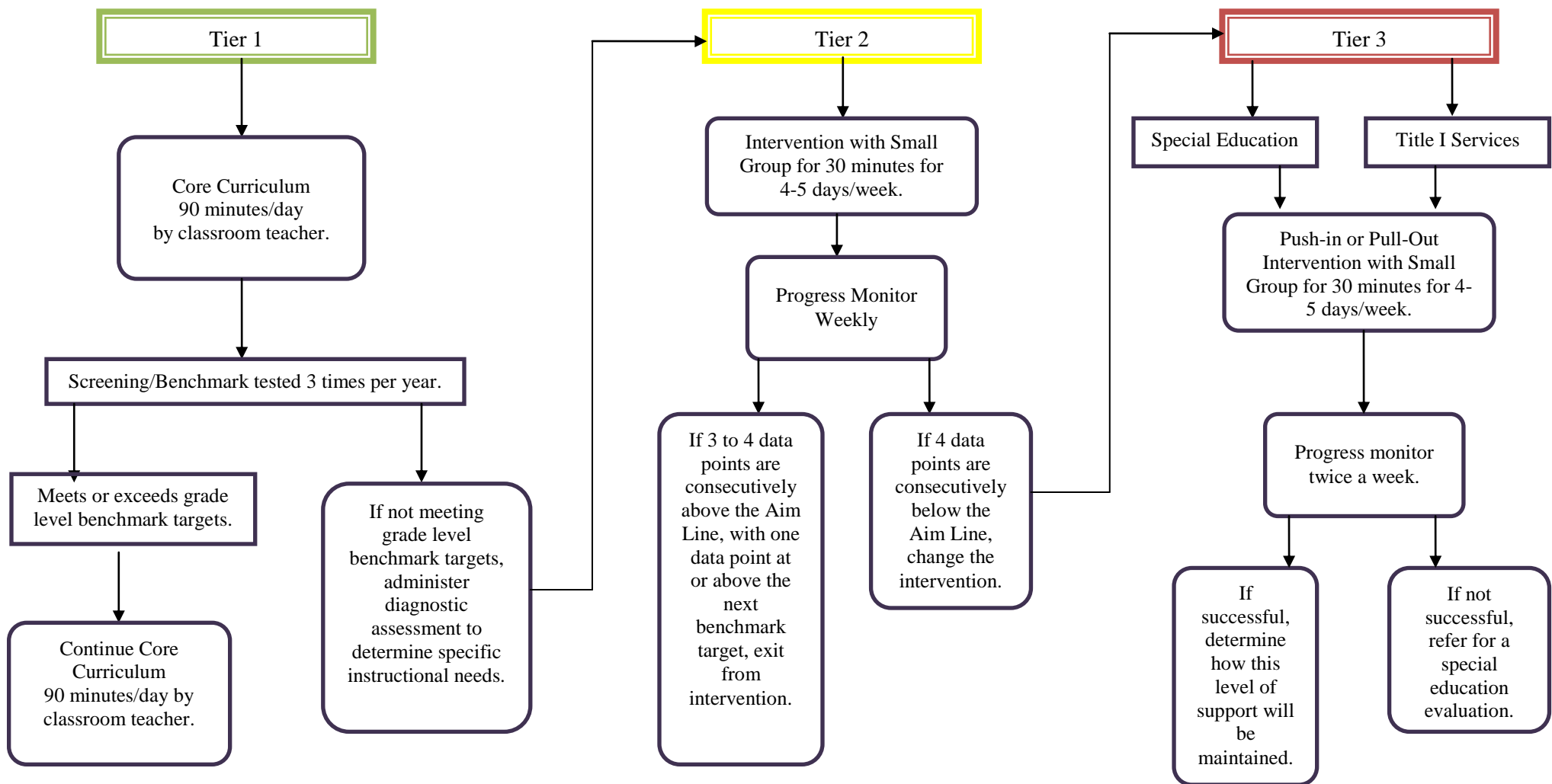
The second part of the day is a facilitated discussion format. The facilitated discussion portion of the day includes a research component, sharing best practices, challenges and potential solutions, data driven decision making, developing an effective parent program, etc. This part of the day is dedicated to strengthening the districts' ability to meet the needs of ELs and their families. Each district will identify areas needing improvement and develop an annual plan to meet the identified needs. In the areas where there are common needs, the MRVED staff facilitates activities to meet those needs. As is the tradition of MRVED staff development, instructors will have "homework" and will be asked to provide evidence that what they are learning is being put to use in the district and classroom. This evidence will include sharing of student work.

For the 2011-2012 school year, the focus of these workshops included implementing the WIDA standards (the sole focus of one meeting, plus addressed at all of the others), collecting and using data, technology implementation, and implementing best practices using research on what works with ELs, especially within content areas. Parent involvement is another area of emphasis that was addressed.

Studies show that newsletters can be an effective way to provide educational information. Some of the benefits include convenience, ability to save past issues for future reference, and timely, relevant information. Often times, small adjustments in teaching by a mainstream teacher can make significant differences for ELs. Mainstream teachers are bombarded by staff development opportunities, so if they don't have many ELs in their classrooms, they may choose another professional development opportunity over the courses being taught on strategies for ELs. The newsletter serves both as an introduction to strategies for working with ELs and also a follow-up. As a follow-up it provides consistent reinforcement of strategies already learned. The newsletters also provide a spring-board for discussions on how to better serve our EL population.

Post Assessment Methods and Data for Commissioner

Data will be submitted to Commissioner by July 1, due date.



APR 20 2012

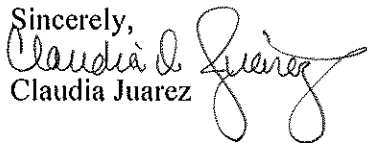
Claudia Juarez
P.O. Box 178
Hanley Falls, MN 56245

April 20, 2012

School Board
Yellow Medicine
555 7th Avenue
Granite Falls, MN 56241

Honorable Members of Yellow Medicine East School Board:

I am writing to tender my resignation as Hispanic Liaison effective the last day of school in this academic year. For the most part, the position has been very enjoyable and I have taken great pride in providing academic, social, and other support not only to Hispanic students in the Bert Raney building, but also all students. The challenges that our families face are considerable, and we have a long way to go. I believe that along with our families, the YME staff has a distance to cover in their need to deepen their understanding of students of color. I thank you for the opportunity to work here for these years. Gracias.

Sincerely,

Claudia Juarez

Yellow Medicine East School

MAY 11 2012

I am writing this letter with a very heavy heart. My family and I will be moving to Texas this June and for that reason I need must resign from my position as a paraprofessional in our Jr. High working with the 6th grade. I am excited to be embarking on a new chapter of my life but am very sad to be leaving a job that I love, amazing teachers and staff, and of course the students.

I would like to take this opportunity to thank the school board, administration, and staff for allowing me to work with kids and help them grow in many ways. I would especially like to thank the 6th grade teachers (Stacy Hinz, Linda Richter, Jim Williams, and Steve Huettl) for all that they have done for me. I have learned so much from all of them about how kids learn and different ways to teach. They have truly made me a better educator. These skills will certainly help me when I pursue a career in a school in Texas.

One of the best parts of working at YME is that I have made life long friends here. I cannot say thank you enough for that.

I would also like to take the opportunity to encourage the school board to find a great person to replace me. I have heard rumors (I hope they are just rumors) that my job will not exist next year and possibly ever again. I truly feel that is the biggest mistake you as a school board could make. 6th grade is that crucial year of transition from elementary to Jr. High/High School. This is the year that they need to catch up on things they have missed in elementary and prepare for the big part of their education. As you all know, Jr. High is very different from elementary school and they only get one year to prepare for that transition. I see so many Jr. High kids struggle and I truly think if there is not someone to help the teachers fill in the gaps and help these kids prepare, it is going to get worse for those kids. Isn't that what we are really hear for? To help kids learn? I look at all I do with kids individually and in a small group setting every day and I think, how sad that this may not happen again and the ones that suffer in the end if the kids. Please don't let that happen.

In closing, I would like to again say thank you for the privilege of working with such great administration, staff and students. I will continue to support and cheer on YME even if it is from 1,500 miles away.

Sincerely,



Dee Dee Dreier

6th Grade Paraprofessional

April 27, 2012

Mr. Grant Velde
YME Board of Education Chairperson
Yellow Medicine East School District
450 9th Avenue
Granite Falls, MN 56241

Dear Mr. Grant Velde,

This letter is a notice of my pending retirement on May 31, 2012.

I wish to resign contingent upon receiving severance pay as outlined in Article XI, Section 2, Subdivision 2 of the Master Contract. I would like the remaining money (from the maximum original match of \$22,500) to be placed in the Minnesota Health Care Savings Plan.

According to Section 3, Subdivision 1 of Article XI, I will remain eligible to receive the single insurance benefit of \$200 per month upon retirement until I become eligible for Medicare. I also wish to continue the dental, vision, and life insurance at my own expense.

I have included the signed memorandum of understanding opportunity for retirement incentive offered by the board on April 20, 2012. I understand that a one-time payment of \$20,000 will be paid to the Minnesota Health Care Savings Plan after all of the retirement incentive qualifications have been met. I have met with TRA and submitted all paperwork on April 25, 2012.

I have loved being a teacher for a total of 34 years. My career includes 4 years at Wood Lake, 15 years at Echo Elementary, and 15 years at Bert Raney. I thank you for allowing me to impact the lives of students. I have always worked very hard to give students a strong academic base, at the same time encouraging them to become responsible contributors to society with a positive attitude toward education and learning.

Sincerely,


Mrs. Zee Anne Reishus
Elementary Teacher

c: Al Stockman, YME Superintendent *AS 4-27-12*
Elaine Haugen, YME EA President
Tammy Barnes, Education Minnesota Field Staff

Katie Lewandowski
224 Mooney Circle
Granite Falls, MN 56241
(320) 293-8617
ktlewand24@gmail.com

April 23, 2012

Jodi Kennedy
Principal
Bert Raney Elementary
555 7th St
Granite Falls, MN 56241

Dear Jodi Kennedy,

I'm writing this letter to inform you that I will not be returning as the K-5 Art Specialist at Bert Raney Elementary for the 12'-13' school year do to personal reasons.

I thank you for having the ability to see my potential and for your support in the growth of my professional career this past year. I have immensely enjoyed working within this school district and will never forget the learning experienced in my classroom, by both my students and myself. This was the most supportive and complete first year experience I could have ever imagined.

If I can be of any help during this transition, please let me know. I will be glad to help in any way I can.

Sincerely,



Katie Lewandowski

April 30, 2012

Mr. Grant Velde, Board Chairman
Mr. Al Stoeckman, Superintendent
Independent School District #2190
450 9th Ave.
Granite Falls, Minnesota 56241

To: Mr Velde, Chairman
Mr. Al Stoeckman, Superintendent
Members of the Yellow Medicine East School Board

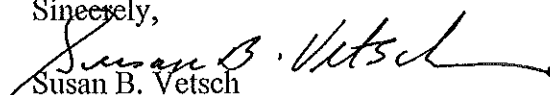
This letter is notice of my retirement effective at the conclusion of the 2011-12 school year. My retirement would become effective at the conclusion of the school day on May 31, 2012.

I wish to resign contingent upon these factors:

- 1) The school board grants my request for the Retirement Incentive of \$20,000. This money is to be paid in a one time payment to my account in the Minnesota Health Care Savings Plan. My application is attached with this letter.
- 2) I receive severance pay as outlined in Article XI, Section 2, Subdivision 2 of the Master Contract. This article states that the balance of my severance pay under the deferred compensation plan will be paid by the Yellow Medicine East School District to my account in the Minnesota Post Retirement Health Care Savings Plan.
- 3) According to Section 4, Subdivision 1 of Article XI, I will receive a single insurance benefit of \$200 per month upon my retirement until I become eligible for Medicare.
- 4) Finally, should I qualify; I wish to remain eligible for any legislative or district incentive that may be enacted to benefit those who retire at the conclusion of the 2011-12 school year.

I would like to express my appreciation to the Yellow Medicine East School District for their support of the Spanish program during my tenure here. I have enjoyed and shared many diverse experiences throughout my 22 years with great staff and students!!

Sincerely,



Susan B. Vetsch
Spanish Instructor
Yellow Medicine East Schools



Renville County West

Independent School District No. 2890

301 Northeast Third Street – PO Box 338 Renville, Minnesota 56284

Lance Bagstad, Superintendent

Phone: 320.329.8362/Fax: 320.329.3271

April 24, 2012

Dear YME School Board,

The Renville County West football program currently finds itself in a very precarious position. Due to lack of participation numbers in our upper grades, we are researching options for the future of our football program. The Renville County West school board, through this letter, is officially inquiring in regards to your interest in a future partnership in football. Please contact Mr. Bagstad, RCW superintendent, should you have questions. Thank you for your consideration in this matter and I look forward to your response prior to May 15th.

Sincerely,

David Hamre, Chair
Renville County West School Board

RCW Elementary School

Gina Hagen, Dean of Students
301 NE Third Street – PO Box 338
Renville, MN 56284
320.329.8368 * 888.299.0822
Fax: 320.329.3672

RCW High School

Jeff Wilson, Principal
301 NE Third Street – PO Box 338
Renville, MN 56284
320.329.8368 * 888.299.0822
Fax: 320.329.8191