

Yellow Medicine East ISD 2190 School Board Meeting Agenda



Monday, June 13, 2011 at 7:00 PM
Regular Meeting
Granite Falls City Hall

1. Call to Order	3
2. Approval of Agenda	
3. Approval of May 9, 2011 Meeting Minutes	6
4. Opportunity for Citizens to Speak	
5. Special Reports	
A. Spring Activities Report	8
B. Native American Programming - R. Bjerkeset	
6. Reports	
A. Enrollment Report	12
B. Finance Report	13
C. Bert Raney Elementary Report - J. Kennedy	
D. YME High School Report - K. Norell	14
E. Superintendent Report - A. Stoeckman	15
7. Action Items	
A. Approval of Bills for Payment	16
B. Approval of Transfer of Implicit Funds for Fiscal Year 2010-2011 from the OPEB Trust Fund	
C. Approval of Adjustment to Fund 25 OPEB Trust Fund for the 2010-2011 Budget	
D. Approval FY 2011-2012 Budget	43
E. Approval of Memorandum of Understanding Between ISD 2190 & MSEA-YME	47
F. Approval of Native American Policies & Procedures	48
G. Resolution Authorizing the Execution and Delivery of a Master Governmental Lease-Purchase Agreement, Supplement No. 4827-1 and Related Instruments, and Determining Other Matters in Connection Therewith.	
H. Acknowledgement of Donations Received	49
I. Approval of 2011-2012 High School Student Handbook	50

J. 2011-2012 MASA Membership Renewal	
K. Behavior Analyst Services 2011-2012	
L. ECHO Charter School Contract	86
M. 2011-2012 MREA Membership Renewal	
8. Personnel Items	
A. Elementary Art Instructor - K. Lewandowski	
B. Food Service Director - V. Wensauer	
C. Extended Employment - J. Kennedy	
D. Leave of Absence Request - H. Anderson	
E. Resignation - High School Instructor - B. Raymo	94
F. Resignation - Outside Maintenance - D. Andert	
G. Resignation - Junior High Baseball Coach - B. Raymo	
H. Resignation - Junior High Softball Coach - D. Baldry	
I. Placement on Unrequested Leave of Absence - V. Skjefte	95
9. Discussion Items	
10. Upcoming Events	96
11. Closed Session for Teacher & Administrator Negotiations	
12. Adjourn	

YELLOW MEDICINE EAST PUBLIC SCHOOLS

Independent School District 2190

To: YME School Board Members
From: Allen Stoeckman, Superintendent
Date: June 10, 2011
RE: Board Meeting – June 13, 2011

The agenda notes for the June 13 Board meeting are as follows. Supporting exhibits are posted on BoardBook. Please note that the meeting will be held at Granite Falls City Hall. Contact Denise if you will be unable to attend.

- | Item | Description |
|------|--|
| 1. | Call to Order |
| 2. | Approval of Agenda |
| 3. | Approval of May 9, 2011 Meeting Minutes |
| 4. | Opportunity for Citizens to Speak |
| 5. | Special Reports |
| A. | Spring Activities Report
<i>Written reports received from the Spring coaches are posted on BoardBook.</i> |
| B. | Native American Program – R. Bjerkset
<i>Roberta Bjerkset will present on the Native American programming at YME.</i> |
| 6. | Reports |
| A. | Enrollment Report
<i>Posted on BoardBook</i> |
| B. | Finance Report
<i>Posted on Board Book</i> |
| C. | Bert Raney Elementary Report – J. Kennedy |
| D. | YME High School Report – K. Norell
<i>Posted on BoardBook</i> |
| E. | Superintendent Report – A. Stoeckman
<i>Posted on BoardBook</i> |
| 7. | Action Items |
| A. | Approval of Bills for Payment |
| B. | Approval of Transfer of Implicit Funds for Fiscal Year 2010-2011 from the OPEB Trust Fund
<i>Other Post Employment Benefit (OPEB) funds of \$96,953 cover current retirement costs of employees. Recommend approval.</i> |
| C. | Approval of Adjustment to Fund 25 OPEB Trust Fund for the 2010-2011 Budget
<i>Other Post Employment Benefit (OPEB) funds of \$179,000 cover the recently agreed to retirement incentive costs of employees. These funds are placed in Health Saving Accounts. Recommend approval.</i> |

- D. Approval of FY 2011-2012 Budget
With the impasse at the State Legislature, the preliminary budget presented at the May Board Meeting is unchanged. The Finance Committee is comfortable recommending a deficit budget. Budget revisions will be made at a later date reflecting decisions made at the State Legislature. Recommend approval.
- E. Approval of Memorandum of Understanding Between ISD2190 & MSEA-YME
Recently the Board approved retirement incentives for EMYME staff resulting in some cost savings. Employees within the Minnesota School Employee Association also expressed interest in a retirement incentive. This incentive, approved by the Finance Committee, offers a \$5,000 insurance benefit to MSEA employees who qualify for retirement under the rule of 90. Conservative estimates show a savings of \$8,500 over the first two years alone. Recommend approval.
- F. Approval of Native American Policies & Procedures
Berta Bjerkeset will present information earlier in the meeting. Also she has asked for parent representatives to attend the meeting. Programming for Native American students continues to go well. Recommend approval of the polices and procedures presented by Berta.
- G. Resolution Authorizing the Execution and Delivery of a Master Governmental Lease-Purchase Agreement, Supplement No. 4827-1 and Related Instruments, and Determining Other Matters in Connection Therewith.
This 4-year lease for approximately \$112,000 (\$28,000 @ year) covers the equipment and installation of updated phone, Internet, data cabling, wireless, and non-Apple computer hardware. Recommend approval.
- H. Acknowledgement of Donations Received
The Board must acknowledge donations received over \$1,000. A list of those donations is posted on BoardBook.
- I. Approval of 2011-2012 High School Student Handbook
Posted on BoardBook
- J. 2011-2012 MASA Membership Renewal
Annual membership of \$1,246 is for participation in the state, Minnesota Association of School Administrators and national, American Association of School Administrators professional organizations. Request approval.
- K. Behavior Analyst Services 2011-2012
Cindy Loe recommends our involvement with the SW/WC Service Cooperative project of a Behavior Analyst to evaluate the needs of students with behavior issues. This service would determine needs and possibly prevent the placement of students in an educational setting outside of our district reducing tuition costs to other school districts. Cost of the \$5,000 agreement is neutral due to Special Education reimbursement opportunities through MVCC. Recommend approval.
- L. ECHO Charter School Agreement
The ECHO Charter School has not secured a sponsor for the upcoming school year. At the February 2011 meeting, the Board agreed to continue sponsorship for another year.
- M. 2011-2012 MREA Membership Renewal
Annual membership of \$1,982 is for participation in the Minnesota Rural Education Association. Request approval.

8. Personnel Items
 - A. Elementary Art Instructor – K. Lewandowski
This two-year position is generously funded by the Fagen Foundation giving new graduates their first full-time teaching position. Jodi Kennedy and elementary teachers interviewed three candidates. Katie is from Clear Lake, MN and a graduate of the University of Wisconsin Stout. Recommend approval.
 - B. Food Service Director – V. Wensauer
Ten individuals applied for the position. Four candidates were interviewed by Food Service Staff, Office Staff, and Student Council members. Val is from Scared Heart and has 25 years of experience working as a dietary manager in area nursing homes. Her contract offer is for 240 days at \$37,000. She would become part of the Supervisory/Confidential bargaining group. Recommend approval.
 - C. Extended Employment – J. Kennedy
Previous elementary principals had contracts of 230 days. Jodi agreed to a one-year 215-day contract. With the facilities project done at BRE last summer, Jodi came in early to help set up and get prepared for her job. She has already worked 215 days. Ten additional days would compensate her for the time needed to complete year-end records. Recommend approval.
 - D. Leave of Absence Request – H. Anderson
Childcare leave for the first semester of the 2011-12 school year. Recommend approval.
 - E. Resignation – High School Instructor – B. Raymo
Brandon has taught Social Studies, coached, and served as a technology integration coach. His long-term goal is to focus on technology integration. He has been offered and accepted the assistant director position at MRVED that will now have the focus of technology integration at the instructional level. Recommend approval.
 - F. Resignation – Outside Maintenance – D. Andert
Darvin has worked 35 years for YME. He qualifies for the MSEA retirement incentive listed above. Recommend approval.
 - G. Resignation – Junior High Baseball Coach – B. Raymo
Brandon has accepted a job with MRVED. Recommend approval.
 - H. Resignation – Junior High Softball Coach – D. Baldry
 - I. Placement on Unrequested Leave of Absence – V. Skjefte
Val's salary was being paid by integration funds that are in jeopardy depending on the State Legislatures K-12 budget. If funding continues, Val could be recalled. Recommend approval.
9. Discussion Items
Survey Monkey results from YME staff members evaluating the superintendent were emailed to Board Members. The Board needs to annually evaluate the superintendent and make public their recommendations. Evaluation instruments will be distributed for Board Members to complete. Please return anonymously to Denise who will compile results to be shared at the July Board Meeting.
10. Upcoming Events
11. Closed Session for Teacher & Administrator Negotiations
EMYME has expressed a desire to negotiate. Also Jodi Kennedy and Karen Norell's contracts are up for renewal. Discussion will be held to establish parameters of the negotiations process.
12. Adjourn

**YELLOW MEDICINE EAST ISD #2190
SCHOOL BOARD MEETING MINUTES
MONDAY, MAY 9, 2011 – 7:00 pm
YME BOARD ROOM**

Board Members Present: Jane Hagert, Dawn Odegard, Tim Opdahl, Steve Rupp, Grant Velde, Steve Zumhofe

Board Members Absent: Shelly Weir

Community / Staff Members Present: Kathy Anderson, Kendal Borning, LeeAnn Boushek, BeaAnn Hagert, Elizabeth Halverson, Jennessa Hoffman, Lisa Knutson, Tyler Knutson, Cindy Loe, Karen Norell, Perry Oftedahl, Darrel Refsland, Ted Refsland, Ashly Sneller, Al Stoeckman, Denise Streich, Kathy Velde,

Chairman Velde called the meeting to order.

Motion by Odegard, second by Hagert and carried to approve the agenda for the meeting.

Motion by Opdahl, second by Zumhofe and carried to approve the minutes from the April 11, 2011 meeting.

The opportunity for citizens to speak received no response.

Jennessa Hoffman & BeaAnn Hagert shared photos and reported on their experiences from their recent Spanish Club trip to Europe.

Kendal Borning, Elizabeth Halverson, Tyler Knutson, Ted Refsland, and Ashley Sneller, members of the YME FFA Chapter, shared photos and reported on their experiences from their recent FFA trip to Hawaii.

Enrollment & fund balance reports were submitted for review.

YME High School Principal, Karen Norell, submitted a written report and explained the idea of broadcasting events via the internet.

Superintendent Stoeckman reviewed his written report with the Board.

The Finance Committee met on May 2 and reviewed the revised FY 11 Budget and the preliminary FY 12 Budget.

Motion by Rupp to approve the addendum to a Memorandum of Understanding for Retirement Incentive and the addendum to a Memorandum of Understanding for Extended Leaves of Absence Incentive. The motion was withdrawn by Rupp.

Motion by Opdahl, second by Rupp and carried unanimously to approve the Addendum to a Memorandum of Understanding for Retirement Incentive, no longer requiring a minimum number of applicants.

Motion by Hagert, second by Zumhofe and carried, with Opdahl opposed to approve the Addendum to a Memorandum of Understanding for Extended Leaves of Absence, no longer requiring a minimum number of applicants.

Motion by Hagert, second by Zumhofe and carried unanimously to approve the resignation of Steve Huettl as per Memorandum of Understanding for Retirement Incentive.

A recess was called.

The meeting was called back to order.

Motion by Zumhofe, second by Odegard and carried to approve a leave of absence request received from Laura Bristle.

Motion by Hagert, second by Rupp and carried, with Hagert, Opdahl, Rupp and Velde voting in favor, and Odegard and Zumhofe voting against, to approve the proposed placement of Valerie Skjefte on Unrequested Leave of Absence.

Motion by Zumhofe, second by Opdahl and carried to approve the second reading and adoption of the 700 Series Policies – Non-Instructional Operations & Business Services.

Motion by Zumhofe, second by Opdahl and carried to approve the second reading and adoption of the 800 Series Policies – Buildings/Sites.

Motion by Zumhofe, second by Opdahl and carried to approve the second reading and adoption of the 900 Series Policies – Community Relations.

Motion by Rupp, second by Hagert and carried to approve facility bills for payment in the amount of \$267,070.83 with checks numbered 190-194 and 2008, payroll wire transfers in the amount of \$175,835.91 numbered 201000093-201000097, and bills for payment in the amount of \$433,261.58 with checks numbered 15579-15729.

Motion by Opdahl, second by Hagert and carried to approve the revised budget for FY11, as follows:

2010-11 Revised Budgets		
General	9,256,305	9,188,757
Food Service	370,400	386,058
Community Service	319,527	316,026
Debt Service	265,461	322,140
OPEB Trust Fund	57,000	102,600
OPEB Debt Service	197,688	194,000
Building Fund	Equal to Actual Received	Equal to Actual Expended

Motion by Hagert, second by Rupp and carried to renew membership with the MN State High School League for 2011-2012 school year.

Motion by Odegard, second by Zumhofe and carried to approve the last day of school for the class of 2011, for those who have completed all graduation requirements, as May 27, 2011.

Motion by Zumhofe, second by Hagert and carried to approve a 4-year lease with Apple Inc., for 66 end of production teacher workstations and 130 iPad 2 model computers for \$165,931.73, as presented.

Discussion items included: acknowledgement of EMYME’s notice of desire to negotiate, Board members Opdahl & Velde will confer diplomas at commencement, a possible one-year extension of the Charter School Agreement with the ECHO Charter School, and chain of communication protocol between Board members and the school community.

Upcoming Events

Event	Date	Location	Time
Baccalaureate	May 25, 2011	HS Auditorium	7:00 PM
Last Day of School – Early Out	June 2, 2011	District	12:30 PM
Graduation	June 3, 2011	Espeland Gym	7:00 PM
Staff Work Day	June 3 & 6, 2011	District	
Board Meeting	June 13, 2011	To Be Determined	7:00 PM
School Auction	June 17, 2011	Clarkfield Site & Kollen Building	To Be Determined

The meeting was adjourned by Chairman Velde.

YME School Board Members,

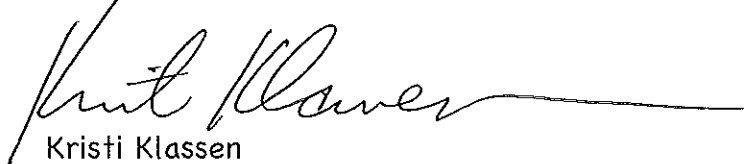
This is a report for the 2011 softball season.

We finished our season with a 5-15. We were 4-12 in the West Central South Conference for a 7th place finish. Our conference is extremely tough and our kids were competitive in the majority of the games.

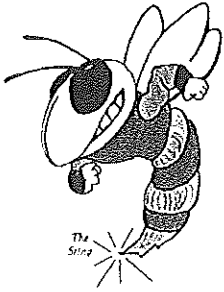
We got the 7th seed in our section. We played MACCRAY in our first sub-section game, they were the #2 seeded team. We lost a very hard fought battle 3-2 in 13 innings. This was our best-played game of the year. We played our best ball at the end of the season. We are all very proud of how well we played in our final game. We were a very young and inexperienced team. We lose 2 seniors to graduation and return 8 out of 9 starters next season.

There have been many improvements to our main field the past few years, a temporary outfield fence, new dugouts and a new storage shed but the field is in need of more repairs. The backstop fence needs to be replaced; it is attached to the pole with a wire. It would also be nice to be able to water the field. There is water to the concession stand but we don't have a way to get it to the field. These are just a couple of the needs of our main field.

Thank You,

A handwritten signature in cursive script, appearing to read "Kristi Klassen", followed by a long horizontal line extending to the right.

Kristi Klassen
Head Softball Coach



YELLOW MEDICINE EAST

High School Activities Department
 450 9th Avenue, Granite Falls MN 56241
 (320) 564-4081 Ext. 110- Tim ; Ext. 111 - Jean
 Tim Knapper, Activities Director

End of Season Report

Year: 2011 Sport: Track and Field Head Coach/Advisor: Scott Jans

Assistants:

- | | | |
|--------------------|------------------|----------|
| 1. Jim Ford | 3. David Wingert | 5. _____ |
| 2. Paul Hoernemann | 4. Tasha Feldman | 6. _____ |

Season Record: NA Conference Record NA Standing: Boys – 4th, Girls 8th

List any team honors:

List any individual honors:

All Conference: Mariah Skjefte,
 Zach Svobodny,
 Jacob Pederson

Sub section champion:

Mariah Skjefte – discus
 Jacob Pederson – 400M

State Qualifier:

Zach Svobodny – high jump 6'4"

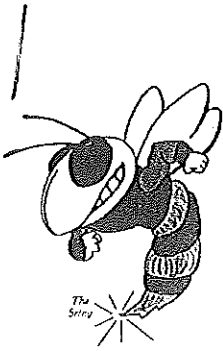
Season Recap/Highlights: We had a young team this year. The athletes gained great experience. It was a difficult spring with cold/rainy weather. Our seniors performed well in their last year. Mariah Skjefte had a great year throwing the discus. Zach Svobodny did an excellent job with high jump. We will continue to build our team for next year.

Capital Requests: (include approximate cost)

Pole vault pits	\$ 12,000
Set of 8 hurdles	\$ 800
_____	\$ _____
_____	\$ _____
_____	\$ _____

Supplies List for next year:
 (include approximate cost)

3 stopwatches	\$150
3 tape measures	\$120
spikes	\$100
awards	\$200
tape	\$100



YELLOW MEDICINE EAST

High School Activities Department
450 9th Avenue, Granite Falls MN 56241
(320) 564-4081 Ext. 110- Tim ; Ext. 111 - Jean
Tim Knapper, Activities Director

Appendix C

End of Season Report

Year: 2011 Sport: Boys Tennis Head Coach/Advisor: Jeff Lalim

Assistants:

1. Gordy Kasel 3. _____ 5. _____
2. _____ 4. _____ 6. _____

Season Record: 4-7 Conference Record 1-3 Standing: 3rd

List any team honors:

Banquet on June 20th

List any individual honors:

Season Recap/Highlights: We finished 4-7. This was our best record since 2007. The boys played very well all season! It was fun to watch the player's improvement!

Capital Requests: (include approximate cost)

\$ _____

\$ _____

\$ _____

\$ _____

\$ _____

\$ _____

Supplies List for next year: (include approximate cost)

Tennis Balls \$ 150.⁰⁰
Tournament fee \$ 30.⁰⁰

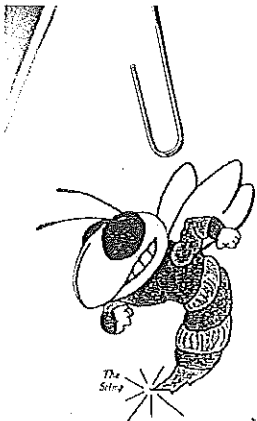
\$ _____

\$ _____

\$ _____

****Please Attach:**

1. List of games played & results
2. A roster with varsity letter winners identified
3. A copy of cumulative statistics for the year



YELLOW MEDICINE EAST

High School Activities Department
 450 9th Avenue, Granite Falls MN 56241
 (320) 564-4081 Ext. 110- Tim ; Ext. 111 - Jean
 Tim Knapper, Activities Director

Appendix C

End of Season Report

Year: 2011 Sport: BASEBALL Head Coach/Advisor: T. Schwite

Assistants:

- | | | |
|----------------------|----------|----------|
| 1. <u>Jake Suter</u> | 3. _____ | 5. _____ |
| 2. _____ | 4. _____ | 6. _____ |

Season Record: 8-11 Conference Record 6-10 Standing: 6th

List any team honors:

List any individual honors:

- Devon Dyrda - All Conference
Dylan Lindstrom - All Conference
Derek Dyrda - All Conference - Honorable Mention

Season Recap/Highlights:

We began the year at 5-1. Finished the remainder at 3-10.

Capital Requests: (include approximate cost)

<u>Uniform Pants</u>	\$ <u>??</u>
<u>Additional Coach</u>	\$ _____
_____	\$ _____
_____	\$ _____
_____	\$ _____
_____	\$ _____

Supplies List for next year: (include approximate cost)

<u>3-4 BBCOR bats</u>	\$ <u>900.⁰⁰</u>
<u>Helmets</u>	\$ <u>130.⁰⁰</u>
<u>Catcher's Gear</u>	\$ <u>200.⁰⁰</u>
<u>8 doz. Baseballs</u>	\$ <u>300.⁰⁰</u>
_____	\$ _____
_____	\$ _____

****Please Attach:**

1. List of games played & results
2. A roster with varsity letter winners identified
3. A copy of cumulative statistics for the year

Appendix D

YELLOW MEDICINE EAST ENROLLMENT UPDATE 2010-2011

	ANTICIPATED			SEPTEMBER			OCTOBER			NOVEMBER			DECEMBER			JANUARY		
	BRE	HS	ENR	BRE	HS	ENR	BRE	HS	ENR	BRE	HS	ENR	BRE	HS	ENR	BRE	HS	ENR
Kind	56			62			63			63			64			64		
First	52			51			52			52			54			53		
Second	54			54			53			54			54			54		
Third	46			46			47			47			46			46		
Fourth	50			48			48			49			49			49		
Fifth	78			78			78			78			78			78		
Sixth	59			62			61			61			61			61		
	395			401			402			404			406			405		
Seventh		53			57			58			59			58			58	
Eighth		93			88			87			86			86			85	
Ninth		71			72			73			73			72			72	
Tenth		75			75			76			77			76			73	
Eleventh		78			83			81			81			81			81	
Twelfth		75			74			73			73			73			73	
	445			449			448			449			446			442		
K-12 TOTAL			840			850			850			853			852			847

	FEBRUARY			MARCH			APRIL			MAY			LAST DAY OF SCHOOL		
	BRE	HS	ENR	BRE	HS	ENR	BRE	HS	ENR	BRE	HS	ENR	BRE	HS	ENR
Kind	62			63			63			62			64		
First	53			53			53			53			54		
Second	54			54			54			54			54		
Third	46			46			46			46			47		
Fourth	49			49			49			48			48		
Fifth	77			76			75			74			74		
Sixth	61			61			61			61			61		
	402			402			401			398			402		
Seventh		58			57			57			56			56	
Eighth		85			87			86			86			85	
Ninth		72			69			69			67			68	
Tenth		69			69			69			69			68	
Eleventh		80			77			78			77			77	
Twelfth		75			75			75			73			74	
	439			434			434			428			428		
K-12 TOTAL			841			836			835			826			830

**Yellow Medicine East #2190
Board Report
June 2011**

2010-11	Revised	Year to Date	Budget Balance	Percent	2009-10
By Fund	2010-11	Expenditures		Expended	YTD Expended
General	9,188,757	8,094,151	1,094,606	88.09%	85.69%
Food Service	386,058	316,017	70,041	81.86%	85.24%
Community Service	316,026	243,314	72,712	76.99%	78.60%
Debt Redemption	77,140	77,070	70	99.91%	99.91%
Debt Red. (Constr. Bonds)	245,000	244,313	687	99.72%	0.00%
OPEB Bonds Trust	179,000	94,540	84,460	52.82%	N/A
OPEB Debt Service	194,000	193,851	149	99.92%	N/A
Sub-total	10,585,981	9,263,256	1,322,725	87.50%	
Building Project (Fund 06)	7,019,577	7,019,577	0		1,331,840
Total	17,605,558	16,282,833	1,322,725		

Year to date amounts include current month's accounts payables plus previous month's payroll.

Building Project Budget to equal amount expended (per Board budget approval June 2010)

Building Project expended to date: \$8,351,417

Salaries % expended to date (approximately)

Contracted July-June	Supt/Finance/Maint/Comm Ed	91.67%
Contracted August-July	Principals	83.33%
Contracted Sept-August	Teachers/Fd Svc Supv/Nurses	75.00%
12 Month Non-certified	Secretaries	91.67%
12 Month Non-certified	Custodians	86.00%
9 Month Non-certified	Assistants/Cooks	92.00%

Liquid Asset Fund/Citizen's Alliance Money Market (Investments)

5/31/2011

Month End Cash Invested	\$2,003,710.73	General Closing Market Value
Contruccion Account (QZABS 8.26 Mil)	\$2,224,773.04	Facilities Project
Capital/Energy Bonds (QZABS 2.485 Mil)	\$462,041.83	Facilities Project

Electronic Fund Transfers/LAF Checks

			From	To
5/9/2011	\$ 1,468.69	Xcel Energy	F&M	Xcel
5/6/2011	\$ 68.78	RevTrak Fees	LAF	Revtrak
5/11/2011	\$ 160,000.00	Board Accounts Payable	LAF	Citizens Bank
5/20/2011	\$ 1,000.00	Payroll (F&M Bank)	LAF	F&M Bank
5/20/2011	\$ 296,754.37	Payroll (GF Bank direct deposits)	LAF	GF Bank
5/20/2011	\$ 175,000.00	Board Accounts Payable	LAF	Citizens Bank
5/24/2011	\$ 50,000.00	Payroll Accounts Payable/AP	LAF	Citizens Bank
5/11/2011	\$ 177,000.00	Alt. Facilities Transfer (Money Mkt Acct)	Citizens	LAF
5/11/2011	\$ 91,000.00	Energy/Capital Transfer (Money Mkt Acct)	Citizens	LAF

Trust Fund (PERA) OPEB \$1,906,946.39 Ending 5/31/2011

RE: June 2011 Board Report

1. The 2011-2012 Student Handbook is attached for your review. Changes are in red print. Note in particular the ATTENDANCE information and guidelines. Our high school faculty has been studying attendance policies for the past two years. In particular we were looking at our current practice "grade deducts for attendance". We studied several policies and our consensus was to "tweak" the policy from Northfield schools and Bloomington schools to what we think will be an effective policy for YME. Note it does not use grade deducts as a consequence but it does address excessive absences, makeup, and tardiness. It is our recommendation that you approve the guidelines for implementation for the 2011-2012 school year. Also note the requirements for graduation for the Class of 2015 and beyond and the eligibility requirements (recommendation from our AD and from our high school faculty) for activities.

2. 180 students were on the honor roll all four quarters of the 2010-2011 school year. 51 of those were awarded patches for achieving this for the first time.

3. 73/75 students participated in graduation exercises. 75 students did complete all requirements for diploma. Thank you to Mr. Stoeckman, Mr. Velde, and Mr. Opdahl for participating in the ceremony.

4. "College and Career Ready" is the mantra for Minnesota high schools. If we believe that is our mission at YME we need to seriously think about the vital role a Guidance Counselor plays in making opportunities available for students. Dollars for Scholars made \$59,000 + available to students for post secondary schooling--our Guidance Counselor is the link to making that happen. Certainly I realize the tight budget but this is a position that serves us well.

5. The high school office will be at BRE for the summer and will be up and operating on Monday, June 13. Kudos to our staff in evacuating the high school building. Contractors were able to access much of the site on June 3 and we had all classrooms ready by the end of the day on June 6. We look forward to returning to a renovated building.

6. Congratulations to Zach Svobodny for advancing to the STATE TRACK meet in the high jump. Zach was third (6'4") in the high jump. Congratulations to Taylor Olson for advancing to the state golf meet. Taylor is making his third state appearance having finished #11 last year at state. He was the medalist for sections.

7. I will be in district all of June with some vacation time planned for July. KN

--

Karen A. Norell
High School Principal
Yellow Medicine East Schools

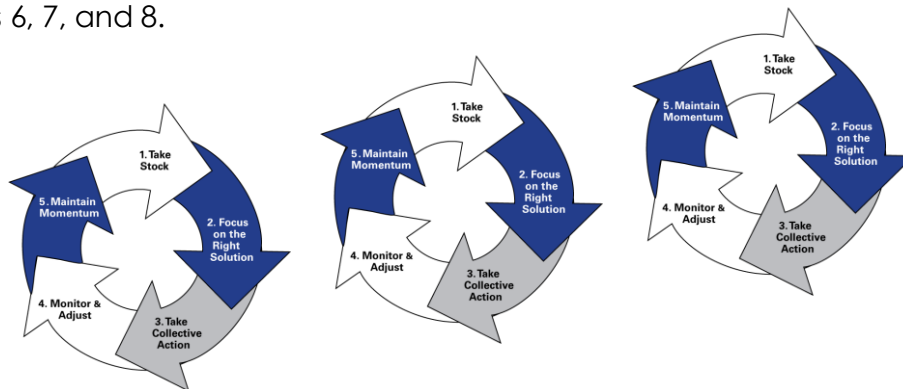


Superintendent Report

June 13, 2011

Middle Level Redesign

The final meeting for the 2010-11 school year with representatives from the Minnesota Department of Education and Mid-Continent Research in Education and Learning was held on June 6. The Leadership Team from the Kerkhoven, Murdock, Sunburg (KMS) school district joined us. We shared the “fractal” changes both our districts attempted this past year discussing considerations for 2011-12 (YME’s fractal was IDEAL Problem Solving). Two statements from the presenters stood out for me this past year, “Collective efficacy is the greatest predictor of success” and “When trust is high, costs are low. When trust is low, costs are high.” Looking ahead to 2011-12, a character education committee is planning an advisory program for grades 7 and 8. Also, discussions will begin regarding the new Reading/Language Arts standards that are grouped among grades 6, 7, and 8.



Air Quality/Energy Project

The 1930 and 1965 buildings have been vacated. High School, Community Education, District and MVCC Offices are housed at Bert Raney Elementary for the summer. Ceilings and lights are coming down; radiators and univents are being removed. New ductwork for ventilation is being installed. Items to consider:

- Upgrade restrooms with capital fund reserves
- Upgrade security camera system with 2011-12 Health and Safety levy dollars
- Upgrade signage throughout the buildings and campus

CHECK NUMBER	CHECK DATE	VENDOR	AMOUNT
000000195	20110613	BILL'S ELECTRIC	80.00
000000196		BISBEE PLUMBING	1,020.00
000000197		HONEYWELL INTERNATIONAL INC.	59,987.00
000000198		INNOVATIVE OFFICE SOLUTIONS	100.96
000000199		KRANZ CONSTRUCTION	49,063.00
000000200		MASTERPAK CONTAINERS INC.	262.08
000000201		MCDOWALL COMPANY INC.	180,768.85
000000202		OFFICE MAX CONTRACT INC.	441.40
000000203		PAAPE ENERGY INC.	60,002.00
000000204		RYER PLUMBING INC.	400.28
000002009		HONEYWELL INTERNATIONAL INC.	43,828.00
	20110613		395,953.57
Totals for BNK00			395,953.57
000015730	20110523	ALLTEL	44.62
000015731		ALLTEL	543.39
000015732		AMERICAN FAMILY LIFE ASSURANCE	340.94
000015733		AMERITAS LIFE INSURANCE CORP.	427.00
000015734		INTERNAL REVENUE SERVICE	239.67
000015735		KENNEDY, JODI	200.00
000015736		MADISON NATIONAL LIFE	2,411.46
000015737		154200&01-NCPERS GROUP LIFE	96.00
000015738		MN TEACHERS RETIREMENT ASSOC.	13,441.06
000015739		MSEA	1,066.88
000015740		ORANGE TREE EMPLOYMENT SCREENING	16.00
000015741		PRE-PAID LEGAL	25.90
000015742		PRINCIPAL MUTUAL LIFE	6,573.84
000015743		SCHULTE, TREVOR	400.00
000015745		SW/WC SVC. COOP - HEALTH INS.	53,575.34
000015746		Y.M.E.E.A.	3,464.46
	20110523		82,866.56
000015747	20110613	ADVOCATE TRIBUNE	2,413.86
000015748		AMERICAN WELDING AND GAS	423.02
000015749		APPERT FOODS	3,800.18
000015750		APPLE COMPUTER	599.00
000015751		APPLE COMPUTER, INC.	50.00
000015755		BENNETT & BENNETT INC.	43,616.79
000015756		BEST BUSINESS PRODUCTS	70.50
000015757		BIO CORPORATION	139.73
000015758		BOELTER, NICOLE	165.96
000015759		BOOTLEGGERS SUPPER CLUB	1,620.00
000015760		BRUFLAT, BARBARA	35.00
000015761		CARL'S BAKERY	39.33
000015762		CDW GOVERNMENT, INC.	582.94
000015763		CENEX CREDIT CARD	1,657.49
000015764		CENTRAL MN CHRISTIAN SCHOOL	1,033.00
000015766		CITY OF GRANITE FALLS	11,385.59
000015767		CONSUMERS COOPERATIVE OIL CO.	365.71
000015768		CULLIGAN	24.95
000015769		DAIRY QUEEN	178.12
000015770		DALLAS II	108.25
000015771		DANA F. COLE & COMPANY, LLP	763.25
000015772		DAVE'S ELECTRIC CO	180.51
000015773		DEAN FOODS NORTH CENTRAL, INC.	3,404.51

CHECK NUMBER	CHECK DATE	VENDOR	AMOUNT
000015774	20110613	DEMCO, INC.	118.25
000015775		DITTERICH, MARY	140.70
000015776		DU-MART	35.08
000015777		EAP CONSULTANTS	224.64
000015780		ECONOMART	3,027.08
000015781		FARMERS UNION OIL CO.	4.14
000015782		GRANITE FALLS AUTO PARTS	257.65
000015783		GRANITE FALLS OFFICIALS ASSOC.	885.00
000015784		GRANITE FLORAL & GREENHOUSE	68.49
000015785		GREAT PLAINS NATURAL GAS CO	1,697.56
000015786		GRINDER ESPRESSO CAFE/GIFTS	15.44
000015787		HANSEN, LISA	420.00
000015788		HDL	118.28
000015789		HENDERSON, ROBIN	239.97
000015791		HILLYARD/HUTCHINSON	2,691.98
000015792		HOERNAMANN, AMY	146.96
000015793		HOLT, ANDREW	122.40
000015794		IKON OFFICE SOLUTIONS	600.00
000015795		IMAGESTUFF.COM	65.86
000015796		INNOVATIVE LEARNING CONCEPTS INC.	181.29
000015797		INNOVATIVE OFFICE SOLUTIONS	306.98
000015798		ISCORP	391.00
000015799		JAHN, ELIZABETH	149.35
000015800		JANS, SCOTT	37.70
000015801		JEFFERS PETROGLYPHS	350.00
000015802		JENSEN, PAMELA	75.00
000015803		JESSEN, PATRICIA	45.82
000015804		JIM'S CLOTHING & SPORTING GOOD	1,059.00
000015805		JOSTEN'S	486.64
000015806		KENNEDY, JODI	910.95
000015807		KHALI, MARGARET	77.85
000015808		KILOWATT COMMUNITY CENTER	3,126.00
000015809		KMS	2,583.01
000015810		KNAPPER, TIMOTHY	94.22
000015811		KORTHUIS JEWELRY	304.40
000015812		LAVOIE, SHEILA	1,305.60
000015813		LEASE FINANCE GROUP	11,571.22
000015814		LECY, BENJAMIN	250.00
000015815		LEE'S AUTO & DIESEL INC.	90.01
000015816		LIDS TEAM SPORTS	193.98
000015817		MACKIN LIBRARY MEDIA	668.24
000015818		LONDGREN, KAREN	221.77
000015819		MEYERS REPAIR SHOP	182.00
000015820		MN DEPT. OF HEALTH	35.00
000015821		MINNESOTA ELEVATOR, INC.	407.82
000015822		MN RIVER VALLEY EDUCATION DIST	250.00
000015823		MN VALLEY LUTHERAN H.S.	425.00
000015824		MUSIC IS ELEMENTARY	41.45
000015825		MUSIC MART	259.40
000015826		MUSIC STREET	269.00
000015827		MUSSER ENVIRONMENTAL INC.	2,606.86
000015828		MVCC	209,272.80
000015829		NELSEN'S CLEANERS & LAUNDERERS	21.18
000015830		NEW DOMINION SCHOOL	3,173.10
000015831		OFFICE MAX CONTRACT INC.	34,786.66
000015832		OLSON SANITATION INC.	988.65

CHECK NUMBER	CHECK DATE	VENDOR	AMOUNT
000015833	20110613	PAN-O-GOLD BAKING CO.	916.11
000015834		PERIPOLE BERGERAULT	14.20
000015835		PIONEER MFG. CO.	3,604.95
000015836		PITNEY BOWES	1,042.35
000015837		PRAIRIE PALETTE	34.73
000015838		PRINCIPALS ESSENTIALS, INC.	208.00
000015839		QUILL CORPORATION	50.47
000015840		RATWICK, ROSZAK & MALONEY, P.A	1,386.00
000015841		REINHART INST FOODS	2,470.69
000015842		REINHART INST FOODS	5,508.00
000015843		REINHART INST FOODS	1,961.62
000015844		RTS	153.19
000015845		RUTLEDGE DENINE	159.60
000015846		RYER PLUMBING INC.	2,019.84
000015847		S & S WORLDWIDE	274.35
000015848		SAWMILL	51.87
000015849		SCHOLASTIC BOOK FAIRS	999.92
000015850		SHRED-IT	687.50
000015851		SMSU SOCCER	1,000.00
000015852		SONS OF NORWAY	100.00
000015853		SOUTHWEST WHOLESALE	4,452.65
000015854		SPORTDECALS INC	63.15
000015855		SPORTSONLINE.COM	303.57
000015856		STOECKMAN, ALLEN	474.51
000015857		STUKEL HELEN	318.52
000015858		SUBWAY	40.82
000015859		SUPPLIES OUTLET	38.89
000015860		SUTER, CASSANDRA	24.05
000015861		SW/WC SERVICE COOPERATIVES - FERGUS FALLS	145.00
000015862		TEAM LABORATORY CHEMICAL CORP.	1,270.00
000015863		TECHNICAL SOLUTIONS OF MADISON LAKE INC.	270.00
000015864		THRIFTY WHITE DRUG	46.04
000015866		TRUE VALUE-GF/MONTE	515.73
000015867		US MATH RECOVERY COUNCIL	9,950.00
000015868		VAN MOER, MARGO	119.50
000015869		VELDE, HEATHER	70.10
000015871		VISA	689.44
000015872		VOSIKA PORTABLE TOILET RENTAL	255.00
000015873		WEIDAUER, BARRY	188.07
000015874		WEIR, SHELLY	68.88
000015875		WEST CENTRAL TAE KWON DO	408.00
000015876		WEST CENTRAL TRIBUNE	57.00
000015877		XCEL ENERGY	31.59
000015890		YME SCHOOLS-ADM	14,998.63
000015891		YME BOARD ACCOUNT	569.40
000015892		YME-FOOD SERVICE	355.00
000015893		YOUTH FRONTIERS, INC.	750.00
	20110613		419,853.05
		Totals for BNK02	502,719.61
		Totals for checks	898,673.18

FUND SUMMARY

<u>FUND</u>	<u>DESCRIPTION</u>	<u>BALANCE SHEET</u>	<u>REVENUE</u>	<u>EXPENSE</u>	<u>TOTAL</u>
01	GENERAL FUND	111,970.38	-25.85	346,645.56	458,590.09
02	FOOD SERVICE	1,247.16	385.30	23,517.39	25,149.85
04	COMMUNITY SERVICE	1,854.05	35.00	5,966.97	7,856.02
06	CONSTRUCTION/BUILDING FUND	0.00	0.00	395,953.57	395,953.57
09	TRUST FUND	2,128.25	0.00	0.00	2,128.25
25	REVOCABLE TRUST (FY10)	0.00	0.00	8,995.40	8,995.40
*** Fund Summary Totals ***		117,199.84	394.45	781,078.89	898,673.18

***** End of report *****

<u>CHECK</u>	<u>CHECK</u>		<u>AMOUNT</u>	<u>SB</u>
<u>NUMBER</u>	<u>DATE</u>	<u>VENDOR</u>		
		FEDERAL TAX WITHHOLDING	91,947.72	
		ING SERVICE CENTER	17,376.51	
		MN TEACHERS RETIREMENT ASSOC.	31,080.98	
		PUBLIC EMPLOYEES RETIREMENT	17,918.54	
		STATE TAX WITHHOLDING	16,916.46	
		Totals for BNK02	175,240.21	
		Totals for checks	175,240.21	

FUND SUMMARY

<u>FUND</u>	<u>DESCRIPTION</u>	<u>BALANCE SHEET</u>	<u>REVENUE</u>	<u>EXPENSE</u>	<u>TOTAL</u>
01	GENERAL FUND	162,799.15	0.00	0.00	162,799.15
02	FOOD SERVICE	5,542.67	0.00	0.00	5,542.67
04	COMMUNITY SERVICE	6,898.39	0.00	0.00	6,898.39
*** Fund Summary Totals ***		175,240.21	0.00	0.00	175,240.21

***** End of report *****

Check Nbr	Vendor Name	Check Date	Invoice Number	Invoice Desc	PO Number	Invoice Amount	Check Amount
15747	ADVOCATE TRIBUNE	06/13/2011	1	legals	0	259.00	2,413.86
01 E 005 010 000 000 380				BOARD OF EDUCATION//PRINTING/ADVERTISING/		259.00	
04 E 500 505 000 321 450			11	SUMMER REC FEES	0	1,491.95	
				COMMUNITY EDUCATION GENERAL/COMMUNITY EDUCATION/MATERIA		1,491.95	
01 E 300 211 165 000 899			2	DIPLOMA PAPER	0	10.00	
				SECONDARY EDUCATION GENERAL//MISCELLANEOUS EXPENSE/GRAD		10.00	
04 E 500 505 000 321 380			22	VISIT GUIDE	0	165.00	
				COMMUNITY EDUCATION GENERAL/COMMUNITY EDUCATION/PRINTIN		165.00	
01 E 300 298 205 000 401			3	EASTSIDE STORIES	0	383.61	
				EXTRACURRICULAR ACTIVITIES//GENERAL SUPPLIES/NEWSPAPER		383.61	
02 E 005 770 000 701 401			40	ENVELOPES	0	104.30	
				FOOD SERVICES/SCHOOL LUNCH/GENERAL SUPPLIES/		104.30	
15748	AMERICAN WELDING AND GAS	06/13/2011	1294052		0	423.02	423.02
01 E 300 301 501 830 433				AG EDUCATION (VOCATIONAL)/VOCATIONAL PROGRAMS/INDIVIDUA		423.02	
15749	APPERT FOODS	06/13/2011	1		0	3,260.31	3,800.18
02 E 005 770 000 701 490				FOOD SERVICES/SCHOOL LUNCH/FOOD/		3,260.31	
02 E 005 770 000 701 401			2	REG. SUPPLIES	0	271.82	
				FOOD SERVICES/SCHOOL LUNCH/GENERAL SUPPLIES/		271.82	
02 E 005 770 000 701 490			3	CREDIT	0	-13.28	
				FOOD SERVICES/SCHOOL LUNCH/FOOD/		-13.28	
02 E 005 770 000 705 490			4		0	281.33	
				FOOD SERVICES/BREAKFAST/FOOD/		281.33	
15750	APPLE COMPUTER	06/13/2011	9874938461	IPAD	215	599.00	599.00
01 E 100 402 000 419 433				MILD/MODERATE MENTALLY IMP;/94-142 FEDERAL/INDIVIDUAL I		599.00	
15751	APPLE COMPUTER, INC.	06/13/2011	9874253169		0	50.00	50.00
01 E 200 612 199 000 401				TECHNOLOGY//GENERAL SUPPLIES/KAREN MCCOY		50.00	
15752	Vendor Continued Void	06/13/2011					0.00
15753	Vendor Continued Void	06/13/2011					0.00
15754	Vendor Continued Void	06/13/2011					0.00
15755	BENNETT & BENNETT INC.	06/13/2011	1	BAND	0	224.90	43,616.79
01 E 300 298 233 733 361				EXTRACURRICULAR ACTIVITIES/TRANSPORTATION/NON-AUTHORIZE		224.90	
01 E 005 760 000 728 361			10	BELVIEW SHUTTLE	0	1,955.00	
				PUPIL TRANSPORTATION/TO BOARD AND LODGING FACILITY/BUS		1,955.00	
01 E 300 294 215 733 361			12	BASEBALL	0	368.91	
				BOYS ATHLETICS/TRANSPORTATION/NON-AUTHORIZED/BUS CONTR.		368.91	
01 E 005 760 000 720 361			2	fuel	0	12,191.91	
				PUPIL TRANSPORTATION/REGULAR TO AND FROM SCHOOL/BUS CON		12,191.91	
01 E 005 760 000 720 361			3	CLKFD SHUTTLE	0	3,511.20	
				PUPIL TRANSPORTATION/REGULAR TO AND FROM SCHOOL/BUS CON		3,511.20	
01 E 300 294 224 733 361			33	TENNIS	0	207.01	
				BOYS ATHLETICS/TRANSPORTATION/NON-AUTHORIZED/BUS CONTR.		207.01	
01 E 005 760 000 713 361			4	OUT OF DISTRICT	0	4,715.04	
				PUPIL TRANSPORTATION/OPEN ENROLLMENT/BUS CONTR. (XWKD T		4,715.04	
01 E 300 294 215 733 361			40	BASEBALL	0	1,861.38	
				BOYS ATHLETICS/TRANSPORTATION/NON-AUTHORIZED/BUS CONTR.		1,861.38	
01 E 300 296 210 733 361			42	SOFTBALL	0	1,004.10	
				GIRLS ATHLETICS/TRANSPORTATION/NON-AUTHORIZED/BUS CONTR		1,004.10	
			43	TENNIS	0	939.57	

Check Nbr	Vendor Name	Check Date	Invoice Number	Invoice Desc	PO Number	Invoice Amount	Check Amount
01 E 300 294 224 733 361				BOYS ATHLETICS/TRANSPORTATION/NON-AUTHORIZED/BUS CONTR.		939.57	
			44	TRACK	0	316.50	
01 E 300 292 219 733 361				BOYS/GIRLS ATHLETICS/TRANSPORTATION/NON-AUTHORIZED/BUS		316.50	
			45	GOLF	0	919.89	
01 E 300 292 225 733 361				BOYS/GIRLS ATHLETICS/TRANSPORTATION/NON-AUTHORIZED/BUS		919.89	
			46	TRACK	0	1,789.22	
01 E 300 292 219 733 361				BOYS/GIRLS ATHLETICS/TRANSPORTATION/NON-AUTHORIZED/BUS		1,789.22	
			47	HEAD START	0	315.69	
01 E 100 203 000 733 361				ELEMENTARY GENERAL ED./TRANSPORTATION/NON-AUTHORIZED/BU		315.69	
			48	FIELD TRIPS	0	2,784.93	
01 E 100 203 000 733 361				ELEMENTARY GENERAL ED./TRANSPORTATION/NON-AUTHORIZED/BU		2,784.93	
			5	ATHLETIC SHUTTLE	0	161.46	
01 E 005 760 000 717 361				PUPIL TRANSPORTATION/LATE ACTIVITY BUS/BUS CONTR. (XWKD		161.46	
			50	FIELD TRIPS	0	1,166.09	
01 E 300 211 000 733 361				SECONDARY EDUCATION GENERAL/TRANSPORTATION/NON-AUTHORIZ		1,166.09	
			51	FESTIVAL OF NATIONS	0	415.49	
01 E 005 211 731 315 305				SECONDARY EDUCATION GENERAL/INTEGRATION/PROFESSIONAL FE		415.49	
			55	UPPER SIOUX DAY	0	90.48	
01 E 005 203 731 315 305				ELEMENTARY GENERAL ED./INTEGRATION/PROFESSIONAL FEES/IN		90.48	
			6	SPECIAL NEEDS	0	7,166.42	
01 E 005 760 000 723 361				PUPIL TRANSPORTATION/HANDICAPPED/BUS CONTR. (XWKD TO 36		7,166.42	
			60	MARTIN MARIETTA	0	25.40	
01 E 005 203 734 315 305				ELEMENTARY GENERAL ED./INTEGRATION/PROFESSIONAL FEES/IN		25.40	
			7	PRAIRIELAND SHUTTLE	0	1,456.20	
01 E 005 760 000 723 361				PUPIL TRANSPORTATION/HANDICAPPED/BUS CONTR. (XWKD TO 36		1,456.20	
			8	BAND RENT	0	30.00	
01 E 300 258 233 000 370				MUSIC//RENTALS AND LEASES/INSTRUMENTAL MUSIC		30.00	
15756 BEST BUSINESS PRODUCTS		06/13/2011	109921		0	70.50	70.50
04 E 500 590 000 321 401				OTHER COMMUNITY SERVICES/COMMUNITY EDUCATION/GENERAL SU		70.50	
15757 BIO CORPORATION		06/13/2011	157535	minks	226	139.73	139.73
01 E 300 260 000 000 430				NATURAL SCIENCES//SUPPLIES/		139.73	
15758 NICOLE J BOELTER		06/13/2011	1		0	165.96	165.96
01 E 300 258 233 000 430				MUSIC//SUPPLIES/INSTRUMENTAL MUSIC		165.96	
15759 BOOTLEGGERS SUPPER CLUB		06/13/2011	80811	SR. BANQUET	0	1,620.00	1,620.00
09 L 230 27				TRUST FUND/DEFERRED REVENUE/SENIOR CITIZENS ADVOCACY		1,620.00	
15760 BARBARA BRUFLAT		06/13/2011	1	SPEAKER	0	35.00	35.00
04 E 500 580 000 325 430				EARLY CHILDHOOD AND FAM ED/EARLY CHILDHOOD AND FAMILY E		35.00	
15761 CARL'S BAKERY		06/13/2011	2		0	8.60	39.33
01 E 300 298 205 000 401				EXTRACURRICULAR ACTIVITIES//GENERAL SUPPLIES/NEWSPAPER		8.60	
			4704		0	13.54	
01 E 300 292 000 000 899				BOYS/GIRLS ATHLETICS//MISCELLANEOUS EXPENSE/		13.54	
			4706		71	17.19	
04 E 500 590 000 321 899				OTHER COMMUNITY SERVICES/COMMUNITY EDUCATION/MISCELLANE		17.19	
15762 CDW GOVERNMENT, INC.		06/13/2011	XXM 1540	TONER	219	582.94	582.94
01 E 005 790 000 315 401				OTHER PUPIL SUPPORT SERVICES/INTEGRATION/GENERAL SUPPLI		582.94	

Check Nbr	Vendor Name	Check Date	Invoice Number	Invoice Desc	PO Number	Invoice Amount	Check Amount
15763	CENEX CREDIT CARD	06/13/2011	1		0	1,657.49	1,657.49
01 E 005 810 193 000 442				OPERATIONS AND MAINTENANCE//GAS & OIL/CAR EXPENSES		1,657.49	
15764	CENTRAL MN CHRISTIAN SCHOOL	06/13/2011	1	5 @ \$206.60	0	1,033.00	1,033.00
01 E 005 760 000 720 361				PUPIL TRANSPORTATION/REGULAR TO AND FROM SCHOOL/BUS CON		1,033.00	
15765	Vendor Continued Void	06/13/2011					0.00
15766	CITY OF GRANITE FALLS	06/13/2011	1	BR WATER/SEWER	0	339.44	11,385.59
01 E 005 810 183 000 330				OPERATIONS AND MAINTENANCE//UTILITY SERVICES/SEWER-WATE		339.44	
01 E 005 810 184 000 330			2	BR ELECTRICITY	0	2,230.36	
				OPERATIONS AND MAINTENANCE//UTILITY SERVICES/ELECTRICIT		2,230.36	
01 E 005 810 183 000 330			3	HS WATER/SEWER	0	1,545.55	
				OPERATIONS AND MAINTENANCE//UTILITY SERVICES/SEWER-WATE		1,545.55	
04 E 500 580 000 325 430			3287	BUS	0	64.00	
				EARLY CHILDHOOD AND FAM ED/EARLY CHILDHOOD AND FAMILY E		64.00	
01 E 005 810 184 000 330			4	HS ELECTRICITY	0	7,078.52	
				OPERATIONS AND MAINTENANCE//UTILITY SERVICES/ELECTRICIT		7,078.52	
01 E 005 810 184 000 330			5	track	0	26.23	
				OPERATIONS AND MAINTENANCE//UTILITY SERVICES/ELECTRICIT		26.23	
01 E 300 361 000 000 330			6	carpentry	0	22.16	
				CARPENTRY//UTILITY SERVICES/		22.16	
01 E 005 810 191 000 330			7	OM	0	79.33	
				OPERATIONS AND MAINTENANCE//UTILITY SERVICES/OUTSIDE MA		79.33	
15767	CONSUMERS COOPERATIVE OIL CO.	06/13/2011	1		0	365.71	365.71
01 E 005 810 193 000 442				OPERATIONS AND MAINTENANCE//GAS & OIL/CAR EXPENSES		365.71	
15768	CULLIGAN	06/13/2011	1		0	24.95	24.95
01 E 025 810 183 000 330				OPERATIONS AND MAINTENANCE//UTILITY SERVICES/SEWER-WATE		24.95	
15769	DAIRY QUEEN	06/13/2011	1		0	28.00	178.12
01 E 100 203 000 000 899				ELEMENTARY GENERAL ED.//MISCELLANEOUS EXPENSE/		28.00	
01 L 230 33			10		0	50.00	
				GENERAL FUND/DEFERRED REVENUE/BERT RANEY ACTIVITY ACCOU		50.00	
01 L 230 33			100		0	50.71	
				GENERAL FUND/DEFERRED REVENUE/BERT RANEY ACTIVITY ACCOU		50.71	
01 L 230 33			20		0	49.41	
				GENERAL FUND/DEFERRED REVENUE/BERT RANEY ACTIVITY ACCOU		49.41	
15770	DALLAS II	06/13/2011	1		0	108.25	108.25
09 L 230 28				TRUST FUND/DEFERRED REVENUE/SENIOR CITIZENS CARD PROJEC		108.25	
15771	DANA F. COLE & COMPANY, LLP	06/13/2011	1	FLEX 2011	0	763.25	763.25
01 L 215 98				GENERAL FUND/DEDUCTIONS PAYABLE/DED. ADJUSTMENTS		763.25	
15772	DAVE'S ELECTRIC CO	06/13/2011	102286		0	11.02	180.51
01 E 005 810 000 000 410				OPERATIONS AND MAINTENANCE//CUST/REPAIR SUPPLIES/		11.02	
02 E 005 770 000 701 350			102362		0	156.24	
				FOOD SERVICES/SCHOOL LUNCH/REPAIRS AND MAINTENANCE SVCS		156.24	
01 E 300 301 501 830 433			102715		0	13.25	
				AG EDUCATION (VOCATIONAL)/VOCATIONAL PROGRAMS/INDIVIDUA		13.25	
15773	DEAN FOODS NORTH CENTRAL, INC.	06/13/2011	1		0	14.42	3,404.51
02 E 005 770 000 707 495				FOOD SERVICES/ALA CARTE/OTHER/MILK/		14.42	
02 E 005 770 000 701 495			11		0	2,580.49	
				FOOD SERVICES/SCHOOL LUNCH/MILK/		2,580.49	

Check Nbr	Vendor Name	Check Date	Invoice Number	Invoice Desc	PO Number	Invoice Amount	Check Amount
02 E 005 770 000 705 495			3	FOOD SERVICES/BREAKFAST/MILK/	0	809.60	809.60
15774 DEMCO, INC.		06/13/2011	4213950	EDUCATIONAL MEDIA/LIBRARY//GENERAL SUPPLIES/	217	118.25	118.25
01 E 300 620 000 000 401						118.25	
15775 DITTERICH, MARY		06/13/2011	1	OLIVIA	0	30.00	140.70
02 E 005 770 105 701 366				FOOD SERVICES/SCHOOL LUNCH/TRAVEL-SCHOOL BUSINESS/FARM		30.00	
02 E 005 770 000 701 366			22	GREAT TRAYS	0	110.70	110.70
15776 DU-MART		06/13/2011	1	SECONDARY EDUCATION GENERAL//MISCELLANEOUS EXPENSE/	0	35.08	35.08
01 E 300 211 000 000 899						35.08	
15777 EAP CONSULTANTS		06/13/2011	1	MONTHLY SERVICE	0	224.64	224.64
01 L 230 92				FEE		224.64	
				GENERAL FUND/DEFERRED REVENUE/WELLNESS \$			
15778 Vendor Continued Void		06/13/2011					0.00
15779 Vendor Continued Void		06/13/2011					0.00
15780 ECONOMART		06/13/2011	1	OTHER COMMUNITY SERVICES/COMMUNITY EDUCATION/MISCELLANE	65	11.17	3,027.08
04 E 500 590 000 321 899						11.17	
01 E 005 203 731 315 305			10	ELEMENTARY GENERAL ED./INTEGRATION/PROFESSIONAL FEES/IN	212	25.05	25.05
01 E 005 203 734 315 305			11	cookies	0	34.90	34.90
01 E 300 331 000 830 433			12	VOCATIONAL HOME EC/VOCATIONAL PROGRAMS/INDIVIDUAL INST	0	2,072.01	2,072.01
01 E 300 260 000 000 430			13	NATURAL SCIENCES//SUPPLIES/	0	11.10	11.10
01 E 100 203 362 000 899			14	ELEMENTARY GENERAL ED.//MISCELLANEOUS EXPENSE/ELEM SNAC	0	56.07	56.07
01 E 100 203 362 000 899			16	ELEMENTARY GENERAL ED.//MISCELLANEOUS EXPENSE/ELEM SNAC	0	247.77	247.77
02 E 005 770 000 701 401			17	FOOD SERVICES/SCHOOL LUNCH/GENERAL SUPPLIES/	0	90.82	90.82
01 E 005 211 731 315 305			20	SECONDARY EDUCATION GENERAL/INTEGRATION/PROFESSIONAL FE	0	75.77	75.77
01 E 300 211 165 000 899			30	SECONDARY EDUCATION GENERAL//MISCELLANEOUS EXPENSE/GRAD	0	79.31	79.31
01 L 230 33			501	GENERAL FUND/DEFERRED REVENUE/BERT RANEY ACTIVITY ACCOU	0	111.61	111.61
01 E 100 203 000 000 899			54	ELEMENTARY GENERAL ED.//MISCELLANEOUS EXPENSE/	0	44.32	44.32
04 E 500 590 000 321 401			55	OTHER COMMUNITY SERVICES/COMMUNITY EDUCATION/GENERAL SU	0	2.69	2.69
04 E 500 590 180 321 401			56	OTHER COMMUNITY SERVICES/COMMUNITY EDUCATION/GENERAL SU	0	9.35	9.35
04 E 500 505 000 321 401			6	apples	0	142.40	142.40
01 E 100 203 408 000 430			60	ELEMENTARY GENERAL ED.//SUPPLIES/ELEM PHY ED	0	12.74	12.74
15781 FARMERS UNION OIL CO.		06/13/2011	1		0	4.14	4.14

Check Nbr	Vendor Name	Check Date	Invoice Number	Invoice Desc	PO Number	Invoice Amount	Check Amount
01 E 300 301 501 830 433				AG EDUCATION (VOCATIONAL)/VOCATIONAL PROGRAMS/INDIVIDUA		4.14	
15782 GRANITE FALLS AUTO PARTS		06/13/2011	1		0	74.16	257.65
01 E 005 810 193 000 401				OPERATIONS AND MAINTENANCE//GENERAL SUPPLIES/CAR EXPENS		74.16	
			10		0	143.34	
01 E 005 810 193 000 401				OPERATIONS AND MAINTENANCE//GENERAL SUPPLIES/CAR EXPENS		143.34	
			11		0	9.67	
01 E 300 301 501 830 433				AG EDUCATION (VOCATIONAL)/VOCATIONAL PROGRAMS/INDIVIDUA		9.67	
			2	BAND TRAILER	0	30.48	
01 E 300 258 233 000 430				MUSIC//SUPPLIES/INSTRUMENTAL MUSIC		30.48	
15783 GRANITE FALLS OFFICIALS ASSOC.		06/13/2011	1	BASEBALL	0	725.00	885.00
01 E 300 294 215 000 319				BOYS ATHLETICS//OTHER PERSONAL SERVICES/BASEBALL		725.00	
			2	SOFTBALL	0	160.00	
01 E 300 296 210 000 319				GIRLS ATHLETICS//OTHER PERSONAL SERVICES/SOFTBALL		160.00	
15784 GRANITE FLORAL & GREENHOUSE		06/13/2011	1	PROJECT RESPECT	0	68.49	68.49
01 E 005 203 734 315 305				ELEMENTARY GENERAL ED./INTEGRATION/PROFESSIONAL FEES/IN		68.49	
15785 GREAT PLAINS NATURAL GAS CO		06/13/2011	1		0	546.94	1,697.56
01 E 025 810 000 000 440				OPERATIONS AND MAINTENANCE//FUEL FOR BUILDINGS/		546.94	
			10	HS	0	554.83	
01 E 005 810 000 000 440				OPERATIONS AND MAINTENANCE//FUEL FOR BUILDINGS/		554.83	
			11		0	104.77	
01 E 025 810 000 000 440				OPERATIONS AND MAINTENANCE//FUEL FOR BUILDINGS/		104.77	
			12	BERT RANEY	0	70.50	
01 E 005 810 000 000 440				OPERATIONS AND MAINTENANCE//FUEL FOR BUILDINGS/		70.50	
			20	BR	0	382.99	
01 E 005 810 000 000 440				OPERATIONS AND MAINTENANCE//FUEL FOR BUILDINGS/		382.99	
			3	MAINTENANCE	0	37.53	
01 E 005 810 191 000 440				OPERATIONS AND MAINTENANCE//FUEL FOR BUILDINGS/OUTSIDE		37.53	
15786 GRINDER ESPRESSO CAFE/GIFTS		06/13/2011	1.3		0	15.44	15.44
04 E 500 590 157 321 401				OTHER COMMUNITY SERVICES/COMMUNITY EDUCATION/GENERAL SU		15.44	
15787 HANSEN, LISA		06/13/2011	1	TECH TRAINING DAY	0	420.00	420.00
01 E 005 640 734 315 305				STAFF DEVELOPMENT/INTEGRATION/PROFESSIONAL FEES/INTEGRA		420.00	
15788 HDL		06/13/2011	2174249		0	82.28	118.28
01 E 300 255 000 000 450				INDUSTRIAL EDUCATION//MATERIALS PURCH FOR RESALE/		82.28	
			2174846		0	25.80	
01 E 300 255 000 000 450				INDUSTRIAL EDUCATION//MATERIALS PURCH FOR RESALE/		25.80	
			2179643		0	18.31	
01 E 300 255 000 000 450				INDUSTRIAL EDUCATION//MATERIALS PURCH FOR RESALE/		18.31	
			2181893		0	-8.11	
01 E 300 255 000 000 430				INDUSTRIAL EDUCATION//SUPPLIES/		-8.11	
15789 HENDERSON, ROBIN		06/13/2011	1		0	-75.00	239.97
01 E 005 211 733 315 305				SECONDARY EDUCATION GENERAL/INTEGRATION/PROFESSIONAL FE		-75.00	
			10	PROJECT RESPECT	0	153.71	
01 E 005 203 734 315 305				ELEMENTARY GENERAL ED./INTEGRATION/PROFESSIONAL FEES/IN		153.71	
			2		0	75.76	
01 E 005 203 734 315 305				ELEMENTARY GENERAL ED./INTEGRATION/PROFESSIONAL FEES/IN		75.76	
			3		0	85.50	
01 E 005 790 000 315 366				OTHER PUPIL SUPPORT SERVICES/INTEGRATION/TRAVEL-SCHOOL		85.50	

Check Nbr	Vendor Name	Check Date	Invoice Number	Invoice Desc	PO Number	Invoice Amount	Check Amount
15790	Vendor Continued Void	06/13/2011					0.00
15791	HILLYARD/HUTCHINSON	06/13/2011	11585632		0	-97.25	2,691.98
01 E	005 810 000 000 410			OPERATIONS AND MAINTENANCE//CUST/REPAIR SUPPLIES/		-97.25	
			6664476		0	280.29	
02 E	005 770 000 701 401			FOOD SERVICES/SCHOOL LUNCH/GENERAL SUPPLIES/		280.29	
			6741789		0	74.45	
01 E	300 298 000 000 401			EXTRACURRICULAR ACTIVITIES//GENERAL SUPPLIES/		74.45	
			6741811		0	1,643.23	
01 E	005 810 000 000 410			OPERATIONS AND MAINTENANCE//CUST/REPAIR SUPPLIES/		1,643.23	
			6759237		0	175.10	
02 E	005 770 000 701 401			FOOD SERVICES/SCHOOL LUNCH/GENERAL SUPPLIES/		175.10	
			6759300		0	464.75	
01 E	005 810 000 000 410			OPERATIONS AND MAINTENANCE//CUST/REPAIR SUPPLIES/		464.75	
			6776954		0	151.41	
01 E	005 810 000 000 410			OPERATIONS AND MAINTENANCE//CUST/REPAIR SUPPLIES/		151.41	
15792	HOERNAMANN, AMY	06/13/2011	1	READING RECOVERY	0	111.52	146.96
01 E	100 640 000 306 367			STAFF DEVELOPMENT/STAFF DEV. 50% SITE/TRAVEL-PROFESS DE		111.52	
			11	RIT WORKSHOP	0	35.44	
01 E	100 203 000 306 367			ELEMENTARY GENERAL ED./STAFF DEV. 50% SITE/TRAVEL-PROFE		35.44	
15793	ANDREW HOLT	06/13/2011	1		0	122.40	122.40
01 E	300 211 130 000 366			SECONDARY EDUCATION GENERAL//TRAVEL-SCHOOL BUSINESS/HOM		122.40	
15794	IKON OFFICE SOLUTIONS	06/13/2011	1028525500		0	600.00	600.00
01 E	300 211 000 000 430			SECONDARY EDUCATION GENERAL//SUPPLIES/		600.00	
15795	IMAGESTUFF.COM	06/13/2011	92698		221	65.86	65.86
01 E	100 203 000 000 899			ELEMENTARY GENERAL ED.//MISCELLANEOUS EXPENSE/		65.86	
15796	INNOVATIVE LEARNING CONCEPTS I	06/13/2011	222049-1		0	181.29	181.29
01 E	300 211 000 000 430			SECONDARY EDUCATION GENERAL//SUPPLIES/		181.29	
15797	INNOVATIVE OFFICE SOLUTIONS	06/13/2011	100-10587556-1	CARD STOCK	222	127.71	306.98
01 E	005 790 000 315 401			OTHER PUPIL SUPPORT SERVICES/INTEGRATION/GENERAL SUPPLI		127.71	
			10573135-1		224	29.28	
01 E	300 211 000 000 430			SECONDARY EDUCATION GENERAL//SUPPLIES/		29.28	
			10595183-1		0	149.99	
01 E	005 790 000 315 401			OTHER PUPIL SUPPORT SERVICES/INTEGRATION/GENERAL SUPPLI		149.99	
15798	ISCORP	06/13/2011	1		0	97.75	391.00
01 E	100 203 000 000 350			ELEMENTARY GENERAL ED.//REPAIRS AND MAINTENANCE SVCS/		97.75	
			11		0	97.75	
01 E	300 211 000 000 350			SECONDARY EDUCATION GENERAL//REPAIRS AND MAINTENANCE SV		97.75	
			12		0	195.50	
01 E	005 110 000 000 350			ACCOUNTING OFFICE//REPAIRS AND MAINTENANCE SVCS/		195.50	
15799	ELIZABETH JAHN	06/13/2011	1		0	149.35	149.35
01 L	230 36			GENERAL FUND/DEFERRED REVENUE/MUSIC-BERT RANEY		149.35	
15800	JANS, SCOTT	06/13/2011	1	STATE TRACK	0	37.70	37.70
01 E	300 292 219 000 369			BOYS/GIRLS ATHLETICS//PARTICIPATION FEES/TRACK		37.70	
15801	JEFFERS PETROGLYPHS	06/13/2011	432		0	350.00	350.00
01 E	005 203 731 315 305			ELEMENTARY GENERAL ED./INTEGRATION/PROFESSIONAL FEES/IN		350.00	
15802	PAMELA JENSEN	06/13/2011	429		0	75.00	75.00
01 E	005 203 731 315 305			ELEMENTARY GENERAL ED./INTEGRATION/PROFESSIONAL FEES/IN		75.00	

Check Nbr	Vendor Name	Check Date	Invoice Number	Invoice Desc	PO Number	Invoice Amount	Check Amount
15803	JESSEN, PATRICIA	06/13/2011	1	DQ/PIZZA	0	45.82	45.82
01 L	230 33			GENERAL FUND/DEFERRED REVENUE/BERT RANEY ACTIVITY ACCOU		45.82	
15804	JIM'S CLOTHING & SPORTING GOOD	06/13/2011	85729	SUMMER REC	0	1,059.00	1,059.00
04 E	500 505 000 321 450			COMMUNITY EDUCATION GENERAL/COMMUNITY EDUCATION/MATERIA		1,059.00	
15805	JOSTEN'S	06/13/2011	11	GOWN	0	37.00	486.64
01 E	300 790 388 000 899			OTHER PUPIL SUPPORT SERVICES//MISCELLANEOUS EXPENSE/KID		37.00	
			14662955		222	449.64	
01 E	300 211 165 000 899			SECONDARY EDUCATION GENERAL//MISCELLANEOUS EXPENSE/GRAD		449.64	
15806	JODI L KENNEDY	06/13/2011	1		0	467.46	910.95
01 E	100 050 000 000 899			PRINCIPAL'S OFFICE//MISCELLANEOUS EXPENSE/		467.46	
			2		0	307.50	
01 E	100 050 000 000 366			PRINCIPAL'S OFFICE//TRAVEL-SCHOOL BUSINESS/		307.50	
			3		0	135.99	
01 E	100 050 000 000 366			PRINCIPAL'S OFFICE//TRAVEL-SCHOOL BUSINESS/		135.99	
15807	KHALI, MARGARET	06/13/2011	1	CULTURAL CONNECTEDNESS	0	77.85	77.85
01 E	005 640 734 315 305			STAFF DEVELOPMENT/INTEGRATION/PROFESSIONAL FEES/INTEGRA		77.85	
15808	KILOWATT COMMUNITY CENTER	06/13/2011	1	SOFTBALL	0	50.00	3,126.00
01 E	300 298 000 000 370			EXTRACURRICULAR ACTIVITIES//RENTALS AND LEASES/		50.00	
			2	\$ FOR SCHOLARS	0	100.00	
01 E	300 211 000 000 370			SECONDARY EDUCATION GENERAL//RENTALS AND LEASES/		100.00	
			3	HS PE	0	126.00	
01 E	300 211 000 000 370			SECONDARY EDUCATION GENERAL//RENTALS AND LEASES/		126.00	
			4	BR PE	0	2,850.00	
01 E	100 203 000 000 370			ELEMENTARY GENERAL ED.//RENTALS AND LEASES/		2,850.00	
15809	KMS	06/13/2011	2010-11	FRENCH I- ITV	0	2,583.01	2,583.01
01 E	300 230 129 310 391			FOREIGN/NATIVE LANGUAGES/COOPERATIVE/MN SCH DIST - REIM		2,583.01	
15810	KNAPPER, TIMOTHY	06/13/2011	1		0	44.48	94.22
01 E	300 292 000 000 366			BOYS/GIRLS ATHLETICS//TRAVEL-SCHOOL BUSINESS/		44.48	
			2		0	49.74	
04 E	500 505 000 321 366			COMMUNITY EDUCATION GENERAL/COMMUNITY EDUCATION/TRAVEL-		49.74	
15811	KORTHUIS JEWELRY	06/13/2011	5192		0	304.40	304.40
01 E	300 258 233 000 430			MUSIC//SUPPLIES/INSTRUMENTAL MUSIC		304.40	
15812	SHEILA LAVOIE	06/13/2011	1	TRANSPORTATION	0	1,305.60	1,305.60
01 E	005 760 000 723 361			THRU 5/27/11 PUPIL TRANSPORTATION/HANDICAPPED/BUS CONTR. (XWKD TO 36		1,305.60	
15813	LEASE FINANCE GROUP	06/13/2011	13172	FINAL PAYMENT	0	11,571.22	11,571.22
01 L	230 33			GENERAL FUND/DEFERRED REVENUE/BERT RANEY ACTIVITY ACCOU		11,571.22	
15814	LECY, BENJAMIN	06/13/2011	1	ART PROJECT	0	250.00	250.00
01 E	005 212 732 315 433			ART/INTEGRATION/INDIVIDUAL INST SUPPLIES/INTEGRATION GO		250.00	
15815	LEE'S AUTO & DIESEL INC.	06/13/2011	21903	98 CUTLASS	0	90.01	90.01
01 E	005 810 193 000 401			OPERATIONS AND MAINTENANCE//GENERAL SUPPLIES/CAR EXPENS		90.01	
15816	LIDS TEAM SPORTS	06/13/2011	82487		0	93.98	193.98
01 E	300 292 219 000 401			BOYS/GIRLS ATHLETICS//GENERAL SUPPLIES/TRACK		93.98	
			82709		0	100.00	
01 E	300 292 225 000 401			BOYS/GIRLS ATHLETICS//GENERAL SUPPLIES/GOLF		100.00	
15817	MACKIN LIBRARY MEDIA	06/13/2011	294096		0	668.24	668.24
01 E	300 620 000 000 470			EDUCATIONAL MEDIA/LIBRARY//LIBRARY BOOKS/		668.24	

Check Nbr	Vendor Name	Check Date	Invoice Number	Invoice Desc	PO Number	Invoice Amount	Check Amount
15818	LONDGREN, KAREN	06/13/2011	1		0	93.48	221.77
01 E 200 612 199 000 366				TECHNOLOGY//TRAVEL-SCHOOL BUSINESS/KAREN MCCOY		93.48	
			2		0	128.29	
01 E 200 612 199 000 401				TECHNOLOGY//GENERAL SUPPLIES/KAREN MCCOY		128.29	
15819	MEYERS REPAIR SHOP	06/13/2011	2338	TOWING	0	182.00	182.00
01 E 005 810 000 000 899				(INSURANCE) OPERATIONS AND MAINTENANCE//MISCELLANEOUS EXPENSE/		182.00	
15820	MN DEPT. OF HEALTH	06/13/2011	19114	ANNUAL FEE	0	35.00	35.00
02 E 005 770 000 701 899				FOOD SERVICES/SCHOOL LUNCH/MISCELLANEOUS EXPENSE/		35.00	
15821	MINNESOTA ELEVATOR, INC.	06/13/2011	212089		0	87.98	407.82
01 E 005 810 000 000 350				OPERATIONS AND MAINTENANCE//REPAIRS AND MAINTENANCE SVC		87.98	
			213923	JUNE	0	319.84	
01 E 005 860 000 347 590				HEALTH & SAFETY EQUIP/PHYSICAL HAZARD CONTROL/OTHER CAP		319.84	
15822	MN RIVER VALLEY EDUCATION DIST	06/13/2011	WORKSHOP		0	250.00	250.00
01 E 005 640 000 308 366				STAFF DEVELOPMENT/STAFF DEV. 25% DIST. WIDE/TRAVEL-SCHO		250.00	
15823	MN VALLEY LUTHERAN H.S.	06/13/2011	2010-11		0	425.00	425.00
01 E 005 760 000 720 361				PUPIL TRANSPORTATION/REGULAR TO AND FROM SCHOOL/BUS CON		425.00	
15824	MUSIC IS ELEMENTARY	06/13/2011	180589		0	41.45	41.45
01 L 230 36				GENERAL FUND/DEFERRED REVENUE/MUSIC-BERT RANEY		41.45	
15825	MUSIC MART	06/13/2011	1		0	83.19	259.40
01 E 300 258 233 000 430				MUSIC//SUPPLIES/INSTRUMENTAL MUSIC		83.19	
			2		0	176.21	
01 E 300 258 233 000 350				MUSIC//REPAIRS AND MAINTENANCE SVCS/INSTRUMENTAL MUSIC		176.21	
15826	MUSIC STREET	06/13/2011	2032	DRUMHEADS	0	204.00	269.00
01 E 300 258 233 000 430				MUSIC//SUPPLIES/INSTRUMENTAL MUSIC		204.00	
			2276		0	65.00	
01 E 300 258 233 000 350				MUSIC//REPAIRS AND MAINTENANCE SVCS/INSTRUMENTAL MUSIC		65.00	
15827	MUSSER ENVIRONMENTAL INC.	06/13/2011	2011-12	1 OF 3 FY12 H&S	0	2,606.86	2,606.86
01 A 131 00				GENERAL FUND/PREPAID EXPENSE		2,606.86	
15828	MVCC	06/13/2011	FY11 FINAL		0	209,272.80	209,272.80
01 E 200 420 000 740 396				SPECIAL EDUCATIONAL GENERAL/STATE FUNDED SPECIAL ED/DUE		209,272.80	
15829	NELSEN'S CLEANERS & LAUNDERERS	06/13/2011	1		0	21.18	21.18
02 E 005 770 000 701 382				FOOD SERVICES/SCHOOL LUNCH/LAUNDRY AND DRY CLEANING/		21.18	
15830	NEW DOMINION SCHOOL	06/13/2011	1	SP ED TUITION	0	3,173.10	3,173.10
01 E 998 408 000 740 390				EMOTION/BEHAVIORAL DISORDER/STATE FUNDED SPECIAL ED/TUI		3,173.10	
15831	OFFICE MAX CONTRACT INC.	06/13/2011	194515		0	123.00	34,786.66
01 E 005 020 000 000 401				SUPERINTENDENT'S OFFICE//GENERAL SUPPLIES/		123.00	
			635824	33 IPADS	0	14,157.00	
01 A 131 00				GENERAL FUND/PREPAID EXPENSE		14,157.00	
			682800		0	343.66	
01 E 005 020 000 000 899				SUPERINTENDENT'S OFFICE//MISCELLANEOUS EXPENSE/		34.36	
01 E 100 203 000 000 899				ELEMENTARY GENERAL ED//MISCELLANEOUS EXPENSE/		154.65	
01 E 300 211 000 000 899				SECONDARY EDUCATION GENERAL//MISCELLANEOUS EXPENSE/		154.65	
			708413	47 IPADS	0	20,163.00	
01 A 131 00				GENERAL FUND/PREPAID EXPENSE		20,163.00	
15832	OLSON SANITATION INC.	06/13/2011	1		0	50.00	988.65
01 E 025 810 000 000 330				OPERATIONS AND MAINTENANCE//UTILITY SERVICES/		50.00	
			2		0	938.65	

Check Nbr	Vendor Name	Check Date	Invoice Number	Invoice Desc	PO Number	Invoice Amount	Check Amount
01 E 005 810 000 000 330				OPERATIONS AND MAINTENANCE//UTILITY SERVICES/		938.65	
15833	PAN-O-GOLD BAKING CO.	06/13/2011	1		0	687.08	916.11
02 E 005 770 000 701 490				FOOD SERVICES/SCHOOL LUNCH/FOOD/		687.08	
			22		0	229.03	
02 E 005 770 000 705 490				FOOD SERVICES/BREAKFAST/FOOD/		229.03	
15834	PERIPOLE BERGERAULT	06/13/2011	113634		0	14.20	14.20
01 L 230 36				GENERAL FUND/DEFERRED REVENUE/MUSIC-BERT RANEY		14.20	
15835	PIONEER MFG. CO.	06/13/2011	406396	PAINT	0	3,604.95	3,604.95
01 E 005 810 191 000 410				OPERATIONS AND MAINTENANCE//CUST/REPAIR SUPPLIES/OUTSID		3,604.95	
15836	PITNEY BOWES	06/13/2011	454116-AP11		0	1,042.35	1,042.35
01 E 005 020 000 000 370				SUPERINTENDENT'S OFFICE//RENTALS AND LEASES/		1,042.35	
15837	PRAIRIE PALETTE	06/13/2011	1		0	34.73	34.73
04 E 500 580 000 325 430				EARLY CHILDHOOD AND FAM ED/EARLY CHILDHOOD AND FAMILY E		34.73	
15838	PRINCIPALS ESSENTIALS, INC.	06/13/2011	1662		0	208.00	208.00
01 E 300 050 000 000 899				PRINCIPAL'S OFFICE//MISCELLANEOUS EXPENSE/		208.00	
15839	QUILL CORPORATION	06/13/2011	34574286		0	47.13	50.47
04 E 500 590 000 321 401				OTHER COMMUNITY SERVICES/COMMUNITY EDUCATION/GENERAL SU		47.13	
			4523309		0	3.34	
04 E 500 590 000 321 401				OTHER COMMUNITY SERVICES/COMMUNITY EDUCATION/GENERAL SU		3.34	
15840	RATWICK, ROSZAK & MALONEY, P.A	06/13/2011	47638	APRIL 2011	0	1,386.00	1,386.00
01 E 005 150 000 000 305				LEGAL SERVICES//PROFESSIONAL FEES/		1,386.00	
15841	REINHART INST FOODS	06/13/2011	1		0	2,470.69	2,470.69
02 E 005 770 000 701 490				FOOD SERVICES/SCHOOL LUNCH/FOOD/		2,470.69	
15842	REINHART INST FOODS	06/13/2011	876874	GRANT PAYS \$5000	0	5,508.00	5,508.00
02 E 005 770 000 701 401				FOOD SERVICES/SCHOOL LUNCH/GENERAL SUPPLIES/		5,508.00	
15843	REINHART INST FOODS	06/13/2011	876877	HOT WATER DISP.	0	1,961.62	1,961.62
02 E 005 770 000 701 401				FOOD SERVICES/SCHOOL LUNCH/GENERAL SUPPLIES/		1,961.62	
15844	RTS	06/13/2011	1		0	152.15	153.19
01 E 005 810 000 000 320				OPERATIONS AND MAINTENANCE//COMMUNICATIONAL SERVICES/		152.15	
			2	CLKFD	0	1.04	
01 E 025 810 000 000 320				OPERATIONS AND MAINTENANCE//COMMUNICATIONAL SERVICES/		1.04	
15845	RUTLEDGE DENINE	06/13/2011	1		0	159.60	159.60
01 E 300 211 130 000 366				SECONDARY EDUCATION GENERAL//TRAVEL-SCHOOL BUSINESS/HOM		159.60	
15846	RYER PLUMBING INC.	06/13/2011	6018	PARTIAL - 103A	0	2,000.00	2,019.84
01 E 005 850 000 302 522				FACILITIES/CAPITAL OUTLAY/BUILDING IMPROVEMENTS/		2,000.00	
			6037		0	19.84	
01 E 005 810 191 000 410				OPERATIONS AND MAINTENANCE//CUST/REPAIR SUPPLIES/OUTSID		19.84	
15847	S & S WORLDWIDE	06/13/2011	6953015	SUMMER REC	0	274.35	274.35
04 E 500 505 000 321 450				COMMUNITY EDUCATION GENERAL/COMMUNITY EDUCATION/MATERIA		274.35	
15848	SAWMILL	06/13/2011	1	IT	0	51.87	51.87
01 E 300 255 000 000 430				INDUSTRIAL EDUCATION//SUPPLIES/		51.87	
15849	SCHOLASTIC BOOK FAIRS	06/13/2011	170-038		0	499.96	999.92
01 L 230 33				GENERAL FUND/DEFERRED REVENUE/BERT RANEY ACTIVITY ACCOU		499.96	
			170-038-170		0	499.96	
01 L 230 33				GENERAL FUND/DEFERRED REVENUE/BERT RANEY ACTIVITY ACCOU		499.96	
15850	SHRED-IT	06/13/2011	1		0	687.50	687.50
01 E 005 810 000 000 899				OPERATIONS AND MAINTENANCE//MISCELLANEOUS EXPENSE/		687.50	

Check Nbr	Vendor Name	Check Date	Invoice Number	Invoice Desc	PO Number	Invoice Amount	Check Amount
15851	SMSU SOCCER	06/13/2011	1	SOCCER	0	1,000.00	1,000.00
01 E 005 298 732 315 305				EXTRACURRICULAR ACTIVITIES/INTEGRATION/PROFESSIONAL FEE		1,000.00	
15852	SONS OF NORWAY	06/13/2011	1		0	100.00	100.00
01 E 005 640 734 315 305				STAFF DEVELOPMENT/INTEGRATION/PROFESSIONAL FEES/INTEGRA		100.00	
15853	SOUTHWEST WHOLESALE	06/13/2011	1		0	2,623.03	4,452.65
02 E 005 770 000 701 490				FOOD SERVICES/SCHOOL LUNCH/FOOD/		2,623.03	
			2		0	1,064.49	
02 E 005 770 000 701 401				FOOD SERVICES/SCHOOL LUNCH/GENERAL SUPPLIES/		1,064.49	
			3		0	765.13	
02 E 005 770 000 705 490				FOOD SERVICES/BREAKFAST/FOOD/		765.13	
15854	SPORTDECALS INC	06/13/2011	183851		0	63.15	63.15
01 E 300 292 000 000 899				BOYS/GIRLS ATHLETICS//MISCELLANEOUS EXPENSE/		63.15	
15855	SPORTSONLINE.COM	06/13/2011	93999903	SUMMER REC	0	303.57	303.57
04 E 500 505 000 321 450				COMMUNITY EDUCATION GENERAL/COMMUNITY EDUCATION/MATERIA		303.57	
15856	ALLEN L STOECKMAN	06/13/2011	1	ISTE CONF.	0	338.80	474.51
01 E 005 020 000 000 367				SUPERINTENDENT'S OFFICE//TRAVEL-PROFESS DEVELOPMENT/		338.80	
			2		0	135.71	
01 E 005 020 000 000 366				SUPERINTENDENT'S OFFICE//TRAVEL-SCHOOL BUSINESS/		135.71	
15857	STUKEL HELEN	06/13/2011	1		0	318.52	318.52
04 E 500 580 000 325 366				EARLY CHILDHOOD AND FAM ED/EARLY CHILDHOOD AND FAMILY E		318.52	
15858	SUBWAY	06/13/2011	332491		211	40.82	40.82
01 E 005 203 731 315 305				ELEMENTARY GENERAL ED./INTEGRATION/PROFESSIONAL FEES/IN		40.82	
15859	SUPPLIES OUTLET	06/13/2011	127623		214	38.89	38.89
01 E 100 212 000 000 430				ART//SUPPLIES/		38.89	
15860	CASSANDRA SUTER	06/13/2011	1		0	24.05	24.05
01 E 200 720 000 000 401				HEALTH SERVICES/NURSE//GENERAL SUPPLIES/		24.05	
15861	SW/WC SERVICE COOPERATIVES - F	06/13/2011	32499	SCIENCE/NATURE	0	145.00	145.00
01 E 100 218 000 388 369				GIFTED & TALENTED/TAG (06)/PARTICIPATION FEES/		145.00	
15862	TEAM LABORATORY CHEMICAL CORP.	06/13/2011	84778		0	1,270.00	1,270.00
01 E 005 810 191 000 410				OPERATIONS AND MAINTENANCE//CUST/REPAIR SUPPLIES/OUTSID		1,270.00	
15863	TECHNICAL SOLUTIONS OF MADISON	06/13/2011	3693	CARD ACCESS	0	270.00	270.00
01 E 005 810 000 000 350				REPAIRS		270.00	
				OPERATIONS AND MAINTENANCE//REPAIRS AND MAINTENANCE SVC		270.00	
15864	THRIFTY WHITE DRUG	06/13/2011	1		0	15.12	46.04
04 E 500 580 000 325 430				EARLY CHILDHOOD AND FAM ED/EARLY CHILDHOOD AND FAMILY E		15.12	
			10	TAPE	0	14.85	
01 E 005 810 000 000 410				OPERATIONS AND MAINTENANCE//CUST/REPAIR SUPPLIES/		14.85	
			2		0	16.07	
01 E 005 810 191 000 410				OPERATIONS AND MAINTENANCE//CUST/REPAIR SUPPLIES/OUTSID		16.07	
15865	Vendor Continued Void	06/13/2011					0.00
15866	TRUE VALUE-GF/MONTE	06/13/2011	1	OM	0	263.39	515.73
01 E 005 810 191 000 410				OPERATIONS AND MAINTENANCE//CUST/REPAIR SUPPLIES/OUTSID		263.39	
			2	IT	0	64.75	
01 E 300 255 000 000 450				INDUSTRIAL EDUCATION//MATERIALS PURCH FOR RESALE/		64.75	
			3	INSIDE MAINT.	0	39.64	
01 E 005 810 000 000 410				OPERATIONS AND MAINTENANCE//CUST/REPAIR SUPPLIES/		39.64	
			4	INTEGRATION	0	80.28	
01 E 005 212 732 315 433				ART/INTEGRATION/INDIVIDUAL INST SUPPLIES/INTEGRATION GO		80.28	

Check Nbr	Vendor Name	Check Date	Invoice Number	Invoice Desc	PO Number	Invoice Amount	Check Amount
01 E 200 612 199 000 401			5	TECH TECHNOLOGY//GENERAL SUPPLIES/KAREN MCCOY	0	27.45 27.45	
01 E 005 810 000 000 410			6	INSIDE MAINT. OPERATIONS AND MAINTENANCE//CUST/REPAIR SUPPLIES/	0	16.99 16.99	
01 E 300 301 501 830 433			7	AG AG EDUCATION (VOCATIONAL)/VOCATIONAL PROGRAMS/INDIVIDUA	0	23.23 23.23	
15867 US MATH RECOVERY COUNCIL		06/13/2011	11-274		0	9,950.00	9,950.00
01 E 100 216 640 401 303				TITLE I - PART A/TITLE I/FED SUB AWARD UNDER \$25,000/ST		9,950.00	
15868 VAN MOER, MARGO		06/13/2011	2	KID CHANGE	0	119.50	119.50
01 E 100 790 388 000 899				OTHER PUPIL SUPPORT SERVICES//MISCELLANEOUS EXPENSE/KID		119.50	
15869 HEATHER J VELDE		06/13/2011	1		0	32.59	70.10
04 E 500 590 000 321 366				OTHER COMMUNITY SERVICES/COMMUNITY EDUCATION/TRAVEL-SCH		32.59	
04 E 500 590 000 321 366			10	MILEAGE OTHER COMMUNITY SERVICES/COMMUNITY EDUCATION/TRAVEL-SCH	0	37.51 37.51	
15870 Vendor Continued Void		06/13/2011					0.00
15871 VISA		06/13/2011	1	AMAZON	0	9.98	689.44
01 E 300 050 000 000 401				PRINCIPAL'S OFFICE//GENERAL SUPPLIES/		9.98	
01 E 300 211 165 000 899			2	HERRITAGE ART SECONDARY EDUCATION GENERAL//MISCELLANEOUS EXPENSE/GRAD	0	31.10 31.10	
01 E 300 211 000 000 329			3	UPS-AFS SECONDARY EDUCATION GENERAL//POSTAGE AND EXPRESS/	0	18.92 18.92	
01 E 300 220 000 000 430			4	I-TUNES AUDIO BOOK ENGLISH//SUPPLIES/	0	11.95 11.95	
01 E 300 292 225 000 899			5	CROWN AWARDS BOYS/GIRLS ATHLETICS//MISCELLANEOUS EXPENSE/GOLF	0	68.00 68.00	
01 E 200 790 160 799 460			6	AMAZON.COM OTHER PUPIL SUPPORT SERVICES/OTHER GRANTS/BOOKS/WORKBOO	0	45.49 45.49	
01 E 005 010 000 000 899			7	REDLIN ART CNETER BOARD OF EDUCATION//MISCELLANEOUS EXPENSE/	0	439.90 439.90	
01 E 300 211 000 000 329			8	WEIDAUER-UPS SECONDARY EDUCATION GENERAL//POSTAGE AND EXPRESS/	0	28.96 28.96	
01 L 230 36			9	UPS- JAHN GENERAL FUND/DEFERRED REVENUE/MUSIC-BERT RANEY	0	35.14 35.14	
15872 VOSIKA PORTABLE TOILET RENTAL		06/13/2011	1	INT. UPPER SX STATE PARK	0	255.00	255.00
01 E 005 203 731 315 305				ELEMENTARY GENERAL ED./INTEGRATION/PROFESSIONAL FEES/IN		255.00	
15873 WEIDAUER, BARRY		06/13/2011	1		0	114.80	188.07
01 E 300 211 000 000 366				SECONDARY EDUCATION GENERAL//TRAVEL-SCHOOL BUSINESS/		114.80	
01 E 300 255 000 000 430			10	BASIC REPAIR SUPPLIES INDUSTRIAL EDUCATION//SUPPLIES/	0	73.27 73.27	
15874 SHELLY J WEIR		06/13/2011	1		0	68.88	68.88
01 E 005 010 000 000 366				BOARD OF EDUCATION//TRAVEL-SCHOOL BUSINESS/		68.88	
15875 WEST CENTRAL TAE KWON DO		06/13/2011	1	JUNE	0	408.00	408.00
04 E 500 505 000 321 305				COMMUNITY EDUCATION GENERAL/COMMUNITY EDUCATION/PROFESS		408.00	
15876 WEST CENTRAL TRIBUNE		06/13/2011	585859		0	57.00	57.00
01 E 005 010 000 000 380				BOARD OF EDUCATION//PRINTING/ADVERTISING/		57.00	

Check Nbr	Vendor Name	Check Date	Invoice Number	Invoice Desc	PO Number	Invoice Amount	Check Amount
15877	XCEL ENERGY	06/13/2011	1		0	23.03	31.59
01 E 005 810 184 000 330				OPERATIONS AND MAINTENANCE//UTILITY SERVICES/ELECTRICIT		23.03	
			11		0	8.56	
01 E 025 810 184 000 330				OPERATIONS AND MAINTENANCE//UTILITY SERVICES/ELECTRICIT		8.56	
15878	Vendor Continued Void	06/13/2011					0.00
15879	Vendor Continued Void	06/13/2011					0.00
15880	Vendor Continued Void	06/13/2011					0.00
15881	Vendor Continued Void	06/13/2011					0.00
15882	Vendor Continued Void	06/13/2011					0.00
15883	Vendor Continued Void	06/13/2011					0.00
15884	Vendor Continued Void	06/13/2011					0.00
15885	Vendor Continued Void	06/13/2011					0.00
15886	Vendor Continued Void	06/13/2011					0.00
15887	Vendor Continued Void	06/13/2011					0.00
15888	Vendor Continued Void	06/13/2011					0.00
15889	Vendor Continued Void	06/13/2011					0.00
15890	YME SCHOOLS-ADM	06/13/2011	1	JULY-MAY INTEREST	0	-25.85	14,998.63
01 R 005 000 000 000 092				INVESTMENT EARNINGS/		-25.85	
			6087	VOID WAYNE COOK	0	-170.00	
01 E 300 294 215 000 319				BOYS ATHLETICS//OTHER PERSONAL SERVICES/BASEBALL		-170.00	
			6109	void SMSU	0	-20.00	
01 E 300 298 216 000 899				ADMISSIONS			
				EXTRACURRICULAR ACTIVITIES//MISCELLANEOUS EXPENSE/FLO-T		-20.00	
			6123	US POST OFFICE	0	120.75	
04 E 500 590 000 321 401				OTHER COMMUNITY SERVICES/COMMUNITY EDUCATION/GENERAL SU		120.75	
			6124	CARLA ESQUIBEL	0	20.00	
01 E 300 298 216 000 899				EXTRACURRICULAR ACTIVITIES//MISCELLANEOUS EXPENSE/FLO-T		20.00	
			6125	CHANHASSEN DINNER	0	100.00	
04 E 500 505 000 321 450				THEATRE			
				COMMUNITY EDUCATION GENERAL/COMMUNITY EDUCATION/MATERIA		100.00	
			6126	COREY FIELD	0	50.00	
01 E 300 294 215 000 319				BOYS ATHLETICS//OTHER PERSONAL SERVICES/BASEBALL		50.00	
			6127	DYLAN HOFFMAN	0	50.00	
01 E 300 294 215 000 319				BOYS ATHLETICS//OTHER PERSONAL SERVICES/BASEBALL		50.00	
			6128	GARY SIMS	0	135.00	
01 E 300 292 219 000 319				BOYS/GIRLS ATHLETICS//OTHER PERSONAL SERVICES/TRACK		135.00	
			6129	PLYMOUTH GREEN	0	100.00	
04 E 500 505 000 321 450				MILL BANQUET			
				COMMUNITY EDUCATION GENERAL/COMMUNITY EDUCATION/MATERIA		100.00	
			6130	PLYMOUTH	0	100.00	
04 E 500 505 000 321 450				PLAYHOUSE			
				COMMUNITY EDUCATION GENERAL/COMMUNITY EDUCATION/MATERIA		100.00	
			6132	MMEA - A.	0	300.00	
09 L 230 75				MCCORMICK			
				TRUST FUND/DEFERRED REVENUE/MUSIC ENDOWMENT FUND		300.00	
			6133	WATERTOWN ZOO	0	54.00	
01 L 230 43				GENERAL FUND/DEFERRED REVENUE/SR HIGH PROJECTS		54.00	
			6134	HERITAGE VILLAGE	0	276.00	
01 L 230 33				GENERAL FUND/DEFERRED REVENUE/BERT RANEY ACTIVITY ACCOU		276.00	
			6135	B. BRUFLAT	0	15.00	
01 L 230 33				GENERAL FUND/DEFERRED REVENUE/BERT RANEY ACTIVITY ACCOU		15.00	
			6136	A-Z RECYCLING	0	220.00	
01 E 005 810 000 000 899				OPERATIONS AND MAINTENANCE//MISCELLANEOUS EXPENSE/		220.00	

Check Nbr	Vendor Name	Check Date	Invoice Number	Invoice Desc	PO Number	Invoice Amount	Check Amount
04 E 500 505 000 321 450			6137	AARP COMMUNITY EDUCATION GENERAL/COMMUNITY EDUCATION/MATERIA	0	288.00 288.00	
04 E 500 505 000 321 329			6138	US POST OFFICE COMMUNITY EDUCATION GENERAL/COMMUNITY EDUCATION/POSTAGE	0	302.33 302.33	
01 E 300 255 000 000 430			6139	HDL INDUSTRIAL EDUCATION//SUPPLIES/	0	6.50 6.50	
01 E 300 292 219 000 369			6140	ACGC BOYS/GIRLS ATHLETICS//PARTICIPATION FEES/TRACK	0	130.00 130.00	
01 E 300 292 219 000 186			6141	LINDSEY BENDIX BOYS/GIRLS ATHLETICS//EXTRA-CURRICULAR WORKERS/TRACK	0	25.00 25.00	
01 E 300 292 219 000 186			6142	KATELYN SJURSETH BOYS/GIRLS ATHLETICS//EXTRA-CURRICULAR WORKERS/TRACK	0	25.00 25.00	
01 E 300 292 219 000 186			6143	MEREDITH RUPP BOYS/GIRLS ATHLETICS//EXTRA-CURRICULAR WORKERS/TRACK	0	25.00 25.00	
01 E 300 292 219 000 186			6144	MARK HENDERSON BOYS/GIRLS ATHLETICS//EXTRA-CURRICULAR WORKERS/TRACK	0	50.00 50.00	
01 E 300 292 219 000 186			6145	MONICA KASEL BOYS/GIRLS ATHLETICS//EXTRA-CURRICULAR WORKERS/TRACK	0	50.00 50.00	
01 E 300 292 219 000 186			6146	SCOTT RASMUSSEN BOYS/GIRLS ATHLETICS//EXTRA-CURRICULAR WORKERS/TRACK	0	25.00 25.00	
01 E 300 292 219 000 186			6147	MARK JENSEN BOYS/GIRLS ATHLETICS//EXTRA-CURRICULAR WORKERS/TRACK	0	25.00 25.00	
01 E 300 292 219 000 186			6148	KAREN JACOBSON BOYS/GIRLS ATHLETICS//EXTRA-CURRICULAR WORKERS/TRACK	0	25.00 25.00	
01 E 300 292 219 000 186			6149	TOM JACOBSON BOYS/GIRLS ATHLETICS//EXTRA-CURRICULAR WORKERS/TRACK	0	25.00 25.00	
01 E 300 292 219 000 186			6150	JOEY HEGLUND BOYS/GIRLS ATHLETICS//EXTRA-CURRICULAR WORKERS/TRACK	0	25.00 25.00	
01 L 230 33			6151	LEGIONVILLE GENERAL FUND/DEFERRED REVENUE/BERT RANEY ACTIVITY ACCOU	0	3,000.00 3,000.00	
01 E 300 296 210 000 319			6152	JORDAN HAGERT GIRLS ATHLETICS//OTHER PERSONAL SERVICES/SOFTBALL	0	90.00 90.00	
09 L 230 27			6153	LORI PETERSEN TRUST FUND/DEFERRED REVENUE/SENIOR CITIZENS ADVOCACY	0	100.00 100.00	
01 E 300 292 219 000 186			6155	STEPH FREIBORG BOYS/GIRLS ATHLETICS//EXTRA-CURRICULAR WORKERS/TRACK	0	52.00 52.00	
01 E 300 292 219 000 186			6156	MONICA KASEL BOYS/GIRLS ATHLETICS//EXTRA-CURRICULAR WORKERS/TRACK	0	24.00 24.00	
04 R 500 000 000 321 050			6158	ADAM KVAM COMMUNITY EDUCATION/FEES FROM PATRONS/	0	35.00 35.00	
01 L 230 33			6159	BRAMBLE PARK ZOO GENERAL FUND/DEFERRED REVENUE/BERT RANEY ACTIVITY ACCOU	0	652.00 652.00	
01 E 300 255 000 000 430			6160	BBE HS INDUSTRIAL EDUCATION//SUPPLIES/	0	50.00 50.00	
01 E 300 292 225 000 369			6161	benson GOLF COURSE BOYS/GIRLS ATHLETICS//PARTICIPATION FEES/GOLF	0	66.00 66.00	

Check Nbr	Vendor Name	Check Date	Invoice Number	Invoice Desc	PO Number	Invoice Amount	Check Amount
			6162-6179	6162-6179 FACS BAKERY SHOP	0	540.00	
01 E	300 331 000 830 433			VOCATIONAL HOME EC/VOCATIONAL PROGRAMS/INDIVIDUAL INST		540.00	
			6180	st cloud state univ.	0	365.00	
01 E	100 640 000 306 367			STAFF DEVELOPMENT/STAFF DEV. 50% SITE/TRAVEL-PROFESS DE		365.00	
			6181	steven kvam	0	48.00	
01 E	005 298 732 315 185			EXTRACURRICULAR ACTIVITIES/INTEGRATION/MISCELLANEOUS PA		48.00	
			6182	AMELAI BERGQUIST	0	64.00	
01 E	005 298 732 315 185			EXTRACURRICULAR ACTIVITIES/INTEGRATION/MISCELLANEOUS PA		64.00	
			6183	MAURICIO REYES-MEDIETA	0	64.00	
01 E	005 298 732 315 185			EXTRACURRICULAR ACTIVITIES/INTEGRATION/MISCELLANEOUS PA		64.00	
			6184	EVA TREVINO	0	64.00	
01 E	005 298 732 315 185			EXTRACURRICULAR ACTIVITIES/INTEGRATION/MISCELLANEOUS PA		64.00	
			6185	BRITTANY AEHLIERKING	0	60.00	
01 E	005 298 732 315 185			EXTRACURRICULAR ACTIVITIES/INTEGRATION/MISCELLANEOUS PA		60.00	
			6186	SAM EICKE	0	60.00	
01 E	005 298 732 315 185			EXTRACURRICULAR ACTIVITIES/INTEGRATION/MISCELLANEOUS PA		60.00	
			6187	AMBER WILLIAMSON	0	30.00	
01 E	005 298 732 315 185			EXTRACURRICULAR ACTIVITIES/INTEGRATION/MISCELLANEOUS PA		30.00	
			6188	MADISON MILLER	0	60.00	
01 E	005 298 732 315 185			EXTRACURRICULAR ACTIVITIES/INTEGRATION/MISCELLANEOUS PA		60.00	
			6189	KENDRA ALCHEFSKE	0	30.00	
01 E	005 298 732 315 185			EXTRACURRICULAR ACTIVITIES/INTEGRATION/MISCELLANEOUS PA		30.00	
			6190	TIM AND SHANLEE KOENEN	0	1.20	
02 R	005 000 000 701 601			SCHOOL LUNCH/SALES TO PUPILS/		1.20	
			6191	JIM AND GINNY DAMBROTEN	0	60.80	
02 R	005 000 000 701 601			SCHOOL LUNCH/SALES TO PUPILS/		60.80	
			6192	PAUL AND TAMARA ENSTAD	0	6.70	
02 R	005 000 000 701 601			SCHOOL LUNCH/SALES TO PUPILS/		6.70	
			6193	DOUG AND BARB HAGEN	0	17.55	
02 R	005 000 000 701 601			SCHOOL LUNCH/SALES TO PUPILS/		17.55	
			6194	ORLYN AND CAROL HEGNA	0	73.00	
02 R	005 000 000 701 601			SCHOOL LUNCH/SALES TO PUPILS/		73.00	
			6195	PIA HEISELMAN	0	6.65	
02 R	005 000 000 701 601			SCHOOL LUNCH/SALES TO PUPILS/		6.65	
			6196	JEFF & STACY WALTER	0	3.65	
02 R	005 000 000 701 601			SCHOOL LUNCH/SALES TO PUPILS/		3.65	
			6197	ELANOR & TERRI KNUTSON	0	10.55	
02 R	005 000 000 701 601			SCHOOL LUNCH/SALES TO PUPILS/		10.55	
			6198	DAVE & SHELIA LEE	0	25.65	
02 R	005 000 000 701 601			SCHOOL LUNCH/SALES TO PUPILS/		25.65	

Check Nbr	Vendor Name	Check Date	Invoice Number	Invoice Desc	PO Number	Invoice Amount	Check Amount
			6199	DAVE & TERRI MCCOSS	0	7.60	
02 R	005 000 000 701 601			SCHOOL LUNCH/SALES TO PUPILS/		7.60	
			6200	DEBRA MARBACH	0	1.40	
02 R	005 000 000 701 601			SCHOOL LUNCH/SALES TO PUPILS/		1.40	
			6201	BRAIN & KELLY OLSON	0	7.80	
02 R	005 000 000 701 601			SCHOOL LUNCH/SALES TO PUPILS/		7.80	
			6202	DENNIS & VICKY PREUSS	0	6.60	
02 R	005 000 000 701 601			SCHOOL LUNCH/SALES TO PUPILS/		6.60	
			6203	DON & LINDA REZNECKEK	0	16.65	
02 R	005 000 000 701 601			SCHOOL LUNCH/SALES TO PUPILS/		16.65	
			6204	WAYNE & KARI RIGGE	0	86.30	
02 R	005 000 000 701 601			SCHOOL LUNCH/SALES TO PUPILS/		86.30	
			6205	CHAD SCHULER	0	4.95	
02 R	005 000 000 701 601			SCHOOL LUNCH/SALES TO PUPILS/		4.95	
			6206	KIM STOCK	0	14.20	
02 R	005 000 000 701 601			SCHOOL LUNCH/SALES TO PUPILS/		14.20	
			6207	CHRIS & MARSHA THOMPSON	0	5.70	
02 R	005 000 000 701 601			SCHOOL LUNCH/SALES TO PUPILS/		5.70	
			6208	ARDELL & RHODA WALLER	0	26.70	
02 R	005 000 000 701 601			SCHOOL LUNCH/SALES TO PUPILS/		26.70	
			6209	TIM & TANYA YERIGAN	0	1.65	
02 R	005 000 000 701 601			SCHOOL LUNCH/SALES TO PUPILS/		1.65	
			6210		0	17.60	
04 E	500 590 000 321 401			OTHER COMMUNITY SERVICES/COMMUNITY EDUCATION/GENERAL SU		17.60	
			6211	ST CLOUD STATE UNIV.	0	365.00	
01 E	005 640 734 315 305			STAFF DEVELOPMENT/INTEGRATION/PROFESSIONAL FEES/INTEGRA		365.00	
			6212	TAYLOR OLSON	0	45.00	
01 E	300 292 225 000 379			BOYS/GIRLS ATHLETICS//STATE EXPENSES/GOLF		45.00	
			6213	ZACH SVOBODNY	0	15.00	
01 E	300 292 219 000 401			BOYS/GIRLS ATHLETICS//GENERAL SUPPLIES/TRACK		15.00	
			6215	AARP	0	330.00	
04 E	500 505 000 321 450			COMMUNITY EDUCATION GENERAL/COMMUNITY EDUCATION/MATERIA		330.00	
			6216	ADAM RANEY	0	120.00	
01 E	300 294 215 000 186			BOYS ATHLETICS//EXTRA-CURRICULAR WORKERS/BASEBALL		120.00	
			6218	REGION 3A	0	5,250.00	
01 E	300 298 216 000 899			EXTRACURRICULAR ACTIVITIES//MISCELLANEOUS EXPENSE/FLO-T		5,250.00	
			6219	AMY RICHTER	0	125.00	
01 E	300 294 215 000 186			BOYS ATHLETICS//EXTRA-CURRICULAR WORKERS/BASEBALL		125.00	
			6220	ADAM RANEY	0	125.00	
01 E	300 294 215 000 186			BOYS ATHLETICS//EXTRA-CURRICULAR WORKERS/BASEBALL		125.00	
			6221	SUZIE RICHTER	0	125.00	

Check Nbr	Vendor Name	Check Date	Invoice Number	Invoice Desc	PO Number	Invoice Amount	Check Amount
01 E 300 294 215 000 186				BOYS ATHLETICS//EXTRA-CURRICULAR WORKERS/BASEBALL		125.00	
			6222	GORMAN VELDE	0	200.00	
01 E 300 294 215 000 186				BOYS ATHLETICS//EXTRA-CURRICULAR WORKERS/BASEBALL		200.00	
			6223	NICKSON KNAPPER	0	30.00	
01 E 300 294 215 000 186				BOYS ATHLETICS//EXTRA-CURRICULAR WORKERS/BASEBALL		30.00	
			6224	BENNETT KNAPPER	0	30.00	
01 E 300 294 215 000 186				BOYS ATHLETICS//EXTRA-CURRICULAR WORKERS/BASEBALL		30.00	
			6225	COLE RICHTER	0	30.00	
01 E 300 294 215 000 186				BOYS ATHLETICS//EXTRA-CURRICULAR WORKERS/BASEBALL		30.00	
15891 YME BOARD ACCOUNT		06/13/2011	1	IT	251	100.00	569.40
01 E 300 790 388 000 899				OTHER PUPIL SUPPORT SERVICES//MISCELLANEOUS EXPENSE/KID		100.00	
			11	IT	0	70.87	
01 E 300 790 388 000 899				OTHER PUPIL SUPPORT SERVICES//MISCELLANEOUS EXPENSE/KID		70.87	
			111	IT	0	275.53	
01 E 300 790 388 000 899				OTHER PUPIL SUPPORT SERVICES//MISCELLANEOUS EXPENSE/KID		275.53	
			12	IT	0	23.00	
01 E 300 790 388 000 899				OTHER PUPIL SUPPORT SERVICES//MISCELLANEOUS EXPENSE/KID		23.00	
			14	MISC FEES	0	100.00	
01 E 300 790 388 000 899				OTHER PUPIL SUPPORT SERVICES//MISCELLANEOUS EXPENSE/KID		100.00	
15892 YME-FOOD SERVICE		06/13/2011	1	4TH GRADE MUSIC	0	35.00	355.00
01 E 005 203 731 315 305				ELEMENTARY GENERAL ED./INTEGRATION/PROFESSIONAL FEES/IN		35.00	
			10	4TH GRADE FIELD TRIP	0	70.00	
01 L 230 33				GENERAL FUND/DEFERRED REVENUE/BERT RANEY ACTIVITY ACCOU		70.00	
			4	BIRTHDAY TREATS	0	250.00	
01 E 100 050 000 000 899				PRINCIPAL'S OFFICE//MISCELLANEOUS EXPENSE/		250.00	
15893 YOUTH FRONTIERS, INC.		06/13/2011	1	FY12 RETREAT	0	750.00	750.00
01 A 131 00				GENERAL FUND/PREPAID EXPENSE		750.00	
			147	Computer			
				Check(s) For a Total of			419,853.05

	0	Manual	Checks For a Total of	0.00
	0	Wire Transfer	Checks For a Total of	0.00
	0	ACH	Checks For a Total of	0.00
	147	Computer	Checks For a Total of	419,853.05
Total For	147	Manual, Wire Tran, ACH & Computer	Checks	419,853.05
Less	0	Voided	Checks For a Total of	0.00
			Net Amount	419,853.05

FUND SUMMARY

Fund	Description	Balance Sheet	Revenue	Expense	Total
01	GENERAL FUND	55,850.58	-25.85	331,995.41	387,820.14
02	FOOD SERVICE	0.00	385.30	23,517.39	23,902.69
04	COMMUNITY SERVICE	0.00	35.00	5,966.97	6,001.97
09	TRUST FUND	2,128.25	0.00	0.00	2,128.25

Check Nbr	Vendor Name	Check Date	Invoice Number	Invoice Desc	PO Number	Invoice Amount	Check Amount
195	BILL'S ELECTRIC	06/13/2011	4914	LIGHTS	0	80.00	80.00
06 E 300 855 850 366 520				ALTERNATIVE FACILITIES/INDOOR AIR QUALITY/BUILDING CONS		80.00	
196	BISBEE PLUMBING	06/13/2011	1	REMOVE BOILER	0	1,020.00	1,020.00
06 E 300 855 850 366 520				ALTERNATIVE FACILITIES/INDOOR AIR QUALITY/BUILDING CONS		1,020.00	
197	HONEYWELL INTERNATIONAL INC.	06/13/2011	1		0	59,987.00	59,987.00
06 E 300 855 850 366 520				ALTERNATIVE FACILITIES/INDOOR AIR QUALITY/BUILDING CONS		59,987.00	
198	INNOVATIVE OFFICE SOLUTIONS	06/13/2011	10586418-1	PACKING TAPE	244	100.96	100.96
06 E 300 855 850 366 520				ALTERNATIVE FACILITIES/INDOOR AIR QUALITY/BUILDING CONS		100.96	
199	KRANZ CONSTRUCTION	06/13/2011	5		0	49,063.00	49,063.00
06 E 300 855 850 366 520				ALTERNATIVE FACILITIES/INDOOR AIR QUALITY/BUILDING CONS		49,063.00	
200	MASTERPAK CONTAINERS INC.	06/13/2011	4940	BOXES	0	262.08	262.08
06 E 300 855 850 366 520				ALTERNATIVE FACILITIES/INDOOR AIR QUALITY/BUILDING CONS		262.08	
201	MCDOWALL COMPANY INC.	06/13/2011	11		0	180,768.85	180,768.85
06 E 300 855 850 366 520				ALTERNATIVE FACILITIES/INDOOR AIR QUALITY/BUILDING CONS		180,768.85	
202	OFFICE MAX CONTRACT INC.	06/13/2011	57045	shrink wrap	0	228.18	441.40
06 E 300 855 850 366 520				ALTERNATIVE FACILITIES/INDOOR AIR QUALITY/BUILDING CONS		228.18	
			903193		0	213.22	
06 E 300 855 850 366 520				ALTERNATIVE FACILITIES/INDOOR AIR QUALITY/BUILDING CONS		213.22	
203	PAAPE ENERGY INC.	06/13/2011	7	FINAL (B.R.)	0	11,438.00	60,002.00
06 E 100 855 850 366 520				ALTERNATIVE FACILITIES/INDOOR AIR QUALITY/BUILDING CONS		11,438.00	
			9		0	48,564.00	
06 E 300 855 850 366 520				ALTERNATIVE FACILITIES/INDOOR AIR QUALITY/BUILDING CONS		48,564.00	
204	RYER PLUMBING INC.	06/13/2011	6019	1930 BOILER ROOM- REMOVE SINK/LINES	0	400.28	400.28
06 E 300 855 850 366 520				ALTERNATIVE FACILITIES/INDOOR AIR QUALITY/BUILDING CONS		400.28	
			10	Computer			
				Check(s) For a Total of			352,125.57

Check Summary

	0	Manual	Checks For a Total of	0.00
	0	Wire Transfer	Checks For a Total of	0.00
	0	ACH	Checks For a Total of	0.00
	10	Computer	Checks For a Total of	352,125.57
Total For	10	Manual, Wire Tran, ACH & Computer	Checks	352,125.57
Less	0	Voided	Checks For a Total of	0.00
			Net Amount	352,125.57

FUND SUMMARY

Fund	Description	Balance Sheet	Revenue	Expense	Total
06	CONSTRUCTION/BUILDING FUND	0.00	0.00	352,125.57	352,125.57

Check Nbr	Vendor Name	Check Date	Invoice Number	Invoice Desc	PO Number	Invoice Amount	Check Amount
2009	HONEYWELL INTERNATIONAL INC.	06/13/2011	10	ENERGY	0	15,765.00	43,828.00
06 E 005 870 852 386 520				BUILDING CONSTRUCTION/DEFERRED MAINTENANCE/BUILDING CON		15,765.00	
			2	CAPITAL	0	28,063.00	
06 E 005 870 851 386 520				BUILDING CONSTRUCTION/DEFERRED MAINTENANCE/BUILDING CON		28,063.00	
			1	Computer	Check(s) For a Total of		43,828.00

	0	Manual	Checks For a Total of	0.00
	0	Wire Transfer	Checks For a Total of	0.00
	0	ACH	Checks For a Total of	0.00
	1	Computer	Checks For a Total of	43,828.00
Total For	1	Manual, Wire Tran, ACH & Computer	Checks	43,828.00
Less	0	Voided	Checks For a Total of	0.00
			Net Amount	43,828.00

F U N D S U M M A R Y

Fund	Description	Balance Sheet	Revenue	Expense	Total
06	CONSTRUCTION/BUILDING FUND	0.00	0.00	43,828.00	43,828.00

Yellow Medicine East School

2011-12 Original Budgets

Fund	Appropriation	Projected Fund Balance 6-30-2011	Projected Revenues	Projected Expenditures	Difference	Projected Fund Balance 6-30-2012
	Health & Safety	73,463	-51,706	60,440	-112,146	-38,683
	Capital	468,725	216,687	250,300	-33,613	435,112
	Severance/Health	60,120	0	0	0	60,120
	Safe Schools	53,571	-1,003	38,230	-39,233	14,338
	Basic Skills	49,073		0	0	49,073
	Deferred Maint	0	57,128	57,128	0	0
	Unreserved	1,374,316	8,537,220	8,736,396	-142,048	1,232,268
01 General	Total	2,079,268	8,758,326	9,142,494	-327,040	1,752,228
02 Food Service	Total	-826	371,400	375,215	-3,815	-4,641
	ECFE/Learn. Readiness	11,754	77,612	85,580	-7,968	3,786
	Pool	-66,788	69,243	50,400	18,843	-47,945
	Comm Ed Gen.	17,320	191,886	190,946	940	18,260
04 Community Ed.	Total	-37,714	338,741	326,926	11,815	-25,899
**06 Building Fund	Total (Estimated)	1,082,417	1,225,000	2,000,000	-775,000	307,417
07 Debt Svc	Total	7,717	1,260,450	1,158,565	101,885	109,602
25 OPEB	Total	1,855,571	57,000	111,600	-54,600	1,800,971
47 Debt Svc (OPEB)	Total	12,006	198,183	189,745	8,438	20,444
Grand Total		4,998,439	12,209,100	13,304,545	-1,038,317	3,960,122

** Building Fund Revenue & Expenditure budgets to equal actual received/expended.

Yellow Medicine East

2011-12 Proposed Budget

June 13, 2011 Board Meeting

General Fund	2010-11	2011-12	FY11 to FY12	
Revenues	Revised Budget	Preliminary Budget	Difference	
Federal Programs	418,825	374,138	-44,687	Stimulus \$
Levy/Credits Total	945,998	820,619	-125,379	Facilities Bonds
Local Total	212,245	254,185	41,940	House/Pact 4
State Misc. Total	130,790	131,278	488	
*State Gen Ed/Cty Appt Total	6,268,500	6,097,000	-171,500	Students also includes P-12
State Spec Ed Total	858,500	860,000	1,500	
Sub Total (Unreserved)	8,834,858	8,537,220	-297,638	
Health & Safety	116,156	-51,706	-167,862	3 Year Projects
Capital/Def Maint	277,481	273,815	-3,666	
Safe Schools	27,810	-1,003	-28,813	Did Not Levy 2010
Grand Total	9,256,305	8,758,326	-497,979	

General Fund	2010-11	2011-12	FY11 to FY12	
Expenditures	Revised Budget	Preliminary Budget	Difference	
Salaries	4,508,230	4,348,239	-159,991	Elem Salts/Retiree/ H.S. Tech
Benefits	1,038,399	1,036,376	-2,023	TRA .05% Increase
Purchased Services	2,751,555	2,833,987	82,432	MVCC
Supplies	361,141	368,693	7,552	House
Equipment	66,322	94,922	28,600	
Debt (Interest/Facilities)	10,000	10,000	0	
Miscellaneous	52,129	44,179	-7,950	
Sub Total (Unreserved)	8,787,776	8,736,396	-51,380	
Health & Safety	60,440	60,440	0	
Capital/Def Maint	325,311	307,428	-17,883	Ipads
Safe Schools	15,230	38,230	23,000	H.S. Intercom System
Grand Total	9,188,757	9,142,494	-46,263	

Food Service	2010-11	2011-12	FY11 to FY12
Revenues	Revised Budget	Preliminary Budget	Difference
Federal Programs	201,000	202,000	1,000
Local Total	150,500	150,500	0
State Misc. Total	18,900	18,900	0
Grand Total	370,400	371,400	1,000

Food Service	2010-11	2011-12	FY11 to FY12
Expenditures	Revised Budget	Preliminary Budget	Difference
Salaries	141,147	137,280	-3,867
Benefits	30,511	26,635	-3,876
Purchased Services	5,100	5,000	-100
Supplies	207,700	204,700	-3,000
Miscellaneous	1,600	1,600	0
Grand Total	386,058	375,215	-10,843

Community Education	2010-11	2011-12	FY11 to FY12	
Revenues	Revised Budget	Preliminary Budget	Difference	
Federal	5,055	15,055	10,000	Jobs \$
Levy/State Credits	145,094	168,677	23,583	Pool/ECFE
Local Total	141,597	135,597	-6,000	ECFE XFR
State Misc. Total	27,781	19,412	-8,369	ECFE (To Levy)
Grand Total	319,527	338,741	19,214	

Community Education	2010-11	2011-12	FY11 to FY12	
Expenditures	Revised Budget	Preliminary Budget	Difference	
Salaries	168,445	177,420	8,975	Jobs \$
Benefits	34,681	35,706	1,025	Jobs \$
Purchased Services	71,700	72,500	800	
Supplies	40,300	40,400	100	
Miscellaneous	900	900	0	
Grand Total	316,026	326,926	10,900	

Debt Service Fund	2010-11	2011-12	FY11 to FY12	
Revenues	Revised Budget	Preliminary Budget	Difference	
Levy/Credits Total	28,436	746,912	718,476	For Bonds
Federal	237,025	513,538	276,513	QZAB Bond Interest
Local Total	0	0	0	
Grand Total	265,461	1,260,450	994,989	

Debt Service Fund	2010-11	2011-12	FY11 to FY12	
Expenditures	Revised Budget	Preliminary Budget	Difference	
Debt Service Payments	322,140	1,158,565	836,425	For Bonds
Grand Total	322,140	1,158,565	836,425	

OPEB Trust Fund	2010-11	2011-12	FY11 to FY12	
Revenues	Revised Budget	Preliminary Budget	Difference	
Local Total	57,000	57,000	0	
Grand Total	57,000	57,000	0	

OPEB Trust Fund	2010-11	2011-12	FY11 to FY12	
Expenditures	Revised Budget	Preliminary Budget	Difference	
Insurance/Retiree payments	179,000	111,600	-67,400	Retirees
Grand Total	179,000	111,600	-67,400	

OPEB Debt Service	2010-11	2011-12	FY11 to FY12	
Revenues	Revised Budget	Preliminary Budget	Difference	
Levy/Credits Total	197,688	198,183	495	
Local Total	0	0	0	
Grand Total	197,688	198,183	495	

OPEB Debt Service	2010-11	2011-12	FY11 to FY12	
Expenditures	Revised Budget	Preliminary Budget	Difference	
Debt Service Payments	194,000	189,745	-4,255	
Grand Total	194,000	189,745	-4,255	

Yellow Medicine East Public Schools
Independent School District 2190
Granite Falls, Minnesota 56241

Memorandum of Understanding

Between

Independent School District 2190 (ISD 2190) and
Minnesota School Employees Association Yellow Medicine East (MSEA)

Subject: Retirement Incentive

1. Purpose. An additional insurance benefit totaling not more than \$5,000 paid towards the district health insurance policy for full-time MSEA employees who meet the qualifiers under Section 3, Subd.1 of Article XV.
2. Reference. Currently qualifying full-time employees at the time of retirement are eligible to receive an insurance benefit of \$200.00 per month to be paid towards a district health insurance policy until eligible for Medicare. (Section 3, Subd. 2 of Article XV.)
3. Problem. This one-time incentive provides additional insurance security for retiring full-time MSEA employees.
4. Scope. To be considered, full-time MSEA employees who meet the qualifiers listed above must submit a letter of resignation for the purpose of retiring.
5. **This one-time Memorandum of Understanding offers an additional insurance benefit totaling not more than \$5,000 supplementing the current benefit outlined in Article XV, Section 3, Subd 2.**
6. This Memorandum of Understanding ends June 10, 2011, does not constitute a reopening of the Master Agreement, and shall not be construed as past practice.

Chair of ISD 2190



President of MSEA YME

Date

5/31/11

Date



Print

Close Window

Indian Policies and Procedures

SECTION 8004-INDIAN POLICIES AND PROCEDURES RELATING TO CHILDREN RESIDING ON INDIAN LANDS

Any LEA that claims children residing on Indian lands for the purpose of receiving funds under section 8003 must establish Indian policies and procedures (IPPs) to ensure that the LEA meets the following requirements:

1. Give the tribal officials and parents of Indian children an opportunity to comment on whether Indian children participate on an equal basis with non-Indian children in the educational program and activities provided by the LEA;
2. Assess the extent to which Indian children participate on an equal basis with non-Indian children served by the LEA;
3. Modify, if necessary, its educational program to ensure that Indian children participate on an equal basis with non-Indian children served by the LEA;
4. Disseminate relevant applications, evaluations, program plans, and information related to the educational programs of the LEA in sufficient time to allow the tribes and parents of Indian children an opportunity to review the materials and make recommendations on the needs of the Indian children and how the LEA may help those children realize the benefits of the LEA's education programs and activities;
5. Gather information concerning the Indian community views education issues, including the frequency, location and time of meetings;
6. Notify the Indian parents and tribes of the locations and times of meetings;
7. Consult and involve tribal officials and parents of Indian children in the planning and development of the LEA's educational programs and activities; and
8. Modify the IPPs, if necessary, based upon an assessment by the tribes and parents of the effectiveness of their input regarding the development and implementation of the IPPs.

WAIVER REQUIREMENTS

For any year in which an LEA receives a written statement from the Indian tribe or tribes whose children attend the LEA's schools that the LEA need not comply with the IPP requirements because the tribe(s) is satisfied with the LEA's provision of educational services to such children, the LEA must include the written statement with its application in lieu of IPPs. This statement constitutes a waiver of the IPP requirements of the LEA for that year.

COMPLIANCE

The LEA should review its IPPs annually to ensure compliance with statutory and regulatory requirements. The Impact Aid Program also determines whether the LEA is in compliance by periodically reviewing the LEA's documentation of its IPP compliance activities (the LEA must maintain records documenting such activities). The Impact Aid Program offers technical assistance to LEAs, parents and Indian tribes to enable them to carry out the IPPs.

If an Indian tribe whose children attend school in an LEA believes the LEA is not complying with the required IPPs, the tribe may file a complaint with the Secretary of Education against the LEA. Both the LEA and the Indian community will have an opportunity to participate in a hearing. The Secretary will make a final written determination, based on the findings and recommendations of the hearing examiner, describing how the complaint will be resolved.

The Secretary is also charged with enforcing IPP compliance through withholding funds or taking other appropriate actions. The LEA and the Indian community will have an opportunity to express their views prior to any such action.

Print

Close Window

Last Modified: 06/19/2006

DATE	AMOUNT	DONATIONS TO YME FY11 (OVER \$1,000)
10/1/2010	5,000.00	FAGEN DONATION SUMMER PROGRAM
10/8/2010	3,636.00	HOOPS CLUB-SCORE BOARD
11/12/2010	1,700.00	KIWANIS DONATION- SUPPLIES/RANDOM ACTS OF KINDNESS
11/12/2010	3,000.00	WEE READ-KIWANIS DONATION
12/29/2010	1,000.00	SPECSYS DONATION
1/4/2011	1,000.00	GF BANK WEE READ DONATION
1/25/2011	41,104.00	FAGEN FOUNDATION-ELEM ART DONATION
1/25/2011	2,084.00	DANCE EXPLOSION-COACHES SAL
4/13/2011	4,200.00	WELLNESS \$ - SW/WC SVC COOP

This does not include donations less than \$1,000 or receipts from outside entities where a grant or contract is signed by YME.

Student Handbook

2011-2012



Yellow Medicine East High School
450 9th Ave., Granite Falls, MN 56241
Ph: 320-564-4081, ext. #5

PRINCIPAL'S LETTER

YME Welcomes you to 2011-2012.

Greetings:

2011-2012 promises to be a great year for YME students and staff. We are returning to a renovated building that will help enhance learning and opportunities for everyone. Yellow Medicine East prides itself in offering students a variety of classes and experiences. Our students excel in arts, academics, and athletics. This handbook is provided to each student as a guideline for success. Become familiar with its contents and certainly if you have any questions, let us know. We are a small city and in order to run smoothly and effectively we all need to work with each other and create the very best of learning environments. Take special note of the attendance policy and the requirements for graduation. We look forward to working with you and we extend our very best wishes for "your best year yet".

Karen A. Norell, HS Principal

DISTRICT MISSION STATEMENT:

"Success for all learners"

The mission of the Yellow Medicine East School District is to create opportunities for all individuals to be successful in an inclusive environment where lifelong learning is nurtured.

NONDISCRIMINATION POLICY STATEMENT:

The Yellow Medicine East School District is committed to a policy of nondiscrimination in relation to race, color, creed, age, religion, national origin, sex, and marital status, status with regard to public assistance and/or disability. Violations should be reported to the High School Principal and/or Superintendent of Schools.

Pg-2

ACCESS TO SCHOOL RECORDS:

Under the Family Educational Rights and Privacy Act (FERPA), parents or 18-year-old students have the right to review and inspect school records pertaining to the student. Requests should be made to the High School Principal who will arrange for the records to be reviewed.

The district discloses directory information from student records. Directory information may include the following: name, address, phone number, date of birth, place of birth, participation in officially recognized school activities, weight, height, past statistics, and year in school of members of athletic teams, dates of attendance, awards received, previous schools attended, and names of parents and guardians. The district will also publish an honor roll. Parents or legal guardians may refuse to permit designation of any or all of the above categories as directory information. This refusal should be made in writing and be communicated to the high school principal by **September 15** of each year.

ADVISORY- SCHEDULE:

Advisory (Homeroom) meets for twenty minutes on Wednesday. Generally this is a directed study time for students to complete and organize homework. The time offers Advisors time to help students maintain accurate records and to help students stay focused on school. This period also allows for FREE READ—time to read materials of interest to students and further develop their reading skills. YME encourages students to have a novel with them at all times and to use any open time to develop their reading interest and fluency. **Grades 7/8 will have advisory together and grades 9-12 will have advisory together.**

ATTENDANCE:

Regular attendance at school is considered one of the most important educational issues for all students. YM East High School operates under the guidelines as stipulated by the State of Minnesota. State Compulsory Attendance Law requires

regular school attendance by all persons under the age of sixteen and for those over 16 who have not officially withdrawn from school. Students between the ages of 16-18 must have a parent signature authorizing them to withdraw from school. Forms are available in the office. **WE DO NOT ENCOURAGE ANY STUDENT TO DROP OUT.** Please access other programs and seek assistance before you make a decision that will affect your entire life. Violation of the attendance law is "truancy" and will result in referral to the County Attorney for prosecution. **NCLB legislation calls for students to be in school 90% of the time.**

ATTENDANCE GUIDELINES:

Attendance at school is a shared responsibility between the individual student, and his/her parents/guardians and the school. State law stipulates that it is the parent's/guardian's responsibility to ensure that their son/daughter attends school. The parent/guardian provides a reason for absence or tardiness and the school determines whether the student absence/tardiness is excused or unexcused. Learning is enhanced by regular school attendance. Regular attendance assists in maximizing the educational benefits for each individual student.

***Excused absences:**

Personal illness.
Medical appointments
Family emergencies
School sponsored activities
Family vacations/outings
Religious observations
Orders of the court

***Unexcused:**

Overslept
Missed the bus
Personal appts. i.e. tanning,
Haircuts
No notes/parent verifications

Unexcused tardiness of more than ten minutes is considered an unexcused absence.

Anyone not in the room at the bell is considered tardy. Three (3) unexcused tardies equal one (1) unexcused absence.

ABSENCE PROCEDURE:

If a student must be absent from class or arrive late to school, the student's parent/guardian must call the ATTENDANCE LINE at 320-564-4083 ext. 100 the day of the absence or earlier. The attendance line is available 24 hours a day for your convenience. Absence must be excused within 24 hours or the absence may remain unexcused. A note from a parent/guardian will be accepted the next morning. Parents/guardians are encouraged to apply for an online access account to view their student's attendance.

ALL STUDENTS WHO BECOME ILL DURING THE SCHOOL DAY ARE REQUIRED TO CHECK OUT WITH THE NURSE'S OFFICE PRIOR TO LEAVING THE BUILDING. FAILURE TO CHECK OUT WITH THE NURSE'S OFFICE WILL CAUSE THE STUDENT TO BE UNEXCUSED.

ATTENDANCE LIMITATIONS:

The absence limit per semester is ten (10). Upon the eleventh (11th) absence, the student may not earn credit in the class for the semester. (School sponsored activities/field trips, chronic medical conditions verified by a physician and extended medical excuses of at least three consecutive days verified by a physician are the only days that "do not count" in the 10 absences allowed per semester). This is not meant to imply that students are free to miss school up to the established limit. Rather, reaching the limit is considered "being excessively absent." In addition, students may lose credit upon reaching 3 unexcused absences in a class.

3 unexcused tardies to a class period will be considered 1 unexcused absence and will count in the ten limit.

ABSENCE APPEAL:

If a student, the parent/guardian, or the school feels that extenuating circumstances caused the absence limit to be exceeded; an appeal may be filed with the Principal. The

Principal will hear the facts of the situation before deciding whether to waive a certain number of the ten absences or to enforce the no credit earned.

ATTENDANCE AND CO-CURRICULAR ACTIVITIES:

In order to practice, rehearse, compete or perform in any YME co-curricular activity, the student must be in attendance that day for a minimum of four (4) consecutive hours. Pre-arranged excused absences (at least 24 hours in advance) will be considered an exception to this policy.

HOMEWORK MAKE-UP POLICY:

If you are absent- (1) Email the teacher directly on the first day you are absent asking for homework (2) Check teacher websites for assignments (www.isd2190.org and click the High School) or (3) Call a friend and ask them to bring work home for you.

ONLY after the third consecutive day absent, call the Guidance Office and we will gladly request homework from your teachers.

If you know you will be absent, it is your responsibility to connect with your teachers for your homework in advance. You will still need to report your absence to the Attendance Office.

1. Students will have two days after returning from an absence to make arrangements with the teacher for completing work missed during an excused absence. Failure to make arrangements or failure to follow through with those arrangements will result in losing the right to make up the missed assignments. Work missed as a result of an unexcused absence cannot be made up.
2. Previously announced tests or projects are due immediately upon return to school.

PASSES TO LEAVE CAMPUS:

Permission to leave campus may be granted with written or verbal parent/guardian request. A student must have an excused reason to leave school and must be issued a pass to leave the building.

(High School Faculty approved the attendance guidelines May 2011.)

Note that the State law regarding truancy provides that school officials are MANDATED reporters and must report patterns of absence that indicate issues of neglect and/or abuse. Minnesota has COMPULSORY ATTENDANCE meaning students are to be in school on a regular basis. Yellow Medicine County has CIRCLE sentencing meaning a student may be referred to the Circle before being referred to court. YME Social Workers will be working with students and parents regarding a referral to Circle.

We are what we repeatedly do. Excellence, then, is not an act but a habit. Aristotle

ACADEMIC REQUIREMENTS:

Graduation Requirements: for Class 2012, 2013, 2014

Students eligible for graduation must have a minimum of **24 credits in grades 9-12. Each semester course is worth .5 credit.** The following requirements must be met:

- a. **8 semesters** of English and Social Studies (includes two semesters each of Am. History and Geography)
- b. **6 semesters** of Mathematics.
- c. **6 semesters** of Science
- d. **2 semesters** of Physical Education.
- e. **1 semester** of Health.
- f. **1 semester** of Computers 9. [**•Computer 9 meets .5 Media Arts. Student must take an additional .5 Arts (performing, visual or media.)**]
- g. Arts (1 semester) to meet State Standards.

Pg-7

ACADEMIC REQUIREMENTS:

Graduation Requirements: Class of 2015 and beyond

Students eligible for graduation must have a minimum of 24 credits in grades 9-12. Each semester course is worth .5 credits. The following requirements must be met:

- a. 8 semesters of English
- b. 7 semesters of Social Studies
- c. 6 semesters of Mathematics
- d. 6 semesters of Science
- e. 1 semester of Health
- f. 2 semesters of Physical Education
- g. 1 semester of computer technology
- h. 2 semesters of ARTS

Students must meet MCA-GRAD requirements in Writing, Reading, Math, and Science.

7TH & 8TH GRADERS ARE REQUIRED TO PASS CORE CLASSES. Failing two or more core classes in semester two will result in RETENTION at grade level unless the Principal approves summer school.

*Regular attendance in special programs may be substituted when approved by the Bd. of Education.

*Seniors must carry 6 classes in their senior year to be eligible for graduation (this is 6/7 class hours even though PSEO courses may carry a weight other than .5)

*HS students in PSEO programs must pass the equivalent of 40 qtr. hours or 24 sem. hours to meet a full year of H.S. requirement.

*Students must meet the MCA II-Grad standards in Writing, Reading, and Mathematics (Science for Class of 2015 and beyond).

*Band and Choir credits apply towards graduation.

*NOTE: Students are required to take 6/7 classes per semester. They may opt for a 7th course. ALL students will have an assigned Advisor.

7th & 8th Graders will have quarter EXPLORE classes to introduce them to electives offered in high school. These are 9-week classes. 7th and 8th graders who need specific instruction in Reading will be assigned to READ 180. Students are assigned to READING based on their NWEA scores, MCA scores, and by Teacher recommendation.

ACTIVITY TICKETS:

Each student will have an opportunity to purchase an activity ticket in the Activities Office. This ticket admits students to all home athletic contests, except tournaments and playoffs. They cannot be used at away events nor do they include student dances or special events. Activity passes will not admit students/adults to drama productions—tickets must be purchased for these activities.

**Fees subject to change by School Board action.*

ACTIVITY FEES:

Students participating in co-curriculars will be assessed a fee. WE THINK IT IS EXTREMELY IMPORTANT FOR STUDENTS TO PARTICIPATE IN ACTIVITIES-IF FEES ARE KEEPING YOU FROM PARTICIPATING, COME AND SEE MS. NORELL or MR. KNAPPER- we **WILL** work something out. Payment should be made in the ACTIVITY OFFICE. If you need information contact Mr. Knapper, Activities Director phone: 320-564-4084.

ANNOUNCEMENTS

Student announcements are given each school day via the intercom. They are also posted throughout the building. Announcements will be made at other times during the day as determined by the HS Principal.

MCA-II TESTING:

Students are required to meet standard in the MCA-II Reading, Writing and Math. Writing is given in the 9th grade year, Reading in the 10th grade year, and Math in the 11th grade year.

BUS RULES:

Students riding on buses are expected to conduct themselves in a mannerly fashion. The driver is in full charge of the bus and the students riding in it. The bus driver will handle any behavior issues happening on the bus. Serious misconduct will result in bus riding privileges being revoked and referral to the Principal for further disciplinary action. Remember: Riding the bus is a privilege!

CLASSROOM EXPECTATIONS:

- A. Respect yourself and others.
- B. Be prepared.
- C. Use time wisely. Your planner should be with you at all times and you should be using it on a regular basis.
- D. Be on time.
- E. Be responsible for yourself.

****Your planner must remain intact in order for you to use pass privileges. An incomplete planner is not an acceptable pass. Replacement planners will cost you \$5.***

COUNSELING & GUIDANCE:

A Counselor is available to assist students with academic and personal needs. The office is located near the HS Principal's Office. Our Counselor is here part-time; please check with the office to access services.

WEATHER EMERGENCY INFO:

In case of an emergency, such as school closing, late starts, canceled athletic events, etc, listen to the following radio stations:

KDMA-Montevideo	KMHL-Marshall
WCCO-Minneapolis	KKRC-Granite Falls
KDJS-Willmar	KLGR-Redwood

YME uses instant messaging and will send a phone message and a computer message to all registered accounts.

DISCIPLINE GUIDELINES:

It is the position of the YM East High School that learning can best take place in an environment which is orderly, safe, stimulating, and which enables all students to develop their fullest potential. The following school board policies apply district wide:

I. RULES OF CONDUCT

Disciplinary action may be taken against students for any behavior, which is disruptive of good order or violates the rights of others.

- a. Truancy and Unauthorized Absences
- b. Damage to School or Personal Property
- c. Physical Assault
- d. Verbal Assault
- e. Threats and Disruptions
- f. Dangerous, Harmful, and Nuisance Substances and Articles
- g. Failure to Identify One-self
- h. Violation of federal, state, and local law
- i. Willful conduct which disrupts others to an education.
- j. Willful conduct that endangers school employees, the pupil, or other pupils.
- k. Violation of bus or transportation rules.
- l. Violation of parking or school traffic rules.
- m. Distribution of slanderous, libelous, or pornographic material.

- n. Willful violation of any rule of conduct established in this discipline policy.
- o. Serious misconduct that interferes with the legal and personal right of others in the school or at related school activities.
- p. Insubordination.
- q. Falsification of records or signatures.

II. PROGRAM DISCIPLINARY PLAN

Disciplinary action may include but is not limited to:

- Student Conference
- Meeting with the Teacher, Counselor, or Principal
- Parent contact by telephone or mail
- Detention
- Loss of school privileges
- Parental conference with school staff
- Modified school program or alternative programs
- Removal from class
- Out of School Suspension under Pupil Fair Dismissal
- Exclusion under Pupil Fair Dismissal Act
- Referral to in-school support services
- Referral to community services or outside agency services
- Referral to police or other law enforcement agencies for criminal action
- Petition to County Court for juvenile delinquency adjudication
- Any/All appropriate action, which is appropriate to the circumstances

III. SEVERE BEHAVIORS

Students displaying the behaviors below may incur expulsion from school and/or serious legal consequences:

- A. Possession of a firearm and/or other weapons
- B. Possession of drugs and/or drug paraphernalia
- C. Under the influence of alcohol or drugs
- D. Harassment
- E. Fighting
- F. Conduct, which threatens, or harms staff property or person
- G. Behavior that disrupts the learning environment

The police may be called to assist Administration in investigating allegations and/or charges for the above offenses. Minimum consequences will be suspension from school.

"We do want to take charge of ourselves." Descartes

DETENTION:

Detention in the high school can be assigned and supervised by classroom teachers as needed. Office assigned detention will be served after school on Tuesday/Thursday as determined by the Principal. It is assigned by the Principal and supervised by Staff. Detention will be AFTER SCHOOL 3:00-3:45 p.m. Students are responsible for their own transportation-sports/activity shuttle is not an option. Failure to serve assigned detention in a timely manner may result in suspension from school.

SATURDAY SCHOOL:

Students will have the option of making up detention on Saturday morning as determined by the Principal. (8:00 a.m.- 12:00 p.m.)

CHEATING:

Paper taken away. NO CREDIT given on assignment. Parent (s) will be notified. Note: A student's grade will be affected. Copying other people's work is plagiarism and is considered cheating. Students should make every effort to refrain from passing off others work as their own.

THEFT or VANDALISM:

Police will be notified and charges filed. Parent/Student are responsible for restitution. Student is subject to Fair Dismissal Act. Students that check out laptop computers are responsible for bringing them back in working order-students will be assessed fines and fees to cover damage.

HARASSMENT:

YM East practices NO TOLERANCE in regards to behaviors that result in acts that injure, degrade, or disgrace others. Students who engage in these types of behavior will have serious disciplinary actions invoked.

SAFETY:

YM East endeavors to create a safe environment. Weather emergency drills will be practiced along with lock down drills and safety evacuation drills. Students who endanger others subject themselves to the full disciplinary sanctions allowed under school policy and law enforcement. Routine and random searches will be conducted regarding contraband.

COMPUTER & TECHNOLOGY USE POLICY:

Yellow Medicine Schools have implemented a USE policy regarding student and staff use of computer technology and communications. Students and parents will review this policy at pre conferences in August. Proper use of equipment and access to appropriate sites is foremost in enforcing this policy. Students use privileges will be revoked for misuse.

Technology is ever changing. YME is making every effort to offer students and staff the latest innovations. This means that policy and guidelines are also changing.

CYBERBULLYING:

The misuse of technology including, but not limited to, teasing, intimidating, defaming, threatening, or terrorizing another student, teachers, administrator, volunteer, contractor, or other employee of the school district by sending or posting e-mail messages, instant messages, text messages, digital pictures or images, or Web site postings, including blogs, also may constitute an act of bullying regardless of whether such acts are

committed on or off school district property and/or with or without the use of school district resources.

LOCKERS:

A hall locker will be assigned for books and outer clothing. Lockers remain the property of YM East Schools and are subject to periodic search. Students should not keep valuables in their lockers. YM East Schools assumes no liability for theft from lockers. Students are expected to use lockers properly. Report any damages to the office so repairs can be made promptly.

STUDY HALLS:

The purpose of study hall is to provide a supervised, structured atmosphere for students to study. Students may access the resource room for assistance but must secure prior permission to leave the study hall area. (504, Hispanic Students, and Native Students MUST have a pass to leave the study area for individual assistance with the Liaisons). Students on an IEP will receive resource credit and be assigned to a Special Needs Teacher. Students are expected to bring all study materials with them. Permission to use the library or computer labs must be secured before reporting to study hall.

SMOKING and TOBACCO USE:

It is against the law for students to possess or use tobacco products. Students will be referred to the police via a written "police tag" if observed using. (Note School Staff are mandated reporters and must report violations to the police-tags will be issued.) If caught in possession or using on school grounds students will be suspended from school and upon return will complete a health packet. Items will be confiscated and turned over to the police along with a written citation/tag. (Use of tobacco is a MSHSL violation and students in activities will forfeit their eligibility if caught using or in possession.)

DRESS CODE

Students are expected to show good judgment in dress and grooming at all times. Students should practice good hygiene by showering and brushing their teeth regularly. Clothes should be clean and **FIT** properly. The following standards are expected:

- Hats, caps, hoods, and scarves are not allowed to be worn in the building
- Offensive clothing with lewd or suggestive logo, alcohol & tobacco advertisements, drug logos, gang related colors, etc. should not be worn.
- Clothing must cover the midriff, chest, shoulders & back, and buttocks when seated or standing (SLEEVES are highly suggested so as not to raise concern.)
- **Length of shorts should, at minimum, a five-inch inseam.**
- **Undergarments should remain undergarments; bra straps, underwear, thongs, etc. need to be covered by an outer garment**
- "Sagging" pants **should not** show or reveal undergarments and should be secured with a belt and/or drawstring.
- Students are to have footwear on at all times in compliance with state health rules
- Jewelry that presents a safety hazard to self and others should not be worn

NOTE: when in the judgment of the administration a student's appearance, grooming, or mode of dress interferes with or disrupts the educational process the student will be directed to make modifications or will be sent home for the day. Students will be directed to go home (unexcused absence) to change if student is not able to cover or change at school. CLOTHING at events where students are performing or are part of a production must adhere to the dress code.

GANG RELATED PARAPHENALIA is strictly prohibited at YM East Schools. Students who put symbols or show "colors" will be sent to the office immediately for disciplinary intervention.

Student will be directed to remove the clothing and/or colors or be sent home. Refusal to cooperate will result in removal from school pending a parent conference to resolve the issue. Students who persist in "showing colors" or "presenting" will be referred to the police and will be suspended from school pending a parent conference. A police report will follow.

DROPPING & ADDING OF COURSES:

Students (Grades 9-12) may request a schedule change within the first two weeks of a semester. Changes may be granted provided there is room in the class. A Drop/Add form must be filled out and returned to the Principals Office. Changes after the first two weeks may result in forfeiture of credit and a failing grade.

Advisors should approve 7th/8th grade schedule changes. Parents may request a schedule change by contacting the Advisor who will make contact with the Principal for suggested changes to the schedule.

GRADING SYSTEM:

YM East High School operates on nine week marking and reporting periods. A special interim report is available at parent conferences, which will be held at midquarter of quarter one, two, and three. We anticipate the pre registration will be held during the third quarter conferences giving parents and students time to work with Advisors in selecting courses and verifying transcripts. Conferences are arena style held in the gym.

Parents will want to access the school web site going in to the teacher grade program regarding their student. This will keep you abreast of academic progress. Parents will also want to use the email system directly to teachers for inquires and concerns. For more information-call 564-4083 push 5.

PASS/NO-PASS:

Students in grades 9-12 may elect to take up to **ONE** class per semester on a Pass/No Credit basis. This option allows students to select courses they may wish to attempt without affecting their GPA while receiving credit towards graduation. The deadline for making a pass/no credit option decision is three weeks into the semester. Students that serve as aides will receive a Pass/No Credit. **We strongly suggest that students not use this option in required courses.** Some colleges/universities will not accept a Pass/Fail option for required courses.

GRADUATION HONORS:

Graduation honors will be based on cumulative grade point average (GPA). Senior honor students will be determined from the senior class at the end of the fourth quarter for graduation honors as follows:

- Superior 4.00
- Gold 3.70-3.99
- Silver 3.40-3.69
- White 3.00-3.39

*LIONS Honor Banquet is an invitation banquet held in the spring for academic excellence. Each Lions Club determines the number of students it wishes to invite.

*Student Speakers at Commencement will include the Class President, Valedictorian and Salutatorian.

International Exchange Students will be permitted to participate in the graduation exercises provided they have completed their program of study. If International Students meet the school/state requirements they will be issued an YME diploma otherwise they will receive a "Completion of Program" certificate.

Students will need to be properly dressed in order to participate in graduation. School dress code is in effect.

ALL REQUIREMENTS MUST BE MET IN ORDER FOR A SENIOR TO PARTICIPATE IN GRADUATION EXERCISES. This includes 24 credits, Basic Skills Tests, Mn. Standards, all attendance requirements, and payment of fines or fees.

“Unlike a student's right to a diploma upon completion of graduation requirements, participating in the ceremony is a privilege.” [1988 Fed. Court]

GRADUATION HONORS:

Students will wear the 'traditional' cap and gown as determined by the class. Honor cords will be worn for NHS membership and for academic achievement.

BACCALAUREATE:

The role of school officials is one of neutrality. Student participation is strictly voluntary. (U.S. Department of Education 1998)

HEALTH SERVICES:

If you feel ill during class, please notify your teacher before coming to the nurse's office. (Located in the High School Office.) The nurse will notify your parents if it is necessary for you to go home. Staying in the restroom will be considered a skip. Report to the office for assistance.

The law in Minnesota allows high school students to carry their own prescription medications and aspirin such as Tylenol. The HS office will give Tylenol to high school students provided there is a permission form on file. It is very important that the office be made aware of a student's health history so that we can offer first aid appropriately. In case of an emergency we will make every attempt to notify the parent (s) but will act in good faith by calling the ambulance and/or paramedics as deemed necessary.

ALL ACCIDENTS SHOULD BE REPORTED TO THE PRINCIPAL'S OFFICE IMMEDIATELY. School insurance does not cover student injuries. Proper first aid will be administered and students will be transported to the emergency room if deemed necessary.

HONOR ROLL & ACADEMIC AWARDS:

In order to qualify for the honor roll a student must earn a minimum of a 3.00 grade point average and be in compliance with attendance guidelines.

<u>HONOR</u>	<u>GPA</u>
Superior	4.00
A	3.50-3.99
B	3.00-3.49

***The Faculty selects Student of the Week candidates for inclusion in the local newspaper and for bulletin board display.**

INCOMPLETES:

Any student who has an incomplete grade in a class will have two weeks at the end of the marking period to complete the required work. If the incomplete work is not made up within the time period, the student will not have completed the course of study and therefore will fail the course.

LOST AND FOUND:

All articles found should be taken to the Principal's Office. Upon identification, they will be given to the owner. All unclaimed property will be disposed of at the end of the year.

LUNCH:

YM East High School has an OPEN LUNCH policy, which allows students in grades 9-12 to leave the high school property. Students are expected to practice SAFE DRIVING at all times.

This is a privilege! Students have demonstrated mature use in the past. If trash is left in the lot, students use poor driving judgment, and/or discipline issues surface this privilege can and will be revoked.

Students in Grades 7-8 will have a CLOSED LUNCH hour supervised by high school staff.

Students in Grades 9-12 SHOULD REMAIN IN THE LOWER HALLWAY AND/OR THE HALLWAYS ADJOINING THE CAFETERIA. NO students and/or food items should be in the other wings of the building during the lunch period.

Students are to clean up after themselves and practice good manners while using the lunch services. A "debit card" system is used for payment of lunch. Students can deposit in their accounts by leaving checks in the high school office or by giving them directly to the cashier in the lunchroom. Students on free/reduced lunch must pay for additional milk, seconds, and/or ala Carte items.

YME HIGH SCHOOL IS A NO CELL PHONE ZONE!

YME will not allow use of cell phones during the school day. THEY MAY BE USED BEFORE SCHOOL AND AFTER SCHOOL. Students are encouraged to leave their cell phones in their lockers, cars, or backpacks- IF PHONES ARE USED teachers have been instructed to confiscate the phone and turn it in to the high school office. Phones will be returned at the end of the day. A second/multiple violation will result in phone being confiscated and held for 3 days. The use of text messaging and the use of a digital camera are violations of confidentiality and infringe on the educational atmosphere.

If there is an emergency please call the office and we will make sure that your student receives the message a.s.a.p. All rooms are accessible by telephone and/or the intercom and we will deliver the messages in a timely manner.

ELECTRONIC DEVICES:

Electronic devices such as: ipods, headsets, headphones/ ear buds, etc. are not to be used during the school day (8:15—3:00 p.m.). Teachers will confiscate the items and turn them into the high school office. Violation #1: Students may pick up the device at the end of the day. Violations thereafter: Parents must pick up the device.

MEDIA CENTER-LIBRARY:

The library is a place for students to practice good utilization of their time whether it is informal study or research. The library is a place for “quiet” work. Study hall students wanting to use the library should secure a pass prior to reporting to study hall. Lost and/or damage to books or technology equipment are the personal and financial responsibility of the student.

PARKING OF STUDENT VEHICLES:

Student parking is available in the east lot of the 1930 building and the new gym lot. Parking should be orderly. DO NOT block the driveways or sidewalks. DO NOT park in the restricted signed areas or the handicapped parking areas. Vehicles should be registered in the office. Vehicles illegally parked will be reported to the police. Students ARE NOT to be in the parking lot during the course of the school day unless they have a blue slip from the office or they are leaving/returning from lunch.

POST-SECONDARY ENROLLMENT OPTIONS:

Juniors and Seniors are eligible to participate in post secondary options programs. Check with your counselor or the high school principal for details. The purpose of this program is to provide a wider variety of rigorous academic challenges to high school students. To be eligible a student needs to be in the upper 35% of their class, have a minimum of 3.0 GPA, a 24 ACT score, and/or administrative recommendation.

The State of Minnesota will pay for CLEP test taken at college sites. These tests are "test-outs". Further information is available from your guidance counselor or your high school principal.

PSE COURSES-ON SITE:

YM East High School provides Post Secondary Courses on site through collaboration with Southwest State University. Courses in computer, language arts, and psychology are available. Students should check with the counselor or high school principal when registering for courses to determine if they are eligible to take these courses. Many YM East students graduate from high school with multiple college credits having taken advantage of these on-site academic courses. Courses offered: Critical Writing (3), Essay (3), Computer (3), Psychology (3), Auto Body (6), French IV via ITV (6). CLEP preparation in Pre-Calculus and Calculus. Articulation in Business/Computer Science and Agriculture.

POST SECONDARY VISITS:

Seniors are permitted two (2) days to visit post secondary institutions or be excused for job interviews provided they have prior permission by completing the appropriate forms through the guidance office. (Seniors with privs. have 3 days.)

Juniors are permitted one (1) day for post-secondary visits. The same procedures apply as for Seniors. Students will also have access to college & career fairs as determined by the guidance office.

SENIOR PRIVILEGES:

YM East rewards and encourages responsible citizenship through the granting of senior privileges. Senior privileges are earned not a guaranteed right! *Just as privileges are extended, they can be removed or denied.*

SENIORS ARE NOT ALLOWED TO WRITE THEIR OWN NOTES-
make sure you verify absences with a parent note.

The following privileges are extended to seniors who meet the qualifications:

- Study halls are optional. Seniors with privs are not required to attend. Seniors must be in a designated area or may leave the campus. Attendance at lyceums is expected.
- Final exams: Seniors with privs are exempt from final exams if they have a "B" or better. All projects and coursework need to be completed.
- Post Secondary: Seniors with privs may use a third day for post-secondary visits. ALL SENIORS have 2 days for post secondary visits.
- Early Release: An early release may be available depending on the number of days available at the end of the school year.
- All Seniors are to report to their assigned ADVISORY unless out of the building for work release or PSEO courses.

CRITERIA:

*A Review Committee will review academic progress, behavior, and attendance each quarter to determine privileges for the following quarter.

•JUNIORS

Student records from the junior year will be used to determine eligibility for senior privs in the first semester of the senior year.

•SENIORS

Students who enter the senior year will be eligible for privs as follows:

***Credits:** Must have 17 credits towards graduation to be considered a senior.

***Suspensions:** Any suspensions will result in loss of senior privs for the remainder of the semester or not less than 9 weeks.

***Grades:** A failing grade in any class for any quarter will result in the loss of senior privs for a semester or the remainder of the semester (if the grade occurs at the end of the first or third grading period.) A minimum of 2.00 needs to be earned each quarter in order to maintain senior privs. NOTE: an "I" grade does not allow GPA to be calculated therefore privs will not be extended if a student carries an incomplete at the end of a quarter.

***Attendance:** Sr. privs will not be granted to juniors (first sem. seniors) IF a junior is in violation of the tardy policy. Seniors will have privs revoked if they violate the tardy policy. Juniors who violated the unexcused absence policy will not be granted sr. privs. for quarter one even if time was made up— unexcused absences are unexcused absences regarding sr. privs. Seniors who violate the unexcused policy will have their privs revoked!

***Discipline:** Seniors that have not had any major disciplinary problems will maintain sr. privs. Students that have major disciplinary problems will be grounds for revoking privs. REMOVAL FROM CLASS will be considered grounds for revoking privs.

***Tobacco/Chemical Violations:** Students who are reported for tobacco or chemical violations will have privs revoked. (No less than 9 weeks)

***Junior fines/fees:** Senior privs will not be granted to any student who did not complete junior checkout procedures.

*Privilege revocation, if imposed at the end of one semester, will continue in to the next semester to equal a minimum of 9 weeks loss of privileges. SENIORS must carry their plan book (intact) with them. SENIORS will be issued a PASS card each semester if privs are granted.

There can be no friendship without confidence, and no confidence without integrity. Samuel Johnson

SR. PRIVS ARE GRANTED IF:

1. Start with and maintain a 2.00
2. Follow the attendance rules.
3. Be in strict compliance with behavior and eligibility rules
4. Verify all appointments/notes by parent signature.

SOCIAL WORKER SERVICES:

YM East High School is fortunate to have the services of a School Social Worker. If a student is in need of social, emotional, or psychological services a referral will be made to a School Social Worker. To access the services of the Social Worker please call the HS Office. YME also has School Based Mental Health services available. The School Social Worker can assist you in accessing those services.

VIOLATIONS REPORTED BY LAW ENFORCEMENT:

Note: *State Law requires that law enforcement notify schools when students are issued chemical violation tags.* YME provides support services for students who have issues pertaining to chemical use/abuse. YME also provides services to students in need of mental health support services. We will practice an inter-agency referral/response with Family Services and Mental Health Services.

SUMMER SCHOOL:

Summer school for making up deficit credit(s) is handled through the Alternative Learning Center. Credits are earned by completing independent learning study packets directed by the ALC staff. Students should talk with the HS Principal and/or Guidance Counselor if they need to make up credits. The ALC in Granite Falls meets on Monday and Tuesday from 3:30-5:00 p.m. Students may access the ALC during the academic school year by contacting the Director at 564-4653.

Summer school for students is held at the MNRVED in Montevideo. Students in grades 7 & 8 need to pass CORE

courses to move to the next grade level. Generally failure in 2 or more CORE classes will be a recommendation to repeat the grade level. Students will have the opportunity to attend summer school—two classes may be made-up. The Principal will make a recommendation for a student to go to summer school in order to be promoted to the next grade. The Principal may also make a recommendation for students to go to summer school to work on their academic skills.

Students in grade 9-12 may re-take failed courses during the school year, go to summer school for make-up, and/or make up course work through independent study.

*YM East Schools have access to a day program for Alternative Learning-Area Learning Center. The center is located in Montevideo. Referral to the Area Learning Center is via the High School Principal.

VISITOR'S TO SCHOOL:

Any persons other than YM students, staff, or Board of Education are regarded as visitors. These individuals must report to the Principal's Office before going ANYWHERE in the building. Visitors must wear a nametag and be signed in at the office.

Students may have a student visitor under the following guidelines:

1. Parent notification 24 hours in advance.
2. Student visiting must not be missing his or her own school.
3. No visitors during finals or finals week.
4. No visitors on the day before or after a holiday break.

CO-CURRICULAR ELIGIBILITY:

YM EAST High School is a member of the Minnesota High School League and adheres to the governance of the League. Participation in co-curricular activities is a privilege available to the student body.

STUDENTS MUST PASS THEIR CLASSES TO REMAIN ACTIVE IN THEIR ACTIVITY.

A failing grade at mid-quarter is an indicator grade-a student will have one (1) week upon posting, to get to a passing grade or will be ineligible to participate until the grade is passing.

A failing grade at quarter time results in ineligibility to compete or perform in the next scheduled contest. An eligibility slip must be signed and the student must be passing "all" classes to resume eligibility. A student will remain ineligible until the student is passing. The student will continue to practice and rehearse. **The least amount of sanction will be one game or one public performance missed due to a failing grade at quarter.**

MSHSL requires that student be making progress towards graduation in order to retain eligibility-we interpret that to mean at grade level each year in order to maintain eligibility.

General Guidelines:

BYLAW 100.00: A student participating in League sponsored activities shall be under 20 years of age.

BYLAW 102.00: Students shall be attending school and classes regularly; and be listed on the appropriate school records and not have been dropped because of irregular attendance, extended absence, or suspension from school.

BYLAW 107.00: Any student who intends to participate in high school interscholastic athletics, dance team, or cheerleading activities must have on file in the school, a record of a physical examination performed by a physician within the previous three years.

BYLAW 108.00: To be scholastically eligible, a student must be making satisfactory progress towards the school's requirement for graduation.

***NOTE: YM East maintains that students should be passing all courses in order to participate in co-curricular activities. Coaches will review the academic requirements with student-athletes and parents at the beginning of each season.**

BYLAW 110: No student may participate in any interscholastic activity after the eighth semester in grades 9-12 inclusive. All eight semesters must be consecutive.

BYLAW 202.00: It shall be a violation to assault an official.

*Penalty: any participant found guilty of assault shall be disqualified from participation for a minimum of 4 weeks.

BYLAW 205.00: During the calendar year, regardless of quality, a student shall not:

- use a beverage containing alcohol
- use tobacco
- use or consume, have in possession, buy, sell, or give away any other controlled substance

BYLAW 209.00: During the school year, a student shall not engage in the sexual, racial, or religious harassment or sexual, racial, religious violence or hazing.

THE ABOVE ARE GENERAL GUIDELINES AND HIGHLIGHTS OF THE LEAGUE POLICY. A COMPLETE HANDBOOK IS AVAILABLE FOR REVIEW IN THE ACTIVITIES OFFICE and THE PRINCIPAL'S OFFICE.

NOTE: Students that violate chemical and/or eligibility guidelines during a season WILL NOT be eligible for team or conference awards.

YME SPORTSMANSHIP:

1. Cheer appropriately.
2. Sit in the assigned section as designated by the Activity Director both in our gym and at visiting sites.
3. Stand during the singing/playing of the National Anthem and either participate in the singing or remain quiet.
4. Stand during the playing of the visitor and STING school song.
5. DO NOT boo or heckle game officials or contestants in the competition.
6. NEVER throw anything on the playing court or field.

YME High School will be reading the Sportsmanship Code at the start of each contest.

ACTIVITY: Student Code of Responsibility:

- A. I will respect the rights and beliefs of others and will treat others with courtesy and consideration.
- B. I will be fully responsible for my own actions and the consequences of my actions.
- C. I will respect the property of others.
- D. I will respect and obey the rules of my school and the laws of my community, state, and country.
- E. I will show respect to those who are responsible for enforcing the rules of my school and the laws of my community, state and country.

*A student who is under penalty of exclusion, expulsion, or suspension or whose character violates the Student Code of Responsibilities is not in good standing and is ineligible for a period of time as determined by the principal.

The guidelines applied by the Yellow Medicine East High School Principal provide for periods of ineligibility as follows:

- First violation: . suspension of two games
- Second: suspension of four games
- Third: removal from activity

****NOTE:** "Student in Good Standing" applies to all activities governed by YM East High School both school sponsored and MSHSL sponsored.

*Students may ride home with their parents following contests. Students need to have a parent note signed by the High School Principal or the Activities Director. This needs to be given to the coach/advisor upon boarding the bus. NOTE: The HS Principal cannot authorize students to ride with students. Notes signed indicate that parents are authorizing "alternate" transportation.

There are times when students will need to drive to events on their own due to appointments, etc. We would ask that students use school sponsored transportation as much as possible but if special circumstances come up we will allow students to drive themselves. NOTE we cannot give permission for students to transport other students. Please check with the High School Office if you have any questions regarding policy.

AFTER SCHOOL TUTORIAL:

Students that need "academic" support in the form of teacher assistance, a quiet place to study, use of the computer, and/or guidance from the media center should plan to use the MEDIA CENTER/LIBRARY after school. Most teachers are available until 3:40 p.m. in their classrooms. ***ACADEMICS FIRST-if you need help with schoolwork, get that first and then go to practice!***

BEFORE SCHOOL ACADEMIC SUPPORT:

Teachers are available in the a.m. before school starts to assist students. Make sure you work with your teacher regarding the times available. The library computer center can also be accessed before school.

VIDEOTAPING:

At various times during the school year, we may videotape classes, students in the halls, or school activities. If you do not want your child to appear in these videotapes, send a written note ATTN: PRINCIPAL. If we do not receive a written note, we will assume permission is granted.

BOOKS & MATERIALS:

MN Statute 120.74, subd.1 requires the school board to notify parents about its policy to charge fees for lost, damaged, or destroyed books. Teachers issue books at the beginning of the year/semester. A fee will be assessed for a damaged or lost text.

IMMUNIZATION LAW:

Minnesota law requires that all children attending public, private, or parochial schools be immunized against diphtheria, tetanus, polio, measles, mumps, rubella, and Hepatitis B. To comply with the law parents must submit appropriate documentation to the school. Students not properly immunized will not be allowed to attend school.

NOTE: Students going to college are required to be immunized for meningitis upon enrollment to their school.

www.mshsl.org MN State High School League governs co-curricular activities

www.isd2190.org YME Website

Prom 2010-2011 will be April 30, 2011 aboard the Padelford, St.Paul, Minnesota. Plans and details will be forthcoming.

GUIDELINES FOR PROM DRIVE-UP:

1. REASONABLE, FUN, SAFE, LEGAL will be the guidelines.
2. NO students will be allowed to ride in the bed of a pickup.
3. NO oversized farm equipment will be allowed in the drive-up.
4. NO semi (trucks or trailers) will be allowed in the drive-up.
5. As golf carts and four-wheelers are not street equipment they are not to be used for drive-up.
6. Camper trailers (RV's) are not acceptable vehicles for drive-up. This includes watercraft.
7. Student drivers must have a valid driver's license. Shall be checked by police at the stop sign before student (s) are allowed to drive up to the main entrance.
8. No exhibition driving including excessive 'pipes' and 'engine revving'.
9. Any chemicals-tobacco, alcohol, or drugs-that are detected will result in law enforcement notification and the police will sanction students involved.

Prom Guidelines:

1. Students signed up for prom, either on-site or off-site, **will not** be allowed to leave the site until the event is over. No student may leave, even with parent permission or parent pick-up. Once you are at site you will be required to stay.
2. Only students between the ages of 15-20 will be allowed to participate in YME Prom. A Junior or Senior may invite one guest to the Prom and they will also be between the 15-20 age ranges. Parent permission slips must be signed for all students attending the YME Prom.
3. Guests to prom are under the SAME rules and regulations as YME students meaning they must stay to site as signed up and follow the same rules.
4. Students that have a chemical violation (MSHSL) that has not been cleared will not be eligible for prom activities.
5. Students that are not passing (nearest marking period to prom) will not be allowed to attend prom.
6. Students that have un-resolved attendance issues will not be in good standing and will therefore not be allowed to attend. Student must meet the same requirement as co-curricular

Pg-33

- participation by being in school four consecutive hours the day before prom and all absences from that day must be pre-arranged and excused.
7. Students signing up for the YME Prom are expected to attend the Parent Sponsored After-Prom. The parent permission slip for Prom also includes the Post Prom. If a parent absolutely does not want their child to participate in the post prom activities they will need to call the High School Principal and receive a waiver from participation.
 8. Post-Prom is a LOCK IN. Students should stay to the site from the check-in to the ending.
 9. Yellow Medicine East reserves the right to have any student and/or adult removed from prom if behavior is inappropriate. Law Enforcement will be called as needed.

Post Prom:

1. Post Prom is a parent-sponsored activity promoting safe, fun activities following prom.
2. The parent permission slip allowing students to participate in prom is also the parent permission slip for Post Prom.
3. NO alcohol, tobacco, or drugs allowed-law enforcement would be notified if detected.
4. Students are to stay at post prom until the event ends-if a student leaves early, parents will be called. For all practical purposes, Post-Prom is a Lock-in.
5. Students are under the same rules and regulations as school and are encouraged to be on their very best behavior.
6. Only Juniors/Seniors and their guest are allowed at post prom.
7. Students DO NOT have to attend prom to attend post prom. They are required to have parent permission slips signed and fees paid.

"Bullying implies an imbalance of power or strength. The student who is bullied has difficulty defending himself/herself."

2011-2012 Daily Schedule:

- 1 8:15—9:04
- 2 9:08—9:57
- 3 10:01—10:50
- 4 10:54—11:43
- 5a 11:47—12:36 Class 9-12
11:43—12:18 Lunch 7/8
- 5b 12:22—1:11 Class 7/8
12:36—1:11 9-12 Lunch
- 6 1:15—2:04
- 7 2:08—2:57

YELLOW MEDICINE EAST 2011-2012 CALENDAR

July 11.....	School Board Meeting
August 8.....	School Board Meeting
August 29-September 1.....	Staff Development Day
September 5.....	Labor Day
September 6.....	First Day of School
September 12.....	School Board Meeting
October 10.....	School Board Meeting
October 20 & 21.....	Education Minnesota Break
November 3.....	End of 1 st Quarter - 41 Days
November 4.....	Work/Staff Development Day (MRVED)
November 14.....	School Board Meeting
November 23.....	Staff Development Day
November 24 & 25.....	Thanksgiving Break
December 12.....	School Board Meeting
December 23-January 2.....	Winter Break
January 9.....	School Board Meeting
January 16.....	Staff Development Day (MRVED)
January 20.....	End of 2 nd Quarter – 44 Days
January 23.....	Work/Staff Development Day
February 13.....	School Board Meeting
February 17.....	Staff Development Day
February 20.....	Presidents Day
March 12.....	Early Out – 12:30 pm – Music Contest School Board Meeting
March 23.....	End of 3 rd Quarter – 42 Days
March 26.....	Work/Staff Development Day (MRVED)
April 6- 9.....	Spring Break
April 9.....	School Board Meeting
May 14.....	School Board Meeting
May 28.....	Memorial Day
May 30.....	End of 4 th Quarter – 44 Days
May 31.....	Work/Staff Development Day
June 11.....	School Board Meeting
	171 Student Contact Days
	184 Teacher Contract Days
February 20.....	1 st Makeup Day
May 31.....	2 nd Makeup Day
June 1.....	3 rd Makeup Day

OUTCOME-BASED SCHOOL CONTRACT

BETWEEN

MINNESOTA INDEPENDENT SCHOOL DISTRICT 2190

AND

**EVERY CHILD HAS OPPORTUNITIES CHARTER
SCHOOL, INC.**

AUGUST 2011 – JUNE 2012

TABLE OF CONTENTS

Purpose	1
Term	1
Amendments	1
Management and Administration of the School	1
Authority of the Charter School	2
Pupil Performance	2
Admission Requirements	2
Financial Management	3
Transportation	3
Teacher Leave	3
Health and Safety, Human Rights and Student Dismissal Guidelines	4
Length of School Year	4
Insurance	4
Property Ownership	4
General Authority and Immunity	5
Non-renewal and Termination of Contract	5
Program Operation and Affiliation	6
Pupils with a Disability	6
Reports	6
Authorizer Fee	6
Waiver	6
Disclaimer	6
Signature Page	6

**OUTCOME-BASED SCHOOL CONTRACT
ISD. 2190/EVERY CHILD HAS OPPORTUNITIES CHARTER SCHOOL, INC.**

THIS AGREEMENT executed on this 13th day of June, 2011 and to be effective August 1, 2011, by and between MINNESOTA INDEPENDENT SCHOOL DISTRICT 2190, a school district under Minnesota Statutes (ISD 2190) and EVERY CHILD HAS OPPORTUNITIES CHARTER SCHOOL, INC., a Minnesota non-profit Corporation (E.C.H.O.).

WHEREAS, the parties are authorized under Minnesota law to contract for the development and management of an Outcome-Based School (the “Public School”) under Minnesota Statute 124D.10, and

WHEREAS, it is the intent of the parties that the Public School will be located at 101 Rocket Avenue, Echo, Minnesota (the “Site”). The site is within the boundaries of ISD 2190.

NOW, THEREFORE, IT IS AGREED:

1. Purpose: The purpose of this Agreement is to authorize and permit E.C.H.O. to organize and manage the Public School, and specifically in order to:

- 1.1 improve pupil learning;
- 1.2 increase learning opportunities for pupils;
- 1.3 encourage the use of different and innovative teaching methods;
- 1.4 require the measurement of learning outcomes and create different and innovative forms of measuring outcomes;
- 1.5 establish new forms of accountability for schools; or
- 1.6 create new professional opportunities for teachers, including the opportunity to be responsible for the learning program at the school site.

The primary focus of E.C.H.O. is to provide a comprehensive program of instruction to at least one grade or age group from 4-18 years of age.

2. Term: The Term of this Agreement shall be for 1 year, the 2011-2012 school year. It shall be subject to renewal according to the provisions of Paragraph 16 hereof.

3. Amendments. This Agreement may not be amended absent written agreement executed by both parties and properly authorized. In the event the authority of E.C.H.O. as manager, or ISD 2190 as authorizer, is altered by legislative act, then the altered authority shall be automatically deemed to all be an amendment by mutual written consent to this Agreement.

4. Management and Administration of the School. The Public School and E.C.H.O., except as provided by the Act or this Agreement, will be exempt from all Minnesota Statutes and rules applicable to a school board or school district. In addition:

- 4.1 The school will be managed and administered according to its Bylaws, which at all times material hereto, shall be in accord with the Act.

- 4.2 The E.C.H.O. board of directors shall employ and contract with necessary teachers, as defined by Minnesota Statute 122A.06, who hold valid licenses to perform the particular service for which they are employed in the school.
- 4.3 The E.C.H.O. board may employ necessary employees who are not required to hold teaching licenses to perform duties other than teaching and may contract for other services.
- 4.4 The E.C.H.O. board may discharge teachers and non-licensed employees.
- 4.5 The E.C.H.O. board of directors shall decide matters related to the operation of the school, including budgeting, curriculum and operating procedures.

5. Authority of the Charter School. To the extent provided by the Act, notwithstanding preemption from Minnesota statutes and rules applicable to a school board of a school district, E.C.H.O. may assume such authority and powers granted by the State of Minnesota to Independent School Districts as it deems reasonably necessary to accomplish its obligations in this Agreement. In addition,

- 5.1 Except as stated herein, ISD 2190 shall have no authority, control, power, administrative, or financial responsibilities over the Public School. This clause is not intended to prohibit either party from contracting with the other in the future for any services deemed appropriate by each other.
- 5.2 E.C.H.O. may lease space from ISD 2190, other public or private nonprofit, nonsectarian organizations.

6. Pupil Performance. The Public School shall have minimum outcomes for student performance. The minimum outcomes are described in detail in the Annual Report and measured by standardized and formative assessments.

E.C.H.O. shall report at least annually to ISD 2190 and the Minnesota Board of Education information about student performance reasonably requested by ISD 2190 or the State Board. The nature of these reports and the reporting dates shall be subject to mutual agreement by the parties. In addition to reporting regarding pupil performance, E.C.H.O. must adhere to any additional reporting requirements requested under Paragraph 19 of this contract and Minnesota Statute 124D.10.

7. Admission Requirements

- 7.1 All students residing in ISD 2190 and residing within a thirty (30) mile radius of the Site (the “Primary Area”) must be admitted if they ask to be enrolled provided that there is no conflict with Section 7.2.3 of this contract.
 - 7.1.1 If one student within the Primary Area is admitted, then all siblings shall be admitted when of age.
- 7.2 The Public School may limit admission to:
 - 7.2.1 pupils within an age group or grade level;

- 7.2.2 people who are eligible to participate in the high school graduation incentives program under Minnesota Statute 124D.68;
- 7.2.3 residents of a specific geographic area if the percentage of the population of non-Caucasian people in the geographic area is greater than the percentage of the non-Caucasian population in the congressional district in which the geographic area is located, as long as the Public School reflects the racial and ethnic diversity of that area. The Public School shall enroll an eligible pupil who submits a timely application, unless the number of applications exceeds the capacity of a program, class, grade level, or building. In this case, pupils shall be accepted by lot.

- 7.3 The Public School may not limit admission to pupils on the basis of intellectual ability, measures of achievement or aptitude, athletic ability, or any other ability.
- 7.4 Siblings of students admitted, but residing outside the Primary Area, shall be admitted, space available, as well.
- 7.5 The Public School shall enroll an eligible pupil who submits a timely application, unless the number of applicants exceeds the capacity of the program, class, admitted, a student will then be enrolled for subsequent years without a need for annual reapplication. Continuing students and their siblings will receive first preference in placement.

8. Financial Management

- 8.1 E.C.H.O. will utilize the UFARS financial accounting principles and methods. Student accounting will comply with the MARRS requirements. All accounting records will be audited annually by a public accounting firm engaged by the E.C.H.O. Board of Directors. The annual audit report shall be provided to ISD 2190.
- 8.2 The school will comply with the same financial audits, audit procedures, and audit requirements of school districts under Minnesota Statute 123B.77.
- 8.3 E.C.H.O. will not charge tuition for admission to the Public School.

9. Transportation. The Public School will provide transportation for all students enrolled. In addition:

- 9.1 By July 1 of each year, E.C.H.O. will notify ISD 2190 and the Minnesota Department of Education if it will provide transportation for pupils enrolled at the Public School for the fiscal year.
- 9.2 At the time that a student enrolls in the Public School, E.C.H.O. will provide the parent or guardian with information regarding transportation.

10. Teacher Leave. If a teacher employed by a school district makes a written request for an extended leave of absence to teach in the Public School, the school district must grant the leave. The school district must grant a leave not to exceed a total of five years. Any request to extend the leave shall be granted only at the discretion of the school board. The school district may require that the request for a leave or extension of leave be made up to 90 days before the teacher would otherwise have to report for duty. The

leave is governed by Minnesota Statute 122A.46, including, but not limited to, reinstatement, notice of intention to return, seniority, salary, and insurance. During a leave, the teacher may continue to aggregate benefits and credits in the Teachers' Retirement Association account by paying both the employer and employee contributions based upon the annual salary of the teacher for the last full pay period before the leave began. The retirement association may impose reasonable administrative requirements.

11. Health and Safety, Human Rights and Student Dismissal Guidelines.

The Public School will:

- 11.1 meet all applicable state and local health and safety requirements
- 11.2 comply with Minnesota Statute 121A.15, requiring proof of student immunization against measles, rubella, diphtheria, tetanus, pertussis, polio, mumps, and hemophilus influenza type b prior to enrollment.
- 11.3 comply with the Minnesota Human Rights Act, Chapter 363, which prohibits unfair discriminatory practices in employment, public accommodations, public services or education, and comply with Minnesota Statute 121A.04, which governs provision of equal opportunities for members of both sexes to participate in athletic programs;
- 11.4 comply with the Minnesota Pupil Fair Dismissal Act, Minnesota Statute 121A.40, which defines and governs student exclusion, expulsion and suspension. A discipline policy will be adopted by E.C.H.O. in accordance with the Minnesota Pupil Fair Dismissal Act;
- 11.5 comply with the Minnesota public school fee law, Minnesota Statute 123B.34 to 123B.39, which governs authorized and prohibited student fees.

12. School Year. It may provide instruction throughout the year according to Minnesota Statute 124D.12.

13. Insurance. Notwithstanding anything to contrary in this Agreement, the Public School shall be considered a school district for the purposes of tort liability under Minnesota Chapter 466. E.C.H.O. shall require and keep in full force and effect such insurance as is required to insure said liability.

E.C.H.O. will provide ISD 2190 with proof of insurance upon request.

14. Property Ownership

- 14.1 Upon termination of this Agreement, and in the event of subsequent dissolution of E.C.H.O., all property, which it might lease, borrow or contract for use, shall be promptly returned to those organizations or individuals from which E.C.H.O. has leased or borrowed the materials.
- 14.2 All property, which has been purchased by E.C.H.O., will remain its own. In the event of subsequent dissolution of E.C.H.O., such property will be donated to the City of Echo and surrounding communities, after all financial obligations are met.
- 14.3 All property personally and/or individually owned by the trained and certified teachers or staff employed by E.C.H.O. shall be exempt from

distribution of property and shall remain the property of the individual teachers and staff. Such property includes, but is not limited to, albums, curriculum manuals, and personal mementos and other materials or apparatus which have been personally developed by teachers or staff.

14.4 E.C.H.O. shall comply fully with Minnesota Chapter 317A in the event of dissolution.

15. General Authority and Immunity. E.C.H.O. may not levy taxes or issue bonds. It shall have the right to sue or be sued. The State Board of Education, members of the State Board, members of the Board of ISD 2190 in their official capacity, and employees of ISD 2190 are immune from civil or criminal liability with respect to all activities related to the operation of the Public School. E.C.H.O. shall assume full liability for its activities and shall indemnify and hold harmless ISD 2190 from any suits, claims or liability arising from E.C.H.O. activities under this agreement.

16. Non-renewal and Termination of Contract. ISD 2190, subject to State Board approval, may or may not renew agreement at the end of the term for any ground listed hereafter in this paragraph. In addition:

16.1 At least 60 days before not renewing or terminating this Agreement, ISD 2190, shall notify the E.C.H.O. board of directors of the proposed action in writing. The notice shall state the grounds for the proposed action in reasonable detail and that the E.C.H.O. board of directors may request in writing an informal hearing before ISD 2190 within 14 days of receiving notice of non-renewal or termination of the contract.

16.2 Failure by the E.C.H.O. board of directors to make a written request for a hearing within the 14-day period shall be treated as acquiescence to the proposed action.

16.3 Upon receiving a timely written request for a hearing, ISD 2190 shall give reasonable notice to the E.C.H.O. board of directors of the hearing date. ISD 2190 shall then conduct an informal hearing at a mutually agreeable time before taking final action. The decision of ISD 2190 may be appealed to the State Board.

16.4 The contract will automatically renew for additional three-year periods unless ISD 2190 takes final action to not renew the contract by the last day of classes in the last school year of any contract period.

16.5 ISD 2190 or the State Board may not renew or unilaterally terminate a contract during the term of this Agreement for any of the following grounds:

16.5.1 failure to meet the requirements for pupil performance contained in the contract;

16.5.2 failure to meet generally accepted standards of fiscal management;

16.5.3 for violations of law; or

16.5.4 other good cause shown

16.6 If this contract is terminated or not renewed, E.C.H.O. may pursue the services of another authorizer or dissolve according to the applicable provisions of Minnesota Chapter 317A.

17. Program Operation and Affiliation. E.C.H.O. is nonsectarian in its programs, admission policies, employment practices, and all other operations. E.C.H.O. is not affiliated with a non-public sectarian or religious institution. E.C.H.O. is not to be opened or used as a method or providing education or generating revenue for students who are being home schooled.

18. Pupils with a Disability. E.C.H.O. will comply with Minnesota Statute 125A.02 and 125A.03 and rules relating to the education of pupils with a disability as if it were a school district.

19. Reports. E.C.H.O. will report at least annually to ISD 2190 and the State Board of Education the information required by the State Board or ISD 2190. The reports are public data under Minnesota Statutes, Chapter 13.

20. Authorizer Fee. For 2011-2012 school year ISD 2190 will assess a fee equal to .01 of the basic formula allowance (\$5,124) times the total number of pupil units.

21. Waiver. No waiver by either party or any breach of any covenant or provision of this contract shall be deemed to be a waiver of any succeeding breach of the same or any other covenant or provision.

22. Disclaimer. This contract is not intended to be, nor shall it be interpreted in such manner as, an employment contract, subcontracting agreement, or assignment or normal curricular, co-curricular, or extra-curricular duties by and between any party to or person referred to therein.

Executed this 13th day of June, 2011.

**EVERY CHILD HAS OPPORTUNITIES
CHARTER SCHOOL, INC.**
a Minnesota non-profit Corporation

**YELLOW MEDICINE EAST
INDEPENDENT SCHOOL DISTRICT**
NO. 2190

Larry Schueler, Lead Teacher

Grant Velde, Chairperson

Date

Date

Brandon Raymo

720 17th St.

Granite Falls, MN 56241

320-722-0000

June 6, 2011

To Whom It May Concern:

I would like to inform the Yellow Medicine East School District that I wish to resign from my position as social studies teacher and junior high baseball coach effective board approval. I have accepted the assistant director position at MRVED in Montevideo.

I would also like to publically thank ISD 2190 for providing me the opportunity to grow professionally over the past four years. I have enjoyed my time at Yellow Medicine East and will take with me many memories and experiences.

If I can be of any help during the transition, please let me know.

Sincerely,

A handwritten signature in black ink, appearing to read 'Brandon J. Raymo', with a stylized flourish at the end.

Brandon J. Raymo

Member _____ introduced the following resolution and moved its adoption:

RESOLUTION PLACING VALERIE SKJEFTE ON UNREQUESTED LEAVE OF ABSENCE

WHEREAS, the School Board of Independent School District No. 2190 adopted a resolution proposing the placement of Valerie Skjefte on unrequested leave of absence on May 9, 2011, on the grounds of financial limitations; and

WHEREAS, said written notice of the proposed placement on unrequested leave was received by Valerie Skjefte, by personal service, on May 17, 2011 and

WHEREAS, said written notice of the proposed placement on unrequested leave contained a statement setting forth the reasons for the proposed placement as well as a statement that she was entitled to a hearing before the School Board provided she make a request in writing within fourteen days of receipt of said notice, and that if no hearing was requested within said fourteen day period it constituted acquiescence by Valerie Skjefte to the School Board's proposed action, and

WHEREAS, no written request of any kind was received by the School Board or Superintendent of Schools from Valerie Skjefte for a hearing as of June 13, 2011, and

WHEREAS, said failure to make written request for a hearing within fourteen days after receipt of notice of proposed placement on unrequested leave constitutes acquiescence by Valerie Skjefte to her placement on unrequested leave.

BE IT HEREBY RESOLVED, by the School Board of Independent School District No. 2190 that Valerie Skjefte be and hereby is placed on unrequested leave of absence as a teacher of Independent School District No. 2190 on the grounds of financial limitations effective at the end of the 2010-2011 school year on June 30, 2011 pursuant to Minnesota Statutes, Section 122A.40, Subdivision 10 and Article X, section 3 of the current Master Agreement between the School District and the exclusive representative, without pay or fringe benefits.

BE IT FURTHER RESOLVED that said placement on unrequested leave of absence is not the result of the implementation of an education district agreement.

BE IT FURTHER RESOLVED, that a notice of placement on unrequested leave, together with a copy of this resolution be forwarded to said teacher by certified mail or personal service and that an affidavit of same be placed in her file, together with a copy of the notice and resolution.

The motion for the adoption of the foregoing resolution was duly seconded by Member _____, and upon vote being taken thereon, the following voted in favor thereof: _____

and the following voted against the same: _____

whereupon said resolution was declared duly passed and adopted.

Upcoming Events and Activities

Event	Date	Location	Time
YME Auction	June 17, 2011	Clarkfield Site	9:00 AM
Board Meeting	July 11, 2011	Granite Falls City Hall	7:00 PM