

**YELLOW MEDICINE EAST ISD 2190
SPECIAL BOARD MEETING
JUNE 26, 2007 @ 7:00 PM
LOCATION: YME HIGH SCHOOL BOARD ROOM**

AGENDA

1. **Call to Order** 3
2. **Approval of Agenda**
3. **Approval of June 11, 2007 Meeting Minutes** 8
4. **Opportunity for Citizens to Speak**
5. **Reports**
 - A. **Special Reports**
 1. **Knutson Construction Facility Study Report**
Presenter: Geoff Glueckstein
 2. **2007-2008 Budget Report**
Presenter: Dwayne Strand and LeeAnn Boushek
 3. **Summary Highlights of the 2007 Omnibus E-12 Bill** 11
Presenter: Dwayne Strand
 - B. **Financial Reports**
 1. **Approval of Bills** 51
 2. **Fund Balance Report**
 3. **Food Service Reports** 56
 - C. **Principal and Curriculum/Staff Development Reports**
 - D. **Board/Committee Reports**
 1. **Negotiations Committee** 58
6. **Policy Updates**
7. **Personnel Items**
 - A. **H.A. Hagg Head Cook - K. Staab**
 - B. **Paraprofessional Resignation - K. Koetter**
 - C. **Contract Approval - T. Knapper** 59
 - D. **Custodial Reassignment - R. Pooler**
 - E. **Contract Extension - C. Schommer**
8. **Action Items**
 - A. **Adopt 2007-2008 High School Handbook**
 - B. **Adopt 2007-2008 Elementary Handbook** 60
 - C. **Adopt 2007-2008 Budget**
 - D. **Designation of Board Meeting Dates for 2007-2008** 61
 - E. **Resolution to Hold Meetings on Columbus Day** 62

- F. Leased Space - Musser Environmental
- G. Summer 2008 Drivers Training Fee

9. **Consent Items**

- A. Advertise for Bids - Milk and Bread Products
- B. Designate School Depositories
- C. Authorize Financial Procedures and Personnel
- D. Designate Official School Newspaper
- E. Designate Legal Council
- F. Authorize Facsimilie Use for Board Signatures
- G. MSBA Membership for 2007-2008
- H. MRVED Membership for 2007-2008
- I. Authorization to Pay June/July Bills
- J. Contracts with MVCC for Purchase of Services
- K. Set Truth in Taxation Hearing Dates 63
- L. Attachment 99 - Health & Safety 64
- M. Dissolution of Cooperative Sponsorship of Baseball w/
E.C.H.O. Charter School
- N. Dissolution of Cooperative Sponsorship of Track w/ E.C.H.O.
Charter School
- O. ESEA LEA Appointment

10. **Discussion Items**

- A. MSBA Summer Seminar - August 16-17, 2007
- B. MSBA Board Retreat
- C. State Auditors Report
- D. Property and Liability Insurance Renewal Rate
- E. EM-YME Negotiations

11. **Correspondence**

- A. Election Polling Sites in Schools 73

12. **Upcoming Events & Activities**

13. **Adjourn**

YELLOW MEDICINE EAST PUBLIC SCHOOLS

Independent School District 2190

To: Members of the School Board
From: Dwayne Strand
Date: June 21, 2007
RE: Agenda Details

Here are the agenda notes for the June 26th special Board meeting. Please notify Denise if you are unable to attend. It is important that she be notified if you are not attending as we came very close to not having a quorum at the June 11 meeting.

Please note that the bills will not be available until after 4:00 pm on Monday, June 25.

A negotiations meeting has been scheduled for Monday, June 25th at 8:00 pm in the Board room. Board members Formo, Jepson and Volstad serve on this committee along with Cindy Loe and LeeAnn Boushek.

Item Description

4.0 Opportunity for Citizens to Speak

At this time, no one has asked to address the Board.

5.A.1. Knutson Construction Facility Study Report

Geoff Glueckstein will be in attendance to present the final Facility Study Report that has been completed by Bob Nold.

5.A.2. 2006-2007 Budget Report – L. Boushek

LeeAnn and I continue to work on the 2007-2008 budget. On Tuesday evening, we will walk you through the anticipated revenues and expenditures. Later in the agenda, you will be asked to adopt the 2007-2008 budget.

5.A.3. Summary Highlights of the 2007 Omnibus E-12 Bill

Attached is a summary of the highlights of the E-12 Omnibus E-12 Bill. I will take a quick walk through the document on Tuesday evening.

5.C. Principals' Reports

It is expected that Ms. Hinz and Ms. Norell will be in attendance to report on their respective programs.

5.D.1. Negotiations Committee Report

As noted above, the negotiations committee will meet on Monday evening. A copy of the minutes from that meeting will be shared with you on Tuesday evening. Board members Formo, Jepson and Volstad will be able to provide further updates at the meeting.

7.A. H.A. Hagg Head Cook –K. Staab

With the resignation of Sue Toft, Supervisor Ditterich is recommending the employment of Kari Staab as head cook for the 2007-2008 school year. She will be employed for 5.5 hours per day. Her schedule may be adjusted based on the final enrollment numbers when school opens on September 4th. Ms. Staab has previously served as assistant cook at that site. *Recommend approval of the employment of Kari Staab as head cook at the H. A. Hagg site for the 2007-2008 school year.*

YELLOW MEDICINE EAST PUBLIC SCHOOLS

Independent School District 2190

- 7.B. Paraprofessional Resignation – K. Koetter**
Kathy Koetter has submitted her letter of resignation from her paraprofessional position at H. A. Hagg. *Recommend approval of the resignation of Kathy Koetter from her H. A. Hagg paraprofessional position.*
- 7.C. Contract Approval – T. Knapper**
The Board Negotiations Committee reviewed the attached contract for Tim Knapper. At this time, we will entertain any additional questions you may have regarding the agreement. *Recommend approval of the 2007-2008 contract with Tim Knapper.*
- 7.D. Custodial Reassignment – R. Pooler**
Our original intent was to reduce the custodial staff by a .5 FTE with the student enrollment at H.A. Hagg. However, after discussing the custodial needs of the District, we are recommending that Ron Pooler be moved the Granite site for a full time position for the 07-08 school year. The spreadsheet depicts our custodial reductions over the last 10 years. At the same time, we have increased the amount of space we use on a daily basis. *Recommend a contract extension for Ron Pooler from a .5 FTE to a 1.0 FTE for the 2007-2008 school year.*
- 7.E. Contract Extension – C. Schommer**
We are adding a section of Dakota Language for the 07-08 school year. This will be a Dakota II class. Carrie Schommer has agreed to take on this additional responsibility. The additional period will be funded by the Upper Sioux Community. *Recommend the contract extension for Carrie Schommer from a .167 FTE to a .333 FTE for the 2007-2008 school year.*
- 8.A. Adopt 2007-2008 High School Handbook**
Ms. Norell will review the high school handbook changes with you on Tuesday night. Following any questions, you will need to approve the handbook. *Recommend approval of the 2007-2008 high school handbook.*
- 8.B. Adopt 2007-2008 Elementary Handbook**
Ms. Hinz will review the elementary handbook changes with you on Tuesday night. Following any questions you will need to approve the handbook. *Recommend approval of the 2007-2008 elementary student handbook.*
- 8.C. Adopt 2007-2008 Budget**
A copy of the 2006-2007 budget will be distributed and reviewed by Finance Manager Boushek on Tuesday evening. Following a review and discussion of the information, you will need to adopt the budget. During the course of the year, you will have an opportunity to adjust the budget as needed. *Recommend adoption of the budget for the 2007-2008 school year.*
- 8.D. Designation of Board Meeting Dates for 2007-2008**
Dates for the regular Board meetings held each month will be according to the schedule enclosed in the exhibits. Generally, this is the second Monday of the month at 7:00 p.m. in YME Board Room. The motion would also reserve the fourth Tuesday of each month at 7:00 p.m. in the event a second meeting needs to be called. Later in the agenda there is a resolution to hold our October Board meeting on Columbus Day. *Recommend approval of meeting dates as noted on exhibit with any necessary changes noted following your discussion.*
- 8.E. Resolution to Hold Meetings on Columbus Day**
In order for the Board or other school groups to meet on Monday, October 8, 2007 (Columbus Day) you will need to approve a resolution authorizing meetings on that holiday. *Recommend resolving to meet on Columbus Day, Monday, October 8, 2007.*
- 8.F. Leased Space – Musser Environmental**
Steve Musser from Musser Environmental is interested in leasing space in the old parochial building at the Clarkfield site to house testing equipment and other company supplies. *Recommend*

YELLOW MEDICINE EAST PUBLIC SCHOOLS

Independent School District 2190

approval of the Superintendent negotiating a three-year lease agreement of the parochial building at the Clarkfield site with Musser Environmental beginning with the 2007-2008 school year.

8.G. Summer 2008 Driver's Training Fee

Expenditures are expected to exceed revenues for the 07-08 school year without an increase in fees. The current driver's education fee is \$250.00. It has been at this amount for the last few years. In an effort to break even with the program, it is recommend that the driver's education fee be set at \$300.00 for the summer of 2008. *Recommend approval of a fee increase for the summer of 2008 driver's education program from \$250.00 to \$300.00 per participant.*

9.A. Advertise for Bids – Milk and Bread Products

Annually, you need to call for bids for milk and bread products for the upcoming school year. *Recommend advertising for milk and bread bids for the 2007-2008 school year.*

9.B. Designate School Depositories

Again, at the beginning of each school year, you need to resolve to designate official school depositories for the 2008 fiscal year in accordance with Policy #3210 as follows: F & M Bank of Clarkfield for payroll and Clarkfield site activities; Granite Falls Bank of Granite Falls for Board account, student programs, administrative account and Granite Falls site activities; and Minnesota School District Liquid Asset Funds for receiving state aid and levy revenues. The motion also authorizes the Granite Falls Bank to provide electronic fund transfers to allow for payroll direct deposit services. *Recommend approval of a resolution to designate school depositories as noted above.*

9.C. Authorize Financial Procedures and Personnel

On an annual basis you, again, need to resolve to authorize LeeAnn Boushek, Finance Officer, and/or Terri Peterson, Assistant Finance Officer, to complete and authorize electronic fund transfers as necessary to pay Board bills and payroll and to complete investments for the District in secured accounts to yield the greatest amount of interest return for the 2007-2008 school year. *Recommend approval of authorization of LeeAnn Boushek, Finance Officer, and/or Terri Peterson, Assistant Finance Officer, to complete and authorize electronic fund transfers as necessary to pay Board bills and payroll and to complete investments for the District in secured accounts to yield the greatest amount of interest return for the 2007-2008 school year.*

9.D. Designate Official School Newspaper

Another annual resolution is to designate the Advocate-Tribune as the official school newspaper for the 2007-2008 school year. *Recommend designation of Advocate-Tribune as official newspaper for the 2007-2008 school year.*

9.E. Designate Legal Council

Likewise, you will need to resolve to designate the Ratwik, Roszak & Maloney, P.A. law firm, Kevin Rupp; Holmstrom and Kvam of Granite Falls; and Gilbertson of Clarkfield as legal counsel; and to authorize the Superintendent and Board Chairperson to contact counsel as needed in 2007-2008. *Recommend approval of legal counsel of Ratwik, Roszak & Maloney, P.A. law firm, Kevin Rupp, attorney and Holmstrom and Kvam of Granite Falls; and Gilbertson of Clarkfield as legal counsel for the 2007-2008 school year.*

9.F. Authorize Facsimile Use for Board Signatures

A yearly resolution to authorize facsimile use of Board signatures for Board bills and payroll checks is needed. *Recommend approval of a resolution authorizing facsimile use of board signatures.*

YELLOW MEDICINE EAST PUBLIC SCHOOLS

Independent School District 2190

9.G MSBA Membership for 2007-2008

Authorization to renew membership in the Minnesota School Boards Association for the 2007-2008 school year is also needed at this time. Total cost of membership is approximately \$3,500.00. *Recommend renewal of MSBA membership for the 2007-2008 school year.*

9.H. MRVED Membership for 2007-2008

Annually as a Board, you authorize the renewal of our membership in the Minnesota River Valley Education District for the coming school year. *Recommend approval of the MRVED membership renewal for the 2007-2008 school year.*

9.I. Authorization to Pay June/July Bills

Should we not have a July meeting, you will need your approval to pay bills as necessary to close out the 07 fiscal year and July bills that need to be paid on a timely basis. A copy of the bills paid would be presented to you at the August meeting. *Recommend giving approval to the District office to pay bills as necessary to close out the 2007 fiscal year and July bills that need to be paid on a timely basis.*

9.J. Contracts with MVCC for the Purchase of Services

As is done on an annual basis, the Minnesota Valley Cooperative Center wishes to contract with YME for bookkeeping, payroll, and secretarial services; technology coordination and training services; and staff development coordination and training services for the 2007-2008 school year. *Recommend approval of the MVCC bookkeeping, payroll, and secretarial services; technology coordination and training services; and staff development coordination and training contracts for purchase of services from YME.*

9.K. Set Truth in Taxation Hearing Dates

December 10 will be designated as the date for the Truth in Taxation hearing and December 17 will be designated as the date for a continuation hearing, if needed. *Recommend approval of December 10, 2007 and December 17, 2007 for the 2007-2008 Truth in Taxation hearings.*

9.L. Attachment 99 – Health and Safety

The Minnesota Department of Education requires, in order for Health and Safety funds to be released, the Board review progress on identified issues. The Attachment 99, which is attached, documents District action in these areas. *Recommend approved of the Attachment 99 for 2007-2008.*

9.M. Dissolution of Cooperative Sponsorship of Baseball w/ E.C.H.O. Charter School

Due to the lack of participants, the E.C.H.O. Charter School is requesting that we dissolve our cooperative sponsorship for baseball. *Recommend approving the dissolution of cooperative sponsorship with the E.C.H.O. Charter School for baseball for the 2007-2008 school year.*

9.N. Dissolution of Cooperative Sponsorship of Track w/ E.C.H.O. Charter School

Due to the lack of participants, the E.C.H.O. Charter School is requesting that we dissolve our cooperative sponsorship for track. *Recommend approving the dissolution of cooperative sponsorship with the E.C.H.O. Charter School for track for the 2007-2008 school year.*

9.O. ESEA LEA Appointment

As a Board, you need to authorize me to act as the LEA (Local Education Association) Representative in filing the ESEA (Title I) application for funds as provided under Public Law 107-110 for the 2007-2008 school year. The LEA Representative is to ensure that the School District maintains compliance with the appropriate Federal statues, regulations and state procedures currently in effect and will act as the responsible authority in all matters relating to the administration of this application. *Recommend approval of the appointment of the Superintendent as the LEA Representative for the 2007-2008 school year.*

YELLOW MEDICINE EAST PUBLIC SCHOOLS

Independent School District 2190

10.A. MSBA Summer Seminar – August 16-17, 2007

The MSBA Summer Seminar is scheduled to be held in Bloomington on August 16th and 17th. Specific information about the seminar is available on the MSBA website at www.mnmsba.org. If you are interested in attending, please notify Denise and she will submit your registration and reservation information.

10.B. MSBA Board Retreat

MSBA is offering their services to customize a Board retreat. Possible topics to address could include a board self-evaluation and a goal setting session. They will customize the retreat to meet our needs. There is no charge to do a self-evaluation and the cost of a customized retreat would cost \$600, plus expenses. Available dates in July are the 10, 16, 19, 23, 26, 30 and 31.

10.C. State Auditors Report

Board member Jepson has asked that this item be placed on the agenda for Tuesday night.

10.D. Property and Liability Insurance Renewal Rate

I am meeting with Gayle Bofferding from Brown and Brown on Friday to review our renewal rate for our property and liability insurance. She indicated that we will see a drop in premium of about \$3500.00 even though our coverage of technology equipment increased by about \$200,000.00. I can update you with additional information on Tuesday evening.

10.E. EMYME Negotiations

At this time, the meeting should be closed. The committee will review the EMYME proposal and solicit your input for future negotiations sessions.

**YELLOW MEDICINE EAST ISD #2190
BOARD OF EDUCATION MEETING MINUTES
JUNE 11, 2007 – 7:00 P.M.
BOARD ROOM – YELLOW MEDICINE EAST HIGH SCHOOL**

Board Members Present: Kathy Busack, Chad Fischer, Rich Jepson, Elmo Volstad

Board Members Absent: Cheryl Eckhardt, Warren Formo, Art Rillo

Community / Staff Members Present: Helen Blue-Redner, LeeAnn Boushek, Ron Dessonville, Jordan Hinz, Stacy Hinz, Karen Jacobson, Tim Knapper, Perry Oftedahl, Denise Streich, Dwayne Strand

Chairman Volstad called the meeting to order.

Chairman Volstad approved the agenda for the meeting, as submitted.

Motion by Jepson, second by Busack and carried to approve the minutes from the May 14, 2007 meeting.

The opportunity for citizens to speak received no response.

Mr. Dessonville gave an update on the 2006-2007 agricultural program. His slide show included a description of the courses and information on the FFA program.

Karen Jacobson & Helen Blue-Redner reported on the results of our parent focus groups and the ethnicity survey that was completed this spring by the 5th -11th grade students.

Mr. Knapper was in attendance to update the Board on the spring activities.

Motion by Jepson, second by Busack and carried to approve May bills for payment in the amount of \$733,327.66, with checks numbered 12076 through 12262 and to approve investments for the District.

Fund balance, enrollment and food service reports were submitted for review.

Ms. Hinz reported on the new math programs that will be implemented next year at the elementary level as well as other ongoing initiatives.

Mr. Strand outlined the systems accountability report.

The Negotiations Committee met on June 4th with representatives of the EM-YME negotiations committee. The minutes of the meeting were submitted for review.

Motion by Busack, second by Jepson and carried to employ Jacob Suter as a 1.0 FTE high school science teacher for the 2007-2008 school year.

Motion by Busack, second by Jepson and carried to employ Brandon Raymo as a 1.0 FTE high school social studies teacher for the 2007-2008 school year.

Motion by Busack, second by Jepson and carried to employ Elaine Stoerzinger as a 1.0 FTE high school social studies teacher for the 2007-2008 school year.

Motion by Busack, second by Jepson and carried to employ Heather Anderson as a 1.0 FTE high school English teacher for the 2007-2008 school year.

Motion by Busack, second by Jepson and carried to employ Nikki Royal as a 1.0 FTE high school English teacher for the 2007-2008 school year.

Motion by Busack, second by Jepson and carried to reinstate Trevor Schulte as a 1.0 FTE high school English teacher for the 2007-2008 school year.

Motion by Busack, second by Jepson and carried to employ Joy Kauffman as a .833 FTE high school French instructor for the 2007-2008 school year.

Motion by Busack, second by Jepson and carried to increase the contract of Mary Grey from 0.667 FTE to 1.0 FTE physical education instructor for the 2007-2008 school year.

Motion by Busack, second by Jepson and carried to reinstate Jean Anderson as a 0.667 FTE physical education instructor for the 2007-2008 school year.

Motion by Busack, second by Jepson and carried to employ Melissa Larson as a 1.0 FTE ESL instructor for the 2007-2008 school year.

Motion by Busack, second by Jepson and carried to employ Beth Kesteloot as a 1.0 FTE K-1 instructor at Bert Raney Elementary for the 2007-2008 school year.

Motion by Busack, second by Jepson and carried to employ Rachel McDougall as a 1.0 FTE K-1 instructor at Bert Raney Elementary for the 2007-2008 school year.

Motion by Busack, second by Jepson and carried to employ Darcy Josephson as the Staff Development and Curriculum Coordinator for the 2007-2008 school year.

Motion by Busack, second by Jepson and carried to accept the resignation of Lori Olson, paraprofessional.

Motion by Busack, second by Jepson and carried to accept the resignation of Gail Smolley, paraprofessional.

Motion by Busack, second by Jepson and carried to employ Jenna Luepke for lawn mowing services for the summer months at a rate of \$8.00 per hour.

Motion by Busack, second by Jepson and carried to accept the resignation of Sue Toft, head cook at H.A. Hagg.

Motion by Busack, second by Jepson and carried to terminate the contract of Sarah Bartels, H.A. Hagg Project Resect coordinator.

Motion by Busack, second by Jepson and carried to terminate the paraprofessional position held by Lori Knutson at the close of the 2006-2007 school year.

Motion by Busack, second by Jepson and carried to accept the resignation of Lanny Boelter, effective immediately.

Motion by Busack, second by Jepson and carried to approve the personnel letter of approval for Tim Knapper as community education director for the 2007-2008 school year.

Motion by Busack, second by Jepson and carried to employ Dave McCormick as a 1.0 FTE instrumental music instructor for the 2007-2008 school year.

Motion by Busack, second by Fischer and carried to adopt the 2006-2007 annual report on curriculum, instruction and student achievement.

Motion by Busack, second by Fischer and carried to schedule a special board meeting on Tuesday, June 26, 2007 at 7:00 pm in the YME Board Room.

Motion by Jepson, second by Busack and carried to accept the workers compensation insurance quote submitted by Continental Western for \$45,396 for the 2007-2008 school year.

Motion by Jepson, second by Busack and carried to implement the RevTrak electronic payment program for the 2007-2008 school year.

Motion by Jepson, second by Fisher and carried to approve the lease agreement with the Lease Finance Group for computer equipment, software and related peripheral for \$49,777.88 with annual payments of \$11,549.51 for 5 years.

Motion by Busack, second by Fischer and carried to renew our membership with MREA for the 2007-2008 school year.

Discussion items included the language translator on the YME web-site, board meeting location, special education programming for 2007-2008, and EM-YME negotiations.

The meeting was adjourned by Chairman Volstad.



**Summary of 2007 Omnibus E-12 Education Act
Chapter 146**

*******DRAFT - June 6, 2007*******

Chapter 146 was signed into law May 30, 2007.

Prepared by the MN Department of Education Office of Government Relations (651) 582-8666 and Division of Program Finance (651) 582-8828. Note: Portions of this summary are taken from the House Research Summary of H.F. 2245, prepared by House and Senate education staff on 5/23/07.

Overview of Fiscal Impact

State Aid Appropriations and Property Tax Levies

Total state aid appropriations for E-12 education are increased by \$789 million for the fiscal year 2008 – 2009 biennium, and there is no net change in total school district property tax levies for taxes payable in FY 2009 (taxes payable in 2008). Of the total biennial aid increase, \$665 million is ongoing, and \$124 million is one-time. The impact of the Act on ongoing state spending in the FY 2010–11 biennium is \$829 million. The appropriations reflect the state’s 90% current, 10% final payment schedule. A breakdown of the increases (shown in millions and rounded to the nearest \$100,000), is shown in the table below:

	Program	FY 08 Appropriation	FY 09 Appropriation	Biennial Subtotal Aid	Pay 08 Levy	Biennial Total Approp. + Levy
1	General Education:					
2	Basic Formula Increase @ 2% & 1% -- \$5,074 & \$5,124 (\$100 increase FY 08 and additional \$50 FY 09)	\$ 93.5	\$ 150.1	243.6	\$ -	\$ 243.6
3	Increase Kindergarten Weight from .557 to .612	15.4	17.1	32.5	-	32.5
4	Gifted & Talented – from \$9 to \$12 / PU	2.6	2.8	5.4	-	5.4
5	Equity -- districts over 95 th percentile @ \$46	0.1	0.1	0.2	1.1	1.3
6	Open Enrollment Referendum Aid	1.0	1.1	2.1	-	2.1
7	Increase in misc. aids and referendum levy due to formula increase & K wgt chg	0.7	1.2	1.9	1.2	3.1
8	Safe Schools Levy from \$27 to \$30/PU + \$10 for Intermediate members				5.5	5.5
9	Other General education	1.3	1.3	2.6	0.8	3.4
10	General Education Total	114.6	173.7	288.3	8.6	296.9
11						
12	Education Excellence:					

13	AP / IB /College in Schools	6.5	6.5	13.0		13.0
14	Statewide Testing	5.0	5.0	10.0		10.0
15	Math & Science Teacher Academies	1.5	1.5	3.0		3.0
16	STEM Grants	1.5	1.5	3.0		3.0
17	MN Reading Corps	1.5	1.5	3.0		3.0
18	Early Reading Intervention	0.5	0.5	1.0		1.0
19	Other Education Excellence	0.2	0.4	0.6		1.5
20	Education Excellence Total	16.7	16.9	33.6		33.6
21						
22	Special Education:					
23	Special Education-regular increase	140.2	178.3	318.5		318.5
24	Excess Cost Formula Increase	3.5	5.3	8.8		8.8
25	Transition Disabled Increase	0.2	0.7	0.9		0.9
26	Roll In Part C Expansion \$ & Task Force	0.5	0.8	1.3		1.3
27	Special Education Total	144.4	185.1	329.5	-	329.5
28						
29	Facilities & Technology:					
30	Telecommunications Access	3.9	5.0	8.9		8.9
31	One-Time Technology & Operating Capital @ \$40/PY FY 08, \$55 / PU FY 09	38.1	52.7	90.8		90.8
32	Eden Valley Mercury Cleanup	0.1		0.1		0.1
33	Facilities & Technology total	42.1	57.7	99.8		99.8
34						
35	Nutrition Programs: School Lunch from 10.5 to 12 cents	1.5	1.5	3.0		3.0
36						-
37	Libraries :	1.9	6.1	8.0		8.0
38						-
39	Subtotal, K-12 Education Aids & Levies	326.2	441.4	767.6	8.6	776.2
40						
41	Early Childhood & Family Education:					
42	ECFE from \$112 to 120 FY 08 & later	2.6	3.0	5.6		5.6
43	ECFE One-time Levy Reduction		7.7	7.7	(8.6)	(0.9)
44	Head Start	1.0	1.0	2.0		2.0
45	School Readiness	0.9	1.0	1.9		1.9
46	Part C Expansion moved to Special Ed	(0.4)	(1.1)	(1.5)		(1.5)
47	Adult Basic Ed increase	1.7	1.9	3.6		3.6
48	After School Community Learning Grants	2.8	2.6	5.4		5.4
49	Early Childhood & Family Education total	8.6	16.1	24.7	(8.6)	16.1
50						-
51	State agency budgets total	0.5	1.2	1.7		1.7
52						-
53	Grand Total Increase	330.3	458.3	788.6	-	788.6
54						
55	Base Budget	6,520.2	6,475.7	12,996.0	1,985.1	14,981.1
56	Enacted Total Budget	6,850.7	6,933.8	13,784.5	1,985.1	15,769.6
57	Percent Increase Over Base (Cost to State)	5.1%	7.1%	6.1%	0.0%	5.3%

School District General Fund Revenues

The table below summarizes the changes in state total school district (including charter school) general fund state aid plus levy revenues from FY 2001 – FY 2009. The projected average increases in general fund state aid and levy per pupil are 6.7% for FY 2008 and 2.8% for FY 2009. The amounts shown include operating referendum revenues; for FY 2009, this includes an estimate of successful November 2007 referendum elections. When operating referendum revenues are excluded, the projected increases are 6.7% for FY 2008 and 1.7% for FY 2009.

Fiscal Year	Education Aids (\$ in millions)	Tax Credits (\$ in millions)	Net Levy (\$ in millions)	Total Revenue (\$ in millions)	Unweighted ADM	Revenue Per ADM	Annual Percent Increase
2001	4,132.7	474.7	1,340.3	5,947.7	842,764	7,057	6.1%
2002	4,202.2	483.1	1,397.7	6,083.0	839,424	7,247	2.7%
2003	5,955.8	29.4	466.7	6,451.9	836,579	7,712	6.4%
2004	5,919.4	26.9	607.7	6,554.0	829,832	7,898	2.4%
2005	5,888.6	25.4	689.2	6,603.2	825,843	7,996	1.2%
2006	6,121.8	23.9	730.6	6,876.3	826,542	8,319	4.0%
2007	6,311.9	25.1	923.9	7,260.9	825,679	8,794	5.7%
2008	6,675.3	24.1	1,036.9	7,736.3	824,449	9,384	6.7%
2009	6,720.8	23.3	1,202.9	7,947.0	823,533	9,650	2.8%

Article 1 – General Education Revenue

General Education Revenue	
Bob Porter 582-8851 or Terri Yetter 582-8868	<p>Formula Allowance (Section 6). Increases the basic formula allowance by 2% (\$100) to \$5,074 per pupil unit for fiscal year 2008, and an additional 1% (\$50) to \$5,124 per pupil unit for fiscal year 2009 and later.</p> <p>No changes were made in the linkage of other formulas to the general education formula: compensatory, operating sparsity, transportation sparsity, PSEO, shared time, contract alternative, nonpublic pupil, and tribal contract aids all continue to be calculated using the current formula allowance, and thereby receive a 2% increase in FY 2008 and a 1% increase in FY 2009. Extended time revenue, which is not linked to the formula, does not receive an inflationary increase, and continues to be calculated using a formula allowance of \$4,601.</p> <p>Kindergarten Pupil Unit Weight (Section 5). Beginning in FY 2008, the kindergarten pupil unit weight is increased from .557 to .612. The increase of .055 in the weight is about 10% of what would be required to weight kindergarten students at the same level as students in grade 1. The additional revenue generated by the pupil unit weight increase is unrestricted general fund revenue, which may be used for any general education purpose, including partial funding for full-day kindergarten programs.</p> <p>Gifted and Talented Revenue (Section 7). Beginning in FY 2008, increases gifted and talented revenue from \$9 to \$12 times a district's adjusted marginal</p>

<p>Bob Porter 582-8851</p> <p>or</p> <p>Terri Yetter 582-8868</p>	<p>cost pupil units (AMCPU). Article 2, Section 8 also includes a provision requiring school districts to adopt procedures for the academic acceleration of gifted and talented students.</p> <p>Alternative Teacher Compensation (Q Comp) Revenue (Section 9). No changes to funding allocations for FY 2008-09. Beginning in FY 2010, reduces the basic Q Comp aid from 73.1% to 65% of the total Q Comp revenue (from \$190 per pupil to \$169 per pupil). Since the total Q comp revenue remains \$260 per pupil, the equalized levy portion of the revenue increases from \$70 to \$91 per pupil. Q comp continues to be a component of general education revenue.</p> <p>Equity Revenue (Section 8). Beginning in FY 2008, increases the equity revenue for districts with referendum allowances at or above the 95th percentile from \$23 to \$46 per pupil unit, consistent with the amount that other districts receive per pupil unit from this component of equity revenue.</p> <p>Alternative Attendance Adjustment (Section 16). Beginning in FY 2008, provides an additional alternative attendance adjustment to districts where the net open enrollment pupil units exceed 20% of the district's resident pupil units, and 50% or fewer of open enrolled students are enrolled solely in on-line learning. For qualifying districts, the additional aid equals the first tier referendum equalization limit (currently \$700) times the district's net open enrollment pupil units times the lesser of 1 or the difference between (a) the ratio of the district's net open enrollment pupil units to the district's resident pupil units and (b) .2. Under this formula, a district's additional aid per pupil unit gradually increases as the ratio of the district's net open enrollment pupil units to the district's resident pupil units increases from .2 to 1.2, and then levels off at \$700.</p> <p>County Apportionment Deduction for Wind Energy Tax Receipts (Sections 12 and 20). Beginning in FY 2009, includes school district receipts from the wind energy production tax in the county apportionment deduction from general education aid. Requires the county auditor to report the amount distributed to each school district on each settlement.</p> <p>Uses of General Education Revenue (Section 10). Clarifies that a district may spend general education revenue for kindergarten and prekindergarten programs. Since prekindergarten expenditures are accounted for in the community service fund, school districts electing to spend general education revenue for prekindergarten programs must transfer the amount to be expended for this purpose to the community service fund. (See also Article 5, Section 6, for changes in use of compensatory revenue)</p> <p>Tax Base Replacement Aid (Section 11). Beginning in FY 2008, rolls tax base replacement aid into general education aid, eliminating the need for a separate state appropriation and a separate line on state aid payment reports.</p>
<p>Pat King</p>	<p>Compensatory Revenue Pilot Program (Section 21, Sec. 24, subd. 10).</p>

582-8655	Adds Brooklyn Center to the list of school districts eligible for this program and provides Brooklyn Center a grant of \$75,000 per year. Grants for other participants are continued at the same level as in FY 2007. Requires the Commissioner to review grant applications within 90 days of receipt.
Colleen Leemon 582-8566 (funding) Cindy Shevlin-Woodcock 582-8656 (program)	Safe Schools Levy (Section 14). Beginning with taxes payable in 2008, increases the safe schools levy from \$27 to \$30 per AMCPU, and allows school districts that are members of an intermediate district to levy \$10 per AMCPU, which must be transferred to the intermediate school district. Expands the eligible uses of the safe schools levy to include voluntary opt-in suicide prevention tools, and clarifies that a school district may use safe schools levy revenue to pay costs for licensed school counselors, licensed school nurses, licensed school social workers, licensed school psychologists, and licensed alcohol and chemical dependency counselors to help provide early responses to problems. The amount of the safe schools levy money used for student support services personnel must supplement and not supplant other expenditures made by the school district for this purpose.
Sharon Peck 582-8811	Learning Year Programs (Sections 2, 3, 4). Clarifies that learning year programs may provide instruction on an extended year calendar, and extended school day calendar, or both. Requires area learning centers to serve eligible students enrolled in a district served by the center or a charter school within the geographic boundaries of a district served by the center. Clarifies that a charter school can be a learning year site. Clarifies record-keeping requirements for pupil accounting at learning year sites. Clarifies that continual learning plans must specify learning experiences necessary for grade progression. Requires learning year programs to be approved biennially by the state to provide accelerated instruction that leads to early graduation.
Mike Matlock 582-8379	Special Education Maintenance of Effort – Coops (Section 13). Requires the reduction to general education aid for cooperatives that fail to maintain effort to be apportioned among member school districts based on the individual districts’ shortfall in maintaining effort. If the failure to maintain effort results from expenditures at the cooperative, the reduction must be apportioned among the member districts based on the AMCPU of each district.
John Bulger 582-8781	Election by Petition (Section 19). Requires a petition to mandate a school election to contain the <u>greater of</u> 50 signatures of district voters or 5 percent of the number of voters voting in the most recent school district general election.
Tom Melcher 582-8828	School Finance Reform Task Force (Section 23). Establishes a School Finance Reform Task Force with the following goals: (1) creating a standard and index to ensure that the formula remains adequate over time; (2) simplifying the remaining school formulas; (3) analyzing categorical funding formulas, including but not limited to pupil transportation, compensatory revenue, and limited English proficiency revenue; (4) establishing a schedule for implementation of the other new formulas; and (5) examining the role of the regional delivery structure including the functions performed by intermediate school districts, service cooperatives, education districts, and other cooperative organizations.

	<p>The task force consists of nine members, including the Commissioner of Education, four members of the Senate, and four members of the House. The task force must submit a report to the education committees of the legislature by January 15, 2008, describing the formula recommendations according to the goals it has established.</p> <p>\$75,000 is appropriated to hire an independent contractor to assist the task force. (Appropriation VETOED)</p>
<p>Colleen Leemon 582-8566</p> <p>Terri Yetter 582-8868</p>	<p><u>Other Miscellaneous Changes</u></p> <p>Abatements (Section 17). Updates abatement aid statute by adding a reference to referendum market value, and adding the operating capital, equity, transition, debt service, school age care, deferred maintenance and Q Comp levies to the abatement aid calculations. With these changes, all equalized levies are included in the abatement aid calculations.</p> <p>Excess Tax Increment (Section 18). Updates the calculation of excess tax increment finance adjustments by adding the same levies as are added to the abatement aid calculations under Section 17.</p> <p>Technical corrections (Sections 1, 15, 22, 25). Corrects cross references and deletes an obsolete cross reference. Corrects year reference for onetime energy assistance aid. Provides instructions to Revisor of Statutes for correcting cross references.</p>
<p>Karen Dykoski 582-8766</p>	<p>Appropriations (Section 24).</p> <p>Subd. 2: General Education Aid \$5,604,983,000 for FY 2008 \$5,618,342,000 for FY 2009</p> <p>Subd. 3: Referendum Tax Base Replacement Aid \$870,000 for FY 2008 \$0 for FY 2009</p> <p>Subd. 4: Enrollment Options Transportation \$95,000 for FY 2008 \$97,000 for FY 2009</p> <p>Subd. 5: Abatement Revenue \$1,343,000 for FY 2008 \$1,347,000 for FY 2009</p> <p>Subd. 6: Consolidation Transition \$565,000 for FY 2008 \$212,000 for FY 2009</p> <p>Subd. 7: Nonpublic Pupil Education Aid \$16,290,000 for FY 2008</p>

	<p>\$16,620,000 for FY 2009</p> <p>Subd. 8: Nonpublic Pupil Transportation \$21,551,000 for FY 2008 \$21,392,000 for FY 2009</p> <p>Subd. 9: One Room Schoolhouse (Angle Inlet - Warroad) \$65,000 for FY 2008 \$65,000 for FY 2009</p> <p>Subd. 10: Compensatory Revenue Pilot Project \$2,175,000 for FY 2008 \$2,175,000 for FY 2009</p> <p>Subd. 11: Declining Pupil Aid; Browns Valley \$100,000 for FY 2008 \$100,000 for FY 2009 This is a one-time appropriation.</p> <p>Subd. 12: Education Finance Study (VETOED) \$75,000 for FY 2008</p> <p>Subd. 13: Declining Pupil Aid, Red Lake \$455,000 for FY 2008 \$50,000 for FY 2009</p> <p>Subd. 14: Declining Pupil Aid, McGregor \$100,000 for FY 2008 Any balance in the first year does not cancel but is available in the second.</p> <p>MN House Fiscal Analysis fiscal worksheets for appropriations and tax levies are available online at: http://www.house.leg.state.mn.us/fiscal/files/k1207app.pdf http://www.house.leg.state.mn.us/fiscal/files/k1207lvy.pdf</p>
	<p>Repealer (Section 26). Repeals:</p> <ul style="list-style-type: none"> • M.S. 126D.06, obsolete enrollment options provision for children born before 1978 or their siblings, effective June 30, 2007; • M.S. 124D.081, first grade preparedness, beginning with revenue for fiscal year 2010.

Article 2 – Excellence in Education

Contacts

<p>Barbara O’Sullivan 582-8422</p>	<p>Early childhood literacy programs (Section 1). (a) Establishes an early childhood literacy program to increase the literacy skills of Head Start children and prepare them to be successful readers, and to increase families' participation in providing early literacy experiences to their children. Requires program providers to: prepare children to be successful learners; close the achievement gap for at-risk children; use an integrated approach to early literacy; support children's home language; use teachers and staff to provide professional development opportunities; use ongoing data-based assessments; and foster widespread participation by stakeholders.</p> <p>Encourages program providers to collaborate with qualified early childhood providers in implementing this program and to seek nonstate funds to supplement the program.</p> <p>(b) Allows program providers under paragraph (a) to form partnerships with eligible organizations to provide literacy programs that offer seamless literacy instruction to children through grade 3 that is focused on closing the literacy achievement gap. Requires partnership members to use best efforts and practices and to work collaboratively. Requires program providers to: evaluate children's literacy skills and formulate specific interventions premised on the outcomes of formative and summative assessments and research-based indicators of literacy development. Requires program providers to train teachers and other providers to use assessment outcomes to develop and use coaching models specific to the provider.</p> <p>(c) Directs the commissioner to collect literacy data on children age 3 to grade 3 in order to document the impact of the program model on closing the literacy achievement gap. Directs the commissioner to annually report to the legislature by February 1.</p> <p>Makes this section effective immediately.</p>
<p>Stephanie Olsen 582-8348</p>	<p>Education records (Section 2). (a) Requires a school district, charter school, and a nonpublic school to transmit the records of a transfer student to the school district, charter school or nonpublic school next enrolling that student. Makes nonpublic schools that accept publicly funded educational materials and student support services subject to this requirement.</p> <p>(b) Requires a closed charter school to transmit students' education records to the student's resident school district within ten business days, where the records must be retained subject to the student transferring elsewhere.</p> <p>(c) Requires school districts and charter schools to include a transfer student's formal disciplinary records when transmitting education records to the school where the student is next enrolling. Requires school districts and charter</p>

	schools to notify a student and the student's parents that the student's disciplinary records transfer with the student's educational record.
Beth Aune 582-8751	Required academic standards (Section 3). Directs the commissioner, when reviewing and revising the state's academic standards, to include the contributions of Minnesota American Indian tribes and communities as they relate to each of the academic standards. Makes this section effective for the 2008-2009 school year and later.
Ursula Lentz 612-625-8866 U of M Center for Advanced Research on Language Acquisition (CARLA)	Elective standards (Section 4). (b) Encourages world languages teachers to develop and implement programs that acknowledge and reinforce the language proficiency and cultural awareness of non-English language speakers. Requires world language programs to encompass indigenous American Indian languages and cultures, among other world languages and cultures. Directs the department to consult with postsecondary institutions in developing professional development opportunities.
Beth Aune 582-8751 Dan Smith 582-8330	Graduation requirements; course credits (Section 5). Allows a career and technical education course to fulfill a science, math or arts credit requirement for graduation.
Bonnie Houck 582-8350	Identification (Section 6). Requires a district to identify students before the end of 1 st grade who are at risk of not learning to read before the end of 2 nd grade using a locally adopted assessment method, and annually report those results to the commissioner.
Marlys Peters- Melius 582-8848	Raised academic achievement; advanced placement and international baccalaureate programs (Section 7). Subd. 1. Establishment; eligibility. Requires schools and charter schools interested in participating in pre-advanced placement, advanced placement, and international baccalaureate courses and programs, among other requirements, to have a three-year plan approved by the local school board to establish a new or expand an existing pre-advanced placement, advanced placement or international baccalaureate program and to increase the availability of and all students' access to and completion of these programs. Subd. 2. Application and review process; funding priority. Requires applicants for program funding to submit a proposed budget demonstrating the applicant's ability to implement pre-advanced placement, advanced placement, and international baccalaureate courses and programs. Makes funding available for pre-advanced placement and international baccalaureate courses and programs in addition to advanced placement courses and programs.

	<p>Subd. 3. Funding; permissible funding uses. Allows recipients to use the funding for pre-advanced placement and international baccalaureate courses and programs in addition to advanced placement courses and programs.</p> <p>Subd. 4. Annual reports. Requires grant recipients to annually report to the education commissioner on actual expenditures for pre-advanced placement, advanced placement and international baccalaureate courses and programs.</p> <p>Makes this section effective for the 2007 - 2008 school year and later.</p>
Wendy Behrens 582-8786	<p>Gifted and talented students program (Section 8). (c) Directs school districts to adopt procedures for academic acceleration of gifted and talented students that include an assessment of students' readiness and motivation for acceleration and a match between the curriculum and the students' academic needs.</p>
Dirk Mattson 582-1611	<p>Statewide testing and reporting system (Section 9). Clarifies the language for statewide accountability and graduation testing requirements, including allowing for additional options in retest opportunities; establishes testing parameters for accommodating students with disabilities and English language learners.</p> <p>In reading and math, students now have the following options to demonstrate proficiency in a graduation test: 1) pass the MCA-II or the MTAS; 2) pass the Graduation-Required Assessment for Diploma (GRAD); 3) obtain proficiency on an ELL-identified assessment; or 4) obtain a "Pass Individual" on the MCA-II, GRAD, or MTAS.</p> <p>Establishes a writing proficiency test for graduation in which students have the following options to demonstrate proficiency: 1) pass the Graduation-Required Assessment for Diploma (GRAD); 2) obtain proficiency on an ELL-identified assessment; or 3) obtain a "Pass Individual" on the GRAD.</p> <p>This section also contains a revision to the school year when a value-added measure must be added (2008-2009), in addition to a measure for student achievement growth over time. Other language in this section makes technical revisions to the statute to comply with appropriate testing practices or to clarify procedural language.</p>
	<p>Educational accountability (Section 10). (<u>Appropriation VETOED</u>) Funds the office of educational accountability through the Board of Regents of the University of Minnesota. Directs the office to determine and annually report to the legislature whether and how effectively: the commissioner makes statistical adjustments when reporting student data, consistent with the statutory requirement that the commissioner acknowledge the impact of factors such as residential instability, the number of single parent families, parents' level of education, and parents' income level on school outcomes (Minn. Stat. § 120B.31, subd. 4); the commissioner uses indicators of student achievement growth over time and a value-added assessment model to</p>

	<p>measure school performance; the commissioner makes data available on students who do not pass state GRAD tests and do not receive a diploma and categorizes data based on gender, race, eligibility for free or reduced lunch, and English language proficiency; and the commissioner fulfills certain requirements related to NCLB.</p> <p>Makes this section immediately effective.</p>
<p>Cathy Wagner 582-8688</p> <p>Christy Hovanetz- Lassila 582-8856</p>	<p>School performance report cards (Section 11). (a) Strikes a direction to the education commissioner to identify four to six designations applicable to high and low performing schools. Includes student-to-teacher ratios among the criteria the commissioner must use to determine student performance levels. Requires the commissioner's report on student performance to indicate a school's adequate yearly progress status.</p> <p>(b) Strikes the requirement that a school's designation be clearly stated on each school performance report card.</p> <p>(c) Strikes a reference to school designations.</p> <p>(d) Allows a school or school district to appeal its adequate yearly progress status to the commissioner within 30 days of receiving notice of its status.</p> <p>(e) Declares that school performance report card data are nonpublic data until not later than 10 days after the appeal under paragraph (d) concludes.</p> <p>Makes this section effective immediately and applicable to the 2006-2007 school year and later.</p>
<p>Board of Teaching 582-8888</p>	<p>Grounds for revocation, suspension, or denial (Section 12). Directs the state Board of Teaching to refuse to issue or renew or to automatically revoke the teaching license of a person convicted of a crime involving either the use of minors in a sexual performance or the possession of pornographic works involving a minor. Removes the board's obligation to hold a hearing before withholding or withdrawing a license on these grounds.</p>
<p>Pat King 582-8655</p> <p>Debbie Luedtke 582-8440</p>	<p>Coursework and training (Section 13). Allows a school district to use the staff development reserved revenue for grants to teachers to pay for coursework and training leading to certification as a college in the schools (CIS) or concurrent enrollment teacher; requires the teacher to be enrolled in a program that includes coursework and training focused on teaching a core subject.</p>
<p>Pat King 582-8655</p> <p>Beth Aune 582-8751</p>	<p>Teacher centers (Section 14). Appropriates money to establish regional math and science teacher training centers. Directs each teacher center to provide a professional development program to train kindergarten through grade 12 teachers selected by their district to assist other teachers with math and science curriculum, standards and instruction so that all teachers have access to high quality professional development programs in math and science, and research-based math and science programs and instructional models premised on best practices. Makes this section effective for the 2007-</p>

	2008 school year and later.
	Membership economic development community and civic organizations (Section 15). Allows school boards to authorize and pay for the membership of the district or any district representative designated by the board in local economic development associations or other community or civic organizations that the board deems appropriate.
Carol Hokenson 582-8840	Contract; duties (Section 16). Updates the language of the "set the price" superintendent's report to include the MCA-IIs, so that superintendents must submit an annual report to the education commissioner identifying the amount of expenditures the district requires to ensure an 80% passage rate on the MCA-IIs taken in the 9 th grade, identifying the highest passage rate the district expects to attain on the MCA-IIs by grade 12, and the amount of expenditures the district requires to attain this passage rate. Eliminates the requirement to report the district's special education cross-subsidy (See also Article 7, Section 1, which requires MDE to report annually to the legislature on special education cross subsidies).
Kelly Wosika 582-8855	Alternative attendance programs (Section 17). (b) Permits a school district to provide transportation to allow a student who attends a high-need English language learner program and resides within the program's transportation attendance area to continue in the program until the student completes the program.
Program: Marlys Peters- Melius 582-8848 Data Reporting and Aid: Carol Hokenson 582-8840	Concurrent enrollment program aid (Section 18). Subd. 1. Accreditation. Encourages postsecondary institutions to apply to the National Alliance of Concurrent Enrollment Partnerships for accreditation in order to establish a uniform standard for measuring concurrent enrollment courses and professional development activities. Subd. 2. Eligibility. Makes a school district that offers a certified, National Alliance of Concurrent Enrollment Partnership course through a course agreement under the Minnesota Post-Secondary Enrollment Options program (Minn. Stat. § 124D.09, subd. 10), eligible to receive aid for the costs of providing postsecondary courses at the high school. Beginning in fiscal year 2011, makes aid available to districts only if the district's concurrent enrollment courses are accredited, are being accredited, or are comparable to accredited courses offered by the National Alliance of Concurrent Enrollment Partnership. Subd. 3. Aid. Allocates to an eligible district \$150 per pupil enrolled in a certified, National Alliance of Concurrent Enrollment Partnership course. Requires the money to be used for the cost of delivering the course at the high school. Directs education commissioner to establish application procedures and deadlines for receipt of payment aids.
Karen Johnson 582-8733	Definitions (Section 19). (f) Defines "supplemental online learning" to mean an online course taken in place of a course period during the regular school

	<p>day at a local school district.</p> <p>(g) Defines "full-time online provider" to mean an enrolling school authorized by the Education Department to deliver comprehensive K-12 public education.</p>
Karen Johnson 582-8733	<p>Authorization; notice; limitations on enrollment (Section 20). (a) Allows a student to apply for full-time enrollment in an approved online learning program or for supplemental online learning. Establishes online learning enrollment procedures under this subdivision. Requires the student applicant and the student's parent to apply to the online learning provider and identify the reason for enrolling. Requires an online learning provider that accepts a student to notify the student and the enrolling district within 10 days if the enrolling district is not the online learning provider. Requires the student and the student's parents to notify the provider within 10 days of the student being accepted that the student intends to enroll and requires the student and the student's parent to sign a statement indicating that they understand the expectations of the online learning course. Requires the online provider to notify the enrolling district of the student's enrollment in an online learning course.</p> <p>(b) Specifies the notice requirement for students enrolling in supplemental online learning courses. Allows the notice requirement to be waived.</p>
Karen Johnson 582-8733	<p>Online learning parameters (Section 21). (a) Requires an online learning provider to make available to the enrolling school district the course syllabus, standard alignment, content outline, assessment requirements, and contact information for supplemental online courses the student takes in the enrolling school district.</p> <p>(b) Allows an online learning student to enroll in supplemental online learning courses that equate with a maximum of 50 percent of the student's full course schedule. Allows a student to exceed the supplemental online learning registration limit if the enrolling district agrees to enrollment above the limit or if there is an agreement between the enrolling district and the online learning provider.</p> <p>(f) Requires students who seek to complete more than 50 percent of their full course schedule per term through online learning to apply for open enrollment to an approved full-time online provider or to comply with paragraph (b). Allows full-time online learning students to enroll at a local school under a contract between the online learning provider and the school districts.</p>
Karen Johnson 582-8733	<p>Department of Education (Section 22). Requires online learning providers to demonstrate, rather than affirm, to the commissioner that online learning courses have equivalent standards or instruction, curriculum, and assessment requirements as other courses offered to enrolled students.</p>
Glory Kibbel 582-8695	<p>Formation of a school (Section 23). Strikes language allowing: a charter school applicant to apply to the education commissioner if a school board</p>

	fails to vote on a charter school application within 90 days; the commissioner to assist the applicant in finding an eligible sponsor if a school board elects not to sponsor the charter school.
Stephanie Olsen 582-8348	Related party lease costs (Section 24). Makes conflict of interest provisions applicable to charter school law generally, not just lease agreements.
Stephanie Olsen 582-8348	Pupil enrollment upon nonrenewal or termination of charter school contract (Section 25). Requires a closed charter school to transmit students' education records to the student's resident school district within 10 business days after the school's closure, where the records must be retained subject to the student transferring elsewhere.
Cindy Jackson 582-8572 (policy) Carol Hokenson 582-8840 (finance)	<p>Multiracial diversity (Section 26). (a) Allows school districts to apply to the education commissioner for a waiver from the requirement to maintain racial balance within the school district if the racial imbalance in a school results from: the enrollment of protected multiracial students and the proportion of enrolled multiracial students reflects the proportion of multiracial students who reside in the school attendance area or who are enrolled in the grade levels served by the district; or the enrollment of limited English proficiency students in a transition program that includes an intensive English component.</p> <p>Directs the commissioner to grant the waiver if the school district in which the school is located offers the multiracial students or the limited English proficiency students, as appropriate, the option of enrolling in another school within the district with the requisite racial balance, and the students' parents choose not to pursue that option.</p> <p>(b) Makes this section effective for the 2006-2007 through the 2010-2011 school years or until amended rules pertaining to racial diversity are adopted, whichever comes first.</p> <p>Makes this section effective immediately.</p>
Barbara Troolin 582-8590	Eligible services (Section 27). Allows assurance of mastery (AOM) programs to provide direct scientific, research-based instructional service and intervention (SRBI) to eligible pupils.
Office of Higher Education 642-0567	Minnesota Indian scholarship program awards (Section 28). Directs the Office of Higher Education director to establish procedures for distributing scholarships, based upon the recommendations of post secondary institutions and a standardized need analysis. Makes scholarships available for five years of study at the undergraduate level and for five years of study at the graduate level and allows students to acquire only one degree per level and one terminal degree.
Deb Landvik 582-8763	Parent and family involvement policy (Section 29). (a) Encourages local school boards to adopt and implement a parent and family involvement policy that promotes and supports meaningful communication between home and school, parenting skills, an integral role for parents and caregivers, parents being welcome in school, parents as full decision-making partners,

	<p>community resources to strengthen schools, families, and student learning.</p> <p>(b) Directs participating school boards to convene advisory committees composed of resident parents and district staff to make recommendations to the board on developing and evaluating the parent and family involvement policy. Requires the advisory committees to represent district diversity. Directs committees to consider demographic diversity and barriers to parental involvement when developing recommendations.</p> <p>(c) Requires boards to use best practices.</p> <p>(d) Directs boards to periodically review their policies.</p> <p>(e) Indicates that a district is not obligated to exceed any federal law requirements.</p> <p>Makes this section effective for the 2007-2008 school year and later.</p>
<p>Barbara Troolin 582-8590</p> <p>Cindy Shevlin- Woodcock 582-8656</p>	<p>Alternative delivery of specialized instruction (Section 30). Establishes the approval process and funding mechanism for specialized instructional services. Education commissioner may approve applications from districts “initiating or significantly changing a program” to provide special education prevention services to students who need additional or behavioral support who <i>may</i> eventually qualify for special education (language change from <i>would</i>); provides for an evaluation of academic and behavioral progress; requires districts to submit a detailed budget plan each year before receiving alternative delivery special education aid; prohibits commissioner from approving budget increases that would cause the state to fail to meet federal maintenance of effort requirements. Requires the commissioner to establish criteria for prioritizing and approving budget increases.</p>
<p>Barbara Troolin 582-8590</p> <p>Eric Kloos 582-8268</p>	<p>Alternative instruction required before assessment referral (Section 31). Allows a school, among other options, to use scientifically based instruction in the regular classroom before a student is referred for a special education evaluation. Requires districts to conduct at least 2 instructional strategies or interventions using a system of “scientific, research-based instruction and intervention (SRBI) in academics or behavior, based on the pupil’s needs” before a pupil is referred for a special education evaluation.</p> <p>Allows a district to meet this requirement by establishing an early intervening services program that includes a system of valid and reliable general outcome measures, use of teachers and paraprofessionals working as a team to deliver instruction, small group instruction in the general education environment as long as the special education student’s needs are met, etc. Mandates that expenditures attributable to the time special education staff spends providing small group instruction to non-disabled pupils that affords them more than an “incidental benefit” is not eligible for special education aid, but may be included in alternative delivery initial aid adjustment; requires monitoring of student progress.</p>

<p>Jessie Montano 582-8784</p> <p>Greg Marcus 582-8454</p>	<p>No Child Left Behind review (Section 32). Requires the commissioner to report to the legislature on the status of federal waivers by January 15, 2008. Strikes obsolete language if waivers have already been received. Requires the commissioner to additionally request waivers to: participate in a growth model pilot program, allow a district not making adequate yearly progress to offer supplemental educational services before offering school choice, allow a district not making adequate yearly progress to also be the supplemental service provider, allow the state to maintain a subgroup size of 40 for special education and limited English proficiency subgroups, and create flexibility to enable the state to define and identify highly qualified teachers.</p>
<p>Judith Lamp - Board of School Administrators 999-7389</p> <p>John Melick 582-8658</p>	<p>Board of School Administrators; rulemaking authority (Section 33). (a) Extends from 2007 to 2008 the time by which the Board of School Administrators may adopt rules governing school administrators.</p> <p>(b) Requires the board to retain current rules requiring 3 years of classroom teaching experience for licensure as a principal.</p> <p>Makes this section effective immediately.</p>
<p>Board of Teaching 582-8888</p>	<p>Rulemaking required (Section 34). Directs the Board of Teaching to adopt rules regarding credentials for paraprofessionals. Allows the Board of Teaching to charge fees to issue new or renew credentials.</p>
<p>Glory Kibbel 582-8695</p>	<p>Rulemaking authorized; supplemental education service providers (Section 35). Revives the expired rule and directs the education commissioner to amend the state rule governing supplemental education service providers to include specifications for withdrawing approval from providers that fail to increase students' academic proficiency for two consecutive school years. Requires the rule to indicate how the Education Department will distinguish the effect of supplemental and regular school instruction on students' academic performance and how the department will assess the providers' effectiveness.</p> <p>Makes this section effective immediately.</p>
<p>Linda Sams 582-8431</p>	<p>Rulemaking authority (Section 36). Directs the education commissioner to adopt rules for implementing and administering the graduation-required assessment for diploma (GRAD) in reading and math, and in writing, and for public review of the GRAD test. Requires the rules to specify the GRAD requirements that apply to students in unique circumstances and to establish the criteria for individualized GRAD passing scores for students with an individual education plan or a Section 504 plan and for using an alternative assessment when a student's individual education plan team decides to replace the GRAD test.</p>
	<p>Grant program to promote professional teaching standards (Section 37). (VETOED)</p> <p>Subd. 1. Establishment. Establishes a grant program to promote professional teaching standards through the National Board of Professional Teaching Standards to provide teachers with the</p>

	<p>opportunity to receive national board certification and to reward teachers already certified.</p> <p>Subd. 2. Eligibility. Requires a grant applicant to be a licensed public school teacher with a minimum of five years of classroom teaching experience who is a candidate for or a recipient of national board certification.</p> <p>Subd. 3. Application process. Requires interested, qualified teachers to apply to the education commissioner for a grant or reward. Directs the commissioner to consult with the Board of Teaching when reviewing the applications. Directs the commissioner to provide program support to applicants during the national certification process.</p> <p>Subd. 4. Grant awards; proceeds. (a) Allows the commissioner to award \$1,000 for partial payment of teacher candidates' application fee.</p> <p>(b) Directs the commissioner to award \$3,000 grants to teacher applicants who hold national board certification and \$2,000 to teacher applicants renewing their national board certification.</p> <p>(c) Directs the commissioner, in consultation with interested stakeholders, to award grants of up to \$1,000 to teacher applicants who received national board certification within one year of applying for the grant and allows grantees to use the grant for educational purposes.</p>
John Melick 582-8658	<p>World languages pilot program grants (Section 38). (a) Establishes a pilot program in fiscal years 2008 and 2009 to award five world languages grants to interested school sites and school districts to develop and implement sustainable, high-quality model kindergarten through grade 12 world languages programs and to enhance existing programs. Requires program participants to support non-English language learners in maintaining their native language while mastering English and native English speakers in learning other languages.</p> <p>(b) Directs interested school sites and school districts to apply to the commissioner and to indicate whether the applicant will develop a new program or expand an existing program and whether the applicant intends to offer more intensive programs or programs that are readily accessible to larger numbers of students. Requires applicants to agree to disseminate information about their programs.</p> <p>(c) Directs the commissioner to award grants to qualified applicants on an equitable geographical basis. Directs the commissioner to award three grants to kindergarten through grade 8 sites, one grant to a qualified site interested in a Mandarin Chinese program, and one grant to a qualified site interested in an indigenous American Indian world languages program.</p> <p>(d) Requires the commissioner to provide for a program evaluation and to</p>

	<p>report to the legislature by February 15, 2010.</p> <p>Makes this section effective for the 2007-2008 school year.</p>
<p>Ursula Lentz 612-625-8866</p> <p>U of M Center for Advanced Research on Language Acquisition (CARLA)</p>	<p>Bilingual and multilingual certificates; Department of Education (Section 39). Directs the Education Department, in consultation with interested stakeholders, to recommend to the legislature by February 15, 2008, the standards and process for awarding bilingual and multilingual certificates to kindergarten through grade 12 students who develop and maintain proficiency in multiple languages. Makes this section effective immediately.</p>
<p>Cathy Wagner 582-8688</p> <p>Christy Hovanetz- Lassila 582-8856</p>	<p>School performance report cards; advisory group recommendations (Section 40). (a) Directs the Office of Educational Accountability to convene and facilitate an advisory group of curriculum and measurement experts to consider and recommend how to structure school performance data and school performance report cards to fully, fairly and accurately report student achievement and emphasize school excellence under Minnesota's educational accountability and public reporting system.</p> <p>(b) Lists advisory group members. Requires the Office of Educational Accountability to present the advisory group's recommendations to the legislature by February 15, 2008. Causes the group to expire on February 16, 2008.</p> <p>Makes this section effective immediately.</p>
<p>Yvonne Novack 582-8831</p> <p>Beth Aune 582-8751</p>	<p>Advisory task force on Minnesota American Indian tribes and communities and K-12 standards-based reform (Section 41). (a) Establishes an advisory task force to examine the impact of federal and state standards-based reform on Minnesota's K-12 students, particularly American Indian students; requires the task force to work with Indian educators, parents, and advocates to determine if the state's performance standards, content requirements, assessment measures, and teacher preparation programs are effective to meet the needs of all students, especially American Indian students. The task force shall make recommendations on these subjects to the legislature. Compensation is subject to the availability of appropriations, and the education commissioner is directed to provide the task force with administrative and clerical support.</p>
<p>Office of Higher Education 642-0567</p>	<p>American Indian scholarship (Section 42). Transfers administration of the American Indian scholarship program from the Education Department to the Minnesota Office of Higher Education. Directs the office, at no cost to the scholarship program, to maintain an office in the Bemidji area and to contract with a person residing in or around Bemidji to assist with the distribution of scholarships under this section. Requires Bemidji state university to provide office space at no cost.</p>
<p>John Melick 582-8658</p>	<p>World languages resources (Section 43). Directs the education commissioner, after consulting with the quality teaching network, to employ</p>

	<p>a full-time state world languages coordinator by July 1, 2007, to: assist charter schools and school districts in developing and enhancing world languages courses and programs; collaborate with professionals and charter schools and school districts in developing world languages programs; survey charter schools and school districts to determine the types of existing world languages programs, identify exemplary world languages programs, and address staff development needs; identify successful world languages programs in other states; report to the commissioner on the feasibility and structure of a world languages graduation requirement; and annually report to the legislature on the status and needs of world languages programs in Minnesota.</p> <p>(b) Directs the commissioner by July 1, 2009, to recommend an assessment tool for charter schools and school districts to use in measuring students' proficiency in world languages.</p> <p>(c) Directs the commissioner, upon request, to evaluate the plans of charter schools and school districts in developing and enhancing their world languages programs. Directs the department to assist school districts in monitoring local assessment results.</p> <p>Makes this section effective immediately.</p>
<p>Office of Higher Education 642-0567</p> <p>Program: John Ryberg 582-8757 Aid: Bill Kiesow 582-8801</p> <p>Colleen Leemon 582-8566</p> <p>Aid: John Bulger 582-8781</p>	<p>Appropriations (Section 44, 45, and 46) Section 44 Subd. 2: American Indian Scholarships \$1,950,000 for FY 2008 \$1,950,000 for FY 2009</p> <p>Section 45 Subd. 2: Independent Office of Education Accountability (VETOED) \$200,000 for FY 2008 \$200,000 for FY 2009</p> <p>Section 46 Subd. 2: Charter School Building Lease Aid \$31,875,000 for FY 2008 \$36,193,000 for FY 2009</p> <p>Subd. 3: Charter School Startup Aid \$1,896,000 for FY 2008 \$2,161,000 for FY 2009</p> <p>Subd. 4: Integration Aid \$61,769,000 for FY 2008 \$61,000,000 for FY 2009</p>

<p>Bondo Nyembwe 582-8520 Aid: Sharon Peck 582-8811</p>	<p>Subd. 5: Magnet School Grants \$750,000 for FY 2008 \$750,000 for FY 2009 Any balance in the first year does not cancel but is available in the second.</p>
<p>Aid: Greg Sogaard 582-8858</p>	<p>Subd. 6: Interdistrict Desegregation or Integration Transportation Grants \$9,639,000 for FY 2008 \$11,567,000 for FY 2009</p>
<p>Yvonne Novack 582-8831</p>	<p>Subd. 7: Success for the Future \$2,137,000 for FY 2008 \$2,137,000 for FY 2009</p>
<p>Yvonne Novack 582-8831</p>	<p>Subd. 8: American Indian Teacher Preparation Grants \$190,000 for FY 2008 \$190,000 for FY 2009</p>
<p>Yvonne Novack 582-8831 Aid: Greg Sogaard 582-8858</p>	<p>Subd. 9: Tribal Contract Schools \$2,338,000 for FY 2008 \$2,422,000 for FY 2008</p>
<p>Yvonne Novack 582-8831</p>	<p>Subd. 10: Early Childhood Programs at Tribal Schools \$68,000 for FY 2008 \$68,000 for FY 2009</p> <p>Subd. 11: Statewide Testing \$15,150,000 for FY 2008 \$15,150,000 for FY 2009 Any balance in the first year does not cancel but is available in the second.</p>
<p>Marlys Peters-Melius 582-8848</p>	<p>Subd. 12: Examination Fees; Teacher Training and Support Programs \$4,500,000 for FY 2008 \$4,500,000 for FY 2009 Allocations are specified</p>
<p>Marlys Peters-Melius 582-8848</p>	<p>Subd. 13: Preadvanced Placement, Advanced Placement, International Baccalaureate, and Concurrent Enrollment Programs \$6,500,000 for FY 2008 \$6,500,000 for FY 2009</p>

<p>Bondo Nyembwe 582-8520</p> <p>Aid: John Bulger 582-8781</p> <p>Audrey Suker Serve MN 612-333-7738</p> <p>Audrey Suker Serve MN 612-333-7738</p>	<p>\$2.5 million in each year is for concurrent enrollment. The base appropriation for FY 2010 and later is \$2,000,000.</p> <p>Subd. 14: Collaborative Urban Educator \$528,000 for FY 2008 \$528,000 for FY 2009</p> <ul style="list-style-type: none"> • \$210,000 each year is for the Southeast Asian teacher program at Concordia University, St. Paul. • \$159,000 each year is for the collaborative urban educator program at the University of St. Thomas. • \$159,000 each year is for the Center for Excellence in Urban Teaching at Hamline University. <p>Subd. 15: Youth Works Program \$900,000 for FY 2008 \$900,000 for FY 2009</p> <p>Subd. 16: Early Childhood Literacy \$1,500,000 for FY 2008 \$1,500,000 for FY 2009</p> <p>Any balance in the first year does not cancel but is available in the second. \$1,000,000 each year is for AmeriCorps members in the MN Reading Corps \$500,000 each year is for words work grants for children age 3 – grade 3 The base appropriation for FY 2010 and later is \$1,000,000.</p> <p>Subd. 17: St. Croix River Education District \$500,000 for FY 2008 \$500,000 for FY 2009</p> <p>This is a one-time appropriation.</p> <p>Subd. 18: Student Organizations \$725,000 for FY 2008 \$725,000 for FY 2009</p> <ul style="list-style-type: none"> • Allocations to specified for each organization • \$40,000 each year is for student organizations serving health occupations. • \$38,000 each year is for student organizations serving service occupations. • \$88,000 each year is for student organizations serving trade and industry occupations. • \$84,000 each year is for student organizations serving business occupations. • \$131,000 each year is for student organizations serving agriculture occupations. • \$125,000 each year is for student organizations serving family and consumer science occupations. • \$95,000 each year is for student organizations serving marketing
--	---

	occupations.
Linda Sams 582-8431	<p>Subd. 19: Education Planning and Assessment Program (EPAS) \$829,000 for FY 2008 \$829,000 for FY 2009 Any balance in the first year does not cancel but is available in the second.</p>
Marlys Peters-Melius 582-8848	<p>Subd. 20: College Level Examination Program (CLEP) \$1,650,000 for FY 2008 \$1,650,000 for FY 2009 Any balance in the first year does not cancel but is available in the second.</p>
John Melick 582-8658	<p>Subd. 21: World Languages Grants \$250,000 for FY 2008 \$250,000 for FY 2009 Any balance in the first year does not cancel but is available in the second. This is a one-time appropriation.</p> <p>Subd. 22: National Board for Professional Teaching Standards (VETOED) \$250,000 for FY 2008 \$250,000 for FY 2009</p> <ul style="list-style-type: none"> • \$63,000 each year is for grants of \$1,000 to eligible teachers accepted as candidates for National Board for Professional Teaching Standards certification. • \$125,000 each year is for grants of \$2,000 to eligible teachers according to M.S. 122A.73, subd. 4 (b). • \$62,000 each year is for grants of \$1,000 to eligible teachers who have received National Board for Professional to A Chance to Grow/New Visions for the Minnesota Learning Resource Center's comprehensive training program for education professionals charged with helping children acquire basic reading and mathematic skills.
Pat King 582-8655	<p>Subd. 23 Mathematics and Science Teacher Centers \$1,500,000 for FY 2008 \$1,500,000 for FY 2009 Any balance in the first year does not cancel but is available in the second. This is a one-time appropriation.</p>
Beth Aune 582-8751	
Barbara O'Sullivan 582-8422	<p>Subd. 24 First Grade Preparedness \$7,250,000 for FY 2008 \$7,250,000 for FY 2009 This is a one-time appropriation.</p>
Dr. Eric Jolly Science	<p>Subd. 25 Statewide Science, Technology, Engineering, and Math Initiative</p>

Museum of MN 651-221-9444	\$1,500,000 for FY 2008 \$1,500,000 for FY 2009 Allocations are specified. This is a one-time appropriation.
Connie Anderson 582-8750 John Melick 582-8658	Revisor instructions (Section 47). Directs the Revisor of Statutes to renumber a section, correct cross-references and make other needed corrections. Repealer (Section 48). Repeals: ▶ 120B.233 - character development education revenue and pilot program ▶ 124D.62 - exemption from licensure requirements for limited English proficiency and English as a second language teachers (repeals commissioner's ability to grant an exemption from the requirement that ESL or LEP teachers be licensed)

Article 3 – Special Programs

Contacts

Mike Landers 582-8810	Special Education-Regular and Transition-Disabled Aid (Sections 1, 2, 3, 9, 11, 12, 13, 14). <ul style="list-style-type: none"> • Beginning in FY 2008, changes the special education-regular and transition-disabled aid formulas by calculating the aid using current year expenditures, instead of second prior year expenditures adjusted for ADM change. • Beginning in FY 2008, combines the statewide funding caps for special education-regular and transition-disabled into one overall cap to ensure a uniform level of funding for expenditures in both programs. • Beginning in FY 2008, includes funding for expansion of Part C services in the special education-regular and excess cost aid formulas. • Sets the combined statewide cap for special education-regular and transition-disabled aid at \$694,063,000 for FY 2008, \$719,470,000 for FY 2009, \$735,693,000 for FY 2010, and \$786,586,000 for FY 2011. After adjusting for the roll-in of transition-disabled aid and categorical funding for expanded Part C services and ADM changes from year to year, the imputed growth factors are 27.5% for FY 2008, 3.8% for FY 2009, 1.9% for FY 2010, and 6.6% for FY 2011. Beginning in FY 2012, sets the growth factor for the statewide special education-regular / transition disabled funding cap at 4.6% per year. • Assuming a state average 4.5% annual increase in special education costs and a state average 7.8% annual increase in special transportation costs, the statewide adjustment /proration factors for special education-regular funding are projected to be 89% for FY 2008 and 88% for FY 2009. • Updates the deduction for other revenue used in calculating aid for contracted placements. The deduction is calculated using the resident district's average general education revenue, excluding basic skills and Q Comp revenue, and referendum equalization aid per adjusted pupil unit
--------------------------	--

	<p>attributable to the pupil. Clarifies that this calculation includes students receiving special education services who are residents of the state and are placed in a care and treatment facility by court action in a state that does not have a reciprocity agreement with Minnesota (those who also qualify for out-of-state tuition aid).</p>
<p>Mike Landers 582-8810</p>	<p>Special Education Excess Cost Aid (Sections 17 – 19).</p> <ul style="list-style-type: none"> • Beginning in FY 2008, includes transition-disabled expenditures in calculating special education excess cost aid. • Beginning in FY 2008, eliminates the alternative excess cost aid formula, which provided funding for 70% of the difference between the increase in a district’s unreimbursed cost between the second prior year and the current year and 1.6% of the district’s general education revenue. This formula was no longer needed due to the use of current year data in the special education-regular aid formula, which will make the excess cost aid calculations more stable and predictable. The remaining excess cost aid formula funds 75% of the unreimbursed cost exceeding 4.36% of the district’s general education revenue. • Clarifies that special transportation expenses are included in excess cost aid calculations. • Sets the statewide cap for special education excess cost aid at \$110,641,000 for FY 2008, \$110,918,000 for FY 2009, \$110,847,000 for FY 2010, and \$110,892,000 for FY 2011. After adjusting for the roll-in of categorical funding for expanded Part C services and ADM changes from year to year, the imputed growth factors are 5.2% for FY 2008 and 0% for FY 2009-FY 2011. • For FY 2012 and later, sets the growth factor for the statewide special education excess cost aid cap at 2% per year.
<p>Tom Melcher 582-8828</p>	<p>Special Education Forecast Maintenance of Effort (Section 15). Creates a process to allocate additional amounts of aid to the special education formulas if state spending on special education aid falls short of federal maintenance of effort requirements. Requires MDE to report to the education committee chairs in the legislature regarding any allocations made under this provision.</p>
<p>Mike Landers 582-8810</p>	<p>Travel Aid (Section 8). Clarifies that travel aid is paid for community-based as well as home-based services to children with disabilities under age five and their families.</p>
<p>Mike Landers 582-8810</p>	<p>Out-of-State Tuition Aid (Section 20). Updates the deduction for other revenue used in calculating out-of-state tuition aid consistent with the change noted above for contracted placements. The calculation uses the resident district’s average general education revenue, excluding basic skills and Q Comp revenue, and referendum equalization aid per adjusted pupil unit attributable to the pupil.</p>
<p>Program: Barbara Troolin 582-8590 or Cindy Shevlin-</p>	<p>Alternative Delivery Program and Aid Adjustment (Section 16 and Article 2, Section 30)</p> <ul style="list-style-type: none"> • Beginning in FY 2008, limits the requirement to submit a full application to districts initiating or significantly changing a program. • Updates language regarding eligible pupils – these are pupils who need

Woodcock 582-8656	<p>additional academic or behavioral support to succeed in the general education environment and who may eventually qualify for special education.</p> <ul style="list-style-type: none"> • Requires all participating districts to submit an annual budget for review and approval by the Commissioner. Prohibits the Commissioner from approving budget increases that would cause the state to fail to maintain effort under federal special education law. Requires the Commissioner to establish criteria for prioritizing and approving budget increases, which may include maintaining current programs, locating programs throughout the state, and developing innovative programs. • Updates and simplifies program evaluation procedures • Updates aid adjustment to reflect current year funding.
<p>Carol Hokenson 582-8840</p> <p>Or</p> <p>George Holt 582-8889</p>	<p>Special Education Tuition Billing (Sections 4, 21, 22).</p> <ul style="list-style-type: none"> • Clarifies which portions of general education revenue are included in special education tuition billing calculations. <ul style="list-style-type: none"> ○ Referendum equalization aid is included, but not tax base replacement aid, because the equalization aid follows the student while the tax base replacement aid stays with the resident district. ○ For students served under an agreement between boards, basic skills revenue and sparsity revenue is excluded from the amount charged to the resident district, since these components are paid directly to the serving district. ○ For students served under an agreement between boards, outside of the regular classroom more than 60% of the school day, the portion of general education revenue which offsets special education costs is calculated using the serving district's average basic skills and sparsity revenue per pupil, and the resident district's average for other general education revenue components. ○ For students served by a coop without a fiscal agent school district, the general education revenue and referendum equalization aid attributable to the student are calculated using the resident district's average general education revenue and referendum equalization aid excluding sparsity revenue. • Allows intermediate districts and cooperatives that received an exemption from uniform tuition billing in FY 2007 to apply for a one-year extension of the exemption for FY 2008. • Allows districts to apply for a waiver to cover any remaining unreimbursed costs of serving pupils with a disability in programs operated at residential facilities licensed by the Department of Human Services or the Department of Corrections. • For FY 2007 only, allows a district or charter school not otherwise eligible for a waiver to apply for a waiver to cover any remaining unreimbursed costs of serving pupils with a disability.
Barbara O'Sullivan 582-8422	<p>School of Parent's Choice (Section 5). Authorizes, in addition to the current open enrollment options, the parent of a student with a disability who is not yet enrolled in kindergarten and not open enrolled in a nonresident district to request that the resident district enter into a tuition agreement with the</p>

	nonresident district to provide educational services to the parent's child.
Carol Hokenson 582-8840	Extended School Year (ESY) (Sections 6, 9). Strikes obsolete references to summer school and replaces them with references to ESY, to conform to federal special education regulations.
Eric Kloos 582-8268	Statewide Hearing Loss Coordinator (Section 7). Defines duties for a statewide hearing loss coordinator: collaborate with and advise state agencies, support the MDE early hearing detection and intervention teams, serve as a liaison, provide training and outreach to identify culturally appropriate and evidence-based early intervention programs, provide data, educate early childhood providers and teachers to use assessment data, etc. Requires MDE to provide aggregate data on outcomes of deaf and hard-of-hearing children who receive early intervention services. Provides that if MDE expends federal funds to employ a hearing loss coordinator, then this appropriation shall be reallocated to the world languages coordinator position
Ken Moos 582-8370	Litigation Costs; Annual Report (Section 10). Requires districts to report their special education litigation costs to the department annually through UFARS; requires the department to report on school district special education litigation costs to the legislative education committees by January 15 of each year.
Amy Roberts 582-8482	Task Force To Compare Federal And State Special Education Requirements (Section 23). Creates a task force appointed by the commissioner of the bureau of mediation services to study and compare state and federal special education requirements. Requires the task force to file a report with recommendations to conform to federal requirements with the education committees of the legislature by February 15, 2008.
Aid: Mike Landers 582-8811 Subd. 1-8	<p>Section 24.APPROPRIATIONS</p> <p>Subd. 2: Special Education; Regular \$677,622,000 for FY 2008 \$716,929,000 for FY 2009</p> <p>Subd. 3: Aid for Children with Disabilities \$1,538,000 for FY 2008 \$1,729,000 for FY 2009</p> <p>Subd. 4: Travel for Home Based Services \$254,000 for FY 2008 \$284,000 for FY 2009</p> <p>Subd. 5: Special Education; Excess Costs \$108,656,000 for FY 2008 \$110,826,000 for FY 2009</p> <p>Subd. 6: Transition for Disabled Students \$879,000 for FY 2008 \$ \$0 for FY 2009</p> <p>Subd. 7: Court Placed Special Education Revenue</p>

	<p>\$72,000 for FY 2008 \$74,000 for FY 2009</p> <p>Subd. 8: Special Education Out of State Tuition \$250,000 for FY 2008 \$250,000 for FY 2009</p> <p>Subd. 8: Special Education Task Force \$20,000 for FY 2008 This is a one-time appropriation.</p>
Mike Landers 582-8811	<p>Repealer (Section 25). Repeals:</p> <ul style="list-style-type: none"> ▶ 124D.454, subd. 4, 5, 6 and 7 - the funding formula for the transition for disabled students programs since this funding is now included in a district's regular special education aid; ▶ 125A.10 - coordinating interagency services for a students with disabilities; ▶ 125A.75, subd. 6 - special education summer school approval process (ESY is included in the regular special education application for the fiscal year); ▶ 125A.76, subd. 3 - adjusted special education base revenue (this subdivision is not needed since the special education formula will now be calculated on current year data instead of data from the second prior year).

Article 4 – Facilities and Technology

Bob Porter 582-8851	<p>School Technology And Operating Capital Aid (Section 11). Qualifies all school districts for one-time technology and operating capital aid equal to \$40 for fiscal year 2008 and \$55 for fiscal year 2009 per adjusted marginal cost pupil unit. The aid must be used only for the purposes authorized for operating capital revenue in M.S. 126C.10, Subd. 14.</p>
Mary Mehsikomer 582-8827 (Program) Chris Kubesh (Funding) 582-8319	<p>Equity in Telecommunications Access Aid (Section 16, subdivision 5). Provides a one-time increase of \$3.9 million in FY 2008 and \$5.0 million in FY 2009 over the \$3.75 million permanent funding base for the program to fully fund the estimated cost of the current telecommunications access formula for the next two years. In the event that this increase is not sufficient to fully fund the formula, the aid will be prorated.</p>
Bob Porter 582-8851 (Referendum) Bill Kiesow 582-8801	<p>Job Zones, Debt Service Equalization, and Alternative Facilities Levies (Sections 5, 6, 7 and 10).</p> <ul style="list-style-type: none"> • Makes JOBZ property exempt from all operating referendum levies (previously JOBZ property was not exempt from pre-2004 operating referendum levies). This will simplify referendum aid and levy calculations. • Eliminates the exemption of JOBZ property from non-bonded debt service levies, making JOBZ property subject to all debt service fund

(Debt)	<p>levies. This will simplify debt service aid and levy calculations.</p> <ul style="list-style-type: none"> Excludes annual pay-as-you-go levies under the alternative facilities program from debt service equalization, and includes these levies in the health & safety levy equalization program. Since the annual pay-as –you-go alternative facilities levies are made in the general fund of a school district, and since JOBZ property is exempt from these levies, this will also help simplify school district aid and levy calculations. Sets appropriations for debt service equalization at \$8,866,000 for FY 2010 and at \$6,631,000 for FY 2011. The state total debt equalization aid is declining annually due to tax base growth and, in many districts, declining enrollment. Legislation proposed to increase and index debt equalization was not enacted in 2007.
Chris Kubesh 582-8319	<p>Capital Project Levy Referendum (section 8). Limits a capital project levy referendum to a term of not more than 10 years. Currently, there are no capital project levy referendums in place that exceed the 10 year limit.</p>
John Bulger 582-8781	<p>Cooperative Facilities Grants (Sections 1 – 4). Expands the Cooperative Secondary Facilities Grant Act to include elementary as well as secondary facilities, and changes the title to the “Cooperative Facilities Grant Act”. Makes a school district that has consolidated with another school district since July 1, 1980, eligible for the grant. Increases the maximum grant amount for new construction from \$5 million to \$20 million and the maximum grant amount for remodeling or improving an existing facility from \$200,000 to \$10 million. In either case, the grant must not exceed 75% of the approved project costs. Eliminates minimum and maximum district enrollment size criteria for the program. Requires the commissioner to award grants first to districts that will close at least one existing school building. While criteria are changed for future grants, no funds are appropriated for grants in the current biennium.</p>
Bill Kiesow 582-8801	<p>Minneapolis and St Paul Bonding (Sections 9, 12, 13).</p> <ul style="list-style-type: none"> Extends the authority of the Minneapolis school district to annually sell and issue building bonds in an amount not to exceed \$15 million per year for 8 more years, through 2016, by two-thirds majority of the school board without voter approval. Extends the authority of the St. Paul School District to annually sell and issue building bonds in an amount not to exceed \$15 million per year for 8 more years, through 2016, by two-thirds majority of the school board without voter approval. Grants the St. Paul School District explicit levy authority for the bonds issued under this provision.
Bill Kiesow 582-8801	<p>Administrative lease levy; Spring Lake Park (Section 14). Allows Independent School District No. 16, Spring Lake Park, to lease administrative space for no more than five years if the district can certify to the commissioner that leasing administrative space is less expensive than the district's proposed instructional lease.</p>
Bill Kiesow 582-8801	<p>Health and safety revenue; Clearbrook-Gonvick (Section 15). Allows Independent School District No. 2311, Clearbrook-Gonvick to use health and</p>

	safety revenue for the demolition of a school building.
	Section 16: Appropriations
Program: Phil Allmon 582-8748 Aid: Chris Kubesh 582-8319	Subd. 2: Health and Safety Revenue \$190,000 for FY 2008 \$179,000 for FY 2009
Aid: Chris Kubesh 582-8319	Subd. 3: Debt Service Equalization \$14,813,000 for FY 2008 \$11,124,000 for FY 2009
Aid: Chris Kubesh 582-8319	Subd. 4: Alternative Facilities Bonding \$19,287,000 for FY 2008 \$19,287,000 for FY 2009
Program: Mary Mehsikomer 582-8827 Aid: Chris Kubesh 582-8319	Subd. 5: Equity in Telecommunications Access \$7,622,000 for FY 2008 \$8,743,000 for FY 2009 Any balance in the first year does not cancel but is available in the second.
Aid: Chris Kubesh 582-8319	Subd. 6: Deferred Maintenance Aid \$3,290,000 for FY 2008 \$2,667,000 for FY 2009
	Subd. 7: Rocori School District \$53,000 for FY 2008
Aid: Bob Porter 582-8851	Subd. 8: School Technology and Operating Capital Aid Grants \$38,145,000 for FY 2008 \$52,676,000 for FY 2009 This is a one-time appropriation.
	Subd. 9: Eden Valley-Watkins Environmental Remediation \$126,000 for FY 2008

Article 5 – Nutrition and Accounting

Contacts

Becky Leschner	School Lunch Aid (Section 5). Beginning in FY 2008, increases school
----------------	---

582-8508	lunch aid by 1.5 cents per meal served, from 10.5 cents to 12 cents.
Deb Firkus 582-8775	<p>Budget notification (Sections 1, 2).</p> <ul style="list-style-type: none"> • Moves language regarding the publication of budget information to a new subdivision. Requires a school board to annually notify the public of its revenue, expenditures, fund balances, and other relevant budget information. Requires this information to be included in the district's truth in taxation materials; posted on the district's website with a link to the school report card information on the department of education's website; and published in a qualified newspaper of general circulation within the district. • Strikes language directing school boards to inform the administrative authority at each school site about the general education and referendum revenue that MDE estimates that enrolled pupils at the site will generate.
Ken Moos 582-8370	<p>Account transfer for reorganizing school districts (Section 3). Changes the consolidation statute to allow the newly formed board of a consolidated school district, by board resolution on or before August 30 of the year of the reorganization, to make permanent transfers between funds or accounts of the consolidating districts, which shall be reported on the affected districts' audited financial statements for the year immediately preceding the consolidation.</p>
Lisa DeRemee 582-8467	<p>Plainview-Elgin-Millville; Fund Balance Calculations (Section 11).</p> <ul style="list-style-type: none"> • The change in section 3 above was triggered by the experience of Plainview-Elgin-Millville, which incurred an ECFE fund balance penalty in FY 2007 due to the fund balance carried by one of the consolidating districts on the June 30 just prior to consolidation. • This section provides state aid to offset the fund balance penalty applied to the district for FY 2007, and authorizes the Department to recalculate school district's three-year average fund balances used in calculations for later years using revised June 30, 2006 balances if the consolidated district makes permanent fund transfers and submits a request for the June 30, 2006 account balance of the consolidated district to be adjusted for purposes of calculating the fund balance penalties.
Ken Moos 582-8370	<p>Elimination of Obsolete Reserve Accounts (Section 4). Requires a school board to eliminate reserve accounts in all areas where specific statutory authority for the reserve no longer exists as of June 30, 2007.</p> <ul style="list-style-type: none"> • Requires any balance in the reserved for bus purchases account as of June 30, 2007 to be transferred to the district's reserved account for operating capital. • Requires any balances in other obsolete general fund accounts as of June 30, 2007 to be transferred to the school district's unreserved general fund balance. • Allows a school board to replace any specific eliminated reserve account with a designated account for that same program. • Accounts eliminated include: <ul style="list-style-type: none"> 410 Unemployment Compensation 412 Bus Purchases 423 Certain Teacher Programs (Family Connections, Teacher Mentoring) 433 Student Transportation Safety

	439 Graduation Standards 442 Class Size, All-Day K, and Special Ed Student-Instructor Ratio
Colleen Leemon 582-8566	<p>Compensatory Revenue Allocations (Section 6).</p> <ul style="list-style-type: none"> • Authorizes a district to reallocate the 5% of compensatory revenue not required to be allocated to the site generating the revenue for compensatory education purposes at any grade level, including students attending learning readiness or other prekindergarten programs. (Note: Since prekindergarten expenditures are accounted for in the community service fund, school districts electing to spend a portion of compensatory education revenue for prekindergarten programs must transfer the amount to be allocated for this purpose to the community service fund.) • Allows a school district that opens or closes school buildings, changes school attendance areas, or otherwise significantly changes its enrollment to adjust the allocation of its compensatory revenue accordingly. Requires a district reallocating compensatory revenue under this provision to notify MDE of the adjustments, and requires MDE to adjust its report on school district revenue allocations by building accordingly.
Colleen Leemon 582-8566	<p>Levy authority for certain unfunded severance and retirement costs (Section 7). Authorizes a school district that has participated in the cooperative secondary facilities program to levy for certain severance and retirement costs. Sets the maximum levy amount at \$150,000 per year for each of the next 10 years, through taxes payable in 2017. Requires the revenue received under this section to be reserved and spent only for severance and retirement costs.</p>
Colleen Leemon 582-8566	<p>Proposed Levy Certification Date Extension (Sections 8 – 10). Extends the certification date for the proposed levy by one week, from September 30 to October 7, for those school districts that have reached an agreement with their home county auditor to the delayed date. The proposed levy is used by the county auditor in preparing Truth-in-Taxation notices. For districts receiving an extension, the deadline for notifying MDE of the proposed levies is moved back from October 7 to October 10. For districts in more than one county that receive an extension, the date for the home county auditor to certify the proposed levy and the proposed local tax rate to the other county auditor(s) is moved back from October 5 to October 10.</p>
Ken Moos 582-8370	<p>Fund transfer (Section 12).</p> <p>Subd. 1. Brainerd. Authorizes Independent School District No. 181, Brainerd, to transfer up to \$750,000 from its operating capital account to its undesignated general fund balance without making a levy reduction.</p> <p>Subd. 2. Campbell-Tintah. Authorizes Independent School District No. 852, Campbell-Tintah, to transfer up to \$100,000 from its reserved for operating capital account to its undesignated general fund without making a levy reduction.</p> <p>Subd. 3. Comfrey. Authorizes Independent School District No. 81,</p>

	<p>Comfrey, to transfer up to \$250,000 from its reserved for operating capital account to its undesignated general fund balance without making a levy reduction.</p> <p>Subd. 4. Floodwood. Authorizes Independent School District No. 698, Floodwood, to transfer up to \$227,000 from its disabled accessibility fund to its undesignated general fund balance without making a levy reduction.</p> <p>Subd. 5. International Falls. Authorizes Independent School District No. 361, International Falls, to transfer up to \$100,000 from its reserved for operating capital account to its undesignated general fund balance without making a levy reduction.</p> <p>Subd. 6. Jackson County Central. Authorizes Independent School District No. 2895, Jackson County Central, to transfer up to \$300,000 from its reserved for operating capital account to its undesignated general fund balance without making a levy reduction.</p> <p>Subd. 7. Red Rock Central. Authorizes Independent School District No. 2884, Red Rock Central, to transfer up to \$81,000 from its reserved for disabled accessibility account to its undesignated general fund balance without making a levy reduction.</p> <p>Subd. 8. Windom. Authorizes Independent School District No. 177, Windom, to transfer up to \$50,000 from its reserved for operating capital account to its undesignated general fund balance without making a levy reduction.</p>
<p>Program: Becky Leschner 582-8508</p> <p>Aid: Karen Dykoski 582-8766</p> <p>Lisa DeRemee 582-8467</p>	<p>Section 13: Appropriations</p> <p>Subd. 2: School Lunch \$12,022,000 for FY 2008 \$12,166,000 for FY 2009</p> <p>Subd. 3: Traditional School Breakfast; Kindergarten Milk \$5,460,000 for FY 2008 \$5,695,000 for FY 2009</p> <p>Subd. 4: Summer School Service Replacement Aid \$150,000 for FY 2008 \$150,000 for FY 2009</p> <p>Subd. 5: Plainview-Elgin-Millville Fund Balance Replacement Aid \$17,000 for FY 2008 This is a one-time appropriation.</p>
<p>Charles Speiker 582-8737</p>	<p>Repealer (Section 14). Repeals:</p> <ul style="list-style-type: none"> • M.S. 123D.749 (Structurally Balanced School District Budgets).

Article 6 – Libraries

Contacts

<p>Catherine Durivage (MN Library for the Blind and Physically Handicapped) 800-722-0550</p>	<p>Services to the blind and physically handicapped (Section 1). Directs MDE to provide specialized services to the blind and physically handicapped through the Minnesota Library for the Blind and Physically Handicapped under a cooperative plan with the national Library Services for the Blind and Physically Handicapped of the Library of Congress.</p>
<p>Suzanne Miller 582-8251</p>	<p>Limitation (Section 2). Declares that in the context of regional library basic system support grants , funds collected from a sales and use tax for extending the operating hours of Hennepin County and Minneapolis public libraries under MS, section 473.757, subdivision 2, are not considered amounts provided by a city or county to support public library operations. Makes this section effective immediately.</p>
	<p>Appropriations (Section 1)</p> <p>Subd. 2: Basic System Support \$9,182,000 for FY 2008 \$13,138,000 for FY 2009</p> <p>Subd. 3: Multicounty, Multitype Library Systems \$1,260,000 for FY 2008 \$1,300,000 for FY 2009</p> <p>Subd. 4: Electronic Library for Minnesota \$900,000 for FY 2008 \$900,000 for FY 2009</p> <p>Subd. 5: Regional Library Telecommunications Aid \$2,190,000 for FY 2008 \$2,300,000 for FY 2009 Any balance in the first year does not cancel but is available in the second.</p> <p>Subd. 5: Hennepin County – Minneapolis Library Merger (<u>VETOED</u>) \$4,500,000 for FY 2008 This is a one-time appropriation.</p>

Article 7 – State Agencies

Contacts

<p>Mike Landers 582-8810</p>	<p>Cross-subsidy report (Section 1). Directs the commissioner to annually submit a report to the legislature, by January 10, on the amount each school district is cross-subsidizing special education costs with general education revenue. This reflects current practice, except that the report to the</p>
----------------------------------	---

	Legislature would be made earlier -- MDE currently calculates the cross subsidies using information reported by school districts for funding purposes. (See also Article 2, Section 16, which strikes the requirement for superintendents to report special education cross subsidies to MDE.)
	Disposition of license fees. (Section 2). Directs the local county registrar to deposit \$3 of the marriage license fee in the state government special revenue fund that is appropriated to the commissioner of public safety for parenting time centers.
Dan Smith 582-8330	Rulemaking authority; career and technical education (Section 3). Directs the commissioner to adopt rules for administering career and technical education programs for students in grades 7 to 12 to ensure that the career and technical levy and career and technical programs can be administered to serve students under current state and local organizational structures. Makes this section effective immediately.
Tammy McGlone 582-8835	<p>Appropriations for State Agencies</p> <p>Section 4, Subd. 2, Department of Education \$22,169,000 for FY 2008 \$22,653,000 for FY2009</p> <p>Any balance in the first year does not cancel but is available in the second year. \$7,000 in FY 2008 is for GRAD testing rulemaking. \$7,000 in FY 2008 is for Career and Technical Education Rulemaking. \$40,000 each year is for an early hearing loss intervention coordinator.</p> <ul style="list-style-type: none"> • \$260,000 each year is for the Minnesota Children's Museum. • \$41,000 each year is for the Minnesota Academy of Science. • \$619,000 in FY 2008 and \$632,000 in FY 2009 is for the Board of Teaching. • \$163,000 in FY 2008 and \$171,000 in FY 2009 is for the Board of School Administrators. • \$50,000 in each year is for the Duluth Children's Museum. • The expenditures of federal grants and aids as shown in the biennial budget document and its supplements are approved and appropriated and shall be spent as indicated. <p>Section 5: Appropriations; Minnesota State Academies \$11,788,000 for FY 2008 \$11,915,000 for FY 2009</p> <p>Any balance in the first year does not cancel but is available in the second year.</p> <p>Section 6: Appropriations; Perpich Center for Arts Education \$6,929,000 for FY 2008 \$7,090,000 for FY 2009</p> <p>Any balance in the first year does not cancel but is available in the second year.</p>

	Section 7: Appropriations; Department of Public Safety \$96,000 for FY 2008 \$96,000 for FY 2009
--	---

Article 8 – Pupil Transportation Standards

Contacts

<p>All school bus transportation questions, except as noted, go to:</p> <p>Sgt. Duane Bartels Minnesota State Patrol 260-2223</p> <p>Bob Fischer (MDE) 582-8776</p>	<p>Early childhood family education participants (Section 1). Clarifies that school districts may transport ECFE and school readiness participants along all school bus routes when space is available, not just regular routes.</p> <p>Student training (Section 2). Clarifies that students taking driver's training instruction classes must receive appropriate information regarding school bus safety. Strikes language requiring all students in grades 9 and 10 to receive training on the laws and procedures of operating a vehicle in the vicinity of a school bus, now requiring only those students in driver's training classes to receive this training; requires the school transportation safety director, upon request of the superintendent, to certify that all students, including non-public students, transported by school bus within the district have received bus safety training.</p> <p>Cellular phone. (Section 3). Defines cellular phone.</p> <p>Personal cellular phone call prohibition. (Section 4). Prohibits a school bus driver from operating a bus while communicating or operating a cellular phone for personal reasons, including hand-held or hands free cellular phones, while the bus is in motion.</p> <p>Driver seat belt. (Section 5). Requires all school buses and Head Start buses to have driver seat belts.</p> <p>National Standards adopted. (Section 6). Conforms the state's school bus equipment, body, and chassis standards to the 2005 (instead of 2000) "National School Transportation Specifications and Procedures", including multifunctional school activity buses.</p> <p>Applicability. (Section 7). Amends a date to require that school bus standards apply to school buses manufactured after Dec. 31, 2007; buses manufactured before Dec. 31, 2007, must conform to the MN standards in effect on the date of manufacture.</p> <p>Electrical system; battery. (Section 8). Raises the minimum amperage of school bus generators and alternators to 130 amperes.</p> <p>Identification. (Section 9). Clarifies that after December 31, all type A, B, C, and D buses must display lettering that reads "Unlawful to pass when red</p>
---	--

lights are flashing."

Seat and crash barriers (Section 10). Requires all school bus seats to have a minimum cushion depth of 15 inches and a seat back height of at least 20 inches above the seating reference point.

Driver's license classifications, endorsements, exemptions (Section 11). Clarifies that a person may drive certain multifunctional school activity buses and certain type A school buses without a school bus endorsement.

Exception for certain school bus drivers (Section 12). Clarifies that a person may drive a multifunctional school activity bus without a school bus endorsement. Clarifies that when a type A school bus is being driven by a driver without a school bus endorsement that the driver may not use the eight-light system. Clarifies that the bus drivers must be trained in the proper use of child safety restraint systems if child safety restraints are used by the passengers on the school bus.

Training (Section 13). Includes nonpublic schools and private contractors in those who may use alternative assessments for bus driver training; allows a school bus driver to receive at least eight hours of school bus in-service training as an alternative to being assessed for bus driver competencies after the initial year of assessment.

Rules revised (Section 14). Grants the commissioner of public safety the authority to amend and adopt revisions to the listed rules under the good cause exemption to the state rulemaking process.

Repealers (Section 15). Repeals the following effective January 1, 2008:

- M.S. 169.4502, subd. 15 – Additional MN school bus chassis standards; oil filter or oil filtration system (repeals subdivision allowing an oil filtration system to be used in lieu of an oil filter)
- M.S. 169.4503, subd. 17, 18, 26 – Additional MN school bus body standards
 - **17** – mirrors (repeals requirement that all school buses be equipped with a minimum of 2 crossover mirrors, mounted on left and right sides of bus)
 - **18** – overall width (repeals the exclusion of mirrors, mirror brackets, and the stop arm in the overall width limit)
 - **26** – crossing control arm (repeals provision that if a bus is equipped with a crossing control arm, an automatic recycling interrupt switch may be installed for temporary disabling of the crossing control arm).

Article 9– Early Childhood Education

Contacts

Michelle Weber 582-8880	Head Start Distribution of appropriation (Section 1). Modifies statutes for distribution of Head Start programs; requires the commissioner to develop procedures to make payments based on the number of children reported to be enrolled during the required time of program operations. States requirements for such a procedure, including reporting schedules, corrective action plan requirements, and financial consequences to be imposed. Requires reduction of subsequent allocations to programs reporting chronic under-enrollment. Envisions shifting of funds for these programs to fully enrolled programs.
Barbara O’Sullivan 582-8422	Head Start Application requirements (Section 2). Modifies what is required for plans from eligible Head Start organizations, requiring a plan for providing Head Start services in conjunction with full-day child care programs to minimize child transitions, increase program intensity and duration, and improve outcomes.
Barbara O’Sullivan 582-8422	Head Start Full-day requirements (Section 3). Requires a phase in of full-day services for Head Start programs, with 25 percent by FY 2009; 40 percent by FY 2011; and 50 percent by FY 2013. Allows Head Start to provide full day services as part of their own program model or in cooperation with licensed full-day child care programs. Allows exemptions to be requested from the commissioner for stated reasons.
Barbara O’Sullivan 582-8422	Developmental screening program information (Section 4). Directs a school district to inform parents that developmental screening is not required if a statement signed by the parents is submitted to the school.
Barbara O’Sullivan 582-8422	ECFE Establishment; purpose (Section 5). Adds to the purpose clause for early childhood family education programs.
Barbara O’Sullivan 582-8422	ECFE Program requirements (Section 6). Amends the program requirements for early childhood family education programs. Amends the list of requirements for these programs.
Board of Teaching 582-8888	ECFE Teachers (Section 7). Changes requirements for hiring teachers for early childhood family education programs to require teachers licensed in early childhood or parent education.
Barbara O’Sullivan 582-8422	ECFE Plan and program data submission requirements (Section 8). Requires a biennial plan be submitted for ECFE programs. Phases in submission of this plan, with one-half of districts by April 1, 2009, and the remainder by April 1, 2010. Requires submission of a biennial plan and annual program data before certification of an ECFE levy for FY 2011.
Lisa DeRemee 582-8467	ECFE Revenue (Section 9). Increases the revenue for ECFE from \$112 to \$120 per child under age 5 residing in the district, beginning in FY 2008. This completes the restoration of the ECFE formula to the rate in effect before reductions enacted during the 2003 legislative session.
Lisa DeRemee 582-8467	Early childhood family education levy (Section 10). For FY 2009 only, reduces the state total ECFE levy from \$22,135,000 to \$13,565,000. The reduction in the ECFE levy offsets other areas in the E-12 Education Act

	<p>where school levies are increased, enabling the legislature to meet its target of zero growth over old law in state total school levies for taxes payable in 2008. The state total ECFE levy returns to \$22,135,000 for FY 2010.</p> <p>Beginning with levies for FY 2011, prohibits a district from certifying a levy for ECFE unless it has met annual program data reporting and biennial plan requirements for the program.</p>
Lisa DeRemee 582-8467	ECFE Use of revenue restricted (Section 11). Allows up to 10 percent of ECFE program revenue from aid, levy and fees to be used for equipment that is used in the ECFE program, which may include only the purchase or lease of computers and related materials or instructional equipment. Allows a district to exceed the 10% limitation in unusual circumstances with prior written approval of the Commissioner.
Lisa DeRemee 582-8467	ECFE Home visiting levy (Section 12). Clarifies that a district must be eligible to levy for ECFE in order to qualify for the home visiting levy.
Barbara O'Sullivan 582-8422	School Readiness Program requirements (Section 13). Includes early literacy skills in the requirements for a school readiness program.
Carol Thomas 582-8453	After-school community learning programs (Section 14). Establishes a competitive statewide after-school community learning grant program for programs serving youth after school or during non-school hours. States outcomes expected from grants, and plans that must be submitted to the commissioner from grant applicants.
Barry Shaffer 582-8442	State total adult basic education aid (Section 15). Increases the state total adult basic education aid (before adjustments) from \$37,673,000 in FY 2007 to \$40,650,000 in FY 2008. The state total aid for later fiscal years is increased by 3% each year over this higher base.
Barry Shaffer 582-8442	Adult basic education program aid limit (Section 16). Increases the limit on total ABE aid per contact hour from \$21 to \$22. Eliminates the individual program contact hour revenue cap for FY 2008 only, and establishes a new contact hour revenue cap of the greater of 11% or \$10,000 for FY 2009 and later. (Also see Art. 10, Sec. 25, which corrects the 3% error in ABE state aid for FY 2007).
	Appropriations (Section 17)
Aid: Lisa DeRemee 582-8467	Subd. 2 Early Childhood Family Education Aid \$21,106,000 for FY 2008 \$29,601,000 for FY 2009
Aid: Lisa DeRemee 582-8467	Subd. 3 School Readiness \$ 9,995,000 for FY 2008 \$10,095,000 for FY 2009
Aid: Lisa DeRemee 582-8467	Subd. 4: Health and Developmental Screening Aid \$3,159,000 for FY 2008 \$3,330,000 for FY 2009

<p>Aid: Michelle Weber 582-8880</p>	<p>Subd. 5: Education Parents Partnership \$50,000 for FY 2008 \$50,000 for FY 2009 Any balance in the first year does not cancel but is available in the second.</p> <p>Subd. 6: Kindergarten Entrance Assessment and Intervention \$287,000 for FY 2008 \$287,000 for FY 2009 Any balance in the first year does not cancel but is available in the second.</p> <p>Subd. 7: Head Start Program \$20,100,000 for FY 2008 \$20,100,000 for FY 2009 Any balance in the first year does not cancel but is available in the second.</p>
<p>Aid: Lisa DeRemee 582-8467</p>	<p>Subd. 8: Community Education Aid \$1,307,000 for FY 2008 \$ 816,000 for FY 2009</p>
<p>Aid: Greg Sogaard 582-8858</p>	<p>Subd. 9: Adults with Disabilities Program Aid \$710,000 for FY 2008 \$710,000 for FY 2009 School districts operating existing program that are not fully funded shall receive full funding beginning in FY 2008 before grants are awarded to others.</p>
<p>Aid: Lisa DeRemee 582-8467</p>	<p>Subd. 10: Hearing Impaired Adults: \$70,000 for FY 2008 \$70,000 for FY 2009</p>
<p>Aid: Lisa DeRemee 582-8467</p>	<p>Subd. 11: School-Age Care Revenue \$1,000 for FY 2008 \$1,000 for FY 2009</p>
<p>Aid: Greg Sogaard 583-8858</p>	<p>Subd. 12: After-school Community Learning Grants \$2,775,000 for FY 2008 \$2,600,000 for FY 2009 This is a one-time appropriation. The commissioner may hire 1 FTE to administer the program.</p>
<p>Aid: Greg Sogaard 583-8858</p>	<p>Subd. 13: Adult Basic Education Aid \$40,347,000 for FY 2008 \$41,745,000 for FY 2009</p>
	<p>Subd. 14: GED Tests \$125,000 for FY 2008 \$125,000 for FY 2009</p>

	<p>Any balance in the first year does not cancel but is available in the second.</p> <p>Subd. 15: Adult Literacy Grants for Recent Immigrants \$1,125,000 for FY 2008</p> <p>Section 18, Subd. 4: Lead Hazard Reduction \$100,000 for FY 2008 \$100,000 for FY 2009</p> <p>The Commissioner of Education may transfer this appropriation to the Commissioner of Health.</p>
<p>Karen Carlson 582-8397</p> <p>Barry Shaffer 582-8442</p>	<p>Repealers (Section 19). Repeals:</p> <ul style="list-style-type: none"> • M.S. 124D.175 – Minnesota Early Learning Foundation (MELF) • M.S. 124D.531, subd. 5 – ABE aid; aid guarantee (repeals provision that any ABE program qualifying for aid that receives less state aid than in FY 2000 must receive additional aid equal to the difference between its FY 2000 aid and its FY 2001 aid)

Article 10 – Education Forecast Adjustments

Contacts

<p>Karen Dykoski 582-8766</p>	<p>Appropriations (Sections 1 – 25). Changes FY 2007 appropriations for forecasted formula-driven programs to reflect the February, 2007, state economic forecast.</p> <p>Of particular note is Section 25, relating to Adult Basic Education (ABE). ABE aid had been prorated in FY 2007, due to an error in 2006 legislation. This will eliminate the need to prorate FY 2007 ABE aid.</p>
-----------------------------------	---

Article 11 – Technical and Conforming Amendments

Contacts

	<p>Technical Changes (Sections 1 – 19). Strikes obsolete language and corrects cross references.</p>
<p>Dan Smith 582-8330</p> <p>Tom Melcher 582-8828</p>	<p>Repealers (Section 19). Repeals:</p> <ul style="list-style-type: none"> • M.S. 123A.22, subd. 11 – Cooperative centers for vocational education; revenue (repeals eligibility of a secondary vocational cooperative for revenue under 124D.453, which has been repealed) • M.S. 123B.81, subd. 8 – Statutory operating debt; plan disclosure (repeals requirement that any district eligible to receive any amounts pursuant to section 126C.42, subd. 1, which has been repealed, must first disclose its SOD retirement plan as a footnote to the audited financial statement).

Check Nbr	Vendor Name	Check Date	Invoice Number	Invoice Desc	PO Number	Invoice Amount	Check Amount
12263	ALPHA WIRELESS	06/26/2007	610738	CAMERAS	0	7,770.28	7,770.28
01 E 005 850 000 342 530				FACILITIES/SAFE SCHOOLS/EQUIPMENT PURCHASES		7,770.28	
12264	AMAZON.COM CREDIT	06/26/2007	0		375	443.04	751.14
01 E 100 203 000 302 560				ELEMENTARY GENERAL ED./CAPITAL OUTLAY/TEXTBOOK/LIBRARY B		443.04	
					1	308.10	
01 E 005 640 375 308 401				STAFF DEVELOPMENT/STAFF DEV. 25% DIST. WIDE/GENERAL SUPP		308.10	
12265	KATHY BUSACK	06/26/2007	1	MILEAGE	0	195.62	195.62
01 E 005 010 000 000 366				BOARD OF EDUCATION//TRAVEL-SCHOOL BUSINESS		195.62	
12266	CANBY PRINT SHOP	06/26/2007	8093		389	21.00	21.00
01 E 100 203 404 000 430				ELEMENTARY GENERAL ED.//SUPPLIES		21.00	
12267	CDW GOVERNMENT, INC.	06/26/2007	FSJ7388		433	407.08	407.08
01 E 300 211 000 302 530				SECONDARY EDUCATION GENERAL/CAPITAL OUTLAY/EQUIPMENT PUR		407.08	
12268	CITY OF GRANITE FALLS	06/26/2007	1574		0	30.00	30.00
04 E 500 582 000 344 361				LEARNING READINESS/LEARNING READINESS/BUS CONTRACT (XWK		30.00	
12269	CALEB CORNELIUS	06/26/2007	1		0	25.00	25.00
01 E 300 211 165 000 899				SECONDARY EDUCATION GENERAL//MISCELLANEOUS EXPENSE		25.00	
12270	DAKTRONICS, INC.	06/26/2007	283919		0	131.39	131.39
01 E 005 810 000 000 350				OPERATIONS AND MAINTENANCE//REPAIRS AND MAINTENANCE SVCS		131.39	
12271	ADELA R ESPINOZA	06/26/2007	1		0	6.93	6.93
01 E 100 219 107 799 366				LEP/OTHER GRANTS/TRAVEL-SCHOOL BUSINESS		6.93	
12272	FRONTIER TELEPHONE	06/26/2007	1		0	7.08	7.08
01 E 025 810 000 000 320				OPERATIONS AND MAINTENANCE//COMMUNICATIONAL SERVICES		7.08	
12273	GOPHER SPORT	06/26/2007	7423175		387	87.72	87.72
01 E 100 203 407 000 430				ELEMENTARY GENERAL ED.//SUPPLIES		87.72	
12274	GREAT PLAINS SPORTS	06/26/2007	1		0	48.53	48.53
01 E 300 294 215 000 401				BOYS ATHLETICS//GENERAL SUPPLIES		48.53	
12275	HENDERSON, ROBIN	06/26/2007	1		0	31.05	31.05
01 E 100 219 107 799 401				LEP/OTHER GRANTS/GENERAL SUPPLIES		31.05	
12276	HILLYARD/HUTCHINSON	06/26/2007	2122324	floor machine	0	1,234.25	1,234.25
01 E 005 810 000 302 530				OPERATIONS AND MAINTENANCE/CAPITAL OUTLAY/EQUIPMENT PURC		1,234.25	
12277	HOPE MARKET	06/26/2007	394367		0	59.89	59.89
04 E 500 505 000 321 450				COMMUNITY EDUCATION GENERAL/COMMUNITY EDUCATION/MATERIAL		59.89	
12278	INK SPOT	06/26/2007	9623		0	450.00	569.00
01 E 100 050 000 000 401				PRINCIPAL'S OFFICE//GENERAL SUPPLIES		450.00	
					9642	89.00	
01 E 100 203 000 000 899				ELEMENTARY GENERAL ED.//MISCELLANEOUS EXPENSE		89.00	
					9642-	30.00	
01 E 150 203 000 000 899				ELEMENTARY GENERAL ED.//MISCELLANEOUS EXPENSE		30.00	
12279	RICHARD D. JEPSON	06/26/2007	1	MILEAGE	0	83.23	83.23
01 E 005 010 000 000 366				BOARD OF EDUCATION//TRAVEL-SCHOOL BUSINESS		83.23	
12280	JIM'S CLOTHING & SPORTING GOOD	06/26/2007	76032		0	84.00	84.00
04 E 500 505 000 321 450				COMMUNITY EDUCATION GENERAL/COMMUNITY EDUCATION/MATERIAL		84.00	
12281	JOHNSON CONTROLS	06/26/2007	706120913		0	702.08	702.08
01 E 005 810 000 000 350				OPERATIONS AND MAINTENANCE//REPAIRS AND MAINTENANCE SVCS		702.08	
12282	JOSTEN'S	06/26/2007	12773803	CORDS	0	642.22	642.22
01 E 300 211 165 000 899				SECONDARY EDUCATION GENERAL//MISCELLANEOUS EXPENSE		642.22	
12283	KID SOUNDS	06/26/2007	2952		0	9.00	9.00

Check Nbr	Vendor Name	Check Date	Invoice Number	Invoice Desc	PO Number	Invoice Amount	Check Amount
01 E 100 050 000 000 401				PRINCIPAL'S OFFICE//GENERAL SUPPLIES		9.00	
12284	LEN WORSECH & CO	06/26/2007	8210	JV FIELD	0	506.42	506.42
01 E 300 298 000 000 370				EXTRACURRICULAR ACTIVITIES//RENTALS AND LEASES		506.42	
12285	CAROLINE LINDEN	06/26/2007	2		0	431.35	431.35
01 E 100 204 000 414 366				TITLE II EISENHWOER/TITLE II ESEA/TRAVEL-SCHOOL BUSINESS		431.35	
12286	LISTUL, DARLYS	06/26/2007	1	MILEAGE	0	760.43	877.73
01 E 150 203 169 000 366				ELEMENTARY GENERAL ED.//TRAVEL-SCHOOL BUSINESS		760.43	
01 E 300 257 000 000 433			2	SUPPLIES	0	117.30	
				COMPUTER TECHNOLOGY//INDIVIDUAL INST SUPPLIES		117.30	
12287	MCCOY, KAREN	06/26/2007	1	MILEAGE	0	52.36	52.36
01 E 200 612 199 000 366				TECHNOLOGY//TRAVEL-SCHOOL BUSINESS		52.36	
12288	MIRACLE REC. EQUIPMENT CO.	06/26/2007	657657		0	4,692.31	4,692.31
01 L 230 53				GENERAL FUND/DEFERRED REVENUE/SNAP GRANT		525.75	
01 L 230 33				GENERAL FUND/DEFERRED REVENUE/BERT RANEY ACTIVITY ACCOUN		3,365.15	
01 L 230 69				GENERAL FUND/DEFERRED REVENUE/TARGET \$ (HINZ)		801.41	
12289	MN RURAL EDUCATION ASSOC.	06/26/2007	1	DUES 08	0	2,193.00	2,193.00
01 A 131 00				GENERAL FUND/PREPAID EXPENSE		2,193.00	
12290	MN VALLEY LUTHERAN HIGH SCHOOL	06/26/2007	1	N	0	400.00	400.00
01 E 005 760 000 720 361				PUPIL TRANSPORTATION/REGULAR TO AND FROM SCHOOL/BUS CONT		400.00	
12291	MUSIC MART	06/26/2007	517687		0	3.00	3.00
01 E 300 258 233 000 430				MUSIC//SUPPLIES		3.00	
12292	NAT'L PRINCIPAL'S RESOURCE CTR	06/26/2007	337899		0	8.50	8.50
01 E 150 203 000 000 899				ELEMENTARY GENERAL ED.//MISCELLANEOUS EXPENSE		8.50	
12293	KAREN NORELL	06/26/2007	1	MILEAGE	0	175.56	175.56
01 E 300 050 000 000 366				PRINCIPAL'S OFFICE//TRAVEL-SCHOOL BUSINESS		175.56	
12294	OFFICE MAX BOISE	06/26/2007	1		0	25.00	239.78
01 E 005 020 000 302 530				SUPERINTENDENT'S OFFICE/CAPITAL OUTLAY/EQUIPMENT PURCHAS		25.00	
01 E 005 020 000 000 401			949916		119	214.78	
01 E 200 612 199 000 401				SUPERINTENDENT'S OFFICE//GENERAL SUPPLIES		76.58	
				TECHNOLOGY//GENERAL SUPPLIES		138.20	
12295	OFFICE SYSTEMS	06/26/2007	273800-0		0	352.91	477.08
01 E 150 203 000 000 401				ELEMENTARY GENERAL ED.//GENERAL SUPPLIES		352.91	
01 E 150 050 000 000 401			274492-0		0	124.17	
				PRINCIPAL'S OFFICE//GENERAL SUPPLIES		124.17	
12296	CAROLYN OLSON	06/26/2007	1		0	20.02	20.02
01 E 150 203 169 000 366				ELEMENTARY GENERAL ED.//TRAVEL-SCHOOL BUSINESS		20.02	
12297	PRO CELLULAR WIRELESS	06/26/2007	GRANIIN2250		0	47.52	47.52
01 L 230 05				GENERAL FUND/DEFERRED REVENUE/BERT RANEY CCC (STDNT TEAC		47.52	
12298	RRONA	06/26/2007	10019		0	25.00	25.00
01 E 100 203 113 317 401				ELEMENTARY GENERAL ED./COMPENSATORY/GENERAL SUPPLIES		25.00	
12299	SCHOLASTIC INC	06/26/2007	1379986		0	277.95	450.28
01 E 100 203 000 302 560				ELEMENTARY GENERAL ED./CAPITAL OUTLAY/TEXTBOOK/LIBRARY B		277.95	
01 E 100 203 000 302 560			1399429		0	172.33	
				ELEMENTARY GENERAL ED./CAPITAL OUTLAY/TEXTBOOK/LIBRARY B		172.33	
12300	STATE OF MINNESOTA	06/26/2007	56175	STATE AUDIT	0	2,095.30	2,095.30
01 E 005 110 000 000 311				ACCOUNTING OFFICE//PROFESSIONAL/TECHNICAL SVCS		2,095.30	
12301	STRAND, DWAYNE	06/26/2007	1		0	717.23	1,524.87
01 E 005 020 000 000 366				SUPERINTENDENT'S OFFICE//TRAVEL-SCHOOL BUSINESS		717.23	

Check Nbr	Vendor Name	Check Date	Invoice Number	Invoice Desc	PO Number	Invoice Amount	Check Amount
01 E 100 050 000 000 366			2	PRINCIPAL'S OFFICE//TRAVEL-SCHOOL BUSINESS	0	403.82	403.82
01 E 150 050 000 000 366			3	PRINCIPAL'S OFFICE//TRAVEL-SCHOOL BUSINESS	0	403.82	403.82
12302 DENISE STREICH		06/26/2007	1	MAIL RUN- JAN-JUNE & CITIES TRIP	0	170.17	170.17
01 E 005 020 000 000 366				SUPERINTENDENT'S OFFICE//TRAVEL-SCHOOL BUSINESS		170.17	
12303 SW MN ARTS & HUMANITIES		06/26/2007	1	2007	0	100.00	100.00
01 E 005 010 000 000 820				BOARD OF EDUCATION//DUES & MEMBERSHIPS		100.00	
12304 THE BOOKSOURCE		06/26/2007	836810		376	292.76	292.76
01 E 100 203 113 317 430				ELEMENTARY GENERAL ED./COMPENSATORY/SUPPLIES		292.76	
12305 THEMES & VARIATIONS		06/26/2007	31315		386	92.00	92.00
01 E 100 203 407 000 430				ELEMENTARY GENERAL ED./SUPPLIES		92.00	
12306 WEST MUSIC		06/26/2007	SI169582		388	193.90	193.90
01 E 100 203 407 000 430				ELEMENTARY GENERAL ED./SUPPLIES		193.90	
12307 Vendor Continued Void		06/26/2007					0.00
12308 Vendor Continued Void		06/26/2007					0.00
12309 Vendor Continued Void		06/26/2007					0.00
12310 Vendor Continued Void		06/26/2007					0.00
12311 YME SCHOOLS-ADM		06/26/2007	4635	MARTINEZ	0	-9.60	3,848.46
02 R 005 000 000 701 601				SCHOOL LUNCH/SALES TO PUPILS		-9.60	
01 E 300 292 219 000 186			4650	RASMUSSEN VOID	0	-28.00	
				BOYS/GIRLS ATHLETICS//EXTRA-CURRICULAR WORKERS		-28.00	
01 E 300 292 219 000 186			4654	RASMUSSEN VOID	0	-28.00	
				BOYS/GIRLS ATHLETICS//EXTRA-CURRICULAR WORKERS		-28.00	
01 E 300 298 236 000 319			4872	VOID BRITTA LARSON	0	-100.00	
				EXTRACURRICULAR ACTIVITIES//OTHER PERSONAL SERVICES		-100.00	
02 R 005 000 000 701 601			5206	CARTER GLAD	0	6.80	
				SCHOOL LUNCH/SALES TO PUPILS		6.80	
01 E 300 294 215 000 899			5207	MARCUS SCHWARTZ	0	12.05	
				BOYS ATHLETICS//MISCELLANEOUS EXPENSE		12.05	
04 R 500 000 000 321 050			5208	VERNON ROCKWELL	0	98.00	
				COMMUNITY EDUCATION/FEES FROM PATRONS		98.00	
01 E 300 294 215 000 899			5210	SHERI RICHTER	0	200.00	
				BOYS ATHLETICS//MISCELLANEOUS EXPENSE		200.00	
01 E 300 294 215 000 899			5211	AMY RICHTER	0	200.00	
				BOYS ATHLETICS//MISCELLANEOUS EXPENSE		200.00	
01 E 300 294 215 000 899			5212	TIM KNAPPER	0	490.00	
				BOYS ATHLETICS//MISCELLANEOUS EXPENSE		490.00	
01 E 300 294 215 000 899			5213	BUD BLINT	0	140.00	
				BOYS ATHLETICS//MISCELLANEOUS EXPENSE		140.00	
01 E 300 294 215 000 899			5214	DEAN BALDRY	0	65.00	
				BOYS ATHLETICS//MISCELLANEOUS EXPENSE		65.00	
01 E 300 294 215 000 899			5215	MIKE RICHTER	0	205.00	
				BOYS ATHLETICS//MISCELLANEOUS EXPENSE		205.00	
01 E 300 294 215 000 899			5216	NICK RICHTER	0	165.00	
				BOYS ATHLETICS//MISCELLANEOUS EXPENSE		165.00	

Check Nbr	Vendor Name	Check Date	Invoice Number	Invoice Desc	PO Number	Invoice Amount	Check Amount
01 E 300 294 215 000 899			5217	ADAM RANEY BOYS ATHLETICS//MISCELLANEOUS EXPENSE	0	30.00 30.00	
01 E 300 294 215 000 899			5218	TAYLOR LEE BOYS ATHLETICS//MISCELLANEOUS EXPENSE	0	20.00 20.00	
01 E 300 294 215 000 899			5219	KRISTI KLASSEN BOYS ATHLETICS//MISCELLANEOUS EXPENSE	0	115.00 115.00	
01 E 300 294 215 000 899			5220	DARVIN ANDERT BOYS ATHLETICS//MISCELLANEOUS EXPENSE	0	65.00 65.00	
01 E 300 294 215 000 899			5221	GORMOND VELDE BOYS ATHLETICS//MISCELLANEOUS EXPENSE	0	140.00 140.00	
04 E 500 505 000 321 450			5223	MN ARBORETUM COMMUNITY EDUCATION GENERAL/COMMUNITY EDUCATION/MATERIAL	0	1,005.00 1,005.00	
04 R 500 000 000 321 050			5224	RAE ANN AUS COMMUNITY EDUCATION/FEES FROM PATRONS	0	50.00 50.00	
04 R 500 000 000 321 050			5225	PHYLLIS LETTAN COMMUNITY EDUCATION/FEES FROM PATRONS	0	49.00 49.00	
02 R 005 000 000 701 601			5226	DAVID BEASELY SCHOOL LUNCH/SALES TO PUPILS	0	31.15 31.15	
04 E 500 505 000 321 450			5227	WATERTOWN AQUATIC CENTER COMMUNITY EDUCATION GENERAL/COMMUNITY EDUCATION/MATERIAL	0	188.50 188.50	
04 E 500 505 000 321 450			5228	PIZZA RANCH COMMUNITY EDUCATION GENERAL/COMMUNITY EDUCATION/MATERIAL	0	304.50 304.50	
01 E 300 292 219 000 185			5229	STEPH FREIBORG BOYS/GIRLS ATHLETICS//MISCELLANEOUS PAY	0	96.00 96.00	
01 E 300 292 219 000 185			5230	K. RASMUSSEN BOYS/GIRLS ATHLETICS//MISCELLANEOUS PAY	0	52.00 52.00	
01 E 005 130 000 333 329			5232	POSTMASTER COMMUNITY RELATIONS-SCHOOL NEW/PARENTAL INVOLVEMENT/POST	0	307.61 307.61	
02 R 005 000 000 701 601			VOID 5196	VOID 5196 SCHOOL LUNCH/SALES TO PUPILS	0	-21.55 -21.55	
12312 ZEP MANUFACTURING CO 01 E 025 810 000 000 410		06/26/2007	57253605	OPERATIONS AND MAINTENANCE//CUST/REPAIR SUPPLIES	0	1,529.63 1,529.63	1,529.63

50 Computer Check(s) For a Total of 33,343.49

	0	Manual	Checks For a Total of	0.00
	0	Wire Transfer	Checks For a Total of	0.00
	50	Computer	Checks For a Total of	33,343.49
Total For	50	Manual, Wire Transfer & Computer	Checks	33,343.49
Less	0	Voided	Checks For a Total of	0.00
			Net Amount	33,343.49

FUND SUMMARY

Fund	Description	Balance Sheet	Revenue	Expense	Total
01	GENERAL FUND	6,932.83	0.00	24,534.97	31,467.80
02	FOOD SERVICE	0.00	6.80	0.00	6.80
04	COMMUNITY SERVICE	0.00	197.00	1,671.89	1,868.89

Food Service Report

2005-2006 School Year

Number of Meals Served: Clarkfield Site

Breakfast:

	Grade K-6
Free:	4646
Reduced:	3787
Full Pay:	1934

Adult Breakfast: 201

Total: 10,568

Lunch:

	Grade K-6
Free:	6919
Reduced:	6166
Full Pay:	7239

Adult Lunch: 1004

Total: 21,328

Number of Meals Served: Granite Falls Site

Breakfast:

	Grade K-6	Grade 7-12
Free:	7735	3855
Reduced:	2888	2853
Full Pay:	2057	4527

Adult Breakfast: 296 20

Total: 12,976 11,255

Lunch:

	Grade K-6	Grade 7-12
Free:	21,351	11,989
Reduced:	10,281	9,265
Full Pay:	29,458	32,896

Adult Lunch: 2264 1304

Total: 63,384 55,454

Number of Free/ Reduced/Full Pay Students: Clarkfield Site

Free: 51

Reduced: 39

Full Pay: 48

Number of Free/Reduced/Full Pay Studnets: Granite Falls Site

Free: 256

Reduced: 141

Full Pay: 569

Food Service Report

2006-2007 School Year

Number of Meals Served: Clarkfield Site

Breakfast:		Lunch:	
	Grade K-6		Grade K-6
Free:	4,644	Free:	7,122
Reduced:	2,822	Reduced:	5,407
Full Pay:	1,283	Full Pay:	6,788
Adult Breakfast:	351	Adult Lunch:	797
Total:	9,100	Total:	20,114

Number of Meals Served: Granite Falls Site

Breakfast:		Lunch:			
	Grade K-6	Grade 7-12		Grade K-6	Grade 7-12
Free:	9,038	5732	Free:	25,400	12,919
Reduced:	1,759	3268	Reduced:	8,142	7,442
Full Pay:	3,123	6474	Full Pay:	30,923	32,239
Adult Breakfast:	404	7	Adult Lunch:	2,598	1513
Total:	14,324	15,481	Total:	67,063	54,113

Number of Free/ Reduced/Full Pay Students: Clarkfield Site

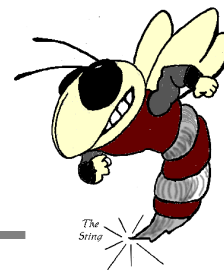
Free: 49
 Reduced: 35
 Full Pay: 45

Number of Free/Reduced/Full Pay Studnets: Granite Falls Site

Free: 290
 Reduced: 116
 Full Pay: 675

YELLOW MEDICINE EAST – ISD 2190

Dwayne A. Strand, Superintendent
450 9th Avenue - Granite Falls, MN 56241
Phone: 320-564-4081 - Fax: 320-564-4781



June 25, 2007 Negotiations Minutes as drafted by S. Koepke

Present: Dave Guertin, Steve Petrich, Jim Williams, Sheila Koepke, Dwayne Strand, Elmo Volstad, LeeAnn Boushek, Cindy Loe, Rich Jepson

1. Steve handed out the 06-07 board contribution dollars for both YME and MVCC. LeeAnn noticed that TRA, FICA and LTD were not included in the list of numbers presented to the board by EM-YME. After some discussion about whether to include or not include TRA, FICA and LTD - all agreed to the numbers on the sheet as baseline figures for the year 06-07..

2. Dave presented Changes in Language Proposals generated through teacher surveys in the spring. Some minor discussions were held regarding the rationale for some of the proposals.

3. Steve presented the EM-YME salary schedule proposal to the board. The proposal is a 4% increase in 07-08 in salary and a 2% career increment increase. In 08-09 a 2% salary schedule increase with a 2% career increment increase. Co-curricular increased 4% both years. Health insurance - EMYME is asking for full single at the \$1,000 deductible level and increasing that dollar amount into the other plans. 08-09 is a 10% increase in the \$1,000 deductible and increasing that monetary amount into the other plans.

Dwayne asked for EM-YME to put special language proposals in writing. Steve will bring MVCC salary figures to Cindy. The board will have their reactions to the EM-YME proposals ready for the next meeting.

Next meeting date: Monday, July 16 at 5:30 pm.

Sheila Koepke
MVCC Special Education Teacher
Yellow Medicine East High School
320-564-4083

YME HIGH SCHOOL
Karen Norell, Principal
450 9th Avenue
Granite Falls, MN 56241
Phone: 320-564-4083
Fax: 320-564-4782

BERT RANEY ELEMENTARY
Stacy Hinz, Principal
555 7th Avenue
Granite Falls, MN 56241
Phone: 320-564-4082
Fax: 320-564-4427

H.A. HAGG ELEMENTARY
Stacy Hinz, Principal
1204 11th Avenue
Clarkfield, MN 56223
Phone: 320-669-4424
Fax: 320-669-4828

Contract Agreement
Yellow Medicine East Community Education Director/Activities Director
July 1, 2007 – June 30, 2008

Whereas the School Board of Yellow Medicine East School District, ISD #2190, has agreed to extend an employment contract to Tim Knapper to fulfill the responsibilities of the Community Education/Activities Director position, this contract is drafted to specify the components of that agreement. Those components include:

1. A 230-day contract, which includes a Base Salary for the 2007-2008 school year of \$48,162.00. This amount is being based on Step 10 of the MA+15 Lane of the current EM-YME Master Agreement (2006-2007). This amount constitutes the 184-day calendar approved by the Board. In addition, the Community Education/Activities Director will be employed for an additional 46 days thus creating a 230-duty day contract per year. The rate of pay for the additional days is calculated on the base salary daily rate and is \$261.75 per day. Both the base salary and the daily rate for the additional days of the contract will be adjusted following the ratification of the master agreement between the School District and Education Minnesota-Yellow Medicine East. The contract will begin on July 1, 2007. Contract days are set by the Community Education/Activities Director and approved by the Superintendent.
2. It is understood that legal holidays, including Christmas Day, New Years Day, July 4th, Good Friday, Memorial Day, Labor Day, and Thanksgiving Day, are not included in the number of contracted working days and are non-duty days.
3. A supervision stipend of \$3,000.00 for his attendance at after school events.
4. The Health Insurance benefit, dental insurance premium, LTD and life insurance benefits as well as the District match to the Deferred Compensation 403(b) option to be provided at 12/9ths of the rate negotiated in the teacher Master Agreement.
5. A professional and civic dues benefit up to \$600 per year. Professional organizations are those associated with the positions of Community Education Director and Activities Director.
6. Other benefits as defined in the EM-YME Master Agreement.
7. Compensation for vandalism to personal property, up to \$500 per incident, for property damage caused by students as it relates to position responsibilities.

** Continued employment in this position will be determined by the Community Education/Activities Director completing the required licensing requirement by the fall of 2009-2010 school year.

FOR:
Tim Knapper
Community Education Director/Activities Coordinator

(Signature)

(Date)

FOR:
Yellow Medicine East Schools #2190
Elmo Volstad, Chair

(Board Chairperson)

(Date)

MEMO

To: School Board Members

From: Stacy Hinz

Date: June 2007

RE: Bert Raney/H.A. Hagg Elementary School Handbook

Following are the changes or additions made to the Bert Raney/H.A. Hagg Elementary handbook for the 2007-08 school year:

Updated the cover – removed phone extensions

Pg. 1 - Updated Table of Contents

Pg. 2 – Need to update Finger Tip Facts page – will complete as names of new staff become available

Pg. 10 – Updated to reflect meal price changes in the Food Service section

- Added trading cards, heelys, and MP3/Ipods to the Forbidden Items section

Pg. 11 – Changed the Gum Policy to “gum-limited” rather than gum-free.

Pg. 14 – Added fourth graders to the School Patrol section.

- Omitted sentence about wearing ID badges and sentence about school staff monitoring entrances.

Pg. 21 – Added Computer Info – Parent Online Access (Parent Portal) section

Pgs. 28-33 – Updated Pupil Fair Dismissal Act

Pg. 37 – Updated Supply List

Pg. 38 – Updated to current school calendar.

2007-2008 YME School Board Meeting Dates

July 9 or 16

August 13

September 10

October 8

November 12

December 10

January 14

February 11

March 10

April 14

May 12

June 9

Member _____ introduced the following resolution and moved its adoption:

**RESOLUTION DIRECTING SCHOOL
TO BE HELD ON OCTOBER 8, 2007**

Whereas the Board of Education does not recognize October 8, 2007, Columbus Day, as a holiday,

Be it resolved, by the School Board of Independent School District No. 2190, as follows:

That the School District intends to conduct school, hold School Board meetings, and other such business on this date.

The motion for the adoption of the foregoing resolution was duly seconded by Member _____

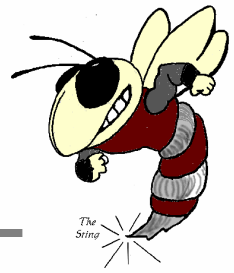
and upon vote being taken thereon, the following voted in favor thereof: _____

and the following voted against the same: _____

Whereupon said resolution was declared duly passed and adopted.

YELLOW MEDICINE EAST – ISD 2190

Dwayne A. Strand, Superintendent
450 9th Avenue - Granite Falls, MN 56241
Phone: 320-564-4081 - Fax: 320-564-4781



NOTICE

Truth in Taxation Hearing Dates Yellow Medicine East - Independent School District No. 2190

Monday, December 10, 2007 – 7:00 pm
YME Board Room

Continuation Hearing – If needed
Monday, December 17, 2007 – 7:00 pm
YME Board Room

Dwayne Strand, Superintendent
June 26, 2007

YME HIGH SCHOOL
Karen Norell, Principal
450 9th Avenue
Granite Falls, MN 56241
Phone: 320-564-4083
Fax: 320-564-4782

BERT RANEY ELEMENTARY
Stacy Hinz, Principal
555 7th Avenue
Granite Falls, MN 56241
Phone: 320-564-4082
Fax: 320-564-4427

H.A. HAGG ELEMENTARY
Stacy Hinz, Principal
1204 11th Avenue
Clarkfield, MN 56223
Phone: 320-669-4424
Fax: 320-669-4828

Attachment 99 Performance Criteria due at MDE 7/27/2007

General Comments

- School district personnel shall be involved in the process of completing this section. This section cannot be completed as a “turnkey” process.
- Responsibility for Health and safety belongs at the district level. The task can, in certain circumstances, be delegated to employees or contractors, but not the responsibility.
- There must be a key district person responsible for each Health and Safety topic. This person is responsible for understanding Attachments 4 and 99 information.
- Attachment 99 replaces Attachment 4 as a reporting requirement. Only Attachment 99 and not Attachment 4 shall be reported to the MDE. Attachment 4 should be used by your district to internally review all Health and Safety programs. MDE is phasing in topics a portion each year until they are all entirely included. For 2007 Pay 2008, the topics are limited to Indoor Air Quality, Safety Committees, Laboratory Safety, Confined Spaces and Employee Right-To-Know. Specific performance criteria are described and the district must either verify they will meet MDE’s criteria or provide their own. Either way, districts will be held to their board-adopted performance criteria. Substituted criteria which is not performance based is an unacceptable report.
- Districts are required to follow the directions shown below and return the completed, board-certified Attachment 99 in order to receive H&S funding for 2007 Pay 2008. All H&S new funding will be delayed until the Attachment 99 is received and verified.
- H&S Management Assistance professionals will key their reporting to the elements in this Attachment. This is part of MDE’s plan to verify that the district is meeting its performance criteria commitment and has conducted a hazard assessment and adopted plans for hazard removal, per page 57 of this Attachment. A district may not refuse access by a Management Assistance professional to accomplish this task and the MDE will not process requests for funding approval without a properly completed Attachment 99. See Attachment 9 for MDE involvement with the Management Assistance program.

Completion Steps for Attachment 99

- District reviews its health and safety hazards, plans/programs to manage them, and this letter and attachments.
- District reviews Attachment 99, affirms each element by highlighting or otherwise indicating, and completes all forms accurately. The attachment is designed to be a “turn-around document.”
- School board validates the information on Attachment 99, certifying that the information in the completed Attachment 99 H&S Performance Criteria will be implemented during fiscal year 2006-2007. In this manner the board, as the policy-setting authority, recognizes and accepts its responsibility for Health and Safety in a manner satisfactory to MDE. A copy of the board-approved minutes and agenda must be attached.
- District returns Attachment 99 in time to arrive at MDE, attn Phil Allmon, or alternatively each region Management Assistance professional, no later than July 27, 2007. Late submissions are strongly discouraged.
- Electronic submission is acceptable and is preferred. Otherwise, provide two paper copies with visible highlighting. Don’t forget to maintain a copy in district files, and to highlight adopted language.

Begin Board-certifying here. General Requirements

- The H&S written plans include policies for managing the hazard, assessing for the hazard, training, and record keeping.
- There is a key district person responsible for each Health and Safety topic. This person is responsible for understanding Attachments 4 and 99 information and the information in the written plans.
- The written plans are current, complete and accurate. They are concise and well organized. They do not make references to other districts or states, or persons not currently with the district.
- In particular, the documentation of training and required reporting is accurate and complete. Training includes an adequate roster of trainees, is dated, and a syllabus of the training, giving information on what trainees can be reasonably expected to know or do.

- The practice of re-photocopying required reports shall not be allowed. Each report shall have a fresh printout with fresh signatures and dates.
- The district has contracted for a Management Assistance professional (or not). His/her name is: Francis Staab and Lee Carlson.

Part I Attachment 99 Performance Criteria – IAQ Management Plan

A. IAQ Coordinator – required in plan

- A person meeting criteria in Attachments 3 and 7 has been appointed as the districts IAQ coordinator
- Communication pathway has been established to notify district staff, parents, and students, who the IAQ Coordinator is and how to contact him/her.
- IAQ coordinator's role and authority shall be clearly defined and understood by district employees, such that he/she can operate effectively.
- The IAQ Coordinator's name and certificate number are Francis Staab IO638.

B. Walk-through performed (required in plan)– Walkthroughs shall be performed at least annually on all school buildings in the district that houses students and/or employees and shall evaluate the following:

- Obvious water intrusion problems (interior and exterior)
- Obvious ventilation failures and/or problems
- Obvious building/structural failures and/or problems
- Overall cleanliness of buildings and classrooms
- Assess the need for O&M programs (e.g. ventilation, carpet, building compounds)

C. Evaluation of key building systems- required in plan

- District shall evaluate all classrooms using equivalent* to the EPA's Tools For Schools Teacher's Checklist at least annually.
- District shall evaluate ventilation systems using equivalent* to the EPA's Tools For Schools Ventilation Checklist at least annually. Activity 22 may be excluded here.
- District shall evaluate all building maintenance issues using equivalent* to the EPA's Tools For Schools maintenance checklist at least annually.

* Equivalent means that each element of each topic is included to the depth described in TFS. If there is a significant departure, an explanation shall accompany the plan.

D. IAQ Management Plan (required in plan) - District shall develop and implement an effective **district specific** IAQ management plan that shall at a minimum have the following elements:

- Identification of IAQ Coordinator
- Communication plan/policy that is specific to the district
- Complaint plan/policy that is district specific
- Plan/policy to address district IAQ issues observed and/or noted during the walk through or through the building systems evaluation process
- Implementation schedule that prioritizes and allocates expenditures to remediate known IAQ issues such as deferred maintenance items (e.g. roof leaks)
- Operations and maintenance plan to maintain building components and mechanical systems
- District policies that are established that affect air quality (animals, cleaning, renovation projects, pest management, chemical use, etc.)
- Annual review of district IAQ Management Plan by IAQ Coordinator and/or IAQ Committee, and school board. This includes a review of all documentation to ensure the plan is indeed district specific and current.

E. District responses to parental concerns--required in plan

- Parents know where to go to find answers to their IAQ questions.
- Parents can obtain checklists or self help information so they can properly evaluate their child's home or other out of school situation.
- Parents can obtain information about school facility construction, maintenance and housekeeping practices, chemicals used, mold and HVAC related information, chemical producing academic

subjects, pesticides and herbicides and the like to determine the extent to which school activities contribute to a child's symptoms.

- Parents can obtain information on what a parent can do – how they can effect change – upon discovering questionable activities occurring within schools.

***F. Mechanical Ventilation improvements if funded under either H&S or Alternative Facilities Bonding and Levy programs**

- All mechanical ventilation improvements shall result in demonstrated current performance criteria as found in state law, statute or rule, to include proper amount of ventilation rate over a specified outside temperature range, proper filtration, and ability to measure ventilation rate.
- Any commissioning resulting from mechanical ventilation improvements shall be done and validated by a Systems Inspector per M.S. 123B.72 that has adequate errors and omissions insurance.
- Mechanical ventilation improvement work funded under H&S shall remain under warranty by the outside party until a full range of seasons has occurred, allowing any deficiencies to become manifest and be corrected.

***G. M.S. 123B.57 responsibility to "...monitor and improve the quality of indoor air..."**

- The district shall determine the mechanical ventilation rate of each occupied space and plan and implement its improvement in a timely manner where found to be inadequate. Use of outside air intake flow hood for unit ventilators or CO2 or thermal-based calculations found in ASHRAE 62-1989 with controls set to minimal outside air settings are adequate. Intended to satisfy TFS Ventilation Checklist Activity 22. This activity does not have to be done to receive HS& funding.
- The district shall determine if there is mold or water intrusion for each occupied space and plan and implement its remediation in a timely manner where found to exist. Visual inspections are adequate.
- The district shall determine the quality of air entering the building and make improvement where needed. Use of human senses is adequate.
- The district shall monitor the use of chemicals, cleaning materials, carpet maintenance (if applicable) pesticides and general housekeeping to ensure proper indoor air quality. Use of human senses is adequate.

Note: Starred paragraphs are not mandatory for inclusion in the district's IAQ program for H&S funding.

Attachment 99 Performance Criteria – Safety Committees

- A district safety committee shall be established where the district exceeds 25 employees or is experiencing excessive lost workdays or accident/incident rates.
- Written statements shall be developed describing safety committee role, responsibilities, activities and administrative support.
- Role of safety committee shall be stated, and shall include consideration of the following:
 - Review high hazard areas of health and safety for adequacy of program protection.
 - Monitor the effectiveness of the safety and health program. Assist administrators, H&S coordinators and supervisors on district/school H&S issues. Bring committee recommendations to school board.
 - Everyone in district needs to know they should contact members of safety committee FIRST for H&S issues.
- There shall be greater employee representation than management, with each bargain unit represented. The safety committee member list shall be posted.
- The number of employee representatives on the committee shall equal or exceed the number of management representatives. The safety committee members shall be made known to all district staff.
- The safety committee shall meet at least quarterly.
- An agenda shall be established prior to meeting. Attendance and minutes shall be recorded. A report of activities shall be posted where all employees have access to it.
- The chair shall be elected by the committee and identified by name.
- Training shall be provided to safety committee members as to their roles and responsibilities.
- Meeting activities shall include consideration of these activities:
 - Establish annual safety goals and objectives for meeting those goals
 - Conduct and/or review safety inspections

- Assist in accident investigation.
- Review accident reports and OSHA 300 logs.
- Accept and evaluate employee suggestions. Make reporting uncomplicated, keeping reporters at ease.
- Review job procedures and recommend improvements
- Monitor safety program effectiveness
- Publicize and promote safety and health
- School board shall review the program annually.

Attachment 99 Performance Criteria – Laboratory Safety Standard and Chemical Hygiene Plan

- There shall be a written and current Chemical Hygiene Plan for all laboratories, per OSHA Laboratory Safety Standard 29 CFR 1910.1450.
- The Chemical Hygiene Officer (CHO) shall be identified for each laboratory. His or her names are Steve Petrich and Mary Quick.
- The CHO shall be responsible for developing and reviewing at least annually chemical handling, storage labeling and disposal procedures (SOPs).
- The CHO shall be responsible for reviewing at least annually lab activities to ensure safe procedures are used.
- The CHO shall review stored chemicals annually and remove unused or excess amounts.
- The CHO shall be responsible for developing and reviewing at least annually engineering controls (e.g. ventilation, chemical storage, fume hoods, gas lines and shutoff, fire prevention, eye-wash and deluge shower)
- The CHO shall be responsible for developing and reviewing at least annually personal protective equipment (PPE) needs (e.g. eye protection, gloves, splash guards, gowns). Included are ensuring students do not wear dangerous clothing (e.g. rings, chains, unsafe shoes, un-bound hair).
- The CHO shall be responsible for developing and reviewing at least annually necessary training for lab employees and ensure that safety is adequately included in curriculum.
- The CHO shall be responsible for developing and reviewing at least annually record keeping practices and procedures, to include chemical inventory, MSDS sheets, monthly checks of safety equipment and implementing MDE and other safety checklists.

Attachment 99 Performance Criteria – Lockout/Tagout (LO/TO)

- District shall develop and implement a Written Management Plan for Lockout/Tagout, encompassing OSHA standard 29 CFR 1910.147, explaining procedures for implementing Lockout/Tagout for each area for each building where LO/TO hazards exist.
- The district administration shall identify school district Contact Person(s) for Lockout/Tagout zones.
- The district administration shall survey the facility at least annually to identify energy potential physical hazards that require Lockout/Tagout.
- The district administration shall train affected employees on proper Lockout/Tagout methods and techniques at least annually.
- The district administration shall identify and procure Lockout/Tagout locks, tags and other devices. (List locations of equipment)
- The district administration shall evaluate Lockout/Tagout record keeping practices and procedures at least annually.
- Procedures are in place to inform contractors of Lockout/Tagout requirements
- Specific energy controls are developed when required.
- The district administration shall evaluate current Lockout/Tagout procedures at least annually.
- The district administration shall survey the facility at least annually to identify Confined Spaces physical hazards per the standard that require Confined Space entry procedures, using the criteria found at <http://www.osha-slc.gov/dts/osta/oshasoft/csa.html>.

Attachment 99 Performance Criteria – Confined Spaces

Review program and obtain school board approval at least annually.

Confined Space Standard

- District shall develop and implement a Written Management Plan for Confined Spaces, encompassing OSHA standard 29 CFR 1910.146, explaining procedures for implementing Confined Spaces for each

area for each building where Confined Spaces hazards exist.

- The district administration shall identify school district Contact Person(s) for Confined Spaces permit and non-permit zones.
- The district administration shall survey the facility at least annually to identify Confined Spaces physical hazards per the standard that require Confined Space entry procedures, using the criteria found at <http://www.osha-slc.gov/dts/osta/oshasoft/csa.html>.
- The district shall determine the location of all Confined Spaces, and which are Permit Required Confined Spaces using the criteria found in Attachment A of the standard.
- Using the criteria found in 1910.146(c)(5), the district shall determine which Permit Required spaces need comply with paragraphs (d) through (f) and (h) through (k) of the standard.
- For Permit Required spaces that need not comply with paragraphs (d) through (f) and (h) through (k) of the standard, the district shall establish and maintain monitoring and inspection data that will demonstrate that continuous forced air ventilation alone is sufficient.
- For Permit Required spaces where the district has not established and maintained monitoring and inspection data that will demonstrate that continuous forced air ventilation alone is sufficient, the district shall implement paragraphs (d) through (f) and (h) through (k) of the standard.
- The district shall establish a properly trained and provisioned Permit Required Confined Space rescue and emergency service, that will become activated whenever a person enters a Permit Required Confined Space.
- The district shall carry out practice Permit Required Confined Spaces rescues at least once every 12 month, as called for under paragraph (K) of the standard.
- District shall inform Confined Spaces entrants information called for in the standard, how they may communicate with persons outside the Confined Spaces and what steps they should take if they should develop a medical emergency while in the Confined Spaces (e.g. heat stress, electrocution, burns, heart attack, etc.).
- The district shall inform any outside contractor doing work in a Confined Space that the workplace contains permit spaces and that permit space entry is allowed only through compliance with a permit space program per 1910.143.

Attachment 99 Performance Criteria – Employee Right-To-Know (ERTK)

Employee-Right to Know - Hazard Communication. The program shall:

- Develop and implement a Written Management Plan for Minnesota Employee Right To Know, in compliance with Minnesota Regulations 5206.
- Identify school district Contact Person(s) for MN ERTK.
- Review Written Plan as needed, and update (at least annually).
- Identify Hazard communications functional areas (e.g. kitchen, shops, art, maintenance, etc.).
- Survey the facility to identify chemical, heat, noise, radiation and infectious agents hazards.
- Manage Material Safety Data Sheet (MSDS) acquisition, compilation and distribution. Ideally, MSDS would be available in functional area.
- Perform Chemical Inventory. Update at least annually. Ideally, chemical inventory would be available with MSDSs in functional area.
- Monitor use and markings on Secondary Use Containers.
- Ensure placement of ERTK Minnesota-approved posters.
- Perform initial and annual functional area training.
- Provide all record keeping activities and procedures.
- Respond to regulatory agency correspondence, guidelines and recommendations, guidelines and recommendations.
- Monitor or provide updates on regulatory changes and new developments.
- Review program and obtain school board approval at least annually.

Facility Safety Review

Client Name: YME Public School

OHSA fine Range

Building	Photo #	Location	Standard	Description	Minimum	Maximum	Anticipated Completion
High School		District Office	Lab Standard	Complete lab safety check list in Activities Manual			Summer 2007
High School		Boiler Room	PPE	Adjust water flow at eyewash			Summer 2007
High School		Fan Room	Fire Code	Storage of flammables in fan room			Summer 2007
High School		Kitchen	Fire Code	Use of "household use only" appliances not allowed			Summer 2007
Bert Raney		Storage area	Electrical code	Maintain drop cords in a good condition			Summer 2007
Bert Raney		Boiler room	PPE	Adjust water flow at eyewash			Summer 2007
Bert Raney		Room 221	Asbestos Management	Sample of floor tile taken			Summer 2007
Bert Raney		Gymnasium	Fire Code	Replace bulb in Exit sign			Summer 2007
Bert Raney		Gymnasium	General Duty	Install protective grills on bulb fixtures			Summer 2007
Bert Raney		Custodial rooms	PPE	Provide protective eyewear on custodial carts			Summer 2007

Inspected by: Francis Staab /Lee Carlson Date 6-07-2007

Facility Safety Review

Client Name: YME Public School

OHSA fine Range

Building	Photo #	Location	Standard	Description	Minimum	Maximum	Anticipated Completion
High School		Metals shop	Guarding	Demark areas around stationary equipment			Summer 2007
High School		Ag Shop	General Duty	Repair auto-retract on over-head door			Summer 2007
High School		Ag Shop	PPE	Adjust water flow at eyewash station			Summer 2007
High School		Chemistry Room	Chemical storage	Proper storage of chemicals			Summer 2007
High School		Chemistry Room	Fire code	Mount fire extinguisher			Summer 2007
High School		Chemistry Room	Fire code	Label chemical storage room			Summer 2007

Inspected by: Francis Staab/Lee Carlson Date 6-07-2007

Facility Safety Review

Client Name: YME Public School

OHSA fine Range

Building	Photo #	Location	Standard	Description	Minimum	Maximum	Anticipated Completion
H.A. Hagg		Kitchen	Fire code	Discontinue use of "household use only" appliances			Summer 2007
H.A. Hagg		Kitchen	Electrical	GFI receptacles in wet areas			Summer 2007
H.A. Hagg		Kitchen Storage	Fire code	Mount fire extinguisher			Summer 2007
H.A. Hagg		Hallway by art room	Fire code	Exit sign missing			Summer 2007
H.A. Hagg		Gymnasium	General Duty	Safety strap missing in basket ball assembly			Summer 2007
H.A. Hagg		Room 201	Fire code	Provide approved fans in wet areas			Summer 2007
H.A. Hagg		Hallway to computer room	Fire Code	Replace exit light sign bulb			Summer 2007
H.A. Hagg		Boiler room	Machine guarding	Replace belt guard			Summer 2007
H.A. Hagg		Boiler room	PPE	Maintain eyewash station			Summer 2007
H.A. Hagg		Boiler room	PPE	Provide adequate PPE when handling boiler chemicals			Summer 2007

71

Inspected by: Francis Staab/Lee Carlson Date 6-07-2007

Date: June 26, 2007

School District: Yellow Medicine East – ISD 2190

Person Affirming: Dwayne Strand, Superintendent

Signature: *Dwayne R. Strand*

Telephone with ext. 320-564-4081 Ext. 106

Affirm that the following is an accurate, board-approved summary of this school district's current Health and Safety program, submitted in accordance with Minn. Stat. § 123B.57 regardless of whether or not funding is requested. A copy of the school board minutes is attached.

Additional comments:

To: Superintendents, Principals and School Board Chairs

From: Charlie Kyte-MASA, Bob Meeks-MSBA, Joann Knuth-MASSP and Fred Storti-MESPA

Date: May 29, 2007

Re: Election polling sites in schools

This past November we heard of concerns by school administrators that utilizing school sites for election polling places created potential conflicts with school security. Current state statute (MN 204B.16, subd 6) requires that school buildings, along with other public facilities, be made available for elections.

The use of school buildings used as public election polling sites is scattered across the state. Some school districts have not had requests to use school buildings as election sites and in other districts, the use of school buildings as election polling sites is a long standing tradition.

Because of the recently expressed concerns, representatives of the associations of Minnesota's counties and cities met with representatives of the education associations listed above to review and discuss this issue. As the result of this meeting, we would make the following suggestions to school leaders:

- 1) Be cognizant of the fact that the use of school buildings for election polling sites is directed by Minnesota state law.
- 2) Where election polling sites are located in school buildings, school officials and county/ city election officials should meet well in advance of election dates to resolve issues of polling locations within schools and school security. We would recommend that such a meeting be held in June to prepare for November elections.
- 3) Work together to establish polling places within schools that separate, to the extent possible, students and voters; and further, to provide appropriate personnel to restrict voters from entering parts of the school buildings in which students are occupying.

Research indicates that there are positive effects of holding elections in school buildings. Students become more aware of their future responsibilities as citizens in a democracy. Voting citizens have an opportunity to see the inside of their school. Yet there is a need to balance these positive advantages with the risks inherent of having large numbers of

people entering a school building that needs to be seen by parents, teachers and students as a very safe place.

We ask that you, as school officials, work together with election officials in your counties and cities where the process of holding elections within school buildings occurs. A similar memo is being sent to city and county officials alerting them to the concerns of school leaders on the election-school security issue. We hope that there is a spirit of working together so that we can co-exist on this issue in harmony.