

**YELLOW MEDICINE EAST ISD 2190
REGULAR BOARD MEETING
JUNE 11, 2007 @ 7:00 PM
LOCATION: YME HIGH SCHOOL BOARD ROOM**

AGENDA

1. **Call to Order** 3
2. **Approval of Agenda**
3. **Approval of May 14, 2007 Meeting Minutes**
4. **Opportunity for Citizens to Speak**
5. **Reports**
 - A. **Special Reports**
 1. YME Agriculture Program
Presenter: Ron Dessonville
 2. Focus Group Report
Presenter: K. Jacobson and H. Blue-Redner
 3. Spring Activities Reports
Presenter: Spring Coaches and Advisors
 - B. **Financial Reports**
 1. Approval of Bills 9
 2. Fund Balance Report
 3. Enrollment Report 28
 4. Food Service Report 29
 - C. **Principal and Curriculum/Staff Development Reports**
 - D. **Board/Committee Reports**
 1. Negotiations Committee 30
6. **Policy Updates**
7. **Personnel Items**
 - A. Science Contract- J. Suter
 - B. Social Studies Contract - B. Raymo
 - C. Social Studies Contract -E. Stoerzinger
 - D. English/Language Arts Contract - H. Anderson
 - E. English/Language Arts Contract - N. Royal
 - F. English/Language Arts Contract - T. Schulte
 - G. French Contract - J. Kauffman
 - H. Physical Education Contract Extension - M. Grey
 - I. Physical Education Contract - J. Anderson
 - J. ESL Contract - M. Larson
 - K. Elementary Contract - B. Kesteloot

L.	Elementary Contract - R. McDougall	
M.	Curriculum Staff Development Contract - D. Josephson	31
N.	Paraprofessional Resignation - L. Olson	
O.	Paraprofessional Resignation - G. Smolley	
P.	Summer Mowing Contract- J. Luepke	
Q.	Resignation - S. Toft	
R.	Hagg Project Respect Coordinator Termination - S. Bartels	
S.	Paraprofessional Termination - L. Knutson	
T.	Resignation - L. Boelter	
U.	Request for Personnel Letter of Approval – T. Knapper	32
V.	Instrumental Music - D. McCormick	
8.	Action Items	
A.	Approval of Systems Accountability Report	35
B.	June 26th Board Meeting	
C.	Worker's Comp Quotes	41
D.	RevTrak Electronic Payment Program	
E.	Lease Agreement for Computer Equipment, Software, and Related Peripherals	42
F.	2007-2008 MREA Membership Fee	44
9.	Consent Items	
10.	Discussion Items	
A.	YME Website - Language Translator	
B.	Board Meetings	
C.	Special Education Programming for 2007-2008	
D.	EMYME Negotiations	
11.	Correspondence	
A.	2006-2007 Board Expense Form	45
12.	Upcoming Events & Activities	47
13.	Adjourn	

YELLOW MEDICINE EAST – ISD 2190

Dwayne A. Strand, Superintendent
450 9th Avenue - Granite Falls, MN 56241
Phone: 320-564-4081 - Fax: 320-564-4781



To: School Board
From: Dwayne Strand
Date: June 7, 2007
RE: Board Notes for June 11th Meeting

4. Opportunity for Citizens to Speak

At this time, no one has asked to address the Board.

5.A.1. YME Agriculture Program - Ron Dessonville

Mr. Dessonville will be in attendance to update you on the 2006-2007 agricultural program.

5.A.2. Focus Group Report - K. Jacobson and H. Blue-Redner

Karen Jacobson and Helen Blue-Redner will be in attendance to review the results of our parent focus groups and the Ethnicity Survey that our 5th - 11th grade students completed this spring.

5.A.3. Spring Activities Reports - Spring Coaches and Advisors

Mr. Knapper has asked the spring coaches and advisors to attend on Monday evening to update you on their seasons and activities.

5.C. Principal and Curriculum/Staff Development Reports

It is expected that Ms. Sorenson and Ms. Hinz will be in attendance on Monday evening to update you on their programs. I believe that Ms. Norell is out of town on Monday evening.

5.D.1. Negotiations Committee

The Negotiations Committee met on Monday, June 4th with representatives of the EM-YME Negotiations Committee. A copy of the minutes of that meeting is attached for your information.

7.A. Science Contract- J. Suter

Ms. Norell is recommending the employment of Mr. Jake Suter as a high school science teacher for the 2007-2008 school year. He is a recent graduate of SMSU. He will be paid on Step 1 of the BA lane. He will also be involved in coaching. *Recommend approval of the employment of Jake Suter as a high school science teacher for the 2007-2008 school year.*

7.B. Social Studies Contract - B. Raymo

Ms. Norell is recommending the employment of Mr. Brandon Raymo as a high school social studies teacher for the 2007-2008 school year. He is a recent graduate of SMSU and completed his student teaching at YME. He will be paid on Step 1 of the BA lane. He will also be involved in coaching. *Recommend approval of the employment of Brandon Raymo as a high school social studies teacher for the 2007-2008 school year.*

7.C. Social Studies Contract – E. Stoerzinger

Ms. Norell is recommending the employment of Elaine Stoerzinger as a high school social studies teacher for the 2007-2008 school year. She is a recent graduate of Luther College. She will be paid on Step 1 of the BA lane. *Recommend approval of the employment of Elaine Stoerzinger as a high school social studies teacher for the 2007-2008 school year.*

YME HIGH SCHOOL
Karen Norell, Principal
450 9th Avenue
Granite Falls, MN 56241
Phone: 320-564-4083
Fax: 320-564-4782

BERT RANEY ELEMENTARY
Stacy Hinz, Principal
555 7th Avenue
Granite Falls, MN 56241
Phone: 320-564-4082
Fax: 320-564-4427

H.A. HAGG ELEMENTARY
Stacy Hinz, Principal
1204 11th Avenue
Granite Falls, MN 56223
Phone: 320-669-4424
Fax: 320-669-4828

YELLOW MEDICINE EAST – ISD 2190

Dwayne A. Strand, Superintendent
450 9th Avenue - Granite Falls, MN 56241
Phone: 320-564-4081 - Fax: 320-564-4781



7.D. English/Language Arts Contract - H. Anderson

Ms. Norell is recommending the employment of Ms. Heather Anderson as a high school English/language arts teacher for the 2007-2008 school year. She is currently teaching English in Redwood Falls. She completed her student teaching last year at YME. She will be paid on Step 2 of the BA lane. She will also be involved in coaching. *Recommend approval of the employment of Heather Anderson as a high school English/language arts teacher for the 2007-2008 school year.*

7.E. English/Language Arts Contract - N. Royal

Ms. Norell is recommending the employment of Ms. Nikki Royal as a high school language arts teacher for the 2007-2008 school year. She is a recent graduate of Concordia. She will be paid on Step 1 of the BA lane. *Recommend approval of the employment of Nikki Royal as a high school English/language arts teacher for the 2007-2008 school year.*

7.F. English/Language Arts Contract - T. Schulte

Mr. Trevor Schulte has accepted the callback for an English/language arts position and will be employed on Step 8 of the MA lane for the coming year. *Recommend approval of the 2007-2008 contract for Trevor Schulte.*

7.G. French Contract – J. Kauffman

Ms. Norell is recommending the employment of Ms. Joy Kauffman as a 0.833 FTE French teacher for the 2007-2008 school year. She will be paid on Step 3 of the BA+15 lane. *Recommend approval of the employment of Joy Kauffman as a high school French teacher for the 2007-2008 school year.*

7.H. Physical Education Contract Extension - M. Grey

With the approval of the leave of absence for Gary Wolf, Ms. Norell is recommending the full time employment of Mary Grey as a physical education instructor. Her current employment is for .67 of a full time contract. She teaches physical education at both Hagg Elementary and the high school. The additional .33 FTE time will be spent in the high school. *Recommend approval of the contract extension for Mary Grey from a .67 FTE contract to a full time physical education contract for the 2007-2008 school year.*

7.I. Physical Education Contract - J. Anderson

Again, with the approval of the leave of absence for Gary Wolf, Jean Anderson was offered a callback from ULA for the 07-08 school year. She is entitled to a .50 FTE contract. However, with Mr. Wolf's leave, she has been offered a .67 contract. She will be employed as both a DAPE instructor and a high school physical education instructor. *Recommend approval of a .67 FTE contract for Jean Anderson as a DAPE/PE instructor for the 2007-2008 school year.*

7.J. ESL Contract - M. Larson

The administrative team is recommending the employment of Melissa Larson as a K-12 ESL instructor for the 07-08 school year. Ms. Larson is enrolled in programming. We will apply for a waiver or provisional license, as we were unable to secure a fully licensed applicant. She will be placed on Step 2 of the BA lane. She was non-renewed this spring from her 6th grade position with the District. *Recommend approval of the ESL contract for Melissa Larson for the 2007-2008 school year.*

YME HIGH SCHOOL
Karen Norell, Principal
450 9th Avenue
Granite Falls, MN 56241
Phone: 320-564-4083
Fax: 320-564-4782

BERT RANEY ELEMENTARY
Stacy Hinz, Principal
555 7th Avenue
Granite Falls, MN 56241
Phone: 320-564-4082
Fax: 320-564-4427

H.A. HAGG ELEMENTARY
Stacy Hinz, Principal
1204 11th Avenue
Granite Falls, MN 56223
Phone: 320-669-4424
Fax: 320-669-4828

YELLOW MEDICINE EAST – ISD 2190

Dwayne A. Strand, Superintendent
450 9th Avenue - Granite Falls, MN 56241
Phone: 320-564-4081 - Fax: 320-564-4781



7.K. Elementary Contract - B. Kesteloot

Ms. Hinz is recommending the employment as Beth Kesteloot as a K-1 instructor at Bert Raney Elementary. She was non-renewed earlier this spring. She will be placed on the BA Lane Step 4. She will be tenured with this renewal of her contract. *Recommend approval of the elementary contract for Beth Kesteloot for the 2007-2008 school year.*

7.L. Elementary Contract - R. McDougall

Ms. Hinz is recommending the employment as Rachel McDougall as a K-1 instructor at Bert Raney Elementary. She was non-renewed earlier this spring. She will be placed on step 2 of the BA Lane. *Recommend approval of the elementary contract for Rachel McDougall for the 2007-2008 school year.*

7.M. Curriculum Staff Development Contract - D. Josephson

The administrative team is recommending the employment of Darcy Josephson as Staff Development and Curriculum Coordinator. She is currently employed in this position in the Redwood Area School District. A copy of her contract is attached for your review. *Recommend approval of the Staff Development and Curriculum Coordinator contract with Darcy Josephson for the 2007-2008 school year.*

7.N. Paraprofessional Resignation - L. Olson

Lori Olson has submitted her letter of resignation from her Bert Raney paraprofessional position effective at the end of the current school year. As a certified instructor, she has indicated that she is interested in substitute teaching in the coming school year. *Recommend accepting the resignation of Lori Olson effective at the end of the 2006-2007 school year.*

7.O. Paraprofessional Resignation - G. Smolley

Gail Smolley has submitted her letter of resignation from her Hagg paraprofessional position effective at the end of the current school year. She has accepted other employment. *Recommend accepting the resignation of Gail Smolley effective at the end of the 2006-2007 school year.*

7.P. Summer Mowing Contract – J. Luepke

A contract for mowing at the Granite Falls site was sent to Nathan Morland following the May Board meeting. Following his receipt of the contract, he informed me that he would now not be able to enter into a contract agreement with the District. After a discussion with Supervisor Staab, it was decided that we should attempt to employ a part-time employee for mowing as needed at \$8.00 per hour. Supervisor Staab is recommending the employment of Jenna Luepke for lawn mowing during the summer months. She will use YME equipment and be paid \$8.00 per hour. *Recommend employment of Jenna Luepke for lawn mowing during the summer months.*

7.Q. Resignation - S. Toft

Sue Toft, Head Cook at the Clarkfield site, has submitted a letter of resignation. As noted in her letter of resignation, Ms. Toft has worked in the district for 28 years. I will be working with Supervisor Ditterich to present a staffing recommendation by the August meeting. *Recommend approval of the resignation of Sue Toft.*

7.R. Hagg Project Respect Coordinator Termination – S. Bartels

The funding for this position ends at the end of the current school year. This position was funded with a grant from PACT 4. As a result, the coordinator position, held by Sarah Bartels, needs to

YME HIGH SCHOOL
Karen Norell, Principal
450 9th Avenue
Granite Falls, MN 56241
Phone: 320-564-4083
Fax: 320-564-4782

BERT RANEY ELEMENTARY
Stacy Hinz, Principal
555 7th Avenue
Granite Falls, MN 56241
Phone: 320-564-4082
Fax: 320-564-4427

H.A. HAGG ELEMENTARY
Stacy Hinz, Principal
1204 11th Avenue
Granite Falls, MN 56223
Phone: 320-669-4424
Fax: 320-669-4828

YELLOW MEDICINE EAST – ISD 2190

Dwayne A. Strand, Superintendent
450 9th Avenue - Granite Falls, MN 56241
Phone: 320-564-4081 - Fax: 320-564-4781



be terminated. *Recommend the termination of the Hagg Project Respect Coordinator position held by Sarah Bartels at the end of the 06-07 school year.*

7.S. Paraprofessional Termination – L. Knutson

The administrative team is recommending the termination of the paraprofessional position held by Lori Knutson. She was employed to ride a bus route this spring. *Recommend the termination of the paraprofessional position held by Lori Knutson at the close of the 06-07 school year.*

7.T. Resignation – L. Boelter

Lanny Boelter has submitted a letter of resignation from his teaching position at YME, effective immediately. *Recommend approval of the resignation of Lanny Boelter, effective immediately.*

7.U. Request for Personnel Letter of Approval – T. Knapper

Your approval is needed prior to our submitting a request for license waiver for Tim Knapper for the Community Education portion of his position. This approval can be granted for three consecutive years. Mr. Knapper is working with St. Cloud State University to complete his licensure program. *Recommend approval of the personnel letter of approval for Tim Knapper for Community Education Director for the 2007-2008 school year.*

7.V. Instrumental Music – D. McCormick

Ms. Norell is recommending the employment of Mr. Dave McCormick as the instrumental music instructor for the 2007-2008 school year. He will be paid on Step 6 of the MA lane. He will also be involved in pep and marching band. *Recommend approval of the employment of Dave McCormick as the instrumental music instructor for the 2007-2008 school year.*

8.A. Approval of Systems Accountability Report

As required by law, you need to approve the 2006-2007 Annual Report on Curriculum, Instruction and Student Achievement. The report will be presented by Ms. Sorenson during her report. An electronic copy of the report will then be posted on the District website. *Recommend your adoption of the 2006-2007 Annual Report on Curriculum, Instruction and Student Achievement.*

8.B. June 26th Board Meeting

A Board meeting will need to be scheduled on June 26th to adopt the 2007-2008 budget and to approve various designations for the coming school year. The Health and Safety Attachment 99 will also need your approval. Depending on the agenda items for July, it is possible to cancel this meeting if you would like. If not, we could certainly use the July meeting to review and set District goals for the 2007-2008 school year. *Recommend scheduling a special board meeting for June 26, 2007.*

8.C. Worker's Comp Quotes

Attached is a summary sheet detailing the quotes we received for Worker's Compensation Insurance. It is our recommendation to accept the quote from Continental Western. While this quote is slightly higher than the lowest quote, they will assist the District in the development of a safety program that will include a return-to-work program and other safety issues. *Recommend accepting the Worker's Comp quote from Continental Western for \$45,396.00 for the 2007-2008 school year.*

YME HIGH SCHOOL
Karen Norell, Principal
450 9th Avenue
Granite Falls, MN 56241
Phone: 320-564-4083
Fax: 320-564-4782

BERT RANEY ELEMENTARY
Stacy Hinz, Principal
555 7th Avenue
Granite Falls, MN 56241
Phone: 320-564-4082
Fax: 320-564-4427

H.A. HAGG ELEMENTARY
Stacy Hinz, Principal
1204 11th Avenue
Granite Falls, MN 56223
Phone: 320-669-4424
Fax: 320-669-4828

YELLOW MEDICINE EAST – ISD 2190

Dwayne A. Strand, Superintendent
450 9th Avenue - Granite Falls, MN 56241
Phone: 320-564-4081 - Fax: 320-564-4781



8.D. RevTrak Electronic Payment Program

It is my recommendation that we proceed with implementing this program for the coming school year. Transaction costs will be paid by the user. The only cost to the District would be the \$50.00 per month fee. *Recommend implementing the RevTrak Electronic Payment Program for the 2007-2008 school year.*

8.E. Lease Agreement for Computer Equipment

Attached for your review is a lease/purchase agreement to upgrade our network system. All the work will be completed this summer and the costs will be spread out of the four years of the lease. The lease costs have been built into our capital projects budgets. This will allow us to make all the upgrades at one time so that our system works as efficiently as possible. *Recommend approval of the lease agreement with Lease/Finance/Group for computer equipment, software and related peripheral for \$49,777.88 with annual payments of \$11,549.51 for 4 years.*

8.F. 2007-2008 MREA Membership Fee

Enclosed for your review is the invoice for our membership with MREA for the 2007-2008 school year. Membership dues are \$2,193.00. *Recommend renewing our MREA membership for the 2007-2008 school year.*

10.A. YME Website - Language Translator

When you have some time, you might want to visit our District website to check out the new language translator that has been added to the site. Kurt Muhl, a student at YME, worked on this project as part of a classroom assignment.

10.B. Board Meetings

Board member Jepson and I had discussed possibly moving one or two Board meetings a year to other sites. Further discussion can take place on Monday evening.

10.C. Special Education Programming for 2007-2008

The building principals met last week with Cindy and I to talk about programming for special education for 2007-2008. The three populations that we addressed in our discussion were the ASD, Early Childhood and Level III student population.

With regard to our ASD and ECSE students: We discussed creating an ASD setting that would house the program for the 7 currently identified preK-grade 6 students. One certified staff member would be assigned to this caseload. Depending on the space that is identified for this program, we also discussed housing our self-contained center-based ECSE program there as well. The majority of our ECSE students have already been integrated into other early childhood settings.

With regard to our Level III students: We discussed creating a two-part program for Level III students. There would be a mental health component and an academic component. The mental health component would be staffed with a social worker and support staff. We also discussed utilizing our PE staff to help support the recreational piece. We would run both an elementary program and a high school program – flip-flopping it with the academic piece – one in the morning and the other in the afternoon.

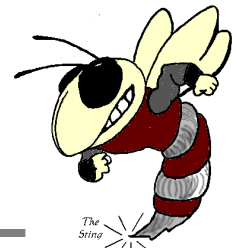
YME HIGH SCHOOL
Karen Norell, Principal
450 9th Avenue
Granite Falls, MN 56241
Phone: 320-564-4083
Fax: 320-564-4782

BERT RANEY ELEMENTARY
Stacy Hinz, Principal
555 7th Avenue
Granite Falls, MN 56241
Phone: 320-564-4082
Fax: 320-564-4427

H.A. HAGG ELEMENTARY
Stacy Hinz, Principal
1204 11th Avenue
Granite Falls, MN 56223
Phone: 320-669-4424
Fax: 320-669-4828

YELLOW MEDICINE EAST – ISD 2190

Dwayne A. Strand, Superintendent
450 9th Avenue - Granite Falls, MN 56241
Phone: 320-564-4081 - Fax: 320-564-4781



The academic piece would be supported by a special needs instructor and other support staff. Again, there would be both an elementary program and a high school program. If schedules permit, we also discussed supporting this piece with other program specialists.

Space is the concern for both programs and we are currently investigating possible options for all programs. Until we identify the spaces that we are able to use, it is difficult to move forward with more specific program planning. Once space issues are resolved, staff will be invited to help develop the structure of the programs.

None of these are new thoughts as they have all been discussed numerous times over the last couple of years with our staff. It is our hope that we can create a structure that supports the work that our teachers do and best meet the needs of our students – some of whose needs take away our ability to serve the needs of other students.

10.D. EM-YME Contract Negotiations

At this point in the meeting, if you want to discuss negotiations proposals and strategies, you would need to close the meeting. We could also wait to see what the EM-YME proposal entails on the 25th of June and then enter into closed session on the 26th.

11.A. Board Expense Form

Please complete your board expense form for the 2006-2007 year and bring it to the meeting on Monday night.

YME HIGH SCHOOL
Karen Norell, Principal
450 9th Avenue
Granite Falls, MN 56241
Phone: 320-564-4083
Fax: 320-564-4782

BERT RANEY ELEMENTARY
Stacy Hinz, Principal
555 7th Avenue
Granite Falls, MN 56241
Phone: 320-564-4082
Fax: 320-564-4427

H.A. HAGG ELEMENTARY
Stacy Hinz, Principal
1204 11th Avenue
Granite Falls, MN 56223
Phone: 320-669-4424
Fax: 320-669-4828

Check Nbr	Vendor Name	Check Date	Invoice Number	Invoice Desc	PO Number	Invoice Amount	Check Amount
12076	ACCESSORY LINES FOR MUSIC SPEC	06/11/2007	2772		405	372.00	372.00
01 E 300 258 233 000 450				MUSIC//MATERIALS PURCH FOR RESALE		372.00	
12077	ADVOCATE TRIBUNE	06/11/2007	1	SUMMER REC. BROCHURES	0	1,645.16	2,114.33
04 E 500 505 000 321 380				COMMUNITY EDUCATION GENERAL/COMMUNITY EDUCATION/PRINTING		1,645.16	
			2		0	220.00	
01 E 100 203 000 000 430				ELEMENTARY GENERAL ED.//SUPPLIES		220.00	
			3		0	249.17	
01 E 005 010 000 000 380				BOARD OF EDUCATION//PRINTING/ADVERTISING		249.17	
12078	ALEXANDRIA SCHOOLS	06/11/2007	1	LITERACY	0	1,500.00	1,500.00
01 E 100 216 000 401 366				TITLE I - PART A/TITLE I/TRAVEL-SCHOOL BUSINESS		1,500.00	
12079	AMAZON.COM CREDIT	06/11/2007	273449285936533		0	39.95	39.95
01 E 005 610 375 308 401				CURRICULUM CONSULTANT & DEVLOP/STAFF DEV. 25% DIST. WIDE		39.95	
12080	AMERICAN WELDING SUPPLIES	06/11/2007	1		0	88.70	88.70
01 E 300 301 501 830 433				AG EDUCATION (VOCATIONAL)/VOCATIONAL PROGRAMS/INDIVIDUAL		88.70	
12081	ANDERSON, RITA	06/11/2007	1		0	50.05	50.05
01 E 150 203 169 000 366				ELEMENTARY GENERAL ED.//TRAVEL-SCHOOL BUSINESS		50.05	
12082	APPERT FOODS	06/11/2007	1		0	3,643.16	3,643.16
02 E 005 770 000 701 490				FOOD SERVICES/SCHOOL LUNCH/FOOD		3,159.30	
02 E 005 770 000 705 490				FOOD SERVICES/BREAKFAST/FOOD		483.86	
12083	APPLE FINANCIAL SERVICES	06/11/2007	259177	COMPUTERS	0	46,456.92	46,456.92
01 A 131 00				GENERAL FUND/PREPAID EXPENSE		46,456.92	
12084	APPLE COMPUTER, INC.	06/11/2007	9255802356		13	205.20	205.20
01 E 200 612 000 302 555				TECHNOLOGY/CAPITAL OUTLAY/TECHNOLOGY EQUIPMENT		205.20	
12085	BAILEY'S CUSTOM CAP MFG.	06/11/2007	2516		0	35.00	35.00
01 E 300 790 388 000 899				OTHER PUPIL SUPPORT SERVICES//MISCELLANEOUS EXPENSE		35.00	
12086	BAND SHOPPE	06/11/2007	349215-01		0	19.85	19.85
01 E 300 258 233 000 450				MUSIC//MATERIALS PURCH FOR RESALE		19.85	
12087	Vendor Continued Void	06/11/2007					0.00
12088	BENNETT & BENNETT TRANSP. INC.	06/11/2007	1		0	6,347.86	36,543.13
01 E 005 760 000 720 361				PUPIL TRANSPORTATION/REGULAR TO AND FROM SCHOOL/BUS CONT		6,347.86	
			2	CLKFD. SHUTTLE	0	2,587.20	
01 E 005 760 000 720 361				PUPIL TRANSPORTATION/REGULAR TO AND FROM SCHOOL/BUS CONT		2,587.20	
			20	FIELD TRIPS & XC	0	15,483.72	
01 E 100 203 000 733 361				ELEMENTARY GENERAL ED./TRANSPORTATION/NON-AUTHORIZED/BUS		4,086.14	
01 E 300 211 000 733 361				SECONDARY EDUCATION GENERAL/TRANSPORTATION/NON-AUTHORIZE		1,370.83	
01 E 300 292 219 733 361				BOYS/GIRLS ATHLETICS/TRANSPORTATION/NON-AUTHORIZED/BUS C		1,726.44	
01 E 300 292 225 733 361				BOYS/GIRLS ATHLETICS/TRANSPORTATION/NON-AUTHORIZED/BUS C		3,021.98	
01 E 300 294 215 733 361				BOYS ATHLETICS/TRANSPORTATION/NON-AUTHORIZED/BUS CONTRAC		1,734.06	
01 E 300 294 224 733 361				BOYS ATHLETICS/TRANSPORTATION/NON-AUTHORIZED/BUS CONTRAC		1,314.53	
01 E 300 296 210 733 361				GIRLS ATHLETICS/TRANSPORTATION/NON-AUTHORIZED/BUS CONTRA		1,286.80	
01 E 150 203 000 733 361				ELEMENTARY GENERAL ED./TRANSPORTATION/NON-AUTHORIZED/BUS		942.94	
			3	OUT OF DISTRICT	0	3,351.60	
01 E 005 760 000 713 361				PUPIL TRANSPORTATION/OPEN ENROLLMENT/BUS CONTRACT (XWK T		3,351.60	
			4	ATHLETIC SHUTTLE	0	494.55	
01 E 005 760 000 717 361				PUPIL TRANSPORTATION/LATE ACTIVITY BUS/BUS CONTRACT (XWK		494.55	
			5	SPECIAL NEEDS	0	8,278.20	
01 E 005 760 000 723 361				PUPIL TRANSPORTATION/HANDICAPPED/BUS CONTRACT (XWK TO 36		8,278.20	
12089	BERNICK'S PEPSI-COLA	06/11/2007	1	ELEM ST. COUNCIL	0	45.90	71.70
01 L 230 39				GENERAL FUND/DEFERRED REVENUE/BERT RANEY JUICE MACHNINE		45.90	

Check Nbr	Vendor Name	Check Date	Invoice Number	Invoice Desc	PO Number	Invoice Amount	Check Amount
			2		0	25.80	
01 L	230 43			GENERAL FUND/DEFERRED REVENUE/SR HIGH PROJECTS		25.80	
12090	BEST BUSINESS PRODUCTS	06/11/2007	847261	COPIER	0	52.50	288.64
04 E	500 590 000 321 401			OTHER COMMUNITY SERVICES/COMMUNITY EDUCATION/GENERAL SUP		52.50	
			847831		847831	236.14	
02 E	005 770 000 701 401			FOOD SERVICES/SCHOOL LUNCH/GENERAL SUPPLIES		236.14	
12091	BILL'S ELECTRIC	06/11/2007	1	KITCHEN	0	46.00	1,635.21
02 E	005 770 000 701 350			FOOD SERVICES/SCHOOL LUNCH/REPAIRS AND MAINTENANCE SVCS		46.00	
			2	COPY ROOM	0	1,345.24	
01 E	005 810 000 302 522			OPERATIONS AND MAINTENANCE/CAPITAL OUTLAY/BUILDING IMPRO		1,345.24	
			3		0	240.47	
01 E	005 810 000 000 350			OPERATIONS AND MAINTENANCE//REPAIRS AND MAINTENANCE SVCS		240.47	
			4		0	1,035.84	
01 E	005 810 000 000 410			OPERATIONS AND MAINTENANCE//CUST/REPAIR SUPPLIES		1,035.84	
			5		0	249.60	
01 E	025 810 000 000 410			OPERATIONS AND MAINTENANCE//CUST/REPAIR SUPPLIES		249.60	
			6		0	-1,281.94	
01 E	005 810 000 000 410			OPERATIONS AND MAINTENANCE//CUST/REPAIR SUPPLIES		-1,281.94	
12092	BRUFLAT PLUMBING & HEATING INC	06/11/2007	3485	WATER CORKERS	0	4,524.34	4,524.34
01 E	005 850 000 302 522			FACILITIES/CAPITAL OUTLAY/BUILDING IMPROVEMENTS		4,524.34	
12093	CAPITAL ONE, F.S.B.	06/11/2007	1		0	24.64	1,128.55
01 E	100 203 113 317 430			ELEMENTARY GENERAL ED./COMPENSATORY/SUPPLIES		24.64	
			2		0	35.99	
01 E	100 203 000 000 329			ELEMENTARY GENERAL ED./POSTAGE AND EXPRESS		35.99	
			3		0	8.29	
01 E	005 020 000 000 329			SUPERINTENDENT'S OFFICE//POSTAGE AND EXPRESS		8.29	
			4	LINDEN - HOLUM	0	787.33	
01 E	100 204 000 414 366			TITLE II EISENHWOER/TITLE II ESEA/TRAVEL-SCHOOL BUSINESS		787.33	
			5		0	272.30	
01 L	230 10			GENERAL FUND/DEFERRED REVENUE/SUPT POP FUND		272.30	
12094	CARL'S BAKERY	06/11/2007	1		0	27.20	27.20
01 L	230 43			GENERAL FUND/DEFERRED REVENUE/SR HIGH PROJECTS		27.20	
12095	CASEY'S	06/11/2007	1		372	39.00	39.00
01 E	100 050 000 000 899			PRINCIPAL'S OFFICE//MISCELLANEOUS EXPENSE		39.00	
12096	CDW GOVERNMENT, INC.	06/11/2007	FJX8869		104	228.50	228.50
01 E	200 612 000 000 450			TECHNOLOGY//MATERIALS PURCH FOR RESALE		228.50	
12097	CENEX CREDIT CARD	06/11/2007	1		0	1,438.73	1,438.73
01 E	005 810 193 000 442			OPERATIONS AND MAINTENANCE//GAS & OIL		1,438.73	
12098	CITIZENS STATE BANK	06/11/2007	1		0	100,000.00	100,004.00
01 E	005 240 000 302 580			HEALTH/PHY ED/RECREATION/CAPITAL OUTLAY/CAPITAL LEASE PR		100,000.00	
			2	LIFT EQUIPMENT	0	4.00	
01 E	005 240 000 302 580			HEALTH/PHY ED/RECREATION/CAPITAL OUTLAY/CAPITAL LEASE PR		4.00	
12099	CITY OF GRANITE FALLS	06/11/2007	1	SWR/WTR	0	2,089.37	10,469.73
01 E	005 810 183 000 330			OPERATIONS AND MAINTENANCE//UTILITY SERVICES		2,089.37	
			2	ELEC	0	8,314.77	
01 E	005 810 184 000 330			OPERATIONS AND MAINTENANCE//UTILITY SERVICES		8,314.77	
			3	GARAGE	0	57.59	

Check Nbr	Vendor Name	Check Date	Invoice Number	Invoice Desc	PO Number	Invoice Amount	Check Amount
01 E 005 810 191 000 330				OPERATIONS AND MAINTENANCE//UTILITY SERVICES		57.59	
			4	CARPENTRY	0	8.00	
01 E 300 361 000 830 330				CARPENTRY (HOUSE)/VOCATIONAL PROGRAMS/UTILITY SERVICES		8.00	
12100 CITY OF GRANITE FALLS		06/11/2007	1537	BASEALL LEASE	0	500.00	500.00
01 E 300 294 215 000 370				BOYS ATHLETICS//RENTALS AND LEASES		500.00	
12101 CLARKFIELD AUTOMOTIVE REPAIR		06/11/2007	13596	PICKUP	0	93.63	93.63
01 E 005 810 193 000 350				OPERATIONS AND MAINTENANCE//REPAIRS AND MAINTENANCE SVCS		93.63	
12102 CONSUMERS COOPERATIVE OIL CO.		06/11/2007	1		0	202.72	276.22
01 E 025 810 193 000 442				OPERATIONS AND MAINTENANCE//GAS & OIL		202.72	
			71903	GIFT CERT.	0	73.50	
01 L 230 84				GENERAL FUND/DEFERRED REVENUE/HAGG CCC (STUDENT TEACHER		73.50	
12103 COUNTRY FLORAL		06/11/2007	3836	GRADUATION	0	467.25	467.25
01 E 300 211 165 000 899				SECONDARY EDUCATION GENERAL//MISCELLANEOUS EXPENSE		467.25	
12104 COUNTRYSIDE PUBLIC HEALTH		06/11/2007	1		0	50.00	50.00
01 E 200 720 000 000 311				HEALTH SERVICES/NURSE//PROFESSIONAL/TECHNICAL SVCS		50.00	
12105 TIM CROWLEY		06/11/2007	1		0	375.00	375.00
01 E 300 408 000 419 305				EMOTION/BEHAVIORAL DISORDER/94-142 FEDERAL/PROFESSIONAL		375.00	
12106 CROWN AWARDS		06/11/2007	30589294		0	99.70	99.70
01 E 300 292 219 000 401				BOYS/GIRLS ATHLETICS//GENERAL SUPPLIES		99.70	
12107 CULLIGAN		06/11/2007	1		0	10.02	32.75
01 E 025 810 183 000 330				OPERATIONS AND MAINTENANCE//UTILITY SERVICES		10.02	
			10		0	22.73	
01 E 005 810 183 000 330				OPERATIONS AND MAINTENANCE//UTILITY SERVICES		22.73	
12108 BRJH, INC		06/11/2007	37		0	26.52	26.52
01 E 100 203 108 799 401				ELEMENTARY GENERAL ED./OTHER GRANTS/GENERAL SUPPLIES		26.52	
12109 DAVE'S ELECTRIC CO		06/11/2007	1		0	65.25	112.25
01 L 230 03				GENERAL FUND/DEFERRED REVENUE/BERT RANEY LOUNGE		65.25	
			2		0	47.00	
01 L 230 04				GENERAL FUND/DEFERRED REVENUE/HIGH SCHOOL LOUNGE		47.00	
12110 DEAN FOODS NORTH CENTRAL, INC.		06/11/2007	1		0	509.09	3,474.91
02 E 025 770 000 701 495				FOOD SERVICES/SCHOOL LUNCH/MILK		509.09	
			10		0	2,782.34	
02 E 005 770 000 701 495				FOOD SERVICES/SCHOOL LUNCH/MILK		2,158.19	
02 E 005 770 000 705 495				FOOD SERVICES/BREAKFAST/MILK		624.15	
			2		0	183.48	
02 E 025 770 000 705 401				FOOD SERVICES/BREAKFAST/GENERAL SUPPLIES		183.48	
12111 DOLLAR STOP		06/11/2007	1		0	14.00	14.00
01 L 230 10				GENERAL FUND/DEFERRED REVENUE/SUPT POP FUND		14.00	
12112 DOTY, JILL		06/11/2007	1		0	40.81	40.81
01 E 200 219 000 317 366				LEP/COMPENSATORY/TRAVEL-SCHOOL BUSINESS		40.81	
12113 DU-MART		06/11/2007	1		0	29.96	134.53
01 E 300 298 236 000 899				EXTRACURRICULAR ACTIVITIES//MISCELLANEOUS EXPENSE		29.96	
			10		0	27.72	
01 E 300 211 000 000 899				SECONDARY EDUCATION GENERAL//MISCELLANEOUS EXPENSE		27.72	
			6372		0	5.96	
01 E 100 790 399 799 401				OTHER PUPIL SUPPORT SERVICES/OTHER GRANTS/GENERAL SUPPLI		5.96	
			6382		0	43.92	

Check Nbr	Vendor Name	Check Date	Invoice Number	Invoice Desc	PO Number	Invoice Amount	Check Amount
01 E 300 298 236 000 899				EXTRACURRICULAR ACTIVITIES//MISCELLANEOUS EXPENSE		43.92	
			6384		406	26.97	
01 E 300 790 388 000 899				OTHER PUPIL SUPPORT SERVICES//MISCELLANEOUS EXPENSE		26.97	
12114 Vendor	Continued Void	06/11/2007					0.00
12115 Vendor	Continued Void	06/11/2007					0.00
12116	ECONOMART	06/11/2007	1		360	39.42	1,851.81
01 E 100 203 000 000 899				ELEMENTARY GENERAL ED./MISCELLANEOUS EXPENSE		39.42	
			10		417	58.99	
01 E 300 211 165 000 899				SECONDARY EDUCATION GENERAL//MISCELLANEOUS EXPENSE		58.99	
			10002		365	48.08	
01 E 005 610 375 308 401				CURRICULUM CONSULTANT & DEVLOP/STAFF DEV. 25% DIST. WIDE		48.08	
			10036		0	3.96	
01 E 300 260 000 000 430				NATURAL SCIENCES//SUPPLIES		3.96	
			10054		391	11.41	
01 E 300 301 501 830 433				AG EDUCATION (VOCATIONAL)/VOCATIONAL PROGRAMS/INDIVIDUAL		11.41	
			10056		415	7.27	
01 E 300 301 501 830 433				AG EDUCATION (VOCATIONAL)/VOCATIONAL PROGRAMS/INDIVIDUAL		7.27	
			10071		362	8.86	
01 E 100 203 108 799 401				ELEMENTARY GENERAL ED./OTHER GRANTS/GENERAL SUPPLIES		8.86	
			10167		371	65.89	
01 E 300 790 388 000 899				OTHER PUPIL SUPPORT SERVICES//MISCELLANEOUS EXPENSE		65.89	
			10184		395	39.26	
01 L 230 43				GENERAL FUND/DEFERRED REVENUE/SR HIGH PROJECTS		39.26	
			20006		0	4.95	
01 E 300 260 000 000 430				NATURAL SCIENCES//SUPPLIES		4.95	
			20015		368	46.96	
01 E 100 203 362 000 899				ELEMENTARY GENERAL ED./MISCELLANEOUS EXPENSE		46.96	
			20051		362	64.67	
01 E 100 203 108 799 401				ELEMENTARY GENERAL ED./OTHER GRANTS/GENERAL SUPPLIES		64.67	
			3		0	1,390.59	
01 E 300 331 000 830 433				VOCATIONAL HOME EC/VOCATIONAL PROGRAMS/INDIVIDUAL INST S		1,390.59	
			30034		355	29.89	
01 E 005 790 721 000 401				OTHER PUPIL SUPPORT SERVICES//GENERAL SUPPLIES		29.89	
			4		0	3.78	
02 E 005 770 000 701 490				FOOD SERVICES/SCHOOL LUNCH/FOOD		3.78	
			50	55 ALIVE	0	27.83	
04 E 500 505 000 321 450				COMMUNITY EDUCATION GENERAL/COMMUNITY EDUCATION/MATERIAL		27.83	
12117	FAMILY FOODS	06/11/2007	1		0	27.24	27.24
01 L 230 84				GENERAL FUND/DEFERRED REVENUE/HAGG CCC (STUDENT TEACHER		27.24	
12118	FOOD SERVICES OF AMERICA	06/11/2007	1		0	225.85	225.85
02 E 025 770 000 701 490				FOOD SERVICES/SCHOOL LUNCH/FOOD		211.35	
02 E 025 770 000 705 490				FOOD SERVICES/BREAKFAST/FOOD		14.50	
12119	FORD JAMES	06/11/2007	1	CONF TRACK PREP	0	25.00	25.00
01 E 300 292 219 000 319				BOYS/GIRLS ATHLETICS//OTHER PERSONAL SERVICES		25.00	
12120	G & K SERVICES	06/11/2007	1		0	74.52	433.44
02 E 025 770 000 701 382				FOOD SERVICES/SCHOOL LUNCH/LAUNDRY AND DRY CLEANING		74.52	
			10		0	358.92	
01 E 025 810 000 000 899				OPERATIONS AND MAINTENANCE//MISCELLANEOUS EXPENSE		358.92	

Check Nbr	Vendor Name	Check Date	Invoice Number	Invoice Desc	PO Number	Invoice Amount	Check Amount
12121	GOPHER SPORT	06/11/2007	7419516		0	985.60	985.60
01 E 100 203 408 000 430				ELEMENTARY GENERAL ED.//SUPPLIES		600.00	
01 L 230 33				GENERAL FUND/DEFERRED REVENUE/BERT RANEY ACTIVITY ACCOUN		385.60	
12122	GRANITE BOWLING CENTER	06/11/2007	1		0	3,769.00	3,769.00
01 E 300 240 000 000 430				HEALTH/PHY ED/RECREATION//SUPPLIES		3,769.00	
12123	GRANITE FALLS AUTO PARTS	06/11/2007	1		0	18.00	24.99
01 E 300 301 501 830 433				AG EDUCATION (VOCATIONAL)/VOCATIONAL PROGRAMS/INDIVIDUAL		18.00	
			2		0	6.99	
01 E 300 301 501 830 433				AG EDUCATION (VOCATIONAL)/VOCATIONAL PROGRAMS/INDIVIDUAL		6.99	
12124	GRANITE FLORAL & GREENHOUSE	06/11/2007	70013		0	40.00	171.63
01 L 230 10				GENERAL FUND/DEFERRED REVENUE/SUPT POP FUND		40.00	
			70586		0	34.60	
01 E 300 301 501 830 433				AG EDUCATION (VOCATIONAL)/VOCATIONAL PROGRAMS/INDIVIDUAL		34.60	
			71028		0	57.03	
01 E 100 203 403 000 899				ELEMENTARY GENERAL ED.//MISCELLANEOUS EXPENSE		57.03	
			71389		0	40.00	
01 L 230 10				GENERAL FUND/DEFERRED REVENUE/SUPT POP FUND		40.00	
12125	GRANITE FALLS CONSTRUCTION	06/11/2007	37565		0	91.00	91.00
01 E 005 810 191 000 410				OPERATIONS AND MAINTENANCE//CUST/REPAIR SUPPLIES		91.00	
12126	GREAT PLAINS NATURAL GAS CO	06/11/2007	1		0	20.00	2,414.62
01 E 025 810 000 000 440				OPERATIONS AND MAINTENANCE//FUEL FOR BUILDINGS		20.00	
			10		0	902.90	
01 E 025 810 000 000 440				OPERATIONS AND MAINTENANCE//FUEL FOR BUILDINGS		902.90	
			2		0	1,229.22	
01 E 005 810 000 000 440				OPERATIONS AND MAINTENANCE//FUEL FOR BUILDINGS		1,229.22	
			3		0	262.50	
01 E 005 810 000 000 440				OPERATIONS AND MAINTENANCE//FUEL FOR BUILDINGS		262.50	
12127	Vendor Continued Void	06/11/2007					0.00
12128	GREAT PLAINS SPORTS	06/11/2007	313879		0	50.00	2,332.75
01 E 300 298 000 000 899				EXTRACURRICULAR ACTIVITIES//MISCELLANEOUS EXPENSE		50.00	
			313920		0	42.80	
01 E 300 292 219 000 401				BOYS/GIRLS ATHLETICS//GENERAL SUPPLIES		42.80	
			313937		0	114.22	
01 E 300 292 219 000 401				BOYS/GIRLS ATHLETICS//GENERAL SUPPLIES		114.22	
			313940		0	106.90	
01 E 300 292 225 000 401				BOYS/GIRLS ATHLETICS//GENERAL SUPPLIES		106.90	
			313944		0	71.41	
01 E 300 296 210 000 401				GIRLS ATHLETICS//GENERAL SUPPLIES		71.41	
			313971		0	1,515.00	
01 E 300 294 227 000 401				BOYS ATHLETICS//GENERAL SUPPLIES		1,515.00	
			314085		0	410.52	
04 E 500 505 000 321 450				COMMUNITY EDUCATION GENERAL/COMMUNITY EDUCATION/MATERIAL		410.52	
			314087		0	21.90	
01 E 300 292 219 000 401				BOYS/GIRLS ATHLETICS//GENERAL SUPPLIES		21.90	
12129	GREY, MARY	06/11/2007	1		0	779.42	779.42
01 E 150 203 169 000 366				ELEMENTARY GENERAL ED.//TRAVEL-SCHOOL BUSINESS		779.42	
12130	GUERTIN, DAVID	06/11/2007	1	GOLF TEES	0	40.00	680.05
01 E 300 292 225 000 369				BOYS/GIRLS ATHLETICS//PARTICIPATION FEES		40.00	

Check Nbr	Vendor Name	Check Date	Invoice Number	Invoice Desc	PO Number	Invoice Amount	Check Amount
01 E 300 292 225 000 899			10	STATE	0	540.05	
				BOYS/GIRLS ATHLETICS//MISCELLANEOUS EXPENSE		540.05	
01 E 300 292 225 000 369			2	STUDENT PRACTICE ROUNDS	0	100.00	
				BOYS/GIRLS ATHLETICS//PARTICIPATION FEES		100.00	
12131 HARCOURT ACHIEVE		06/11/2007	70711597		0	309.93	309.93
01 E 100 203 000 302 560				ELEMENTARY GENERAL ED./CAPITAL OUTLAY/TEXTBOOK/LIBRARY B		309.93	
12132 HDL		06/11/2007	1553226		0	312.63	331.02
01 E 300 255 000 000 450				INDUSTRIAL EDUCATION//MATERIALS PURCH FOR RESALE		312.63	
01 E 300 255 000 000 450			1558600	INDUSTRIAL EDUCATION//MATERIALS PURCH FOR RESALE	414	11.49	
						11.49	
01 E 300 255 000 000 450			1561580	INDUSTRIAL EDUCATION//MATERIALS PURCH FOR RESALE	0	6.90	
						6.90	
12133 HENDERSON, ROBIN		06/11/2007	1		0	27.86	27.86
01 E 100 203 108 799 401				ELEMENTARY GENERAL ED./OTHER GRANTS/GENERAL SUPPLIES		27.86	
12134 HILLYARD/HUTCHINSON		06/11/2007	205822		0	25.20	2,629.39
01 E 005 810 000 000 410				OPERATIONS AND MAINTENANCE//CUST/REPAIR SUPPLIES		25.20	
01 E 005 810 000 000 410			2066922	OPERATIONS AND MAINTENANCE//CUST/REPAIR SUPPLIES	0	1,209.19	
						1,209.19	
01 E 005 810 000 000 410			7151448	OPERATIONS AND MAINTENANCE//CUST/REPAIR SUPPLIES	0	1,395.00	
						1,395.00	
12135 HINZ, STACY		06/11/2007	1	MEALS- SMART TRAINING	0	47.44	159.68
01 E 100 640 000 306 367				STAFF DEVELOPMENT/STAFF DEV. 50% SITE/TRAVEL-PROFESS DEV		47.44	
01 E 100 640 000 306 367			2	MEALS- INT. COLLAB.	0	112.24	
				STAFF DEVELOPMENT/STAFF DEV. 50% SITE/TRAVEL-PROFESS DEV		112.24	
12136 HOERNAMANN, AMY		06/11/2007	1		0	28.48	28.48
01 L 230 33				GENERAL FUND/DEFERRED REVENUE/BERT RANEY ACTIVITY ACCOUN		28.48	
12137 HOLM, KRIS		06/11/2007	1		0	104.72	151.97
01 E 300 420 000 419 366				SPECIAL EDUCATIONAL GENERAL/94-142 FEDERAL/TRAVEL-SCHOOL		104.72	
01 E 300 420 000 419 460			2	SPECIAL EDUCATIONAL GENERAL/94-142 FEDERAL/BOOKS/WORKBOO	0	47.25	
						47.25	
12138 HOLUM, DIANE		06/11/2007	1		0	996.28	996.28
01 E 100 203 113 317 366				ELEMENTARY GENERAL ED./COMPENSATORY/TRAVEL-SCHOOL BUSINE		996.28	
12139 HOMEWOOD SUITES		06/11/2007	105973A		0	395.00	395.00
01 E 100 204 000 414 366				TITLE II EISENHWOER/TITLE II ESEA/TRAVEL-SCHOOL BUSINESS		395.00	
12140 IKON FINANCIAL SERVICES		06/11/2007	1		0	175.00	1,252.00
01 E 300 620 000 302 580				EDUCATIONAL MEDIA/LIBRARY/CAPITAL OUTLAY/CAPITAL LEASE P		175.00	
01 E 300 211 000 302 580			2	SECONDARY EDUCATION GENERAL/CAPITAL OUTLAY/CAPITAL LEASE	0	274.00	
						274.00	
01 E 150 203 000 302 580			3	ELEMENTARY GENERAL ED./CAPITAL OUTLAY/CAPITAL LEASE PRIN	0	274.00	
						274.00	
01 E 100 203 000 302 580			4	ELEMENTARY GENERAL ED./CAPITAL OUTLAY/CAPITAL LEASE PRIN	0	274.00	
						274.00	
01 E 005 020 000 302 580			5	SUPERINTENDENT'S OFFICE/CAPITAL OUTLAY/CAPITAL LEASE PRI	0	255.00	
						255.00	
12141 Vendor Continued Void		06/11/2007					0.00

Check Nbr	Vendor Name	Check Date	Invoice Number	Invoice Desc	PO Number	Invoice Amount	Check Amount
12142	IKON OFFICE SOLUTIONS	06/11/2007	1	07-08 MAINT.	0	8,640.00	13,134.44
01 A	131 00			GENERAL FUND/PREPAID EXPENSE		8,640.00	
			1008241586		381	368.99	
01 E	300 211 000 000 430			SECONDARY EDUCATION GENERAL//SUPPLIES		368.99	
			1008241587		0	87.59	
01 E	300 211 000 000 430			SECONDARY EDUCATION GENERAL//SUPPLIES		87.59	
			2	06-07 OVER	0	138.47	
01 E	300 620 000 000 350			EDUCATIONAL MEDIA/LIBRARY//REPAIRS AND MAINTENANCE SVCS		138.47	
			3		0	239.24	
01 E	005 020 000 000 350			SUPERINTENDENT'S OFFICE//REPAIRS AND MAINTENANCE SVCS		239.24	
			4		0	1,063.68	
01 E	300 211 000 000 350			SECONDARY EDUCATION GENERAL//REPAIRS AND MAINTENANCE SVC		1,063.68	
			5		0	913.51	
01 E	100 203 000 000 350			ELEMENTARY GENERAL ED.//REPAIRS AND MAINTENANCE SVCS		913.51	
			6		0	386.96	
01 E	150 203 000 000 350			ELEMENTARY GENERAL ED.//REPAIRS AND MAINTENANCE SVCS		386.96	
			8	07-08 RATE INCREASE	0	1,296.00	
01 A	131 00			GENERAL FUND/PREPAID EXPENSE		1,296.00	
12143	IMAGESTUFF.COM	06/11/2007	51946		364	83.90	83.90
01 E	100 203 000 000 899			ELEMENTARY GENERAL ED.//MISCELLANEOUS EXPENSE		83.90	
12144	INK SPOT	06/11/2007	1		0	11.50	11.50
01 E	150 203 000 000 430			ELEMENTARY GENERAL ED.//SUPPLIES		11.50	
12145	INNOVATIVE OFFICE SOLUTIONS, L	06/11/2007	1		0	70.00	152.97
01 E	100 640 000 306 899			STAFF DEVELOPMENT/STAFF DEV. 50% SITE/MISCELLANEOUS EXPE		70.00	
			W3920973-1		407	82.97	
01 E	300 050 000 000 401			PRINCIPAL'S OFFICE//GENERAL SUPPLIES		82.97	
12146	INSTRUCTOR	06/11/2007	1	JESSEN	89	8.00	8.00
01 E	150 203 402 000 460			ELEMENTARY GENERAL ED.//BOOKS/WORKBOOKS		8.00	
12147	ISCORP	06/11/2007	632171		0	195.50	195.50
01 E	005 110 000 000 350			ACCOUNTING OFFICE//REPAIRS AND MAINTENANCE SVCS		195.50	
12148	JEFFREY IVERSON	06/11/2007	1		0	118.75	243.21
01 E	300 298 236 000 899			EXTRACURRICULAR ACTIVITIES//MISCELLANEOUS EXPENSE		118.75	
			10		0	124.46	
01 E	300 298 236 000 899			EXTRACURRICULAR ACTIVITIES//MISCELLANEOUS EXPENSE		124.46	
12149	ELIZABETH JAHN	06/11/2007	1	KEMPS TOPS	0	42.06	42.06
01 L	230 36			GENERAL FUND/DEFERRED REVENUE/MUSIC-BERT RANEY		42.06	
12150	JANS, SCOTT	06/11/2007	1		0	79.36	79.36
01 L	230 42			GENERAL FUND/DEFERRED REVENUE/MATH TEAM		79.36	
12151	JIM'S CLOTHING & SPORTING GOOD	06/11/2007	1		0	1,422.00	1,422.00
04 E	500 505 000 321 450			COMMUNITY EDUCATION GENERAL/COMMUNITY EDUCATION/MATERIAL		1,422.00	
12152	JOHNSON CONTROLS	06/11/2007	55045278	JUNE 07 TO AUGUST 07	0	6,500.00	6,500.00
01 E	005 810 810 000 350			OPERATIONS AND MAINTENANCE//REPAIRS AND MAINTENANCE SVCS		6,500.00	
12153	JOSTEN'S	06/11/2007	12713158		0	8.67	8.67
01 E	300 211 165 000 899			SECONDARY EDUCATION GENERAL//MISCELLANEOUS EXPENSE		8.67	
12154	CLAUDIA JUAREZ	06/11/2007	1		0	26.18	26.18
01 E	100 219 107 799 366			LEP/OTHER GRANTS/TRAVEL-SCHOOL BUSINESS		26.18	

Check Nbr	Vendor Name	Check Date	Invoice Number	Invoice Desc	PO Number	Invoice Amount	Check Amount
12155	KID SOUNDS	06/11/2007	2952		0	90.00	90.00
01 E 100 050 000 000 401				PRINCIPAL'S OFFICE//GENERAL SUPPLIES		90.00	
12156	KILOWATT COMMUNITY CENTER	06/11/2007	1	PHY ED	0	600.00	1,855.00
01 E 300 211 000 000 370				SECONDARY EDUCATION GENERAL//RENTALS AND LEASES		600.00	
01 E 300 298 000 000 370			2	TAE KWON DO	0	330.00	
				EXTRACURRICULAR ACTIVITIES//RENTALS AND LEASES		330.00	
01 E 005 020 000 000 370			3	PACT 4	0	50.00	
				SUPERINTENDENT'S OFFICE//RENTALS AND LEASES		50.00	
01 E 150 203 000 000 350			4	HAGG	0	312.50	
				ELEMENTARY GENERAL ED.//REPAIRS AND MAINTENANCE SVCS		312.50	
01 E 100 203 000 000 350			5	BRE	0	425.00	
				ELEMENTARY GENERAL ED.//REPAIRS AND MAINTENANCE SVCS		425.00	
01 E 300 298 000 000 370			6	ELEM WRESTLING	0	137.50	
				EXTRACURRICULAR ACTIVITIES//RENTALS AND LEASES		137.50	
12157	KNAPPER, TIMOTHY	06/11/2007	1		0	35.37	35.37
01 E 300 298 000 000 899				EXTRACURRICULAR ACTIVITIES//MISCELLANEOUS EXPENSE		35.37	
12158	JULIE KOEPP	06/11/2007	1	WATER	0	5.99	26.01
01 E 150 050 000 000 401				PRINCIPAL'S OFFICE//GENERAL SUPPLIES		5.99	
01 E 150 203 000 000 366			2	MILEAGE	0	20.02	
				ELEMENTARY GENERAL ED.//TRAVEL-SCHOOL BUSINESS		20.02	
12159	KORTHUIS JEWELRY	06/11/2007	1		368	12.00	34.75
01 E 300 258 233 000 430				MUSIC//SUPPLIES		12.00	
01 E 300 258 231 000 430			22.75		390	22.75	
				MUSIC//SUPPLIES		22.75	
12160	KVAM, PEGGY	06/11/2007	1		0	19.95	19.95
01 E 100 203 108 799 401				ELEMENTARY GENERAL ED.//OTHER GRANTS/GENERAL SUPPLIES		19.95	
12161	LADNER'S HARDWARE	06/11/2007	1		0	173.76	663.04
01 E 005 810 191 000 410				OPERATIONS AND MAINTENANCE//CUST/REPAIR SUPPLIES		173.76	
01 E 005 810 000 302 530			2	TORO	0	373.98	
				OPERATIONS AND MAINTENANCE/CAPITAL OUTLAY/EQUIPMENT PURC		373.98	
01 E 300 212 000 000 430			3		0	14.99	
				ART//SUPPLIES		14.99	
01 E 300 301 501 830 433			4		0	12.87	
				AG EDUCATION (VOCATIONAL)/VOCATIONAL PROGRAMS/INDIVIDUAL		12.87	
01 E 005 810 000 000 410			5		0	65.46	
				OPERATIONS AND MAINTENANCE//CUST/REPAIR SUPPLIES		65.46	
01 E 300 255 000 000 430			6		0	21.98	
				INDUSTRIAL EDUCATION//SUPPLIES		21.98	
12162	LAVIN, CYNTHIA	06/11/2007	1		0	12.76	12.76
01 E 100 203 405 000 430				ELEMENTARY GENERAL ED.//SUPPLIES		12.76	
12163	LEARNING PAGE	06/11/2007	LPC0012261		369	599.50	599.50
01 E 100 203 113 317 401				ELEMENTARY GENERAL ED.//COMPENSATORY/GENERAL SUPPLIES		599.50	
12164	LEN WORSECH & CO	06/11/2007	8183		0	220.00	220.00
01 E 300 292 219 000 401				BOYS/GIRLS ATHLETICS//GENERAL SUPPLIES		220.00	
12165	LIFETOUCH	06/11/2007	I318950		0	837.80	837.80
01 L 230 33				GENERAL FUND/DEFERRED REVENUE/BERT RANEY ACTIVITY ACCOUN		837.80	
12166	CAROLINE LINDEN	06/11/2007	1		0	387.27	387.27

Check Nbr	Vendor Name	Check Date	Invoice Number	Invoice Desc	PO Number	Invoice Amount	Check Amount
01 E 100 204 000 414 366				TITLE II EISENHWOER/TITLE II ESEA/TRAVEL-SCHOOL BUSINESS		387.27	
12167	LOOKOUT BOOKS	06/11/2007	L41678		0	79.80	79.80
01 E 300 620 000 000 470				EDUCATIONAL MEDIA/LIBRARY//LIBRARY BOOKS		79.80	
12168	MASA	06/11/2007	1	07-08 DUES	0	745.00	745.00
01 A 131 00				GENERAL FUND/PREPAID EXPENSE		745.00	
12169	MAXWELL MEDALS & AWARDS	06/11/2007	3042349IN		0	264.40	264.40
01 E 300 292 219 000 401				BOYS/GIRLS ATHLETICS//GENERAL SUPPLIES		264.40	
12170	MCGRAW-HILL	06/11/2007	30465548001		0	351.40	312.40
01 E 100 203 000 302 560				ELEMENTARY GENERAL ED./CAPITAL OUTLAY/TEXTBOOK/LIBRARY B		351.40	
01 E 100 203 000 302 560			31017764001	ELEMENTARY GENERAL ED./CAPITAL OUTLAY/TEXTBOOK/LIBRARY B	0	-39.00	
12171	MEDICAL TECHNOLOGIES, INC.	06/11/2007	97502		0	206.00	206.00
01 E 200 720 000 000 311				HEALTH SERVICES/NURSE//PROFESSIONAL/TECHNICAL SVCS		206.00	
12172	MENARDS	06/11/2007	1		0	59.40	59.40
01 E 005 810 000 000 410				OPERATIONS AND MAINTENANCE//CUST/REPAIR SUPPLIES		59.40	
12173	MESPA	06/11/2007	479		0	1,650.00	1,650.00
01 E 100 204 000 414 366				TITLE II EISENHWOER/TITLE II ESEA/TRAVEL-SCHOOL BUSINESS		1,650.00	
12174	MINNESOTA ELEVATOR, INC.	06/11/2007	118545	CLARKFIELD	0	115.22	411.53
01 E 025 860 000 347 590				HEALTH & SAFETY EQUIP/PHYSICAL HAZARD CONTROL/OTHER CAPI		115.22	
01 E 005 860 000 347 590			119378	HS	0	296.31	
12175	MN JH SCHOOL MATH LEAGUE	06/11/2007	1	MATH LEAGUE	0	130.00	130.00
01 A 131 00				GENERAL FUND/PREPAID EXPENSE		130.00	
12176	MN WEST COMM.& TECH. COLL	06/11/2007	84496		0	1,190.16	1,190.16
01 E 300 200 000 000 433				POST SECONDARY OPTIONS ENROLL//INDIVIDUAL INST SUPPLIES		1,190.16	
12177	LAURA M MOLDEN	06/11/2007	1		0	10.01	10.01
01 E 300 211 169 000 366				SECONDARY EDUCATION GENERAL//TRAVEL-SCHOOL BUSINESS		10.01	
12178	MONTEVIDEO SCHOOL DISTRICT 129	06/11/2007	07-682	CURR. COOR.	0	13,672.12	13,799.81
01 E 005 610 129 308 391				CURRICULUM CONSULTANT & DEVLOP/STAFF DEV. 25% DIST. WIDE		13,672.12	
01 E 005 610 375 308 305			07-684	PRESENTER	0	50.69	
12179	MUSIC MART	06/11/2007	514496		0	12.51	12.51
01 E 300 258 233 000 450				MUSIC//MATERIALS PURCH FOR RESALE		12.51	
12180	MUSIC STREET	06/11/2007	117569		0	43.00	43.00
01 E 300 258 233 000 350				MUSIC//REPAIRS AND MAINTENANCE SVCS		43.00	
12181	MUSIC THEATRE INTERNATIONAL	06/11/2007	399777	FALL MUSICAL	408	1,118.25	1,118.25
01 A 131 00				GENERAL FUND/PREPAID EXPENSE		1,118.25	
12182	MUSSER ENVIRONMENTAL	06/11/2007	030-02-1	07-08 HTS	0	3,785.61	3,785.61
01 A 131 00				GENERAL FUND/PREPAID EXPENSE		3,785.61	
12183	MVCC	06/11/2007	2	4TH QTR	0	193,660.47	193,660.47
01 E 200 420 000 310 397				SPECIAL EDUCATIONAL GENERAL/COOPERATIVE/DUE TO SCHOOLS B		193,660.47	
12184	MVCC	06/11/2007	4 QTR.		0	193,660.47	193,660.47
01 E 200 420 000 310 396				SPECIAL EDUCATIONAL GENERAL/COOPERATIVE/DUE TO SCHOOLS S		193,660.47	
12185	MVTV	06/11/2007	01		0	200.00	200.00
01 E 005 810 000 311 320				OPERATIONS AND MAINTENANCE/TELECOMMUNICATIONS GRANT/COMM		200.00	

Check Nbr	Vendor Name	Check Date	Invoice Number	Invoice Desc	PO Number	Invoice Amount	Check Amount
12186	NELSEN'S CLEANERS & LAUNDERERS	06/11/2007	1		0	52.22	52.22
02 E 005 770 000 701 382				FOOD SERVICES/SCHOOL LUNCH/LAUNDRY AND DRY CLEANING		52.22	
12187	NORTHWEST EVALUATION ASSOC.	06/11/2007	10509	07-08 LICENSE	0	8,066.50	8,066.50
01 A 131 00				GENERAL FUND/PREPAID EXPENSE		8,066.50	
12188	O'NEAL, MARLYS	06/11/2007	1		0	19.25	19.25
01 E 150 050 000 000 366				PRINCIPAL'S OFFICE//TRAVEL-SCHOOL BUSINESS		19.25	
12189	OFFICE DEPOT	06/11/2007	387405426-001		0	10.98	10.98
04 E 500 505 000 321 401				COMMUNITY EDUCATION GENERAL/COMMUNITY EDUCATION/GENERAL		10.98	
12190	OFFICE MAX	06/11/2007	974363		105	42.49	42.49
01 L 230 10				GENERAL FUND/DEFERRED REVENUE/SUPT POP FUND		42.49	
12191	OLD DUTCH FOODS, INC.	06/11/2007	1		0	95.40	95.40
02 E 005 770 000 701 490				FOOD SERVICES/SCHOOL LUNCH/FOOD		95.40	
12192	PACT 4 FAMILIES COLLABORATIVE	06/11/2007	266		0	3,000.00	7,765.50
01 R 200 790 170 799 099				OTHER PUPIL SUPPORT SERVICES/OTHER GRANTS/MISCELLANEOUS		3,000.00	
				LCTS-YME 001-060266 H. EVENSON	0	4,765.50	
01 E 200 420 000 740 305				SPECIAL EDUCATIONAL GENERAL/STATE FUNDED SPECIAL ED/PROF		4,765.50	
12193	PAN-O-GOLD BAKING CO.	06/11/2007	1		0	104.22	914.13
02 E 025 770 000 701 490				FOOD SERVICES/SCHOOL LUNCH/FOOD		100.18	
02 E 025 770 000 705 490				FOOD SERVICES/BREAKFAST/FOOD		4.04	
				10	0	809.91	
02 E 005 770 000 701 490				FOOD SERVICES/SCHOOL LUNCH/FOOD		719.91	
02 E 005 770 000 705 490				FOOD SERVICES/BREAKFAST/FOOD		90.00	
12194	PAPER DIRECT, INC.	06/11/2007	1042936801019		427	81.92	81.92
01 E 300 211 000 000 430				SECONDARY EDUCATION GENERAL//SUPPLIES		81.92	
12195	PEARSON EDUCATION	06/11/2007	4015323970		336	45.16	45.16
01 E 100 203 406 000 899				ELEMENTARY GENERAL ED./MISCELLANEOUS EXPENSE		45.16	
12196	SONJA PEDERSON	06/11/2007	1		0	132.44	132.44
01 E 200 720 000 000 366				HEALTH SERVICES/NURSE//TRAVEL-SCHOOL BUSINESS		132.44	
12197	Vendor Continued Void	06/11/2007					0.00
12198	J.W. PEPPER & SON INC.	06/11/2007	11396197		383	162.89	212.93
01 E 300 258 233 000 430				MUSIC//SUPPLIES		162.89	
				11398425	0	17.50	
01 E 300 258 231 000 430				MUSIC//SUPPLIES		17.50	
				11399363	0	1.70	
01 E 300 258 231 000 430				MUSIC//SUPPLIES		1.70	
				11400712	0	12.39	
01 E 300 298 233 000 401				EXTRACURRICULAR ACTIVITIES//GENERAL SUPPLIES		12.39	
				11400724	0	1.80	
01 E 300 298 233 000 401				EXTRACURRICULAR ACTIVITIES//GENERAL SUPPLIES		1.80	
				11400733	0	5.25	
01 E 300 298 233 000 401				EXTRACURRICULAR ACTIVITIES//GENERAL SUPPLIES		5.25	
				11400741	0	11.40	
01 E 300 298 233 000 401				EXTRACURRICULAR ACTIVITIES//GENERAL SUPPLIES		11.40	
12199	PEPSI COLA BOTTLING -PIPESTONE	06/11/2007	121317		0	167.00	167.00
01 E 150 203 108 799 401				ELEMENTARY GENERAL ED./OTHER GRANTS/GENERAL SUPPLIES		167.00	
12200	PETERSON, TERRI	06/11/2007	1		0	23.10	23.10
01 E 005 110 000 000 366				ACCOUNTING OFFICE//TRAVEL-SCHOOL BUSINESS		23.10	
12201	PITNEY BOWES	06/11/2007	1		0	254.00	357.98

Check Nbr	Vendor Name	Check Date	Invoice Number	Invoice Desc	PO Number	Invoice Amount	Check Amount
01 E 005 020 000 000 370				SUPERINTENDENT'S OFFICE//RENTALS AND LEASES		254.00	
			5500305054		0	103.98	
01 E 005 020 000 000 401				SUPERINTENDENT'S OFFICE//GENERAL SUPPLIES		103.98	
12202 PRAIRIE PALETTE		06/11/2007	3374		0	142.50	142.50
01 E 005 810 191 000 410				OPERATIONS AND MAINTENANCE//CUST/REPAIR SUPPLIES		142.50	
12203 PRAIRIE'S EDGE CASINO RESORT		06/11/2007	1	LITERACY COLLAB.	0	923.58	923.58
01 E 100 203 000 000 899				ELEMENTARY GENERAL ED.//MISCELLANEOUS EXPENSE		923.58	
12204 PURCHASE POWER		06/11/2007	1		0	470.00	3,030.00
01 E 100 050 000 000 329				PRINCIPAL'S OFFICE//POSTAGE AND EXPRESS		470.00	
			2		0	450.00	
01 E 100 203 000 000 329				ELEMENTARY GENERAL ED.//POSTAGE AND EXPRESS		450.00	
			3		0	700.00	
01 E 300 211 000 000 329				SECONDARY EDUCATION GENERAL//POSTAGE AND EXPRESS		700.00	
			4		0	410.00	
01 E 005 020 000 000 329				SUPERINTENDENT'S OFFICE//POSTAGE AND EXPRESS		410.00	
			5		0	1,000.00	
02 E 005 770 000 701 329				FOOD SERVICES/SCHOOL LUNCH/POSTAGE AND EXPRESS		1,000.00	
12205 QUILL CORPORATION		06/11/2007	22739		110	8.88	67.38
01 L 230 10				GENERAL FUND/DEFERRED REVENUE/SUPT POP FUND		8.88	
			6916593		106	58.50	
01 L 230 10				GENERAL FUND/DEFERRED REVENUE/SUPT POP FUND		58.50	
12206 RATWICK, ROSZAK & MALONEY, P.A		06/11/2007	2190-0001		0	507.00	507.00
01 E 005 150 000 000 305				LEGAL SERVICES//PROFESSIONAL FEES		507.00	
12207 REINHART INST FOODS		06/11/2007	1		0	3,819.08	3,819.08
02 E 005 770 000 701 401				FOOD SERVICES/SCHOOL LUNCH/GENERAL SUPPLIES		300.58	
02 E 005 770 000 701 490				FOOD SERVICES/SCHOOL LUNCH/FOOD		3,420.11	
02 E 005 770 000 705 490				FOOD SERVICES/BREAKFAST/FOOD		98.39	
12208 RESOURCES FOR EDUCATORS INC.		06/11/2007	1		0	198.00	198.00
02 E 005 770 000 701 899				FOOD SERVICES/SCHOOL LUNCH/MISCELLANEOUS EXPENSE		198.00	
12209 RILEY BUS SERVICE, INC.		06/11/2007	6137	LAKEVILLE	0	605.00	3,312.00
04 E 500 505 000 321 361				COMMUNITY EDUCATION GENERAL/COMMUNITY EDUCATION/BUS CONT		605.00	
			6138	HARMONY	0	1,099.00	
04 E 500 505 000 321 361				COMMUNITY EDUCATION GENERAL/COMMUNITY EDUCATION/BUS CONT		1,099.00	
			6139	ST PAUL	0	636.00	
04 E 500 505 000 321 361				COMMUNITY EDUCATION GENERAL/COMMUNITY EDUCATION/BUS CONT		636.00	
			6305	CHANHASSEN	0	517.00	
04 E 500 505 000 321 361				COMMUNITY EDUCATION GENERAL/COMMUNITY EDUCATION/BUS CONT		517.00	
			6342	STATE	0	455.00	
01 E 300 292 219 733 361				BOYS/GIRLS ATHLETICS/TRANSPORTATION/NON-AUTHORIZED/BUS C		455.00	
12210 ROCKLER		06/11/2007	30746880		396	163.91	163.91
01 E 300 255 000 000 430				INDUSTRIAL EDUCATION//SUPPLIES		163.91	
12211 ROLIGHED, ROBYN		06/11/2007	1		0	30.03	30.03
01 E 150 203 169 000 366				ELEMENTARY GENERAL ED.//TRAVEL-SCHOOL BUSINESS		30.03	
12212 RTS		06/11/2007	1		0	285.82	316.61
01 E 005 810 000 000 320				OPERATIONS AND MAINTENANCE//COMMUNICATIONAL SERVICES		285.82	
			2		0	30.79	
01 E 025 810 000 000 320				OPERATIONS AND MAINTENANCE//COMMUNICATIONAL SERVICES		30.79	

Check Nbr	Vendor Name	Check Date	Invoice Number	Invoice Desc	PO Number	Invoice Amount	Check Amount
12213	SAWMILL	06/11/2007	1		0	600.12	600.12
01 E 300 255 000 000 450				INDUSTRIAL EDUCATION//MATERIALS PURCH FOR RESALE		600.12	
12214	SCHAFFFRAN, JANE	06/11/2007	1		0	88.32	88.32
01 E 100 203 404 000 460				ELEMENTARY GENERAL ED.//BOOKS/WORKBOOKS		88.32	
12215	SCHEDULE STAR / AOA	06/11/2007	703088	07-08 08-09	0	450.00	450.00
01 E 300 298 000 000 899				EXTRACURRICULAR ACTIVITIES//MISCELLANEOUS EXPENSE		450.00	
12216	CLINT SCHILLER	06/11/2007	0198106-IN		357	22.40	56.78
01 E 200 720 000 000 401				HEALTH SERVICES/NURSE//GENERAL SUPPLIES		22.40	
			1		413	21.02	
01 E 300 211 000 000 899				SECONDARY EDUCATION GENERAL//MISCELLANEOUS EXPENSE		21.02	
			10		0	13.36	
01 E 300 790 388 000 899				OTHER PUPIL SUPPORT SERVICES//MISCELLANEOUS EXPENSE		13.36	
12217	SCHOLASTIC INC	06/11/2007	4974178		380	159.09	159.09
01 E 100 203 000 302 560				ELEMENTARY GENERAL ED./CAPITAL OUTLAY/TEXTBOOK/LIBRARY B		159.09	
12218	SCHOOL-TECH, INC.	06/11/2007	302005	TRACK POLE	0	435.85	594.55
09 L 230 20				TRUST FUND/DEFERRED REVENUE/DONATION (ANONYMOUS)		435.85	
			304022	TRACK RAKE	0	158.70	
09 L 230 20				TRUST FUND/DEFERRED REVENUE/DONATION (ANONYMOUS)		158.70	
12219	SCHWICKERT'S	06/11/2007	1	GF ROOF	0	1,385.61	2,771.22
01 E 005 850 000 302 522				FACILITIES/CAPITAL OUTLAY/BUILDING IMPROVEMENTS		1,385.61	
			2	HAGG ROOF	0	1,385.61	
01 E 025 850 000 302 522				FACILITIES/CAPITAL OUTLAY/BUILDING IMPROVEMENTS		1,385.61	
12220	SKATETIME SCHOOL PROGRAMS	06/11/2007	5053		0	742.00	742.00
01 L 230 33				GENERAL FUND/DEFERRED REVENUE/BERT RANEY ACTIVITY ACCOUN		742.00	
12221	SNA	06/11/2007	3		0	80.00	94.00
02 E 005 770 000 701 899				FOOD SERVICES/SCHOOL LUNCH/MISCELLANEOUS EXPENSE		80.00	
			424683		0	8.00	
02 E 005 770 000 701 899				FOOD SERVICES/SCHOOL LUNCH/MISCELLANEOUS EXPENSE		8.00	
			445110		0	6.00	
02 E 005 770 000 701 899				FOOD SERVICES/SCHOOL LUNCH/MISCELLANEOUS EXPENSE		6.00	
12222	SOPLAND, JAMES L.	06/11/2007	1		0	21.18	21.18
01 E 005 810 000 000 366				OPERATIONS AND MAINTENANCE//TRAVEL-SCHOOL BUSINESS		21.18	
12223	SOUTHWEST WHOLESAL	06/11/2007	1		0	805.27	4,868.11
02 E 025 770 000 701 401				FOOD SERVICES/SCHOOL LUNCH/GENERAL SUPPLIES		81.40	
02 E 025 770 000 701 490				FOOD SERVICES/SCHOOL LUNCH/FOOD		618.07	
02 E 025 770 000 705 490				FOOD SERVICES/BREAKFAST/FOOD		105.80	
			10		0	4,062.84	
02 E 005 770 000 701 401				FOOD SERVICES/SCHOOL LUNCH/GENERAL SUPPLIES		402.17	
02 E 005 770 000 701 490				FOOD SERVICES/SCHOOL LUNCH/FOOD		3,148.21	
02 E 005 770 000 705 490				FOOD SERVICES/BREAKFAST/FOOD		512.46	
12224	STUKEL HELEN	06/11/2007	ADMIN CONF.		0	364.03	364.03
04 E 500 580 000 325 366				EARLY CHILDHOOD AND FAM ED/EARLY CHILDHOOD AND FAMILY ED		364.03	
12225	SUBWAY	06/11/2007	1		0	28.41	28.41
01 E 005 610 375 308 401				CURRICULUM CONSULTANT & DEVLOP/STAFF DEV. 25% DIST. WIDE		28.41	
12226	SW/WC SERVICE COOP - MARSHALL	06/11/2007	1		0	100.00	250.00
01 E 100 640 000 306 367				STAFF DEVELOPMENT/STAFF DEV. 50% SITE/TRAVEL-PROFESS DEV		100.00	
			18154		0	40.00	
01 E 005 020 000 000 367				SUPERINTENDENT'S OFFICE//TRAVEL-PROFESS DEVELOPMENT		40.00	

Check Nbr	Vendor Name	Check Date	Invoice Number	Invoice Desc	PO Number	Invoice Amount	Check Amount
01 E 100 218 000 388 369			18175		0	10.00	
				GIFTED & TALENTED/TAG (06)/PARTICIPATION FEES		10.00	
01 E 005 110 000 000 366			18211		0	100.00	
01 E 100 050 000 000 366				ACCOUNTING OFFICE//TRAVEL-SCHOOL BUSINESS		25.00	
01 E 300 050 000 000 366				PRINCIPAL'S OFFICE//TRAVEL-SCHOOL BUSINESS		25.00	
01 E 150 050 000 000 366				PRINCIPAL'S OFFICE//TRAVEL-SCHOOL BUSINESS		25.00	
12227 TEAM LABORATORY CHEMICAL CORP.		06/11/2007	71736		0	1,180.50	1,180.50
01 E 005 810 191 000 410				OPERATIONS AND MAINTENANCE//CUST/REPAIR SUPPLIES		1,180.50	
12228 THERAPY SHOPPE INC.		06/11/2007	75870		367	36.47	36.47
01 E 100 402 000 419 433				MILD/MODERATE MENTALLY IMP;/94-142 FEDERAL/INDIVIDUAL IN		36.47	
12229 TIGERDIRECT.COM		06/11/2007	P85574920101		252	40.46	40.46
01 E 100 620 000 000 401				EDUCATIONAL MEDIA/LIBRARY//GENERAL SUPPLIES		40.46	
12230 TJOVSOLD EQUIPMENT		06/11/2007	75533		0	6.46	6.46
01 E 005 810 191 000 410				OPERATIONS AND MAINTENANCE//CUST/REPAIR SUPPLIES		6.46	
12231 TONGEN CONSTRUCTION		06/11/2007	1	TRACK BORE	0	981.85	981.85
01 E 005 850 000 302 511				FACILITIES/CAPITAL OUTLAY/SITE/GROUNDS IMPROVEMENT		981.85	
12232 TRANS-MISSISSIPPI BIOLOGICAL		06/11/2007	68912		0	126.50	126.50
01 E 100 203 405 000 899				ELEMENTARY GENERAL ED.//MISCELLANEOUS EXPENSE		126.50	
12233 TRI-COUNTY NEWS		06/11/2007	1		0	34.00	34.00
01 E 005 020 000 000 401				SUPERINTENDENT'S OFFICE//GENERAL SUPPLIES		34.00	
12234 VAN MOER, MARGO		06/11/2007	1		0	64.88	76.88
01 E 100 790 388 000 899				OTHER PUPIL SUPPORT SERVICES//MISCELLANEOUS EXPENSE		64.88	
01 L 230 33			10	AWARDS	0	12.00	
				GENERAL FUND/DEFERRED REVENUE/BERT RANEY ACTIVITY ACCOUN		12.00	
12235 VELDE SANITATION		06/11/2007	29964		0	505.00	855.00
01 E 005 810 000 000 330				OPERATIONS AND MAINTENANCE//UTILITY SERVICES		505.00	
01 E 025 810 000 000 330			29964-	OPERATIONS AND MAINTENANCE//UTILITY SERVICES	0	350.00	350.00
12236 CINDY VELDE		06/11/2007	1		0	20.00	59.76
04 E 500 590 000 321 401				OTHER COMMUNITY SERVICES/COMMUNITY EDUCATION/GENERAL SUP		20.00	
04 E 500 590 157 321 366			2	CAREGIVERS	0	16.00	16.00
				OTHER COMMUNITY SERVICES/COMMUNITY EDUCATION/TRAVEL-SCHO		16.00	
04 E 500 590 000 321 366			3		0	23.76	23.76
				OTHER COMMUNITY SERVICES/COMMUNITY EDUCATION/TRAVEL-SCHO		23.76	
12237 WEIDAUER, BARRY		06/11/2007	1	IND TECH	0	118.41	118.41
01 E 300 211 000 000 366				SECONDARY EDUCATION GENERAL//TRAVEL-SCHOOL BUSINESS		118.41	
12238 WELDERS SUPPLY		06/11/2007	1		0	5.58	5.58
01 E 300 301 501 830 433				AG EDUCATION (VOCATIONAL)/VOCATIONAL PROGRAMS/INDIVIDUAL		5.58	
12239 WEST CENTRAL TRIBUNE		06/11/2007	429851		0	52.00	52.00
01 E 005 010 000 000 380				BOARD OF EDUCATION//PRINTING/ADVERTISING		52.00	
12240 WILLIE'S KORNER STORE		06/11/2007	1		0	25.00	41.00
01 E 100 203 108 799 401				ELEMENTARY GENERAL ED./OTHER GRANTS/GENERAL SUPPLIES		25.00	
01 E 300 620 000 000 489			2	EDUCATIONAL MEDIA/LIBRARY//PERIODICAL/NEWSPAPERS	0	16.00	16.00
12241 W.T. COX SUBSCRIPTIONS		06/11/2007	07-08 BR	07-08 BR	0	637.39	966.21
01 A 131 00				GENERAL FUND/PREPAID EXPENSE		637.39	
			1	07-08 HAGG	0	328.82	

Check Nbr	Vendor Name	Check Date	Invoice Number	Invoice Desc	PO Number	Invoice Amount	Check Amount
01 A	131 00			GENERAL FUND/PREPAID EXPENSE		328.82	
12242	XCEL ENERGY	06/11/2007	1		0	17.65	17.65
01 E 025 810 184 000 330				OPERATIONS AND MAINTENANCE//UTILITY SERVICES		17.65	
12243	YME COMMUNITY EDUCATION	06/11/2007	1	FALL ECFE	0	900.00	2,275.00
01 E 100 412 000 740 393				ECSE SPEC ED/STATE FUNDED SPECIAL ED/SPECIAL ED CONTRACT		900.00	
			2	WINTER/SPRING ECFE FEES	0	1,375.00	
01 E 100 412 000 740 393				ECSE SPEC ED/STATE FUNDED SPECIAL ED/SPECIAL ED CONTRACT		1,375.00	
12244	YME FOOD SVC -CLARKFIELD	06/11/2007	1		0	72.00	324.00
01 L 230 84				GENERAL FUND/DEFERRED REVENUE/HAGG CCC (STUDENT TEACHER		72.00	
			10	ELEMENTARY GENERAL ED./MISCELLANEOUS EXPENSE	0	120.00	
01 E 100 203 000 000 899						120.00	
			2	GENERAL FUND/DEFERRED REVENUE/HAGG CCC (STUDENT TEACHER	0	132.00	
01 L 230 84						132.00	
12245	YME SCHOOL ACTIVITY ACCOUNT	06/11/2007	1	CLASS 06	0	69.00	186.34
01 L 230 43				GENERAL FUND/DEFERRED REVENUE/SR HIGH PROJECTS		69.00	
			2	CLASS 07	0	96.34	
01 L 230 43				GENERAL FUND/DEFERRED REVENUE/SR HIGH PROJECTS		96.34	
			3	WRESTLING	0	21.00	
01 E 300 294 221 000 899				BOYS ATHLETICS//MISCELLANEOUS EXPENSE		21.00	
12246	Vendor Continued Void	06/11/2007					0.00
12247	Vendor Continued Void	06/11/2007					0.00
12248	Vendor Continued Void	06/11/2007					0.00
12249	Vendor Continued Void	06/11/2007					0.00
12250	Vendor Continued Void	06/11/2007					0.00
12251	Vendor Continued Void	06/11/2007					0.00
12252	Vendor Continued Void	06/11/2007					0.00
12253	Vendor Continued Void	06/11/2007					0.00
12254	Vendor Continued Void	06/11/2007					0.00
12255	Vendor Continued Void	06/11/2007					0.00
12256	Vendor Continued Void	06/11/2007					0.00
12257	Vendor Continued Void	06/11/2007					0.00
12258	YME SCHOOLS-ADM	06/11/2007	1	flo thru	0	3.00	8,107.81
01 E 300 298 000 000 899				EXTRACURRICULAR ACTIVITIES//MISCELLANEOUS EXPENSE		3.00	
			2	EXTRACURRICULAR ACTIVITIES//MISCELLANEOUS EXPENSE	0	-0.15	
01 E 300 298 000 000 899						-0.15	
			3	BOYS/GIRLS ATHLETICS//MISCELLANEOUS LOCAL REVENUE	0	-885.00	
01 R 300 292 219 000 099						-885.00	
			5014V	VOID	0	-40.00	
01 E 300 790 388 000 899				OTHER PUPIL SUPPORT SERVICES//MISCELLANEOUS EXPENSE		-40.00	
			5022	ADDL DAVE HOMAN	0	60.00	
01 E 300 296 210 000 319				GIRLS ATHLETICS//OTHER PERSONAL SERVICES		60.00	
			5088	wayne karrels	0	60.00	
01 E 300 294 215 000 319				BOYS ATHLETICS//OTHER PERSONAL SERVICES		60.00	
			5089	POSTMASTER	0	337.50	
04 E 500 505 000 321 329				COMMUNITY EDUCATION GENERAL/COMMUNITY EDUCATION/POSTAGE		337.50	
			5090	XIONG HERR	0	115.43	
01 E 200 420 000 419 305				SPECIAL EDUCATIONAL GENERAL/94-142 FEDERAL/PROFESSIONAL		115.43	
			5091	JOHN AND ALICE KVISTAD	0	60.00	
09 L 230 27				TRUST FUND/DEFERRED REVENUE/SENIOR CITIZENS ADVOCACY		60.00	

Check Nbr	Vendor Name	Check Date	Invoice Number	Invoice Desc	PO Number	Invoice Amount	Check Amount
09 L	230 27		5092	BOOTLEGGERS	0	1,110.00	
				TRUST FUND/DEFERRED REVENUE/SENIOR CITIZENS ADVOCACY		1,110.00	
01 L	230 33		5093	SCIENCE MUSEUM	0	457.50	
				GENERAL FUND/DEFERRED REVENUE/BERT RANEY ACTIVITY ACCOUN		457.50	
01 E	150 203 108 799 305		5094	NORTHERN PRAIRIE PERFORMING	0	750.00	
				ELEMENTARY GENERAL ED./OTHER GRANTS/PROFESSIONAL FEES		750.00	
01 E	300 292 219 000 369		5095	MONTE HS	0	75.00	
				BOYS/GIRLS ATHLETICS//PARTICIPATION FEES		75.00	
04 E	500 505 000 321 450		5096	AARP	0	250.00	
				COMMUNITY EDUCATION GENERAL/COMMUNITY EDUCATION/MATERIAL		250.00	
04 R	500 505 548 321 050		5097	SHARON LOBDELL	0	250.00	
				COMMUNITY EDUCATION GENERAL/COMMUNITY EDUCATION/FEES FRO		250.00	
01 L	230 33		5099	BRAMBLE PARK ZOO	0	570.00	
				GENERAL FUND/DEFERRED REVENUE/BERT RANEY ACTIVITY ACCOUN		570.00	
01 L	230 33		5100	MCCORE SOD HOUSES	0	216.00	
				GENERAL FUND/DEFERRED REVENUE/BERT RANEY ACTIVITY ACCOUN		216.00	
01 L	230 33		5101	Laura Ingalls Wilder	0	183.00	
				GENERAL FUND/DEFERRED REVENUE/BERT RANEY ACTIVITY ACCOUN		183.00	
01 E	300 292 219 000 319		5102	DARWIN TEBEEST	0	100.00	
				BOYS/GIRLS ATHLETICS//OTHER PERSONAL SERVICES		100.00	
01 E	300 292 219 000 319		5103	DUANE CLITS	0	150.00	
				BOYS/GIRLS ATHLETICS//OTHER PERSONAL SERVICES		150.00	
01 E	300 292 219 000 319		5104	GARY SIMS	0	100.00	
				BOYS/GIRLS ATHLETICS//OTHER PERSONAL SERVICES		100.00	
01 E	300 292 219 000 319		5105	BOB GREY	0	25.00	
				BOYS/GIRLS ATHLETICS//OTHER PERSONAL SERVICES		25.00	
01 E	300 292 219 000 319		5106	BRUCE BERGESON	0	25.00	
				BOYS/GIRLS ATHLETICS//OTHER PERSONAL SERVICES		25.00	
01 E	300 292 219 000 319		5107	JOHN DREYER	0	25.00	
				BOYS/GIRLS ATHLETICS//OTHER PERSONAL SERVICES		25.00	
01 E	300 292 219 000 401		5108	MONTE SCHOOLS	0	100.00	
				BOYS/GIRLS ATHLETICS//GENERAL SUPPLIES		100.00	
01 E	300 292 219 000 319		5109	MEGAN LECY	0	20.00	
				BOYS/GIRLS ATHLETICS//OTHER PERSONAL SERVICES		20.00	
01 E	300 292 219 000 319		5110	KURT MUHL	0	20.00	
				BOYS/GIRLS ATHLETICS//OTHER PERSONAL SERVICES		20.00	
01 E	300 292 219 000 319		5111	JESSICA ERICKSON	0	20.00	
				BOYS/GIRLS ATHLETICS//OTHER PERSONAL SERVICES		20.00	
01 E	300 292 219 000 319		5112	MACY MCKAY	0	20.00	
				BOYS/GIRLS ATHLETICS//OTHER PERSONAL SERVICES		20.00	
01 E	300 292 219 000 319		5113	BOBBY JO REINKE	0	20.00	
				BOYS/GIRLS ATHLETICS//OTHER PERSONAL SERVICES		20.00	
01 E	300 292 219 000 319		5114	BRIAN ROSENAU	0	20.00	
				BOYS/GIRLS ATHLETICS//OTHER PERSONAL SERVICES		20.00	
01 E	300 292 219 000 319		5115	JOSH PETERSON	0	20.00	
				BOYS/GIRLS ATHLETICS//OTHER PERSONAL SERVICES		20.00	

Check Nbr	Vendor Name	Check Date	Invoice Number	Invoice Desc	PO Number	Invoice Amount	Check Amount
01 E 300 292 219 000 319			5116	SARAH CROSS BOYS/GIRLS ATHLETICS//OTHER PERSONAL SERVICES	0	20.00 20.00	
01 E 300 292 219 000 319			5117	RACHEL CROWLEY BOYS/GIRLS ATHLETICS//OTHER PERSONAL SERVICES	0	20.00 20.00	
01 E 300 292 219 000 319			5118	TRAVIS REZNECHEK BOYS/GIRLS ATHLETICS//OTHER PERSONAL SERVICES	0	20.00 20.00	
01 E 300 292 219 000 319			5119	HUNTER LANGSETH BOYS/GIRLS ATHLETICS//OTHER PERSONAL SERVICES	0	20.00 20.00	
02 E 005 770 000 701 490			5120	PAN-O-GOLD FOOD SERVICES/SCHOOL LUNCH/FOOD	0	10.08 10.08	
01 E 300 331 000 830 433			5122	ANDREA BENDICKSON VOCATIONAL HOME EC/VOCATIONAL PROGRAMS/INDIVIDUAL INST S	0	18.00 18.00	
01 E 300 331 000 830 433			5123	STAN BENSON VOCATIONAL HOME EC/VOCATIONAL PROGRAMS/INDIVIDUAL INST S	0	18.00 18.00	
01 E 300 331 000 830 433			5124	KAITLYN FLAATA VOCATIONAL HOME EC/VOCATIONAL PROGRAMS/INDIVIDUAL INST S	0	18.00 18.00	
01 E 300 331 000 830 433			5125	JESSICA FAY VOCATIONAL HOME EC/VOCATIONAL PROGRAMS/INDIVIDUAL INST S	0	18.00 18.00	
01 E 300 331 000 830 433			5126	LOGAN JOHNSON VOCATIONAL HOME EC/VOCATIONAL PROGRAMS/INDIVIDUAL INST S	0	18.00 18.00	
01 E 300 331 000 830 433			5127	ANDREA KELLEN VOCATIONAL HOME EC/VOCATIONAL PROGRAMS/INDIVIDUAL INST S	0	18.00 18.00	
01 E 300 331 000 830 433			5128	NICHOLAS LUND VOCATIONAL HOME EC/VOCATIONAL PROGRAMS/INDIVIDUAL INST S	0	18.00 18.00	
01 E 300 331 000 830 433			5129	SCOTT RUPP VOCATIONAL HOME EC/VOCATIONAL PROGRAMS/INDIVIDUAL INST S	0	18.00 18.00	
01 E 300 331 000 830 433			5130	CALIE SIK VOCATIONAL HOME EC/VOCATIONAL PROGRAMS/INDIVIDUAL INST S	0	18.00 18.00	
01 E 300 331 000 830 433			5131	KRISTA SLANGLAND VOCATIONAL HOME EC/VOCATIONAL PROGRAMS/INDIVIDUAL INST S	0	18.00 18.00	
01 E 300 331 000 830 433			5132	ESTEBAN TARIN VOCATIONAL HOME EC/VOCATIONAL PROGRAMS/INDIVIDUAL INST S	0	18.00 18.00	
01 E 300 331 000 830 433			5133	BRANDON TODD VOCATIONAL HOME EC/VOCATIONAL PROGRAMS/INDIVIDUAL INST S	0	18.00 18.00	
01 E 300 331 000 830 433			5134	JUSTIN TONGEN VOCATIONAL HOME EC/VOCATIONAL PROGRAMS/INDIVIDUAL INST S	0	18.00 18.00	
01 E 300 331 000 830 433			5135	KELCY VOLD VOCATIONAL HOME EC/VOCATIONAL PROGRAMS/INDIVIDUAL INST S	0	18.00 18.00	
01 E 300 240 000 000 430			5136	SUPER AMERICA HEALTH/PHY ED/RECREATION//SUPPLIES	0	18.00 18.00	
01 E 300 240 000 000 430			5137	WILLIE'S HEALTH/PHY ED/RECREATION//SUPPLIES	0	76.00 76.00	
01 E 005 020 000 000 367			5138	KENNEDY SUPERINTENDENT'S OFFICE//TRAVEL-PROFESS DEVELOPMENT	0	75.00 75.00	
04 R 500 505 548 321 050			5139	CINDY CROSS COMMUNITY EDUCATION GENERAL/COMMUNITY EDUCATION/FEES FRO	0	250.00 250.00	
			5140	WATERTOWN ZOO	0	158.00	

Check Nbr	Vendor Name	Check Date	Invoice Number	Invoice Desc	PO Number	Invoice Amount	Check Amount
01 L	230 56			GENERAL FUND/DEFERRED REVENUE/HAGG ELEMENTARY SCHOOL ACT		158.00	
			5141	JOSTENS	0	50.00	
01 E	300 790 388 000 899			OTHER PUPIL SUPPORT SERVICES//MISCELLANEOUS EXPENSE		50.00	
			5142	DORIE HEGNA	0	75.00	
04 R	500 000 000 321 050			COMMUNITY EDUCATION/FEES FROM PATRONS		75.00	
			5143	DAVE BROKKE	0	56.00	
01 E	300 292 219 000 186			BOYS/GIRLS ATHLETICS//EXTRA-CURRICULAR WORKERS		56.00	
			5144	MARK JENSEN	0	28.00	
01 E	300 292 219 000 186			BOYS/GIRLS ATHLETICS//EXTRA-CURRICULAR WORKERS		28.00	
			5145	SCOTT RASMUSSON	0	28.00	
01 E	300 292 219 000 186			BOYS/GIRLS ATHLETICS//EXTRA-CURRICULAR WORKERS		28.00	
			5147	JODY KESSLER	0	36.00	
01 E	300 292 219 000 186			BOYS/GIRLS ATHLETICS//EXTRA-CURRICULAR WORKERS		36.00	
			5148	DENNIS KESSLER	0	20.00	
01 E	300 292 219 000 186			BOYS/GIRLS ATHLETICS//EXTRA-CURRICULAR WORKERS		20.00	
			5149	KAREN JACOBSON	0	32.00	
01 E	300 292 219 000 186			BOYS/GIRLS ATHLETICS//EXTRA-CURRICULAR WORKERS		32.00	
			5150	TOM JACOBSON	0	32.00	
01 E	300 292 219 000 186			BOYS/GIRLS ATHLETICS//EXTRA-CURRICULAR WORKERS		32.00	
			5151	Alyssa HOFFMAN	0	60.00	
01 E	300 292 219 000 186			BOYS/GIRLS ATHLETICS//EXTRA-CURRICULAR WORKERS		60.00	
			5152	MN GOLF COACHES ASSOC.	0	69.00	
01 E	300 292 225 000 401			BOYS/GIRLS ATHLETICS//GENERAL SUPPLIES		69.00	
			5153	DAVE GUERTIN	0	144.00	
01 E	300 292 225 000 401			BOYS/GIRLS ATHLETICS//GENERAL SUPPLIES		144.00	
			5154	SUBWAY	0	50.00	
01 L	230 33			GENERAL FUND/DEFERRED REVENUE/BERT RANEY ACTIVITY ACCOUN		50.00	
			5155	SCIENCE MUSEUM	0	22.50	
01 L	230 33			GENERAL FUND/DEFERRED REVENUE/BERT RANEY ACTIVITY ACCOUN		22.50	
			5157	MN ZEPHYR	0	200.00	
04 E	500 505 000 321 450			COMMUNITY EDUCATION GENERAL/COMMUNITY EDUCATION/MATERIAL		200.00	
			5158	MN LANDSCAPE ARBORETUM	0	75.00	
04 E	500 505 000 321 450			COMMUNITY EDUCATION GENERAL/COMMUNITY EDUCATION/MATERIAL		75.00	
			5159	DORIE RICHARDS	0	75.00	
04 E	500 505 000 321 450			COMMUNITY EDUCATION GENERAL/COMMUNITY EDUCATION/MATERIAL		75.00	
			5161	SCOTT JANS	0	370.00	
01 E	300 292 219 000 899			BOYS/GIRLS ATHLETICS//MISCELLANEOUS EXPENSE		370.00	
			5162	COURTYARD BY MARRIOT	0	416.10	
01 E	300 292 219 000 899			BOYS/GIRLS ATHLETICS//MISCELLANEOUS EXPENSE		416.10	
			5163	SUBWAY	0	63.75	
01 E	005 110 000 000 899			ACCOUNTING OFFICE//MISCELLANEOUS EXPENSE		63.75	
			5164	ACMC	0	30.00	
01 E	300 790 388 000 899			OTHER PUPIL SUPPORT SERVICES//MISCELLANEOUS EXPENSE		30.00	
			5165	AARP	0	210.00	
04 E	500 505 000 321 450			COMMUNITY EDUCATION GENERAL/COMMUNITY EDUCATION/MATERIAL		210.00	

Check Nbr	Vendor Name	Check Date	Invoice Number	Invoice Desc	PO Number	Invoice Amount	Check Amount
02 R	005 000 000 701 601		5166-5200	MEAL REFUNDS	0	644.10	
				SCHOOL LUNCH/SALES TO PUPILS		644.10	
01 A	131 00		5204	EXT. REG. CTR.	0	165.00	
				GENERAL FUND/PREPAID EXPENSE		165.00	
12259 YME BOARD ACCOUNT		06/11/2007	1	BOOK	0	6.00	6.00
01 E 300 790 388 000 899				OTHER PUPIL SUPPORT SERVICES//MISCELLANEOUS EXPENSE		6.00	
12260 YME - CLARKFIELD PETTY CASH		06/11/2007	1		0	120.00	120.00
01 L 230 56				GENERAL FUND/DEFERRED REVENUE/HAGG ELEMENTARY SCHOOL ACT		120.00	
12261 YME-FOOD SERVICE		06/11/2007	1	BD TREATS	0	201.00	1,351.90
01 E 100 050 000 000 899				PRINCIPAL'S OFFICE//MISCELLANEOUS EXPENSE		201.00	
01 L 230 33			2	KDGTN. ROUNDUP	0	665.00	
				GENERAL FUND/DEFERRED REVENUE/BERT RANEY ACTIVITY ACCOUN		665.00	
01 E 100 203 000 000 899			3	TRIPS	0	485.90	
				ELEMENTARY GENERAL ED.//MISCELLANEOUS EXPENSE		485.90	
12262 YOUCAN TOOCAN INC.		06/11/2007	227579		366	29.45	29.45
01 E 100 402 000 419 433				MILD/MODERATE MENTALLY IMP;/94-142 FEDERAL/INDIVIDUAL IN		29.45	

187 Computer Check(s) For a Total of 733,327.66

	0	Manual	Checks For a Total of	0.00
	0	Wire Transfer	Checks For a Total of	0.00
	187	Computer	Checks For a Total of	733,327.66
Total For	187	Manual, Wire Transfer & Computer	Checks	733,327.66
Less	0	Voided	Checks For a Total of	0.00
			Net Amount	733,327.66

F U N D S U M M A R Y

Fund	Description	Balance Sheet	Revenue	Expense	Total
01	GENERAL FUND	77,135.45	2,115.00	624,340.90	703,591.35
02	FOOD SERVICE	0.00	644.10	18,755.38	19,399.48
04	COMMUNITY SERVICE	0.00	575.00	7,997.28	8,572.28
09	TRUST FUND	1,764.55	0.00	0.00	1,764.55

YME FOOD SERVICE REPORT TO THE SCHOOL BOARD

May 2007

Granite Falls Site

Meal Type	Total Reimbursable Meals Served (Free + Reduced + Paid)	Number of Days Served	Total Free Meals Served	Total Reduced-Price Meals Served	Total Full Pay Meals Served	Total Non-Reimbursable Meals Served	Number of Participants Approved for Free Meals	Number of Participants Approved for Reduced-Price Meals	Number of Participants Non Approved for Free or Reduced-Price Meals
Breakfast	4,131	22	1,947	685	1,499	21	290	116	559
Lunch	14,073	22	4,510	1,863	7,700	528	290	116	559

Clarkfield Site

Meal Type	Total Reimbursable Meals Served (Free + Reduced + Paid)	Number of Days Served	Total Free Meals Served	Total Reduced-Price Meals Served	Total Full Pay Meals Served	Total Non-Reimbursable Meals Served	Number of Participants Approved for Free Meals	Number of Participants Approved for Reduced-Price Meals	Number of Participants Non Approved for Free or Reduced-Price Meals
Breakfast	1,094	22	529	353	212	21	49	35	45
Lunch	2,410	22	845	690	875	72	49	35	45

YELLOW MEDICINE EAST – ISD 2190

Dwayne A. Strand, Superintendent
450 9th Avenue - Granite Falls, MN 56241
Phone: 320-564-4081 - Fax: 320-564-4781



MINUTES – EMYME NEGOTIATIONS MONDAY, JUNE 4, 2007

Attending: EMYME – Dave Guertin, Steve Petrich, Sheila Koepke, and Jim Williams
DISTRICT – Cindy Loe, LeeAnn Boushek, Dick Jepson, Elmo Volstad, Warren Formo,
Dwayne Strand

1. The EMYME negotiators reviewed the attached meeting guidelines with the District negotiators.
2. EMYME reported that they had just received surveys back from their membership and had not yet reviewed them to develop an initial proposal.
3. Current issues to address or discuss during the negotiations process include the Deferred Compensation language, the language dealing with hiring retired staff and reviewing Q-Comp. The EMYME will begin to address the Deferred Compensation language and the District will initially address the other issues.
4. The EMYME negotiators will work with the District Business Office to establish the base information for both the YME and MVCC staff.
5. The negotiators agreed to try to schedule meetings at least every two or three weeks to keep the process moving. Both parties also agreed to meet even if full committees could not be in attendance.
6. The next meeting is scheduled for June 25th at 8:00 pm in the Boardroom. The following dates are possible third meeting dates: July 9th, 10th or 16th.
7. The EMYME will present their initial proposal to the District negotiators at the June 25th meeting.

YME HIGH SCHOOL
Karen Norell, Principal
450 9th Avenue
Granite Falls, MN 56241
Phone: 320-564-4083
Fax: 320-564-4782

BERT RANEY ELEMENTARY
Stacy Hinz, Principal
555 7th Avenue
Granite Falls, MN 56241
Phone: 320-564-4082
Fax: 320-564-4427

H.A. HAGG ELEMENTARY
Stacy Hinz, Principal
1204 11th Avenue
Clarkfield, MN 56223
Phone: 320-669-4424
Fax: 320-669-4828

Contract Agreement
Yellow Medicine East
Curriculum and Staff Development

Whereas the Yellow Medicine East School District School Board, of Independent School District #2190, has agreed to extend an employment contract to Darcy Josephson to fulfill the responsibilities of Curriculum and Staff Development coordination, this contract is drafted to specify the components of that agreement. Those components include:

1. A 204-day employment contract based on MA 15 - 14th Increment for the 2007-2008 school year. The salary will be determined following the EM-YME negotiations for the 2007-2009 contract. The 2006-2007 contract salary for a 204-day contract is \$63,721.00.
2. Adjusting the days and the hours of the contract to meet the flexibility of the position. The exact days and hours of service will be determined by the coordinator and the administrative team.
3. A fringe benefit package, including Health Insurance, Dental Insurance, LTD, and Life Insurance, prorated based on 10/9ths the Certified Staff Master Agreement between EM-YME and the School District.
4. Being eligible to participate in a tax sheltered annuity plan through payroll deduction established pursuant to Section 403(b) of the Internal Revenue Code. Participation benefits will be offered at 10/9ths of the provisions of the schedule provided in the Certified Staff Master Agreement at the start of the second year of employment.
5. A dues benefit of up to \$350.00 per year.
6. Disability leave to accumulate at 15 days the first year, as per the Certified Staff Master Agreement, and at 12 additional days every year after, to a maximum of 90 days. The coordinator will be eligible to receive Leaves of Absence as per the Certified Staff Master Agreement.
7. The contract will commence on August 1, 2007 and will end on July 31, 2008.

The Yellow Medicine East School District and Darcy Josephson agree that the components as outlined are agreed upon, and that this document constitutes a contract settlement for the 2007-2008 school year.

FOR:
Darcy Josephson
Staff Development/Curriculum Coordinator

FOR:
Yellow Medicine East Schools #2190

(Signature)

Elmo Volstad, Chairperson

(Date)

(Date)

Minnesota Board of School Administrators
TIES Building – 1667 Snelling Avenue North
Falcon Heights, MN 55108
**REQUEST FOR ADMINISTRATIVE PERSONNEL LETTER of APPROVAL for
Community Education Director**
(this form complies with MN Statute 124.B.19 Authorization: MN Rule 3512-3500)

GENERAL INFORMATION AND INSTRUCTIONS: Complete a separate form for each administrator for whom a letter of approval request is made. Minnesota Rule 3512.5300 defines a qualified administrator as holding a valid Minnesota license to perform the particular services for which s/he is employed in a public school. This form must be completed when a district proposes to assign an administrator to a position for which the administrator does not hold the appropriate license for the intended assignment.

Pursuant to MN Rule 3512.3500, subpart 9c a letter of approval for community education director requires that no licensed community education director has applied for the position. If a licensed community education director has applied and is willing to accept the position, the request for letter of approval cannot be granted.

For assistance, contact Minnesota Board of School Administrators at 651-999-7387. Submit the completed form by fax (651-999-7388) or by mail to the address at the top of this form.

1. District Name and District Number: **Yellow Medicine East District 2190**
2. Address, City, State, and Zip Code: **450 9th Avenue
Granite Falls, MN 56241**
3. District Superintendent: **Dwayne Strand**
4. Individual for whom the letter of approval is requested: **Tim Knapper**
5. Minnesota licensure file folder number: **352156**
6. Administrative area of the letter of approval request:
***Community Education Director**
7. Term of request: **From: July 1, 2007 To: June 30, 2008**
8. Describe the individual's qualifications for the position.

***As an employee of the district for the last twelve (12) years, Mr. Knapper has clear understanding of how our programs operate. As a teacher and a coach in the school district, Mr. Knapper has established collaborative relationships throughout the district that will benefit his transition into the community education program. He has also been responsible for delivering a number of community education programs in the past so has a clear understanding for the scope of the position.**

***Mr. Knapper served in this position last year and was very successful. He is also currently enrolled in programming at St. Cloud State University.**

***Mr. Knapper is organized, hard-working and possess the communication skills necessary for overseeing a strong community education program.**

9. Identify the supervisor for this position and their licensure file folder number:

***Superintendent Dwayne Strand – License Number 218877**

***Our retired community education director, Dave Brokke, will also be available to assist when needed. His license number is 202937.**

10. Provide the name of the administrative education licensure institution the applicant for the letter of approval will be or is attending.

***Mr. Knapper is attending St. Cloud State University. He has earned 10 semester credits toward his community education director licensure and K-12 administrative licensure. He is enrolled in programming this summer and will earn an additional 3 semester credits.**

11. Please state the district's justification for the request and circumstances that surround this request:

***Our former community education director retired on June 30, 2006. He served as both our community education director and activities director. With his retirement, we advertised for a combination of these positions. No licensed community education directors applied for the position. Mr. Knapper was appointed by the Board in June 2006 to fill the activities director position. The community education position remained open and unfilled. Mr. Knapper indicated that he was interested in pursuing licensure as a community education director should no qualified candidates apply. As there were no other applications, Mr. Knapper enrolled in programming and was appointed to the position in August 2006. He has completed his first year successfully and, as indicated above, is continuing his work towards licensure.**

12. If this is a renewal of an earlier approved request, list the number of credits earned since the previous letter of approval was approved. 6 semester credits

Mr. Knapper is enrolled in an additional 3 semester credits this summer. By fall of 2007, he will have earned 13 credits towards his licensure.

13. Has the district submitted other letter of approval requests to the Board of School Administrators? Are you aware of letter of approval requests being accepted or rejected?

***To my knowledge, the District has only submitted the original request for Mr. Knapper for the 2006-2007 school year.**

14. Describe the district's efforts to find a licensed applicant for this position:

***On April 18, 2006, ads were posted for the part-time community education director position. The postings included the Granite Falls newspaper – the Advocate Tribune and regional flyer, The Star Advisor; the MSBA website and newsletter, EdPost, and the Yellow Medicine East website. No licensed community education directors have made application for the part-time position.**

***We have not advertised this year as Mr. Knapper is working on his licensure.**

I attest that the information stated in this letter of approval application to be true to the best of my knowledge.

District Superintendent or School Board Chair signature:

_____ **Date:** _____

Yellow Medicine East
School District
#2190

*Annual Report on Curriculum,
Instruction and
Student Achievement*

2006-2007

The Yellow Medicine East School Board approved *The Annual Report on Curriculum, Instruction and Student Achievement* at its regular Board Meeting on _____ . The minutes can be accessed through the district website.

Public Notice of the publication of this document is printed in the School News.

An electronic copy of this document is available online at www.yme.k12.mn.us
A paper copy of this document can be requested from the district office.

Instructional and Curriculum Advisory Committee Yellow Medicine East District

The Yellow Medicine East School District believes that the community should have an opportunity to be involved in the development of the school curriculum. Any person who resides in the school district, or is the parent of an open-enrolled student in the district, may apply for membership on the Instructional and Curriculum Advisory Committee (ICAC). No one will be excluded from membership due to national origin, race, gender, disability, age, nor political or religious affiliations. The term of the membership will be for one calendar year beginning in November. The committee meets four times a year.

2006-2007 ICAC Members

Dwayne Strand, Superintendent
Peggy Heglund Community
Jennifer Kattevold Community
Gene Stukel Community
Elaine Halverson GT
Howard Hultman Community

Karen Norell, High School Principal
Stacy Hinz, Elementary Principal
Yvonne Sorenson, Curriculum Coord.
Cheryl Eckhardt, Board Member
Elmo Volstad, Board Member

If you wish to become a member for 2007-2008 school year, please submit an application by November 1:

**I would like to be considered for membership on the
YME Instruction and Curriculum Advisory Committee.**

Name _____ Date _____

Address _____ Phone _____

City _____ State _____ Zip _____

Send to: Yellow Medicine East Schools
 Attn: Stacy Hinz
 450 9th Ave., Granite Falls, MN 56241

Student Achievement

Yellow Medicine East Schools' goal is to continually improve instruction and learning so as to meet the Minnesota Academic Standards and raise student test scores. YME schools have a comprehensive testing program to evaluate our students' learning. The results from assessments are used to make curriculum decisions, to develop District and site improvement plans, and to make decisions about individual student needs. Assessment, evaluation and curriculum development is a continuous work in progress.

Each year the Minnesota Department of Education (MDE) publishes a school report for the public. To see the report card for Yellow Medicine East, go to: <http://education.state.mn.us/ReportCard2005/> The report cards are updated each year in August by the start of the state fair.

ASSESSMENT TOOLS
DRA – Developmental Reading Assessment
OS – Observation Survey
MCAII – Minnesota Comprehensive Assessments
GRAD – Graduation Requirement
BST – Basic Skills Test
ACT – American College Test
ASVAB – Armed Services Vocational Battery
NWEA – Northwest Evaluation Association
TEAE – Test of Emerging Academic English
MTELL- Math Test for English Language Learners

TEST	ADMINISTERED	PURPOSE
DRA	K-3	Reading Placement
OS – Observation Study	1	Reading Recovery
DIAL – R	Pre – K	Screening
MCA II – reading	3,4,5,6,7,8,10	Adequate Yearly Progress for No Child Left Behind (AYP)
MCAII – math	3,4,5,6,7,8,11	AYP
GRAD – writing	9 & 10 for 2007, 9 th only thereafter	Graduation requirement
BST – reading/math	non-passing 11-12	Graduation requirement
ACT	12	College Admission
ASVAB	11	Vocational Entry
NWEA	2-10	Individual Achievement

Northwest Evaluation Association (NWEA) Measures of Academic Progress (MAP) tests are given to all YME 2-10th graders. These assessments measure the growth in student achievement over time. While our individual students are taking the computerized adaptive test, the program customizes the test to the student's achievement level. Each student takes a test in Reading, Mathematics, and Language Usage.

MAP is used to:

- Place new students in the appropriate course or instructional setting
- Focus instruction for new students
- Monitor growth in student achievement over time
- Determine student proficiency related to the district's graduation standards
- Screen students for Title I eligibility, special education services, and gifted program

Yellow Medicine East District Improvement Plan Staff Development Goals/Progress 2006-2007

1. Provide instructional strategies based on Best Practices

100% of teachers participated in one or more of the following:

Minnesota River Valley Education District (MRVED) Best Practice Meetings

MRVED Common In-service

MRVED Lesson Study

MDE sponsored training

100% of K-2 teachers received training for the Literacy Collaborative Framework

2. Improve student learning through quality assessment and data analysis

Teachers were trained on how to access and evaluate NWEA MAP and MCAII data to make adjustments in instruction. Achievement gaps were found in subgroups.

Achievement gaps were found in the population of free/reduced students. Data analysis is ongoing.

3. Integrate technology throughout curriculum

Several technology training sessions were held throughout the year. Several teachers received training through the MRVED Technology E2T2 Grant.

4. Increase appreciation for differences, diversity and respect for others

Work continued with the Olweus Bullying Prevention Program; staff attended training for working with ADD/ADHD students and all staff attended a session on diversity.

Yellow Medicine East District BST - Grades 10 through 12

The BSTs are reading, mathematics, and writing tests that students who entered grade 8 in 2004-05 or earlier must pass to receive a diploma from a public high school. The reading and mathematics tests were first administered to these students in grade 8 and the writing test in grade 10. Students can re-take any of these tests twice each year and three times in grade 12.

Students entering grade 8 in 2005-06 or later do not take the BST, but will take the MCA-II/GRAD (Written Composition in grade 9, Reading in grade 10, Mathematics in grade 11). They must obtain a satisfactory score on each of these tests to graduate from a public school in Minnesota.

Number of students who have passed the BSTs in **Reading**

Class of	# PASS at State Level	# PASS Individual (IEP) (504)	# PASS Translated (other than English)	# EXEMPT	# Not passing	Total Number of Students
2007	85	*	0	0	0	91
2008	86	*	0	*	3	94
2009	74	*	0	0	8	82

* less than 5

Number of students who have passed the BSTs in **Mathematics**

Class of	# PASS State Level	# PASS Individual (IEP) (504)	# PASS Translated (other than English)	# EXEMPT	# Not Passing	Total Number of Students
2007	83	*	0	0	0	91
2008	81	0	0	*	8	94
2009	69	0	0	*	13	82

* less than 5

Number of students who have passed the BSTs in **Writing**

Class of	# PASS State Level	# PASS Individual (IEP) (504)	# PASS Translated (other than English)	# EXEMPT	# Not Passing	Total Number of Students
2007	88	0	0	0	0	91
2008	87	0	0	0	3	94
2009	73		0	*	5	82

2007 graduates denied a diploma because of not passing the basic tests: 0

BST information is located at the Minnesota Department of Education website:
http://education.state.mn.us/mde/Accountability_Programs/Assessment_and_Testing/Assessments/BST/index.html

Yellow Medicine East District Graduation Requirements

	Semesters	Credits
LANGUAGE ARTS *Required areas for grades 11 and 12	8	4.0
SOCIAL STUDIES *Grade 11 is World History/Geography *Social 12 is an elective + .5 Economics	8	4.0
MATHEMATICS	6	3.0
SCIENCE	6	3.0
PHYSICAL EDUCATION	2	2.0
HEALTH	1	0.5
COMPUTER APPLICATIONS	1	0.5
ARTS STANDARD *May be met in dance, theater, media arts, music, or visual arts	1	0.5

Required.....16.5
Electives.....7.5
TOTAL.....24.0

Worker's Compensation Quotes
Friday, May 25th

Insurer	Quote
SFM Insurance	\$43,702.00
Continental Western	\$45,396.00
F & M Insurance	\$47,997.00
MSBA Insurance Trust	\$ 52,878.00

Administrative Recommendation: It is our recommendation that we accept the Continental Western Insurance quote. While it is slightly higher than the lowest quote, this is the same company that provides our property and liability insurance. They also are willing to assist us in developing a safety program that includes a return-to-work program.

June 13, 2007

Ms. LeeAnn Boushek
Finance Officer
Yellow Medicine East Public Schools
Independent School District No. 2190
450 9th Ave.
Granite Falls, Minnesota 56241

Dear LeeAnn,

The following TAX-EXEMPT MUNICIPAL LEASE PURCHASE Proposal is in response to your request for personal property, herein called the "equipment".

LESSEE	Yellow Medicine East Public Schools Granite Falls, Minnesota
LESSOR	Lease Finance Group, Inc., or its assigns
EQUIPMENT	Computer Equipment, Software, and Related Peripherals
EQUIPMENT COST	\$ 49,777.88
ESTIMATED DELIVERY DATE	This proposal applies only to items of equipment assumed to be delivered by the 1 st of July, 2007.
TERMS OF THE LEASE	The lease term for the equipment shall commence on the delivery date of the equipment. The lease will be comprised of a base term of 5 years.
RENTAL PAYMENTS	Base rents are to be Annual , each in Advance , and each rental in the amount of: Lease Rate Factor: .23202100 Annual Lease Payment: \$ 11,549.51
RENTAL ADJUSTMENTS	The rental payments are predicted on the yield of the like term Treasury Note and the Prime Rate which are now currently 4.79% (5-Year T-Rate), and 8.25% respectively. Any increase in the yield on either indexes prior to the lease Commencement Date will cause the rental payments to increase proportionally by the greater basis point change.
STRUCTURE	Full Payout, Tax Exempt / Lease Purchase Subject To Annual Appropriation Of Available Funds.
LEASE EXPIRATION OPTIONS	Upon lease expiration, lessee shall purchase the equipment by making a final payment of \$ 1.00.
CONTINGENCIES	This proposal is contingent upon the ISD 2190 qualifying for tax exempt status.

INSURANCE

Prior to delivery and acceptance of the equipment, Lessee will be required to furnish physical damage and liability insurance in amounts and with endorsements acceptable to lessor.

CLOSING COSTS, DEPOSITS, OR LEGAL FEES

A One hundred Dollar (\$100.00) Documentation Fee and the cost of an Opinion Of Counsel.

OPERATING EXPENSES

This is a net lease, thereby all operating expenses, including insurance, maintenance and taxes, will be the responsibility of the lessee.

COMMITMENT

Upon acceptance of this proposal, and prior to submission of this transaction to the Lessor's credit committee, a commitment fee in the amount of \$.00 will be due and payable.

If the transaction is approved, this fee will be applied, pro rata to the first semi-annual payment due under the lease. If the transaction is not approved the fee will be returned. If the transaction is approved, but take down does not occur through no fault of Lease Finance Group, Inc. this fee will be considered earned by Lease Finance Group, Inc.

This is a proposal only and is subject to the review and approval of the Lessor's Credit Committee.

This proposal must be accepted by the ISD 2190 prior to the 13th of June 2007, or it will expire automatically.

I, appreciate the opportunity to submit this proposal. If you have any questions or need additional information, please call me at (952) 944-3314.

Sincerely,

LEASE FINANCE GROUP, INC.

Charlie Hicks
Account Manager

Agreed and Accepted:

Independent School District No 2190

By: _____

Title: _____

Date: _____

Yellow Medicine East District #2190

Board Expenses

Board Member _____

Date _____

	Date	Meeting Description (List Separately)	Location	Mileage
1				
2				
3				
4				
5				
6				
7				
8				
9				
10				
11				
12				
13				
14				
15				
16				
17				
18				
19				
20				
21				
22				
23				
24				
25				

Date	Signature

Office Use: Meetings _____ @ _____ =
 Mileage _____ @ _____ =
 Copy to _____

Upcoming Events and Activities

Event	Date	Location	Time
Special Board Meeting	June 26, 2007	District	7:00 PM