

YELLOW MEDICINE EAST ISD 2190
REGULAR BOARD MEETING
APRIL 9, 2007 @ 7:00 PM
LOCATION: LITTLE THEATER - YME HIGH SCHOOL

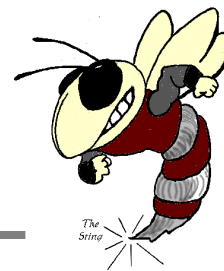
AGENDA

1. **Call to Order**
2. **Approval of Agenda** 3
3. **Approval of March 12, 2007 Meeting Minutes** 9
4. **Opportunity for Citizens to Speak**
 - A. H.A. Hagg Staff
5. **Reports**
 - A. Special Reports
 1. FFA Trip Update
Presenter: FFA Students and Mr. Dessonville
 - B. Financial Reports
 1. Approval of Bills 11
 2. Fund Balance Report 26
 3. Enrollment Report 27
 4. Food Service Report 28
 - C. Principal and Staff Development Reports
 1. Curriculum & Staff Development Report
 2. Elementary Report
 3. High School Report
 - D. Board/Committee Reports
 1. Negotiation Committee Report
 2. Budget Committee Report 29
6. **Policy Updates**
7. **Personnel Items**
 - A. Superintendent Contract - D. Strand 40
 - B. Retirement - S. Zumhofe 47
 - C. Retirement - J. Doty 48
 - D. Retirement - D. Dyer 49
 - E. Retirement- T. McGarthwaite 50
 - F. Retirement - D. Phinney 51
 - G. Retirement - L. Lindberg 52
 - H. Non-renew - C. Sands 53
 - I. Non-renew - E. Carpenter
 - J. Non-renew - A. Louwagie

K.	Non-renew Contract - N. Neville	
L.	Non-renew Contract - V. Skjefte	
M.	Non-renew Contract - B. Kesteloot	
N.	Non-renew Contract - M. Larson	
O.	Non-renew Contract - R. McDougall	
P.	Call Back - T. Schulte	55
Q.	Advertise for 07-08 Positions	
R.	Bus Supervisor - L. Knutson	
S.	GBB Resignation - K. Sandry	
T.	VB Resignation - K. Sandry	
8.	Consent Items	
9.	Action Items	
A.	Extended Leave Memorandum of Understanding	56
B.	Call for Quotes - Workers' Compensation Insurance	
C.	Approve 2007-2008 Calendar	58
D.	Dissolve Football Sponsorship w/ ECHO Charter School	
E.	Gene's Sporting Goods Contract for Apparel	59
10.	Discussion Items	
A.	Ethnicity Perception Survey	60
B.	Mowing Contract	
11.	Correspondence	69
12.	Upcoming Events & Activities	70
13.	Adjourn	

YELLOW MEDICINE EAST – ISD 2190

Dwayne A. Strand, Superintendent
450 9th Avenue - Granite Falls, MN 56241
Phone: 320-564-4081 - Fax: 320-564-4781



To: Members of the School Board
From: Dwayne Strand
Date: April 5, 2007
RE: April 9, 2007 Agenda Details

The agenda, agenda notes and supporting exhibits for the March 12th meeting are provided here for your review prior to the meeting. The format for notes has changed somewhat – all the notes are listed here for your review.

Due to the holiday, the list of bills is a partial list. A complete list will be provided on Monday night.

As always, if you have questions or would like additional information for Monday night, please do not hesitate to contact me. ***If you will be unable to attend, please notify Denise.***

Item Description

4.A. Opportunities for Citizens to Speak

Staff members from H.A. Hagg Elementary have asked to address the Board.

REPORTS

5.A.1. FFA Trip Update

Ms. Norell has asked Mr. Dessonville and members of the FFA to update you on their recent trip to Missouri.

5.C. Principal and Staff Development Reports

It is expected that the building administrators and Ms. Sorenson will be in attendance on Monday night to report to the Board. Ms. Norell will just be returning from her trip to San Diego where she had an opportunity to participate in the “Marine Educators” program.

5.D.1. Negotiation Committee Report

Following two meetings with the Negotiation Committee, we have reached a tentative agreement for a one-year contract for me. A copy of that contract is attached as an action item. We also continued to tweak the extended leave opportunity that we have been working on with the EM staff. A copy of the memorandum of understanding is also attached as an action item. Further discussion and explanation can take place on Monday evening. Board members Volstad, Jepson and Formo were in attendance at various meetings and may have additional information to share.

5.D.2. Budget Committee

The budget committee met on Tuesday, April 3rd to discuss the impact of the student enrollments at the CACS and its effect on the 07-08 budget. The minutes are attached. Also attached are the documents that were reviewed at the committee meeting and which will be reviewed during this

YME HIGH SCHOOL
Karen Norell, Principal
450 9th Avenue
Granite Falls, MN 56241
Phone: 320-564-4083
Fax: 320-564-4782

BERT RANEY ELEMENTARY
Stacy Hinz, Principal
555 7th Avenue
Granite Falls, MN 56241
Phone: 320-564-4082
Fax: 320-564-4427

H.A. HAGG ELEMENTARY
Stacy Hinz, Principal
1204 11th Avenue
Clarkfield, MN 56223
Phone: 320-669-4424
Fax: 320-669-4828

YELLOW MEDICINE EAST – ISD 2190

Dwayne A. Strand, Superintendent
450 9th Avenue - Granite Falls, MN 56241
Phone: 320-564-4081 - Fax: 320-564-4781



part of the meeting with the full Board. Personnel and actions items relate to the need to reduce the budget are listed later in the agenda. Board member Volstad was in attendance and may have additional information to share.

Also attached in this section is an outline of a plan to try to formalize what the structure of Hagg will look like for the 07-08 school year that would allow the Board to take formal action on the structure at the May meeting.

PERSONNEL ITEMS

7.A. Superintendent Contract/Goals – D. Strand

The Negotiation Committee and I have reached a tentative agreement that is being brought to you for your approval. A copy of the contract is attached for your review. The changes to the contract include the fact that it is a one-year contract and it includes a 2.5% increase in salary. The 07-08 salary is \$101,987.50. There were no other language or financial changes to the contract. Also attached is a goal sheet for the 2007-2008 school year. Your input will be solicited. *The committee and I recommend approval of the contract for the 2007-2008 school year.*

7.B. Retirement – S. Zumhofe

Mr. Zumhofe has submitted his letter of retirement/resignation effective September 16, 2007. He has taught English in the YME District for the last 33 years. He is also submitting his resignation from the one act play. He will work with Ms. Norell and myself to fulfill his obligations to the District so he meets his retirement date. *Recommend accepting the retirement/resignation of Steve Zumhofe effective September 16, 2007.*

7.C Retirement– J. Doty

Jill Doty has submitted her letter of retirement effective May 31, 2007. She has held a variety of positions in the District during her tenure and is currently our ESL instructor. *Recommend accepting the retirement of Jill Doty effective May 31, 2007.*

7.D. Retirement – D. Dyer

Doug Dyer has submitted his letter of retirement effective May 31, 2007. He also has held a variety of positions in the District, both at the elementary and the secondary level, since the mid-70's. *Recommend accepting the retirement of Doug Dyer effective on May 31, 2007.*

7.E. Retirement – T. McGrathwaite

Tom McGarthwaite has submitted his letter of retirement effective May 31, 2007. He has spent his entire career in the District beginning with the 73-74 school year. He plans to continue with our drivers' training program. *Recommend accepting the retirement of Tom McGarthwaite effective June 30, 2007.*

7.F. Retirement – D. Phinney

Diana Phinney has submitted her letter of resignation effective May 31, 2007 contingent on the Memorandum of Understanding – Extended Leave Opportunity with EM-YME not being approved by both the Board and the EM-YME membership. If the memorandum is approved, it is her intent to apply for a leave of absence and will withdraw her letter of retirement/resignation. Ms. Phinney began her career in the mid-60's and has held a variety of elementary positions. *Recommend*

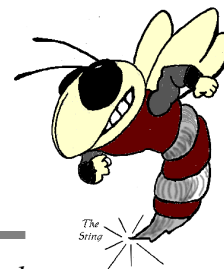
YME HIGH SCHOOL
Karen Norell, Principal
450 9th Avenue
Granite Falls, MN 56241
Phone: 320-564-4083
Fax: 320-564-4782

BERT RANEY ELEMENTARY
Stacy Hinz, Principal
555 7th Avenue
Granite Falls, MN 56241
Phone: 320-564-4082
Fax: 320-564-4427

H.A. HAGG ELEMENTARY
Stacy Hinz, Principal
1204 11th Avenue
Clarkfield, MN 56223
Phone: 320-669-4424
Fax: 320-669-4828

YELLOW MEDICINE EAST – ISD 2190

Dwayne A. Strand, Superintendent
450 9th Avenue - Granite Falls, MN 56241
Phone: 320-564-4081 - Fax: 320-564-4781



accepting the retirement of Diana Phinney effective May 31, 2007 contingent on the Memorandum of Understanding – Extended Leave Opportunity with EM-YME not being approved by both the Board and the EM-YME membership.

7.G. Retirement – L. Lindberg

Lila Lindberg has submitted her letter of retirement effective May 31, 2007. She began her employment in the District in 1965. The majority of her years of her employment in the District have been in the Title I program. *Recommend accepting the retirement of Lila Lindberg effective May 31, 2007.*

The following probationary staff are being recommend for non-renewal at the end of the 06-07 school year by the administrative team. The non-renewals are based on evaluations, projected course enrollments and interest in soliciting candidates with multiple licensures (ex. Reading). A sample exhibit for non-renewing the probationary staff is enclosed. You are not required to approve the non-renewals by roll call vote but you may do so if you so choose.

7.H. Non-renew Contract – C. Sands

Recommend the non-renewal of the probationary contract of English instructor Corissa Sands effective at the end of the 06-07 school year.

7.I. Non-renew Contract – E. Carpenter

Recommend the non-renewal of the probationary contract of French instructor Elissa Carpenter effective at the end of the 06-07 school year.

7.J. Non-renew Contract – A. Louwagie

Recommend the non-renewal of the probationary contract of science instructor Anne Louwagie effective at the end of the 06-07 school year.

7.K. Non-renew Contract – N. Neville

Recommend the non-renewal of the probationary part-time contract of math instructor Noreen Neville effective at the end of the 06-07 school year.

7.L. Non-renew Contract – V. Skjefte

Recommend the non-renewal of the probationary part-time contract of counselor Val Skjefte effective at the end of the 06-07 school year.

The following elementary probationary staff are being recommended for non-renewal at the end of the 06-07 school year. The administrative team is recommending the non-renewal of the contracts of the probationary staff listed below based on the anticipated or projected loss of student enrollment at this level. Non-renewed staff may be called back for positions for which they are qualified should any positions become available. Again, you are not required to approve the non-renewals by roll call vote but you may do so if you so choose.

YME HIGH SCHOOL
Karen Norell, Principal
450 9th Avenue
Granite Falls, MN 56241
Phone: 320-564-4083
Fax: 320-564-4782

BERT RANEY ELEMENTARY
Stacy Hinz, Principal
555 7th Avenue
Granite Falls, MN 56241
Phone: 320-564-4082
Fax: 320-564-4427

H.A. HAGG ELEMENTARY
Stacy Hinz, Principal
1204 11th Avenue
Clarkfield, MN 56223
Phone: 320-669-4424
Fax: 320-669-4828

YELLOW MEDICINE EAST – ISD 2190

Dwayne A. Strand, Superintendent
450 9th Avenue - Granite Falls, MN 56241
Phone: 320-564-4081 - Fax: 320-564-4781



7.M. Non-renew Contract – B. Kesteloot

Recommend the non-renewal of the probationary part-time contract of elementary instructor Beth Kesteloot effective at the end of the 06-07 school year.

7.N. Non-renew Contract – M. Larson

Recommend the non-renewal of the probationary part-time contract of elementary instructor Melissa Larson effective at the end of the 06-07 school year.

7.O. Non-renew Contract - R. McDougal

Recommend the non-renewal of the probationary part-time contract of elementary instructor Rachel McDougal effective at the end of the 06-07 school year.

7.P. Call Back – T. Schulte

With both the resignation and the non-renewal of English staff, a call back position exists for Trevor Schulte. He is currently on an unrequested leave of absence. Following your approval on Monday night, he will be notified that a position in the District exists for which he is licensed and qualified. Following his receipt of the notification, he has 10 days to respond to the call back. *Recommend a call back to Trevor Schulte for a high school English position for the 07-08 school year.*

7.Q. Advertise for 07-08 Teaching Positions

Due to the resignations and the non-renewals for staff approved on Monday night, the following positions will be advertised for following the meeting. The actual employment of new personnel will be based on final course enrollment figures and be approved at future board meetings. At this time, we will need to advertise for high school English with a reading endorsement, high school science (multiple licensure), high school social studies, and high school counselor, again with multiple licensure and ESL. *Recommend advertising for the positions listed above for the 2007-2008 school year.*

7.R. Bus Supervisor – L. Knutson

Lori Knutson has been hired to do bus supervision for 1.5 hours/day. *Recommend approval of the employment of Lori Knutson as a bus supervisor for the remainder of the 06-07 school year.*

ACTION ITEMS

9.A. Extended Leave Memorandum of Understanding

Attached is a final draft for the Extended Leave of Absence opportunity being extended by the District to members of EM-YME. Last month you approved a draft form of the extended leave plan. Working with the negotiations committee and EM-YME leadership, the draft has been “tweaked” to include an insurance benefit of up to \$7,600.00 per year and the TRA contribution in exchange for an extended leave of absence. The total District contribution to any one staff member has not changed from the draft that was previously approved. The closing date for the MOU has been changed to May 14th to coincide with the May Board meeting. *Recommend approval of the Memorandum of Understanding – Extended Leave of Absence Opportunity.*

9.B. Call for Quotes – Workers’ Compensation Insurance

We were informed recently by Farm Bureau that our Workers’ Comp policy is going to be canceled at the end of the current school year. Our high claim usage was cited as the reason for the non-

YME HIGH SCHOOL
Karen Norell, Principal
450 9th Avenue
Granite Falls, MN 56241
Phone: 320-564-4083
Fax: 320-564-4782

BERT RANEY ELEMENTARY
Stacy Hinz, Principal
555 7th Avenue
Granite Falls, MN 56241
Phone: 320-564-4082
Fax: 320-564-4427

H.A. HAGG ELEMENTARY
Stacy Hinz, Principal
1204 11th Avenue
Clarkfield, MN 56223
Phone: 320-669-4424
Fax: 320-669-4828

YELLOW MEDICINE EAST – ISD 2190

Dwayne A. Strand, Superintendent
450 9th Avenue - Granite Falls, MN 56241
Phone: 320-564-4081 - Fax: 320-564-4781



renewal. We are currently working with Farm Bureau to determine what can be done to have our policy reinstated. However, at this time, we should call for quotes for Workers' Compensation Insurance. *Recommend calling for quotes for Workers' Compensation Insurance for the 2007-2008 school year.*

9.C. Approve 2007-2008 Calendar

The attached calendar is being brought to you for your approval. As discussed at previous meetings, both calendars being considered were very similar. The calendar being presented for approval fits better with summer schedules that follow the close of the academic year. *Recommend approval of the 2007-2008 school calendar as presented.*

9.D. Dissolve Football Sponsorship with ECHO Charter School

Mr. Knapper reported last month that we had been placed in Class AAA for football next year. This placement is a result of our cooperative sponsorship with the ECHO Charter School. That sponsorship adds 47 students to our high school enrollment numbers. Mr. Knapper has been in contact with the MSHSL and Jerry Gladis from the charter school about our dissolving the sponsorship for football. In his discussions, he did find out that after we dissolve our cooperative sponsorship, we can enter into agreements with individuals who attend the charter school as long as they live in our District. Our enrollment would then increase by the number of agreements versus having to count all 47 students. With the 47 students, we were over the Class AA limit by 3 students. Dissolving the sponsorship and contracting with individual students would leave us with plenty of room for any District students who attend ECHO Charter and want to play football at YME. *Recommend dissolving our cooperative sponsorship of football with the ECHO Charter School.*

9.E. Gene's Sporting Goods Contract for Apparel

Attached is the contract with Gene's Sporting Goods that Mr. Knapper discussed last month. Following a review of the contract and any additional questions that you may have, a motion to approve the contract would be in order. *Recommend approval of the contract with Gene's Sporting Goods for exclusive sales of group sporting goods shoes and uniforms.*

DISCUSSION ITEMS

10.A. Ethnicity Perception Survey

One of our District goals, as well as building goals, is to provide a safe and welcome learning environment by increasing our appreciation for differences, diversity and respect for others. As a part of meeting that goal, we have drafted an ethnicity survey that will be given to our 6th through 12th grade students. Our students are involved in a number of student surveys each year that give us data on many things such as smoking and alcohol use as well as relationship information. There are however, very few, if any questions that deal with respect for others as it applies to diversity. This survey will give us data that can be used for further grant writing and program improvement. The survey is attached for your information.

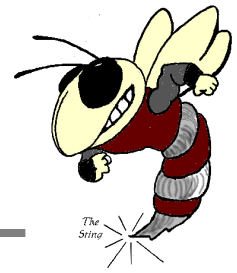
YME HIGH SCHOOL
Karen Norell, Principal
450 9th Avenue
Granite Falls, MN 56241
Phone: 320-564-4083
Fax: 320-564-4782

BERT RANEY ELEMENTARY
Stacy Hinz, Principal
555 7th Avenue
Granite Falls, MN 56241
Phone: 320-564-4082
Fax: 320-564-4427

H.A. HAGG ELEMENTARY
Stacy Hinz, Principal
1204 11th Avenue
Clarkfield, MN 56223
Phone: 320-669-4424
Fax: 320-669-4828

YELLOW MEDICINE EAST – ISD 2190

Dwayne A. Strand, Superintendent
450 9th Avenue - Granite Falls, MN 56241
Phone: 320-564-4081 - Fax: 320-564-4781



10.B. Mowing Contract

Chairman Volstad asked that this item be placed on the agenda for Monday night's meeting. He had been contacted with regard to contracting out our summer mowing. Currently, Francis and Jim take care of the mowing at the H.A. Hagg site and Darvin takes care of the grounds in Granite Falls. If additional help is needed, help is hired at an hourly rate. Further discussion can talk place on Monday night.

YME HIGH SCHOOL
Karen Norell, Principal
450 9th Avenue
Granite Falls, MN 56241
Phone: 320-564-4083
Fax: 320-564-4782

BERT RANEY ELEMENTARY
Stacy Hinz, Principal
555 7th Avenue
Granite Falls, MN 56241
Phone: 320-564-4082
Fax: 320-564-4427

H.A. HAGG ELEMENTARY
Stacy Hinz, Principal
1204 11th Avenue
Clarkfield, MN 56223
Phone: 320-669-4424
Fax: 320-669-4828

YELLOW MEDICINE EAST ISD #2190
BOARD OF EDUCATION MEETING MINUTES
MARCH 12, 2007 – 7:00 P.M.
YME BOARD ROOM

Board Members Present: Busack, Eckhardt, Fischer, Jepson, Rillo, Volstad

Board Members Absent: Formo

Community / Staff Members Present: Kathy Anderson, Brian Barber, Tammy Berg, LeeAnn Boushek, Liz DeBlicek, Sheila Dyrdaahl, Stacy Hinz, Tim Knapper, Spencer Kvam, Sue Larson, Karen McCoy, Dan McGonigle, Karen Norell, Steve Petrich, Kim Sandry, Dwayne Strand, Rita Strand, Denise Streich, Deb Swenson, Emily Swenson, Kathleen Velde, Gary Wolf

Chair Volstad called the meeting to order and approved the agenda for the evening, moving discussion item 10.B. Superintendent Contract, to an action item.

Motion by Busack, second by Eckhardt and carried to approve the minutes from the February 12, 2007 meeting.

The opportunity for citizens to speak received no response.

Gary Wolf, wrestling coach, Kathleen Velde, spring play director, and Kim Sandry, girls basketball coach reported on their respective activities. Nate Dahlager, boys basketball coach, and Jeff Iverson, knowledge bowl coach, submitted written reports.

Tim Knapper, Community Education and Activities Director, gave a community education and activities update.

Karen McCoy reviewed two computer lease options for upgrading the computer labs in the District.

Motion by Jepson, second by Busack and carried to approve February bills for payment in the amount of \$217,549.29, with checks numbered 11501 through 11643 and to approve investments for the District.

Fund balance, enrollment and food service reports were submitted for review.

Stacy Hinz, H.A. Hagg & Bert Raney Elementary Principal, and Karen Norell, YME High School principal, reported on activities at their respective sites.

The Facilities Strategic Planning Committee met with Bob Nold from Knutson Construction on February 22, 2007. Mr. Nold will present his report to the Board when it is complete.

Negotiation Committee met on March 5, 2007 to discuss possible extended leave opportunities for certified staff and also the Superintendent's contract.

Members of the YME, RCW, and MACCRAY school boards met on March 7, 2007 and discussed ways to support each other. The committee will meet again in early June with the administrative teams from the districts meeting prior to that.

Motion by Eckhardt, second by Rillo and carried to approve a leave of absence for Lorraine Tebben, food service staff.

Motion by Eckhardt, second by Rillo and carried to approve the employment of Jenna Luepke, kitchen helper.

Motion by Busack, second by Fischer and carried to approve the 2007-2008 contracts with the Southwest/West Central Service Cooperative.

Motion by Rillo, second by Busack and carried to offer the extended leave incentive to EM-YME, as presented.

Motion by Jepson, second by Rillo and carried to approve lease option #2 (\$46,456.92 annually) from Apple Financial Services, as presented by Karen McCoy.

Motion by Eckhardt, second by Fischer and carried to approve the 2006-2007 calendar change, as submitted, which will make May 4 a school day.

The meeting was closed and the Superintendent evaluation was conducted.

The meeting was opened and Chair Volstad summarized strengths and areas of concern. Strengths noted focused on support of academics and areas of concern focused on leadership and communication skills.

LeeAnn Boushek, Denise Streich, Liz DeBlieck, Kathy Anderson, Stacy Hinz, and Rita Strand spoke in support of Superintendent Strand.

Motion by Busack, second by Rillo to offer a contract to Mr. Strand. Those in favor: Busack, Eckhardt, Rillo. Those opposed: Jepson, Fisher, Volstad. The motion failed due to a tie vote.

Discussion items included the results from the school choice survey and the tentative 2007-2008 school calendar.

Correspondence included the most recent edition of boardcaster and the Governor's recommended budget for 2007-2008.

Upcoming Events & Activities:	Date	Location	Time
Early Out	March 12, 2007	District	2:00 PM
Large Group Music Contest - YME Hosting	March 12, 2007	District	2:30 PM
State Assessment Review Committee Meeting	March 15, 2007	MDE - Roseville, MN	1:00 PM
MASA Spring Conference	March 15-16, 2007	Bloomington, MN	
Early Out	March 22, 2007	District	1:15 PM
Inservice Day - No School	March 23, 2007	District	
RevTrack Meeting	March 28, 2007	Board Room - District	1:00 PM
Annual Spring Law Conference	March 30, 2007	Bloomington, MN	8:00 AM
Easter Break	April 6-9, 2007	District	
School Board Meeting	April 9, 2007	Board Room - District	7:00 PM

The meeting was adjourned by Chairman Volstad.

Check Nbr	Vendor Name	Check Date	Invoice Number	Invoice Desc	PO Number	Invoice Amount	Check Amount
11678	Vendor Continued Void	04/09/2007					0.00
11679	ADVOCATE TRIBUNE	04/09/2007	1	SUBSCRIPTION RENEWAL	0	79.00	1,155.69
01 E 005 020 000 000 401				SUPERINTENDENT'S OFFICE//GENERAL SUPPLIES		79.00	
			2		0	174.50	
01 E 005 010 000 000 380				BOARD OF EDUCATION//PRINTING/ADVERTISING		174.50	
			3	HEALTH PAY	0	539.90	
04 E 500 505 000 321 380				COMMUNITY EDUCATION GENERAL/COMMUNITY EDUCATION/PRINTING		539.90	
			32437		306	79.50	
01 E 100 203 000 000 899				ELEMENTARY GENERAL ED./MISCELLANEOUS EXPENSE		79.50	
			4	COFFEE HOUSE NIGHT	0	55.65	
04 E 500 505 000 321 450				COMMUNITY EDUCATION GENERAL/COMMUNITY EDUCATION/MATERIAL		55.65	
			5		0	155.14	
01 E 300 298 000 000 899				EXTRACURRICULAR ACTIVITIES//MISCELLANEOUS EXPENSE		155.14	
			6		0	72.00	
04 E 500 590 000 321 401				OTHER COMMUNITY SERVICES/COMMUNITY EDUCATION/GENERAL SUP		72.00	
11680	ALPHA WIRELESS	04/09/2007	607913	RADIOS	0	4,815.00	4,815.00
01 E 005 850 000 342 530				FACILITIES/SAFE SCHOOLS/EQUIPMENT PURCHASES		3,542.95	
01 E 005 790 721 000 530				OTHER PUPIL SUPPORT SERVICES//EQUIPMENT PURCHASES		1,272.05	
11681	AMAZON.COM CREDIT	04/09/2007	549011182732576		302	500.00	540.94
01 E 005 610 375 308 401				CURRICULUM CONSULTANT & DEVLOP/STAFF DEV. 25% DIST. WIDE		500.00	
			797325060262002		0	20.47	
01 E 300 220 000 000 430				ENGLISH//SUPPLIES		20.47	
			890466931745233		315	20.47	
01 E 300 220 000 000 430				ENGLISH//SUPPLIES		20.47	
11682	AMERICAN WELDING SUPPLIES	04/09/2007	1		0	356.05	356.05
01 E 300 301 501 830 433				AG EDUCATION (VOCATIONAL)/VOCATIONAL PROGRAMS/INDIVIDUAL		356.05	
11683	ERIC ANDERSON	04/09/2007	1	STIPENED	0	75.00	87.13
01 E 150 640 000 306 899				STAFF DEVELOPMENT/STAFF DEV. 50% SITE/MISCELLANEOUS EXPE		75.00	
			2	MILEAGE	0	12.13	
01 E 150 640 000 306 899				STAFF DEVELOPMENT/STAFF DEV. 50% SITE/MISCELLANEOUS EXPE		12.13	
11684	APPERT FOODS	04/09/2007	1		0	4,304.31	4,304.31
02 E 005 770 000 701 401				FOOD SERVICES/SCHOOL LUNCH/GENERAL SUPPLIES		14.88	
02 E 005 770 000 701 490				FOOD SERVICES/SCHOOL LUNCH/FOOD		3,704.61	
02 E 005 770 000 701 495				FOOD SERVICES/SCHOOL LUNCH/MILK		17.10	
02 E 005 770 000 705 490				FOOD SERVICES/BREAKFAST/FOOD		567.72	
11685	APPLE COMPUTER, INC.	04/09/2007	9252218869		87	69.00	69.00
01 E 200 612 000 302 555				TECHNOLOGY/CAPITAL OUTLAY/TECHNOLOGY EQUIPMENT		69.00	
11686	ASCD	04/09/2007	1		81	1,060.00	1,060.00
01 E 005 610 375 308 366				CURRICULUM CONSULTANT & DEVLOP/STAFF DEV. 25% DIST. WIDE		1,060.00	
11687	AWARD EMBLEM MFG CO	04/09/2007	333624		0	56.55	56.55
01 E 300 298 233 000 401				EXTRACURRICULAR ACTIVITIES//GENERAL SUPPLIES		56.55	
11688	BARNES & NOBLE COLLEGE BOOKSEL	04/09/2007	4546		0	465.25	465.25
01 E 300 200 000 000 433				POST SECONDARY OPTIONS ENROLL//INDIVIDUAL INST SUPPLIES		465.25	
11689	BARNES & NOBLE.COM	04/09/2007	83478797		0	22.99	22.99
01 E 150 050 000 000 401				PRINCIPAL'S OFFICE//GENERAL SUPPLIES		22.99	
11690	SARAH BARTELS	04/09/2007	1		0	68.02	68.02
01 E 150 203 108 799 401				ELEMENTARY GENERAL ED./OTHER GRANTS/GENERAL SUPPLIES		68.02	

Check Nbr	Vendor Name	Check Date	Invoice Number	Invoice Desc	PO Number	Invoice Amount	Check Amount
11691	BECKER IRON & METAL	04/09/2007	83370		0	388.40	388.40
01 E 300 255 000 000 430				INDUSTRIAL EDUCATION//SUPPLIES		388.40	
11692	BECKLER, DEB	04/09/2007	1		0	23.10	23.10
01 E 300 050 000 000 366				PRINCIPAL'S OFFICE//TRAVEL-SCHOOL BUSINESS		23.10	
11693	Vendor Continued Void	04/09/2007					0.00
11694	Vendor Continued Void	04/09/2007					0.00
11695	BENNETT & BENNETT TRANSP. INC.	04/09/2007	1	REGULAR ROUTES	0	51,389.73	72,774.63
01 E 005 760 000 720 361				PUPIL TRANSPORTATION/REGULAR TO AND FROM SCHOOL/BUS CONT		51,389.73	
			10	BOYS BB	0	285.90	
01 E 300 294 213 733 361				BOYS ATHLETICS/TRANSPORTATION/NON-AUTHORIZED/BUS CONTRAC		285.90	
			11	BR FIELD TRIPS	0	91.56	
01 E 100 203 000 733 361				ELEMENTARY GENERAL ED./TRANSPORTATION/NON-AUTHORIZED/BUS		91.56	
			14	BOWLING	0	318.36	
01 E 300 211 000 733 361				SECONDARY EDUCATION GENERAL/TRANSPORTATION/NON-AUTHORIZE		318.36	
			15	MATH MASTERS	0	204.63	
01 E 150 218 000 733 361				GIFTED & TALENTED/TRANSPORTATION/NON-AUTHORIZED/BUS CONT		204.63	
			16	MATH MASTERS	0	204.62	
01 E 100 218 000 733 361				GIFTED & TALENTED/TRANSPORTATION/NON-AUTHORIZED/BUS CONT		204.62	
			2	FUEL	0	4,940.16	
01 E 005 760 000 720 361				PUPIL TRANSPORTATION/REGULAR TO AND FROM SCHOOL/BUS CONT		4,940.16	
			3	CLKFD. SHUTTLE	0	1,999.20	
01 E 005 760 000 720 361				PUPIL TRANSPORTATION/REGULAR TO AND FROM SCHOOL/BUS CONT		1,999.20	
			4	OUT OF DISTRICT	0	2,998.80	
01 E 005 760 000 713 361				PUPIL TRANSPORTATION/OPEN ENROLLMENT/BUS CONTRACT (XWK T		2,998.80	
			5	COMM. ED.	0	150.23	
04 E 500 505 000 321 361				COMMUNITY EDUCATION GENERAL/COMMUNITY EDUCATION/BUS CONT		150.23	
			6	SPECIAL NEEDS	0	9,933.84	
01 E 005 760 000 723 361				PUPIL TRANSPORTATION/HANDICAPPED/BUS CONTRACT (XWK TO 36		9,933.84	
			7	RENT	0	30.00	
01 E 300 258 233 000 370				MUSIC//RENTALS AND LEASES		30.00	
			8	SH GBB	0	142.92	
01 E 300 296 213 733 361				GIRLS ATHLETICS/TRANSPORTATION/NON-AUTHORIZED/BUS CONTRA		142.92	
			9	SHARE	0	84.68	
01 E 005 790 721 000 366				OTHER PUPIL SUPPORT SERVICES//TRAVEL-SCHOOL BUSINESS		84.68	
11696	BERNICK'S PEPSI-COLA	04/09/2007	1	ELEM. ST. COUNCIL	0	137.70	137.70
01 L 230 39				GENERAL FUND/DEFERRED REVENUE/BERT RANEY JUICE MACHNINE		137.70	
11697	BEST ACCESS SYSTEMS	04/09/2007	MN-437295	DOOR LOCKS- FIRE	78	1,846.38	1,846.38
01 E 005 860 000 363 530				MARSHALL HEALTH & SAFETY EQUIP/FIRE SAFETY/EQUIPMENT PURCHASES		1,846.38	
11698	BRENNAN INDUSTRIES	04/09/2007	43780		0	2,841.00	2,841.00
01 E 300 240 248 000 430				HEALTH/PHY ED/RECREATION//SUPPLIES		2,841.00	
11699	BRUFLAT PLUMBING & HEATING INC	04/09/2007	1		0	63.50	63.50
01 E 025 810 000 000 350				OPERATIONS AND MAINTENANCE//REPAIRS AND MAINTENANCE SVCS		63.50	
11700	CAPITAL ONE, F.S.B.	04/09/2007	1	ORIENTAL TRADING	0	40.75	1,046.22
01 E 300 298 236 000 899				EXTRACURRICULAR ACTIVITIES//MISCELLANEOUS EXPENSE		40.75	
			2	MADDENS	0	344.06	
01 E 100 216 000 401 366				TITLE I - PART A/TITLE I/TRAVEL-SCHOOL BUSINESS		344.06	
			3	NW AIR	0	626.41	

Check Nbr	Vendor Name	Check Date	Invoice Number	Invoice Desc	PO Number	Invoice Amount	Check Amount
01 E 100 204 000 414 366				TITLE II EISENHWOER/TITLE II ESEA/TRAVEL-SCHOOL BUSINESS		626.41	
			4	BURSCH TRAVEL	0	35.00	
01 E 100 204 000 414 366				TITLE II EISENHWOER/TITLE II ESEA/TRAVEL-SCHOOL BUSINESS		35.00	
11701 CARL'S BAKERY		04/09/2007	1		0	36.48	352.22
01 L 230 43				GENERAL FUND/DEFERRED REVENUE/SR HIGH PROJECTS		36.48	
			10		0	123.84	
02 E 025 770 000 701 490				FOOD SERVICES/SCHOOL LUNCH/FOOD		123.84	
			1892		0	22.60	
01 E 005 010 000 000 899				BOARD OF EDUCATION//MISCELLANEOUS EXPENSE		22.60	
			1893		324	92.50	
01 L 230 05				GENERAL FUND/DEFERRED REVENUE/BERT RANEY CCC (STDNT TEAC		92.50	
			1895		0	76.80	
01 E 100 790 108 799 401				OTHER PUPIL SUPPORT SERVICES/OTHER GRANTS/GENERAL SUPPLI		76.80	
11702 CAROLINA BIOLOGICAL SUPPLY CO.		04/09/2007	25355145 R1		337	25.06	523.90
01 E 300 260 000 000 430				NATURAL SCIENCES//SUPPLIES		25.06	
			25356243 R1		0	41.09	
01 E 300 260 000 000 430				NATURAL SCIENCES//SUPPLIES		41.09	
			25487185RI		0	457.75	
01 E 300 301 501 830 433				AG EDUCATION (VOCATIONAL)/VOCATIONAL PROGRAMS/INDIVIDUAL		457.75	
11703 CDW GOVERNMENT, INC.		04/09/2007	DRB0300		0	71.13	112.38
01 E 200 612 000 302 555				TECHNOLOGY/CAPITAL OUTLAY/TECHNOLOGY EQUIPMENT		71.13	
			DX27980		0	41.25	
01 E 200 612 199 000 401				TECHNOLOGY//GENERAL SUPPLIES		41.25	
11704 CENEX CREDIT CARD		04/09/2007	1		0	838.07	838.07
01 E 005 810 193 000 442				OPERATIONS AND MAINTENANCE//GAS & OIL		838.07	
11705 CIMA COMPANIES, INC.		04/09/2007	1	volunteer insurance	0	517.90	517.90
04 E 500 590 156 321 401				OTHER COMMUNITY SERVICES/COMMUNITY EDUCATION/GENERAL SUP		517.90	
11706 CITY OF CLARKFIELD		04/09/2007	1		0	535.12	535.12
01 E 025 810 183 000 330				OPERATIONS AND MAINTENANCE//UTILITY SERVICES		535.12	
11707 CITY OF GRANITE FALLS		04/09/2007	1	SWR/WTR	0	1,558.76	10,167.01
01 E 005 810 183 000 330				OPERATIONS AND MAINTENANCE//UTILITY SERVICES		1,558.76	
			2	ELEC	0	8,539.89	
01 E 005 810 184 000 330				OPERATIONS AND MAINTENANCE//UTILITY SERVICES		8,539.89	
			3	GARAGE	0	60.36	
01 E 005 810 191 000 330				OPERATIONS AND MAINTENANCE//UTILITY SERVICES		60.36	
			4	CARPENTRY	0	8.00	
01 E 300 361 000 830 330				CARPENTRY (HOUSE)/VOCATIONAL PROGRAMS/UTILITY SERVICES		8.00	
11708 CITY OF GRANITE FALLS		04/09/2007	1495		0	40.00	40.00
01 E 300 790 388 000 899				OTHER PUPIL SUPPORT SERVICES//MISCELLANEOUS EXPENSE		40.00	
11709 CLASSROOM DIRECT/REPRINT		04/09/2007	W04317550001		303	379.80	917.74
01 E 100 203 000 000 899				ELEMENTARY GENERAL ED.//MISCELLANEOUS EXPENSE		379.80	
			W04327700001		308	537.94	
01 E 100 203 000 000 899				ELEMENTARY GENERAL ED.//MISCELLANEOUS EXPENSE		537.94	
11710 CONSUMERS COOPERATIVE OIL CO.		04/09/2007	1		0	242.95	242.95
01 E 025 810 193 000 442				OPERATIONS AND MAINTENANCE//GAS & OIL		242.95	
11711 COUNTRYSIDE PUBLIC HEALTH		04/09/2007	1		0	50.00	62.50

Check Nbr	Vendor Name	Check Date	Invoice Number	Invoice Desc	PO Number	Invoice Amount	Check Amount
01 E 005 860 000 347 305				HEALTH & SAFETY EQUIP/PHYSICAL HAZARD CONTROL/PROFESSION		50.00	
			2		0	12.50	
01 E 200 720 000 000 311				HEALTH SERVICES/NURSE//PROFESSIONAL/TECHNICAL SVCS		12.50	
11712 TIM CROWLEY		04/09/2007	1		0	225.00	225.00
01 E 300 408 390 000 305				EMOTION/BEHAVIORAL DISORDER//PROFESSIONAL FEES		225.00	
11713 CULLIGAN		04/09/2007	1		0	10.02	32.75
01 E 025 810 183 000 330				OPERATIONS AND MAINTENANCE//UTILITY SERVICES		10.02	
			10		0	22.73	
01 E 025 810 183 000 330				OPERATIONS AND MAINTENANCE//UTILITY SERVICES		22.73	
11714 BRJH, INC		04/09/2007	102	COFFEE HOUSE	0	115.00	115.00
				NIGHT			
04 E 500 505 000 321 450				COMMUNITY EDUCATION GENERAL/COMMUNITY EDUCATION/MATERIAL		115.00	
11715 DAVE'S ELECTRIC CO		04/09/2007	1		0	65.50	182.49
01 L 230 03				GENERAL FUND/DEFERRED REVENUE/BERT RANEY LOUNGE		65.50	
			2		0	65.50	
01 L 230 04				GENERAL FUND/DEFERRED REVENUE/HIGH SCHOOL LOUNGE		65.50	
			3		0	48.49	
01 E 300 255 000 000 430				INDUSTRIAL EDUCATION//SUPPLIES		48.49	
			4		0	3.00	
01 E 005 810 000 000 899				OPERATIONS AND MAINTENANCE//MISCELLANEOUS EXPENSE		3.00	
11716 DEAN FOODS NORTH CENTRAL, INC.		04/09/2007	1		0	733.10	3,853.14
02 E 025 770 000 701 495				FOOD SERVICES/SCHOOL LUNCH/MILK		359.58	
02 E 025 770 000 705 495				FOOD SERVICES/BREAKFAST/MILK		163.80	
02 E 025 770 000 707 495				FOOD SERVICES/ALA CARTE/OTHER/MILK		209.72	
			10		0	3,120.04	
02 E 005 770 000 701 495				FOOD SERVICES/SCHOOL LUNCH/MILK		2,158.74	
02 E 005 770 000 705 495				FOOD SERVICES/BREAKFAST/MILK		561.00	
02 E 005 770 000 707 495				FOOD SERVICES/ALA CARTE/OTHER/MILK		400.30	
11717 DOTY, JILL		04/09/2007	1		0	79.37	281.63
01 E 200 219 000 317 366				LEP/COMPENSATORY/TRAVEL-SCHOOL BUSINESS		79.37	
			2	COMBO TV	0	202.26	
01 L 230 33				GENERAL FUND/DEFERRED REVENUE/BERT RANEY ACTIVITY ACCOUN		202.26	
11718 DOVE ENTERPRISES		04/09/2007	2792		0	72.00	72.00
01 E 100 203 113 317 430				ELEMENTARY GENERAL ED./COMPENSATORY/SUPPLIES		72.00	
11719 DU-MART		04/09/2007	1		0	18.47	54.37
02 E 005 770 000 701 401				FOOD SERVICES/SCHOOL LUNCH/GENERAL SUPPLIES		18.47	
			2		0	26.28	
09 L 230 28				TRUST FUND/DEFERRED REVENUE/SENIOR CITIZENS CARD PROJECT		26.28	
			3	spring play	0	9.62	
01 E 300 298 236 000 899				EXTRACURRICULAR ACTIVITIES//MISCELLANEOUS EXPENSE		9.62	
11720 ECHO CHARTER SCHOOL		04/09/2007	1		0	200.00	200.00
01 E 100 412 000 740 390				ECSE SPEC ED/STATE FUNDED SPECIAL ED/TUITION TO OTH MN S		200.00	
11721 Vendor Continued Void		04/09/2007					0.00
11722 ECONOMART		04/09/2007	1		0	454.78	734.69
01 E 300 331 000 830 433				VOCATIONAL HOME EC/VOCATIONAL PROGRAMS/INDIVIDUAL INST S		454.78	
			10		0	25.00	
02 E 005 770 000 707 490				FOOD SERVICES/ALA CARTE/OTHER/FOOD		25.00	
			2		0	30.33	
01 E 100 790 108 799 401				OTHER PUPIL SUPPORT SERVICES/OTHER GRANTS/GENERAL SUPPLI		30.33	

Check Nbr	Vendor Name	Check Date	Invoice Number	Invoice Desc	PO Number	Invoice Amount	Check Amount
01 E 100 203 403 000 899			3	ELEMENTARY GENERAL ED.//MISCELLANEOUS EXPENSE	0	17.40	17.40
01 E 005 790 721 000 401			4	OTHER PUPIL SUPPORT SERVICES//GENERAL SUPPLIES	0	10.38	10.38
01 E 005 010 000 000 899			5	BOARD OF EDUCATION//MISCELLANEOUS EXPENSE	0	23.25	23.25
01 L 230 05			6	GENERAL FUND/DEFERRED REVENUE/BERT RANEY CCC (STDNT TEAC	0	20.49	20.49
01 E 005 790 161 000 899			7	IMPACT AID OTHER PUPIL SUPPORT SERVICES//MISCELLANEOUS EXPENSE	0	72.31	72.31
01 E 300 298 240 000 401			8	EXTRACURRICULAR ACTIVITIES//GENERAL SUPPLIES	0	69.38	69.38
01 L 230 43			9	GENERAL FUND/DEFERRED REVENUE/SR HIGH PROJECTS	0	11.37	11.37
11723 ELLISON		04/09/2007	2213372		301	789.70	835.70
01 L 230 05				GENERAL FUND/DEFERRED REVENUE/BERT RANEY CCC (STDNT TEAC		789.70	
01 L 230 14			2221702	GENERAL FUND/DEFERRED REVENUE/CLARKFIELD PRINCIPAL POP	321	46.00	46.00
11724 EPA AUDIO VISUAL		04/09/2007	165454		0	705.47	705.47
01 E 300 211 000 000 530				SECONDARY EDUCATION GENERAL//EQUIPMENT PURCHASES		705.47	
11725 ETA/CUISENAIRE		04/09/2007	50016787		83	115.17	115.17
01 E 150 203 402 000 460				ELEMENTARY GENERAL ED.//BOOKS/WORKBOOKS		115.17	
11726 FARMERS UNION OIL CO.		04/09/2007	1		0	180.00	180.00
01 E 005 810 191 000 410				OPERATIONS AND MAINTENANCE//CUST/REPAIR SUPPLIES		180.00	
11727 FOOD SERVICES OF AMERICA		04/09/2007	1		0	878.21	878.21
02 E 025 770 000 701 490				FOOD SERVICES/SCHOOL LUNCH/FOOD		579.56	
02 E 025 770 000 705 490				FOOD SERVICES/BREAKFAST/FOOD		298.65	
11728 G & K SERVICES		04/09/2007	1		0	229.86	278.78
01 E 025 810 000 000 382				OPERATIONS AND MAINTENANCE//LAUNDRY AND DRY CLEANING		229.86	
02 E 025 770 000 701 382			10	FOOD SERVICES/SCHOOL LUNCH/LAUNDRY AND DRY CLEANING	0	48.92	48.92
11729 GAGE FOOD PRODUCTS CO.		04/09/2007	1		0	292.78	292.78
02 E 005 770 000 701 490				FOOD SERVICES/SCHOOL LUNCH/FOOD		292.78	
11730 G.C. PETERSON MACHINERY CO INC		04/09/2007	69979-00		344	69.49	126.13
01 E 300 255 000 000 430				INDUSTRIAL EDUCATION//SUPPLIES		69.49	
01 E 300 255 000 000 430			70338-00	INDUSTRIAL EDUCATION//SUPPLIES	362	56.64	56.64
11731 GRANITE BOWLING CENTER		04/09/2007	1		0	106.50	106.50
01 L 230 33				GENERAL FUND/DEFERRED REVENUE/BERT RANEY ACTIVITY ACCOUN		106.50	
11732 GRANITE FALLS AUTO PARTS		04/09/2007	1		0	24.84	24.84
01 E 005 810 191 000 410				OPERATIONS AND MAINTENANCE//CUST/REPAIR SUPPLIES		24.84	
11733 GRANITE FALLS CONSTRUCTION		04/09/2007	37456-7		0	689.00	689.00
01 E 005 810 191 000 410				OPERATIONS AND MAINTENANCE//CUST/REPAIR SUPPLIES		689.00	
11734 GREAT PLAINS NATURAL GAS CO		04/09/2007	1		0	3,316.13	4,478.65
01 E 025 810 000 000 440				OPERATIONS AND MAINTENANCE//FUEL FOR BUILDINGS		3,316.13	
01 E 005 810 000 000 440			10	OPERATIONS AND MAINTENANCE//FUEL FOR BUILDINGS	0	879.82	879.82

Check Nbr	Vendor Name	Check Date	Invoice Number	Invoice Desc	PO Number	Invoice Amount	Check Amount
			2		0	282.70	
01 E 005 810 000 000 440				OPERATIONS AND MAINTENANCE//FUEL FOR BUILDINGS		282.70	
11735 GREAT PLAINS SPORTS		04/09/2007	313455		0	47.99	548.52
01 E 300 296 213 000 401				GIRLS ATHLETICS//GENERAL SUPPLIES		47.99	
			313456		0	107.08	
01 E 300 296 210 000 899				GIRLS ATHLETICS//MISCELLANEOUS EXPENSE		107.08	
			313461		0	100.35	
01 E 300 294 221 000 401				BOYS ATHLETICS//GENERAL SUPPLIES		100.35	
			313546		0	293.10	
01 E 300 294 215 000 401				BOYS ATHLETICS//GENERAL SUPPLIES		293.10	
11736 GREENWOOD PUBLISHING		04/09/2007	3171338		84	79.00	79.00
01 E 005 610 375 308 401				CURRICULUM CONSULTANT & DEVLOP/STAFF DEV. 25% DIST. WIDE		79.00	
11737 GUERTIN, DAVID		04/09/2007	1	GOLF CLINIC	0	127.02	127.02
01 E 300 292 225 000 401				BOYS/GIRLS ATHLETICS//GENERAL SUPPLIES		127.02	
11738 H & H CONST. INC		04/09/2007	1	3/2 SNOW REMOVAL	0	400.00	400.00
01 E 005 810 191 000 350				OPERATIONS AND MAINTENANCE//REPAIRS AND MAINTENANCE SVCS		400.00	
11739 HEARTLAND WOOD PRODUCTS		04/09/2007	58597		326	62.10	1,748.55
01 E 300 255 000 000 450				INDUSTRIAL EDUCATION//MATERIALS PURCH FOR RESALE		62.10	
			58622		343	1,686.45	
01 E 300 255 000 000 450				INDUSTRIAL EDUCATION//MATERIALS PURCH FOR RESALE		1,686.45	
11740 HENDERSON, ROBIN		04/09/2007	1		0	165.21	214.76
01 E 100 790 108 799 401				OTHER PUPIL SUPPORT SERVICES/OTHER GRANTS/GENERAL SUPPLI		165.21	
			2		0	49.55	
01 E 005 790 721 000 401				OTHER PUPIL SUPPORT SERVICES//GENERAL SUPPLIES		49.55	
11741 HINZ, STACY		04/09/2007	1	PLAYGROUND EQUIP.	0	141.56	206.47
01 L 230 33				GENERAL FUND/DEFERRED REVENUE/BERT RANEY ACTIVITY ACCOUN		141.56	
			2	THRIFTY WHITE	0	19.96	
01 E 100 203 000 000 899				ELEMENTARY GENERAL ED.//MISCELLANEOUS EXPENSE		19.96	
			3	MEAL REIMB.	0	21.96	
01 E 100 050 000 000 366				PRINCIPAL'S OFFICE//TRAVEL-SCHOOL BUSINESS		21.96	
			4	AMAZON ON CC	0	22.99	
01 E 100 203 000 000 899				ELEMENTARY GENERAL ED.//MISCELLANEOUS EXPENSE		22.99	
11742 HOLM, KRIS		04/09/2007	1		0	126.28	149.38
01 E 200 740 000 419 366				SOCIAL WORKER/94-142 FEDERAL/TRAVEL-SCHOOL BUSINESS		126.28	
			2		0	23.10	
01 E 200 740 640 419 366				SOCIAL WORKER/94-142 FEDERAL/TRAVEL-SCHOOL BUSINESS		23.10	
11743 HOUGHTON MIFFLIN CO		04/09/2007	1		0	21.15	21.15
01 E 150 203 406 000 430				ELEMENTARY GENERAL ED.//SUPPLIES		21.15	
11744 HOYER, PAT		04/09/2007	1		0	7.99	7.99
02 E 005 770 000 701 401				FOOD SERVICES/SCHOOL LUNCH/GENERAL SUPPLIES		7.99	
11745 IKON FINANCIAL SERVICES		04/09/2007	1		0	175.00	1,252.00
01 E 300 620 000 302 580				EDUCATIONAL MEDIA/LIBRARY/CAPITAL OUTLAY/CAPITAL LEASE P		175.00	
			10		0	274.00	
01 E 100 203 000 302 580				ELEMENTARY GENERAL ED./CAPITAL OUTLAY/CAPITAL LEASE PRIN		274.00	
			2		0	274.00	
01 E 300 211 000 302 580				SECONDARY EDUCATION GENERAL/CAPITAL OUTLAY/CAPITAL LEASE		274.00	
			3		0	274.00	

Check Nbr	Vendor Name	Check Date	Invoice Number	Invoice Desc	PO Number	Invoice Amount	Check Amount
01 E 150 203 000 302 580				ELEMENTARY GENERAL ED./CAPITAL OUTLAY/CAPITAL LEASE PRIN		274.00	
			5		0	255.00	
01 E 005 020 000 302 580				SUPERINTENDENT'S OFFICE/CAPITAL OUTLAY/CAPITAL LEASE PRI		255.00	
11746 IMAGESTUFF.COM		04/09/2007	49506		311	39.30	39.30
01 E 100 203 000 000 899				ELEMENTARY GENERAL ED./MISCELLANEOUS EXPENSE		39.30	
11747 INK SPOT		04/09/2007	9623	HS	0	331.00	450.00
01 E 300 211 000 000 430				SECONDARY EDUCATION GENERAL//SUPPLIES		331.00	
			9642	ELEM.	0	119.00	
01 E 100 203 000 000 899				ELEMENTARY GENERAL ED./MISCELLANEOUS EXPENSE		119.00	
11748 INNOVATIVE OFFICE SOLUTIONS, L		04/09/2007	64887-1	MATS	0	730.26	825.52
01 E 005 810 000 302 530				OPERATIONS AND MAINTENANCE/CAPITAL OUTLAY/EQUIPMENT PURC		730.26	
			OE-66012-1		314	32.88	
01 E 100 203 000 000 899				ELEMENTARY GENERAL ED./MISCELLANEOUS EXPENSE		32.88	
			OE-66195-1		316	62.38	
01 E 100 203 000 000 430				ELEMENTARY GENERAL ED./SUPPLIES		62.38	
11749 ISCORP		04/09/2007	631856		0	195.50	195.50
01 E 005 110 000 000 350				ACCOUNTING OFFICE//REPAIRS AND MAINTENANCE SVCS		195.50	
11750 JEFFREY IVERSON		04/09/2007	1	FLAGS	0	21.79	21.79
01 E 100 203 000 000 401				ELEMENTARY GENERAL ED./GENERAL SUPPLIES		21.79	
11751 ELIZABETH JAHN		04/09/2007	1		0	65.07	65.07
01 E 150 203 169 000 366				ELEMENTARY GENERAL ED./TRAVEL-SCHOOL BUSINESS		65.07	
11752 BOOTLEGGERS SUPPER CLUB		04/09/2007	1	MRVED REIMB.	0	574.91	574.91
04 E 500 505 000 321 450				COMMUNITY EDUCATION GENERAL/COMMUNITY EDUCATION/MATERIAL		574.91	
11753 JIM'S CLOTHING & SPORTING GOOD		04/09/2007	74230		0	70.00	70.00
01 E 300 294 213 000 401				BOYS ATHLETICS//GENERAL SUPPLIES		70.00	
11754 JOHNSON CONTROLS		04/09/2007	703071631		0	1,779.28	1,779.28
01 E 005 810 000 000 350				OPERATIONS AND MAINTENANCE//REPAIRS AND MAINTENANCE SVCS		1,779.28	
11755 TODD JOHNSON		04/09/2007	1	ELEM WRESTLING	0	300.00	300.00
04 E 500 505 000 321 305				COMMUNITY EDUCATION GENERAL/COMMUNITY EDUCATION/PROFESSI		300.00	
11756 JOSTEN'S		04/09/2007	598493	78-96	353	78.96	78.96
01 E 300 298 233 000 401				EXTRACURRICULAR ACTIVITIES//GENERAL SUPPLIES		78.96	
11757 CLAUDIA JUAREZ		04/09/2007	1		0	19.64	19.64
01 E 100 219 107 799 401				LEP/OTHER GRANTS/GENERAL SUPPLIES		19.64	
11758 KLOCKIT		04/09/2007	2635152		356	149.79	149.79
01 E 300 255 000 000 430				INDUSTRIAL EDUCATION//SUPPLIES		149.79	
11759 KNAPPER, TIMOTHY		04/09/2007	1		0	189.98	189.98
04 E 500 505 000 321 366				COMMUNITY EDUCATION GENERAL/COMMUNITY EDUCATION/TRAVEL-S		189.98	
11760 KVAM, PEGGY		04/09/2007	1	LITERACY	0	206.32	256.37
01 E 100 204 000 414 366				TITLE II EISENHWOER/TITLE II ESEA/TRAVEL-SCHOOL BUSINESS		206.32	
			2	COACHING	0	50.05	
01 E 100 203 113 317 366				ELEMENTARY GENERAL ED./COMPENSATORY/TRAVEL-SCHOOL BUSINE		50.05	
11761 Vendor Continued Void		04/09/2007					0.00
11762 LADNER'S HARDWARE		04/09/2007	1		28	7.45	540.16
04 E 500 590 156 321 401				OTHER COMMUNITY SERVICES/COMMUNITY EDUCATION/GENERAL SUP		7.45	
			10		0	44.34	
01 E 005 810 000 000 410				OPERATIONS AND MAINTENANCE//CUST/REPAIR SUPPLIES		44.34	
			2		0	89.54	

Check Nbr	Vendor Name	Check Date	Invoice Number	Invoice Desc	PO Number	Invoice Amount	Check Amount
01 E 005 810 000 000 410				OPERATIONS AND MAINTENANCE//CUST/REPAIR SUPPLIES		89.54	
			3		0	104.74	
01 E 005 810 191 000 410				OPERATIONS AND MAINTENANCE//CUST/REPAIR SUPPLIES		104.74	
			4	SPRING PLAY	0	58.91	
01 E 300 298 236 000 899				EXTRACURRICULAR ACTIVITIES//MISCELLANEOUS EXPENSE		58.91	
			5		0	1.98	
01 E 300 255 000 000 430				INDUSTRIAL EDUCATION//SUPPLIES		1.98	
			6		0	215.50	
02 E 005 770 000 701 401				FOOD SERVICES/SCHOOL LUNCH/GENERAL SUPPLIES		215.50	
			7		0	17.70	
01 E 300 301 501 830 433				AG EDUCATION (VOCATIONAL)/VOCATIONAL PROGRAMS/INDIVIDUAL		17.70	
11763 LEE'S AUTO & DIESEL		04/09/2007	2001	2001 WINDSTAR	0	835.17	835.17
01 E 005 810 193 000 350				OPERATIONS AND MAINTENANCE//REPAIRS AND MAINTENANCE SVCS		835.17	
11764 CAROLINE LINDEN		04/09/2007	1		0	393.14	393.14
01 E 100 204 000 414 366				TITLE II EISENHWOER/TITLE II ESEA/TRAVEL-SCHOOL BUSINESS		393.14	
11765 MASA		04/09/2007	1	CONFERENCE	0	249.00	249.00
01 E 005 020 000 000 366				SUPERINTENDENT'S OFFICE//TRAVEL-SCHOOL BUSINESS		249.00	
11766 MEEKER & WRIGHT SP ED COOP		04/09/2007	MARCH07		0	959.00	959.00
01 E 998 407 000 740 390				SPECIFIC LEARNING DISABILIT/STATE FUNDED SPECIAL ED/TUIT		959.00	
11767 MERCIER PIANO		04/09/2007	1		0	90.00	90.00
01 E 150 203 000 000 899				ELEMENTARY GENERAL ED./MISCELLANEOUS EXPENSE		90.00	
11768 MESPA		04/09/2007	462		0	35.00	35.00
01 E 100 203 113 317 430				ELEMENTARY GENERAL ED./COMPENSATORY/SUPPLIES		35.00	
11769 MN COMMUNITY ED ASSOC.		04/09/2007	2118		0	434.00	434.00
04 E 500 505 000 321 820				COMMUNITY EDUCATION GENERAL/COMMUNITY EDUCATION/DUES & M		434.00	
11770 MN DMA		04/09/2007	1	DITTERICH	0	110.00	110.00
02 E 005 770 000 701 367				FOOD SERVICES/SCHOOL LUNCH/TRAVEL-PROFESS DEVELOPMENT		110.00	
11771 MINNESOTA ELEVATOR, INC.		04/09/2007	114995		0	112.22	405.53
01 E 025 860 000 347 590				HEALTH & SAFETY EQUIP/PHYSICAL HAZARD CONTROL/OTHER CAPI		112.22	
			115809		0	293.31	
01 E 005 860 000 347 590				HEALTH & SAFETY EQUIP/PHYSICAL HAZARD CONTROL/OTHER CAPI		293.31	
11772 MN SCHOOL NUTRITION ASSOCIATIO		04/09/2007	1		0	125.00	125.00
02 E 005 770 000 701 367				FOOD SERVICES/SCHOOL LUNCH/TRAVEL-PROFESS DEVELOPMENT		125.00	
11773 MTI DISTRIBUTING CO.		04/09/2007	561259	bearings	0	195.51	195.51
01 E 005 810 191 000 410				OPERATIONS AND MAINTENANCE//CUST/REPAIR SUPPLIES		195.51	
11774 MUSIC THEATRE INTERNATIONAL		04/09/2007	306354		0	10.00	10.00
01 E 300 298 236 000 899				EXTRACURRICULAR ACTIVITIES//MISCELLANEOUS EXPENSE		10.00	
11775 MVCC		04/09/2007	07-03		0	130,000.00	130,000.00
01 E 200 420 000 310 396				SPECIAL EDUCATIONAL GENERAL/COOPERATIVE/DUE TO SCHOOLS S		130,000.00	
11776 MVCC		04/09/2007	07-03-		0	130,000.00	130,000.00
01 E 200 420 000 310 396				SPECIAL EDUCATIONAL GENERAL/COOPERATIVE/DUE TO SCHOOLS S		130,000.00	
11777 MVCC		04/09/2007	07-03--		0	127,320.94	127,320.94
01 E 200 420 000 310 396				SPECIAL EDUCATIONAL GENERAL/COOPERATIVE/DUE TO SCHOOLS S		127,320.94	
11778 MVTV		04/09/2007	1		0	200.00	200.00
01 E 005 810 000 311 320				OPERATIONS AND MAINTENANCE/TELECOMMUNICATIONS GRANT/COMM		200.00	
11779 NAEIR		04/09/2007	H124929		0	47.11	47.11
04 E 500 505 000 321 450				COMMUNITY EDUCATION GENERAL/COMMUNITY EDUCATION/MATERIAL		47.11	

Check Nbr	Vendor Name	Check Date	Invoice Number	Invoice Desc	PO Number	Invoice Amount	Check Amount
11780	NELSEN'S CLEANERS & LAUNDERERS	04/09/2007	1		0	20.33	20.33
02 E 005 770 000 701 382				FOOD SERVICES/SCHOOL LUNCH/LAUNDRY AND DRY CLEANING		20.33	
11781	NEON NEEDLES	04/09/2007	4529		0	468.00	468.00
04 E 500 505 000 321 450				COMMUNITY EDUCATION GENERAL/COMMUNITY EDUCATION/MATERIAL		468.00	
11782	NIMCO, INC.	04/09/2007	324430		335	118.69	118.69
09 L 230 34				TRUST FUND/DEFERRED REVENUE/DARE WALMART \$		118.69	
11783	NORCOSTCO, INC.	04/09/2007	896789		318	18.76	18.76
01 E 300 298 236 000 899				EXTRACURRICULAR ACTIVITIES//MISCELLANEOUS EXPENSE		18.76	
11784	NORTHERN STATES SUPPLY	04/09/2007	158173		0	173.57	173.57
01 E 300 255 000 000 430				INDUSTRIAL EDUCATION//SUPPLIES		173.57	
11785	OFFICE MAX BOISE	04/09/2007	167293		0	10.00	1,316.74
01 E 100 203 113 317 430				ELEMENTARY GENERAL ED./COMPENSATORY/SUPPLIES		10.00	
			526483		0	116.65	
01 E 100 203 113 317 430				ELEMENTARY GENERAL ED./COMPENSATORY/SUPPLIES		116.65	
			526483-		0	352.49	
01 E 005 020 000 000 401				SUPERINTENDENT'S OFFICE//GENERAL SUPPLIES		352.49	
			577365		0	834.16	
01 E 005 020 000 000 401				SUPERINTENDENT'S OFFICE//GENERAL SUPPLIES		100.00	
01 E 100 203 000 000 430				ELEMENTARY GENERAL ED./SUPPLIES		217.08	
01 E 300 211 000 000 430				SECONDARY EDUCATION GENERAL//SUPPLIES		217.08	
01 E 300 298 000 000 899				EXTRACURRICULAR ACTIVITIES//MISCELLANEOUS EXPENSE		100.00	
04 E 500 505 000 321 401				COMMUNITY EDUCATION GENERAL/COMMUNITY EDUCATION/GENERAL		200.00	
			586786		92	3.44	
01 E 300 211 000 000 430				SECONDARY EDUCATION GENERAL//SUPPLIES		3.44	
11786	OHIO STATE UNIVERSITY	04/09/2007	21967		300	650.00	1,400.00
01 L 230 05				GENERAL FUND/DEFERRED REVENUE/BERT RANEY CCC (STDNT TEAC		650.00	
			22306	SITE FEES	0	750.00	
01 E 100 204 000 414 820				TITLE II EISENHWOER/TITLE II ESEA/DUES & MEMBERSHIPS		750.00	
11787	OPEN TEXT	04/09/2007	1	FIRST CLASS	0	1,037.69	1,037.69
01 E 200 612 000 302 555				TECHNOLOGY/CAPITAL OUTLAY/TECHNOLOGY EQUIPMENT		1,037.69	
11788	ORANGE TREE EMPLOYMENT SCREENI	04/09/2007	15021		0	16.00	16.00
01 R 005 000 000 000 099				MISCELLANEOUS LOCAL REVENUE		16.00	
11789	PAN-O-GOLD BAKING CO.	04/09/2007	1		0	141.92	802.49
02 E 025 770 000 701 490				FOOD SERVICES/SCHOOL LUNCH/FOOD		121.92	
02 E 025 770 000 705 490				FOOD SERVICES/BREAKFAST/FOOD		20.00	
			10		0	660.57	
02 E 005 770 000 701 490				FOOD SERVICES/SCHOOL LUNCH/FOOD		625.57	
02 E 005 770 000 705 490				FOOD SERVICES/BREAKFAST/FOOD		35.00	
11790	PEDDLER DAN STORE	04/09/2007	402044		0	30.00	30.00
01 E 100 203 362 000 899				ELEMENTARY GENERAL ED./MISCELLANEOUS EXPENSE		30.00	
11791	SONJA PEDERSON	04/09/2007	1		0	130.13	143.75
01 E 200 720 000 000 366				HEALTH SERVICES/NURSE//TRAVEL-SCHOOL BUSINESS		130.13	
			2		0	13.62	
04 E 500 583 000 354 401				PRE-SCHOOL SCREENING/EARLY CHILDHOOD SCREENING/GENERAL S		13.62	
11792	J.W. PEPPER & SON INC.	04/09/2007	11382972		0	55.00	86.34
01 E 300 258 233 000 430				MUSIC//SUPPLIES		55.00	
			11383694		314	6.00	
01 E 300 258 233 000 430				MUSIC//SUPPLIES		6.00	
			11386925		340	23.94	

Check Nbr	Vendor Name	Check Date	Invoice Number	Invoice Desc	PO Number	Invoice Amount	Check Amount
01 E 300 258 233 000 430				MUSIC//SUPPLIES		23.94	
			11387003		0	1.40	
01 E 300 258 231 000 430				MUSIC//SUPPLIES		1.40	
11793 PITNEY BOWES		04/09/2007	1		0	254.00	254.00
01 E 005 020 000 000 370				SUPERINTENDENT'S OFFICE//RENTALS AND LEASES		254.00	
11794 PRAIRIE PALETTE		04/09/2007	1		0	53.90	53.90
01 E 005 810 191 000 410				OPERATIONS AND MAINTENANCE//CUST/REPAIR SUPPLIES		53.90	
11795 RATWICK, ROSZAK & MALONEY, P.A		04/09/2007	35899		0	372.55	372.55
01 E 005 150 000 000 305				LEGAL SERVICES//PROFESSIONAL FEES		372.55	
11796 READING RECOVERY PRO/COUNCIL		04/09/2007	25673		0	165.00	165.00
01 E 100 203 113 317 401				ELEMENTARY GENERAL ED./COMPENSATORY/GENERAL SUPPLIES		165.00	
11797 REINHART INST FOODS		04/09/2007	1		0	1,338.60	3,572.28
02 E 025 770 000 701 401				FOOD SERVICES/SCHOOL LUNCH/GENERAL SUPPLIES		232.76	
02 E 025 770 000 701 490				FOOD SERVICES/SCHOOL LUNCH/FOOD		941.03	
02 E 025 770 000 705 490				FOOD SERVICES/BREAKFAST/FOOD		164.81	
			10		0	2,233.68	
02 E 005 770 000 701 401				FOOD SERVICES/SCHOOL LUNCH/GENERAL SUPPLIES		85.97	
02 E 005 770 000 701 490				FOOD SERVICES/SCHOOL LUNCH/FOOD		1,772.34	
02 E 005 770 000 705 490				FOOD SERVICES/BREAKFAST/FOOD		375.37	
11798 RENAISSANCE LEARNING		04/09/2007	3120350		0	490.68	490.68
01 E 300 211 000 000 899				SECONDARY EDUCATION GENERAL//MISCELLANEOUS EXPENSE		490.68	
11799 RESOURCES FOR EDUCATORS INC.		04/09/2007	1223168-B1		0	208.00	406.00
01 E 100 203 113 317 401				ELEMENTARY GENERAL ED./COMPENSATORY/GENERAL SUPPLIES		208.00	
			1229153-B1		0	198.00	
02 E 005 770 000 701 401				FOOD SERVICES/SCHOOL LUNCH/GENERAL SUPPLIES		198.00	
11800 RESOURCES FOR READING		04/09/2007	M355640		312	15.95	15.95
01 E 100 203 113 317 401				ELEMENTARY GENERAL ED./COMPENSATORY/GENERAL SUPPLIES		15.95	
11801 RILEY BUS SERVICE, INC.		04/09/2007	1		0	1,003.00	2,769.00
01 E 300 296 228 733 361				GIRLS ATHLETICS/TRANSPORTATION/NON-AUTHORIZED/BUS CONTRA		1,003.00	
			10		0	1,766.00	
04 E 500 505 000 321 450				COMMUNITY EDUCATION GENERAL/COMMUNITY EDUCATION/MATERIAL		1,766.00	
11802 RIVARD'S		04/09/2007	12204		0	1,324.03	1,324.03
01 E 005 810 191 000 410				OPERATIONS AND MAINTENANCE//CUST/REPAIR SUPPLIES		1,324.03	
11803 RTS		04/09/2007	1		0	233.97	272.80
01 E 005 810 000 000 320				OPERATIONS AND MAINTENANCE//COMMUNICATIONAL SERVICES		233.97	
			2		0	38.83	
01 E 025 810 000 000 320				OPERATIONS AND MAINTENANCE//COMMUNICATIONAL SERVICES		38.83	
11804 RYER PLUMBING		04/09/2007	3350		0	236.02	236.02
01 E 005 810 000 000 410				OPERATIONS AND MAINTENANCE//CUST/REPAIR SUPPLIES		236.02	
11805 SAWMILL		04/09/2007	1		338	5.44	1,190.47
01 E 300 301 501 830 433				AG EDUCATION (VOCATIONAL)/VOCATIONAL PROGRAMS/INDIVIDUAL		5.44	
			10		0	57.34	
02 E 005 770 000 701 401				FOOD SERVICES/SCHOOL LUNCH/GENERAL SUPPLIES		7.08	
01 E 300 298 236 000 899				EXTRACURRICULAR ACTIVITIES//MISCELLANEOUS EXPENSE		50.26	
			2		0	1,127.69	
01 E 300 255 000 000 430				INDUSTRIAL EDUCATION//SUPPLIES		1,127.69	
11806 SCHOLASTIC BOOK FAIRS		04/09/2007	W2264625BF		0	5,103.71	5,103.71
01 L 230 33				GENERAL FUND/DEFERRED REVENUE/BERT RANEY ACTIVITY ACCOUN		5,103.71	

Check Nbr	Vendor Name	Check Date	Invoice Number	Invoice Desc	PO Number	Invoice Amount	Check Amount
11807	SCHOOL HEALTH CORPORATION	04/09/2007	1287518-		319	78.02	78.02
01 E 200 720 000 000 401				HEALTH SERVICES/NURSE//GENERAL SUPPLIES		78.02	
11808	SCHOOL-TECH, INC.	04/09/2007	295008		0	130.81	130.81
01 E 300 292 225 000 401				BOYS/GIRLS ATHLETICS//GENERAL SUPPLIES		130.81	
11809	SKYWARD	04/09/2007	120664	FY08 MAINTENANCE	0	8,272.18	8,272.18
01 A 131 00				GENERAL FUND/PREPAID EXPENSE		8,272.18	
11810	SOUTHWEST MN STATE UNIVERSITY	04/09/2007	57616		0	11,700.00	11,700.00
01 E 300 200 000 000 433				POST SECONDARY OPTIONS ENROLL//INDIVIDUAL INST SUPPLIES		11,700.00	
11811	SOUTHWEST WHOLESAL	04/09/2007	1		0	1,143.86	9,025.79
02 E 025 770 000 701 490				FOOD SERVICES/SCHOOL LUNCH/FOOD		733.82	
02 E 025 770 000 705 401				FOOD SERVICES/BREAKFAST/GENERAL SUPPLIES		229.25	
02 E 025 770 000 705 490				FOOD SERVICES/BREAKFAST/FOOD		180.79	
			10		0	7,802.18	
02 E 005 770 000 701 401				FOOD SERVICES/SCHOOL LUNCH/GENERAL SUPPLIES		147.89	
02 E 005 770 000 701 490				FOOD SERVICES/SCHOOL LUNCH/FOOD		7,171.76	
02 E 005 770 000 705 401				FOOD SERVICES/BREAKFAST/GENERAL SUPPLIES		482.53	
			159657		0	79.75	
01 E 100 203 362 000 899				ELEMENTARY GENERAL ED.//MISCELLANEOUS EXPENSE		79.75	
11812	SPECIAL SYSTEMS INC.	04/09/2007	30942		0	300.00	300.00
01 E 005 860 000 363 305				HEALTH & SAFETY EQUIP/FIRE SAFETY/PROFESSIONAL FEES		300.00	
11813	ST. JOHN'S LUTHERAN SCHOOL	04/09/2007	1	3RD QTR	0	800.00	800.00
				TRANSPORTATION			
01 E 005 760 000 720 361				PUPIL TRANSPORTATION/REGULAR TO AND FROM SCHOOL/BUS CONT		800.00	
11814	STEIN'S, INC	04/09/2007	487285		0	597.70	680.51
01 E 025 810 000 000 410				OPERATIONS AND MAINTENANCE//CUST/REPAIR SUPPLIES		597.70	
			487926		0	82.81	
01 E 025 810 000 000 410				OPERATIONS AND MAINTENANCE//CUST/REPAIR SUPPLIES		82.81	
11815	STEPPING STONE THEATRE	04/09/2007	873	ARTIST IN	0	970.90	1,377.00
				RESIDENCY			
01 E 100 790 108 799 305				OTHER PUPIL SUPPORT SERVICES/OTHER GRANTS/PROFESSIONAL F		970.90	
			873-		0	406.10	
01 E 150 790 108 799 305				OTHER PUPIL SUPPORT SERVICES/OTHER GRANTS/PROFESSIONAL F		406.10	
11816	STRAND, DWAYNE	04/09/2007	1	MASA	0	424.22	451.17
01 E 005 020 000 000 367				SUPERINTENDENT'S OFFICE//TRAVEL-PROFESS DEVELOPMENT		424.22	
			2		0	26.95	
01 E 005 020 000 000 366				SUPERINTENDENT'S OFFICE//TRAVEL-SCHOOL BUSINESS		26.95	
11817	STUDY ISLAND	04/09/2007	66414		0	2,596.00	2,596.00
01 E 300 710 000 000 461				COUNSELING/GUIDANCE//STANDARDZED TESTS		865.34	
01 E 100 712 000 000 461				ELEMENTARY GUIDANCE/COUNSELING//STANDARDZED TESTS		865.33	
01 E 150 712 000 000 461				ELEMENTARY GUIDANCE/COUNSELING//STANDARDZED TESTS		865.33	
11818	SUPER 8 GRANITE FALLS	04/09/2007	109100		320	270.90	270.90
01 E 100 790 108 799 305				OTHER PUPIL SUPPORT SERVICES/OTHER GRANTS/PROFESSIONAL F		270.90	
11819	SW/WC SERVICE COOP - MARSHALL	04/09/2007	1		0	20.00	634.10
01 E 300 640 000 306 367				STAFF DEVELOPMENT/STAFF DEV. 50% SITE/TRAVEL-PROFESS DEV		20.00	
			2	CAREER EXPLORER	0	614.10	
01 E 200 420 000 419 305				SPECIAL EDUCATIONAL GENERAL/94-142 FEDERAL/PROFESSIONAL		614.10	
11820	TECH CHECK	04/09/2007	3191B-IN		0	-100.00	455.00
01 E 200 612 000 302 555				TECHNOLOGY/CAPITAL OUTLAY/TECHNOLOGY EQUIPMENT		-100.00	
			8020-IN		0	105.00	
01 E 200 612 199 000 305				TECHNOLOGY//PROFESSIONAL FEES		105.00	

Check Nbr	Vendor Name	Check Date	Invoice Number	Invoice Desc	PO Number	Invoice Amount	Check Amount
01 E 200 612 199 000 305			8149-IN	TECHNOLOGY//PROFESSIONAL FEES	0	450.00	
						450.00	
11821	THRIFTY WHITE DRUG	04/09/2007	1		0	7.99	7.99
01 E 100 203 000 000 899				ELEMENTARY GENERAL ED.//MISCELLANEOUS EXPENSE		7.99	
11822	TJOSVOLD EQUIPMENT	04/09/2007	1	AERATOR	0	1,200.00	1,200.00
01 E 005 810 000 302 530				OPERATIONS AND MAINTENANCE/CAPITAL OUTLAY/EQUIPMENT PURC		1,200.00	
11823	UNIVERSITY OF MINNESOTA	04/09/2007	1		0	200.00	200.00
02 E 005 770 000 701 367				FOOD SERVICES/SCHOOL LUNCH/TRAVEL-PROFESS DEVELOPMENT		200.00	
11824	VAN MOER, MARGO	04/09/2007	1		0	99.23	99.23
01 E 100 203 362 000 899				ELEMENTARY GENERAL ED.//MISCELLANEOUS EXPENSE		99.23	
11825	VELDE SANITATION	04/09/2007	28199		0	505.00	855.00
01 E 005 810 000 000 330				OPERATIONS AND MAINTENANCE//UTILITY SERVICES		505.00	
01 E 025 810 000 000 330			28199-	OPERATIONS AND MAINTENANCE//UTILITY SERVICES	0	350.00	
						350.00	
11826	CINDY VELDE	04/09/2007	1		0	13.80	13.80
04 E 500 590 000 321 366				OTHER COMMUNITY SERVICES/COMMUNITY EDUCATION/TRAVEL-SCHO		13.80	
11827	KATHLEEN VELDE	04/09/2007	1	PLAY SUPPLIES	0	34.42	34.42
01 E 300 298 236 000 899				EXTRACURRICULAR ACTIVITIES//MISCELLANEOUS EXPENSE		34.42	
11828	WANGBERG, ALBERT	04/09/2007	422458		0	70.00	70.00
01 E 300 211 000 000 899				SECONDARY EDUCATION GENERAL//MISCELLANEOUS EXPENSE		70.00	
11829	WARD'S NATURAL SCIENCE	04/09/2007	9746-610-00		0	81.66	176.53
01 E 300 260 000 000 430				NATURAL SCIENCES//SUPPLIES		81.66	
01 E 300 260 000 000 430			9746-610-01	NATURAL SCIENCES//SUPPLIES	0	52.30	
						52.30	
01 E 300 260 000 000 430			9746-610-02	NATURAL SCIENCES//SUPPLIES	0	42.57	
						42.57	
11830	WELDERS SUPPLY	04/09/2007	893774		0	5.58	5.58
01 E 300 301 501 830 433				AG EDUCATION (VOCATIONAL)/VOCATIONAL PROGRAMS/INDIVIDUAL		5.58	
11831	WELLS FARGO BROKERAGE SERVICES	04/09/2007	6-984994AB9		0	27,960.67	27,960.67
01 E 005 850 102 000 580				FACILITIES//CAPITAL LEASE PRINCIPAL		20,277.55	
01 E 005 850 102 000 581				FACILITIES//CAPITAL LEASE INTEREST		7,683.12	
11832	WEST MUSIC	04/09/2007	81148537		309	28.90	28.90
01 E 100 203 000 000 899				ELEMENTARY GENERAL ED.//MISCELLANEOUS EXPENSE		28.90	
11833	XCEL ENERGY	04/09/2007	1		0	23.13	44.82
04 E 500 560 000 321 330				RECREATION-SWIM POOL/COMMUNITY EDUCATION/UTILITY SERVICE		23.13	
01 E 025 810 184 000 330			2	OPERATIONS AND MAINTENANCE//UTILITY SERVICES	0	21.69	
						21.69	
11834	YMC TREASURER	04/09/2007	1		0	50.00	50.00
01 E 005 850 000 000 896				FACILITIES//TAXES		50.00	
11835	Vendor Continued Void	04/09/2007					0.00
11836	Vendor Continued Void	04/09/2007					0.00
11837	Vendor Continued Void	04/09/2007					0.00
11838	YME SCHOOLS-ADM	04/09/2007	497	JILL FRY	0	75.00	2,970.04
01 R 300 296 000 000 050				GIRLS ATHLETICS//FEES FROM PATRONS		75.00	
01 E 300 294 213 000 186			4978	Joan Taylor	0	56.00	
				BOYS ATHLETICS//EXTRA-CURRICULAR WORKERS		32.00	
01 E 300 296 213 000 186				GIRLS ATHLETICS//EXTRA-CURRICULAR WORKERS		24.00	
			4980	BRAD & MARY JO BAKKEN	0	19.80	

Check Nbr	Vendor Name	Check Date	Invoice Number	Invoice Desc	PO Number	Invoice Amount	Check Amount
02 R	005 000 000 701 601			SCHOOL LUNCH/SALES TO PUPILS		19.80	
			4981	WAL-MART	0	101.76	
01 E	300 294 224 000 401			BOYS ATHLETICS//GENERAL SUPPLIES		101.76	
			4982	DICK DANDURAND	0	24.00	
01 E	300 294 221 000 186			BOYS ATHLETICS//EXTRA-CURRICULAR WORKERS		24.00	
			4983	RANDY DYRDAHL	0	24.00	
01 E	300 294 221 000 186			BOYS ATHLETICS//EXTRA-CURRICULAR WORKERS		24.00	
			4984	TODD JOHNSON	0	40.00	
01 E	300 294 221 000 186			BOYS ATHLETICS//EXTRA-CURRICULAR WORKERS		40.00	
			4985	STEVE LYNNER	0	40.00	
01 E	300 294 221 000 186			BOYS ATHLETICS//EXTRA-CURRICULAR WORKERS		40.00	
			4986	OLD LOG THEATRE	0	734.50	
04 E	500 505 000 321 450			COMMUNITY EDUCATION GENERAL/COMMUNITY EDUCATION/MATERIAL		734.50	
			4987	DEAN FOODS	0	6.48	
02 E	005 770 000 701 495			FOOD SERVICES/SCHOOL LUNCH/MILK		6.48	
			4988	KYLE GAFFANEY	0	16.00	
01 E	300 294 213 000 186			BOYS ATHLETICS//EXTRA-CURRICULAR WORKERS		16.00	
			4989	UMM	0	684.00	
01 L	230 33			GENERAL FUND/DEFERRED REVENUE/BERT RANEY ACTIVITY ACCOUN		522.00	
01 L	230 56			GENERAL FUND/DEFERRED REVENUE/HAGG ELEMENTARY SCHOOL ACT		162.00	
			4990	mprc	0	50.00	
01 E	005 790 721 000 401			OTHER PUPIL SUPPORT SERVICES//GENERAL SUPPLIES		50.00	
			4991	QUINCY AFRAID OF LIGHTENING	0	100.00	
01 E	200 206 000 433 305			DRUG FREE \$ FED./DRUG F SCH/PROFESSIONAL FEES		100.00	
			4992	BERNADETTE CARSTENSON	0	18.00	
01 E	300 298 239 000 185			EXTRACURRICULAR ACTIVITIES//MISCELLANEOUS PAY		18.00	
			4993	KIM KVAM	0	20.00	
01 E	300 298 239 000 185			EXTRACURRICULAR ACTIVITIES//MISCELLANEOUS PAY		20.00	
			4994	JOAN TAYLOR	0	70.00	
04 R	500 000 000 321 050			COMMUNITY EDUCATION/FEES FROM PATRONS		70.00	
			4996	POSTMASTER	0	337.50	
04 E	500 505 000 321 329			COMMUNITY EDUCATION GENERAL/COMMUNITY EDUCATION/POSTAGE		337.50	
			4998	LAKEVILLE CELEBRATION CENTER	0	390.00	
04 E	500 505 000 321 450			COMMUNITY EDUCATION GENERAL/COMMUNITY EDUCATION/MATERIAL		390.00	
			4999	SW RESEARCH & OUTREACH CENTER	0	15.00	
01 E	100 640 000 306 367			STAFF DEVELOPMENT/STAFF DEV. 50% SITE/TRAVEL-PROFESS DEV		15.00	
			5000	BENSON COMM ED	0	148.00	
04 E	500 505 000 321 450			COMMUNITY EDUCATION GENERAL/COMMUNITY EDUCATION/MATERIAL		148.00	
11839	YME-FOOD SERVICE	04/09/2007	1		0	88.83	271.33
04 E	500 590 000 321 401			OTHER COMMUNITY SERVICES/COMMUNITY EDUCATION/GENERAL SUP		88.83	
			10	CONFERENCES	0	115.00	
01 L	230 84			GENERAL FUND/DEFERRED REVENUE/HAGG CCC (STUDENT TEACHER		115.00	
			2		0	67.50	
01 L	230 43			GENERAL FUND/DEFERRED REVENUE/SR HIGH PROJECTS		67.50	

Check Nbr	Vendor Name	Check Date	Invoice Number	Invoice Desc	PO Number	Invoice Amount	Check Amount
11840	YOUTH FRONTIERS, INC.	04/09/2007	54212		0	358.53	358.53
09 L	230 34			TRUST FUND/DEFERRED REVENUE/DARE WALMART \$		358.53	
11841	ZEP MANUFACTURING CO	04/09/2007	1		0	925.22	925.22
01 E	025 810 191 000 410			OPERATIONS AND MAINTENANCE//CUST/REPAIR SUPPLIES		925.22	
				164 Computer	Check(s) For a Total of		616,516.75

	0	Manual	Checks For a Total of	0.00
	0	Wire Transfer	Checks For a Total of	0.00
	164	Computer	Checks For a Total of	616,516.75
Total For	164	Manual, Wire Transfer & Computer	Checks	616,516.75
Less	0	Voided	Checks For a Total of	0.00
			Net Amount	616,516.75

F U N D S U M M A R Y

Fund	Description	Balance Sheet	Revenue	Expense	Total
01	GENERAL FUND	16,607.95	91.00	568,281.13	584,980.08
02	FOOD SERVICE	0.00	19.80	23,755.86	23,775.66
04	COMMUNITY SERVICE	0.00	70.00	7,187.51	7,257.51
09	TRUST FUND	503.50	0.00	0.00	503.50

**Yellow Medicine East #2190
Board Report
April 2007**

	2006-07 Expenditures	Revised Budget	Year to Date	Budget Balance	Percent	% Exp.
	By Fund	2006-07	Expenditures		Expended	2005-06%
	General	9,748,164	6,784,246	2,963,918	69.60%	70.08%
	Food Service	400,849	323,085	77,764	80.60%	73.83%
	Community Service	292,283	219,888	72,395	75.23%	77.19%
	Debt Redemption	139,092	137,953	1,139	99.18%	99.44%
	Trust Fund	0		0	0.00%	0.00%
	Total	10,580,388	7,465,172	3,115,216	70.56%	71.04%

Year to date amounts include current month's accounts payables plus previous month's payroll.

Salaries % expended to date (approximately)

Contracted July-June	Supt/Finance/Maint/Comm Ed	75.00%
Contracted August-July	Principals	66.67%
Contracted Sept-August	Teachers/Fd Svc Supv/Nurses	58.33%
12 Month Non-certified	Secretaries	75.00%
12 Month Non-certified	Custodians	69.50%
9 Month Non-certified	Assistants/Cooks	69.10%

Liquid Asset Fund (Investments)

Month End Cash Invested \$1,674,321.35

YME FOOD SERVICE REPORT TO THE SCHOOL BOARD

March 2007

Granite Falls Site

Meal Type	Total Reimbursable Meals Served (Free + Reduced + Paid)	Number of Days Served	Total Free Meals Served	Total Reduced-Price Meals Served	Total Full Pay Meals Served	Total Non-Reimbursable Meals Served	Number of Participants Approved for Free Meals	Number of Participants Approved for Reduced-Price Meals	Number of Participants Non Approved for Free or Reduced-Price Meals
Breakfast	3,547	19	1,759	591	1,197	49	281	113	564
Lunch	6,325	19	4,351	1,693	281	503	281	113	564

Clarkfield Site

Meal Type	Total Reimbursable Meals Served (Free + Reduced + Paid)	Number of Days Served	Total Free Meals Served	Total Reduced-Price Meals Served	Total Full Pay Meals Served	Total Non-Reimbursable Meals Served	Number of Participants Approved for Free Meals	Number of Participants Approved for Reduced-Price Meals	Number of Participants Non Approved for Free or Reduced-Price Meals
Breakfast	1,000	19	539	335	126	50	49	34	45
Lunch	2,228	19	810	625	793	77	49	34	45

YELLOW MEDICINE EAST – ISD 2190

Dwayne A. Strand, Superintendent
450 9th Avenue - Granite Falls, MN 56241
Phone: 320-564-4081 - Fax: 320-564-4781



Budget Committee Minutes April 3, 2007

The budget committee met on Tuesday, April 3, 2007 at 4:30 pm in the Board Room.

Present: Elmo Volstad, LeeAnn Boushek, and Dwayne Strand

Not Attending: Chad Fischer, Karen Norell, and Stacy Hinz

The following items were discussed.

1. We reviewed the 2006-2007 tuition bill calculations for special education. Tuition billing is now taken care of at the state level. Previously, we would have received the funding and been billed directly by schools providing the service. In other words, we would have received the revenue and paid the expenses. Over the last two years, we have seen a dramatic increase in special education tuitions. Part of the increase is due to an increase in the tuition rate but we have also seen a huge increase in the number of special education students we are serving – an increase of 27 students over the previous year. This increase in costs will have an impact on the budget adjustments that will need to be made in the 2006-2007 budget. A spreadsheet detailing these costs is attached and further information will be discussed on Monday night at the Board meeting.
2. We reviewed a previous Board handout depicting the 2006-2007 costs to operate the Hagg site. It is attached as a budget draft dated 12/29/06. This information is helpful as we continue to examine the impact of the possible loss of students to the Clarkfield Area Charter School.
3. We also reviewed an updated revised unreserved estimate for the 2006-2007 school year and an estimate for 2007-2008 revenues and expenditures. That handout is attached. We will review it in detail on Monday night at the Board meeting. These estimates are based on the current staffing and operational patterns. At this time, based primarily on changes in the special education budget, we are projecting a deficit of \$193,697.00 at the close of the 2006-2007 school year. Based on the 2007-2008 projections, we could see a fund balance increase in the unappropriated fund of over \$300,000.00. Again, however, these projections are based on our current enrollment numbers.
4. The next item of discussion was enrollment projects for the CACS. As of March 28th, Interim CACS Director Dave Biermeir indicated that they have 67 students enrolled. Using those enrollment figures, we had run four (4) general education revenue reports. The information that we discussed is included in the chart below. Column 1 projects the revenue if the Hagg projected enrollment remained at 117 students. Column 2 reflects the loss of 67 students, column 3 reflects the loss of 80 students and the 4th column reflects the loss of 100 students either to the CACS or to other districts in the area. The revenue reductions are cushioned by a formula that combines the previous year's enrollment figures with the current year figures. However, that also means that there will be additional reductions needed the following year (2008-2009). We will also see a significant reduction in compensatory aid during the 2008-2009 school year.

+

YME HIGH SCHOOL
Karen Norell, Principal
450 9th Avenue
Granite Falls, MN 56241
Phone: 320-564-4083
Fax: 320-564-4782

BERT RANEY ELEMENTARY
Stacy Hinz, Principal
555 7th Avenue
Granite Falls, MN 56241
Phone: 320-564-4082
Fax: 320-564-4427

H.A. HAGG ELEMENTARY
Stacy Hinz, Principal
1204 11th Avenue
Clarkfield, MN 56223
Phone: 320-669-4424
Fax: 320-669-4828

YELLOW MEDICINE EAST – ISD 2190

Dwayne A. Strand, Superintendent
 450 9th Avenue - Granite Falls, MN 56241
 Phone: 320-564-4081 - Fax: 320-564-4781



	0 Students Lost	67 Students Lost	80 Students Lost	100 Students Lost
General Fund Revenue	8,298,517.00	7,985,900.00	7,930,419.00	7,867,011.00
Reduction in Revenue		312,617.00	368,098.00	431,506.00

5. Based on the reductions in revenue as noted above, the committee discussed possible reductions in the 2007-2008 budget that would be necessary in order to retain the projected increase in fund balance as noted in Projected 2007-2008 Budget attachment. A smaller reduction will result in a smaller increase in the fund balance at the close of the 2007-2008 school year. Based on the projected decrease in student numbers at the elementary sites, the following reductions would provide the reductions to expenditures needed to offset the decrease in revenues. If both elementary sites remain open, the following reductions could be made prior to the close of the current school year:

- A. Elementary Retirement \$ 63,050.00
- B. Non-renew 3 elementary instructors \$111,576.00
- C. Eliminate paraprofessional positions \$ 44,787.00
- D. Eliminate one part-time custodial position \$ 16,900.00
- E. Reduce instructional budgets \$ 10,000.00

Total savings (general fund) from listed reductions: \$246,313.00

The food service budget would also be reduced by staff reductions **\$ 15,319.00**

If the Hagg site were to be closed, the following reductions in expenditures would be realized as noted in attachment 1A:

- A. Maintenance (Cost to operate and 1.5 custodial positions) \$167,600.00
- B. Elementary Retirement \$ 63,050.00
- C. Non-renew 3 elementary instructors \$111,576.00
- D. Principal's office \$ 34,200.00
- E. Eliminate paraprofessional positions \$ 60,094.00
- F. Reduce Instructional budgets \$ 30,000.00

Total savings from listed reductions: \$466,520.00

The food service budget would also be reduced by staff reductions **\$ 29,780.00**

YME HIGH SCHOOL
 Karen Norell, Principal
 450 9th Avenue
 Granite Falls, MN 56241
 Phone: 320-564-4083
 Fax: 320-564-4782

BERT RANEY ELEMENTARY
 Stacy Hinz, Principal
 555 7th Avenue
 Granite Falls, MN 56241
 Phone: 320-564-4082
 Fax: 320-564-4427

H.A. HAGG ELEMENTARY
 Stacy Hinz, Principal
 1204 11th Avenue
 Clarkfield, MN 56223
 Phone: 320-669-4424
 Fax: 320-669-4828

YELLOW MEDICINE EAST – ISD 2190

Dwayne A. Strand, Superintendent
450 9th Avenue - Granite Falls, MN 56241
Phone: 320-564-4081 - Fax: 320-564-4781



6. The committee discussed various grade level scenarios based on retaining 50 of the elementary students at Hagg. Some of the scenarios use both sites and some use Bert Raney as a single site. Attached are the spreadsheets detailing the projected enrollments for Bert Raney and Hagg Elementary schools that were reviewed.
7. Finally, the committee reviewed a map of Bert Raney that demonstrates how the building could be used if there were to be a single site elementary school next year. Bert Raney can accommodate 22/23 sections.

This information will be reviewed during the report section of the April 9, 2007 Board meeting.

YME HIGH SCHOOL
Karen Norell, Principal
450 9th Avenue
Granite Falls, MN 56241
Phone: 320-564-4083
Fax: 320-564-4782

BERT RANEY ELEMENTARY
Stacy Hinz, Principal
555 7th Avenue
Granite Falls, MN 56241
Phone: 320-564-4082
Fax: 320-564-4427

H.A. HAGG ELEMENTARY
Stacy Hinz, Principal
1204 11th Avenue
Clarkfield, MN 56223
Phone: 320-669-4424
Fax: 320-669-4828

***** EXPENDITURES - COSTS FOR RESIDENT STUDENTS SERVED BY OTHER DISTRICTS/COOPERATIVES *****											AMOUNT OF FEDERAL FUNDS TO BE APPLIED	0.00
	(A)	(B)	(C)=(A)-(B)	(D)	(E)	(F)=(D)-(E)	(G)	(H)	(I)	(J)	(K)=	
SERVING NBR-TYPE	***** REIMBURSABLE NET INITIAL AMOUNT	FEDERAL PORTION	COST AMT AFTER FED SUBTRACTION	**** NON-REIMBURSABLE INITIAL AMOUNT	FEDERAL PORTION	NET COST AMT AFTER FED SUBTRACTION	GENERAL EDUC COST	DEBT SERVICE COST	BUILDING LEASE COST	TRANSPORTATION COST	(C)+(F)+(G)+(H)+(I)+(J) TOTAL AMOUNT	
0129-01 MONTEVIDEO PUB	21,236.46	0.00	21,236.46	8,550.95	0.00	8,550.95	0.00	0.00	0.00	0.00	29,787.41	
0318-01 GRAND RAPIDS P	310.04	0.00	310.04	248.40	0.00	248.40	561.86	0.00	0.00	0.00	1,120.30	
0347-01 WILLMAR PUBLIC	2,620.40	0.00	2,620.40	2,272.15	0.00	2,272.15	0.00	0.00	0.00	0.00	4,892.55	
0378-01 DAWSON-BOYD PU	15,047.53	0.00	15,047.53	8,945.95	0.00	8,945.95	0.00	0.00	0.00	0.00	23,993.48	
0413-01 MARSHALL PUBLI	11,624.08	0.00	11,624.08	7,495.06	0.00	7,495.06	0.00	0.00	0.00	0.00	19,119.14	
0414-01 MINNEOTA PUBLI	24,613.69	0.00	24,613.69	12,054.75	0.00	12,054.75	0.00	0.00	0.00	0.00	36,668.44	
0742-01 ST. CLOUD PUBL	413.28	0.00	413.28	301.89	0.00	301.89	1,373.43	0.00	0.00	0.00	2,088.60	
0991-83 REGN 6 & 8-S.W	74,151.63	0.00	74,151.63	19,312.06	0.00	19,312.06	21,600.37	0.00	0.00	0.00	115,064.06	
2167-01 LAKEVIEW SCHOO	19,835.36	0.00	19,835.36	9,952.60	0.00	9,952.60	0.00	0.00	0.00	0.00	29,787.96	
2180-01 M.A.C.C.R.A.Y.	3,792.07	0.00	3,792.07	2,091.23	0.00	2,091.23	0.00	0.00	0.00	0.00	5,883.30	
2890-01 RENVILLE COUNT	1,187.92	0.00	1,187.92	549.89	0.00	549.89	0.00	0.00	0.00	0.00	1,737.81	
2897-01 REDWOOD AREA S	563.63	0.00	563.63	297.82	0.00	297.82	0.00	0.00	0.00	0.00	861.45	
4026-07 E.C.H.O. CHART	28,853.04	0.00	28,853.04	5,480.34	0.00	5,480.34	0.00	0.00	0.00	0.00	34,333.38	
4028-07 ECI' NOMPA WOO	0.00	0.00	0.00	737.34	0.00	737.34	0.00	0.00	0.00	0.00	737.34	
6018-61 MN RIVER VALLE	11,311.39	0.00	11,311.39	180.21	0.00	180.21	0.00	0.00	0.00	0.00	11,491.60	
* EXPENDITURES TOTAL *	215,560.52	0.00	215,560.52	78,470.64	0.00	78,470.64	23,535.66	0.00	0.00	0.00	317,566.82	
***** REVENUES - COSTS FOR SERVING NON-RESIDENT STUDENTS *****												
RESIDENT NBR-TYPE	(A) ***** REIMBURSABLE NET INITIAL AMOUNT	(B) FEDERAL PORTION	(C)=(A)-(B) COST AMT AFTER FED SUBTRACTION	(D) **** NON-REIMBURSABLE INITIAL AMOUNT	(E) FEDERAL PORTION	(F)=(D)-(E) NET COST AMT AFTER FED SUBTRACTION	(G) GENERAL EDUC COST	(H) DEBT SERVICE COST	(I) BUILDING LEASE COST	(J) TRANSPORTATION COST	(K)= (C)+(F)+(G)+(H)+(I)+(J) TOTAL AMOUNT	
0129-01 MONTEVIDEO PUB	310.12	0.00	310.12	166.90	0.00	166.90	0.00	0.00	0.00	0.00	477.02	
0378-01 DAWSON-BOYD PU	3,648.88	0.00	3,648.88	1,965.47	0.00	1,965.47	0.00	0.00	0.00	0.00	5,614.35	
0413-01 MARSHALL PUBLI	1,951.49	0.00	1,951.49	1,051.25	0.00	1,051.25	0.00	0.00	0.00	0.00	3,002.74	
0640-01 WABASSO PUBLIC	0.00	0.00	0.00	0.00	0.00	0.00	2,134.43	0.00	0.00	0.00	2,134.43	
2167-01 LAKEVIEW SCHOO	555.00	0.00	555.00	298.96	0.00	298.96	0.00	0.00	0.00	0.00	853.96	
2180-01 M.A.C.C.R.A.Y.	8,253.27	0.00	8,253.27	4,451.56	0.00	4,451.56	0.00	0.00	0.00	0.00	12,704.83	
2890-01 RENVILLE COUNT	26,200.91	0.00	26,200.91	14,030.89	0.00	14,030.89	27,267.01	0.00	0.00	0.00	67,498.81	
2897-01 REDWOOD AREA S	6,638.94	0.00	6,638.94	3,578.46	0.00	3,578.46	4,164.96	0.00	0.00	0.00	14,382.36	
* REVENUES TOTAL *	47,558.61	0.00	47,558.61	25,543.49	0.00	25,543.49	33,566.40	0.00	0.00	0.00	106,668.50	
				REIMBURSABLE NET COST	NONREIMBURSABLE NET COST	GENERAL EDUC COST	DEBT SERVICE COST	BUILDING LEASE COST	TRANSPORTATION COST	TOTAL AMOUNT		
***** REVENUES LESS EXPENDITURES *****				168,001.91-	52,927.15-	10,030.74	0.00	0.00	0.00	210,898.32-		

Yellow Medicine East Unreserved Estimate 2007-08

4.3.2007

<u>06-07 Revenues (original)</u>	9,260,047	
Adjustments:		
Special Ed from Schools	-50,000	
Special Ed State	-210,000	
Special Ed Federal	-19,725	
General Education Aid	58,700	
Misc. Local	46,245	(Fees, Admissions, Interest, Grants)
Federal Programs	32,398	
Impact Aid	64,000	
Total Adjustments/Revised Budget	-78,382	9,181,665

<u>06-07 Expenditures (original)</u>	9,290,270	
Adjustments:		
Salary/Benefit Adjustments	-111,416	(Math, Soc St, K-1, 6th Grade, Counselor, Misc)
Severance (3 Additional Retirements)	31,400	(Original budgeted for 3)
Tuition to Schools	-142,000	(State changed tuition process)
MVCC	90,000	(Pre-school teachers/Paras)
Federal Programs	32,398	
PSEO	-15,000	
Unemployment/Workers Comp	-11,000	
Miscellaneous	-11,306	(Supplies, Dues Etc.)
Total Adjustments/Revised Budget	85,092	9,375,362
		-193,697

07-08 Revenues:

06-07 Adjusted Revenues	9,181,665	
07-08 Adjustments:		
Levy (referendum)	411,000	
Levy (MRVED/Unemp adj)	-51,000	
Gen Ed Aid (referendum)	285,000	
Gen Ed Aid (15 less pupils)	-105,000	
Additional Compensatory	60,000	Based on Fall 2006 Free & Reduced Count
Special Ed Aid	-25,000	
CSR (Literacy) Grant	-50,000	
* 2% Gen Ed Increase	118,000	Estimated state increase. (will depend on legislative action)
Total	643,000	9,824,665

07-08 Expenditures:

06-07 Adjusted Expenditures	9,375,362	
** 3% Salaries/Benefits/MVCC	225,000	Based on \$6,000,000 Sal/Ben & \$1,500,000 MVCC Sal/Ben, (For every 1% of increase, the budget will increase approximately \$75,000)
Retiree replacements	-60,000	
Severance payments	-46,700	
Total	118,300	9,493,662
Difference	331,003	

Included are the major revenue and expenditures changes that will affect the unappropriated fund balance.

HAGG 06-07 DATA

Program	06-07 Budget	Comments/Questions
Maintenance	167200	Any custodial shift to GF site? Johnson Controls? Insurance?
School Nurse	4500	
Elementary Principal Office	34200	Secretarial/Supplies etc. savings
Media Center	<u>14100</u>	Para professional/books/magazines etc.
General Fund Total	220000	
Food Service	45730	Any food service shift to GF site?
Capital	6000	One leased computer lab
<hr/>		
Facilities		Projects to come from lease \$?
LEP (Migrants)		Shift time to GF site/ reduce time?
TAG		Shift time to GF site/ reduce time?
*K-6 Regular	450000	Dependent on number of students transferred to Bert Raney
**Special Ed	35635	Dependent on number of students transferred to Bert Raney
**Social Worker	22787	Shift time to GF site/ reduce time?
<u>Revenues</u>		
****General Education Aid	-	Loss dependent on number of students leaving YME
***Lease Dollars	+	Mainly capital revenue
<u>Possible Increases</u>		
Portable units		
Special Ed Tuition		Dependent on special ed students enrolling out of YME
Transportation		Additional Shuttles to GF? (\$10,000 per shuttle)

*Currently the regular education budget is \$450,000 at the Hagg site. If teaching reductions were made, the savings would be less because teachers released would be paid less than some of the staff at Hagg. The \$450,00 includes all instructional budgets (salaries/benefits/supplies/travel, etc.) It does not include the federal programs or grants that we receive 100% back in revenues.

**The special education and social worker amounts are based on the current expenditure budget. The savings would be less than the amount shown because of revenues received back from the state.

***Some of the lease dollars received would go to general fund to cover items like insurance, Johnson Controls, and administrative fees. The remainder (80-85%) would go back into the capital fund balance.

****General Education Aid per pupil (rounded): \$3500 (K), \$7000 (1-3), \$6700 (4-6), \$8200 (7-12)
Does not include referendum dollars (\$581 per pupil unit)

Elementary Enrollments as of 3-12-07 Projected to 07-08

	Bert Raney	Hagg	Total
K	56	16	72
1	49	14	63
2	80	17	97
3	55	16	71
4	50	24	74
5	64	18	82
6	52	12	64
	406	117	523

CCS Enrollment as of 3/28/07 as per Dave Biermeier

K	7
1	10
2	10
3	10
4	15
5	10
6	5
	67

40% Hagg Students Retained for 07-08

	Bert Raney	Hagg	Total
K	56	9	65
1	49	4	53
2	80	7	87
3	55	6	61
4	50	9	59
5	64	8	72
6	52	7	59
	406	50	456

Bert Raney with Current Bert Raney Enrollment Numbers				
K-1	105		105	6 Teachers - Sections of 17 and 18
2	80		80	4 Teachers - Sections of 20
3	55		55	3 Teachers - Sections of 18 and 19
4	50		50	2 Teachers - Sections of 25
5	64		64	3 Teachers - Sections of 21 and 22
6	52		52	2 Teachers - Sections of 26
			406	20 Staff

40% of Hagg Students Staying at Hagg				
K-1 and 2	20		20	1 Teacher of 20
3 and 4	15		15	1 Teacher of 15
5 and 6	15		15	1 Teacher of 15
			50	3 Staff

40% of Hagg Students Staying at Hagg				
K-1 and 2	20		20	1 Teacher of 20
3, 4 and 5	23		23	1 Teacher of 23
				2 Staff
			43	

Bert Raney with Current Hagg 6th grade Enrollment				
K-1	105		105	6 Teachers - Sections of 17 and 18
2	80		80	4 Teachers - Sections of 20
3	55		55	3 Teachers - Sections of 18 and 19
4	50		50	2 Teachers - Sections of 25
5	64		64	3 Teachers - Sections of 21 and 22
6	52	7	59	3 Teachers - Sections of 19 and 20
			413	21 Staff

40% Hagg plus Bert Raney - one site				
K-1	105	13	118	6 Teachers - Sections of 19 and 20
2	80	7	87	4 Teachers - Sections of 21 and 22
3	55	6	61	3 Teachers - Sections of 20 and 21
4	50	9	59	3 Teachers - Sections of 20
5	64	8	72	3 Teachers - Sections of 23 and 24
6	52	7	59	3 Teachers - Sections of 19 and 20
			456	22 Staff



Home of the 'Sting'

YELLOW MEDICINE EAST

Independent School District 2190

Success For All Learners

Superintendent

Dwayne Strand
450 9th Avenue
Granite Falls, MN 56241
320-564-4081 - Phone
320-564-4781 - Fax
dstrand@yme.k12.mn.us

Bert Raney Elementary

Stacy Hinz, Principal
555 7th Avenue
Granite Falls, MN 56241
320-564-4082 - Phone
320-564-4427 - Fax
shinz@yme.k12.mn.us

H.A. Hagg Elementary

Stacy Hinz, Principal
1204 11th Avenue
Clarkfield, MN 56223
320-669-4424 - Phone
320-669-4428 - Fax
shinz@yme.k12.mn.us

High School

Karen Norell, Principal
450 9th Avenue
Granite Falls, MN 56241
320-564-4083 - Phone
320-564-4782 - Fax
knorell@yme.k12.mn.us

Visit us on the web at:

www.yme.k12.mn.us

HAGG ELEMENTARY

2007-2008

As we try to determine what kind of staffing pattern will be needed at Hagg Elementary next fall, the administrative team is suggesting the following:

1. Identify a meeting date between now and the May Board meeting to hold a public meeting for the parents of students currently enrolled at Hagg or parents of preschool children who would be attending Hagg Elementary in the future.
2. At the community meeting, the Board or members from the Board would reiterate their commitment to keeping the site open for the 07-08 school year and into the future as long as enrollment numbers hold steady. Class scenarios (based on various enrollment figures) could be presented. Questions could be asked and answered.
3. Following that meeting, enrollment forms could be sent to all students currently enrolled or eligible to enroll at Hagg. The registration forms would give the District current student numbers of interested families. The letter would also indicate that failure to return the form would indicate to the Board the likelihood that those children would not be attending Hagg Elementary next year. The due date for applications could be set for the first part of May.
4. Using numbers from the returned registrations, the most viable staffing pattern for Hagg for the 07-08 school year could be identified and then approved at the May meeting. This would then give all parents the information many are asking for. At this time, the Board would also affirm that the staffing pattern could and would change based on actual enrollments in the fall.

Food for thought. Further discussion can take place on Monday evening. I think we (as a District) need to be able to say to parents "Based on the number of families indicating that their children will be attending Hagg next fall, this is how that site will be staffed at this time." This then allows them to make informed decisions about what is best for their families for the coming school year.

YELLOW MEDICINE EAST SUPERINTENDENT'S CONTRACT

The School Board of Independent School District No. 2190, Granite Falls, Minnesota (School Board) enters into this agreement with Dwayne Strand, Superintendent, a legally qualified and licensed Superintendent, who agrees to perform the duties of Superintendent of Schools of the School District.

The School District and the Superintendent agree as follows:

I. Applicable Statute:

This contract is entered into between the School District and the Superintendent in conformance with Minn. Statute 123B.143, Subd.1.

II. Licensure

The Superintendent shall furnish throughout the life of this contract a valid and appropriate license to act as Superintendent in the State of Minnesota as provided by applicable state laws, rules and regulations.

III. Duration, Expiration, Termination and Mutual Consent:

1. Duration

This contract is for a term of one year commencing on July 1, 2007 and ending on June 30, 2008. It shall remain in full force and effect unless modified by mutual consent of the School Board and the Superintendent, or unless terminated as provided herein.

2. Subsequent Contract

- a. Notice by Superintendent: The notice provisions of this contract shall obligate the School Board only if no later than September 1 immediately prior to the expiration of this contract the Superintendent provides written notice to each member of the School Board calling to the attention of members of the School Board the notice requirements as contained in this section of the Superintendent's contract; provided that if the Superintendent provides this notice after September 1, the November 1 and December 31 deadlines in subparagraphs b. and e. shall be extended the same number of days that the Superintendent's notice is delayed beyond September 1.
- b. Preliminary Notice—School Board: In the event that School Board is contemplating not offering the Superintendent a subsequent contract, the School Board shall give preliminary written notice of such intent not to offer a subsequent contract no later than November 1 immediately preceding the date of expiration of this contract.
- c. Request for Meeting: Within ten (10) calendar days after receipt of an intent not to renew as provided in Paragraph b. hereof, the Superintendent may request, in writing, a meeting with the School Board to discuss its intentions, the reasons therefore, and ways in which any concerns of the School Board might be addressed by the parties.
- d. Meeting Between the Parties: Upon receipt of such request, the School Board shall within fifteen (15) calendar days hold a meeting with the Superintendent.

- e. Final Action—School Board: The School Board shall delay taking final action on a subsequent contract for at least seven (7) calendar days after the meeting between the parties, however, the School Board shall take final action on a subsequent contract no later than December 31 and shall notify the Superintendent of such action in writing.
- f. Effect: The timeline provided herein is intended to provide both the School Board and the Superintendent with an appropriate process to address the subsequent contract issue and is intended to bind both parties unless the parties mutually agree to extend the timeline in writing. The timeline provided herein may be extended by written agreement between the School Board Chair and the Superintendent. In such event, the School Board Chair shall confer with and notify School Board members, in writing, of such extension.

3. Expiration:

This contract shall expire at the end of the term specified in Section 1 hereof. At the conclusion of its term, neither party shall have any further claim against the other, and the School District employment of the Superintendent shall cease, unless a subsequent contract is entered into in accordance with M.S. 123B.143, Subd. 1.

4. Termination During the Term:

The Superintendent's employment may be terminated during the term of this contract only for cause as defined in M.S. 122A.40, Subds. 9 or 13. Except for purposes of describing grounds for discharge, the provisions of M.S. 122A.40 shall not be applicable. If the School Board proposes to terminate the Superintendent during the contract term for cause as described in M. S. 122A.40, Subd. 9 or 13, it shall notify the Superintendent in writing of the proposed grounds for termination. The Superintendent shall be entitled to a hearing before an arbitrator provided the Superintendent makes such a request in writing within fifteen (15) calendar days after receipt of the written notice of the proposed termination. In such event, the parties shall jointly petition the Bureau of Mediation Services (BMS) for a list of five (5) arbitrators. The arbitrator shall be selected by the parties through the normal striking process as provided by BMS rules. The arbitrator shall conduct a hearing under normal arbitration procedure rules and issue a written decision. The decision of the arbitrator shall be final and binding upon the parties, subject to normal judicial review of arbitration decisions provided by law. The Superintendent may be suspended with pay pending final determination by the arbitrator. If the Superintendent fails to request a hearing as provided herein within the fifteen (15) calendar day period, it shall be deemed acquiescence by the Superintendent of the School Board's proposed action and the proposed action shall become final on such date as determined by the School Board, and the Superintendent shall have no further claim or recourse.

5. Mutual Consent:

This contract may be terminated at any time by the parties by mutual consent.

IV. Duties:

The Superintendent shall have charge of the administration of the schools under the direction of the School Board. The Superintendent shall be the chief executive officer of the School Board; shall direct and assign teachers and other employees of the schools under the Superintendent's supervision; shall organize, reorganize and arrange the administrative and supervisory staff, including the instruction and business affairs, as best serves the School District subject to the approval of the School Board; shall select all personnel subject to the approval of the School Board; shall from time to time suggest policies,

regulations, rules and procedures deemed necessary for the School District, and in general perform all duties incident to the office of the Superintendent and such other duties as may be prescribed by the School Board from time to time. The Superintendent shall abide by the policies, regulations, rules and procedures established by the School Board and the State Board of Education. The Superintendent shall have the right to attend all School Board meetings and all School Board and citizen committee meetings, serve as an ex-officio member of the School Board and all School Board committees and provide administrative recommendations on each item of business considered by each of these groups.

V. Duty Year and Leaves:

1. Basic Work Year:

The Superintendent's duty year shall be for the entire 12-month contract years as provide herein and the Superintendent shall perform services on those legal holidays on which the School District is authorized to conduct school if the School Board so determines. The Superintendent shall be on duty during any emergency, natural or unnatural, unless otherwise excused in accordance with School Board administrative policy.

2. Vacation:

The Superintendent shall earn 20 working days of annual paid vacation each contract year. Unused vacation may be accumulated to a maximum of 40 days. Upon termination of employment, the Superintendent shall be entitled to payment of any unused vacation days accrued and earned pursuant to the provisions of this paragraph.

3. Holidays:

The Superintendent shall be entitled to 9 paid holidays each contract year as designated by the School Board. In a typical year, these days would be New Year's Day, Good Friday, Memorial Day, July 4th, Labor Day, Thanksgiving Day, Christmas Eve Day (if it falls on a Monday through Thursday), Christmas Day, the day after Thanksgiving, and President's Day (if school is not is session).

4. Sick Leave:

The Superintendent shall earn sick leave at a rate of 1 day for each working month, which may be accumulated to a maximum of 90 days. The Superintendent will be credited with unused sick leave as of November 30, 2002.

5. Emergency Leave:

The Superintendent may be granted paid emergency leave during the contract year at the direction of the School Board.

6. Bereavement Leave:

The Superintendent shall be granted bereavement leave for a death within the Superintendent's immediate or close family. The time utilized shall be in a reasonable amount and shall be determined after conferring with the School Board Chair. Days utilized will be deducted from sick leave. Other bereavement leave may be utilized as outlined in the Master Agreement as negotiated by the Education Association.

7. Medical Leave:

- a. The Superintendent and the School District agree to incorporate by reference and be bound by the provisions of M.S. 122A.40, Subd. 12 relating to suspension and leave of absence for health reasons.
- b. If the Superintendent is unable to perform regular duties because of personal illness or disability and has exhausted all sick leave credit available or has become eligible for long term disability compensation and has not been suspended or placed on leave of absence pursuant to M.S. 122.40, Subd. 12, the Superintendent shall, upon request, be granted a medical leave of absence, without pay for up to one year in duration. The School Board may, at its discretion, extend such leave upon written request. A request for medical leave of absence or extension thereof pursuant to this section shall be accompanied by a written statement from a physician outlining the condition of health and estimated time at which the Superintendent is expected to be able to resume normal responsibilities. The Superintendent when on medical leave of absence is eligible to continue to participate in group insurance programs as permitted under the insurance policy provisions, but the Superintendent shall pay the entire premium for such programs as the Superintendent wishes to retain commencing with the beginning of the leave. If medical leave of at least one full year is granted pursuant to this section, the Superintendent voluntarily waives any right to a leave of absence to which the Superintendent might otherwise be entitled pursuant to M.S. 122A.40, Subd. 12.

VI. Insurance

1. Health and Hospitalization and Dental

The School District shall provide the Superintendent with a fully paid single health and hospitalization benefit under the School District's group plan. The School District will also provide a health insurance benefit to the Superintendent's spouse in an amount equal to that which when added to her monthly benefit through the MVCC will provide for a fully paid single health insurance benefit. Should the Superintendent wish to return to a family policy, he will be provided with a benefit no less than that amount being offered to other District administrators.

The School District will provide the Superintendent with a \$1,100.00 dental insurance policy. This amount will be adjusted as the benefit to other District administrators is negotiated.

2. Life Insurance:

The School District shall provide a group term life insurance plan up to \$250,000.00 of coverage for the Superintendent, payable to the Superintendent's named beneficiary, at the expense of the School District.

3. Long Term Disability Insurance:

The School District shall provide, at the School District expense, long term disability coverage for the Superintendent in the School District's group plan.

4. Liability Insurance:

The School District shall provide, at School District expense, liability insurance naming the Superintendent as an insured, along with the School District, in an amount not less than that, which is required by law for the School District.

5. Insurance Deductible Compensation:

The Superintendent will be compensated for vandalism to personal property, up \$500 per incident, for property damage caused by students as it relates to position responsibilities.

6. Claims Against the School District:

The eligibility of the Superintendent, or the Superintendent's dependents or beneficiary, for insurance benefits shall be governed by the terms of the insurance policies purchased by the School District pursuant to this section. It is understood that the School District's only obligation is to purchase the insurance policies described herein, and no claim shall be made against the School District as a result of denial by an insurer of insurance benefits if the School district has purchased the policies and paid the premiums described herein.

VII. Other Benefits:

1. Tax Sheltered Annuities:

The Superintendent will be eligible to participate in a tax sheltered annuity plan through payroll deduction established pursuant to Section 403 (b) of the Internal Revenue Code of 1986, Minnesota Statutes, Section 123B.02, Subd. 15, and 12/9th of the schedule provided in the School District Agreement on a yearly/maximum basis, and as otherwise provided by law.

2. Conferences and Meetings:

The School District shall pay all legally valid expenses and fees for the Superintendent's attendance at professional conferences and meetings with other educational agencies when attendance thereof is required, directed or permitted by the School Board. The Superintendent shall periodically report to the School Board relative to all meetings and conferences attended. The Superintendent shall file itemized expenses statements to be processed and approved as provided by law.

3. Dues:

The Superintendent is encouraged to belong to and participate in appropriate professional educational and civic organizations where such membership will serve the best interests of the School District. Accordingly, the School District will pay such membership dues for organizations as are required, directed, or permitted by the School Board. The Superintendent shall present appropriate statements for approval as provided by law.

VIII. Salary

The Superintendent shall be paid a salary of \$101,987.50 for the 2007-2008 school year. The annual salary may be modified, but shall not be reduced, during the term of this contract. The parties shall endeavor to agree by April 1 of each year on the amount of the salary for the following year. The salary shall be paid in 12 equal installments during the contract year.

IX. Other Provisions:

1. Outside Activities:

While the Superintendent shall devote full time and due diligence to the affairs and the activities of the School District, the Superintendent may serve as a consultant to other School Districts or educational agencies, lecture, engage in writing and speaking activities, and engage in other activities if such activities do not impede the Superintendent's ability to perform the duties of the Superintendency. The Superintendent shall not engage in other employment, consultant service or other activity for which a salary, fee, or honorarium is paid without the prior approval of the School Board.

2. Indemnifications and Provision of Counsel:

In the event that an action is brought or a claim is made against the Superintendent arising out of or in connection with the Superintendent's employment, and the Superintendent is acting within the scope of employment or official duties, the School District shall defend and indemnify to the extent permitted by law. Indemnification, as provided in this section, shall not apply in the case of malfeasance in office or willful or wanton neglect of duty, and the obligation of the School District herein shall be subject to the limitations as provided in Minnesota Statutes, Chapter 466.

3. Severability:

If any provision of this contract is held to be invalid by operation of law the remainder of the shall not be affected thereby and shall remain in full force and effect.

This contract shall be effective only upon signatures of the Superintendent and of the officers of the School Board after authorization for such signatures by the officers is given by the School Board in appropriate action in its minutes.

IN WITNESS HEREOF, I have subscribed my signature this 9th day of April 2007.

Superintendent Signature:

Dwayne Strand

Chairperson:

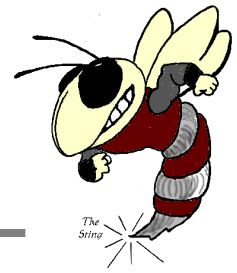
Elmo Volstad

Clerk:

Cheryl Eckhardt

YELLOW MEDICINE EAST – ISD 2190

Dwayne A. Strand, Superintendent
450 9th Avenue - Granite Falls, MN 56241
Phone: 320-564-4081 - Fax: 320-564-4781



Superintendent Goals for 2007-2008

1. Support the continued development of YME as a safe and welcoming environment by striving to increase the appreciation for the differences, diversity and respect of others.
2. Support the continued implementation of best practices with regard to literacy instruction K-8 and reading across the curriculum.
3. Support the continued use of data to drive differentiated instruction.
4. Work with local districts and state agencies and legislators to continue to promote quality education and services for our students.
5. Work to complete updating the district policies and job descriptions.
6. Improve communication between the Board and the Superintendent.
7. Improve sensitivity to the needs of staff and the community.

YME HIGH SCHOOL
Karen Norell, Principal
450 9th Avenue
Granite Falls, MN 56241
Phone: 320-564-4083
Fax: 320-564-4782

BERT RANEY ELEMENTARY
Stacy Hinz, Principal
555 7th Avenue
Granite Falls, MN 56241
Phone: 320-564-4082
Fax: 320-564-4427

H.A. HAGG ELEMENTARY
Stacy Hinz, Principal
1204 11th Avenue
Clarkfield, MN 56223
Phone: 320-669-4424
Fax: 320-669-4828

1659 8th Ave.
Granite Falls, Minnesota 56241
March 30, 2007

Mr. Strand and Yellow Medicine East School Board
Yellow Medicine East Schools
450 9th Ave.
Granite Falls, Minnesota 56241

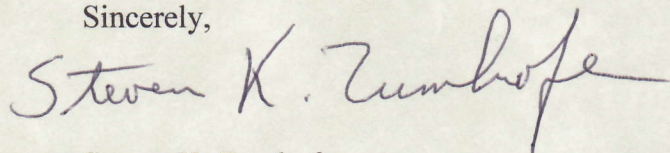
Dear Mr. Strand and Yellow Medicine East School Board:

After teaching for one year in the Chisago Lakes School District and for thirty-three years in the Yellow Medicine East School District, I have decided that it is my time to leave the teaching profession. I will hit the Rule of 90 on September 17, 2007, when I turn fifty-six and will have taught for thirty-four years. Therefore, I am resigning from my position as an English and speech instructor and as the one-act play director for Yellow Medicine East High School effective September 16, 2007.

I wish to express my sincere gratitude to the Granite Falls School District, the Granite Falls-Clarkfield School District, the Granite Falls-Clarkfield-Echo School District, and finally the Yellow Medicine East School District for allowing me to fulfill my profession with your students. I can think of no other school I would rather teach at. I can think of no other students I would rather teach. Over my thirty-four years, I have worked under a number of outstanding superintendents and a number of outstanding principals, and I have had the honor of working with probably well over one hundred fellow teachers, many of whom I regard as simply the best at what they do. I will miss all of these people. I will miss the support staff who have been so helpful every day – I could not have done my job without them. But most of all, I am truly going to miss the outstanding students who have attended this school over the years. People on the street often ask me, “Aren’t these kids different today? Aren’t they a lot harder to work with? I don’t know how you teachers do it.” My response every time has been, “Yes, the students are different, but they are the coolest people walking the halls of Yellow Medicine East every day. The kids are great!” They are the ones I will truly miss.

I will work with Mr. Strand and Ms. Norell to fulfill my obligations to the school district and to work out a smooth exit from the school. Thank you very much once again for thirty-four very memorable years of my life.

Sincerely,



Steven K. Zumhofe
English – Speech Instructor
One-Act Play Director

March 13, 2007

Dwayne Strand, Superintendent
Yellow Medicine East Schools
450 9th Avenue
Granite Falls, Minnesota 56241

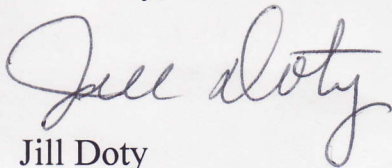
To: Mr. Strand, Superintendent
Members of the Yellow Medicine East School Board

This letter is notice of my pending retirement on May 31, 2007. After eighteen years with the Yellow Medicine East Schools, I have decided I will be retiring. I have enjoyed working with students over the years and have been personally and professionally challenged and rewarded.

I wish to resign contingent upon receiving severance as outlines in Article XI, Section 2, Subd. 4 of the Master Agreement which states that the balance of my severance pay under the deferred compensation plan will be paid by the Yellow Medicine East School District to the Minnesota Post Retirement Health Care Savings Plan to my personal account. In Section 4, Subd. 1 of Article XI states that I remain eligible for the single insurance benefit of \$200.00 per month upon retirement until eligible for Medicare. It is also my intention to retain eligibility for any legislative or district incentive that may be enacted to benefit those retiring in the 2006-2007 school year.

Thank you for the opportunity to work with a great staff of professionals, students, and families of the Yellow Medicine East District.

Sincerely,

A handwritten signature in cursive script that reads "Jill Doty".

Jill Doty

Cc. Dwayne Strand, Superintendent
Yellow Medicine East Schools

March 22, 2007

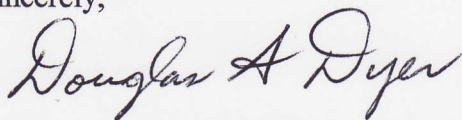
Dwayne Strand, Superintendent
Yellow Medicine East Schools
450 9th Avenue
Granite Falls, Minnesota 56241

To: Dwayne Strand, Superintendent
Members of Yellow Medicine East School Board

This letter is notice of my pending retirement on May 31, 2007.

I wish to resign contingent upon receiving severance as outlined in Article XI, Section 2, Subd. 2 of the Master Agreement. This article states that if the District's total contribution to such a teacher's deferred compensation plan is less than the maximum School District Match of \$22,500 (calculated based on years of service), the teacher is eligible to receive the balance of the maximum School District match to be placed in the Minnesota Post Retirement Health Care Saving Plan (PRHCSP) established under Minn. Statutes, 352.98 and as outlined in the Minnesota State Retirement System's Trust and Plan Documents. And according to Section 4, Subd. 1. of Article XI, that I remain eligible and receive the single insurance benefit of \$200.00 per month upon retirement until eligible for Medicare. It is also my intention to retain eligibility for any legislative or district incentive that may be enacted to benefit those retiring in the 2006-2007 school year.

Sincerely,



Douglas A. Dyer, Social Studies Instructor
Yellow Medicine East Schools

Cc: Karen Norell, Principal
Yellow Medicine East Schools

March 30, 2007

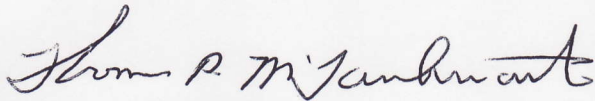
Dwayne Strand, Superintendent
Yellow Medicine East Schools
450 9th Ave.
Granite Falls, Minnesota 56241

To: Dwayne Strand
Members of the Yellow Medicine East School Board

This is a notice of my pending retirement on June 30, 2007.

I wish to resign contingent upon receiving severance as outlined in Article XI, Section 2, and Subd. 2 of the Master Agreement. This article states that if the District's total contribution to such a teacher's deferred compensation plan is less than the maximum School District Match of \$22,500 (calculated based on years of service), the teacher is eligible to receive the balance of the maximum School District match to be placed in the Minnesota Post Retirement Health Care Savings Plan (PRHCSP) established under Minn. Statutes, 352.98 and as outlined in the Minnesota State Retirement System's Trust and Plan Documents. And according to Section 4, Subd. 1 of Article XI, that I remain eligible and receive the single insurance benefit of \$200 per month upon retirement until eligible for Medicare. It is also my intent to remain eligible for any legislative or district incentive that may be enacted to benefit those retiring in the 2006-2007 school year.

Sincerely



Thomas P. McGarthwaite
Yellow Medicine East Schools

March 31, 2007

Dwayne Strand, Superintendent
Yellow Medicine East School District
450 9th Avenue
Granite Falls, MN 56241

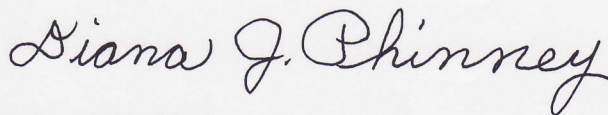
Dear Mr. Strand and the YME Board of Education,

This letter is a notice of my Pending retirement on May 31, 2007 in the event that the Memorandum of Understanding for Extended Leave of Absence does not occur.

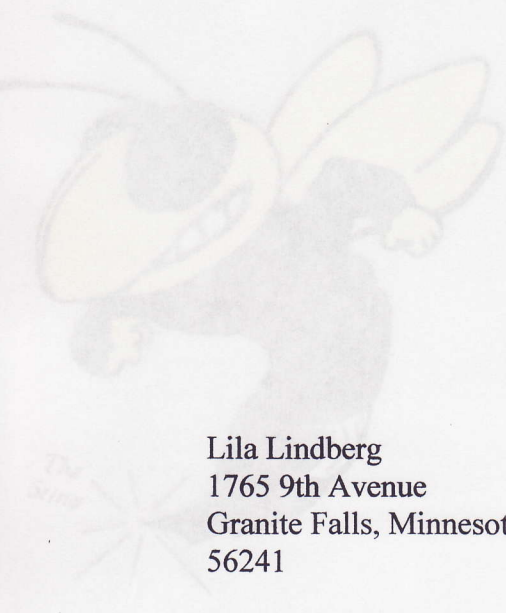
I wish to resign contingent upon receiving severance pay as outlined in Article XI, Section 2, Subdivision 2 of the Master Contract. I would like the remaining money (from the maximum original match of \$22,500) to be placed in the Minnesota Post Retirement Health Care Savings Plan. According to Section 4, Subdivision 1 of Article XI, I will remain eligible to receive the single insurance benefit of \$200 per month upon retirement until I become eligible for Medicare. Also I want to stay with the dental plan and pay the monthly premiums. It is my intention to retain eligibility for any legislative or district incentive that may be enacted to benefit those retiring in the 2006-2007 school year.

Thank you for employing me twice in my career as a teacher in this school district. In my 26 years of teaching, I have always worked hard to do my best, to provide my students with, what is good for kids, and to make a difference in their future as they grow and learn. I hope you will continue to provide what it takes to give our district's children a good education for the future.

Sincerely,



Diana J. Phinney
Elementary Teacher



Lila Lindberg
1765 9th Avenue
Granite Falls, Minnesota
56241

March 23, 2007

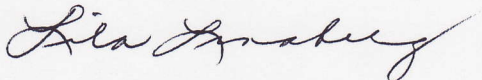
Dwayne Strand
Superintendent of Schools
Yellow Medicine East School District
450 9th Avenue
Granite Falls, Minnesota
56241

Dear Mr. Strand:

Please accept this letter as notification that I will be resigning on May 31st.

I have been with the school as a teacher in a variety of capacities in the Yellow Medicine district since 1965. Many opportunities presented themselves to me to broaden my expertise working with children and my professional development.

Sincerely,



Lila Lindberg

Member _____ Introduced the following resolution and moved its adoption:

**RESOLUTION RELATING TO THE TERMINATION
AND NONRENEWAL OF THE TEACHING CONTRACT
OF _____ A PROBATIONARY TEACHER.**

WHEREAS, _____ is a probationary teacher in Independent School District No. 2190.

BE IT RESOLVED, by the School Board of Independent School District No. 2190, that pursuant to Minnesota Statutes 122A.40, Subdivision 5, that the teaching contract of _____, a probationary teacher in Independent School District No. 2190, is hereby terminated at the close of the current 2006-2007 school year.

BE IT FURTHER RESOLVED that written notice be sent to said teacher regarding termination and non-renewal of her contract as provided by law, and that said notice shall be in substantially the following form:

NOTICE OF TERMINATION
AND NON-RENEWAL

DATE

NAME

ADDRESS

CITY, STATE ZIP

Dear NAME:

You are hereby notified that at a regular meeting of the School Board of Independent School District No. 2190 held on April 9, 2007, a resolution was adopted by a majority roll call to vote to terminate your contract effective at the end of the current school year and not to renew your contract for the 2007-2008 school year. Said action of the Board is taken pursuant to M.S. 122A.40, Subd.5.

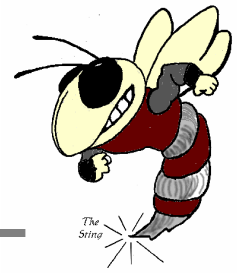
You may officially request that the School Board give its reasons for the non-renewal of your teaching contract. For your information, however, this action is taken because of a decrease in enrollment and curtailment of programs.

Yours very truly,

SCHOOL BOARD OF YELLOW MEDICINE EAST
INDEPENDENT SCHOOL DISTRICT #2190

YELLOW MEDICINE EAST – ISD 2190

Dwayne A. Strand, Superintendent
450 9th Avenue - Granite Falls, MN 56241
Phone: 320-564-4081 - Fax: 320-564-4781



April 10, 2007

Corissa Sands
110 South 4th Street – Apartment # 206
Marshall, MN 56258

Dear Corissa:

You are hereby notified that at a regular meeting of the School Board of Independent School District No. 2190 held on April 9, 2007, a resolution was adopted by a majority roll call to vote to terminate your contract effective at the end of the current school year and not to renew your contract for the 2007-2008 school year. Said action of the Board is taken pursuant to M.S. 122A.40, Subd.5.

You may officially request that the School Board give its reasons for the non-renewal of your teaching contract. For your information, however, this action is taken because of a decrease in enrollment and curtailment of programs.

Yours very truly,

SCHOOL BOARD OF YELLOW MEDICINE EAST
INDEPENDENT SCHOOL DISTRICT #2190

Cheryl Eckhardt
Clerk of the School Board

YME HIGH SCHOOL
Karen Norell, Principal
450 9th Avenue
Granite Falls, MN 56241
Phone: 320-564-4083
Fax: 320-564-4782

BERT RANEY ELEMENTARY
Stacy Hinz, Principal
555 7th Avenue
Granite Falls, MN 56241
Phone: 320-564-4082
Fax: 320-564-4427

H.A. HAGG ELEMENTARY
Stacy Hinz, Principal
1204 11th Avenue
Clarkfield, MN 56223
Phone: 320-669-4424
Fax: 320-669-4828

YELLOW MEDICINE EAST – ISD 2190

Dwayne A. Strand, Superintendent
450 9th Avenue - Granite Falls, MN 56241
Phone: 320-564-4081 - Fax: 320-564-4781



April 9, 2007

Trevor Schulte
1090 Bergeson Drive
Granite Falls, MN 56241

Dear Trevor:

This is to notify you that the following position has become available:

- 1.0 FTE English position

Our records indicate that you are properly licensed to fill this vacancy and have reinstatement rights to this position.

Please advise the School District in writing, which must be received in the School District office within 10 days of receipt of this letter, whether you will assume the duties of this position. The Board has determined that the duties of the position commence on August 27, 2007.

While you have every right to use the full 10 days to make your decision, if you make your decision earlier, a prompt reply would be appreciated by the School District and by others who may be affected by your decision.

If you should have any questions, please contact me.

Sincerely,

Dwayne Strand
Superintendent of Schools

YME HIGH SCHOOL
Karen Norell, Principal
450 9th Avenue
Granite Falls, MN 56241
Phone: 320-564-4083
Fax: 320-564-4782

BERT RANEY ELEMENTARY
Stacy Hinz, Principal
555 7th Avenue
Granite Falls, MN 56241
Phone: 320-564-4082
Fax: 320-564-4427

H.A. HAGG ELEMENTARY
Stacy Hinz, Principal
1204 11th Avenue
Clarkfield, MN 56223
Phone: 320-669-4424
Fax: 320-669-4828

MEMORANDUM OF UNDERSTANDING OPPORTUNITY FOR EXTENDED LEAVE OF ABSENCE

The School Board of Independent School District No. 2190, Yellow Medicine East, will grant a one-time opportunity to teachers interested in making application for an extended leave of absence. Teachers making application must have completed at least ten (10) years of teaching service in the School District by the end of the 2006-2007 school year and be at least 50 years of age by August 15, 2007.

REQUIREMENTS AND RESTRICTIONS

1. The incentive plan is available to both full and part time teachers and is only in effect for the designated period during the 2006-2007 school year.
2. The incentive plan is available for all teachers who meet the plan's eligibility requirements and whose application is received in the District Office prior to **3:30 p.m. on May 14, 2007**.
3. To be eligible for the extended leave of absence incentives, the teacher must have completed ten (10) full years of teaching experience in Independent School District No. 2190 by June 30, 2007 and be at least 50 years of age by August 15, 2007.
4. Teachers must be actively teaching for Independent School District No. 2190 during the 2006-2007 school year and have completed the 2006-2007 school year.
5. Independent School District No. 2190 makes no representations as to whether a teacher who is placed on an extended leave of absence will receive credit for TRA benefits. It is the individual teacher's responsibility to ascertain TRA benefits and eligibility. The School District will assist in the completion and submittal of the required paperwork.
6. Appropriate statutory language for M.S. 122A.46 applies for teachers requesting an extended leave of absence.

EXTENDED LEAVE OF ABSENCE PLAN

1. Teachers, both full and part-time, who are eligible must submit a request for an extended leave of absence from the School District. This leave must begin with the 2007-2008 school year and be received in the District Office by May 14, 2007. The School Board will consider Extended Leave of Absence requests of three (3) to five (5) years in duration.
2. For an eligible teacher, who is granted an extended leave of absence, the School District will pay the teacher's contribution and the employer's contributions to TRA for a period of up to five (5) years. The payment will be calculated on the full 06-07 TRA salary. This salary amount includes both the base salary and any supplemental salary paid during the 2006-2007 school year. The payments will be made on a monthly basis.

3. An eligible teacher who is granted an extended leave of absence under this offering will also be eligible to continue participation in the School District's group health and hospitalization insurance program provided the teacher requests the coverage. The payment shall be in an amount of up to \$7,600.00 per year. The teacher may choose the policy - family or single - and the deductible. Again, these payments will be made on a monthly basis.
4. Any teacher who chooses to retire during their extended leave of absence in accordance with this Memorandum of Understanding and who meets the eligibility requirements for retirement benefits as provided in Article XI of the Master Agreement, shall receive all retirement benefits pursuant to Article XI of the Master Agreement.

OTHER REQUIRMENTS AND RESTRICTIONS

1. The benefits will be prorated for teachers who are contracted for less than full time during the 2006-2007 school year.
2. If retiring during the extended leave agreement, the monthly extended leave incentives will immediately cease to be paid by the School District (on the effective date the retirement/resignation.)
3. If the teacher returns to teach in the School District during or at the end of the Extended Leave of Absence, the teacher will be required to reimburse all funds paid on the employees behalf during the leave and will not be eligible for continued benefits under this early retirement incentive plan. Payment shall be in full prior to the start of the school year in which the employee is returning. If payment is not received in full prior to the start of the school year, the reimbursement will be made through payroll deductions as agreed upon by both the teacher and the School District, until the full amount is repaid to the School District.
4. This offer expires on May 14, 2007.
5. This offer does not constitute a reopening of the Agreement or negotiations.
6. This offer shall not be construed as a past practice.

IN WITNESS WHEREOF, the parties have executed this Memorandum of Understanding.

YELLOW MEDICINE EAST
EDUCATION ASSOCIATION

INDEPENDENT SCHOOL DISTRICT
NO. 2190, GRANITE FALLS, MN

By: _____
Its President

By: _____
Its Chairperson

By: _____
Its Secretary

By: _____
Its Clerk



Yellow Medicine East 2007-2008 School Calendar

The school day will begin at **8:25** am & end at **3:10** pm



July 2007						
S	M	T	W	T	F	S
1	2	3	4	5	6	7
8	9	10	11	12	13	14
15	16	17	18	19	20	21
22	23	24	25	26	27	28
29	30	31				

August 2007						
S	M	T	W	T	F	S
			1	2	3	4
5	6	7	8	9	10	11
12	13	14	15	16	17	18
19	20	21	22	23	24	25
26	27	28	29	30	31	

September 2007						
S	M	T	W	T	F	S
						1
2	3	4	5	6	7	8
9	10	11	12	13	14	15
16	17	18	19	20	21	22
23	24	25	26	27	28	29
30						

October 2007						
S	M	T	W	T	F	S
	1	2	3	4	5	6
7	8	9	10	11	12	13
14	15	16	17	18	19	20
21	22	23	24	25	26	27
28	29	30	31			

November 2007						
S	M	T	W	T	F	S
				1	2	3
4	5	6	7	8	9	10
11	12	13	14	15	16	17
18	19	20	21	22	23	24
25	26	27	28	29	30	

December 2007						
S	M	T	W	T	F	S
						1
2	3	4	5	6	7	8
9	10	11	12	13	14	15
16	17	18	19	20	21	22
23	24	25	26	27	28	29
30	31					

August 27-30 Inservice Days
 September 4 First Day of School
 October 16 Early Out
 October 17 Inservice Day
 October 18 & 19 EM Break
 November 2 End of 1st Quarter – 41 Days
 November 5 Late Start
 November 21 Inservice Day
 November 22 & 23 Thanksgiving Break
 Dec. 24 – Jan. 1 Christmas Break
 January 18 End of 2nd Quarter – 45 Days
 January 21 Inservice Day
 January 22 Late Start
 February 13 Early Out
 February 14 Inservice Day
 February 15 Comp Day – No School
 February 18 Presidents Day
 March 19 Early Out
 March 20 Inservice Day
 March 21-24 Easter Break
 March 28 End of 3rd Quarter – 43 Days
 April 18 Early Out
 May 2 Early Out
 May 3 Prom
 May 26 Memorial Day
 May 29 End of 4th Quarter – 42 Days
 May 30 Early Out
 May 30 Inservice Day
 June 2 Inservice Day

January 2008						
S	M	T	W	T	F	S
		1	2	3	4	5
6	7	8	9	10	11	12
13	14	15	16	17	18	19
20	21	22	23	24	25	26
27	28	29	30	31		

February 2008						
S	M	T	W	T	F	S
					1	2
3	4	5	6	7	8	9
10	11	12	13	14	15	16
17	18	19	20	21	22	23
24	25	26	27	28	29	

March 2008						
S	M	T	W	T	F	S
						1
2	3	4	5	6	7	8
9	10	11	12	13	14	15
16	17	18	19	20	21	22
23	24	25	26	27	28	29
30	31					

April 2008						
S	M	T	W	T	F	S
		1	2	3	4	5
6	7	8	9	10	11	12
13	14	15	16	17	18	19
20	21	22	23	24	25	26
27	28	29	30			

May 2008						
S	M	T	W	T	F	S
				1	2	3
4	5	6	7	8	9	10
11	12	13	14	15	16	17
18	19	20	21	22	23	24
25	26	27	28	29	30	31

June 2008						
S	M	T	W	T	F	S
1	2	3	4	5	6	7
8	9	10	11	12	13	14
15	16	17	18	19	20	21
22	23	24	25	26	27	28
29	30					

- First/Last Day of School
- Inservice Day
- Vacation Day
- Early Out
- Late Start
- Comp Day
- End of Quarter

Up to two days may be used for Parent-Teacher Conferences and will be scheduled by the administrators. The first day missed for inclement weather will not be made up. All other days missed for storms or other emergencies will be made up at the end of the year. The board reserves the right to amend or adjust the calendar.



ATHLETIC DEPARTMENT PROPOSAL

In order to simplify the ordering process and take advantage of the performance reputation of Nike products, the school and Nike agree as follows:

The school shall be able to purchase all Nike footwear and equipment at 30% off suggested retail prices and 35% off all Nike apparel, with the exception of game day uniforms. (Due to the custom nature of uniforms, no actual suggested retail pricing exists. Prices will have to be negotiated by sport at the time of purchase. Nike will attempt to get as close as possible to the apparel discount mentioned above.)

Nike uniforms will be purchased during the normal buying cycle for each sport.

All purchases will be made through a retailer mutually agreed upon, who is in good standing with Nike Team Sports. School is to pay freight charges.

- * Each coach on staff will be given a pair of shoes and a coaches polo. Additional product rebates will be made available on a by sport basis when uniforms are purchased.

OR

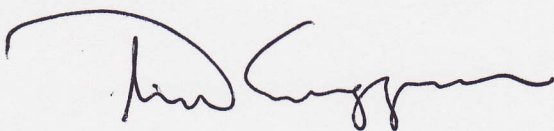
A product rebate fund will be set up for use by the Athletic Director. Product value will equal x % of total purchases.

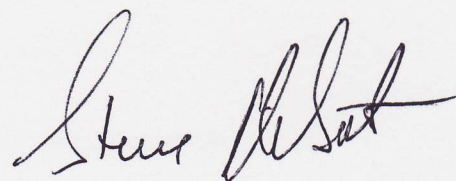
All athletic programs will exclusively wear Nike footwear, apparel, and equipment. State or conference ball adoptions excepted.

All coaches and teams should wear Nike apparel and footwear in practice, competitions, clinics, sports camps, or any sports related appearance on behalf of the school.

Existing agreements with other manufacturers will be discussed and resolved as to rollover dates into the Nike agreement.

This period of this agreement would be three years starting July 2007


3-26-07


3-26-07

Perceptions of Race and Ethnicity

1. Introduction and Instructions

This survey addresses issues that have not been examined in the other surveys you have taken. Please take the time needed to thoughtfully answer each question and be as truthful as possible. This survey is completely confidential; NO ONE WILL KNOW YOUR NAME!

*** 1. How old are you?**

- 11
- 12
- 13
- 14
- 15
- 16
- 17
- 18
- 19

*** 2. What grade are you in?**

- 6th
- 7th
- 8th
- 9th
- 10th
- 11th
- 12th

*** 3. How many years have you attended school in this district?**

- 1-3 Years
- 4-6 Years
- 7-9 Years
- 9+ Years

*** 4. Would you PRIMARILY describe yourself as:**

- American Indian/Alaska Native
- Asian
- African American
- Hispanic or Latino
- Native Hawaiian or Pacific Islander

White

* 5. What is the language spoken MOST OFTEN in your home? (Choose one)

- English
- Spanish
- Dakota
- Hmong
- Other
- Other (please specify)

* 6. Is another language spoken in your home?

- Yes
- No

* 7. If you answered yes to question #6, what language is it?

- English
- Spanish
- Dakota
- Hmong
- Other (please specify)

* 8. From what you've experienced or seen in school, please rate relations/relationships between ETHNIC MINORITY students and WHITE students overall.

- Excellent
- Good
- Fair
- Poor
- Bad

* 9. How often is your response to question #8 true?

- All the time
- Often
- Sometimes

* 10. From what you've experienced or seen in school, please rate relations/relationships between ETHNIC MINORITY students and TEACHERS

overall.

- Excellent
- Good
- Fair
- Poor
- Bad

* **11. How often is your response to question #10 true?**

- All the time
- Often
- Sometimes

* **12. From what you've experienced or seen in school, please rate relations/relationships between WHITE students overall.**

- Excellent
- Good
- Fair
- Poor
- Bad

* **13. How often is your response to question #12 true?**

- All the time
- Often
- Sometimes

* **14. From what you've experienced or seen in school, please rate relations/relationships between WHITE students and TEACHERS overall.**

- Excellent
- Good
- Fair
- Poor
- Bad

* **15. How often is your response to question #14 true?**

- All the time
- Often
- Sometimes

*** 16. How many times a week does your family usually eat dinner together? (Check one)**

- 1
- 2
- 3
- 4
- 5
- 6
- 7

*** 17. Who do you live with? (check one)**

- Both Parents
- Mother Only
- Father Only
- Adoptive Parents
- Father and Stepmother
- Mother and Stepfather
- Father and Girlfriend
- Mother and Boyfriend
- Sometimes Mother, Sometimes Father
- Girlfriend/Boyfriend
- Grandparents or Other Relatives
- Other (please specify)

*** 18. Do you worry about your family's financial well-being>**

- Yes
- No

*** 19. If you answered yes to question #18, how often do you worry?**

- All the time
- Often
- Sometimes
- Rarely

*** 20. Do you plan to attend college?**

- Yes
- No

* **21. If you plan to attend college, are you the first one to do so in your family?**

Yes

No

* **22. What is the highest level of schooling your Father reached? (Check one)**

Attended High School but did not graduate

Graduated from High School

Vocational or Technical School

Some college

College degree or beyond

Don't know

* **23. What is the highest level of schooling your Mother reached? (Check one)**

Attended High School but did not graduate

Graduated from High School

Vocational or Technical School

Some college

College degree or beyond

Don't know

* **24. Have your parents encouraged you to think about college?**

Yes

No

* **25. Are your parents actively involved in your college planning?**

Yes

No

* **26. Do you think your parents expect you to go to college?**

Yes

No

Don't know

* **27. Is there an influential adult in your life other than your parent/s who has been a mentor to you and who has encouraged you?**

Yes

No

* **28. If you answered yes to question # 27, who are they? (Check one)**

- Relative
- Friend
- Teacher
- YME Staff Member
- Other

* **29. Do you feel welcome and accepted at YME?**

- Always
- Sometimes
- Rarely
- Never

* **30. Do you feel a sense of belonging at YME?**

- Always
- Sometimes
- Rarely
- Never

* **31. If you are an ethnic minority (Hispanic, American Indian, etc.), do you feel that your classmates understand (or want to understand) your culture and traditions?**

- Always
- Sometimes
- Rarely
- Definitely Not Ever

* **32. If you are white, do you feel that your classmates who are ethnic minorities understand (or want to understand) your culture and traditions?**

- Always
- Sometimes
- Rarely
- Definitely Not Ever

* **33. Do you take care of younger siblings or others on a regular basis?**

- Yes
- No

* 34. If you answered yes to question #33, how often do you do so?

- Daily
- 2-4 Days/Week
- 1-2 Days/Week
- Monthly

35. Are you paid for this or any other chores at home?

- Yes
- No

36. Do you work at a regular job outside of school for pay?

- Yes
- No

* 37. Do members of your extended family live with you (grandparents, uncles, aunts, cousins)?

- Yes
- No

* 38. Is getting a good education at YME or in the future important to you?

- Definitely
- Maybe
- Not At All

* 39. Do you believe that students of all ethnicities should be treated with respect?

- Definitely
- Sometimes
- Not At All

* 40. Do you believe that you treat all students with respect?

- Definitely
- Sometimes
- Not Often Enough
- Not At All

* 41. Do you believe you are treated with respect?

- Yes
- No

* 42. Do you feel there is racism at YME?

- Definitely
- Sometimes
- Hardly Ever
- Never

* 43. Do you believe that people can work together to overcome racism?

- Definitely
- Sometimes
- Rarely
- Never

* 44. Do you support the development of multicultural education within the YME curriculum? (Adding multicultural curriculum would mean that accurate lessons about other ethnic groups' history, culture, language and politics would be incorporated into regular course curriculum.)

- Yes
- No

* 45. Do you feel at ease interacting at school with students of another ethnicity?

- Always
- Sometimes
- On Rare Occasions
- Never

* 46. Do you participate in sports or extra-curricular activities at YME?

- Yes
- No

* 47. If so, please check all that apply:

- Drama
- Sports
- Choir
- After School Program
- Band
- Marching Band
- Intramural Sports

- Knowledge Bowl
- Spelling Bee
- Geography Bee
- Student Newspaper
- Yearbook
- Other
- Other (please specify)

Done >>

SHARE Project Update



April 2007, Volume # 11

Happenings

The SHARE Coordinating Council will be meeting at 11:30, Wednesday, April 11, at the Blue Heron in Willmar.

SHARE Advisor/Liaisons will be meeting at 9:00 Friday April 13 at the Blue Heron in Willmar.

School Safety: Psychology of a Shooter, training will be held April 10 at the Holiday Inn in Willmar. You need to have registered to attend.

The school survey results reported in this newsletter are selected questions from surveys teachers of grades 1, 3, 5, 7, 9, and 11 completed in May 2006 and are compared to surveys completed in March 2005. The percentages are the responses indicated in parenthesis.

The SHARE website now has a Parent Tips page and a Myths and Facts page. The information comes from Connect with Kids and will address various concerns. This month is on drinking and driving.

Incredible Years Program

One of the programs that funding is provided for through the SHARE Project is the Incredible Years Program. This is an evidenced based program that has been utilized for several years by early childhood and public health agencies in the PACT 4 area.

Incredible Years has two long-range goals. The first goal is to develop comprehensive treatment programs for young children with early onset conduct problems. The second goal is the development of cost-effective, community-based, universal prevention programs that all families and teachers of young children can use to promote social competence and to prevent children from developing conduct problems in the first place. The purpose of the series is to prevent delinquency, drug abuse, and violence. The short-term goals of the series are to:

Reduce conduct problems in children:

- Decrease negative behaviors and noncompliance with parents at home.
- Decrease peer aggression and disruptive behaviors in the classroom.

Promote social, emotional, and academic competence in children:

- Increase children's social skills.
- Increase children's understanding of feelings.
- Increase children's conflict management skills and decrease negative attributions.
- Increase academic engagement, school readiness, and cooperation with teachers.

The initial training for facilitators in our area was done through the Project SUCCEED grant. The SHARE Project is providing \$5000 to each of the four public health agencies to do two series of classes a year. In setting up these classes one of the issues that arose was the lack of facilitators in the area as many of those trained through Project SUCCEED have moved or changed jobs. It was decided by the coordinating council and approved by the federal project officer to fund another training for facilitators. The training is scheduled for May 23, 24, and 25 and is limited to 20 participants who agree to do at least one series of classes a year in their local area. For further information on the training you can contact either Rick Loseth from PACT 4 or your county public health agency.



Teacher Surveys

* During your most recent full week of teaching at this school, how often did you have to interrupt your designated class to deal with student misbehavior or disruption? (A lot or Often responses)

2005 - 29.6% 2006 - 27.1%

* Students in my class control their tempers in conflict situations with peers. (Strongly agree or Agree Responses)

2005 - 80% 2006 - 77.8%

* Students in my class compromise in conflict situations by changing their ideas to reach agreement. (Strongly agree or Agree Responses)

2005 - 58.1% 2006 - 57.2%

* Students in my class respond appropriately when pushed or hit by other children. (Strongly agree or Agree Responses)

2005 - 43.5% 2006 - 49.6%

* Students in my class get along with people who are different. (Strongly agree or Agree Responses)

2005 - 76.7% 2006 - 78.1%

* During the past 30 days, have you observed students bullying in your designated class? (Yes Responses)

2005 - 41.6% 2006 - 50.7%

* During the past 30 days, have you observed students fighting in your designated class? (Yes Responses)

2005 - 21.5 % 2006 - 26.7%

THANK YOU!

To all the school staff and students who took the time out of their busy schedules to complete the SHARE surveys this past month. These surveys not only provides important information to give to the federal agencies on the SHARE Project, but also gives valuable information back to individual school districts that they can use in addressing needs.

SHARE Website link - www.pact4.org

Check out the website to keep updated on SHARE. School Liaisons have contributed articles to the website. You are encouraged to contribute articles on activities and happenings in your school through Safe Schools/Healthy Students.

Upcoming Events and Activities

Event	Date	Location	Time
MAASFEP Conference	April 18-20, 2007	Minneapolis	
Prom	April 28, 2007	District	
Early Out	May 4, 2007	District	1:15 PM
ESL Coordinators Meeting	May 3-4, 2007	St. Paul	
School Board Meeting	May 14, 2007	District	7:00 PM