

**YELLOW MEDICINE EAST ISD 2190
REGULAR BOARD MEETING
MARCH 12, 2007 @ 7:00 PM
LOCATION: YME HIGH SCHOOL BOARD ROOM**

AGENDA

1. **Call to Order** 3
2. **Approval of Agenda**
3. **Approval of February 12, 2007 Meeting Minutes** 4
4. **Opportunity for Citizens to Speak**
5. **Reports**
 - A. **Special Reports**
 1. Winter Activities Report
Presenter: Winter Coaches
 2. Community Education /Activities Update 6
Presenter: Tim Knapper
 3. Computer Lease Options 8
Presenter: Karen McCoy
 - B. **Financial Reports**
 1. Approval of Bills 12
 2. Fund Balance Report 27
 3. Enrollment Report 28
 4. Food Service Report 29
 - C. **Principal and Staff Development Reports**
 1. Curriculum & Staff Development Report
Presenter: Yvonne Sorenson
 2. Elementary Report
Presenter: Stacy Hinz
 3. High School Report
Presenter: Karen Norell
 - D. **Board/Committee Reports**
 1. Facilities Strategic Planning Committee Report
 2. Negotiation Committee Report
 3. RCW/MACCRA Y/YME Meeting Report
6. **Policy Updates**
7. **Personnel Items** 30
 - A. Leave of Absence - L. Tebben
 - B. Kitchen Helper - J. Luepke

8.	Consent Items	31
	A. 2007-2008 SW/WC Service Contracts	32
9.	Action Items	35
	A. Extended Leave/Early Retirement Incentive	36
	B. Computer Lease Agreement	
	C. 2006-2007 Calendar Change	38
10.	Discussion Items	39
	A. Superintendent Evaluation	
	B. Superintendent Contract	
	C. School Choice Survey	40
	D. 2007-2008 School Calendar	44
11.	Correspondence	46
	A. Boardcaster - MSBA's New Day at the Capitol	47
	B. Governor's Recommended Budget for 07-08	49
12.	Upcoming Events & Activities	51
13.	Adjourn	

YELLOW MEDICINE EAST – ISD 2190

Dwayne A. Strand, Superintendent
450 9th Avenue - Granite Falls, MN 56241
Phone: 320-564-4081 - Fax: 320-564-4781



To: School Board Members
From: Dwayne
RE: March Board Meeting
Date: March 8, 2007

The agenda, agenda notes and supporting exhibits for the March 12th meeting are provided here for your review prior to the meeting.

As always, if you have questions or would like additional information for Monday night, please do not hesitate to contact me. If you will be unable to attend, please notify Denise.

5.A.1/2. Mr., Knapper has invited the winter sports coaches and activity supervisors to report on Monday evening. If they are unable to attend, it is expected that many of them will submit written reports. Mr. Knapper will also be in attendance to give a community education and activities update.

5.A.3. Ms. McCoy will be in attendance to report on entering into a new lease agreement with Apple Computers for our computer labs. Attached are two lease options. More information can be found in the Action Items information.

5.C. It is expected that Ms. Sorenson, Ms. Norell and Ms. Hinz will all be in attendance on Monday evening.

5.D.1. Facilities Strategic Planning Committee Report

The Vision Committee met with Bob Nold from Knutson Construction on February 22nd. After reviewing and revising space allocations with the committee, Mr. Nold will finalize his cost projections and present them to the Board when he is finished. Board member Eckhardt was in attendance and may have additional information to share with you.

5.D.2. Negotiation Committee Report

The Negotiation Committee met on March 5th to discuss the issue of extended leave opportunities for certified staff and the Superintendent's contract. Action and discussion items give you additional information. Board members Volstad, Jepson and Formo were in attendance and may have additional information to share.

5.D.3. RCW/MACCRA Y/YME Meeting Report

Board members Jepson and Volstad and I met with the RCW and MACCRA Y members of this committee on Wednesday, March 7th. The discussion continued to focus on short-term ways that we can support each other – especially as we begin planning for the 07-08 school year. There was also considerable discussion about having our high schools focus on specializing in a curriculum track such as the arts, the academics, or tech prep. The committee plans to meet again in early June. Prior to that time, the administrative teams of the three districts will continue to meet.

YME HIGH SCHOOL
Karen Norell, Principal
450 9th Avenue
Granite Falls, MN 56241
Phone: 320-564-4083
Fax: 320-564-4782

BERT RANEY ELEMENTARY
Stacy Hinz, Principal
555 7th Avenue
Granite Falls, MN 56241
Phone: 320-564-4082
Fax: 320-564-4427

H.A. HAGG ELEMENTARY
Stacy Hinz, Principal
1204 11th Avenue
Clarkfield, MN 56223
Phone: 320-669-4424
Fax: 320-669-4828

YELLOW MEDICINE EAST ISD #2190
BOARD OF EDUCATION MEETING MINUTES
FEBRUARY 12, 2007 - 7:00 P.M.
YME BOARD ROOM

Board members present: Kathy Busack, Cheryl Eckhardt, Chad Fischer, Rich Jepson, Elmo Volstad

Board member absent: Warren Formo, Art Rillo

Community / Staff Members Present: Kathy Anderson, Emily Balfany, LeeAnn Boushek, Landon Cole, Ron Dessonville, Eric Dubblede, Madison Hinz, Stacy Hinz, Karen Jacobson, Dan Johnson, Karen McCoy, Karen Norell, Vickie Novak, Steve Petrich, Dwayne Strand, Denise Streich, Sue Toft, Lyndsey Weber

Chairman Volstad called the meeting to order.

Chairman Volstad approved the agenda for the meeting with the addition of one personnel item.

Chairman Volstad approved the minutes from the January 8, 2007 meeting.

The opportunity for citizens to speak received no response.

Karen Jacobson, from the Minnesota River Valley Education District, reported on the Math Science Partnership Grant recently awarded to the MRVED and also highlighted progress on other MRVED initiatives.

Karen McCoy, technology coordinator, gave an update on the district technology plan and the computer lease for the labs.

Motion by Jepson, second by Busack and carried to approve January bills for payment in the amount of \$268,180.30, with checks numbered 11282 through 11457 and to approve investments for the District.

Fund balance, enrollment and food service reports were submitted.

Staff Development & Curriculum Coordinator Yvonne Sorenson submitted a written report.

Principals Hinz & Norell reported on their respective sites.

FFA students Lyndsey Weber, Landon Cole, Dan Johnson and Eric Dubblede reviewed the itinerary for their March trip to Iowa and Missouri.

Eric Dubblede also updated the Board on the spring choir trip to Chicago.

Spanish students Emily Balfany & Vickie Novak updated the Board on their trip to Europe in late March.

Minutes from the January 24 RCW/MACCRA Y/YME meeting were shared with the Board. The community education directors and high school principals from the three districts met on February 8th.

The Negotiation Committee met on January 17th to discuss the issue of early retirement incentives for certified staff. The committee also met on February 7th to review and finalize the proposal.

A meeting with the full Vision Committee has been scheduled for February 22nd. The agenda will include an update on the assessment of our current facilities in relationship to the standards that were set during committee discussions.

Motion by Busack, second by Fischer and carried to approve employment of Brandy Idso as a paraprofessional at Bert Raney Elementary.

Motion by Busack, second by Fischer and carried to approve a leave of absence for Jen Schwankl.

Motion by Busack, second by Fischer and carried to accept the resignation of Melissa Torgerson, food service staff.

Motion by Jepson, second by Busack and carried to approve the 2007-2011 YME Technology Plan, as submitted.

Discussion items included probationary staff continuing contract status, preliminary 2007-2008 calendars, projected 2007-2008 H.A. Hagg student enrollment, 2006-2007 budget update, CSR legislation, wireless radio upgrades, RevTrack workshop, and the Superintendent evaluation.

Correspondence items included an MREA flier, a call back letter of intent from Trevor Schulte, a continued leave of absence request from Pam Jensen, a SHARE project update, the boardcaster publication, the conciliation court ruling, and an ASCD conference opportunity.

A special Board meeting was scheduled for Monday, March 5 2007.

<u>Upcoming Events & Activities</u>	<u>Date</u>	<u>Location</u>	<u>Time</u>
Early Out	February 14, 2007	District	1:15 PM
MRVED Superintendent Meeting	February 14, 2007	MRVED	9:00 AM
PACT 4 Collaborative Meeting	February 14, 2007	Olivia	12:00 PM
SHARE Coordinators Council Meeting	February 14, 2007	Olivia	2:00 PM
Inservice Day - No School	February 15, 2007	District	
President's Day - No School	February 19, 2007	District	
SAC Committee Meeting	February 27, 2007	Marshall	1:00 PM
ePayment Orientation & Review	February 28, 2007	District	1:00 PM
Special Board Meeting	March 5, 2007	District	7:00 PM
Board Meeting	March 12, 2007	District	7:00 PM

Chairman Volstad adjourned the meeting.

School Board Report: Monday, March 12, 2007

1. Addition of Mora and Milaca to WCC (fall of 2008)

- a. Both of our appeals failed
- b. AD's are currently working on restructuring the conference and will make a recommendation to Superintendents soon.
 - i. Dance & Tennis will stay as is (no division)
 - ii. 9-9 split or 10-8 split (north / south) to be determined
 - iii. Paynesville would like to go South
 - iv. LPGE wants to go south in FB only
 - v. NLS wants to go north in FB and south with everything else.
 - vi. Breckenridge has applied to WCC in FB and Pelican Rapids, WCA, and DGF may also apply. (then what)??

2. Reclassification of Football and Recommendation:

- a. We have been placed in Class AAA for next fall
- b. Our section opponents include GSL (515), Dassel Cokato (621), Litchfield (527), Annandale (596), etc...
- c. 356 is the enrolment cutoff for class AA. Our enrollment is 312. We have a cooperative sponsorship with ECHO which adds 47 kids and puts us over the 356 cutoff by 3.
- d. My recommendation would be to dissolve the sponsorship with ECHO.
 - i. We will have a difficult time competing in AAA / that section
 - ii. We had one player from ECHO last year. Less in past years.

3. FYI – Volleyball, Baseball and Softball reclassification:

- a. AAA – Top 96 AA – Next 128 A – remainder
- b. We are still in AA, but have been joined by some smaller AAA schools including Marshall (818), New Ulm (744) , Fairmont,(519) Worthington (573)

4. Nike Contract with Genes Sporting Goods

- a. 3 year commitment to buy Nike Uniforms from Genes
- b. Any team shoe or apparel sales would be Nike & made through Genes
- c. We receive 30% off MSRP on Nike footwear and equipment and 35% off MSRP on Nike apparel orders
- d. We currently do a majority of our uniform orders from Genes.
- e. Coaching staff will receive complimentary shirt & shoes each year.
- f. Monte is currently doing it “they really like it”
- g. Our coaching staff is in favor of it.
- h. Any questions



Karen McCoy
Yellow Medicine School District

Apple Financial Services (AFS) Education Finance greatly appreciates your interest in our products and services. We also thank you for the opportunity to present this proposal for the financing of your pending Apple acquisition. Research shows that access to technology raises student engagement and achievement. As a result, AFS Education Finance believes that by removing financial barriers, schools can more easily meet their core objectives...teaching. We provide comprehensive products and services customized for each school's unique budgetary situation. This includes traditional lease-purchase financing, asset management products for greater equipment flexibility, and no-cost consulting services.

Specific to your pending Apple acquisition, we believe the following AFS Education Finance product best addresses your situation:

- AppleEquity Lease**
 The AppleEquity Lease is designed to meet the requirements of schools that need to quickly build a fleet of computers or choose to add to their fleet on an annual basis while retaining the benefits of \$1.00 buyout municipal lease structures. This lease has a unique equity option that is unlike anything offered in the marketplace today. AppleEquity has a \$1 purchase option at the end of term but provides a school with the ability to cash out their equity accumulated through plan payments annually to acquire the latest technology.
- Apple Trade-in Services**
 Apple Financial Services also offers trade-in services for obsolete or aging equipment. AFS can help you take out old or obsolete equipment by providing cash back for aging equipment with aftermarket value and recycling services for obsolete equipment. Provide me with a list of equipment you wish to trade in and I will provide a quote for the trade-in value or the cost of recycling.

I am pleased to provide the following lease proposal for your review and I look forward to discussing any specific requirements you may have. Please don't hesitate to call me at 800-APPLE-LN (800 277-5356) 42387. Or feel free to visit our website at <http://www.apple.com/education/financing>

Sincerely,
Bobby Dickerson
Inside Leasing Manager
rdickerson@apple.com

Apple Web Proposal		3 year Apple Equity Lease		
Product Category	Product Description	Apple Hardware Price	Lease rate	Annual Lease Payment
Apple	iMacs	\$235,439.00	2.9%	\$ 52,566.13

Assumes a first payment of \$35,407.21 upfront with 4 annual payments of \$52,566.13 starting 07/01/07

End of Lease Options

AppleEquity Lease

Options available to lessee upon completion of the base lease term are as follows:

1. Exercise the option to purchase the equipment at end of term for one dollar
2. Return all products to lessor at lessee's expense.

Pricing Notes and Conditions

Payments, rates, terms, and conditions contained in this non-binding proposal are offered for informational purposes only and are subject to change without notice and shall not be construed as an offer to extend credit or enter into any lease financing transaction.

Applications for credit or lease financing shall be subject to our independent credit review, and shall be reviewed and/or approved subject to such terms and conditions as we may require in our sole discretion.

All quotes are exclusive of any applicable taxes.

This proposal is subject to the execution of mutually acceptable documentation between lessor and lessee, the terms and conditions of which shall be controlling.

Lease Discount Disclosure Statement: Apple Computer, Inc., as lessor, through the Apple Education Finance Program, provides an equipment discount ("Discount") to certain third party investors. The proposed lease shall be financed by a particular third party investor and, therefore, the Discount may be applied to facilitate this Lease Discount Promotion. The actual interest rate you will pay in respect of any resulting lease shall be reflected in an amortization table provided with such lease. The lease discount listed above refers to the lease discount for the lessor's assignee.

The lease charge portion of the Payments (described above) can be determined by applying to the Total Adjusted Cost (described above) the rate which will amortize such Total Adjusted Cost down to the Purchase Option amount (as described above) by payment of such Payments. The lease charge rate may be higher than the actual annual interest rate because of the amortization of certain costs, expenses and fees incurred by us. It is understood that even if our mutual intention is confirmed by you, neither party shall be legally bound to the other by reason of this proposal, nor shall any rights, liabilities or obligations arise as a result of this proposal. Rates are subject to verification that the Lessee is a state or political subdivision as defined in Section 103 of the Internal Revenue Code of 1986.



Karen McCoy
Yellow Medicine School District

Apple Financial Services (AFS) Education Finance greatly appreciates your interest in our products and services. We also thank you for the opportunity to present this proposal for the financing of your pending Apple acquisition. Research shows that access to technology raises student engagement and achievement. As a result, AFS Education Finance believes that by removing financial barriers, schools can more easily meet their core objectives...teaching. We provide comprehensive products and services customized for each school's unique budgetary situation. This includes traditional lease-purchase financing, asset management products for greater equipment flexibility, and no-cost consulting services.

Specific to your pending Apple acquisition, we believe the following AFS Education Finance product best addresses your situation:

- AppleEquity Lease**
 The AppleEquity Lease is designed to meet the requirements of schools that need to quickly build a fleet of computers or choose to add to their fleet on an annual basis while retaining the benefits of \$1.00 buyout municipal lease structures. This lease has a unique equity option that is unlike anything offered in the marketplace today. AppleEquity has a \$1 purchase option at the end of term but provides a school with the ability to cash out their equity accumulated through plan payments annually to acquire the latest technology.
- Apple Trade-in Services**
 Apple Financial Services also offers trade-in services for obsolete or aging equipment. AFS can help you take out old or obsolete equipment by providing cash back for aging equipment with aftermarket value and recycling services for obsolete equipment. Provide me with a list of equipment you wish to trade in and I will provide a quote for the trade-in value or the cost of recycling.

I am pleased to provide the following lease proposal for your review and I look forward to discussing any specific requirements you may have. Please don't hesitate to call me at 800-APPLE-LN (800 277-5356) 42387. Or feel free to visit our website at <http://www.apple.com/education/financing>

Sincerely,
Bobby Dickerson
Inside Leasing Manager
rdickerson@apple.com

Apple Web Proposal		3 year Apple Equity Lease		
Product Category	Product Description	Apple Hardware Price	Lease rate	Annual Lease Payment
Apple	iMacs	\$211,264.00	2.9%	\$ 46,456.92

Assumes a first payment of \$34,479.82 upfront with 4 annual payments of \$46,456.92 starting 07/01/07

End of Lease Options

AppleEquity Lease

Options available to lessee upon completion of the base lease term are as follows:

1. Exercise the option to purchase the equipment at end of term for one dollar
2. Return all products to lessor at lessee's expense.

Pricing Notes and Conditions

Payments, rates, terms, and conditions contained in this non-binding proposal are offered for informational purposes only and are subject to change without notice and shall not be construed as an offer to extend credit or enter into any lease financing transaction.

Applications for credit or lease financing shall be subject to our independent credit review, and shall be reviewed and/or approved subject to such terms and conditions as we may require in our sole discretion.

All quotes are exclusive of any applicable taxes.

This proposal is subject to the execution of mutually acceptable documentation between lessor and lessee, the terms and conditions of which shall be controlling.

Lease Discount Disclosure Statement: Apple Computer, Inc., as lessor, through the Apple Education Finance Program, provides an equipment discount ("Discount") to certain third party investors. The proposed lease shall be financed by a particular third party investor and, therefore, the Discount may be applied to facilitate this Lease Discount Promotion. The actual interest rate you will pay in respect of any resulting lease shall be reflected in an amortization table provided with such lease. The lease discount listed above refers to the lease discount for the lessor's assignee.

The lease charge portion of the Payments (described above) can be determined by applying to the Total Adjusted Cost (described above) the rate which will amortize such Total Adjusted Cost down to the Purchase Option amount (as described above) by payment of such Payments. The lease charge rate may be higher than the actual annual interest rate because of the amortization of certain costs, expenses and fees incurred by us. It is understood that even if our mutual intention is confirmed by you, neither party shall be legally bound to the other by reason of this proposal, nor shall any rights, liabilities or obligations arise as a result of this proposal. Rates are subject to verification that the Lessee is a state or political subdivision as defined in Section 103 of the Internal Revenue Code of 1986.

Check Nbr	Vendor Name	Check Date	Invoice Number	Invoice Desc	PO Number	Invoice Amount	Check Amount
11501	ADVOCATE TRIBUNE	03/12/2007	1	BRE SUBSCRIPTION	0	79.00	961.35
01 E 100 620 000 000 489				EDUCATIONAL MEDIA/LIBRARY//PERIODICAL/NEWSPAPERS		79.00	
			2	OLE & LENA	0	53.50	
04 E 500 505 000 321 450				COMMUNITY EDUCATION GENERAL/COMMUNITY EDUCATION/MATERIAL		53.50	
			3	COFFEE HOUSE	0	55.65	
04 E 500 505 000 321 450				COMMUNITY EDUCATION GENERAL/COMMUNITY EDUCATION/MATERIAL		55.65	
			4	NIGHT	0	708.20	
01 E 005 010 000 000 380				BOARD OF EDUCATION//PRINTING/ADVERTISING		708.20	
			5	BB PROGRAM	0	65.00	
01 E 300 298 000 000 899				EXTRACURRICULAR ACTIVITIES//MISCELLANEOUS EXPENSE		65.00	
11502	AMERICAN WELDING SUPPLIES	03/12/2007	1		0	386.43	386.43
01 E 300 301 501 830 433				AG EDUCATION (VOCATIONAL)/VOCATIONAL PROGRAMS/INDIVIDUAL		386.43	
11503	APPERT FOODS	03/12/2007	1		0	4,902.42	4,902.42
02 E 005 770 000 701 490				FOOD SERVICES/SCHOOL LUNCH/FOOD		4,074.86	
02 E 005 770 000 701 495				FOOD SERVICES/SCHOOL LUNCH/MILK		17.10	
02 E 005 770 000 705 401				FOOD SERVICES/BREAKFAST/GENERAL SUPPLIES		92.20	
02 E 005 770 000 705 490				FOOD SERVICES/BREAKFAST/FOOD		718.26	
11504	SARAH BARTELS	03/12/2007	1		0	21.69	21.69
01 E 150 203 108 799 401				ELEMENTARY GENERAL ED./OTHER GRANTS/GENERAL SUPPLIES		21.69	
11505	Vendor Continued Void	03/12/2007					0.00
11506	Vendor Continued Void	03/12/2007					0.00
11507	Vendor Continued Void	03/12/2007					0.00
11508	BENNETT & BENNETT TRANSP. INC.	03/12/2007	1	REGULAR ROUTES	0	51,389.73	76,519.67
01 E 005 760 000 720 361				PUPIL TRANSPORTATION/REGULAR TO AND FROM SCHOOL/BUS CONT		51,389.73	
			10	FUEL	0	2,851.20	
01 E 005 760 000 720 361				PUPIL TRANSPORTATION/REGULAR TO AND FROM SCHOOL/BUS CONT		2,851.20	
			2	DEC BAND RENT	0	30.00	
01 E 300 258 233 000 370				MUSIC//RENTALS AND LEASES		30.00	
			20	BRE FIELD TRIPS	0	595.85	
01 E 100 203 000 733 361				ELEMENTARY GENERAL ED./TRANSPORTATION/NON-AUTHORIZED/BUS		595.85	
			21	HEADSTART	0	68.42	
01 E 100 203 000 733 361				ELEMENTARY GENERAL ED./TRANSPORTATION/NON-AUTHORIZED/BUS		68.42	
			26	LIFETIME ACTIVITY	0	160.91	
01 E 300 211 000 733 361				SECONDARY EDUCATION GENERAL/TRANSPORTATION/NON-AUTHORIZE		160.91	
			27	MATH LEAGUE	0	68.04	
01 E 300 298 240 733 361				EXTRACURRICULAR ACTIVITIES/TRANSPORTATION/NON-AUTHORIZED		68.04	
			28	BOWLING	0	1,227.96	
01 E 300 211 000 733 361				SECONDARY EDUCATION GENERAL/TRANSPORTATION/NON-AUTHORIZE		1,227.96	
			3	CLKFD. SHUTTLE	0	2,234.40	
01 E 005 760 000 720 361				PUPIL TRANSPORTATION/REGULAR TO AND FROM SCHOOL/BUS CONT		2,234.40	
			4	OUT OF DISTRICT	0	3,351.60	
01 E 005 760 000 713 361				PUPIL TRANSPORTATION/OPEN ENROLLMENT/BUS CONTRACT (XWK T		3,351.60	
			44	ATHLETIC SHUTTLE	0	235.20	
01 E 005 760 000 717 361				PUPIL TRANSPORTATION/LATE ACTIVITY BUS/BUS CONTRACT (XWK		235.20	
			45	READY SET LEARN	0	308.56	
04 E 500 582 000 344 361				LEARNING READINESS/LEARNING READINESS/BUS CONTRACT (XWK		308.56	
			46	SPECIAL NEEDS	0	9,933.84	
01 E 005 760 000 723 361				PUPIL TRANSPORTATION/HANDICAPPED/BUS CONTRACT (XWK TO 36		9,933.84	

Check Nbr	Vendor Name	Check Date	Invoice Number	Invoice Desc	PO Number	Invoice Amount	Check Amount
01 E 300 258 233 000 370			47	RENT	0	30.00	
				MUSIC//RENTALS AND LEASES		30.00	
01 E 300 296 213 733 361			48	GBB	0	641.63	
				GIRLS ATHLETICS/TRANSPORTATION/NON-AUTHORIZED/BUS CONTRA		641.63	
01 E 300 294 221 733 361			49	WRESTLING	0	1,494.90	
				BOYS ATHLETICS/TRANSPORTATION/NON-AUTHORIZED/BUS CONTRAC		1,494.90	
01 E 300 296 228 733 361			50	DANCELINE	0	711.83	
				GIRLS ATHLETICS/TRANSPORTATION/NON-AUTHORIZED/BUS CONTRA		711.83	
01 E 300 294 213 733 361			51	BBB JH	0	194.03	
				BOYS ATHLETICS/TRANSPORTATION/NON-AUTHORIZED/BUS CONTRAC		194.03	
01 E 300 294 213 733 361			56	BBB	0	882.15	
				BOYS ATHLETICS/TRANSPORTATION/NON-AUTHORIZED/BUS CONTRAC		882.15	
01 E 300 296 213 733 361			60	GBB JH	0	109.42	
				GIRLS ATHLETICS/TRANSPORTATION/NON-AUTHORIZED/BUS CONTRA		109.42	
11509 BERNICK'S PEPSI-COLA		03/12/2007	1	B R ST. COUNCIL	0	137.70	137.70
01 L 230 39				GENERAL FUND/DEFERRED REVENUE/BERT RANEY JUICE MACHNINE		137.70	
11510 BEST BUSINESS PRODUCTS		03/12/2007	837791		0	52.50	52.50
04 E 500 590 000 321 401				OTHER COMMUNITY SERVICES/COMMUNITY EDUCATION/GENERAL SUP		52.50	
11511 BILL'S ELECTRIC		03/12/2007	3597		0	199.11	199.11
01 E 005 810 000 000 410				OPERATIONS AND MAINTENANCE//CUST/REPAIR SUPPLIES		199.11	
11512 BOUND TO READ		03/12/2007	171674		0	71.00	71.00
01 L 230 33				GENERAL FUND/DEFERRED REVENUE/BERT RANEY ACTIVITY ACCOUN		71.00	
11513 BRIH DESIGN		03/12/2007	7000119		0	1,658.75	1,658.75
01 E 200 420 000 419 305				SPECIAL EDUCATIONAL GENERAL/94-142 FEDERAL/PROFESSIONAL		1,658.75	
11514 SUSAN PYE BROKAW		03/12/2007	1	ADHD PRESENTATION	0	580.83	730.83
01 E 200 420 640 419 367				SPECIAL EDUCATIONAL GENERAL/94-142 FEDERAL/TRAVEL-PROFES		580.83	
01 L 230 62			2	MANUALS	0	150.00	
				GENERAL FUND/DEFERRED REVENUE/TEENS ETC. (KHALI)		150.00	
11515 BRUFLAT PLUMBING & HEATING INC		03/12/2007	1	SEWER LINE	0	734.27	770.25
01 E 005 850 000 302 522				FACILITIES/CAPITAL OUTLAY/BUILDING IMPROVEMENTS		734.27	
01 E 025 810 000 000 410			3304		0	35.98	
				OPERATIONS AND MAINTENANCE//CUST/REPAIR SUPPLIES		35.98	
11516 CAPITAL ONE, F.S.B.		03/12/2007	10226	BATTERY WAREHOUSE	0	172.35	320.08
01 E 200 612 199 000 401				TECHNOLOGY//GENERAL SUPPLIES		172.35	
01 L 230 10			3	ROSEWOOD	0	45.00	
				GENERAL FUND/DEFERRED REVENUE/SUPT POP FUND		45.00	
01 E 300 211 000 000 329			4	UPS-MACDOCTORS	0	28.73	
				SECONDARY EDUCATION GENERAL//POSTAGE AND EXPRESS		28.73	
01 E 300 240 000 000 430			69359	HOIST FITNESS	0	74.00	
				HEALTH/PHY ED/RECREATION//SUPPLIES		74.00	
11517 CARL'S BAKERY		03/12/2007	1887		0	19.00	182.42
01 E 100 790 108 799 401				OTHER PUPIL SUPPORT SERVICES/OTHER GRANTS/GENERAL SUPPLI		19.00	
02 E 005 770 000 701 490			1888		0	42.75	
				FOOD SERVICES/SCHOOL LUNCH/FOOD		42.75	
01 E 100 790 108 799 401			1889		0	40.00	
				OTHER PUPIL SUPPORT SERVICES/OTHER GRANTS/GENERAL SUPPLI		40.00	
			1890		0	48.64	

Check Nbr	Vendor Name	Check Date	Invoice Number	Invoice Desc	PO Number	Invoice Amount	Check Amount
01 E 300 294 221 000 401				BOYS ATHLETICS//GENERAL SUPPLIES		48.64	
			1891		0	28.98	
01 E 300 296 213 000 401				GIRLS ATHLETICS//GENERAL SUPPLIES		28.98	
			898		0	3.05	
01 E 100 790 108 799 401				OTHER PUPIL SUPPORT SERVICES/OTHER GRANTS/GENERAL SUPPLI		3.05	
11518 CDW GOVERNMENT, INC.		03/12/2007	DLN6238		299	371.47	371.47
01 E 100 203 000 000 899				ELEMENTARY GENERAL ED.//MISCELLANEOUS EXPENSE		371.47	
11519 CENEX CREDIT CARD		03/12/2007	1		0	594.46	594.46
01 E 005 810 193 000 442				OPERATIONS AND MAINTENANCE//GAS & OIL		594.46	
11520 CIRCUIT CITY STORES, INC.		03/12/2007	4200443453		298	99.99	99.99
01 E 300 258 233 302 530				MUSIC/CAPITAL OUTLAY/EQUIPMENT PURCHASES		99.99	
11521 CITY OF GRANITE FALLS		03/12/2007	1	SWR/WTR	0	1,551.44	11,113.72
01 E 005 810 183 000 330				OPERATIONS AND MAINTENANCE//UTILITY SERVICES		1,551.44	
			2	ELEC	0	9,461.32	
01 E 005 810 184 000 330				OPERATIONS AND MAINTENANCE//UTILITY SERVICES		9,461.32	
			3	GARAGE	0	92.96	
01 E 005 810 191 000 330				OPERATIONS AND MAINTENANCE//UTILITY SERVICES		92.96	
			4	CARPENTRY	0	8.00	
01 E 300 361 000 830 330				CARPENTRY (HOUSE)/VOCATIONAL PROGRAMS/UTILITY SERVICES		8.00	
11522 CONSUMERS COOPERATIVE OIL CO.		03/12/2007	1		0	361.19	361.19
01 E 005 810 193 000 442				OPERATIONS AND MAINTENANCE//GAS & OIL		361.19	
11523 COUNTRYSIDE PUBLIC HEALTH		03/12/2007	1	hearing screening	0	310.00	507.50
01 E 200 720 000 000 311				HEALTH SERVICES/NURSE//PROFESSIONAL/TECHNICAL SVCS		310.00	
			2	vision & hearing screening	0	135.00	
01 E 200 720 000 000 311				HEALTH SERVICES/NURSE//PROFESSIONAL/TECHNICAL SVCS		135.00	
			3	PREP & DEV.	0	12.50	
01 E 200 720 000 000 311				HEALTH SERVICES/NURSE//PROFESSIONAL/TECHNICAL SVCS		12.50	
			4	HEP B	0	50.00	
01 E 005 860 000 347 305				HEALTH & SAFETY EQUIP/PHYSICAL HAZARD CONTROL/PROFESSION		50.00	
11524 TIM CROWLEY		03/12/2007	1		0	75.00	75.00
01 E 300 408 390 000 305				EMOTION/BEHAVIORAL DISORDER//PROFESSIONAL FEES		75.00	
11525 CRYSTEEL DIST. INC.		03/12/2007	LP122560		0	162.25	1,068.26
01 E 005 810 191 000 410				OPERATIONS AND MAINTENANCE//CUST/REPAIR SUPPLIES		162.25	
			lp122602		0	68.47	
01 E 005 810 191 000 410				OPERATIONS AND MAINTENANCE//CUST/REPAIR SUPPLIES		68.47	
			LP122874		0	323.90	
01 E 005 810 000 302 530				OPERATIONS AND MAINTENANCE/CAPITAL OUTLAY/EQUIPMENT PURC		323.90	
			LP122987	HYDRAULIC PUMP	0	513.64	
01 E 005 810 000 302 530				OPERATIONS AND MAINTENANCE/CAPITAL OUTLAY/EQUIPMENT PURC		513.64	
11526 CULLIGAN		03/12/2007	1003401		0	10.02	32.75
01 E 025 810 184 000 330				OPERATIONS AND MAINTENANCE//UTILITY SERVICES		10.02	
			1010151		0	22.73	
01 E 025 810 184 000 330				OPERATIONS AND MAINTENANCE//UTILITY SERVICES		22.73	
11527 DAVE'S ELECTRIC CO		03/12/2007	71688		0	17.50	171.00
01 L 230 33				GENERAL FUND/DEFERRED REVENUE/BERT RANEY ACTIVITY ACCOUN		17.50	
			71784		0	23.00	

Check Nbr	Vendor Name	Check Date	Invoice Number	Invoice Desc	PO Number	Invoice Amount	Check Amount
01 L	230 04			GENERAL FUND/DEFERRED REVENUE/HIGH SCHOOL LOUNGE		23.00	
			72089		0	22.00	
01 L	230 33			GENERAL FUND/DEFERRED REVENUE/BERT RANEY ACTIVITY ACCOUN		22.00	
			72248		0	49.00	
01 L	230 12			GENERAL FUND/DEFERRED REVENUE/CLARKFIELD TEACHERS		49.00	
			72440		0	29.75	
01 L	230 33			GENERAL FUND/DEFERRED REVENUE/BERT RANEY ACTIVITY ACCOUN		29.75	
			72761		0	29.75	
01 L	230 04			GENERAL FUND/DEFERRED REVENUE/HIGH SCHOOL LOUNGE		29.75	
11528	DEAN FOODS NORTH CENTRAL, INC.	03/12/2007	1		0	299.44	3,302.54
02 E	025 770 000 701 495			FOOD SERVICES/SCHOOL LUNCH/MILK		299.44	
			10		0	2,590.52	
02 E	025 770 000 701 495			FOOD SERVICES/SCHOOL LUNCH/MILK		1,829.38	
02 E	025 770 000 705 495			FOOD SERVICES/BREAKFAST/MILK		491.36	
02 E	025 770 000 707 495			FOOD SERVICES/ALA CARTE/OTHER/MILK		269.78	
			2		0	279.55	
02 E	025 770 000 707 495			FOOD SERVICES/ALA CARTE/OTHER/MILK		279.55	
			3		0	133.03	
02 E	025 770 000 705 495			FOOD SERVICES/BREAKFAST/MILK		133.03	
11529	DISCOUNT SCHOOL SUPPLY	03/12/2007	D7144690001		0	104.64	436.75
04 E	500 580 000 325 430			EARLY CHILDHOOD AND FAM ED/EARLY CHILDHOOD AND FAMILY ED		104.64	
			DO7114850101		0	127.34	
01 E	150 203 401 000 430			ELEMENTARY GENERAL ED./SUPPLIES		127.34	
			DO7114900101		0	21.79	
01 E	150 203 401 000 430			ELEMENTARY GENERAL ED./SUPPLIES		21.79	
			P16795670101		0	182.98	
01 E	150 203 401 000 430			ELEMENTARY GENERAL ED./SUPPLIES		182.98	
11530	DIVINE HOUSE, INC.	03/12/2007	JAN-FEB		0	3,602.40	3,602.40
01 E	998 416 000 740 394			MULTIPLE DISABILITIES/STATE FUNDED SPECIAL ED/PAYMENTS T		3,602.40	
11531	DOLLARS FOR SCHOLARS	03/12/2007	1	HAGG PROJECTS	0	300.00	600.00
01 L	230 57			GENERAL FUND/DEFERRED REVENUE/HAGG PROJECTS		300.00	
			2	BRE LOUNGE	0	300.00	
01 L	230 03			GENERAL FUND/DEFERRED REVENUE/BERT RANEY LOUNGE		300.00	
11532	DOTY, JILL	03/12/2007	1		0	25.80	25.80
01 E	200 219 000 317 366			LEP/COMPENSATORY/TRAVEL-SCHOOL BUSINESS		25.80	
11533	DU-MART	03/12/2007	1		0	17.82	17.82
04 E	500 590 000 321 401			OTHER COMMUNITY SERVICES/COMMUNITY EDUCATION/GENERAL SUP		17.82	
11534	KRIS ECKSTEIN	03/12/2007	1	SAFETY PRES.	0	280.00	280.00
01 E	005 790 721 000 305			OTHER PUPIL SUPPORT SERVICES//PROFESSIONAL FEES		280.00	
11535	Vendor Continued Void	03/12/2007					0.00
11536	ECONOMART	03/12/2007	10026		0	25.37	1,183.81
01 E	100 790 108 799 401			OTHER PUPIL SUPPORT SERVICES/OTHER GRANTS/GENERAL SUPPLI		25.37	
			10205		298	14.17	
01 E	100 203 403 000 899			ELEMENTARY GENERAL ED./MISCELLANEOUS EXPENSE		14.17	
			20002	K/1 SNACKS	0	199.27	
01 E	100 203 362 000 899			ELEMENTARY GENERAL ED./MISCELLANEOUS EXPENSE		199.27	
			20008	RETREAT	0	40.35	
09 L	230 91			TRUST FUND/DEFERRED REVENUE/AT RISK \$ (ROC/DARE-MVCC)		40.35	

Check Nbr	Vendor Name	Check Date	Invoice Number	Invoice Desc	PO Number	Invoice Amount	Check Amount
			20146	WRESTLING PARENTS NIGHT	0	17.81	
01 E 300 294 221 000 401				BOYS ATHLETICS//GENERAL SUPPLIES		17.81	
			20215	HEALTH/PHY ED/RECREATION//SUPPLIES	314	72.26	
01 E 300 240 000 000 430						72.26	
			30006	RETREAT	296	99.38	
01 E 005 640 375 308 401				STAFF DEVELOPMENT/STAFF DEV. 25% DIST. WIDE/GENERAL SUPP		99.38	
			30016	OLE&LENA	0	9.90	
04 E 500 505 000 321 450				COMMUNITY EDUCATION GENERAL/COMMUNITY EDUCATION/MATERIAL		9.90	
			30068	BOYS BB	0	83.44	
01 E 300 294 213 000 401				BOYS ATHLETICS//GENERAL SUPPLIES		83.44	
			5	VOCATIONAL HOME EC/VOCATIONAL PROGRAMS/INDIVIDUAL INST S	0	538.68	
01 E 300 331 000 830 433						538.68	
			6	VISION COMMITTEE	0	83.18	
01 E 005 010 000 000 899				BOARD OF EDUCATION//MISCELLANEOUS EXPENSE		83.18	
11537 EDUCATIONAL RESOURCES		03/12/2007	861067	TECHNOLOGY//GENERAL SUPPLIES	0	50.00	50.00
01 E 200 612 199 000 401						50.00	
11538 EPA AUDIO VISUAL		03/12/2007	165115	GENERAL FUND/DEFERRED REVENUE/GIRLS BEST GRANT (HINZ)	73	1,422.30	1,459.15
01 L 230 81				TECHNOLOGY/CAPITAL OUTLAY/TECHNOLOGY EQUIPMENT		711.15	
01 E 200 612 000 302 555						711.15	
			60022749	TECHNOLOGY//GENERAL SUPPLIES	0	36.85	
01 E 200 612 199 000 401						36.85	
11539 ADELA R ESPINOZA		03/12/2007	1	KID CHANGE	0	18.00	18.00
01 E 300 790 388 000 899				OTHER PUPIL SUPPORT SERVICES//MISCELLANEOUS EXPENSE		18.00	
11540 FOOD SERVICES OF AMERICA		03/12/2007	1	FOOD SERVICES/SCHOOL LUNCH/GENERAL SUPPLIES	0	1,253.45	1,253.45
02 E 025 770 000 701 401				FOOD SERVICES/SCHOOL LUNCH/FOOD		88.82	
02 E 025 770 000 701 490				FOOD SERVICES/BREAKFAST/FOOD		595.78	
02 E 025 770 000 705 490						568.85	
11541 G & K SERVICES		03/12/2007	1	FOOD SERVICES/SCHOOL LUNCH/LAUNDRY AND DRY CLEANING	0	47.92	276.78
02 E 025 770 000 701 382						47.92	
			2	OPERATIONS AND MAINTENANCE//LAUNDRY AND DRY CLEANING	0	228.86	
01 E 025 810 000 000 382						228.86	
11542 GENE STUKEL PHOTOGRAGHY		03/12/2007	1	SECONDARY EDUCATION GENERAL//MISCELLANEOUS EXPENSE	0	95.00	95.00
01 E 300 211 000 000 899						95.00	
11543 GOPHER SPORT		03/12/2007	7379961	ELEMENTARY GENERAL ED.//MISCELLANEOUS EXPENSE	0	42.85	42.85
01 E 100 203 000 000 899						42.85	
11544 GRANITE FALLS AREA CHAMBER		03/12/2007	1	VARIETY SHOW	0	481.00	481.00
04 E 500 505 000 321 450				COMMUNITY EDUCATION GENERAL/COMMUNITY EDUCATION/MATERIAL		481.00	
11545 GRANITE FALLS OFFICIALS ASSOC.		03/12/2007	1	BOYS BB	0	1,870.00	3,840.00
01 E 300 294 213 000 319				BOYS ATHLETICS//OTHER PERSONAL SERVICES		1,870.00	
			2	GIRLS BB	0	1,970.00	
01 E 300 296 213 000 319				GIRLS ATHLETICS//OTHER PERSONAL SERVICES		1,970.00	
11546 GRANITE FLORAL & GREENHOUSE		03/12/2007	69804	PARENTS NIGHT - WRESTLING	0	12.00	94.62
01 E 300 294 221 000 401				BOYS ATHLETICS//GENERAL SUPPLIES		12.00	
			69876	AG EDUCATION (VOCATIONAL)/VOCATIONAL PROGRAMS/INDIVIDUAL	305	30.62	
01 E 300 301 501 830 433						30.62	
			70131	GIRLS BB	0	24.00	
01 E 300 296 213 000 401				GIRLS ATHLETICS//GENERAL SUPPLIES		24.00	

Check Nbr	Vendor Name	Check Date	Invoice Number	Invoice Desc	PO Number	Invoice Amount	Check Amount
01 E 300 294 213 000 401			70218	BOYS BB	0	28.00	
				BOYS ATHLETICS//GENERAL SUPPLIES		28.00	
11547 GRANITE FALLS AUTO PARTS		03/12/2007	1		0	73.98	80.19
01 E 005 810 191 000 410				OPERATIONS AND MAINTENANCE//CUST/REPAIR SUPPLIES		73.98	
01 E 300 301 501 830 433			2		0	6.21	
				AG EDUCATION (VOCATIONAL)/VOCATIONAL PROGRAMS/INDIVIDUAL		6.21	
11548 GRANITE FALLS AMBULANCE SERVIC		03/12/2007	1		0	160.00	160.00
01 L 230 92				CPR/AED		160.00	
				GENERAL FUND/DEFERRED REVENUE/BC/BS SETTLEMENT			
11549 GRAPHIC EDGE		03/12/2007	242559		0	225.64	225.64
04 E 500 505 000 321 450				COMMUNITY EDUCATION GENERAL/COMMUNITY EDUCATION/MATERIAL		225.64	
11550 GREAT PLAINS NATURAL GAS CO		03/12/2007	1		0	78.89	29,448.34
01 E 025 810 000 000 440				OPERATIONS AND MAINTENANCE//FUEL FOR BUILDINGS		78.89	
01 E 025 810 000 000 440			10		0	9,798.14	
				OPERATIONS AND MAINTENANCE//FUEL FOR BUILDINGS		9,798.14	
01 E 005 810 000 000 440			2		0	19,332.28	
				OPERATIONS AND MAINTENANCE//FUEL FOR BUILDINGS		19,332.28	
01 E 005 810 191 000 440			3		0	239.03	
				OPERATIONS AND MAINTENANCE//FUEL FOR BUILDINGS		239.03	
11551 GREAT PLAINS SPORTS		03/12/2007	1		0	199.50	199.50
01 E 300 296 210 000 401				GIRLS ATHLETICS//GENERAL SUPPLIES		199.50	
11552 HAAN CRAFTS		03/12/2007	73056		0	215.10	215.10
01 E 300 250 000 000 433				HOME ECONOMICS//INDIVIDUAL INST SUPPLIES		215.10	
11553 HANDWRITING WITHOUT TEARS		03/12/2007	255676-1		0	141.29	141.29
04 E 500 580 000 325 430				EARLY CHILDHOOD AND FAM ED/EARLY CHILDHOOD AND FAMILY ED		141.29	
11554 HARCOURT ACHIEVE		03/12/2007	69056583		243	1,402.67	1,467.96
01 E 100 203 113 317 430				ELEMENTARY GENERAL ED./COMPENSATORY/SUPPLIES		1,402.67	
01 E 100 203 113 317 430			69117351		0	65.29	
				ELEMENTARY GENERAL ED./COMPENSATORY/SUPPLIES		65.29	
11555 HEARTLAND EXPRESS		03/12/2007	1		0	40.00	40.00
01 E 300 790 388 000 899				OTHER PUPIL SUPPORT SERVICES//MISCELLANEOUS EXPENSE		40.00	
11556 XIONG HERR		03/12/2007	1		0	90.43	90.43
01 E 100 203 000 000 899				TRANSLATING		90.43	
				ELEMENTARY GENERAL ED./MISCELLANEOUS EXPENSE		90.43	
11557 HILLYARD/HUTCHINSON		03/12/2007	2034040		0	749.41	847.21
01 E 005 810 000 000 410				OPERATIONS AND MAINTENANCE//CUST/REPAIR SUPPLIES		749.41	
01 E 005 810 000 000 410			7142079		0	97.80	
				OPERATIONS AND MAINTENANCE//CUST/REPAIR SUPPLIES		97.80	
11558 HINZ, STACY		03/12/2007	1		0	168.89	168.89
01 E 200 204 000 414 366				TITLE II EISENHWOER/TITLE II ESEA/TRAVEL-SCHOOL BUSINESS		168.89	
11559 HOLIDAY INN ARDEN HILLS		03/12/2007	1		0	1,033.76	1,033.76
01 E 300 296 228 000 899				STATE DANIELINE		1,033.76	
				GIRLS ATHLETICS//MISCELLANEOUS EXPENSE			
11560 IKON FINANCIAL SERVICES		03/12/2007	1		0	175.00	1,252.00
01 E 300 620 000 302 580				EDUCATIONAL MEDIA/LIBRARY/CAPITAL OUTLAY/CAPITAL LEASE P		175.00	
01 E 300 211 000 302 580			2		0	274.00	
				SECONDARY EDUCATION GENERAL/CAPITAL OUTLAY/CAPITAL LEASE		274.00	
01 E 150 203 000 302 580			3		0	274.00	
				ELEMENTARY GENERAL ED./CAPITAL OUTLAY/CAPITAL LEASE PRIN		274.00	
			4		0	274.00	

Check Nbr	Vendor Name	Check Date	Invoice Number	Invoice Desc	PO Number	Invoice Amount	Check Amount
01 E 100 203 000 302 580				ELEMENTARY GENERAL ED./CAPITAL OUTLAY/CAPITAL LEASE PRIN		274.00	
			5		0	255.00	
01 E 005 020 000 302 580				SUPERINTENDENT'S OFFICE/CAPITAL OUTLAY/CAPITAL LEASE PRI		255.00	
11561 IKON OFFICE SOLUTIONS		03/12/2007	1007554550		316	205.99	205.99
01 E 300 050 000 000 401				PRINCIPAL'S OFFICE//GENERAL SUPPLIES		205.99	
11562 INNOVATIVE OFFICE SOLUTIONS, L		03/12/2007	60987-2		276	7.09	282.39
01 E 100 790 399 799 401				OTHER PUPIL SUPPORT SERVICES/OTHER GRANTS/GENERAL SUPPLI		7.09	
			63550-1		0	48.66	
01 E 100 203 402 000 899				ELEMENTARY GENERAL ED.//MISCELLANEOUS EXPENSE		48.66	
			OE-65182-1		305	226.64	
01 E 100 203 000 000 899				ELEMENTARY GENERAL ED.//MISCELLANEOUS EXPENSE		226.64	
11563 ISCORP		03/12/2007	631710		0	195.50	195.50
01 E 005 110 000 000 350				ACCOUNTING OFFICE//REPAIRS AND MAINTENANCE SVCS		195.50	
11564 JEFFREY IVERSON		03/12/2007	1	MMEA	0	308.32	308.32
01 E 300 640 000 306 367				STAFF DEVELOPMENT/STAFF DEV. 50% SITE/TRAVEL-PROFESS DEV		308.32	
11565 JOHNSON CONTROLS		03/12/2007	0702222283	BOILER	0	955.86	7,455.86
01 E 005 850 000 302 522				FACILITIES/CAPITAL OUTLAY/BUILDING IMPROVEMENTS		955.86	
			54579637	CONTRACT	0	6,500.00	
01 E 005 810 810 000 350				OPERATIONS AND MAINTENANCE//REPAIRS AND MAINTENANCE SVCS		6,500.00	
11566 KILOWATT COMMUNITY CENTER		03/12/2007	1	testing	0	75.00	1,920.00
01 E 300 211 000 000 370				SECONDARY EDUCATION GENERAL//RENTALS AND LEASES		75.00	
			2	PHY ED	0	675.00	
01 E 300 211 000 000 370				SECONDARY EDUCATION GENERAL//RENTALS AND LEASES		675.00	
			3	RETREAT	0	150.00	
09 L 230 91				TRUST FUND/DEFERRED REVENUE/AT RISK \$ (ROC/DARE-MVCC)		150.00	
			4	BBB	0	650.00	
01 E 300 298 000 000 370				EXTRACURRICULAR ACTIVITIES//RENTALS AND LEASES		650.00	
			5	TAE KWON DO	0	270.00	
01 E 300 298 000 000 370				EXTRACURRICULAR ACTIVITIES//RENTALS AND LEASES		270.00	
			6	PACT 4	0	100.00	
01 E 300 211 000 000 370				SECONDARY EDUCATION GENERAL//RENTALS AND LEASES		100.00	
11567 KLOCKIT		03/12/2007	2609093		255	2.45	2.45
01 E 300 255 000 000 430				INDUSTRIAL EDUCATION//SUPPLIES		2.45	
11568 KNAPPER, TIMOTHY		03/12/2007	1	STATE DANCE	0	79.39	1,594.67
01 E 300 298 000 000 899				EXTRACURRICULAR ACTIVITIES//MISCELLANEOUS EXPENSE		79.39	
			10	STATE WRESTLING HOTELS	0	1,479.66	
01 E 300 294 221 000 899				BOYS ATHLETICS//MISCELLANEOUS EXPENSE		1,479.66	
			2		0	35.62	
04 E 500 505 000 321 366				COMMUNITY EDUCATION GENERAL/COMMUNITY EDUCATION/TRAVEL-S		35.62	
11569 Vendor Continued Void		03/12/2007					0.00
11570 LADNER'S HARDWARE		03/12/2007	1		0	62.65	728.22
01 E 005 810 191 000 410				OPERATIONS AND MAINTENANCE//CUST/REPAIR SUPPLIES		62.65	
			10		0	19.12	
01 E 005 810 000 000 410				OPERATIONS AND MAINTENANCE//CUST/REPAIR SUPPLIES		19.12	
			2		0	48.41	
01 E 005 810 000 000 410				OPERATIONS AND MAINTENANCE//CUST/REPAIR SUPPLIES		48.41	

Check Nbr	Vendor Name	Check Date	Invoice Number	Invoice Desc	PO Number	Invoice Amount	Check Amount
01 E 300 301 501 830 433			3	AG EDUCATION (VOCATIONAL)/VOCATIONAL PROGRAMS/INDIVIDUAL	0	44.52	44.52
01 E 005 810 000 000 410			4	OPERATIONS AND MAINTENANCE//CUST/REPAIR SUPPLIES	0	79.07	79.07
01 E 300 255 000 000 430			5	INDUSTRIAL EDUCATION//SUPPLIES	0	4.98	4.98
01 E 005 810 000 302 530			6	SNOW BLOWER OPERATIONS AND MAINTENANCE/CAPITAL OUTLAY/EQUIPMENT PURC	0	419.95	419.95
01 E 300 298 236 000 899			7	EXTRACURRICULAR ACTIVITIES//MISCELLANEOUS EXPENSE	0	33.44	33.44
01 E 005 810 000 000 410			8	OPERATIONS AND MAINTENANCE//CUST/REPAIR SUPPLIES	0	2.09	2.09
01 E 300 255 000 000 430			9	INDUSTRIAL EDUCATION//SUPPLIES	0	13.99	13.99
11571 LAKESHORE LEARNING MATERIALS		03/12/2007	370375	KINDERGARTEN//MISCELLANEOUS EXPENSE	0	109.84	109.84
01 E 150 201 000 000 899						109.84	
11572 LEARNING ZONE EXPRESS		03/12/2007	147027	HEALTH FAIR EDUC. FOOD SERVICES/SCHOOL LUNCH/GENERAL SUPPLIES	0	283.81	283.81
02 E 005 770 000 701 401						283.81	
11573 LEE'S AUTO & DIESEL		03/12/2007	10495	PICK UP OPERATIONS AND MAINTENANCE//REPAIRS AND MAINTENANCE SVCS	0	218.70	787.74
01 E 005 810 193 000 350						218.70	
01 E 005 810 193 000 350			10547	W. VAN OPERATIONS AND MAINTENANCE//REPAIRS AND MAINTENANCE SVCS	0	569.04	569.04
11574 MACDOCTORS		03/12/2007	1023882	REPAIR BR TECHNOLOGY/CAPITAL OUTLAY/TECHNOLOGY EQUIPMENT	0	434.45	434.45
01 E 200 612 000 302 555						434.45	
11575 MARSHALL INDEPENDENT		03/12/2007	1	SUPERINTENDENT'S OFFICE//GENERAL SUPPLIES	0	119.60	119.60
01 E 005 020 000 000 401						119.60	
11576 MAXWELL MEDALS & AWARDS		03/12/2007	3039969	IN EXTRACURRICULAR ACTIVITIES//MISCELLANEOUS EXPENSE	0	133.15	133.15
01 E 300 298 000 000 899						133.15	
11577 MCCOY, KAREN		03/12/2007	1	TECHNOLOGY//TRAVEL-SCHOOL BUSINESS	0	143.99	143.99
01 E 200 612 199 000 366						143.99	
11578 MEEKER & WRIGHT SP ED COOP		03/12/2007	FEB07	SPECIFIC LEARNING DISABILIT/STATE FUNDED SPECIAL ED/TUIT	0	942.88	942.88
01 E 998 407 000 740 390						942.88	
11579 MINNESOTA ELEVATOR, INC.		03/12/2007	113194	HEALTH & SAFETY EQUIP/PHYSICAL HAZARD CONTROL/OTHER CAPI	0	112.22	386.34
01 E 025 860 000 347 590						112.22	
01 E 005 860 000 347 590			113992	HEALTH & SAFETY EQUIP/PHYSICAL HAZARD CONTROL/OTHER CAPI	0	274.12	274.12
11580 MPRC		03/12/2007	1	OTHER PUPIL SUPPORT SERVICES//GENERAL SUPPLIES	307	25.00	25.00
01 E 005 790 721 000 401						25.00	
11581 MUSIC MART		03/12/2007	504623-625	MUSIC//MATERIALS PURCH FOR RESALE	0	19.65	75.90
01 E 300 258 233 000 450						19.65	
01 E 300 258 233 000 350			506961	MUSIC//REPAIRS AND MAINTENANCE SVCS	308	56.25	56.25
11582 MUSIC STREET		03/12/2007	115015	MUSIC//MATERIALS PURCH FOR RESALE	307	8.47	26.94
01 E 300 258 233 000 450						8.47	
01 E 300 258 233 000 450			116987-8	MUSIC//MATERIALS PURCH FOR RESALE	322	18.47	18.47
11583 MUSIC THEATRE INTERNATIONAL		03/12/2007	296451-999		319	10.00	10.00

Check Nbr	Vendor Name	Check Date	Invoice Number	Invoice Desc	PO Number	Invoice Amount	Check Amount
01 E 300 298 236 000 899				EXTRACURRICULAR ACTIVITIES//MISCELLANEOUS EXPENSE		10.00	
11584 MVTV		03/12/2007	1		0	200.00	300.00
01 E 005 810 000 311 320				OPERATIONS AND MAINTENANCE//TELECOMMUNICATIONS GRANT/COMM		200.00	
			2	REPAIR ON CLKFD TOWER	0	100.00	
01 E 200 612 000 302 555				TECHNOLOGY/CAPITAL OUTLAY/TECHNOLOGY EQUIPMENT		100.00	
11585 NATIONAL SCIENCE LEAGUE		03/12/2007	2052		0	455.00	455.00
01 L 230 33				GENERAL FUND/DEFERRED REVENUE/BERT RANEY ACTIVITY ACCOUN		455.00	
11586 NELSEN'S CLEANERS & LAUNDERERS		03/12/2007	1		0	27.07	27.07
02 E 005 770 000 701 382				FOOD SERVICES/SCHOOL LUNCH/LAUNDRY AND DRY CLEANING		27.07	
11587 NORTHLAND FOUNDATION		03/12/2007	1		0	123.00	123.00
01 L 230 33				GENERAL FUND/DEFERRED REVENUE/BERT RANEY ACTIVITY ACCOUN		123.00	
11588 OFFICE MAX		03/12/2007	233808		0	-25.00	154.04
01 E 005 020 000 302 530				SUPERINTENDENT'S OFFICE/CAPITAL OUTLAY/EQUIPMENT PURCHAS		-25.00	
			255424		0	18.06	
01 E 005 020 000 000 401				SUPERINTENDENT'S OFFICE//GENERAL SUPPLIES		18.06	
			263840		0	12.77	
01 E 005 020 000 000 401				SUPERINTENDENT'S OFFICE//GENERAL SUPPLIES		12.77	
			828437		0	148.21	
01 E 005 020 000 000 401				SUPERINTENDENT'S OFFICE//GENERAL SUPPLIES		148.21	
11589 OLD DUTCH FOODS, INC.		03/12/2007	1		0	298.40	298.40
02 E 005 770 000 701 490				FOOD SERVICES/SCHOOL LUNCH/FOOD		298.40	
11590 ORANGE TREE EMPLOYMENT SCREENI		03/12/2007	14420		0	24.00	24.00
01 R 005 000 000 000 099				MISCELLANEOUS LOCAL REVENUE		24.00	
11591 PALOS SPORTS		03/12/2007	317737		0	58.50	58.50
01 E 150 050 000 000 401				PRINCIPAL'S OFFICE//GENERAL SUPPLIES		58.50	
11592 PAN-O-GOLD BAKING CO.		03/12/2007	1		0	86.55	642.69
02 E 025 770 000 701 490				FOOD SERVICES/SCHOOL LUNCH/FOOD		76.24	
02 E 025 770 000 705 490				FOOD SERVICES/BREAKFAST/FOOD		10.31	
			10		0	556.14	
02 E 005 770 000 701 490				FOOD SERVICES/SCHOOL LUNCH/FOOD		527.77	
02 E 005 770 000 705 490				FOOD SERVICES/BREAKFAST/FOOD		28.37	
11593 SONJA PEDERSON		03/12/2007	1		0	19.41	19.41
01 E 200 720 000 000 401				HEALTH SERVICES/NURSE//GENERAL SUPPLIES		19.41	
11594 Vendor Continued Void		03/12/2007					0.00
11595 Vendor Continued Void		03/12/2007					0.00
11596 J.W. PEPPER & SON INC.		03/12/2007	11322249		0	-75.00	568.61
01 E 300 258 233 000 430				MUSIC//SUPPLIES		-75.00	
			11361795		0	54.94	
01 E 300 258 233 000 430				MUSIC//SUPPLIES		54.94	
			11361997		242	318.45	
01 E 300 258 233 000 430				MUSIC//SUPPLIES		318.45	
			11366018		260	67.99	
01 E 300 258 233 000 430				MUSIC//SUPPLIES		67.99	
			11370723		0	72.99	
01 E 300 258 233 000 430				MUSIC//SUPPLIES		72.99	
			11372548		0	18.39	
01 E 300 258 231 000 430				MUSIC//SUPPLIES		18.39	

Check Nbr	Vendor Name	Check Date	Invoice Number	Invoice Desc	PO Number	Invoice Amount	Check Amount
01 E 300 258 233 000 430			11372788	MUSIC//SUPPLIES	0	-220.00	
						-220.00	
01 E 300 258 233 000 430			11372811	MUSIC//SUPPLIES	0	-128.40	
						-128.40	
01 E 300 258 233 000 430			11373195	MUSIC//SUPPLIES	0	75.00	
						75.00	
01 E 300 258 231 000 430			11375389	MUSIC//SUPPLIES	288	1.95	
						1.95	
01 E 300 258 233 000 430			11375969	MUSIC//SUPPLIES	0	-50.00	
						-50.00	
01 E 300 258 233 000 430			11378659	MUSIC//SUPPLIES	312	58.99	
						58.99	
01 E 300 258 231 000 430			11380041	MUSIC//SUPPLIES	320	60.59	
						60.59	
01 E 300 258 231 000 430			11380155	MUSIC//SUPPLIES	320	93.80	
						93.80	
01 E 300 258 233 000 430			11382485	MUSIC//SUPPLIES	314	37.99	
						37.99	
01 E 300 258 233 000 430			11382928	MUSIC//SUPPLIES	329	62.99	
						62.99	
01 E 300 258 231 000 430			11382940	MUSIC//SUPPLIES	328	117.94	
						117.94	
11597 PITNEY BOWES		03/12/2007	454116-FB07		0	254.00	254.00
01 E 005 020 000 000 370				SUPERINTENDENT'S OFFICE//RENTALS AND LEASES		254.00	
11598 QUILL CORPORATION		03/12/2007	4423844		74	89.99	89.99
01 E 005 020 000 000 401				SUPERINTENDENT'S OFFICE//GENERAL SUPPLIES		89.99	
11599 RATWICK, ROSZAK & MALONEY, P.A		03/12/2007	35586		0	220.50	220.50
01 E 005 150 000 000 305				LEGAL SERVICES//PROFESSIONAL FEES		220.50	
11600 REINHART INST FOODS		03/12/2007	1		0	525.36	2,829.05
02 E 025 770 000 701 401				FOOD SERVICES/SCHOOL LUNCH/GENERAL SUPPLIES		180.49	
02 E 025 770 000 701 490				FOOD SERVICES/SCHOOL LUNCH/FOOD		259.40	
02 E 025 770 000 705 490				FOOD SERVICES/BREAKFAST/FOOD		85.47	
02 E 005 770 000 701 401			10		0	2,303.69	
02 E 005 770 000 701 490				FOOD SERVICES/SCHOOL LUNCH/GENERAL SUPPLIES		399.72	
02 E 005 770 000 701 490				FOOD SERVICES/SCHOOL LUNCH/FOOD		1,433.29	
02 E 005 770 000 705 490				FOOD SERVICES/BREAKFAST/FOOD		470.68	
11601 RIDGEWATER COLLEGE		03/12/2007	1		295	79.00	79.00
01 E 005 790 721 000 366				OTHER PUPIL SUPPORT SERVICES//TRAVEL-SCHOOL BUSINESS		79.00	
11602 DALE ROSENAU		03/12/2007	1		0	15.00	15.00
01 E 300 255 000 000 430				INDUSTRIAL EDUCATION//SUPPLIES		15.00	
11603 RTS		03/12/2007	1		0	232.09	270.97
01 E 005 810 000 000 320				OPERATIONS AND MAINTENANCE//COMMUNICATIONAL SERVICES		232.09	
01 E 025 810 000 000 320			2		0	38.88	
				OPERATIONS AND MAINTENANCE//COMMUNICATIONAL SERVICES		38.88	
11604 RUTLEDGE DENINE		03/12/2007	1		0	80.90	80.90
01 E 300 430 000 000 366				HOMEBOUND//TRAVEL-SCHOOL BUSINESS		80.90	
11605 RYER PLUMBING		03/12/2007	3308		0	320.31	320.31
01 E 005 810 000 000 410				OPERATIONS AND MAINTENANCE//CUST/REPAIR SUPPLIES		320.31	

Check Nbr	Vendor Name	Check Date	Invoice Number	Invoice Desc	PO Number	Invoice Amount	Check Amount
11606	SAWMILL	03/12/2007	3		0	16.23	155.30
01 E 005 810 000 000 410				OPERATIONS AND MAINTENANCE//CUST/REPAIR SUPPLIES		16.23	
			378156		0	34.39	
01 E 300 301 501 830 433				AG EDUCATION (VOCATIONAL)/VOCATIONAL PROGRAMS/INDIVIDUAL		34.39	
			378622		0	33.61	
01 E 300 298 236 000 899				EXTRACURRICULAR ACTIVITIES//MISCELLANEOUS EXPENSE		33.61	
			4		0	71.07	
01 E 300 255 000 000 430				INDUSTRIAL EDUCATION//SUPPLIES		71.07	
11607	SCANTRON CORPORATION	03/12/2007	99566079		302	539.85	539.85
01 E 300 211 000 000 430				SECONDARY EDUCATION GENERAL//SUPPLIES		539.85	
11608	CLINT SCHILLER	03/12/2007	1		0	29.50	29.50
01 E 300 790 388 000 899				OTHER PUPIL SUPPORT SERVICES//MISCELLANEOUS EXPENSE		29.50	
11609	SCHOOL-TECH, INC.	03/12/2007	288852		0	210.05	210.05
01 E 300 292 219 000 401				BOYS/GIRLS ATHLETICS//GENERAL SUPPLIES		210.05	
11610	SKYWARD	03/12/2007	120291		0	200.00	200.00
01 E 005 110 000 000 401				ACCOUNTING OFFICE//GENERAL SUPPLIES		200.00	
11611	GAIL SMOLLEY	03/12/2007	1	YEARBOOK	0	31.49	31.49
01 L 230 56				GENERAL FUND/DEFERRED REVENUE/HAGG ELEMENTARY SCHOOL ACT		31.49	
11612	SNA	03/12/2007	157005		0	8.00	8.00
02 E 005 770 000 701 899				FOOD SERVICES/SCHOOL LUNCH/MISCELLANEOUS EXPENSE		8.00	
11613	SOUTHWEST STATE UNIVERSITY	03/12/2007	1	spring 2007	0	3,120.06	3,120.06
01 E 300 200 000 000 433				POST SECONDARY OPTIONS ENROLL//INDIVIDUAL INST SUPPLIES		3,120.06	
11614	SOUTHWEST WHOLESALE	03/12/2007	1		0	1,232.15	9,548.86
02 E 025 770 000 701 490				FOOD SERVICES/SCHOOL LUNCH/FOOD		942.85	
02 E 025 770 000 705 401				FOOD SERVICES/BREAKFAST/GENERAL SUPPLIES		135.65	
02 E 025 770 000 705 490				FOOD SERVICES/BREAKFAST/FOOD		153.65	
			10		0	8,316.71	
02 E 025 770 000 701 401				FOOD SERVICES/SCHOOL LUNCH/GENERAL SUPPLIES		557.28	
02 E 025 770 000 701 490				FOOD SERVICES/SCHOOL LUNCH/FOOD		5,829.46	
02 E 025 770 000 705 490				FOOD SERVICES/BREAKFAST/FOOD		1,929.97	
11615	SPECIAL SYSTEMS INC.	03/12/2007	30899		0	425.00	425.00
01 E 005 860 000 363 305				HEALTH & SAFETY EQUIP/FIRE SAFETY/PROFESSIONAL FEES		425.00	
11616	ST. PAUL'S LUTHERAN CHURCH	03/12/2007	1	PS SCREENING	0	100.00	100.00
04 E 500 583 000 354 305				PRE-SCHOOL SCREENING/EARLY CHILDHOOD SCREENING/PROFESSIO		100.00	
11617	STRAND, DWAYNE	03/12/2007	1		0	124.01	216.41
01 E 100 216 000 401 366				TITLE I - PART A/TITLE I/TRAVEL-SCHOOL BUSINESS		124.01	
			2		0	92.40	
01 E 005 020 000 000 366				SUPERINTENDENT'S OFFICE//TRAVEL-SCHOOL BUSINESS		92.40	
11618	SW/WC SERVICE COOP - MARSHALL	03/12/2007	1	AUTISM & DCD TRAINING	0	2,826.30	2,826.30
01 E 005 411 000 419 305				AUTISTIC/94-142 FEDERAL/PROFESSIONAL FEES		2,826.30	
11619	SW/WC SERVICE COOP - MARSHALL	03/12/2007	2		0	95.00	190.00
01 E 100 050 000 000 367				PRINCIPAL'S OFFICE//TRAVEL-PROFESS DEVELOPMENT		95.00	
			3		0	95.00	
01 E 300 050 000 000 367				PRINCIPAL'S OFFICE//TRAVEL-PROFESS DEVELOPMENT		95.00	
11620	TEACHER'S DISCOVERY	03/12/2007	23146401019		311	202.02	202.02
01 E 300 230 251 000 430				FOREIGN LANGUAGE//SUPPLIES		202.02	
11621	TECH CHECK	03/12/2007	7883-IN		0	1,091.57	7,526.59
01 E 200 612 000 302 555				TECHNOLOGY/CAPITAL OUTLAY/TECHNOLOGY EQUIPMENT		1,091.57	

Check Nbr	Vendor Name	Check Date	Invoice Number	Invoice Desc	PO Number	Invoice Amount	Check Amount
01 E 200 612 000 302 555			7967	TECHNOLOGY/CAPITAL OUTLAY/TECHNOLOGY EQUIPMENT	0	6,435.02	6,435.02
11622 THRIFTY WHITE DRUG		03/12/2007	875536	HEALTH SERVICES/NURSE//GENERAL SUPPLIES	0	7.58	113.42
01 E 200 720 000 000 401						7.58	
04 E 500 582 000 344 430			875542	LEARNING READINESS/LEARNING READINESS/SUPPLIES	0	31.24	31.24
01 E 300 790 388 000 899			890249	KID CHANGE OTHER PUPIL SUPPORT SERVICES//MISCELLANEOUS EXPENSE	0	74.60	74.60
11623 UNIVERSITY PLAZA HOTEL		03/12/2007	1	LIT. COLLAB.	277	318.73	318.73
01 E 200 204 000 414 366				TITLE II EISENHWOER/TITLE II ESEA/TRAVEL-SCHOOL BUSINESS		318.73	
11624 US BANK TRUST		03/12/2007	1855463	GO REF BOND FEE	0	431.25	431.25
07 E 025 910 000 000 790				DEBT REDEMPTION//OTHER DEBT SVC EXP		431.25	
11625 VELDE SANITATION		03/12/2007	27350	OPERATIONS AND MAINTENANCE//UTILITY SERVICES	0	505.00	855.00
01 E 005 810 000 000 330						505.00	
01 E 025 810 000 000 330			27350-	OPERATIONS AND MAINTENANCE//UTILITY SERVICES	0	350.00	350.00
11626 KATHLEEN VELDE		03/12/2007	1	ENGLISH//SUPPLIES	0	65.73	65.73
01 E 300 220 000 000 430						60.00	
01 E 300 298 236 000 899				EXTRACURRICULAR ACTIVITIES//MISCELLANEOUS EXPENSE		5.73	
11627 WELDERS SUPPLY		03/12/2007	869668	AG EDUCATION (VOCATIONAL)/VOCATIONAL PROGRAMS/INDIVIDUAL	0	5.04	5.04
01 E 300 301 501 830 433						5.04	
11628 WEST CENTRAL COMMUNICATION		03/12/2007	609965	OTHER PUPIL SUPPORT SERVICES//EQUIPMENT PURCHASES	70	5,618.95	5,618.95
01 E 005 790 721 000 530						5,618.95	
11629 WEST CENTRAL TROPHIES		03/12/2007	12216	EXTRACURRICULAR ACTIVITIES//MISCELLANEOUS EXPENSE	0	533.00	533.00
01 E 300 298 000 000 899						533.00	
11630 WEST CENTRAL TRIBUNE		03/12/2007	1	NIE PROGRAM	0	100.00	100.00
01 E 300 220 000 000 430				ENGLISH//SUPPLIES		100.00	
11631 WILLIAMS, JAMES		03/12/2007	1	ELEMENTARY GENERAL ED.//TRAVEL-SCHOOL BUSINESS	0	46.20	46.20
01 E 150 203 000 000 366						46.20	
11632 WILLIAM V MACGILL & CO		03/12/2007	IN0164113	HEALTH SERVICES/NURSE//GENERAL SUPPLIES	274	66.15	393.65
01 E 200 720 000 000 401						66.15	
01 E 200 720 000 000 401			IN0165881	HEALTH SERVICES/NURSE//GENERAL SUPPLIES	294	327.50	327.50
11633 WOLF, GARY		03/12/2007	1	STATE PARKING	0	79.00	79.00
01 E 300 294 221 000 899				BOYS ATHLETICS//MISCELLANEOUS EXPENSE		79.00	
11634 XCEL ENERGY		03/12/2007	1	RECREATION-SWIM POOL/COMMUNITY EDUCATION/UTILITY SERVICE	0	23.85	45.99
04 E 500 560 000 321 330						23.85	
01 E 025 810 184 000 330			2	OPERATIONS AND MAINTENANCE//UTILITY SERVICES	0	22.14	22.14
11635 YMC FAMILY SERVICE CENTER		03/12/2007	1	WE ARE TAX EXEMPT	0	26.39	26.39
04 E 500 590 000 321 401				OTHER COMMUNITY SERVICES/COMMUNITY EDUCATION/GENERAL SUP		26.39	
11636 YME SCHOOL ACTIVITY ACCOUNT		03/12/2007	1	MULTI-AGE	0	623.74	623.74
01 L 230 14				GENERAL FUND/DEFERRED REVENUE/CLARKFIELD PRINCIPAL POP		623.74	
11637 Vendor Continued Void		03/12/2007					0.00
11638 Vendor Continued Void		03/12/2007					0.00
11639 Vendor Continued Void		03/12/2007					0.00
11640 Vendor Continued Void		03/12/2007					0.00
11641 YME SCHOOLS-ADM		03/12/2007	4948	MIKE LETENDER	0	190.00	6,184.17
01 E 300 294 213 000 319				BOYS ATHLETICS//OTHER PERSONAL SERVICES		190.00	

Check Nbr	Vendor Name	Check Date	Invoice Number	Invoice Desc	PO Number	Invoice Amount	Check Amount
01 E 300 296 213 000 319			4949	TIM MUNDT GIRLS ATHLETICS//OTHER PERSONAL SERVICES	0	190.00 190.00	
01 E 300 296 228 000 899			4950	CHRIS EGGEBRATEN GIRLS ATHLETICS//MISCELLANEOUS EXPENSE	0	1,008.00 1,008.00	
01 E 300 296 228 000 899			4951	the dollar stop GIRLS ATHLETICS//MISCELLANEOUS EXPENSE	0	24.00 24.00	
04 E 500 505 000 321 450			4952	PRAIRIE RUNNER'S 4-H COMMUNITY EDUCATION GENERAL/COMMUNITY EDUCATION/MATERIAL	0	150.00 150.00	
04 E 500 505 000 321 450			4953	JB YATES COMMUNITY EDUCATION GENERAL/COMMUNITY EDUCATION/MATERIAL	0	100.00 100.00	
01 E 300 211 000 000 430			4954	IKON SECONDARY EDUCATION GENERAL//SUPPLIES	0	4.01 4.01	
04 E 500 505 000 321 450			4955	AARP COMMUNITY EDUCATION GENERAL/COMMUNITY EDUCATION/MATERIAL	0	340.00 340.00	
04 E 500 505 000 321 450			4956	ANDES TOWER HILLS COMMUNITY EDUCATION GENERAL/COMMUNITY EDUCATION/MATERIAL	0	493.00 493.00	
04 E 500 505 000 321 450			4957	ACTORS THEATRE OF MN COMMUNITY EDUCATION GENERAL/COMMUNITY EDUCATION/MATERIAL	0	1,003.30 1,003.30	
01 E 300 294 213 000 319			4959	BRIAN ONKEN BOYS ATHLETICS//OTHER PERSONAL SERVICES	0	190.00 190.00	
04 E 500 505 000 321 450			4960	TARGET CENTER COMMUNITY EDUCATION GENERAL/COMMUNITY EDUCATION/MATERIAL	0	506.00 506.00	
04 E 500 505 000 321 450			4961	ACTORS THEATRE OF MN COMMUNITY EDUCATION GENERAL/COMMUNITY EDUCATION/MATERIAL	0	181.70 181.70	
01 E 005 020 000 000 367			4962	MAASFEP SUPERINTENDENT'S OFFICE//TRAVEL-PROFESS DEVELOPMENT	0	210.00 210.00	
01 E 300 240 000 000 430			4963	DJ'S HEALTH/PHY ED/RECREATION//SUPPLIES	0	101.40 101.40	
01 E 100 620 000 000 470			4964	NICOLE KOTEK EDUCATIONAL MEDIA/LIBRARY//LIBRARY BOOKS	0	4.00 4.00	
01 E 300 294 221 000 899			4965	TIM KNAPPER BOYS ATHLETICS//MISCELLANEOUS EXPENSE	0	336.00 336.00	
01 E 300 294 213 000 319			4966	TOM MUNDT BOYS ATHLETICS//OTHER PERSONAL SERVICES	0	190.00 190.00	
04 E 500 505 000 321 450			4967	CHANHASSEN GROUP SALES COMMUNITY EDUCATION GENERAL/COMMUNITY EDUCATION/MATERIAL	0	100.00 100.00	
04 E 500 590 000 321 329			4968	POSTMASTER OTHER COMMUNITY SERVICES/COMMUNITY EDUCATION/POSTAGE AND	0	110.76 110.76	
01 E 300 294 213 000 186			4969	NANCY CUKLANZ BOYS ATHLETICS//EXTRA-CURRICULAR WORKERS	0	264.00 264.00	
01 E 300 294 213 000 186			4970	CHERI FJERMSTAD BOYS ATHLETICS//EXTRA-CURRICULAR WORKERS	0	192.00 104.00	
01 E 300 296 213 000 186				GIRLS ATHLETICS//EXTRA-CURRICULAR WORKERS		88.00	
01 E 300 294 213 000 186			4971	DAN JOHNSON BOYS ATHLETICS//EXTRA-CURRICULAR WORKERS	0	64.00 32.00	

Check Nbr	Vendor Name	Check Date	Invoice Number	Invoice Desc	PO Number	Invoice Amount	Check Amount
01 E 300 296 213 000 186				GIRLS ATHLETICS//EXTRA-CURRICULAR WORKERS		32.00	
			4972	ERIC LYNNER	0	64.00	
01 E 300 294 213 000 186				BOYS ATHLETICS//EXTRA-CURRICULAR WORKERS		64.00	
			4973	AMANDA MASSMAN	0	40.00	
01 E 300 296 213 000 186				GIRLS ATHLETICS//EXTRA-CURRICULAR WORKERS		40.00	
			4974	JERRY RUPP	0	80.00	
01 E 300 294 221 000 186				BOYS ATHLETICS//EXTRA-CURRICULAR WORKERS		80.00	
			4975	DAVID SKJEFTE	0	16.00	
01 E 300 296 213 000 186				GIRLS ATHLETICS//EXTRA-CURRICULAR WORKERS		16.00	
			4976	DESTRY SKJEFTE	0	16.00	
01 E 300 296 213 000 186				GIRLS ATHLETICS//EXTRA-CURRICULAR WORKERS		16.00	
			4977	DEB SWENSON	0	16.00	
01 E 300 296 213 000 186				GIRLS ATHLETICS//EXTRA-CURRICULAR WORKERS		16.00	
11642 YME PTO		03/12/2007	1	FOOD & ADMISSION FOR A FAMILY FOR THE SOCK HOP	0	31.00	31.00
01 E 300 790 388 000 899				OTHER PUPIL SUPPORT SERVICES//MISCELLANEOUS EXPENSE		31.00	
11643 YME - CLARKFIELD PETTY CASH		03/12/2007	1		0	5.30	5.30
01 L 230 56				GENERAL FUND/DEFERRED REVENUE/HAGG ELEMENTARY SCHOOL ACT		5.30	

143 Computer Check(s) For a Total of 217,549.29

	0	Manual	Checks For a Total of	0.00
	143	Computer	Checks For a Total of	217,549.29
Total For	143		Manual and Computer Checks	217,549.29
Less	0	Voided	Checks For a Total of	0.00
			Net Amount	217,549.29

FUND SUMMARY

Fund	Description	Balance Sheet	Revenue	Expense	Total
01	GENERAL FUND	3,284.38	24.00	185,779.99	189,088.37
02	FOOD SERVICE	0.00	0.00	23,186.96	23,186.96
04	COMMUNITY SERVICE	0.00	0.00	4,652.36	4,652.36
07	DEBT REDEMPTION	0.00	0.00	431.25	431.25
09	TRUST FUND	190.35	0.00	0.00	190.35

**Yellow Medicine East #2190
Board Report
March 2007**

	2006-07 Expenditures	Revised Budget	Year to Date	Budget Balance	Percent	% Exp.
	By Fund	2006-07	Expenditures		Expended	2005-06%
General		9,748,164	5,666,471	4,081,693	58.13%	64.05%
Food Service		400,849	283,691	117,158	70.77%	64.12%
Community Service		292,283	210,715	81,568	72.09%	68.85%
Debt Redemption		139,092	137,953	1,139	99.18%	99.44%
Trust Fund		0		0	0.00%	0.00%
Total		10,580,388	6,298,830	4,281,558	59.53%	64.92%

Year to date amounts include current month's accounts payables plus previous month's payroll.

Salaries % expended to date (approximately)

Contracted July-June	Supt/Finance/Maint/Comm Ed	66.67%
Contracted August-July	Principals	58.33%
Contracted Sept-August	Teachers/Fd Svc Supv/Nurses	50.00%
12 Month Non-certified	Secretaries	66.67%
12 Month Non-certified	Custodians	61.00%
9 Month Non-certified	Assistants/Cooks	53.66%

Liquid Asset Fund (Investments)

Month End Cash Invested \$1,545,777.83

YME FOOD SERVICE REPORT TO THE SCHOOL BOARD

February 2007

Granite Falls Site

Meal Type	Total Reimbursable Meals Served (Free + Reduced + Paid)	Number of Days Served	Total Free Meals Served	Total Reduced-Price Meals Served	Total Full Pay Meals Served	Total Non-Reimbursable Meals Served	Number of Participants Approved for Free Meals	Number of Participants Approved for Reduced-Price Meals	Number of Participants Non Approved for Free or Reduced-Price Meals
Breakfast	3,254	17	1,553	507	1,148	46	280	112	569
Lunch	12,158	17	3,823	1,478	6,408	449	280	112	569

Clarkfield Site

Meal Type	Total Reimbursable Meals Served (Free + Reduced + Paid)	Number of Days Served	Total Free Meals Served	Total Reduced-Price Meals Served	Total Full Pay Meals Served	Total Non-Reimbursable Meals Served	Number of Participants Approved for Free Meals	Number of Participants Approved for Reduced-Price Meals	Number of Participants Non Approved for Free or Reduced-Price Meals
Breakfast	881	17	464	280	105	32	53	34	46
Lunch	1,983	17	705	546	660	72	53	34	45

Personnel Items
March 12, 2007

7.A. Leave of Absence – L. Tebben

Lorraine Tebben is requesting a leave of absence until such time as her physician certifies that she is able to return to work. She is employed as a kitchen assistant at the Granite Falls site.
Recommend approval of a leave of absence for Lorraine Tebben.

7.B. Kitchen Helper – J. Luepke

Food Service Director Ditterich is recommending the employment of Jenna Luepke as a kitchen assistant at the Granite Falls site, effective February 22nd. She is employed for 3.75 hours per day at a pay rate of \$10.75 per hour. This position became available due to a resignation.
Recommend the approval of the employment of Jenna Luepke as a kitchen assistant.

Consent Items
March 12, 2007
Recommendations to the Board

8.A. SW/WC 2007-2008 Service Contracts

Attached are the YME 2007-2008 Service Contracts with the Southwest/West Central Service Cooperative. The contracts include the Service Cooperative Membership Dues, Cooperative Purchasing and Special Education Regional Low Incidence Projects. These are the three contracts we have had renewed on an annual basis for a number of years. The service cooperative requests early identification of the services we will be purchasing for the coming year to help them determine their staffing requirements for 07-08. The total cost of the first two contracts is \$1,811.15 (\$1,661.15 in dues and \$150.00 for cooperative purchasing). The Special Education Regional Low Incidence Projects is reimbursed through state aids and does not require any additional local support of costs. *Recommend approval of the Service Cooperative Membership Dues, Cooperative Purchasing and Special Education Regional Low Incidence Projects contracts with the SW/WC Service Cooperative Center for the 2007-2008 school year.*

SOUTHWEST AND WEST CENTRAL SERVICE COOPERATIVES

SC DUES
2007-2008

THIS AGREEMENT, made and entered into this 15th day of February, 2007, by and between Southwest and West Central Service Cooperatives, hereinafter referred to as SC, and SC Independent School District Yellow Medicine East, No. 2190, located at Granite Falls, Minnesota, hereinafter referred to as School, witnesseth:

That for good and valuable consideration of the premises, mutual terms, covenants, provisions, and conditions hereinafter set forth, it is agreed by and between the parties as follows:

WHEREAS, the SC was created by the legislature (M.S. 123.A21) to perform planning on a regional basis and to assist in meeting specific needs of clients in participating school districts which could be better provided by a SC than by the members themselves. The SC shall provide those programs and services which are determined pursuant to subdivision 7, to be priority needs of the particular region and shall assist in meeting special needs which arise from fundamental constraints upon individual members;

WHEREAS, school districts participating in programs and services shall share in costs incurred for providing those programs and services; the SC Board of Directors shall determine the approximate cost of each program and service which remains after funds from other sources have been budgeted; and the SC Board of Directors shall assess each participating school district a proportionate share of the remaining cost in the form of a service fee; and

WHEREAS, the SC Board of Directors has established the service fee in the form of membership dues for school districts who want to participate in SC programs for 2007-2008, it is hereby stipulated and agreed that the School desires to support the organizing, establishing, financing, administering, and operating of the SC and to pay for such support and service in the amount of:

\$1172 per district **	=	\$1,172.00
<u>1087</u> students @ \$.45 (PK-12)*	=	\$ <u>489.15</u>
TOTAL:	=	\$1,661.15

*NOTE: Student population is based upon 2005-2006 data as identified by the Minnesota Automated Reporting Student System (MARSS).

****Districts participating in an academic pairing agreement will experience a reduction in base fees for SC membership as follows: two districts shall be assessed base fees in total at a ratio of 1.5; three districts shall be assessed base fees in total at a ratio of 1.7; four or more districts shall be assessed base fees in total at a ratio of 1.9.**

All payments due SC by School shall be paid on or before August 15, 2007.

WHEREAS, school districts may share and/or pair, in signing this contract, the School certifies that when said district is involved in two-way or multi-way pairing and/or sharing of pupils and staff in one or more grades (PK-12), contracts for SC services signed by the School shall be delivered only to buildings located within the contracting Schools' boundaries.

IN WITNESS WHEREOF, Parties hereto have executed this agreement the day and year first above written.

SC Member School District No. 2190
Granite Falls, Minnesota

Southwest and West Central
Service Cooperatives

BY: _____
(Chairperson)

BY: _____
(Chairperson)

(Clerk)

(Clerk)

(Date)

(Date)

SOUTHWEST AND WEST CENTRAL SERVICE COOPERATIVES
MINNESOTA COOPERATIVE PURCHASING SERVICES
2007-2008

THIS AGREEMENT, made and entered into this 15th day of February, 2007, by and between Southwest and West Central Service Cooperatives, hereinafter referred to as SC, and SC Independent School District Yellow Medicine East, No. 2190, located at Granite Falls, Minnesota, hereinafter referred to as School, witnesseth:

1. The SC is engaged in quantity purchasing to obtain competitive pricing on supplies and equipment used by schools by direct negotiation as well as state bidding procedures. **The following contracts were bid following the State of Minnesota Bid Guidelines** (subject to change): A & B Business Equipment, Acoustical Surfaces Inc., Audio Enhancement, CDWG, Compview, Food Services of America, Heartland Paper Company, IP MobleNet, JH Larson, Midwest Playscapes, Office Max, Nasco Science Equipment, The Nelson Group, Radio & TV, School Specialty, Tech Depot, and Tri-Dim Filters. **The following contracts were arranged through direct negotiation with the vendor** (subject to change): Educational Resources (Adobe, Microsoft and Filemaker pricing), Acme Electric - Tool Crib of the North, Retrofit Recycling and Scott Electric. **Cut Paper is bid each spring for summer delivery.**
2. That the School desires to obtain said services and agrees to pay for said services, supplies, and equipment.
3. The SC shall furnish price lists, specifications, consultation, and other related support activities to the School upon payment of a **membership fee of \$150.00** per independent school district or non-public school for the period beginning July 1, 2007 through June 30, 2008, due on or before August 15, 2007.
4. Payments for goods received by School shall be made in accordance with billings received for same goods.
5. Available to School entering into this contract is the direct order and delivery of office and computer supplies, projection bulbs, building bulbs, physical education supplies and equipment, custodial supplies, industrial paper, filters, bulb recycling, art supplies, copiers, computers, computer software, audio visual equipment, power and hand tools, science equipment, safety equipment, sound field amplification systems, playground equipment, food and kitchen supplies, plumbing and electrical supplies, vehicles and cut paper. Orders may be placed at any time during the fiscal year with selected vendors.

IN WITNESS WHEREOF, Parties hereto have executed this agreement the day and year first above written.

SC Member School District No. 2190
Granite Falls, Minnesota

Southwest and West Central Service
Cooperatives

BY: _____
(Chairperson)

BY: _____
(Chairperson)

(Clerk)

(Clerk)

(Date)

(Date)

SW/WC SERVICE COOPERATIVES

REGIONAL LOW INCIDENCE PROJECT

2007 – 2008

School District: Yellow Medicine East

District support is based on a cost of \$3.35 per student in PK-12* plus a base fee of \$2,626.00 per district. District support is presented as follows:

Local support cost	\$.00
District will be reimbursed through state special education aids	<u>\$6,267.45</u>
TOTAL DISTRICT SUPPORT	<u>\$6,267.45</u>

Fees for services will be invoiced and payable as identified on the invoice.

* Number of students in PK-12 = 1087. Student population is based upon 2005-2006 data as identified by the Minnesota Automated Reporting Student System (MARSS).

Action Items

March 12, 2007

Recommendations to the Board

9.A. Extended Leave Incentive Plan

Attached for your information and possible approval is a draft Extended Leave/Retirement Incentive Plan that will be presented to the certified teaching staff. It allows for an extended leave of absence incentive for certified staff. It allows any active staff that are 50 years or older and have 10 years of teaching service in the district to take an extended leave of absence for 3 to 5 years. During this time, the district will pay TRA and health insurance costs (as defined in the plan). Specific information is detailed in the plan. Further discussion can take place on Monday night. With your approval, the plan will be forwarded to EM-YME for their consideration and response. *Recommend approval of the Extended Leave Plan for the 2006-2007 school year.*

9.B. Computer Lease Agreement

As Technology Coordinator McCoy reported earlier, our lease of computers for our labs expires at the end of the 06-07 school year. Two proposals have been enclosed for your review. As has been done in the past, early approval of a new lease agreement generally allows the district to secure a better lease cost. Both proposals include updating our laptop computers as well. Karen will review each of the two proposals with you during the report section of the meeting. The upfront payment will be made with Microsoft dollars and the first lease payment will not be due until July 1, 2007. The first proposal includes replacing all computers in each of the labs (6). The second proposal calls for leasing 5 new labs. The elementary computer labs would be partially furnished with 25 computers currently housed in the labs. The current cost of leasing our computer labs is about \$36,000.00. It would be my recommendation that you approve lease option 2 for \$46,456.92. The use of the labs at the elementary level is less heavy and can be accommodated with fewer new computers at this time. *Recommend approval of a 4-year computer lease with Apple Financial services for \$46,456.92.*

9.C. 2006-2007 Calendar Change

The current school calendar will have to be adjusted as a result of the recent snow days. (A copy of the calendar is attached for your review.) The first snow day is forgiven and the second day will be made up. At this time, we can look at a couple of options. We looked at a number of options and also got input from the EM-YME. The option that seems to make the most sense at this time is to make May 4th a student day with an early out. The inservice day could then be changed to a floating day whereby teachers would put in the required 8 hours outside of the school day (comp time). These inservice activities would be approved by the building administrators and the staff development coordinator. As there may be other options you want to consider, further discussion can take place on Monday evening. The notation at the bottom of the calendar states the days will be made up at the end of the year but it also states that the Board reserves the right to modify and change the calendar. *Recommend changing the 06-07 calendar, making Friday, May 4th a student day. The inservice time would be rescheduled by building administrators prior to the end of the school year.*

YME TEACHER'S EXTENDED LEAVE OF ABSENCE OPPORTUNITY

March 11, 2007

THE PLAN:

The School Board will grant a one-time opportunity to teachers interested in making application for an extended leave of absence. Teachers making application must have completed at least ten (10) years of teaching service in the district by the end of the 2006-2007 school year and be at least 50 years of age by August 15, 2007.

REQUIREMENTS AND RESTRICTIONS

1. The incentive plan is only in effect for the designated period during the 2006-2007 school year.
2. The incentive is available for all teachers who meet the plan's eligibility requirements and whose application is received in the District Office prior to **3:30 p.m. on May 15, 2007**.
3. To be eligible for the extended leave of absence incentives, the teacher must have completed ten (10) full years of teaching experience in Independent School District 2190 by June 30, 2007 and be at least 50 years of age by August 15, 2007.
4. Teachers must be actively teaching for ISD 2190 during the 2006-2007 school year and have completed the 2006-2007 school year.
5. Independent School District 2190 makes no representations as to whether a teacher who is placed on an extended leave of absence will receive credit for TRA benefits. It is the individual teacher's responsibility to ascertain TRA benefits and eligibility. The District will assist in the completion and submittal of the required paperwork.
6. *Appropriate statutory language for M.S. 122A.46 applies for teachers requesting an extended leave of absence.*

EXTENDED LEAVES OF ABSENCE PLAN

1. Teachers who are eligible must submit a request for an extended leave of absence from the School District. This leave must begin with the 2007-2008 school year and be received in the District Office by May 15, 2007. The School Board will consider Extended Leave of Absence requests of three (3) to five (5) years in duration.
2. For an eligible teacher, who is granted an extended leave of absence, the School District will pay all of the teacher's contributions and employer's contributions to TRA for a period of up to five (5) years. The payments will be paid on a monthly basis.
3. An eligible teacher who is granted an extended leave of absence under this offering will also be eligible to continue participation in the School District's group health and hospitalization insurance program provided the teacher requests the coverage. All payments related to the continuation of insurance shall be at the School District's expense for a period of up to five (5) years. Again, these payments will be made on a monthly basis. The payment shall be that equal to the 2006-2007 premium paid for a \$2000.00 deductible single health insurance policy.

4. In addition, the District will put into escrow an additional \$3000.00 per year (up to 5 years). This amount will be put into escrow on June 30th of each year of the leave. These dollars may be used to pay any increase in insurance costs during the duration of the leave of absence. The School District shall contribute the balance of this incentive amount into the State of Minnesota Post Retirement Health Care Savings Plan at the time the teacher resigns or retires from the District. Should the teacher resign or retire during the year, the amount for that year will be prorated on a monthly basis.
5. Any teacher resigning and retiring in accordance with this Memorandum of Understanding and who meets the eligibility requirements for retirement severance pay as provided in Article XI of the Master Agreement, shall, in addition to the additional retirement incentive received under Paragraph 4, receive all retirement benefits pursuant to Article XI of the Agreement.

OTHER REQUIRMENTS AND RESTRICTIONS

1. The benefit will be prorated for teachers who are contracted for less than full time during the 2006-2007 school year.
2. If retiring during the extended leave agreement, the monthly extended leave incentives will immediately cease to be paid by the district.
- ~~3. Any teacher resigning or retiring during their extended leave of absence and who meets the eligibility requirements for retirement severance pay as provided in Article XI of the Agreement, shall receive retirement severance pay in an amount calculated pursuant to Article XI of the Agreement.~~
4. If the teacher returns to teach in the School District during or at the end of the Extended Leave of Absence, the teacher will be required to immediately reimburse the benefit used during the leave and will not be eligible for continued benefits under this early retirement incentive plan. Payment shall be in full prior to the start of the school year in which the employee is returning. If payment is not received in full prior to the start of the school year, it will be deducted from the employee's payroll checks until the full amount is repaid to the district. This will be done on the basis of 50% of the employee's monthly gross checks or \$2000.00 per month whichever is greater until the incentive is repaid to the District. ***Should the teacher request reinstatement to a position in the District, District dollars escrowed for additional insurance to be placed into the State of Minnesota Post Retirement Health Care Savings Plan at the time the teacher resigns or retires from the District would be retained by the District .***



Yellow Medicine East 2006-2007 School Calendar

*** ADJUSTED ***



The school day will begin at **8:25** am & end at **3:10** pm

July 2006						
S	M	T	W	T	F	S
						1
2	3	4	5	6	7	8
9	10	11	12	13	14	15
16	17	18	19	20	21	22
23	24	25	26	27	28	29
30	31					

August 2006						
S	M	T	W	T	F	S
		1	2	3	4	5
6	7	8	9	10	11	12
13	14	15	16	17	18	19
20	21	22	23	24	25	26
27	28	29	30	31		

September 2006						
S	M	T	W	T	F	S
					1	2
3	4	5	6	7	8	9
10	11	12	13	14	15	16
17	18	19	20	21	22	23
24	25	26	27	28	29	30

October 2006						
S	M	T	W	T	F	S
1	2	3	4	5	6	7
8	9	10	11	12	13	14
15	16	17	18	19	20	21
22	23	24	25	26	27	28
29	30	31				

November 2006						
S	M	T	W	T	F	S
			1	2	3	4
5	6	7	8	9	10	11
12	13	14	15	16	17	18
19	20	21	22	23	24	25
26	27	28	29	30		

December 2006						
S	M	T	W	T	F	S
					1	2
3	4	5	6	7	8	9
10	11	12	13	14	15	16
17	18	19	20	21	22	23
24	25	26	27	28	29	30
31						

August 21-28,
August 29, 30, 31
August 30

September 5

October 17

October 18
October 19 & 20

November 3
November 6

November 23-24

Dec 25-Jan 2

January 2
January 3
January 15

January 16
January 19
January 22

February 14
February 15
February 16
February 19
February 22

March 2
March 22

March 23
March 26

April 5
April 6-9
April 10

April 17-18

April 19th
April 23
April 24-25

April 26
April 28

May 4
May 28
May 31

June 1

Floating Inservice Day
Inservice Day
Back to School Night K-12

First Day of School

Early Out
Conferences K-12
Inservice Day
EM Break

First Quarter Ends (41 Days)
Second Quarter Begins
Late Start
Thanksgiving Vacation

Christmas Vacation

Inservice Day
School Resumes
Martin Luther King Day
Inservice Day

Late Start
Second Quarter Ends (45 Days)
Third Quarter Begins

Early Out
Inservice Day
Comp Day – No School
Presidents Day – No School
NAEP Testing - HAH

NAEP Testing - BRE
Third Quarter Ends (41 days)
Early Out
Conferences K-12
Inservice Day
Fourth Quarter Begins

Comp Day – No School
Easter Break – No School
Late Start
MCA Writing – Grade 9
MCA II Reading
Grades 3, 4, 5, 6, 7, 8,
MCA II Reading - Grade 10
MCA II Math - Grade 11
MCA II Math
Grades 3, 4, 5, 6, 7, 8,
MCA II Writing – Grade 6
Prom

Early Out
Memorial Day – No School
Fourth Quarter Ends (44 Days)
Last Day of School

Inservice Day
Graduation

January 2007						
S	M	T	W	T	F	S
	1	2	3	4	5	6
7	8	9	10	11	12	13
14	15	16	17	18	19	20
21	22	23	24	25	26	27
28	29	30	31			

February 2007						
S	M	T	W	T	F	S
					1	2
3	4	5	6	7	8	9
10	11	12	13	14	15	16
17	18	19	20	21	22	23
24	25	26	27	28		

March 2007						
S	M	T	W	T	F	S
					1	2
3	4	5	6	7	8	9
10	11	12	13	14	15	16
17	18	19	20	21	22	23
24	25	26	27	28	29	30
31						

April 2007						
S	M	T	W	T	F	S
1	2	3	4	5	6	7
8	9	10	11	12	13	14
15	16	17	18	19	20	21
22	23	24	25	26	27	28
29	30					

May 2007						
S	M	T	W	T	F	S
			1	2	3	4
5	6	7	8	9	10	11
12	13	14	15	16	17	18
19	20	21	22	23	24	25
26	27	28	29	30	31	

June 2007						
S	M	T	W	T	F	S
					1	2
3	4	5	6	7	8	9
10	11	12	13	14	15	16
17	18	19	20	21	22	23
24	25	26	27	28	29	30

Up to two days may be used for Parent-Teacher Conferences and will be scheduled by the administrators. The first day missed for inclement weather will not be made up. All other days missed for storms or other emergencies will be made up at the end of the year. The board reserves the right to amend or adjust the calendar.
Board Approved May 30, 2006

Discussion Information
March 12, 2007

10.A. Superintendent Evaluation

The meeting will be closed for the evaluation review. It is anticipated that all Board members will be in attendance and that my evaluation can be completed at this time. I would assume that all of you have received copies of the summary evaluation information that had been collected by Board member Formo. Following a review of the summary of your evaluations, further discussion can take place. When the evaluation is complete, the Board meeting will be reopened. At that time, Chairman Volstad will need to summarize the discussion for the meeting minutes. The summary should include strengths, areas of concern and recommendations for future goals related to performance.

10. B. Superintendent Contract

The Negotiation Committee met with me on Monday, March 5th. At this time there is no tentative contract. At our original negotiations meeting, Chairman Volstad informed me that they would be recommending to the Board that I not be offered a new contract. Since then we have had two brief meetings. At those meetings, we discuss both a shortened contract and a leave of absence. I am not interested in a leave at this time. Following any update of information committee members wish to share, Chairman Volstad will direct the Board in a conversation as to whether or not they wish to extend a new contract to me at this time. Formal action on any discussion will take place at the April meeting.

10.C. Hagg School Choice Survey

Attached is a copy of the survey that was mailed to the families of students currently attending Hagg Elementary. Also attached is spreadsheet detailing the responses we have received as of Thursday. We will update the numbers for you on Monday night. Further discussion can take place on Monday evening.

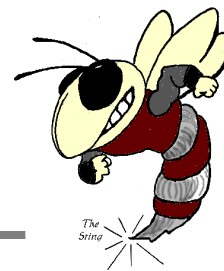
I did talk to Glory Kibbel at the Department of Education. Staff from the Department had made a site visit this week. Peddler Dan's was approved as the site for the CACS. It still has to be inspected by the fire marshal and will have to be brought up to code prior to opening. They were told that at this time they did not have completed enrollment applications. The Department will be monitoring the enrollment status over the next month and hopes to act on final approval of the Charter based on their enrollment numbers by early April at the latest.

10.D. YME 2007-2008 School Calendar

Attached are the two calendars that have been considered by the administrative team and the school staff. A recent survey over Survey Monkey indicated that the staff did not have a strong preference for one calendar over the other. The second calendar allows for a weeklong winter break over Easter. Your input will be solicited on Monday evening. A final calendar can be approved at the April meeting. It is hoped that by that time we may have a strong feeling about the legislative intent to possibly allow for the starting of school prior to Labor Day.

YELLOW MEDICINE EAST – ISD 2190

Dwayne A. Strand, Superintendent
450 9th Avenue - Granite Falls, MN 56241
Phone: 320-564-4081 - Fax: 320-564-4781



February 21, 2007

Dear

As we move forward in planning for the 2007-2008 school year, the Yellow Medicine East Board of Education is interested in knowing of your plans for the coming school year with regard to your school choice options for your children.

The Clarkfield Area Charter School is currently moving forward in its development and projected opening at the beginning of the new school year. We know that if the charter school receives final approval to open this fall, it will affect the enrollment of the student population at H.A. Hagg Elementary. However, both the site and the enrollment numbers must receive final approval from the Department of Education prior to CACS being allowed to begin operations this fall.

Likewise, the YME District is also in the process of planning for the new school year. It is at this time that we look at our projected enrollments and begin to make staffing recommendations for the 2007-2008 school year.

At their January school board meeting, the Board affirmed their commitment to support the continued operation of H.A. Hagg Elementary. The administrative team and the school staff support that affirmation. This affirmation was again confirmed at the February Board meeting.

However, if the Clarkfield Area Charter School does become operational and impacts the enrollment of H.A. Hagg Elementary, the Board will need to address this issue. In an attempt to better understand the options parents are considering for the 2007-2008 school year, the YME Board of Education is asking that you complete the attached survey and return it in the self-addressed stamped envelope that has been provided for your convenience.

As you consider your school choice options for the 2007-2008 school year, we would ask you to consider the opportunities your child currently has as a student enrolled in the Yellow Medicine East School District. We are very proud of the great opportunities we are able to offer our elementary students. These opportunities include:

- All day every day kindergarten
- Reading Recovery for at risk 1st graders

YME HIGH SCHOOL
Karen Norell, Principal
450 9th Avenue
Granite Falls, MN 56241
Phone: 320-564-4083
Fax: 320-564-4782

BERT RANEY ELEMENTARY
Stacy Hinz, Principal
555 7th Avenue
Granite Falls, MN 56241
Phone: 320-564-4082
Fax: 320-564-4427

H.A. HAGG ELEMENTARY
Stacy Hinz, Principal
1204 11th Avenue
Clarkfield, MN 56223
Phone: 320-669-4424
Fax: 320-669-4828

YELLOW MEDICINE EAST – ISD 2190

Dwayne A. Strand, Superintendent
450 9th Avenue - Granite Falls, MN 56241
Phone: 320-564-4081 - Fax: 320-564-4781



- The Literacy Collaborative reform efforts to raise the level of reading achievement
- Multi-age K/1 classrooms
- Highly qualified music and physical education programs
- Strong paraprofessional support services
- Extensive special education programming including speech, OT, PT and ECSE
- Integrated early childhood programming – Headstart, ECFE and ECSE
- Extensive technology programs and equipment
- Project Respect –programming designed to promote interactions between the generations within the community
- Hispanic and American Indian liaisons and tutors
- Olweus Bullying prevention and Character Education programs
- Instrumental Music for 6th grade students
- Established curriculum meeting the current MN Academic Standards
- Highly qualified staff all of who teach within their area of licensure
- Well developed and researched based professional development opportunities for staff focused on improvement of instruction resulting in the increased academic performance of our students
- Low class sizes allow children multiple opportunities to participate in activities within and outside of school: (Hagg enrollment as of 1/08/07: K/1-15; 2nd-16; 3rd-23; 4th-18, 5th/6th- 22.)

Again, as a District we are very proud of what we have to offer our elementary students - your children - and encourage you to consider these strengths as you make an informed choice about what is the best option for your children.

Please feel free to contact any Board member or school administrator with questions you might have and thank you for taking time to complete and return the enclosed survey by March 5, 2007.

Yellow Medicine East School Board

Elmo Volstad, Chair
Rich Jepson, Vice Chair
Cheryl Eckhardt, Clerk
Chad Fischer, Treasurer
Kathy Busack, Director
Art Rillo, Director
Warren Formo, Director

YME HIGH SCHOOL
Karen Norell, Principal
450 9th Avenue
Granite Falls, MN 56241
Phone: 320-564-4083
Fax: 320-564-4782

BERT RANEY ELEMENTARY
Stacy Hinz, Principal
555 7th Avenue
Granite Falls, MN 56241
Phone: 320-564-4082
Fax: 320-564-4427

H.A. HAGG ELEMENTARY
Stacy Hinz, Principal
1204 11th Avenue
Clarkfield, MN 56223
Phone: 320-669-4424
Fax: 320-669-4828

YELLOW MEDICINE EAST – ISD 2190

Dwayne A. Strand, Superintendent
450 9th Avenue - Granite Falls, MN 56241
Phone: 320-564-4081 - Fax: 320-564-4781



SCHOOL CHOICE SURVEY February 21, 2007

PLEASE INDICATE THE SCHOOL CHOICE OPTION YOU ARE CURRENTLY CONSIDERING FOR THE 2007-2008 SCHOOL YEAR. Please return the survey in the enclosed self-addressed stamped envelope by March 5, 2007.

The YME District will use this information as they begin planning for staffing needs for the 2007-2008 school year. It is important that the grades of your child/ren are identified.

_____ We have not yet made any decisions regarding school choice options for the 2007-2008 school year.

_____ Our child/ren will be attending the H. A. Hagg Elementary for the 2007-2008 school year.

_____ Our child/ren will be enrolling in the Clarkfield Charter School for the 2007-2008 school year.

_____ We will be selecting a school option for our child/ren other than the two listed above.

_____ Home School _____ Open Enroll to a Neighboring District _____ Other

Grades your children will be in for the 2007-2008 school year. Please mark all that apply.

_____ K _____ 1 _____ 2 _____ 3 _____ 4 _____ 5 _____ 6

_____ We would like the Board to schedule a meeting with parents to discuss the options available to our child/ren.

As a District, we understand that this is preliminary information that will be used to help us plan for a successful new school year for all of our children. Please feel free to contact the school or a Board member with any questions you may have.

Thank you for taking the time to complete and return this survey.

The Yellow Medicine East Board of Education

Parent Name: _____ (Optional)

YME HIGH SCHOOL
Karen Norell, Principal
450 9th Avenue
Granite Falls, MN 56241
Phone: 320-564-4083
Fax: 320-564-4782

BERT RANEY ELEMENTARY
Stacy Hinz, Principal
555 7th Avenue
Granite Falls, MN 56241
Phone: 320-564-4082
Fax: 320-564-4427

H.A. HAGG ELEMENTARY
Stacy Hinz, Principal
1204 11th Avenue
Clarkfield, MN 56223
Phone: 320-669-4424
Fax: 320-669-4828

School Choice Survey Results

	School Choice Option						Grade Level 2007-2008							Comments	
	No Decision Made	H.A. Hagg	CCS	Home School	Open Enroll	Other	Kindergarten	Grade 1	Grade 2	Grade 3	Grade 4	Grade 5	Grade 6		
1	X											1	1		
2	X							1							
3	X								1				1	Leaning toward leaving them at H.A. Hagg	
4	X						1			1					
5	X									1					
6	X														
7		X					1	1			1				
8		X									1		1		
9		X						1		1					
10		X					1			1		1			
11		X						1			1				
12		X										2			
13		X						1				1			
14		X							1						
15		X							1					If no elem in Clk next year, will enroll out	
16			X				2		1			1			
17			X					1							
18			X						1		1	2			
19			X										1		
20			X									1			
21			X					1							
22					X				1			2		Open enrolling to Dawson/Boyd	
23						X			1					Moving to New Orleans	
6	9	6			1	1	5	7	4	5	6	11	4	42	TOTAL
							2	2	2	0	1	4	1	12	CCS
							1	1	0	1	2	1	2	8	Undecided
									1			2		3	Open Enroll
										1				1	Other
							2	4	1	3	3	4	1	18	YME



Yellow Medicine East 2007-2008 School Calendar

The school day will begin at **8:25** am & end at **3:10** pm



DRAFT 1-31-07 Calendar 1

July 2007						
S	M	T	W	T	F	S
1	2	3	4	5	6	7
8	9	10	11	12	13	14
15	16	17	18	19	20	21
22	23	24	25	26	27	28
29	30	31				

August 2007						
S	M	T	W	T	F	S
			1	2	3	4
5	6	7	8	9	10	11
12	13	14	15	16	17	18
19	20	21	22	23	24	25
26	27	28	29	30	31	

September 2007						
S	M	T	W	T	F	S
						1
2	3	4	5	6	7	8
9	10	11	12	13	14	15
16	17	18	19	20	21	22
23	24	25	26	27	28	29
30						

October 2007						
S	M	T	W	T	F	S
	1	2	3	4	5	6
7	8	9	10	11	12	13
14	15	16	17	18	19	20
21	22	23	24	25	26	27
28	29	30	31			

November 2007						
S	M	T	W	T	F	S
				1	2	3
4	5	6	7	8	9	10
11	12	13	14	15	16	17
18	19	20	21	22	23	24
25	26	27	28	29	30	

December 2007						
S	M	T	W	T	F	S
						1
2	3	4	5	6	7	8
9	10	11	12	13	14	15
16	17	18	19	20	21	22
23	24	25	26	27	28	29
30	31					

- August 27-30 Inservice Days
- September 4 First Day of School
- October 16 Early Out
- October 17 Inservice Day
- October 18 & 19 EM Break
- November 2 End of 1st Quarter – 41 Days
- November 5 Late Start
- November 21 Inservice Day
- November 22 & 23 Thanksgiving Break
- Dec. 24 – Jan. 1 Christmas Break
- January 18 End of 2nd Quarter – 45 Days
- January 21 Inservice Day
- January 22 Late Start
- February 13 Early Out
- February 14 Inservice Day
- February 15 Comp Day – No School
- February 18 Presidents Day
- March 19 Early Out
- March 20 Inservice Day
- March 21-24 Easter Break
- March 28 End of 3rd Quarter – 43 Days
- April 18 Early Out
- May 2 Early Out
- May 3 Prom
- May 26 Memorial Day
- May 29 End of 4th Quarter – 42 Days
- May 30 Inservice Day
- June 2 Inservice Day

January 2008						
S	M	T	W	T	F	S
		1	2	3	4	5
6	7	8	9	10	11	12
13	14	15	16	17	18	19
20	21	22	23	24	25	26
27	28	29	30	31		

February 2008						
S	M	T	W	T	F	S
					1	2
3	4	5	6	7	8	9
10	11	12	13	14	15	16
17	18	19	20	21	22	23
24	25	26	27	28	29	

March 2008						
S	M	T	W	T	F	S
						1
2	3	4	5	6	7	8
9	10	11	12	13	14	15
16	17	18	19	20	21	22
23	24	25	26	27	28	29
30	31					

April 2008						
S	M	T	W	T	F	S
		1	2	3	4	5
6	7	8	9	10	11	12
13	14	15	16	17	18	19
20	21	22	23	24	25	26
27	28	29	30			

May 2008						
S	M	T	W	T	F	S
				1	2	3
4	5	6	7	8	9	10
11	12	13	14	15	16	17
18	19	20	21	22	23	24
25	26	27	28	29	30	31

June 2008						
S	M	T	W	T	F	S
1	2	3	4	5	6	7
8	9	10	11	12	13	14
15	16	17	18	19	20	21
22	23	24	25	26	27	28
29	30					

- First/Last Day of School
- Inservice Day
- Vacation Day
- Early Out
- Late Start
- Comp Day
- End of Quarter

Up to two days may be used for Parent-Teacher Conferences and will be scheduled by the administrators. The first day missed for inclement weather will not be made up. All other days missed for storms or other emergencies will be made up at the end of the year. The board reserves the right to amend or adjust the calendar.

Correspondence Items
March 12, 2007

11.A. Boardcaster – MSBA’s New Day at the Capitol

The Minnesota School Boards Association in partnership with the Association of Minnesota Counties and the League of Minnesota Cities are sponsoring a joint legislative conference on March 28-29 in St. Paul. Further information will be forthcoming.

11.B. Governor’s Recommended Budget for 07-08

Attached is a spreadsheet, recently published, detailing the financial impact of the proposed Governor’s recommendations for the 2007 legislature. It compares the current law to the Governor’s recommendation. It includes both the projected increase for the 2% annual increases and the revenue for potential successful schools.

boardcaster

February 16, 2007

PERSONNEL NOTES

Warren-Alvarado-Oslo is hiring a superintendent. For an application, call 218-745-5393 or email suptsearch@wao.k12.mn.us. Deadline is Feb. 28. Start date is July 1. Apply to Chair Ken Dagoberg, 224 E. Bridge Ave., Warren, 56762. **Eveleth-Gilbert** is accepting applications for a superintendent through March 7. Apply to Donald Andersen, ADM Search, 222 W. 5th St. S., Melrose, 56352; phone 320-256-3520. Request application from donadm@meltel.net. Start date is July. **Lake City** is hiring a superintendent. For information, contact search consultant Ken LaCroix at 651-437-7453 or email lacroixkp@hotmail.com. Deadline is March 23.

Elk River is accepting applications for a business services director through Feb. 28. For application and information, call 763-241-3417.

Rochester is accepting applications for an elementary principal and a high school assistant principal through March 5. Apply online at www.rochester.k12.mn.us/school85/hr. **Benson** has a vacancy for a high school principal. Apply by March 14 to Donald Andersen, ADM Search, 222 W. 5th St. S., Melrose, 56352; 320-256-3520. Request application at donadm@meltel.net. Start date is summer of 2007. **Central Schools** is hiring a middle school principal/athletic director to begin July 1. Apply by March 16 to Supt. Brian Corlett, Central Public Schools, 531 Morse St., PO Box 247, Norwood Young America, 55368; phone 952-467-7001; email bcorlett@central.k12.mn.us.

ADMINISTRATIVE MOVES

Lee Westrum is **Benson's** new superintendent. **Randolph** Supt. Don Pressnall is retiring July 31.



MSBA'S "NEW" DAY AT THE CAPITOL

The Minnesota School Boards Association, Association of Minnesota Counties and League of Minnesota Cities have entered a new era of partnership by working more closely than ever on common issues. That's why MSBA is replacing the annual Day at the Capitol with a joint legislative conference March 28-29 in St. Paul, "**Renewing the Partnership: Joint Legislative Conference for Cities, Counties and Schools.**"

In today's political landscape, we can't work in isolation and expect results. We must unite to ensure state officials provide adequate funding for Minnesota's priorities (such as public schools), preserve local decision-making and respect the collective wisdom of the thousands of local leaders who govern our state's communities.

Join us for this unprecedented event. You'll gain an increased understanding of how our individual issues fit together in the big picture, stronger relationships locally among units of government, and the latest behind-the-scenes news and analysis from Capitol insiders – all while sending a message to state leaders that we're united! Watch your mailbox and the web site for registration and details.

Planning Ahead

Phase III Schedule

March 17	St. Cloud
March 20	Morton
March 22	Rochester
April 10	Bemidji
April 12	Onamia

HIRING THE RIGHT SUPERINTENDENT

Leadership is important. And hiring the right superintendent to lead and manage your district is one of the biggest and most important jobs a school board will ever undertake.

Your MSBA has developed a workshop to help school boards conduct a successful search. An MSBA staff member will come to your board meeting to conduct this workshop. The workshop topics include the following:

- whether to use a consultant
- how to work with a consultant
- setting a time line
- developing qualifications
- involving stakeholders and the media
- dealing with internal candidates
- legal pitfalls
- conducting a site visit
- interviewing tips

Each board member receives a booklet with sample vacancy announcements, letters, interview questions, and other materials board members can adapt for their district's needs.

The cost is \$400 plus expenses. As you develop your plans for the hiring process, keep this MSBA service in mind. For more information contact Sandy Gundlach at 800-324-4459 or at sgundlach@mnmsba.org or Bob Lowe at 800-324-4459 or at blowe@mnmsba.org.

NEGOTIATIONS SEMINAR MATERIALS AVAILABLE

If you were unable to attend MSBA's Negotiations Seminars, you may still obtain the seminar packets for \$60. Contact Sue Honetschlager at 800-324-4459 or email shonetschlager@mnmsba.org. Quantities are limited. Orders will be filled on a first-come, first-served basis.

AN AWARENESS PROGRAM FOR CHILD PROTECTION PROFESSIONALS

The Western Area City Cooperative, in partnership with the Minnesota School Boards Association, League of Minnesota Cities and Association of Minnesota Counties, is sponsoring a specialized training program with the National Center for Missing and Exploited Children. The sessions are March 27 in Moorhead, March 28 in Alexandria and March 29 in Moorhead. For information, email wacco@prtcl.com with the subject line "Missing and Exploited Children."

PHASE III TRAINING SET FOR REGIONAL LOCATIONS

Good governance doesn't just happen. It takes training and experience. Learn about building a high-performance board at MSBA's Phase III Orientation. Sessions are scheduled throughout the state this spring. (See the Planning Ahead box for details. A brochure and registration details were included with the last Caster.) Phase III builds on skills learned in Phase I and Phase II.

ELECTION NEWS

Nevis voters nixed a proposed \$4.07 million bond referendum Feb. 5 by a vote of 563-525.

MSDLAF+ RATES

Rates for the MN School District Liquid Asset Fund Plus as of Feb. 13 are: Liquid Portfolio Daily Rate - 4.76%; MAX Portfolio Daily Rate - 5.07%; CD Rates (all rates are net of fee and quoted on a 365 day basis) - 30 day - 5%; 60 day - 5%; 90 day - 5.07%; 180 day - 5.20%; Yearly - 5.25%. MSDLAF+ Term: 60 day - 5.19%; 90 day - 5.20%; 180 day - 5.25%; Yearly - 5.17%.

		TYPE DISTRICT NUMBER BELOW, THEN HIT ENTER. FOR MINNEAPOLIS, ENTER DISTRICT NUMBER = 1.2										
		2190 = DISTRICT NUMBER										
MAJOR K-12 FUNDING COMPONENTS, FY 2007 TO FY 2009											01/19/07	
NOVEMBER 2006 BUDGET FORECAST BASIS											MDE, Program Finance	
AND GOVERNOR'S RECOMMENDATIONS FOR 2007 LEGISLATION												
YELLOW MEDICINE EAST #2190												
		A	B	C	D	E	F	G	H	I	J	K
						----- FY 2008 -----			----- FY 2009 -----			
		FY 2007 REVENUE	CURRENT LAW REVENUE	GOVERNOR REVENUE	CHANGE C-B	CHANGE PER ADM	PERCENT CHANGE D/B	CURRENT LAW REVENUE	GOVERNOR REVENUE	CHANGE H-G	CHANGE PER ADM	PERCENT CHANGE I/G
1	ADJUSTED AVERAGE DAILY MEMBERSHIP	1,041	1,027	1,027	N/A	N/A	N/A	1,008	1,008	N/A	N/A	N/A
2	BASIC REVENUE (a)	6,035,601	5,933,584	6,052,876	119,292	116	2.0%	5,805,305	6,041,065	235,760	234	4.1%
3	OTHER GENERAL REVENUE (b) EXCLUDING OPERATING REFERENDUM	1,029,382	920,534	945,443	24,909	24	2.7%	906,432	951,705	45,273	45	5.0%
4	OPERATING REFERENDUM	603,296	1,420,465	1,420,465	0	0	0.0%	1,408,929	1,408,929	0	0	0.0%
5	COMBINED SPECIAL EDUCATION (c)	981,474	967,692	985,154	17,462	17	1.8%	950,911	988,894	37,984	38	4.0%
6	OTHER CATEGORICALS (d)	204,328	246,715	246,715	0	0	0.0%	245,167	245,167	0	0	0.0%
7	TOTAL EXCLUDING POTENTIAL SUCCESSFUL SCHOOLS & 3R HIGH SCHOOL REVENUES = (2)+(3)+(4)+(5)+(6) =	8,854,081	9,488,990	9,650,653	161,663	157	1.7%	9,316,744	9,635,761	319,017	316	3.4%
8	POTENTIAL SUCCESSFUL SCHOOLS (e)	0	0	127,560	127,560	124	N/A	0	125,880	125,880	125	N/A
9	POTENTIAL 3R HIGH SCHOOL	0	0	24,208	24,208	24	N/A	0	70,800	70,800	70	N/A
10	TOTAL INCLUDING POTENTIAL SUCCESSFUL SCHOOLS & 3R HIGH SCHOOL = (7)+(8)+(9) =	8,854,081	9,488,990	9,802,421	313,431	305	3.3%	9,316,744	9,832,441	515,697	512	5.5%
Footnotes:												
(a) The basic formula allowance under current law is \$4,974 for all three years. The basic formula allowances recommended by the Governor are \$4,974 in FY 2007, \$5,074 in FY 2008, and \$5,176 in FY 2009.												
(b) Other general revenue includes extended time, compensatory, LEP, training & experience, sparsity, transportation sparsity, operating capital, equity, gifted & talented, Q comp, transition, late ratification penalty, pension adjustment and alternative attendance revenues.												
(c) Combined special education revenue includes regular special education, excess cost, and transition disabled revenues.												
(d) Other categoricals includes career technical, integration, and alternative facilities/deferred maintenance revenues plus miscellaneous levies.												
(e) Based on rate of \$120 per pupil enrolled; actual rate will be between \$90 and \$150, depending on number of pupils enrolled in successful schools.												

		TYPE DISTRICT NUMBER BELOW, THEN HIT ENTER. FOR MINNEAPOLIS, ENTER DISTRICT NUMBER = 1.2										
		2190 = DISTRICT NUMBER										
MAJOR K-12 FUNDING COMPONENTS, FY 2007 TO FY 2009 NOVEMBER 2006 BUDGET FORECAST BASIS AND GOVERNOR'S RECOMMENDATIONS FOR 2007 LEGISLATION		01/19/07 MDE, Program Finance										
YELLOW MEDICINE EAST #2190												
		A	B	C	D	E	F	G	H	I	J	K
		----- FY 2008 -----					----- FY 2009 -----					
		FY 2007 REVENUE	CURRENT LAW REVENUE	GOVERNOR REVENUE	CHANGE C-B	CHANGE PER ADM	PERCENT CHANGE D/B	CURRENT LAW REVENUE	GOVERNOR REVENUE	CHANGE H-G	CHANGE PER ADM	PERCENT CHANGE I/G
DETAILS												
1	ADJUSTED ADM (CAP = 1.0)	1,041	1,027	1,027	0	N/A	N/A	1,008	1,008	0	N/A	N/A
2	BASIC	6,035,601	5,933,584	6,052,876	119,292	116	2.0%	5,805,305	6,041,065	235,760	234	4.1%
3	EXTENDED TIME	0	0	0	0	0	0.0%	0	0	0	0	0.0%
4	COMPENSATORY	455,116	445,156	454,921	9,765	10	2.2%	439,170	458,628	19,458	19	4.4%
5	LEP TOTAL	45,009	45,100	46,002	902	1	2.0%	45,229	47,120	1,891	2	4.2%
6	TRAINING & EXPERIENCE	21,623	17,164	17,164	0	0	0.0%	12,787	12,787	0	0	0.0%
7	SPARSITY	0	0	0	0	0	0.0%	0	0	0	0	0.0%
8	TRANSPORTATION SPARSITY	230,326	227,975	241,447	13,472	13	5.9%	225,798	244,074	18,276	18	8.1%
9	OPERATING CAPITAL	265,013	260,534	260,534	0	0	0.0%	254,901	254,901	0	0	0.0%
10	EQUITY	134,707	93,766	94,536	770	1	0.8%	87,438	93,086	5,648	6	6.5%
11	GIFTED & TALENTED	10,921	10,736	10,736	0	0	0.0%	10,504	10,504	0	0	0.0%
12	Q COMP	0	0	0	0	0	0.0%	0	0	0	0	0.0%
13	TRANSITION	0	0	0	0	0	0.0%	0	0	0	0	0.0%
14	LATE RATIFICATION	0	0	0	0	0	0.0%	0	0	0	0	0.0%
15	PENSION ADJUSTMENT	-72,064	-53,068	-53,068	0	0	0.0%	-53,068	-53,068	0	0	0.0%
16	OPTIONS ADJ. REFERENDUM AID	-61,269	-126,829	-126,829	0	0	0.0%	-116,327	-116,327	0	0	0.0%
17	OPTIONS ADJ. CHARTER TRANSPORT	0	0	0	0	0	0.0%	0	0	0	0	0.0%
18	OPTIONS ADJ. FARIBAULT	0	0	0	0	0	0.0%	0	0	0	0	0.0%
19	OPERATING REFERENDUM	603,296	1,420,465	1,420,465	0	0	0.0%	1,408,929	1,408,929	0	0	0.0%
20	SPECIAL ED REGULAR	778,877	771,022	788,409	17,387	17	2.3%	761,245	794,239	32,993	33	4.3%
21	SPECIAL ED EXCESS	202,597	196,670	196,745	75	0	0.0%	189,665	194,656	4,990	5	2.6%
22	SPECIAL ED CROSS SUBSIDY	0	0	0	0	0	0.0%	0	0	0	0	0.0%
23	TRANSITION DISABLED	0	0	0	0	0	0.0%	0	0	0	0	0.0%
24	CAREER TECHNICAL	26,906	26,906	26,906	0	0	0.0%	26,906	26,906	0	0	0.0%
25	INTEGRATION	0	0	0	0	0	0.0%	0	0	0	0	0.0%
26	ALT FACILITIES/DEFERRED MAINT	0	71,576	71,576	0	0	0.0%	70,028	70,028	0	0	0.0%
27	MISCELLANEOUS LEVIES	177,422	148,234	148,234	0	0	0.0%	148,234	148,234	0	0	0.0%
28	TOTAL EXCLUDING POTENTIAL SUCCESSFUL SCHOOLS & 21ST CENTURY HS = SUM OF (2) TO (27) =	8,854,081	9,488,990	9,650,653	161,663	157	1.7%	9,316,744	9,635,761	319,017	316	3.4%
29	POTENTIAL SUCCESSFUL SCHOOLS FUNDING	0	0	127,560	127,560	124	N/A	0	125,880	125,880	125	N/A
30	POTENTIAL 3R HIGH SCHOOL FUNDING	0	0	24,208	24,208	24	N/A	0	70,800	70,800	70	N/A
31	TOTAL INCLUDING POTENTIAL SUCCESSFUL SCHOOLS & 3R HIGH SCHOOL = (28)+(29)+(30) =	8,854,081	9,488,990	9,802,421	313,431	305	3.3%	9,316,744	9,832,441	515,697	512	5.5%
Footnotes:												
(a) Miscellaneous levies include reemployment, safe schools, ice arena, severance, swimming pool, lost interest, tree growth, other general, building/land leases, and other capital levies. Projected levies are based on expenditure data for Pay 2007 levy authority.												

Upcoming Events and Activities

Event	Date	Location	Time
Early Out	March 12, 2007	District	2:00 PM
Large Group Music Contest - YME Hosting	March 12, 2007	District	2:30 PM
State Assessment Review Committee Meeting	March 15, 2007	MDE - Roseville, MN	1:00 PM
MASA Spring Conference	March 15-16, 2007	Bloomington, MN	
Early Out	March 22, 2007	District	1:15 PM
Inservice Day - No School	March 23, 2007	District	
RevTrack Meeting	March 28, 2007	Board Room - District	1:00 PM
Annual Spring Law Conference	March 30, 2007	Bloomington, MN	8:00 AM
Easter Break	April 6-9, 2007	District	
School Board Meeting	April 9, 2007	Board Room - District	7:00 PM