

**YELLOW MEDICINE EAST ISD 2190
REGULAR BOARD MEETING
FEBRUARY 12, 2007 @ 7:00 PM
LOCATION: YME HIGH SCHOOL BOARD ROOM**

AGENDA

1. **Call to Order**
2. **Approval of Agenda**
3. **Approval of January 8, 2007 Meeting Minutes** 3
4. **Opportunity for Citizens to Speak**
5. **Reports** 5
 - A. Special Reports
 1. MRVED Update
Presenter: Karen Jacobson
 2. Technology Update 7
Presenter: Karen McCoy
 - a. E-Mail 8
 - b. 2007-2011 Technology Plan 14
 - B. Financial Reports
 1. Approval of Bills 22
 2. Fund Balance Report 39
 3. Enrollment Report 40
 4. Food Service Report 41
 - C. Principal and Staff Development Reports
 1. Curriculum & Staff Development Report - Y. Sorenson 42
 2. Elementary Report - S. Hinz 47
 3. High School Report - K. Norell
 - a. FFA Trip to Missouri - L. Weber
 - b. Choir trip to Chicago - J. Iverson
 - c. Trip to Spain - S. Vetsch
 - D. Board/Committee Reports
 1. RCW/MACCRA Y/YME Meeting Report 51
 2. Negotiation Committee Report
 3. Facilities Strategic Planning Committee
6. **Policy Updates**
7. **Personnel Items** 53
 - A. Paraprofessional Contract - B. Idso
 - B. Leave of Absence - J. Schwankl

8.	Consent Items	
9.	Action Items	54
	A. YME 2007-2011 Technology Plan	
	B. Early Retirement Incentives	56
10.	Discussion Items	59
	A. Probationary Staff Continuing Contract Status	61
	B. 2007-2008 Calendar	62
	C. Projected 07-08 Hagg Student Enrollment	64
	D. 06-07 Budget Update	
	E. CSR Legislation	
	F. Radio Upgrades	
	G. RevTrack Workshop	
	H. Superintendent Evaluation	
11.	Correspondence	66
	A. MREA Flier	67
	B. Call Back Letter of Interest - T. Schulte	
	C. Continued Leave of Absence Request - P. Jensen	
	D. SHARE Project Update	68
	E. Boardcaster	69
	F. Conciliation Court Ruling	71
	G. ASCD Conference Opportunity	72
12.	Upcoming Events & Activities	75
13.	Adjourn	

YELLOW MEDICINE EAST ISD #2190
BOARD OF EDUCATION MEETING MINUTES
JANUARY 8, 2007 – 7:00 P.M.
YME BOARD ROOM

Board Members Present: Cheryl Eckhardt, Warren Formo, Chad Fischer, Rich Jepson, Elmo Volstad

Board Members Absent: Kathy Busack, Art Rillo

Community / Staff Members Present: Kathy Anderson, Stacy Hinz, Tom McGarthwaite, Steve Petrich, Dwayne Strand, Denise Streich

The meeting was called to order by Chairman Formo.

Motion by Jepson, second by Echardt and carried to elect Elmo Volstad as Board Chair for the 2007 calendar year.

Motion by Eckhardt, second by Volstad and carried to elect Rich Jepson Board Vice-Chair for the 2007 calendar year.

Motion by Volstad, second by Jepson and carried to elect Cheryl Eckhardt as Board Clerk for the 2007 calendar year.

Motion by Eckhardt, second by Volstad and carried to elect Chad Fischer as Board Treasurer for the 2007 calendar year.

Board committee assignments were established for the 2007 calendar year.

The agenda for the evening was approved by Volstad.

Motion by Jepson, second by Fischer and carried to approve the minutes from the December 11, 2006 meeting.

The opportunity for citizens to speak received no response.

Superintendent Strand updated the Board with a report on federal programs.

Motion by Jepson, second by Formo and carried to approve December bills for payment in the amount of \$769,250.60, with checks numbered 11050 through 11235 and to approve investments for the District.

Fund balance, enrollment and food service reports were submitted.

Yvonne Sorenson submitted a written report on curriculum and staff development activities.

Principal Hinz reported on the H.A. Hagg & Bert Raney Elementary sites.

Motion by Formo, second by Eckhardt and carried to renew our membership with PACT 4.

Motion by Formo, second by Eckhardt and carried to approve the submitted 2006 Pay Equity Implementation Report.

Motion by Eckhardt, second by Fischer and carried to approve a resolution directing district administration to consider options for reducing expenditures for the 2007-2008 school year.

Discussion Items included capital & maintenance projects, early retirement opportunities, an update on the Knutson Construction Facility Study update, information on the Clarkfield Area Charter School, an update on the Citizens Concerned for Kids restitution, and an update on the state audit.

A negotiation committee meeting was scheduled for January 17 at 6:30.

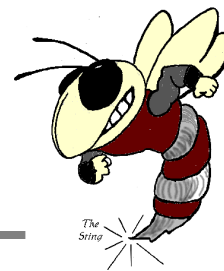
Upcoming Events & Activities:

School Board Convention	January 10-12, 2007		
Paraprofessional Week	January 15-18, 2007	District	
Wellness Committee Meeting	January 16, 2007	District	12:45 pm
MRVED Superintendent's Meeting	January 17, 2007	Montevideo	9:00 am
Superintendent Advisory Council	January 17, 2007	SW/WC Srvc. Coop	9:30 am
Meet w/ MACCRAY & RCW School Boards	January 24, 2007	MACCRAY HS	5:30 pm
SHARE Coordinators Council Meeting	February 7, 2007	PACT 4	11:30 am
School Board Meeting	February 12, 2007	District	7:00 pm

The meeting was adjourned.

YELLOW MEDICINE EAST – ISD 2190

Dwayne A. Strand, Superintendent
450 9th Avenue - Granite Falls, MN 56241
Phone: 320-564-4081 - Fax: 320-564-4781



To: School Board Members
From: Dwayne
RE: January Board Meeting
Date: February 8, 2007

The agenda, agenda notes and supporting exhibits for the February 12th meeting are provided here for your review prior to the meeting.

As always, if you have questions or would like additional information for Monday night, please do not hesitate to contact me. If you will be unable to attend, please notify Denise.

5.A. Karen Jacobson from the MRVED office and Karen McCoy, district technology coordinator will both be in attendance to report to the Board. Jacobson will report on the math grant recently awarded to the MRVED and will highlight other MRVED progress and initiatives. Ms. McCoy will update you on the district technology initiatives, the new YME technology plan and the computer lease for our building labs.

5.B. Staff Development Coordinator Sorenson is out of the District at a meeting and will not be in attendance. It is expected that both Ms. Norell and Mrs. Hinz will both be in attendance. As a part of her Board report, Ms. Norell has asked Ms. Vetsch, Mr. Iverson and Mr. Dessonville to update you on upcoming trips that their students will be taking this spring.

5.D.1. RCW/MACCRA Y/YME Meeting

Board members Jepson and Volstad and I met with the RCW and MACCRA Y members of this committee on Wednesday, January 24th. A copy of the minutes from this meeting is attached for your information. Our Community Education directors and high school principals are scheduled to meet on February 8th. Further discussion can take place on Monday night.

5.D.2. Negotiation Committee Report

The Negotiation Committee met on January 17th to discuss the issue of early retirement incentives for certified staff. LeeAnn and I, also, met with Steve Petrich and Dave Guertin to discuss possible early retirement incentives. Following those discussions, we met with Cindy Loe to look at what we might offer for an affordable incentive package for our staff. The committee met on the 7th of February to review and finalize the proposal which are offered under Action Item 9.B.

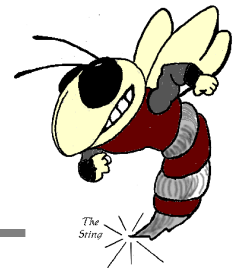
YME HIGH SCHOOL
Karen Norell, Principal
450 9th Avenue
Granite Falls, MN 56241
Phone: 320-564-4083
Fax: 320-564-4782

BERT RANEY ELEMENTARY
Stacy Hinz, Principal
555 7th Avenue
Granite Falls, MN 56241
Phone: 320-564-4082
Fax: 320-564-4427

H.A. HAGG ELEMENTARY
Stacy Hinz, Principal
1204 11th Avenue
Clarkfield, MN 56223
Phone: 320-669-4424
Fax: 320-669-4828

YELLOW MEDICINE EAST – ISD 2190

Dwayne A. Strand, Superintendent
450 9th Avenue - Granite Falls, MN 56241
Phone: 320-564-4081 - Fax: 320-564-4781



5.D.3 Facilities Strategic Planning Committee

Board members Jepson and Eckhardt, committee co-chairs Hagert and Henderson as well as LeeAnn and I met with Bob Nold to review preliminary assessment data. A meeting with the full Vision Committee has been scheduled for February 22nd. The agenda for this meeting will include an update on Bob's assessment of our current facilities in relationship to the standards we set during our discussions. We will also review our identified space needs and prioritize them. This information that will be prioritized is found in the report, sections 3.6.1-3.6.8 and the first appendix if you wish to review it. Further discussion can take place on Monday evening.

YME HIGH SCHOOL
Karen Norell, Principal
450 9th Avenue
Granite Falls, MN 56241
Phone: 320-564-4083
Fax: 320-564-4782

BERT RANEY ELEMENTARY
Stacy Hinz, Principal
555 7th Avenue
Granite Falls, MN 56241
Phone: 320-564-4082
Fax: 320-564-4427

H.A. HAGG ELEMENTARY
Stacy Hinz, Principal
1204 11th Avenue
Clarkfield, MN 56223
Phone: 320-669-4424
Fax: 320-669-4828

Technology Update

February 12, 2007

Technology Plan

Four year plan
Due to MDE March 2007

Email archiving: regulatory and institutional authorities are increasingly requiring organizations to provide reliable long-term storage and retrieval of electronic messages.

Article
Firstclass options
Policy: refer to section 4, D

Infrastructure

Current: core pieces 8 - 9 years old, bottlenecks
Future

Computer Labs

Lease - last year of current lease
Reallocation
Layout (4 at HS, 2 at BRE, 1 at Hagg)

Laptops

Roll into lease

Teacher Workstations - lease December 2005 (4 year)

State online testing

Initial testing in spring 2007

499 EMPLOYEE EMAIL POLICY

I. PURPOSE

This policy is created to insure that district employees maximize the benefits of email usage and to minimize potential liability created by its use. All users of the district email system are obligated to use this resource responsibly, professionally, and ethically.

II. GENERAL STATEMENT OF POLICY

District employees are given access to the district email system to assist them in performing their job. There should be no expectation of privacy in anything created, stored, sent, or received on the system. The email system belongs to the Yellow Medicine East School District and may only be used for business purposes, with limited availability for personal use. Without prior notice, Yellow Medicine East administration may review any material created, stored, sent, or received on its email system.

III. DATA PRIVACY

Minnesota Government Data Practices Act and The Family Educational Records Privacy Act (FERPA) apply to district email correspondence.

IV. EMPLOYEE RESPONSIBILITIES

- A. Personal Use
Employees are discouraged from using the Yellow Medicine East's email system for anything other than legitimate business/educational purposes.
- B. Confidential Information
Employees should use extreme caution when sending confidential information via email to an outside entity or person (an email address outside the district). Emails should be clearly marked as confidential information and a disclaimer as noted later in the policy should be included in the email.
- C. Passwords
Employees must make all passwords known to the district email administrator. The use of passwords to gain access to the computer system or to secure specific files does not provide users with an expectation of privacy in the respective system or document. Passwords should not be given to anyone other than the district email administrator.
- D. Email Retention
Employees are expected to archive all emails at the end of each school year that should be retained for district purposes and delete others, prior to leaving for summer break.

V. ACCOUNT ACTIVATION

Email accounts are granted to all employees of the Yellow Medicine East School District and to substitutes who are employed at the discretion of administration.

VI. BEST PRACTICES

The Yellow Medicine East School District considers email to be an important means of communication and recognizes the importance of proper email content and speedy replies in conveying a professional image and delivering good public relations. Users should take the same care in drafting an email as they would for any other form of communication. Therefore, Yellow Medicine East requests users adhere to the following guidelines:

- A. Writing emails:
- Write well-structured emails and use short, descriptive subjects.
 - Email messages transmitted outside the district must include a signature, including your name, job title, and school name, and also include the disclaimer presented later in this policy.
 - Users must spell check all emails prior to transmission.
 - Do not send unnecessary attachments.
 - Do not write emails in capitals.
 - Only mark emails as urgent if they really are urgent.
- B. Replying to emails:
Email users will make every attempt to answer emails within at least 8 working hours, but users must endeavor to answer priority emails within 4 hours.

VII. PROHIBITED ACTIVITIES

The following are strictly prohibited by the Yellow Medicine East School District:

- A. Sending, receiving, downloading, displaying, printing, or otherwise disseminating material that is sexually explicit, profane, obscene, harassing, fraudulent, racially offensive, defamatory, or otherwise unlawful.
- B. Disseminating or storing commercial or personal advertisements, solicitations, promotions, destructive programs (viruses, or other self-destructing code), political information, or any other unauthorized material.
- C. Wasting email resources by, among other things, sending mass mailings or chain letters, forwarding unauthorized attachments, unnecessary printing of email messages, excessive personal use, or otherwise creating unnecessary network traffic.
- D. Violating any state, federal, or international law.
- E. Forward a message that has been marked as 'Do Not Forward' or 'Confidential'.
- F. Send unsolicited email messages.
- G. Forge or attempt to forge email messages.
- H. Disguise or attempt to disguise your identity when sending mail.
- I. Send email messages using another person's email account.
- J. Copy a message or attachment belonging to another user without permission of the originator.

VIII. DISCLAIMER

The following disclaimer will be added to each outgoing email:

NOTICE - CONFIDENTIAL INFORMATION

The information in this communication is proprietary and strictly confidential. It is intended solely for the use of the individual or entity named above. If the reader of this message is not the intended recipient, or the employee or agent responsible to deliver it to the intended recipient, any dissemination, distribution, copying or other use of the information contained in this communication is strictly prohibited. If you have received this communication in error, please first notify the sender immediately and then delete this communication from all data storage devices and destroy all hard copies. Finally, the recipient should check this email and any attachments for the presence of viruses. Yellow Medicine East accepts no liability for any damage caused by any virus transmitted by this email.

IX. VIOLATIONS

- A. Employees having knowledge of someone using district email resources for any unauthorized activities are obligated to report the incident immediately to your supervisor.
- B. Violations of this policy will be taken seriously and may result in disciplinary action, including possible termination, and civil and criminal liability.

X. NOTIFICATION

District employees will be notified annually of this policy and will be required to verify that they have read and acknowledge the procedures and requirements of the policy.

Reviewed by Policy Committee: 02-22-05
First Reading: 03-14-05
Second Reading: 05-09-05
Adopted: 05-09-05

Ruling: Schools must archive eMail

With more school district business being conducted online now than ever before, school technology leaders should know about new rules flowing from a ruling by the U.S. Supreme Court. Experts say the rules--which require schools and other entities to archive eMail, instant messages, and other digital communications written by their employees--could force administrators to rethink eMail storage policies and take stock of existing technologies to ensure compliance.

December 8, 2006—According to new federal rules that went into effect Dec. 1, schools, businesses, and other organizations are required to keep tabs on all eMail, instant messages (IM), and other digital communications produced by their employees.

The rules, first approved by the U.S. Supreme Court in April, have been widely reported as important for businesses and other for-profit enterprises. But, according to legal experts familiar with the case, the High Court's ruling also applies to public schools and other nonprofit organizations.

The ruling--which states that any entity involved in litigation must be able to produce "electronically stored information" during the discovery process--the process in which opposing sides of a legal dispute must share evidence before trial--could have significant implications for school technology departments, especially in places where technicians routinely copy over backup discs and other information housed on school servers.

In an interview with *eSchool News*, Alvin F. Lindsay, a partner with Hogan & Hartson LLP, said that while the law has always required schools, corporations, and other entities to produce certain kinds of documentation as evidence in the discovery process, the latest ruling is an affirmation that eMail messages and electronic documents are part of that mix.

An expert on issues concerning technology and the law, Lindsay has called prematurely deleting or copying over eMail documents a matter of "virtual shredding."

Lindsay says the rules will require schools and other organizations to think about how and where they store digital information in advance of potential legal skirmishes. Schools, for example, might want to conduct technology inventories to better understand what types of eMail storage and data backup systems they have in place; establish guidelines for the kinds of information that must be saved and for those that can be deleted; and decide where to store critical data, so the information is easily accessible in the event of a problem, he said.

The new regulations don't constitute any major changes to the law per se, Lindsay said, but by noting that electronic communications should be preserved with the same care and diligence as other business-related documents, the High Court ruling forces managers "to recognize this distinction up front," giving schools, businesses, and even individual users an opportunity to be proactive in efforts to secure relevant computer-based information.

Many districts already are working with their staff members to help them understand they should expect limited privacy when using school-owned technology.

"We have a policy that employees need to sign indicating they have no right to consider anything that they do on our network--including our [voice-over-IP system]--as confidential," wrote Marc Liebman, superintendent of the Berryessa Union School District in San Jose, Calif. But even that isn't enough, explained Lindsay--not anymore.

hough it's important for educators and other school stakeholders to recognize how information that is sent and received on school computers and other devices might be used in litigation, the new rules represent a call to action for schools and other entities to understand how and where personal communications between employees are stored on the network, he said.

To do that, several corporations--and even some schools--have begun turning to companies that offer solutions for tracking, storing, and searching for eMail communication and other electronic data.

Roger Matus, chief executive officer of Concord, Mass.-based inBoxer Inc., recently told the

Associated Press (AP) his company has received a five-fold increase in requests for solutions that streamline the search and retrieval of eMail messages and other electronic information, compared with six months ago.

"Companies used to focus on how they store information," Matus told AP. "Now, they're focusing on how to retrieve it."

For schools and other entities that often require the assistance of legal counsel, the rules also could translate into higher costs, experts say. Not only will organizations need to find a method of cataloging and searching through eMail and IM in the event of a lawsuit; they also might consider investing in technology that helps them filter through digital photos stored on employees' phones and information tucked away on removable memory sticks, among other portable devices.

The ruling no doubt will force some school leaders to reevaluate their digital storage techniques, but it isn't likely to send administrators into a panic, said Mary Kusler, assistant director of government relations for the American Association of School Administrators (AASA).

"This isn't all that new for school districts," said Kusler, who added: "Most schools already operate this way."

Still, it's important for schools to maintain compliance. To do that, Kusler said, the AASA recommends that administrators verify their systems and servers are robust enough to handle the increase in stored information. Schools also should check with their respective state and local governments and legal counsel to ensure they meet all pre-established requirements for document retention, she said.

John Q. Porter, deputy superintendent of information systems for the Montgomery County Public Schools in Maryland, said his district has long had a policy for storing electronic communications such as eMail in the event of a lawsuit.

"It happens to us frequently, and we do have a process in place," said Porter, whose district keeps all employee-generated eMail messages for at least 10 weeks. Montgomery County also has a software program that enables district IT staff to search through and cull information archived on the network for review in the event of a legal dispute.

To be fair, he said, the district includes disclaimers that appear on every machine and remote eMail interface reminding employees that any information produced by them and distributed over the district's network is the property of the school system.

"Our understanding is that, as long as you have a process in place so this type of information is discoverable in the event of a lawsuit, then that is fine," said Porter.

Where schools are more likely to get burned is if they don't have a policy for saving electronic information and, in the event of a lawsuit, decide suddenly to erase eMail messages or other documents to avoid detection, noted Porter.

"If you were involved in some type of litigation and decided tomorrow to delete eMail," he explained, "now, that would be a problem."

Despite its existing safeguards, Porter said, Montgomery County officials will look closely at the new rules to decide if any upgrades or changes to the school system's policies are necessary.

"I don't think it's going to change anything, but we certainly are going to have our lawyers take a look at it," he said of the ruling.

Unlike Montgomery County, some districts have learned the importance of archiving and saving electronic communications the hard way.

In late 2002, members of the Oshkosh Area School District in Oshkosh, Wis., found themselves thick in controversy after a local newspaper discovered that school board members had been routinely erasing eMail messages sent to them by constituents.

The *Oshkosh Northwestern*, which requested the messages as part of an open-records request for a story it planned to run on district boundary and consolidations plans, said the eMail correspondence should have been archived--and that deleting it violated the state's open-records laws.

At the time of the controversy, former state Attorney General Jim Doyle, who is now governor of Wisconsin, agreed that the decision by school board members to delete constituents' eMail messages did, in fact, violate state law. For their part, members of the Oshkosh school board at the time told *eSchool News* they were unaware that eMail messages were public records (see story: <http://www.eschoolnews.com/news/showStory.cfm?ArticleID=4161>).

The Supreme Court ruling that went into effect Dec. 1 confirms this policy for all entities subject to a lawsuit.

TECHNOLOGY INFRASTRUCTURE, MANAGEMENT AND SUPPORT QUESTIONS FOR SCHOOL DISTRICTS, CHARTER SCHOOLS AND NONPUBLIC SCHOOLS

Please describe plans for technology implementation based on responses to the following questions. Think about these questions in terms of a planning context. For example, where are you now in terms of telecommunications/Internet connectivity and where do you need or want to be at the end of the planning cycle? The table can be expanded as needed to provide complete information.

QUESTION	RESPONSE
What is your telecommunications/Internet connectivity capacity in your school district or school for Internet access and video connectivity?	Our district shares 100 mbps backbone Ethernet WAN with 17 other districts via the LCTN-MRVED Cooperative. In addition we share 18 mbps of Internet Bandwidth with the other schools. The Internet Bandwidth includes Internet 2 access. We also have access to the Learning Network of Minnesota and QoS for our video calls on the State Network. We have three E.164 numbers available to us and one of them is our MCU which can connect all 20 LCTN-MRVED personal codecs to the outside world at one time. The LCTN manages our IP schemes for both data and video. The LCTN also manages our connections to and from our ITV rooms and to outside sites.
Do you have plans to expand this capacity within the next three to four years?	Yes
If you plan to expand telecommunications capacity, what will be your anticipated capacity by the end of this planning period (July 1, 2011)?	We anticipate having a shared 1GB backbone Ethernet WAN with 20 other districts.
What is your student to Internet-connected computer ratio? What will this ratio be at the end of the planning cycle?	Approximately five students for every Internet-connected computer (5:1). Due to financial restraints, I do not foresee this ratio decreasing during this planning cycle, but possibly increasing.
What is your teacher to Internet-connected computer ratio? What will this ratio be at the end of the planning cycle?	1:1 ratio. Each certified staff member in addition to most of the support staff each have an Internet connected workstation. I do not foresee this ratio changing.
Are the majority of the computers accessible for students located within labs or classrooms?	Approximately 95% of the computers accessible for students are located in lab environments. Each special needs classroom is equipped with additional Internet connected computers for individualized instructions purposes.
What is the average age of computer equipment used for instruction?	Most equipment on the WAN is 2-5 years old. Some of the main equipment will be replaced June 2007 when the network is upgraded. This may also lead to other changes of equipment on the backbone. All routers will be upgraded as necessary. The current age of lab computers used for instruction is four years old.
What is timeline for your computer equipment replacement cycle?	Backbone equipment will be new as of June 2007. Cisco Firewall will be replaced at that time with a newer version of the the PIX. Any further changes will take place as needed or

QUESTION	RESPONSE
	<p>required to run our current or future applications.</p> <p>YME is currently under a four-year computer lease, which will expire at the end of the 06-07 school year. The intent is to initiate a new lease to obtain new computers in each instructional lab for the 07-08 school year.</p>
<p>What is your computer platform? PC-based, MacIntosh-based or both?</p>	<p>Macintosh</p>
<p>How many technology support staff do you have to manage your technology infrastructure and network?</p>	<p>One full-time 12 month employee</p>
<p>Is the technology support staff sufficient to effectively manage your technology infrastructure and network? If not, what staff capacity do you think you need?</p>	<p>Most of the time, one support staff member is sufficient. In times of increased need/demand, outside vendors are contracted to assist.</p>
<p>Is assistive technology for students with special needs provided and supported in your school district or school?</p>	<p>Yes</p>
<p>Are technology support staff provided with the necessary training they need, including training associated with assistive technology?</p>	<p>Due to the demands of tech support staff to be 'on-site', tech training is limited.</p>
<p>How and when are technology support staff provided with training?</p>	<p>Annual TIES convention, and occasional workshops off site.</p>
<p>What particular challenges does your school district or school face in providing sufficient access and technology resources to your staff and students?</p>	<p>Technology training time. Declining enrollments are impacting the offering of advanced technology instruction/curriculum.</p>

BUDGET TEMPLATE FOR SCHOOL DISTRICTS, CHARTER SCHOOLS, AND NONPUBLIC SCHOOLS

UFARS OBJECT CODE	CATEGORY	ITEM(S) DESCRIPTION	FY2008 BUDGET	FY2009 BUDGET	FY2010 BUDGET	FY2011 BUDGET
100	Salaries and Wages for Technology Staff		50470	52000	53500	55100
200	Fringe Benefits for Technology Staff		13600	14000	14500	14900
300	Purchased Technology Services					
	Consultant Services		3000	4000	4000	5000
	Communications (telephone, Internet access)	Sprint, Frontier, RTS, MVTV (does not include credit for e-rate)	19000	19000	19000	19000
	Computer and System Services					
	Technology Staff Development	See below				
	Technology Workshops and Conferences	Conferences & trainings	2000	3000	4000	4000
	Technology Leases and Rentals	See Capital				
	Purchased Technology Services (i.e., maintenance)					
400	Supplies and Materials (computer software, etc. both instructional and		11000	12000	12000	13000

UFARS OBJECT CODE	CATEGORY	ITEM(S) DESCRIPTION	FY2008 BUDGET	FY2009 BUDGET	FY2010 BUDGET	FY2011 BUDGET
	non-instructional)					
500	Capital Expenditures (technology equipment)		65000	70000	75000	80000
800	Other Expenditures (list)					
TOTALS			164070	174000	182000	191000

Action & Implementation Plan for Yellow Medicine East 2007-2008														
Year	2007					2008								
Month	July	Aug	Sept	Oct	Nov	Dec	Jan	Feb	Mar	Apr	May	June	Responsible Party	
Full-time Tech Coordinator	X	X	X	X	X	X	X	X	X	X	X	X	School Board & Administration	
Tech Coordinator training	X	X	X	X	X	X	X	X	X	X	X	X	Administration	
Review & Update service contracts										X			Tech Coordinator & Superintendent	
Purchase & Install 3 classroom LCD Projectors					X								Tech Coordinator	
Upgrade & Maintain network printing capabilities	X	X	X	X	X	X	X	X	X	X	X	X	Tech Coordinator	
Staff/Curriculum Development	X	X	X	X	X	X	X	X	X	X	X	X	Staff Development/Curriculum Coordinator & Tech Coordinator	
Maintenance of infrastructure	X	X	X	X	X	X	X	X	X	X	X	X	Tech Coordinator	
Radio/Video lab equipment purchases and upgrades		X											Tech Coordinator	
Technology Committee meetings				X			X			X			Tech Coordinator	
Provide staff with ongoing training and support to ensure full integration of technology into all curriculums	X	X	X	X	X	X	X	X	X	X	X	X	Staff Development/Curriculum Coordinator & Tech Coordinator	
Order district wide printer supplies & service printers	X												Tech Coordinator	
Purchase and professionally install audio enhancement sound systems	X												Media Specialist	
Update technology curriculum software	X	X											Tech Coordinator	
Update K-12 technology scope and sequence curriculum	X	X	X	X	X	X	X	X	X	X	X	X	Technology Instructors	
Upgrade and maintain firewall & filtering system	X	X	X	X	X	X	X	X	X	X	X	X	Tech Coordinator	
Provide electronic student management system and make data available to parents via online	X	X	X	X	X	X	X	X	X	X	X	X	Tech Coordinator	
Maintain wireless WAN system	X	X	X	X	X	X	X	X	X	X	X	X	Tech Coordinator & LCTN	
Employ instructional staff for K-12 technology			X	X	X	X	X	X	X	X	X		School Board & Administration	
Upgrade district-wide of office suite software package	X	X										X	Tech Coordinator	
Post course outlines and assignments electronically via individual teacher websites linked to district website			X	X	X	X	X	X	X	X	X		Classroom Instructors	
Update District Website	X	X	X	X	X	X	X	X	X	X	X	X	Tech Coordinator	
Update teacher & lab computer software	X	X											Tech Coordinator	
Provide e-mail for students via Gaggle.net	X	X	X	X	X	X	X	X	X	X	X	X	Tech Coordinator	
Provide community education classes on a variety of software packages				X	X			X	X				Community Ed & Technology Staff	
Maintain laptops & USB Drives available for student checkout			X	X	X	X	X	X	X	X	X		Media Specialist & Tech Coordinator	
Utilize netTrekker for student Internet search options			X	X	X	X	X	X	X	X	X		Classroom Instructors	
Review and revise district AUP, Web Publishing, Security, Disaster Recovery Plans, and technology plan					X								Tech Writing Committee with Tech Committee	
Maintain Teacher workstations district-wide	X	X	X	X	X	X	X	X	X	X	X	X	Tech Coordinator	
Maintain server access district-wide	X	X	X	X	X	X	X	X	X	X	X	X	Tech Coordinator	
Provide technology resources for classroom teachers as deemed nec. for curriculum			X	X	X	X	X	X	X	X	X		Media Specialist & Tech Coordinator	
Initiate new four year lease for lab computers district-wide	X												School Board & Administration, Tech Coordinator	
Provide continuous online learning opportunities for staff & students			X	X	X	X	X	X	X	X	X		Classroom Instructors	
NWEA Online Testing				X			X			X			Tech Coordinator, Classroom Instructors	
Provide resources for State online testing			X	X	X	X	X	X	X	X	X		Staff Development/Curriculum Coordinator & Tech Coordinator	

Action & Implementation Plan for Yellow Medicine East 2008-2009													
Year	2008					2009							
Month	July	Aug	Sept	Oct	Nov	Dec	Jan	Feb	Mar	Apr	May	June	Responsible Party
Full-time Tech Coordinator	X	X	X	X	X	X	X	X	X	X	X	X	School Board & Administration
Tech Coordinator training	X	X	X	X	X	X	X	X	X	X	X	X	Administration
Review & Update service contracts										X			Tech Coordinator & Superintendent
Purchase & Install 3 classroom LCD Projectors					X								Tech Coordinator
Upgrade & Maintain network printing capabilities	X	X	X	X	X	X	X	X	X	X	X	X	Tech Coordinator
Staff/Curriculum Development	X	X	X	X	X	X	X	X	X	X	X	X	Staff Development/Curriculum Coordinator & Tech Coordinator
Maintenance of infrastructure	X	X	X	X	X	X	X	X	X	X	X	X	Tech Coordinator
Radio/Video lab equipment purchases and upgrades		X											Tech Coordinator
Technology Committee meetings				X			X			X			Tech Coordinator
Provide staff with ongoing training and support to enable full integration of technology into all curriculums	X	X	X	X	X	X	X	X	X	X	X	X	Staff Development/Curriculum Coordinator & Tech Coordinator
Order district wide printer supplies & service printers	X												Tech Coordinator
Purchase and professionally install audio enhancement sound systems	X												Media Specialist
Update technology curriculum software	X	X											Tech Coordinator
Update K-12 technology scope and sequence curriculum	X	X	X	X	X	X	X	X	X	X	X	X	Technology Instructors
Upgrade and maintain firewall & filtering system	X	X	X	X	X	X	X	X	X	X	X	X	Tech Coordinator
Provide electronic student management system and make data available to parents via online	X	X	X	X	X	X	X	X	X	X	X	X	Tech Coordinator
Maintain wireless WAN system	X	X	X	X	X	X	X	X	X	X	X	X	Tech Coordinator & LCTN
Employ instructional staff for K-12 technology			X	X	X	X	X	X	X	X	X	X	School Board & Administration
Upgrade district-wide office suite software package	X	X										X	Tech Coordinator
Post course outlines and assignments electronically via individual teacher websites linked to district website			X	X	X	X	X	X	X	X	X	X	Classroom Instructors
Update District Website	X	X	X	X	X	X	X	X	X	X	X	X	Tech Coordinator
Update teacher & lab computer software	X	X											Tech Coordinator
Provide e-mail for students via Gaggle.net			X	X	X	X	X	X	X	X	X	X	Tech Coordinator
Provide community education classes on a variety of software packages				X	X			X	X				Community Ed & Technology Staff
Maintain laptops & USB Drives available for student checkout			X	X	X	X	X	X	X	X	X	X	Media Specialist & Tech Coordinator
Utilize netTrekker for student Internet search options			X	X	X	X	X	X	X	X	X	X	Classroom Instructors
Review and revise district AUP, Web Publishing, Security, Disaster Recovery Plans, and technology plan					X								Tech Writing Committee with Tech Committee
Maintain Teacher workstations district-wide	X	X	X	X	X	X	X	X	X	X	X	X	Tech Coordinator
Maintain server access district-wide	X	X	X	X	X	X	X	X	X	X	X	X	Tech Coordinator
Provide technology resources for classroom teachers as deemed nec. for curriculum			X	X	X	X	X	X	X	X	X	X	Media Specialist & Tech Coordinator
Maintain computer lab workstations and update as needed	X	X	X	X	X	X	X	X	X	X	X	X	School Board & Administration, Tech Coordinator
Provide continuous online learning opportunities for staff & students			X	X	X	X	X	X	X	X	X	X	Classroom Instructors
NWEA Online Testing				X			X			X			Tech Coordinator, Classroom Instructors
Provide resources for State online testing			X	X	X	X	X	X	X	X	X	X	Staff Development/Curriculum Coordinator & Tech Coordinator
Replace/Upgrade email server	X												Tech Coordinator

Action & Implementation Plan for Yellow Medicine East 2007-2008														
Year	2007					2008								
Month	July	Aug	Sept	Oct	Nov	Dec	Jan	Feb	Mar	Apr	May	June	Responsible Party	
Full-time Tech Coordinator	X	X	X	X	X	X	X	X	X	X	X	X	School Board & Administration	
Tech Coordinator training	X	X	X	X	X	X	X	X	X	X	X	X	Administration	
Review & Update service contracts										X			Tech Coordinator & Superintendent	
Purchase & Install 3 classroom LCD Projectors					X								Tech Coordinator	
Upgrade & Maintain network printing capabilities	X	X	X	X	X	X	X	X	X	X	X	X	Tech Coordinator	
Staff/Curriculum Development	X	X	X	X	X	X	X	X	X	X	X	X	Staff Development/Curriculum Coordinator & Tech Coordinator	
Maintenance of infrastructure	X	X	X	X	X	X	X	X	X	X	X	X	Tech Coordinator	
Radio/Video lab equipment purchases and upgrades		X											Tech Coordinator	
Technology Committee meetings provide staff with ongoing training and support to ensure full integration of technology into all curriculums	X	X	X	X	X	X	X	X	X	X	X	X	Staff Development/Curriculum Coordinator & Tech Coordinator	
Order district wide printer supplies & service printers	X												Tech Coordinator	
Purchase and professionally install audio enhancement sound systems	X												Media Specialist	
Update technology curriculum software	X	X											Tech Coordinator	
Update K-12 technology scope and sequence curriculum	X	X	X	X	X	X	X	X	X	X	X	X	Technology Instructors	
Upgrade and maintain firewall & filtering system	X	X	X	X	X	X	X	X	X	X	X	X	Tech Coordinator	
Provide electronic student management system and make data available to parents via online	X	X	X	X	X	X	X	X	X	X	X	X	Tech Coordinator	
Maintain wireless WAN system	X	X	X	X	X	X	X	X	X	X	X	X	Tech Coordinator & LCTN	
Employ instructional staff for K-12 technology			X	X	X	X	X	X	X	X	X	X	School Board & Administration	
Upgrade district-wide office suite software package	X	X										X	Tech Coordinator	
Post course outlines and assignments electronically via individual teacher websites linked to district website			X	X	X	X	X	X	X	X	X	X	Classroom Instructors	
Update District Website	X	X	X	X	X	X	X	X	X	X	X	X	Tech Coordinator	
Update teacher & lab computer software	X	X											Tech Coordinator	
Provide e-mail for students via Gaggle.net	X	X	X	X	X	X	X	X	X	X	X	X	Tech Coordinator	
Provide community education classes on a variety of software packages				X	X			X	X				Community Ed & Technology Staff	
Maintain laptops & USB Drives available for student checkout			X	X	X	X	X	X	X	X	X	X	Media Specialist & Tech Coordinator	
Utilize netTrekker for student Internet search options			X	X	X	X	X	X	X	X	X	X	Classroom Instructors	
Review and revise district AUP, Web Publishing, Security, Disaster Recovery Plans, and technology plan					X								Tech Writing Committee with Tech Committee	
Maintain Teacher workstations district-wide	X	X	X	X	X	X	X	X	X	X	X	X	Tech Coordinator	
Maintain server access district-wide	X	X	X	X	X	X	X	X	X	X	X	X	Tech Coordinator	
Provide technology resources for classroom teachers as deemed nec. for curriculum			X	X	X	X	X	X	X	X	X	X	Media Specialist & Tech Coordinator	
Maintain computer lab workstations and update as needed	X	X	X	X	X	X	X	X	X	X	X	X	School Board & Administration, Tech Coordinator	
Provide continuous online learning opportunities for staff & students			X	X	X	X	X	X	X	X	X	X	Classroom Instructors	
NWEA Online Testing				X			X			X			Tech Coordinator, Classroom Instructors	
Provide resources for State online testing			X	X	X	X	X	X	X	X	X	X	Staff Development/Curriculum Coordinator & Tech Coordinator	
Replace/Upgrade Student Server	X												Tech Coordinator	

Action & Implementation Plan for Yellow Medicine East 2010-2011															
Year	2010					2011								Responsible Party	
Month	July	Aug	Sept	Oct	Nov	Dec	Jan	Feb	Mar	Apr	May	June			
Full-time Tech Coordinator	X	X	X	X	X	X	X	X	X	X	X	X	X	School Board & Administration	
Tech Coordinator training	X	X	X	X	X	X	X	X	X	X	X	X	X	Administration	
Review & Update service contracts										X				Tech Coordinator & Superintendent	
Purchase & Install 3 classroom LCD Projectors					X									Tech Coordinator	
Upgrade & Maintain network printing capabilities	X	X	X	X	X	X	X	X	X	X	X	X	X	Tech Coordinator	
Staff/Curriculum Development	X	X	X	X	X	X	X	X	X	X	X	X	X	Staff Development/Curriculum Coordinator & Tech Coordinator	
Maintenance of infrastructure	X	X	X	X	X	X	X	X	X	X	X	X	X	Tech Coordinator	
Radio/Video lab equipment purchases and upgrades		X												Tech Coordinator	
Technology Committee meetings				X			X			X				Tech Coordinator	
Provide staff with ongoing training and support to enable full integration of technology into all curriculums	X	X	X	X	X	X	X	X	X	X	X	X	X	Staff Development/Curriculum Coordinator & Tech Coordinator	
Order district wide printer supplies & service printers	X													Tech Coordinator	
Purchase and professionally install audio enhancement sound systems	X													Media Specialist	
Update technology curriculum software	X	X												Tech Coordinator	
Update K-12 technology scope and sequence curriculum	X	X	X	X	X	X	X	X	X	X	X	X	X	Technology Instructors	
Upgrade and maintain firewall & filtering system	X	X	X	X	X	X	X	X	X	X	X	X	X	Tech Coordinator	
Provide electronic student management system and make data available to parents via online	X	X	X	X	X	X	X	X	X	X	X	X	X	Tech Coordinator	
Maintain wireless WAN system	X	X	X	X	X	X	X	X	X	X	X	X	X	Tech Coordinator & LCTN	
Employ instructional staff for K-12 technology			X	X	X	X	X	X	X	X	X	X	X	School Board & Administration	
Upgrade district-wide of office suite software package	X	X										X		Tech Coordinator	
Post course outlines and assignments electronically via individual teacher websites linked to district website			X	X	X	X	X	X	X	X	X	X		Classroom Instructors	
Update District Website	X	X	X	X	X	X	X	X	X	X	X	X	X	Tech Coordinator	
Update teacher & lab computer software	X	X												Tech Coordinator	
Provide e-mail for students via Gaggie.net	X	X	X	X	X	X	X	X	X	X	X	X	X	Tech Coordinator	
Provide community education classes on a variety of software packages				X	X			X	X					Community Ed & Technology Staff	
Maintain laptops & USB Drives available for student checkout			X	X	X	X	X	X	X	X	X	X		Media Specialist & Tech Coordinator	
Utilize netTrekker for student Internet search options			X	X	X	X	X	X	X	X	X	X		Classroom Instructors	
Review and revise district AUP, Web Publishing, Security, Disaster Recovery Plans, and technology plan					X									Tech Writing Committee with Tech Committee	
Maintain Teacher workstations district-wide	X	X	X	X	X	X	X	X	X	X	X	X	X	Tech Coordinator	
Maintain server access district-wide	X	X	X	X	X	X	X	X	X	X	X	X	X	Tech Coordinator	
Provide technology resources for classroom teachers as deemed nec. for curriculum			X	X	X	X	X	X	X	X	X	X		Media Specialist & Tech Coordinator	
Maintain computer lab workstations and update as needed	X	X	X	X	X	X	X	X	X	X	X	X	X	School Board & Administration, Tech Coordinator	
Provide continuous online learning opportunities for staff & students			X	X	X	X	X	X	X	X	X	X		Classroom Instructors	
NWEA Online Testing				X			X			X				Tech Coordinator, Classroom Instructors	
Provide resources for State online testing			X	X	X	X	X	X	X	X	X	X		Staff Development/Curriculum Coordinator & Tech Coordinator	
Replace/Upgrade Student Server	X													Tech Coordinator	

Check Nbr	Vendor Name	Check Date	Invoice Number	Invoice Desc	PO Number	Invoice Amount	Check Amount
11282	Vendor Continued Void	02/12/2007					0.00
11283	ADVOCATE TRIBUNE	02/12/2007	1		0	186.80	3,402.99
01 E 005 010 000 000 380				BOARD OF EDUCATION//PRINTING/ADVERTISING		186.80	
			10	WINTER BROCHURES	0	1,253.49	
04 E 500 505 000 321 380				COMMUNITY EDUCATION GENERAL/COMMUNITY EDUCATION/PRINTING		1,253.49	
			2	NOTARY STAMP	0	15.17	
01 E 005 020 000 000 401				SUPERINTENDENT'S OFFICE//GENERAL SUPPLIES		15.17	
			3	SCHOOL NEWS	0	1,019.45	
01 E 005 130 000 333 380				COMMUNITY RELATIONS-SCHOOL NEW/PARENTAL INVOLVEMENT/PRIN		1,019.45	
			4		270	54.00	
01 E 100 203 000 000 899				ELEMENTARY GENERAL ED./MISCELLANEOUS EXPENSE		54.00	
			5		0	116.25	
01 E 100 203 000 000 899				ELEMENTARY GENERAL ED./MISCELLANEOUS EXPENSE		116.25	
			7	OLE & LENA	0	340.00	
04 E 500 505 000 321 450				COMMUNITY EDUCATION GENERAL/COMMUNITY EDUCATION/MATERIAL		340.00	
			8	WINTER BROCHURES	0	417.83	
04 E 500 580 000 325 380				EARLY CHILDHOOD AND FAM ED/EARLY CHILDHOOD AND FAMILY ED		417.83	
11284	AMAZON.COM CREDIT	02/12/2007	902742366649118		0	-10.36	37.44
01 E 300 211 000 000 899				SECONDARY EDUCATION GENERAL/MISCELLANEOUS EXPENSE		-10.36	
			934263110368866		0	47.80	
01 E 300 211 000 000 899				SECONDARY EDUCATION GENERAL/MISCELLANEOUS EXPENSE		47.80	
11285	AMERICAN WELDING SUPPLIES	02/12/2007	922313	WELDING	0	990.01	1,034.56
01 E 300 301 501 830 433				AG EDUCATION (VOCATIONAL)/VOCATIONAL PROGRAMS/INDIVIDUAL		990.01	
			922856		0	44.55	
01 E 300 301 501 830 433				AG EDUCATION (VOCATIONAL)/VOCATIONAL PROGRAMS/INDIVIDUAL		44.55	
11286	APPERT FOODS	02/12/2007	1		0	4,331.68	4,331.68
02 E 005 770 000 701 401				FOOD SERVICES/SCHOOL LUNCH/GENERAL SUPPLIES		1,663.58	
02 E 005 770 000 701 490				FOOD SERVICES/SCHOOL LUNCH/FOOD		2,284.29	
02 E 005 770 000 701 495				FOOD SERVICES/SCHOOL LUNCH/MILK		17.10	
02 E 005 770 000 705 490				FOOD SERVICES/BREAKFAST/FOOD		366.71	
11287	B & H PHOTO	02/12/2007	188353820-25865918		0	164.12	164.12
01 E 150 050 000 000 401				PRINCIPAL'S OFFICE//GENERAL SUPPLIES		164.12	
11288	BALFANY CONSTRUCTION	02/12/2007	1	LOCKER ROOM	0	1,925.00	1,925.00
01 E 005 850 000 302 522				FACILITIES/CAPITAL OUTLAY/BUILDING IMPROVEMENTS		1,925.00	
11289	Vendor Continued Void	02/12/2007					0.00
11290	Vendor Continued Void	02/12/2007					0.00
11291	BENNETT & BENNETT TRANSP. INC.	02/12/2007	1	TAG	0	134.57	76,839.04
01 E 100 218 000 733 361				GIFTED & TALENTED/TRANSPORTATION/NON-AUTHORIZED/BUS CONT		134.57	
			10	WRESTLING	0	1,132.65	
01 E 300 294 221 733 361				BOYS ATHLETICS/TRANSPORTATION/NON-AUTHORIZED/BUS CONTRAC		1,132.65	
			11	REGULAR ROUTES	0	51,389.73	
01 E 005 760 000 720 361				PUPIL TRANSPORTATION/REGULAR TO AND FROM SCHOOL/BUS CONT		51,389.73	
			12		0	5,552.51	
01 E 005 760 000 720 361				PUPIL TRANSPORTATION/REGULAR TO AND FROM SCHOOL/BUS CONT		5,552.51	
			13	CLKFD. SHUTTLE	0	1,764.00	
01 E 005 760 000 720 361				PUPIL TRANSPORTATION/REGULAR TO AND FROM SCHOOL/BUS CONT		1,764.00	
			14	OUT OF DISTRICT	0	2,646.00	
01 E 005 760 000 713 361				PUPIL TRANSPORTATION/OPEN ENROLLMENT/BUS CONTRACT (XWK T		2,646.00	
			15	ATHLETIC SHUTTLE	0	459.90	

Check Nbr	Vendor Name	Check Date	Invoice Number	Invoice Desc	PO Number	Invoice Amount	Check Amount
01 E 005 760 000 717 361				PUPIL TRANSPORTATION/LATE ACTIVITY BUS/BUS CONTRACT (XWK		459.90	
			16	SPECIAL NEEDS	0	9,933.84	
01 E 005 760 000 723 361				PUPIL TRANSPORTATION/HANDICAPPED/BUS CONTRACT (XWK TO 36		9,933.84	
			18	RENT	0	30.00	
01 E 300 298 000 000 370				EXTRACURRICULAR ACTIVITIES//RENTALS AND LEASES		30.00	
			2	sh/jh tag	0	499.08	
01 E 300 218 000 733 361				GIFTED & TALENTED/TRANSPORTATION/NON-AUTHORIZED/BUS CONT		499.08	
			3	SH MATH LEAGUE	0	138.83	
01 E 300 298 240 733 361				EXTRACURRICULAR ACTIVITIES/TRANSPORTATION/NON-AUTHORIZED		138.83	
			4	DANCELINE	0	1,006.25	
01 E 300 296 228 733 361				GIRLS ATHLETICS/TRANSPORTATION/NON-AUTHORIZED/BUS CONTRA		1,006.25	
			5	SH BBB	0	376.73	
01 E 300 294 213 733 361				BOYS ATHLETICS/TRANSPORTATION/NON-AUTHORIZED/BUS CONTRAC		376.73	
			7	JH BBB	0	445.91	
01 E 300 294 213 733 361				BOYS ATHLETICS/TRANSPORTATION/NON-AUTHORIZED/BUS CONTRAC		445.91	
			8	SH GBB	0	904.52	
01 E 300 296 213 733 361				GIRLS ATHLETICS/TRANSPORTATION/NON-AUTHORIZED/BUS CONTRA		904.52	
			9	JH GBB	0	424.52	
01 E 300 296 213 733 361				GIRLS ATHLETICS/TRANSPORTATION/NON-AUTHORIZED/BUS CONTRA		424.52	
11292 BERNICK'S PEPSI-COLA		02/12/2007	1	ELEM ST COUNCIL	0	137.70	189.30
01 L 230 39				GENERAL FUND/DEFERRED REVENUE/BERT RANEY JUICE MACHNINE		137.70	
			21134		0	51.60	
01 E 300 220 000 000 430				ENGLISH//SUPPLIES		51.60	
11293 BILL'S ELECTRIC		02/12/2007	1	IND TECH	0	432.00	623.08
01 E 300 255 000 000 430				INDUSTRIAL EDUCATION//SUPPLIES		432.00	
			2	AG	0	191.08	
01 E 300 301 501 830 433				AG EDUCATION (VOCATIONAL)/VOCATIONAL PROGRAMS/INDIVIDUAL		191.08	
11294 HELEN M BLUE-REDNER		02/12/2007	1		0	37.35	37.35
01 E 100 203 000 000 366				ELEMENTARY GENERAL ED.//TRAVEL-SCHOOL BUSINESS		37.35	
11295 BRIH DESIGN		02/12/2007	7000040	W. SELMES	0	983.75	983.75
01 E 200 420 000 419 305				SPECIAL EDUCATIONAL GENERAL/94-142 FEDERAL/PROFESSIONAL		983.75	
11296 BROAD REACH		02/12/2007	ART7092		0	55.29	55.29
01 E 300 620 000 000 470				EDUCATIONAL MEDIA/LIBRARY//LIBRARY BOOKS		55.29	
11297 BRUFLAT PLUMBING & HEATING INC		02/12/2007	1		0	100.00	100.00
01 E 025 810 000 000 350				OPERATIONS AND MAINTENANCE//REPAIRS AND MAINTENANCE SVCS		100.00	
11298 CAPITAL ONE, F.S.B.		02/12/2007	2	NOTARY RENEWAL	0	44.00	1,737.30
01 E 005 010 000 000 899				BOARD OF EDUCATION//MISCELLANEOUS EXPENSE		44.00	
			3	BURSCH TRAVEL	0	1,046.73	
01 E 100 216 000 401 366				TITLE I - PART A/TITLE I/TRAVEL-SCHOOL BUSINESS		1,046.73	
			4	ON TIME SUPPLIES	237	77.36	
01 E 300 260 000 000 430				NATURAL SCIENCES//SUPPLIES		77.36	
			TRANS 3&4	BURSCH TRAVEL	0	569.21	
01 E 100 204 000 414 366				TITLE II EISENHWOER/TITLE II ESEA/TRAVEL-SCHOOL BUSINESS		569.21	
11299 CARL'S BAKERY		02/12/2007	11838	ONE ACT PLAY	262	25.60	123.45
01 E 300 298 236 000 899				EXTRACURRICULAR ACTIVITIES//MISCELLANEOUS EXPENSE		25.60	
			1886	PARENT ADVISORY	71	22.30	
01 E 100 216 000 401 430				TITLE I - PART A/TITLE I/SUPPLIES		22.30	

Check Nbr	Vendor Name	Check Date	Invoice Number	Invoice Desc	PO Number	Invoice Amount	Check Amount
01 E 100 790 108 799 401			871		268	9.60	
			OTHER PUPIL SUPPORT SERVICES/OTHER GRANTS/GENERAL SUPPLI			9.60	
02 E 025 770 000 701 490			888-11837		0	65.95	
			FOOD SERVICES/SCHOOL LUNCH/FOOD			65.95	
11300 CARLEX		02/12/2007	135495A		296	88.80	88.80
01 E 300 230 251 000 430			FOREIGN LANGUAGE//SUPPLIES			88.80	
11301 CDW GOVERNMENT, INC.		02/12/2007	CZJ6265	SCANNER	59	87.08	274.81
01 E 005 020 000 302 530			SUPERINTENDENT'S OFFICE/CAPITAL OUTLAY/EQUIPMENT PURCHAS			87.08	
01 E 200 612 000 302 555			dgg5806		69	50.30	
			TECHNOLOGY/CAPITAL OUTLAY/TECHNOLOGY EQUIPMENT			50.30	
01 E 300 255 000 000 430			DHG0016		285	137.43	
			INDUSTRIAL EDUCATION//SUPPLIES			137.43	
11302 CENEX CREDIT CARD		02/12/2007	1		0	527.53	527.53
01 E 005 810 193 000 442			OPERATIONS AND MAINTENANCE//GAS & OIL			527.53	
11303 CHAMPIONSHIP BOOKS & VIDEO PRO		02/12/2007	565123		0	77.90	77.90
01 E 300 294 224 000 401			BOYS ATHLETICS//GENERAL SUPPLIES			77.90	
11304 CHILDCRAFT ED CORP		02/12/2007	M047149401026		0	26.95	301.94
01 E 100 203 000 302 560			ELEMENTARY GENERAL ED./CAPITAL OUTLAY/TEXTBOOK/LIBRARY B			26.95	
01 E 150 203 000 302 530			M47372101012		72	274.99	
			ELEMENTARY GENERAL ED./CAPITAL OUTLAY/EQUIPMENT PURCHASE			274.99	
11305 CITY OF GRANITE FALLS		02/12/2007	1	SWR/WTR	0	1,409.48	10,170.61
01 E 005 810 183 000 330			OPERATIONS AND MAINTENANCE//UTILITY SERVICES			1,409.48	
01 E 005 810 184 000 330			2	ELEC	0	8,694.29	
			OPERATIONS AND MAINTENANCE//UTILITY SERVICES			8,694.29	
01 E 005 810 191 000 330			3	GARAGE	0	66.84	
			OPERATIONS AND MAINTENANCE//UTILITY SERVICES			66.84	
11306 CITY OF GRANITE FALLS		02/12/2007	1414	SAND LOTS	0	32.78	32.78
01 E 005 810 191 000 350			OPERATIONS AND MAINTENANCE//REPAIRS AND MAINTENANCE SVCS			32.78	
11307 CITY OF GRANITE FALLS		02/12/2007	1418		0	40.00	40.00
01 E 300 790 388 000 899			OTHER PUPIL SUPPORT SERVICES//MISCELLANEOUS EXPENSE			40.00	
11308 CLASSROOM DIRECT/REPRINT		02/12/2007	W4206940001		0	243.22	486.44
01 E 100 203 000 000 899			ELEMENTARY GENERAL ED./MISCELLANEOUS EXPENSE			243.22	
01 E 300 211 000 302 530			W4206950001		260	243.22	
			SECONDARY EDUCATION GENERAL/CAPITAL OUTLAY/EQUIPMENT PUR			243.22	
11309 FERN CLOUD		02/12/2007	1		0	200.00	200.00
01 E 100 790 108 799 305			OTHER PUPIL SUPPORT SERVICES/OTHER GRANTS/PROFESSIONAL F			200.00	
11310 COMPVIEW		02/12/2007	139150	PROJECTOR	286	425.86	425.86
01 E 300 620 000 302 530			EDUCATIONAL MEDIA/LIBRARY/CAPITAL OUTLAY/EQUIPMENT PURCH			425.86	
11311 CONSUMERS COOPERATIVE OIL CO.		02/12/2007	1		0	123.92	295.73
01 E 025 810 193 000 442			OPERATIONS AND MAINTENANCE//GAS & OIL			123.92	
01 E 025 810 193 000 442			10		0	171.81	
			OPERATIONS AND MAINTENANCE//GAS & OIL			171.81	
11312 CONTINENTAL WESTERN GROUP		02/12/2007	1		0	20.00	20.00
01 E 005 940 000 000 340			PROPERTY AND OTHER INSURANCE//INSURANCE			20.00	
11313 COUNTRYSIDE PUBLIC HEALTH		02/12/2007	1		0	25.00	378.50
01 E 200 720 000 000 311			HEALTH SERVICES/NURSE//PROFESSIONAL/TECHNICAL SVCS			25.00	
			10		0	112.50	

Check Nbr	Vendor Name	Check Date	Invoice Number	Invoice Desc	PO Number	Invoice Amount	Check Amount
01 E 200 720 000 000 311				HEALTH SERVICES/NURSE//PROFESSIONAL/TECHNICAL SVCS		112.50	
			11		0	20.00	
01 E 200 720 000 000 311				HEALTH SERVICES/NURSE//PROFESSIONAL/TECHNICAL SVCS		20.00	
			2		0	50.00	
01 E 200 720 000 000 311				HEALTH SERVICES/NURSE//PROFESSIONAL/TECHNICAL SVCS		50.00	
			3		0	171.00	
01 E 200 720 000 000 311				HEALTH SERVICES/NURSE//PROFESSIONAL/TECHNICAL SVCS		171.00	
11314 TIM CROWLEY		02/12/2007	1		0	75.00	75.00
01 E 300 408 390 000 305				EMOTION/BEHAVIORAL DISORDER//PROFESSIONAL FEES		75.00	
11315 CRYSTEEL DIST. INC.		02/12/2007	LP122251		0	68.00	68.00
01 E 005 810 191 000 410				OPERATIONS AND MAINTENANCE//CUST/REPAIR SUPPLIES		68.00	
11316 CULLIGAN		02/12/2007	1		0	32.75	32.75
01 E 025 810 183 000 330				OPERATIONS AND MAINTENANCE//UTILITY SERVICES		32.75	
11317 CULTURE FOR KIDS		02/12/2007	143678A		233	697.20	697.20
01 E 200 790 160 799 460				OTHER PUPIL SUPPORT SERVICES/OTHER GRANTS/BOOKS/WORKBOOK		697.20	
11318 CURTIS COMPANY		02/12/2007	150070071		71	83.50	83.50
01 E 150 620 000 000 401				EDUCATIONAL MEDIA/LIBRARY//GENERAL SUPPLIES		83.50	
11319 NATHAN DAHLAGER		02/12/2007	1		0	90.99	90.99
01 E 300 294 213 000 401				BOYS ATHLETICS//GENERAL SUPPLIES		90.99	
11320 DAWSON-BOYD SCHOOL #378		02/12/2007	1205	FOOD AT IN-SERVICE	0	316.50	316.50
01 E 100 640 000 306 367				STAFF DEVELOPMENT/STAFF DEV. 50% SITE/TRAVEL-PROFESS DEV		316.50	
11321 DEAN FOODS NORTH CENTRAL, INC.		02/12/2007	1		0	860.53	3,542.51
02 E 025 770 000 701 495				FOOD SERVICES/SCHOOL LUNCH/MILK		348.21	
02 E 025 770 000 705 495				FOOD SERVICES/BREAKFAST/MILK		146.16	
02 E 025 770 000 707 495				FOOD SERVICES/ALA CARTE/OTHER/MILK		366.16	
			10		0	2,681.98	
02 E 005 770 000 701 495				FOOD SERVICES/SCHOOL LUNCH/MILK		1,675.24	
02 E 005 770 000 705 490				FOOD SERVICES/BREAKFAST/FOOD		484.88	
02 E 005 770 000 707 495				FOOD SERVICES/ALA CARTE/OTHER/MILK		521.86	
11322 DEPT. OF EMPLOYMENT & ECONOMIC		02/12/2007	7977689	QTR 4 2006	0	967.53	967.53
01 E 150 203 000 000 280				ELEMENTARY GENERAL ED.//UNEMPLOYMENT COMPENSATION		967.53	
11323 DETOY'S RESTAURANT		02/12/2007	1		0	28.76	28.76
01 E 100 050 000 000 401				PRINCIPAL'S OFFICE//GENERAL SUPPLIES		28.76	
11324 DIAMOND VOGEL PAINT		02/12/2007	11207821		0	331.26	331.26
01 E 005 810 000 000 410				OPERATIONS AND MAINTENANCE//CUST/REPAIR SUPPLIES		331.26	
11325 DOLLAR STOP		02/12/2007	1		283	6.00	6.00
01 E 100 790 108 799 401				OTHER PUPIL SUPPORT SERVICES/OTHER GRANTS/GENERAL SUPPLI		6.00	
11326 DOTY, JILL		02/12/2007	1		0	40.04	40.04
01 E 200 219 000 317 366				LEP/COMPENSATORY/TRAVEL-SCHOOL BUSINESS		40.04	
11327 DEE DEE DREIER		02/12/2007	1	DANCE EXPLOSION	0	1,620.00	1,620.00
04 E 500 505 000 321 305				COMMUNITY EDUCATION GENERAL/COMMUNITY EDUCATION/PROFESSI		1,620.00	
11328 DU-MART		02/12/2007	2516		0	15.83	15.83
01 E 100 203 405 000 899				ELEMENTARY GENERAL ED.//MISCELLANEOUS EXPENSE		15.83	
11329 ECOLAB		02/12/2007	6600321		0	140.00	265.50
01 E 025 810 000 000 350				OPERATIONS AND MAINTENANCE//REPAIRS AND MAINTENANCE SVCS		140.00	
			6600341		0	125.50	
01 E 005 810 000 000 350				OPERATIONS AND MAINTENANCE//REPAIRS AND MAINTENANCE SVCS		125.50	

Check Nbr	Vendor Name	Check Date	Invoice Number	Invoice Desc	PO Number	Invoice Amount	Check Amount
11330	Vendor Continued Void	02/12/2007					0.00
11331	ECONOMART	02/12/2007	1		280	30.00	845.57
01 E 100 257 000 000 430				COMPUTER TECHNOLOGY//SUPPLIES		30.00	
			10		0	24.14	
01 E 100 790 108 799 401				OTHER PUPIL SUPPORT SERVICES/OTHER GRANTS/GENERAL SUPPLI		24.14	
			10103	TITLE 1 PARENT MTG.	0	36.55	
01 E 100 216 000 401 366				TITLE I - PART A/TITLE I/TRAVEL-SCHOOL BUSINESS		36.55	
			11		0	28.11	
01 E 005 790 721 000 401				OTHER PUPIL SUPPORT SERVICES//GENERAL SUPPLIES		28.11	
			2		0	174.95	
01 E 100 203 362 000 899				ELEMENTARY GENERAL ED.//MISCELLANEOUS EXPENSE		174.95	
			3		0	26.08	
04 E 500 580 000 325 430				EARLY CHILDHOOD AND FAM ED/EARLY CHILDHOOD AND FAMILY ED		26.08	
			30016	AUTO MAINT. OPERATIONS AND MAINTENANCE//GENERAL SUPPLIES	0	6.74	
01 E 005 810 193 000 401						6.74	
			4		0	365.68	
01 E 300 331 000 830 433				VOCATIONAL HOME EC/VOCATIONAL PROGRAMS/INDIVIDUAL INST S		365.68	
			5		0	45.48	
01 E 100 790 388 000 899				OTHER PUPIL SUPPORT SERVICES//MISCELLANEOUS EXPENSE		45.48	
			6		0	33.46	
01 L 230 43				GENERAL FUND/DEFERRED REVENUE/SR HIGH PROJECTS		33.46	
			7		0	12.33	
01 E 300 260 000 000 430				NATURAL SCIENCES//SUPPLIES		12.33	
			8		0	14.03	
01 E 300 298 236 000 899				EXTRACURRICULAR ACTIVITIES//MISCELLANEOUS EXPENSE		14.03	
			9		0	48.02	
01 E 100 203 403 000 899				ELEMENTARY GENERAL ED.//MISCELLANEOUS EXPENSE		48.02	
11332	EDUCATIONAL RESOURCES	02/12/2007	859148	adobe	65	305.28	1,107.48
01 E 005 020 000 000 401				SUPERINTENDENT'S OFFICE//GENERAL SUPPLIES		305.28	
			859224		0	802.20	
01 E 200 612 120 301 555				TECHNOLOGY/CAPITAL (NON 302 FIN)//TECHNOLOGY EQUIPMENT		802.20	
11333	EDUCATIONAL TESTING SERVICE	02/12/2007	20065598		0	40.00	40.00
01 R 005 000 000 000 099				MISCELLANEOUS LOCAL REVENUE		40.00	
11334	EMC PUBLISHING/ PARADIGM	02/12/2007	1248011		243	197.40	197.40
01 E 300 230 000 000 430				FOREIGN LANGUAGE//SUPPLIES		197.40	
11335	FIRST CLASS CONFERENCES	02/12/2007	1	RDG RECOVERY	295	395.00	395.00
01 E 100 203 113 317 366				ELEMENTARY GENERAL ED./COMPENSATORY/TRAVEL-SCHOOL BUSINE		395.00	
11336	FOLLETT EDUCATIONAL SERVICES	02/12/2007	846438A		265	429.00	429.00
01 E 300 220 000 000 430				ENGLISH//SUPPLIES		429.00	
11337	FOOD SERVICES OF AMERICA	02/12/2007	1		0	918.94	918.94
02 E 025 770 000 701 490				FOOD SERVICES/SCHOOL LUNCH/FOOD		706.09	
02 E 025 770 000 705 401				FOOD SERVICES/BREAKFAST/GENERAL SUPPLIES		23.04	
02 E 025 770 000 705 490				FOOD SERVICES/BREAKFAST/FOOD		189.81	
11338	FRAN DEBAERE	02/12/2007	1		0	125.00	399.50
01 E 005 810 000 000 350				OPERATIONS AND MAINTENANCE//REPAIRS AND MAINTENANCE SVCS		125.00	
			2		0	274.50	
01 E 005 810 000 000 410				OPERATIONS AND MAINTENANCE//CUST/REPAIR SUPPLIES		274.50	

Check Nbr	Vendor Name	Check Date	Invoice Number	Invoice Desc	PO Number	Invoice Amount	Check Amount
11339	FRANKLIN COVEY CO.	02/12/2007	54045063		277	163.21	163.21
01 E 200 740 000 419 430				SOCIAL WORKER/94-142 FEDERAL/SUPPLIES		163.21	
11340	FRY, JILL	02/12/2007	1		0	34.50	34.50
01 E 100 203 000 000 366				ELEMENTARY GENERAL ED.//TRAVEL-SCHOOL BUSINESS		34.50	
11341	G & K SERVICES	02/12/2007	1		0	251.12	251.12
02 E 025 770 000 701 382				FOOD SERVICES/SCHOOL LUNCH/LAUNDRY AND DRY CLEANING		23.26	
01 E 025 810 000 000 382				OPERATIONS AND MAINTENANCE//LAUNDRY AND DRY CLEANING		227.86	
11342	GRANITE FALLS AUTO PARTS	02/12/2007	1		0	89.35	89.35
01 E 005 810 193 000 401				OPERATIONS AND MAINTENANCE//GENERAL SUPPLIES		89.35	
11343	GRANITE FLORAL & GREENHOUSE	02/12/2007	68777		0	25.00	65.00
01 L 230 10				GENERAL FUND/DEFERRED REVENUE/SUPT POP FUND		25.00	
				69559	0	40.00	
01 L 230 10				GENERAL FUND/DEFERRED REVENUE/SUPT POP FUND		40.00	
11344	GRANITE FLUID POWER	02/12/2007	2106		0	20.00	20.00
01 E 005 810 000 000 410				OPERATIONS AND MAINTENANCE//CUST/REPAIR SUPPLIES		20.00	
11345	GREAT PLAINS NATURAL GAS CO	02/12/2007	1		0	7,763.34	20,886.98
01 E 025 810 000 000 440				OPERATIONS AND MAINTENANCE//FUEL FOR BUILDINGS		7,763.34	
				2	0	13,041.52	
01 E 005 810 000 000 440				OPERATIONS AND MAINTENANCE//FUEL FOR BUILDINGS		13,041.52	
				3	0	82.12	
01 E 005 810 191 000 440				OPERATIONS AND MAINTENANCE//FUEL FOR BUILDINGS		82.12	
11346	GREAT PLAINS SPORTS	02/12/2007	313169		0	186.10	1,103.84
01 E 300 296 210 000 401				GIRLS ATHLETICS//GENERAL SUPPLIES		186.10	
				313198	0	917.74	
01 E 300 294 215 000 401				BOYS ATHLETICS//GENERAL SUPPLIES		917.74	
11347	HANSEN, LISA	02/12/2007	1		0	14.25	48.29
01 E 100 204 000 414 366				TIES		14.25	
				TITLE II EISENHWOER/TITLE II ESEA/TRAVEL-SCHOOL BUSINESS			
				10	0	23.23	
01 E 100 203 404 000 430				DQ- AR		23.23	
				ELEMENTARY GENERAL ED.//SUPPLIES			
				2	0	10.81	
01 E 100 790 108 799 401				OTHER PUPIL SUPPORT SERVICES/OTHER GRANTS/GENERAL SUPPLI		10.81	
11348	HDL	02/12/2007	1491669		0	96.65	450.14
01 E 300 255 000 000 450				INDUSTRIAL EDUCATION//MATERIALS PURCH FOR RESALE		96.65	
				1491673	0	75.74	
01 E 300 255 000 000 450				INDUSTRIAL EDUCATION//MATERIALS PURCH FOR RESALE		75.74	
				1491675	0	139.73	
01 E 300 255 000 000 450				INDUSTRIAL EDUCATION//MATERIALS PURCH FOR RESALE		139.73	
				1494267	252	50.54	
01 E 300 255 000 000 450				INDUSTRIAL EDUCATION//MATERIALS PURCH FOR RESALE		50.54	
				1496905	267	87.48	
01 E 300 255 000 000 450				INDUSTRIAL EDUCATION//MATERIALS PURCH FOR RESALE		87.48	
11349	HEARTLAND WOOD PRODUCTS	02/12/2007	58429		258	2,356.50	2,356.50
01 E 300 255 000 000 450				INDUSTRIAL EDUCATION//MATERIALS PURCH FOR RESALE		2,356.50	
11350	HEINAMANN WORKSHOPS	02/12/2007	3111245		274	66.52	66.52
01 E 100 203 000 000 899				ELEMENTARY GENERAL ED.//MISCELLANEOUS EXPENSE		66.52	
11351	HENDERSON, ROBIN	02/12/2007	1		0	57.62	123.32
01 E 100 790 308 799 401				OTHER PUPIL SUPPORT SERVICES/OTHER GRANTS/GENERAL SUPPLI		57.62	

Check Nbr	Vendor Name	Check Date	Invoice Number	Invoice Desc	PO Number	Invoice Amount	Check Amount
01 E 005 790 721 000 366			2	OTHER PUPIL SUPPORT SERVICES//TRAVEL-SCHOOL BUSINESS	0	65.70	
						65.70	
11352 HILLYARD/HUTCHINSON		02/12/2007	1983508	BOYS/GIRLS ATHLETICS//LAUNDRY AND DRY CLEANING	0	221.11	3,477.97
01 E 300 292 000 000 382						221.11	
01 E 005 810 000 000 410			2004823	OPERATIONS AND MAINTENANCE//CUST/REPAIR SUPPLIES	0	3,256.86	
						3,256.86	
11353 HINZ, STACY		02/12/2007	1	TITLE II EISENHWOER/TITLE II ESEA/TRAVEL-SCHOOL BUSINESS	0	169.40	2,140.00
01 E 100 204 000 414 366						169.40	
01 E 100 216 000 401 366			10	TITLE I - PART A/TITLE I/TRAVEL-SCHOOL BUSINESS	0	1,970.60	
						1,970.60	
11354 HOLM, KRIS		02/12/2007	1	SOCIAL WORKER/94-142 FEDERAL/TRAVEL-SCHOOL BUSINESS	0	147.48	506.88
01 E 200 740 000 419 366						147.48	
01 E 200 740 000 419 430			15	grief council SOCIAL WORKER/94-142 FEDERAL/SUPPLIES	0	11.44	
						11.44	
01 E 300 790 388 000 899			2	OTHER PUPIL SUPPORT SERVICES//MISCELLANEOUS EXPENSE	0	69.30	
						69.30	
01 E 300 790 388 000 899			3	KID CHANGE OTHER PUPIL SUPPORT SERVICES//MISCELLANEOUS EXPENSE	0	270.65	
						270.65	
01 E 005 790 181 799 401			5	OTHER PUPIL SUPPORT SERVICES/OTHER GRANTS/GENERAL SUPPLI	0	8.01	
						8.01	
11355 HUT PRODUCTS		02/12/2007	10294A	ART//SUPPLIES	161	117.99	117.99
01 E 300 212 000 000 430						117.99	
11356 IKON FINANCIAL SERVICES		02/12/2007	1	EDUCATIONAL MEDIA/LIBRARY/CAPITAL OUTLAY/CAPITAL LEASE P	0	175.00	1,252.00
01 E 300 620 000 302 580						175.00	
01 E 300 211 000 302 580			2	SECONDARY EDUCATION GENERAL/CAPITAL OUTLAY/CAPITAL LEASE	0	274.00	
						274.00	
01 E 150 203 000 302 580			3	ELEMENTARY GENERAL ED./CAPITAL OUTLAY/CAPITAL LEASE PRIN	0	274.00	
						274.00	
01 E 100 203 000 302 580			4	ELEMENTARY GENERAL ED./CAPITAL OUTLAY/CAPITAL LEASE PRIN	0	274.00	
						274.00	
01 E 005 020 000 302 580			5	SUPERINTENDENT'S OFFICE/CAPITAL OUTLAY/CAPITAL LEASE PRI	0	255.00	
						255.00	
11357 IMAGESTUFF.COM		02/12/2007	47448	ELEMENTARY GENERAL ED.//GENERAL SUPPLIES	271	35.52	50.88
01 E 100 203 000 000 401						35.52	
01 E 100 203 000 000 401			47787	ELEMENTARY GENERAL ED.//GENERAL SUPPLIES	278	15.36	
						15.36	
11358 INK SPOT		02/12/2007	1	FOOD SERVICES/SCHOOL LUNCH/GENERAL SUPPLIES	0	194.11	194.11
02 E 005 770 000 701 401						194.11	
11359 INNOVATIVE OFFICE SOLUTIONS, L		02/12/2007	3584490-1	PRINCIPAL'S OFFICE//GENERAL SUPPLIES	270	198.37	456.40
01 E 300 050 000 000 401						198.37	
01 E 005 110 000 000 401			61121-1	ACCOUNTING OFFICE//GENERAL SUPPLIES	0	28.05	
						28.05	
01 E 005 110 000 000 401			61857-1	ACCOUNTING OFFICE//GENERAL SUPPLIES	0	26.35	
						26.35	
01 E 100 203 000 000 430			62490-1	ELEMENTARY GENERAL ED.//SUPPLIES	292	127.50	
						127.50	
			OE-599461		269	69.59	

Check Nbr	Vendor Name	Check Date	Invoice Number	Invoice Desc	PO Number	Invoice Amount	Check Amount
01 E 100 203 000 000 899				ELEMENTARY GENERAL ED.//MISCELLANEOUS EXPENSE		69.59	
			OE60987-1		0	6.54	
01 E 100 203 000 000 899				ELEMENTARY GENERAL ED.//MISCELLANEOUS EXPENSE		6.54	
11360 INTERMEDIATE DISTRICT #287		02/12/2007	62520	06 SS TUITION	0	1,371.16	1,371.16
01 E 998 410 000 740 390				MISC. HEALTH DISABILITIES/STATE FUNDED SPECIAL ED/TUITIO		1,371.16	
11361 ISCORP		02/12/2007	631578		0	195.50	195.50
01 E 005 110 000 000 350				ACCOUNTING OFFICE//REPAIRS AND MAINTENANCE SVCS		195.50	
11362 JAGUAR EDUCATIONAL		02/12/2007	37824P		0	121.79	181.74
01 E 150 201 000 000 430				KINDERGARTEN//SUPPLIES		121.79	
			37888P		0	59.95	
01 E 100 203 000 000 899				ELEMENTARY GENERAL ED.//MISCELLANEOUS EXPENSE		59.95	
11363 ELIZABETH JAHN		02/12/2007	1		0	337.81	337.81
01 E 150 203 169 000 366				ELEMENTARY GENERAL ED.//TRAVEL-SCHOOL BUSINESS		337.81	
11364 JB YATES		02/12/2007	1		0	50.00	50.00
04 E 500 505 000 321 450				COMMUNITY EDUCATION GENERAL/COMMUNITY EDUCATION/MATERIAL		50.00	
11365 JIFFY-JR. PRODUCTS		02/12/2007	143925		287	292.26	292.26
01 E 300 255 000 000 450				INDUSTRIAL EDUCATION//MATERIALS PURCH FOR RESALE		292.26	
11366 JIMMY'S PIZZA		02/12/2007	595388		266	77.00	77.00
01 E 005 790 721 000 401				OTHER PUPIL SUPPORT SERVICES//GENERAL SUPPLIES		77.00	
11367 JOHNSON CONTROLS		02/12/2007	515-1015468	BOILER	0	609.25	709.66
01 E 005 810 000 000 350				OPERATIONS AND MAINTENANCE//REPAIRS AND MAINTENANCE SVCS		609.25	
			5151012116		0	100.41	
01 E 005 810 000 000 350				OPERATIONS AND MAINTENANCE//REPAIRS AND MAINTENANCE SVCS		100.41	
11368 JOSTEN'S		02/12/2007	12455524		0	588.71	588.71
01 E 300 211 165 000 899				SECONDARY EDUCATION GENERAL//MISCELLANEOUS EXPENSE		588.71	
11369 KDMA - AM		02/12/2007	1	OLE & LENA	0	100.00	203.27
04 E 500 505 000 321 305				COMMUNITY EDUCATION GENERAL/COMMUNITY EDUCATION/PROFESSI		100.00	
			KKRC		0	51.25	
01 E 005 010 000 000 380				BOARD OF EDUCATION//PRINTING/ADVERTISING		51.25	
			KMGH		0	52.02	
01 E 005 010 000 000 380				BOARD OF EDUCATION//PRINTING/ADVERTISING		52.02	
11370 KILOWATT COMMUNITY CENTER		02/12/2007	1	ECFE	0	200.00	1,310.00
01 E 100 203 000 000 370				ELEMENTARY GENERAL ED.//RENTALS AND LEASES		200.00	
			2	BBB	0	500.00	
01 E 300 298 000 000 370				EXTRACURRICULAR ACTIVITIES//RENTALS AND LEASES		500.00	
			3	TAE KWON DO	0	570.00	
01 E 300 298 000 000 370				EXTRACURRICULAR ACTIVITIES//RENTALS AND LEASES		570.00	
			5	SPED SWIM	0	40.00	
01 E 300 211 000 000 370				SECONDARY EDUCATION GENERAL//RENTALS AND LEASES		40.00	
11371 KLOCKIT		02/12/2007	557630		0	2.05	171.24
01 E 300 255 000 000 430				INDUSTRIAL EDUCATION//SUPPLIES		2.05	
			557921		255	6.95	
01 E 300 255 000 000 430				INDUSTRIAL EDUCATION//SUPPLIES		6.95	
			558694		0	2.05	
01 E 300 255 000 000 430				INDUSTRIAL EDUCATION//SUPPLIES		2.05	
			559374		280	157.74	
01 E 300 255 000 000 450				INDUSTRIAL EDUCATION//MATERIALS PURCH FOR RESALE		157.74	

Check Nbr	Vendor Name	Check Date	Invoice Number	Invoice Desc	PO Number	Invoice Amount	Check Amount
01 E 300 255 000 000 450			559530	INDUSTRIAL EDUCATION//MATERIALS PURCH FOR RESALE	280	2.45	2.45
11372 KNAPPER, TIMOTHY		02/12/2007	1	ADV. COUNCIL	0	48.73	171.66
04 E 500 505 000 321 450				COMMUNITY EDUCATION GENERAL//COMMUNITY EDUCATION/MATERIAL		48.73	
01 E 300 298 000 000 366			10	EXTRACURRICULAR ACTIVITIES//TRAVEL-SCHOOL BUSINESS	0	27.51	27.51
04 E 500 505 000 321 366			11	COMMUNITY EDUCATION GENERAL//COMMUNITY EDUCATION/TRAVEL-S	0	81.58	81.58
04 E 500 505 000 321 450			2	HEALTH FAIR	0	13.84	13.84
11373 Vendor Continued Void		02/12/2007					0.00
11374 LADNER'S HARDWARE		02/12/2007	1		0	55.65	422.23
01 E 300 255 000 000 430				INDUSTRIAL EDUCATION//SUPPLIES		55.65	
01 E 300 298 000 000 899			10	EXTRACURRICULAR ACTIVITIES//MISCELLANEOUS EXPENSE	0	38.48	38.48
02 E 005 770 000 701 401			2	FOOD SERVICES/SCHOOL LUNCH/GENERAL SUPPLIES	0	29.99	29.99
01 E 100 203 405 000 430			20	ELEMENTARY GENERAL ED.//SUPPLIES	0	11.99	11.99
01 E 005 810 191 000 410			3	OPERATIONS AND MAINTENANCE//CUST/REPAIR SUPPLIES	0	45.30	45.30
01 E 005 810 000 000 410			4	OPERATIONS AND MAINTENANCE//CUST/REPAIR SUPPLIES	0	17.74	17.74
01 E 300 212 000 000 430			5	ART//SUPPLIES	0	65.12	65.12
01 E 100 203 405 000 899			6	ELEMENTARY GENERAL ED.//MISCELLANEOUS EXPENSE	0	11.99	11.99
01 E 005 810 000 000 410			7	OPERATIONS AND MAINTENANCE//CUST/REPAIR SUPPLIES	0	70.97	70.97
01 L 230 03			9	MICROWAVE	0	75.00	75.00
11375 LAKES COUNTRY SERVICE COOP		02/12/2007	55638	GENERAL FUND/DEFERRED REVENUE/BERT RANEY LOUNGE	0	286.00	286.00
01 E 300 218 000 388 401				GIFTED & TALENTED/TAG (06)/GENERAL SUPPLIES		286.00	
11376 LAKESHORE LEARNING MATERIALS		02/12/2007	317487		0	191.10	191.10
01 E 150 201 000 000 430				KINDERGARTEN//SUPPLIES		191.10	
11377 LAKEVIEW SCHOOL DIST. #2167		02/12/2007	1	DOUBLEPAID FY06	0	6,754.42	6,754.42
01 A 120 00				GENERAL FUND/DUE FROM OTH MN SCH DIST		6,754.42	
11378 LEE & BERNER LTD.		02/12/2007	1	07 FLEX FEES	0	904.80	904.80
01 L 215 98				GENERAL FUND/DEDUCTIONS PAYABLE/DED. ADJUSTMENTS		904.80	
11379 LEE'S AUTO & DIESEL		02/12/2007	1		0	175.40	175.40
01 E 005 810 193 000 401				OPERATIONS AND MAINTENANCE//GENERAL SUPPLIES		175.40	
11380 LIBRARY VIDEO COMPANY		02/12/2007	Y419710001		74	16.90	16.90
01 E 150 203 000 000 401				ELEMENTARY GENERAL ED.//GENERAL SUPPLIES		16.90	
11381 LIFETOUGH		02/12/2007	1135 & 1165		0	27.00	27.00
01 E 300 790 388 000 899				OTHER PUPIL SUPPORT SERVICES//MISCELLANEOUS EXPENSE		27.00	
11382 CAROLINE LINDEN		02/12/2007	1		0	340.80	629.33
01 E 100 204 000 414 366				TITLE II EISENHWOER/TITLE II ESEA/TRAVEL-SCHOOL BUSINESS		340.80	

Check Nbr	Vendor Name	Check Date	Invoice Number	Invoice Desc	PO Number	Invoice Amount	Check Amount
01 E 100 204 000 414 366			2	TITLE II EISENHWOER/TITLE II ESEA/TRAVEL-SCHOOL BUSINESS	0	288.53	288.53
11383 MACDOCTORS		02/12/2007	1023634	ELEMENTARY GENERAL ED./REPAIRS AND MAINTENANCE SVCS	0	184.95	184.95
01 E 150 203 000 000 350						184.95	
11384 MCGRAW-HILL		02/12/2007	28033875001	ELEMENTARY GENERAL ED./BOOKS/WORKBOOKS	0	686.25	725.48
01 E 100 203 404 000 460						686.25	
01 E 150 203 402 000 460			28432570001	ELEMENTARY GENERAL ED./BOOKS/WORKBOOKS	76	39.23	39.23
11385 MEEKER & WRIGHT SP ED COOP		02/12/2007	JAN07	SPECIFIC LEARNING DISABILIT/STATE FUNDED SPECIAL ED/TUIT	0	1,047.50	1,047.50
01 E 998 407 000 740 390						1,047.50	
11386 MILLER EQUIPMENT & MFG, INC		02/12/2007	6593	AG EDUCATION (VOCATIONAL)/VOCATIONAL PROGRAMS/INDIVIDUAL	146	51.00	51.00
01 E 300 301 501 830 433						51.00	
11387 MLCS WOODWORKING		02/12/2007	598898	INDUSTRIAL EDUCATION//SUPPLIES	261	109.00	109.00
01 E 300 255 000 000 430						109.00	
11388 MINNESOTA CHEMICAL CO		02/12/2007	328873	OPERATIONS AND MAINTENANCE//CUST/REPAIR SUPPLIES	0	286.19	286.19
01 E 005 810 000 000 410						286.19	
11389 MINNESOTA ELEVATOR, INC.		02/12/2007	111390	HEALTH & SAFETY EQUIP/PHYSICAL HAZARD CONTROL/OTHER CAPI	0	112.22	386.34
01 E 025 860 000 347 590						112.22	
01 E 005 860 000 347 590			112199	HEALTH & SAFETY EQUIP/PHYSICAL HAZARD CONTROL/OTHER CAPI	0	274.12	274.12
11390 Vendor Continued Void		02/12/2007					0.00
11391 MN RIVER VALLEY EDUCATION DIST		02/12/2007	1	MRVED	0	15,108.22	36,030.14
01 E 005 105 129 310 391				ADMINISTRATIVE SUPPORT/COOPERATIVE/MN SCH DIST - REIMBUR		15,108.22	
01 E 005 105 129 310 391			2	PROF. FEES	0	375.00	375.00
01 E 005 105 129 310 391				ADMINISTRATIVE SUPPORT/COOPERATIVE/MN SCH DIST - REIMBUR		375.00	
01 E 005 105 129 310 391			3	COMM ED	0	250.00	250.00
01 E 005 105 129 310 391				ADMINISTRATIVE SUPPORT/COOPERATIVE/MN SCH DIST - REIMBUR		250.00	
01 E 610 211 129 310 370			4	ALC LEASE	0	16,046.60	16,046.60
01 E 610 211 129 310 370				SECONDARY EDUCATION GENERAL/COOPERATIVE/RENTALS AND LEAS		16,046.60	
01 E 200 612 000 302 555			5	LCTN	0	3,428.58	3,428.58
01 E 200 612 000 302 555				TECHNOLOGY/CAPITAL OUTLAY/TECHNOLOGY EQUIPMENT		3,428.58	
01 E 300 211 000 302 530			6	LASER ENGRAVER	0	551.98	551.98
01 E 300 211 000 302 530				SECONDARY EDUCATION GENERAL/CAPITAL OUTLAY/EQUIPMENT PUR		551.98	
01 E 200 612 000 302 555			8	SMARTNET	0	269.76	269.76
01 E 200 612 000 302 555				TECHNOLOGY/CAPITAL OUTLAY/TECHNOLOGY EQUIPMENT		269.76	
11392 MN WEST COMM.& TECH. COLL		02/12/2007	80659	SPRING 07	0	2,291.49	2,291.49
01 E 300 200 000 000 433				POST SECONDARY OPTIONS ENROLL//INDIVIDUAL INST SUPPLIES		2,291.49	
11393 MTI DISTRIBUTING CO.		02/12/2007	557168	OPERATIONS AND MAINTENANCE//CUST/REPAIR SUPPLIES	0	422.46	826.27
01 E 005 810 191 000 410						422.46	
01 E 005 810 191 000 410			557679	OPERATIONS AND MAINTENANCE//CUST/REPAIR SUPPLIES	0	403.81	403.81
01 E 005 810 191 000 410						403.81	
11394 MUSIC MART		02/12/2007	503842	MUSIC//SUPPLIES	0	18.20	24.45
01 E 300 258 233 000 430						18.20	
01 E 300 258 233 000 430			504017	MUSIC//SUPPLIES	0	6.25	6.25
01 E 300 258 233 000 430						6.25	
11395 MUSIC THEATRE INTERNATIONAL		02/12/2007	296451	EXTRACURRICULAR ACTIVITIES//MISCELLANEOUS EXPENSE	0	10.00	10.00
01 E 300 298 236 000 899						10.00	

Check Nbr	Vendor Name	Check Date	Invoice Number	Invoice Desc	PO Number	Invoice Amount	Check Amount
11396	MUSSER ENVIRONMENTAL	02/12/2007	1	PROJ. 030-02	0	195.00	3,980.62
01 E 005 860 000 352 305				HEALTH & SAFETY EQUIP/ENVIRONMENTAL HLTH & SAFETY/PROFES		195.00	
				PROJ 030-01	0	3,785.62	
01 E 005 860 000 352 305				HEALTH & SAFETY EQUIP/ENVIRONMENTAL HLTH & SAFETY/PROFES		3,785.62	
11397	MVTV	02/12/2007	1		0	200.00	200.00
01 E 005 810 000 311 320				OPERATIONS AND MAINTENANCE/TELECOMMUNICATIONS GRANT/COMM		200.00	
11398	NASCO	02/12/2007	478783		0	32.25	32.25
01 E 300 301 501 830 433				AG EDUCATION (VOCATIONAL)/VOCATIONAL PROGRAMS/INDIVIDUAL		32.25	
11399	NATIONAL GEOGRAPHIC SCHOOL PUB	02/12/2007	01007100070242		242	223.10	467.33
01 E 100 203 000 000 430				ELEMENTARY GENERAL ED.//SUPPLIES		223.10	
				1000150070062	0	21.12	
01 E 150 201 000 000 460				KINDERGARTEN//BOOKS/WORKBOOKS		21.12	
				1007100-07-0242 -	0	223.11	
01 E 150 203 000 000 430				ELEMENTARY GENERAL ED.//SUPPLIES		223.11	
11400	NCS PEARSON, INC.	02/12/2007	98979		0	6.00	6.00
01 E 100 712 000 000 461				ELEMENTARY GUIDANCE/COUNSELING//STANDARDZED TESTS		6.00	
11401	NELSEN'S CLEANERS & LAUNDERERS	02/12/2007	1		0	14.98	14.98
02 E 005 770 000 701 382				FOOD SERVICES/SCHOOL LUNCH/LAUNDRY AND DRY CLEANING		14.98	
11402	OFFICE MAX BOISE	02/12/2007	744361		266	552.00	552.00
01 E 300 257 000 000 433				COMPUTER TECHNOLOGY//INDIVIDUAL INST SUPPLIES		300.00	
01 E 200 612 000 302 555				TECHNOLOGY/CAPITAL OUTLAY/TECHNOLOGY EQUIPMENT		252.00	
11403	OFFICE SYSTEMS	02/12/2007	249992-1		68	52.00	52.00
01 E 150 203 000 000 430				ELEMENTARY GENERAL ED.//SUPPLIES		52.00	
11404	OHIO STATE UNIVERSITY	02/12/2007	1	WORKSHOP	0	9,100.00	9,712.92
01 E 100 204 000 414 366				TITLE II EISENHWOER/TITLE II ESEA/TRAVEL-SCHOOL BUSINESS		9,100.00	
				21638	0	612.92	
01 E 100 204 000 414 366				LIT. COLLABORATIVE TITLE II EISENHWOER/TITLE II ESEA/TRAVEL-SCHOOL BUSINESS		612.92	
11405	OLD DUTCH FOODS, INC.	02/12/2007	1		0	246.56	246.56
02 E 005 770 000 701 490				FOOD SERVICES/SCHOOL LUNCH/FOOD		246.56	
11406	ORANGE TREE EMPLOYMENT SCREENI	02/12/2007	13748		0	40.00	40.00
01 R 005 000 000 000 099				MISCELLANEOUS LOCAL REVENUE		40.00	
11407	PACT 4 FAMILIES COLLABORATIVE	02/12/2007	2007	2007	0	1,036.00	1,036.00
01 E 005 010 000 000 820				BOARD OF EDUCATION//DUES & MEMBERSHIPS		1,036.00	
11408	PAN-O-GOLD BAKING CO.	02/12/2007	1		0	134.56	834.21
02 E 025 770 000 701 490				FOOD SERVICES/SCHOOL LUNCH/FOOD		107.64	
02 E 025 770 000 705 490				FOOD SERVICES/BREAKFAST/FOOD		26.92	
				10	0	699.65	
02 E 005 770 000 701 490				FOOD SERVICES/SCHOOL LUNCH/FOOD		559.72	
02 E 005 770 000 705 490				FOOD SERVICES/BREAKFAST/FOOD		139.93	
11409	PEACHTREE BUSINESS PRODUCTS	02/12/2007	P130628100017	PARKING TAGS	0	609.00	609.00
01 E 005 810 000 342 401				OPERATIONS AND MAINTENANCE/SAFE SCHOOLS/GENERAL SUPPLIES		609.00	
11410	Vendor Continued Void	02/12/2007					0.00
11411	J.W. PEPPER & SON INC.	02/12/2007	11361825		242	95.00	325.53
01 E 300 258 233 000 430				MUSIC//SUPPLIES		95.00	
				11363014	0	6.09	
01 E 300 258 231 000 430				MUSIC//SUPPLIES		6.09	
				11363105	0	2.80	
01 E 300 258 231 000 430				MUSIC//SUPPLIES		2.80	

Check Nbr	Vendor Name	Check Date	Invoice Number	Invoice Desc	PO Number	Invoice Amount	Check Amount
01 E 300 258 231 000 430			11363107	MUSIC//SUPPLIES	0	1.40	1.40
01 E 300 258 233 000 430			11366691	MUSIC//SUPPLIES	0	60.00	60.00
01 E 300 258 231 000 430			11370062	MUSIC//SUPPLIES	0	66.99	66.99
01 E 300 258 231 000 430			11370273	MUSIC//SUPPLIES	0	93.25	93.25
11412 PEPSI COLA BOTTLING -PIPESTONE		02/12/2007	43919	OPERATIONS AND MAINTENANCE//CUST/REPAIR SUPPLIES	0	10.00	10.00
01 E 025 810 000 000 410						10.00	
11413 PETERSON, TERRI		02/12/2007	1	ACCOUNTING OFFICE//TRAVEL-SCHOOL BUSINESS	0	61.17	61.17
01 E 005 110 000 000 366						61.17	
11414 PIONEER REVERE		02/12/2007	253524	OPERATIONS AND MAINTENANCE//CUST/REPAIR SUPPLIES	0	195.00	195.00
01 E 005 810 191 000 410						195.00	
11415 PITNEYBOWES		02/12/2007	454116-JA07	SUPERINTENDENT'S OFFICE//RENTALS AND LEASES	0	254.00	254.00
01 E 005 020 000 000 370						254.00	
11416 PITNEYBOWES		02/12/2007	5500128460	SUPERINTENDENT'S OFFICE//GENERAL SUPPLIES	0	54.98	54.98
01 E 005 020 000 000 401						54.98	
11417 PLAYFIT EDUCATION		02/12/2007	21532	REGISTRATION 3-27-07	273	179.00	179.00
01 E 100 203 000 000 899				ELEMENTARY GENERAL ED.//MISCELLANEOUS EXPENSE		179.00	
11418 POWER FACTOR INC.		02/12/2007	12328	OPERATIONS AND MAINTENANCE//CUST/REPAIR SUPPLIES	281	82.43	82.43
01 E 005 810 000 000 410						82.43	
11419 QUILL CORPORATION		02/12/2007	3445395	OTHER COMMUNITY SERVICES/COMMUNITY EDUCATION/GENERAL SUP	0	66.99	135.65
04 E 500 590 000 321 401						66.99	
01 E 005 110 000 000 401			4367804	ACCOUNTING OFFICE//GENERAL SUPPLIES	0	68.66	68.66
11420 RATWICK, ROSZAK & MALONEY, P.A		02/12/2007	35458	LEGAL SERVICES//PROFESSIONAL FEES	0	177.65	177.65
01 E 005 150 000 000 305						177.65	
11421 REINHART INST FOODS		02/12/2007	1	FOOD SERVICES/SCHOOL LUNCH/FOOD	0	1,396.40	5,326.45
02 E 025 770 000 701 490						898.87	
02 E 025 770 000 705 401				FOOD SERVICES/BREAKFAST/GENERAL SUPPLIES		174.35	
02 E 025 770 000 705 490				FOOD SERVICES/BREAKFAST/FOOD		323.18	
02 E 005 770 000 701 401			10	FOOD SERVICES/SCHOOL LUNCH/GENERAL SUPPLIES	0	3,930.05	
02 E 005 770 000 701 490						657.00	
02 E 005 770 000 705 490				FOOD SERVICES/SCHOOL LUNCH/FOOD		2,895.75	
				FOOD SERVICES/BREAKFAST/FOOD		377.30	
11422 RETROFIT RECYCLING, INC.		02/12/2007	1480	HEALTH & SAFETY EQUIP/ENVIRONMENTAL HLTH & SAFETY/PROFES	0	169.50	169.50
01 E 005 860 000 352 305						169.50	
11423 ROCKLER		02/12/2007	30520810	INDUSTRIAL EDUCATION//SUPPLIES	256	40.56	40.56
01 E 300 255 000 000 430						40.56	
11424 RTS		02/12/2007	1	OPERATIONS AND MAINTENANCE//COMMUNICATIONAL SERVICES	0	275.89	315.07
01 E 005 810 000 000 320						275.89	
01 E 025 810 000 000 320			2	OPERATIONS AND MAINTENANCE//COMMUNICATIONAL SERVICES	0	39.18	39.18
						39.18	
11425 SAWMILL		02/12/2007	1	ECSE FACILITIES/CAPITAL OUTLAY/BUILDING IMPROVEMENTS	0	124.99	127.79
01 E 005 850 000 302 522						124.99	
01 E 005 810 000 000 410			2	OPERATIONS AND MAINTENANCE//CUST/REPAIR SUPPLIES	0	2.80	2.80

Check Nbr	Vendor Name	Check Date	Invoice Number	Invoice Desc	PO Number	Invoice Amount	Check Amount
11426	SCHOOL HEALTH CORPORATION	02/12/2007	1271759		279	58.94	58.94
01 E 025 720 000 000 401				HEALTH SERVICES/NURSE//GENERAL SUPPLIES		58.94	
11427	SCHOOL OUTFITTERS	02/12/2007	162231		232	609.91	609.91
01 E 100 620 000 302 561				READING TABLE EDUCATIONAL MEDIA/LIBRARY/CAPITAL OUTLAY/AV EQUIPMENT		609.91	
11428	SOUTHWEST WHOLESALE	02/12/2007	1		0	1,613.75	7,183.84
02 E 025 770 000 701 490				FOOD SERVICES/SCHOOL LUNCH/FOOD		1,424.11	
02 E 025 770 000 705 401				FOOD SERVICES/BREAKFAST/GENERAL SUPPLIES		189.64	
			10		0	5,570.09	
02 E 005 770 000 701 401				FOOD SERVICES/SCHOOL LUNCH/GENERAL SUPPLIES		333.05	
02 E 005 770 000 701 490				FOOD SERVICES/SCHOOL LUNCH/FOOD		4,328.27	
02 E 005 770 000 705 490				FOOD SERVICES/BREAKFAST/FOOD		908.77	
11429	STEIN'S, INC	02/12/2007	482730		0	438.63	1,226.40
01 E 025 810 000 000 410				OPERATIONS AND MAINTENANCE//CUST/REPAIR SUPPLIES		438.63	
			483233		0	787.77	
01 E 005 810 000 000 410				OPERATIONS AND MAINTENANCE//CUST/REPAIR SUPPLIES		787.77	
11430	STRAND, DWAYNE	02/12/2007	1		0	28.49	462.23
01 E 005 790 721 000 366				SHARE OTHER PUPIL SUPPORT SERVICES//TRAVEL-SCHOOL BUSINESS		28.49	
			2		0	433.74	
01 E 005 020 000 000 366				SUPERINTENDENT'S OFFICE//TRAVEL-SCHOOL BUSINESS		433.74	
11431	SUBWAY	02/12/2007	221179		0	37.52	37.52
01 E 005 010 000 000 899				BOARD OF EDUCATION//MISCELLANEOUS EXPENSE		37.52	
11432	SW/WC SERVICE COOP - MARSHALL	02/12/2007	1		0	10.00	262.80
01 E 100 218 000 388 369				SCIENCE WORKSHOP GIFTED & TALENTED/TAG (06)/PARTICIPATION FEES		10.00	
			335348		0	252.80	
01 E 300 211 000 000 430				PAPER SECONDARY EDUCATION GENERAL//SUPPLIES		252.80	
11433	THE MESSENGER	02/12/2007	1		0	22.00	22.00
01 E 150 050 000 000 401				PRINCIPAL'S OFFICE//GENERAL SUPPLIES		22.00	
11434	THRIFTY WHITE DRUG	02/12/2007	1		0	9.99	9.99
01 E 100 203 000 000 899				ELEMENTARY GENERAL ED.//MISCELLANEOUS EXPENSE		9.99	
11435	TJOSVOLD EQUIPMENT	02/12/2007	74262		0	12.27	12.27
01 E 005 810 191 000 410				OPERATIONS AND MAINTENANCE//CUST/REPAIR SUPPLIES		12.27	
11436	TLK DISTRIBUTING, INC.	02/12/2007	1		0	174.24	174.24
02 E 005 770 000 701 490				FOOD SERVICES/SCHOOL LUNCH/FOOD		174.24	
11437	ALICIA TONGEN	02/12/2007	1		0	19.25	19.25
01 E 300 211 169 000 366				SECONDARY EDUCATION GENERAL//TRAVEL-SCHOOL BUSINESS		19.25	
11438	VELDE SANITATION	02/12/2007	1		0	350.00	855.00
01 E 025 810 000 000 330				OPERATIONS AND MAINTENANCE//UTILITY SERVICES		350.00	
			2		0	505.00	
01 E 005 810 000 000 330				OPERATIONS AND MAINTENANCE//UTILITY SERVICES		505.00	
11439	CINDY VELDE	02/12/2007	1		0	43.65	180.47
04 E 500 590 156 321 366				OTHER COMMUNITY SERVICES/COMMUNITY EDUCATION/TRAVEL-SCHO		43.65	
			10		0	80.03	
04 E 500 590 156 321 366				OTHER COMMUNITY SERVICES/COMMUNITY EDUCATION/TRAVEL-SCHO		80.03	
			11		0	41.31	
04 E 500 590 000 321 329				OTHER COMMUNITY SERVICES/COMMUNITY EDUCATION/POSTAGE AND		41.31	
			2		0	3.00	
04 E 500 590 156 321 366				FOOD OTHER COMMUNITY SERVICES/COMMUNITY EDUCATION/TRAVEL-SCHO		3.00	
			3		0	12.48	

Check Nbr	Vendor Name	Check Date	Invoice Number	Invoice Desc	PO Number	Invoice Amount	Check Amount
04 E 500 505 000 321 450				COMMUNITY EDUCATION GENERAL/COMMUNITY EDUCATION/MATERIAL		12.48	
11440 VENTURA CORPORATION		02/12/2007	246831		0	191.37	191.37
04 E 500 505 000 321 450				COMMUNITY EDUCATION GENERAL/COMMUNITY EDUCATION/MATERIAL		191.37	
11441 WANGBERG, ALBERT		02/12/2007	1		0	160.00	160.00
01 E 300 258 231 000 350				MUSIC//REPAIRS AND MAINTENANCE SVCS		160.00	
11442 WELDERS SUPPLY		02/12/2007	1		0	5.58	5.58
01 E 300 301 501 830 433				AG EDUCATION (VOCATIONAL)/VOCATIONAL PROGRAMS/INDIVIDUAL		5.58	
11443 BEN WIDBOOM		02/12/2007	1	TAEKWONDO	0	508.00	508.00
04 E 500 505 000 321 305				COMMUNITY EDUCATION GENERAL/COMMUNITY EDUCATION/PROFESSI		508.00	
11444 XCEL ENERGY		02/12/2007	1		0	19.81	68.59
01 E 025 810 184 000 330				OPERATIONS AND MAINTENANCE//UTILITY SERVICES		19.81	
			2		0	48.78	
04 E 500 560 000 321 330				RECREATION-SWIM POOL/COMMUNITY EDUCATION/UTILITY SERVICE		48.78	
11445 YME SCHOOL ACTIVITY ACCOUNT		02/12/2007	yearbook	CITY OF GF	0	75.00	75.00
01 R 005 000 000 000 099				MISCELLANEOUS LOCAL REVENUE		75.00	
11446 Vendor Continued Void		02/12/2007					0.00
11447 Vendor Continued Void		02/12/2007					0.00
11448 Vendor Continued Void		02/12/2007					0.00
11449 Vendor Continued Void		02/12/2007					0.00
11450 Vendor Continued Void		02/12/2007					0.00
11451 Vendor Continued Void		02/12/2007					0.00
11452 Vendor Continued Void		02/12/2007					0.00
11453 YME SCHOOLS-ADM		02/12/2007	4893	EMILY WRIGHT	0	150.00	7,599.58
04 E 500 580 000 325 430				EARLY CHILDHOOD AND FAM ED/EARLY CHILDHOOD AND FAMILY ED		150.00	
			4894	US POST OFFICE	0	337.50	
04 E 500 505 000 321 329				COMMUNITY EDUCATION GENERAL/COMMUNITY EDUCATION/POSTAGE		337.50	
			4895	POSTMASTER	0	102.70	
04 E 500 590 000 321 329				OTHER COMMUNITY SERVICES/COMMUNITY EDUCATION/POSTAGE AND		102.70	
			4896	BOB MILLER	0	40.00	
01 E 300 294 213 000 319				BOYS ATHLETICS//OTHER PERSONAL SERVICES		40.00	
			4897	LITCHFIELD HS	0	80.00	
01 E 300 218 000 388 369				GIFTED & TALENTED/TAG (06)/PARTICIPATION FEES		80.00	
			4898	POSTMASTER	0	160.00	
01 E 150 050 000 000 329				PRINCIPAL'S OFFICE//POSTAGE AND EXPRESS		160.00	
			4899	GORDON LEE	0	190.00	
01 E 300 296 213 000 319				GIRLS ATHLETICS//OTHER PERSONAL SERVICES		190.00	
			4900	JIM REED	0	190.00	
01 E 300 294 213 000 319				BOYS ATHLETICS//OTHER PERSONAL SERVICES		190.00	
			4901	POSTMASTER	0	10.90	
01 E 005 020 000 000 329				SUPERINTENDENT'S OFFICE//POSTAGE AND EXPRESS		10.90	
			4902	DOUG GINGLES	0	135.00	
01 E 300 294 221 000 319				BOYS ATHLETICS//OTHER PERSONAL SERVICES		135.00	
			4903	JIM REED	0	190.00	
01 E 300 294 213 000 319				BOYS ATHLETICS//OTHER PERSONAL SERVICES		190.00	
			4904	ELDRIDGE PLAYS & MUSICALS	0	261.95	
01 E 300 298 236 000 899				EXTRACURRICULAR ACTIVITIES//MISCELLANEOUS EXPENSE		261.95	
			4905	ORTONVILLE HS	0	80.00	
01 E 300 218 000 388 369				GIFTED & TALENTED/TAG (06)/PARTICIPATION FEES		80.00	

Check Nbr	Vendor Name	Check Date	Invoice Number	Invoice Desc	PO Number	Invoice Amount	Check Amount
01 E 300 298 000 000 366			4907	MN INTERSCHOLASTIC ATHLETIC ASSOC. EXTRACURRICULAR ACTIVITIES//TRAVEL-SCHOOL BUSINESS	0	180.00	180.00
01 E 300 298 236 000 899			4908	IE CLARK EXTRACURRICULAR ACTIVITIES//MISCELLANEOUS EXPENSE	0	153.50	153.50
04 E 500 505 000 321 305			4909	AARP COMMUNITY EDUCATION GENERAL/COMMUNITY EDUCATION/PROFESSI	0	300.00	300.00
09 L 230 20			4911	YOUTH FRONTIERS TRUST FUND/DEFERRED REVENUE/DONATION (ANONYMOUS)	0	750.00	750.00
01 L 230 36			4912	POSTMASTER GENERAL FUND/DEFERRED REVENUE/MUSIC-BERT RANEY	0	20.65	20.65
01 E 300 294 213 000 319			4913	CRAIG NORLAND BOYS ATHLETICS//OTHER PERSONAL SERVICES	0	190.00	190.00
01 E 300 296 213 000 319			4914	CRAIG NORLAND GIRLS ATHLETICS//OTHER PERSONAL SERVICES	0	190.00	190.00
01 E 300 294 221 000 319			4915	GREG PETERSON BOYS ATHLETICS//OTHER PERSONAL SERVICES	0	190.00	190.00
01 E 300 294 221 000 319			4916	DOUG GINGLES BOYS ATHLETICS//OTHER PERSONAL SERVICES	0	190.00	190.00
01 E 300 292 225 000 401			4917	SUNSHINE GOLF CLINIC BOYS/GIRLS ATHLETICS//GENERAL SUPPLIES	0	120.00	120.00
01 E 300 292 219 000 369			4918	HOLDINGFORD HS BOYS/GIRLS ATHLETICS//PARTICIPATION FEES	0	130.00	130.00
04 E 500 560 000 321 320			4919	FRONTIER TELEPHONE RECREATION-SWIM POOL/COMMUNITY EDUCATION/COMMUNICATIONAL	0	99.14	99.14
01 E 300 298 236 000 899			4920	VICKIE ZUMHOFE EXTRACURRICULAR ACTIVITIES//MISCELLANEOUS EXPENSE	0	35.00	35.00
01 E 300 298 236 000 899			4921	CORISSA SANDS EXTRACURRICULAR ACTIVITIES//MISCELLANEOUS EXPENSE	0	35.00	35.00
01 E 300 298 236 000 899			4922	ADAM REZNECHEK EXTRACURRICULAR ACTIVITIES//MISCELLANEOUS EXPENSE	0	35.00	35.00
01 E 300 298 236 000 899			4923	TYLER KNUTSON EXTRACURRICULAR ACTIVITIES//MISCELLANEOUS EXPENSE	0	35.00	35.00
01 E 100 620 000 000 470			4924	MARY LUEPKE EDUCATIONAL MEDIA/LIBRARY//LIBRARY BOOKS	0	22.60	22.60
01 E 100 218 000 388 369			4925	MATH MASTERS GIFTED & TALENTED/TAG (06)/PARTICIPATION FEES	0	140.00	70.00
01 E 150 218 000 388 369				GIFTED & TALENTED/TAG (06)/PARTICIPATION FEES			70.00
01 E 300 296 228 000 401			4926	MAPLE GROVE DANCE GIRLS ATHLETICS//GENERAL SUPPLIES	0	612.00	612.00
01 E 005 130 000 333 329			4927	POSTMASTER COMMUNITY RELATIONS-SCHOOL NEW/PARENTAL INVOLVEMENT/POST	0	337.50	337.50
01 E 300 258 233 000 430			4929	LUVERNE MIDDLE SCHOOL MUSIC//SUPPLIES	0	48.00	48.00
			4930	heather evenson	0	69.09	

Check Nbr	Vendor Name	Check Date	Invoice Number	Invoice Desc	PO Number	Invoice Amount	Check Amount
01 E 300 790 388 000 899				OTHER PUPIL SUPPORT SERVICES//MISCELLANEOUS EXPENSE		69.09	
			4931	MIKE LETENDRE	0	190.00	
01 E 300 296 213 000 319				GIRLS ATHLETICS//OTHER PERSONAL SERVICES		190.00	
			4932	SCOTT SCHWEIGLER	0	190.00	
01 E 300 294 213 000 319				BOYS ATHLETICS//OTHER PERSONAL SERVICES		190.00	
			4933	SW MN JR HIGH	0	40.00	
01 E 300 258 233 000 430				MUSIC//SUPPLIES		40.00	
			4934	JIM REED	0	190.00	
01 E 300 296 213 000 319				GIRLS ATHLETICS//OTHER PERSONAL SERVICES		190.00	
			4935	SCOTT SCHWEIGER	0	190.00	
01 E 300 296 213 000 319				GIRLS ATHLETICS//OTHER PERSONAL SERVICES		190.00	
			4938	NICK RICHTER	0	200.00	
01 E 300 294 213 000 319				BOYS ATHLETICS//OTHER PERSONAL SERVICES		120.00	
01 E 300 296 213 000 319				GIRLS ATHLETICS//OTHER PERSONAL SERVICES		80.00	
			4939	KEITH SCHREINER	0	220.00	
01 E 300 294 213 000 319				BOYS ATHLETICS//OTHER PERSONAL SERVICES		100.00	
01 E 300 296 213 000 319				GIRLS ATHLETICS//OTHER PERSONAL SERVICES		120.00	
			4940	STEVE AMMERMAN	0	190.00	
01 E 300 294 213 000 319				BOYS ATHLETICS//OTHER PERSONAL SERVICES		190.00	
			4941	TRACY MILROY HS	0	35.00	
01 E 300 294 213 000 369				BOYS ATHLETICS//PARTICIPATION FEES		35.00	
			4942	SW MN JH MUSIC	0	90.00	
01 E 300 258 231 000 430				MUSIC//SUPPLIES		90.00	
			4943	BOLD HS	0	50.00	
01 E 300 294 221 000 369				BOYS ATHLETICS//PARTICIPATION FEES		50.00	
			4944	ANDREA BENDICKSON	0	152.00	
01 E 300 294 213 000 186				BOYS ATHLETICS//EXTRA-CURRICULAR WORKERS		72.00	
01 E 300 296 213 000 186				GIRLS ATHLETICS//EXTRA-CURRICULAR WORKERS		80.00	
			4945	ALLEN & NANCY	0	27.95	
02 R 005 000 000 701 601				SCHOOL LUNCH/SALES TO PUPILS		27.95	
			4946	BRAD ELLINGBOE	0	21.60	
02 R 005 000 000 701 601				SCHOOL LUNCH/SALES TO PUPILS		21.60	
			4947	MIKE AND JANA	0	2.50	
02 R 005 000 000 701 601				SCHOOL LUNCH/SALES TO PUPILS		2.50	
11454 YME - CLARKFIELD PETTY CASH		02/12/2007	1	POSTAGE	0	15.16	15.16
01 E 150 203 000 000 329				ELEMENTARY GENERAL ED.//POSTAGE AND EXPRESS		15.16	
11455 YME-FOOD SERVICE		02/12/2007	1	PACT 4	244	36.00	36.00
01 E 300 790 388 000 899				OTHER PUPIL SUPPORT SERVICES//MISCELLANEOUS EXPENSE		36.00	
11456 YOUTH FRONTIERS, INC.		02/12/2007	1	RESPECT RETREAT	0	450.00	1,245.00
09 L 230 20				TRUST FUND/DEFERRED REVENUE/DONATION (ANONYMOUS)		450.00	
			2		0	795.00	
09 L 230 91				TRUST FUND/DEFERRED REVENUE/AT RISK \$ (ROC/DARE-MVCC)		795.00	

175 Computer Check(s) For a Total of 254,572.30

	0	Manual	Checks For a Total of	0.00
	175	Computer	Checks For a Total of	254,572.30
Total For	175		Manual and Computer Checks	254,572.30
Less	0	Voided	Checks For a Total of	0.00
			Net Amount	254,572.30

FUND SUMMARY

Fund	Description	Balance Sheet	Revenue	Expense	Total
01	GENERAL FUND	7,991.03	155.00	215,556.00	223,702.03
02	FOOD SERVICE	0.00	52.05	22,886.72	22,938.77
04	COMMUNITY SERVICE	0.00	0.00	5,936.50	5,936.50
09	TRUST FUND	1,995.00	0.00	0.00	1,995.00

**Yellow Medicine East #2190
Board Report
February 2007**

	2006-07 Expenditures	Revised Budget	Year to Date	Budget Balance	Percent	% Exp.
	By Fund	2006-07	Expenditures		Expended	2005-06%
	General	9,748,164	4,991,855	4,756,309	51.21%	55.72%
	Food Service	400,849	239,759	161,090	59.81%	54.31%
	Community Service	292,283	186,678	105,605	63.87%	59.78%
	Debt Redemption	139,092	137,522	1,570	98.87%	99.24%
	Trust Fund	0		0	0.00%	0.00%
	Total	10,580,388	5,555,814	5,024,574	52.51%	56.68%

Year to date amounts include current month's accounts payables plus previous month's payroll.

Salaries % expended to date (approximately)

Contracted July-June	Supt/Finance/Maint/Comm Ed	58.33%
Contracted August-July	Principals	50.00%
Contracted Sept-August	Teachers/Fd Svc Supv/Nurses	41.67%
12 Month Non-certified	Secretaries	58.33%
12 Month Non-certified	Custodians	52.77%
9 Month Non-certified	Assistants/Cooks	45.33%

Liquid Asset Fund (Investments)

Month End Cash Invested \$1,697,613.35

YME FOOD SERVICE REPORT TO THE SCHOOL BOARD

Jan-07

Granite Falls Site

Meal Type	Total Reimbursable Meals Served (Free + Reduced + Paid)	Number of Days Served	Total Free Meals Served	Total Reduced-Price Meals Served	Total Full Pay Meals Served	Total Non-Reimbursable Meals Served	Number of Participants Approved for Free Meals	Number of Participants Approved for Reduced-Price Meals	Number of Participants Non Approved for Free or Reduced-Price Meals
Breakfast	3,293	19	1,630	584	1,079	51	282	116	564
Lunch	13,928	20	4,481	1,862	7,585	484	282	116	564

Clarkfield Site

Meal Type	Total Reimbursable Meals Served (Free + Reduced + Paid)	Number of Days Served	Total Free Meals Served	Total Reduced-Price Meals Served	Total Full Pay Meals Served	Total Non-Reimbursable Meals Served	Number of Participants Approved for Free Meals	Number of Participants Approved for Reduced-Price Meals	Number of Participants Non Approved for Free or Reduced-Price Meals
Breakfast	966	15	514	321	131	42	53	34	45
Lunch	2,233	16	835	603	795	78	53	34	45

STAFF DEVELOPMENT /CURRICULUM REPORT

February 2007

Yvonne Sorenson

Staff Development:

- February 14 is an early dismissal for staff development and the entire day on February 15 will be devoted to staff development. The schedules for these two days are attached.
- The staff development committee will be meeting all day on February 23 at the KCC. The purpose of this meeting is to work on staff development goals and make long range plans for staff development.
- The MRVED has been awarded a large grant to work on math over the next three years. All teachers in the MRVED schools who teach math will be involved at sometime over the next three years. This grant will provide high quality staff development in math. This is very exciting news and provides a great opportunity for our teachers. You will be updated as we move forward with this grant.

Curriculum:

- We are continuing to update curriculum maps and align them to the standards.
- The math standards are under revision at the state level and we are watching progress on those to see what changes will need to be made in our curriculum. The math department is continuing discussion on changes that need to be made to get all students ready for Algebra I in 8th grade, starting with the class of 2015 (this year's 4th graders).

Assessment:

- Students in grade 8 and biology students will take the state science test this spring. This is a field test and will not count for Adequate Yearly Progress. The science test is an interactive, online test. Participating in the field test will allow us to test our technology. According to NCLB all states must test students in grades 5,8 and once in high school in science.
- English Language Learners will take a math test (the MTELL) online this spring in place of the math MCAII. This is a sheltered English test and the students will wear headphones as the test is read to them.
- Minnesota has developed a new alternative assessment for Special Education students who can't take the MCAII's. Our teachers will receive training on this assessment in March.

February 14 & 15 Staff Development Agenda 7-12 Teachers & Para'

February 14th: all teachers and para's (Cindy will notify para's who need to attend the autism session).

AD/HD Strategies for Educators *
presented by Susan Pye Brokaw, LMFT, LICSW;
ADHD Specialist and Psychotherapist
1:30-3:30 Little Theatre

(this presentation was re-scheduled from November 6)

- *This will meet the re-licensure requirement for accommodations, modifications and adaptations.*

Secondary Schedule for February 15th:

Who	What	Bring	Location	When
7-12 teachers	1. AD/HD follow-up 2. Editing Across the Curriculum 3. Constructed Response: Getting Ready for the MCAII's 4. Focus on vocabulary (<i>This will meet the re-licensure requirement for reading.</i>) 5. One Student At a Time: See It Say It (video on school shooting narrated by Scott Staska)	- "When Kids Can't Read" by Kylee Beers, if you have it - information you have on teaching vocabulary. - anything that will add to the discussion of any of these topics.	Library	8:00-11:30
	Lunch-on your own			11:30-12:30

Register for the afternoon sessions by going to: <http://www.surveymonkey.com/s.asp?u=708183187628> Register for one of the 12:30 sessions and at least one of the sessions that are scheduled from 1:40-3:40.

12:30- 1:30: Watch a short DVD and have a discussion. Choose from: Just Once-Methamphetamine Cutting Behaviors Invisable Weapons: Teasing and Bullying Caught In The Web: Online Dangers for Teens

1:40-3:40 Choose at least one of the following. Check times carefully as sessions range from 30 minutes to 2 hours.

1:40-3:40 This session runs two full hours.	AED/CPR training. This session is limited to 20 people and coaches will have priority, but anyone can register. Spots remaining after coaches will be filled on a first registered basis.	Little Theatre
1:40-3:40	SpEd File review	
1:40-2:10 OR 3:00-3:30 (choose one)	Burning a CD with Karen Gustafson: Learn how to burn movies, music, files etc. to a CD	High School Library
2:15-3:00	Electronic file management with Karen McCoy. Learn how to organize your electronic files.	High School Library
1:40-2:40	I Movies: Learn the basics of I Movies with Ryan Bremmer	Room 257
2:40-3:40	Teacher Web Update: update your Teacher Web. Darlys will be available to assist you.	Room 262

February 14 & 15 Staff Development Agenda K-6 Teachers

February 14th: all teachers and para's (Cindy will notify para's who need to attend an autism session)

AD/HD Strategies for Educators *
presented by Susan Pye Brokaw, LMFT, LICSW;
ADHD Specialist and Psychotherapist
1:30-3:30 Little Theatre

(this presentation was re-scheduled from November 6)

** This will meet the re-licensure requirement for accommodations, modifications and adaptations.*

45

Elementary Schedule for February 15th:

Who	What	Location	When
K-2	Literacy Collaborative Class	Peggy's Room	7:40-11:40
3-6 & SpEd	Success Maker Demo	BR West Lab	8:30-9:30
3-6 & SpEd	Interactive Read A-Louds	Lisa's Room	9:45-11:45
	Lunch	On Your Own	
K-6 and SpEd	Saxon Representative: Math Program	Lunchroom	12:45-2:00.
SpEd	File Review	On Your Own or per Cindy's instructions	2:00-3:40
K-6	On Your Own		2:00-3:40
Optional	AED/CPR: this session is limited to 20 participants and coaches have priority. To register go to: http://www.surveymonkey.com/s.asp?u=708183187628	Little Theatre	1:40-3:40

Day	Session	Presenter	Description
Feb. 3 Sat.	Reading Aloud Across the Day	Lester Laminack – Author and Constultant Asheville, NC	Explored the power of read-alouds.
Feb. 4 Sunday	What counts as evidence?	Dr. Richard Allington – Professor of Education University of Tennessee	Discrepency between the rhetoric and reality of federal/state mandates
Feb. 4 Sunday	Power of Reading Partnerships	Kathy Collins – Primary Reading Specialist – Columbia University, New York	Setting up reading partnerships to provide opportunities for students to be come readers, thinkers, and talkers
Feb. 4 Sunday	Moving on with Transitional Guided Reading	Janet Richardson – Literacy Consultant – Arlington, VA	Moving beyond early guided reading
Feb. 5 Monday	Preventing Summer Reading Setback	Dr. Richard Allington – Professor of Education University of Tennessee	Exploring strategies for preventing summer reading setback
Feb. 5 Monday	Language – Literacy Connection: Constructing Knowledge Through Talk	Dr. Linda Dorn – Professor of Reading – University of Arkansas	Talking about books provides opportunities for children to practice literate language.
Feb. 5 Monday	Teaching Students to read like writers.	Katie Wood Ray – Author – Portsmouth, New Hampshire	Explore the idea of reading immersion in the writing workshop and

			how this reading helps students develop vision for the writing they are asked to do.
Feb. 5 Monday	Response to Intervention (RTI) – How does Reading Recovery Fit?	Beth Swenson – Literacy Collaborative District Trainer Brainerd, Minnesota	Learn how RTI, Literacy Collaborative (LC) and RR work with one another.
Feb. 6 Tuesday	Iceland’s Unique Culture and Land Arrive in U.S. through Books	Bruce McMillan – author, photo-illustrator, and designer of children’s books	A journey into Iceland
Feb. 6 Tuesday	101 Primary Literacy Center Ideas you Can use tomorrow	Ann Smelser – Kindergarten Teacher – Planfield, IL	Literacy Ideas to springboard you into the future.
Purchased	Comprehensions, Fluency, and Vocab Instruction in K-6 Classrooms	Robert Schwartz – Reading Recovery Trainer – Oakland University – Rochester, MI	Explore a number of patterns that support student’s learning and help organize our teaching decisions
Purchased	Using Literacy Strategies to enhance content area classes	Bonnie Moody – Literacy Coordinator – Newark, OH	Beyond the textbook – strategies, skills, materials, and lessons that help all readers understand what they read
Purchased	Chapter Glancing	Jeff Williams	Chapter Glancing helps readers uncover and use the information that authors embed in chapter books.

**2007 National K-6 Literacy Conference (Reading Recovery)
Cindy Lavin Grade 5**

Pre-conference: This was my favorite conference to attend, so I'm glad it went all day.

Are They Really Reading? Teaching Children Reading Comprehension with Nonfiction (Grades K-6) **Tony Stead** author and national literacy consultant, New York, NY

I learned so much about basic strategies that I can take back and use in my classroom this year. He showed us a new graphic organizer to use with non-fiction that makes sense!

The RAN strategy:

**What I Think I Know Confirmed Misconceptions
New Learning Wonderings**

He uses a lot of non-fiction and post-it notes to help students with comprehension.

"I learned that 73% of students read non-fiction at least three levels below that of fiction." "Boys were more competent than girls in comprehending non-fiction, but girls read with better phrasing and pace."

His book: *Reality Checks: Teaching Reading Comprehension With Nonfiction*, was ordered for our teachers to read.

I just want to thank the board and my principal for the chance to attend this conference. It was an opportunity for me to gain a better understanding of Literacy Collaborative and what it will look like for grades 3-6. I am excited about the future of literacy for our students at Bert Raney and H.A. Hagg.

I also attended many other workshops including the following:

Introducing Young Writers to the Persuasive Writing Genre by Pamela Kennedy

She shared videos of her classroom and was very helpful, as she still is a classroom teacher.

What's New in Intermediate Literature? by Dan McKey and elementary principal who gave us a list of what is brand new out there and of quality for children grades 3-6. I found the list very helpful and will share it with the teachers in grades 3-6.

Writer's Workshop and Preparing for State Writing Assessments by Paula Keinert She gave us a lot of hands-on tips to help students prepare all year to pass the state tests. She showed us how to do this through writer's workshop.

Poetry in the Intermediate Classroom by Pam Warren grades 3-6 Wow!! This was the best! I couldn't write down ideas fast enough. I want to try out many of her methods with my class next week. She is from Minnesota and is a teacher in a Literacy Collaborative classroom.

Before Revision: Vision. Text Study in the Writing Workshop K-6 by Katie Wood Ray

This is a famous author of many books and I was impressed with her. She talked about how language must come with reading and writing. "What have you read that is like what you are trying to write?" "Talk to me about your writing." "Learn to write from where you start your reading life." She had so many ideas that I want to try and I want to order some of her books.

**Meeting of School Board Representatives
and Administrative Representatives
from MACCRAY, RCW and YME**
Wednesday, January 24, 2007
MACCRAY High School – Clara City, MN

In Attendance: Randy Janssen, Greg Schmidt - Superintendent, Tim Smith (MACCRAY); Dan Lippert, Dave Hamre, Jeff Wilson – Elementary Principal/Activities Director (RCW); Dick Jeppson, Dwayne Strand - Superintendent, Elmo Volstad (YME)

After introductions the group talked broadly about the future direction of our schools and the need to continue the dialogue and build trust between the three districts.

Concern was expressed about the potential loss of autonomy if athletic teams were to pair. Others felt it was important to have this be a win-win opportunity for our schools and they needed to always focus on students and maintaining or improving program opportunities.

It was also recognized that it likely get to be even more difficult to offer low incidence courses as time goes on. No school has the desire to cut programs when it's possible that some can be shared. The comment was made that it could simply be a matter of talking on the phone as future hiring needs/program cuts are being identified.

There was some discussion about moving toward on-line learning in conjunction with ITV to meet the needs of students and as a way to limit staff and students having to travel between districts. The schools that belong to the Little Crow Telemedia Network (of which MACCRAY is a member) had a meeting earlier in the day. Each representative was encouraged to identify individuals/courses that they believe could be successful on-line teachers/courses to bring to the next meeting. MRVED is likely moving in a similar direction.

RCW expressed the desire to partner with a district to have an ALC for its students, especially those students in grades 7-9. Both YME and MACCRAY said that they have a program. YME's program is a cooperative arrangement with six other districts and the program is at capacity at this time. It was stated that MACCRAY's program is currently serving students within their district and it may be a possibility to share the program with RCW and that dialogue should occur between the principals and the MACCRAY ALC coordinator, Jim Trulock.

Near the end of the ALC/ALP discussion, Dick Jeppson said that if there are partnerships between districts that could prove advantageous and in areas that YME had no demonstrated need - he had no problem with the other two schools getting together to talk about them in YME's absence. He recognized the each of the three districts will have different needs and encouraged on-going dialogue between the schools.

The districts are also sharing calendar information and may be looking at ways of doing common in-service activities as needs are identified. YME already is on a common curriculum review

cycle with other MRVED (MN River Valley Education District) member schools. They also participate in common in-service days with those schools.

The next meeting, to be hosted by YME, is set to be held on Wednesday, March 7, 2007 (Board Room) at 5:30 p.m. Between now and then, the following goals were set:

- have the activities directors of each of the schools meet to begin discussions about the possibility of sharing some activities – with the ultimate goal of making some recommendations;
- have the high school principals meet to discuss possible academic offerings that could be shared – with the ultimate goal of making some recommendations;
- Dwayne Strand is going to look into the cost of a facilitator to assist the three schools in moving ahead with our discussions.
- Dwayne Strand is going to put together an e-mail contact list to be distributed to the group.

Submitted by Gregory A. Schmidt

Personnel Items
February 12, 2007

7.A. Paraprofessional Contract – B. Idso

Ms. Hinz is recommending the employment of Brandie Idso as a Bert Raney paraprofessional. This position became available with the resignation of a former employee. *Recommend the employment of Brandie Idso as a paraprofessional.*

7.B. Leave of Absence – J. Schwankl

Jen Schwankl is requesting a leave of absence beginning on or about May 18, 2007 and extending through the end of the school year. *Recommend approving the leave of absence for Jen Schwankl.*

Action Items

February 12, 2007

Recommendations to the Board

9.A. YME 2007-2011 Technology Plan

A copy of the YME 2007-2011 Technology Plan is attached for your review and information. Ms. McCoy will review the plan with you on Monday evening. The plan must be reviewed by you and forwarded to the Department of Education by April 1st. A copy of our plan must be on file before we can receive state and ERATE technology funds. *Recommend approval of the 2007-2011 YME Technology Plan.*

9.B. Early Retirement Incentives

Listed below are my original notes that were accurate up through the negotiation committee meeting last night. Following that meeting, I talked with our attorney, Kevin Rupp about our retirement plan as he was in the process of reviewing information related to this issue and had not yet gotten back to me.

He indicated that we do run the risk of an age discrimination suit as a part of this plan is based on age.

We tried to create language that did not rely on the rule of 90 or eligible to receive a full TRA benefit but were not successful. His recommendation is that we do not move forward with implementing the plan. Therefore, the following information may be a moot point but will bring you up to speed with what we had attempted to do.

The Negotiation Committee met twice on this issue. In between the two meetings, LeeAnn and I also talked met with Steve Petrich and Dave Guertin to discuss possible early retirement incentives and met with Cindy Loe to draft a proposal.

Following our discussions and a meeting with the committee on February 7th, we drafted a plan that we feel offers an affordable incentive package to the staff. That plan is attached and models an Elk River plan that Board member Jepson shared with us during our initial meeting.

Plan Highlights:

1. The Board would approve the final plan at the March meeting. This would give us time to have everything approved by our attorney and Education Minnesota prior to this date. (Dates could change depending on how the process moves forward.)
2. The plan allows the District to approve up to 7 applications, not counting those eligible to retire at the end of the 06-07 school year. It also states that a minimum of three applications must be received or the incentive program may be cancelled. Again, this number does not include those eligible to retire by the end of the current school year. The minimum required helps to offset the incentive benefit to those eligible to retire this year.
3. The benefits are divided into 8 categories. The first two categories include those eligible to retire by June 30th. The other categories give the eligible teacher this same \$5,000.00 benefit from categories 1 and 2 and then give just about enough of an additional benefit to cover the cost of TRA and health insurance at today's rate for the duration of their anticipated leave.

Anticipated savings:

If a MA+15 teacher retires or takes a leave and a BA1 teacher is hired to replace this position, the anticipated savings is about \$30,000.00 per year. This savings would be affected by:

1. A different placement of staff leaving and the placement of staff hired to replace position.
2. The health benefit taken by new employee. Currently, almost without exception, staff leaving would have a single policy and staff coming in may be interested in a family policy.
3. Teachers who would have retired without the incentive program.
4. Staff reductions needed if, for example, the Charter School significantly reduces the Hagg student population for the 07-08 school year. The less senior – less expensive staff would be placed on ULA or nonrenewed and more expensive staff positions would be retained.

5. The benefit offered the staff in this incentive plan.

With your approval, we would share this information with EM-YME representatives. If there is a feeling that there is considerable interest in such a proposal/plan, we would move forward in finalizing the documents. If there appears to be a lack of sufficient interest, it does not make much sense to spend time and money on formalizing the documents.

YME TEACHER'S EARLY RETIREMENT INCENTIVE PLAN

March 11, 2007

REQUIREMENTS AND RESTRICTIONS

1. The plan is only in effect for the designated period during the 2006-2007 school year.
2. The plan is available for all teachers who meet the plan's eligibility requirements and whose application is received, along with a letter of resignation or a request for a leave of absence, in the District Office prior to **3:30 p.m. on April 27, 2007**.
3. The application forms will be available to be picked up in the District Office beginning at **8:00 a.m. on March 12, 2007**.
4. Teachers applying for the plan will be required to provide proof of TRA eligibility, as determined by the School District, along with their resignation or request of a TRA Extended Leave of Absence, whichever is applicable.
5. The School Board will grant seven (7) qualified applications for this program excluding those employees eligible to retire during the 2006-2007 school year. If necessary, the order of eligibility will be determined by lottery on or before May 1, 2007. The Superintendent of Schools will have the discretion to recommend to the School Board that more than seven (7) qualified applications for this program be granted.
6. Independent School District 2190 makes no representations as to any benefits a teacher may be entitled to from TRA or whether a teacher who is placed on a TRA Extended Leave of Absence will receive credit for TRA benefits. In each instance, it is the individual teacher's responsibility to ascertain TRA benefits and eligibility.
7. Teachers will need to have completed ten (10) full years of teaching experience in Independent School District 2190 by June 30, 2007, to be eligible.
8. Teachers must be actively teaching for ISD 2190 during the 2006-2007 school year and have completed the 2006-2007 school year.
9. If a minimum of three (3) eligible applications, excluding those who are eligible to retire during the 2006-2007 school year, are not received, the School Board will have the discretion to revoke the early retirement incentive plan and applicants will have the right to withdraw their resignation or request for TRA Extended Leave of Absence.

RESIGNATIONS

1. Teachers who are eligible to begin receiving a full TRA retirement annuity, as defined by TRA, on or before June 30, 2007, must submit their resignation. The resignation must be effective no later than June 30, 2007.
2. Teachers who are eligible to begin receiving a reduced TRA retirement annuity, as defined by TRA, and who do not wish to request a TRA Extended Leave of Absence, may choose to participate in the early retirement incentive plan by submitting a letter of resignation. The resignation must be effective no later than June 30, 2007.

TRA EXTENDED LEAVES OF ABSENCE

1. Teachers who are eligible to begin receiving a full TRA retirement annuity, as defined by TRA, after June 30, 2007, are able to request a TRA Extended Leave of Absence from the School District. This leave must begin with the 2007-2008 school year. The School Board will consider TRA Extended Leave of Absence requests of three (3) years in duration.
2. Teachers will then be eligible for the benefit under this program and may use the benefit to assist in defraying the cost of health and/or dental insurance premiums and/or TRA (as stated in the Benefits Section) during their leave of absence.
3. It is the intent of this program that a teacher will submit a retirement resignation at the end of their approved TRA Extended Leave of Absence or earlier.

BENEFITS

1. Category #1: Teachers first eligible to receive a full TRA retirement annuity (not reduced), as defined by TRA, on or before June 30, 2007, and who submit their resignation effective no later than June 30, 2007, will receive a benefit of \$5,000.
2. Category #2: Teachers who are eligible to receive a reduced TRA retirement annuity, as defined by TRA, and who submit their resignation effective no later than June 30, 2007, will receive a benefit of \$5,000.
3. Category #3: Teachers first eligible to receive a full TRA retirement annuity (not reduced) between July 1, 2007 and December 31, 2007, will receive a benefit of \$10,000.00.
4. Category #4: Teachers first eligible to receive a full TRA retirement annuity (not reduced), as defined by TRA, between January 1, 2008, and June 30, 2008, will receive a benefit of \$15,000.
5. Category #5: Teachers first eligible to receive a full TRA retirement annuity (not reduced), as defined by TRA, between July 1, 2008, and December 31, 2008, will receive a benefit of \$20,000.
6. Category #6: Teachers first eligible to receive a full TRA retirement annuity (not reduced), as defined by TRA, between January 1, 2009, and June 30, 2009, will receive a benefit of \$25,000.
7. Category #7: Teachers first eligible to receive a full TRA retirement annuity (not reduced), as defined by TRA, between July 1, 2009 and December 31, 2009, will receive a benefit of \$30,000.
8. Category #8: Teachers first eligible to receive a full TRA retirement annuity (not reduced), as defined by TRA, between January 1, 2010 and June 30, 2010, will receive a benefit of \$35,000.
9. Categories cannot be combined (stacked).
10. The benefit will be prorated for teachers who are contracted for less than full time during the 2006-2007 school year.
11. Prior to retirement, the benefit may be used to pay for health and/or dental insurance premiums and may be used to pay the employer's and the employee's portion of TRA service credit during the teacher's TRA Extended Leave of Absence. This benefit will be held in escrow by the district

and payments will be made monthly as directed by the employee. This benefit is offered independently from any provisions in the Master Agreement and the dollar amount balance remaining at retirement will be transferred to the State of Minnesota Post Retirement Health Care Savings Plan.

12. If retiring by June 30, 2007, the benefit will be transferred to the State of Minnesota Post Retirement Health Care Savings Plan. This benefit is offered independently from any provisions in the Master Agreement.
13. Teachers eligible to receive a TRA Extended Leave of Absence will remain eligible to receive the balance of the maximum School District match to their 403(b) annuity as noted in the Master Agreement, Article X1. The teacher must provide the School District with written notice of their resignation/retirement by April 1st of the school year at the end of which the resignation will be effective. If the teacher resigns during the school year, written notice of the retirement/resignation must be provided to the School District at least 90 days before the effective date of the resignation.
14. If the teacher returns to teach in the School District during or at the end of the TRA Extended Leave of Absence, the teacher will be required to **immediately reimburse** the benefit used during the leave and will not be eligible for benefits under this early retirement incentive plan. Payment shall be in full prior to the start of the school year in which the employee is returning. If payment is not received in full prior to the start of the school year, it will be deducted from the employee's payroll checks until the full amount is repaid to the district. This will be done on the basis of 50% of the employee's monthly gross checks or \$2000.00 per month whichever is greater until the incentive is repaid to the District.

Discussion Information
February 12, 2007

10.A. Probationary Staff Continuing Contract Status

Attached for your review is a list of probationary staff – both YME and MVCC – and their status as to being eligible or not eligible for continuing contract rights at the end of the school year. In the next month of so, the same list will be presented with an administrative recommendation as to whether a new contract should be extended to the probationary staff for the 07-08 school year.

10.B. 2007-2008 Calendar

Two calendars are presented for your review. These calendars have been presented as drafts to all district staff who will work with their site teams to review and make recommended changes. Further discussion can take place on Monday evening pertaining to your comments and suggestions for the 07-08 school calendar.

10.C. Projected 07-08 Hagg Student Enrollment

Attached for your review is information regarding the projected enrollments for Hagg Elementary for the 07-08 school year. It details the number of students projected to attend and the aid generated by those students. I have also attached the Hagg expenditure information that was distributed at last month's meeting.

10.D. 06-07 Budget Update

On Monday evening, updated budget information (revenues and expenditures) for the current school year will be presented for your review. We will also touch briefly on early budget revenue projections for the 07-08 school year.

10.E. CSR Legislation

Senator Kubly has written and is seeking support of legislation calling for the Commissioner of Education to provide funding equal to the federal comprehensive school reform funds that school districts received in fiscal year 2006. The funding would be made available in fiscal year 2008 and would be allocated to those districts that received the federal funding in 2006. The bill is S.F. 202. If passed, the YME district would receive \$100,000.00 to replace the lost CSR third year funding.

10.F. Radio Upgrades

We are currently in the process of upgrading our hand-held radio communication system. We are moving from a VHF system to a digital communication system. We have also added a number of radios so we are able to better communicate with both groups and individuals. The total cost of the 29 radios is just under \$10,000.00. Of this amount, \$7,012.00 is from our Pact 4 SHARE grant. The remaining costs will be paid dollars levied for school safety.

10.G. RevTrack Workshop

The YME School District will be hosting a RevTrack workshop in late February for neighboring school districts that are interested in implementing an electronic payment program within their district. A number of our staff will be attending this session as we explore the possibility of implementing an e-payment program for YME.

10.H. Superintendent Evaluation

At this point in the meeting, the chair will close the meeting to review the evaluations completed by the Board members.

YELLOW MEDICINE EAST PUBLIC SCHOOLS

Independent School District 2190

Serving the Communities of Clarkfield, Echo, Granite Falls, Hanley Falls, Hazel Run, and Upper Sioux

Success for All Learners

PROBATIONARY STAFF LIST

February 5, 2007

The following teachers are probationary members of the Yellow Medicine East School District staff. Several of the teachers are in a position to move from probationary status to continuing contract status. Administrative recommendations will be presented at a later date as to whether or not contracts will be renewed for the 07-08 school year.

<u>NAME</u>	<u>CURRENT POSITION</u>	<u>CONTINUING CONTRACT STATUS</u>
Elissa Carpenter	French	Not Eligible
Jeff Iverson	Vocal Music	Not eligible
Beth Kesteloot	Hagg Kindergarten/First Grade	Eligible
Melissa Larson	Bert Raney Sixth Grade	Not Eligible
Anne Louwagie	Biology	Not eligible
Rachel McDougall	Bert Raney Kindergarten/First Grade	Not Eligible
Corissa Sands	English	Not Eligible
Carrie Schommer	Dakota	Eligible
Val Skjefte	Counselor	Not Eligible

Elissa Carpenter: Ms. Carpenter is not eligible for continuing contract status. As she did not have continuing contract status in her previous district, she will need to complete two more years in the district before becoming eligible.

Jeff Iverson: Mr. Iverson is not eligible for continuing contract status. He will be competing his second year as a vocal instructor at the high school.

Beth Kesteloot: Ms. Kesteloot is eligible for continuing contract status as she is completing her third year in the district as an elementary instructor at Hagg.

Melissa Larson: Ms. Larson was hired following the passage of the referendum levy as a sixth grade instructor at Bert Raney. She is not eligible for continuing contract status.

Anne Louwagie: Ms. Louwagie will be completing her second year of teaching in the YME District. She is not eligible for continuing contract status until the completion of her third year in the district.

Rachel McDougall: Ms. McDougall is completing her first year as an elementary instructor at Bert Raney and is not eligible for continuing contract status.

Corrisa Sands: Ms. Sands is not eligible for continuing contract status. She is completing her first year of teaching English in the high school.

Carrie Schommer: Ms. Schommer is eligible for continuing contract status. She currently is employed for one hour per day to teach Dakota.

Val Skjefte: Ms. Skjefte is completing her first year as a high school counselor and is not eligible for continuing contract status.

MVCC Employees:

Clint Schiller: Mr. Schiller is also completing his first year in the district. He had earned continuing contract status prior to accepting his position here; and therefore is also eligible for continuing contract status at the end of the current year.

Amy Stewart: Ms. Stewart is completing her first year in the YME district and is eligible for continuing contract status as she had earned those rights prior to accepting a position in our district.

Create an environment where lifelong learning is valued, excellence is expected, and improvement is continuous.



Yellow Medicine East 2007-2008 School Calendar

The school day will begin at **8:25** am & end at **3:10** pm



DRAFT 1-31-07 Calendar 1

July 2007						
S	M	T	W	T	F	S
1	2	3	4	5	6	7
8	9	10	11	12	13	14
15	16	17	18	19	20	21
22	23	24	25	26	27	28
29	30	31				

August 2007						
S	M	T	W	T	F	S
			1	2	3	4
5	6	7	8	9	10	11
12	13	14	15	16	17	18
19	20	21	22	23	24	25
26	27	28	29	30	31	

September 2007						
S	M	T	W	T	F	S
						1
2	3	4	5	6	7	8
9	10	11	12	13	14	15
16	17	18	19	20	21	22
23	24	25	26	27	28	29
30						

October 2007						
S	M	T	W	T	F	S
	1	2	3	4	5	6
7	8	9	10	11	12	13
14	15	16	17	18	19	20
21	22	23	24	25	26	27
28	29	30	31			

November 2007						
S	M	T	W	T	F	S
				1	2	3
4	5	6	7	8	9	10
11	12	13	14	15	16	17
18	19	20	21	22	23	24
25	26	27	28	29	30	

December 2007						
S	M	T	W	T	F	S
						1
2	3	4	5	6	7	8
9	10	11	12	13	14	15
16	17	18	19	20	21	22
23	24	25	26	27	28	29
30	31					

August 27-30 Inservice Days

September 4 First Day of School

October 16 Early Out
October 17 Inservice Day
October 18 & 19 EM Break

November 2 End of 1st Quarter – 41 Days
November 5 Late Start
November 21 Inservice Day
November 22 & 23 Thanksgiving Break

Dec. 24 – Jan. 1 Christmas Break

January 18 End of 2nd Quarter – 45 Days
January 21 Inservice Day
January 22 Late Start

February 13 Early Out
February 14 Inservice Day
February 15 Comp Day – No School
February 18 Presidents Day

March 19 Early Out
March 20 Comp Day – No School
March 21-24 Easter Break
March 25 Inservice Day
March 28 End of 3rd Quarter – 43 Days

April 18 Early Out

May 2 Early Out
May 3 Prom
May 26 Memorial Day
May 29 End of 4th Quarter – 42 Days
Early Out
May 30 Inservice Day

June 2 Inservice Day

January 2008						
S	M	T	W	T	F	S
		1	2	3	4	5
6	7	8	9	10	11	12
13	14	15	16	17	18	19
20	21	22	23	24	25	26
27	28	29	30	31		

February 2008						
S	M	T	W	T	F	S
					1	2
3	4	5	6	7	8	9
10	11	12	13	14	15	16
17	18	19	20	21	22	23
24	25	26	27	28	29	

March 2008						
S	M	T	W	T	F	S
						1
2	3	4	5	6	7	8
9	10	11	12	13	14	15
16	17	18	19	20	21	22
23	24	25	26	27	28	29
30	31					

April 2008						
S	M	T	W	T	F	S
		1	2	3	4	5
6	7	8	9	10	11	12
13	14	15	16	17	18	19
20	21	22	23	24	25	26
27	28	29	30			

May 2008						
S	M	T	W	T	F	S
				1	2	3
4	5	6	7	8	9	10
11	12	13	14	15	16	17
18	19	20	21	22	23	24
25	26	27	28	29	30	31

June 2008						
S	M	T	W	T	F	S
1	2	3	4	5	6	7
8	9	10	11	12	13	14
15	16	17	18	19	20	21
22	23	24	25	26	27	28
29	30					

Up to two days may be used for Parent-Teacher Conferences and will be scheduled by the administrators. The first day missed for inclement weather will not be made up. All other days missed for storms or other emergencies will be made up at the end of the year. The board reserves the right to amend or adjust the calendar.



Yellow Medicine East 2007-2008 School Calendar

The school day will begin at **8:25** am & end at **3:10** pm



DRAFT 1-31-07 Calendar 2

July 2007						
S	M	T	W	T	F	S
1	2	3	4	5	6	7
8	9	10	11	12	13	14
15	16	17	18	19	20	21
22	23	24	25	26	27	28
29	30	31				

August 2007						
S	M	T	W	T	F	S
			1	2	3	4
5	6	7	8	9	10	11
12	13	14	15	16	17	18
19	20	21	22	23	24	25
26	27	28	29	30	31	

September 2007						
S	M	T	W	T	F	S
						1
2	3	4	5	6	7	8
9	10	11	12	13	14	15
16	17	18	19	20	21	22
23	24	25	26	27	28	29
30						

October 2007						
S	M	T	W	T	F	S
	1	2	3	4	5	6
7	8	9	10	11	12	13
14	15	16	17	18	19	20
21	22	23	24	25	26	27
28	29	30	31			

November 2007						
S	M	T	W	T	F	S
				1	2	3
4	5	6	7	8	9	10
11	12	13	14	15	16	17
18	19	20	21	22	23	24
25	26	27	28	29	30	

December 2007						
S	M	T	W	T	F	S
						1
2	3	4	5	6	7	8
9	10	11	12	13	14	15
16	17	18	19	20	21	22
23	24	25	26	27	28	29
30	31					

August 27-30 Inservice Days

September 4 First Day of School

October 16 Early Out
October 17 Inservice Day
October 18 & 19 EM Break

November 2 End of 1st Quarter – 41 Days
November 5 Late Start
November 21 Inservice Day
November 22 & 23 Thanksgiving Break

Dec. 24 – Jan. 1 Christmas Break

January 2 Inservice Day
January 18 End of 2nd Quarter – 45 Days
January 21 Inservice Day
January 22 Late Start

February 14 Early Out
February 15 Inservice Day
February 18 Presidents Day

March 17-18 Comp Day – No School
March 19-24 Easter Break
March 28 End of 3rd Quarter – 42 Days

April 18 Early Out

May 1 Early Out
May 2 Inservice Day
May 3 Prom
May 26 Memorial Day
May 30 End of 4th Quarter – 43 Days
Early Out

June 2 & 3 Inservice Day

171 Student Contact Days

January 2008						
S	M	T	W	T	F	S
		1	2	3	4	5
6	7	8	9	10	11	12
13	14	15	16	17	18	19
20	21	22	23	24	25	26
27	28	29	30	31		

February 2008						
S	M	T	W	T	F	S
					1	2
3	4	5	6	7	8	9
10	11	12	13	14	15	16
17	18	19	20	21	22	23
24	25	26	27	28	29	

March 2008						
S	M	T	W	T	F	S
						1
2	3	4	5	6	7	8
9	10	11	12	13	14	15
16	17	18	19	20	21	22
23	24	25	26	27	28	29
30	31					

April 2008						
S	M	T	W	T	F	S
		1	2	3	4	5
6	7	8	9	10	11	12
13	14	15	16	17	18	19
20	21	22	23	24	25	26
27	28	29	30			

May 2008						
S	M	T	W	T	F	S
				1	2	3
4	5	6	7	8	9	10
11	12	13	14	15	16	17
18	19	20	21	22	23	24
25	26	27	28	29	30	31

June 2008						
S	M	T	W	T	F	S
1	2	3	4	5	6	7
8	9	10	11	12	13	14
15	16	17	18	19	20	21
22	23	24	25	26	27	28
29	30					

Up to two days may be used for Parent-Teacher Conferences and will be scheduled by the administrators. The first day missed for inclement weather will not be made up. All other days missed for storms or other emergencies will be made up at the end of the year. The board reserves the right to amend or adjust the calendar.

HAGG 06-07 DATA

Program	06-07 Budget	Comments/Questions
Maintenance	167200	Any custodial shift to GF site? Johnson Controls? Insurance?
School Nurse	4500	
Elementary Principal Office	34200	Secretarial/Supplies etc. savings
Media Center	<u>14100</u>	Para professional/books/magazines etc.
General Fund Total	220000	
Food Service	45730	Any food service shift to GF site?
Capital	6000	One leased computer lab
Facilities		Projects to come from lease \$?
LEP (Migrants)		Shift time to GF site/ reduce time?
TAG		Shift time to GF site/ reduce time?
*K-6 Regular	450000	Dependent on number of students transferred to Bert Raney
**Special Ed	35635	Dependent on number of students transferred to Bert Raney
**Social Worker	22787	Shift time to GF site/ reduce time?
<u>Revenues</u>		
****Geneal Education Aid	-	Loss dependent on number of students leaving YME
***Lease Dollars	+	Mainly capital revenue
<u>Possible Increases</u>		
Portable units		
Special Ed Tuition		Dependent on special ed students enrolling out of YME
Transportation		Additional Shuttles to GF? (\$10,000 per shuttle)

*Currently the regular education budget is \$450,000 at the Hagg site. If teaching reductions were made, the savings would be less because teachers released would be paid less than some of the staff at Hagg. The \$450,00 includes all instructional budgets (salaries/benefits/supplies/travel, etc.) It does not include the federal programs or grants that we receive 100% back in revenues.

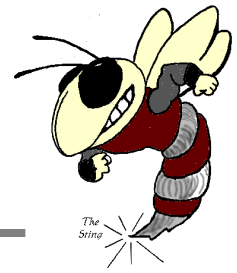
**The special education and social worker amounts are based on the current expenditure budget. The savings would be less than the amount shown because of revenues received back from the state.

***Some of the lease dollars received would go to general fund to cover items like insurance, Johnson Controls, and administrative fees. The remainder (80-85%) would go back into the capital fund balance.

****General Education Aid per pupil (rounded): \$3500 (K), \$7000 (1-3), \$6700 (4-6), \$8200 (7-12)
Does not include new referendum dollars @ \$581.00 PPU.

YELLOW MEDICINE EAST – ISD 2190

Dwayne A. Strand, Superintendent
450 9th Avenue - Granite Falls, MN 56241
Phone: 320-564-4081 - Fax: 320-564-4781



Projected Student Numbers for H. A. Hagg for 2007-2008

Hagg	07-08
Grade K/1	16
	16
Grade 2	15
Grade 3	16
Grade 4	22
Grade 5	18
Grade 6	<u>11</u>
	114

Kindergarten 16 x \$3879.00* = \$62,064.00
Grades 1-3 47 x \$7759.00* = \$364,673.00
Grades 4-6 51 x \$7451.00* = \$380,001.00

*Includes a 2% increase in the formula and the \$581.00 PPU referendum levy

Total Aid Generated: \$806,738.00

75% of aid = \$605,054.00
50% of aid = \$403,369.00
25% of aid = \$201,685.00

YME HIGH SCHOOL
Karen Norell, Principal
450 9th Avenue
Granite Falls, MN 56241
Phone: 320-564-4083
Fax: 320-564-4782

BERT RANEY ELEMENTARY
Stacy Hinz, Principal
555 7th Avenue
Granite Falls, MN 56241
Phone: 320-564-4082
Fax: 320-564-4427

H.A. HAGG ELEMENTARY
Stacy Hinz, Principal
1204 11th Avenue
Clarkfield, MN 56223
Phone: 320-669-4424
Fax: 320-669-4828

Correspondence Items
February 12, 2007

11.A. MREA Flyer

Flyer is attached.

11.B. Call Back Letter of Intent – T. Schulte

Mr. Schulte has notified the District of his interest in being recalled this spring for any language arts positions that become available for the 07-08 school year. He is currently on an unrequested leave of absence.

11.C. Continued Leave of Absence Notification – P. Jensen

Pam Jensen has notified the District of her intent to remain on a requested leave of absence through the 07-08 school year. This will be the third year of her five-year leave.

11.D. SHARE Project Update

Flyer is attached.

11.E. Boardcaster

A copy of the last *boardcaster* has been attached. Please note the Officers' Workshops and Phase III training sessions for those of you that might be interested.

11.F. Conciliation Court Finding

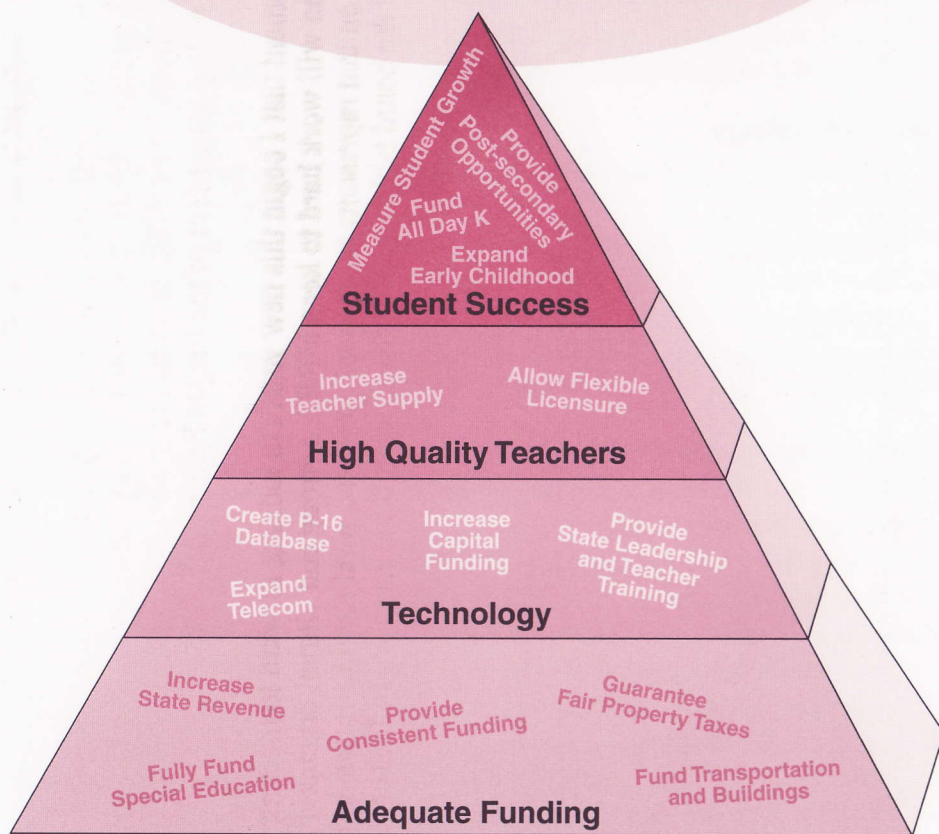
In our claim against Chad Husby, the court dismissed our claim for judgment. A copy of the court memorandum is attached.

11.G. ASCD Conference Opportunity

As a part of the E2T2-2 Grant, our District has the opportunity to attend the upcoming conference described in the attached flyer. Board members are also encouraged to attend.

Our Goal:

*Learner First =
Student Success*



Contact Us: 700 Cedar Street, Suite #208 • Alexandria, MN 56308
 office@mnrea.org • www.mnrea.org • 320-762-6574

Lee Warne, *Executive Director* • lwarne@mnrea.org
 Sam Walseth, *Legislative Director* • sam@capitolhillassoc.com
 Vernae Hasbargen, *Sr. Legislative Analyst* • vernae@mnrea.org

Prepare Each Student to Succeed

Give students the tools to be successful in life

- ✓ Guarantee school readiness through expanded early childhood programs.
- ✓ Fund all day, every day K.
- ✓ Measure individual student growth to improve achievement.
- ✓ Provide access to post secondary opportunities without leaving their high schools.

Guarantee high quality teachers

- ✓ Allow appropriate flexibility in licensure.
- ✓ Increase teacher supply through alternative licensure, loan forgiveness, scholarships, and competitive teacher compensation packages.

Use technology

- ✓ Create a uniform, privacy protected database of academic information for all P-16 students.
- ✓ Increase capital funding for hardware, software, and technical support.
- ✓ Ensure state leadership and relevant teacher training so technology is integrated into curriculum, assessment and instruction.
- ✓ Expand telecom capacity for student opportunities and state accountability measures.

Meet funding commitments

- ✓ Increase state revenue for schools, recognizing the inadequacy as evidenced by the Myers Funding Study.
- ✓ Provide consistent and equitable funding for schools that includes inflationary increases.
- ✓ Adjust the equalization formulas and tax bases to guarantee that property taxes for education are equitable for all taxpayers.
- ✓ Assure transportation and building costs are adequately funded.
- ✓ Fully fund special education mandates.



MREA will work with national coalitions to improve special education and telecommunications funding.

SHARE Project Update



February 2007, Volume # 9

Happenings

The next Coordinating Council meeting is scheduled for 2:00 pm on Wednesday February 14, 2007 at Max's in Olivia.

SHARE Advisor/Liaisons will meet February 14, 2007 at 9:00 at Max's in Olivia. If you want anything on the agenda please let me know.

Training on School Safety: Psychology of a Shooter sponsored by Ridgewater College, Kandiyohi County Sheriff's Office and Willmar Police Department will be held April 10, 2007. SHARE will reimburse participants in the SHARE grant a portion of the registration for staff they send to the training. For further information contact your school's SHARE Advisor, Coordinating Council member or Janice Madden.

School surveys completed in May 2006 provided good information on what's happening in the schools. This month is the results tobacco, alcohol and drug usage.

SHARE in Your School

The SHARE Project provides the following funding to each School District to assist with meeting the goals and objectives of the grant.

SHARE Advisor: to support the implementation of the goals and objectives in within their school district. They are the main contact between the school district's steering committee and the coordinating council.

Parent/School Liaison: to promote parent involvement in their child's school and education. They assist parents in locating resources and developing the skills necessary to advocate for their individual, family, and cultural needs within the school and community.

School Safety Modifications: to assist in maintaining a safe and healthy school environment through equipment and facility modifications. Examples would be installing security cameras, purchasing two-way radios and putting in keyless entries.

Pre-School Tuition Scholarships: to help families, who otherwise could not afford it, send their pre-school age children to a pre-school or other school readiness program.

Support to Implement Evidenced-Based Programs: such as Olweus, Second Step, Project Northland, and Strengthening Families. SHARE covers the cost of the training, staff stipends and supplies.

Leadership Training: each school district has \$1500 to use at their discretion for leadership training of administration or others who would provide a leadership role in the school.

Mental Health Training for Teachers: each school district has \$1500 to provide mental health training to staff as determined by their needs. There also is funding for mental health training on depression and suicide that is available through the four mental health agencies in the SHARE Project area.

Student Surveys

Tobacco, Alcohol, and Drug Usage

490 students claimed to have smoked during the past month, 231 claimed to have smoked at school during the school day, 251 claimed to have smoked on school property after hours.

246 students (7.9%) claimed to have used smokeless tobacco during the last month, 73 claimed to use it everyday and 73 claimed to use smokeless tobacco 6 or more times during the day.

833 students claimed to have used alcohol in the last month and 580 claimed drinking excessively. Usage increases with age but even 54 7th graders claimed being drunk at least once.

300 students claimed marijuana usage, 169 claimed inhalant usage, and 94 claimed methamphetamine usage. Inhalant usage was twice that of meth at 7th and 9th grades but evens out at 4.3% at 11th grade.

523 students claimed to have been offered, sold or given cigarettes at school during the school

Local Steering Committees

The role of the Local Steering Committee (LSC) is to provide community and district input to the SHARE project and work with the Coordinating Council in implementation of the project. The LSC will assist in identifying school and community needs; act as a sounding board for ideas; provide input to the project's goals and objectives; and be a direct link to each school and community. The LSC is to assist in implementing the programs and services outlined in the grant, when appropriate. Membership in the committee will be comprised of school district staff, parents, students, law enforcement, juvenile justice, mental health and other community members who have an interest in the project. The goal of membership is to have representation from all segments of the "community" being served through the local school district. The LSC meets at least quarterly during the calendar year and more often if needed.

SHARE Website link - www.pact4.org

Check out the website to keep updated on SHARE. School Liaisons have contributed articles to the website. You are encouraged to contribute articles on activities and happenings in your school through Safe Schools/Healthy Students.

boardcaster

February 2, 2007

PERSONNEL NOTES

Ely has a superintendent vacancy. Apply by Feb. 12 to Donald Andersen, ADM Search, 222 W. 5th St. S., Melrose, 56352; phone 320-256-3520. Request application by email at donadm@meltel.net. Start date is July 2007. **Glencoe-Silver Lake** is hiring a superintendent. Apply by Feb. 16 to Chair Jodi Braband, Glencoe-Silver Lake School District, 1621 E. 16th St., Glencoe, 55336; phone 320-864-4001. For an application, email Dawn Peterson at dpeterson@gsl.k12.mn.us or call 320-864-2495. **East Grand Forks** is seeking a superintendent to begin in July. Apply by Feb. 16 to Donald Andersen, ADM Search, 222 W. 5th St. S., Melrose, 56352; phone 320-256-3520. Request application by email at donadm@meltel.net. **Eveleth-Gilbert** is accepting applications for a superintendent through March 7. Apply to Donald Andersen, ADM Search, 222 W. 5th St. S., Melrose, 56352; phone 320-256-3520. Request application from donadm@meltel.net. Start date is July.

Hermantown has a high school principal vacancy with a July 1 start. Applications are at www.hermantown.k12.mn.us. Deadline is Feb. 9. **St. Paul** is hiring a special education director. Apply by Feb. 18 to Melissa Hogle, HR Dept., St. Paul Public Schools, 360 Colborne St., St. Paul, 55102; email melissa.hogle@spps.org. **Centennial** is seeking a director of elementary and secondary education to begin July 1. Apply by Feb. 21 to HR Director Larry Jablinski, Centennial School District, 4707 North Rd., Circle Pines, 55014; phone 763-792-6009; email ljablinski@isd12.org.

ADMINISTRATIVE MOVES

Lee Warne, former executive director of the Southwest/West Central Service Cooperatives, is the new part-time executive director of the **Minnesota Rural Education Association**. **East Grand Forks Supt.** Walt Aanenson is retiring June 30.

MSBA'S "NEW" DAY AT THE CAPITOL

The Minnesota School Boards Association, Association of Minnesota Counties and League of Minnesota Cities have entered a new era of partnership by working more closely than ever on common issues. That's why MSBA is replacing the annual Day at the Capitol with a joint legislative conference March 28-29 in St. Paul.

Nearly 1,000 school, city and county officials will come together to explore issues common to local government. In today's political landscape, we can't work in isolation and expect results. We must unite to ensure state officials provide adequate funding for Minnesota's priorities (such as public schools), preserve local decision-making and respect the collective wisdom of the thousands of local leaders who govern our state's communities.

Join us for this unprecedented event. You'll gain an increased understanding of how our individual issues fit together in the big picture, stronger relationships locally among units of government, and the latest behind-the-scenes news and analysis from Capitol insiders – all while sending a message to state leaders that we're united! Watch your mailbox and the web site for registration and details.

Planning Ahead

Officers' Workshop Schedule

- February 6
Mankato
- February 8
Bemidji
- February 10
St. Louis Park

Phase III Schedule

- March 17
St. Cloud
- March 20
Morton
- March 22
Rochester
- April 10
Bemidji
- April 12
Onamia

OFFICERS' WORKSHOPS SET FOR FEBRUARY

If you are a school board chair, vice chair, clerk or treasurer, you have additional responsibilities on your board. Learn more about the roles and responsibilities of officers during a series of workshops throughout the state in February. Topics include the following: unusual voting requirements, parliamentary procedure, conducting board hearings, the open meeting law, organizing effective meetings and more.

The sessions run from 8 a.m. to 3 p.m. They will be held Feb. 6 (Mankato), Feb. 8 (Bemidji) and Feb. 10 (St. Louis Park). More information is available at www.mnmsba.org. Look for Officers' Workshop under the Board Development drop-down menu.

SCHOOL BOARD RECOGNITION WEEK FEB. 26 - MARCH 2

In recognition of school board members' dedicated service, Feb. 26 - March 2 is designated as School Board Recognition Week. A kit with certificates for board members and suggested activities has been mailed to school district offices.

MSBA thanks all of our members for their hard work and dedication to Minnesota's students!

SCHOOL BOARD STUDY UNDERWAY

St. Paul School Board member Tom Conlon is writing a doctoral dissertation on how school board members learn to do their jobs and to uncover their training and learning experiences. MSBA will assist him with this study by mailing out a survey to a select sample of school board members around Minnesota sometime in February. Tom will share his findings with MSBA in efforts to help us evaluate and improve training and services to school boards. We encourage those receiving a survey to participate and help shape the work of school boards in the future. If you have questions about the study, contact Tom at t.conlonsr@comcast.net.

PHASE III TRAINING SET FOR REGIONAL LOCATIONS

Good governance doesn't just happen. It takes training and experience. Learn about building a high-performance board at MSBA's Phase III Orientation. Sessions are scheduled throughout the state this spring. (See the Planning Ahead box for details. A brochure and registration information are also included with this Caster.) Phase III builds on skills learned in Phase I and Phase II.

NEGOTIATIONS COSTING SEMINAR

SchoolFinances.Com has released its updated Negotiations Costing Model for 2007-09. The new system includes multiple ways to accommodate benefits and Q-Comp. A training session has been scheduled from 9 a.m. to 12:30 p.m. Feb. 9 in Apple Valley. The fee for the session is \$100. For more information or to register, please call Ann Thomas at 952-435-0990 or email Ann@schoolfinances.com.

SchoolFinances.Com will also discuss how districts can secure information on districts selected for comparison. A system that includes the settlements reported to the MSBA in the last seven negotiations periods will also be reviewed.

SCHOOL FINANCE ELECTIONS: A COMPREHENSIVE PLANNING MODEL FOR SUCCESS

The Minnesota Association of School Administrators, Resource Training and Solutions and Springsted, Inc. are offering referendum training. The workshop's content represents a marriage of research and successful practice, emphasizing systems and strategies rather than specific campaign tactics and allowing school leaders to elevate their thinking to a more comprehensive and long-range vision of election planning.

The sessions are Thursday, Feb. 8 in St. Cloud and Friday, Feb. 9 in St. Paul. For details, go to www.mnasa.org.

MSDLAF+ RATES

Rates for the MN School District Liquid Asset Fund Plus as of Jan. 29 are: Liquid Portfolio Daily Rate - 4.75%; MAX Portfolio Daily Rate - 5.08%; CD Rates (all rates are net of fee and quoted on a 365 day basis) - 30 day - 5%; 60 day - 5%; 90 day - 5.07%; 180 day - 5.10%; Yearly - 5.15%. MSDLAF+ Term: 60 day - 5.19%; 90 day - 5.22%; 180 day - 5.26%; Yearly - 5.18%.

PUBLISHED AS A MEMBER SERVICE BY THE MINNESOTA SCHOOL BOARDS ASSOCIATION, 1900 W. JEFFERSON AVE., ST. PETER, MN 56082. SHELLEY TOUGAS, EDITOR. PHONE: 507-934-2450; 800-324-4459. FAX: 507-931-1515. EMAIL: stougas@mnmsba.org.

MEMORANDUM

The legal basis for Plaintiff's claim against the Defendant is an Order of the Court of Appeals dated December 11, 2005 (Appellate Court file #A05-71) in which a Judgment for Costs and Disbursements was entered against Citizens Concerned for Kids (CCK) in the amount of \$1,512.42. A \$500.00 appeal bond, which had been posted by CCK as required by the Rules for an appeal of this nature, has been cashed and paid to Plaintiff. Hence, the claim in this matter for \$1,012.42, plus a filing fee of \$60.00.

Said claim is hereby denied because Plaintiff has not demonstrated by a preponderance of the evidence that Defendant is personally liable for this judgment. CCK was created pursuant to M.S. 540.151 as an unincorporated organization for the sole apparent reason of pursuing the underlying civil litigation. Pursuant to said statute, such an organization "...may sue in or be sued by such common name.... The judgment in such cases shall accrue to the joint or common benefit of and bind the *joint or common property* of the associates, the same as though all had been named as parties to the action." Id. (emphasis added). There has been no evidence that this Defendant has joint or common property with other members of the group. The sole basis claimed by Plaintiff for Defendant's personal liability for this judgment against CCK is that Defendant apparently designated himself "managing agent of the association." However, this is apparently for the purpose of effectuating service and does not demonstrate a legal basis to hold Defendant personally liable for the judgment of CCK.


RJS

LCTN and MRVED Schools,

As a part of the E2T2 – 2 “Are We There Yet?” grant, the following opportunity is being made available to your schools.

David Warlick, will be in Minnesota as the keynote speaker at the annual Minnesota Association for Supervision and Curriculum Development conference.

His topic will be: “Millennial Children and Our Classrooms”.

I have heard him speak and he is incredible. He will take your mind to places it has not been before. You will never look at schools and learning the same again.

Please see the attached flyer for more details.

Here is the deal.

- ❑ Each district can send up to four people. In particular we would like to encourage administration and board members to attend. In fact let’s up the ante. If your district sends an administrator or board member, the MRVED/LCTN will pay for up to six to attend the conference. (Thus you could send seven.)

Warlick’s message has profound implications for schools. (If you send four people MASCD will actually let you send your leader for no cost.) Send a copy of the MASCD registrations to the MRVED and we will reimburse you for expenses – up to four registrants.

- ❑ MRVED/LCTN will reimburse one car’s mileage to the conference. Submit your mileage to the MRVED and we will reimburse you for those expenses at the State rate of \$0.485 per mile.
- ❑ MRVED/LCTN will reimburse those attending the conference for appropriate meals – according to State travel guidelines. Submit your receipts for the meals to the MRVED and we will reimburse you.
- ❑ MRVED/LCTN will cover up to \$100 of sub expenses for each teacher attending. Submit the list of those attending to the MRVED and we will reimburse you.

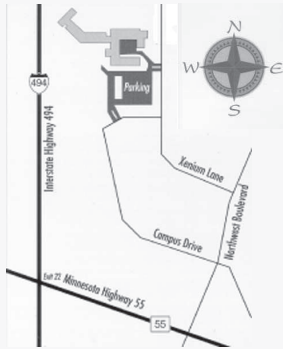
The deadline for registration is Tuesday, February 27, 2007.



“Leadership for Learning”

Impacting Minnesota children through
• Support • Information • Voice

Radisson
HOTEL AND CONFERENCE
CENTER PLYMOUTH
3131 Campus Drive - Plymouth, Minnesota 55442



From Minneapolis-St. Paul Int'l Airport

Follow I-494 West. I-494 will curve around and become I-494 North. Stay on I-494 North to Highway 55, Exit 22. Turn right onto Highway 55 East. Turn left on Northwest Boulevard at the first set of signal lights. Take the third left off Northwest Boulevard, Xenium Lane. Follow Xenium Lane to the hotel.

From Downtown Minneapolis

Take I-394 West to the Plymouth Road exit. Turn right and follow Plymouth Road. This will become Northwest Boulevard. After you have crossed Highway 55, take the third left, Xenium Lane. Follow Xenium Lane to the hotel: 3131 Campus Drive.

A special rate is available for conference attendees staying at the hotel. Contact the hotel for details: 763-559-6200.



Lori Sandvig, Executive Secretary
5033 West 56th Street
Edina, MN 55436

**The 2007 Minnesota ASCD
Winter Conference
on Teaching and Learning**



presents the
**Minnesota ASCD
Winter Conference
on Teaching and Learning**

**Reach
and
Teach**



the
**21st Century
Brain**

**TUESDAY, MARCH 6
8 A.M.-3:15 P.M.**

**Radisson Hotel and Conference Center
3131 Campus Drive
Plymouth**

Reach and Teach the 21st CENTURY BRAIN

Tuesday, March 6, at the Radisson Hotel and Conference Center in Plymouth

Keynote Address by David Warlick of The Landmark Project "Millennial Children and Our Classrooms"

Children in our classrooms today are tech-savvy, adaptive, fast learners, always connected, and ultra-communicators. They are a species of learner who can see, hear, and speak through walls and around the planet. Information is what gives their experience meaning, and they do not merely consume the information. They play it, work it, and remix it into experiences that are personally enjoyable and valuable.

What kind of classrooms address the unique learning styles of Millennials and a future that we can not even describe? In "Millennial Children and Our Classrooms," keynote speaker David Warlick will address questions that are pivotal to retooling classrooms and reforming education. A renowned innovator and leader in the field of educational technology, he will share his contagious passion and enthusiasm for reaching this new species of learner who demands to learn, not to be taught.

The conference will emphasize using technology to reach and teach learners of the 21st Century, with breakout sessions also featuring a wide variety of other strategies and techniques (see complete list in the next column). There is something for all grade levels, with an emphasis on the middle and higher grades.

Conference Schedule

8:00-9:00	Registration
9:00-10:00	David Warlick Keynote Address
10:00-10:20	Break
10:20-11:20	Breakout Sessions I
11:30-1:00	Lunch and Conversation
1:00-2:00	Breakout Sessions II
2:00-2:15	Break
2:15-3:15	Breakout Sessions III

★ See registration form for fee information ★

Breakout Sessions

- Moving Your School to Brain Compatible Learning
- Online Learning and the Digital Native
- Do Boys Ask for Directions? A Biologically Wired Question
- Bringing History Alive with Modern Technology
- The Psychological Work of Teaching High School English
- Not Afraid of 1s and 0s! The TICT Initiative in Osseo Area Schools
- Structure by Design: Strategies for Competent Secondary Writing
- Teaching to the Adolescent Brain: Strategies That Engage and Motivate
- What Do I Do With This Gifted Kid? Easy Steps to Differentiate in an Elementary Classroom for Gifted Kids
- Passion and Culture: Effective Schools for the 21st Century
- Differentiated Instruction for Today's Classroom
- INput Principles of the Brain: The Surprising Basic Instructional Actions for Every Teacher and Trainer at Every Level

Breakout Sessions With David Warlick

- Video Games as Learning Engines – David provides an overview of various video game genres, video games in education, and some spin-off activities that will literally amaze you.
- You and the New World Wide Web – David addresses the changing shape of information and how new tools like blogs, podcasts, RSS, social media, and social networks can be used to create powerful new learning experiences for our children.



The 2007 Minnesota ASCD Winter Conference on Teaching & Learning
"Reach and Teach the 21st Century Brain"
David Warlick, Keynote Speaker

Please print. Use a separate form for each enrollee. When four team members register at the same time, their leader is free (send all five registrations in one envelope).

Name of individual attending _____

School District _____

Mailing address _____

Phone _____

Email _____

Registrations must be received by Tuesday, Feb. 27. Registrations are nonrefundable; substitutions must be confirmed by noon on Monday, March 5. Make checks payable to Minnesota ASCD (purchase orders are also accepted) and return with this form to:

Lori Sandvig, Executive Secretary, Minnesota ASCD, 5033 West 56th Street, Edina, MN 55436.
You may also register online at www.mnascd.org or by fax at 952-920-9123.

PRICING

Minnesota ASCD Members:

- \$170/person early bird (through Friday, Feb. 16)
- \$180/person after Friday, Feb. 16

Non-members (price includes one-year membership in Minnesota ASCD):

- \$210/person early bird (through Friday, Feb. 16)
- \$220/person after Friday, Feb. 16

When four or more members from a school pay, their leader attends FREE.

Upcoming Events and Activities

Event	Date	Location	Time
Early Out	February 14, 2007	District	1:15 PM
MRVED Superintendent Meeting	February 14, 2007	MRVED	9:00 AM
PACT 4 Collaborative Meeting	February 14, 2007	Olivia	12:00 PM
SHARE Coordinators Council Meeting	February 14, 2007	Olivia	2:00 PM
Inservice Day - No School	February 15, 2007	District	
President's Day - No School	February 19, 2007	District	
SAC Committee Meeting	February 27, 2007	Marshall	1:00 PM
ePayment Orientation & Review	February 28, 2007	District	1:00 PM
Board Meeting	March 12, 2007	District	7:00 PM