

**YELLOW MEDICINE EAST ISD 2190
REGULAR BOARD MEETING
JANUARY 8, 2007 @ 7:00 PM
LOCATION: YME HIGH SCHOOL BOARD ROOM**

AGENDA

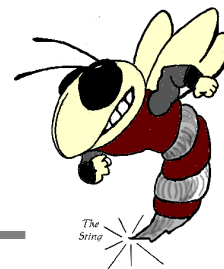
1. **Call to Order** 3
2. **Board Organization & Selection of Officers**
 - A. Chair
 - B. Vice-Chair
 - C. Clerk
 - D. Treasurer
 - E. Committee Assignments 4
3. **Approval of Agenda**
4. **Approval of December 11, 2006 Meeting Minutes** 5
5. **Opportunity for Citizens to Speak**

At this time, no one has asked to address the Board.
6. **Reports**
 - A. Special Reports
 1. Federal Programs Report 7
Presenter: Dwayne Strand
 - B. Financial Reports
 1. Approval of Bills 9
 2. Fund Balance Report 39
 3. Enrollment Report 40
 4. Food Service Report 41
 - C. Principal and Staff Development Reports
 1. Staff Development/Curriculum Report - Y. Sorenson 42
 2. Elementary Report - S. Hinz
 3. High School Report - K. Norell
 - D. Board/Committee Reports
7. **Policy Updates**
8. **Personnel Items**
9. **Consent Items** 43
 - A. PACT 4 Contribution Statement/Letter of Intent
 - B. Pay Equity Implementation Report 44

10.	Action Items	45
	A. Resolution directing Administration to consider options to reduce expenditures.	46
11.	Discussion Items	47
	A. Capital and Maintenance Projects	
	B. Early Retirement/Opportunities for Extended Leave	
	C. Knutson Facility Study Update	
	D. Clarkfield Area Charter School	49
	E. CCK Restitution Update	
	F. State Audit Update	
12.	Correspondence	
13.	Upcoming Events & Activities	54
14.	Adjourn	

YELLOW MEDICINE EAST – ISD 2190

Dwayne A. Strand, Superintendent
450 9th Avenue - Granite Falls, MN 56241
Phone: 320-564-4081 - Fax: 320-564-4781



To: School Board Members
From: Dwayne
RE: December Board Meeting
Date: January 4, 2008

The agenda, agenda notes and supporting exhibits for the January 8th meeting are provided on BoardBook for your review prior to the meeting.

As always, if you have questions or would like additional information for Monday night, please do not hesitate to contact me. If you will be unable to attend, please notify Denise.

Board Organization and Selection of Officers

2. Board Organization and Officers

Chairman Formo will call the meeting to order and lead the meeting through the election of the new chair. Once the chair is elected or re-elected, he/she will assume office and conduct the remainder of the meeting.

2.A. Chair

Nominations and election of the chair for the 2007 calendar year will take place.

2.B. Vice-Chair

Nominations and election of the vice chair for the 2007 calendar year will take place.

2.C. Clerk

Nominations and election of the clerk for the 2007 calendar year will take place.

2.D. Treasurer

Nominations and election of the treasurer for the 2007 calendar year will take place.

2.E. Committee Assignments

Included in the packet is a list of current board committee assignments. New assignments will be made on Monday night. If there is a committee you would like to serve on that you are not already on or one that you are on and you would rather not serve on, drop Denise a note and we will have that information ready for Monday night.

YME HIGH SCHOOL
Karen Norell, Principal
450 9th Avenue
Granite Falls, MN 56241
Phone: 320-564-4083
Fax: 320-564-4782

BERT RANEY ELEMENTARY
Stacy Hinz, Principal
555 7th Avenue
Granite Falls, MN 56241
Phone: 320-564-4082
Fax: 320-564-4427

H.A. HAGG ELEMENTARY
Stacy Hinz, Principal
1204 11th Avenue
Clarkfield, MN 56223
Phone: 320-669-4424
Fax: 320-669-4828

Committee Assignments

2006

ECFE Advisory Committee: *Volstad*
(Early Childhood Family Education)

MVCC Board: *Jepson, Eckhardt, Busack*
(Minnesota Valley Cooperative Center)

MRVED Board: *Formo*
(Minnesota River Valley Education District)

SW/WC SC Delegate: *Volstad*
(Southwest/West Central Service Cooperative)

RDC: *Fischer*
(Rural Development Commission)

MSHSL/Local Activities Representative: *Rillo*
(Minnesota State High School League)

Instructional and Curriculum Advisory Committee:
Fischer, Eckhardt

Staff Development: *Formo, Volstad*

Community Ed. Advisory:
Fischer – Clarkfield Site
Rillo – Granite Falls Site

IEIC Administrative Team: *Eckhardt*
(Interagency Early Identification Committee)

MSBA Legislative Liaison: *Formo*
(Minnesota School Board Association)

Policy Committee: *Eckhardt, Volstad, Busack*

Budget/Finance Committee: *Fischer, Formo*

Negotiations Committee: *Jepson, Formo, Volstad*

Technology Committee: *Eckhardt, Rillo*

Buildings & Grounds Committee: *Volstad, Jepson*

Transportation Committee: *Fischer, Volstad*

Swimming Pool Committee: *Fischer, Eckhardt*

PAC: *Eckhardt*
(Parent Advisory Committee)

Vocational Advisory Committee: *Jepson*

Safe Schools Advisory Committee: *Rillo*

Title I Parent Advisory Committee: *Busack*

Health and Wellness Advisory Committee: *Rillo*

**YELLOW MEDICINE EAST ISD #2190
BOARD OF EDUCATION MEETING MINUTES
DECEMBER 11, 2006 – 7:00 P.M.
YME BOARD ROOM**

Board Members Present: Kathy Busack, Cheryl Eckhardt, Chad Fischer, Rich Jepson, Art Rillo, Elmo Volstad,

Board Members Absent: Warren Formo

Community / Staff Members Present: Jack Anderson, Karla Anderson, Steve Barber, Mike Gaffaney, Robin Henderson, Stacy Hinz, Tim Knapper, Ethan Kontz, Mike Kontz, Sharon MacFarlane, Dan McGonigle, Karen Norell, Amy Rhode, Kelsey Rhode, Tim Rhode, Sherry Ristau, Dwayne Strand, Denise Streich, Helen Stukel, Kirsten Tjosas

The meeting was called to order by Vice-Chair Eckhardt.

Vice-Chair Eckhardt approved the agenda for the meeting with the addition of one report item and three discussion items.

Motion by Busack, second by Volstad and carried to approve the minutes from the November 13, 2006 meeting.

Sherry Ristau, from the Southwest Initiative Foundation presented an award to Jack Anderson who is donating it to the YME School Readiness Program. A grant was also awarded to the Project Respect program and was accepted by Dwayne Strand and Robin Henderson.

The fall coaches reported on their respective seasons - Steve Barber (Tennis), Mike Gaffaney (Football) and Kirsten Tjosas (Volleyball).

Vice-Chair Eckhardt recessed the meeting for the Truth in Taxation hearing. Once the hearing was completed, the meeting was reopened and Eckhardt continued with the evening's agenda.

Motion by Volstad, second by Busack and carried to approve November bills for payment in the amount of \$227,914.15, with checks numbered 10861 through 11013 and to approve investments for the District.

Fund balance, enrollment, and school lunch reports were submitted.

Ms. Sorenson submitted a written staff development and curriculum report.

Ms. Norell and Ms. Hinz were in attendance to present reports from their respective sites.

Board members Jepson and Volstad updated the Board on their recent meeting with Board representatives from RCW and MACCRAY.

Motion by Busack, second by Jepson and carried to approve a personal leave of absence for Claudia Juarez.

Motion by Busack, second by Jepson and carried to approve a teaching contract for Melissa Larson for the remainder of the 2006-2007 school year.

Motion by Busack, second by Jepson and carried to extend the contract for Corissa Sands by .167 FTE for the second semester of the 2006-2007 school year. Her contract will go to full time beginning on January 22, 2007.

Motion by Jepson, second by Rillo and carried to renew our subscription to the MASA jobsite for 2007. The cost of renewal is \$750.00.

Motion by Busack, second by Volstad and carried to adopt and certify the 2006 pay 2007 levy.

Motion by Jepson, second by Volstad and carried to approve the Schwickert's roof repair contract of \$14,410.00.

Discussion items included: the 2007 MSBA Annual Conference, 2007 Board committee assignments, the ERATE appeal, information on the Clarkfield Charter School, early retirement incentives, and maintenance items.

Upcoming Events & Activities

Cider & Cookies	December 13, 2006	YME Board Room	2:00 – 4:00 PM
MRVED Supt. Meeting	December 20, 2006	Montevideo	9:00 AM
Holiday Break	December 25, 2006 – January 2, 2007	District	
School Board Meeting	January 8, 2006	District	7:00 PM

The meeting was adjourned.

YELLOW MEDICINE EAST PUBLIC SCHOOLS

Independent School District 2190

Success for All Learners

2006-2007 FEDERAL ESEA PROGRAM OVERVIEW

- ✓ Funding is generated by the Federal Low Income Percent of Enrollment – **7.98** (8.33)
- ✓ Funds are distributed to Districts and Buildings by percent of students eligible to receive free or reduced meals
 - ✓ H.A. Hagg Elementary **60.65** (54.47)
 - ✓ Bert Raney Elementary **48.18** (44.02)
 - ✓ YME High School **33.45** (33.69)

Application is divided into Title Programs listed below:

TITLE I PART A

- ✓ Funds can be used to support supplementary instruction for qualifying schools in the areas of reading and math. Both elementary schools are targeted for receiving funds based on percentages of free and reduced students in attendance. Our funds are targeted towards implementing the literacy collaborative and supporting the instruction of reading.
- ✓ Both elementary schools have implemented school wide programs, which allows staff employed with Title I dollars to serve all students enrolled in the building.
- ✓ 06-07 program is written for **\$129,746.09** (\$139,922.00).
- ✓ Majority of dollars are spent on staff.

TITLE I PART C

- ✓ Funds are used to support Migrant Education.
- ✓ Migrant students are those children whose parents have come in the search of work in agriculture. A student can maintain their migrant status for up to three years.
- ✓ 06-07 program is written for **\$3,460.00** (\$9,377.00).
- ✓ The program dollars are spent to support a portion of a paraprofessional's position.

TITLE II PART A

- ✓ These funds are used to support staff development and other activities designed to insure that the teaching staff is highly qualified.
- ✓ Funds are spent on staff development activities as well as substitutes hired to allow for release time for staff to work on curriculum development activities.
- ✓ Again, the majority of our dollars are targeted towards implementing the literacy collaborative and supporting the instruction of reading.
- ✓ 06-07 program is written for **\$67,789.00** (\$74,773.00).

TITLE II PART D

- ✓ The funds are used to support technology advancement in the District.
- ✓ 06-07 program is written for **\$1,707.00** (\$2,329.00).
- ✓ LCD projectors for classroom instructors will again be purchased with these funds.

YELLOW MEDICINE EAST PUBLIC SCHOOLS

Independent School District 2190

Success for All Learners

TITLE III

- ✓ These funds are used to support English Language Learners.
- ✓ District must form a consortium of schools if they are not able to generate an allocation of \$10,000.00 – which translates into approximately 100 students.
- ✓ Our allocation is for **\$6,617.10** (\$4,893.00). We have formed a consortium through the MRVED.
- ✓ Funds are used for staff development activities for both certified staff and paraprofessionals.

TITLE IV

- ✓ These funds are used to support activities designed to promote safe and drug-free schools.
- ✓ Our funds are used to support a coordinator as well as lyceums and programs for students.
- ✓ Our allocation for 06-07 is **\$3,705.00** (\$4,983).

TITLE V

- ✓ Title V funds can be used to support one of 24 possible initiatives.
- ✓ Our funds are used to support a portion of our Reading Recovery program. This position provides tutoring services.
- ✓ Our entitlement for 06-07 is **\$2,226.00** (\$3,161.00).

CSR Grant

- ✓ Competitive grant for qualifying schools.
- ✓ \$100,000.00 a year for three years was originally awarded to the District.
- ✓ As the program was cut at the federal level, we will receive no grant dollars for the 06-07 school year (\$50,000).

**Numbers in () indicated dollars received for the 05-06 school year.*

Check Nbr	Vendor Name	Check Date	Invoice Number	Invoice Desc	PO Number	Invoice Amount	Check Amount
11050	ADVOCATE TRIBUNE	01/08/2007	1		0	288.75	288.75
01 E 005 010 000 000 380				BOARD OF EDUCATION//PRINTING/ADVERTISING		288.75	
11051	AMERICAN WELDING SUPPLIES	01/08/2007	1		0	44.55	44.55
01 E 300 301 501 830 433				AG EDUCATION (VOCATIONAL)/VOCATIONAL PROGRAMS/INDIVIDUAL		44.55	
11052	APPERT FOODS	01/08/2007	1		0	3,965.59	3,965.59
02 E 005 770 000 701 401				FOOD SERVICES/SCHOOL LUNCH/GENERAL SUPPLIES		78.70	
02 E 005 770 000 701 490				FOOD SERVICES/SCHOOL LUNCH/FOOD		3,203.11	
02 E 005 770 000 701 495				FOOD SERVICES/SCHOOL LUNCH/MILK		17.10	
02 E 005 770 000 705 490				FOOD SERVICES/BREAKFAST/FOOD		666.68	
11053	APPLE COMPUTER, INC.	01/08/2007	9246698911		52	1,199.00	1,199.00
01 E 300 211 150 000 555				SECONDARY EDUCATION GENERAL//TECHNOLOGY EQUIPMENT		1,199.00	
11054	AUS FLOORS & MORE	01/08/2007	9377	HAGG	0	5,222.75	5,222.75
01 E 025 850 000 302 522				FACILITIES/CAPITAL OUTLAY/BUILDING IMPROVEMENTS		5,222.75	
11055	AVENUES FOR CARE	01/08/2007	559		0	851.25	1,830.00
01 E 998 404 000 740 394				PHYSICALLY IMPAIRED/STATE FUNDED SPECIAL ED/PAYMENTS TO		851.25	
			571	DEC 06	0	978.75	
01 E 998 404 000 740 394				PHYSICALLY IMPAIRED/STATE FUNDED SPECIAL ED/PAYMENTS TO		978.75	
11056	SARAH BARTELS	01/08/2007	1		0	4.78	4.78
01 E 150 790 108 799 401				OTHER PUPIL SUPPORT SERVICES/OTHER GRANTS/GENERAL SUPPLI		4.78	
11057	BEFOUR INC	01/08/2007	34667		0	59.70	59.70
01 E 300 294 221 000 401				BOYS ATHLETICS//GENERAL SUPPLIES		59.70	
11058	Vendor Continued Void	01/08/2007					0.00
11059	Vendor Continued Void	01/08/2007					0.00
11060	BENNETT & BENNETT TRANSP. INC.	01/08/2007	1	regular ROUTES	0	51,389.73	74,848.20
01 E 005 760 000 720 361				PUPIL TRANSPORTATION/REGULAR TO AND FROM SCHOOL/BUS CONT		51,389.73	
			10	sh math league	0	68.78	
01 E 300 298 240 733 361				EXTRACURRICULAR ACTIVITIES/TRANSPORTATION/NON-AUTHORIZED		68.78	
			11	CLKFD. SHUTTLE	0	2,352.00	
01 E 005 760 000 720 361				PUPIL TRANSPORTATION/REGULAR TO AND FROM SCHOOL/BUS CONT		2,352.00	
			13	TAG KB	0	301.35	
01 E 300 218 000 733 361				GIFTED & TALENTED/TRANSPORTATION/NON-AUTHORIZED/BUS CONT		301.35	
			15	FIELD TRIPS HAGG	0	354.96	
01 E 150 203 000 733 361				ELEMENTARY GENERAL ED./TRANSPORTATION/NON-AUTHORIZED/BUS		354.96	
			2	FUEL	0	2,970.76	
01 E 005 760 000 720 361				PUPIL TRANSPORTATION/REGULAR TO AND FROM SCHOOL/BUS CONT		2,970.76	
			20	BRE FIELD TRIPS	0	275.38	
01 E 100 203 000 733 361				ELEMENTARY GENERAL ED./TRANSPORTATION/NON-AUTHORIZED/BUS		275.38	
			25	SH BB	0	908.93	
01 E 300 294 213 733 361				BOYS ATHLETICS/TRANSPORTATION/NON-AUTHORIZED/BUS CONTRAC		908.93	
			26	GBB	0	572.49	
01 E 300 296 213 733 361				GIRLS ATHLETICS/TRANSPORTATION/NON-AUTHORIZED/BUS CONTRA		572.49	
			27	WRESTLING	0	1,568.73	
01 E 300 294 221 733 361				BOYS ATHLETICS/TRANSPORTATION/NON-AUTHORIZED/BUS CONTRAC		1,568.73	
			3	OUT OF DISTRICT	0	3,528.00	
01 E 005 760 000 713 361				PUPIL TRANSPORTATION/OPEN ENROLLMENT/BUS CONTRACT (XWK T		3,528.00	
			4	ATHLETIC SHUTTLE	0	593.25	
01 E 005 760 000 717 361				PUPIL TRANSPORTATION/LATE ACTIVITY BUS/BUS CONTRACT (XWK		593.25	
			5	SPECIAL NEEDS	0	9,933.84	
01 E 005 760 000 723 361				PUPIL TRANSPORTATION/HANDICAPPED/BUS CONTRACT (XWK TO 36		9,933.84	

Check Nbr	Vendor Name	Check Date	Invoice Number	Invoice Desc	PO Number	Invoice Amount	Check Amount
			6	RENT	0	30.00	
01 E 300 298 000 000 370				EXTRACURRICULAR ACTIVITIES//RENTALS AND LEASES		30.00	
11061 BERNICK'S PEPSI-COLA		01/08/2007	1	ST. COUNCIL	0	45.90	45.90
01 L 230 39				GENERAL FUND/DEFERRED REVENUE/BERT RANEY JUICE MACHNINE		45.90	
11062 BEST BUSINESS PRODUCTS		01/08/2007	828060	REGULAR SUPPLIES	0	151.23	151.23
02 E 005 770 000 701 401				FOOD SERVICES/SCHOOL LUNCH/GENERAL SUPPLIES		151.23	
11063 BILL'S ELECTRIC		01/08/2007	1	BOILER ROOM	0	226.72	611.14
01 E 025 810 000 000 350				OPERATIONS AND MAINTENANCE//REPAIRS AND MAINTENANCE SVCS		226.72	
			3540		0	384.42	
01 E 005 810 000 000 410				OPERATIONS AND MAINTENANCE//CUST/REPAIR SUPPLIES		384.42	
11064 HELEN M BLUE-REDNER		01/08/2007	1		0	71.76	71.76
01 E 100 203 000 000 366				ELEMENTARY GENERAL ED.//TRAVEL-SCHOOL BUSINESS		71.76	
11065 BRUFLAT PLUMBING & HEATING INC		01/08/2007	3204	EAST GYM	0	233.27	233.27
01 E 025 810 000 000 350				OPERATIONS AND MAINTENANCE//REPAIRS AND MAINTENANCE SVCS		233.27	
11066 BUREAU OF EDUCATION & RESEARCH		01/08/2007	3582130		210	185.00	185.00
01 E 300 640 000 306 367				STAFF DEVELOPMENT/STAFF DEV. 50% SITE/TRAVEL-PROFESS DEV		185.00	
11067 CALLOWAY HOUSE, INC.		01/08/2007	7774664		196	32.90	32.90
01 E 100 203 403 000 460				ELEMENTARY GENERAL ED.//BOOKS/WORKBOOKS		32.90	
11068 CANBY NEWS		01/08/2007	57941	DCL	0	11.10	11.10
04 E 500 505 000 321 450				COMMUNITY EDUCATION GENERAL/COMMUNITY EDUCATION/MATERIAL		11.10	
11069 CAPITAL ONE, F.S.B.		01/08/2007	1		0	31.30	65.62
01 E 200 612 199 000 401				TECHNOLOGY//GENERAL SUPPLIES		31.30	
			2		0	34.32	
01 E 300 211 000 000 329				SECONDARY EDUCATION GENERAL//POSTAGE AND EXPRESS		34.32	
11070 CARL'S BAKERY		01/08/2007	1		0	82.71	162.22
02 E 025 770 000 701 490				FOOD SERVICES/SCHOOL LUNCH/FOOD		82.71	
			1885		21	6.55	
09 L 230 26				TRUST FUND/DEFERRED REVENUE/SR CITIZENS CENTER		6.55	
			756		238	72.96	
01 E 100 790 108 799 401				OTHER PUPIL SUPPORT SERVICES/OTHER GRANTS/GENERAL SUPPLI		72.96	
11071 CASEY'S		01/08/2007	119021		258	27.58	27.58
01 E 100 790 308 799 401				OTHER PUPIL SUPPORT SERVICES/OTHER GRANTS/GENERAL SUPPLI		27.58	
11072 CDW GOVERNMENT, INC.		01/08/2007	CTM4428		0	131.88	925.28
01 E 300 255 000 000 430				INDUSTRIAL EDUCATION//SUPPLIES		131.88	
			CTM9262		219	588.91	
01 E 300 257 000 000 433				COMPUTER TECHNOLOGY//INDIVIDUAL INST SUPPLIES		588.91	
			CTR9195		50	165.80	
01 E 200 612 120 301 555				TECHNOLOGY/CAPITAL (NON 302 FIN)/TECHNOLOGY EQUIPMENT		165.80	
			CTW3530		0	38.69	
01 E 200 612 000 302 555				TECHNOLOGY/CAPITAL OUTLAY/TECHNOLOGY EQUIPMENT		38.69	
11073 CENEX CREDIT CARD		01/08/2007	1		0	535.77	535.77
01 E 005 810 193 000 442				OPERATIONS AND MAINTENANCE//GAS & OIL		535.77	
11074 CENTERING CORPORATION		01/08/2007	602729		229	57.65	57.65
01 L 230 92				GENERAL FUND/DEFERRED REVENUE/BC/BS SETTLEMENT		57.65	
11075 CHILDCRAFT ED CORP		01/08/2007	M047149401018		0	267.89	267.89
01 E 150 203 000 302 530				ELEMENTARY GENERAL ED./CAPITAL OUTLAY/EQUIPMENT PURCHASE		267.89	
11076 CITY OF CLARKFIELD		01/08/2007	1		0	433.33	433.33

Check Nbr	Vendor Name	Check Date	Invoice Number	Invoice Desc	PO Number	Invoice Amount	Check Amount
01 E 005 810 183 000 330				OPERATIONS AND MAINTENANCE//UTILITY SERVICES		433.33	
11077 CITY OF GRANITE FALLS		01/08/2007	1	SWR/WTR	0	1,548.24	10,622.55
01 E 005 810 183 000 330				OPERATIONS AND MAINTENANCE//UTILITY SERVICES		1,548.24	
			2	ELEC	0	8,991.17	
01 E 005 810 184 000 330				OPERATIONS AND MAINTENANCE//UTILITY SERVICES		8,991.17	
			3	GARAGE	0	75.14	
01 E 005 810 191 000 330				OPERATIONS AND MAINTENANCE//UTILITY SERVICES		75.14	
			4	CARPENTRY	0	8.00	
01 E 300 361 000 830 330				CARPENTRY (HOUSE)/VOCATIONAL PROGRAMS/UTILITY SERVICES		8.00	
11078 CITY OF GRANITE FALLS		01/08/2007	1372		0	65.50	65.50
09 L 230 26				TRUST FUND/DEFERRED REVENUE/SR CITIZENS CENTER		65.50	
11079 CITY OF GRANITE FALLS		01/08/2007	1376		0	167.50	167.50
04 E 500 505 000 321 450				COMMUNITY EDUCATION GENERAL/COMMUNITY EDUCATION/MATERIAL		167.50	
11080 CLASSROOM DIRECT/REPRINT		01/08/2007	4174370001		222	135.98	335.88
01 E 100 203 000 000 899				ELEMENTARY GENERAL ED.//MISCELLANEOUS EXPENSE		135.98	
			4177250001		229	199.90	
01 E 150 203 000 000 430				ELEMENTARY GENERAL ED.//SUPPLIES		199.90	
11081 FERN CLOUD		01/08/2007	1	BUFFALO PRESENTATION	0	200.00	200.00
01 E 100 790 108 799 305				OTHER PUPIL SUPPORT SERVICES/OTHER GRANTS/PROFESSIONAL F		200.00	
11082 COMMISSIONER OF EDUCATION		01/08/2007	1		0	30.00	30.00
01 E 300 640 000 306 367				STAFF DEVELOPMENT/STAFF DEV. 50% SITE/TRAVEL-PROFESS DEV		30.00	
11083 COMPUTER MAN		01/08/2007	231131		0	160.45	160.45
01 E 100 203 000 000 350				ELEMENTARY GENERAL ED.//REPAIRS AND MAINTENANCE SVCS		160.45	
11084 COMPVIEW		01/08/2007	136995	4 overheads	227	792.00	792.00
01 E 100 203 000 302 530				ELEMENTARY GENERAL ED./CAPITAL OUTLAY/EQUIPMENT PURCHASE		792.00	
11085 CONSUMERS COOPERATIVE OIL CO.		01/08/2007	1		0	20.14	20.14
01 E 025 810 193 000 442				OPERATIONS AND MAINTENANCE//GAS & OIL		20.14	
11086 TIM CROWLEY		01/08/2007	1		0	75.00	75.00
01 E 300 408 390 000 305				EMOTION/BEHAVIORAL DISORDER//PROFESSIONAL FEES		75.00	
11087 CULLIGAN		01/08/2007	1		0	10.02	32.75
01 E 025 810 183 000 330				OPERATIONS AND MAINTENANCE//UTILITY SERVICES		10.02	
			10		0	22.73	
01 E 025 810 183 000 330				OPERATIONS AND MAINTENANCE//UTILITY SERVICES		22.73	
11088 DACEY, FLORENCE		01/08/2007	1	PIONEER RESIDENCY	0	2,270.80	2,270.80
01 E 100 790 108 799 305				OTHER PUPIL SUPPORT SERVICES/OTHER GRANTS/PROFESSIONAL F		2,270.80	
11089 DAVE'S ELECTRIC CO		01/08/2007	1		0	30.25	42.25
01 L 230 04				GENERAL FUND/DEFERRED REVENUE/HIGH SCHOOL LOUNGE		30.25	
			2		0	12.00	
01 L 230 03				GENERAL FUND/DEFERRED REVENUE/BERT RANEY LOUNGE		12.00	
11090 DEAN FOODS NORTH CENTRAL, INC.		01/08/2007	1		0	2,314.20	2,947.74
02 E 005 770 000 701 495				FOOD SERVICES/SCHOOL LUNCH/MILK		1,650.96	
02 E 005 770 000 705 495				FOOD SERVICES/BREAKFAST/MILK		362.16	
02 E 005 770 000 707 495				FOOD SERVICES/ALA CARTE/OTHER/MILK		301.08	
			10		0	633.54	
02 E 025 770 000 701 495				FOOD SERVICES/SCHOOL LUNCH/MILK		271.30	
02 E 025 770 000 705 495				FOOD SERVICES/BREAKFAST/MILK		100.94	
02 E 025 770 000 707 495				FOOD SERVICES/ALA CARTE/OTHER/MILK		261.30	

Check Nbr	Vendor Name	Check Date	Invoice Number	Invoice Desc	PO Number	Invoice Amount	Check Amount
11091	DELTA EDUCATION	01/08/2007	202500002604		0	263.02	282.42
01 E 100 203 000 000 899				ELEMENTARY GENERAL ED.//MISCELLANEOUS EXPENSE		263.02	
			202500006005		224	19.40	
01 E 100 203 000 000 899				ELEMENTARY GENERAL ED.//MISCELLANEOUS EXPENSE		19.40	
11092	DEMCO, INC.	01/08/2007	2674894		225	129.94	129.94
01 E 300 620 000 000 401				EDUCATIONAL MEDIA/LIBRARY//GENERAL SUPPLIES		129.94	
11093	DHARMA TRADING CO.	01/08/2007	490466		235	56.43	56.43
01 E 100 790 308 799 401				OTHER PUPIL SUPPORT SERVICES/OTHER GRANTS/GENERAL SUPPLI		56.43	
11094	DITTRICH, MARY	01/08/2007	1		0	125.74	125.74
02 E 005 770 000 701 899				FOOD SERVICES/SCHOOL LUNCH/MISCELLANEOUS EXPENSE		125.74	
11095	DIVINE HOUSE, INC.	01/08/2007	1		0	474.00	474.00
01 E 998 416 000 740 394				MULTIPLE DISABILITIES/STATE FUNDED SPECIAL ED/PAYMENTS T		474.00	
11096	DOLLAR STOP	01/08/2007	1		248	22.00	22.00
01 E 100 790 308 799 401				OTHER PUPIL SUPPORT SERVICES/OTHER GRANTS/GENERAL SUPPLI		22.00	
11097	DOTY, JILL	01/08/2007	1		0	41.06	41.06
01 E 200 219 000 317 366				LEP/COMPENSATORY/TRAVEL-SCHOOL BUSINESS		41.06	
11098	Vendor Continued Void	01/08/2007					0.00
11099	DU-MART	01/08/2007	1		0	119.42	269.25
01 E 300 790 309 799 401				OTHER PUPIL SUPPORT SERVICES/OTHER GRANTS/GENERAL SUPPLI		119.42	
			2138		247	34.09	
01 E 100 790 308 799 401				OTHER PUPIL SUPPORT SERVICES/OTHER GRANTS/GENERAL SUPPLI		34.09	
			2502		255	18.05	
01 E 100 790 308 799 401				OTHER PUPIL SUPPORT SERVICES/OTHER GRANTS/GENERAL SUPPLI		18.05	
			2728		216	20.94	
01 E 300 211 000 000 430				SECONDARY EDUCATION GENERAL//SUPPLIES		20.94	
			2732		239	21.27	
01 E 100 790 108 799 401				OTHER PUPIL SUPPORT SERVICES/OTHER GRANTS/GENERAL SUPPLI		21.27	
			2742		216	39.80	
01 E 300 211 000 000 430				SECONDARY EDUCATION GENERAL//SUPPLIES		39.80	
			2750		253	15.68	
01 E 100 790 308 799 401				OTHER PUPIL SUPPORT SERVICES/OTHER GRANTS/GENERAL SUPPLI		15.68	
11100	ECHO CHARTER SCHOOL	01/08/2007	1		0	200.00	200.00
01 E 100 412 000 740 390				ECSE SPEC ED/STATE FUNDED SPECIAL ED/TUITION TO OTH MN S		200.00	
11101	ECONOMART	01/08/2007	1		0	1,497.78	1,503.58
01 E 300 331 000 830 433				VOCATIONAL HOME EC/VOCATIONAL PROGRAMS/INDIVIDUAL INST S		816.70	
02 E 005 770 000 701 401				FOOD SERVICES/SCHOOL LUNCH/GENERAL SUPPLIES		12.18	
01 E 100 790 308 799 401				OTHER PUPIL SUPPORT SERVICES/OTHER GRANTS/GENERAL SUPPLI		192.61	
01 E 100 203 362 000 899				ELEMENTARY GENERAL ED.//MISCELLANEOUS EXPENSE		272.25	
01 E 100 790 108 799 401				OTHER PUPIL SUPPORT SERVICES/OTHER GRANTS/GENERAL SUPPLI		26.67	
01 E 300 790 309 799 401				OTHER PUPIL SUPPORT SERVICES/OTHER GRANTS/GENERAL SUPPLI		143.84	
01 E 005 790 721 000 401				OTHER PUPIL SUPPORT SERVICES//GENERAL SUPPLIES		33.53	
			50		0	5.80	
01 E 300 331 000 830 433				VOCATIONAL HOME EC/VOCATIONAL PROGRAMS/INDIVIDUAL INST S		5.80	
11102	EDUCATORS OUTLET	01/08/2007	306556		0	55.23	55.23
01 E 150 201 000 000 430				KINDERGARTEN//SUPPLIES		55.23	
11103	EHLERS AND ASSOCIATES	01/08/2007	334090	referendum	0	3,586.41	3,586.41
01 E 005 199 000 000 305				SCHOOL ELECTIONS//PROFESSIONAL FEES		3,586.41	
11104	FARMERS UNION OIL CO.	01/08/2007	1		0	293.16	293.16
01 E 005 810 191 000 410				OPERATIONS AND MAINTENANCE//CUST/REPAIR SUPPLIES		293.16	

Check Nbr	Vendor Name	Check Date	Invoice Number	Invoice Desc	PO Number	Invoice Amount	Check Amount
11105	FLAGHOUSE, INC. 01 E 300 296 213 000 401	01/08/2007	1	GIRLS ATHLETICS//GENERAL SUPPLIES	0	228.85 228.85	228.85
11106	FOOD SERVICES OF AMERICA 02 E 025 770 000 701 490 02 E 025 770 000 705 490	01/08/2007	1	FOOD SERVICES/SCHOOL LUNCH/FOOD FOOD SERVICES/BREAKFAST/FOOD	0	853.42 535.00 318.42	853.42
11107	FRONTIER TELEPHONE 01 E 025 810 000 000 320	01/08/2007	1	OPERATIONS AND MAINTENANCE//COMMUNICATIONAL SERVICES	0	336.67 336.67	336.67
11108	FRY, JILL 01 E 100 790 308 799 361	01/08/2007	1	OTHER PUPIL SUPPORT SERVICES/OTHER GRANTS/BUS CONTRACT (0	82.80 82.80	82.80
11109	G & K SERVICES 02 E 025 770 000 701 382 01 E 025 810 000 000 382	01/08/2007	1 2	FOOD SERVICES/SCHOOL LUNCH/LAUNDRY AND DRY CLEANING OPERATIONS AND MAINTENANCE//LAUNDRY AND DRY CLEANING	0 0	64.21 64.21 344.79 344.79	409.00
11110	GOODFELLOWS RESTAURANT 09 L 230 28	01/08/2007	1	TRUST FUND/DEFERRED REVENUE/SENIOR CITIZENS CARD PROJECT	20	227.93 227.93	227.93
11111	GRANITE BOWLING CENTER 01 E 300 790 309 799 401	01/08/2007	1	OTHER PUPIL SUPPORT SERVICES/OTHER GRANTS/GENERAL SUPPLI	0	65.55 65.55	65.55
11112	GRANITE FALLS AUTO PARTS 01 E 005 810 193 000 401 01 E 300 301 501 830 433	01/08/2007	1 2	OPERATIONS AND MAINTENANCE//GENERAL SUPPLIES AG EDUCATION (VOCATIONAL)/VOCATIONAL PROGRAMS/INDIVIDUAL	0 0	140.01 140.01 46.69 46.69	186.70
11113	GRANITE FALLS BANK 01 E 300 211 000 000 899	01/08/2007	1	SECONDARY EDUCATION GENERAL//MISCELLANEOUS EXPENSE	0	32.00 32.00	32.00
11114	GRANITE FLORAL & GREENHOUSE 01 E 300 301 501 830 433	01/08/2007	69129	AG EDUCATION (VOCATIONAL)/VOCATIONAL PROGRAMS/INDIVIDUAL	217	49.00 49.00	49.00
11115	GREAT PLAINS NATURAL GAS CO 01 E 025 810 000 000 440 01 E 005 810 000 000 440 01 E 025 810 000 000 440 01 E 005 810 191 000 440	01/08/2007	1 10 2 22	OPERATIONS AND MAINTENANCE//FUEL FOR BUILDINGS OPERATIONS AND MAINTENANCE//FUEL FOR BUILDINGS OPERATIONS AND MAINTENANCE//FUEL FOR BUILDINGS OPERATIONS AND MAINTENANCE//FUEL FOR BUILDINGS	0 0 0 0	5,924.91 5,924.91 10,023.02 10,023.02 52.22 52.22 149.72 149.72	16,149.87
11116	GREAT PLAINS SPORTS 01 E 005 850 000 302 522 01 E 300 296 213 000 401 01 E 300 292 219 000 401 01 E 300 294 215 000 401 01 E 300 296 210 000 401 09 L 230 20 01 E 300 294 221 000 401	01/08/2007	311300 312843 312975 313021	VB PLATES FACILITIES/CAPITAL OUTLAY/BUILDING IMPROVEMENTS GIRLS ATHLETICS//GENERAL SUPPLIES BOYS/GIRLS ATHLETICS//GENERAL SUPPLIES BOYS ATHLETICS//GENERAL SUPPLIES GIRLS ATHLETICS//GENERAL SUPPLIES TRUST FUND/DEFERRED REVENUE/DONATION (ANONYMOUS) BOYS ATHLETICS//GENERAL SUPPLIES	0 0 0 0 0	326.10 326.10 390.23 390.23 5,730.00 100.00 100.00 180.00 5,350.00 224.03 224.03	6,670.36
11117	H & H CONST. INC 01 E 005 810 191 000 350	01/08/2007	1	OPERATIONS AND MAINTENANCE//REPAIRS AND MAINTENANCE SVCS	0	200.00 200.00	200.00
11118	HAMMETTE INTERNATIONAL INC 01 L 230 43	01/08/2007	42552	GENERAL FUND/DEFERRED REVENUE/SR HIGH PROJECTS	0	111.00 111.00	111.00

Check Nbr	Vendor Name	Check Date	Invoice Number	Invoice Desc	PO Number	Invoice Amount	Check Amount
11119	HAMPTON-BROWN	01/08/2007	158660		35	43.31	43.31
01 E 100 219 000 317 460				LEP/COMPENSATORY/BOOKS/WORKBOOKS		43.31	
11120	HANSEN, LISA	01/08/2007	1		0	86.94	86.94
01 E 100 204 000 414 366				TITLE II EISENHWOER/TITLE II ESEA/TRAVEL-SCHOOL BUSINESS		86.94	
11121	HANSEN SHARPENING SERVICE	01/08/2007	1923		0	106.70	106.70
01 E 300 255 000 000 430				INDUSTRIAL EDUCATION//SUPPLIES		106.70	
11122	HENDERSON, ROBIN	01/08/2007	1	AFS	0	768.07	768.07
01 E 100 790 308 799 401				OTHER PUPIL SUPPORT SERVICES/OTHER GRANTS/GENERAL SUPPLI		768.07	
11123	HILLYARD/HUTCHINSON	01/08/2007	1951610		0	3,753.54	3,753.54
01 E 005 810 000 000 410				OPERATIONS AND MAINTENANCE//CUST/REPAIR SUPPLIES		3,753.54	
11124	HINZ, STACY	01/08/2007	1		0	89.50	544.50
01 E 100 203 000 000 899				ELEMENTARY GENERAL ED./MISCELLANEOUS EXPENSE		89.50	
			10	RR CONFERENCE	0	530.00	
01 E 100 204 000 414 367				TITLE II EISENHWOER/TITLE II ESEA/TRAVEL-PROFESS DEVELOP		530.00	
			2		0	-75.00	
01 E 100 640 000 306 367				STAFF DEVELOPMENT/STAFF DEV. 50% SITE/TRAVEL-PROFESS DEV		-75.00	
11125	HOFFMAN & BROBST	01/08/2007	340450	FY06 AUDIT	0	11,620.00	11,620.00
01 E 005 110 000 000 311				ACCOUNTING OFFICE//PROFESSIONAL/TECHNICAL SVCS		11,620.00	
11126	HOLMBERG ORCHARD	01/08/2007	1		0	34.00	34.00
01 L 230 56				GENERAL FUND/DEFERRED REVENUE/HAGG ELEMENTARY SCHOOL ACT		34.00	
11127	HOLUM, DIANE	01/08/2007	1		0	576.34	576.34
01 E 100 203 113 317 366				ELEMENTARY GENERAL ED./COMPENSATORY/TRAVEL-SCHOOL BUSINE		576.34	
11128	HOMWOOD SUITES	01/08/2007	33306	linden	0	432.00	432.00
01 E 100 204 000 414 367				TITLE II EISENHWOER/TITLE II ESEA/TRAVEL-PROFESS DEVELOP		432.00	
11129	HOUGHTON MIFFLIN CO	01/08/2007	940127984		0	174.90	174.90
01 E 100 203 000 302 560				ELEMENTARY GENERAL ED./CAPITAL OUTLAY/TEXTBOOK/LIBRARY B		174.90	
11130	HYATT REGENCY MINNEAPOLIS	01/08/2007	A-18661	TIES	36	698.75	698.75
01 E 300 204 000 414 366				TITLE II EISENHWOER/TITLE II ESEA/TRAVEL-SCHOOL BUSINESS		698.75	
11131	IKON FINANCIAL SERVICES	01/08/2007	1		0	1,252.00	1,252.00
01 E 005 020 000 302 580				SUPERINTENDENT'S OFFICE/CAPITAL OUTLAY/CAPITAL LEASE PRI		255.00	
01 E 100 203 000 302 580				ELEMENTARY GENERAL ED./CAPITAL OUTLAY/CAPITAL LEASE PRIN		274.00	
01 E 300 211 000 302 580				SECONDARY EDUCATION GENERAL/CAPITAL OUTLAY/CAPITAL LEASE		274.00	
01 E 300 620 000 302 580				EDUCATIONAL MEDIA/LIBRARY/CAPITAL OUTLAY/CAPITAL LEASE P		175.00	
01 E 150 203 000 302 580				ELEMENTARY GENERAL ED./CAPITAL OUTLAY/CAPITAL LEASE PRIN		274.00	
11132	IKON OFFICE SOLUTIONS	01/08/2007	2315865A		0	150.00	150.00
01 E 300 211 000 000 430				SECONDARY EDUCATION GENERAL//SUPPLIES		150.00	
11133	INNOVATIVE OFFICE SOLUTIONS, L	01/08/2007	1		0	121.18	305.97
01 E 150 203 000 000 401				ELEMENTARY GENERAL ED./GENERAL SUPPLIES		121.18	
			57360-1		0	174.80	
01 E 300 211 000 000 899				SECONDARY EDUCATION GENERAL//MISCELLANEOUS EXPENSE		174.80	
			OE57862-1		222	9.99	
01 E 300 258 231 000 430				MUSIC//SUPPLIES		9.99	
11134	ISCORP	01/08/2007	631446		0	195.50	195.50
01 E 005 110 000 000 350				ACCOUNTING OFFICE//REPAIRS AND MAINTENANCE SVCS		195.50	
11135	TAMARA ISFELD	01/08/2007	1		0	125.00	125.00
01 E 300 790 309 799 401				OTHER PUPIL SUPPORT SERVICES/OTHER GRANTS/GENERAL SUPPLI		125.00	
11136	J & S ONE STOP	01/08/2007	1		0	87.34	87.34
01 E 300 790 309 799 401				OTHER PUPIL SUPPORT SERVICES/OTHER GRANTS/GENERAL SUPPLI		87.34	

Check Nbr	Vendor Name	Check Date	Invoice Number	Invoice Desc	PO Number	Invoice Amount	Check Amount
11137	ELIZABETH JAHN	01/08/2007	1	AOSA CONF.	0	434.02	434.02
01 E 100 204 000 414 367				TITLE II EISENHWOER/TITLE II ESEA/TRAVEL-PROFESS DEVELOP		434.02	
11138	JIMMY'S PIZZA	01/08/2007	595193		0	87.00	87.00
01 E 300 790 309 799 401				OTHER PUPIL SUPPORT SERVICES/OTHER GRANTS/GENERAL SUPPLI		87.00	
11139	JOHNSON CONTROLS	01/08/2007	612120699		0	880.55	880.55
01 E 005 810 000 000 350				OPERATIONS AND MAINTENANCE//REPAIRS AND MAINTENANCE SVCS		880.55	
11140	KHALI, MARGARET	01/08/2007	1		0	29.63	29.63
01 L 230 62				GENERAL FUND/DEFERRED REVENUE/TEENS ETC. (KHALI)		29.63	
11141	KLOCKIT	01/08/2007	2601547		0	187.83	187.83
01 E 300 255 000 000 430				INDUSTRIAL EDUCATION//SUPPLIES		187.83	
11142	KUBITZ EDUCATIONAL SERVICES	01/08/2007	8975		0	202.50	202.50
01 E 100 203 113 317 430				ELEMENTARY GENERAL ED./COMPENSATORY/SUPPLIES		202.50	
11143	KVAM, PEGGY	01/08/2007	1		0	71.76	71.76
01 E 100 204 000 414 366				TITLE II EISENHWOER/TITLE II ESEA/TRAVEL-SCHOOL BUSINESS		71.76	
11144	LADNER'S HARDWARE	01/08/2007	1		0	537.01	537.01
01 E 005 810 000 000 410				OPERATIONS AND MAINTENANCE//CUST/REPAIR SUPPLIES		258.10	
01 E 005 810 191 000 410				OPERATIONS AND MAINTENANCE//CUST/REPAIR SUPPLIES		41.55	
01 E 005 810 193 000 401				OPERATIONS AND MAINTENANCE//GENERAL SUPPLIES		19.47	
01 E 300 255 000 000 430				INDUSTRIAL EDUCATION//SUPPLIES		12.77	
01 E 300 301 501 830 433				AG EDUCATION (VOCATIONAL)/VOCATIONAL PROGRAMS/INDIVIDUAL		66.72	
02 E 005 770 000 701 401				FOOD SERVICES/SCHOOL LUNCH/GENERAL SUPPLIES		29.99	
01 E 100 790 308 799 401				OTHER PUPIL SUPPORT SERVICES/OTHER GRANTS/GENERAL SUPPLI		108.41	
11145	LAKE COUNTRY SCALE WORKS, INC.	01/08/2007	12534		0	100.00	100.00
01 E 300 294 221 000 401				BOYS ATHLETICS//GENERAL SUPPLIES		100.00	
11146	LIFELINE AED INC.	01/08/2007	LL-1628		0	100.00	300.00
01 L 230 92				GENERAL FUND/DEFERRED REVENUE/BC/BS SETTLEMENT		100.00	
				LL-1629	0	100.00	
01 L 230 92				GENERAL FUND/DEFERRED REVENUE/BC/BS SETTLEMENT		100.00	
				LL-1630	0	100.00	
01 L 230 92				GENERAL FUND/DEFERRED REVENUE/BC/BS SETTLEMENT		100.00	
11147	LIFETOUGH	01/08/2007	1	ELEM. YEARBOOK	0	1,682.16	1,682.16
01 L 230 33				GENERAL FUND/DEFERRED REVENUE/BERT RANEY ACTIVITY ACCOUN		1,682.16	
11148	CAROLINE LINDEN	01/08/2007	1		0	302.30	302.30
01 E 100 204 000 414 367				TITLE II EISENHWOER/TITLE II ESEA/TRAVEL-PROFESS DEVELOP		302.30	
11149	MACDOCTORS	01/08/2007	1022965	FREIGHT	0	27.00	27.00
01 E 300 211 000 000 329				SECONDARY EDUCATION GENERAL//POSTAGE AND EXPRESS		27.00	
11150	MARSHALL INDEPENDENT	01/08/2007	1		0	119.60	119.60
01 E 150 620 000 000 489				EDUCATIONAL MEDIA/LIBRARY//PERIODICAL/NEWSPAPERS		119.60	
11151	MASA	01/08/2007	1	07 MEMBERSHIP	0	750.00	750.00
01 E 005 010 000 000 820				BOARD OF EDUCATION//DUES & MEMBERSHIPS		750.00	
11152	MCCOY, KAREN	01/08/2007	1		0	5.31	5.31
01 E 200 612 199 000 401				TECHNOLOGY//GENERAL SUPPLIES		5.31	
11153	MDE	01/08/2007	14133	LARGE SITE LICENSE	0	1,085.00	1,085.00
01 E 300 710 000 000 401				COUNSELING/GUIDANCE//GENERAL SUPPLIES		1,085.00	
11154	MEEKER & WRIGHT SP ED COOP	01/08/2007	1	7-06-06 TO 7-27-06	0	60.16	4,766.41
01 E 998 407 000 740 390				SPECIFIC LEARNING DISABILIT/STATE FUNDED SPECIAL ED/TUIT		60.16	
			2	SEPT-NOV 2006	0	3,973.00	
01 E 998 407 000 740 390				SPECIFIC LEARNING DISABILIT/STATE FUNDED SPECIAL ED/TUIT		3,973.00	

Check Nbr	Vendor Name	Check Date	Invoice Number	Invoice Desc	PO Number	Invoice Amount	Check Amount
			DEC06		0	733.25	
01 E 998 407 000 740 390				SPECIFIC LEARNING DISABILIT/STATE FUNDED SPECIAL ED/TUIT		733.25	
11155 MERLIN'S WOODCRAFTS		01/08/2007	48		0	145.00	145.00
01 E 100 203 000 000 899				ELEMENTARY GENERAL ED./MISCELLANEOUS EXPENSE		145.00	
11156 MESPA		01/08/2007	1	06-07 DUES - S. HINZ	0	610.00	610.00
01 E 100 050 000 000 820				PRINCIPAL'S OFFICE//DUES & MEMBERSHIPS		610.00	
11157 MILLER EQUIPMENT & MFG, INC		01/08/2007	5062		0	18.00	18.00
01 E 025 810 000 000 350				OPERATIONS AND MAINTENANCE//REPAIRS AND MAINTENANCE SVCS		18.00	
11158 MIXED BLOOD THEATRE CO		01/08/2007	1		0	625.00	625.00
01 E 200 206 000 433 305				DRUG FREE \$ FED./DRUG F SCH/PROFESSIONAL FEES		625.00	
11159 MMEA		01/08/2007	1831		228	90.00	90.00
01 E 300 640 000 306 367				STAFF DEVELOPMENT/STAFF DEV. 50% SITE/TRAVEL-PROFESS DEV		90.00	
11160 MN DEPT. OF EDUCATION		01/08/2007	1	FIRST FIVE MENTORSHIP PROGRAM	0	600.00	600.00
01 E 300 204 000 414 367				TITLE II EISENHWOER/TITLE II ESEA/TRAVEL-PROFESS DEVELOP		600.00	
11161 MINNESOTA ELEVATOR, INC.		01/08/2007	109767		0	112.22	386.34
01 E 025 860 000 347 590				HEALTH & SAFETY EQUIP/PHYSICAL HAZARD CONTROL/OTHER CAPI		112.22	
			110559		0	274.12	
01 E 005 860 000 347 590				HEALTH & SAFETY EQUIP/PHYSICAL HAZARD CONTROL/OTHER CAPI		274.12	
11162 MN FOOD SERVICE COMPLIANCE CEN		01/08/2007	1		0	179.00	179.00
02 E 005 770 000 701 401				FOOD SERVICES/SCHOOL LUNCH/GENERAL SUPPLIES		179.00	
11163 MONTEVIDEO SCHOOL DISTRICT 129		01/08/2007	07-655	1/2 JULY-DEC. CURRICULUM COOR.	0	13,675.94	13,675.94
01 E 005 610 129 308 391				CURRICULUM CONSULTANT & DEVLOP/STAFF DEV. 25% DIST. WIDE		13,675.94	
11164 MUSIC MART		01/08/2007	497460		0	78.60	78.60
01 E 300 258 233 000 430				MUSIC//SUPPLIES		78.60	
11165 MUSIC STREET		01/08/2007	114524		227	61.25	73.25
01 E 300 258 233 000 450				MUSIC//MATERIALS PURCH FOR RESALE		61.25	
			31023		0	12.00	
01 E 300 258 233 000 350				MUSIC//REPAIRS AND MAINTENANCE SVCS		12.00	
11166 MVCC		01/08/2007	'07-02	2ND QTR.	0	130,000.00	130,000.00
01 E 200 420 000 310 396				SPECIAL EDUCATIONAL GENERAL/COOPERATIVE/DUE TO SCHOOLS S		130,000.00	
11167 MVCC		01/08/2007	-07-02'	2ND QTR	0	127,320.93	127,320.93
01 E 200 420 000 310 396				SPECIAL EDUCATIONAL GENERAL/COOPERATIVE/DUE TO SCHOOLS S		127,320.93	
11168 MVCC		01/08/2007	07-02	2ND QTR.	0	130,000.00	130,000.00
01 E 200 420 000 310 396				SPECIAL EDUCATIONAL GENERAL/COOPERATIVE/DUE TO SCHOOLS S		130,000.00	
11169 MVTV		01/08/2007	1		0	200.00	200.00
01 E 005 810 000 311 320				OPERATIONS AND MAINTENANCE/TELECOMMUNICATIONS GRANT/COMM		200.00	
11170 NATIONAL GEOGRAPHIC SCHOOL PUB		01/08/2007	1001150-07-0062		62	315.36	315.36
01 E 150 201 000 000 460				KINDERGARTEN//BOOKS/WORKBOOKS		315.36	
11171 NATIONAL PEDICULOSIS ASSOCIATI		01/08/2007	12021		0	33.95	33.95
01 E 200 720 000 000 401				HEALTH SERVICES/NURSE//GENERAL SUPPLIES		33.95	
11172 NELSEN'S CLEANERS & LAUNDERERS		01/08/2007	1		0	11.99	11.99
02 E 005 770 000 701 382				FOOD SERVICES/SCHOOL LUNCH/LAUNDRY AND DRY CLEANING		11.99	
11173 NEMETSCHKE NA INC.		01/08/2007	15995		0	1,405.00	1,480.00
01 E 300 255 000 000 430				INDUSTRIAL EDUCATION//SUPPLIES		1,405.00	

Check Nbr	Vendor Name	Check Date	Invoice Number	Invoice Desc	PO Number	Invoice Amount	Check Amount
01 E 300 255 000 000 430			16032	INDUSTRIAL EDUCATION//SUPPLIES	223	75.00	75.00
11174 NORCOSTCO, INC.		01/08/2007	889049	ONE ACT PLAY	224	62.55	62.55
01 E 300 298 236 000 899				EXTRACURRICULAR ACTIVITIES//MISCELLANEOUS EXPENSE		62.55	
11175 OFFICE DEPOT		01/08/2007	1	OTHER COMMUNITY SERVICES/COMMUNITY EDUCATION/GENERAL SUP	0	25.90	87.87
04 E 500 590 000 321 401						25.90	
04 E 500 590 156 321 401			358128256	OTHER COMMUNITY SERVICES/COMMUNITY EDUCATION/GENERAL SUP	0	61.97	61.97
11176 OFFICE MAX BOISE		01/08/2007	322351	ELEMENTARY GENERAL ED.//SUPPLIES	49	232.40	874.66
01 E 100 203 000 000 430				SECONDARY EDUCATION GENERAL//SUPPLIES		116.20	
01 E 300 211 000 000 430						116.20	
01 L 230 92			51972346	GENERAL FUND/DEFERRED REVENUE/BC/BS SETTLEMENT	56	3.78	3.78
01 E 005 020 000 302 530			5994	TABLE ADJUSTMENT	0	-25.00	-25.00
01 E 005 020 000 000 401			5994-	SUPERINTENDENT'S OFFICE//GENERAL SUPPLIES	0	7.38	7.38
01 E 005 020 000 000 401			968263	SUPERINTENDENT'S OFFICE//GENERAL SUPPLIES	0	11.67	11.67
01 E 005 020 000 302 530			971604	SUPERINTENDENT'S OFFICE/CAPITAL OUTLAY/EQUIPMENT PURCHAS	0	644.43	644.43
11177 OFFICE SYSTEMS		01/08/2007	249992-0	ELEMENTARY GENERAL ED.//SUPPLIES	0	315.95	315.95
01 E 150 203 000 000 430						315.95	
11178 OHIO STATE UNIVERSITY		01/08/2007	21336	A MCCARRIER	0	1,045.42	1,045.42
01 E 100 204 000 414 305				TITLE II EISENHWOER/TITLE II ESEA/PROFESSIONAL FEES		1,045.42	
11179 ON TIME SUPPLIES		01/08/2007	33908	NATURAL SCIENCES//SUPPLIES	237	77.36	77.36
01 E 300 260 000 000 430						77.36	
11180 ONE UMMAH CONSULTING		01/08/2007	1	INTERCULTURAL WORKSHOP	0	1,129.98	1,129.98
01 E 300 211 150 000 305				SECONDARY EDUCATION GENERAL//PROFESSIONAL FEES		1,129.98	
11181 ORANGE TREE EMPLOYMENT SCREENI		01/08/2007	12952	MISCELLANEOUS LOCAL REVENUE	0	8.00	24.00
01 R 005 000 000 000 099						8.00	
01 R 005 000 000 000 099			13242	MISCELLANEOUS LOCAL REVENUE	0	16.00	16.00
11182 PACT 4 FAMILIES COLLABORATIVE		01/08/2007	1	2007 DUES	0	1,036.00	5,801.50
01 E 005 010 000 000 820				BOARD OF EDUCATION//DUES & MEMBERSHIPS		1,036.00	
01 E 200 740 000 740 305			2	SOC. WKR- 1ST HALF	0	4,765.50	4,765.50
11183 PAN-O-GOLD BAKING CO.		01/08/2007	1	FOOD SERVICES/SCHOOL LUNCH/FOOD	0	525.75	559.70
02 E 005 770 000 701 490				FOOD SERVICES/BREAKFAST/FOOD		420.60	
02 E 005 770 000 705 490						105.15	
02 E 005 770 000 705 490			10	FOOD SERVICES/BREAKFAST/FOOD	0	33.95	33.95
11184 SONJA PEDERSON		01/08/2007	1	HEALTH SERVICES/NURSE//TRAVEL-SCHOOL BUSINESS	0	66.93	66.93
01 E 200 720 000 000 366						66.93	
11185 J.W. PEPPER & SON INC.		01/08/2007	11339667	MUSIC//SUPPLIES	0	249.99	321.57
01 E 300 258 233 000 430						249.99	

Check Nbr	Vendor Name	Check Date	Invoice Number	Invoice Desc	PO Number	Invoice Amount	Check Amount
01 E 300 258 231 000 430			11351637	MUSIC//SUPPLIES	209	39.99	39.99
01 E 100 203 407 000 430			11356387	ELEMENTARY GENERAL ED.//SUPPLIES	0	31.59	31.59
11186 PITNEYBOWES		01/08/2007	454116-DC06	RENTAL	0	254.00	254.00
01 E 005 020 000 000 370				SUPERINTENDENT'S OFFICE//RENTALS AND LEASES		254.00	
11187 PRAIRIE GRAIN PARTNERS LLC		01/08/2007	25780	OPERATIONS AND MAINTENANCE//CUST/REPAIR SUPPLIES	0	72.90	72.90
01 E 025 810 191 000 410						72.90	
11188 PRAIRIE'S EDGE CASINO RESORT		01/08/2007	62347	K. HICKS	0	53.91	53.91
01 E 100 204 000 414 367				TITLE II EISENHWOER/TITLE II ESEA/TRAVEL-PROFESS DEVELOP		53.91	
11189 QUAD-STATE ASBESTOS REMOVAL		01/08/2007	1	HAGG ASBESTOS REMOVAL	0	7,003.00	7,003.00
01 E 025 860 000 358 590				HEALTH & SAFETY EQUIP/ASBESTOS/OTHER CAPITAL EXPENDITURE		7,003.00	
11190 QUILL CORPORATION		01/08/2007	3120797	ACCOUNTING OFFICE//GENERAL SUPPLIES	53	47.54	47.54
01 E 005 110 000 000 401						47.54	
11191 RATWICK, ROSZAK & MALONEY, P.A		01/08/2007	1	LEGAL SERVICES//PROFESSIONAL FEES	0	377.40	377.40
01 E 005 150 000 000 305						377.40	
11192 REDWOOD AREA THEATRE		01/08/2007	1	PLAY -MUSICAL	0	185.00	185.00
01 E 300 298 236 000 899				EXTRACURRICULAR ACTIVITIES//MISCELLANEOUS EXPENSE		185.00	
11193 REINHART INST FOODS		01/08/2007	1	FOOD SERVICES/SCHOOL LUNCH/GENERAL SUPPLIES	0	4,688.82	5,142.74
02 E 005 770 000 701 401						343.47	
02 E 005 770 000 701 490				FOOD SERVICES/SCHOOL LUNCH/FOOD		1,960.76	
02 E 005 770 000 701 899				FOOD SERVICES/SCHOOL LUNCH/MISCELLANEOUS EXPENSE		2,097.90	
02 E 005 770 000 705 490				FOOD SERVICES/BREAKFAST/FOOD		286.69	
02 E 025 770 000 701 401			10	FOOD SERVICES/SCHOOL LUNCH/GENERAL SUPPLIES	0	453.92	
02 E 025 770 000 701 490				FOOD SERVICES/SCHOOL LUNCH/FOOD		135.64	
02 E 025 770 000 705 490				FOOD SERVICES/BREAKFAST/FOOD		91.90	
11194 RILEY BUS SERVICE, INC.		01/08/2007	5754	CHANHASSEN	0	457.50	987.50
04 E 500 505 000 321 361				COMMUNITY EDUCATION GENERAL/COMMUNITY EDUCATION/BUS CONT		457.50	
04 E 500 505 000 321 361			5917	LAKEVILLE	0	530.00	530.00
				COMMUNITY EDUCATION GENERAL/COMMUNITY EDUCATION/BUS CONT		530.00	
11195 RTS		01/08/2007	1	OPERATIONS AND MAINTENANCE//COMMUNICATIONAL SERVICES	0	220.60	261.23
01 E 005 810 000 000 320						220.60	
01 E 025 810 000 000 320			2	OPERATIONS AND MAINTENANCE//COMMUNICATIONAL SERVICES	0	40.63	40.63
11196 SAWMILL		01/08/2007	1	INDUSTRIAL EDUCATION//SUPPLIES	0	60.31	121.15
01 E 300 255 000 000 430						60.31	
01 E 005 810 000 000 410			2	OPERATIONS AND MAINTENANCE//CUST/REPAIR SUPPLIES	0	60.84	60.84
11197 SAX ARTS & CRAFTS		01/08/2007	9210939	ART//SUPPLIES	220	224.00	288.00
01 E 300 212 000 000 430						224.00	
01 E 300 212 000 000 430			C1008953	ART//SUPPLIES	0	64.00	64.00
11198 SCHOOL HEALTH CORPORATION		01/08/2007	1264250-00	HEALTH SERVICES/NURSE//GENERAL SUPPLIES	251	71.80	131.04
01 E 200 720 000 000 401						71.80	
01 E 200 720 000 000 401			1264607-10	HEALTH SERVICES/NURSE//GENERAL SUPPLIES	0	3.10	3.10
			1265104-00		257	56.14	

Check Nbr	Vendor Name	Check Date	Invoice Number	Invoice Desc	PO Number	Invoice Amount	Check Amount
01 E 200 720 000 000 401				HEALTH SERVICES/NURSE//GENERAL SUPPLIES		56.14	
11199 SCHOOL SPECIALTY INC.		01/08/2007	56473700		249	114.32	114.32
01 E 100 203 000 000 899				ELEMENTARY GENERAL ED.//MISCELLANEOUS EXPENSE		114.32	
11200 SCHWICKERT'S		01/08/2007	SIC002836	TECTA REPAIRS	0	14,410.00	14,410.00
01 E 005 850 000 302 522				FACILITIES/CAPITAL OUTLAY/BUILDING IMPROVEMENTS		14,410.00	
11201 DANIEL E SIK		01/08/2007	1		0	8.97	8.97
01 E 300 211 169 000 366				SECONDARY EDUCATION GENERAL//TRAVEL-SCHOOL BUSINESS		8.97	
11202 SKITS OUTREACH SERVICES		01/08/2007	1		245	1,009.29	1,009.29
01 E 200 206 000 433 305				DRUG FREE \$ FED./DRUG F SCH/PROFESSIONAL FEES		1,009.29	
11203 SOUTHWEST WHOLESALE		01/08/2007	1		0	8,946.81	11,994.94
02 E 005 770 000 701 401				FOOD SERVICES/SCHOOL LUNCH/GENERAL SUPPLIES		1,933.44	
02 E 005 770 000 701 490				FOOD SERVICES/SCHOOL LUNCH/FOOD		6,463.70	
02 E 005 770 000 705 490				FOOD SERVICES/BREAKFAST/FOOD		549.67	
			10		0	830.45	
02 E 025 770 000 701 401				FOOD SERVICES/SCHOOL LUNCH/GENERAL SUPPLIES		146.70	
02 E 025 770 000 701 490				FOOD SERVICES/SCHOOL LUNCH/FOOD		545.59	
02 E 025 770 000 705 490				FOOD SERVICES/BREAKFAST/FOOD		138.16	
			20		0	2,217.68	
02 E 005 770 000 701 401				FOOD SERVICES/SCHOOL LUNCH/GENERAL SUPPLIES		2,217.68	
11204 SPECIAL SYSTEMS INC.		01/08/2007	30863	ANNUAL MAINTENANCE	0	1,990.00	1,990.00
01 E 005 860 000 363 305				HEALTH & SAFETY EQUIP/FIRE SAFETY/PROFESSIONAL FEES		1,990.00	
11205 ST. JOHN'S LUTHERAN SCHOOL		01/08/2007	1	2ND QTR TRANSPORTATION	0	800.00	800.00
01 E 005 760 000 720 361				PUPIL TRANSPORTATION/REGULAR TO AND FROM SCHOOL/BUS CONT		800.00	
11206 STEIN'S, INC		01/08/2007	478983-1		0	25.30	680.66
01 E 005 810 000 000 410				OPERATIONS AND MAINTENANCE//CUST/REPAIR SUPPLIES		25.30	
			480226		0	655.36	
01 E 025 810 000 000 410				OPERATIONS AND MAINTENANCE//CUST/REPAIR SUPPLIES		655.36	
11207 STRAND, DWAYNE		01/08/2007	1		0	57.96	57.96
01 E 005 020 000 000 366				SUPERINTENDENT'S OFFICE//TRAVEL-SCHOOL BUSINESS		57.96	
11208 STRAND, RITA		01/08/2007	1	CIDER	0	8.95	8.95
01 L 230 10				GENERAL FUND/DEFERRED REVENUE/SUPT POP FUND		8.95	
11209 SUPER 8 GRANITE FALLS		01/08/2007	106569-70		0	603.42	603.42
01 L 230 01				GENERAL FUND/DEFERRED REVENUE/ARTS COUNCIL		603.42	
11210 SW/WC SERVICE COOP - MARSHALL		01/08/2007	16622	1/3 SPECIAL NEEDS	0	1,966.05	1,966.05
01 E 200 420 000 740 390				SPECIAL EDUCATIONAL GENERAL/STATE FUNDED SPECIAL ED/TUIT		1,966.05	
11211 TEACHING RESOURCE CENTER		01/08/2007	1012020		66	39.71	39.71
01 E 150 201 000 000 430				KINDERGARTEN//SUPPLIES		39.71	
11212 THERAPY SHOPPE INC.		01/08/2007	68069-	SHIPPING	0	6.49	6.49
01 E 100 402 000 419 433				MILD/MODERATE MENTALLY IMP;/94-142 FEDERAL/INDIVIDUAL IN		6.49	
11213 Vendor Continued Void		01/08/2007					0.00
11214 THRIFTY WHITE DRUG		01/08/2007	1		0	27.56	206.06
04 E 500 580 000 325 430				EARLY CHILDHOOD AND FAM ED/EARLY CHILDHOOD AND FAMILY ED		27.56	
			10		262	90.00	
01 E 100 790 308 799 401				OTHER PUPIL SUPPORT SERVICES/OTHER GRANTS/GENERAL SUPPLI		90.00	
			2		0	19.83	
02 E 005 770 000 701 401				FOOD SERVICES/SCHOOL LUNCH/GENERAL SUPPLIES		19.83	
			20		0	23.97	

Check Nbr	Vendor Name	Check Date	Invoice Number	Invoice Desc	PO Number	Invoice Amount	Check Amount
01 E 005 810 000 000 410				OPERATIONS AND MAINTENANCE//CUST/REPAIR SUPPLIES		23.97	
			21		0	12.76	
01 E 100 203 000 000 899				ELEMENTARY GENERAL ED.//MISCELLANEOUS EXPENSE		12.76	
			824255		0	17.94	
01 E 300 790 309 799 401				OTHER PUPIL SUPPORT SERVICES/OTHER GRANTS/GENERAL SUPPLI		17.94	
			824257		250	14.00	
01 E 100 790 108 799 401				OTHER PUPIL SUPPORT SERVICES/OTHER GRANTS/GENERAL SUPPLI		14.00	
11215 TIES		01/08/2007	23060		0	960.00	960.00
01 E 100 204 000 414 366				TITLE II EISENHWOER/TITLE II ESEA/TRAVEL-SCHOOL BUSINESS		240.00	
01 E 300 204 000 414 366				TITLE II EISENHWOER/TITLE II ESEA/TRAVEL-SCHOOL BUSINESS		720.00	
11216 ALICIA TONGEN		01/08/2007	1		0	17.94	17.94
01 E 300 211 169 000 366				SECONDARY EDUCATION GENERAL//TRAVEL-SCHOOL BUSINESS		17.94	
11217 US BANK TRUST TFM		01/08/2007	1	ENERGY BONDS	0	60,000.00	66,070.00
07 E 005 910 000 000 710				DEBT REDEMPTION//BOND PRINCIPAL		60,000.00	
			2	ENERGY BONDS	0	6,070.00	
07 E 005 910 000 000 720				DEBT REDEMPTION//BOND INTEREST		6,070.00	
11218 U.S. BANK TRUST		01/08/2007	33396540	INTEREST	0	1,000.00	51,000.00
07 E 005 910 000 000 720				DEBT REDEMPTION//BOND INTEREST		1,000.00	
			33396540-	PRINCIPAL- LAST PAYMENT	0	50,000.00	
07 E 005 910 000 000 710				DEBT REDEMPTION//BOND PRINCIPAL		50,000.00	
11219 VALLEY TROLL		01/08/2007	857-4		0	45.89	45.89
01 L 230 62				GENERAL FUND/DEFERRED REVENUE/TEENS ETC. (KHALI)		45.89	
11220 VAN MOER, MARGO		01/08/2007	1		238	117.25	117.25
01 E 300 790 388 000 899				OTHER PUPIL SUPPORT SERVICES//MISCELLANEOUS EXPENSE		117.25	
11221 VELDE SANITATION		01/08/2007	25694		0	505.00	855.00
01 E 005 810 000 000 330				OPERATIONS AND MAINTENANCE//UTILITY SERVICES		505.00	
			25694-		0	350.00	
01 E 025 810 000 000 330				OPERATIONS AND MAINTENANCE//UTILITY SERVICES		350.00	
11222 CINDY VELDE		01/08/2007	1		0	84.57	100.72
04 E 500 590 156 321 366				OTHER COMMUNITY SERVICES/COMMUNITY EDUCATION/TRAVEL-SCHO		84.57	
			2		0	8.43	
04 E 500 590 000 321 401				OTHER COMMUNITY SERVICES/COMMUNITY EDUCATION/GENERAL SUP		8.43	
			3		0	7.72	
09 L 230 28				TRUST FUND/DEFERRED REVENUE/SENIOR CITIZENS CARD PROJECT		7.72	
11223 WEEKLY READER		01/08/2007	1		0	153.72	153.72
01 E 100 203 405 000 430				ELEMENTARY GENERAL ED.//SUPPLIES		153.72	
11224 WELDERS SUPPLY		01/08/2007	820716		0	5.58	5.58
01 E 300 301 501 830 433				AG EDUCATION (VOCATIONAL)/VOCATIONAL PROGRAMS/INDIVIDUAL		5.58	
11225 BEN WIDBOOM		01/08/2007	1	TAEKWONDO	0	1,008.00	1,008.00
04 E 500 505 000 321 305				COMMUNITY EDUCATION GENERAL/COMMUNITY EDUCATION/PROFESSI		1,008.00	
11226 XCEL ENERGY		01/08/2007	1		0	28.92	28.92
01 E 025 810 184 000 330				OPERATIONS AND MAINTENANCE//UTILITY SERVICES		28.92	
11227 YMC FAMILY SERVICE CENTER		01/08/2007	1		0	32.12	32.12
04 E 500 590 000 321 401				OTHER COMMUNITY SERVICES/COMMUNITY EDUCATION/GENERAL SUP		32.12	
11228 YMC TREASURER		01/08/2007	1	ELECTION COST	0	896.25	896.25
01 E 005 199 000 000 401				SCHOOL ELECTIONS//GENERAL SUPPLIES		896.25	

Check Nbr	Vendor Name	Check Date	Invoice Number	Invoice Desc	PO Number	Invoice Amount	Check Amount
11229	YME SCHOOL ACTIVITY ACCOUNT	01/08/2007	1	BOX TOPS	0	207.67	867.59
01 L	230 56			GENERAL FUND/DEFERRED REVENUE/HAGG ELEMENTARY SCHOOL ACT		207.67	
			10	POP PROFIT	0	659.92	
01 L	230 15			GENERAL FUND/DEFERRED REVENUE/STUDENT COUNCIL		659.92	
11230	Vendor Continued Void	01/08/2007					0.00
11231	Vendor Continued Void	01/08/2007					0.00
11232	Vendor Continued Void	01/08/2007					0.00
11233	Vendor Continued Void	01/08/2007					0.00
11234	Vendor Continued Void	01/08/2007					0.00
11235	YME SCHOOLS-ADM	01/08/2007	4067	VOID	0	-6.00	7,849.71
01 E	100 620 000 000 401			EDUCATIONAL MEDIA/LIBRARY//GENERAL SUPPLIES		-6.00	
			4152	VOID TODD BALFANY	0	-1.95	
02 R	005 000 000 701 601			SCHOOL LUNCH/SALES TO PUPILS		-1.95	
			4179	VOIDBEV PETERSEN	0	-38.05	
02 R	005 000 000 701 601			SCHOOL LUNCH/SALES TO PUPILS		-38.05	
			4658	VOID COMM OF ED.	0	-80.00	
01 E	005 610 375 308 366			CURRICULUM CONSULTANT & DEVLOP/STAFF DEV. 25% DIST. WIDE		-80.00	
			4698	NLS SCHOOL	0	50.00	
01 E	300 292 226 000 319			BOYS/GIRLS ATHLETICS//OTHER PERSONAL SERVICES		50.00	
			4819	VOIDMARK JENSEN	0	-104.00	
01 E	300 294 211 000 186			BOYS ATHLETICS//EXTRA-CURRICULAR WORKERS		-104.00	
			4864	QUILL	0	7.83	
01 E	005 110 000 000 401			ACCOUNTING OFFICE//GENERAL SUPPLIES		7.83	
			4865	JEFF GLADIS	0	190.00	
01 E	300 294 213 000 319			BOYS ATHLETICS//OTHER PERSONAL SERVICES		190.00	
			4866	LARRY HALVORSON	0	135.00	
01 E	300 294 221 000 319			BOYS ATHLETICS//OTHER PERSONAL SERVICES		135.00	
			4867	CARTER GLAD	0	80.00	
01 E	300 294 213 000 319			BOYS ATHLETICS//OTHER PERSONAL SERVICES		80.00	
			4868	AL HANDAHL	0	40.00	
01 E	300 296 213 000 319			GIRLS ATHLETICS//OTHER PERSONAL SERVICES		40.00	
			4869	FRONTIER	0	99.05	
01 E	025 810 000 000 320			OPERATIONS AND MAINTENANCE//COMMUNICATIONAL SERVICES		99.05	
			4870	MOLLY KVAM	0	100.00	
01 E	300 298 236 000 319			EXTRACURRICULAR ACTIVITIES//OTHER PERSONAL SERVICES		100.00	
			4871	ISAK KVAM	0	100.00	
01 E	300 298 236 000 319			EXTRACURRICULAR ACTIVITIES//OTHER PERSONAL SERVICES		100.00	
			4872	BRITTA LARSON	0	100.00	
01 E	300 298 236 000 319			EXTRACURRICULAR ACTIVITIES//OTHER PERSONAL SERVICES		100.00	
			4873	KURT JOHNSON	0	375.00	
04 E	500 505 000 321 305			COMMUNITY EDUCATION GENERAL/COMMUNITY EDUCATION/PROFESSI		375.00	
			4874	TIM CROWLEY	0	150.00	
01 E	300 408 390 000 305			EMOTION/BEHAVIORAL DISORDER//PROFESSIONAL FEES		150.00	
			4875	JENI REED	0	190.00	
01 E	300 294 213 000 319			BOYS ATHLETICS//OTHER PERSONAL SERVICES		190.00	
			4876	F&M BANK	0	20.00	
01 E	005 110 000 000 899			ACCOUNTING OFFICE//MISCELLANEOUS EXPENSE		20.00	
			4878	PURCHASE POWER	0	3,030.00	
01 E	005 020 000 000 329			SUPERINTENDENT'S OFFICE//POSTAGE AND EXPRESS		730.00	

Check Nbr	Vendor Name	Check Date	Invoice Number	Invoice Desc	PO Number	Invoice Amount	Check Amount
01 E 300 211 000 000 329				SECONDARY EDUCATION GENERAL//POSTAGE AND EXPRESS		2,300.00	
			4879	UPPER SIOUX COMMUNITY	0	95.00	
01 E 005 010 000 000 899				BOARD OF EDUCATION//MISCELLANEOUS EXPENSE		95.00	
			4880	MARK HERMAN	0	190.00	
01 E 300 294 213 000 319				BOYS ATHLETICS//OTHER PERSONAL SERVICES		190.00	
			4881	RICK MCLAIN	0	190.00	
01 E 300 296 213 000 319				GIRLS ATHLETICS//OTHER PERSONAL SERVICES		190.00	
			4882	POSTMASTER	0	160.00	
01 E 005 020 000 000 329				SUPERINTENDENT'S OFFICE//POSTAGE AND EXPRESS		160.00	
			4883	COMM. OF ED.	0	75.00	
01 E 100 640 000 306 367				STAFF DEVELOPMENT/STAFF DEV. 50% SITE/TRAVEL-PROFESS DEV		75.00	
			4884	PLAZA THREE THEATRE	0	1,500.00	
01 L 230 33				GENERAL FUND/DEFERRED REVENUE/BERT RANEY ACTIVITY ACCOUN		1,000.00	
01 L 230 56				GENERAL FUND/DEFERRED REVENUE/HAGG ELEMENTARY SCHOOL ACT		500.00	
			4885	KIMBALL SCHOOLS	0	130.00	
01 E 300 294 221 000 369				BOYS ATHLETICS//PARTICIPATION FEES		130.00	
			4886	NYA SCHOOLS ISD 108	0	150.00	
01 E 300 294 221 000 369				BOYS ATHLETICS//PARTICIPATION FEES		150.00	
			4887	POST OFFICE	0	47.40	
04 E 500 580 000 325 329				EARLY CHILDHOOD AND FAM ED/EARLY CHILDHOOD AND FAMILY ED		47.40	
			4888	PIPESTONE SCHOOL	0	50.00	
01 E 300 294 221 000 369				BOYS ATHLETICS//PARTICIPATION FEES		50.00	
			4889	KMS SCHOOL	0	75.00	
01 E 300 294 221 000 369				BOYS ATHLETICS//PARTICIPATION FEES		75.00	
			4890	STEVE AMMERMAN	0	190.00	
01 E 300 294 213 000 319				BOYS ATHLETICS//OTHER PERSONAL SERVICES		190.00	
			4891	SUB-REGIONAL KNOWLEDGE BOWL	0	480.00	
01 E 300 218 000 388 369				GIFTED & TALENTED/TAG (06)/PARTICIPATION FEES		480.00	
			4892	KIWANIS	0	100.00	
01 E 100 050 000 000 820				PRINCIPAL'S OFFICE//DUES & MEMBERSHIPS		100.00	
				INTEREST	0	-19.57	
01 R 005 000 000 000 092				INVESTMENT EARNINGS		-19.57	

186 Computer Check(s) For a Total of 769,250.60

	0	Manual	Checks For a Total of	0.00
	186	Computer	Checks For a Total of	769,250.60
Total For	186		Manual and Computer Checks	769,250.60
Less	0	Voided	Checks For a Total of	0.00
			Net Amount	769,250.60

FUND SUMMARY

Fund	Description	Balance Sheet	Revenue	Expense	Total
01	GENERAL FUND	5,332.22	4.43	612,248.19	617,584.84
02	FOOD SERVICE	0.00	-40.00	26,141.01	26,101.01
04	COMMUNITY SERVICE	0.00	0.00	2,837.05	2,837.05
07	DEBT REDEMPTION	0.00	0.00	117,070.00	117,070.00
09	TRUST FUND	5,657.70	0.00	0.00	5,657.70

Check Nbr	Vendor Name	Check Date	Invoice Number	Invoice Desc	PO Number	Invoice Amount	Check Amount
11050	ADVOCATE TRIBUNE	01/08/2007	1		0	288.75	288.75
01 E 005 010 000 000 380				BOARD OF EDUCATION//PRINTING/ADVERTISING		288.75	
11051	AMERICAN WELDING SUPPLIES	01/08/2007	1		0	44.55	44.55
01 E 300 301 501 830 433				AG EDUCATION (VOCATIONAL)/VOCATIONAL PROGRAMS/INDIVIDUAL		44.55	
11052	APPERT FOODS	01/08/2007	1		0	3,965.59	3,965.59
02 E 005 770 000 701 401				FOOD SERVICES/SCHOOL LUNCH/GENERAL SUPPLIES		78.70	
02 E 005 770 000 701 490				FOOD SERVICES/SCHOOL LUNCH/FOOD		3,203.11	
02 E 005 770 000 701 495				FOOD SERVICES/SCHOOL LUNCH/MILK		17.10	
02 E 005 770 000 705 490				FOOD SERVICES/BREAKFAST/FOOD		666.68	
11053	APPLE COMPUTER, INC.	01/08/2007	9246698911		52	1,199.00	1,199.00
01 E 300 211 150 000 555				SECONDARY EDUCATION GENERAL//TECHNOLOGY EQUIPMENT		1,199.00	
11054	AUS FLOORS & MORE	01/08/2007	9377	HAGG	0	5,222.75	5,222.75
01 E 025 850 000 302 522				FACILITIES/CAPITAL OUTLAY/BUILDING IMPROVEMENTS		5,222.75	
11055	AVENUES FOR CARE	01/08/2007	559		0	851.25	1,830.00
01 E 998 404 000 740 394				PHYSICALLY IMPAIRED/STATE FUNDED SPECIAL ED/PAYMENTS TO		851.25	
			571	DEC 06	0	978.75	
01 E 998 404 000 740 394				PHYSICALLY IMPAIRED/STATE FUNDED SPECIAL ED/PAYMENTS TO		978.75	
11056	SARAH BARTELS	01/08/2007	1		0	4.78	4.78
01 E 150 790 108 799 401				OTHER PUPIL SUPPORT SERVICES/OTHER GRANTS/GENERAL SUPPLI		4.78	
11057	BEFOUR INC	01/08/2007	34667		0	59.70	59.70
01 E 300 294 221 000 401				BOYS ATHLETICS//GENERAL SUPPLIES		59.70	
11058	Vendor Continued Void	01/08/2007					0.00
11059	Vendor Continued Void	01/08/2007					0.00
11060	BENNETT & BENNETT TRANSP. INC.	01/08/2007	1	regular ROUTES	0	51,389.73	74,848.20
01 E 005 760 000 720 361				PUPIL TRANSPORTATION/REGULAR TO AND FROM SCHOOL/BUS CONT		51,389.73	
			10	sh math league	0	68.78	
01 E 300 298 240 733 361				EXTRACURRICULAR ACTIVITIES/TRANSPORTATION/NON-AUTHORIZED		68.78	
			11	CLKFD. SHUTTLE	0	2,352.00	
01 E 005 760 000 720 361				PUPIL TRANSPORTATION/REGULAR TO AND FROM SCHOOL/BUS CONT		2,352.00	
			13	TAG KB	0	301.35	
01 E 300 218 000 733 361				GIFTED & TALENTED/TRANSPORTATION/NON-AUTHORIZED/BUS CONT		301.35	
			15	FIELD TRIPS HAGG	0	354.96	
01 E 150 203 000 733 361				ELEMENTARY GENERAL ED./TRANSPORTATION/NON-AUTHORIZED/BUS		354.96	
			2	FUEL	0	2,970.76	
01 E 005 760 000 720 361				PUPIL TRANSPORTATION/REGULAR TO AND FROM SCHOOL/BUS CONT		2,970.76	
			20	BRE FIELD TRIPS	0	275.38	
01 E 100 203 000 733 361				ELEMENTARY GENERAL ED./TRANSPORTATION/NON-AUTHORIZED/BUS		275.38	
			25	SH BB	0	908.93	
01 E 300 294 213 733 361				BOYS ATHLETICS/TRANSPORTATION/NON-AUTHORIZED/BUS CONTRAC		908.93	
			26	GBB	0	572.49	
01 E 300 296 213 733 361				GIRLS ATHLETICS/TRANSPORTATION/NON-AUTHORIZED/BUS CONTRA		572.49	
			27	WRESTLING	0	1,568.73	
01 E 300 294 221 733 361				BOYS ATHLETICS/TRANSPORTATION/NON-AUTHORIZED/BUS CONTRAC		1,568.73	
			3	OUT OF DISTRICT	0	3,528.00	
01 E 005 760 000 713 361				PUPIL TRANSPORTATION/OPEN ENROLLMENT/BUS CONTRACT (XWK T		3,528.00	
			4	ATHLETIC SHUTTLE	0	593.25	
01 E 005 760 000 717 361				PUPIL TRANSPORTATION/LATE ACTIVITY BUS/BUS CONTRACT (XWK		593.25	
			5	SPECIAL NEEDS	0	9,933.84	
01 E 005 760 000 723 361				PUPIL TRANSPORTATION/HANDICAPPED/BUS CONTRACT (XWK TO 36		9,933.84	

Check Nbr	Vendor Name	Check Date	Invoice Number	Invoice Desc	PO Number	Invoice Amount	Check Amount
			6	RENT	0	30.00	
01 E 300 298 000 000 370				EXTRACURRICULAR ACTIVITIES//RENTALS AND LEASES		30.00	
11061 BERNICK'S PEPSI-COLA		01/08/2007	1	ST. COUNCIL	0	45.90	45.90
01 L 230 39				GENERAL FUND/DEFERRED REVENUE/BERT RANEY JUICE MACHNINE		45.90	
11062 BEST BUSINESS PRODUCTS		01/08/2007	828060	REGULAR SUPPLIES	0	151.23	151.23
02 E 005 770 000 701 401				FOOD SERVICES/SCHOOL LUNCH/GENERAL SUPPLIES		151.23	
11063 BILL'S ELECTRIC		01/08/2007	1	BOILER ROOM	0	226.72	611.14
01 E 025 810 000 000 350				OPERATIONS AND MAINTENANCE//REPAIRS AND MAINTENANCE SVCS		226.72	
			3540		0	384.42	
01 E 005 810 000 000 410				OPERATIONS AND MAINTENANCE//CUST/REPAIR SUPPLIES		384.42	
11064 HELEN M BLUE-REDNER		01/08/2007	1		0	71.76	71.76
01 E 100 203 000 000 366				ELEMENTARY GENERAL ED.//TRAVEL-SCHOOL BUSINESS		71.76	
11065 BRUFLAT PLUMBING & HEATING INC		01/08/2007	3204	EAST GYM	0	233.27	233.27
01 E 025 810 000 000 350				OPERATIONS AND MAINTENANCE//REPAIRS AND MAINTENANCE SVCS		233.27	
11066 BUREAU OF EDUCATION & RESEARCH		01/08/2007	3582130		210	185.00	185.00
01 E 300 640 000 306 367				STAFF DEVELOPMENT/STAFF DEV. 50% SITE/TRAVEL-PROFESS DEV		185.00	
11067 CALLOWAY HOUSE, INC.		01/08/2007	7774664		196	32.90	32.90
01 E 100 203 403 000 460				ELEMENTARY GENERAL ED.//BOOKS/WORKBOOKS		32.90	
11068 CANBY NEWS		01/08/2007	57941	DCL	0	11.10	11.10
04 E 500 505 000 321 450				COMMUNITY EDUCATION GENERAL/COMMUNITY EDUCATION/MATERIAL		11.10	
11069 CAPITAL ONE, F.S.B.		01/08/2007	1		0	31.30	65.62
01 E 200 612 199 000 401				TECHNOLOGY//GENERAL SUPPLIES		31.30	
			2		0	34.32	
01 E 300 211 000 000 329				SECONDARY EDUCATION GENERAL//POSTAGE AND EXPRESS		34.32	
11070 CARL'S BAKERY		01/08/2007	1		0	82.71	162.22
02 E 025 770 000 701 490				FOOD SERVICES/SCHOOL LUNCH/FOOD		82.71	
			1885		21	6.55	
09 L 230 26				TRUST FUND/DEFERRED REVENUE/SR CITIZENS CENTER		6.55	
			756		238	72.96	
01 E 100 790 108 799 401				OTHER PUPIL SUPPORT SERVICES/OTHER GRANTS/GENERAL SUPPLI		72.96	
11071 CASEY'S		01/08/2007	119021		258	27.58	27.58
01 E 100 790 308 799 401				OTHER PUPIL SUPPORT SERVICES/OTHER GRANTS/GENERAL SUPPLI		27.58	
11072 CDW GOVERNMENT, INC.		01/08/2007	CTM4428		0	131.88	925.28
01 E 300 255 000 000 430				INDUSTRIAL EDUCATION//SUPPLIES		131.88	
			CTM9262		219	588.91	
01 E 300 257 000 000 433				COMPUTER TECHNOLOGY//INDIVIDUAL INST SUPPLIES		588.91	
			CTR9195		50	165.80	
01 E 200 612 120 301 555				TECHNOLOGY/CAPITAL (NON 302 FIN)/TECHNOLOGY EQUIPMENT		165.80	
			CTW3530		0	38.69	
01 E 200 612 000 302 555				TECHNOLOGY/CAPITAL OUTLAY/TECHNOLOGY EQUIPMENT		38.69	
11073 CENEX CREDIT CARD		01/08/2007	1		0	535.77	535.77
01 E 005 810 193 000 442				OPERATIONS AND MAINTENANCE//GAS & OIL		535.77	
11074 CENTERING CORPORATION		01/08/2007	602729		229	57.65	57.65
01 L 230 92				GENERAL FUND/DEFERRED REVENUE/BC/BS SETTLEMENT		57.65	
11075 CHILDCRAFT ED CORP		01/08/2007	M047149401018		0	267.89	267.89
01 E 150 203 000 302 530				ELEMENTARY GENERAL ED./CAPITAL OUTLAY/EQUIPMENT PURCHASE		267.89	
11076 CITY OF CLARKFIELD		01/08/2007	1		0	433.33	433.33

Check Nbr	Vendor Name	Check Date	Invoice Number	Invoice Desc	PO Number	Invoice Amount	Check Amount
01 E 005 810 183 000 330				OPERATIONS AND MAINTENANCE//UTILITY SERVICES		433.33	
11077 CITY OF GRANITE FALLS		01/08/2007	1	SWR/WTR	0	1,548.24	10,622.55
01 E 005 810 183 000 330				OPERATIONS AND MAINTENANCE//UTILITY SERVICES		1,548.24	
			2	ELEC	0	8,991.17	
01 E 005 810 184 000 330				OPERATIONS AND MAINTENANCE//UTILITY SERVICES		8,991.17	
			3	GARAGE	0	75.14	
01 E 005 810 191 000 330				OPERATIONS AND MAINTENANCE//UTILITY SERVICES		75.14	
			4	CARPENTRY	0	8.00	
01 E 300 361 000 830 330				CARPENTRY (HOUSE)/VOCATIONAL PROGRAMS/UTILITY SERVICES		8.00	
11078 CITY OF GRANITE FALLS		01/08/2007	1372		0	65.50	65.50
09 L 230 26				TRUST FUND/DEFERRED REVENUE/SR CITIZENS CENTER		65.50	
11079 CITY OF GRANITE FALLS		01/08/2007	1376		0	167.50	167.50
04 E 500 505 000 321 450				COMMUNITY EDUCATION GENERAL/COMMUNITY EDUCATION/MATERIAL		167.50	
11080 CLASSROOM DIRECT/REPRINT		01/08/2007	4174370001		222	135.98	335.88
01 E 100 203 000 000 899				ELEMENTARY GENERAL ED.//MISCELLANEOUS EXPENSE		135.98	
			4177250001		229	199.90	
01 E 150 203 000 000 430				ELEMENTARY GENERAL ED.//SUPPLIES		199.90	
11081 FERN CLOUD		01/08/2007	1	BUFFALO PRESENTATION	0	200.00	200.00
01 E 100 790 108 799 305				OTHER PUPIL SUPPORT SERVICES/OTHER GRANTS/PROFESSIONAL F		200.00	
11082 COMMISSIONER OF EDUCATION		01/08/2007	1		0	30.00	30.00
01 E 300 640 000 306 367				STAFF DEVELOPMENT/STAFF DEV. 50% SITE/TRAVEL-PROFESS DEV		30.00	
11083 COMPUTER MAN		01/08/2007	231131		0	160.45	160.45
01 E 100 203 000 000 350				ELEMENTARY GENERAL ED.//REPAIRS AND MAINTENANCE SVCS		160.45	
11084 COMPVIEW		01/08/2007	136995	4 overheads	227	792.00	792.00
01 E 100 203 000 302 530				ELEMENTARY GENERAL ED./CAPITAL OUTLAY/EQUIPMENT PURCHASE		792.00	
11085 CONSUMERS COOPERATIVE OIL CO.		01/08/2007	1		0	20.14	20.14
01 E 025 810 193 000 442				OPERATIONS AND MAINTENANCE//GAS & OIL		20.14	
11086 TIM CROWLEY		01/08/2007	1		0	75.00	75.00
01 E 300 408 390 000 305				EMOTION/BEHAVIORAL DISORDER//PROFESSIONAL FEES		75.00	
11087 CULLIGAN		01/08/2007	1		0	10.02	32.75
01 E 025 810 183 000 330				OPERATIONS AND MAINTENANCE//UTILITY SERVICES		10.02	
			10		0	22.73	
01 E 025 810 183 000 330				OPERATIONS AND MAINTENANCE//UTILITY SERVICES		22.73	
11088 DACEY, FLORENCE		01/08/2007	1	PIONEER RESIDENCY	0	2,270.80	2,270.80
01 E 100 790 108 799 305				OTHER PUPIL SUPPORT SERVICES/OTHER GRANTS/PROFESSIONAL F		2,270.80	
11089 DAVE'S ELECTRIC CO		01/08/2007	1		0	30.25	42.25
01 L 230 04				GENERAL FUND/DEFERRED REVENUE/HIGH SCHOOL LOUNGE		30.25	
			2		0	12.00	
01 L 230 03				GENERAL FUND/DEFERRED REVENUE/BERT RANEY LOUNGE		12.00	
11090 DEAN FOODS NORTH CENTRAL, INC.		01/08/2007	1		0	2,314.20	2,947.74
02 E 005 770 000 701 495				FOOD SERVICES/SCHOOL LUNCH/MILK		1,650.96	
02 E 005 770 000 705 495				FOOD SERVICES/BREAKFAST/MILK		362.16	
02 E 005 770 000 707 495				FOOD SERVICES/ALA CARTE/OTHER/MILK		301.08	
			10		0	633.54	
02 E 025 770 000 701 495				FOOD SERVICES/SCHOOL LUNCH/MILK		271.30	
02 E 025 770 000 705 495				FOOD SERVICES/BREAKFAST/MILK		100.94	
02 E 025 770 000 707 495				FOOD SERVICES/ALA CARTE/OTHER/MILK		261.30	

Check Nbr	Vendor Name	Check Date	Invoice Number	Invoice Desc	PO Number	Invoice Amount	Check Amount
11091	DELTA EDUCATION	01/08/2007	202500002604		0	263.02	282.42
01 E 100 203 000 000 899				ELEMENTARY GENERAL ED.//MISCELLANEOUS EXPENSE		263.02	
			202500006005		224	19.40	
01 E 100 203 000 000 899				ELEMENTARY GENERAL ED.//MISCELLANEOUS EXPENSE		19.40	
11092	DEMCO, INC.	01/08/2007	2674894		225	129.94	129.94
01 E 300 620 000 000 401				EDUCATIONAL MEDIA/LIBRARY//GENERAL SUPPLIES		129.94	
11093	DHARMA TRADING CO.	01/08/2007	490466		235	56.43	56.43
01 E 100 790 308 799 401				OTHER PUPIL SUPPORT SERVICES/OTHER GRANTS/GENERAL SUPPLI		56.43	
11094	DITTRICH, MARY	01/08/2007	1		0	125.74	125.74
02 E 005 770 000 701 899				FOOD SERVICES/SCHOOL LUNCH/MISCELLANEOUS EXPENSE		125.74	
11095	DIVINE HOUSE, INC.	01/08/2007	1		0	474.00	474.00
01 E 998 416 000 740 394				MULTIPLE DISABILITIES/STATE FUNDED SPECIAL ED/PAYMENTS T		474.00	
11096	DOLLAR STOP	01/08/2007	1		248	22.00	22.00
01 E 100 790 308 799 401				OTHER PUPIL SUPPORT SERVICES/OTHER GRANTS/GENERAL SUPPLI		22.00	
11097	DOTY, JILL	01/08/2007	1		0	41.06	41.06
01 E 200 219 000 317 366				LEP/COMPENSATORY/TRAVEL-SCHOOL BUSINESS		41.06	
11098	Vendor Continued Void	01/08/2007					0.00
11099	DU-MART	01/08/2007	1		0	119.42	269.25
01 E 300 790 309 799 401				OTHER PUPIL SUPPORT SERVICES/OTHER GRANTS/GENERAL SUPPLI		119.42	
			2138		247	34.09	
01 E 100 790 308 799 401				OTHER PUPIL SUPPORT SERVICES/OTHER GRANTS/GENERAL SUPPLI		34.09	
			2502		255	18.05	
01 E 100 790 308 799 401				OTHER PUPIL SUPPORT SERVICES/OTHER GRANTS/GENERAL SUPPLI		18.05	
			2728		216	20.94	
01 E 300 211 000 000 430				SECONDARY EDUCATION GENERAL//SUPPLIES		20.94	
			2732		239	21.27	
01 E 100 790 108 799 401				OTHER PUPIL SUPPORT SERVICES/OTHER GRANTS/GENERAL SUPPLI		21.27	
			2742		216	39.80	
01 E 300 211 000 000 430				SECONDARY EDUCATION GENERAL//SUPPLIES		39.80	
			2750		253	15.68	
01 E 100 790 308 799 401				OTHER PUPIL SUPPORT SERVICES/OTHER GRANTS/GENERAL SUPPLI		15.68	
11100	ECHO CHARTER SCHOOL	01/08/2007	1		0	200.00	200.00
01 E 100 412 000 740 390				ECSE SPEC ED/STATE FUNDED SPECIAL ED/TUITION TO OTH MN S		200.00	
11101	ECONOMART	01/08/2007	1		0	1,497.78	1,503.58
01 E 300 331 000 830 433				VOCATIONAL HOME EC/VOCATIONAL PROGRAMS/INDIVIDUAL INST S		816.70	
02 E 005 770 000 701 401				FOOD SERVICES/SCHOOL LUNCH/GENERAL SUPPLIES		12.18	
01 E 100 790 308 799 401				OTHER PUPIL SUPPORT SERVICES/OTHER GRANTS/GENERAL SUPPLI		192.61	
01 E 100 203 362 000 899				ELEMENTARY GENERAL ED.//MISCELLANEOUS EXPENSE		272.25	
01 E 100 790 108 799 401				OTHER PUPIL SUPPORT SERVICES/OTHER GRANTS/GENERAL SUPPLI		26.67	
01 E 300 790 309 799 401				OTHER PUPIL SUPPORT SERVICES/OTHER GRANTS/GENERAL SUPPLI		143.84	
01 E 005 790 721 000 401				OTHER PUPIL SUPPORT SERVICES//GENERAL SUPPLIES		33.53	
			50		0	5.80	
01 E 300 331 000 830 433				VOCATIONAL HOME EC/VOCATIONAL PROGRAMS/INDIVIDUAL INST S		5.80	
11102	EDUCATORS OUTLET	01/08/2007	306556		0	55.23	55.23
01 E 150 201 000 000 430				KINDERGARTEN//SUPPLIES		55.23	
11103	EHLERS AND ASSOCIATES	01/08/2007	334090	referendum	0	3,586.41	3,586.41
01 E 005 199 000 000 305				SCHOOL ELECTIONS//PROFESSIONAL FEES		3,586.41	
11104	FARMERS UNION OIL CO.	01/08/2007	1		0	293.16	293.16
01 E 005 810 191 000 410				OPERATIONS AND MAINTENANCE//CUST/REPAIR SUPPLIES		293.16	

Check Nbr	Vendor Name	Check Date	Invoice Number	Invoice Desc	PO Number	Invoice Amount	Check Amount
11105	FLAGHOUSE, INC. 01 E 300 296 213 000 401	01/08/2007	1	GIRLS ATHLETICS//GENERAL SUPPLIES	0	228.85 228.85	228.85
11106	FOOD SERVICES OF AMERICA 02 E 025 770 000 701 490 02 E 025 770 000 705 490	01/08/2007	1	FOOD SERVICES/SCHOOL LUNCH/FOOD FOOD SERVICES/BREAKFAST/FOOD	0	853.42 535.00 318.42	853.42
11107	FRONTIER TELEPHONE 01 E 025 810 000 000 320	01/08/2007	1	OPERATIONS AND MAINTENANCE//COMMUNICATIONAL SERVICES	0	336.67 336.67	336.67
11108	FRY, JILL 01 E 100 790 308 799 361	01/08/2007	1	OTHER PUPIL SUPPORT SERVICES/OTHER GRANTS/BUS CONTRACT (0	82.80 82.80	82.80
11109	G & K SERVICES 02 E 025 770 000 701 382 01 E 025 810 000 000 382	01/08/2007	1 2	FOOD SERVICES/SCHOOL LUNCH/LAUNDRY AND DRY CLEANING OPERATIONS AND MAINTENANCE//LAUNDRY AND DRY CLEANING	0 0	64.21 64.21 344.79 344.79	409.00
11110	GOODFELLOWS RESTAURANT 09 L 230 28	01/08/2007	1	TRUST FUND/DEFERRED REVENUE/SENIOR CITIZENS CARD PROJECT	20	227.93 227.93	227.93
11111	GRANITE BOWLING CENTER 01 E 300 790 309 799 401	01/08/2007	1	OTHER PUPIL SUPPORT SERVICES/OTHER GRANTS/GENERAL SUPPLI	0	65.55 65.55	65.55
11112	GRANITE FALLS AUTO PARTS 01 E 005 810 193 000 401 01 E 300 301 501 830 433	01/08/2007	1 2	OPERATIONS AND MAINTENANCE//GENERAL SUPPLIES AG EDUCATION (VOCATIONAL)/VOCATIONAL PROGRAMS/INDIVIDUAL	0 0	140.01 140.01 46.69 46.69	186.70
11113	GRANITE FALLS BANK 01 E 300 211 000 000 899	01/08/2007	1	SECONDARY EDUCATION GENERAL//MISCELLANEOUS EXPENSE	0	32.00 32.00	32.00
11114	GRANITE FLORAL & GREENHOUSE 01 E 300 301 501 830 433	01/08/2007	69129	AG EDUCATION (VOCATIONAL)/VOCATIONAL PROGRAMS/INDIVIDUAL	217	49.00 49.00	49.00
11115	GREAT PLAINS NATURAL GAS CO 01 E 025 810 000 000 440 01 E 005 810 000 000 440 01 E 025 810 000 000 440 01 E 005 810 191 000 440	01/08/2007	1 10 2 22	OPERATIONS AND MAINTENANCE//FUEL FOR BUILDINGS OPERATIONS AND MAINTENANCE//FUEL FOR BUILDINGS OPERATIONS AND MAINTENANCE//FUEL FOR BUILDINGS OPERATIONS AND MAINTENANCE//FUEL FOR BUILDINGS	0 0 0 0	5,924.91 5,924.91 10,023.02 10,023.02 52.22 52.22 149.72 149.72	16,149.87
11116	GREAT PLAINS SPORTS 01 E 005 850 000 302 522 01 E 300 296 213 000 401 01 E 300 292 219 000 401 01 E 300 294 215 000 401 01 E 300 296 210 000 401 09 L 230 20 01 E 300 294 221 000 401	01/08/2007	311300 312843 312975 313021	VB PLATES FACILITIES/CAPITAL OUTLAY/BUILDING IMPROVEMENTS GIRLS ATHLETICS//GENERAL SUPPLIES BOYS/GIRLS ATHLETICS//GENERAL SUPPLIES BOYS ATHLETICS//GENERAL SUPPLIES GIRLS ATHLETICS//GENERAL SUPPLIES TRUST FUND/DEFERRED REVENUE/DONATION (ANONYMOUS) BOYS ATHLETICS//GENERAL SUPPLIES	0 0 0 0 0	326.10 326.10 390.23 390.23 5,730.00 100.00 100.00 180.00 5,350.00 224.03 224.03	6,670.36
11117	H & H CONST. INC 01 E 005 810 191 000 350	01/08/2007	1	OPERATIONS AND MAINTENANCE//REPAIRS AND MAINTENANCE SVCS	0	200.00 200.00	200.00
11118	HAMMETTE INTERNATIONAL INC 01 L 230 43	01/08/2007	42552	GENERAL FUND/DEFERRED REVENUE/SR HIGH PROJECTS	0	111.00 111.00	111.00

Check Nbr	Vendor Name	Check Date	Invoice Number	Invoice Desc	PO Number	Invoice Amount	Check Amount
11119	HAMPTON-BROWN	01/08/2007	158660		35	43.31	43.31
01 E 100 219 000 317 460				LEP/COMPENSATORY/BOOKS/WORKBOOKS		43.31	
11120	HANSEN, LISA	01/08/2007	1		0	86.94	86.94
01 E 100 204 000 414 366				TITLE II EISENHWOER/TITLE II ESEA/TRAVEL-SCHOOL BUSINESS		86.94	
11121	HANSEN SHARPENING SERVICE	01/08/2007	1923		0	106.70	106.70
01 E 300 255 000 000 430				INDUSTRIAL EDUCATION//SUPPLIES		106.70	
11122	HENDERSON, ROBIN	01/08/2007	1	AFS	0	768.07	768.07
01 E 100 790 308 799 401				OTHER PUPIL SUPPORT SERVICES/OTHER GRANTS/GENERAL SUPPLI		768.07	
11123	HILLYARD/HUTCHINSON	01/08/2007	1951610		0	3,753.54	3,753.54
01 E 005 810 000 000 410				OPERATIONS AND MAINTENANCE//CUST/REPAIR SUPPLIES		3,753.54	
11124	HINZ, STACY	01/08/2007	1		0	89.50	544.50
01 E 100 203 000 000 899				ELEMENTARY GENERAL ED./MISCELLANEOUS EXPENSE		89.50	
			10	RR CONFERENCE	0	530.00	
01 E 100 204 000 414 367				TITLE II EISENHWOER/TITLE II ESEA/TRAVEL-PROFESS DEVELOP		530.00	
			2		0	-75.00	
01 E 100 640 000 306 367				STAFF DEVELOPMENT/STAFF DEV. 50% SITE/TRAVEL-PROFESS DEV		-75.00	
11125	HOFFMAN & BROBST	01/08/2007	340450	FY06 AUDIT	0	11,620.00	11,620.00
01 E 005 110 000 000 311				ACCOUNTING OFFICE//PROFESSIONAL/TECHNICAL SVCS		11,620.00	
11126	HOLMBERG ORCHARD	01/08/2007	1		0	34.00	34.00
01 L 230 56				GENERAL FUND/DEFERRED REVENUE/HAGG ELEMENTARY SCHOOL ACT		34.00	
11127	HOLUM, DIANE	01/08/2007	1		0	576.34	576.34
01 E 100 203 113 317 366				ELEMENTARY GENERAL ED./COMPENSATORY/TRAVEL-SCHOOL BUSINE		576.34	
11128	HOMWOOD SUITES	01/08/2007	33306	linden	0	432.00	432.00
01 E 100 204 000 414 367				TITLE II EISENHWOER/TITLE II ESEA/TRAVEL-PROFESS DEVELOP		432.00	
11129	HOUGHTON MIFFLIN CO	01/08/2007	940127984		0	174.90	174.90
01 E 100 203 000 302 560				ELEMENTARY GENERAL ED./CAPITAL OUTLAY/TEXTBOOK/LIBRARY B		174.90	
11130	HYATT REGENCY MINNEAPOLIS	01/08/2007	A-18661	TIES	36	698.75	698.75
01 E 300 204 000 414 366				TITLE II EISENHWOER/TITLE II ESEA/TRAVEL-SCHOOL BUSINESS		698.75	
11131	IKON FINANCIAL SERVICES	01/08/2007	1		0	1,252.00	1,252.00
01 E 005 020 000 302 580				SUPERINTENDENT'S OFFICE/CAPITAL OUTLAY/CAPITAL LEASE PRI		255.00	
01 E 100 203 000 302 580				ELEMENTARY GENERAL ED./CAPITAL OUTLAY/CAPITAL LEASE PRIN		274.00	
01 E 300 211 000 302 580				SECONDARY EDUCATION GENERAL/CAPITAL OUTLAY/CAPITAL LEASE		274.00	
01 E 300 620 000 302 580				EDUCATIONAL MEDIA/LIBRARY/CAPITAL OUTLAY/CAPITAL LEASE P		175.00	
01 E 150 203 000 302 580				ELEMENTARY GENERAL ED./CAPITAL OUTLAY/CAPITAL LEASE PRIN		274.00	
11132	IKON OFFICE SOLUTIONS	01/08/2007	2315865A		0	150.00	150.00
01 E 300 211 000 000 430				SECONDARY EDUCATION GENERAL//SUPPLIES		150.00	
11133	INNOVATIVE OFFICE SOLUTIONS, L	01/08/2007	1		0	121.18	305.97
01 E 150 203 000 000 401				ELEMENTARY GENERAL ED./GENERAL SUPPLIES		121.18	
			57360-1		0	174.80	
01 E 300 211 000 000 899				SECONDARY EDUCATION GENERAL//MISCELLANEOUS EXPENSE		174.80	
			OE57862-1		222	9.99	
01 E 300 258 231 000 430				MUSIC//SUPPLIES		9.99	
11134	ISCORP	01/08/2007	631446		0	195.50	195.50
01 E 005 110 000 000 350				ACCOUNTING OFFICE//REPAIRS AND MAINTENANCE SVCS		195.50	
11135	TAMARA ISFELD	01/08/2007	1		0	125.00	125.00
01 E 300 790 309 799 401				OTHER PUPIL SUPPORT SERVICES/OTHER GRANTS/GENERAL SUPPLI		125.00	
11136	J & S ONE STOP	01/08/2007	1		0	87.34	87.34
01 E 300 790 309 799 401				OTHER PUPIL SUPPORT SERVICES/OTHER GRANTS/GENERAL SUPPLI		87.34	

Check Nbr	Vendor Name	Check Date	Invoice Number	Invoice Desc	PO Number	Invoice Amount	Check Amount
11137	ELIZABETH JAHN	01/08/2007	1	AOSA CONF.	0	434.02	434.02
01 E 100 204 000 414 367				TITLE II EISENHWOER/TITLE II ESEA/TRAVEL-PROFESS DEVELOP		434.02	
11138	JIMMY'S PIZZA	01/08/2007	595193		0	87.00	87.00
01 E 300 790 309 799 401				OTHER PUPIL SUPPORT SERVICES/OTHER GRANTS/GENERAL SUPPLI		87.00	
11139	JOHNSON CONTROLS	01/08/2007	612120699		0	880.55	880.55
01 E 005 810 000 000 350				OPERATIONS AND MAINTENANCE//REPAIRS AND MAINTENANCE SVCS		880.55	
11140	KHALI, MARGARET	01/08/2007	1		0	29.63	29.63
01 L 230 62				GENERAL FUND/DEFERRED REVENUE/TEENS ETC. (KHALI)		29.63	
11141	KLOCKIT	01/08/2007	2601547		0	187.83	187.83
01 E 300 255 000 000 430				INDUSTRIAL EDUCATION//SUPPLIES		187.83	
11142	KUBITZ EDUCATIONAL SERVICES	01/08/2007	8975		0	202.50	202.50
01 E 100 203 113 317 430				ELEMENTARY GENERAL ED./COMPENSATORY/SUPPLIES		202.50	
11143	KVAM, PEGGY	01/08/2007	1		0	71.76	71.76
01 E 100 204 000 414 366				TITLE II EISENHWOER/TITLE II ESEA/TRAVEL-SCHOOL BUSINESS		71.76	
11144	LADNER'S HARDWARE	01/08/2007	1		0	537.01	537.01
01 E 005 810 000 000 410				OPERATIONS AND MAINTENANCE//CUST/REPAIR SUPPLIES		258.10	
01 E 005 810 191 000 410				OPERATIONS AND MAINTENANCE//CUST/REPAIR SUPPLIES		41.55	
01 E 005 810 193 000 401				OPERATIONS AND MAINTENANCE//GENERAL SUPPLIES		19.47	
01 E 300 255 000 000 430				INDUSTRIAL EDUCATION//SUPPLIES		12.77	
01 E 300 301 501 830 433				AG EDUCATION (VOCATIONAL)/VOCATIONAL PROGRAMS/INDIVIDUAL		66.72	
02 E 005 770 000 701 401				FOOD SERVICES/SCHOOL LUNCH/GENERAL SUPPLIES		29.99	
01 E 100 790 308 799 401				OTHER PUPIL SUPPORT SERVICES/OTHER GRANTS/GENERAL SUPPLI		108.41	
11145	LAKE COUNTRY SCALE WORKS, INC.	01/08/2007	12534		0	100.00	100.00
01 E 300 294 221 000 401				BOYS ATHLETICS//GENERAL SUPPLIES		100.00	
11146	LIFELINE AED INC.	01/08/2007	LL-1628		0	100.00	300.00
01 L 230 92				GENERAL FUND/DEFERRED REVENUE/BC/BS SETTLEMENT		100.00	
				LL-1629	0	100.00	
01 L 230 92				GENERAL FUND/DEFERRED REVENUE/BC/BS SETTLEMENT		100.00	
				LL-1630	0	100.00	
01 L 230 92				GENERAL FUND/DEFERRED REVENUE/BC/BS SETTLEMENT		100.00	
11147	LIFETOUCH	01/08/2007	1	ELEM. YEARBOOK	0	1,682.16	1,682.16
01 L 230 33				GENERAL FUND/DEFERRED REVENUE/BERT RANEY ACTIVITY ACCOUN		1,682.16	
11148	CAROLINE LINDEN	01/08/2007	1		0	302.30	302.30
01 E 100 204 000 414 367				TITLE II EISENHWOER/TITLE II ESEA/TRAVEL-PROFESS DEVELOP		302.30	
11149	MACDOCTORS	01/08/2007	1022965	FREIGHT	0	27.00	27.00
01 E 300 211 000 000 329				SECONDARY EDUCATION GENERAL//POSTAGE AND EXPRESS		27.00	
11150	MARSHALL INDEPENDENT	01/08/2007	1		0	119.60	119.60
01 E 150 620 000 000 489				EDUCATIONAL MEDIA/LIBRARY//PERIODICAL/NEWSPAPERS		119.60	
11151	MASA	01/08/2007	1	07 MEMBERSHIP	0	750.00	750.00
01 E 005 010 000 000 820				BOARD OF EDUCATION//DUES & MEMBERSHIPS		750.00	
11152	MCCOY, KAREN	01/08/2007	1		0	5.31	5.31
01 E 200 612 199 000 401				TECHNOLOGY//GENERAL SUPPLIES		5.31	
11153	MDE	01/08/2007	14133	LARGE SITE LICENSE	0	1,085.00	1,085.00
01 E 300 710 000 000 401				COUNSELING/GUIDANCE//GENERAL SUPPLIES		1,085.00	
11154	MEEKER & WRIGHT SP ED COOP	01/08/2007	1	7-06-06 TO 7-27-06	0	60.16	4,766.41
01 E 998 407 000 740 390				SPECIFIC LEARNING DISABILIT/STATE FUNDED SPECIAL ED/TUIT		60.16	
			2	SEPT-NOV 2006	0	3,973.00	
01 E 998 407 000 740 390				SPECIFIC LEARNING DISABILIT/STATE FUNDED SPECIAL ED/TUIT		3,973.00	

Check Nbr	Vendor Name	Check Date	Invoice Number	Invoice Desc	PO Number	Invoice Amount	Check Amount
			DEC06		0	733.25	
01 E 998 407 000 740 390				SPECIFIC LEARNING DISABILIT/STATE FUNDED SPECIAL ED/TUIT		733.25	
11155 MERLIN'S WOODCRAFTS		01/08/2007	48		0	145.00	145.00
01 E 100 203 000 000 899				ELEMENTARY GENERAL ED./MISCELLANEOUS EXPENSE		145.00	
11156 MESPA		01/08/2007	1	06-07 DUES - S. HINZ	0	610.00	610.00
01 E 100 050 000 000 820				PRINCIPAL'S OFFICE//DUES & MEMBERSHIPS		610.00	
11157 MILLER EQUIPMENT & MFG, INC		01/08/2007	5062		0	18.00	18.00
01 E 025 810 000 000 350				OPERATIONS AND MAINTENANCE//REPAIRS AND MAINTENANCE SVCS		18.00	
11158 MIXED BLOOD THEATRE CO		01/08/2007	1		0	625.00	625.00
01 E 200 206 000 433 305				DRUG FREE \$ FED./DRUG F SCH/PROFESSIONAL FEES		625.00	
11159 MMEA		01/08/2007	1831		228	90.00	90.00
01 E 300 640 000 306 367				STAFF DEVELOPMENT/STAFF DEV. 50% SITE/TRAVEL-PROFESS DEV		90.00	
11160 MN DEPT. OF EDUCATION		01/08/2007	1	FIRST FIVE MENTORSHIP PROGRAM	0	600.00	600.00
01 E 300 204 000 414 367				TITLE II EISENHWOER/TITLE II ESEA/TRAVEL-PROFESS DEVELOP		600.00	
11161 MINNESOTA ELEVATOR, INC.		01/08/2007	109767		0	112.22	386.34
01 E 025 860 000 347 590				HEALTH & SAFETY EQUIP/PHYSICAL HAZARD CONTROL/OTHER CAPI		112.22	
			110559		0	274.12	
01 E 005 860 000 347 590				HEALTH & SAFETY EQUIP/PHYSICAL HAZARD CONTROL/OTHER CAPI		274.12	
11162 MN FOOD SERVICE COMPLIANCE CEN		01/08/2007	1		0	179.00	179.00
02 E 005 770 000 701 401				FOOD SERVICES/SCHOOL LUNCH/GENERAL SUPPLIES		179.00	
11163 MONTEVIDEO SCHOOL DISTRICT 129		01/08/2007	07-655	1/2 JULY-DEC. CURRICULUM COOR.	0	13,675.94	13,675.94
01 E 005 610 129 308 391				CURRICULUM CONSULTANT & DEVLOP/STAFF DEV. 25% DIST. WIDE		13,675.94	
11164 MUSIC MART		01/08/2007	497460		0	78.60	78.60
01 E 300 258 233 000 430				MUSIC//SUPPLIES		78.60	
11165 MUSIC STREET		01/08/2007	114524		227	61.25	73.25
01 E 300 258 233 000 450				MUSIC//MATERIALS PURCH FOR RESALE		61.25	
			31023		0	12.00	
01 E 300 258 233 000 350				MUSIC//REPAIRS AND MAINTENANCE SVCS		12.00	
11166 MVCC		01/08/2007	'07-02	2ND QTR.	0	130,000.00	130,000.00
01 E 200 420 000 310 396				SPECIAL EDUCATIONAL GENERAL/COOPERATIVE/DUE TO SCHOOLS S		130,000.00	
11167 MVCC		01/08/2007	-07-02'	2ND QTR	0	127,320.93	127,320.93
01 E 200 420 000 310 396				SPECIAL EDUCATIONAL GENERAL/COOPERATIVE/DUE TO SCHOOLS S		127,320.93	
11168 MVCC		01/08/2007	07-02	2ND QTR.	0	130,000.00	130,000.00
01 E 200 420 000 310 396				SPECIAL EDUCATIONAL GENERAL/COOPERATIVE/DUE TO SCHOOLS S		130,000.00	
11169 MVTV		01/08/2007	1		0	200.00	200.00
01 E 005 810 000 311 320				OPERATIONS AND MAINTENANCE/TELECOMMUNICATIONS GRANT/COMM		200.00	
11170 NATIONAL GEOGRAPHIC SCHOOL PUB		01/08/2007	1001150-07-0062		62	315.36	315.36
01 E 150 201 000 000 460				KINDERGARTEN//BOOKS/WORKBOOKS		315.36	
11171 NATIONAL PEDICULOSIS ASSOCIATI		01/08/2007	12021		0	33.95	33.95
01 E 200 720 000 000 401				HEALTH SERVICES/NURSE//GENERAL SUPPLIES		33.95	
11172 NELSEN'S CLEANERS & LAUNDERERS		01/08/2007	1		0	11.99	11.99
02 E 005 770 000 701 382				FOOD SERVICES/SCHOOL LUNCH/LAUNDRY AND DRY CLEANING		11.99	
11173 NEMETSCHKE NA INC.		01/08/2007	15995		0	1,405.00	1,480.00
01 E 300 255 000 000 430				INDUSTRIAL EDUCATION//SUPPLIES		1,405.00	

Check Nbr	Vendor Name	Check Date	Invoice Number	Invoice Desc	PO Number	Invoice Amount	Check Amount
01 E 300 255 000 000 430			16032	INDUSTRIAL EDUCATION//SUPPLIES	223	75.00	75.00
11174 NORCOSTCO, INC.		01/08/2007	889049	ONE ACT PLAY	224	62.55	62.55
01 E 300 298 236 000 899				EXTRACURRICULAR ACTIVITIES//MISCELLANEOUS EXPENSE		62.55	
11175 OFFICE DEPOT		01/08/2007	1	OTHER COMMUNITY SERVICES/COMMUNITY EDUCATION/GENERAL SUP	0	25.90	87.87
04 E 500 590 000 321 401						25.90	
04 E 500 590 156 321 401			358128256	OTHER COMMUNITY SERVICES/COMMUNITY EDUCATION/GENERAL SUP	0	61.97	61.97
11176 OFFICE MAX BOISE		01/08/2007	322351	ELEMENTARY GENERAL ED.//SUPPLIES	49	232.40	874.66
01 E 100 203 000 000 430				SECONDARY EDUCATION GENERAL//SUPPLIES		116.20	
01 E 300 211 000 000 430						116.20	
01 L 230 92			51972346	GENERAL FUND/DEFERRED REVENUE/BC/BS SETTLEMENT	56	3.78	3.78
01 E 005 020 000 302 530			5994	TABLE ADJUSTMENT	0	-25.00	-25.00
01 E 005 020 000 000 401			5994-	SUPERINTENDENT'S OFFICE//GENERAL SUPPLIES	0	7.38	7.38
01 E 005 020 000 000 401			968263	SUPERINTENDENT'S OFFICE//GENERAL SUPPLIES	0	11.67	11.67
01 E 005 020 000 302 530			971604	SUPERINTENDENT'S OFFICE/CAPITAL OUTLAY/EQUIPMENT PURCHAS	0	644.43	644.43
11177 OFFICE SYSTEMS		01/08/2007	249992-0	ELEMENTARY GENERAL ED.//SUPPLIES	0	315.95	315.95
01 E 150 203 000 000 430						315.95	
11178 OHIO STATE UNIVERSITY		01/08/2007	21336	A MCCARRIER	0	1,045.42	1,045.42
01 E 100 204 000 414 305				TITLE II EISENHWOER/TITLE II ESEA/PROFESSIONAL FEES		1,045.42	
11179 ON TIME SUPPLIES		01/08/2007	33908	NATURAL SCIENCES//SUPPLIES	237	77.36	77.36
01 E 300 260 000 000 430						77.36	
11180 ONE UMMAH CONSULTING		01/08/2007	1	INTERCULTURAL WORKSHOP	0	1,129.98	1,129.98
01 E 300 211 150 000 305				SECONDARY EDUCATION GENERAL//PROFESSIONAL FEES		1,129.98	
11181 ORANGE TREE EMPLOYMENT SCREENI		01/08/2007	12952	MISCELLANEOUS LOCAL REVENUE	0	8.00	24.00
01 R 005 000 000 000 099						8.00	
01 R 005 000 000 000 099			13242	MISCELLANEOUS LOCAL REVENUE	0	16.00	16.00
11182 PACT 4 FAMILIES COLLABORATIVE		01/08/2007	1	2007 DUES	0	1,036.00	5,801.50
01 E 005 010 000 000 820				BOARD OF EDUCATION//DUES & MEMBERSHIPS		1,036.00	
01 E 200 740 000 740 305			2	SOC. WKR- 1ST HALF	0	4,765.50	4,765.50
11183 PAN-O-GOLD BAKING CO.		01/08/2007	1	FOOD SERVICES/SCHOOL LUNCH/FOOD	0	525.75	559.70
02 E 005 770 000 701 490				FOOD SERVICES/BREAKFAST/FOOD		420.60	
02 E 005 770 000 705 490						105.15	
02 E 005 770 000 705 490			10	FOOD SERVICES/BREAKFAST/FOOD	0	33.95	33.95
11184 SONJA PEDERSON		01/08/2007	1	HEALTH SERVICES/NURSE//TRAVEL-SCHOOL BUSINESS	0	66.93	66.93
01 E 200 720 000 000 366						66.93	
11185 J.W. PEPPER & SON INC.		01/08/2007	11339667	MUSIC//SUPPLIES	0	249.99	321.57
01 E 300 258 233 000 430						249.99	

Check Nbr	Vendor Name	Check Date	Invoice Number	Invoice Desc	PO Number	Invoice Amount	Check Amount
01 E 300 258 231 000 430			11351637	MUSIC//SUPPLIES	209	39.99	39.99
01 E 100 203 407 000 430			11356387	ELEMENTARY GENERAL ED.//SUPPLIES	0	31.59	31.59
11186 PITNEYBOWES		01/08/2007	454116-DC06	RENTAL	0	254.00	254.00
01 E 005 020 000 000 370				SUPERINTENDENT'S OFFICE//RENTALS AND LEASES		254.00	
11187 PRAIRIE GRAIN PARTNERS LLC		01/08/2007	25780	OPERATIONS AND MAINTENANCE//CUST/REPAIR SUPPLIES	0	72.90	72.90
01 E 025 810 191 000 410						72.90	
11188 PRAIRIE'S EDGE CASINO RESORT		01/08/2007	62347	K. HICKS	0	53.91	53.91
01 E 100 204 000 414 367				TITLE II EISENHWOER/TITLE II ESEA/TRAVEL-PROFESS DEVELOP		53.91	
11189 QUAD-STATE ASBESTOS REMOVAL		01/08/2007	1	HAGG ASBESTOS REMOVAL	0	7,003.00	7,003.00
01 E 025 860 000 358 590				HEALTH & SAFETY EQUIP/ASBESTOS/OTHER CAPITAL EXPENDITURE		7,003.00	
11190 QUILL CORPORATION		01/08/2007	3120797	ACCOUNTING OFFICE//GENERAL SUPPLIES	53	47.54	47.54
01 E 005 110 000 000 401						47.54	
11191 RATWICK, ROSZAK & MALONEY, P.A		01/08/2007	1	LEGAL SERVICES//PROFESSIONAL FEES	0	377.40	377.40
01 E 005 150 000 000 305						377.40	
11192 REDWOOD AREA THEATRE		01/08/2007	1	PLAY -MUSICAL	0	185.00	185.00
01 E 300 298 236 000 899				EXTRACURRICULAR ACTIVITIES//MISCELLANEOUS EXPENSE		185.00	
11193 REINHART INST FOODS		01/08/2007	1	FOOD SERVICES/SCHOOL LUNCH/GENERAL SUPPLIES	0	4,688.82	5,142.74
02 E 005 770 000 701 401						343.47	
02 E 005 770 000 701 490				FOOD SERVICES/SCHOOL LUNCH/FOOD		1,960.76	
02 E 005 770 000 701 899				FOOD SERVICES/SCHOOL LUNCH/MISCELLANEOUS EXPENSE		2,097.90	
02 E 005 770 000 705 490				FOOD SERVICES/BREAKFAST/FOOD		286.69	
02 E 025 770 000 701 401			10	FOOD SERVICES/SCHOOL LUNCH/GENERAL SUPPLIES	0	453.92	
02 E 025 770 000 701 490				FOOD SERVICES/SCHOOL LUNCH/FOOD		135.64	
02 E 025 770 000 705 490				FOOD SERVICES/BREAKFAST/FOOD		91.90	
11194 RILEY BUS SERVICE, INC.		01/08/2007	5754	CHANHASSEN	0	457.50	987.50
04 E 500 505 000 321 361				COMMUNITY EDUCATION GENERAL/COMMUNITY EDUCATION/BUS CONT		457.50	
04 E 500 505 000 321 361			5917	LAKEVILLE	0	530.00	530.00
				COMMUNITY EDUCATION GENERAL/COMMUNITY EDUCATION/BUS CONT		530.00	
11195 RTS		01/08/2007	1	OPERATIONS AND MAINTENANCE//COMMUNICATIONAL SERVICES	0	220.60	261.23
01 E 005 810 000 000 320						220.60	
01 E 025 810 000 000 320			2	OPERATIONS AND MAINTENANCE//COMMUNICATIONAL SERVICES	0	40.63	40.63
11196 SAWMILL		01/08/2007	1	INDUSTRIAL EDUCATION//SUPPLIES	0	60.31	121.15
01 E 300 255 000 000 430						60.31	
01 E 005 810 000 000 410			2	OPERATIONS AND MAINTENANCE//CUST/REPAIR SUPPLIES	0	60.84	60.84
11197 SAX ARTS & CRAFTS		01/08/2007	9210939	ART//SUPPLIES	220	224.00	288.00
01 E 300 212 000 000 430						224.00	
01 E 300 212 000 000 430			C1008953	ART//SUPPLIES	0	64.00	64.00
11198 SCHOOL HEALTH CORPORATION		01/08/2007	1264250-00	HEALTH SERVICES/NURSE//GENERAL SUPPLIES	251	71.80	131.04
01 E 200 720 000 000 401						71.80	
01 E 200 720 000 000 401			1264607-10	HEALTH SERVICES/NURSE//GENERAL SUPPLIES	0	3.10	3.10
			1265104-00		257	56.14	

Check Nbr	Vendor Name	Check Date	Invoice Number	Invoice Desc	PO Number	Invoice Amount	Check Amount
01 E 200 720 000 000 401				HEALTH SERVICES/NURSE//GENERAL SUPPLIES		56.14	
11199 SCHOOL SPECIALTY INC.		01/08/2007	56473700		249	114.32	114.32
01 E 100 203 000 000 899				ELEMENTARY GENERAL ED.//MISCELLANEOUS EXPENSE		114.32	
11200 SCHWICKERT'S		01/08/2007	SIC002836	TECTA REPAIRS	0	14,410.00	14,410.00
01 E 005 850 000 302 522				FACILITIES/CAPITAL OUTLAY/BUILDING IMPROVEMENTS		14,410.00	
11201 DANIEL E SIK		01/08/2007	1		0	8.97	8.97
01 E 300 211 169 000 366				SECONDARY EDUCATION GENERAL//TRAVEL-SCHOOL BUSINESS		8.97	
11202 SKITS OUTREACH SERVICES		01/08/2007	1		245	1,009.29	1,009.29
01 E 200 206 000 433 305				DRUG FREE \$ FED./DRUG F SCH/PROFESSIONAL FEES		1,009.29	
11203 SOUTHWEST WHOLESALE		01/08/2007	1		0	8,946.81	11,994.94
02 E 005 770 000 701 401				FOOD SERVICES/SCHOOL LUNCH/GENERAL SUPPLIES		1,933.44	
02 E 005 770 000 701 490				FOOD SERVICES/SCHOOL LUNCH/FOOD		6,463.70	
02 E 005 770 000 705 490				FOOD SERVICES/BREAKFAST/FOOD		549.67	
			10		0	830.45	
02 E 025 770 000 701 401				FOOD SERVICES/SCHOOL LUNCH/GENERAL SUPPLIES		146.70	
02 E 025 770 000 701 490				FOOD SERVICES/SCHOOL LUNCH/FOOD		545.59	
02 E 025 770 000 705 490				FOOD SERVICES/BREAKFAST/FOOD		138.16	
			20		0	2,217.68	
02 E 005 770 000 701 401				FOOD SERVICES/SCHOOL LUNCH/GENERAL SUPPLIES		2,217.68	
11204 SPECIAL SYSTEMS INC.		01/08/2007	30863	ANNUAL MAINTENANCE	0	1,990.00	1,990.00
01 E 005 860 000 363 305				HEALTH & SAFETY EQUIP/FIRE SAFETY/PROFESSIONAL FEES		1,990.00	
11205 ST. JOHN'S LUTHERAN SCHOOL		01/08/2007	1	2ND QTR TRANSPORTATION	0	800.00	800.00
01 E 005 760 000 720 361				PUPIL TRANSPORTATION/REGULAR TO AND FROM SCHOOL/BUS CONT		800.00	
11206 STEIN'S, INC		01/08/2007	478983-1		0	25.30	680.66
01 E 005 810 000 000 410				OPERATIONS AND MAINTENANCE//CUST/REPAIR SUPPLIES		25.30	
			480226		0	655.36	
01 E 025 810 000 000 410				OPERATIONS AND MAINTENANCE//CUST/REPAIR SUPPLIES		655.36	
11207 STRAND, DWAYNE		01/08/2007	1		0	57.96	57.96
01 E 005 020 000 000 366				SUPERINTENDENT'S OFFICE//TRAVEL-SCHOOL BUSINESS		57.96	
11208 STRAND, RITA		01/08/2007	1	CIDER	0	8.95	8.95
01 L 230 10				GENERAL FUND/DEFERRED REVENUE/SUPT POP FUND		8.95	
11209 SUPER 8 GRANITE FALLS		01/08/2007	106569-70		0	603.42	603.42
01 L 230 01				GENERAL FUND/DEFERRED REVENUE/ARTS COUNCIL		603.42	
11210 SW/WC SERVICE COOP - MARSHALL		01/08/2007	16622	1/3 SPECIAL NEEDS	0	1,966.05	1,966.05
01 E 200 420 000 740 390				SPECIAL EDUCATIONAL GENERAL/STATE FUNDED SPECIAL ED/TUIT		1,966.05	
11211 TEACHING RESOURCE CENTER		01/08/2007	1012020		66	39.71	39.71
01 E 150 201 000 000 430				KINDERGARTEN//SUPPLIES		39.71	
11212 THERAPY SHOPPE INC.		01/08/2007	68069-	SHIPPING	0	6.49	6.49
01 E 100 402 000 419 433				MILD/MODERATE MENTALLY IMP;/94-142 FEDERAL/INDIVIDUAL IN		6.49	
11213 Vendor Continued Void		01/08/2007					0.00
11214 THRIFTY WHITE DRUG		01/08/2007	1		0	27.56	206.06
04 E 500 580 000 325 430				EARLY CHILDHOOD AND FAM ED/EARLY CHILDHOOD AND FAMILY ED		27.56	
			10		262	90.00	
01 E 100 790 308 799 401				OTHER PUPIL SUPPORT SERVICES/OTHER GRANTS/GENERAL SUPPLI		90.00	
			2		0	19.83	
02 E 005 770 000 701 401				FOOD SERVICES/SCHOOL LUNCH/GENERAL SUPPLIES		19.83	
			20		0	23.97	

Check Nbr	Vendor Name	Check Date	Invoice Number	Invoice Desc	PO Number	Invoice Amount	Check Amount
01 E 005 810 000 000 410				OPERATIONS AND MAINTENANCE//CUST/REPAIR SUPPLIES		23.97	
			21		0	12.76	
01 E 100 203 000 000 899				ELEMENTARY GENERAL ED.//MISCELLANEOUS EXPENSE		12.76	
			824255		0	17.94	
01 E 300 790 309 799 401				OTHER PUPIL SUPPORT SERVICES/OTHER GRANTS/GENERAL SUPPLI		17.94	
			824257		250	14.00	
01 E 100 790 108 799 401				OTHER PUPIL SUPPORT SERVICES/OTHER GRANTS/GENERAL SUPPLI		14.00	
11215 TIES		01/08/2007	23060		0	960.00	960.00
01 E 100 204 000 414 366				TITLE II EISENHWOER/TITLE II ESEA/TRAVEL-SCHOOL BUSINESS		240.00	
01 E 300 204 000 414 366				TITLE II EISENHWOER/TITLE II ESEA/TRAVEL-SCHOOL BUSINESS		720.00	
11216 ALICIA TONGEN		01/08/2007	1		0	17.94	17.94
01 E 300 211 169 000 366				SECONDARY EDUCATION GENERAL//TRAVEL-SCHOOL BUSINESS		17.94	
11217 US BANK TRUST TFM		01/08/2007	1	ENERGY BONDS	0	60,000.00	66,070.00
07 E 005 910 000 000 710				DEBT REDEMPTION//BOND PRINCIPAL		60,000.00	
			2	ENERGY BONDS	0	6,070.00	
07 E 005 910 000 000 720				DEBT REDEMPTION//BOND INTEREST		6,070.00	
11218 U.S. BANK TRUST		01/08/2007	33396540	INTEREST	0	1,000.00	51,000.00
07 E 005 910 000 000 720				DEBT REDEMPTION//BOND INTEREST		1,000.00	
			33396540-	PRINCIPAL- LAST PAYMENT	0	50,000.00	
07 E 005 910 000 000 710				DEBT REDEMPTION//BOND PRINCIPAL		50,000.00	
11219 VALLEY TROLL		01/08/2007	857-4		0	45.89	45.89
01 L 230 62				GENERAL FUND/DEFERRED REVENUE/TEENS ETC. (KHALI)		45.89	
11220 VAN MOER, MARGO		01/08/2007	1		238	117.25	117.25
01 E 300 790 388 000 899				OTHER PUPIL SUPPORT SERVICES//MISCELLANEOUS EXPENSE		117.25	
11221 VELDE SANITATION		01/08/2007	25694		0	505.00	855.00
01 E 005 810 000 000 330				OPERATIONS AND MAINTENANCE//UTILITY SERVICES		505.00	
			25694-		0	350.00	
01 E 025 810 000 000 330				OPERATIONS AND MAINTENANCE//UTILITY SERVICES		350.00	
11222 CINDY VELDE		01/08/2007	1		0	84.57	100.72
04 E 500 590 156 321 366				OTHER COMMUNITY SERVICES/COMMUNITY EDUCATION/TRAVEL-SCHO		84.57	
			2		0	8.43	
04 E 500 590 000 321 401				OTHER COMMUNITY SERVICES/COMMUNITY EDUCATION/GENERAL SUP		8.43	
			3		0	7.72	
09 L 230 28				TRUST FUND/DEFERRED REVENUE/SENIOR CITIZENS CARD PROJECT		7.72	
11223 WEEKLY READER		01/08/2007	1		0	153.72	153.72
01 E 100 203 405 000 430				ELEMENTARY GENERAL ED.//SUPPLIES		153.72	
11224 WELDERS SUPPLY		01/08/2007	820716		0	5.58	5.58
01 E 300 301 501 830 433				AG EDUCATION (VOCATIONAL)/VOCATIONAL PROGRAMS/INDIVIDUAL		5.58	
11225 BEN WIDBOOM		01/08/2007	1	TAEKWONDO	0	1,008.00	1,008.00
04 E 500 505 000 321 305				COMMUNITY EDUCATION GENERAL/COMMUNITY EDUCATION/PROFESSI		1,008.00	
11226 XCEL ENERGY		01/08/2007	1		0	28.92	28.92
01 E 025 810 184 000 330				OPERATIONS AND MAINTENANCE//UTILITY SERVICES		28.92	
11227 YMC FAMILY SERVICE CENTER		01/08/2007	1		0	32.12	32.12
04 E 500 590 000 321 401				OTHER COMMUNITY SERVICES/COMMUNITY EDUCATION/GENERAL SUP		32.12	
11228 YMC TREASURER		01/08/2007	1	ELECTION COST	0	896.25	896.25
01 E 005 199 000 000 401				SCHOOL ELECTIONS//GENERAL SUPPLIES		896.25	

Check Nbr	Vendor Name	Check Date	Invoice Number	Invoice Desc	PO Number	Invoice Amount	Check Amount
11229	YME SCHOOL ACTIVITY ACCOUNT	01/08/2007	1	BOX TOPS	0	207.67	867.59
01 L	230 56			GENERAL FUND/DEFERRED REVENUE/HAGG ELEMENTARY SCHOOL ACT		207.67	
			10	POP PROFIT	0	659.92	
01 L	230 15			GENERAL FUND/DEFERRED REVENUE/STUDENT COUNCIL		659.92	
11230	Vendor Continued Void	01/08/2007					0.00
11231	Vendor Continued Void	01/08/2007					0.00
11232	Vendor Continued Void	01/08/2007					0.00
11233	Vendor Continued Void	01/08/2007					0.00
11234	Vendor Continued Void	01/08/2007					0.00
11235	YME SCHOOLS-ADM	01/08/2007	4067	VOID	0	-6.00	7,849.71
01 E	100 620 000 000 401			EDUCATIONAL MEDIA/LIBRARY//GENERAL SUPPLIES		-6.00	
			4152	VOID TODD BALFANY	0	-1.95	
02 R	005 000 000 701 601			SCHOOL LUNCH/SALES TO PUPILS		-1.95	
			4179	VOIDBEV PETERSEN	0	-38.05	
02 R	005 000 000 701 601			SCHOOL LUNCH/SALES TO PUPILS		-38.05	
			4658	VOID COMM OF ED.	0	-80.00	
01 E	005 610 375 308 366			CURRICULUM CONSULTANT & DEVLOP/STAFF DEV. 25% DIST. WIDE		-80.00	
			4698	NLS SCHOOL	0	50.00	
01 E	300 292 226 000 319			BOYS/GIRLS ATHLETICS//OTHER PERSONAL SERVICES		50.00	
			4819	VOIDMARK JENSEN	0	-104.00	
01 E	300 294 211 000 186			BOYS ATHLETICS//EXTRA-CURRICULAR WORKERS		-104.00	
			4864	QUILL	0	7.83	
01 E	005 110 000 000 401			ACCOUNTING OFFICE//GENERAL SUPPLIES		7.83	
			4865	JEFF GLADIS	0	190.00	
01 E	300 294 213 000 319			BOYS ATHLETICS//OTHER PERSONAL SERVICES		190.00	
			4866	LARRY HALVORSON	0	135.00	
01 E	300 294 221 000 319			BOYS ATHLETICS//OTHER PERSONAL SERVICES		135.00	
			4867	CARTER GLAD	0	80.00	
01 E	300 294 213 000 319			BOYS ATHLETICS//OTHER PERSONAL SERVICES		80.00	
			4868	AL HANDAHL	0	40.00	
01 E	300 296 213 000 319			GIRLS ATHLETICS//OTHER PERSONAL SERVICES		40.00	
			4869	FRONTIER	0	99.05	
01 E	025 810 000 000 320			OPERATIONS AND MAINTENANCE//COMMUNICATIONAL SERVICES		99.05	
			4870	MOLLY KVAM	0	100.00	
01 E	300 298 236 000 319			EXTRACURRICULAR ACTIVITIES//OTHER PERSONAL SERVICES		100.00	
			4871	ISAK KVAM	0	100.00	
01 E	300 298 236 000 319			EXTRACURRICULAR ACTIVITIES//OTHER PERSONAL SERVICES		100.00	
			4872	BRITTA LARSON	0	100.00	
01 E	300 298 236 000 319			EXTRACURRICULAR ACTIVITIES//OTHER PERSONAL SERVICES		100.00	
			4873	KURT JOHNSON	0	375.00	
04 E	500 505 000 321 305			COMMUNITY EDUCATION GENERAL/COMMUNITY EDUCATION/PROFESSI		375.00	
			4874	TIM CROWLEY	0	150.00	
01 E	300 408 390 000 305			EMOTION/BEHAVIORAL DISORDER//PROFESSIONAL FEES		150.00	
			4875	JENI REED	0	190.00	
01 E	300 294 213 000 319			BOYS ATHLETICS//OTHER PERSONAL SERVICES		190.00	
			4876	F&M BANK	0	20.00	
01 E	005 110 000 000 899			ACCOUNTING OFFICE//MISCELLANEOUS EXPENSE		20.00	
			4878	PURCHASE POWER	0	3,030.00	
01 E	005 020 000 000 329			SUPERINTENDENT'S OFFICE//POSTAGE AND EXPRESS		730.00	

Check Nbr	Vendor Name	Check Date	Invoice Number	Invoice Desc	PO Number	Invoice Amount	Check Amount
01 E 300 211 000 000 329				SECONDARY EDUCATION GENERAL//POSTAGE AND EXPRESS		2,300.00	
			4879	UPPER SIOUX COMMUNITY	0	95.00	
01 E 005 010 000 000 899				BOARD OF EDUCATION//MISCELLANEOUS EXPENSE		95.00	
			4880	MARK HERMAN	0	190.00	
01 E 300 294 213 000 319				BOYS ATHLETICS//OTHER PERSONAL SERVICES		190.00	
			4881	RICK MCLAIN	0	190.00	
01 E 300 296 213 000 319				GIRLS ATHLETICS//OTHER PERSONAL SERVICES		190.00	
			4882	POSTMASTER	0	160.00	
01 E 005 020 000 000 329				SUPERINTENDENT'S OFFICE//POSTAGE AND EXPRESS		160.00	
			4883	COMM. OF ED.	0	75.00	
01 E 100 640 000 306 367				STAFF DEVELOPMENT/STAFF DEV. 50% SITE/TRAVEL-PROFESS DEV		75.00	
			4884	PLAZA THREE THEATRE	0	1,500.00	
01 L 230 33				GENERAL FUND/DEFERRED REVENUE/BERT RANEY ACTIVITY ACCOUN		1,000.00	
01 L 230 56				GENERAL FUND/DEFERRED REVENUE/HAGG ELEMENTARY SCHOOL ACT		500.00	
			4885	KIMBALL SCHOOLS	0	130.00	
01 E 300 294 221 000 369				BOYS ATHLETICS//PARTICIPATION FEES		130.00	
			4886	NYA SCHOOLS ISD 108	0	150.00	
01 E 300 294 221 000 369				BOYS ATHLETICS//PARTICIPATION FEES		150.00	
			4887	POST OFFICE	0	47.40	
04 E 500 580 000 325 329				EARLY CHILDHOOD AND FAM ED/EARLY CHILDHOOD AND FAMILY ED		47.40	
			4888	PIPESTONE SCHOOL	0	50.00	
01 E 300 294 221 000 369				BOYS ATHLETICS//PARTICIPATION FEES		50.00	
			4889	KMS SCHOOL	0	75.00	
01 E 300 294 221 000 369				BOYS ATHLETICS//PARTICIPATION FEES		75.00	
			4890	STEVE AMMERMAN	0	190.00	
01 E 300 294 213 000 319				BOYS ATHLETICS//OTHER PERSONAL SERVICES		190.00	
			4891	SUB-REGIONAL KNOWLEDGE BOWL	0	480.00	
01 E 300 218 000 388 369				GIFTED & TALENTED/TAG (06)/PARTICIPATION FEES		480.00	
			4892	KIWANIS	0	100.00	
01 E 100 050 000 000 820				PRINCIPAL'S OFFICE//DUES & MEMBERSHIPS		100.00	
				INTEREST	0	-19.57	
01 R 005 000 000 000 092				INVESTMENT EARNINGS		-19.57	

186 Computer Check(s) For a Total of 769,250.60

	0	Manual	Checks For a Total of	0.00
	186	Computer	Checks For a Total of	769,250.60
Total For	186		Manual and Computer Checks	769,250.60
Less	0	Voided	Checks For a Total of	0.00
			Net Amount	769,250.60

FUND SUMMARY

Fund	Description	Balance Sheet	Revenue	Expense	Total
01	GENERAL FUND	5,332.22	4.43	612,248.19	617,584.84
02	FOOD SERVICE	0.00	-40.00	26,141.01	26,101.01
04	COMMUNITY SERVICE	0.00	0.00	2,837.05	2,837.05
07	DEBT REDEMPTION	0.00	0.00	117,070.00	117,070.00
09	TRUST FUND	5,657.70	0.00	0.00	5,657.70

**Yellow Medicine East #2190
Board Report
January 2007**

	2006-07 Expenditures	Revised Budget	Year to Date	Budget Balance	Percent	% Exp.
	By Fund	2006-07	Expenditures		Expended	2005-06%
	General	9,748,164	4,248,756	5,499,408	43.59%	49.45%
	Food Service	400,849	198,113	202,736	49.42%	44.26%
	Community Service	292,283	166,158	126,125	56.85%	53.99%
	Debt Redemption	139,092	137,522	1,570	98.87%	99.24%
	Trust Fund	0		0	0.00%	0.00%
	Total	10,580,388	4,750,549	5,829,839	44.90%	50.40%

Year to date amounts include current month's accounts payables plus previous month's payroll.

Salaries % expended to date (approximately)

Contracted July-June	Supt/Finance/Maint/Comm Ed	50.00%
Contracted August-July	Principals	41.67%
Contracted Sept-August	Teachers/Fd Svc Supv/Nurses	33.33%
12 Month Non-certified	Secretaries	50.00%
12 Month Non-certified	Custodians	44.44%
9 Month Non-certified	Assistants/Cooks	37.00%

Liquid Asset Fund (Investments)

Month End Cash Invested \$2,098,240.20

YELLOW MEDICINE EAST ENROLLMENT UPDATE 2006-2007

	SEPTEMBER				OCTOBER				NOVEMBER				DECEMBER				JANUARY			
	BR	HAH	SH	ENR	BR	HAH	SH	ENR	BR	HAH	SH	ENR	BR	HAH	SH	ENR	BR	HAH	SH	ENR
Kinder	57	16		73	51	16		67	53	16		69	50	15		65	51	14		65
First	78	15		93	80	15		95	79	15		94	79	16		95	80	16		96
Second	54	16		70	55	15		70	55	15		70	57	16		73	56	16		72
Third	51	22		73	52	22		74	51	22		73	50	23		73	50	23		73
Fourth	66	19		85	65	18		83	65	18		83	65	18		83	62	18		80
Fifth	54	10		64	52	10		62	53	10		63	52	11		63	53	11		64
Sixth	58	12		70	60	12		72	60	12		72	58	12		70	57	12		69
	418	110		528	415	108		523	416	108		524	411	111		522	409	110		519
Seventh			78				77				76			78					77	
Eighth			84				85				83			84					83	
Ninth			91				92				92			89					88	
Tenth			83				84				83			82					82	
Eleventh			95				98				94			94					91	
Twelfth			89				89				89			87					86	
			520				525				517			514					507	
K-12 ENROLLMENT TOTAL			1048				1048				1041			1036					1026	

40

	FEBRUARY				MARCH				APRIL				MAY				LAST DAY OF SCHOOL			
	BR	HAH	SH	ENR	BR	HAH	SH	ENR	BR	HAH	SH	ENR	BR	HAH	SH	ENR	BR	HAH	SH	ENR
Kinder				0				0				0				0				0
First				0				0				0				0				0
Second				0				0				0				0				0
Third				0				0				0				0				0
Fourth				0				0				0				0				0
Fifth				0				0				0				0				0
Sixth				0				0				0				0				0
	0	0		0	0	0		0	0	0		0	0	0		0	0		0	0
Seventh																				
Eighth																				
Ninth																				
Tenth																				
Eleventh																				
Twelfth																				
				0				0				0				0				0
K-12 ENROLLMENT TOTAL				0				0				0				0				0

YME FOOD SERVICE REPORT TO THE SCHOOL BOARD

December, 2006

Granite Falls Site: 2006

Meal Type	Total Reimbursable Meals Served (Free + Reduced + Paid)	Average Daily Attendance	Number of Days Served	Total Free Meals Served	Total Reduced-Price Meals Served	Total Non-Reimbursable Meals Served	Number of Participants Approved for Free Meals	Number of Participants Approved for Reduced-Price Meals	Number of Participants Non Approved for Free or Reduced-Price Meals
Breakfast	2,480	895	15	1,286	388	35	284	174	563
Lunch	11,152	895	16	3,572	1,412	413	284	114	563

Granite Falls Site: 2005

Meal Type	Total Reimbursable Meals Served (Free + Reduced + Paid)	Average Daily Attendance	Number of Days Served	Total Free Meals Served	Total Reduced-Price Meals Served	Total Non-Reimbursable Meals Served	Number of Participants Approved for Free Meals	Number of Participants Approved for Reduced-Price Meals	Number of Participants Non Approved for Free or Reduced-Price Meals
Breakfast	2,277	915	16	1,050	578	32	253	143	570
Lunch	11,228	915	16	3,222	1,832	381	253	143	570

Clarkfield Site: 2006

Meal Type	Total Reimbursable Meals Served (Free + Reduced + Paid)	Average Daily Attendance	Number of Days Served	Total Free Meals Served	Total Reduced-Price Meals Served	Total Non-Reimbursable Meals Served	Number of Participants Approved for Free Meals	Number of Participants Approved for Reduced-Price Meals	Number of Participants Non Approved for Free or Reduced-Price Meals
Breakfast	701	133	15	377	230	23	50	34	45
Lunch	1,789	133	16	641	489	82	50	34	45

Clarkfield Site: 2005

Meal Type	Total Reimbursable Meals Served (Free + Reduced + Paid)	Average Daily Attendance	Number of Days Served	Total Free Meals Served	Total Reduced-Price Meals Served	Total Non-Reimbursable Meals Served	Number of Participants Approved for Free Meals	Number of Participants Approved for Reduced-Price Meals	Number of Participants Non Approved for Free or Reduced-Price Meals
Breakfast	1,006	138	16	441	374	20	48	40	51
Lunch	1,973	138	16	653	563	83	48	40	51

STAFF DEVELOPMENT/CURRICULUM REPORT

January 2007
Yvonne Sorenson

Staff Development:

- January 2 Staff Development: Jane Elliot, our scheduled trainer was unable to come. Nehrwr Abdul-Wahid from oneummahconsulting.com was secured to come in her place. All staff attended and learned about intercultural competency and how we look at diversity. During the first part of the morning, the K-2 teachers met with Peggy Kvam as part of the Literacy Collaborative and the remaining teachers attended curriculum meetings.
- January 15: 3-12 teachers and specialists will attend the MRVED Common In-Service in Dawson. Teachers will attend one break-out session of their choice, a content area session and hear a motivational speaker. K-2 teachers will meet in BRE to continue with the Literacy Collaborative course work.
- January 16 late start will focus on technology integration.

Curriculum work:

- The 4-12 math team met to begin discussion on what needs to be done to get this year's 4th grade students and beyond ready for Algebra in 8th grade and Algebra II as a graduation requirement. They also started looking at what needs to be done to get this year's 9th grade students ready to pass the math GRAD test in 11th grade.
- The 7-12 science team began looking at the test specification for the MCA Science test, which students in grades 5,8 and 10 will take in 2008.

Assessment update:

- On January 23 the 9th grade students will be taking the GRAD writing test. Students need to pass this test to receive a Minnesota diploma. This test has been moved from grade 10 to 9th grade; however this year both 9th and 10th grade students will take it. After this year it will be 9th grade only.
- The BST math and reading tests are being phased out. Only students in grades 10-12 who haven't passed them with need to re-take these tests in February.

Consent Items
January 8, 2007
Recommendations to the Board

9.A. PACT 4 Contribution Statement/Letter of Intent

Our membership in PACT 4 is up for renewal. PACT 4 is a 4 county mental health collaborative that provides early intervention and prevention activities for youth and families. Membership is base billed at \$1.00 per student. The cost for the District to participate is \$1,036.00. The membership year runs from January 1st through December 31st. ***Recommend renewing our PACT 4 membership.***

9.B. Pay Equity Implementation Report

Every 5 years, we are required to complete a pay equity review and submit an implementation report. The intent of the legislation for this requirement is to insure that all staff are paid equal salaries for equal work. A copy of the report is attached for your review and information. Your approval of the report is required before it can be submitted. ***Recommend approval of the 06 Pay Equity Implementation Report.***

Job Nbr	Class Title	Nbr Males	Nbr Females	Class Type	Jobs Points	Min Mo. Salary	Max Mo. Salary	Yrs to Max Salary	Yrs of Service	Exceptional Service Pay
1	Kitchen Assistants	0	3	F	35	\$1,773.00	\$1,773.00	0	3.00	
2	ESL Assistant	0	4	F	41	\$2,173.00	\$2,208.00	0	5.00	
3	Cooks Helper	0	1	F	49	\$2,116.00	\$2,116.00	0	16.00	
4	Learning Readiness Asst.	0	1	F	53	\$2,010.00	\$2,010.00	0	6.00	
5	Equipment Manager	1	0	M	60	\$2,035.00	\$2,035.00	0	8.00	
6	Teacher Asst/Elem Clsrm T1	0	4	F	61	\$2,173.00	\$2,173.00	0	2.00	
7	Teacher Asst/Elem Clsrm T2	0	10	F	61	\$2,208.00	\$2,208.00	0	23.00	
8	Teacher Asst/Lib Media Ctrs	0	3	F	62	\$2,173.00	\$2,208.00	0	10.00	
9	Custodian	5	1	M	62	\$2,253.00	\$2,449.00	0	28.00	
10	Asst. Cook	0	2	F	62	\$2,274.00	\$2,274.00	0	18.00	
11	Maint Helper/Custodian	1	0	M	76	\$2,478.00	\$2,478.00	0	25.00	
12	Secretary III	0	2	F	78	\$2,390.00	\$2,390.00	0	1.00	
13	Nurse Health Services	0	1	F	99	\$2,863.00	\$2,863.00	0	1.00	
14	Secretary II	0	1	F	99	\$2,624.00	\$2,624.00	0	1.00	
15	YMC Senior Advocate	0	1	F	101	\$2,237.00	\$2,237.00	0	4.00	
16	Head Cook	0	2	F	101	\$2,346.00	\$2,346.00	0	30.00	
17	Secretary IB	0	1	F	101	\$2,695.00	\$2,695.00	0	18.00	
18	Secretary IA	0	2	F	110	\$3,050.00	\$3,050.00	0	17.00	
19	School Accountant	0	1	F	112	\$3,343.00	\$3,343.00	0	8.00	
20	Title IX Liason	0	2	F	115	\$3,007.00	\$3,007.00	0	7.00	
21	Maintenance	1	0	M	122	\$2,525.00	\$2,525.00	0	10.00	
22	504/IG Coordinator	0	2	F	123	\$2,814.00	\$3,225.00	0	10.00	
23	Secretary to Superintendent	0	1	F	128	\$2,988.00	\$2,988.00	0	4.00	
24	Outside Maintenance	1	0	M	131	\$2,693.00	\$2,693.00	0	30.00	
25	ECFE Parent Home Visit Coord	0	1	F	150	\$4,430.00	\$4,430.00	0	9.00	
26	ECFE Early Childhood Educ	0	3	F	155	\$4,164.00	\$4,579.00	4.00	14.00	
27	Licensed Personnal BS/BA	20	37	B	167	\$3,608.00	\$6,767.00	15.00	33.00	
28	Chapter I/Title I Lead Teacher	0	1	F	167	\$4,579.00	\$4,579.00	0	22.00	
29	Asst. Finance Officer	0	1	F	170	\$3,343.00	\$3,343.00	0	7.00	
30	ECFE/Learn Readiness Coord	0	1	F	184	\$4,164.00	\$4,579.00	4.00	25.00	

Job Class Data Entry Verification List

Yellow Medicine East - ISD 21
450 9th Avenue
LGID: 2

Case: 2007 Data					Status:					
Job Nbr	Class Title	Nbr Males	Nbr Females	Class Type	Jobs Points	Min Mo. Salary	Max Mo. Salary	Yrs to Max Salary	Yrs of Service	Exceptional Service Pay
31	ESL Instructor	0	1	F	187	\$3,608.00	\$6,767.00	15.00	17.00	
32	Lic Prson MS/ME Non-Sup MA/M	0	3	F	188	\$4,204.00	\$6,767.00	15.00	24.00	
33	Technology Coordinator	0	1	F	190	\$4,066.00	\$4,066.00	0	9.00	
34	Food Service Director	0	1	F	193	\$2,865.00	\$2,865.00	0	15.00	
35	Supervisor of Custodians	1	0	M	193	\$4,130.00	\$4,130.00	0	4.00	
36	Finance Officer	0	1	F	197	\$4,450.00	\$4,450.00	0	32.00	
37	Community Ed Director	1	0	M	225	\$5,780.00	\$5,780.00	0	1.00	
38	Elementary Principal	0	1	F	265	\$6,008.00	\$6,008.00	0	1.00	
39	Sr. High Principal	0	1	F	265	\$7,153.00	\$7,153.00	0	6.00	
40	MRVED Director	1	0	M	285	\$7,820.00	\$7,820.00	0	8.00	
41	Superintendent	1	0	M	323	\$8,292.00	\$8,292.00	0	5.00	

Action Items
January 8, 2007
Recommendations to the Board

10.A. Resolution Directing Administration to Consider Options to Reduce Expenditures

This is the first formal step in the 2007-2008 budget development process. Although we do not anticipate many, if any at all, reductions for the 2007-2008 school year, this resolution is the first step in the process should the Board need to move forward with any budget reductions prior to the close of the school year. For example, there could be a need to reduce staff based on projected enrollment numbers based on declining enrollment or the impact of enrollments in the Clarkfield Area Charter School. It is anticipated that we will have a projected 07-08 budget for your review at the February meeting. The resolution opens the process of reducing programs and expenditures if so needed. A copy of the resolution is attached. *Recommend approval of the resolution directing district administrators to consider options for reducing expenditures for the 2007-2008 school year.*

Member _____ introduced the following resolution and moved its adoption:

RESOLUTION DIRECTING THE ADMINISTRATION TO MAKE RECOMMENDATIONS FOR REDUCTIONS IN PROGRAMS AND POSITIONS AND REASONS THEREFORE

WHEREAS, the financial condition of the School District dictates that the School Board must reduce expenditures immediately, and

WHEREAS, there has been a reduction in student enrollment, and,

WHEREAS, this reduction in expenditure and decrease in student enrollment must include discontinuance of positions and discontinuance or curtailment of programs, and

WHEREAS, a determination must be made as to which teachers' contracts must be terminated and not renewed and which teachers may be placed on unrequested leave of absence without pay or fringe benefits in effecting discontinuance of positions,

BE IT RESOLVED, by the School Board of Independent School District No. 2190, as follows:

That the School Board hereby directs the Superintendent of Schools and administration to consider the discontinuance of programs or positions to effectuate economies in the School District and reduce expenditures and, as a result of a reduction in enrollment, make recommendations to the School Board for the discontinuance of programs, curtailment of programs, discontinuance of positions or curtailment of positions.

The motion for the adoption of the foregoing resolution was duly seconded by Member _____ and upon vote being taken thereon, the following voted in favor thereof: _____

and the following voted against the same: _____

whereupon said resolution was declared duly passed and adopted January 8, 2007.

Discussion Information

January 8, 2007

11.A. Capital and Maintenance Projects

The administrative team and program supervisors are in the process of updating our 5-year maintenance and capital project projections. This is preliminary information. A number of the projects will be evaluated in conjunction with the findings and recommendations from the Knutson Facility Study. As we begin to build the 2007-2008 budget, the recommended projects will be reviewed, evaluated and recommended for inclusion in the final budget based on need in comparison to other projects and the dollars available for such projects. We have also tried to identify the needs for major project renovations, which again will be evaluated in terms of the information from the Knutson Study. A draft of the budgets will be available for you on Monday evening.

11.B. Early Retirement Incentives/Opportunities for Extended Leaves

At the December Board meeting, Board member Jepson asked that we explore the possibility of offering early retirement incentives and opportunities to certified staff approaching retirement age. We briefly discussed the Memorandum of Understandings from Redwood Falls that had been addressed during our last negotiations session with Education Minnesota – Yellow Medicine East. Board member Jepson had reported that EM members had recently brought the concept to his attention.

Following that Board meeting, I met with Pete Scheffler and Lisa Hansen to discuss the EM's perspective on this issue. At this point in time, they had not had any conversation with their membership regarding this issue or any details regarding what incentives these members were interested in. They will attempt to gather additional information during the month of January and discussions can then be scheduled from there if the Board is potentially interested in pursuing this concept.

I had also talked to both the EM regional representative and Redwood Falls Superintendent Rick Elingsworth about the memorandums that were in place in their District during the last two rounds of contract negotiations. As I reviewed their agreements, it appears that they had three options that their Board and the local EM had agreed upon.

1. The first was an additional retirement incentive. If at least two staff members provided the Board with early retirement/resignation letters (by March), they would be provided an additional \$5,000.00 in retirement incentive. If three or more provided the letters of retirement/resignation, that amount was raised to \$10,000.00 per staff member. These dollars were contributed to the teacher's VEBA account. Our contract currently mandates an April 1st notification date.
2. The second memorandum provided an opportunity for an extended leave of absence. Here the teacher could apply for a 3 to 5 year leave of absence. For the eligible teacher granted the leave of absence, the District paid all of the TRA contributions from August 29th through November 30th. Then the payments – both the individual and the District – became the responsibility of the individual. If they submitted a letter of resignation by December 15th of that year, they were then eligible for \$8,425.00 in retirement incentives deposited into their VEBA account
3. The third option provided for the District to pay the TRA contributions of both employee and employer for a period of one year for the employee on a three to five year leave of absence. Following that year, the payments then became the responsibility of the employee.

In all cases, if the employee returned from a leave of absence, any payments made on their behalf by the Board were to be reimbursed by the staff member.

These are some options that worked for Redwood. There could certainly be many other options that could be created depending on the need and the interest in moving forward with this concept.

For comparison's sake, I am listing 2006-2007 contracted salaries that will help to give you an idea of the savings that might be realized if some kind of retirement/leave opportunities were to be put in place:

BA Step 1 = \$30,647.00
BA +30 Step 6 = \$37,691.00
MA Step 6 = \$41,386.00
MA +15 Step 14+ = \$57,474.00

Salary savings would be decreased by retirement or leave incentives. Further discussion can take place on Monday evening.

11.C. Knutson Facility Study Update

I have been in recent contact with Bob Nold regarding the next phases of his work. He indicated that he will have a draft of his summary and comparison sent to the District by the week of January 26th. After our review, he will finalize the reports and plans to present to the Board at the February 12th Board meeting. His report will include a summary of existing conditions and what it will take to bring it up to the standards identified by the Facilities Committee and a comparison of this cost to what an equivalent new site would cost. Following Mr. Nold's presentation in February, I believe it would be beneficial to set up a time to tour the facilities – both inside and outside – to look at the condition of the sites. Further discussion can take place on Monday evening.

11.D. Clarkfield Area Charter School

We have attached for your review copy a of the current 06-07 budget as it pertains to the Hagg site. LeeAnn and I have put this information together to help visualize the financial impact to the District should the Hagg site be closed in the future due to the impact of the Clarkfield Charter School becoming operational. We can walk through the information that is presented here on Monday evening. Also, attached are various enrollment projections for the 07-08 school enrollment depicting various percentages of students attending the Clarkfield Area Charter School. I also hope to have some cost information for portable classrooms.

11.E. CCK Restitution Update

We had a Conciliation Court hearing on Tuesday, January 2nd requesting the balance of the restitution awarded the District following the CCK lawsuit. Both Mr. Husby and I were in attendance. The hearing was conducted over ITV. Following the hearing, our documents were faxed to the judge who indicated that we would probably have a ruling within two weeks.

11.F. State Audit Update

At this time, there is no additional information to share with you.

Current Elementary Enrollments

Bert Raney	06-07				Hagg	'06-07
Grade K/1	19				Grade K/1	16
51-K	17					15
79-1	19					
	20					
	19					
	18					
	19					
Grade 2	23				Grade 2	16
	23					
Grade '2/3	21					
10-2						
11/3						
Grade 3	20				Grade 3	22
	19					
Grade 4	21				Grade 4	18
	22					
	22					
Grade 5	27				Grade '5-6	22
	25					
Grade 6	20					
	20					
	19					
# Staff	20				# Staff	6

75% of Hagg Students Enroll in the Charter School

Bert Raney	BR	HAGG	Total	07-08	07-08		Hagg
Grade K/1	55-K	4-K	59	16	19		Grade K/1
	51-1	4-1	55	16	19		
				16	19		
			114	16	19		
				16	19		
				17	19		
				17			
Grade 2	79	4	83	20	20		Grade 2
				21	21		
				21	21		
				21	21		
Grade 3	66	4	70	17	23		Grade 3
				17	23		
				18	24		
				18			
Grade 4	61	6	67	16	22		Grade 4
				17	22		
				17	23		
				17			
Grade 5	63	5	68	17	22		Grade 5
				17	23		
				17	23		
Grade 6	52	3	55	18	27		Grade 6
				18	28		
				19			
				25	21		

50% Loss of Hagg Students by Grade Level

Bert Raney	BR	HAGG	Total	07-08		Hagg	07-08
Grade K/1	55-K	8-K	63	17	20	Grade K/1	16
	51-1	8-1	59	17	20		16
				17	20		
			122	17	20		
				18	21		
				18	21		
				18			
Grade 2	79	8	87	21	29	Grade 2	15
				22	29		
				22	29		
				22			
Grade 3	66	8	74	18	24	Grade 3	16
				18	25		
				19	25		
				19			
Grade 4	61	11	72	18	24	Grade 4	22
				18	24		
				18	24		
				18			
Grade 5	63	9	72	18	24	Grade 5	18
				18	24		
				18	24		
				18			
Grade 6	52	6	58	19	29	Grade 6	11
				19	29		
				20			
				26	20		

25% Loss of Hagg Students to Charter School

Bert Raney	BR	HAGG	Total	07-08	07-08		Hagg
Grade K/1	55-K	12-K	67	18	21		Grade K/1
	51-1	12-1	63	18	21		
				18	22		
			130	19	22		
				19	22		
				19	22		
				19			
Grade 2	79	11	90	22	30		Grade 2
				22	30		
				23	30		
				23			
Grade 3	66	12	78	19	26		Grade 3
				19	26		
				20	26		
				20			
Grade 4	61	17	78	19	26		Grade 4
				19	26		
				20	26		
				20			
Grade 5	63	14	77	19	25		Grade 5
				19	26		
				19	26		
				20			
Grade 6	52	8	60	20	30		Grade 6
				20	30		
				20			
				26	20		

HAGG 06-07 DATA

Program	06-07 Budget	Comments/Questions
Maintenance	167200	Any custodial shift to GF site? Johnson Controls? Insurance?
School Nurse	4500	
Elementary Principal Office	34200	Secretarial/Supplies etc. savings
Media Center	<u>14100</u>	Para professional/books/magazines etc.
General Fund Total	220000	
Food Service	45730	Any food service shift to GF site?
Capital	6000	One leased computer lab
Facilities		Projects to come from lease \$?
LEP (Migrants)		Shift time to GF site/ reduce time?
TAG		Shift time to GF site/ reduce time?
*K-6 Regular	450000	Dependent on number of students transferred to Bert Raney
**Special Ed	35635	Dependent on number of students transferred to Bert Raney
**Social Worker	22787	Shift time to GF site/ reduce time?
<u>Revenues</u>		
****Geneal Education Aid	-	Loss dependent on number of students leaving YME
***Lease Dollars	+	Mainly capital revenue
<u>Possible Increases</u>		
Portable units		
Special Ed Tuition		Dependent on special ed students enrolling out of YME
Transportation		Additional Shuttles to GF? (\$10,000 per shuttle)

*Currently the regular education budget is \$450,000 at the Hagg site. If teaching reductions were made, the savings would be less because teachers released would be paid less than some of the staff at Hagg. The \$450,00 includes all instructional budgets (salaries/benefits/supplies/travel, etc.) It does not include the federal programs or grants that we receive 100% back in revenues.

**The special education and social worker amounts are based on the current expenditure budget. The savings would be less than the amount shown because of revenues received back from the state.

***Some of the lease dollars received would go to general fund to cover items like insurance, Johnson Controls, and administrative fees. The remainder (80-85%) would go back into the capital fund balance.

****General Education Aid per pupil (rounded): \$3500 (K), \$7000 (1-3), \$6700 (4-6), \$8200 (7-12)
Does not include new referendum dollars @ \$581.00 PPU.

Upcoming Events and Activities

Event	Date	Location	Time
School Board Convention	January 10-12, 2007		
Paraprofessional Week	January 15-18, 2007	District	
Wellness Committee Meeting	January 16, 2007	District	12:45 PM
MRVED Superintendent Meeting	January 17, 2007	Montevideo	9:00 AM
Superintendent Advisory Council	January 17, 2007	SW/WC Srvc. Coop	9:30 AM
Meet w/ MACCRAY & RCW School Boards	January 24, 2007	MACCRAY HS	5:30 PM
SHARE Coordinators Council Meeting	February 7, 2007	PACT 4	11:30 AM
School Board Meeting	February 12, 2007	District	7:00 PM