

# Princeton Public Schools - ISD 477

## School Board Meeting Agenda

Tuesday, August 21, 2018 at 5:00 PM  
Policy Committee Meeting  
District Office Board Room

---

1. 402 - Disability Nondiscrimination	2
2. 406 - Employee Public and Private Personnel Data	5
3. 410 - Family and Medical Leave	23
4. 418 - Drug Free Workplace/Drug Free School	45
5. 418 - Form	55
6. 506 - Student Discipline	57
7. 506 - Form	102
8. 514 - Bullying Prohibition Policy	104
9. Bullying & Harassment Procedures Manual (NEW)	127

\* If any one board member wishes to remove an item from the consent agenda for discussion, that item should be added to the board meeting agenda prior to its approval.

**PRINCETON PUBLIC SCHOOLS  
POLICY 402-DISABILITY NONDISCRIMINATION**

**I. PURPOSE**

The purpose of this policy is to provide a fair employment setting for all persons and to comply with state and federal law.

**II. GENERAL STATEMENT OF POLICY**

- A. The school district shall not discriminate against qualified individuals with disabilities because of the disabilities of such individuals in regard to job application procedures, hiring, advancement, discharge, compensation, job training, and other terms, conditions, and privileges of employment.
- B. The school district shall not engage in contractual or other arrangements that have the effect of subjecting its qualified applicants or employees with disabilities to discrimination on the basis of disability. The school district shall not exclude or otherwise deny equal jobs or job benefits to a qualified individual because of the known disability of an individual with whom the qualified individual is known to have a relationship or association.
- C. The school district shall make reasonable accommodations for the known physical or mental limitations of an otherwise qualified individual with a disability who is an applicant or employee, unless the accommodation would impose undue hardship on the operation of the business of the school district.
- D. Any job applicant or employee wishing to discuss the need for a reasonable accommodation, or other matters related to a disability or the enforcement and application of this policy, should contact the **Human Resource Director**. This individual is the school district's appointed ADA/Section 504 coordinator.

**Legal References:** Minn. Stat. Ch. 363A (Minnesota Human Rights Act)  
29 U.S.C. 794 et seq. (§ 504 of Rehabilitation Act of 1973)  
42 U.S.C., Ch. 126 § 12112 (Americans with Disabilities Act)  
29 C.F.R. Part 32  
34 C.F.R. Part 104

**Cross References:** MSBA/MASA Model Policy 521 (Student Disability  
Nondiscrimination)

Adopted: May 11, 2004

Revised: May 5, 2015

Revised: September 6, 2016

Adopted: \_\_\_\_\_

MSBA/MASA Model Policy 402

Orig. 1995

Revised: \_\_\_\_\_

Rev. ~~2003~~ 2015

## 402 DISABILITY NONDISCRIMINATION POLICY

*[Note: School districts are required by statute to have a policy addressing these issues.]*

### I. PURPOSE

The purpose of this policy is to provide a fair employment setting for all persons and to comply with state and federal law.

### II. GENERAL STATEMENT OF POLICY

- A. The school district shall not discriminate against qualified individuals with disabilities because of the disabilities of such individuals in regard to job application procedures, hiring, advancement, discharge, compensation, job training, and other terms, conditions, and privileges of employment.
- B. The school district shall not engage in contractual or other arrangements that have the effect of subjecting its qualified applicants or employees with disabilities to discrimination on the basis of disability. The school district shall not exclude or otherwise deny equal jobs or job benefits to a qualified individual because of the known disability of an individual with whom the qualified individual is known to have a relationship or association.
- C. The school district shall make reasonable accommodations for the known physical or mental limitations of an otherwise qualified individual with a disability who is an applicant or employee, unless the accommodation would impose undue hardship on the operation of the business of the school district.
- D. Any job applicant or employee wishing to discuss the need for a reasonable accommodation, or other matters related to a disability or the enforcement and application of this policy, should contact \_\_\_\_\_ (list the name, title, office address, telephone number, and e-mail address). This individual is the school district's appointed ADA/Section 504 coordinator.

**Legal References:** Minn. Stat. Ch. 363A (Minnesota Human Rights Act)  
29 U.S.C. 794 *et seq.* (Rehabilitation Act of 1973, § 504)  
42 U.S.C., Ch. 126 § 12112 (Americans with Disabilities Act)  
29 C.F.R. Part 32  
34 C.F.R. Part 104

**Cross References:** MSBA/MASA Model Policy 521 (Student Disability Nondiscrimination)

**PRINCETON PUBLIC SCHOOLS**  
**POLICY 406- EMPLOYEE PUBLIC AND PRIVATE PERSONNEL DATA**

**I. PURPOSE**

The purpose of this policy is to provide guidance to school district employees as to the data the school district collects and maintains regarding its personnel.

**II. GENERAL STATEMENT OF POLICY**

- A. All data on individuals collected, created, received, maintained or disseminated by the school district, which is classified by statute or federal law as public, shall be accessible to the public pursuant to the procedures established by the school district.
- B. All other data on individuals is private or confidential.

**III. DEFINITIONS**

- A. "Public" means that the data is available to anyone who requests it.
- B. "Private" means the data is available to the subject of the data and to school district staff who need it to conduct the business of the school district.
- C. "Confidential" means the data is not available to the subject.
- D. "Parking space leasing data" means the following government data on an application for, or lease of, a parking space: residence address, home telephone number, beginning and ending work hours, place of employment, location of parking space, and work telephone number.
- E. "Personnel data" means data on individuals collected because they are or were employees of the school district, applicants for employment, or volunteers or independent contractors for the school district, or members of or applicants for an advisory board or commission. Personnel data include data submitted to the school district by an employee as part of an organized self-evaluation effort by the school district to request suggestions from all employees on ways to cut costs, make the school district more efficient, or to improve school district operations. An employee who is identified in a suggestion shall have access to all data in

the suggestion except the identity of the employee making the suggestion.

- F. "Finalist" means an individual who is selected to be interviewed by the school board for a position.
- G. "Protected health information" means individually identifiable health information transmitted in electronic form by a school district acting as a healthcare provider. "Protected health information" excludes health information in education records covered by FERPA and employment records held by a school district in its role as employer.
- H. "Public official" means business manager, human resource director, and an individual defined as superintendent, principal, or director who is employed in a position requiring an administrative license.

#### **IV. PUBLIC PERSONNEL DATA**

- A. The following information on employees, including volunteers and independent contractors, is public:
  - 1. Name;
  - 2. employee identification number, which may not be the employee's social security number;
  - 3. actual gross salary;
  - 4. salary range;
  - 5. terms and conditions of employment relationship;
  - 6. contract fees;
  - 7. actual gross pension;
  - 8. the value and nature of employer-paid fringe benefits;
  - 9. the basis for and the amount of any added remuneration, including expense reimbursement, in addition to salary;
  - 10. job title;
  - 11. bargaining unit;
  - 12. job description;

13. education and training background;
14. previous work experience;
15. date of first and last employment;
16. the existence and status of any complaints or charges against the employee, regardless of whether the complaint or charge resulted in a disciplinary action;
17. the final disposition of any disciplinary action, as defined in Minn. Stat. §13.43, Subd. 2(b), together with the specific reasons for the action and data documenting the basis of the action, excluding data that would identify confidential sources who are employees of the school district;
18. the complete terms of any agreement settling any dispute arising out of the employment relationship, including superintendent buyout agreements, except that the agreement must include specific reasons for the agreement if it involves the payment of more than \$10,000 of public money, and such agreement may not have the purpose or effect of limiting access to or disclosure of personnel data or limiting the discussion of information or opinions related to personnel data;
19. work location;
20. work telephone number;
21. badge number;
22. work-related continuing education;
23. honors and awards received; and
24. payroll time sheets or other comparable data that are used only to account for employee's work time for payroll purposes, except to the extent that release of timesheet data would reveal the employee's reasons for the use of sick or other medical leave or other not public data.

B. The following information on applicants for employment is public:

1. veteran status;

2. relevant test scores;
  3. rank on eligible list;
  4. job history;
  5. education and training; and
  6. work availability.
- C. Names of applicants are private data except when certified as eligible for appointment to a vacancy or when they become finalists for an employment position.
- D. Applicants for appointment to a public body.
1. Data about applicants for appointment to a public body are private data on individuals except that the following are public:
    - a) Name;
    - b) city of residence, except when the appointment has a residency requirement that requires the entire address to be public;
    - c) education and training;
    - d) employment history;
    - e) volunteer work;
    - f) awards and honors;
    - g) prior government service;
    - h) any data required to be provided or that are voluntarily provided in an application for appointment to a multimember agency pursuant to Minn. Stat. § 15.0597; and
    - i) veteran status.
  2. Once an individual is appointed to a public body, the following additional items of data are public:
    - a) residential address;

- b) either a telephone number or electronic mail address where the appointee can be reached, or both at the request of the appointee;
  - c) first and last dates of service on the public body;
  - d) the existence and status of any complaints or charges against an appointee; and
  - e) upon completion of an investigation of a complaint or charge against an appointee, the final investigative report is public, unless access to the data would jeopardize an active investigation.
3. Notwithstanding paragraph 2., any electronic mail address or telephone number provided by a public body for use by an appointee shall be public. An appointee may use an electronic mail address or telephone number provided by the public body as the designated electronic mail address or telephone number at which the appointee can be reached.
- E. Regardless of whether there has been a final disposition as defined in Minn. Stat. § 13.43, Subd. 2(b), upon completion of an investigation of a complaint or charge against a public official, as defined in Minn. Stat. § 13.43, Subd. 2(e), or if a public official resigns or is terminated from employment while the complaint or charge is pending, all data relating to the complaint or charge are public, unless access to the data would jeopardize an active investigation or reveal confidential sources.
- F. Data relating to a complaint or charge against a public official is public only if:
- 1. the complaint or charge results in disciplinary action or the employee resigns or is terminated from employment while the complaint or charge is pending; or
  - 2. potential legal claims arising out of the conduct that is the subject of the complaint or charge are released as part of a settlement agreement with another person. Data that is classified as private under another law is not made public by this provision.

**V. PRIVATE PERSONNEL DATA**

- A. All other personnel data are private and will only be shared with school district staff whose work requires such access. Private data will not be otherwise released unless authorized by law or by the employee's informed written consent.
- B. Data pertaining to an employee's dependents are private data on individuals.
- C. Data created, collected or maintained by the school district to administer employee assistance programs are private.
- D. Parking space leasing data are private.
- E. Personnel data may be disseminated to labor organizations to the extent the school district determines it is necessary for the labor organization to conduct its business or when ordered or authorized by the Commissioner of the Bureau of Mediation Services.
- F. The school district may display a photograph of a current or former employee to prospective witnesses as part of the school district's investigation of any complaint or charge against the employee.
- G. The school district may, if the responsible authority or designee reasonably determines that the release of personnel data is necessary to protect an employee from harm to self or to protect another person who may be harmed by the employee, release data that are relevant to the concerns for safety to:
  - 1. The person who may be harmed and to the attorney representing the person when the data are relevant to obtaining a restraining Order;
  - 2. A pre-petition screening team conducting an investigation of the employee under Minn. Stat. § 253B.07, Subd. 1; or
  - 3. A court, law enforcement agency or prosecuting authority.
- H. Private personnel data or confidential investigative data on employees may be disseminated to a law enforcement agency for the purpose of reporting a crime or alleged crime committed by an employee, or for the

purpose of assisting law enforcement in the investigation of such a crime or alleged crime.

- I. A complainant has access to a statement provided by the complainant to the school district in connection with a complaint or charge against an employee.
- J. When allegations of sexual or other types of harassment are made against an employee, the employee shall not have access to data that would identify the complainant or other witnesses if the school district determines that the employee's access to that data would:
  - 1. threaten the personal safety of the complainant or a witness; or
  - 2. subject the complainant or witness to harassment.

If a disciplinary proceeding is initiated against the employee, data on the complainant or witness shall be available to the employee as may be necessary for the employee to prepare for the proceeding.

- K. The school district shall make any report to the board of teaching or the state board of education as required by Minn. Stat. § 122A.20, Subd. 2, and shall, upon written request from the licensing board having jurisdiction over a teacher's license, provide the licensing board with information about the teacher from the school district's files, any termination or disciplinary proceeding, and settlement or compromise, or any investigative file in accordance with Minn. Stat. §122A.20, Subd. 2.
- L. Private personnel data shall be disclosed to the department of economic security for the purpose of administration of the unemployment insurance program under Minn. Stat. Ch. 268.
- M. When a report of alleged maltreatment of a student in a school is made to the Commissioner of Education, data that are relevant and collected by the school about the person alleged to have committed maltreatment must be provided to the Commissioner on request for purposes of an assessment or investigation of the maltreatment report.
- N. The school district shall release to a requesting school district or charter school private personnel data on a current or former employee related to acts of violence toward or sexual contact with a student, if an investigation conducted by or on behalf of the school district or law

enforcement affirmed the allegations in writing prior to release and the investigation resulted in the resignation of the subject of the data.

- O. The identity of an employee making a suggestion as part of an organized self-evaluation effort by the school district to cut costs, make the school district more efficient, or to improve school district operations is private.
- P. Health information on employees is private unless otherwise provided by law. To the extent that the school district transmits protected health information, the school district will comply with all privacy requirements.
- Q. Personal home contact information for employees may be used by the school district and shared with another government entity in the event of an emergency or other disruption to ensure continuity of operation for the school district or government entity.
- R. The personal telephone number, home address, and electronic mail address of a current or former employee of a contractor or subcontractor maintained as a result of a contractual relationship between the school district and a contractor or subcontractor entered on or after August 1, 2012, are private data. These data must be shared with another government entity to perform a function authorized by law. The data also must be disclosed to a government entity or any person for prevailing wage purposes.

#### **VI. MULTIPLE CLASSIFICATIONS**

If data on individuals are classified as both private and confidential by Minn. Stat. Ch. 13, or any other state or federal law, the data are private.

#### **VII. CHANGE IN CLASSIFICATIONS**

The school district shall change the classification of data in its possession if it is required to do so to comply with other judicial or administrative rules pertaining to the conduct of legal actions or with a specific statute applicable to the data in the possession of the disseminating or receiving agency.

#### **VIII. RESPONSIBLE AUTHORITY**

The school district has designated the Human Resources Coordinator as the authority responsible for personnel data.

## IX. EMPLOYEE AUTHORIZATION/RELEASE FORM

An employee authorization form is included as an addendum to this policy.

**Legal References:** Minn. Stat. Ch. 13 (Minnesota Government Data Practices Act)  
Minn. Stat. § 13.02 (Definitions)  
Minn. Stat. § 13.37 (General Nonpublic Data)  
Minn. Stat. § 13.39 (Civil Investigation Data)  
Minn. Stat. § 13.43 (Personnel Data)  
Minn. Stat. § 13.601. Subd. 3 (Elected and Appointed Officials)  
Minn. Stat. § 122A.20, Subd. 2 (Mandatory Reporting)  
P.L. 104-191 (HIPAA)  
45 C.F.R. Parts 160 and 164 (HIPAA Regulations)

**Cross References:** Policy 206 (Public Participation in School Board Meetings/Complaints about Persons at School Board Meetings and Data Privacy Considerations)  
Policy 515 (Protection and Privacy of Pupil Records)  
MSBA Service Manual, Chapter 13, School Law Bulletin "I" (School Records – Privacy – Access to Data)

Adopted: May 11, 2004  
Revised: December 8, 2009  
Revised: January 14, 2014  
Reviewed: May 5, 2015  
Revised: September 6, 2016

Adopted: \_\_\_\_\_

MSBA/MASA Model Policy 406

Orig. 1995

Revised: \_\_\_\_\_

Rev. 2014

## **406 PUBLIC AND PRIVATE PERSONNEL DATA**

*[Note: The provisions of this policy accurately reflect the Minnesota Government Data Practices Act and are not discretionary in nature.]*

### **I. PURPOSE**

The purpose of this policy is to provide guidance to school district employees as to the data the school district collects and maintains regarding its personnel.

### **II. GENERAL STATEMENT OF POLICY**

- A. All data on individuals collected, created, received, maintained or disseminated by the school district, which is classified by statute or federal law as public, shall be accessible to the public pursuant to the procedures established by the school district.
- B. All other data on individuals is private or confidential.

### **III. DEFINITIONS**

- A. “Public” means that the data is available to anyone who requests it.
- B. “Private” means the data is available to the subject of the data and to school district staff who need it to conduct the business of the school district.
- C. “Confidential” means the data is not available to the subject.
- D. “Parking space leasing data” means the following government data on an application for, or lease of, a parking space: residence address, home telephone number, beginning and ending work hours, place of employment, location of parking space, and work telephone number.
- E. “Personnel data” means government data on individuals maintained because they are or were employees of the school district, applicants for employment, or volunteers or independent contractors for the school district, or members of or applicants for an advisory board or commission. Personnel data include data submitted to the school district by an employee as part of an organized self-evaluation effort by the school district to request suggestions from all employees on ways to cut costs, make the school district more efficient, or to improve school district operations. An employee who is identified in a suggestion shall have access to all data in the suggestion except the identity of the employee making the suggestion.

- F. “Finalist” means an individual who is selected to be interviewed by the school board for a position.
- G. “Protected health information” means individually identifiable health information transmitted in electronic form by a school district acting as a health care provider. “Protected health information” excludes health information in education records covered by the federal Family Educational Rights and Privacy Act and employment records held by a school district in its role as employer.
- H. “Public officials” means business managers; human resource directors; athletic directors whose duties include at least 50 percent of their time spent in administration, personnel, supervision, and evaluation; chief financial officers; directors; and individuals defined as superintendents and principals.

#### **IV. PUBLIC PERSONNEL DATA**

- A. The following information on employees, including volunteers and independent contractors, is public:
  - 1. name;
  - 2. employee identification number, which may not be the employee’s social security number;
  - 3. actual gross salary;
  - 4. salary range;
  - 5. terms and conditions of employment relationship;
  - 6. contract fees;
  - 7. actual gross pension;
  - 8. the value and nature of employer-paid fringe benefits;
  - 9. the basis for and the amount of any added remuneration, including expense reimbursement, in addition to salary;
  - 10. job title;
  - 11. bargaining unit;
  - 12. job description;
  - 13. education and training background;

14. previous work experience;
15. date of first and last employment;
16. the existence and status of any complaints or charges against the employee, regardless of whether the complaint or charge resulted in a disciplinary action;
17. the final disposition of any disciplinary action, as defined in Minn. Stat. § 13.43, Subd. 2(b), together with the specific reasons for the action and data documenting the basis of the action, excluding data that would identify confidential sources who are employees of the school district;
18. the complete terms of any agreement settling any dispute arising out of the employment relationship, including superintendent buyout agreements, except that the agreement must include specific reasons for the agreement if it involves the payment of more than \$10,000 of public money, and such agreement may not have the purpose or effect of limiting access to or disclosure of personnel data or limiting the discussion of information or opinions related to personnel data;
19. work location;
20. work telephone number;
21. badge number;
22. work-related continuing education;
23. honors and awards received; and
24. payroll time sheets or other comparable data that are used only to account for employee's work time for payroll purposes, except to the extent that release of time sheet data would reveal the employee's reasons for the use of sick or other medical leave or other not public data.

B. The following information on applicants for employment is public:

1. veteran status;
2. relevant test scores;
3. rank on eligible list;
4. job history;
5. education and training; and

6. work availability.
- C. Names of applicants are private data except when certified as eligible for appointment to a vacancy or when they become finalists for an employment position.
  - D. Applicants for appointment to a public body.
    1. Data about applicants for appointment to a public body are private data on individuals except that the following are public:
      - a. name;
      - b. city of residence, except when the appointment has a residency requirement that requires the entire address to be public;
      - c. education and training;
      - d. employment history;
      - e. volunteer work;
      - f. awards and honors;
      - g. prior government service;
      - h. any data required to be provided or that are voluntarily provided in an application for appointment to a multimember agency pursuant to Minn. Stat. § 15.0597; and
      - i. veteran status.
    2. Once an individual is appointed to a public body, the following additional items of data are public:
      - a. residential address;
      - b. either a telephone number or electronic mail address where the appointee can be reached, or both at the request of the appointee;
      - c. first and last dates of service on the public body;
      - d. the existence and status of any complaints or charges against an appointee; and
      - e. upon completion of an investigation of a complaint or charge against an appointee, the final investigative report is public, unless access to the data would jeopardize an active investigation.

3. Notwithstanding paragraph 2., any electronic mail address or telephone number provided by a public body for use by an appointee shall be public. An appointee may use an electronic mail address or telephone number provided by the public body as the designated electronic mail address or telephone number at which the appointee can be reached.
- E. Regardless of whether there has been a final disposition as defined in Minn. Stat. § 13.43, Subd. 2(b), upon completion of an investigation of a complaint or charge against a public official, as defined in Minn. Stat. § 13.43, Subd. 2(e), or if a public official resigns or is terminated from employment while the complaint or charge is pending, all data relating to the complaint or charge are public, unless access to the data would jeopardize an active investigation or reveal confidential sources.
- F. Data relating to a complaint or charge against a public official is public only if: (1) the complaint or charge results in disciplinary action or the employee resigns or is terminated from employment while the complaint or charge is pending; or (2) potential legal claims arising out of the conduct that is the subject of the complaint or charge are released as part of a settlement agreement. Data that is classified as private under another law is not made public by this provision.

## **V. PRIVATE PERSONNEL DATA**

- A. All other personnel data are private and will only be shared with school district staff whose work requires such access. Private data will not be otherwise released unless authorized by law or by the employee's informed written consent.
- B. Data pertaining to an employee's dependents are private data on individuals.
- C. Data created, collected or maintained by the school district to administer employee assistance programs are private.
- D. Parking space leasing data are private.
- E. An individual's checking account number is private when submitted to a government entity.
- F. Personnel data may be disseminated to labor organizations to the extent the school district determines it is necessary for the labor organization to conduct its business or when ordered or authorized by the Commissioner of the Bureau of Mediation Services.
- G. The school district may display a photograph of a current or former employee to prospective witnesses as part of the school district's investigation of any complaint or charge against the employee.
- H. The school district may, if the responsible authority or designee reasonably

determines that the release of personnel data is necessary to protect an employee from harm to self or to protect another person who may be harmed by the employee, release data that are relevant to the concerns for safety to:

1. the person who may be harmed and to the attorney representing the person when the data are relevant to obtaining a restraining order;
  2. a pre-petition screening team conducting an investigation of the employee under Minn. Stat. § 253B.07, Subd. 1; or
  3. a court, law enforcement agency, or prosecuting authority.
- I. Private personnel data or confidential investigative data on employees may be disseminated to a law enforcement agency for the purpose of reporting a crime or alleged crime committed by an employee, or for the purpose of assisting law enforcement in the investigation of such a crime or alleged crime.
- J. A complainant has access to a statement provided by the complainant to the school district in connection with a complaint or charge against an employee.
- K. When allegations of sexual or other types of harassment are made against an employee, the employee shall not have access to data that would identify the complainant or other witnesses if the school district determines that the employee's access to that data would:
1. threaten the personal safety of the complainant or a witness; or
  2. subject the complainant or witness to harassment.

If a disciplinary proceeding is initiated against the employee, data on the complainant or witness shall be available to the employee as may be necessary for the employee to prepare for the proceeding.

- L. The school district shall make any report to the ~~board of teaching~~ Minnesota Professional Educator Licensing and Standards Board or the state board of education as required by Minn. Stat. § 122A.20, Subd. 2, and shall, upon written request from the licensing board having jurisdiction over a teacher's license, provide the licensing board with information about the teacher from the school district's files, any termination or disciplinary proceeding, and settlement or compromise, or any investigative file in accordance with Minn. Stat. § 122A.20, Subd. 2.
- M. Private personnel data shall be disclosed to the department of economic security for the purpose of administration of the unemployment insurance program under Minn. Stat. Ch. 268.
- N. When a report of alleged maltreatment of a student in a school is made to the Commissioner of Education, data that are relevant and collected by the school

about the person alleged to have committed maltreatment must be provided to the Commissioner on request for purposes of an assessment or investigation of the maltreatment report. Additionally, personnel data may be released for purposes of informing a parent, legal guardian, or custodian of a child that an incident has occurred that may constitute maltreatment of the child, when the incident occurred, and the nature of the conduct that may constitute maltreatment.

- O. The school district shall release to a requesting school district or charter school private personnel data on a current or former employee related to acts of violence toward or sexual contact with a student, if an investigation conducted by or on behalf of the school district or law enforcement affirmed the allegations in writing prior to release and the investigation resulted in the resignation of the subject of the data; or the employee resigned while a complaint or charge involving the allegations was pending, the allegations involved acts of sexual contact with a student, and the employer informed the employee in writing, before the employee resigned, that if the employee resigns while the complaint or charge is still pending, the employer must release private personnel data about the employee's alleged sexual contact with a student to a school district or charter school requesting the data after the employee applies for employment with that school district or charter school and the data remain classified as provided in Minn. Stat. Ch. 13. Data that are released under this paragraph must not include data on the student.
- P. The identity of an employee making a suggestion as part of an organized self-evaluation effort by the school district to cut costs, make the school district more efficient, or to improve school district operations is private.
- Q. Health information on employees is private unless otherwise provided by law. To the extent that the school district transmits protected health information, the school district will comply with all privacy requirements.
- R. Personal home contact information for employees may be used by the school district and shared with another government entity in the event of an emergency or other disruption to ensure continuity of operation for the school district or government entity.
- S. The personal telephone number, home address, and electronic mail address of a current or former employee of a contractor or subcontractor maintained as a result of a contractual relationship between the school district and a contractor or subcontractor entered on or after August 1, 2012, are private data. These data must be shared with another government entity to perform a function authorized by law. The data also must be disclosed to a government entity or any person for prevailing wage purposes.
- T. When a teacher is discharged immediately because the teacher's license has been revoked due to a conviction for child abuse or sexual abuse or when the Commissioner of the Minnesota Department of Education (MDE) makes a final determination of child maltreatment involving a teacher, the school principal or

other person having administrative control of the school must include in the teacher's employment record the information contained in the record of the disciplinary action or the final maltreatment determination, consistent with the definition of public data under Minn. Stat. § 13.41, Subd. 5, and must provide the Board of Teaching Minnesota Professional Educator Licensing and Standards Board and the licensing division at MDE with the necessary and relevant information to enable the Board of Teaching Minnesota Professional Educator Licensing and Standards Board and MDE's licensing division to fulfill their statutory and administrative duties related to issuing, renewing, suspending, or revoking a teacher's license. In addition to the background check required under Minn. Stat. § 123B.03, a school board or other school hiring authority must contact the Board of Teaching Minnesota Professional Educator Licensing and Standards Board and MDE to determine whether the teacher's license has been suspended or revoked, consistent with the discharge and final maltreatment determinations. Unless restricted by federal or state data practices law or by the terms of a collective bargaining agreement, the responsible authority for a school district must disseminate to another school district private personnel data on a current or former teacher (employee or contractor) of the district, including the results of background investigations, if the requesting school district seeks the information because the subject of the data has applied for employment with the requesting school district.

## **VI. MULTIPLE CLASSIFICATIONS**

If data on individuals are classified as both private and confidential by Minn. Stat. Ch. 13, or any other state or federal law, the data are private.

## **VII. CHANGE IN CLASSIFICATIONS**

The school district shall change the classification of data in its possession if it is required to do so to comply with other judicial or administrative rules pertaining to the conduct of legal actions or with a specific statute applicable to the data in the possession of the disseminating or receiving agency.

## **VIII. RESPONSIBLE AUTHORITY**

The school district has designated [*name and title, telephone*] as the authority responsible for personnel data. If you have any questions, contact [*him/her*].

## **IX. EMPLOYEE AUTHORIZATION/RELEASE FORM**

An employee authorization form is included as an addendum to this policy.

**Legal References:** Minn. Stat. Ch. 13 (Minnesota Government Data Practices Act)  
Minn. Stat. § 13.02 (Definitions)  
Minn. Stat. § 13.37 (General Nonpublic Data)  
Minn. Stat. § 13.39 (Civil Investigation Data)

Minn. Stat. § 13.43 (Personnel Data)  
Minn. Stat. § 13.601, Subd. 3 (Elected and Appointed Officials)  
Minn. Stat. § 122A.20, Subd. 2 (Mandatory Reporting)  
Minn. Stat. § 122A.40, Subds. 13 and 16 (Employment; Contracts;  
Termination)  
Minn. Stat. § 626.556, Subd. 7 (Reporting of Maltreatment of Minors)  
P.L. 104-191 (HIPAA)  
45 C.F.R. Parts 160 and 164 (HIPAA Regulations)

***Cross References:*** MSBA/MASA Model Policy 206 (Public Participation in School Board Meetings/Complaints about Persons at School Board Meetings and Data Privacy Considerations)  
MSBA/MASA Model Policy 515 (Protection and Privacy of Pupil Records)  
MSBA Service Manual, Chapter 13, School Law Bulletin “T” (School Records – Privacy – Access to Data)

**PRINCETON PUBLIC SCHOOLS**  
**POLICY 410-FAMILY AND MEDICAL LEAVE**

**I. PURPOSE**

The purpose of this policy is to provide for family and medical leave to school district employees in accordance with the Family and Medical Leave Act of 1993 (FMLA) and also with parenting leave under state law.

**II. GENERAL STATEMENT OF POLICY**

The following procedures and policies regarding family and medical leave are adopted by the school district, pursuant to the requirements of the FMLA and consistent with the requirements of the Minnesota parenting leave laws.

**III. DEFINITIONS**

A. "Covered active duty" means:

1. in the case of a member of a regular component of the Armed Forces, duty during the deployment of the member with the Armed Forces to a foreign country; and
2. in the case of a member of a reserve component of the Armed Forces, duty during the deployment of the member with the Armed Forces to a foreign country under a call or order to active duty under a provision of law referred to in 10 U.S.C. § 101(a)(13)(B).

B. "Covered servicemember" means:

1. a member of the Armed Forces, including a member of the National Guard or Reserves, who is undergoing medical treatment, recuperation, or therapy, is otherwise in outpatient status, or is otherwise on the temporary disability retired list, for a serious injury or illness; or
2. a covered veteran who is undergoing medical treatment, recuperation, or therapy for a serious injury or illness and who was a member of the Armed Forces, including a member of the National Guard or Reserves and was discharged or released under

conditions other than dishonorable, , at any time during the period of five years preceding the first date the eligible employee takes FMLA leave care for the covered veteran

3. "Eligible employee" means an employee who has been employed by the school district for a total of at least 12 months period immediately preceding the commencement of the leave. An employee returning from fulfilling his or her Uniformed Services Employment and Reemployment Right Act (USERRA)-covered service obligation shall be credited with the hours of service that would have been performed but for the period of absence from work due to or necessitated by USERRA-covered service. In determining whether the employee met the hours of service requirement, and to determine the hours that would have been worked during the period of absence from work due to or necessitated by USERRA-covered service, the employee's pre-service work schedule can generally be used for calculations. While the 12 months of employment need not consecutive, employment periods prior to a break in service obligation or a written agreement, including a collective bargaining agreement, exists concerning the school district's intention to rehire the employee after the break in service.
- C. "Military caregiver leave" means leave taken to care for a covered service member with a serious injury or illness.
  - D. "Next of kin of a covered servicemember" means the nearest blood relative other than the covered service member's spouse, parent, son, or daughter, in the following order of priority: blood relatives who have been granted legal custody of the covered servicemember by court decree or statutory provisions, brothers and sisters, grandparents, aunts and uncles, and first cousins, unless the covered servicemember has specifically designated in writing another blood relative as his or her nearest blood relative for purposes of military caregiver leave under the FMLA. When no such designation is made and there are multiple family members with the same level of relationship to the covered servicemember, all such family members shall be considered the covered service member's next of kin, and the employee may take FMLA leave to provide care to the covered servicemember, either consecutively or simultaneously. When such designation has been made, the designated individual shall be deemed to be the covered servicemembers only next of kin.

- E. "Outpatient status" means, with respect to a covered servicemember who is a current member of the Armed Forces, the status of a member of the Armed Forces assigned to:
1. a military medical treatment facility as an outpatient; or
  2. a unit established for the purpose of providing command and control of members of the Armed Forces receiving care as outpatients.
- F. "Qualifying exigency" means a situation where the eligible employee seeks leave for one or more of the following reasons:
1. to address any issues that arise from a short-notice deployment (seven calendar days or less) of a covered military member;
  2. to attend military events and related activities of a covered military Member;
  3. to address issues related to childcare and school activities of a covered military member's child;
  4. to address financial and legal arrangements for a covered military member;
  5. to attend counseling provided by someone other than a health care provider for oneself, a covered military member, or his/her child;
  6. to spend up to five days with a covered military member who is on short-term, temporary rest and recuperation leave during a period of deployment;
  7. to attend post-deployment activities related to a covered military member; and
  8. to address other events related to a covered military member that both the employee and school district agree is a qualifying exigency.
  9. to address parental care needs.
- G. "Serious health condition" means an illness, injury, impairment, or physical or mental condition that involves:

1. inpatient care in a hospital, hospice, or residential medical care facility; or
  2. continuing treatment by a health care provider.
- H. "Spouse" means a husband or wife. For purposes of this definition, husband or wife refers to the other person with whom an individual entered into marriages as defined or recognized under state law for purposes of marriage in the state in which the marriage was entered in to or, in the case of marriage entered into outside of any state, if the marriage is valid in the place where entered into and could have been entered into in at least one state. This definition includes an individual in a same-sex or common law marriage that either: (1) was entered into in a state that recognizes such marriages; or (2) if entered into outside of any state, is valid in the place where entered into and could have been entered into in at least
- I. "Veteran" has the meaning given in 38 U.S.C. § 101.

#### **IV. LEAVE ENTITLEMENT**

##### **A. Twelve-week Leave under Federal Law**

1. Eligible employees are entitled to a total of 12 workweeks of unpaid family or medical leave during the applicable 12-month period as defined below, plus any additional leave as required by law. Leave may be taken for one or more of the following reasons in accordance with applicable law:
  - a) birth of the employee's child and to care for such child;
  - b) placement of an adopted or foster child with the employee;
  - c) to care for the employee's spouse, son, daughter, or parent with a serious health condition;
  - d) the employee's serious health condition makes the employee unable to perform the functions of the employee's job; and/or
  - e) any qualifying exigency arising from the employee's spouse, son, daughter, or parent being on covered active duty, or notified of an impending call or order to covered active duty in the Armed Forces.

2. For the purposes of this policy, “year” is defined as a rolling 12-month period measured backward from the date an employee’s leave is to commence.
3. An employee’s entitlement to FMLA leave for the birth, adoption, or foster care of a child expires at the end of the 12-month period beginning on the date of the birth or placement.
4. A “serious health condition” typically requires either inpatient care or continuing treatment by or under the supervision of a health care provider, as defined by applicable law. Family and medical leave generally is not intended to cover short-term conditions for which treatment and recovery are very brief.
5. A “serious injury or illness,” in the case of a member of the Armed Forces, including a member of the National Guard or Reserves, means:
  - a) injury or illness that was incurred by the member in the line of duty on active duty in the Armed Forces (or that existed before the beginning of the member’s active duty and was aggravated by service in the line of duty on active duty in the Armed Forces) and that may render the member medically unfit to perform the duties of the member’s office, grade, rank, or rating; and
  - b) in the case of a covered veteran who was a member of the Armed Forces, including a member of the National Guard or Reserves, at any time, during the period of five years preceding the date on which the veteran undergoes the medical treatment, recuperation, or therapy, means a qualifying injury or illness that was incurred by the member in the line of duty on active duty in the Armed Forces (or that existed before the beginning of the member’s active duty and was aggravated by service in the line of duty in the Armed Forces) and that manifested itself before or after the member became a veteran and is:
    - (1) a continuation of a serious injury or illness that was incurred or aggravated when the covered veteran was a member of the Armed Forces and rendered the

service member unable to perform the duties of the service member's office grade, rank, or rating: or

(2) a physical or mental condition that substantially impairs the covered veteran has received U.S. Department of Veterans Affairs Service-Related Disability (VASRD) rating of 50 percent or greater and such VASRD rating is based, in whole or in part, on the condition precipitating the need for military caregiver leave: or

(3) a physical or mental condition that substantially impairs the covered veteran's ability to secure or follow a substantially gainful occupation by reason of a disability or disabilities related to military service, or would do so absent treatment: or

(4) an injury, including a psychological injury, on the basis of which the covered veteran has been enrolled in the Department of Veterans Affairs Program of Comprehensive Assistance for Family Caregivers.

6. Eligible spouses employed by the school district are limited to an aggregate of 12 weeks of leave during any 12-month period for the birth and care of a newborn child or adoption of a child, the placement of a child for foster care, or to care for a parent. This limitation for spouses employed by the school district does not apply to leave taken: by one spouse to care for the other spouse who is seriously ill; to care for a child with a serious health condition; because of the employee's own serious health condition; or pursuant to Paragraph IV.A.1.e. Above.
7. Depending on the type of leave, intermittent or reduced schedule leave may be granted in the discretion of the school district or when medically necessary. However, part-time employees are only eligible for a pro-rata portion of leave to be used on an intermittent or reduced schedule basis, based on their average hours worked per week. Where an intermittent or reduced schedule leave is foreseeable based on planned medical treatment, the school district may transfer the employee temporarily to an available alternative position for which the employee is qualified and which better accommodates recurring periods of leave than does the

employee's regular position, and which has equivalent pay and benefits.

8. If an employee requests a leave for the serious health condition of the employee or the employee's spouse, child, or parent, the employee will be required to submit sufficient medical certification. In such a case, the employee must submit the medical certification within 15 days from the date of the request or as soon as practicable under the circumstances.
9. If the school district has reason to doubt the validity of a health care provider's certification, it may require a second opinion at the school district's expense. If the opinions of the first and second health care providers differ, the school district may require certification from a third health care provider at the school district's expense. An employee may also be required to present a certification from a health care provider indicating that the employee is able to return to work.
10. Requests for leave shall be made to the school district. When leave relates to an employee's spouse, son, daughter, parent, or covered servicemember being on covered active duty, or notified of an impending call or order to covered active duty pursuant to Paragraph IV.A.1.e. above, and such leave is foreseeable, the employee shall provide reasonable and practical notice to the school district of the need for leave. For all other leaves, employees must give 30 days' written notice of a leave of absence where practicable. The failure to provide the required notice may result in a delay of the requested leave. Employees are expected to make a reasonable effort to schedule leaves resulting from planned medical treatment so as not to disrupt unduly the operations of the school district, subject to and in coordination with the health care provider.
11. The school district may require that a request for leave under Paragraph IV.A.1.e. above be supported by a copy of the covered military member's active duty orders or other documentation issued by the military indicating active duty or a call to active duty status and the dates of active duty service. In addition, the school district may require the employee to provide sufficient certification supporting the qualifying exigency for which leave is requested.

12. During the period of a leave permitted under this policy, the school district will provide health insurance under its group health plan under the same conditions coverage would have been provided had the employee not taken the leave. The employee will be responsible for payment of the employee contribution to continue group health insurance coverage during the leave. An employee's failure to make necessary and timely contributions may result in termination of coverage. An employee who does not return to work after the leave may be required, in some situations, to reimburse the school district for the cost of the health plan premiums paid by it.

13. The school district may request or require the employee to substitute accrued paid leave for any part of the 12-week period. Employees may be allowed to substitute paid leave for unpaid leave by meeting the requirements set out in the administrative directives and guidelines established for the implementation of this policy, if any. Employees eligible for leave must comply with the family and medical leave directives and guidelines prior to starting leave. The superintendent shall be responsible to develop directives and guidelines as necessary to implement this policy. Such directives and guidelines shall be submitted to the school board for annual review.

The school district shall comply with written notice requirements as set forth in federal regulations.

14. Employees returning from a leave permitted under this policy are eligible for reinstatement in the same or an equivalent position as provided by law. However, the employee has no greater right to reinstatement or to other benefits and conditions of employment than if the employee had been continuously employed during the leave.

#### B. Twelve-week Leave under State Law

An employee who does not qualify for parenting leave under Paragraphs IV.A.1.a. or IV.A.1.b. above may qualify for a 12-week unpaid leave which is available to a biological or adoptive parent in conjunction with the birth or adoption of a child, or to a female employee for prenatal caregiver incapacity due to pregnancy, childbirth, or related health conditions. The

length of the leave shall be determined by the employee but must not exceed 12 weeks unless agreed by the employer. The employee may qualify if he or she has worked for the school district for at least 12 months and has worked an average number of hours per week equal to one-half of the full time equivalent during the 12-month period immediately preceding the leave. This leave is separate and exclusive of the family and medical leave described in the preceding paragraphs but may be reduced by any period of paid parental, disability, personal, or medical, or sick leave, or accrued vacation provided by the employer, or leave taken for the same purpose under the FMLA. The leave taken under this section shall begin at a time requested by the employee. An employee who plans to take leave under this section must give the employer reasonable notice of the date the leave shall commence and the estimated duration of the leave. For leave taken by a biological or adoptive parent in conjunction with the birth or adoption; except that, in the case where the child must remain in the hospital longer than the mother, the leave must begin within 12 months after the child leaves the hospital.

C. Twenty-six-week Servicemember Family Military Leave

1. An eligible employee who is the spouse, son, daughter, parent, or next of kin of a covered servicemember shall be entitled to a total of 26 workweeks of leave during a 12-month period to care for the servicemember. The leave described in this paragraph shall be available only during a single 12-month period. For purposes of this leave, the need to care for a servicemember includes both physical and psychological care.
2. During a single 12-month period, an employee shall be entitled to a combined total of 26 workweeks of leave under Paragraphs IV.A. and IV.C. above.
3. The 12-month period referred to in this section begins on the first day the eligible employee takes leave to care for a covered servicemember and ends 12 months after that date.
4. Eligible spouses employed by the school district are limited to an aggregate of 26 weeks of leave during any 12-month period if leave is taken for birth of the employee's child or to care for the child after birth; for placement of a child with the employee for adoption or foster care or to care for the child after placement; to

care for the employee's parent with a serious health condition; or to care for a covered servicemember with a serious injury or illness.

5. The school district may request or require the employee to substitute accrued paid leave for any part of the 26-week period. Employees may be allowed to substitute paid leave for unpaid leave by meeting the requirements set out in the administrative directives and guidelines established for the implementation of this policy, if any. Employees eligible for leave must comply with the family and medical leave directives and guidelines prior to starting leave.
6. An employee will be required to submit sufficient medical certification issued by the health care provider of the covered servicemember and other information in support of requested leave and eligibility for such leave under this section within 15 days from the date of the request or as soon as practicable under the circumstances.
7. The provisions of Paragraphs IV.A.7., IV.A.10., IV.A.12., IV.A.13., and IV.A.14. above shall apply to leaves under this section.

## **V. SPECIAL RULES FOR INSTRUCTIONAL EMPLOYEES**

- A. An instructional employee is one whose principal function is to teach and instruct students in a class, a small group, or an individual setting. This includes, but is not limited to, teachers, coaches, driver's education instructors, and special education assistants.
- B. Instructional employees who request foreseeable medically necessary intermittent or reduced work schedule leave greater than 20 percent of the work days in the leave period may be required to:
  1. take leave for the entire period or periods of the planned medical treatment; or
  2. move to an available alternative position for which the employee is qualified, and which provides equivalent pay and benefits, but not necessarily equivalent duties.
- C. Instructional employees who request continuous leave near the end of a semester may be required to extend the leave through the end of the semester. The number of weeks remaining before the end of a semester

does not include scheduled school breaks, such as summer, winter, or spring break.

1. If an instructional employee begins leave for any purpose more than five weeks before the end of a semester and it is likely the leave will last at least three weeks, the school district may require that the leave be continued until the end of the semester.
  2. If the employee begins leave for a purpose other than the employee's own serious health condition during the last five weeks of a semester, the school district may require that the leave be continued until the end of the semester if the leave will last more than two weeks or if the employee's return from leave would occur during the last two weeks of the semester.
  3. If the employee begins leave for a purpose other than the employee's own serious health condition during the last three weeks of the semester and the leave will last more than five working days, school district may require the employee to continue taking leave until the end of the semester.
- D. The entire period of leave taken under the special rules will be counted as leave. The school district will continue to fulfill the school district's leave responsibilities and obligations, including the obligation to continue the employee's health insurance and other benefits, if an instructional employee's leave entitlement ends before the involuntary leave period expires.

## **VI. OTHER**

- A. The provisions of this policy are intended to comply with applicable law, including the FMLA and applicable regulations. Any terms used from the FMLA will have the same meaning as defined by the FMLA and/or applicable regulations. To the extent that this policy is ambiguous or contradicts applicable law, the language of the applicable law will prevail.
- B. The requirements stated in the collective bargaining agreement between Employees in a certified collective bargaining unit and the school district regarding family and medical leaves (if any) shall be followed.

## VII. DISSEMINATION OF POLICY

- A. This policy shall be conspicuously posted in each school district building in areas accessible to employees.
- B. This policy will be reviewed at least annually for compliance with state and federal law.

**Legal References:** Minn. Stat. §§ 181.940-181.944 (Parenting Leave)  
10 U.S.C. § 101 et seq. (Armed Forces General Military Law)  
29 U.S.C. § 2601 et seq. (Family and Medical Leave Act)  
38 U.S.C. § 101 (Definitions)  
29 C.F.R. Part 825 (Family and Medical Leave Act)

**Cross References:** MSBA Service Manual, Chapter 13, School Law Bulletin “M” (Statutory Provisions Which Grant Leaves to Licensed as well as Non-Licensed School District Employees – Family and Medical Leave Act Summary)

Adopted: June 8, 200  
Revised: October 27, 2009  
Revised: December 21, 2010  
Reviewed: November 8, 2011  
Revised: May 19, 2015  
Revised: September 6, 2016

Adopted: \_\_\_\_\_

MSBA/MASA Model Policy 410

Orig. 1995

Revised: \_\_\_\_\_

Rev. ~~2014~~ 2015

## **410 FAMILY AND MEDICAL LEAVE POLICY**

*[Note: School districts are required by statute to have a policy addressing these issues.]*

### **I. PURPOSE**

The purpose of this policy is to provide for family and medical leave to school district employees in accordance with the Family and Medical Leave Act of 1993 (FMLA) and also with parenting leave under state law.

### **II. GENERAL STATEMENT OF POLICY**

The following procedures and policies regarding family and medical leave are adopted by the school district, pursuant to the requirements of the FMLA and consistent with the requirements of the Minnesota parenting leave laws.

### **III. DEFINITIONS**

A. “Covered active duty” means:

1. in the case of a member of a regular component of the Armed Forces, duty during the deployment of the member with the Armed Forces to a foreign country; and
2. in the case of a member of a reserve component of the Armed Forces, duty during the deployment of the member with the Armed Forces to a foreign country under a call or order to active duty under a provision of law referred to in 10 U.S.C. § 101(a)(13)(B).

B. “Covered servicemember” means:

1. a member of the Armed Forces, including a member of the National Guard or Reserves, who is undergoing medical treatment, recuperation, or therapy, is otherwise in outpatient status, or is otherwise on the temporary disability retired list, for a serious injury or illness; or
2. a covered veteran who is undergoing medical treatment, recuperation, or therapy for a serious injury or illness and who was a member of the Armed Forces, including a member of the National Guard or Reserves, and was discharged or released under conditions other than dishonorable, at any time during the period of five years preceding the first date the eligible employee takes FMLA leave to care for the covered veteran.

- C. “Eligible employee” means an employee who has been employed by the school district for a total of at least 12 months and who has been employed for at least 1,250 hours of service during the 12-month period immediately preceding the commencement of the leave. An employee returning from fulfilling his or her Uniformed Services Employment and Reemployment Rights Act (USERRA)-covered service obligation shall be credited with the hours of service that would have been performed but for the period of absence from work due to or necessitated by USERRA-covered service. In determining whether the employee met the hours of service requirement, and to determine the hours that would have been worked during the period of absence from work due to or necessitated by USERRA-covered service, the employee’s pre-service work schedule can generally be used for calculations. While the 12 months of employment need not be consecutive, employment periods prior to a break in service of seven years or more may not be counted unless the break is occasioned by the employee’s fulfillment of his or her USERRA-covered service obligation or a written agreement, including a collective bargaining agreement, exists concerning the school district’s intention to rehire the employee after the break in service.
- D. “Military caregiver leave” means leave taken to care for a covered servicemember with a serious injury or illness.
- E. “Next of kin of a covered servicemember” means the nearest blood relative other than the covered servicemember’s spouse, parent, son, or daughter, in the following order of priority: blood relatives who have been granted legal custody of the covered servicemember by court decree or statutory provisions, brothers and sisters, grandparents, aunts and uncles, and first cousins, unless the covered servicemember has specifically designated in writing another blood relative as his or her nearest blood relative for purposes of military caregiver leave under the FMLA. When no such designation is made and there are multiple family members with the same level of relationship to the covered servicemember, all such family members shall be considered the covered servicemember’s next of kin, and the employee may take FMLA leave to provide care to the covered servicemember, either consecutively or simultaneously. When such designation has been made, the designated individual shall be deemed to be the covered servicemember’s only next of kin.
- F. “Outpatient status” means, with respect to a covered servicemember who is a current member of the Armed Forces, the status of a member of the Armed Forces assigned to:
1. a military medical treatment facility as an outpatient; or
  2. a unit established for the purpose of providing command and control of members of the Armed Forces receiving care as outpatients.
- G. “Qualifying exigency” means a situation where the eligible employee seeks leave for one or more of the following reasons:

1. to address any issues that arise from a short-notice deployment (seven calendar days or less) of a covered military member;
2. to attend military events and related activities of a covered military member;
3. to address issues related to childcare and school activities of a covered military member's child;
4. to address financial and legal arrangements for a covered military member;
5. to attend counseling provided by someone other than a health care provider for oneself, a covered military member, or his/her child;
6. to spend up to 15 calendar days with a covered military member who is on short-term, temporary rest and recuperation leave during a period of deployment;
7. to attend post-deployment activities related to a covered military member;
8. to address parental care needs; and
9. to address other events related to a covered military member that both the employee and school district agree is a qualifying exigency.

H. "Serious health condition" means an illness, injury, impairment, or physical or mental condition that involves:

1. inpatient care in a hospital, hospice, or residential medical care facility; or
2. continuing treatment by a health care provider.

I. "Spouse" means a husband or wife. For purposes of this definition, husband or wife refers to the other person with whom an individual entered into marriage as defined or recognized under state law for purposes of marriage in the state in which the marriage was entered into or, in the case of a marriage entered into outside of any state, if the marriage is valid in the place where entered into and could have been entered into in at least one state. This definition includes an individual in a same-sex or common law marriage that either: (1) was entered into in a state that recognizes such marriages; or (2) if entered into outside of any state, is valid in the place where entered into and could have been entered into in at least one state.

J. "Veteran" has the meaning given in 38 U.S.C. § 101.

#### IV. LEAVE ENTITLEMENT

A. Twelve-week Leave under Federal Law

1. Eligible employees are entitled to a total of 12 work weeks of unpaid family or medical leave during the applicable 12-month period as defined below, plus any additional leave as required by law. Leave may be taken for one or more of the following reasons in accordance with applicable law:
  - a. birth of the employee's child and to care for such child;
  - b. placement of an adopted or foster child with the employee;
  - c. to care for the employee's spouse, son, daughter, or parent with a serious health condition;
  - d. the employee's serious health condition makes the employee unable to perform the functions of the employee's job; and/or
  - e. any qualifying exigency arising from the employee's spouse, son, daughter, or parent being on covered active duty, or notified of an impending call or order to covered active duty in the Armed Forces.
2. For the purposes of this policy, "year" is defined as a rolling 12-month period measured backward from the date an employee's leave is to commence.
3. An employee's entitlement to FMLA leave for the birth, adoption, or foster care of a child expires at the end of the 12-month period beginning on the date of the birth or placement.
4. A "serious health condition" typically requires either inpatient care or continuing treatment by or under the supervision of a health care provider, as defined by applicable law. Family and medical leave generally is not intended to cover short-term conditions for which treatment and recovery are very brief.
5. A "serious injury or illness," in the case of a member of the Armed Forces, including a member of the National Guard or Reserves, means:
  - a. injury or illness that was incurred by the member in the line of duty on active duty in the Armed Forces or that existed before the beginning of the member's active duty and was aggravated by service in the line of duty on active duty in the Armed Forces and that may render the member medically unfit to perform the duties of the member's office, grade, rank, or rating; and
  - b. in the case of a covered veteran who was a member of the Armed

Forces, including a member of the National Guard or Reserves, at any time, during the period of five years preceding the date on which the veteran undergoes the medical treatment, recuperation, or therapy, means a qualifying injury or illness that was incurred by the member in the line of duty on active duty in the Armed Forces or that existed before the beginning of the member's active duty and was aggravated by service in the line of duty in the Armed Forces and that manifested itself before or after the member became a veteran, and is:

- (1) a continuation of a serious injury or illness that was incurred or aggravated when the covered veteran was a member of the Armed Forces and rendered the servicemember unable to perform the duties of the servicemember's office, grade, rank, or rating; or
  - (2) a physical or mental condition for which the covered veteran has received a U.S. Department of Veterans Affairs Service-Related Disability (VASRD) rating of 50 percent or greater and such VASRD rating is based, in whole or in part, on the condition precipitating the need for military caregiver leave; or
  - (3) a physical or mental condition that substantially impairs the covered veteran's ability to secure or follow a substantially gainful occupation by reason of a disability or disabilities related to military service, or would do so absent treatment; or
  - (4) an injury, including a psychological injury, on the basis of which the covered veteran has been enrolled in the Department of Veterans Affairs Program of Comprehensive Assistance for Family Caregivers.
6. Eligible spouses employed by the school district are limited to an aggregate of 12 weeks of leave during any 12-month period for the birth and care of a newborn child or adoption of a child, the placement of a child for foster care, or to care for a parent. This limitation for spouses employed by the school district does not apply to leave taken: by one spouse to care for the other spouse who is seriously ill; to care for a child with a serious health condition; because of the employee's own serious health condition; or pursuant to Paragraph IV.A.1.e. above.
7. Depending on the type of leave, intermittent or reduced schedule leave may be granted in the discretion of the school district or when medically necessary. However, part-time employees are only eligible for a pro-rata portion of leave to be used on an intermittent or reduced schedule basis, based on their average hours worked per week. Where an intermittent or

reduced schedule leave is foreseeable based on planned medical treatment, the school district may transfer the employee temporarily to an available alternative position for which the employee is qualified and which better accommodates recurring periods of leave than does the employee's regular position, and which has equivalent pay and benefits.

8. If an employee requests a leave for the serious health condition of the employee or the employee's spouse, child, or parent, the employee will be required to submit sufficient medical certification. In such a case, the employee must submit the medical certification within 15 days from the date of the request or as soon as practicable under the circumstances.
9. If the school district has reason to doubt the validity of a health care provider's certification, it may require a second opinion at the school district's expense. If the opinions of the first and second health care providers differ, the school district may require certification from a third health care provider at the school district's expense. An employee may also be required to present a certification from a health care provider indicating that the employee is able to return to work.
10. Requests for leave shall be made to the school district. When leave relates to an employee's spouse, son, daughter, parent, or covered servicemember being on covered active duty, or notified of an impending call or order to covered active duty pursuant to Paragraph IV.A.1.e. above, and such leave is foreseeable, the employee shall provide reasonable and practical notice to the school district of the need for leave. For all other leaves, employees must give 30 days' written notice of a leave of absence where practicable. The failure to provide the required notice may result in a delay of the requested leave. Employees are expected to make a reasonable effort to schedule leaves resulting from planned medical treatment so as not to disrupt unduly the operations of the school district, subject to and in coordination with the health care provider.
11. The school district may require that a request for leave under Paragraph IV.A.1.e. above be supported by a copy of the covered military member's active duty orders or other documentation issued by the military indicating active duty or a call to active duty status and the dates of active duty service. In addition, the school district may require the employee to provide sufficient certification supporting the qualifying exigency for which leave is requested.
12. During the period of a leave permitted under this policy, the school district will provide health insurance under its group health plan under the same conditions coverage would have been provided had the employee not taken the leave. The employee will be responsible for payment of the employee contribution to continue group health insurance coverage during the leave. An employee's failure to make necessary and timely contributions may result in termination of coverage. An employee who

does not return to work after the leave may be required, in some situations, to reimburse the school district for the cost of the health plan premiums paid by it.

13. The school district may request or require the employee to substitute accrued paid leave for any part of the 12-week period. Employees may be allowed to substitute paid leave for unpaid leave by meeting the requirements set out in the administrative directives and guidelines established for the implementation of this policy, if any. Employees eligible for leave must comply with the family and medical leave directives and guidelines prior to starting leave. The superintendent shall be responsible to develop directives and guidelines as necessary to implement this policy. Such directives and guidelines shall be submitted to the school board for annual review.

The school district shall comply with written notice requirements as set forth in federal regulations.

14. Employees returning from a leave permitted under this policy are eligible for reinstatement in the same or an equivalent position as provided by law. However, the employee has no greater right to reinstatement or to other benefits and conditions of employment than if the employee had been continuously employed during the leave.

B. Twelve-week Leave under State Law

An employee who does not qualify for parenting leave under Paragraphs IV.A.1.a. or IV.A.1.b. above may qualify for a 12-week unpaid leave which is available to a biological or adoptive parent in conjunction with the birth or adoption of a child, or to a female employee for prenatal care or incapacity due to pregnancy, childbirth, or related health conditions. The length of the leave shall be determined by the employee but must not exceed 12 weeks unless agreed by the employer. The employee may qualify if he or she has worked for the school district for at least 12 months and has worked an average number of hours per week equal to one-half of the full time equivalent during the 12-month period immediately preceding the leave. This leave is separate and exclusive of the family and medical leave described in the preceding paragraphs but may be reduced by any period of paid parental, disability, personal, or medical, or sick leave, or accrued vacation provided by the employer so that the total leave does not exceed 12 weeks, unless agreed by the employer, or leave taken for the same purpose under the FMLA. The leave taken under this section shall begin at a time requested by the employee. An employee who plans to take leave under this section must give the employer reasonable notice of the date the leave shall commence and the estimated duration of the leave. For leave taken by a biological or adoptive parent in conjunction with the birth or adoption of a child, the leave must begin within 12 months of the birth or adoption; except that, in the case where the child must remain in the hospital longer than the mother, the leave must begin within 12 months after the child leaves the hospital.

C. Twenty-six-week Servicemember Family Military Leave

1. An eligible employee who is the spouse, son, daughter, parent, or next of kin of a covered servicemember shall be entitled to a total of 26 work weeks of leave during a 12-month period to care for the servicemember. The leave described in this paragraph shall be available only during a single 12-month period. For purposes of this leave, the need to care for a servicemember includes both physical and psychological care.
2. During a single 12-month period, an employee shall be entitled to a combined total of 26 work weeks of leave under Paragraphs IV.A. and IV.C. above.
3. The 12-month period referred to in this section begins on the first day the eligible employee takes leave to care for a covered servicemember and ends 12 months after that date.
4. Eligible spouses employed by the school district are limited to an aggregate of 26 weeks of leave during any 12-month period if leave is taken for birth of the employee's child or to care for the child after birth; for placement of a child with the employee for adoption or foster care or to care for the child after placement; to care for the employee's parent with a serious health condition; or to care for a covered servicemember with a serious injury or illness.
5. The school district may request or require the employee to substitute accrued paid leave for any part of the 26-week period. Employees may be allowed to substitute paid leave for unpaid leave by meeting the requirements set out in the administrative directives and guidelines established for the implementation of this policy, if any. Employees eligible for leave must comply with the family and medical leave directives and guidelines prior to starting leave.
6. An employee will be required to submit sufficient medical certification issued by the health care provider of the covered servicemember and other information in support of requested leave and eligibility for such leave under this section within 15 days from the date of the request or as soon as practicable under the circumstances.
7. The provisions of Paragraphs IV.A.7., IV.A.10., IV.A.12., IV.A.13., and IV.A.14. above shall apply to leaves under this section.

V. **SPECIAL RULES FOR INSTRUCTIONAL EMPLOYEES**

- A. An instructional employee is one whose principal function is to teach and instruct students in a class, a small group, or an individual setting. This includes, but is not limited to, teachers, coaches, driver's education instructors, and special education

assistants.

- B. Instructional employees who request foreseeable medically necessary intermittent or reduced work schedule leave greater than 20 percent of the work days in the leave period may be required to:
  - 1. take leave for the entire period or periods of the planned medical treatment; or
  - 2. move to an available alternative position for which the employee is qualified, and which provides equivalent pay and benefits, but not necessarily equivalent duties.
  
- C. Instructional employees who request continuous leave near the end of a semester may be required to extend the leave through the end of the semester. The number of weeks remaining before the end of a semester does not include scheduled school breaks, such as summer, winter, or spring break.
  - 1. If an instructional employee begins leave for any purpose more than five weeks before the end of a semester and it is likely the leave will last at least three weeks, the school district may require that the leave be continued until the end of the semester.
  - 2. If the employee begins leave for a purpose other than the employee's own serious health condition during the last five weeks of a semester, the school district may require that the leave be continued until the end of the semester if the leave will last more than two weeks or if the employee's return from leave would occur during the last two weeks of the semester.
  - 3. If the employee begins leave for a purpose other than the employee's own serious health condition during the last three weeks of the semester and the leave will last more than five working days, school district may require the employee to continue taking leave until the end of the semester.
  
- D. The entire period of leave taken under the special rules will be counted as leave. The school district will continue to fulfill the school district's leave responsibilities and obligations, including the obligation to continue the employee's health insurance and other benefits, if an instructional employee's leave entitlement ends before the involuntary leave period expires.

## **VI. OTHER**

- A. The provisions of this policy are intended to comply with applicable law, including the FMLA and applicable regulations. Any terms used from the FMLA will have the same meaning as defined by the FMLA and/or applicable regulations. To the extent that this policy is ambiguous or contradicts applicable law, the language of the applicable law will prevail.

- B. The requirements stated in the collective bargaining agreement between employees in a certified collective bargaining unit and the school district regarding family and medical leaves (if any) shall be followed.

**VII. DISSEMINATION OF POLICY**

- A. This policy shall be conspicuously posted in each school district building in areas accessible to employees.
- B. This policy will be reviewed at least annually for compliance with state and federal law.

***Legal References:*** Minn. Stat. §§ 181.940-181.944 (Parenting Leave)  
10 U.S.C. § 101 *et seq.* (Armed Forces General Military Law)  
29 U.S.C. § 2601 *et seq.* (Family and Medical Leave Act)  
38 U.S.C. § 101 (Definitions)  
29 C.F.R. Part 825 (Family and Medical Leave Act)

***Cross References:*** MSBA Service Manual, Chapter 13, School Law Bulletin “M” (Statutory Provisions Which Grant Leaves to Licensed as well as Non-Licensed School District Employees – Family and Medical Leave Act Summary)

**PRINCETON PUBLIC SCHOOLS**  
**POLICY 418- DRUG-FREE WORKPLACE/ DRUG-FREE SCHOOL**

**I. PURPOSE**

The purpose of this policy is to maintain a safe and healthful environment for employees and students by prohibiting the use of alcohol, toxic substances medical cannabis and controlled substances without a physician's prescription.

**II. GENERAL STATEMENT OF POLICY**

- A. Use or possession of controlled substances, toxic substances, medical cannabis and alcohol before, during, or after school hours, at school or in any other school location, is prohibited as general policy. Paraphernalia associated with controlled substances is prohibited.
- B. A violation of this policy occurs when any student, teacher, administrator, other school district personnel, or member of the public uses or possesses alcohol, toxic Substances, controlled substances, or medical cannabis in any school location.
- C. The school district will act to enforce this policy and to discipline or take appropriate action against any student, teacher, administrator, school personnel, or member of the public who violates this policy.

**III. DEFINITIONS**

- A. "Alcohol" includes any alcoholic beverage, malt beverage, fortified wine, or other intoxicating liquor.
- B. "Controlled substances" include narcotic drugs, hallucinogenic drugs, Amphetamines, barbiturates, marijuana, anabolic steroids, or any other controlled substance as defined in Schedules I through V of the Controlled Substances Act, 21 U.S.C. § 812, including analogues and look-alike drugs.
- C. "Medical cannabis" means any species of the genus cannabis plant, or any mixture or preparation of them, including whole plant extracts and resins, and is delivered in the form of: liquid, including, but not limited to, oil; (2) pill; (3) vaporized delivery method with use of liquid or oil but which does not require the use of dried leaves or plant form; or (4) any other method, excluding smoking, approved by the commissioner.
- D. "Toxic substances" includes glue, cement, aerosol paint, or other substances used or possessed with the intent of inducing intoxication or excitement of the central nervous system.

- E. "Use" includes to sell, buy, manufacture, distribute, dispense, possess, use, or be under the influence of alcohol and/or controlled substances, whether or not for the purpose of receiving remuneration or consideration. 418 418 - 2 E. "Possess" means to have on one's person, in one's effects, or in an area subject to one's control.
- F. "School location" includes any school building or on any school premises; in any school-owned vehicle or in any other school-approved vehicle used to transport students to and from school or school activities; off school property at any school sponsored or school-approved activity, event, or function, such as a field trip or athletic event, where students are under the jurisdiction of the school district; or during any period of time such employee is supervising students on behalf of the school district or otherwise engaged in school district business.

#### **IV. EXCEPTIONS**

- A. A violation of this policy does not occur when a person brings onto a school location, for such person's own use, a controlled substance, except medical cannabis, which has a currently accepted medical use in treatment in the United States and the person has a physician's prescription for the substance. The person shall comply with the relevant procedures of this policy.
- B. A violation of this policy does not occur when a person possesses an alcoholic beverage in a school location when the possession is within the exceptions of Minn. Stat. § 624.701, Subd. 1a (experiments in laboratories; pursuant to a temporary license to sell liquor issued under Minnesota laws or possession after the purchase from such a temporary license holder).

#### **V. PROCEDURES**

- A. Students who have a prescription from a physician for medical treatment with a controlled substance, except medical cannabis, must comply with the school district's student medication policy.
- B. Employees who have a prescription from a physician for medical treatment with a controlled substance are permitted to possess such controlled substance, except medical cannabis, and associated necessary paraphernalia, such as an inhaler or syringe. The employee must inform his or her supervisor. The employee may be required to provide a copy of the prescription.
- C. Each employee shall be provided with written notice of this Drug-Free Workplace/Drug-Free School policy and shall be required to acknowledge that he or she has received the policy.

- D. Employees are subject to the school district's drug and alcohol testing policies and procedures.
- E. Members of the public are not permitted to possess controlled substances in a school location except with the express permission of the superintendent.
- F. No person is permitted to possess or use medical cannabis on a school bus or van; or on the grounds of any preschool or primary or secondary school; or on the grounds of any child care facility.
- G. Possession of alcohol on school grounds pursuant to the exceptions of Minn. Stat. § 624.701, Subd. 1a, shall be by permission of the school board only. The applicant shall apply for permission in writing and shall follow the school board procedures for placing an item on the agenda.

## **VI. ENFORCEMENT**

### **A. Students.**

1. A student who violates the terms of this policy shall be subject to discipline in accordance with the school district's discipline policy. Such discipline may include suspension or expulsion from school.
2. The student may be referred to a drug or alcohol assistance or Rehabilitation program and/or to law enforcement officials when appropriate.

### **B. Employees.**

1. As a condition of employment in any federal grant, each employee who is engaged either directly or indirectly in performance of a federal grant shall abide by the terms of this policy and shall notify his or her supervisor in writing of his or her conviction of any criminal drug statute for a violation occurring in any of the places listed above on which work on a school district federal grant is performed, no later than five (5) calendar days after such conviction. Conviction means a finding of guilt (including a plea of no contest) or imposition of sentence, or both, by any judicial body charged with the responsibility to determine violations of the federal or state criminal drug statutes.
2. An employee who violates the terms of this policy is subject to disciplinary action, including nonrenewal, suspension, termination, or discharge as deemed appropriate by the school board.
3. In addition, any employee who violates the terms of this policy may be required to satisfactorily participate in a drug and/or alcohol abuse assistance or rehabilitation program approved by the school district. Any employee who fails to satisfactorily participate in and

complete such a program is subject to nonrenewal, suspension, or termination as deemed appropriate by the school board.

4. Sanctions against employees, including nonrenewal, suspension, termination, or discharge shall be pursuant to and in accordance with applicable statutory authority, collective bargaining agreements, and school district policies.

C. The Public

A member of the public who violates this policy shall be informed of the policy and asked to leave. If necessary, law enforcement officials will be notified and asked to provide an escort.

Legal References: Minn. Stat. § 121A.22 (Administration of Drugs and Medicine)  
Minn. Stat. § 152.22 (Medical Cannabis; Definitions)  
Minn. Stat. § 152.23 (Medical Cannabis; Limitations)  
Minn. Stat. § 340A.403 (3.2 Percent Malt Liquor Licenses)  
Minn. Stat. § 340A.404 (Intoxicating Liquor; On-Sale Licenses)  
Minn. Stat. § 609.684 (Sale of Toxic Substances to Children; Abuse of Toxic Substances)  
Minn. Stat. § 624.701 (Liquor in Certain Buildings or Grounds) 41  
U.S.C. §§ 701-707 (Drug-Free Workplace Act)  
20 U.S.C. § 7101-7165 (Safe and Drug-Free Schools and Communities Act)  
21 U.S.C. § 812 (Schedules of Controlled Substances)  
41 U.S.C. §§ 8101-8106 (Drug-Free Workplace Act)  
21 C.F.R. §§ 1308.11-1308.15 (Controlled Substances)  
34 C.F.R. Part 85 (Government-wide Requirements for Drug-Free Workplace)

Cross References: MSBA/MASA Model Policy 403 (Discipline, Suspension and Dismissal of School District Employees)  
MSBA/MASA Model Policy 416 (Drug and Alcohol Testing)  
MSBA/MASA Model Policy 417 (Chemical Use/Abuse)  
MSBA/MASA Model Policy 506 (Student Discipline)  
MSBA/MASA Model Policy 516 (Student Medication)

Adopted: June 8, 2004  
Revised: January 14, 2014  
Revised: May 15, 2015  
Revised: September 6, 2016

Adopted: \_\_\_\_\_

MSBA/MASA Model Policy 418

Orig. 1995

Revised: \_\_\_\_\_

Rev. 2015

## **418 DRUG-FREE WORKPLACE/DRUG-FREE SCHOOL**

*[Note: School districts are required by statute to have a policy addressing these issues.]*

### **I. PURPOSE**

The purpose of this policy is to maintain a safe and healthful environment for employees and students by prohibiting the use of alcohol, toxic substances, medical cannabis, and controlled substances without a physician's prescription.

### **II. GENERAL STATEMENT OF POLICY**

- A. Use or possession of controlled substances, toxic substances, medical cannabis, and alcohol before, during, or after school hours, at school or in any other school location, is prohibited as general policy. Paraphernalia associated with controlled substances is prohibited.
- B. A violation of this policy occurs when any student, teacher, administrator, other school district personnel, or member of the public uses or possesses alcohol, toxic substances, controlled substances, or medical cannabis in any school location.
- C. The school district will act to enforce this policy and to discipline or take appropriate action against any student, teacher, administrator, school personnel, or member of the public who violates this policy.

### **III. DEFINITIONS**

- A. "Alcohol" includes any alcoholic beverage, malt beverage, fortified wine, or other intoxicating liquor.
- B. "Controlled substances" include narcotic drugs, hallucinogenic drugs, amphetamines, barbiturates, marijuana, anabolic steroids, or any other controlled substance as defined in Schedules I through V of the Controlled Substances Act, 21 U.S.C. § 812, including analogues and look-alike drugs.
- C. "Medical cannabis" means any species of the genus cannabis plant, or any mixture or preparation of them, including whole plant extracts and resins, and is delivered in the form of: (1) liquid, including, but not limited to, oil; (2) pill; (3) vaporized delivery method with use of liquid or oil but which does not require the use of dried leaves or plant form; or (4) any other method, excluding smoking, approved by the commissioner.
- D. "Toxic substances" includes glue, cement, aerosol paint, or other substances used

or possessed with the intent of inducing intoxication or excitement of the central nervous system.

- E. “Use” includes to sell, buy, manufacture, distribute, dispense, possess, use, or be under the influence of alcohol and/or controlled substances, whether or not for the purpose of receiving remuneration or consideration.
- F. “Possess” means to have on one’s person, in one’s effects, or in an area subject to one’s control.
- G. “School location” includes any school building or on any school premises; in any school-owned vehicle or in any other school-approved vehicle used to transport students to and from school or school activities; off school property at any school-sponsored or school-approved activity, event, or function, such as a field trip or athletic event, where students are under the jurisdiction of the school district; or during any period of time such employee is supervising students on behalf of the school district or otherwise engaged in school district business.

#### **IV. EXCEPTIONS**

- A. A violation of this policy does not occur when a person brings onto a school location, for such person’s own use, a controlled substance, except medical cannabis, which has a currently accepted medical use in treatment in the United States and the person has a physician’s prescription for the substance. The person shall comply with the relevant procedures of this policy.
- B. A violation of this policy does not occur when a person possesses an alcoholic beverage in a school location when the possession is within the exceptions of Minn. Stat. § 624.701, Subd. 1a (experiments in laboratories; pursuant to a temporary license to sell liquor issued under Minnesota laws or possession after the purchase from such a temporary license holder).

#### **V. PROCEDURES**

- A. Students who have a prescription from a physician for medical treatment with a controlled substance, except medical cannabis, must comply with the school district’s student medication policy.

*[Note: School districts are required by Minn. Stat. § 121A.22 to develop procedures for the administration of drugs and medicine. If the school district does not have a student medication policy such as MSBA/MASA Model Policy 516, this Paragraph A. can be modified to provide: “Students who have a prescription from a physician for medical treatment with a controlled substance must provide a copy of the prescription and the medication to the school nurse, principal, or other designated staff member. The school district’s licensed school nurse, trained health clerk, principal, or teacher will administer the prescribed medication in accordance with school district procedures.”]*

- B. Employees who have a prescription from a physician for medical treatment with a controlled substance, except medical cannabis, are permitted to possess such controlled substance and associated necessary paraphernalia, such as an inhaler or syringe. The employee must inform his or her supervisor. The employee may be required to provide a copy of the prescription.
- C. Each employee shall be provided with written notice of this Drug-Free Workplace/Drug-Free School policy and shall be required to acknowledge that he or she has received the policy.
 

*[Note: The Drug-Free Workplace Act requires that school district employees be notified by a published statement of the prohibition of the use of controlled substances and actions that will be taken against employees for violations of such prohibition. 41 U.S.C. § 8103; 34 C.F.R. Part 84. An acknowledgment will document satisfaction by the school district of this federal requirement.]*
- D. Employees are subject to the school district's drug and alcohol testing policies and procedures.
- E. Members of the public are not permitted to possess controlled substances in a school location except with the express permission of the superintendent.
- F. No person is permitted to possess or use medical cannabis on a school bus or van; or on the grounds of any preschool or primary or secondary school; or on the grounds of any child care facility.
- G. Possession of alcohol on school grounds pursuant to the exceptions of Minn. Stat. § 624.701, Subd. 1a, shall be by permission of the school board only. The applicant shall apply for permission in writing and shall follow the school board procedures for placing an item on the agenda.

## VI. ENFORCEMENT

- A. Students
  - 1. A student who violates the terms of this policy shall be subject to discipline in accordance with the school district's discipline policy. Such discipline may include suspension or expulsion from school.
  - 2. The student may be referred to a drug or alcohol assistance or rehabilitation program and/or to law enforcement officials when appropriate.
- B. Employees
  - 1. As a condition of employment in any federal grant, each employee who is engaged either directly or indirectly in performance of a federal grant shall abide by the terms of this policy and shall notify his or her supervisor in

writing of his or her conviction of any criminal drug statute for a violation occurring in any of the places listed above on which work on a school district federal grant is performed, no later than five (5) calendar days after such conviction. Conviction means a finding of guilt (including a plea of nolo contendere) or imposition of sentence, or both, by any judicial body charged with the responsibility to determine violations of the federal or state criminal drug statutes.

2. An employee who violates the terms of this policy is subject to disciplinary action, including nonrenewal, suspension, termination, or discharge as deemed appropriate by the school board.
3. In addition, any employee who violates the terms of this policy may be required to satisfactorily participate in a drug and/or alcohol abuse assistance or rehabilitation program approved by the school district. Any employee who fails to satisfactorily participate in and complete such a program is subject to nonrenewal, suspension, or termination as deemed appropriate by the school board.
4. Sanctions against employees, including nonrenewal, suspension, termination, or discharge shall be pursuant to and in accordance with applicable statutory authority, collective bargaining agreements, and school district policies.

C. The Public

A member of the public who violates this policy shall be informed of the policy and asked to leave. If necessary, law enforcement officials will be notified and asked to provide an escort.

**Legal References:** Minn. Stat. § 121A.22 (Administration of Drugs and Medicine)  
Minn. Stat. § 152.22 (Medical Cannabis; Definitions)  
Minn. Stat. § 152.23 (Medical Cannabis; Limitations)  
Minn. Stat. § 340A.403 (3.2 Percent Malt Liquor Licenses)  
Minn. Stat. § 340A.404 (Intoxicating Liquor; On-Sale Licenses)  
Minn. Stat. § 609.684 (Sale of Toxic Substances to Children; Abuse of Toxic Substances)  
Minn. Stat. § 624.701 (~~Liquor~~ Alcohol in Certain Buildings or Grounds)  
20 U.S.C. § 7101-7165 (Safe and Drug-Free Schools and Communities Act)  
21 U.S.C. § 812 (Schedules of Controlled Substances)  
41 U.S.C. §§ 8101-8106 (Drug-Free Workplace Act)  
21 C.F.R. §§ 1308.11-1308.15 (Controlled Substances)  
34 C.F.R. Part 84 (Government-wide Requirements for Drug-Free Workplace)

**Cross References:** MSBA/MASA Model Policy 403 (Discipline, Suspension, and Dismissal)

of School District Employees)  
MSBA/MASA Model Policy 416 (Drug and Alcohol Testing)  
MSBA/MASA Model Policy 417 (Chemical Use and Abuse)  
MSBA/MASA Model Policy 506 (Student Discipline)  
MSBA/MASA Model Policy 516 (Student Medication)



# PRINCETON

PUBLIC SCHOOLS



## ACKNOWLEDGEMENT DRUG-FREE WORKPLACE / DRUG-FREE SCHOOL POLICY

I have received a copy of the Drug-Free Workplace / Drug-Free School Policy of Independent School District No. 477, Princeton, Minnesota.

Date: \_\_\_\_\_

\_\_\_\_\_  
*Signature of Employee / Applicant*

\_\_\_\_\_  
*Typed or Printed Name*

### Core Values



 706 1st Street,  
 Princeton, MN 55371  
 763-389-2422  
 763-389-9142  
 [isd477.org](http://isd477.org)

[TO BE PLACED ON SCHOOL DISTRICT LETTERHEAD]

— ACKNOWLEDGMENT —

**DRUG-FREE WORKPLACE/DRUG-FREE SCHOOL POLICY**

I have received a copy of the Drug-Free Workplace/Drug-Free School Policy of Independent School District No. \_\_\_\_\_, \_\_\_\_\_, Minnesota.

Dated: \_\_\_\_\_

\_\_\_\_\_  
*Signature of Employee/Applicant*

\_\_\_\_\_  
*Typed or Printed Name*

**PRINCETON PUBLIC SCHOOLS  
POLICY 506-STUDENT DISCIPLINE**

**I. PURPOSE**

The purpose of this policy is to ensure that students are aware of and comply with the school district's expectations for student conduct. Such compliance will enhance the school district's ability to maintain discipline and ensure that there is no interference with the educational process. The school district will take appropriate disciplinary action when students fail to adhere to the Code of Student Conduct established by this policy.

**II. GENERAL STATEMENT OF POLICY**

The school board recognizes that individual responsibility and mutual respect are essential components of the educational process. The school board further recognizes that nurturing the maturity of each student is of primary importance and is closely linked with the balance that must be maintained between authority and self-discipline as the individual progresses from a child's dependence on authority to the more mature behavior of self-control.

All students are entitled to learn and develop in a setting which promotes respect of self, others and property. Proper positive discipline can only result from an environment which provides options and stresses student self-direction, decision-making and responsibility. Schools can function effectively only with internal discipline based on mutual understanding of rights and responsibilities.

Students must conduct themselves in an appropriate manner that maintains a climate in which learning can take place. Overall decorum affects student attitudes and influences student behavior. Proper student conduct is necessary to facilitate the education process and to create an atmosphere conducive to high student achievement.

Although this policy emphasizes the development of self-discipline, it is recognized that there are instances when it will be necessary to administer disciplinary measures. The position of the school district is that a fair and equitable district-wide student discipline policy will contribute to the quality of the student's educational experience. This discipline policy is adopted in accordance with and subject to the Minnesota Pupil Fair Dismissal Act, Minn. Stat. § 121A.40-121A.56.

In view of the foregoing and in accordance with Minn. Stat. § 121A.55, the school board, with the participation of school district administrators, teachers, employees, students, parents, community members, and such other individuals and organizations as appropriate, has developed this policy which governs student conduct and applies to all students of the school district.

### III. AREAS OF RESPONSIBILITY

- A. The School Board. The school board holds all school personnel responsible for the maintenance of order within the school district and supports all personnel acting within the framework of this discipline policy.
- B. Superintendent. The superintendent shall establish guidelines and directives to carry out this policy, hold all school personnel, students and parents responsible for conforming to this policy, and support all school personnel performing their duties within the framework of this policy. The superintendent shall also establish guidelines and directives for using the services of appropriate agencies for assisting students and parents. Any guidelines or directives established to implement this policy shall be submitted to the school board for approval and shall be attached as an addendum to this policy.
- C. Principal. The school principal is given the responsibility and authority to formulate building rules and regulations necessary to enforce this policy, subject to final school board approval. The principal shall give direction and support to all school personnel performing their duties within the framework of this policy. The principal shall consult with parents of students conducting themselves in a manner contrary to the policy. The principal shall also involve other professional employees in the disposition of behavior referrals and shall make use of those agencies appropriate for assisting students and parents. A principal, in exercising his or her lawful authority, may use reasonable force when it is necessary under the circumstances to correct or restrain a student or prevent bodily harm or death to another.
- D. Teachers. All teachers shall be responsible for providing a well-planned teaching/learning environment and shall have primary responsibility for student conduct, with appropriate assistance from the administration. All teachers shall enforce the Code of Student Conduct. In exercising the

teacher's lawful authority, a teacher may use reasonable force when it is necessary under the circumstances to correct or restrain a student or prevent bodily harm or death to another.

- E. Other School District Personnel. All school district personnel shall be responsible for contributing to the atmosphere of mutual respect within the school. Their responsibilities relating to student behavior shall be as authorized and directed by the superintendent. A school employee, school bus driver, or other agent of a school district, in exercising his or her lawful authority, may use reasonable force when it is necessary under the circumstances to restrain a student or prevent bodily harm or death to another.
- F. Parents or Legal Guardians. Parents and guardians shall be held responsible for the behavior of their children as determined by law and community practice. They are expected to cooperate with school authorities and to participate regarding the behavior of their children.
- G. Students. All students shall be held individually responsible for their behavior and for knowing and obeying the Code of Student Conduct and this policy.
- H. Community Members. Members of the community are expected to contribute to the establishment of an atmosphere in which rights and duties are effectively acknowledged and fulfilled.

#### **IV. STUDENT RIGHTS**

All students have the right to an education and the right to learn.

#### **V. STUDENT RESPONSIBILITIES**

All students have the responsibility:

- A. For their behavior and for knowing and obeying all school rules, regulations, policies and procedures;
- B. To attend school daily, except when excused, and to be on time to all classes and other school functions;
- C. To pursue and attempt to complete the courses of study prescribed by the

state and local school authorities;

- D. To make necessary arrangements for making up work when absent from school;
- E. To assist the school staff in maintaining a safe school for all students;
- F. To be aware of all school rules, regulations, policies and procedures, including those in this policy, and to conduct themselves in accord with them;
- G. To assume that until a rule or policy is waived, altered or repealed, it is in full force and effect;
- H. To be aware of and comply with federal, state and local laws;
- I. To volunteer information in disciplinary cases should they have any knowledge relating to such cases and to cooperate with school staff as appropriate;
- J. To respect and maintain the school's property and the property of others;
- K. To dress and groom in a manner which meets standards of safety and health and common standards of decency and which is consistent with applicable school district policy;
- L. To avoid inaccuracies in student newspapers or publications and refrain from indecent or obscene language;
- M. To conduct themselves in an appropriate physical or verbal manner; and
- N. To recognize and respect the rights of others.

## **VI. CODE OF STUDENT CONDUCT**

- A. The following are examples of unacceptable behavior subject to disciplinary action by the school district. These examples are not intended to be an exclusive list. Any student who engages in any of these activities shall be disciplined in accordance with this policy. This policy applies to all school buildings, school grounds, and school property; school-sponsored activities or trips; school bus stops; school buses, school vehicles, school

contracted vehicles, or any other vehicles approved for school district purposes; the area of entrance or departure from school premises or events; and all school-related functions. This policy also applies to any student whose conduct at any time or in any place interferes with or obstructs the mission or operations of the school district or the safety or welfare of the student, other students, or employees.

1. Violations against property including, but not limited to, damage to or destruction of school property or the property of others, failure to compensate for damage or destruction of such property, arson, breaking and entering, theft, robbery, possession of stolen property, extortion, trespassing, unauthorized usage, or vandalism;
2. The use of profanity or obscene language, or the possession of obscene materials;
3. Gambling, including, but not limited to, playing a game of chance for stakes;
4. Violation of the school district's Hazing Prohibition Policy;
5. Attendance problems including, but not limited to, truancy, absenteeism, tardiness, skipping classes, or leaving school grounds without permission;
6. Violation of the school district's Student Attendance Policy;
7. Opposition to authority using physical force or violence;
8. Using, possessing, or distributing tobacco or tobacco paraphernalia;
9. Using, possessing, distributing, intending to distribute, making a request to another person for (solicitation), or being under the influence of alcohol or other intoxicating substances or look-alike substances;
10. Using, possessing, distributing, intending to distribute, making a request to another person for (solicitation), or being under the influence of narcotics, drugs, or other controlled substances, or look-alike substances,

except as prescribed by a physician, including one student sharing prescription medication with another student;

11. Using, possessing, or distributing items or articles that are illegal or harmful to persons or property including, but not limited to, drug paraphernalia;
12. Using, possessing, or distributing weapons, or look-alike weapons or other dangerous objects;
13. Violation of the school district's Weapons Policy;
14. Violation of the school district's Violence Prevention Policy;
15. Possession of ammunition including, but not limited to, bullets or other projectiles designed to be used in or as a weapon;
16. Possession, use, or distribution of explosives or any compound or mixture, the primary or common purpose or intended use of which is to function as an explosive;
17. Possession, use, or distribution of fireworks or any substance or combination of substances or article prepared for the purpose of producing a visible or an audible effect by combustion, explosion, deflagration or detonation;
18. Using an ignition device, including a butane or disposable lighter or matches, inside an educational building and under circumstances where there is a risk of fire, except where the device is used in a manner authorized by the school;
19. Violation of any local, state or federal law as appropriate;
20. Acts disruptive of the educational process, including, but not limited to, disobedience, disruptive or disrespectful behavior, defiance of authority, cheating, insolence, insubordination, failure to identify oneself, improper activation of fire alarms, or bomb threats;
21. Violation of the school district's Internet Acceptable Use and Safety Policy;

22. Possession of nuisance devices or objects which cause distractions and may facilitate cheating including, but not limited to, pagers, radios, and phones, including picture phones;
23. Violation of school bus or transportation rules or the school district's Student Transportation Safety Policy;
24. Violation of parking or school traffic rules and regulations, including, but not limited to, driving on school property in such a manner as to endanger persons or property;
25. Violation of directives or guidelines relating to lockers or improperly gaining access to a school locker;
26. Violation of the school district's Search of Student Lockers, Desks, Personal Possessions, and Student's Person Policy;
27. Violation of the school district's Student Use and Parking of Motor Vehicles; Patrols, Inspections, and Searches Policy;
28. Possession or distribution of slanderous, libelous or pornographic materials;
29. Violation of the school district' Bullying Prohibition Policy;
30. Student attire or personal grooming which creates a danger to health or safety or creates a disruption to the educational process, including clothing which bears a message which is lewd, vulgar, or obscene, apparel promoting products or activities that are illegal for use by minors, or clothing containing objectionable emblems, signs, words, objects, or pictures communicating a message that is racist, sexist, or otherwise derogatory to a protected minority group or which connotes gang membership;
31. Criminal activity;
32. Falsification of any records, documents, notes or signatures;
33. Tampering with, changing, or altering records or documents of the school District by any method including, but not limited to, computer access or other electronic means;

34. Scholastic dishonesty which includes, but is not limited to, cheating on a school assignment or test, plagiarism, or collusion, including the use of picture phones or other technology to accomplish this end;
35. Impertinent or disrespectful language toward teachers or other school district personnel;
36. Violation of the school district's Harassment and Violence Policy;
37. Actions, including fighting or any other assaultive behavior, which causes or could cause injury to the student or other persons or which otherwise endangers the health, safety, or welfare of teachers, students, other school district personnel, or other persons;
38. Committing an act which inflicts great bodily harm upon another person, even though accidental or a result of poor judgment;
39. Violations against persons, including, but not limited to, assault or threatened assault, fighting, harassment, interference or obstruction, attack with a weapon, or look-alike weapon, sexual assault, illegal or inappropriate sexual conduct, or indecent exposure;
40. Verbal assaults, or verbally abusive behavior, including, but not limited to, use of language that is discriminatory, abusive, obscene, threatening, intimidating or that degrades other people;
41. Physical or verbal threats including, but not limited to, the staging or reporting of dangerous or hazardous situations that do not exist;
42. Inappropriate, abusive, threatening, or demeaning actions based on race, color, creed, religion, sex, gender identity, marital status, status with regard to public assistance, disability, national origin or sexual orientation;
43. Violation of the school district's Distribution of Non School-Sponsored Materials on School Premises by Students and

Employees Policy;

44. Violation of school rules, regulations, policies, or procedures, including, but not limited to, those policies specifically enumerated in this policy;
45. Other acts, as determined by the school district, which are disruptive of the educational process or dangerous or detrimental to the student or other students, school district personnel or surrounding persons, or which violate the rights of others or which damage or endanger the property of the school, or which otherwise interferes with or obstruct the mission or operations of the school district or the safety or welfare of students or employees.

## **VII. DISCIPLINARY ACTION OPTIONS**

The general policy of the school district is to utilize progressive discipline to the extent reasonable and appropriate based upon the specific facts and circumstances of student misconduct. The specific form of discipline chosen in a particular case is solely within the discretion of the school district. At a minimum, violation of school district rules, regulations, policies or procedures will result in discussion of the violation and a verbal warning. The school district shall, however, impose more severe disciplinary sanctions for any violation, including exclusion or expulsion, if warranted by the student's misconduct, as determined by the school district. Disciplinary action may include, but is not limited to, one or more of the following:

- A. Student conference with teacher, principal, counselor or other school District personnel, and verbal warning;
- B. Confiscation by school district personnel and/or by law enforcement of any item, article, object, or thing, prohibited by, or used in the violation of, any school district policy, rule, regulation, procedure, or state or federal law. If confiscated by the school district, the confiscated item, article, object, or thing will be released only to the parent/guardian following the completion of any investigation or disciplinary action instituted or taken related to the violation.

- C. Parent contact;
- D. Parent conference;
- E. Removal from class;
- F. In-school suspension;
- G. Suspension from extracurricular activities;
- H. Detention or restriction of privileges;
- I. Loss of school privileges;
- J. In-school monitoring or revised class schedule;
- K. Referral to in-school support services;
- L. Referral to community resources or outside agency services;
- M. Financial restitution;
- N. Referral to police, other law enforcement agencies, or other appropriate authorities;
- O. A request for a petition to be filed in district court for juvenile delinquency adjudication;
- P. Out-of-school suspension under the Pupil Fair Dismissal Act;
- Q. Preparation of an admission or readmission plan;
- R. Saturday school;
- S. Expulsion under the Pupil Fair Dismissal Act;
- T. Exclusion under the Pupil Fair Dismissal Act; and/or
- U. Other disciplinary action as deemed appropriate by the school district.

## VIII. REMOVAL OF STUDENTS FROM CLASS

- A. The teacher of record shall have the general control and government of the classroom. Teachers have the responsibility of attempting to modify disruptive student behavior by such means as conferring with the student, using positive reinforcement, assigning detention or other consequences, or contacting the student's parents. When such measures fail, or when the teacher determines it is otherwise appropriate based upon the student's conduct, the teacher shall have the authority to remove the student from class pursuant to the procedures established by this discipline policy. "Removal from class" and "removal" mean any actions taken by a teacher, principal, or other school district employee to prohibit a student from attending a class or activity period for a period of time not to exceed five (5) days, pursuant to this discipline policy.

Grounds for removal from class shall include any of the following:

1. Willful conduct that significantly disrupts the rights of others to an education, including conduct that interferes with a teacher's ability to teach or communicate effectively with students in a class or with the ability of other students to learn;
2. Willful conduct that endangers surrounding persons, including school district employees, the student or other students, or the property of the school;
3. Willful violation of any school rules, regulations, policies or procedures, including the Code of Student Conduct in this policy; or
4. Other conduct, which in the discretion of the teacher or administration, requires removal of the student from class.

Such removal shall be for at least one (1) activity period or class period of instruction for a given course of study and shall not exceed five (5) such periods.

A student must be removed from class immediately if the student engages in assault or violent behavior. "Assault" is an act done with intent

to cause fear in another of immediate bodily harm or death; or the intentional infliction of, or attempt to inflict, bodily harm upon another. The removal from class shall be for a period of time deemed appropriate by the principal, in consultation with the teacher.

- B. If a student is removed from class more than five (5) times in a school year, the school district shall notify the parent or guardian of the student's fifth removal from class and make reasonable attempts to convene a meeting with the student's parent or guardian to discuss the problem that is causing the student to be removed from class.
  
- C. Procedures for Removal of a Student From a Class.
  - 1. The Princeton School District shall follow the Minnesota Pupil Fair Dismissal Act in all cases requiring student removal from a class.
  - 2. Teachers may refer a student for removal to the building principal who will determine the length of time the student shall remain out of the classroom.
  - 3. Teachers and Principals shall use the Building Discipline Referral Form for reporting incidents requiring removal.
  - 4. Building shall modify these procedures to adjust for age of students.
  
- D. Responsibility for and Custody of a Student Removed From Class.
  - 1. Student shall be sent to the office of the respective building.
  - 2. Students shall walk to the office.
  - 3. Students may be accompanied to the office at the discretion of the referring staff member. The office shall be responsible for providing an escort.
  - 4. The principal or assistant principal of the building shall have control and responsibility for the student after removal from class.

- E. Procedures for Return of a Student to a Class From Which the Student Was Removed.
  - 1. The student shall return to class after serving the assigned amount of time.
  - 2. All aspects of the readmission plan spelled out in the disciplinary report must have been completed for return to class.
  
- F. Procedures for Notification.
  - 1. The student shall return to class after serving the assigned amount of time.
  - 2. All aspects of the readmission plan spelled out in the disciplinary report must have been completed for return to class.
  
- G. Disabled Students; Special Provisions.
  - 1. In the case of Special Education Students the District shall follow the provisions of the State and Federal Laws in accord with the Individuals with Disabilities Education Act. (IDEA).
  - 2. If circumstances warrant a Special Education Referral such referral shall be made by the classroom teacher, the building Student Assistance Team or the Parents.
  
- H. Procedures for Detecting and Addressing Chemical Abuse Problems of Students While on School Premises.
  - 1. Establishment of a chemical abuse preassessment team pursuant to Minn. Stat. § 121A.26;
  - 2. Establishment of a school and community advisory team to address chemical abuse problems in the district pursuant to Minn. Stat. § 121A.27; and
  - 3. Establishment of teacher reporting procedures to the chemical abuse preassessment team pursuant to Minn. Stat. § 121A.29.

- I. Procedures for Immediate and Appropriate Interventions Tied to Violations of the Code of Student Conduct.
- J. Any Procedures Determined Appropriate for Encouraging Early Involvement of Parents or Guardians in Attempts to Improve a Student's Behavior.
- K. Any Procedures Determined Appropriate for Encouraging Early Detection of Behavioral Problems.

**IX. DISMISSAL**

- A. "Dismissal" means the denial of the current educational program to any student, including exclusion, expulsion and suspension. Dismissal does not include removal from class.

The school district shall not deny due process or equal protection of the law to any student involved in a dismissal proceeding which may result in suspension, exclusion or expulsion.

The school district shall not dismiss any student without attempting to provide alternative educational services before dismissal proceedings, except where it appears that the student will create an immediate and substantial danger to self or to surrounding persons or property.

- B. Violations leading to suspension, based upon severity, may also be grounds for actions leading to expulsion, and/or exclusion. A student may be dismissed on any of the following grounds:
  - 1. Willful violation of any reasonable school board regulation, including those found in this policy;
  - 2. Willful conduct that significantly disrupts the rights of others to an education, or the ability of school personnel to perform their duties, or school sponsored extracurricular activities; or
  - 3. Willful conduct that endangers the student or other students, or surrounding persons, including school district employees, or property of the school.

C. Suspension Procedures

1. "Suspension" means an action by the school administration, under rules promulgated by the School Board, prohibiting a student from attending school for a period of no more than ten (10) school days; provided, however, if a suspension is longer than five (5) school days, the suspending administrator shall provide the superintendent with a reason for the longer term of suspension. This definition does not apply to dismissal for one (1) school day or less where a student with a disability does not receive regular or special education instruction during that dismissal period.
2. If a student's total days of removal from school exceed ten (10) cumulative days in a school year, the school district shall make reasonable attempts to convene a meeting with the student and the student's parent or guardian before subsequently removing the student from school and, with the permission of the parent or guardian, arrange for a mental health screening for the student at the parent or guardian's expense. The purpose of this meeting is to attempt to determine the pupil's need for assessment or other services or whether the parent or guardian should have the student assessed or diagnosed to determine whether the student needs treatment for a mental health disorder.
3. Each suspension action may include a readmission plan. The plan shall include, where appropriate, a provision for implementing alternative educational services upon readmission which must not be used to extend the current suspension. A readmission plan must not obligate a parent or guardian to provide psychotropic drugs to their student as a condition of readmission. School administration must not use the refusal of a parent or guardian to consent to the administration of psychotropic drugs to their student or to consent to a psychiatric evaluation, screening, or examination of the student as a ground, by itself, to prohibit the student from attending class or participating in a school-related activity, or as a basis of a charge of child abuse, child neglect, or medical or educational neglect. The school administration may not impose consecutive suspensions against the same student for the same course of conduct, or incident of misconduct, except where the student will create an immediate and substantial danger to self

or to surrounding persons or property or where the school district is in the process of initiating an expulsion, in which case the school administration may extend the suspension to a total of fifteen (15) days.

4. A child with a disability may be suspended. When a child with a disability has been suspended for more than five (5) consecutive days or ten (10) cumulative school days in the same year, and that suspension does not involve a recommendation for expulsion or exclusion or other change in placement under federal law, relevant members of the child's IEP team, including at least one of the child's teachers, shall meet and determine the extent to which the child needs services in order to continue to participate in the general education curriculum, although in another setting, and to progress toward meeting the goals in the child's IEP. That meeting must occur as soon as possible, but no more than ten (10) days after the sixth (6<sup>th</sup>) consecutive day of suspension or the tenth (10<sup>th</sup>) cumulative day of suspension has elapsed.
5. The school administration shall implement alternative educational services when the suspension exceeds five (5) days. Alternative educational services may include, but are not limited to, special tutoring, modified curriculum, modified instruction, other modifications or adaptations, instruction through electronic media, special education services as indicated by appropriate assessments, homebound instruction, supervised homework, or enrollment in another district or in an alternative learning center under Minn. Stat. § 123A.05 selected to allow the pupil to progress toward meeting graduation standards under Minn. Stat. § 120B.02, although in a different setting.
6. The school administration shall not suspend a student from school without an informal administrative conference with the student. The informal administrative conference shall take place before the suspension, except where it appears that the student will create an immediate and substantial danger to self or to surrounding persons or property, in which case the conference shall take place as soon as practicable following the suspension. At the informal administrative conference, a school administrator shall notify the student of the grounds for the suspension, provide an explanation of the evidence the authorities have, and the student may present

the student's version of the facts. A separate administrative conference is required for each period of suspension.

7. After school administration notifies a student of the grounds for suspension, school administration may, instead of imposing the suspension, do one or more of the following:
  - a. strongly encourage a parent or guardian of the student to attend school with the student for one day;
  - b. assign the student to attend school on Saturday as supervised by the principal or the principal's designee; and
  - c. petition the juvenile court that the student is in need of services under Minn. Stat. Ch. 260C.
8. A written notice containing the grounds for suspension, a brief statement of the facts, a description of the testimony, a readmission plan, and a copy of the Minnesota Pupil Fair Dismissal Act, Minn. Stat. § 121A.40-121A.56, shall be personally served upon the student at or before the time the suspension is to take effect, and upon the student's parent or guardian by mail within forty-eight (48) hours of the conference. (See attached sample Notice of Suspension.)
9. The school administration shall make reasonable efforts to notify the student's parent or guardian of the suspension by telephone as soon as possible following suspension.
10. In the event a student is suspended without an informal administrative conference on the grounds that the student will create an immediate and substantial danger to surrounding persons or property, the written notice shall be served upon the student and the student's parent or guardian within forty-eight (48) hours of the suspension. Service by mail shall be complete upon mailing.
11. Notwithstanding the foregoing provisions, the student may be suspended pending the school board's decision in an expulsion or

exclusion proceeding, provided that alternative educational services are implemented to the extent that suspension exceeds five (5) days.

D. Expulsion and Exclusion Procedures

1. “Expulsion” means a school board action to prohibit an enrolled student from further attendance for up to twelve (12) months from the date the student is expelled. The authority to expel rests with the school board.
2. “Exclusion” means an action taken by the school board to prevent enrollment or reenrollment of a student for a period that shall not extend beyond the school year. The authority to exclude rests with the school board.
3. All expulsion and exclusion proceedings will be held pursuant to and in accordance with the provisions of the Minnesota Pupil Fair Dismissal Act, Minn. Stat. §121A.40-121A.56.
4. No expulsion or exclusion shall be imposed without a hearing, unless the right to a hearing is waived in writing by the student and parent or guardian.
5. The student and parent or guardian shall be provided written notice of the school district’s intent to initiate expulsion or exclusion proceedings. This notice shall be served upon the student and his or her parent or guardian personally or by mail, and shall contain a complete statement of the facts; a list of the witnesses and a description of their testimony; state the date, time and place of hearing; be accompanied by a copy of the Pupil Fair Dismissal Act, Minn. Stat. § 121A.40-121A.56; describe alternative educational services accorded the student in an attempt to avoid the expulsion proceedings; and inform the student and parent or guardian of their right to: (1) have a representative of the student’s own choosing, including legal counsel at the hearing; (2) examine the student’s records before the hearing; (3) present evidence; and (4) confront and cross-examine witnesses. The school district shall advise the student’s parent or guardian that free or low-cost legal assistance may be available and that a legal assistance resource

list is available from the Minnesota Department of Education (MDE).

6. The hearing shall be scheduled within ten (10) days of the service of the written notice unless an extension, not to exceed five (5) days, is requested for good cause by the school district, student, parent or guardian.
7. All hearings shall be held at a time and place reasonably convenient to the student, parent or guardian and shall be closed, unless the student, parent or guardian requests an open hearing.
8. The school district shall record the hearing proceedings at district expense, and a party may obtain a transcript at its own expense.
9. The student shall have a right to a representative of the student's own choosing, including legal counsel, at the student's sole expense. The school district shall advise the student's parent or guardian that free or low-cost legal assistance may be available and that a legal assistance resource list is available from MDE. The school board may appoint an attorney to represent the school district in any proceeding.
10. If the student designates a representative other than the parent or guardian, the representative must have a written authorization from the student and the parent or guardian providing them with access to and/or copies of the student's records.
11. All expulsion or exclusion hearings shall take place before and be conducted by an independent hearing officer designated by the school district. The hearing shall be conducted in a fair and impartial manner. Testimony shall be given under oath and the hearing officer shall have the power to issue subpoenas and administer oaths.
12. At a reasonable time prior to the hearing, the student, parent or guardian, or authorized representative shall be given access to all school district records pertaining to the student, including any tests or reports upon which the proposed dismissal action may be based.

13. The student, parent or guardian, or authorized representative, shall have the right to compel the presence of any school district employee or agent or any other person who may have evidence upon which the proposed dismissal action may be based, and to confront and cross-examine any witnesses testifying for the school district.
14. The student, parent or guardian, or authorized representative, shall have the right to present evidence and testimony, including expert psychological or educational testimony.
15. The student cannot be compelled to testify in the dismissal proceedings.
16. The hearing officer shall prepare findings and a recommendation based solely upon substantial evidence presented at the hearing, which must be made to the school board and served upon the parties within two (2) days after the close of the hearing.
17. The school board shall base its decision upon the findings and recommendation of the hearing officer and shall render its decision at a meeting held within five (5) days after receiving the findings and recommendation. The school board may provide the parties with the opportunity to present exceptions and comments to the hearing officer's findings and recommendation provided that neither party presents any evidence not admitted at the hearing. The decision by the school board must be based on the record, must be in writing, and must state the controlling factors on which the decision is made in sufficient detail to apprise the parties and the Commissioner of Education (Commissioner) of the basis and reason for the decision.
18. A party to an expulsion or exclusion decision made by the school board may appeal the decision to the Commissioner within twenty-one (21) calendar days of school board action pursuant to Minn. Stat. § 121A.49. The decision of the school board shall be implemented during the appeal to the Commissioner.
19. The school district shall report any suspension, expulsion or exclusion action taken to the appropriate public service agency, when the student is under the supervision of such agency.

20. The school district must report, through the MDE electronic reporting system, each expulsion or exclusion within thirty (30) days of the effective date of the action to the Commissioner. This report must include a statement of alternative educational services given the student and the reason for, the effective date, and the duration of the exclusion or expulsion. The report must also include the student's age, grade, gender, gender identity, race, and special education status. The dismissal report must include state student identification numbers of affected students.
21. Whenever a student fails to return to school within ten (10) school days of the termination of dismissal, a school administrator shall inform the student and his/her parent or guardian by mail of the student's right to attend and to be reinstated in the school district.

#### **X. ADMISSION OR READMISSION PLAN**

A school administrator shall prepare and enforce an admission or readmission plan for any student who is excluded or expelled from school. The plan may include measures to improve the student's behavior, including completing a character education program consistent with Minn. Stat. § 120B.232, Subd. 1, and require parental involvement in the admission or readmission process, and may indicate the consequences to the student of not improving the student's behavior. The readmission plan must not obligate parents to provide a sympathomimetic medication for their child as a condition of readmission.

#### **XI. NOTIFICATION OF POLICY VIOLATIONS**

Notification of any violation of this policy and resulting disciplinary action shall be as provided herein, or as otherwise provided by the Pupil Fair Dismissal Act or other applicable law. The teacher, principal or other school district official may provide additional notification as deemed appropriate.

In addition, the school district must report, through the MDE electronic reporting system, each physical assault of a school district employee by a student within thirty (30) days of the assault. This report must include a statement of the alternative educational services or other sanction, intervention, or resolution given to the student in response to the assault and the reason for, the effective date, and the duration of the exclusion or expulsion or other sanction,

intervention, or resolution. The report must also include the student's age, grade, gender, race, and special education status.

## **XII. STUDENT DISCIPLINE RECORDS**

The policy of the school district is that complete and accurate student discipline records be maintained. The collection, dissemination, and maintenance of student discipline records shall be consistent with applicable school district policies and federal and state law, including the Minnesota Government Data Practices Act, Minn. Stat. Ch. 13.

## **XIII. DISABLED STUDENTS**

Students who are currently identified as eligible under the IDEA or Section 504 will be subject to the provisions of this policy, unless the student's IEP or 504 plan specifies a necessary modification.

Before initiating an expulsion or exclusion of a student with a disability, relevant members of the child's IEP team and the child's parent shall, consistent with federal law, conduct a manifestation determination and determine whether the child's behavior was (i) caused by or had a direct and substantial relationship to the child's disability and (ii) whether the child's conduct was a direct result of a failure to implement the child's IEP. If the student's educational program is appropriate and the behavior is not a manifestation of the student's disability, the school district will proceed with discipline – up to and including expulsion – as if the student did not have a disability, unless the student's educational program provides otherwise. If the team determines that the behavior subject to discipline is a manifestation of the student's disability, the team shall conduct a functional behavioral assessment and implement a behavioral intervention plan for such student provided that the school district had not conducted such assessment prior to the manifestation determination before the behavior that resulted in a change of placement. Where a behavioral intervention plan previously has been developed, the team will review the behavioral intervention plan and modify it as necessary to address the behavior.

When a student who has an IEP is excluded or expelled for misbehavior that is not a manifestation of the student's disability, the school district shall continue to provide special education and related services during the period of expulsion or exclusion.

## **XIV. OPEN ENROLLED STUDENTS**

The school district may terminate the enrollment of a nonresident student enrolled under an Enrollment Option Program (Minn. Stat. § 124D.03) or Enrollment in Nonresident District (Minn. Stat. § 124D.08) at the end of a school year if the student meets the definition of a habitual truant, the student has been provided appropriate services for truancy (Minn. Stat. Ch. 260A), and the student's case has been referred to juvenile court. The school district may also terminate the enrollment of a nonresident student over the age of sixteen (16) enrolled under an Enrollment Options Program if the student is absent without lawful excuse for one or more periods of fifteen (15) school days and has not lawfully withdrawn from school.

#### **XV. DISTRIBUTION OF POLICY**

The school district will notify students and parents of the existence and contents of this policy in such manner as it deems appropriate. Copies of this discipline policy shall be made available to all students and parents at the commencement of each school year and to all new students and parents upon enrollment. This policy shall also be available upon request in each principal's office.

#### **XVI. REVIEW OF POLICY**

The principal and representatives of parents, students and staff in each school building shall confer at least annually to review this discipline policy, determine if the policy is working as intended, and to assess whether the discipline policy has been enforced. Any recommended changes shall be submitted to the superintendent for consideration by the school board, which shall conduct an annual review of this policy.

**Legal References:** Minn. Stat. Ch. 13 (Minnesota Government Data Practices Act)  
Minn. Stat. § 120B.02 (Educational Expectations for Minnesota Students)  
Minn. Stat. § 120B.232 (Character Development Education)  
Minn. Stat. § 121A.26 (School Preassessment Teams)  
Minn. Stat. § 121A.27 (School and Community Advisory Team)  
Minn. Stat. § 121A.29 (Reporting; Chemical Abuse)  
Minn. Stat. §§ 121A.40-121A.56 (Pupil Fair Dismissal Act)  
Minn. Stat. § 121A.575 (Alternatives to Pupil Suspension)  
Minn. Stat. § 121A.582 (Reasonable Force)  
Minn. Stat. §§ 121A.60-121A.61 (Removal From Class)

Minn. Stat. § 122A.42 (General Control of Schools)  
Minn. Stat. § 123A.05 (Area Learning Center Organization)  
Minn. Stat. § 124D.03 (Enrollment Options Program)  
Minn. Stat. § 124D.08 (Enrollment in Nonresident District)  
Minn. Stat. Ch.125A (Students With Disabilities)  
Minn. Stat. Ch. 260A (Truancy)  
Minn. Stat. Ch. 260C (Juvenile Court Act)  
20 U.S.C. § 1400-1487 (Individuals with Disabilities Education Improvement Act of 2004)  
29 U.S.C. § 794 et seq. (Rehabilitation Act of 1973, § 504)  
34 C.F.R. § 300.530(e)(1) (Manifestation Determination)  
MSBA/MASA Model Policy 711 (Video Recording on School Buses)  
MSBA/MASA Model Policy 712 (Video Surveillance Other Than on Buses)

**Cross References:** Princeton Policy 413 (Harassment and Violence)  
Princeton Policy 501 (School Weapons)  
Princeton Policy 502 (Search of Student Lockers, Desks, Personal Possessions, and Student's Person)  
Princeton Policy 503 (Student Attendance)  
Princeton Policy 505 (Distribution of Non School-Sponsored Materials on School Premises by Students and Employees)  
Princeton Policy 514 (Bullying Prohibition Policy)  
Princeton Policy 524 (Internet Acceptable Use and Safety Policy)  
Princeton Policy 525 (Violence Prevention)  
Princeton Policy 526 (Hazing Prohibition)  
Princeton Policy 527 (Student Use and Parking of Motor Vehicles; Patrols, Inspections, and Searches)  
Princeton Policy 610 (Field Trips)  
Princeton Policy 709 (Student Transportation Safety Policy)

Adopted: May, 18, 1984

Revised: May, 1994

Revised: August 27, 1996

Inserted Revised Appendices: January 11, 2000

Revised: December 17, 2002

Revised: April 13, 2010

Revised: May 24, 2011

Revised: June 12, 2012  
Reviewed: October 8, 2013  
Revised: October 20, 2015  
Revised: August 16, 2016

Adopted: \_\_\_\_\_

MSBA/MASA Model Policy 506

Orig. 1995

Revised: \_\_\_\_\_

Rev. ~~2016~~ 2017

## **506 STUDENT DISCIPLINE**

*[Note: School districts are required by statute to have a policy addressing these issues.]*

### **I. PURPOSE**

The purpose of this policy is to ensure that students are aware of and comply with the school district's expectations for student conduct. Such compliance will enhance the school district's ability to maintain discipline and ensure that there is no interference with the educational process. The school district will take appropriate disciplinary action when students fail to adhere to the Code of Student Conduct established by this policy.

### **II. GENERAL STATEMENT OF POLICY**

The school board recognizes that individual responsibility and mutual respect are essential components of the educational process. The school board further recognizes that nurturing the maturity of each student is of primary importance and is closely linked with the balance that must be maintained between authority and self-discipline as the individual progresses from a child's dependence on authority to the more mature behavior of self-control.

All students are entitled to learn and develop in a setting which promotes respect of self, others, and property. Proper positive discipline can only result from an environment which provides options and stresses student self-direction, decision-making, and responsibility. Schools can function effectively only with internal discipline based on mutual understanding of rights and responsibilities.

Students must conduct themselves in an appropriate manner that maintains a climate in which learning can take place. Overall decorum affects student attitudes and influences student behavior. Proper student conduct is necessary to facilitate the education process and to create an atmosphere conducive to high student achievement.

Although this policy emphasizes the development of self-discipline, it is recognized that there are instances when it will be necessary to administer disciplinary measures. The position of the school district is that a fair and equitable district-wide student discipline policy will contribute to the quality of the student's educational experience. This discipline policy is adopted in accordance with and subject to the Minnesota Pupil Fair Dismissal Act, Minn. Stat. §§ 121A.40-121A.56.

In view of the foregoing and in accordance with Minn. Stat. § 121A.55, the school board, with the participation of school district administrators, teachers, employees, students, parents, community members, and such other individuals and organizations as appropriate, has developed this policy which governs student conduct and applies to all

students of the school district.

### III. AREAS OF RESPONSIBILITY

- A. The School Board. The school board holds all school personnel responsible for the maintenance of order within the school district and supports all personnel acting within the framework of this discipline policy.
- B. Superintendent. The superintendent shall establish guidelines and directives to carry out this policy, hold all school personnel, students, and parents responsible for conforming to this policy, and support all school personnel performing their duties within the framework of this policy. The superintendent shall also establish guidelines and directives for using the services of appropriate agencies for assisting students and parents. Any guidelines or directives established to implement this policy shall be submitted to the school board for approval and shall be attached as an addendum to this policy.
- C. Principal. The school principal is given the responsibility and authority to formulate building rules and regulations necessary to enforce this policy, subject to final school board approval. The principal shall give direction and support to all school personnel performing their duties within the framework of this policy. The principal shall consult with parents of students conducting themselves in a manner contrary to the policy. The principal shall also involve other professional employees in the disposition of behavior referrals and shall make use of those agencies appropriate for assisting students and parents. A principal, in exercising his or her lawful authority, may use reasonable force when it is necessary under the circumstances to correct or restrain a student or prevent bodily harm or death to another.
- D. Teachers. All teachers shall be responsible for providing a well-planned teaching/learning environment and shall have primary responsibility for student conduct, with appropriate assistance from the administration. All teachers shall enforce the Code of Student Conduct. In exercising the teacher's lawful authority, a teacher may use reasonable force when it is necessary under the circumstances to correct or restrain a student or prevent bodily harm or death to another.
- E. Other School District Personnel. All school district personnel shall be responsible for contributing to the atmosphere of mutual respect within the school. Their responsibilities relating to student behavior shall be as authorized and directed by the superintendent. A school employee, school bus driver, or other agent of a school district, in exercising his or her lawful authority, may use reasonable force when it is necessary under the circumstances to restrain a student or prevent bodily harm or death to another.
- F. Parents or Legal Guardians. Parents and guardians shall be held responsible for the behavior of their children as determined by law and community practice. They are expected to cooperate with school authorities and to participate

regarding the behavior of their children.

- G. Students. All students shall be held individually responsible for their behavior and for knowing and obeying the Code of Student Conduct and this policy.
- H. Community Members. Members of the community are expected to contribute to the establishment of an atmosphere in which rights and duties are effectively acknowledged and fulfilled.

#### **IV. STUDENT RIGHTS**

All students have the right to an education and the right to learn.

#### **V. STUDENT RESPONSIBILITIES**

All students have the responsibility:

- A. For their behavior and for knowing and obeying all school rules, regulations, policies, and procedures;
- B. To attend school daily, except when excused, and to be on time to all classes and other school functions;
- C. To pursue and attempt to complete the courses of study prescribed by the state and local school authorities;
- D. To make necessary arrangements for making up work when absent from school;
- E. To assist the school staff in maintaining a safe school for all students;
- F. To be aware of all school rules, regulations, policies, and procedures, including those in this policy, and to conduct themselves in accord with them;
- G. To assume that until a rule or policy is waived, altered, or repealed, it is in full force and effect;
- H. To be aware of and comply with federal, state, and local laws;
- I. To volunteer information in disciplinary cases should they have any knowledge relating to such cases and to cooperate with school staff as appropriate;
- J. To respect and maintain the school's property and the property of others;
- K. To dress and groom in a manner which meets standards of safety and health and common standards of decency and which is consistent with applicable school district policy;
- L. To avoid inaccuracies in student newspapers or publications and refrain from

indecent or obscene language;

M. To conduct themselves in an appropriate physical or verbal manner; and

N. To recognize and respect the rights of others.

## **VI. CODE OF STUDENT CONDUCT**

A. The following are examples of unacceptable behavior subject to disciplinary action by the school district. These examples are not intended to be an exclusive list. Any student who engages in any of these activities shall be disciplined in accordance with this policy. This policy applies to all school buildings, school grounds, and school property or property immediately adjacent to school grounds; school-sponsored activities or trips; school bus stops; school buses, school vehicles, school contracted vehicles, or any other vehicles approved for school district purposes; the area of entrance or departure from school premises or events; and all school-related functions, school-sponsored activities, events, or trips. School district property also may mean a student's walking route to or from school for purposes of attending school or school-related functions, activities, or events. While prohibiting unacceptable behavior subject to disciplinary action at these locations and events, the school district does not represent that it will provide supervision or assume liability at these locations and events. This policy also applies to any student whose conduct at any time or in any place interferes with or obstructs the mission or operations of the school district or the safety or welfare of the student, other students, or employees.

1. Violations against property including, but not limited to, damage to or destruction of school property or the property of others, failure to compensate for damage or destruction of such property, arson, breaking and entering, theft, robbery, possession of stolen property, extortion, trespassing, unauthorized usage, or vandalism;
2. The use of profanity or obscene language, or the possession of obscene materials;
3. Gambling, including, but not limited to, playing a game of chance for stakes;
4. Violation of the school district's Hazing Prohibition Policy;
5. Attendance problems including, but not limited to, truancy, absenteeism, tardiness, skipping classes, or leaving school grounds without permission;
6. Violation of the school district's Student Attendance Policy;
7. Opposition to authority using physical force or violence;
8. Using, possessing, or distributing tobacco, tobacco-related devices,

electronic cigarettes, or tobacco paraphernalia in violation of the school district's Tobacco-Free Environment Policy;

9. Using, possessing, distributing, intending to distribute, making a request to another person for (solicitation), or being under the influence of alcohol or other intoxicating substances or look-alike substances;
10. Using, possessing, distributing, intending to distribute, making a request to another person for (solicitation), or being under the influence of narcotics, drugs, or other controlled substances (except as prescribed by a physician), or look-alike substances (these prohibitions include medical marijuana or medical cannabis, even when prescribed by a physician, and one student sharing prescription medication with another student);
11. Using, possessing, or distributing items or articles that are illegal or harmful to persons or property including, but not limited to, drug paraphernalia;
12. Using, possessing, or distributing weapons, or look-alike weapons or other dangerous objects;
13. Violation of the school district's Weapons Policy;
14. Violation of the school district's Violence Prevention Policy;
15. Possession of ammunition including, but not limited to, bullets or other projectiles designed to be used in or as a weapon;
16. Possession, use, or distribution of explosives or any compound or mixture, the primary or common purpose or intended use of which is to function as an explosive;
17. Possession, use, or distribution of fireworks or any substance or combination of substances or article prepared for the purpose of producing a visible or an audible effect by combustion, explosion, deflagration or detonation;
18. Using an ignition device, including a butane or disposable lighter or matches, inside an educational building and under circumstances where there is a risk of fire, except where the device is used in a manner authorized by the school;
19. Violation of any local, state, or federal law as appropriate;
20. Acts disruptive of the educational process, including, but not limited to, disobedience, disruptive or disrespectful behavior, defiance of authority, cheating, insolence, insubordination, failure to identify oneself, improper activation of fire alarms, or bomb threats;

21. Violation of the school district's Internet Acceptable Use and Safety Policy;
22. Possession of nuisance devices or objects which cause distractions and may facilitate cheating including, but not limited to, pagers, radios, and phones, including picture phones;
23. Violation of school bus or transportation rules or the school district's Student Transportation Safety Policy;
24. Violation of parking or school traffic rules and regulations, including, but not limited to, driving on school property in such a manner as to endanger persons or property;
25. Violation of directives or guidelines relating to lockers or improperly gaining access to a school locker;
26. Violation of the school district's Search of Student Lockers, Desks, Personal Possessions, and Student's Person Policy;
27. Violation of the school district's Student Use and Parking of Motor Vehicles; Patrols, Inspections, and Searches Policy;
28. Possession or distribution of slanderous, libelous, or pornographic materials;
29. Violation of the school district' Bullying Prohibition Policy;
30. Student attire or personal grooming which creates a danger to health or safety or creates a disruption to the educational process, including clothing which bears a message which is lewd, vulgar, or obscene, apparel promoting products or activities that are illegal for use by minors, or clothing containing objectionable emblems, signs, words, objects, or pictures communicating a message that is racist, sexist, or otherwise derogatory to a protected minority group or which connotes gang membership;
31. Criminal activity;
32. Falsification of any records, documents, notes, or signatures;
33. Tampering with, changing, or altering records or documents of the school district by any method including, but not limited to, computer access or other electronic means;
34. Scholastic dishonesty which includes, but is not limited to, cheating on a school assignment or test, plagiarism, or collusion, including the use of

picture phones or other technology to accomplish this end;

35. Impertinent or disrespectful words, symbols, acronyms, or language, whether oral or written, related to ~~toward~~ teachers or other school district personnel;
36. Violation of the school district's Harassment and Violence Policy;
37. Actions, including fighting or any other assaultive behavior, which causes or could cause injury to the student or other persons or which otherwise endangers the health, safety, or welfare of teachers, students, other school district personnel, or other persons;
38. Committing an act which inflicts great bodily harm upon another person, even though accidental or a result of poor judgment;
39. Violations against persons, including, but not limited to, assault or threatened assault, fighting, harassment, interference or obstruction, attack with a weapon, or look-alike weapon, sexual assault, illegal or inappropriate sexual conduct, or indecent exposure;
40. Verbal assaults or verbally abusive behavior including, but not limited to, use of words, symbols, acronyms, or language, whether oral or written, that ~~is~~ are discriminatory, abusive, obscene, threatening, intimidating, ~~or that~~ degrading to other people, or threatening to school property;
41. Physical or verbal threats including, but not limited to, the staging or reporting of dangerous or hazardous situations that do not exist;
42. Inappropriate, abusive, threatening, or demeaning actions based on race, color, creed, religion, sex, marital status, status with regard to public assistance, disability, national origin, or sexual orientation;
43. Violation of the school district's Distribution of Nonschool-Sponsored Materials on School Premises by Students and Employees Policy;
44. Violation of the school district's one-to-one device rules and regulations;
- 44 45. Violation of school rules, regulations, policies, or procedures, including, but not limited to, those policies specifically enumerated in this policy;
- 45 46. Other acts, as determined by the school district, which are disruptive of the educational process or dangerous or detrimental to the student or other students, school district personnel or surrounding persons, or which violate the rights of others or which damage or endanger the property of the school, or which otherwise interferes with or obstruct the mission or operations of the school district or the safety or welfare of students or employees.

## **VII. DISCIPLINARY ACTION OPTIONS**

The general policy of the school district is to utilize progressive discipline to the extent reasonable and appropriate based upon the specific facts and circumstances of student misconduct. The specific form of discipline chosen in a particular case is solely within the discretion of the school district. At a minimum, violation of school district rules, regulations, policies, or procedures will result in discussion of the violation and a verbal warning. The school district shall, however, impose more severe disciplinary sanctions for any violation, including exclusion or expulsion, if warranted by the student's misconduct, as determined by the school district. Disciplinary action may include, but is not limited to, one or more of the following:

- A. Student conference with teacher, principal, counselor, or other school district personnel, and verbal warning;
- B. Confiscation by school district personnel and/or by law enforcement of any item, article, object, or thing, prohibited by, or used in the violation of, any school district policy, rule, regulation, procedure, or state or federal law. If confiscated by the school district, the confiscated item, article, object, or thing will be released only to the parent/guardian following the completion of any investigation or disciplinary action instituted or taken related to the violation.
- C. Parent contact;
- D. Parent conference;
- E. Removal from class;
- F. In-school suspension;
- G. Suspension from extracurricular activities;
- H. Detention or restriction of privileges;
- I. Loss of school privileges;
- J. In-school monitoring or revised class schedule;
- K. Referral to in-school support services;
- L. Referral to community resources or outside agency services;
- M. Financial restitution;
- N. Referral to police, other law enforcement agencies, or other appropriate authorities;

- O. A request for a petition to be filed in district court for juvenile delinquency adjudication;
- P. Out-of-school suspension under the Pupil Fair Dismissal Act;
- Q. Preparation of an admission or readmission plan;
- R. Saturday school;
- S. Expulsion under the Pupil Fair Dismissal Act;
- T. Exclusion under the Pupil Fair Dismissal Act; and/or
- U. Other disciplinary action as deemed appropriate by the school district.

### **VIII. REMOVAL OF STUDENTS FROM CLASS**

- A. The teacher of record shall have the general control and government of the classroom. Teachers have the responsibility of attempting to modify disruptive student behavior by such means as conferring with the student, using positive reinforcement, assigning detention or other consequences, or contacting the student's parents. When such measures fail, or when the teacher determines it is otherwise appropriate based upon the student's conduct, the teacher shall have the authority to remove the student from class pursuant to the procedures established by this discipline policy. "Removal from class" and "removal" mean any actions taken by a teacher, principal, or other school district employee to prohibit a student from attending a class or activity period for a period of time not to exceed five (5) days, pursuant to this discipline policy.

Grounds for removal from class shall include any of the following:

1. Willful conduct that significantly disrupts the rights of others to an education, including conduct that interferes with a teacher's ability to teach or communicate effectively with students in a class or with the ability of other students to learn;
2. Willful conduct that endangers surrounding persons, including school district employees, the student or other students, or the property of the school;
3. Willful violation of any school rules, regulations, policies or procedures, including the Code of Student Conduct in this policy; or
4. Other conduct, which in the discretion of the teacher or administration, requires removal of the student from class.

Such removal shall be for at least one (1) activity period or class period of instruction for a given course of study and shall not exceed five (5) such periods.

A student must be removed from class immediately if the student engages in assault or violent behavior. "Assault" is an act done with intent to cause fear in another of immediate bodily harm or death; or the intentional infliction of, or attempt to inflict, bodily harm upon another. The removal from class shall be for a period of time deemed appropriate by the principal, in consultation with the teacher.

- B. If a student is removed from class more than ten (10) times in a school year, the school district shall notify the parent or guardian of the student's tenth removal from class and make reasonable attempts to convene a meeting with the student's parent or guardian to discuss the problem that is causing the student to be removed from class.

***[Note: The following Sections C. - K. must be developed and inserted by each school district based upon individual district practices, procedures, and preferences.]***

***C. Procedures for Removal of a Student From a Class.***

1. *Specify procedures to be followed by a teacher, administrator or other school district employee to remove a student from a class;*
2. *Specify required approvals necessary;*
3. *Specify paperwork and reporting procedures.*

***D. Responsibility for and Custody of a Student Removed From Class.***

1. *Designation of where student is to go when removed;*
2. *Designation of how student is to get to designated destination;*
3. *Whether student must be accompanied;*
4. *Statement of what student is to do when and while removed;*
5. *Designation of who has control over and responsibility for student after removal from class.*

***E. Procedures for Return of a Student to a Class From Which the Student Was Removed.***

1. *Specification of procedures;*
2. *Actions or approvals required such as notes, conferences, readmission plans.*

***F. Procedures for Notification.***

1. *Specify procedures for notifying students and parents/guardians of violations of the rules of conduct and resulting disciplinary action;*
2. *Actions or approvals required, such as notes, conferences, readmission plans.*

**G. *Disabled Students; Special Provisions.***

1. *Procedures for consideration of whether there is a need for further assessment;*
2. *Procedures for consideration of whether there is a need for a review of the adequacy of the current Individualized Education Program (IEP) of a disabled student who is removed from class or disciplined; and*
3. *Any procedures determined appropriate for referring students in need of special education services to those services.*

**H. *Procedures for Detecting and Addressing Chemical Abuse Problems of Students While on School Premises.***

1. *Establishment of a chemical abuse preassessment team pursuant to Minn. Stat. § 121A.26;*
2. *Establishment of a school and community advisory team to address chemical abuse problems in the district pursuant to Minn. Stat. § 121A.27; and*
3. *Establishment of teacher reporting procedures to the chemical abuse preassessment team pursuant to Minn. Stat. § 121A.29.*

**I. *Procedures for Immediate and Appropriate Interventions Tied to Violations of the Code of Student Conduct.***

**J. *Any Procedures Determined Appropriate for Encouraging Early Involvement of Parents or Guardians in Attempts to Improve a Student's Behavior.***

**K. *Any Procedures Determined Appropriate for Encouraging Early Detection of Behavioral Problems.***

**IX. DISMISSAL**

- A. “Dismissal” means the denial of the current educational program to any student, including exclusion, expulsion and suspension. Dismissal does not include removal from class.

The school district shall not deny due process or equal protection of the law to

any student involved in a dismissal proceeding which may result in suspension, exclusion or expulsion.

The school district shall not dismiss any student without attempting to provide alternative educational services before dismissal proceedings, except where it appears that the student will create an immediate and substantial danger to self or to surrounding persons or property.

B. Violations leading to suspension, based upon severity, may also be grounds for actions leading to expulsion, and/or exclusion. A student may be dismissed on any of the following grounds:

1. Willful violation of any reasonable school board regulation, including those found in this policy;
2. Willful conduct that significantly disrupts the rights of others to an education, or the ability of school personnel to perform their duties, or school sponsored extracurricular activities; or
3. Willful conduct that endangers the student or other students, or surrounding persons, including school district employees, or property of the school.

C. Suspension Procedures

1. “Suspension” means an action by the school administration, under rules promulgated by the School Board, prohibiting a student from attending school for a period of no more than ten (10) school days; provided, however, if a suspension is longer than five (5) school days, the suspending administrator shall provide the superintendent with a reason for the longer term of suspension. This definition does not apply to dismissal for one (1) school day or less where a student with a disability does not receive regular or special education instruction during that dismissal period.
2. If a student’s total days of removal from school exceed ten (10) cumulative days in a school year, the school district shall make reasonable attempts to convene a meeting with the student and the student’s parent or guardian before subsequently removing the student from school and, with the permission of the parent or guardian, arrange for a mental health screening for the student at the parent or guardian’s expense. The purpose of this meeting is to attempt to determine the student’s need for assessment or other services or whether the parent or guardian should have the student assessed or diagnosed to determine whether the student needs treatment for a mental health disorder.
3. Each suspension action may include a readmission plan. The plan shall include, where appropriate, a provision for implementing alternative

educational services upon readmission which must not be used to extend the current suspension. A readmission plan must not obligate a parent or guardian to provide psychotropic drugs to their student as a condition of readmission. School administration must not use the refusal of a parent or guardian to consent to the administration of psychotropic drugs to their student or to consent to a psychiatric evaluation, screening, or examination of the student as a ground, by itself, to prohibit the student from attending class or participating in a school-related activity, or as a basis of a charge of child abuse, child neglect, or medical or educational neglect. The school administration may not impose consecutive suspensions against the same student for the same course of conduct, or incident of misconduct, except where the student will create an immediate and substantial danger to self or to surrounding persons or property or where the school district is in the process of initiating an expulsion, in which case the school administration may extend the suspension to a total of fifteen (15) days.

4. A child with a disability may be suspended. When a child with a disability has been suspended for more than five (5) consecutive days or ten (10) cumulative school days in the same year, and that suspension does not involve a recommendation for expulsion or exclusion or other change in placement under federal law, relevant members of the child's IEP team, including at least one of the child's teachers, shall meet and determine the extent to which the child needs services in order to continue to participate in the general education curriculum, although in another setting, and to progress toward meeting the goals in the child's IEP. That meeting must occur as soon as possible, but no more than ten (10) days after the sixth (6<sup>th</sup>) consecutive day of suspension or the tenth (10<sup>th</sup>) cumulative day of suspension has elapsed.
5. The school administration shall implement alternative educational services when the suspension exceeds five (5) days. Alternative educational services may include, but are not limited to, special tutoring, modified curriculum, modified instruction, other modifications or adaptations, instruction through electronic media, special education services as indicated by appropriate assessments, homebound instruction, supervised homework, or enrollment in another district or in an alternative learning center under Minn. Stat. § 123A.05 selected to allow the student to progress toward meeting graduation standards under Minn. Stat. § 120B.02, although in a different setting.
6. The school administration shall not suspend a student from school without an informal administrative conference with the student. The informal administrative conference shall take place before the suspension, except where it appears that the student will create an immediate and substantial danger to self or to surrounding persons or property, in which case the conference shall take place as soon as practicable following the suspension. At the informal administrative conference, a school administrator shall notify the student of the grounds for the suspension,

provide an explanation of the evidence the authorities have, and the student may present the student's version of the facts. A separate administrative conference is required for each period of suspension.

7. After school administration notifies a student of the grounds for suspension, school administration may, instead of imposing the suspension, do one or more of the following:
  - a. strongly encourage a parent or guardian of the student to attend school with the student for one day;
  - b. assign the student to attend school on Saturday as supervised by the principal or the principal's designee; and
  - c. petition the juvenile court that the student is in need of services under Minn. Stat. Ch. 260C.
8. A written notice containing the grounds for suspension, a brief statement of the facts, a description of the testimony, a readmission plan, and a copy of the Minnesota Pupil Fair Dismissal Act, Minn. Stat. §§ 121A.40-121A.56, shall be personally served upon the student at or before the time the suspension is to take effect, and upon the student's parent or guardian by mail within forty-eight (48) hours of the conference. (See attached sample Notice of Suspension.)
9. The school administration shall make reasonable efforts to notify the student's parent or guardian of the suspension by telephone as soon as possible following suspension.
10. In the event a student is suspended without an informal administrative conference on the grounds that the student will create an immediate and substantial danger to surrounding persons or property, the written notice shall be served upon the student and the student's parent or guardian within forty-eight (48) hours of the suspension. Service by mail shall be complete upon mailing.
11. Notwithstanding the foregoing provisions, the student may be suspended pending the school board's decision in an expulsion or exclusion proceeding, provided that alternative educational services are implemented to the extent that suspension exceeds five (5) days.

D. Expulsion and Exclusion Procedures

1. "Expulsion" means a school board action to prohibit an enrolled student from further attendance for up to twelve (12) months from the date the student is expelled. The authority to expel rests with the school board.
2. "Exclusion" means an action taken by the school board to prevent

enrollment or re-enrollment of a student for a period that shall not extend beyond the school year. The authority to exclude rests with the school board.

3. All expulsion and exclusion proceedings will be held pursuant to and in accordance with the provisions of the Minnesota Pupil Fair Dismissal Act, Minn. Stat. §§121A.40-121A.56.
4. No expulsion or exclusion shall be imposed without a hearing, unless the right to a hearing is waived in writing by the student and parent or guardian.
5. The student and parent or guardian shall be provided written notice of the school district's intent to initiate expulsion or exclusion proceedings. This notice shall be served upon the student and his or her parent or guardian personally or by mail, and shall contain a complete statement of the facts; a list of the witnesses and a description of their testimony; state the date, time and place of hearing; be accompanied by a copy of the Pupil Fair Dismissal Act, Minn. Stat. §§ 121A.40-121A.56; describe alternative educational services accorded the student in an attempt to avoid the expulsion proceedings; and inform the student and parent or guardian of their right to: (1) have a representative of the student's own choosing, including legal counsel at the hearing; (2) examine the student's records before the hearing; (3) present evidence; and (4) confront and cross-examine witnesses. The school district shall advise the student's parent or guardian that free or low-cost legal assistance may be available and that a legal assistance resource list is available from the Minnesota Department of Education (MDE).
6. The hearing shall be scheduled within ten (10) days of the service of the written notice unless an extension, not to exceed five (5) days, is requested for good cause by the school district, student, parent, or guardian.
7. All hearings shall be held at a time and place reasonably convenient to the student, parent, or guardian and shall be closed, unless the student, parent, or guardian requests an open hearing.
8. The school district shall record the hearing proceedings at district expense, and a party may obtain a transcript at its own expense.
9. The student shall have a right to a representative of the student's own choosing, including legal counsel, at the student's sole expense. The school district shall advise the student's parent or guardian that free or low-cost legal assistance may be available and that a legal assistance resource list is available from MDE. The school board may appoint an attorney to represent the school district in any proceeding.
10. If the student designates a representative other than the parent or guardian,

the representative must have a written authorization from the student and the parent or guardian providing them with access to and/or copies of the student's records.

11. All expulsion or exclusion hearings shall take place before and be conducted by an independent hearing officer designated by the school district. The hearing shall be conducted in a fair and impartial manner. Testimony shall be given under oath and the hearing officer shall have the power to issue subpoenas and administer oaths.
12. At a reasonable time prior to the hearing, the student, parent or guardian, or authorized representative shall be given access to all school district records pertaining to the student, including any tests or reports upon which the proposed dismissal action may be based.
13. The student, parent or guardian, or authorized representative, shall have the right to compel the presence of any school district employee or agent or any other person who may have evidence upon which the proposed dismissal action may be based, and to confront and cross-examine any witnesses testifying for the school district.
14. The student, parent or guardian, or authorized representative, shall have the right to present evidence and testimony, including expert psychological or educational testimony.
15. The student cannot be compelled to testify in the dismissal proceedings.
16. The hearing officer shall prepare findings and a recommendation based solely upon substantial evidence presented at the hearing, which must be made to the school board and served upon the parties within two (2) days after the close of the hearing.
17. The school board shall base its decision upon the findings and recommendation of the hearing officer and shall render its decision at a meeting held within five (5) days after receiving the findings and recommendation. The school board may provide the parties with the opportunity to present exceptions and comments to the hearing officer's findings and recommendation provided that neither party presents any evidence not admitted at the hearing. The decision by the school board must be based on the record, must be in writing, and must state the controlling facts on which the decision is made in sufficient detail to apprise the parties and the Commissioner of Education (Commissioner) of the basis and reason for the decision.
18. A party to an expulsion or exclusion decision made by the school board may appeal the decision to the Commissioner within twenty-one (21) calendar days of school board action pursuant to Minn. Stat. § 121A.49. The decision of the school board shall be implemented during the appeal

to the Commissioner.

19. The school district shall report any suspension, expulsion or exclusion action taken to the appropriate public service agency, when the student is under the supervision of such agency.
20. The school district must report, through the MDE electronic reporting system, each expulsion or exclusion within thirty (30) days of the effective date of the action to the Commissioner. This report must include a statement of alternative educational services given the student and the reason for, the effective date, and the duration of the exclusion or expulsion. The report must also include the student's age, grade, gender, race, and special education status. The dismissal report must include state student identification numbers of affected students.
21. Whenever a student fails to return to school within ten (10) school days of the termination of dismissal, a school administrator shall inform the student and his/her parent or guardian by mail of the student's right to attend and to be reinstated in the school district.

## **X. ADMISSION OR READMISSION PLAN**

A school administrator shall prepare and enforce an admission or readmission plan for any student who is excluded or expelled from school. The plan may include measures to improve the student's behavior, including completing a character education program consistent with Minn. Stat. § 120B.232, Subd. 1, and require parental involvement in the admission or readmission process, and may indicate the consequences to the student of not improving the student's behavior. The readmission plan must not obligate parents to provide a sympathomimetic medication for their child as a condition of readmission.

## **XI. NOTIFICATION OF POLICY VIOLATIONS**

Notification of any violation of this policy and resulting disciplinary action shall be as provided herein, or as otherwise provided by the Pupil Fair Dismissal Act or other applicable law. The teacher, principal or other school district official may provide additional notification as deemed appropriate.

In addition, the school district must report, through the MDE electronic reporting system, each physical assault of a school district employee by a student within thirty (30) days of the assault. This report must include a statement of the alternative educational services or other sanction, intervention, or resolution given to the student in response to the assault and the reason for, the effective date, and the duration of the exclusion or expulsion or other sanction, intervention, or resolution. The report must also include the student's age, grade, gender, race, and special education status.

## **XII. STUDENT DISCIPLINE RECORDS**

The policy of the school district is that complete and accurate student discipline records

be maintained. The collection, dissemination, and maintenance of student discipline records shall be consistent with applicable school district policies and federal and state law, including the Minnesota Government Data Practices Act, Minn. Stat. Ch. 13.

### **XIII. DISABLED STUDENTS**

Students who are currently identified as eligible under the IDEA or Section 504 will be subject to the provisions of this policy, unless the student's IEP or 504 plan specifies a necessary modification.

Before initiating an expulsion or exclusion of a student with a disability, relevant members of the child's IEP team and the child's parent shall, consistent with federal law, conduct a manifestation determination and determine whether the child's behavior was (i) caused by or had a direct and substantial relationship to the child's disability and (ii) whether the child's conduct was a direct result of a failure to implement the child's IEP. If the student's educational program is appropriate and the behavior is not a manifestation of the student's disability, the school district will proceed with discipline – up to and including expulsion – as if the student did not have a disability, unless the student's educational program provides otherwise. If the team determines that the behavior subject to discipline is a manifestation of the student's disability, the team shall conduct a functional behavioral assessment and implement a behavioral intervention plan for such student provided that the school district had not conducted such assessment prior to the manifestation determination before the behavior that resulted in a change of placement. Where a behavioral intervention plan previously has been developed, the team will review the behavioral intervention plan and modify it as necessary to address the behavior.

When a student who has an IEP is excluded or expelled for misbehavior that is not a manifestation of the student's disability, the school district shall continue to provide special education and related services during the period of expulsion or exclusion.

### **XIV. OPEN ENROLLED STUDENTS**

The school district may terminate the enrollment of a nonresident student enrolled under an Enrollment Option Program (Minn. Stat. § 124D.03) or Enrollment in Nonresident District (Minn. Stat. § 124D.08) at the end of a school year if the student meets the definition of a habitual truant, the student has been provided appropriate services for truancy (Minn. Stat. Ch. 260A), and the student's case has been referred to juvenile court. The school district may also terminate the enrollment of a nonresident student over the age of seventeen (17) enrolled under an Enrollment Options Program if the student is absent without lawful excuse for one or more periods on fifteen (15) school days and has not lawfully withdrawn from school.

### **XV. DISTRIBUTION OF POLICY**

The school district will notify students and parents of the existence and contents of this policy in such manner as it deems appropriate. Copies of this discipline policy shall be made available to all students and parents at the commencement of each school year and

to all new students and parents upon enrollment. This policy shall also be available upon request in each principal's office.

## **XVI. REVIEW OF POLICY**

The principal and representatives of parents, students and staff in each school building shall confer at least annually to review this discipline policy, determine if the policy is working as intended, and to assess whether the discipline policy has been enforced. Any recommended changes shall be submitted to the superintendent for consideration by the school board, which shall conduct an annual review of this policy.

**Legal References:** Minn. Stat. Ch. 13 (Minnesota Government Data Practices Act)  
Minn. Stat. § 120B.02 (Educational Expectations for Minnesota Students)  
Minn. Stat. § 120B.232 (Character Development Education)  
Minn. Stat. § 121A.26 (School Preassessment Teams)  
Minn. Stat. § 121A.29 (Reporting; Chemical Abuse)  
Minn. Stat. §§ 121A.40-121A.56 (Pupil Fair Dismissal Act)  
Minn. Stat. § 121A.575 (Alternatives to Pupil Suspension)  
Minn. Stat. § 121A.582 (Reasonable Force)  
Minn. Stat. §§ 121A.60-121A.61 (Removal From Class)  
Minn. Stat. § 122A.42 (General Control of Schools)  
Minn. Stat. § 123A.05 (Area Learning Center Organization)  
Minn. Stat. § 124D.03 (Enrollment Options Program)  
Minn. Stat. § 124D.08 (Enrollment in Nonresident District)  
Minn. Stat. Ch.125A (Students With Disabilities)  
Minn. Stat. § 152.22 (Medical Cannabis; Definitions)  
Minn. Stat. § 152.23 (Medical Cannabis; Limitations)  
Minn. Stat. Ch. 260A (Truancy)  
Minn. Stat. Ch. 260C (Juvenile Court Act)  
20 U.S.C. §§ 1400-1487 (Individuals with Disabilities Education Improvement Act of 2004)  
29 U.S.C. § 794 *et seq.* (Rehabilitation Act of 1973, § 504)  
34 C.F.R. § 300.530(e)(1) (Manifestation Determination)

**Cross References:** MSBA/MASA Model Policy 413 (Harassment and Violence)  
MSBA/MASA Model Policy 501 (School Weapons)  
MSBA/MASA Model Policy 502 (Search of Student Lockers, Desks, Personal Possessions, and Student's Person)  
MSBA/MASA Model Policy 503 (Student Attendance)  
MSBA/MASA Model Policy 505 (Distribution of Nonschool-Sponsored Materials on School Premises by Students and Employees)  
MSBA/MASA Model Policy 514 (Bullying Prohibition Policy)  
MSBA/MASA Model Policy 524 (Internet Acceptable Use and Safety Policy)  
MSBA/MASA Model Policy 525 (Violence Prevention)  
MSBA/MASA Model Policy 526 (Hazing Prohibition)  
MSBA/MASA Model Policy 527 (Student Use and Parking of Motor

Vehicles; Patrols, Inspections, and Searches)  
MSBA/MASA Model Policy 610 (Field Trips)  
MSBA/MASA Model Policy 709 (Student Transportation Safety Policy)  
MSBA/MASA Model Policy 711 (Video Recording on School Buses)  
MSBA/MASA Model Policy 712 (Video Surveillance Other Than on  
Buses)

**NOTICE OF SUSPENSION**

(Date)  
(Name of Parent or Guardian)  
(Address)  
(City, State, Zip)

Dear (Parent or Guardian)

(Name of Student) has been suspended from (name of school) for (number of days) commencing on (date).

The grounds for suspension are:

Briefly, the facts that have been determined are:

The testimony received was:

An administrative conference to determine the above was conducted before

\_\_\_\_\_, at \_\_\_\_\_ on \_\_\_\_\_  
(Name of Administrator) (Time) (Date)

pursuant to Minn. Stat. §§ 121A.40-121A.56, a copy of which is enclosed.

The plan of readmission is:

Alternative educational services in the form of homework will be available to be picked up at the school after \_\_\_\_\_ [date] .

While suspended, the student may not come on any school campus except with you for the purpose of discussing conduct.

If you have any questions, please call.

Sincerely,

\_\_\_\_\_  
Administrator

Enc: Minn. Stat. §§ 121A.40-121A.56

*(Sample Form)*  
**NOTICE OF SUSPENSION**  
(Date)

(Name of Parent or Guardian)  
(Address)  
(City, State, Zip)

Dear (Parent or Guardian)

(Name of Student) has been suspended from (name of school) for (number of days) commencing on (date).

The grounds for suspension are:

Briefly, the facts that have been determined are:

The testimony received was:

An administrative conference to determine the above was conducted before \_\_\_\_\_, at \_\_\_\_\_ on \_\_\_\_\_  
(Name of Administrator) (Time) (Date)

pursuant to Minn. Stat. §§ 121A.40-121A.56, a copy of which is enclosed.

The plan of readmission is:

Alternative educational services in the form of homework will be available to be picked up at the school after \_\_\_\_\_ [date].

While suspended, the student may not come on any school campus except with you for the purpose of discussing conduct.

If you have any questions, please call.

Sincerely,

\_\_\_\_\_  
Administrator

Enc: Minn. Stat. §§ 121A.40-121A.56

**PRINCETON PUBLIC SCHOOLS  
POLICY 514-BULLYING PROHIBITION POLICY**

**I. PURPOSE**

A safe and civil environment is needed for students to learn and attain high academic standards and to promote healthy human relationships. Bullying, like other violent or disruptive behavior, is conduct that interferes with a student's ability to learn and/or a teacher's ability to educate students in a safe environment. The school district cannot monitor the activities of students at all times and eliminate all incidents of bullying between students, particularly when students are not under the direct supervision of school personnel. However, to the extent such conduct affects the educational environment of the school district and the rights and welfare of its students and is within the control of the school district in its normal operations, the school district intends to prevent bullying and to take action to investigate, respond to, and to remediate, and discipline for those acts of bullying which have not been successfully prevented. The purpose of this policy is to assist the school district in its goal of preventing and responding to acts of bullying, intimidation, violence, reprisal, retaliation, and other similar disruptive and detrimental behavior.

**II. GENERAL STATEMENT OF POLICY**

A. An act of bullying, by either an individual student or a group of students, is expressly prohibited on school premises, on school district property, at school functions or activities, or on school transportation. This policy applies not only to students who directly engage in an act of bullying but also to students who, by their indirect behavior, condone or support another student's act of bullying. This policy also applies to any student whose conduct at any time or in any place constitutes bullying or other prohibited conduct that interferes with or obstructs the mission or operations of the school district or the safety or welfare of the student, or other students, or materially and substantially interferes with a student's educational opportunities or performance or ability to participate in school functions or activities or receive school benefits, services, or privileges. This policy also applies to an act of cyberbullying regardless of whether such acts are act is committed on or off school district property and/or with or without the use of school district resources.

B. No teacher, administrator, volunteer, contractor, or other employee of the

school district shall permit, condone, or tolerate bullying.

- C. Apparent permission or consent by a student being bullied does not lessen or negate the prohibitions contained in this policy.
- D. Retaliation against a victim, good faith reporter, or a witness of bullying is prohibited.
- E. False accusations or reports of bullying against another student are prohibited.
- F. A person who engages in an act of bullying, reprisal, retaliation, or false reporting of bullying or permits, condones, or tolerates bullying shall be subject to discipline or other remedial responses for that act in accordance with the school district's policies and procedures, including the school district's discipline policy (See MSBA/MASA Model Policy 506). The school district may take into account the following factors:
  - 1. The developmental ages and maturity levels of the parties involved;
  - 2. The levels of harm, surrounding circumstances, and nature of the behavior;
  - 3. Past incidences or past or continuing patterns of behavior;
  - 4. The relationship between the parties involved; and
  - 5. The context in which the alleged incidents occurred.

Consequences for students who commit prohibited acts of bullying may range from remedial responses or positive behavioral interventions up to and including suspension and/or expulsion. The school district shall employ research-based developmentally appropriate best practices that include preventative and remedial measures and effective discipline for deterring violations of this policy, apply throughout the school district, and foster student, parent, and community participation.

Consequences for employees who permit, condone, or tolerate bullying or engage in an act of reprisal or intentional false reporting of bullying may result in disciplinary action up to and including termination or discharge.

Consequences for other individuals engaging in prohibited acts of bullying may include, but not be limited to, exclusion from school district property and events.

- G. The school district will act to investigate all complaints of bullying reported to the school district and will discipline or take appropriate action against any student, teacher, administrator, volunteer, contractor, or other employee of the school district who is found to have violated this policy.

### III. DEFINITIONS

For purposes of this policy, the definitions included in this section apply.

- A. “Bullying” means intimidating, threatening, abusive, or harming conduct that is objectively offensive and:
  - 1. an actual or perceived imbalance of power exists between the student engaging in the prohibited conduct and the target of the prohibited conduct, and the conduct is repeated or forms a pattern; or
  - 2. materially and substantially interferes with a student’s educational opportunities or performance or ability to participate in school functions or activities or receive school benefits, services, or privileges.

The term, “bullying,” specifically includes cyberbullying as defined in this policy.

  - 3. A “threat” is a statement of an intention to inflict pain, injury, damage, or other hostile action on someone in retribution for something done or not done.
- B. “Cyberbullying” means bullying using technology or other electronic communication, including, but not limited to, a transfer of a sign, signal, writing, image, sound, or data, including a post on a social network Internet website or forum, transmitted through a computer, cell phone, or

other electronic device. The term applies to prohibited conduct which occurs on school premises, on school district property, at school functions or activities, on school transportation, or on school computers, networks, forums, and mailing lists, or off school premises to the extent that it substantially and materially disrupts student learning or the school environment.

- C. “Immediately” means as soon as possible but in no event longer than 24 hours.
- D. “Intimidating, threatening, abusive, or harming conduct” means, but is not limited to, conduct that does the following:
  - 1. Causes physical harm to a student or a student’s property or causes a student to be in reasonable fear of harm to person or property;
  - 2. Under Minnesota common law, violates a student’s reasonable expectation of privacy, defames a student, or constitutes intentional infliction of emotional distress against a student; or
  - 3. Is directed at any student or students, including those based on a person’s actual or perceived race, ethnicity, color, creed, religion, national origin, immigration status, sex, marital status, familial status, socioeconomic status, physical appearance, sexual orientation including gender identity and expression, academic status related to student performance, disability, or status with regard to public assistance, age, or any additional characteristic defined in the Minnesota Human Rights Act (MHRA). However, prohibited conduct need not be based on any particular characteristic defined in this paragraph or the MHRA.
- E. “On school premises, on school district property, at school functions or activities, or on school transportation” means all school district buildings, school grounds, and school property or property immediately adjacent to school grounds, school bus stops, school buses, school vehicles, school contracted vehicles, or any other vehicles approved for school district purposes, the area of entrance or departure from school grounds, premises, or events, and all school-related functions, school-sponsored activities, events, or trips. School district property also may mean a

student's walking route to or from school for purposes of attending school or school-related functions, activities, or events. While prohibiting bullying at these locations and events, the school district does not represent that it will provide supervision or assume liability at these locations and events.

- F. "Prohibited conduct" means bullying or cyberbullying as defined in this policy or retaliation or reprisal for asserting, alleging, reporting, or providing information about such conduct or knowingly making a false report about bullying.
- G. "Remedial response" means a measure to stop and correct prohibited conduct, prevent prohibited conduct from recurring, and protect, support, and intervene on behalf of a student who is the target or victim of prohibited conduct.
- H. "Student" means a student enrolled in a public school or a charter school.

#### **IV. REPORTING PROCEDURE**

- A. Any person who believes he or she has been the target or victim of bullying or any person with knowledge or belief of conduct that may constitute bullying or prohibited conduct under this policy shall report the alleged acts immediately to an appropriate school district official designated by this policy. A person may report bullying anonymously. However, the school district may not rely solely on an anonymous report to determine discipline or other remedial responses.
- B. The school district encourages the reporting party or complainant to use the report form available from the principal or building supervisor of each building or available in the school district office, but oral reports shall be considered complaints as well.
- C. The building principal, the principal's designee, or the building supervisor (hereinafter the "building report taker") is the person responsible for receiving reports of bullying or other prohibited conduct at the building level. Any person may report bullying or other prohibited conduct directly to a school district human rights officer or the superintendent. If the complaint involves the building report taker, the complaint shall be made

or filed directly with the superintendent or the school district human rights officer by the reporting party or complainant.

The building report taker shall ensure that this policy and its procedures, practices, consequences, and sanctions are fairly and fully implemented and shall serve as the primary contact on policy and procedural matters. The building report taker or a third party designated by the school district shall be responsible for the investigation. The building report taker shall provide information about available community resources to the target or victim of the bullying or other prohibited conduct, the perpetrator, and other affected individuals as appropriate.

- D. A teacher, school administrator, volunteer, contractor, or other school employee shall be particularly alert to possible situations, circumstances, or events that might include bullying. Any such person who witnesses, observes, receives a report of, or has other knowledge or belief of conduct that may constitute bullying or other prohibited conduct shall make reasonable efforts to address and resolve the bullying or prohibited conduct and shall inform the building report taker immediately. School district personnel who fail to inform the building report taker of conduct that may constitute bullying or other prohibited conduct or who fail to make reasonable efforts to address and resolve the bullying or prohibited conduct in a timely manner may be subject to disciplinary action.
- E. Reports of bullying or other prohibited conduct are classified as private educational and/or personnel data and/or confidential investigative data and will not be disclosed except as permitted by law. The building report taker, in conjunction with the responsible authority, shall be responsible for keeping and regulating access to any report of bullying and the record of any resulting investigation.
- F. Submission of a good faith complaint or report of bullying or other prohibited conduct will not affect the complainant's or reporter's future employment, grades, work assignments, or educational or work environment.
- G. The school district will respect the privacy of the complainant(s), the individual(s) against whom the complaint is filed, and the witnesses as much as possible, consistent with the school district's obligation to

investigate, take appropriate action, and comply with any legal disclosure obligations.

## V. SCHOOL DISTRICT ACTION

- A. Upon receipt of a complaint or report of bullying or other prohibited conduct, the school district shall undertake or authorize an investigation by the building report taker or a third party designated by the school district.
- B. The building report taker or other appropriate school district officials may take immediate steps, at their discretion, to protect the target or victim of the bullying or other prohibited conduct, the complainant, the reporter, and students, or others, pending completion of an investigation of the bullying or other prohibited conduct, consistent with applicable law.
- C. The alleged perpetrator of the bullying or other prohibited conduct shall be allowed the opportunity to present a defense during the investigation or prior to the imposition of discipline or other remedial responses.
- D. Upon completion of an investigation that determines that bullying or other prohibited conduct has occurred, the school district will take appropriate action. Such action may include, but is not limited to, warning, suspension, exclusion, expulsion, transfer, remediation, termination, or discharge. Disciplinary consequences will be sufficiently severe to try to deter violations and to appropriately discipline prohibited conduct. Remedial responses to the bullying or other prohibited conduct shall be tailored to the particular incident and nature of the conduct and shall take into account the factors specified in Section II.F. of this policy. School district action taken for violation of this policy will be consistent with the requirements of applicable collective bargaining agreements; applicable statutory authority, including the Minnesota Pupil Fair Dismissal Act; the student discipline policy (See MSBA/MASA Model Policy 506) and other applicable school district policies; and applicable regulations.
- E. The school district is not authorized to disclose to a victim private educational or personnel data regarding an alleged perpetrator who is a student or employee of the school district. School officials will notify the parent(s) or guardian(s) of students who are targets of bullying or other prohibited conduct and the parent(s) or guardian(s) of alleged perpetrators of bullying or other prohibited conduct who have been

involved in a reported and confirmed bullying incident of the remedial or disciplinary action taken, to the extent permitted by law.

- F. In order to prevent or respond to bullying or other prohibited conduct committed by or directed against a child with a disability, the school district shall, when determined appropriate by the child's individualized education program (IEP) team or Section 504 team, allow the child's IEP or Section 504 plan to be drafted to address the skills and proficiencies the child needs as a result of the child's disability to allow the child to respond to or not to engage in bullying or other prohibited conduct.

## **VI. RETALIATION OR REPRISAL**

The school district will discipline or take appropriate action against any student, teacher, administrator, volunteer, contractor, or other employee of the school district who commits an act of reprisal or who retaliates against any person who asserts, alleges, or makes a good faith report of alleged bullying or prohibited conduct, who provides information about bullying or prohibited conduct, who testifies, assists, or participates in an investigation of alleged bullying or prohibited conduct, or who testifies, assists, or participates in a proceeding or hearing relating to such bullying or prohibited conduct. Retaliation includes, but is not limited to, any form of intimidation, reprisal, harassment, or intentional disparate treatment. Disciplinary consequences will be sufficiently severe to deter violations and to appropriately discipline the individual(s) who engaged in the prohibited conduct. Remedial responses to the prohibited conduct shall be tailored to the particular incident and nature of the conduct and shall take into account the factors specified in Section II.F. of this policy.

## **VII. TRAINING AND EDUCATION**

- A. The school district shall discuss this policy with school personnel and volunteers and provide appropriate training to school district personnel regarding this policy. The school district shall establish a training cycle for school personnel to occur during a period not to exceed every three school years. Newly employed school personnel must receive the training within the first year of their employment with the school district. The school district or a school administrator may accelerate the training cycle or provide additional training based on a particular need or circumstance. This policy shall be included in employee handbooks, training materials,

and publications on school rules, procedures, and standards of conduct, which materials shall also be used to publicize this policy.

- B. The school district shall require ongoing professional development, consistent with Minn. Stat. § 122A.60, to build the skills of all school personnel who regularly interact with students to identify, prevent, and appropriately address bullying and other prohibited conduct. Such professional development includes, but is not limited to, the following:
  - 1. Developmentally appropriate strategies both to prevent and to immediately and effectively intervene to stop prohibited conduct;
  - 2. The complex dynamics affecting a perpetrator, target, and witnesses to prohibited conduct;
  - 3. Research on prohibited conduct, including specific categories of students at risk for perpetrating or being the target or victim of bullying or other prohibited conduct in school;
  - 4. The incidence and nature of cyberbullying; and
  - 5. Internet safety and cyberbullying.
- C. The school district annually will provide education and information to students regarding bullying, including information regarding this school district policy prohibiting bullying, the harmful effects of bullying, and other applicable initiatives to prevent bullying and other prohibited conduct.
- D. The administration of the school district is directed to implement programs and other initiatives to prevent bullying, to respond to bullying in a manner that does not stigmatize the target or victim, and to make resources or referrals to resources available to targets or victims of bullying.
- E. The administration is encouraged to provide developmentally appropriate instruction and is directed to review programmatic instruction to determine if adjustments are necessary to help students identify and prevent or reduce bullying and other prohibited conduct, to value diversity in school and society, to develop and improve students' knowledge and

skills for solving problems, managing conflict, engaging in civil discourse, and recognizing, responding to, and reporting bullying or other prohibited conduct, and to make effective prevention and intervention programs available to students.

The administration must establish strategies for creating a positive school climate and use evidence-based social-emotional learning to prevent and reduce discrimination and other improper conduct.

The administration is encouraged, to the extent practicable, to take such actions as it may deem appropriate to accomplish the following:

1. Engage all students in creating a safe and supportive school environment;
  2. Partner with parents and other community members to develop and implement prevention and intervention programs;
  3. Engage all students and adults in integrating education, intervention, and other remedial responses into the school environment;
  4. Train student bystanders to intervene in and report incidents of bullying and other prohibited conduct to the school's primary contact person;
  5. Teach students to advocate for themselves and others;
  6. Prevent inappropriate referrals to special education of students who may engage in bullying or other prohibited conduct; and
  7. Foster student collaborations that, in turn, foster a safe and supportive school climate.
- F. The school district may implement violence prevention and character development education programs to prevent or reduce policy violations. Such programs may offer instruction on character education including, but not limited to, character qualities such as attentiveness, truthfulness,

respect for authority, diligence, gratefulness, self-discipline, patience, forgiveness, respect for others, peacemaking, and resourcefulness.

- G. The school district shall inform affected students and their parents of rights they may have under state and federal data practices laws to obtain access to data related to an incident and their right to contest the accuracy or completeness of the data. The school district may accomplish this requirement by inclusion of all or applicable parts of its protection and privacy of pupil records policy (See MSBA/MASA Model Policy 515) in the student handbook.

## VIII. NOTICE

- A. The school district will give annual notice of this policy to students, parents or guardians, and staff, and this policy shall appear in the student handbook.
- B. This policy or a summary thereof must be conspicuously posted in the administrative offices of the school district and the office of each school.
- C. This policy must be given to each school employee and independent contractor who regularly interacts with students at the time of initial employment with the school district.
- D. Notice of the rights and responsibilities of students and their parents under this policy must be included in the student discipline policy (See MSBA/MASA Model Policy 506) distributed to parents at the beginning of each school year.
- E. This policy shall be available to all parents and other school community members in an electronic format in the language appearing on the school district's or a school's website.
- F. The school district shall provide an electronic copy of its most recently amended policy to the Commissioner of Education.

## IX. POLICY REVIEW

To the extent practicable, the school board shall, on a cycle consistent with other school district policies, review and revise this policy. The policy shall be made consistent with Minn. Stat. § 121A.031 and other applicable law. Revisions shall be made in consultation with students, parents, and community organizations.

**Legal References:** Minn. Stat. Ch. 13 (Minnesota Government Data Practices Act)  
Minn. Stat. § 120A.05, Subds. 9, 11, 13, and 17 (Definition of Public School)  
Minn. Stat. § 120B.232 (Character Development Education)  
Minn. Stat. § 121A.03 (Sexual, Religious and Racial Harassment and Violence)  
Minn. Stat. § 121A.031 (School Student Bullying Policy)  
Minn. Stat. § 121A.0311 (Notice of Rights and Responsibilities of Students and Parents under the Safe and Supportive Minnesota Schools Act)  
Minn. Stat. §§ 121A.40-121A.56 (Pupil Fair Dismissal Act)  
Minn. Stat. § 121A.69 (Hazing Policy)  
Minn. Stat. § 124D.10 (Charter School)  
Minn. Stat. Ch. 363A (Minnesota Human Rights Act)  
20 U.S.C. § 1232g et seq. (Family Educational Rights and Privacy Act) 34 C.F.R. §§ 99.1 - 99.67 (Family Educational Rights and Privacy)

**Cross References:** MSBA/MASA Model Policy 403 (Discipline, Suspension, and Dismissal of School District Employees)  
MSBA/MASA Model Policy 413 (Harassment and Violence)  
MSBA/MASA Model Policy 414 (Mandated Reporting of Child Neglect or Physical or Sexual Abuse)  
MSBA/MASA Model Policy 415 (Mandated Reporting of Maltreatment of Vulnerable Adults)  
MSBA/MASA Model Policy 423 (Employee-Student Relationships)  
MSBA/MASA Model Policy 501 (School Weapons Policy)  
MSBA/MASA Model Policy 506 (Student Discipline)  
MSBA/MASA Model Policy 507 (Corporal Punishment)  
MSBA/MASA Model Policy 515 (Protection and Privacy of Pupil Records)  
MSBA/MASA Model Policy 521 (Student Disability Nondiscrimination)

MSBA/MASA Model Policy 522 (Student Sex Nondiscrimination)  
MSBA/MASA Model Policy 524 (Internet Acceptable Use and  
Safety Policy)  
MSBA/MASA Model Policy 525 (Violence Prevention)  
MSBA/MASA Model Policy 526 (Hazing Prohibition)  
MSBA/MASA Model Policy 529 (Staff Notification of Violent  
Behavior by Students)  
MSBA/MASA Model Policy 709 (Student Transportation Safety  
Policy)  
MSBA/MASA Model Policy 711 (Video Recording on School Buses)  
MSBA/MASA Model Policy 712 (Video Surveillance Other Than on  
Buses)

Adopted: January 27, 2004  
Revised: November 24, 2009  
Revised: August 10, 2010  
Revised: March 22, 2011  
Revised: October 21, 2014  
Revised: August 18, 2015  
Revised: April 16, 2017

Adopted: \_\_\_\_\_

MSBA/MASA Model Policy 514

Orig. 2003

Revised: \_\_\_\_\_

Rev. 2014

## **514 BULLYING PROHIBITION POLICY**

*[Note: School districts are required by statute to have a policy addressing bullying.]*

### **I. PURPOSE**

A safe and civil environment is needed for students to learn and attain high academic standards and to promote healthy human relationships. Bullying, like other violent or disruptive behavior, is conduct that interferes with a student's ability to learn and/or a teacher's ability to educate students in a safe environment. The school district cannot monitor the activities of students at all times and eliminate all incidents of bullying between students, particularly when students are not under the direct supervision of school personnel. However, to the extent such conduct affects the educational environment of the school district and the rights and welfare of its students and is within the control of the school district in its normal operations, the school district intends to prevent bullying and to take action to investigate, respond to, and to remediate and discipline for those acts of bullying which have not been successfully prevented. The purpose of this policy is to assist the school district in its goal of preventing and responding to acts of bullying, intimidation, violence, reprisal, retaliation, and other similar disruptive and detrimental behavior.

### **II. GENERAL STATEMENT OF POLICY**

- A. An act of bullying, by either an individual student or a group of students, is expressly prohibited on school premises, on school district property, at school functions or activities, or on school transportation. This policy applies not only to students who directly engage in an act of bullying but also to students who, by their indirect behavior, condone or support another student's act of bullying. This policy also applies to any student whose conduct at any time or in any place constitutes bullying or other prohibited conduct that interferes with or obstructs the mission or operations of the school district or the safety or welfare of the student or other students, or materially and substantially interferes with a student's educational opportunities or performance or ability to participate in school functions or activities or receive school benefits, services, or privileges. This policy also applies to an act of cyberbullying regardless of whether such act is committed on or off school district property and/or with or without the use of school district resources.
- B. No teacher, administrator, volunteer, contractor, or other employee of the school district shall permit, condone, or tolerate bullying.
- C. Apparent permission or consent by a student being bullied does not lessen or negate the prohibitions contained in this policy.

- D. Retaliation against a victim, good faith reporter, or a witness of bullying is prohibited.
- E. False accusations or reports of bullying against another student are prohibited.
- F. A person who engages in an act of bullying, reprisal, retaliation, or false reporting of bullying or permits, condones, or tolerates bullying shall be subject to discipline or other remedial responses for that act in accordance with the school district's policies and procedures, including the school district's discipline policy (See MSBA/MASA Model Policy 506). The school district may take into account the following factors:
  - 1. The developmental ages and maturity levels of the parties involved;
  - 2. The levels of harm, surrounding circumstances, and nature of the behavior;
  - 3. Past incidences or past or continuing patterns of behavior;
  - 4. The relationship between the parties involved; and
  - 5. The context in which the alleged incidents occurred.

Consequences for students who commit prohibited acts of bullying may range from remedial responses or positive behavioral interventions up to and including suspension and/or expulsion. The school district shall employ research-based developmentally appropriate best practices that include preventative and remedial measures and effective discipline for deterring violations of this policy, apply throughout the school district, and foster student, parent, and community participation.

Consequences for employees who permit, condone, or tolerate bullying or engage in an act of reprisal or intentional false reporting of bullying may result in disciplinary action up to and including termination or discharge.

Consequences for other individuals engaging in prohibited acts of bullying may include, but not be limited to, exclusion from school district property and events.

- G. The school district will act to investigate all complaints of bullying reported to the school district and will discipline or take appropriate action against any student, teacher, administrator, volunteer, contractor, or other employee of the school district who is found to have violated this policy.

### **III. DEFINITIONS**

For purposes of this policy, the definitions included in this section apply.

- A. “Bullying” means intimidating, threatening, abusive, or harming conduct that is objectively offensive and:
1. an actual or perceived imbalance of power exists between the student engaging in the prohibited conduct and the target of the prohibited conduct, and the conduct is repeated or forms a pattern; or
  2. materially and substantially interferes with a student’s educational opportunities or performance or ability to participate in school functions or activities or receive school benefits, services, or privileges.

The term, “bullying,” specifically includes cyberbullying as defined in this policy.

- B. “Cyberbullying” means bullying using technology or other electronic communication, including, but not limited to, a transfer of a sign, signal, writing, image, sound, or data, including a post on a social network Internet website or forum, transmitted through a computer, cell phone, or other electronic device. The term applies to prohibited conduct which occurs on school premises, on school district property, at school functions or activities, on school transportation, or on school computers, networks, forums, and mailing lists, or off school premises to the extent that it substantially and materially disrupts student learning or the school environment.

- C. “Immediately” means as soon as possible but in no event longer than 24 hours.

- D. “Intimidating, threatening, abusive, or harming conduct” means, but is not limited to, conduct that does the following:

1. Causes physical harm to a student or a student’s property or causes a student to be in reasonable fear of harm to person or property;
2. Under Minnesota common law, violates a student’s reasonable expectation of privacy, defames a student, or constitutes intentional infliction of emotional distress against a student; or
3. Is directed at any student or students, including those based on a person’s actual or perceived race, ethnicity, color, creed, religion, national origin, immigration status, sex, marital status, familial status, socioeconomic status, physical appearance, sexual orientation including gender identity and expression, academic status related to student performance, disability, or status with regard to public assistance, age, or any additional characteristic defined in the Minnesota Human Rights Act (MHRA). However, prohibited conduct need not be based on any particular characteristic defined in this paragraph or the MHRA.

- E. “On school premises, on school district property, at school functions or activities, or on school transportation” means all school district buildings, school grounds, and school property or property immediately adjacent to school grounds, school

bus stops, school buses, school vehicles, school contracted vehicles, or any other vehicles approved for school district purposes, the area of entrance or departure from school grounds, premises, or events, and all school-related functions, school-sponsored activities, events, or trips. School district property also may mean a student's walking route to or from school for purposes of attending school or school-related functions, activities, or events. While prohibiting bullying at these locations and events, the school district does not represent that it will provide supervision or assume liability at these locations and events.

- F. "Prohibited conduct" means bullying or cyberbullying as defined in this policy or retaliation or reprisal for asserting, alleging, reporting, or providing information about such conduct or knowingly making a false report about bullying.
- G. "Remedial response" means a measure to stop and correct prohibited conduct, prevent prohibited conduct from recurring, and protect, support, and intervene on behalf of a student who is the target or victim of prohibited conduct.
- H. "Student" means a student enrolled in a public school or a charter school.

#### **IV. REPORTING PROCEDURE**

- A. Any person who believes he or she has been the target or victim of bullying or any person with knowledge or belief of conduct that may constitute bullying or prohibited conduct under this policy shall report the alleged acts immediately to an appropriate school district official designated by this policy. A person may report bullying anonymously. However, the school district may not rely solely on an anonymous report to determine discipline or other remedial responses.
- B. The school district encourages the reporting party or complainant to use the report form available from the principal or building supervisor of each building or available in the school district office, but oral reports shall be considered complaints as well.
- C. The building principal, the principal's designee, or the building supervisor (hereinafter the "building report taker") is the person responsible for receiving reports of bullying or other prohibited conduct at the building level. Any person may report bullying or other prohibited conduct directly to a school district human rights officer or the superintendent. If the complaint involves the building report taker, the complaint shall be made or filed directly with the superintendent or the school district human rights officer by the reporting party or complainant.

The building report taker shall ensure that this policy and its procedures, practices, consequences, and sanctions are fairly and fully implemented and shall serve as the primary contact on policy and procedural matters. The building report taker or a third party designated by the school district shall be responsible for the investigation. The building report taker shall provide information about available community resources to the target or victim of the bullying or other prohibited conduct, the perpetrator, and other affected individuals as appropriate.

- D. A teacher, school administrator, volunteer, contractor, or other school employee shall be particularly alert to possible situations, circumstances, or events that might include bullying. Any such person who witnesses, observes, receives a report of, or has other knowledge or belief of conduct that may constitute bullying or other prohibited conduct shall make reasonable efforts to address and resolve the bullying or prohibited conduct and shall inform the building report taker immediately. School district personnel who fail to inform the building report taker of conduct that may constitute bullying or other prohibited conduct or who fail to make reasonable efforts to address and resolve the bullying or prohibited conduct in a timely manner may be subject to disciplinary action.
- E. Reports of bullying or other prohibited conduct are classified as private educational and/or personnel data and/or confidential investigative data and will not be disclosed except as permitted by law. The building report taker, in conjunction with the responsible authority, shall be responsible for keeping and regulating access to any report of bullying and the record of any resulting investigation.
- F. Submission of a good faith complaint or report of bullying or other prohibited conduct will not affect the complainant's or reporter's future employment, grades, work assignments, or educational or work environment.
- G. The school district will respect the privacy of the complainant(s), the individual(s) against whom the complaint is filed, and the witnesses as much as possible, consistent with the school district's obligation to investigate, take appropriate action, and comply with any legal disclosure obligations.

## **V. SCHOOL DISTRICT ACTION**

- A. Within three days of the receipt of a complaint or report of bullying or other prohibited conduct, the school district shall undertake or authorize an investigation by the building report taker or a third party designated by the school district.
- B. The building report taker or other appropriate school district officials may take immediate steps, at their discretion, to protect the target or victim of the bullying or other prohibited conduct, the complainant, the reporter, and students or others, pending completion of an investigation of the bullying or other prohibited conduct, consistent with applicable law.
- C. The alleged perpetrator of the bullying or other prohibited conduct shall be allowed the opportunity to present a defense during the investigation or prior to the imposition of discipline or other remedial responses.
- D. Upon completion of an investigation that determines that bullying or other prohibited conduct has occurred, the school district will take appropriate action. Such action may include, but is not limited to, warning, suspension, exclusion,

expulsion, transfer, remediation, termination, or discharge. Disciplinary consequences will be sufficiently severe to try to deter violations and to appropriately discipline prohibited conduct. Remedial responses to the bullying or other prohibited conduct shall be tailored to the particular incident and nature of the conduct and shall take into account the factors specified in Section II.F. of this policy. School district action taken for violation of this policy will be consistent with the requirements of applicable collective bargaining agreements; applicable statutory authority, including the Minnesota Pupil Fair Dismissal Act; the student discipline policy (See MSBA/MASA Model Policy 506) and other applicable school district policies; and applicable regulations.

- E. The school district is not authorized to disclose to a victim private educational or personnel data regarding an alleged perpetrator who is a student or employee of the school district. School officials will notify the parent(s) or guardian(s) of students who are targets of bullying or other prohibited conduct and the parent(s) or guardian(s) of alleged perpetrators of bullying or other prohibited conduct who have been involved in a reported and confirmed bullying incident of the remedial or disciplinary action taken, to the extent permitted by law.
- F. In order to prevent or respond to bullying or other prohibited conduct committed by or directed against a child with a disability, the school district shall, when determined appropriate by the child's individualized education program (IEP) team or Section 504 team, allow the child's IEP or Section 504 plan to be drafted to address the skills and proficiencies the child needs as a result of the child's disability to allow the child to respond to or not to engage in bullying or other prohibited conduct.

## **VI. RETALIATION OR REPRISAL**

The school district will discipline or take appropriate action against any student, teacher, administrator, volunteer, contractor, or other employee of the school district who commits an act of reprisal or who retaliates against any person who asserts, alleges, or makes a good faith report of alleged bullying or prohibited conduct, who provides information about bullying or prohibited conduct, who testifies, assists, or participates in an investigation of alleged bullying or prohibited conduct, or who testifies, assists, or participates in a proceeding or hearing relating to such bullying or prohibited conduct. Retaliation includes, but is not limited to, any form of intimidation, reprisal, harassment, or intentional disparate treatment. Disciplinary consequences will be sufficiently severe to deter violations and to appropriately discipline the individual(s) who engaged in the prohibited conduct. Remedial responses to the prohibited conduct shall be tailored to the particular incident and nature of the conduct and shall take into account the factors specified in Section II.F. of this policy.

## **VII. TRAINING AND EDUCATION**

- A. The school district shall discuss this policy with school personnel and volunteers and provide appropriate training to school district personnel regarding this policy. The school district shall establish a training cycle for school personnel to occur

during a period not to exceed every three school years. Newly employed school personnel must receive the training within the first year of their employment with the school district. The school district or a school administrator may accelerate the training cycle or provide additional training based on a particular need or circumstance. This policy shall be included in employee handbooks, training materials, and publications on school rules, procedures, and standards of conduct, which materials shall also be used to publicize this policy.

- B. The school district shall require ongoing professional development, consistent with Minn. Stat. § 122A.60, to build the skills of all school personnel who regularly interact with students to identify, prevent, and appropriately address bullying and other prohibited conduct. Such professional development includes, but is not limited to, the following:
  - 1. Developmentally appropriate strategies both to prevent and to immediately and effectively intervene to stop prohibited conduct;
  - 2. The complex dynamics affecting a perpetrator, target, and witnesses to prohibited conduct;
  - 3. Research on prohibited conduct, including specific categories of students at risk for perpetrating or being the target or victim of bullying or other prohibited conduct in school;
  - 4. The incidence and nature of cyberbullying; and
  - 5. Internet safety and cyberbullying.
- C. The school district annually will provide education and information to students regarding bullying, including information regarding this school district policy prohibiting bullying, the harmful effects of bullying, and other applicable initiatives to prevent bullying and other prohibited conduct.
- D. The administration of the school district is directed to implement programs and other initiatives to prevent bullying, to respond to bullying in a manner that does not stigmatize the target or victim, and to make resources or referrals to resources available to targets or victims of bullying.
- E. The administration is encouraged to provide developmentally appropriate instruction and is directed to review programmatic instruction to determine if adjustments are necessary to help students identify and prevent or reduce bullying and other prohibited conduct, to value diversity in school and society, to develop and improve students' knowledge and skills for solving problems, managing conflict, engaging in civil discourse, and recognizing, responding to, and reporting bullying or other prohibited conduct, and to make effective prevention and intervention programs available to students.

The administration must establish strategies for creating a positive school climate

and use evidence-based social-emotional learning to prevent and reduce discrimination and other improper conduct.

The administration is encouraged, to the extent practicable, to take such actions as it may deem appropriate to accomplish the following:

1. Engage all students in creating a safe and supportive school environment;
  2. Partner with parents and other community members to develop and implement prevention and intervention programs;
  3. Engage all students and adults in integrating education, intervention, and other remedial responses into the school environment;
  4. Train student bystanders to intervene in and report incidents of bullying and other prohibited conduct to the schools' primary contact person;
  5. Teach students to advocate for themselves and others;
  6. Prevent inappropriate referrals to special education of students who may engage in bullying or other prohibited conduct; and
  7. Foster student collaborations that, in turn, foster a safe and supportive school climate.
- F. The school district may implement violence prevention and character development education programs to prevent or reduce policy violations. Such programs may offer instruction on character education including, but not limited to, character qualities such as attentiveness, truthfulness, respect for authority, diligence, gratefulness, self-discipline, patience, forgiveness, respect for others, peacemaking, and resourcefulness.
- G. The school district shall inform affected students and their parents of rights they may have under state and federal data practices laws to obtain access to data related to an incident and their right to contest the accuracy or completeness of the data. The school district may accomplish this requirement by inclusion of all or applicable parts of its protection and privacy of pupil records policy (See MSBA/MASA Model Policy 515) in the student handbook.

## **VIII. NOTICE**

- A. The school district will give annual notice of this policy to students, parents or guardians, and staff, and this policy shall appear in the student handbook.
- B. This policy or a summary thereof must be conspicuously posted in the administrative offices of the school district and the office of each school.
- C. This policy must be given to each school employee and independent contractor

who regularly interacts with students at the time of initial employment with the school district.

- D. Notice of the rights and responsibilities of students and their parents under this policy must be included in the student discipline policy (See MSBA/MASA Model Policy 506) distributed to parents at the beginning of each school year.
- E. This policy shall be available to all parents and other school community members in an electronic format in the language appearing on the school district's or a school's website.
- F. The school district shall provide an electronic copy of its most recently amended policy to the Commissioner of Education.

## **IX. POLICY REVIEW**

To the extent practicable, the school board shall, on a cycle consistent with other school district policies, review and revise this policy. The policy shall be made consistent with Minn. Stat. § 121A.031 and other applicable law. Revisions shall be made in consultation with students, parents, and community organizations.

**Legal References:** Minn. Stat. Ch. 13 (Minnesota Government Data Practices Act)  
Minn. Stat. § 120A.05, Subds. 9, 11, 13, and 17 (Definition of Public School)  
Minn. Stat. § 120B.232 (Character Development Education)  
Minn. Stat. § 121A.03 (Sexual, Religious and Racial Harassment and Violence)  
Minn. Stat. § 121A.031 (School Student Bullying Policy)  
Minn. Stat. § 121A.0311 (Notice of Rights and Responsibilities of Students and Parents under the Safe and Supportive Minnesota Schools Act)  
Minn. Stat. §§ 121A.40-121A.56 (Pupil Fair Dismissal Act)  
Minn. Stat. § 121A.69 (Hazing Policy)  
Minn. Stat. ~~§ 124D.10~~ Ch. 124E (Charter School)  
Minn. Stat. Ch. 363A (Minnesota Human Rights Act)  
20 U.S.C. § 1232g *et seq.* (Family Educational Rights and Privacy Act)  
34 C.F.R. §§ 99.1 - 99.67 (Family Educational Rights and Privacy)

**Cross References:** MSBA/MASA Model Policy 403 (Discipline, Suspension, and Dismissal of School District Employees)  
MSBA/MASA Model Policy 413 (Harassment and Violence)  
MSBA/MASA Model Policy 414 (Mandated Reporting of Child Neglect or Physical or Sexual Abuse)  
MSBA/MASA Model Policy 415 (Mandated Reporting of Maltreatment of Vulnerable Adults)  
MSBA/MASA Model Policy 423 (Employee-Student Relationships)  
MSBA/MASA Model Policy 501 (School Weapons Policy)

MSBA/MASA Model Policy 506 (Student Discipline)  
MSBA/MASA Model Policy 507 (Corporal Punishment)  
MSBA/MASA Model Policy 515 (Protection and Privacy of Pupil  
Records)  
MSBA/MASA Model Policy 521 (Student Disability Nondiscrimination)  
MSBA/MASA Model Policy 522 (Student Sex Nondiscrimination)  
MSBA/MASA Model Policy 524 (Internet Acceptable Use and Safety  
Policy)  
MSBA/MASA Model Policy 525 (Violence Prevention)  
MSBA/MASA Model Policy 526 (Hazing Prohibition)  
MSBA/MASA Model Policy 529 (Staff Notification of Violent Behavior  
by Students)  
MSBA/MASA Model Policy 709 (Student Transportation Safety Policy)  
MSBA/MASA Model Policy 711 (Video Recording on School Buses)  
MSBA/MASA Model Policy 712 (Video Surveillance Other Than on  
Buses)



# PRINCETON

PUBLIC SCHOOLS



## Bullying & Harassment Plan & Procedures for ISD477 Policy 514: Bullying Prohibition Policy Including Training and Communication Plan

**DRAFT**  
**August 7, 2018**

### Core Values



706 1st Street  
Princeton, MN 55371  
763-389-4789  
763-389-7250  
isd477.org

July 2018

# Table of Contents

<a href="#"><u>Introduction</u></a>	<a href="#"><u>2</u></a>
<a href="#"><u>Goal Statement</u></a>	<a href="#"><u>2</u></a>
<a href="#"><u>Acknowledgements</u></a>	<a href="#"><u>3</u></a>
<a href="#"><u>Quick Links to Procedural Resources</u></a>	<a href="#"><u>3</u></a>
<a href="#"><u>Staff Handouts (to be added)</u></a>	<a href="#"><u>3</u></a>
<a href="#"><u>Definitions</u></a>	<a href="#"><u>4</u></a>
<a href="#"><u>Bullying and Harassment Plan Overview</u></a>	<a href="#"><u>6</u></a>
<a href="#"><u>School and District Bullying &amp; Harassment</u></a>	<a href="#"><u>7</u></a>
<a href="#"><u>Investigation Guidelines &amp; Checklist</u></a>	<a href="#"><u>7</u></a>
<a href="#"><u>Investigation Flowchart</u></a>	<a href="#"><u>8</u></a>
<a href="#"><u>(temporary insert - page 3:19)</u></a>	<a href="#"><u>8</u></a>
<a href="#"><u>Initial Processing of Incident Report Form Flowchart</u></a>	<a href="#"><u>9</u></a>
<a href="#"><u>(temporary insert - page 4:9)</u></a>	<a href="#"><u>9</u></a>
<a href="#"><u>Policies</u></a>	<a href="#"><u>10</u></a>
<a href="#"><u>Policy 514 - Bullying Prohibition Policy</u></a>	<a href="#"><u>10</u></a>
<a href="#"><u>Other policies related to 514 (not exclusive)</u></a>	<a href="#"><u>14</u></a>
<a href="#"><u>Staff Training Handouts</u></a>	<a href="#"><u>14</u></a>
<a href="#"><u>Tennessee Warning for Students Use this link for for copies.</u></a>	<a href="#"><u>15</u></a>
<a href="#"><u>Tennessee Warning for Staff Use this link for for copies.</u></a>	<a href="#"><u>16</u></a>
<a href="#"><u>Form 1</u></a>	<a href="#"><u>20</u></a>
<a href="#"><u>Form 2 -</u></a>	<a href="#"><u>21</u></a>
<a href="#"><u>Form 3 -</u></a>	<a href="#"><u>23</u></a>
<a href="#"><u>Community Resources</u></a>	<a href="#"><u>25</u></a>
<a href="#"><u>Training and Plan Review Tracking</u></a>	<a href="#"><u>27</u></a>

# **Introduction**

## **Goal Statement**

**The Goal of this Bullying and Harassment Procedures Plan is to establish appropriate policy and procedures to assist Princeton Public Schools in creating a safe and civil environment for learning.**

**The Princeton Public School District is committed to providing training to all employees and students to try to prevent bullying and harassment.**

## **Acknowledgements**

***These procedures are based on materials and training provided through the Minnesota Department of Educating the McGrath Response System.***

## Quick Links to Procedural Resources

[Tennessean Warning for Students](#)

[Tennessean Warning for Staff](#)

Policy 514 - Bullying Prohibition Policy [Policy 514](#)

Pupil Fair Dismissal Act [PFDA Brochure](#)

Form 1 - (*Print in Beige*) [Bullying and Offensive Behavior Report Form](#)

Form 2 - (*Print in Yellow*) [Staff Report Form for Bullying](#)

Form 3 - (*Print in White*) [Bullying Investigation Interview Form](#)

**Staff Handouts (to be added)**

## Definitions

For purposes of this policy, the definitions included in this section apply.

A. **“Bullying”** means intimidating, threatening, abusive, or harming conduct that is objectively offensive and:

1. an actual or perceived imbalance of power exists between the student engaging in the prohibited conduct and the target of the prohibited conduct, and the conduct is repeated or forms a pattern; or
2. materially and substantially interferes with a student’s educational opportunities or performance or ability to participate in school functions or activities or receive school benefits, services, or privileges. The term, “bullying,” specifically includes cyberbullying as defined in this policy.

B. A **“threat”** is a statement of an intention to inflict pain, injury, damage, or other hostile action on someone in retribution for something done or not done.

C. **“Cyberbullying”** means bullying using technology or other electronic communication, including, but not limited to, a transfer of a sign, signal, writing, image, sound, or data, including a post on a social network Internet website or forum, transmitted through a computer, cell phone, or other electronic device. The term applies to prohibited conduct which occurs on school premises, on school district property, at school functions or activities, on school transportation, or on school computers, networks, forums, and mailing lists, or off school premises to the extent that it substantially and materially disrupts student learning or the school environment.

D. **“Immediately”** means as soon as possible but in no event longer than 24 hours.

E. **“Intimidating, threatening, abusive, or harming conduct”** means, but is not limited to, conduct that does the following:

1. Causes physical harm to a student or a student’s property or causes a student to be in reasonable fear of harm to person or property;
2. Under Minnesota common law, violates a student’s reasonable expectation of privacy, defames a student, or constitutes intentional infliction of emotional

distress against a student; or

3. Is directed at any student or students, including those based on a person's actual or perceived race, ethnicity, color, creed, religion, national origin, immigration status, sex, marital status, familial status, socioeconomic status, physical appearance, sexual orientation including gender identity and expression, academic status related to student performance, disability, or status with regard to public assistance, age, or any additional characteristic defined in the Minnesota Human Rights Act (MHRA). However, prohibited conduct need not be based on any particular characteristic defined in this paragraph or the MHRA.

F. **“On school premises, on school district property, at school functions or activities, or on school transportation”** means all school district buildings, school grounds, and school property or property immediately adjacent to school grounds, school bus stops, school buses, school vehicles, school contracted vehicles, or any other vehicles approved for school district purposes, the area of entrance or departure from school grounds, premises, or events, and all school-related functions, school-sponsored activities, events, or trips. School district property also may mean a student's walking route to or from school for purposes of attending school or school-related functions, activities, or events. While prohibiting bullying at these locations and events, the school district does not represent that it will provide supervision or assume liability at these locations and events.

G. **“Prohibited conduct”** means bullying or cyberbullying as defined in this policy or retaliation or reprisal for asserting, alleging, reporting, or providing information about such conduct or knowingly making a false report about bullying.

H. **“Remedial response”** means a measure to stop and correct prohibited conduct, prevent prohibited conduct from recurring, and protect, support, and intervene on behalf of a student who is the target or victim of prohibited conduct.

I. **“Student”** means a student enrolled in a public school or a charter school.

## Bullying and Harassment Plan Overview

This plan addresses an allegation of bullying or harassment by a student or staff member. When such a allegation occurs, the following procedures will go into effect.

- The receiving adult?? Initiates the gathering of facts regarding the allegation within 24 hours.
- Interviews of students and others as necessary takes place.
- Law enforcement is notified at any time....
- Forms are completed..
- Determination is make whether bullying/harassment/having
- Continue/discontinue investigation
- Documentation
- Consequences
- Document resolution
- WHEN SKYWARD?
- WHEN PARENT NOTIFICATION
- Staff are trained annually
- Plan is reviewed annually
- Policies reviewed
- Communication to parents/students/community
- Documentation Retention

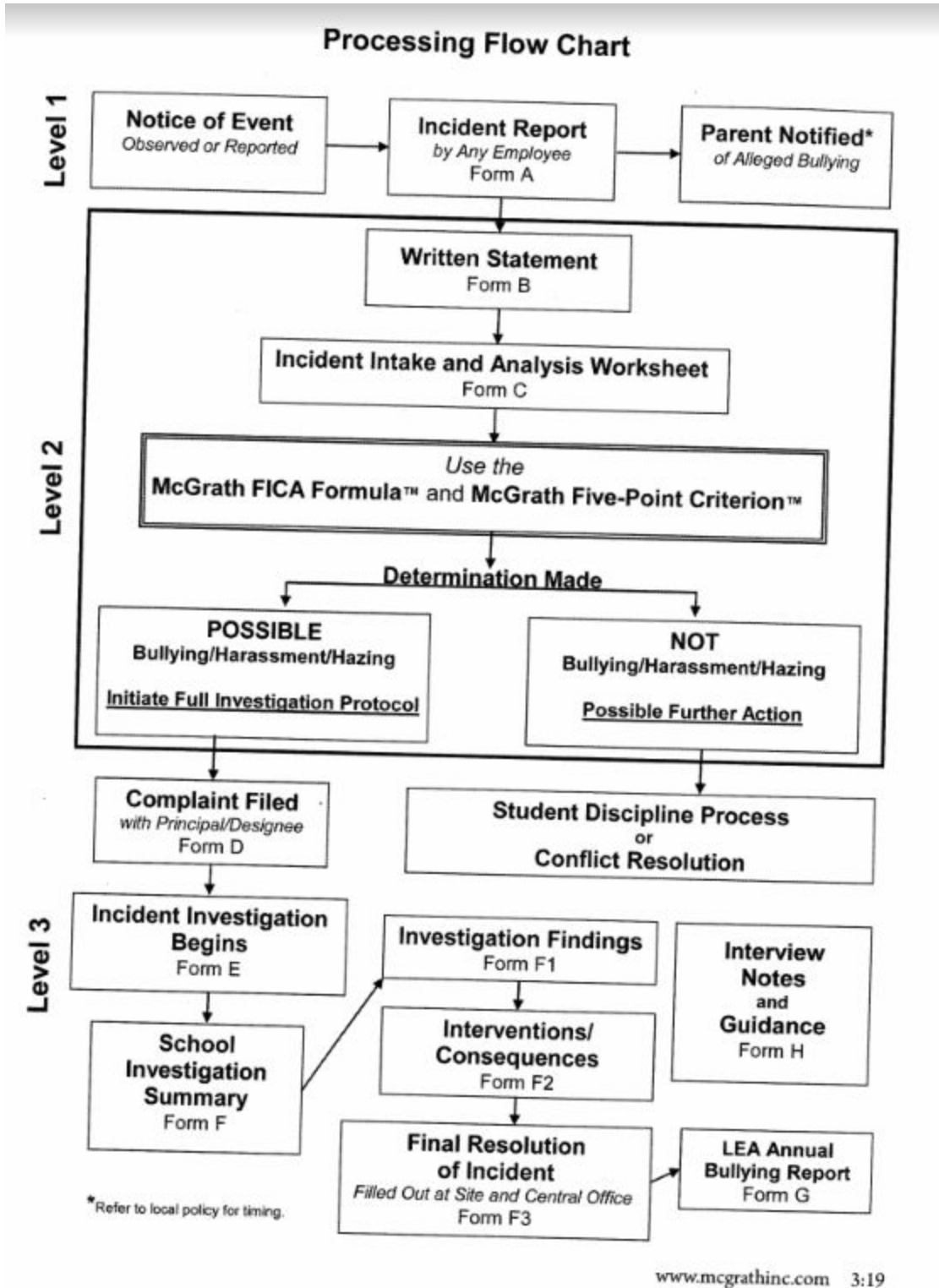
## **School and District Bullying & Harassment Investigation Guidelines & Checklist**

**Covering all the Bases:** (From the *McGrath Intake and Investigation Manual*)

- Sound Policy:** Have an explicit policy against bullying and illegal harassment which clearly outlines a responsive, prompt, complaint procedure.
- Follow It:** Follow the policy, protocols and procedures
- Train On It:** Provide regular training and education to all supervisory and non-supervisory employees and students regarding the policy and procedures.
- Talk About It:** Express disapproval of bullying and illegal harassment and explain the sanctions for such conduct.
- Encourage Reports:** Maintain procedure for complaint intake that encourages victims to come forward and does not require that they complain to the alleged perpetrator.
- Help Reporters:** Ensure privacy, provide effective remedies, and protect witnesses and victims against retaliation.
- Investigate:** Promptly and thoroughly investigate all reports or complaints of possible illegal bullying or harassment.
- Fix What You Can:** Take immediate corrective action when needed.
- Consequence:** Implement appropriate consequences if allegations are substantiated.
- Report, If Indicated:** Promptly report suspected child abuse, sexual assault, or other criminal violations.

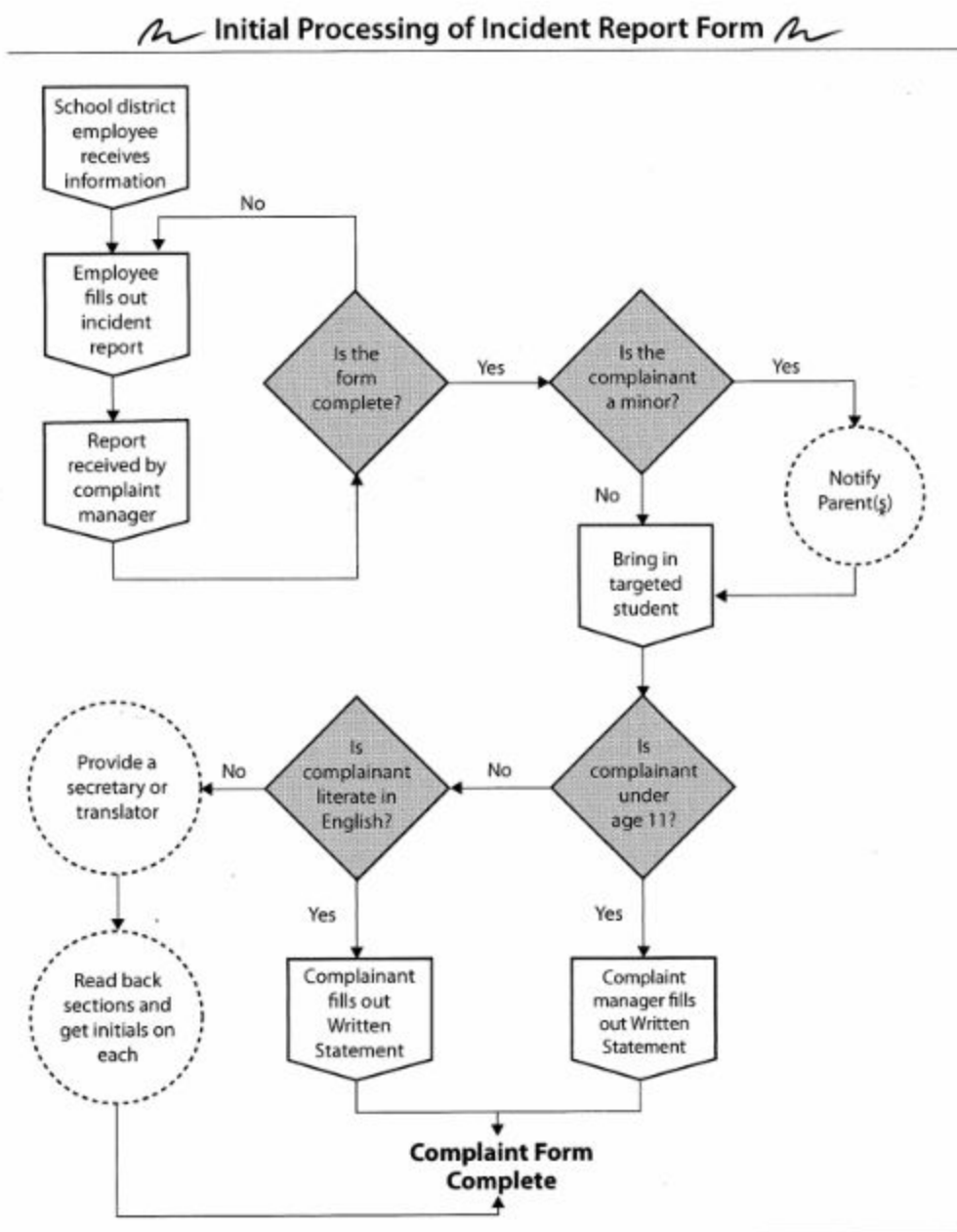
# Investigation Flowchart

(temporary insert - page 3:19)



## Initial Processing of Incident Report Form Flowchart

(temporary insert - page 4:9)



One of the most important functions of first responders is to “spot, intervene, record, and inform”. Incident Report Form A is used to record their observations and information, which they must transmit to the principal/designee.

\* Refer to local policy for timing.

## Policies

### Policy 514 - Bullying Prohibition Policy

514

#### PRINCETON PUBLIC SCHOOLS DRAFT BULLYING PROHIBITION POLICY

##### I. PURPOSE

The purpose of this policy is to provide clear guidelines regarding the investigation and response by District staff toward acts of bullying and other similar disruptive and detrimental behavior.

##### II. GENERAL STATEMENT OF POLICY

The policy of this school district is that procedures related to the investigation and response of district staff toward acts of bullying and other similar disruptive and detrimental behavior will be developed and implemented.

##### III. DEVELOPMENT OF PROCEDURES

The Superintendent shall be responsible for ensuring the development and implementation of procedures related to the investigation and response of district staff toward acts of bullying and other similar disruptive and detrimental behavior. The procedures shall be operated in compliance with state and federal statute, rules, and regulations.

##### IV. DEFINITIONS

For purposes of this policy, the definitions included in this section apply.

- A. "Bullying" means intimidating, threatening, abusive, or harming conduct that is objectively offensive and:
  - 1. an actual or perceived imbalance of power exists between the student engaging in the prohibited conduct and the target of the prohibited conduct, and the conduct is repeated or forms a pattern; or
  - 2. materially and substantially interferes with a student's educational opportunities or performance or ability to participate in school functions or activities or receive school benefits, services, or privileges. The term, "bullying," specifically includes cyberbullying as defined in this policy.
- B. A "threat" is a statement of an intention to inflict pain, injury, damage, or other hostile action on someone in retribution for something done or not done.
- C. "Cyberbullying" means bullying using technology or other electronic communication, including, but not limited to, a transfer of a sign, signal, writing, image, sound, or data, including a post on a social network Internet website or forum, transmitted through a computer, cell phone, or other electronic device. The term applies to prohibited conduct which occurs on school premises, on

school district property, at school functions or activities, on school transportation, or on school computers, networks, forums, and mailing lists, or off school premises to the extent that it substantially and materially disrupts student learning or the school environment.

- D. “Immediately” means as soon as possible but in no event longer than 24 hours.
- E. “Intimidating, threatening, abusive, or harming conduct” means, but is not limited to, conduct that does the following:
  - 1. Causes physical harm to a student or a student’s property or causes a student to be in reasonable fear of harm to person or property;
  - 2. Under Minnesota common law, violates a student’s reasonable expectation of privacy, defames a student, or constitutes intentional infliction of emotional distress against a student; or
  - 3. Is directed at any student or students, including those based on a person’s actual or perceived race, ethnicity, color, creed, religion, national origin, immigration status, sex, marital status, familial status, socioeconomic status, physical appearance, sexual orientation including gender identity and expression, academic status related to student performance, disability, or status with regard to public assistance, age, or any additional characteristic defined in the Minnesota Human Rights Act (MHRA). However, prohibited conduct need not be based on any particular characteristic defined in this paragraph or the MHRA.
- F. “On school premises, on school district property, at school functions or activities, or on school transportation” means all school district buildings, school grounds, and school property or property immediately adjacent to school grounds, school bus stops, school buses, school vehicles, school contracted vehicles, or any other vehicles approved for school district purposes, the area of entrance or departure from school grounds, premises, or events, and all school-related functions, school-sponsored activities, events, or trips. School district property also may mean a student’s walking route to or from school for purposes of attending school or school-related functions, activities, or events. While prohibiting bullying at these locations and events, the school district does not represent that it will provide supervision or assume liability at these locations and events.
- G. “Prohibited conduct” means bullying or cyberbullying as defined in this policy or retaliation or reprisal for asserting, alleging, reporting, or providing information about such conduct or knowingly making a false report about bullying.
- H. “Remedial response” means a measure to stop and correct prohibited conduct, prevent prohibited conduct from recurring, and protect, support, and intervene on behalf of a student who is the target or victim of prohibited conduct.
- I. “Student” means a student enrolled in a public school or a charter school.

## V. BULLY PROHIBITION PROCEDURE GUIDELINES

- A. An act of bullying, by either an individual student or a group of students, is expressly prohibited on school premises, on school district property, at school functions or activities, or on school transportation. This policy applies not only to

- students who directly engage in an act of bullying but also to students who, by their indirect behavior, condone or support another student's act of bullying.
- B. School staff will act to investigate all complaints of bullying reported to the school district and will take appropriate action toward any student, teacher, administrator, volunteer, contractor, or other employee of the school district who is found to have violated this policy. Immediate steps will be taken at the discretion of school staff to protect all parties consistent with applicable law.
  - C. Reporting procedures will be developed and disseminated to all students and district staff. Reporting procedures will be available to any person who believes he or she has been the target of bullying or any person with knowledge or belief of conduct that may constitute bullying or prohibited conduct under this policy shall report the alleged acts immediately to an appropriate school district official designated by this policy. A person may report bullying anonymously, however, the school district may not rely solely on an anonymous report to determine discipline or other remedial responses.
  - D. Reports of bullying or other prohibited conduct are classified as private educational and/or personnel data and/or confidential investigative data and will not be disclosed except as permitted by law. The school district will respect the privacy of the complainant(s), the individual(s) against whom the complaint is filed, and the witnesses as much as possible, consistent with the school district's obligation to investigate, take appropriate action, and comply with any legal disclosure obligations.
  - E. The school district shall develop and provide training to school district personnel, volunteers, and students regarding this policy, reporting procedures, investigation procedures according to an established training cycle for new and returning individuals of all positions referenced previously consistent with Minn. Stat. § 122A.60.
  - F. The administration of the school district will develop and implement programs and other initiatives to establish a positive school climate, to prevent bullying, to respond to bullying in a manner that does not stigmatize the target or victim, and to make resources or referrals to resources available to targets or victims of bullying.
  - G. Procedures will be created to ensure adequate notice of this policy to students, parents/guardians, and school staff.

## VI. POLICY REVIEW

To the extent practicable, the school board shall, on a cycle consistent with other school district policies, review and revise this policy. The policy shall be made consistent with Minn. Stat. § 121A.031 and other applicable law. Revisions shall be made in consultation with students, parents, and community organizations.

### Legal References:

- Minn. Stat. Ch. 13 (Minnesota Government Data Practices Act)
- Minn. Stat. § 120A.05, Subds. 9, 11, 13, and 17 (Definition of Public School)
- Minn. Stat. § 120B.232 (Character Development Education)
- Minn. Stat. § 121A.03 (Sexual, Religious and Racial Harassment and Violence)

- Minn. Stat. § 121A.031 (School Student Bullying Policy)
- Minn. Stat. § 121A.0311 (Notice of Rights and Responsibilities of Students and Parents under the Safe and Supportive Minnesota Schools Act)
- Minn. Stat. §§ 121A.40-121A.56 (Pupil Fair Dismissal Act)
- Minn. Stat. § 121A.69 (Hazing Policy)
- Minn. Stat. § 124D.10 (Charter School)
- Minn. Stat. Ch. 363A (Minnesota Human Rights Act)
- 20 U.S.C. § 1232g et seq. (Family Educational Rights and Privacy Act) 34 C.F.R. §§ 99.1 - 99.67 (Family Educational Rights and Privacy)

Cross References:

- MSBA/MASA Model Policy 403 (Discipline, Suspension, and Dismissal of School District Employees)
- MSBA/MASA Model Policy 413 (Harassment and Violence)
- MSBA/MASA Model Policy 414 (Mandated Reporting of Child Neglect or Physical or Sexual Abuse)
- MSBA/MASA Model Policy 415 (Mandated Reporting of Maltreatment of Vulnerable Adults)
- MSBA/MASA Model Policy 423 (Employee-Student Relationships)
- MSBA/MASA Model Policy 501 (School Weapons Policy)
- MSBA/MASA Model Policy 506 (Student Discipline)
- MSBA/MASA Model Policy 507 (Corporal Punishment)
- MSBA/MASA Model Policy 515 (Protection and Privacy of Pupil Records)
- MSBA/MASA Model Policy 521 (Student Disability Nondiscrimination)
- MSBA/MASA Model Policy 522 (Student Sex Nondiscrimination)
- MSBA/MASA Model Policy 524 (Internet Acceptable Use and Safety Policy)
- MSBA/MASA Model Policy 525 (Violence Prevention)
- MSBA/MASA Model Policy 526 (Hazing Prohibition)
- MSBA/MASA Model Policy 529 (Staff Notification of Violent Behavior by Students)
- MSBA/MASA Model Policy 709 (Student Transportation Safety Policy)
- MSBA/MASA Model Policy 711 (Video Recording on School Buses)
- MSBA/MASA Model Policy 712 (Video Surveillance Other Than on Buses)

Adopted: January 27, 2004

Revised: November 24, 2009

Revised: August 10, 2010

Revised: March 22, 2011

Revised: October 21, 2014

Revised: August 18, 2015

Revised: April 16, 2017

**Other policies related to 514 (not exclusive)**

**Staff Training Handouts**

**TO BE DEVELOPED**

[Tennesen Warning for Students](#) Use this link for for copies.

**TENNESSEN WARNING  
NOTICE TO STUDENT WITNESSES**

Name of Student \_\_\_\_\_

Grade \_\_\_\_\_ Age: \_\_\_\_\_ School \_\_\_\_\_

Interviewer \_\_\_\_\_ Position \_\_\_\_\_

- The purpose of this interview is to collect information regarding possible harassment and/or the violation of other school rules and policies.
- The information gathered may be used by the school district in administrative proceedings and disciplinary actions including suspensions, expulsions, or other actions. The information may also be used in civil litigation or other legal proceedings.
- Students are not legally required to provide any information, however refusal or failure to provide information may result in the district being unable to adequately investigate the matter at hand, and may contribute to decisions that are based on incomplete information.
- The information you provide during this interview may be released to the Minnesota Department of Education, the Minnesota Attorney General's office, the Minnesota Department of Human Rights, school district employees, the school board, your parents and other individuals dependent on the direction the investigation goes.

My signature verifies that the Tennesen Warning was given to me.

\_\_\_\_\_  
*student signature*

\_\_\_\_\_  
*date*



## Princeton Public Schools Tennessees Warning

Name of individual interviewed: \_\_\_\_\_

Date of interview: \_\_\_\_\_

Individuals present: \_\_\_\_\_

Location of interview: \_\_\_\_\_

Interview conducted by: \_\_\_\_\_

1. The District is conducting an investigation. The purpose of this interview is to gather information in response to allegations that have been made against one or more individuals.
2. The information that you provide during this interview may be used by the School District to determine whether the allegations are true and what action, if any, should be taken. The information may also be used in a variety of proceedings including, but not limited to, any disciplinary proceedings, grievance proceedings, administrative proceedings, civil proceedings, and criminal proceedings.
3. At this time, you are not legally required to provide any private or confidential information about yourself during this interview. However, this interview may be the only opportunity you will have to provide information before the School District decides whether or not the allegations are true. Your failure or refusal to provide information may result in the School District reaching a decision without the benefit of information that you could have provided.
4. Although you are not legally required to provide private or confidential information during this interview, providing any false or misleading information will be considered insubordination and may result in disciplinary action against you.
5. The information that you provide during this interview may be released to the District's School Board, the Superintendent, other supervisors in the District who have a need to know the information, the School District's legal counsel, and other individuals directly or indirectly involved in the investigation, including other witnesses and the representatives of such individuals. Upon proper request, the School District may also be required to release the information to various federal and state agencies including, but not limited to, the United States Department of Education, the Office for Civil Rights, the Minnesota Department of Human Rights, the Minnesota Department of Education, and law enforcement.
6. Retaliation in any form or degree is prohibited. Retaliation against any person who participates in this investigation (such as any form of harassment, intimidation, or coercion) will be considered to be misconduct and will result in disciplinary action. Please report any form of retaliation immediately.

By signing below you acknowledge only that you have been given an opportunity to read this Notice and ask any questions you may have about it before being interviewed. A copy of this Notice will be given to you upon request.

Dated: \_\_\_\_\_

Signed: \_\_\_\_\_

RRM: 1678

# Pupil Fair Dismissal Act Brochure

Use this link for for copies.

commissioner of education of the basis and reason for the decision.

#### Subd. 14. Admission or readmission plan.

(a) A school administrator shall prepare and enforce an admission or readmission plan for any pupil who is excluded or expelled from school. The plan may include measures to improve the pupil's behavior, including completing a character education program, consistent with section 120B.232, subdivision 1, and require parental involvement in the admission or readmission process, and may indicate the consequences to the pupil of not improving the pupil's behavior.

(b) The definition of suspension under section 121A.41, subdivision 10, does not apply to a student's dismissal from school for one school day or less, except as provided under federal law for a student with a disability. Each suspension action may include a readmission plan. A readmission plan must provide, where appropriate, alternative education services, which must not be used to extend the student's current suspension period. Consistent with section 125A.091, subdivision 5, a readmission plan must not obligate a parent or guardian to provide psychotropic drugs to their student as a condition of readmission. School officials must not use the refusal of a parent or guardian to consent to the administration of psychotropic drugs to their student or to consent to a psychiatric evaluation, screening or examination of the student as a ground, by itself, to prohibit the student from attending class or participating in a school-related activity, or as a basis of a charge of child abuse, child neglect or medical or educational neglect.

#### 121A.48 Good faith exception

A violation of the technical provisions of the pupil fair dismissal act, made in good faith, is not a defense to a disciplinary procedure under the act unless the pupil can demonstrate actual prejudice as a result of the violation.

#### 121A.49 Appeal

A party to an exclusion or expulsion decision made under sections 121A.40 to 121A.56 may appeal the decision to the commissioner of education within 21 calendar days of the school board action. Upon being served with a notice of appeal, the district shall provide the commissioner and the parent or guardian with a complete copy of the hearing record within five days of its receipt of the notice of appeal. All written submissions by the appellant must be submitted and served on the respondent within ten days of its actual receipt of the transcript. All written submissions by the respondent must be submitted and served on the appellant within ten days of its actual receipt of the written submissions of the appellant. The decision of the school board must be implemented during the appeal to the commissioner.

In an appeal under this section, the commissioner may affirm the decision of the agency, may remand the decision for additional findings, or may reverse or modify the decision if the substantial rights of the petitioners have been prejudiced because the administrative findings, inferences, conclusions, or decisions are:

- (1) in violation of constitutional provisions;
- (2) in excess of the statutory authority or jurisdiction of the school district;
- (3) made upon unlawful procedure, except as provided in section 121A.48;
- (4) affected by other error of law;
- (5) unsupported by substantial evidence in view of the entire record submitted; or
- (6) arbitrary or capricious.

The commissioner or the commissioner's representative shall make a final decision based upon the record. The commissioner shall issue a decision within 30 calendar days of receiving the entire record and the parties' written submission on appeal. The commissioner's decision shall be final and binding upon the parties after the time for appeal expires under section 121A.50.

#### 121A.50 Judicial review

The decision of the commissioner of education made under sections 121A.40 to 121A.56 is subject to judicial review under sections 14.63 to 14.69. The decision of the commissioner is stayed pending an appeal under this section.

#### 121A.51 Reports to Service Agency

The school board shall report any action taken pursuant to sections 121A.40 to 121A.56 to the appropriate public service agency, when the pupil is under the supervision of such agency.

#### 121A.52 Nonapplication of Compulsory Attendance Law

The provisions of section 120A.22, subdivision 5, shall not apply to any pupil during a dismissal pursuant to sections 121A.40 to 121A.56.

#### 121A.53 Report to Commissioner of Education

Subdivision 1. **Exclusions and Expulsions.** The school board must report through the department electronic reporting system each exclusion or expulsion within 30 days of the effective date of the action to the commissioner of education. This report must include a statement of alternative educational services given the pupil and the reason for the effective date, and the duration of the exclusion or expulsion. The report must also include the student's age, grade, gender, race, and special education status.

Subd. 2. **Report.** The school board must include state student identification numbers of affected pupils on all dismissal reports required by the department. The department must report annually to the commissioner summary data on the number of dismissals by age, grade, gender, race, and special education status of the affected pupils. All dismissal reports must be submitted through the department electronic reporting system.

#### 121A.54 Notice of Right to be Reinstated

Whenever a pupil fails to return to school within ten school days of the termination of dismissal, a school administrator shall inform the pupil and the pupil's parents by mail of the pupil's right to attend and to be reinstated in the public school.

#### 121A.55 Policies to be Established

(a) The commissioner of education shall promulgate guidelines to assist each school board. Each school board shall establish uniform criteria for dismissal and adopt written policies and rules to effectuate the purposes of sections 121A.40 to 121A.56. The policies shall emphasize preventing dismissals through early detection of problems and shall be designed to address students' inappropriate behavior from recurring. The policies shall recognize the continuing responsibility of the school for the education of the pupil during the dismissal period. The alternative educational services, if the pupil wishes to take advantage of them, must be adequate to allow the pupil to make progress towards meeting the graduation standards adopted under section 120B.02, and help prepare the pupil for readmission.

(b) An area learning center under section 123A.05 may not prohibit an expelled or excluded pupil from enrolling solely because a district expelled or excluded the pupil. The board of the area learning center may use the provisions of the Pupil Fair Dismissal Act to exclude a pupil or to require an admission plan.

(c) Each school district shall develop a policy, and report it to the commissioner, on the appropriate use of peace officers and crisis teams to remove students who have an individualized education program from school grounds.

#### 121A.56 Application

Subdivision 1. **Prohibition Against Discrimination Remains in Effect.** Sections 121.40 to 121A.56 shall not be deemed to amend or otherwise affect or change section 363A.13, subdivision 2.

#### Subd. 2. Portions of School Program for Credit.

Sections 121A.40 to 121A.56 shall apply only to those portions of the school program for which credit is granted.

## The Pupil Fair Dismissal Act



### Pupils Suspension, Exclusion and Expulsion

#### 121A.40 Citation

Sections 121A.40 to 121A.56 may be cited as "The Pupil Fair Dismissal Act."

#### 121A.41 Definitions

Subdivision 1. **"Applicability"** As used in sections 121A.40 to 121A.56, the terms defined in this section shall have the meanings assigned to them.

Subd. 2. **"Dismissal"** means the denial of the current educational program to any pupil, including exclusion, expulsion, and suspension. It does not include removal from class.

Subd. 3. **"District"** means any school district.

Subd. 4. **"Exclusion"** means an action taken by the school board to prevent enrollment or re-enrollment of a pupil for a period that shall not extend beyond the school year.

Subd. 5. **"Expulsion"** means a school board action to prohibit an enrolled pupil from further attendance for up to 12 months from the date the pupil is expelled.

Subd. 6. **"Parent"** means (a) one of the pupil's parents, (b) in the case of divorce or legal separation, the parent or parents with physical custody of the pupil, including a noncustodial parent with legal custody who has provided the district with a current address and telephone number, or (c) a legally appointed guardian. In the case of a pupil with a disability under the age of 18, parent may include a district-appointed surrogate parent.

Subd. 7. **"Pupil"** (a) means any student:

- (1) without a disability under 21 years of age; or
- (2) with a disability under 21 years old who has not received a regular high school diploma or for a child with a disability who becomes 21 years old during the school year but has not received a regular high school diploma, until the end of that school year; and
- (3) who remains eligible to attend a public elementary or secondary school.

(b) A "student with a disability" or a "pupil with a disability" has the same meaning as a "child with a disability" under section 125A.02.

Subd. 8. **"School"** means any school defined in section 120A.05, subdivisions 9, 11, 13 and 17.

Subd. 9. **"School board"** means the governing body of any school district.

Subd. 10. **"Suspension"** means an action by the school administration, under rules promulgated by the school board, prohibiting a pupil from attending school for a period of no more than ten school days. If a suspension is longer than five days, the suspending administrator must provide the superintendent with a reason for the longer suspension. This definition does not apply to dismissal from school for one school day or less, except as provided in federal law for a student with a disability. Each suspension action may include a readmission plan. The readmission plan shall include, where appropriate, a provision for implementing alternative educational services upon readmission and may not be used to extend the current suspension. Consistent with section 125A.091, subdivision 5, the readmission plan must not obligate a parent to provide a sympathomimetic medication for the parent's child as a condition of readmission. The school administration may not impose consecutive suspensions against the same pupil for the same course of conduct, or incident of misconduct, except where the pupil will create an immediate and substantial danger to self or to surrounding persons or property, or where the district is in the process of initiating an expulsion, in which case the school administration may extend the suspension to a total of 15 school days.

Subd. 11. "Alternative educational services" may include, but are not limited to, special tutoring, modified curriculum, modified instruction, other modifications or adaptations, instruction through electronic media, special education services as indicated by appropriate assessment, homebound instruction, supervised homework, or enrollment in another district or in an alternative learning center under section 123A.05 selected to allow the pupil to progress toward meeting graduation standards under section 120B.02, although in a different setting.

#### 121A.42 Policy

No public school shall deny due process or equal protection of the law to any public school pupil involved in a dismissal proceeding which may result in suspension, exclusion, or expulsion.

#### 121A.43 Exclusion and Expulsion of Pupils with a Disability

(a) Consistent with federal law governing days of removal and section 121A.46, school personnel may suspend a child with a disability. When a child with a disability has been suspended for more than five consecutive school days or 10 cumulative school days in the same school year, and that suspension does not involve a recommendation for expulsion or exclusion or other change of placement under federal law, relevant members of the child's individualized education program team, including at least one of the child's teachers, shall meet and determine the extent to which the child needs services in order to continue to participate in the general education curriculum, although in another setting, and to progress toward meeting the goals in the child's individualized education program. That meeting must occur as soon as possible, but no more than 10 days after the sixth consecutive day of suspension or the tenth cumulative day of suspension has elapsed.

(b) A dismissal for one school day or less is a day or a partial day of suspension if the child with a disability does not receive regular or special education instruction during that dismissal period. The notice requirements under section 121A.46 do not apply to a dismissal of one day or less.

(c) A child with a disability shall be provided alternative educational services to the extent a suspension exceeds five consecutive school days.

(d) Before initiating an expulsion or exclusion under sections 121A.40 to 121A.56, the district, relevant members of the child's individualized education program team, and the child's parent shall, consistent with federal law, determine whether the child's behavior was caused by or had a direct and substantial relationship to the child's disability and whether the child's conduct was a direct result of a failure to implement the child's individualized education program. When a child with a disability who has an individualized education program is excluded or expelled under sections 121A.40 to 121A.56 for misbehavior that is not a manifestation of the child's disability, the district shall continue to provide special education and related services during the exclusion or expulsion.

#### 121A.44 Expulsion for possession of firearm

(a) Notwithstanding the time limitation in section 121A.41, subdivision 5, a school board must expel for a period of at least one year a pupil who is determined to have brought a firearm to school except the board may modify this expulsion requirement for a pupil on a case-by-case basis. For the purposes of this section, firearm is as defined in United States Code, title 18, section 921.

(b) Notwithstanding chapter 13, a student's expulsion or withdrawal or transfer from a school after an expulsion action is initiated against the student for a weapons violation under paragraph (a) may be disclosed by the school district initiating the expulsion proceeding. Unless the information is otherwise public, the disclosure may be made only to another school district in connection with the possible admission of the student to the other district.

#### 121A.45 Grounds for dismissal

Subdivision 1. **Provision of Alternative Programs.** No school shall dismiss any pupil without attempting to provide alternative educational services before dismissal proceedings, except where it appears that the pupil will create an immediate and substantial danger to self or to surrounding persons or property.

Subd. 2. **Grounds for Dismissal.** A pupil may be dismissed on any of the following grounds:

(a) willful violation of any reasonable school board regulation. Such regulation must be clear and definite to provide notice to pupils that they must conform their conduct to its requirements;

(b) willful conduct that significantly disrupts the rights of others to an education, or the ability of school personnel to perform their duties, or school sponsored extracurricular activities; or

(c) willful conduct that endangers the pupil or other pupils, or surrounding persons, including school district employees, or property of the school.

Subd. 3. **Parent Notification and Meeting.** If a pupil's total days of removal from school exceeds ten cumulative days in a school year, the school district shall make reasonable attempts to convene a meeting with the pupil and the pupil's parent or guardian before subsequently removing the pupil from school and, with the permission of the parent or guardian, arrange for a mental health screening for the pupil. The district is not required to pay for the mental health screening. The purpose of this meeting is to attempt to determine the pupil's need for assessment or other services or whether the parent or guardian should have the pupil assessed or diagnosed to determine whether the pupil needs treatment for a mental health disorder.

#### 121A.46 Suspension procedures

Subdivision 1. **Informal Administrative Conference Before Suspension.** The school administration shall not suspend a pupil from school without an informal administrative conference with the pupil. The informal administrative conference shall take place before the suspension, except where it appears that the pupil will create an immediate and substantial danger to self or to surrounding persons or property, in which case the conference shall take place as soon as practicable following the suspension.

Subd. 2. **Administrator Notifies Pupil of Grounds for Suspension.** At the informal administrative conference, a school administrator shall notify the pupil of the grounds for the suspension, provide an explanation of the evidence the authorities have, and the pupil may present the pupil's version of the facts.

Subd. 3. **Written Notice of Grounds for Suspension.** A written notice containing the grounds for suspension, a brief statement of the facts, a description of the testimony, a readmission plan, and a copy of sections 121A.40 to 121A.56, shall be personally served upon the pupil at or before the time the suspension is to take effect, and upon the pupil's parent or guardian by mail within 48 hours of the conference. The district shall make reasonable efforts to notify the parents of the suspension by telephone as soon as possible following suspension. In the event a pupil is suspended without an informal administrative conference on the grounds that the pupil will create an immediate and substantial danger to surrounding persons or property, the written notice shall be served upon the pupil and the pupil's parent or guardian within 48 hours of suspension. Service by mail is complete upon mailing.

Subd. 4. **Suspension Pending Expulsion or Exclusion Hearing.** Notwithstanding the provisions of subdivisions 1 and 3, the pupil may be suspended pending the school board's decision in the expulsion or exclusion hearing; provided that alternative educational services are implemented to the extent that suspension exceeds five days.

#### 121A.47 Exclusion and expulsion procedures

##### Subdivision 1. **Requiring a Hearing; Pupil May Waive Hearing.**

No exclusion or expulsion shall be imposed without a hearing, unless the right to a hearing is waived in writing by the pupil and parent or guardian. The action shall be initiated by the school board or its agent.

Subd. 2. **Written notice.** Written notice of intent to take action shall:

(a) be served upon the pupil and the pupil's parent or guardian personally or by mail;

(b) contain a complete statement of the facts, a list of the witnesses and a description of their testimony;

(c) state the date, time and place of the hearing;

(d) be accompanied by a copy of sections 121A.40 to 121A.56;

(e) describe alternative educational services accorded the pupil in an attempt to avoid the expulsion proceedings; and

(f) inform the pupil and parent or guardian of the right to:

(1) have a representative of the pupil's own choosing, including legal counsel, at the hearing. The district shall advise the pupil's parent or guardian that free or low-cost legal assistance may be available and that a legal assistance resource list is available from the Department of Education.

(2) examine the pupil's records before the hearing;

(3) present evidence; and

(4) confront and cross-examine witnesses.

Subd. 3. **Hearing Schedule.** The hearing shall be scheduled within ten days of the service of the written notice unless an extension, not to exceed five days, is requested for good cause by the school board, pupil, parent or guardian.

Subd. 4. **Convenient Time and Place of Hearing.** The hearing shall be at a time and place reasonably convenient to pupil, parent or guardian.

Subd. 5. **Closed or Open Hearing.** The hearing shall be closed unless the pupil, parent or guardian requests an open hearing.

Subd. 6. **Impartial Hearer.** The hearing shall take place before:

(1) an independent hearing officer;

(2) a member of the school board;

(3) a committee of the school board, or

(4) the full school board;

as determined by the school board. The hearing shall be conducted in a fair and impartial manner.

Subd. 7. **Creating Hearing Record.** The school board shall record the hearing proceedings at district's expense, and a party may obtain a transcript at its own expense. Testimony shall be given under oath. The hearing officer or a member of the school board shall have the power to issue subpoenas and administer oaths.

Subd. 8. **Access to Pupil's Records.** At a reasonable time prior to the hearing, the pupil, parent or guardian, or representative, shall be given access to all public school system records pertaining to the pupil, including any tests or reports upon which the proposed action may be based.

Subd. 9. **Pupil's Right to Compel Testimony.** The pupil, parent or guardian, or representative, shall have the right to compel the attendance of any official employee or agent of the public school system or any public employee or any other person who may have evidence upon which the proposed action may be based, and to confront and to cross-examine any witness testifying for the public school system.

Subd. 10. **Pupil's Right to Present Evidence and Testimony.** The pupil, parent or guardian, or representative, shall have the right to present evidence and testimony, including expert psychological or educational testimony.

Subd. 11. **Pupil Not Compelled to Testify.** The pupil cannot be compelled to testify in the dismissal proceedings.

Subd. 12. **Hearer's Recommendation Limited to Evidence at Hearing; Service Within Two Days.** The recommendation of the hearing officer or school board member or committee shall be based solely upon substantial evidence presented at the hearing and must be made to the school board and served upon the parties within two days of the end of the hearing.

Subd. 13. **Basis of School Board Decision; Opportunity for Comment.** The school board shall base its decision upon the recommendation of the hearing officer or school board member or committee and shall render its decision at a meeting held within five days after receiving the recommendation. The school board may provide the parties with the opportunity to present exceptions and comments to the hearing officer's recommendations provided that neither party presents any evidence not admitted at the hearing. The decision by the school board must be based on the record, must be in writing, and must state the controlling facts on which the decision is made in sufficient detail to apprise the parties and the



*This side for office use only*

People Interviewed/Dates of interview:

---

---

---

---

---

---

---

---

Impact:

---

---

Context/Other information:

---

---

---

---

---

---

---

Action:

---

---

---

---

Parent/guardian of target(s) contacted:

---

Parent guardian of offender(s) contacted:

---

Others Notified:

---

beige 7/18







## **Suicide Prevention/Crisis Information**

### **If it is a Life Threatening situation:**

- Go to the nearest hospital emergency room.
- Call 911 or the emergency number of your local police.
- If someone you know is suicidal, get help immediately and stay with the person until he or she gets help.

### **Crisis Connection: 24 Hour Hotline**

- 612-379-6363
- Toll Free: 866-379-6363

### **Canvas Health:**

- Can provide counseling services and a Mobile Crisis Response Unit.
- 800-523-3333

### **Text 4 Life:**

- Text "LIFE" to 61222 to connect to a trained crisis counselor
- [www.TXT4life.org](http://www.TXT4life.org)

### **National Suicide Prevention Lifeline**

- 1-800-273-TALK (1-800-273-8255). This is a confidential source of help available 24 hours a day, 7 days a week, and staffed by trained phone counselors.

### **Four County Crisis Response Team**

- Mental Health Crisis Services for Benton, Sherburne, Stearns and Wright Counties
- 320-253-5555 or 1-800-635-8008
- 24 Hours a day/7 days a week
- The Crisis Response Team is a group of counselors who provide support and assistance to children and adults experiencing a mental health Crisis.

### **SAVE: Suicide Awareness Voices of Education**

- To cope with grief after a suicide
- [www.SAVE.org](http://www.SAVE.org)

### **United Way 2-1-1 (formerly First Call for Help)**

- Dial 2-1-1 or 1-800-543-7709
- 24 hours a day/7 days a week
- United Way 2-1-1 is a free and confidential community helpline that helps people access information they need to navigate the complex array of human services.

## **Central Minnesota Mental Health Center: Same Day, Emergency Appointments**

- CMMHC provides a wide range of mental health and chemical dependency services. The Buffalo and Monticello sites have same-day, emergency appointments Monday-Friday where therapists can help determine appropriate next steps to overcome the current crisis. Please call the front desk to determine your crisis needs and “e-slot” availability. A variety of payment options are acceptable, including Private Insurance, Medical Assistance and Medicare. A sliding fee scale for those without insurance, based on ability to pay, may also be available.
- Buffalo: 763-682-4400 Mon-Fri 308 12th Ave. South, Buffalo, MN 55313
- Monticello: 763-295-5086 Mon - Fri 407 Washington Street, Monticello, MN 55362

## **Community Mental Health and Social Service Organizations & Ministerial Support**

### **Lighthouse Child and Family Services**

Contact Persons: Jen Goerger or Julie Hanenburg

Contact Number: Milaca Office: 320-983-2335

Contact Number: Princeton Office: 763-631-0129

### **Mille Lacs County Community and Veteran Services**

Contact Number: 320-983-8202

### **Sherburne County Health and Human Services**

Contact Number: 763-765-4000

### **Isanti County Family Services**

Contact Number: 763-689-1711

### **Family Ties**

Kelsey Aydt, Social Worker

Contact Number: 763-389-6178

## Training and Plan Review Tracking

This plan and procedures will be reviewed with all staff members prior to September 30 of each school year. As new staff members are hired.... Signatures?

How do we track those at training? Who keeps that documentation/where?

Event/Task	Task Leader(s)	Recommended Timeline	Date Completed
<b>Starting July 1, 2018</b>			
<b>Initial Revise Policy 514</b>	<b>Ad Hoc Team Colby Dohrmann Muckenhirn  Superintendent</b>	<b>July - Aug 21 - ad hoc team prepares Aug. 14 - ad hoc present to admin team Aug. 21 bd committee Sept. 1st/2nd reading Oct. 1 , on website</b>	
<b>Initial Prepare Bullying &amp; Harassment Procedures</b>	<b>Ad Hoc Team Colby Dohrmann Muckenhirn</b>	<b>July - Aug 21 - ad hoc team prepares Aug. 14 - ad hoc present to admin team Aug. 21 - DRAFT 1 prepared for bd committee Sept. __ Final First Copy Completed</b>	
<b>Initial Administrative Review of Procedures and Revisions</b> <input type="checkbox"/> Manual <input type="checkbox"/> Policy <input type="checkbox"/> Forms <input type="checkbox"/> Website <input type="checkbox"/> Input from stakeholders ? <input type="checkbox"/> Input from local law enforcement ?	<b>Administrative Team Superintendent Ad Hoc Team</b>	<b>Aug. 14, 2018 Sept. __, 2018 April 30, 2019 Sept. 2019 April 2020 Sept. 2020 Thereafter in April and Sept.</b>	
<b>Train All Staff</b>			
<b>Train Newly Hired Staff (intermittent)</b>			
<b>Communicate procedures and</b>			

<b>policy to students</b>			
<b>Communicate procedures and policy to parents</b>			
<b>Communicate procedures and policy to community</b>			