

# WAYZATA PUBLIC SCHOOLS

Independent School District 284  
Wayzata, Minnesota

## **BOARD OF EDUCATION**

Regular Meeting - December 8, 2014 - 5:30 PM  
Wayzata City Hall, 600 Rice Street, Wayzata

### **AGENDA**

<b>1. CALL TO ORDER/ROLL CALL</b>	4
<b>2. PERFECT ACT RECOGNITION</b>	5
<b>3. NATIONAL MERIT SCHOLAR SEMI-FINALIST RECOGNITION</b>	6
<b>4. INTERMISSION</b> <i>The remainder of the meeting will commence at 7:00 p.m. or shortly thereafter.</i>	
<b>5. APPROVAL OF AGENDA AND CONSENT AGENDA ITEMS</b>	8
Consent Agenda items are considered to be routine in nature and will be enacted by one motion. There will be no separate discussion of these items unless a Board member or citizen so requests, in which event the item will be removed as a Consent Agenda item and addressed. Consent Agenda items are as follows:	
A. Approval of Minutes	9
1. 10.27.2014 Special	10
2. 10.28.2014 Closed	11
3. 11.10.2014 Regular Meeting	12
4. 11.24.2014 Special	16
B. Finance and Business Recommendations	
1. Monthly Reports	17
C. Human Resource Recommendations	
1. Monthly Recommendations	33
D. Approval of the World's Best Workforce Comprehensive, Long-term Strategic Plan	35
E. Authorization of Issuance of Individual Procurement Cards (P-Card)	41
<b>6. STUDENT CURRICULUM PRESENTATION</b>	
A. West Middle School	42
Susan Sommerfeld, Jim Bollum, Kit Swanson, John Lunseth, Carole Tubesing	
<b>7. RECOGNITIONS</b>	
A. Retiree Recognition	51
B. November Employee of the Month - Joel Martin	52
C. December Employee of the Month	54
<b>8. REPORTS FROM ORGANIZATIONS</b>	
A. Wayzata High School Student Council Representative	
<b>9. SUPERINTENDENT'S REPORTS AND RECOMMENDATIONS</b>	
A. Superintendent	
B. Teaching and Learning	
C. Finance and Business Services	
1. Monthly Financial Reports	55
2. Truth in Taxation	74
a. Audience Time To Speak	
3. Approve Levy Limitation and Certification 2015	89
D. Human Resource Services	
<b>10. OTHER BOARD ACTION</b>	
<b>11. BOARD REPORTS</b>	91

12. **AUDIENCE OPPORTUNITY TO ADDRESS SCHOOL BOARD** 92  
This section of the agenda provides an opportunity for those who have called and placed their names on the list and for members of the audience to address the School Board.

13. **ADJOURN** 93

# WAYZATA PUBLIC SCHOOLS

Independent School District 284  
Wayzata, Minnesota

## MISSION

### **Our Core Purpose:**

The mission of Wayzata Public Schools is to ensure a world-class education that prepares each and every student to thrive today and excel tomorrow in an ever-changing global society.

## VISION

### **What We Intend to Create and Experience:**

The vision of Wayzata Public Schools is to be a model of excellence where all students discover their unique talents, develop a love and tenacity for learning and demonstrate confidence and capacity for success through:

### **Exceptional Student Learning, Experiences and Relationships:**

- High achievement by each and every student—no exceptions, no excuses;
- Content-rich, rigorous and personalized education;
- Meaningful relationships with teachers, staff, mentors and peers in a welcoming, nurturing and safe environment.

### **Community Trust, Confidence and Partnership:**

- Comprehensive learning opportunities meeting diverse learner needs and community aspirations;
- Committed to being the first choice for students and families;
- Maintaining the highest levels of satisfaction and pride by staff, parents and community.

### **Operational Excellence:**

- Attraction, development and retention of exemplary, creative and valued employees;
- Effective and efficient use of time and human, financial and physical resources;
- Culture of continuous improvement and responsive innovation;
- High performing district governance, management and partnerships.

**WAYZATA PUBLIC SCHOOLS**  
Independent School District 284  
Wayzata, Minnesota

**BOARD OF EDUCATION**  
Regular Meeting – December 8, 2014

**AGENDA SECTION:** 1. Call to Order

**ITEM:** Call to Order/Roll Call Attendance

**COMMENTS BY:** Linda Cohen, Board Chair

School Board Chair, Ms. Linda Cohen, will call the meeting to order.

	<u>Present</u>	<u>Absent</u>
Ms. Linda A. Cohen	_____	_____
Ms. Andrea Cuene	_____	_____
Ms. Sarah Johansen	_____	_____
Mr. Jay A. Hesby	_____	_____
Mr. Chris McCullough	_____	_____
Ms. Carter G. Peterson	_____	_____
Ms. Cheryl Polzin	_____	_____
Dr. Chace B. Anderson, Ex Officio	_____	_____

**WAYZATA PUBLIC SCHOOLS**  
Independent School District 284  
Wayzata, Minnesota

**BOARD OF EDUCATION**  
Regular Meeting – December 8, 2014

**AGENDA SECTION: PERFECT ACT SCORES**

**COMMENTS BY: Superintendent Chace B. Anderson**

**A number of WHS students have earned perfect scores on the SAT and ACT exams. Tonight we will honor two of those students who have earned perfect scores of 36 on the 2014 ACT exam: senior Leighton Zhao and junior Michael Cai.**

**Leighton Zhao** said he took the Princeton Review Course in advance and then took several practice tests on his own the week prior to sitting the June 2014 exam. He said some of his courses at Wayzata High School helped prepare him for the exam by working on vocabulary and math. Currently Zhao is taking Advanced Placement (AP) Biology, AP Literature, AP Statistics and AP American Government. Upon graduation he will have taken 17 AP courses at WHS.

Outside of academics, Zhao is on the Science Olympiad Team, Math Team, Destination ImagiNation and plays the clarinet in the WHS Wind Ensemble. He also volunteers at the Chinese School on weekends at Central Middle School and is a tutor at Project For Pride and Living in New Hope.

Zhao said he is currently applying to colleges but is has not decided on his top three choices. He is still undecided for his future major but is interested in math and science.

**Michael Cai** said he prepared for the ACT by taking the Princeton Review Course. He said his some of his normal course load at WHS also helped prepare him for the exam. He is currently enrolled in AP Physics, AP Chemistry, AP U.S. History, AP statistics and AP Composition. Next semester he will be enrolled in Spanish 4, Organic Chemistry and Human Anatomy.

Outside of academics, Cai is on the Quiz Bowl Team, the WHS Cross Country Team, and the WHS Track Team. He plays piano in private lessons and volunteers at the Plymouth Library and Maple Grove Hospital.

On a recent trip this summer, Cai said he had the opportunity to visit several east coast schools and is interested in attending college on either the east or west coast, but the University of Minnesota is also an option. He is interested in pursuing a degree in chemical engineering.

**WAYZATA PUBLIC SCHOOLS**

Independent School District 284  
Wayzata, Minnesota

**BOARD OF EDUCATION**

Regular Meeting – December 8, 2014

**AGENDA SECTION: NATIONAL MERIT SCHOLARSHIP SEMI-FINALISTS**

**COMMENTS BY: Superintendent Chace B. Anderson**

Wayzata High School has 20 seniors who have been selected as 2014-2015 National Merit Scholarship semifinalists. We are very pleased that Wayzata Public Schools students do such a commendable job on these highly competitive national tests year after year. It speaks very positively about their motivation and aptitude and highlights the excellent work Wayzata Public Schools' teachers and support staff do in providing a solid learning experience for such achievement. Through this recognition event, we are not only honoring these scholars, but the elementary, middle and high school teachers who the students have selected as having "had the most positive and formative influence" on them as learners in Wayzata Public Schools. Today the students will be awarding their esteemed teachers with an empty engraved frame as a token of their appreciation, which will later be filled with photographs of the student and teacher that we've taken this evening!

Sue Iverson, a Vision 21 teacher at WHS, will introduce the semifinalists. As the students are introduced, they will in turn introduce their choice of elementary, middle or high school "Esteemed Teachers."

The following students are 2013-14 National Merit Scholarship Semifinalists:

Jakob Cornell

Nicholas Lawrence

Luke Soucy

Neha Potlapalli

Orien Zeng

Kaylyn Billmeyer

Michelle Qian

Alan Chiang

Mason Zhang

Jason Dong

Henry Lee

Bella Roussanov

Leighton Zhao

Changyeon Park

Sruti Paladugu

Thomas Zhang

Katherine Gehling

Jenica Zhong

Michael Ansinha

Shravankumar Panneerselvam

The esteemed teachers chosen by the students are:

Adam Hegg

Brennan Jones

Curt Wyffels

Daniel Roth

David Motes

Jeff Dahl

Jeff Prondzinski

John Poeschl

Mark Johnston

Mark Sullwold

Paula Von Eschen

Steve O'Neill

Amanda Laden

Barb Abramson

Amy Belikoff

Clarice Hagen

Joan Campbell-Pyzdrowski

Jodi Grack

Julie Light

Karen Ward-Elser

Kathryn Kottke

Kristin Baldwin

Meaghan Decker

Paula Von Eschen

Sheila Peterson

Sue Bradsher

Tika Kude

**WAYZATA PUBLIC SCHOOLS**  
Independent School District 284  
Wayzata, Minnesota

**BOARD OF EDUCATION**  
Regular Meeting – December 8, 2014

**AGENDA SECTION:** 5. Approval of Agenda and Consent Agenda Items

**ITEM:** \_\_\_\_\_

**COMMENTS BY:** Linda Cohen, Board Chair

Consent Agenda items are considered to be routine in nature and will be enacted by one motion. There will be no separate discussion of these items unless a Board member or citizen so requests, in which event, the item will be removed as a Consent Agenda item and addressed. Consent Agenda items are as follows:

- A. Approval of Minutes**
- B. Finance and Business Recommendations**
- C. Human Resource Recommendations**
- D. Approval of the World's Best Workforce Comprehensive, Long-term Strategic Plan**
- E. Authorization of Issuance of Individual Procurement Cards (P-Card)**

**RECOMMENDED ACTION:** Approve the agenda as presented and the Consent Agenda items.

Motion by: \_\_\_\_\_ ROLL CALL Passed \_\_\_\_\_

Second by: \_\_\_\_\_ Failed \_\_\_\_\_

Abstentions: \_\_\_\_\_

**WAYZATA PUBLIC SCHOOLS**  
Independent School District 284  
Wayzata, Minnesota

**BOARD OF EDUCATION**  
Regular Meeting – December 8, 2014

**AGENDA SECTION:** 5. Approval of Minutes

**ITEM:** A. Approval of Minutes

**COMMENTS BY:** Cheryl Polzin, Board Clerk

- 10.27.2014 Special Meeting Minutes
- 10.28.2014 Closed Board Meeting Minutes
- 11.10.2014 Regular Board Meeting Minutes
- 11.24.2014 Special Meeting Minutes

**RECOMMENDED ACTION:** Approve the minutes of the Board meetings as listed.

Motion by: \_\_\_\_\_ Yes \_\_\_\_\_ Passed \_\_\_\_\_

Second by: \_\_\_\_\_ No \_\_\_\_\_ Failed \_\_\_\_\_

Abstentions: \_\_\_\_\_

# Minutes of Special

## The Board of Trustees Wayzata Public Schools

---

A Special of the Board of Trustees of Wayzata Public Schools was held Monday, October 27, 2014, beginning at 4:00 PM in the District Administration Building.

### 1. Call to Order & Roll Call

*The meeting was called to order by Linda Cohen, Board Chair. Cheryl Polzin, Board Clerk, called the roll. The following School Board members were present: Linda Cohen, Andrea Cuene, Jay Hesby, Sarah Johansen, Carter Peterson, Chris McCullough, Cheryl Polzin., and Chace B. Anderson, Superintendent of Schools and ex officio member of the School Board.*

### 2. Human Resource Services

#### A. HR Recommendations

*Annie Doughty, Executive Director of Human Resource Services, introduced the Human Resource Recommendations. Typically these items are handled in a Regular Board Meeting, but as a special meeting was called to handle a financial matter, Human Resource Services added several contract changes to the Board Special Meeting. Jay Hesby moved to approve the recommendations, and Chris McCullough seconded the motion. The motion passed unanimously.*

### 3. Finance and Business

#### A. Resolution to Acquire Land for Public Purpose

*Jim Westrum, Executive Director of Finance and Business, introduced the resolution to acquire property for the purposes of operating Birchview Elementary School. Carter Peterson moved to waive the reading and approve the resolution. The motion was seconded by Jay Hesby, and the motion passed unanimously with a roll call vote.*

### 4. Adjourn

*Board Chair Linda Cohen recommended the meeting adjourn, and the motion was approved unanimously. The meeting was adjourned 4:11 p.m.*

# Minutes of Closed Meeting

## The Board of Education Wayzata Public Schools

---

A Closed Meeting of the Board of Education of Wayzata Public Schools was held Tuesday, October 28 2014, beginning at 5:00 PM in the District Administration Building.

**1. Call to Order & Roll Call**

*The meeting was called to order by Linda Cohen, Board Chair. Cheryl Polzin, Board Clerk, called the roll. The following School Board members were present: Linda Cohen, Jay Hesby, Sarah Johansen, Chris McCullough, Carter Peterson, Cheryl Polzin, and Dr. Chace B. Anderson, Superintendent of Schools and Ex Officio member of the School Board. Andrea Cuene, Board member, joined the meeting at 5:07 p.m.*

**2. Administration**

*Attorney-Client privileged discussion, relating to possible litigation.*

**3. Adjourn**

*A motion to adjourn was made by Carter Peterson. The motion carried 7-0 and the meeting was adjourned at 6:10 p.m.*

# Minutes of Regular Meeting

## The Board of Education Wayzata Public Schools

---

A Regular meeting of the Board of Education of Wayzata Public Schools was held Monday, November 10, 2014, beginning at 6:00 PM in the Wayzata City Hall, 600 Rice Street, Wayzata.

### 1. CALL TO ORDER/ROLL CALL

*The meeting was called to order by Linda Cohen, Board Chair. Cheryl Polzin, Board Clerk, called the roll. The following School Board members were present: Linda Cohen, Andrea Cuene, Jay Hesby, Sarah Johansen, Carter Peterson, Chris McCullough, Cheryl Polzin., and Chace B. Anderson, Superintendent of Schools and ex officio member of the School Board.*

### 2. APPROVAL OF AGENDA AND CONSENT AGENDA ITEMS

*Linda Cohen, Board Chair, recommended a change to the agenda. Due to inclement weather, the Chair recommended that the following be stricken from the agenda: 4-A November Employee of the Month, 5 Reports from Organizations, and 11 and 12, Perfect ACT and National Merit Scholar recognitions. These items will be moved to the December 8<sup>th</sup> Regular meeting. Andrea Cuene moved to adopt the agenda as amended and to approve the consent agenda items as listed. Carter Peterson seconded the motion, and it carried unanimously with a roll call vote.*

#### A. Approval of Minutes

*Approved the minutes of the 9.08.2014 Regular Meeting, and the 10.13.2014 Regular Meeting.*

#### B. Finance and Business Recommendations

##### 1. Monthly Reports

*Approved the following disbursements:*

<i>General Checking Account for October 2014</i>	<i>\$ 5,055,293.30</i>
<i>Wire Transfer for October 2014</i>	<i>\$ 9,047,657</i>

<b>AMOUNT</b>	<b>DONATED BY</b>	<b>PURPOSE</b>
\$100.00	Krishnamoorthy Ramaswamy	Educ Matching Gift Program
\$100.00	Kottemann Orthodontics	field trip scholarships & supplies
\$100.00	Kottemann Orthodontics	field trip scholarships & supplies
\$100.00	Kottemann Orthodontics	field trip scholarships & supplies
\$400.00	Waytonka Club	expense of health supplies
\$422.00	OW PTA	field trip scholarships
\$500.00	BV PTA	District liaison
\$500.00	PC PTO	District liaison
\$500.00	CMS PTA	District liaison
\$500.00	WHS PTO	District liaison
\$3,500.00	KL PTA	Field trip busing
\$18,086.98	Target	Take charge of education-WHS

C. Human Resource Recommendations

1. Monthly Recommendations

*Approved the Human Resource recommendations as follows:*

Employment

**Juli Anderson**                      3.5 Hour Culinary Express                      Greenwood  
New Position

**Kim Bohlke**                              3 Hour Paraprofessional                      Oakwood  
New Position

**Jill Brown**                              2.5 Hour Paraprofessional                      Greenwood  
Transfer

**Stacy Herron**                          6 Hour Paraprofessional                      High School  
Transfer

**Martha Long**                          1.0 School Psychologist (LTR)                      District  
Leave of Absence

**Brandy McCoy**                      3.25 Home Base Assistant                      Oakwood  
Resignation

**Carolyn Rucke Williams**      1.0 Social Studies Teacher      (14-15 only) High School  
Resignation

**Lory Ullom**                              2.5 Hour Paraprofessional                      Birchview  
Transfer

Leave of Absence

**Kristin Corens**, East Middle Science Teacher, has requested a leave of absence from March 23-27, 2015 using two personal days and three days without pay.

**Jill Gregory**, Sunset Hill Art Teacher, has requested a day without pay on January 20, 2015.

**David Jackson**, Birchview 5<sup>th</sup> Grade Teacher, has requested a leave of absence from January 5-9, 2015 using two personal days and three days without pay.

**Ananda Lemon**, Oakwood 1<sup>st</sup> Grade Teacher, has requested a leave of absence beginning approximately February 14 through April 10, 2014.

**Anna Magnuson**, Oakwood 2<sup>nd</sup> Grade Teacher, has requested a leave of absence beginning approximately February 19 through May 15, 2014.

**Madeline Ray**, Greenwood 5<sup>th</sup> Grade Teacher, has requested a leave of absence beginning approximately March 27, 2015 through the end of the 2014-2015 school year.

*Andrea Wachholz, Birchview and Plymouth Creek Special Education Teacher, has requested a leave of absence from January 6-8, 2015 using one personal day and two days without pay.*

*Alison Wobschall, Partners in Prevention Coordinator, has requested a leave of absence beginning approximately January 12 through April 3, 2014.*

Resignation

*Teresa Frost, Oakwood Paraprofessional, has submitted her resignation effective November 25, 2014.*

*Lauren Motzko, High School Paraprofessional, has submitted her resignation effective October 28, 2014.*

*Mila Nazarenko, East Middle Paraprofessional, has submitted her resignation effective November 7, 2014.*

*John Sucansky, Communications Specialist, has submitted his resignation effective November 30, 2014.*

**3. STUDENT CURRICULUM PRESENTATION**

*No presentation*

**4. RECOGNITIONS**

- A. November Employee of the Month  
*Postponed.*

**5. REPORTS FROM ORGANIZATIONS**

- A. Wayzata High School Student Council Representative.  
*Canceled due to inclement weather.*

**6. SUPERINTENDENT'S REPORTS AND RECOMMENDATIONS**

- A. Superintendent

- B. Teaching and Learning

1. Policies for First Reading

- a. Policy 605 Religion in Schools

- b. Policy 607 School Calendar

*Superintendent Anderson made a few comments about the policies and the changes that have been made to update these policies. Jay Hesby made a motion to waive the reading of the policies and move them both to the December work session for further discussion. Sarah Johansen seconded the motion, and it carried unanimously.*

2. Policies for Second Reading and Approval

- a. Policy 503 - Compulsory Attendance

- b. Policy 506 - Student Dress Code

- c. Policy 532 - Equal Educational Opportunity

d. Policy 519 – Weapons

*Jill Johnson, Executive Director of Teaching and Learning, introduced the policies and gave a brief overview of the changes that were made per Board discussion at a work session. Carter Petersen made a motion to waive reading of the policies and to approve them. Jay Hesby seconded the motion, and it carried unanimously.*

C. Finance and Business Services

1. Monthly Financial Reports

2. Comprehensive Annual Financial Report for Fiscal Year Ending June 30, 2014

*Jim Westrum, Executive Director of Finance and Business, introduced the monthly financial reports and the Comprehensive Annual Financial Report per recommendation from the auditors as discussed in a Board work session. Carter Petersen made a motion to approve the report, and Chris McCullough seconded the motion. The motion carried unanimously.*

3. Resolution Awarding The Sale, Determining The Form And Details, Authorizing The Execution, Delivery, And Registration, And Providing For The Payment Of General Obligation School Building Refunding Bonds, Series 2014c

*Jim Westrum introduced the resolution, which was approved in the October 13<sup>th</sup> School Board Meeting. This resolution provides the district the ability to work its financial advisors Ehlers and Associates, to take competitive bids and work to refinance the existing debt service. Jay Hesby made a motion to waive the reading and approve the resolution. Carter Peterson seconded the motion and it carried unanimously via a roll call vote.*

D. Human Resource Services

**7. OTHER BOARD ACTION**

**8. BOARD REPORTS**

**9. AUDIENCE OPPORTUNITY TO ADDRESS SCHOOL BOARD**

*No audience members wished to address the Board.*

**10. INTERMISSION**

~~The remainder of the agenda shall commence at 7:00 pm~~

**11. PERFECT ACT**

*Postponed.*

**12. NATIONAL MERIT SCHOLARSHIP SEMI-FINALISTS AND ESTEEMED TEACHERS**

*Postponed.*

**13. ADJOURN**

*Carter Peterson moved to adjourn the meeting. The motion carried, and the meeting was adjourned at 6:14 pm.*

# Minutes of Special Meeting

## The Board of Education Wayzata Public Schools

---

A Special Meeting of the Board of Education of Wayzata Public Schools was held Monday, November 24, 2014, beginning at 4:00 PM in the District Administration Building.

### 1. Call to Order & Roll Call

*The meeting was called to order by Linda Cohen, Board Chair. Cheryl Polzin, Board Clerk, called the roll. The following School Board members were present: Linda Cohen, Andrea Cuene, Jay Hesby, Sarah Johansen, Carter Peterson, Chris McCullough, Cheryl Polzin., and Chace B. Anderson, Superintendent of Schools and ex officio member of the School Board.*

### 2. Administration

#### A. Board Meeting Time Changes

*Linda Cohen, Board Chair, recommended that the December 1st Board work session move to a start time of 5:00 pm to better accommodate Board member schedules, and administration recommended the December 8th Regular meeting begin at 5:30 pm to accommodate items that were posted in the November 10<sup>th</sup> Regular meeting due to inclement weather. Carter Peterson moved to approve both time changes, and Jay Hesby seconded the motion. It carried with a unanimous vote.*

### 3. Human Resource Services

#### A. Human Resource Recommendations

*Annie Doughty, Executive Director of Human Resource Services introduced the HR contract and employment recommendations. Chris McCullough made a motion to approve the recommended changes, and Andrea Cuene seconded the motion. The motion carried unanimously.*

### 4. Finance and Business

#### A. Resolution Authorizing the Superintendent and Executive Director of Finance and Business Services to Execute A Purchase Agreement for Sale of Land

#### B. Resolution Authorizing the Superintendent and Executive Director of Finance and Business Services to

#### Execute A Purchase Agreement for Purchase of Land

*Jim Westrum, Executive Director of Finance and Business, presented the resolutions to allow the superintendent and executive director of finance and business to approve a sale of land and purchase of land for the elementary school. These agreements will not be fully binding until ratified in a Board meeting, but allows the district to begin the process. Carter Peterson moved to waive the reading of the resolutions and to combine them into one vote. Sarah Johansen seconded the motion, and it carried unanimously with a roll call vote.*

### 5. Adjourn

*Chris McCullough motioned to adjourn the meeting. The motion carried unanimously and the meeting was adjourned at 4:06 pm.*

**WAYZATA PUBLIC SCHOOLS**  
Independent School District 284  
Wayzata, Minnesota

**BOARD OF EDUCATION**  
Regular Meeting – December 8, 2014

**AGENDA SECTION: APPROVAL OF AGENDA AND CONSENT AGENDA ITEMS**

**ITEM: Finance & Business Recommendations**

**COMMENTS BY: Jim Westrum, Executive Director of Finance and Business**

**Finance and Business Recommendations**

These routine items are presented for Board of Education review and approval through a single consent motion.

**Monthly Bills**

The attached lists itemize claims for which the Board of Education is requested to authorize payment.

General Checking Account for November 2014	\$1,765,890
Wire Transfer for October 2014	\$10,322,780

**RECOMMENDED ACTION:** Authorize payment as recommended.

**Acknowledgement Of Contributions**

Minn. Stat. 465.03 - GIFTS TO MUNICIPALITIES.

“Any city, county, school district or town may accept a grant or devise of real or personal property and maintain such property for the benefit of its citizens in accordance with the terms prescribed by the donor. Nothing herein shall authorize such acceptance or use for religious or sectarian purposes. Every such acceptance shall be by resolution of the governing body adopted by a two-thirds majority of its members, expressing such terms in full.”

**Monthly Donations**

The attached lists donations for which the Board of Education is requested to accept.

Donations received in November 2014	\$20,870.23
-------------------------------------	-------------

<b>AMOUNT</b>	<b>DONATED BY</b>	<b>PURPOSE</b>
\$67.34	Wells Fargo -community support -GW	Scholarships
\$97.00	GW PTA	Veterans Day assembly
\$200.00	PC PTO	Office supplies
\$228.64	Wells Fargo -matching donation program-SSH	Student activity funds
\$400.00	PC PTO	Principal awards
\$500.00	PC PTO	Scholarships
\$1,061.25	OW PTA	Computer lab
\$2,644.00	PC PTO	Payment to PCE sponsored by PTO
\$3,000.00	GW PTA	Support GW media center
\$5,172.00	GW PTA	Support curriculum through filed trip contribution
\$7,500.00	PC PTO	Field trips

**RECOMMENDED ACTION:** That the School Board approves the following checking account and wire transfer payments and accepts with appreciation the following gifts, which are in compliance with current District policy and guidelines:

Motion by: \_\_\_\_\_ Yes \_\_\_\_\_ Passed \_\_\_\_\_

Second by: \_\_\_\_\_ No \_\_\_\_\_ Failed \_\_\_\_\_

Abstentions: \_\_\_\_\_

**WAYZATA PUBLIC SCHOOLS**  
**MONTHLY CHECK DISBURSEMENT SUMMARY**  
**NOVEMBER 2014**

CHECK	VENDOR	DESCRIPTION	DATE	AMOUNT
388800	UPPER LAKE FOODS	GROCERIES	11/25/14	173,346.66
388670	INTERMEDIATE DIST 287	DEC 14 PROVIDED SERVICES	11/20/14	149,139.00
388511	XCEL ENERGY	Monthly Energy	11/11/14	131,881.63
388434	BRENNAN CONSTRUCTION OF MN INC	BV-REPLACE CORRIDOR DR 9/30/14	11/11/14	91,931.50
388534	MOODLEROOMS	ANNUAL RENEWAL	11/13/14	66,000.00
388567	WAYZATA EDUCATION ASSN	Payroll accrual	11/14/14	57,393.97
388591	JAMF SOFTWARE, LLC	Caspe Suite for iOS and Mac	11/18/14	57,040.00
388648	CLIFTONLARSONALLEN LLP	SERVICE THRU 10/24/14, AUDIT 6/30/14	11/20/14	44,648.90
388808	WORKS COMPUTING	Net App	11/25/14	25,125.32
388713	AGROPUR INC DIVISION OF NATREL USA	DAIRY PRODUCTS	11/25/14	25,087.26
388398	MN DEPT OF EDUCATION	FY15 MCIS	11/06/14	24,375.00
388803	US ENERGY SERVICES, INC	Oct-14	11/25/14	22,652.14
701335	BOILER SERVICES, INC	REPLACE 2 WATER HEATERS	11/07/14	20,700.00
388509	WEST METRO LEARNING CONNECTIONS	Special Pupil NN	11/11/14	20,526.00
388406	PAMS LUNCHROOM LLC	SERVICE-10/14	11/06/14	20,001.15
388319	NEW LOOK CONTRACTING INC	CMS-SERVICES	11/04/14	19,690.00
388294	FIRST STUDENT, INC	TRANSPORTATION	11/04/14	16,886.71
388362	DIVERSIFIED SNACK DISTRIBUTION INC	GROCERIES	11/06/14	16,647.63
388599	LIFE INSURANCE CO OF NORTH AMERICA	Payroll accrual	11/18/14	16,557.94
388782	CITY OF PLYMOUTH - FINANCE DEPT	SH-WATER	11/25/14	15,313.97
388565	SCHOOL SERVICE EMPLOYEES	Payroll accrual	11/14/14	14,789.87
388630	WEST METRO LEARNING CONNECTIONS	SP PUPIL NN 10/13-10/24	11/18/14	14,410.00
701381	SCHOLASTIC INC	MATH PD-WHS	11/21/14	14,310.00
388276	BULLIS INSURANCE AGENCY LLC	BOILER & MACH POL#BEP2666244	11/04/14	13,700.00
388734	DIVERSIFIED SNACK DISTRIBUTION INC	GROCERIES	11/25/14	12,383.92
388603	MINNETONKA PLUMBING INC	OW-WATER SOFTENER	11/18/14	12,103.00
388451	FOLLETT SCHOOL SOLUTIONS INC	KL-Math Journals for Grades K - 5	11/11/14	11,655.60
388414	SYNERGIZE SPORTS MARKETING &	EMS-CONCERT SHIRTS	11/06/14	11,523.00
388363	DUFFEY PAPER, C. J.	PAPER-INVENTORY-WHITE	11/06/14	11,419.20
388348	BERGIN FRUIT AND NUT COMPANY	GROCERIES 10/14	11/06/14	11,215.15
388530	LOFFLER COMPANIES INC	WPS CANON IR3235i COPIER BLANKET	11/13/14	11,098.42
701341	TRIO SUPPLY CO	CULINARY SUPPLIES	11/07/14	10,435.34
388665	HILLYARD INC MINNEAPOLIS	CMS-SUPPLIES	11/20/14	10,291.28
388370	FOLLETT SCHOOL SOLUTIONS INC	BV-14-15 EVERYDAY MATH BKS	11/06/14	10,265.70
701379	INSPEC, INC.	HIGH SCHOOL ATHLETIC TRACK IMPROVEMENTS CONST. ADMIN.	11/21/14	10,152.90
388369	FOLLETT SCHOOL SOLUTIONS INC	MATH BOOKS	11/06/14	10,048.00
388279	CUSTOM DRYWALL, INC	WHS CAFETERIA MODIFICATION - METAL STUD/DRYWALL	11/04/14	9,850.00
701333	ANCHOR PAPER COMPANY	INVENTORY-COLORED PAPER	11/07/14	9,704.20
388786	REPUBLIC SERVICES #894	SERVICES-10/14	11/25/14	9,443.21
388368	FOLLETT SCHOOL SOLUTIONS INC	SH-Everyday Math Journals	11/06/14	9,184.50
388719	BERGIN FRUIT AND NUT COMPANY	GROCERIES 11/14	11/25/14	8,439.31
388660	HANUS ENTERPRISES,LLP	bus garage rent	11/20/14	8,318.08
388632	WOLD ARCHITECTS AND ENGINEERS	BV-REPLACE ES WALL PANEL #132270	11/18/14	8,163.59
388742	FLAGSHIP RECREATION LLC	MDE#32496 GW PLYGRD PARTS	11/25/14	7,986.09
388540	PSAT/NMSQT	HS-650 tests CODE#242650	11/13/14	7,826.00
388361	DENNY'S 5TH AVENUE BAKERY	GROCERIES	11/06/14	7,340.29
388328	TERRELL DANIELS INC	COMM-PROF SERV-CICC 6/12-10/20	11/04/14	7,338.12
388624	TARGET COMMERCIAL INTERIORS	GW-MINI BLINDS	11/18/14	7,270.00
388316	MOTG (MN OFFICE TECHNOLOGY GRP)	WPS PRODUCTION MAINTENANCE BLANKET	11/04/14	7,262.39
388282	CUSTOM EDUCATION SOLUTIONS	CUSTOM ED SOLUTIONS - GRADE LEVEL BOOKS	11/04/14	7,049.72
701338	INSPEC, INC.	WAYZATA SCHOOLS 2014 ROOFING OBSERVATION	11/07/14	6,982.91
388423	AECOM TECHNICAL SERVICES INC	CMS limited site investigation PROJ#60330920	11/11/14	6,955.16
388419	UNIVERSAL ATHLETIC SERVICE INC	EMS-PE APPAREL	11/06/14	6,764.00
388518	CENTURY LINK BUSINESS SERVICES	OCT INTERNET	11/13/14	6,500.00
388785	PRODOCON INC	EMS-SUPPLIES	11/25/14	6,448.02
701340	JOSTENS, INC	YEARBOOK DEPOSIT	11/07/14	6,400.00
388300	ISD #276-MINNETONKA SCHOOLS	S & B DRUG FREE DIRECTOR	11/04/14	6,257.45

388607	PEDIATRIC HOME SERVICE	NURSING SERVICES 10/6-10/10/14	11/18/14	6,187.50
388403	MOTG (MN OFFICE TECHNOLOGY GRP)	MONTHLY PRINTER MAINTENANCE	11/06/14	6,143.04
388433	BREDEMUS HARDWARE CO, INC	Dome-rebuilt doors	11/11/14	6,100.00
388482	PARALLEL TECHNOLOGIES INC	OW video	11/11/14	6,024.56
388485	CITY OF PLYMOUTH - FINANCE DEPT	FUEL USAGE-SEPT 14	11/11/14	5,470.75
388570	ART SPARK LLC	CED-ART CAMP 7/7-7/29	11/18/14	5,460.00
388612	RELATE COUNSELING CTR	MH WHS 10/14	11/18/14	5,441.25
388741	FIRST STUDENT, INC	TRANSPORTATION	11/25/14	5,114.81
388486	PLYMOUTH PRESBYTERIAN CHURCH	RENT 11/14 & REKEYING	11/11/14	5,065.00
388676	LIFETIME FITNESS, INC.	Lifetime fitness lockerroom rental 12/14	11/20/14	4,919.30
388778	CITY OF PLYMOUTH - FINANCE DEPT	FUEL USAGE-SEPT 14	11/25/14	4,553.86
388733	DENNY'S 5TH AVENUE BAKERY	GROCERIES	11/25/14	4,542.42
388334	XEROX FINANCIAL SERVICES	WPS PRODUCTION COPIER BLANKET	11/04/14	4,520.00
388809	XEROX FINANCIAL SERVICES	WPS PRODUCTION COPIER BLANKET	11/25/14	4,520.00
388342	ANOKA-RAMSEY COMMUNITY COLLEGE	BUS1113,CNET 1201,CNET2101	11/06/14	4,500.00
388775	MULCAHY CO, B. J.	WMS-HEATING PUMP	11/25/14	4,463.80
388500	TRUSTED EMPLOYEES	background cks	11/11/14	4,433.00
388510	WORKS COMPUTING	HP Maintenance Support for C7000 and Blades	11/11/14	4,389.18
388680	MILLER 32ND AVE, LLC	Miller ave rent	11/20/14	4,224.01
388553	TEAM PERSONNEL SERVICES INC	temp staff- dome up	11/13/14	4,159.44
388331	TRUST POINT/FBO WAYZATA SCHOOLS	ADM FEES QTR 1-3, 2014	11/04/14	4,118.54
701339	INSPEC, INC.	WAYZATA SCHOOLS ROOF MANAGEMENT 2014	11/07/14	4,000.00
388522	DKI OF HENNEPIN COUNTY INC	CHICKEN HEARTED FOX CLASS GL,OW, GW	11/13/14	3,870.00
388367	FOLLETT SCHOOL SOLUTIONS INC	Kindergarten Materials	11/06/14	3,713.29
388498	SUNDE LAND SURVEYING, LLC	SH-site survey for plan developmnt	11/11/14	3,600.00
388608	PHASOR ELECTRIC CO	CMS-LED WALL PACKS	11/18/14	3,446.15
388340	ADVANCE PIERRE FOODS	GROCERIES CUST #602590	11/06/14	3,431.68
701383	TIERNEY BROTHERS, INC.	PROJECTORS & SMARTBOOKS	11/21/14	3,176.00
388459	H & B SPECIALIZED PRODUCTS	KL-Gym wall pads	11/11/14	3,067.00
388626	TEENS ALONE	COUNSELING 7/1/14-6/30/15	11/18/14	3,000.00
388532	MCGRAW HILL SCHOOL EDUCATION	8th Grade Health Textbooks	11/13/14	2,959.96
701373	TIERNEY BROTHERS, INC.	PROJECTORS-REPLACEMENTS	11/13/14	2,934.00
388578	CORPORATE HEALTH SYSTEMS INC	FLEX PROCESS-11/14 & COBRA	11/18/14	2,911.11
388729	COMMERCIAL DOOR SYSTEMS, INC	CSF-STOCK SUPPLIES	11/25/14	2,881.20
388356	COLLEGE TOWN PIZZA INC #1966	PIZZA	11/06/14	2,863.00
388572	BRAUN INTEREC CORP	CSF ADD'N-PROF SERV THRU 6/13/14	11/18/14	2,786.75
388404	NICOL, BARBARA	PROF SERV 9/14	11/06/14	2,750.00
388347	BAYFIELD FRUIT CO	GROCERIES	11/06/14	2,726.50
388613	REX MILLS LLC	STATIONERY & ENVELOPES	11/18/14	2,700.00
388488	RETROFIT COMPANIES INC	MDE#32480 GLK HAZ WASTE RECYCLE	11/11/14	2,692.36
388364	DVM PIZZA, INC	PIZZA	11/06/14	2,689.50
388751	HI-TECH REFRIGERATION	CMS SERVICE	11/25/14	2,664.45
388543	RAV TECHNOLOGIES, INC	WCC-CINSTALL	11/13/14	2,656.00
388389	LANDS BEST FOODS, LLC	GROCERIES	11/06/14	2,624.80
388579	DOUGHTY, JEFFREY	WARM UP JACKETS	11/18/14	2,597.00
388382	INNOVATIVE OFFICE SOLUTIONS, LLC	SH CAFETERIA TABLES	11/06/14	2,511.44
388376	HACKMAN CONSULTING GROUP	PC-STAFF TRAINING-PD	11/06/14	2,500.00
388794	STONEBROOKE EQUIPMENT INC	B&G SPREADER	11/25/14	2,479.00
388417	TROPICANA CHILLED DSD	BEVERAGES-CUST#124737	11/06/14	2,469.52
388375	H & B SPECIALIZED PRODUCTS	SH-BACKSTOP,BACKBRD & GOAL	11/06/14	2,454.45
701372	TIERNEY BROTHERS, INC.	PROJECTOR BULBS	11/13/14	2,430.00
388762	LANDS BEST FOODS, LLC	GROCERIES	11/25/14	2,398.60
701337	COMMERCIAL KITCHEN SERVICES	INV# 52113, 52882, 53031, & 53135	11/07/14	2,291.84
388693	RELATE COUNSELING CTR	HS-MH 10/14	11/20/14	2,280.00
388383	INSIGHTS NORTH AMERICA INC	UNITS & BLOCKS	11/06/14	2,268.39
388357	COLLEGE TOWN PIZZA INC #1937	PIZZA	11/06/14	2,220.00
388429	B & D PLUMBING, HEATING & AC INC	final HVAC contract SH	11/11/14	2,220.00
388724	CEL PUBLIC RELATIONS, INC.	PROF SERV 10/14	11/25/14	2,160.00
388321	CITY OF PLYMOUTH - FINANCE DEPT	SECURITY FOR FOOTBALL GAMES	11/04/14	2,073.54
388737	ECM PUBLISHERS, INC	COMMUNICATOR	11/25/14	2,038.24
388573	CEL PUBLIC RELATIONS, INC.	ALUMNI IMPLEMENTATION	11/18/14	2,000.00
388750	HERC-U-LIFT, INC	MDE#32475 16TH AVE-PPE SUPPLIES	11/25/14	1,998.46
388539	PRODOCON INC	EMS-SUPPLES	11/13/14	1,908.15
388796	TROPICANA CHILLED DSD	BEVERAGES-CUST#124737	11/25/14	1,907.44

141500708	SOMMERFELD, SUSAN	REIMBURSE	11/25/14	1,904.00
388439	COMMERCIAL DOOR SYSTEMS, INC	PC materials	11/11/14	1,796.37
388330	TIGER ATHLETICS INC	BARRE CLASS-LEASE LEVY	11/04/14	1,740.00
388307	MACKIN EDUCATIONAL RESOURCES	6th Grade - Novels	11/04/14	1,738.92
388745	GOPHER SPORT	PE CURRICULUM	11/25/14	1,699.13
388516	BRANDED CUSTOM SPORTSWEAR INC	HEATHERE ZIP T'S	11/13/14	1,697.14
388444	CTB, INC	CSF-9FT CABINET	11/11/14	1,672.00
388431	BLB CONSULTING LLC	REIT DRAWINGS 10/1-10/31	11/11/14	1,655.00
388625	TAYLOR MUSIC	MUSICAL INSTRUMENTS	11/18/14	1,646.00
388807	WESTSIDE WHOLESALE TIRE, INC	CSF-REPAIR 97 TRACTOR TIRE	11/25/14	1,613.04
388545	ROY C., INC	OW-AUTO DR EQUIPMENT	11/13/14	1,590.00
388736	DVM PIZZA, INC	PIZZA	11/25/14	1,568.50
388457	GRAINGER INC., W. W.	MDE#32475 KL PPE	11/11/14	1,529.65
388324	SAM'S CLUB	LAKER'S BREAKFAST NOOK SUPPLIES	11/04/14	1,508.02
388628	THINKING MAPS, INC	OW - TRAINING OF STAFF	11/18/14	1,500.00
388598	LIDS TEAM SPORTS	BB APPAREL	11/18/14	1,495.27
388714	AIR PURIFICATION & ENERGY	WMS-FILTERS	11/25/14	1,477.51
388505	WAYZATA, CITY OF	AD-WATER/SEWER	11/11/14	1,456.34
388590	ISD #270-HOPKINS SCHOOLS	rent for transportation office 11/14	11/18/14	1,431.79
388525	HI-TECH REFRIGERATION	OWHB-REPAIR REFRIG/FREEZER	11/13/14	1,403.63
388541	PUBLIC STORAGE	STORAGE 12/14	11/13/14	1,403.00
388489	REX MILLS LLC	FB YEARBKS	11/11/14	1,400.00
388354	BROWN'S ICE CREAM CO	GROCERIES	11/06/14	1,380.60
388327	STAPLES ADVANTAGE	PF-SUPPLIES	11/04/14	1,362.26
388675	LEARNING A-Z	RAZ-KIDS	11/20/14	1,359.20
388422	XCEL ENERGY	12945,12925 & 12955 16TH AVE N 9/27-10/27	11/06/14	1,349.02
388727	COLLEGE TOWN PIZZA INC #1966	PIZZA	11/25/14	1,344.00
388526	INTERPREP INC	BLAKE SCHOOL SPANISH PD	11/13/14	1,339.04
388753	HILL CO, ROBERT B.	GL-SALT	11/25/14	1,309.92
388773	MN PRINT MANAGEMENT	VISITOR BADGES	11/25/14	1,292.20
388728	COLLEGE TOWN PIZZA INC #1937	PIZZA	11/25/14	1,290.00
388453	GARVEY COMMUNICATIONS	SERVICE 10/4-31/2014	11/11/14	1,267.50
701342	MEI - MINNESOTA ELEVATOR INC	NOV SERVICES	11/13/14	1,240.64
388586	FIRST STUDENT, INC	HS-TRANSPORT	11/18/14	1,230.94
701334	ANCHOR PAPER COMPANY	INVENTORY-COLORED PAPER	11/07/14	1,198.20
388583	ELLER, JOHN	PROF SERV & MILEAGE	11/18/14	1,197.04
388793	STEP SAVER INC	HS-SALT	11/25/14	1,181.83
388610	PRIMEX WIRELESS INC	EMS-ROOF ANTENNA	11/18/14	1,176.92
388458	GRANT, DEBORAH	REIMBURSE	11/11/14	1,175.03
388765	LUBRICATION TECHNOLOGIES INC	BULK OIL	11/25/14	1,174.26
388580	DUGAN, JENNIFER	G SOCCER BANQUET	11/18/14	1,151.40
388535	MP NEXLEVEL LLC	LOCATES 10/14	11/13/14	1,150.58
388323	PROFESSIONAL INTERPRETING	INTERPRETER	11/04/14	1,139.20
388700	SPORRE, LAURIE	ATH-SERVICE & SUPPLIES	11/20/14	1,130.16
701371	TIERNEY BROTHERS, INC.	SMART BOARD REPLACEMENT	11/13/14	1,099.00
141500586	BOLLUM, JAMES	REIMBURSE	11/12/14	1,086.03
388506	WCEC INDUSTRIAL SERVICES	MDE#32480 3 FLAMMABLE WASTE TRAPS-SERVICE	11/11/14	1,059.50
388428	B & D PLUMBING, HEATING & AC INC	EMS-POOL RE-HANG PIPE 8/30/14 (FINAL)	11/11/14	1,043.70
701336	BOILER SERVICES, INC	SERVICES	11/07/14	1,035.55
388524	GOPHER STATE ONE-CALL	LOCATES-8/14	11/13/14	1,026.90
388622	STAPLES ADVANTAGE	SH-OFFICE SUPPLIES	11/18/14	1,019.70
388802	US SALT INC	DIST-SALT	11/25/14	1,007.17
388412	SPIRITWEAR USA	EMS-TP TSHIRTS	11/06/14	1,004.50
388577	CONGER, AMY	PARTNERSHIP FOR HEALTHY KIDS	11/18/14	1,000.00
388466	LEUNG, E	OCTOBER LEGAL SERVICES	11/11/14	999.00
388410	SCHMITT MUSIC CO	CMS-BAND MUSIC BKS	11/06/14	982.59
388310	MN DECA	CONF-HS 12/14	11/04/14	970.00
388702	TERRELL DANIELS INC	COMM-PROF SERV 9/23-11/18	11/20/14	960.00
141500547	CAMPBELL, CLAIRE	REIMBURSE	11/05/14	959.30
388556	XEROX FINANCIAL SERVICES	ECSE RM D116 & WELCOME CENTER COPIER BLANKET	11/13/14	933.96
388536	PACE ANALYTICAL	CMS-SOIL CORRECTIONS UNDER BOILER TESTING	11/13/14	933.50
388757	INTERSTATE POWER SYSTEMS	MDE#32491 BV-GENERATOR REPAIR	11/25/14	923.11
388747	HAWKINS INC	WMS-POOL SUPPLIES	11/25/14	886.49
388723	BRYAN ROCK PRODUCTS	CMS-ROCK	11/25/14	881.27

388484	PEDIATRIC HOME SERVICE	MA NURSE	11/11/14	881.25
388611	PROFESSIONAL INTERPRETING	SCHOOL HOME VISIT	11/18/14	879.10
388299	INNOVATIVE OFFICE SOLUTIONS	GL HALF MOON TABLES	11/04/14	878.32
388420	WAYZATA HIGH SCHOOL SENIOR CLASS	VOLUNTEER HRS	11/06/14	875.00
388432	BLICK ART MATERIALS	CMS-ART SUPPLIES	11/11/14	860.56
388418	TRUSTED EMPLOYEES	AD-PROF SERV	11/06/14	830.00
388313	MN STATE HIGH SCHOOL LEAGUE	STATE SOCCER TOURN	11/04/14	828.00
388448	EGAN COMPANY	OW & BV-REPAIR PA SYSTEM	11/11/14	820.00
388615	SCHMITTY & SONS / GRAY LINE MPLS	ATH-TRANSPORT CC STATE MEET 11/1/14	11/18/14	796.50
388329	THINKING MAPS, INC	THINKING MAPS - STAFF DEVELOPMENT	11/04/14	795.00
388343	APPLE JACK ORCHARDS	FIELD TRIP	11/06/14	792.00
388767	MINVALCO	SUPPLIES	11/25/14	788.10
388792	STAPLES ADVANTAGE	GW STAND-UP DESKS	11/25/14	785.36
388658	GOPHER SPORT	CMS-PE SUPPLIES	11/20/14	778.94
388345	ARUX SOFTWARE	MONTHLY SERVICE INVOICE	11/06/14	775.00
388557	YOUTH FRONTIERS, INC	GW-KINDNESS RETREAT DEPOSIT 2/6/15	11/13/14	750.00
388589	HUIE, WING	CHALK TALK WORKSHOP 11/12/14	11/18/14	750.00
388454	GOODIN CO	OW-WATER HEATER SUPPLY	11/11/14	745.22
388503	US ENERGY SERVICES, INC	MGMT FEE 11/14	11/11/14	743.00
388277	BUREAU OF LECTURES & CONCERT ARTISTS	PC-ASSEMBLY 10/8/14	11/04/14	740.00
388721	BROWN'S ICE CREAM CO	GROCERIES	11/25/14	733.76
141500710	WARMBOE, ABBEE	REIMBURSE	11/25/14	730.19
388475	MN STATE HIGH SCHOOL LEAGUE	STATE SWIM/DIVE 11/14	11/11/14	720.00
388443	CREATIVE RESOURCES AGENCY LLC	ATH-B TENNIS APPAREL	11/11/14	717.82
388642	BENCHMARK EDUCATION CO	BV-KNGN BKS	11/20/14	705.10
388718	BAYFIELD FRUIT CO	GROCERIES	11/25/14	701.10
388639	ASK, TRONDSON & SMITH INC	HR-PROF SERV 10/28/14	11/20/14	688.55
388497	STAPLES ADVANTAGE	office supplies	11/11/14	688.28
388520	COMPREHENSIVE REPAIR	HS-TABLE SAW REPAIR	11/13/14	685.00
388588	GOPHER SPORT	WMS-PE SUPPLIES	11/18/14	679.98
388399	MN FUTURE PROBLEM SOLVING PROGRAM	REG 14-15-HS	11/06/14	660.00
388770	MN DEPT OF LABOR AND INDUSTRY	WMS-BOILER FEES	11/25/14	660.00
388746	GRAINGER INC., W. W.	SUPPLIES	11/25/14	626.69
388606	NORTHERN STAR COUNCIL (NSC)	BV-4TH GR BASE CAMP DEPOSIT	11/18/14	625.00
388461	HERC-U-LIFT, INC	MDE#32476 AERIAL LIFT INSPN	11/11/14	619.00
388339	ADECCO ENGINEERING & TECHNICAL	HELP DESK/TECH SUPPOR	11/06/14	615.60
388593	JIMMY'S JOHNNYS INC	CMS-3 BIFFS	11/18/14	612.88
388666	HOLDAHL CO	CMS-ETD SUPPLIES	11/20/14	611.86
388421	WEST MUSIC CO	OW-RECORDERS	11/06/14	605.00
388659	GRAINGER INC., W. W.	DOMA ALC LIGHTS	11/20/14	602.02
388620	SOFTWARE MACKIEV	Kid Pix Software for 1 lab at GW	11/18/14	600.60
388600	MACKIN EDUCATIONAL RESOURCES	6TH GR NOVELS	11/18/14	600.35
388788	RYAN CO, INC	HS-METERING VALVE	11/25/14	592.20
388336	YOGASTUDIO	HS-PROF SERV	11/04/14	589.40
388712	ADI	ESC-REPAIR DR ACCESS	11/25/14	587.55
388533	MINNESOTA QUIZ BOWL ALLIANCE	HS-REGISTER 4 TEAMS MD	11/13/14	580.00
388297	HI-TECH REFRIGERATION	GW-STAFF-REFRIG MAINTENANCE	11/04/14	565.46
388552	STAPLES ADVANTAGE	GL KINDERGARTEN FURNITURE	11/13/14	532.55
388349	BERGIN FRUIT AND NUT COMPANY	GROCERIES 9/14	11/06/14	530.65
388682	MOEN, CHRISTINE	FB POSTERS-ATH	11/20/14	520.00
388295	GIBBS MUSEUM	GL-1ST GR FIELD TRIP 10/9	11/04/14	506.00
388774	MN SAFETY COUNCIL	MDE#32485 DUES	11/25/14	495.00
388437	CHAMPIONSHIP PRODUCTS UNLIMITED LLC	ATH-W APPAREL	11/11/14	490.00
388681	MN LANDSCAPE ARBORETUM	PC-KDGN FIELD TRIP 05/19/15 RESERVATION #86	11/20/14	490.00
701370	TIERNEY BROTHERS, INC.	PROJECTOR-B WITTMAN	11/13/14	489.00
388805	WATSON CO INC., THE	ALA CART DRINKS	11/25/14	485.25
388772	MN CLAY USA - MIDWEST	PC-ART SUPPLIES	11/25/14	482.75
388692	REGION V	WC-MARSS SUPPORT SERV 1/14-6/15	11/20/14	480.00
388585	FAMILY SPEECH & THERAPY SERVICES LLC	SPECIAL PUPIL NN	11/18/14	465.52
388704	UNIVERSAL ATHLETIC SERVICE INC	ATH-BASEBALL SUPPLIES	11/20/14	464.94
701380	SCHMITT MUSIC CO	CONCERT BAND SCORES	11/21/14	451.39
388548	SMITH, ROBERT	OW-REMOVE STUMP	11/13/14	450.00
388650	EAGAN HIGH SCHOOL DEBATE	HS-NOVICE ST CHAMPIONSHIP 12/14 (15 TEAMS)	11/20/14	450.00
388663	HIGHLAND PK HS SPEECH&DEBATE BSTRS	DEBATE TOURN 11/14	11/20/14	450.00

388764	LITTLE BIG THINGS LLC	HS-STAFF TRAINING 11/4/14	11/25/14	450.00
388467	LIGHTNING DANCE TEAM BOOSTER CLUB	Proactive coaching	11/11/14	440.52
388312	MN FUTURE PROBLEM SOLVING PROGRAM	EMS-REGISTER 4TEAMS	11/04/14	440.00
388760	JOHNSTONE SUPPLY	SUPPLIES	11/25/14	428.47
388401	MN STATE COLLEGES & UNIVERSITIES	11/13/2014 5 ATTENDEES	11/06/14	425.00
701331	ALLEGRA PRINT & IMAGING	LETTERHEAD & YOU'VE BEEN CAUGHT IN THE ACT PADS	11/07/14	424.74
388694	SCHEE, DEBORAH	CED-PROF SERV 10/29-11/19	11/20/14	421.85
388320	PEPPER & SON INC., J. W.	BV-MUSIC ORDER	11/04/14	420.37
141500583	ANDERSON, MARY	REIMBURSE	11/12/14	420.02
388735	DOYLE SECURITY PRODUCTS	CSF-LOCK SUPPLIES	11/25/14	415.14
388476	MOORE MEDICAL LLC	Non Pub Health	11/11/14	413.02
388790	SPS CO	CMS-SUPPLIES	11/25/14	412.08
141500672	WITTMAN, ROBERT	REIMBURSE	11/19/14	400.81
388377	HAHN, R.N.,PHN, MICHELLE	CONSULT SERVICES 10/14	11/06/14	400.00
388447	EBC (EDUCATORS BENEFIT CONSULTANTS)	admin and compliance service 11/14	11/11/14	400.00
388806	WAYZATA COMMUNITY CHURCH	WMS-ROOM FEE 7TH GR RETREAT 11/20 & 11/21	11/25/14	400.00
141500629	DUENAS, DOMINIC	REIMBURSE	11/19/14	399.32
388478	NAPA AUTO PARTS OF CORCORAN	CSF-SHOP SUPPLIES	11/11/14	393.51
388308	MARK WAGAR VIOLINS	ORCHESTRA INSTRUMENT REPAIRS	11/04/14	389.10
141500570	OGMAN, ELLEN	REIMBURSE	11/05/14	383.04
141500670	VOLLENDORF, AMY	REIMBURSE	11/19/14	381.47
388455	GOPHER SPORT	KINDERGARTEN RECESS CART	11/11/14	379.00
388743	FRAZZINI, JENNIFER	RETURNED LOST IPAD	11/25/14	379.00
388492	ROOT-O-MATIC	SERVICE	11/11/14	360.00
388669	INTERMEDIATE DIST 287	CED-WKSP 11/8/14	11/20/14	360.00
388795	THREE RIVERS PARK DISTRICT	BV-3RD GR FIELD TRIP 12/19/14	11/25/14	360.00
141500566	LANKFORD, LYNDA	REIMBURSE	11/05/14	359.62
388397	MN ASSN FOR CAREER & TECHNICAL ADMIN	MENTOR PROG 10/1/14	11/06/14	344.25
388777	PARTNERS IN LEARNING PROGRAMS, INC	BUILDING SIGNAGE	11/25/14	333.45
388758	IRON MOUNTAIN	DIST-STORAGE 11/14	11/25/14	330.89
388587	GLENBROOKS DEBATE	HS-DEBATE TOURN 11/22-11/24/14 ADD'L TEAMS	11/18/14	330.00
388465	JOHNSTONE SUPPLY	BV-SUPPLIES	11/11/14	327.00
388789	SCIENCE EXPLORERS	CED-BV-TECHNO TINKERING 11/5-12/10	11/25/14	322.00
388542	PUBLIC STORAGE 08316	STORAGE 12/14	11/13/14	321.00
388581	EASTVIEW LDT BOOSTER CLUB	DANCE TOURNAMENT	11/18/14	320.00
388350	BLICK ART MATERIALS	GW-ART SUPPLIES FOR ART SPECIALIST	11/06/14	316.74
388517	CDW GOVERNMENT, INC	WC MONITOR ARM	11/13/14	308.37
388616	SCHRADER, THOMAS	OFFICIAL/SUPERVISOR	11/18/14	307.76
388527	INTERQUEST DETECTION CANINES OF MN	HS-SEARCH 1/2 DAY 10/15/14	11/13/14	303.00
388424	ALL AMERICAN COMMERCIAL TITLE INC	file#102257 Best & Flanagan	11/11/14	300.00
388771	MN URBAN DEBATE LEAGUE AUGSBURG	HS-DEBATE 11/22/14	11/25/14	300.00
141500568	NELSON, KATHRYN	REIMBURSE	11/05/14	298.90
141500706	SCHAEFBAUER, RODGER	REIMBURSE	11/25/14	297.64
388633	ADVISORS MARKETING GROUP	AD-ENGRAVING	11/20/14	297.00
388575	COACHES CHOICE, INC	APPAREL	11/18/14	295.91
141500571	PRONDZINSKI, JEFF	REIMBURSE	11/05/14	293.68
388574	CHASKA DANCE TEAM	TOURN 12/6/14	11/18/14	290.00
141500596	IVERSON, SUE	REIMBURSE	11/12/14	286.65
388635	ALLINA HEALTH SYSTEM	PRE EMPLOYMENT SCREENING 10/20/14	11/20/14	285.00
388537	PARALLEL TECHNOLOGIES INC	KL-WIRING	11/13/14	283.14
141500559	HAAS, DEBORAH	REIMBURSE	11/05/14	280.00
388440	CONCORDIA COLLEGE - DEBATE	W.E.Lillo Tourn 11/14	11/11/14	275.00
388491	ROOT-O-MATIC	video server to ID pavement collapse	11/11/14	275.00
388768	MN ASSN OF ALTERNATIVE PROGRAMS	HS-CONF 2/11/15	11/25/14	275.00
388787	ROY C., INC	GW-SERV-DOOR	11/25/14	275.00
388274	BARNES & NOBLE	PROF DEVELOPMENT BOOKS - AWE STUDY GROUP	11/04/14	270.06
388315	MONSTER WORLDWIDE INC	CSF-JOB POSTINGS 9/12/14	11/04/14	270.00
388400	MN SAFETY COUNCIL	CED-PROF SERV 10/13/14	11/06/14	270.00
388651	EASTER, MARK	WMS-PIANO TUNING	11/20/14	270.00
141500565	KOPECKY, KATHLEEN	REIMBURSE	11/05/14	268.35
141500673	ZEMLIN, LYNN	REIMBURSE	11/19/14	265.20
388318	NEW WAY HYPNOSIS CLINIC, INC	CED PROF SERVICES	11/04/14	264.00
141500564	JOHNSON, SALLY	REIMBURSE	11/05/14	260.96
141500621	ACKERMAN, BRIAN	REIMBURSE	11/19/14	259.00

388473	MN SAFETY COUNCIL	CED-PROF SERV 10/23/14	11/11/14	255.00
388531	MANN, MIKE	GLHB-STORYTELLING 11/4/14	11/13/14	250.00
388791	ST CROIX PREPARATORY ACADEMY	HS-DEBATE TOURN 10/17/14 (10 teams)	11/25/14	250.00
388563	PHEAA	Payroll accrual	11/14/14	249.13
141500580	WOBSCHELL, ALISON	REIMBURSE	11/05/14	239.74
141500713	ZAFFARANO, ERICA	REIMBURSE	11/25/14	239.41
388561	PERFORMANT RECOVERY INC	Payroll accrual	11/14/14	235.01
388445	CULLIGAN - METRO	CMS-SERVICE	11/11/14	235.00
388538	PLYMOUTH ICE CTR	PC-3RD GR SKATING 12/18 & 12/19	11/13/14	230.00
388696	SMUDE, DONALD	OFFICIAL	11/20/14	228.50
388480	NHA HEATING & AIR CONDITIONING INC	WMS-SERVICES	11/11/14	225.00
388725	CHISAGO LAKES HIGH SCHOOL	MTEEA SUPER MILEAGE 5/15	11/25/14	225.00
388415	TIJERINA, JESSICA	CED-PROF SERV & SUPPLIES	11/06/14	224.80
388687	PLYMOUTH ROTARY	DUES & MEALS 7/8/14-10/9/14	11/20/14	221.00
388311	MN FUTURE PROBLEM SOLVING PROGRAM	CMS-STUDENT REGISTRATION	11/04/14	220.00
388604	MN FUTURE PROBLEM SOLVING PROGRAM	FPS REGISTER-WMS	11/18/14	220.00
388801	US FOODS CULINARY E & S	DIST-KITCHEN SUPPLIES #H001568	11/25/14	217.75
388395	MINNETESOL	OW-MELED CONFERENCE	11/06/14	215.00
388697	SODERBERG, JAY	CED-PROF SERV 9/10-11/12	11/20/14	212.50
388493	SCHAUB, CAROL	CED-PROF SERV	11/11/14	209.00
388679	MCGIVERN, FRANK	OFFICIAL	11/20/14	205.50
141500562	JOHNSON, DOUGLAS	REIMBURSE	11/05/14	204.66
388409	CITY OF PLYMOUTH - FINANCE DEPT	SH-SITE PLAN AMENDMENT	11/06/14	200.00
388595	LAKEVILLE SOUTH HIGH SCHOOL	DANCE TEAM INVITATIONAL	11/18/14	200.00
388717	BARNES & NOBLE	PC-BKS	11/25/14	199.12
388636	ALLINA HEALTH	DRIVER PHYSICALS	11/20/14	197.00
701332	ALLEGRA PRINT & IMAGING	EMERGENCY FLIP BOOKS	11/07/14	195.43
388571	ASSE (AMER SOCIETY OF SAFETY	MDE#32485 ASSE MEMBERSHIP	11/18/14	195.00
141500554	GAMMACK, SARA	REIMBURSE	11/05/14	192.02
388776	OFFICE DEPOT, INC	GW-BINDERS FOR THIRD GRADE READING LESSONS	11/25/14	191.99
388326	SHRED-N-GO	SHREDDING SERVICES - BLANKET PO	11/04/14	191.60
388596	LANGUAGE LINE SERVICES	INTEPRETER LINE	11/18/14	190.73
388474	MN STATE COLLEGES & UNIVERSITIES	SP ED-CPR PD	11/11/14	190.00
388699	SPONITZ, CLARA	ATH-BOYS BB	11/20/14	190.00
388427	AT&T MOBILITY	IPADS	11/11/14	189.95
388710	ACCO BRANDS CORPORATION	PC-LAMINITE	11/25/14	189.42
388338	3RD LAIR SKATE PARK	SKATE CAMP	11/06/14	189.00
388634	ALBRECHT, VICTOR	CED-PROF SERV 11/5/14	11/20/14	189.00
141500679	CHRISTEN, COURTNEY	REIMBURSE	11/25/14	187.15
141500631	EICHELDINGER, MATTHEW	REIMBURSE	11/19/14	185.42
141500645	MERZ, IRENE	REIMBURSE	11/19/14	184.07
141500644	LANDY, JENNIFER	REIMBURSE	11/19/14	182.56
388559	IRS CENTER - UNITED STATES TREASURY	Payroll accrual	11/14/14	182.00
388394	MCGEEHAN, JILL	BALANCE CULINARY EXPRESS ACCT	11/06/14	181.45
388464	J & R SCHOOL SUPPLIES	pencil store supplies	11/11/14	181.05
701356	SCHMITT MUSIC CO	REEDS-BAND SUPPLIES	11/13/14	179.94
388301	JOHNSON, MELISSA	ACCOUNT CLOSING-CULINARY EXPRESS	11/04/14	177.05
141500611	SHEPARD, TYLER	REIMBURSE	11/12/14	176.04
141500573	SCUDDER, GERI	REIMBURSE	11/05/14	175.00
141500674	ZOBRAK, CHRISTOPHER	REIMBURSE	11/19/14	175.00
141500619	WESTMAN, AMY	REIMBURSE	11/12/14	174.87
388468	LONG LAKE TRUE VALUE	SUPPLIES 9/29-10/25	11/11/14	174.85
388732	CUSTOM EDUCATION SOLUTIONS	CUSTOM ED SOLUTIONS - GRADE LEVEL BOOKS	11/25/14	174.83
141500633	FLADWOOD, TREVOR	REIMBURSE	11/19/14	174.28
388726	CITI-CARGO & STORAGE	DOME STORAGE-11/14	11/25/14	174.00
141500677	BOCKSELL, ELAINE	REIMBURSE	11/25/14	170.75
388512	(SM)2 INC	PEPFEST VIDEO-ATH	11/13/14	170.00
141500561	HOLDEN, CARLY	REIMBURSE	11/05/14	170.00
141500612	SONSTEGARD, LAURIE	REIMBURSE	11/12/14	169.76
141500696	MARGET, DONNA	REIMBURSE	11/25/14	168.85
388759	JOHN DEERE LANDSCAPES	DIST-SUPPLIES	11/25/14	168.78
141500686	GALLAGHER, KELLY	REIMBURSE	11/25/14	168.62
388446	DEMCO, INC.	CMS-MEDIA CTR SUPPLIES	11/11/14	166.90
388298	HOME DEPOT/GEFC	HS-SUPPLIES	11/04/14	165.34

141500659	RIDLEY, SARA	REIMBURSE	11/19/14	162.96
388508	WEST METRO SPEECH/LANGUAGE	fall workshop	11/11/14	160.00
388597	LAW OFFICE OF JULIE L. FINCH, PLLC	PROF SERV 10/16/14	11/18/14	160.00
388638	ANDERSON, PETER	OFFICIAL	11/20/14	160.00
388662	HERDER, JAMES	OFFICIAL	11/20/14	160.00
388756	HORIZON EQUIPMENT	CLEANING SUPPLIES	11/25/14	160.00
141500704	ROGERS, JUDY	REIMBURSE	11/25/14	159.94
141500656	PLATT, SALLY	REIMBURSE	11/19/14	158.00
141500622	BERSCHEIT, DEBORAH	REIMBURSE	11/19/14	156.95
388562	PERFORMANT RECOVERY INC	Payroll accrual	11/14/14	156.68
388652	EDUCATIONAL DESIGN, LLC-THE 2 SISTERS	SH-SUBSCRIPTIONS	11/20/14	156.00
141500702	RANDALL, LIZABETH	REIMBURSE	11/25/14	154.85
701376	ALLEGRA PRINT & IMAGING	PHOTOS	11/21/14	153.00
388278	COCA-COLA REFRESHMENTS	BV-POP	11/04/14	151.20
388627	THEIN, CHRIS	ATH-PAPER PRODUCTS	11/18/14	150.41
388314	MN STRING & ORCHESTRA TEACHERS ASSN	EMS-8TH GR ORCH FESTIVAL	11/04/14	150.00
388358	COMPREHENSIVE REPAIR	EMS-SAW REPAIR	11/06/14	150.00
141500693	JOHNSON, BONNIE	REIMBURSE	11/25/14	149.86
388649	DOOHER, ZACHARY	OFFICIAL	11/20/14	148.50
388672	JOHNSON, RONALD D	OFFICIAL	11/20/14	148.50
388407	PARALLEL TECHNOLOGIES INC	DSL-PPC	11/06/14	146.25
701369	SCHMITT MUSIC CO	B SAX REEDS	11/13/14	146.12
388513	ALBRIGHT, RYAN & ALLISON	CULINARY EXPRESS REFUND	11/13/14	145.05
388405	NOVINSKA, TOD	CED-PROF SERV 10/27/14	11/06/14	145.00
388715	AMERICAN CANCER SOCIETY	TROJAN LOCKER RM DONATION	11/25/14	144.00
141500640	HOCH, STEPHANIE	REIMBURSE	11/19/14	142.53
388332	VEBEROD GEM GALLERY	HS-SAW BLADES, MISC.	11/04/14	141.95
141500661	RIES, CAROLE	REIMBURSE	11/19/14	140.50
388411	SHERMAN, JULIE	MAKE UP BOOT CAMP	11/06/14	140.00
388601	MAKEMUSIC	WMS-ORCH SUPPLIES	11/18/14	140.00
388641	BARNES & NOBLE	PROFESSIONAL DEVELOPMENT BOOKS	11/20/14	138.54
388487	PROFESSIONAL INTERPRETING	pre school screen	11/11/14	137.60
141500585	BOLLING, KRISTEN	REIMBURSE	11/12/14	136.79
388544	REALLY GOOD STUFF	SH - Supplies for PBIS/Intervention/Kid Picks	11/13/14	136.12
141500575	ST CYR, JUDITH	REIMBURSE	11/05/14	134.40
141500593	HILL, KATHRYN	REIMBURSE	11/12/14	132.80
141500557	GILDEMEISTER, BETH	REIMBURSE	11/05/14	130.76
388674	KOONTZ, BRANDON	OFFICIAL	11/20/14	129.00
388684	O'BRIAN, COLIN	OFFICIAL	11/20/14	128.00
701374	SCHMITT MUSIC CO	BAND INSTRUMENT REPAIR	11/18/14	128.00
388449	FERGUSON ENTERPRISES, INC #1657	SUPPLIES	11/11/14	127.88
388569	APPLE AUTOMATIC FOOD SERVICE	OW-COFFEE	11/18/14	126.95
141500700	OSWALD, SHERRI	REIMBURSE	11/25/14	120.68
388442	CREATING ART INC	Sunflower painting class 10/21	11/11/14	120.00
388576	COMPREHENSIVE REPAIR	CMS-SAW REPAIR	11/18/14	120.00
388450	FLINN SCIENTIFIC, INC.	MDE#32475 HS SCIENCE PPE	11/11/14	118.08
388551	STAPLES ADVANTAGE	AD-SUPPLIES	11/13/14	117.24
388477	MOTG (MN OFFICE TECHNOLOGY GRP)	WC-COPIER STAPLES	11/11/14	116.00
141500705	SADR-PANAH, SONIA	REIMBURSE	11/25/14	115.00
141500694	JOHNSON, JERI	REIMBURSE	11/25/14	113.74
141500678	CAMPBELL-KLETT, LAUREN	REIMBURSE	11/25/14	112.86
388594	KIRSHBAUM, SHELBY	OFFICIAL	11/18/14	109.00
388602	MICEK, NICKOLAS	OFFICIAL	11/18/14	109.00
388614	RYHORCHUK, DUNCAN	OFFICIAL	11/18/14	109.00
141500667	SOLHEID, CAROL	REIMBURSE	11/19/14	107.69
141500632	ELIAS, MARK	REIMBURSE	11/19/14	107.50
141500638	HARTOS, CAITLIN	REIMBURSE	11/19/14	107.39
141500712	WIER, COLLEEN	REIMBURSE	11/25/14	107.30
141500655	PETERSON, DONNA	REIMBURSE	11/19/14	106.18
701352	SCHMITT MUSIC CO	BAND INSTRUMENT REPAIR	11/13/14	105.00
141500588	DOUGHTY, ROSANNE	REIMBURSE	11/12/14	103.31
388560	NEW YORK LIFE	Payroll accrual	11/14/14	102.25
388355	CENTERPOINT ENERGY	12945-16TH AVE-GAS 9/23-10/22/2014	11/06/14	102.11
141500563	JOHNSON, JERI	REIMBURSE	11/05/14	101.75

141500682	DUBBS, ANGIE	REIMBURSE	11/25/14	100.18
388283	FAY, GRETA	OFFICIAL	11/04/14	100.00
388305	LAKE CONFERENCE	ATH-NORDIC SKI PARK EXPENSE	11/04/14	100.00
388309	MN ASSN OF SCHOOL BUSINESS OFFICIALS	AD-CONF 11/14	11/04/14	100.00
388380	HAYFT, ANDREA	CED-PROF SERV 10/23/14	11/06/14	100.00
388408	PLOOG, MICHELLE	OFFICIAL	11/06/14	100.00
388566	TIDEWATER FINANCE CO	Payroll accrual	11/14/14	100.00
701382	SCHOOL SPECIALTY	V21 MAKERSPACE PROJECT	11/21/14	99.62
141500556	GENGLER, SCOTT	REIMBURSE	11/05/14	99.56
388754	HILLYARD INC MINNEAPOLIS	PC-SUPPLIES	11/25/14	98.26
141500567	MCKERNAN, ALISON	REIMBURSE	11/05/14	97.16
388386	K4 APPLICATION INC DBA DUNN BROS	HS-COFFEE	11/06/14	95.00
388761	K4 APPLICATION INC DBA DUNN BROS	HS-COFFEE	11/25/14	95.00
701343	SCHMITT MUSIC CO	BAND REPAIR	11/13/14	95.00
701345	SCHMITT MUSIC CO	BAND INSTRUMENT REPAIR	11/13/14	95.00
701346	SCHMITT MUSIC CO	BAND INSTRUMENT REPAIR	11/13/14	95.00
701347	SCHMITT MUSIC CO	BAND INSTRUMENT REPAIR	11/13/14	95.00
701348	SCHMITT MUSIC CO	BAND INSTRUMENT REPAIR	11/13/14	95.00
701349	SCHMITT MUSIC CO	BAND INSTRUMENT REPAIR	11/13/14	95.00
701353	SCHMITT MUSIC CO	BAND INSTRUMENT REPAIR	11/13/14	95.00
388436	CENTURY LINK	ELM CREEK 10/28-11/27	11/11/14	94.96
388371	FOSTER, TODD	BALANCE CULINARY EXPRESS ACCT	11/06/14	94.40
141500649	MUELLER, LINDSEY	REIMBURSE	11/19/14	94.02
141500582	ZOBRACK, CHRISTOPHER	REIMBURSE	11/05/14	94.00
141500584	BECK, JONI	REIMBURSE	11/12/14	93.80
388671	JOHNSON, ANDY	OFFICIAL	11/20/14	93.00
701344	SCHMITT MUSIC CO	BAND INSTRUMENT REPAIR	11/13/14	93.00
388755	HOBART SERVICE	GW REFRIGERATOR	11/25/14	91.90
388335	YILTALO, MARK	ACOUNTS CLOSING-CULINARY EXPRESS	11/04/14	90.35
388425	ANDERSON, PATTI	CED-PROF SERV	11/11/14	90.00
388346	BAUMGART, GAIL	PF PLUS	11/06/14	88.00
141500552	FOLTZ-RINGSTROM, SHARON	REIMBURSE	11/05/14	87.47
388438	CITI-CARGO & STORAGE	DOME-STORAGE	11/11/14	87.00
388643	BERRY COFFEE CO	BV-WATER LEASE NOV,DEC & JAN	11/20/14	87.00
701361	SCHMITT MUSIC CO	OBOE REPAUR	11/13/14	87.00
388273	ART EDUCATORS OF MN (AEM)	EMS-CONF 11/14	11/04/14	85.00
388748	HEDBERG AGGREGATES INC	SH-BLOCKS	11/25/14	84.76
141500574	SKALLAND, AMANDA	REIMBURSE	11/05/14	84.34
388413	STAPLES ADVANTAGE	EMS-SUPPLIES	11/06/14	83.21
388351	BLOOM, MARY	OFFICIAL	11/06/14	83.00
388353	BRISCO, GERRY	OFFICIAL	11/06/14	83.00
141500647	MILLER, JANET	REIMBURSE	11/19/14	81.26
388711	ACME TOOLS - PLYMOUTH	SUPPLIES	11/25/14	81.26
388640	BARKER, CURTIS	OFFICIAL	11/20/14	80.00
388653	EMANUEL, DANIEL	OFFICIAL	11/20/14	80.00
388656	GIESEMANN, SCOTT	OFFICIAL	11/20/14	80.00
388661	HAYWOOD, BRUCE	OFFICIAL	11/20/14	80.00
388686	PILON, JOE	OFFICIAL	11/20/14	80.00
388688	POGATCHNIK, DEAN	OFFICIAL	11/20/14	80.00
388698	SOLOMON, RICARDO	OFFICIAL	11/20/14	80.00
141500597	JABIR, SEEMEEN	REIMBURSE	11/12/14	80.00
141500636	GRIWAC, GRETCHEN	REIMBURSE	11/19/14	80.00
141500643	LAGERQUIST, SARAH	REIMBURSE	11/19/14	79.50
141500701	PERSZYK, CARA	REIMBURSE	11/25/14	78.25
388722	BROWN'S ICE CREAM CO	FOOD CONCESSIONS	11/25/14	77.57
141500551	FEHRENBACH, ANN	REIMBURSE	11/05/14	76.22
388462	HOLDAHL CO	SUPPLIES	11/11/14	76.18
141500634	GALE, CHRISTA	REIMBURSE	11/19/14	75.82
141500599	KNOPIK, EMILY	REIMBURSE	11/12/14	75.68
141500624	BLAKE, KAISA	REIMBURSE	11/19/14	75.13
701354	SCHMITT MUSIC CO	BAND BOOKS	11/13/14	75.10
388471	MN BOARD OF SCHOOL ADMINISTRATORS	KL-ANNUAL FEE KW	11/11/14	75.00
388766	LUSSIER, GARY	SH-PROF SERV	11/25/14	75.00
701357	SCHMITT MUSIC CO	TENOR SAX REPAIR	11/13/14	73.00

141500600	LADEN, AMANDA	REIMBURSE	11/12/14	72.99
141500587	BUDKE, MEGAN	REIMBURSE	11/12/14	71.79
141500581	WONG, MARGARET	REIMBURSE	11/05/14	71.73
388271	ANDERSON, PETER	OFFICIAL	11/04/14	71.25
388337	ZAPPEFILLO, DAVID	OFFICIAL	11/04/14	71.25
388306	LINGEN, MICHELLE	COLLAGES-G SWIM & DIVE	11/04/14	70.33
141500606	ROHWEDER, MATTHEW	REIMBURSE	11/12/14	70.24
388617	SCHULTZ, DAVE	BV-5TH GR FIELD TRIP	11/18/14	70.00
388619	SIGNS NOW	GSW SIGNS	11/18/14	70.00
388678	LOKEN, CHRISTOPHER	OFFICIAL	11/20/14	70.00
701377	COMMERCIAL KITCHEN SERVICES	INV#53092	11/21/14	70.00
388609	PREMIUM WATERS, INC	PC-WATER COOLER RENTAL 11/14	11/18/14	69.40
388695	SENSION, TIM	OFFICIAL	11/20/14	68.50
388708	WORTHINGTON, CLARK	OFFICIAL	11/20/14	68.50
388637	ANDERSON, PATTI	CED-PROF SERV	11/20/14	67.50
141500703	REGNIER, BONNIE	REIMBURSE	11/25/14	67.25
141500664	RUNYON, NANCY	REIMBURSE	11/19/14	66.92
141500603	PASHINA, KEN	REIMBURSE	11/12/14	65.69
701367	SCHMITT MUSIC CO	BASS SAX REPORTS	11/13/14	65.48
701360	SCHMITT MUSIC CO	MARCHING BARITONE REPAIR	11/13/14	65.00
141500676	BLOCK, CARMEN	REIMBURSE	11/25/14	61.94
141500550	FARISS, JACK	REIMBURSE	11/05/14	60.06
388325	SCHERER'S PUMPKIN PATCH	GLHB-PUMPKINS FOR RELEASE DAY	11/04/14	60.00
388426	ASBO INTERNATIONAL	RENEWAL	11/11/14	60.00
141500555	GARDNER, LUCIA	REIMBURSE	11/05/14	59.58
141500601	LEVIN, WILLIAM	REIMBURSE	11/12/14	59.44
141500592	HARREN, KIMBERLY	REIMBURSE	11/12/14	58.58
388275	BECKMAN, CHRIS	OFFICIAL	11/04/14	57.00
388333	WORTHINGTON, CLARK	OFFICIAL	11/04/14	57.00
388677	LOGAN, JOHN	OFFICIAL	11/20/14	57.00
388582	ECKROTH MUSIC	WMS-BAND SUPPLIES	11/18/14	56.10
388667	HUTCHINSON, LANDYN	BALANCE CULINARY EXPRESS ACCT	11/20/14	55.70
388690	RAGHAVENDRAN, ROHAN	BALANCE CULINARY EXPRESS ACCT	11/20/14	55.30
141500688	HALONEN, WENDY	REIMBURSE	11/25/14	55.00
141500578	THEISEN, JOHN	REIMBURSE	11/05/14	53.54
388744	FULFIL - 2B LLC	CED-PROF SERV 11/1 & 11/8	11/25/14	53.40
388763	LARSON CO, J. H.	SUPPLIES	11/25/14	53.30
141500680	DAVIN, MOLLY	REIMBURSE	11/25/14	53.14
388657	GLYNN, KYLE	OFFICIAL	11/20/14	53.00
141500615	TUORILA, DELROY	REIMBURSE	11/12/14	52.89
701358	SCHMITT MUSIC CO	FLUTE REPAIR	11/13/14	52.00
388379	HANSON, JAMIE	BALANCE CULINARY EXPRESS ACCT	11/06/14	51.95
388668	INGRAM LIBRARY SERVICES	CMS-MEDIA CTR BKS	11/20/14	50.90
388501	TUROVSKY, GENE	BALANCE CULINARY EXPRESS ACCT	11/11/14	50.55
388435	CENTERPOINT ENERGY	12955-16TH AVE-GAS	11/11/14	50.40
141500618	WAITE, WILLIAM	REIMBURSE	11/12/14	50.40
141500553	GALLAGHER, KELLY	REIMBURSE	11/05/14	50.18
388385	JOHNSON, HOLLY	OFFICIAL	11/06/14	50.00
388483	PARK GIRLS BASKETBALL BOOSTER CLUB	ATH-G BB SCRIMMAGE 11/22/14	11/11/14	50.00
388528	KAYE, ERIC	SHIPPING CANDY TO THE TROOPS -STUDENT COUNCIL	11/13/14	50.00
388605	NEOPOST USA INC	ANNUAL POSTAGE ACH FEE	11/18/14	50.00
701362	SCHMITT MUSIC CO	TENOR SAX REPAIR	11/13/14	50.00
141500697	MCCOY, BRANDY	REIMBURSE	11/25/14	50.00
141500707	SHERRY, JACQUELINE	REIMBURSE	11/25/14	50.00
388502	UPPER LAKE FOODS	FOOD-CONCESSION-HS	11/11/14	49.50
141500620	ZEMLIN, LYNN	REIMBURSE	11/12/14	49.50
141500549	ETLING, BRIAN	REIMBURSE	11/05/14	49.28
141500691	HORN, DAVID	REIMBURSE	11/25/14	48.94
141500639	HEGG, ADAM	REIMBURSE	11/19/14	48.74
141500635	GENDREAU, KRISTEN	REIMBURSE	11/19/14	48.58
388546	RUEGG, SUZANNE	CULINARY EXPRESS REFUND BRENNNA RUEGG	11/13/14	48.00
388705	US FUND FOR UNICEF	EMS-TRICK OR TREAT DONATION	11/20/14	47.78
141500548	DISCH, HILARY	REIMBURSE	11/05/14	47.43
388296	HAWKINS, JEFFREY	OFFICIAL	11/04/14	47.00

141500609	SEELAND, ELIZABETH	REIMBURSE	11/12/14	45.76
141500545	BRANDT, KAREN	REIMBURSE	11/05/14	45.76
141500589	EBERHARDT, JAMES	REIMBURSE	11/12/14	45.68
141500626	DILLEY, JODI	REIMBURSE	11/19/14	45.36
388519	CHELBERG, JULIE	CULINARY EXPRESS REFUND	11/13/14	45.15
141500668	SOMMERFELD, TIMOTHY	REIMBURSE	11/19/14	45.00
141500699	NEIL, KAREN	REIMBURSE	11/25/14	45.00
701365	SCHMITT MUSIC CO	OBOE REEDS	11/13/14	44.97
141500625	BOWAR, MELISSA	REIMBURSE	11/19/14	44.95
141500610	SHANNON-ANDERSON, KARI	REIMBURSE	11/12/14	44.18
141500637	HALVORSON, REBECCA	REIMBURSE	11/19/14	44.00
141500658	RAVNHOLDT, TANYA	REIMBURSE	11/19/14	43.99
388720	BLACK & DECKER SERVICE CTR	CSF-SUPPLIES	11/25/14	43.93
388416	TIMM, RONALD	CED-PROF SERV	11/06/14	43.50
141500546	CALVERT, STACY	REIMBURSE	11/05/14	43.12
388392	LARSON, DAN	BALANCE CULINARY EXPRESS ACCT	11/06/14	42.40
388472	MN MATHEMATICS LEAGUE	CMS-STUDENT REGISTRATION DN	11/11/14	40.00
388470	MERTENS, TOM	BALANCE CULINARY EXPRESS ACCT	11/11/14	39.90
141500695	LEWIS, ADRIENNE	REIMBURSE	11/25/14	39.87
701359	SCHMITT MUSIC CO	PEARL SNARE REPAIR	11/13/14	39.00
388555	TRANS-MISSISSIPPI BIOLOGICAL	BLANKET-LIVING MATERIALS-SCIENCE CTR	11/13/14	38.82
388804	VIKING ELECTRIC SUPPLY, INC	CSF-SUPPLIES	11/25/14	38.72
141500646	MEYER, ASHLEY	REIMBURSE	11/19/14	38.64
388303	KRAVCHENKO, BECCA	SUPPLIES- SPAM SET	11/04/14	38.58
141500684	EYDEL, ELLA	REIMBURSE	11/25/14	38.24
388549	SMITH, VICKY	CULINARY EXPRESS FUND IAN SMITH	11/13/14	36.40
141500671	WILLIAMS, CARRI	REIMBURSE	11/19/14	35.28
388701	TACKMANN, DEBORAH	WMS-BOOK NC	11/20/14	35.00
388365	EZRILOV, RICHARD	BALANCE CULINARY EXPRESS ACCT	11/06/14	34.80
388749	HENDERSON, DOREEN	BALANCE CULINARY EXPRESS ACCT	11/25/14	34.65
701368	SCHMITT MUSIC CO	BASSOON REPAIR	11/13/14	34.00
141500641	IVERSON, MINDY	REIMBURSE	11/19/14	33.49
701351	SCHMITT MUSIC CO	BAND BOOKS	11/13/14	33.36
141500685	FASCHING, WENDY	REIMBURSE	11/25/14	33.00
141500595	HOLZ, JILL	REIMBURSE	11/12/14	31.82
388360	DENISON, AMY	BALANCE CULINARY EXPRESS ACCT	11/06/14	31.75
141500558	GOSSEN, CAROLINE	REIMBURSE	11/05/14	31.64
141500608	SCHULTZ, DAVID	REIMBURSE	11/12/14	30.86
141500614	THOUR, TERESA KAY	REIMBURSE	11/12/14	30.57
141500623	BEUGEN, MARA	REIMBURSE	11/19/14	30.35
141500628	DORFER, MARLYS	REIMBURSE	11/19/14	30.35
388514	ALMEIDA, JUNIA	CULINARY EXPRESS REFUND	11/13/14	30.00
388554	TERRY, LINDSAY	CULINARY EXPRESS REFUND	11/13/14	30.00
388703	TWIN WEST CHAMBER OF COMMERCE	AD-NOV LEGISLATIVE BREAKFAST	11/20/14	30.00
701363	SCHMITT MUSIC CO	BAND INSTRUMENT REPAIR	11/13/14	30.00
141500572	RHODES, MARY-LYNN	REIMBURSE	11/05/14	30.00
141500662	RODGERS, JUDITH	REIMBURSE	11/19/14	29.98
388378	HANSEN, LINDA	BALANCE CULINARY EXPRESS ACCT	11/06/14	29.80
141500569	NELSON, MICHAEL	REIMBURSE	11/05/14	29.72
141500709	STARKEN, JESSIE	REIMBURSE	11/25/14	29.56
388390	LARSEN, LORI	BALANCE CULINARY EXPRESS ACCT	11/06/14	29.55
141500651	NYGORD, DAVID	REIMBURSE	11/19/14	29.12
141500594	HOFFMANN, ANGELA	REIMBURSE	11/12/14	28.06
141500653	OLSON, BEN	REIMBURSE	11/19/14	27.99
388387	KNUTSON, JERRY	BALANCE CULINARY EXPRESS ACCT	11/06/14	27.95
141500642	KRUEGER, KATHRYN	REIMBURSE	11/19/14	27.78
388372	FURRY, DANIEL	BALANCE CULINARY EXPRESS ACCT	11/06/14	27.35
141500544	BADGER, BRENDA	REIMBURSE	11/05/14	27.22
141500665	SCHAEFBAUER, RODGER	REIMBURSE	11/19/14	27.00
141500577	STINSON, MICHELE	REIMBURSE	11/05/14	26.54
141500689	HERZOG, JORDAN	REIMBURSE	11/25/14	26.46
701350	SCHMITT MUSIC CO	BAND BOOKS	11/13/14	26.29
141500660	RIEBEL, NANCY	REIMBURSE	11/19/14	26.21
388304	KRUTZIG, DANIEL	ACCOUNT CLOSING - CULINARY EXPRESS	11/04/14	26.20

388317	MULCAHY CO, B. J.	IMPELLER	11/04/14	26.00
388646	BURKE, DAVID	BALANCE CULINARY EXPRESS ACCT	11/20/14	25.15
388396	MITCHELL, CATHY	BALANCE CULINARY EXPRESS ACCT	11/06/14	25.10
141500698	MOSIMAN, MATTHEW	REIMBURSE	11/25/14	25.09
388523	DRANCHAK, JOLANDA	FIELD TRIP REFUND-HS	11/13/14	25.00
388730	COOPER HIGH SCHOOL	HS-BIRDS OF PREY DEBATE TOURN 11/22/14	11/25/14	25.00
141500692	JASPER, LEANNE	REIMBURSE	11/25/14	25.00
141500590	GREGORY, JILL	REIMBURSE	11/12/14	24.99
388547	SCHULTZ, GLORIA	CULIANRY EXPRESS REFUNDS AXEL & KAIA SCHULTZ	11/13/14	24.75
141500591	HANSON, MYOUNGHEE	REIMBURSE	11/12/14	24.64
388716	AUTOMATED LOGIC CORP	GW-TEMP SENSOR	11/25/14	24.50
388584	EXCEL LEGAL COURIER	COURIER 10/14	11/18/14	24.00
388618	SHRED-N-GO	SHREDDING SERVICES - BLANKET PO	11/18/14	24.00
388373	GOLIN, SHERYL	MTB BANQUET-AWARDS & BALLOONS	11/06/14	23.83
388655	GARZA-STORK, JENNIFER	BALANCE CULINARY EXPRESS ACCT	11/20/14	23.80
388683	NAUSS, LISA	BALANCE CULINARY EXPRESS ACCT	11/20/14	23.75
388515	BLACKWELL, MICHELE	CULIANRY EXPRESS REFUNDS	11/13/14	23.40
388391	LARSEN, TOM	BALANCE CULINARY EXPRESS ACCT	11/06/14	23.35
388430	BISER, BRUCE	BALANCE CULINARY EXPRESS ACCT	11/11/14	22.65
701355	SCHMITT MUSIC CO	BAND BOOKS	11/13/14	22.24
141500648	MOE, BETH	REIMBURSE	11/19/14	22.18
141500683	ERICKSON, MARK	REIMBURSE	11/25/14	22.18
388558	ZARNS, DARCY	CULINARY EXPRESS REFUNDS	11/13/14	22.10
141500650	NIKSTAD, ERICA	REIMBURSE	11/19/14	21.83
388302	KOTHRAD, TOM	ACCOUNT CLOSING-CULINARY EXPRESS	11/04/14	21.50
388344	ARORA, SMRITI	BALANCE CULINARY EXPRESS ACCT	11/06/14	21.50
388374	GROSSER, STEVE	BALANCE CULINARY EXPRESS ACCT	11/06/14	21.45
141500690	HOGAN, NICOLE	REIMBURSE	11/25/14	21.00
141500666	SELINGER, JUDITH	REIMBURSE	11/19/14	20.72
388388	KROLL, JEANE	BALANCE CULINARY EXPRESS ACCT	11/06/14	20.70
388707	WILLIAMS, JEFF	BALANCE CULINARY EXPRESS ACCT	11/20/14	20.65
388731	CUB FOODS	GROCERIES-CUST#27	11/25/14	20.65
388452	GABRIELSEN, TIM	BALANCE CULINARY EXPRESS ACCT	11/11/14	20.40
388341	ANDERSON, RICHARD	BALANCE CULINARY EXPRESS ACCT	11/06/14	20.35
388469	MARTIN, KEELEY	cul exp refund bal	11/11/14	20.25
388685	BERG, MARNE	BALANCE CULINARY EXPRESS ACCT	11/20/14	19.50
388647	CAVANAUGH, JOANNE	BALANCE CULINARY EXPRESS ACCT	11/20/14	19.45
388673	KLEIN, DANA	BALANCE CULINARY EXPRESS ACCT	11/20/14	19.20
388689	PREMIUM WATERS, INC	TRANSPORT-WATER DELIVERY 10/14	11/20/14	18.90
388783	PREMIUM WATERS, INC	TRANSPORT-WATER DELIVERY 11/14	11/25/14	18.90
388706	WENDELL'S	NAMEPLATE-MELISSA LAHR	11/20/14	18.57
141500652	OLINGER, AMY	REIMBURSE	11/19/14	18.48
388623	ST. CROIX SCREENPRINTING INC	APPAREL-ATH	11/18/14	18.00
701366	SCHMITT MUSIC CO	CLASSROOM SUPPLIES	11/13/14	18.00
141500681	DIERKS, SUSAN	REIMBURSE	11/25/14	18.00
141500598	JUELICH, ANDREW	REIMBURSE	11/12/14	17.95
388352	BOBB, SUSAN	BALANCE CULINARY EXPRESS ACCT	11/06/14	17.50
388709	YASMINEH, COURTNEY	BALANCE CULINARY EXPRESS ACCT	11/20/14	17.45
388384	ISDAHL, JOANNE	REIMBURSE	11/06/14	16.99
141500687	HAGEN, CLARICE	REIMBURSE	11/25/14	16.14
388568	ACME TOOLS - PLYMOUTH	CMS-EQUIPMENT REPAIR	11/18/14	16.10
141500675	BAKER, KATHRYN	REIMBURSE	11/25/14	16.02
701364	SCHMITT MUSIC CO	NECK CORK REPAIR	11/13/14	16.00
141500627	DITTER, PAMELA	REIMBURSE	11/19/14	15.98
388460	HAMEL BUILDING CTR	DIST-SUPPLIES	11/11/14	15.85
388490	ROE, MARK	BALANCE CULINARY EXPRESS ACCT	11/11/14	15.70
388644	BOOTH LAW GROUP LLC	PROF SERV 10/14	11/20/14	15.50
388499	TANNER, JOHN	BALANCE CULINARY EXPRESS ACCT	11/11/14	15.05
388691	REBERS, DENISE	BALANCE CULINARY EXPRESS ACCT	11/20/14	14.90
388393	LEINFELDER, DAVE	BALANCE CULINARY EXPRESS ACCT	11/06/14	14.65
388629	WENDELL'S	INK STAMP PAD	11/18/14	14.57
388779	CITY OF PLYMOUTH - FINANCE DEPT	18935 CO RD 47	11/25/14	14.30
141500605	RASSOULI, FARAH	REIMBURSE	11/12/14	14.05
141500711	WARZEHA, CHERYL	REIMBURSE	11/25/14	13.98



<b>AMOUNT</b>	<b>DONATED BY</b>	<b>PURPOSE</b>
\$67.34	Wells Fargo -community support -GW	Scholarships
\$97.00	GW PTA	Veterans Day assembly
\$200.00	PC PTO	Office supplies
\$228.64	Wells Fargo -matching donation program-SSH	Student activity funds
\$400.00	PC PTO	Principal awards
\$500.00	PC PTO	Scholarships
\$1,061.25	OW PTA	Computer lab
\$2,644.00	PC PTO	Payment to PCE sponsored by PTO
\$3,000.00	GW PTA	Support GW media center
\$5,172.00	GW PTA	Support curriculum through field trip contribution
\$7,500.00	PC PTO	Field trips

Total \$20,870.23

12/8/2014

**WAYZATA PUBLIC SCHOOLS  
WIRE TRANSFER, EFT AND ACH ACTIVITY  
OCTOBER 2014**

<u>FROM</u>	<u>TO</u>	<u>DATE</u>	<u>AMOUNT</u>
Wells Fargo-Checking	Wells Fargo-Payroll	Multiple	\$4,483,233
Wells Fargo-Checking	IRS		
	- Federal P/R Taxes	10/1/2014	\$867,790
	- Federal P/R Taxes	10/16/2014	\$830,482
Wells Fargo-Checking	MN Department of Revenue		
	- State P/R Taxes (MN)	10/1/2014	\$142,364
	- State P/R Taxes (MN)	10/16/2014	\$135,215
Wells Fargo-Checking	Delta Dental		
	- Dental Claims	Multiple	\$98,325
Wells Fargo-Checking	Preferred One		
	- Health Claims	Multiple	\$1,423,716
Wells Fargo-Checking	Wells Fargo Commercial Card		
	- Purchase Card Program	10/3/2014	\$366,014
Wells Fargo-Checking	Corporate Health Systems		
	- Flex Benefits	Multiple	\$107,792
Wells Fargo-Checking	Preferred One		
	- Broker/Reinsurance Fees	10/9/2014	\$85,731
Wells Fargo-Checking	Payroll Vendors (TRA, EBC, MSRS, etc.)		
	- Electronic Payments	Multiple	\$1,488,790
Wells Fargo-Checking	District Employees		
	- Expense Reimbursement	Multiple	\$33,591
Wells Fargo-Checking	Commerce Bank/Control Pay		
	- Electronic A/P	Multiple	\$177,425
Wells Fargo-Checking	MN Department of Revenue		
	- Sales & Use Tax Payment	9/22/2014	\$4,672
Wells Fargo-Checking	Citi Street		
	- Health Care Savings	10/27/2014	\$72,640
Wells Fargo-Checking	Neopost Advance		
	- Replenish Postage Meter	10/20/2014	\$5,000
<b>TOTAL ACTIVITY - OCTOBER 2014</b>			<b><u>\$10,322,780</u></b>

**WAYZATA PUBLIC SCHOOLS**  
**Independent School District 284**  
**Wayzata, Minnesota**

**BOARD OF EDUCATION**

Regular Meeting – December 8, 2014

**AGENDA SECTION: 5. APPROVAL OF AGENDA AND CONSENT AGENDA ITEMS**

**ITEM: C. Human Resource Recommendations**

**COMMENTS BY: Annie Doughty, Exec Director of Human Resource Services**

Employment

**Judy Hamman** 6 Hour Paraprofessional High School  
 Contract Ending

**Lynette Haux** 2.75 Hour Paraprofessional Oakwood  
 Resignation

**Rasha Kablawi** 6.5 Hour Paraprofessional High School  
 Leave of Absence

**Kevin Kluever** 3 Hour Paraprofessional West Middle  
 Transfer

**Julia Kvistberg** 2.5 Hour Paraprofessional Birchview  
 Transfer

**Kaitlin Meyers** 6 Hour Paraprofessional East Middle  
 Resignation

**Lindsey Redmann** 1.0 Counselor (LTR 14-15 only) High School  
 Leave of Absence

**Jon Rieke** 8 Hour Custodian High School  
 Transfer

**Dae Hee Yoon** 2 Hour Paraprofessional Gleason Lake  
 Resignation

Contract Modification

**Margaret Herbert,** District CICC Coordinator from 47 weeks to 52 weeks  
 (2014-15 only)

Extended Leave of Absence (3 year minimum, 5 year maximum)

**Jodi Olson** Teacher on Leave of Absence 1<sup>st</sup> year – effective 1/1/15

Leave of Absence

**Kaisa Blake**, Central Middle Special Education Teacher, has requested a leave of absence from March 25-27 using two personal days and one day without pay.

**Joseph McAuliff**, Greenwood 4<sup>th</sup> Grade Teacher, has requested a leave of absence beginning approximately May 15-26, 2015.

**Jessica Starken**, Central Middle Science Teacher, has requested a leave of absence beginning approximately April 6, 2015 through the end of the 2014-2015 school year.

Resignation

**Erin Grubestic**, Gleason Lake Paraprofessional, has submitted her resignation effective December 5, 2014.

**Kim Hughes**, Community Education Paraprofessional, has submitted her resignation effective December 15, 2014.

**Dawn Long**, Oakwood Paraprofessional, has submitted her resignation effective December 1, 2014.

Retirement

**John Murray**, Plymouth Creek Custodian, has submitted his retirement effective December 16, 2014. Mr. Murray has been employed with the District since 2003.

**Linda Polley**, West Middle Paraprofessional, has submitted her retirement effective December 12, 2014. Ms. Polley has been employed with the District since 1999.

**RECOMMENDED ACTION:** Approve the Human Resource Actions as recommended.

Motion by: \_\_\_\_\_ Yes \_\_\_\_\_ Passed \_\_\_\_\_

Second by: \_\_\_\_\_ No \_\_\_\_\_ Failed \_\_\_\_\_

Abstentions \_\_\_\_\_

**WAYZATA PUBLIC SCHOOLS**  
Independent School District 284  
Wayzata, Minnesota

**BOARD OF EDUCATION**  
Regular Meeting – December 8, 2014

**AGENDA SECTION: 5. Approval of Agenda and Consent Agenda Items**

**ITEM: D. Approval of the World’s Best Workforce Plan**

**COMMENTS BY: Jill Johnson, Executive Dir. of Teaching and Learning**

Per Minnesota State Statute (Section 120B.11), each public school district must prepare a comprehensive, long-term strategic plan to support and improve teaching and learning with the ultimate goal of creating the world’s best workforce. The strategic plan is intended to serve as a foundational document that aligns educational initiatives that serve students pre-k through high school.

Wayzata’s World’s Best Workforce Plan serves as a blueprint that demonstrates how current district initiatives and plans work together in a concerted effort to create a quality workforce equipped with the necessary skills for the 21st century.

Per Minnesota State Statute (Section 120B.11), school boards must approve the plan. The plan has been discussed thoroughly and in detail in Board work sessions; tonight we ask the Wayzata School Board to approve the plan.

**RECOMMENDED ACTION:** Approve the World’s Best Workforce comprehensive, long-term strategic plan.

Motion by: \_\_\_\_\_ Yes \_\_\_\_\_ Passed \_\_\_\_\_

Second by: \_\_\_\_\_ No \_\_\_\_\_ Failed \_\_\_\_\_

Abstentions: \_\_\_\_\_

**Wayzata Public Schools - Independent School District 284  
World’s Best Workforce - Local Plan  
2015 – 2019**

The World’s Best Workforce Plan (state statute, section 120B.11) is a comprehensive, long-term strategic plan to support and improve teaching and learning with the ultimate goal of creating the world’s best workforce. It is intended to serve as a foundational document that aligns educational initiatives that serve students pre-k through high school.

Each district must develop a plan that addresses the following five goals:

1. All children are ready for school
2. All third-graders can read at grade level
3. All racial and economic achievement gaps between students are closed
4. All students are ready for career and college
5. All students graduate from high school

Wayzata’s World’s Best Workforce Plan serves as a blueprint that demonstrates how current district initiatives and plans work together in a concerted effort to create a quality workforce equipped with the necessary skills for the 21st century.

**School District Overview**

Wayzata Public Schools serves all or part of Corcoran, Maple Grove, Medicine Lake, Medina, Minnetonka, Orono, Plymouth and Wayzata. The district includes seven elementary schools (K-5), three middle schools (6-8), and one high school (9-12). The district’s community education department serves the learning needs of residents of all ages through a variety of programs and offerings. The student enrollment for the district is approximately 10,661 students, which include 4,803 elementary students, 2,553 middle school students and 3,305 high school students. The student body in our district, based on 2013 - 2014 enrollments, includes the following: White, not of Hispanic origin – 72 percent; Black, not of Hispanic origin – 8 percent; Asian or Pacific Islander – 16 percent; Hispanic – 4 percent; American Indian or Alaskan Native – 0.3 percent. Other data on our students includes the following: Percent of students receiving free/reduced lunch – 13 percent; Percent of students receiving special education services – 9.27 percent; Percent of English Language Learner students – 2 percent. Wayzata Public Schools employs more than 1,500 employees including about 790 teaching positions. The district operates with a total expenditure budget for the 2014 - 2015 school year of more than \$165 million, which includes about \$123 million for the general operations of the schools.

Wayzata Public Schools is one of 367 districts in the nation, and one of 11 districts in Minnesota, honored by the College Board with a place on the second annual AP Honor Roll for simultaneously increasing access to Advanced Placement coursework while maintaining or increasing the percentage of students earning scores of three or higher on AP exams. As part of the new Minnesota Department of Education Multiple Measurements Rating (MMR) system, Wayzata Public Schools had four identified “Reward” schools in 2014. Wayzata was one of only three districts statewide with four or more “Reward” schools. Wayzata Public Schools students continue to perform at very high levels on the Minnesota Department of Education accountability assessments (MCA, MCA-Mod, MTAS) with 80.5 percent of students proficient in reading and 82 percent proficient in math on 2013 - 2014 state-mandated assessments. Year after year, the average score of Wayzata students on the ACT exceeds both the state and national averages. For the 2013 - 2014 school year, the average score of Wayzata students on the ACT was 26.1, with the state average at 22.9 and the national average at 21.0.

## INTRODUCTION

A Strategic Roadmap provides the foundation for our comprehensive, long-term strategic plan. The Strategic Roadmap was developed during the 2010 - 2011 school year through a series of meetings and work sessions that included school board members, district administration, principals, teachers, parents and community members.

**Mission:** The Mission of the Wayzata Public Schools is to ensure a world-class education that prepares each and every student to thrive today and excel tomorrow in an ever-changing global society.

**Vision:** The Vision of the Wayzata Public Schools is to be a model of excellence where all students discover their unique talents, develop a love and tenacity for learning and demonstrate confidence and capacity for success.

**Strategic Objectives:** To achieve the School District's Mission and Vision and the goals of the World's Best Workforce, three strategic objectives have been identified:

1. **Exceptional Learning** – High Achievement by each and every student – no exceptions, no excuses.
2. **Exceptional Experience** – Each and every student will experience a content-rich, rigorous and personalized education
3. **Exceptional Relationships** – Each and every student will experience meaningful relationships with teachers, staff, mentors and peers in a welcoming, nurturing and safe environment.

**Strategies:** To achieve the strategic objectives, we will implement eight strategies. These eight strategies form the foundation for our comprehensive long-term strategic plan.

- **Strategy #1:** Transform our learning program to reflect the “MyWay” beliefs, instructional practices and learning experiences.
- **Strategy #2:** Create a culture of positive relationships with clear and transparent expectations, while recognizing the diverse talents, backgrounds, culture and viewpoints of others.
- **Strategy #3:** Design, create and maintain welcoming and safe schools that support student learning.
- **Strategy #4:** Create and support the conditions so that teachers are prepared to deliver quality first-time instruction that meets the learning needs of each and every student.
- **Strategy #5:** Strengthen student awareness and involvement in planning of their educational program.
- **Strategy #6:** Refine our approach to intervention by creating a tiered and integrated system of supports to respond to student learning and behavior needs.
- **Strategy #7:** Maintain, expand learning opportunities for student identified as being gifted and talented.
- **Strategy #8:** Expand opportunities for student served through special services so that they may be fully engaged in the learning program.

## I: GOALS AND BENCHMARKS

**Goals:** The school board has established an expectation to make yearly growth comparable to our historical district trends.

**Goal Process:** Annual goals (SMART) are established by sites at the annual data retreat and approved by the Board of Education.

## II: ASSESSING AND EVALUATING STUDENT PROGRESS

To evaluate our results, the Key Performance Indicators listed below will be used to assess student progress toward achieving identified goals and objectives. The outcomes required as part of the WBWF are noted with an asterisk. Those items in *italics* are already in place. The other items are to be developed.

<b>Achievement</b> <i>Academics and Activities</i>	<b>Engagement</b> <i>Student Engagement in the School Experience</i>	<b>Aspirations</b> <i>What Students Aspire to Achieve</i>
<b>Academic Outcomes</b> <ol style="list-style-type: none"> <li>1. <i>Kindergarten Readiness (ISEL)*</i></li> <li>2. <i>Third Grade Literacy (MCA)*</i></li> <li>3. <i>MCA Proficiency (MCA)</i></li> <li>4. <i>Achievement Gap Reductions (MMR)*</i></li> <li>5. <i>College and Career Readiness (Explore, PLAN, ACT)*</i></li> <li>6. <i>Graduation from High School (Student Graduating)*</i></li> </ol> <b>Activities Outcomes</b>	<ol style="list-style-type: none"> <li>1. <i>Student Engagement Survey</i></li> <li>2. <i>Student Attendance</i></li> <li>3. <i>Participation in Academic Opportunities (Course Enrollment)</i></li> <li>4. <i>Participation in School Activities and Events (Participation Numbers)</i></li> </ol>	<ol style="list-style-type: none"> <li>1. <i>Plan to Graduate from High School (Student Survey)</i></li> <li>2. <i>Post High School Plans (Naviance, SLEDS)</i> <ul style="list-style-type: none"> <li>▪ <i>Attend College</i></li> <li>▪ <i>Enter Military</i></li> <li>▪ <i>Enter Work Force</i></li> </ul> </li> </ol>

This data is used at the –

1. **Individual student level** – Data is used when planning instruction, determining the need for instructional supports and/or advanced course work.
2. **Classroom level** - Data is used to monitor progress toward building goals and to identify common areas of strengths and areas for improvement.
3. **Building and district level** – Data is uses by the professional development committee, teaching and learning, principals and supervisors to prioritize needs and provide resources for training and support.
4. **District level** - Data is used to assess and evaluate overall student progress toward achieving our goals and objectives.

## III: ASSESSING AND EVALUATING CURRICULUM AND INSTRUCTION

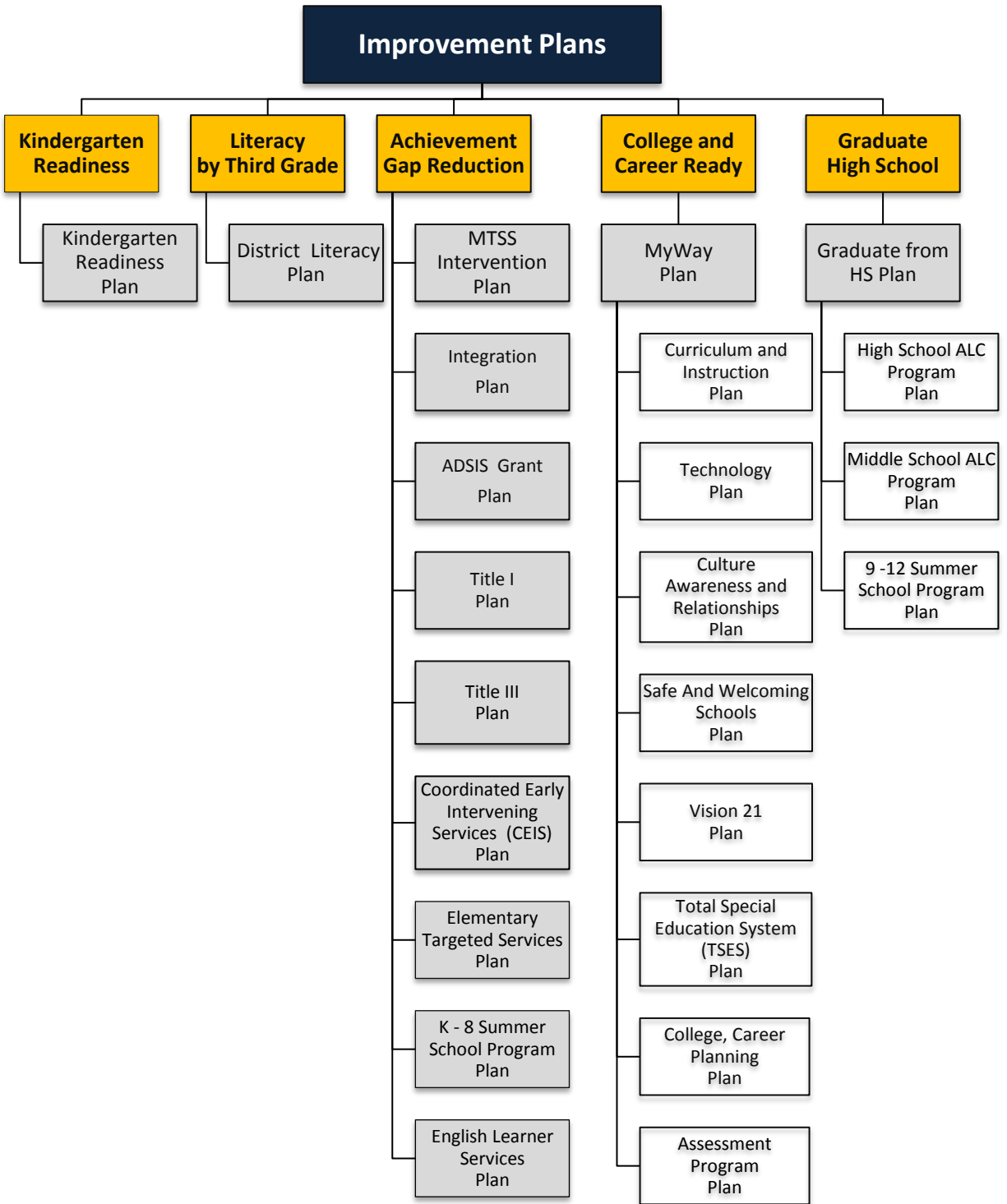
The effectiveness of curriculum and instruction is assessed and evaluated through the curriculum review process, and the teacher and principal evaluation process.

**Assessing and Evaluating Curriculum:** The Wayzata Public Schools use a continuous improvement model to assess and evaluate curriculum, instruction and learning programs. The review process consists of four phases and is co-facilitated by district staff, resource teachers and principals. Community involvement is encouraged and participation is facilitated through the curriculum, instruction and technology advisory committee. Recommended changes from the review are presented to the Executive Director of Teaching and Learning for consideration and possible adoption. Results from the review process and shared with the school board at committee meetings and board work sessions.

**Assessing and Evaluating Instruction:** Instruction is assessed and evaluated through the principal and teacher evaluation process.

## IV: STRATEGIES FOR IMPROVING CURRICULUM, INSTRUCTION and STUDENT ACHIEVEMENT

Strategies for improving curriculum, instruction and student achievement are implemented through the use of “Plans.” Plans are aligned to the goals of the WBWF.



### Support Plans

Talent Management Plan	Teacher Development and Evaluation Plan	Principal Development and Evaluation Plan	Program Evaluation Plan	Professional Development Plan [Title II Plan]	Q-Comp Plan
------------------------	---	---	-------------------------	---	-------------

## V: BOARD AND COMMITTEE – Roles and Responsibilities

**World’s Best Workforce Leadership Team (WBWF – LT):** Provides oversight for the district’s World’s Best Workforce Plan.

- Executive Director of Teaching and Learning,
- Director of Curriculum and Instruction,
- Director of Special Services,
- Director of Technology,
- Director of Research and Evaluation,
- Director of Personalization and Intervention,
- Q-Comp Program Supervisor

**Advisory Committees:** Advise and provide recommendations to the WBWF - LT

- Curriculum, Instruction and Technology (CITAC) Advisory
- Special Services Advisory
- Community Education Advisory
- District Parent Liaison Committee
- Teaching and Learning Committee of the School Board

**Superintendent and Strategy Leadership Team:** Recommends WBWF Plan to School Board

**School Board:** Adopts the final World’s Best Workforce plan

## VI: PLAN COMMUNICATION

1. Publish a public report in the local newspaper with the largest circulation in the district, by mail, or by electronic means on the district website.
2. Transmit an electronic summary of its report to the MDE Commissioner of Education in the form and manner the commissioner determines.

**WAYZATA PUBLIC SCHOOLS**

Independent School District 284  
Wayzata, Minnesota

**BOARD OF EDUCATION**

Regular Meeting – December 8, 2014

**AGENDA SECTION:** APPROVAL OF AGENDA AND CONSENT AGENDA

**ITEM:** Business and Finance Services  
Authorization of Issuance of Individual Procurement Card  
(P-Card)

**COMMENTS BY:** Jim Westrum, Executive Director of Business & Finance

**Authorization of Issuance of Individual Procurement Card (P-Card)**

The administration recommends the issuance of a Procurement Card to the following employees:

Sandi Arndt, Coordinator, Family Learning Center

Elizabeth Robertson, Birchview Media Specialist

Carol Solheid, Home Base Manager

Raquel Williamson, Secretary, Family Learning Center

Darcey Hazlett, East Middle School FACS Teacher

Kristin Erickson, Kimberly Lane Home Base

Susan Busch, West Middle School FACS Teacher

Marie Beck, Secretary, Science Center

Scott Gengler, Principal on Special Assignment

Kallie Spauling, Greenwood Secretary

**RECOMMENDED ACTION:** Approve and Authorize of Issuance of Individual Procurement Card (P-Card).

Motion by: \_\_\_\_\_ Yes \_\_\_\_\_ Passed \_\_\_\_\_

Second by: \_\_\_\_\_ No \_\_\_\_\_ Failed \_\_\_\_\_

Abstentions: \_\_\_\_\_



**West Middle School**  
Susan Sommerfeld, Principal  
2014 - 2015

### SITE IMPROVEMENT PLAN

The intent of the World’s Best Workforce (WBWF) is to ensure that every school district in the state is making strides to increase student academic performance.

To achieve this goal, each Wayzata Public School must develop and implement a site improvement plan that addresses the following goals: (1) Kindergarten Readiness, (2) Grade 3 Literacy, (3) Achievement Gap Reduction, (4) MCA Proficiency, (5) College and Career Readiness and (6) Graduation from High School.

### GOALS

GOAL	OUTCOME
<b>Grading for Learning:</b>	<b>Grading for Learning:</b> WMS will continue to study SBG practices and conduct PD at the site level as well as participate in project teams at the district level.
<b>Multi-Tiered System of Supports:</b>	<b>Multi-Tiered System of Supports:</b> The student proficiency gap between the highest achieving ethnic group and the lowest achieving ethnic group enrolled October 1 in grades 6-8 at Wayzata West Middle School using all state <u>Reading</u> accountability tests (MCA, MTAS) will decrease from 32.7% in 2014 to 26.7% in 2015 by increasing the proficiency rate of the groups as follows: <ul style="list-style-type: none"> <li>– Highest achieving ethnic student group from 90.2% in 2014 to 91.2% in 2015 and</li> <li>– Lowest achieving ethnic student group from 57.5% in 2014 to 64.5% in 2015.</li> </ul>
<b>Q-Comp Goal</b>	The percentage of all students enrolled October 1 in grades 6-8 at Wayzata West Middle School who earn an achievement level of Meets the Standards or Exceeds the Standards in <u>Math</u> on all state accountability tests (MCA, MTAS) will increase from 79% in 2014 to 81% in 2015.

### ACTIONS

<b>Goal #1: GOAL #1: <u>Grading for Learning:</u></b> WMS will continue to study SBG practices and conduct PD at the site level as well as participate in project teams at the district level.		
<b>PERFORMANCE TARGET:</b> This is a long term district-wide middle level goal. Full SBG implementation is scheduled for the 16-17 school year.		
<b>ALIGNMENT TO STRATEGIC ROAD MAP – GRID:</b> STRATEGIC DIRECTIONS A, B, C, E		
ACTIONS	INDICATORS OF SUCCESS	TIMELINE
Work with district committee and principals to develop timeline and exemplars	Timelines and exemplars are determined	Fall 2014
Work to help staff understand SBG at the building and PLC levels. Discuss with staff development committee a way to buy ASCD book for all staff to read and conduct book study.	Staff knows and understands the basic tenets of SBG and can pick power standards to be in grade book.	2014-15 school year

<p><b>GOAL #2: Multi-Tiered System of Supports:</b> The student proficiency gap between the highest achieving ethnic group and the lowest achieving ethnic group enrolled October 1 in grades 6-8 at Wayzata West Middle School using all state <u>Reading</u> accountability tests (MCA, MTAS) will decrease from 32.7% in 2014 to 26.7% in 2015 by increasing the proficiency rate of the groups as follows:</p> <ul style="list-style-type: none"> <li>– Highest achieving ethnic student group from 90.2% in 2014 to 91.2% in 2015 and</li> <li>– Lowest achieving ethnic student group from 57.5% in 2014 to 64.5% in 2015</li> </ul>		
<p><b>PERFORMANCE TARGET:</b> See above</p>		
<p><b>ALIGNMENT TO STRATEGIC ROAD MAP – GRID:</b> STRATEGIC DIRECTIONS A, B, C</p>		
ACTIONS	INDICATORS OF SUCCESS	TIMELINE
Interact with the student MyWay survey in order to understand who our students are and how they engage at school.	Activity is conducted	Oct. 2014
Data shared with teachers about highest and lowest performing students.	All teachers are aware of the exact students to target and given the fall MAP data for 6 <sup>th</sup> and 7 <sup>th</sup> gr. And MCA data for 8 <sup>th</sup> gr.	Oct. 2014
Data retreat team/SAT convenes to check Performance Matters data and verify that students have supports.	SAT and Data team have met and looked at data.	2014-15

<p><b>GOAL #3:</b> The percentage of all students enrolled October 1 in grades 6-8 at Wayzata West Middle School who earn an achievement level of Meets the Standards or Exceeds the Standards in <u>Math</u> on all state accountability tests (MCA, MTAS) will increase from 79% in 2014 to 81% in 2015.</p>		
<p><b>PERFORMANCE TARGET:</b> See Above</p>		
<p><b>ALIGNMENT TO STRATEGIC ROAD MAP – GRID:</b> STRATEGIC DIRECTIONS A, B</p>		
ACTIONS	INDICATORS OF SUCCESS	TIMELINE
Offer MATH180	Students in the class experience growth	2014-15
Yellow and red students identified for intervention	Accurate lists for students will be generated.	Oct 2014
Math para and Math180 teacher will offer support to classroom math teachers.	West Wing math help in place, students on “watch list” getting help	2014-15

# West Middle School

## *Site Presentation*

School Board Meeting  
December 8, 2014

Susan Sommerfeld, Principal



# Site Goal 1: Grading for Learning

- All Middle Schools
- Assessment based on state standards
- Grading is a continuation of curriculum alignment to state standards
- Support and enrichment based on achievement of specific standards
- Descriptive of what students can do

45

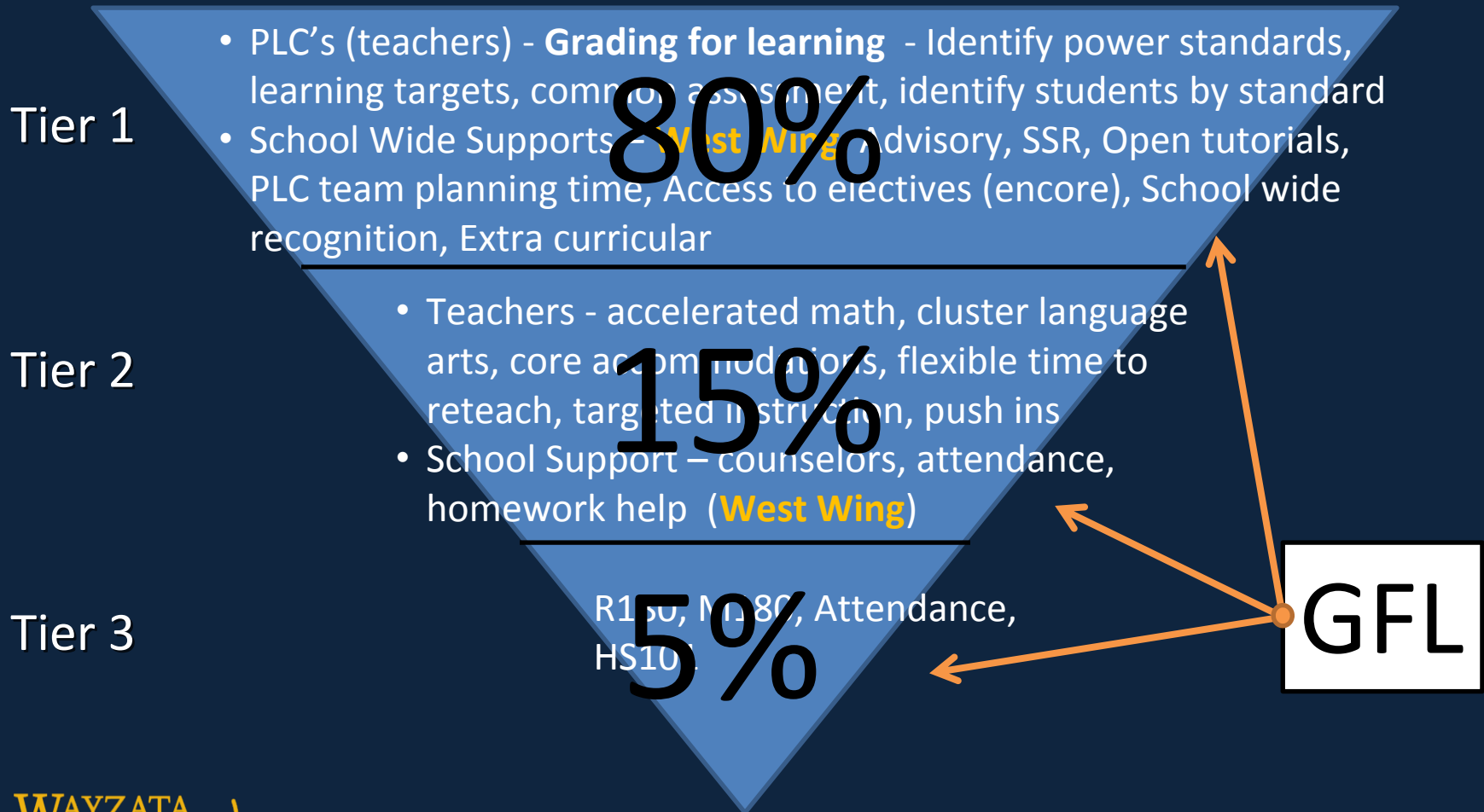
# Site Goal 2: Q-Comp Goal

- Math
  - (MCA, MTAS) will increase from 79% in 2014 to 81% in 2015

# Site Goal #3: Multi Tiered System of Support

- Decrease the gap on state reading tests
  - 32.7% to 26.7%
- Highest achieving ethnic student group from 90.2% in 2014 to 91.2% in 2015 and
- Lowest achieving ethnic student group from 57.5% in 2014 to 64.5% in 2015.
- Support - Tier 1, 2, 3

# Tiered System of Support



48

# West Wing

- After school home work help
- Open tutorial – math
- Collaboration among WMS, Ridgedale Y, WPD
  - Two certified teachers – LA and Math
  - Y – Youth Coordinator
  - 2 – 3 Para Professional
  - Police School Resource Officer

49

# West Wing

- [Video Clip](#)

**WAYZATA PUBLIC SCHOOLS**  
Independent School District 284  
Wayzata, Minnesota

**BOARD OF EDUCATION**

Regular Meeting – December 8, 2014

**AGENDA SECTION** 7. RECOGNITIONS

**ITEM:** A. Wayzata Public Schools 2014-2015 Retirees

**COMMENTS BY:** Superintendent Chace B. Anderson

Tonight we would like to recognize the following employees who announced their retirement in 2014. We would like to thank them for their years of service to Wayzata Public Schools and wish them well in their future endeavors.

<u>Name</u>	<u>Position</u>	<u>Years of Service</u>
John Murray	Custodian, Plymouth Creek	11 Years
Linda Polley	Paraprofessional, West Middle	15 Years

**WAYZATA PUBLIC SCHOOLS**  
Independent School District 284  
Wayzata, Minnesota

**BOARD OF EDUCATION**  
Regular Meeting – December 8, 2014

**AGENDA SECTION: 7. Recognitions**

**ITEM: B. November Employee of the Month**

**COMMENTS BY: Superintendent Chace B. Anderson**

We are excited to recognize Mr. Joel Martin, 5th grade teacher at Greenwood Elementary, as the district's November Employee of the Month. Joel invests in his students as people and builds relationships with them that demonstrate how much he cares about them. Joel brings a servant-heart and genuine professionalism to work. He is a collaborative educator, and his leadership and perspective are valued by our school.

The following comments are just a sample of those shared by Greenwood staff about Mr. Joel Martin:

- Joel is dedicated to each and every student in his class. He is always willing to go above and beyond to help students and staff.
- Mr. Martin always greets everyone at Greenwood and helps make our school a friendly place to work!
- Mr. Martin is the kind of teacher you want for your child.
- Joel is an excellent teacher that makes it a priority to create relationships with, and include all students in his classroom.
- Joel is such a great leader at our school! He was a mentor last year as I began my first year at Greenwood and has made me feel welcome and appreciated since day one!!
- There is never a day when Joel doesn't have a smile on his face and is readily greeting both staff and students. He conveys such a genuine authenticity with everyone he talks to and every year takes the time to really get to know his students beyond their academics.
- Joel is like a ray of sunshine; always pleasant and positive.
- Joel takes time to get to know staff and their family lives. He is willing to drop everything to help. He often puts others needs before his own. He is a mentor and positive role model.
- A caring and positive presence at Greenwood, Joel works hard for his students and is a model of responsible professionalism for his colleagues.

- I see him spend extra time with students. They feel valued. Thanks Mr. Martin!
- Joel made my first year at GW and my first year teaching so great! We call him our fearless leader in 5th grade!
- Joel always has a positive attitude. He is sincere when asking how things are going and listens attentively to you when you respond.
- Joel is a dedicated teacher who is committed to his students.
- Joel will do anything for anyone; he's a stand out teacher, friend, dad, and husband.

**WAYZATA PUBLIC SCHOOLS**  
Independent School District 284  
Wayzata, Minnesota

**BOARD OF EDUCATION**  
Regular Meeting – December 8, 2014

**AGENDA SECTION: 7. Recognitions**

**ITEM: C. December Employee of the Month**

**COMMENTS BY: Superintendent Chace B. Anderson**

Central Middle School is pleased to select Brigid Austin as the Wayzata December Employee of the Month. Brigid has been an important part of Central’s learning community as an 8<sup>th</sup> grade Language Arts teacher since 2010. The key to Brigid’s success as a classroom teacher is twofold. She is deeply committed to making personal connections with her students and she is dedicated to personalizing the learning experience of her students to ensure that all children are successful in her classroom. Brigid nurtures the child, while developing the scholar.

Brigid’s commitment to personalizing each student’s learning is admirable. This commitment helps all students and in particular struggling learners. Brigid operates under the assumption that all students cannot only learn, but thrive. She differentiates her lessons to generate the appropriate rigor while creating “relevance”, the great middle school motivator. Brigid is also an asset to her Professional Learning Community (PLC), especially as a new district Language Arts curriculum comes into play. Her positive attitude and quiet business-like demeanor helps her PLC get things done.

Most importantly, Brigid’s students know she believes in them. She supports their growth while meeting them where they are. She views challenging interactions as opportunities to build long lasting teacher-student relationships. You will often see Brigid working with students individually or in small groups during lunch or after school. Brigid realizes that many students require extra time and opportunities to build their confidence and competence with the material. She knows that student needs must be met through thoughtful implementation of the curriculum and motivating relationships.

One colleague described Brigid as follows, “She works incredibly hard to make sure each of her students understands the material and feels comfortable in her class. She does so much out-of-the-classroom work too; she gives and cares 100% of the time. She’s been very inspirational to me and I am very thankful I get to work with her every day.”

We are proud to name Brigid Austin, December Employee of the Month. Congratulations, Brigid!

**WAYZATA PUBLIC SCHOOLS**  
Independent School District 284  
Wayzata, Minnesota

**BOARD OF EDUCATION**  
Regular Meeting – December 8, 2014

**AGENDA SECTION: SUPERINTENDENT’S REPORTS AND RECOMMENDATIONS**

**ITEM: Finance and Business Services**

**COMMENTS BY: Jim Westrum, Exec. Director of Finance and Business Services**

**Monthly Financial Reports**

Enclosed for School Board review and information are the following financial reports:

- Student Activity Fund Report of October 2014.
- Investment Summary as of October 2014.
- Revenue Board Report as of October 2014.
- Expenditures Board Report as of October 2014.
- Analysis of Financial Reports as of October 2014.

No School Board action is required.

Wayzata Public Schools  
 Student Activity Fund Summary  
 October 2014

**PROGRAM/LOCATION : MISCELLANEOUS**

<i>Fund</i>	<i>Type</i>	<i>Org</i>	<i>Prg</i>	<i>Crs</i>	<i>Fin</i>	<i>Obj/Src</i>	<i>Account Name</i>	<b>Balance as Of 06/30/14</b>	<b>FY'2014/15 Revenue</b>	<b>FY'2014/15 Expend</b>	<b>Balance as Of 10/31/14</b>
21	E/R	018	000	000	000	899/XXX	AD BUILDING	4,028.30	0.00	32.19	3,996.11
<b>TOTAL MISCELLANEOUS</b>								<b>4,028.30</b>	<b>-</b>	<b>32.19</b>	<b>3,996.11</b>

**Wayzata Public Schools**  
**Student Activity Fund Summary**  
**October 2014**

**PROGRAM/LOCATION : WAZATA HIGH SCHOOL**

<b>Fund</b>	<b>Type</b>	<b>Org</b>	<b>Prg</b>	<b>Crs</b>	<b>Fin</b>	<b>Obj/Src</b>	<b>Account Name</b>	<b>Balance as Of 06/30/14</b>	<b>FY'2014/15 Revenue</b>	<b>FY'2014/15 Expend</b>	<b>Balance as Of 10/31/14</b>
21	E/R	251	280	001	000	899/099	WAYZATA PLAYERS	29,773.10	8,027.29	4,888.07	32,912.32
21	E/R	251	280	003	000	899/099	YEARBOOK (WAYAKO)	816.63	99,799.30	67,025.33	33,590.60
21	E/R	251	280	005	000	899/099	CERAMICS	6,063.81	1,703.77	6,000.00	1,767.58
21	E/R	251	280	007	000	899/099	CHEERLEADERS	608.47	5,690.00	3,629.03	2,669.44
21	E/R	251	280	008	000	899/099	CHOIR	5,760.51	17,482.00	13,113.83	10,128.68
21	E/R	251	280	009	000	899/099	DANCE TEAM	14,342.73	3,208.16	12,537.18	5,013.71
21	E/R	251	280	016	000	899/099	ACTIVITY SUPPORT	30,754.86	34,933.72	9,523.65	56,164.93
21	E/R	251	280	017	000	899/099	DECA	11,892.68	15,853.79	399.30	27,347.17
21	E/R	251	280	019	000	899/099	FRENCH	1,056.60	455.97	0.00	1,512.57
21	E/R	251	280	020	000	899/099	GERMAN	8,817.18	188.22	0.00	9,005.40
21	E/R	251	280	021	000	899/099	LETTERMAN	64,146.20	2,786.34	10,434.66	56,497.88
21	E/R	251	280	022	000	899/099	FINE ARTS	2,146.72	10.00	0.00	2,156.72
21	E/R	251	280	024	000	899/099	BAND	11,244.96	13,740.51	9,309.97	15,675.50
21	E/R	251	280	026	000	899/099	NATIONAL HONOR	4,996.53	130.00	391.99	4,734.54
21	E/R	251	280	027	000	899/099	STUDENT SERVICES	94.41	2,000.00	101.64	1,992.77
21	E/R	251	280	028	000	899/099	ORCHESTRA	6,854.46	2,159.50	1,567.86	7,446.10
21	E/R	251	280	030	000	899/099	STUDENT COUNCIL	8,455.23	12,783.40	12,818.94	8,419.69
21	E/R	251	280	031	000	899/099	SPANISH (KEEP OPEN)	4,404.56	938.46	6.00	5,337.02
21	E/R	251	280	038	000	899/099	SCHOLARSHIPS	-	0.00	0.00	-
21	E/R	251	280	039	000	899/099	THEATRE ARTS	2,291.46	828.66	707.17	2,412.95
21	E/R	251	280	040	000	899/099	BUSINESS PROFESS(BPA)	818.75	5,533.05	2,991.66	3,360.14
21	E/R	251	280	042	000	899/099	SKILLS USA	954.04	0.00	0.00	954.04
21	E/R	251	280	043	000	899/099	ART CLUB	-	0.00	0.00	-
21	E/R	251	280	044	000	899/099	LINK	5,841.10	118.95	4,433.44	1,526.61
21	E/R	251	280	047	000	899/099	SUPER MILEAGE TEAM	1,596.08	320.00	0.00	1,916.08
21	E/R	251	280	048	000	899/099	Y.E.S.	403.74	2,944.26	2,199.75	1,148.25
21	E/R	251	280	049	000	899/099	CREATIVE WRITING	2,337.57	0.00	0.00	2,337.57
21	E/R	251	280	050	000	899/099	TROJAN LOCK ROOM (DECA)	19,040.92	12,713.64	8,154.14	23,600.42
21	E/R	251	280	051	000	899/099	V21 - ACTIVITY SUPPORT	418.13	200.00	440.00	178.13
21	E/R	251	280	052	000	899/099	ROBOTICS TEAM	6,462.24	80.00	1,334.00	5,208.24
21	E/R	251	280	053	000	899/099	SHOW STOPPERS	5,202.81	10,342.00	4,477.36	11,067.45
21	E/R	251	280	055	000	899/099	CHINESE CLUB	1,898.98	290.48	0.00	2,189.46
21	E/R	251	280	056	000	899/099	LAKER'S BKST NOOK	6,713.59	3,978.80	2,241.41	8,450.98
21	E/R	251	280	057	000	899/099	WHS INTERNATIONAL FESTIV	170.30	1,635.00	47.03	1,758.27
21	E/R	251	280	058	000	899/099	FRESHMAN RETREAT	624.73	5,275.30	0.00	5,900.03
21	E/R	251	280	059	000	899/099	TRAP & SKEET (NEW)	3,017.62	2,885.00	0.00	5,902.62
21	E/R	251	280	060	000	899/099	JR STATESMAN (NEW)	1,221.20	0.00	0.00	1,221.20
21	E/R	251	280	061	000	899/099	QUIZ BOWL (NEW)	2,967.25	1,306.15	0.00	4,273.40
<b>TOTAL WAZATA HIGH SCHOOL</b>								<b>274,210.15</b>	<b>270,341.72</b>	<b>178,773.41</b>	<b>365,778.46</b>

**Wayzata Public Schools**  
**Student Activity Fund Summary**  
**October 2014**

**PROGRAM/LOCATION : WAZATA HIGH SCHOOL ATHLETICS**

<i>Fund</i>	<i>Type</i>	<i>Org</i>	<i>Prg</i>	<i>Crs</i>	<i>Fin</i>	<i>Obj/Src</i>	<i>Account Name</i>	<b>Balance as Of 06/30/14</b>	<b>FY'2014/15 Revenue</b>	<b>FY'2014/15 Expend</b>	<b>Balance as Of 10/31/14</b>
21	E/R	251	280	070	000	899/099	BASEBALL	8,518.39	0.00	500.00	8,018.39
21	E/R	251	280	071	000	899/099	BASKETBALL - BOYS	1,053.71	622.50	1,127.57	548.64
21	E/R	251	280	072	000	899/099	BASKETBALL - GIRLS	6,226.47	0.00	0.00	6,226.47
21	E/R	251	280	073	000	899/099	CROSS COUNTRY - BOYS	3,264.00	810.00	6,901.77	(2,827.77)
21	E/R	251	280	074	000	899/099	CROSS COUNTRY - GIRLS	1,856.13	990.00	7,850.38	(5,004.25)
21	E/R	251	280	075	000	899/099	FOOTBALL	47,487.43	320.00	6,668.96	41,138.47
21	E/R	251	280	076	000	899/099	GYMNASTICS	4,161.00	280.00	42.50	4,398.50
21	E/R	251	280	077	000	899/099	GOLF - BOYS	230.54	1,650.00	372.64	1,507.90
21	E/R	251	280	078	000	899/099	GOLF - GIRLS	2,822.91	0.00	493.63	2,329.28
21	E/R	251	280	079	000	899/099	HOCKEY - BOYS	12,472.63	7,100.00	2,504.61	17,068.02
21	E/R	251	280	080	000	899/099	HOCKEY - GIRLS	12,591.97	3,802.50	2,005.00	14,389.47
21	E/R	251	280	081	000	899/099	SKIING - ALPINE	9,806.55	0.00	3,274.67	6,531.88
21	E/R	251	280	082	000	899/099	SKIING - NORDIC	9,513.44	600.00	(577.03)	10,690.47
21	E/R	251	280	083	000	899/099	SOFTBALL	1,992.20	148.16	265.86	1,874.50
21	E/R	251	280	084	000	899/099	SWIMMING/DIVING - BOYS	5,084.96	0.00	128.52	4,956.44
21	E/R	251	280	085	000	899/099	SWIMMING/DIVING - GIRLS	10,261.52	3,202.00	5,161.20	8,302.32
21	E/R	251	280	086	000	899/099	SOCCER - BOYS	13,029.79	1,060.00	7,110.01	6,979.78
21	E/R	251	280	087	000	899/099	SOCCER - GIRLS	11,463.20	1,267.00	3,024.71	9,705.49
21	E/R	251	280	088	000	899/099	SYNCHRONIZED SWIMMING	6,333.11	0.00	365.50	5,967.61
21	E/R	251	280	089	000	899/099	TENNIS - BOYS	25,633.28	0.00	890.98	24,742.30
21	E/R	251	280	090	000	899/099	TENNIS - GIRLS	1,904.58	7,367.00	8,298.06	973.52
21	E/R	251	280	091	000	899/099	TRACK/FIELD - BOYS	2,632.41	110.00	201.48	2,540.93
21	E/R	251	280	092	000	899/099	TRACK/FIELD - GIRLS	1,513.00	530.00	36.75	2,006.25
21	E/R	251	280	093	000	899/099	VOLLEYBALL	5,030.44	5,285.96	7,217.45	3,098.95
21	E/R	251	280	094	000	899/099	WRESTLING	696.32	130.00	0.00	826.32
21	E/R	251	280	095	000	899/099	ADAPTIVE ATHLETICS	3,510.12	250.00	0.00	3,760.12
21	E/R	251	280	096	000	899/099	BOYS LACROSSE	10,840.52	660.00	122.50	11,378.02
21	E/R	251	280	097	000	899/099	GIRLS LACROSSE	6,621.10	580.00	0.00	7,201.10
<b>TOTAL HIGH SCHOOL ATHLETICS</b>								<b>226,551.72</b>	<b>36,765.12</b>	<b>63,987.72</b>	<b>199,329.12</b>

**Wayzata Public Schools**  
**Student Activity Fund Summary**  
**October 2014**

**PROGRAM/LOCATION : CENTRAL MIDDLE SCHOOL**

<i>Fund</i>	<i>Type</i>	<i>Org</i>	<i>Prg</i>	<i>Crs</i>	<i>Fin</i>	<i>Obj/Src</i>	<i>Account Name</i>	<b>Balance as Of 06/30/14</b>	<b>FY'2014/15 Revenue</b>	<b>FY'2014/15 Expend</b>	<b>Balance as Of 10/31/14</b>
21	E/R	253	280	152	000	899/099	MUSICAL	6,015.83	0.00	1,235.36	4,780.47
21	E/R	253	280	156	000	899/099	STUDENT COUNCIL	3,231.85	0.00	0.00	3,231.85
21	E/R	253	280	157	000	899/099	BAND	607.67	3,522.18	(660.00)	4,789.85
21	E/R	253	280	161	000	899/099	YEARBOOKS	6,568.29	2,161.00	128.89	8,600.40
21	E/R	253	280	165	000	899/099	STUDENT SERVICES	7,770.73	2,170.75	1,653.11	8,288.37
<b>TOTAL CENTRAL MIDDLE SCHOOL</b>								<b>24,194.37</b>	<b>7,853.93</b>	<b>2,357.36</b>	<b>29,690.94</b>

**Wayzata Public Schools**  
**Student Activity Fund Summary**  
**October 2014**

**PROGRAM/LOCATION : WEST MIDDLE SCHOOL**

<i>Fund</i>	<i>Type</i>	<i>Org</i>	<i>Prg</i>	<i>Crs</i>	<i>Fin</i>	<i>Obj/Src</i>	<i>Account Name</i>	<b>Balance as Of 06/30/14</b>	<b>FY'2014/15 Revenue</b>	<b>FY'2014/15 Expend</b>	<b>Balance as Of 10/31/14</b>
21	E/R	351	280	202	000	899/099	CHOIR - KEEP!	30.89	0.00	0.00	30.89
21	E/R	351	280	203	000	899/099	STUDENT SERVICES	6,893.17	350.76	2,401.99	4,841.94
21	E/R	351	280	209	000	899/099	STUDENT COUNCIL	157.58	0.00	0.00	157.58
21	E/R	351	280	212	000	899/099	YEARBOOK	4,391.17	0.00	0.00	4,391.17
21	E/R	351	280	213	000	899/099	THEATER	10,484.03	0.00	869.25	9,614.78
21	E/R	351	280	215	000	899/099	DAY ONE	150.00	78.00	103.96	124.04
<b>TOTAL WEST MIDDLE SCHOOL</b>								<b>22,106.84</b>	<b>428.76</b>	<b>3,375.20</b>	<b>19,160.40</b>

**Wayzata Public Schools**  
**Student Activity Fund Summary**  
**October 2014**

**PROGRAM/LOCATION : EAST MIDDLE SCHOOL**

<i>Fund</i>	<i>Type</i>	<i>Org</i>	<i>Prg</i>	<i>Crs</i>	<i>Fin</i>	<i>Obj/Src</i>	<i>Account Name</i>	<b>Balance as Of 06/30/14</b>	<b>FY'2014/15 Revenue</b>	<b>FY'2014/15 Expend</b>	<b>Balance as Of 10/31/14</b>
21	E/R	352	280	100	000	899/099	STUDENT SERVICES	16,517.74	331.00	6,419.29	10,429.45
21	E/R	352	280	104	000	899/099	BAND	1,668.07	0.00	0.00	1,668.07
21	E/R	352	280	105	000	899/099	STUDENT COUNCIL	12,461.67	2,046.55	2,413.86	12,094.36
21	E/R	352	280	107	000	899/099	VARIETY FUND	10,296.05	0.00	560.81	9,735.24
<b>TOTAL EAST MIDDLE SCHOOL</b>								<b>40,943.53</b>	<b>2,377.55</b>	<b>9,393.96</b>	<b>33,927.12</b>

**Wayzata Public Schools**  
**Student Activity Fund Summary**  
**October 2014**

**PROGRAM/LOCATION : BIRCHVIEW**

<i>Fund</i>	<i>Type</i>	<i>Org</i>	<i>Prg</i>	<i>Crs</i>	<i>Fin</i>	<i>Obj/Src</i>	<i>Account Name</i>	<b>Balance as Of 06/30/14</b>	<b>FY'2014/15 Revenue</b>	<b>FY'2014/15 Expend</b>	<b>Balance as Of 10/31/14</b>
21	E/R	404	280	251	000	899/099	STUDENT SERV - K	-	0.00	0.00	-
21	E/R	404	280	253	000	899/099	STUDENT SERV - GR 1	-	704.57	0.00	704.57
21	E/R	404	280	254	000	899/099	STUDENT SERV - GR 2	-	0.00	0.00	-
21	E/R	404	280	255	000	899/099	STUDENT SERV - GR 3	-	0.00	0.00	-
21	E/R	404	280	256	000	899/099	STUDENT SERV - GR 4	-	0.00	0.00	-
21	E/R	404	280	257	000	899/099	STUDENT SERV - GR 5	-	0.00	0.00	-
21	E/R	404	280	259	000	899/099	STUDENT COUNCIL	1,935.06	0.00	0.00	1,935.06
21	E/R	404	280	260	000	899/099	STUDENT SERV - GENERAL	4,769.58	339.93	4,573.05	536.46
21	E/R	404	280	261	000	899/099	MEDIA	1,508.57	1,004.99	0.00	2,513.56
<b>TOTAL BIRCHVIEW</b>								<b>8,213.21</b>	<b>2,049.49</b>	<b>4,573.05</b>	<b>5,689.65</b>

**Wayzata Public Schools**  
**Student Activity Fund Summary**  
**October 2014**

**PROGRAM/LOCATION : GREENWOOD**

<i>Fund</i>	<i>Type</i>	<i>Org</i>	<i>Prg</i>	<i>Crs</i>	<i>Fin</i>	<i>Obj/Src</i>	<i>Account Name</i>	<b>Balance as Of 06/30/14</b>	<b>FY'2014/15 Revenue</b>	<b>FY'2014/15 Expend</b>	<b>Balance as Of 10/31/14</b>
21	E/R	406	280	307	000	899/099	KINDERGARTEN	1,449.26	0.00	0.00	1,449.26
21	E/R	406	280	311	000	899/099	MEDIA	95.38	0.00	0.00	95.38
21	E/R	406	280	312	000	899/099	STUDENT SERVICES	798.04	13,437.72	195.00	14,040.76
<b>TOTAL GREENWOOD</b>								<b>2,342.68</b>	<b>13,437.72</b>	<b>195.00</b>	<b>15,585.40</b>

**Wayzata Public Schools**  
**Student Activity Fund Summary**  
**October 2014**

**PROGRAM/LOCATION : OAKWOOD**

<i>Fund</i>	<i>Type</i>	<i>Org</i>	<i>Prg</i>	<i>Crs</i>	<i>Fin</i>	<i>Obj/Src</i>	<i>Account Name</i>	<b>Balance as Of 06/30/14</b>	<b>FY'2014/15 Revenue</b>	<b>FY'2014/15 Expend</b>	<b>Balance as Of 10/31/14</b>
21	E/R	407	280	469	000	899/099	STUDENT COUNCIL	1,122.95	0.00	0.00	1,122.95
21	E/R	407	280	474	000	899/099	STUDENT SERV - GENERAL	7,282.99	571.50	153.02	7,701.47
21	E/R	407	280	476	000	899/099	CHESS CLUB	675.92	450.00	173.89	952.03
<b>Total Oakwood Elementary</b>								<b>9,081.86</b>	<b>1,021.50</b>	<b>326.91</b>	<b>9,776.45</b>

**Wayzata Public Schools**  
**Student Activity Fund Summary**  
**October 2014**

**PROGRAM/LOCATION : SUNSET HILL**

<i>Fund</i>	<i>Type</i>	<i>Org</i>	<i>Prg</i>	<i>Crs</i>	<i>Fin</i>	<i>Obj/Src</i>	<i>Account Name</i>	<b>Balance as Of 06/30/14</b>	<b>FY'2014/15 Revenue</b>	<b>FY'2014/15 Expend</b>	<b>Balance as Of 10/31/14</b>
21	E/R	408	280	572	000	899/099	STUDENT SERVICES	13,805.52	7,304.58	6,401.71	14,708.39
21	E/R	408	280	574	000	899/099	PENCIL MACHINE/STORE	1,493.59	294.75	258.00	1,530.34
<b>TOTAL SUNSET HILL</b>								<b>15,299.11</b>	<b>7,599.33</b>	<b>6,659.71</b>	<b>16,238.73</b>

Wayzata Public Schools  
 Student Activity Fund Summary  
 October 2014

**PROGRAM/LOCATION : PLYMOUTH CREEK**

<i>Fund</i>	<i>Type</i>	<i>Org</i>	<i>Prg</i>	<i>Crs</i>	<i>Fin</i>	<i>Obj/Src</i>	<i>Account Name</i>	<b>Balance as Of 06/30/14</b>	<b>FY'2014/15 Revenue</b>	<b>FY'2014/15 Expend</b>	<b>Balance as Of 10/31/14</b>
21	E/R	410	280	533	000	899/099	STUDENT SERVICES	6,349.98	0.00	2,742.47	3,607.51
<b>TOTAL PLYMOUTH CREEK</b>								<b>6,349.98</b>	<b>-</b>	<b>2,742.47</b>	<b>3,607.51</b>

Wayzata Public Schools  
 Student Activity Fund Summary  
 October 2014

**PROGRAM/LOCATION : GLEASON LAKE**

<i>Fund</i>	<i>Type</i>	<i>Org</i>	<i>Prg</i>	<i>Crs</i>	<i>Fin</i>	<i>Obj/Src</i>	<i>Account Name</i>	<b>Balance as Of 06/30/14</b>	<b>FY'2014/15 Revenue</b>	<b>FY'2014/15 Expend</b>	<b>Balance as Of 10/31/14</b>
21	E/R	411	280	352	000	899/099	STUDENT SERVICES	17,992.54	4,860.28	1,303.57	21,549.25
<b>TOTAL GLEASON LAKE</b>								<b>17,992.54</b>	<b>4,860.28</b>	<b>1,303.57</b>	<b>21,549.25</b>

**Wayzata Public Schools**  
**Student Activity Fund Summary**  
**October 2014**

**PROGRAM/LOCATION : KIMBERLY LANE**

<i>Fund</i>	<i>Type</i>	<i>Org</i>	<i>Prg</i>	<i>Crs</i>	<i>Fin</i>	<i>Obj/Src</i>	<i>Account Name</i>	<b>Balance as Of 06/30/14</b>	<b>FY'2014/15 Revenue</b>	<b>FY'2014/15 Expend</b>	<b>Balance as Of 10/31/14</b>
21	E/R	412	280	401	000	899/099	STUDENT COUNCIL	2,558.24	0.00	0.00	2,558.24
21	E/R	412	280	403	000	899/099	KINDERGARTEN ACTIVITY (NEW	935.37	2,566.72	35.00	3,467.09
21	E/R	412	280	404	000	899/099	CARLSON	1,544.60	0.00	1,544.60	-
21	E/R	412	280	405	000	899/099	SPRAQUE	1,356.92	0.00	1,356.92	-
21	E/R	412	280	430	000	899/099	MEDIA	185.03	0.00	0.00	185.03
21	E/R	412	280	431	000	899/099	STUDENT SERVICES	34,311.07	2,302.56	50.00	36,563.63
<b>TOTAL KIMBERLY LANE</b>								<b>40,891.23</b>	<b>4,869.28</b>	<b>2,986.52</b>	<b>42,773.99</b>



**WAYZATA PUBLIC SCHOOLS  
INVESTMENT SUMMARY  
AS OF OCTOBER 31, 2014**

**GENERAL FUND**

<u>Investment Held At</u>	<u>Type of Investment</u>	<u>Purchase Date</u>	<u>Maturity Date</u>	<u>Investment Cost</u>	<u>Maturity Amount</u>	<u>Interest Earned</u>	<u>Yield</u>
PMA/MN Trust	Money Market	N/A	NOW	N/A	\$21,851,404	N/A	0.04%
MSDLAF+	Money Market	N/A	NOW	N/A	\$6,680,491	N/A	0.02%
MSDMAX	Money Market	N/A	NOW	N/A	\$6,026,113	N/A	0.04%
Morgan Stanley	Money Market	N/A	NOW	N/A	\$3,506,667	N/A	0.04%
PMA/MN TRUST	Term Series	7/31/14	1/28/15	\$10,000,000	\$10,005,455	\$5,455	11.00%
<b>Total General Fund</b>				<b>\$10,000,000</b>	<b>\$48,070,131</b>	<b>\$5,455</b>	

Note: Term Series investment held with PMA/MN Trust consists of investments in certificates of deposit, obligations of the U.S. Government, it's agencies and instrumentalities, municipal obligations or any other instruments permitted under Minnesota law.

**FUND 06 (ALT FACILITIES BONDS)**

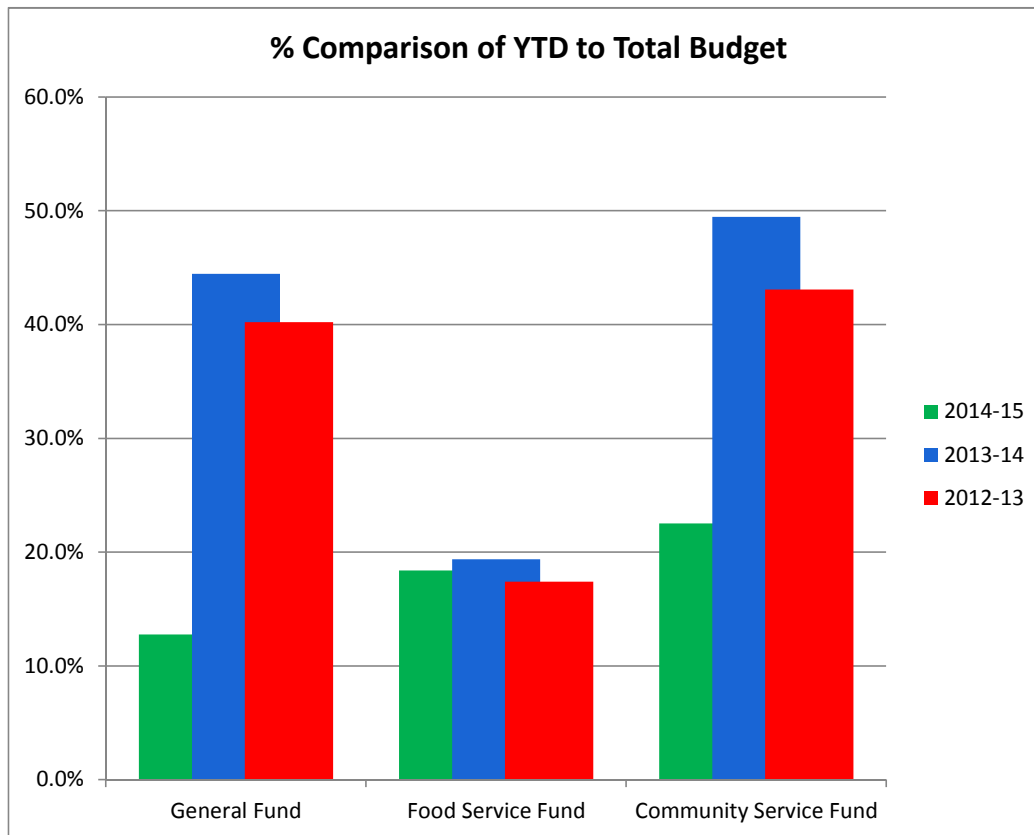
<u>Investment Held At</u>	<u>Type of Investment</u>	<u>Purchase Date</u>	<u>Maturity Date</u>	<u>Investment Cost</u>	<u>Maturity Amount</u>	<u>Interest Earned</u>	<u>Yield</u>
MSDLAF+	Money Market	N/A	NOW	N/A	\$2,165,479	N/A	0.02%
MSDLAF MANAGED	Fannie Mae Global Notes	5/22/14	7/2/15	\$1,681,370	\$1,684,316	\$2,946	0.16%
MSDLAF MANAGED	FNMA Notes	5/22/14	7/28/15	\$5,035,607	\$5,044,933	\$9,326	0.16%
MSDLAF MANAGED	FNMA Notes	5/22/14	8/26/16	\$5,513,255	\$5,577,885	\$64,630	0.52%
<b>Total Alt. Facilities Bonds Fund</b>				<b>\$12,230,232</b>	<b>\$14,472,613</b>	<b>\$76,902</b>	

**FUND 82 (2014 BUILDING BONDS)**

<u>Investment Held At</u>	<u>Type of Investment</u>	<u>Purchase Date</u>	<u>Maturity Date</u>	<u>Investment Cost</u>	<u>Maturity Amount</u>	<u>Interest Earned</u>	<u>Yield</u>
MSDLAF+	Money Market	N/A	NOW	N/A	\$48,350,228	N/A	0.02%
MSDLAF MANAGED	US Treasury Notes	5/22/14	11/30/15	\$5,597,324	\$5,615,405	\$18,081	0.21%
MSDLAF MANAGED	US Treasury Notes	5/22/14	12/31/15	\$5,001,563	\$5,020,137	\$18,574	0.23%
MSDLAF MANAGED	US Treasury Notes	5/22/14	1/31/16	\$5,009,961	\$5,031,798	\$21,837	0.26%
MSDLAF MANAGED	US Treasury Notes	5/22/14	2/29/16	\$4,997,265	\$5,022,192	\$24,927	0.28%
MSDLAF MANAGED	US Treasury Notes	5/22/14	4/30/16	\$6,303,445	\$6,345,891	\$42,446	0.35%
MSDLAF MANAGED	FNMA Notes	5/22/14	10/26/15	\$9,691,330	\$9,720,777	\$29,447	0.21%
MSDLAF MANAGED	Fannie Mae Global Notes	5/22/14	3/30/16	\$5,014,550	\$5,046,438	\$31,888	0.34%
MSDLAF MANAGED	FHLMC Notes	5/22/14	5/27/16	\$3,282,363	\$3,308,795	\$26,432	0.40%
<b>Total Building Bonds Fund</b>				<b>\$44,897,801</b>	<b>\$93,461,661</b>	<b>\$213,632</b>	

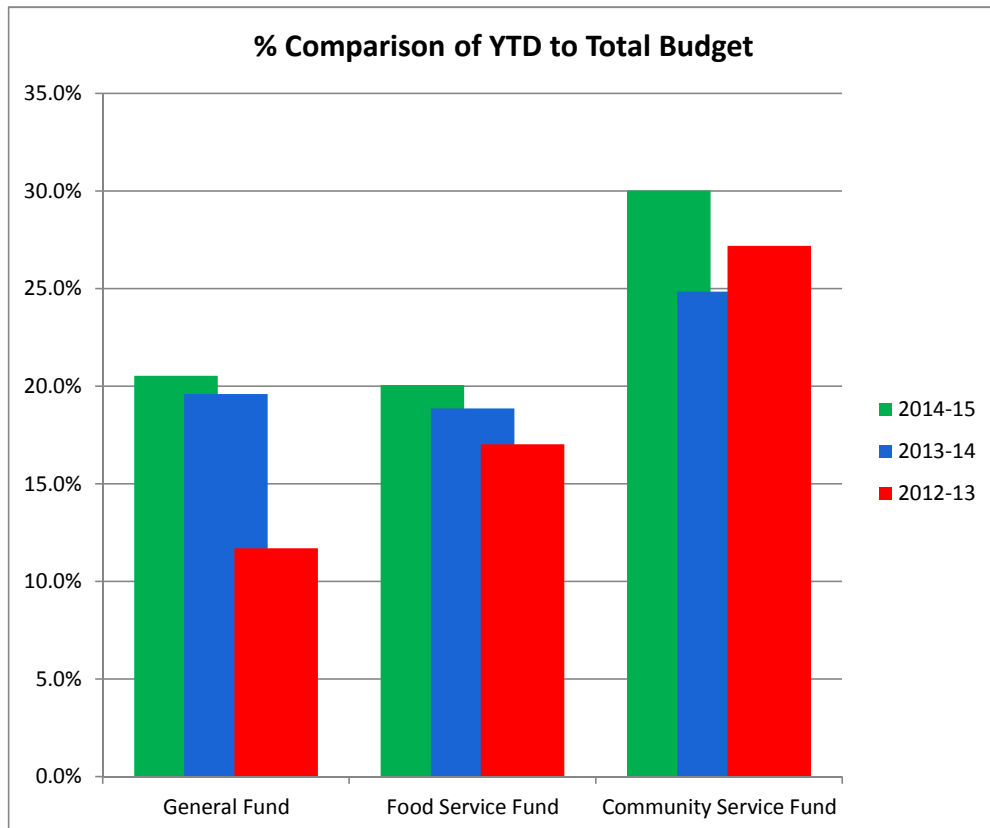
**STATEMENT OF REVENUES**  
**For the month ended October 31, 2014**

Fund	Year- To-Date	Budget	YTD as % of Budget		
			2014-15	2013-14	2012-13
General Fund	\$ 16,570,927	\$ 126,140,699	13.1%	45.3%	40.8%
Transportation Fund	-	16,683	0.0%	83.9%	0.0%
Capital Expenditures Fund	-	1,162,406	0.0%	100.0%	100.0%
Federal Programs Fund	38,896	2,964,657	1.3%	0.0%	0.0%
<b>Total</b>	<b>\$ 16,609,823</b>	<b>\$ 130,284,445</b>	<b>12.7%</b>	<b>44.5%</b>	<b>40.2%</b>
Food Service Fund	\$ 1,005,818	\$ 5,473,511	18.4%	19.4%	17.4%
Community Service Fund	1,717,858	7,630,203	22.5%	49.5%	43.1%
Alt Fac, Const and Tech Fund	38,488	6,890,968	0.6%	0.5%	0.1%
Debt Service Fund	156	10,026,175	0.0%	98.6%	97.9%
OPEB Debt Service Fund	3	1,526,204	0.0%	98.6%	98.0%
Building Construction Fund	113,676	-	100.0%	0.0%	0.0%
<b>Total All Funds</b>	<b>\$ 19,485,822</b>	<b>\$ 161,831,506</b>	<b>12.0%</b>	<b>45.7%</b>	<b>41.8%</b>



**STATEMENT OF EXPENDITURES**  
**For the month ended October 31, 2014**

Fund	Year-		YTD as % of Budget		
	To-Date	Budget	2014-15	2013-14	2012-13
<b>General Fund</b>					
Salaries	\$ 15,086,748	\$ 75,130,680	20.1%	20.1%	20.4%
Benefits	4,821,013	22,518,434	21.4%	21.0%	22.1%
Purchased Services	3,584,073	18,833,516	19.0%	19.5%	17.2%
Supplies & Materials	1,404,815	3,539,272	39.7%	41.0%	37.2%
Capital Expenditures	1,622,760	2,440,936	66.5%	494.4%	51.7%
Other Expenses	147,193	7,373,958	2.0%	1.8%	3.6%
<b>Total General Fund</b>	<b>\$ 26,666,601</b>	<b>\$ 129,836,796</b>	<b>20.5%</b>	<b>19.6%</b>	<b>11.7%</b>
Food Service Fund	\$ 1,125,454	\$ 5,613,933	20.0%	18.9%	17.0%
Community Service Fund	2,173,575	7,241,560	30.0%	24.8%	27.2%
Alt Fac, Const and Tech Fund	12,831,969	24,017,605	53.4%	45.1%	45.7%
Debt Service Fund	846,269	12,807,065	6.6%	10.2%	9.0%
OPEB Debt Service Fund	47,906	1,451,238	3.3%	5.5%	8.5%
Building Construction Fund	1,660,829	-	100.0%	0.0%	0.0%
<b>Total All Funds</b>	<b>\$ 45,352,603</b>	<b>\$ 180,968,197</b>	<b>25.1%</b>	<b>29.6%</b>	<b>21.7%</b>





Analysis of financial reports for month ending October 31, 2014

**Statement of Revenues:** This report reflects revenue received by the month end noted above. Items noted are as follows:

- The District received only \$13 million in state aid during the month of July compared to \$23 - \$27 million in prior years. The State did not borrow from the School District for the past fiscal year and a repayment of those monies was unnecessary. Levy dollars will be credited to the Transportation, Capital Expenditures, Community Education, Alt Fac, Const and Tech, and the Debt Service Funds when received. The entries are recorded effective July 1<sup>st</sup> but will occur at a later date. Those items are noted in the prior year's receipts.
- Food Service Fund revenues year-to-date as a percent of budget through October 31<sup>st</sup> had a net decrease of 1.0% compared to prior year due to several factors. First, in fiscal 2014, the District received approximately \$127,000 in state and federal aid. However, for fiscal 2015 and 2013, these funds were not received until later in the year. This decrease was offset by the increase in the per meal price at all sites ranging from ten cents at elementary and middle schools to twenty-five cents at the high school. There is also a continued increase in lunch and ala carte participation at the high school.
- In addition to the timing of tax levy dollars noted in the first bullet, the Community Service Fund revenues decreased nearly \$500,000 due to the elimination of the Wayzata Plus program; a result of offering all-day kindergarten this year which is funded through general education aid in the General Fund.
- Interest earnings are reflected in the newly established Building Construction Fund. Those investments have been held since the May proceeds were received.
- Federal Programs are required to spend grant entitlements prior to request for reimbursement. Reimbursement requests start with some frequency in October.

**Statement of Expenses:** This report reflects actual expenditures paid without taking in account any outstanding encumbrance balances. Items note are as follows:

- The General Fund expenditures are in line with the prior years through the month of October with the exception of Capital Expenditures. In July, 2013, the District purchased a portion of the Elm Creek Golf Course in anticipation of expansion needs at the High School. This capital expenditure was reimbursed upon the May 2014 receipt of the related bond proceeds.
- The Food Service Fund expenses increased as a result of increased participation at the high school in the lunch and ala carte programs and supplies purchased for the start of the school year.
- The Community Service Fund is noting additional expenditures for moving outlays and various other items.
- Alt Fac, Const and Tech Fund increase is due to the timing of projects which vary from year to year.
- The Debt Service and OPEB Debt Service Funds reflect interest payments on debt that are due the first of August. The payment in August is for interest only and a principal and interest payment is due February 1<sup>st</sup> of each year. The budget reflects the newly issued school building bond and alternative facilities bond with the first payment due in February. The bond issues will follow a semi-annual payment of interest and an annual payment of principal starting in FY15.
- A budget is not reflected for the Building Construction Fund due to projects spanning over multiple fiscal years. The schools are targeted for a Fall 2016 opening.

**WAYZATA PUBLIC SCHOOLS**  
Independent School District 284  
Wayzata, Minnesota

**BOARD OF EDUCATION**  
Regular Meeting – December 8, 2014

**AGENDA SECTION:** 9. Superintendent's Reports

**ITEM:** C. Truth in Taxation

**COMMENTS BY:** Jim Westrum, Exec. Director of Finance and Business

**Truth in Taxation**

School districts are required to meet the Truth in Taxation requirements for levy year 2013, taxes payable 2014. While school districts are no longer required to hold a separate Truth in Taxation hearing, they are required to discuss the payable 2013 levy and the current year budget at a regularly scheduled board meeting.

Truth in Taxation requirements are as follows:

- On or before September 30, 2015, each school district must adopt a proposed 2014 payable 2015 property tax levy and certify and submit it to the county auditor.
- The county auditor mails parcel specific tax notices to each property owner in the district.
- The school district is required to discuss the payable 2015 levy and current year budget.
- The public is given time to speak.
- The school board must adopt a final levy by December 31, 2014.

# Truth-in-Taxation Presentation for Taxes Payable in 2015

**December 8, 2014**

**School Board Regular Meeting**



**Excellence. For each and every student.**

Notice of  
Proposed Property Taxes  
Independent School District 284

The Wayzata Independent School District 284 will include in its regularly scheduled meeting a presentation on its current budget and on the amount of property taxes it is proposing to collect in 2015 to pay for a portion of the costs of the district for the 2015 - 2016 school year.

Attend the Regularly Scheduled School Board Meeting  
All residents of the school district are invited to attend the Board Meeting to express their opinions on the current budget and on the proposed amount of 2015 property taxes.

The meeting and presentation will be held on:

Monday, December 8, 2014 at 7:00 p.m.

Wayzata City Hall

600 Rice Street

Wayzata

**Excellence. For each and every student.**



# 2014-2015 Budget

FUND	REVENUE	EXPENDITURES
General Fund	\$130,284,445	\$129,836,796
Food Service	5,473,511	5,613,933
Community Svc.	7,630,203	7,241,560
Construction	6,890,968	24,017,605
Debt Service	11,552,379	14,258,303
<b>TOTAL</b>	<b>\$161,831,506</b>	<b>\$180,968,197</b>



**Excellence. For each and every student.**

# 2014-2015 Budget

FUND	JUNE 30, 2014 ACTUAL FUND BALANCES	FY 2015 BUDGET REVENUES AND TRANSFERS IN	FY 2015 BUDGET EXPENDITURES AND TRANSFERS OUT	JUNE 30, 2015 PROJECTED FUND BALANCES
General Fund/Restricted	\$ 6,474,792	\$ 11,608,583	\$ 10,756,831	\$ 7,326,544
General Fund/Other	\$ 15,722,202	\$ 118,675,862	\$ 119,079,965	\$ 15,318,099
Food Service Fund	\$ 1,225,357	\$ 5,473,511	\$ 5,613,933	\$ 1,084,935
Community Service Fund	\$ 2,013,812	\$ 7,630,203	\$ 7,621,560	\$ 2,022,455
Building Construction Fund	\$ 124,716,990	\$ 6,890,968	\$ 24,017,605	\$ 107,590,353
Debt Service Fund	\$ 4,771,248	\$ 10,026,175	\$ 12,807,065	\$ 1,990,358
Trust Fund	\$ 317,144	\$ -	\$ -	\$ 317,144
Internal Service Fund	\$ 5,371,429			\$ 5,371,429
* OPEB Revocable Trust Fund	\$ -	\$ -	\$ -	\$ -
OPEB Irrevocable Trust Fund	\$ 32,958,937	\$ -	\$ -	\$ 32,958,937
OPEB Debt Service Fund	\$ 133,574	\$ 1,526,204	\$ 1,451,238	\$ 208,540
<b>TOTAL - ALL FUNDS</b>	<b>\$ 193,705,485</b>	<b>\$ 161,831,506</b>	<b>\$ 181,348,197</b>	<b>\$ 174,188,794</b>



**Excellence. For each and every student.**

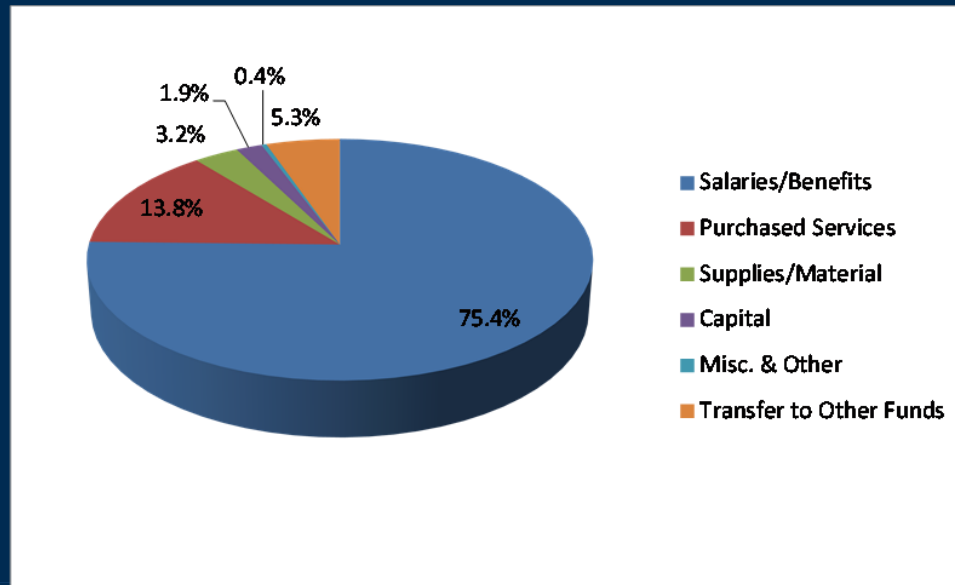
# Budget Basics – Revenue Sources

79



**Excellence. For each and every student.**

# Budget Basics – Expenditures Categories 2014-2015 Object Amount

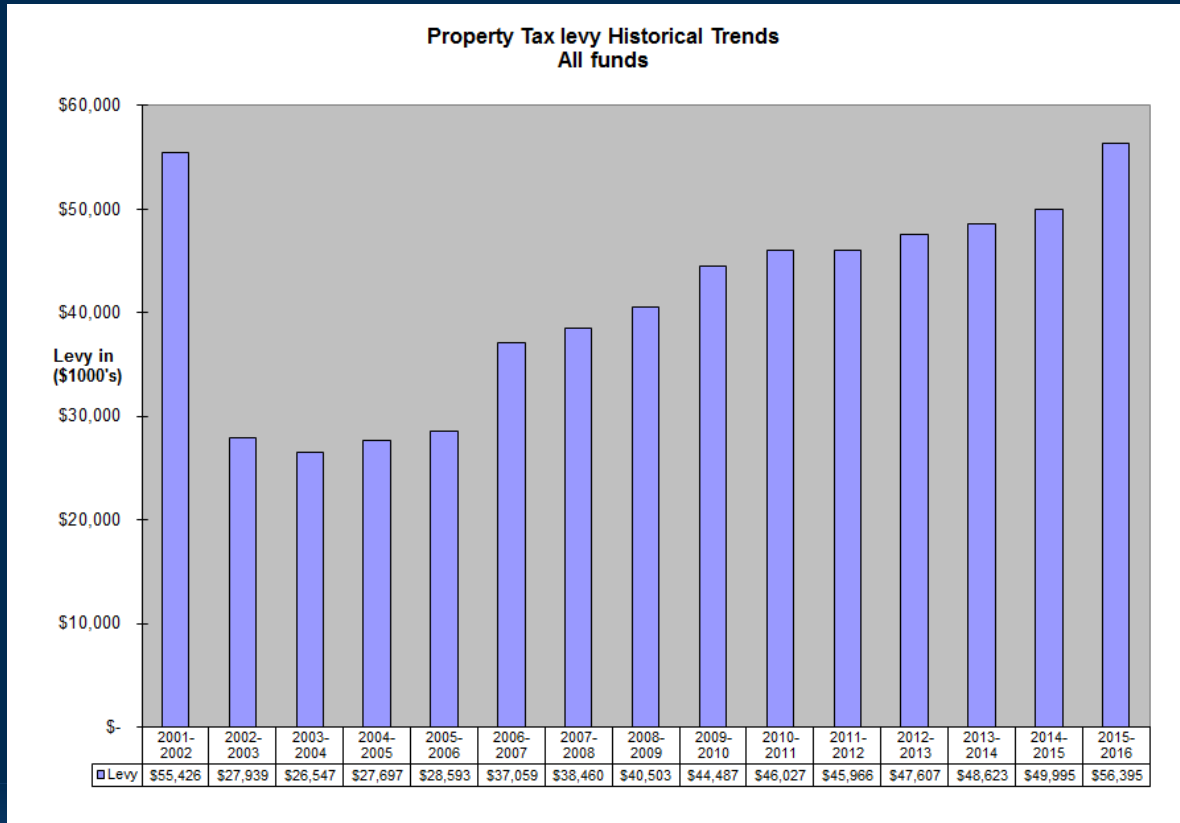


80



**Excellence. For each and every student.**

# Property Tax Levy History



**Excellence. For each and every student.**

# The Proposed Tax Levy

- 2015 Proposed Levy: \$55,998,254
- 2014 Certified Levy: \$49,995,137
- Change: \$6,003,117, or 12.01%

82



**Excellence. For each and every student.**

# Total Levy All Funds - Proposed

<u>FUND</u>	<u>PRELIMINARY 2015 LEVY</u>	<u>PAYABLE 2014 LEVY</u>	<u>CHANGE</u>	<u>PERCENT CHANGE</u>
General	\$ 38,970,668	\$ 36,896,656	\$ 2,074,012	5.62%
Community Service	\$ 1,253,598	\$ 1,546,101	\$ (292,503)	-18.92%
Debt Service	\$ 16,168,904	\$ 11,552,379	\$ 4,616,524	39.96%
Per Truth in Taxation Notice	<u>56,393,170</u>	<u>\$ 49,995,137</u>	<u>\$ 6,398,033</u>	<u>12.80%</u>
Bond Refunding- Savings	<u>(394,916)</u>		<u>\$ (394,916)</u>	
Adjusted Total	<u>55,998,254</u>	<u>49,995,137</u>	<u>6,003,117</u>	<u>12.01%</u>

Page 1



**Excellence. For each and every student.**

# Effect on Taxpayers

- The School Board approved a 12.8% increase in its property tax levy in September
- The School Board refinanced existing bonds and will reduce the levy by \$394,916
- The remaining school levy increase is primarily due to increased resident student enrollment tied directly to voter approved referendum authority and amounts related to the February 25, 2014 referendum
- District property valuation fluctuations have a direct impact on individual taxpayers



**Excellence. For each and every student.**

# Effect on Taxpayers

- The District's tax levy is spread to property owners based upon taxable market value
- There is not a direct correlation between the District's total levy change of 12.01% and what individual property owners will pay



**Excellence. For each and every student.**

# Effect on Taxpayers

The District's tax levy is spread to property owners based upon taxable market value

- If a property owner has NO increase in taxable market value, the change in the school portion of the taxes will be minimal if any, and less than the projected impact amount shared during the February 2014 referendum
- If the property owner has a decrease in taxable market value, the school portion of the taxes will decrease
- If the property owner has an increase in taxable market value and the home was valued at less than \$413,800, the school portion of the taxes will increase slightly more than the percentage increase in the taxable market value
- If the property owner has an increase in taxable market value and the home was already valued over \$413,800, the school portion of the taxes will increase slightly more than the percentage increase in the taxable market value



**Excellence. For each and every student.**

# Changes from Last Year

- Largest changes in the General fund levy is voter approved referendum authority due to increasing resident student enrollment
- The principal and interest for the bonds recently approved by voters is included in the levy payable in 2015



**Excellence. For each and every student.**

# Truth-in-Taxation Presentation for Taxes Payable in 2015

Discussion and Opportunity  
for the Public to comment.



**Excellence. For each and every student.**

**WAYZATA PUBLIC SCHOOLS**  
 Independent School District 284  
 Wayzata, Minnesota

**BOARD OF EDUCATION**  
 Regular Meeting – December 8, 2014

**AGENDA SECTION:** 9. Superintendent’s Reports

**ITEM:** C. Certification and Levy

**COMMENTS BY:** Jim Westrum, Exec. Director of Finance and Business

**Certification of 2014 Payable 2015 Tax Levy**

The Administration recommends certification of the 2014 Payable 2015 Property Tax Levy in the amount of \$56,393,169.71. This amount is unchanged from the amount included in the parcel specific notices mailed to taxpayers in November, but will be reduced by the Minnesota Department of Revenue for the recent bond refunding.

General Fund – Referendum Market Value – Voter Approved	\$18,196,861.56
General Fund – Referendum Market Value – Other	6,482,903.13
General Fund – Net Tax Capacity – Voter Approved	5,585,903.57
General Fund – Net Tax Capacity – Gen Ed	374,057.27
General Fund – Net Tax Capacity – Other	8,330,942.49
Community Service Fund	1,253,597.98
Debt Service Fund – Net Tax Capacity – Voter Approved	12,510,161.47
Debt Service Fund – Net Tax Capacity - Other	1,977,985.31
OPEB Pension	<u>1,680,756.93</u>
<b>Total Certified Levy</b>	<b>\$56,393,169.71</b>

**RECOMMENDED ACTION:** Approved and authorize the Board Clerk to sign the attached final 2014 Payable 2015 Levy for Independent School District 284.

Motion by: \_\_\_\_\_ Yes \_\_\_\_\_ Passed \_\_\_\_\_

Second by: \_\_\_\_\_ No \_\_\_\_\_ Failed \_\_\_\_\_

Abstentions: \_\_\_\_\_

Minnesota Department of Education  
 Levy Limitation and Certification Report  
 2014 Payable 2015

District Number-Type: 0284-01  
 District Name: WAYZATA PUBLIC SCHOOL DISTRICT  
 Home County: HENNEPIN

Date Printed: 12/5/14  
 Limits Updated: 11/24/14  
 Certified Submitted: 12/5/14

	LIMIT	PROPOSED	CERTIFIED
<b>SUBTOTALS BY LEVY CATEGORY</b>			
GENERAL - RMV VOTER - JOBZ EXEMPT	18,196,861.56	18,196,861.56	18,196,861.56
GENERAL - RMV OTHER - JOBZ EXEMPT	6,482,903.13	6,482,903.13	6,482,903.13
GENERAL - NTC VOTER - JOBZ EXEMPT	5,585,903.57	5,585,903.57	5,585,903.57
GENERAL - NTC OTHER GENED - EXEMPT	374,057.27	374,057.27	374,057.27
GENERAL - NTC OTHER - JOBZ EXEMPT	8,330,942.49	8,330,942.49	8,330,942.49
COMMUNITY SERVICE - NTC OTHER - JOBZ EXEMPT	1,253,597.98	1,253,597.98	1,253,597.98
GENERAL DEBT - NTC VOTER - JOBZ NONEXEMPT	12,510,161.47	12,510,161.47	12,510,161.47
GENERAL DEBT - NTC OTHER - JOBZ NONEXEMPT	1,977,985.31	1,977,985.31	1,977,985.31
OPEB DEBT - NTC VOTER - JOBZ NONEXEMPT	0.00	0.00	0.00
OPEB DEBT - NTC OTHER - JOBZ NONEXEMPT	1,680,756.93	1,680,756.93	1,680,756.93
<b>SUBTOTALS BY FUND</b>			
GENERAL FUND	38,970,668.02	38,970,668.02	38,970,668.02
COMMUNITY SERVICES FUND	1,253,597.98	1,253,597.98	1,253,597.98
GENERAL DEBT SERVICE FUND	14,488,146.78	14,488,146.78	14,488,146.78
OPEB/PENSION DEBT SERVICE FUND	1,680,756.93	1,680,756.93	1,680,756.93
<b>SUBTOTALS BY TAX BASE</b>			
REFERENDUM MARKET VALUE	24,679,764.69	24,679,764.69	24,679,764.69
NET TAX CAPACITY	31,713,405.02	31,713,405.02	31,713,405.02
<b>SUBTOTALS BY TRUTH IN TAXATION CATEGORY</b>			
VOTER APPROVED	36,292,926.60	36,292,926.60	36,292,926.60
OTHER	20,100,243.11	20,100,243.11	20,100,243.11
<b>TOTAL LEVY</b>			
TOTAL LEVY	56,393,169.71	56,393,169.71	56,393,169.71

The school district must submit the completed original of this form to the home county auditor by December 29, 2014. A duplicate form must be submitted to Minnesota Department of Education, Program Finance Division, 1500 Highway 36 West, Roseville, MN 55113, by January 7, 2015.

The certified levy listed above is the levy voted by the school board for taxes payable in 2015.

Signature of School Board Clerk \_\_\_\_\_

Date of Certification \_\_\_\_\_

**WAYZATA PUBLIC SCHOOLS**  
Independent School District 284  
Wayzata, Minnesota

**BOARD OF EDUCATION**  
Regular Meeting – December 8, 2014

**AGENDA SECTION:** 11. Board Reports

**ITEM:** \_\_\_\_\_

**COMMENTS BY:** Linda Cohen, Board Chair

This section of the agenda provides an opportunity for Board members to provide updates on School Board-related work or to make announcements of interest to the public.

**WAYZATA PUBLIC SCHOOLS**  
Independent School District 284  
Wayzata, Minnesota

**BOARD OF EDUCATION**  
Regular Meeting – December 8, 2014

**AGENDA SECTION:** 12. Audience Opportunity to Address the Board

**ITEM:** \_\_\_\_\_

**COMMENTS BY:** Linda Cohen, Board Chair

This section of the agenda provides an opportunity for members of the audience to address the School Board. Speakers will be allotted approximately two minutes.

**WAYZATA PUBLIC SCHOOLS**  
Independent School District 284  
Wayzata, Minnesota

**BOARD OF EDUCATION**  
Regular Meeting – December 8, 2014

**AGENDA SECTION:** 13. Adjourn

**ITEM:** \_\_\_\_\_

**COMMENTS BY:** Linda Cohen, Board Chair

This agenda item brings closure to the school board meeting.

**RECOMMENDED ACTION:** Call the meeting to a close.

Motion by: \_\_\_\_\_ Yes \_\_\_\_\_ Passed \_\_\_\_\_

No \_\_\_\_\_ Failed \_\_\_\_\_

Abstentions: \_\_\_\_\_