

**Regular Board of Education Meeting
Wednesday, October 19, 2011 7:00 PM
Central Services**

I. Public Comment

Attachments:

Approved Minutes 10-5-11

3

II. Administrative Reports

A. Superintendent's Announcements

Rationale: Mr. Addley will provide district updates.

B. Student Representative Reports

Rationale: Ms. Jennifer Lengvarsky and Mr. Sean Goodridge will report on activities taking place at the high school.

C. Business Manager's Report

Attachments:

Sept. Statement of Accounts

7

Rationale: Mr. Harry Traver, Business Manager, will present the September statement of accounts.

D. Schools in the Spotlight

Rationale: Ms. Ellen Godiksen, Drama Coach and Teacher at Granby Memorial Middle School, along with a few students, will profile the Drama Program at GMMS.

E. Special Education Programmatic & Academic Performance

Attachments:

Special Education Programmatic & Academic Performance

13

Rationale: Ms. Aimee Martin, Director of Pupil Personnel Services, will present a report on programmatic and academic performance of special education students.

F. Program & Academic Performance by Residence

Attachments:

Programmatic & Academic Performance by Residence

28

Programmatic & Academic Performance by Residence Narrative

47

Rationale: Ms. Diane Dugas, Director of Curriculum, Teaching & Learning, will present Choice and Hartland achievement and programmatic data.

III. Consent Agenda

A. Minutes

Rationale: The Board will approve/amend the minutes of the October 5, 2011 Board of Education meeting.

IV. Old Business

A. Early Childhood Feasibility Study Update

Rationale: The Curriculum Subcommittee will provide a recommendation to the Board on the merits of integrated pre-school and full-day kindergarten.

B. CPPAC

Rationale: The Board will review and discuss district priorities for the upcoming CPPAC November Meeting.

V. New Business

A. Spanish After-School Program

Rationale: Ms. Valorie Hollister and Ms. Danielle Sandridge will share with the Board the Granby Recreation Department's Spanish after-school programs at the elementary schools.

B. Superintendent Goals

Attachments:

2011-2012 Superintendent Goals 56

Rationale: Mr. Addley will present his goals for the 2011-2012 school year.

VI. Miscellaneous

A. Board Standing Committee Reports

1. Curriculum/Policy/Technology/Communication

Attachments:

Curriculum Subcommittee Minutes 10-5-11 58

Monthly Curriculum Subcommittee Report - October 59

2. Finance/Personnel/Facilities

B. Other Board-Related Reports

1. CPPAC

2. CREC/CABE

3. Granby Education Foundation

4. Energy-Saving Initiatives

C. Calendar of Events

Attachments:

Calendar of Events 61

D. Board Member Announcements

Attachments:

Hartland BOE Meeting 10-17-11 62

VII. Executive Session/Non-Meeting

Regular Board of Education Meeting - Approved Minutes
October 5, 2011, 7:00 p.m.
Central Services

Attendance Taken at 6:56 p.m.:

Present Board Members:

Cal Heminway
Edward Ohannessian
Ronald Walther
Ms. Rosemarie Weber

Absent Board Members:

Marie Nicholls
John O'Connor
Matthew Wutka

Mr. Heminway called the meeting to order at 7:00 p.m.

I. Public Comment

There were no public comments this evening.

II. Administrative Reports

Mr. Heminway requested that a motion be made to reorder the agenda and have Item 2C follow item 2B. This motion was made by Ed Ohannessian and seconded by Ron Walther at 7:00 p.m.

II.A. Superintendent's Announcements

- Mr. Addley reminded everyone that materials for all Board meetings can be found on-line.
- Mr. Addley extended a warm welcome to elementary principals and Sue Homrok-Lemke, Principal at Henry James Middle School in Simsbury, who is interning with Alan for the Executive Leadership Program.
- A Superintendent's Forum will be held on Wednesday, Oct 12th at 6:30 p.m. to discuss a variety of issues pertaining to the school system and to share district priorities.
- There was a half day of professional development yesterday with regard to PLC teams and focusing on the work and building the capacity to do the work.
- Nearly all new teachers attended a PLC 2-day conference this week.
- Thursday is school climate day and there will be a variety of activities going on in the district.
- We continue to receive high participation rates for summer reading - Kearns had over a 90% participation rate.
- Teacher leadership academy which are workshops led by administrators will begin next week. Over 15 teachers have signed up for the fourth cohort going through these workshops.
- District & Community Partners – we continue to meet with consultants. A retreat was held on September 27th.
- Thank you to Hal Kolding for building the little white schoolhouse for the Celebrate 225 Granby Parade.

- We said farewell to Chief Watkins. The Board of Education will pay an official recognition to him to offer our thanks and appreciation for his leadership. We welcomed Chief Carl Rosensweig this week. Chief Rosensweig comes to us from West Hartford.
- There will be no school on Monday in observance of the Columbus Day Holiday.
- The GEF Global Learning Academy is looking for a few more students to hopefully run the program.
- The Zippslip software is working out a few kinks and currently working toward paying for field trips on-line.

II.B. Student Representative Reports

- Tuesday the junior class attended *The Crucible* at the Hartford Stage.
- Last Wednesday *Invisible Children* came to the high school to educate the students about the war in Uganda.
- Varsity and JV field hockey won games against Suffield.
- Granby football had their first win on Saturday against Suffield.

II.C. Elementary School Improvement Plans

The elementary school improvement plans were presented for Kearns, Kelly Lane and Wells Road by Ms. Kim Dessert, Mr. Robert Gilbert and Dr. Anna Forlenza-Bailey, respectively. Each principal discussed their school improvement plan for the 2011-2012 school year, their action plan, as well as what their respective staffs and students are doing with regard to being effective collaborators and compassionate contributors.

II.D. Teaching & Learning

Ms. Diane Dugas, Director of Curriculum, Teaching and Learning, presented the common core state standards (CCSS) and assessment and its implications for Granby Public Schools to the Board. The standards are designed to be robust and relevant to the real world, reflecting the knowledge and skills that young people need for success in college and careers. The timeline was presented with 2010-2011 as the year where the plan is being rolled out. The next couple of years will be preparation as the new standards will come into place in 2015. The new assessment will be given in grades 3-8 and will not be in March any longer but will be a 12-week window in April and May. Our current kindergartners will never take CMT and our current 8th graders will not take CAPT but the new assessment in Grade 11. Testing will be computerized and information will be presented via animation, simulation, on-line access to information, video or audio stimulus and moveable models. The Board inquired if all students will need a computer and if there will be any looking back to the CMTs. Computers are not needed for all students at one time due to the 12 week window. It will be a different model and it is in its infancy stages so we don't really know at this point but probably not. The new test was demonstrated as to what it will look like - being able to manipulate the data and then respond. Granby's implementation timeline was discussed. The implementation of curriculum committees was introduced this year and over the next couple of years it will be the continuous work of curriculum alignment and the infusion of research and technology standards. The Board inquired how successful Granby will be with assistance from the state. Ms. Dugas stated that we have key people from our state department in key areas. The Board also inquired how energized should they be with respect to what Granby needs in order to be successful on this timeline. Ms. Dugas stated that we need to make sure that students have the technology available and the skills to use the technology. How will the state support districts is the question. Granby is already looking at high levels of thinking which the vision and mission have positioned us to do as well as PLCs.

III. Consent Agenda

III.A. Minutes

A Motion was made to approve the consent agenda by Ron Walther and seconded by Rosemarie Weber at 9:10 p.m.

IV. Old Business

IV.A. CABE Board Recognition Awards & Attendance at CABE/CAPSS Convention

Mr. Addley stated that he has the document available for the Board to sign and would be happy to fill out the application which is due October 13th. The Board decided to go forward with applying for the award.

V. New Business

V.A. FY13 Budget

Mr. Addley stated that there was close to a \$700K challenge this year. Administrators will be taking a zero increase in FY13 and teachers have already taken a zero increase. Administrators are working on their end of the challenge at this point and we will need to get creative.

VI. Miscellaneous

VI.A. Board Standing Committee Reports

VI.A.1. Curriculum/Policy/Technology/Communication

This committee met this evening and reviewed curriculum director's report; reviewed the CCSS standards; an update on concerns some parents have about the amount of homework students receive - work is being done on adjusting the administrative regulations to the homework policy; and, reviewed a draft of a new bullying policy to reflect a new state statute - a new bullying policy will have to be implemented.

VI.A.2. Finance/Personnel/Facilities

This committee did not meet.

VI.B. Other Board-Related Reports

VI.B.1. CPPAC

This committee is scheduled to meet on November 9th. The Board will be putting forward the long-term plan for athletic fields and the custodial/maintenance facility.

VI.B.2. CREC/CABE

CREC/CABE has not met. Mr. Heminway stated that he participated in a workshop yesterday for the education foundation and that he and Mr. Addley attended a Great Path Academy meeting today. The CCM Annual Meeting was held today and Mr. Heminway was on a panel with John Adams and stated how they work together on two different boards. Mary Glassman, President of CCM, told the Governor that she wanted to work on changing the ECS formula and reducing mandates. Governor Malloy indicated that we are probably looking at another flat year to municipalities next year. Bruce Douglas was in the second session and a member of the panel and spoke very strongly about regional approaches and implied that this may be something we will deal with and should attempt to come up with regional approaches ourselves as opposed to waiting for the state to do it.

VI.B.3. Granby Education Foundation

Due to negotiations, neither Mr. Heminway nor Mr. Addley attended the last meeting of the GEF.

VI.B.4. District Efficiency Initiatives

With regard to clean energy funds, the RFP discussion session has been moved from today to next Wednesday. Mr. Traver will attend this meeting and report back to the Board at the next meeting.

VI.C. Calendar of Events

The calendar of events is as presented.

VI.D. Board Member Announcements

There were no board member announcements.

VII. Executive Session/Non-Meeting

A Motion was made to go into a very brief non-meeting to discuss negotiations. This Motion was made by Ron Walther and seconded by Ed Ohannessian at 9:20.

The non-meeting ended at approximately 9:40 p.m.

Respectfully submitted,

Linda Powell
Board Recorder

GRANBY PUBLIC SCH
 FY 2010-11 FINANCIAL
 FOR PERIOD JULY 1,

<u>Description</u>	<u>Original Budget</u>	<u>Net Budget Transfers</u>	<u>Revised Budget</u>
Certified Salaries:			
Administration	1,573,852	-	1,573,852
Regular Education	9,785,808	-	9,785,808
Special Education	1,285,028	-	1,285,028
Total	<u>12,644,688</u>	-	<u>12,644,688</u>
Substitute/Tutor/Support Salaries			
Substitutes	152,000	-	152,000
Sped Support (Speech, O.T. & P.T.)	262,988	-	262,988
Tech Support	180,981	-	180,981
Tutors - Regular Education	157,411	-	157,411
Tutors - Special Education	190,233	-	190,233
Total	<u>943,613</u>	-	<u>943,613</u>
Teaching Assistant Salaries:			
Regular Education	456,601	-	456,601
Special Education	910,337	-	910,337
Total	<u>1,366,938</u>	-	<u>1,366,938</u>
School Secretaries' Salaries	555,263	-	555,263
Central Office Salaries	347,764	-	347,764
Custodial & Maintenance Salaries	1,253,595	-	1,253,595
Purchased Services:			
Instructional	212,952	-	212,952
Administration	404,049	-	404,049
Maintenance	86,115	-	86,115
Total	<u>703,116</u>	-	<u>703,116</u>
Legal Services	65,000	-	65,000
Repairs & Maintenance:			
Instructional	87,050	-	87,050
Administration	8,500	-	8,500
Maintenance	245,710	-	245,710
Total	<u>341,260</u>	-	<u>341,260</u>
Transportation:			
Regular Education	783,341	-	783,341
Special Education	383,198	-	383,198
Vocational-Tech	48,125	-	48,125
Total	<u>1,214,664</u>	-	<u>1,214,664</u>

Insurance - Property & Liability	71,508	-	71,508
Communications	90,107	-	90,107
Tuition:			
Vocational	63,936	-	63,936
Special Education	729,728	-	729,728
Adult Education	9,000	-	9,000
Total	<u>802,664</u>	-	<u>802,664</u>
Conference & Travel Expense	56,425	-	56,425
General Supplies:			
Regular Education	287,180	-	287,180
Special Education	26,300	-	26,300
Administration	81,369	-	81,369
Maintenance	142,700	-	142,700
Total	<u>537,549</u>	-	<u>537,549</u>
Electricity	584,044	-	584,044
Fuel	318,952	-	318,952
Textbooks/Workbooks	170,679	-	170,679
Library/Media Center	53,330	-	53,330
Software	151,254	-	151,254
Dues & Fees	38,722	-	38,722
Replacement Equipment:			
Instructional	4,000	-	4,000
Administration	2,500	-	2,500
Maintenance	4,000	-	4,000
Total	<u>10,500</u>	-	<u>10,500</u>
New Equipment:			
Instructional	-	-	-
Administration	-	-	-
Maintenance	-	-	-
Total	<u>-</u>	-	<u>-</u>
Student Activities	575,345	-	575,345
Employee Benefits	4,086,021	-	4,086,021
	-	-	-
Total Budget calculated page totals:	26,983,001	-	26,983,001

**GRANBY BOARD OF EDUCATION
 FINANCIAL STATEMENT OF ACCOUNTS
 FOR PERIOD JULY 1, 2011 - AUGUST 31, 2011
 Selected Revenue and Special Education Accounts**

I. Revenue	<u>FY2011-12 Budget</u>	<u>Currently Anticipated</u>	<u>Received To Date</u>
Reg. Tuition from other Towns	706,171	718,140	0
SPED Tuition from other Towns	110,500	110,500	0
SDE Excess Cost Reimbursement	148,364	148,364	0
Rental Fees	75,000	75,000	21,119
Pay for Participation	50,300	50,300	0
Sub Total	1,090,335	1,102,304	21,119

II. Expenditures	<u>FY2011-12 Adj Budget</u>	<u>Expended</u>	<u>Encumbered</u>
Legal Expense	50,000	0	8,200
Teacher Assistants	910,337	84,600	831,204
Special Education Tutors	190,233	32,956	131,145
Evaluation & Therapy Services	56,180	4,052	15,675
Special Ed Transportation	383,198	36,028	59,747
Tuition - High Schools	525,585	32,696	226,961
Tuition - PreK to Grade 8	204,143	20,908	144,503
Total Tuition	729,728	53,604	371,464
Total Expenditures	2,319,676	211,240	1,417,435

HOOLS

STATEMENT OF ACCOUNTS
2011 - SEPTEMBER 30, 2011

September 30, 2011

<u>Expended</u>	<u>Encumbered</u>	<u>Balance</u>	<u>% Enc/ Exp</u>
408,962	1,168,461	(3,571)	100.2%
1,114,351	8,641,457	30,000	99.7%
151,518	1,133,510	-	100.0%
<u>1,674,831</u>	<u>10,943,428</u>	<u>26,429</u>	<u>99.8%</u>
5,877	300	145,823	4.1%
39,568	223,420	-	100.0%
49,253	131,728	-	100.0%
12,794	136,299	8,318	94.7%
32,956	131,145	26,132	86.3%
<u>140,448</u>	<u>622,892</u>	<u>180,273</u>	<u>80.9%</u>
38,072	400,940	17,589	96.1%
84,600	831,204	(5,467)	100.6%
<u>122,672</u>	<u>1,232,144</u>	<u>12,122</u>	<u>99.1%</u>
91,660	463,603	-	100.0%
72,201	275,563	-	100.0%
283,988	936,679	32,928	97.4%
29,338	102,983	80,631	62.1%
44,434	302,994	56,621	86.0%
16,597	46,299	23,219	73.0%
<u>90,369</u>	<u>452,276</u>	<u>160,471</u>	<u>77.2%</u>
-	29,200	35,800	44.9%
6,055	13,985	67,010	23.0%
-	-	8,500	0.0%
93,681	92,236	59,793	75.7%
<u>99,736</u>	<u>106,221</u>	<u>135,303</u>	<u>60.4%</u>
83,767	678,527	21,047	97.3%
36,028	59,747	287,423	25.0%
3,610	44,515	-	100.0%
<u>123,405</u>	<u>782,789</u>	<u>308,470</u>	<u>74.6%</u>

36,389	35,119	-	100.0%
22,273	42,571	25,263	72.0%
-	71,928	(7,992)	112.5%
53,604	371,464	304,660	58.3%
-	-	9,000	0.0%
<u>53,604</u>	<u>443,392</u>	<u>305,668</u>	61.9%
7,637	14,248	34,540	38.8%
140,201	70,272	76,707	73.3%
6,692	6,065	13,543	48.5%
10,925	19,765	50,679	37.7%
41,593	28,508	72,599	49.1%
<u>199,411</u>	<u>124,610</u>	<u>213,528</u>	60.3%
74,501	509,543	-	100.0%
925	318,027	-	100.0%
66,877	14,178	89,624	47.5%
20,800	2,697	29,833	44.1%
46,811	65,507	38,936	74.3%
29,420	535	8,767	77.4%
-	-	4,000	0.0%
-	-	2,500	0.0%
2,877	1,782	(659)	116.5%
<u>2,877</u>	<u>1,782</u>	<u>5,841</u>	44.4%
-	-	-	
-	1,694	(1,694)	
-	-	-	
<u>-</u>	<u>1,694</u>	<u>(1,694)</u>	
36,930	239,154	299,261	48.0%
476,433	392,025	3,217,563	21.3%
-	-	-	
3,774,198	18,049,877	5,158,926	80.9%
3,774,198	18,049,877	5,158,926	
-	-	-	

**VB\$
vs. Frcst**

11,969

0

0

0

0

11,969

Balance

41,800

-5,467

26,132

36,453

287,423

265,928

38,732

304,660

691,001

Special Education Programmatic and Academic Performance

October, 2011

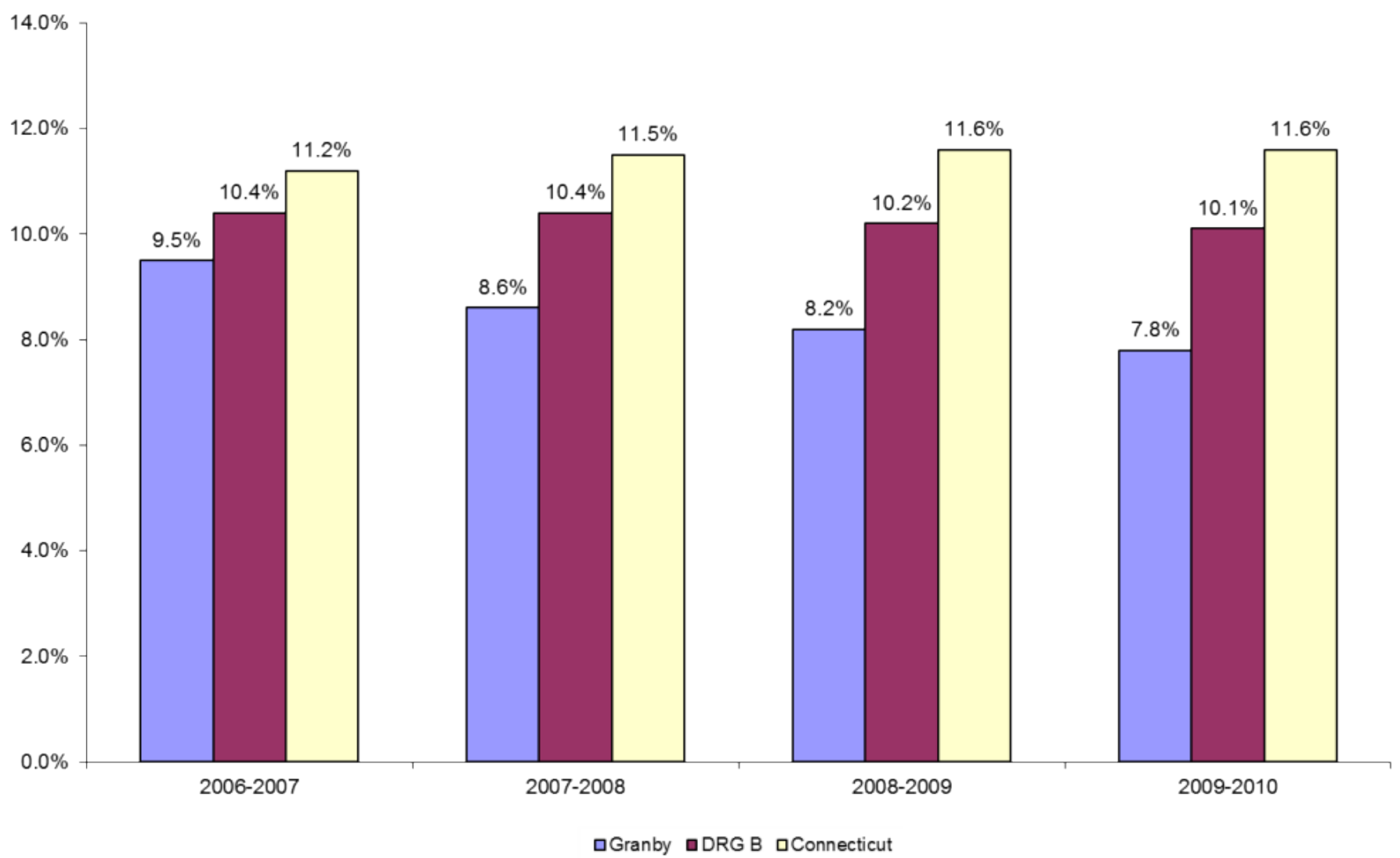
Guiding Principles

- Inclusion
- Early Intervention
- Highly trained staff
- One District, One Vision

Enrollment History

School Year	District Population	Special Education Students	Percentage of Special Education Students
2006-2007	2278	217	9.5
2007-2008	2324	197	8.5
2008-2009	2270	183	8.1
2009-2010	2275	178	7.8
2010-2011	2236	189	8.5

% Students Enrolled in Special Ed



Of All K-12 Students for Whom District is Financially Responsible, Number and Percentage with Disabilities 2009-2010

Disability	Count	District Percent	DRG Percent	State Percent
Autism	14	0.6	1.1	1.0
Learning Disability	62	2.7	3.4	3.9
Intellectual Disability	8	0.4	0.3	0.5
Emotional Disturbance	11	0.5	0.5	1.0
Speech Impairment	46	2.0	2.0	2.2
Other Health Impairment*	31	1.4	2.1	2.1
Other Disabilities**	6	0.3	0.7	0.9
Total	178	7.8	10.1	11.6

*Includes chronic health problems such as attention deficit disorders and epilepsy

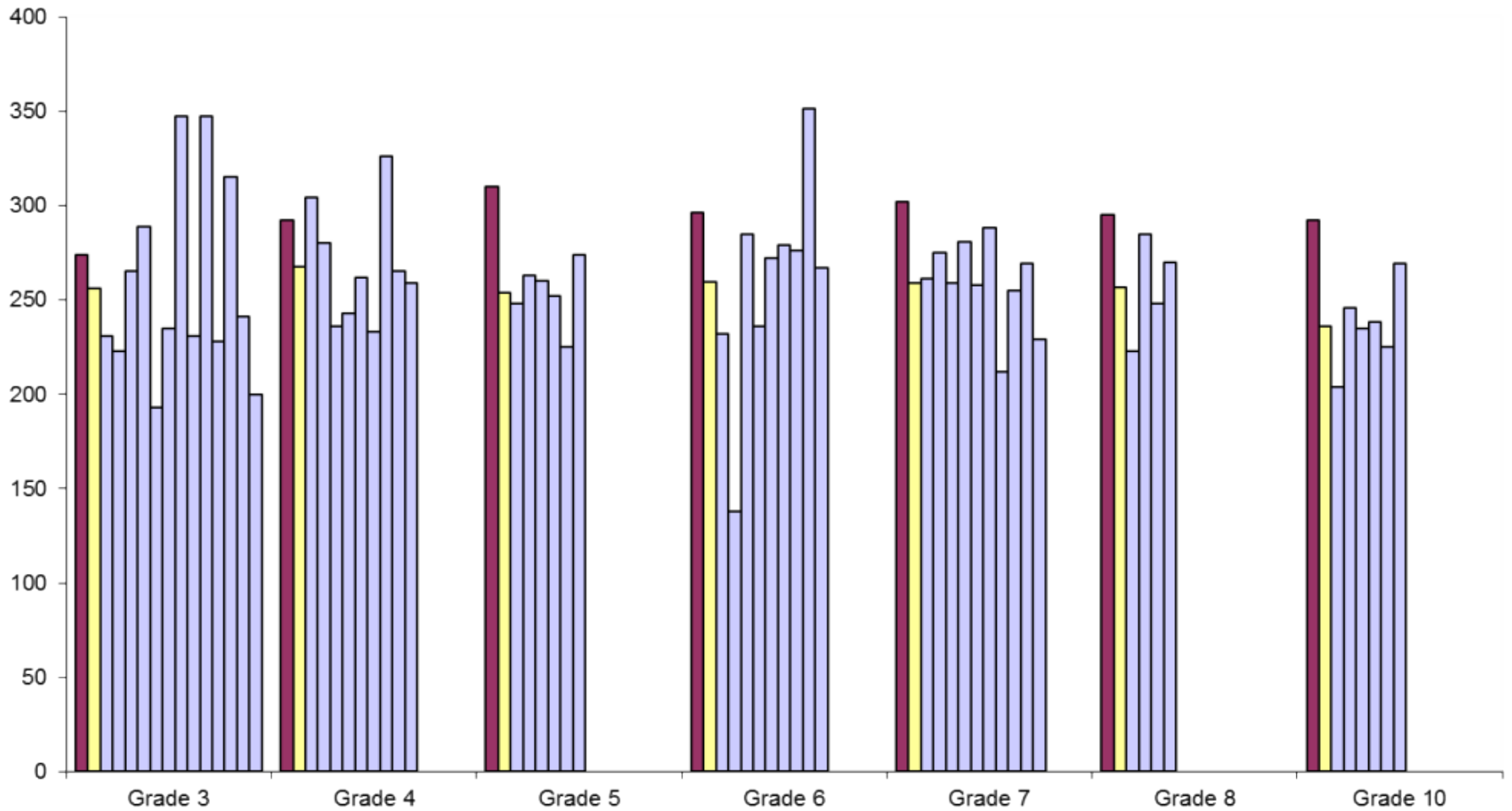
**Includes traumatic brain injury, hearing, visual, and orthopedic impairments, deaf-blindness, multiple disabilities, developmental delay

Programmatic Data: High School 2010-2011

	% General Education Students	% Special Education Students	Difference
Athletics	Fall: 30.1% Winter: 16.4% Spring: 34.1%	Fall: 13.2% Winter: 15.1% Spring: 9.4%	Fall: -16.9 Winter: -1.3 Spring: -24.7
Discipline Referrals	56.6%	38.8%	-17.8
AP Courses	29.3%	0.0%	-29.3
Honors Courses	70.2%	5.7%	-64.5

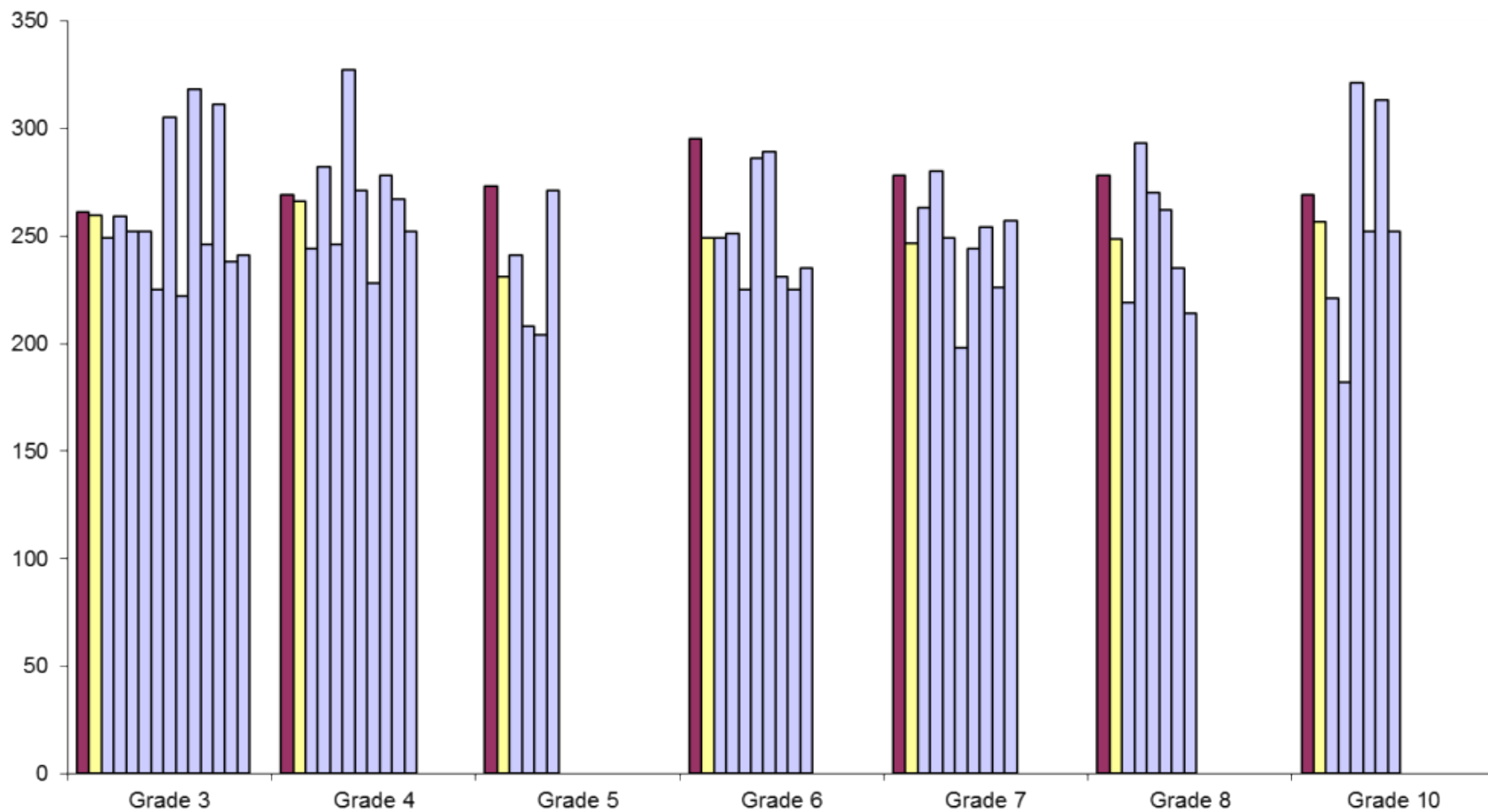
2010-2011 CMT/CAPT Math

1st bar in each series shows General Ed average, 2nd bar is the Special Ed average, followed by Special Ed Students' Scores



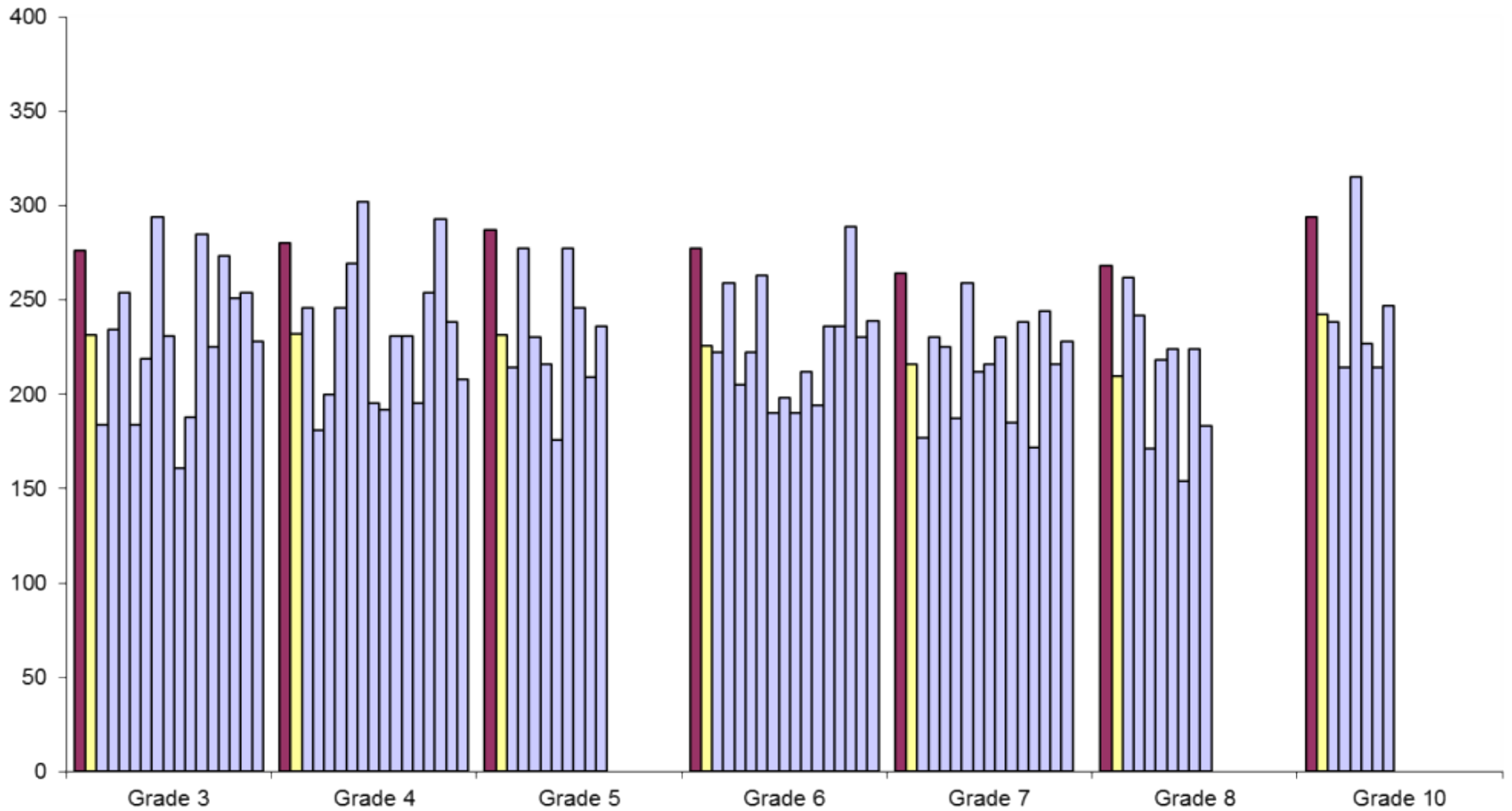
2010-2011 CMT/CAPT Reading

1st bar in each series shows General Ed average, 2nd bar is the Special Ed average, followed by Special Ed Students' Scores



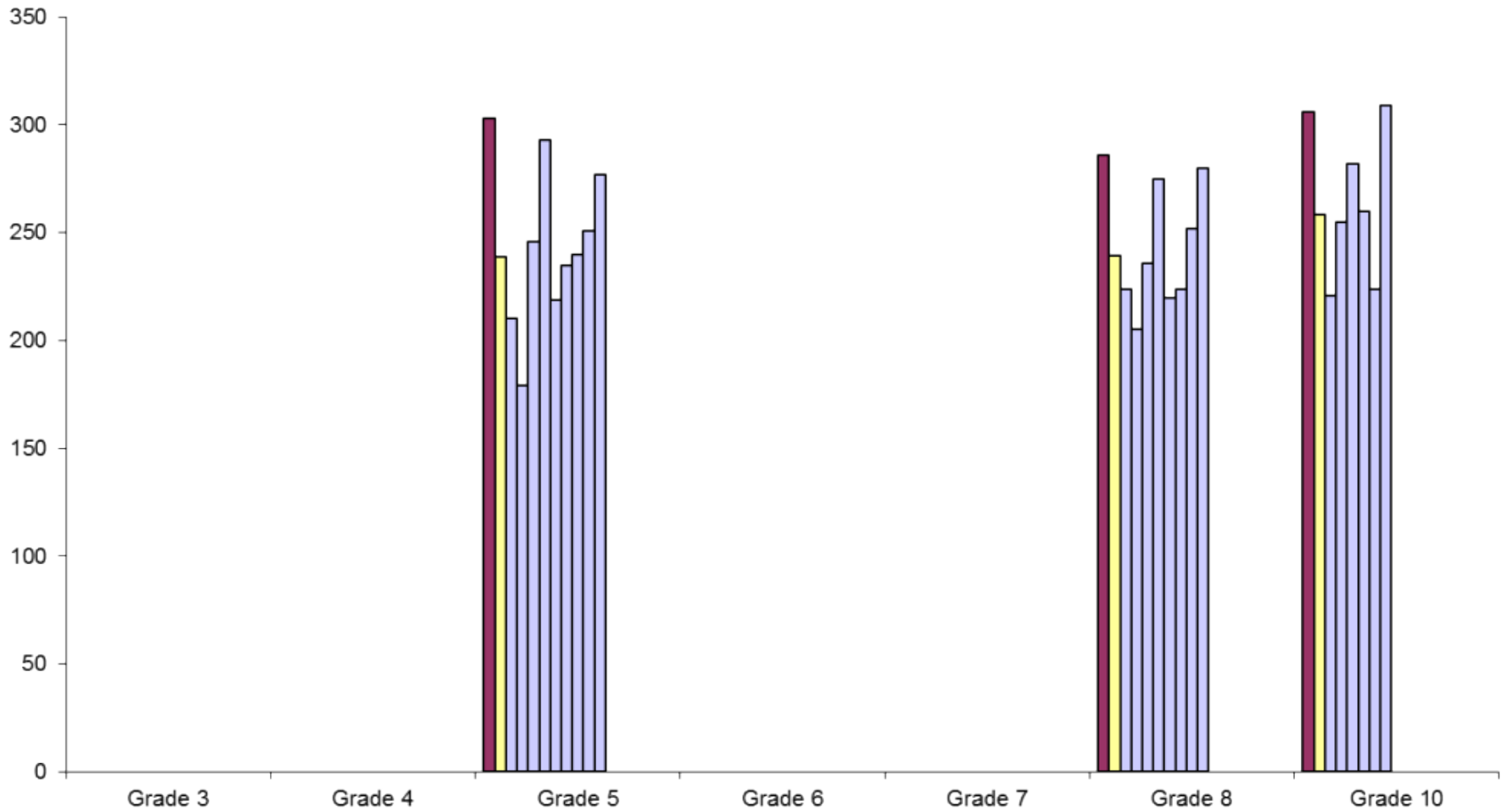
2010-2011 CMT/CAPT Writing

1st bar in each series shows General Ed average, 2nd bar is the Special Ed average, followed by Special Ed Students' Scores



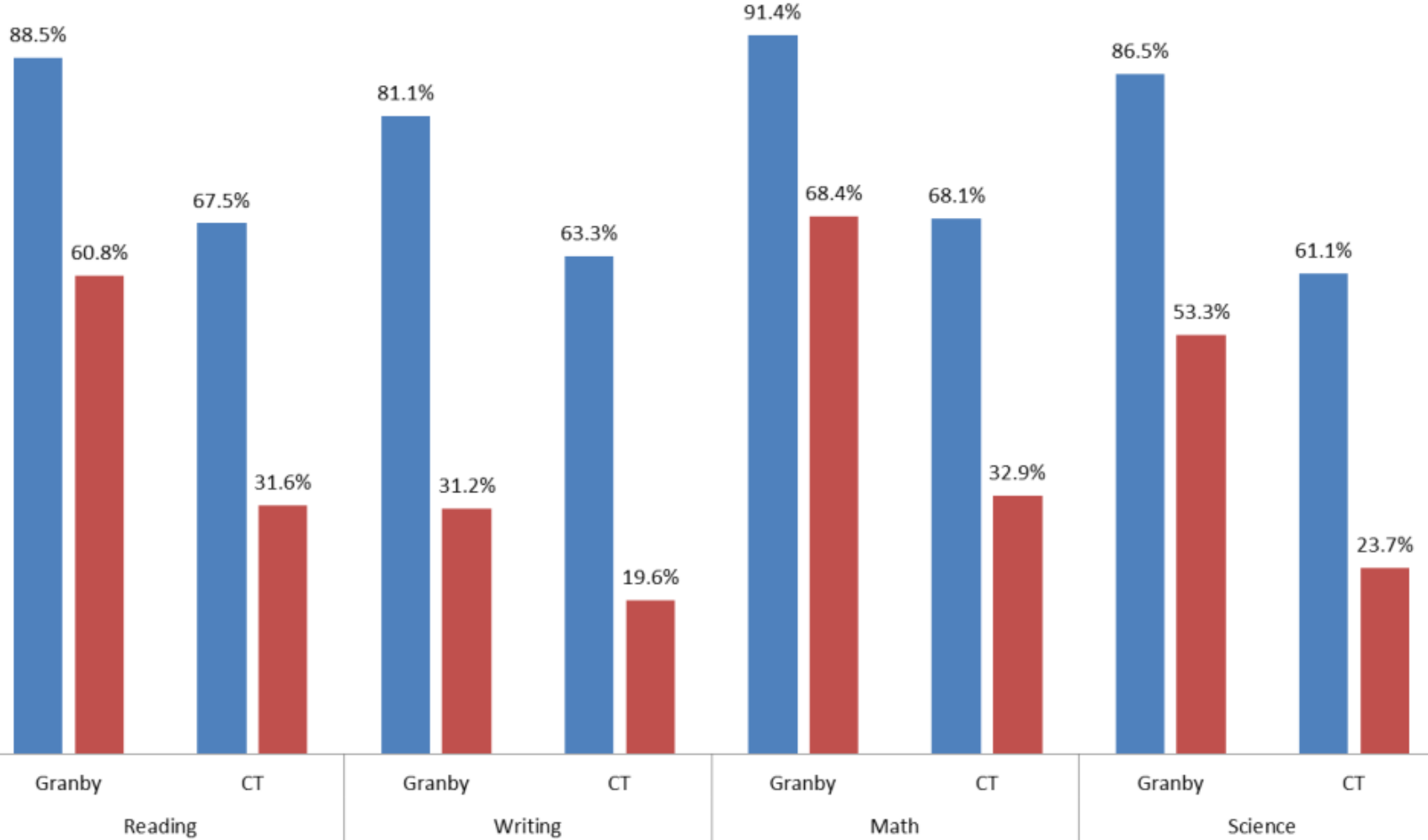
2010-2011 CMT/CAPT Science

1st bar in each series shows General Ed average, 2nd bar is the Special Ed average, followed by Special Ed Students' Scores



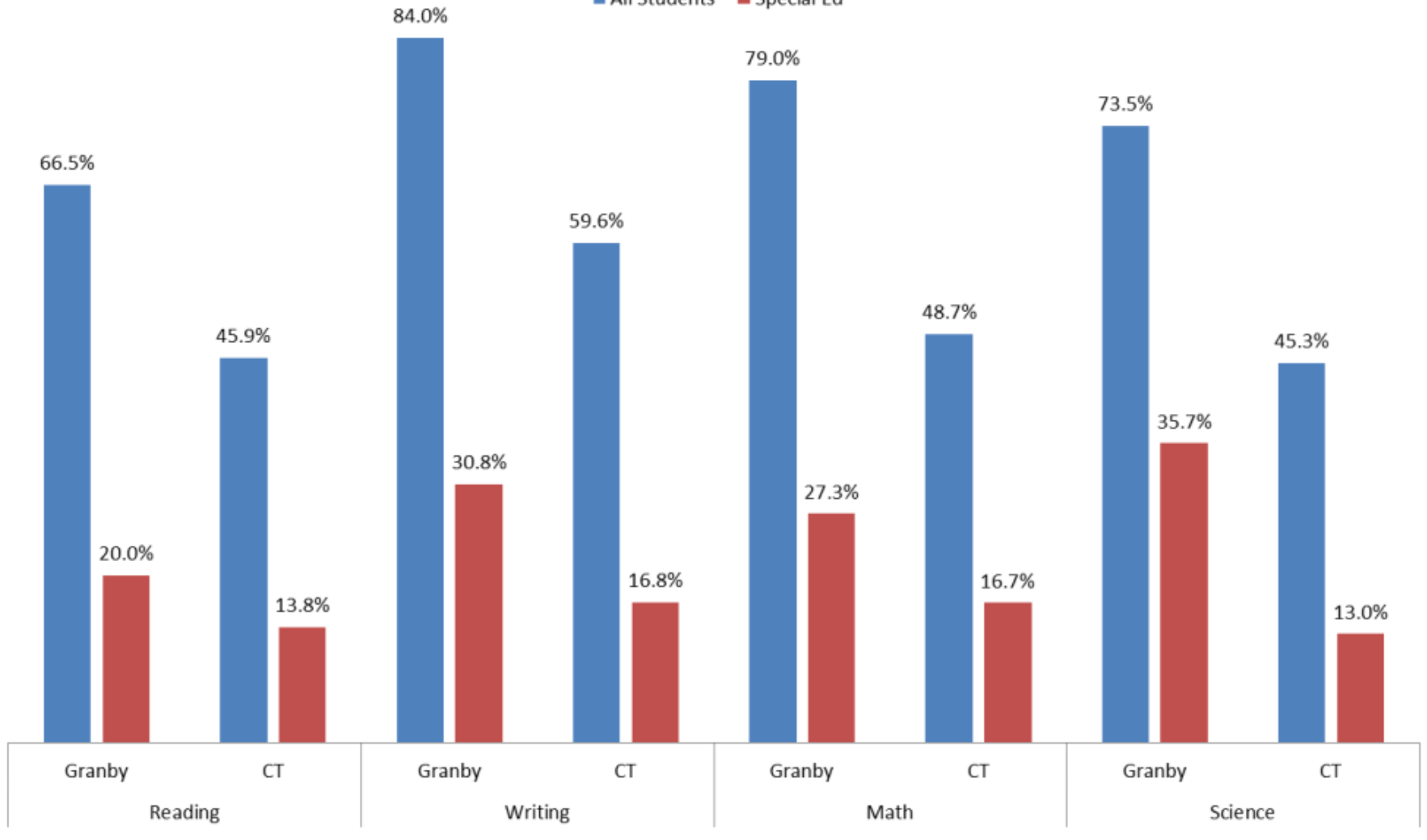
CMT 2010: Achievement Gap % Students Goal or Above

■ All Students ■ Special Ed



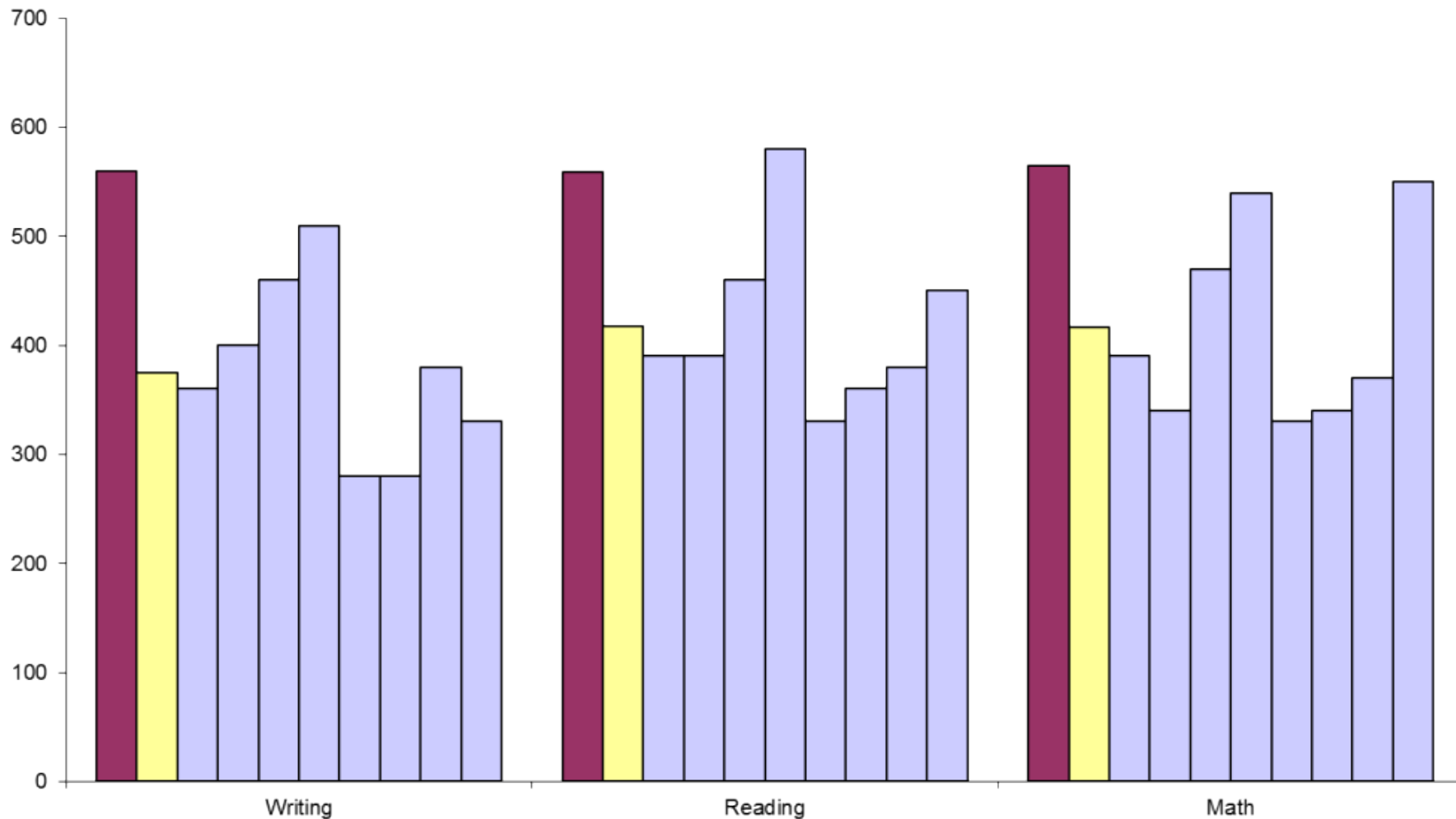
CAPT 2010: Achievement Gap % Students Goal or Above

■ All Students ■ Special Ed



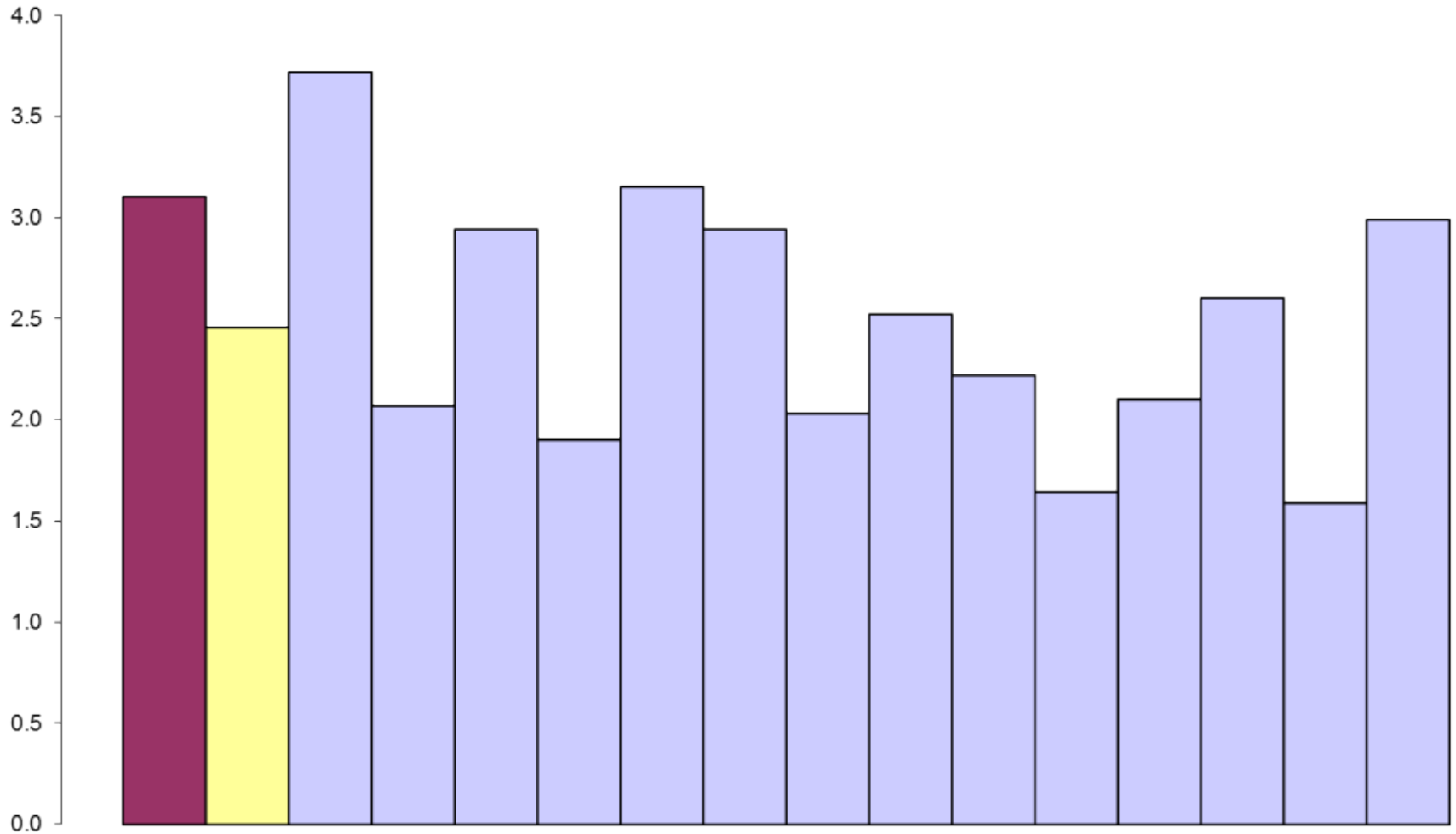
Class of 2011 SAT Scores

1st bar in each series shows General Ed average, 2nd bar is the Special Ed average, followed by individual SE Students' Scores



Class of 2011 GPA

1st bar in each series shows General Ed average, 2nd bar is the Special Ed average, followed by individual SE Students' GPAs



CURRENT FOCUS

- Scientific Research-Based Interventions (Response to Intervention)
- Early Childhood Feasibility Study
- Special Education Opportunities Review

Programmatic and Academic Performance by Residence

October, 2011

Presented by Diane Dugas, Director of Curriculum, Teaching
and Learning

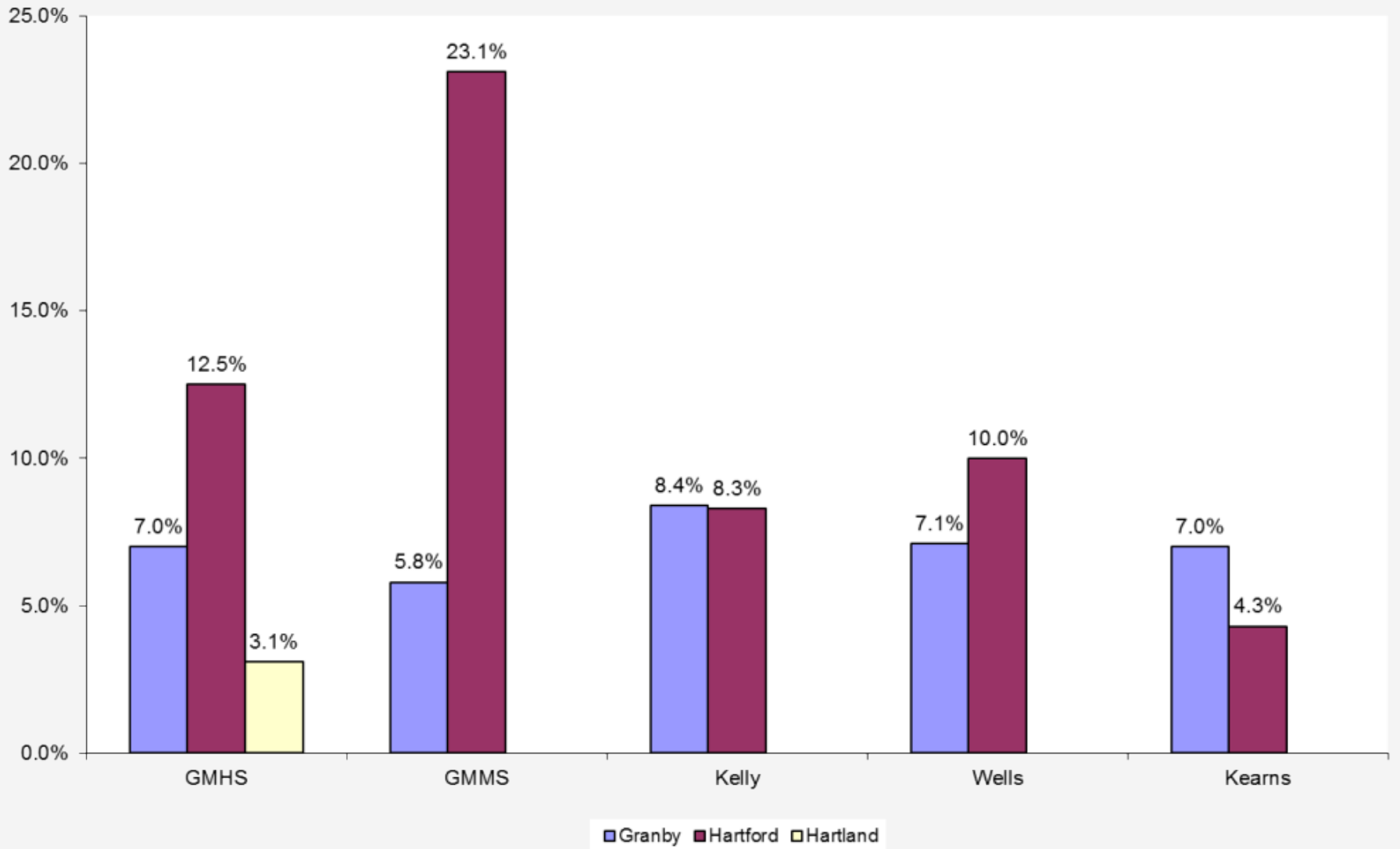
Enrollment History

	District Population	Hartford Enrollment	GMHS Population	Hartland Enrollment
2002-2003	2,155	29	594	11
2003-2004	2,198	34	601	27
2004-2005	2,222	32	666	33
2005-2006	2,261	43	674	41
2006-2007	2,278	52	687	44
2007-2008	2,324	72	750	50
2008-2009	2,270	75	736	57
2009-2010	2,275	74	753	54
2010-2011	2,236	74	780	64
2011-2012	2,157	72	757	60

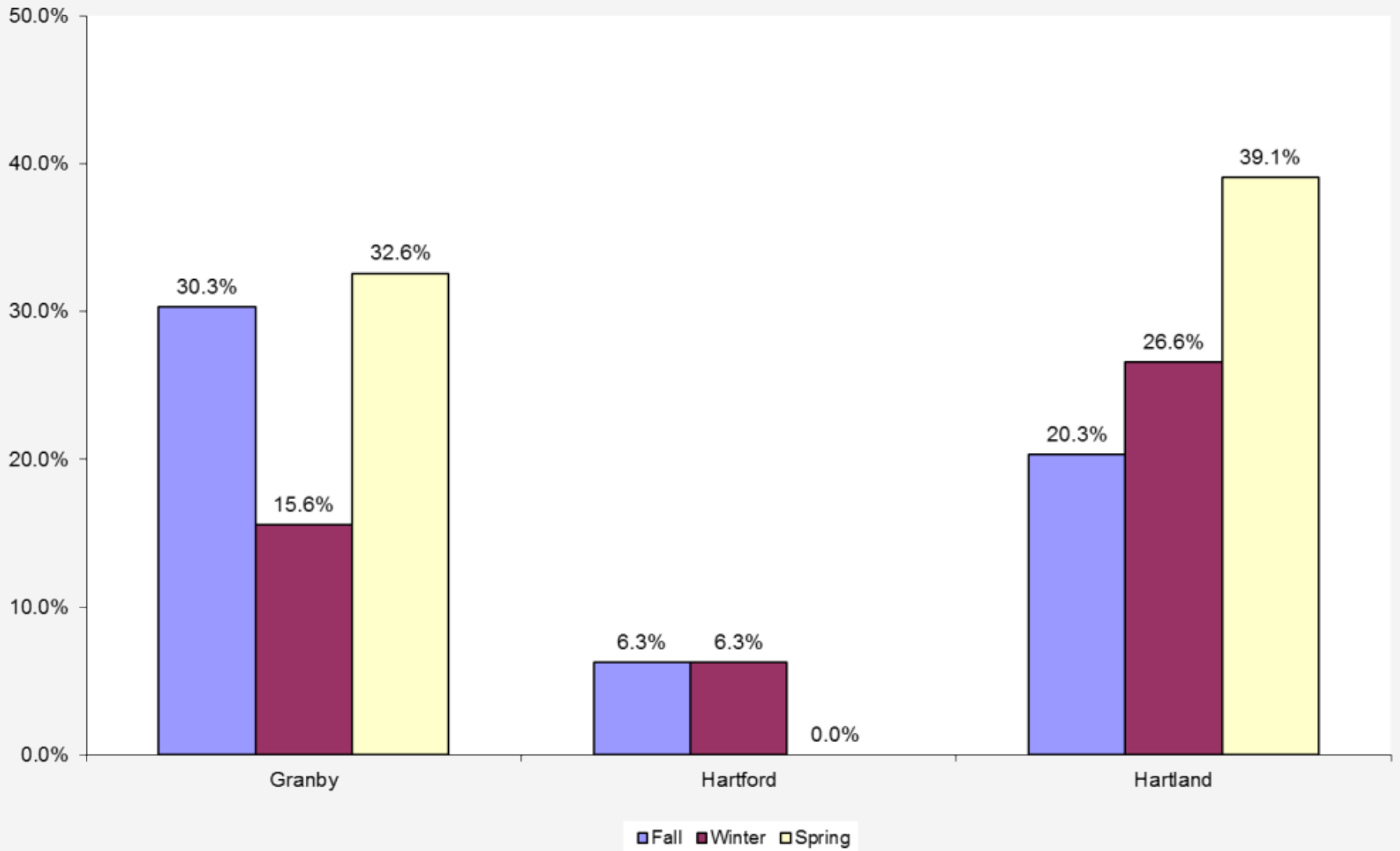
Programmatic Data 2010-2011

	% Granby Population	% Hartford Students	Difference Hartford	% Hartland Students	Difference Hartland
Special Education	7.1%	10.8%	3.7	3.1%	-4.0
Athletics	Fall: 30.2% Winter: 15.6% Spring: 32.6%	Fall: 6.3% Winter: 6.3% Spring: 0.0%	Fall: -23.9 Winter: -9.3 Spring: -32.6	Fall: 20.3% Winter: 26.6% Spring: 39.1%	Fall: -9.9 Winter: 11.0 Spring: 6.5
Discipline Referrals	39.6%	68.8%	29.2	37.5%	-2.1
AP Enrollment	28.0%	31.3%	3.3	18.8%	-9.2
Honors Courses	67.9%	43.8%	-24.1	48.4%	-19.5

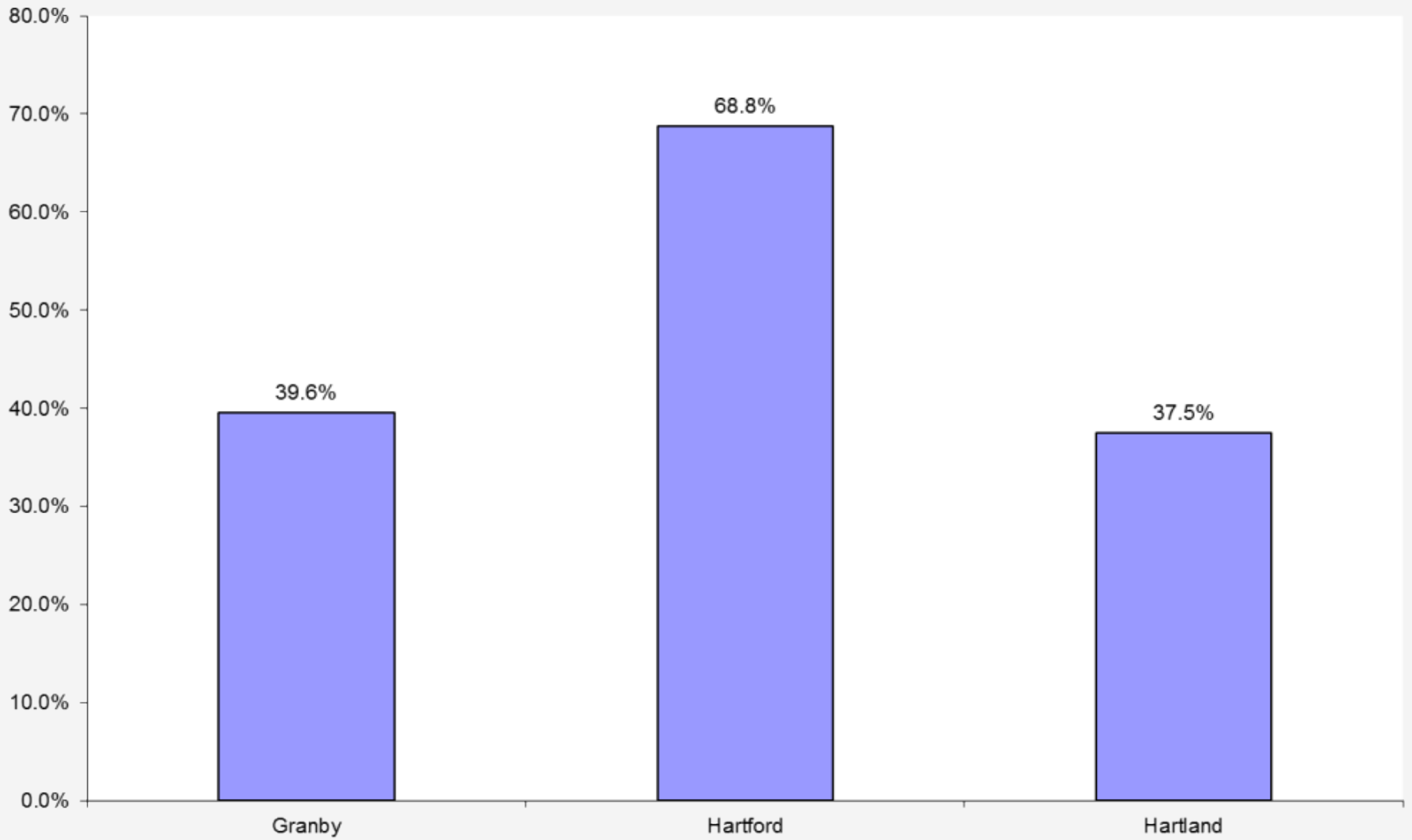
% Students Enrolled in Special Education 2010-2011



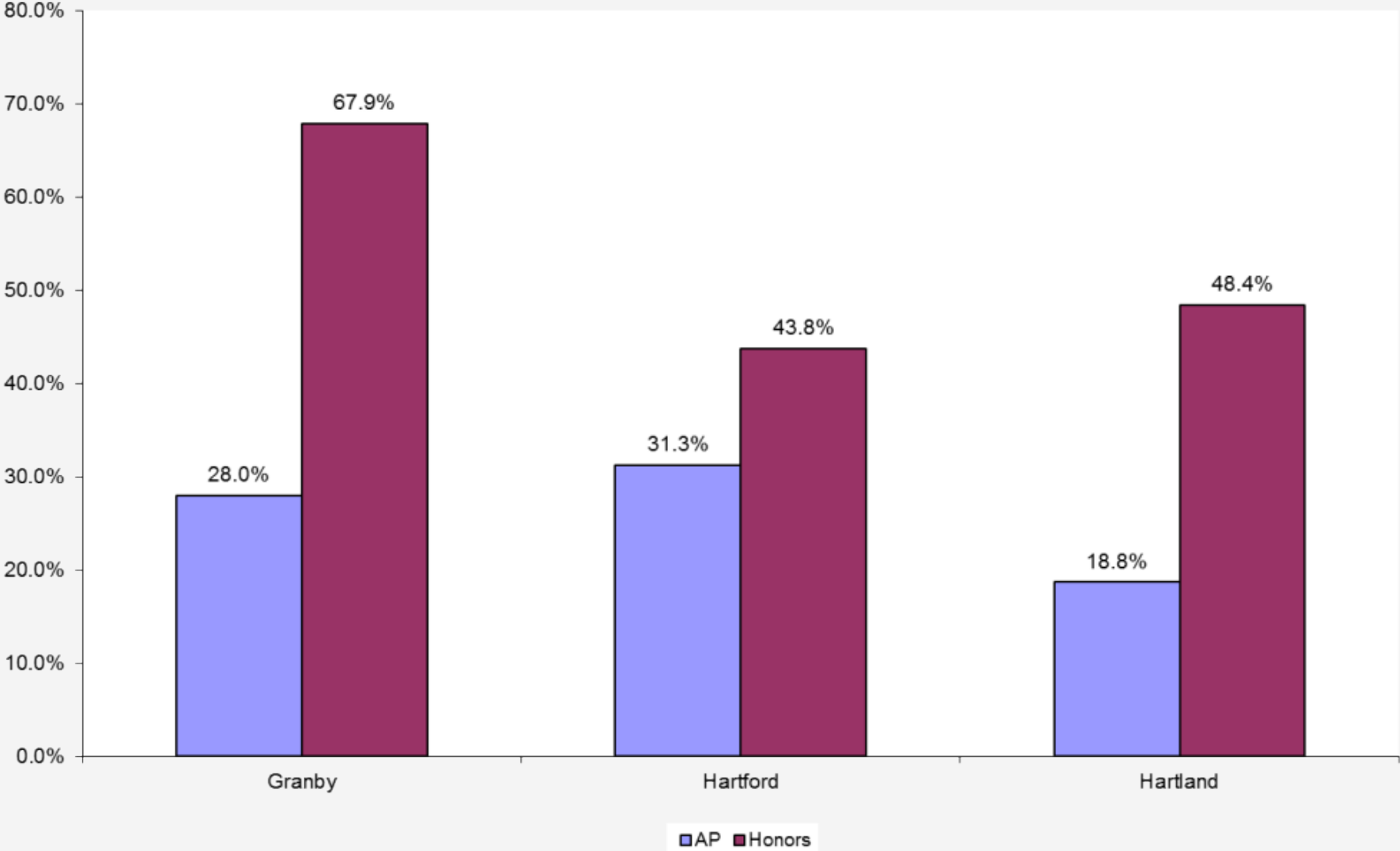
GMHS Athletics: % Students participating in sports 2010-2011



**GMHS Discipline: % Students with at least one referral
2010-2011**

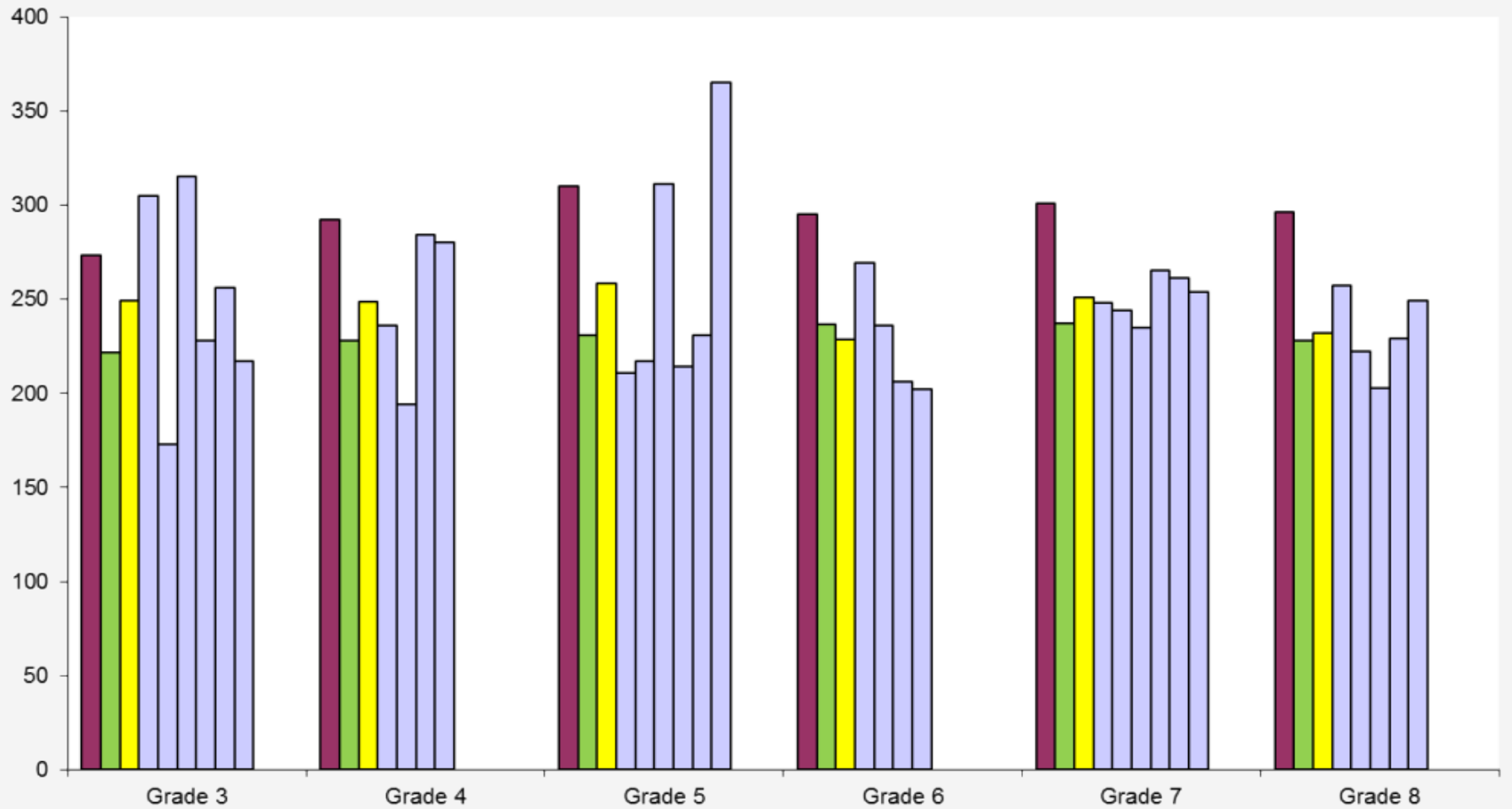


**GMHS: % Students Enrolled in Honors & AP
2010-2011**



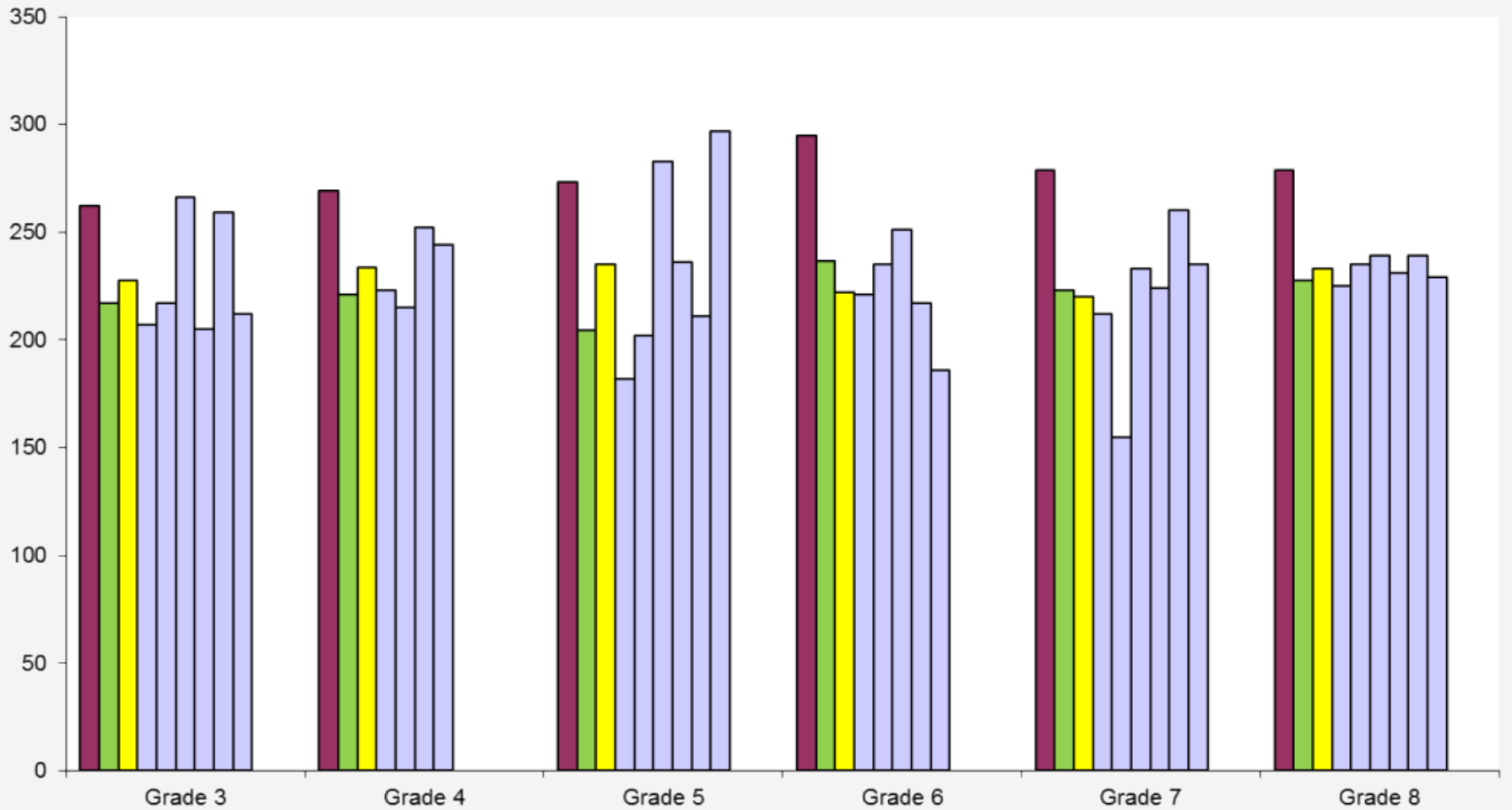
2010-2011 CMT Math

1st bar in each series shows Granby average, 2nd bar is the Hartford Schools' average, 3rd bar is Choice Students' average, followed by Chocie Students' Scores



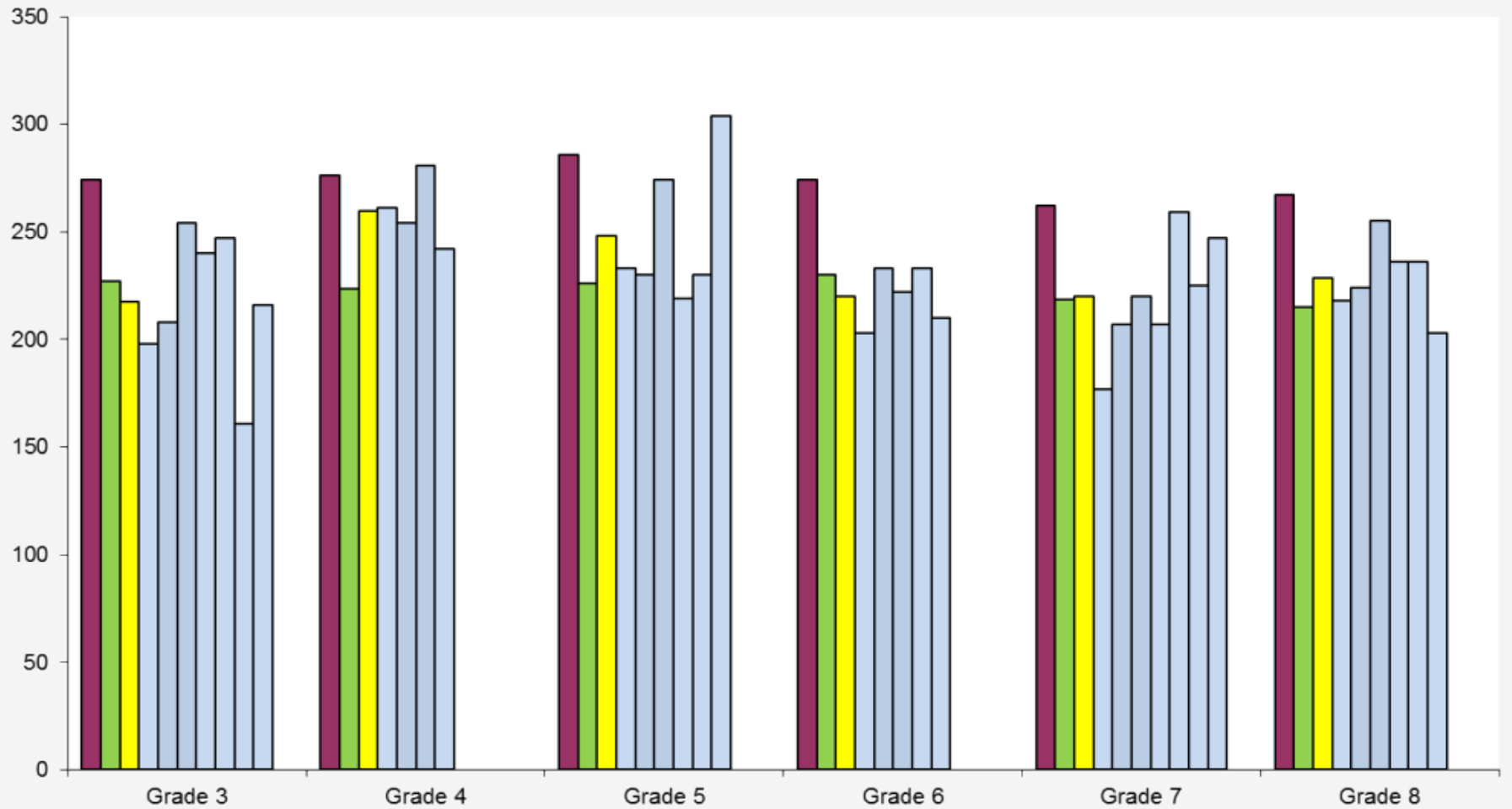
2010-2011 CMT Reading

1st bar in each series shows Granby average, 2nd bar is the Hartford Schools' average, 3rd bar is Choice Students' average, followed by Choice Students' Scores



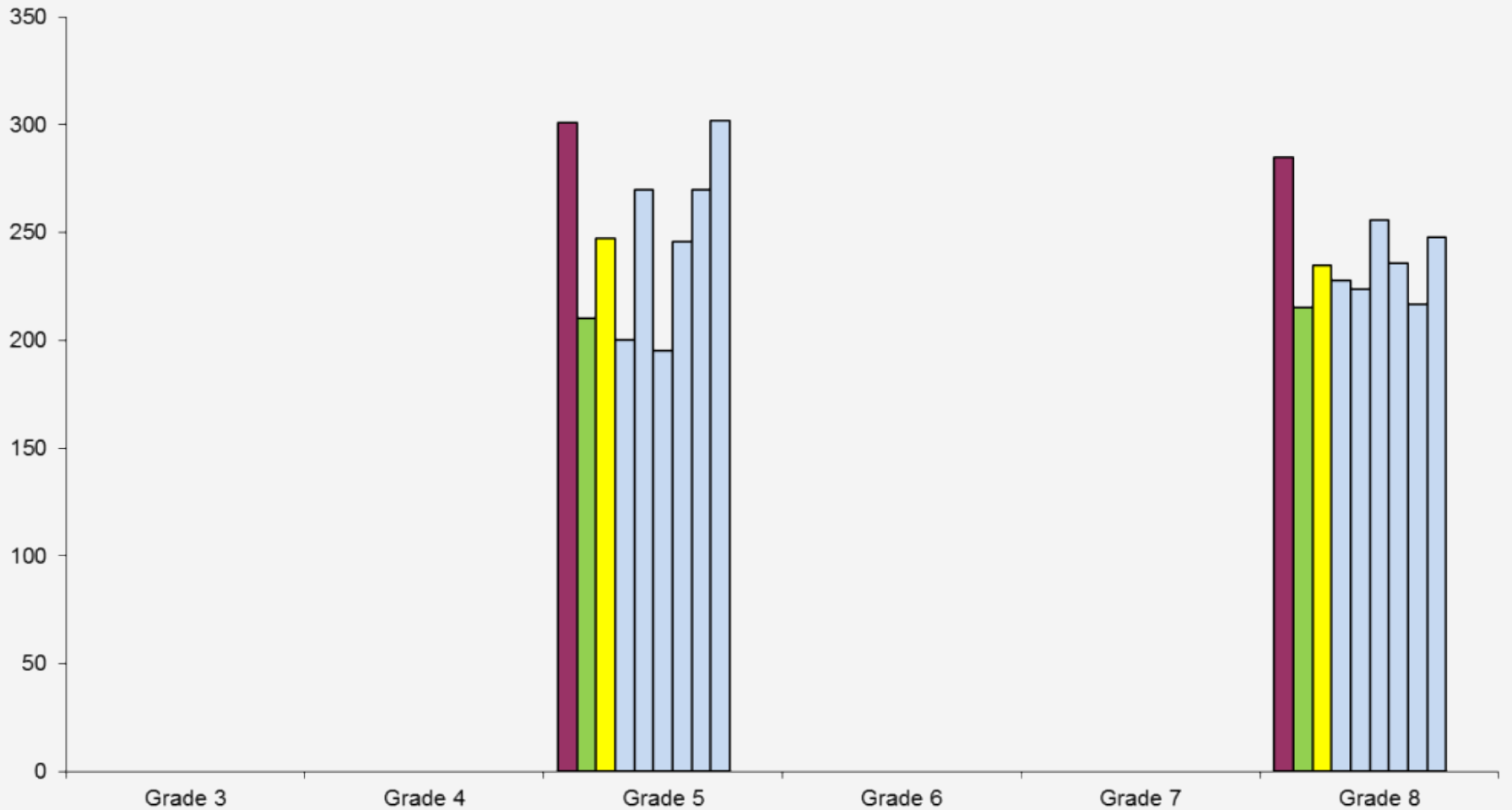
2010-2011 CMT Writing

1st bar in each series shows Granby average, 2nd bar is the Hartford Schools' average, 3rd bar is Choice Students' average, followed by Choice Students' Scores

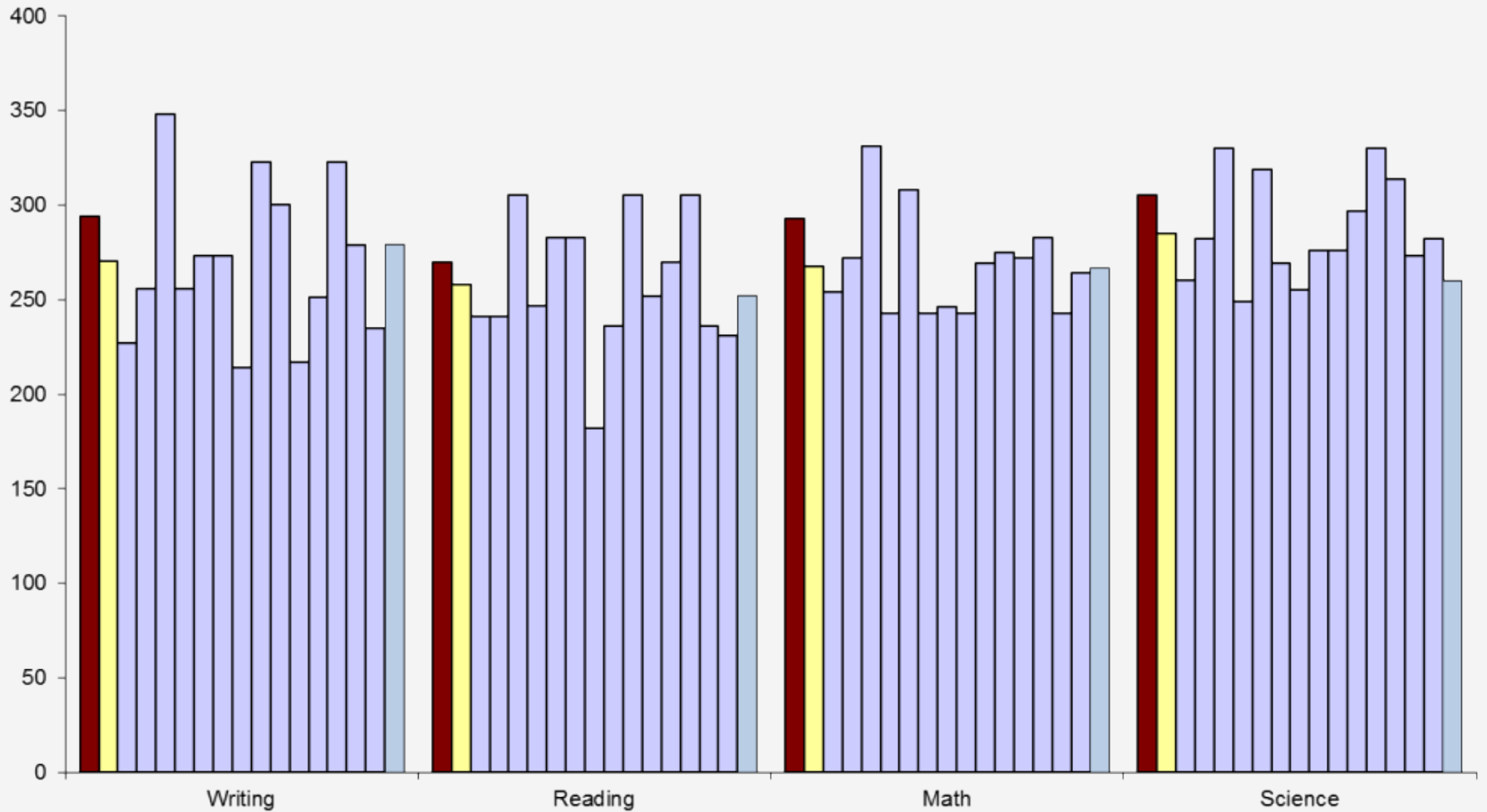


2010-2011 CMT Science

1st bar in each series shows Granby average, 2nd bar is the Hartford Schools' average, 3rd bar is Choice Students' average, followed by Choice Students' Scores

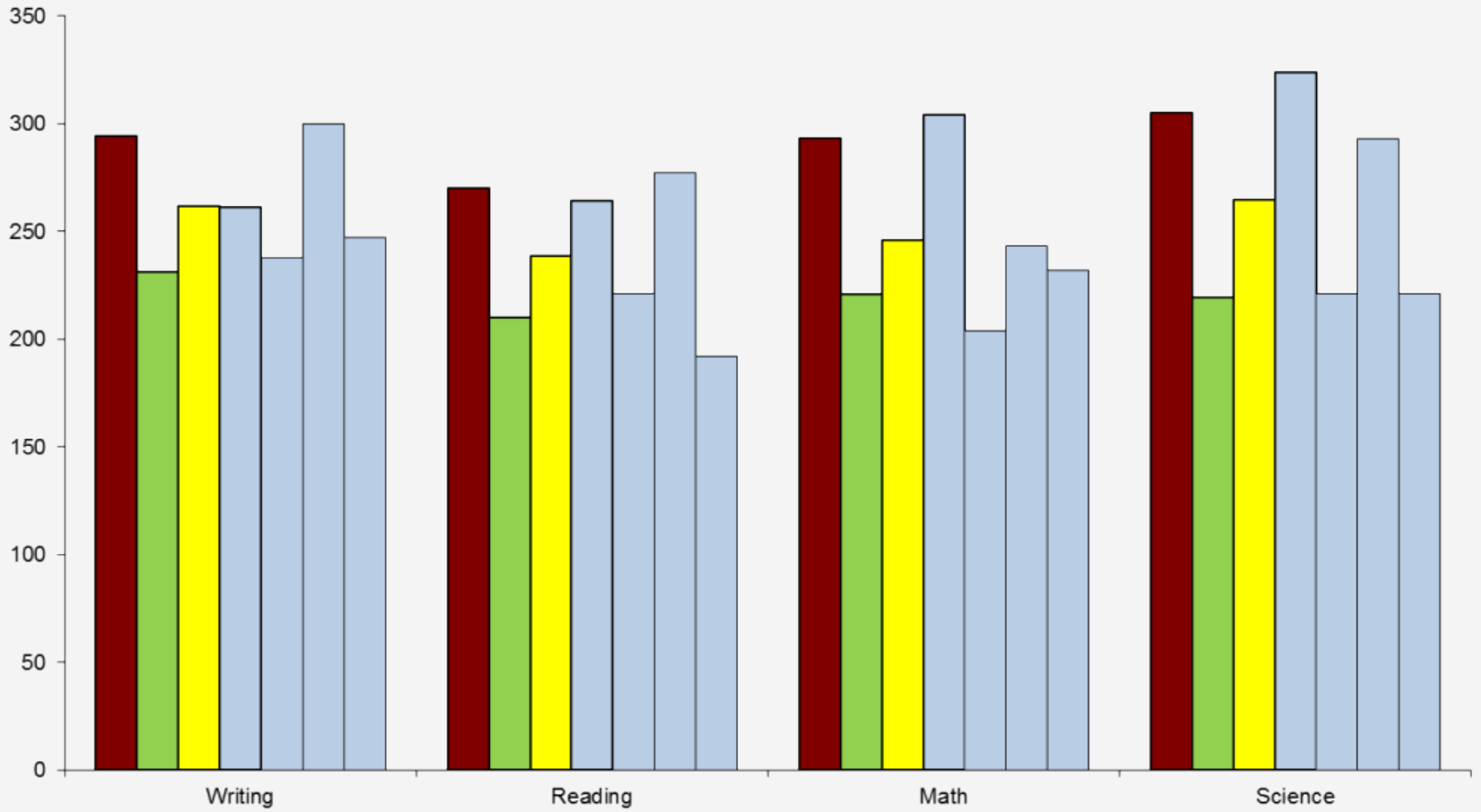


2010-2011 CAPT Scale Scores
1st bar in each series shows Granby average, 2nd bar is the Hartland average,
followed by individual Hartland Students' Scores



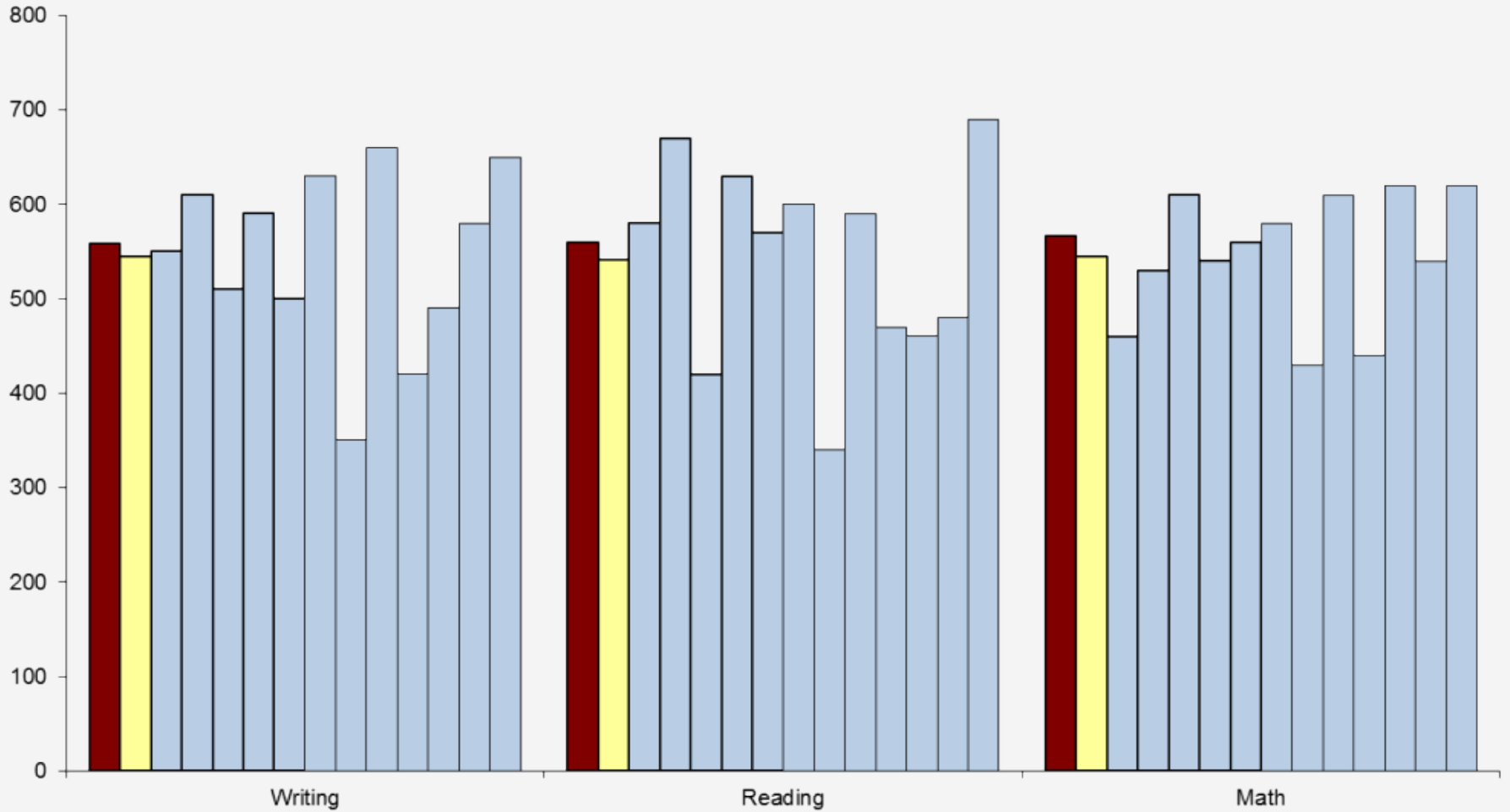
2010-2011 CAPT Scale Scores

1st bar in each series shows Granby average, 2nd bar is the Hartford Schools' average, 3rd bar is Choice Students' average, followed by individual Choice Students' Scores



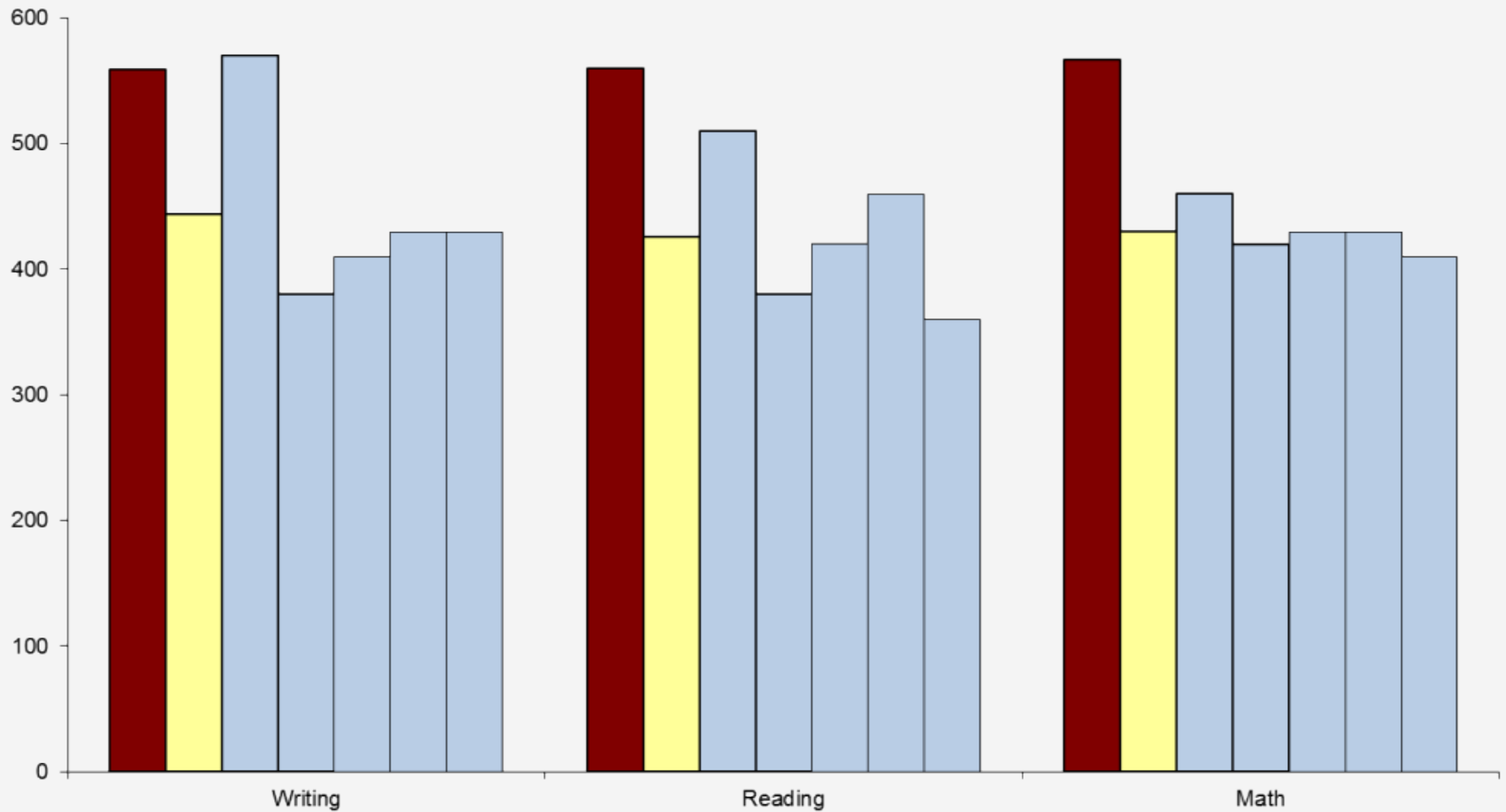
Class of 2011 SAT Scores

1st bar in each series shows Granby average, 2nd bar is the Hartland average, followed by individual Hartland Students' Scores



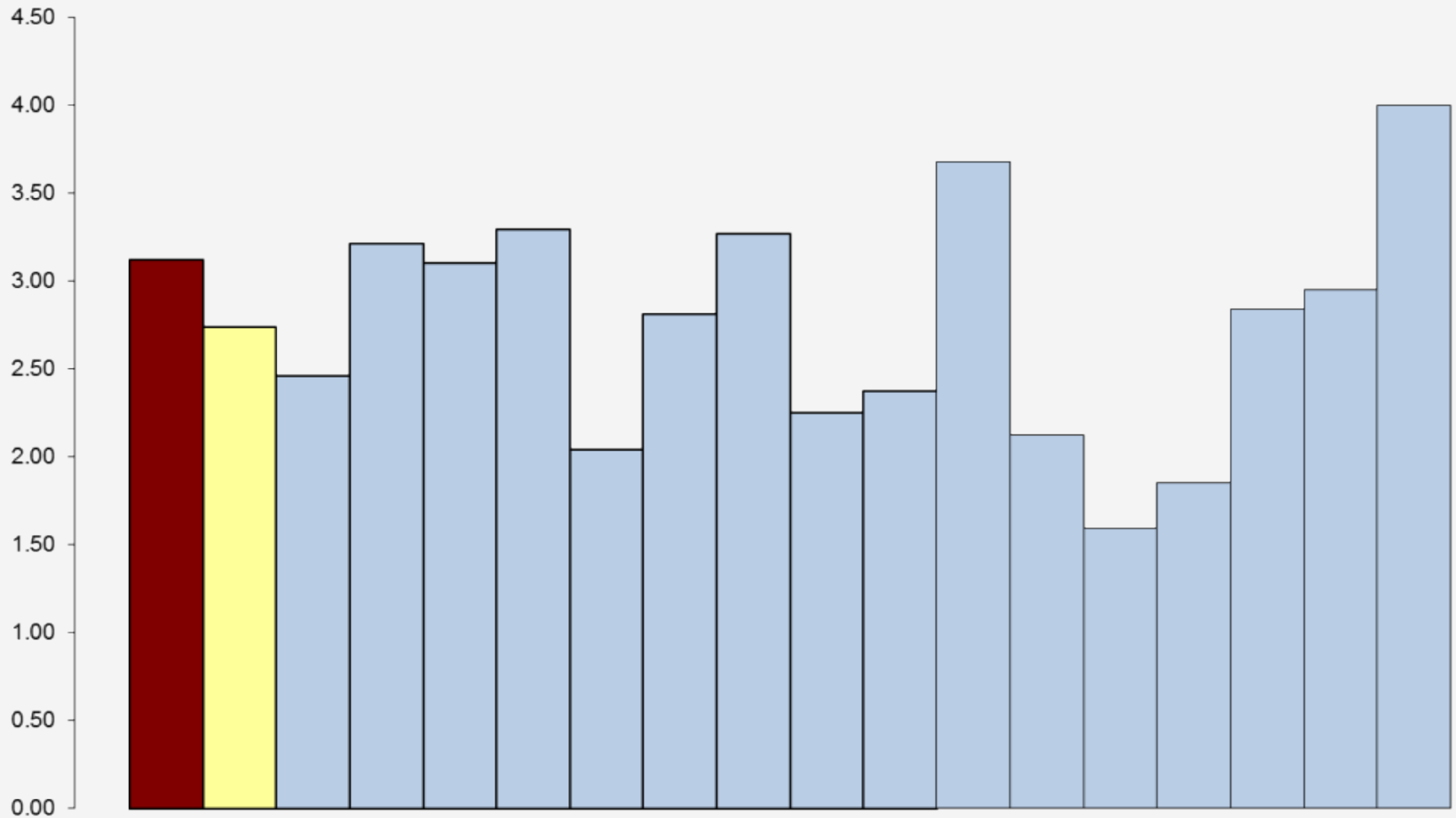
Class of 2011 SAT Scores

1st bar in each series shows Granby average, 2nd bar is the Hartford average, followed by individual Hartford Students' Scores



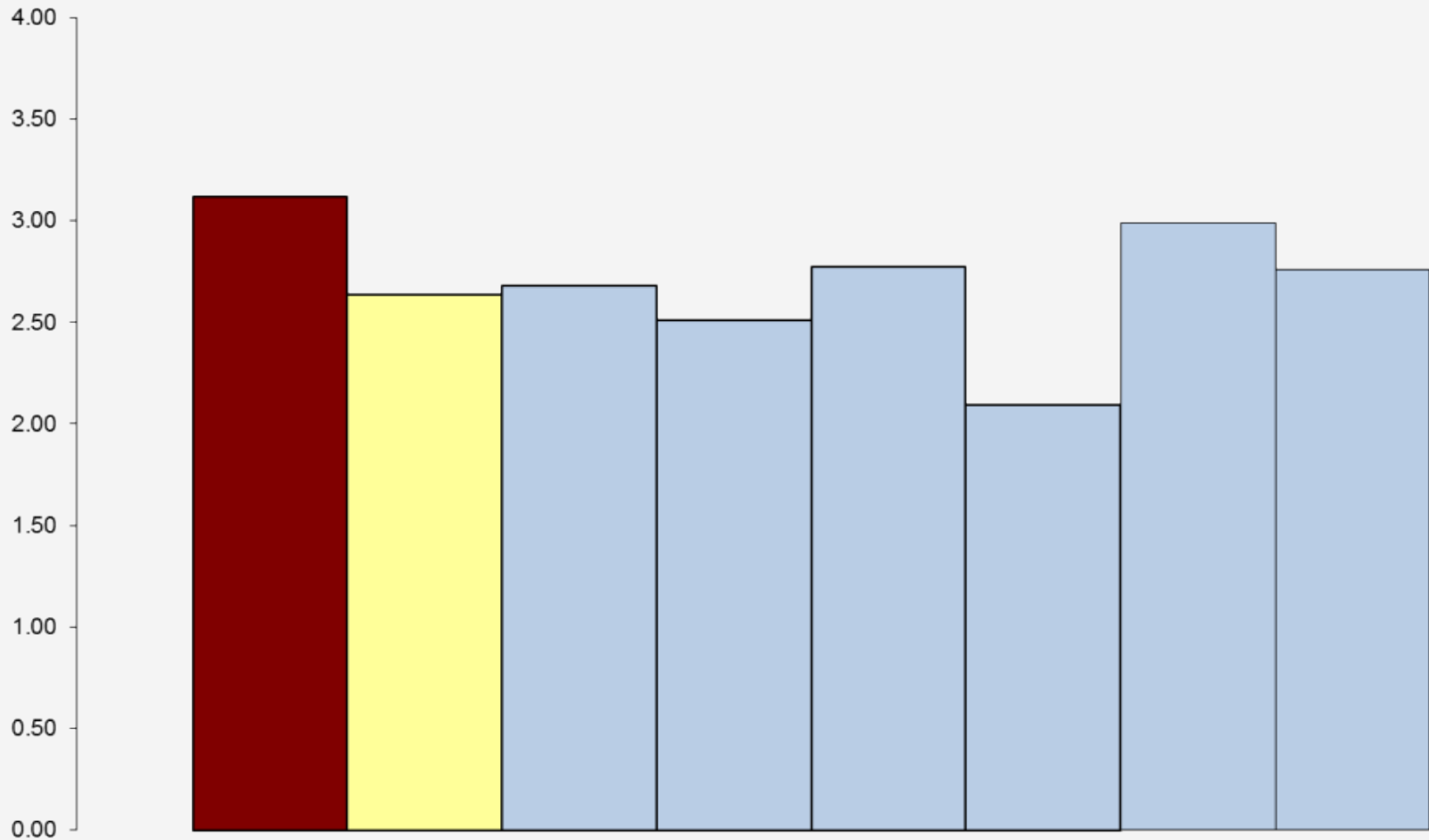
Class of 2011 GPA

1st bar in each series shows Granby average, 2nd bar is the Hartland average, followed by individual Hartland Students' GPAs



Class of 2011 GPA

1st bar in each series shows Granby average, 2nd bar is the Hartford average, followed by individual Hartford Students' GPAs



2011 Graduates

	Hartford		Hartland	
	2010	2011	2010	2011
Number of Graduates	5	6	9	16
# attending 2 or 4-year college	4	6	8	14
# entering the work force	1	0	1	2
# taking AP courses	1	5	2	4
National Honor Society Members	0	0	1	0
Top 10 Scholar	0	0	0	1

Implications for Deepening Equality

- Continue efforts to embrace Hartford and Hartland students in the full life of the Granby learning community
- Track additional avenues of school and community involvement
- Communicate high expectations and accessibility to post secondary opportunities
- Early Identification of academic and social interventions, goal setting and celebrations

To: Granby Board of Education
 From: Diane Dugas, Director of Curriculum, Teaching and Learning
 Date: October 14, 2011
 RE: Program and Academic Performance by Residence

This report provides programmatic and achievement data for the students that attend Granby Public Schools through both the Hartford Open Choice Program and the Hartland students that attend Granby Memorial High School. Demographical data is taken from 2009-2010 Strategic School Profile and achievement data is actual district generated student performance data from the 2010-2011 school year. The data assists the district in identifying strengths and needs in improving academic equity across subgroups of students.

Table 1: Granby Public Schools, 2009-2010 2,275 Students, 74 Choice students (3.3%)		
Race/Ethnicity	Number	Percent
American Indian	8	0.4
Asian American	28	1.2
Black	103	4.5
Hispanic	44	1.9
White	2,092	91.9
Total Minority	183	8.0
Open Choice	74	3.3
Minority Staff	3	2.1

Enrollment:

Year	Enrollment History			
	District Population	Hartford Enrollment	GMHS Population	Hartland Enrollment
2002 - 2003	2,155	29	594	11
2003-2004	2,198	34	601	27
2004-2005	2,222	32	666	33
2005-2006	2,261	43	674	41
2006-2007	2,278	52	687	44
2007-2008	2,324	72	750	50
2008-2009	2,270	75	736	57
2009-2010	2,275	74	753	54
2010-2011	2,237	76	787	65
2011-2012	2,157	72	757	60

Programmatic Data

The programmatic data that is analyzed includes both Open Choice and Hartland participation. Representation includes special education, athletics, disciplinary incidents (at least one referral), AP and Honors courses. At this time Programmatic Data is limited to an analysis at the high school level. Future efforts are underway to track appropriate programmatic data across the grades including participation in other curricular activities such as band, chorus other extracurricular activities and host family participation.

Sports participation across all seasons decreased for the Granby population in comparison to last year by 10%, 2% and 10% respectively. Specifically for Hartford students fall and spring sports participation declined by almost 100%. Hartland participation for fall and winter increased, maintaining spring participation. Clearly Hartland participation is closer in participation level to the Granby residents than our Hartford student residents.

Discipline referrals reference one or more incidents amongst the total population of students by residence. Incidents are similar across residence i.e.: cell phone violation or cutting class is comparable across all three populations in reported incidents.

AP enrollment increased significantly for both Hartford and Hartland students over last year. Hartford students increased from 5.6% of students enrolled in an AP class to 31.3% and Hartland students increased from 5.7% to 18.8%. Hartford student's participation in honors classes also increased significantly from 27.8% in 2010 to 43.8% in 2011. Granby students increased honors participation by 4.9% whereas Hartland maintained enrollment between 47-48%. These increases support the HS focus to have prepare all students to post-secondary access through preparedness.

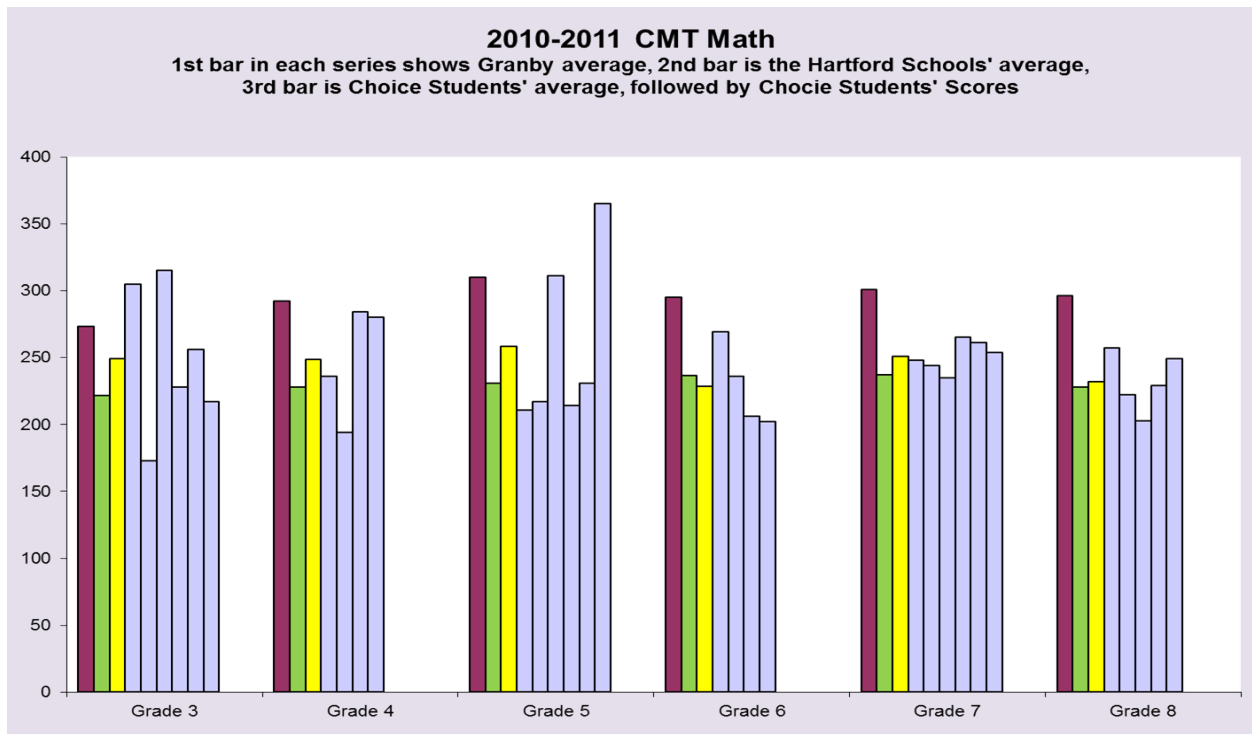
	% Granby Population	% Hartford Students	Difference Hartford	% Hartland Students	Difference Hartland
Special Education	7.1%	10.8%	3.7	3.1%	-4.0
Athletics	Fall: 30.2% Winter: 15.6% Spring: 32.6%	Fall: 6.3% Winter: 6.3% Spring: 0.0%	Fall: -23.9 Winter: -9.3 Spring: -32.6	Fall: 20.3% Winter: 26.6% Spring: 39.1%	Fall: -9.9 Winter: 11.0 Spring: 6.5
Discipline Referrals	39.6%	68.8%	29.2	37.5%	-2.1
AP Enrollment	28.0%	31.3%	3.3	18.8%	-9.2
Honors Courses	67.9%	43.8%	-24.1	48.4%	-19.5

Academic Performance

Charts 1-6 show the average Granby student scaled scores on CMT and CAPT versus the actual scaled scores for Open Choice and Hartland students. Average scores for Hartford students attending Hartford Public Schools are also provided for comparison of our Open Choice students to their sending district. Given the small sample size of students in each grade level, the actual students' scores are reflected by the bar chart.

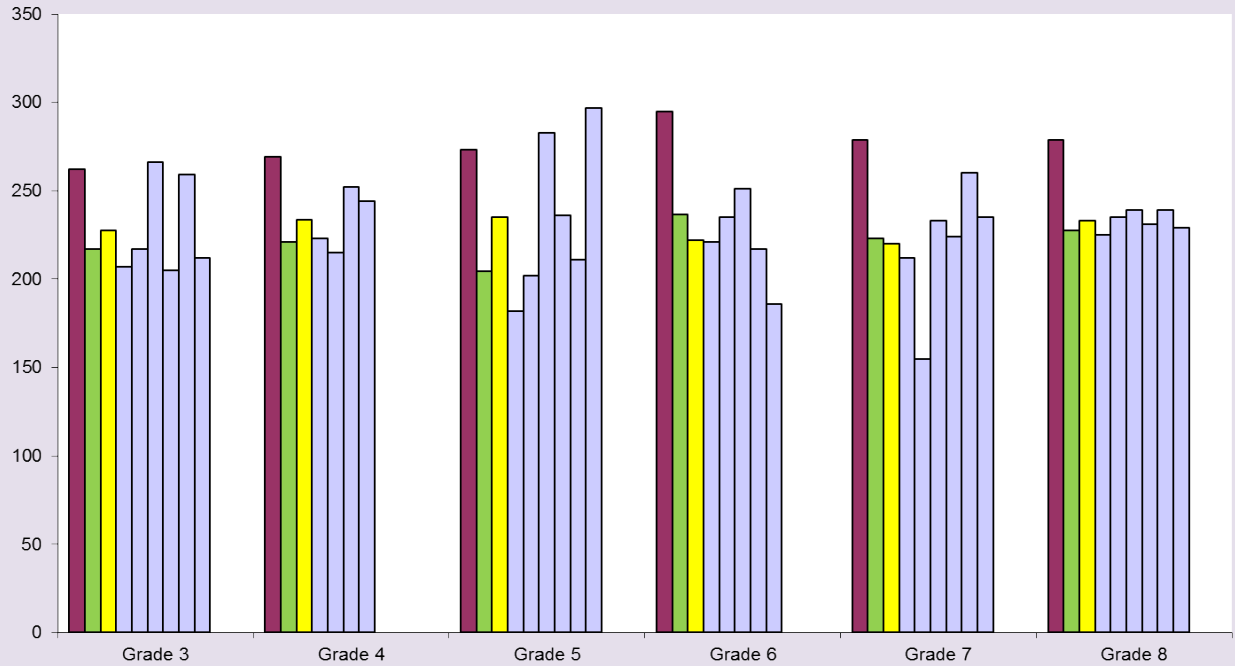
An analysis of the results indicates that although Hartford students show greater gains in most curricular areas they still underperform in comparison to Granby resident students. Specifically:

- In math Open Choice students' outperform Hartford school students in all grades except 6th, but underperform in comparison to Granby resident students.
- In reading Open Choice students' scores are comparable or better than Hartford school students, but are underperform in comparison to Granby resident students
- In writing Open Choice students' scores outperform Hartford School students in grades 4, 5 and 8, and underperform in grades 3, 6, and 7 as well as in comparison to Granby. This variance in writing results mirrors our district variance in writing.
- In Science Open Choice students exceed Hartford School students, yet still underperform Granby resident students.
- At the High School level Open Choice Students outperform their Hartford School counterparts across all curriculum areas, and although the gap is closing, they still underperform in comparison to final CAPT averages of Granby resident students'.
- Hartland results are similar falling slightly shy of the average Granby resident scaled scores.



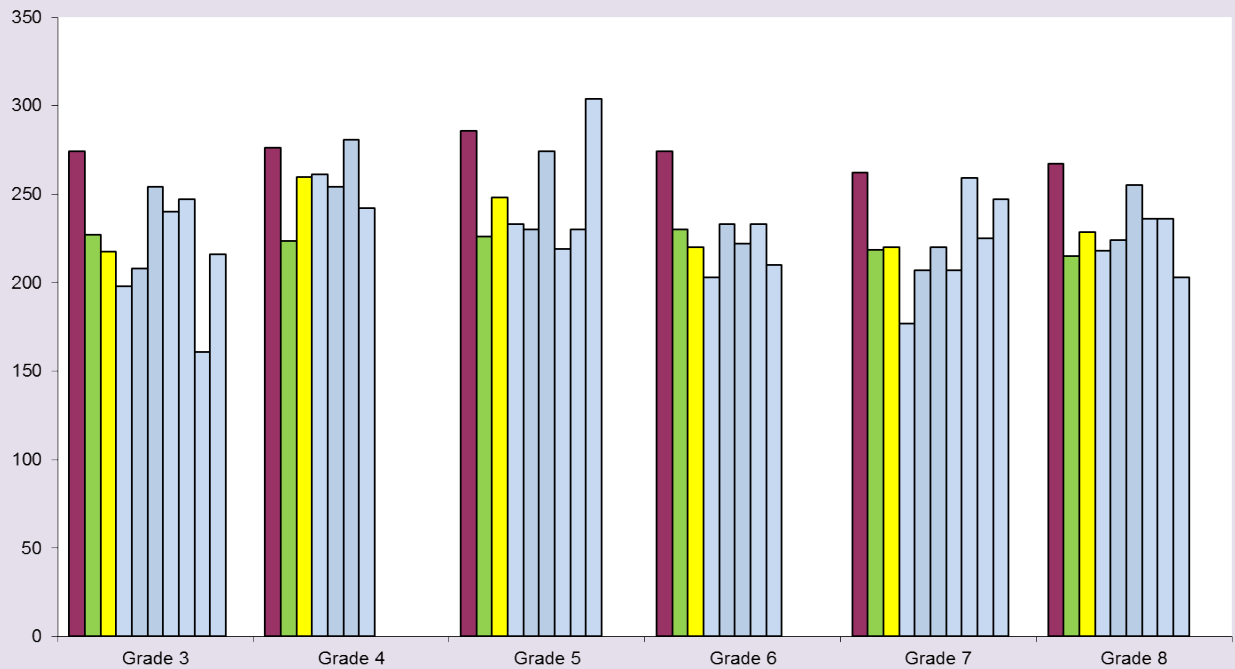
2010-2011 CMT Reading

1st bar in each series shows Granby average, 2nd bar is the Hartford Schools' average, 3rd bar is Choice Students' average, followed by Choice Students' Scores



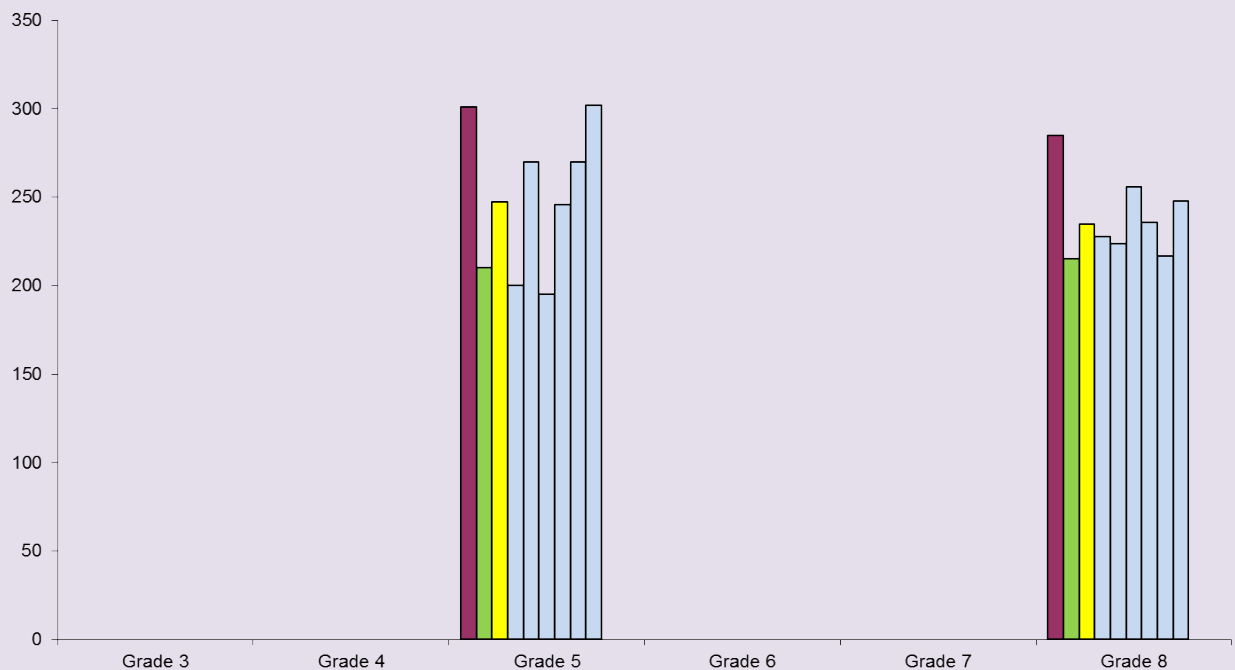
2010-2011 CMT Writing

1st bar in each series shows Granby average, 2nd bar is the Hartford Schools' average, 3rd bar is Choice Students' average, followed by Choice Students' Scores

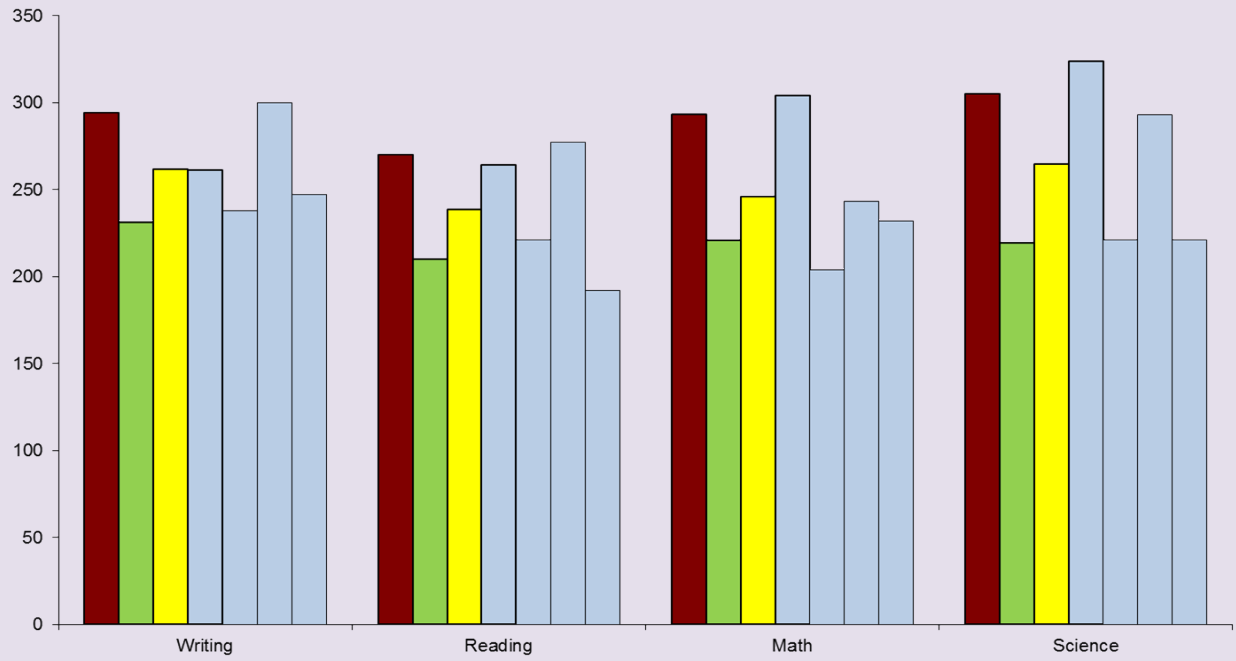


2010-2011 CMT Science

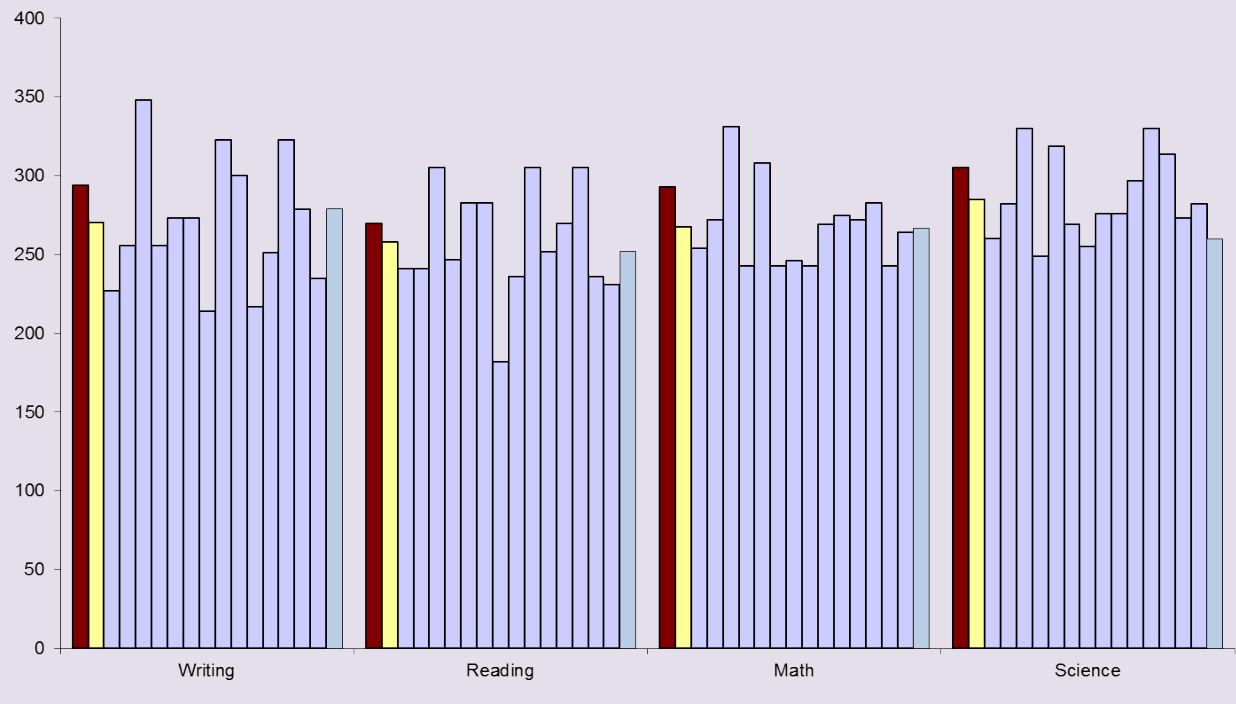
1st bar in each series shows Granby average, 2nd bar is the Hartford Schools' average, 3rd bar is Choice Students' average, followed by Choice Students' Scores



2010-2011 CAPT Scale Scores
1st bar in each series shows Granby average, 2nd bar is the Hartford Schools' average,
3rd bar is Choice Students' average, followed by individual Choice Students' Scores

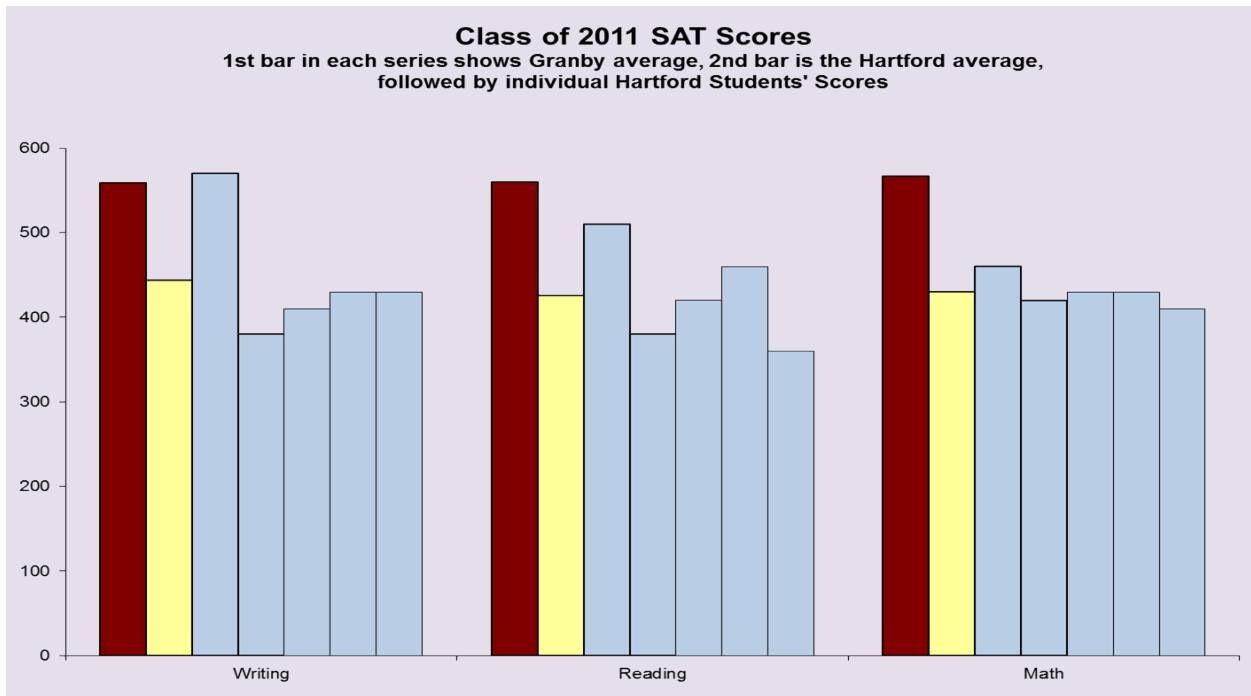
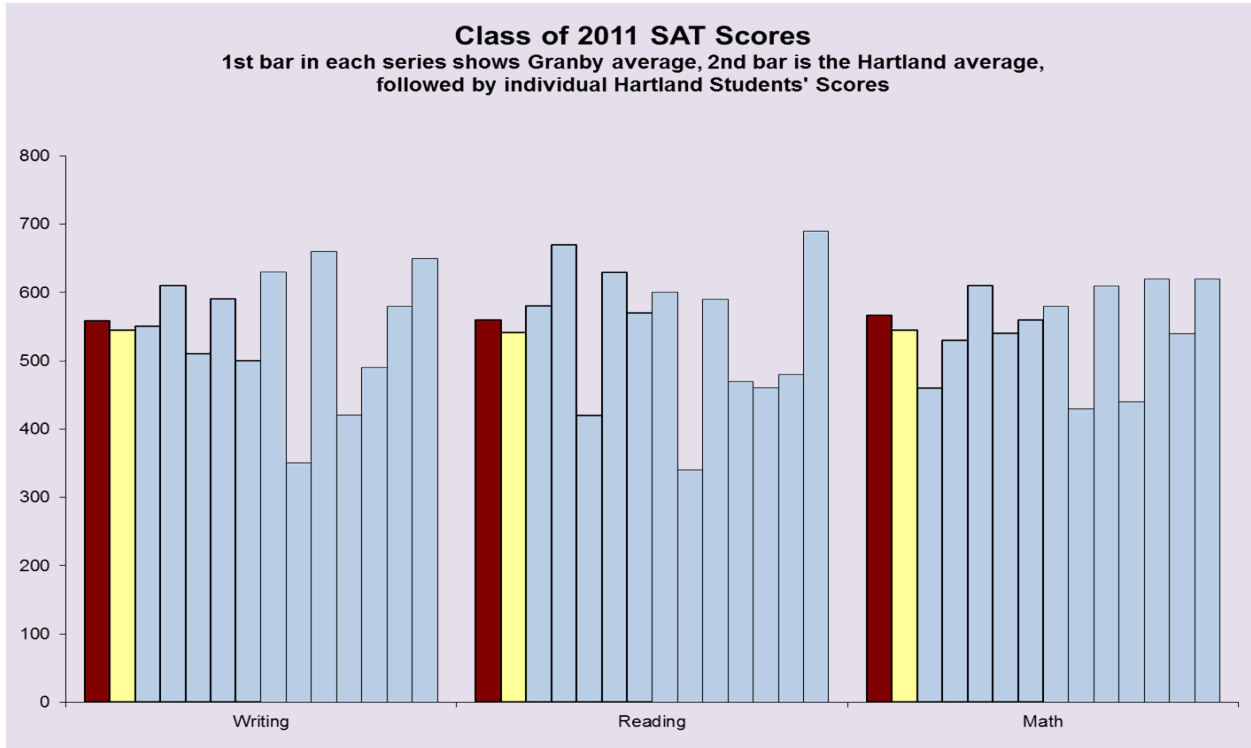


2010-2011 CAPT Scale Scores
1st bar in each series shows Granby average, 2nd bar is the Hartland average,
followed by individual Hartland Students' Scores

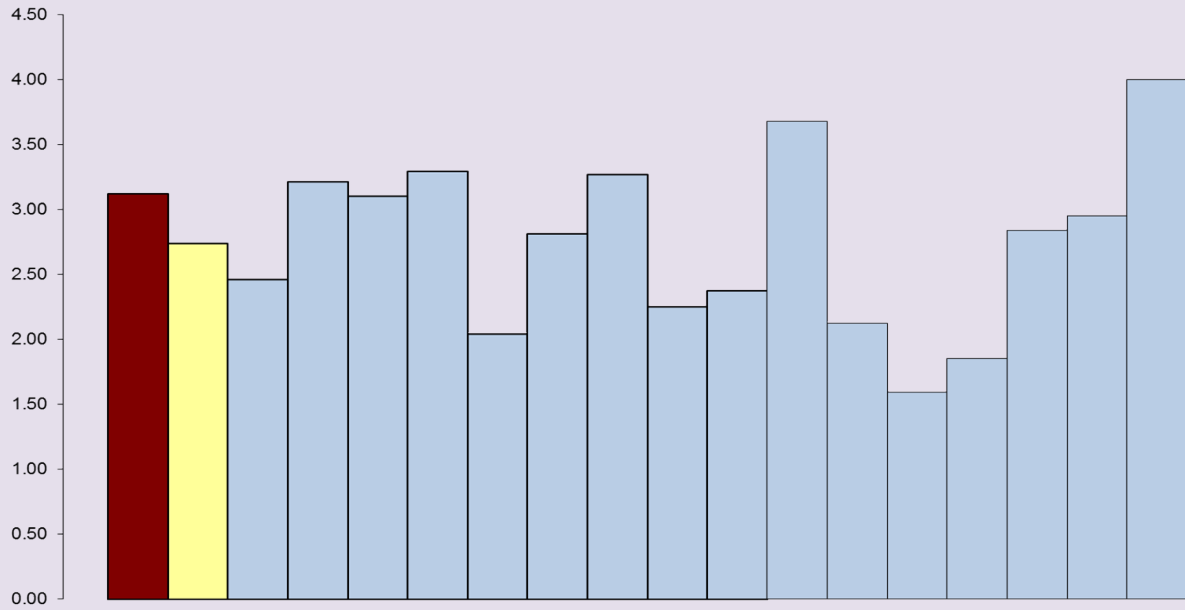


SAT and GPA

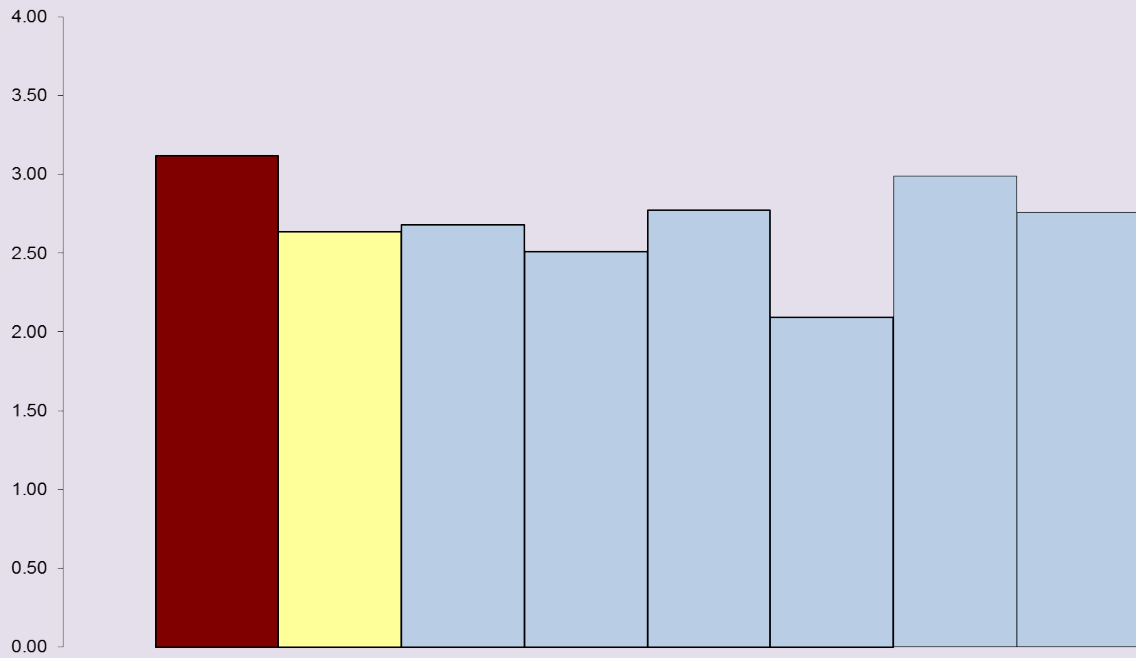
The following two charts represent the average SAT scores of Granby, Hartland and Hartford students followed by individual scores for students from Hartford and Hartland. The two after SAT represent grade point averages for Hartland and Hartford students in comparison to Granby resident students.



Class of 2011 GPA
 1st bar in each series shows Granby average, 2nd bar is the Hartland average,
 followed by individual Hartland Students' GPAs



Class of 2011 GPA
 1st bar in each series shows Granby average, 2nd bar is the Hartford average,
 followed by individual Hartford Students' GPAs



The final chart portrays a summary of the graduating class of 2010 in comparison to the graduating class of 2011.

	Hartford		Hartland	
	2010	2011	2010	2011
Number of Graduates	5	6	9	16
# attending 2 or 4 year colleges	4	6	8	14
# entering work force	1	0	1	2
# taking AP courses	1	5	2	4
National Honor Society Members	0	0	1	0
Top 10 Scholars	0	0	0	1

Summary

Granby Public Schools receives students from two sending towns, Hartford through the Open Choice program in grades K-12 and Hartland in grades 9-12 which Granby is the designated receiving school. The numbers of Choice students from Hartford attending Granby Public Schools in each grade level do not constitute large enough groups for state or NCLB reporting purposes. In a continued effort to ensure we are providing an equitable education for all students Granby administration disaggregates the data to inform instruction and programmatic decisions. Collaborative working relations with both Hartland and Hartford have promoted increased enrollment and community involvement. Continued efforts to identify alternative measures to identify school/community engagement are being sought. As the data indicates continued focus on providing equitable and timely learning opportunities to close the achievement gap are needed. As we continue to analyze the performance data for all students the information will be valuable in supporting practices that will assist all students in reaching high levels of achievement.

TO: Granby Board of Education
FR: Alan Addley
DT: October 17, 2011
RE: Annual Goals & Objectives

STUDENT ACHIEVEMENT

- Advance the work of the district's mission and achievement goal;
- Continue to increase student participation (PSAT, SAT and AP) and achievement across the district on standardized testing;
- Increase student performance in language arts;
- Make progress towards the district achievement goal (DAG);
- Begin to develop site-based assessments to measure the DAG; and,
- Maintain a focus on student learning through clearly defining and supporting the work of the professional learning communities teams.

PROFESSIONAL/PERSONAL LEADERSHIP

- Model the moral and ethical leadership for the district;
- Continue to foster positive staff morale and provide opportunities to build the capacity of teacher leaders;
- Serve as a mentor for UConn's Executive Leadership Committee;
- Provide leadership opportunities for district staff through participation in the District Leadership Academy;
- Attend at least one regional or national professional development conference;
- Serve as a Solution Tree Associate Consultant for professional development; and,
- Complete doctoral studies at the University of Connecticut.

BOARD & COMMUNITY RELATIONS

- Assist the Board in establishing written values for the district;
- Maintain high levels of communication with the Board, town officials and the community;
- Continue to address the district priorities established by the community as part of the entry plan;
- Serve as a resource for Board outreach to neighboring local boards of education;
- Support the advancement of the CPPAC projects; and,
- Actively seek constructive feedback and provide differing opinions.

EDUCATIONAL LEADERSHIP (INSTRUCTIONAL & CURRICULUM)

- Maintain high level of visibility within schools and classrooms on a weekly basis;
- Advance the work of the professional learning community teams across the district while limiting new initiatives;
- Increase the interventions and enrichment opportunities across the district for all students;
- Advance and expand the influence of the administrative Classroom Walkthroughs to include more staff;
- Support the Board's strategic plan for early childhood and world languages;
- Advance to the work of the Instructional Plan;
- Initiate the process to update the Teacher Evaluation and Professional Development Plan; and,
- Support the implementation of a curriculum review plan and make progress in the development of a coherent and guaranteed curriculum for all students, particularly in language arts.

BUSINESS MATTERS

- Provide quality services and support to principals;
- Provide a budget that supports the district's mission, is reflective of the economic climate and is responsive to the community;
- Successfully implement the recommendations of the special education review;
- Adopt and implement an updated District Emergency Operations Plan;
- Seek regionalizing opportunities with neighboring towns; and,
- Manage the budget to continue to realize savings to the town.

**Curriculum/Policy/Technology/Communication Subcommittee Meeting Minutes
October 5, 2011
5:30 p.m.**

Attendance:

Ronald Walther – Present
Rosemarie Weber – Present
John O'Connor - Absent

Alan Addley - Present
Diane Dugas - Present

Meeting commenced at: 5:45 p.m.

Meeting adjourned at: 6:40 p.m.

1. Curriculum Director's Report – Reviewed monthly report – attached. Discussion focused on curriculum planning.

2. Common Core State Standards – Preview of BOE presentation.

3. Homework Update – Mike Dunn reviewed meeting with concerned parents. Presented plan to review administrative regulations that includes parental involvement - Feb. 1st with administrators.

4. Bullying Policy – Administration has been trained. Aimee Martin named District Coordinator. This will essentially be a new policy.

5. Other – None.

Monthly Curriculum Sub Committee Report

From: Diane Dugas, Director of Curriculum, Teaching and Learning

Date: October 2011

Professional Development:

- Collaborated on the roll out of reader workshop resources and math instructional resources:
 - Strategy Toolkit, Developmental Studies mentor text and IDR libraries
 - Every-Day Counts Calendar Math for Kindergarten
- Job-embedded professional development with K-8 teachers on SMART goal development modeling data analysis
- Approve all professional development for district and monitor online master calendar to track district professional development
- Advanced use of technology for acquiring CEU's – All feedback for PD is now paperless, requiring on-line submission.
- Participation in the Connecticut Center for School Change School Improvement Planning network with Bob Gilbert and Anna Forlenza-Baily – Yearlong participation in monthly meetings focused on refining our Theories of Action, aligning to the district and identifying building based Problems of Practice to address.
- Administrative participation in the State roll out of Common Core Standards
- Administrative participation in State-wide Positive School Climate Workshop

Curriculum:

- Facilitation of district-wide curriculum committees in all content areas
 - Overview of curriculum development process
 - Presentation of new common core state standards and assessment expectations
 - Analysis of current curriculum units, pacing, performance assessments and resources
- Ongoing work with Ed Lyman to modify our current curriculum management system

Committee Work:

- Granby Prevention Council Committee meeting – Approval of four sub group committee responsibilities
- DCP – Review of staffing and planning for September 27th in-service, September 27 finalized Theory of Action for struggling readers and clarified model of service delivery.
- TEAM – Established year long meeting dates and focus of agendas for TCC committee and New teacher induction
- Technology Committee – Initial meeting with Jon Lambert to identify previous technology plan work committee, tasks and timeline.

Other:

- Grant work – Completion of Consolidated Grant development including Title I, II and III

- Collaborated with Kelly and Wells to refine the afterschool learning intervention
- Meeting with consultant Jonathan Costa and Pat Law to discuss and plan the development of DAG rubrics to be piloted at the HS addressing action steps in our district instructional plan
- Worked collaboratively with Global Academy Director Jung Jung Su to plan and develop the Saturday Global Learning Academy.
- Supported Principals in the development and presentation of School Improvement Plans
- Supported Principals in planning and facilitation of building walkthrough
- Continued work with SERC to revise the strategic plan including professional development activities and timeline related to cultural competence and equitable practices
- Began work on district curriculum budget process
- Evaluation and goal setting with Language Arts Supervisor and math consulting teacher.
- Weekly meetings with ELL Tutor to monitor ELL program implementation
- Supported various PLC teams (and administrators) across the levels in reflection and revision of SMART goals, connection of CFA's to curriculum and use of the 5 step PLC data conversation.
- Established regular meetings with LA supervisor and math consulting teacher
- Attended Granby's 225th Anniversary Celebration

Monthly Meetings:

District Ad Council – Focus on emergency planning and SIP planning

Elementary Ad Council Meetings – Focus on curriculum, instruction, assessment and PLC issues.

Secondary Ad Council Meetings – Focus on PLC, collaborative practices between schools.

Principals Seminar – Determined focus of supervision for the year through jig-sawing book club reads.

Bi Monthly Building Administrator Meetings – Discussions around SMART Goals and feedback to teams, School Improvement Plans and other items as determined by principals

District Leadership Team meetings – Individual meetings to establish goals and review content curriculum progress

K-12 Language Arts meetings-Establish focus areas for discussion and outcomes desired for year, address coaching issues in enhancing teacher capacity, address unique student needs.

PLC Team meetings – Worked with teams in assisting reflection on SMART goals, delving deeper into analysis of data and strategies to implement with students, addressed questions regarding CFA's

Superintendent meetings – Ongoing daily communication and district level planning

BOE meetings- Presentations of District level achievement and continuous improvement plans

October 18	College Fair	1-2:30 p.m.	HS Community Gym
October 19	Harvest Festival	4-7 p.m.	Wells Road
October 19	Finance Subcommittee Meeting BOE Meeting	5:30 p.m. 7:00 p.m.	Central Services
October 25	NHS Induction Ceremony		HS Auditorium
October 26	French & Spanish National Honors Society Induction Ceremony	7:00 p.m.	HS Media Center
November 2	Curriculum Subcommittee Mtg. BOE Meeting	5:30 p.m. 7:00 p.m.	Central Services
November 8	No School – Professional Dev.		Offices Open
November 16	Curriculum Subcommittee Mtg. BOE Meeting	5:30 p.m. 7:00 p.m.	Central Services
November 18-19	CABE/CAPSS Convention		Mystic, Connecticut
November 18-22	Early Release – Elementary Only		
November 23	Early Release – All Schools		
November 24-25	Thanksgiving Holiday Recess		Offices Closed

Agenda
Hartland Board of Education
Monday – October 17, 2011
West Hartland Library
7:00 PM

N.B.
Meeting @ West
Hartland Library

1. Call to Order – Amy Bourque-Chairperson
2. Hartland Board of Education Mission Statement
3. Approval of Minutes – September 12, 2011.
4. Communications
 - Public Comment on Agenda Items
 - Gilbert Board of Education Report – Philip Groth
 - Hartland School Report – Kristin Smith & Bethany Makowski
 - Granby High School Report – Meghan Blasig
 - PTO
5. Chair Report – Amy Bourque
 - Fall Newsletter
 - CABE/CAPSS Convention – Nov. 18, 2011
6. Superintendent Report – Robert V. Fish
 - CAPSS – LCSA Student Award Program 11/16/11
 - Voucher/Designated High School Update
 - Oil/Diesel Update
 - Roof Replacement & Solar Report
7. Principal Report – Laura H. Hollingsworth
 - School Events
 - Staff In-service
8. Committee & Liaison Reports
 - Shared Services - Amy Bourque
 - Board of Finance – Robert V. Fish
9. Curriculum Report – Laura H. Hollingsworth
 - Scientific Research-Based Interventions (SRBI) Data Collection
10. New Business
 - Sept. Bills & Statement – Robert V. Fish
 - Quarterly Financial Report

- Strategic School Profiles (SSP's) RVF & Laura H. Hollingsworth
- Policy Review
 - Policy #5131.9 Bullying/Safe School Climate Plan
 - Policy #5131 Student Code of Conduct/Discipline Code

11. Public Comments on Agenda Items

12. Future Agenda

- Committee Reports
- Curriculum Reports
- Policy Review
- November BOE – Monday, November 14, 2011 7:00 pm

Adjournment

Copies of this agenda are available at the office of the Superintendent of Schools,
Hartland School.