

DOUGLAS SCHOOL DISTRICT  
BOARD OF EDUCATION

**AGENDA**

**Monday, January 12, 2026**

**VANDENBERG ELEMENTARY SCHOOL - Library Conference Room  
561 Briggs Street  
Box Elder, SD 57719**

**5:00 PM**

DOUGLAS SCHOOL DISTRICT INVITES YOU TO ATTEND A SCHEDULED ZOOM ROOM MEETING:

Join Zoom Meeting <https://sdk12.zoom.us/j/93030927817?pwd=w3keYbIyuiB1aodDzyxfcl280UOmIR.1>  
Meeting ID: 930 3092 7817  
Passcode: 968843

Individuals attending virtually and desiring to speak during public forum should email their request to the Superintendent's Office (Kevin.Case@k12.sd.us or Jackie.McPherson@k12.sd.us), including all identifying information by noon of the day of the board meeting.

{{Name: Agenda Item Name}}

1. Call Meeting To Order:
2. Pledge of Allegiance and Moment of Silence In Honor Of Fallen Soldiers And Active Duty Persons:
3. Recognition:
4. Review of Board Working Agreements:
  - We ask
  - We learn
  - We lead
- 5.
6. Public Forum:
7. Approval of Agenda:
8. Consent Agenda Items:
  - A. Approval of Regular Meeting Minutes of December 8, 2025.
  - B. Approve Personnel Action.
  - C. Approve Financial Reports

- D. Approve the Purchases and Issuing of Accounts Payable and Payroll.
  - E. Approve Twelve (12) High School Students for Early Graduation (graduating in fewer than eight semesters), pending Successful Completion of all Required Classes and Credits.
  - F. Approve Conflict Disclosures and Waiver Authorizations Pursuant to SDCL 3-23-3
9. Items Removed From Consent Agenda
10. Elementary and Secondary Curriculum and Instruction Items:
- A. Presentation of the DSD 2024-2025 State Accountability Report Card.
  - B. January 5–6 Professional Development Sessions Review
11. Superintendent Items:
- A. Approve Open Enrollment Application under the Emergency Clause of Board Policy JECB - Admission of Non-Resident Students as recommended.
  - B. Douglas Middle School Addition Update
12. Fiscal Resources Items:
13. Operational Support Services Items:
14. Reports:
- A. Superintendent:
  - B. Committee Reports From Board Members and Comments from Associate Board Members
15. Upcoming Calendar Events:
- Jan 19 - Holiday, No School
  - Jan 26 - BOE Meeting, 5:00 pm
  - Feb 9, 10 & 12 - Parent Teacher Conferences, 3:30 - 7:00 pm
  - Feb 13 - Conference Comp Day, No School
  - Feb 16 - Holiday, No School
16. Executive Session for BOE Review of Superintendent Evaluation Summary according to SDCL 1-25-2.1.
17. Action As A Result of Executive Session
18. Adjournment

|         |          |       |  |      |             |
|---------|----------|-------|--|------|-------------|
| SECTION | <b>B</b> | TITLE | <b>Board Governance and Operations</b> | FILE | <b>BDDH</b> |
|---------|----------|-------|--|------|-------------|

**Public Participation at Board Meetings**

The School Board recognizes and respects the input which may be provided by the public on school district matters. The Board also recognizes and respects the distinction between a school board meeting that is open to the public and a public hearing held by the school board.

- At a school board meeting which is open to the public, members of the public may be present, observe and listen to the school board conduct its business and may speak during the school board meeting consistent with this policy.
- At a public hearing held by the school board, there is usually one topic to be presented by the District and discussed. The public is given the opportunity to speak and be heard on the topic which is the reason for the public hearing. This type of meeting allows for public participation under the rules designed specifically for that meeting and is not subject to this policy.

This Policy applies only to regularly scheduled school board meetings held in open session. Matters addressed in executive session pursuant to SDCL 1-25-2 are not open to the public.

Personnel matters or complaints that directly or indirectly identify an employee shall not be discussed. Complaints against school employees or students, and complaints related to sexual harassment or bullying, must be addressed according to specific school district policies before being addressed by the School Board.

When a complaint against a school employee or a student is brought to the Board during the public forum, the Board President will direct the person bringing the complaint to the applicable complaint procedure. The complaint procedures are designed to ensure the proper balance in protecting the rights of the person(s) bringing the complaint and the rights of the person against whom the complaint is made. The Board will address the complaint only if the matter has been appealed to the Board pursuant to the applicable complaint policy

Persons making references about a specific school employee or employees, or a specific student or students during the public forum should be mindful that based upon what the person says during the public forum the employee(s) or student(s) about whom the comments are made may have legal recourse against the person voicing the complaint.

Persons speaking during the Public Forum at a school board meeting shall not cause public inconvenience, annoyance, or alarm to the school board or any person, and shall not engage in threatening behavior, make unreasonable noise, be disruptive, boisterous, argumentative, or threatening, shall not make comments which

are disrespectful to one or more persons, and shall not use profanity.

The time designated for Public Forum on the agenda shall be immediately before the adoption of the meeting agenda by the school board.

In order to assure that the Board may conduct its meetings in a respectful and efficient manner, the procedure for public participation at regularly scheduled monthly school board meetings is as follows:

1. Agenda and Non Agenda Items:

- a. Before the meeting is called to order, an individual who desires to speak at a school board meeting must in writing inform the Superintendent, the Business Manager or the Board President of the person's desire to speak and the topic upon which the person intends to speak. The requesting party must sign a form (prepared by the school district) with their name, address, email and topic to be addressed. Individuals attending virtually and desiring to speak during public forum, should email their request to the superintendent's office, including all identifying information, by noon the day of the meeting.
- b. During the time designated for Public Forum, the Board President will recognize the person who signed up to speak and the person may speak on the topic according to the rules set forth in this policy
- c. A speaker shall be granted 5 minutes to present comments to the school board. Upon receiving a request for an extension of time from the speaker, the school board, upon a motion being made and passed by a majority of school board members present and voting, may grant an additional amount of time not to exceed 5 minutes. Additional extensions may be granted only upon a two-thirds vote of school board members present and voting.
- d. Should a number of persons wish to address the school board on the same agenda item, or should the comments become repetitious, the School Board President, in the President's sole discretion, may shorten the time for comments to two minutes per person in order that persons wishing to address the school board may be heard and still allow the school board sufficient time to conduct its agenda business.

2. Adding an Item to the School Board Meeting Agenda in Order to Request Specific School Board Action:

- a. Any person or delegation (with one person being the spokesperson for the delegation) making a specific request to the school board which would require formal action by the school board must present a written request to the Superintendent for the item to be placed on the school board meeting proposed agenda. The written request must be submitted to the Superintendent at least five calendar days before the school board meeting.
- b. The specific request to add an item to the agenda shall clearly identify what is being requested and why, signed by the person making the request, and include the person's name, address, email and telephone number.
- c. The Superintendent will forward the request to the School Board President and the Board President will decide whether the item will be placed on the proposed agenda. Whether any item is to be addressed at the school board meeting is determined by a majority of school

board members at the beginning of the school board meeting when the school board adopts the proposed agenda as printed or adopted after being modified.

- d. If the item on the meeting agenda is adopted by the school board, the person or spokesperson for the delegation who has submitted the request for specific school board action will be granted 10 minutes to explain the request to the school board. Upon receiving a request for an extension of time from the speaker, the school board, upon a motion being made and passed by the majority of school board members present, may grant an additional amount of time not to exceed 5 minutes. Additional extensions may be granted only upon a two-thirds vote of school board members present and voting.
- e. In the sole discretion of the school board, requests to the school board for specific action submitted after the proposed agenda has been posted may be:
  - deferred until the next regular meeting or a special school board meeting, or
  - added to the meeting agenda for discussion purposes only, or
  - added to the agenda for discussion and possible action.

### 3. Authority of Presiding Officer:

The Board vests in its presiding officer the authority to terminate the right of any person to speak at the end of the time granted pursuant to provision 1.d, provision 1.e, or provision 2.d. as set forth in this policy. The presiding officer may also terminate the right of a person to speak at a school board meeting should the person cause public inconvenience, annoyance, or alarm to the school board or any person, engage in threatening behavior, make unreasonable noise, disturb or be disruptive of an official school board meeting, or when comments are disrespectful to one or more persons, boisterous, argumentative, threatening, or contain profanity.

If deemed necessary by the presiding officer, the presiding officer may contact local law enforcement to have a person removed from the school board meeting as it is a violation of law for a person to intentionally cause or create a risk of serious public inconvenience, annoyance, alarm or disturbance at a school board meeting.

## REFERENCES

### State Reference:

|                  |   |
|------------------|---|
| SDCL 1-25-1      | Official meetings open to the public      |
| SDCL 1-25-2      | Executive or closed meetings              |
| SDCL 13-32-6     | Disturbance of school as a misdemeanor    |
| SDCL 13-8-39     | Management of schools by board            |
| SDCL 22-18-35(3) | Disturbing any lawful assembly or meeting |

### Policy Cross Reference:

|      |                                      |
|------|--------------------------------------|
| BD   | School Board Meetings                |
| BDDB | Board Meeting Agendas and Format     |
| BDDC | Agenda Preparation and Dissemination |

**Adoption History**

|                           |            |  |  |
|---------------------------|------------|--|--|
| Approved                  | 9/8/1977   |  |  |
| First Reading of Revision | 10/10/1985 |  |  |
| Approved - Revision       | 11/14/1985 |  |  |
| First Reading             | 11/17/2014 |  |  |
| Approved                  | 12/8/2014  |  |  |
| First Reading-Rewrite     | 2/13/2017  |  |  |
| Approved                  | 2/27/2017  |  |  |
| First Reading-Revision    | 2/28/2022  |  |  |
| Approved                  | 3/14/2022  |  |  |

**DOUGLAS SCHOOL BOARD  
REQUEST TO COMMENT  
SPEAKER SIGN IN**

DATE \_\_\_\_\_

Persons speaking during the Public Forum at a school board meeting shall not cause public inconvenience, annoyance, or alarm to the school board or any person, and shall not engage in threatening behavior, make unreasonable noise, be disruptive, boisterous, argumentative or threatening, shall not make comments which are disrespectful to one or more persons, and shall not use profanity.

Please print legibly.

|   | <b>Name &amp; Address</b> | <b>Email &amp; Phone #</b> | <b>Topic / Item #</b> |
|---|---------------------------|----------------------------|-----------------------|
| 1 |                           |                            |                       |
| 2 |                           |                            |                       |
| 3 |                           |                            |                       |
| 4 |                           |                            |                       |
| 5 |                           |                            |                       |
| 6 |                           |                            |                       |
| 7 |                           |                            |                       |
| 8 |                           |                            |                       |
| 9 |                           |                            |                       |

|         |          |       |  |      |                  |
|---------|----------|-------|--|------|------------------|
| SECTION | <b>B</b> | TITLE | <b>Board Governance and Operations</b> | FILE | <b>BDDH-E(2)</b> |
|---------|----------|-------|--|------|------------------|

### Introduction to Public Forum

*If the Board/Board President wishes to have the Board President make an introductory statement at the beginning of the Public Forum, the following may serve as a starting point which could be modified at the discretion of the Board/Board President and which is consistent with local Board policy.*

This is the time for the Public Forum.

Each individual wishing to address the Board is asked to sign the form on the table in the back of the room with their name, address, email and topic to be addressed being legible. Persons having signed in will be recognized and have an opportunity to speak.

Speakers will have five (5) minutes to present comments to the school board. An extension of time may be granted pursuant to Board policy. Should more than one person wish to address the school board on the same agenda item, or should the comments become repetitious, speaker time may be shortened.

The District has policies related to complaints involving bullying, sexual harassment, school employees or students. Those policies include procedures designed to balance the rights of the person(s) bringing the complaint and the rights of the person against whom the complaint is made. If a complaint about bullying, sexual harassment, school employees or students is brought to the Board during the public forum, the person will be informed as to the applicable complaint procedure.

\* Individuals attending virtually and desiring to speak during public forum, instructions are given on the meeting agenda when it is posted to email their request to the superintendent's office, including all identifying information, by noon the day of the board meeting.

*Notes: All Board members should be aware that SDCL 22-18-35(3) says any person who intentionally causes serious public inconvenience, annoyance, or alarm to any other person, or creates a risk thereof by disturbing any lawful assembly or meeting of persons without lawful authority is a criminal offense (Class 2 Misdemeanor). This statute could be referenced in extreme situations if a speaker/group fails to respect the decorum expected during a formal governmental meeting*

Adopted: 3/14/2022

MINUTES  
DOUGLAS SCHOOL DISTRICT  
BOARD OF EDUCATION MEETING

Monday, December 8, 2025

The Douglas School District No. 51-1 Board of Education held a Regular meeting on Monday, December 8, 2025 at 5:00 PM in the library conference room at Vandenberg Elementary School, Box Elder, South Dakota. President Tanya Gray presided. Those present were:

Ben Frerichs: Present, Tanya Gray: Present, Amy McGovern: Present, Chris Misselt: Present, Tonya Welch: Present. Paul Koecher: Associate Member, present.

All actions in these Minutes were by unanimous vote unless otherwise stated.

President Tanya Gray called the meeting to order at 5:00 p.m.

There was nothing for public forum.

Motion to approve the agenda. This motion, made by Ben Frerichs and seconded by Amy McGovern, Carried 5-0.

Motion to approve the consent agenda, Items 7A-E. This motion, made by Amy McGovern and seconded by Tonya Welch, Carried 5-0.

Approved Regular Board Meeting Minutes of November 24, 2025.

Approved Personnel Action for December 8, 2025. (Attachment)

Approved Accounts Payable Report for December 15 and Payroll Report for November, 2025. (Attachments)

Approved declaring library books as surplus (surplus for sale or discard).

There were no conflicts disclosed as defined in SDCL 3-23.

**Elementary and Secondary Curriculum and Instruction Items:**

Executive Director of Secondary Academics Courtney Crosswait shared information on the Portrait of a Graduate work taking place in the district and the "why" driving the work. Portrait of a Graduate is a shared vision that identifies the skills, characteristics, and habits every student needs for success in school, career, and life. Focus Groups with input from parents/guardians, alumni, current students, staff, local businesses, and community partners begin this week. In addition, two Steering Committee meetings are scheduled to create and finalize the draft to be presented to the School Board in April.

**Fiscal Resources Items:**

Approve the following resolution as presented. This motion, made by Chris Misselt and seconded by Ben Frerichs, Carried 5-0.

BE IT RESOLVED that the Douglas Board of Education, in accordance with Board Policy BBB, hereby sets the Douglas School District Board Election for June 2, 2026. Polls will be open from 7:00 am until 7:00 pm.

**Reports:**

Superintendent Kevin Case shared a brief update with board members on the succession plan model and requested that each one complete the self-evaluation and schedule a rounding with him in the next week, if they have not already done so. This process encourages conversation beyond just checking a box on an evaluation sheet.

Committee Reports From Board Members and Comments from Associate Board Members

Paul Koecher, Associate Board Member, reported that the B-1s are returning to Ellsworth, bringing parents home and beginning an important period of reintegration for families.

Ben Frerichs commented that the wellness program is going well.

Amy McGovern and Chris Misselt commented on the Portrait of a Graduate process.

Tanya Gray stated the audit report was postponed until January.

Motion to adjourn the meeting at 5:30 p.m. This motion, made by Ben Frerichs and seconded by Tonya Welch, Carried 5-0.

\_\_\_\_\_  
Tanya Gray, President

\_\_\_\_\_  
Trista Olney, Business Manager

\_\_\_\_\_ Initials

\_\_\_\_\_ Date

Published once at the total approximate cost of \_\_\_\_\_.

**DOUGLAS SCHOOL DISTRICT****PERSONNEL ACTION 12/8/2025****Classified Service Factor Bonus**

|  | <b>Name</b>        | <b>Position/Years</b>      | <b>Amount</b> | <b>Dates of Service</b> |
|--|--------------------|----------------------------|---------------|-------------------------|
|  | Jacqueline Heisler | Instructional Aide/5 years | \$194.00      | 12/14/2020-12/14/2025   |

**Certified Resignations/Terminations**

|  | <b>Name</b>   | <b>Position</b>   | <b>Location</b> | <b>Effective Date</b> |
|--|---------------|-------------------|-----------------|-----------------------|
|  | Kelli Waddell | 4th Grade Teacher | VES             | 5/22/2026             |

**Classified Resignations/Terminations**

|  | <b>Name</b>      | <b>Position</b>        | <b>Location</b> | <b>Effective Date</b> |
|--|------------------|------------------------|-----------------|-----------------------|
|  | Kevin Christ     | Instructional Aide     | HS              | 12/5/2025             |
|  | Janee Leigh      | Intramural Girls BBall | MS              | 5/22/2026             |
|  | Danielle Hirvela | 8th Girls BBall        | MS              | 11/13/2025            |

**Temporary Hires**

|  | <b>Name</b>     | <b>Position</b> | <b>Salary</b>      | <b>Effective Date</b> |
|--|-----------------|-----------------|--------------------|-----------------------|
|  | Jace Caldwell   | 8th Girls BBall | \$2367.11 Prorated | 11/13/2025            |
|  | Jacob Ferdinand | 6th Boys BBall  | \$1,235.00         | 12/02/2025            |
|  | George Johnson  | 8th Asst BBall  | \$2,443.00         | 12/02/2025            |

\*\* Personnel Action additions and updates made after initial publication and before scheduled school board

| <u>Vendor Name</u>                     | <u>Check #</u> | <u>Expensed</u> | <u>Amount</u> |
|--|----------------|-----------------|---------------|
| A & B WELDING SUPPLY COMPANY INC.      | 186734         |                 | 63.13         |
| ACADIENCE LEARNING INC.                | 186735         |                 | 3,900.00      |
| ACTION MECHANICAL INC                  | 186736         |                 | 9,880.00      |
| ADMINPARTNERS                          | 186737         |                 | 100.00        |
| AMAZON.COM                             | 186738         |                 | 5,994.36      |
| AMERICAN FENCE COMPANY                 | 186739         |                 | 2,509.00      |
| AMERICAN LEGION                        | 186740         |                 | 750.00        |
| AMICK SOUND INC                        | 186742         |                 | 935.96        |
| BEST WESTERN PLUS RAMKOTA HOTEL        | 186743         |                 | 512.00        |
| BLACK HILLS CHEMICAL CO                | 186744         |                 | 155.79        |
| BLACK HILLS URGENT CARE                | 186745         |                 | 100.00        |
| BOX ELDER HARDWARE                     | 186746         |                 | 1,085.35      |
| BZT WRAPS                              | 186747         |                 | 3,672.09      |
| CENTURY BUSINESS                       | 186748         |                 | 99.43         |
| CENTURYLINK                            | 186749         |                 | 518.75        |
| CHADRON HIGH SCHOOLS                   | 186750         |                 | 100.00        |
| CITY OF BOX ELDER                      | 186752         |                 | 11,902.56     |
| ELEVATE RAPID CITY                     | 186754         |                 | 500.00        |
| FIDUCIARY ACCOUNT                      | 186755         |                 | 1,432.00      |
| FOOD SERVICE                           | 186756         |                 | 105.22        |
| Hager, Summer                          | 186757         |                 | 19.18         |
| HARLOW'S BUS SALES, INC.               | 186759         |                 | 450.00        |
| HIGH POINT NETWORKS, LLC               | 186760         |                 | 13.10         |
| HOLIDAY INN & SUITES SIOUX FALLS       | 186761         |                 | 3,117.90      |
| JOSTENS INC                            | 186762         |                 | 128.95        |
| JW PEPPER & SONS, INC.                 | 186763         |                 | 90.19         |
| KIEFFER SANITATION, INC.-AUTO PAY      | 279            |                 | 3,090.95      |
| LEADERSHIP MATTERS LLC                 | 186764         |                 | 6,400.00      |
| LYNN JACKSON SHULTZ & LEBRUN PC INC    | 186765         |                 | 747.00        |
| LYNN'S DAKOTAMART                      | 186766         |                 | 303.27        |
| MENARDS                                | 186767         |                 | 999.61        |
| MG OIL COMPANY, INC.                   | 186768         |                 | 4,789.74      |
| MIDCONTINENT COMMUNICATIONS- AUTO PAY  | 282            |                 | 0.00          |
| MIDWEST BUS PARTS, INC.                | 186769         |                 | 502.94        |
| MONTANA DAKOTA UTILITIES COMPANY, INC. | 280            |                 | 6,404.22      |

|                                      |        |                   |
|--------------------------------------|--------|-------------------|
| NASCO EDUCATION LLC                  | 186770 | 761.12            |
| O'REILLY AUTO PARTS BOX ELDER        | 186771 | 349.99            |
| Pettit, Ann                          | 186772 | 96.00             |
| PRECISION MECHANICAL LLP             | 186773 | 2,184.55          |
| RIVERSIDE TECHNOLOGIES INC           | 186776 | 5,709.00          |
| SANFORD HEALTH OCCMED                | 186777 | 245.00            |
| SASD                                 | 186778 | 90.00             |
| SHERWIN WILLIAMS                     | 186781 | 180.30            |
| SOFTWARE UNLIMITED INC               | 186783 | 240.00            |
| STAGECOACH WEST BUS INC              | 186784 | 4,200.00          |
| STAN HOUSTON EQUIPMENT COMPANY, INC. | 186785 | 908.60            |
| SWIFTEC INC                          | 186786 | 1,750.18          |
| TRANE US INC                         | 186787 | 3,050.72          |
| ULINE SHIPPING SUPPLY SPEC.          | 186788 | 575.08            |
| VANWAY TROPHY & AWARD, INC.          | 186789 | 22.00             |
| VERIZON WIRELESS                     | 186790 | 249.79            |
| VOYAGER FLEET SYSTEMS, INC.          | 186791 | 593.42            |
| WEST RIVER ELECTRIC-AUTOPAY          | 281    | 1,789.73          |
| <b>GENERAL FUND</b>                  |        | <b>94,368.17</b>  |
| AMAZON.COM                           | 186738 | 104.13            |
| AMERICAN TIME & SIGNAL COMPANY, INC. | 186741 | 3,195.42          |
| CENTURY BUSINESS                     | 186748 | 10,429.90         |
| CO-OP ARCHITECTURE                   | 186753 | 165,444.00        |
| SECO CONSTRUCTION INC                | 186780 | 101,312.00        |
| SWIFTEC INC                          | 186786 | 234,602.32        |
| <b>CAPITAL OUTLAY</b>                |        | <b>515,087.77</b> |
| AMAZON.COM                           | 186738 | 980.21            |
| CHILDRENS HOME CHILD ADVOCACY CENTER | 186751 | 13,923.00         |
| FIDUCIARY ACCOUNT                    | 186755 | 484.00            |
| PRO-ED, INC.                         | 186774 | 338.00            |
| RATWIK, ROSZAK & MALONEY, P.A        | 186775 | 899.00            |
| SD DEPARTMENT OF HUMAN SERVICES      | 186779 | 13,435.56         |
| SHINING PATHWAY ABA, LLS             | 186782 | 51,215.00         |
| <b>SPECIAL ED</b>                    |        | <b>81,274.77</b>  |
| AMAZON.COM                           | 186738 | 111.74            |
| HAGGERTYS MUSICWORKS                 | 186758 | 85.00             |

|                                    |       |                   |
|------------------------------------|-------|-------------------|
| <b>GRANTS</b>                      |       | <b>196.74</b>     |
| AMAZON.COM                         | 12930 | 341.53            |
| CASH-WA DISTRIBUTING COMPANY, INC. | 12931 | 5,554.97          |
| CHILD AND ADULT NUTRITION          | 12933 | 6,320.05          |
| COCA-COLA BOTTLING CO HIGH COUNTRY | 12934 | 576.00            |
| D&R SERVICE, INC.                  | 12935 | 5,655.21          |
| GENERAL FUND                       | 12937 | 59,097.93         |
| PAN-O-GOLD BAKING COMPANY, INC.    | 12938 | 291.54            |
| PIZZA HUT- BOX ELDER               | 12939 | 726.00            |
| PRAIRIE FARMS                      | 12940 | 4,833.24          |
| REINHART FOOD SERVICE LLC          | 12941 | 14,170.20         |
| SERVALL TOWEL & LINEN SUPPLY, INC. | 12942 | 187.80            |
| SYSCO MONTANTA                     | 12943 | 7,541.40          |
| <b>FOOD SERVICE</b>                |       | <b>105,295.87</b> |
| AMAZON.COM                         | 50567 | 6,057.64          |
| BULK BOOKSTORE                     | 50568 | 3,224.15          |
| Clark, Michael                     | 50569 | 154.00            |
| EASTMAN, TYLER                     | 50570 | 60.00             |
| GOTTLOB, SHAYNE                    | 50571 | 60.00             |
| HOWER, MATTHEW                     | 50572 | 240.00            |
| KIRKEBY, MICHAEL                   | 50573 | 60.00             |
| MAREK'S DJ SERVICES                | 50574 | 465.00            |
| MIEDEMA, ROBERT                    | 50575 | 160.00            |
| NIELSEN, COLE                      | 50576 | 120.00            |
| OLIVER, KENNETH                    | 50577 | 80.00             |
| RAPID PACKAGING                    | 50578 | 117.80            |
| <b>STUDENT ACTIVITY</b>            |       | <b>10,798.59</b>  |
| <b>Grand Total:</b>                |       | <b>807,021.91</b> |

**PAYROLL EXPENDITURES**

**NOVEMBER 7 2025**

**NOVEMBER 21 2025**

**TOTALS**

**\$1,275,678.85**

**\$1,422,044.32**

**DOUGLAS SCHOOL DISTRICT  
PERSONNEL ACTION 1/12/2026**

**Employee Leave of Absence Requests**

| Name             | Building | Position | Effective Date |
|------------------|----------|----------|----------------|
| BOE See Attached |          |          |                |

**Classified Resignations/Terminations**

| Name             | Position                  | Location             | Effective Date |
|------------------|---------------------------|----------------------|----------------|
| John Bates       | LRA                       | VES                  | 12/08/2025     |
| Micah Bredberg   | Custodian                 | FC                   | 1/2/2026       |
| Jace Waltman     | Bldg & Maint. Coordinator | Building and Grounds | 1/16/2026      |
| Nelson Rodriguez | 7th Boys Basketball       | MS                   | 12/22/2025     |
| Sarah Tucker     | Volleyball Head Coach     | HS                   | 12/30/2025     |
| Mason Johnson    | Custodian                 | FC                   | 01/06/2026     |

**Certified Staff Hiring**

| Name       | Location / Position | Wage        | Effective Date |
|------------|---------------------|-------------|----------------|
| Tessa Ryan | MS/ELA Teacher      | \$28,590.06 | 1/5/2026       |

**Classified Staff Hiring**

| Name        | Location / Position   | Wage     | Effective Date |
|-------------|-----------------------|----------|----------------|
| Debra James | HS/Instructional Aide | 17.75/hr | 01/21/2026     |

**Temporary Hires**

| Name            | Position                   | Salary     | Effective Date |
|-----------------|----------------------------|------------|----------------|
| Makiah Chadwick | Asst Boys Wrestling        | \$4,588.00 | 2025-2026      |
| Marlin Kingi    | 7th Head Boys BBall        | \$3,533.00 | 2025-2026      |
| Aaron Kowaleski | 7th Asst. Boys BBall       | \$2,853.00 | 2025-2026      |
| Loghan Pitts    | 6th Intramural Cheer Coach | \$1,235.00 | 2025-2026      |

**Substitute Hires**

| Name                | Substitute Teacher | Substitute Classified   | Effective Date |
|---------------------|--------------------|-------------------------|----------------|
| Caryna Pourier      | Substitute Teacher | Per Substitute Pay Rate | 11/4/2025      |
| Constance Hubbard   | Substitute Teacher | Per Substitute Pay Rate | 12/11/2025     |
| Peter Johnson       | Substitute Teacher | Per Substitute Pay Rate | 11/4/2025      |
| Mallory Walker      | Substitute Teacher | Per Substitute Pay Rate | 11/5/2025      |
| Beverly Fuller      | Substitute Teacher | Per Substitute Pay Rate | 11/5/2025      |
| Emmersyn Crawford   | Substitute Teacher | Per Substitute Pay Rate | 11/24/2025     |
| Lily Militello      | Substitute Teacher | Per Substitute Pay Rate | 11/20/2025     |
| Dedra Handboy       | Substitute Teacher | Per Substitute Pay Rate | 11/25/2025     |
| Emilee Rogers       | Substitute Teacher | Per Substitute Pay Rate | 12/19/2025     |
| Heather Burden      | Substitute Teacher | Per Substitute Pay Rate | 12/22/2025     |
| Madison Worden      | Substitute Teacher | Per Substitute Pay Rate | 12/29/2025     |
| Frederick MacDonald | Substitute Teacher | Per Substitute Pay Rate | 12/22/2025     |
| Kevin Plooster      | Substitute Teacher | Per Substitute Pay Rate | 1/8/2026       |

\*\* Personnel Action additions and updates made after initial publication and before scheduled school board

| <b>November 1, 2025<br/>FINANCIAL</b> | <b>GENERAL<br/>FUND</b> | <b>CAPITAL<br/>OUTLAY</b> | <b>SPECIAL<br/>EDUCATION</b> |
|---------------------------------------|-------------------------|---------------------------|------------------------------|
| BALANCE 10/31/25                      | (447,467.39)            | (277,469.77)              | 1,509,964.17                 |
| RECEIPTS:                             |                         |                           |                              |
| TAXES                                 | 1,506,857.73            | 1,434,128.81              | 703,374.87                   |
| INTEREST                              | 1,490.88                | 0.00                      | 0.00                         |
| ADMISSIONS                            | 6,167.00                | 0.00                      | 0.00                         |
| LOCAL                                 | 0.00                    | 39.66                     | 0.00                         |
| COUNTY                                | 18,308.36               | 0.00                      | 0.00                         |
| STATE                                 | 1,446,727.00            | 0.00                      | 329,452.00                   |
| FEDERAL                               | 16,214.89               | 95,285.00                 | 321,309.00                   |
| OTHER                                 | 4,243.35                | 0.00                      | 0.00                         |
| INTERFUND TRAN.                       | 13,425.98               | 0.00                      | 0.00                         |
| TOTAL RECEIPTS:                       | 3,013,435.19            | 1,529,453.47              | 1,354,135.87                 |
| DISBURSEMENTS:                        |                         |                           |                              |
| VERIFIED CLAIMS                       | 251,395.86              | 487,861.50                | 54,231.54                    |
| SALARIES                              | 2,049,915.57            | 0.00                      | 502,593.07                   |
| TRANSFERS OUT                         | 0.00                    |                           |                              |
| <b>BALANCE 11/30/25</b>               | <b>264,656.37</b>       | <b>764,122.20</b>         | <b>2,307,275.43</b>          |
| BALANCE 11/30/24                      | 745,894.86              | (315,225.19)              | 1,667,339.08                 |

---

| <b>November 1, 2025<br/>FINANCIAL</b> | <b>FEDERAL<br/>PROJECTS</b> | <b>UNEMPLOY-<br/>MENT FUND</b> |
|---------------------------------------|-----------------------------|--------------------------------|
| BALANCE 10/31/25                      | (151,548.49)                | 47,510.70                      |
| RECEIPTS:                             |                             |                                |
| LOCAL                                 |                             |                                |
| STATE                                 |                             |                                |
| FEDERAL                               |                             | 0.00                           |
| REIMBURSEMENTS                        | 175,582.01                  |                                |
| OTHER (LOCAL) -AFROTC                 | 0.00                        | 0.00                           |
| INTERFUND TRAN.                       |                             |                                |
| TRANSFER IN                           |                             |                                |
| TOTAL RECEIPTS:                       | 175,582.01                  | 0.00                           |
| DISBURSEMENTS:                        |                             |                                |
| VERIFIED CLAIMS                       | 678.66                      | 0.00                           |
| SALARIES                              | 84,771.60                   | 0.00                           |
| TRANSFERS OUT                         |                             |                                |
| <b>BALANCE 11/30/25</b>               | <b>(61,416.74)</b>          | <b>47,510.70</b>               |
| BALANCE 11/30/24                      | (4,676,117.27)              | 49,497.51                      |

| <b>November 1, 2025<br/>FINANCIAL</b> | <b>DEP CARE</b> | <b>MEDICAL REIMB</b> | <b>IMPACT AID</b>    |
|---------------------------------------|-----------------|----------------------|----------------------|
| BALANCE 10/31/25                      | 1,709.66        | (2,804.55)           | 29,995,952.54        |
| RECEIPTS:                             |                 |                      |                      |
| INTEREST                              | 0.00            | 0.00                 | 13,425.98            |
| FEDERAL                               | 0.00            | 0.00                 | 816,581.00           |
| LOCAL                                 | 1,396.26        | 3,508.38             | 0.00                 |
| OTHER                                 |                 |                      |                      |
| INTERFUND TRAN.                       |                 |                      |                      |
| LOANS                                 |                 |                      |                      |
| TOTAL RECEIPTS:                       | 1,396.26        | 3,508.38             | 830,006.98           |
| DISBURSEMENTS:                        |                 |                      |                      |
| VERIFIED CLAIMS                       | 606.68          | 4,777.17             | 0.00                 |
| EXPENDITURES/TRANSFERS OUT            | 0.00            | 0.00                 | 13,425.98            |
| <b>BALANCE 11/30/25</b>               | <b>2,499.24</b> | <b>(4,073.34)</b>    | <b>30,812,533.54</b> |
| BALANCE 11/30/24                      | (346.64)        | (11,634.29)          | 27,685,539.54        |

---

| <b>November 1, 2025<br/>FINANCIAL</b> | <b>FOOD<br/>SERVICE</b> | <b>FIDUCIARY<br/>FUNDS</b> |
|---------------------------------------|-------------------------|----------------------------|
| BALANCE 10/31/25                      | 129,203.80              | 248,379.01                 |
| RECEIPTS:                             |                         |                            |
| INTEREST                              |                         |                            |
| SALES                                 | 71,009.16               | 0.00                       |
| STATE                                 | 0.00                    | 0.00                       |
| FEDERAL                               | 93,442.89               | 0.00                       |
| LOCAL                                 | 291.55                  | 43,889.06                  |
| OTHER                                 | 0.00                    | 0.00                       |
| INTERFUND TRAN.                       | 0.00                    |                            |
| LOANS                                 |                         |                            |
| TOTAL RECEIPTS:                       | 164,743.60              | 43,889.06                  |
| DISBURSEMENTS:                        |                         |                            |
| VERIFIED CLAIMS                       | 119,149.80              | 63,870.63                  |
| SALARIES                              | 42,011.61               | 0.00                       |
| <b>BALANCE 11/30/25</b>               | <b>132,785.99</b>       | <b>228,397.44</b>          |
| BALANCE 11/30/24                      | 209,359.17              | 256,794.44                 |

**Board Report - For School Board 01/15/2026**

| <u>Vendor Name</u>                       | <u>Check #</u> | <u>Expensed</u> | <u>Amount</u> |
|--|----------------|-----------------|---------------|
| A & B WELDING SUPPLY COMPANY INC.        | 186812         |                 | 58.35         |
| ACT                                      | 186813         |                 | 5,088.50      |
| ACTION MECHANICAL INC                    | 186814         |                 | 567.56        |
| AMAZON.COM                               | 186815         |                 | 7,982.10      |
| ANCORA PUBLISHING                        | 186816         |                 | 7,068.99      |
| APPLE INC                                | 186817         |                 | 1,218.00      |
| BERS WINDY FLATS RUBBLE SITE             | 186819         |                 | 84.00         |
| BJ'S INSTRUMENT REPAIR                   | 186820         |                 | 200.00        |
| BLACK HILLS CHEMICAL CO                  | 186821         |                 | 17,474.49     |
| BLACK HILLS ENERGY- AUTO PAY             | 286            |                 | 31,946.77     |
| BLACK HILLS ROOFING. INC.                | 186822         |                 | 1,021.00      |
| BLACK HILLS SPECIAL SERVICES COOPERATIVE | 186823         |                 | 40,678.92     |
| BLACK HILLS URGENT CARE                  | 186824         |                 | 200.00        |
| BOX ELDER HARDWARE                       | 186826         |                 | 1,629.56      |
| BZT WRAPS                                | 186827         |                 | 10,821.40     |
| C.O.R.E FRESHMAN IMPACT                  | 186828         |                 | 1,129.13      |
| Case. Kevin                              | 186829         |                 | 300.00        |
| CENTURY BUSINESS                         | 186830         |                 | 106.68        |
| CENTURYLINK                              | 186831         |                 | 518.75        |
| CHURCHILL. MANOLIS. FREEMAN. KLUDT &     | 186833         |                 | 5,483.08      |
| CLARK PRINTING. INC.                     | 186834         |                 | 1,012.20      |
| Clark. Karlina                           | 186835         |                 | 62.54         |
| COLUMN SOFTWARE PBC                      | 186836         |                 | 548.64        |
| COMFORT INN                              | 186838         |                 | 1,400.00      |
| CREATIVELY FOCUSED LLC                   | 186840         |                 | 13,956.25     |
| CRESCENT ELECTRIC                        | 186841         |                 | 21.16         |
| DAKOTA BUS SERVICE. INC.                 | 186843         |                 | 4,227.50      |
| DAYS INN - WATERTOWN                     | 186844         |                 | 325.59        |
| DAYS INN GILLETTE                        | 186845         |                 | 922.88        |
| DEWEY. SUSAN                             | 283            |                 | 195.73        |
| DOUBLETREE RAPID CITY DOWNTOWN           | 186846         |                 | 71.83         |
| EMC INSURANCE COMPANIES                  | 186847         |                 | 2,000.00      |
| EVERGREEN OFFICE PRODUCTS                | 186849         |                 | 794.20        |
| FIDUCIARY ACCOUNT                        | 186850         |                 | 11,469.00     |
| FOOD SERVICE                             | 186852         |                 | 14.03         |

**Board Report - For School Board 01/15/2026**

| <u>Vendor Name</u>                     | <u>Check #</u> | <u>Expensed</u> | <u>Amount</u> |
|--|----------------|-----------------|---------------|
| GRAINGER. INC                          | 186853         |                 | 35.52         |
| GREAT WESTERN TIRE COMPANY             | 186854         |                 | 41.95         |
| HAGGERTYS MUSICWORKS                   | 186855         |                 | 85.00         |
| HIGH POINT NETWORKS. LLC               | 186856         |                 | 12.30         |
| HILLYARD INC                           | 186857         |                 | 1,825.60      |
| HOT SPRINGS SCHOOL DISTRICT            | 186858         |                 | 200.00        |
| IMAGES OF THE WORLD                    | 186859         |                 | 1,050.00      |
| INFINITE CAMPUS                        | 186860         |                 | 3,357.90      |
| INFINITY MACHINE LLC                   | 186861         |                 | 259.15        |
| INNOVATIVE OFFICE SOLUTIONS            | 186862         |                 | 4,016.92      |
| INSTITUTE FOR MULTISENORY EDUCATION    | 186863         |                 | 1,500.00      |
| JOSTENS INC                            | 186864         |                 | 2,439.50      |
| JW PEPPER & SONS. INC.                 | 186865         |                 | 59.99         |
| KIEFFER SANITATION. INC.-AUTO PAY      | 186917         |                 | 3,849.15      |
| KSB SCHOOL LAW                         | 186867         |                 | 500.00        |
| LAKOTA NATION INVITATIONAL             | 186868         |                 | 500.00        |
| LEAD/DEADWOOD SCHOOL DISTRICT          | 186869         |                 | 90.00         |
| LEADERSHIP MATTERS LLC                 | 186870         |                 | 5,945.50      |
| LEXIA VOYAGER SOPRIS LEARNING INC      | 186871         |                 | 504.90        |
| LIFEWAYS INC                           | 186872         |                 | 10,000.00     |
| LYMAN SCHOOL DISTRICT 42-1             | 186873         |                 | 200.00        |
| LYNN'S DAKOTAMART                      | 186874         |                 | 137.29        |
| MENARDS                                | 186875         |                 | 1,653.48      |
| MG OIL COMPANY. INC.                   | 186876         |                 | 3,651.31      |
| MIDCONTINENT COMMUNICATIONS- AUTO PAY  | 284            |                 | 1,496.81      |
| MIDWEST BUS PARTS. INC.                | 186878         |                 | 387.03        |
| MILLER SCHOOL DISTRICT                 | 186879         |                 | 125.00        |
| Miller. Travis                         | 186880         |                 | 107.76        |
| MONTANA DAKOTA UTILITIES COMPANY. INC. | 287            |                 | 14,256.79     |
| NORTHERN TRUCK EQUIPMENT CORP.         | 186881         |                 | 585.65        |
| O'REILLY AUTO PARTS BOX ELDER          | 186882         |                 | 664.75        |
| PROPHET CORPORATION DBA GOPHER. THE    | 186883         |                 | 1,039.97      |
| QPR INSTITUTE                          | 186884         |                 | 100.00        |
| RAMKOTA HOTEL                          | 186885         |                 | 442.20        |
| RAPID CITY CENTRAL                     | 186886         |                 | 600.00        |

**Board Report - For School Board 01/15/2026**

| <u>Vendor Name</u>                  | <u>Check #</u> | <u>Expensed</u> | <u>Amount</u>    |
|-------------------------------------|----------------|-----------------|------------------|
| RIDDELL / ALL AMERICAN SPORTS CORP  | 186888         |                 | 63.60            |
| RIO GRANDE                          | 186889         |                 | 350.78           |
| RIVERSIDE TECHNOLOGIES INC          | 186890         |                 | 8,114.00         |
| SANFORD HEALTH OCCMED               | 186891         |                 | 285.00           |
| SANORBIX LLC                        | 186892         |                 | 7,000.00         |
| SASD                                | 186893         |                 | 45.00            |
| SCHOOL NURSE SUPPLY                 | 186894         |                 | 2,486.47         |
| SDACCC                              | 186896         |                 | 325.00           |
| SECURLY                             | 186897         |                 | 2,756.00         |
| SHI INTERNATIONAL CORP.             | 186898         |                 | 28.71            |
| SHIRT SHACK ATHLETICS ROOM. LLC     | 186900         |                 | 918.54           |
| SIGN EXPRESS                        | 186901         |                 | 174.25           |
| SOUTH DAKOTA ONE CALL               | 186902         |                 | 36.75            |
| SPEARFISH HIGH SCHOOL ACTIVITIES    | 186903         |                 | 410.00           |
| STAGECOACH WEST BUS INC             | 186904         |                 | 11,376.00        |
| STEVENS HIGH SCHOOL ACTIVITIES      | 186905         |                 | 314.00           |
| STURGIS BROWN HIGH SCHOOL           | 186906         |                 | 50.00            |
| SUPPLYHOUSE.COM                     | 186908         |                 | 1,217.58         |
| TYLER TECHNOLOGIES                  | 186909         |                 | 11,645.00        |
| ULINE SHIPPING SUPPLY SPEC.         | 186910         |                 | 1,926.97         |
| UNITY SCHOOL BUS PARTS. INC.        | 186911         |                 | 181.19           |
| VANWAY TROPHY & AWARD. INC.         | 186912         |                 | 38.20            |
| VICTOR TECHNOLOGY - SEAT SACK       | 186913         |                 | 144.90           |
| VOYAGER FLEET SYSTEMS. INC.         | 186914         |                 | 113.51           |
| WHITE. ALEXA                        | 186915         |                 | 146.94           |
| WORLAND HIGH SCHOOL                 | 186916         |                 | 500.00           |
| <b>GENERAL FUND</b>                 |                |                 | <hr/> 282,968.64 |
| ACTION MECHANICAL INC               | 186814         |                 | 61,490.00        |
| BARNES & NOBLE INC                  | 186818         |                 | 8.76             |
| CENTURY BUSINESS                    | 186830         |                 | 8,330.99         |
| COMBINED BUILDING SPECIALTIES. INC. | 186837         |                 | 14,038.00        |
| CONVERGINT TECHNOLOGIES LLC         | 186839         |                 | 5,817.37         |
| FOLLETT CONTENT SOLUTIONS. LLC      | 186851         |                 | 7,722.91         |
| INNOVATIVE OFFICE SOLUTIONS         | 186862         |                 | 14,130.48        |
| ULINE SHIPPING SUPPLY SPEC.         | 186910         |                 | 2,056.09         |

**Board Report - For School Board 12/30/2025**

| <u>Vendor Name</u>                       | <u>Check #</u> | <u>Expensed</u> | <u>Amount</u> |
|--|----------------|-----------------|---------------|
| <b>CAPITAL OUTLAY</b>                    |                |                 | 113,594.60    |
| AMAZON.COM                               | 186815         |                 | 831.71        |
| BLACK HILLS SPECIAL SERVICES COOPERATIVE | 186823         |                 | 281,366.73    |
| BONILLA. BLANCA                          | 186825         |                 | 697.97        |
| CHILDREN'S CARE HOSPITAL & SCHOOL        | 186832         |                 | 19,278.00     |
| Crooks. Teresa                           | 186842         |                 | 1,070.23      |
| ESTMAN. GEORGEANN                        | 186848         |                 | 780.78        |
| FIDUCIARY ACCOUNT                        | 186850         |                 | 4,821.96      |
| Kielhold. Nancv                          | 186866         |                 | 503.55        |
| LYNN'S DAKOTAMART                        | 186874         |                 | 24.74         |
| MICROSONIC                               | 186877         |                 | 47.00         |
| RAMKOTA HOTEL                            | 186885         |                 | 121.00        |
| RATWIK. ROSZAK & MALONEY. P.A            | 186887         |                 | 1,237.00      |
| SD DEPARTMENT OF HUMAN SERVICES          | 186895         |                 | 13,435.56     |
| SHINING PATHWAY ABA. LLS                 | 186899         |                 | 45,435.00     |
| SUNBELT STAFFING LLC                     | 186907         |                 | 740.00        |
| <b>SPECIAL ED</b>                        |                |                 | 370,391.23    |
| AMAZON.COM                               | 186815         |                 | 361.50        |
| <b>GRANTS</b>                            |                |                 | 361.50        |
|  |                |                 | 767,315.97    |
| AMAZON.COM                               | 12952          |                 | 104.36        |
| CASH-WA DISTRIBUTING COMPANY. INC.       | 12953          |                 | 10,669.81     |
| COCA-COLA BOTTLING CO HIGH COUNTRY       | 12954          |                 | 1,212.00      |
| D&R SERVICE. INC.                        | 12955          |                 | 678.96        |
| PAN-O-GOLD BAKING COMPANY. INC.          | 12956          |                 | 365.21        |
| PIZZA HUT- BOX ELDER                     | 12957          |                 | 1,375.00      |
| PRAIRIE FARMS                            | 12958          |                 | 8,942.40      |
| REINHART FOOD SERVICE LLC                | 12959          |                 | 15,367.99     |
| SERVALL TOWEL & LINEN SUPPLY. INC.       | 12960          |                 | 301.34        |
| SYSCO MONTANTA                           | 12961          |                 | 576.49        |
| <b>FOOD SERVICE</b>                      |                |                 | 39,593.56     |
|  |                |                 | 39,593.56     |
| A&J SCREENING                            | 50580          |                 | 297.16        |
| ACE STEEL & RECYCLING. INC.              | 50579          |                 | 404.07        |
| ADMIRAL BEVERAGE OF THE BLACK HILLS      | 50615          |                 | 671.19        |
| AMAZON.COM                               | 50616          |                 | 435.76        |

**Board Report - For School Board 12/30/2025**

| <u>Vendor Name</u>                  | <u>Check #</u> | <u>Expensed</u> | <u>Amount</u> |
|-------------------------------------|----------------|-----------------|---------------|
| ANGELIQUES                          | 50582          |                 | 221.82        |
| ARNOLD. LONDON                      | 50583          |                 | 220.10        |
| BADWOUND. KJ                        | 50618          |                 | 103.96        |
| BEER. KENNETH                       | 50619          |                 | 103.96        |
| BLACKSMITH. JEREMY                  | 50620          |                 | 368.37        |
| BURNETT. DAVID                      | 50621          |                 | 185.87        |
| BUSCHUR. PAUL                       | 50585          |                 | 299.78        |
| CAILLIER. JORDAN                    | 50622          |                 | 207.92        |
| Clark. Michael                      | 50623          |                 | 4,970.00      |
| Dauchertv. Dale                     | 50587          |                 | 255.53        |
| DIVISION OF REHABILITATION SERVICES | 50588          |                 | 4,821.96      |
| DOMINOS PIZZA- BOX ELDER            | 50579          |                 | 67.44         |
| DOUGLAS PETTY CASH                  | 50627          |                 | 47.86         |
| EAFB EXCHANGE                       | 50579          |                 | 11.75         |
| EASTMAN. TYLER                      | 50589          |                 | 60.00         |
| EDDY. COY                           | 50590          |                 | 85.00         |
| ELSHERE. TRINK                      | 50591          |                 | 85.00         |
| EMC INSURANCE COMPANIES             | 50628          |                 | 1,277.00      |
| EMR ENTERPRISES                     | 50592          |                 | 672.50        |
| FLEMMING. IAN                       | 50593          |                 | 85.00         |
| FUGATE. JIM                         | 50629          |                 | 395.32        |
| GARCIA. BEAU                        | 50630          |                 | 98.32         |
| GOTTLOB. NICK                       | 50631          |                 | 159.67        |
| GOTTLOB. SHAYNE                     | 50595          |                 | 60.00         |
| GURR. DEAN                          | 50596          |                 | 88.96         |
| HENRY. MYLES                        | 50597          |                 | 214.41        |
| HOYLE. TRAVIS                       | 50632          |                 | 150.00        |
| JD PRODUCTIONS                      | 50633          |                 | 900.00        |
| JOHNSON. DAWSON                     | 50598          |                 | 85.00         |
| KIRKEBY. MICHAEL                    | 50634          |                 | 148.96        |
| KOLAR. CAIN                         | 50635          |                 | 105.52        |
| LEE. GEORGE                         | 50600          |                 | 264.41        |
| LEHMANN. ROBERT                     | 50636          |                 | 88.96         |
| LUNA. MARWIN                        | 50637          |                 | 400.00        |
| LYNN'S DAKOTAMART                   | 50579          |                 | 16.96         |

**Board Report - For School Board 12/30/2025**

| <u>Vendor Name</u>               | <u>Check #</u> | <u>Expensed</u> | <u>Amount</u>     |
|----------------------------------|----------------|-----------------|-------------------|
| MCPHERSON. DUANE                 | 50638          |                 | 159.67            |
| MIEDEMA. ROBERT                  | 50639          |                 | 436.74            |
| OSBORN. GENEIEVE                 | 50640          |                 | 99.41             |
| PIZZA HUT- BOX ELDER             | 50579          |                 | 339.65            |
| QUADIENT                         | 50603          |                 | 565.44            |
| RAHN. MARCY                      | 50604          |                 | 130.13            |
| REAGLE. COREY                    | 50605          |                 | 650.64            |
| REAUSAW. BRENT E                 | 50642          |                 | 346.94            |
| RODRIGUEZ. DOMICO                | 50643          |                 | 112.51            |
| RUSH. DANIEL                     | 50606          |                 | 112.72            |
| SAM'S CLUB                       | 50579          |                 | 2,558.68          |
| SCHMIDT. DARREN                  | 50644          |                 | 177.92            |
| SHAY. KANNON                     | 50607          |                 | 85.00             |
| SINGHISEN. CONNOR                | 50608          |                 | 88.96             |
| SOUTHEASTERN PERFORMANCE APPAREL | 50579          |                 | 2,189.24          |
| STRICHERZ. JESSE                 | 50609          |                 | 168.84            |
| SUDT. TOMMY                      | 50610          |                 | 85.00             |
| TACO BELL                        | 50579          |                 | 18.96             |
| TACO JOHNS RAPID CITY            | 50579          |                 | 46.78             |
| TIBBTS. CASSEN                   | 50611          |                 | 85.00             |
| VANDERBOOM. CHASE                | 50612          |                 | 85.00             |
| VOEGELI. RICH                    | 50613          |                 | 85.00             |
| WAL-MART STORES INC              | 50579          |                 | 482.63            |
| WALLACE. ROLANDO                 | 50645          |                 | 207.92            |
| WUERTZER. ROYCE                  | 50646          |                 | 177.92            |
| <b>STUDENT ACTIVITY</b>          |                |                 | <u>28,632.19</u>  |
|                                  |                |                 | <u>28,632.19</u>  |
| Grand Total:                     |                |                 | <u>835,541.72</u> |

**PAYROLL EXPENDITURES**

**DECEMBER 5 2025**

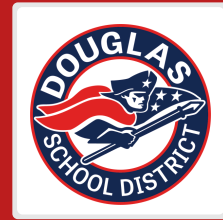
**DECEMBER 19 2025**

**TOTALS**

**\$1,305,671.91**

**\$1,243,947.55**

# DSD January Professional Development Review 2026



## **Overview:**

On January 5 and 6, the district held structured professional development and work sessions designed to support staff learning, compliance requirements, school improvement efforts, and second-semester readiness. The schedule intentionally balanced required trainings, leadership collaboration, and teacher work time.

## **Key Activities and Outcomes:**

### District Welcome & Cultural Awareness Presentation

- The district provided light breakfast refreshments followed by a Cultural Awareness presentation at the high school. This presentation was funded through Title VI and featured storytelling and perspectives from both students and parents. The focus was on understanding diverse experiences and building inclusive school communities where all students and families feel valued and connected.

### QPR (Question, Persuade, Refer) Training

- QPR training was delivered to all certified staff, satisfying state suicide prevention training requirements. This training equips staff with skills to recognize warning signs, respond appropriately, and connect students to support when needed.

### KSB Law Training

- KSB Law provided training focused on Title IX, ensuring staff understand district responsibilities, legal requirements, and appropriate responses should concerning behaviors or incidents occur within the district.

### CHAMPS Training (Building Leadership Teams)

- Building Leadership Teams (BLT) met with the district's CHAMPS trainer to review the initiative and discuss implementation and next action steps to support consistent, positive behavior practices across buildings.

### Building Business & Administrative Collaboration

- Administrators met with their individual staffs to:
  - Review and gain deeper insight into employee survey results
  - Analyze student and school data
  - Review school improvement plans and identify action steps for second-semester success

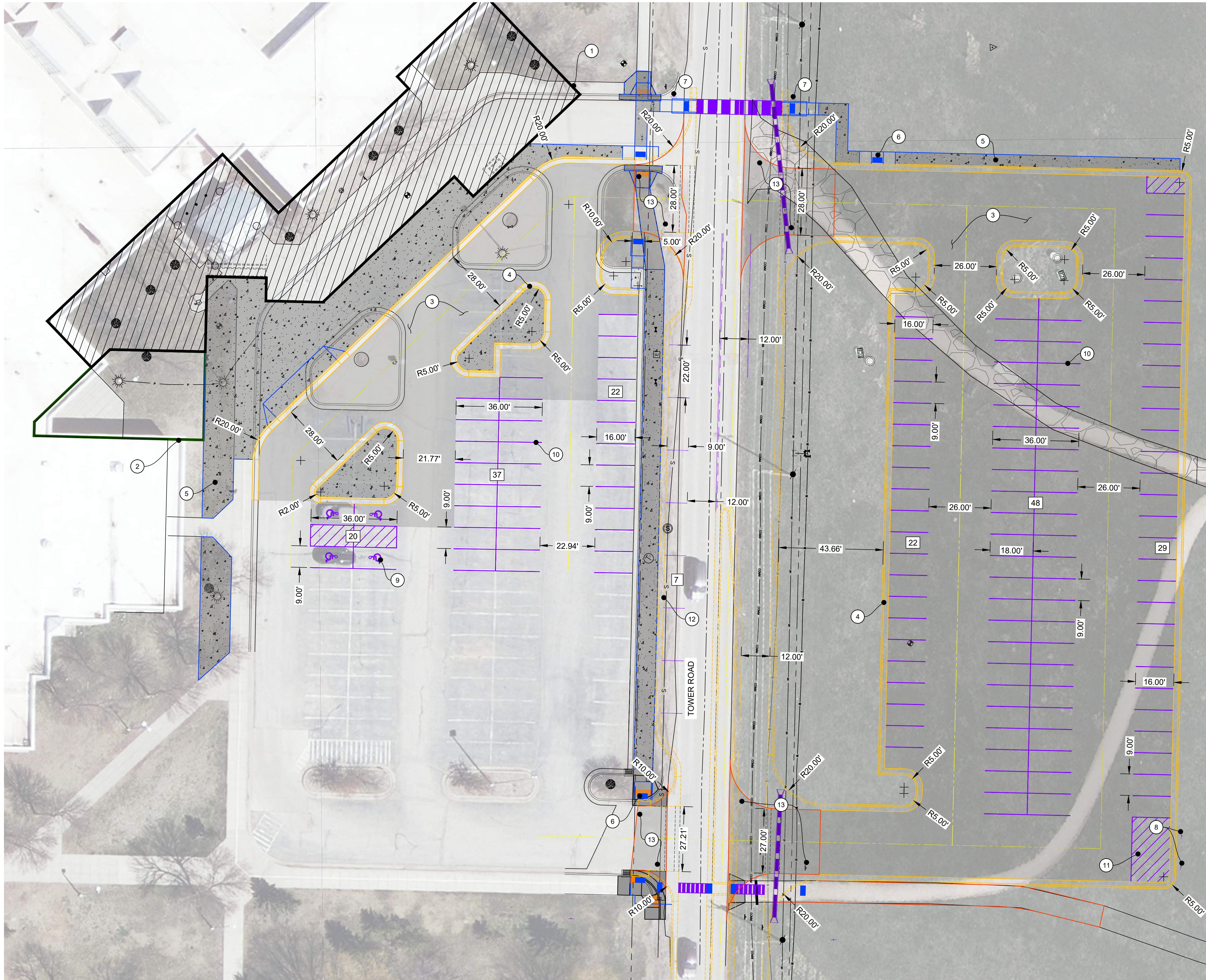
### Administrative Asst. Collaboration

- All administrative assistants met together to continue work on ensuring consistency in practices and procedures across district buildings.

### Teacher Work Time

- The overall schedule included teacher work time, allowing for planning, preparation, and collaboration in advance of the second semester.

*continuous improvement*  
DSDK12.NET



- ① PROPOSED BUILDING EXPANSION
- ② PROPOSED COURTYARD - REFER TO LANDSCAPING SHEETS
- ③ PROPOSED ASPHALT PAVEMENT
- ④ PROPOSED CURB AND GUTTER
- ⑤ PROPOSED SIDEWALK
- ⑥ PROPOSED HANDICAP RAMP
- ⑦ PROPOSED FLASHING CROSSWALK SIGNS
- ⑧ PROPOSED NO PARKING SIGNS
- ⑨ PROPOSED HANDICAP PARKING STALL
- ⑩ PROPOSED PARKING STALL
- ⑪ PROPOSED SNOW REMOVAL AREA
- ⑫ FUTURE CURB AND GUTTER
- ⑬ ASPHALT APPROACH
- ⑭ ASPHALT PATH

**CO Arch OP**

1108 S. Main St. 102  
Aberdeen, SD 57401  
Phone: 605-725-4852

600 Kansas City St. Suite 1  
Rapid City, SD 57701  
Phone: 605-716-3652

440 E. 8th St. 221  
Sioux Falls, SD 57103  
Phone: 605-334-9999

co-oparch.com

**TDG**  
Towey Design Group  
147 Chisholm Drive  
Box Elder, SD 57719  
605.600.3758

TDG PROJECT NO: 25-094

**PRELIMINARY  
NOT FOR  
CONSTRUCTION**

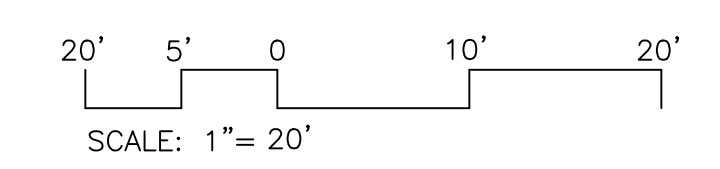
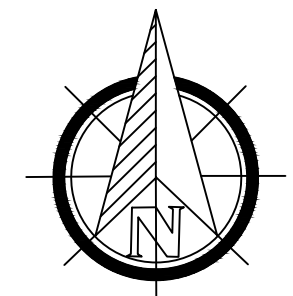
ISSUE:  
12-04-2025 DD 100%

REVISION SCHEDULE:

| REV. # | REV. DSC. | REV. DATE |
|--------|-----------|-----------|
|        |           |           |

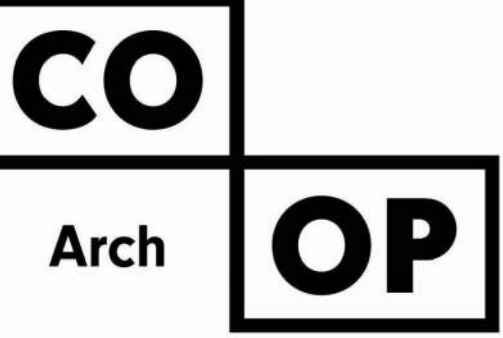
PROJECT:  
DOUGLAS MS ADDITION  
DOUGLAS SCHOOL DISTRICT 51-1  
BOX ELDER, SOUTH DAKOTA

SHEET TITLE:  
DOUGLAS PARKING  
LOT SITE PLAN



**C400**

- ① PROPOSED ASPHALT PAVEMENT
- ② PROPOSED CURB AND GUTTER
- ③ PROPOSED HANDICAP RAMP
- ④ PROPOSED PARKING STALL
- ⑤ PROPOSED 4' WIDE CONCRETE PAN
- ⑥ PROPOSED 5' SIDEWALK - BY KLJ
- ⑦ PROPOSED 18" CULVERT
- ⑧ PROPOSED 18" FLARED END SECTION



1108 S. Main St. 102  
Aberdeen, SD 57401  
Phone: 605-725-4852

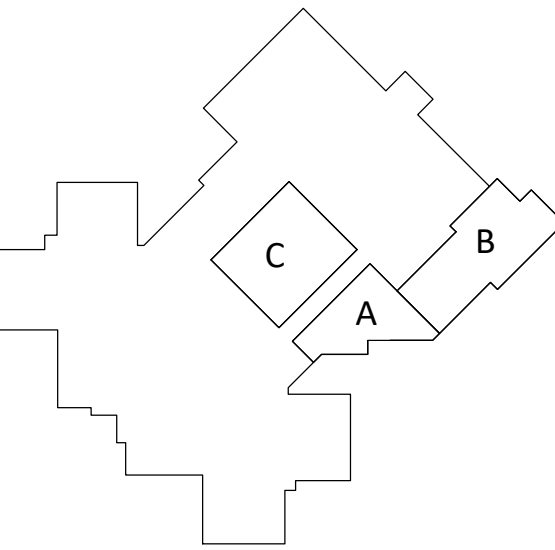
600 Kansas City St. Suite 1  
Rapid City, SD 57701  
Phone: 605-716-3652

440 E. 8th St. 221  
Sioux Falls, SD 57103  
Phone: 605-334-9999

co-oparch.com



**Towey Design Group**  
147 Chisholm Drive  
Box Elder, SD 57719  
605.600.3758



TDG PROJECT NO: 25-094

**PRELIMINARY  
NOT FOR  
CONSTRUCTION**

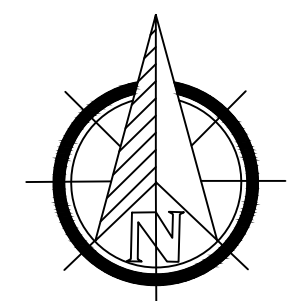
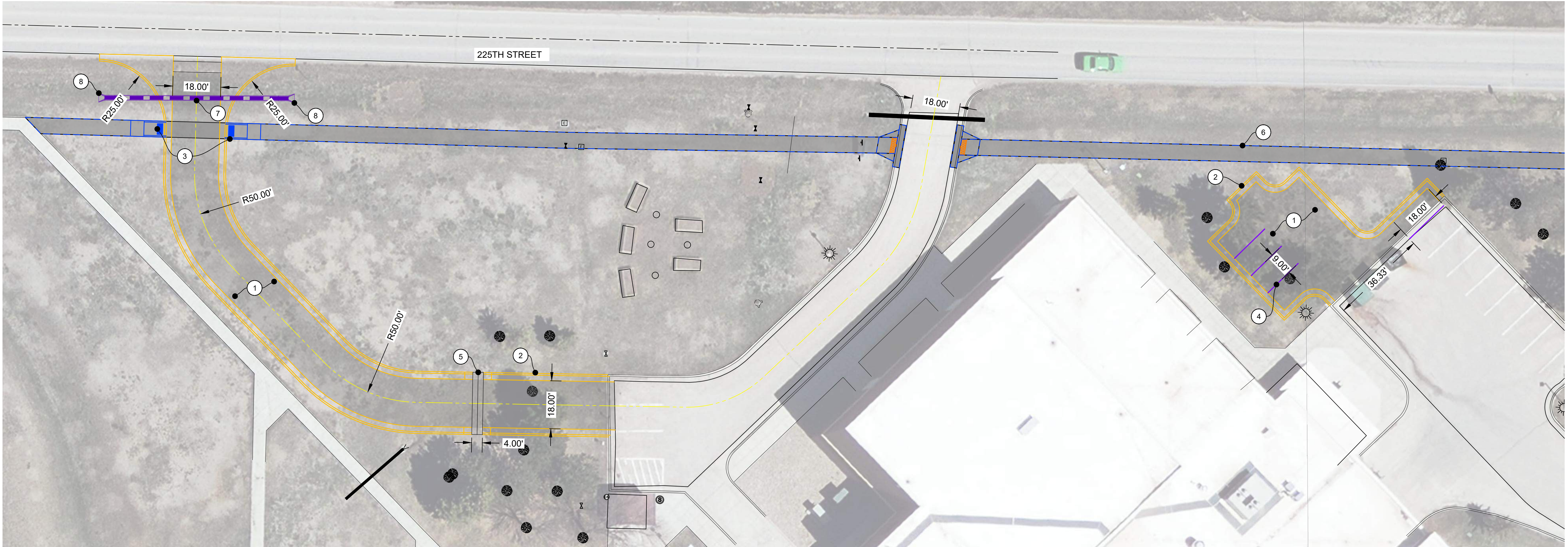
ISSUE:  
12-04-2025 DD 100%

REVISION SCHEDULE:  
REV. # REV. DSC. REV. DATE

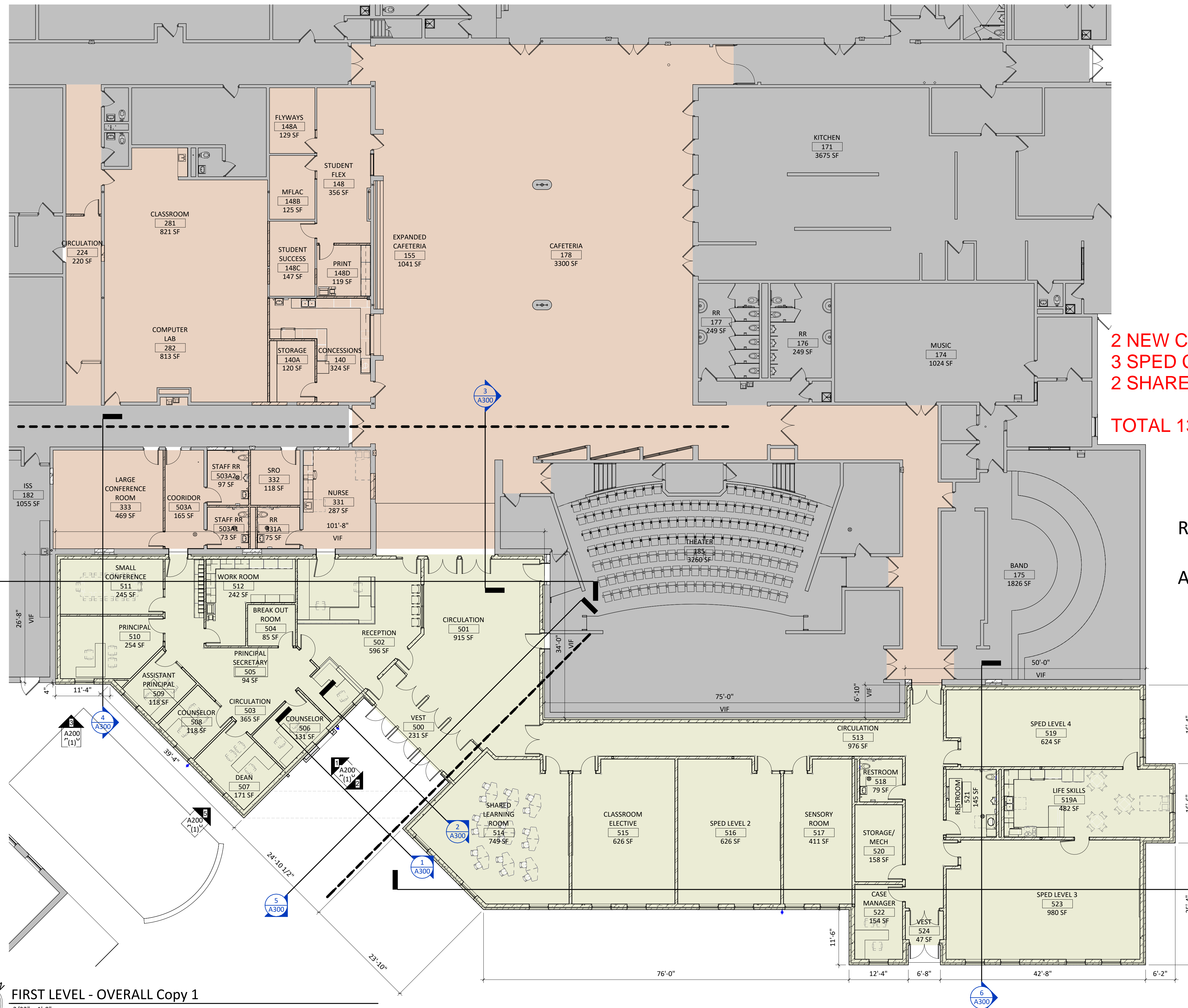
PROJECT:  
DOUGLAS MS ADDITION  
DOUGLAS SCHOOL DISTRICT 51-1  
BOX ELDER, SOUTH DAKOTA

SHEET TITLE:  
DOUGLAS BUS LOOP  
SITE PLAN

**C401**



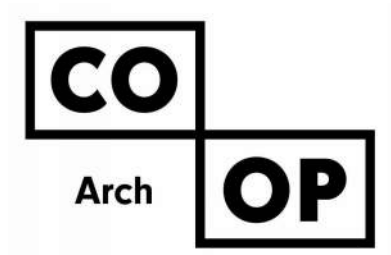
20' 5' 0' 10' 20'  
SCALE: 1"=20'

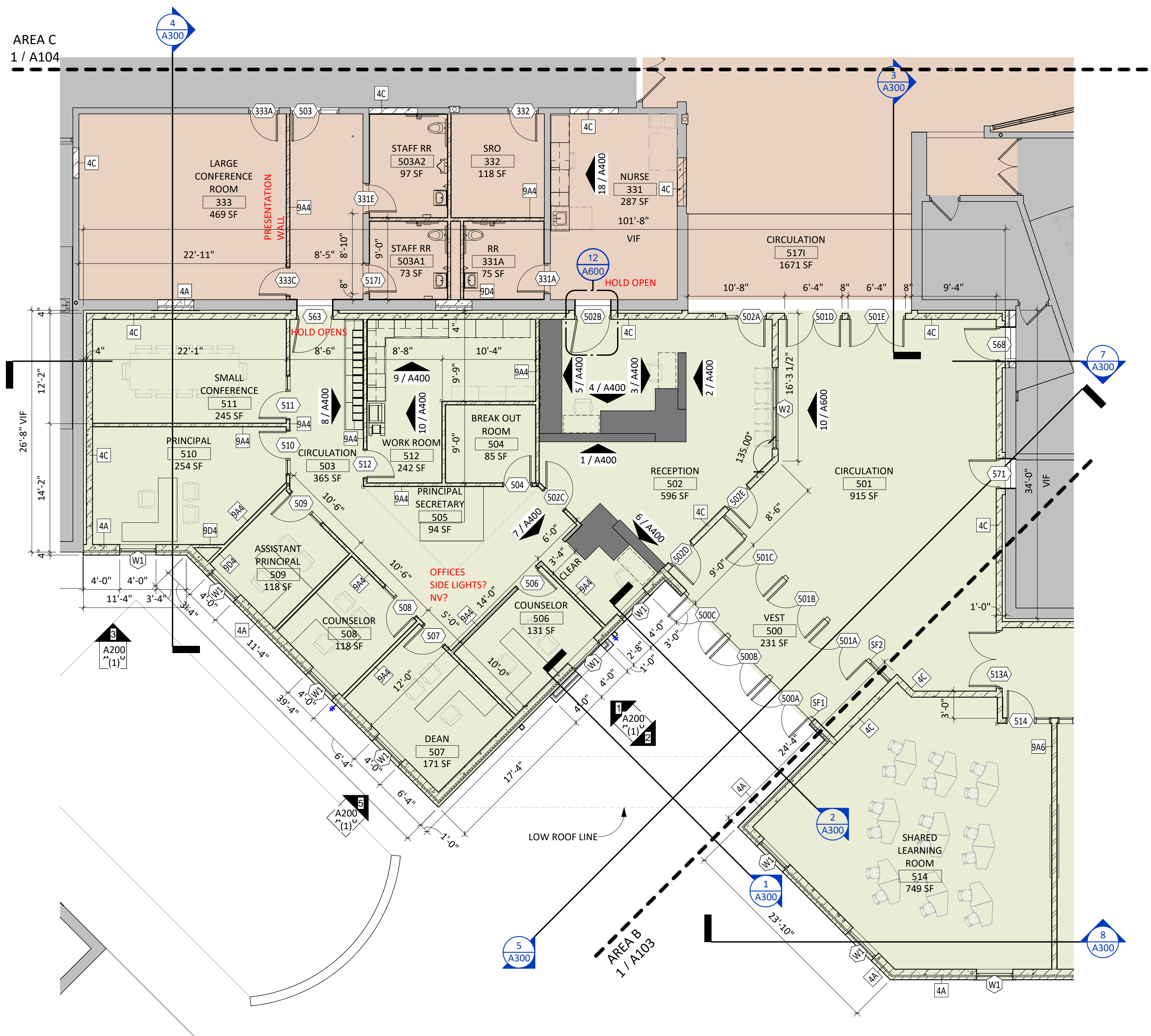


2 NEW CLASSROOMS= 50 STUDENTS  
 3 SPED CLASSROOMS= 30 STUDENTS  
 2 SHARED CLASSROOMS= 50 STUDENTS  
**TOTAL 130**

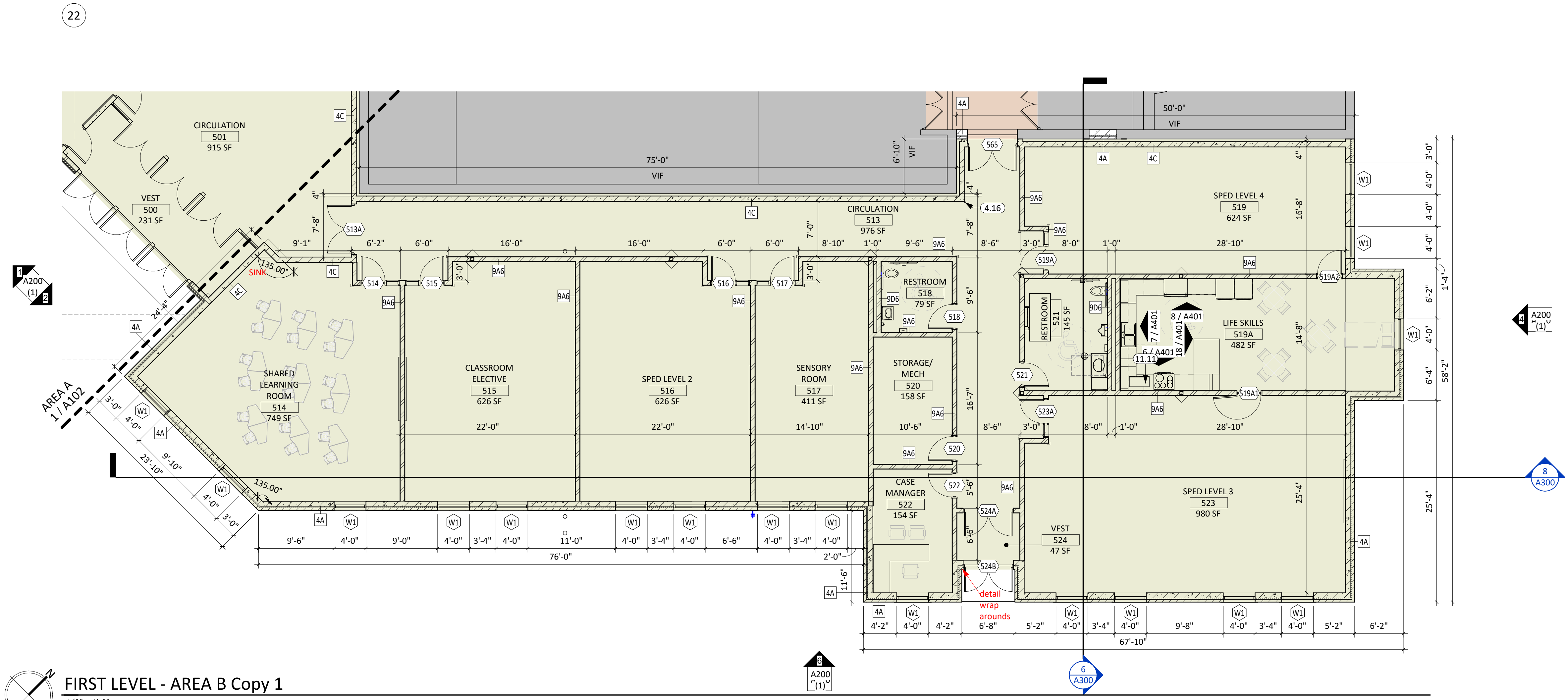
RENOVATION: 12,400 SF  
 ADDITION: 10,800 SF

FIRST LEVEL - OVERALL Copy 1  
 3/32" = 1'-0"

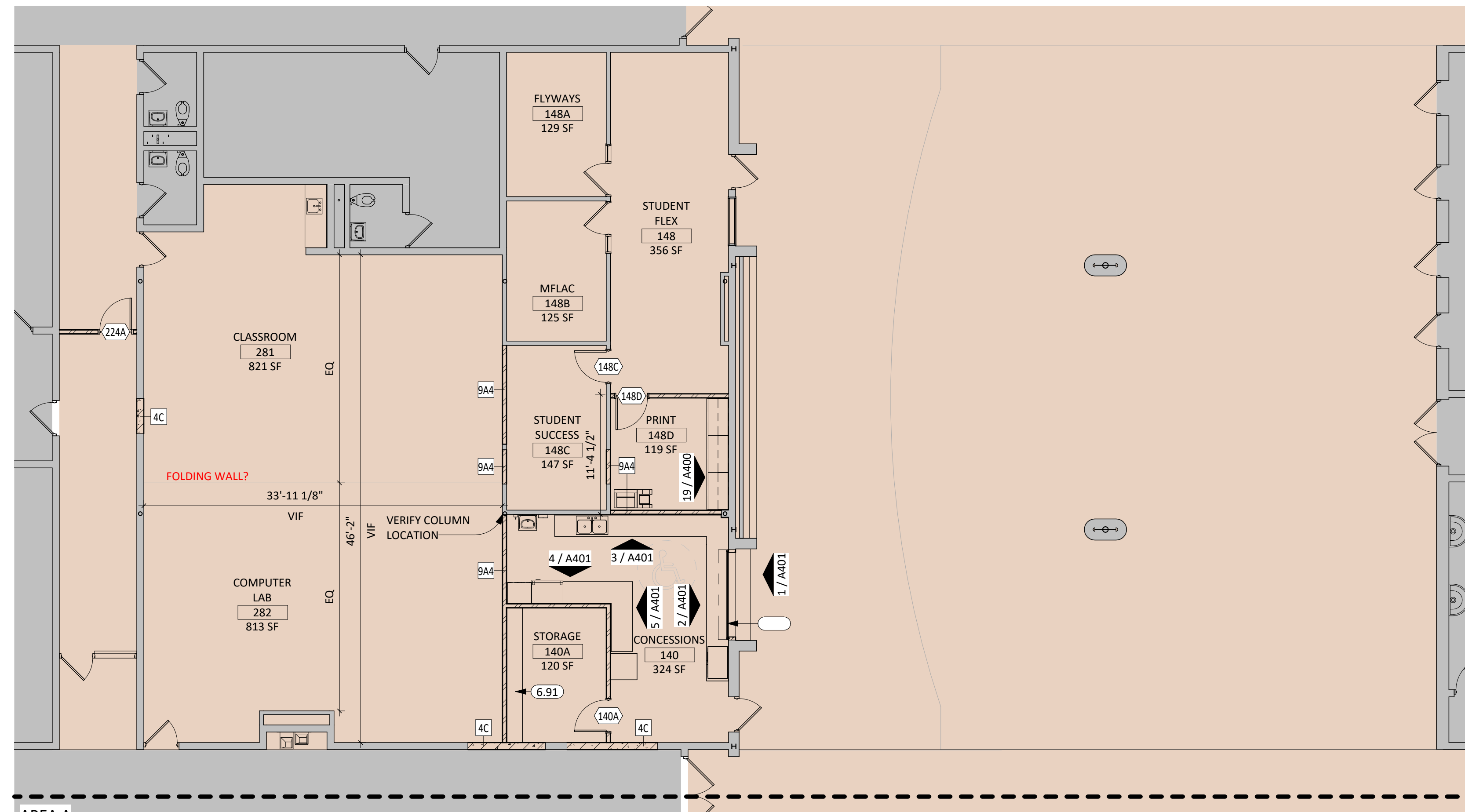




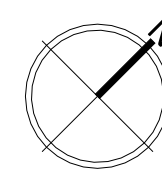
FIRST LEVEL - AREA A Copy 1  
 1/8" = 1'-0"



**FIRST LEVEL - AREA B Copy 1**  
 1/8" = 1'-0"

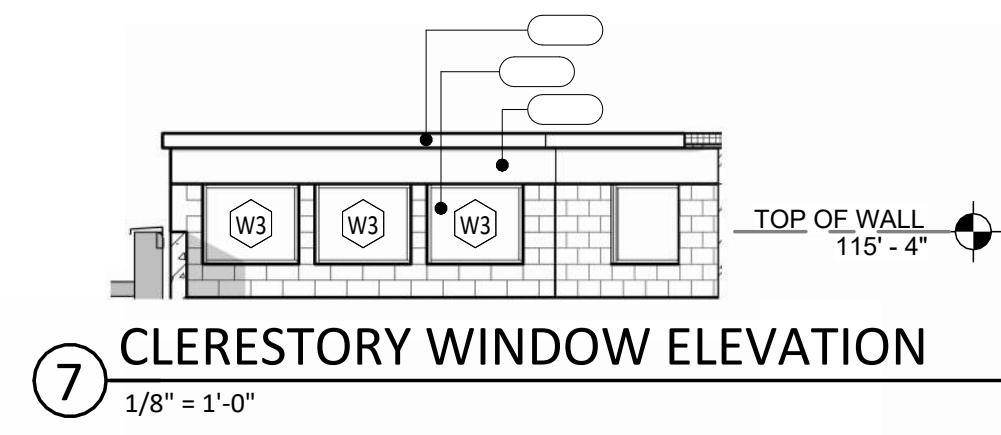


AREA A  
1 / A102

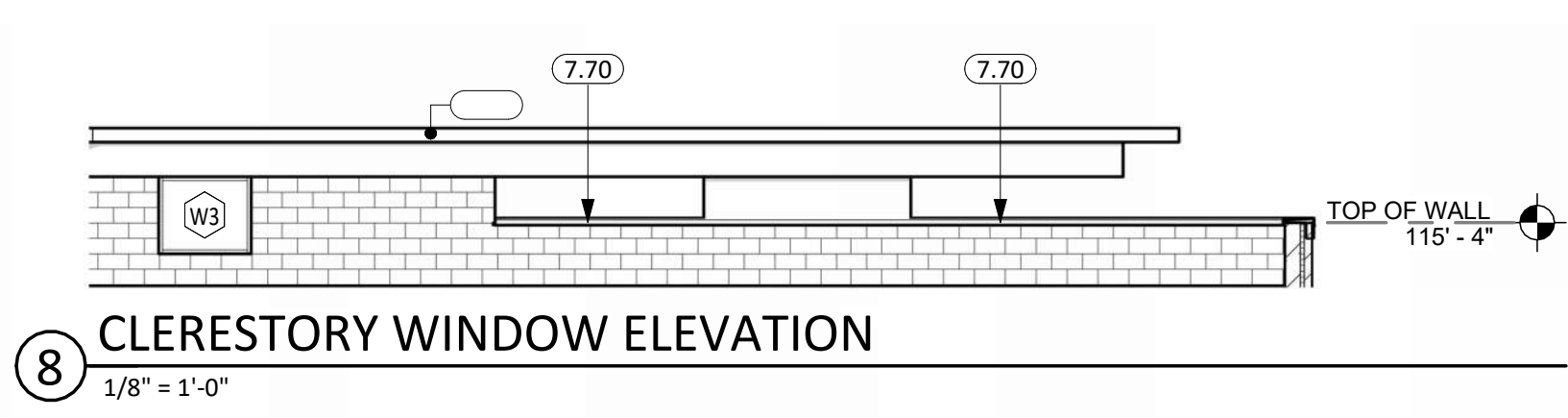


**FIRST LEVEL - AREA C Copy 1**

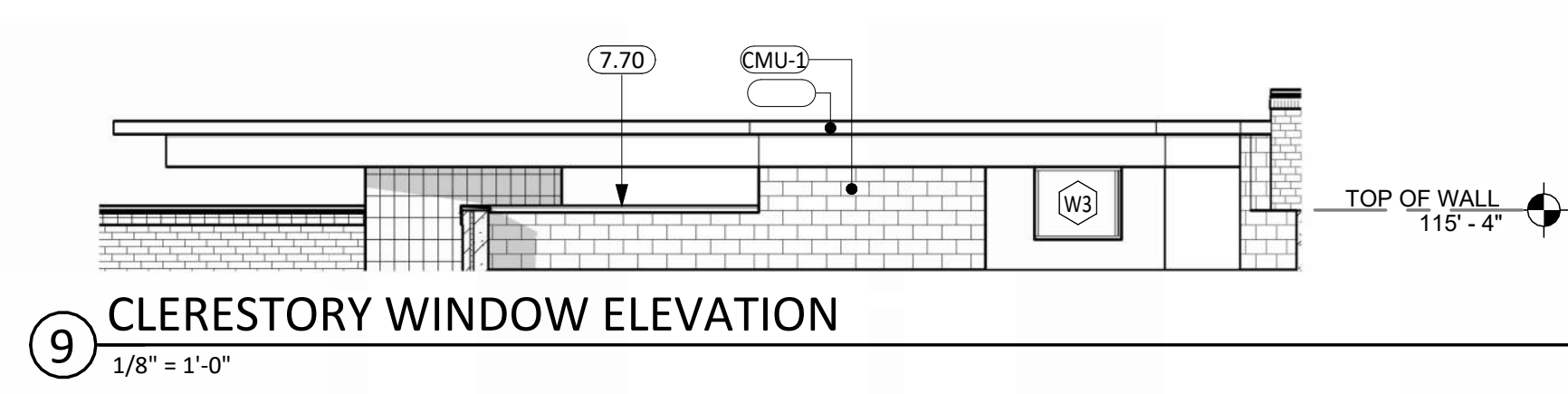
1/8" = 1'-0"



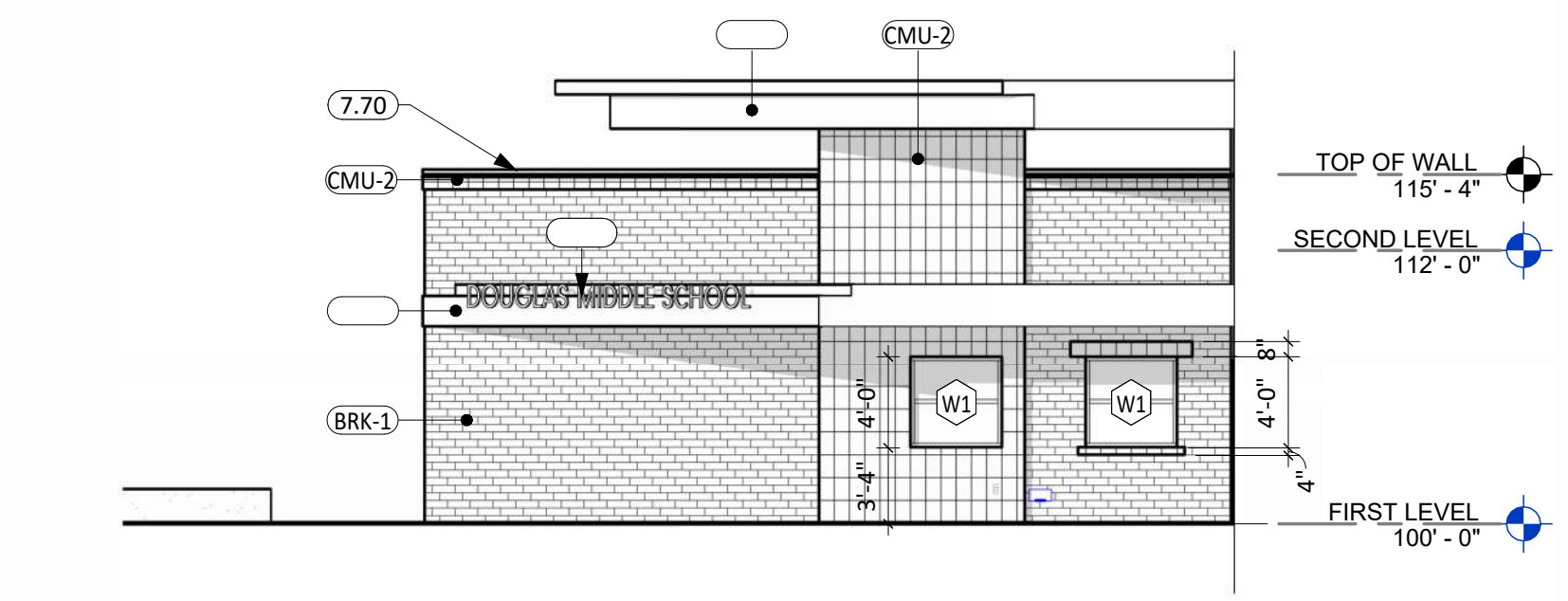
7 CLERESTORY WINDOW ELEVATION  
1/8" = 1'-0"



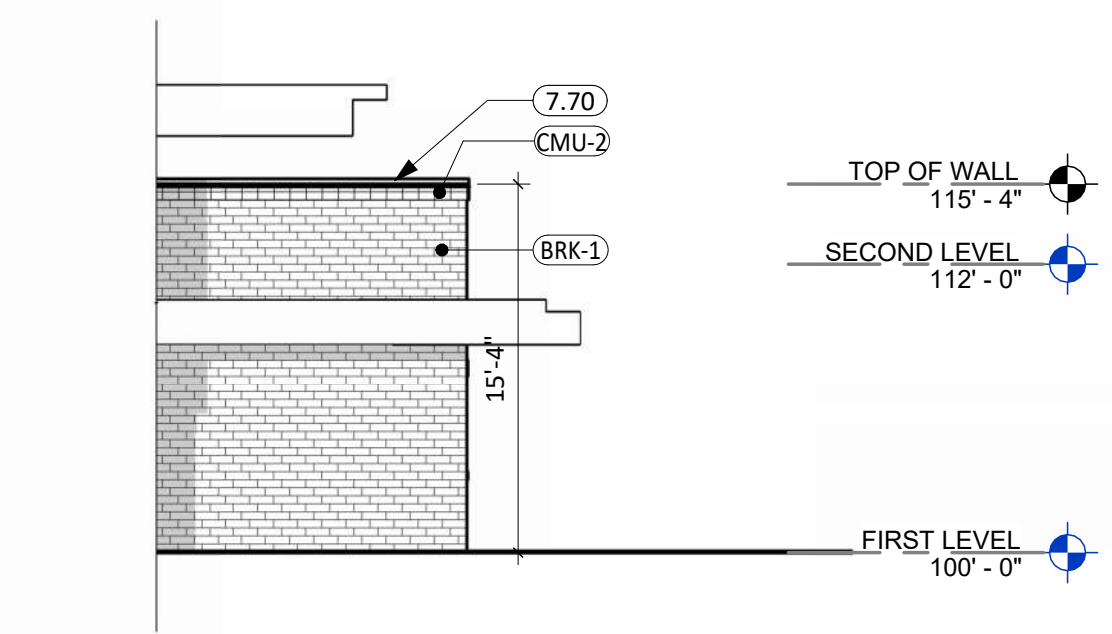
8 CLERESTORY WINDOW ELEVATION  
1/8" = 1'-0"



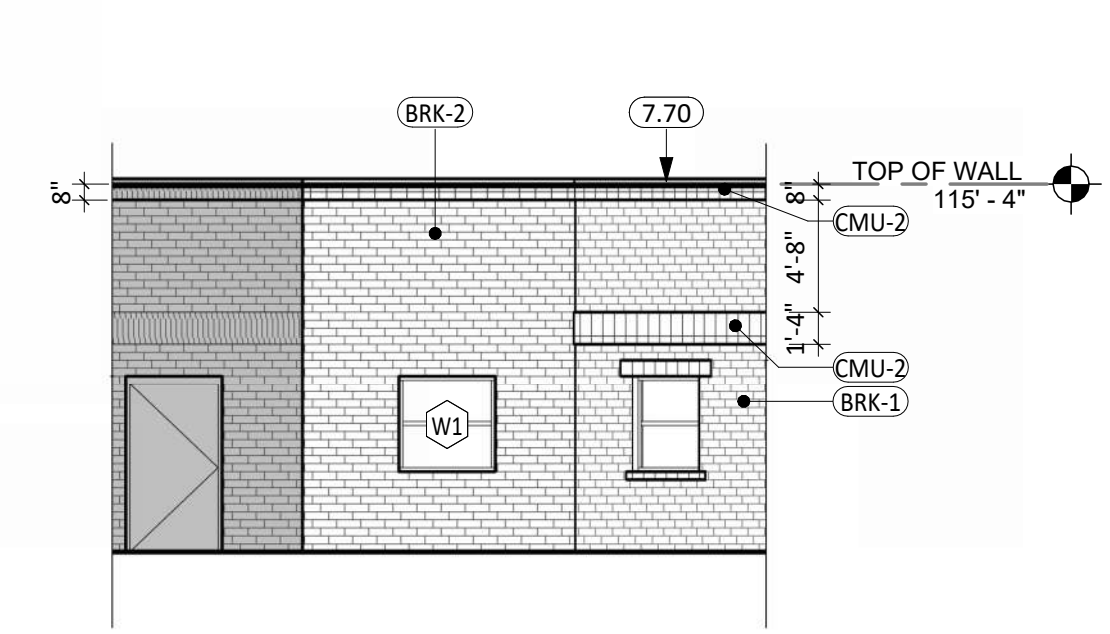
9 CLERESTORY WINDOW ELEVATION  
1/8" = 1'-0"



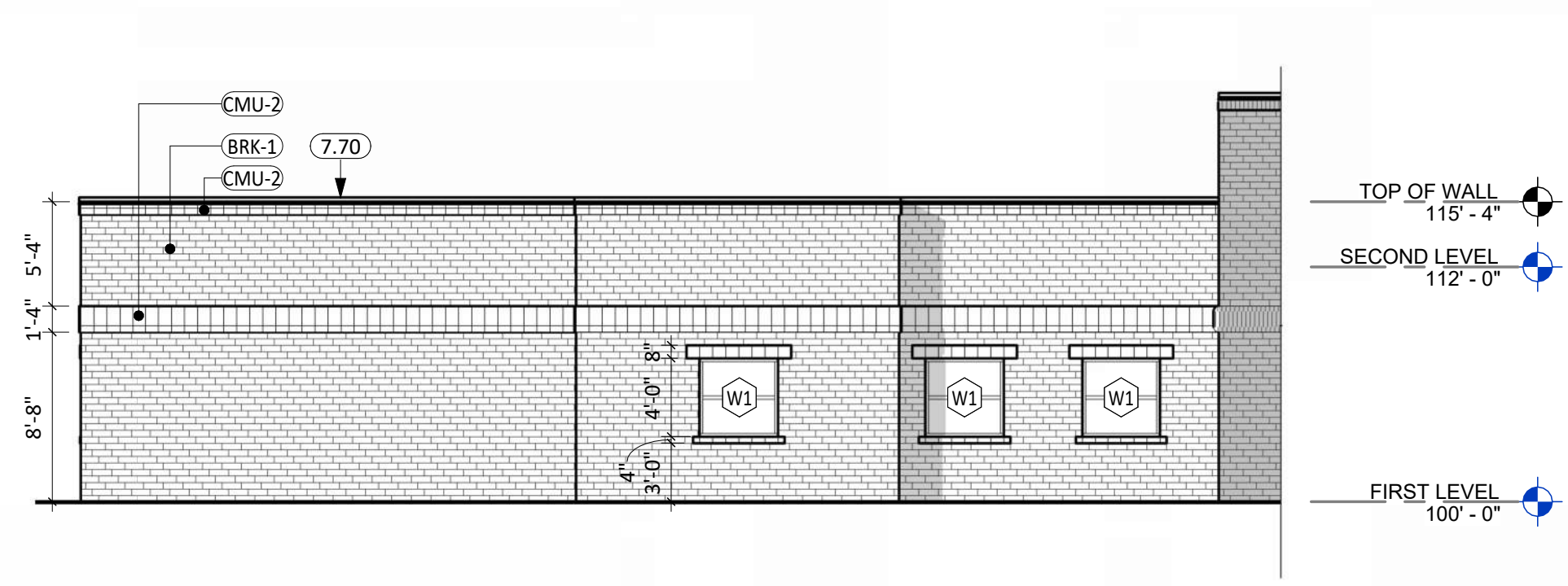
1 ELEVATION Copy 1  
1/8" = 1'-0"



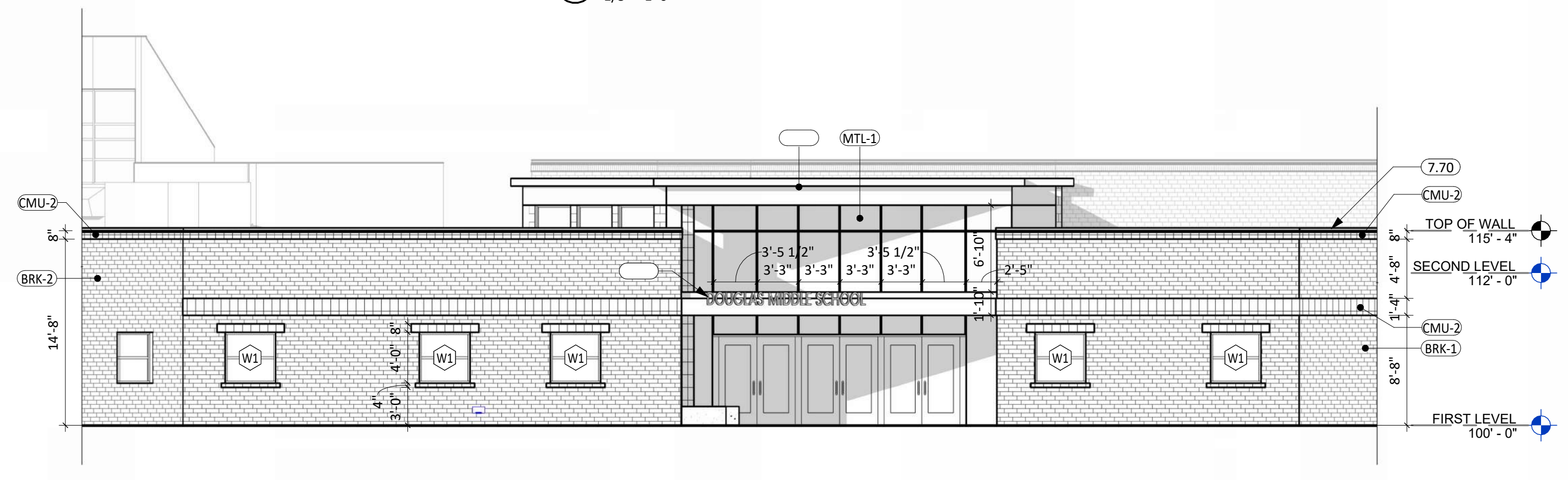
2 ELEVATION  
1/8" = 1'-0"



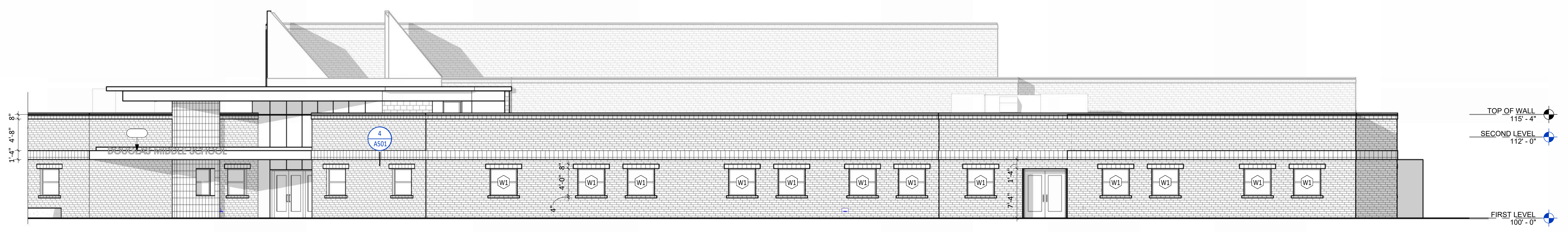
3 SOUTH EAST ELEVATION 1 Copy 1  
1/8" = 1'-0"



4 NORTH EAST ELEVATION Copy 1  
1/8" = 1'-0"



5 SOUTH ELEVATION Copy 1  
1/8" = 1'-0"



6 SOUTH EAST ELEVATION 2 Copy 1  
1/8" = 1'-0"

