

1. Call to Order and Roll Call ( <i>Helen Bassett, School Board Chair</i> )	2
2. Acceptance of the Agenda ( <i>Helen Bassett, School Board Chair</i> )	3
3. Superintendent's Report ( <i>David Engstrom, Superintendent</i> )	4
4. Operations	
A. Non-Action: First Reading of Policy 201: Legal Status of the School Board ( <i>John Vento, School Board Treasurer/Director</i> )	64
B. Action: Approval of Preliminary Levy Certification for Taxes Payable in 2023 ( <i>Ukee Dozier, Executive Director of Finance</i> )	70
C. Action: Approval of August 2022 Donations ( <i>Ukee Dozier, Executive Director of Finance</i> )	86
5. Action - Consent Agenda ( <i>Helen Bassett, School Board Chair</i> )	89
A. Administrative	
1. Workers Compensation Insurance Policy Renewal	90
2. Extended Field Trip - International Travel Requiring Board Approval: Armstrong High School trip to Costa Rica	95
3. Draft Minutes	96
B. Personnel Matters	
1. Licensed Staff Personnel Report	99
2. Non-Licensed Staff Personnel Report	100
C. Financial Matters	
1. Disbursements	101
6. Board Reports	112
7. Announcements	113
8. CLOSED SESSION: The Board will be going into closed session pursuant to Minn. Stat. 13D.05, Subd. 2(b) for preliminary consideration of allegations or charges against a District employee. ( <i>Helen Bassett, School Board Chair</i> )	
9. CLOSED SESSION pursuant to the attorney-client privilege to discuss pending litigation. ( <i>Helen Bassett, School Board Chair</i> )	
10. Adjournment ( <i>Helen Bassett, School Board Chair</i> )	116



## School Board of Robbinsdale Area Schools

Business Meeting - September 19, 2022

**AGENDA SECTION:** Call to Order

**ITEM:** Roll Call Attendance

	<b>PRESENT</b>	<b>ABSENT</b>
Helen Bassett	<hr/>	<hr/>
David Boone	<hr/>	<hr/>
Sharon Brooks Green	<hr/>	<hr/>
Greta Evans-Becker	<hr/>	<hr/>
Mike Herring	<hr/>	<hr/>
Sam Sant	<hr/>	<hr/>
John Vento	<hr/>	<hr/>
David Engstrom, ex-officio	<hr/>	<hr/>



## School Board of Robbinsdale Area Schools

Business Meeting – September 19, 2022

**AGENDA SECTION:** Acceptance of Agenda

**ITEM:** 2. Acceptance of Business Meeting Agenda

**PRESENTER:** Helen Bassett, School Board Chair

**Recommended Action:** Approve Business Meeting agenda.

**Motion by:** \_\_\_\_\_ **Yes:** \_\_\_\_\_ **Passed:** \_\_\_\_\_

**Second by:** \_\_\_\_\_ **No:** \_\_\_\_\_ **Failed:** \_\_\_\_\_

**Abstentions:** \_\_\_\_\_

**School Board of Robbinsdale Area Schools**

Business Meeting – September 19, 2022

**AGENDA SECTION:** Superintendent's Report

---

**ITEM:** 3. Superintendent's Report

---

**PRESENTER:** David Engstrom, Superintendent

---



# Summer Programs 2022





ROBBINSDALE  
Area Schools

# Mission

The mission of Robbinsdale Area Schools is to inspire and educate all learners to develop their unique potential and positively contribute to their community.



# Unified District Vision Goals

1. Implement policies and practices that open pathways to academic excellence for all students.
2. Utilize culturally responsive teaching and personalized learning for all students.
3. Engage family and community members as partners.
4. Engage and Empower students by amplifying student voice.



# COVID Recovery

## COVID Recovery: Session 1 (June 13- July 1)

- Students who missed services because they were not provided during the pandemic (ex: on the job training, orientation and mobility)
- Students who demonstrated a decrease in skills
- Students who lost service time due to isolation/quarantine or technology access issues



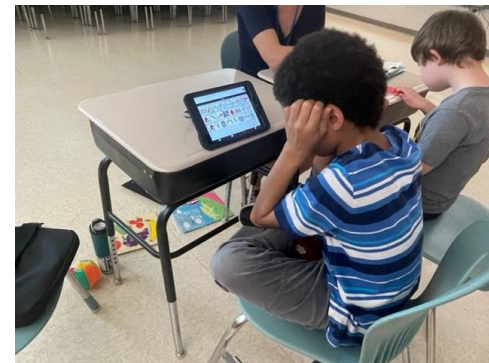
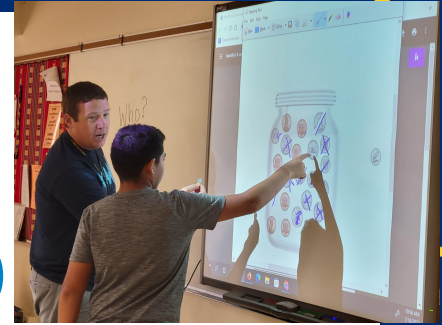


ROBBINSDALE  
Area Schools

# Extended School Year (ESY)

## Extended School Year: Session 2 (July 11- July 29)

- Federal and state mandated program for eligible students in special education.
- Services designed to *maintain* the academic social/behavioral, communication, or other skills that they have learned as part of their Individual Education Plan (IEP)
- Eligibility through IEP team due to regression in skills, self-sufficiency (functional skills), or unique circumstances



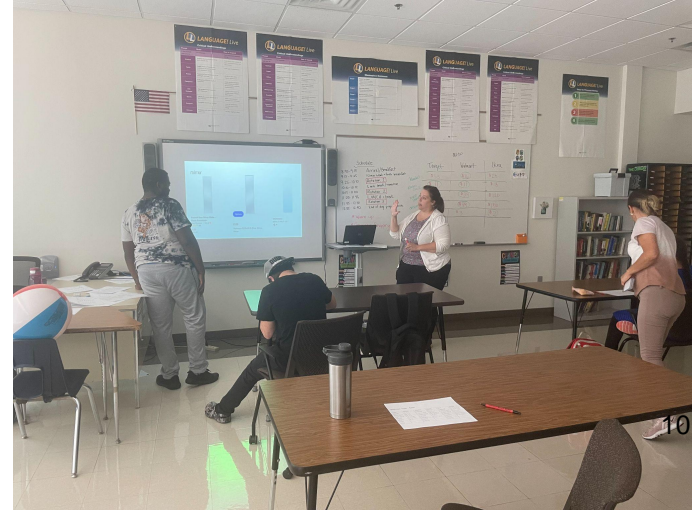


ROBBINSDALE  
Area Schools

# Extended School Year (ESY) / COVID Recovery

## Over 190 students with disabilities participated in summer programs

- 61 students received COVID recovery services for learning disruptions due to the pandemic
- 21 students accessed both Covid recovery and ESY services
- 149 students attended ESY only





## Extended School Year (ESY)

### ESY Sites for 2022:

- New Hope Learning Center
- Forest Elementary
- Noble Elementary\*
- Neill Elementary\*
- RSI\*
- Plymouth MS\*
- Armstrong High School
- Robbinsdale Transition Center

**\* Joint site partnership  
with Targeted Services**

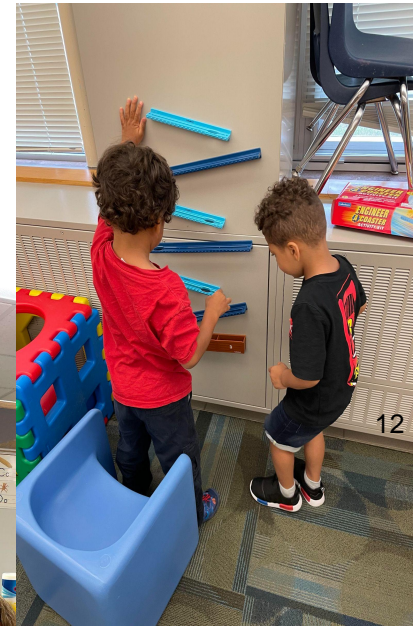
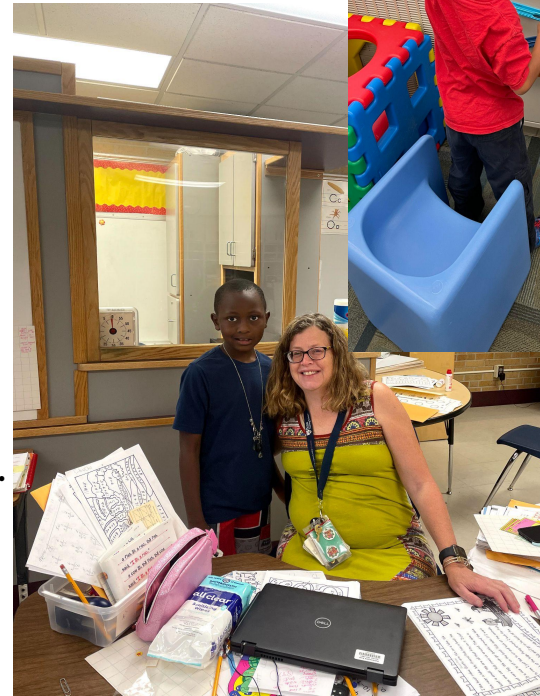


ROBBINSDALE  
Area Schools

## Extended School Year (ESY) / Targeted Services Partnership

Resource special education students received services by a licensed special education teacher while attending Targeted Services.

This allowed students more access to learning alongside their general education peers.





ROBBINSDALE  
Area Schools

## K-5 Targeted Services

Targeted Services offered two 3-week sessions district wide.

### Session 1 Attendance

ENE - 193

NOE - 207

RSI - 194

### Session 2 Attendance

ENE - 118

NOE - 112

RSI - 142



**All students received a free  
breakfast and lunch each  
day in addition to  
Language Arts, Math and  
Social Emotional  
Instruction!**



ROBBINSDALE  
Area Schools



## K-5 Targeted Services



math 4 love

- Teachers and students love the Math 4 Love and LIT Camp curriculum. The opportunities for students to see math and literacy in a different way helps to engage students in learning and teachers enjoy teaching in a different way.
- Targeted Services is an inclusive program where ALL students were really excited to be back with their friends and have opportunities for enrichment.
- Teachers loved the small class sizes that allowed a lot of opportunity to differentiate and teach in small groups
- All Students liked being with their peers.

14



## 6-8 Targeted Services

Targeted Services offered two 3-week sessions district wide.

### Session 1 Attendance

6th-8th Grade: 68

### Session 2 Attendance

6th-8th Grade: 40

**All students received a free breakfast  
and lunch each day in addition to  
Language Arts, Math and Social  
Emotional Instruction!**

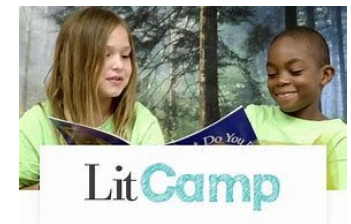
## 6-8 Targeted Services



math 4 love

- The students enjoyed the curriculum and their teachers. They were excited to be in school and did not want to miss a day.
- The teachers had an opportunity to work with small class sizes that allowed them more opportunities for individual support. This helped them build stronger relationships. The new curriculum was easy for the teachers to use and engaging.
- We saw growth in math and reading skills for each individual student.

16





## Credit Recovery

	Number of Students Enrolled	Number of Credits Earned
Session 1	787	583
Session 2	429	516
Total	1216	1099



ROBBINSDALE  
Area Schools

## Credit Recovery

- Edgenuity is very successful and provides individualized access for everyone.
- Intentional staffing allowed opportunities to meet students needs immediately.
- Elements of blended learning/modern classroom increased self paced learning.
- Student successes were celebrated by clapping for everyone who completed a credit and playing Pomp and Circumstance for those that completed all graduation requirements.



18





# Community Education

## Summer Academy

- 803 registrations for the 215 class sections offered in arts, fitness, life skills, social studies and STEM
- 503 students served entering grades K-9 for two weeks each month in June, July and August
- 18% of participants qualified for free/reduced lunch and paid half of the class fee
- Popular class options include Babysitting 101, Ninja Warriors, Chess Camp, and Ultimate Art Effects

## Summer Explorers

- New K-5 outdoor recreation and STEM based program
- 259 registrations over eight weeks
- Popular week's were sports extravaganza, science explorers and cooking creations





# Community Education

## Swim Program

- Aquatics offers year-round swim lessons with many District students who serve as instructors
- Aquatics teaches over 1,000 students to swim each year
- 555 registrations for day and evening swim lessons at Sandburg Middle School
  - 27% of attendees from Adventure Club
  - 19% of attendees qualified for free/reduced lunch
- Transportation returned for Adventure Club





ROBBINSDALE  
Area Schools

## Community Education

Adventure Club: 675 enrollees  
The Basement: 100 enrollees

- Increase of 130 registrants from last summer
- Field trips were back!
- Walking trips to community parks and businesses
- Service Learning and kid led activities
- Outdoor learning and play





# Community Education

## Adult Academic Program

- Classes offered June - July, with some well-attended classes continuing into August
- Monday – Thursday daytime, Tuesday & Thursday evenings through June/July; Tuesday & Thursday daytime in August
- Staff responded to expressed student needs by adjusting some sessions' dates/times
- Driver Education (photo) and Property Maintenance both offered as 'extra classes' in June

Overall attendance:

- 235+ students participated
- 5,922 total programming hours





ROBBINSDALE  
Area Schools



## College 4 Kids



23

25 incoming 6th through 8th grade Robbinsdale Area School students participated in this virtual, tuition-free, week-long program, June 21 - June 24. College 4 Kids aims to expose middle school students to various career pathways through educational courses including program and industry overviews, followed by fun hands-on activities. The courses are taught by Hennepin Technical College instructors. The courses that were offered this summer:

- Culinary
- Motion Control
- Nursing
- Graphics/ Computer Programming



ROBBINSDALE  
Area Schools

# Freedom Schools

CDF Freedom Schools:

CDF program provides summer and after-school enrichment through a research based, multicultural curriculum model that supports children and families around high quality academic enrichment

- parent and family involvement
- civic engagement and social action
- intergenerational leadership development
- nutritional health
- mental health





ROBBINSDALE  
Area Schools



## Freedom Schools

### Robbinsdale American Indian Freedom Schools and a Traditional Freedom School

- Served scholars in grades K-8
- Scholars read aloud with Superintendent Engstrom, Robbinsdale City Council members, as well as one of our site coordinators who is a published author, Sean Stewart
- The American Indian Site visited sacred sites such as the Bruce Vento Nature Sanctuary, while the traditional site got to see spaces like the Minneapolis Institute of Arts
- Students got to interact with local BIPOC businesses such as Two Scoops Eatery, Redmons Popcorn and MN Black Box!
- Over 150 scholars were served in Freedom Schools between the Traditional and American Indian sites at FAIR Crystal!

## Career and College Now!

- This program is a partnership between Hennepin Technical College, Minneapolis Community and Technical College, and Robbinsdale Area Schools(RAS) to offer college courses to students in RAS. Classes were offered virtually and in person this year. Over 100 students participated in the program
- Courses that students had access to were Art and Social Justice, Intro to Sociology, Race in America, First Year Students Transition (FYST), English Composition, Intro to Statistics, Certified Nursing Assistant and Home Health Aide Class.



ROBBINSDALE  
Area Schools



## Summer Bridge

- The Bridge to College Literacy course is to prepare students for their first year of college or PSEO with Hennepin Technical College. Academic reading strategies, literacy, and college readiness are the focus of instruction and assessment.
- The course is co taught by an HTC instructor and a licensed RAS teacher. After successful completion of the course, students will receive a high school credit and the ability to forgo developmental courses at HTC. 5 RAS students participated in Summer Bridge

Thank you for  
your  
dedication to  
students and  
learning!





# Summer 2022 Project Summaries

Facilities, Operations, and  
Transportation Department  
September 2022



ROBBINSDALE  
Area Schools

# Robbinsdale Middle School

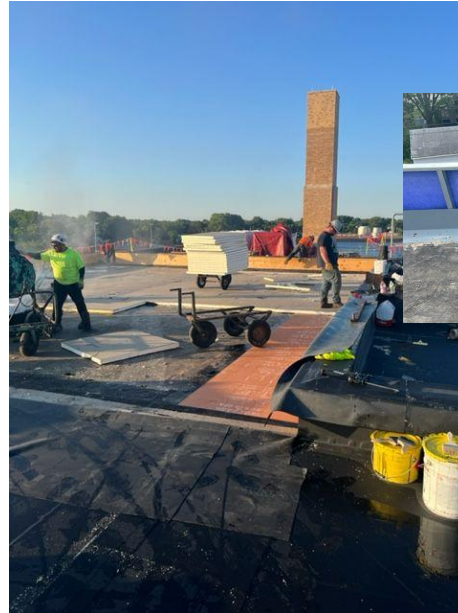




ROBBINSDALE  
Area Schools

# Roof Replacement

**Partial roof replacement with new roof drains and built up parapet wall to accommodate the insulation that was added to be compliant with new energy codes.**



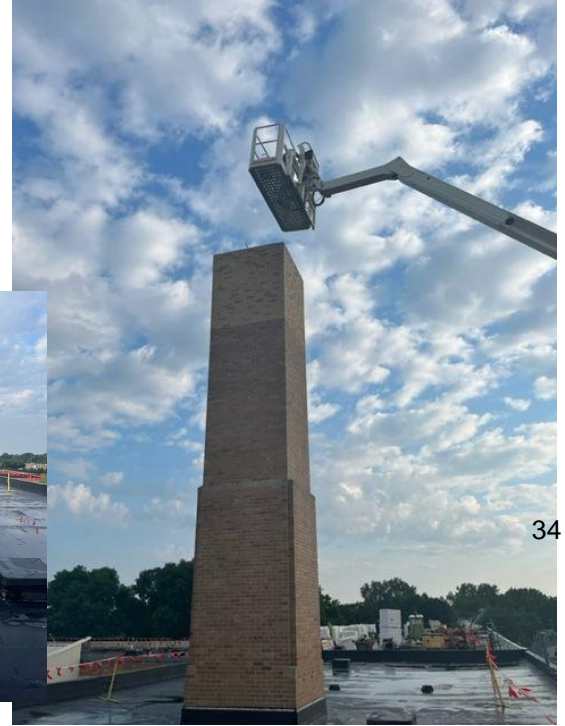
33



ROBBINSDALE  
Area Schools

## Chimney Repair

**Tuck-pointing and replacement of masonry elements to maintain usage of the chimney for required ventilation and to prevent damage to the roof and rooms below.**



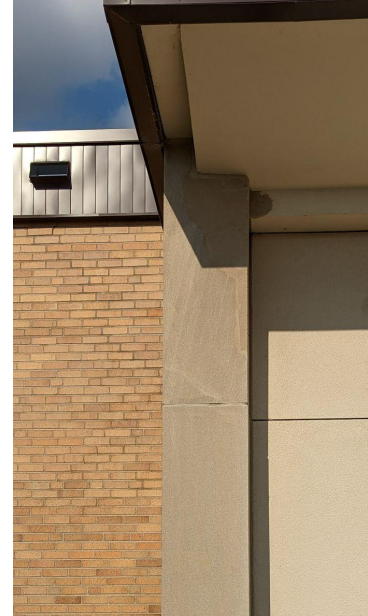
34



ROBBINSDALE  
Area Schools

## Tuck Pointing & Masonry Repair

**Tuck-pointing and sealing of exterior walls to prolong the lifespan of the building and keep moisture out.**

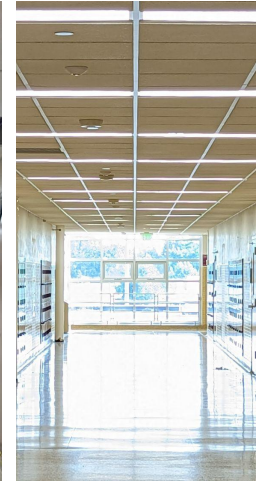




ROBBINSDALE  
Area Schools

## 3rd Floor Ceiling and Lights

Replacement of acoustical ceiling tiles and installment of new, dimmable, LED light fixtures in the classrooms and corridors. Created plenum space for HVAC, plumbing, and electrical chases to reside.



36



ROBBINSDALE  
Area Schools

# Air Conditioning

**Added air conditioning to the gym, upgraded key mechanical components in the building, and improvements to the controls that manage those systems.**

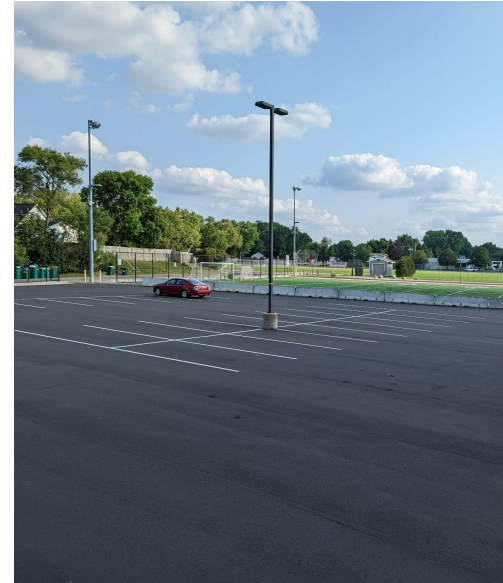




ROBBINSDALE  
Area Schools

# Repaving Parking Lot

**Repaving the upper and lower east parking lots, along with some repairs to the asphalt trail at the south end of the site.**



38



ROBBINSDALE  
Area Schools

# New Fire Panel and Notification System

**New Fire Panel and mass notification system to improve emergency response within our buildings.**



39



ROBBINSDALE  
Area Schools

# SEA Olson Elementary School





ROBBINSDALE  
Area Schools

## Exterior Facade Improvements

**Precast concrete panels were replaced with new metal panels. Areas behind the old system were waterproofed and insulated for better energy efficiency.**



41



ROBBINSDALE  
Area Schools

# Window Replacement

**Windows were replaced to achieve a higher R-value for energy efficiency. The new windows also feature a combination of laminated and tempered glass to withstand damage from the adjacent basketball courts.**





ROBBINSDALE  
Area Schools

## Partial Roof Replacement

**Creation of new parapet walls to accommodate removal of existing ballast roof system and replacement with a built-up roofing system to prevent water intrusion and associated damage, with energy code required tapered insulation for increased energy efficiency.**

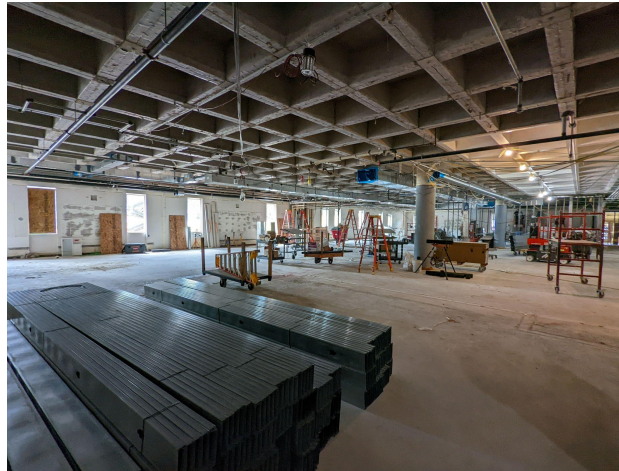




ROBBINSDALE  
Area Schools

## New Interior Walls

**Removal of 1970's demountable partition walls that contained hazardous materials. Construction of new interior stud walls allowed for reconfiguration of the space to create larger classrooms and cafeteria spaces.**

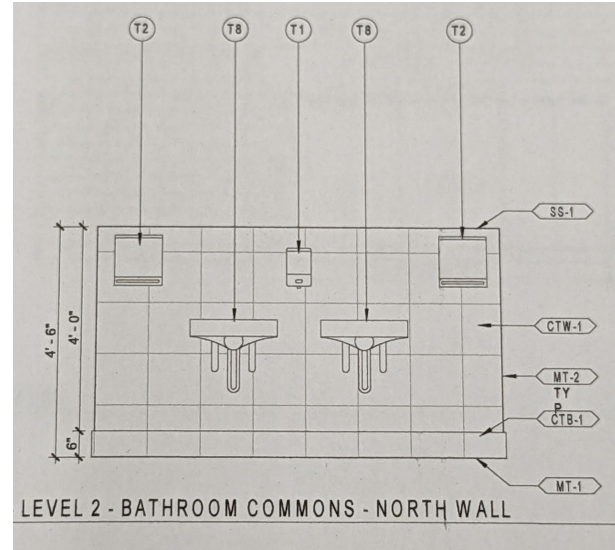
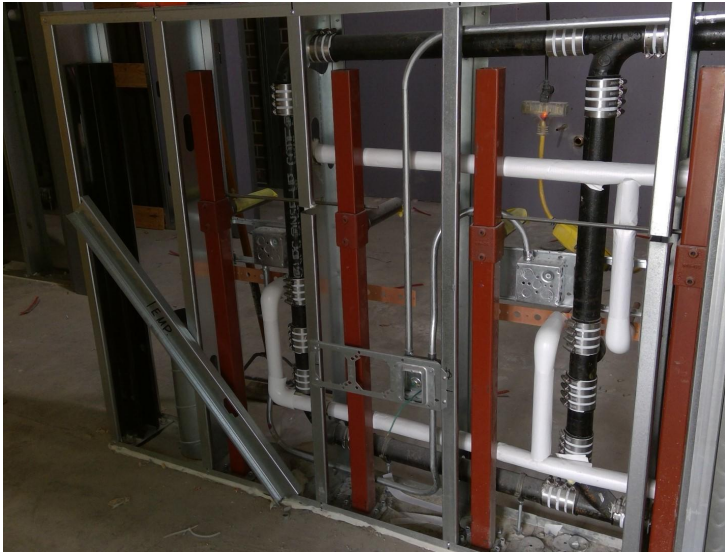




ROBBINSDALE  
Area Schools

# Upgraded Bathroom Facilities

**New gender-neutral bathroom stalls with shared sink common areas alleviates bathroom wait times for students. The first set of these will be completed by early October.**



45



ROBBINSDALE  
Area Schools

# Upgraded Mechanical and Electrical

Updated old mechanical and electrical systems that were a half-century old.



46



ROBBINSDALE  
Area Schools

# New Lighting and Controls

Replaced decades-old fluorescent fixtures with new, dimmable LED lighting.





ROBBINSDALE  
Area Schools

# New Fire Panel and Notification System

**New Fire Panel and mass notification system to improve emergency response within our buildings.**



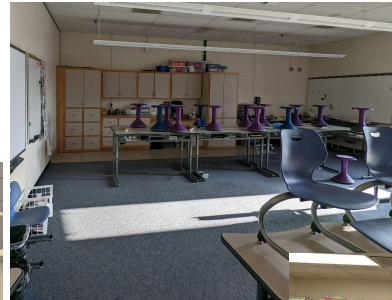
48



ROBBINSDALE  
Area Schools

## Increased Classroom Storage Capability

**Sinks and usable countertop spaces are a vital part of the learning environment for these SEA students. The rooms were designed to capitalize on that necessity, and allow for storage of science and art materials, while still making the spaces feel warm and welcoming.**





ROBBINSDALE  
Area Schools

# Upgraded Classroom Technology

Replacement of whiteboards, chalkboards, and old technology with state of the art classroom technology.



50



ROBBINSDALE  
Area Schools

# Northport Elementary School

---



ROBBINSDALE  
Area Schools

# New Fire Panel and Notification system

**New Fire Panel and mass notification system to improve emergency response within our buildings.**



52

## New lighting and controls

**New LED lights in classrooms, hallways and the kitchen improve the look and feel of the building combined with a new lighting control system**





ROBBINSDALE  
Area Schools

## New Paving in the play area

**New asphalt paving and striping for games help support students during recess**





ROBBINSDALE  
Area Schools

# Plymouth Middle School





ROBBINSDALE  
Area Schools

# New Fire Panel and Notification system

**New Fire Panel and mass notification system to improve emergency response within our buildings.**



56



ROBBINSDALE  
Area Schools

## New individual wash stations

The new stations improve the flow of the space by eliminating the crowding around a common sink





ROBBINSDALE  
Area Schools

## New paving

**A new coating of chip and seal improves the look and the lifespan of the parking area**





ROBBINSDALE  
Area Schools

# Armstrong High School





ROBBINSDALE  
Area Schools

## New Paving by the stadium

**Students learn to drive on the new asphalt parking area that also supports sports practice with the new striping**



60



ROBBINSDALE  
Area Schools



61

# A new look in the Career and Technical Education Area

**New equipment and finishes support students learning modern techniques for students interested in the trades**





# Thank you!

Facilities, Operations, and  
Transportation Department



## School Board of Robbinsdale Area Schools

Business Meeting – September 19, 2022

<b>AGENDA SECTION:</b>	Operations
<b>ITEM:</b>	4.A. Non-Action: First Reading of Policy 201: Legal Status of the School Board
<b>PRESENTER:</b>	John Vento, School Board Treasurer/Director

**Description:** Director Vento will present School Board Policy 201: Legal Status of the School Board, for first reading.

**MSBA/MASA Model Policy 201**

**Orig. 1995: Rev. 2009**

**201 LEGAL STATUS OF THE SCHOOL BOARD**

**I. PURPOSE**

The care, management, and control of the schools is vested by statutory and constitutional authority in the school board. The school board shall carry out the mission of the school district with diligence, prudence, and dedication to the ideals of providing the finest public education. The purpose of this policy is to define the authority, duties, and powers of the school board in carrying out its mission.

**II. GENERAL STATEMENT OF POLICY**

A. The school board is the governing body of the school district. As such, the school board has responsibility for the care, management, and control over public schools in the school district.

**1.2 Purpose**

B. Generally, elected members of the school board have binding authority only when acting as a school board legally in session, except where specific authority is provided to school board members or officers individually. Generally, the school board is not bound by an action or statement on the part of an individual school board member unless the action is specifically directed or authorized by the school board.

**III. DEFINITION**

“School board” means the governing body of the school district.

**IV. ORGANIZATION AND MEMBERSHIP**

A. The membership of the school board consists of **seven** elected / **appointed** directors. ~~or seven if the school board has submitted the question to the electors and a majority have approved a seven member school board.~~ The term of office is four years.

~~**[Note: This number may be different for combining or consolidating school boards that are in a transition period.]**~~

B. There may be other ex officio members of the school board as provided by law. The superintendent is an ex officio member.

C. A majority of voting members constitutes a quorum. The act of the majority of a quorum is the act of the school board.

## **V. POWERS AND DUTIES**

A. The school board has powers and duties specified by statute. The school board authority includes implied powers in addition to specific powers granted by the legislature.

B. The school board exercises administrative functions. It also has certain powers of a legislative character and other powers of a quasi-judicial character.

C. The school board shall **govern** the schools of the school district; adopt rules for their organization, government, and instruction; prescribe textbooks and courses of study; and make and authorize contracts.

D. The school board shall have the general charge of the business of the school district, its facilities and property, and of the interest of the schools.

E. The school board, among other duties, shall perform the following in accordance with applicable law:

1. provide by levy of tax, necessary funds for the conduct of schools, the payment of indebtedness, and all proper expenses of the school district;

2. conduct the business of the schools and pay indebtedness and proper expenses;
3. employ and contract with necessary qualified teachers and discharge the same for cause;
4. provide services to promote the health of its pupils;
5. provide school buildings and erect needed buildings;
6. purchase, sell, and exchange school district property and equipment as deemed necessary by the school board for school purposes;
7. provide for payment of claims against the school district, and prosecute and defend actions by or against the school district, in all proper cases;
8. employ and discharge necessary employees and contract for other services;
9. provide for transportation of pupils to and from school, as governed by statute; and
10. procure insurance against liability of the school district, its officers, and employees.

F. The school board, at its discretion, may perform the following:

1. provide library facilities, public evening schools, adult and continuing education programs, summer school programs, and intersession classes of flexible school year programs;
2. furnish school lunches for pupils and teachers on such terms as the school board determines;

3. enter into agreements with one or more other independent school districts to provide for agreed upon educational services;
4. lease rooms or buildings for school purposes;
5. authorize the use of school facilities for community purposes that will not interfere with their use for school purposes;
6. authorize co curricular and extracurricular activities;
7. receive, for the benefit of the school district, bequests, donations, or gifts for any proper purpose; and
8. perform other acts as the school board shall deem to be reasonably necessary or required for the governance of the schools.

**Legal References:** Minn. Stat. § 123A.22 (Cooperative Centers)

Minn. Stat. § 123B.02 (General Powers)

Minn. Stat. § 123B.09 (School Board Powers)

Minn. Stat. § 123B.14 (School District Officers)

Minn. Stat. § 123B.23 (Liability Insurance)

Minn. Stat. § 123B.49 (Cocurricular and Extracurricular Activities; Insurance)

Minn. Stat. § 123B.51 (Schoolhouses and Sites; Access for Noncurricular Purposes)

Minn. Stat. § 123B.85 (Definition)

*Jensen v. Indep. Consol. Sch. Dist. No. 85*, 160 Minn. 233, 199 N.W. 911 (1924)

**Cross References:** MSBA/MASA Model Policy 101 (Legal Status of the School District)

MSBA/MASA Model Policy 202 (School Board Officers)

MSBA/MASA Model Policy 203 (Operation of the School Board -Governing Rules)

MSBA/MASA Model Policy 205 (Open Meetings and Closed Meetings)

MSBA Service Manual, Chapter 1, School District Governance, Powers and Duties

## School Board of Robbinsdale Area Schools

Business Meeting – September 19, 2022

**AGENDA SECTION:** Operations

---

**ITEM:** 4.B. Approval of Preliminary Levy Certification for Taxes Payable in 2023

---

**COMMENTS BY:** Ukee Dozier - Executive Director of Finance

---

**Description:** School Boards typically certify the preliminary levy at the “Maximum” level. The use of the term “Maximum” allows for any corrections/changes in levy totals between now and December’s final certification to be made without recertification. The final levy certification in December will require a specific dollar amount.

I have attached a powerpoint that provides information relating to the proposed levy. The current proposed levy is showing an estimated increase of \$5 million or 7.4% from the current pay 2022 levy. Please note that this figure includes Health and Safety levy estimates that have not been reflected in the most recent levy certification run. The total certified levy figure will be presented with the final levy certification in December.

**Recommended Action:** It is recommended that the School Board certify the Preliminary Levy for taxes payable in 2023 as a “Maximum” levy amount.

	<b>Yes</b>	<b>No</b>	<b>Abstention</b>
Helen Bassett			
David Boone			
Sharon Brooks Green			
Greta Evans-Becker			
Michael Herring			
Sam Sant			
John Vento			

**Motion by:** \_\_\_\_\_ **Yes:** \_\_\_\_\_ **Passed:** \_\_\_\_\_

**Second by:** \_\_\_\_\_ **No:** \_\_\_\_\_ **Failed:** \_\_\_\_\_

**Abstentions:** \_\_\_\_\_



# Preliminary Proposed Levy Taxes Payable 2023

Ukee Dozier  
Executive Director of Finance  
September 19, 2022



# Overview

- Public education in MN is financed by a combination of state aid, federal allocations, locally generated revenue, as well as property taxes.
- The Proposed Levy Payable 2023 represents an estimated proposal of property tax revenue for the 2023-24 school year.
- The district has a timeline to follow that is set by statute and followed by the Minnesota Department of Education.
- The district is providing an update on the Preliminary Proposed Levy for Taxes Payable in 2023
- The school board is obligated to certify proposed levies by statutory dates that will be discussed in the presentation.



ROBBINSDALE  
Area Schools

# District Levy Funding Types

## Voter Approved Levies:

- Operating Referendum
- Capital Projects Levy (Tech)
- Building Bond issues

## Legislative levies:

Provides school districts the authority to levy for specific costs.

- Safe Schools
- Capital Projects/LTFM as well as associated debt service
- Lease Levies



# Property Taxes

## Property Tax Timeline:

- Spring (2022) – Tax assessor values properties in the district for the following year – challenges can be made to the board of equalization
- Fall (2022) – preliminary school levies as well as city and county taxes are used to compute proposed property tax statements and mailed out
- Winter (2022) – final taxes are certified
- Spring (2023) – Property tax statements are mailed out



# Levy Limitation

## Factors effecting change on Levy Limitations:

- Property tax value changes – collectively and individually
- State aid appropriation changes and/or equalization
- Adjustments to actual data versus estimates from prior levies
- Enrollment – Estimates vs Prior year Actuals
- Inflation



ROBBINSDALE  
Area Schools

# Levy Certification Timeline

## **September 8, 2022**

- Deadline for MDE to certify levy limitations to school districts

## **September 30, 2022**

- Deadline for districts to submit data changes to MDE
- Deadline for School Boards to certify proposed levies to county auditor

## **October 7, 2022**

- Deadline for districts to submit copy of proposed levies to MDE

## **December 5, 2022**

- ISD 281 scheduled (Truth in Taxation) meeting to discuss Pay 2023 final levy
- Districts are required to hold hearing in regularly scheduled meeting between November 24 and December 28.

## **December 19, 2022**

- ISD 281 scheduled meeting to adopt final Pay 2023 levy

## **December 28, 2022**

- Deadline to submit final levy to county – Copy to MDE by January 7, 2023



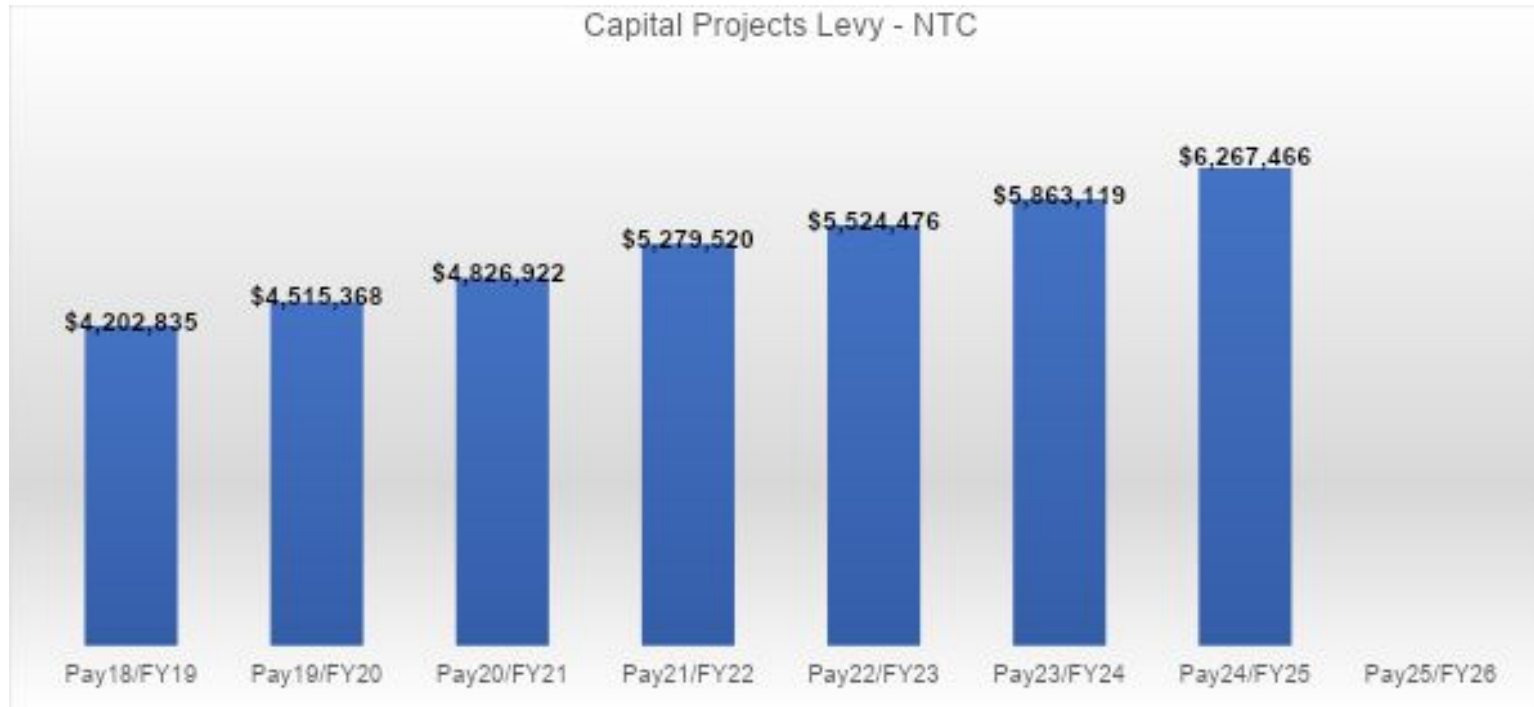
# Levy Categories and Comparison

Category	Certified Pay 18	Certified Pay 19	Certified Pay 20	Certified Pay 21	Certified Pay 22	Proposed Pay 23	\$ Change	% Change
Referendum	18,362,268	24,469,835	22,269,042	21,868,789	21,587,202	25,141,476	3,554,274	16.5%
Local Optional	5,450,800	5,118,494	8,444,001	8,819,111	7,621,959	7,726,743	104,785	1.4%
Equity	1,326,743	930,776	906,400	881,117	834,145	813,219	(20,926)	-2.5%
Transition	266,905	253,956	248,227	240,194	227,510	222,117	(5,393)	-2.4%
Technology	4,202,835	4,515,368	4,826,922	5,279,520	5,524,476	5,863,119	338,644	6.1%
Operating Capital	1,039,139	1,181,634	1,202,178	1,316,984	1,456,520	1,520,616	64,096	4.4%
Q Comp	1,162,348	1,153,019	1,172,913	1,166,817	1,066,658	1,025,754	(40,904)	-3.8%
Achievement & Integration	870,060	846,754	861,726	851,916	825,635	819,851	(5,784)	-0.7%
Unemployment	75,000	125,000	75,000	150,000	300,000	200,000	(100,000)	-33.3%
Safe Schools	705,659	671,423	656,276	635,039	601,504	587,245	(14,260)	-2.4%
Career Tech Education	276,956	310,383	317,711	364,887	364,887	239,185	(125,702)	-34.4%
Long-Term Facilities Maintenance	1,010,066	1,686,318	1,685,803	141,489	1,393,745	2,621,397	1,227,652	88.1%
Lease Levy	2,920,756	2,905,046	2,929,145	2,947,699	2,877,212	3,180,847	303,635	10.6%
Adjustments and Abatement	(826,311)	(15,433)	(2,275,685)	(436,492)	(255,812)	(1,703,055)	(1,447,244)	
Community Education	2,053,377	2,400,253	2,562,732	2,149,514	2,204,508	1,752,692	(451,817)	-20.5%
Debt	19,013,411	18,197,133	18,251,378	16,580,877	18,036,407	19,695,782	1,659,375	9.2%
OPEB	1,917,010	230,858	1,419,614	2,595,268	2,698,613	2,663,258	(35,356)	-1.3%
<b>TOTAL</b>	<b>59,827,023</b>	<b>64,980,816</b>	<b>65,553,383</b>	<b>65,552,730</b>	<b>67,365,168</b>	<b>72,370,244</b>	<b>5,005,075</b>	<b>7.4%</b>

\*Highlighted cell is inclusive of Health and Safety estimates that is not reflected in most recent MDE Levy Certification run



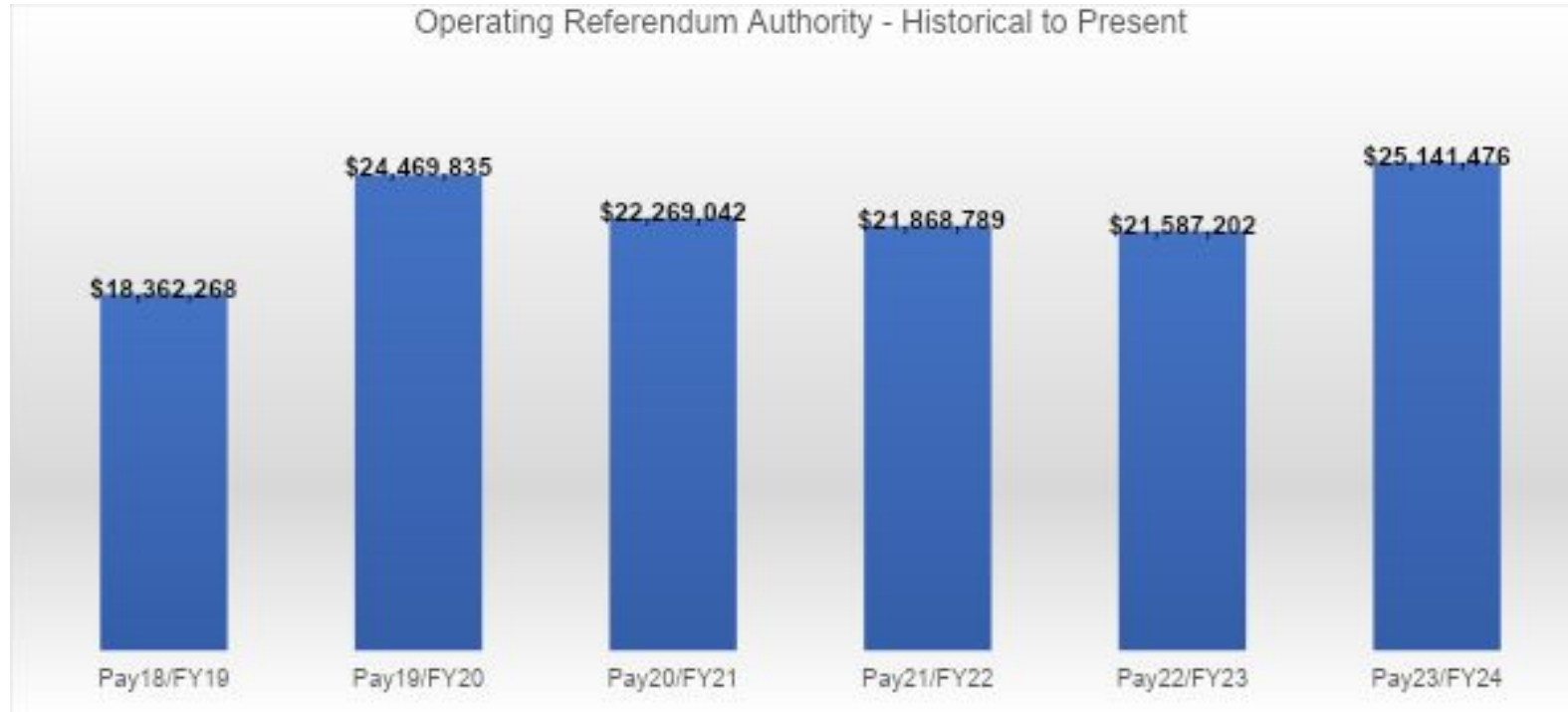
# Capital Projects Levy Trend with Expiration





ROBBINSDALE  
Area Schools

# Operating Referendum – Historical to Present

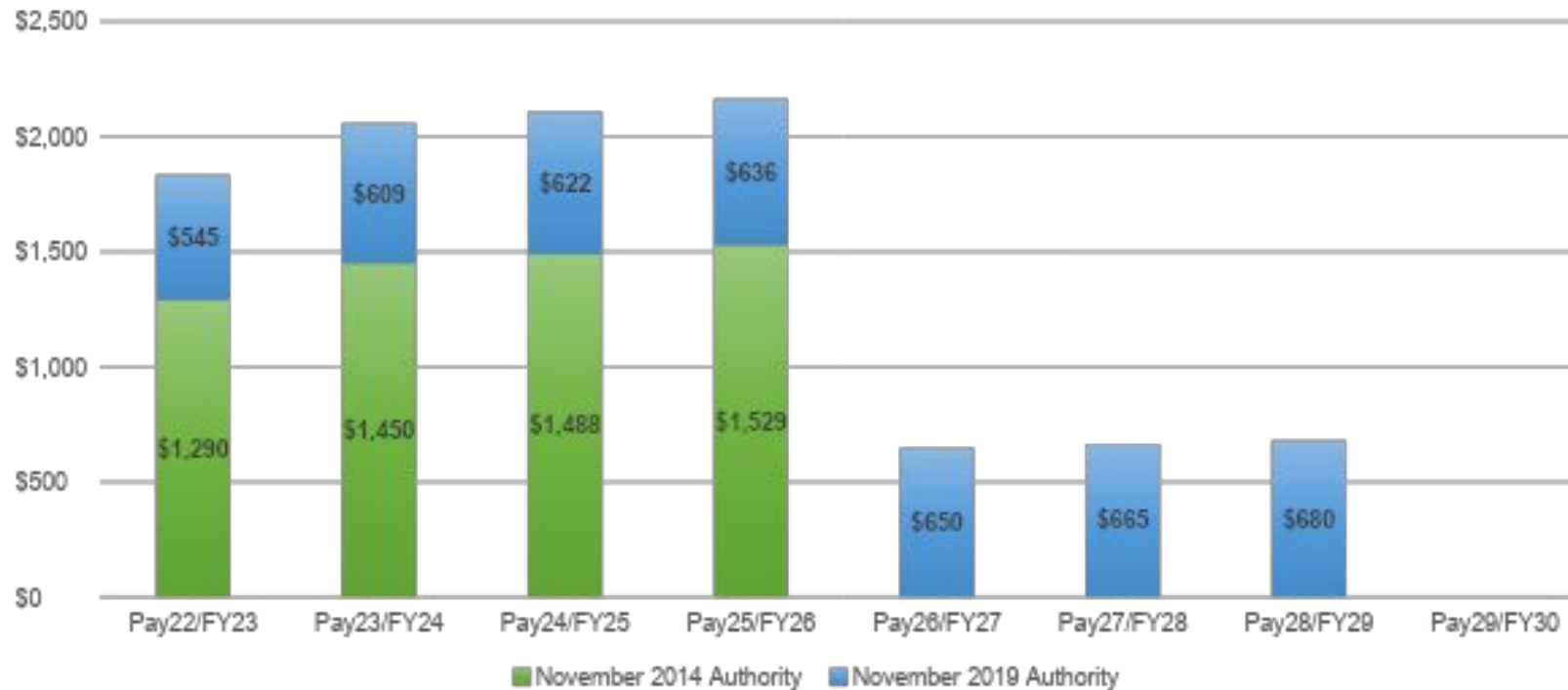




ROBBINSDALE  
Area Schools

# Referendum Authority to Expiration

Referendum Authority Projections to Expiration - (Estimated MDE  
CPI Adjustments for Future Years)





# Levy Highlights

- Operating Referendum - \$3.5 million increase due to inflationary increases applied to Pay 23, and Pay 22 adjustments, despite 304 adjusted pupil units estimated decrease.
- Capital Projects (Tech) – \$339k increase due to Net Tax Capacity increase



# Summary and Board Action

- **Summary** - Final preliminary proposed Pay 23 levy project an estimated increase from current year levy of \$5 million or 7.4%.
- **Board Action** - Approval of the final tax levy at maximum allowable for taxes payable in 2023.



ROBBINSDALE  
Area Schools

# Questions

Minnesota Department of Education  
Levy Limitation and Certification Report  
2022 Payable 2023

District Number-Type: 0281-01  
District Name: Robbinsdale Public School District  
Home County: HENNEPIN

Date Printed: 9/14/22  
Limits Updated: 9/13/22  
Proposed Submitted: 9/14/22

LIMIT

PROPOSED

**SUBTOTALS BY LEVY CATEGORY**

- GENERAL - RMV VOTER - JOBZ EXEMPT
- GENERAL - RMV OTHER - JOBZ EXEMPT
- GENERAL - NTC VOTER - JOBZ EXEMPT
- GENERAL - NTC OTHER - JOBZ EXEMPT
- COMMUNITY SERVICE - NTC OTHER - JOBZ EXEMPT
- GENERAL DEBT - NTC VOTER - JOBZ NONEXEMPT
- GENERAL DEBT - NTC OTHER - JOBZ NONEXEMPT
- OPEB DEBT - NTC VOTER - JOBZ NONEXEMPT
- OPEB DEBT - NTC OTHER - JOBZ NONEXEMPT

The School Board has voted to certify the MAXIMUM levy authority.

After October 1st, the county auditor should consult the Minnesota Department of Education (MDE) website for the district's current levy limitation and use this amount for the Truth in Taxation notices.

**SUBTOTALS BY FUND**

- GENERAL FUND
- COMMUNITY SERVICES FUND
- GENERAL DEBT SERVICE FUND
- OPEB/PENSION DEBT SERVICE FUND

If there is a change to the district's levy limitation after October 1st, the county will be notified by MDE via email. Before finalizing tax computations for the Truth in Taxation notices, counties should double check the MDE website to be sure no changes have been made to the district's levy limitation that the county is not already aware of through this email process.

**SUBTOTALS BY TAX BASE**

- REFERENDUM MARKET VALUE
- NET TAX CAPACITY

**SUBTOTALS BY TRUTH IN TAXATION CATEGORY**

- VOTER APPROVED
- OTHER

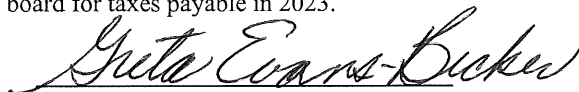
**TOTAL LEVY**

- TOTAL LEVY

The school district must submit the completed original of this form to the home county auditor by September 30, 2022. A duplicate form must be submitted to Minnesota Department of Education, School Finance Division, 400 NE Stinson Blvd., Minneapolis, MN 55413, by October 7, 2022.

The certified levy listed above is the levy voted by the school board for taxes payable in 2023.

Signature of School Board Clerk



Date of Certification

9/19/2022

## School Board of Robbinsdale Area Schools

Business Meeting – September 19, 2022

**AGENDA SECTION:** Operations

---

**ITEM:** 4.C. Approval of Resolution Accepting Donations

---

**COMMENTS BY:** Ukee Dozier - Executive Director of Finance

---

**Description:** The School Board will be asked to move approval of the Resolution Accepting Donations in the amount of \$21,217.39. The School Board and Superintendent are grateful for the generous contributions supporting our students and staff in Robbinsdale Area Schools.

**Recommended Action:** Approve the resolution accepting donations.

	Yes	No	Abstention
Helen Bassett			
David Boone			
Sharon Brooks Green			
Greta Evans-Becker			
Michael Herring			
Sam Sant			
John Vento			

**Motion by:** \_\_\_\_\_ **Yes:** \_\_\_\_\_ **Passed:** \_\_\_\_\_

**Second by:** \_\_\_\_\_ **No:** \_\_\_\_\_ **Failed:** \_\_\_\_\_

**Abstentions:** \_\_\_\_\_

The following resolution was moved by Director Boone and seconded by Director Evans Becker

**RESOLUTION ACCEPTING DONATIONS**

WHEREAS, Minnesota Statutes 123B.02, Subd. 6 provides: "The board may receive, for the benefit of the district, bequests, donations, or gifts for any proper purpose and apply the same to the purpose designated. In that behalf, the board may act as trustee of any trust created for the benefit of the district, or for the benefit of pupils thereof, including trusts created to provide pupils of the district with advanced education after completion of high school, in the advancement of education."; and

WHEREAS, Minnesota Statutes 465.03 provides: "Any city, county, school district or town may accept a grant or devise of real or personal property and maintain such property for the benefit of its citizens in accordance with the terms prescribed by the donor. Nothing herein shall authorize such acceptance or use for religious or sectarian purposes. Every such acceptance shall be by resolution of the governing body adopted by a two-thirds majority of its members, expressing such terms in full."; and

87

WHEREAS, every such acceptance shall be by resolution of the governing body adopted by a two-thirds majority of its members, expressing such terms in full.

THEREFORE, BE IT RESOLVED, that the School Board of Robbinsdale School District, ISD 281, gratefully accepts the following donations as identified below:

**September 19, 2022**

School	Donor	Amount	Purpose
Cooper High School	W Metro Fire/Rescue District	\$500.00	Nordic Ski Team
Credit Recovery	Target Employee Giving Campaign	50.00	General School needs
Fair School Pilgrim Lane	US Bancorp Employee Match	500.00	General School needs
Fair School Pilgrim Lane	Kemmetmueller Photography	174.00	General School needs
Lakeview Elementary	Lakeview Elementary PTSO	1,533.00	Enhancements to the playground to include a GaGa pit
Meadowlake Elementary School	The Blackbaud Giving Fund	40.00	General School needs
Meadowlake Elementary School	The Blackbaud Giving Fund	40.00	General School needs
Meadowlake Elementary School	The Blackbaud Giving Fund	40.00	General School needs
Meadowlake Elementary School	The Blackbaud Giving Fund	40.00	General School needs

Plymouth Middle School	The Blackbaud Giving Fund	28.00	General School needs
Robbinsdale Area Schools	Gordon & Mary Jane Lee	50.00	McKinney-Veto Eligible (Homeless) students - school supplies
RSI Elementary School	RSI PTSO	13,596.06	To enhance the playground area to include an additional shad structure and two benches along with a GaGa pit
Sandburg Middle School	Target Employee Giving Campaign	10.00	General School needs
Sandburg Middle School	Target Employee Giving Campaign	10.00	General School needs
Sandburg Middle School	Kemmetmueller Photography	122.00	General School needs
Sonnesyn Elementary School	Sonnesyn PTSO	4,330.33	General School needs
Sonnesyn Elementary School	Target Employee Giving Campaign	20.00	General School needs
Sonnesyn Elementary School	Kemmetmueller Photography	134.00	General School needs

**Total     \$21,217.39**

88

The vote on adoption of the Resolution was as follows:

Aye: *Directors: Bassett, Boone, Brooks Green, Evans-Becker, Herring, Sant and Vento*

Nay: *None*

Absent: *None*

Whereupon, said Resolution was declared duly adopted.

By: *[Signature]*  
Chair

By: *[Signature]*  
Clerk



## School Board of Robbinsdale Area Schools

Business Meeting – September 19, 2022

**AGENDA SECTION:** Consent Agenda  
**ITEM:** 5. Approval of Consent Agenda  
**PRESENTER:** Helen Bassett, School Board Chair

**Description:** Consent Agenda items are considered routine in nature and will be enacted by one motion. There will be no separate discussion of these items unless a Board member so requests, in which the item will be removed as a Consent Agenda item and addressed. Consent Agenda items include administrative, personnel matters and financial matters.

**Recommended Motion:** Approve the Consent Agenda items.

	Yes	No	Abstention
Helen Bassett			
David Boone			
Sharon Brooks Green			
Greta Evans-Becker			
Michael Herring			
Sam Sant			
John Vento			

**Motion by:** \_\_\_\_\_ **Yes:** \_\_\_\_\_ **Passed:** \_\_\_\_\_

**Second by:** \_\_\_\_\_ **No:** \_\_\_\_\_ **Failed:** \_\_\_\_\_

**Abstentions:** \_\_\_\_\_



**To:** School Board Members and Superintendent  
**From:** Ukee Dozier - Executive Director of Finance  
**Date:** September 19, 2022  
**Re:** Workers Compensation Renewal - Consent Agenda

**RECOMMENDATION:**

It is recommended that we renew our Workers' Compensation Insurance Policy for the policy year October 1, 2022 through September 30, 2023 with SFM Insurance Company for the guaranteed cost of \$871,075.

**DISCUSSION:**

The renewal premium is a decrease of \$76,059 from the previous year premium. The Experience Modification Factor increased from 1.37 to .096, the District received a premium discount which is reflected in the renewal decrease. The Experience Modification Factor is a term used in the American insurance business and more specifically in workers' compensation insurance. It is the adjustment of annual premium based on previous loss experience. Usually three years of loss experience are used to determine the experience modifier for a workers' compensation policy. The District also takes part in a loss to premium retention program.

**QUESTIONS:**

For questions please contact Ukee Dozier at 763-504-8037 or [Ukee\\_Dozier@rdale.org](mailto:Ukee_Dozier@rdale.org)

Relevant documents:

- [USI Executive Summary Memo](#)
- [Premium Summary](#)

# Executive Summary Memo – Robbinsdale Area School ISD 281

Your service team at USI Insurance Services thanks you for the opportunity to handle your workers compensation insurance program.

## Market Update & Rate Forecast

While we are beginning to see the market stabilize overall, the market continues to present challenges, and we are continuing to see rate increases. We anticipate that rate increases will begin to moderate during the second half of 2022 for insureds with good loss experience/ The USI Mid-Year Market Outlook:

Product Line	Year-End 2021	Mid-Year 2022
<b>PROPERTY</b>		
Property Non-Catastrophic w/Good Loss History	Flat to up 10%	Flat to up 10%
CAT Property w/Minimal Loss History	Up 10% to 15%+	Up 10% to 15%+
CAT or Non-CAT Property w/Poor Loss History	Up 20%+	Up 20%+
<b>CASUALTY</b>		
Primary General/Product Liability	Up 10% to 20%	Up 10% to 20%
Primary Auto Liability w/Fleet Less Than 200 & Good Loss History	Flat to up 5%**	Flat to up 5%**
Primary Auto Liability w/Fleet Less Than 200 & Poor Loss History	Up 20% to 30%+*	Up 20% to 30%+*
Primary Auto Liability w/Fleet in Excess of 200	Flat to up 5%**	Flat to up 5%**
Excess Auto Buffers	Up 40%+	Up 40%+
Workers' Compensation Guaranteed Cost	Down 10% to up 10%**	Down 10% to up 10%**
Workers' Compensation Loss Sensible	Flat to up 5%**	Flat to up 5%**
Umbrella & Excess Liability (Middle Market)	Up 5% to 25%***	Up 5% to 25%***
Umbrella & Excess Liability (Risk Management)	Up 25% to 50%+***	Up 25% to 50%+***

**Casualty:** Casualty continues to seek increase in rates due to social inflation, increased attorney involvement in claims, and nuclear jury verdicts. This is also exacerbated by the unknown market dynamics across all lines including Workers' Compensation via Covid-19.

## How USI Can Help:

- Begin the renewal process at least 150-days prior to inception. Complete a loss analysis early to assess the impact of program structure, retention, and risk mitigation efforts. This establishes your "ask" of the market, allowing for early indications from incumbents and understanding of your options around limits, retentions, coverage, and price
- Work with your broker to evaluate all market options in the U.S. and London. Focus on risk appetite and industry
- Clearly identify and differentiate each risk to the marketplace, reinforcing risk quality and mitigation efforts; this is imperative

## Risk Management Plan/Assessment Implementation:

Given these and other market changes and challenges, experts recommend that commercial property brokers such as ours who have the resources begin the renewal process early and explore multiple market strategies, in tandem with implementing a robust risk management plan. That way, we are ahead of the innovative and creative renewal strategies which transition the outcomes in our clients' best favor. It is our responsibility to keep you informed of the challenging market we currently face; and with the recent outbreak the industry is being tested in ways that we could not have seen coming. Nonetheless, we would have strongly recommended our team implement a robust risk management plan to combat these conditions as it related to your entity, as losses have crept up in the last few years and we want to implement mitigation strategies to derive positive results in both frequency of losses, leading to premium reductions and a better risk profile. See suggested sample below titled **Targeted Development of Risk Management Plan'**.

## Targeted Development of Risk Management Plan

---

Your USI's Property/Casualty & Risk Management team suggests using a risk management approach which coincides with ERM implementation of a robust enterprise risk management program. This risk management plan tends to focus on the following five operational areas:

1. Strategic/Business Operations
2. Legal/Transaction Liability
3. Workers Compensation/Safety/Loss Control
4. General Insurance/Health Insurance
5. Corporate Governance/Information Security

In turn, when assessing and reporting on risk in each area, we suggest applying the following evaluative model:

- Identification of the specific risk evaluated
- Assignment of the degree of risk the identified practices present
- Determination of the urgency with which the identified risk should be addressed
- The USI Risk Management Team's methodology in completing a risk management assessment takes a broad assessment of your organization in tandem with what is assessed by your insurance carriers, utilizing various reports to help provide guidance to help manage the areas of greatest concern. This gives our clients a comprehensive continuous improvement plan that creates a vision and course of action for its — helping better protect the hard and soft costs of its organization
- Description of our recommendations for mitigating the identified risk(s)

Like any organization, your organization is confronted with numerous challenges and risks, of which the following are amongst the most common for your industry (not in order):

1. Cyber/Crime Risks & Financial Controls
2. Contractual Risk Transfer Liability
3. Employee Training
4. PCA Employment Status/Wage and Hour and Joint Status of Employer/Employee, Malpractice Exposure
5. Network Employment/Privacy Liability Business Continuity & Strategy
6. Corporate Governance
7. Fleet Safety/Controls
8. Safety Implementation Strategy
9. Insurance Risk Transfer
10. OSHA Compliance

***In going through this plan, please direct any questions to Mohammad ElSawaf, Mark Kraemer, or Sean Smith.***

**Robbinsdale Area Schools ISD 281 Workers Compensation Risk Management & Insurance Renewal Key Takeaways for 10/1/2022 to 10/1/2023:**

- Despite total exposure payrolls going up nearly \$4,000,000, total premium is down almost \$76,000
- Self-care rate since nurse-line implementation is at 71% since January 1, 2022
- 2022-2023 Targeted Risk Management & Service Calendar implementation led to better processes, outcomes:
  - October 2021 Claim Review: 8 closed claims and total reserve reductions of \$76,627
  - January 2022 Claim Review: 16 closed claims and total reserve reductions of \$50,926
  - Valuation Review (March 2022): 24 closed claims and total reserve reductions of \$81,573
  - April 2022: 14 closed claims and reserve reductions of \$32,881
  - July 2022 Claim Review: 16 closed claims and total reserve reductions of \$41,154
- Success Stories – lag time decreased on claim reporting from 17 days to 8 days, the lowest it has ever been since SFM has written 281!
- Nurse Care line implementation from 1/1/2022 to 7/17/2022 resulted in cost savings of \$19,898
- Experience modification drop from 1.37 in 2021 to .96 in 2022
- Future projected experience modification drop again for the October 2023 renewal

*All in all, the terms provided are quite favorable given the risk profile at ISD 281. Please consult with the School Focus Group Team at USI on the details of the provided proposal, CSP, Stewardship, and reports.*

# Workers' Compensation

**Insurance Company:** SFM Mutual Insurance Company  
**Policy Term:** 10/01/2022 to 10/01/2023  
**Coverage:** **Part One** – Workers' Compensation agrees to pay the benefits required under the applicable State's Workers' Compensation Law.

**Part Two** – Employers Liability for work-related injuries or disease other than that which is imposed by a state Workers' Compensation Law.

**Part Three** – Other States. States in which you have no exposure on the policy inception date, but in which you may have a temporary or future worksite or exposure in during the policy term. If listed, statutory benefits will apply as if the state were listed in Part One.

Coverage Description	Limit
Employers Liability - Each Accident	\$500,000
Employers Liability - Disease (Policy Limit)	\$500,000
Employers Liability - Disease (Each Employee)	\$500,000
Experience Mod	Refer to Schedule of Exposures

Coverage is not automatic in all states. Please notify us immediately if you begin operations in another state.

## Workers' Compensation Schedule of Exposures

State: MN Experience Modifier: 0.96

Class Code	Classification Description	Estimated Annual Payroll	Rate	Premium
8868	Colleges or Schools Professional	\$116,399,372	0.61	\$710,036
9101	Colleges or Schools All other	\$4,904,372	5.78	\$283,473
7382	Bus Co: All Other Employees	\$542,297	5.34	\$28,959
8385	Bus Company: Garage Employees	If Any	3.21	\$0
7380	Drivers, Chauffeurs And Their Helpers	If Any	7.85	\$0
<b>Total Estimated Standard Premium (without Premium Adjustments)</b>				\$0

Premium Adjustments	Amount
	\$1,022,468.00

<b>Total Estimated Annual Premium Including Premium Adjustments</b>	<b>-\$151,393.00</b>
---	----------------------

<b>Total Estimated Annual Premium Including Premium Adjustments for all States</b>	<b>\$871,075.00</b>
--	---------------------

This proposal is merely a descriptive summary of coverage provided by the insurance companies being proposed and should be used for reference purposes only; it is not a binder and does not amend or alter the insurance contract. Please refer to the policy contract for specific terms, conditions, limitations, and exclusions.





**To:** School Board Members and Superintendent  
**From:** Marti Voight, Assistant Superintendent  
**Date:** September 19, 2022  
**Re:** Extended Field Trip - International Travel Requiring Board Approval

**Description:**

Per policy 610: Field Trips, revised August 21, 2017, field trips outside the United States must be approved by the school board.

A group of Armstrong World Language students, along with two chaperones, wish to go to Costa Rica March 24 - April 2, 2023 during spring break. This trip would immerse the students in authentic Spanish language and Costa Rican cultural experiences, history, customs and routines. Upon return, the students will complete a "one pager" as a reflection of this cultural and language learning experience.

These students will share their experience after the trip at a school board meeting in the spring.

**Recommended Motion:**

School Board approve the Armstrong High School trip to Costa Rica, March 24 - April 2, 2023.

*\*\*Approved September 19, 2022*

A Business Meeting of the School Board of Robbinsdale Area Schools (RAS) was held Wednesday, September 7, 2022, beginning at 6:03 p.m. in the Boardroom at the Robbinsdale Area Schools Education Service Center. A recording of the meeting can be found at: [https://rdale.granicus.com/MediaPlayer.php?view\\_id=2&clip\\_id=1081](https://rdale.granicus.com/MediaPlayer.php?view_id=2&clip_id=1081)

### **Call to Order and Roll Call**

Chair Bassett called the meeting to order at 6:03 p.m. Directors present: Helen Bassett, David Boone, Sharon Brooks Green, Greta Evans-Becker, Michael Herring, Sam Sant, and John Vento; and David Engstrom, Superintendent. Director(s) absent: none. There was a quorum; and the meeting was called to order.

### **Acceptance of the Agenda**

Chair Bassett asked for a motion to accept the Business Meeting agenda for September 7, 2022. MOTION: Director Vento moved approval of the agenda, and Director Boone seconded the motion. Upon vote being taken thereon, the following voted in favor thereof: Directors Bassett, Boone, Brooks Green, Evans-Becker, Herring, Sant, and Vento. And the following voted against the same: none. Said motion was declared duly passed. 96

### **Operations**

- A. *Non-Action: Review of Preliminary Levy Certification - presented by Ukee Dozier, Executive Director of Finance*

Mr Dozier provided an update on the Preliminary Proposed Levy taxes Payable in 2023, followed by time for questions.

- B. *Action: Approval to Rescind the Resolution Requiring Staff Vaccination/Testing for COVID-19 - presented by Marti Voight, Assistant Superintendent*

Ms. Voight and the district Incident Command Team recommended approval to rescind the resolution requiring all staff to be vaccinated against COVID-19 or submit to regularly scheduled COVID-19 testing. MOTION: Director Sant moved approval, and Director Vento seconded the motion. Upon vote being taken thereon, the following voted in favor thereof: Directors Bassett, Boone, Brooks Green, Evans-Becker, Sant, and Vento. And the following voted against the same: Director Herring. Said motion was declared duly passed.

- C. *Action: Approval of e-Learning Plan for 2022-2023 - presented by John Groenke, Executive Director of Student Services*

Mr. Groenke recommended approval of the e-Learning Plan for the 2022-2023 school year. MOTION: Director Boone moved approval, and Director Brooks Green seconded the motion. Upon vote being taken thereon, the following voted in favor thereof: Directors Bassett, Boone, Brooks Green, Evans-Becker, Herring, Sant, and Vento. And the following voted against the same: none. Said motion was declared duly passed.

### **Consent Agenda**

Consent Agenda items include administrative, personnel matters, and financial matters.

Director Boone made a motion for removal of the Conference and Travel Request submitted by Chair Bassett and Director Brooks Green for further discussion - but approve the rest of the Consent Agenda, and Director Evans-Becker seconded the motion. Upon vote being taken thereon, the following voted in favor thereof: Directors Bassett, Boone, Brooks Green, Evans-Becker, Herring, Sant, and Vento. And the following voted against the same: none. Said motion was declared duly passed.

After some discussion by the Board, Director Herring made a motion for approval of the Conference and Travel Request, and Director Sant seconded the motion. Upon vote being taken thereon, the following voted in favor thereof: Directors Bassett, Brooks Green, Evans-Becker, Herring Sant, and Vento. And the following voted against the same: Director Boone. Said motion was declared duly passed.

**Announcements** (can be found on our website)

**Adjournment**

MOTION: Director Herring moved approval, and Director Evans-Becker seconded the motion. Upon vote being taken thereon, the following voted in favor thereof: Directors Bassett, Boone, Brooks Green, Evans-Becker, Herring, Sant, and Vento. And the following voted against the same: none. Meeting was adjourned.

Prepared and submitted by:

Molly Olson

Assistant Clerk, Robbinsdale Area Schools

Executive Assistant to the Superintendent and School Board

Signed: *Guta Evans-Becker*  
School Board Clerk, Independent School District 281

Date: 9/19/2022

*\*\*Reviewed September 19, 2022*

A Work Session of the School Board of Robbinsdale Area Schools was held Wednesday, September 19, 2022. *Complete agendas, reports, and presentations are available at the office and [on our website](#). **Work session summary minutes are not approved by the School Board.***

Director(s) present: Helen Bassett, David Boone, Sharon Brooks Green, Greta Evans-Becker, Michael Herring, Sam Sant, and John Vento; and David Engstrom, Superintendent. Director(s) absent: none.

#### **District Update**

Superintendent Engstrom provided an update on the first two days of school, thanked all staff for their work in preparation for the year.

#### **SY 2022-2023 Staffing Update**

98

Amy O'Hern, Executive Director of Human Resources, presented an update on the current staffing situation at the start of the 2022-2023 school year. The Board had an opportunity for questions following the report.

#### **Board of Education and Superintendent Discussion for Determination of SY 2022-2023 Superintendent Evaluation Elements**

The Board and Superintendent Engstrom engaged in a discussion to determine/prioritize which elements will be used in the 2022-2023 school year to evaluate Superintendent Engstrom.

#### **School Board Self-Evaluation Follow Up**

The Board reviewed the recommendations summary notes provided by Gail Gilman from the Minnesota School Boards Association, who facilitated the Self-Evaluation In-Service held on August 10, 2022. Chair Bassett requested that Directors send her any of the recommended protocols that should be of focus this year.

#### **School Board Monitoring Committee**

Tabled for discussion at a later date.

Prepared and submitted by:

Molly Olson  
Assistant Clerk, Robbinsdale Area Schools  
Executive Assistant to the Superintendent and School Board

**LICENSED STAFF - September 19, 2022****CHANGE OF ASSIGNMENT**

<b>Name</b>	<b>Building</b>	<b>Title</b>		<b>Effective Date</b>
Mary Jane Adams	SOE	Sec. Asst. Prin. to Elem. Head Principal		09/19/2022

**NEW HIRE**

<b>Name</b>	<b>Building</b>	<b>Title</b>	<b>Lane/Step</b>	<b>Effective Date</b>
Kathryn (Katy) Edstrom	PMS	1.0/Nurse	BA/10	09/06/2022
Gina Elliot	ESC	Assistant Director of Nutrition Services	Lv3/1	09/12/2022
Katherine Foster	CHS	1.0/EL	MA/10	09/01/2022
Toni Guidarelli	AHS	1.0/Math	MA/10	09/22/2022
Erin Jenkins	FAIR-C	1.0/Media Specialist	MA15/2	09/19/2022
Sarah Johnson	NHLC	.8/Early Childhood	MA/2	09/08/2022
Allison Ross	PMS/SMS	1.0/Social Studies	BA/5	09/02/2022
Michael Sorenson	SMS	1.0/Grade 6	MA/5	09/01/2022
Geri-Anne Zubich	CHS	1.0/Social Studies	MA45/10	09/19/2022

**RESIGNATION/RETIREMENT**

<b>Name</b>	<b>Building</b>	<b>Title</b>		<b>Effective Date</b>
Marco Deloya	FOE	1.0/Counselor		08/31/2022
Emily Ostrom	NOE	1.0/Special Education		06/09/2022
Hamad Rashid	AHS	1.0/Math		06/09/2022
Katherine Willow	LVE	1.0/Music		09/06/2022
Naomi Witzke	SOE	1.0/Grade 4		06/09/2022
Tyler Wozniak	CHS	1.0/Social Studies		09/16/2022
Lori Yerbich	FAIR-C	1.0/Media Specialist		06/09/2022

**RESCIND NEW HIRE**

<b>Name</b>	<b>Building</b>	<b>Title</b>	<b>Lane/Step</b>	<b>Effective Date</b>
Aisha Haybe	NPE	1.0/EL	BA/2	8/29/2022
Marcus Leab	RVA	1.0/English	MA45/10	8/29/2022

**NON-LICENSED STAFF - September 19, 2022**

**CHANGE OF ASSIGNMENT**

<b>Name</b>	<b>Building</b>	<b>Title</b>	<b>Effective Date</b>
Elizabeth Goers	FOE	Clerical EA to Office Employee	09/06/2022
Kelli Vomhof	ESC	Office Employee to Program Assistant	09/12/2022

**NEW HIRE**

<b>Name</b>	<b>Building</b>	<b>Title</b>	<b>Step/Lane</b>	<b>Effective Date</b>
Brock Bertram	PMS	Program Assistant	LV7, Step 1	08/29/2022
Shirlee Brown	FOE	Nutrition Services	C3, Step 3	09/06/2022
Iisiah Bundy	FAIR-C	Program Assistant	LV7, Step 1	09/19/2022
Adam Dale	FAIR-C	Tutor EA	CL3, Step 3	09/06/2022
JoVianni Davis	CHS	Security EA	CL4, Step 3	09/06/2022
Jesse Enger	ENE	Special Ed EA	CL3, Step 3	09/06/2022
Catherine Hall	LVE	Tutor EA	CL3, Step 3	09/08/2022
Samantha Lamb	NHLC	ECFE EA	CL3, Step 3	09/06/2022
MacLaren McCants	PMS	Security EA	CL4, Step 3	09/12/2022
Qualve'ja McClure	NHLC	Special Ed EA	CL3, Step 3	09/06/2022
Katelyn Merchant	ENE	Adventure Club EA	CL2, Step 3	09/06/2022
Proscovia Mwadime	LVE	Nutrition Services	C2, Step 5	09/06/2022
Rolando Ramos	AHS	Security EA	CL4, Step 3	09/06/2022
Nichole Ronich	NHLC	Health EA	CL3, Step 2	09/12/2022
Vallerie Shephard	PMS	Program Assistant	LV7, Step 1	09/13/2022
Miles Stokes	FAIR-PL/RSI	Adventure Club EA	CL2, Step 3	09/06/2022
Lisa White	SMS	Service Employee	CU7, Step 3	08/30/2022

**REHIRE**

<b>Name</b>	<b>Building</b>	<b>Title</b>	<b>Effective Date</b>
Desmond Goines	CHS	Special Ed EA	09/08/2022
Najat Hamza	NOE	Tutor EA	09/08/2022
Amy Overby	NOE	Tutor EA	09/06/2022
Courtney Saurer	NOE	Program Assistant	09/07/2022
Lisa Vilipski	SEA	Adventure Club EA	08/30/2022

**RESIGNATION/RETIREMENT**

<b>Name</b>	<b>Building</b>	<b>Title</b>	<b>Effective Date</b>
Deborah Hall (21 yrs.)	CLC	Office Employee	11/30/2022
Kayla Fraser	NPE	Program Assistant	06/09/2022
Kara McFee	RSI	Program Assistant	08/30/2022
Quamon Peoples	SMS	Service Employee	08/19/2022
Annalese Wright	AHS	AVID Tutor EA	06/08/2022

Robbinsdale Area Schools  
Board Disbursement Report  
August 1 - August 31, 2022

Check Number	Check Type	Check Date	Vendor	Amount
826546	V	8/12/2022	JONES, EMILY	\$75.11
827368	V	8/31/2022	CENTER FOR TEACHING FOR BILITERACY, LLC	\$6,000.00
827419	R	8/4/2022	ADVANCED COMMERCIAL KITCHENS	\$2,464.43
827420	R	8/4/2022	BIX PRODUCE COMPANY, LLC	\$1,551.18
827421	R	8/4/2022	PAN-O-GOLD BAKING CO	\$168.74
827423	R	8/4/2022	ST PAUL BEVERAGE SOLUTIONS, LLC	\$1,918.80
827424	R	8/4/2022	THE GOOD ACRE	\$96.78
827425	R	8/4/2022	TRIO SUPPLY CO	\$1,807.60
827428	R	8/4/2022	UPPER LAKES FOODS, INC.	\$10,838.76
827429	R	8/4/2022	BUSINESS IMPACT GROUP	\$709.90
827430	R	8/4/2022	CONSTANTINE DANCE CLASSES, INC.	\$295.00
827431	R	8/4/2022	GROTH MUSIC CO	\$310.00
827432	R	8/4/2022	POVOLNY, KATHLEEN	\$30.00
827437	R	8/4/2022	SCHMITT MUSIC COMPANY	\$3,041.00
827438	R	8/4/2022	SPECTRUM SCREENPRINTING	\$2,114.75
827439	R	8/4/2022	THE GOOD ACRE	\$83.49
827440	R	8/4/2022	ZASTROW, JOHN	\$320.00
827442	R	8/4/2022	BRAUN INTERTEC CORPORATION	\$8,260.00
827443	R	8/4/2022	BUILDING CONTROLS GROUP, LLC	\$12,982.66
827444	R	8/4/2022	FLAGSHIP RECREATION LLC	\$192,568.80
827445	R	8/4/2022	KFI ENGINEERS, PC	\$903.00
827446	R	8/4/2022	BKBM ENGINEERS	\$205.00
827447	R	8/4/2022	BUILDING RESTORATION CORP	\$154,954.50
827448	R	8/4/2022	FOBBE ELECTRIC INC	\$96,638.75
827449	R	8/4/2022	JOHN A DAL SIN & SON, INC.	\$74,263.40
827449	V	8/10/2022	JOHN A DAL SIN & SON, INC.	\$74,263.40
827451	R	8/4/2022	KRAUS-ANDERSON CONSTRUCTION COMPANY	\$257,765.47
827452	R	8/4/2022	NORTHLAND MECHANICAL CONTRACTORS, INC.	\$109,744.00
827453	R	8/4/2022	ACTIVE INTERNET TECHNOLOGIES, LLC	\$2,700.00
827454	R	8/4/2022	AIM ELECTRONICS, INC	\$551.25
827455	R	8/4/2022	BIFFS, INC.	\$709.50
827456	R	8/4/2022	BUNYAN, CANDACE	\$1,000.00
827457	R	8/4/2022	CITY OF CRYSTAL	\$150.00
827458	R	8/4/2022	CLIMB THEATRE INC	\$2,000.00
827459	R	8/4/2022	COMMERCIAL KITCHEN SERVICES	\$332.00
827460	R	8/4/2022	D. ERVASTI SALES CO	\$1,275.98
827461	R	8/4/2022	FIELDS, JAMERSON	\$3,008.00
827462	R	8/4/2022	HENNEPIN TECHNICAL COLLEGE	\$15,000.00
827463	R	8/4/2022	HUDSON MAGIC, LLC	\$837.50
827464	R	8/4/2022	INGINA LLC	\$1,190.00
827465	R	8/4/2022	MASA	\$199.99
827466	R	8/4/2022	MBAYE, GHANA	\$4,200.00
827467	R	8/4/2022	MCCRITTY, LARS	\$3,500.00
827468	R	8/4/2022	METRO ECSU	\$350.00
827469	R	8/4/2022	METRO TRANSIT SALES OPERATIONS	\$4,200.00
827470	R	8/4/2022	MINNEAPOLIS CONVENTION CENTER	\$1,560.00
827471	R	8/4/2022	MINNESOTA ORCHESTRA ASSOCIATION	\$1,957.50
827472	R	8/4/2022	NORTHWEST SUBURBAN CONFERENCE	\$7,500.00
827473	R	8/4/2022	SCHMITT MUSIC COMPANY	\$323.32
827474	R	8/4/2022	STOEN, LINDA	\$160.00
827475	R	8/4/2022	ST PAUL BEVERAGE SOLUTIONS, LLC	\$225.12
827476	R	8/4/2022	THE FOOD GROUP MINNESOTA, INC	\$497.00

Robbinsdale Area Schools  
Board Disbursement Report  
August 1 - August 31, 2022

Check Number	Check Type	Check Date	Vendor	Amount
827477	R	8/5/2022	ACADEMY OF HOLY ANGELS	\$295.46
827478	R	8/5/2022	AGAPE CHRISTIAN ACADEMY	\$1,899.92
827479	R	8/5/2022	AVAIL ACADEMY - BLAINE CAMPUS	\$1,166.88
827480	R	8/5/2022	AVAIL ACADEMY - EDINA CAMPUS	\$2,528.24
827481	R	8/5/2022	BENILDE - ST MARGARET'S	\$36,504.27
827482	R	8/5/2022	BETHANY CHRISTIAN ACADEMY	\$557.26
827483	R	8/5/2022	BLAKE SCHOOL, THE	\$10,457.04
827484	R	8/5/2022	BRECK SCHOOL	\$18,933.75
827485	R	8/5/2022	CHESTERTON ACADEMY	\$2,157.98
827486	R	8/5/2022	CITY OF LAKES WALDORF SCHOOL	\$1,542.75
827487	R	8/5/2022	CROSS OF CHRIST LUTHERAN CHURCH & SCHOOL	\$233.75
827488	R	8/5/2022	FOURTH BAPTIST CHRISTIAN SCH	\$26,258.54
827489	R	8/5/2022	FRANKLIN CENTER	\$1,686.74
827490	R	8/5/2022	GROVES ACADEMY	\$2,438.48
827491	R	8/5/2022	HAND IN HAND CHRISTIAN MONTESSORI-WEST CAMPUS	\$302.94
827492	R	8/5/2022	HOLY SPIRIT	\$276.76
827493	R	8/5/2022	HOLY TRINITY LUTHERAN SCHOOL	\$2,157.98
827494	R	8/5/2022	HOPE ACADEMY	\$3,223.88
827495	R	8/5/2022	INTERNATIONAL SCHOOL OF MN	\$755.48
827496	R	8/5/2022	LAKE COUNTRY SCHOOL	\$609.62
827497	R	8/5/2022	MARANATHA CHRISTIAN ACADEMY	\$17,475.15
827498	R	8/5/2022	MAYER LUTHERAN SCHOOL	\$321.64
827499	R	8/5/2022	MINNEHAHA ACADEMY	\$2,842.40
827500	R	8/5/2022	MINNETONKA CHRISTIAN ACADEMY	\$3,177.13
827501	R	8/5/2022	MINNEAPOLIS JEWISH DAY SCHOOL	\$5,054.61
827502	R	8/5/2022	MINNESOTA WALDORF SCHOOL	\$263.67
827503	R	8/5/2022	PROVIDENCE ACADEMY	\$6,995.67
827504	R	8/5/2022	SOUTHWEST CHRISTIAN HIGH SCHOO	\$613.36
827505	R	8/5/2022	ST. THOMAS ACADEMY	\$306.68
827506	R	8/5/2022	ST AGNES SCHOOL	\$897.60
827507	R	8/5/2022	ST CROIX LUTHERAN HIGH SCHOOL	\$562.87
827508	R	8/5/2022	TOTINO-GRACE HIGH SCHOOL	\$6,700.21
827509	R	8/5/2022	WEST LUTHERAN HIGH SCHOOL	\$7,494.96
827510	R	8/5/2022	WOODCREST BAPTIST ACADEMY	\$1,778.37
827512	R	8/5/2022	LAWAL SCOTT ERICKSON ARCHITECTS, INC.	\$81,174.20
827513	R	8/5/2022	LOFFLER COMPANIES - 131511	\$13,655.00
827514	R	8/5/2022	BLUUM OF MINNESOTA, LLC	\$12,736.92
827515	R	8/5/2022	CDW GOVERNMENT	\$6,457.82
827516	R	8/5/2022	CENGAGE LEARNING INC	\$29,486.88
827517	R	8/5/2022	COOL AIR MECHANICAL, INC.	\$36,800.00
827518	R	8/5/2022	FIRST BOOK	\$158.62
827519	R	8/5/2022	GOODIN COMPANY	\$505.51
827520	R	8/5/2022	GRAINGER	\$3,176.19
827521	R	8/5/2022	HENNEPIN COUNTY - MAIL CODE 131	\$437.58
827522	R	8/5/2022	HOME DEPOT CREDIT SERVICES	\$1,470.96
827522	V	8/5/2022	HOME DEPOT CREDIT SERVICES	\$1,470.96
827523	R	8/5/2022	IDENTISYS	\$784.64
827524	R	8/5/2022	INTEREUM, INC	\$11,224.89
827525	R	8/5/2022	KAPLAN EARLY LEARNING	\$37.89
827526	R	8/5/2022	KFI ENGINEERS, PC	\$10,319.50
827528	R	8/5/2022	MCGRAW HILL LLC	\$166,703.35
827529	R	8/5/2022	MIDWEST PLAYSCAPES INC	\$6,579.50

Robbinsdale Area Schools  
Board Disbursement Report  
August 1 - August 31, 2022

Check Number	Check Type	Check Date	Vendor	Amount
827530	R	8/5/2022	NORTHLAND MECHANICAL CONTRACTORS, INC.	\$954.26
827531	R	8/5/2022	TRUSTWORTHY GLASS	\$250.00
827532	R	8/5/2022	UHL COMPANY	\$4,335.00
827533	R	8/5/2022	VIRCO INC.	\$5,869.99
827534	R	8/5/2022	HOME DEPOT PRO	\$1,470.96
827535	R	8/8/2022	UHL COMPANY	\$1,085.00
827536	R	8/8/2022	ARVIG	\$3,950.90
827537	R	8/8/2022	ASPEN WASTE SYSTEMS, INC.	\$1,852.01
827538	R	8/8/2022	BLUUM OF MINNESOTA, LLC	\$4,485.46
827539	R	8/8/2022	BORDER STATES ELECTRIC SUPPLY	\$113.15
827540	R	8/8/2022	CENTRAL MN EDUCATIONAL	\$32,955.93
827541	R	8/8/2022	COACH CLIFF'S GAGA BALL PITS LLC	\$1,140.50
827542	R	8/8/2022	COMMITTEE FOR CHILDREN	\$2,329.00
827543	R	8/8/2022	CYBER ADVISORS, INC.	\$18,816.00
827547	R	8/8/2022	DALCO ENTERPRISES INC	\$8,750.17
827548	R	8/8/2022	DISCOUNT SCHOOL SUPPLY	\$4,325.31
827549	R	8/8/2022	DYNAMIC TECHNICAL BUILDING SYSTEMS, INC	\$3,254.46
827550	R	8/8/2022	ENERVATION INC	\$1,907.00
827551	R	8/8/2022	FEDEX	\$38.55
827552	R	8/8/2022	FINKEN WATER SOLUTIONS	\$15.00
827553	R	8/8/2022	FISLERDATA, LLC	\$289.00
827554	R	8/8/2022	FUSE STUDIO, INC.	\$9,341.45
827555	R	8/8/2022	GRANICUS, LLC	\$504.72
827556	R	8/8/2022	HEARTWOOD TREE SURGEONS	\$2,327.20
827557	R	8/8/2022	HIRSHFIELD'S PAINT	\$1,173.84
827558	R	8/8/2022	HORIZON COMMERCIAL POOL SUPPLY	\$1,295.68
827559	R	8/8/2022	INDROTEC	\$3,433.79
827560	R	8/8/2022	INNOVATIVE OFFICE SOLUTIONS LLC	\$417.24
827561	R	8/8/2022	JEFF'S S.O.S. DRAIN & SEWER	\$9,200.00
827563	R	8/8/2022	JOHNSON CONTROLS FIRE PROTECTION LP	\$4,219.44
827564	R	8/8/2022	LAKESHORE LEARNING MATERIALS	\$56.96
827565	R	8/8/2022	LEXIA LEARNING SYSTEMS LLC	\$636.00
827566	R	8/8/2022	LINDE GAS & EQUIPMENT INC	\$79.51
827567	R	8/8/2022	LOFFLER COMPANIES - 131511	\$97.23
827568	R	8/8/2022	MEDCO SUPPLY COMPANY	\$1,278.20
827569	R	8/8/2022	MENARDS	\$148.67
827570	R	8/8/2022	METROPOLITAN COURIER CORP.	\$109.65
827571	R	8/8/2022	MONOPRICE INC	\$1,018.96
827572	R	8/8/2022	MTI DISTRIBUTING CO	\$3,902.95
827573	R	8/8/2022	NOKOMIS SHOE SHOP	\$839.75
827574	R	8/8/2022	OVERHEAD DOOR CO - NORTHLAND	\$206.95
827575	R	8/8/2022	PETERSON COMPANIES INC	\$380.00
827576	R	8/8/2022	PREMIUM WATERS, INC.	\$32.00
827577	R	8/8/2022	QUICKSILVER EXPRESS COURIER	\$158.84
827578	R	8/8/2022	REPUBLIC SERVICES #899	\$6,732.28
827581	R	8/8/2022	RICOH USA, INC	\$796.91
827582	R	8/8/2022	SCHOOL HEALTH CORPORATION	\$20.26
827583	R	8/8/2022	SCREENCAST-0-MATIC	\$1,476.00
827584	R	8/8/2022	SEESAW LEARNING INC	\$39,936.60
827585	R	8/8/2022	SIEMENS INDUSTRY INC	\$2,959.78
827586	R	8/8/2022	SITEONE LANDSCAPE SUPPLY HOLDING, LLC	\$451.92
827588	R	8/8/2022	STAPLES ADVANTAGE	\$2,470.07

Robbinsdale Area Schools  
Board Disbursement Report  
August 1 - August 31, 2022

Check Number	Check Type	Check Date	Vendor	Amount
827589	R	8/8/2022	SYSCLOUD INC.	\$14,571.04
827590	R	8/8/2022	T-MOBILE	\$21,373.36
827591	R	8/8/2022	TEACHER'S DISCOVERY	\$1,594.54
827592	R	8/8/2022	UHL COMPANY	\$5,435.50
827593	R	8/8/2022	WORLD BOOK , INC	\$5,208.00
827594	R	8/8/2022	AMSD	\$11,894.00
827595	R	8/8/2022	CAPTIVATE MEDIA + CONSULTING	\$4,950.00
827596	R	8/8/2022	CARROLL-BLAKEY, ROSILYN	\$800.00
827597	R	8/8/2022	CENTER FOR TEACHING FOR BILITERACY, LLC	\$74,000.00
827597	V	8/31/2022	CENTER FOR TEACHING FOR BILITERACY, LLC	\$74,000.00
827598	R	8/8/2022	GBR INTERPRETING AND TRANSLATION SERVICES	\$675.00
827599	R	8/8/2022	HAZELDEN PUBLISHING	\$16,500.00
827600	R	8/8/2022	LVC COMPANIES INC	\$446.90
827601	R	8/8/2022	ROTARY CLUB OF CRYSTAL, NEW HOPE, ROBBINSDALE	\$155.00
827602	R	8/8/2022	ST PAUL BEVERAGE SOLUTIONS, LLC	\$226.77
827603	R	8/8/2022	THE GOOD ACRE	\$193.56
827604	R	8/8/2022	THE MN BLACK BOX	\$6,517.00
827605	R	8/8/2022	W L HALL CO.	\$2,520.00
827606	R	8/8/2022	BETTCHER, PAUL	\$75.00
827607	R	8/8/2022	CAPTIVATE MEDIA + CONSULTING	\$4,785.00
827608	R	8/8/2022	CARROLL-BLAKEY, ROSILYN	\$400.00
827609	R	8/8/2022	GREENWAY STRATEGY GROUP LLC	\$30,000.00
827610	R	8/8/2022	MEDINA ENTERTAINMENT CENTER	\$308.71
827611	R	8/8/2022	MINNESOTA CHILL FOUNDATION	\$400.00
827612	R	8/8/2022	STATE OF MN DHS	\$6,805.70
827613	R	8/8/2022	ST PAUL BEVERAGE SOLUTIONS, LLC	\$789.71
827614	R	8/10/2022	FUSE STUDIO, INC.	\$647.00
827623	R	8/10/2022	FRATTALLONE'S HARDWARE STORES	\$1,235.21
827634	R	8/10/2022	ADAMS PEST CONTROL - MAIN	\$1,135.00
827635	R	8/10/2022	ANCOM COMMUNICATIONS INC	\$250.00
827636	R	8/10/2022	APEC	\$1,250.20
827637	R	8/10/2022	BLUUM OF MINNESOTA, LLC	\$2,250.00
827638	R	8/10/2022	CDW GOVERNMENT	\$933.10
827643	R	8/10/2022	DALCO ENTERPRISES INC	\$27,663.59
827644	R	8/10/2022	DISCOUNT SCHOOL SUPPLY	\$20.79
827645	R	8/10/2022	DREAMBOX LEARNING, INC	\$92,250.00
827646	R	8/10/2022	ELECTRIC MOTOR REPAIR	\$229.44
827647	R	8/10/2022	GRAINGER, W.W. INC.	\$103.98
827647	V	8/25/2022	GRAINGER, W.W. INC.	\$103.98
827648	R	8/10/2022	HEARTWOOD TREE SURGEONS	\$4,030.76
827649	R	8/10/2022	HILLYARD INC - MINNEAPOLIS	\$13.49
827650	R	8/10/2022	HOLDAHL COMPANY	\$464.07
827651	R	8/10/2022	INSIGHT PUBLIC SECTOR, INC	\$159,146.67
827651	V	8/17/2022	INSIGHT PUBLIC SECTOR, INC	\$159,146.67
827652	R	8/10/2022	JOHNSON CONTROLS INC	\$1,498.08
827653	R	8/10/2022	JOHNSON CONTROLS FIRE PROTECTION LP	\$342.80
827654	R	8/10/2022	LAKESHORE LEARNING MATERIALS	\$94.53
827655	R	8/10/2022	LEXIA LEARNING SYSTEMS LLC	\$19,068.00
827656	R	8/10/2022	LIVEACTION, INC	\$1,045.00
827657	R	8/10/2022	MATRIX COMMUNICATIONS INC.	\$85,520.60
827658	R	8/10/2022	MENARDS	\$92.42
827659	R	8/10/2022	RED WING BUSINESS ADVANTAGE ACCOUNT	\$1,305.59

Robbinsdale Area Schools  
Board Disbursement Report  
August 1 - August 31, 2022

Check Number	Check Type	Check Date	Vendor	Amount
827663	R	8/10/2022	REGENTS OF THE UNIVERSITY OF MINNESOTA	\$12,496.00
827664	R	8/10/2022	RICOH USA INC	\$102.71
827667	R	8/10/2022	RICOH USA, INC	\$1,189.17
827668	R	8/10/2022	SHRED-IT USA	\$576.19
827669	R	8/10/2022	STAPLES ADVANTAGE	\$128.99
827670	R	8/10/2022	STAR TRIBUNE	\$551.10
827671	R	8/10/2022	TRANE US INC	\$475.40
827672	R	8/10/2022	UHL COMPANY	\$1,600.00
827673	R	8/10/2022	UNIVERSAL ATHLETIC SERVICE, INC.	\$1,561.55
827674	R	8/10/2022	JOHN A DALSIN & SON, INC.	\$154,954.50
827681	R	8/10/2022	RICOH USA INC	\$16,606.79
827684	R	8/12/2022	EDUCATION MINNESOTA	\$2.00
827685	R	8/12/2022	FLORIDA STATE DISBURSEMENT UNIT	\$218.77
827686	R	8/12/2022	GREGORY A. BURRELL	\$280.62
827687	R	8/12/2022	GURSTEL LAW FIRM	\$327.12
827688	R	8/12/2022	MESSERLI & KRAMER	\$313.86
827689	R	8/12/2022	MISSISSIPPI DEPART OF HUMAN SERVICES	\$254.79
827690	R	8/12/2022	MN CHILD SUPPORT PAYMENT CTR	\$3,564.69
827691	R	8/12/2022	SCHOOL SERVICE EMPLOYEES	\$19.00
827692	R	8/12/2022	TRUST POINT INC.	\$5,095.94
827693	R	8/12/2022	SCHOOL SERVICE EMPLOYEES	\$2,435.64
827694	R	8/12/2022	JONES, EMILY	\$75.11
827695	R	8/12/2022	CITY OF CRYSTAL	\$85.00
827695	V	8/17/2022	CITY OF CRYSTAL	\$85.00
827696	R	8/12/2022	CITY OF CRYSTAL - ACCOUNTS RECEIVABLE	\$9,287.10
827698	R	8/12/2022	CITY OF GOLDEN VALLEY	\$3,582.72
827701	R	8/12/2022	CITY OF NEW HOPE	\$16,367.67
827703	R	8/12/2022	CITY OF PLYMOUTH	\$8,887.67
827704	R	8/12/2022	ISD 287	\$9,409.87
827705	R	8/12/2022	MAINLINE TRANSPORTATION, INC	\$10,800.00
827706	R	8/12/2022	ALLSTREAM	\$4,011.54
827708	R	8/12/2022	CENTERPOINT ENGERY GAS RECEIVABLES, LLC	\$2,968.33
827709	R	8/12/2022	E-FFICIENT SCHOOL TRANSPORTATION, LLC	\$18,976.25
827711	R	8/12/2022	ISD 287	\$159,425.12
827712	R	8/12/2022	LAKESIDE BUS CO LLC	\$17,180.00
827713	R	8/12/2022	LIBERTY MUTUAL GROUP	\$138,976.33
827713	V	8/17/2022	LIBERTY MUTUAL GROUP	\$138,976.33
827714	R	8/12/2022	US BANK	\$2,100.00
827716	R	8/12/2022	ISD 287	\$159,425.12
827716	V	8/17/2022	ISD 287	\$159,425.12
827717	R	8/17/2022	CITY OF CRYSTAL - ACCOUNTS RECEIVABLE	\$85.00
827718	R	8/17/2022	INSIGHT PUBLIC SECTOR, INC	\$159,147.27
827720	R	8/17/2022	ISD 287	\$159,425.12
827721	R	8/17/2022	LIBERTY MUTUAL INSURANCE COMPANY	\$138,976.33
827722	R	8/19/2022	APPLE COMPUTER INC	\$7,790.00
827723	R	8/19/2022	BRADY, PATTY	\$361.80
827724	R	8/19/2022	CAPTIVATE MEDIA + CONSULTING	\$15,000.00
827724	V	8/26/2022	CAPTIVATE MEDIA + CONSULTING	\$15,000.00
827725	R	8/19/2022	CITY OF NEW HOPE	\$175.00
827726	R	8/19/2022	CITY OF ROBBINSDALE	\$5,947.35
827727	R	8/19/2022	CLINICARE CORPORATION	\$2,676.75
827728	R	8/19/2022	COMPUTER INTEGRATION TECHNOLOGIES, INC	\$37.00

Robbinsdale Area Schools  
Board Disbursement Report  
August 1 - August 31, 2022

Check Number	Check Type	Check Date	Vendor	Amount
827729	R	8/19/2022	COUNCIL FOR EXCEPTIONALCHILDREN	\$195.00
827730	R	8/19/2022	FIELDS, JAMERSON	\$768.00
827731	R	8/19/2022	HDS OF MN INC	\$905.00
827732	R	8/19/2022	HENRY, GINA	\$30.00
827733	R	8/19/2022	INGINA LLC	\$770.00
827734	R	8/19/2022	INTERNATIONAL BACCALAUREATE	\$8,800.00
827735	R	8/19/2022	LVC COMPANIES INC	\$348.40
827736	R	8/19/2022	MAB DESIGN	\$3,200.00
827737	R	8/19/2022	MASA	\$1,850.00
827738	R	8/19/2022	MASPA/STATE NEGOTIATORS	\$550.00
827739	R	8/19/2022	MASSP	\$4,265.00
827740	R	8/19/2022	MCDOWELL AGENCY (THE)	\$11.00
827743	R	8/19/2022	MESPA - MN ELEMENTARY SCHOOL PRINCIPAL ASSOC	\$14,584.00
827744	R	8/19/2022	MINNESOTA CHILL FOUNDATION	\$700.00
827745	R	8/19/2022	MIRROR PROMOTIONS	\$2,104.45
827746	R	8/19/2022	MN DEPT LABOR & INDUSTRY	\$200.00
827747	R	8/19/2022	NCS PEARSON INC	\$613.50
827749	R	8/19/2022	PEDIATRIC HOME SERVICE	\$4,781.25
827750	R	8/19/2022	PEOPLE INCORPORATED	\$3,346.36
827755	R	8/19/2022	SCHMITT MUSIC COMPANY	\$2,897.19
827756	R	8/19/2022	ST PAUL BEVERAGE SOLUTIONS, LLC	\$196.21
827757	R	8/19/2022	TYLER TECHNOLOGIES INC	\$6,562.88
827758	R	8/19/2022	UCP SEGUIN	\$7,953.40
827759	R	8/19/2022	VEEMAH INTEGRATED WELLENSS AND CONSULTING SER	\$4,026.88
827760	R	8/19/2022	VISUAL IMPACT LLC	\$2,235.00
827761	R	8/19/2022	CITY OF NEW HOPE	\$64,105.54
827762	R	8/19/2022	CITY OF ROBBINSDALE	\$22,099.24
827763	R	8/19/2022	CLINICARE CORPORATION	\$2,319.85
827764	R	8/19/2022	ECSI - ELECTRONIC COMM SYSTEMS	\$170.00
827765	R	8/19/2022	ANOKA-HENNEPIN SCHOOLS ECFE	\$180.00
827766	R	8/19/2022	ISD#270 HOPKINS SCHOOL DISTRICT	\$2,627.80
827767	R	8/19/2022	MINNETONKA AREA SCHOOLS ECFE	\$685.00
827768	R	8/19/2022	NATIONAL SCHOOL BOARD ASSOCIATION	\$3,500.00
827769	R	8/19/2022	RATWIK, ROSZAK & MALONEY, P.A.	\$294.00
827770	R	8/19/2022	SCHMITT MUSIC COMPANY	\$36.00
827771	R	8/19/2022	SKILLSUSA, INC	\$26.00
827772	R	8/19/2022	SPORTBOARDZ LLC	\$29.50
827773	R	8/19/2022	ECM PUBLISHERS, INC.	\$68.64
827774	R	8/22/2022	PETERSON, RYAN	\$210.00
827775	R	8/22/2022	ANDRASCHKO, CAROL	\$18.40
827776	R	8/22/2022	BERG, JENNIFER	\$17.10
827777	R	8/22/2022	BERTOSSI, TERESA	\$127.75
827778	R	8/22/2022	BLACKHAWK, BETSY	\$82.10
827779	R	8/22/2022	BOYLAND, STEPHANIE	\$11.95
827780	R	8/22/2022	BRESNAHAN, SHARON	\$150.20
827785	R	8/22/2022	CENTERPOINT ENGERY GAS RECEIVABLES, LLC	\$10,347.56
827786	R	8/22/2022	CENTER FOR TEACHING FOR BILITERACY, LLC	\$44,000.00
827786	V	8/31/2022	CENTER FOR TEACHING FOR BILITERACY, LLC	\$44,000.00
827787	R	8/22/2022	CITY OF NEW HOPE	\$500.00
827788	R	8/22/2022	DAVIS, WILEY	\$23.45
827789	R	8/22/2022	DELUDE, DAWN	\$76.10
827790	R	8/22/2022	DORSEY, GEORGETTE	\$19.95

Robbinsdale Area Schools  
Board Disbursement Report  
August 1 - August 31, 2022

Check Number	Check Type	Check Date	Vendor	Amount
827791	R	8/22/2022	ELIAS, JODI	\$30.80
827792	R	8/22/2022	ENGWELL, JULIE	\$72.65
827793	R	8/22/2022	FORBES SOLUTIONS PLLC	\$14,150.00
827794	R	8/22/2022	HAYWOOD, LEIGHA	\$25.95
827795	R	8/22/2022	HIGH TOUCH HIGH TECH OF THE TWIN CITIES	\$2,358.00
827796	R	8/22/2022	HOLMES, NAOMI	\$38.20
827798	R	8/22/2022	ISD 287	\$159,425.12
827799	R	8/22/2022	JETSON, KAREN	\$21.25
827800	R	8/22/2022	JOHNSON, SARAH	\$278.00
827801	R	8/22/2022	JOHNSON, TODD	\$167.80
827802	R	8/22/2022	KAROL, GAYLE	\$14.50
827803	R	8/22/2022	KERWIN PAQUIN, MICHELLE	\$20.30
827804	R	8/22/2022	LRP PUBLICATIONS	\$345.00
827805	R	8/22/2022	MANCIA, AURELIA	\$19.95
827806	R	8/22/2022	MCEA	\$90.00
827807	R	8/22/2022	MERRIAM, MARY	\$134.60
827808	R	8/22/2022	MOHAMED, KALTUM	\$1,100.00
827809	R	8/22/2022	MORDAL, KIM	\$64.75
827810	R	8/22/2022	PEDIATRIC HOME SERVICE	\$1,556.25
827811	R	8/22/2022	PEPLINSKI, JULIE	\$339.35
827812	R	8/22/2022	PLUCAR, GWENDOLYN	\$69.45
827813	R	8/22/2022	REKELA, BARBARA	\$48.05
827814	R	8/22/2022	STEINKE, AMY	\$190.60
827815	R	8/22/2022	THE RETROFIT COMPANIES, INC	\$1,012.50
827816	R	8/22/2022	TREJO MORALES, INES	\$148.00
827817	R	8/22/2022	WELLBEATS, INC	\$722.80
827818	R	8/22/2022	WHITEHOUSE, LORA	\$25.00
827819	R	8/22/2022	WIGG, BRIAN	\$21.80
827820	R	8/22/2022	WILLIAMS, ALYSIA	\$9.84
827821	R	8/22/2022	WILLIS, VASILIKI	\$46.45
827822	R	8/22/2022	WINNETKA PROPERTIES	\$23,682.07
827823	R	8/26/2022	EDUCATION MINNESOTA	\$2.00
827824	R	8/26/2022	FLORIDA STATE DISBURSEMENT UNIT	\$218.77
827825	R	8/26/2022	GREGORY A. BURRELL	\$280.62
827826	R	8/26/2022	MESSERLI & KRAMER	\$313.86
827827	R	8/26/2022	MISSISSIPPI DEPART OF HUMAN SERVICES	\$254.79
827828	R	8/26/2022	MN CHILD SUPPORT PAYMENT CTR	\$3,888.73
827829	R	8/26/2022	SCHOOL SERVICE EMPLOYEES	\$19.00
827830	R	8/26/2022	TRUST POINT INC.	\$6,176.04
827831	R	8/26/2022	SCHOOL SERVICE EMPLOYEES	\$2,435.64
827832	R	8/25/2022	ECM PUBLISHERS, INC.	\$612.00
827833	R	8/25/2022	KFI ENGINEERS, PC	\$37,661.57
827834	R	8/25/2022	A.J. MOORE ELECTRIC, INC.	\$277,391.45
827835	R	8/25/2022	ACOUSTICS ASSOCIATES INC	\$76,696.35
827836	R	8/25/2022	ARVIG ENTERPRISES, INC	\$3,000.00
827837	R	8/25/2022	BLUUM OF MINNESOTA, LLC	\$27,368.00
827838	R	8/25/2022	BORDER STATES ELECTRIC SUPPLY	\$272.98
827839	R	8/25/2022	BRAUN INTERTEC CORPORATION	\$21,702.56
827840	R	8/25/2022	BUILDING RESTORATION CORP	\$176,304.80
827841	R	8/25/2022	CDW GOVERNMENT	\$56,860.45
827842	R	8/25/2022	CULLIGAN BOTTLED WATER	\$40.00
827844	R	8/25/2022	DALCO ENTERPRISES INC	\$10,509.61

Robbinsdale Area Schools  
Board Disbursement Report  
August 1 - August 31, 2022

Check Number	Check Type	Check Date	Vendor	Amount
827845	R	8/25/2022	DELL MARKETING L.P.	\$744.96
827846	R	8/25/2022	EARL F. ANDERSEN, INC.	\$451.65
827847	R	8/25/2022	FLAGSHIP RECREATION LLC	\$7,431.56
827848	R	8/25/2022	FOBBE ELECTRIC INC	\$75,857.50
827853	R	8/25/2022	FRATTALLONE'S HARDWARE STORES	\$1,179.20
827854	R	8/25/2022	FUSE STUDIO, INC.	\$8,998.33
827855	R	8/25/2022	GRAINGER	\$3,389.56
827856	R	8/25/2022	HEALY AWARDS INC	\$551.96
827857	R	8/25/2022	HOLDAHL COMPANY	\$343.68
827858	R	8/25/2022	INDROTEC	\$3,634.67
827859	R	8/25/2022	JAMF SOFTWARE, LLC	\$23,652.00
827860	R	8/25/2022	JOHN A DALSIN & SON, INC.	\$432,288.95
827862	R	8/25/2022	KFI ENGINEERS, PC	\$77,368.94
827863	R	8/25/2022	LAKESHORE LEARNING MATERIALS	\$261.29
827866	R	8/25/2022	LVC COMPANIES INC	\$1,395.00
827867	R	8/25/2022	MAERTENS-BRENNY CONSTRUCTION CO.	\$369,949.94
827868	R	8/25/2022	MENARDS	\$636.79
827869	R	8/25/2022	MIDLAND NURSERY INC.	\$98.00
827870	R	8/25/2022	MINNESOTA PAVING AND MATERIALS	\$200,711.25
827871	R	8/25/2022	MTI DISTRIBUTING CO	\$261.96
827872	R	8/25/2022	NOKOMIS SHOE SHOP	\$469.85
827873	R	8/25/2022	NORTHLAND MECHANICAL CONTRACTORS, INC.	\$555,839.75
827874	R	8/25/2022	NOW MICRO INC.	\$120.00
827875	R	8/25/2022	O'REILLY AUTOMOTIVE, INC	\$60.93
827876	R	8/25/2022	PETERSON COMPANIES INC	\$190.00
827877	R	8/25/2022	POCKET NURSE	\$633.95
827878	R	8/25/2022	PRO LIGHTING GROUP INC	\$1,161.00
827879	R	8/25/2022	QUICKSILVER EXPRESS COURIER	\$289.79
827880	R	8/25/2022	REGENTS OF THE UNIVERSITY OF MINNESOTA	\$5,347.00
827882	R	8/25/2022	RICOH USA, INC	\$353.70
827883	R	8/25/2022	ROOF SPEC INC	\$9,700.00
827885	R	8/25/2022	SAVVAS LEARNING COMPANY LLC	\$14,969.00
827886	R	8/25/2022	SVL SERVICE CORPORATION	\$115,145.00
827887	R	8/25/2022	THE RETROFIT COMPANIES, INC	\$807.20
827888	R	8/25/2022	TRANE US INC	\$3,208.00
827889	R	8/25/2022	TREND ENTERPRISES INC	\$94.85
827890	R	8/25/2022	TWIN CITIES BOILER REPAIR	\$17,500.00
827891	R	8/25/2022	ULINE	\$201.95
827892	R	8/25/2022	UNIVERSAL ATHLETIC SERVICE, INC.	\$1,048.45
827893	R	8/25/2022	WASCHE COMMERCIAL FINISHES, INC	\$22,116.00
827894	R	8/25/2022	GRAINGER	\$103.98
827895	R	8/26/2022	CAPTIVATE MEDIA + CONSULTING	\$3,500.00
827896	R	8/29/2022	HOLY TRINITY LUTHERAN SCHOOL	\$7,044.29
827897	R	8/29/2022	NYSTROM PUBLISHING COMPANY	\$1,773.44
827898	R	8/29/2022	UNITED PARCEL SERVICE	\$42.21
827899	R	8/29/2022	VALPAK FRANCHISE OPERATIONS, LLC	\$28,800.00
827900	R	8/29/2022	VISUAL IMPACT LLC	\$106.00
202200090	W	8/12/2022	COMMISSIONER OF REVENUE REF #	\$50,945.28
202200091	W	8/12/2022	INTERNAL REVENUE SERVICE REF #	\$307,185.67
202200092	W	8/12/2022	MN TEACHERS RETIREMENT ASSOC	\$83,727.97
202200093	W	8/12/2022	PUBLIC EMPLOYEES RETIREMENT ASSOCIATION	\$99,103.99
202200094	W	8/12/2022	AVIBEN	\$36,248.66

Robbinsdale Area Schools  
Board Disbursement Report  
August 1 - August 31, 2022

Check Number	Check Type	Check Date	Vendor	Amount
202200095	W	8/12/2022	ISD#281: FLEX BENEFITS	\$4,675.94
202200096	W	8/12/2022	AMERIFLEX	\$5,471.46
202200097	W	8/12/2022	I S D # 281 - PAYROLL ACCT	\$920,889.37
202200097	V	8/12/2022	I S D # 281 - PAYROLL ACCT	\$920,889.37
202200098	W	8/12/2022	I S D # 281 - PAYROLL ACCT	\$908,710.96
202200099	W	8/30/2022	XCEL ENERGY	\$21,625.53
202200100	W	8/25/2022	XCEL ENERGY	\$97,293.42
202200101	W	8/24/2022	XCEL ENERGY	\$52,292.35
202200102	W	8/26/2022	COMMISSIONER OF REVENUE REF #	\$51,541.75
202200103	W	8/26/2022	INTERNAL REVENUE SERVICE REF #	\$303,561.17
202200104	W	8/26/2022	MN TEACHERS RETIREMENT ASSOC	\$78,972.75
202200105	W	8/26/2022	PUBLIC EMPLOYEES RETIREMENT ASSOCIATION	\$96,504.55
202200106	W	8/26/2022	AVIBEN	\$38,624.93
202200107	W	8/26/2022	ISD#281: FLEX BENEFITS	\$5,599.46
202200108	W	8/26/2022	AMERIFLEX	\$6,080.17
202200109	W	8/5/2022	HARRIS BANK	\$62,770.39
202200110	W	8/5/2022	STAPLES ADVANTAGE	\$2,471.90
202200111	W	8/5/2022	KONA ICE TWIN CITIES	\$623.20
202200112	W	8/5/2022	THREE RIVERS PARK DISTRICT	\$39.50
202200113	W	8/5/2022	MN CHILDREN'S MUSEUM	\$130.00
202200114	W	8/5/2022	MINNESOTA HISTORICAL SOCIETY	\$504.00
202200115	W	8/5/2022	STAGES THEATRE CO	\$2,726.00
202200116	W	8/5/2022	CITY OF CRYSTAL	\$3,036.00
202200117	W	8/5/2022	SCIENCE MUSEUM OF MINNESOTA	\$303.00
202200118	W	8/5/2022	AMAZON.COM	\$1,154.71
202200119	W	8/5/2022	ASCD	\$239.00
202200120	W	8/5/2022	UNIVERSITY OF MN - TWIN CITIES	\$690.00
202200121	W	8/5/2022	CITY OF NEW HOPE	\$1,706.76
202200122	W	8/5/2022	SIDEKICK THEATRE	\$1,413.00
202200123	W	8/5/2022	PACER CENTER	\$160.00
202200124	W	8/5/2022	STAR TRIBUNE	\$270.60
202200125	W	8/5/2022	CITY OF GOLDEN VALLEY	\$940.00
202200126	W	8/5/2022	LAKES COUNTRY SERVICE COOP	\$2,265.00
202200127	W	8/5/2022	ALL STRINGS ATTACHED	\$128.00
202200128	W	8/5/2022	MILTON'S	\$1,224.60
202200129	W	8/5/2022	TARGET	\$1,176.91
202200130	W	8/5/2022	MICHAELS #9700	\$122.40
202200131	W	8/5/2022	SCHOOL NUTRITION ASSOCIATION	\$18.00
202200132	W	8/5/2022	POW WOW GROUNDS LLC	\$2,124.00
202200133	W	8/5/2022	2SCOOPS ICE CREAM EATERY	\$3,220.00
202200134	W	8/5/2022	HY-VEE, INC.	\$726.76
202200135	W	8/5/2022	LAKESHORE LEARNING MATERIALS	\$266.61
202200136	W	8/5/2022	CITY OF PLYMOUTH	\$25.00
202200137	W	8/5/2022	CITY OF BROOKLYN PARK	\$30.00
202200138	W	8/5/2022	ANCHOR PAPER	\$1,618.91
202200139	W	8/5/2022	RYDIN DECAL	\$969.25
202200140	W	8/5/2022	UCONN	\$350.00
202200141	W	8/5/2022	NEW HOPE BOWL LOUNGE	\$740.00
202200142	W	8/5/2022	MENARDS	\$5.99
202200143	W	8/5/2022	CUB FOODS	\$155.65
202200144	W	8/5/2022	MINNESOTA ZOO	\$870.00
202200145	W	8/5/2022	CITY OF EAGAN	\$250.00

Robbinsdale Area Schools  
Board Disbursement Report  
August 1 - August 31, 2022

Check Number	Check Type	Check Date	Vendor	Amount
202200146	W	8/5/2022	BLICK ART MATERIALS	\$1,109.54
202200147	W	8/5/2022	MASMS	\$125.00
202200148	W	8/5/2022	HOME DEPOT CREDIT SERVICES	\$23.90
202200149	W	8/5/2022	BIRCHBARK BOOKS	\$50.00
202200150	W	8/5/2022	TWINS BALLPARK, LLC	\$1,180.00
202200151	W	8/26/2022	I S D # 281 - PAYROLL ACCT	\$856,316.32
202200157	W	8/29/2022	XCEL ENERGY	\$78,682.91
202200158	W	8/31/2022	ISD#281: FLEX BENEFITS	\$1,704,907.00
202200168	W	8/8/2022	DELTA DENTAL	\$30,342.34
202200169	W	8/12/2022	DELTA DENTAL	\$25,012.33
202200170	W	8/19/2022	DELTA DENTAL	\$29,504.00
202200171	W	8/22/2022	DELTA DENTAL	\$7,480.68
202200172	W	8/26/2022	DELTA DENTAL	\$25,893.40
202200173	W	8/1/2022	PREFERRED ONE	\$582,648.40
202200174	W	8/8/2022	PREFERRED ONE	\$309,586.05
202200175	W	8/11/2022	PREFERRED ONE	\$130,965.02
202200176	W	8/15/2022	PREFERRED ONE	\$258,631.49
202200177	W	8/22/2022	PREFERRED ONE	\$364,643.99
202200178	W	8/29/2022	PREFERRED ONE	\$322,440.46
202200179	W	8/1/2022	PREFERRED ONE	\$66,849.50
202200180	W	8/8/2022	PREFERRED ONE	\$51,081.02
202200181	W	8/15/2022	PREFERRED ONE	\$106,579.73
202200182	W	8/29/2022	PREFERRED ONE	\$98,082.09
202200183	W	8/30/2022	AMERIFLEX	\$11,861.35
202200184	W	8/30/2022	AMERIFLEX	\$7,791.63
202200185	W	8/30/2022	AMERIFLEX	\$6,562.98
202200186	W	8/30/2022	AMERIFLEX	\$10,166.77
202200187	W	8/30/2022	AMERIFLEX	\$15,202.01
202200188	W	8/1/2022	AVIDIA BANK	\$4,123.73
202200189	W	8/2/2022	AVIDIA BANK	\$45.84
202200190	W	8/2/2022	AVIDIA BANK	\$13,138.81
202200191	W	8/15/2022	AVIDIA BANK	\$4,466.88
202200192	W	8/29/2022	AVIDIA BANK	\$4,624.58
202200193	W	8/31/2022	AVIDIA BANK	\$287.04
202200194	W	8/9/2022	FEEDPAY	\$1,750.00
202200195	W	8/9/2022	BANKCARD SERVICES WORLDWIDE	\$11,530.78
202200196	W	8/11/2022	WELLS FARGO BROKERAGE SERV LLC	\$356.82
202200197	W	8/15/2022	AMERIFLEX	\$5,718.30
222300046	A	8/2/2022	Grace, Tamuriel	\$1,173.27
222300047	A	8/2/2022	HANSON, MELODIE	\$192.52
222300048	A	8/2/2022	HARRIS, RAMON	\$80.00
222300049	A	8/2/2022	LEWIS, JACQUES	\$90.00
222300050	A	8/2/2022	MCNAMEE, PAUL	\$12.17
222300051	A	8/2/2022	MEAD, THOMAS	\$90.00
222300052	A	8/2/2022	SALA, PAULA	\$90.00
222300053	A	8/2/2022	WILLIAMS, WILLIAM	\$90.00
222300054	A	8/2/2022	DAVEY, MELISSA	\$27.00
222300055	A	8/2/2022	Diamond, Stephanie	\$43.00
222300056	A	8/2/2022	Geier, Lisa	\$50.21
222300057	A	8/2/2022	GROSSKURTH, DERECK	\$59.00
222300058	A	8/2/2022	HANCOCK, JAY	\$61.00
222300059	A	8/2/2022	HARMON, REBECCA	\$60.00

Robbinsdale Area Schools  
Board Disbursement Report  
August 1 - August 31, 2022

Check Number	Check Type	Check Date	Vendor	Amount
222300060	A	8/2/2022	MARSH & MCLENNAN AGENCY	\$34,095.50
222300061	A	8/2/2022	Oesterreich, Elizabeth	\$32.13
222300062	A	8/2/2022	Sloss, Karis	\$45.66
222300063	A	8/2/2022	Strecker, Casey	\$52.15
222300064	A	8/2/2022	VOIGHT, MARTHA	\$207.31
222300065	A	8/2/2022	VOMHOF, KELLI	\$213.83
222300066	A	8/2/2022	MN-CRYSTAL CENTER - HA, LLC	\$85,090.36
222300067	A	8/9/2022	COLLABORATIVE STUDENT TRANSPORTATION OF MINNE	\$2,665.00
222300068	A	8/12/2022	AUL SPECIAL PAY TRUST/MIDAMERICA ADM & RETIRE	\$505.75
222300069	A	8/12/2022	AUL HEALTH BENEFIT TRUST/MIDAMERICA ADM & RET	\$242,863.74
222300070	A	8/12/2022	AFSCME COUNCIL 5	\$876.37
222300071	A	8/12/2022	ROBB FEDERATION OF TEACHERS	\$1,079.04
222300072	A	8/13/2022	Kessler, Clarice	\$925.00
222300073	A	8/13/2022	RESERVE ACCOUNT-PITNEY BOWES	\$15,000.00
222300074	A	8/13/2022	Williams, Anthony	\$177.90
222300075	A	8/26/2022	ROBB FEDERATION OF TEACHERS	\$561.47
222300076	A	8/26/2022	AUL HEALTH BENEFIT TRUST/MIDAMERICA ADM & RET	\$49,136.46
222300077	A	8/26/2022	AFSCME COUNCIL 5	\$1,610.04
222300078	A	8/30/2022	COLLABORATIVE STUDENT TRANSPORTATION OF MINNE	\$11,530.00
222300079	A	8/30/2022	CAMBRIDGE EDUCATIONAL SERVICES	\$6,951.30
222300080	A	8/30/2022	HEALTHSTAT INC	\$25,937.47
222300081	A	8/30/2022	MN-CRYSTAL CENTER - HA, LLC	\$85,678.42
222300083	A	8/31/2022	METROPOLITAN LIFE INSURANCE COMPANY	\$50,315.28
222300084	A	8/31/2022	SUPERIOR VISION SERVICES, INC.	\$7,719.85

**Total \$14,174,611.45**

**School Board of Robbinsdale Area Schools**

Business Meeting – September 19, 2022

**AGENDA SECTION:** Board Reports**ITEM:** 6. Board Reports**COMMENTS BY:** Helen Bassett, School Board Chair

This portion of the agenda provides an opportunity for Board members to update the community on school board-related work on committees or to make announcements of interest to the public.



ROBBINSDALE  
Area Schools

# Announcements | September 19, 2022

## Financial Advisory Council (FAC) Member Application Period

Extended through September 23, 2022

## League of Women Voters School Board Candidate Forum

Tuesday, September 27, 2022 6:00 p.m.

## Legislative Action Coalition (LAC) Meeting

Rescheduled to Thursday, September 29, 2022 5:00 p.m.

*Visit the district calendar on our website for additional details on these meeting/events.  
Visit our school websites for activities and sporting event details.*



## 2022-2023 School Board Meetings

Meetings are typically held the first and third Monday of each month (except when the calendar does not permit) at the Education Service Center, 4148 Winnetka Avenue North, New Hope, MN, in the Board Room on the third floor. School Board Work Sessions are scheduled to follow the first school board meeting of the month. School Board Work Sessions typically start ten minutes after the adjournment of the preceding School Board Business Meeting.

2022			
Monday	July 18	6 p.m. 7 p.m.	Listening Time Business Meeting
Monday	August 1	6 p.m.	Business Meeting Work Session
Monday	August 15	6 p.m. 7 p.m.	Listening Time Business Meeting
Wednesday	September 7	6 p.m.	Business Meeting Work Session
Monday	September 19	6 p.m. 7 p.m.	Listening Time Business Meeting
Monday	October 3	6 p.m.	Business Meeting Work Session
Monday	October 17	6 p.m. 7 p.m.	Listening Time Business Meeting
Monday	November 7	6 p.m. 7 p.m.	World's Best Work Force Public Hearing Business Meeting Work Session
Tuesday	November 8		Election Day
Monday	November 21	6 p.m. 7 p.m.	Listening Time Business Meeting
Monday	December 5	6 p.m. 7 p.m.	Truth in Taxation Public Hearing Business Meeting Work Session
Monday	December 19	6 p.m. 7 p.m.	Truth in Taxation Public Hearing (if needed) Listening Time



			Business Meeting Closed Session for Supt. Mid-Year Review
--	--	--	--

2023			
Monday	January 9	6 p.m.	Organizational Meeting Business Meeting Work Session
Tuesday	January 24	6 p.m. 7 p.m.	Listening Time Business Meeting
Monday	February 6	6 p.m.	Business Meeting Work Session
Tuesday	February 21	6 p.m. 7 p.m.	Listening Time Business Meeting
Monday	March 6	6 p.m.	Business Meeting Work Session
Monday	March 20	6 p.m. 7 p.m.	Listening Time Business Meeting
Tuesday	April 4	6 p.m.	Business Meeting Work Session
Monday	April 17	6 p.m. 7 p.m.	Listening Time Business Meeting
Monday	May 1	6 p.m.	Business Meeting Work Session
Monday	May 15	6 p.m. 7 p.m.	Listening Time Business Meeting
Monday	May 22	8 p.m.	Closed Session for Supt. Evaluation
Monday	June 5	6 p.m.	Business Meeting Work Session
Monday	June 19	6 p.m. 7 p.m.	Listening Time Business Meeting



## School Board of Robbinsdale Area Schools

Business Meeting – September 19, 2022

**AGENDA SECTION:** Adjournment

---

**ITEM:** 10. Action: Adjournment of Business Meeting

---

**PRESENTER:** Helen Bassett, School Board Chair

---

**Recommended Motion:** Call the business meeting to a close.

**Motion by:** \_\_\_\_\_ **Yes:** \_\_\_\_\_ **Passed:** \_\_\_\_\_

**Second by:** \_\_\_\_\_ **No:** \_\_\_\_\_ **Failed:** \_\_\_\_\_

**Abstentions:** \_\_\_\_\_