

Facilities and Operations Committee
Meeting
Wednesday, January 24, 2024 4:30 PM

Dr. Matthew Prophet Education Center
501 N. Dixon St.
Portland, OR 97227

Agenda

1. Introductions
2. Roosevelt High School Grandstands
3. Grant Bowl - Phase 2
4. Cleveland High School Comprehensive Planning Update
5. Ida B Wells High School Comprehensive Planning Update
6. Public Comment Comment will be provided during the related agenda topic.
 - The topic must be related to an item on the agenda.
 - To sign up for public comment email PublicComment@pps.net or call 503-916-3741.
7. Adjourn



PORTLAND PUBLIC SCHOOLS

OFFICE OF OPERATIONS

501 North Dixon Street / Portland, OR 97227

Telephone: (503) 916-2000

Mailing Address: P. O. Box 3107 / 97208-3107

STAFF MEMO

Date: January 9, 2023

To: Facilities & Operations Committee

From: Dan Jung, Chief Operating Officer

Subject: Roosevelt High School Grandstands

SUMMARY

The existing Roosevelt High School grandstands have an approximate 800 person capacity. Improvements to the grandstands were not included in the RHS modernization, however the track and field have recently been replaced. District staff have looked into the request to increase capacity to 1,500 capacity for home spectators and add 800 visitor seats on the opposite side of the field.

SCOPE OF WORK

The requested scope includes expansion of the existing home bleachers from 800 seats to 1,500 seats, the installation of a visitors' bleacher section with a seating capacity of 800 seats, and added secure storage under the existing home bleachers (total seat count after completion will be 2,300). The proposal will also add approximately 6,000 SF of building area for use as storage under the bleachers. This would require demolition of the existing concession building located adjacent to the home bleachers.

The proposed project will require a Type III Conditional Use review and cost approximately \$3.5M - \$4.0M.

Proceeding with design and construction of grandstands will require allocation of capital funds. PPS's capital needs are deep and broad, and funds are finite.

DISTRICT CAPITAL NEEDS

Deferred Maintenance

PPS's Facility Condition Assessment (FCA) - completed in 2021 - documented the condition of the District's building assets. The FCA identified over 3000 assets in either Currently Critical or Potentially Critical condition and another approximately 2500 in Necessary but Not Yet Critical.

Examples of critical deficiencies include:

- Failing sanitary sewer lines
- Outdated electrical equipment, wiring and lights
- Deteriorated window systems
- Outdated fire/life/safety systems
- Inoperable stage lighting and curtains
- Mechanical system controls, fans, air handlers and boilers no longer working properly
- Leaking and eroding domestic water lines
- Outdated play equipment
- And much more

Repairing systems that are long past their useful life is costly, inefficient and not sustainable. Ultimately the systems will fail, creating emergency situations. Much of the failing equipment is so outdated that replacement parts are no longer available to repair, which often requires PPS's Machine Shop to fabricate (build from scratch) parts.

Impacts of these aged systems are real and growing. Temperature issues are the most common complaints from school staff - with over 6,000 mechanical system work orders submitted last year - and system issues range from simple discomfort (both hot and cold) to poor indoor air quality, costly emergency repairs and even school closures due to lack of heat.

Staff have identified 5 - 10 sanitary sewer lines in critical condition. In just the last few weeks Astor Elementary was closed for 1 day due to a sewer backup and Jefferson High School was closed due to a deteriorated water supply line that caused flooding.

The Facility Condition Index (FCI) is the ratio of a building's maintenance costs relative to replacing the building at current construction costs. FCI values range from 0.00 (Good) to 1.00

(Critical). A higher FCI indicates a greater need for remedial funding, relative to the facility's replacement value. The District average FCI is 0.13 or "Poor." Sixty-two (62) facilities rated Poor or Critical of the ninety-four (94) sites assessed, indicating a critical need to invest in existing facilities.

Staff estimate that to reduce the FCI from "poor" to "fair" over a ten-year period, would require a total investment of approximately \$700 million, or \$70 million per year.¹

Planned Improvements

The Board of Education accepted the Long-Range Facility Plan (LRFP) in December 2021 after a year of development and engagement with subject matter staff and the broader District community. The purpose of the LRFP is to plan for future capital improvements within the context of current educational vision and student enrollment trends over the next 10 to 15 years. The plan provides a strategic framework to be tested against community voice and vision prior to future bond campaigns.

The plan notes that most of the District's high schools are on small urban sites and lack the acreage to provide the athletic facilities and fields needed to support comprehensive high school athletic programming. The priority athletic capital improvements noted in the LRFP are:

High Priority

- Develop Jackson, Marshall, and Whitaker-Adams as athletic hubs.
- Athletic upgrades at four (4) middle schools: Lane, Ockley Green, George, and West Sylvan. Each site should at minimum have a multipurpose turf field with a track, an appropriately sized main gym and an auxiliary gym.
- Access to turf baseball and softball fields for all high schools (e.g., Franklin, Marshall).

Moderate Priority

- Athletic upgrades at four (4) additional middle schools: Hosford, Beaumont, Roseway Heights, and Harrison Park. Each site should at minimum have a multipurpose turf field with a track, an appropriately sized main gym and an auxiliary gym.

[See LRFP - Volume 1 \(page 74 - 79\) for details.](#)

¹ This calculation is based on the deficiencies identified in the FCA and does not account for additional asset failures after completion of the FCA.

AVAILABILITY OF FUNDS

Non-Bond Funds

Non-bond funds for facility improvements are limited. PPS's primary source for unrestricted capital are Funds 404² and 445.³ New revenue into these funds have (generally) been dropping in recent years. The below table illustrates that the average new revenue for the 3-year period from FY17 - FY19 was about \$8 million; however the average for the 3-year period from FY22 - FY24 decreased to approximately \$5.8 million per year. Decreasing funding coupled with high construction escalation rates in recent years, and an aged facility portfolio, has hampered PPS's ability to respond to critical facility needs.

	New Revenue		
	Fund 404	Fund 445	Total
FY 2016/17	7,199,536	676,131	7,875,667
FY 2017/18	8,424,893	727,914	9,152,807
FY 2018/19	6,158,795	847,021	7,005,816
FY 2019/20	4,372,877	11,347,858 ¹	15,720,735
FY 2020/21	3,464,861	45,441	3,510,301
FY 2021/22	5,445,928	78,579	5,524,507
FY 2022/23	4,466,906	737,928	5,204,834
FY 2023/24	5,506,267	1,220,000	6,726,267

¹ \$10 million from sale of property

Additionally PPS's primary fund (Fund 191) for non-capital improvements is relatively very small and has also been declining in revenue in recent years.

Begin Fund Balance	
	Fund 191
FY 2016/17	2,206,777
FY 2017/18	2,762,132
FY 2018/19	1,610,606
FY 2019/20	1,640,606
FY 2020/21	1,310,606
FY 2021/22	1,245,606
FY 2022/23	1,186,606
FY 2023/24	996,606

² Fund 404 receives revenue from the City of Portland's Construction Excise Tax

³ Fund 445 receives revenue from Civic Use of Building permit fees, lease revenue and property sales

It is also worth noting that the majority of currently available funds (capital and non-capital) have been allocated to active construction projects. PPS has over 100 current projects, below is a sampling:

- Sidewalk repairs at Richmond
- Chimney repairs at Rice
- Elevator repairs at Jackson
- Steam leak repairs at Buckman
- Sewer line replacement at Creston
- Carpet replacement at Astor
- Front door replacement at Rigler
- Pre-K play equipment at King
- Water intrusion repair at Llewellyn
- Abate and replace flooring at Abernethy
- Installation of projector at Woodlawn
- Replacement of the vent hood at Sunnyside
- Replace exterior lighting at Jackson
- Repair covered play structure at Sabin
- Replace the roll-up doors at Chavez
- Regrout and repair restroom at Cleveland
- Repair siding at Creston
- Replace univents at Applegate
- Repair sidewalk at Boise-Eliot
- Repair sewer line at Chief Joseph
- Replace the backflow fire sprinkler at George
- Repair stairs at Grey

Bond Funds

The Lincoln High School Modernization project completed phase 1 of construction in summer 2022 and reached substantial completion for phase 2 in summer 2023. The project is currently in the closeout phase. The project budget contains \$242,500,000 in funds coming from the 2017 general obligation bond. Current forecasts estimate the project will complete approximately \$17 million under budget.⁴

⁴ \$10 million of this savings has been earmarked for additional health and safety improvements in an MOA with the Portland Association of Teachers.

The 2017 bond funded the modernization of Lincoln High School, McDaniel High School, Benson Polytechnic High School and Kellogg Middle School. Additionally the 2017 bond language states at least \$158 million of funds will be allocated for district-wide health and safety projects.⁵

As the 2017 construction program nears completion⁶ program savings become available for other/additional projects. Program savings can be allocated to projects that are capitalizable and meet bond compensability requirements.⁷ Generally bond funds can be used for a variety of capital projects from addressing current deferred major maintenance needs - such as replacing end of life elevators, failing playgrounds, deteriorating sewer lines, etc. - to new and unplanned projects.

RECOMMENDATION

Considering the condition of PPS's existing facility portfolio, and the limited availability of funding to address deferred maintenance, Staff recommends that future improvements to Roosevelt's grandstands be considered as part of future bond planning, and that 2017 bond savings be used to address deferred maintenance and existing facility needs.

⁵ To date the 2017 bond has spent approximately \$122M on health and safety improvements.

⁶ The final major construction project, Benson Polytechnic HS, is scheduled to reach substantial completion in summer 2024.

⁷ Any bond allocation to a project that is not expressly identified in the bond language would need to be vetted with bond counsel.

ATHLETICS

PROGRAM VISION & DESCRIPTION

- » Develop Multiple Athletic Hubs: Due to the undersized high school sites, the district will need to develop three (3) athletic hubs over the next 10 years to meet current and future athletic needs. Jackson, Marshall, and Whitaker-Adams are the preferred locations for the athletic hubs. See below for the desired athletic hub facilities, fields, and amenities.
- » Athletic Upgrades to One (1) Middle School in each Cluster: Eight (8) middle school sites were identified (one in each cluster) for athletic facility upgrades. Each site should at minimum have a multipurpose turf field with a track, an appropriately sized main gym, and an auxiliary gym.

CLUSTER	SITE
CLEVELAND	HOSFORD MS
FRANKLIN	LANE MS
GRANT	BEAUMONT MS
JEFFERSON	OCKLEY GREEN MS
MCDANIEL	ROSEWAY HEIGHTS MS
ROOSEVELT	GEORGE MS
WELLS-BARNETT	JACKSON MS
LINCOLN	WEST SYLVAN MS

FACILITY CONSTRAINTS

- » Most of the district’s high schools are on small urban sites and lack the acreage to provide the athletic facilities and fields needed to support a comprehensive high school athletics program.
- » Middle school facilities are outdated in terms of

- both indoor athletic facilities and outdoor spaces. The district is working to add more athletic program options at the middle school level and improve access; however, the level of demand exceeds available facility capacity/resources.
- » There is a general lack of baseball/softball facilities on both the east and west sides of the district.
 - » BIPOC communities are disproportionately impacted by disparities in athletic facilities/fields. North Portland and Southeast Portland are the areas where upgrades are most needed.

CAPITAL FORECAST

High Priority

- » Develop Jackson, Marshall, and Whitaker-Adams as athletic hubs.
- » Athletic upgrades at four (4) middle schools: Lane, Ockley Green, George, and West Sylvan. Each site should at minimum have a multipurpose turf field with a track, an appropriately sized main gym and an auxiliary gym.
- » Access to turf baseball and softball fields for all high schools (e.g., Franklin, Marshall).

Moderate Priority

- » Athletic upgrades at four (4) additional middle schools: Hosford, Beaumont, Roseway Heights, and Harrison Park. Each site should at minimum have a multipurpose turf field with a track, an appropriately sized main gym and an auxiliary gym.

Lower Priority

- » There is insufficient information to accurately discern long-term facilities needs for athletic programs.

HUB CONSTITUENCY

At minimum, each athletic hub site should provide:

- » Double wide Field: football/soccer fields (two fields side-by-side) that can also serve baseball/softball
- » Artificial turf
- » Field lighting
- » Bleacher seating around baseball/softball fields in the corners.
- » Eight (8) competition tennis courts with exterior lighting

The following facilities are also highly desired at each athletic hub site:

- » Main gymnasium and large auxiliary gymnasium.
- » Multi Use space for basketball, wrestling, etc.

Additionally, the following athletic amenities may be provided at select athletic hub sites at the district’s discretion based on funding availability, site features, public partnerships, and evolving programmatic needs:

- » Multiple additional lit turf fields, including an upper baseball/softball field with track and one (1) multipurpose field
- » Competition lap pool with 5-8 lanes
- » Dance room
- » Wrestling room / mat room

ATHLETIC HUBS

TOWARD A HUB MODEL

Like other urban districts, Portland Public School's sites are located on small parcels of land. This space constraint is especially challenging for athletics because of the program's intensive space needs.

The section on the previous page outlines the facility supports necessary for a comprehensive athletics program, including three tiers of regulation team competitions. Field areas are governed by the National Federation of State High School Associations (NFHS) standards. Most schools do not have enough land area for multiple fields, seating, and lighting. Across the high school portfolio, only McDaniel supports comprehensive athletics programming; even McDaniel presents scheduling challenges for a three-tiered athletics schedule.

As a shared resource across schools, hubs are a viable path toward expanding existing athletics programming and alleviating schedule constraints. The potential hub sites identified here collectively incorporate all areas of the district. Yet, because each hub is regionally distinct, the hub model is only successful if all three sites are developed. Omit one site, and the model only contributes to the existing programmatic imbalance.

In addition to their strategic geography, these hub sites have sufficient land area for multiple fields, spectator seating, and support buildings. Jackson is the largest site in the district with over 34 acres. Marshall is second with over 24 acres. Whitaker-Adams is the smallest of the hubs with 10 acres but is vacant and could be entirely committed to athletics programming.

MIDDLE SCHOOLS

The district is currently expanding athletics programming for middle schools. Student interest in middle school athletics far exceeds the available resources. But, like district high schools, middle school sites are constrained; few middle schools can support athletics based on the available site area.

Currently, middle schools rely on district high schools to support athletics programming, further stressing already over-scheduled facilities.

Hubs could provide the opportunity for young athletes to participate in programs not available at their schools, staging athletic success later in their academic path.

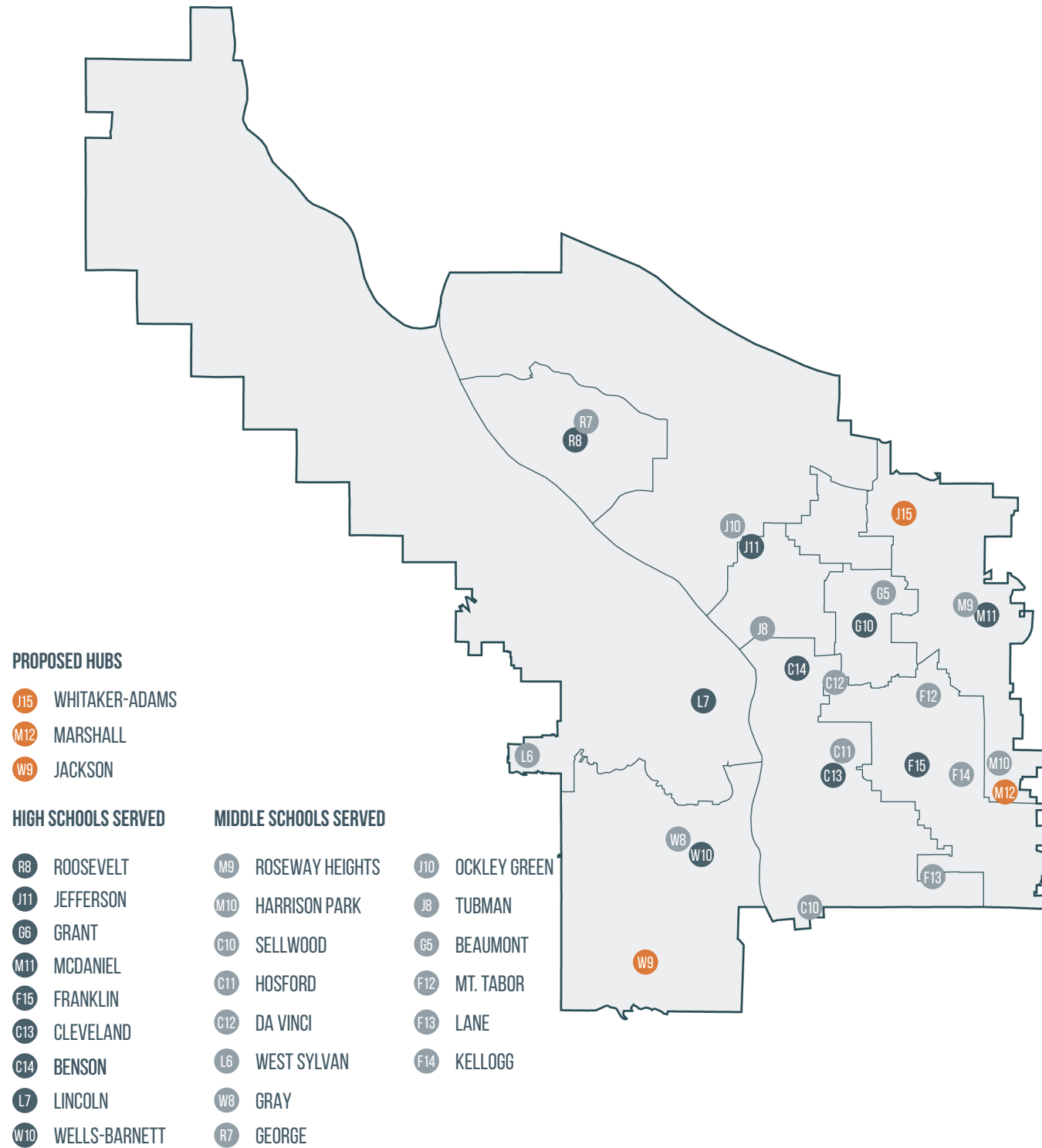
EXISTING PROGRAMS SUPPORTED

Below are the sites each athletics hub would serve with details on the existing programming compared against district standards for athletics programming. Many of our fields are shared between football and soccer, creating scheduling barriers for both programs.

Roosevelt (9)

The Roosevelt site supports one field shared by football and soccer with a track and another field shared between baseball and softball. Both fields are lit, and there is limited seating at the football/ soccer field. The field shared by baseball and softball is grass, while the football/soccer is turf. Per district standards, both fields should be turf. A district hub model would support nine (9) programs at Roosevelt.

PROGRAM	SUPPORTED ON SITE	SUPPORTED AT HUB
FOOTBALL	PARTIAL - SHARED USE	YES (1)
TRACK	YES	YES (1)
BASEBALL	PARTIAL - GRASS/ SHARED USE	YES (1)
SOFTBALL	PARTIAL - GRASS/ SHARED USE	YES (1)
LACROSSE	NO	YES (2)
SOCCER	PARTIAL - SHARED USE	YES (2)
TENNIS	PARTIAL - 4 COURTS	NO
SWIM	NO	YES (1)



ATHLETIC HUBS

Jefferson (15)

The existing Jefferson site supports one field for football. The field is turf, has lighting, provides spectator seating, and has a track. The existing baseball/softball field is undersized for regulation team sports and is used only for practice. A district hub model would support fifteen (15) programs at Jefferson.

PROGRAM	SUPPORTED ON SITE	SUPPORTED AT HUB
FOOTBALL	PARTIAL - SHARED USE	YES (1)
TRACK	YES	YES (1)
BASEBALL	NO	YES (2)
SOFTBALL	NO	YES (2)
LACROSSE	NO	YES (2)
SOCCER	PARTIAL - SHARED USE	YES (4)
TENNIS	PARTIAL - 2 COURTS	NO
SWIM	NO	YES (2)
CROSS COUNTRY	NO	YES (1)

Wells-Barnett (16)

The adjacency to Reike Elementary School benefits the Wells-Barnett athletics program by supporting a dedicated soccer and softball field. The Wells-Barnett site supports football on a lit field with spectator seating, a grass multi-use practice field, and a grass baseball and softball field. A district hub model would support sixteen (16) programs at Wells-Barnett.

PROGRAM	SUPPORTED ON SITE	SUPPORTED AT HUB
FOOTBALL	YES	YES (1)
TRACK	YES	NO
BASEBALL	PARTIAL - UNLIT	YES (2)
SOFTBALL	PARTIAL - UNLIT	YES (1)
LACROSSE	YES	YES (2)
SOCCER	PARTIAL - OWNED BY PPR	YES (4)
TENNIS	PARTIAL - TWO COURTS	YES (2)
SWIM	PARTIAL - OWNED BY PPR	YES (2)
CROSS COUNTRY	NO	YES (2)

Cleveland (19)

The district owns the field three blocks east of Cleveland and supports football and soccer on a shared field. The field is lit and has spectator seating. No other programs are supported at Cleveland. A district hub model would support nineteen (19) programs at Cleveland.

PROGRAM	SUPPORTED ON SITE	SUPPORTED AT HUB
FOOTBALL	PARTIAL - SHARED USE	YES (1)
TRACK	YES	NO
BASEBALL	NO	YES (3)
SOFTBALL	NO	YES (3)
LACROSSE	NO	YES (4)
SOCCER	PARTIAL - SHARED USE	YES (6)
TENNIS	NO	YES (8)
SWIM	NO	YES (2)

Franklin (21)

Franklin supports football and soccer on a shared field with lights and spectator seating. The north part of the site has a grass baseball field but without lights and no support for softball. Per district standards, the baseball field should be turfed and lit for full use of practice and game scheduling playtime. A district hub model would support twenty one (21) programs at Franklin.

PROGRAM	SUPPORTED ON SITE	SUPPORTED AT HUB
FOOTBALL	PARTIAL - SHARED USE	YES (1)
TRACK	YES	NO
BASEBALL	PARTIAL - UNLIT	YES (1)
SOFTBALL	NO	YES (2)
LACROSSE	PARTIAL - SHARED USE	YES (2)
SOCCER	PARTIAL - SHARED USE	YES (4)
TENNIS	NO	YES (8)
SWIM	NO	YES (2)
CROSS COUNTRY	NO	YES (1)

PROGRAM VISION

Grant (25)

All athletics facilities for Grant are located on property owned by Portland Parks & Recreation. The Parks property supports one field for football and soccer, a multi-use field shared by baseball, soccer (practice), and Lacrosse. Construction of a softball field is planned for 2021-22. The site also supports tennis. No lighting or spectator seating is present. A district hub model would support twenty-five (25) programs at Grant.

PROGRAM	SUPPORTED ON SITE	SUPPORTED AT HUB
FOOTBALL	PARTIAL - OWNED BY PPR	YES (1)
TRACK	PARTIAL - OWNED BY PPR	NO
BASEBALL	PARTIAL - OWNED BY PPR	YES (2)
SOFTBALL	PLANNED FOR 2021-22 (PPR)	YES (1)
LACROSSE	PARTIAL - OWNED BY PPR	YES (4)
SOCCER	PARTIAL - OWNED BY PPR	YES (5)
TENNIS	PARTIAL - 6 COURTS (PPR)	YES (6)
SWIM	PARTIAL - OWNED BY PPR	YES (2)
WATER POLO	PARTIAL - OWNED BY PPR	YES (2)
CROSS COUNTRY	NO	YES (2)

McDaniel (9)

McDaniel supports most complete athletics programming across the high schools. The site supports a dedicated football field with lighting and spectator seating. A multi-use field is also shared across soccer, baseball, softball, and lacrosse. A district hub model would support nine (9) programs at McDaniel.

PROGRAM	SUPPORTED ON SITE	SUPPORTED AT HUB
FOOTBALL	PARTIAL - SHARED USE	YES (1)
TRACK	YES	NO
BASEBALL	PARTIAL - SHARED USE	YES (2)
SOFTBALL	PARTIAL - SHARED USE	YES (2)
LACROSSE	PARTIAL - SHARED USE	YES (4)
SOCCER	PARTIAL - SHARED USE	YES (2)
TENNIS	NO	YES (2)
SWIM	NO	YES (2)

Benson (21)

The site adjacent to Benson is owned by Portland Parks & Recreation and supports two fields with a perimeter track. The Parks' site also supports four tennis courts. The Benson site supports no athletics programming. A district hub model would support twenty-one (21) programs at Benson.

PROGRAM	SUPPORTED ON SITE	SUPPORTED AT HUB
FOOTBALL	PARTIAL - OWNED BY PPR	YES (1)
TRACK	PARTIAL - OWNED BY PPR	NO
BASEBALL	PARTIAL - OWNED BY PPR	YES (2)
SOFTBALL	PARTIAL - OWNED BY PPR	YES (2)
LACROSSE	NO	YES (2)
SOCCER	PARTIAL - OWNED BY PPR	YES (6)
TENNIS	PARTIAL - 4 COURTS (PPR)	YES (4)
SWIM	NO	YES (2)
CROSS COUNTRY	NO	YES (2)

Lincoln (29)

Phase II of the Lincoln modernization will include a lit field shared by football and soccer with spectator seating. The site will also support a small multi-use practice field. A district hub model would support twenty-nine (29) programs at Lincoln.

PROGRAM	SUPPORTED ON SITE	SUPPORTED AT HUB
FOOTBALL	PARTIAL - SHARED USE	YES (2)
TRACK	YES	NO
BASEBALL	NO	YES (3)
SOFTBALL	NO	YES (3)
LACROSSE	PARTIAL - HALF-SIZED FIELD	YES (4)
SOCCER	PARTIAL - SHARED USE	YES (7)
TENNIS	NO	YES (8)
SWIM	NO	YES (4)
WATER POLO	NO	YES (3)
RUGBY	NO	YES (2)
CROSS COUNTRY	NO	YES (2)



PORTLAND PUBLIC SCHOOLS

OFFICE OF OPERATIONS

501 North Dixon Street / Portland, OR 97227

Telephone: (503) 916-2000

Mailing Address: P. O. Box 3107 / 97208-3107

STAFF MEMO

Date: January 9, 2024

To: Facilities & Operations Committee

From: Dan Jung, Chief Operating Officer

Subject: Grant Bowl; Phase 2

SUMMARY

Recent conversions have reactivated discussions regarding improvements of Grant High Schools track and field facilities (commonly known as the Grant “Bowl”). PPS is currently replacing the Bowl’s synthetic turf field, and is scheduled to replace the track in summer 2024. Some community members have requested the District complete further improvements in the Grant Bowl, including new lighting, grandstands, fencing, etc.

Proceeding with design and construction of additional improvements at the Grant Bowl will require allocation of staff resources and capital funds. PPS’s capital needs are deep and broad, whereas funds are limited.

At the September 5, 2023 Board of Education meeting, board members recommended discussion regarding Phase 2 take place at the Facilities & Operations (F&O) Committee.

BACKGROUND

In the original plans for the modernization of Grant High School, the project team identified a location in the field north of the school, “Hollywood Field,” to be developed as a competition softball field to be used by the High School teams. During the design process it was determined

that this location was not a good selection for softball and the field was removed from the project.

The District undertook a Grant Bowl master planning effort including public meetings and various development options. Information regarding options and public meeting minutes can be found on the Grant Bowl Planning Project webpage:

<https://www.pps.net/site/Default.aspx?PageID=16065>

On February 25, 2020 the Board of Education approved Resolution No. 6058 approving the proposed Grant Bowl Alternative Master Plan and directing the Superintendent to design and construct Phase 1 with proceeds of the 2012 general obligation bond.

Phase 1 improvements included an OSAA compliant softball field at the upper field (shared outfield with baseball) to include field lighting to support softball, baseball and soccer. The estimated cost in 2020 was approximately \$1.7M

PPS completed design and construction of Phase 1 in July 2022.

Phase 2 contemplates reconfiguration of the track-and-field amenities such as high jump, shot put and javelin facilities, new field lighting, grandstand seating for up to 1500 capacity, concessions, press box and storage areas, and perimeter for ticketed events. Replacement of the track and field was also included in Phase 2. The estimated cost in 2020 was approximately \$11.2M (including replacement of the track and field).

GRANT FIELD

In August 2023, the City of Portland closed the Grant Bowl field to organized sports due to safety concerns, blocking the use of the field weeks before the start of the high school sports season. The City acknowledged that it has a current maintenance backlog of over \$600 million, which has resulted in several neighborhood facilities closing. The City did not budget for the field's replacement, even though it was expected to have a 10-year lifespan, and the City has not identified or prioritized replacement Funding.

In September 2023 the Board passed Resolution No. 6755 directing the Superintendent to identify financial and other resources to replace the Grant Bowl track and field.

The Grant Bowl synthetic turf field is currently being replaced with completion scheduled for the end of January 2024. The track is planned for replacement in summer 2024, after the track-and-field season ends and fall sports begin.¹

COMMUNITY FEEDBACK

The Grant High School community is an active supporter of Grant athletics. Many community members have expressed that they are eager to proceed with the design of Phase 2, and construction. As noted above the 2020 cost estimate for Phase 2 was \$11.2M (including replacement of the track and field).

Community members have expressed a variety of priorities ranging from completing all of the improvements as soon as possible to completing Phase 2 in additional subphases.

The next steps necessary to complete the improvements include identification of funds, procurement of an architecture/engineering firm, design of the improvements, land use and building permit review, followed by construction.

DISTRICT CAPITAL NEEDS

Deferred Maintenance

PPS's Facility Condition Assessment (FCA) - completed in 2021 - documented the condition of the District's building assets. The FCA identified over 3000 assets in either Currently Critical or Potentially Critical condition and another approximately 2500 in Necessary but Not Yet Critical.

Examples of critical deficiencies include:

- Failing sanitary sewer lines
- Outdated electrical equipment, wiring and lights
- Deteriorated window systems
- Outdated fire/life/safety systems
- Inoperable stage lighting and curtains
- Mechanical system controls, fans, air handlers and boilers no longer working properly
- Leaking and eroding domestic water lines
- Outdated play equipment
- And much more

Repairing systems that are long past their useful life is costly, inefficient and not sustainable.

Ultimately the systems will fail, creating emergency situations. Much of the failing equipment is

¹ PPS is currently negotiating a long-term lease with Portland Parks and Recreation pertaining to use of the Grant Bowl

so outdated that replacement parts are no longer available to repair, which often requires PPS's Machine Shop to fabricate (build from scratch) parts.

Impacts of these aged systems are real and growing. Temperature issues are the most common complaints from school staff - with over 6,000 mechanical system work orders submitted last year - and system issues range from simple discomfort (both hot and cold) to poor indoor air quality, costly emergency repairs and even school closures due to lack of heat.

Staff have identified 5 - 10 sanitary sewer lines in critical condition. In just the last few weeks Astor Elementary was closed for 1 day due to a sewer backup and Jefferson High School was closed due to a deteriorated water supply line that caused flooding.

The Facility Condition Index (FCI) is the ratio of a building's maintenance costs relative to replacing the building at current construction costs. FCI values range from 0.00 (Good) to 1.00 (Critical). A higher FCI indicates a greater need for remedial funding, relative to the facility's replacement value. The District average FCI is 0.13 or "Poor." Sixty-two (62) facilities rated Poor or Critical of the ninety-four (94) sites assessed, indicating a critical need to invest in existing facilities.

Staff estimate that to reduce the FCI from "poor" to "fair" over a ten-year period, would require a total investment of approximately \$700 million, or \$70 million per year.²

Planned Improvements

The Board of Education accepted the Long-Range Facility Plan (LRFP) in December 2021 after a year of development and engagement with subject matter staff and the broader District community. The purpose of the LRFP is to plan for future capital improvements within the context of current educational vision and student enrollment trends over the next 10 to 15 years. The plan provides a strategic framework to be tested against community voice and vision prior to future bond campaigns.

The plan notes that most of the District's high schools are on small urban sites and lack the acreage to provide the athletic facilities and fields needed to support comprehensive high school athletic programming. The priority athletic capital improvements noted in the LRFP are:

² This calculation is based on the deficiencies identified in the FCA and does not account for additional asset failures after completion of the FCA.

High Priority

- Develop Jackson, Marshall, and Whitaker-Adams as athletic hubs.
- Athletic upgrades at four (4) middle schools: Lane, Ockley Green, George, and West Sylvan. Each site should at minimum have a multipurpose turf field with a track, an appropriately sized main gym and an auxiliary gym.
- Access to turf baseball and softball fields for all high schools (e.g., Franklin, Marshall).

Moderate Priority

- Athletic upgrades at four (4) additional middle schools: Hosford, Beaumont, Roseway Heights, and Harrison Park. Each site should at minimum have a multipurpose turf field with a track, an appropriately sized main gym and an auxiliary gym.

The Long Range Facilities Plan can be found on PPS's website: <https://www.pps.net/Page/954>

See Volume 1 (page 74 - 79) for details.

AVAILABILITY OF FUNDS

Non-Bond Funds

Non-bond funds for facility improvements are limited. PPS's primary source for unrestricted capital are Funds 404³ and 445.⁴ New revenue into these funds have (generally) been dropping in recent years. The below table illustrates that the average new revenue for the 3-year period from FY17 - FY19 was about \$8 million; however the average for the 3-year period from FY22 - FY24 decreased to approximately \$5.8 million per year. Decreasing funding coupled with high construction escalation rates in recent years, and an aged facility portfolio, has hampered PPS's ability to respond to critical facility needs.

³ Fund 404 receives revenue from the City of Portland's Construction Excise Tax

⁴ Fund 445 receives revenue from Civic Use of Building permit fees, lease revenue and property sales

New Revenue			
	Fund 404	Fund 445	Total
FY 2016/17	7,199,536	676,131	7,875,667
FY 2017/18	8,424,893	727,914	9,152,807
FY 2018/19	6,158,795	847,021	7,005,816
FY 2019/20	4,372,877	11,347,858 ¹	15,720,735
FY 2020/21	3,464,861	45,441	3,510,301
FY 2021/22	5,445,928	78,579	5,524,507
FY 2022/23	4,466,906	737,928	5,204,834
FY 2023/24	5,506,267	1,220,000	6,726,267

¹ \$10 million from sale of property

Additionally PPS's primary fund (Fund 191) for non-capital improvements is relatively very small and has also been declining in revenue in recent years.

Begin Fund Balance	
	Fund 191
FY 2016/17	2,206,777
FY 2017/18	2,762,132
FY 2018/19	1,610,606
FY 2019/20	1,640,606
FY 2020/21	1,310,606
FY 2021/22	1,245,606
FY 2022/23	1,186,606
FY 2023/24	996,606

It is also worth noting that the majority of currently available funds (capital and non-capital) have been allocated to active construction projects. PPS has over 100 current projects, below is a sampling:

- Sidewalk repairs at Richmond
- Chimney repairs at Rice
- Elevator repairs at Jackson
- Steam leak repairs at Buckman
- Sewer line replacement at Creston
- Carpet replacement at Astor
- Front door replacement at Rigler
- Pre-K play equipment at King
- Water intrusion repair at Llewellyn

- Abate and replace flooring at Abernethy
- Installation of projector at Woodlawn
- Replacement of the vent hood at Sunnyside
- Replace exterior lighting at Jackson
- Repair covered play structure at Sabin
- Replace the roll-up doors at Chavez
- Regrout and repair restroom at Cleveland
- Repair siding at Creston
- Replace univents at Applegate
- Repair sidewalk at Boise-Eliot
- Repair sewer line at Chief Joseph
- Replace the backflow fire sprinkler at George
- Repair stairs at Grey

Bond Funds

The Lincoln High School Modernization project completed phase 1 of construction in summer 2022 and reached substantial completion for phase 2 in summer 2023. The project is currently in the closeout phase. The project budget contains \$242,500,000 in funds coming from the 2017 general obligation bond. Current forecasts estimate the project will complete approximately \$17 million under budget.⁵

The 2017 bond funded the modernization of Lincoln High School, McDaniel High School, Benson Polytechnic High School and Kellogg Middle School. Additionally the 2017 bond language states at least \$158 million of funds will be allocated for district-wide health and safety projects.⁶

As the 2017 construction program nears completion⁷ program savings become available for other/additional projects. Program savings can be allocated to projects that are capitalizable and meet bond compensability requirements.⁸ Generally bond funds can be used for a variety of capital projects from addressing current deferred major maintenance needs - such as replacing end of life elevators, failing playgrounds, deteriorating sewer lines, etc. - to new and unplanned projects.

⁵ \$10 million of this savings has been earmarked for additional health and safety improvements in an MOA with the Portland Association of Teachers.

⁶ To date the 2017 bond has spent approximately \$122M on health and safety improvements.

⁷ The final major construction project, Benson Polytechnic HS, is scheduled to reach substantial completion in summer 2024.

⁸ Any bond allocation to a project that is not expressly identified in the bond language would need to be vetted with bond counsel.

RECOMMENDATION

Considering the condition of PPS's existing facility portfolio, and the limited availability of funding to address deferred maintenance, Staff recommends that future improvements to Grant Bowl be considered as part of future bond planning, and that 2017 bond savings be used to address deferred maintenance and existing facility needs.

REFERENCES

- Grant Bowl Master Plan (02/07/2020)
- Resolution no. 6058 - Resolution Authorizing Grant Bowl Master Plan
- Resolution no. 6755 - Resolution to Replace the Grant Bowl and the Buckman Field Track for the use of Grant and Benson High School Students



CALENDAR

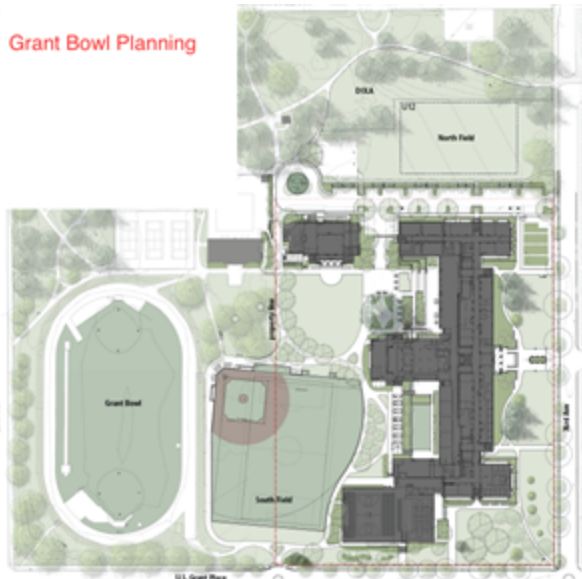


ENROLL



CONTACT

Grant Bowl Planning Project



The Grant Bowl Master Planning project was undertaken to explore considerations for adding lights, bleachers and two regulation softball fields in addition to the existing sports fields in the Grant Bowl. Some of the goals include the ability to host Grant Football games on a home field and support Grant's softball team at the school, rather than remote locations. The addition of lighting will make both these possible by extending use time and make the bowl safer for students and the community. On February 25, 2020 the Board of Education approved Phase One of the Grant Bowl Master Plan. Phase One includes adding an OSAA regulation softball field to the upper turf field at Grant High School. [Click here for more information](#)

[about the Grant Athletics Upper Fields project.](#) Phase 2 of the approved alternative plan - a full upgrade to the Grant Bowl - has no identified funding source at this time.

The project is a partnership PPS and Portland Parks and Recreation.

For more information about the Grant Bowl Project and school building improvements, contact: 503-916-2222 or email schoolmodernization@pps.net

[View the Grant Bowl FAQ](#)

Get Involved

Grant Master Planning Advisory group

The Grant Master Planning Advisory Group is made up of school and community stakeholder representatives who work together to help provide feedback for the Grant Bowl master plan. While members do not make decisions, their input is crucial in creating a design that the entire community can be proud of.

[Grant Bowl Master Planning Advisory Group Charter](#)

[Letter from the PPS Superintendent & School Board endorsing the preferred Option #1 10-4-18](#)

[Grant Bowl Master Planning Advisory Group #1 Mtg. Minutes 10-21-19](#)

[Grant Bowl Master Planning Workshop Meeting Minutes 11-6-19](#)

[Grant Bowl Master Planning Comments 11 6 2019](#)

[Grant Bowl Master Planning Workshop Illustration Board Feedback 11-6-19](#)

[Grant Bowl Master Planning Advisory Group #2 Mtg. Minutes 11-18-19](#)

[Grant Bowl MP workshop #2 presentation 12-3-19](#)

[Grant Bowl MP workshop#2 Comment Stations Boards 12-3-19](#)

[Grant Bowl MP workshop#2 Public Comments on Presentation Boards 12-3-19](#)

[Field Lighting examples in Portland 12-3-19](#)

[Public events at Grant w/attendance numbers 2019 \(12-3-19\)](#)

[Grant Bowl Advisory Group Meeting #3 Presentation 12-12-19](#)

[Grant Bowl Advisory Group Mtg #3 Minutes 12-12-19](#)

[Grant Bowl Advisory Group Mtg # 3 Agenda 12-12-19](#)

Previous meeting notes and School Board decisions related to the Grant Bowl Master Planning process.

[Grant DAG #11 Meeting minutes 5-10-18](#)

[Grant Field Options SUMMARY 9-26-18](#)

[A review of the Grant field options from the DAG #12 mtg 7-5-18.](#)

Stay Informed

The Grant Bowl Project Update

On Tuesday, February 25th, the PPS Board of Education approved the Grant Bowl Master Plan. The Master Plan report presented two options; a base option keeping all activities in the bowl and an alternate option which places a competitive softball field in the upper field at Grant. The alternate option was conceived to be completed in two phases. The first being the construction of the softball field and the second the improvements to the Grant Bowl. [View the approved Master Plan here](#)

The Alternative Master Plan was developed together with the community and a design advisory group. Notes and comments from the Advisory group and community meetings are found on this page.

School Board approval provided direction and funding to complete Phase One of the Alternate plan, constructing a softball field in the upper field at Grant High School. In order to support both baseball and softball in this location, field lighting is part of the project. Phase One is being

funded out of the 2012 School Building Improvement Bond. Phase Two will need to seek funding from other sources.

The Grant Upper field improvement is a joint project between PPS, Portland Parks and Recreation, Portland Interscholastic League and the Grant Park community.

The Grant Bowl Project Summary

The Grant Bowl project is independent of the Grant modernization project that was completed in 2019. It was during the Grant modernization that PPS began work on addressing the needs of Grant athletics not addressed in modernization work. Meetings were held during that time about various options to address these concerns and an independent planning process with its own timeline and funding was begun.

Project Goals

The overall goal of the Grant Bowl project is to provide a safe, and well-functioning sports facility to support softball and other sports at Grant, through the addition of lights, bleachers, and infrastructure to host athletic practices and games. Grant is one of the few schools in Oregon that is not able to host home games due to the nature of the fields.

Important facts about the athletic fields used by Grant:

- Unlike other PPS high schools Grant has a limited field area for its athletics programs.
- The Grant bowl, where many Grant teams practice/play is owned by Portland Parks and Recreation (PP&R).
- The modernization of the school did not include additional funding for redeveloping the Grant Bowl. The modernization did include improvements to the upper field which is jointly owned and shared by PPS and PP&R.
- Grant is the only 6A high school in the state that cannot host home games because of the lack of lighting.

Project Team

[Bora Architects](#) is the design team for the Grant Bowl Master Planning project. Bora has a strong background in designing creative functional and sustainable learning environments. They designed the Faubion PK-8 School that was funded through the 2012 Bond and opened in 2017.

Project History

Recap of the Grant Bowl project to date

In 2010, the Friends of Grant Athletics (FOGA), Portland Public Schools (PPS) and Portland Parks and Recreation (PP&R) came together to launch an initiative to improve the playing conditions at the Grant Bowl. The group hired Dull Olson Weeks Architects (DOWA) and Atlas Landscape Design to undertake a design process that concluded in 2011. Their design included new artificial turf fields, a resurfaced track and other park improvements. Those track and field improvements were completed in 2013. Their design did not include lights or bleachers, making it more difficult, to host spectators at sporting events. To date Grant is not able to host home football or soccer games, the school plays these games off-site.

During the modernization of Grant, the Hollyrood field was originally identified the site for a renovated softball field. It was later determined this would not adequately support the needs of Grant softball. Following a robust engagement process, the community voiced support to improve

the Grant Bowl to better support Grant Athletics including softball. The Board of Education voted to begin the design process improve the facilities in the bowl to that end. This Grant Bowl Master Planning workshop is the next step in that process.

Grant Fields Update Winter 2019

On October 9, 2018 PPS Board of Education held a work session to review a number of available options to provide a softball field adjacent to Grant High School. These options are available in [the Grant field options summary](#). A recommendation was then developed in partnership with Grant High School’s administration, the softball and baseball coaches, and with Portland Parks & Recreation. The recommendation is to make improvements to the existing Grant Bowl, creating a multi-use field that will accommodate softball in addition to the currently supported programs such as football, and track & field. All available options for placing softball adjacent to Grant HS are on property owned by Portland Parks & Recreation. Therefore, we will be working in close partnership with PP&R to define the project scope, requirements, and implementation of a successful project plan.

PORTLAND PUBLIC SCHOOLS



501 N. Dixon St
Portland, OR 97227



(503) 916-2000

Translate



Select Language ▼

Connect with PPS



[Site Map](#) • [Terms and Conditions](#)
[Questions or Feedback?](#)

The District is committed to equal opportunity and nondiscrimination in all its educational and employment activities. The District prohibits discrimination based on perceived or actual race; national or ethnic origin; color; sex; religion; age; sexual orientation; gender expression or identity;

pregnancy; marital status; veteran's status; familial status; economic status or source of income; mental or physical disability or perceived disability; or military service.

504 Coordinator: Marquita Guzman, mguzman@pps.net 971-393-8633

ADA Coordinator: Jey Buno, jbuno@pps.net, 503-916-3360

Title IX Program Manager: Liane O'Banion, lobanion@pps.net, 503-568-2646

Accessibility Statement

Conflict/Complaint Resolution Process

District Offices: 501 N. Dixon St. Portland, OR 97227
© 2023 Portland Public Schools

ATHLETICS

PROGRAM VISION & DESCRIPTION

- » Develop Multiple Athletic Hubs: Due to the undersized high school sites, the district will need to develop three (3) athletic hubs over the next 10 years to meet current and future athletic needs. Jackson, Marshall, and Whitaker-Adams are the preferred locations for the athletic hubs. See below for the desired athletic hub facilities, fields, and amenities.
- » Athletic Upgrades to One (1) Middle School in each Cluster: Eight (8) middle school sites were identified (one in each cluster) for athletic facility upgrades. Each site should at minimum have a multipurpose turf field with a track, an appropriately sized main gym, and an auxiliary gym.

CLUSTER	SITE
CLEVELAND	HOSFORD MS
FRANKLIN	LANE MS
GRANT	BEAUMONT MS
JEFFERSON	OCKLEY GREEN MS
MCDANIEL	ROSEWAY HEIGHTS MS
ROOSEVELT	GEORGE MS
WELLS-BARNETT	JACKSON MS
LINCOLN	WEST SYLVAN MS

FACILITY CONSTRAINTS

- » Most of the district’s high schools are on small urban sites and lack the acreage to provide the athletic facilities and fields needed to support a comprehensive high school athletics program.
- » Middle school facilities are outdated in terms of

- both indoor athletic facilities and outdoor spaces. The district is working to add more athletic program options at the middle school level and improve access; however, the level of demand exceeds available facility capacity/resources.
- » There is a general lack of baseball/softball facilities on both the east and west sides of the district.
 - » BIPOC communities are disproportionately impacted by disparities in athletic facilities/fields. North Portland and Southeast Portland are the areas where upgrades are most needed.

CAPITAL FORECAST

High Priority

- » Develop Jackson, Marshall, and Whitaker-Adams as athletic hubs.
- » Athletic upgrades at four (4) middle schools: Lane, Ockley Green, George, and West Sylvan. Each site should at minimum have a multipurpose turf field with a track, an appropriately sized main gym and an auxiliary gym.
- » Access to turf baseball and softball fields for all high schools (e.g., Franklin, Marshall).

Moderate Priority

- » Athletic upgrades at four (4) additional middle schools: Hosford, Beaumont, Roseway Heights, and Harrison Park. Each site should at minimum have a multipurpose turf field with a track, an appropriately sized main gym and an auxiliary gym.

Lower Priority

- » There is insufficient information to accurately discern long-term facilities needs for athletic programs.

HUB CONSTITUENCY

At minimum, each athletic hub site should provide:

- » Double wide Field: football/soccer fields (two fields side-by-side) that can also serve baseball/softball
- » Artificial turf
- » Field lighting
- » Bleacher seating around baseball/softball fields in the corners.
- » Eight (8) competition tennis courts with exterior lighting

The following facilities are also highly desired at each athletic hub site:

- » Main gymnasium and large auxiliary gymnasium.
- » Multi Use space for basketball, wrestling, etc.

Additionally, the following athletic amenities may be provided at select athletic hub sites at the district’s discretion based on funding availability, site features, public partnerships, and evolving programmatic needs:

- » Multiple additional lit turf fields, including an upper baseball/softball field with track and one (1) multipurpose field
- » Competition lap pool with 5-8 lanes
- » Dance room
- » Wrestling room / mat room

ATHLETIC HUBS

TOWARD A HUB MODEL

Like other urban districts, Portland Public School's sites are located on small parcels of land. This space constraint is especially challenging for athletics because of the program's intensive space needs.

The section on the previous page outlines the facility supports necessary for a comprehensive athletics program, including three tiers of regulation team competitions. Field areas are governed by the National Federation of State High School Associations (NFHS) standards. Most schools do not have enough land area for multiple fields, seating, and lighting. Across the high school portfolio, only McDaniel supports comprehensive athletics programming; even McDaniel presents scheduling challenges for a three-tiered athletics schedule.

As a shared resource across schools, hubs are a viable path toward expanding existing athletics programming and alleviating schedule constraints. The potential hub sites identified here collectively incorporate all areas of the district. Yet, because each hub is regionally distinct, the hub model is only successful if all three sites are developed. Omit one site, and the model only contributes to the existing programmatic imbalance.

In addition to their strategic geography, these hub sites have sufficient land area for multiple fields, spectator seating, and support buildings. Jackson is the largest site in the district with over 34 acres. Marshall is second with over 24 acres. Whitaker-Adams is the smallest of the hubs with 10 acres but is vacant and could be entirely committed to athletics programming.

MIDDLE SCHOOLS

The district is currently expanding athletics programming for middle schools. Student interest in middle school athletics far exceeds the available resources. But, like district high schools, middle school sites are constrained; few middle schools can support athletics based on the available site area.

Currently, middle schools rely on district high schools to support athletics programming, further stressing already over-scheduled facilities.

Hubs could provide the opportunity for young athletes to participate in programs not available at their schools, staging athletic success later in their academic path.

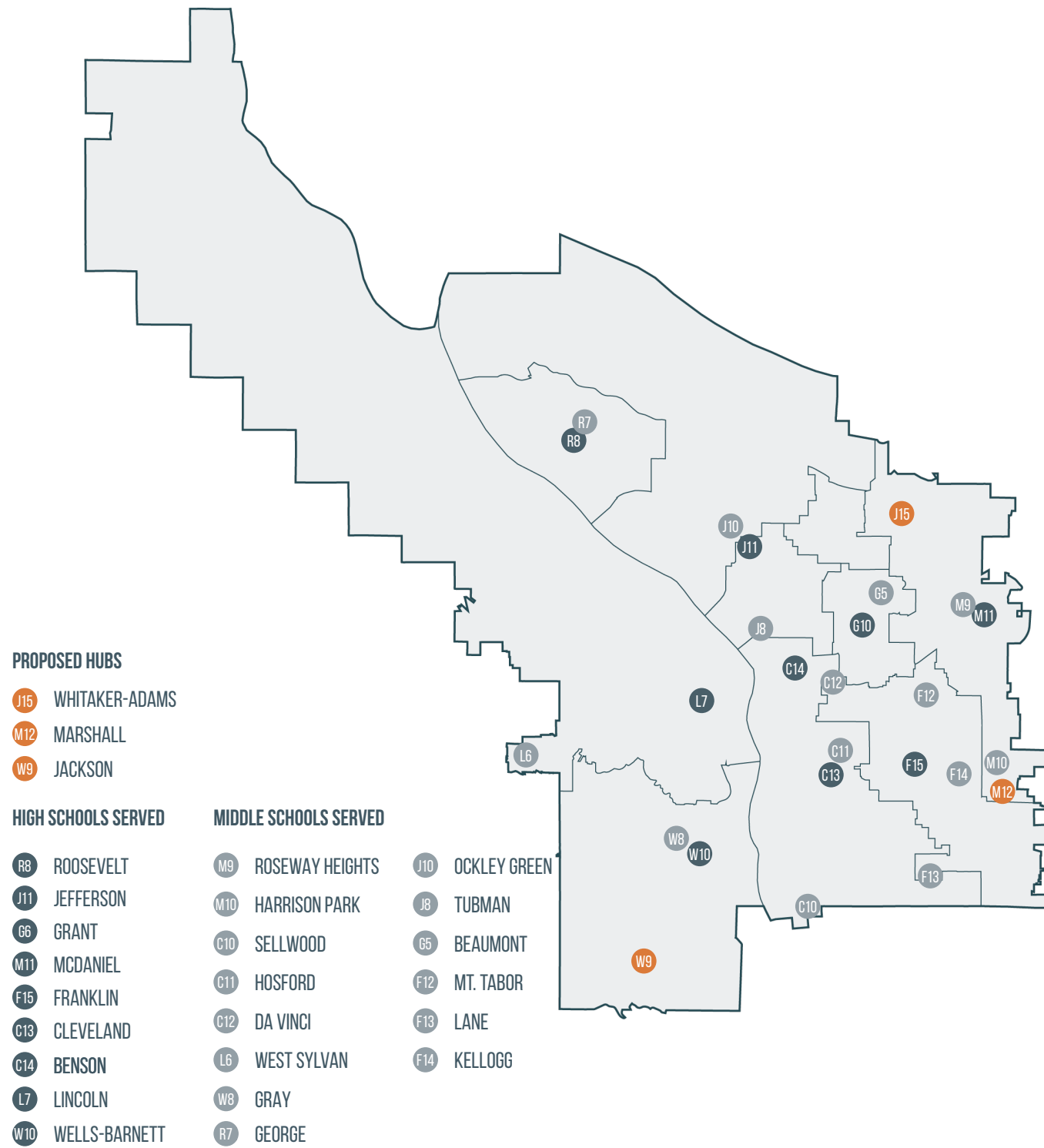
EXISTING PROGRAMS SUPPORTED

Below are the sites each athletics hub would serve with details on the existing programming compared against district standards for athletics programming. Many of our fields are shared between football and soccer, creating scheduling barriers for both programs.

Roosevelt (9)

The Roosevelt site supports one field shared by football and soccer with a track and another field shared between baseball and softball. Both fields are lit, and there is limited seating at the football/ soccer field. The field shared by baseball and softball is grass, while the football/soccer is turf. Per district standards, both fields should be turf. A district hub model would support nine (9) programs at Roosevelt.

PROGRAM	SUPPORTED ON SITE	SUPPORTED AT HUB
FOOTBALL	PARTIAL - SHARED USE	YES (1)
TRACK	YES	YES (1)
BASEBALL	PARTIAL - GRASS/ SHARED USE	YES (1)
SOFTBALL	PARTIAL - GRASS/ SHARED USE	YES (1)
LACROSSE	NO	YES (2)
SOCCER	PARTIAL - SHARED USE	YES (2)
TENNIS	PARTIAL - 4 COURTS	NO
SWIM	NO	YES (1)



ATHLETIC HUBS

Jefferson (15)

The existing Jefferson site supports one field for football. The field is turf, has lighting, provides spectator seating, and has a track. The existing baseball/softball field is undersized for regulation team sports and is used only for practice. A district hub model would support fifteen (15) programs at Jefferson.

PROGRAM	SUPPORTED ON SITE	SUPPORTED AT HUB
FOOTBALL	PARTIAL - SHARED USE	YES (1)
TRACK	YES	YES (1)
BASEBALL	NO	YES (2)
SOFTBALL	NO	YES (2)
LACROSSE	NO	YES (2)
SOCCER	PARTIAL - SHARED USE	YES (4)
TENNIS	PARTIAL - 2 COURTS	NO
SWIM	NO	YES (2)
CROSS COUNTRY	NO	YES (1)

Wells-Barnett (16)

The adjacency to Reike Elementary School benefits the Wells-Barnett athletics program by supporting a dedicated soccer and softball field. The Wells-Barnett site supports football on a lit field with spectator seating, a grass multi-use practice field, and a grass baseball and softball field. A district hub model would support sixteen (16) programs at Wells-Barnett.

PROGRAM	SUPPORTED ON SITE	SUPPORTED AT HUB
FOOTBALL	YES	YES (1)
TRACK	YES	NO
BASEBALL	PARTIAL - UNLIT	YES (2)
SOFTBALL	PARTIAL - UNLIT	YES (1)
LACROSSE	YES	YES (2)
SOCCER	PARTIAL - OWNED BY PPR	YES (4)
TENNIS	PARTIAL - TWO COURTS	YES (2)
SWIM	PARTIAL - OWNED BY PPR	YES (2)
CROSS COUNTRY	NO	YES (2)

Cleveland (19)

The district owns the field three blocks east of Cleveland and supports football and soccer on a shared field. The field is lit and has spectator seating. No other programs are supported at Cleveland. A district hub model would support nineteen (19) programs at Cleveland.

PROGRAM	SUPPORTED ON SITE	SUPPORTED AT HUB
FOOTBALL	PARTIAL - SHARED USE	YES (1)
TRACK	YES	NO
BASEBALL	NO	YES (3)
SOFTBALL	NO	YES (3)
LACROSSE	NO	YES (4)
SOCCER	PARTIAL - SHARED USE	YES (6)
TENNIS	NO	YES (8)
SWIM	NO	YES (2)

Franklin (21)

Franklin supports football and soccer on a shared field with lights and spectator seating. The north part of the site has a grass baseball field but without lights and no support for softball. Per district standards, the baseball field should be turfed and lit for full use of practice and game scheduling playtime. A district hub model would support twenty one (21) programs at Franklin.

PROGRAM	SUPPORTED ON SITE	SUPPORTED AT HUB
FOOTBALL	PARTIAL - SHARED USE	YES (1)
TRACK	YES	NO
BASEBALL	PARTIAL - UNLIT	YES (1)
SOFTBALL	NO	YES (2)
LACROSSE	PARTIAL - SHARED USE	YES (2)
SOCCER	PARTIAL - SHARED USE	YES (4)
TENNIS	NO	YES (8)
SWIM	NO	YES (2)
CROSS COUNTRY	NO	YES (1)

PROGRAM VISION

Grant (25)

All athletics facilities for Grant are located on property owned by Portland Parks & Recreation. The Parks property supports one field for football and soccer, a multi-use field shared by baseball, soccer (practice), and Lacrosse. Construction of a softball field is planned for 2021-22. The site also supports tennis. No lighting or spectator seating is present. A district hub model would support twenty-five (25) programs at Grant.

PROGRAM	SUPPORTED ON SITE	SUPPORTED AT HUB
FOOTBALL	PARTIAL - OWNED BY PPR	YES (1)
TRACK	PARTIAL - OWNED BY PPR	NO
BASEBALL	PARTIAL - OWNED BY PPR	YES (2)
SOFTBALL	PLANNED FOR 2021-22 (PPR)	YES (1)
LACROSSE	PARTIAL - OWNED BY PPR	YES (4)
SOCCER	PARTIAL - OWNED BY PPR	YES (5)
TENNIS	PARTIAL - 6 COURTS (PPR)	YES (6)
SWIM	PARTIAL - OWNED BY PPR	YES (2)
WATER POLO	PARTIAL - OWNED BY PPR	YES (2)
CROSS COUNTRY	NO	YES (2)

McDaniel (9)

McDaniel supports most complete athletics programming across the high schools. The site supports a dedicated football field with lighting and spectator seating. A multi-use field is also shared across soccer, baseball, softball, and lacrosse. A district hub model would support nine (9) programs at McDaniel.

PROGRAM	SUPPORTED ON SITE	SUPPORTED AT HUB
FOOTBALL	PARTIAL - SHARED USE	YES (1)
TRACK	YES	NO
BASEBALL	PARTIAL - SHARED USE	YES (2)
SOFTBALL	PARTIAL - SHARED USE	YES (2)
LACROSSE	PARTIAL - SHARED USE	YES (4)
SOCCER	PARTIAL - SHARED USE	YES (2)
TENNIS	NO	YES (2)
SWIM	NO	YES (2)

Benson (21)

The site adjacent to Benson is owned by Portland Parks & Recreation and supports two fields with a perimeter track. The Parks' site also supports four tennis courts. The Benson site supports no athletics programming. A district hub model would support twenty-one (21) programs at Benson.

PROGRAM	SUPPORTED ON SITE	SUPPORTED AT HUB
FOOTBALL	PARTIAL - OWNED BY PPR	YES (1)
TRACK	PARTIAL - OWNED BY PPR	NO
BASEBALL	PARTIAL - OWNED BY PPR	YES (2)
SOFTBALL	PARTIAL - OWNED BY PPR	YES (2)
LACROSSE	NO	YES (2)
SOCCER	PARTIAL - OWNED BY PPR	YES (6)
TENNIS	PARTIAL - 4 COURTS (PPR)	YES (4)
SWIM	NO	YES (2)
CROSS COUNTRY	NO	YES (2)

Lincoln (29)

Phase II of the Lincoln modernization will include a lit field shared by football and soccer with spectator seating. The site will also support a small multi-use practice field. A district hub model would support twenty-nine (29) programs at Lincoln.

PROGRAM	SUPPORTED ON SITE	SUPPORTED AT HUB
FOOTBALL	PARTIAL - SHARED USE	YES (2)
TRACK	YES	NO
BASEBALL	NO	YES (3)
SOFTBALL	NO	YES (3)
LACROSSE	PARTIAL - HALF-SIZED FIELD	YES (4)
SOCCER	PARTIAL - SHARED USE	YES (7)
TENNIS	NO	YES (8)
SWIM	NO	YES (4)
WATER POLO	NO	YES (3)
RUGBY	NO	YES (2)
CROSS COUNTRY	NO	YES (2)



CHS Modernization–Comprehensive Planning Update

COMMUNITY ENGAGEMENT PROCESS

DATE	TOPIC
- CPC#1, October 4, 2023:	Introduction and Overview
- CPC#2, November 16, 2023:	Vision & Goals, Ed Spec Program
- CPC#3, December 5, 2023:	Site Analysis, Trade-Offs, Historic Building Questions
- CPC#4, January 18, 2024:	Site Options for Review and Feedback
- CPC#5, February 15, 2024:	Refined Final Site Options for Review*
*Comp. Plan Staff Report Submit to Board Office by March 6, 2024 for 4/2/24 BOE Meeting	
- CPC#6, March 14, 2024:	Share Out of Comprehensive Plan

CHS Staff:

- January 2nd, 2024: Staff Meeting presentation and feedback exercise

Community Design Workshops:

- December 16th at CHS
- January 20th at CHS
- February TBD



CHS Modernization–Comprehensive Planning Update

PROGRESS TO DATE:

4 PLANNING COMMITTEE MEETINGS

2 PUBLIC DESIGN WORKSHOPS

CHS STAFF MEETING PRESENTATION

COMMUNITY STAKEHOLDER INTERVIEWS

NEXT STEPS:

REFINE DESIGN OPTIONS

2 CPC MEETINGS

1 PUBLIC DESIGN WORKSHOP/OPEN HOUSE

MULTIPLE FOCUS GROUP LISTENING SESSIONS

OPPORTUNITIES:

BROAD COMMUNITY INVOLVEMENT

CENTERING HISTORICALLY MARGINALIZED VOICES

REFINING DESIGN OPTIONS

CHALLENGES:

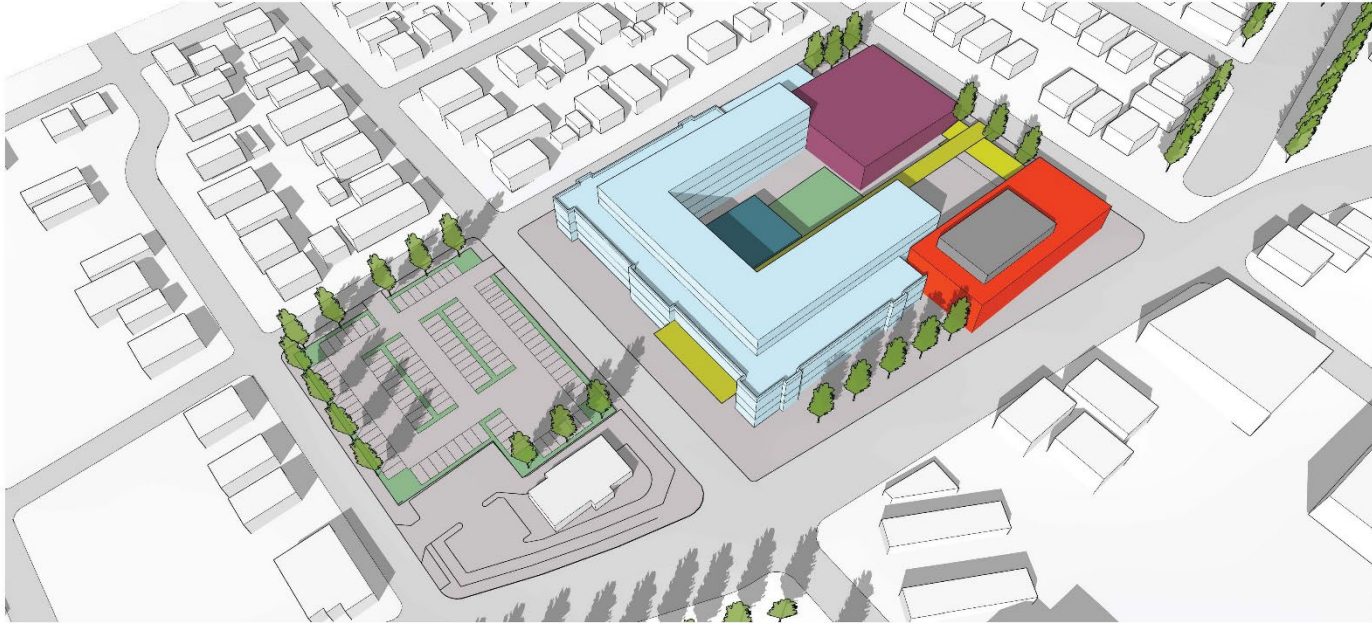
CONSTRAINED SITE CONDITIONS

DECISION TO KEEP OR DEMOLISH THE 1929 STRUCTURE

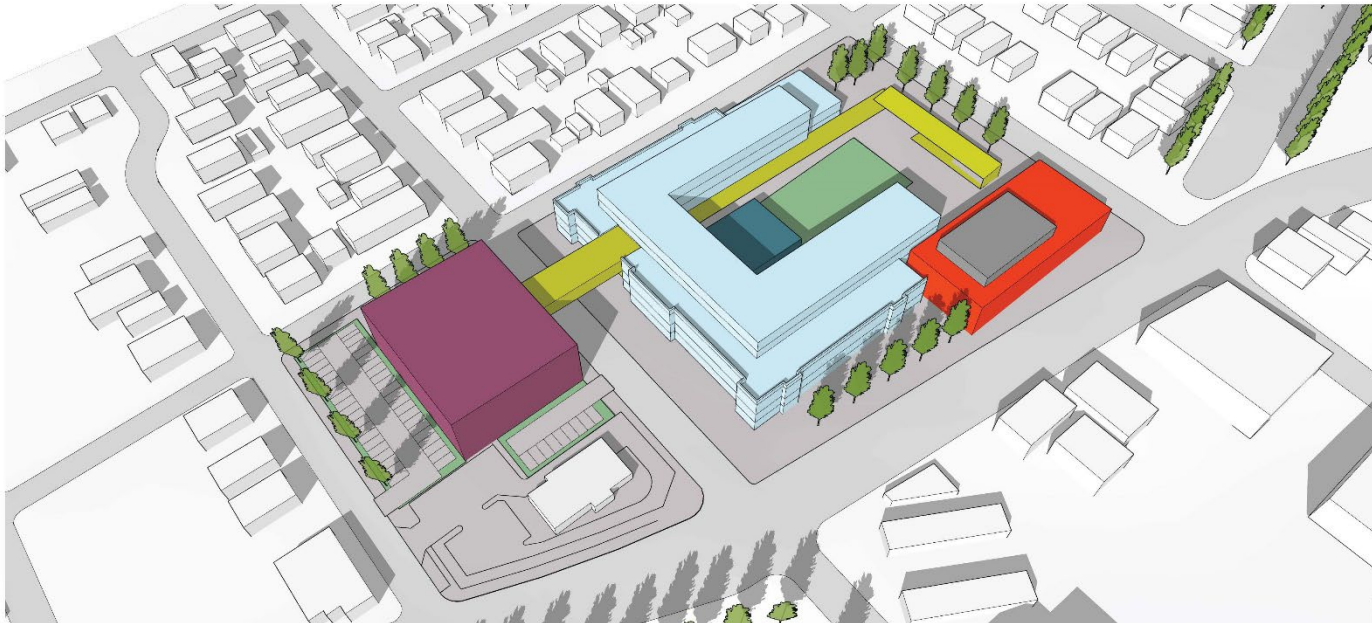
IMPROVING STUDENT SAFETY AT 26TH AND POWELL



Site Options for Historic Reno + New Construction



Historic Reno + New Construction: 1 Site



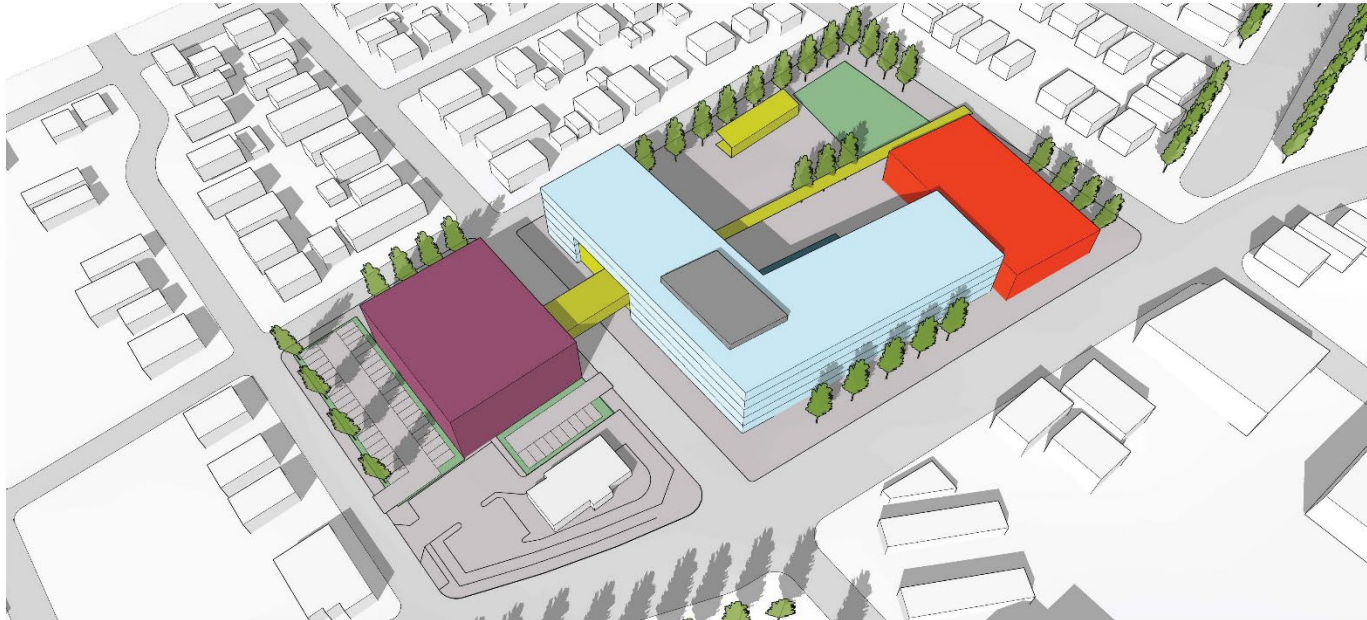
Historic Reno + New Construction: 2 Sites



Site Options for All New Construction



All New Construction – 1 Site



All New Construction – 2 Sites



IBWHS Modernization - Comprehensive Planning Update

COMMUNITY ENGAGEMENT:

Comprehensive Planning Committee Meetings:

CPC #1 October 11, 2023 Introduction and Overview

CPC#2 October 26, 2023 Vision and Goals, Ed Spec Program

CPC #3 December 6, 2023 Site Analysis, 3 Site Ideas Presented for Feedback

CPC#4 January TBD, 2024 2 Site Plan Options narrowing to 1 Site Plan

CPC#5 February 13, 2024 Recommended Final Site Design Concept for Review

CPC#6 March 12, 2024 Share Out of Comprehensive Plan

Community Design Workshops:

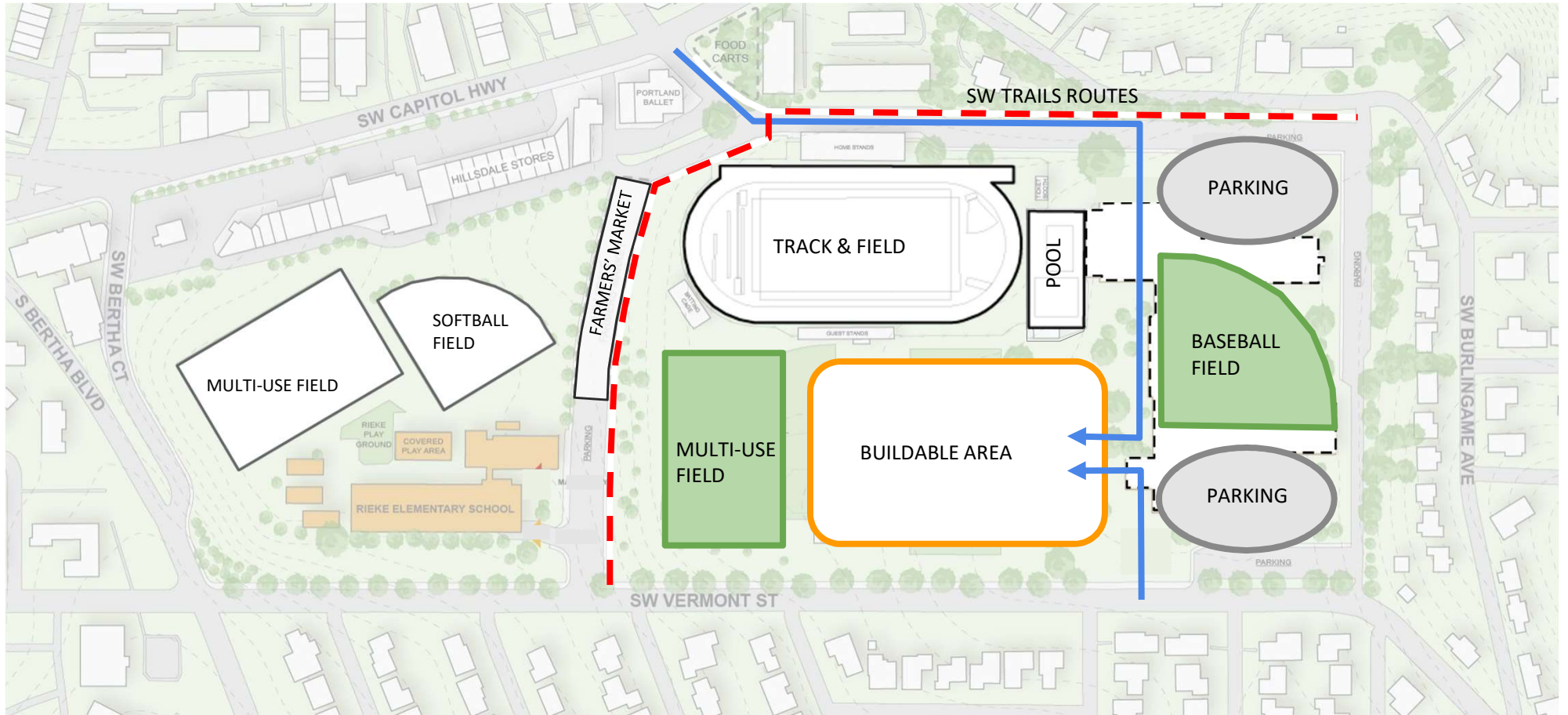
#1 October 29, 2023

#2 December 17, 2023

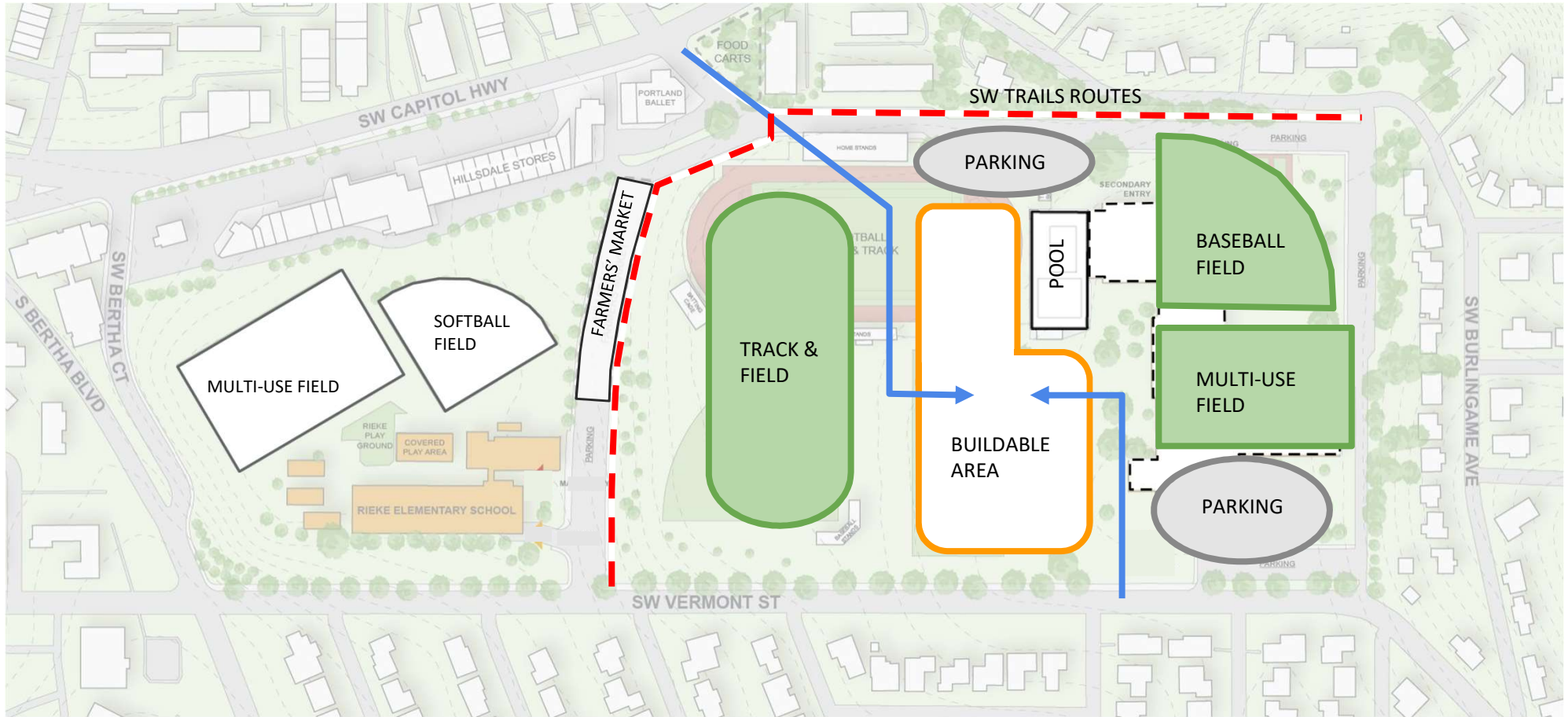
#3 January 21, 2024

Open House TBD

SCHEME 1 - PEDESTRIAN APPROACH

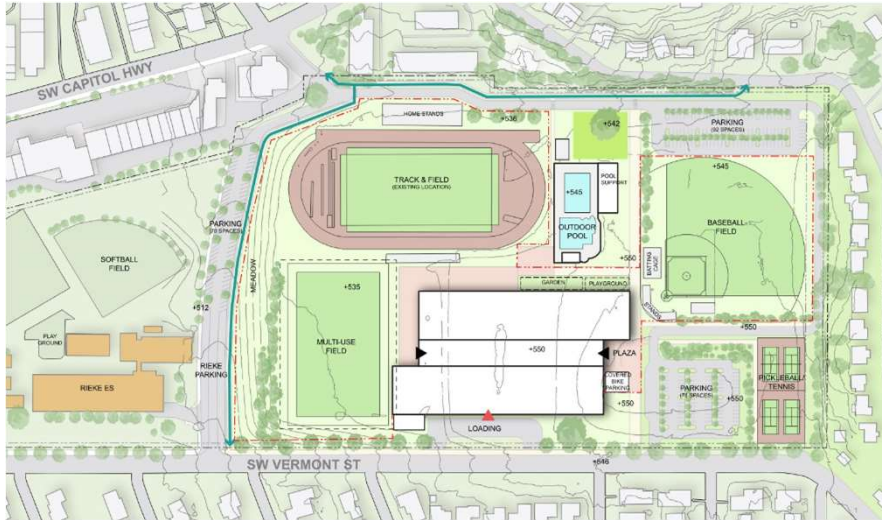


SCHEME 2 - PEDESTRIAN APPROACH



SITE CONCEPTS - SUMMARY

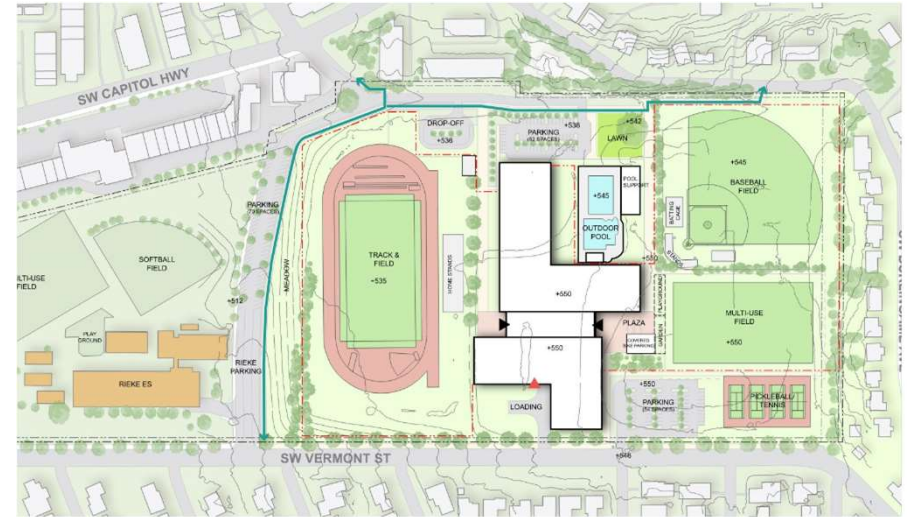
SCHEME 1



- keeps existing pool, adds new pool support building
- keeps existing track & field with improvements
- new tennis and pickleball courts
- new baseball field and multi-use field
- improved softball field
- building form “steps up” with topography of site, with upper and lower courtyards
- strong N-S pedestrian thoroughfare

In Progress

SCHEME 2



- keeps existing pool, adds new pool support building
- new track & field moved to N-S position
- new tennis and pickleball courts
- new baseball field and multi-use field
- improved softball field
- building form connects to both Capitol Hwy and Vermont Street with central, two-sided entry