

**Medina Valley Independent School District
Board of Trustees
Regular Meeting on Monday, November 28, 2022 at 6:30 PM
Medina Valley ISD Central Office Board Room**

A Regular Board Meeting of the MVISD Board of Trustees was held on Monday, November 28, 2022, beginning at 6:30 PM at/on Medina Valley ISD Central Office Board Room.

I. First Order of Business	
A Establish a Quorum	
B Pledge of Allegiance to the Flag followed by a moment of silence	3
II. Public Hearing Concerning the Financial Integrity Rating System of Texas (FIRST)	
A Discussion Concerning the Financial Integrity Rating System of Texas (FIRST)	
B Public Comments Regarding FIRST Report	
III. Student/Staff Recognition	
A District Holiday Card Artwork Winners	
1 Laikyn Neal, LaCoste Elementary	4
2 Kinsley Seiter & Jamie Masters, MVHS	5
B Star Student(s) from Medina Valley Middle School	6
C Above & Beyond Service to Medina Valley Middle School - Staff Recognition	7
IV. Public Comment	8
<i>At Regular Board Meetings the Board shall permit public comment on any topic. At all other Board Meetings public comments will be limited to items on the agenda posted with the notice of the meeting. All Public Comments are limited to 5 minutes.</i>	
V. Announcements/Communications/Presentations	
A Financial Briefing	9
B Construction Update	12
C Superintendent Briefing	24
D Bond Committee Report	35
E 3rd Quarter 2022 Demographic Study Report Overview	48
F Board Committee Reports	
• Finance & Operations Committee	
• Construction Committee	
VI. Discussion and Possible Action Items	
A Consent Agenda Items	
1 Minutes of Regular Board Meeting on October 17, 2022 and Special Meeting on November 7, 2022	67
B Consider naming Elementary #6	72
C Consider High School Band and Concert Uniforms	74
D Consider the Educational Specifications for Medina Valley High Schools	75
E Consider the Long-Range Facility Plan for Medina Valley High School #2	78
F Budget Amendment	90
VII. Closed Session	91
A Consultation with Attorney (TX Govt. Code Section 551.071)	
• The Board will consult with its legal counsel regarding legal issues relating to a grievance	
B Personnel Matters (TX Govt. Code Section 551.074)	
• Assistant Superintendent	
• Executive Director of Schools	
• The Board will hear the Level III grievance of Jessica Fischer	
C Considering the deployment, specific occasions for, or implementation of, security personnel or devices (TX Govt. Code Section 551.076) - District Safety Audit Reports	
D Deliberation Regarding Real Property (TX Govt. Code Section 551.072)	
VIII. Continued Discussion and Possible Action Items	
A Consider and take possible action regarding the Level III grievance of Jessica Fischer	
B Consider award of bid for a safety item	
C Consider creation of a Special Education Certified Interpreter Aide position	
D Consider creation of a Special Education Visual Impaired Teacher position	
E Consider creation of a Communications Department position	
F Consider adjustments to the 2022-2023 Additional Duty Rates	
G Consider adjustments to the 2022-2023 Clerical/Paraprofessional Pay Ranges	
H Consider adjustments to the 2022-2023 Administrative/Professional Pay Ranges and Job Classifications	
I Consider new hire for the Assistant Superintendent position	
J Consider new hire for the Executive Director of Schools position	
K Consider professional contract recommendations	
L Consideration of future meeting dates	
IX. Adjournment	

(Items do not have to be taken in the same order as shown on the meeting agenda.)









A gray scroll graphic with a white text message. The scroll is unrolled, showing the text in the center. The top and bottom edges of the scroll are rounded, and there are small circular details on the left side suggesting the scroll's binding.

**Thank you for your
Above & Beyond
Service!**

Public Comments

OCTOBER 2022
MEDINA VALLEY INDEPENDENT SCHOOL DISTRICT
GENERAL FUND FINANCIAL STATEMENT

<u>Estimated Revenues</u>		<u>Original Budget</u>	<u>Current Budget</u>	<u>Current Period Actual</u>	<u>YTD Actual</u>	<u>Balance</u>	<u>Current Year Percent Recognized</u>
5700	Local Revenues	\$ 36,410,641	\$ 36,410,641	\$ 1,311,554	\$ 1,469,480	\$ 34,941,161	4.04%
5800	State Program Revenues	\$ 30,880,783	\$ 32,906,496	\$ 6,383,195	\$ 14,083,384	\$ 18,823,112	42.80%
5900	Federal Revenues	\$ 1,270,000	\$ 1,270,000	\$ 14,742	\$ 18,127	\$ 1,251,873	1.43%
Total Revenues		\$ 68,561,424	\$ 70,587,137	\$ 7,709,491	\$ 15,570,991	\$ 55,016,146	22.06%
Proposed Appropriations							
11	Instruction	\$ 39,809,875	\$ 39,866,926	\$ 3,386,768	\$ 6,599,416	\$ 33,267,510	16.55%
12	Media Services	\$ 671,445	\$ 671,445	\$ 54,138	\$ 93,888	\$ 577,557	13.98%
13	Staff Development	\$ 701,616	\$ 701,616	\$ 55,581	\$ 138,034	\$ 563,582	19.67%
21	Instruct. Leadership	\$ 868,278	\$ 868,278	\$ 77,428	\$ 161,894	\$ 706,384	18.65%
23	School Leadership	\$ 3,447,370	\$ 3,447,370	\$ 299,079	\$ 593,604	\$ 2,853,766	17.22%
31	Counseling	\$ 2,893,641	\$ 2,893,641	\$ 221,122	\$ 427,373	\$ 2,466,268	14.77%
32	Social Work Services	\$ 490,242	\$ 490,242	\$ 50,971	\$ 97,354	\$ 392,888	19.86%
33	Health Services	\$ 762,463	\$ 762,463	\$ 72,258	\$ 143,183	\$ 619,280	18.78%
34	Student Transportation	\$ 4,402,577	\$ 4,402,577	\$ 333,966	\$ 771,238	\$ 3,631,339	17.52%
35	Food Service	\$ 126,727	\$ 126,727	\$ 9,263	\$ 19,103	\$ 107,624	15.07%
36	Extracurricular Activities	\$ 2,126,543	\$ 2,126,543	\$ 212,816	\$ 393,485	\$ 1,733,058	18.50%
41	General Admin	\$ 2,309,578	\$ 2,309,578	\$ 196,476	\$ 422,581	\$ 1,886,997	18.30%
51	Maint. Operations	\$ 6,660,154	\$ 6,788,446	\$ 642,724	\$ 1,666,775	\$ 5,121,671	24.55%
52	Security/Monitoring	\$ 1,005,492	\$ 1,379,887	\$ 13,619	\$ 121,023	\$ 1,258,864	8.77%
53	Data Processing	\$ 1,782,489	\$ 1,782,489	\$ 171,117	\$ 514,085	\$ 1,268,404	28.84%
61	Community Services	\$ 9,987	\$ 9,987	\$ 1,348	\$ 2,724	\$ 7,263	27.28%
81	Facilities Construction	\$ 2,947	\$ 1,468,922	\$ 262	\$ 526	\$ 1,468,396	0.00%
95	JJAEP	\$ 5,000	\$ 5,000	\$ -	\$ -	\$ 5,000	0.00%
99	Intergovernmental	\$ 485,000	\$ 485,000	\$ -	\$ 114,892	\$ 370,108	23.69%
Totals		\$ 68,561,424	\$ 70,587,137	\$ 5,798,936	\$ 12,281,178	\$ 58,305,959	17.40%

**OCTOBER 2022
MEDINA VALLEY INDEPENDENT SCHOOL DISTRICT
FOOD SERVICE FUND FINANCIAL STATEMENT**

<u>Estimated Revenues</u>		<u>Original Budget</u>	<u>Current Budget</u>	<u>Current Period Actual</u>	<u>YTD Actual</u>	<u>Balance</u>	<u>Current Year Percent Recognized</u>
5700	Local and Intermediate Revenues	\$1,500,152	\$1,500,152	\$204,089	\$ 400,472	\$1,099,680	26.70%
5800	State Program Revenues	\$ 7,000	\$ 7,000	\$ -	\$ -	\$ 7,000	0.00%
5900	Federal Revenues	\$3,562,125	\$3,562,125	\$318,086	\$ 733,770	\$2,828,355	20.60%
Total Revenues		\$5,069,277	\$5,069,277	\$522,175	\$1,134,242	\$3,935,035	22.37%

Proposed Appropriations

11	Instruction						
12	Media Services						
13	Staff Development						
21	Instruct. Leadership						
23	School Leadership						
31	Counseling						
32	Social Work Services						
33	Health Services						
34	Student Transportation						
35	Food Service	\$4,608,123	\$4,608,123	\$353,341	\$ 686,455	\$3,921,668	14.90%
36	Extracurricular Activities						
41	General Admin						
51	Maint. Operations						
52	Security/Monitoring						
53	Data Processing						
61	Community Services						
81	Facilities Construction						
95	JJAEP						
99	Intergovernmental						
Totals		\$4,608,123	\$4,608,123	\$353,341	\$ 686,455	\$3,921,668	14.90%

**OCTOBER 2022
MEDINA VALLEY INDEPENDENT SCHOOL DISTRICT
INTEREST SINKING FUND FINANCIAL STATEMENT**

<u>Estimated Revenues</u>	<u>Original Budget</u>	<u>Current Budget</u>	<u>Current Period Actual</u>	<u>YTD Actual</u>	<u>Balance</u>	<u>Current Year Percent Recognized</u>
5700 Local and Intermediate Revenues	\$ 19,623,032	\$ 19,623,032	\$ 669,230	\$ 710,129	\$ 18,912,903	3.62%
5800 State Program Revenues	\$ -	\$ -	\$ -	\$ -	\$ -	0.00%
5900 Federal Revenues	\$ -	\$ -	\$ -	\$ -	\$ -	0.00%
Total Revenues	\$ 19,623,032	\$ 19,623,032	\$ 669,230	\$ 710,129	\$ 18,912,903	3.62%

Proposed Appropriations

11 Instruction						
12 Media Services						
13 Staff Development						
21 Instruct. Leadership						
23 School Leadership						
31 Counseling						
32 Social Work Services						
33 Health Services						
34 Student Transportation						
35 Food Service						
36 Extracurricular Activities						
41 General Admin						
51 Maint. Operations						
52 Security/Monitoring						
53 Data Processing						
61 Community Services						
71 Debt Service	\$ 19,510,553	\$ 19,510,553	\$ -	\$ 500	\$ 19,510,053	0.00%
81 Facilities Construction						
95 JJAEP						
99 Intergovernmental						
Totals	\$ 19,510,553	\$ 19,510,553	\$ -	\$ 500	\$ 19,510,053	0.00%



Medina Valley
INDEPENDENT SCHOOL DISTRICT

**Board of Trustees Meeting:
Elementary School #6
Project Update**

GENERAL PROJECT SUMMARY:

General Contractor (CMR): F.A. Nunnelly General Contractor

Original Substantial Completion Date: April 2024

Requested Days to Date: Zero (0)

Original Contract Sum (GMP): \$42,139,608.00

Change Order Sum to Date: \$0.00

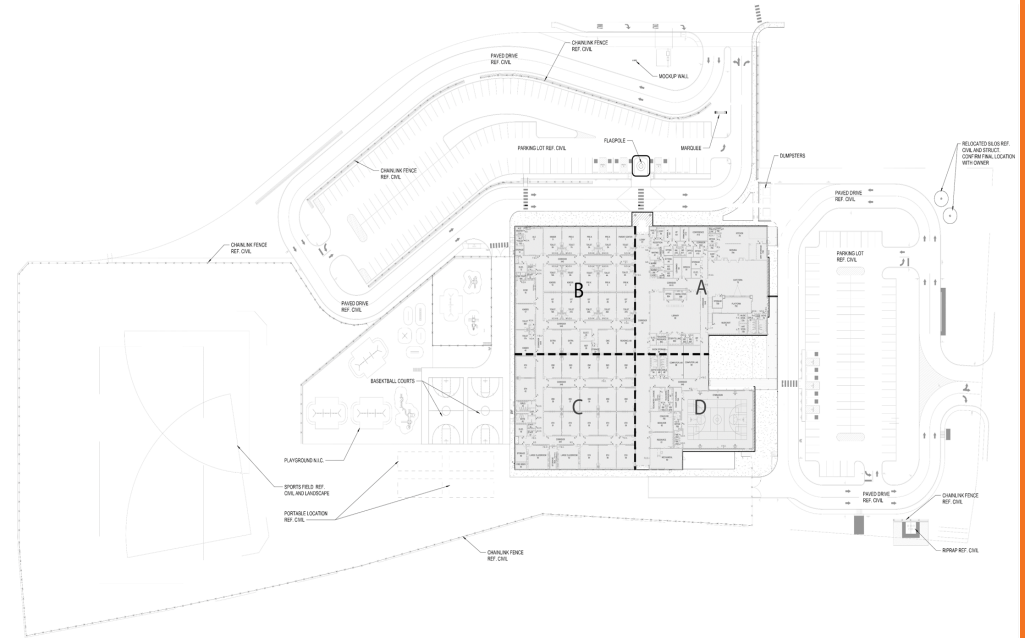
Current Contract Sum: \$42,139,608.00

Percentage of Work Complete: 5% - Pay Application No. 2

\$2,104,548 Total Stored/Completed

RECENT CONSTRUCTION ACTIVITY

1. Project submittal process is ongoing
2. Site work on the property has begun
 - Rough grading on the North drive up lane
 - Rough grading of the Staff Parking
3. Piers drilling activities in Area A, C, and D
 - Averaging 8 piers per day
 - Installation of cages at piers continue
4. Utility trenching has begun on Area A



2 WEEK LOOK AHEAD SUMMARY:

1. Complete drilling of piers in Area C
2. Begin drilling of piers in Area B
3. Begin storm drain in Area A
4. Mud slab installation to begin in Area A and D





















Medina Valley
INDEPENDENT SCHOOL DISTRICT

Superintendent Briefing

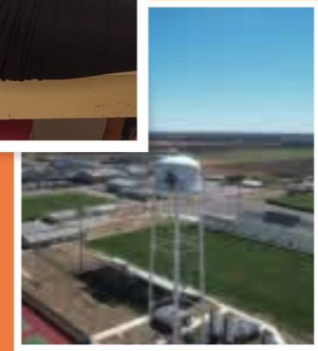
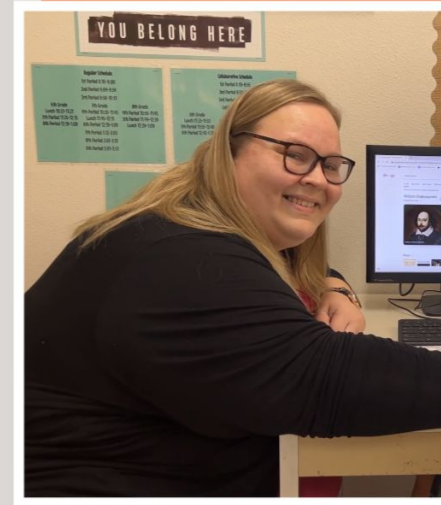
November 28, 2022



Medina Valley
INDEPENDENT SCHOOL DISTRICT

Employee of the Month

November
2022



Karee Kerr, Medina Valley MS Theatre & Journalism Teacher

BEST OF MEDINA COUNTY 2022

Awarded by **GOMEDINA**

Best Elementary School

CASTROVILLE ES

Best Middle School

MEDINA VALLEY MS

Best High School

MEDINA VALLEY HS





Narcan is available at
all 8 of our MVISD
campuses.

The District applied
for a State-Funded
program that
provides free Narcan,
and we were granted
\$2000 to supply it on
all of our campuses.



Congratulations to MVHS
Football & Volleyball on
successful seasons!

MVHS Boys Golf

1st Place @ Alamo Heights

Match Play Invitational

Levi Keith - 1st Place Individual

Girls Basketball

Won Silver Bracket @

Harlandale Invitational

MVHS Football Players & Cheerleaders volunteer at Elementary Schools
MVHS Student Council hosted Painting With a Twist at MV Rehabilitation Center





Medina Valley High School Percussion
1st Place in their Division at the South Texas Classic
Also Received: Best Front Ensemble and Best Bass Line!



Seven Middle School Band
Students earned spots in Region
Band!

The UIL Academics
Congressional Debate Team
competed at the UIL Region
20 Congressional Debate
Meet.

Carissa Caesar's performance
earned a spot at the State
Meet which will be held in
Austin January 4th and 5th.



Rylie Human signed her letter of intent for Cheerleading at the University of the Cumberland.



MVHS FFA

9 Teams Advance to Area at
District Contest

3 Teams Advance to State:
Ag Advocacy, Sr. Chapter
Conducting & Radio Broadcasting

Brady Prukop - 3rd Place in a
competitive class at the Houston
Scramble Prospect Show

Mason Emiliano Aguilar & Tender

Felix Bernal

3rd Place at Bricklayers 500
Competition



District Enrollment

	5/27/22	11/15/22
Castroville Elementary	616	625
LaCoste Elementary	660	733
Ladera Elementary	659	756
Luckey Ranch Elementary	750	860
Potranco Elementary	783	850
Medina Valley Middle School	916	1,025
Loma Alta Middle School	760	794
Medina Valley High School	1,921	2,140
<u>District-Wide</u>	7,065	7,783



Medina Valley
INDEPENDENT SCHOOL DISTRICT

**COMMUNITY BOND ADVISORY
COMMITTEE REPORT**



Committee Charge



What is our goal?

The Community Bond Advisory Committee is charged with developing a bond recommendation that supports educational excellence for students and addresses the District's fast-growth. The recommendation should be developed with community support in mind.

Demographer Recap

Ten Year Forecast by Campus – Annual housing rate 1,500-1,900

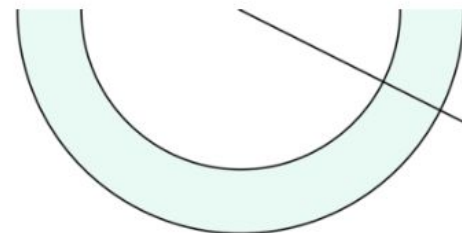


ELEMENTARY CAMPUS	Capacity	Fall	ENROLLMENT PROJECTIONS									
		2022/23	2023/24	2024/25	2025/26	2026/27	2027/28	2028/29	2029/30	2030/31	2031/32	2032/33
CASTROVILLE ELEMENTARY	750	627	626	651	657	679	705	726	757	784	811	839
LACOSTE ELEMENTARY	850	737	791	873	968	1,037	1,113	1,173	1,250	1,337	1,419	1,514
LADERA ELEMENTARY	850	752	866	1,015	1,169	1,324	1,479	1,594	1,709	1,817	1,928	2,054
LUCKEY RANCH ELEMENTARY	1,000	856	958	1,073	1,146	1,242	1,349	1,427	1,496	1,528	1,605	1,692
POTRANCO ELEMENTARY	1,000	842	883	949	994	1,041	1,084	1,175	1,268	1,360	1,427	1,491
ELEMENTARY TOTALS	4,450	3,814	4,124	4,561	4,934	5,323	5,730	6,095	6,480	6,826	7,190	7,590
Elementary Absolute Change		573	310	437	373	389	407	365	385	346	364	400
Elementary Percent Change		17.68%	8.13%	10.60%	8.18%	7.88%	7.65%	6.37%	6.32%	5.34%	5.33%	5.56%
LOMA ALTA MIDDLE SCHOOL	1,100	793	892	995	1,146	1,219	1,369	1,466	1,631	1,730	1,828	1,903
MEDINA VALLEY MIDDLE SCHOOL	1,100	1,029	1,105	1,204	1,265	1,300	1,336	1,401	1,455	1,540	1,615	1,691
MIDDLE SCHOOL TOTAL	2,200	1,822	1,997	2,199	2,411	2,519	2,705	2,867	3,086	3,270	3,443	3,594
Middle School Absolute Change		214	175	202	212	108	186	162	219	184	173	151
Middle School Percent Change		13.31%	9.60%	10.12%	9.64%	4.48%	7.38%	5.99%	7.64%	5.96%	5.29%	4.39%
MEDINA VALLEY HIGH SCHOOL	2,350	2,149	2,372	2,538	2,821	3,068	3,244	3,539	3,727	3,912	4,208	4,444
HIGH SCHOOL TOTAL		2,149	2,372	2,538	2,821	3,068	3,244	3,539	3,727	3,912	4,208	4,444
High School Absolute Change		213	223	166	283	247	176	295	188	185	296	236
High School Percent Change		11.00%	10.38%	7.00%	11.15%	8.76%	5.74%	9.09%	5.31%	4.96%	7.57%	5.61%
DISTRICT TOTALS	9,000	7,785	8,493	9,298	10,166	10,910	11,679	12,501	13,293	14,008	14,841	15,628
District Absolute Change		1,000	708	805	868	744	769	822	792	715	833	787
District Percent Change		14.74%	9.09%	9.48%	9.34%	7.32%	7.05%	7.04%	6.34%	5.38%	5.95%	5.30%

New Elementary School needed every 2-3 years
 New Middle School needed every +/- 6 years
 New High School needed every +/- 10 years



School District Growth and Size Comparisons



Rank	DISTRICT	2021/22 Enrollment	10-YEAR CHANGE (11/12-21/22)	10-YEAR PCT Growth	SQUARE MILES
1	Comal ISD	27,288	9,471	53.2%	586.04
2	Medina Valley ISD	6,785	3,240	91.4%	290.78
3	Boerne ISD	10,327	3,574	52.9%	306.82
4	Judson ISD	24,536	2,033	9.0%	55.70
5	Schertz-Cibolo-Universal City ISD	15,890	2,830	21.7%	60.01
54	Northside ISD (Bexar)	102,377	4,267	4.3%	317.10
55	North East ISD	59,830	-7,609	-11.3%	132.24
56	San Antonio ISD	44,710	-9,684	-17.8%	74.73

- Medina Valley ISD is the fastest growing district in region 20 based upon percentage growth



Financial Report Summary



Authorization

The amount that the community approves the District to borrow.



Capacity

The amount that the District can finance.
The District is limited to \$0.50 tax rate.



Personal Impact

Potential Tax Increase: \$0.028

Taxable Home Value	Monthly Increase	Annual Increase
\$160,000	\$3.71	\$44.50
\$260,000	\$6.03	\$72.31
\$360,000	\$8.34	\$100.12



Campus Standards

Elementary School

Design + Construction: 2 Years
Ideal Size of Property: 15-20 acres
Ideal Student Population: 850

Middle School

Design + Construction: 3 Years
Ideal Size of Property: 40-50 acres
Ideal Student Population: 1,100

High School

Design + Construction: 4 Years
Ideal Size of Property: 80+ acres
Ideal Student Population: 2,400



School Size Approach for MVISD

- Best for kids:
 - Academically
 - Social-Emotional
 - Campus Climate
 - Safety & Security
 - Extracurricular Activities
 - Traffic
 - Transportation



School Size Approach from Other ISDs

Comal ISD -

Elementary Schools – 850 student capacity, minimum of 15 acres

Middle Schools – 1,150 student capacity, minimum of 25 acres

High Schools – 2,500 student capacity, minimum of 80 acres

Hays CISD -

Elementary Schools – 900 student capacity, minimum of 15 acres

Middle Schools – 1,200 student capacity, minimum of 25 acres

High Schools – 2,250 student capacity, minimum of 80 acres

Leander ISD -

Elementary Schools – 850 student capacity, minimum of 15 acres

Middle Schools – 1,358 student capacity, minimum of 25 acres

High Schools – 2,400 student capacity, minimum of 80 acres

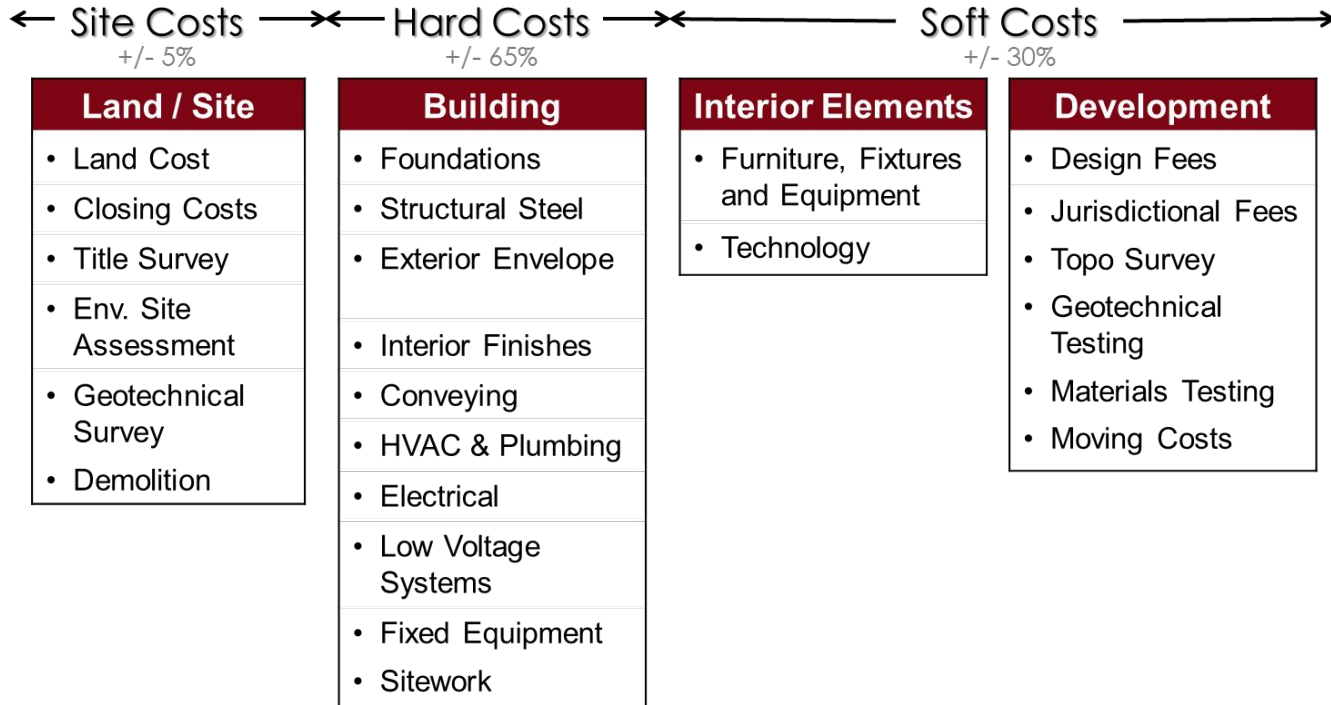


Bond Projects for Consideration

- High School 2
- High School 2 Stadium (6000 seats)
- Middle School 3
- Elementary School 7
- Land Purchase(s)
- MVHS AFJROTC Building
- MVHS Agricultural Classroom Updates
- Potranco, LAMS & MVMS Drive Improvements
- Key Card Entry & Security Cameras
- MVHS Athletic Stadium Updates



Analysis of Total Project Costs





MEDINA VALLEY ISD COMMUNITY BOND ADVISORY COMMITTEE



October 26, 2022

Meeting Summary

The MVISD Community Bond Advisory Committee met on October 26, 2022 and covered District growth, the educational vision for our schools, and modern learning environments.

Natalie Benke, Director of Curriculum and Assessment, reviewed our District's Strategic Plan and the academic opportunities that MVISD offers to support the District's Profile of a Graduate. We strive for all MVISD students to be strong in: Communications, Academics, Problem-Solving, Citizenship and to be Well-Rounded. Architects O'Connell Robertson presented to the group showcasing modern learning environments and how school design can help support 21st century learning and MVISD's mission/vision.

Our District Demographer shared a presentation that highlighted: Fall 2022 enrollment setting a record at 14% growth rate (1,000 students), capacity at each campus, housing trends/overview for our area, and what future enrollment projections look like for MVISD. His presentation concluded that new campuses will be needed to accommodate future growth.

Full Meeting Presentation is available at www.mvisd.com under the Community Tab.

Nuestro Demógrafo del Distrito compartió una presentación que incluye los aspectos más destacados: Otoño 2022 inscripción estableciendo un récord en la tasa de crecimiento del 14% (1,000 estudiantes), la capacidad en cada campus, las tendencias de la vivienda / visión general de nuestra área, y lo que las proyecciones futuras de inscripción parecen para MVISD. Su presentación concluyó que se necesitarán nuevos campus para acomodar el crecimiento futuro.

La presentación completa de la reunión está disponible en www.mvisd.com en la pestaña Comunidad.



MEDINA VALLEY ISD COMMUNITY BOND ADVISORY COMMITTEE



November 9, 2022

Meeting Summary

The MVISD Community Bond Advisory Committee met on November 9, 2022 and covered financial information, tax impact, potential bond projects and construction market costs.

Derek Honea, MVISD's Financial Advisor with RBC Capital Markets, reviewed the District's bond history, the current market, bond capacity, bond authorization and potential tax impact.

O'Connell Robertson, the District's architect, reviewed potential bond projects for consideration that included:

- High School 2
- High School 2 Stadium
- Middle School 3
- Elementary 7
- Land Purchases
- MVHS AFJROTC Building
- MVHS Agricultural Classroom Updates
- Drive Improvements at Potranco, LAMS and MVMS
- Key Card Entry & Security Cameras
- MVHS Athletic Stadium Updates

The Committee participated in two interactive activities, one sharing their thoughts on what range of Bond Funding they believe the community would support, and another ranking the proposed projects in priority order. The results showed the majority of the committee supported a bond amount between 300-400 million. The top projects the group felt were most important were: High School 2, Middle School 3, Elementary 7, Key Card Entry/Security Cameras, and Land Purchases.

Project pricing for all potential projects will be presented at the next meeting, and more conversations are to take place to determine what bond package options the committee would like to draft. They will continue to talk through various options on projects and bond funding to finalize a bond package recommendation to present to the board in February 2023.

Full Meeting Presentation is available at www.mvisd.com under the Community Tab.

En dos actividades interactivas, una compartiendo sus pensamientos sobre qué rango de financiación de bonos creen que la comunidad apoyaría, y otra clasificando los proyectos propuestos en orden de prioridad. Los resultados mostraron que la mayoría del comité apoyó una cantidad de bonos entre 300-400 millones. Los principales proyectos que consideraron más importantes fueron: La Escuela Secundaria 2, la Escuela Media 3, la Escuela Primaria 7, la Entrada con Tarjeta/Cámaras de Seguridad y la Compra de Terrenos.

Los precios de todos los proyectos potenciales se presentarán en la próxima reunión, y se llevarán a cabo más conversaciones para determinar las opciones del paquete de bonos que el comité desea redactar. Continuarán hablando sobre varias opciones de proyectos y financiación de bonos para finalizar una recomendación de paquete de bonos para presentar a la junta en febrero de 2023.

La presentación completa de la reunión está disponible en www.mvisd.com en la pestaña Comunidad.



MEDINA VALLEY ISD CONSULTIVO DE DE LA COMUNIDAD

de 2022

de Bonos de la Comunidad de MVISD se reunió el 9 de noviembre de 2022 y cubrió el crecimiento del Distrito, la visión de las escuelas y los entornos de aprendizaje modernos.

Directora de Currículo y Evaluación, revisó nuestro Distrito y las oportunidades académicas para apoyar el Perfil de un Graduado del Distrito que todos los estudiantes de MVISD sepan académicos, resolución de problemas, la ciudadanía y el bienestar. Arquitectos O'Connell Robertson presentaron a los miembros del comité los posibles proyectos de bonos para ayudar a apoyar el aprendizaje del siglo 21 y



MEDINA VALLEY ISD CONSULTIVO DE DE LA COMUNIDAD

de 2022

de Bonos de la Comunidad de MVISD se reunió el 9 de noviembre de 2022 y cubrió el crecimiento del Distrito, la visión de las escuelas y los entornos de aprendizaje modernos.

Financiero de MVISD con RBC Capital Markets, revisó la historia de los bonos del Distrito actual, la capacidad de los bonos, la autorización de los bonos y el impacto fiscal, los posibles proyectos de bonos y los costos del mercado de construcción.

El arquitecto del Distrito, revisó los posibles proyectos de bonos para su consideración que incluyeron:

- Actualizaciones de las aulas de agricultura del MVHS
- Mejoras en la conducción en Potranco, LAMS y MVMS
- Entrada con tarjeta y cámaras de seguridad
- Actualizaciones en el estado de atletismo de MVHS

El arquitecto del Distrito, revisó los posibles proyectos de bonos para su consideración que incluyeron:

Los precios de todos los proyectos potenciales se presentarán en la próxima reunión, y se llevarán a cabo más conversaciones para determinar las opciones del paquete de bonos que el comité desea redactar. Continuarán hablando sobre varias opciones de proyectos y financiación de bonos para finalizar una recomendación de paquete de bonos para presentar a la junta en febrero de 2023.

La presentación completa de la reunión está disponible en www.mvisd.com en la pestaña Comunidad.



Summary from November 9

The committee participated in two interactive activities:

1

Sharing their thoughts on what range of Bond Funding they believe the community would support

Majority Supported:
Bond Amount between 300-400M

2

Ranking the proposed bond projects in priority order

Priority Projects were:

1. *High School 2*
2. *Middle School 3*
3. *Elementary 7*
4. *Key Card Entry & Security Cameras*
5. *Land Purchases*



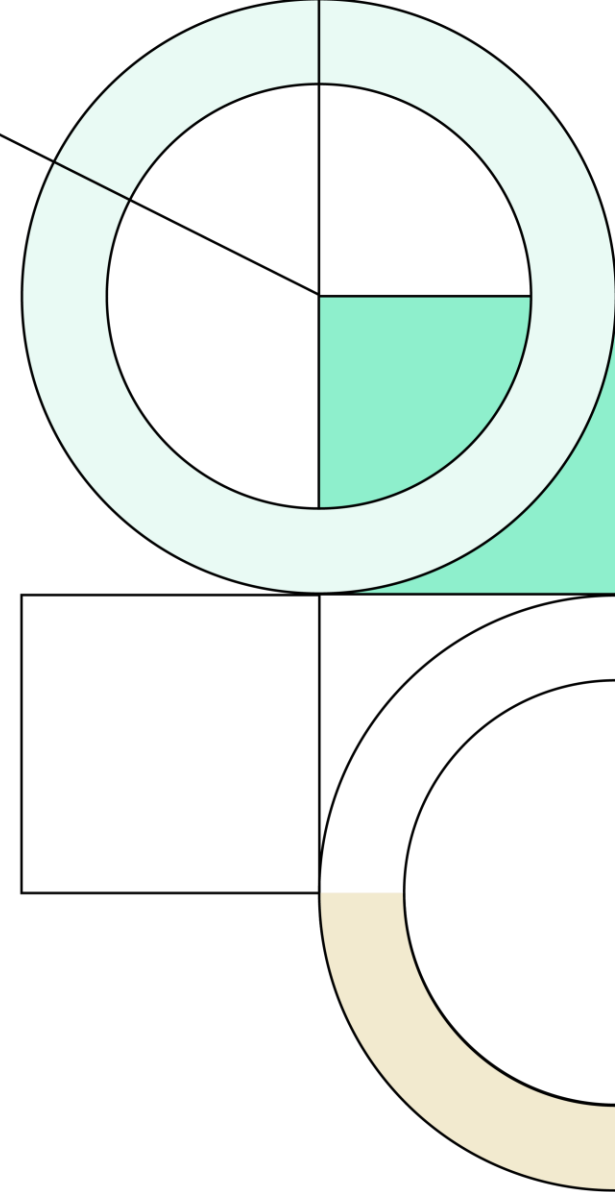
Medina Valley
INDEPENDENT SCHOOL DISTRICT

The CBAC will continue to meet throughout the next couple of months to finalize a bond package recommendation to present to the board in February.



3Q22

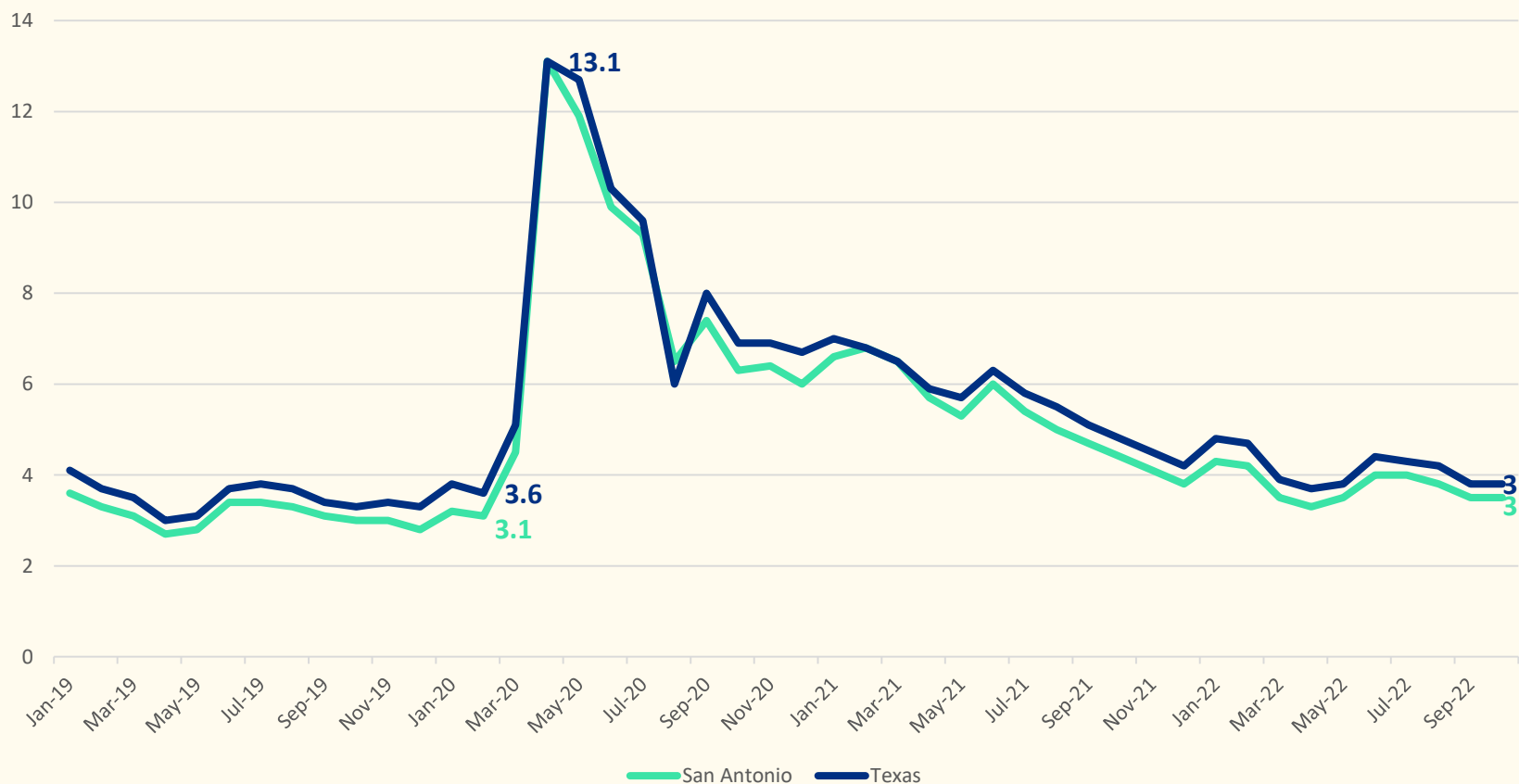
Demographic Report



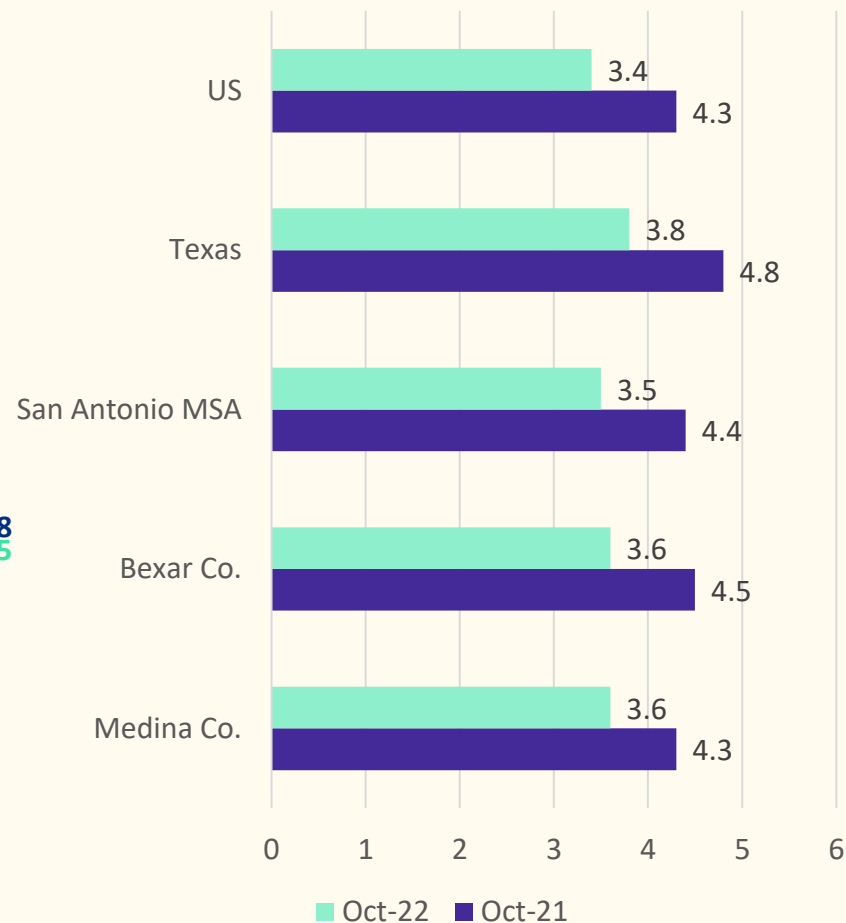


Local Economic Conditions

Unemployment Rate, Jan 2019 - Oct 2022



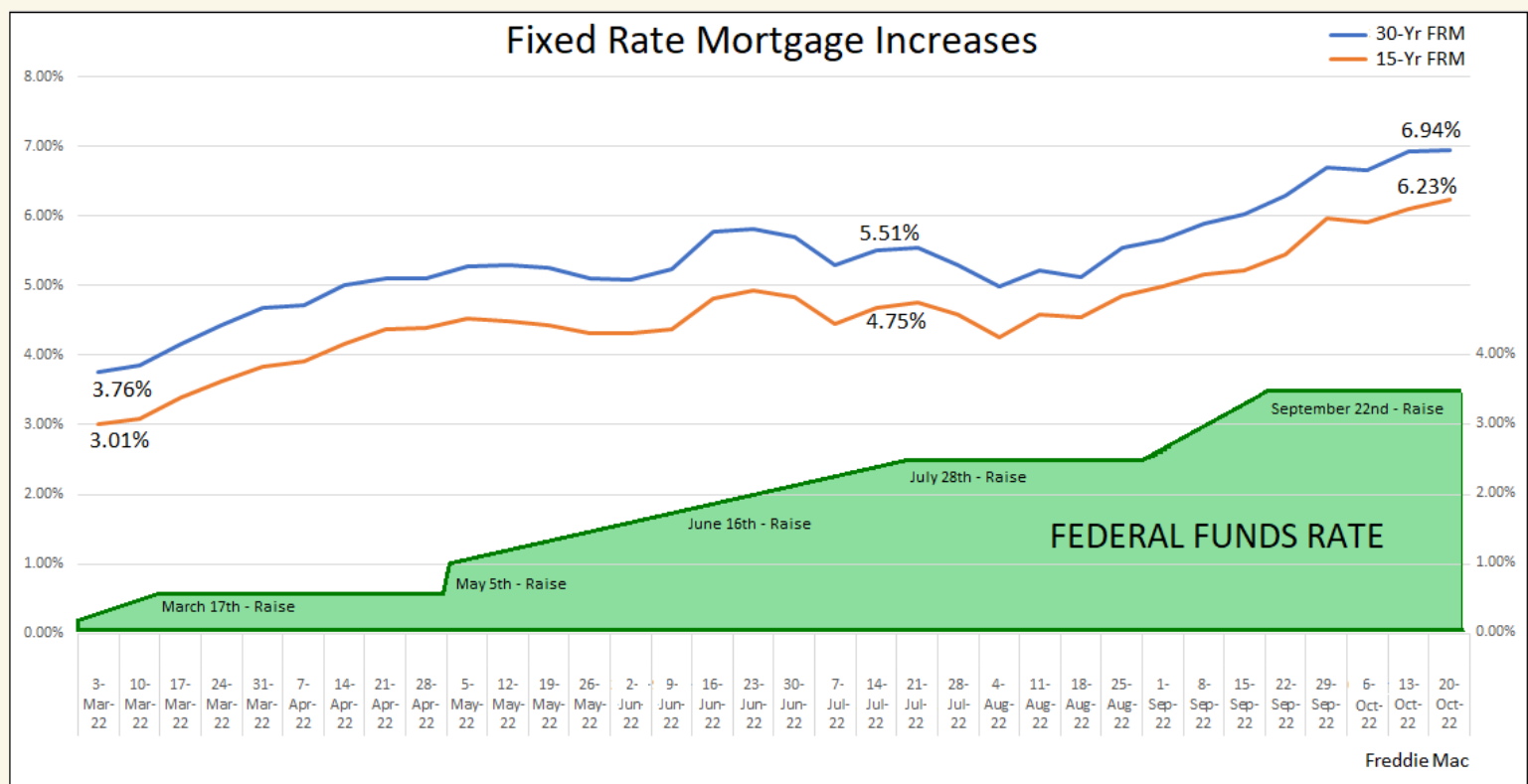
Unemployment Rate, Year Over Year





Economic Conditions

Combination of Price Escalation & Interest Rate Increases Impact on Monthly Payments



SPRING 2022
 3.5% Interest Rate
 HOME PRICE
 \$343,221
 Average Monthly House Payment
 \$1,905

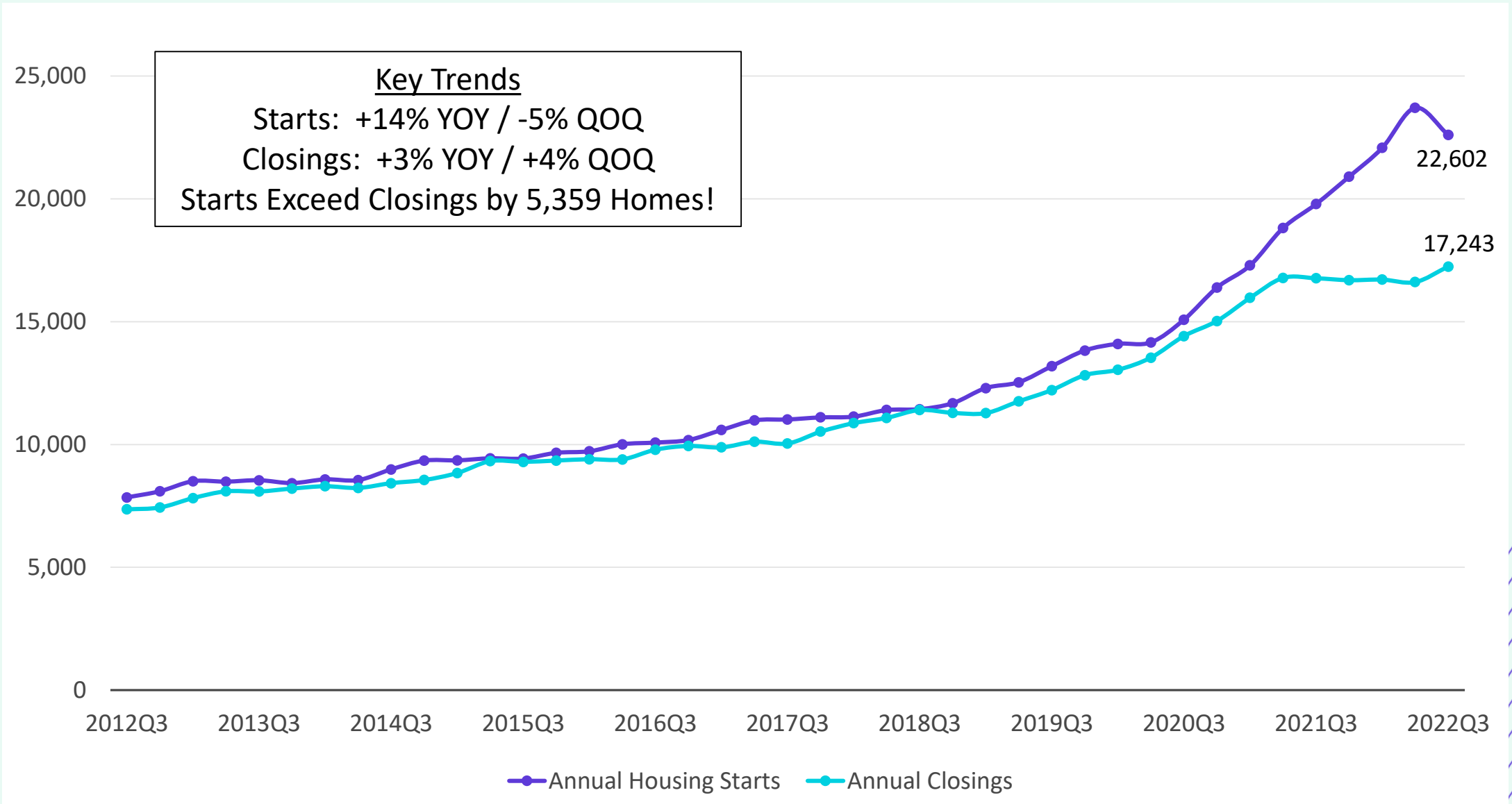
FALL 2022
 7.0% Interest Rate
 HOME PRICE
 \$365,700
 Average Monthly House Payment
 \$2,765

\$860 More Per Month **Increased By 45.15%**

* Since January 2022 – Base Prices have been up by 8% and Mortgage Rates up by approximately 79%



San Antonio New Home Starts & Closings are Flattening Out





San Antonio New Home Ranking Report

ISD Ranked by Annual Closings – 3Q22

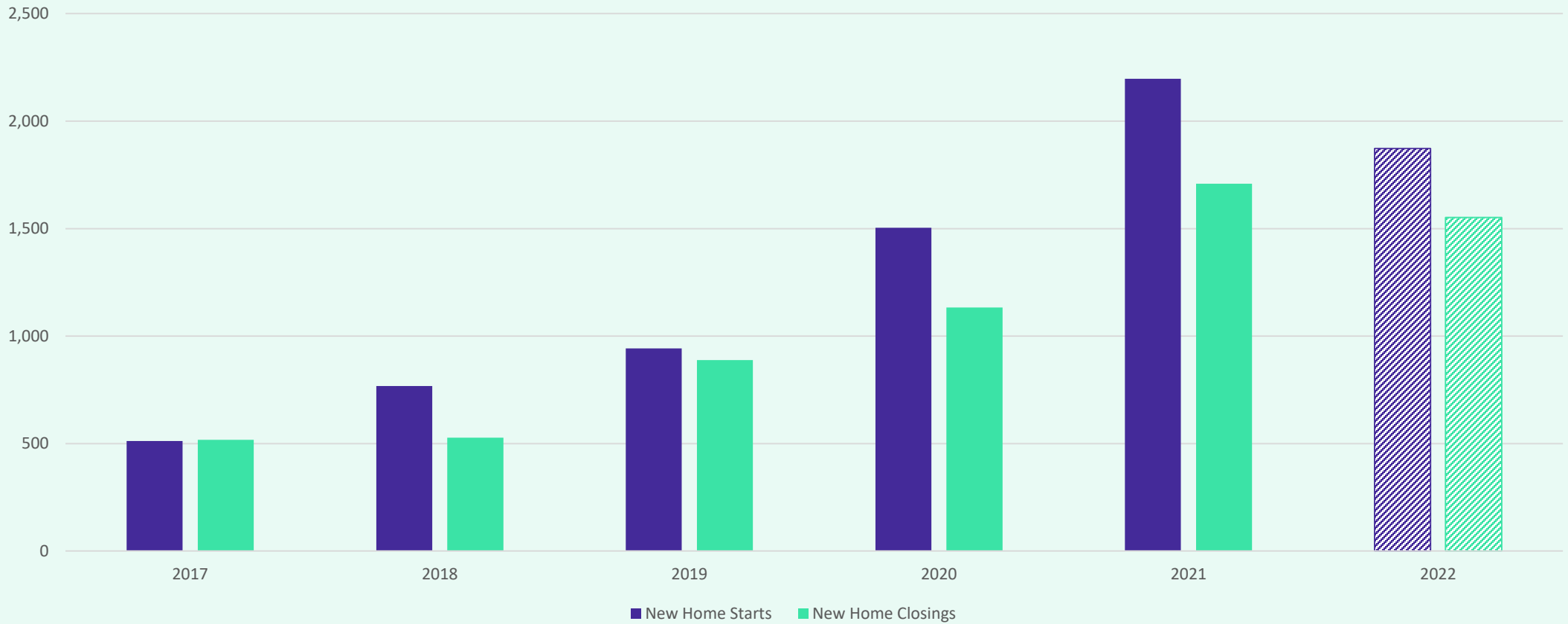
Rank	District Name	Annual Starts	Annual Closings	Inventory	VDL	Future
1	NORTHSIDE ISD	4,782	4,124	3,483	5,450	26,861
2	COMAL ISD	3,830	2,898	3,028	3,395	24,816
3	MEDINA VALLEY ISD*	2,667	2,011	1,707	3,189	28,943
4	EAST CENTRAL ISD	2,367	1,491	1,854	2,914	26,504
5	JUDSON ISD	1,689	1,374	1,140	1,392	1,519
6	SOUTHWEST ISD	1,297	851	890	1,945	10,475
7	SCHERTZ-CIBOLO-U CITY ISD	1,234	822	1,017	1,629	7,474
8	BOERNE ISD	727	772	582	1,175	11,147
9	NEW BRAUNFELS ISD	836	763	660	1,207	6,425
10	SEGUIN ISD	706	486	405	845	5,323
11	NORTH EAST ISD	391	417	318	692	6,124
12	SOUTHSIDE ISD	613	373	370	948	10,505
13	NAVARRO ISD	703	283	528	1,536	4,764
14	SAN ANTONIO ISD	337	278	312	300	1,301
15	SOUTH SAN ANTONIO ISD	293	148	226	202	637
16	LYTLE ISD	111	93	57	110	1,381
17	HARLANDALE ISD	74	82	36	19	144
18	ALAMO HEIGHTS ISD	36	29	57	83	55
19	JOURDANTON ISD	9	20	8	4	36
20	MARION ISD	25	18	24	221	4,513

• Based on additional housing research by Zonda Education

*Includes Redbird Ranch (Medina Valley ISD)



District New Home Starts and Closings by Quarter

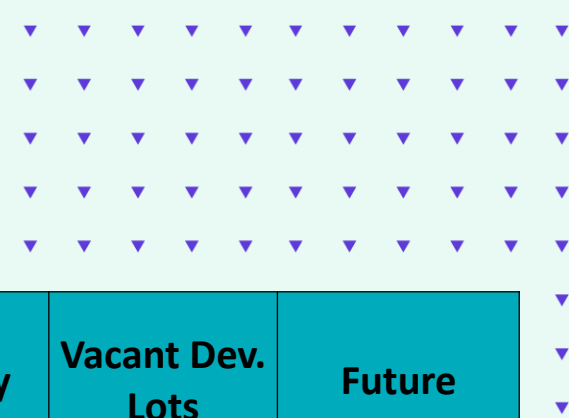


Starts	2017	2018	2019	2020	2021	2022
1Q	112	124	161	299	526	633
2Q	143	163	277	273	528	702
3Q	150	199	254	397	495	538
4Q	107	282	251	535	648	
Total	512	768	943	1,504	2,197	1,873

Closings	2017	2018	2019	2020	2021	2022
1Q	119	109	192	199	401	400
2Q	133	146	242	293	485	559
3Q	134	132	209	296	432	593
4Q	131	140	245	345	391	
Total	517	527	888	1,133	1,709	1,552

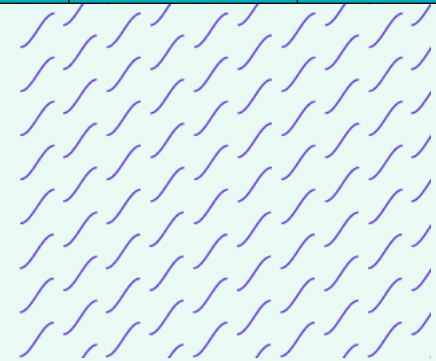


District Housing Overview by Elementary Zone



Elementary	Annual Starts	Quarter Starts	Annual Closings	Quarter Closings	Under Const.	Inventory	Vacant Dev. Lots	Future
CASTROVILLE	44	17	14	5	42	43	393	855
LACOSTE	851	191	659	234	526	559	583	4,494
LADERA	469	75	418	111	300	312	767	7,583
LUCKEY RANCH	587	107	432	118	269	286	689	3,711
POTRANCO	716	148	488	125	457	507	757	12,300
Grand Total	2,667	538	2,011	593	1,594	1,707	3,189	28,943

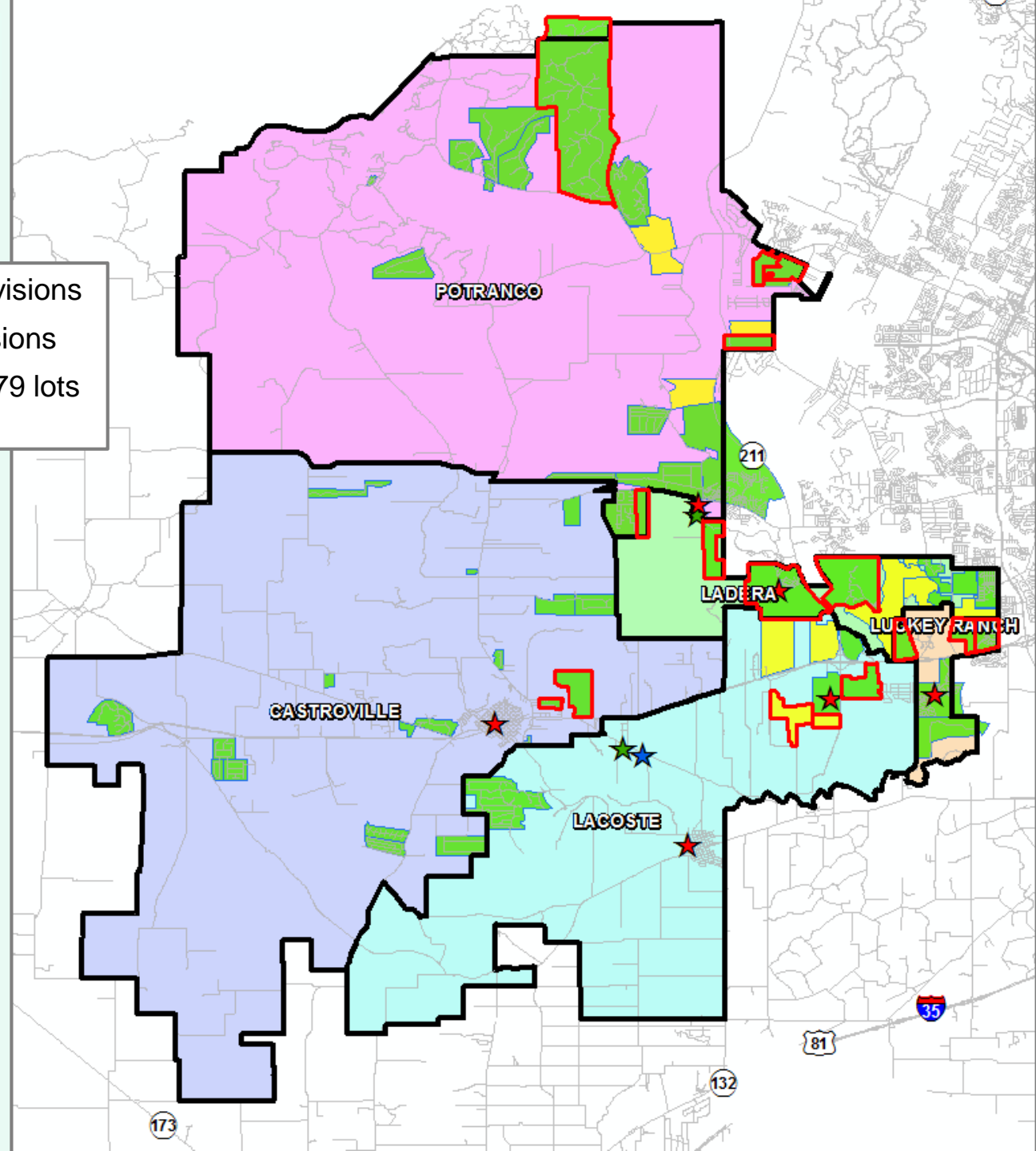
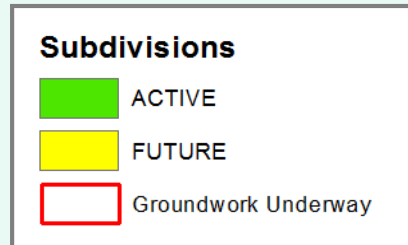
- Highest activity in the category
- Second highest activity in the category
- Third highest activity in the category





District Housing Overview

- The district has 54 actively building subdivisions
- Within MVISD there are 11 future subdivisions
- Of these, groundwork is underway on 2,679 lots within 16 subdivisions





Residential Activity



Lucky Ranch South

- 2,457 total lots
- 305 vacant developed lots
- 2,152 future lots
- First lots delivered for homebuilding 3Q22
- Anticipate building 150 – 200 homes per year
- LGI Homes



Residential Activity



Briggs Ranch East

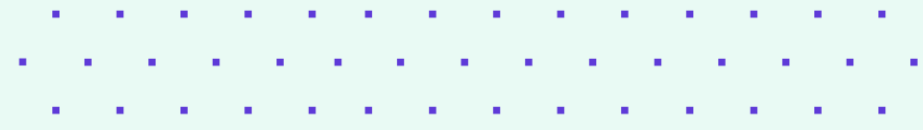
- 432 total lots
- 273 future lots
- 3 homes under construction
- 156 vacant developed lots
- First lots delivered for homebuilding 3Q22
- Mid \$200K+
- Pulte Homes



Residential Activity

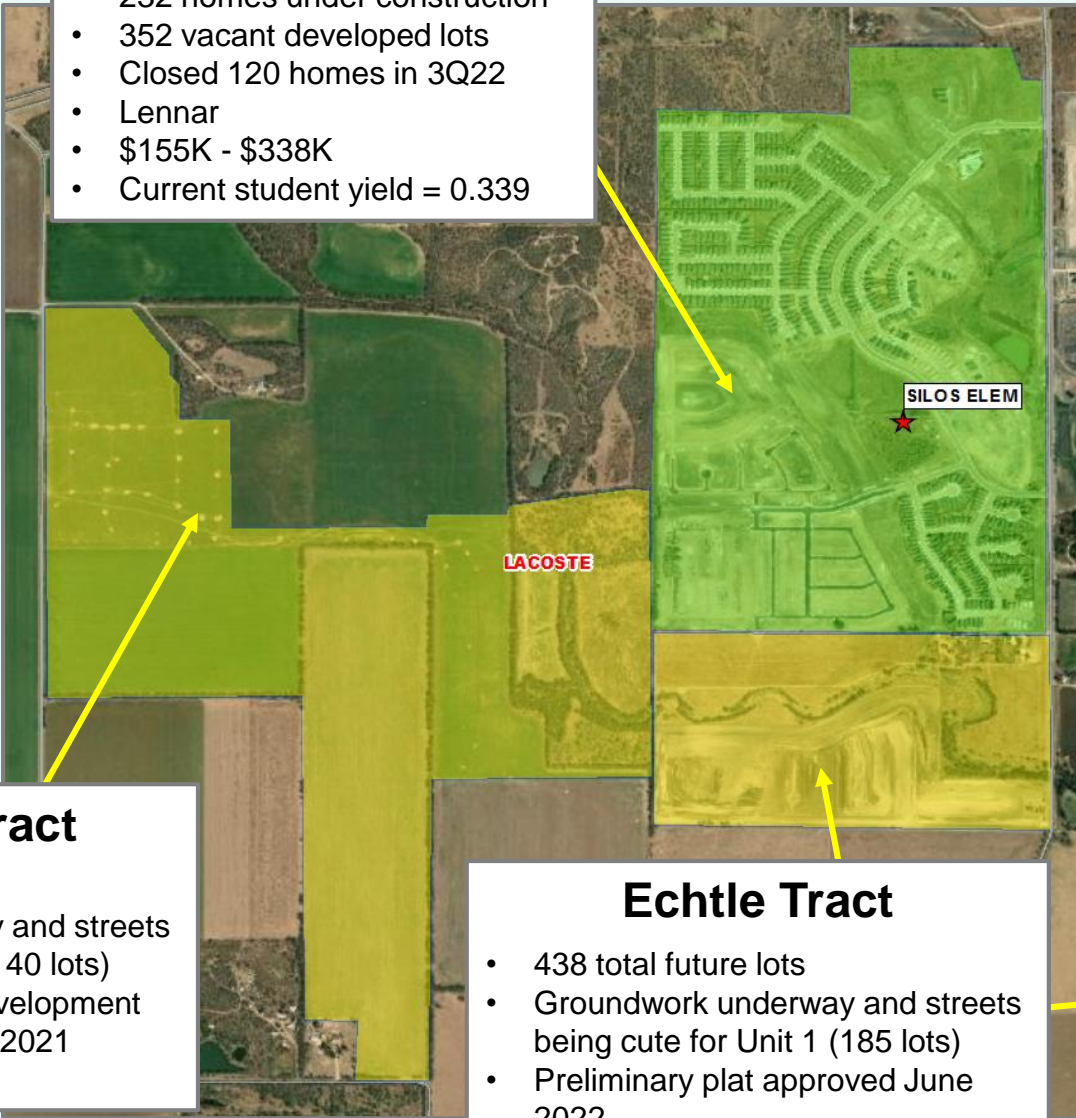
The Silos

- 1,458 total lots
- 177 future lots
- 666 occupied homes
- 232 homes under construction
- 352 vacant developed lots
- Closed 120 homes in 3Q22
- Lennar
- \$155K - \$338K
- Current student yield = 0.339



Jungman Tract

- 1,430 total future lots
- Groundwork underway and streets being cute for Unit 1 (140 lots)
- Preliminary master development plan approved August 2021
- Ashton Woods Homes



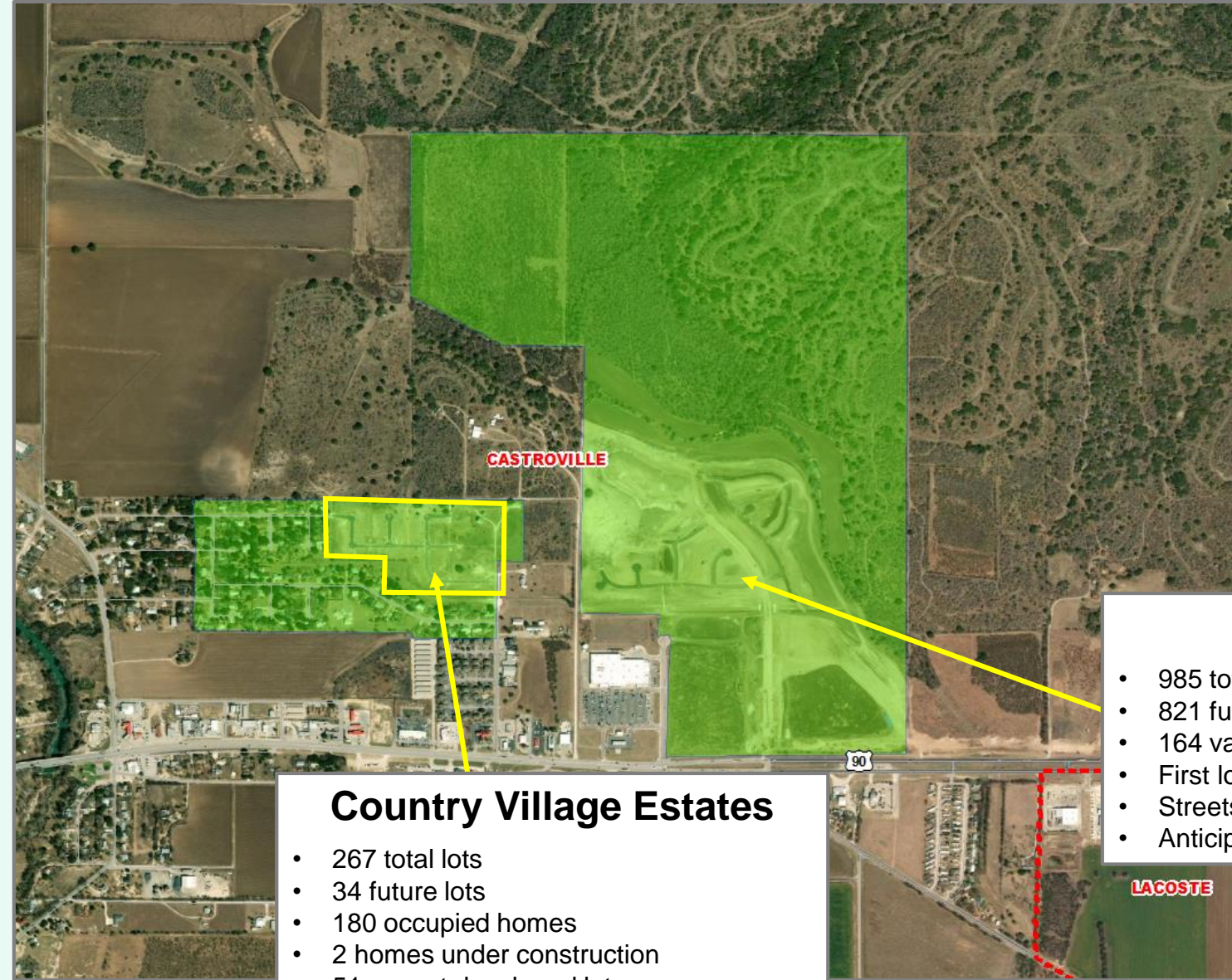
Echtle Tract

- 438 total future lots
- Groundwork underway and streets being cute for Unit 1 (185 lots)
- Preliminary plat approved June 2022
- Ashton Woods Homes





Residential Activity



Country Village Estates

- 267 total lots
- 34 future lots
- 180 occupied homes
- 2 homes under construction
- 51 vacant developed lots
- Homebuilding on Phase 5 started 3Q22

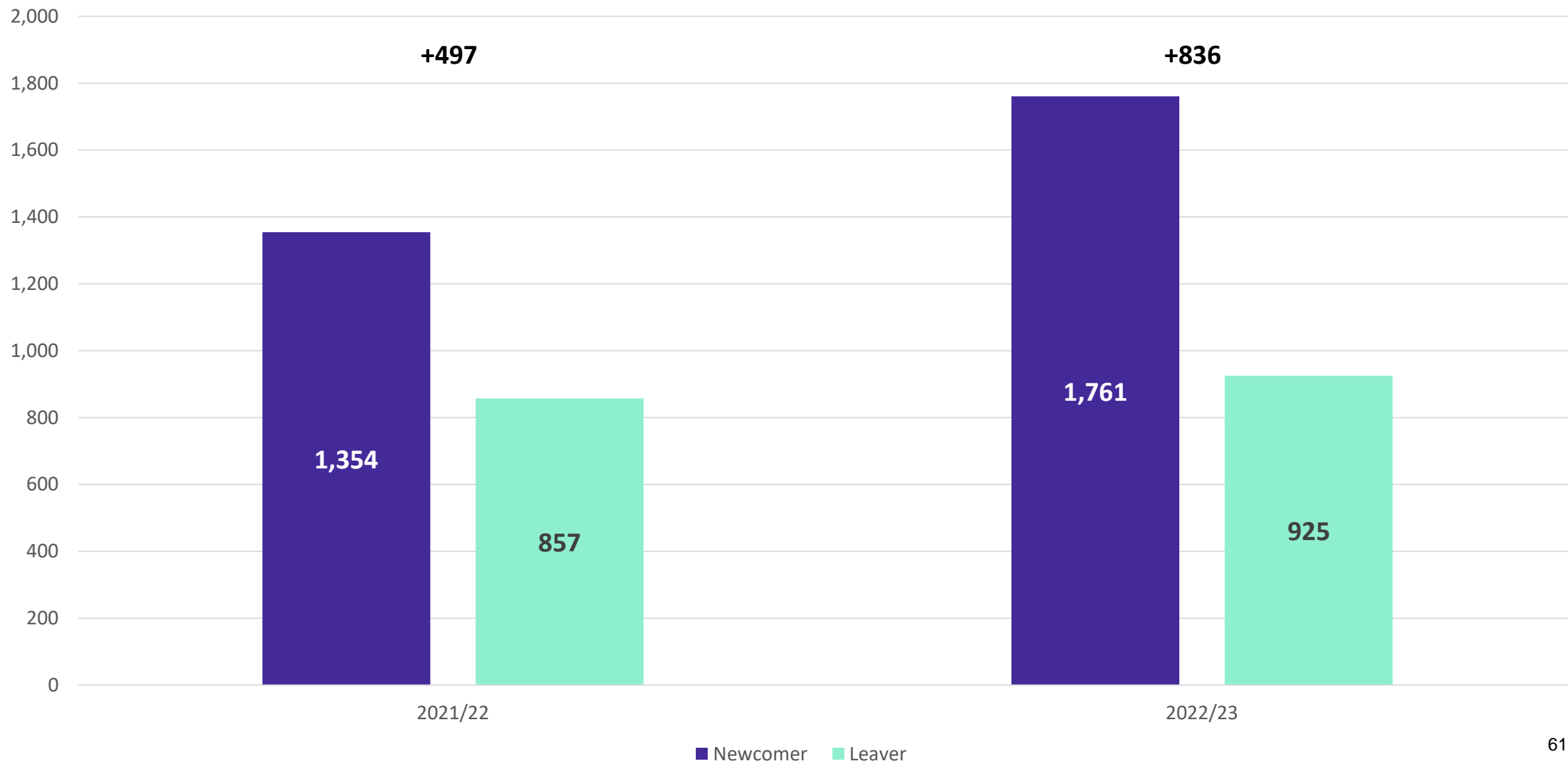


Alsatian Oaks

- 985 total lots
- 821 future lots
- 164 vacant developed lots
- First lots delivered for homebuilding 3Q22
- Streets being paved for Unit 2 (69 lots)
- Anticipate building 200 – 220 homes per year



Newcomers and Leavers





Annual Enrollment Change

Year (Oct.)	EE	PK	K	1st	2nd	3rd	4th	5th	6th	7th	8th	9th	10th	11th	12th	Total	Total Growth	% Growth
2018/19	45	209	374	384	367	391	421	415	436	454	408	427	390	388	358	5,467		
2019/20	30	181	431	408	422	411	447	470	483	465	469	436	433	399	367	5,852	385	7.0%
2020/21	26	160	398	474	429	461	460	473	509	489	490	483	449	434	390	6,125	273	4.7%
2021/22	49	186	483	489	527	489	499	519	524	545	539	518	522	458	438	6,785	660	10.8%
2022/23	52	260	562	583	570	625	555	607	617	579	626	602	559	537	451	7,785	1,000	14.7%

*Yellow Box = largest grade per year
Green Box = second largest grade per year

	EE	PK	K	1st	2nd	3rd	4th	5th	6th	7th	8th	9th	10th	11th	12th	Elem	MS	HS
3 Year Avg.	1.139	0.971	1.096	1.140	1.087	1.117	1.115	1.101	1.118	1.050	1.063	1.052	1.042	1.015	0.978	1.109	1.077	1.022
2019/20	0.667	0.866	1.152	1.091	1.099	1.120	1.143	1.116	1.164	1.067	1.033	1.069	1.014	1.023	0.946	1.120	1.088	1.013
2020/21	0.867	0.884	0.923	1.100	1.051	1.092	1.119	1.058	1.083	1.012	1.054	1.030	1.030	1.002	0.977	1.057	1.050	1.010
2021/22	1.885	1.163	1.214	1.229	1.112	1.140	1.082	1.128	1.108	1.071	1.102	1.057	1.081	1.020	1.009	1.151	1.094	1.042
2022/23	1.061	1.398	1.164	1.207	1.166	1.186	1.135	1.216	1.189	1.105	1.149	1.117	1.079	1.029	0.985	1.179	1.147	1.052

- Medina Valley ISD added 1,000 students this year with increased housing activity
- High grade level growth across all grades



Ten Year Forecast by Grade Level – Mid level projections

Year (Oct.)	EE	PK	K	1st	2nd	3rd	4th	5th	6th	7th	8th	9th	10th	11th	12th	Total	Total Growth	% Growth
2018/19	45	209	374	384	367	391	421	415	436	454	408	427	390	388	358	5,467		
2019/20	30	181	431	408	422	411	447	470	483	465	469	436	433	399	367	5,852	385	7.0%
2020/21	26	160	398	474	429	461	460	473	509	489	490	483	449	434	390	6,125	273	4.7%
2021/22	49	186	483	489	527	489	499	519	524	545	539	518	522	458	438	6,785	660	10.8%
2022/23	52	260	562	583	570	625	555	607	617	579	626	602	559	537	451	7,785	1,000	14.7%
2023/24	52	271	616	639	640	623	682	601	688	672	637	664	626	561	521	8,493	708	9.1%
2024/25	52	309	662	702	703	704	683	746	674	772	753	675	691	628	544	9,298	805	9.5%
2025/26	52	332	712	757	773	774	777	757	812	750	849	797	702	694	628	10,166	868	9.3%
2026/27	52	361	772	806	821	837	828	846	809	891	819	898	799	705	666	10,910	744	7.3%
2027/28	52	393	839	867	882	888	902	907	890	872	943	866	900	802	676	11,679	769	7.0%
2028/29	52	424	909	907	943	950	951	959	975	957	935	998	868	903	770	12,501	822	7.0%
2029/30	52	458	981	978	982	1,008	1,017	1,004	1,032	1,034	1,020	989	1,000	872	866	13,293	792	6.3%
2030/31	52	487	1,045	1,044	1,049	1,034	1,051	1,064	1,074	1,094	1,102	1,079	992	1,004	837	14,008	715	5.4%
2031/32	52	518	1,108	1,103	1,118	1,105	1,089	1,097	1,139	1,138	1,166	1,166	1,082	996	964	14,841	833	5.9%
2032/33	52	545	1,169	1,170	1,181	1,177	1,161	1,135	1,174	1,207	1,213	1,233	1,169	1,086	956	15,628	787	5.3%

Yellow box = largest grade per year
Green box = second largest grade per year



Ten Year Forecast by Elementary Campus – Mid level

CAMPUS LEVEL ENROLLMENT HISTORY AND PROJECTIONS

ELEMENTARY CAMPUS	Capacity	Fall	ENROLLMENT PROJECTIONS									
		2022/23	2023/24	2024/25	2025/26	2026/27	2027/28	2028/29	2029/30	2030/31	2031/32	2032/33
CASTROVILLE ELEMENTARY	750	627	626	651	657	679	705	726	757	784	811	839
LACOSTE ELEMENTARY	850	737	791	873	968	1,037	1,113	1,173	1,250	1,337	1,419	1,514
LADERA ELEMENTARY	850	752	866	1,015	1,169	1,324	1,479	1,594	1,709	1,817	1,928	2,054
LUCKEY RANCH ELEMENTARY	1,000	856	958	1,073	1,146	1,242	1,349	1,427	1,496	1,528	1,605	1,692
POTRANCO ELEMENTARY	1,000	842	883	949	994	1,041	1,084	1,175	1,268	1,360	1,427	1,491
ELEMENTARY TOTALS	4,450	3,814	4,124	4,561	4,934	5,323	5,730	6,095	6,480	6,826	7,190	7,590
Elementary Absolute Change		573	310	437	373	389	407	365	385	346	364	400
Elementary Percent Change		17.68%	8.13%	10.60%	8.18%	7.88%	7.65%	6.37%	6.32%	5.34%	5.33%	5.56%
LOMA ALTA MIDDLE SCHOOL	1,100	793	892	995	1,146	1,219	1,369	1,466	1,631	1,730	1,828	1,903
MEDINA VALLEY MIDDLE SCHOOL	1,100	1,029	1,105	1,204	1,265	1,300	1,336	1,401	1,455	1,540	1,615	1,691
MIDDLE SCHOOL TOTAL	2,200	1,822	1,997	2,199	2,411	2,519	2,705	2,867	3,086	3,270	3,443	3,594
Middle School Absolute Change		214	175	202	212	108	186	162	219	184	173	151
Middle School Percent Change		13.31%	9.60%	10.12%	9.64%	4.48%	7.38%	5.99%	7.64%	5.96%	5.29%	4.39%
MEDINA VALLEY HIGH SCHOOL	2,350	2,149	2,372	2,538	2,821	3,068	3,244	3,539	3,727	3,912	4,208	4,444
HIGH SCHOOL TOTAL		2,149	2,372	2,538	2,821	3,068	3,244	3,539	3,727	3,912	4,208	4,444
High School Absolute Change		213	223	166	283	247	176	295	188	185	296	236
High School Percent Change		11.00%	10.38%	7.00%	11.15%	8.76%	5.74%	9.09%	5.31%	4.96%	7.57%	5.61%
DISTRICT TOTALS	9,000	7,785	8,493	9,298	10,166	10,910	11,679	12,501	13,293	14,008	14,841	15,628
District Absolute Change		1,000	708	805	868	744	769	822	792	715	833	787
District Percent Change		14.74%	9.09%	9.48%	9.34%	7.32%	7.05%	7.04%	6.34%	5.38%	5.95%	5.30%

Yellow box = exceeds capacity
64



Ten Year Forecast by Elementary Campus – High level

		Fall	ENROLLMENT PROJECTIONS									
ELEMENTARY CAMPUS	Capacity	2022/23	2023/24	2024/25	2025/26	2026/27	2027/28	2028/29	2029/30	2030/31	2031/32	2032/33
CASTROVILLE ELEMENTARY	750	627	661	701	728	765	809	851	897	940	984	1,028
LACOSTE ELEMENTARY	850	737	827	924	1,035	1,126	1,225	1,329	1,431	1,529	1,622	1,718
LADERA ELEMENTARY	850	752	905	1,058	1,229	1,397	1,567	1,698	1,833	1,976	2,132	2,323
LUCKEY RANCH ELEMENTARY	1,000	856	1,008	1,148	1,260	1,380	1,516	1,632	1,755	1,894	2,009	2,126
POTRANCO ELEMENTARY	1,000	842	971	1,105	1,223	1,355	1,468	1,605	1,725	1,825	1,953	2,077
ELEMENTARY TOTALS		3,814	4,372	4,936	5,475	6,023	6,585	7,115	7,641	8,164	8,700	9,272
Elementary Absolute Change		573	558	564	539	548	562	530	526	523	536	572
Elementary Percent Change		17.68%	14.63%	12.90%	10.92%	10.01%	9.33%	8.05%	7.39%	6.84%	6.57%	6.57%
LOMA ALTA MIDDLE SCHOOL	1,100	793	923	1,094	1,284	1,411	1,615	1,781	2,011	2,156	2,307	2,414
MEDINA VALLEY MIDDLE SCHOOL	1,100	1,029	1,139	1,251	1,383	1,491	1,597	1,669	1,775	1,902	2,029	2,143
MIDDLE SCHOOL TOTAL		1,822	2,062	2,345	2,667	2,902	3,212	3,450	3,786	4,058	4,336	4,557
Middle School Absolute Change		214	240	283	322	235	310	238	336	272	278	221
Middle School Percent Change		13.31%	13.17%	13.72%	13.73%	8.81%	10.68%	7.41%	9.74%	7.18%	6.85%	5.10%
MEDINA VALLEY HIGH SCHOOL	2,200	2,149	2,440	2,676	3,012	3,361	3,644	4,087	4,420	4,780	5,216	5,580
HIGH SCHOOL TOTAL		2,149	2,440	2,676	3,012	3,361	3,644	4,087	4,420	4,780	5,216	5,580
High School Absolute Change		213	291	236	336	349	283	443	333	360	436	364
High School Percent Change		11.00%	13.54%	9.67%	12.56%	11.59%	8.42%	12.16%	8.15%	8.14%	9.12%	6.98%
DISTRICT TOTALS		7,785	8,874	9,957	11,154	12,286	13,441	14,652	15,847	17,002	18,252	19,409
District Absolute Change		1,000	1,089	1,083	1,197	1,132	1,155	1,211	1,195	1,155	1,250	1,157
District Percent Change		14.74%	13.99%	12.20%	12.02%	10.15%	9.40%	9.01%	8.16%	7.29%	7.35%	6.34%

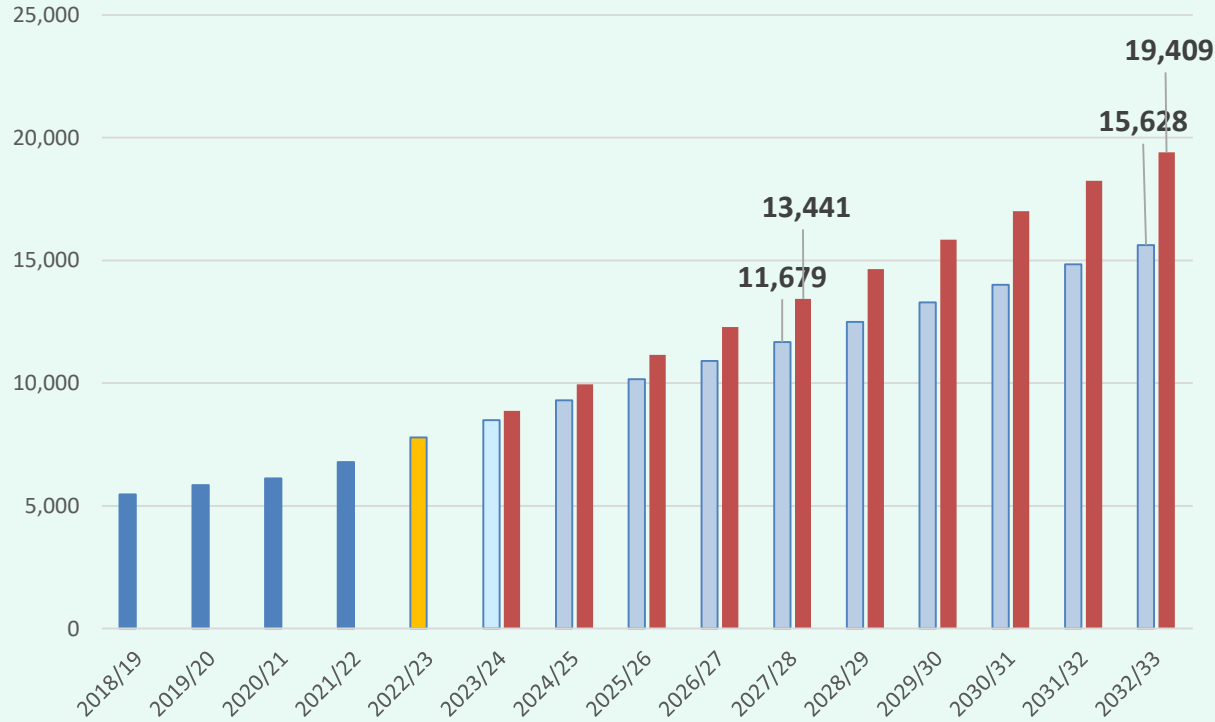
65

Yellow box = exceeds capacity



Key Takeaways

Enrollment Projections



- Medina Valley ISD added 1,000 students this fall as the housing market continued its record pace
- Medina Valley is anticipated to have record high annual starts and closings by the end of 2022
- Groundwork is underway on roughly 2,670 lots across the district
- Mid level forecast to add 1,500 – 1,900 new homes annually for the next 2-3 years
- High level forecast continues 2,200 – 2,700 pace for new homes
- The district is forecasted to enroll more than 11,600 students in 2027/28, and more than 15,600 students in 2032/33 with the Mid-level forecast
- High level forecast five year enrollment = 13,441

Medina Valley Independent School District
Regular School Board Meeting

Board Minutes

October 17, 2022, 6:30 PM

Medina Valley ISD Central Office Board Room

A **Regular Board Meeting** of the Board of Trustees was held Monday, October 17, 2022, beginning at 6:30 PM at the Medina Valley ISD Central Office Board Room.

I. First Order of Business

A Establish a Quorum

Beth Zinsmeyer, Board President, called the Medina Valley ISD Regular Board Meeting to order at 6:30 pm. A quorum of the Board Members were present, Shannon Beasley, Jennilea Campbell, Matt Castiglione, Paula Davidson, Mario De Leon and Beth Zinsmeyer. Veronica Cavazos was absent.

B Pledge of Allegiance to the Flag followed by a moment of silence

Everyone joined in the Pledge of Allegiance to the Flag followed by a moment of silence.

II. Student/Staff Recognition Presentations

A Star Student(s) from Luckey Ranch Elementary

B Above & Beyond Service to Luckey Ranch Elementary *Staff Recognition*

III. Public Comment

Jennifer Alamos, Topic: Athletic Facilities

Terry Beck, Topic: Incompetency within the District

Raul Reyes, Topic: Security in the morning

Hank Seay, Topic: General

IV. Announcements/Communications/Presentations

A JC Zamora presented the monthly Financial Briefing.

B Dr. Caloss presented his monthly Superintendent Briefing.

V. Discussion and Possible Action Items

A Consent Agenda Items

- 1 Minutes of Regular Board Meeting on September 19th, and Special Board Meeting on October 5th
- 2 Donations

Matt Castiglione made a Motion, seconded by Jennilea Campbell, to approve the consent agenda items as presented. All of the Board Members voted for and the Motion passed.

Medina Valley Independent School District
Regular School Board Meeting

Board Minutes

October 17, 2022, 6:30 PM

Medina Valley ISD Central Office Board Room

- B Consider TASB initiated Board Policy Update 119 affecting Local Policies CPC, DMA, EHAA, EHB, EHBAA, EHBB, EIF, FFBA, and FFH

Shannon Beasley made a Motion, seconded by Mario De Leon, to approve the TASB initiated Board Policy Update 119 affecting Local Policies CPC, DMA, EHAA, EHB, EHBAA, EHBB, EIF, FFBA, and FFH as presented. All of the Board Members voted for and the Motion passed.

- C Consider 2022-2023 District Improvement Plan

Jennilea Campbell made a Motion, seconded by Paula Davidson, to approve the 2022-2023 District Improvement Plan as presented. All of the Board Members voted for and the Motion passed.

- D Consider the MVISD Investment Policy

Shannon Beasley made a Motion, seconded by Mario De Leon, to adopt the MVISD 2022-2023 Investment Policy as presented. All of the Board Members voted for and the Motion passed.

- E Consider and take possible action to select a construction procurement method for the High School #2 Project and delegate authority to the Superintendent to proceed with procurement

Mario De Leon made a Motion, seconded by Jennilea Campbell, to select Construction Manager-at-Risk (CMaR) as our method of procurement for the High School #2 project and authorize the Superintendent, with the assistance of the District's Counsel, to prepare and issue Request for Proposals for a Construction Manager at Risk in a one-step process for the High School #2 Project, delegate to the Superintendent or his designee the authority to determine the criteria and weight of the criteria for evaluation of proposals, and authorize the Superintendent to establish a committee to evaluate and rank the proposals and bring the committee's recommended rankings back to the Board for approval as presented. All of the Board Members voted for and the Motion passed.

- F Consider adjustments to the 2022-2023 Administrative/Professional Pay Ranges and Job Classifications

Shannon Beasley made a Motion, seconded by Jennilea Campbell, to approve the 2022-2023 Administrative/Professional Pay Ranges and Job Classification with the creation of the Dietician and Executive Director positions and the addition of Pay Grade 10 as presented. Paula Davidson voted against, Matt Castiglione voted against, Shannon Beasley voted for, Jennilea Campbell voted for, Mario De Leon voted for, and Beth Zinsmeyer voted for and the Motion passed.

Medina Valley Independent School District
Regular School Board Meeting

Board Minutes

October 17, 2022, 6:30 PM

Medina Valley ISD Central Office Board Room

The Board President, Beth Zinsmeyer announced that in accordance with the Texas Open Meetings Act, under the exceptions noted in TX Govt. Code Section 551.074 Personnel Matters, and TX Govt. Code 551.072 Deliberation Regarding Real Property, that the Board of Trustees would convene into a closed meeting at 7:57 pm. All voting or action will take place when the Board and Superintendent reconvene in the open meeting.

VI. Closed Session

A Personnel Matters (TX Govt. Code Section 551.074)

- professional contracts

B Deliberation Regarding Real Property (TX Govt. Code Section 551.072)

Board President Beth Zinsmeyer announced that the Board would reconvene into Open Session at 8:28 pm.

VII. Continued Discussion and Possible Action Items

A Consider professional contract recommendations

Matt Castiglione made a Motion, seconded by Mario De Leon, to approve the contract recommendations by the Superintendent for professional contracts as presented.

Congratulations to the following Medina Valley ISD new hire:

- Daniell Rosas, Loma Alta Middle School
- Marissa Hudson, Medina Valley Middle School
- Maria Younan, Social Worker
- Rafael Barajas, Director of Construction

B Consideration of future meeting dates

- We have a special meeting, to consider the recommended Local Policy Revisions from the Policy Review Session, scheduled for November 7, 2022 at 6:00 pm.
- The next scheduled Regular Board Meeting is November 28th at 6:30 pm.

VIII. Adjournment

Paula Davidson made a Motion, seconded by Shannon Beasley, to adjourn the Regular Board Meeting at 8:30 pm on October 17, 2022. All of the Board Members voted for and the Motion passed.

Beth Zinsmeyer, Board President

Jennilea Campbell, Board Secretary

Board Approved _____

**Medina Valley Independent School District
Special School Board Meeting**

Board Minutes

November 7, 2022, 6:00 PM

Medina Valley ISD Central Office Board Room

A **Special Board Meeting** of the Board of Trustees was held Monday, November 7, 2022, beginning at 6:00 pm at the Medina Valley ISD Central Office Board Room.

I. First Order of Business

A Establish a Quorum

Beth Zinsmeyer, Board President, called the Medina Valley ISD Special Board Meeting to order at 6:01 pm. A quorum of the Board Members were present, Jennilea Campbell, Matt Castiglione, Veronica Cavazos, Paula Davidson, Mario De Leon and Beth Zinsmeyer. Shannon Beasley arrived at 6:06 pm.

B Pledge of Allegiance to the Flag followed by a moment of silence

Everyone joined in the Pledge of Allegiance to the Flag followed by a moment of silence.

II. Public Comment

Hank Seay, Topic: Closed Session Discussion about certain Board Members

III. Discussion and Possible Action Items

A Consider adopting policy changes to MVISD Local Policies: AE, AF, BBB, BE, BQA, BQB, CB, CDC, CH, CI, CO, CRD, CV, DC, DEA, DEC, DFBB, DHE, EEB, EHAD, EIC, EIF, FD, FDA, FDC, FEC, FEE, FEF, FFA, FFAC, FL, FM, FMG, FNAA, FNAB, FNCE, GKD, GKDA and CW(EXHIBIT) and DNA(REGULATION)

Matt Castiglione made a Motion, seconded by Veronica Cavazos, to approve the proposed revisions related to the TASB Policy Review Session affecting Local Policies AE, AF, BBB, BE, BQA, BQB, CB, CDC, CH, CI, CO, CRD, CV, DC, DEA, DEC, DFBB, DHE, EEB, EHAD, EIC, EIF, FD, FDA, FDC, FEC, FEE, FEF, FFA, FFAC, FL, FM, FMG, FNAA, FNAB, FNCE, GKD, GKDA and CW(EXHIBIT) and DNA(REGULATION) as presented. All of the Board Members voted for and the Motion passed.

IV. MVISD Team of 8 Board Training (moved up in the agenda)

Greg Gibson with Moak Casey started the Team of 8 Training with the Board.

**Medina Valley Independent School District
Special School Board Meeting**

Board Minutes

November 7, 2022, 6:00 PM

Medina Valley ISD Central Office Board Room

V. Closed Session

The Board President, Beth Zinsmeyer announced that in accordance with the Texas Open Meetings Act, under the exceptions noted in TX Govt. Code Section 551.074 Personnel Matters, that the Board of Trustees would convene into a closed meeting at 8:07 pm. All voting or action will take place when the Board and Superintendent reconvene in the open meeting.

- A Personnel Matters (TX Govt. Code Section 551.074)
- Professional Contracts
 - Roles and Responsibilities of a Public Officer

Board President Beth Zinsmeyer announced that the Board would reconvene into Open Session at 9:32 pm.

VI. Continued Discussion and Possible Action Items

- A Consider professional contract recommendations

Shannon Beasley made a Motion, seconded by Mario De Leon, to approve the contract recommendations by the Superintendent for professional contracts as presented.

Congratulations to the following Medina Valley ISD new hire:

Cheyenne Mayfield Castroville Teacher (ALE)

Julia Van Brocklin Potranco Teacher

Zelda Martinez Potranco Teacher

Paige Sheppard MVHS Teacher ESSER (Math)

Jessica Aguilar Angles Special Programs Speech Language Pathologist

Claudia Marsch Guidance and Counseling Social Worke

VII. Adjournment

Veronica Cavazos made a Motion, seconded by Jennilea Campbell, to adjourn the Special Board Meeting at 9:35 pm on November 7, 2022. All of the Board Members voted for and the Motion passed.

Beth Zinsmeyer, Board President

Jennilea Campbell, Board Secretary

Board Approved _____

NAMING FACILITIES

CW
(LOCAL)

The responsibility for naming facilities shall rest with the Board.

The Board shall publicly announce its intent to name a new school. The announcement shall provide notice of an opportunity for the community to submit nominations for school names. Nominations shall be submitted on a form provided by the District. Students, staff, and community members may submit nominations.

Guidelines

The following guidelines shall be used when naming school facilities:

Naming Elementary Campuses

Consideration shall be given to naming elementary schools after the area, road, or subdivision in which they are located. Elementary schools shall not be named for individuals.

Naming Middle and High School Campuses

Consideration shall be given to naming middle and high schools to reflect the local heritage, or historical significance, of the school site. All middle and high school names shall begin with "Medina Valley." Middle schools and high schools shall not be named for individuals.

Naming Specific Buildings or Facilities on a Campus

Classroom buildings that are part of a campus shall not be assigned separate names.

Requests to name specific facilities on a campus (e.g., libraries, band halls, courtyards, amphitheaters, athletic facilities, and the like) shall be considered on a case-by-case basis. Names previously assigned to such facilities shall remain in use.

Committee Membership

The Superintendent may form a committee composed of Board members, administrators, staff, and community members to review proposed names and forward a recommendation to the Superintendent.

Public Dedication

A new school building or major addition to a facility shall be dedicated in a public formal ceremony. There shall be a program or open house to which the Board, students, parents, staff, and community members are invited. All plans for the public formal opening of a school shall be made in cooperation with the principal.

Dedication Plaque

A dedication plaque shall include the following information:

1. The name of the facility;
2. The year it was completed;
3. The names of the members of the Board at the time the contract for the facility was awarded and at the time of dedication of the facility;

NAMING FACILITIES

CW
(LOCAL)

4. The name of the Superintendent at the time the contract for the facility was awarded and at the time of dedication of the facility;
5. The name of the architect or engineer; and
6. The name of the contractor.

The plaque may include information regarding the city and state. No other information may be included in dedication plaques without Board approval.

STANBURY UNIFORMS, INC.

P.O. Box 100 - Stanbury Industrial Drive
 Brookfield, Missouri 64628
 Phone (660) 258-2246
 Fax (660) 258-5781
stanbury@shighway.com

Order Date 25-Oct-22

Sold To: JUAN RODRIGUEZ - FINE ARTS DIRECTOR
 MEDINA VALLEY HIGH SCHOOL
 Address: 8365 FM 471 South, Castroville, TX 78009
 Phone: (830) 931-2243 ext. 1151
 Juan Rodriguez <juan.rodriguez@mvisd.org>

Our Order No. _____ Estimated Ship Date 120 DAYS
After Receipt of All Details

Customer Order No. _____

Salesman _____ Shipping Charges to be Paid By:
 Stanbury
 Buyer

Invoice No. _____ Deposit \$ _____

Ship To:

This order is made in good faith with the understanding that same will become a contract for the sale of goods described at the prices and terms shown, upon the Acceptance by Stanbury Uniforms, Inc. and subject to the conditions of sale appearing below hereof which are incorporated in and made part of such agreement.

QUANTITY	DESCRIPTION	UNIT PRICE	EXTENDED PRICE
200	TUX PACKAGES - BLACK JACKET , WHITE OXFORD SHIRT, BLACK VEST, BLACK PANTS - LARGER SIZES INCL	156.90	31,380.00
150	ADJUSTIBLE BLACK STRAIGHT TIES	16.90	2,535.00
150	ADJUSTIBLE ORANGE STRAIGHT TIES	16.90	2,535.00
150	2717 (DANCE SOPH) WOMANS BLACK "VELVET" DRESS WITH PALAZZO PANTS	99.00	14,850.00
150	CB100-SSRB (DANCE SOPH) - FITTED BELT	34.00	5,100.00
800			
	SUBTOTAL		56,400.00
	PRIORITY FREIGHT		\$1,475.00
	TOTAL		\$57,875.00

We, the undersigned, have read and fully understand the contract and all of its terms and conditions stated therein, and fully agree to accept all of them.

ORGANIZATION _____

NAME (TYPED OR PRINTED PLEASE)	POSITION	DAYTIME TELEPHONE NUMBER
SIGNATURE _____	_____	_____
BOOSTERS: PRESIDENT _____	_____	DAYTIME TELEPHONE _____
TREASURER _____	_____	DAYTIME TELEPHONE _____

TERMS

- Term A: OPEN ACCOUNT - NET 30 DAYS. If bona fide Board of Education (School Board of Directors) purchase order is issued, or if this contract is signed by Superintendent, Principal or Purchasing Agent, who is authorized to purchase on behalf of this Board of Education (School Board of Directors).
- Term B: FIFTY PERCENT DEPOSIT WITH ORDER, balance C.O.D. This applies to all orders from organizations and individuals except those where term "A" applies.
- Term C: PREPAYMENT - Cash discount is allowed, provided a check for the contract amount is mailed with the contract and purchase order. Freight charges, unless included in the price above, will be invoiced. This prepayment discount is not available for credit card payments.

A late charge of 1.5% per month will be assessed against all accounts not paid within 30 days from date of payment specified in the contract. This is equal to 18% per year or such lesser amount to the extent this exceeds that authorized by law.

CONDITIONS OF SALE

All uniforms, accessories, and/or other made-to-order garments shall be made in accordance with the specifications. This order is subject to approval and acceptance by Stanbury Uniforms, Inc., Brookfield, Missouri, and cannot be cancelled after it has been accepted by Stanbury Uniforms, Inc. The estimated ship date stated above (which shall be the estimated date for delivery to the specified transportation company at Brookfield) is subject to any delays by strikes, fire or other casualty, failure of suppliers to make deliveries, and any other causes of delay over which Stanbury Uniforms, Inc., may have no control. All orders are shipped immediately after completion. All shipments are to be made F.O.B. SHIPPING POINT Brookfield, Missouri. As seller's option, accessories may be shipped direct to purchaser, F.O.B. supplier. Seller will not assume additional expense for arrival, air freight or special delivery shipments. All payments on this order are to be made direct to Stanbury Uniforms, Inc., at its office in Brookfield, Missouri. The contract expressly made performable in Brookfield, Missouri. This contract may not be altered, varied or changed except in writing, and such change must be authorized by the president of Stanbury Uniforms, Inc. It is specifically understood that all terms and conditions of this sale are set out herein in writing, and that there are no oral agreements in this transaction. **NOTE: Estimated ship date is established upon receipt at factory of all the following information, signed, sealed contract and/or purchase order, sample approval form signed and dated, sample uniform, all measurements and/or stock items approval and reprinting approval in writing. These conditions of sale are considered to be extending upon a purchase order signed contract. No alterations for necessary alterations due to factory error must be made at our factory, within 21 days. Only by special agreement without office should any alterations be made locally to protect your warranty. **ATTENTION: Quoted prices do not include any taxes, packing rates and one-time fees, required to be collected by Stanbury Uniforms, Inc. They must be shown as separate line item above.



Educational Specifications for Medina Valley High Schools

Description of intent to meet standards defined in TEA's Chapter 61, Subchapter CC, Section 1040(d)2

- (i) Medina Valley ISD mission, vision, goals, and pedagogy;
 - a. Mission: "Medina Valley ISD exists to develop, cultivate, and inspire self-directed critical thinkers and life-long learners who strive to achieve their highest potential."
 - b. Vision: "Medina Valley ISD will empower student to exhibit the attributes of the District's Profile of a Graduate." The Profile as defined in MVISD's June 2022 Strategic Plan:
 - 1. Citizenship: Responsible, respectful, trustworthy, and self-disciplined citizens who are actively engaged in their community
 - 2. Communications: Can listen and read critically, speak, and write articulately, communicate using advanced technologies, and adapt their communication style appropriately
 - 3. Academics: Possess the necessary skills to produce quality work and be prepared for the future
 - 4. Problem-Solver: Collaborative, creative, and innovative critical thinkers
 - 5. Well-Rounded Confident, goal driven, college and career ready individuals, who challenge themselves to continue to learn and grow
 - c. Goals: As defined in MVISD's June 2022 Strategic Plan, Medina Valley ISD will...
 - 1. take a proactive role in planning for our rapidly growing population.
 - 2. ensure proper allocation of funds to support all areas of the district.
 - 3. provide a variety of academic and extracurricular activities that promote well-rounded, career minded students.
 - 4. foster an environment of parental and community involvement through open communication.
 - 5. provide relevant and reliable technology for staff, students, and guests.
 - 6. provide and maintain facilities that are appropriate for district programs, while instilling a sense of pride.
 - 7. exceed federal/state/local legislative requirements to develop an educational journey for each student's interest and success.
 - 8. recruit and retain quality staff while offering relevant professional development and leadership opportunities.
 - d. Pedagogy: Medina Valley ISD develops the skills of its students to utilize technology trends, employment, and economic shifts to collaborate and find solutions, ask questions, and interact with others efficiently to understand what and why they're learning and how to apply that learning to the real world.



- (ii) Preliminary details related to facility type, grades served, and maximum student enrollment.
 - a. Facility Type: High School
 - b. Grades Served: 9-12
 - c. Enrollment: 2,400 classroom capacity

- (iii) Pertinent provisions of the multi-hazard emergency operations plan (EOP) that may inform the functionality of the built environment, including how the district complies with TEC, §37.108; Medina Valley ISD's EOP addresses each of the five phases of emergency management, as defined by the Texas School Safety Center (TxSSC), in conjunction with the Governor's Office of Homeland Security, and the Commissioner of Education.
 - a. Prevention: Actions to avoid an incident or to intervene to stop an incident from occurring. Examples: Cyberbullying prevention, pandemic influenza sanitation measures, building access control procedures, security systems and cameras, etc.
 - b. Mitigation: Includes activities to reduce the loss of life and property from natural and/or human-caused disasters by avoiding or lessening the impact of a disaster and providing value to the public by creating safer communities. Examples: Structural changes to buildings, elevating utilities, bracing and locking chemical cabinets, properly mounting lighting fixtures, ceiling systems, cutting vegetation to reduce wildland fires, etc.
 - c. Preparedness: A continuous cycle of planning, organizing, training, equipping, exercising, evaluating, and taking corrective action in an effort to ensure effective coordination during incident response. Examples: Conducting drills, preparing homework packages to allow continuity of learning if school closures are necessary, etc.
 - d. Response: Activities that address the short-term, direct effects of an incident. Examples: Lockdown, shelter-in-place, evacuation of students, search and rescue operations, fire suppression, etc.
 - e. Recovery: Encompasses both short-term and long-term efforts for the rebuilding and revitalization of affected communities. Examples: Short-term recovery focuses on crisis counseling and restoration of lifelines such as water and electric supply, and critical facilities. Long-term recovery includes more permanent rebuilding.

As noted in the Active Shooter Appendix to the Active Threat Annex, the functionality of the building will need to include:

- f. Locking hardware: Ensure that hardware allows for legitimate access and denies entry to unauthorized persons. Consider testing automation technology.
- g. Surveillance: Ensure that video surveillance systems are installed in appropriate locations and provide video resolution that aids in identification. When possible, install systems that enable offsite monitoring by district administrators and emergency response agencies.
- h. Lighting: Provide adequate site lighting.
- i. Emergency communications systems: Ensure that emergency communications systems effectively notify the intended audience and appropriate response agencies.



- j. Identify and mark safe rooms for visitors, staff, and students who may be away from their normal space.
- (iv) Inclusive design goals and considerations
- a. Medina Valley High School #2 will be building upon the inclusive design goals that have been established and successful at Medina Valley High School, such as:
 - i. Intervention pull-out for math, science, English in weeks prior to STAAR EOC testing
 - ii. Scheduled tutorials for specialized demographics
 - iii. Inclusion teachers in math and ELA classes
 - iv. 100% Graduation Rate: Distinction in Student Achievement, closing the performance gap, and post-secondary readiness
 - v. Provide opportunities in extra-curricular involvement for students.
 - vi. Identify and target special populations and support with additional assistance beyond the classroom.
 - vii. Continue to support the Gifted and Talented Program
 - viii. Provide Universal writing process professional development to assist students in writing across curriculum
 - b. The design for the Medina Valley High School #2 building will support the above goals and will also provide full access as required by the Texas Accessibility Standards 2012 edition. If the design is to include multiple levels, ramps and elevators will support access for all students and staff. Parking lots will have the appropriate accessible parking spaces, with clear routes to the building. Buses will have a dedicated drop-off loop to keep traffic separated and provide an accessible route to the building for students.
- (v) Minimum total square footage required to comply with the quantitative method of compliance
- a. Flexibility Level at Medina Valley HS2 is expected to be a minimum of Level 3 (L3): Multiple student/teacher presentation spaces; organization of spaces allows for proximal outdoor access that is visible from classrooms; flexible and mobile furniture that is easily rearranged; high use of multipurpose walls, including digital touchscreen and other functionalities; learner-centric digital instruction with high levels of access to a range of mobile devices.
 - b. The minimum aggregate square footage for instructional facilities is based on the planned capacity and the selected flexibility level: $2,400 \text{ students} \times 36 \text{ sf / student} = 86,400 \text{ SF}$
 - i. This minimum square footage may be comprised of the following: classrooms, science labs, collaboration areas, and elective classrooms that are used more than 51% of the school day
 - ii. This minimum square footage excludes cafeterias, gymnasiums, library, administration, and building support spaces.



Medina Valley ISD
HS2 Design Update
November 28, 2022

Board of Trustees Update

- High School 2 Project Process

Date	Meeting
Aug 15, 2022	Board of Trustees Meeting Approval of Architect Rankings
Aug 18, 2022	Introduction & Kick Off Meeting
Aug 25, 2022	HS2 Process Overview
Sep 15, 2022	PEC Meeting 1 HS2 Planning Process & Goals
Sep 21-22, 2022	Departmental User Group Meetings Discuss needs of HS programs
Oct 4, 2022	Board of Trustees Meeting Bond and HS2 Planning Process
Oct 6, 2022	PEC Meeting 2 Initial Program Draft

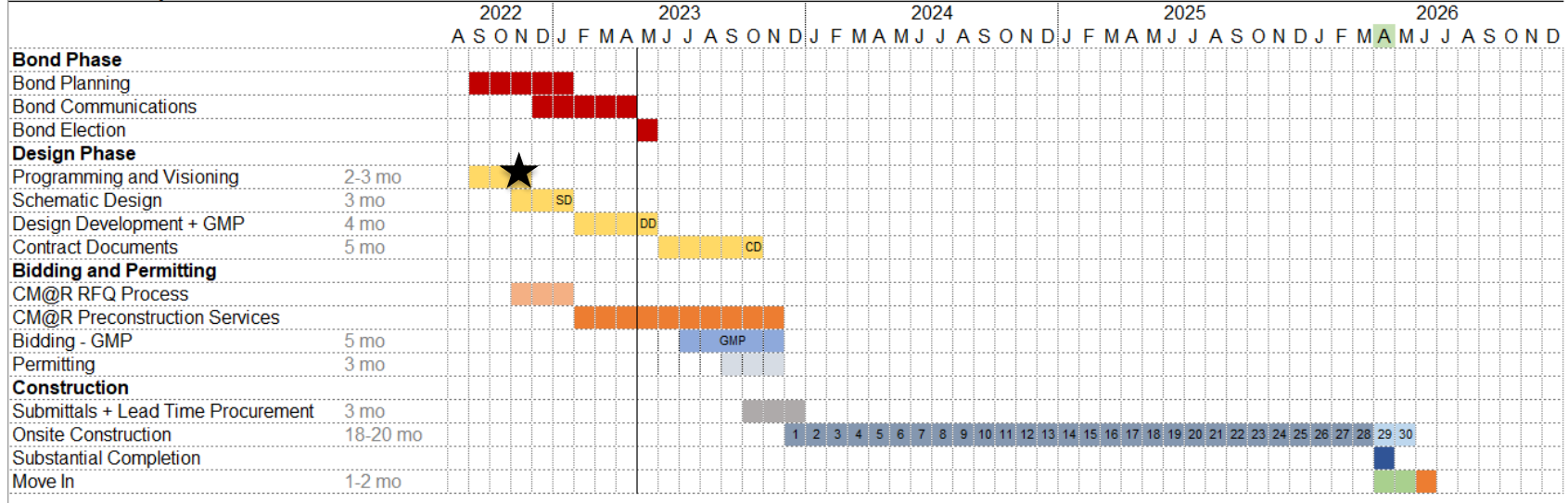
Date	Meeting
Oct 18, 2022 Thursday	Departmental User Group Meetings Discuss building systems
Oct 18, 2022	PEC Meeting 3 Revised Program Draft
Oct 24, 2022	High School Tours MV, Comal, Southwest, Belton
Nov 3, 2022	PEC Meeting 4 Updated Space Program Schematic Design Kick-Off
Nov 4, 2022	CMAR RFP Released
Nov 17, 2022	PEC Meeting 5: Updated Space Program Site Concepts Review
Nov 18, 2022	CMAR RFP Pre-Proposal Meeting

Date	Meeting
Nov 28, 2022	Board of Trustees Meeting Long Range Facility Plans Educational Specifications
Dec 5, 2022	Building Committee Meeting Progress Update
Dec 13, 2022	CMAR RFP Proposals due
Dec 15, 2022	PEC Meeting 6: Floor Plan Concepts
Dec 15, 2022	Board of Trustees Meeting Programming Update
Dec 16, 2022	CMAR Interview Notifications if required
Jan 4, 2023	CMAR Interviews if required

HS2 Planning Process Update

Date	Meeting
Jan 19, 2023	PEC Meeting 7: Exterior 3D Concepts
Jan 23, 2023	Board of Trustees Meeting CMAR Ranking Recommendation
Feb 2, 2023	PEC Meeting 8: Interior Finishes/Materials
Feb 27, 2023	Board of Trustees Meeting HS2 Schematic Design Update
Apr 2023 Jun 2023	Board of Trustees Meetings HS2 Design Development Updates
Aug 2023 Nov 2023	Board of Trustees Meetings HS2 Contract Documents Updates
Dec 2023	HS2 Construction Start estimated

Medina Valley ISD - HS2 - Schedule Overview



HS2 Planning Process Update

Board of Trustees Update

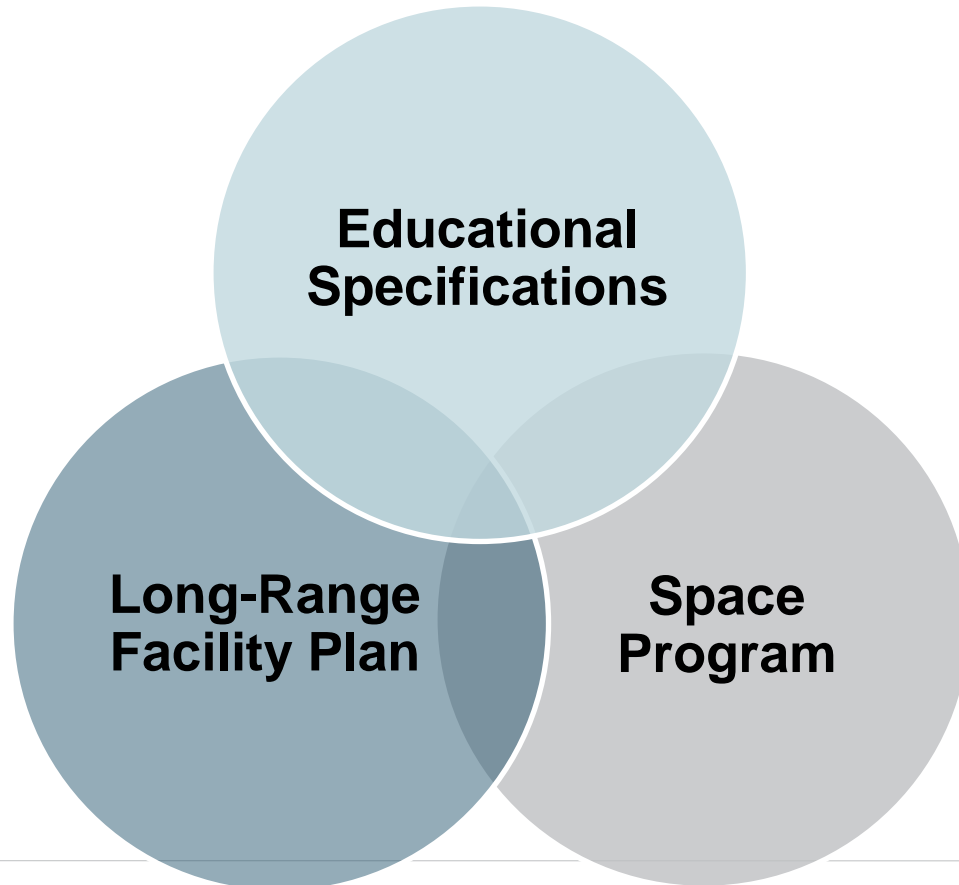
- Long Range Facility Plan
- Educational Specification

Long Range Facility Plan to include:

1. Proposed instructional programs
2. Site evaluation of the campus, re: your already completed Feasibility Study
3. District educational specifications
4. District enrollment projections
5. Intended compliance with the TEA safety + security standards

Educational Specification to include:

1. District mission, vision, goals, and pedagogy
2. Facility type, grades served, max. student enrollment
3. Pertinent provisions of the multi-hazard emergency operations plan (TEC 37.108)
4. Inclusive design goals on this campus
5. Minimum total square footage required to comply with the quantitative method of compliance



December 15, 2022
Board of Trustees Meeting

Programming Document to include:

1. Project Goals
2. Space Program
3. Planned Site Elements
4. Building Organizational Concepts
5. Building System Expectations

Programming deliverables



STRATEGIC PLAN

MISSION

Medina Valley ISD exists to develop, cultivate, and inspire self-directed critical thinkers and life-long learners who strive to achieve their highest potential.

VISION

Medina Valley ISD will empower students to exhibit the attributes of the District's Profile of a Graduate.

CORE BELIEFS AND COMMITMENTS

All students will reach their full potential.

Medina Valley ISD will provide all students with a challenging and well-rounded education.

We believe student success is best achieved...

...through a quality education that addresses all students' academic, social, and emotional needs.

Medina Valley ISD will recruit and retain high-quality and highly-qualified staff.

...by providing an engaging, safe, and balanced learning environment for students involving parents, teachers, and the community.

Medina Valley ISD will provide a supportive and safe learning environment.

...by fostering student experiences that teach them to value and respect the differences of others.

Medina Valley ISD will provide a collaborative, inclusive, and effective learning community.

We believe all staff play a critical role in the success of our students.

Medina Valley ISD will effectively facilitate and contribute to teamwork, and provide relevant and sustainable professional development.

PROFILE OF A GRADUATE

Citizenship



Responsible, respectful, trustworthy, and self-disciplined citizens who are actively engaged in their community

Communications



Can listen and read critically, speak and write articulately, communicate using advanced technologies, and adapt their communication style appropriately

Academics



Possess the necessary skills to produce quality work and be prepared for the future

Problem-Solver



Collaborative, creative, and innovative critical thinkers

Well-Rounded



Confident, goal driven, college and career ready individuals, who challenge themselves to continue to learn and grow

DISTRICT GOALS

Medina Valley ISD will...

- 1 take a proactive role in planning for our rapidly growing population.
- 2 ensure proper allocation of funds to support all areas of the district.
- 3 provide a variety of academic and extracurricular activities that promote well-rounded, career-minded students.
- 4 foster an environment of parental and community involvement through open communication.
- 5 provide relevant and reliable technology for staff, students, and guests.
- 6 provide and maintain facilities that are appropriate for district programs, while instilling a sense of pride.
- 7 exceed federal/state/local legislative requirements to develop an educational journey for each student's interests and success.
- 8 recruit and retain quality staff while offering relevant professional development and leadership opportunities.

Long-Range Facility Plan for Medina Valley High School #2

Description of intent to meet standards defined in TEA's Chapter 61, Subchapter CC, Section 1040(d)1

- (i) Proposed instructional programs at the project campus;
 - a. Core Curriculum: Mathematics, Science, English Language Arts, Social Studies
 - b. Special Education: ALE, 18+, Resource, Intervention
 - c. Career and Technical Education: Architecture and Construction; Arts, Audio/Video Technology, & Communications; Business, Marketing, & Finance; Education & Training; Health Science; Hospitality & Tourism; Human Services; Law & Public Service; Science, Technology, Engineering, & Mathematics; Transportation, Distribution, & Logistics
 - d. Performing and Fine Arts: Art, Music, Theatre Arts
 - e. Physical Education and Athletics

- (ii) Site evaluation of the project campus;
 - a. Refer to "Medina Valley High School #2 Feasibility Study", completed in February 2019 by Moy Tarin Ramirez Engineers. Notes here summarize key site development considerations.
 - b. General Description: The project site is located near the intersection of CR 381 and Potranco Road in Medina County is approximately 92.843 acres. The tract is located outside both the Corporate Limits and the Extraterritorial Jurisdiction of the City of San Antonio (CoSA) and is currently not subject to any zoning or setback restrictions. It is recommended that the CoSA Unified Development Code be followed where this is not specific direction given under the Medina County Regulations.
 - c. Vehicular Access: The site will have two points of access: the primary access will be from CR 381, southeast of the Loma Alta Middle School, and the secondary access point at Potranco Road from the northwest corner of the site. Due to the increased trips generated from this site, improvements to Potranco Road (FM 1957) and an in-depth Traffic Impact Analysis (TIA) are recommended and will likely be required by TxDOT.
 - d. Pedestrian Access: CR 381 has a 6'-wide sidewalk, but there are currently no sidewalks along FM 1957. This project will need to include installation of ADA-compliant sidewalks and pedestrian crossings near driveway access points and connections to the new building(s).
 - e. Topography: The site has approximately 87' of fall from the northeastern side of the tract to the southwestern corner and the average slopes across the site range from +/- 1.0 to 8.0%. Grading for site development appears to be feasible, but the placement of building(s) and site amenities (parking, athletic fields, etc) should anticipate that grading, or cutting and filling, of the site and retaining wall construction will be required.

al specifications;
 refer to "Educational Specifications for Medina Valley High Schools", dated October 2022.
 Notes here summarize key design considerations
 Mission: "Medina Valley ISD exists to develop, cultivate, and inspire self-directed critical thinkers and life-long learners who strive to achieve their highest potential."
 Vision: "Medina Valley ISD will empower student to exhibit the attributes of the District's Profile of a Graduate."
 General Description: a new comprehensive High School to serve grades 9-12
 The design for the Medina Valley High School #2 building will support the district's inclusion goals and also provide full access as required by Texas Accessibility Standards

Medina Valley ISD enrollment projections, maximum student enrollment of the facility;
 Completed in June 2022 by Zonda Education, MVISD's demographic report projects district growth of 150% in the next 10 years. The district's single high school has a capacity of 2,150 students, but the demographic report indicates the potential for over 4,400 students by 2031. Medina Valley High School #2 should provide instructional capacity of 2,400 students and utilize the core spaces for 3,000 students. The design should include/indicate spaces for building expansion if/when additional instructional spaces are needed.

compliance, partial compliance, or full compliance with each of the safety and security requirements required in subsection (k) of this section.
 This project will ensure there are adequate communications technology and infrastructure to allow for emergency response communications and to implement access control restrictions. As this project is all new construction, the project will need to comply with all three of the additional safety and security standards noted in subsection (k):

- i. Exterior door numbering
- ii. Visitor management
- iii. Security cameras

Long Range Facility Plan

Educational Specifications for Medina Valley High Schools

Description of intent to meet standards defined in TEA's Chapter 61, Subchapter CC, Section 1040(d)2

- (i) Medina Valley ISD mission, vision, goals, and pedagogy:
 - a. Mission: "Medina Valley ISD exists to develop, cultivate, and inspire self-directed critical thinkers and life-long learners who strive to achieve their highest potential."
 - b. Vision: "Medina Valley ISD will empower student to exhibit the attributes of the District's Profile of a Graduate." The Profile as defined in MVISD's June 2022 Strategic Plan:
 - 1. Citizenship: Responsible, respectful, trustworthy, and self-disciplined citizens who are actively engaged in their community
 - 2. Communications: Can listen and read critically, speak, and write articulately, communicate using advanced technologies, and adapt their communication style appropriately
 - 3. Academics: Possess the necessary skills to produce quality work and be prepared for the future
 - 4. Problem-Solver: Collaborative, creative, and innovative critical thinkers
 - 5. Well-Rounded Confident, goal driven, college and career ready individuals, who challenge themselves to continue to learn and grow
 - c. Goals: As defined in MVISD's June 2022 Strategic Plan, Medina Valley ISD will...
 - 1. take a proactive role in planning for our rapidly growing population.
 - 2. ensure proper allocation of funds to support all areas of the district.
 - 3. provide a variety of academic and extracurricular activities that promote well-rounded, career minded students.
 - 4. foster an environment of parental and community involvement through open communication.
 - 5. provide relevant and reliable technology for staff, students, and guests.
 - 6. provide and maintain facilities that are appropriate for district programs, while instilling a sense of pride.
 - 7. exceed federal/state/local legislative requirements to develop an educational journey for each student's interest and success.
 - 8. recruit and retain quality staff while offering relevant professional development and leadership opportunities.
 - d. Pedagogy: Medina Valley ISD develops the skills of its students to utilize technology trends, employment, and economic shifts to collaborate and find solutions, ask questions, and interact with others efficiently to understand what and why they're learning and how to apply that learning to the real world.

Details related to facility type, grades served, and maximum student enrollment.
 Facility Type: High School
 Grades Served: 9-12
 Maximum Student Enrollment: 2,400 classroom capacity

visions of the multi-hazard emergency operations plan (EOP) that may inform the built environment, including how the district complies with TEC, §37.108; Medina Valley ISD addresses each of the five phases of emergency management, as defined by the Texas Safety Center (TxSSC), in conjunction with the Governor's Office of Homeland Security and the Commissioner of Education.
 Emergency Response: Actions to avoid an incident or to intervene to stop an incident from occurring. Examples: Cyberbullying prevention, pandemic influenza sanitation measures, building security control procedures, security systems and cameras, etc.
 Disaster Preparedness: Includes activities to reduce the loss of life and property from natural and/or human-caused disasters by avoiding or lessening the impact of a disaster and providing to the public by creating safer communities. Examples: Structural changes to buildings, seismic retrofits, bracing and locking chemical cabinets, properly mounting lighting fixtures, fire alarm systems, cutting vegetation to reduce wildland fires, etc.
 Business Continuity: A continuous cycle of planning, organizing, training, equipping, exercising, testing, and taking corrective action in an effort to ensure effective coordination during an emergency response. Examples: Conducting drills, preparing homework packages to allow for continuity of learning if school closures are necessary, etc.
 Incident Response: Activities that address the short-term, direct effects of an incident. Examples: Evacuation, shelter-in-place, evacuation of students, search and rescue operations, fire suppression, etc.
 Recovery: Encompasses both short-term and long-term efforts for the rebuilding and revitalization of affected communities. Examples: Short-term recovery focuses on crisis response and restoration of lifelines such as water and electric supply, and critical facilities. Long-term recovery includes more permanent rebuilding.

Active Shooter Appendix to the Active Threat Annex, the functionality of the building includes:
 Access Control: Ensure hardware allows for legitimate access and denies entry to unauthorized persons. Consider testing automation technology.
 Video Surveillance: Ensure that video surveillance systems are installed in appropriate locations to provide video resolution that aids in identification. When possible, install systems that allow for offsite monitoring by district administrators and emergency response agencies.
 Lighting: Provide adequate site lighting.
 Emergency Communications Systems: Ensure that emergency communications systems effectively notify the intended audience and appropriate response agencies.

Identify and mark safe rooms for visitors, staff, and students who may be away from their normal space.

Design goals and considerations for Medina Valley High School #2 will be building upon the inclusive design goals that have been established and successful at Medina Valley High School, such as:
 Intervention pull-out for math, science, English in weeks prior to STAAR EOC testing
 Scheduled tutorials for specialized demographics
 Inclusion teachers in math and ELA classes
 100% Graduation Rate: Distinction in Student Achievement, closing the performance gap, and post-secondary readiness
 Provide opportunities in extra-curricular involvement for students.
 Identify and target special populations and support with additional assistance beyond the classroom.
 Continue to support the Gifted and Talented Program
 Provide Universal writing process professional development to assist students in writing across curriculum

Design for the Medina Valley High School #2 building will support the above goals and also provide full access as required by the Texas Accessibility Standards 2012 edition. If design is to include multiple levels, ramps and elevators will support access for all students and staff. Parking lots will have the appropriate accessible parking spaces, with routes to the building. Buses will have a dedicated drop-off loop to keep traffic separated and provide an accessible route to the building for students.

Minimum square footage required to comply with the quantitative method of compliance for Level 3 (L3) at Medina Valley HS2 is expected to be a minimum of Level 3 (L3): Multiple student/teacher presentation spaces; organization of spaces allows for proximal outdoor spaces that is visible from classrooms; flexible and mobile furniture that is easily rearranged; use of multipurpose walls, including digital touchscreen and other functionalities; learner-centric digital instruction with high levels of access to a range of mobile devices.
 Minimum aggregate square footage for instructional facilities is based on the planned capacity and the selected flexibility level: 2,400 students x 36 sf / student = 86,400 SF
 This minimum square footage may be comprised of the following: classrooms, science labs, collaboration areas, and elective classrooms that are used more than 51% of the school day
 This minimum square footage excludes cafeterias, gymnasiums, library, administration, and building support spaces.

Education Specifications

Questions

- Long Range Facility Plan
- Educational Specification



Long-Range Facility Plan for Medina Valley High School #2

Description of intent to meet standards defined in TEA's Chapter 61, Subchapter CC, Section 1040(d)1

- (i) Proposed instructional programs at the project campus;
 - a. Core Curriculum: Mathematics, Science, English Language Arts, Social Studies
 - b. Special Education: ALE, 18+, Resource, Intervention
 - c. Career and Technical Education: Architecture and Construction; Arts, Audio/Video Technology, & Communications; Business, Marketing, & Finance; Education & Training; Health Science; Hospitality & Tourism; Human Services; Law & Public Service; Science, Technology, Engineering, & Mathematics; Transportation, Distribution, & Logistics
 - d. Performing and Fine Arts: Art, Music, Theatre Arts
 - e. Physical Education and Athletics

- (ii) Site evaluation of the project campus;
 - a. Refer to "Medina Valley High School #2 Feasibility Study", completed in February 2019 by Moy Tarin Ramirez Engineers. Notes here summarize key site development considerations.
 - b. General Description: The project site is located near the intersection of CR 381 and Potranco Road in Medina County is approximately 92.843 acres. The tract is located outside both the Corporate Limits and the Extraterritorial Jurisdiction of the City of San Antonio (CoSA) and is currently not subject to any zoning or setback restrictions. It is recommended that the CoSA Unified Development Code be followed where this is not specific direction given under the Medina Country Regulations.
 - c. Vehicular Access: The site will have two points of access: the primary access will be from CR 381, southeast of the Loma Alta Middle School, and the secondary access point at Potranco Road from the northwest corner of the site. Due to the increased trips generated from this site, improvements to Potranco Road (FM 1957) and an in-depth Traffic Impact Analysis (TIA) are recommended and will likely be required by TxDOT.
 - d. Pedestrian Access: CR 381 has a 6'-wide sidewalk, but there are currently no sidewalks along FM 1957. This project will need to include installation of ADA-compliant sidewalks and pedestrian crossings near driveway access points and connections to the new building(s).
 - e. Topography: The site has approximately 87' of fall from the northeastern side of the tract to the southwestern corner and the average slopes across the site range from +/- 1.0 to 8.0%. Grading for site development appears to be feasible, but the placement of building(s) and site amenities (parking, athletic fields, etc) should anticipate that grading, or cutting and filling, of the site and retaining wall construction will be required.



(iii) Educational specifications;

- a. Refer to “Educational Specifications for Medina Valley High Schools”, dated October 2022. Notes here summarize key design considerations
- b. Mission: “Medina Valley ISD exists to develop, cultivate, and inspire self-directed critical thinkers and life-long learners who strive to achieve their highest potential.”
- c. Vision: “Medina Valley ISD will empower student to exhibit the attributes of the District’s Profile of a Graduate.”
- d. General Description: a new comprehensive High School to serve grades 9-12
- e. The design for the Medina Valley High School #2 building will support the district’s inclusion goals and also provide full access as required by Texas Accessibility Standards

(iv) Medina Valley ISD enrollment projections, maximum student enrollment of the facility;

- a. Completed in June 2022 by Zonda Education, MVISD’s demographic report projects district growth of 150% in the next 10 years. The district’s single high school has a capacity of 2,150 students, but the demographic report indicates the potential for over 4,400 students by 2031.
- b. Medina Valley High School #2 should provide instructional capacity of 2,400 students.

(v) The noncompliance, partial compliance, or full compliance with each of the safety and security standards required in subsection (k) of this section.

- a. This project will ensure there are adequate communications technology and infrastructure to allow for emergency response communications and to implement access control restrictions.
- b. As this project is all new construction, the project will need to comply with all three of the additional safety and security standards noted in subsection (k):
 - i. Exterior door numbering
 - ii. Visitor management
 - iii. Security cameras

**PROPOSED NOVEMBER BUDGET AMENDMENT
2022-2023 GENERAL FUND**

	2022-2023 ADOPTED BUDGET (AS OF 9/01/22)	2022-2023 AMENDED BUDGET 9/18/22	2022-2023 CURRENT AMENDMENTS (AS OF 11/28/22)	2022-2023 AMENDED BUDGET (AS OF 11/28/22)
Estimated Revenues				
5700 LOCAL AND INTERMEDIATE REVENUES	\$ 36,410,641	\$ 36,410,641	\$ -	\$ 36,410,641
5800 STATE PROGRAM REVENUES	\$ 30,880,783	\$ 32,906,496	\$ -	\$ 32,906,496
5900 FEDERAL REVENUES	\$ 1,270,000	\$ 1,270,000	\$ -	\$ 1,270,000
7900 OTHER SOURCES	\$ -	\$ -	\$ -	\$ -
Total Estimated Revenue	\$ 68,561,424	\$ 70,587,137	\$ -	\$ 70,587,137
Appropriations				
11 INSTRUCTION	\$ 39,809,875	\$ 39,866,926	\$ (65,800)	\$ 39,932,726
12 INSTRUCTIONAL RESOURCES/MEDIA SERVICES	\$ 671,445	\$ 671,445	\$ -	\$ 671,445
13 CURRICULUM & INSTRUCTIONAL STAFF DEVELOPMENT	\$ 701,616	\$ 701,616	\$ 1,000	\$ 700,616
21 INSTRUCTIONAL LEADERSHIP	\$ 868,278	\$ 868,278	\$ 12,000	\$ 856,278
23 SCHOOL LEADERSHIP	\$ 3,447,370	\$ 3,447,370	\$ -	\$ 3,447,370
31 GUIDANCE, COUNSELING & EVALUATION SERVICES	\$ 2,893,641	\$ 2,893,641	\$ -	\$ 2,893,641
32 SOCIAL WORK SERVICES	\$ 490,242	\$ 490,242	\$ -	\$ 490,242
33 HEALTH SERVICES	\$ 762,463	\$ 762,463	\$ -	\$ 762,463
34 STUDENT (PUPIL) TRANSPORTATION	\$ 4,402,577	\$ 4,402,577	\$ -	\$ 4,402,577
35 FOOD SERVICE	\$ 126,727	\$ 126,727	\$ -	\$ 126,727
36 EXTRA-CURRICULAR ACTIVITIES	\$ 2,126,543	\$ 2,126,543	\$ 52,800	\$ 2,073,743
41 GENERAL ADMINISTRATION	\$ 2,309,578	\$ 2,309,578	\$ -	\$ 2,309,578
51 PLANT MAINTENANCE & OPERATIONS	\$ 6,660,154	\$ 6,788,446	\$ -	\$ 6,788,446
52 SECURITY AND MONITORING	\$ 1,005,492	\$ 1,379,887	\$ (109,430)	\$ 1,489,317
53 DATA PROCESSING SERVICES	\$ 1,782,489	\$ 1,782,489	\$ -	\$ 1,782,489
61 COMMUNITY SERVICES	\$ 9,987	\$ 9,987	\$ -	\$ 9,987
71 DEBT SERVICE	\$ -	\$ -	\$ -	\$ -
81 FACILITIES AND CONSTRUCTION	\$ 2,947	\$ 1,468,922	\$ 109,430	\$ 1,359,492
95 JUVENILE JUSTICE ALTERNATIVE	\$ 5,000	\$ 5,000	\$ -	\$ 5,000
99 OTHER INTERGOVERNMENTAL CHARGES	\$ 485,000	\$ 485,000	\$ -	\$ 485,000
8911 OTHER USES	\$ -	\$ -	\$ -	\$ -
Total Appropriations	\$ 68,561,424	\$ 70,587,137	\$ -	\$ 70,587,137
Net (Revenues Less Appropriations)	\$ -	\$ -	\$ -	\$ -

MVISD Closed Session

The Board has convened into a Closed Meeting in accordance with the Open Meetings Act, Chapter 551, Texas Government Code.

Please feel free to remain on this Video/Teleconference. At the conclusion of the Closed Meeting the Board and Superintendent will return and continue with the agenda.