



LINCOLN COUNTY SCHOOL DISTRICT

Dr. Majalise Tolan
Superintendent

District Office | Teaching & Learning Center
1212 NE Fogarty Street, Newport, OR 97365
PO Box 1110, Newport, OR 97365
T 541-265-9211 | F 541-265-3059
www.lincoln.k12.or.us

**LINCOLN COUNTY SCHOOL DISTRICT
Board of Directors – Board Work Session
Wednesday, November 12, 2025 - 5:00 PM
Crestview Heights Elementary
2750 S Crestline Dr
Waldport, OR 97394**

Agenda

1. Call to Order & Establishment of a Quorum
2. Bond Updates
 - a. Facility Tours
 - b. Architect Presentations on Auditoriums

Lincoln County School District

Newport, Waldport, and Toledo High School
Performing Arts

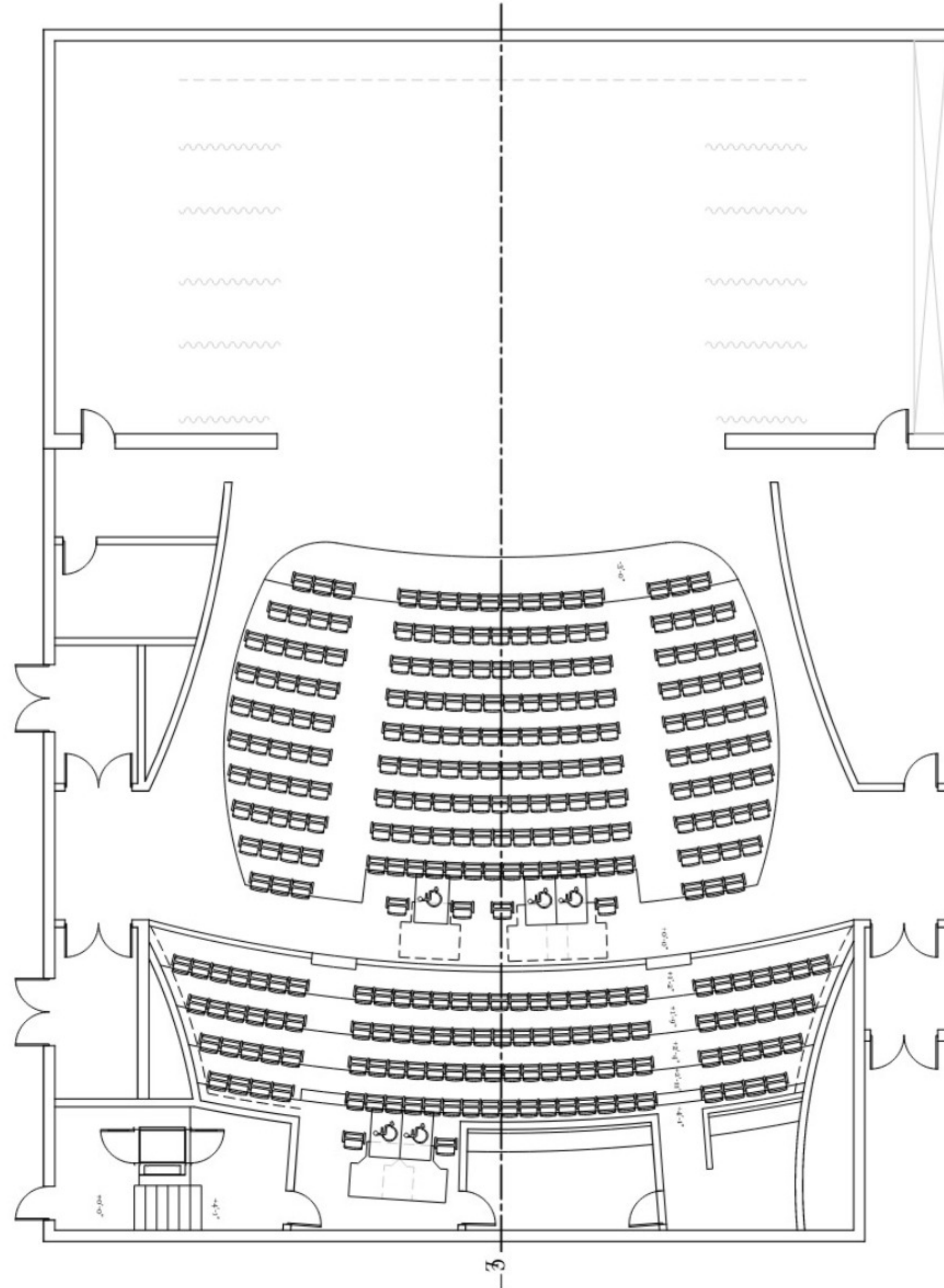
Board Meeting Presentation
November 12, 2025

Agenda

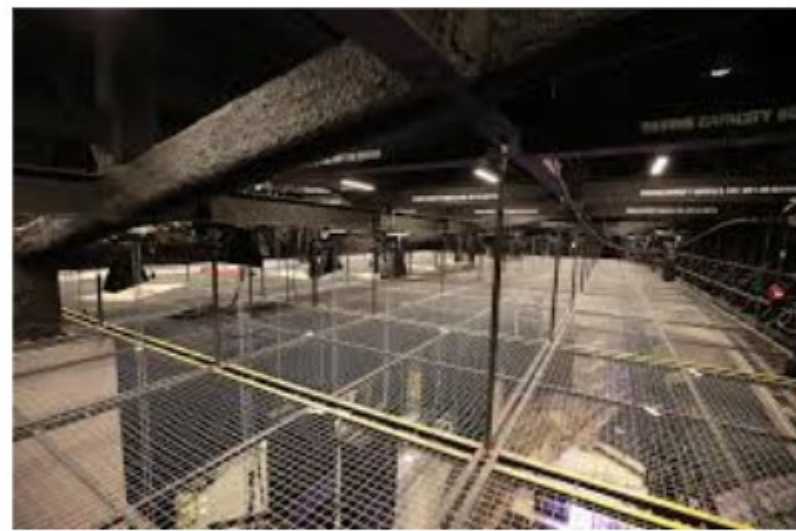
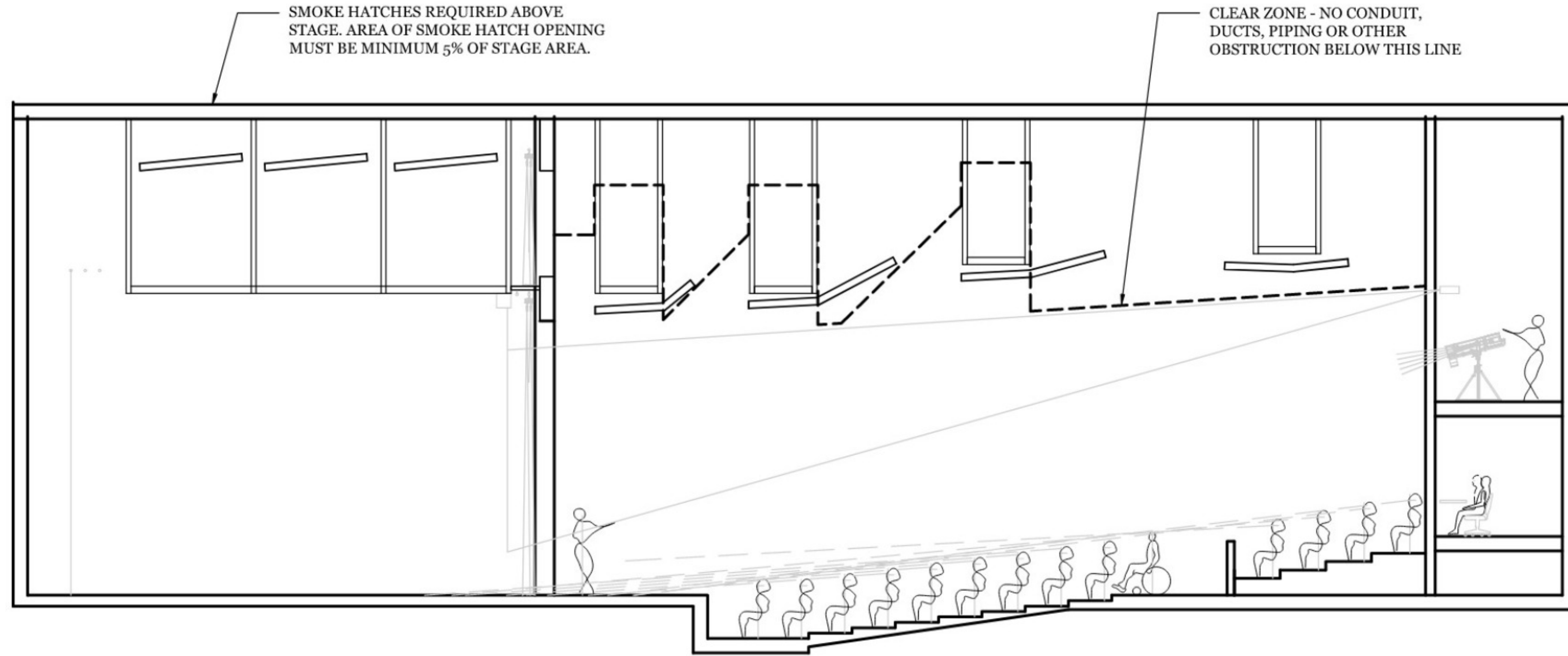
- **Auditorium Concepts**
- **Newport**
 - Plans
 - Massing
- **Waldport**
 - Plans
 - Massing
- **Toledo**
 - Plans
 - Massing

Auditorium Layout

Auditorium Plan



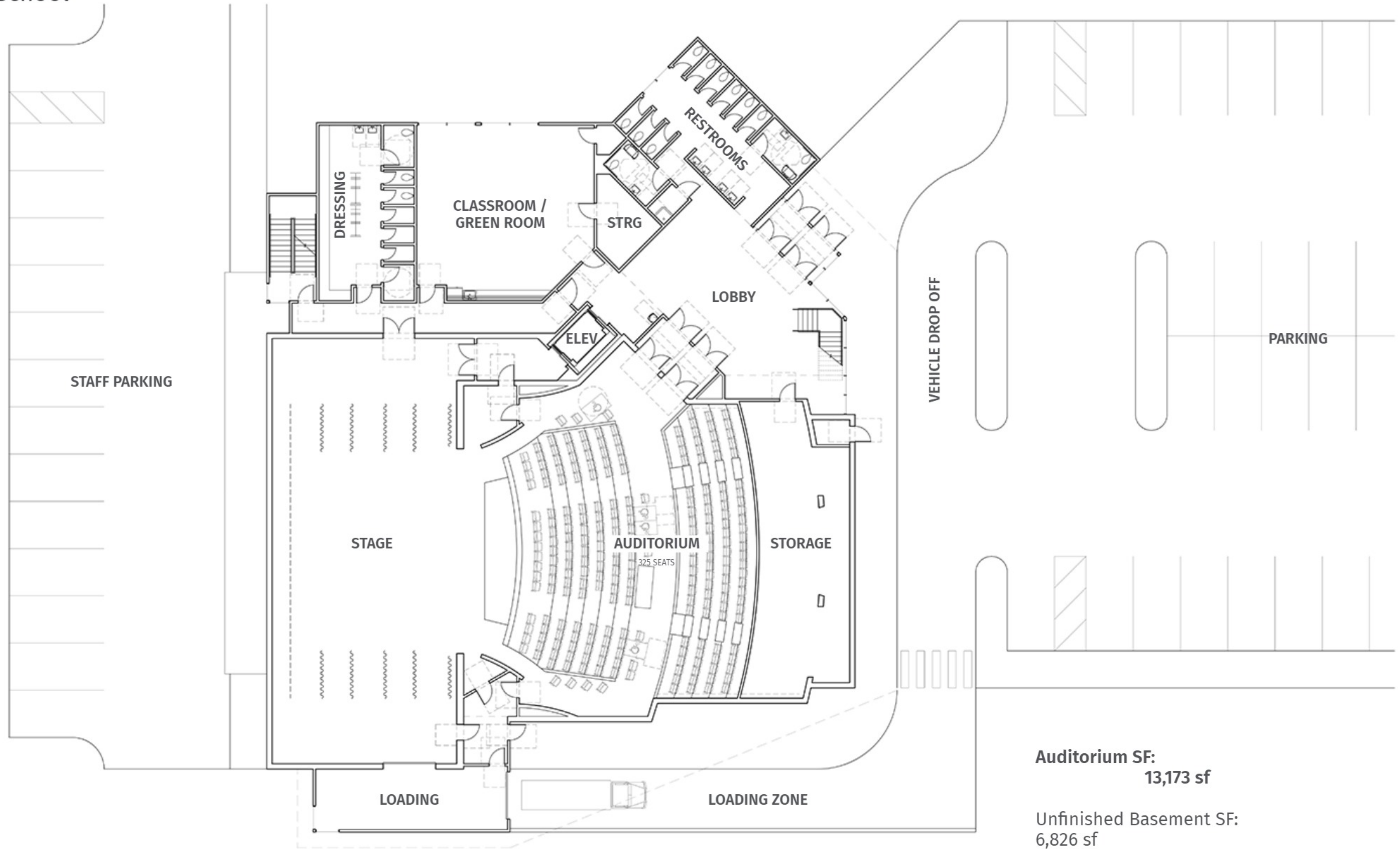
Auditorium Section



Newport High School

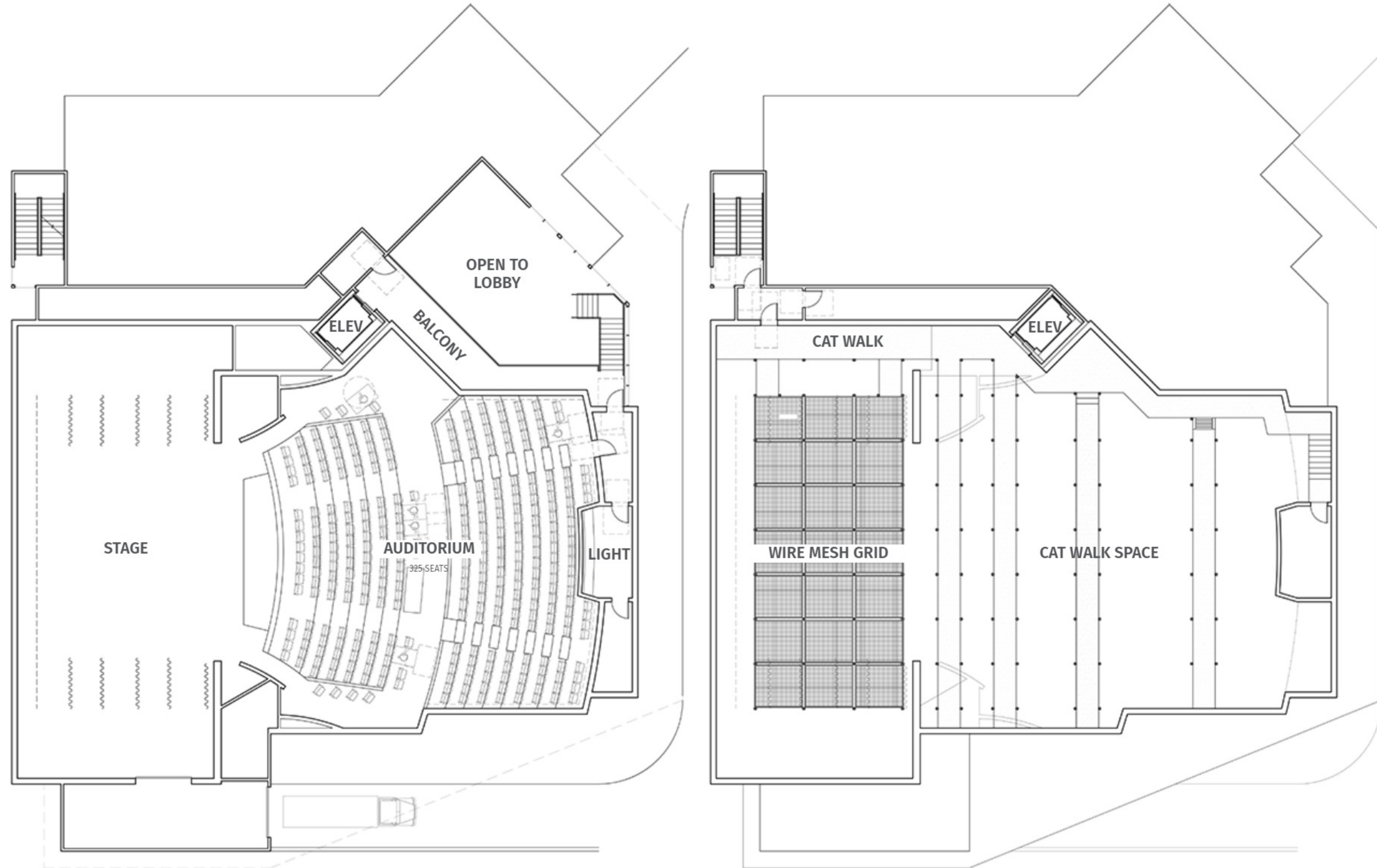
Concept Floor Plan - Main Level

Newport High School



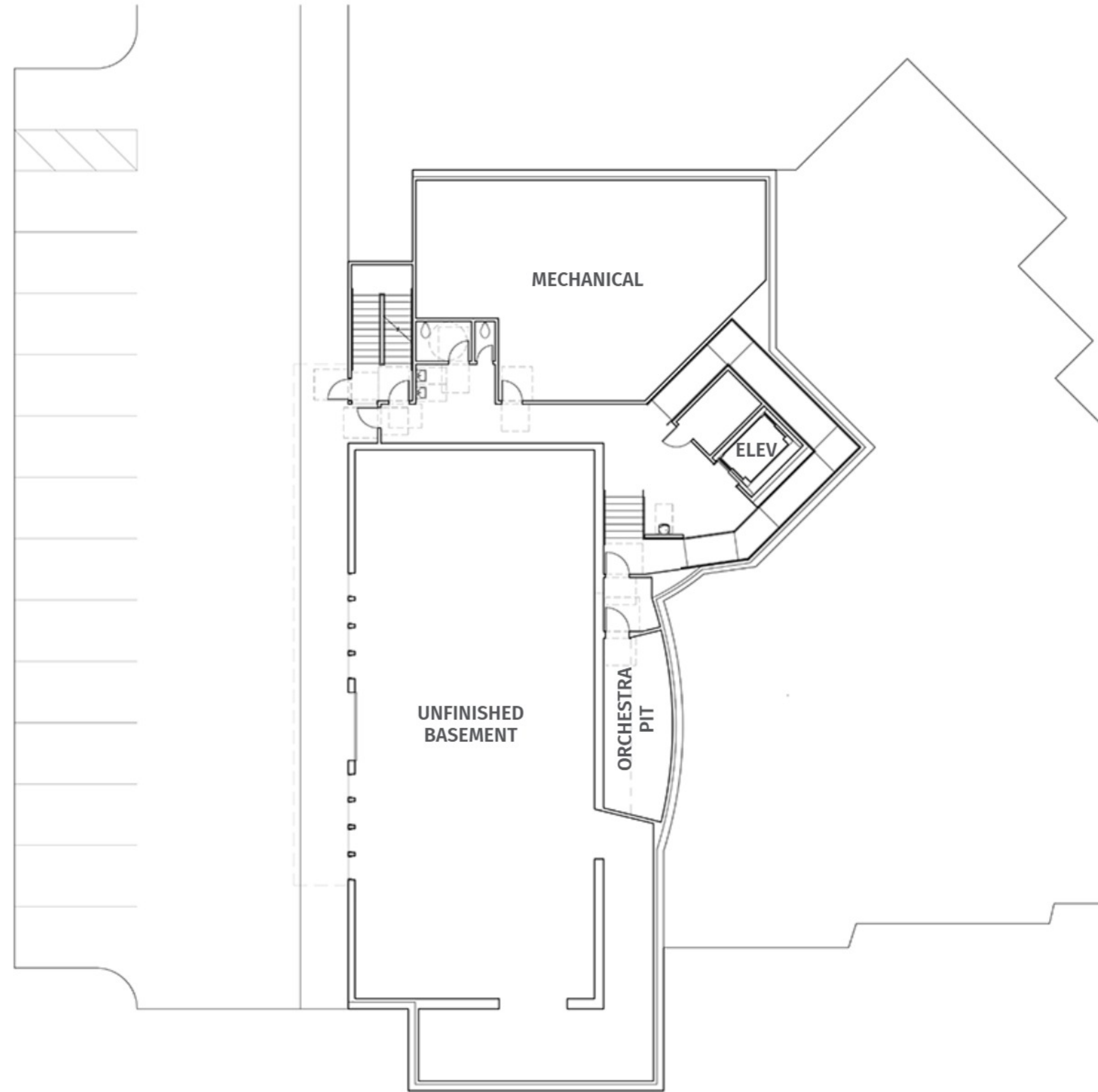
Concept Floor Plan - Upper Level and Cat Walk Level

Newport High School



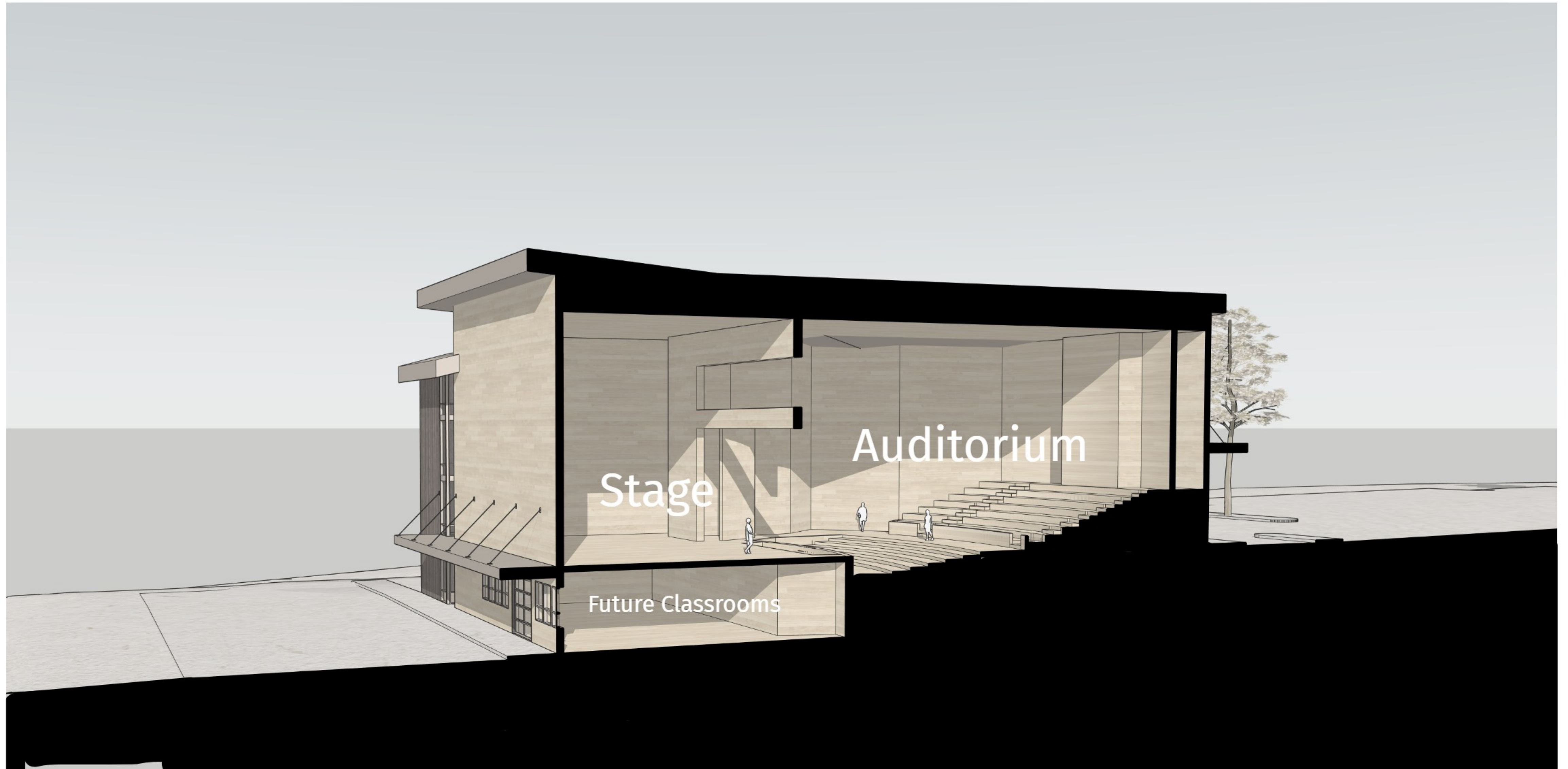
Concept Floor Plan - Basement Level

Newport High School



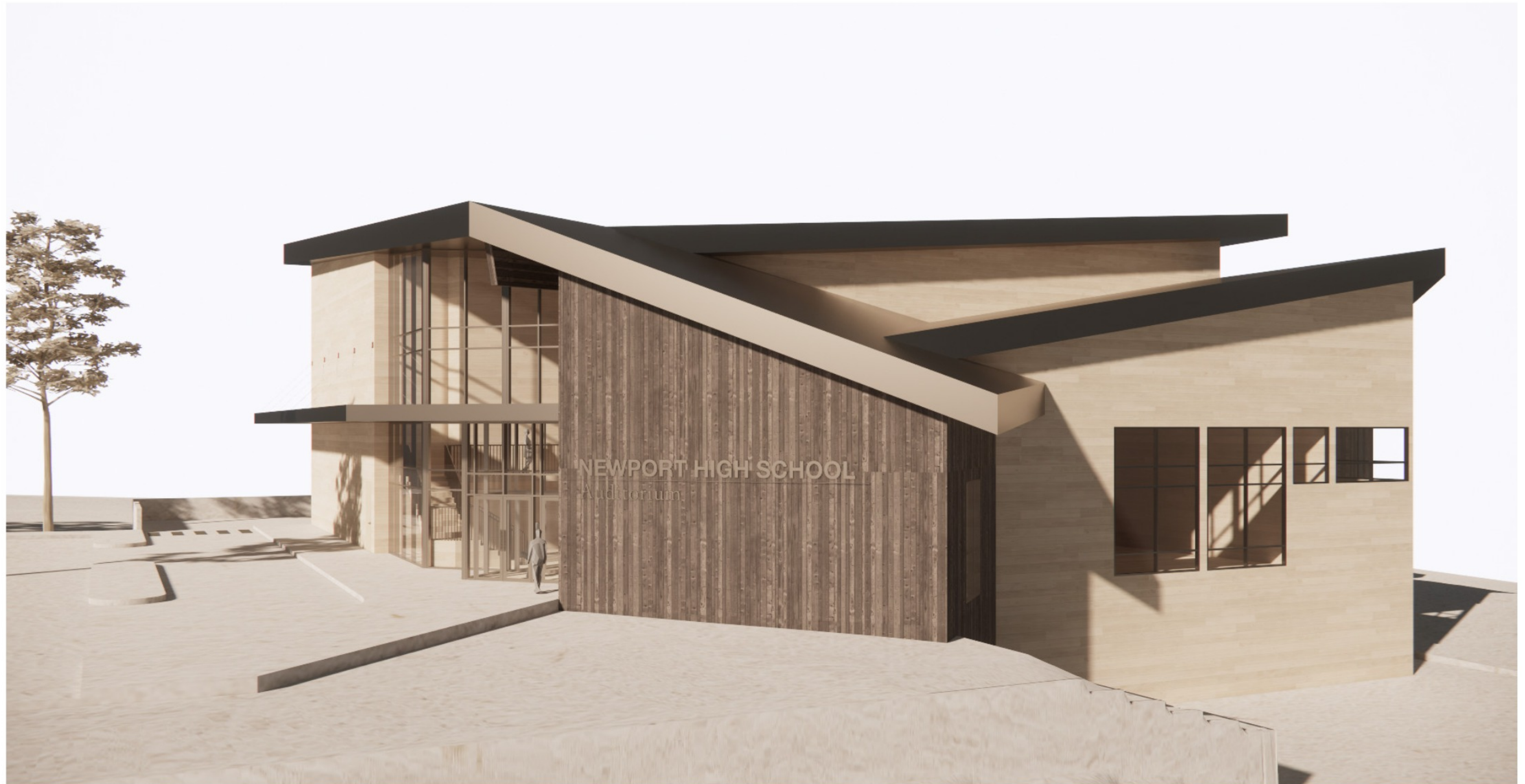
E/W Section Through Auditorium

Newport High School



Concept Massing

Newport High School



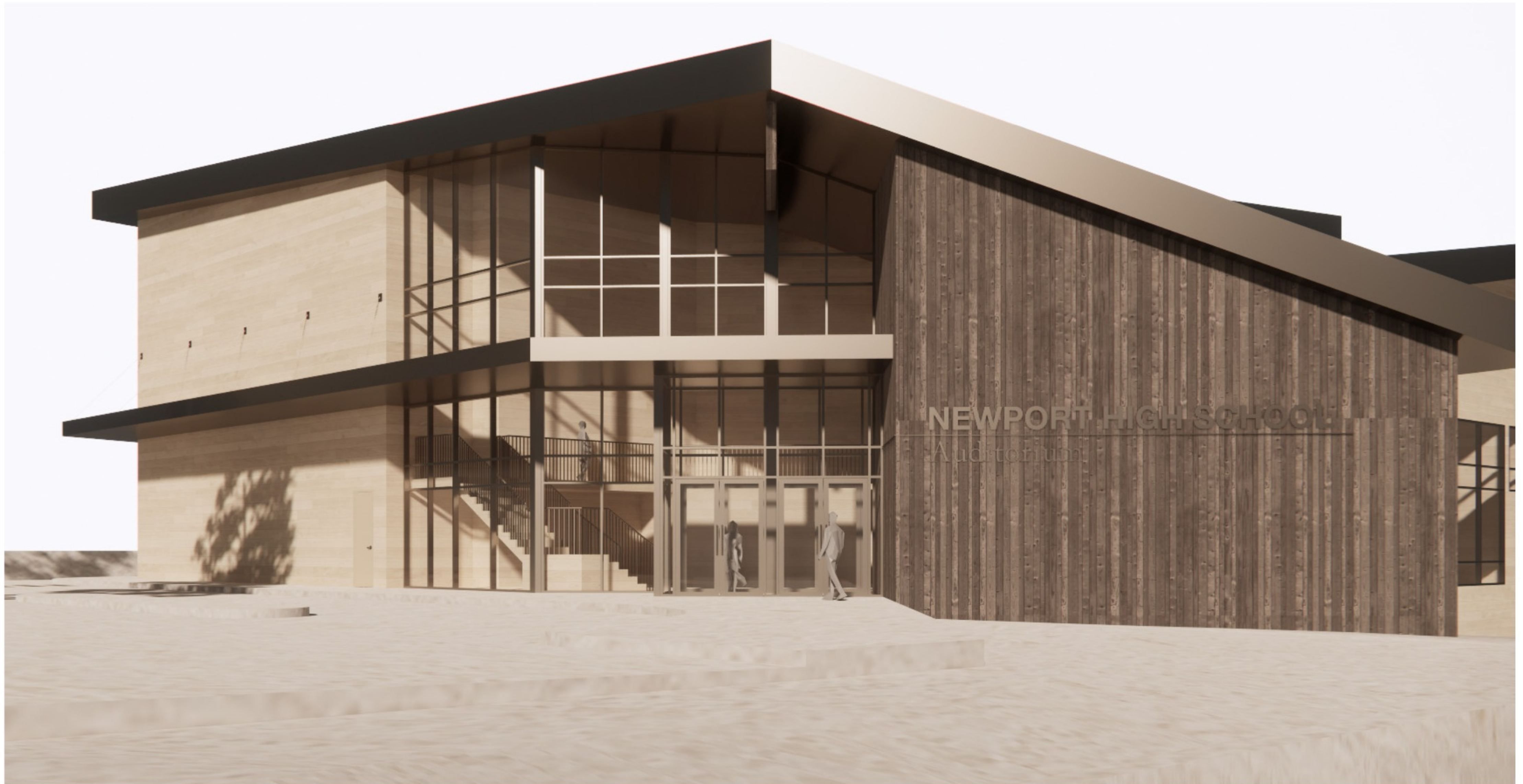
Concept Massing

Newport High School



Concept Massing

Newport High School



Concept Massing

Newport High School



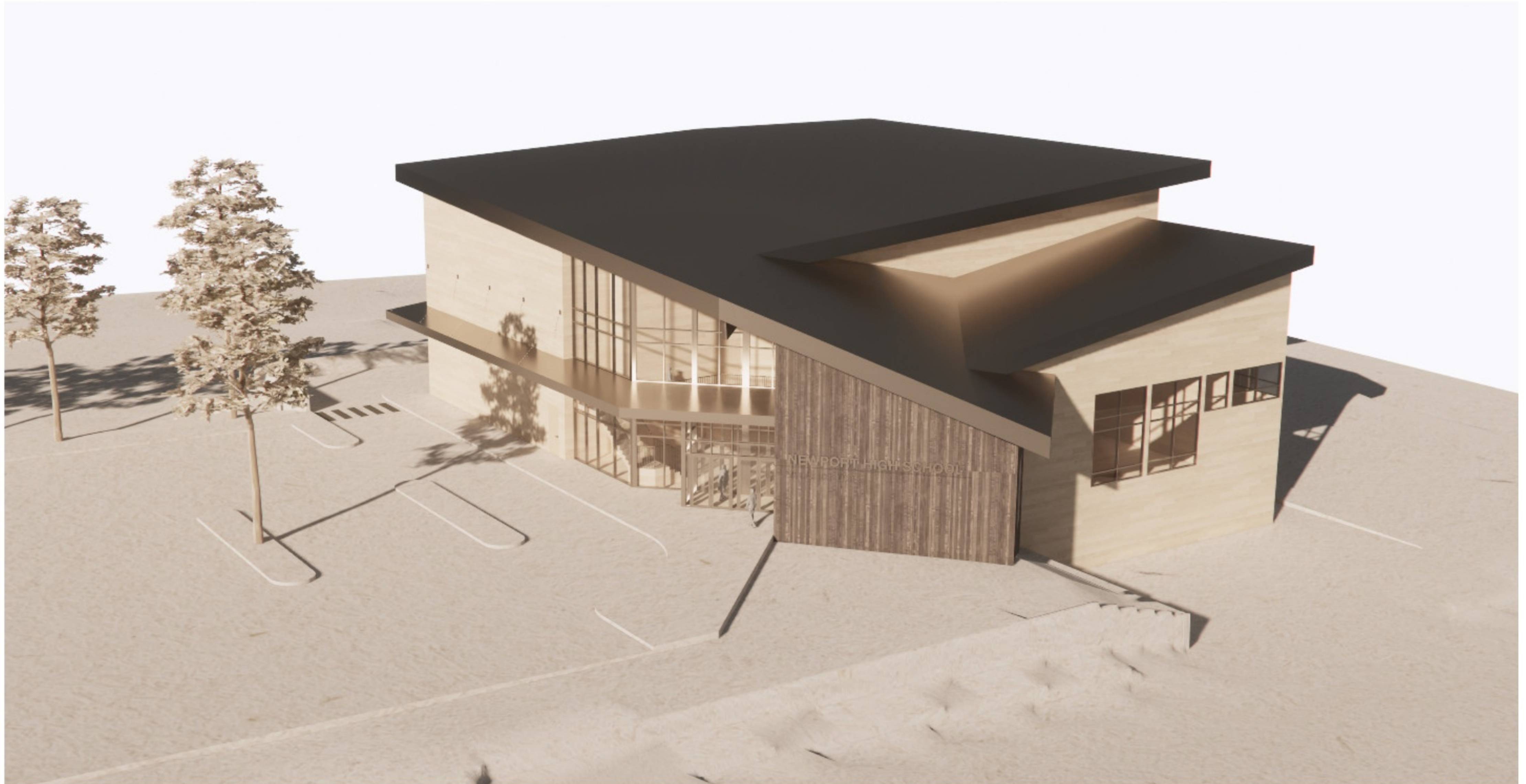
Concept Massing

Newport High School



Concept Massing

Newport High School



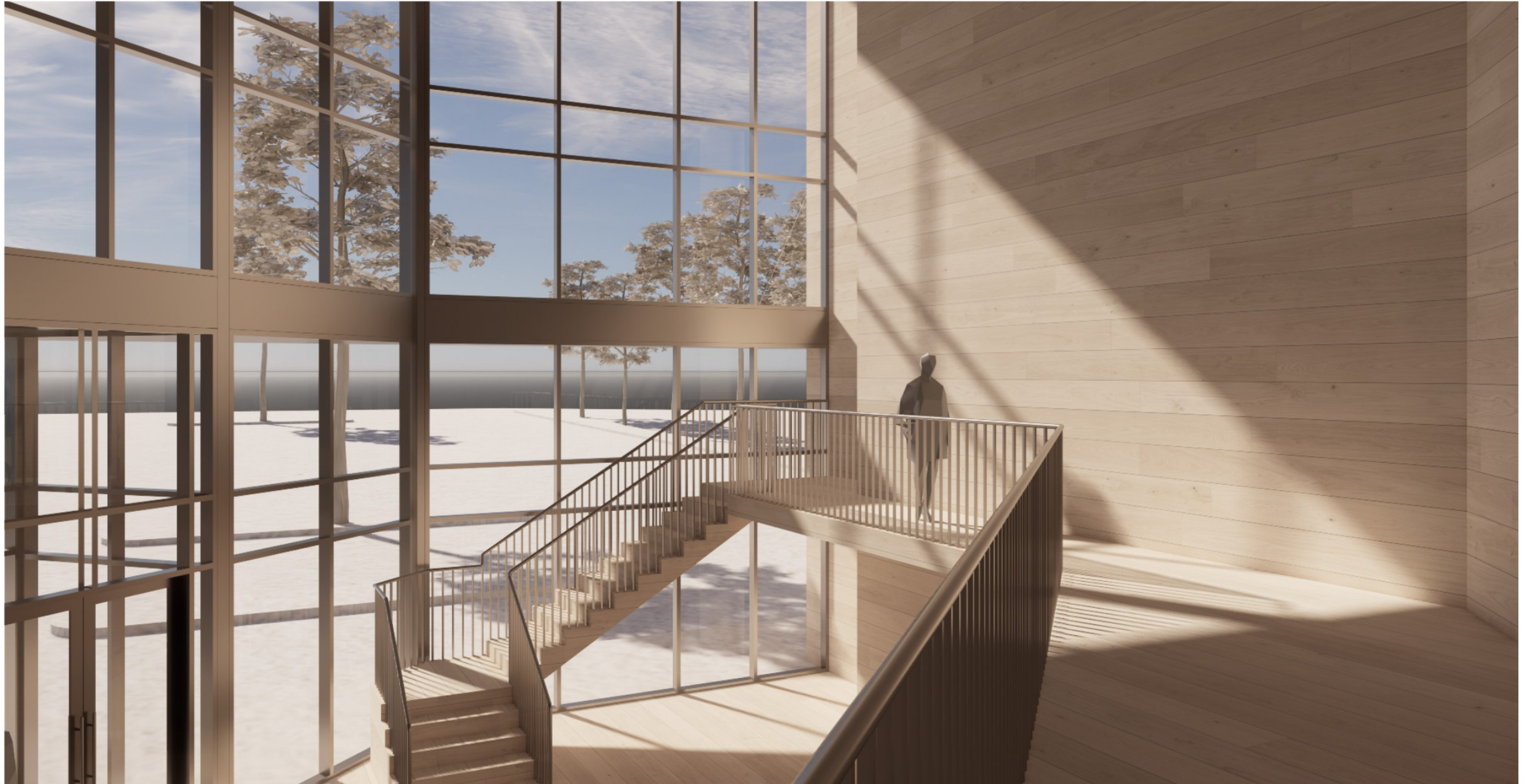
Concept Massing

Newport High School



Concept Massing

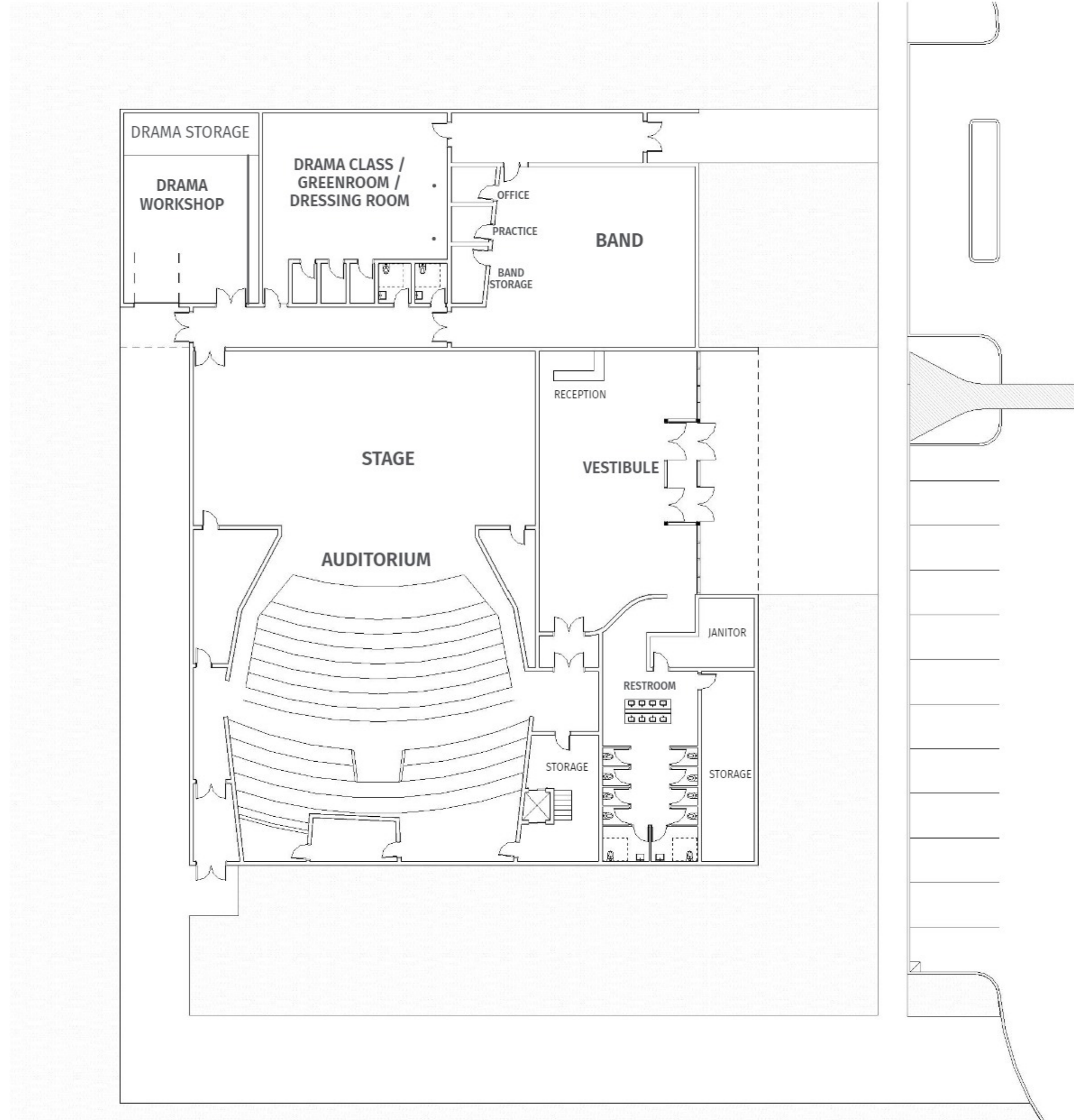
Newport High School



Waldport High School

Concept Floor Plan

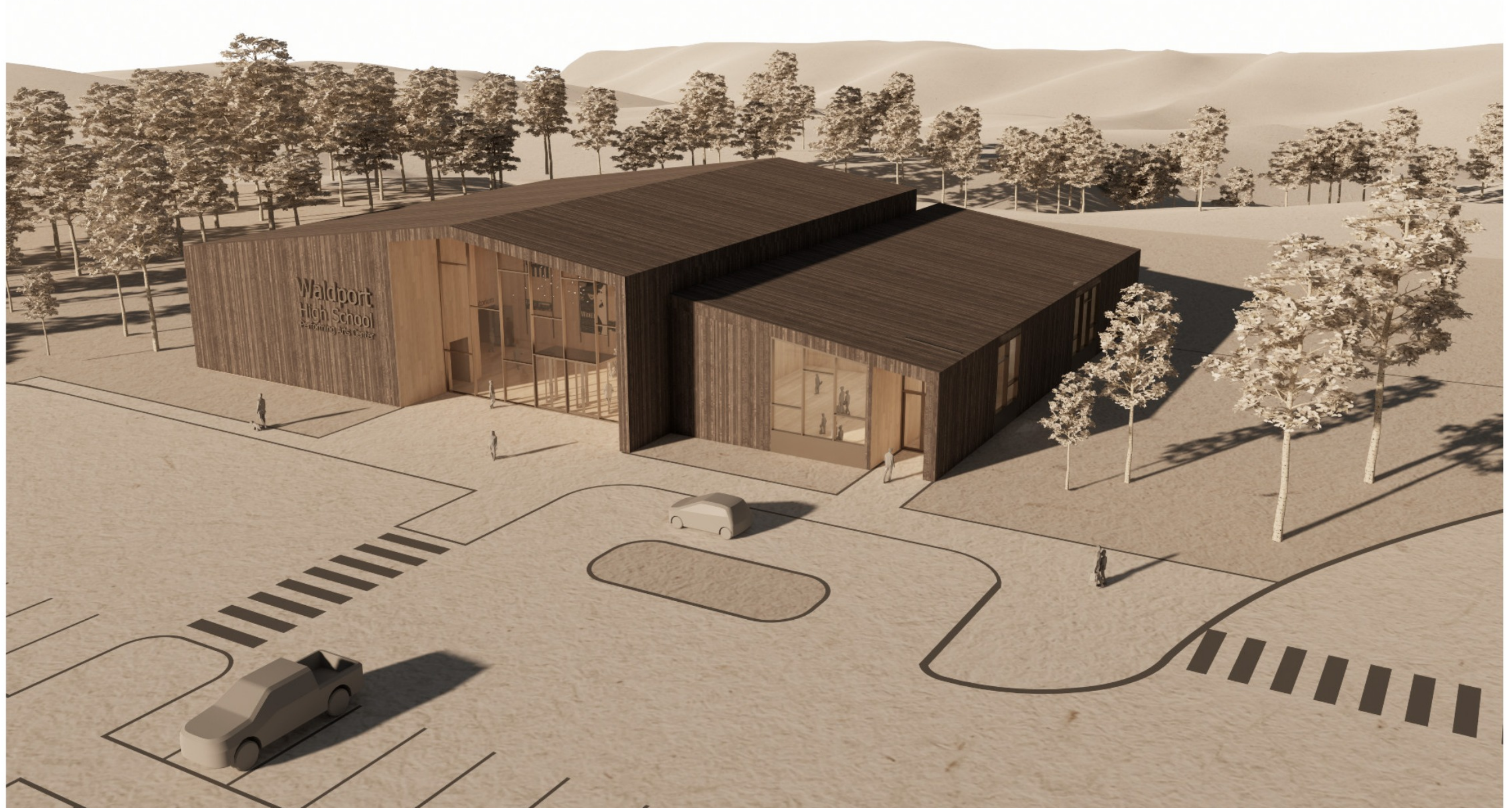
Waldport High School



Total SF:	16,000 sf
Classroom Wing -	5,000 sf
Auditorium -	11,000 sf

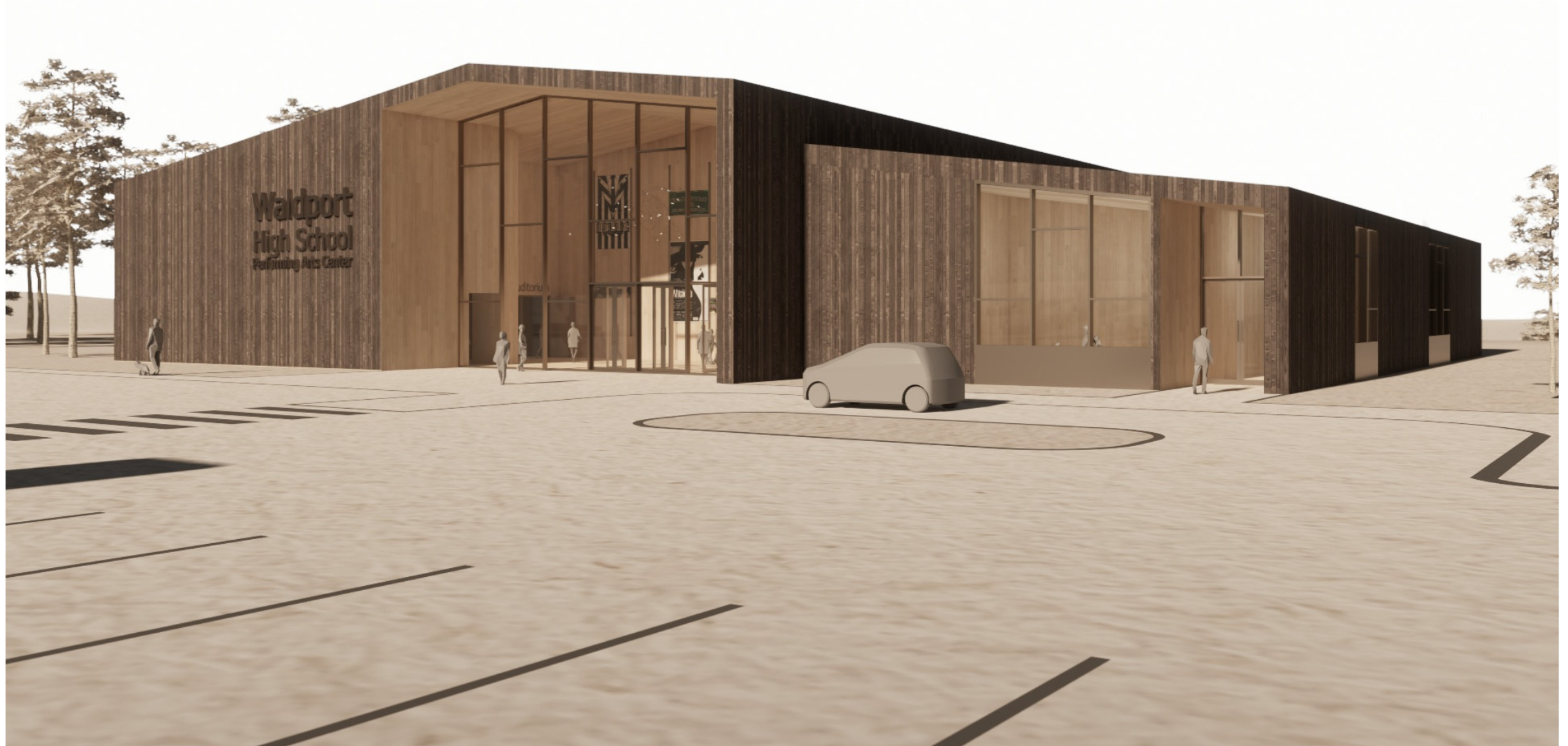
Concept Massing

Waldport High School



Concept Massing

Waldport High School



Concept Massing

Waldport High School



Concept Massing

Waldport High School



Concept Massing

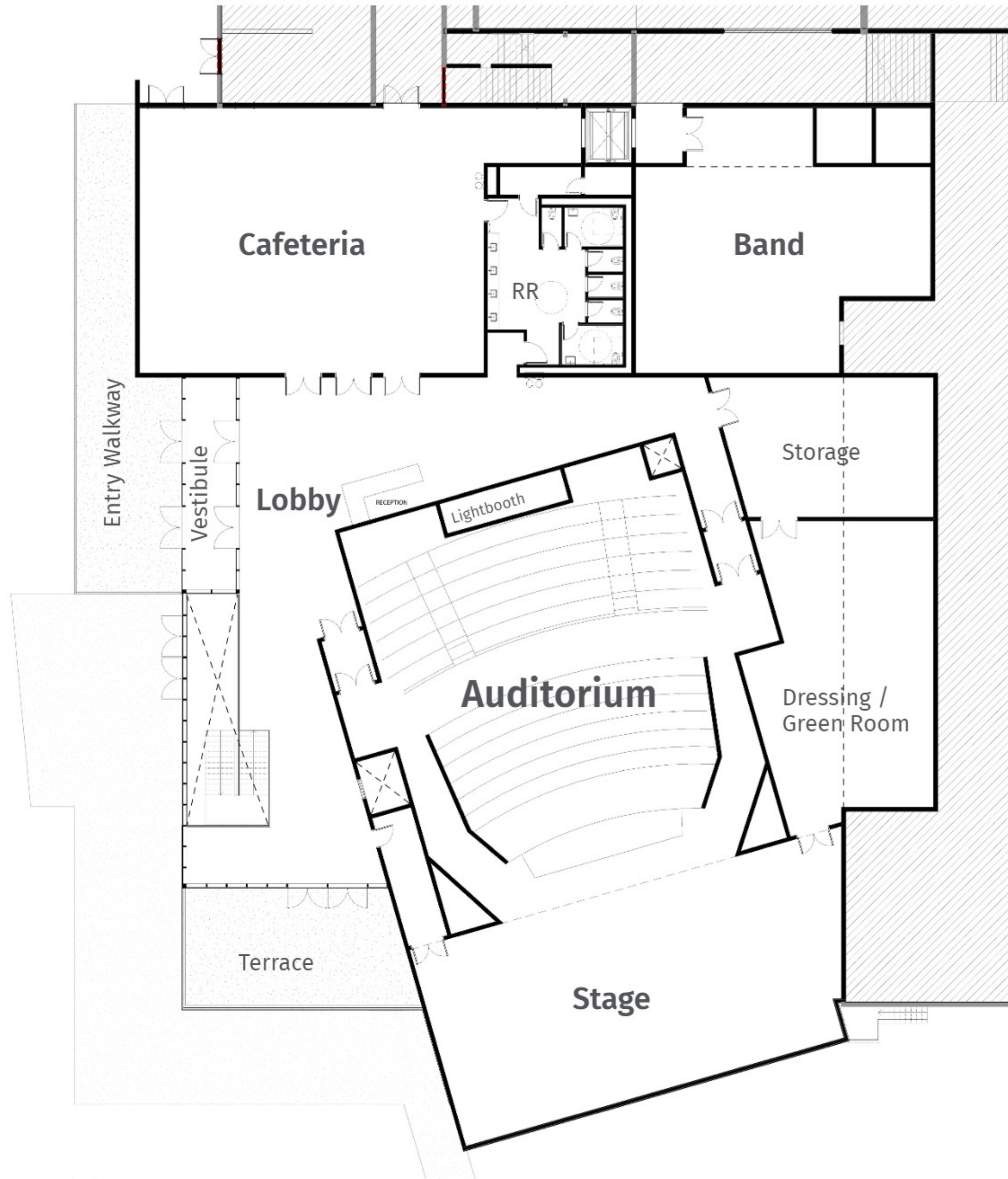
Waldport High School



Toledo High School

Concept Floor Plan - Main Level

Toledo High School

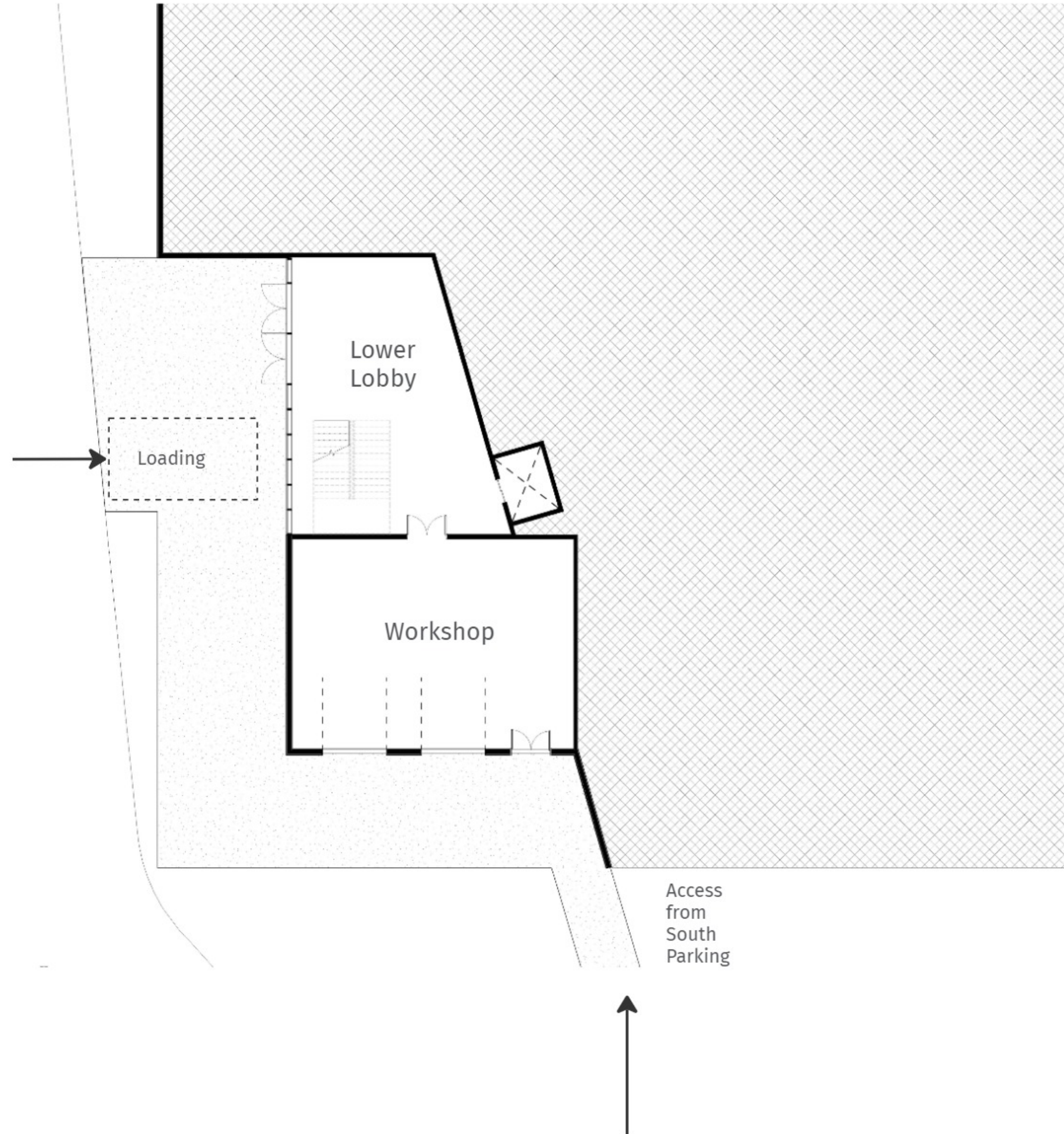


Total SF (new):
Main Floor - 12,000 sf
Basement - 2,200 sf

Total SF (renovated): 7,000 sf

Concept Floor Plan - Basement Level

Toledo High School



Total SF (new):
Main Floor - 12,000 sf
Basement - 2,200 sf
Total SF (renovated): 7,000 sf

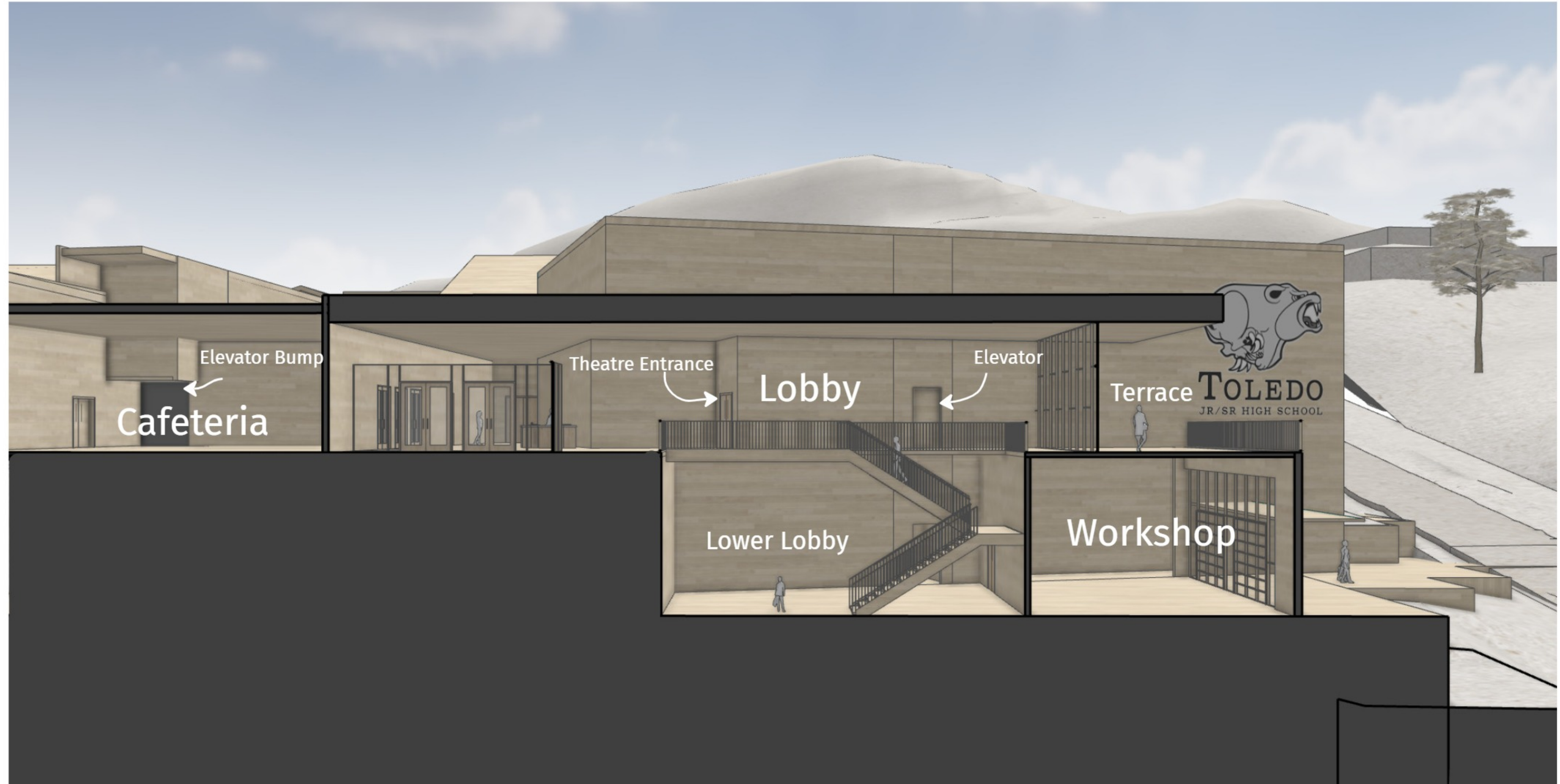
E/W Section Through Auditorium

Toledo High School



N/S Section Through Double Height Lobby

Toledo High School



Concept Massing

Toledo High School



Concept Massing

Toledo High School



Concept Massing

Toledo High School



Concept Massing

Toledo High School



Concept Massing

Toledo High School





Auditorium

Thank you

1. Waldport Middle/High
 2. Toledo Jr/Sr
 3. Newport High
3. Adjournment

Board Goals 2024-2029

GOAL ONE: Lincoln County School District will establish and meet high expectations for student achievement.

GOAL TWO: Lincoln County School District will create equitable, diverse, inclusive, and accessible learning environments across the district within a framework of excellence in education.

GOAL THREE: LCSD will provide for the long term health and welfare of our facilities and finances, focusing on accessibility, technological innovation, and purposeful utilization.

GOAL FOUR: Lincoln County School District will strengthen community relationships through communication and engagement with staff, students, families, and community partners.

Lincoln County School District Equity Team Land Acknowledgement Statement

We ask that you take a moment to stop what you are doing, to listen to these words as we recognize the land that we currently inhabit. No matter where each of us is physically located in Lincoln County, we must understand that we are on traditional homelands and unceded territories of indigenous peoples. Where we live in Lincoln County, these are the ancestral homelands for the Confederated Tribes of Siletz Indians.

Lincoln County School District acknowledges the Confederated Tribes of Siletz Indians that consists of over 30 bands originating from Northern California to Southern Washington. The Confederated Tribes of Siletz Indians currently occupy and manage a mere fraction of their original 1855 1.1 million-acre Siletz coastal reservation that covered land in what is now Tillamook, Lincoln, Benton, Marion, and Coos Counties. We must remember the people of the Confederated Tribes of Siletz Indians are and will forever be the first stewards of this land, water, and fish.

We acknowledge and recognize the continued sovereignty of the Confederated Tribes of Siletz Indians and honor their ancestral homelands. We are committed to bringing awareness to their history and the existence of the Confederated Tribes of Siletz Indians since time immemorial.

NON-DISCRIMINATION: Lincoln County Schools do not discriminate nor tolerate discrimination on the basis of an individual's race, color, religion, sex, sexual orientation, national origin, disability, gender identity, marital status or age or because of the race, color, religion, sex, sexual orientation, national origin, disability, gender identity, marital status or age of any other persons with whom the individual associates.