

LISLE COMMUNITY UNIT SCHOOL DISTRICT 202
BOARD ROOM
5211 CENTER AVENUE
LISLE, ILLINOIS 60532
Board of Education Meeting
May 1, 2023
6:00 PM

Members of the public are welcome to attend all Lisle Community Unit School District 202 Board of Education meetings, including those held via video conferencing. Anyone wishing to view the meeting or provide comments is encouraged to review the information below.

In-Person Meeting Viewing: Guests are welcome to attend the meeting in-person in the Board Room.

Public Comment: Public comments can be made in person or via email at publiccomment@lisle202.org. Comments must be received by 5:00 p.m. on the day on which the meeting is held. Comments submitted by the deadline will not be read aloud during the meeting, but rather will be provided to the School Board before the start of the meeting and will become part of the meeting record.

Please see the "Meeting Dates, Agendas and Minutes" page for links to the Board of Education meeting agendas, minutes and video feeds.

AGENDA

- | | |
|---|----|
| 1. Call to Order and Roll Call | |
| 2. Public Comment | |
| 3. Oath of Office to Newly Elected Board Members and the Board Member Code of Conduct | 2 |
| 4. Selection of Board Officers | 4 |
| 5. Determination of Board Committee Assignments | 5 |
| 6. Approval of SASSED Board of Directors and Governing Board Appointment Resolution | 6 |
| 7. Establishment of Regular Meeting Time, Dates and Place | 8 |
| 8. Schematic Designs and Construction Timeline for the Proposed Junior High Renovations | 10 |
| 9. Adjournment | |



Oath of Office

I (name) do solemnly swear that:

I will support the Constitution of the United States, and the Constitution of the State of Illinois, and that

I will faithfully discharge the duties of the office of Member of the Board of Education of the Lisle Community Unit School District Number 202, DuPage County, Illinois, according to the best of my ability.

I further swear that:

I shall respect taxpayer interests by serving as a faithful protector of the school district's assets;

I shall encourage and respect the free expression of opinion by my fellow board members and others who seek a hearing before the board, while respecting the privacy of students and employees;

I shall recognize that a board member has no legal authority as an individual and that decisions can be made only by a majority vote at a public board meeting; and

I shall abide by majority decisions of the board, while retaining the right to seek changes in such decisions through ethical and constructive channels.

As part of the Board of Education, I shall accept the responsibility for my role in the equitable and quality education of every student in the School District;

I shall foster with the Board extensive participation of the community, formulate goals, define outcomes, and set the course for Lisle CUSD 202;

I shall assist in establishing a structure and an environment designed to ensure all students have the opportunity to attain their maximum potential through a sound organizational framework;

I shall strive to ensure a continuous assessment of student achievement and all conditions affecting the education of our children, in compliance with State law;

I shall serve as education's key advocate on behalf of students and our community's school (or schools) to advance the vision for Lisle CUSD 202; and

I shall strive to work together with the District Superintendent to lead the School District toward fulfilling the vision the Board has created, fostering excellence for every student in the areas of academic skills, knowledge, citizenship, and personal development.

FOR ACTION

Lisle Community Unit School District No. 202 Board of Education Meeting May 1, 2023

SUBJECT: Selection of Board Officers

BACKGROUND: The Board of Education established the terms of office to be for a one-year period by resolution through *Board Policy 2:110 – Qualifications, Terms, and Duties of Board Officers*. The Board of Education approved current Board Officer Positions for a period of one year on May 23, 2022.

Steps in the Process:

1. Appointment of President Pro Tem:

- a. The Board President will make a motion to appoint the Superintendent as President Pro Tem.
- b. A nomination need not be seconded.
- c. A voice vote will be taken.

2. Appointment of the President:

- a. The President Pro Tem will invite nominations for President of the Board of Education.
- b. A nomination need not be seconded.
- c. If only one member is nominated, a voice vote may be taken in which each member can vote in favor or in opposition of the nominated candidate.
- d. If two or more members are nominated, the election for President must be by a roll call vote.
- e. Voting continues until one member receives a majority of the votes cast.

3. The President Pro Tem will relinquish the chair to the newly elected President.

4. The same procedure will be followed for the selection of the Vice President and the Secretary.

Definitions for Reference:

Voice Vote - The presiding officer states the question, and then asks those in favor to say "yea" in unison and those against to say "nay."

Roll Call Vote – Each Board Member votes “yea” or “nay” as his or her name is called by the presiding officer

FOR DISCUSSION

Lisle Community Unit School District No. 202 Board of Education Meeting May 1, 2023

SUBJECT: Determination of Board Committee Assignments

BACKGROUND: According to Board Policy 2:150 – Committees, the Board of Education may establish committees to assist with the Board’s governance function and, in some situations, to comply with state law requirements. Below is a list of the current Board Committee Member Assignments.

SCHOOL BOARD COMMITTEES

Finance – Committee of the Whole

Educational, Equity, Excellence (E3) – Helderle, Sims, and Nagler

Facility Master Planning Committee - Sims, Lesniak, and Ahlmann

Policy – Committee of the Whole

Vision 202 – Ahlmann, Nagler (Alternate: Helderle)

Classified (CEAL) Negotiations – McConville and Lesniak

Certified (LEA) Negotiations – McConville and Lesniak

School Improvement / Monitoring Tool Committee – Sims and Helderle (Alternate: Nagler)

SCHOOL BOARD MEMBERS SERVING ON EXTERNAL COMMITTEES

Intergovernmental – Ahlmann (Alternate: Helderle)

Professional Council – Ahlmann (Alternate: Lesniak)

Lisle Education Foundation – McConville (Alternate: Ahlmann)

Legislative Education Network of DuPage (LEND) – Ahlmann

Illinois Association of School Boards Delegate (IASB) – Helderle (Alternate: McConville)

Home and School Association (HSO) Council – Ahlmann, Nagler, and Sims (rotating)

School Association for Special Education, DuPage (SASED)

Governing Board – Lesniak (Alternate: Nadeau)

Board of Directors – Keith Filipiak (Alternate – Lesniak)

FOR ACTION

**Lisle Community Unit School District 202
Board of Education Meeting
May 1, 2023**

SUBJECT: Approval of SASED Board of Control/Governing Board Appointment Resolution

BACKGROUND INFORMATION: The proposed resolution appoints a Lisle 202 Board Member as the SASED Board of Control Representative and Governing Board Representative, and a Board Member as the *Alternate* Board of Control Representatives and Governing Board Representatives.

The proposed resolution appoints:

1. Board Member _____ as the SASED Governing Board Representative
2. Board Member _____ as the *Alternate* SASED Governing Board Representative
3. Superintendent Keith Filipiak as the SASED Board of Director Representative
4. Board Member _____ as the *Alternate* SASED Board of Directors Representative

FINANCIAL IMPACT: N/A

SUGGESTED MOTION: That the Board of Education approve the SASED Board of Directors and Governing Board Appointment Resolution.

SASED BOARD OF DIRECTORS/GOVERNING BOARD
APPOINTMENT RESOLUTION

WHEREAS, the Board of Education of **Lisle Community Unit School District #202**, DuPage County, Illinois (hereinafter "Board"), is a Member District of The School Association for Special Education in DuPage County (hereinafter "SASED"), established pursuant to a Joint Agreement/Bylaws for SASED, dated April 30, 1981, as last amended July 1, 2016 (hereinafter "Agreement"); and

WHEREAS, pursuant to Article IV of the Agreement, SASED is managed by a Governing Board consisting of one representative of each Member District who is an elected official and one alternate representative who is an elected official, each whom serve a two-year term; and

WHEREAS, pursuant to amendment to the Joint Amendment/Bylaws for SASED to take effect May 1, 2023 under Article V of the Agreement, SASED is managed by a Board of Directors consisting of the Superintendent and one alternate representative, who is an elected official and who serves a two-year term;

NOW, THEREFORE, be it hereby resolved by the Board of Education of **Lisle Community Unit School District #202**, DuPage County, Illinois, as follows:

SECTION I: _____ is hereby appointed as the Governing Board Representative.

SECTION II: _____ is hereby appointed as the Governing Board Alternate Representative to perform all the functions of the Governing Board Representative to SASED, including attendance of meetings and voting, when the actual Governing Board Representative is unable to perform such functions.

SECTION III: _____ is hereby appointed as the Board of Directors Alternate Representative to perform all the functions of the Board of Directors Representative to SASED, including attendance of meetings and voting, when the actual Board of Directors Representative is unable to perform such functions.

SECTION IV: This Resolution shall be in full force and effect at the May 24, 2023 Board of Directors meeting and the May 31, 2023 Governing Board meeting.

ADOPTED THIS ___day of _____, 2023, by the following vote:

AYES: _____

NAYS: _____

ABSENT: _____

BOARD OF EDUCATION
Lisle Community Unit School District #202, DuPage
County, Illinois

BY _____
Its President

ATTEST

BY _____
Its Secretary

FOR ACTION

**Lisle Community Unit School District No. 202
Board of Education Meeting
May 1, 2023**

SUBJECT: Establishment of Regular Meeting Time, Date, and Place

BACKGROUND DATA: The Open Meetings Act requires each public body to give public notice of its schedule of dates, times, and places for regular meetings at the beginning of each fiscal year and to make the schedule generally available.

The attached document included the proposed time, date, and place for the regular Board Meetings

SUGGESTED MOTION: That the Board of Education approve the proposed time, date, and place for the regular Board Meetings for the 2023-2024 fiscal year.



Lisle Community Unit School District 202 Board of Education meetings are held in the Central Office Board Room located at 5211 Center Avenue, Lisle Illinois 60532 on the 4th Monday of each month at 7:30 p.m. unless otherwise noted.

School Year 2023-2024

Monday, July 24, 2023

Monday, August 28, 2023

Monday, September 25, 2023

Monday, October 23, 2023

Monday, November 27, 2023

Monday, December 18, 2023 (THIRD MONDAY)

Monday, January 22, 2024

Monday, February 26, 2024

Monday, March 18, 2024 (THIRD MONDAY)

Monday, April 22, 2024

Monday, May 20, 2024 (THIRD MONDAY)

Monday, June 24, 2024

Approved: May 1, 2023

Perkins&Will



LISLE 2022
COMMUNITY UNIT SCHOOL DISTRICT

JUNIOR HIGH SCHOOL RENOVATIONS

May 1, 2023

AGENDA

- **MASTER PLAN & BUDGET**
- **PHASED IMPLEMENTATION**
 - **PHASE 1**
 - **PHASE 2 – 5TH GRADE ADDITION**
 - **FUTURE PHASES**
- **TIMELINE**
- **STUDENT ENGAGEMENT**

Master Plan & Budget

Comprehensive Plan:

- **Phased implementation**
- **Prioritization**
- **5th Grade addition**

Budget:

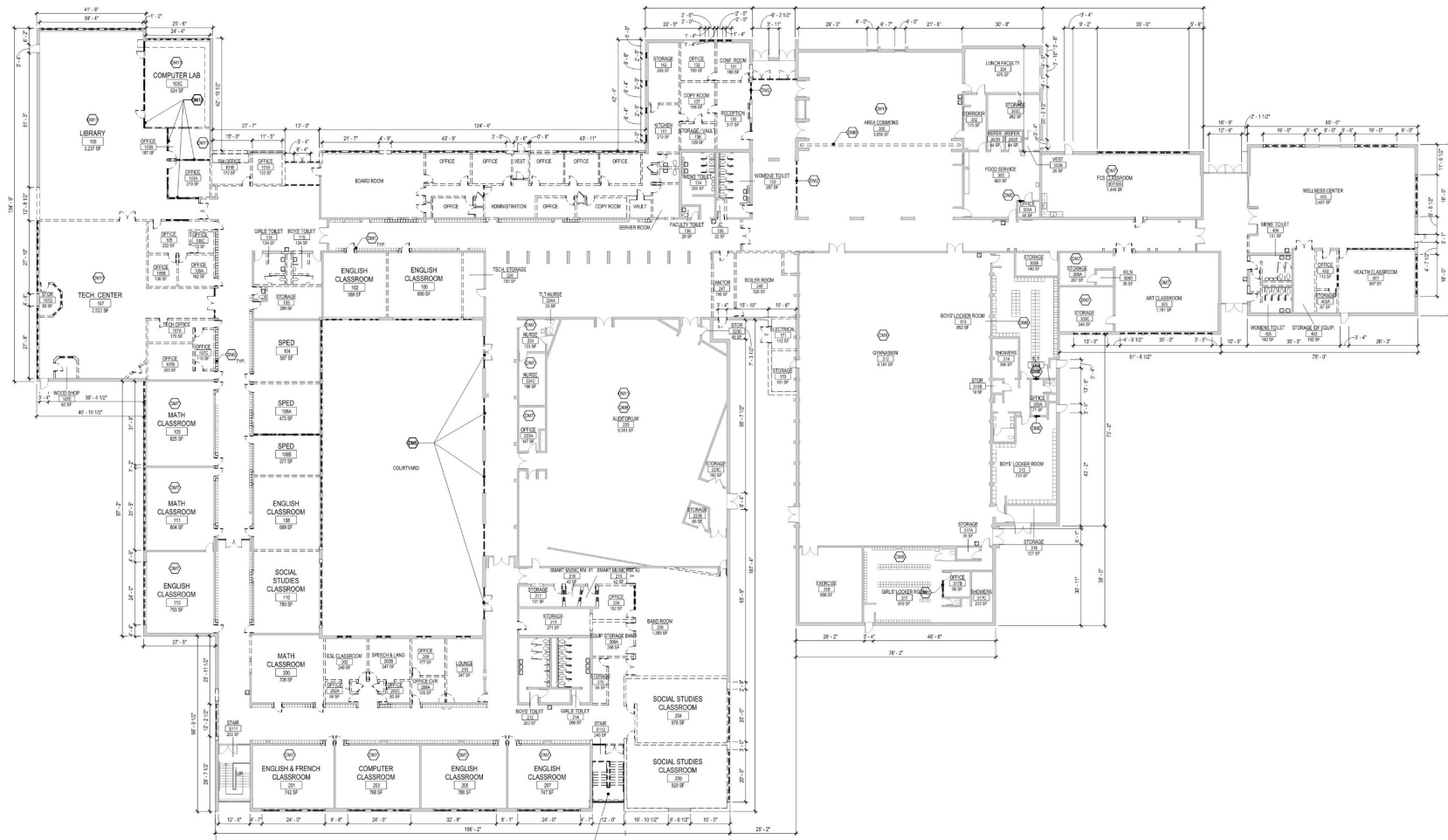
- **\$20M – Phase 1**
- **\$10M – Phase 2 – 5th Grade Addition**



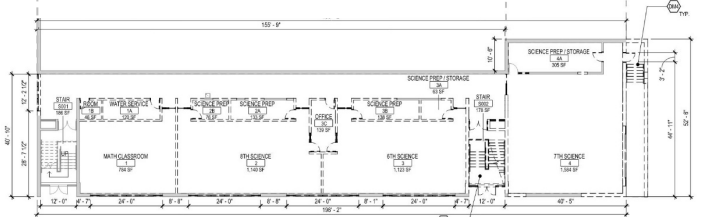
Lisle Junior High School



Phased Implementation

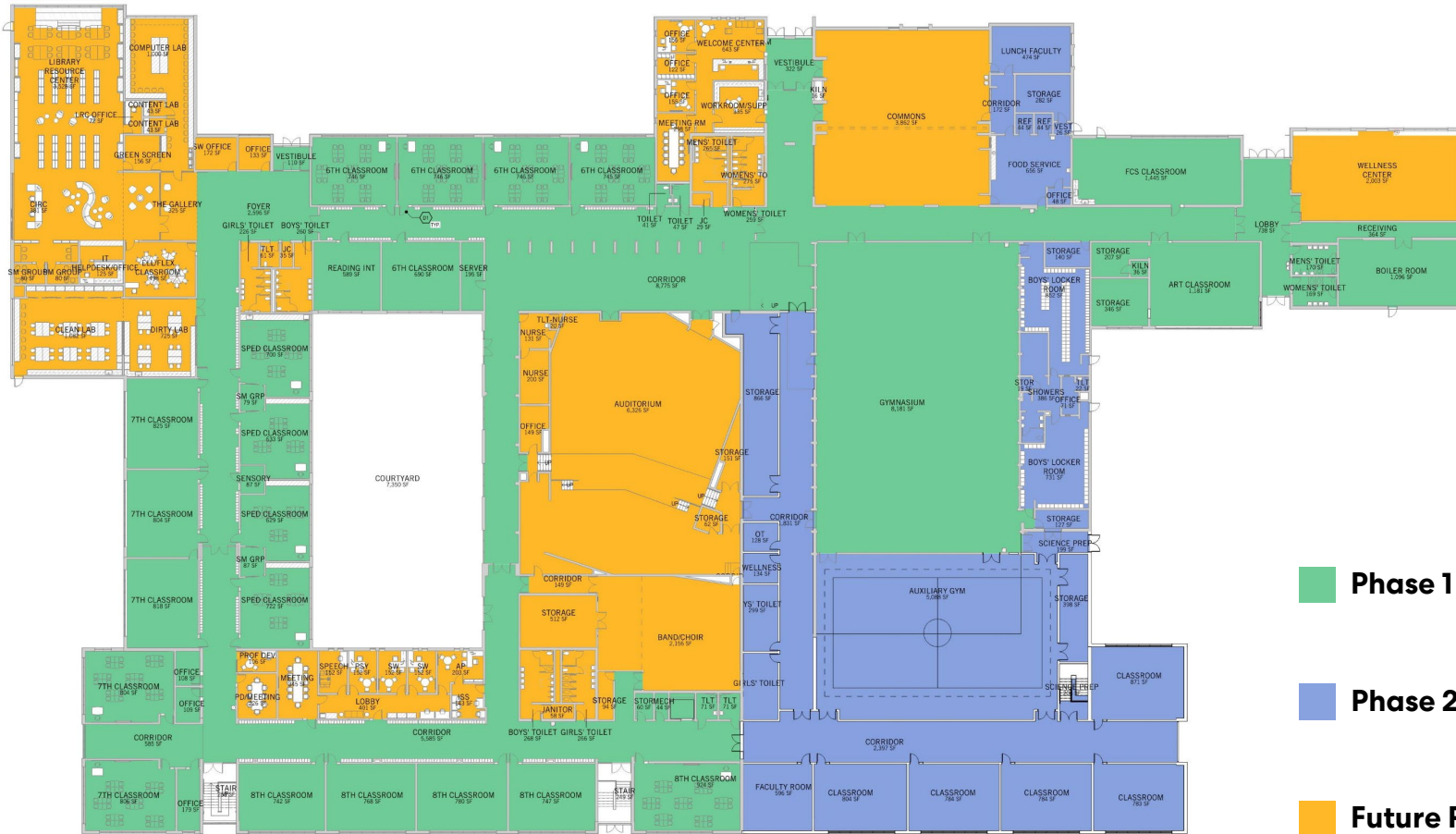


First Floor



Lower Level

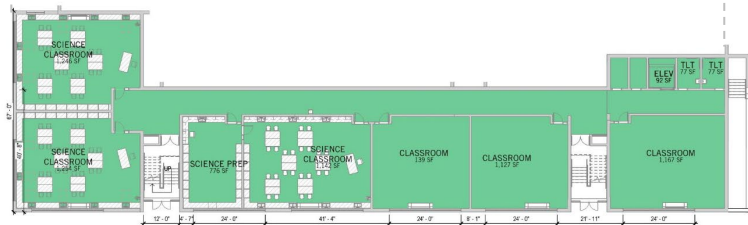
MASTER PLAN



	Phase 1 – General Renovations & Classroom Addition	\$ 19.5M
	Phase 2 – 5th Grade Addition	\$11-13M
	Future Phases	\$ 9-12M

TOTAL **\$40-45M**

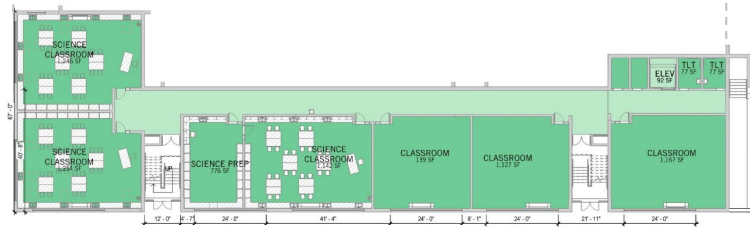
First Floor



Lower Level



First Floor



Lower Level

Phase 1

Light Renovations

- LED Lighting
- Classroom Lighting, Painting & Unit Ventilators
- Flooring at Classrooms

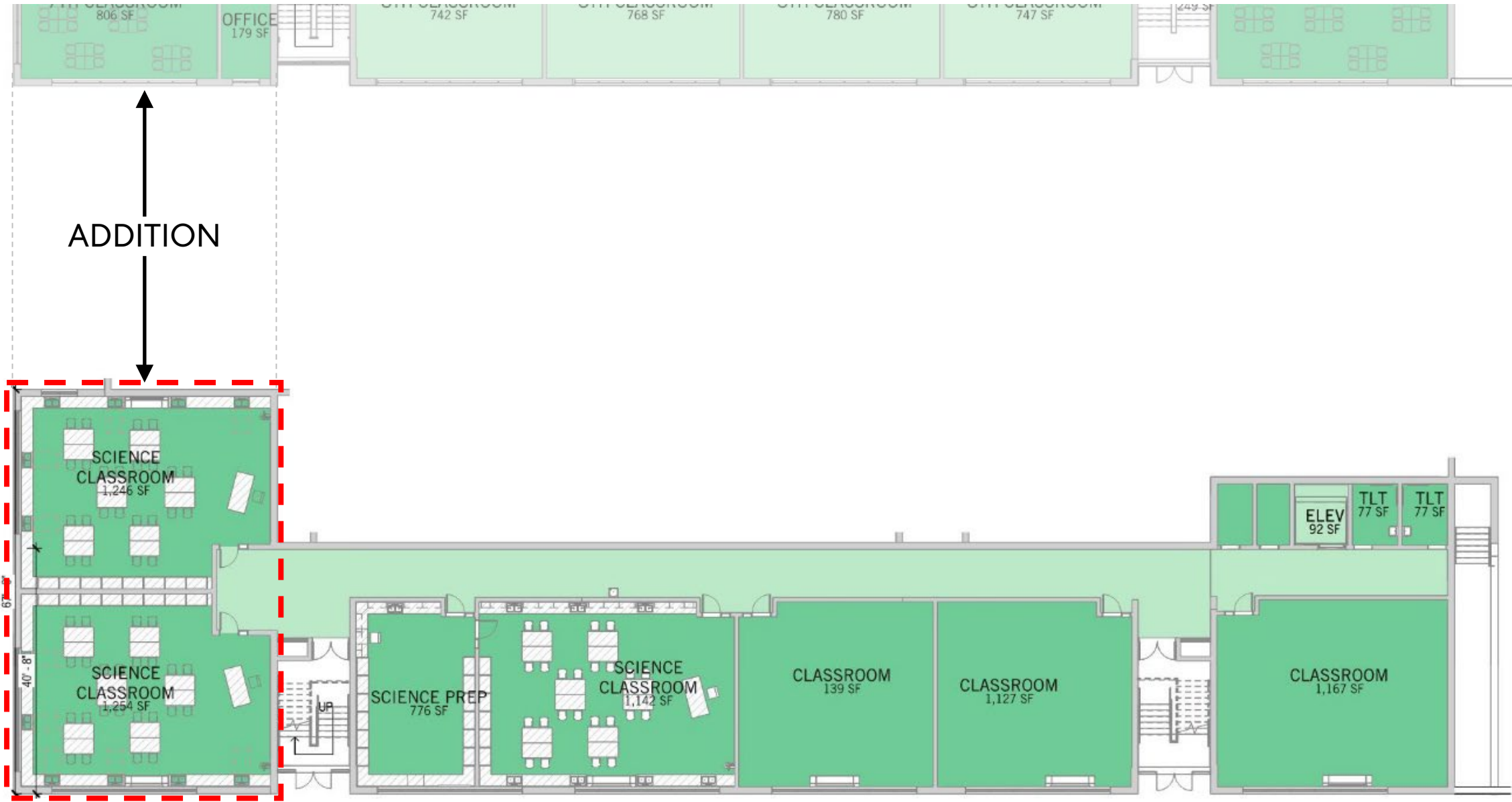
Heavier Renovations & Addition

- Classrooms at Central Office (4)
- Special Education Classrooms (4)
- Elevator
- Single Use Toilet Rooms (6)
- Science Labs (3)
- Lower Level Classrooms (3)
- Main Mechanical & Electrical Room

TOTAL

\$ 19.5M

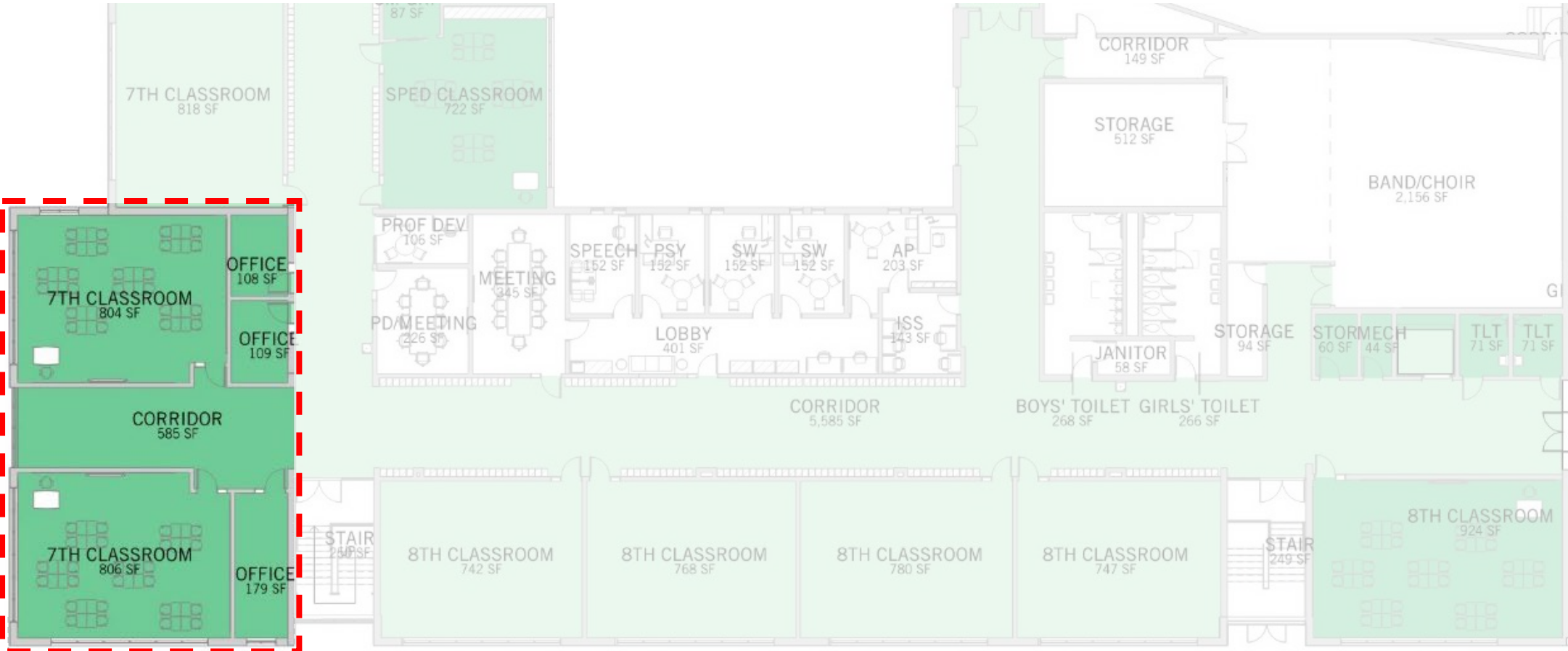
SCIENCE ADDITION & RENOVATIONS



ADDITION

Lower Level

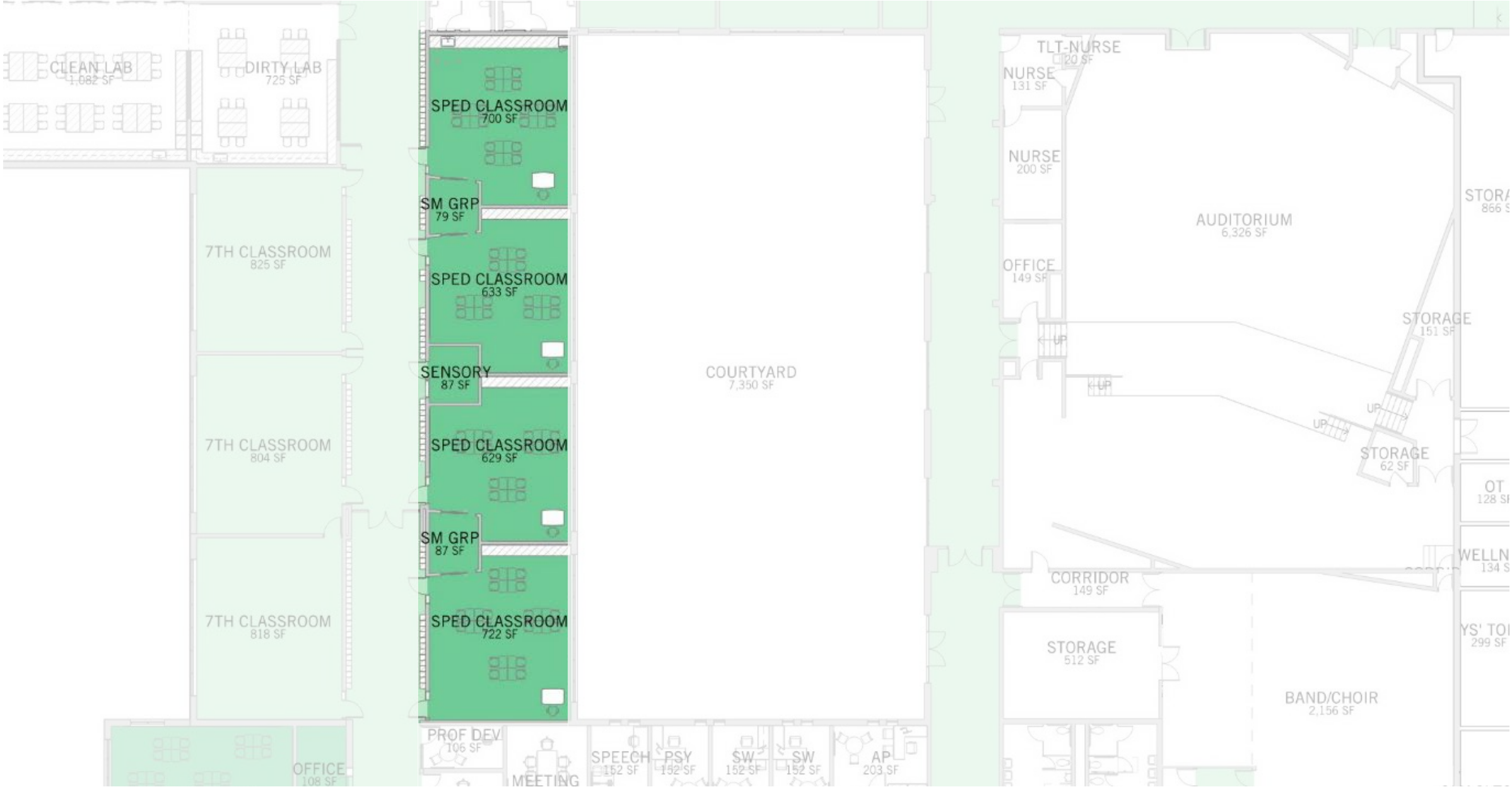
CLASSROOMS ADDITION



ADDITION

First Floor

SPECIAL EDUCATION RENOVATIONS



PHASE 2 - 5th GRADE ADDITION



Phase 2

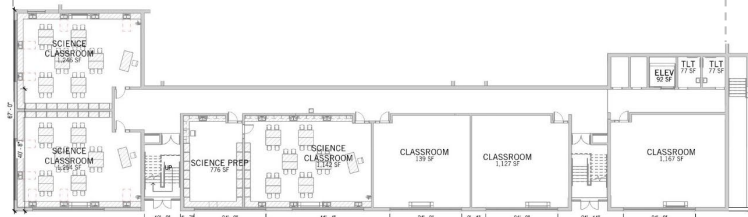
Addition

- Auxiliary Gym & Storage
- 5th Grade Classrooms (5)
- Toilet Rooms

Renovations

- Boys & Girls Locker Rooms
- Cafeteria Kitchen & Servery

First Floor

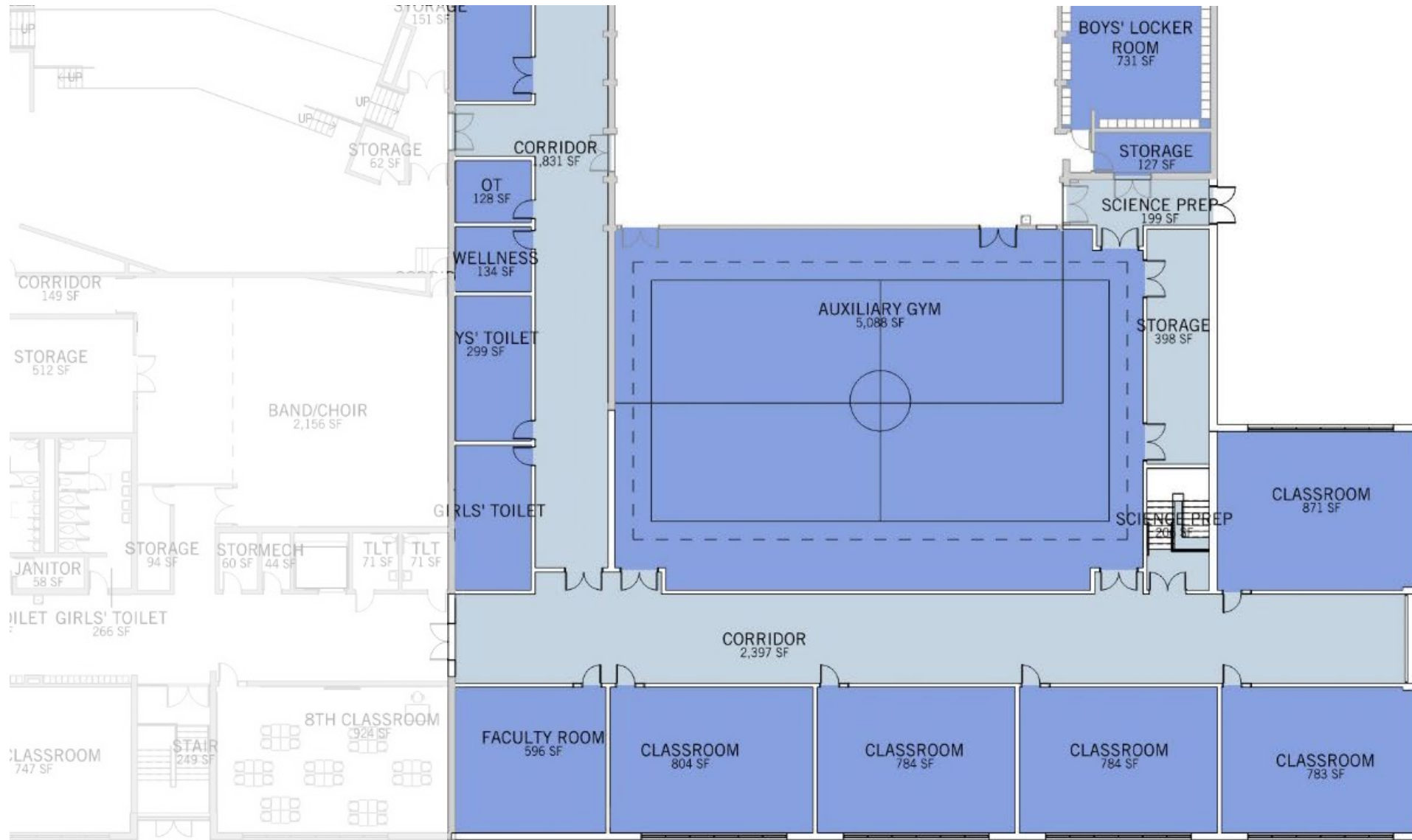


Lower Level

TOTAL

\$ 11-13M

AUXILIARY GYM & CLASSROOM ADDITION





Future Phases

Light Renovations

- Cafeteria Ceiling, Lighting & Acoustics
- Wellness Center Ceiling & Lighting
- Auditorium Ceiling & Lighting
- Classroom Flooring & Ceilings
- Corridor Ceiling, Flooring & Painting

Heavier Renovations

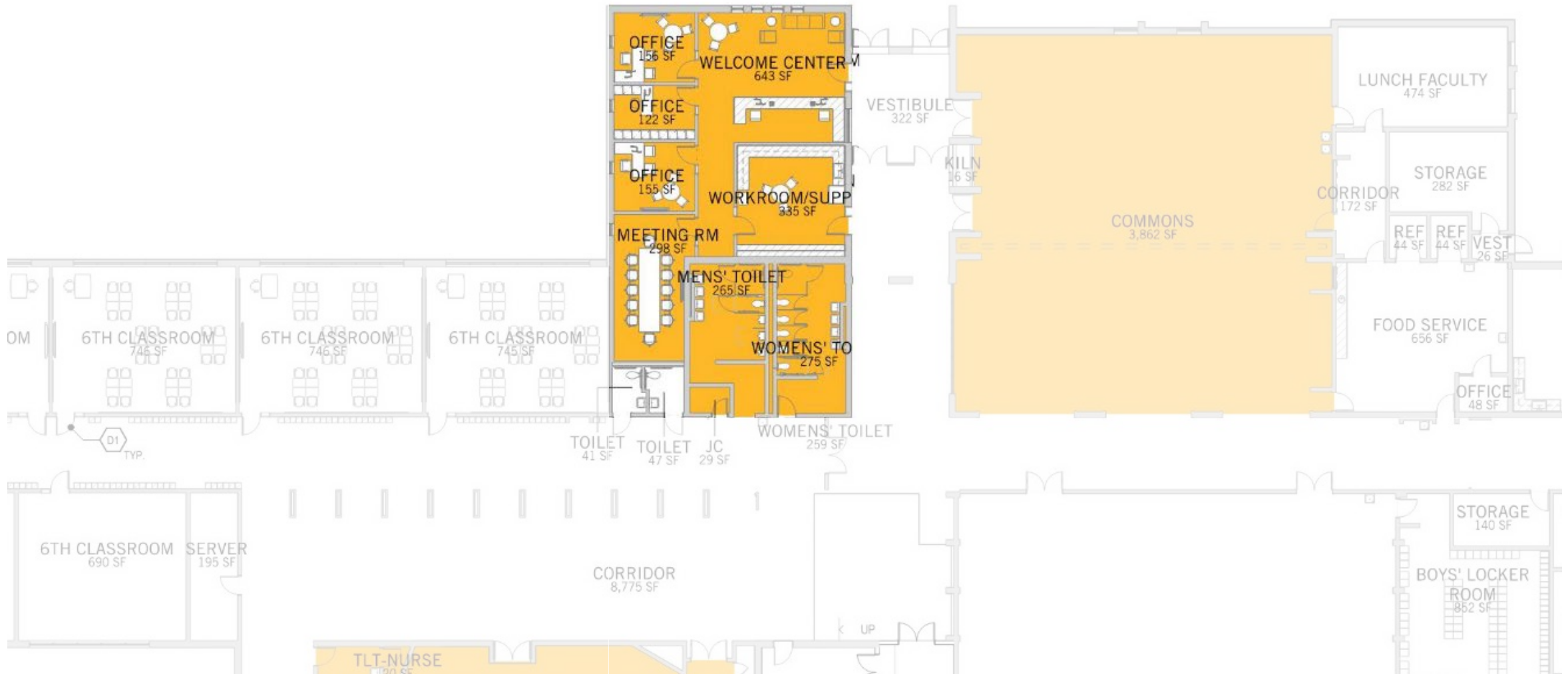
- LRC & STEM Lab
- Student Services
- Band & Choir Room
- Main Office
- Group Toilet Rooms

TOTAL

\$ 9-12M*

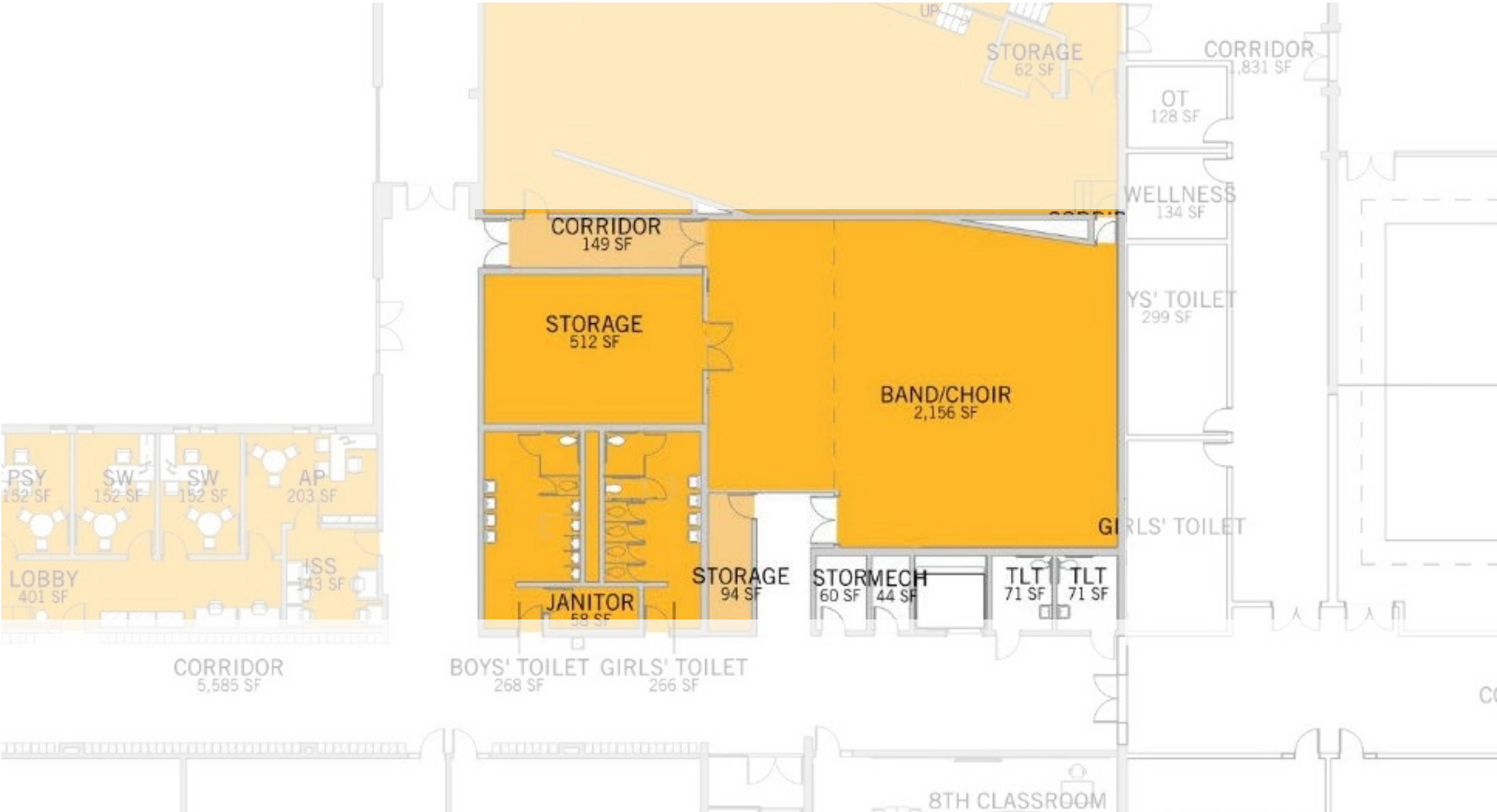
*Future projects range due to unknown escalation and timing of execution

MAIN OFFICE

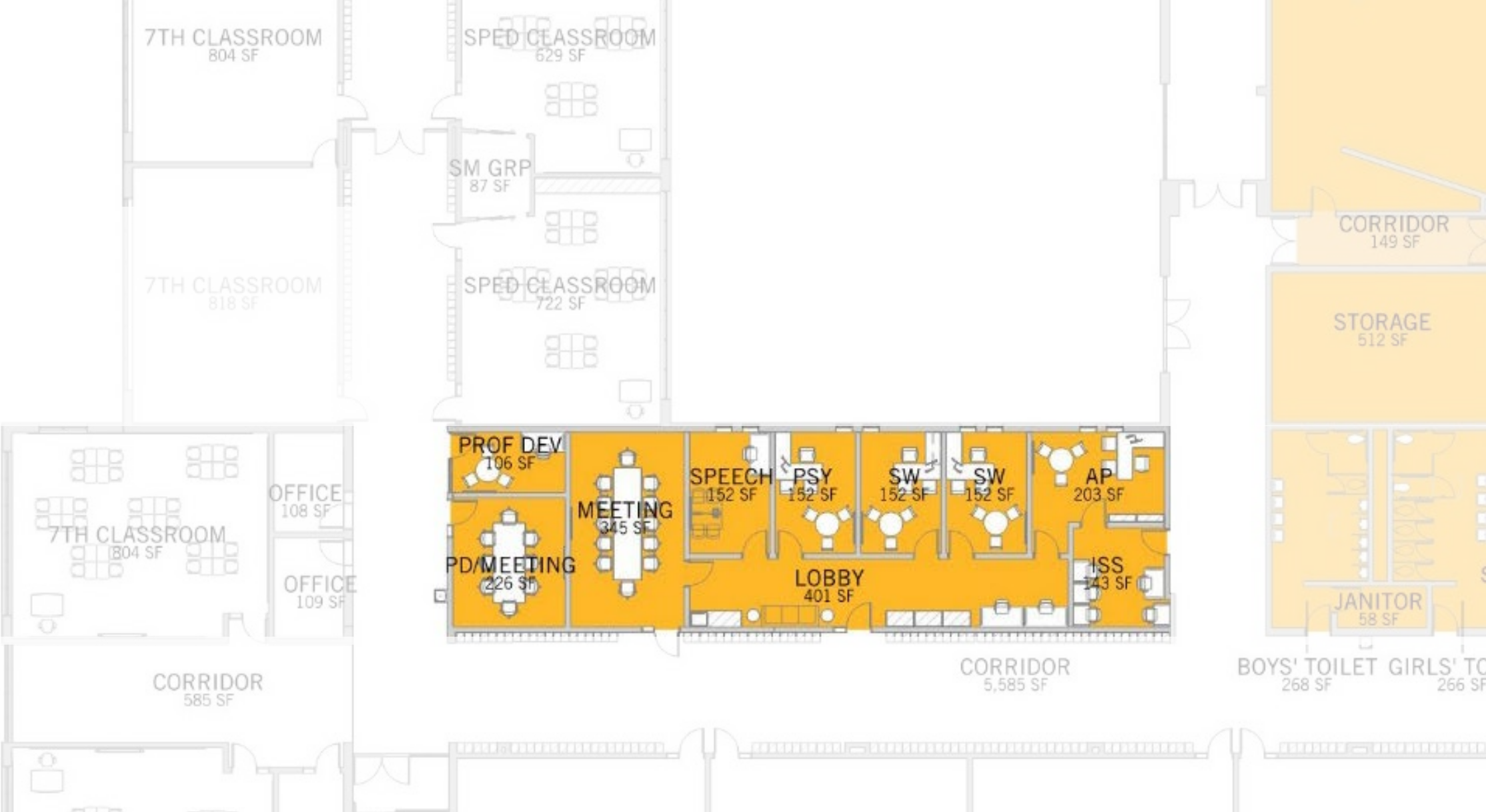




BAND/CHOIR ROOM



STUDENT SERVICES



Imagery

EXISTING



NEW



EXISTING



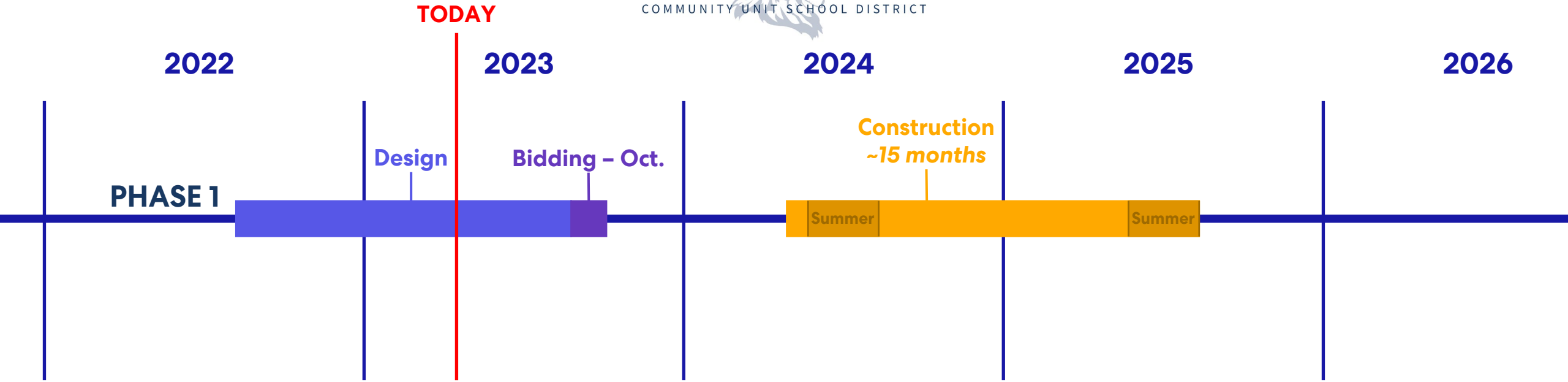
NEW



Timeline

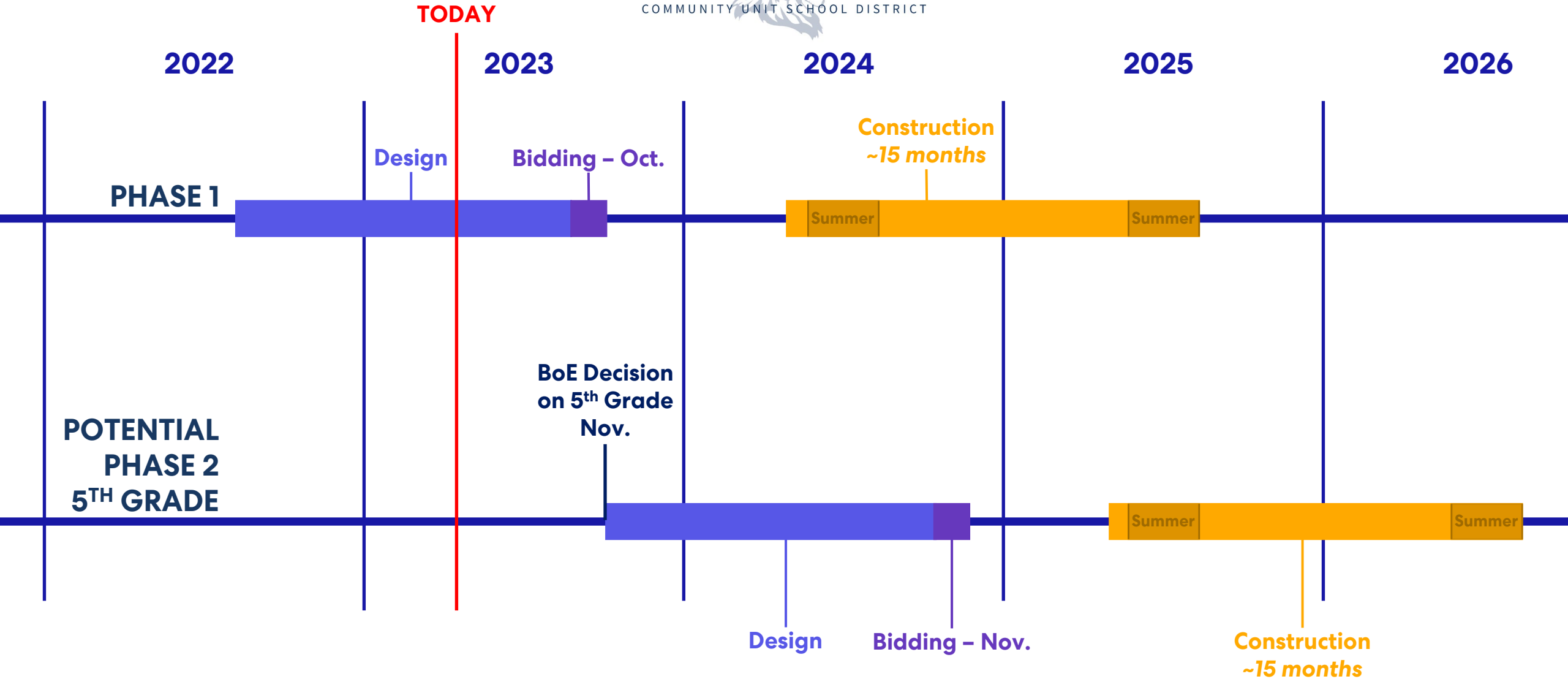
LISLE 202

COMMUNITY UNIT SCHOOL DISTRICT



LISLE 202

COMMUNITY UNIT SCHOOL DISTRICT



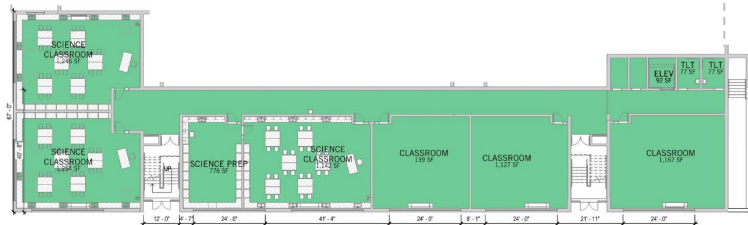
MASTER PLAN



	Phase 1 – General Renovations & Classroom Addition	\$ 19.5M
	Phase 2 – 5th Grade Addition	\$11-13M
	Future Phases	\$ 9-12M

TOTAL **\$40-45M**

First Floor



Lower Level

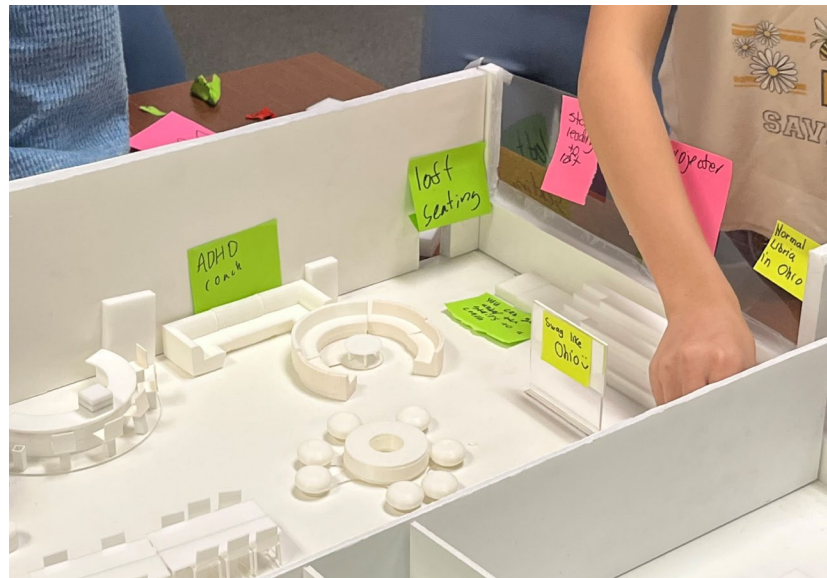
Student Engagement

Student Engagement



Student Engagement





Model

QUESTIONS?