



**Board of Education
Big Lake School District #727
Work Session**

Mission Statement

Our mission is to challenge, educate, & inspire all students to reach their highest level of achievement in academics, athletics, & the arts.

**Thursday, May 9, 2024
6:30 PM
Middle School Student Center
601 Minnesota Ave
Big Lake, MN 55309**

I. Call to Order

Chair, Tonya Reasoner

II. Roll Call

Chair, Tonya Reasoner

III. Continue Discussion on Referendum

Superintendent, Tim Truebenbach

2

IV. Announce Closed Session for Negotiation Strategies after Adjournment

Chair, Tonya Reasoner

V. Adjournment

Chair, Tonya Reasoner

Strategic Plan Focus Areas

Student Support

Staff Support

Family & Community Engagement



**LONG RANGE PLANNING
BOARD WORK SESSION**

Draft: May 9, 2024





- **Objectives & Goals**
- **Overview of Process**
- **Rethinking Special Education Spaces**
- **Multi-Purpose Facilities**
- **Next Steps**
- **Q & A**

Objectives and Goals:

- Previous Process
 - What's already been done?
- Determine Special Education Needs
 - Co-locate Setting IV services into one facility
- Determine Multi-Purpose Facility Needs
- Develop a District and Community Driven Process
 - Needs-based Discussions – Not Solutions
 - Community Engagement – Build Consensus
 - Prioritize Addressing Most Critical Needs

LONG RANGE PLANNING

OVERVIEW OF PROCESS

Process Milestones (Detailed Schedule to be Developed):

- Data Gathering
- On-going District Admin Team Meetings
- Options Committee?
- Board Committee Review(s)
- Finalize Recommendation to Board
- Consideration of Recommendation
- Board Discussion / Action
- Review and Comment to MDE
- Referendum Campaign

LONG RANGE PLANNING

OVERVIEW OF PROCESS

Submit Review & Comment application materials to Commissioner of Education (school board must approve application prior to submission)*

Receive Review and Comment by

Adopt formal Resolution Calling the Election (resolution contains form of election notice and ballot - adopt at least 74 days prior to election)**

Furnish ballot to each County Auditor in which the District lies at least 74 prior to election**

Furnish ballot or notice of special election to Commissioner of Education at least 74 days prior to election**

(1) A mailed notice of new/combined polling places to registered voters is required at least 25 days prior to election** †

-OR-

(2) If previously established combined precincts to be used, 14 days mailed notice of polling places to every affected household with at least 1 registered voter (exceptions if election falls on date of certain other elections)** †

Appoint election judges at least 25 days prior to election**

Publish Review and Comment (at least 48 days but no more than 60 days prior to election date)**

Hold School Board public meeting to discuss MDE Commissioner's Review & Comment response **

Publish election notice (publish twice at least one week before election)**

Post election notice at the administrative offices of the district at least ten days prior to election date **

Post sample ballot (at the administrative offices at least four days prior to election; and at each polling place on the date of election)**

Distribute informational material

Hold special election

Provide written notice of certified vote totals to Commissioner of Education in a timely fashion after the election**

November 5, 2024

June 28, 2024

September 6, 2024

August 23, 2024

August 23, 2024

August 23, 2024

October 11, 2024

October 22, 2024

October 11, 2024

September 6, 2024

September 18, 2024

October 29, 2024

October 26, 2024

November 1, 2024

November 5, 2024

SPECIAL EDUCATION

RETHINKING SPED SPACES

Important Topics to Consider:

- Facility durability and longevity
- Inclusive organization of spaces
- Centralization vs. decentralization of services within building
- Material and color choices sensitive to stimulation needs
- Active vs quiet/calming spaces
- Equipment and assistive technology accommodation / storage
- Systems choices (sound and light)
- Variety and flexibility to allow for program evolution & student choice
- Life skills and independence-supportive spaces
- Universal design
- Academic and social spaces
- Future Ready Design / Flexibility
- Adjacencies
- Separate Entrance / Access
- Safety and Security



SPECIAL EDUCATION

CASE STUDY - ISD 181: LINCOLN ED CENTER



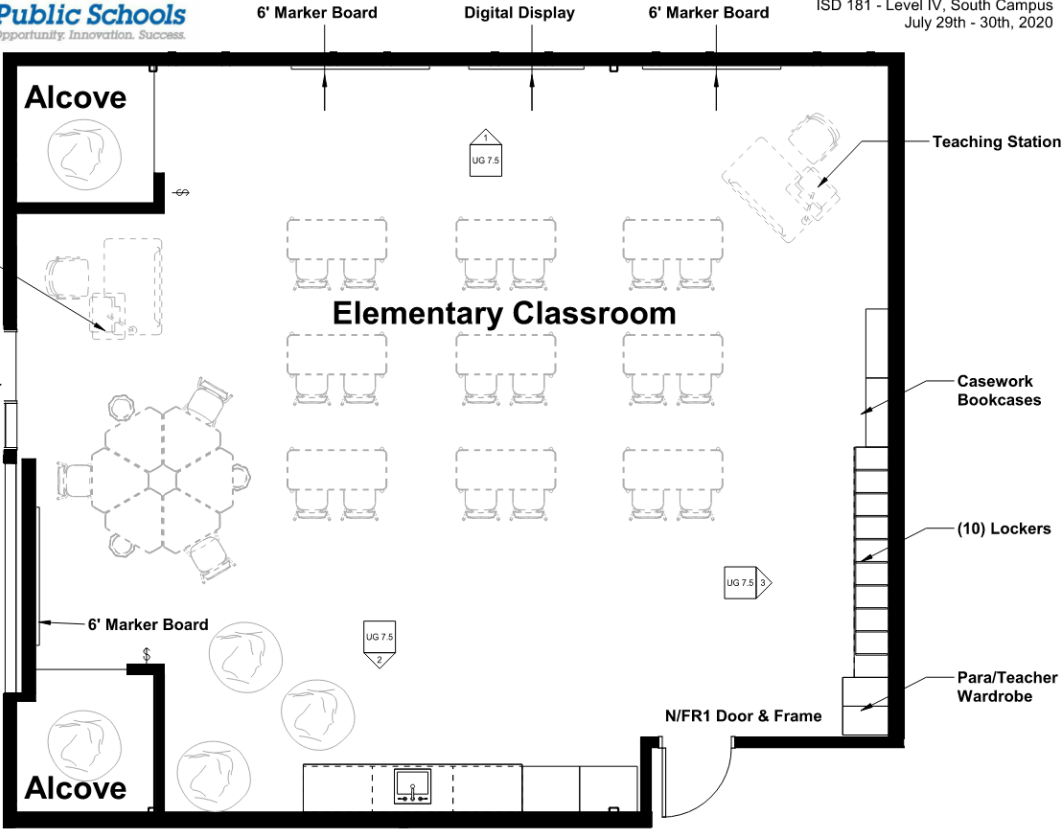


SPECIAL EDUCATION

ISD 181: LINCOLN ED CENTER - CLASSROOM

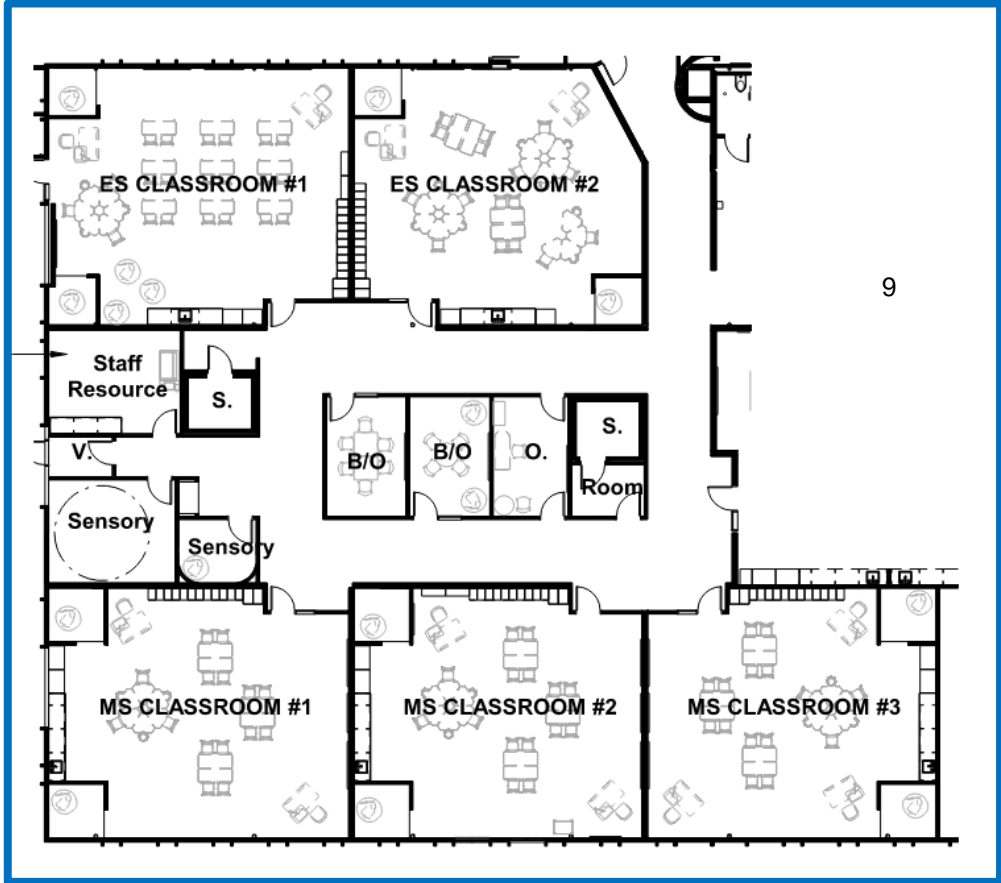


Brainerd School District
ISD 181 - Level IV, South Campus
July 29th - 30th, 2020



- Notes:**
1. Flooring - Hard Surface
 2. No Drawers in Base Cabinets
 3. Dimmable LED Lighting on at least 2 zones running parallel to teaching wall. Can lights over teacher desk, alcove and small group areas.
 4. Alcove to be LED security light, not RGB. Switch outside
 5. 18 Students, prefer rectangular table layout
 6. 10 lockers with totes to fit into cubby. Raise off floor 12" for student boots.

- Questions:**
1. Phone location?





SPECIAL EDUCATION

ISD 181: CLASSROOM ALCOVE + TOILET ROOM W/ SHOWER





SPECIAL EDUCATION

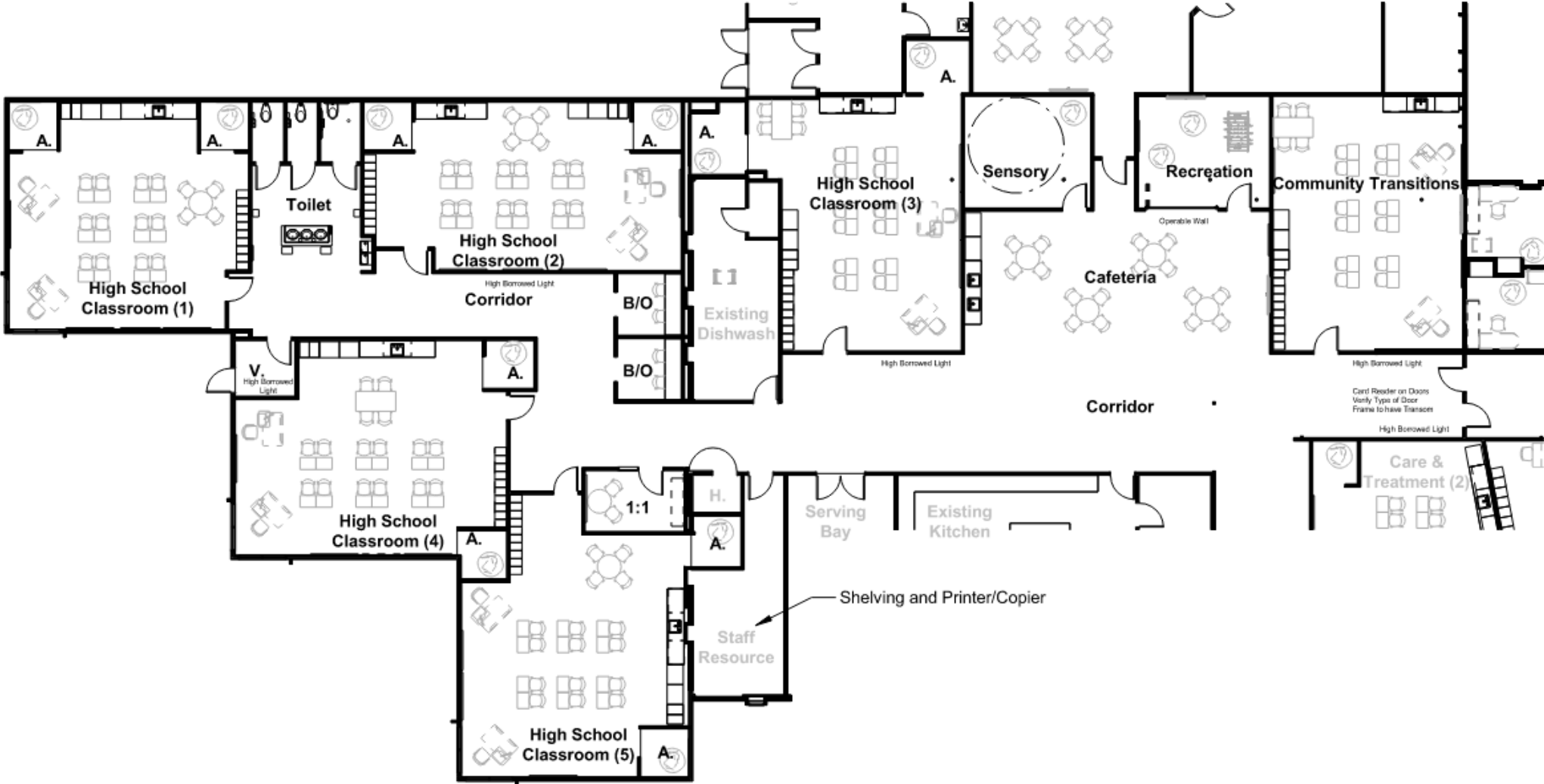
ISD 181: LINCOLN ED CENTER - CALMING





SPECIAL EDUCATION

ISD 181: LINCOLN ED CENTER – HS WING





SPECIAL EDUCATION

ISD 181: LINCOLN ED CENTER – CAFETERIA + STUDENT TOILETS





SPECIAL EDUCATION

ISD 181: LINCOLN ED CENTER – OUTDOOR SPACES



SPECIAL EDUCATION

OTHER CONSIDERATIONS



- Durability
- Motor Skills
- Active
- Colors
- Maintenance

SPECIAL EDUCATION

OTHER CONSIDERATIONS



- Durability
- Motor Skills
- Active
- Colors
- Maintenance

RESPECT

RESPONSIBILITY

FAIRNESS

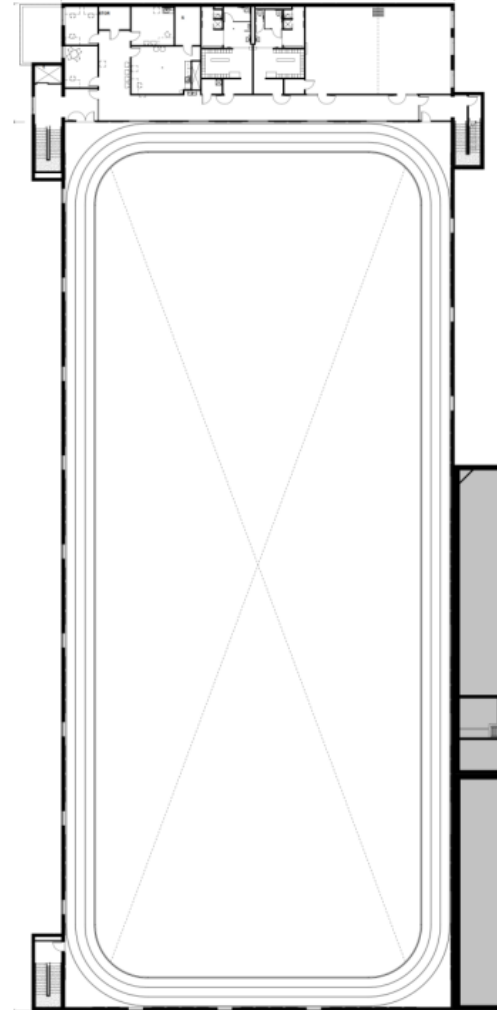
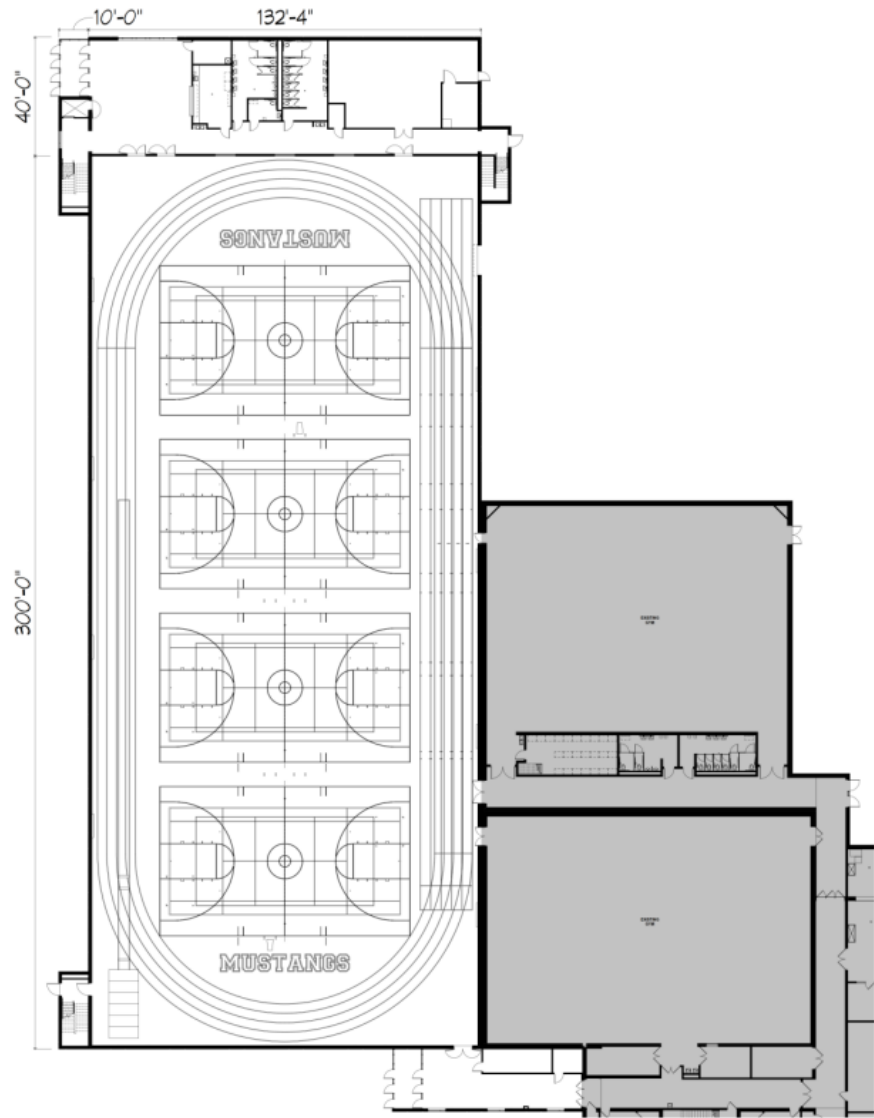
CARING



MULTI-PURPOSE FACILITY CONSIDERATIONS

Important Topics to Consider:

- Facility Durability and Longevity
- Future Ready Design / Flexibility
- Adjacencies
- 4 Gym Stations
 - Track around outside of courts
- Elevated Walking Track
- Storm Shelter Requirements
- Concessions / School Store
- Changing / Locker Rooms
- Safety and Security
 - Day vs Evening Use
 - Secure Lines / Access
 - Shared Spaces
- Storage
 - Exterior and Interior Access
- Types of Activities / Classes
- Community Access and Amenities



ISD 332

MORA WELLNESS CENTER (PARTNERSHIP WITH HEALTH-CARE)

ADDITION: GYM, PHYSICAL THERAPY SPACE, AEROBICS ROOM, AND WALKING TRACK





ISD 332

MORA WELLNESS CENTER (PARTNERSHIP WITH HEALTH-CARE)

ADDITION: GYM, PHYSICAL THERAPY SPACE, AEROBICS ROOM, AND WALKING TRACK



www.woldae.com



ISD 332

MORA WELLNESS CENTER (PARTNERSHIP WITH HEALTH-CARE)

ADDITION: GYM, PHYSICAL THERAPY SPACE, AEROBICS ROOM, AND WALKING TRACK



www.woldae.com



ISD 332

MORA WELLNESS CENTER (PARTNERSHIP WITH HEALTH-CARE)

ADDITION: GYM, PHYSICAL THERAPY SPACE, AEROBICS ROOM, AND WALKING TRACK



www.woldae.com



ISD 278

ORONO ACTIVITY CENTER

ADDITION: GYMNASIUM, TRACK, FITNESS CENTER, COMMUNITY EDUCATION ROOM





ISD 621

MOUNDS VIEW HIGH SCHOOL ACTIVITY CENTER

ADDITION: NEW GYMNASIUM/LOCKER ROOMS/WEIGHT ROOM



www.woldae.com



25

ISD 621

MOUNDS VIEW HIGH SCHOOL ACTIVITY CENTER

ADDITION: NEW GYMNASIUM/LOCKER ROOMS/WEIGHT ROOM



www.woldae.com



ISD 719

PRIOR LAKE HIGH SCHOOL ACTIVITY CENTER

ADDITION: NEW GYMNASIUMS/WEIGHT ROOM





ISD 2144

WILDCAT COMMUNITY CENTER

**ADDITION: NEW ACTIVITIES CENTER/FITNESS & WEIGHTROOM/GYMNASTICS
GYM/COMMUNITY ED OFFICES**





ISD 2144

WILDCAT COMMUNITY CENTER

**ADDITION: NEW ACTIVITIES CENTER/FITNESS & WEIGHTROOM/GYMNASTICS
GYM/COMMUNITY ED OFFICES**



MULTI-PURPOSE FACILITY – DRAFT PROGRAM



PRELIMINARY SPACE SUMMARY

Main Vestibule	200	SF
Field House Gymnasium (4 Station + Track) 8' Between Courts (5) Lanes at 42" each	38,300	SF
Commons	790	SF
Concessions	200	SF
Storage	875	SF
Connection to Exist Bldg	300	SF
	<hr/>	
	40,465	SF
 Other (Big Lake and/or Partner)		
Offices (2 @ 140)	280	SF
Multi-Purpose Room	1,000	SF
Locker / Changing Rooms (2 @ 215)	430	SF
Misc	225	
Storage	100	SF
	<hr/>	
	2,035	SF
 Elevated Walking Track (Approx 9-10' Wide)	 7,500	 SF

DRAFT

Preliminary MP Estimate:
 \$ 18,580,000 Approx Construction
 \$ 3,720,000 Project Costs
\$22,300,000 Total MP Cost

\$ 6,700,000 Setting IV

\$29,000,000 Grand Total NTE

TOTAL NET SQUARE FOOTAGE	50,000	SF
NET TO GROSS FACTOR	1.30	
(Incl: mech, elec, structural, public toilets, circulation/elevator, maintenance / custodial, storm shelter)		
TOTAL GROSS SQUARE FOOTAGE	65,000	SF



SPECIAL EDUCATION- DRAFT PROGRAM

Prelim Setting IV Estimate:
 \$ 5,580,000 Approx Construction
 \$ 1,120,000 Project Costs
\$ 6,700,000 Total SPED Cost

\$22,300,000 MP Facility

\$29,000,000 Grand Total NTE

Administration		
Reception, Office(s), Conference Room(s) and Workroom	1,015	SF
Health / Nurse		
Cot Area, Office / Exam Area, Toilet Room w/ Shower	335	SF
Staff Space		
Open Office (workstations and work space), Break Room, Staff Toilets	630	SF
K-5 Program		
Classrooms (3 @ 450)	1,350	SF
Sensory, Resource Area, Quiet Area, Indiv Instruction, Toilet Rooms	780	SF
	<u>2,130</u>	<u>SF</u>
6-12 Program		
Classrooms (3 @ 450)	1,350	SF
Sensory, Resource Area, Quiet Area, Indiv Instruction, Toilet Rooms	830	SF
	<u>2,180</u>	<u>SF</u>
K-12 NeuroTypical Program		
Classrooms (3 @ 450)	1,350	SF
Sensory, Resource Area, Quiet Area, Indiv Instruct, Swing Room, Storage, Toilet Rooms/Shower	1,430	SF
	<u>2,780</u>	<u>SF</u>
Occupational Therapy		
Sensory Room & Storage	625	SF
Adaptive Physical Education		
Multi-Purpose (Motor Skills), Storage	1,150	SF
Cafeteria		
Seating Area (MP Room), Food Cart(s) and Storage	1,025	SF
General Toilet Rooms		
Toilet Rooms	130	SF
TOTAL NET SQUARE FOOTAGE	12,000	SF
Net to Gross Factor		
(Incl: mech, elec, struct, circulation & maintenance/custodial/receiving)	1.25	
TOTAL GROSS SQUARE FOOTAGE	15,000	SF
OUTDOOR SPACE SUMMARY		
Playground (5-12 years, accessible, fenced) Playfields - Grass Area		

DRAFT

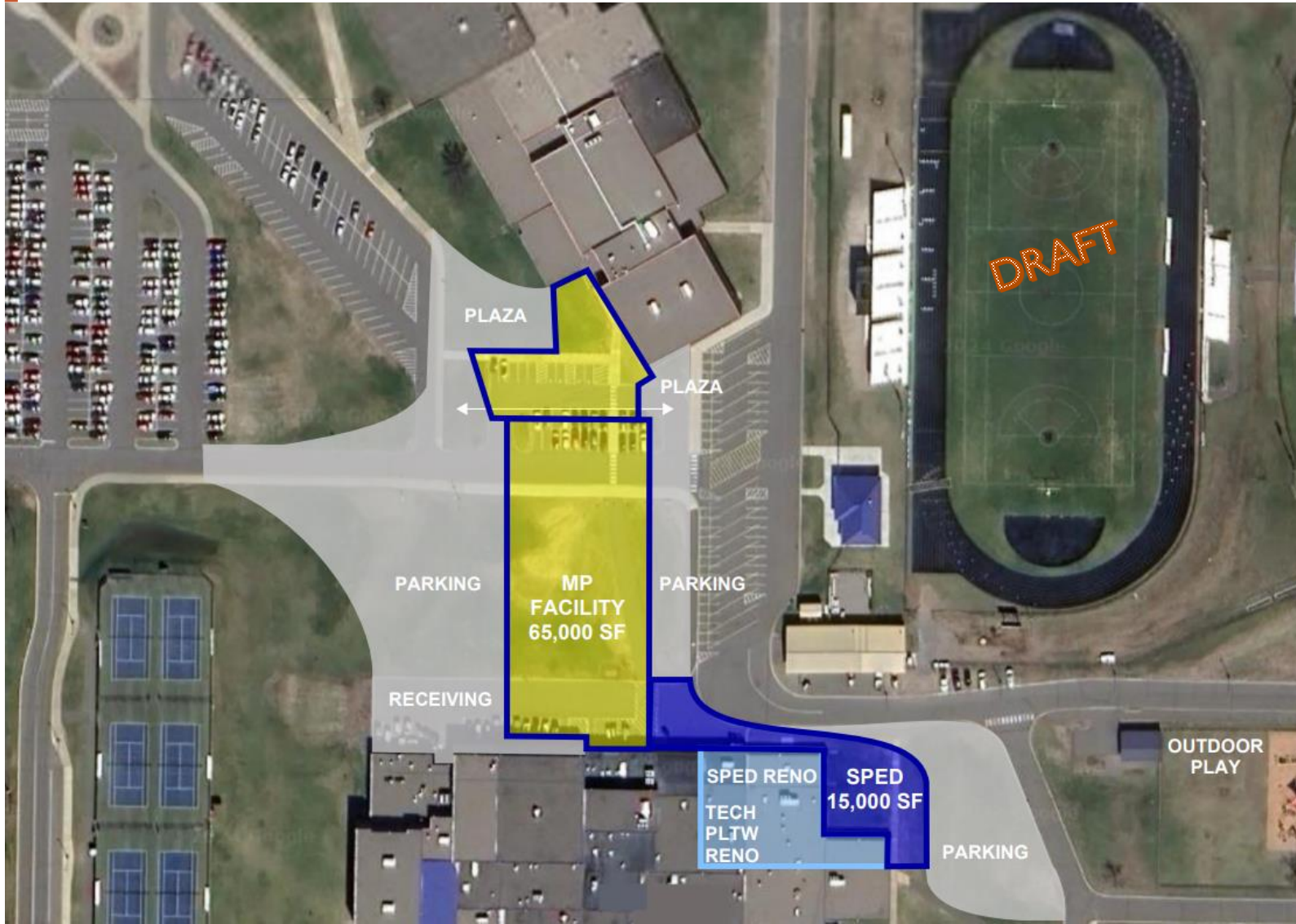
MULTI-PURPOSE FACILITY + SETTING IV

PRELIMINARY OPTIONS



MULTI-PURPOSE FACILITY + SETTING IV

PRELIMINARY OPTIONS



LONG RANGE PLANNING

NEXT STEPS

- **Next Steps**
- **Q & A**

Wold