

**NORTH BRANCH INDEPENDENT SCHOOL DISTRICT NO. 138
NORTH BRANCH AREA MIDDLE SCHOOL, FTLA ROOM #816, 38431
LINCOLN TRL, NORTH BRANCH, MN 55056
SPECIAL SCHOOL BOARD MEETING
THURSDAY, FEBRUARY 19, 2026
5:30 PM**

AGENDA

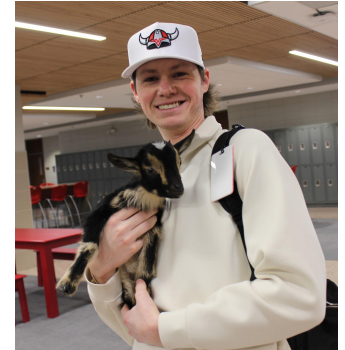
Notice is hereby given that the School Board of North Branch Area Public Schools will hold a Special School Board Meeting on Thursday, February 19, 2026 at 5:30 PM in the North Branch Area Middle School, FTLA Room #816, 38431 Lincoln Trl, North Branch, MN 55056.

- I. Call to Order
- II. Roll Call
- III. Pledge of Allegiance
- IV. Approval of Agenda
- V. School Board Recognition
 - A. Minnesota School Board Recognition
- VI. Superintendent's Report 2
- VII. New Business
 - A. Spotlight: Middle School 10
 - B. Consider Resolution Canvassing Returns of Votes of School District Special Election 21
 - C. Post Special Election Discussion 32
- VIII. Adjournment

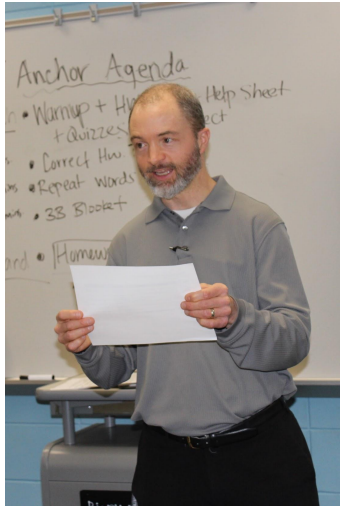


Superintendent Update February 19, 2026

Prioritizing Staff Wellness



Prioritizing Staff Wellness



City of North Branch Comprehensive Plan- Community Feedback regarding NBAPS



Schools as a Community Anchor- Listed as one of top five community strengths

- Education identified as a defining strength of the community
- Schools and local events viewed as central to community identity

Strong Support for Career-Connected Learning

- Support for continued expansion of technical training and real-world skill development
- Community alignment with ensuring students graduate with a clear plan

5

Safe Access to Schools

- Desire for improved walking/biking routes for students
- Traffic flow concerns near school areas

Expectation of Engagement

- Appreciation for transparent communication
- Interest in inclusive planning that elevates youth and family voices

Economic Development Update



Schools as a Lever for Growth and Workforce Alignment

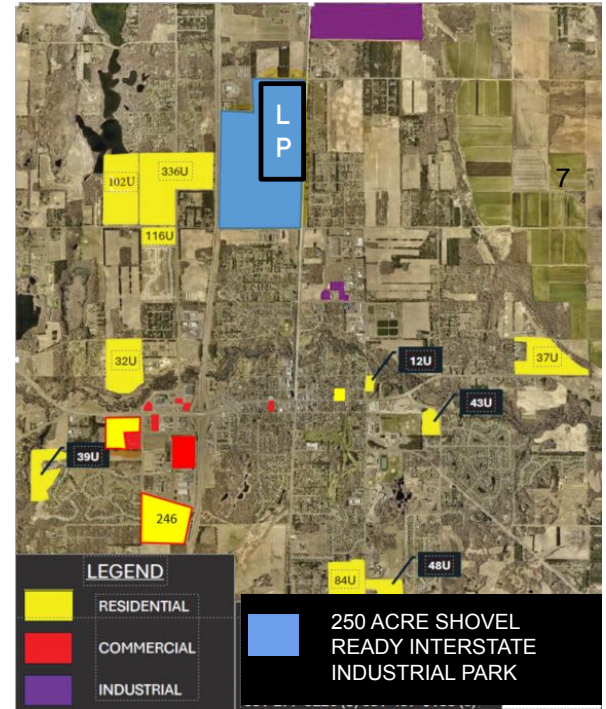
- Sara Paul serves as Chair of the North Branch EDA
- Education and economic development strategically aligned
- Major new industrial investment underway
- Direct implications for workforce, housing, and enrollment

Transformational Investment Underway



Louisiana-Pacific (LP) Project

- \$157 million manufacturing facility
- 250,000–350,000 sq. ft. plant
- 120 acres purchased in Interstate Business Park
- Nearly ½ of the 250-acre park now committed
- Eligible for up to \$10M Minnesota Forward Fund support (presenting to Finance and Commerce next week)
- Manufacturing SmartSide & ExpertFinish siding products



Workforce Alignment to NBAPS Choice Not Chance Philosophy



Viking Bridge Potential Opportunities:

- Advanced manufacturing pathways
- Skilled trades & industrial maintenance
- Automation & robotics
- Logistics & supply chain

Goal: Every student graduates with a plan with local high-wage career opportunities.





**North Branch
Area Middle¹⁰
School**

Spotlight Presentation 2.19.26



Vision- What we intend to create

Inspire dreams, build integrity and instill hope in our students, our staff, our families and our communities.



Mission- Purpose of our work

*Partner with students, families and communities to challenge all students¹² to achieve their **greatest potential** and become informed and engaged citizens.*

LIFE SKILLS GOAL

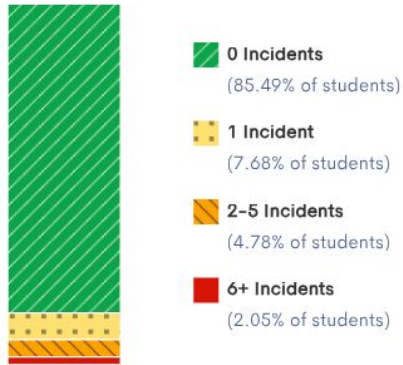
Throughout the 2025–26 school year, 85% of NBAMS students will display respectful, enthusiastic, and determined behaviors (0–2 referrals); and 100% of NBAMS students with three or more referrals will have a personalized intervention to support an increase of desired behaviors.



NBAMS: Behavior Referral Data

Incidents ⓘ

Incident Ranges - This School Year



Incidents ⓘ



Total Referral Count as of
mid-February:

SY25-26 Referrals = 243

Students with 3+ behavior referrals = 19

Examples of personalized interventions include:

- scheduled breaks
- strategic educational assistant support
- school-based mental health therapy sessions
- check-in/check-out with a behavior interventionist
- behavior contracts
- restorative conversations



What's Working?

- ★ Monthly data summary shared prior to the BLT meeting
- ★ STARS Team Weekly Meetings
- ★ A significant amount of parent communication
- ★ Reviewing and reteaching expected behaviors
- ★ Consistent use of behavior processing forms
- ★ Adjusting student schedules per behavioral progress monitoring
- ★ School-wide focus on affirmative attention, preventative reminders, and opportunities to respond
- ★ Targeted social skill instruction
- ★ Team approach to suspension readmit meetings



NBAMS: MySAEBRS Data

Winter MySAEBRS:

86% of NBAMS students reported feeling positive about their ability to navigate school (academically and behaviorally).

13% of students reported feeling within the some risk range.

1% reported feeling at high risk.

The majority of the students in the some risk range reported feeling a lack of confidence in their academic behavior skills.



The 1% reporting feeling at risk equates to four students. All four of these students are being closely monitored by the STARS team, have ¹⁶ targeted intervention and/or are receiving special education services.

Social Behavior Domain (7 items)

Students' ability to understand social norms, empathize, and understand the perspectives of others..

Academic Behavior Domain (6 items)

Skills necessary for students to be prepared for, participate in, and benefit from academic instruction.

Emotional Behavior Domain (7 items)

Students' ability to regulate internal states, adapt to change, and respond to stressful/challenging events.

ACADEMIC GOAL

Throughout the 2025–2026 school year, 80% of all grades at NBAMS will be a C– or above. Students not earning a C– or better will be provided with intervention strategies to aid their learning.



NBAMS: Semester One Results

Grade 6 = 1171/1308 Posted Grades were a C- or better (90%)

Grade 7 = 1231/1424 Posted Grades were a C- or better (86%)

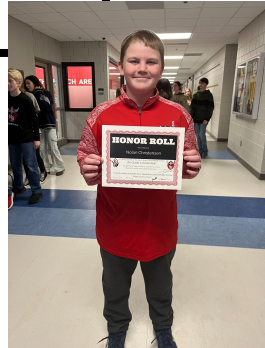
Grade 8 = 931/1225 posted grades were a C- or better (76%)



Grade 6 = 71% of posted grades for Semester 1 exceeded the goal (A, A-, B+, B, B-)

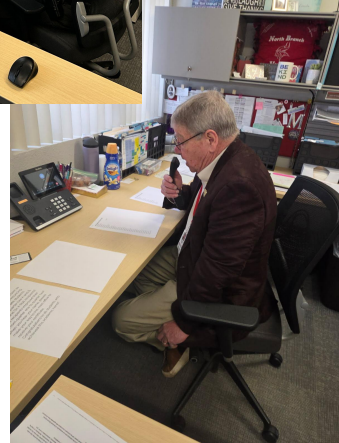
Grade 7 = 73% of posted grades for Semester 1 exceeded the goal (A, A-, B+, B, B-)

Grade 8 = 62% of posted grades for Semester 1 exceeded the goal (A, A-, B+, B, B-)



What's Working?

- ★ Monthly data summary shared prior to the building level leadership meeting (pivot table accessible academic data by grade)
- ★ Support Team for At Risk Students (STARS) Team Weekly Meetings
- ★ Assigned homework help for Grade 7 and Grade 8
- ★ Check n Connect - Focus on executive functioning skill development
- ★ HS and MS Mentoring and Academic Tutoring
- ★ Weeks 3, 5, 7 Grade Checks in Advisory every quarter
- ★ Guest Honor Roll and On a Roll Readers
- ★ Grade 6 Continental Math; Grade 7⁸ Math League
- ★ Grades 7 and 8 Jazz Band and Show Choir
- ★ Team approach to suspension readmit meetings



Questions?



EXTRACT OF MINUTES OF MEETING
OF THE SCHOOL BOARD
OF INDEPENDENT SCHOOL DISTRICT NO. 138
(NORTH BRANCH AREA PUBLIC SCHOOLS)
STATE OF MINNESOTA

Pursuant to due call and notice thereof, a special meeting of the School Board of Independent School District No. 138 (North Branch Area Public Schools), State of Minnesota, was duly held in the School District on February 19, 2026, at 5:30 o'clock p.m. for the purpose, in part, of canvassing its special election.

The following members were present:

and the following were absent:

Member _____ moved the adoption of the following resolution:

**RESOLUTION CANVASSING RETURNS
OF VOTES OF SCHOOL DISTRICT SPECIAL ELECTION**

BE IT RESOLVED by the School Board of Independent School District No. 138, State of Minnesota, as follows:

1. It is hereby found, determined and declared that the special election of the voters of this School District held on February 10, 2026, was in all respects duly and legally called and held.

2. As specified in the attached Abstract and Return of Votes Cast, at said election a total of 1,105 voters of the School District voted on the question of renewing a capital project levy authorization to fund technology for taxes payable in 2028 and thereafter (SCHOOL DISTRICT QUESTION 1), of which 446 voted in favor, 659 voted against the same. Said proposition, having received the approval of at least a majority of such votes, is hereby declared to have failed.

3. The Clerk is hereby directed to certify the results of the election to the County Auditor of each county in which the School District is located in whole or in part and to the Commissioner of Education.

The motion for the adoption of the foregoing resolution was duly seconded by Member _____ and upon vote being taken thereon, the following voted in

favor thereof:

and the following voted against the same:

whereupon said resolution was declared duly passed and adopted.

**INDEPENDENT SCHOOL DISTRICT NO. 138
(NORTH BRANCH AREA PUBLIC SCHOOLS)
STATE OF MINNESOTA**

**ABSTRACT AND RETURN OF VOTES CAST
SPECIAL ELECTION**

FEBRUARY 10, 2026

Registration Statistics

Number of persons registered at opening of polls	*1.	15,375	
Number of new registrants on election day	*2.	20	

Ballots delivered to the precinct

Ballots delivered as certified by the clerk	3.	6720	
Ballot count adjustments from incident log (+/-)	4.	0	
Number of unofficial ballots made	5.	0	
Number of absentee ballots delivered	6.	N/A	

Total number of ballots delivered to precinct (3+4+5+6=A)			A 6720
---	--	--	--

Ballots not in the ballot box

Number of spoiled ballots	*7.	1	
Number of originals for which duplicates made	*8.	0	
Number of rejected absentees	*9.	N/A	
Number of unused ballots	*10.	5733	

Total number of ballots not in the ballot box (7+8+9+10=B)			B 5734
--	--	--	--

Ballots cast in the ballot box

Number of signatures on roster (preregistered + EDR)	*11.	986	
Number of accepted regular, military and overseas absentee ballots	*12.	N/A	
Number of accepted federal only absentee ballots	*13.	N/A	
Number of accepted presidential only absentee ballots	*14.	N/A	

Total number of ballots in the ballot box (=persons voting) (11+12+13+14=C)			C 986
---	--	--	---

Ballots returned to Auditor/Clerk

Ballots returned from the precinct (B + C = D)			D 6720
--	--	--	--

Difference for auditor/clerk notation on delivery record (A - D = E)			E 0
--	--	--	---

*are entered into ERS stats

SUMMARY OF ELECTION TOTALS

**SCHOOL DISTRICT QUESTION 1
PROPOSITION ON RENEWING THE CAPITAL PROJECT LEVY AUTHORIZATION
OF THE SCHOOL DISTRICT**

Yes	$387 + 59AB =$ <u>446</u>
No	$599 + 60 AB =$ <u>659</u>
Completely Blank Ballots	<u>0</u>
Completely Defective Ballots	<u>0</u>
TOTAL BALLOTS COUNTED FOR THIS QUESTION	<u>1105</u>

CLERK’S CERTIFICATE AS TO ABSTRACT AND RETURN OF VOTES CAST

STATE OF MINNESOTA)
) ss.
COUNTY OF CHISAGO)

I, the undersigned, being the duly qualified and acting Clerk of Independent School District No. 138 (North Branch Area Public Schools), State of Minnesota, do hereby certify that I have carefully compared the attached copy of the Abstract and Return of Votes Cast in the District’s February 10, 2026 special election, with the original thereof on file and of record in my office and the same is a full, true and complete copy thereof.

WITNESS MY HAND officially as Clerk of said School District this ____ day of _____, 2026.

School District Clerk

**INDEPENDENT SCHOOL DISTRICT NO. 138
(NORTH BRANCH AREA PUBLIC SCHOOLS)
STATE OF MINNESOTA**

**PRECINCT SUMMARY STATEMENT
SPECIAL ELECTION
FEBRUARY 10, 2026**

COUNTY: Chisago/Isanti PRECINCT NO.: ISD 138 POLLIN GPLACE: Main St. Church

Registration Statistics

Number of persons registered at opening of polls	*1.	<u>15,375</u>
Number of new registrants on election day	*2.	<u>15</u>

Ballots delivered to the precinct

Ballots delivered as certified by the clerk	3.	<u>6,720</u>
Ballot count adjustments from incident log (+/-)	4.	<u>0</u>
Number of unofficial ballots made	5.	<u>0</u>
Number of absentee ballots delivered	6.	<u>N/A</u>

Total number of ballots delivered to precinct (3+4+5+6=A) A 6720

Ballots not in the ballot box

Number of spoiled ballots	*7.	<u>1</u>
Number of originals for which duplicates made	*8.	<u>0</u>
Number of rejected absentees	*9.	<u>N/A</u>
Number of unused ballots	*10.	<u>5,733</u>

Total number of ballots not in the ballot box (7+8+9+10=B) B 5,734

Ballots cast in the ballot box

Number of signatures on roster (preregistered + EDR)	*11.	<u>986</u>
Number of accepted regular, military and overseas absentee ballots	*12.	<u>N/A</u>
Number of accepted federal only absentee ballots	*13.	<u>N/A</u>
Number of accepted presidential only absentee ballots	*14.	<u>N/A</u>

Total number of ballots in the ballot box (=persons voting) (11+12+13+14=C) C 986

Ballots returned to Auditor/Clerk

Ballots returned from the precinct (B + C = D) D 6720

Difference for auditor/clerk notation on delivery record (A - D = E) E 0

*are entered into ERS stats

COUNTY: CHISAGO/ISANTI

PRECINCT NO.: ISD 138

POLLING PLACE: MAIN STREET CHURCH

**SCHOOL DISTRICT QUESTION 1
PROPOSITION ON RENEWAL OF EXPIRING CAPITAL PROJECT LEVY
AUTHORIZATION TO FUND TECHNOLOGY**

Yes	<u>387</u>
No	<u>599</u>
Completely Blank Ballots	<u>0</u>
Completely Defective Ballots	<u>0</u>
TOTAL BALLOTS COUNTED FOR THIS QUESTION	<u>986</u>

(Attach Certificate of Election Judges and each judge's signed oath of office)

**CERTIFICATE OF ELECTION JUDGES
OPTICAL SCAN PRECINCT**

We the undersigned election judges who served at the polling place hereby certify (please place an "X" next to those items that apply)

that the national flag of the United States was displayed on a suitable staff during voting hours;

all of the ballots cast were properly piled, checked and counted;

that the number of ballots entered on the summary statement correctly show the number of votes cast for each candidate and for and against each question;

that the number of persons voting as shown by the summary statement is 986 ;

that the order of the offices and questions to be voted on and the candidates' names on the ballots was the same as on the zero tape and the sample ballot;

that the number of ballots entered on this Summary Statement correctly show the number of ballots in the transfer case;

that the ballots have been counted and agree with the number of names as shown on the summary statement or that any discrepancy has been noted on the incident report;

_____ that the number of excess ballots, if any, is _____;

_____ that all ballots requiring duplication were duplicated and are in the proper envelope;

_____ that the number of write-in votes for each office has been properly recorded, if this process was done at the polling place;

_____ that all ballots used in the election and all ballots that have been duplicated have been placed in the transfer case and that the case was securely sealed with an official seal in such a manner as to render it impossible to open the case without breaking the seal; and

that the numbers of any seals used to seal the transfer case or cases are EY010461

(signature of election judge)

Tom Lane

(signature of election judge)

Lynn E. Wilson

(signature of election judge)

Carol J. Hilgert

(signature of election judge)

(signature of election judge)

(signature of election judge)

[Signature]

(signature of election judge)

(signature of election judge)

(signature of election judge)

(signature of election judge)

School District Summary Statement

ISD# 138 Special Election February 10, 2026

Combined Polling

Place Main Street Church

Check if AB

County Chisago

Number of Election Judges who worked in this precinct n/a

Number of Voting Booths in this precinct n/a

Registration Statistics

Number of persons registered at 7 a.m. *1. Chisago County 13863 Isanti County 1512

Number of new registrants on election day *2. 5

Ballots delivered to the precinct

Ballots delivered as certified by the clerk 3. N/A

Ballot count adjustments from incident log (+/-) 4. 1

Number of unofficial ballots made 5. 1

Number of absentee ballots delivered 6. n/a

Total number of ballots delivered to precinct (3+4+5+6 = A) A N/A

Ballots not in the ballot box

Number of spoiled ballots *7. 0

Number of originals for which duplicates made *8. 4

Number of rejected absentees *9. n/a

Number of unused ballots 10. N/A

Total number ballots not in the ballot box (7+8+9+10 = B) B 4

Ballots cast in the ballot box

Number of signatures on roster (preregistered + EDR) *11. N/A

Number of accepted regular, military and overseas absentee & mail b *12. 119

Number of accepted federal only absentee ballots *13. n/a

Number of accepted presidential only absentee ballots *14. n/a

Total number of ballots in the ballot box (= persons voting) (11+12+13+14 = C) C 119

Ballots returned to Auditor/Clerk

Ballots returned from the precinct (B + C = D) D N/A

Difference for auditor/clerk notation on delivery record (A - D = E) E N/A

Attach the Scan totals tape to this form

See Next Page

School District 2144 Question 1

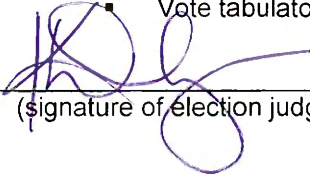
Yes
No
Overvotes
Undervotes
Total

59
60
0
0
119

Certificate of Election Judges

We the undersigned election judges hereby certify

- that the national flag of the United States was displayed on a suitable staff during voting hours;
- that the number of ballots entered on this summary statement correctly show the number of votes cast for each candidate;
- that the order of the offices and questions to be voted on and the candidates' names on the ballots was the same on the zero tape and the sample ballot;
- the number of ballots entered on this summary statement correctly show the number of ballots in the transfer case;
- that the ballots have been counted and agree with the number of names as shown on the summary statement or that any discrepancy has been noted on the incident report;
- that the number of excess ballots, if any, is _____
- that all ballots requiring duplication were duplicated and are in the proper envelope;
- that the number of write-in votes for each office has been properly recorded, if this process was done at the polling place;
- that all ballots used in the election and all ballots that have been duplicated have been placed in the transfer case and the case was securely sealed with an official seal in such a manner as to render it impossible to open the case without breaking the seal; and
- that the numbers of any seals used to seal the transfer case or cases are 5943702
- Vote tabulator seal number _____



(signature of election judge)

(signature of election judge)

(signature of election judge)



(signature of election judge)

(signature of election judge)

(signature of election judge)



Post Election Discussion February 19, 2026

Renewal of Capital Projects Levy Update



The Capital Projects Levy renewal did not pass in the special election.

- The question was placed on the ballot early to preserve time before expiration (end of next year). Statewide, about two-thirds of capital levies passed this year. Local dynamics matter, and we'll be reviewing our turnout and voting data carefully.
- Our levy authority remains in place through next year; there is no immediate disruption. Time remains to plan strategically.

33

Tonight's discussion:

- Review of turnout and voting data
- Recommended next steps for community engagement

Tonight is about understanding before deciding.
The data gives us context. Listening will give us direction.



Voter Turnout Data

Unofficial Results

- Total votes cast: 986
 - Yes: 387 (39.3%)
 - No: 599 (60.7%)

Margin: 212 votes

Yes - 59 Absentee Votes

No - 60 Absentee Votes

880 – Chisago voters from roster

12 – Chisago EDR's

91 – Isanti voters from roster

3 – Isanti EDR's

986 – TOTAL FOR ELECTION DAY

***EDR - Election Day Registration**

Narrative: 2017 vs. 2026 Capital Projects Levy Comparison



- Turnout Comparison
- Support Levels & Margin
- In-Person Voting Trends
- Turnout vs. Persuasion Analysis
- What Changed Between Elections
- Implications for Future Planning

Draft Family Survey



- The survey is a listening tool.
- It helps distinguish turnout vs. sentiment.
- It assesses trust, clarity, timing, and economic concerns.

Focus Groups – Do We Want Deeper Insight?

Considerations:

- Surveys identify patterns.
- Focus groups help us understand nuance.
- Especially helpful for understanding persuadable voters.

37

Questions:

1. Do we believe deeper listening is warranted?
2. Are there concerns about timing or scope?

Goal:

Board alignment on whether to proceed not to design them in detail tonight.

Optimistic Closure



Tonight was about understanding before deciding.
The data gives us context. Listening will give us direction.

