

**LIVONIA PUBLIC SCHOOLS  
BOARD OF EDUCATION**

**Regular Meeting  
February 27, 2023 - 6:30 PM  
Board Room  
15125 Farmington Road  
Livonia, Michigan 48154**

**AGENDA**

- |  |            |
|--|------------|
| <b>I. ROLL CALL: Madeline Acosta, Tammy Bonifield, Karen Bradford, Colleen Burton, Dan Centers, Liz Jarvis, Mark Johnson</b>   |            |
| <b>II. PLEDGE OF ALLEGIANCE</b>  |            |
| <b>III. COMMUNICATIONS</b>   |            |
| <b>A. Principals' Week Resolution</b>  | <b>3</b>   |
| <b>B. District Update from the Superintendent</b>  |            |
| <b>C. Written Communications</b>   |            |
| <b>D. Response to Prior Audience Communications</b>  |            |
| <b>E. Audience Communications (limited to 15 minutes, with remainder taking place prior to HEARING FROM BOARD MEMBERS)</b>   |            |
| <b>IV. CONSENT AGENDA--Items marked with an "*" will be considered in one motion. These routine items have been individually reviewed by Board committees and were unanimously recommended for placing on this consent agenda. Any member of the Board may remove items from the consent agenda prior to voting.</b> | <b>5</b>   |
| <b>V. DISPOSITION OF MINUTES</b>   |            |
| <b>A. *Minutes of the Special Meeting of January 30, 2023</b>  | <b>6</b>   |
| <b>B. *Minutes of the Regular Meeting of January 30, 2023</b>  | <b>7</b>   |
| <b>VI. BUSINESS MATTERS</b>  |            |
| <b>A. Purchase of LMC Furniture - 2021 Bond</b>  | <b>15</b>  |
| <b>B. Purchase of Scoreboards for H.S. Baseball/Softball Fields</b>  | <b>95</b>  |
| <b>C. Purchase of Vehicle for LCTC</b>   | <b>103</b> |
| <b>VII. INSTRUCTION MATTERS</b>  |            |
| <b>A. Limited Out of District Schools of Choice for 2023-2024</b>  | <b>107</b> |
| <b>B. Expulsion of Secondary Students</b>  | <b>108</b> |
| <b>VIII. PERSONNEL MATTERS</b>   |            |
| <b>A. Teachers for Approval</b>  | <b>109</b> |
| <b>B. Teachers for Tenure</b>  | <b>111</b> |
| <b>C. Teacher for Recall</b>   | <b>112</b> |
| <b>D. Resignation</b>  | <b>114</b> |
| <b>E. Retirements</b>  | <b>115</b> |
| <b>IX. HEARING FROM BOARD MEMBERS</b>  |            |
| <b>A. Second Reading of Board Bylaw BBABA - Duties of the President</b>  | <b>118</b> |
| <b>B. Second Reading of Board Policy JI - Pledge of Allegiance</b>   | <b>121</b> |

**C. Hearing from Board Members**  
**X. ADJOURNMENT**

**LIVONIA PUBLIC SCHOOLS  
BOARD OF EDUCATION MEETING  
February 27, 2023**

**TOPIC:** Principals' Week Resolution

**RECOMMENDATION:**

Move that the Board of Education of the Livonia Public Schools School District adopt the attached resolution establishing the week of February 27, 2023, as Principals' Week in Livonia Public Schools.

**RATIONALE:**

Research has shown that one of the most tangible and indispensable characteristics of effective schools is their strong administrative leadership. The Livonia Public Schools' Board of Education believes this dedicated group of educators deserves this special recognition by proclaiming the week of February 27, 2023 as Principals' Week in the Livonia Public Schools School District.

**BUDGETARY INFORMATION:**

None

**RESOURCE PERSONNEL:**

Stacy Jenkins, Administrator of Communications

**EXHIBITS:**

Attached Resolution

**LIVONIA PUBLIC SCHOOLS  
BOARD OF EDUCATION  
February 27, 2023**

**PRINCIPALS' WEEK  
RESOLUTION**

**WHEREAS**, Principals' Week is dedicated to recognizing the significant contributions of Livonia Public Schools' principals and the commitment to providing quality educational experiences and guidance for their students; and,

**WHEREAS**, energetic and inspiring school leadership is essential if schools, teachers, and support staff are to implement college and career-ready standards and assessments; and,

**WHEREAS**, school principals play a vital role in the success of students and act as the liaison between the school and the community it serves; and,

**WHEREAS**, we join with educators, parents and students to raise awareness of the importance of educational leadership;

**NOW, THEREFORE, BE IT RESOLVED**, the trustees of the Livonia Public Schools Board of Education recognize the week of February 27, 2023 as

**SCHOOL PRINCIPALS' WEEK**

and encourage all citizens to thank and support the efforts of school principals in our community.

---

Mark Johnson, President  
Board of Education

**LIVONIA PUBLIC SCHOOLS  
BOARD OF EDUCATION MEETING  
February 27, 2023**

**TOPIC:** Consent Agenda

**RECOMMENDATION:**

Move that the Board of Education of the Livonia Public Schools School District approve the following consent agenda items, as recommended by the superintendent:

- V.A. Minutes of the Special Meeting of January 30, 2023
- V.B. Minutes of the Regular Meeting of January 30, 2023

**RATIONALE:**

The agenda for the Board of Education meeting has certain items designated and identified by an asterisk \*. These items, identified in advance with the concurrence of all Board members present, will be acted upon in a single motion.

**BUDGETARY INFORMATION:**

None

**RESOURCE PERSONNEL:**

Andrea L. Oquist, Superintendent

**EXHIBITS:**

Attached

Off/Supt/jw

**MINUTES  
BOARD OF EDUCATION  
Livonia Public Schools  
Special Meeting  
January 30, 2023**

President Burton convened the meeting at 6:17 p.m.

**Members Present** Bonifield, Bradford, Burton, Centers, Jarvis, Johnson

**Members Absent** Acosta

**Administering the Oaths of Office** Former LPS Board member Lynda Scheel, who is the Treasurer for the City of Livonia and a Notary Public, administered oaths of office to reelected Board trustees Colleen Burton, Liz Jarvis, and Mark Johnson.

**Election of Officers**

**President:**

Mrs. Burton nominated Mr. Johnson for the office of president.

Voting for Mr. Johnson:

Ayes: Bonifield, Bradford, Burton, Centers, Jarvis, Johnson

Nayes: None

**Vice President:**

Mr. Johnson nominated Mrs. Bradford for the office of vice president.

Voting for Mrs. Bradford

Ayes: Bonifield, Bradford, Burton, Centers, Jarvis, Johnson

Nayes: None

**Secretary:**

Mrs. Bradford nominated Mrs. Bonifield for the office of secretary.

Voting for Mrs. Bonifield

Ayes: Bonifield, Bradford, Burton, Centers, Jarvis, Johnson

Nayes: None

**Treasurer:**

It was moved by Mr. Centers and supported by Mr. Johnson that Alison Smith, Chief Financial Officer, be appointed Treasurer of the Livonia Public Schools School District until the next annual election.

Ayes: Bonifield, Bradford, Burton, Centers, Jarvis, Johnson

Nayes: None

**Adjournment** President Burton adjourned the meeting at 6:32 p.m.

**Off/Supt/jw**

**MINUTES  
BOARD OF EDUCATION  
Livonia Public Schools  
Regular Meeting  
January 30, 2023**

President Johnson convened the meeting at 6:39 p.m.

**Members Present** Bonifield, Bradford, Burton, Centers, Jarvis, Johnson

**Members Absent** Acosta

**District Update from the Superintendent** Superintendent Oquist presented highlights of recent activities taking place across the District, as well as upcoming events.

**Board Recognition Month** Ms. Stacy Jenkins, Administrator of Communications, recognized Board members for their status as an Honor Board and for all they do to support the District. Mr. Phillip Francis, Assistant Superintendent of District Services, read a Recognition Resolution for Board members from the Wayne County Regional Educational Service Agency Board of Education. Superintendent Oquist also expressed her appreciation to the Board, on behalf of the District, for their outstanding work and dedication.

**Written Communications** None

**Response to Prior Audience Communications** None

**Audience Communications** An individual addressed the Board regarding the treatment of bus drivers and student misbehavior on the bus, stating that riding a bus is a privilege.

Ms. Isolina Carlini, Holmes Middle School teacher and LPS Robotics Coach/Coordinator, announced that there is a website dedicated to Livonia Public Schools' FIRST Robotics Programs. She noted that five elementary schools now have a Robotics team.

**Consent Agenda** It was moved by Mrs. Burton and supported by Mrs. Bradford that the Board of Education of the Livonia Public Schools School District approve the following consent agenda items, as recommended by the superintendent:

V.A. Minutes of the Regular Meeting of December 12, 2022

Ayes: Bonifield, Bradford, Burton, Centers, Jarvis, Johnson  
Nays: None

**Approval to Purchase Furniture for LCTC & Robotics – 2021 Bond**

It was moved by Mr. Centers and supported by Mrs. Jarvis that the Board of Education of the Livonia Public Schools School District accept the recommendation from the Owner’s Representative, Plante Moran Cresa, to approve the purchase and installation of furniture for LCTC and Robotics from NBS Commercial Interiors, Troy, Michigan; Interior Office Source, Milford, Michigan; KI Direct, Green Bay, Wisconsin; DEW-EL, Holland, Michigan; Interior Environments, Novi, Michigan; and Wenger, Owantonna, Minnesota for a total amount not to exceed \$285,258, which includes contingency.

Ayes: Bonifield, Bradford, Burton, Centers, Jarvis, Johnson  
Nays: None

**Approval of IT Bid Results for LCTC & Robotics**

It was moved by Mrs. Bonifield and supported by Mr. Centers that the Board of Education of the Livonia Public Schools School District accept the recommendation from the Owner’s Representative, Plante Moran Cresa, to approve Digital Age Technology, Davison, Michigan, as the technology contractor for the renovation of LCTC and the new robotics center, in the amount of \$113,177, which includes contingency, and authorize the Superintendent or her designee to negotiate and execute final contracts with the recommended contractor.

Ayes: Bonifield, Bradford, Burton, Centers, Jarvis, Johnson  
Nays: None

**Approval of IT Bid Results for 2023 Renovations – 2021 Bond**

It was moved by Mrs. Bradford and supported by Mrs. Burton that the Board of Education of the Livonia Public Schools School District accept the recommendation from the Owner’s Representative, Plante Moran Cresa, to approve Phase 2 of the Technology Contractor bid from AMcomm Telecommunications, Brighton, Michigan, in the amount of \$240,000, which includes contingency, and authorize the Superintendent or her designee to negotiate and execute final contracts with the recommended contractor.

Ayes: Bonifield, Bradford, Burton, Centers, Jarvis, Johnson  
Nays: None

**Approval of Bid Results for Security Cameras**

It was moved by Mrs. Jarvis and supported by Mrs. Bonifield that the Board of Education of the Livonia Public Schools School District accept the recommendation from the Owner’s

Representative, Plante Moran Cresa, to approve the purchase and installation of security cameras, including licensing for ten years, from Sentinel Technologies, Chicago, Illinois, in the amount of \$1,890,542.66, which includes contingency.

Ayes: Bonifield, Bradford, Burton, Centers, Jarvis, Johnson  
Nays: None

**Approval of Bid  
Results for Early  
Childhood Center  
– 2021 Bond**

It was moved by Mrs. Bradford and supported by Mrs. Bonifield that the Board of Education of the Livonia Public Schools School District accept the recommendation from its Owner's Representative, Plante Moran Cresa, and its Construction Manager, Clark Construction Company, to approve the contractors identified and the construction project budgets for the Early Childhood Center addition and renovations, in the total amount of \$27,668,021, which includes costs for hard construction, fees, and contingency, and authorize the Superintendent or her designee to negotiate and execute final contracts on behalf of the Board of Education with the awarded contractors.

Ayes: Bonifield, Bradford, Burton, Centers, Jarvis, Johnson  
Abstain: Burton (a member of her family's business bid to one of the companies listed)  
Nays: None

**Approval of Bid  
Results for  
Franklin Tennis  
Courts**

It was moved by Mrs. Burton and supported by Mrs. Bradford that the Board of Education of the Livonia Public Schools School District accept the recommendation from its Owner's Representative, Plante Moran Cresa, and its Designer, Foresite Design, Inc., to approve the contractors identified and the construction project budget for the Franklin High School Tennis Courts Project in the total amount of \$1,213,740, which includes costs for hard construction and contingency, and authorize the Superintendent or her designee to negotiate and execute final contracts on behalf of the Board of Education with the awarded contractors.

Ayes: Bonifield, Bradford, Burton, Centers, Jarvis, Johnson  
Nays: None

**Approval of TMP  
Contract  
Amendment**

It was moved by Mr. Centers and supported by Mrs. Jarvis that the Board of Education of the Livonia Public Schools School District approve the recommendation from the Owner's Representative, Plante Moran Cresa, to approve a contract amendment for TMP Architecture, Inc., Bloomfield Hills, Michigan, in the amount of \$621,125.

Ayes: Bonifield, Bradford, Burton, Centers, Jarvis, Johnson  
Nays: None

**Approval to Purchase Playground Equipment for Webster RISE Program**

It was moved by Mrs. Bonifield and supported by Mr. Centers that the Board of Education of the Livonia Public Schools School District approve the purchase of elementary playground equipment for the Webster Elementary RISE Program from Kidstuff Playsystems, in care of Kennedy Recreation, Clinton Township, Michigan, in the amount of \$137,020, which includes contingency, and authorize the Superintendent or her designee to negotiate and execute final contracts on behalf of the Board of Education.

Ayes: Bonifield, Bradford, Burton, Centers, Jarvis, Johnson  
Nays: None

**Approval to Purchase Furniture for Stevenson Community Room**

It was moved by Mrs. Bradford and supported by Mrs. Burton that the Board of Education of the Livonia Public Schools School District approve the purchase of furniture for the Stevenson High School Community Room from Interior Environments, Novi, Michigan, for a total amount of \$53,136.29.

Ayes: Bonifield, Bradford, Burton, Centers, Jarvis, Johnson  
Nays: None

**Recommend Expulsion for One Secondary Student**

It was moved by Mrs. Jarvis and supported by Mrs. Burton that the Board of Education of the Livonia Public Schools School District expel one high school student for violations of the Livonia Public Schools' Board of Education policies.

Ayes: Bonifield, Bradford, Burton, Centers, Jarvis, Johnson  
Nays: None

**Teachers for Approval**

It was moved by Mrs. Burton and supported by Mrs. Bradford that the Board of Education of the Livonia Public Schools School District accept the recommendation of the superintendent and offer employment for the 2022-23 school year to the following teachers:

<b>Dardini, McKenna</b>	<b>1.0 Teacher</b>	<b>Frost Middle School</b>
<b>Dunn, Allyson</b>	<b>1.0 Teacher</b>	<b>Cooper Elementary</b>
<b>Hurley, Thomas</b>	<b>1.0 Teacher, Social Studies</b>	<b>Franklin High School</b>
<b>Kefallinos, Yanni</b>	<b>1.0 Teacher, Social Studies</b>	<b>Stevenson .8</b>
		<b>Franklin .2</b>

Ayes: Bonifield, Bradford, Burton, Centers, Jarvis, Johnson  
Nays: None

**Teachers for Tenure**

It was moved by Mrs. Burton and supported by Mrs. Bradford that the Board of Education of the Livonia Public Schools School District accept the recommendation of the superintendent and acknowledge that tenure status has been granted to the following teachers on the respective date:

**Kelly Billin** 11/23/22

(Note: The correct tenure date for Kelly Billin is 11/23/21. Therefore, this information will be amended at the next Regular meeting.)

**Alison Boike** 1/26/23

**Brittany Cornellier** 1/10/23

**Gillian Drutchas** 1/29/23

**Erin Horback** 1/29/23

Ayes: Bonifield, Bradford, Burton, Centers, Jarvis, Johnson  
Nays: None

**Leave of Absence**

It was moved by Mr. Centers and supported by Mrs. Jarvis that the Board of Education of the Livonia Public Schools School District accept the recommendation of the superintendent and approve the request for a leave of absence as listed below:

**Alison Frazier** 1/17/23

Ayes: Bonifield, Bradford, Burton, Centers, Jarvis, Johnson  
Nays: None

**Resignation**

The Board was informed of the following resignation:

**Kimberly Zarzycki** 1/20/23

**Retirements**

It was moved by Mrs. Bonifield and supported by Mrs. Burton that the Board of Education of the Livonia Public Schools School District adopt a resolution of appreciation for:

**Janet Cronin**, who retired from the District on December 23, 2022, and devoted 15.4 years of dedicated, loyal, and outstanding service to the Livonia Public Schools as a paraprofessional at Western Wayne Skill Center, Webster Elementary, Livonia Career Technical Center, Grant Elementary, Churchill High School, and Frost Middle School.

**Joan McCloskey**, who retired from the District on January 13, 2023, and devoted 23.1 years of dedicated, loyal, and outstanding service to the Livonia Public Schools as a bus driver in the Transportation Department.

**Rossann Padgen**, who retired from the District on January 13, 2023, and devoted 33.5 years of dedicated, loyal, and outstanding service to the Livonia Public Schools as a paraprofessional at Jackson Early Childhood Center, Hoover Elementary, Coolidge Elementary, Grant Elementary, Perrinville Early Childhood Center, and Roosevelt Elementary.

Ayes: Bonifield, Bradford, Burton, Centers, Jarvis, Johnson  
Nays: None

**First Reading of**

Proposed changes to Bylaw BBABA were reviewed by the Board

**Board Bylaw  
BBABA – Duties  
of the President**

and will be on the agenda of the next Regular Board meeting for a second reading and potential approval.

**BYLAWS OF THE BOARD  
BOARD OPERATIONS  
DUTIES OF THE PRESIDENT**

**BBABA  
FEBRUARY 24, 2020**

The president of the Board shall preside at all regular meetings, special meetings, closed sessions, committee meetings, and study sessions; shall have the option to make and second motions, shall vote on all agenda items unless a conflict of interest exists; shall plan cooperatively with the superintendent the agendas for such meetings; shall represent and speak for the Board when requested to do so and only on action which the Board has already taken; shall sign documents as required by law and correspondence as authorized by the Board; shall appoint Board members as committee chairpersons and members as soon as feasible following the meeting of the election of officers; shall make other committee appointments; and shall perform such other duties as authorized by the Board.

**First Reading of  
Board Policy JI –  
Pledge of  
Allegiance**

The proposed new policy JI was reviewed by the Board and will be on the agenda of the next Regular Board meeting for a second reading and potential approval.

**BOARD POLICY  
STUDENTS  
PLEDGE OF ALLEGIANCE**

**JI  
DATE**

In accordance with the Revised School Code, the opportunity to recite the pledge of allegiance to the flag of the United States will be offered each school day to all students. A student will not be compelled, against the student’s objection or the objection of the student’s parent or legal guardian, to recite the pledge of allegiance. A student will not be subject to any penalty or retaliation at school for not reciting the pledge of allegiance.

**Second Reading  
of Board Policies:**

It was moved Mrs. Bradford and supported by Mrs. Burton that the Board of Education of the Livonia Public Schools School District accept the recommendation of the Policy Committee and adopt Board Policy language for the following policies:

**IDDA – Special  
Education  
Programs**

**BOARD POLICY  
INSTRUCTIONAL PROGRAM  
SPECIAL EDUCATION PROGRAMS**

**IDDA  
JANUARY 30, 2023**

The School District will provide eligible students with Individualized Education Plans (IEP) programming and services to meet their needs. These programs and services will be coordinated by the Department of Student Services and its staff. The District will abide by all applicable laws, including State and Federal laws such as Michigan Administrative Rules for Special Education (MARSE) and Individuals with Disability Education Act (IDEA).

**IDDD – Programs  
for the  
Academically  
Talented**

**BOARD POLICY  
INSTRUCTIONAL PROGRAM  
PROGRAMS FOR THE ACADEMICALLY TALENTED**

**IDDD  
JANUARY 30, 2023**

The School District will provide academically talented students access to learning opportunities both in general education classrooms and in magnet programs, to meet their needs. These programs and services will be coordinated by the directors of elementary and secondary education with the support of the Academic Services Department.

**II – Systemwide  
Assessment  
Program**

**IIA – Testing**

**Programs  
(Removal of  
Policy)**

Staff may conduct studies and research to ascertain appropriate curricular and instructional opportunities and programming for academically talented students.

**IIC – Use and  
Dissemination of  
Assessment  
Results**

**BOARD POLICY II  
INSTRUCTIONAL PROGRAM JANUARY 30, 2023  
SYSTEMWIDE ASSESSMENT PROGRAM**

The purpose of the systemwide assessment program is to plan appropriate instructional activities for each student in addition to providing the School District and each school essential information on the growth and achievement of our learners.

The School District will select and administer a series of aptitude, diagnostic and standardized achievement assessments, which provide information related to a student's learning potential as well as longitudinal achievement data on individual learners and cohorts of students in the District. Other appropriate assessments may be used for diagnostic purposes.

The School District shall assess learning based on the current standards and curriculum being used in classrooms across the District. This includes, but is not limited to, school improvement assessments, common course and grade level assessments, and unit tests. These assessments, along with standardized assessments, provide a broader picture of a student's abilities and attainment of standards. In addition, surveys and student focus groups provide a "picture" of students' thoughts, feelings and attitudes.

~~**BOARD POLICY IIA  
INSTRUCTIONAL PROGRAM JUNE 20, 1988  
TESTING PROGRAMS**~~

~~The Board of Education expects the staff to select and administer a series of mental capacity tests and standardized achievement tests, particularly in the areas of the so-called basic skills and study skills, as one source of data indicating the nature of the students' potential and of their longitudinal achievement as they progress through the schools. Other appropriate tests may be used on an optional basis for diagnostic purposes.~~

~~Although it is the general attitude of this Board that reasonable limits should be placed on the administering of tests to students, it is permissible to administer selected so-called external tests to those students desiring to take the same for college entrance, scholarships, academic competition, and college placement.~~

~~The Board of Education encourages the staff to examine continually the values which reflect the objectives of the School System, the needs of students, and the circumstances in society which indicate the necessity for new or different educational experiences. As a result of such study and reexamination, the staff is further encouraged to seek better means for assessing learning in such areas as the cognitive abilities including inductive thinking, the process of inquiry, critical thinking, and the process of problem-solving. Also, it is expected that assessment means should be found or devised through which data may be gathered regarding learning in the so-called "affective domain," including such factors as feelings, attitudes, and appreciations.~~

**BOARD POLICY IIC  
INSTRUCTIONAL PROGRAM JANUARY 30, 2023  
USE AND DISSEMINATION OF ASSESSMENT RESULTS**

The District will provide all parents/guardians and students who are over 18, full access to personal educational data. Student records will not be released to a third party without prior written consent of the parent/guardian or student (if over 18), with the exceptions

made for Livonia Public Schools staff, governmental educational agencies, or other persons, as provided by law.

Ayes: Bonifield, Bradford, Burton, Centers, Jarvis, Johnson  
Nays: None

**Approval for Board Members to Participate in MASB's Virtual Winter Institute and Take MASB Classes**

It was moved by Mrs. Jarvis and supported by Mr. Centers that the Board of Education of the Livonia Public Schools School District approve that Board Trustees Madeline Acosta, Tammy Bonifield, Liz Jarvis, and Mark Johnson participate in MASB's Virtual Winter Institute February 24-26, 2023, and take MASB classes, for a total cost of \$2,178.

Ayes: Bonifield, Bradford, Burton, Centers, Jarvis, Johnson  
Nays: None

**Adjournment**

President Burton adjourned the meeting at 8:20 p.m.

**Off/Supt/jw**

**LIVONIA PUBLIC SCHOOLS  
BOARD OF EDUCATION MEETING  
February 27, 2023**

**TOPIC:** Purchase of LMC Furniture – 2021 Bond

**RECOMMENDATION:**

Move that the Board of Education of the Livonia Public Schools School District accept the recommendation from the Owner’s Representative, Plante Moran Cresa, and approve the Phase Two purchase of furniture for Library Media Centers at Cleveland Elementary, Rosedale Elementary, Riley Upper Elementary, Frost Middle School, and Franklin High School from NBS Commercial Interiors in Troy, Michigan, in an amount not to exceed \$926,000.

**RATIONALE:**

The LMC’s at these locations are being renovated this summer via the 2021 Bond Initiative. New furniture that is mobile and flexible will be required for the renovated spaces.

**BUDGETARY INFORMATION:**

2021 Bond Fund

**RESOURCE PERSONNEL:**

Phillip Francis, Assistant Superintendent of District Services

**EXHIBITS:**

Attached

PF/ko

February 8, 2023

Mr. Phillip Francis  
Asst. Superintendent of District Services  
Livonia Public Schools  
15125 Farmington Road  
Livonia, MI 48154

RE: 2021 Bond Program  
LMC Furniture Purchase Recommendation  
Cleveland ES / Rosedale ES / Riley UES / Frost MS / Franklin HS

Dear Mr. Francis:

This letter transmits an update from Plante Moran Cresa (PMC) as it relates to the assignment to assist and advise Livonia Public Schools (LPS) in its purchase of furniture for the Project listed above. This update represents the mutual efforts of PMC, French Associates, and LPS administration and staff (the Team).

Coinciding with ongoing design efforts to renovate and reimagine LMC spaces as part of the 2021 Bond Program, the Team has conducted multiple meetings and site visits over the course of the past few months focused on the selection of furniture to best serve each space. Following a previous recommendation for the purchase of bookcases for these locations, the Team continued meetings with LPS staff to finalize design, select finishes and review samples for the remaining furniture at the 2023 sites.

The Team recommends awarding **NBS Commercial Interiors** to supply and install LMC furniture in an amount not-to-exceed **\$926,000.00** as further detailed below and within French’s recommendation documents dated February 1, 2023.

Cleveland Elementary:	\$111,453.61
Rosedale Elementary:	\$113,840.24
Riley Upper Elementary:	\$144,221.87
Frost Middle:	\$171,844.88
Franklin High:	\$340,554.25
<hr/>	
NBS Quotation:	\$881,914.85
Contingency (5%):	\$44,085.15
<hr/>	
<b>Award Recommendation (NTE):</b>	<b>\$926,000.00</b>

For the Vendor, the pricing for this work will be detailed in a Purchase Order Agreement, pending final review and approval of terms by district legal counsel.

The Team is available at the Board's convenience to answer any questions regarding this recommendation. Please direct all questions through me via email at [brian.weber@plantemoran.com](mailto:brian.weber@plantemoran.com).

Sincerely,

PLANTE MORAN CRESA



Brian Weber  
Vice President

Enclosures: French Associates Recommendation Letter  
Vendor Proposals  
Product Information & Layout



architects planners interiors

236 Mill Street  
Rochester, MI  
48307

February 1<sup>st</sup>, 2023

Phillip Francis  
Asst. Superintendent of District Services  
Livonia Public Schools

**Subject: 2021 Bond Program – 2023 Renovations  
Media Center Furniture Balance**

Dear Mr. Francis,

French Associates has been consulting with NBS Commercial Interiors in the development and programming of furniture for the 2021 Bond Program projects. Throughout the design process, NBS has aided in product selections, availability, and lead times.

On January 25<sup>th</sup>, 2023 French Associates received furniture quotes from NBS Commercial Interiors for the balance of furniture remaining for Cleveland Elementary, Rosedale Elementary, Frost Middle School, Riley Upper Elementary and Franklin High School.

Enclosed are the furniture quotes that utilize the E&I, Omnia, TIPS and NCPA consortium group pricing. The totals for these projects are as follows:

Cleveland Elementary: \$111,453.61  
Rosedale Elementary: \$113,840.24  
Riley Upper Elementary: \$144,221.87  
Frost Middle School: \$171,844.88  
Franklin High School: \$340,554.25

**French Associates is recommending award to NBS Commercial Interiors for the procurement and installation of furniture in the Media Centers at all schools listed above in the total amount of \$881,914.85.**

Please contact me if you have any questions.

Sincerely,

Jessica Walter  
Interior Designer





CONTRACT DOCUMENTS  
THIS CONTRACT DOCUMENTS SET FORTH THE AGREEMENT BETWEEN THE CLIENT AND THE CONTRACTOR FOR THE DESIGN AND CONSTRUCTION OF THE PROJECT. THE CONTRACTOR SHALL BE RESPONSIBLE FOR OBTAINING ALL NECESSARY PERMITS AND APPROVALS FROM THE APPROPRIATE AGENCIES. THE CONTRACTOR SHALL BE RESPONSIBLE FOR OBTAINING ALL NECESSARY PERMITS AND APPROVALS FROM THE APPROPRIATE AGENCIES. THE CONTRACTOR SHALL BE RESPONSIBLE FOR OBTAINING ALL NECESSARY PERMITS AND APPROVALS FROM THE APPROPRIATE AGENCIES.

APPROVED BY: \_\_\_\_\_ DATE: \_\_\_\_\_

<input type="checkbox"/> APPROVED	<input type="checkbox"/> APPROVED AS NOTED
07/29/22	PROGRESS
08/09/22	BUDGET LABOR
10/27/22	VISIONS
12/18/22	AUDIT
01/24/23	REVISED AUDIT

OWNER:  
**LIVONIA PUBLIC SCHOOLS**

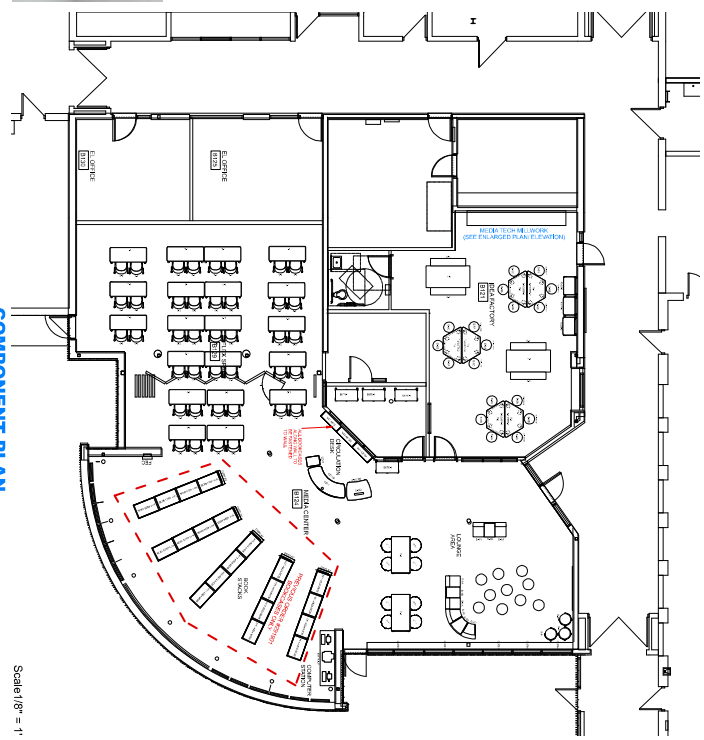
PROJECT:  
**ROSEDALE EL - MEDIA CENTER RENOVATION**

SPEC NAME AND/OR TYPICAL SYMBOL, ALL

PROJECT FOLDER	221118
DESIGNER	TRB
ACCOUNT MANAGER	M. BONDAN
DRAWING	S. WAZZANI
PROJECT MANAGER	M. GIBSON

**COMPONENT PLAN**

DRAWING NUMBER:  
**ID-3.1**



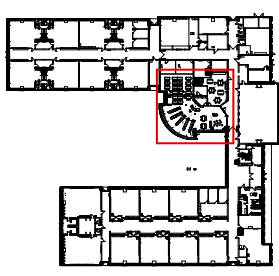
**COMPONENT PLAN**

Scale: 1/8" = 1'



**ENLARGED PLAN / ELEVATION**

Scale: 1/118



**KEY PLAN**

Scale: 1/8" = 1'

<p>(T3 &amp; S5) SMITH SYSTEM - PLANNER STUDIO</p> <p>LEGS (S-64)</p> <p>(S-68) SMITH SYSTEM - OODLE</p> <p>(S-69)</p> <p>(S-41)</p>	<p>(S-1) ERIG BRIGHTON JR</p> <p>BACK (OT1-1) NATIONAL WHIMSY (OT1-2)</p>	<p>(S-4) COMCORE - LILY PADS</p> <p>(S-54)</p> <p>(S-58)</p> <p>(S-56)</p> <p>(S-50)</p>	<p>(T1) SMITH SYSTEM - ELEMENTAL</p> <p>LAM TOP</p> <p>LEGS-PLATINUM</p> <p>(T2) SMITH SYSTEM - ELEMENTAL ACTIVITY (T2) PVC EDGE</p>	<p>(S-2) AND - BABY CHAIR</p> <p>BACK-STERLING</p> <p>SEAT-PLATINUM</p> <p>LEGS-PLATINUM</p> <p>(BKT-1) BOOK SIDES - CHARCOAL</p>	<p>(CD-1, 2, 3) NOMAD DESK</p> <p>LAM TOP</p> <p>VERTICAL LAM</p> <p>ACCENT LAM</p> <p>(BKT-1) BOOK PLATINUM</p>
--	---	--	--	---	--

**MEDIA CENTER B124  
GROUND FLOOR  
QUOTE #357813**







2595 Bellingham • Troy, MI 48083 • 248.823.5400 • 248.823.5401 Fax  
 2211 Old Earhart Rd. Ste.190 • Ann Arbor, MI 48105 • 248.823.5400 • 248.823.5401 Fax  
 3201 Pine Tree Rd. Ste. A • Lansing, MI 48911 • 517.886.0072 • 248.823.5401 Fax  
 5160 Alliance Dr. • Bay City, MI 48706 • 989.895.8574 • 989.895.8545 Fax  
 4 North St. Clair St. • Toledo, OH 43604 • 419.662.2040 • 248.823.5401 Fax

**Quotation 357842**

**Quote Date 01/27/23**

**Customer Order**

**Project 221131**

**Customer L00002**

**Terms NET 10 DAYS**

**Expiration Date**

**Account Representative MONIQUE DUGAN**

**yourNBS.com**

**Remit Payments to: NBS, 6973 Reliable Parkway, Chicago, IL 60686**

**Quote To**

Livonia Public Schools  
 15125 FARMINGTON RD  
 LIVONIA, MI, 48154-5413

**Ship To**

Harry Lau  
 Frost Middle School  
 14041 STARK RD  
 MEDIA CENTER  
 LIVONIA, MI, 48154-5409

**Phone +1 (313) 523-9156**

**Phone +1 (734) 744-2537**

**Cell +1 (734) 812-8597**

hlau@livoniapublicschools.org

**Sales Location Troy**

**PO REQUIRED TO PLACE ORDER**

**E&I, OMNIA, TIPS & NCPA CONTRACTS HAVE BEEN APPLIED TO THIS QUOTE**

**PRICING IS VALID FOR 30 DAYS**

**LEAD TIME: 14-16 WEEKS FROM RECEIPT OF PO**

**STRAIGHT TIME NON UNION LABOR HAS BEEN QUOTED**

**ALL PRODUCT TO INSTALL AT THE SAME TIME**

**PRICING DOES NOT INCLUDE THE REMOVAL OR MOVING OF EXISTING PRODUCT**

**IF REQUIRED STORAGE FEES AND OVERTIME DIFFERENTIAL FEES WILL BE INVOICED AS NEEDED**

**30 DAYS OF FREE STORAGE HAS BEEN INCLUDED IN OUR PRICING**

Description	Quantity	Unit Price	Extended Price
<b>CIRC DESK</b>			
1 <b>SMLBR21001</b> - Booktruck, Six Sloping Shelf, 18"D x 36"W x 43"H <b>Cart Finish:</b> Smith System Paint PLT - PLATINUM SMITH SYST <b>Tag For</b> CIRC DESK BKTK-1	4	407.40	1,629.60
2 <b>ND-75DL-MOB</b> - Nomad Mobile Desk WITH transaction top (LEFT) 24"D x 75"W Mobile 29"H worksurface, with grommet 35"H Transaction top, 3mm PVC Edge: Silver Grey	1	3,823.20	3,823.20

TITLE OF PRODUCT TRANSFERS UPON RECEIPT BY CUSTOMER.

24

ACCEPTED BY \_\_\_\_\_ TITLE \_\_\_\_\_ DATE \_\_\_\_\_

yourNBS.com

Remit Payments to: NBS, 6973 Reliable Parkway, Chicago, IL 60686

Description	Quantity	Unit Price	Extended Price
<p>2 (5) locking casters.            HPL Accent Panel A: Wilsonart Lapis Blue D417-60            HPL End Panels B &amp; C: Formica Greyed Oak 5791-60            HPL Worksurface D &amp; T-Top: Nevamar White Fiesta MW550-SD            E: Powder Coat: Dove Grey 304            MEDIA TECH  <b>Tag For</b> CIRCULATION DESK            CD-1</p>			
<p>3 <b>MCD-1817 - STEEL CENTER DRAWER</b>            18"W X 17"D X 2"H            FINISH:BLACK            MEDIA TECH  <b>Tag For</b> CIRC DESK            CD-1B</p>	1	192.60	192.60
<p>4 <b>WMPS661220-W-LL-P2A - Mobile Pedestal, 2 Box, 1 File Drawers</b>            14-13/26"W x 20-3/4"D X 27"H            HPL: Formica Greyed Oak 5791-60            PVC: Dove Grey 304            LOCK FINISH: Nickel            PULL: P2 Nickel            MEDIA TECH  <b>Tag For</b> CIRCULATION DESK            CD-3</p>	1	509.85	509.85
<p>5 <b>ND-40BR-MOB - Nomad Book Return</b>            30"Dx40"Wx29"H, Mobile HPL/3mm PVC top w/ radiused corners,            book return slot in top, Curved face, steel end frames w/ floating HPL            panel, 4 locking casters. For use w/ MCD-DBTL1824-24            Depressible Book Truck (sold separately)            A: HPL Front: Formica Greyed Oak 5791-PG            C: HPL End Panel: Formica Greyed Oak 5791-PG            D: HPL Work Surface: Nevamar White Fiesta MW550-SD            D: PVC Work Surface: Silver Gray C600244            E: Powder Coat: Dove Grey 304            MEDIA TECH  <b>Tag For</b> CIRCULATION DESK            CD-2</p>	1	1,759.05	1,759.05
<p>6 <b>MCD-DBTL-1824-24 - Depressible Platform Book Truck,</b>            18"Dx24.25"Wx24"H HPL construction with 3mm PVC            edge banding, spring-loaded platform lift mechanism.            HPL: Formica Greyed Oak 5791-PG            PVC Edge: Silver Grey C600244            MEDIA TECH  <b>Tag For</b> CIRCULATION DESK            BKT-2</p>	1	1,327.50	1,327.50
<b>Sub Total</b>			9,241.80
<b>Total</b>			9,241.80

TITLE OF PRODUCT TRANSFERS UPON RECEIPT BY CUSTOMER.

25

ACCEPTED BY \_\_\_\_\_ TITLE \_\_\_\_\_ DATE \_\_\_\_\_

Description	Quantity	Unit Price	Extended Price
<b>COMPUTER STATION</b>			
<b>7 WUW2081-SP-ADA - Walk-up Wall Hung ADA Computer Workstation</b> 81"W x 20"D x 13"+H  Consisting of: Center storage module at 27"W x 13"H+ with 2-locking doors, flanked by a 27"W surface extending off the bottom right side of cabinet & another at the top left side. Full height (13"+) panel at the right end for ADA compliance. 2-Wire management grommets in the surface to coordinate with a series of wire management access holes/channels across the back of the station to conceal all wires. Wall hung using a hidden mount on the back of the cabinet along with hidden cleats behind the left and right surface extensions. Workstation has a 7/8" border on all sides with a recessed reveal detail.  Inset Reveal & Doors: Wilsonart Magnolia 5012-60 Exterior Shell: Pionite Blueberry Hill SB040-SD Edge: White Pulls: Rod Style - Brushed Nickel Finishes as noted or equal, based on location PRIMEWAY Tag For WALK-UP COMP STATION WALK-UP	1	3,682.67	3,682.67
<b>Sub Total</b>			3,682.67
<b>Total</b>			<b>3,682.67</b>
<b>BOOK STACKS</b>			
<b>8 DISP-4724 - Media Technologies Display End Panel, 3 opening,</b> 24"Wx3-1/2"Dx47-1/2"H **to mount on H11-4824 Double Sided Bookcases. HPL/3mm PVC construction HPL: Formica Greyed Oak 5791-PG Interior Back Panel: Pionite Blueberry Hill SB040-SD PVC: Silver Grey C600244 MEDIA TECH Tag For BOOK STACKS DISPLAY	14	706.05	9,884.70
<b>Sub Total</b>			9,884.70
<b>Total</b>			<b>9,884.70</b>
<b>FLEX SPACE D102</b>			
<b>9 BXYARMLESS - AMQ Bixby Chair Armless</b>	48	166.52	7,992.96

TITLE OF PRODUCT TRANSFERS UPON RECEIPT BY CUSTOMER.

26

ACCEPTED BY \_\_\_\_\_ TITLE \_\_\_\_\_ DATE \_\_\_\_\_

Description	Quantity	Unit Price	Extended Price
<b>9 Cushion: No Cushion</b> <b>Frame Finish: Paint PC03 - Platinum</b> <b>Seat Shell Finish: Plastic PL02 - Sterling Dark</b> <b>Back Shell Finish: Plastic PL03 - Platinum</b> <b>Castors or Glides: Soft Castors</b> <b>Accessories: No Accessory</b> <b>Storage Tray: No Storage Tray</b> AMQ SOLUTI <b>Tag For</b> FLEX SPACE S-2			
<b>10 SMEMTNL2460 - Elemental; Table-Nest and fold, With casters, 24D x 60W</b> Worksurface Finish: Smith System Laminate 494360 - CLASSIC LINEN HIGH GLOSS Edge Type: 1 1/4in Top w 3/8in Bmp TMld Edge Finish: Smith System T-Mold CHP - CHAMPAGNE T MOLD Leg Finish: Smith System Paint PLT - Platinum Height: EJ - Adjustable Height SMITH SYST <b>Tag For</b> FLEX SPACE T-1	24	667.20	16,012.80
<b>Sub Total</b>			24,005.76
<b>Total</b>			<b>24,005.76</b>
<b>IDEA FACTORY</b>			
<b>11 SMPLN25740 - Planner Activity Table-48"D x 90"W</b> <b>Worksurface Finish: SMITH SYSTEM LAMINATE 798360 - BOARDWALK OAK LAMINATE</b> <b>Edge Type: 1 1/4in Top w 3/8in Bmpr TMld</b> <b>Edge Finish: SMITH SYSTEM T-MOLD BLU - BLUEBERRY T MOLD</b> <b>Leg Finish: SMITH SYSTEM PAINT PLT - PLATINUM</b> SMITH SYST <b>Tag For</b> IDEA FACTORY T-7	6	764.40	4,586.40
<b>12 1011FT1.PSS9 - Lumin, 24" Counter Stool, Plastic Seat &amp; Back, Armless</b> <b>Frame Information:</b> <b>FC2: Silver Frame</b> <b>Plastic Shell Color Selection:</b> <b>SC24: Apple</b>	30	228.00	6,840.00

TITLE OF PRODUCT TRANSFERS UPON RECEIPT BY CUSTOMER.

Description	Quantity	Unit Price	Extended Price
12 ~: No Selection <b>Glide Option Selection:</b> GL1: Standard Multi-Surface Glide <b>Packaging Options:</b> AB: Fully Assembled in a Bag EXEMPLIS Tag For IDEA FACTORY ST-1			
13 <b>SMCSA10006020</b> - Cascade Mega-Case-Open, 6-3" & 2-6" EW totes, casters <b>Edge Panel Configuration:</b> P- Pltnm Body w/Solid End Pnls <b>End Panel Finish:</b> Smith System Paint BL - BLUEBERRY SMITH SYST Tag For IDEA FACTORY CAB-1	6	951.00	5,706.00
14 <b>SMINC17577</b> - Interchange; 3 inch dual wheel casters-Pack of 4, Locking, Colorful <b>Caster Finish:</b> Smith System Plastic PLATINUM - Platinum SMITH SYST Tag For IDEA FACTORY CAB-1/CSTR	6	76.80	460.80
<b>Sub Total</b>			17,593.20
<b>Total</b>			17,593.20
<b>LOUNGE AREA 1</b>			
15 <b>ETRND</b> - Elbrook Round Table <b>Size Option:</b> Modular <b>Height:</b> Seated <b>Diameter:</b> 36.00000 <b>Top Surface Finish:</b> Woodgrain HPL 2HAW - ASH WENGE (HPL) <b>Edge Finish:</b> Plastic - PG1 6703 - ASH WENGE <b>Base Finish:</b> Smooth Metallic 4799 - PLATINUM METALLIC <b>Wheel Option:</b> With Wheels STEELCASE Tag For LOUNGE AREA 1 T-2	3	823.33	2,469.99
16 <b>83N4272SRTL</b> - FOOTINGS,42DX72W,SOFT RECTANGULAR TOP, HPL <b>RIM PROFILE:</b>	2	879.96	1,759.92

TITLE OF PRODUCT TRANSFERS UPON RECEIPT BY CUSTOMER.

Description	Quantity	Unit Price	Extended Price
<b>16 VG1009: SOFTENED,WHITE NEBBIA</b> <b>GROMMET:</b> <b>X: NO GROMMET</b> <b>LAMINATE GROUP:</b> <b>GAL2: GALLERY LAMINATE-GRADE 2</b> <b>G1009: WHITE NEBBIA</b> KIMBALL OF <b>Tag For</b> LOUNGE AREA 1 T-3			
<b>17 CBV285228YBKP - FOOTINGS,28DX52WX28H,Y BASE KIT</b> <b>COLUMN PAINT COLOR:</b> <b>501: PLATINUM METALLIC</b> <b>FOOT PAINT COLOR:</b> <b>501: PLATINUM METALLIC</b> KIMBALL OF <b>Tag For</b> LOUNGE AREA 1 T-3B	2	540.50	1,081.00
<b>18 SMEMTEL3636 - Elemental; Table-Square, 36D x 36W</b> Worksurface Finish: Smith System Laminate 494360 - CLASSIC LINEN HIGH GLOSS Edge Type: 1 1/4in Top w 3/8in Bmp TMld Edge Finish: Smith System T-Mold CHP - CHAMPAGNE T MOLD Leg Finish: Smith System Paint PLT - Platinum Height: EC - Fixed Height for Caster SMITH SYST <b>Tag For</b> LOUNGE AREA 1 T-4	6	243.60	1,461.60
<b>19 SMINC17576 - Interchange; 3 inch dual wheel casters-Pack of 4, Locking</b> SMITH SYST <b>Tag For</b> LOUNGE AREA 1 T-4/CSTR	6	61.20	367.20
<b>20 TS4TWP - Campfire; Table-Personal</b> <b>TOP OPT: *OPT:TOP SELECTION</b> <b>HPL TOP: HPL TOP</b> <b>TOP-SURF: TOP SURFACE</b> <b>OLL01: *TOP-SURF:OLL01 PRICE GROUP 1</b> <b>2900: MISC LAMINATE</b> STEELCASE CORPORATION Laminate: 2HWA -GREY KINGSWOOD STEELCASE	4	362.48	1,449.92

TITLE OF PRODUCT TRANSFERS UPON RECEIPT BY CUSTOMER.

Description	Quantity	Unit Price	Extended Price
<b>20</b> <b>Tag For</b> LOUNGE AREA 1 T-5			
<b>21</b> <b>911500568SR</b> - High Pressure Laminate-61x97, .028" Thick <b>TOP-SURF:</b> 2HWA GREY KINGSWOOD (HPL) STEELCASE	1	212.67	212.67
<b>22</b> <b>TS31413M</b> - Jenny; Chair-Round, Low, Multiple fabric <b>INR BACK:</b> 59DH GRADED IN PR. GRP. 8 MOMENTUM TEXTILES Purchaser: VENDOR Pattern: SILICA COMPASS Color: FRESH -09170423 Direction: VERTICAL <b>OUT BACK:</b> 59DH GRADED IN PR. GRP. 8 MOMENTUM TEXTILES Purchaser: VENDOR Pattern: SILICA COMPASS Color: FRESH -09170423 Direction: VERTICAL <b>SEAT:</b> 59DH GRADED IN PR. GRP. 8 ARC-COM FABRICS INC Purchaser: VENDOR Pattern: MAJORCA Color: INDIGO -62964 Direction: HORIZONTAL STEELCASE <b>Tag For</b> LOUNGE AREA 1 S-1A	4	1,310.08	5,240.32
<b>23</b> <b>TS31401CM</b> - Jenny; Chair-No arms, Multiple fabric, Casters <b>INR BACK:</b> 59DH GRADED IN PR. GRP. 8 MOMENTUM TEXTILES Purchaser: VENDOR Pattern: SILICA COMPASS Color: FRESH -09170423 Direction: VERTICAL <b>OUT BACK:</b> 59DH GRADED IN PR. GRP. 8 MOMENTUM TEXTILES Purchaser: VENDOR Pattern: SILICA COMPASS Color: FRESH -09170423 Direction: VERTICAL <b>SEAT:</b> 59DH GRADED IN PR. GRP. 8 ARC-COM FABRICS INC Purchaser: VENDOR Pattern: MAJORCA Color: INDIGO -62964	2	1,024.88	2,049.76

TITLE OF PRODUCT TRANSFERS UPON RECEIPT BY CUSTOMER.

Description	Quantity	Unit Price	Extended Price
23 Direction: HORIZONTAL STEELCASE <b>Tag For</b> LOUNGE AREA 1 S-1B			
24 <b>TS31401CM</b> - Jenny; Chair-No arms, Multiple fabric, Casters <b>INR BACK:</b> 5999 MISC FABRIC MOMENTUM TEXTILES Purchaser: VENDOR Pattern: SILICA COMPASS Color: FRESH -09170423 Direction: VERTICAL <b>OUT BACK:</b> 5999 MISC FABRIC MOMENTUM TEXTILES Purchaser: VENDOR Pattern: SILICA COMPASS Color: FRESH -09170423 Direction: VERTICAL <b>SEAT:</b> 5744 BLUEBERRY STEELCASE <b>Tag For</b> LOUNGE AREA 1 S-1B	2	896.54	1,793.08
25 <b>BXBYARMLESS</b> - AMQ Bixby Chair Armless <b>Cushion:</b> No Cushion <b>Frame Finish:</b> Paint PC03 - Platinum <b>Seat Shell Finish:</b> Plastic PL02 - Sterling Dark <b>Back Shell Finish:</b> Plastic PL03 - Platinum <b>Castors or Glides:</b> Soft Castors <b>Accessories:</b> No Accessory <b>Storage Tray:</b> No Storage Tray AMQ SOLUTI <b>Tag For</b> LOUNGE AREA 1 S-2	33	166.52	5,495.16
26 <b>N93M3MX</b> - FRINGE,MID BACK,3 SEAT,ARMLESS,CONTRAST <b>BACK UPHOLSTERY GRADE:</b> DTE: DESIGNTEX GRADE E <b>3921_501:</b> LINNEN WASSABI <b>LUMBAR UPHOLSTERY GRADE:</b> DTE: DESIGNTEX GRADE E <b>3921_501:</b> LINNEN WASSABI <b>EXTREME BACK UPH GRADE:</b>	4	2,621.08	10,484.32

TITLE OF PRODUCT TRANSFERS UPON RECEIPT BY CUSTOMER.

Description	Quantity	Unit Price	Extended Price
26 <b>DTE: DESIGNTEX GRADE E</b> <b>3921_501: LINNEN WASSABI</b> <b>SEAT UPHOLSTERY GRADE:</b> <b>DTE: DESIGNTEX GRADE E</b> <b>3921_406: LINNEN OCEANIA</b> <b>FRONT SEAT GROMMET:</b> <b>X: NO FRONT SEAT GROMMET</b> <b>LEG MATERIAL/FINISH:</b> <b>501: METAL LEG,PLATINUM METALLIC</b> <b>GLIDE:</b> <b>STD: STANDARD GLIDE</b> KIMBALL OF <b>Tag For</b> LOUNGE AREA 1 S-4			
27 <b>N66RD48CL - WHIMSY,48DIA ROUND,MOBILE,LAMINATE TOP</b> <b>LAMINATE:</b> <b>G1009: WHITE NEBBIA</b> <b>UPHOLSTERY GRADE:</b> <b>DTE: DESIGNTEX GRADE E</b> <b>3921_406: LINNEN OCEANIA</b> KIMBALL OF <b>Tag For</b> LOUNGE AREA 1 OTT-1	2	1,087.80	2,175.60
28 <b>N66RD48CL - WHIMSY,48DIA ROUND,MOBILE,LAMINATE TOP</b> <b>LAMINATE:</b> <b>G1009: WHITE NEBBIA</b> <b>UPHOLSTERY GRADE:</b> <b>DTE: DESIGNTEX GRADE E</b> <b>3921_501: LINNEN WASSABI</b> KIMBALL OF <b>Tag For</b> LOUNGE AREA 1 OTT-2	2	1,087.80	2,175.60
29 <b>8308/2FO/GD1 - RAVEN INSIDE 30 CURCE MODULAR UNIT</b> SEAT HEIGHT: 18" BACK HEIGHT: 33" UPHOLSTERY BACK: CF STINSON POLYGON MARIANA POL20 BACK FABRIC DIRECTION: RAILROAD OR OFF THE BOLT - TBD UPHOLSTERY SEAT: CF STINSON CORE 2.0 BLUEBERRY CRE261	7	1,355.83	9,490.81

TITLE OF PRODUCT TRANSFERS UPON RECEIPT BY CUSTOMER.

yourNBS.com

Remit Payments to: NBS, 6973 Reliable Parkway, Chicago, IL 60686

Description	Quantity	Unit Price	Extended Price
29 LEGS: ALUMINUM +/NON GANGING UNIT ERG INTERN Tag For LOUNGE AREA 1 S-5A			
30 <b>8314/2FO/GD1</b> - RAVEN OUTSIDE 30 CURCE MODULAR UNIT SEAT HEIGHT: 18" BACK HEIGHT: 33" UPHOLSTERY BACK: CF STINSON POLYGON MARIANA POL20 BACK FABRIC DIRECTION: RAILROAD OR OFF THE BOLT - TBD UPHOLSTERY SEAT: CF STINSON CORE 2.0 BLUEBERRY CRE261 LEGS: ALUMINUM +/NON GANGING UNIT ERG INTERN Tag For LOUNGE AREA 1 S-5B	1	1,459.71	1,459.71
31 <b>8334/2FO/GD1</b> - RAVEN BACKLESS 30 CURCE MODULAR UNIT SEAT HEIGHT: 18" SEAT DEPTH: 27" UPHOLSTERY: CF STINSON CORE 2.0 BLUEBERRY CRE261 LEGS: ALUMINUM +/NON GANGING UNIT ERG INTERN Tag For LOUNGE AREA 1 S-5C	3	1,087.80	3,263.40
<b>Sub Total</b>			52,430.06
<b>Total</b>			<b>52,430.06</b>
<b>LOUNGE AREA 2</b>			
32 <b>N66RD48CL</b> - WHIMSY,48DIA ROUND,MOBILE,LAMINATE TOP <b>LAMINATE:</b> <b>G1009:</b> WHITE NEBBIA <b>UPHOLSTERY GRADE:</b> <b>DTE:</b> DESIGNTEX GRADE E <b>3921_501:</b> LINNEN WASSABI KIMBALL OF Tag For LOUNGE AREA 2 OTT-2	1	1,087.80	1,087.80
33 <b>F119-22X31X35-Z</b> - Rock'n Roller XL 22"L x 31"W x 35"H Fabric Seat Finish GR1 Grade-5 Little Dot Chartruse	2	1,016.17	2,032.34

TITLE OF PRODUCT TRANSFERS UPON RECEIPT BY CUSTOMER.

33

ACCEPTED BY \_\_\_\_\_ TITLE \_\_\_\_\_ DATE \_\_\_\_\_

Description	Quantity	Unit Price	Extended Price
<b>33</b> Embroidery Option ~ No Embroidery CAL 133 Option FOMCORE <b>Tag For</b> LOUNGE AREA 2 S-3A			
<b>34</b> <b>F119-22X31X35-Z</b> - Rock'n Roller XL 22"L x 31"W x 35"H Fabric Seat Finish GR1 Grade-5 Little Dot Sapphire Embroidery Option ~ No Embroidery CAL 133 Option FOMCORE <b>Tag For</b> LOUNGE AREA 2 S-3B	2	1,016.17	2,032.34
<b>Sub Total</b>			5,152.48
<b>Total</b>			5,152.48
<b>LOUNGE AREA 3</b>			
<b>35</b> <b>N66RD48CL</b> - WHIMSY,48DIA ROUND,MOBILE,LAMINATE TOP <b>LAMINATE:</b> <b>G1009:</b> WHITE NEBBIA <b>UPHOLSTERY GRADE:</b> <b>DTE:</b> DESIGNTEX GRADE E <b>3921_501:</b> LINNEN WASSABI KIMBALL OF <b>Tag For</b> LOUNGE AREA 3 OTT-2	1	1,087.80	1,087.80
<b>36</b> <b>8308/2FO/GD1</b> - RAVEN INSIDE 30 CURGE MODULAR UNIT SEAT HEIGHT: 18" BACK HEIGHT: 33" UPHOLSTERY BACK: CF STINSON POLYGON MARIANA POL20 BACK FABRIC DIRECTION: RAILROAD OR OFF THE BOLT - TBD UPHOLSTERY SEAT: CF STINSON CORE 2.0 BLUEBERRY CRE261 LEGS: ALUMINUM +/NON GANGING UNIT ERG INTERN <b>Tag For</b> LOUNGE AREA 3 S-5D	8	1,355.83	10,846.64

yourNBS.com

Remit Payments to: NBS, 6973 Reliable Parkway, Chicago, IL 60686

Description	Quantity	Unit Price	Extended Price
<b>Sub Total</b>			11,934.44
<b>Total</b>			<b>11,934.44</b>

**MEDIA TECH MILLWORK**

<b>37</b>	<b>TRN-SB-841813-L - TRANSITION 84X18X13 STARTER UNIT</b> FLOOR TO TOP OF UNIT HEIGHT 78"H X 20"W X 13"D INCLUDES 3-FIXED AND 4-TAB CAM ADJUSTABLE SHELVES HPL END PANELS/BASE/TOP: WA BLACKBIRD 5024-60 PVC END PANELS/BASE/TOP: BLACK C600001 HPL ADJ SHELVES: WA MAGNOLIA 5012-60 PVC ADJ SHELVES: GENERIC WHITE C100033 MEDIA TECH <b>Tag For</b> MEDIA TECH MILLWORK TRN-841813	1	497.25	497.25
<b>38</b>	<b>TRN-SB-841813A-L - TRANSITION 84X18X13 ADDER UNIT</b> FLOOR TO TOP OF UNIT HEIGHT 78"H X 19"W X 13"D INCLUDES 3-FIXED AND 4-TAB CAM ADJUSTABLE SHELVES HPL END PANELS/BASE/TOP: WA BLACKBIRD 5024-60 PVC END PANELS/BASE/TOP: BLACK C600001 HPL ADJ SHELVES: WA MAGNOLIA 5012-60 PVC ADJ SHELVES: GENERIC WHITE C100033 MEDIA TECH <b>Tag For</b> MEDIA TECH MILLWORK TRN-841813A	1	389.70	389.70
<b>39</b>	<b>WCS-481430-LL-HPA - ELEMENTS CUPBOARD STORAGE WALL</b> UNIT 48"W X 14"D X 30"H WITH 2-ADJUSTABLE SHELVES, 2-DOORS WITH HINGE HPL: WA FRESH CUT 13065-60 PVC: FRESH CUT C700189 HINGE: H3 PULL: TBD LOCK: KEY ALIKE MEDIA TECH <b>Tag For</b> MEDIA TECH MILLWORK WCS-481430	2	745.65	1,491.30
<b>40</b>	<b>BOF-482434-L-CT - OPEN FOLIO UNIT WITH CONTINUOUS TOP</b> 48"W X 24"D X 34"H 22-FIXED SHELVES HPL CASE: WA BLACKBIRD 5024-60 PVC CASE: BLACK C600001 HPL FOLIO SHELVES: WA MAGNOLIA 5012-60 MEDIA TECH <b>Tag For</b> MEDIA TECH MILLWORK BOF-482434	1	759.60	759.60
<b>41</b>	<b>BCCB4D2-482434-LL-HP - CUPBOARD BASE UNIT</b> 48"W X 24"D X 34"H	1	1,196.55	1,196.55

TITLE OF PRODUCT TRANSFERS UPON RECEIPT BY CUSTOMER.

35

ACCEPTED BY \_\_\_\_\_ TITLE \_\_\_\_\_ DATE \_\_\_\_\_

Description	Quantity	Unit Price	Extended Price
<b>41</b> 4-CUBICLE AND 2-DRAWER STORAGE 2-ADJUSTABLE SHELVES, 2-DOORS WITH HINGE HPL: WA FRESH CUT 13065-60 PVC: FRESH CUT C700189 HINGE: H3 PULL: TBD LOCK: KEY ALIKE MEDIA TECH <b>Tag For</b> MEDIA TECH MILLWORK BCSLD-242434			
<b>42</b> <b>ECTBL-C-24196</b> - CONTINUOUS TOP ECT WITH 4" BACK SPLASH 196"W X 24"D X 1.25"H +/ECTBL-C-24186 TO BE 186"L HPL: WA MUSHROOM 5013-60 PVC: TBD (FOG C600257 RECOMMENDED) MEDIA TECH <b>Tag For</b> MEDIA TECH MILLWORK ECTBL-C-24196	1	537.30	537.30
<b>43</b> <b>WSCSA48-C-T</b> - 48" WIDE VST ASSEMBLY WITH 2-SUPPORT ARMS +/MODIFIED FOR USE WITH 34"H OVERALL WORKSURFACE TFL: CANADIAN GRAY PVC: SILVER GRAY C600244 POWDER COAT: 809 SILVER MEDIA TECH <b>Tag For</b> MEDIA TECH MILLWORK WS-C-2430	1	277.65	277.65
<b>44</b> <b>HT-96</b> - HORIZONTAL MOUNTING TRACK 96" WITH PRE-PUNCHED MOUNT HOULES ON 16" CENTERS. INCLUDES CONCEALMENT MATERIAL. FINISH: ANODIZED ALUMINUM WALL TYPE: CMU MEDIA TECH <b>Tag For</b> MEDIA TECH MILLWORK HT-96	5	78.75	393.75
<b>45</b> <b>HTAEC</b> - HORIZONTAL MOUNTING TRACK END CAP WITH MOUNTING SCREWS FINISH: BLACK MEDIA TECH <b>Tag For</b> MEDIA TECH MILLWORK HTAEC	4	7.20	28.80
<b>46</b> <b>HTACS</b> - HORIZONTAL MOUNTING TRACK CONNECTOR SPLICE PLATE FINISH: ALUMINUM MEDIA TECH	4	3.15	12.60

TITLE OF PRODUCT TRANSFERS UPON RECEIPT BY CUSTOMER.

Description	Quantity	Unit Price	Extended Price
46 Tag For MEDIA TECH MILLWORK HTACS			
47 <b>UPCHARGE</b> - UPCHARGE FOR PREMIUM LAMINATE FORMICA GREYED OAK 5791-PG MEDIA TECH	1	349.92	349.92
<b>Sub Total</b>			5,934.42
<b>Total</b>			<b>5,934.42</b>
49 <b>LOT</b> - LAMINTE UPCHARGE 494360 - CLASSIC LINEN HIGH GLOSS SMITH SYST	1	448.35	448.35
50 <b>LOT</b> - PROJECT MANAGEMENT FEES 32 HOURS X \$85 NBS TROY	1	2,720.00	2,720.00
51 <b>LOT</b> - NON UNION STRAIGHT TIME LABOR TO RECEIVE AND DELIVER NEW PRODUCT TO THE JOB SITE  ALL WORK TO BE DONE AT ONE TIME ROSE MOVIN	1	2,383.00	2,383.00
52 <b>LOT</b> - NON UNION STRAIGHT TIME LABOR TO INSTALL NEW PRODUCT PER PRINT  ALL WORK TO BE DONE AT ONE TIME  PRICING DOES NOT INCLUDE THE REMOVAL OF EXISTING PRODUCT  CLEAR AND READY SPACE INCLUDES DEBRIS REMOAVL ROSE MOVIN	1	10,954.00	10,954.00
53 <b>LOT</b> - NON UNION LABOR OVERTIME DIFFERENTIAL  WILL BE INVOICED IF REQUIRED ROSE MOVIN	1	3,952.00	3,952.00
54 <b>MONTHLY</b> - MONTHLY STORAGE FEES TO HOLD FURNITURE AT WAREHOUSE.  WILL BE INVOICED MONTHLY FOR THE MONTHS USED - NOT TO EXCEED FIGURE ROSE MOVIN	4	1,235.00	4,940.00

<b>Quotation Totals</b>		
<b>Sub Total</b>		165,256.88
MEDIA TECH FREIGHT		1,363.00

TITLE OF PRODUCT TRANSFERS UPON RECEIPT BY CUSTOMER.



2595 Bellingham • Troy, MI 48083 • 248.823.5400 • 248.823.5401 Fax  
 2211 Old Earhart Rd. Ste.190 • Ann Arbor, MI 48105 • 248.823.5400 • 248.823.5401 Fax  
 3201 Pine Tree Rd. Ste. A • Lansing, MI 48911 • 517.886.0072 • 248.823.5401 Fax  
 5160 Alliance Dr. • Bay City, MI 48706 • 989.895.8574 • 989.895.8545 Fax  
 4 North St. Clair St. • Toledo, OH 43604 • 419.662.2040 • 248.823.5401 Fax

**Quotation 357842**  
 Page 15 / 15 (cont'd)

**yourNBS.com**      **Remit Payments to:** NBS, 6973 Reliable Parkway, Chicago, IL 60686

SMITH SYST FREIGHT	4,093.00
FOMCORE FREIGHT	607.00
STEELCASE COM FABRIC LINE 24	525.00
<b>Grand Total</b>	<b>171,844.88</b>

**End of Quotation**

TITLE OF PRODUCT TRANSFERS UPON RECEIPT BY CUSTOMER.

38

ACCEPTED BY \_\_\_\_\_ TITLE \_\_\_\_\_ DATE \_\_\_\_\_



2595 Bellingham • Troy, MI 48083 • 248.823.5400 • 248.823.5401 Fax  
 2211 Old Earhart Rd. Ste.190 • Ann Arbor, MI 48105 • 248.823.5400 • 248.823.5401 Fax  
 3201 Pine Tree Rd. Ste. A • Lansing, MI 48911 • 517.886.0072 • 248.823.5401 Fax  
 5160 Alliance Dr. • Bay City, MI 48706 • 989.895.8574 • 989.895.8545 Fax  
 4 North St. Clair St. • Toledo, OH 43604 • 419.662.2040 • 248.823.5401 Fax

**Quotation 357813**

**Quote Date** 01/27/23

**Customer Order**

**Project** 221129

**Customer** L00002

**Terms** NET 10 DAYS

**Expiration Date**

**Account Representative** MONIQUE DUGAN

**yourNBS.com**

**Remit Payments to:** NBS, 6973 Reliable Parkway, Chicago, IL 60686

**Quote To**

Livonia Public Schools  
 15125 FARMINGTON RD  
 LIVONIA, MI, 48154-5413

**Ship To**

Harry Lau  
 Rosedale Elementary School  
 36651 ANN ARBOR TRL  
 MEDIA CENTER  
 LIVONIA, MI, 48150-3421

**Phone** +1 (313) 523-9156

**Phone** +1 (734) 744-2537

**Cell** +1 (734) 812-8597

hlau@livoniapublicschools.org

**Sales Location** Troy

**PO REQUIRED TO PLACE ORDER**

**E&I, OMNIA, TIPS & NCPA CONTRACTS HAVE BEEN APPLIED TO THIS QUOTE**

**PRICING IS VALID FOR 30 DAYS**

**LEAD TIME: 14-16 WEEKS FROM RECEIPT OF PO**

**STRAIGHT TIME NON UNION LABOR HAS BEEN QUOTED**

**ALL PRODUCT TO INSTALL AT THE SAME TIME**

**PRICING DOES NOT INCLUDE THE REMOVAL OR MOVING OF EXISTING PRODUCT**

**IF REQUIRED STORAGE FEES AND OVERTIME DIFFERENTIAL FEES WILL BE INVOICED AS NEEDED**

**30 DAYS OF FREE STORAGE HAS BEEN INCLUDED IN OUR PRICING**

Description	Quantity	Unit Price	Extended Price
-------------	----------	------------	----------------

**BOOK STACKS**

1	<b>DISP-4724</b> - Media Technologies Display End Panel, 3 opening, 24"Wx3-1/2"Dx47-1/2"H **to mount on H11-4824 Double Sided Bookcases. HPL/3mm PVC construction HPL: Formica Greyed Oak 5791-PG Interior Back Panel: Wilsonart Tangerine 4915-60 PVC: Silver Grey C600244 MEDIA TECH <b>Tag For</b> BOOK STACKS DISPLAY	5	706.05	3,530.25
---	--	---	--------	----------

TITLE OF PRODUCT TRANSFERS UPON RECEIPT BY CUSTOMER.

ACCEPTED BY \_\_\_\_\_ TITLE \_\_\_\_\_ DATE \_\_\_\_\_

Description	Quantity	Unit Price	Extended Price
<b>Sub Total</b>			3,530.25
<b>Total</b>			<b>3,530.25</b>

**WALK UP STATION**

<b>2</b>	<b>WUW2081-SP-ADA - Walk-up Wall Hung ADA Computer Workstation</b> 81"W x 20"D x 13"+H	1	3,682.67	3,682.67
	<p>Consisting of:                      Center storage module at 27"W x 13"H+ with 2-locking doors, flanked by a 27"W surface extending off the bottom right side of cabinet &amp; another at the top left side. Full height (13"+) panel at the left end for ADA compliance.                      2-Wire management grommets in the surface to coordinate with a series of wire management access holes/channels across the back of the station to conceal all wires.                      Wall hung using a hidden mount on the back of the cabinet along with hidden cleats behind the left and right surface extensions.                      Workstation has a 7/8" border on all sides with a recessed reveal detail.</p> <p>Inset Reveal &amp; Doors: Wilsonart Magnolia 5012-60                      Exterior Shell: Wilsonart Lapis Blue D417K-18                      Edge: White                      Pulls: Rod Style - Brushed Nickel                      Finishes as noted or equal, based on location                      PRIMEWAY</p> <p><b>Tag For</b>            WALK-UP COMP STATION                                                WALK-UP</p>			
<b>Sub Total</b>				3,682.67
<b>Total</b>				<b>3,682.67</b>

**CIRC DESK**

<b>3</b>	<b>SMLBR21004 - Booktruck, Six Sloping Shelf with Six Book Supports,</b> 18"D x 36"W x 43"H <b>Cart Finish:</b> Smith System Paint CL - CLEMENTINE <b>Divider Finish:</b> Smith System Plastic BLACK - BLACK SMITH SYST	4	447.60	1,790.40
	<b>Tag For</b> CIRC DESK BKTK-1			
<b>4</b>	<b>H11-4112 - Benchmark Shelving</b> 37"W x 12"D x 48"H Sgl Face Starter TFL back, HPL panel, PVC construction, HPL shelves, HPL: Formica Grayed Oak 5791-PG	1	471.15	471.15

TITLE OF PRODUCT TRANSFERS UPON RECEIPT BY CUSTOMER.

40

ACCEPTED BY \_\_\_\_\_ TITLE \_\_\_\_\_ DATE \_\_\_\_\_

Description	Quantity	Unit Price	Extended Price
<b>4</b> PVC: Silver Gray C600244 TFL Back: Greyed Oak 5791 MEDIA TECH <b>Tag For</b> CIRCULATION DESK H11-4812A			
<b>5</b> <b>H11-4812A</b> - Benchmark Shelving 37"W x 12"D x 48"H Sgl Face Adder TFL back, HPL panel, PVC construction, HPL shelves, HPL: Formica Grayed Oak 5791-PG PVC: Silver Gray C600244 TFL Back: Greyed Oak 5791 MEDIA TECH <b>Tag For</b> CIRCULATION DESK H11-4812A	2	391.95	783.90
<b>6</b> <b>ND-75DX-MOB</b> - Nomad Desk WITHOUT transaction counter 75"W X 24"D, 29"H Worksurface, with grommet HPL Worksurface D: Nevamar White Fiesta MW550-SD HPL Panel B & C: Premium Color: Formica Grayed Oak 5791-PG PVC Edge: Silver Grey C600244 Accent Panel A: Wilsonart Lapis Blue D417-60 Powdercoat: 809 Silver MEDIA TECH <b>Tag For</b> CIRC DESK CD-1	1	3,636.45	3,636.45
<b>7</b> <b>MCD-1817</b> - Steel Pencil Drawer 18"W x 17"D X 2"H Finish: Black MEDIA TECH <b>Tag For</b> CIRCULATION DESK CD-1B	1	192.60	192.60
<b>8</b> <b>ND-40BR-MOB</b> - Nomad Mobile Book Return 34"W x 29"H HPL Worksurface: WA Classic Linen 4943-38 HPL Panel B,C: Premium Color: Formica Grayed Oak 5791-PG PVC Edge: Silver Grey C600244 Powdercoat: 809 Silver MEDIA TECH <b>Tag For</b> CIRC DESK CD-2	1	1,759.05	1,759.05
<b>9</b> <b>MDS-DBTL-1824-24</b> - Nomad Depressible Book Truck 32/39" H HPL Panel: Premium Color: Formica Grayed Oak 5791-PG	1	1,327.50	1,327.50

TITLE OF PRODUCT TRANSFERS UPON RECEIPT BY CUSTOMER.



2595 Bellingham • Troy, MI 48083 • 248.823.5400 • 248.823.5401 Fax  
 2211 Old Earhart Rd. Ste.190 • Ann Arbor, MI 48105 • 248.823.5400 • 248.823.5401 Fax  
 3201 Pine Tree Rd. Ste. A • Lansing, MI 48911 • 517.886.0072 • 248.823.5401 Fax  
 5160 Alliance Dr. • Bay City, MI 48706 • 989.895.8574 • 989.895.8545 Fax  
 4 North St. Clair St. • Toledo, OH 43604 • 419.662.2040 • 248.823.5401 Fax

**Quotation 357813**  
 Page 4 / 11 (cont'd)

yourNBS.com

Remit Payments to: NBS, 6973 Reliable Parkway, Chicago, IL 60686

Description	Quantity	Unit Price	Extended Price
<b>9</b> PVC Edge: Silver Grey C600244 Powdercoat: 809 Silver MEDIA TECH <b>Tag For</b> CIRC DESK BKTK-2			
<b>10</b> <b>WMPS661220-W-LP2A</b> - Nomad Mobile Pedestal 2 Box 14-13/16"W" x 20-3/4"D x 27"H HPL Premium Color: Formica Grayed Oak 5791-PG PVC Edge: Silver Grey C600244 Pull Type: P2 Arch Pull Pull Finish: Nickel Lock Type: Lock Alike MEDIA TECH <b>Tag For</b> CIRC DESK CD-3	1	509.85	509.85
<b>Sub Total</b>			10,470.90
<b>Total</b>			<b>10,470.90</b>
<b>FLEX SPACE B129</b>			
<b>11</b> <b>BXBYARMLESS</b> - AMQ Bixby Chair Armless <b>Cushion:</b> No Cushion <b>Frame Finish:</b> Paint PC03 - Platinum <b>Seat Shell Finish:</b> Plastic PL02 - Sterling Dark <b>Back Shell Finish:</b> Plastic PL03 - Platinum <b>Castors or Glides:</b> Soft Castors <b>Accessories:</b> No Accessory <b>Storage Tray:</b> No Storage Tray AMQ SOLUTI <b>Tag For</b> FLEX SPACE B129 S-2	40	166.52	6,660.80
<b>12</b> <b>SMEMTNL2460</b> - Elemental; Table-Nest and fold, With casters, 24D x 60W Worksurface Finish: Smith System Laminate 494360 - CLASSIC LINEN HIGH GLOSS Edge Type: 1 1/4in Top w 3/8in Bmp TMld Edge Finish: Smith System T-Mold CHP - CHAMPAGNE T MOLD Leg Finish: Smith System Paint PLT - Platinum Height: EJ - Adjustable Height SMITH SYST <b>Tag For</b> FLEX SPACE B129 T-1	20	667.20	13,344.00

TITLE OF PRODUCT TRANSFERS UPON RECEIPT BY CUSTOMER.

42

ACCEPTED BY \_\_\_\_\_ TITLE \_\_\_\_\_ DATE \_\_\_\_\_

Description	Quantity	Unit Price	Extended Price
<b>Sub Total</b>			20,004.80
<b>Total</b>			<b>20,004.80</b>

LOUNGE AREA 1

13	<b>FK007-CONVOCART-Z-SE - Convo Lily Set (10 Convo Lily pads and cart)</b> <b>Select Fabric Seat Finish:</b> <b>GR2: Grade-2</b> <b>DOD: Doodle</b> <b>GR1: Grade-1</b> <b>STX-8838: Imperial</b> <b>GR1: Grade-1</b> <b>STX-8823: Carbon</b> <b>GR1: Grade-1</b> <b>STX-8802: Lagoon</b> <b>GR1: Grade-1</b> <b>STX-8833: Crème De Menthe</b> <b>GR1: Grade-1</b> <b>STX-8842: Limoncello</b>	3	4,404.40	13,213.20
----	---	---	----------	-----------

FOMCORE

Tag For LOUNGE AREA 1  
 S-4

14	<b>N66RD22C - WHIMSY,22DIA ROUND,MOBILE</b> <b>UPHOLSTERY GRADE:</b> <b>MOMK: MOMENTUM GRADE K</b> <b>09191642: SILICA STRIDE ROYAL</b>	8	703.80	5,630.40
----	--	---	--------	----------

**LEATHER PULL:**  
**EB: EBONY LEATHER**

KIMBALL OF

Tag For LOUNGE AREA 1  
 OTT-1

15	<b>KRB-C3060L-29-4C - Media Technologies Kirby Mobile Table</b> 30"x60"x29"H HPL Worksurface, HPL Panels, 3mm PVC Edges, Panel-mount locking casters. HPL Top/Exterior End Panels: Formica 8824-58 White drops HPL Interior of Base: Wilsonart Lapis Blue D417-60 PVC: Silver Grey C600244 Powder Coat: Silver 809 MEDIA TECH	2	667.80	1,335.60
----	--	---	--------	----------

TITLE OF PRODUCT TRANSFERS UPON RECEIPT BY CUSTOMER.

43

ACCEPTED BY \_\_\_\_\_ TITLE \_\_\_\_\_ DATE \_\_\_\_\_

Description	Quantity	Unit Price	Extended Price
15 Tag For LOUNGE AREA T-4			
16 NAC1872CUSH - ACCESSORIES,18DX72W,CUSHION UPHOLSTERY GRADE: 6: GRADE 6 3628: ESSENCE MIDNIGHT METALLIC KIMBALL OF Tag For LOUNGE AREA 1 CUSH	5	547.40	2,737.00
17 7380/F20/FGD - BRIGHT JR 18"W SINGLE SEAT MODULAR UNIT SEAT HEIGHT: 15" BACK HEIGHT: 28" A-BACK: MOMENTUM BAUBLE MADRAS 09489544 FABRIC BACK DIRECTION: RAILROAD OR OFF THE BOLT - TBD B-SEAT: CF STINSON CORE 2.0 REGAL BLUE CRE274 C-SIDES: CF STINSON CORE 2.0 REGAL BLUE CRE274 D-BACK: MOMENTUM BAUBLE MADRAS 09489544 FABRIC BACK DIRECTION: RAILROAD OR OFF THE BOLT - TBD +/NON GANGING UNIT ERG INTERN Tag For LOUNGE AREA 1 S-1A	4	1,149.05	4,596.20
18 7382-T/FGD - BRIGHTON JR 18X24 UPH MODULAR TABLE WITH LAMINATE TOP TABLE HEIGHT: 14" LAMINATE: STD/TBD EDGE DETAIL: GR 6F .75" FLAT MULTIPLY EDGE STAIN: STD/TBD C-SIDES: CF STINSON STRIDE GERN ST157 +/NON GANGING UNIT ERG INTERN Tag For LOUNGE AREA 1 S-1B	2	1,196.58	2,393.16
19 7383/2FO/FGD - BRIGHT JR 30 DEGREE MODULAR UNIT SEAT HEIGHT: 15" BACK HEIGHT: 28" A-BACK: MOMENTUM BAUBLE MADRAS 09489544 FABRIC BACK DIRECTION: RAILROAD OR OFF THE BOLT - TBD B-SEAT: CF STINSON CORE 2.0 REGAL BLUE CRE274 C-SIDES: CF STINSON CORE 2.0 REGAL BLUE CRE274 D-BACK: MOMENTUM BAUBLE MADRAS 09489544 FABRIC BACK DIRECTION: RAILROAD OR OFF THE BOLT - TBD +/NON GANGING UNIT ERG INTERN Tag For LOUNGE AREA 1 S-1C	2	1,400.91	2,801.82

TITLE OF PRODUCT TRANSFERS UPON RECEIPT BY CUSTOMER.

Description	Quantity	Unit Price	Extended Price
<b>20</b> <b>7385-T/FGD - BRIGHTON JR 18X24 UPH MODULAR TABLE WITH LAMINATE TOP</b> TABLE HEIGHT: 14" LAMINATE: STD/TBD EDGE DETAIL: GR 6F .75" FLAT MULTIPLY EDGE STAIN: STD/TBD C-SIDES: CF STINSON STRIDE GERN ST157 +/NON GANGING UNIT ERG INTERN <b>Tag For</b> LOUNGE AREA 1 S-1D	1	1,429.33	1,429.33
<b>Sub Total</b>			34,136.71
<b>Total</b>			<b>34,136.71</b>
<b>IDEA FACTORY</b>			
<b>21</b> <b>TRN-SB-841813-L - TRANSITION 84X18X13 STARTER UNIT</b> FLOOR TO TOP OF UNIT HEIGHT 78"H X 20"W X 13"D INCLUDES 3-FIXED AND 4-TAB CAM ADJUSTABLE SHELVES HPL END PANELS/TOP/BASE: WA CATALINA 13092-60 PVC END PANELS/TOP/BASE: CATALINA C500195 HPL ADJ SHELVES: WA MAGNOLIA 5012-60 PVC ADJ SHELVES:GENERIC WHITE C100033 MEDIA TECH <b>Tag For</b> IDEA FACTORY TRN-841813	1	497.25	497.25
<b>22</b> <b>TRN-SB-841813A-L - TRANSITION 84X18X13 ADDER UNIT</b> FLOOR TO TOP OF UNIT HEIGHT 78"H X 19"W X 13"D INCLUDES 3-FIXED AND 4-TAB CAM ADJUSTABLE SHELVES HPL END PANELS/TOP/BASE: WA CATALINA 13092-60 PVC END PANELS/TOP/BASE: CATALINA C500195 HPL ADJ SHELVES: WA MAGNOLIA 5012-60 PVC ADJ SHELVES: GENERIC WHITE C100033 MEDIA TECH <b>Tag For</b> IDEA FACTORY TRN-841813A	1	389.70	389.70
<b>23</b> <b>WCS-481430-LL-HPA - ELEMENTS CUPBOARD STORAGE WALL</b> UNIT 48"W X 14"D X 30"H WITH 2-ADJUSTABLE SHELVES, 2-DOORS WITH HINGE HPL: WA DRAGON FIR 13088-60 PVC: DRAGON FIRE C300346 HINGE: H3 PULL: TBD LOCK: KEY ALIKE MEDIA TECH <b>Tag For</b> MEDIA TECH MILLWORK WCS-481430	1	745.65	745.65

TITLE OF PRODUCT TRANSFERS UPON RECEIPT BY CUSTOMER.

45

ACCEPTED BY \_\_\_\_\_ TITLE \_\_\_\_\_ DATE \_\_\_\_\_

Description	Quantity	Unit Price	Extended Price
<b>24 BOF-482434-L-CT - OPEN FOLIO UNIT WITH CONTINUOUS TOP</b> 48"W X 24"D X 34"H HPL CASE: WA CATALINA 13092-60 PVC CASE: CATALINA C500195 HPL FOLIO SHELVES: WA MAGNOLIA 5012-60 MEDIA TECH <b>Tag For</b> MEDIA TECH MILLWORK BOF-482434	1	759.60	759.60
<b>25 ECTBL-C-24138 - CONTINUOUS TOP ECT WITH 4" BACK SPLASH</b> 138"W X 24"D X 1.25"H HPL: WA MUSHROOM 5013-60 PVC: TBD (FOG C600257 RECOMMENDED) MEDIA TECH <b>Tag For</b> MEDIA TECH MILLWORK BCSLD-242434	1	440.10	440.10
<b>26 WSCSA48-C-T - 48" WIDE VST ASSEMBLY WITH 2-SUPPORT</b> ARMS MODIFIED FOR USE WITH 34"H OVERALL WORKSURFACE TFL: CANADIAN GRAY PVC: SILVER GRAY C600244 POWDER COAT: 809 SILVER MEDIA TECH <b>Tag For</b> MEDIA TECH MILLWORK WS-C-2430	1	277.65	277.65
<b>27 HT-96 - HORIZONTAL MOUNTING TRACK 96" WITH</b> PRE-PUNCHED MOUNT HOULES ON 16" CENTERS. INCLUDES CONCEALMENT MATERIAL. FINISH: ANODIZED ALUMINUM WALL TYPE: CMU MEDIA TECH <b>Tag For</b> MEDIA TECH MILLWORK HT-96	5	78.75	393.75
<b>28 HTAEC - HORIZONTAL MOUNTING TRACK END CAP</b> WITH MOUNTING SCREWS FINISH: BLACK MEDIA TECH <b>Tag For</b> MEDIA TECH MILLWORK HTAEC	4	7.20	28.80
<b>29 HTACS - HORIZONTAL MOUNTING TRACK CONNECTOR SPLICE</b> PLATE FINISH: ALUMINUM MEDIA TECH <b>Tag For</b> MEDIA TECH MILLWORK HTACS	4	3.15	12.60
<b>30 UPCHARGE - UPCHARGE FOR PREMIUM LAMINATE</b> FORMICA GREYED OAK 5791-PG	1	245.83	245.83

TITLE OF PRODUCT TRANSFERS UPON RECEIPT BY CUSTOMER.

46

ACCEPTED BY \_\_\_\_\_ TITLE \_\_\_\_\_ DATE \_\_\_\_\_

Description	Quantity	Unit Price	Extended Price
30 MEDIA TECH			
32 <b>SMEMTEL60TR</b> - Elemental; Table-Trapezoid, 30D x 60W Worksurface Finish: Smith System Laminate 494360 - CLASSIC LINEN HIGH GLOSS Edge Type: D-1 1/4in Top w 4mm TMld Edge Finish: Smith System T-Mold ORG - ORANGE T MOLD Leg Finish: Smith System Paint PLT - Platinum Height: EA - Adjustable Height SMITH SYST <b>Tag For</b> IDEA FACTORY B121 T-2	6	337.80	2,026.80
33 <b>SMCSC511000000</b> - Cascade Mid-Cabinet-Open, shelves, casters <b>Edge Panel Configuration:</b> P- Pltnm Body w/Solid End Pnls <b>End Panel Finish:</b> Smith System Paint CHL - CHARCOAL SMITH SYST <b>Tag For</b> IDEA FACTORY B121 43/29-S	3	621.00	1,863.00
34 <b>SMINC17577</b> - Interchange; 3 inch dual wheel casters-Pack of 4, Locking, Colorful <b>Caster Finish:</b> Smith System Plastic PLATINUM - Platinum SMITH SYST <b>Tag For</b> IDEA FACTORY B121 T-2/CSTR-2	6	76.80	460.80
35 <b>SMOODLE31</b> - Oodle; Stool-Stack of 3, With 1 movement disc <b>Oodle Finish:</b> Smith System Plastic CHARCOAL - Charcoal SMITH SYST <b>Tag For</b> IDEA FACTORY B121 S-6B	6	157.20	943.20
36 <b>SMOODLE31</b> - Oodle; Stool-Stack of 3, With 1 movement disc <b>Oodle Finish:</b> Smith System Plastic ORANGE - Orange SMITH SYST <b>Tag For</b> IDEA FACTORY B121 S-6A	6	157.20	943.20
37 <b>SMOODLE31</b> - Oodle; Stool-Stack of 3, With 1 movement disc <b>Oodle Finish:</b> Smith System Plastic PLATINUM - Platinum SMITH SYST <b>Tag For</b> IDEA FACTORY B121 S-6C	6	157.20	943.20
38 <b>SMPLN25212BUTCHER</b> - Planner; Studio-Butcher table, Fixed height, With casters, 36D x 72W x 29H <b>Leg Finish:</b> SMITH SYSTEM PAINT OR - ORANGE	2	1,371.00	2,742.00

TITLE OF PRODUCT TRANSFERS UPON RECEIPT BY CUSTOMER.

47

ACCEPTED BY \_\_\_\_\_ TITLE \_\_\_\_\_ DATE \_\_\_\_\_

Description	Quantity	Unit Price	Extended Price
38 SMITH SYST Tag For IDEA FACTORY B121 T-3			
39 <b>SMPLN25271BUTCHER</b> - Planner; Studio-Single bench, Butcher block, For 72W table, 12D x 58W Leg Finish: SMITH SYSTEM PAINT OR - ORANGE SMITH SYST Tag For IDEA FACTORY B121 S-5	4	729.60	2,918.40
<b>Sub Total</b>			16,631.53
<b>Total</b>			<b>16,631.53</b>
40 <b>LOT - LAMINATE UPCHARGE</b> 494360 CLASSIC LINEN HIGH GLOSS SMITH SYST	1	419.38	419.38
41 <b>LOT - PROJECT MANAGEMENT FEES</b> 32 HOURS X \$85 NBS TROY	1	2,720.00	2,720.00
42 <b>LOT - NON UNION STRAIGHT TIME LABOR TO RECEIVE AND DELIVER NEW PRODUCT TO THE JOB SITE</b>  ALL WORK TO BE DONE AT ONE TIME ROSE MOVIN	1	1,591.00	1,591.00
43 <b>LOT - NON UNION STRAIGHT TIME LABOR TO INSTALL NEW PRODUCT PER PRINT</b>  ALL WORK TO BE DONE AT ONE TIME  PRICING DOES NOT INCLUDE THE REMOVAL OF EXISTING PRODUCT  CLEAR AND READY SPACE INCLUDES DEBRIS REMOAVL ROSE MOVIN	1	8,451.00	8,451.00
44 <b>LOT - NON UNION LABOR OVERTIME DIFFERENTIAL</b>  WILL BE INVOICED IF REQUIRED ROSE MOVIN	1	2,912.00	2,912.00
45 <b>MONTHLY - MONTHLY STORAGE FEES TO HOLD FURNITURE AT WAREHOUSE.</b>  WILL BE INVOICED MONTHLY FOR THE MONTHS USED - NOT TO EXCEED FIGURE ROSE MOVIN	4	911.00	3,644.00

TITLE OF PRODUCT TRANSFERS UPON RECEIPT BY CUSTOMER.

48

ACCEPTED BY \_\_\_\_\_ TITLE \_\_\_\_\_ DATE \_\_\_\_\_



2595 Bellingham • Troy, MI 48083 • 248.823.5400 • 248.823.5401 Fax  
 2211 Old Earhart Rd. Ste.190 • Ann Arbor, MI 48105 • 248.823.5400 • 248.823.5401 Fax  
 3201 Pine Tree Rd. Ste. A • Lansing, MI 48911 • 517.886.0072 • 248.823.5401 Fax  
 5160 Alliance Dr. • Bay City, MI 48706 • 989.895.8574 • 989.895.8545 Fax  
 4 North St. Clair St. • Toledo, OH 43604 • 419.662.2040 • 248.823.5401 Fax

**Quotation 357813**  
 Page 11 / 11 (cont'd)

**yourNBS.com**      **Remit Payments to:** NBS, 6973 Reliable Parkway, Chicago, IL 60686

Description	Quantity	Unit Price	Extended Price
<b>Quotation Totals</b>			
<b>Sub Total</b>			108,194.24
FOMCORE FREIGHT			744.00
SMITH SYST FREIGHT			3,789.00
MEDIA TECH FREIGHT			1,113.00
<b>Grand Total</b>			<b>113,840.24</b>

**End of Quotation**

TITLE OF PRODUCT TRANSFERS UPON RECEIPT BY CUSTOMER.

ACCEPTED BY \_\_\_\_\_ TITLE \_\_\_\_\_ DATE \_\_\_\_\_



2595 Bellingham • Troy, MI 48083 • 248.823.5400 • 248.823.5401 Fax  
 2211 Old Earhart Rd. Ste.190 • Ann Arbor, MI 48105 • 248.823.5400 • 248.823.5401 Fax  
 3201 Pine Tree Rd. Ste. A • Lansing, MI 48911 • 517.886.0072 • 248.823.5401 Fax  
 5160 Alliance Dr. • Bay City, MI 48706 • 989.895.8574 • 989.895.8545 Fax  
 4 North St. Clair St. • Toledo, OH 43604 • 419.662.2040 • 248.823.5401 Fax

**Quotation 357754**

**Quote Date** 01/31/23

**Project** 221078

**Customer** L00002

**Terms** NET 10 DAYS

**Account Representative** MONIQUE DUGAN

**yourNBS.com**

**Remit Payments to:** NBS, 6973 Reliable Parkway, Chicago, IL 60686

**Quote To**

Livonia Public Schools  
 15125 FARMINGTON RD  
 LIVONIA, MI, 48154-5413

**Ship To**

PHILLIP FRANCIS  
 Franklin High School  
 31000 JOY RD  
 MEDIA CENTER  
 LIVONIA, MI, 48150-3916

**Phone** +1 (313) 523-9156

**Phone** +1 (734) 744-2554

pfrancis@livoniapublicschools.org

**Sales Location** Troy

**PO REQUIRED TO PLACE ORDER**

**E&I, OMNIA, PEPPM, TIPS & NCPA CONTRACTS HAVE BEEN APPLIED TO THIS QUOTE**

**PRICING IS VALID FOR 30 DAYS**

**LEAD TIME: 14-16 WEEKS FROM RECEIPT OF PO**

**STRAIGHT TIME NON UNION LABOR HAS BEEN QUOTED**

**ALL PRODUCT TO INSTALL AT THE SAME TIME**

**PRICING DOES NOT INCLUDE THE REMOVAL OR MOVING OF EXISTING PRODUCT**

**IF REQUIRED STORAGE FEES AND OVERTIME DIFFERENTIAL FEES WILL BE INVOICED AS NEEDED**

**30 DAYS OF FREE STORAGE HAS BEEN INCLUDED IN OUR PRICING**

Description	Quantity	Unit Price	Extended Price
<b>CIRCULATION DESK</b>			
<b>1 SMLBR21004 - Booktruck, Six Sloping Shelf with Six Book Supports, 18"D x 36"W x 43"H</b> <b>Cart Finish:</b> Smith System Paint NV - NAVY <b>Divider Finish:</b> Smith System Plastic BLACK - BLACK SMITH SYST <b>Tag For</b> CIRCULATION DESK BKT-1	4	447.60	1,790.40
<b>2 ND-75DL-MOB - Nomad Mobile Desk WITH transaction top (LEFT)</b> 24"Dx75"Wx35"H Mobile 29"H worksurface with grommet, Transaction top 35"H,	1	3,823.20	3,823.20

TITLE OF PRODUCT TRANSFERS UPON RECEIPT BY CUSTOMER.

50

ACCEPTED BY \_\_\_\_\_ TITLE \_\_\_\_\_ DATE \_\_\_\_\_

Description	Quantity	Unit Price	Extended Price
<p><b>2</b> 3mm PVC Edge: Silver Grey                      (5) locking casters.                      ACCENT PANEL A: HPL Front: Wilsonart Lapis Blue D417-60                      PANEL B &amp; C: HPL Formica Greyed Oak 5791-60                      Worksurface D: HPL &amp; T-Top: Nevamar White Fiesta MW550-SD                      Powder Coat: Dove Grey 304                      MEDIA TECH  <b>Tag For</b> CIRCULATION DESK                      CD-1</p>			
<p><b>3</b> <b>MCD-1817</b> - STEEL CENTER DRAWER                      18"W X 17"D X 2"H                      FINISH: BLACK                      MEDIA TECH  <b>Tag For</b> CIRCULATION DESK                      CD-1B</p>	1	192.60	192.60
<p><b>4</b> <b>WMPS661220-W-LL-P2A</b> - Mobile Pedestal, 2 Box, 1 File Drawers                      14-13/16"W x 20-3/4"D x 27"H                      HPL: Formica Greyed Oak 5791-60                      PVC: Silver Gray C600244                      Pulls: P2 Nickel                      LOCK FINISH: Nickel                      MEDIA TECH  <b>Tag For</b> CIRCULATION DESK                      CD-3</p>	1	509.85	509.85
<p><b>5</b> <b>ND-40BR-MOB</b> - Nomad Book Return                      30"Dx40"Wx29"H, Mobile HPL/3mm PVC top w/ radiused corners,                      book return slot in top, Curved face, steel end frames w/ floating HPL                      panel, 4 locking casters. For use w/ MCD-DBTL1824-24                      Depressible Book Truck (sold separately)                      A: HPL Front: Formica Greyed Oak 5791-PG                      C: HPL End Panel: Formica Greyed Oak 5791-PG                      D: HPL Work Surface: Nevamar White Fiesta MW550-SD                      D: PVC Work Surface: Silver Gray C600244                      E: Powder Coat: Dove Grey 304                      MEDIA TECH  <b>Tag For</b> CIRCULATION DESK                      CD-2</p>	1	1,759.05	1,759.05
<p><b>6</b> <b>MCD-DBTL-1824-24</b> - Depressible Platform Book Truck,                      18"Dx24.25"Wx24"H HPL construction with 3mm PVC                      edge banding, spring-loaded platform lift mechanism.                      HPL: Formica Greyed Oak 5791-PG                      PVC Edge: Silver Grey C600244                      MEDIA TECH  <b>Tag For</b> CIRCULATION DESK                      BKT-2</p>	2	1,327.50	2,655.00

TITLE OF PRODUCT TRANSFERS UPON RECEIPT BY CUSTOMER.

yourNBS.com

Remit Payments to: NBS, 6973 Reliable Parkway, Chicago, IL 60686

Description	Quantity	Unit Price	Extended Price
<b>Sub Total</b>			10,730.10
<b>Total</b>			<b>10,730.10</b>

FLEX SPACE F125

<b>7</b>	<b>SMEMTNL2460</b> - Elemental; Table-Nest and fold, With casters, 24D x 60W Worksurface Finish: Smith System Laminate 494360 - CLASSIC LINEN LAMINATE HIGH GLOSS Edge type: 1 1/4in Top w 3/8in Bmp TMld Edge Finish: Smith System T-Mold CHP - CHAMPAGNE T MOLD Leg Finish: Smith System Paint PLT - Platinum Height: EJ - Adjustable Height SMITH SYST <b>Tag For</b> FLEX SPACE F125 T-1	30	667.80	20,034.00
----------	--	----	--------	-----------

<b>8</b>	<b>BXBYARMLESS</b> - AMQ Bixby Chair Armless <b>Cushion:</b> No Cushion <b>Frame Finish:</b> Paint PC03 - Platinum <b>Seat Shell Finish:</b> Plastic PL02 - Sterling Dark <b>Back Shell Finish:</b> Plastic PL03 - Platinum <b>Castors or Glides:</b> Soft Castors <b>Accessories:</b> No Accessory <b>Storage Tray:</b> No Storage Tray AMQ SOLUTI <b>Tag For</b> FLEX SPACE F125 S-2	60	166.52	9,991.20
----------	--	----	--------	----------

<b>Sub Total</b>			30,025.20
<b>Total</b>			<b>30,025.20</b>

LARGE PRESENTATION

<b>9</b>	<b>SMEMTNL2460</b> - Elemental; Table-Nest and fold, With casters, 24D x 60W Worksurface Finish: Smith System Laminate 494360 - CLASSIC LINEN LAMINATE HIGH GLOSS Edge Type: 1 1/4in Top w 3/8in Bmp TMld Edge Finish: Smith System T-Mold CHP - CHAMPAGNE T MOLD Leg Finish: Smith System Paint PLT - Platinum Height: EJ - Adjustable Height SMITH SYST <b>Tag For</b> LARGE PRESENTATION T-1	20	667.80	13,356.00
----------	---	----	--------	-----------

<b>10</b>	<b>BXBYARMLESS</b> - AMQ Bixby Chair Armless	40	166.52	6,660.80
-----------	--	----	--------	----------

TITLE OF PRODUCT TRANSFERS UPON RECEIPT BY CUSTOMER.

52

ACCEPTED BY \_\_\_\_\_ TITLE \_\_\_\_\_ DATE \_\_\_\_\_

Description	Quantity	Unit Price	Extended Price
<b>10</b> <b>Cushion:</b> No Cushion <b>Frame Finish:</b> Paint PC03 - Platinum <b>Seat Shell Finish:</b> Plastic PL02 - Sterling Dark <b>Back Shell Finish:</b> Plastic PL03 - Platinum <b>Castors or Glides:</b> Soft Castors <b>Accessories:</b> No Accessory <b>Storage Tray:</b> No Storage Tray AMQ SOLUTI <b>Tag For</b> LARGE PRESENTATION S-2			
<b>Sub Total</b>			20,016.80
<b>Total</b>			<b>20,016.80</b>

LOUNGE AREAS

<b>11</b> <b>ETRND</b> - Elbrook Round Table <b>Size Option:</b> Modular <b>Height:</b> Seated <b>Diameter:</b> 36.00000 <b>Top Surface Finish:</b> Woodgrain HPL 2HAW - ASH WENGE (HPL) <b>Edge Finish:</b> Plastic - PG1 6703 - ASH WENGE <b>Base Finish:</b> Smooth Metallic 4799 - PLATINUM METALLIC <b>Wheel Option:</b> With Wheels STEELCASE <b>Tag For</b> LOUNGE AREAS T-2	3	787.74	2,363.22
<b>12</b> <b>ETSQU</b> - Elbrook Square Table <b>Size Option:</b> Modular <b>Height:</b> Seated <b>Width:</b> 28.00000 <b>Depth:</b> 28.00000 <b>Top Surface Finish:</b> Woodgrain HPL 2HAW - ASH WENGE (HPL) <b>Edge Finish:</b> Plastic - PG1 6703 - ASH WENGE <b>Base Finish:</b> Smooth Metallic 4799 - PLATINUM METALLIC <b>Wheel Option:</b> With Wheels STEELCASE <b>Tag For</b> LOUNGE AREAS T-3	9	749.07	6,741.63

TITLE OF PRODUCT TRANSFERS UPON RECEIPT BY CUSTOMER.

53

ACCEPTED BY \_\_\_\_\_ TITLE \_\_\_\_\_ DATE \_\_\_\_\_

yourNBS.com

Remit Payments to: NBS, 6973 Reliable Parkway, Chicago, IL 60686

Description	Quantity	Unit Price	Extended Price
<b>13 83N4272SRTL - FOOTINGS,42DX72W,SOFT RECTANGULAR TOP, HPL</b> <b>RIM PROFILE:</b> <b>VG1009: SOFTENED,WHITE NEBBIA</b> <b>GROMMET:</b> <b>X: NO GROMMET</b> <b>LAMINATE GROUP:</b> <b>GAL2: GALLERY LAMINATE-GRADE 2</b> <b>G1009: WHITE NEBBIA</b> KIMBALL OF <b>Tag For LOUNGE AREAS</b> T-6	4	879.96	3,519.84
<b>14 CBV285228YBKP - FOOTINGS,28DX52WX28H,Y BASE KIT</b> <b>COLUMN PAINT COLOR:</b> <b>501: PLATINUM METALLIC</b> <b>FOOT PAINT COLOR:</b> <b>501: PLATINUM METALLIC</b> KIMBALL OF <b>Tag For LOUNGE AREAS</b> T-6B	4	540.50	2,162.00
<b>15 TS4TWP - Campfire; Table-Personal</b> <b>TOP OPT: *OPT:TOP SELECTION</b> <b>HPL TOP: HPL TOP</b> <b>TOP-SURF: TOP SURFACE</b> <b>LAMINATE: *TOP-SURF:LAMINATE FINISHES</b> <b>2HAT: ACACIA (HPL)</b> STEELCASE <b>Tag For LOUNGE AREAS</b> T-7	6	294.98	1,769.88
<b>16 TS31401CM - Jenny; Chair-No arms, Multiple fabric, Casters</b> <b>INR BACK: 59DD GRADED IN PR. GRP. 4</b> CF STINSON INC - Acct 140021 Purchaser: VENDOR Pattern: MOCCASIN 2.0 Color: SAIL -MOC255 Direction: HORIZONTAL <b>OUT BACK: 59DD GRADED IN PR. GRP. 4</b> CF STINSON INC - Acct 140021 Purchaser: VENDOR Pattern: MOCCASIN 2.0	4	912.46	3,649.84

TITLE OF PRODUCT TRANSFERS UPON RECEIPT BY CUSTOMER.

Description	Quantity	Unit Price	Extended Price
<p>16      Color: SAIL -MOC255                      Direction: HORIZONTAL  <b>SEAT: 59DH GRADED IN PR. GRP. 8</b>                      ARC-COM FABRICS INC                      Purchaser: VENDOR                      Pattern: SKYE                      Color: COCOA #17 -63346                      Direction: VERTICAL                      STEELCASE  <b>Tag For</b>      LOUNGE AREAS                                       S-1A</p>			
<p>17      <b>TS31413M</b> - Jenny; Chair-Round, Low, Multiple fabric  <b>INR BACK: 59DE GRADED IN PR. GRP. 5</b>                      CF STINSON INC - Acct 140021                      Purchaser: VENDOR                      Pattern: AVANT -AV                      Color: PAPRIKA -AV115                      Direction: HORIZONTAL  <b>OUT BACK: 59DE GRADED IN PR. GRP. 5</b>                      CF STINSON INC - Acct 140021                      Purchaser: VENDOR                      Pattern: AVANT -AV                      Color: PAPRIKA -AV115                      Direction: HORIZONTAL  <b>SEAT: 59DH GRADED IN PR. GRP. 8</b>                      ARC-COM FABRICS INC                      Purchaser: VENDOR                      Pattern: SKYE                      Color: COCOA #17 -63346                      Direction: VERTICAL                      STEELCASE  <b>Tag For</b>      LOUNGE AREAS                                       S-1B</p>	11	1,167.45	12,841.95
<p>18      <b>BXBYARMLESS</b> - AMQ Bixby Chair Armless  <b>Cushion:</b> No Cushion  <b>Frame Finish:</b> Paint PC03 - Platinum  <b>Seat Shell Finish:</b> Plastic PL02 - Sterling Dark  <b>Back Shell Finish:</b> Plastic PL03 - Platinum  <b>Castors or Glides:</b> Soft Castors  <b>Accessories:</b> No Accessory  <b>Storage Tray:</b> No Storage Tray                      AMQ SOLUTI  <b>Tag For</b>      LOUNGE AREAS                                       S-2</p>	18	166.52	2,997.36

TITLE OF PRODUCT TRANSFERS UPON RECEIPT BY CUSTOMER.

Description	Quantity	Unit Price	Extended Price
<p>19 <b>N93M2OMX - FRINGE,MID BACK,2 SEAT,CLEAN-OUT, ARMLESS,CONTRAST</b>  <b>BACK UPHOLSTERY GRADE:</b>  <b>CFSD:</b> CF STINSON GRADE D  <b>CRS_53:</b> CRISS CROSS BRICK  <b>LUMBAR UPHOLSTERY GRADE:</b>  <b>CFSD:</b> CF STINSON GRADE D  <b>CRS_53:</b> CRISS CROSS BRICK  <b>EXTREME BACK UPH GRADE:</b>  <b>CFSD:</b> CF STINSON GRADE D  <b>CRS_53:</b> CRISS CROSS BRICK  <b>SEAT UPHOLSTERY GRADE:</b>  <b>COM:</b> CUSTOMER'S OWN MATERIAL  <b>SPECIAL:</b> SEAT UPHOLSTERY PATTERN COLOR  <b>FRONT SEAT GROMMET:</b>  <b>X:</b> NO FRONT SEAT GROMMET  <b>LEG MATERIAL/FINISH:</b>  <b>501:</b> METAL LEG,PLATINUM METALLIC  <b>GLIDE:</b>  <b>STD:</b> STANDARD GLIDE                      KIMBALL OF  <b>Tag For</b> LOUNGE AREAS                      S-3</p>	2	1,804.12	3,608.24
<p>20 <b>N93M3OMX - FRINGE,MID BACK,3 SEAT,CLEAN-OUT, ARMLESS,CONTRAST</b>  <b>BACK UPHOLSTERY GRADE:</b>  <b>CFSD:</b> CF STINSON GRADE D  <b>CRS_53:</b> CRISS CROSS BRICK  <b>LUMBAR UPHOLSTERY GRADE:</b>  <b>CFSD:</b> CF STINSON GRADE D  <b>CRS_53:</b> CRISS CROSS BRICK  <b>EXTREME BACK UPH GRADE:</b>  <b>CFSD:</b> CF STINSON GRADE D  <b>CRS_53:</b> CRISS CROSS BRICK  <b>SEAT UPHOLSTERY GRADE:</b>  <b>COM:</b> CUSTOMER'S OWN MATERIAL  <b>SPECIAL:</b> SEAT UPHOLSTERY PATTERN COLOR</p>	3	2,446.28	7,338.84

TITLE OF PRODUCT TRANSFERS UPON RECEIPT BY CUSTOMER.

Description	Quantity	Unit Price	Extended Price
<p>20 <b>FRONT SEAT GROMMET:</b>                      X: NO FRONT SEAT GROMMET  <b>LEG MATERIAL/FINISH:</b>                      501: METAL LEG,PLATINUM METALLIC  <b>GLIDE:</b>                      STD: STANDARD GLIDE                      KIMBALL OF                      Tag For LOUNGE AREAS                      S-4A</p>			
<p>21 <b>N93M3OMX - FRINGE,MID BACK,3 SEAT,CLEAN-OUT, ARMLESS,CONTRAST</b>  <b>BACK UPHOLSTERY GRADE:</b>                      COM: CUSTOMER'S OWN MATERIAL                      SPECIAL: BACK UPHOLSTERY PATTERN COLOR  <b>LUMBAR UPHOLSTERY GRADE:</b>                      COM: CUSTOMER'S OWN MATERIAL                      SPECIAL: LUMBAR UPHOLSTERY PATTERN COLO  <b>EXTREME BACK UPH GRADE:</b>                      COM: CUSTOMER'S OWN MATERIAL                      SPECIAL: EXTREME BACK UPH PATTERN COLOR  <b>SEAT UPHOLSTERY GRADE:</b>                      COM: CUSTOMER'S OWN MATERIAL                      SPECIAL: SEAT UPHOLSTERY PATTERN COLOR  <b>FRONT SEAT GROMMET:</b>                      X: NO FRONT SEAT GROMMET  <b>LEG MATERIAL/FINISH:</b>                      501: METAL LEG,PLATINUM METALLIC  <b>GLIDE:</b>                      C10: SOFT GLIDE                      KIMBALL OF                      Tag For LOUNGE AREAS                      S-4B</p>	8	2,164.76	17,318.08
<p>22 <b>N93MOUR9X - FRINGE,MID BACK,OUTSIDE ROUND 90 DEGREE, CONTRAST</b>  <b>BACK UPHOLSTERY GRADE:</b>                      CFSD: CF STINSON GRADE D                      CRS_53: CRISS CROSS BRICK  <b>LUMBAR UPHOLSTERY GRADE:</b></p>	1	2,064.94	2,064.94

TITLE OF PRODUCT TRANSFERS UPON RECEIPT BY CUSTOMER.

Description	Quantity	Unit Price	Extended Price
22 <b>CFSD: CF STINSON GRADE D</b> <b>CRS_53: CRISS CROSS BRICK</b> <b>EXTREME BACK UPH GRADE:</b> <b>CFSD: CF STINSON GRADE D</b> <b>CRS_53: CRISS CROSS BRICK</b> <b>SEAT UPHOLSTERY GRADE:</b> <b>COM: CUSTOMER'S OWN MATERIAL</b> <b>SPECIAL: SEAT UPHOLSTERY PATTERN COLOR</b> <b>LEG MATERIAL/FINISH:</b> <b>501: METAL LEG,PLATINUM METALLIC</b> <b>GLIDE:</b> <b>STD: STANDARD GLIDE</b> KIMBALL OF <b>Tag For</b> LOUNGE AREAS S-5			
23 <b>N93GB2 - FRINGE,GANGING CONNECTOR BRACKET, SET OF 2</b> KIMBALL OF <b>Tag For</b> LOUNGE AREAS GB	5	45.54	227.70
24 <b>VCBCO120HP - Common-BENCH,RECT,47.24x23.62 H26.97</b> <b>Upholstery Finish: ATL60141 - Atlantic 60141</b> <b>Glides Option: Plastic</b> <b>Fire Retardant: CAL TB117-2013</b> <b>SKU: CO120HP-2</b> STEELCASE <b>Tag For</b> LOUNGE AREAS S-6	2	2,176.13	4,352.26
25 <b>8308/2FO - RAVEN 30 DEGREE INSIDE CURVE MODULAR UNIT</b> SEAT HT. 18" BACK HT. 33" LEGS POWDERCOAT: BRUSHED ALUMINUM BACK: CF STINSON POLYGON MARIANA POL20 FABRIC DIRECTION: RAILROAD OR OFF THE BOLT TBD SEAT: CF STINSON CORE 2.0 BLUEBERRY CRE261 FABRIC DIRECTION: RAILROAD OR OFF THE BOLT TBD +/-NON-GANGING UNIT ERG INTERN <b>Tag For</b> LOUNGE AREAS S-7	17	1,355.83	23,049.11
26 <b>8314/2FO - RAVEN 30 DEGREE OUTSIDE CURVE MODULAR UNIT</b> SEAT HT. 18"	1	1,459.71	1,459.71

TITLE OF PRODUCT TRANSFERS UPON RECEIPT BY CUSTOMER.

Description	Quantity	Unit Price	Extended Price
26    BACK HT. 33" LEGS POWDERCOAT: BRUSHED ALUMINUM BACK: CF STINSON POLYGON MARIANA POL20 FABRIC DIRECTION: RAILROAD OR OFF THE BOLT TBD SEAT: CF STINSON CORE 2.0 BLUEBERRY CRE261 FABRIC DIRECTION: RAILROAD OR OFF THE BOLT TBD +/NON-GANGING UNIT ERG INTERN Tag For        LOUNGE AREAS S-8			
27 <b>8334 - RAVEN 30 DEGREE BACKLESS CURVED MODULAR UNIT</b> SEAT HT. 18" SEAT DEPTH 27" LEGS POWDERCOAT: BRUSHED ALUMINUM SEAT/SIDES: CF STINSON CORE 2.0 BLUEBERRY CRE261 FABRIC DIRECTION: RAILROAD OR OFF THE BOLT TBD +/NON-GANGING UNIT ERG INTERN Tag For        LOUNGE AREAS S-9	3	1,087.80	3,263.40
28 <b>GD2 - FLAT GANGING DEVICE</b> ERG INTERN	20	52.43	1,048.60
29 <b>N66RD48CL - WHIMSY,48DIA ROUND,MOBILE,LAMINATE TOP</b> <b>LAMINATE:</b> <b>G1009: WHITE NEBBIA</b> <b>UPHOLSTERY GRADE:</b> <b>CFSB: CF STINSON GRADE B</b> <b>AVA_115: AVANT PAPRIKA</b> KIMBALL OF Tag For        LOUNGE AREAS OTT-1	4	1,012.36	4,049.44
30 <b>N66RD48CL - WHIMSY,48DIA ROUND,MOBILE,LAMINATE TOP</b> <b>LAMINATE:</b> <b>G1009: WHITE NEBBIA</b> <b>UPHOLSTERY GRADE:</b> <b>CFSB: CF STINSON GRADE B</b> <b>MOC_55: MOCCASIN SAIL</b> KIMBALL OF Tag For        LOUNGE AREAS OTT-2	3	1,012.36	3,037.08

yourNBS.com

Remit Payments to: NBS, 6973 Reliable Parkway, Chicago, IL 60686

Description	Quantity	Unit Price	Extended Price
<b>Sub Total</b>			106,863.12
<b>Total</b>			<b>106,863.12</b>
<b>PATRIOT ROOM</b>			
<b>31</b> <b>SMEMENTNL2460</b> - Elemental; Table-Nest and fold, With casters, 24D x 60W Worksurface Finish: Smith System Laminate 494360 - CLASSIC LINEN LAMINATE HIGH GLOSS Edge Type: 1 1/4in Top w 3/8in Bmp TMId Edge Finish: Smith System T-Mold CHP - CHAMPAGNE T MOLD Leg Finish: Smith System Paint PLT - Platinum Height: EJ - Adjustable Height SMITH SYST <b>Tag For</b> PATRIOT ROOM T-1	6	667.80	4,006.80
<b>32</b> <b>SAP361586-1/P</b> - CABINET CRB2400 36"W X 42"H X 22"D CUSTOMIZED TO HAVE STAINLESS STEEL TOP WITH SAFETY J, TOP SPLIT DRAWERS OVER DOUBLE DOORS, 1-ADJUSTABLE SHELF, CASTERS, LOCKING, FINISHED ON BOTH ENDS HPL: LOVE LETTERS EDGE: PEPPERDUST WB MANUF <b>Tag For</b> PATRIOT ROOM T-8	5	2,518.00	12,590.00
<b>33</b> <b>COUNTER</b> - COUNTER/STORAGE AREA FOR PATRIOT ROOM WB MANUF <b>Tag For</b> PATRIOT ROOM	1	4,000.00	4,000.00
<b>34</b> <b>ETRND</b> - Elbrook Round Table <b>Size Option:</b> Modular <b>Height:</b> Seated <b>Diameter:</b> 36.00000 <b>Top Surface Finish:</b> Woodgrain HPL 2HAW - ASH WENGE (HPL) <b>Edge Finish:</b> Plastic - PG1 6703 - ASH WENGE <b>Base Finish:</b> Smooth Metallic 4799 - PLATINUM METALLIC <b>Wheel Option:</b> With Wheels STEELCASE <b>Tag For</b> PATRIOT ROOM T-2	3	787.74	2,363.22
<b>35</b> <b>83N4272SRTL</b> - FOOTINGS,42DX72W,SOFT RECTANGULAR TOP, HPL	2	879.96	1,759.92

TITLE OF PRODUCT TRANSFERS UPON RECEIPT BY CUSTOMER.

60

ACCEPTED BY \_\_\_\_\_ TITLE \_\_\_\_\_ DATE \_\_\_\_\_

Description	Quantity	Unit Price	Extended Price
<p>35 <b>RIM PROFILE:</b>  <b>VG1009:</b> SOFTENED,WHITE NEBBIA  <b>GROMMET:</b>  <b>X:</b> NO GROMMET  <b>LAMINATE GROUP:</b>  <b>GAL2:</b> GALLERY LAMINATE-GRADE 2  <b>G1009:</b> WHITE NEBBIA                      KIMBALL OF  <b>Tag For</b> PATRIOT ROOM                      T-6</p>			
<p>36 <b>CBV285228YBKP - FOOTINGS,28DX52WX28H,Y BASE KIT</b>  <b>COLUMN PAINT COLOR:</b>  <b>501:</b> PLATINUM METALLIC  <b>FOOT PAINT COLOR:</b>  <b>501:</b> PLATINUM METALLIC                      KIMBALL OF  <b>Tag For</b> PATRIOT ROOM                      T-6B</p>	2	540.50	1,081.00
<p>37 <b>BXBYARMLESS - AMQ Bixby Chair Armless</b>  <b>Cushion:</b> No Cushion  <b>Frame Finish:</b> Paint PC03 - Platinum  <b>Seat Shell Finish:</b> Plastic PL02 - Sterling Dark  <b>Back Shell Finish:</b> Plastic PL03 - Platinum  <b>Castors or Glides:</b> Soft Castors  <b>Accessories:</b> No Accessory  <b>Storage Tray:</b> No Storage Tray                      AMQ SOLUTI  <b>Tag For</b> PATRIOT ROOM                      S-2</p>	12	166.52	1,998.24
<p>38 <b>N93M3OMX - FRINGE,MID BACK,3 SEAT,CLEAN-OUT, ARMLESS,CONTRAST</b>  <b>BACK UPHOLSTERY GRADE:</b>  <b>COM:</b> CUSTOMER'S OWN MATERIAL  <b>SPECIAL:</b> BACK UPHOLSTERY PATTERN COLOR  <b>LUMBAR UPHOLSTERY GRADE:</b>  <b>COM:</b> CUSTOMER'S OWN MATERIAL  <b>SPECIAL:</b> LUMBAR UPHOLSTERY PATTERN COLO  <b>EXTREME BACK UPH GRADE:</b></p>	4	2,164.76	8,659.04

TITLE OF PRODUCT TRANSFERS UPON RECEIPT BY CUSTOMER.

yourNBS.com

Remit Payments to: NBS, 6973 Reliable Parkway, Chicago, IL 60686

Description	Quantity	Unit Price	Extended Price
<b>38</b> <b>COM:</b> CUSTOMER'S OWN MATERIAL <b>SPECIAL:</b> EXTREME BACK UPH PATTERN COLOR <b>SEAT UPHOLSTERY GRADE:</b> <b>COM:</b> CUSTOMER'S OWN MATERIAL <b>SPECIAL:</b> SEAT UPHOLSTERY PATTERN COLOR <b>FRONT SEAT GROMMET:</b> <b>X:</b> NO FRONT SEAT GROMMET <b>LEG MATERIAL/FINISH:</b> <b>501:</b> METAL LEG,PLATINUM METALLIC <b>GLIDE:</b> <b>C10:</b> SOFT GLIDE KIMBALL OF <b>Tag For</b> PATRIOT ROOM S-4B			
<b>39</b> <b>COSFZCH - Montara650; Chair</b> <b>Upholstery Version:</b> Upholstered Seat Wood Back <b>Seat Finish:</b> Stand In 5744 - BLUEBERRY <b>Shell Finish:</b> Rift Cut/Low Sheen VP05 - WHITE OAK <b>Base Finish:</b> Smooth Paint 4141 - PLATINUM MATTE <b>Base Type:</b> Sled <b>Fabric Backer:</b> Backer Not Required COALESS <b>Tag For</b> PATRIOT ROOM S-10	9	497.50	4,477.50
<b>40</b> <b>TS30702 - Scoop; Stool, Upholstered seat pad</b> <b>LEGS:</b> 4799 PLATINUM METALLIC <b>PLASTIC:</b> 6618 WHITE <b>UPHLSTRY:</b> 5999 MISC FABRIC CF STINSON INC - Acct 140021 Purchaser: VENDOR Pattern: VECTOR -VEC Color: BLUE -17 Direction: VERTICAL STEELCASE <b>Tag For</b> PATRIOT ROOM ST-2	6	295.84	1,775.04
<b>Sub Total</b>			42,710.76
<b>Total</b>			<b>42,710.76</b>

TITLE OF PRODUCT TRANSFERS UPON RECEIPT BY CUSTOMER.

62

ACCEPTED BY \_\_\_\_\_ TITLE \_\_\_\_\_ DATE \_\_\_\_\_

Description	Quantity	Unit Price	Extended Price
<b>TECHNOLOGY AREA</b>			
<b>41 SMEMTEL3636</b> - Elemental; Table-Square, 36D x 36W Worksurface Finish: Smith System Laminate 494360 - CLASSIC LINEN LAMINATE HIGH GLOSS Edge Type: 1 1/4in Top w 3/8in Bmp TMld Edge Finish: Smith System T-Mold CHP - CHAMPAGNE T MOLD Leg Finish: Smith System Paint PLT - Platinum Height: EC - Fixed Height for Caster SMITH SYST <b>Tag For</b> TECHNOLOGY AREA T-4	5	243.60	1,218.00
<b>42 SMINC17576</b> - Interchange; 3 inch dual wheel casters-Pack of 4, Locking SMITH SYST <b>Tag For</b> TECHNOLOGY AREA T-4/CSTR	5	61.20	306.00
<b>43 FLXWTH</b> - Flex; Work table-Rectangle, Standing height Depth: 23.00000 Width: 58.00000 <b>Top Surface Finish:</b> Woodgrain HPL 2HAW - ASH WENGE (HPL) <b>Edge Finish:</b> Plastic - PG1 6703 - ASH WENGE <b>Frame Finish:</b> Smooth Metallic 4799 - PLATINUM METALLIC <b>Peg Finish:</b> Smooth Metallic 4799 - PLATINUM METALLIC <b>Footrest Finish:</b> Smooth Metallic 4799 - PLATINUM METALLIC <b>Wheels or Glides Finish:</b> Plastic - PG1 6527 - MERLE <b>Cable Catch:</b> No Cable Catch <b>Mobility:</b> Mobile - 2 Glides and 2 Wheels <b>Core Options:</b> Standard Core STEELCASE <b>Tag For</b> TECHNOLOGY AREA T-5	8	1,058.06	8,464.48
<b>44 BXBYARMLESS</b> - AMQ Bixby Chair Armless Cushion: No Cushion <b>Frame Finish:</b> Paint PC03 - Platinum <b>Seat Shell Finish:</b> Plastic PL02 - Sterling Dark <b>Back Shell Finish:</b> Plastic PL03 - Platinum <b>Castors or Glides:</b> Soft Castors <b>Accessories:</b> No Accessory <b>Storage Tray:</b> No Storage Tray	20	166.52	3,330.40

TITLE OF PRODUCT TRANSFERS UPON RECEIPT BY CUSTOMER.

Description	Quantity	Unit Price	Extended Price
44 AMQ SOLUTI Tag For TECHNOLOGY AREA S-2			
45 1011FT1.PSS2 - Lumin, 30" Bar Stool, Plastic Seat & Back, Armless <b>Frame Information:</b> FC2: Silver Frame <b>Plastic Shell Color Selection:</b> SC5: Navy ~: No Selection <b>Glide Option Selection:</b> GL1: Standard Multi-Surface Glide <b>Packaging Options:</b> AB: Fully Assembled in a Bag EXEMPLIS Tag For TECHNOLOGY AREA ST-1	16	228.00	3,648.00
<b>Sub Total</b>			16,966.88
<b>Total</b>			16,966.88

**BOOK STACKS**

46 DWUW2081-SP-ADA - Double Walk Up Free Standing ADA Compliant Computer Workstation 96"W x 20"D x 36+"H  Consisting of: Center storage module at 32"W x 13"H+ with 2 locking doors with a 32"W surface extending off the bottom RH/LH side (one of each) of cabinet & another off the top on the opposite side  2-Wire management grommets in the surface to coordinate with a series of wire management access holes/channels across the back of the station to conceal all wires.  Filler section 16+"D included between the 2-units along the back edge and at each end to fill space around the 2-columns. Workstations & filler section have recessed reveal detail as needed. Inset Reveal & Doors: Wilsonart Magnolia 5012-60 Exterior Shell: Wilsonart Island D498 PVC Edge: White Pulls: Rod Style Brushed Nickel Finishes as noted or equal, based on location +/Field measure required to verify site dimensions/conditions and create template	1	12,413.33	12,413.33
--	---	-----------	-----------

TITLE OF PRODUCT TRANSFERS UPON RECEIPT BY CUSTOMER.

Description	Quantity	Unit Price	Extended Price
46 <b>PRIMEWAY</b> Tag For        BOOK STACKS WALK-UP			
47 <b>CUSTOM - Primeway Mobile Book Return Cart</b> 31" x 24" x 24" high Cart is on 4 industrial casters, is a box with an open top, closed on sides and bottom, fixed rod style pull on the face and depressible shelf on the inside, that lowers as books build up on the shelf. Shelf has white foam pad on top to ease impact of books. Front 2 casters, on pull side have a brake if needed. Laminate: Formica Greyed Oak 5791-PG Edge: Primeway standard vinyl Pulls: 4" Elliptical Wire Pulls in Matte Nickel PRIMEWAY Tag For        BOOK STACKS BKRTN	1	1,643.87	1,643.87
48 <b>CUSTOM - Primeway Book Return Cart Storage Cabinet</b> 33" x 25" x 36" high Top is inset, on both side and back panels of cabinet. (Gallery Style) False panel on face of cabinet with a slot for inserting books. Closed storage area below the top that houses the mobile book return cart with double doors that will open to allow the cart to roll out. Laminate: Formica Greyed Oak 5791-PG Edge: Primeway standard vinyl Pulls: 4" Elliptical Wire Pulls in Matte Nickel PRIMEWAY Tag For        BOOK STACKS BKTK-3	1	1,292.13	1,292.13
49 <b>DISP-4724 - Media Technologies Display End Panel, 3 opening,</b> 24"Wx3-1/2"Dx47-1/2"H **to mount on H11-4824 Double Sided Bookcases. HPL/3mm PVC construction HPL: Formica Greyed Oak 5791-PG Interior Back Panel: Wilsonart Lapis Blue D417-60 PVC: Silver Grey C600244 MEDIA TECH Tag For        BOOK STACKS DISPLAY	11	706.05	7,766.55
<b>Sub Total</b>			23,115.88
<b>Total</b>			<b>23,115.88</b>
<b>ACOUSTICAL SCREENS</b>			
50 <b>ZTRPAT1018 - ZINTRA WAMIKA PATTERN 48" X 108" X 1/2"</b> TOP COLOR- GREIGE DIMS W X H->48"W X 108"H ZINTRA PANEL ORIENTATION->PORTRAIT	11	892.86	9,821.46

TITLE OF PRODUCT TRANSFERS UPON RECEIPT BY CUSTOMER.

Description	Quantity	Unit Price	Extended Price
50 M D C WALL Tag For ACOUSTICAL SCREENS SCR-1			
51 ZTRHDW1021 - 8' DOUBLE RAIL TRACK ZINTRA ALUMINUM SYSTEM M D C WALL Tag For ACOUSTICAL SCREENS SCR-1	13	142.86	1,857.18
52 ZTRHDW1022 - ZINTRA PANEL FIXING HARDWARE FOR SLIDING TRACK SYSTEM M D C WALL Tag For ACOUSTICAL SCREENS SCR-1	11	285.71	3,142.81
53 ZINTRAWSD - ZINTRA WORKSHOP DRAWING DIMS W X H->(8)48"W X 108"H BASE COLOR->TBD TOP COLOR->N/A DESIGN->MONSOON PATTERN M D C WALL Tag For ACOUSTICAL SCREENS	3	279.00	837.00
<b>Sub Total</b>			15,658.45
<b>Total</b>			15,658.45

**NORTH CAFETERIA**

54 TS30702 - Scoop; Stool, Upholstered seat pad LEGS: 4799 PLATINUM METALLIC PLASTIC: 6618 WHITE UPHLLSTRY: 5999 MISC FABRIC CF STINSON INC - Acct 140021 Purchaser: VENDOR Pattern: VECTOR -VEC Color: BLUE -17 Direction: VERTICAL STEELCASE Tag For NORTH CAFETERIA ST-2	18	295.84	5,325.12
<b>Sub Total</b>			5,325.12
<b>Total</b>			5,325.12

**SOUTH CAFETERIA  
ST-2**

55 TS30702 - Scoop; Stool, Upholstered seat pad	12	295.84	3,550.08
---	----	--------	----------

TITLE OF PRODUCT TRANSFERS UPON RECEIPT BY CUSTOMER.

Description	Quantity	Unit Price	Extended Price
<b>55</b> <b>LEGS: 4799 PLATINUM METALLIC</b> <b>PLASTIC: 6618 WHITE</b> <b>UPHOLSTRY: 5999 MISC FABRIC</b> CF STINSON INC - Acct 140021 Purchaser: VENDOR Pattern: VECTOR -VEC Color: BLUE -17 Direction: VERTICAL STEELCASE <b>Tag For</b> SOUTH CAFETERIA ST-2			
<b>Sub Total</b>			3,550.08
<b>Total</b>			<b>3,550.08</b>
<b>56</b> <b>UPCHARGE - UPCHARGE FOR PREMIUM LAMINATE</b> FORMICA GREYED OAK 5791-PG MEDIA TECH	1	334.12	334.12
<b>58</b> <b>LOT - LAMINATE UPCHARGE</b> CLASSIC LINEN HIGH GLOSS SMITH SYST	1	936.35	936.35
<b>59</b> <b>LOT - PROJECT MANAGEMENT FEES</b> 32 HOURS X \$85 NBS TROY	1	2,720.00	2,720.00
<b>60</b> <b>LOT - NON UNION STRAIGHT TIME LABOR TO RECEIVE AND</b> DELIVER NEW PRODUCT TO THE JOB SITE  ALL WORK TO BE DONE AT ONE TIME ROSE MOVIN	1	3,318.00	3,318.00
<b>61</b> <b>LOT - NON UNION STRAIGHT TIME LABOR TO INSTALL NEW</b> PRODUCT PER PRINT  ALL WORK TO BE DONE AT ONE TIME  PRICING DOES NOT INCLUDE THE REMOVAL OF EXISTING PRODUCT  CLEAR AND READY SPACE INCLUDES DEBRIS REMOAVL ROSE MOVIN	1	17,719.00	17,719.00
<b>62</b> <b>LOT - NON UNION LABOR</b> OVERTIME DIFFERENTIAL  WILL BE INVOICED IF REQUIRED ROSE MOVIN	1	6,448.00	6,448.00

TITLE OF PRODUCT TRANSFERS UPON RECEIPT BY CUSTOMER.



2595 Bellingham • Troy, MI 48083 • 248.823.5400 • 248.823.5401 Fax  
 2211 Old Earhart Rd. Ste.190 • Ann Arbor, MI 48105 • 248.823.5400 • 248.823.5401 Fax  
 3201 Pine Tree Rd. Ste. A • Lansing, MI 48911 • 517.886.0072 • 248.823.5401 Fax  
 5160 Alliance Dr. • Bay City, MI 48706 • 989.895.8574 • 989.895.8545 Fax  
 4 North St. Clair St. • Toledo, OH 43604 • 419.662.2040 • 248.823.5401 Fax

**Quotation 357754**  
 Page 19 / 19 (cont'd)

yourNBS.com

Remit Payments to: NBS, 6973 Reliable Parkway, Chicago, IL 60686

Description	Quantity	Unit Price	Extended Price
63 MONTHLY - MONTHLY STORAGE FEES TO HOLD FURNITURE AT WAREHOUSE.  WILL BE INVOICED MONTHLY FOR THE MONTHS USED - NOT TO EXCEED FIGURE ROSE MOVIN	4	1,950.00	7,800.00

Quotation Totals	
<b>Sub Total</b>	314,237.86
MEDIA TECH FREIGHT	1,049.00
M D C WALL FREIGHT	1,402.00
SMITH SYST FREIGHT	5,509.00
STEELCASE COM FABRIC LINE 40	90.00
STEELCASE COM FABRIC LINE 54	248.00
STEELCASE COM FABRIC LINE 55	169.00
WB MANUF FREIGHT	1,500.00
<b>Grand Total</b>	<b>324,204.86</b>

End of Quotation

TITLE OF PRODUCT TRANSFERS UPON RECEIPT BY CUSTOMER.

68

ACCEPTED BY \_\_\_\_\_ TITLE \_\_\_\_\_ DATE \_\_\_\_\_



2595 Bellingham • Troy, MI 48083 • 248.823.5400 • 248.823.5401 Fax  
 2211 Old Earhart Rd. Ste.190 • Ann Arbor, MI 48105 • 248.823.5400 • 248.823.5401 Fax  
 3201 Pine Tree Rd. Ste. A • Lansing, MI 48911 • 517.886.0072 • 248.823.5401 Fax  
 5160 Alliance Dr. • Bay City, MI 48706 • 989.895.8574 • 989.895.8545 Fax  
 4 North St. Clair St. • Toledo, OH 43604 • 419.662.2040 • 248.823.5401 Fax

**Quotation 357573**

**Quote Date** 01/30/23

**Customer Order**

**Project** 221128

**Customer** L00002

**Terms** NET 10 DAYS

**Expiration Date**

**Account Representative** MONIQUE DUGAN

**yourNBS.com**

**Remit Payments to:** NBS, 6973 Reliable Parkway, Chicago, IL 60686

**Quote To**

Livonia Public Schools  
 15125 FARMINGTON RD  
 LIVONIA, MI, 48154-5413

**Ship To**

PHILLIP FRANCIS  
 Riley Upper Elementary School  
 15555 HENRY RUFF ST  
 MEDIA CENTER  
 LIVONIA, MI, 48154-3240

**Phone** +1 (313) 523-9156

**Phone** +1 (734) 744-2554

pfrancis@livoniapublicschools.org

**Sales Location** Troy

**PO REQUIRED TO PLACE ORDER**

**E&I, OMNIA, TIPS & NCPA CONTRACTS HAVE BEEN APPLIED TO THIS QUOTE**

**PRICING IS VALID FOR 30 DAYS**

**LEAD TIME: 14-16 WEEKS FROM RECEIPT OF PO**

**STRAIGHT TIME NON UNION LABOR HAS BEEN QUOTED**

**ALL PRODUCT TO INSTALL AT THE SAME TIME**

**PRICING DOES NOT INCLUDE THE REMOVAL OR MOVING OF EXISTING PRODUCT**

**IF REQUIRED STORAGE FEES AND OVERTIME DIFFERENTIAL FEES WILL BE INVOICED AS NEEDED**

**30 DAYS OF FREE STORAGE HAS BEEN INCLUDED IN OUR PRICING**

Description	Quantity	Unit Price	Extended Price
-------------	----------	------------	----------------

**BOOK STACKS**

1	N66RD22C - WHIMSY,22DIA ROUND,MOBILE <b>UPHOLSTERY GRADE:</b> <b>ARCD:</b> ARCCOM GRADE D <b>SPCT_69710:</b> SPECTRUM LIME <b>LEATHER PULL:</b> <b>X:</b> NO LEATHER PULL KIMBALL OF <b>Tag For</b> BOOK STACKS OTT-3B	1	498.64	498.64
---	--	---	--------	--------

TITLE OF PRODUCT TRANSFERS UPON RECEIPT BY CUSTOMER.

ACCEPTED BY \_\_\_\_\_ TITLE \_\_\_\_\_ DATE \_\_\_\_\_

Description	Quantity	Unit Price	Extended Price
<b>2 N66RD22C - WHIMSY,22DIA ROUND,MOBILE</b> <b>UPHOLSTERY GRADE:</b> <b>CFSB: CF STINSON GRADE B</b> <b>AVA_149: AVANT DARK PURPLE</b> <b>LEATHER PULL:</b> <b>X: NO LEATHER PULL</b> KIMBALL OF <b>Tag For</b> BOOK STACKS OTT-3A	1	463.68	463.68
<b>3 SMLBR21004 - Booktruck, Six Sloping Shelf with Six Book Supports,</b> 18"D x 36"W x 43"H <b>Cart Finish:</b> Smith System Paint PR - PURPLE <b>Divider Finish:</b> Smith System Plastic BLACK - BLACK SMITH SYST <b>Tag For</b> BOOK STACKS BKTK-1	4	447.60	1,790.40
<b>4 DISP-4724 - Media Technologies Display End Panel, 3 opening,</b> 24"Wx3-1/2"Dx47-1/2"H **to mount on H11-4824 Double Sided Bookcases. HPL/3mm PVC construction HPL: Formica Greyed Oak 5791-PG Interior Back Panel: Wilsonart Eggplant 4913 PVC: Silver Grey C600244 MEDIA TECH <b>Tag For</b> BOOK STACKS DISPLAY	11	706.05	7,766.55
<b>5 TS34403 - Alight; Ottoman-Bench</b> <b>UPHOLSTRY:</b> 5999 MISC FABRIC CF STINSON INC - Acct 140021 Purchaser: VENDOR Pattern: ORIGAMI -OGI Color: PINWHEEL -34 Direction: VERTICAL <b>LEG OPT:</b> *OPT:LEG OPTIONS <b>ALUMINUM:</b> STD:ALUMINUM LEGS STEELCASE <b>Tag For</b> BOOK STACKS S-10	4	471.04	1,884.16

**Sub Total** 12,403.43

**Total** 12,403.43

FLEX SPACE F119

TITLE OF PRODUCT TRANSFERS UPON RECEIPT BY CUSTOMER.

70

ACCEPTED BY \_\_\_\_\_ TITLE \_\_\_\_\_ DATE \_\_\_\_\_

Description	Quantity	Unit Price	Extended Price
<b>6 BXBYARMLESS - AMQ Bixby Chair Armless</b> Cushion: No Cushion Frame Finish: Paint PC03 - Platinum Seat Shell Finish: Plastic PL02 - Sterling Dark Back Shell Finish: Plastic PL03 - Platinum Castors or Glides: Soft Castors Accessories: No Accessory Storage Tray: No Storage Tray AMQ SOLUTI Tag For FLEX SPACE F119 S-2	32	166.52	5,328.64
<b>7 SMENTNL2460 - Elemental; Table-Nest and fold, With casters, 24D x 60W</b> Worksurface Finish: Smith System Laminate 494360 - CLASSIC LINEN HIGH GLOSS Edge Type: 1 1/4in Top w 3/8in Bmp TMld Edge Finish: Smith System T-Mold CHP - CHAMPAGNE T MOLD Leg Finish: Smith System Paint PLT - Platinum Height: EJ - Adjustable Height SMITH SYST Tag For FLEX SPACE F119 T-1	16	667.80	10,684.80
<b>Sub Total</b>			16,013.44
<b>Total</b>			<b>16,013.44</b>
<b>LOUNGE AREA 1</b>			
<b>8 7372/FR - BRIGHTON 30 DEGREE CURVED 3-STEP UNIT</b> STEP 1 HT: 14" STEP 2 HT: 24" STEP 3 HT: 30" OVERALL WIDTH: 62" D-BACK: CF STINSON AVANT DARK PURPLE AV149 FABRIC DIRECTION: RAILROAD OR OFF THE BOLT TBD A-STEPS: CF STINSON AVANT DARK PURPLE AV149 FABRIC DIRECTION: RAILROAD OR OFF THE BOLT TBD C-SIDES: CF STINSON AVANT DARK PURPLE AV149 FABRIC DIRECTION: RAILROAD OR OFF THE BOLT TBD ERG INTERN Tag For LOUNGE AREA 1 S-5	2	2,433.34	4,866.68
<b>9 7372/FR - BRIGHTON 30 DEGREE CURVED 3-STEP UNIT</b> STEP 1 HT: 14" STEP 2 HT: 24" STEP 3 HT: 30"	2	2,520.07	5,040.14

TITLE OF PRODUCT TRANSFERS UPON RECEIPT BY CUSTOMER.

Description	Quantity	Unit Price	Extended Price
<p>9 OVERALL WIDTH: 62"                      D-BACK: ARCCOM SPECTRUM MOONSTONE #26 AC-69715                      FABRIC DIRECTION: RAILROAD OR OFF THE BOLT TBD                      A-STEPS: ARCCOM SPECTRUM MOONSTONE #26 AC-69715                      FABRIC DIRECTION: RAILROAD OR OFF THE BOLT TBD                      C-SIDES: ARCCOM SPECTRUM MOONSTONE #26 AC-69715                      FABRIC DIRECTION: RAILROAD OR OFF THE BOLT TBD                      ERG INTERN                      Tag For LOUNGE AREA 1                      S-3</p>			
<p>10 7372/FR - BRIGHTON 30 DEGREE CURVED 3-STEP UNIT                      STEP 1 HT: 14"                      STEP 2 HT: 24"                      STEP 3 HT: 30"                      OVERALL WIDTH: 62"                      D-BACK: ARCCOM SPECTRUM AC LIME #21 AC-69710                      FABRIC DIRECTION: RAILROAD OR OFF THE BOLT TBD                      A-STEPS: ARCCOM SPECTRUM AC LIME #21 AC-69710                      FABRIC DIRECTION: RAILROAD OR OFF THE BOLT TBD                      C-SIDES: ARCCOM SPECTRUM AC LIME #21 AC-69710                      FABRIC DIRECTION: RAILROAD OR OFF THE BOLT TBD                      ERG INTERN                      Tag For LOUNGE AREA 1                      S-4</p>	2	2,520.07	5,040.14
<p>11 N66RD16C - WHIMSY,16DIA ROUND,MOBILE                      UPHOLSTERY GRADE:                      ARCD: ARCCOM GRADE D                      SPCT_69710: SPECTRUM LIME                      LEATHER PULL:                      X: NO LEATHER PULL                      KIMBALL OF                      Tag For LOUNGE AREA 1                      OTT-4B</p>	3	421.36	1,264.08
<p>12 N66RD16C - WHIMSY,16DIA ROUND,MOBILE                      UPHOLSTERY GRADE:                      ARCD: ARCCOM GRADE D                      SPCT_69715: SPECTRUM MOONSTONE                      LEATHER PULL:                      X: NO LEATHER PULL                      KIMBALL OF                      Tag For LOUNGE AREA 1                      OTT-4C</p>	3	421.36	1,264.08
<p>13 N66RD16C - WHIMSY,16DIA ROUND,MOBILE</p>	2	392.38	784.76

TITLE OF PRODUCT TRANSFERS UPON RECEIPT BY CUSTOMER.

72

ACCEPTED BY \_\_\_\_\_ TITLE \_\_\_\_\_ DATE \_\_\_\_\_

Description	Quantity	Unit Price	Extended Price
13 <b>UPHOLSTERY GRADE:</b> CFSB: CF STINSON GRADE B AVA_149: AVANT DARK PURPLE <b>LEATHER PULL:</b> X: NO LEATHER PULL KIMBALL OF Tag For LOUNGE AREA 1 OTT-4A			
14 <b>N66RD22C - WHIMSY,22DIA ROUND,MOBILE</b> <b>UPHOLSTERY GRADE:</b> ARCD: ARCCOM GRADE D SPCT_69710: SPECTRUM LIME <b>LEATHER PULL:</b> X: NO LEATHER PULL KIMBALL OF Tag For LOUNGE AREA 1 OTT-3B	1	498.64	498.64
15 <b>N66RD22C - WHIMSY,22DIA ROUND,MOBILE</b> <b>UPHOLSTERY GRADE:</b> ARCD: ARCCOM GRADE D SPCT_69715: SPECTRUM MOONSTONE <b>LEATHER PULL:</b> X: NO LEATHER PULL KIMBALL OF Tag For LOUNGE AREA 1 OTT-3C	1	498.64	498.64
16 <b>N66RD22C - WHIMSY,22DIA ROUND,MOBILE</b> <b>UPHOLSTERY GRADE:</b> CFSB: CF STINSON GRADE B AVA_149: AVANT DARK PURPLE <b>LEATHER PULL:</b> X: NO LEATHER PULL KIMBALL OF Tag For LOUNGE AREA 1 OTT-3A	2	463.68	927.36
17 <b>N66RD42CL - WHIMSY,42DIA ROUND,MOBILE,LAMINATE TOP</b> <b>LAMINATE:</b> PT: PORTICO	3	865.26	2,595.78

TITLE OF PRODUCT TRANSFERS UPON RECEIPT BY CUSTOMER.

73

ACCEPTED BY \_\_\_\_\_ TITLE \_\_\_\_\_ DATE \_\_\_\_\_

Description	Quantity	Unit Price	Extended Price
<b>17 UPHOLSTERY GRADE:</b> <b>CFSB:</b> CF STINSON GRADE B <b>AVA_149:</b> AVANT DARK PURPLE KIMBALL OF <b>Tag For</b> LOUNGE AREA 1 OTT-1			
<b>18 N66RD48CL - WHIMSY,48DIA ROUND,MOBILE,LAMINATE TOP</b> <b>LAMINATE:</b> <b>PT:</b> PORTICO <b>UPHOLSTERY GRADE:</b> 7: GRADE 7 <b>70705:</b> SILICA ETCH MINK KIMBALL OF <b>Tag For</b> LOUNGE AREA 1 OTT-2	1	1,059.84	1,059.84
<b>19 TS31413M - Jenny; Chair-Round, Low, Multiple fabric</b> <b>INR BACK:</b> 5999 MISC FABRIC CF STINSON INC - Acct 140021 Purchaser: VENDOR Pattern: SILICONE-UPTOWN Color: TIDAL -SUP352 Direction: VERTICAL <b>OUT BACK:</b> 5999 MISC FABRIC CF STINSON INC - Acct 140021 Purchaser: VENDOR Pattern: SILICONE-UPTOWN Color: TIDAL -SUP352 Direction: VERTICAL <b>SEAT:</b> 5999 MISC FABRIC CF STINSON INC - Acct 140021 Purchaser: VENDOR Pattern: AVANT -AV Color: DARK PURPLE -AV149 Direction: VERTICAL STEELCASE <b>Tag For</b> LOUNGE AREA 1 S-1	8	1,109.52	8,876.16
<b>20 TS4TWP - Campfire; Table-Personal</b> <b>TOP OPT:</b> *OPT:TOP SELECTION <b>HPL TOP:</b> HPL TOP <b>TOP-SURF:</b> TOP SURFACE <b>OLL01:</b> *TOP-SURF:OLL01 PRICE GROUP 1	4	362.48	1,449.92

TITLE OF PRODUCT TRANSFERS UPON RECEIPT BY CUSTOMER.

Description	Quantity	Unit Price	Extended Price
<b>20</b> <b>2900: MISC LAMINATE</b> STEELCASE CORPORATION Laminate: 2HWA -GREY KINGSWOOD STEELCASE <b>Tag For</b> LOUNGE AREA 1 T-2			
<b>21</b> <b>911500568SR - High Pressure Laminate-61x97, .028" Thick</b> <b>TOP-SURF: 2HWA GREY KINGSWOOD (HPL)</b> STEELCASE	1	212.67	212.67
<b>22</b> <b>7374/2FO/FR - BRIGHTON 30 DEGREE CURVED 3-STEP UNIT</b> STEP 1 HT: 14" STEP 2 HT: 24" STEP 3 HT: 30" OVERALL WIDTH: 62" D-BACK: ARCCOM SPECTRUM MOONSTONE #26 AC-69715 FABRIC DIRECTION: RAILROAD OR OFF THE BOLT TBD A-STEPS: ARCCOM STREAMLINE CARIBBEAN #5 AC-62074 FABRIC DIRECTION: RAILROAD OR OFF THE BOLT TBD C-SIDES: ARCCOM SPECTRUM MOONSTONE #26 AC-69715 FABRIC DIRECTION: RAILROAD OR OFF THE BOLT TBD ERG INTERN <b>Tag For</b> LOUNGE AREA 1 S-6A	1	3,251.64	3,251.64
<b>23</b> <b>7395/2FO/FR - BRIGHTON 36"W 3-STEP UNIT</b> STEP 1 HT: 14" STEP 2 HT: 24" STEP 3 HT: 30" OVERALL WIDTH: 36" D-BACK: ARCCOM SPECTRUM MOONSTONE #26 AC-69715 FABRIC DIRECTION: RAILROAD OR OFF THE BOLT TBD A-STEPS: ARCCOM STREAMLINE CARIBBEAN #5 AC-62074 FABRIC DIRECTION: RAILROAD OR OFF THE BOLT TBD C-SIDES: ARCCOM SPECTRUM MOONSTONE #26 AC-69715 FABRIC DIRECTION: RAILROAD OR OFF THE BOLT TBD ERG INTERN <b>Tag For</b> LOUNGE AREA 1 S-6B	4	2,176.09	8,704.36
<b>24</b> <b>8308/2FO/FR - RAVEN 30 DEGREE INSIDE CURVE MODULAR UNIT</b> SEAT HT: 18" BACK HT: 33" LEGS: BRUSHED ALUMINUM BACK: CF STINSON EFFERVESCENCE 2.0 NEW WAVE EFF10 FABRIC DIRECTION: RAILROAD OR OFF THE BOLT TBD SEAT: CF STINSON CORE 2.0 GRAY CRE214 FABRIC DIRECTION: RAILROAD OR OFF THE BOLT TBD ERG INTERN	7	1,355.83	9,490.81

TITLE OF PRODUCT TRANSFERS UPON RECEIPT BY CUSTOMER.

75

ACCEPTED BY \_\_\_\_\_ TITLE \_\_\_\_\_ DATE \_\_\_\_\_

Description	Quantity	Unit Price	Extended Price
24 Tag For LOUNGE AREA 1 S-7			
25 <b>8314/2FO/FR - RAVEN 30 DEGREE OUTSIDE CURVE MODULAR UNIT</b> SEAT HT: 18" BACK HT: 33" LEGS: BRUSHED ALUMINUM BACK: CF STINSON EFFERVESCENCE 2.0 NEW WAVE EFF10 FABRIC DIRECTION: RAILROAD OR OFF THE BOLT TBD SEAT: CF STINSON CORE 2.0 GRAY CRE214 FABRIC DIRECTION: RAILROAD OR OFF THE BOLT TBD ERG INTERN Tag For LOUNGE AREA 1 S-8	1	1,263.71	1,263.71
26 <b>8334/FR - RAVEN 30 DEGREE BACKLESS CURVE MODULAR UNIT</b> SEAT HT: 18" SEAT DEPTH: 27" LEGS: BRUSHED ALUMINUM SEAT/SIDES: CF STINSON AVANT DARK PURPLE AV149 FABRIC DIRECTION: RAILROAD OR OFF THE BOLT TBD ERG INTERN Tag For LOUNGE AREA 1 S-9	3	1,152.48	3,457.44
27 <b>NST-C2048L-72-G7 - NEST CLOSED BACK UNIT</b> 48" X 20" X 72" HPL PANELS: GREYED OAK 5791-PG SEAT: GRADE 5 - MOMENTUM PATTERN: TRIBECA COLOR: JAM SIDES: GRADE 7 - CF STINSON PATTERN: ORIGAMI COLOR: PINWHEEL +/TO BE MODIFIED TO BE 48"W MEDIA TECH Tag For LOUNGE AREA 1 S-11	3	3,856.95	11,570.85
<b>Sub Total</b>			72,117.70
<b>Total</b>			72,117.70

SMALL GROUP F143

28 <b>BXBYARMLESS - AMQ Bixby Chair Armless</b> Cushion: No Cushion Frame Finish: Paint PC03 - Platinum Seat Shell Finish: Plastic PL02 - Sterling Dark Back Shell Finish: Plastic PL03 - Platinum	6	166.52	999.12
--	---	--------	--------

TITLE OF PRODUCT TRANSFERS UPON RECEIPT BY CUSTOMER.

76

ACCEPTED BY \_\_\_\_\_ TITLE \_\_\_\_\_ DATE \_\_\_\_\_

Description	Quantity	Unit Price	Extended Price
<b>28 Castors or Glides:</b> Soft Castors <b>Accessories:</b> No Accessory <b>Storage Tray:</b> No Storage Tray AMQ SOLUTI <b>Tag For</b> SMALL GROUP F143 S-2			
<b>29 SMENTNL2460 -</b> Elemental; Table-Nest and fold, With casters, 24D x 60W Worksurface Finish: Smith System Laminate 494360 - CLASSIC LINEN HIGH GLOSS LAMINATE Edge Type: 1 1/4in Top w 3/8in Bmp TMld Edge Finish: Smith System T-Mold CHP - CHAMPAGNE T MOLD Leg Finish: Smith System Paint PLT - Platinum Height: EJ - Adjustable Height SMITH SYST <b>Tag For</b> SMALL GROUP F143 T-1	3	667.20	2,001.60
<b>Sub Total</b>			3,000.72
<b>Total</b>			<b>3,000.72</b>
<b>SMALL GROUP F144</b>			
<b>30 BXBARMLESS -</b> AMQ Bixby Chair Armless <b>Cushion:</b> No Cushion <b>Frame Finish:</b> Paint PC03 - Platinum <b>Seat Shell Finish:</b> Plastic PL02 - Sterling Dark <b>Back Shell Finish:</b> Plastic PL03 - Platinum <b>Castors or Glides:</b> Soft Castors <b>Accessories:</b> No Accessory <b>Storage Tray:</b> No Storage Tray AMQ SOLUTI <b>Tag For</b> SMALL GROUP F144 S-2	6	166.52	999.12
<b>31 SMENTNL2460 -</b> Elemental; Table-Nest and fold, With casters, 24D x 60W Worksurface Finish: Smith System Laminate 494360 - CLASSIC LINEN HIGH GLOSS LAMINATE Edge Type: 1 1/4in Top w 3/8in Bmp TMld Edge Finish: Smith System T-Mold CHP - CHAMPAGNE T MOLD Leg Finish: Smith System Paint PLT - Platinum Height: EJ - Adjustable Height SMITH SYST <b>Tag For</b> SMALL GROUP F144 T-1	3	667.20	2,001.60

TITLE OF PRODUCT TRANSFERS UPON RECEIPT BY CUSTOMER.

Description	Quantity	Unit Price	Extended Price
<b>Sub Total</b>			3,000.72
<b>Total</b>			<b>3,000.72</b>
<b>CIRC DESK</b>			
<b>32 ND-75DL-MOB - Nomad Desk WITH Transaction Top (LEFT)</b> 24"D X 75"W, 29"H Worksurface,With grommet 35"H Transaction Ledge HPL Worksurface D: Custom Color: Nevamar White Fiesta MW550-SD HPL Panel B & C: Premium Color: Grayed Oak 5791-PG PVC Edge: Silver Grey C600244 Accent Panel A: Wilsonart Eggplant4913-60 Powdercoat: 809 Silver MEDIA TECH <b>Tag For</b> CIRC DESK CD-1	1	3,823.20	3,823.20
<b>33 MCD-1817 - Steel Pencil Drawer</b> 18"W x 17"D X 2"H Finish: Black MEDIA TECH <b>Tag For</b> CIRCULATION DESK CD-1B	1	192.60	192.60
<b>34 ND-40BR-MOB - Nomad Mobile Book Return</b> 34"W x 29"H HPL Worksurface: WA Classic Linen 4943-38 HPL Panel B,C: Premium Color: Formica Grayed Oak 5791-PG PVC Edge: Silver Grey C600244 Powdercoat: 809 Silver MEDIA TECH <b>Tag For</b> CIRC DESK CD-2	1	1,759.05	1,759.05
<b>35 MDS-DBTL-1824-24 - Nomad Depressible Book Truck</b> 32/39" H HPL Panel: Premium Color: Formica Grayed Oak 5791-PG PVC Edge: Silver Grey C600244 Powdercoat: 809 Silver MEDIA TECH <b>Tag For</b> CIRC DESK BKTK-2	1	1,327.50	1,327.50
<b>36 WMPS661220-W-LL-P2A - Nomad Mobile Pedestal 2 Box</b> 15"W x 20"H HPL Premium	1	509.85	509.85

TITLE OF PRODUCT TRANSFERS UPON RECEIPT BY CUSTOMER.

78

ACCEPTED BY \_\_\_\_\_ TITLE \_\_\_\_\_ DATE \_\_\_\_\_

Description	Quantity	Unit Price	Extended Price
<b>36</b> Color: Formica Grayed Oak 5791-PG PVC Edge: Silver Grey C600244 Pull Type: P2 Arch Pull Pull Finish: Nickel Lock Type: Lock Alike MEDIA TECH <b>Tag For</b> CIRC DESK CD-3			
<b>Sub Total</b>			7,612.20
<b>Total</b>			7,612.20
WALK-UP COMPUTER STATION WALK-UP COUNTER			
<b>37</b> <b>WUW2081-SP-ADA</b> - Walk-up Wall Hung ADA Computer Workstation 81"W x 20"D x 13"+H  Consisting of: Center storage module at 27"W x 13"H+ with 2-locking doors, flanked by a 27"W surface extending off the bottom right side of cabinet & another at the top left side. Full height (13"+) panel at the right end for ADA compliance. 2-Wire management grommets in the surface to coordinate with a series of wire management access holes/channels across the back of the station to conceal all wires. Wall hung using a hidden mount on the back of the cabinet along with hidden cleats behind the left and right surface extensions. Workstation has a 7/8" border on all sides with a recessed reveal detail.  Inset Reveal & Doors: Wilsonart Magnolia 5012-60 Exterior Shell: Wilsonart Concord Grape 13098-60 Edge: White Pulls: Rod Style - Brushed Nickel Finishes as noted or equal, based on location PRIMEWAY <b>Tag For</b> WALK-UP COMP STATION WALK-UP	1	3,682.67	3,682.67
<b>Sub Total</b>			3,682.67
<b>Total</b>			3,682.67
<b>38</b> <b>UPCHARGE</b> - UPCHARGE FOR PREMIUM LAMINATE FORMICA GREYED OAK 5791-PG MEDIA TECH	1	538.99	538.99
<b>40</b> <b>LOT</b> - LAMINATE UPCHARGE 494360 - CLASSIC LINEN HIGH GLOSS SMITH SYST	1	375.00	375.00

TITLE OF PRODUCT TRANSFERS UPON RECEIPT BY CUSTOMER.

79

ACCEPTED BY \_\_\_\_\_ TITLE \_\_\_\_\_ DATE \_\_\_\_\_

Description	Quantity	Unit Price	Extended Price
<b>41 LOT - PROJECT MANAGEMENT FEES</b> 32 HOURS X \$85 NBS TROY	1	2,720.00	2,720.00
<b>42 LOT - NON UNION STRAIGHT TIME LABOR TO RECEIVE AND DELIVER NEW PRODUCT TO THE JOB SITE</b>  ALL WORK TO BE DONE AT ONE TIME ROSE MOVIN	1	1,788.00	1,788.00
<b>43 LOT - NON UNION STRAIGHT TIME LABOR TO INSTALL NEW PRODUCT PER PRINT</b>  ALL WORK TO BE DONE AT ONE TIME  PRICING DOES NOT INCLUDE THE REMOVAL OF EXISTING PRODUCT  CLEAR AND READY SPACE INCLUDES DEBRIS REMOAVL ROSE MOVIN	1	6,940.00	6,940.00
<b>44 LOT - NON UNION LABOR OVERTIME DIFFERENTIAL</b>  WILL BE INVOICED IF REQUIRED ROSE MOVIN	1	2,496.00	2,496.00
<b>45 MONTHLY - MONTHLY STORAGE FEES TO HOLD FURNITURE AT WAREHOUSE.</b>  WILL BE INVOICED MONTHLY FOR THE MONTHS USED - NOT TO EXCEED FIGURE ROSE MOVIN	4	780.00	3,120.00

**Quotation Totals**

<b>Sub Total</b>	135,808.87
MEDIA TECH FREIGHT	1,375.00
SMITH SYST FREIGHT	2,231.00
STEELCASE COM FABRIC LINE 5	886.00
STEELCASE COM FABRIC LINE 19	430.00
STEELCASE COM FABRIC LINE 19	3,491.00
<b>Grand Total</b>	<b>144,221.87</b>

End of Quotation



2595 Bellingham • Troy, MI 48083 • 248.823.5400 • 248.823.5401 Fax  
 2211 Old Earhart Rd. Ste.190 • Ann Arbor, MI 48105 • 248.823.5400 • 248.823.5401 Fax  
 3201 Pine Tree Rd. Ste. A • Lansing, MI 48911 • 517.886.0072 • 248.823.5401 Fax  
 5160 Alliance Dr. • Bay City, MI 48706 • 989.895.8574 • 989.895.8545 Fax  
 4 North St. Clair St. • Toledo, OH 43604 • 419.662.2040 • 248.823.5401 Fax

**Quotation 357812**

**Quote Date** 01/27/23

**Customer Order**

**Project** 221130

**Customer** L00002

**Terms** NET 10 DAYS

**Expiration Date**

**Account Representative** MONIQUE DUGAN

[yourNBS.com](http://yourNBS.com)

Remit Payments to: NBS, 6973 Reliable Parkway, Chicago, IL 60686

**Quote To**

Livonia Public Schools  
 15125 FARMINGTON RD  
 LIVONIA, MI, 48154-5413

**Ship To**

PHILLIP FRANCIS  
 Cleveland Elementary School  
 28030 CATHEDRAL ST  
 MEDIA CENTER  
 LIVONIA, MI, 48150-4107

**Phone** +1 (313) 523-9156

**Phone** +1 (734) 744-2554

[pfrancis@livoniapublicschools.org](mailto:pfrancis@livoniapublicschools.org)

**Sales Location** Troy

**PO REQUIRED TO PLACE ORDER**

**E&I, OMNIA, TIPS & NCPA CONTRACTS HAVE BEEN APPLIED TO THIS QUOTE**

**PRICING IS VALID FOR 30 DAYS**

**LEAD TIME: 14-16 WEEKS FROM RECEIPT OF PO**

**STRAIGHT TIME NON UNION LABOR HAS BEEN QUOTED**

**ALL PRODUCT TO INSTALL AT THE SAME TIME**

**PRICING DOES NOT INCLUDE THE REMOVAL OR MOVING OF EXISTING PRODUCT**

**IF REQUIRED STORAGE FEES AND OVERTIME DIFFERENTIAL FEES WILL BE INVOICED AS NEEDED**

**30 DAYS OF FREE STORAGE HAS BEEN INCLUDED IN OUR PRICING**

Description	Quantity	Unit Price	Extended Price
BOOK STACKS E127			

1	<b>TS31402CM</b> - Jenny; Chair, 2 arms, Multiple fabric, Casters <b>ARMS:</b> 5999 MISC FABRIC DESIGNTEX INC Purchaser: VENDOR Pattern: BEGUILED BY THE WILD -3043 Color: SILVER DORY -802 Direction: VERTICAL <b>INR BACK:</b> 59DF GRADED IN PR. GRP. 6 DESIGNTEX INC Purchaser: VENDOR Pattern: BEGUILED BY THE WILD -3043 Color: SILVER DORY -802	1	1,059.38	1,059.38
---	---	---	----------	----------

TITLE OF PRODUCT TRANSFERS UPON RECEIPT BY CUSTOMER.

Description	Quantity	Unit Price	Extended Price
<p>1      Direction: VERTICAL  <b>OUT BACK: 59DF GRADED IN PR. GRP. 6</b>                      DESIGNTEX INC                      Purchaser: VENDOR                      Pattern: BEGUILLED BY THE WILD -3043                      Color: SILVER DORY -802                      Direction: VERTICAL  <b>SEAT: 59DD GRADED IN PR. GRP. 4</b>                      DESIGNTEX INC                      Purchaser: VENDOR                      Pattern: ALPHABET -3877                      Color: IRON -802                      Direction: HORIZONTAL                      STEELCASE  <b>Tag For</b>      BOOK STACKS E127                                       S-1</p>			
<p>2      <b>FK007-CONVOCART-Z-SE</b> - Convo Lily Set (10 Convo Lily pads and cart)  <b>Select Fabric Seat Finish:</b>  <b>GR2:</b> Grade-2  <b>DOD:</b> Doodle  <b>GR1:</b> Grade-1  <b>STX-8838:</b> Imperial  <b>GR1:</b> Grade-1  <b>STX-8823:</b> Carbon  <b>GR1:</b> Grade-1  <b>STX-8802:</b> Lagoon  <b>GR1:</b> Grade-1  <b>STX-8833:</b> Crème De Menthe  <b>GR1:</b> Grade-1  <b>STX-8842:</b> Limoncello                      FOMCORE  <b>Tag For</b>      BOOK STACKS E127                                       S-5</p>	3	4,228.00	12,684.00
<p>3      <b>DISP-4724</b> - Media Technologies Display End Panel, 3 opening, 24"Wx3-1/2"Dx47-1/2"H                      **to mount on H11-4824 Double Sided Bookcases. HPL/3mm PVC construction                      HPL: Formica Greyed Oak 5791-PG                      Interior Back Panel: Wilsonart Brittany Blue D321-60                      PVC: Silver Grey C600244                      MEDIA TECH</p>	7	706.05	4,942.35

TITLE OF PRODUCT TRANSFERS UPON RECEIPT BY CUSTOMER.

yourNBS.com

Remit Payments to: NBS, 6973 Reliable Parkway, Chicago, IL 60686

Description	Quantity	Unit Price	Extended Price
3 Tag For BOOK STACKS DISPLAY			
<b>Sub Total</b>			18,685.73
<b>Total</b>			<b>18,685.73</b>
<b>CIRC DESK</b>			
4 <b>SMLBR21004</b> - Booktruck, Six Sloping Shelf with Six Book Supports, 18"D x 36"W x 43"H <b>Cart Finish:</b> Smith System Paint PLT - PLATINUM <b>Divider Finish:</b> Smith System Plastic BLACK - BLACK SMITH SYST <b>Tag For</b> CIRC DESK BKTK-1	3	447.60	1,342.80
5 <b>ND-75DX-MOB</b> - Nomad Desk WITHOUT transaction top 24"D X 75"W, 29"H Worksurface, With grommet HPL Worksurface D: Custom Color: Nevamar White Fiesta MW550-SD HPL Panel B & C: Premium Color: Formica Grayed Oak 5791-PG PVC Edge: Silver Grey C600244 Accent Panel A: Wilsonart Brittany Blue D321-60 Powdercoat: 809 Silver MEDIA TECH <b>Tag For</b> CIRC DESK CD-1	1	3,636.45	3,636.45
6 <b>MCD-1817</b> - Steel Pencil Drawer 18"W x 17"D X 2"H Finish: Black MEDIA TECH <b>Tag For</b> CIRCULATION DESK CD-1B	1	192.60	192.60
7 <b>ND-40BR-MOB</b> - Nomad Mobile Book Return 34"W x 29"H HPL Worksurface: Gen Laminate Color: WA Classic Linen 4943-38 HPL Panel B,C: Premium Color: Formica Grayed Oak 5791-PG PVC Edge: Silver Grey C600244 Powdercoat: 809 Silver MEDIA TECH <b>Tag For</b> CIRC DESK CD-2	1	1,759.05	1,759.05
8 <b>MDS-DBTL-1824-24</b> - Nomad Depressible Book Truck 32/39" H	3	1,327.50	3,982.50

TITLE OF PRODUCT TRANSFERS UPON RECEIPT BY CUSTOMER.

83

ACCEPTED BY \_\_\_\_\_ TITLE \_\_\_\_\_ DATE \_\_\_\_\_

Description	Quantity	Unit Price	Extended Price
<p>8 HPL Panel: Premium                      Color: Formica Grayed Oak 5791-PG                      PVC Edge: Silver Grey C600244                      Powdercoat: 809 Silver                      MEDIA TECH                      Tag For CIRC DESK                      BKTK-2</p>			
<p>9 <b>WMPS661220-W-LL-P2A</b> - Nomad Mobile Pedestal 2 Box                      15"W x 20"H                      HPL Premium                      Color: Formica Grayed Oak 5791-PG                      PVC Edge: Silver Grey C600244                      Pull Type: P2 Arch Pull                      Pull Finish: Nickel                      Lock Type: Lock Alike                      MEDIA TECH                      Tag For CIRC DESK                      CD-3</p>	1	509.85	509.85
<b>Sub Total</b>			11,423.25
<b>Total</b>			<b>11,423.25</b>
<b>WALK-UP COMPUTER STATION</b>			
<p>10 <b>WUW2081-SP-ADA</b> - Walk-up Wall Hung ADA Computer                      Workstation                      81"W x 20"D x 13"H</p> <p>Consisting of:                      Center storage module at 27"W x 13"H+ with 2-locking doors,                      flanked by a 27"W surface extending off the bottom                      right side of cabinet &amp; another at the top left side. Full height (13"+)                      panel at the right end for ADA compliance.                      2-Wire management grommets in the surface to coordinate with a                      series of wire management access holes/channels across the back                      of the station to conceal all wires.                      Wall hung using a hidden mount on the back of the cabinet along                      with hidden cleats behind the left and right surface extensions.                      Workstation has a 7/8" border on                      all sides with a recessed reveal detail.</p> <p>Inset Reveal &amp; Doors: Wilsonart Magnolia 5012-60                      Exterior Shell: Wilsonart Island 0498K-18                      Edge: White                      Pulls: Rod Style - Brushed Nickel                      Finishes as noted or equal, based on location                      PRIMEWAY                      Tag For WALK-UP COMP STATION                      WALK-UP</p>	1	3,682.67	3,682.67

TITLE OF PRODUCT TRANSFERS UPON RECEIPT BY CUSTOMER.

yourNBS.com

Remit Payments to: NBS, 6973 Reliable Parkway, Chicago, IL 60686

Description	Quantity	Unit Price	Extended Price
<b>Sub Total</b>			3,682.67
<b>Total</b>			<b>3,682.67</b>
<b>FLEX SPACE E105</b>			
<b>11</b> <b>SMEMTNL2460</b> - Elemental; Table-Nest and fold, With casters, 24D x 60W Worksurface Finish: Smith System Laminate 494360 - CLASSIC LINEN HIGH GLOSS Edge Type: 1 1/4in Top w 3/8in Bmp TMId Edge Finish: Smith System T-Mold CHP - CHAMPAGNE T MOLD Leg Finish: Smith System Paint PLT - Platinum Height: EJ - Adjustable Height SMITH SYST <b>Tag For</b> FLEX SPACE E105 T-1	20	667.20	13,344.00
<b>12</b> <b>BXBYARMLESS</b> - AMQ Bixby Chair Armless <b>Cushion:</b> No Cushion <b>Frame Finish:</b> Paint PC03 - Platinum <b>Seat Shell Finish:</b> Plastic PL02 - Sterling Dark <b>Back Shell Finish:</b> Plastic PL03 - Platinum <b>Castors or Glides:</b> Soft Castors <b>Accessories:</b> No Accessory <b>Storage Tray:</b> No Storage Tray AMQ SOLUTI <b>Tag For</b> FLEX SPACE E105 S-2	40	166.52	6,660.80
<b>Sub Total</b>			20,004.80
<b>Total</b>			<b>20,004.80</b>
<b>IDEA FACTORY E129</b>			
<b>13</b> <b>SMEMTEL60TR</b> - Elemental; Table-Trapezoid, 30D x 60W Worksurface Finish: Smith System Laminate 494360 - CLASSIC LINEN HIGH GLOSS Edge Type: D-1 1/4in Top w 4mm TMId Edge Finish: Smith System T-Mold ORG - ORANGE T MOLD Leg Finish: Smith System Paint PLT - Platinum Height: EA - Adjustable Height SMITH SYST <b>Tag For</b> IDEA FACTORY E129 T-2	6	337.80	2,026.80
<b>14</b> <b>SMINC17577</b> - Interchange; 3 inch dual wheel casters-Pack of 4, Locking, Colorful	6	76.80	460.80

TITLE OF PRODUCT TRANSFERS UPON RECEIPT BY CUSTOMER.

85

ACCEPTED BY \_\_\_\_\_ TITLE \_\_\_\_\_ DATE \_\_\_\_\_

Description	Quantity	Unit Price	Extended Price
<b>14 Caster Finish:</b> Smith System Plastic PLATINUM - Platinum SMITH SYST <b>Tag For</b> IDEA FACTORY E129 T-2/CSTR			
<b>15 SMPLN25212BUTCHER</b> - Planner; Studio-Butcher table, Fixed height, With casters, 36D x 72W x 29H <b>Leg Finish:</b> SMITH SYSTEM PAINT OR - ORANGE SMITH SYST <b>Tag For</b> IDEA FACTORY E129 T-3	2	1,371.00	2,742.00
<b>16 SMCSC310015000</b> - Cascade Mega-Case-Open, 15-3" SW totes, casters <b>Edge Panel Configuration:</b> P- Pltnm Body w/Solid End Pnls <b>End Panel Finish:</b> Smith System Paint CHL - CHARCOAL SMITH SYST <b>Tag For</b> IDEA FACTORY E129 CAB-1	3	945.00	2,835.00
<b>17 SMPLN25271BUTCHER</b> - Planner; Studio-Single bench, Butcher block, For 72W table, 12D x 58W <b>Leg Finish:</b> SMITH SYSTEM PAINT OR - ORANGE SMITH SYST <b>Tag For</b> IDEA FACTORY E129 S-4	4	729.60	2,918.40
<b>18 SMOODLE31</b> - Oodle; Stool-Stack of 3, With 1 movement disc <b>Oodle Finish:</b> Smith System Plastic CHARCOAL - Charcoal SMITH SYST <b>Tag For</b> IDEA FACTORY E129 S-6B	6	157.20	943.20
<b>19 SMOODLE31</b> - Oodle; Stool-Stack of 3, With 1 movement disc <b>Oodle Finish:</b> Smith System Plastic PLATINUM - Platinum SMITH SYST <b>Tag For</b> IDEA FACTORY E129 S-6C	6	157.20	943.20
<b>20 SMOODLE31</b> - Oodle; Stool-Stack of 3, With 1 movement disc <b>Oodle Finish:</b> Smith System Plastic ORANGE - Orange SMITH SYST <b>Tag For</b> IDEA FACTORY E129 S-6A	6	157.20	943.20
<b>Sub Total</b>			13,812.60
<b>Total</b>			<b>13,812.60</b>

TITLE OF PRODUCT TRANSFERS UPON RECEIPT BY CUSTOMER.

86

ACCEPTED BY \_\_\_\_\_ TITLE \_\_\_\_\_ DATE \_\_\_\_\_

Description	Quantity	Unit Price	Extended Price
<b>LOUNGE AREA</b>			
<b>21 N66RD42CL - WHIMSY,42DIA ROUND,MOBILE,LAMINATE TOP</b> <b>LAMINATE:</b> <b>G1009: WHITE NEBBIA</b> <b>UPHOLSTERY GRADE:</b> <b>MOMD: MOMENTUM GRADE D</b> <b>09165968: NIFTY ADOBE</b> KIMBALL OF <b>Tag For</b> LOUNGE AREA OTT-1	1	960.24	960.24
<b>22 N66RD22C - WHIMSY,22DIA ROUND,MOBILE</b> <b>UPHOLSTERY GRADE:</b> <b>DTC: DESIGNTEX GRADE C</b> <b>3877_401: ALPHABET MEDITERRANEAN</b> <b>LEATHER PULL:</b> <b>EB: EBONY LEATHER</b> KIMBALL OF <b>Tag For</b> LOUNGE AREA OTT-5	1	527.62	527.62
<b>23 N66RD16C - WHIMSY,16DIA ROUND,MOBILE</b> <b>UPHOLSTERY GRADE:</b> <b>DTC: DESIGNTEX GRADE C</b> <b>3877_401: ALPHABET MEDITERRANEAN</b> <b>LEATHER PULL:</b> <b>EB: EBONY LEATHER</b> KIMBALL OF <b>Tag For</b> BOOK STACKS E127 OTT-2	2	453.56	907.12
<b>24 N66RD16C - WHIMSY,16DIA ROUND,MOBILE</b> <b>UPHOLSTERY GRADE:</b> <b>DTC: DESIGNTEX GRADE C</b> <b>3877_202: ALPHABET LIMONCELLO</b> <b>LEATHER PULL:</b> <b>EB: EBONY LEATHER</b> KIMBALL OF <b>Tag For</b> BOOK STACKS E127 OTT-3	3	453.56	1,360.68

TITLE OF PRODUCT TRANSFERS UPON RECEIPT BY CUSTOMER.

Description	Quantity	Unit Price	Extended Price
<b>25 N66RD16C - WHIMSY,16DIA ROUND,MOBILE</b> <b>UPHOLSTERY GRADE:</b> DTC: DESIGNTEX GRADE C 3877_703: ALPHABET HABANERO <b>LEATHER PULL:</b> EB: EBONY LEATHER KIMBALL OF Tag For BOOK STACKS E127 OTT-4	4	453.56	1,814.24
<b>26 8334/GD1 - RAVEN MODULAR CURVED BACKLESS UNIT</b> SEAT DEPTH: 27" SEAT HEIGHT: 18" LEGS POWDERCOAT: BRUSHED ALUMINUM SEAT: CF STINSON PING PONG MAI TAI PNG10 FABRIC DIRECTION: RAILROAD OR OFF THE BOLT - TBD +/NON GAGING UNIT ERG INTERN Tag For LOUNGE AREA S-3	6	1,408.75	8,452.50
<b>27 TS34403 - Alight; Ottoman-Bench</b> <b>UPHLSTRY: 59DF GRADED IN PR. GRP. 6</b> MOMENTUM TEXTILES Purchaser: VENDOR Pattern: NIFTY Color: ADOBE -09165968 Direction: HORIZONTAL <b>LEG OPT: *OPT:LEG OPTIONS</b> <b>ALUMINUM: STD:ALUMINUM LEGS</b> STEELCASE Tag For LOUNGE AREA S-7	2	510.60	1,021.20
<b>28 TS34403 - Alight; Ottoman-Bench</b> <b>UPHLSTRY: 59DD GRADED IN PR. GRP. 4</b> DESIGNTEX INC Purchaser: VENDOR Pattern: ALPHABET -3877 Color: MEDITERRANEAN -401 Direction: HORIZONTAL STEELCASE Tag For LOUNGE AREA S-7B	1	488.06	488.06
<b>29 TS34403 - Alight; Ottoman-Bench</b> <b>UPHLSTRY: 59DD GRADED IN PR. GRP. 4</b>	1	488.06	488.06

TITLE OF PRODUCT TRANSFERS UPON RECEIPT BY CUSTOMER.

Description	Quantity	Unit Price	Extended Price
<b>29</b> DESIGNTEX INC Purchaser: VENDOR Pattern: ALPHABET -3877 Color: LIMONCELLO -202 Direction: HORIZONTAL STEELCASE <b>Tag For</b> LOUNGE AREA S-7C			
<b>Sub Total</b>			16,019.72
<b>Total</b>			<b>16,019.72</b>
<b>MEDIA TECH MILLWORK</b>			
<b>30</b> <b>TRN-SB-841813-L</b> - TRANSITION 84X18X13 STARTER UNIT FLOOR TO TOP OF UNIT HEIGHT 78"H X 20"W X 13"D INCLUDES 3-FIXED AND 4-TAB CAM ADJUSTABLE SHELVES HPL End Panels, Top, Bottom: WA Sunnyside Up 13089-60 PVC End Panels, Top, Bottom: Sunny Side Up C200812 HPL Adj Shelves: WA Magnolia 5012-60  PVC Adj Shelves: Generic White C100033 MEDIA TECH	1	497.25	497.25
<b>31</b> <b>TRN-SB-841813A-L</b> - TRANSITION 84X18X13 ADDER UNIT FLOOR TO TOP OF UNIT HEIGHT 78"H X 19"W X 13"D INCLUDES 3-FIXED AND 4-TAB CAM ADJUSTABLE SHELVES HPL End Panels, Top, Bottom: WA Sunnyside Up 13089-60 PVC End Panels, Top, Bottom: Sunny Side Up C200812 HPL Adj Shelves: WA Magnolia 5012-60 PVC Adj Shelves: Generic White C100033 MEDIA TECH	1	389.70	389.70
<b>32</b> <b>WCS-481430-LL-HPA</b> - ELEMENTS CUPBOARD STORAGE WALL UNIT 48"W X 14"D X 30"H WITH 2-ADJUSTABLE SHELVES, 2-DOORS WITH HINGE HPL: WA Dragon Fire 13088-60 PVC: Dragon Fire C300346 Hinge: H3  HINGE: H3 RIGHT OR LEFT FACING PULL: TBD LOCK: KEY ALIKE MEDIA TECH <b>Tag For</b> MEDIA TECH MILLWORK WCS-481430	1	745.65	745.65
<b>33</b> <b>BOF-482434-L-CT</b> - OPEN FOLIO UNIT WITH CONTINUOUS TOP 48"W X 24"D X 34"H 22-FIXED SHELVES HPL Case: WA Sunnyside Up 13089-60 PVC Case: Sunny Side Up C200812 HPL Folio Shelves: WA Magnolia 5012-60	1	759.60	759.60

TITLE OF PRODUCT TRANSFERS UPON RECEIPT BY CUSTOMER.

89

ACCEPTED BY \_\_\_\_\_ TITLE \_\_\_\_\_ DATE \_\_\_\_\_



2595 Bellingham • Troy, MI 48083 • 248.823.5400 • 248.823.5401 Fax  
 2211 Old Earhart Rd. Ste.190 • Ann Arbor, MI 48105 • 248.823.5400 • 248.823.5401 Fax  
 3201 Pine Tree Rd. Ste. A • Lansing, MI 48911 • 517.886.0072 • 248.823.5401 Fax  
 5160 Alliance Dr. • Bay City, MI 48706 • 989.895.8574 • 989.895.8545 Fax  
 4 North St. Clair St. • Toledo, OH 43604 • 419.662.2040 • 248.823.5401 Fax

**Quotation 357812**  
 Page 10 / 12 (cont'd)

yourNBS.com

Remit Payments to: NBS, 6973 Reliable Parkway, Chicago, IL 60686

Description	Quantity	Unit Price	Extended Price
<b>33</b> MEDIA TECH <b>Tag For</b> MEDIA TECH MILLWORK BOF-482434			
<b>34</b> <b>ECTBL-C-24138</b> - CONTINUOUS TOP ECT WITH 4" BACK SPLASH 138"W X 24"D X 1.25"H HPL: WA Mushroom 5013-60 PVC: TBD MEDIA TECH <b>Tag For</b> MEDIA TECH MILLWORK BCSLD-242434	1	440.10	440.10
<b>35</b> <b>WCSA48-C-T</b> - 48" WIDE VST ASSEMBLY WITH 2-SUPPORT ARMS MODIFIED FOR USE WITH 34"H OVERALL WORKSURFACE TFL: Canadian Gray  PVC: Silver Gray C600244  Powder Coat: 809 Silver MEDIA TECH <b>Tag For</b> MEDIA TECH MILLWORK WS-C-2430	1	277.65	277.65
<b>36</b> <b>HT-96</b> - HORIZONTAL MOUNTING TRACK 96" WITH PRE-PUNCHED MOUNT HOULES ON 16" CENTERS. INCLUDES CONCEALMENT MATERIAL. FINISH: ANODIZED ALUMINUM WALL TYPE: CMU/GYPSUM MEDIA TECH <b>Tag For</b> MEDIA TECH MILLWORK HT-96	5	78.75	393.75
<b>37</b> <b>HTAEC</b> - HORIZONTAL MOUNTING TRACK END CAP WITH MOUNTING SCREWS FINISH: BLACK MEDIA TECH <b>Tag For</b> MEDIA TECH MILLWORK HTAEC	4	7.20	28.80
<b>38</b> <b>HTACS</b> - HORIZONTAL MOUNTING TRACK CONNECTOR SPLICE PLATE FINISH: ALUMINUM MEDIA TECH <b>Tag For</b> MEDIA TECH MILLWORK HTAEC	4	3.15	12.60
<b>39</b> <b>UPCHARGE</b> - UPCHARGE FOR PREMIUM LAMINATE FORMICA GREYED OAK 5791-PG MEDIA TECH	1	247.36	247.36

TITLE OF PRODUCT TRANSFERS UPON RECEIPT BY CUSTOMER.

90

ACCEPTED BY \_\_\_\_\_ TITLE \_\_\_\_\_ DATE \_\_\_\_\_

Description	Quantity	Unit Price	Extended Price
<b>Sub Total</b>			3,792.46
<b>Total</b>			<b>3,792.46</b>
41 LOT - LAMINATE UPCHARGE 494360 - CLASSIC LINEN HIGH GLOSS SMITH SYST	1	419.38	419.38
42 LOT - PROJECT MANAGEMENT FEES 32 HOURS X \$85 NBS TROY	1	2,720.00	2,720.00
43 LOT - NON UNION STRAIGHT TIME LABOR TO RECEIVE AND DELIVER NEW PRODUCT TO THE JOB SITE  ALL WORK TO BE DONE AT ONE TIME ROSE MOVIN	1	1,873.00	1,873.00
44 LOT - NON UNION STRAIGHT TIME LABOR TO INSTALL NEW PRODUCT PER PRINT  ALL WORK TO BE DONE AT ONE TIME  PRICING DOES NOT INCLUDE THE REMOVAL OF EXISTING PRODUCT  CLEAR AND READY SPACE INCLUDES DEBRIS REMOAVL ROSE MOVIN	1	7,218.00	7,218.00
45 LOT - NON UNION LABOR OVERTIME DIFFERENTIAL  WILL BE INVOICED IF REQUIRED ROSE MOVIN	1	2,704.00	2,704.00
46 MONTHLY - MONTHLY STORAGE FEES TO HOLD FURNITURE AT WAREHOUSE.  WILL BE INVOICED MONTHLY FOR THE MONTHS USED - NOT TO EXCEED FIGURE ROSE MOVIN	4	846.00	3,384.00

**Quotation Totals**

<b>Sub Total</b>	105,739.61
FOMCORE FREIGHT	714.00
SMITH SYST FREIGHT	3,860.00
MEDIA TECH FREIGHT	988.00
STEELCASE COM FABRIC LINE 1	152.00
<b>Grand Total</b>	<b>111,453.61</b>

TITLE OF PRODUCT TRANSFERS UPON RECEIPT BY CUSTOMER.



2595 Bellingham • Troy, MI 48083 • 248.823.5400 • 248.823.5401 Fax  
 2211 Old Earhart Rd. Ste.190 • Ann Arbor, MI 48105 • 248.823.5400 • 248.823.5401 Fax  
 3201 Pine Tree Rd. Ste. A • Lansing, MI 48911 • 517.886.0072 • 248.823.5401 Fax  
 5160 Alliance Dr. • Bay City, MI 48706 • 989.895.8574 • 989.895.8545 Fax  
 4 North St. Clair St. • Toledo, OH 43604 • 419.662.2040 • 248.823.5401 Fax

**Quotation 357812**  
**Page 12 / 12 (cont'd)**

**yourNBS.com**      **Remit Payments to:** NBS, 6973 Reliable Parkway, Chicago, IL 60686

**End of Quotation**

TITLE OF PRODUCT TRANSFERS UPON RECEIPT BY CUSTOMER.

92

ACCEPTED BY \_\_\_\_\_ TITLE \_\_\_\_\_ DATE \_\_\_\_\_



2595 Bellingham • Troy, MI 48083 • 248.823.5400 • 248.823.5401 Fax  
 2211 Old Earhart Rd. Ste.190 • Ann Arbor, MI 48105 • 248.823.5400 • 248.823.5401 Fax  
 3201 Pine Tree Rd. Ste. A • Lansing, MI 48911 • 517.886.0072 • 248.823.5401 Fax  
 5160 Alliance Dr. • Bay City, MI 48706 • 989.895.8574 • 989.895.8545 Fax  
 4 North St. Clair St. • Toledo, OH 43604 • 419.662.2040 • 248.823.5401 Fax

**Quotation 352959**

**Quote Date** 01/30/23  
**Project** 221078  
**Customer** L00002  
**Terms** NET 10 DAYS  
**Account Representative** FERNANDO SANJUAN

**yourNBS.com**      **Remit Payments to:** NBS, 6973 Reliable Parkway, Chicago, IL 60686

**Quote To**

Accounts Payable  
 Livonia Public Schools  
 15125 FARMINGTON RD  
 LIVONIA, MI, 48154-5413

**Ship To**

PHILLIP FRANCIS  
 Benjamin Franklin High School  
 31000 Joy Rd  
 Media Center/Thread Product  
 Livonia, MI, 48150

**Phone** 3135239156  
**Fax** 7344214870

**Phone** +1 (734) 744-2554

[pfrancis@livoniapublicschools.org](mailto:pfrancis@livoniapublicschools.org)

**Sales Location** Troy

**E&I CONTRACT PRICING HAS BEEN APPLIED**

**PRICING IS VALID FOR 30 DAYS**

**REVISION 1-30-23: Surcharge Omitted**

Description	Quantity	Unit Price	Extended Price
<b>CLARIFICATIONS - CLARIFICATIONS</b> Assumes Tying Into Existing Circuit/Jbox at Infeed Location Excludes the Removal of Existing Carpet Tile All Work to be Done During Normal Business Hours (Mon – Fri 7:00am-3:30pm) All Work to be Performed by Non-Union Labor All Work to be Performed by Licensed Electrician Excludes Pulling Electrical Permit Assumes Work to be Done in (1) Phase Excludes Correcting Existing Code Violation (if any) Current Manufacturing Lead Time is Approx. 6-8 Weeks Area of Work to be Free/Clear of Furniture and Obstructions Approved Shop Drawings Required Prior to Order Entry	1	N/C	N/C

TITLE OF PRODUCT TRANSFERS UPON RECEIPT BY CUSTOMER.

ACCEPTED BY \_\_\_\_\_ TITLE \_\_\_\_\_ DATE \_\_\_\_\_

yourNBS.com

Remit Payments to: NBS, 6973 Reliable Parkway, Chicago, IL 60686

Description	Quantity	Unit Price	Extended Price
<b>Furnish &amp; Install (2) Runs of Steelcase Thread</b> (1) 84" Powertrack Infeed – Dual Circuit Wall Infeed (1) 24" Powertrack Infeed – Single Circuit Floor Box Infeed (1) 36" Powertrack Infeed (1) 84" Powertrack Infeed (2) 120" Powertrack Infeed (3) 96" Powertrack Infeed (2) 144" Powertrack Infeed (1) Blank Connector (3) 1-Door Connectors (9) 2-Door Connectors (5) Power Hubs – Low Profile Plug (2) Power Hubs – 3 Prong Plug (16) Plug Adapters See drawing dated 12/15/22 (THREAD)	1	16,349.39	16,349.39
<b>Quotation Totals</b>			
Sub Total			<b>16,349.39</b>
Grand Total			<b>16,349.39</b>

End of Quotation

**LIVONIA PUBLIC SCHOOLS  
BOARD OF EDUCATION MEETING  
February 27, 2023**

**TOPIC: Purchase of Scoreboards for H.S. Baseball/Softball Fields**

**RECOMMENDATION:**

Move that the Board of Education of the Livonia Public Schools School District approve the purchase and installation of athletic field improvements in the form of scoreboards at the baseball and softball fields at Churchill High School, Franklin High School, and Stevenson High School in the amount of \$145,000, which includes contingency, and authorize the Superintendent or her designee to negotiate and execute final contracts with the recommended contractors.

**RATIONALE:**

This General Fund project will complete the planned athletic field improvements at Churchill High School, Franklin High School, and Stevenson High School during the spring/summer of 2023.

**BUDGETARY INFORMATION:**

General Fund

**RESOURCE PERSONNEL:**

Phillip Francis, Assistant Superintendent of District Services

**EXHIBITS:**

Attached

PF/ko



Thank you, Harry Lau, for choosing Daktronics.

**The following items are required to process your order:**

- Please verify that this equipment fulfills your project needs**
- Signed Quote with Purchase Order number**
- Validate and complete Project Site Information page, return with order**  
*Help ensure Daktronics shipping, invoicing, and service locations are accurate.*
- Payment & Invoicing** – Please provide Purchase Order number.

You may submit your order to your sales team via the following methods.

<p><b>Email:</b> Attention: Jason Snook – <a href="mailto:Jason.Snook@daktronics.com">Jason.Snook@daktronics.com</a> Kathy Herold – <a href="mailto:Kathy.Herold@daktronics.com">Kathy.Herold@daktronics.com</a></p>	<p><b>Mail:</b> Daktronics, Inc Attn: Kathy Herold PO Box 5128 Brookings, SD 57006</p>
--	--

**After your order has been placed:**

- [Freight Unloading Guidelines](#)** – Shipping to site via LTL (enclosed trailer). Usually unloads at a dock. Forklift or pallet jack may be required.
- Logos, Graphics or Sponsor Advertisements** – [vector files](#) must be submitted with your order documents, not to exceed 1 week of order placement. Once artwork is received, you will be sent a final layout requesting your approval before production. If artwork is not received, the panels will be painted the same as scoreboard and shipped blank.

# DAKTRONICS QUOTE # 814125-1-0

Livonia Public Schools  
 Harry Lau  
 15125 Farmington Rd  
 Livonia, MI USA 48154  
 Phone: (734)744-2500  
 Fax:  
 Email:

21/Dec/2022  
 Quote valid for: 60 days  
 Terms: Net 30 days from shipment with  
 Purchase Order  
 Subject to Credit Review  
 FCA: DESTINATION  
 Delivery: Call For Production Time

**Reference: Churchill High School Baseball**

Item No.	Model	Description	Qty	Price
1	BA-2017-W-PV-F	<b>PanaView® Baseball Scoreboard; Scoreboard Color: Red (42146); Caption Color: White (7725-10); Caption Choice (Pitch Count, At Bat, H/E, or Time): At Bat</b> Cabinet Dimensions: 6' 0" H X 14' 0" W X 0' 8" D (Approx. Dimensions) Digit Type: PANAVIEW Digit Color: WHITE Max Power: 290 watts/display Weight: Unpackaged 300 lbs per display; Packaged 616 lbs per display	2	\$22,101.00
	Stripe; 0A-1091-0185	Border Stripe for BA-2017 Scoreboards; Color: White (7725-10)	2	
	AS-1600 Kit	All Sport® 1600 Control Console Kit	2	
	Outdoor Scoreboard Radio Communication (Transmitter)	Frequency of 2.4 GHz	2	
	Radio Receiver	Frequency of 2.4 GHz	2	
	I-Beam Mounting Method (A)	For 2 I-Beams	2	
	DA-1001-14 with Non-Backlit Lettering and Screen Backing	Arch Truss; Alum, 3ft tall x 14ft long w/ 50% Non-Backlit Lettering/Logo & Screen Backing. Cabinet Dimensions: 3' 0" H X 14' 0" W X 0' 3" D (Approx. Dimensions) Weight: Unpackaged 170 lbs per display; Packaged 375 lbs per display	2	
	FREIGHT	Shipping to site via LTL (enclosed trailer). Usually unloads at a dock. Forklift or pallet jack may be required.	1	
<b>Services</b>				
2	G5C5-W	Five Year Warranty - Parts Coverage - G5G5	1	

Total Price Excluding Applicable Tax:	<b>\$22,101.00</b>
---------------------------------------	--------------------

Please reference listed sales literature: DD1628383 for G5C5-W, DD2118169 for BA-2017-W-PV-F, SL-04352 for AS-1600 Kit, SL-04370 for Outdoor Scoreboard Radio Communication (Transmitter), SL-04370 for Radio Receiver, SL-08028 for DA-1001-14 with Non-Backlit Lettering and Screen Backing



# DAKTRONICS QUOTE # 814126-1-0

Livonia Public Schools  
 Harry Lau  
 15125 Farmington Rd  
 Livonia, MI USA 48154  
 Phone: (734)744-2500  
 Fax:  
 Email:

21/Dec/2022  
 Quote valid for: 60 days  
 Terms: Net 30 days from shipment with  
 Purchase Order  
 Subject to Credit Review  
 FCA: DESTINATION  
 Delivery: Call For Production Time

**Reference: Stevenson High School Baseball**

Item No.	Model	Description	Qty	Price
1	BA-2017-W-PV-F	<b>PanaView® Baseball Scoreboard; Scoreboard Color: Navy Blue (42111); Caption Color: White (7725-10); Caption Choice (Pitch Count, At Bat, H/E, or Time): AT BAT</b> Cabinet Dimensions: 6' 0" H X 14' 0" W X 0' 8" D (Approx. Dimensions) Digit Type: PANAVIEW Digit Color: WHITE Max Power: 290 watts/display Weight: Unpackaged 300 lbs per display; Packaged 616 lbs per display	2	\$22,101.00
	Stripe; 0A-1091-0185	Border Stripe for BA-2017 Scoreboards; Color: White (7725-10)	2	
	AS-1600 Kit	All Sport® 1600 Control Console Kit	2	
	Outdoor Scoreboard Radio Communication (Transmitter)	Frequency of 2.4 GHz	2	
	Radio Receiver	Frequency of 2.4 GHz	2	
	I-Beam Mounting Method (A)	For 2 I-Beams	2	
	DA-1001-14 with Non-Backlit Lettering and Screen Backing	Arch Truss; Alum, 3ft tall x 14ft long w/ 50% Non-Backlit Lettering/Logo & Screen Backing. Cabinet Dimensions: 3' 0" H X 14' 0" W X 0' 3" D (Approx. Dimensions) Weight: Unpackaged 170 lbs per display; Packaged 375 lbs per display	2	
	FREIGHT	Shipping to site via LTL (enclosed trailer). Usually unloads at a dock. Forklift or pallet jack may be required.	1	
<b>Services</b>				
2	G5C5-W	Five Year Warranty - Parts Coverage - G5G5	1	

<b>Total Price Excluding Applicable Tax:</b>	<b>\$22,101.00</b>
--	--------------------

Please reference listed sales literature: DD1628383 for G5C5-W, DD2118169 for BA-2017-W-PV-F, SL-04352 for AS-1600 Kit, SL-04370 for Outdoor Scoreboard Radio Communication (Transmitter), SL-04370 for Radio Receiver, SL-08028 for DA-1001-14 with Non-Backlit Lettering and Screen Backing



# DAKTRONICS QUOTE # 814128-1-0

Livonia Public Schools  
 Harry Lau  
 15125 Farmington Rd  
 Livonia, MI USA 48154  
 Phone: (734)744-2500  
 Fax:  
 Email:

21/Dec/2022  
 Quote valid for: 60 days  
 Terms: Net 30 days from shipment with  
 Purchase Order  
 Subject to Credit Review  
 FCA: DESTINATION  
 Delivery: Call For Production Time

**Reference: Franklin High School Baseball**

Item No.	Model	Description	Qty	Price
1	BA-2017-W-PV-F	<b>PanaView® Baseball Scoreboard; Scoreboard Color: Navy Blue (42111); Caption Color: White (7725-10); Caption Choice (Pitch Count, At Bat, H/E, or Time): At Bat</b> Cabinet Dimensions: 6' 0" H X 14' 0" W X 0' 8" D (Approx. Dimensions) Digit Type: PANAVIEW Digit Color: WHITE Max Power: 290 watts/display Weight: Unpackaged 300 lbs per display; Packaged 616 lbs per display	2	\$22,102.00
	Stripe; 0A-1091-0185	Border Stripe for BA-2017 Scoreboards; Color: White (7725-10)	2	
	AS-1600 Kit	All Sport® 1600 Control Console Kit	2	
	Outdoor Scoreboard Radio Communication (Transmitter)	Frequency of 2.4 GHz	2	
	Radio Receiver	Frequency of 2.4 GHz	2	
	I-Beam Mounting Method (A)	For 2 I-Beams	2	
	DA-1001-14 with Non-Backlit Lettering and Screen Backing	Arch Truss; Alum, 3ft tall x 14ft long w/ 50% Non-Backlit Lettering/Logo & Screen Backing. Cabinet Dimensions: 3' 0" H X 14' 0" W X 0' 3" D (Approx. Dimensions) Weight: Unpackaged 170 lbs per display; Packaged 375 lbs per display	2	
	FREIGHT	Shipping to site via LTL (enclosed trailer). Usually unloads at a dock. Forklift or pallet jack may be required.	1	
<b>Services</b>				
2	G5C5-W	Five Year Warranty - Parts Coverage - G5G5	1	

<b>Total Price Excluding Applicable Tax:</b>	<b>\$22,102.00</b>
--	--------------------

Please reference listed sales literature: DD1628383 for G5C5-W, DD2118169 for BA-2017-W-PV-F, SL-04352 for AS-1600 Kit, SL-04370 for Outdoor Scoreboard Radio Communication (Transmitter), SL-04370 for Radio Receiver, SL-08028 for DA-1001-14 with Non-Backlit Lettering and Screen Backing



**Leasing Program**

If your purchase exceeds \$25,000, you may qualify for our leasing program allowing you more flexibility to spread out the cost of your Daktronics display over of a period up to five (5) years. Benefits of our leasing program include fixed rate financing, non-appropriation clause, no prepayment penalty, and customizable payment schedules. Plus, at the end of the lease, the equipment is yours to keep with no additional balloon payments.

Sample payment options as follows:

- \$50,000 in total equipment cost = \$11,285 per year
- \$100,000 in total equipment cost = \$22,568 per year
- \$250,000 in total equipment cost = \$56,420 per year

\*\*Payments based on 5 year/annual payment in advance structure. **Leasing is subject to credit approval and agreed upon documentation with Daktronics lending partner.** Contact your Daktronics representative for additional options and details.

**Exclusions:**

- |   |   |
|---|---|
| - <b>Electrical Installation</b>                          | - <b>Physical/Mechanical Installation</b> |
| - <b>Structure</b>  | - <b>Foundation</b>                       |
| - <b>Power</b>  | - <b>Hoist</b>                            |
| - <b>Technical Support/Installation Support</b>           | - <b>Engineering Certification</b>        |
| - <b>Signal Conduit</b>                                   | - <b>Labor to Pull Signal Cable</b>       |
| - <b>Applicable Permits</b>                               | - <b>Taxes</b>                            |
| - <b>Electrical Switch Gear or Distribution Equipment</b> | - <b>Front End Equipment</b>              |

Unless expressly stated otherwise in this Quote # 814128-1 Rev 0 or the attachments, if Daktronics performs installation of the Equipment, the price quoted does not include the following services pertaining to physical installations: digging of footings (including dirt removal), any materials fabrication, installation of steel cages, rebar, or bolt attachments, or pouring and finishing of concrete footings. Those service may be provided for an additional cost beyond the quoted price. Purchaser shall be fully responsible for any and all additional costs plus overhead in the event anything unexpected of any nature whatsoever is found while digging the footings including but are not limited to rock, water, utility lines, pipes or any other unforeseen circumstance. The Purchaser acknowledges and agrees that it is fully responsible for all site conditions.

Prices and charges are subject to change by Daktronics at any time before the final agreement between the parties is effective. Ship Date will be determined after customer purchase order is received or agreement is signed or otherwise effective, shop drawings are approved (if required) and down payment is received (if required).

**Installation Responsibilities:**

If applicable please reference Attachment A for Installation Responsibilities.

**Ad/ID Copy Approval Process**

Customer shall provide digital artwork for advertising and identification panels, conforming to [Daktronics' graphic file standards](#), at the time of order. Daktronics will create a proof of provided artwork and require approval of that proof three weeks prior to the initial anticipated ship date. Advertising and identification panels not approved in time, will be shipped without copy in Daktronics' standard finish.

Jason Snook  
PHONE: 734-476-1304  
FAX: 605-697-4746  
EMAIL: Jason.Snook@daktronics.com

Kathy Herold  
PHONE: 605-692-0200  
FAX: 605-692-0381  
EMAIL: Kathy.Herold@daktronics.com

**Terms And Conditions:**

- The Terms and Conditions which apply to this order available on request.
- SL-02374 Standard Warranty and Limitation of Seller's Liability ([www.daktronics.com/terms\\_conditions/SL-02374.pdf](http://www.daktronics.com/terms_conditions/SL-02374.pdf))
- SL-02375 Standard Terms and Conditions of Sale ([www.daktronics.com/terms\\_conditions/SL-02375.pdf](http://www.daktronics.com/terms_conditions/SL-02375.pdf))
- SL-07862 Software License Agreement ([www.daktronics.com/terms\\_conditions/SL-07862.pdf](http://www.daktronics.com/terms_conditions/SL-07862.pdf))

**Acceptance:**

The parties acknowledge and agree that the agreement (the "Agreement") is comprised of the terms and conditions contained within this quote and any attachments thereto, along with the documents at the website addresses above. Purchaser hereby agrees to purchase the equipment as defined in the Agreement. Purchaser acknowledges having had the opportunity and means to review the Agreement. The Agreement represents the entire agreement of the parties and supersedes any previous understanding or agreement. The Undersigned has actual authority to execute this document and Daktronics is relying on such authority. Purchaser acknowledges and agrees to the above, as evidenced by its attestation below.

\_\_\_\_\_ Customer Signature

\_\_\_\_\_ Date

\_\_\_\_\_ Print Name

\_\_\_\_\_ Title



# PROJECT SITE INFORMATION – REQUIRED TO PLACE YOUR ORDER

This document is for order processing purposes only and is not intended to be part of the Agreement

Daktronics Quote # \_\_\_\_\_

**Purchase Order Information:**

\_\_\_\_\_ PO#

\_\_\_\_\_ PO Date

Purchaser (Bill To) hereby confirms that the equipment is to be delivered to (Ship To) and may be installed by Purchases or Daktronics, as indicated elsewhere herein, at the address (Installation Location) indicated below unless otherwise specified.

<b>SHIP TO:</b> (delivery location) Company: _____ Contact: _____ Street Address: _____ City: _____ State: _____ Zip: _____ Telephone: _____ Email: (for shipping notification) _____ Additional Email: (for shipping notification) _____	<b>INSTALLATION LOCATION:</b> (end user) ID# _____ Company: _____ Contact: _____ Street Address: _____ City: _____ State: _____ Zip: _____ Telephone: _____ Email: (for order acknowledgement) _____ Training Contact & Email: (if applicable) _____
---	--

<b>BILL TO:</b> (receive and pay invoices) ID# _____ Company: _____ Contact: _____ Street Address: _____ City: _____ State: _____ Zip: _____ Telephone: _____ Email: _____
---

<b>***LOGO &amp; AD COPY APPROVAL***</b> (if applicable) Name: _____ Email: _____
--

**\*\*Logos, Graphics, or Sponsor Advertisements\*\***  
[Vector files](#) must be submitted with your order documents, not to exceed 1 week of order placement. If artwork is no received, the panels will be painted the same as your scoreboard or display and shipped blank.



---

Specializing in the sale and installation of scoreboards and message displays

To: Livonia Schools

-1/27/2023

Per your request, we are pleased to offer the following price quote for installation of Daktronics baseball scoreboards.

Services Based on Contract:

- Remove existing scoreboards and discard off-site
- Install Daktronics Scoreboard BA-2017 @6 and Truss for Baseball/Softball
  - Install one beam to go with the other two existing beams for 4 of the scoreboards
  - Install 2 beams each for 2 of the scoreboards in a new location (total of 4 beams)
- Set Radio Communication Channels
- Perform Systems Check to Make Sure All LEDs are functioning properly
- Test Controller Connectivity

Price \$65,000

Need access to all scoreboards

Not responsible for landscape

Leave dirt on site

\*No electrical work and need a PO to start the work

**LIVONIA PUBLIC SCHOOLS  
BOARD OF EDUCATION MEETING  
February 27, 2023**

**TOPIC: Purchase of Vehicle for LCTC**

**RECOMMENDATION:**

Move that the Board of Education of the Livonia Public Schools School District approve the purchase of a vehicle for the LCTC Construction Trades program, for a cost not to exceed \$81,000 as allowed through the 61c grant.

**RATIONALE:**

The reason for a purchase order not to exceed \$81,000 is the high turnover of vehicle inventory. This vehicle (F550 or F600) will be used for hauling construction trades equipment to and from approved construction sites.

**BUDGETARY INFORMATION:**

The purchase will be funded through 61C Grant funds.

**RESOURCE PERSONNEL:**

Kevin Etue, Director of Secondary Programs and District Services.

**EXHIBITS:**

Attached

KE/ms



Preview Order 4542 - F5H 4x4 Reg Chas Cab DRW: Order Summary Time of Preview: 01/20/2023 10:24:36 Receipt: 1/20/2023

Dealership Name: Suburban Ford of Romeo

Sales Code : F48418

Dealer Rep.	kyle cherry	Type	Retail	Vehicle Line	Superduty	Order Code	4542
Customer Name	X XXXXX	Priority Code	19	Model Year	2023	Price Level	320

DESCRIPTION	MSRP	DESCRIPTION	MSRP
F550 4X4 CHASSIS CAB DRW/169	\$54850	.BACKGLASS DEFROST	\$0
169 INCH WHEELBASE	\$0	.FOG LAMPS	\$0
OXFORD WHITE	\$0	.ADJUSTABLE GAS/BRAKE PEDAL	\$0
40/20/40 CLOTH SEAT	\$0	.REMOTE START SYSTEM	\$0
MEDIUM DARK SLATE	\$0	.8-WAY POWER SEAT-DRIVER	\$0
PREFERRED EQUIPMENT PKG.663A	\$0	PLATFORM RUNNING BOARDS	\$320
.XLT TRIM	\$0	19500# GVWR PACKAGE	\$0
.AM/FM STEREO MP3/CLK	\$0	ENGINE BLOCK HEATER	\$100
6.7L POWER STROKE V8 DIESEL	\$9995	50 STATE EMISSIONS	\$0
10-SPEED AUTO TORQSHIFT	\$0	HIGH CAPACITY TRAILER TOW PKG	\$580
225/70R19 5G BSW ALL POSITION	\$0	350 AMP ALTERNATOR	\$0
4.30 RATIO LIMITED SLIP AXLE	\$395	FUEL CHARGE	\$0
PAYLOAD PLUS PACKAGE UPGRADE	\$1155	PRICED DORA	\$0
CV LOT MANAGEMENT	\$0	DESTINATION & DELIVERY	\$1895
XLT VALUE PACKAGE	\$1900		
TOTAL BASE AND OPTIONS			MSRP \$71190
DISCOUNTS			NA
TOTAL			\$71190

Customer Name:  
Customer Address:

Customer Email:  
Customer Phone:

Customer Signature

Date

# BRIGHTON WORK TRUCK QUOTE



8240 Grand River  
Brighton, MI 48114

Phone (810)494-4243  
Fax 810-220-0964

Email toddmp\_ford@yahoo.com  
Email tprovencal@brightonford.com

Today's Date 01/20/2023 Quote #

Purchaser's Name Livonia Public Schools

Please enter my order for one: New  Used  Demo   
Year 2022 Make FORD

Model/Ser F600 Trim XLT

VIN 1FDFF6LN7NDA26805 Stock # 222207

Description	Details	Total
Purchase Price	(Including freight & accessories)	66,050 00
Options	12' STAKE BODY	12,557 00
Other Taxable Charges		
Doc Fee		210 00
CVR Fee		24 00
Total Tax		0 00
Total Taxable Items With Tax		78,841.00
Non-Taxable Charges	(Labor, service, contract, etc )	
Doc fee (non-tax)		15 00
Transfer Fee (non-tax)		8 00
Total Non-Taxable Charges		23.00
Total Delivered Price		78,864.00
Cash Deposit Submitted w/ Order		
Rebates	GOVERNMENT BID DISCOUNT	3,100.00
Trade-in Allowance For Trade-in (As appraised)		
Trade-in Less Balance Owning To (To roll into new payment)		
Trade-in: Net Equity of Trade (Balance owed minus trade-in value)		0.00
Total Down Payment		0.00
Cash Due on Delivery	(Cash, cashiers or certified check only)	
Unpaid Balance of Cash Price		75,764.00



Plus new plates if needed

Description of Trade-in	Used Car Warranties
Year	A <input type="checkbox"/> Sold "as-is" implied no warranty at all
Make	B <input type="checkbox"/> Sold with 60 days or 2,000 miles 50% discount on parts & labor
Model	C <input type="checkbox"/> Sold with 100% powertrain, conditions as specified in warranty certificate # _____
Trim	Check which warranty applies to your purchase, all work will be performed at Brighton Ford
VIN	X _____
License #	
Expiration Date	Signature of Purchaser _____

The front and back of this order and other signed agreement between the parties compromise of the entire agreement affecting this purchase or lease and no oral agreements or understanding of concerning same has been made or entered into or will be recognized. I hereby certify that no credit has been extended to me for the purchase of this motor vehicle except as appears in writing of this agreement. I have read the matter printed on the back hereof and agree to it as a part of this order the same as if it were printed above my signature. I certify that I am of legal age and he acknowledge of copy of this order.

"The information you see on the window form for this vehicle is part of this contract. Information on the window form overrides any contrary provisions in the contract of sale."

**THIS ORDER IS NOT A BINDING CONTRACT**

TODD PROVENCAL

Salesman

SIGNATURE OF PURCHASER \_\_\_\_\_

THIS ORDER IS NOT VALID UNLESS SIGNED AND ACCEPTED BY DEALER OR HIS/HER AUTHORIZED REPRESENTATIVE

STREET ADDRESS \_\_\_\_\_

APPROVED \_\_\_\_\_

CITY & STATE \_\_\_\_\_ ZIP \_\_\_\_\_

BUSINESS PHONE # \_\_\_\_\_ HOME/CELL # \_\_\_\_\_

THANK YOU FOR YOUR BUSINESS!



**LIVONIA PUBLIC SCHOOLS  
BOARD OF EDUCATION MEETING  
February 27, 2023**

**TOPIC: Limited Out of District Schools of Choice for 2023-2024**

**RECOMMENDATION:**

Move that the Board of Education of the Livonia Public Schools School District accept the recommendation of the Superintendent to participate in Limited Out of District Schools of Choice under Section 105 and 105c for the 2023-2024 school year. Openings to include no more than 185 seats in kindergarten through sixth grade.

**RATIONALE:**

Section 105 & 105c Limited Schools of Choice will bring additional revenue to the District in the amount of approximately \$1,600,000 if all seats are filled. In addition to the additional revenue, these placements will help rebalance class size and fill gaps at various locations throughout our schools without negatively impacting class size. Also, strategic placement of Schools of Choice students helps to reduce the possibility of kindergarten overflow and combination classrooms.

**BUDGETARY INFORMATION:**

Added revenue to the general fund – up to \$1,600,000.

**RESOURCE PERSONNEL:**

William Green, Director of Elementary Programs and District Services  
Kevin Etue, Director of Secondary Programs and District Services

BG/ch



**LIVONIA PUBLIC SCHOOLS  
BOARD OF EDUCATION MEETING  
February 27, 2023**

**TOPIC:** **Approval of Teachers**

**RECOMMENDATION:**

Move that the Board of Education of the Livonia Public Schools School District accept the recommendation of the superintendent and offer employment for the 2022-23 school year to the teachers listed on the attached document.

**RATIONALE:**

These teachers have been interviewed, along with many other applicants, for the vacancies that existed in our instructional program. We believe these teachers are the most qualified for the positions and recommend they be approved for employment.

**BUDGETARY INFORMATION:**

The positions listed are within the 2022-23 budget.

**RESOURCE PERSONNEL:**

Anthony Abbate, Director of Human Resources  
Jennifer Keatts, Director of Human Resources

**EXHIBIT:**

Attached

ljn

**2022-2023 School Year  
New Teachers for Board of Education Approval  
February 27, 2023**

NAME	DEGREE/SCHOOL	FTE	ASSIGNMENT	MOST RECENT EXPERIENCE	TOTAL YEARS OF EXPERIENCE	STEP
<b>Cocke, Kelly</b>	Master of Occupational Therapy in Occupational Therapy Eastern Michigan University  Bachelor of Science in Human Biology Michigan State University	(1.0)	Occupational Therapist Early On Jackson Early Childhood Center February 13, 2023	Ivy Rehab Pediatric Occupational Therapist	8 years	Step 5 (MS) 5 years probation
<b>Kaminski, Daniel</b>	Master of Occupational Therapy in Combined Occupational Therapy Eastern Michigan University  Bachelor of Science in Combined Occupational Therapy Eastern Michigan University	(1.0)	Occupational Therapist Garfield Community School February 27, 2023	ProMedica Total Rehab Pediatrics Occupational Therapist	2.5 years	Step 2.5 (MS) 5 years probation  110
<b>Newitt, Sandra</b>	Master of Physical in Physical Therapy Oakland University  Bachelor of Arts in Biology Wheaton College	(1.0)	Physical Therapist Early On Jackson Early Childhood Center March 6, 2023	Edu Healthcare Madison District Public Schools Physical Therapist/Early Interventionist	28 years	Step 12 (MS) 5 years probation

**LIVONIA PUBLIC SCHOOLS  
BOARD OF EDUCATION MEETING  
February 27, 2023**

**TOPIC:                    Granting of Tenure Status to Specified Teachers**

**RECOMMENDATION:**

Move that the Board of Education of the Livonia Public Schools School District amend the tenure motion that was approved at the January 30, 2023 Regular Board meeting, to reflect the correct tenure effective date of November 22, **2021** for Kelly Billin; thereby accepting the recommendation of the superintendent and acknowledging that tenure status has been granted to the following teachers, effective on the respective dates:

<u>Name</u>	<u>Date</u>
Kelly Billin	November 22, 2021
Alison Boike	January 26, 2023
Brittany Cornellier	January 10, 2023
Gillian Drutchas	January 29, 2023
Erin Horback	January 29, 2023

**RATIONALE :**

These teachers have successfully completed the District’s requirements for probationary teachers including years of service, evaluations, and overall performance, as well as student growth. We have carefully reviewed all of the supporting documents and based upon our review, as well as the recommendations of building principals, these individuals have achieved tenure status with the Livonia Public Schools.

**RESOURCE PERSONNEL:**

Jennifer Keatts, Director of Human Resources  
Anthony Abbate, Director of Human Resources

**EXHIBIT:**

None

**LIVONIA PUBLIC SCHOOLS  
BOARD OF EDUCATION MEETING  
February 27, 2023**

**TOPIC:** Recall of a Teacher

**RECOMMENDATION:**

Move that the Board of Education accept the recommendation of the superintendent and recall to District employment as a teacher for the 2022-23 school year the person listed on the attached document dated February 27, 2023.

**RATIONALE:**

Following Board authorization on June 13, 2022, to begin the recall procedure, the process was initiated. The attached document contains the name of one person who has been recalled and declined the position. There are two teachers remaining on layoff.

**BUDGETARY INFORMATION:**

This position is within the 2022-23 budget guidelines.

**RESOURCE PERSONNEL:**

Anthony Abbate, Director of Human Resources  
Jennifer Keatts, Director of Human Resources

**EXHIBIT:**

Attached

ljn

**Livonia Public Schools**

**LEA STAFF RECALLS**

**2022-2023**

**February 27, 2023**

<b>LAST NAME</b>	<b>FIRST NAME</b>	<b>SENIORITY DATE</b>	<b>FTE</b>	<b>POSITION</b>	<b>GRADE LEVEL</b>	<b>LOCATION</b>	<b>STATUS</b>
<i>Secondary</i>							
McGill	Erin	01/29/2021	(1.0)	Teacher	10, 11, and 12	Stevenson High School	Declined

**LIVONIA PUBLIC SCHOOLS  
BOARD OF EDUCATION MEETING  
February 27, 2023**

**TOPIC:** Resignation

**RECOMMENDATION:**

As authorized in the Board of Education motion of June 13, 2022, the following resignation has been accepted by the superintendent:

<u>Name</u>	<u>Date Effective</u>
Fran Mason	February 14, 2023

**BUDGETARY INFORMATION:**

None

**RESOURCE PERSONNEL:**

Jennifer Keatts, Director of Human Resources  
Anthony Abbate, Director of Human Resources

**EXHIBIT:**

None

**LIVONIA PUBLIC SCHOOLS  
BOARD OF EDUCATION MEETING  
February 27, 2023**

**TOPIC: Resolution of Appreciation for Employees Who are Retiring**

**RECOMMENDATION:**

Move that the Board of Education of the Livonia Public Schools School District adopt the attached resolutions of appreciation for services rendered by:

**Jennifer Abler  
Jennifer Johns  
Lynda Melcher**

**BUDGETARY INFORMATION:**

None

**RESOURCE PERSONNEL:**

Jennifer Keatts, Director of Human Resources  
Anthony Abbate, Director of Human Resources

**EXHIBIT:**

Attached resolutions

**LIVONIA PUBLIC SCHOOLS  
BOARD OF EDUCATION MEETING  
February 27, 2023**

**RESOLUTION**

**Jennifer Abler**

**WHEREAS**, It has been brought to the attention of the Board of Education of the Livonia Public Schools School District that Jennifer Abler retired from the district on February 24, 2023; and,

**WHEREAS**, Jennifer Abler has devoted 25.6 years of dedicated, loyal, and outstanding service to the students of Franklin High School, Riley Middle School, Churchill High School, Frost Middle School, and Stevenson High School as a teacher and as a math coordinator in the Curriculum Department; and,

**WHEREAS**, She has made many contributions to the educational profession and touched the lives of countless students during her tenure with the Livonia Public Schools;

**NOW, THEREFORE, BE IT RESOLVED** That the Board of Education does hereby congratulate Jennifer Abler on her years of service to the educational profession and expresses publicly its sincere appreciation and offers its best wishes for her retirement.

**Jennifer Johns**

**WHEREAS**, It has been brought to the attention of the Board of Education of the Livonia Public Schools School District that Jennifer Johns retired from the district on February 3, 2023; and,

**WHEREAS**, Jennifer Johns has devoted 18.5 years of dedicated, loyal, and outstanding service to the students of Perrinville Early Childhood Center and Jackson Early Childhood Center as a teacher and team leader; and,

**WHEREAS**, She has made many contributions to the educational profession and touched the lives of countless students during her tenure with the Livonia Public Schools;

**NOW, THEREFORE, BE IT RESOLVED** That the Board of Education does hereby congratulate Jennifer Johns on her years of service to the educational profession and expresses publicly its sincere appreciation and offers its best wishes for her retirement.

**Lynda Melcher**

**WHEREAS**, It has been brought to the attention of the Board of Education of the Livonia Public Schools School District that Lynda Melcher will retire from the district on June 15, 2023; and,

**WHEREAS**, Lynda Melcher has devoted 29.5 years of dedicated, loyal, and outstanding service to the students of Franklin High School and Churchill High School as a teacher; and,

**WHEREAS**, She has made many contributions to the educational profession and touched the lives of countless students during her tenure with the Livonia Public Schools;

**NOW, THEREFORE, BE IT RESOLVED** That the Board of Education does hereby congratulate Lynda Melcher on her years of service to the educational profession and expresses publicly its sincere appreciation and offers its best wishes for her retirement.

**LIVONIA PUBLIC SCHOOLS  
BOARD OF EDUCATION MEETING  
February 27, 2023**

**TOPIC:**                    **Second Reading & Adoption of Board Bylaw**

**RECOMMENDATION:**

Move that the Board of Education of the Livonia Public Schools School District accept the recommendation of the Policy Committee and adopt Board Policy language per the attached document for:

**Board Bylaw BBABA – Duties of the President**

**RATIONALE:**

The Board Policy Committee has met with staff to review proposed language for the above bylaw and is recommending approval by the entire Board. This language was submitted for first reading at the Board meeting of January 30, 2023.

**BUDGETARY INFORMATION:**

None

**RESOURCE PERSONNEL:**

Andrea L. Oquist, Superintendent

**EXHIBITS:**

Attached Bylaw

Off/Supt/jw

# BYLAWS OF THE BOARD

BBABA

## BOARD OPERATIONS DUTIES OF THE PRESIDENT

FEBRUARY 27, 2023

The president of the Board shall preside at all regular meetings, special meetings, closed sessions, committee meetings, and study sessions; shall have the option to make and second motions, shall vote on all agenda items unless a conflict of interest exists; shall plan cooperatively with the superintendent the agendas for such meetings; shall represent and speak for the Board when requested to do so and only on action which the Board has already taken; shall sign documents as required by law and correspondence as authorized by the Board; shall appoint Board members as committee chairpersons and members as soon as feasible following the meeting of the election of officers; shall make other committee appointments; and shall perform such other duties as authorized by the Board.

LEGAL REF.: MCL 380.11a(6)

# BYLAWS OF THE BOARD

BBABA

## BOARD OPERATIONS DUTIES OF THE PRESIDENT

FEBRUARY 24, 2020

The president of the Board shall preside at all regular meetings, special meetings, closed sessions, committee meetings, and study sessions; shall have the option to make and second motions, shall vote on all agenda items unless a conflict of interest exists; shall plan cooperatively with the superintendent the agendas for such meetings; shall represent and speak for the Board when requested to do so and only on action which the Board has already taken; shall sign documents as required by law and correspondence as authorized by the Board; shall appoint Board members as committee chairpersons and members as soon as feasible following the meeting of the election of officers; shall make other committee appointments; and shall perform such other duties as authorized by the Board.

LEGAL REF.: MCL 380.11a(6)

**LIVONIA PUBLIC SCHOOLS  
BOARD OF EDUCATION MEETING  
February 27, 2023**

**TOPIC:**                    **Second Reading & Adoption of Board Policy**

**RECOMMENDATION:**

Move that the Board of Education of the Livonia Public Schools School District accept the recommendation of the Policy Committee and adopt Board Policy language per the attached document for:

**Board Policy JI – Pledge of Allegiance**

**RATIONALE:**

The Board Policy Committee has met with staff to review proposed language for the above policy and is recommending approval by the entire Board. This language was submitted for first reading at the Board meeting of January 30, 2023.

**BUDGETARY INFORMATION:**

None

**RESOURCE PERSONNEL:**

Andrea Oquist, Superintendent

**EXHIBITS:**

Attached Policy

Off/Supt/jw

# BOARD POLICY

Jl

## STUDENTS PLEDGE OF ALLEGIANCE

FEBRUARY 27, 2023

In accordance with the Revised School Code, the opportunity to recite the pledge of allegiance to the flag of the United States will be offered each school day to all students. A student will not be compelled, against the student's objection or the objection of the student's parent or legal guardian, to recite the pledge of allegiance. A student will not be subject to any penalty or retaliation at school for not reciting the pledge of allegiance.

LEGAL REF.: MCL 380.1347a