



## Agenda

Open Session/Executive Board Meeting  
Thursday, January 28, 2021 - 5:00 PM  
Zoom/YouTube

**This Board meeting will be held electronically as per requirements outlined in Governor Brown's Executive Orders 20-10 and 20-16 relating to COVID-19.**

**Times listed on the agenda below are only estimates and may be adjusted.**

### OPEN SESSION

- 5:00 Call to Order - Native Land Acknowledgement 2
- 5:05 Community Requests
- 5:25 Reopening Schools, Athletics and Facilities - Action 3  
Presenter: Matt Utterback
- 6:30 Adjourn Open Session

### EXECUTIVE SESSION

Convened under Oregon Laws ORS 192.660 (2)(a)

NOTICE TO MEDIA: In accordance with ORS 192.660(3) media representatives must be excluded when student matters are discussed and all other matters discussed in Executive Session must remain undisclosed.

**This executive session will be held online.**

Members of the media may contact Sandra Henderson hendersons@nclack.k12.or.us for login information to access this meeting in accordance with ORS 192.660(4) and ORS 332.061(2)

6:30 Superintendent Candidates - Finalists Selection

8:00 Adjourn Executive Session

### OPEN SESSION

- 8:00 Process for Finalist Interviews - Action 29
- 8:30 Adjourn 1



## Native Land Acknowledgment

We acknowledge the land on which we sit and which we call the North Clackamas School District rests on the traditional and indigenous lands and village sites of the Native peoples of the Kalapuya, Chinook, Molalla, and the Clackamas. We take this opportunity to offer gratitude for the ability to learn, work, and be a community on this land, and we offer thanks to the original caretakers of this region. We recognize the historic policies of colonization, genocide, relocation, and assimilation that affected Indigenous and Native families both past and present and that will affect those in the future, and honor the resilience and revitalization of our Indigenous and Native communities. We pay our respects to the Elders, both past and present, who have been the stewards of this land throughout the generations.

## **REOPENING SCHOOLS, ATHLETICS, and FACILITIES**

**ACTION**  
January 28, 2021

### **SUPERINTENDENT'S RECOMMENDATION:**

Implement a grades K-1 elementary hybrid delivery model when employees working with grade K-1 elementary school students have had the opportunity for both COVID-19 vaccine doses and after Clackamas County has met the state Health Metrics for Returning to In-Person Instruction for two consecutive weeks.

Expand the elementary hybrid model to grades 2-3 when employees working with grade 2-3 elementary school students have had the opportunity for both COVID-19 vaccine doses and with Clackamas County still meeting the state Health Metrics for Returning to In-Person Instruction and approximately two weeks after implementing the K-1 elementary hybrid delivery model. Grades 4-12 will remain in Comprehensive Distance Learning.

Begin the implementation of limited in-person instruction at all grades as long as the state Health Metrics for Returning to In-Person instruction continue to be met.

Allow district high schools to participate in Oregon Schools Activities Association (OSAA) approved and designated high school activities following all safety and health protocols for athletes, coaches, and spectators as outlined by the Oregon Health Authority and OSAA.

Open rental of NCS D fields to local youth-service nonprofit athletic groups for the spring season beginning March 22 while following all state health and safety protocols.

### **BACKGROUND:**

#### **PREVIOUS BOARD ACTIONS ON REOPENING SCHOOLS (October 22, 2020):**

Continue in Comprehensive Distance Learning for kindergarten through 12<sup>th</sup> grade students through second quarter (February 9, 2021) and authorize the Superintendent to:

- pilot small group instruction/services on-site according to state guidelines and safety protocols,
- facilitate Oregon Schools Activity Association (OSAA) high school athletic groups access to District fields beginning November 2, 2020 according to OSAA and state guidelines and safety protocols,
- revisit these timelines with the School Board should the required COVID-19 Oregon Health Metrics for In-Person Instruction be modified.

NEW HEALTH METRIC GUIDANCE:

On December 23, Governor Brown announced new guidance on the reopening of schools in a [letter](#) to the directors of the Oregon Health Authority and the Oregon Department of Education. In her letter, Governor Brown called on Oregon’s local school boards, superintendents, educators, and school employees to work together toward the resumption of in-person instruction.

In addition, beginning on January 1, 2021, the [Health Metrics for Returning to In-Person Instruction](#) transitioned from *mandatory* requirements to *advisory* recommendations. On January 19, the Oregon Health Authority and the Oregon Department of Education revised the Health Metrics for Returning to In-Person Instruction. The revised metrics are outlined in the table below:

METRICS & MODELS	ON-SITE	ON-SITE AND HYBRID	ELEMENTARY ON-SITE AND HYBRID TRANSITION	DISTANCE LEARNING
County Case Rate per 100,000 People Over 14 days	<50.0	50.0 to <200.0	200.0 to ≤350.0	>350.0
County Case Count over 14 days for small & medium counties	<30	30 to <60	60 to ≤90	>90
County Test Positivity <sup>1</sup> Advised for to medium and large counties <sup>2</sup>	<5.0%	5.0% to <10.0%	≤10.0%	>10.0%
Advisory Instructional Model	Prioritize On-Site or Hybrid (as needed to maintain small cohorts) instructional models.	Prioritize careful phasing in of On-Site or Hybrid for elementary schools (starting with younger students and adding additional grades over time).  Middle school and high school primarily Comprehensive Distance Learning with Limited In-Person Instruction. Over time, if elementary schools can demonstrate the ability to limit transmission in the school environment <sup>3</sup> , transition to On-Site or Hybrid.	Prioritize careful phasing in of On-Site or Hybrid for elementary schools (starting with younger students and adding additional grades over time).	Prioritize Comprehensive Distance Learning with Limited In-Person Instruction.
<ol style="list-style-type: none"> <li>If statewide testing volume decreases by more than 10% in the week prior compared to the previous week due to external factors (such as due to a natural disaster or acute decrease in testing supplies), then OHA and ODE will advise temporarily suspending the use of percent positivity in local reopening considerations.</li> <li>Small counties with a population of less than 15,000 are advised to meet case counts in the metrics framework and not test positivity rates.</li> <li>As a measure to monitor limited introduction or spread, local public health should look for an average outbreak size of 3 or less, excluding outbreaks with only one case, over the prior 4 weeks.</li> </ol>		<p>When trends are increasing, pause expansion of additional in-person learning and maintain access to in-person learning for those who have it. Schools are not advised to reduce in-person learning or revert to Comprehensive Distance Learning based on metrics if the school can demonstrate the ability to limit transmission in the school environment.</p>		

### CURRENT RATES OF INFECTION:

As the [Health Date Metrics by County](#) currently stand, Clackamas County has met the advisory metric to begin the transition of elementary students to in-person instruction for the three weeks prior to January 16. There is concern from local researches and epidemiologists of a potential infection surge beginning in mid-February due to pandemic fatigue (individuals not following safety protocols) and the spread of the new more infectious virus variant.

### VACCINE AVAILABILITY:

During the week of January 11, Oregon's Governor announced vaccinations for K-12 employees will start being administered beginning the week of January 25. The Governor hoped to have most K-12 employees vaccinated within two weeks. This timeline was dependent on vaccine supply that now appears to be limited statewide and nationally. Local school districts, including NCSd, are currently working with Portland area healthcare providers including Kaiser, Oregon Health Sciences University, Providence, Legacy, and Peace Health to develop a vaccination plan to provide K-12 employees with both COVID-19 vaccine doses.

North Clackamas will prioritize employees based on job role with a strong focus on reinstating in-person instruction and providing vaccine access for those employees who are most likely to have direct, prolonged contact with students in enclosed spaces. Within Clackamas County, school districts will generally prioritize all employees needed to establish in-person elementary hybrid instruction. In NCSd, this will begin with K-1, followed by grades 2-3 and limited in-person instruction at all levels. In developing the prioritization, further job groups will be considered based on the likelihood of contact with students and families. These prioritizations will continue to include staff from all job categories until all NCSd employees have been given access to the COVID-19 vaccine.

There are approximately 900 district employees that will need to be given the opportunity to be vaccinated prior to fully implementing the K-3 elementary hybrid delivery model. As employees begin to get vaccinated the district will update the community on the number of staff that have been provided the opportunity to be vaccinated.

### ELEMENTARY HYBRID MODEL:

While the school district has remained in comprehensive distance learning since the beginning of the school year, district staff continues planning for an elementary hybrid (partially in-person/partially online) instructional model while keeping comprehensive distance learning (fully online) as an option for families. The elementary hybrid model will be ready to implement at the end of first semester/quarter 2 assuming State Health Metrics for Returning to In-Person Instruction continue to be met and staff that will work directly with students have had the opportunity to receive both doses of the COVID-19 vaccine. That hybrid model would start with grades K-1 and then roll-up to grades 2-3. The district would then assess how well the model is working before potentially expanding to additional grades.

Of families responding to a district survey in late November and early December, approximately 66 percent would prefer the hybrid model and 33 percent of families would remain in comprehensive distance learning. The district was not able to connect with approximately 15 percent of elementary families.

District leadership has also conducted a survey of elementary staff to assist in determining who can safely return to in-person instruction.

District staff has also been working on designing the details of the elementary hybrid model. This includes finalizing the daily schedule, determining the number of hybrid and comprehensive distance learning class sections per grade at each school, and the refining of health and safety protocols. In addition, Transportation staff has been working on new bus routes and Nutrition Services has considered meal service options.

Adding an elementary hybrid model as an option for students is complex and it is estimated it will take several weeks to transition once the decision is made. Among many factors, the District will need to consider:

- The recall of over 120 laid-off employees and/or the multi-week hiring and training process of new employees.
- The training of staff in numerous safety protocols and professional development for how to teach students in an environment that will not allow for close partner or small group interaction.
- Parent communication on the new model, teacher assignments, weekly schedule, safety protocols, meal service options, and transportation.
- Maintaining adequate staffing through the safety protocols to cover staff absences and the potential need to cover staff needing to isolate or quarantine.

#### LIMITED IN-PERSON INSTRUCTION:

Limited in-person instruction (LIPI) is allowed as an additional support to students. Limited in-person instruction does not replace comprehensive distance learning. Instead, it provides a small cohort of students the opportunity to access school staff on-site in short time periods to receive additional academic and/or social-emotional support. Should the superintendent's reopening recommendations be adopted by the school board, the district would begin the implementation of LIPI with a small number of employees and then expand with additional staff.

#### HIGH SCHOOL ATHLETICS AND ACTIVITIES:

Since the beginning of November, District high school students have had the opportunity to participate in after school athletic training and conditioning following strict health and safety protocols. Hundreds of students are participating weekly. Coaches and students are following the health and safety protocols and the rollout of these training and conditioning settings has gone exceptionally well.

North Clackamas high schools are members of the Oregon Schools Activities Association (OSAA). Under OSAA's revised athletic calendar, Season 2, also known as the fall season (cross country, football, soccer, and volleyball) is currently scheduled to start between February 8 and February 22 and run through April 11.

Cross country and soccer, both outdoors and considered no and limited contact sports (respectively), are allowed to compete even when the county is at an “extreme risk” level ([county risk level information](#)). All indoor activities, including volleyball, are prohibited when a county is in the extreme risk category. Full contact sports remain prohibited across the state including football, wrestling, and basketball.

#### COMMUNITY USE OF DISTRICT FACILITIES:

Under this recommendation, district fields will be available to local youth-serving nonprofit athletic groups starting March 22nd. District programs, including high school athletics, will retain priority for use of district grounds and may need to expand their use footprint to K-8 fields to address distancing guidelines. This may limit some community access.

In season facility use priority will remain the same as defined in district policy [KG-AR](#). Fall sports will not be able to claim priority scheduling for the spring season even if they missed their season due to the impacts of COVID-19.

All groups will be required to fully comply with current guidance from the Oregon Health Authority and the Governor. Each community group requesting field space must submit to the Director of Community Services a Return to Play Plan demonstrating their readiness to meet state guidance and requirements. Additionally, each group will sign the COVID-19 Facility Use Liability Release Form as recommended by the Oregon Schools Board Association.

#### DECISION MAKING GUIDANCE AND TOOLS:

When making decisions throughout the pandemic, district leadership and the school board have worked with community partners, students, parents, staff, employee associations, the Oregon Department of Education, and the Clackamas County Health Department.

The district’s decision-making process continues to be guided by these beliefs:

- Valuing a high-quality education and the academic progress of each child
- Supporting low rates of COVID-19 virus transmission in the community
- Coordinating actions that underscore the safety and care for people and provide reassurance for students, staff, and parents
- Standing ready with multiple educational delivery models that are responsive to the current health and community needs

In addition, decisions regarding in-person instruction will continue to be guided by the state’s [Ready Schools Safe Learners](#) guidance document and each school’s Operational Blueprint outlining safety measures for on-site learning.

As school districts transition to new instructional models the state recommends districts consider using an equity-based decision tool. An equity-based decision tool illustrates potential positive and negative impacts on students, families, and staff from all communities. A decision tool can inform a school district/school regarding issues of equity in implementation, including: timing, costs (to schools and families), capacity, morale, disproportionate impacts, professional learning needs, and more.

For a number of years, the District as utilized the following equity lens in decision-making:

When making decisions and taking action, utilize the following questions:

- Does this decision align with the District mission/ vision?
- What systems of oppression might exist within this situation?
- Whom does this decision affect both positively and negatively?
- Does the decision being made ignore or worsen existing disparities or produce other unintended consequences?
- Are those being affected by the decision included in the process?
- What other possibilities were explored?
- Is the decision sustainable?

North Clackamas Schools has an established commitment to the public health of our community and the safety of both students and staff. This includes a thorough consideration of how the virus transmission rates are affecting all of our community members. Of particular concern are the disproportionate rates of COVID-19 among Oregonians who identify as Pacific Islander, Native American/Alaska Native, Black/African American, and Hispanic/Latinx.

**ATTACHMENTS:**

- Reopening Schools, Athletics, Facilities PowerPoint
- [Governor of Oregon Letter to the Director of the Oregon Health Authority and the Director of the Oregon Department of Education](#)
- [Health Metrics for the Returning to In-Person Instruction](#)
- [Health Data Metrics by County](#)
- [Ready Schools, Safe Learners Guidance](#)

**PRESENTER:**

Matt Utterback, Superintendent



**NCSD School Board  
Open Session  
January 28, 2021  
5:00-6:30**

**Reopening Schools, Athletics,  
and Facilities**

## Presentation Overview



1. Superintendent Recommendations
2. Previous Board Actions
3. New Health Metrics Guidance
4. Current County Metric Data
5. Vaccine Availability
6. Status of Elementary Hybrid Model
7. Limited In-Person Instruction Update
8. Activities and Athletics Update
9. Community Use of District Facilities
10. Questions and Board Discussion

# Guiding Thoughts

---

The district's decision-making process continues to be guided by these beliefs:


- Valuing a high-quality education and the academic progress of each child
- Low rates of COVID-19 virus transmission in the community
- Coordinated actions that underscore the safety and care for people and provide reassurance for students, staff, and parents
- Stand ready with multiple educational delivery models that are responsive to the current health and community needs


# Planning Guidance

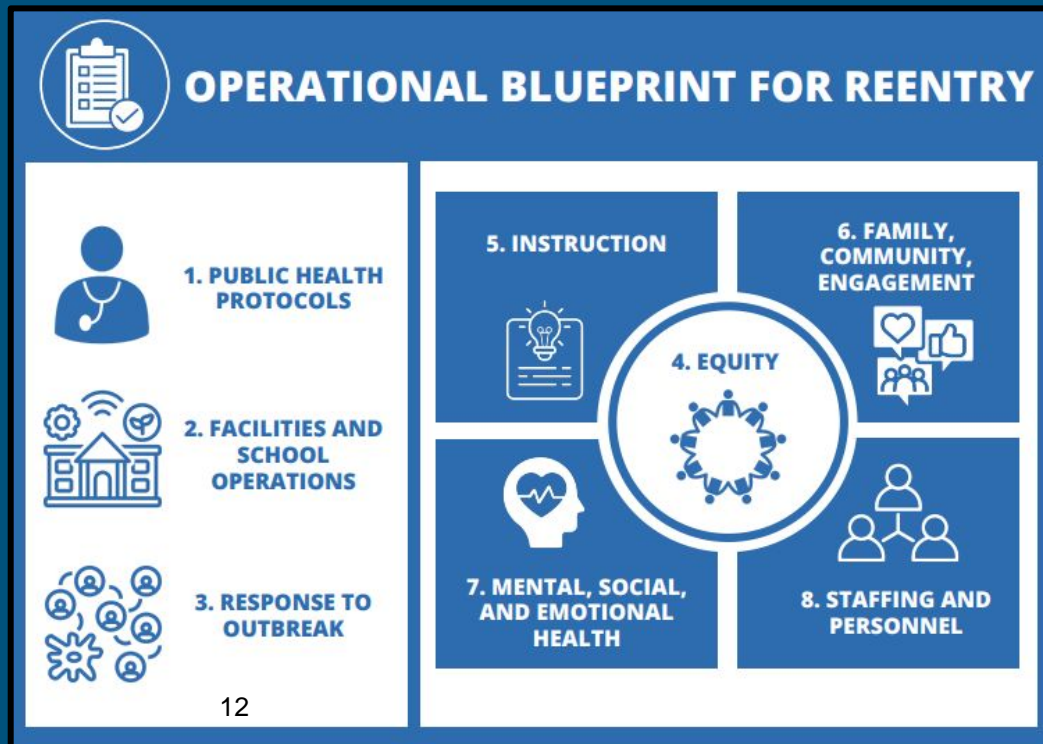
**READY SCHOOLS,  
SAFE LEARNERS**

**GUIDANCE FOR SCHOOL YEAR 2020-21**

**VERSION 5.1.0**  
December 31, 2020

 **OREGON**  
DEPARTMENT OF  
EDUCATION  
*Oregon achieves... together!*

 **Health**  
Authority



# Equity-Based Decision Tools

## North Clackamas School District Equity Lens

When making decisions and taking action, utilize the following questions:

- Does this decision align with the District mission/ vision?
- What systems of oppression might exist within this situation?
- Whom does this decision affect both positively and negatively?
- Does the decision being made ignore or worsen existing disparities or produce other unintended consequences?
- Are those being affected by the decision included in the process?
- What other possibilities were explored?
- Is the decision/ outcome sustainable?

**OREGON DEPARTMENT OF EDUCATION**  
Oregon achieves... together!

### Decision Tree

This decision tree is intended to support Oregon educational leaders being efficient and effective that require thoughtful intervention, design, and problem-solving. The sequence of questions is intentional and offers key considerations that would lead to decision-making that deepens relationships and trust, and avoids unintended impacts harm to communities. This decision tree is not intended for simple problems, but rather complex problems that benefit from deliberate decision-making process.

#### Decision Tools for SY2020-21

Oregon's school leaders are faced with hundreds of decisions, large and small, each week. In preparation for the 2020-21 school year there are significant decisions to make that need the best amounts of time or information. These tools have been developed by ODE to support school leaders, including business managers, principals, assistant principals, teacher leaders, and superintendents, to support making clear choices with a consistent check against key values and equity.

The first tool is titled our "Decision Tree" and is intended as the simplest, most consistent, and easiest to use in considering difficult decisions. It can also help leaders spot patterns or gaps in their thought process or point them to the use of the other two decision tools.

The second tool is a collection of "Comparing Questions" which offer leaders with a set of prompts they could select from to deepen their own reflections or bring to community or staff meetings to help get underneath some decision-making challenges.

Finally, we've adapted the "Consultancy Protocol" with credit to the School Reform Initiative, for use in bringing a small or individual team together to consider what are the most difficult design and decision-making dilemmas in facing for the 2020-2021 school year.

Taken together, these three tools provide leaders with concrete resources that can improve the quality of decision-making while supporting decisions to be made. The hundreds of decisions made by Oregon's school leaders over the next three months will shape not just the next year but also shape the next several years as the kinds of decisions we make in difficult conditions are the clearest reflections of our values and choices.

#### Starting Condition

Individuals (self or team) arrive with a mental picture through these three pre-questions, identifying and naming each and ensure you consider the conditions and processes for the decisions you need to make. Keep your responses in mind as you move through the five questions in the decision tree.

**A** What is your interior condition? Are you calm and steady, full of turmoil, reacting? In this a state from which you wish to make this decision?

**B** What kind of a decision is this? Examples: urgent, complex, urgent and complex, foundational, structural, short-term/long-term, etc.

**C** What is your timeline for when you need to decide by? What other parameters will support your decision-making process?  
Remember to use as guide-rails to support a certain order (foundation-building, staff or using a trauma informed lens or remaining with fundamental equity goals).

Decision → Done

# Superintendent Recommendations

---

Implement a grades K-1 elementary hybrid delivery model when employees working with grade K-1 elementary school students have had the opportunity for both COVID-19 vaccine doses and after Clackamas County has met the state Health Metrics for Returning to In-Person Instruction for two consecutive weeks.

Expand the elementary hybrid model to grades 2-3 when employees working with grade 2-3 elementary school students have had the opportunity for both COVID-19 vaccine doses and with Clackamas County still meeting the state Health Metrics for Returning to In-Person Instruction and approximately two weeks after implementing the K-1 elementary hybrid delivery model. Grades 4-12 will remain in Comprehensive Distance Learning.

# Superintendent Recommendations

---

Begin the implementation of limited in-person instruction at all grades as long as the state Health Metrics for Returning to In-Person instruction continue to be met.

Allow district high schools to participate in Oregon Schools Activities Association (OSAA) approved and designated high school activities following all safety and health protocols for athletes, coaches, and spectators as outlined by the Oregon Health Authority and OSAA.

Open rental of NCSD fields to local youth-service nonprofit athletic groups for the spring season beginning March 22 while following all state health and safety protocols.

# NCSD Current Status (Action taken 10/22/20)

---

Continue in Comprehensive Distance Learning for kindergarten through 12<sup>th</sup> grade students through second quarter (February 9, 2021) and authorize the Superintendent to:

- pilot small group instruction/services on-site according to state guidelines and safety protocols,
- facilitate Oregon Schools Activity Association (OSAA) high school athletic groups access to District fields beginning November 2, 2020 according to OSAA and state guidelines and safety protocols,
- revisit these timelines with the School Board should the required COVID-19 Oregon Health Metrics for In-Person Instruction be modified.

# Changes to State Health Metrics for Reopening

## Governor's Goal:

- Prioritize elementary education
- Moves the Health Metrics for Returning to In-Person Instruction from mandatory to advisory
- Adjust the health metric cases per 100,000 residents.

# New State Health Metrics for Reopening

METRICS & MODELS	ON-SITE	ON-SITE AND HYBRID	ELEMENTARY ON-SITE AND HYBRID TRANSITION	DISTANCE LEARNING
County Case Rate per 100,000 People Over 14 days	<50.0	50.0 to <200.0	200.0 to ≤350.0	>350.0
County Case Count over 14 days for small & medium counties	<30	30 to <60	60 to ≤90	>90
County Test Positivity* Advised for to medium and large counties*	<5.0%	5.0% to <10.0%	≤10.0%	>10.0%
Advisory Instructional Model	Prioritize On-Site or Hybrid (as needed small cohorts) instructional models.	Prioritize careful phasing in of On-Site or Hybrid for elementary schools (starting with younger students and adding additional grades over time).  Middle school and high school primarily Comprehensive Distance Learning with Limited In-Person Instruction. Over time, if elementary schools can demonstrate the ability to limit transmission in the school environment <sup>3</sup> , transition to On-Site or Hybrid.	Prioritize careful phasing in of On-Site or Hybrid for elementary schools (starting with younger students and adding additional grades over time).	Prioritize Comprehensive Distance Learning with Limited In-Person Instruction.

1. If statewide testing volume decreases by more than 10% in the week prior compared to the previous week due to external factors (such as due to a natural disaster or acute decrease in testing supplies), then OHA and ODE will advise temporarily suspending the use of percent positivity in local reopening considerations.
2. Small counties with a population of less than 15,000 are advised to meet case counts in the metrics framework and not test positivity.
3. As a measure to monitor limited introduction or spread, local public health should look for an average outbreak size of 3 or less, excluding outbreaks with only one case, over the prior 4 weeks.

When trends are increasing, pause expansion of additional in-person learning and maintain access to in-person learning for those who have it. Schools are not advised to reduce in-person learning or revert to Comprehensive Distance Learning based on metrics if the school can demonstrate the ability to limit transmission in the school environment.

# Current County Health Metrics

- As the Health Date Metrics by County currently stand, Clackamas County has met the advisory metric to begin the transition of elementary students to in-person instruction for the three weeks prior to **January 16**.
- There is concern from local researches and epidemiologists of a potential infection surge beginning in mid-February due to pandemic fatigue (individuals not following safety protocols) and the spread of the new more infectious virus variant.

# Vaccine Availability

- During the week of January 11, Oregon's Governor announced vaccinations for K-12 employees will start being administered beginning the week of January 25. K-12 staff in the Metro started receiving the COVID-19 vaccine this week.
- It will likely take several weeks for all Metro area K-12 employees to receive their first dose.
- North Clackamas is prioritizing employees based on job role with a strong focus on reinstating in-person instruction and providing vaccine access for those employees who are most likely to have direct, prolonged contact with students in enclosed spaces.
- There are approximately 900 district employees needed to safely initiate K-3 in person hybrid instruction. These employees will need to be given the opportunity to be vaccinated prior to fully implementing the K-3 elementary hybrid delivery model.
- Overall the district has over 2,700 individuals eligible for the vaccine at this time.

# Elementary Hybrid Model Update

- Planning continues for an elementary hybrid model while keeping comprehensive distance learning as an option for families
- The hybrid model will be ready to implement at the end of first semester/quarter 2 (though staff will have not had the opportunity to be fully vaccinated)
- That hybrid model would start with grades K-1 and then roll-up to grades 2-3.
- The district would then assess how well the model is working before potentially expanding to <sup>21</sup>additional grades.

# Elementary Hybrid Model Update

- Parent survey results:
  - Approximately 68 percent prefer hybrid
  - Approximately 31 percent prefer comprehensive distance learning
  - The district did not connect with approximately 15 percent of elementary families
  - Response results among demographic groups was generally within ten percent points of the average (response rates among demographic groups was similar)
- Interviews and surveys of elementary staff
- School level teams will develop and revise health, safety, and instructional practices

# Elementary Hybrid Model Update

While continuing with daily instruction and school operations, recent planning includes:

- Refining the daily schedule
- Determining the number of class sections per grade at each school
- Health and safety protocols
- Bus routes
- Meal Service options

# Elementary Hybrid Model Update

## Future considerations:

- Recall of over 120 laid-off employees and/or the hiring and training process of new employees
- Training of staff
- Parent communication on the new model, teacher assignments, weekly schedule, safety protocols, meal service options, and transportation.
- Maintaining adequate staffing

# Limited In-Person Instruction Update

Limited in-person instruction (LIPi) is allowed as an additional support to students.

- does not replace comprehensive distance learning
- small groups of students
- short time periods
- additional academic and/or social-emotional support

# High School Athletics and Activities Update

## Currently:

- Athletic training and conditioning sessions
- Strict health and safety protocols

## Looking ahead:

- Season 2 “fall” season: cross country, football, soccer, and volleyball
- Scheduled to start between February 8-22 and run through April 11.
- Cross country and soccer are allowed to compete when the county is at an “extreme risk” level.
- All indoor activities are prohibited when a county is in the “extreme risk” category.
- Full contact sports remain prohibited across the state.

# Community Use of District Facilities

- Under this recommendation, district fields will be available to local youth-serving nonprofit athletic groups starting March 22nd.
- In season facility use priority will remain the same as defined in district policy KG-AR.
- All groups will be required to fully comply with current guidance from the Oregon Health Authority and the Governor. Each community group requesting field space must submit to the Director of Community Services a Return to Play Plan demonstrating their readiness to meet state guidance and requirements. Additionally, each group will sign the COVID-19 Facility Use Liability Release Form as recommended by the Oregon Schools Board Association.



# Questions and Board Discussion

## **PROCESS FOR FINALIST INTERVIEWS**

## **DISCUSSION/ACTION**

January 28, 2021

### **SUPERINTENDENT'S RECOMMENDATION:**

Time is set aside on the agenda to discuss and take action regarding the format of the superintendent finalist interviews.

### **BACKGROUND:**

The Board will need to decide whether to hold the Board's February 1st finalist interviews in person or in a virtual format. Following are possible options for conducting the interviews.

- Option 1: In person interview with all Board members present
- Option 2: In person interview with some Board members using Zoom and other Board members present
- Option 3: Zoom interview with none of the candidates present in the district that day

Risk management will advise regarding safety protocols should you choose to hold an in person meeting. The entire Board Room has been reserved for that evening to provide space for social distancing.

### **ATTACHMENTS:**

February 1 Finalists Interview Schedule

### **PRESENTER / STAFF CONTACT:**

Matt Utterback, Superintendent

North Clackamas School District – Superintendent Finalists Interviews – February 1, 2021

		Candidate 1	Candidate 2	Candidate 3
30 min	7:00 - 7:30	Candidate Orientation		
45 min	7:30 - 8:15	Student Advisory Council (Libby and Petra) Sandra Zoom Host	Superintendent Utterback	Principals/Admins (88) (Shelly Simonyi) Kathy Host
10 min	8:15 - 8:25	Break (10 min)		
45 min	8:25 - 9:10	Principals/Admins (88) (Shelly Simonyi) Kathy Host	Student Advisory Council (Libby and Petra) Sandra Zoom Host	Superintendent Utterback
10 min	9:10 - 9:20	Break (10 min)		
45 min	9:20-10:05	Superintendent Utterback	Principals/Admins (88) (Shelly Simonyi) Kathy Zoom Host	Student Advisory Council (Libby and Petra) Sandra Zoom Host
1 hr 25 min	10:05-11:30	Break/Lunch	Break/Lunch	Break/Lunch
45 min	11:30- 12:15	Admin Bldg/Technology (123) (Chelsi Reno) Lisa Zoom Host	Associations - NCEA & OSEA (Will Ruehle) Sandra Zoom Host	PCLA (12-20) & Madres (10) (Cindy Detchon) Kathy Host
10 min	12:15 - 12:25	Break (10 min)		
45 min	12:25-1:10	Associations - NCEA & OSEA (Will Ruehle) Sandra Zoom Host	PCLA (12-20) & Madres (10) (Cindy Detchon) Kathy Host	Admin Bldg/Technology (123) (Chelsi Reno) Lisa Zoom Host
10 min	1:10 - 1:20	Break (10 min)		
45 min	1:20 - 2:05	PCLA (12-20) & Madres (10) (Cindy Detchon) Kathy Host	Admin Bldg/Technology (123) (Chelsi Reno) Lisa Zoom Host	Associations - NCEA & OSEA (Will Ruehle) Sandra Zoom Host
25 min	2:05 - 2:30	Break - Free Time (1 hr 20 min)	Break (25 min)	Break (25 min)
45 min	2:30 - 3:15		Business Leaders/Partners (Michael Ralls) Kathy Host	Executive Team (13) (Tiffany Shireman) Sandra/Donna Zoom Host
10 min	3:15-3:25		Break	
45 min	3:25-4:10	Business Leaders/Partners (Michael Ralls) Kathy Host	Executive Team (13) (Tiffany Shireman) Donna Zoom Host	Break - Free Time (1 hr & 5 min)
10 min	4:10 - 4:20	Break		
45 min	4:20 - 5:05	Executive Team (13) (Tiffany Shireman) Donna Zoom Host	Break/Dinner (55 Min)	Business Leaders/Partners (Michael Ralls) Kathy Host
3.25 hours	5:05 - 8:35	Dinner (1 hr & 10 min)	Board Interview 5:00 - 6:00 Sandra Zoom Host or in person	Break (25 min)
			Break (30 min)	Staff/Community Forum 5:30 - 6:15 (Jonathan Hutchison) Kathy Host
		Board Interview 6:15 – 7:15 Sandra Zoom Host or in person	Staff/Community Forum 6:30 - 7:15 (Jonathan Hutchison) Kathy Host	Dinner (1 hr & 15 min)
		Break (15 min)		Board Interview 7:30 – 8:30 Sandra Zoom Host or in person
		Staff/Community Forum 7:30 - 8:15 (Jonathan Hutchison) Kathy Host		