

District Leadership Team Meeting  
Wednesday, December 11, 2024 4:30 PM

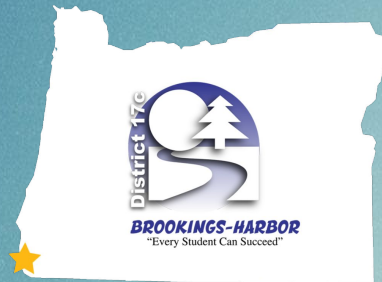
Kalmiopsis Elementary/Room 51  
650 Easy St  
Brookings, Oregon 97415

## **Agenda**

1. Welcome
2. Longitudinal Growth Performance Target (LGPT) update
  - Seven year trends for Graduation Rates; 9th Grade on Track, 3rd Grade Reading, and Attendance
3. Strategic Plan
  - Review of BHSD Priorities and Sub Goals Progress
4. Dinner Break
5. Table Group Discussion Time
  - Integrated Guidance 25-27 Plan Preparation - Discussion of Well Rounded Education Primary Questions
6. Table Group Share Out Time
7. Next Steps
8. Adjournment

# District Leadership Team

December 11, 2024



# DLT Members - Welcome Back!

- Ashley Pruitt (BHHS Registrar)
- Caleb Crotzer (BHHS Math)
- Danielle Slater (AMS Special Education)
- Dede Corpening (Director of Fiscal Services)
- Jennifer Legat (AMS Science)
- Jess Beaman (Director of Facilities)
- Kyla Babich (KES Teacher)
- Lisa Piscitello (BHHS ELA)
- Melanie McVay (KES Teacher)
- Patrick Farinholt (KES Teacher)
- Shaun Bavaro (BHHS Teacher)
- K'la Kennedy (KES Teacher)
- Carol Leonard (KES Principal)
- Nick Chapman (KES Vice Principal)
- Vickie Nigh (AMS Principal)
- Matthew Bennett (AMS Vice Principal)
- Tristan Harkins (BHHS Principal)
- Kelly Whitley (BHHS Vice Principal)
- Lynn Schiermeyer (Director of Special Programs)
- Helena Chirinian (Superintendent)
- Jay Trost (Board Chair)
- Katherine Johnson (Board Vice Chair)
- Alan Nidiffer (Board Member)
- Janece Payne (Board Member)
- Trish Walker (Board Member)
- Nancy Raskauskas-Coons (Admin Asst to Board)

# Meeting norms

- Be Present
- Listen
- Open-minded
- Honesty
- Confidentiality
- Keep discussions positive and solutions-based

(Created 1/11/24)



# Welcome - Tonight's Agenda

Welcome

Longitudinal Growth Performance Target (LGPT) update -Seven year trends for Graduation Rates; 9th Grade on Track, 3rd Grade Reading, and Attendance (Helena)

Strategic Plan Review BHSD Priorities and Sub Goals Progress

Discussion questions presented

- Integrated Guidance 25-27 Plan Preparation
- Well Rounded Education Primary Questions

Dinner provided/Discussion time

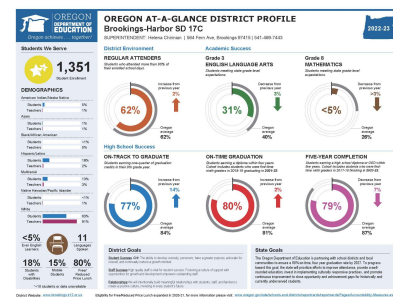
Discussion Wrap Up and Share Out

Next Steps, Next Meeting Date, Adjournment - Goal to finish by 6 PM!

# LGPT

Update

# Longitudinal Performance Growth Targets



- Based on data available for longitudinal analysis; Use overall rates for districts and gaps in disaggregated rates; and Include the common metrics and any locally defined metrics included in an applicant’s SIA plan.
- 5-year targets **for each of the common metrics** (4-year graduation, 5-year completion, 3<sup>rd</sup> grade reading, 9<sup>th</sup> grade on track, and regular attendance); Baseline and stretch targets **for each of the common metrics**; and Gap closing targets for **each of the five common metrics for focal student groups**.

# BHSD LPGT: Four Year Cohort Graduation

		2023-24 Target	2024-25 Target	2025-26 Target	2026-27 Target	2027-28 Target
District-wide	Baseline (All Students)	81%	81.5%	82%	82.5%	83%
	Stretch (All Students)	81.5%	82%	82.5%	83%	84%
Focal Student Groups	Gap-Closing (Focal Group Students)	76.5%	77.5%	79%	80.5%	82%

7-year prior  
data

	Avg.	Trend	2017-18 Actual	2018-19 Actual	2019-20 Actual	2020-21 Actual	2021-22 Actual	2022-23 Actual	2023-24 Actual
District-wide	78.18%	-2.44%	74.44%	80.58%	84.03%	77.87%	80.15%	72.00%	No data yet
Focal Student Groups	73.70%	0.20%	66.67%	79.28%	78.89%	69.51%	72.73%		

# BHSD LPGT: Five Year Cohort Completion

		2023-24 Target	2024-25 Target	2025-26 Target	2026-27 Target	2027-28 Target
District-wide	Baseline	82%	82.5%	83%	83.5%	84%
	Stretch	82.3%	82.5%	83.3%	83.8%	84.3%
Focal Student Groups	Gap-Closing	78%	79%	80%	80.75%	81.5%

7-year prior  
data

	Avg.	Trend	2017-18 Actual	2018-19 Actual	2019-20 Actual	2020-21 Actual	2021-22 Actual	2022-23 Actual	2023-24 Actual
District-wide	81.71%	1.20%	80.80%	79.55%	83.33%	85.71%	78.86%	82.00%	No data yet
Focal Student Groups	77.1%	-0.1%	76.14%	73.96%	81.03%	81.32%	71.76%		

# BHSD LPGT: 9th Grade On-Track

		2023-24 Target	2024-25 Target	2025-26 Target	2026-27 Target	2027-28 Target
District-wide	Baseline	63.5%	67.5%	71.5%	76%	80%
	Stretch	70%	75%	80%	85%	90%
Focal Student Groups	Gap-Closing	56%	60.5%	65%	69.75%	74%

7-year prior  
data

	Avg.	Trend	2016-17 Actual	2017-18 Actual	2018-19 Actual	2020-21 Actual	2021-22 Actual	2022-23 Actual	2023-24 Actual
District-wide	74.52%	-5.28%	91.82%	92.92%	90.68%	68.6%	63.3%	77.00%	73.00%
Focal Student Groups	77.8%	-10.2%	90.28%	92.96%	88.06%	62.03%	54.84%		

# BHSD LPGT: 3rd Grade ELA Proficiency

		2023-24 Target	2024-25 Target	2025-26 Target	2026-27 Target	2027-28 Target
District-wide	Baseline	36%	37.5%	39%	41.5%	43%
	Stretch	38%	40%	42%	46%	50%
Focal Student Groups	Gap-Closing	27%	29%	31%	33%	36%

7-year prior  
data

	Avg.	Trend	2015-16 Actual	2016-17 Actual	2017-18 Actual	2018-19 Actual	2021-22 Actual	2022-23 Actual	2023-24 Actual
District-wide	37.68%	-2.33%	34.55%	46.09%	44.55%	41.79%	33.8%	33.0%	30.0%
Focal Student Groups	29.65%	-1.29%	28.79%	34.18%	29.03%	29.76%	24.53%		

# BHSD LPGT: Regular Attenders

		2023-24 Target	2024-25 Target	2025-26 Target	2026-27 Target	2027-28 Target
District-wide	Baseline	67%	68%	69%	70%	71%
	Stretch	68%	70%	72%	74%	76%
Focal Student Groups	Gap-Closing	53%	56%	59%	62%	65%

7-year prior  
data

	Avg.	Trend	2016-17 Actual	2017-18 Actual	2018-19 Actual	2020-21 Actual	2021-22 Actual	2022-23 Actual	2023-24 Actual
District-wide	66.15%	-1.56%	75.81%	63.95%	70.68%	61.14%	60.44%	62.00%	69.0%
Focal Student Groups	56.99%	-6.02%	69.68%	57.79%	62.7%	48.2%	44.4%		

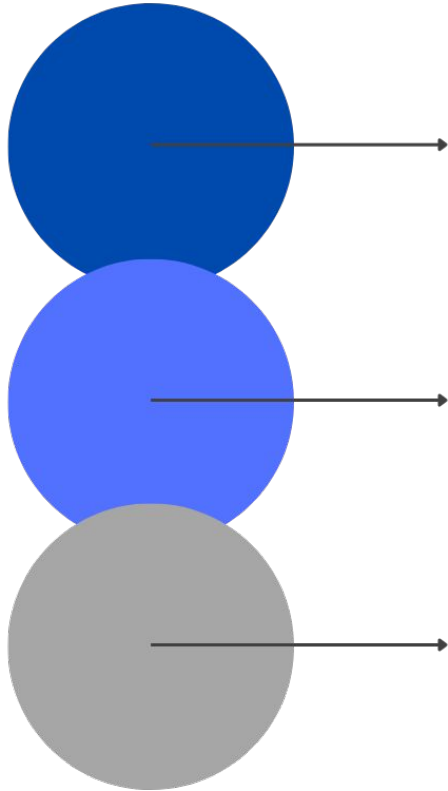
# **Strategic Plan Review**

Past work of the District Leadership Team

# **Strategic Plan Review**

- **BHSD 3 Priorities**
- **BHSD Goals**
- **BHSD Continuous Improvement Plan (CIP)  
and Building Level Goals**
- **BHSD Longitudinal Performance Growth Targets  
(LPGTs)**

# BHSD Priorities



## Student Success

Student success is **Grit**: The ability to develop curiosity, persevere, have a greater purpose, advocate for oneself, and continually nurture a growth mindset.

Staff Success Recruiting, developing, and retaining high-quality staff is vital for student success. Fostering a culture of support with opportunities for growth and development empowers outstanding staff.

## Relationships

We will intentionally build meaningful relationships with students, staff, and families to create a positive culture, investing in every student's future.

# BHSD Goals - Student Success

## Goal 1-

Brookings-Harbor School District will achieve an annual student growth rate on social-emotional learning in the area of student growth mindset and self-efficacy of 2% with an 8% improvement by June 2026 as measured by the Panorama student survey.

## Goal 2-

Brookings-Harbor School District will achieve a median student growth percentile in ELA and Math at a level 4 in all tested grades by June 2026 as measured on the ODE At A Glance Profile (55<sup>th</sup> percentile)

## Goal 3-

Brookings-Harbor School District will achieve a Regular Attender rate of 90% by June 2026 in all grades.



# BHSD Goals - Staff Success

## Goal 1-

By June 2026:

90% of staff will report that professional development is relevant, meaningful, and beneficial.

90% of staff will report that they have multiple opportunities to meaningfully engage with system improvement in support of our students. This goal will be measured by staff feedback and survey results, with annual improvement targets set each year.



# BHSD Goals - Relationships

## Goal 1-

Each school year, the District will set targets for the District and school-level social media campaign with the goal of “Telling our stories” and proactively sharing the successes, accomplishments, and challenges with our community.

## Goal 2-

Develop parent and community volunteer corps: Provide multiple coordinated specific avenues for volunteer service to the district and communicate these opportunities to our community.



# Continuous Improvement Goals

KES



1. K-12 students' growth mindset and self-efficacy will grow by 2% using the Panorama student-emotional learning screener by June of each year and 8% overall by 2026.
2. K-12 students will achieve a median student growth percentile of level 4 in ELA and Math on the Oregon School Report Card (55th percentile) by June 2026.
3. K-12 students will achieve a regular attender rate of 90% by June 2026 in all grades.
4. 90% of staff will report that professional development is relevant, meaningful, and beneficial.

AMS



1. Azalea will achieve a median student growth percentile in ELA and Math at a level 4 on the Oregon School Report Card (55th percentile) by June 2026 as measured by Oregon State report cards in all tested grades.
2. Azalea will achieve an annual student growth rate on social-emotional learning in the area of self-efficacy of 2% with an 8% improvement by June 2026 as measured by the Panorama student survey.
3. Azalea will achieve a regular attender rate of 90% by June 2026 in all grades.

BHHS



1. BHHS students will improve in the areas of self-efficacy and sense of belonging from the fall to the spring administration using the Panorama social-emotional screener. (K-12 students' growth mindset and self-efficacy will grow by 2% using the Panorama student-emotional learning screener by June of each year and 8% overall by 2026. )
2. BHHS students will achieve a median student growth percentile of level 4 in ELA and Math as demonstrated by performance on the Oregon Statewide Assessment System (OSAS). (K-12 students will achieve a median student growth percentile of level 4 in ELA and Math on the Oregon School Report Card (55th percentile) by June 2026).
3. BHHS students will become regular attenders. (K-12 students will achieve a regular attender rate of 90% by June 2026 in all grades.)
4. 90% of staff will report that professional development is relevant, meaningful, and beneficial.

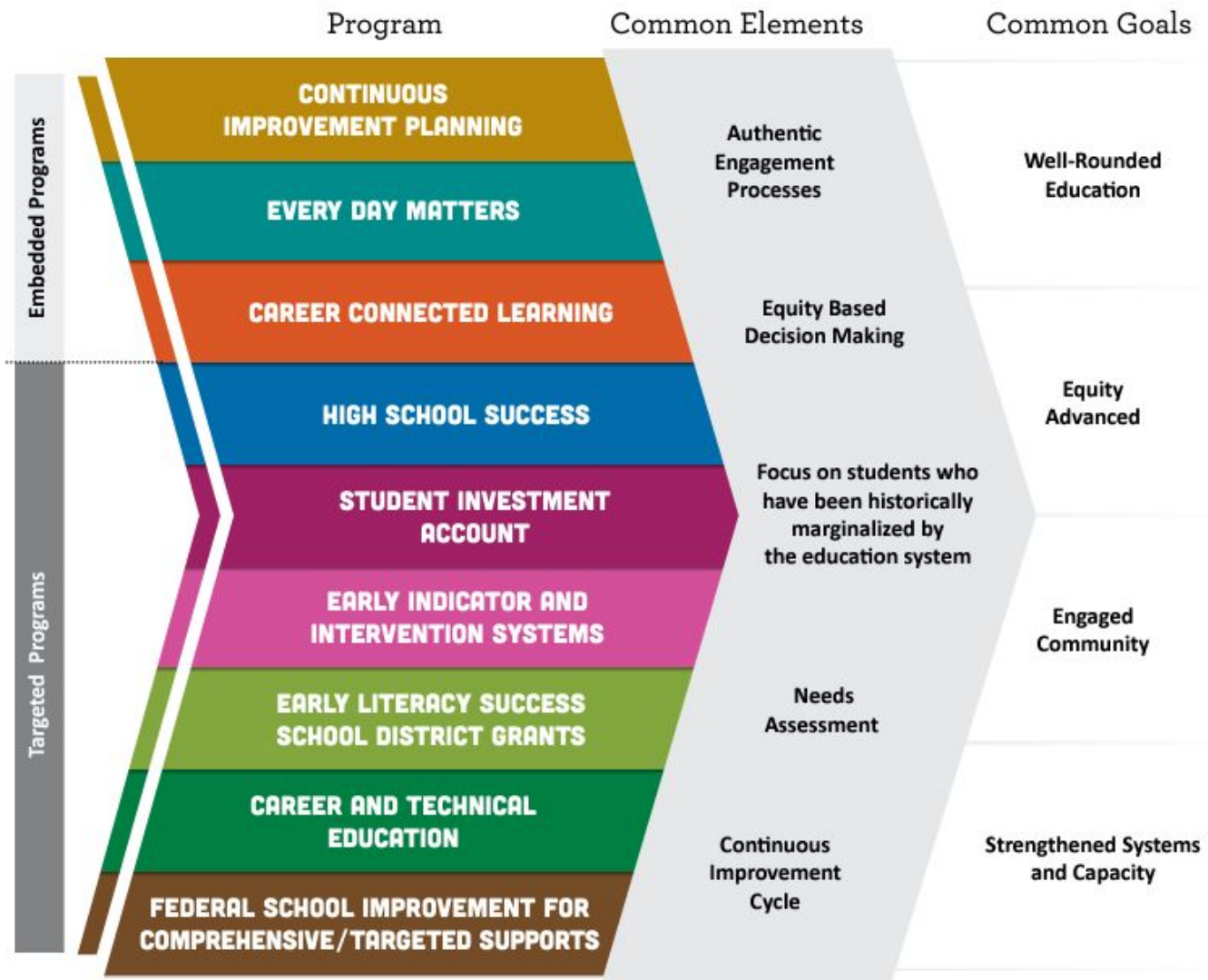
# Next Phase Planning

While the DLT continues to monitor progress on current Strategic Plan and related goals, CIPS and LPGTs, we need to start shaping the next iteration ...

# Continuous Improvement Cycle

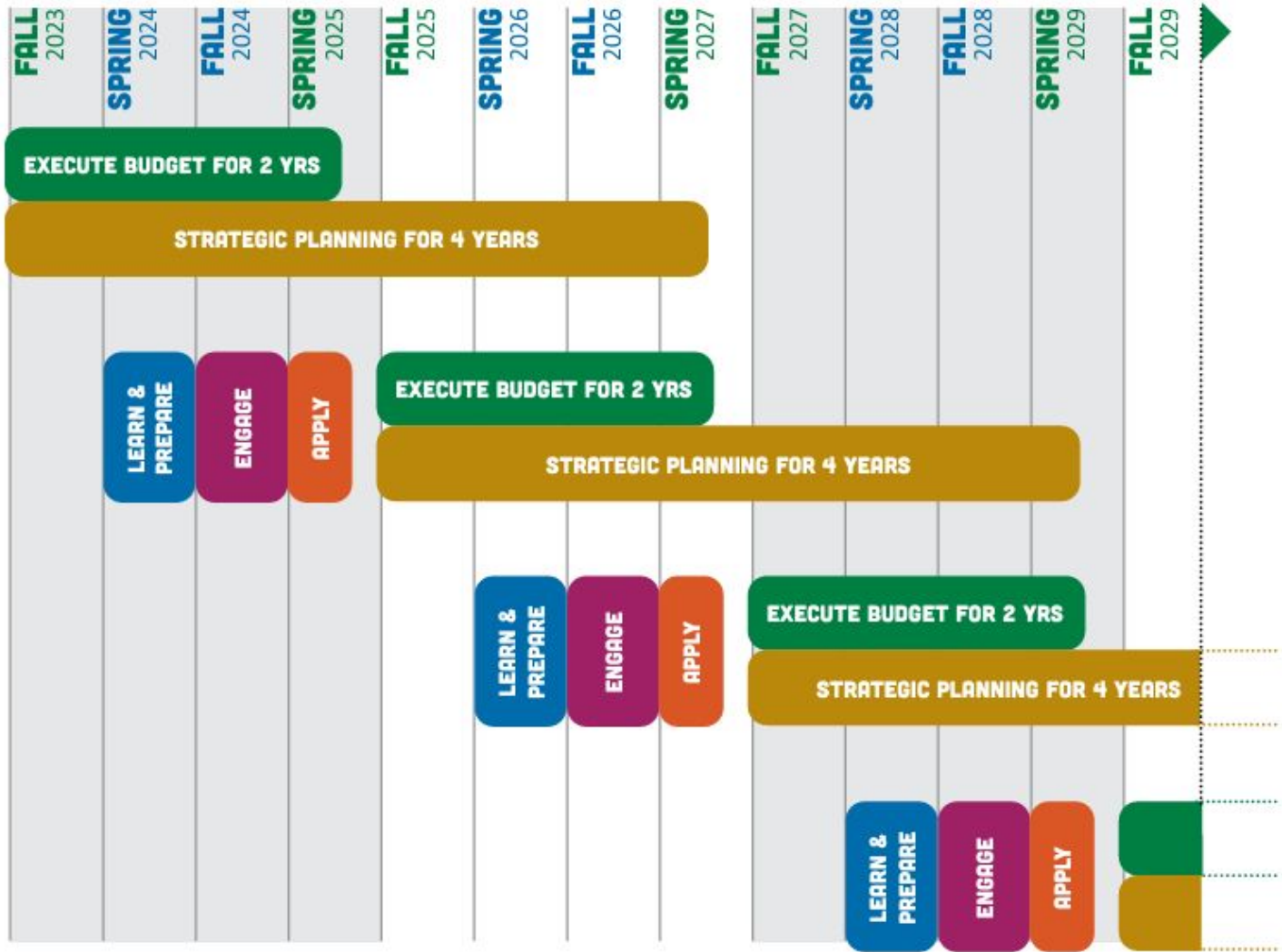
- **Annually (end of each school year)**
  - Review strategic goals and determine if there is a need to consider revising any of the goals (DLT)
  - Review progress towards strategic goals K-12 (DLT)
  - Celebrate successes (DLT and all staff)
  - Identify needs or questions for the start of the following school year (DLT and schools)
- **Annually (start of each school year)**
  - Develop or confirm school level annual plan and goals (School Leadership Teams)
  - Identify resources, training or data need





# *Designing Next Phase of Integrated Guidance for BHSD*

[Student Success Act](#) information from ODE

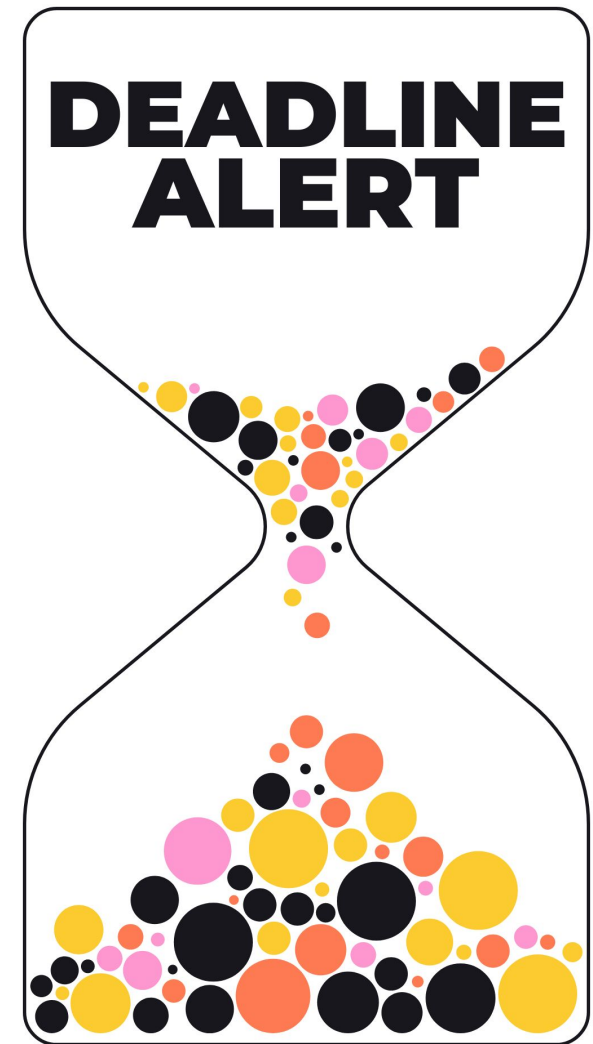


## A 12-Step Guide to Efficient and Effective Program Integration

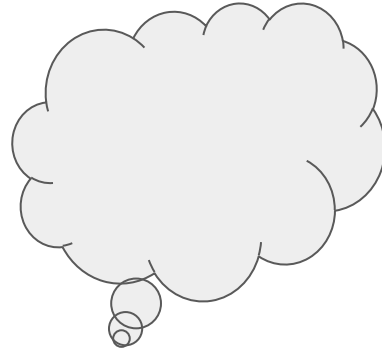


# By next Spring (April 30, 2025), the District will submit its “Small/Rural Schools & Districts with CTE 25-27 Integrated Application”

- Lays out the rationale that shapes budget priorities for associated funds
- Shows proof of Needs Assessment and Engagement processes
- Built on District Priorities and Goals, input from stakeholders, and equity lens



# Discussion Questions



# **REVIEW Table Group Discussion Questions**

In our past two discussions, we looked at ...

- **Current goals and progress markers**
- **Data needs**
- **Critical areas for improvement**
- **How to engage students**
- **Offerings that keep students connected to school**
- **How do we protect/support student priorities**
- **Community Survey - Barriers to Participation/Engagement with Students, community**

# TONIGHTS WORK: Table Group Discussion

## Well Rounded Education - Primary Questions

- How have we supported a well-rounded education in the past two years?  
Where do we need more focus?
- What patterns or trends in well-rounded education opportunities can we identify over the past 3-5 years?
- What factors contributed to the patterns/trends identified?

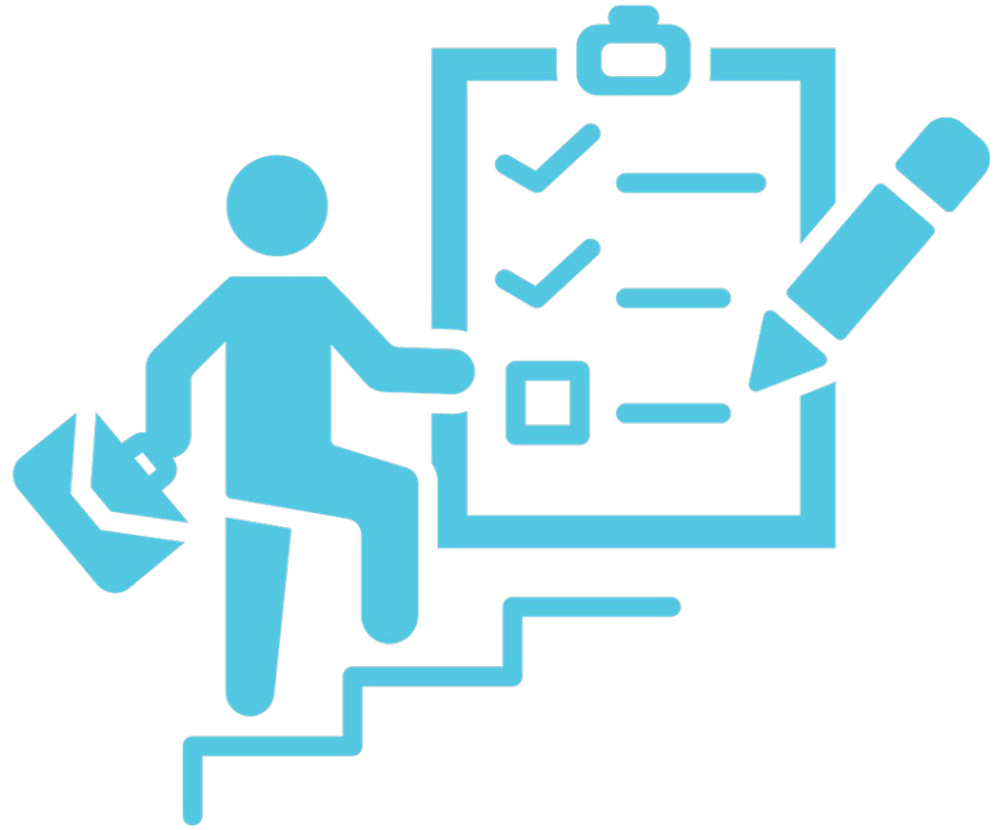
(Source: Page 118, Appendix E: Integrated Needs Assessment Tool, [Aligning for Student Success: Integrated Guidance Update 2025-27](#))

**DINNER BREAK**

# **GROUP SHARE OUT**

# Next Steps

- Next DLT in late winter  
(Potentially February or  
March 2025)
- Tonight's input will be used in  
25-27 SIA Plan/Integrated  
Guidance Planning due in  
April 2025
- Needs Assessment?



# Adjournment

Thank you for coming!