



**PORT TAMPA BAY
MONTHLY BUSINESS MEETING
FEBRUARY 17, 2026 - 9:30 AM**

A. INVOCATION - PLEDGE OF ALLEGIANCE, COMMENDATION, AND PUBLIC COMMENT	
1. INVOCATION - PLEDGE OF ALLEGIANCE	
2. COMMENDATION FOR STEVE FINNESY	
3. PUBLIC COMMENT	
B. MINUTES AND FINANCIAL STATEMENTS	
1. RECEIPT OF THE JANUARY 20, 2026 BOARD MEETING MINUTES	3
2. PRESENTATION OF CARGO AND CRUISE QUARTERLY REPORT	12
3. PRESENTATION AND RECEIPT OF THE FINANCIAL STATEMENT FOR MONTHS ENDING JANUARY 31, 2026	13
C. CONSENT AGENDA	
1. CONTRACT EXTENSION FOR GEOGRAPHIC INFORMATION SYSTEMS (GIS) ENTERPRISE MANAGED CLOUD SERVICES AGREEMENT	14
2. LEASE AMENDMENT WITH LOGISTEC GULF COAST, LLC	15
D. REGULAR AGENDA	
1. EXTENSION OF PORT SECURITY SYSTEM MAINTENANCE AND REPAIR SERVICES AGREEMENT WITH LAFORCE GSA, LLC	17
2. AWARD OF CONTRACT FOR SPOIL ISLAND 2D REHABILITATION (REBID) ITB NO. 003-26	18
3. AWARD OF CONTRACT FOR RO-RO-MILL AND RESURFACE OF TEN (10) ACRES (HOOKER'S POINT) ITB NO. 004-26	20
4. SITE IMPROVEMENT PERMIT FOR PANGAEA FLORIDA, LLC	23
E. RECEIPT OF REPORTS	
1. REPORT OF MONTHLY AGED RECEIVABLES	25
2. REPORT OF MONTHLY CONTRACT STATUS	31
3. REPORT OF MONTHLY WORK PERMITS	33
4. REPORT OF EXPENDITURES BETWEEN \$50,000 AND \$250,000	35
F. EXECUTIVE DIRECTOR REPORT	

G. PRESENTATIONS

- 1. FEDERAL GOVERNMENT AFFAIRS UPDATE**
- 2. MARITIME EXPO RECAP**

H. NEW BUSINESS

I. FUTURE PROPOSED PROJECTS

36

J. CALENDAR OF EVENTS

FEBRUARY 19, 2026: 20TH ANNUAL MARITIME INDUSTRY AWARDS NIGHT AT UNIVERSITY CLUB OF TAMPA

K. DATE OF NEXT MEETING

TUESDAY, MARCH 24, 2026, (FOURTH TUESDAY) AT 9:30 AM IN PORT TAMPA BAY BOARDROOM

L. ADJOURNMENT



Board of Commissioners Meeting Minutes

Date: January 20, 2026
Location: Port Tampa Bay Headquarters, 1101 Channelside Drive, Tampa, Florida

Port Tampa Bay Board Members Present:

Chad W. Harrod	Chairman	Seat #1
Ted Conner	Vice Chairman	Seat #3
Mark Kaplan	Commissioner	Seat #4
Patrick H. Allman	Secretary/Treasurer	Seat #5
The Honorable Christine Miller	Commissioner	Seat #6
The Honorable Mayor Jane Castor	Commissioner	Seat #7

Port Tampa Bay Senior Staff Present:

Charles Klug	Principal Counsel
Michael Pool	Chief Financial Officer
Brian Giuliani	Chief Operating Officer
Thomas Hobbs	Chief External Affairs Officer
Greg Lovelace	Sr. Vice President of Marketing & Business Development
Patrick Blair	Vice President of Engineering
Mark Dubina	Vice President of Security
Ryan Fierst	Vice President of Legal Affairs
Ram Kancharla	Vice President of Planning and Economic Development
Karl Strauch	Vice President of Marketing
Matt Thompson	Vice President of Operations
Joanne Toledo	Vice President of Human Resources
Ed Washington	Vice President of Real Estate

The Public Attendance Sign-in Sheet is Attachment "A".

Chairman Harrod called the meeting to order at 9:32 a.m. and welcomed attendees, staff, and the public.

A. Invocation and Pledge of Allegiance

Chaplain Steve Finnesy led the Invocation and the Pledge of Allegiance.

Public Comment

No public comments were received.

Proclamation – National Human Trafficking Awareness Month

Chairman Harrod read a proclamation declaring Port Tampa Bay’s support of National Human Trafficking Awareness Month. The proclamation is Attachment “B.”

B. Approval of Meeting Minutes

Chairman Harrod received the following sets of minutes for approval:

December 12, 2025 Financial Workshop and December 16, 2025 Board Meeting

Motion: Commissioner Ted Conner
Second: The Honorable Mayor Castor
Vote: Motion carried unanimously

Financial Report

Presenter: Michael Poole

Michael Poole presented the Port’s financial statements for the first quarter of the 2026 fiscal year, which ran Oct. 1 through Dec. 31, 2025. He reported total operating revenues of approximately \$24 million, exceeding budget by nearly 2%, primarily due to higher-than-anticipated port usage fees and steady lease revenues. Cargo and cruise activity together generated \$17.6 million in port usage fees, supported by approximately 4.3 million tons of cargo, over 66,000 TEUs, and approximately 445,000 cruise passengers during the quarter. Operating expenses totaled approximately \$12.9 million and were below budget due to favorable timing related to service contracts, maintenance, consulting, and travel. Non-operating items included interest income of approximately \$801,000, interest expense of approximately \$857,000, and ad valorem tax collections totaling approximately \$11.4 million, representing about 90% of the annual budgeted amount. The quarter closed with an operating income of approximately \$11.5 million and a net income of approximately \$21.3 million, resulting in an operating margin of 47%, exceeding the budgeted margin of 42%.

The Chairman and Board discussed year-over-year interest income trends, cash balances, and interest rate changes.

Motion: Commissioner Mark Kaplan
Second: The Honorable Miller
Vote: Motion carried unanimously

C. Consent Agenda

- C-1 MINOR WORK PERMIT APPLICATION #25-025 - REQUEST FOR VARIANCE TO CONSTRUCT PRIVATE RESIDENTIAL DOCK WITH BOAT LIFT LOCATED AT 1064 SIGNET DR., APOLLO BEACH, FL**
- C-2 MINOR WORK PERMIT APPLICATION #25-036 - REQUEST FOR VARIANCE TO CONSTRUCT PRIVATE RESIDENTIAL DOCK WITH BOAT LIFT LOCATED AT 1070 SIGNET DR., APOLLO BEACH, FL**
- C-3 SUBMERGED LANDS LEASE WITH PALM RIVER RESERVE HOMEOWNERS ASSOCIATION, INC.**
- C-4 SITE IMPROVEMENTS PERMIT FOR TAMPA ELECTRIC COMPANY (TECO) TO ADD LIGHT POLES TO ILLUMINATE GULF SULPHUR SERVICES, LTD, LLLP LEASEHOLD PREMISES**
- C-5 STANDARD WORK PERMIT APPLICATION #25-016 AND VARIANCE REQUEST - CITY OF TAMPA - WEST RIVERWALK - CONSTRUCTION OF THREE OVERWATER WALKWAYS ON HILLSBOROUGH RIVER**

Motion: The Honorable Mayor Castor
Second: Commissioner Conner
Vote: Motion carried unanimously

D. Regular Agenda

D-1 PURCHASE OF PORT TAMPA BAY VEHICLES FOR MULTIPLE DEPARTMENTS

Presenter: Chris Hart

Chris Hart, Senior Manager of Fleet Management, presented a request to authorize the purchase of up to five replacement vehicles for multiple Port departments as part of the Fleet Management Program. The program replaces vehicles at the end of their useful life to reduce maintenance costs and improve efficiency. The PTB Procurement Department obtained quotes for the new vehicles from the State of Florida contract motor vehicles, Sourcewell Cooperative, and other competitively bid government purchasing contracts. The proposed purchase, funded in the FY2026 Capital Budget, would not exceed \$275,000.

Mr. Hart explained that vehicles would be disposed of through auction or trade-in, with auctions currently yielding stronger returns.

Motion: Commissioner Kaplan
Second: The Honorable Miller
Vote: Motion carried unanimously

D-2 APPROVE FUNDING FOR PHASE II METROPORT DEVELOPMENT DESIGN - RFQ NO. 005-24

Presenter: Patrick Blair

Patrick Blair, Vice President of Engineering, presented a request to authorize funding for Phase 2 design services and Phase 1 construction support services for the MetroPort Development project. Mr. Blair noted the continuing growth of cruise business with an estimated 1.8 million cruise passengers this fiscal year and the need to build another cruise terminal to accommodate the increased demand. He stated that the project supports continued growth in cruise operations and includes land reclamation, bulkhead construction, and future cruise terminal and parking garage development. HDR's proposal totaled \$950,000, which includes approximately \$111,820 for design services, construction support, and exploratory design funds for future phases.

Mr. Blair outlined the anticipated project timeline, noting that terminal opening is projected approximately three years and eight months from January 2026. Board discussion included site layout, parking capacity, cruise industry trends, and potential competition from speculative cruise port proposals in Manatee County. Staff emphasized the environmental and logistical challenges of alternative sites and reaffirmed confidence in Port Tampa Bay's strategic approach.

Motion: Commissioner Patrick Allman
Second: The Honorable Mayor Castor
Vote: Motion carried unanimously

D-3 APPROVE ADDITIONAL FUNDING FOR TARIFFS ON PASSENGER BRIDGE REPLACEMENTS FOR CRUISE TERMINALS 2 AND 6

Presenter: Patrick Blair

Mr. Blair presented a request to authorize a change order with FMT Sweden AB in the amount of \$825,000 to cover tariffs imposed on three passenger boarding bridges currently in transport to Port Tampa Bay. The tariffs resulted from a 15% duty imposed on goods from Sweden. Staff explained that no U.S.-based manufacturers were available at the time of procurement and that Port Tampa Bay is working with industry partners and the American Association of Port Authorities to pursue possible waivers or rebates for the tariff expense.

Board discussion addressed tariff timing, responsibility for payment, potential reimbursement, and alignment with actions taken by other Florida ports facing similar circumstances. Mr. Klug confirmed that PTB would be entitled to any refund of tariffs paid in the event the tariffs are not enforceable or rebated.

Motion: Commissioner Allman
Second: The Honorable Mayor Castor
Vote: Motion carried unanimously

E. Receipt of Reports

- E-1 Report of Monthly Aged Receivables
- E-2 Report of Monthly Contract Status
- E-3 Report of Monthly Work Permits
- E-4 Report of Expenditures between \$50,000 and \$100,000

Motion: Commissioner Kaplan
Second: Commissioner Conner
Vote: Approved unanimously

F. Executive Director's Report

Charles Klug delivered the Executive Director's Report on behalf of President and CEO Paul Anderson.

Annual Holiday Luncheon at Propeller Club with Keynote Speaker Mayor Jane Castor

Mr. Klug reported that on Tuesday, December 16, 2025, more than two hundred members of the Propeller Club of Tampa gathered for the annual holiday luncheon, which was hosted by Mayor Jane Castor. He noted that the Propeller Club of Tampa is the largest Propeller Club in the United States, and possibly the largest in the world. Attendees were encouraged to bring donated supplies for the Tampa Port Ministries Seafarers Center, reinforcing the Port community's commitment to supporting mariners. Mayor Castor delivered an address highlighting significant economic development and infrastructure initiatives underway throughout the Tampa Bay region, as well as major projects occurring within the Port. The event was one of the best-attended luncheons in recent memory and was very well received by members.

COSCO Shipping Visit

Mr. Klug further reported that senior Port Tampa Bay leadership, including Raul Alfonso, Executive Vice President and Chief Commercial Officer; Brian Giuliani, Chief Operations Officer; Greg Lovelace, Senior Vice President of Business Development and Marketing; and other members of the leadership team, recently welcomed representatives from COSCO Shipping to Port Tampa Bay. COSCO Shipping Lines has been a valued container line

partner of Port Tampa Bay since 2019, and the visit provided an opportunity to strengthen relationships, discuss ongoing operations, and explore future business opportunities.

Port Tampa Bay Maritime Expo

Mr. Klug announced that the annual Port Tampa Bay Maritime Expo would be held on January 21 from 10 a.m. to 2 p.m. at Cruise Terminal 6. He explained that the expo is designed to connect students in grades 6 through 12, adult continuing education students, and local college students with career opportunities throughout the Port and maritime industries. Students from Hillsborough, Pinellas, and Pasco counties were expected to attend and engage with approximately 40 exhibitors, including Port tenants, maritime academies, military branches, and industry partners. The expo highlights a wide range of high-demand maritime careers, many of which do not require a four-year college degree. More than 800 attendees were expected.

Tampa Ship Completed Drydock *Atlas*

Mr. Klug also highlighted the recent completion of work on the large dry dock known as the *Atlas*, which was constructed and refurbished at Tampa Ship and Bollinger Shipyards at a cost exceeding \$500 million. The dry dock is being transported to Connecticut, where it will be used by General Dynamics to support the construction, launch, and sustainment of U.S. Navy submarines. This project reflects Port Tampa Bay's long-standing legacy and expertise in shipbuilding, marine construction, and vessel repair. In addition, Port staff are actively working with the Port's four local shipyards to identify opportunities for federal shipbuilding funding, workforce development, and job training programs for welders, pipefitters, and other skilled trades critical to the maritime industry. Several of these shipyards would also be participating in the Maritime Expo.

G. Presentations

There were no presentations.

H: New Business

There was no new business.

I. Future Proposed Projects

Charles Klug outlined the future project list and encouraged vendors to bid.

J. Calendar of Events

Port Tampa Bay Maritime Expo - January 21, 2026, at Cruise Terminal 6

Anchor Ball - January 24, 2026, at TPepin's Hospitality Centre

34th Annual Salute to the U.S. Coast Guard - January 27, 2026, at Hilton Tampa Downtown

K. Next Meeting:

Chairman Harrod announced the next Board meeting would be Tuesday, February 17, 2026, at 9:30 a.m. Information is available at www.porttb.com.

L. Adjournment

Chairman Harrod adjourned the meeting at 10:17 a.m.

Respectfully submitted,

Chad W. Harrod
Chairman

Patrick Allman
Secretary/Treasurer

Attachment A

PORT TAMPA BAY BOARD MEETING

January 20, 2026 - 9:30 A.M.

PUBLIC ATTENDANCE SIGN-IN SHEET

NAME	BUSINESS
Nina Mabileau	City of Tampa - Mobility
Jane Marino	Hillborough County Sheriff
Jerre White	TBASS
Steve Finney	Tampa Port Ministries
Mark Siebenaller	CAC - Channels District
Bob Nathan	Moffatt & Nichol
Danica Richards	Tucker/Hall
Philip Erbland	Stantec
Ryan Horstman	ESA
Samuel Maglio	Palm River Reserve HOA
Michelle Esuda	Colliers Engineering & Design
David Nelson	WGMA
Nancy Lehr	Moffatt & Nichol
Brian Moore	GHD

Additional spaces on next page.

Attachment B

**Port Tampa Bay Proclamation for
National Human Trafficking Awareness Month**

WHEREAS, human trafficking is a crime that harms the health and well-being of individuals, families and communities across Florida and throughout the United States; and

WHEREAS, ports have a unique role to play in preventing human trafficking, not only because of their position as public-sector leaders and employers, but also because of their role as the operators and owners of significant trade and travel facilities; and

WHEREAS, Port Tampa Bay is committed to preventing human trafficking and has worked with Truckers Against Trafficking, the Department of Homeland Security, and Businesses Ending Slavery and Trafficking (BEST) to distribute information on warning signs, bring public awareness by posting information in its cruise terminals and administrative buildings, and educate its employees and associates; and

WHEREAS, Port Tampa Bay has been a leader in human trafficking prevention by participating in committees such as the U.S. Transportation Federal Advisory Committee and the Hillsborough Commission on Human Trafficking; and

WHEREAS, Port Tampa Bay is committed to outreach raising awareness about the importance of the issue of human trafficking and implementing best practices to combat human trafficking;

NOW, THEREFORE, BE IT PROCLAIMED that Port Tampa Bay's Board of Commissioners expresses its support in combating human trafficking with a particular focus on raising awareness about the importance of this issue, and furthermore the Board supports ratification of this proclamation.

Executed this 20th day of January 2026.

Port Tampa Bay
Port Tampa Bay Public Berths
FY26 VS FY25 1st Quarter (October-December)

BULK CARGO				
	FY26	FY25	Inc(Dec)	%
COMMODITY	NET TONS	NET TONS		
DRY BULK CARGO				
CEMENT, BULK	140,285	231,184	(90,899)	-39%
GRANITE ROCK, BULK	178,614	65,990	112,624	171%
LIMESTONE	139,299	143,554	(4,255)	-3%
PHOSPHATIC CHEMICAL, BULK	34,417	66,289	(31,872)	-48%
PRILLED SULPHUR	170,358	0	170,358	170k%
<i>Other Dry Bulk Commodities</i>	<i>740,814</i>	<i>509,843</i>	<i>230,971</i>	<i>45%</i>
Total Dry Bulk Cargo:	1,403,787	1,016,860	386,927	38%
LIQUID BULK CARGO				
AMMONIA, ANHYDROUS	81,147	37,168	43,979	100%
CONCENTRATE & CITRUS JUICE	165,034	103,499	61,535	59%
PETROLEUM PRODUCTS	2,106,528	2,133,777	(27,249)	-1%
SULPHUR, LIQUID	64,999	116,691	(51,692)	-44%
SULPHURIC ACID	40,712	42,813	(2,101)	-5%
<i>Other Liquid Bulk Commodities</i>	<i>47,475</i>	<i>23,333</i>	<i>24,142</i>	<i>103%</i>
Total Liquid Bulk Cargo:	2,505,895	2,457,281	48,614	2%
TOTAL BULK CARGO:	3,909,682	3,474,141	435,541	13%
GENERAL CARGO				
	FY26	FY25	Inc(Dec)	%
Commodity	NET TONS	NET TONS		
Containerized	308,289	280,461	27,828	10%
Scrap Metal	21,185	48,044	(26,859)	-56%
Steel Products	33,966	106,363	(72,397)	-68%
<i>Other General Cargo Commodities</i>	<i>63,637</i>	<i>34,208</i>	<i>29,429</i>	<i>86%</i>
TOTAL GENERAL CARGO:	427,077	469,076	(41,999)	-9%
TOTAL BULK AND GENERAL:	4,336,759	3,943,217	393,542	10.0%
TEUS (includes empties)	66,682	65,961	721	1%
Passengers	444,667	437,957	6,710	2%
No. of Cruise Ship Sailings	101	104	(3)	-3%

Port Tampa Bay
Budgetary Comparative Statement of Revenues and Expenses
For the four (4) months ending January 2025

	Budget	Actual	Favorable (Unfavorable)	%
Description				
Port Usage Fees	25,853,822	25,327,151	(526,671)	-2.0%
Rentals	8,776,717	8,903,279	126,562	1.4%
Other Operating	195,783	198,382	2,599	1.3%
Operating Revenue	34,826,322	34,428,812	(397,510)	-1.1%
Personnel	8,250,993	7,883,959	367,034	4.4%
Promotional	902,736	580,839	321,897	35.7%
Administrative	10,954,547	9,480,103	1,474,444	13.5%
Operating Expense	20,108,277	17,944,901	2,163,376	10.8%
Operating Income	14,718,045	16,483,911	1,765,866	12.0%
	42%	48%		
Interest Income	892,668	1,041,695	149,027	16.7%
Interest Expense	(1,505,851)	(1,145,679)	360,172	-23.9%
Ad Valorem Tax Receipts	11,967,752	11,662,050	(305,702)	-2.6%
Other, net	(1,360,741)	(1,507,728)	(146,987)	10.8%
Non-Operating	9,993,828	10,050,338	56,510	0.6%
Net Income	24,711,873	26,534,249	1,822,376	7.4%

SUBJECT: CONTRACT EXTENSION FOR GEOGRAPHIC INFORMATION SYSTEMS (GIS) ENTERPRISE MANAGED CLOUD SERVICES AGREEMENT

BACKGROUND:

Port Tampa Bay (PTB) maintains a cloud hosted Geographic Information Systems (GIS) database. This GIS database houses all of PTB's as-built construction plans, permits, surveys of utility locations, and greatly assists PTB's Engineering department in performing its day-to-day duties. This cloud-hosted system is an instrumental part of PTB's Disaster Recovery Plan and is used extensively by PTB's Engineering Department staff in the aftermath of a hurricane to document the damage to port facilities, completing bathymetric surveys of channels and berths, and preparing FEMA and Insurance claims.

FACTS/COMMENTS:

In 2022, PTB advertised an RFP under RFP no. P-003-22 for GIS enterprise managed cloud services, and the Board approved a contract (Contract) with Timmons Group, Inc., at its November 2022 Board meeting, to host cloud services for an initial term of three (3) years with an option to extend the Contract for two (2) extension options of three (3) years each with an annual recurring cost of \$39,400.20. The initial term of the contract expires on January 31, 2026, and staff recommends extending and funding the Contract with Timmons Group, Inc. for the extension option period of three (3) years from February 1, 2026 to January 31, 2029.

Funding for this contract was included in the FY26 Operations budget in the amount of \$40,840.20 for the annual recurring cost.

RECOMMENDATION:

Authorize the Port President/CEO, or his designee, to approve the contract extension and funding for the GIS Enterprise Managed Cloud Services with the Timmons Group, Inc, for three (3) additional years, and funding for the contract in an amount not to exceed \$40,840.20 per year, subject to review by Port counsel.

Board Meeting
February 17, 2026
Engineering

SUBJECT: LEASE AMENDMENT WITH LOGISTEC GULF COAST, LLC**BACKGROUND:**

Logistec Gulf Coast, LLC (Logistec) is a stevedore and terminal operator for dry bulk products with operations throughout the Gulf of America. Logistec leases approximately 28.46 acres of land located along Berth 300 and Berth 302 on Port Redwing (Premises) from Port Tampa Bay (PTB) pursuant to an Amended and Restated Ground Lease Agreement effective April 1, 2017 (Lease).

The Lease premises are comprised of a parcel located west of the Berth 300 access road (West Parcel), consisting of approximately 11.58 acres, and a parcel located east of the Berth 300 access road (East Parcel), consisting of approximately 16.88 acres. Staff has negotiated with Logistec to increase the West Parcel to 11.785 acres of land by adding approximately 0.205 acres of vacant land along the west and south boundaries of the Premises, and to decrease the East Parcel to approximately 16.675 acres by removing approximately 0.205 acres of vacant land along the southern edge.

The parcel of land removed from the East Parcel would be used to construct a conveyor connecting Berths 300 and 302. The conveyor between Berths 300 and 302 will allow PTB tenants located east of Berth 302 to unload cargo at Berth 300 while other vessels are located at Berth 302.

FACTS/COMMENTS:

PTB staff and Logistec negotiated the following terms for an amendment to the Lease to adjust the Premises.

Premises: The total acreage of the reconfigured Premises would remain at approximately 28.46 acres. The current Premises would be modified to remove approximately 0.205 acres of land along the southern boundary of the East Parcel in exchange for adding parcels consisting of approximately 0.205 acres of vacant land along the west and south boundary lines of the West Parcel, as indicated on Exhibit "A" (Revised Premises).

Lease

Terms: All other terms and conditions of the Lease remain the same.

Other: Logistec would be responsible for the environmental condition of the parcels of land being released (Released Premises) through the date of the Lease Amendment. The Lease Amendment would be subject to satisfactory environmental assessments of the Released Premises at PTB's sole discretion.

RECOMMENDATION:

Authorize the Port President/CEO, or his designee, to execute an amendment to the Lease with Logistec Gulf Coast, LLC, in accordance with the terms set forth in this agenda item, subject to review by Port counsel.

Board Meeting
February 17, 2026
Real Estate

EXHIBIT "A"

LOGISTEC GULF COAST, LLC

DIANA TOLEDO ALMEIDA ROAD

Revised Premises
11.785 Acres ±

Revised Premises
16.675 Acres ±

REVISED PREMISES

PORT REDWING

January 29, 2026

Prepared By:
Craig S. Kurial
Professional Land Surveyor #4642
Senior Professional Land Surveyor
Port Tampa Bay

PORT TAMPA BAY
101 Channelside Drive
Tampa, Florida 33602
(813) 905-7678 Fax (813) 905-8888
WWW.PORTTB.COM

THIS IS NOT A SURVEY

SUBJECT: EXTENSION OF PORT SECURITY SYSTEM MAINTENANCE AND REPAIR SERVICES AGREEMENT WITH LAFORCE GSA, LLC

BACKGROUND:

On January 26, 2022, Port Tampa Bay (PTB) staff advertised a request for proposals for qualified security system maintenance and repair companies. On March 23, 2022, PTB Board of Commissioners awarded the contract to GSA Security, Inc. (GSA). The Board approved an agreement with GSA (Agreement) to maintain, enhance, repair, and troubleshoot existing PTB camera systems, access control devices, and other security network components for a period of three (3) years (April 14, 2022 to April 13, 2025) with two (2) extension options of one (1) year each. The first year of the of the Agreement was at a cost not to exceed \$481,000, which included a 5% contingency.

On March 25, 2025, the Board approved the extension of the Agreement for one (1) year extending the Agreement to April 13, 2026, and approved the assignment of the Agreement to LaForce GSA, LLC, a subsidiary of LaForce, LLC (LaForce GSA), without an increase in cost.

FACTS/COMMENTS:

Since the acquisition, LaForce GSA staff and management have remained responsive to all the needs of PTB and have met or exceeded all the requirements of the existing contract. The Agreement has a final extension option of one (1) year. PTB staff recommends extending the Agreement for the period of one (1) year to April 13, 2027, at a cost not to exceed \$547,545, which includes increases in wages for LaForce GSA service staff and a 5% contingency. This increase is the first increase since FY2022 and represents approximately a 13.8% increase over last year.

Funds for this Agreement were included in the Fiscal Year 2026 PTB Operating Budget.

RECOMMENDATION:

Authorize the Port President/CEO, or his designee, to exercise the final extension option, extending the Agreement to April 13, 2027, at a cost not to exceed \$547,545 which includes a wage increase for LaForce GSA service staff and a 5% contingency, subject to review by Port counsel.

SUBJECT: AWARD OF CONTRACT FOR SPOIL ISLAND 2D REHABILITATION (REBID) ITB NO.003-26

BACKGROUND:

Port Tampa Bay (PTB) owns and utilizes Spoil Island 2D, which is one of its two main Dredge Material Management Areas (DMMA's). Portions of the levee and armoring were displaced and eroded along the northwest and western portions of the shoreline from recent storm damage. PTB proposes to rehabilitate, repair, and stabilize portions of levee/berm that encompass the dredged material management area on Spoil Island 2D. Work would include mobilization of equipment to the spoil island, mining good soils from within the island, placement and grading of the soils, and installing geotextiles and armoring along six (6) sections of the island for a total contiguous length of approximately 3,000 linear feet.

FACTS/COMMENTS:

In accordance with PTB's procurement policy, staff readvertised an Invitation to Bid under ITB No. B-003-26 on Friday, December 12, 2025 on Euna OpenBids (DemandStar) (online procurement database system) as well in the Tampa Bay Times, Florida Sentinel Bulletin, and LaGaceta for construction of the project. Staff held a non-mandatory pre-bid teleconference on Thursday, December 18, 2025, and received the following bids on Thursday, January 22, 2026:

<u>Bidder</u>	<u>Total Base Bid</u>
Russell Marine	\$1,873,777.00
Underwater Engineering Services	\$3,743,575.00
Vecellio & Grogan	\$3,886,696.80
Southern Road & Bridge	\$4,921,148.40
Crisdel Group	\$5,031,009.20
Tampa Bay Marine	\$6,489,845.00

Russell Marine LLC (Russell) is the apparent low, responsive, and responsible bidder for the project. Russell is a state-licensed general contractor that is experienced and qualified to perform marine construction and has previously worked on projects of similar size and complexity. Russel has committed to partner with Small Business Enterprise (SBE) firms to achieve a 9% SBE participation on this project.

The requested authorization for the project would be for an amount not to exceed \$2,500,000, which would include a contingency of \$626,223 for unforeseen conditions and to maximize the scope of the work.

RECOMMENDATION:

Authorize the Port President/CEO, or his designee, to execute a contract with Russell Marine LLC for the Spoil Island 2D project, in the amount of \$1,873,777.00 with a contingency amount of \$626,223, for a total authorized expenditure not to exceed \$2,500,000, subject to review by Port counsel.

Board Meeting
February 17, 2026
Engineering



SUBJECT: AWARD OF CONTRACT FOR RO-RO-MILL AND RESURFACE OF TEN (10) ACRES (HOOKER'S POINT) ITB NO.004-26

BACKGROUND:

On May 16, 2023, Port Tampa Bay's (PTB) Board approved a lease agreement with Glovis America Inc. for approximately ten (10) acres of vacant land to be developed by PTB for the use of automobile storage in support of Ro-Ro vessel operations (Vehicle Storage Area). In June of 2025, PTB completed the development of the ten (10) acres of the new Ro-Ro Vehicle Storage Area. PTB has grown the Ro-Ro business significantly over the past few years, from 1,400 vehicles in 2022, to 44,000 vehicles in 2025 and projects approximately 78,000 vehicles in 2026 with the completion of the Berth 203 uplands expansion. PTB has approximately ten (10) acres of previously paved land that can be rehabilitated for significantly less money than creating a new paved area and would allow for the continual growth of this business line to expand to 100,000 vehicles in 2027.

FACTS/COMMENTS:

In accordance with PTB's procurement policy, staff advertised an invitation to bid under ITB No. B-004-26 on January 9, 2026, on Euna OpenBids (DemandStar) (online procurement database system) as well as in the Tampa Bay Times, the Florida Sentinel Bulletin, and La Gaceta for construction of the project. Staff held a non-mandatory pre-bid teleconference on January 15, 2026, and received the following five (5) responsive bids on February 5, 2026:

<u>Bidder</u>	<u>Total Base Bid</u>	<u>Total Base + Alt 1</u>	<u>Alternate 2</u>
C.W. Roberts	\$1,112,018.35	\$1,176,456.54	\$ 758,813.63
Ajax Paving	\$1,416,816.58	\$1,527,808.85	\$ 633,188.03
Preferred Materials	\$1,450,439.50	\$1,518,794.96	\$ 766,849.79
American Construction	\$1,477,252.85	\$1,542,628.20	\$1,302,188.53
EZ Contracting	\$1,686,743.25	\$1,775,609.92	\$1,046,416.90

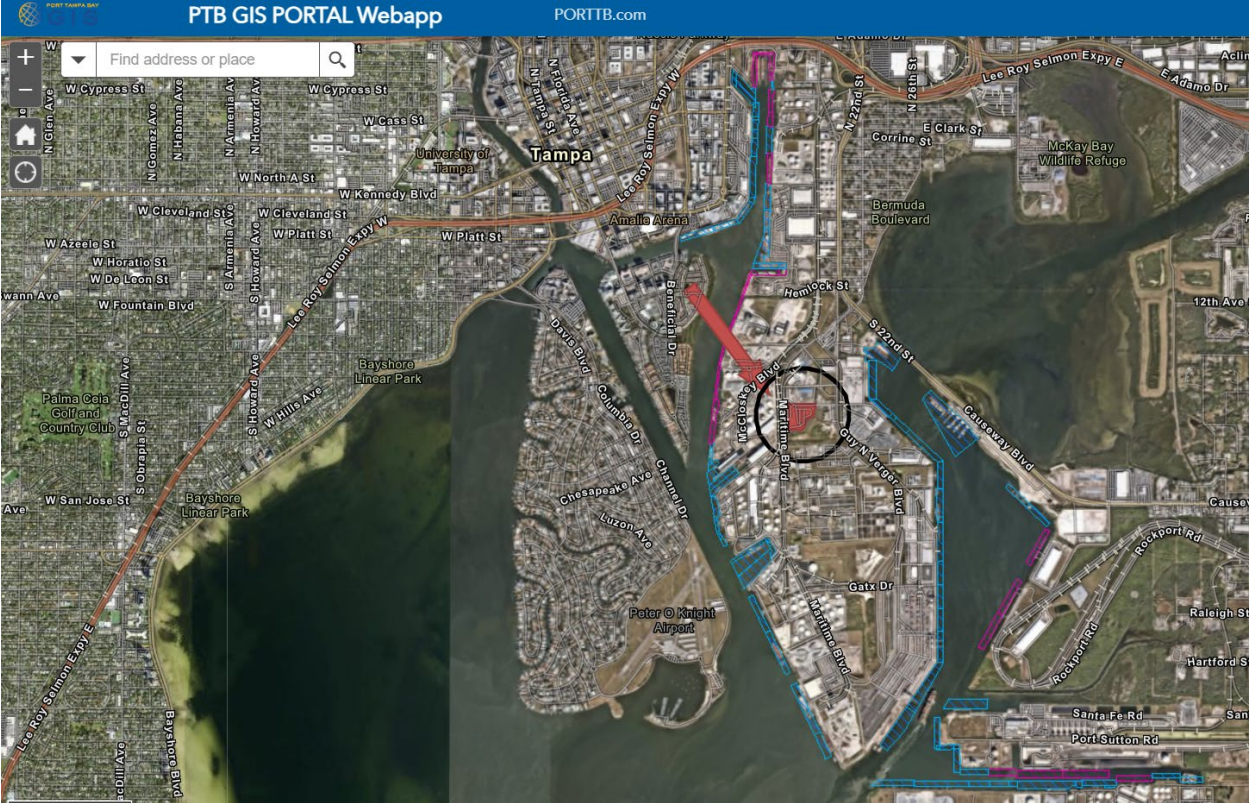
C.W. Roberts Contracting, Inc. (C.W. Roberts) is the apparent low, responsive, and responsible bidder for the project. C.W. Roberts is a state-licensed general contractor that is experienced and qualified to perform asphalt rehabilitation construction and has previously worked on projects of similar size and complexity. C.W. Roberts has committed to partner with Small Business Enterprise (SBE) firms to achieve a 9% SBE participation on this project. The requested authorization would be for an amount not to exceed \$1,600,000, which includes a contingency of \$423,443.46 of the project for unforeseen conditions. Funding for this project was included in PTB's FY2026 Capital Project in the amount of \$1,600,000.

RECOMMENDATION:

Authorize the Port President/CEO, or his designee, to execute a contract with C.W. Roberts Contracting for the construction of the Hooker's Point Vehicle Storage Area project in the amount of \$1,176,456.54 with a contingency in the amount of \$423,443.46, for a total authorized expenditure not to exceed \$1,600,000, subject to review by Port counsel.

Board Meeting
February 17, 2026
Engineering

Project Location



SUBJECT: SITE IMPROVEMENT PERMIT FOR PANGAEA FLORIDA, LLC

BACKGROUND:

Port Tampa Bay's (PTB) policy for Site Improvement Permits establishes guidelines for tenants and other users to obtain PTB's consent before constructing any improvements on PTB property. The policy requires PTB's Board of Commissioners to approve the construction or modification of improvements on PTB property that has an estimated construction cost in excess of \$200,000 or that involves the granting of an easement.

FACTS/COMMENTS:

Pangaea Florida, LLC, (Pangaea) leases approximately 2.0 acres of land with conveyor access to Berth 302 for the importation of aggregate and other commodities.

Pangaea recently submitted a Site Improvement Permit application for the installation of an elevated overland conveyor at Port Redwing. The location of the conveyor would be located on the north side of the service road, running from Berth 300 eastward to Berth 302, and along the entire length of property leased to Logistec and would require an easement from PTB for the installation and operation of the elevated overland conveyor. The approximate cost of the project is \$5,000,000.

PTB staff reviewed the application, determined the proposed location of the improvements does not have any conflicts, and recommends approval of the Site Improvement Permit.

RECOMMENDATION:

Authorize the Port President/CEO, or his designee, to execute the Site Improvement Permit to Pangaea Florida, LLC for the construction of the improvements described in this agenda item and an easement for the installation and operation of the elevated overland conveyor, subject to review by Port counsel.

Board Meeting
February 17, 2026
Engineering



TAMPA PORT AUTHORITY
Monthly Aged Receivables
January 31, 2026

Customer Number	Customer Name	Current	31 - 60 Days	61 - 90 Days	91 & Over	Customer Balance
Port Fees						
D073	470 BULK PRODUCTS LLC	20.00	-	-	-	20.00
T425	AGUNSA USA, INC (Eastport Lease))	(2,452.92)	-	-	-	(2,452.92)
S036	ALTAMAR SHIPPING	2,268.00	-	-	-	2,268.00
T012	AMALIE OIL COMPANY	920.00	-	-	-	920.00
D081	AMERICAN MARINE EXPRESS, INC	168.00	-	-	-	168.00
D054	ANCHOR SANDBLASTING AND COATINGS, INC	440.00	-	-	-	440.00
T400	ARDENT MILLS, LLC	11,926.36	-	-	-	11,926.36
S073	AUTOMOTIVE CORE SUPPLY, INC.	-	-	-	10.50	10.50
A512	BEYEL BROTHERS INC	-	613.44	-	-	613.44
A552	BIEHL & CO FLORIDA LLC	77,641.40	-	-	-	77,641.40 25
S041	BRONCO TRANSPORT	94.50	-	-	-	94.50
T201	BUCKEYE TERMINALS, LLC	213,159.82	-	-	-	213,159.82
T307	BUCKEYE TERMINALS, LLC (North Terminal Easement)	356.75	-	-	-	356.75
T003	CARGILL INC	(644.25)	-	-	-	(644.25)
D049	CARGILL SALT	67.76	20.00	-	-	87.76
S025	CARGILL SALT DIVISION	588.00	-	-	-	588.00
T131	CARNIVAL CRUISE LINES	497,126.00	-	-	-	497,126.00
T198	CEMEX CONSTRUCTION MATERIALS FLORIDA, LLC	22,711.52	-	-	-	22,711.52
T014	CENTRAL FLORIDA PIPELINE LLC	220,947.93	-	-	-	220,947.93
T145	CENTRAL FLORIDA PIPELINE LLC	1,997.82	-	-	-	1,997.82
T109	CITRUS PRODUCTS	111,371.09	-	404.41	404.41	112,179.91
D047	CITY OF TAMPA (SW & WW)	840.00	-	-	-	840.00
D089	CITY OF TAMPA (WATER DPT. BADGES)	80.00	-	-	-	80.00
D048	CITY OF TAMPA MOBILITY DEPARTMENT	300.00	-	-	-	300.00
Q502	CUSTOMS BROKER SUPPLIERS INC	-	-	-	107.30	107.30
M147	DELTCORP INDUSTRIES, LLC	40.00	-	-	-	40.00
Q450	DOLE FRESH FRUIT COMPANY	23,218.00	-	-	-	23,218.00
Q127	DONGKUK INTERNATIONAL INC (CA)	6,881.65	-	-	-	6,881.65

TAMPA PORT AUTHORITY
Monthly Aged Receivables
January 31, 2026

Customer Number	Customer Name	Current	31 - 60 Days	61 - 90 Days	91 & Over	Customer Balance
Q081	DONGKUK INTERNATIONAL INC (NJ)	103.77	-	-	-	103.77
P320	Dr. Malcom Klein	45.00	-	-	-	45.00
S064	DV CONTAINER SERVICES	31.50	-	-	-	31.50
S074	EDGE METALS RECYCLING, INC	367.50	-	-	-	367.50
T132	FLORIDA AQUARIUM	507.50	-	-	-	507.50
Q525	FRACHT FWO INC (TX)	-	-	-	1,667.14	1,667.14
A429	GAC SHIPPING (USA) INC	146,651.90	25,376.72	-	-	172,028.62
T185	GAETANO CACCIATORE INC	34,168.32	-	-	-	34,168.32
S043	GLOBAL DISTRIBUTION INC	714.00	-	10.50	-	724.50
A254	GREAT LAKES DREDGE & DOCK	-	638.28	-	-	638.28
A264	GULF MARINE REPAIR INC	537.84	-	-	-	537.84
T063	GULF SULPHUR SERVICES	8,406.41	284.73	284.73	29,145.35	38,121.22
A549	HOST AGENCY, LLC	2,240.36	-	-	-	2,240.36
Q010	HUSTEEL USA INC	6,060.88	-	-	-	6,060.88
Q039	HYUNDAI STEEL PIPE AMERICA, INC	753.67	-	-	-	753.67
A306	INCHCAPE SHIPPING SERVICES	103,324.52	-	-	1,898.53	105,223.05
T101	INTERACID NORTH AMERICA, INC	5,177.87	-	-	54.12	5,231.99
D078	KAG SPECIALTY PRODUCTS GROUP, LLC	9.50	-	-	20.00	29.50
Q480	KG STEEL USA INC	373.49	-	-	-	373.49
A350	KIMMINS CONTRACTING	40.00	-	-	-	40.00
D032	KINDER MORGAN - CENTRAL FLORIDA PIPELINE LLC	20.00	-	-	-	20.00
T116	KINDER MORGAN BULK/TBS	1,532.99	-	-	-	1,532.99
A346	KIRBY CORPORATION	-	662.04	-	-	662.04
A003	KIRBY OFFSHORE MARINE	769.45	1,056.64	1,006.72	233.24	3,066.05
A248	LA CARRIERS, LLC	385.40	-	-	-	385.40
Q410	LEE COMPANY CUSTOMS BROKER	3,847.25	-	-	-	3,847.25
T308	LOGISTEC GULF COAST LLC	49,369.23	-	-	-	49,369.23
T328	MAJESTIC STEEL USA	21,401.92	-	-	-	21,401.92
T430	MARGARITAVILLE AT SEA	329,812.00	-	-	-	329,812.00
A360	MARTIN GAS MARINE	4,990.48	591.84	-	-	5,582.32
T135	MARTIN MARIETTA AGGREGATES	36,511.30	-	-	-	36,511.30

TAMPA PORT AUTHORITY
Monthly Aged Receivables
January 31, 2026

Customer Number	Customer Name	Current	31 - 60 Days	61 - 90 Days	91 & Over	Customer Balance
T134	MARTIN OPERATING PARTNERSHIP	227,927.17	-	-	-	227,927.17
A465	MASTER, OWNER & OPERATORS	133,167.93	-	-	-	133,167.93
Q487	METAL ROOF MASTER	-	-	-	881.03	881.03
S067	MKD LOGISTICS LLC	(58.00)	-	-	-	(58.00)
A509	MOBRO MARINE INC	87.48	-	-	-	87.48
A053	MORAN TOWING CORPORATION	2,493.42	-	-	-	2,493.42
T002	MOSAIC CROP NUTRITION, LLC	1,916.94	-	-	2,588.69	4,505.63
T011	MURPHY OIL USA INC	77,021.63	-	-	-	77,021.63
S075	NAV TRANSPORTATION/NORTHSTAR SVCS LTD	136.50	-	-	-	136.50
A071	NORTON LILLY INTERNATIONAL, US, INC	84,010.20	17,265.61	-	-	101,275.81
T200	NORWEGIAN CRUISE LINE	333,242.75	191.84	-	-	333,434.59
A439	NOVA INTERNATIONAL SHIPPING	(3,406.79)	-	-	-	(3,406.79)
A069	OSG SHIP MANAGEMENT, INC	4,899.35	-	-	-	4,899.35
T205	PLAINS LPG SERVICES, L.P.	5,830.85	-	-	-	5,830.85
T318	PORT LOGISTICS TERMINAL OPERATIONS LLC	3,703.81	-	-	-	3,703.81
S039	PORTS AMERICA	10.50	-	-	-	10.50
T006	PORTS AMERICA	1,043.58	-	-	-	1,043.58
T182	PORTS AMERICA	297,435.01	180.87	-	-	297,615.88
Q359	POSCO INTERNATIONAL AMERICA (NJ)	1,721.13	-	-	-	1,721.13
A283	PRO TRANSPORT INC, TAMPA	-	-	10.50	-	10.50
D075	RELIABLE TAMPA PARTNERS	140.00	-	-	-	140.00
T202	ROYAL CARIBBEAN CRUISES LTD.	918,970.10	543,795.35	-	-	1,462,765.45
A064	SAVAGE & SON, AR	512,860.61	-	-	-	512,860.61
A531	SAVAGE MARINE MANAGEMENT COMPANY, LLC	31,220.90	-	-	-	31,220.90
A486	SEACAT LINES C/O NAGA LOGISTICS	41,668.36	-	-	-	41,668.36
T329	SESCO CEMENT OF FLORIDA LLC	21,077.66	-	-	-	21,077.66
S069	SOUTHERN CARTAGE, INC	(220.89)	-	-	-	(220.89)
D080	SOUTHERN SKILL TRADES INC	-	20.00	-	-	20.00
S055	TAMPA CONTAINER TRANSPORT	10.50	-	-	-	10.50
T021	TAMPA PORT SERVICES, LLC	(8,580.18)	-	-	6,363.17	(2,217.01)
Q493	THE MILL STEEL COMPANY	-	-	182.74	-	182.74

TAMPA PORT AUTHORITY
Monthly Aged Receivables
January 31, 2026

Customer Number	Customer Name	Current	31 - 60 Days	61 - 90 Days	91 & Over	Customer Balance
D084	TITAN FLORIDA (TITAN CONCRETE-WEST COAST REGION)	380.00	-	-	-	380.00
T173	TITAN FLORIDA LLC	73,310.39	31,366.99	337.98	2,331.46	107,346.82
T150	TRADEMARK METALS RECYCLING FKA ONESTEEL	58,864.71	-	68.39	-	58,933.10
A251	TRADEMARK METALS RECYCLING LLC	20.00	-	-	-	20.00
A497	TRANS-ATLANTIC AGENCIES INC	94,874.25	-	-	-	94,874.25
T020	TRANSMONTAIGNE INC	69,286.61	-	-	-	69,286.61
A553	VALHALLA SHIP AGENCY, LLC	12,706.50	-	-	-	12,706.50
T119	VULCAN MATERIALS COMPANY	-	-	18,617.39	3,873.05	22,490.44
T056	YARA NORTH AMERICA INC	5,901.40	-	-	-	5,901.40
Subtotal Port Fees		4,951,895.86	622,064.35	20,923.36	49,577.99	5,644,461.56

28

Lease Charges

L430	AGUNSA USA INC (Hooker's Point)	18,750.00	-	-	-	18,750.00
L416	AJAX PAVING INDUSTRIES OF FL, LLC	25,000.00	-	-	-	25,000.00
L045	AMALIE OIL	303.42	-	-	-	303.42
L400	ARDENT MILLS, LLC	31.53	-	-	-	31.53
L011	CARGILL FINANCIAL SERVICE CTR	(677.08)	-	-	-	(677.08)
L207	CARGILL INC SALT FACILITY	(302.81)	-	-	-	(302.81)
L403	CELLCO PARTNERSHIP DBA VERIZON WIRELESS	(5.58)	-	-	-	(5.58)
L399	CEMEX CONSTRUCTION MATERIALS FLORIDA LLC	20,375.19	-	-	-	20,375.19
L299	CEMEX CONSTRUCTION MATERIALS FLORIDA, LLC	(2,377.32)	-	-	332.04	(2,045.28)
L198	CULBREATH KEY BAYSIDE CONDO ASSOC.	170.79	11,385.96	-	-	11,556.75
L044	DIVERSIFIED MARINE TECH	159.32	-	-	-	159.32
L196	E.N. BISSO & SON INC	1.81	-	-	-	1.81
L317	Extenet Systems, Inc	111.04	111.04	111.04	7,622.11	7,955.23
L415	GLOVIS AMERICA, INC	2,091.56	33,873.00	3,664.50	1,465.77	41,094.83
L124	GULF MARINE REPAIR INC	740.00	-	-	-	740.00
L214	GULF SULPHUR SERVICES	22,155.18	105.18	105.18	9,787.79	32,153.33

TAMPA PORT AUTHORITY
Monthly Aged Receivables
January 31, 2026

Customer Number	Customer Name	Current	31 - 60 Days	61 - 90 Days	91 & Over	Customer Balance
L103	INTERNATIONAL SHIP REPAIR & MARINE SERVICES, INC	80.00	-	-	-	80.00
L313	JIAN LU AND JINLI XIE	1,382.63	-	-	-	1,382.63
L304	Key West Landings Dock Association, Inc	-	2,090.01	-	-	2,090.01
L098	KINDER MORGAN BULK TERMINALS	11,291.51	-	-	-	11,291.51
L104	LITTLE HARBOR SMI, LLC	247.55	16,503.63	-	-	16,751.18
L308	LOGISTEC GULF COAST LLC	875.58	20.00	-	-	895.58
L328	MAJESTIC STEEL USA	17,025.85	-	-	-	17,025.85
L263	MARINE TOWING OF TAMPA	2,862.31	-	-	-	2,862.31
L173	MARTIN OPERATING PARTNERSHIP	28,925.43	-	-	437.06	29,362.49
L010	MOSAIC CROP NUTRITION, LLC	431.00	-	28,733.33	-	29,164.33
L408	NAV TRANSPORTATION LLC	2,940.00	-	-	-	2,940.00
L410	NORTH ATLANTIC INTERNATIONAL OCEAN CARRIER, INC	8,358.66	11,958.26	8,058.41	-	28,375.33
L057	OSG SHIP MANAGEMENT, INC	238.79	-	-	-	238.79
L405	PORT HENDRY D, LLC	809.92	-	809.92	-	1,619.84
L264	PORTS AMERICA	88,500.00	-	-	-	88,500.00
L292	PURAGLOBE FLORIDA LLC	(200.00)	-	-	-	(200.00)
L433	SEA SUB SYSTEMS OFFSHORE, INC	1,000.00	-	-	-	1,000.00
L329	SESCO CEMENT FLORIDA LLC	13.00	26.00	169.00	-	208.00
L138	SHRIMP SVC DOCK ASSOCIATION	16.00	-	-	-	16.00
L235	STARSHIP CRUISE LINE	392.76	-	-	-	392.76
L064	SUPERIOR SEAFOODS INC	80.20	-	-	-	80.20
L253	T C PORT YBOR LLC	(112.18)	-	-	-	(112.18)
L067	TAMPA BAY PIPELINE COMPANY	(174.08)	-	-	-	(174.08)
L179	TAMPA JUICE SERVICE INC.	6,987.58	-	-	-	6,987.58
L049	TAMPA PORT SERVICES, LLC	(110.70)	-	10,669.51	488.93	11,047.74
L190	TAMPA SHIP LLC	7,080.00	40.00	-	-	7,120.00
L239	TITAN FLORIDA LLC	50.00	-	-	-	50.00
L209	TRADEMARK METALS RECYCLING FKA ONESTEEL	13.00	-	481.74	-	494.74
L297	TRANSFLO TERMINAL SERVICES, INC.	1,072.83	-	-	-	1,072.83
L078	TRANSMONTAIGNE TERMINALING INC	479.67	-	-	-	479.67
L440	UNITED STATES COAST GUARD	(284.58)	-	-	-	(284.58)

TAMPA PORT AUTHORITY
Monthly Aged Receivables
January 31, 2026

Customer Number	Customer Name	Current	31 - 60 Days	61 - 90 Days	91 & Over	Customer Balance
L307	VERIZON WIRELESS PERSONAL COMMUNICATIONS LP	(119.72)	-	-	-	(119.72)
L079	VERSAGGI SHRIMP COMPANY	45.83	-	-	-	45.83
L146	VULCAN MATERIALS	(1,537.92)	-	-	-	(1,537.92)
Subtotal Lease Charges		265,187.97	76,113.08	52,802.63	20,133.70	414,237.38
Total Port Fees and Lease Charges as of January 31, 2026		\$ 5,217,083.83	\$ 698,177.43	\$ 73,725.99	\$ 69,711.69	\$ 6,058,698.94

TAMPA PORT AUTHORITY
MONTHLY CONTRACT STATUS REPORT
01/31/2026

Project	Contractor	Contract Financial Record #	Original Bd App Date	Amt Approved Including Amendments	Costs Incurred to Date	Percent Complete
OPERATING AND NON-CAPITAL CONTRACTS:						
State Legislative Services	Advocacy Group at Cardenas Partners	26-29	06/17/25	\$ 60,000	\$ 15,000	25.0%
State Legislative Services	Gray Robinson, P.A.	26-29	06/17/25	\$ 60,000	\$ -	0.0%
Benefit Consulting Services	AON Consulting, Inc.	26-25	04/15/25	\$ 145,000	\$ -	0.0%
Insurance Broker Services	Arthur J. Gallagher Risk Management Services, LLC	26-28	08/19/25	\$ 150,000	\$ 75,000	50.0%
Property, Liability, and Flood Insurance Coverage	Arthur J. Gallagher Risk Management Services, LLC	26-42	04/15/25	\$ 4,471,896	\$ 5,611	0.1%
Strategic Communications Services Consultant	Bayview Public Relations	26-54	09/16/25	\$ 25,000	\$ 9,677	38.7%
Government Relations Consultant Services	Van Scoyoc & Associates	26-33	10/22/24	\$ 90,000	\$ 22,500	25.0%
Government Relations Consultant Services	Becker & Poliakoff, P.A.	26-33	04/15/25	\$ 90,000	\$ 22,500	25.0%
Bond Council	Bryant Miller Olive, P.A.	26-16	10/01/23	\$ 60,000	\$ 60,000	100.0%
Real Estate Consulting Services	Colliers International	26-17	09/02/25	\$ 75,000	\$ -	0.0%
Workers Compensation & Auto Insurance	Florida Insurance Alliance/PGIT	26-05	09/17/24	\$ 198,806	\$ 198,806	100.0%
Security System Maintenance & Repair	GSA Security/LaForce Holdings	25-03	03/23/22	\$ 481,000	\$ 314,120	65.3%
Drone Detection System	GSA Security	24-26	02/20/24	\$ 120,000	\$ 61,509	51.3%
Software Licensing - iSeaports	Harbour Mastery, Inc.	26-26	10/21/14	\$ 65,000	\$ 58,000	89.2%
Law Enforcement Services	Hillsborough County Sheriff's Office	26-39	09/20/22	\$ 3,754,165	\$ 691,086	18.4%
SBE Uniformed Security Guard Service	Martinez & Company	26-21	06/18/19	\$ 401,265	\$ 143,534	35.8%
Financial Audit Services	Mauldin & Jenkins, LLC	26-19	09/16/25	\$ 64,900	\$ 5,000	7.7%
Strategic Communications Services Consultant	Mercury Public Affairs, LLC	25-14	02/20/24	\$ 165,000	\$ 142,744	86.5%
Website Development & Website Hosting Services	Pantheon Solutions	26-35	11/15/22	\$ 45,000	\$ 7,500	16.7%
Financial Advisory Services	PFM Financial Advisors LLC	26-40	09/20/22	\$ 30,000	\$ -	0.0%
Video Production Services	Shooting Stars Post Inc	26-30	08/15/23	\$ 90,000	\$ 32,525	36.1%
Landscaping Services	TCC Enterprise Inc	26-06	09/21/21	\$ 138,100	\$ 32,025	23.2%
Grounds Maintenance	TCC Enterprise Inc	26-18	09/21/21	\$ 456,060	\$ 103,650	22.7%
Elevator/Escalator Maintenance & Repair Services	ThyssenKrupp Elevator	26-27	09/15/20	\$ 967,142	\$ 515,122	53.3%
Hosting and Support Services	Timmons Group	25-20	12/21/21	\$ 72,950	\$ 37,437	51.3%
Medical Insurance	United Healthcare	26-37	08/19/25	\$ 4,308,788	\$ 268,601	6.2%
Uniformed Security Guard Services	Universal Protection Service dba Allied Universal	26-15	12/19/23	\$ 4,272,625	\$ 81,992	1.9%
CBP IT equipment and service	US Customs & Border Patrol	25-65	05/20/25	\$ 450,399	\$ -	0.0%
Annual recurring services	US Customs & Border Patrol	25-66	05/20/25	\$ 75,638	\$ -	0.0%
Janitorial Services	Xtremely Clean	26-08	08/19/25	\$ 614,601	\$ 156,763	25.5%
				\$ 21,998,335	\$ 3,060,703	
OPERATING AND NON-CAPITAL CONTRACTS:						
CONTINUING ANNUAL CONTRACTS:						
Disaster Recovery services	Belfor USA Group (Year 4)	25-24	06/18/24	\$ 10,000	\$ -	0.0%
Professional Service Contracts	Various	20-01-02	09/17/19	\$ 6,195,000	\$ 270,967	4.4%
Professional Service Contracts	Various	21-01-02	09/15/20	\$ 7,799,442	\$ 570,583	7.3%
Professional Service Contracts	Various	22-01-02		\$ 14,537,473	\$ 13,191,448	90.7%
Professional Service Contracts	Various	23-01-02		\$ 12,065,909	\$ 9,799,702	81.2%
Professional Service Contracts	Various	24-01-02		\$ 8,880,630	\$ 7,039,799	79.3%
Professional Service Contracts	Various	25-01-02		\$ 8,750,000	\$ 8,039,369	91.9%

TAMPA PORT AUTHORITY
MONTHLY CONTRACT STATUS REPORT
01/31/2026

Project	Contractor	Contract Financial Record #	Original Bd App Date	Amt Approved Including Amendments	Costs Incurred to Date	Percent Complete
				\$ 49,488,454	\$ 30,872,499	
CONTINUING ANNUAL CONTRACTS:						
CONSTRUCTION AND CAPITAL CONTRACTS:						
HP Resiliency Project	Hypower, LLC	23-52-2	04/02/25	\$ 6,576,845	4,420,516	67.2%
HP Resiliency Project	Tampa Electric Company (TECO)	23-52-3	10/22/24	\$ 7,000,000	4,250,000	60.7%
Passenger Bridge Replacements at Terminals 2 & 6	FMT Sweden AB & Global Rigging Transport	23-54	02/28/24	\$ 7,199,474	3,433,906	47.7%
Shrimp Dock Repairs	Tampa Bay Marine	24-22a	11/14/23	\$ 2,415,451	319,779	13.2%
Berth 218 Construction	Orion Marine Construction	24-43	03/19/24	\$ 21,496,775	20,035,444	93.2%
Hookers Point Vehicle Storage Area	PCS Civil, Inc	24-44	04/16/24	\$ 3,500,000	3,467,478	99.1%
Eastport Mitigation Credits	Mangrove Point Mitigation/Tampa Bay Mitigation & Souther	24-47	08/15/23	\$ 3,248,070	2,613,300	80.5%
Berth 301 Wharf	Moffatt & Nichol	24-55	06/17/25	\$ 1,200,000	595,214	49.6%
Electrical Power Generator at Hookers Point Security Complex	Austin Construction Group	24-56	11/14/23	\$ 750,000	702,734	93.7%
Metro Port Design	HDR Engineering, Inc.	24-57	06/18/24	\$ 500,000	466,014	93.2%
Berth 214 Wharf	Russell Marine, LLC	24-58	06/18/24	\$ 67,159,751	44,348,574	66.0%
Security Upgrades @ Heavy Weather Building	GSA Security	24-59		\$ 240,000	143,065	59.6%
Navigational Improvements - Maintenance Dredging	Orion Marine Construction	25-04	06/21/22	\$ 3,500,000	2,366,736	67.6%
Acquisition of 2 new container gantry cranes	Liebherr Crane Company	25-45	12/17/24	\$ 41,496,739	19,750,704	47.6%
Berth 301 Wharf	Orion Marine Construction	25-55	12/22/25	\$ 21,400,000		0.0%
PTB's Video Wall System Upgrade	GSA Security	25-60	11/19/24	\$ 143,153	141,044	98.5%
Hooker's Point Berth 223 Marine Improvements	Russell Marine, LLC	25-61	01/21/25	\$ 1,000,000	985,647	98.6%
Eastport Phase III	Moffatt & Nichol	25-62	01/21/25	\$ 1,270,464	217,679	17.1%
Hooker's Point Lumber Warehouse (Berth 206)	Reno Boyd Building Co., LLC	25-63	05/20/25	\$ 1,600,000	119,680	7.5%
Stormwater Resiliency Master Plan	Applied Sciences Consulting, Inc.	25-67	05/20/25	\$ 500,000	71,360	14.3%
HVAC Chillers for T3 & Chiller coils for HQ Bldg	Tampa Bay Trane	25-69	08/19/25	\$ 1,217,044	161,140	13.2%
Terminal 6 Lifecycle Repairs	Russell Marine LLC	25-70	09/16/25	\$ 2,500,000	107,598	4.3%
Port Redwing Signalization project	Sun Civil, LLC	25-71	09/16/25	\$ 1,200,000	-	0.0%
Bldg 209 Warehouse	Reno Building LLC	26-72	10/21/25	\$ 4,000,000	-	0.0%
Gate Arm Control System Upgrade	Laforce Holdings	26-73	10/21/25	\$ 116,718	58,856	50.4%
CONSTRUCTION AND CAPITAL CONTRACTS:				<u>\$ 201,230,484</u>	<u>\$ 108,776,467</u>	

MINOR WORK PERMIT REPORT

1/1/2026 – 1/31/2026

PERMITS ISSUED

24-030	Glenn Kaleta	Dock/Non-covered boatlift/Mirabay Canal/Apollo Beach
25-025	Mathew Morgenthal	Dock/Non-covered boatlift/Mirabay Canal/Apollo Beach
25-036	Nicholas Parrot	Dock/Non-covered boatlift/Mirabay Canal/Apollo Beach

REVISIONS

VIOLATIONS

--	--	--

*Indicates that permit was issued After-The-Fact

PENDING APPLICATIONS SUMMARY

Appl.#	M/S	Applicant	Proposed Work
23-035	S	Port Tampa Bay (TPA) Engineering Dept.	Offshore Breakwater @ West Side of Spoil Island 2D, Tampa, FL
23-068	S	MAA Westshore Exchange LLC	Docking Facility at 5440 W. Tyson Avenue, Tampa, FL
24-025	S	Westshore Marina Ventures, LLC	Add approx 23,666 sq ft of overwater structure to the existing Westshore Yacht Club to accommodate mooring 48 additional slips
22-020	M	Pine Key Project, LLC	Dock @ Pine Key Island (aka One Beer Can Island), Gibsonton
23-034	M	City of Tampa	Replace 1-Dock & Install 24 Mooring Anchors/Buoys @ 1002 Severn Avenue-Tampa, FL-Davis Island Seaplane Basin
23-057	M	Key West Landings Dock Assoc. Inc.	Extend Dock-install lift @ Marina Slip-Riverview, Alafia River
23-058	M	Hillsborough County Capital Programs	Replace/extend box culvert @ W of 6515 Riverview Drive, Riverview, FL
24-031	M	Smart Communication Holdings, LLC	Dock/Boatlift @ 5718 Tybee Island Drive, Apollo Beach, FL (Mirabay)
24-045	M	Book of Sail LLC	Dock/Rip Rap @ 840 Signet Drive, Apollo Beach, FL 33572 (Mirabay)
24-048	M	Egypt Shrine Holdings Corp	Dock @ 5017 E. Washington Street, Tampa, FL
25-007	M	Tampa Hillsborough Expressway Authority	Selmon Expressway Bridge Widening/Tampa
25-009	M	Emory Todd	Dock/non-covered boatlift/Platform List @ 5109 W. San Jose, Tampa, FL
25-016	S	City of Tampa	Pedestrian Bridge & Boardwalk @ Western Shoreline of Hillsborough River Between Platt & Brorein ST, Tampa
25-017	S	Tampa Electric Company (TECO)	Big Bend Deeping N-S Channel and Big Bend Berth @ 603 Big Bend Rd, Apollo Beach, FL
25-024	M	GVI-IP Tampa Hotel Owner LLC	Dock @ 2900 Bayport Drive, Tampa, F L33607

Appl.#	M/S	Applicant	Proposed Work
25-028	S	South Bay CDD Holdings Inc.	Multi-slip Docking Facility @ 3290 Mangrove PT Drive, Ruskin, FL
25-029	S	South Bay CDD Holdings Inc.	Destiny Drive & Bahia Beach Blvd., Ruskin, FL
25-031	M	Cargill, Inc.	Platforms, pilings, hopper/conveyor @ 200 N. 19 th Street, (Berth 256) Tampa, FL
25-035	M	L yol & Amy Brumby	Observation Deck @ 1126 Seagrape Drive , Ruskin, FL 33570
25-037	S	MacDill AFT	Repair/Replace Docking Facility @9909 Marina Bay Drive, Tampa
25-039	S	Andalucia Yacht Club Inc.	Replace Access Picks @ 1303 Puerto Drive, Apollo Beach, FL 33572
25-040	M	Hillsborough County	Repair Bridge #100248@Memorial Highway & Sweetwater Creek, Tampa
25-041	M	Jason Coleman	Repair/Replace Boatlift @ 885 Symphony Isles Blvd., Apollo Beach
25-042	M	Jason Bowers	Maintenance Dredge@ 621 Balibay Rd, Apollo Beach (Mirabay)
25-043	M	Sidney Wilson	Seawall @ 3240 42 nd Avenue SE, Ruskin FL
25-044	M	Vaseem Akhtar	Boatlift/Piling @ 6119 Lagomar Lane, Apollo Beach, FL
25-045	M	Aqua Tech Eco Consultants-Beau Williams	Seagrass Restoration @ Folio #031526-0000/Old Tampa Bay/Tampa
25-046	M	Aqua Tech Eco Consultants-Beau Williams	Seagrass Restoration @ Folio #031526-0000/290000-0196/Old Tampa Bay/Tampa
25-047	M	Tim & Cheryl Fitzpatrick	Boatlift @1337 Puerto Drive, Apollo Beach
25-048	M	Thomas Hammer	Modify Dock-Relocated Boatlift & Platform Portion @ 1032 Seagrape Drive, Ruskin
26-001	M	Robert Pugh	Modify Dock/Construct Concrete Load-out & Floating Dock @ 9809 Vaughn Street, Gibsonton, FL
26-002	M	Riverwalk Hotel Property Owner, LLC	Cantilever, ADA Access Ramp to Riverwalk @ 200 N. Ashley Drive, Tampa, FL

Board Meeting
February 17, 2026
Environmental Department 463812

EXPENDITURES
Between \$50,000 - \$250,000
01/01/2026 - 01/31/2026

COMPANY	DESCRIPTION	AMOUNT	FUNDING	ADDITIONAL INFORMATION

Board Meeting
February 17, 2026
ID149166

Future Proposed Projects

February 2026

Project Name	Current Contractor / Consultant	Estimated Proposal/Bid Release	Estimated Board Approval
Real Estate Consulting Services	Colliers International Florida, LLC	March/April	May/June
Video Production Services	Shooting Stars Post, Inc.	March/April	May/June
Social Media Public Relations	Bayview Public Relations d/b/a B2 Communications	April/May	June/August
Cruise Terminal 5 Architectural Design Services	NEW PROJECT	February/March	April/May
Channelside Civil Design Services	NEW PROJECT	February/March	April/May

36

NOTE: This list contains possible future projects. Be advised these projects/contracts may be cancelled, delayed, or revised as required by PTB. Recently added contracts/projects are reflected in **bold**.

* - To Be Determined