

School District of River Falls
Finance and Facilities Committee meeting

Monday, October 10, 2022 - 6:00 PM

District Office

852 E Division Street

River Falls, Wisconsin 54022

Educational Program Committee members: Alan Tuchtenhagen (Chair), Lindsey Curtis, & Cindy Holbrook

Agendas can be viewed at <https://www.rfsd.k12.wi.us/district/school-board.cfm> or at

<https://meetings.boardbook.org/Public/Organization/1447>

1. CALL TO ORDER - 6:00 p.m. in the District Office Conference Room

2. MANNER OF PUBLIC NOTIFICATION OF MEETING

3. HEARING OF VISITORS OR DELEGATIONS

4. Review 2022-23 District Student Enrollment

2

Description: Director of Finance and Facilities, Chad Smurawa, will provide the committee with a 2022-23 district student enrollment update.

Recommended Action: None, informational only.

5. Review Property Valuations, State Aid Amount, and Potential Tax Levy

3

Description: Director of Finance and Facilities, Chad Smurawa, will provide the committee with the most current property valuations, state aid amount and tax levy information.

Recommended Action: None, informational only.

6. Proposed/suggested items for the next regular and future Finance & Facilities meeting agenda(s)

Description: As always, committee members will be given the opportunity to suggest items for future committee and/or Board meeting agendas.

Recommended Action: As needed.

7. Schedule next Board/Committee meetings

Description: Upcoming committee meeting dates, times, and locations will be reviewed.

Recommended Action: Set the meeting schedule as follows:

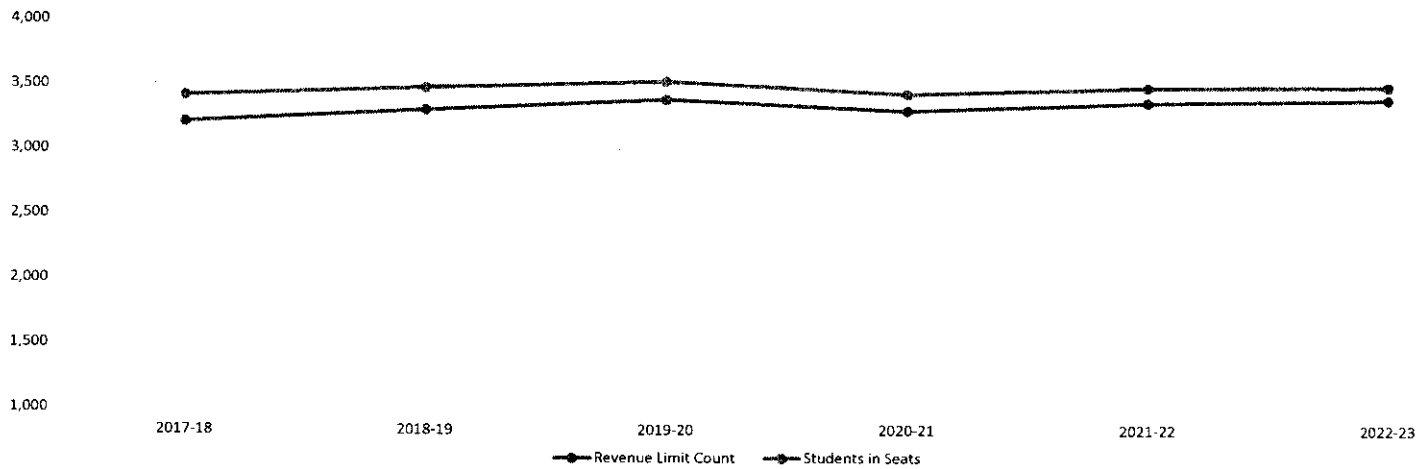
Finance and Facilities Committee meeting, Monday, November 14, 2022, 6:00 p.m.

The meeting will be held at the District Office, 852 E. Division Street

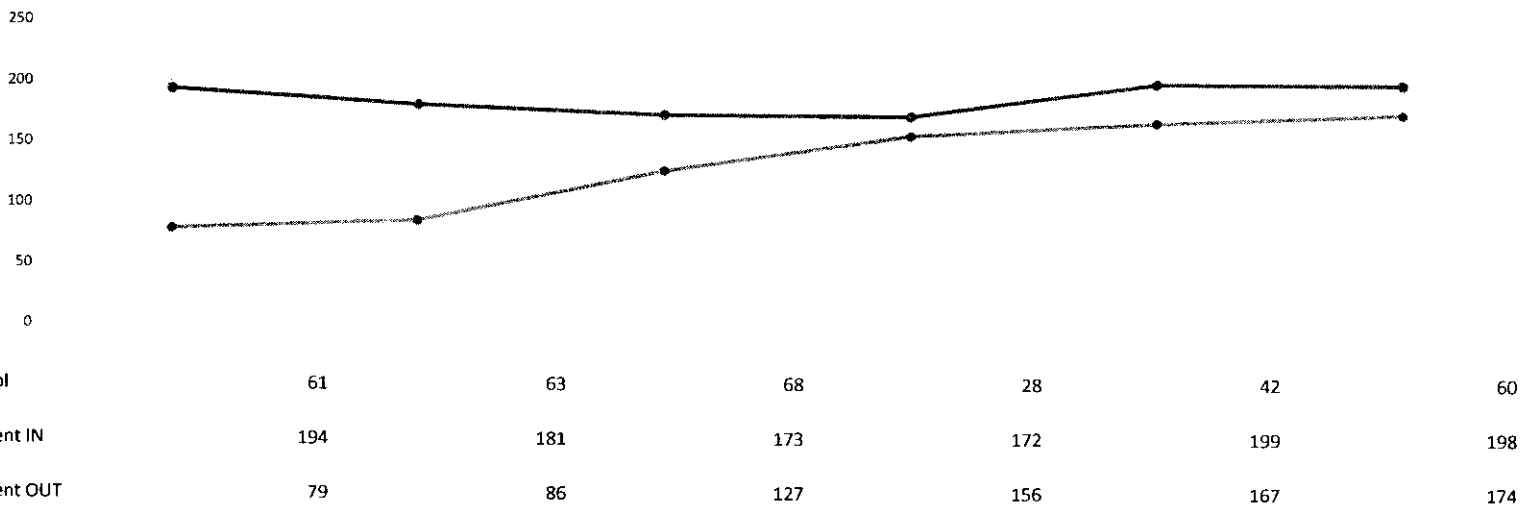
8. ADJOURN

**School District of River Falls
3rd Friday Pupil Count**

	2017-18	2018-19	2019-20	2020-21	2021-22	2022-23
Revenue Limit Count	3,213	3,306	3,386	3,300	3,365	3,388
	75	93	80	(86)	65	23
Students in Seats	3416	3476	3525	3429	3481	3490
	91	60	49	(96)	52	9



Open Enrollment



School District of River Falls 2022-23 Levy & Mil Rate Overview

F&F Meeting - 10/10/2022

	A	B	C	D	E	F	G
	YEAR	District Valuation	Valuation % Change	Tax Levy	Tax Levy % Change	Mil Rate	Mil Rate % Change
1	2007-08	\$1,841,894,909	2.9%	\$16,174,555	7.8%	\$8.78	4.7%
2	2008-09	\$1,925,046,904	4.5%	\$16,289,045	0.7%	\$8.46	-3.6%
3	2009-10	\$1,820,328,010	-5.4%	\$17,728,446	8.8%	\$9.74	15.1%
4	2010-11	\$1,736,270,723	-4.6%	\$18,071,126	1.9%	\$10.41	6.9%
5	2011-12	\$1,645,529,364	-5.2%	\$17,894,533	-1.0%	\$10.87	4.5%
6	2012-13	\$1,610,415,988	-2.1%	\$17,576,603	-1.8%	\$10.91	0.4%
7	2013-14	\$1,605,076,205	-7.6%	\$17,317,408	-1.5%	\$10.79	3.7%
8	2014-15	\$1,713,087,986	6.7%	\$16,782,778	-3.1%	\$9.80	-9.2%
9	2015-16	\$1,783,728,944	4.1%	\$18,259,799	8.8%	\$10.24	4.5%
10	2016-17	\$1,866,329,400	4.6%	\$17,462,356	-4.4%	\$9.36	-8.6%
11	2017-18	\$2,001,082,417	7.2%	\$18,209,975	4.3%	\$9.10	-2.74%
12	2018-19	\$2,131,349,451	6.5%	\$19,153,050	5.2%	\$8.99	-1.25%
13	2019-20	\$2,243,240,075	5.2%	\$20,274,257	5.9%	\$9.04	0.57%
14	2020-21	\$2,452,371,265	9.3%	\$20,340,078	0.3%	\$8.29	-8.23%
15	2021-22	\$2,604,130,997	6.2%	\$20,484,650	0.7%	\$7.87	-5.16%

5 Yr Average: 6.9%
10 Yr Average: 4.0%

	A	B	C	D	E	F	G
16	(Annual Mtg) 2022-23	\$2,734,337,547	5.0%	\$20,376,904	-0.5%	\$7.45	-5.26%
17	(10/10/22) 2022-23	\$2,971,020,228	14.1%	\$20,376,904	-0.5%	\$6.86	-12.81%

District Valuation:

The total value of property in a school district as determined by the State Department of Revenue on October 1st of each year.

Tax Levy:

Total \$ amount that the district will tax the community in a particular fiscal year.

Mil Rate:

Total Tax Levy divided by District Valuation.

School District of River Falls Tax Levy Schedule

September 19, 2022

2022-23 Annual Meeting

September 30, 2022

Complete 3rd Friday Pupil Count

Plan: +10 Summer school, +35 School Year Total: + 45

Actual: +7 summer school, + 23 School Year Total: + 30

Short 15 Students to Plan

Impact: 3 yr avg impact reduced to 5 student shortfall

October 1, 2022

Certification of 2022 Property Values

Estimate: + 5.0%

Actual: + 14.1%

Impact: Mill rate likely decrease 10%-12%

Tax bills likely flat to + 2% unless reassessment

October 14, 2022

2022-23 State Aid Announced

Estimate: + \$1,200,000

Actual: ?

October 17, 2022

Board of Education Approves 2022-23 Tax Levy

10/10/2022 17:41