

Agenda of Board Workshop Meeting

The Board of Trustees Ector County Independent School District

A Board Workshop Meeting of the Board of Trustees of Ector County Independent School District will be held December 10, 2024, beginning at 6:00 PM.

The subjects to be discussed or considered are listed below. Items do not have to be taken in the same order as shown on this meeting notice.

1. Call to Order - Roll Call
2. Verification of Compliance with Open Meeting Law - this is to certify that the provisions of Section 551.001 of the Texas Government code have been met in connection with public notice of this meeting.
3. Opening Remarks by Superintendent
4. Public Comment
5. Report/Discussion Items
 - A. Presentation of School Action Update at Noel Elementary, Pease Elementary and Zavala Elementary 2
 - B. DLR New Transition Learning Center Presentation 3
 - C. Board 2025-2026 Budget Priorities 26
6. Possible Request for Approval to Move to Closed Meeting - Personnel Matters - Section 551.074 of the Texas Government Code [Board will deliberate the appointment, employment, evaluation, reassignment, duties, discipline, or dismissal of public employees of the District or hear a complaint or charge against an officer or employee.]
Consultations with Attorney - Section 551.071 of the Texas Open Meetings Act [The Board will meet in Closed Session in Consultation with the Board's Attorney Regarding all Matters as Authorized by Law.]
7. Closing Remarks by Superintendent
8. Adjournment



PRESENTATION OF SCHOOL ACTION UPDATE AT NOEL ELEMENTARY, PEASE ELEMENTARY AND ZAVALA ELEMENTARY

In February 2024, the recommendation was approved to reestablish Noel Elementary, Pease Elementary and Zavala Elementary as K-5 schools bringing families back together at their neighborhood schools. The campus principal at each of these schools will provide an update to the Board of Trustees of the impact this decision has made on their campuses.



NEW TRANSITION LEARNING CENTER DESIGN UPDATE

DLR Architects will present to the Superintendent and Board of Trustees an update on the new Transition Learning Center design. Items to be discussed include the project scope/schedule, site plan, floor plans, exterior design concept, next steps, and questions from the trustees.

 DLRGROUP



Design Book

Schematic Design
December 10, 2024



Transition Learning Center covers a wide continuum of student needs and services.

TLC is dedicated to improving the quality of life of students by endorsing choices and protecting rights.

TLC provides each student the skills necessary to achieve greater independence; through classes such as culinary, community, based instruction, technology, recreation and social skills.

5

Content

01 Project Brief

02 Program
Development

03 Design Approach

04 Plan Layout

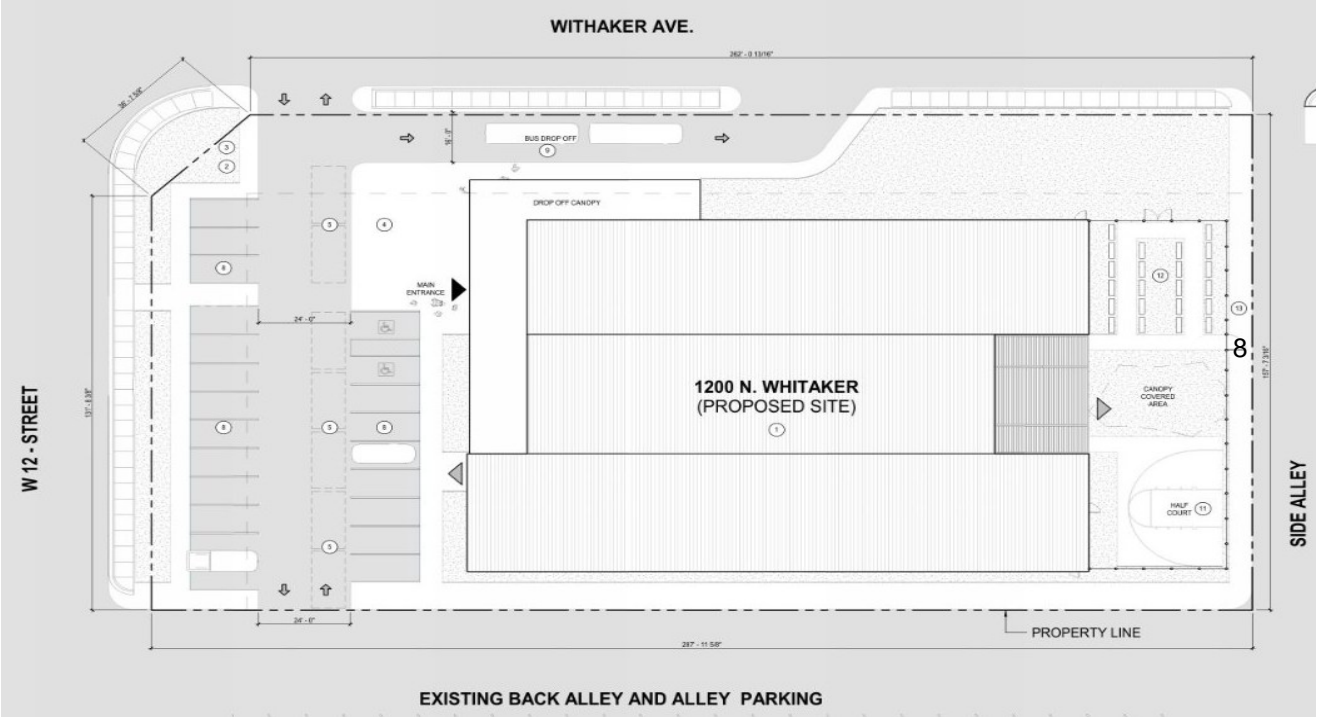
Project Brief

Project Brief

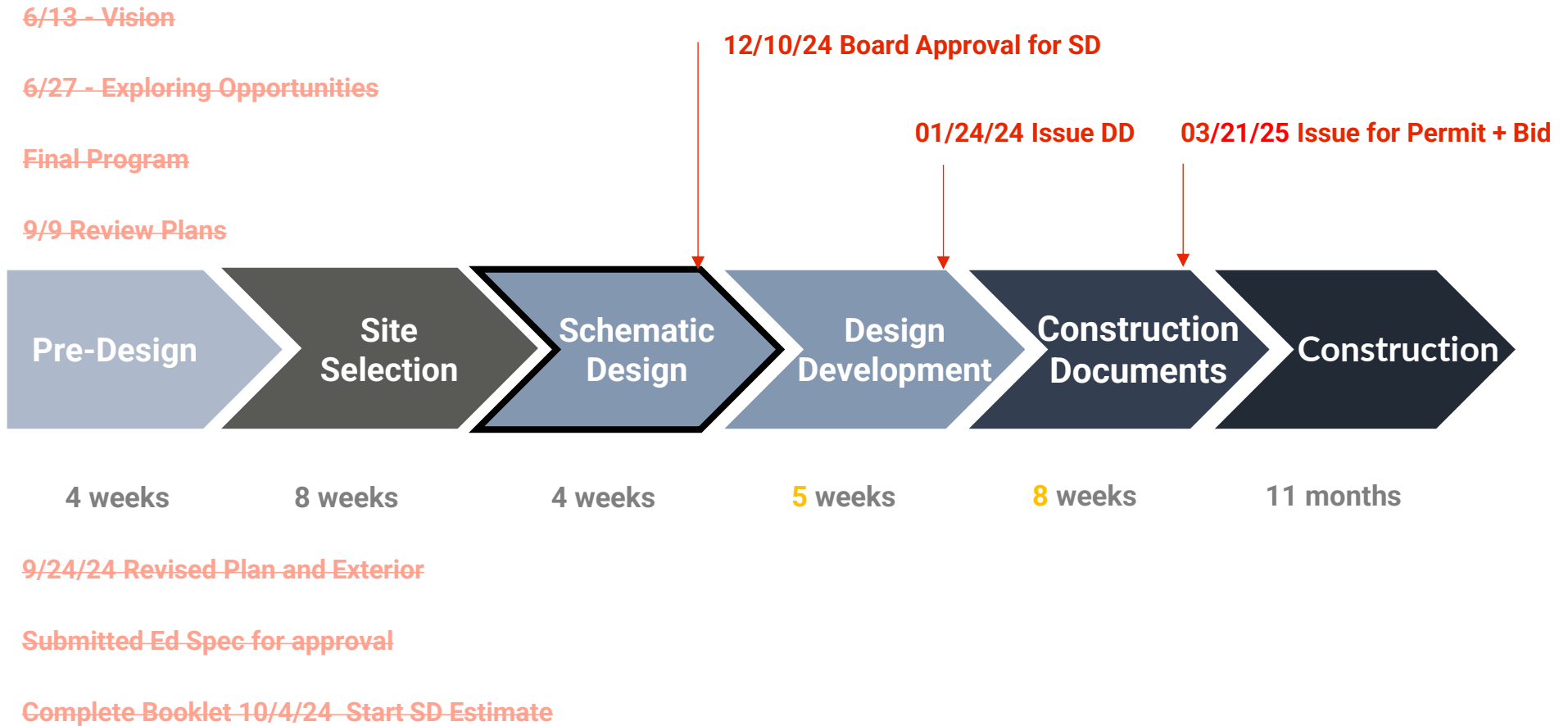
The need for a new Transitional Learning Center was identified by ECISD 2023 bond planning. This supplemental Education Specification (Ed Specs) expands upon the 2024 Education Specification prepared by Ector County ISD and addresses the Transitional Learning Center (TLC) program specifically.

This document was prepared by DLR Group with the critical input of TLC staff, learners, members of the EC ISD district leadership. The new TLC facility will serve a population of approximately 55 learners with diverse, overlapping, and significant special needs. Learners communicate in a variety of ways: verbally in English and Spanish and nonverbally using sign language, specialized switches, and music. Multiple and varied mobility equipment assists learners with movement throughout the day. The TLC’s population also includes a significant number of adults such as educators, teaching assistants, and private-duty nurses as required to address the learners’ unique needs. The TLC campus will be relocated from its current site at 1111 W 12th St, to 1118 W 12th St.

The new facility will be no more than 16,000 gross-square-feet in size to accommodate adequate space for collaboration, specialized instruction, community connection, federally mandated Americans with Disabilities Act (ADA) required clearances, and specialized storage requirements. Site scope for this project includes a new bus drop off area, staff and visitor parking, outdoor learning and play area. See the Building Program section for more detailed breakdown of spaces.



Timeline



Program Development



FINNS Framework

Flexibility: Movement, space for learning activities

Individualization: Personalized activity settings, right-sized furniture

Naturalness and Nature: Connections to nature/natural light, and comfort

Stimulation: Right size, appropriate colors

The SEI/TEI™ research



Neuroscience research



Educational psychology research



P.Barrett (2018) Well designed classrooms can boost learning, case study on *EPSRC Lens on Research and Innovation* webpage: <https://epsrc.ukri.org/newsevents/casestudies/well-designed-classrooms-can-boost-learning/>



What we heard

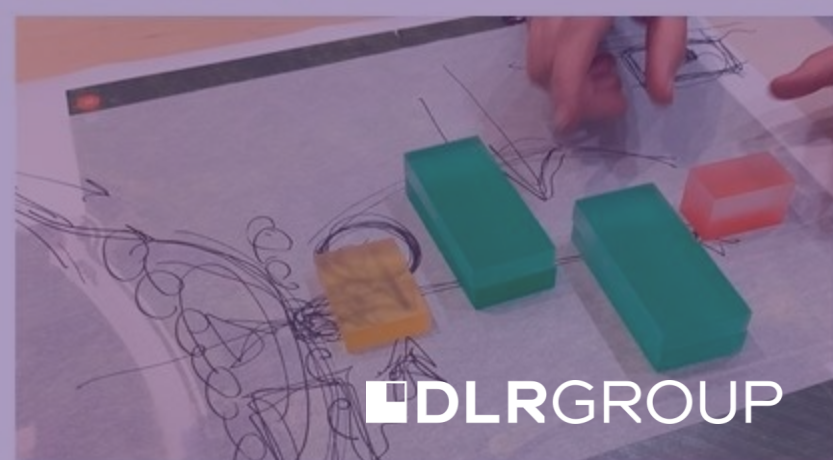
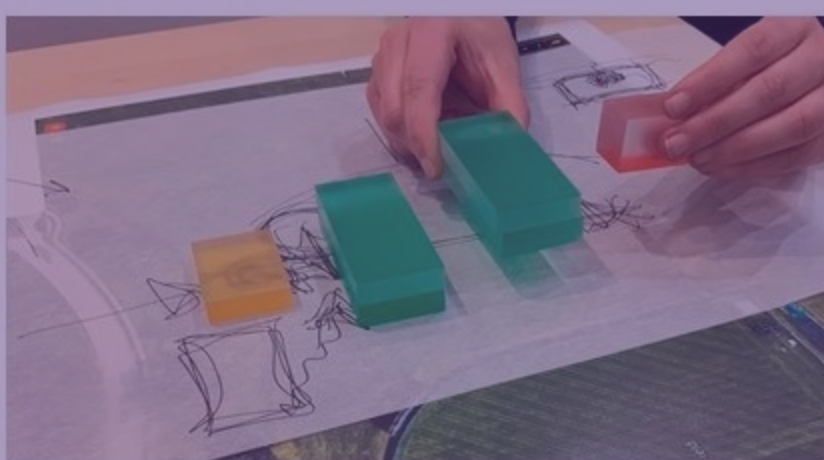
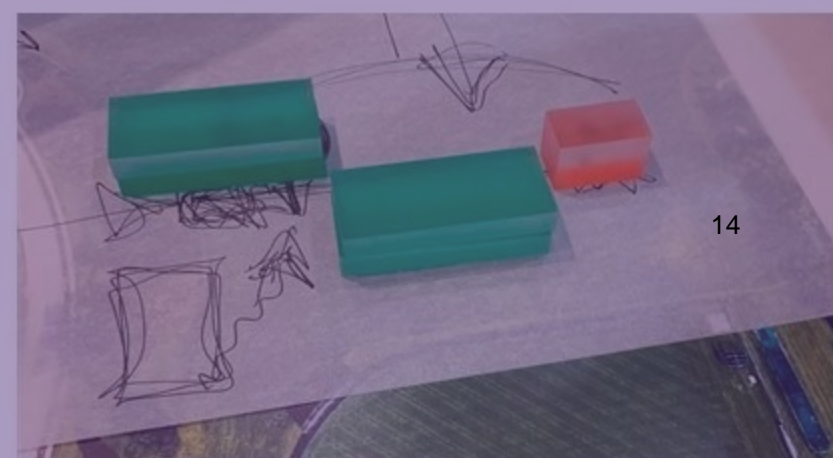
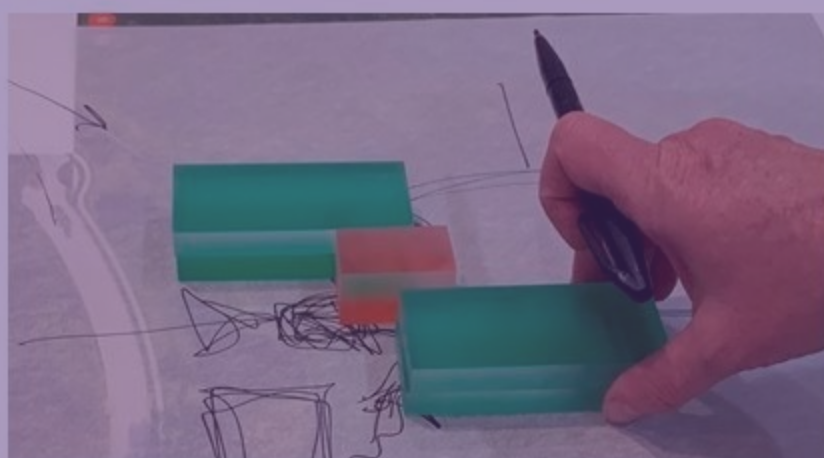
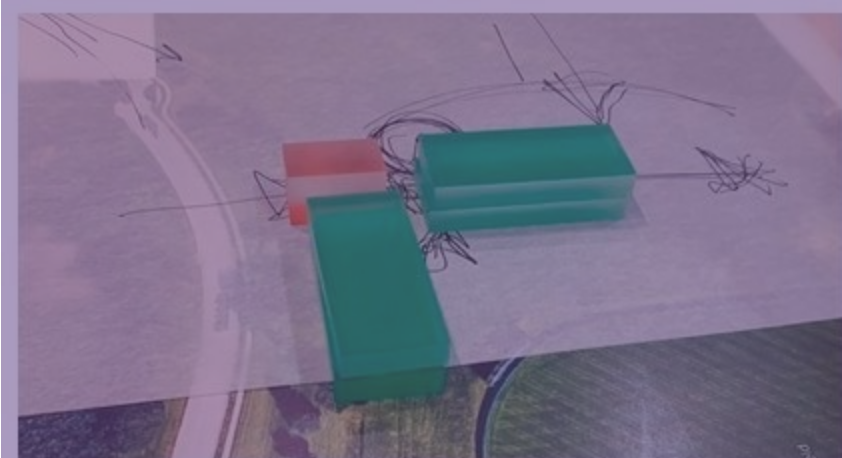
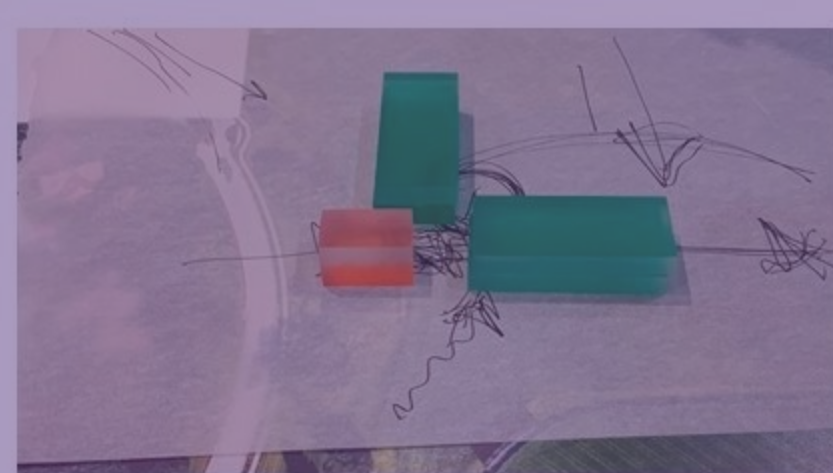
- **Adaptability**
Need to be prepared to aid students with different needs now and to come.
- **Culinary**
Two areas – home culinary skills and restaurant culinary skills, with accessible counter and stove tops.
- **Community Based Instruction**
Include areas for support groups and external teachers, as well as dedicated spaces for teaching daily tasks such as grocery shopping and library use, etc.
- **Technology**
Space must be able to adapt to different technological needs, from laptop use, to using a magnifying glass.
Must be sure technology is incorporated to support jobs options.
- **Recreation**
Space for teaching leisure skills as well as athletic skills.
- **Vocational Skills**
Pre-vocation and vocational skills building lab



Program Summary

SPACE / FUNCTION	SQFT
ADMINISTRATION	2,252
CLINIC	376
SPECIAL CLASSROOMS	7,628
ATHLETICS / PHYSICAL EDUCATION	650
VOCATIONAL LAB	300
ANCILLARY	320
UNASSIGNED SPACE (MECH, CIRCULATION, WALLS, ETC) @ 35% NET AREA	4,034
TOTAL BUILDING GROSS SQUARE FEET	15,560

Design Approach



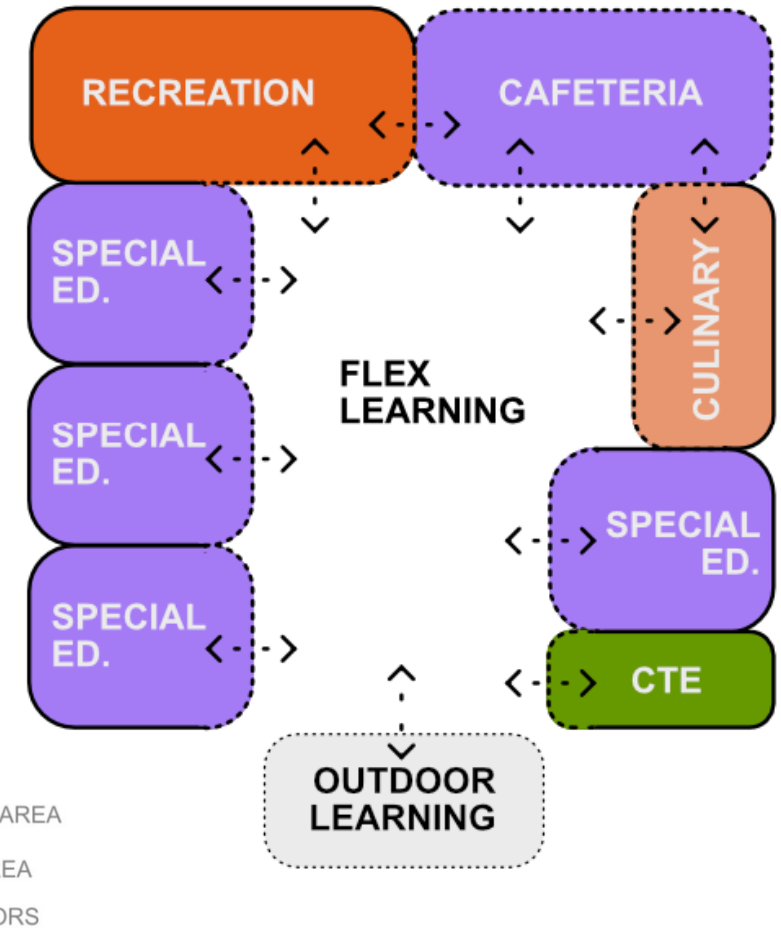
Flexible Learning

GUIDING PRINCIPLE

Flexible Learning Space

In response to program layout wants and needs the Flexible Learning space is placed as the central organizational moment. All other program spaces are oriented around that space or lead to it. This strategy allows dedicated rooms to open to the flexible area when needed for additional students or special activities.

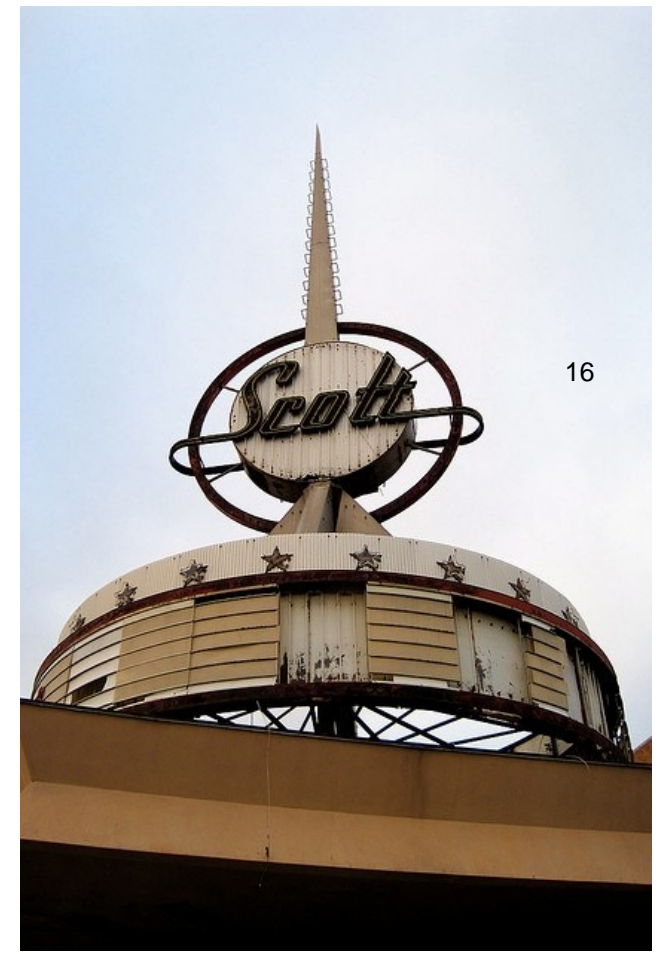
This design principle serves not only as an organizational tool but also as the heart of the plan layout. It becomes a crucial moment in the experience of the building to the students and staff.



15

Concept and Inspiration

Inspiration in Place



16

Concept and Inspiration

Precedents



Program Development

Spatial Wants

PLEASE NOTE: This image shows residential grade ventilation hoods – this facility will require commercial-grade hoods with integrated fire-suppression.



Open Flexible Space



Open Culinary Space

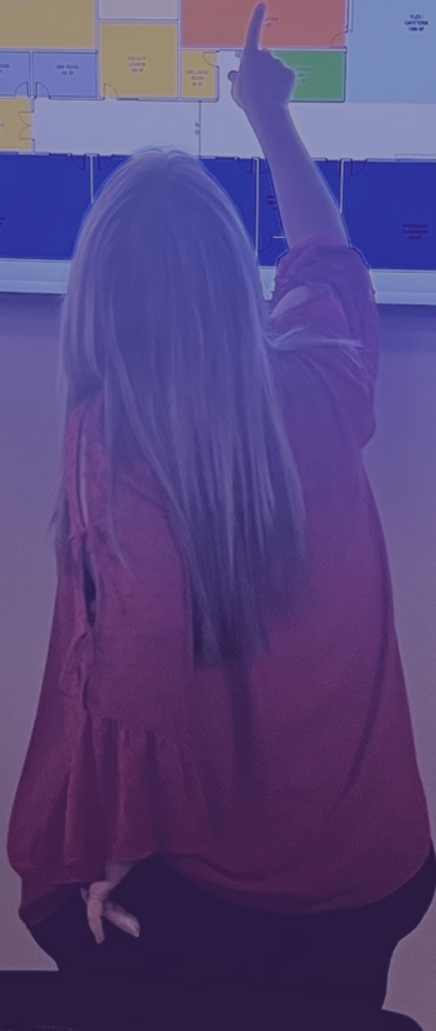
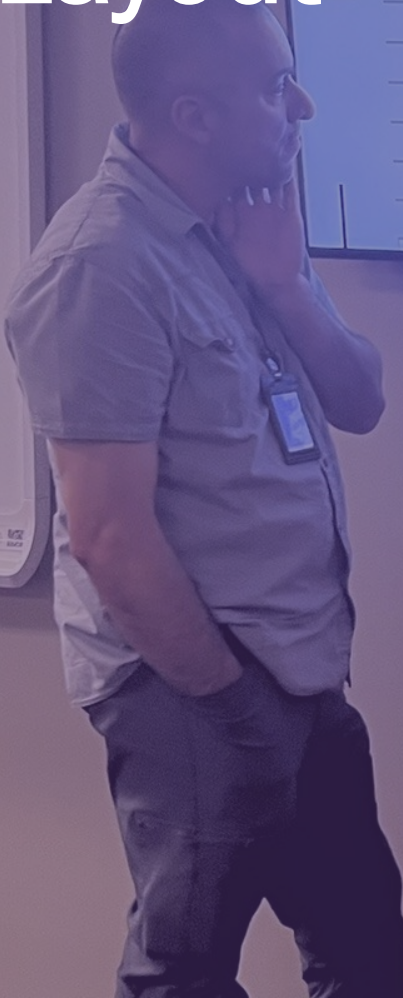


Dedicated Living Lab



Social Recreation Areas

Plan Layout



ecisd
TALENT DEVELOPMENT
COACHES

Heather Bland

Angela Johnson

ODESSA PATHWAY TO
TEACHING CERTIFICATION
OFFICER

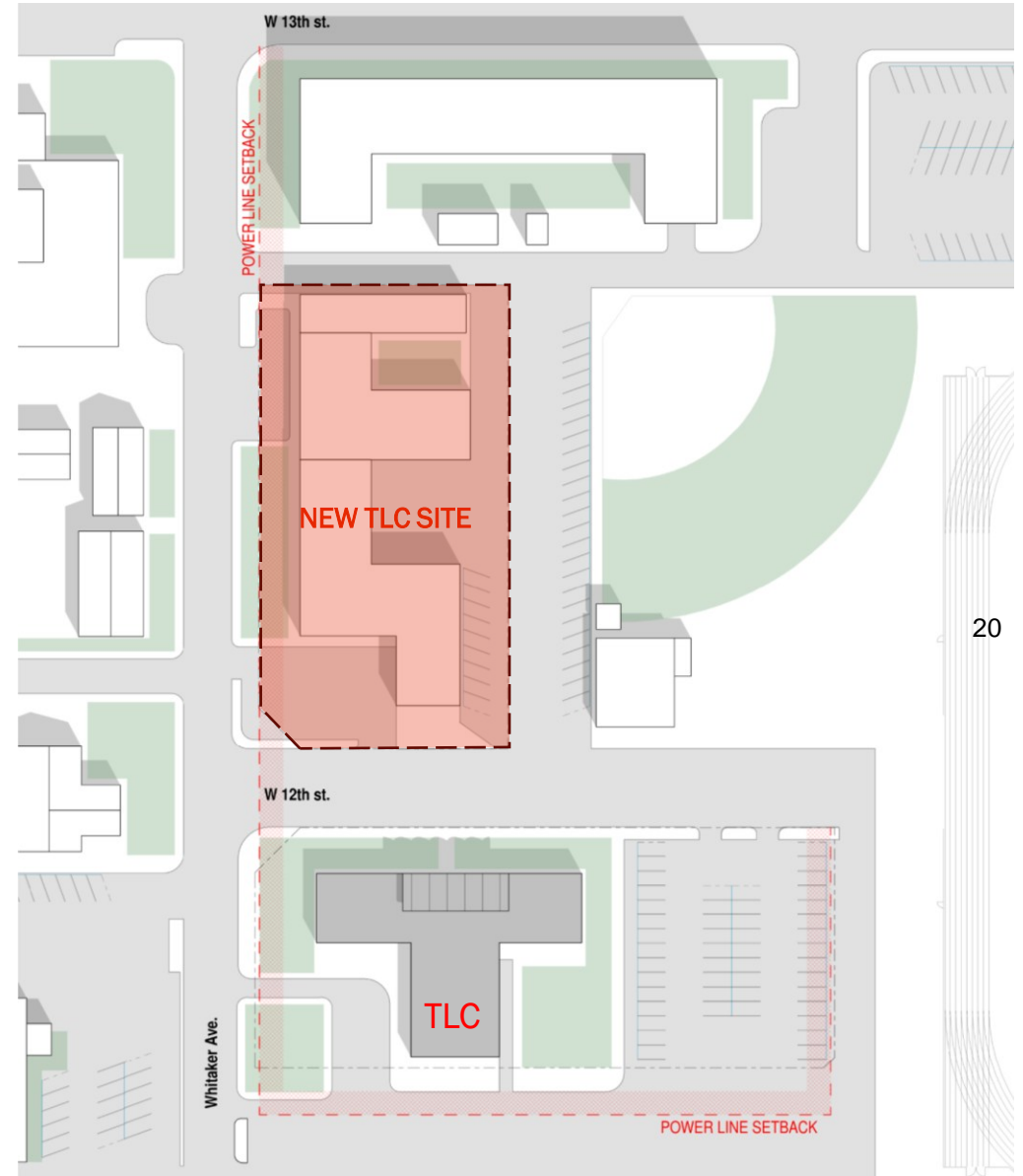
Bj Gamboa



Site Selection

Zoning Summary

- Retail zoning
 - *Education Facility is Permitted Use*
- Maximum Primary building coverage 35%
 - Site Area: 45,302 SF
 - Maximum Coverage: 15,855 SF
- Parking:
 - Provided: 20 Stalls + 2 ADA
- Setbacks
 - Front 25' (12th street)
 - Side 5'
 - Rear 0'



Plan Layout

Site



DUMPSTER



BUS DRIVE



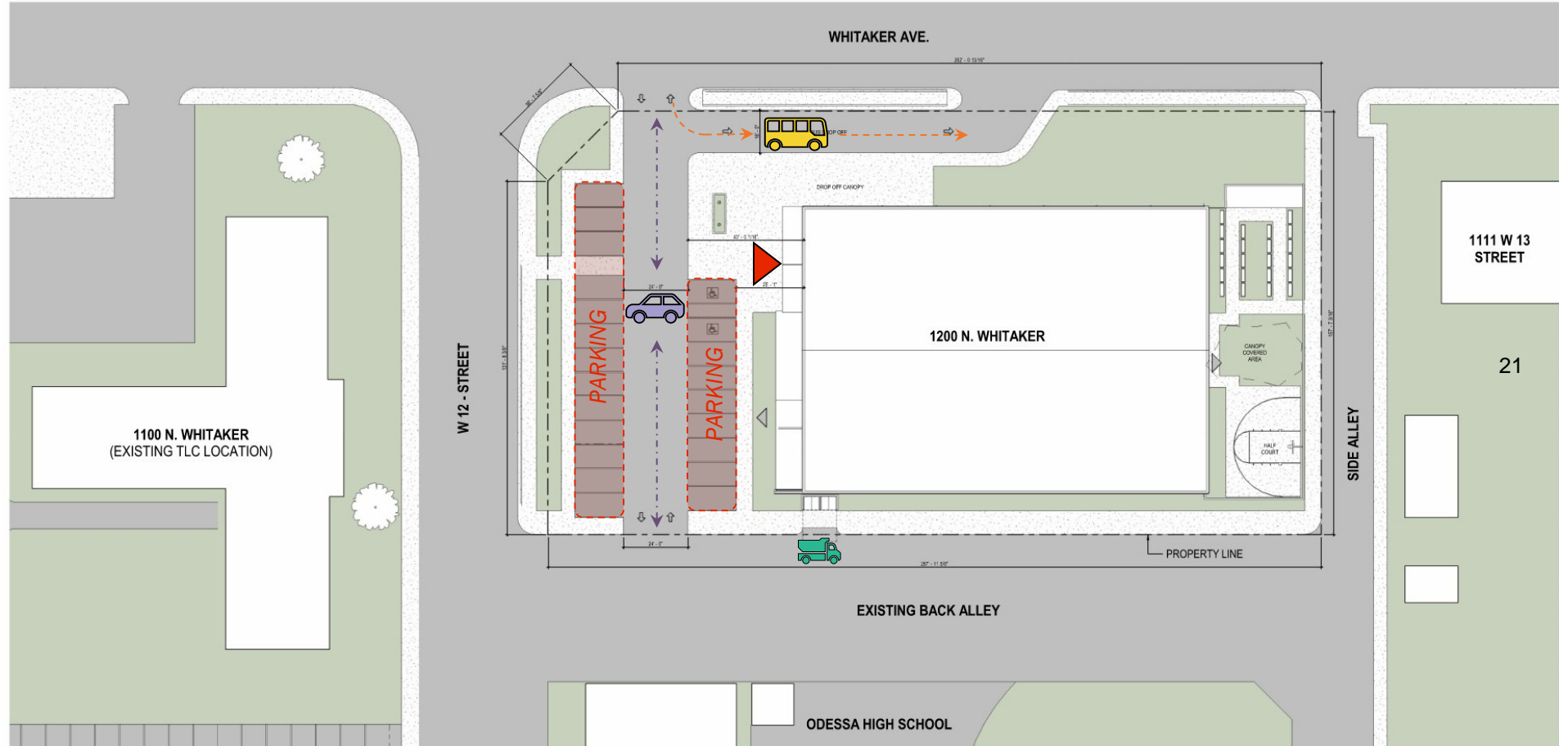
CAR DRIVE



North



Main Entry







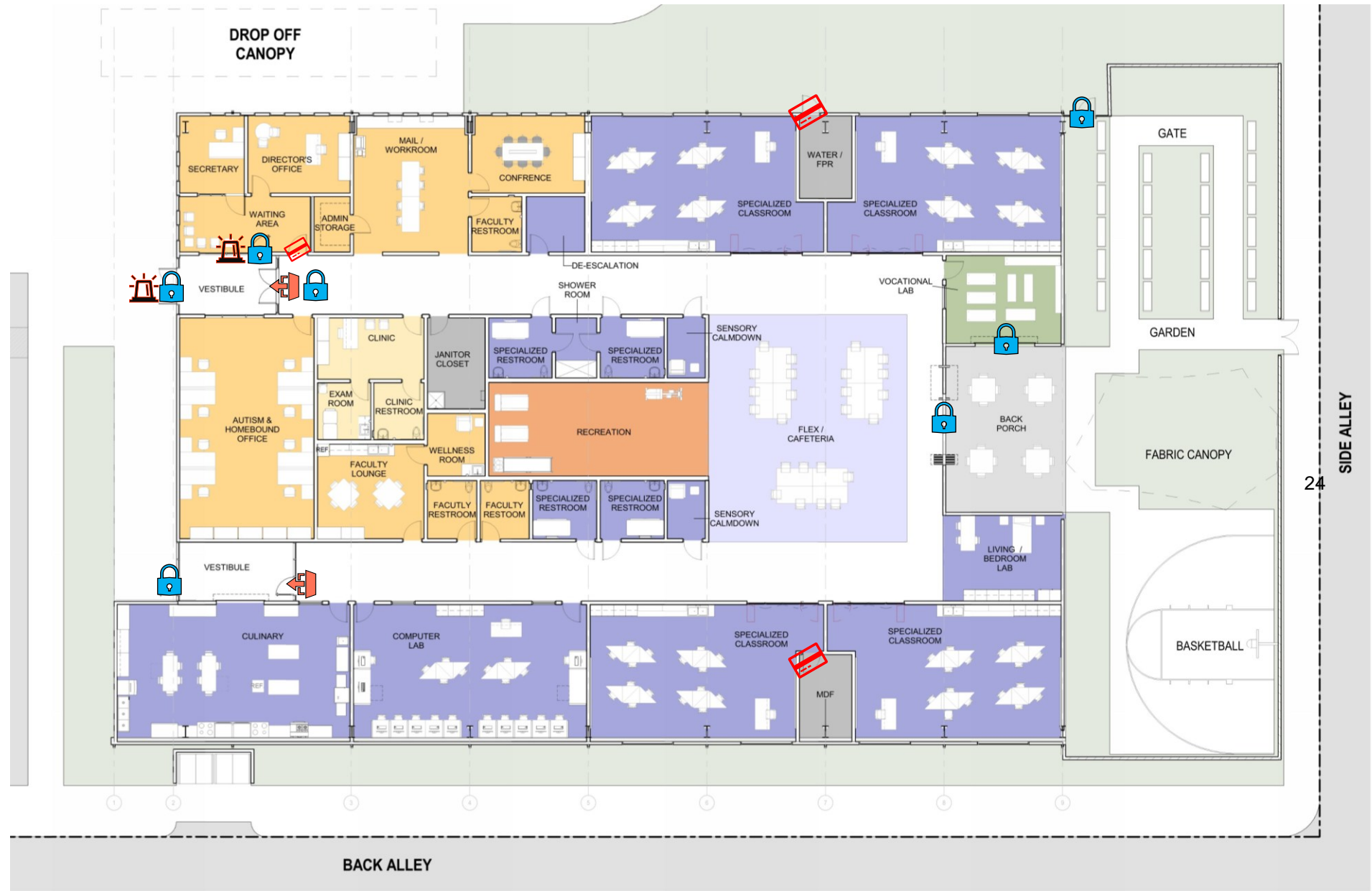
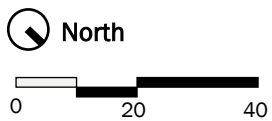
Design Considerations

- Clear, simple & efficient circulation.
- Maximize accessibility.
- Centralize around flexible learning spaces.
- Celebrate building corner at Whitaker Ave.
- Secure & enclosed waiting area.
- Centrally located utility rooms & adjacencies to maintenance areas.
- Opportunities for de-escalate.
- Vocational Lab direct access to exterior.
- Outdoor garden and hardscape.

Plan Layout

Security

-  KEYED LOCK
-  PRIMARILY EGRESS
-  KEY-CARD
-  SPEAKER / BUZZER





End of Document



BOARD 2025-2026 BUDGET PRIORITIES

Dr. Keeley Boyer, Interim Superintendent of Schools and Deborah Ottmers, Chief Financial Officer will present first steps as an organization to listen and discuss the Board of Trustees' budget priorities for the next school year.