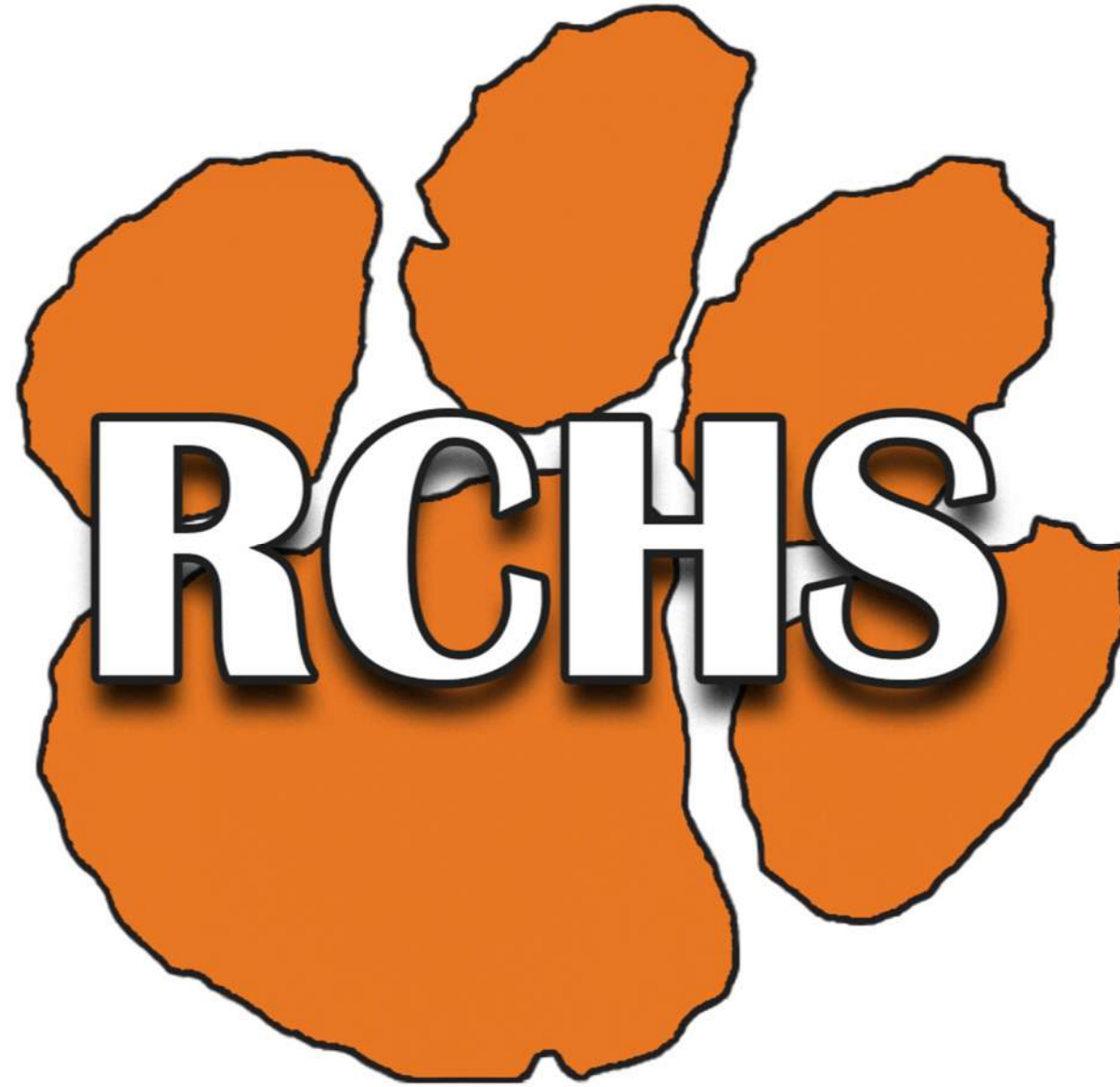


**Richland County Community Unit School District No.1
Board of Education**

**Special Meeting
Thursday, September 11, 2025
Richland County High School
1200 E. Laurel St.
Olney, IL 62450
5:30 PM**

- I. Call to Order and Pledge of Allegiance
- II. Roll Call
- III. Enter Executive Session
 - A. 2(c)(9) To Discuss Student Disciplinary Cases
- IV. Exit Executive Session
- V. Recognition and Comments from Employees and Public
- VI. Unfinished Business
 - A. Athletic Complex Discussion
- VII. Possible Student Discipline Action on Student A
- VIII. Adjournment

2



RICHLAND COUNTY HIGH SCHOOL
ATHLETIC COMPLEX | 9.11.2025 |



FGMARCHITECTS



ATG-Ram Industries, LLC
 Kansas Office Missouri Office
 317 East Commerce St. 2000 Pounds Rd.
 Andover, KS 67002 Festus, MO 63028
 (316) 682-3997 (636) 937-7790
www.atgsports.com
The Safest Turf on Earth

September 11, 2025

Richland Co CUSD #1 Q & A

1. Turf Vs. Grass Summary
 - a. Upfront Cost – more for turf
 - b. 10-Year Maintenance Cost – average around \$50,000.00/year per field
 - c. Cost per Use – use on turf is nearly unlimited, cost per use is significantly less
*See attachment

2. Light Upgrades:

a. 50' Candle LED Athletic Stadium	Add \$45,000.00
b. Action Lighting Per Field RBG Color per field	Add \$82,800.00

3. Ambulance Access – anticipated to the North, see updated design

4. Turf Gimmicks – shock pads, cooling, etc.

5. Schedule:

Item	Description	Date
1	Direction to Proceed	September 11, 2025
2	Signed Contract	September 25, 2025
3	Begin Permitting Process IL DNR / ROE	October 6, 2025
4	Preconstruction Meeting	November 10, 2025
5	*Mobilize Construction Start	November 17, 2025
6	Athletic Field Substantial Completion	July 1, 2026
7	Athletic Stadium Substantial Completion	August 1, 2026
8	Softball Field Substantial Completion	March 1, 2027
9	Baseball Field Substantial Completion	March 1, 2027
10	Tennis Courts Substantial Completion	March 1, 2027
11	Final Completion	April 1, 2027
*We can start sooner if permitting allows. Initial focus will be on all items outside of Athletic Stadium.		

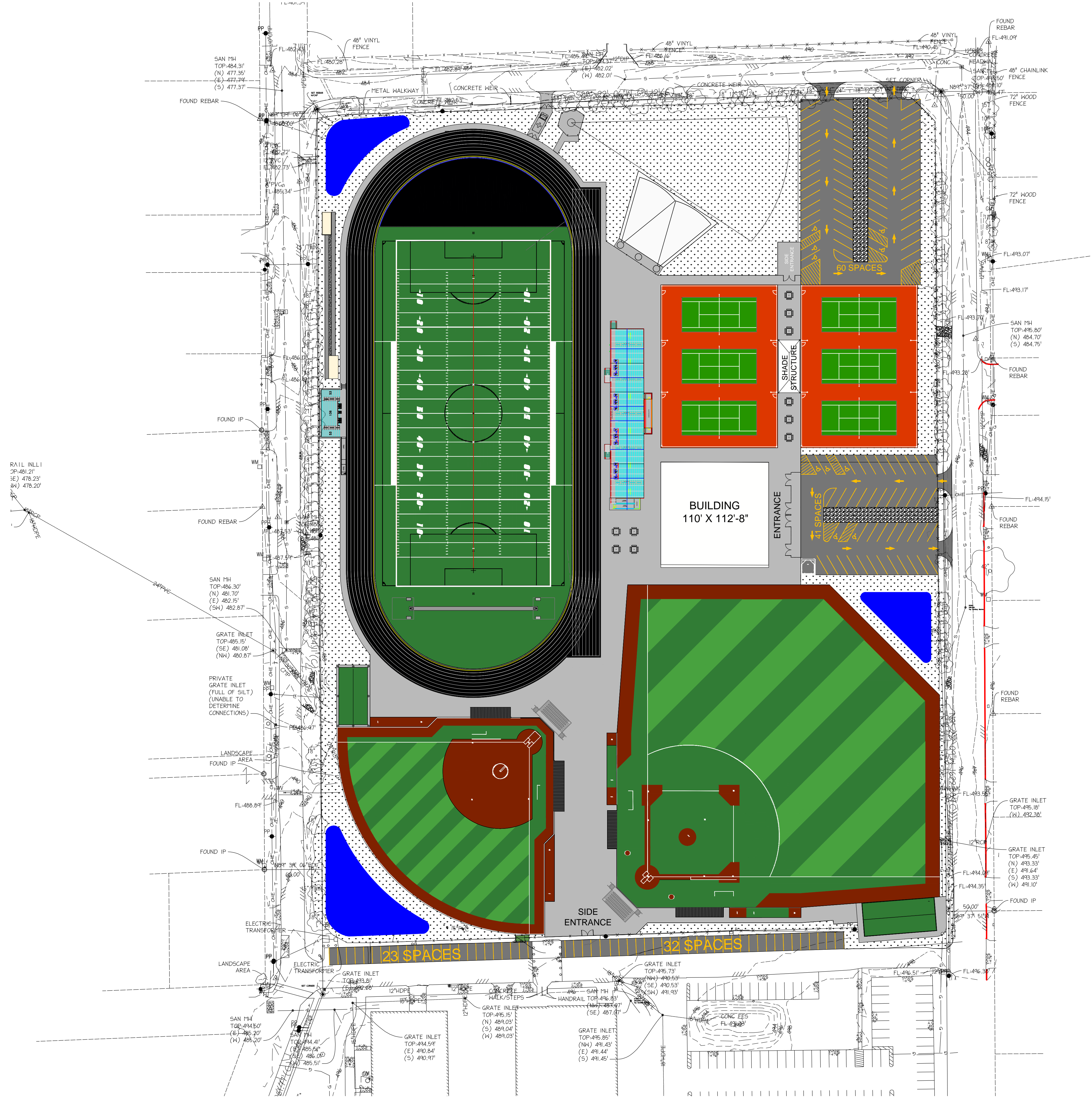
Turf Vs. Grass

Installation Cost			
Item	Natural Grass Field	RamTurf Field	Your Field
Base Installation	\$235,000.00	\$500,000.00	
Surface Installation	\$250,000.00	\$575,000.00	
Surface Expected Life	5 Years	10+ Years	
Initial Cost Total	\$485,000.00	\$1,075,000.00	
Maintenance Cost			
Item	Natural Grass Field	RamTurf Field	Your Field
Aerating	\$750	\$0	
Fertilizer	\$4625	\$0	
Irrigation	\$7250	\$0	
Labor	\$25,000	\$1,000	
Mowing/Fuel	\$2,750	\$200	
Paint Striping	\$2,900	\$0	
Pesticides	\$3,625	\$0	
Re-Sprigging	\$3,500	\$0	
Re-Sodding	\$0	\$0	
Seeding	\$2,750	\$0	
Annual Total	\$53,150	\$1,200	
10-Year Maintenance Total	\$531,500.00	\$12,000.00	
Event Relocation Cost			
Item	Natural Grass Field	RamTurf Field	Your Field
Field Rental	\$1,400	\$0	
Transportation to Alternate Site	\$900	\$0	
Estimated Loss of Gate	\$1,700	\$0	
Estimated Loss Concessions	\$4,600	\$0	
Annual Total	\$8,600	\$0	
10-Year Event Relocation Total	\$86,000	\$0	
Hours Usage			
Item	Natural Grass Field	RamTurf Field	Your Field
Hours Available Annually	400-1000	Available 24/7	
Annual Estimated Hours Usage	600 hours	3,000 hours	
10-Year Estimated Hours Usage	6,000 hours	30,000 hours	
Cost Summary			
Item	Natural Grass Field	RamTurf Field	Your Field
Initial Cost	\$485,000.00	\$1,075,000.00	
Initial Cost + 10-Year Total Cost	\$1,016,500.00	\$1,087,000.00	
10-Year Cost Per Hour Usage	\$169.42	\$36.23	

Other Considerations:

- Many natural grass fields are used significantly less than the 600 hours of estimated annual usage.
- Many schools use their synthetic turf fields to generate revenue.
- Many synthetic turf fields exceed the 10-Year life without being replaced.







ATG-Ram Industries, LLC
 Kansas Office
 317 East Commerce St.
 Andover, KS 67002
 (316) 682-3997
 Missouri Office
 2000 Pounds Rd.
 Festus, MO 63028
 (636) 937-7790
www.atgsports.com
The Safest Turf on Earth

References

1. Clinton CUSD #15

- 2024 Stadium Turf & Track
- 2025 Home & Visitor Bleachers
- 2025 Baseball & Softball Field
- 2025-26 Three Baseball/Softball Turf Infields
- Contacts:

Drew Goebel, Superintendent	(217) 412-7083	dgoebel@cusd15.org
Matt Koeppel, Athletic Director	(217) 650-9479	mkoepfel@cusd15.org

2. Monticello CUSD #25

- 2023 Four (4) Turf Fields
- Contacts:

Adam Clapp, Superintendent	(217) 218-3039	claad@sages.us
Dan Sheehan, Athletic Director	(713) 430-8288	sheda@sages.us

3. Illinois Valley Central High School

- 2023 4 Turf Fields, Track, Athletic Stadium Home Grandstand
- Contacts:

Chad Allison, Superintendent	(309) 357-4812	callison@ivcschools.com
Adam Bussard, As. Superintendent	(618) 409-3936	abussard@ivcschools.com

*See attached photos and reference list for more information.

Clinton CUSD #15
Sports Complex
(Clinton IL)



Monticello CUSD #25
Dwight B. Wilkey Sports Complex
(Monticello, IL)

Illinois Valley Central High School
Sports Complex
(Chillicothe, IL)



*2023 - 2025 Projects

Missouri

Afton High School
 Aurora High School
 Bayless High School
 Belton High School
 Blair Oaks High School
 Boonville High School
 Branson Cedar Ridge Elementary
 Branson Buchanan Intermediate
 Branson High School
 California High School
 Cape Central High School
 Carthage High School
 City of De Soto
 City of Farmington
 City of O'Fallon CarShield Field
 City of O'Fallon Ozzie Smith Sports Complex
 Central (Park Hills) High School
 Clark County High School
 Clinton High School
 College of the Ozarks
 Creve Coeur Park Soccer Complex
 Culver Stockton College
 De Smet Jesuit High School
 De Soto High School
 Eureka United STL Academy
 East Prairie High School
 Excelsior Springs High School
 Farmington High School
 Festus High School
 Forsyth High School
 Fox C-6 Fox High School
 Fox C-6 Seckman High School
 Francis Howell High School
 Grandview R-2 High School
 Herculeaneum High School
 Hermann High School
 Highland High School
 Hollister High School
 Incarnate Word High School
 Jackson High School
 Jefferson R-7 High School

Jennings High School
 John Burroughs School
 Joplin High School
 KCPS Southeast High School
 Kearney High School
 Kirksville High School
 Ladue Horton Watkins High School
 Ladue Schools West Campus
 Lathrop High School
 Lee's Summit East Trails Middle School
 Lee's Summit High School
 Lee's Summit North High School
 Lee's Summit West High School
 Lincoln High School
 Lincoln University
 Lindbergh High School
 Lindenwood University
 Living Word Christian High School
 Lou Fusz Soccer Complex
 Logan Rogersville High School
 Lutheran High School of St. Charles
 Macon High School
 Marshall High School
 Mexico High School
 MICDS
 Mineral Area College
 Missouri Southern State University
 Missouri University S & T
 Missouri Valley College
 Monroe City High School
 Mountain Grove High School
 North County High School
 North KC Northtown High School
 North KC Oak Park High School
 Northwest High School
 Notre Dame De Sion High School
 Pacific High School
 Parkway Central High School
 Parkway North High School
 Parkway South High School

Parkway West High School
 Pattonville High School
 Pleasant Hill High School
 Poplar Bluff High School
 Potosi High School
 Putnam County High School
 Raymore-Peculiar High School
 Raymore-Peculiar East Middle School
 Rolla High School
 Savannah High School
 Schuyler County High School
 Scott City High School
 South Callaway High School
 South Shelby High School
 Southern Boone High School
 Springfield Central High School
 Springfield Hillcrest High School
 Springfield Parkview High School
 St. Clair High School
 St. Dominic High School
 St. Francis Borgia High School
 St. James High School
 St. Joseph Benton High School
 St. Joseph Central High School
 St. Joseph Lafayette High School
 Ste. Genevieve High School
 Sullivan High School
 Troy-Buchanan High School
 Union High School
 Union Middle School
 University City High School
 Vetta Sports GameTime
 Vianney High School
 Warrenton High School
 West Plains High School
 Westminster Christian Academy
 Willard High School
 Windsor High School
 Winfield High School
 World Wide Technology Soccer Park

Kansas

Barton Community College
 Bishop Carroll High School
 Bishop Miege High School
 Boys & Girls Club Wichita
 Chanute High School
 City of Wichita McAdams Park
 Emporia High School
 Emporia Middle School
 Emporia State University
 Gardner Edgerton High School
 Greater Wichita YMCA
 Haysville USD 261 Campus High School
 Haysville USD 261 Colt Stadium
 Highland Community College
 Hoisington High School
 Jewish Community Center of Greater KC
 Lansing High School
 Paola High School
 Pratt Community College
 Pratt High School
 Rose Hill High School
 Salina Business Enterprises Dean Evans Stadium
 Salina Business Enterprises Wilbur Field
 Salina High School
 Salina Central High School
 Shawnee Mission 3&2 Baseball East Complex
 Shawnee Mission East High School
 Shawnee Mission Indian Hills Middle School
 Shawnee North High School
 Shawnee Mission Northwest High School
 Shawnee Mission Softball Complex
 Shawnee Mission Trail Ridge Middle School
 Shawnee Mission West High School
 Shawnee Mission Westridge Soccer Complex
 Spring Hill High School
 St. Thomas Aquinas High School
 The Independent School
 Trinity Academy
 Tonganoxie High School

Illinois

Alton Public School Stadium
 Benton Consolidated High School
 Cahokia High School
 Carterville High School
 Central Catholic High School
 City of East Peoria EastSide Centre
 City of Fairview Heights Miracle League
 Clinton High School
 Collinsville High School
 Dunlap High School
 East Peoria High School
 East St. Louis High School
 Edwardsville High School
 El Paso Gridley High School
 Eureka High School
 Granite City High School
 Harrisburg High School
 Highland High School
 Illinois Valley Central District 321
 John A. Logan College
 Johnston City High School
 Lawrenceville High School
 MacArthur High School
 Macomb High School
 Marion High School
 Mascoutah High School
 Mater Dei Catholic High School
 Monticello CUSD #25
 Mount Vernon Township High School
 Quincy Notre Dame High School
 Quincy Park District
 Seneca High School
 SLSG Collinsville Soccer Complex
 STL Steamers Olis Soccer Complex
 University of Illinois Springfield
 Washington Community High School

Oklahoma

Bridge Creek High School
 Cashion High School
 Clinton High School
 Coweta High School
 Deer Creek High School
 Dewey High School
 El Reno High School

Glenpool High School
 Kingfisher High School
 Lawton Eisenhower High School
 Lawton High School
 Lawton McArthur High School
 Newcastle High School

Okarche High School
 Oologah-Talala High School
 Thomas-Fay-Custer High School
 Wagoner High School
 Warner High School
 Watonga High School

Other Notable

University of Arkansas (AR)
 Fountain Lake High School (AR)
 Osceola High School (AR)
 Rogers High School (AR)
 Rogers Heritage High School (AR)
 Centerville High School (IA)
 City High School (IA)
 Dalzell High School (IA)

Dowling Catholic High School (IA)
 Hempstead High School (IA)
 Solon High School (IA)
 Williamsburg High School (IA)
 Skutt Catholic High School (NE)
 Gretna High School (NE)
 Gretna East High School (NE)
 Freed-Hardeman University (TN)

9 Midwest States



700+ Midwest Turf Fields



ATG



ATG-Ram Industries, LLC

Kansas Office
317 East Commerce St.
Andover, KS 67002
(316) 682-3997

Missouri Office
2000 Pounds Rd.
Festus, MO 63028
(636) 937-7790

www.atgsports.com

The Safest Turf on Earth

Why ATG for Richland Co CUSD #1?



1. ***ATG is Based out of the Midwest***

- a. Local Ownership
- b. Local Accountability
- c. Superior Long-Term Service

2. ***ATG Design-Build: You Can't Build Quality of Less***

- a. One Seamless Relationship
- b. Optimal Value Design
- c. The Midwest's Most Experienced Design-Build Team

3. ***RamTurf: The Safest Turf on Earth***

- a. Proven Quality
- b. Safety Focused
- c. Custom Performance



ATG-Ram Industries, LLC
Kansas Office
 317 East Commerce St.
 Andover, KS 67002
 (316) 682-3997
Missouri Office
 2000 Pounds Rd.
 Festus, MO 63028
 (636) 937-7790
www.atgsports.com
The Safest Turf on Earth

#1 in Customer Service

Maybe the most popular division of ATG amongst our customers is our field maintenance team. We have a team of full-time employees dedicated to assisting customers take care of their field and help keep them in pristine condition. Our intent is to our customers with the best possible service from construction, through completion, throughout the warranty, and as long as the field is in service. Customer Service Program includes:

- In-House Service:** Our full time maintenance employees allow us to assist customers in a timely manner year-round. Personnel includes:
 - Brant Pinson, brant@atgsports.com, 314-526-5237
 - Mark Krause, markkrause@atgsports.com, 573-631-4811
- Closeout Training:** We provide a maintenance manual upon project completion. We also train owner representatives on best practices for caring for the field, maintenance hot spots that potentially need the most attention, proper use of grooming equipment, and use of owner repair kit. The repair kit includes glue, seam tape, gloves, knife, caulk gun and cleaner.
- Retraining/Maintenance Class:** We offer on-site retraining and maintenance classes to allow for maintenance personnel to be fully confident in their field care. This has proven valuable when the owner wants to new person to assist in maintaining the field and/or when maintenance personnel experience turnover.
- On-line Resources:** YouTube videos provide valuable training for caring for the field.
- Assisted Repair:** We are available by phone 24/7 to assist the owner with any repairs they can take care of.
- Scheduled Warranty Repair:** Submit a Survive Request Form and our team will contact you ASAP to schedule a repair. ATG is the only company that can meet all of the following maintenance service levels:

Support Options:	Cost:
24/7 Support	Included for All Warranty Items
Support as needed, same day response	Included for All Warranty Items
Support as needed, within 48 hours response	Included for All Warranty Items
Support as needed, within 7 days response	Included for All Warranty Items

- Comprehensive Services:** ATG offers a full line of maintenance services, including 300-point field inspection, onsite repairs, industrial grooming, magnetic sweeping, leveling of infill, decompaction of infill, and removal of dirt/debris. ATG also offers Gmax and HIC testing from one of our 7 certified impact attenuation technicians.

"ATG is reliable, honest, and operates with integrity. We recommend them to anyone looking for a great quality turf field product, especially turn-key type builds. I have several contacts with ATG and each one always takes the time to explain the process step by step and answer any questions I may come up with. This pertains to a new build or just our field maintenance needs."

Tylee Clubb
 Director of Facilities
 Shawnee Mission School District (KS)

"ATG got us our field within our budget and it's incredible. Brant and their service team has worked with our grounds team on upkeep and thus far we have enjoyed two years of use. If our grounds supervisor has any questions, ATG has provided an answer. Their responsiveness is very impressive."

Erek Noland
 Director of Operations
 Kearney School District (MO)

"I have worked on multiple projects with Joe Gianino and ATG. To say I am pleased is an understatement. We have had very few repair needs, they pick up my call anytime of day when we do have questions and always have a way to help. They are very thorough and work with me to better understand what is happening and what will happen next. The product is top notch and used by nearly all of our programs."

Eric Marshall
 Director of Athletics
 Excelsior Springs School District (MO)

ATG



The Safest Turf on Earth



New RamTurf FF



Features:

- ★ Stronger, More Dense Fiber
- ★ Vertical Fibrillated Fiber Technology
- ★ Non-Compactable High Performance Infill

Benefits:

- ★ Extreme Durability (150,000 Lisport Cycles)
- ★ True Ball Roll & Ball Bounce
- ★ ≤ 145 Gmax for Life
- ★ Natural Rotational Resistance & Foot Feel

Gmax Safety

Lower Gmax by
30-70 Units
With



RAM TURF

7 Certified Impact Attenuation Technicians
Contact ATG Sports Today!
(316) 682-3997 info@atgsports.com

RAM SPORTS DIAGNOSTICS

Sports Surface Impact Report

Report Date: October 3, 2018
Weather: Partly Cloudy, 25-35 mph winds
Temperature: 70°

Summary of Results				
Point	Drop	Drop Height	VO / FPS	GMAX
Point 1	1	2'	11.3	214
Point 2	2	2'	11.3	266
Point 3	3	2'	11.3	302
Point 4	4	2'	11.3	278
Point 5	5	2'	11.3	305
Point 6	6	2'	11.3	275
Point 7	7	2'	11.3	301
Point 8	8	2'	11.3	277
Point 9	9	2'	11.3	305
Point 10	10	2'	11.3	275
Point 11	11	2'	11.3	301
Point 12	12	2'	11.3	275
Point 13	13	2'	11.3	291
Point 14	14	2'	11.3	255
Point 15	15	2'	11.3	275
Point 16	16	2'	11.3	252
Point 17	17	2'	11.3	290
Point 18	18	2'	11.3	285
Point 19	19	2'	11.3	275
Point 20	20	2'	11.3	272
Point 21	21	2'	11.3	290
Point 22	22	2'	11.3	275
Point 23	23	2'	11.3	286
Point 24	24	2'	11.3	272
Point 25	25	2'	11.3	290
Point 26	26	2'	11.3	275
Point 27	27	2'	11.3	286
Point 28	28	2'	11.3	272
Point 29	29	2'	11.3	290
Point 30	30	2'	11.3	275
Point 31	31	2'	11.3	286
Point 32	32	2'	11.3	272
Point 33	33	2'	11.3	290
Point 34	34	2'	11.3	275
Point 35	35	2'	11.3	286
Point 36	36	2'	11.3	272
Point 37	37	2'	11.3	290
Point 38	38	2'	11.3	275
Point 39	39	2'	11.3	286
Point 40	40	2'	11.3	272
Point 41	41	2'	11.3	290
Point 42	42	2'	11.3	275
Point 43	43	2'	11.3	286
Point 44	44	2'	11.3	272
Point 45	45	2'	11.3	290
Point 46	46	2'	11.3	275
Point 47	47	2'	11.3	286
Point 48	48	2'	11.3	272
Point 49	49	2'	11.3	290
Point 50	50	2'	11.3	275
Point 51	51	2'	11.3	286
Point 52	52	2'	11.3	272
Point 53	53	2'	11.3	290
Point 54	54	2'	11.3	275
Point 55	55	2'	11.3	286
Point 56	56	2'	11.3	272
Point 57	57	2'	11.3	290
Point 58	58	2'	11.3	275
Point 59	59	2'	11.3	286
Point 60	60	2'	11.3	272
Point 61	61	2'	11.3	290
Point 62	62	2'	11.3	275
Point 63	63	2'	11.3	286
Point 64	64	2'	11.3	272
Point 65	65	2'	11.3	290
Point 66	66	2'	11.3	275
Point 67	67	2'	11.3	286
Point 68	68	2'	11.3	272
Point 69	69	2'	11.3	290
Point 70	70	2'	11.3	275
Point 71	71	2'	11.3	286
Point 72	72	2'	11.3	272
Point 73	73	2'	11.3	290
Point 74	74	2'	11.3	275
Point 75	75	2'	11.3	286
Point 76	76	2'	11.3	272
Point 77	77	2'	11.3	290
Point 78	78	2'	11.3	275
Point 79	79	2'	11.3	286
Point 80	80	2'	11.3	272
Point 81	81	2'	11.3	290
Point 82	82	2'	11.3	275
Point 83	83	2'	11.3	286
Point 84	84	2'	11.3	272
Point 85	85	2'	11.3	290
Point 86	86	2'	11.3	275
Point 87	87	2'	11.3	286
Point 88	88	2'	11.3	272
Point 89	89	2'	11.3	290
Point 90	90	2'	11.3	275
Point 91	91	2'	11.3	286
Point 92	92	2'	11.3	272
Point 93	93	2'	11.3	290
Point 94	94	2'	11.3	275
Point 95	95	2'	11.3	286
Point 96	96	2'	11.3	272
Point 97	97	2'	11.3	290
Point 98	98	2'	11.3	275
Point 99	99	2'	11.3	286
Point 100	100	2'	11.3	272

RSD RAM SPORTS

Sports Surface Impact Report

Report Date: January 31, 2019
Weather: Temperature 50°
Temp: 50-60 mph

Summary of Results				
Point / Description	Drop	Drop Height	VO / FPS	GMAX
Point 1: 10' End A, Center Field	1	2'	11.3	214
Point 2: 10' End A, 1/4 Mile from Home	2	2'	11.3	266
Point 3: 10' End A, 1/2 Mile from Home	3	2'	11.3	302
Point 4: 10' End A, 3/4 Mile from Home	4	2'	11.3	278
Point 5: 10' End A, 1 Mile from Home	5	2'	11.3	305
Point 6: 10' End B, Center Field	6	2'	11.3	275
Point 7: 10' End B, 1/4 Mile from Home	7	2'	11.3	301
Point 8: 10' End B, 1/2 Mile from Home	8	2'	11.3	275
Point 9: 10' End B, 3/4 Mile from Home	9	2'	11.3	301
Point 10: 10' End B, 1 Mile from Home	10	2'	11.3	275
Point 11: 10' End C, Center Field	11	2'	11.3	291
Point 12: 10' End C, 1/4 Mile from Home	12	2'	11.3	255
Point 13: 10' End C, 1/2 Mile from Home	13	2'	11.3	275
Point 14: 10' End C, 3/4 Mile from Home	14	2'	11.3	252
Point 15: 10' End C, 1 Mile from Home	15	2'	11.3	290
Point 16: 10' End D, Center Field	16	2'	11.3	285
Point 17: 10' End D, 1/4 Mile from Home	17	2'	11.3	275
Point 18: 10' End D, 1/2 Mile from Home	18	2'	11.3	252
Point 19: 10' End D, 3/4 Mile from Home	19	2'	11.3	290
Point 20: 10' End D, 1 Mile from Home	20	2'	11.3	285
Point 21: 10' End E, Center Field	21	2'	11.3	275
Point 22: 10' End E, 1/4 Mile from Home	22	2'	11.3	252
Point 23: 10' End E, 1/2 Mile from Home	23	2'	11.3	290
Point 24: 10' End E, 3/4 Mile from Home	24	2'	11.3	285
Point 25: 10' End E, 1 Mile from Home	25	2'	11.3	275
Point 26: 10' End F, Center Field	26	2'	11.3	291
Point 27: 10' End F, 1/4 Mile from Home	27	2'	11.3	255
Point 28: 10' End F, 1/2 Mile from Home	28	2'	11.3	275
Point 29: 10' End F, 3/4 Mile from Home	29	2'	11.3	252
Point 30: 10' End F, 1 Mile from Home	30	2'	11.3	290
Point 31: 10' End G, Center Field	31	2'	11.3	285
Point 32: 10' End G, 1/4 Mile from Home	32	2'	11.3	275
Point 33: 10' End G, 1/2 Mile from Home	33	2'	11.3	252
Point 34: 10' End G, 3/4 Mile from Home	34	2'	11.3	290
Point 35: 10' End G, 1 Mile from Home	35	2'	11.3	285
Point 36: 10' End H, Center Field	36	2'	11.3	275
Point 37: 10' End H, 1/4 Mile from Home	37	2'	11.3	252
Point 38: 10' End H, 1/2 Mile from Home	38	2'	11.3	290
Point 39: 10' End H, 3/4 Mile from Home	39	2'	11.3	285
Point 40: 10' End H, 1 Mile from Home	40	2'	11.3	275
Point 41: 10' End I, Center Field	41	2'	11.3	291
Point 42: 10' End I, 1/4 Mile from Home	42	2'	11.3	255
Point 43: 10' End I, 1/2 Mile from Home	43	2'	11.3	275
Point 44: 10' End I, 3/4 Mile from Home	44	2'	11.3	252
Point 45: 10' End I, 1 Mile from Home	45	2'	11.3	290
Point 46: 10' End J, Center Field	46	2'	11.3	285
Point 47: 10' End J, 1/4 Mile from Home	47	2'	11.3	275
Point 48: 10' End J, 1/2 Mile from Home	48	2'	11.3	252
Point 49: 10' End J, 3/4 Mile from Home	49	2'	11.3	290
Point 50: 10' End J, 1 Mile from Home	50	2'	11.3	285

With ever increasing data and media coverage of concussions in sports, the perpetual safety focus for the industry as backed by the Synthetic Turf Council (STC) is providing a safe field through low impact attenuation. Impact Attenuation or Gmax is the ability for a surface to displace itself and absorb energy upon impact. Higher gmax ratings have a correlating relationship with increased surface hardness and a decreased ability to absorb energy. ASTM established the standard of < 200 g's, while the STC has increased the safety standard by lowering the recommended maximum gmax to ≤ 165 g's. Premier natural grass sports fields have a typical gmax range of 100-150 G.

ATG Sports has developed a proprietary infill that best mirrors the gmax and foot-to-surface features of high performing natural fields. Our system provides greater safety by maintaining infill volume and providing more air voids for shock contingency, minimizing long-term compaction by eliminating fine infill materials, and providing firmness desired for competitive athletic performance. While some competitor turf systems struggle to meet the ASTM Gmax Standard of < 200 g's half way through the warranty period, RamTurf systems set the bar for impact attenuation safety by consistently testing ≤ 150 g's to the end of the warranty period and beyond.

BEST IS THE STANDARD



Monticello CUSD #25
Dwight B. Wilkey Sports Complex
(Monticello, IL)

"Monticello CUSD #25 is the premiere school district in Central Illinois in academics, athletics, and fine arts. Our district prides itself on living the motto "Best is the Standard." We expect the best of students, our faculty and staff as well as the companies we work with each and every day. In November 2022, the Monticello Board of Education approved ATG Sports to design and construct four turf fields: football, soccer, baseball, and softball. From start to finish, I could not be more impressed with the quality and care that ATG provided. ATG not only provides the highest quality product, they exceeded our expectation in terms of professionalism, communication, and service."

Adam Clapp, Superintendent, Monticello CUSD #25



ATG-RAM Industries, LLC
Kansas Office 317 East Commerce St. Andover, KS 67002 (316) 682-3997
Missouri Office 2000 Pounds Rd. Festus, MO 63028 (636) 937-7790
www.atgsports.com

ATG SPORTS RAMTURF

The Safest Turf on Earth



"I have been in the business of dealing with contractors on projects for MCUSD#25 for over 50 years and without a doubt ATG Sports is the best non-local contractor I have ever worked with. Their work ethic and attention to detail is second to none, and their willingness to work with our district on a collaborative basis was apparent from their first meeting. Not only are they easy to work with, but their product is another level above what I have seen installed throughout the area."

Arthur "Buz" Sievers, Consultant to the Board



"ATG Sports exceeded all expectations from our first meeting until the final walkthrough. The quality advice, workmanship, professionalism, and overall pride and passion that the ATG team exhibited were incredible. ATG consistently went above and beyond to address any concerns or questions we had, making us feel valued and supported throughout the entire project. Our turf fields are something our district and community can be proud of, and we look forward to the many benefits of the fields for years to come."

Dan Sheehan, Athletic Director



"The turf looks fantastic and feels great. We have had zero problems with footing and we use it every day. The efficiency of our practices have increased dramatically, and we are extremely grateful for the facility."

Cully Welter, Head Football Coach, IHSFCA Hall of Fame



"ATG has given our softball community a top tier advantage. The field is ready everyday whether in-season or in the offseason. Safer playing conditions and the chance to get outside in the Illinois spring and winter were something we dreamed of. Our youth programs can now utilize our field. I am so grateful for the investment into our program's future."

Lauren Richardson, Head Softball Coach

"The new turf has been extremely beneficial for Monticello's high school and youth programs. The playing surface rivals professional and collegiate fields, which allows us to push our players on their speed of play and technical ability. When you walk into our facility the quality of the field is very apparent and easy to see. This is a facility we can all be proud of."

David McDaniel, Girls Head Soccer Coach

"You see it with kids of all ages, but there is something special about playing on turf. The turf field has taken away variables that become a worry for a coach: rainy day cancellations, field quality of high use goalie box and PK area, is the grass so tall because the field didn't get mowed. The turf is a problem solver and a unique experience our community is lucky to have."

Dan Burkybile, Boys Head Soccer Coach

"Our new turf field ensures we will have a consistent and reliable playing surface, no matter what central Illinois weather throws at us. Our field is ready to use for practice and games each day regardless of the conditions."

Chris Jones, Head Baseball Coach



ATG-Ram Industries, LLC
Kansas Office
317 East Commerce St.
Andover, KS 67002
(316) 682-3997
Missouri Office
2000 Pounds Rd.
Festus, MO 63028
(636) 937-7790
www.atgsports.com
The Safest Turf on Earth

June 19, 2025

Richland Co CUSD #1
1100 E. Laurell St.
Olney, IL 62450-2508
(618) 395-2324

Estimated Total Budget

\$12,425,000.00 to \$14,000,000.00

ATT: Mr. Jason Fox, Superintendent of Schools

RE: Richland Co CUSD #1 Sports Complex Budget

Sports Complex Budget

- Item 1: Demo/Mass Grading/Utilities \$300,000.00 to \$400,000.00
- Item 2: Football Stadium \$4,250,000.00 to \$4,850,000.00
 - 8-lane all-weather track, RamTurf field, drainage system, full d-zone high jump & 2-way pole vault inside the track, long/triple jump (2 runways/2 pits) outside the track, 3 ring shot put event area, discus event area, track perimeter fence, and basic flatwork around the track
 - Breakouts:
 1. LED Lights = \$275,000.00 to \$325,000.00
 2. Standard Scoreboard = \$50,000.00 to \$70,000.00
 3. Video Scoreboard = \$275,000.00 to \$325,000.00
 4. 1,500 Seat I-Beam bleacher with 48'x8' press box, 500, seat angle frame bleacher, and concrete flatwork for bleachers \$1,400,000.00 to \$1,700,000.00
- Item 3: Varsity Baseball & Softball Stadiums \$4,250,000.00 to \$4,650,000.00
 - Provide turn-key full turf baseball field per layout, including, drainage system, RamTurf system, concrete curb, pitching mounds, block backstop/netting system, block dugouts, field perimeter fencing, foul poles, batters eye, bullpens, batting cages, LED sports lighting, scoreboard, sound system, and bleacher.
 - Provide turn-key full turf softball field per layout, including, drainage system, RamTurf system, concrete curb, block backstop/netting system, block dugouts, field perimeter fencing, foul poles, batters eye, bullpens, batting cages, LED sports lighting, scoreboard, sound system, and bleacher.
 - Includes basic flatwork around each field
 - Breakouts:
 1. Baseball LED Lights = \$300,000.00 to \$350,000.00
 2. Softball LED Lights = \$225,000.00 to \$265,000.00
 3. Baseball Scoreboard = \$45,000.00 to \$60,000.00
 4. Softball Scoreboard = \$45,000.00 to \$60,000.00



ATG-Ram Industries, LLC
Kansas Office
317 East Commerce St.
Andover, KS 67002
(316) 682-3997
Missouri Office
2000 Pounds Rd.
Festus, MO 63028
(636) 937-7790
www.atgsports.com
The Safest Turf on Earth

- **Item 4: 6 Post Tension Concrete Tennis Courts (Per Layout)** \$1,600,000.00 to \$1,800,000.00
 - Turn-key including rock, concrete, tennis court coating, netting, fencing, LED lights and basic flatwork around the courts
 - Breakouts:
 1. Tennis Court LED Lights = \$175,000.00 to \$225,000.00

- **Item 5: Parking (Per Layout)** \$700,000.00 to \$800,000.00
 - Approximately 45,000 SF
 - Includes grading, gravel, asphalt or concrete, striping, two entrance/exit drives, and parking security LED lighting

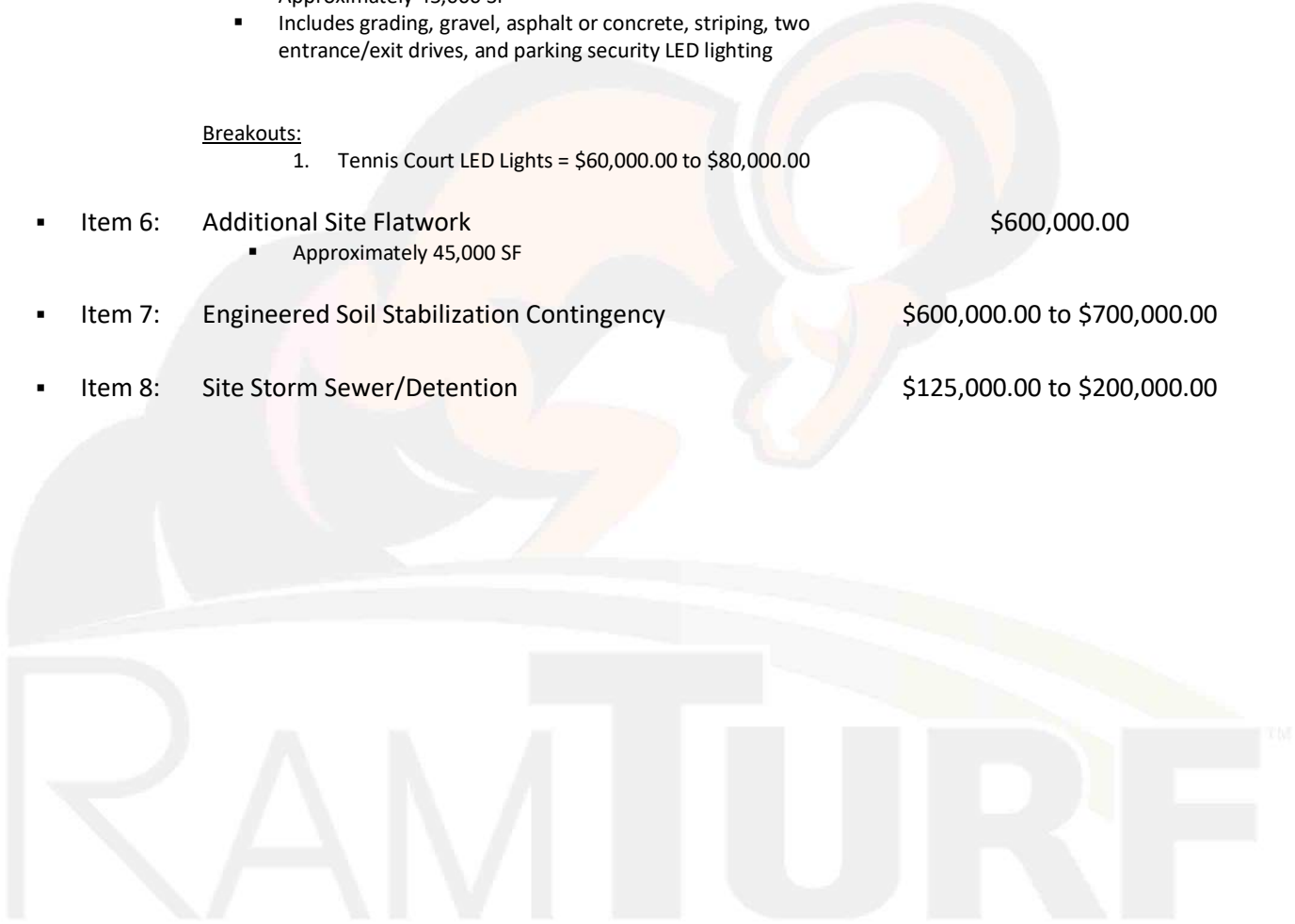
Breakouts:

 1. Tennis Court LED Lights = \$60,000.00 to \$80,000.00

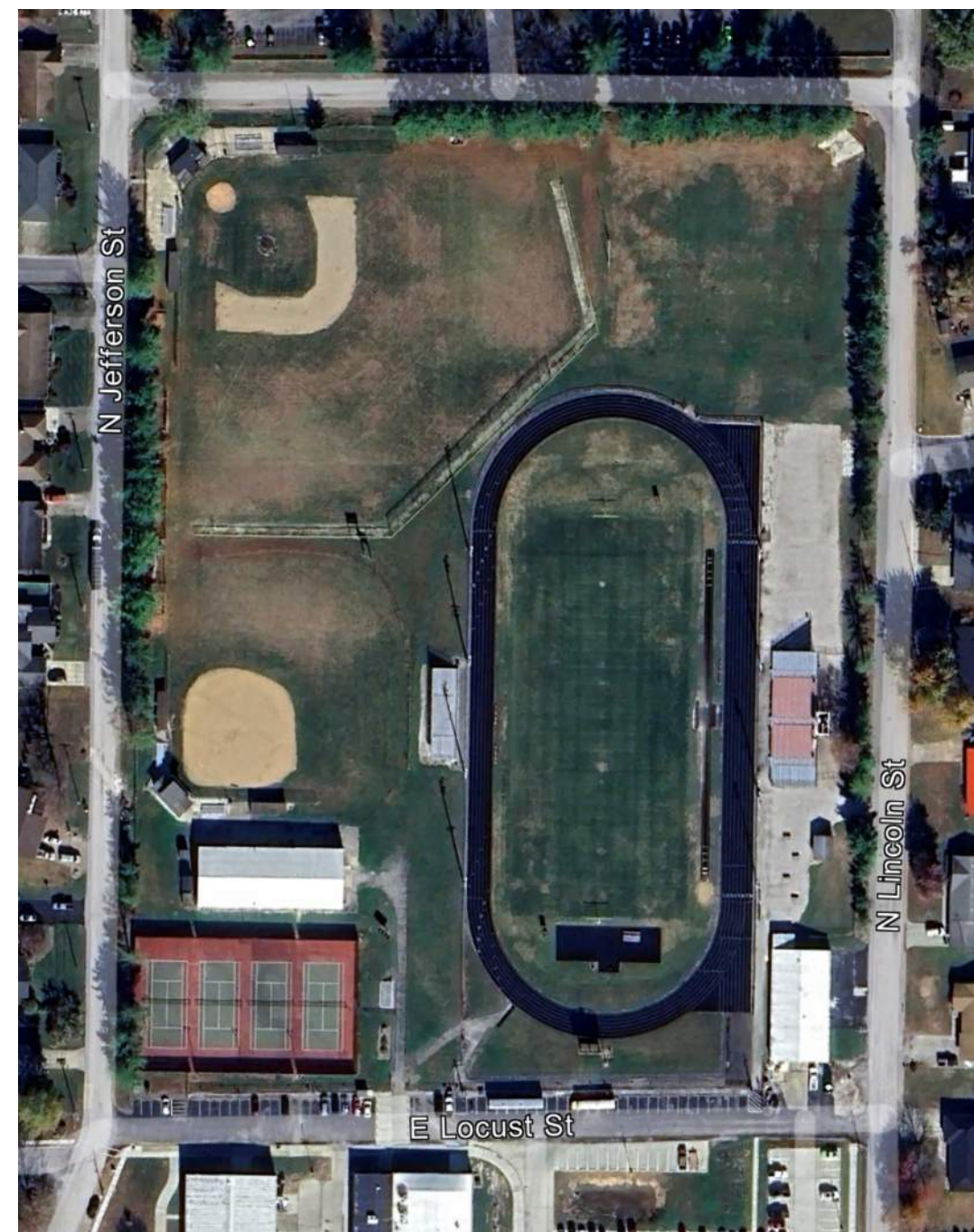
- **Item 6: Additional Site Flatwork** \$600,000.00
 - Approximately 45,000 SF

- **Item 7: Engineered Soil Stabilization Contingency** \$600,000.00 to \$700,000.00

- **Item 8: Site Storm Sewer/Detention** \$125,000.00 to \$200,000.00



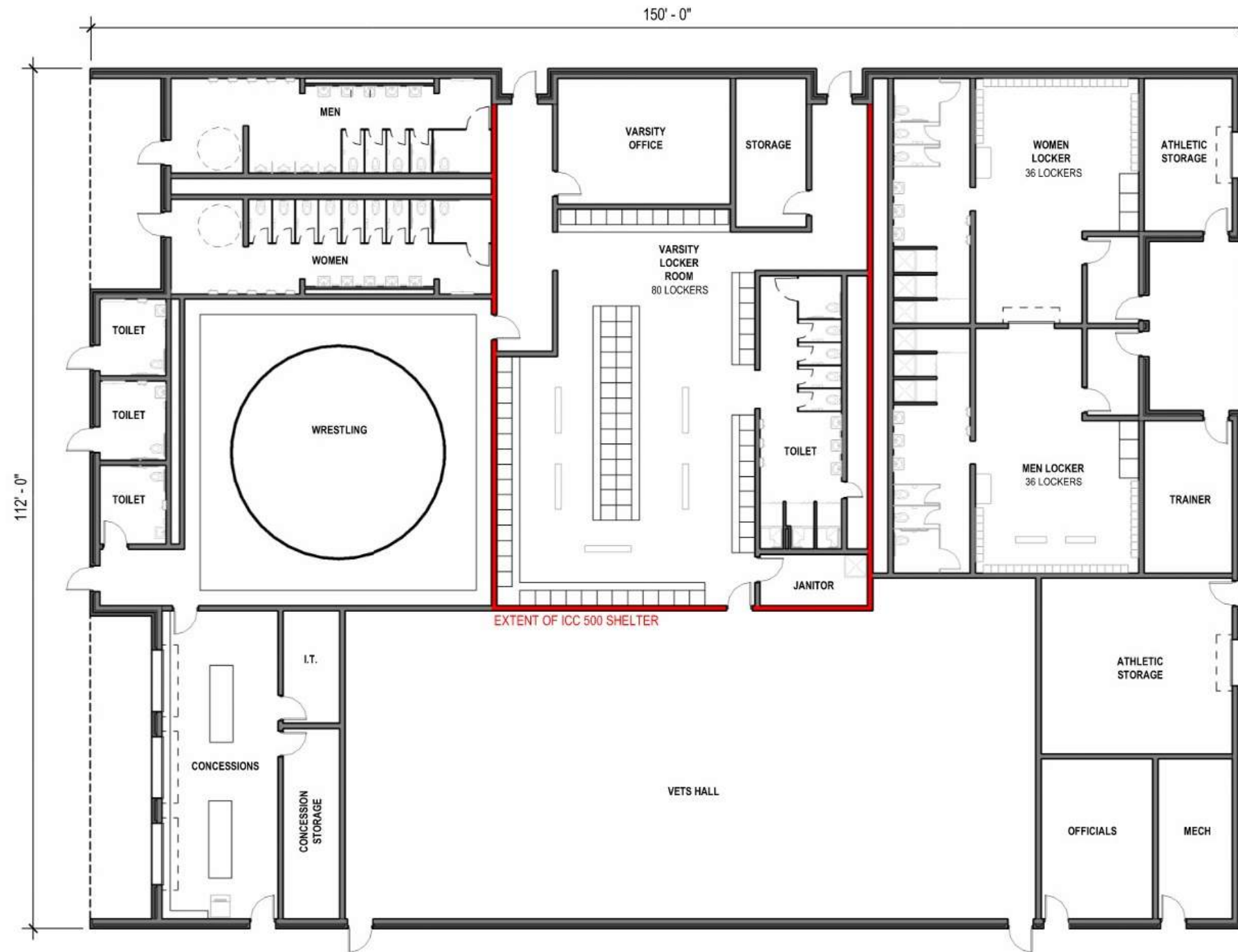
OVERALL SITE PLAN - EXISTING





ATHLETICS BUILDING – SCHEMATIC FLOOR PLAN

Option 1
Total Sf: 16,800sf

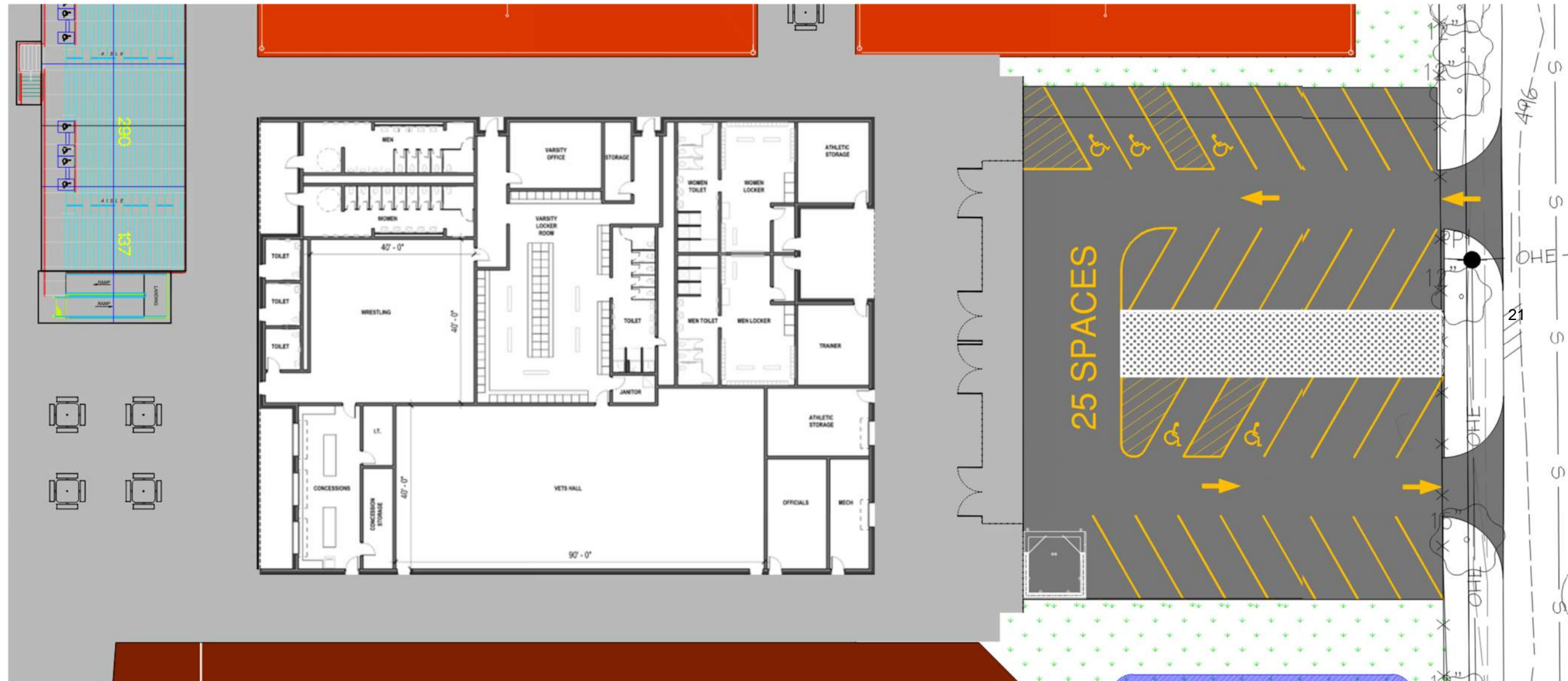




ATHLETICS BUILDING – SCHEMATIC FLOOR PLAN

Option 1

Total Sf: 16,800sf

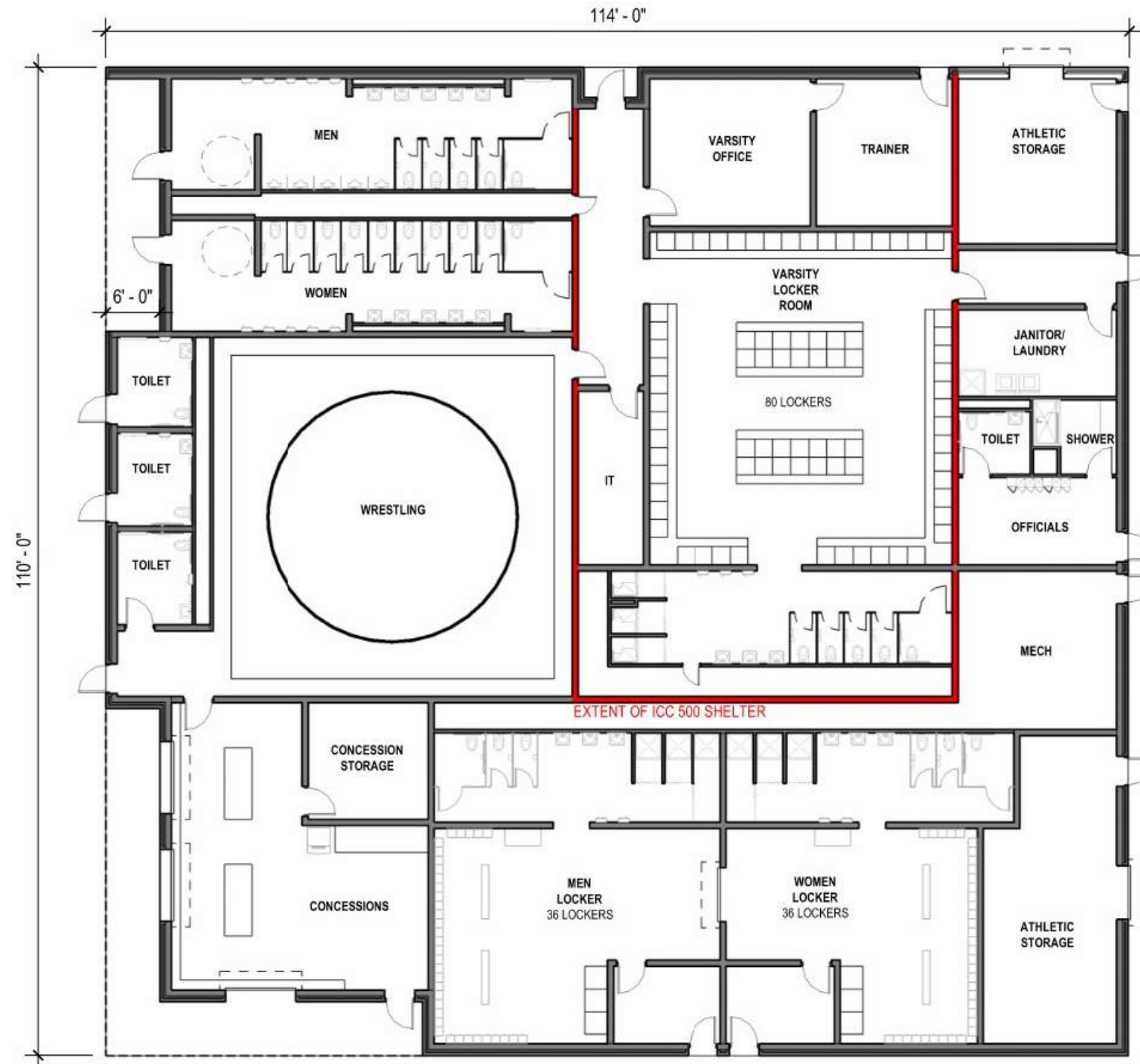




ATHLETICS BUILDING – SCHEMATIC FLOOR PLAN

Option 2

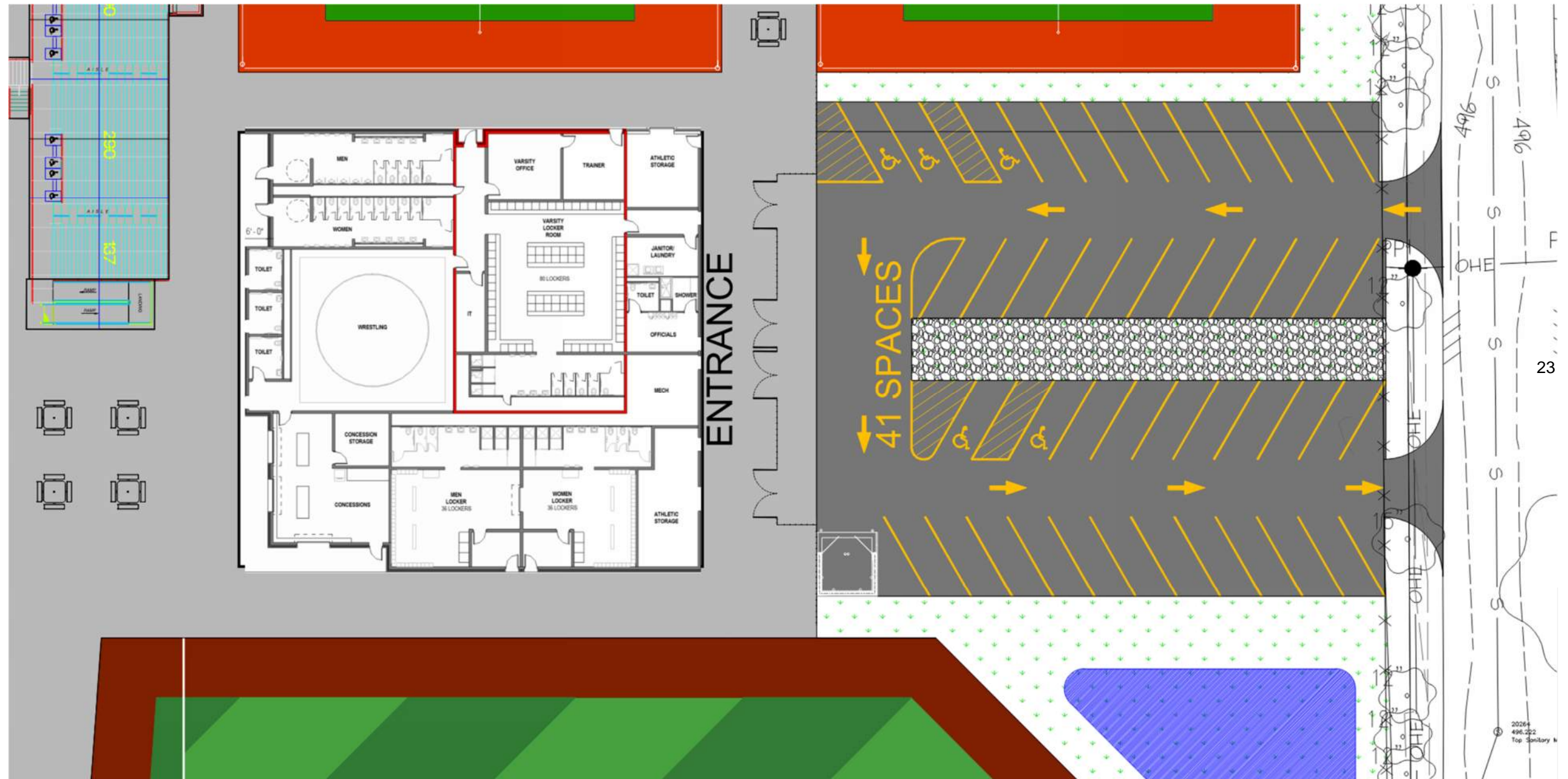
Total Sf: 12,540 sf





ATHLETICS BUILDING – SCHEMATIC FLOOR PLAN

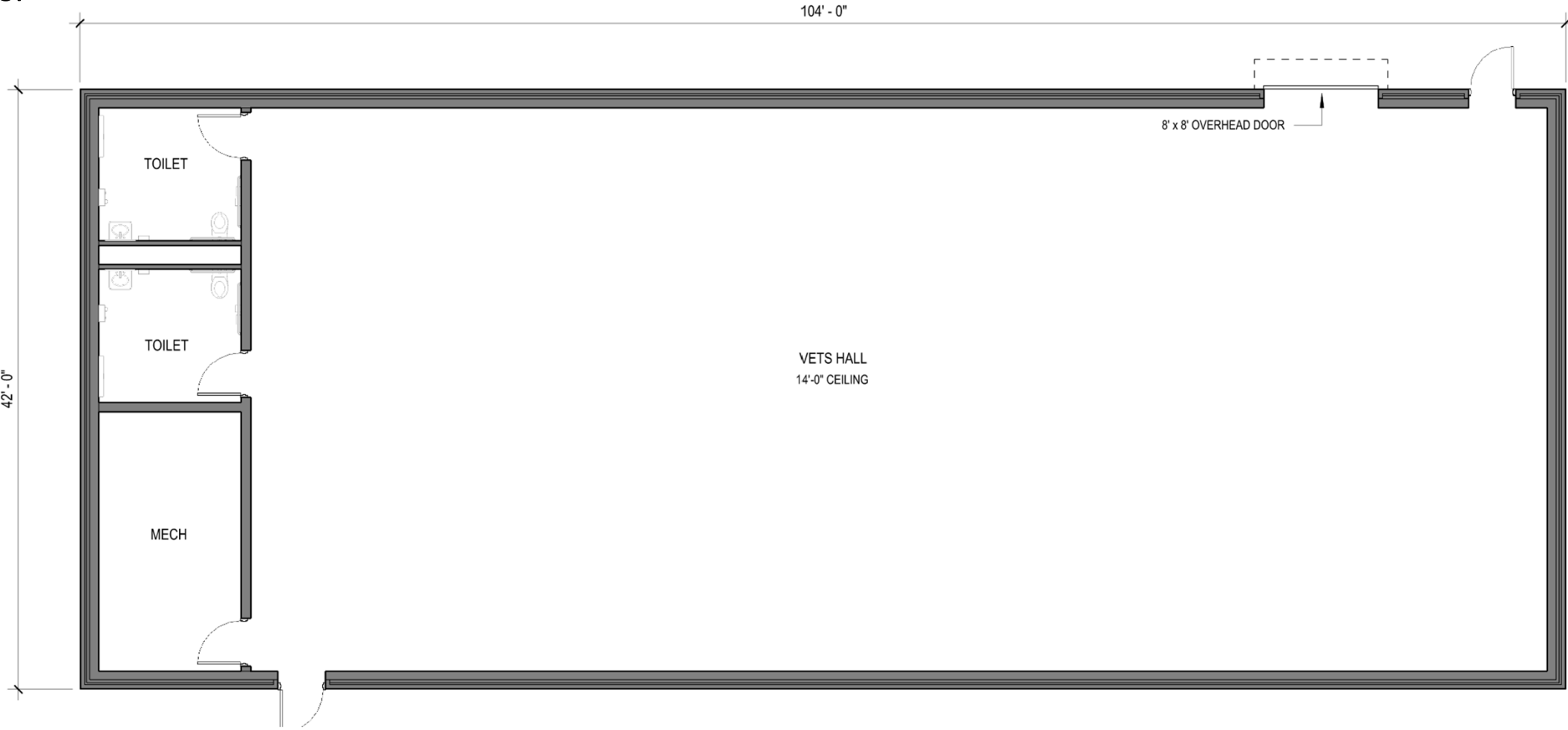
Option 2
Total Sf: 12,540 sf



Vet's Hall Metal Building



Posts 10' grid
Total Sf: 4,410 sf



Locker Room Building- Potential Alternate Location

- Total Sf: 9000 sf
- No storm shelter
- Existing Utilities and storms to be relocated
- Proximity to existing buildings require additional 2hr fire wall construction
- Existing Egress must be maintained
- Relocated Existing green house





BUDGET OVERVIEW – Poettker, FGMA Building Budget

Building Options

Area Of Work	Square Footage	Budget	Comments
Athletic Building -Option 1	5,200 sf	\$5,601,490	(+5200sf) Add Vets Hall/Wrestling
Athletic Building – Option 2	12,540 sf	\$5.1M - \$5.2M	Remove team room, 2 offices, add wrestling





SCHEDULE OPTIONS – Athletic Building

FALL 2026 START (Building Only)

Milestone	Date	Comments
Direction to Proceed	September 11, 2025	
October BOE Milestone Update	October 16, 2025	
Issued For Bids	January 5, 2026	
Bids Open	January 29, 2026	
Board Approval	February 5, 2026	Special Board Meeting To Be determined
Notice to Proceed, Procurement	February 6, 2026	
Construction Duration		34 weeks
Substantial Completion (Full Building)	October 2, 2026*	Prioritize Bathrooms and Concessions for earlier move in





SCHEDULE OPTIONS – Athletic Building

DEFERRED START AUGUST 1, 2027 (Building Only)

Milestone	Date	Comments
Direction to Proceed	TBD	
Finalize Schematic Floor Plan	May 6, 2025	
Design Development Board Update	June 17, 2026	
Design Development Due to CM	June 17, 2026	
Issued For Bids	August 5, 2026	3 weeks 2 day; Thanksgiving falls
Bids Open	September 2, 2026	
Board Approval	September 16, 2026	
Notice to Proceed, Procurement		
Construction Duration		8 months min
Substantial Completion	June 30, 2027	
Owner Occupy	August 1, 2027	Priority for occupancy given to Concessions and toilets





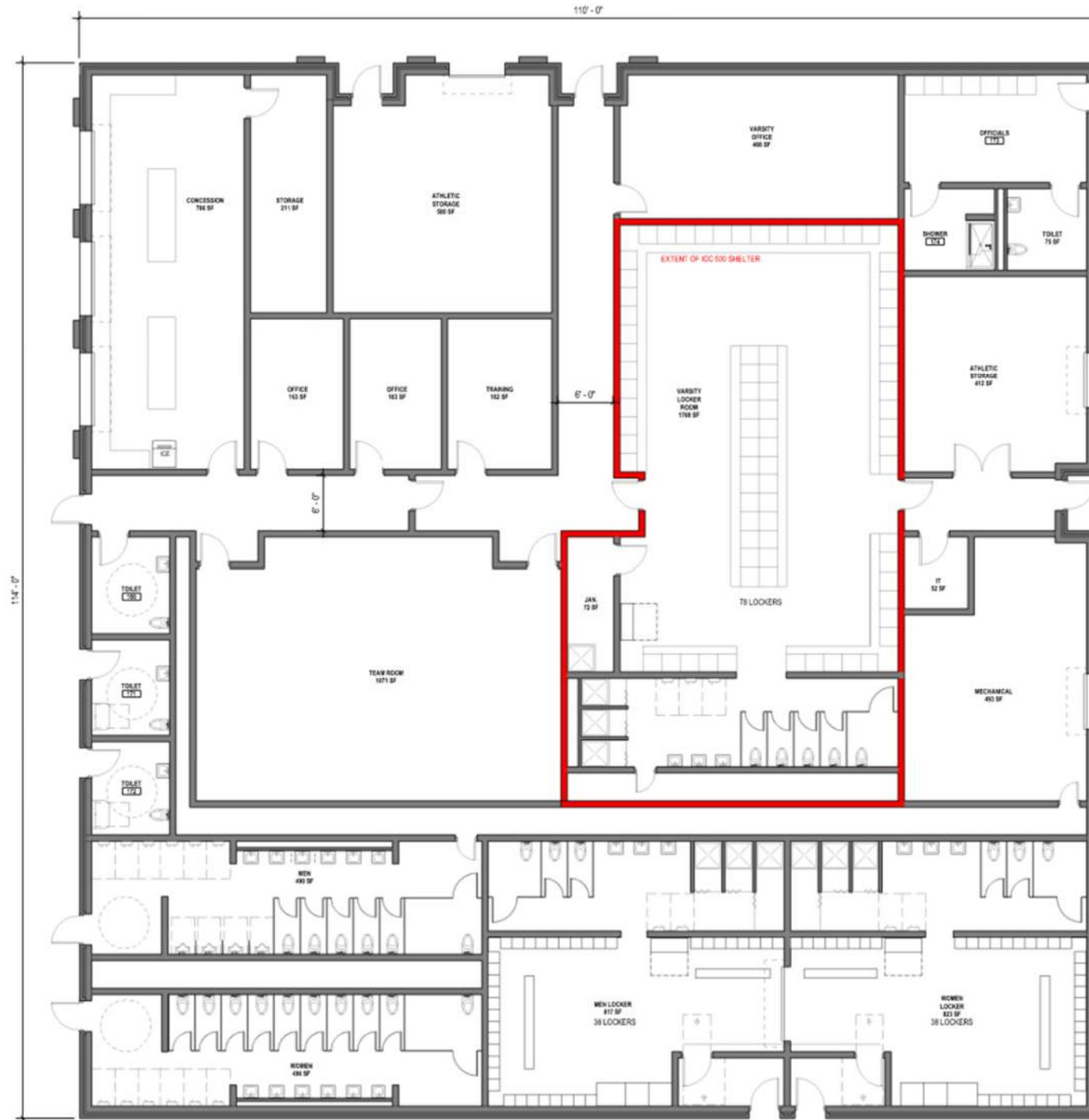
THANK YOU





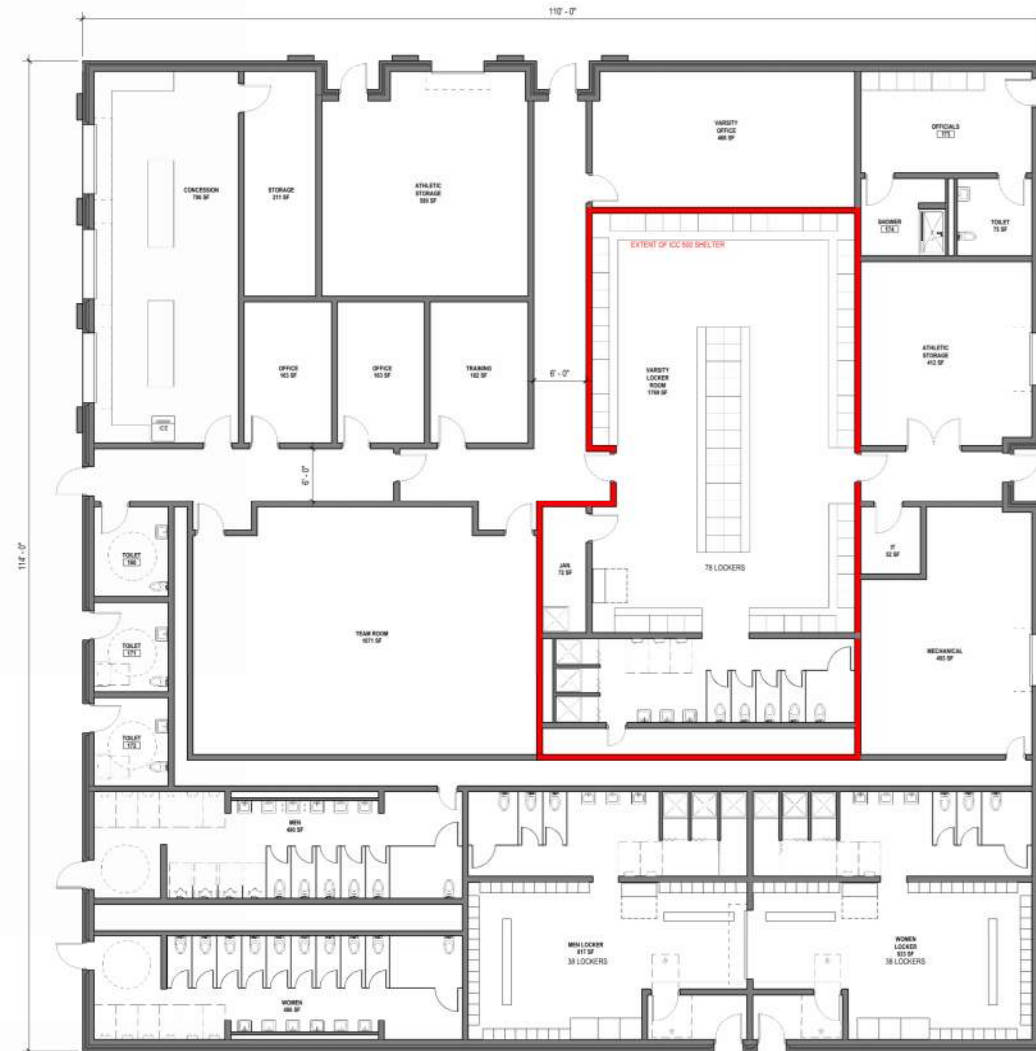
ATHLETICS BUILDING – SCHEMATIC FLOOR PLAN

Original Floor Plan
SF: 12,540



NEW ATHLETIC BUILDING

1200 E LAUREL ST, OLNEY, IL 62450



1 OVERALL FLOOR PLAN
1/8" = 1'-0"



2 NORTH EXTERIOR ELEVATION - OVERALL SD
1/8" = 1'-0"



3 EAST EXTERIOR ELEVATION - OVERALL SD
1/8" = 1'-0"



4 SOUTH EXTERIOR ELEVATION - OVERALL SD
1/8" = 1'-0"



5 WEST EXTERIOR ELEVATION - OVERALL SD
1/8" = 1'-0"

SCHEMATIC DESIGN

BOARD OF EDUCATION | Published 06/13/2025
Job No. 25-4232.01 | ©2025 FGM Architects Inc.

