



Regular Meeting Agenda

Diamondhead Education Center
200 W. Burnsville Parkway
Burnsville, MN 55337
May 16, 2013
6:30 PM

I. Call to Order

- A. Welcome Public
- B. Pledge of Allegiance
- C. Public Recognition
 - 1. Blazing Cats
 - 2. Metcalf Junior High Chess Team Success
 - 3. Burnsville Alternative School Highlights
 - 4. Burnsville High School National Merit Finalists

II. Business Meeting

- A. Approval of Agenda
- B. Consent Agenda

Description: Although Board action is required, it is generally unnecessary to hold discussion on these items. In the even a Board member wishes to disucss an item, that item will be moved for separate consideration.

1. Minutes of the May 2, 2013, Board Meeting	3
2. Human Resources	6
3. Donations	8
4. Payroll, Expenditures, Receipts and Investments	17
5. Budget Analysis	50
6. Approve on a Second Reading Basis, Board Policy 415: <i>Mandated Reporting of Maltreatment of Vulnerable Adults</i>	61
7. Approve on a Second Reading Basis, Board Policy 715: <i>Purchasing and Bid Requirements</i>	65
8. Approve on a Second Reading Basis, Board Policy 803: <i>Health and Safety</i>	67
9. Approve Extended Field Trip for Eagle Ridge Junior High 9th Grade Students to England, June 13-24, 2013	

III. Unfinished Business	2
A. Determine, By Simple Majority Vote of the Quorum, an Appointee to Fill the Vacant Director's Position (10 minutes) (Sweep)	71
B. Adopt a Resolution Filling a School Board Vacancy by Appointment (5 minutes) (Sweep)	72
IV. New Business	
A. Approve Premiums and Rates for FY14 Employee Benefits (10 minutes) (Rider)	73
B. Terms and Conditions of Employment for Confidential Employees (5 minutes) (Sovine)	74
V. Reports	
A. Legislative Committee Report	
VI. Adjourn to Board Workshop on Principal Evaluation System (Lindholm), Teacher Evaluation System (Sovine) and Transportation/Durham (Rider)	

School Board Minutes
 INDEPENDENT SCHOOL DISTRICT 191
 May 2, 2013

The meeting of the Board of Education was called to order by Chair Sweep at 6:30 p.m. at the Burnsville High School Senior Campus in the Diamondhead Education Center.

Call to Order

Members present: Directors Currier, Luth, Schmid, Hill, VandenBoom and Chair Sweep. Others in attendance were Student Advisor Alex Jensen, administrators and staff.

Attendance

Members absent: Superintendent Clegg

Chair Sweep welcomed the audience and asked Director Currier to lead the Pledge of Allegiance.

Pledge of Allegiance

The Burnsville Alternative High School recognition was rescheduled for May 16, 2013. A presentation was given by the University of Minnesota School of Nursing regarding the NIH Grant. John Coskran Volunteer awards were given to Sangeetha Shreedaran, Terry Walters, Kim Robinson, Beth Spaude, and Jean and Richard Kutz.

Public Recognition

Moved by Director Schmid seconded by Director Luth, to approve the agenda. Motion carried unanimously (6, 0).

Agenda

Moved by Director Hill, seconded by Director Currier, to approve the consent agenda.

Consent Agenda

- Minutes of the April 18, 2013 board meeting
- Personnel changes for C. Lindholm, J. Abraham, M. Bien, E. Nyeggen, B. Ramsbacher, B. Tinklenberg, A. Trowbridge, S. Jorgenson, T. Nelson, B. Pavek, S. Zucollo, K. Helwig, K. Young, C. Dorigan-Slette, N. Theis, A. Abtow, J. Kalal, K. Sponsel, and D. Beal.
- Donation of \$36.00 from J. Swanberg to Hidden Valley Elementary for the playground/building beautification program; \$1,784.18 from Sioux Trail PTO to Sioux Trail Elementary for new iPads; \$680.14 from Foundation 191 to Sioux Trail School Elementary for kindergarten leveled readers; \$115.38 from B. Sillman to Eagle Ridge Junior High School; \$30.00 from C. Lane-Yousufzai to Eagle Ridge Junior High School; \$180.00 from N. Rian to Eagle Ridge Junior High; G. Amell volunteered 20 hours at Sky Oaks Elementary and 3M matched his service with a \$250.00 grant; \$50.00 from M. Thompson to Burnsville

Minutes
 HR Report

Donations

<p>High School for the Hall of Fame fund; and \$5,000.00 from Burnsville Lion's Club to be divided equally among the ten elementary schools to be used at the principals' discretion.</p> <ul style="list-style-type: none"> - Approve extended field trip for Rahn Elementary School sixth grade students to go to Camp Sacajawea May 29-30, 2013 and that policy requirements prohibiting elementary extended field trips be waived. 	Extended Field Trip
<p>Chair Sweep made special mention of retirements and the generous donations. Motion carried unanimously (6, 0).</p>	
<p>Moved by Director Hill, seconded by Director Luth, to approve the proposed revisions and re-adopt the unchanged language in the 2013-2014 terms and conditions of employment of the unaffiliated employees of ISD 191. Motion carried (5, 1 with Director VandenBoom voting nay).</p>	Unaffiliated Employees
<p>Moved by Director Currier, seconded by Director VandenBoom, to approve, on a first reading basis, Board Policy 415: <i>Mandated Reporting of Maltreatment of Vulnerable Adults</i>. Motion carried unanimously (6, 0).</p>	Policy 415
<p>Moved by Director Currier, seconded by Director VandenBoom, to approve, on a first reading basis, Board Policy 715: <i>Purchasing and Bid Requirements</i>. Motion carried unanimously (6, 0).</p>	Policy 715
<p>Moved by Director Luth, seconded by Director Schmid, to approve, on a first reading basis, Board Policy 803: <i>Health and Safety</i>. Motion carried unanimously (6, 0).</p>	Policy 803
<p>Moved by Director Hill, seconded by Director VandenBoom, to adopt a self-insured health benefit plan effective July 1, 2013. Motion carried unanimously (6, 0).</p>	Self Insured Health Plan
<p>Moved by Director Currier, seconded by Director Schmid, to enter into a contract with Mr. Joe Gothard in conformance with the Minnesota Statute §123B.143 for a term of three (3) years commencing July 1, 2013 and approve the addendum to the superintendent's contract. Motion carried unanimously (6, 0).</p>	Superintendent Contract
<p>An oral report was given by Alex Jensen.</p>	Student Report
<p>The Directors Hill and Luth gave an oral report for the Legislative Committee.</p>	Board Member Reports
<p>Directors VandenBoom, Schmid, and Chair Sweep gave oral reports.</p>	

Moved by Director VandenBoom, seconded by Director Currier, to adjourn to a Board Workshop at 7:35 p.m.

Adjourn to Board Workshop

The board workshop to interview candidates for the vacant board position began at 7:45 p.m.

Board Workshop

Members present were Directors VandenBoom, Luth, Schmid, Hill, Currier and Chair Sweep.

Attendance

The following candidates were present and participated in the group interview: Abigail Alt, Linda Deason, John Doll, Cynthia Espander, Scott Hume, William John, Colleen Smith and William Streff.

Members of the public, administrators and staff were also present.

Chair Sweep welcomed everyone and gave a brief overview of the interview and selection process. Each of the candidates gave opening and closing statements, and each of the six board members asked all eight candidates questions.

Interview

Chair Sweep gave closing comments and invited the candidates to attend the May 16, 2013, board meeting when the board will vote and appoint a new board member. The workshop ended at 9:41 p.m.

Closing Comments

Bob VandenBoom, Clerk

**Burnsville-Eagan-Savage Public Schools
Independent School District 191
Human Resources**

TO: Members, Board of Education
Randall Clegg, Superintendent

FROM: Stacey Sovine, Director of Labor Relations

DATE: May 16, 2013

RE: Recommended Personnel Changes

**Administrative
Appointment**

Drew Goeldner

-Replacement-Principal, SO, 8 hrs/day, 12 months per year, effective 7/1/13

Resignation

Taber Akin

-Principal, ST, effective 6/30/13

**Certified
Appointment**

Kelsey Parkin

*Replacement-Cluster Psychologist, 1.0 FTE, ISS, effective 8/20/13

David Quamme

*Replacement-Teacher, Math, 1.0 FTE, Metcalf Jr. High School, effective 8/20/13

Nichole Short

-New-SPED Psychologist, 1.0 FTE, Central Cluster, effective 8/20/13

Leave of Absence

Eileen Abrahamson

*Teacher, Rahn, requests an Extended Leave of Absence, effective 8/26/13

Emily Robb

-Teacher (currently on leave), requests a .8 FTE general leave of absence, working .2 FTE, effective 2013/14 school year

**Classified
Appointment**

Anne Naas

*Replacement- Secretary, BALC, 8 hrs/day, effective 5/22/13

Change in Assignment

Daniel Powers

*Temporary B Shift Mechanic, Maintenance Bldg., 8 hrs/day, effective 5/6/12

Resignation

Elizabeth Armstrong

*MEA, MWS, effective 5/13/13

*added to original report
Burnsville-Eagan-Savage #191
Board Meeting – 05/16/2013

Return from Leave

Kami Roark

*MEA, requests to return from leave to her BHS position, effective 5/13/13

TO: Board of Education
Dr. Randall Clegg, Superintendent

Agenda Item II.B.3
May 16, 2013

FROM: Taber Akin, Principal – Sioux Trail School


DATE: May 8, 2013

RE: Donation

Sioux Trail would like to recognize the Burnsville Lion's Club for the support they gave several of our students. Through donations by the Burnsville Lion's Club, many of our students were able to receive eye exams and glasses. With new glasses, they can now see better, making it easier for them to learn.

I request that the following donation be recognized by our district on behalf of some Sioux Trail students:

Eye Exams (approx. \$100) and Eye glasses (max. of \$70)	\$ 850.00
--	-----------

✓To: Dr. Randy Clegg
From: Rob Nelson 
CC: Rose Herrmann (Code: 01-491-203-000-401-007)
Date: April 29, 2013
Memo: Personal Donation

I am pleased to inform you that Harriet Bishop Elementary School has received a donation in the amount of \$1,000.00 from Loren and Laura Solfest. This donation is to go towards classrooms or the school community. I have attached a copy of the letter we received from the Solfest family.

I recommend that the School Board accept this donation from Loren and Laura Solfest in the amount of \$1,000.00.

Loren & Laura Solfest
13932 Exley Way
Apple Valley, MN 55124

RN/jh



TO: Dr. Randy Clegg
FROM: Dave Helke
DATE: April 30th, 2013
RE: Donation

Please accept the donation of a \$500.00 to Burnsville High School presented by:

Burnsville Lions Club
Gaming Account
12220 Villaburne Dr
Burnsville, MN 55337

This check was presented as a contribution towards the Hall of Fame fund.



TO: Dr. Randy Clegg
FROM: Dave Helke
DATE: April 30th, 2013
RE: Donation

Please accept the donation of a \$150.00 to Burnsville High School presented by:

Christine Lane-Yousufzai
13000 Glenhurst Ave S
South Savage, MN 55378

This check was presented as a contribution through the Wells Fargo Community Support/United Way Campaign.



TO: Dr. Randy Clegg
FROM: Dave Helke
DATE: April 30th, 2013
RE: Donation

Please accept the donation of a \$898.2 to Burnsville High School presented by:

Cornerstone Copy of Burnsville
13775 Frontier Court
Burnsville, MN 55337

They donated 2,250 programs for the Beauty and the Beast Musical that was performed at the High School.



TO: Dr. Randy Clegg
FROM: Dave Helke
DATE: April 30th, 2013
RE: Donation

Please accept the donation of a \$549.99 to Burnsville High School presented by:

Kate, Rich and Matt Hardegger
1904 Melody Lane
Burnsville, MN 55337

They donated their Yamaha Stage Custom Drum Set to the Mraz Center for use in the pit.



TO: Dr. Randy Clegg
FROM: Dave Helke
DATE: May 9, 2013
RE: Donation

Please accept the donation of a 2001 Saturn Vin #1G8ZK52781Z213679 to Burnsville High School presented by:

Alexander Gordon Barr
11021 27th Ave
Burnsville, Mn 55337

This vehicle will either be disassembled in the consumer auto class to give the students the opportunity to work with the tools of the trade, and to demonstrate and explain the subsystems of the automobile or used in the Auto Body class to give students the opportunity to remove, replace, and repair panels to provide real industry experience.



TO: Dr. Randy Clegg

FROM: Dave Helke

DATE: May 8, 2013

RE: Donation

Please accept the donation of a \$250.00 to Burnsville High School presented by:

Dakota Electric
4300 220th Street West
Burnsville, MN 55024

This check donated to the BHS Hall of Fame.



TO: Dr. Randy Clegg

FROM: Dave Helke

DATE: May 8, 2013

RE: Donation

Please accept the donation of a \$50.00 to Burnsville High School presented by:

Victor Berra
1111 Riverhill Dr.
Apt. 329
Burnsville, MN 55337

This check donated to the BHS Hall of Fame.



**Agenda II.B.4
May 16, 2013**

TO: Dr. Randall Clegg, Superintendent
FROM: Lisa K. Rider, Executive Director of Business Services
DATE: May 16, 2013
RE: April Payroll, Claims and Receipts

RECOMMENDATION: That the Board approves April payroll checks numbered 717134-717184, and Direct Deposit notices numbered 497650-500513, in the net amount of \$3,531,612.22. April & May claims to date represented by checks numbered 423786-424427, 1007263-1007458, and 100796-100805 and wire transfers and adjustments totaling \$5,619,760.01. Also, that the Board accepts April receipts of \$11,390,279.43 and investments for the General Fund, 2011 Alt. Facilities, 2012A Alt Facilities, and OPEB of \$66,838,032.17 as of April 30, 2013.

April payroll, wire transfers, claims and receipts have been prepared under the direction of Brady Hoffman, Director of Accounting Services, and are presented for approval by the School Board. I would be glad to answer any questions.

LKR/mw

**INDEPENDENT SCHOOL DISTRICT 191
FINANCIAL REPORT
APRIL 30, 2013**

Cash Receipts

Receipts	\$11,390,279.43
Miscellaneous Adjustments	

TOTAL APRIL CASH RECEIVED11,390,279.43**CASH DISBURSEMENTS**

April

Regular Payroll Checks	717134-717184	\$3,531,612.22
Direct Deposit Notices	497650-500513	

Mar Payables previously approved	\$436,272.99
Apr Claims Previously Approved:	\$262,499.01

Apr Claims:	423786-424073	
	424169-424287	
	1007263-1007412	
	100796-100802	\$1,544,702.08

Apr Wire Transfers	\$3,581,118.61
Miscellaneous Adjustments	<u>\$73,309.34</u>

TOTAL APRIL CASH DISBURSED9,429,514.25**TOTAL EXPENSES TO BE APPROVED**

Apr Cash Disbursed	\$9,429,514.25
Less: Items Previously Approved	-\$698,772.00

Plus: Apr Payables	424074-424168	
Checks	424341-424427	\$324,122.25

May Claims:		
Checks	424288-424340	
	1007413-1007458	
	100802-100805	\$96,507.73

TOTAL TO BE APPROVED9,151,372.23

	<u>Money Market</u>	<u>(Original Cost) Investments</u>	<u>Total 4/30/13</u>
GENERAL FUND	\$1,507,963.58	\$30,306,023.36	\$31,813,986.94
OPEB	\$430,263.14	\$15,374,580.39	\$15,804,843.53
2011 ALT FACILITIES	\$724,161.35	\$2,004,344.21	\$2,728,505.56
2012A ALT FACILITIES	\$6,559,417.24	\$9,931,278.90	\$16,490,696.14
	<u>\$9,221,805.31</u>	<u>\$57,616,226.86</u>	<u>\$66,838,032.17</u>

Note: The attached investment reports are provided by our investment advisor, PMA Financial Network, Inc. These reports include our investment and money market balances.



Total Portfolio Report CAR

As of: 4/30/13

PMA Financial Network, Inc.

2135 CityGate Lane
7th Floor
Naperville, Illinois 60563
Telephone . 630-657-6400
Facsimile . 630-718-8701

19

BURNSVILLE ISD 191 / GENERAL FUND

2960

Type	Trans	SEQ	Purchase	Maturity	Instrument	Par-Val/Mat. Val.	Original Cost	Rate
MM					Investment Shares Portfolio	\$1,507,963.58	\$1,507,963.58	
TS	177717	1	8/17/12	5/14/13	MN TRUST TERM SERIES	\$3,257,810.83	\$3,254,200.00	0.150
CD	177630	1	8/17/12	7/10/13	ONEWEST BANK FSB	\$249,979.69	\$249,400.00	0.259
CD	177631	1	8/17/12	7/10/13	BANCO POPULAR NORTH AMERICA	\$249,957.79	\$249,600.00	0.160
CD	177632	1	8/17/12	7/10/13	ASSOCIATED BANK, NA (N)	\$249,656.45	\$249,300.00	0.160
CD	177633	1	8/17/12	7/10/13	FIRST AMERICAN BANK	\$249,762.24	\$249,400.00	0.162
CD	177634	1	8/17/12	7/10/13	CITIBANK	\$249,657.35	\$249,300.00	0.160
CD	177635	1	8/17/12	7/10/13	MERCHANTS BANK OF INDIANA	\$249,656.47	\$249,300.00	0.160
CD	177636	1	8/17/12	7/10/13	THE FIRST, NA	\$249,863.48	\$249,500.00	0.163
CD	176981	1	7/26/12	7/29/13	EAST WEST BANK	\$249,986.61	\$249,000.00	0.393
TS	177119	1	7/31/12	7/29/13	MN TRUST TERM SERIES	\$2,003,978.08	\$2,000,000.00	0.200
TS	181580	1	12/31/12	7/29/13	MN TRUST TERM SERIES	\$6,255,034.25	\$6,250,000.00	0.140
TS	182346	1	1/31/13	7/29/13	MN TRUST TERM SERIES	\$661,197.36	\$660,743.70	0.140
SEC	27545	1	7/30/12	7/30/13	Doral Bank Certificate of Deposit	\$248,000.00	\$248,000.00	0.351
CDR	177219	1	8/2/12	8/1/13	Amalgamated Bank	\$244,959.69	\$244,352.04	0.249
CDR	177219	10	8/2/12	8/1/13	Tristate Capital Bank	\$244,959.69	\$244,352.04	0.249
CDR	177219	11	8/2/12	8/1/13	Alliance Bank of Arizona	\$244,959.69	\$244,352.04	0.249
CDR	177219	12	8/2/12	8/1/13	Cecil Bank	\$71,384.34	\$71,207.22	0.249
CDR	177219	2	8/2/12	8/1/13	Amarillo National Bank	\$244,959.69	\$244,352.04	0.249
CDR	177219	3	8/2/12	8/1/13	Central Bank of Lake of the Ozarks	\$244,959.69	\$244,352.04	0.249
CDR	177219	4	8/2/12	8/1/13	Everbank	\$244,959.69	\$244,352.04	0.249
CDR	177219	5	8/2/12	8/1/13	FirstCapital Bank of Texas, N.A. / First National Bank of Mi	\$244,959.69	\$244,352.04	0.249
CDR	177219	6	8/2/12	8/1/13	Flagstar Bank, FSB	\$244,959.69	\$244,352.04	0.249
CDR	177219	7	8/2/12	8/1/13	HeritageBank of the South	\$244,959.69	\$244,352.04	0.249
CDR	177219	8	8/2/12	8/1/13	Southwest National Bank	\$244,959.69	\$244,352.04	0.249
CDR	177219	9	8/2/12	8/1/13	Biltmore Bank of Arizona	\$244,959.69	\$244,352.04	0.249
SEC	27534	1	8/1/12	8/1/13	Sovereign Bank Certificate of Deposit	\$248,000.00	\$248,000.00	0.451
SEC	27554	1	8/1/12	8/1/13	Mizuho Corporate Bank (USA) Certificate of Deposit	\$248,000.00	\$248,000.00	0.301
SEC	27559	1	8/1/12	8/1/13	Discover Bank Certificate of Deposit	\$248,000.00	\$248,000.00	0.401
CD	179716	1	10/4/12	8/12/13	PRIVATE BANK - MI	\$249,939.88	\$249,500.00	0.206
CD	179717	1	10/4/12	8/12/13	PLAINSCAPITAL BANK	\$249,998.82	\$249,700.00	0.140
CD	179718	1	10/4/12	8/12/13	BANK OF COMMERCE	\$151,382.00	\$151,200.00	0.141
TS	181393	1	12/20/12	12/19/13	MN TRUST TERM SERIES	\$2,004,986.30	\$2,000,000.00	0.250
TS	181472	1	12/26/12	12/26/13	MN TRUST TERM SERIES	\$1,002,500.00	\$1,000,000.00	0.250
CD	183008	1	2/25/13	2/25/14	ORRSTOWN BANK	\$249,673.95	\$249,300.00	0.150
CDR	183012	1	2/28/13	2/27/14	Reliant Bank	\$241,842.54	\$241,481.25	0.150
CDR	183012	10	2/28/13	2/27/14	IBERIABANK	\$94,592.42	\$94,451.11	0.150
CDR	183012	11	2/28/13	2/27/14	ViewPoint Bank (MHC)	\$80,488.55	\$80,368.31	0.150
CDR	183012	12	2/28/13	2/27/14	Carolina Alliance Bank	\$47,007.09	\$46,936.90	0.150
CDR	183012	2	2/28/13	2/27/14	Meridian Bank	\$241,842.54	\$241,481.25	0.150
CDR	183012	3	2/28/13	2/27/14	NBT Bank, National Association	\$241,842.54	\$241,481.25	0.150
CDR	183012	4	2/28/13	2/27/14	Park National Bank	\$241,842.54	\$241,481.25	0.150
CDR	183012	5	2/28/13	2/27/14	Lorain National Bank	\$241,842.54	\$241,481.25	0.150
CDR	183012	6	2/28/13	2/27/14	Metropolitan Bank	\$241,842.54	\$241,481.25	0.150
CDR	183012	7	2/28/13	2/27/14	Union Bank & Trust Company	\$241,842.54	\$241,481.25	0.150

BURNSVILLE ISD 191 / GENERAL FUND

2960
20

Type	Trans	SEQ	Purchase	Maturity	Instrument	Par-Val/Mat. Val.	Original Cost	Rate
CDR	183012	8	2/28/13	2/27/14	Union State Bank	\$241,842.54	\$241,481.25	0.150
CDR	183012	9	2/28/13	2/27/14	SpiritBank	\$96,537.90	\$96,393.68	0.150
SEC	29306	1	3/7/13	3/7/14	Synovus Bank Certificate of Deposit	\$249,000.00	\$249,000.00	0.250
TS	184788	1	4/25/13	4/24/14	MN TRUST TERM SERIES	\$5,009,972.61	\$5,000,000.00	0.200
CD	183007	1	2/25/13	7/29/14	LIBERTY BANK OF ARKANSAS	\$249,554.96	\$249,000.00	0.161
CD	184105	1	3/28/13	7/29/14	METROPOLITAN NATIONAL BANK	\$249,565.56	\$248,900.00	0.200
CD	184106	1	3/28/13	7/29/14	ROCKFORD B&TC	\$249,966.63	\$249,300.00	0.200
CD	184107	1	3/28/13	7/29/14	SONABANK	\$249,966.63	\$249,300.00	0.200

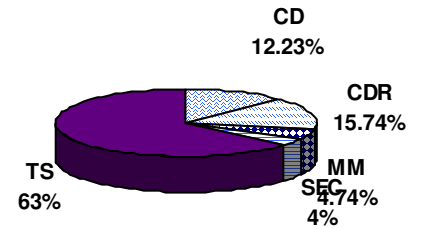
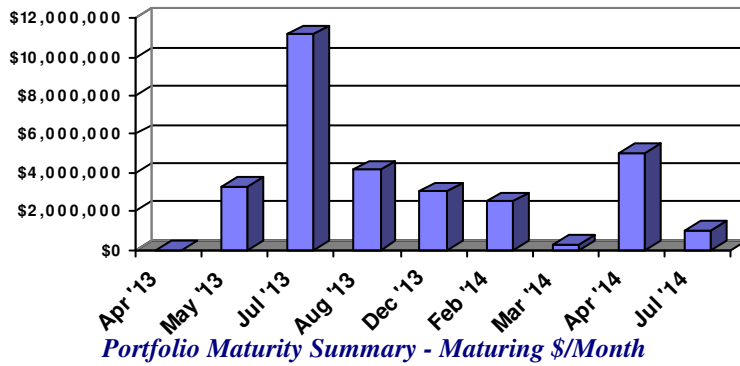
Note: Weighted Yield & Weighted Average Portfolio Maturity are calculated only on the CD, CP, & SEC desk.

Total Amount --> \$31,862,318.73 \$31,813,986.94

Time and Dollar Weighted Portfolio Yield: 0.197 %

Weighted Average Portfolio Maturity: 163.40 Days

MM: 4.74%
CD's: 12.23%
CP: 0.00%
SEC: 3.90%



Portfolio Allocation by Transaction Type



Total Portfolio Report CAR

As of: 4/30/13

PMA Financial Network, Inc.

2135 CityGate Lane
7th Floor
Naperville, Illinois 60563
Telephone . 630-657-6400
Facsimile . 630-718-8701

21

BURNSVILLE ISD 191 / 2009 OPEB TRUST

3596

Type	Trans	SEQ	Purchase	Maturity	Instrument	Par-Val/Mat. Val.	Original Cost	Rate
MM					Investment Shares Portfolio	\$430,263.14	\$430,263.14	
CD	140799	1	9/2/09	6/3/13	FOUNDERS BANK & TRUST	\$249,948.08	\$227,500.00	2.550
CD	141055	1	9/4/09	6/5/13	HERSHEY STATE BANK - HERSHEY, NE	\$249,968.28	\$227,500.00	2.558
CD	141056	1	9/4/09	6/5/13	TRADITIONAL BANK, INC.	\$248,956.99	\$227,600.00	2.500
CD	170864	1	1/4/12	6/27/13	FIRST FREEDOM BANK	\$249,975.72	\$248,900.00	0.298
CD	170865	1	1/4/12	6/27/13	FIRST STATE BANK OF BLOOMINGTON	\$249,937.66	\$249,000.00	0.255
CD	183262	1	3/1/13	6/28/13	PACTRUST BANK, FSB / PACIFIC TRUST BANK, FSB	\$249,965.19	\$249,900.00	0.080
CD	183263	1	3/1/13	6/28/13	BANK OF VIRGINIA	\$249,957.04	\$249,900.00	0.070
CD	153690	2	7/26/12	7/26/13	CITY NATIONAL BANK CA	\$246,154.82	\$243,318.39	1.166
SEC	23568	1	8/23/10	8/23/13	Plains State Bank Certificate of Deposit	\$240,000.00	\$240,000.00	1.300
CD	173178	1	4/3/12	9/30/13	BANK OF AMERICA, NA	\$249,999.71	\$248,700.00	0.350
SEC	22918	1	10/1/09	12/30/13	First Nb - Fox Valley Certificate of Deposit	\$245,000.00	\$245,000.00	2.650
CD	170862	1	1/4/12	1/6/14	FIRST INTERSTATE BANK	\$249,903.13	\$248,200.00	0.342
CD	170863	1	1/4/12	1/6/14	BANK OF NORTH CAROLINA	\$249,993.09	\$248,500.00	0.299
SEC	22877	1	10/15/09	2/1/14	Anoka-Hennepin Minn Indpt Sch Dist #11	\$935,000.00	\$935,000.00	2.880
SEC	22894	1	10/13/09	2/1/14	Duluth Minn Indpt Sch Dist #709 Cfts Partn	\$385,000.00	\$385,000.00	2.880
SEC	23424	1	6/8/10	2/1/14	Big Lake Minn Indpt Sch Dist # 727 Ref- Ser A	\$345,000.00	\$345,000.00	2.400
SEC	23776	1	12/20/10	2/1/14	Woodridge Illinois Taxable	\$250,000.00	\$250,000.00	1.900
SEC	22749	1	9/1/09	3/1/14	Metropolitan Council Minn BABS Taxable	\$720,000.00	\$720,000.00	2.980
CD	173340	1	4/11/12	4/11/14	MINNESOTA BANK & TRUST	\$249,995.77	\$248,500.00	0.301
SEC	26442	1	4/25/12	4/25/14	Apple Bank For Savings Certificate of Deposit	\$249,000.00	\$249,000.00	0.376
SEC	25430	1	11/16/11	11/17/14	Goldman Sachs Bank USA Certificate of Deposit	\$248,000.00	\$248,000.00	1.500
SEC	25431	1	11/16/11	11/17/14	Ally Bank Certificate of Deposit	\$248,000.00	\$248,000.00	1.355
SEC	25434	1	11/17/11	11/17/14	American Express Centurion Bank Certificate of Deposit	\$248,000.00	\$248,000.00	1.506
SEC	25437	1	11/16/11	11/17/14	GE Capital Financial Inc Certificate of Deposit	\$248,000.00	\$248,000.00	1.506
SEC	25439	1	11/16/11	11/17/14	GE Capital Retail Bank / GE Money Bank Certificate of Deposit	\$248,000.00	\$248,000.00	1.506
CD	170720	1	12/23/11	12/22/14	BANK LEUMI USA	\$249,814.02	\$242,900.00	0.949
CD	170721	1	12/23/11	12/22/14	SAFRA NATIONAL BANK OF NEW YORK	\$249,895.82	\$244,100.00	0.791
CD	170858	1	1/4/12	1/5/15	AMERASIA BANK	\$249,881.55	\$245,100.00	0.649
CD	170859	1	1/4/12	1/5/15	WESBANCO BANK INC	\$249,953.71	\$245,900.00	0.549
CD	170860	1	1/4/12	1/5/15	FIRST NATIONAL BANK IN SIOUX FALLS	\$249,913.19	\$246,200.00	0.502
CD	170861	1	1/4/12	1/5/15	DOLLAR BANK, FEDERAL SAVINGS BANK	\$249,930.19	\$246,600.00	0.449
SEC	22642	1	7/15/09	2/1/15	Bemidji Minn Indpt Sch Dist No 031	\$310,000.00	\$310,000.00	3.800
SEC	23423	1	6/8/10	2/1/15	Big Lake Minn Indpt Sch Dist # 727 Ref- Ser A	\$210,000.00	\$210,000.00	2.750
SEC	29288	1	4/9/13	2/1/15	BECKER ISD 726 B	\$250,000.00	\$250,000.00	0.500
SEC	23103	1	11/12/09	3/1/15	Red Wing Minn Indpt Sch Dist #256 Taxable OPEB	\$1,000,000.00	\$1,000,000.00	3.000
CD	173316	1	4/9/12	4/9/15	IDB BANK- NY	\$148,009.36	\$145,000.00	0.692
SEC	22574	1	6/29/09	6/1/15	CEDAR RAPIDS IOWA REF TAXABLE CAP	\$470,000.00	\$470,000.00	3.250
CD	181996	1	1/16/13	1/19/16	BANK OF THE WEST	\$249,980.28	\$246,200.00	0.510
CD	181997	1	1/16/13	1/19/16	MIDLAND STATES BANK	\$206,595.48	\$203,800.00	0.456
CD	182847	1	2/19/13	2/19/16	EAST BOSTON SAVINGS BANK	\$249,956.54	\$245,900.00	0.550
CD	182848	1	2/19/13	2/19/16	BRIDGEWATER BANK	\$249,899.41	\$245,800.00	0.556

BURNSVILLE ISD 191 / 2009 OPEB TRUST

Type	Trans	SEQ	Purchase	Maturity	Instrument	Par-Val/Mat. Val.	Original Cost	Rate
SEC	23783	1	12/20/10	2/1/17	Woodridge Illinois Taxable	\$150,000.00	\$150,000.00	3.350
CD	182782	1	2/15/13	2/15/18	PLAINS COMMERCE BANK	\$249,902.70	\$236,400.00	1.142
SEC	28287	1	10/9/12	1/15/19	Lakewood Township NJ Ref	\$630,000.00	\$630,000.00	1.580
SEC	28397	1	11/15/12	8/15/19	DENTON TX INDEP SCH DIST TXBL -REF -SER C	\$1,000,000.00	\$1,000,000.00	1.520
SEC	28355	1	10/19/12	10/1/19	COOK CNTY IL HIGH SCH DIST #205 THORNTON TWP	\$350,000.00	\$350,000.00	1.939
SEC	28316	1	10/15/12	10/15/19	ABERDEEN TWP NJ REF	\$390,000.00	\$390,000.00	1.570
SEC	28317	1	10/16/12	12/1/19	FAIRFIELD & UNION OH LOCAL SCH DIST	\$330,000.00	\$294,162.00	1.620

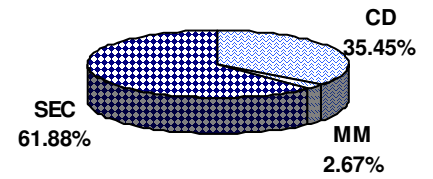
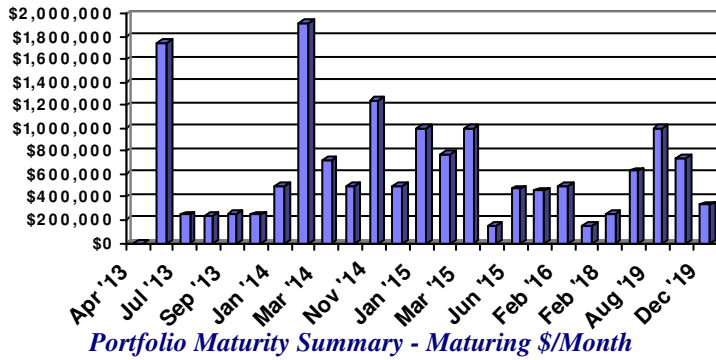
Note: Weighted Yield & Weighted Average Portfolio Maturity are calculated only on the CD, CP, & SEC desk.

Total Amount --> \$15,977,750.87 \$15,804,843.53

Time and Dollar Weighted Portfolio Yield: 1.644 %

Weighted Average Portfolio Maturity: 767.89 Days

MM: 2.72%
CD's: 36.14%
CP: 0.00%
SEC: 61.14%





Total Portfolio Report CAR

As of: 4/30/13

PMA Financial Network, Inc.

2135 CityGate Lane 23
 7th Floor
 Naperville, Illinois 60563
 Telephone . 630-657-6400
 Facsimile . 630-718-8701

BURNSVILLE ISD 191 / 2011 ALT FACILITY

4476

Type	Trans	SEQ	Purchase	Maturity	Instrument	Par-Val/Mat. Val.	Original Cost	Rate
MM					Investment Shares Portfolio	\$724,161.35	\$724,161.35	
SDA					Savings Deposit Account - CITIBANK SDA-C	\$1,004,544.21	\$1,004,544.21	
CDR	182460	1	2/7/13	5/9/13	BBCN Bank	\$247,685.19	\$247,635.79	0.080
CDR	182460	2	2/7/13	5/9/13	Citizens Bank of Oklahoma	\$247,685.19	\$247,635.79	0.080
CDR	182460	3	2/7/13	5/9/13	Pulaski Bank	\$4,729.35	\$4,728.42	0.080
CD	182116	1	1/23/13	6/7/13	LANDMARK COMMUNITY BANK	\$249,992.90	\$249,900.00	0.101
CD	182117	1	1/23/13	6/7/13	BANK OF THE SIERRA	\$84,031.52	\$84,000.00	0.101
CD	182118	1	1/23/13	6/7/13	BANK OF THE SIERRA	\$83,031.15	\$83,000.00	0.101
CD	182119	1	1/23/13	6/7/13	BANK OF THE SIERRA	\$82,931.11	\$82,900.00	0.101

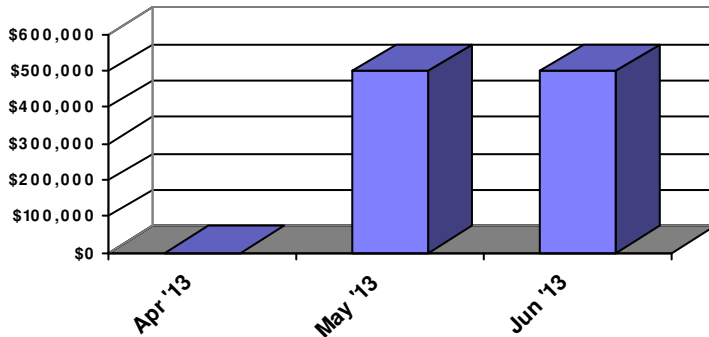
Note: Weighted Yield & Weighted Average Portfolio Maturity are calculated only on the CD, CP, & SEC desk.

Total Amount --> **\$2,728,791.97** **\$2,728,505.56**

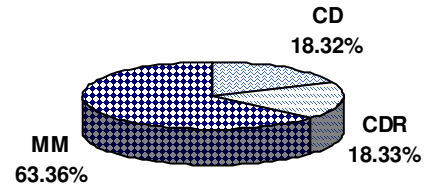
Time and Dollar Weighted Portfolio Yield: **0.095 %**

Weighted Average Portfolio Maturity: **8.98 Days**

MM: 63.36%
CD's: 18.32%
CP: 0.00%
SEC: 0.00%



Portfolio Maturity Summary - Maturing \$/Month



Portfolio Allocation by Transaction Type



Total Portfolio Report CAR

As of: 4/30/13

PMA Financial Network, Inc.

2135 CityGate Lane
7th Floor
Naperville, Illinois 60563
Telephone . 630-657-6400
Facsimile . 630-718-8701

24

BURNSVILLE ISD 191 / 2012A ALT FACILITY

5070

Type	Trans	SEQ	Purchase	Maturity	Instrument	Par-Val/Mat. Val.	Original Cost	Rate
MM					Investment Shares Portfolio	\$6,559,417.24	\$6,559,417.24	
SDA					Savings Deposit Account - CITIBANK SDA-C	\$78.90	\$78.90	
CDR	182226	1	1/31/13	5/2/13	Commercial Bank of California	\$247,685.18	\$247,635.79	0.080
CDR	182226	2	1/31/13	5/2/13	Bangor Savings Bank	\$247,685.18	\$247,635.79	0.080
CDR	182226	3	1/31/13	5/2/13	First Commonwealth Bank	\$247,685.18	\$247,635.79	0.080
CDR	182226	4	1/31/13	5/2/13	Bank of Manhattan, N.A.	\$247,685.18	\$247,635.79	0.080
CDR	182226	5	1/31/13	5/2/13	Chambers Bank	\$247,685.18	\$247,635.79	0.080
CDR	182226	6	1/31/13	5/2/13	Western National Bank	\$247,685.18	\$247,635.79	0.080
CDR	182226	7	1/31/13	5/2/13	First National Bank of St Louis	\$247,685.18	\$247,635.79	0.080
CDR	182226	8	1/31/13	5/2/13	Machias Savings Bank (MHC)	\$202,932.04	\$202,891.57	0.080
CDR	182226	9	1/31/13	5/2/13	BNC National Bank	\$150,787.98	\$150,757.90	0.080
TS	182347	1	1/31/13	7/29/13	MN TRUST TERM SERIES	\$2,001,373.15	\$2,000,000.00	0.140
CDR	184475	1	4/11/13	10/10/13	Cass Commercial Bank	\$244,866.02	\$244,743.98	0.100
CDR	184475	10	4/11/13	10/10/13	Machias Savings Bank (MHC)	\$41,782.13	\$41,761.33	0.100
CDR	184475	2	4/11/13	10/10/13	Susquehanna Bank	\$244,866.02	\$244,743.98	0.100
CDR	184475	3	4/11/13	10/10/13	Paragon Commercial Bank	\$244,866.02	\$244,743.98	0.100
CDR	184475	4	4/11/13	10/10/13	Banco Popular de Puerto Rico	\$244,866.02	\$244,743.98	0.100
CDR	184475	5	4/11/13	10/10/13	Pathfinder Bank (MHC)	\$244,866.02	\$244,743.98	0.100
CDR	184475	6	4/11/13	10/10/13	F&M Bank and Trust Company	\$244,866.02	\$244,743.98	0.100
CDR	184475	7	4/11/13	10/10/13	City First Bank of D.C., National Association	\$244,866.02	\$244,743.98	0.100
CDR	184475	8	4/11/13	10/10/13	ViewPoint Bank (MHC)	\$139,926.91	\$139,857.17	0.100
CDR	184475	9	4/11/13	10/10/13	First Bank	\$105,226.08	\$105,173.64	0.100
TS	182236	1	1/31/13	1/30/14	MN TRUST TERM SERIES	\$751,495.89	\$750,000.00	0.200
CD	182436	1	2/4/13	3/31/14	BANK OF CHINA	\$249,940.78	\$249,200.00	0.258
CDR	184652	1	4/18/13	4/17/14	First Foundation Bank	\$241,842.54	\$241,481.25	0.150
CDR	184652	2	4/18/13	4/17/14	PINNACLE BANK	\$241,842.54	\$241,481.25	0.150
CDR	184652	3	4/18/13	4/17/14	Citizens Bank	\$241,842.54	\$241,481.25	0.150
CDR	184652	4	4/18/13	4/17/14	Happy State Bank	\$241,842.54	\$241,481.25	0.150
CDR	184652	5	4/18/13	4/17/14	Armstrong Bank	\$161,353.37	\$161,112.32	0.150
CDR	184652	6	4/18/13	4/17/14	IBERIABANK / Omni Bank	\$147,250.12	\$147,030.14	0.150
CDR	184652	7	4/18/13	4/17/14	Mutual of Omaha Bank	\$117,734.94	\$117,559.06	0.150
CDR	184652	8	4/18/13	4/17/14	Horizon Community Bank	\$87,387.84	\$87,257.29	0.150
CDR	184652	9	4/18/13	4/17/14	ViewPoint Bank (MHC)	\$21,147.78	\$21,116.19	0.150
CD	184406	1	4/5/13	5/30/14	PATRIOT BANK - OK	\$249,930.65	\$249,500.00	0.150
CD	184405	1	4/5/13	6/6/14	IDB BANK- NY	\$100,283.70	\$100,000.00	0.243
SEC	29257	1	2/8/13	8/8/14	Firstbank Of Puerto Rico Certificate of Deposit	\$249,000.00	\$249,000.00	0.418
CD	182124	1	1/23/13	10/17/14	SOUTHSIDE BANK	\$249,665.91	\$248,800.00	0.201
CD	182434	1	2/4/13	12/26/14	FIRST COMMONS BANK NA	\$249,942.84	\$248,800.00	0.248
CD	182435	1	2/4/13	12/26/14	STATE BANK OF INDIA (NY)	\$249,999.35	\$248,800.00	0.255

BURNSVILLE ISD 191 / 2012A ALT FACILITY

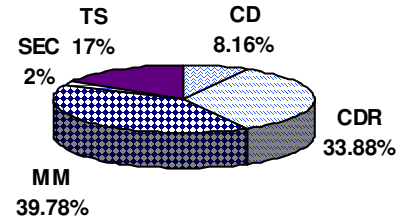
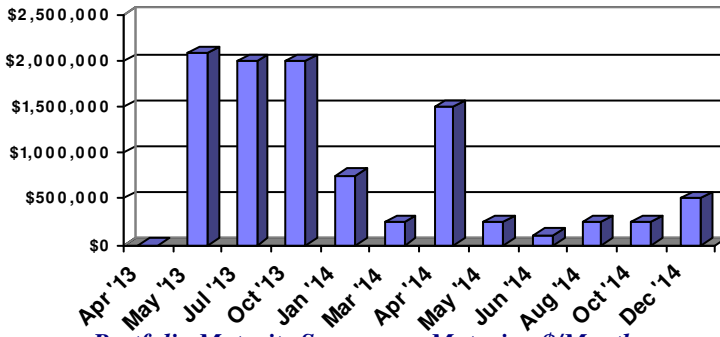
5070
25

Type	Trans	SEQ	Purchase	Maturity	Instrument	Par-Val/Mat. Val.	Original Cost	Rate
<i>Note: Weighted Yield & Weighted Average Portfolio Maturity are calculated only on the CD, CP, & SEC desk.</i>						Total Amount -->	\$16,501,886.16	\$16,490,696.14

Time and Dollar Weighted Portfolio Yield: 0.186 %

Weighted Average Portfolio Maturity: 122.29 Days

MM: 39.78%
CD's: 8.16%
CP: 0.00%
SEC: 1.51%



Portfolio Allocation by Transaction Type

Wire Transfers

Date	From	To	Amount	Description
040113	MSDLAF	Internal Revenue Service	693,721.97	March 30, 2013 Federal Payroll Taxes
040113	MSDLAF	State of Minnesota	116,014.73	March 30, 2013 State Payroll Taxes
040113	MSDLAF	Medica	804,014.70	Health Insurance
040113	MSDLAF	State of Minnesota	662.00	March 30, 2013 Payroll - Levies
040213	MSDLAF	State of Minnesota	2,594.09	March 30, 2013 Payroll - Child Support
040413	State of Minnesota	MSDLAF	155,209.40	State Wire Payment
040413	MSDLAF	Delta Dental	27,058.52	Dental Insurance
041013	Dakota County	MSDLAF	12,022.00	County Wire Payment
041013	State of Minnesota	MSDLAF	3,465.78	State Wire Payment
041013	MSDLAF	Delta Dental	19,133.21	Dental Insurance
041113	MSDLAF	TRA	274,855.84	March 30, 2013 Payroll - TRA
041113	MSDLAF	PERA	87,785.35	March 30, 2013 Payroll - PERA
041513	MDE	MSDLAF	3,711,808.05	March 15, 2013 State Aid Payment
041613	State of Minnesota	MSDLAF	2,544.90	State Wire Payment
041613	MSDLAF	Internal Revenue Service	653,833.35	March 15, 2013 Federal Payroll Taxes
041613	MSDLAF	State of Minnesota	110,298.20	March 15, 2013 State Payroll Taxes
041613	MSDLAF	Internal Revenue Service	893.13	March 15, 2013 Payroll - 3rd Party Sick
041613	MSDLAF	People's Bank	140,332.90	March 15, 2013 Payroll - TSA Deductions
041613	MSDLAF	Teachers Federated Credit Union	34,981.75	March 15, 2013 Payroll - Dues
041613	MSDLAF	State of Minnesota	345.00	Sales Tax
041713	MSDLAF	Delta Dental	12,425.14	Dental Insurance
041713	MSDLAF	State of Minnesota	2,544.29	March 15, 2013 Payroll - Child Support
041713	MSDLAF	State of Minnesota	675.00	March 15, 2013 Payroll - Levies
041813	State of Minnesota	MSDLAF	215,664.73	State Wire Payment
042413	State of Minnesota	MSDLAF	12,160.05	State Wire Payment

Wire Transfers

Date	From	To	Amount	Description
042413	MSDLAF	Delta Dental	14,032.37	Dental Insurance
042513	State of Minnesota	MSDLAF	789.69	State Wire Payment
042613	MSDLAF	TRA	275,112.21	March 15, 2013 Payroll - TRA
042613	MSDLAF	PERA	86,470.26	March 15, 2013 Payroll - PERA
043013	MDE	MSDLAF	6,483,927.14	March 30, 2013 State Aid Payment
043012	MSDLAF	People's Bank	142,955.69	March 30 Payroll - TSA Deductions

Check Register Report

Bank Number	Check Number	Check Status	Check Amount	Check Date	Vendor Number	Vendor Address Number	Vendor Name
1	1007263		\$26.98	04/10/13	88888	17214	BATES, DANIEL W
1	1007264		\$41.49	04/10/13	88888	7279	BEARTH, LUKE A
1	1007265		\$12.86	04/10/13	88888	14527	BENSON, ROSS S
1	1007266		\$68.94	04/10/13	88888	6452	BERG, JANET
1	1007267		\$5.42	04/10/13	88888	9960	BOEKHOFF, LYNETTE
1	1007268		\$5.25	04/10/13	88888	8189	BRAUN, JEAN C
1	1007269		\$22.15	04/10/13	88888	8461	CARLSON, COLETTE
1	1007270		\$25.99	04/10/13	88888	14360	CECKA, NANETTE
1	1007271		\$44.75	04/10/13	88888	16392	CHAMBERLAND, TAUSHA
1	1007272		\$84.16	04/10/13	88888	6315	CHECK, CYNTHIA
1	1007273		\$30.96	04/10/13	88888	17216	CHOUANARD, MARY E
1	1007274		\$320.23	04/10/13	88888	13364	CHRISTIAN, DAVID
1	1007275		\$65.54	04/10/13	88888	12806	CORBAY, STEPHANIE A
1	1007276		\$15.25	04/10/13	88888	9750	CORONIS, ANTHONY L
1	1007277		\$150.00	04/10/13	88888	15885	CROSBIE, CYNTHIA
1	1007278		\$67.24	04/10/13	88888	17873	DERDEN, WILLIAM M
1	1007279		\$27.24	04/10/13	88888	12400	DYBVIG, JOAN E
1	1007280		\$7.46	04/10/13	88888	16015	EICHTEN, HEIDI J
1	1007281		\$10.04	04/10/13	88888	13415	ENGELHARDT, ANGELA C
1	1007282		\$12.82	04/10/13	88888	7304	GOSSMAN, LISA ANN
1	1007283		\$48.82	04/10/13	88888	8737	HAMMES, TIMOTHY
1	1007284		\$64.64	04/10/13	88888	17782	HANDLEY, CHRISTOPHER W
1	1007285		\$113.40	04/10/13	88888	14501	HARRISON, STACY LYNN
1	1007286		\$150.00	04/10/13	88888	14189	HIEBERT, TRACY
1	1007287		\$42.90	04/10/13	88888	15977	HEIM, WILLIAM V
1	1007288		\$14.24	04/10/13	88888	9777	HENRY, JOEL E
1	1007289		\$37.00	04/10/13	88888	11153	HOLEWA, MARY A
1	1007290		\$115.44	04/10/13	88888	8274	HOLT, CLAYTON B
1	1007291		\$35.59	04/10/13	88888	17674	HOYT, KASEY D
1	1007292		\$41.70	04/10/13	88888	14479	KIBLER, JEANNE
1	1007293		\$64.00	04/10/13	88888	274	KLATTE, JEAN H
1	1007294		\$35.60	04/10/13	88888	17786	LARSON, KATIE
1	1007295		\$41.48	04/10/13	88888	16463	LECOMPTE, EMILIE S
1	1007296		\$13.56	04/10/13	88888	12336	LOGAN, KARI M
1	1007297		\$119.22	04/10/13	88888	11807	MAKI, CATHY
1	1007298		\$109.84	04/10/13	88888	11807	MAKI, CATHY
1	1007299		\$150.00	04/10/13	88888	17146	MCDONALD, PATRICIA A
1	1007300		\$36.02	04/10/13	88888	16011	NELSON, JEFFREY P
1	1007301		\$15.09	04/10/13	88888	6326	NEPSUND, CYNTHIA J
1	1007302		\$61.04	04/10/13	88888	709	NORGAARD, PATRICIA
1	1007303		\$49.89	04/10/13	88888	7569	O'REILLY, GINA
1	1007304		\$15.59	04/10/13	88888	9239	OPATZ, LARRY

Check Register Report

29

Bank Number	Check Number	Check Status	Check Amount	Check Date	Vendor Number	Vendor Address Number	Vendor Name
1	1007305		\$70.20	04/10/13	88888	11306	PETERSON, KERI
1	1007306		\$203.79	04/10/13	88888	17565	PETRI, KATHRYN E
1	1007307		\$77.62	04/10/13	88888	17565	PETRI, KATHRYN E
1	1007308		\$18.23	04/10/13	88888	16669	PETTINELLI, STEPHEN M
1	1007309		\$357.92	04/10/13	88888	16003	PRANSCHKE, STEPHANIE T
1	1007310		\$29.49	04/10/13	88888	17730	RICHARDS, JOO REE
1	1007311		\$122.60	04/10/13	88888	13654	ROBB, BRADLEY E
1	1007312		\$39.34	04/10/13	88888	16087	ROBB, EMILY C
1	1007313		\$38.87	04/10/13	88888	8937	SAMPERS, CYNTHIA
1	1007314		\$85.60	04/10/13	88888	8937	SAMPERS, CYNTHIA
1	1007315		\$52.74	04/10/13	88888	17240	SCHNOBRICH, ANGELA M
1	1007316		\$198.52	04/10/13	88888	5031	SHELERUD, SHARON
1	1007317		\$75.00	04/10/13	88888	14619	SLATTERY, CARA
1	1007318		\$13.62	04/10/13	88888	13470	SMALLEY, AMY C
1	1007319		\$97.75	04/10/13	88888	17904	STASKYWICZ, SHELLY L
1	1007320		\$135.14	04/10/13	88888	14874	STILES, JENNIFER E
1	1007321		\$40.51	04/10/13	88888	16046	STRAHOTA, SARA J
1	1007322		\$30.75	04/10/13	88888	17155	TEAL, DARLA L
1	1007323		\$4.35	04/10/13	88888	10299	WEIGHTMAN, ELIZABETH C
1	1007324		\$59.33	04/10/13	88888	13905	WENDLING, PAULA L
1	1007325		\$70.00	04/10/13	88888	16543	WILLIAMS, ROXANNE J
1	1007326		\$24.63	04/10/13	88888	9277	ZEIGLER, SARAH
1	1007327		\$204.00	04/17/13	88888	17934	ANDERSON, ESTHER R
1	1007328		\$12.52	04/17/13	88888	14115	ANDREWS, BRIDGETTE
1	1007329		\$13.60	04/17/13	88888	9569	ANDREWS, DONNA
1	1007330		\$9.04	04/17/13	88888	6956	ASHLEY, MARY K
1	1007331		\$10.00	04/17/13	88888	14006	BECK, LYNDSAY K
1	1007332		\$11.00	04/17/13	88888	11213	BEERLING, LORIE A
1	1007333		\$50.00	04/17/13	88888	17742	BUCK, REBECCA L
1	1007334		\$41.76	04/17/13	88888	12319	CIN, STEPHANIE P
1	1007335		\$56.39	04/17/13	88888	5747	CORDAHL, AMBER
1	1007336		\$21.40	04/17/13	88888	14970	DEUTSCH, MATTHEW R
1	1007337		\$270.80	04/17/13	88888	11911	ELFERING, JEAN
1	1007338		\$24.11	04/17/13	88888	13256	FANDRICH, KARI M
1	1007339		\$140.00	04/17/13	88888	17855	GAITAN, MARCELA
1	1007340		\$20.84	04/17/13	88888	17771	HELWIG, KRISTINE K
1	1007341		\$107.02	04/17/13	88888	16004	JORGENSON, SHANNON E
1	1007342		\$52.85	04/17/13	88888	5733	LAWRENCE, ROELY
1	1007343		\$86.45	04/17/13	88888	16501	NESS, KAREN M
1	1007344		\$110.60	04/17/13	88888	17716	NEWBY, MATTHEW
1	1007345		\$50.79	04/17/13	88888	17716	NEWBY, MATTHEW
1	1007346		\$35.03	04/17/13	88888	17716	NEWBY, MATTHEW

Check Register Report

Bank Number	Check Number	Check Status	Check Amount	Check Date	Vendor Number	Vendor Address Number	Vendor Name
1	1007347		\$20.30	04/17/13	88888	16669	PETTINELLI, STEPHEN M
1	1007348		\$5.98	04/17/13	88888	16669	PETTINELLI, STEPHEN M
1	1007349		\$70.06	04/17/13	88888	17471	SCHMID, JAMES D
1	1007350		\$137.13	04/17/13	88888	4356	SIMON, GLENN D.
1	1007351		\$173.46	04/17/13	88888	14961	SPRY, KARIE
1	1007352		\$15.42	04/17/13	88888	11808	SPODEN, ANNEMARIE
1	1007353		\$60.68	04/17/13	88888	16046	STRAHOTA, SARA J
1	1007354		\$95.87	04/17/13	88888	17289	THOMPSON, LINDEE G
1	1007355		\$75.00	04/17/13	88888	10288	TOMOSON, RHONDA G
1	1007356		\$175.00	04/17/13	88888	17937	TUDISCO, MELINDA
1	1007357		\$64.88	04/17/13	88888	17937	TUDISCO, MELINDA
1	1007358		\$15.01	04/17/13	88888	17937	TUDISCO, MELINDA
1	1007359		\$32.11	04/17/13	88888	17937	TUDISCO, MELINDA
1	1007360		\$100.70	04/17/13	88888	17937	TUDISCO, MELINDA
1	1007361		\$158.95	04/17/13	88888	17937	TUDISCO, MELINDA
1	1007362		\$16.00	04/17/13	88888	17937	TUDISCO, MELINDA
1	1007363		\$15.00	04/17/13	88888	7415	UMHOEFER, THOMAS C
1	1007364		\$51.61	04/17/13	88888	9295	WAGNER-SMITH, SHERRY
1	1007365		\$35.46	04/17/13	88888	9295	WAGNER-SMITH, SHERRY
1	1007366		\$38.83	04/17/13	88888	7858	WARMKA, CHERI R
1	1007368		\$9.88	04/24/13	88888	7839	BARNES, CHERISE C
1	1007369		\$130.40	04/24/13	88888	3696	BERG, CAROL K
1	1007370		\$10.56	04/24/13	88888	12947	BLOM, ANNE E
1	1007371		\$28.58	04/24/13	88888	12947	BLOM, ANNE E
1	1007372		\$46.39	04/24/13	88888	15074	CHAMERLIK, KAREN
1	1007373		\$44.98	04/24/13	88888	17787	CHISAKA, BRIDGET N
1	1007374		\$400.00	04/24/13	88888	16560	CLEGG, RANDALL B
1	1007375		\$29.95	04/24/13	88888	6482	DAHLER, ELOISE J
1	1007376		\$13.76	04/24/13	88888	11833	DOUGLAS, LORI
1	1007377		\$239.41	04/24/13	88888	15991	DRAHOS, CYNTHIA
1	1007378		\$4.08	04/24/13	88888	13415	ENGELHARDT, ANGELA C
1	1007379		\$60.57	04/24/13	88888	15993	FAUST, DANIELLE M
1	1007380		\$32.20	04/24/13	88888	12435	GOODWIN, DE ANNA K
1	1007381		\$383.08	04/24/13	88888	7923	GRISWOLD, CHERYL A
1	1007382		\$597.13	04/24/13	88888	17422	HARVEY, CHRISTOPHER M
1	1007383		\$150.00	04/24/13	88888	17422	HARVEY, CHRISTOPHER M
1	1007384		\$14.72	04/24/13	88888	17771	HELWIG, KRISTINE K
1	1007385		\$118.70	04/24/13	88888	11475	HERMES, SHELLEY
1	1007386		\$1,484.44	04/24/13	88888	13108	HILL, RONALD I
1	1007387		\$26.52	04/24/13	88888	3547	HUGSTAD-VAA, JENNIFER JO
1	1007388		\$17.89	04/24/13	88888	10810	JOROENSEN, KATHLEEN A
1	1007389		\$40.68	04/24/13	88888	16835	KILBER, KRISTY

Check Register Report

Bank Number	Check Number	Check Status	Check Amount	Check Date	Vendor Number	Vendor Address Number	Vendor Name
1	1007390		\$24.13	04/24/13	88888	7847	KOLSTAD, MICHELE M
1	1007391		\$74.00	04/24/13	88888	16890	KREPS, RODNEY V
1	1007392		\$21.70	04/24/13	88888	5087	LEON, STEVEN F
1	1007393		\$40.50	04/24/13	88888	10819	MAIDMENT, LORI
1	1007394		\$6.99	04/24/13	88888	12875	MATHEWS, STEPHANIE A
1	1007395		\$149.16	04/24/13	88888	7268	MESARCHIK, MARY L
1	1007396		\$76.46	04/24/13	88888	2063	MILLER, DIANE
1	1007397		\$80.00	04/24/13	88888	17691	MILLER, LORI A
1	1007398		\$820.42	04/24/13	88888	8627	ORTH, STEVEN D. R.
1	1007399		\$148.50	04/24/13	88888	8627	ORTH, STEVEN D. R.
1	1007400		\$131.27	04/24/13	88888	16645	PAVEK, BROOKE C
1	1007401		\$20.11	04/24/13	88888	16589	PLANTE, MARY TRACEY
1	1007402		\$53.20	04/24/13	88888	9228	ROARK, KIMBERLY J
1	1007403		\$71.38	04/24/13	88888	11689	SCHWAB, ANGELA M
1	1007404		\$24.86	04/24/13	88888	11825	SIEBER, ANDREA
1	1007405		\$99.00	04/24/13	88888	6550	SODERHOLM, JOHN
1	1007406		\$360.92	04/24/13	88888	6851	STEPHES, THOMAS J
1	1007407		\$94.07	04/24/13	88888	11318	STORCK, MARK R
1	1007408		\$48.77	04/24/13	88888	16046	STRAHOTA, SARA J
1	1007409		\$82.21	04/24/13	88888	10408	TAMASI, PHYLLIS
1	1007410		\$105.66	04/24/13	88888	15911	WILLSON, DAWN M
1	1007411		\$145.00	04/24/13	88888	10972	WITTNEBEL, KATHY
1	1007412		\$117.00	04/24/13	88888	10543	WURDEMAN, SCOTT
1	1007413		\$10.00	05/01/13	88888	7817	AMUNDSON, JANE E
1	1007414		\$20.34	05/01/13	88888	7817	AMUNDSON, JANE E
1	1007415		\$80.23	05/01/13	88888	15982	ANDERSON, BJORN RS
1	1007416		\$14.00	05/01/13	88888	17934	ANDERSON, ESTHER R
1	1007417		\$16.59	05/01/13	88888	14115	ANDREWS, BRIDGETTE
1	1007418		\$512.46	05/01/13	88888	15237	BEAL, DIANE E
1	1007419		\$1,250.55	05/01/13	88888	6811	CURRIER, DEEDEE C
1	1007420		\$6.36	05/01/13	88888	6482	DAHLER, ELOISE J
1	1007421		\$65.94	05/01/13	88888	4110	GOETZ, DEBORAH E
1	1007422		\$24.86	05/01/13	88888	12435	GOODWIN, DE ANNA K
1	1007423		\$28.89	05/01/13	88888	17753	GYSBERG, JILL
1	1007424		\$39.98	05/01/13	88888	9267	HOLDEN, MATTHEW J
1	1007425		\$402.72	05/01/13	88888	13202	HRIMNAK, SANDI J
1	1007426		\$704.76	05/01/13	88888	13202	HRIMNAK, SANDI J
1	1007427		\$2,434.05	05/01/13	88888	3547	HUGSTAD-VAA, JENNIFER JO
1	1007428		\$56.95	05/01/13	88888	14613	JOHNSON, RONNA E
1	1007429		\$20.34	05/01/13	88888	14624	JORDAN, JOANNA
1	1007430		\$24.98	05/01/13	88888	14624	JORDAN, JOANNA
1	1007431		\$75.00	05/01/13	88888	2469	LAWELLIN, MARCIA

Check Register Report

Bank Number	Check Number	Check Status	Check Amount	Check Date	Vendor Number	Vendor Address Number	Vendor Name
1	1007432		\$150.00	05/01/13	88888	2469	LAWELLIN, MARCIA
1	1007433		\$38.12	05/01/13	88888	2469	LAWELLIN, MARCIA
1	1007434		\$90.43	05/01/13	88888	13290	LINDELL, MICHELLE M
1	1007435		\$33.90	05/01/13	88888	2051	DEERING, KARI
1	1007436		\$33.90	05/01/13	88888	2051	DEERING, KARI
1	1007437		\$55.50	05/01/13	88888	10140	MACKEY, GALE M
1	1007438		\$67.47	05/01/13	88888	10311	MATHYS, SANDRA
1	1007439		\$19.98	05/01/13	88888	15112	NELSON, TARA A
1	1007440		\$118.99	05/01/13	88888	13433	PAULSEN, KATHY MARIE
1	1007441		\$34.69	05/01/13	88888	13433	PAULSEN, KATHY MARIE
1	1007442		\$23.96	05/01/13	88888	16287	PERALTA, NANCY E
1	1007443		\$106.67	05/01/13	88888	17586	PERLICH, SHAWN
1	1007444		\$75.00	05/01/13	88888	9771	PLUCINAK, JODY L
1	1007445		\$124.75	05/01/13	88888	15241	POWERS, MICHELLE L
1	1007446		\$55.04	05/01/13	88888	17950	QUESENBERRY, KIMBERLY
1	1007447		\$46.10	05/01/13	88888	13879	REISINGER, TONETTE A
1	1007448		\$75.34	05/01/13	88888	17608	RICHARDSON, SARAH ANN SCHLETTY
1	1007449		\$20.56	05/01/13	88888	9228	ROARK, KIMBERLY J
1	1007450		\$156.00	05/01/13	88888	15288	STAPP, BENJAMIN
1	1007451		\$300.00	05/01/13	88888	17616	STEPHENS, DAWN M
1	1007452		\$12.39	05/01/13	88888	17937	TUDISCO, MELINDA
1	1007453		\$33.67	05/01/13	88888	17937	TUDISCO, MELINDA
1	1007454		\$148.17	05/01/13	88888	17937	TUDISCO, MELINDA
1	1007455		\$300.00	05/01/13	88888	11822	TUSHIE, PATRICIA
1	1007456		\$9.97	05/01/13	88888	16491	VITALI, ALICIA F
1	1007457		\$15.00	05/01/13	88888	14021	VON ESCHEN, MERRIEJANE E
1	1007458		\$34.64	05/01/13	88888	16338	WICKHAM, LAURA
Check Count	195	Grand Total	\$21,599.95				

Check Register Report

Bank Number	Check Number	Check Status	Check Amount	Check Date	Vendor Number	Vendor Address Number	Vendor Name
4	423786		\$5,714.28	04/09/13	28363	0	ACET, INC.
4	423787		\$210.00	04/09/13	27129	0	ALI, AMAAL
4	423788		\$360.00	04/09/13	27958	0	AMERICAN INSTITUTES FOR RESEARCH
4	423789		\$653.98	04/09/13	01365	0	AMERIPRIDE LINEN AND APPAREL SERVICES
4	423790		\$3,015.00	04/09/13	27679	0	BENEFITFOCUS.COM, INC.
4	423791		\$1,986.97	04/09/13	00016	2471	BRADY HOFFMAN
4	423792		\$9,674.78	04/09/13	04226	0	BURNSVILLE, CITY OF
4	423793	Unissued	\$0.00	04/09/13	04226	0	BURNSVILLE, CITY OF
4	423794		\$84.34	04/09/13	03866	0	CONTINENTAL CLAY COMPANY
4	423795		\$112.50	04/09/13	00502	0	CORNERSTONE COPY CENTER
4	423796		\$19,460.00	04/09/13	24183	0	DAKOTA TRANSPORT, INC.
4	423797		\$80.00	04/09/13	08124	0	DEANNAS2HANDS
4	423798		\$60.00	04/09/13	27880	0	DUNKLEE, KATHERINE
4	423799		\$642.24	04/09/13	01002	0	EAGAN, CITY OF
4	423800		\$6.42	04/09/13	01463	0	FEDEX
4	423801		\$240.00	04/09/13	27564	0	HADI, MOHAMED
4	423802		\$2,865.23	04/09/13	00862	3	HERFF JONES, INC.
4	423803		\$14,227.00	04/09/13	20347	1	HOUSE OF PRINT
4	423804		\$1,238.22	04/09/13	24335	0	IND. SCHOOL DIST. 8492
4	423805		\$4,448.31	04/09/13	09327	0	INTERMEDIATE SCHOOL DISTRICT 917
4	423806		\$80.00	04/09/13	26825	0	ITH, VANHUON
4	423807		\$15.00	04/09/13	00016	2502	JONES, COLLEEN
4	423808		\$22.56	04/09/13	27225	0	K&K EXPRESS, LLC
4	423809		\$15.00	04/09/13	00016	2503	LUNDGREN, WENDI
4	423810		\$1,150.22	04/09/13	02196	0	MACKIN EDUCATIONAL RESOURCES
4	423811		\$330.00	04/09/13	03412	0	MERZER, SHEILA M.A.L.P.
4	423812		\$301.05	04/09/13	27547	1	MINNESOTA OFFICE TECHNOLOGY GROUP
4	423813		\$136.80	04/09/13	28041	0	MIXMI BRANDS INC.
4	423814		\$420.00	04/09/13	22324	0	MULTILINGUAL WORD, INC.
4	423815		\$1,750.00	04/09/13	22460	0	NUTTING, NANCY A
4	423816		\$42.90	04/09/13	28146	1	ODWALLA
4	423817		\$144.83	04/09/13	02489	1	OFFICE DEPOT COMPANY
4	423818		\$165.00	04/09/13	24879	0	PEREZ, MELISSA M.
4	423819		\$120.00	04/09/13	21343	0	RAMACHER, THUY
4	423820		\$11,855.36	04/09/13	09588	1	SAVAGE, CITY OF
4	423821		\$49,942.07	04/09/13	23848	0	SFM
4	423822		\$19.66	04/09/13	03640	1	STAPLES ADVANTAGE
4	423823		\$978.50	04/09/13	21008	0	TLC SPECIAL TRANSPORTATION
4	423824		\$980.61	04/09/13	03802	0	TRIO SUPPLY
4	423825		\$978.00	04/09/13	27819	0	US BANK EQUIPMENT FINANCE
4	423826		\$29,617.38	04/09/13	04417	1	US FOODS INC

Check Register Report

Bank Number	Check Number	Check Status	Check Amount	Check Date	Vendor Number	Vendor Address Number	Vendor Name
4	423827	Unissued	\$0.00	04/09/13	04417	1	US FOODS INC
4	423828	Unissued	\$0.00	04/09/13	04417	1	US FOODS INC
4	423829		\$6,717.75	04/13/13	03029	1	MINNESOTA ENERGY RESOURCES CORPORATION
4	423830		\$5,913.98	04/13/13	27547	1	MINNESOTA OFFICE TECHNOLOGY GROUP
4	423831		\$755.00	04/13/13	22324	0	MULTILINGUAL WORD, INC.
4	423832		\$160.00	04/13/13	00000	228	NILSSON, ROBIN
4	423833		\$150.00	04/13/13	00000	9267	OLSON, LAURA
4	423834		\$336.20	04/13/13	25300	1	ORANGE TREE EMPLOYMENT SCREENING
4	423835		\$900.00	04/13/13	27135	2	ORTON-GILLINGHAM OF MINNESOTA CLASSES
4	423836		\$743.92	04/13/13	03219	1	PEPSI-COLA COMPANY
4	423837		\$405.00	04/13/13	26842	0	PERALTA, GERMAN
4	423838		\$510.00	04/13/13	24879	0	PEREZ, MELISSA M.
4	423839		\$125.00	04/13/13	26529	0	PLAIN, SUSAN
4	423840		\$60.00	04/13/13	22793	0	RABINOWICZ, JACK
4	423841		\$60.00	04/13/13	21343	0	RAMACHER, THUY
4	423842		\$31.50	04/13/13	03532	2	SCHMITT MUSIC
4	423843		\$484.00	04/13/13	02490	1	SEA LIFE MINNESOTA, INC.
4	423844		\$3.00	04/13/13	00000	5759	SMITH, BRUCE
4	423845		\$340.00	04/13/13	01076	1	SOUTHWEST NEWSPAPERS
4	423846		\$290.00	04/13/13	25672	0	SPECIAL DELIVERY OF MINNESOTA, INC
4	423847		\$450.40	04/13/13	00321	0	SUN NEWSPAPERS
4	423848		\$8,298.89	04/13/13	04417	1	US FOODS INC
4	423849	Unissued	\$0.00	04/13/13	04417	1	US FOODS INC
4	423850		\$1,375.00	04/13/13	07549	0	US OFFICE FURNITURE, INC.
4	423851		\$150.00	04/13/13	00000	9616	WELLS-HERZOG, ABBIE
4	423852		\$240.00	04/13/13	25837	0	WILLIAMS, REBECCA
4	423853		\$13,914.72	04/13/13	02776	0	XCEL ENERGY
4	423854		\$526.46	04/13/13	04451	11	XEROX CORPORATION
4	423855		\$90.00	04/13/13	26310	0	ADEM, ABDULRAHMAN A.
4	423856		\$420.00	04/13/13	27525	0	AHMED, SOFIA
4	423857		\$465.00	04/13/13	23909	0	ALEMENY-JONES, AUREA
4	423858		\$120.00	04/13/13	23652	0	ALL IN ONE TRANSLATION AGENCY, LLC
4	423859		\$883.84	04/13/13	27586	0	AMERICAN OFFICE PRODUCTS
4	423860		\$71.98	04/13/13	00778	0	ARMSTRONG, MAUREEN
4	423861		\$55.27	04/13/13	00016	1690	BALLARD, EILEEN
4	423862		\$150.00	04/13/13	00000	8946	BELINA, KELLY
4	423863		\$268.50	04/13/13	03931	0	BERRY COFFEE COMPANY
4	423864		\$150.00	04/13/13	00016	1890	BIRKHOLZ, CATHY
4	423865		\$268.80	04/13/13	28404	0	BOOTH & LAVORATO LLC
4	423866		\$165.00	04/13/13	28401	0	CHOY, KEREN

Check Register Report

Bank Number	Check Number	Check Status	Check Amount	Check Date	Vendor Number	Vendor Address Number	Vendor Name
4	423867		\$60.00	04/13/13	28260	0	CHOY, SERGIO R.
4	423868		\$283.52	04/13/13	25513	1	CHURCH OFFSET PRINTING, INC.
4	423869		\$2,055.24	04/13/13	00132	0	CLINICARE CORPORATION
4	423870		\$105.00	04/13/13	02213	1	DAKOTA COUNTY MASTER GARDENERS
4	423871		\$420.00	04/13/13	26354	0	DAVILA, ADYS M.
4	423872		\$1,860.00	04/13/13	22061	0	DISTRIBUTED WEBSITE CORPORATION
4	423873		\$21.00	04/13/13	28051	0	DO GOOD DIAPERS LLC
4	423874		\$320.00	04/13/13	00016	2504	ELL, SHELLEY
4	423875		\$9.60	04/13/13	01463	0	FEDEX
4	423876		\$1,480.00	04/13/13	23990	0	FUTURA LANGUAGE PROFESSIONALS
4	423877		\$480.00	04/13/13	21339	0	GOMEZ, THERESA
4	423878		\$150.00	04/13/13	23464	0	HEIER, JILL
4	423879		\$1,039.77	04/13/13	26918	0	IMB DISTRIBUTION
4	423880		\$7,748.08	04/13/13	09327	0	INTERMEDIATE SCHOOL DISTRICT 917
4	423881		\$5,524.40	04/13/13	02043	7	JOSTENS
4	423882		\$21,828.45	04/13/13	27633	0	KELLY SERVICES, INC.
4	423883		\$80.00	04/13/13	26282	0	LEE, WAI YEE
4	423884		\$80.00	04/13/13	26289	0	SALGADO-LANDA, NOE
4	423885		\$47.00	04/16/13	06215	0	AIRPORT TAXI, INC.
4	423886		\$486.00	04/16/13	04895	0	ASSOCIATION OF CLERICAL EMPLOYEES
4	423887		\$157.75	04/16/13	24178	0	CHRUSTOWSKI, RICK
4	423888		\$68,567.25	04/16/13	00809	0	DAKOTA ELECTRIC ASSOCIATION
4	423889		\$416.00	04/16/13	26702	0	DELTA MANAGEMENT ASSOCIATES, INC.
4	423890		\$10,316.33	04/16/13	00641	0	DICK'S/LAKEVILLE SANITATION, INC.
4	423891		\$117.00	04/16/13	27334	0	DS ERICKSON
4	423892		\$277.00	04/16/13	27974	0	ECMC
4	423893		\$797.47	04/16/13	27593	1	EDC EDUCATIONAL SERVICES
4	423894		\$124.57	04/16/13	28202	0	FOUNDATION 191
4	423895		\$228.00	04/16/13	27604	0	GREAT LAKES HIGHER EDUCATION CORPORATIO
4	423896		\$408.00	04/16/13	20324	1	GURSTEL,STALOCH & CHARGO PA
4	423897		\$975.48	04/16/13	07139	0	HASTINGS BUS COMPANY
4	423898		\$16,047.00	04/16/13	01394	0	IND. SCHOOL DIST. 196
4	423899		\$74.55	04/16/13	00016	2505	IVORY, MICHAEL
4	423900		\$218.00	04/16/13	08672	0	KUDOS AWARDS, INC.
4	423901		\$2,019.00	04/16/13	27547	1	MINNESOTA OFFICE TECHNOLOGY GROUP
4	423902		\$427.50	04/16/13	09215	0	MN CHILDREN'S MUSEUM
4	423903		\$140.00	04/16/13	22324	0	MULTILINGUAL WORD, INC.
4	423904		\$6,205.00	04/16/13	04476	0	NATIONAL TREASURE KUNG FU INC
4	423905	Unissued	\$0.00	04/16/13	04476	0	NATIONAL TREASURE KUNG FU INC
4	423906		\$50.00	04/16/13	02489	1	OFFICE DEPOT COMPANY
4	423907		\$238.00	04/16/13	08031	0	ORDWAY CENTER FOR THE PERFORMING

Check Register Report

Bank Number	Check Number	Check Status	Check Amount	Check Date	Vendor Number	Vendor Address Number	Vendor Name
							ARTS
4	423908		\$1,223.76	04/16/13	26086	0	ORKIN COMMERCIAL SERVICES
4	423909		\$120.00	04/16/13	24879	0	PEREZ, MELISSA M.
4	423910		\$1,532.00	04/16/13	28185	0	RANDSTAD WORK SOLUTIONS
4	423911		\$9,460.00	04/16/13	27969	0	READY FOR KINDERGARTEN
4	423912		\$204.00	04/16/13	28277	0	ROBERT J. BRUNO, LTD
4	423913		\$15.00	04/16/13	03619	0	SAVAGE CHAMBER OF COMMERCE
4	423914		\$46.75	04/16/13	03532	2	SCHMITT MUSIC
4	423915		\$31.20	04/16/13	27563	0	SHRED RIGHT
4	423916		\$1,300.00	04/16/13	02978	0	SOLUTION TREE
4	423917		\$277.54	04/16/13	00016	2186	STOFFEL, JOEL
4	423918		\$8,551.00	04/16/13	21008	0	TLC SPECIAL TRANSPORTATION
4	423919	Unissued	\$0.00	04/16/13	21008	0	TLC SPECIAL TRANSPORTATION
4	423920	Unissued	\$0.00	04/16/13	21008	0	TLC SPECIAL TRANSPORTATION
4	423921	Unissued	\$0.00	04/16/13	21008	0	TLC SPECIAL TRANSPORTATION
4	423922		\$57.50	04/16/13	23463	17	UNITED STATES TREASURY
4	423923		\$949.00	04/16/13	27819	0	US BANK EQUIPMENT FINANCE
4	423924		\$22,651.63	04/16/13	04417	1	US FOODS INC
4	423925	Unissued	\$0.00	04/16/13	04417	1	US FOODS INC
4	423926	Unissued	\$0.00	04/16/13	04417	1	US FOODS INC
4	423927		\$60.00	04/16/13	25560	0	WARSAME, KADRA
4	423928		\$60.00	04/16/13	25837	0	WILLIAMS, REBECCA
4	423929		\$1,092.15	04/16/13	04451	11	XEROX CORPORATION
4	423930		\$19,752.90	04/16/13	27490	0	XEROX FINANCIAL SERVICES LLC
4	423931		\$300.00	04/16/13	27135	2	ORTON-GILLINGHAM OF MINNESOTA CLASSES
4	423932		\$120.00	04/19/13	27525	0	AHMED, SOFIA
4	423933		\$120.00	04/19/13	23909	0	ALEMENY-JONES, AUREA
4	423934		\$12.50	04/19/13	28409	0	ALFRED PUBLISHING CO. INC.
4	423935		\$60.00	04/19/13	27129	0	ALI, AMAAL
4	423936		\$10,484.65	04/19/13	26500	0	ARMSTRONG TORSETH SKOLD & RYDEEN INC.
4	423937		\$832.48	04/19/13	00778	0	ARMSTRONG, MAUREEN
4	423938		\$150.00	04/19/13	01131	0	ATHENA AWARDS COMMITTEE
4	423939		\$15,150.00	04/19/13	28410	0	AUGUST ASH, INC.
4	423940		\$6.00	04/19/13	00016	2521	BAULEKE, NATALIE
4	423941		\$6.00	04/19/13	00000	9569	BECKEL, DENISE
4	423942		\$6.00	04/19/13	00016	2519	BELLEFEUILLE, JULIA
4	423943		\$6.00	04/19/13	00016	1367	BERG, PAMELA
4	423944		\$6.00	04/19/13	00016	1909	BERNDT, PEGGY
4	423945		\$700.20	04/19/13	28404	0	BOOTH & LAVORATO LLC
4	423946		\$38.40	04/19/13	00000	5375	BURT, TERRI
4	423947		\$480.00	04/19/13	22414	0	CARLSON, ASHLEIGH

Check Register Report

Bank Number	Check Number	Check Status	Check Amount	Check Date	Vendor Number	Vendor Address Number	Vendor Name
4	423948		\$11.00	04/19/13	00016	2515	CARMACK, MICHAEL
4	423949		\$15,000.00	04/19/13	25888	0	CENTER FOR EFFICIENT SCHOOL OPERATIONS,
4	423950		\$44,588.87	04/19/13	02519	0	CENTERPOINT ENERGY
4	423951		\$2,652.20	04/19/13	02519	3	CENTERPOINT ENERGY SERVICES, INC.
4	423952		\$6.00	04/19/13	00016	2520	CHRISTOPHERSON, D A
4	423953		\$6.00	04/19/13	00016	2409	CONNOR, MICHELLE
4	423954		\$30.81	04/19/13	00000	6738	CONRAD, PAT
4	423955		\$295.75	04/19/13	00502	0	CORNERSTONE COPY CENTER
4	423956		\$160.00	04/19/13	00000	219	COSNER, LORI
4	423957		\$160.00	04/19/13	00016	2524	DELANEY, TOM
4	423958		\$1,340.00	04/19/13	22061	0	DISTRIBUTED WEBSITE CORPORATION
4	423959		\$2,650.16	04/19/13	07092	0	EAGAN SHIRT WERKS
4	423960		\$2,856.00	04/19/13	09272	1	ECM DISTRIBUTION
4	423961		\$430.00	04/19/13	09272	2	ECM PUBLISHERS, INC.
4	423962		\$6.00	04/19/13	00016	2523	EVANS, OWEN
4	423963		\$32.75	04/19/13	28381	0	FEAR THE RODENT SPORTS
4	423964		\$104.00	04/19/13	01463	4	FEDEX FREIGHT
4	423965		\$375.00	04/19/13	25866	0	FLORES, ROSA
4	423966		\$6.00	04/19/13	00000	6501	FOX, DIANNA
4	423967		\$3,305.00	04/19/13	28411	0	GAGE MARKETING GROUP, LLC
4	423968		\$6.00	04/19/13	00000	8872	GEMUENDEN, STEVEN
4	423969		\$1,481.01	04/19/13	17994	0	GOTHARD, JOE
4	423970		\$6.00	04/19/13	00016	2514	HARRIS, JOHN
4	423971		\$12.25	04/19/13	00862	3	HERFF JONES, INC.
4	423972		\$6.00	04/19/13	00000	4885	HEYNE, RICHARD
4	423973		\$7.00	04/19/13	00000	4703	HORROCKS, KEVIN
4	423974		\$109.80	04/19/13	02483	0	INTEGRA TELECOM
4	423975		\$3,878.48	04/19/13	09327	0	INTERMEDIATE SCHOOL DISTRICT 917
4	423976		\$560.00	04/19/13	00906	5	ISD 917-FUND CHEF
4	423977		\$6.00	04/19/13	00016	2522	JACKSON, ANGELA
4	423978		\$205.00	04/19/13	00000	670	JOHNSON, GAIL
4	423979		\$6.00	04/19/13	00016	2516	JOHNSON, STEVEN
4	423980		\$160.00	04/19/13	00016	2525	JORGENSEN, ELSIE
4	423981		\$6.00	04/19/13	00016	2518	KALLSTROM, JAMES
4	423982		\$20.34	04/19/13	00016	2513	KERMES, DARREN
4	423983		\$6.00	04/19/13	00016	2517	KIRK, KEITH
4	423984		\$137.98	04/19/13	02203	0	LAKESHORE LEARNING MATERIALS
4	423985		\$138.00	04/19/13	09669	1	LEARNING FORWARD
4	423986		\$80.00	04/19/13	26282	0	LEE, WAI YEE
4	423987		\$96.00	04/19/13	26890	0	LOVLIE, CHRISTINE
4	423988		\$2.00	04/19/13	00000	5819	LOVSTAD, SUSAN

Check Register Report

Bank Number	Check Number	Check Status	Check Amount	Check Date	Vendor Number	Vendor Address Number	Vendor Name
4	423989		\$186.80	04/19/13	25433	0	LUONG, JOE
4	423990		\$19.20	04/19/13	00000	96	LYNCH, GERALD
4	423991		\$2,550.00	04/19/13	05220	0	MACPHAIL
4	423992		\$62.00	04/19/13	00000	583	MARTINEZ, LAURA MARTHA
4	423993		\$330.00	04/19/13	03412	0	MERZER, SHEILA M.A.L.P.
4	423994		\$1,014.84	04/19/13	24988	0	MIDWEST SPECIAL SERVICES, INC.
4	423995		\$45.00	04/19/13	08543	6	MN DEPT OF HEALTH
4	423996		\$240.00	04/19/13	27424	0	MOHAMED, IDIL A.
4	423997		\$350.00	04/19/13	22324	0	MULTILINGUAL WORD, INC.
4	423998		\$19.20	04/19/13	00000	9173	NELSON, DAWNE
4	423999		\$6.00	04/19/13	00016	2510	NOTERMANN, GERALD
4	424000		\$60.00	04/19/13	25874	0	NUR, ABDIRIZAK
4	424001		\$198.20	04/19/13	25300	1	ORANGE TREE EMPLOYMENT SCREENING
4	424002		\$600.00	04/19/13	27135	2	ORTON-GILLINGHAM OF MINNESOTA CLASSES
4	424003		\$270.00	04/19/13	26396	0	OSMAN, NIMO
4	424004		\$480.00	04/19/13	24879	0	PEREZ, MELISSA M.
4	424005		\$1,422.00	04/19/13	03055	4	PITNEY BOWES
4	424006		\$46.33	04/19/13	00016	2506	QUEENER, RAY
4	424007		\$120.00	04/19/13	21343	0	RAMACHER, THUY
4	424008		\$432.00	04/19/13	26662	1	RAPTOR TECHNOLOGIES
4	424009		\$1,226.23	04/19/13	07711	0	ROLANDO, NORMAN
4	424010		\$6.00	04/19/13	00016	2509	ROTHER, J.L.
4	424011		\$105.00	04/19/13	28412	0	SANJUAN, MIRIAM
4	424012		\$150.00	04/19/13	20491	0	SAVAGE, DAWN
4	424013		\$49.00	04/19/13	00000	5874	SCALES, KELLIE
4	424014		\$23.79	04/19/13	03532	2	SCHMITT MUSIC
4	424015		\$4,495.00	04/19/13	27010	1	SCHOOLDUDE.COM, INC.
4	424016		\$29.00	04/19/13	00000	5770	SHAFIE, ABSHIRO
4	424017		\$22.60	04/19/13	00016	2507	SLOTTERBACK, ROBERT
4	424018		\$108.00	04/19/13	27209	0	SOCCERCHILI
4	424019		\$1,776.00	04/19/13	27462	1	SOLIANT HEALTH
4	424020		\$3,400.00	04/19/13	02978	0	SOLUTION TREE
4	424021		\$1,620.00	04/19/13	28413	0	SPRING LAKE PARK HIGH SCHOOL
4	424022		\$10.17	04/19/13	00016	2508	STALOCH, TERI
4	424023		\$64.00	04/19/13	00000	5892	SUND, DEB
4	424024		\$65.00	04/19/13	00000	5952	TEDROS, MERID
4	424025		\$1,145.70	04/19/13	08203	1	TIES
4	424026		\$14,714.00	04/19/13	21008	0	TLC SPECIAL TRANSPORTATION
4	424027	Unissued	\$0.00	04/19/13	21008	0	TLC SPECIAL TRANSPORTATION
4	424028	Unissued	\$0.00	04/19/13	21008	0	TLC SPECIAL TRANSPORTATION
4	424029	Unissued	\$0.00	04/19/13	21008	0	TLC SPECIAL TRANSPORTATION

Check Register Report

Bank Number	Check Number	Check Status	Check Amount	Check Date	Vendor Number	Vendor Address Number	Vendor Name
4	424030		\$13,358.79	04/19/13	04417	1	US FOODS INC
4	424031		\$1,375.00	04/19/13	07549	0	US OFFICE FURNITURE, INC.
4	424032		\$225.00	04/19/13	25560	0	WARSAME, KADRA
4	424033		\$6.00	04/19/13	00016	2511	WEEKS, LINDA
4	424034		\$6.00	04/19/13	00016	2512	WESTPHAL, MARK
4	424035		\$60.00	04/19/13	25837	0	WILLIAMS, REBECCA
4	424036		\$1,106.00	04/19/13	03144	0	ZAPS LEARNING COMPANY, LLC
4	424037		\$3,365.40	04/23/13	26795	1	ALLIED PROFESSIONALS, INC.
4	424038		\$195.00	04/23/13	06939	0	BUREAU OF CRIMINAL APPREHENSION
4	424039		\$248.70	04/23/13	20289	1	CDW GOVERNMENT, INC.
4	424040		\$1,430.70	04/23/13	02519	0	CENTERPOINT ENERGY
4	424041		\$489.13	04/23/13	02781	5	CENTURYLINK
4	424042		\$810.00	04/23/13	21336	0	COMMUNICATION SERVICE FOR THE DEAF, INC
4	424043	Void	\$240.00	04/23/13	27788	0	DECA, INC.
4	424044		\$1,940.29	04/23/13	02333	1	EARTHGRAINS BAKING CO. INC.
4	424045		\$3.23	04/23/13	01463	0	FEDEX
4	424046		\$124.57	04/23/13	28202	0	FOUNDATION 191
4	424047		\$533.85	04/23/13	27973	0	GENERAL SPORTS CORPORATION
4	424048		\$47.68	04/23/13	00016	2526	JUST, ELIZABETH
4	424049		\$1,280.00	04/23/13	27225	0	K&K EXPRESS, LLC
4	424050		\$225.03	04/23/13	02203	0	LAKESHORE LEARNING MATERIALS
4	424051		\$294.00	04/23/13	25512	0	MAYER ARTS, INC.
4	424052		\$2,781.57	04/23/13	03029	1	MINNESOTA ENERGY RESOURCES CORPORATION
4	424053		\$1,059.30	04/23/13	26643	1	MONKEY IN A DRYER
4	424054		\$70.00	04/23/13	22324	0	MULTILINGUAL WORD, INC.
4	424055		\$290.00	04/23/13	06265	6	NATIONAL ASSOCIATION OF SCHOOL NURSES (NASN)
4	424056		\$300.00	04/23/13	27135	2	ORTON-GILLINGHAM OF MINNESOTA CLASSES
4	424057		\$956.05	04/23/13	03787	0	PEGASUS RECONDITIONING, INC.
4	424058		\$150.00	04/23/13	24879	0	PEREZ, MELISSA M.
4	424059		\$226.99	04/23/13	21851	0	RED WING SHOE STORE
4	424060		\$850.83	04/23/13	03751	1	RYDER TRANSPORTATION SERVICES
4	424061		\$12.00	04/23/13	26921	0	SOUTH SUBURBAN CONFERENCE
4	424062		\$522.00	04/23/13	25672	0	SPECIAL DELIVERY OF MINNESOTA, INC
4	424063		\$2,000.00	04/23/13	25234	0	STEINBERG-BOHN, JANET
4	424064		\$750.00	04/23/13	27734	0	SYMMETRY SYSTEMS UNLIMITED
4	424065		\$12.60	04/23/13	00001	1390	THOMAS, MELISSA
4	424066		\$453.06	04/23/13	03802	0	TRIO SUPPLY
4	424067		\$1,170.69	04/23/13	27819	0	US BANK EQUIPMENT FINANCE
4	424068		\$21,483.50	04/23/13	04417	1	US FOODS INC

Check Register Report

Bank Number	Check Number	Check Status	Check Amount	Check Date	Vendor Number	Vendor Address Number	Vendor Name
4	424069	Unissued	\$0.00	04/23/13	04417	1	US FOODS INC
4	424070	Unissued	\$0.00	04/23/13	04417	1	US FOODS INC
4	424071		\$50.00	04/23/13	09814	0	WAYZATA HIGH SCHOOL
4	424072		\$4,436.75	04/23/13	04451	11	XEROX CORPORATION
4	424073		\$1,176.13	04/23/13	27490	0	XEROX FINANCIAL SERVICES LLC
4	424074		\$15,045.33	05/01/13	28147	1	AGROPUR
4	424075	Unissued	\$0.00	05/01/13	28147	1	AGROPUR
4	424076	Unissued	\$0.00	05/01/13	28147	1	AGROPUR
4	424077	Unissued	\$0.00	05/01/13	28147	1	AGROPUR
4	424078	Unissued	\$0.00	05/01/13	28147	1	AGROPUR
4	424079	Unissued	\$0.00	05/01/13	28147	1	AGROPUR
4	424080	Unissued	\$0.00	05/01/13	28147	1	AGROPUR
4	424081	Unissued	\$0.00	05/01/13	28147	1	AGROPUR
4	424082		\$2,321.64	05/01/13	25114	0	ALL PRO SOUND
4	424083		\$141.00	05/01/13	00216	1	ALPHA VIDEO & AUDIO, INC.
4	424084		\$435.05	05/01/13	01365	0	AMERIPRIDE LINEN AND APPAREL SERVICES
4	424085	Unissued	\$0.00	05/01/13	01365	0	AMERIPRIDE LINEN AND APPAREL SERVICES
4	424086		\$7,387.95	05/01/13	00249	1	APPLE COMPUTER INC.
4	424087		\$347.37	05/01/13	03178	1	AQUA LOGIC, INC.
4	424088		\$777.60	05/01/13	06913	1	ARMCOM DISTRIBUTING COMPANY
4	424089		\$1,484.06	05/01/13	00386	1	BARNES & NOBLE INC
4	424090		\$228.00	05/01/13	25425	0	BERRY BLENDZ
4	424091		\$14,835.00	05/01/13	00477	0	BIX PRODUCE COMPANY
4	424092	Unissued	\$0.00	05/01/13	00477	0	BIX PRODUCE COMPANY
4	424093	Unissued	\$0.00	05/01/13	00477	0	BIX PRODUCE COMPANY
4	424094	Unissued	\$0.00	05/01/13	00477	0	BIX PRODUCE COMPANY
4	424095	Unissued	\$0.00	05/01/13	00477	0	BIX PRODUCE COMPANY
4	424096	Unissued	\$0.00	05/01/13	00477	0	BIX PRODUCE COMPANY
4	424097		\$265.76	05/01/13	00172	1	BLICK ART MATERIALS
4	424098		\$2,724.01	05/01/13	26720	0	BLUE BELL ENTERPRISES, INC.
4	424099		\$4,499.28	05/01/13	00397	1	BRO-TEX, INC.
4	424100		\$132.99	05/01/13	05972	2	CAMBIUM LEARNING INC.
4	424101		\$3,179.53	05/01/13	20289	1	CDW GOVERNMENT, INC.
4	424102		\$792.52	05/01/13	23046	1	CLASSROOM PRODUCTS WAREHOUSE, LLC
4	424103		\$173.48	05/01/13	03866	0	CONTINENTAL CLAY COMPANY
4	424104		\$27.74	05/01/13	06390	1	CREATIVE TEACHING PRESS
4	424105		\$28.00	05/01/13	00647	0	CROWN RENTAL, INC.
4	424106		\$290.40	05/01/13	24563	0	CRYSTAL BROOK DIRECT
4	424107		\$23.49	05/01/13	00645	0	CUB FOODS
4	424108		\$7,405.69	05/01/13	00782	1	CURRICULUM ASSOCIATES, INC.

Check Register Report

Bank Number	Check Number	Check Status	Check Amount	Check Date	Vendor Number	Vendor Address Number	Vendor Name
4	424109		\$3,999.00	05/01/13	02444	0	CYNMAR CORPORATION
4	424110		\$1,832.54	05/01/13	00279	0	D.S.D., INC.
4	424111		\$1,528.45	05/01/13	00837	1	DEMCO, INC.
4	424112		\$354.10	05/01/13	09859	1	DISCOUNT SCHOOL SUPPLY
4	424113		\$354.78	05/01/13	01458	1	GOPHER
4	424114		\$115.78	05/01/13	04387	1	GRAINGER
4	424115		\$487.39	05/01/13	00575	0	GROTH MUSIC COMPANY
4	424116		\$513.50	05/01/13	09046	0	HI TECH REFRIGERATION
4	424117		\$5,350.69	05/01/13	09318	1	HILLYARD INC - MINNEAPOLIS
4	424118		\$18,834.12	05/01/13	02235	2	HM RECEIVABLES CO LLC
4	424119		\$2,378.00	05/01/13	25854	1	HOCKENBERGS
4	424120		\$215.48	05/01/13	04818	0	HORIZON COMMERCIAL POOL SUPPLY
4	424121		\$239.25	05/01/13	03362	4	HOUGHTON MIFFLIN COMPANY
4	424122		\$210.80	05/01/13	24274	1	INNOVATIVE OFFICE SOLUTIONS
4	424123		\$7,864.04	05/01/13	05816	0	JOHN A. DAL SIN & SON, INC.
4	424124		\$324.75	05/01/13	08955	0	KELLEHER, HELMRICH AND ASSOCIATES
4	424125		\$401.20	05/01/13	02203	0	LAKESHORE LEARNING MATERIALS
4	424126		\$7.00	05/01/13	26151	0	LIGHTSPEED TECHNOLOGIES, INC.
4	424127		\$440.00	05/01/13	05077	0	LOCKS SAFE, INC.
4	424128		\$424.24	05/01/13	02196	0	MACKIN EDUCATIONAL RESOURCES
4	424129		\$26.01	05/01/13	06563	1	MCGRAW-HILL COMPANIES
4	424130		\$3,839.37	05/01/13	07752	0	MILLER ELECTRIC, INC.
4	424131		\$1,230.35	05/01/13	08999	1	MINNESOTA ELEVATOR INC
4	424132		\$684.00	05/01/13	28041	0	MIXMI BRANDS INC.
4	424133		\$104.98	05/01/13	03519	0	NAPA AUTO PARTS
4	424134		\$627.94	05/01/13	02704	0	NASCO
4	424135		\$126.25	05/01/13	25372	4	NCS PEARSON INC
4	424136		\$1,555.31	05/01/13	20320	0	NORTHERN AIR CORPORATION (NAC)
4	424137		\$70.20	05/01/13	28146	1	ODWALLA
4	424138		\$2,083.76	05/01/13	02489	1	OFFICE DEPOT COMPANY
4	424139	Unissued	\$0.00	05/01/13	02489	1	OFFICE DEPOT COMPANY
4	424140		\$146.00	05/01/13	03101	0	PUMP AND METER SERVICE, INC.
4	424141		\$1,042.00	05/01/13	21744	0	QUALITY AIR MECHANICAL, INC.
4	424142		\$960.00	05/01/13	23374	0	RECYCLE TECHNOLOGIES, INC.
4	424143		\$7,505.02	05/01/13	03744	1	RENAISSANCE LEARNING, INC.
4	424144		\$360.00	05/01/13	09053	0	RIFTON EQUIPEMENT
4	424145		\$228.72	05/01/13	03808	1	SCANTRON CORPORATION
4	424146		\$86.77	05/01/13	26145	1	SCHOOL OUTFITTERS
4	424147		\$1,675.17	05/01/13	25097	1	SCHOOL SPECIALTY INC
4	424148		\$6,693.00	05/01/13	27010	1	SCHOOLDUDE.COM, INC.
4	424149		\$596.00	05/01/13	27772	0	SEWER DAWGS PLUMBING & DRAINS LLC
4	424150		\$49.49	05/01/13	03745	1	SHERWIN-WILLIAMS

Check Register Report

Bank Number	Check Number	Check Status	Check Amount	Check Date	Vendor Number	Vendor Address Number	Vendor Name
4	424151		\$478.72	05/01/13	03587	1	SIMPLEX GRINNELL
4	424152		\$202.50	05/01/13	24021	0	SPIRAL BINDING COMPANY, INC.
4	424153		\$54.00	05/01/13	03640	1	STAPLES ADVANTAGE
4	424154		\$242.25	05/01/13	23998	2	SUMMIT FACILITY & KITCHEN SERVICE
4	424155		\$65.97	05/01/13	27981	0	TEACH BRIGHT
4	424156		\$2,288.00	05/01/13	00826	1	TIERNEY BROTHERS, INC.
4	424157		\$48,023.39	05/01/13	08203	1	TIES
4	424158		\$227.03	05/01/13	04939	2	TIGERDIRECT INC
4	424159		\$2,170.75	05/01/13	04045	1	TRANE U.S. INC.
4	424160		\$70.44	05/01/13	04060	0	TRANS-MISSISSIPPI BIOLOGICAL SUPPLY
4	424161		\$1,090.63	05/01/13	04037	1	TRIARCO ARTS & CRAFTS
4	424162		\$7,307.06	05/01/13	03802	0	TRIO SUPPLY
4	424163	Unissued	\$0.00	05/01/13	03802	0	TRIO SUPPLY
4	424164		\$1,886.65	05/01/13	02901	1	ULINE
4	424165		\$1,020.97	05/01/13	01197	1	US FOODS CULINARY EQUIPMENT & SUPPLIES LLC
4	424166		\$84.15	05/01/13	04419	0	WESTERN PSYCHOLOGICAL SERVICES
4	424167		\$98.89	05/01/13	22496	0	WILLIAM V. MACGILL & CO.
4	424168		\$780.00	05/01/13	04566	0	ZIEGLER INC.
4	424169		\$630.00	04/26/13	26089	0	ADAGIO DJAY ENTERTAINMENT
4	424170		\$337,970.06	04/26/13	27335	0	AMERICAN HEALTH RESOURCES
4	424171		\$71.83	04/26/13	00428	0	ARAMARK
4	424172		\$196.84	04/26/13	00000	9089	BEAL, JAY
4	424173		\$125.00	04/26/13	00706	0	BURNSVILLE CHAMBER OF COMMERCE
4	424174		\$1,793.88	04/26/13	00132	0	CLINICARE CORPORATION
4	424175		\$360.00	04/26/13	25919	0	CORDOVA-MORALES, LETICIA
4	424176		\$278.84	04/26/13	00647	0	CROWN RENTAL, INC.
4	424177		\$730.00	04/26/13	26097	0	DAD'S BELGIAN WAFFLES
4	424178		\$460.00	04/26/13	06740	0	DAKOTA CITY HERITAGE VILLAGE, INC.
4	424179		\$450.00	04/26/13	20524	0	DEWALD, RINA C.
4	424180		\$84.94	04/26/13	27261	0	EDUCATION WEEK
4	424181		\$300.00	04/26/13	04248	0	GEYEN, JULIE
4	424182		\$600.00	04/26/13	23312	0	GORNY, MICHELE
4	424183		\$929.33	04/26/13	16514	0	GRAFF, SALLY M
4	424184		\$41.10	04/26/13	00001	1391	GRAY, SARONDA
4	424185		\$150.00	04/26/13	28416	0	GUILLAUME, SYDNEY
4	424186		\$665.60	04/26/13	21252	0	HARMER, MARY
4	424187		\$100.00	04/26/13	24154	0	HEALTH COUNSELING SERVICES
4	424188		\$100.00	04/26/13	24067	0	JOHNSON, DENNIS
4	424189		\$40,113.59	04/26/13	27633	0	KELLY SERVICES, INC.
4	424190		\$15.00	04/26/13	26902	0	LEHNER, ANDREW
4	424191		\$1,500.00	04/26/13	08865	11	METRO ECSU

Check Register Report

Bank Number	Check Number	Check Status	Check Amount	Check Date	Vendor Number	Vendor Address Number	Vendor Name
4	424192		\$88.00	04/26/13	27099	0	MIKULAY, ELIZABETH P.
4	424193		\$10.00	04/26/13	28234	0	MOORE, LYNN
4	424194		\$315.00	04/26/13	22324	0	MULTILINGUAL WORD, INC.
4	424195		\$4,809.99	04/26/13	22639	1	NEXTEL
4	424196		\$300.00	04/26/13	27135	2	ORTON-GILLINGHAM OF MINNESOTA CLASSES
4	424197		\$120.00	04/26/13	22010	0	OSTGARD, SEVERA E.
4	424198		\$240.00	04/26/13	24879	0	PEREZ, MELISSA M.
4	424199		\$290.20	04/26/13	26529	0	PLAIN, SUSAN
4	424200		\$60.00	04/26/13	21343	0	RAMACHER, THUY
4	424201		\$1,913.40	04/26/13	28185	0	RANDSTAD WORK SOLUTIONS
4	424202		\$300.00	04/26/13	28375	0	REIN, MICHAEL
4	424203		\$147.00	04/26/13	28168	0	ROARK, RICHARD JEFFREY
4	424204		\$20.00	04/26/13	09588	4	SAVAGE, CITY OF
4	424205		\$11,289.89	04/26/13	28326	0	SCHOOL EXEC CONNECT INC
4	424206		\$11.00	04/26/13	26552	3	SCHOOL NUTRITION ASSOCIATION
4	424207		\$186.00	04/26/13	03609	0	SCIENCE MUSEUM OF MINN.
4	424208		\$1,776.00	04/26/13	27462	1	SOLIANT HEALTH
4	424209		\$263.00	04/26/13	01637	0	THREE RIVERS PARK DISTRICT
4	424210		\$789.50	04/26/13	00826	1	TIERNEY BROTHERS, INC.
4	424211		\$13,628.50	04/26/13	21008	0	TLC SPECIAL TRANSPORTATION
4	424212	Unissued	\$0.00	04/26/13	21008	0	TLC SPECIAL TRANSPORTATION
4	424213	Unissued	\$0.00	04/26/13	21008	0	TLC SPECIAL TRANSPORTATION
4	424214	Unissued	\$0.00	04/26/13	21008	0	TLC SPECIAL TRANSPORTATION
4	424215		\$130.50	04/26/13	27429	1	TRANSWORLD SYSTEMS, INC.
4	424216		\$125.00	04/26/13	05900	0	UNIQUE SOFTWARE CORPORATION
4	424217		\$711.85	04/26/13	28417	0	UNIVERSAL ATHLETIC SERVICE INC.
4	424218		\$212.78	04/26/13	00000	5972	VOSS, SUSAN
4	424219		\$800.00	04/26/13	24793	0	WATCH ME DRAW! LLC
4	424220		\$9.05	04/26/13	02776	0	XCEL ENERGY
4	424221		\$2,232.00	04/26/13	24245	0	YOUTH ENRICHMENT LEAGUE
4	424222		\$302.85	04/26/13	04549	0	ZEE MEDICAL
4	424223		\$98.00	04/29/13	00000	6677	AKERVIK, LAUREEN
4	424224		\$2,426.38	04/29/13	26795	1	ALLIED PROFESSIONALS, INC.
4	424225		\$395.00	04/29/13	08048	1	AMERICAN HEART ASSOCIATION
4	424226		\$486.00	04/29/13	04895	0	ASSOCIATION OF CLERICAL EMPLOYEES
4	424227		\$618.75	04/29/13	04016	0	BEHAVIORAL DIMENSIONS, INC.
4	424228		\$1,890.43	04/29/13	00016	2471	BRADY HOFFMAN
4	424229		\$1,920.00	04/29/13	09991	0	BURNSVILLE ASSOCIATION OF EDUCATIONAL ASSTS
4	424230		\$1,800.00	04/29/13	27938	0	BUTLER, IONE
4	424231		\$3,647.97	04/29/13	02519	0	CENTERPOINT ENERGY
4	424232		\$1,620.00	04/29/13	21336	0	COMMUNICATION SERVICE FOR THE

Check Register Report

Bank Number	Check Number	Check Status	Check Amount	Check Date	Vendor Number	Vendor Address Number	Vendor Name
							DEAF, INC
4	424233		\$293.40	04/29/13	00502	0	CORNERSTONE COPY CENTER
4	424234		\$15,343.52	04/29/13	01016	2	DAKOTA COUNTY PROPERTY TAXATION & RECORDS
4	424235		\$359.00	04/29/13	26702	0	DELTA MANAGEMENT ASSOCIATES, INC.
4	424236		\$42.00	04/29/13	28051	0	DO GOOD DIAPERS LLC
4	424237		\$268.69	04/29/13	01143	1	EBSCO
4	424238		\$239.00	04/29/13	27974	0	ECMC
4	424239		\$100.00	04/29/13	20802	0	EHLERS & ASSOCIATES, INC.
4	424240		\$228.00	04/29/13	27604	0	GREAT LAKES HIGHER EDUCATION CORPORATIO
4	424241		\$130.00	04/29/13	00016	2528	GREENWALD, ROBERTA
4	424242		\$958.50	04/29/13	03539	1	H & A ADMINISTRATORS
4	424243		\$136.23	04/29/13	00862	3	HERFF JONES, INC.
4	424244		\$2,540.25	04/29/13	02483	0	INTEGRA TELECOM
4	424245		\$142.50	04/29/13	01994	0	J&R SCHOOL SUPPLIES, INC.
4	424246		\$78.98	04/29/13	27225	0	K&K EXPRESS, LLC
4	424247		\$29.00	04/29/13	00000	6774	KARJALAHTI, JULIE
4	424248		\$62.00	04/29/13	00000	672	KEENES-BALFUL, PHYLICIA
4	424249		\$62.00	04/29/13	00000	6870	LINT, PETE
4	424250		\$29.00	04/29/13	00000	6000	MAZUR, MARION
4	424251		\$330.00	04/29/13	03412	0	MERZER, SHEILA M.A.L.P.
4	424252		\$1,055.00	04/29/13	08118	0	METRO ATHLETIC SUPPLY
4	424253		\$825.03	04/29/13	27235	0	METROPOLITAN LEARNING ALLIANCE
4	424254		\$3,286.45	04/29/13	27547	1	MINNESOTA OFFICE TECHNOLOGY GROUP
4	424255		\$255.00	04/29/13	00476	0	MN SOCIETY OF CERTIFIED PUBLIC ACCOUNTANTS
4	424256		\$610.00	04/29/13	03216	0	MROS, RICHARD
4	424257		\$144.00	04/29/13	08769	0	NCPERS MINNESOTA
4	424258		\$300.00	04/29/13	27135	2	ORTON-GILLINGHAM OF MINNESOTA CLASSES
4	424259		\$60.00	04/29/13	24879	0	PEREZ, MELISSA M.
4	424260		\$7.96	04/29/13	E6705	0	QUINN, CATHERINE A
4	424261		\$2,756.00	04/29/13	28185	0	RANDSTAD WORK SOLUTIONS
4	424262		\$236.00	04/29/13	28277	0	ROBERT J. BRUNO, LTD
4	424263		\$500.00	04/29/13	27355	0	SAGE TECHNOLOGY GROUP, LLC
4	424264		\$2,300.00	04/29/13	27421	0	SANBORN EDUCATION ASSOCIATES, INC.
4	424265		\$179.30	04/29/13	09588	4	SAVAGE, CITY OF
4	424266		\$7,623.97	04/29/13	07382	0	SCHOOL SERVICES EMPLOYEES LOCAL 284
4	424267		\$500.00	04/29/13	04683	8	SCOTT COUNTY TREASURER
4	424268		\$296.00	04/29/13	27462	1	SOLIANT HEALTH
4	424269		\$98.00	04/29/13	00000	6038	TEIGLAND, KARLIN

Check Register Report

Bank Number	Check Number	Check Status	Check Amount	Check Date	Vendor Number	Vendor Address Number	Vendor Name
4	424270	Void	\$23,098.66	04/29/13	21008	0	TLC SPECIAL TRANSPORTATION
4	424271	Unissued	\$0.00	04/29/13	21008	0	TLC SPECIAL TRANSPORTATION
4	424272	Unissued	\$0.00	04/29/13	21008	0	TLC SPECIAL TRANSPORTATION
4	424273	Unissued	\$0.00	04/29/13	21008	0	TLC SPECIAL TRANSPORTATION
4	424274		\$57.50	04/29/13	23463	17	UNITED STATES TREASURY
4	424275		\$460.33	04/29/13	28417	0	UNIVERSAL ATHLETIC SERVICE INC.
4	424276		\$24,587.91	04/29/13	04417	1	US FOODS INC
4	424277	Unissued	\$0.00	04/29/13	04417	1	US FOODS INC
4	424278	Unissued	\$0.00	04/29/13	04417	1	US FOODS INC
4	424279		\$19.00	04/29/13	00000	6494	WINFIELD, ED
4	424280		\$905.00	04/29/13	02039	0	WORKS, THE
4	424281		\$2,083.58	04/29/13	04451	11	XEROX CORPORATION
4	424282		\$928.05	04/29/13	27490	0	XEROX FINANCIAL SERVICES LLC
4	424283		\$16,887.00	04/29/13	21008	0	TLC SPECIAL TRANSPORTATION
4	424284	Unissued	\$0.00	04/29/13	21008	0	TLC SPECIAL TRANSPORTATION
4	424285	Unissued	\$0.00	04/29/13	21008	0	TLC SPECIAL TRANSPORTATION
4	424286	Unissued	\$0.00	04/29/13	21008	0	TLC SPECIAL TRANSPORTATION
4	424287		\$6,211.66	04/29/13	04417	1	US FOODS INC
4	424288		\$2,185.76	05/03/13	26795	1	ALLIED PROFESSIONALS, INC.
4	424289		\$340.00	05/03/13	09426	0	ARNESON, AL
4	424290		\$85.25	05/03/13	00000	9089	BEAL, JAY
4	424291		\$382.00	05/03/13	03931	0	BERRY COFFEE COMPANY
4	424292		\$928.93	05/03/13	26720	0	BLUE BELL ENTERPRISES, INC.
4	424293		\$175.69	05/03/13	02519	0	CENTERPOINT ENERGY
4	424294		\$135.00	05/03/13	21336	0	COMMUNICATION SERVICE FOR THE DEAF, INC
4	424295		\$84.00	05/03/13	22013	0	CUSTOM WATER WORKS
4	424296		\$130.00	05/03/13	26136	0	CUZZO, JOHN
4	424297		\$110.00	05/03/13	28071	0	DAY, JON
4	424298		\$864.50	05/03/13	00905	0	DODGE NATURE CENTER
4	424299		\$70.00	05/03/13	28238	0	FLADMARK, MIKE
4	424300		\$260.00	05/03/13	20715	0	GAGSTETTER, MARK
4	424301		\$70.00	05/03/13	28193	0	GAIDA, PEG
4	424302		\$76.00	05/03/13	03350	0	GRANDELIS, DAVE
4	424303		\$407.00	05/03/13	20324	1	GURSTEL,STALOCH & CHARGO PA
4	424304		\$26.98	05/03/13	00862	3	HERFF JONES, INC.
4	424305		\$120.00	05/03/13	28423	0	HIESTAND, DEB
4	424306		\$8,623.80	05/03/13	02235	2	HM RECEIVABLES CO LLC
4	424307		\$868.80	05/03/13	26918	0	IMB DISTRIBUTION
4	424308		\$1,454.29	05/03/13	28379	1	INFOBASE LEARNING
4	424309		\$165.00	05/03/13	01896	0	INSTRUMENTALIST COMPANY, THE
4	424310		\$6,500.00	05/03/13	01029	0	INVER HILLS COMMUNITY COLLEGE

Check Register Report

Bank Number	Check Number	Check Status	Check Amount	Check Date	Vendor Number	Vendor Address Number	Vendor Name
4	424311		\$102.83	05/03/13	03003	2	J.W. PEPPER & SON INC.
4	424312		\$120.00	05/03/13	03574	0	JESSEN, CHRIS
4	424313		\$400.00	05/03/13	28420	0	KEIPER, BROCK
4	424314		\$125.00	05/03/13	28421	0	KENDALL, BRUCE
4	424315		\$110.00	05/03/13	27683	0	KING, JEFF
4	424316		\$100.00	05/03/13	05303	0	LEGIONVILLE
4	424317		\$120.00	05/03/13	26493	0	LIKES, TIMOTHY
4	424318		\$4,739.18	05/03/13	26241	0	M&E REALTY COMPANY
4	424319		\$110.00	05/03/13	22042	0	MCCORMICK, PAT
4	424320		\$2,000.00	05/03/13	08865	11	METRO ECSU
4	424321		\$20.20	05/03/13	28422	0	MINNETONKA, CITY OF
4	424322		\$188.61	05/03/13	09615	1	MN RIVER VALLEY SPEC ED COOP #993
4	424323		\$910.00	05/03/13	22324	0	MULTILINGUAL WORD, INC.
4	424324		\$1,568.97	05/03/13	06477	0	OFFICE OF ENTERPRISE TECHNOLOGY
4	424325		\$40.02	05/03/13	00000	9592	OLSON, NANCY
4	424326		\$90.00	05/03/13	24879	0	PEREZ, MELISSA M.
4	424327		\$110.00	05/03/13	26967	0	PETERSON, DONALD
4	424328		\$74.00	05/03/13	E6705	0	QUINN, CATHERINE A
4	424329		\$1,810.00	05/03/13	28263	1	RECOVER HEALTH SERVICES
4	424330		\$8,958.33	05/03/13	09588	1	SAVAGE, CITY OF
4	424331		\$166.61	05/03/13	25097	1	SCHOOL SPECIALTY INC
4	424332		\$288.00	05/03/13	26921	0	SOUTH SUBURBAN CONFERENCE
4	424333		\$22.68	05/03/13	03640	5	STAPLES PRINT SOLUTIONS
4	424334		\$200.00	05/03/13	27182	0	SUMMIT AMUSEMENT COMPANIES
4	424335		\$638.00	05/03/13	21008	0	TLC SPECIAL TRANSPORTATION
4	424336		\$342.50	05/03/13	27429	1	TRANSWORLD SYSTEMS, INC.
4	424337		\$725.00	05/03/13	08595	0	UNIVERSITY OF MINNESOTA-TUITION
4	424338		\$612.13	05/03/13	04417	1	US FOODS INC
4	424339		\$35.00	05/03/13	17649	0	WAHIDI, ZARGHONA
4	424340		\$1,997.05	05/03/13	04451	11	XEROX CORPORATION
4	424341		\$56.97	05/10/13	23584	3	ABC & TOY ZONE
4	424342		\$4,628.70	05/10/13	01118	0	ABLENET, INC.
4	424343		\$274.00	05/10/13	01982	0	ADHESIVE LABEL
4	424344		\$160.00	05/10/13	28394	0	ADVANCED MULTIMEDIA DEVICES INC.
4	424345		\$11,469.59	05/10/13	28147	1	AGROPUR
4	424346	Unissued	\$0.00	05/10/13	28147	1	AGROPUR
4	424347	Unissued	\$0.00	05/10/13	28147	1	AGROPUR
4	424348	Unissued	\$0.00	05/10/13	28147	1	AGROPUR
4	424349	Unissued	\$0.00	05/10/13	28147	1	AGROPUR
4	424350	Unissued	\$0.00	05/10/13	28147	1	AGROPUR
4	424351	Unissued	\$0.00	05/10/13	28147	1	AGROPUR
4	424352		\$392.83	05/10/13	03503	0	AMERICAN TIME & SIGNAL

Check Register Report

Bank Number	Check Number	Check Status	Check Amount	Check Date	Vendor Number	Vendor Address Number	Vendor Name
4	424353		\$229.40	05/10/13	01365	0	AMERIPRIDE LINEN AND APPAREL SERVICES
4	424354		\$2,195.00	05/10/13	00249	1	APPLE COMPUTER INC.
4	424355		\$391.00	05/10/13	26468	0	ARROW LIFT
4	424356		\$1,234.80	05/10/13	03197	1	ATTAINMENT COMPANY, INC.
4	424357		\$69.99	05/10/13	28405	1	AYAGROUP
4	424358		\$170.95	05/10/13	25229	0	BERGIN FRUIT & NUT CO.
4	424359		\$142.50	05/10/13	25425	0	BERRY BLENDZ
4	424360		\$34.90	05/10/13	21653	0	BEYOND PLAY, LLC
4	424361		\$11,371.06	05/10/13	00477	0	BIX PRODUCE COMPANY
4	424362	Unissued	\$0.00	05/10/13	00477	0	BIX PRODUCE COMPANY
4	424363	Unissued	\$0.00	05/10/13	00477	0	BIX PRODUCE COMPANY
4	424364	Unissued	\$0.00	05/10/13	00477	0	BIX PRODUCE COMPANY
4	424365	Unissued	\$0.00	05/10/13	00477	0	BIX PRODUCE COMPANY
4	424366	Unissued	\$0.00	05/10/13	00477	0	BIX PRODUCE COMPANY
4	424367		\$388.64	05/10/13	00454	0	BRYAN ROCK PRODUCTS INC
4	424368		\$2,009.84	05/10/13	20289	1	CDW GOVERNMENT, INC.
4	424369		\$190.69	05/10/13	25513	1	CHURCH OFFSET PRINTING, INC.
4	424370		\$124.97	05/10/13	23046	1	CLASSROOM PRODUCTS WAREHOUSE, LLC
4	424371		\$350.50	05/10/13	27279	1	COLE PAPERS INC.
4	424372		\$150.00	05/10/13	00502	0	CORNERSTONE COPY CENTER
4	424373		\$27.80	05/10/13	00666	1	COUNCIL FOR EXCEPTIONAL CHILDREN
4	424374		\$96.34	05/10/13	00645	0	CUB FOODS
4	424375		\$1,041.73	05/10/13	00279	0	D.S.D., INC.
4	424376		\$867.89	05/10/13	00837	1	DEMCO, INC.
4	424377		\$189.85	05/10/13	08490	0	EDUCATIONAL VIDEO NETWORK, INC.
4	424378		\$1,422.93	05/10/13	01078	0	ELECTRO WATCHMAN, INC.
4	424379		\$151.78	05/10/13	04145	0	FREE SPIRIT PUBLISHING, INC.
4	424380		\$16,916.25	05/10/13	01475	0	FRIEDGES LANDSCAPING, INC.
4	424381		\$220.10	05/10/13	01541	1	GENERAL PARTS, LLC
4	424382		\$245.35	05/10/13	01458	1	GOPHER
4	424383		\$1,607.37	05/10/13	04387	1	GRAINGER
4	424384		\$8,759.87	05/10/13	09046	0	HI TECH REFRIGERATION
4	424385		\$9,517.65	05/10/13	09318	1	HILLYARD INC - MINNEAPOLIS
4	424386		\$219.89	05/10/13	01609	2	HUMAN RELATIONS MEDIA
4	424387		\$635.40	05/10/13	27942	0	J.H. LARSON COMPANY
4	424388		\$242.60	05/10/13	06243	0	KUBITZ EDUCATIONAL SERVICES
4	424389		\$56.96	05/10/13	02203	0	LAKESHORE LEARNING MATERIALS
4	424390		\$6,742.26	05/10/13	27253	0	LANDS BEST FOODS LLC
4	424391		\$68.93	05/10/13	09001	1	LEARNING RESOURCES, INC.
4	424392		\$274.00	05/10/13	06419	1	LENSCRAFTERS, INC.
4	424393		\$41.95	05/10/13	02320	0	LINGUI SYSTEMS, INC.

Check Register Report

Bank Number	Check Number	Check Status	Check Amount	Check Date	Vendor Number	Vendor Address Number	Vendor Name
4	424394		\$210.00	05/10/13	05077	0	LOCKSAFE, INC.
4	424395		\$3,557.30	05/10/13	02196	0	MACKIN EDUCATIONAL RESOURCES
4	424396		\$273.60	05/10/13	28041	0	MIXMI BRANDS INC.
4	424397		\$19.44	05/10/13	03519	0	NAPA AUTO PARTS
4	424398		\$281.42	05/10/13	02704	0	NASCO
4	424399		\$2,950.51	05/10/13	03091	4	NCS PEARSON INC
4	424400		\$1,370.26	05/10/13	25372	4	NCS PEARSON INC
4	424401		\$109.95	05/10/13	28406	0	NEW PATH LEARNING
4	424402		\$101.40	05/10/13	28146	1	ODWALLA
4	424403		\$1,587.13	05/10/13	02489	1	OFFICE DEPOT COMPANY
4	424404	Unissued	\$0.00	05/10/13	02489	1	OFFICE DEPOT COMPANY
4	424405	Unissued	\$0.00	05/10/13	02489	1	OFFICE DEPOT COMPANY
4	424406		\$453.97	05/10/13	23138	0	POPP BINDING AND LAMINATING
4	424407		\$754.52	05/10/13	28403	0	PORTENZO.COM LLC
4	424408		\$328.90	05/10/13	03073	1	PRO-ED
4	424409		\$78.00	05/10/13	03058	0	PSYCHOLOGICAL ASSESS. RESOURCES INC
4	424410		\$208.59	05/10/13	07235	0	REALLY GOOD STUFF
4	424411		\$60.92	05/10/13	03515	1	SARGENT WELCH
4	424412		\$780.59	05/10/13	03196	3	SCHOLASTIC INC.
4	424413		\$949.82	05/10/13	25097	1	SCHOOL SPECIALTY INC
4	424414		\$267.00	05/10/13	02217	1	SIEMENS INDUSTRY, INC.
4	424415		\$153.02	05/10/13	03640	1	STAPLES ADVANTAGE
4	424416		\$141.85	05/10/13	27529	1	STONE SCULPTORS SUPPLIES
4	424417		\$123.70	05/10/13	04308	0	SUPER DUPER SCHOOL CO.
4	424418		\$47.36	05/10/13	03703	0	SUPREME SCHOOL SUPPLY
4	424419		\$312.01	05/10/13	01377	0	THERAPY SHOPPE
4	424420		\$4,411.22	05/10/13	00826	1	TIERNEY BROTHERS, INC.
4	424421		\$4,055.00	05/10/13	08203	1	TIES
4	424422		\$3,078.78	05/10/13	03802	0	TRIO SUPPLY
4	424423		\$1,848.25	05/10/13	01197	1	US FOODS CULINARY EQUIPMENT & SUPPLIES LLC
4	424424		\$920.89	05/10/13	04417	1	US FOODS INC
4	424425		\$205.64	05/10/13	04435	0	WEST MUSIC COMPANY
4	424426		\$3,221.60	05/10/13	04419	0	WESTERN PSYCHOLOGICAL SERVICES
4	424427		\$1,673.64	05/10/13	04484	1	ZANER-BLOSER
Check Count	642	Grand Total	\$1,578,663.22				

Check Register Report

Bank Number	Check Number	Check Status	Check Amount	Check Date	Vendor Number	Vendor Address Number	Vendor Name
3	100796		\$28,883.00	04/12/13	23509	0	COOL AIR MECHANICAL, INC.
3	100797		\$29,539.00	04/12/13	01641	0	H&B SPECIALIZED PRODUCTS, INC.
3	100798		\$241,212.63	04/12/13	26203	0	JORGENSEN CONSTRUCTION, INC.
3	100799		\$17,475.52	04/12/13	24803	0	L&M BOILER SYSTEMS, INC.
3	100800		\$3,135.00	04/12/13	27063	0	MIDWEST BLINDS
3	100801		\$475.36	04/12/13	07752	0	MILLER ELECTRIC, INC.
3	100802		\$6,597.00	04/12/13	08999	1	MINNESOTA ELEVATOR INC
3	100803		\$18,852.34	05/03/13	26500	0	ARMSTRONG TORSETH SKOLD & RYDEEN INC.
3	100804		\$7,457.79	05/03/13	27321	0	ELLIOTT'S PAINTING & DECORATING, INC.
3	100805		\$11,441.25	05/03/13	27063	0	MIDWEST BLINDS
Check Count	10	Grand Total	\$365,068.89				



**Agenda II.B.5
May 16, 2013**

TO: Dr. Randall Clegg, Superintendent

FROM: Lisa K. Rider, Executive Director of Business Services

DATE: May 16, 2013

RE: Budget Analysis for the Month Ending April 30, 2013

RECOMMENDATION: That the Board accept the Budget Analysis for the month ending April 30, 2013

The April Budget Reports are presented for Board information and review. The reports indicate that year-to-date expenditures plus encumbrances in all funds total \$101,674,202 or 64.65% of the Revised Budget. Year-to-date revenue in all funds total \$118,511,257 or 80.39% of the Revised Budget.

Summary financial reports are provided to allow monthly monitoring of the budget as follows:

Revenue Summary By Fund
Expenditure Summary By Fund

All of the reports show last year's actual figures, this year's budget and this year's activity to date. Additional detail is available upon request.

To assist the Board in monitoring monthly financial activity and to help identify budget-to-actual deviations, a graph has been developed as follows:

Cash and Investments by Month for Last year and Current year
General Fund Revenues Year-to-Date for Last two years and Current year
All Funds Revenue Year-to-Date for Last two years and Current year
General Fund Expenditures Year-to-Date for Last two years and Current year
All Funds Expenditures Year-to-Date for Last two years and Current year

All of the reports and graphs are presented on a monthly basis together with comments regarding identified deviations or unanticipated occurrences. I would be glad to answer any questions regarding these reports.

STATEMENT OF REVENUE

DIST 0191 Burnsville-Eagan-Savage ISD191 ACCOUNTING PERIOD 04/01/13 TO 04/30/13

ACCT STATUS: Active and Next Year Accts ACCOUNT RANGES: 01 TO 99-999
 ZERO BALANCES: Suppress Zero Balances
 SORTED BY: ACCOUNT FD ORG
 SUBTOTALLED BY: ACCOUNT FD
 SERIES TOTALS: <None Selected>
 PAGE BREAK ON: <None Selected>

FD	PRIOR YEAR ACTUAL	REVENUE BUDGET	REVISED BUDGET	04/01/13 TO 04/30/13	FISCAL YEAR 201207 RECEIVED THRU 04/30/13	REMAINING ON 04/30/13	PERCENT REMAINING
01 GENERAL	110,203,095.16	109,396,368	10,303,821.70	88,075,617.25	21,320,750.75	19.48 %	
02 FOOD SERVICE	4,625,263.62	4,441,168	454,960.00	3,798,441.65	642,726.35	14.47 %	
04 COMMUNITY SERVICE	5,915,111.94	5,041,462	290,869.53	3,724,022.31	1,317,439.69	26.13 %	
06 CAPITAL PROJECTS	28,233.26	25,000	2,251.46	16,891,213.02	16,866,213.02	7464.85-%	
07 DEBT SERVICE	7,343,410.85	7,354,494	16,227.84	4,077,674.62	3,276,819.38	44.55 %	
08 FLEX BENEFIT FUND	760,731.16	850,000	68,221.42	516,627.79	333,372.21	39.22 %	
09 SCHOLARSHIP FUND	42,317.23	28,250	4,602.55	25,602.55	2,647.45	9.37 %	
11 RHEAUME EDUCATIONAL FUND	1.57	0	0.00	1.57-	1.57	0.00 %	
12 K ROGERS SCHOLARSHIP	2.69	0	0.00	2.69-	2.69	0.00 %	
15 CAMPUS CUP	117,547.53	115,000	13,039.29	87,643.72	27,356.28	23.78 %	
20 ISF - DENTAL	900,769.61	980,300	0.00	0.00	980,300.00	100.00 %	
21 ISF - POST RETIREMENT BENEFITS	1,005,230.65	603,500	0.00	0.00	603,500.00	100.00 %	
22 ISF - HEALTH SELECT 105	14,407,690.26	16,003,000	0.00	0.00	16,003,000.00	100.00 %	
25 OPEB REVOCABLE TRUST	936,951.76	925,000	9,375.30	573,497.44	351,502.56	38.00 %	
47 POST EMPLOYMENT BENEFITS	1,655,377.98	1,661,520	1.37	740,916.15	920,603.85	55.40 %	

STATEMENT OF REVENUE

DIST 0191 Burnsville-Eagan-Savage ISD191 ACCOUNTING PERIOD 04/01/13 TO 04/30/13

FD	PRIOR YEAR ACTUAL	REVIS	BUDGET	04/01/13	04/30/13	FISCAL YEAR 201207	RECEIVED	THRU	04/30/13	REMAINING ON 04/30/13	PERCENT REMAINING
50	0.00	0	0.61	5.14						5.14-	0.00 %
*** REPORT TOTALS:											
	147,941,735.27	147,425,062	11,163,371.07	118,511,257.38						28,913,804.62	19.61 %

STATEMENT OF EXPENDITURES

DIST 0191 Burnsville-Eagan-Savage ISD191 ACCOUNTING PERIOD 04/01/13 TO 04/30/13

ACCT STATUS: Active and Next Year Accts ACCOUNT RANGES: 01- TO 99-
 ZERO BALANCES: Print Zero Balances
 SORTED BY: ACCOUNT FD ORG
 SUBTOTALLED BY: ACCOUNT FD
 SERIES TOTALS: <None Selected>
 PAGE BREAK ON: <None Selected>

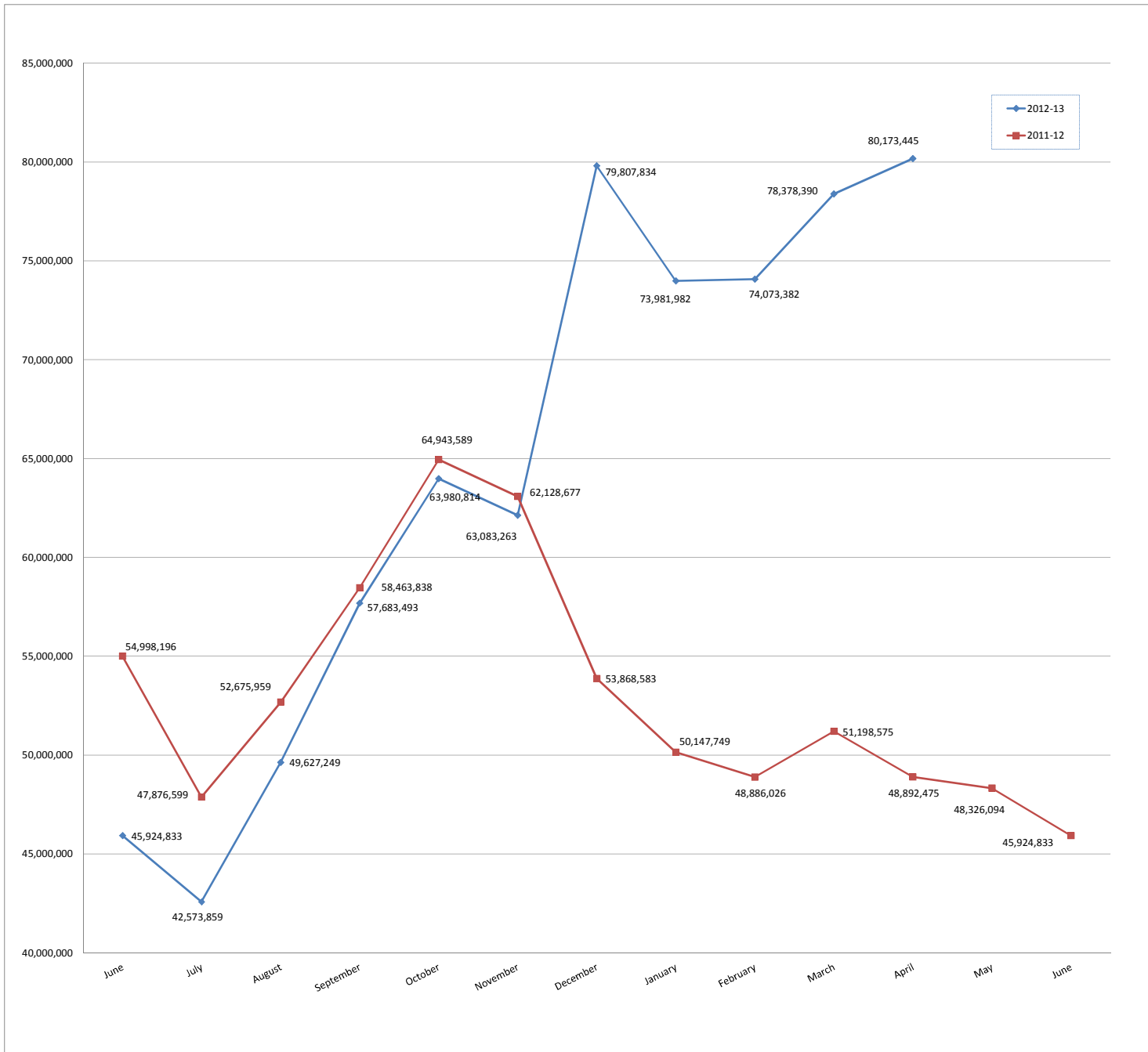
FD	PRIOR YEAR	REVIS	BUDGET	EXPEN	ENCUMBERED	REMAINING	PERCENT
01	ACTUAL	BUDGET	04/30/13	THRU 04/30/13	THRU 04/30/13	ON 04/30/13	REMAINING
01 GENERAL	99,627,408.73	105,095,752	7,971,587.27	74,035,621.33	578,709.95	30,481,420.72	29.00 %
02 FOOD SERVICE	4,424,905.33	4,607,055	400,090.60	3,551,551.65	14,404.01	1,041,099.34	22.59 %
03 TRANSPORTATION	6,388,943.57	6,526,508	92,777.98	3,625,602.67		2,900,905.33	44.44 %
04 COMMUNITY SERVICE	5,345,786.62	5,033,159	447,958.57	3,914,916.06	1,693.35	1,116,549.59	22.18 %
06 CAPITAL PROJECTS	10,002,487.70	6,142,095	341,607.62	3,770,178.75	664,882.81	1,707,033.44	27.79 %
07 DEBT SERVICE	7,486,230.69	7,603,256	0.00	7,599,907.50		3,348.50	0.04 %
08 FLEX BENEFIT FUND	774,210.32	860,025	67,457.82	551,006.81		309,018.19	35.93 %
09 SCHOLARSHIP FUND	46,978.83	30,000	0.00	5,500.00		24,500.00	81.66 %
10 PRIN EARLY RET INS FUND	0.00	0	0.00	0.00		0.00	0.00 %
11 RHEAUME EDUCATIONAL FUND	3,441.30	0	0.00	0.00		0.00	0.00 %
12 KATHY ROGERS SCHOLARSHIP FUND	5,899.57	0	0.00	0.00		0.00	0.00 %
15 CAFE	123,416.06	110,264	6,747.28	72,065.20		38,198.80	34.64 %
20 ISF - DENTAL	922,119.04	980,300	72,649.24	747,694.52		232,605.48	23.72 %
21 ISF - POST RETIREMENT BENEFITS	310,790.19-	1,460,500	0.00	64,864.83		1,395,635.17	95.55 %
22 ISF - HEALTH SELECT 105	14,931,683.49	16,000,000	0.00	0.00		16,000,000.00	100.00 %

STATEMENT OF EXPENDITURES

DIST 0191 Burnsville-Eagan-Savage ISD191 ACCOUNTING PERIOD 04/01/13 TO 04/30/13

FD	PRIOR	FISCAL YEAR 201207						PERCENT
25	YEAR	REVIS	04/01/13	EXPEN	ENCUM	REMAIN	REMAIN	
	ACTUAL	BUDGET	04/30/13	THRU 04/30/13	THRU 04/30/13	ON 04/30/13	ING	
25	OPEB REVOCABLE TRUST	1,593,791.20	1,228,000	20.83	892,549.19		335,450.81	27.31 %
47	POST EMPLOYMENT BENEFITS	1,578,850.00	1,584,400	0.00	1,582,850.00		1,550.00	0.09 %
50	STUDENT FUND	0.00	0	21.69	203.14		203.14-	0.00 %
*** REPORT TOTALS:		152,945,362.26	157,261,314	9,400,918.90	100,414,511.65	1,259,690.12	55,587,112.23	35.34 %

ALL FUNDS CASH AND INVESTMENTS
2011-12 AND 2012-13

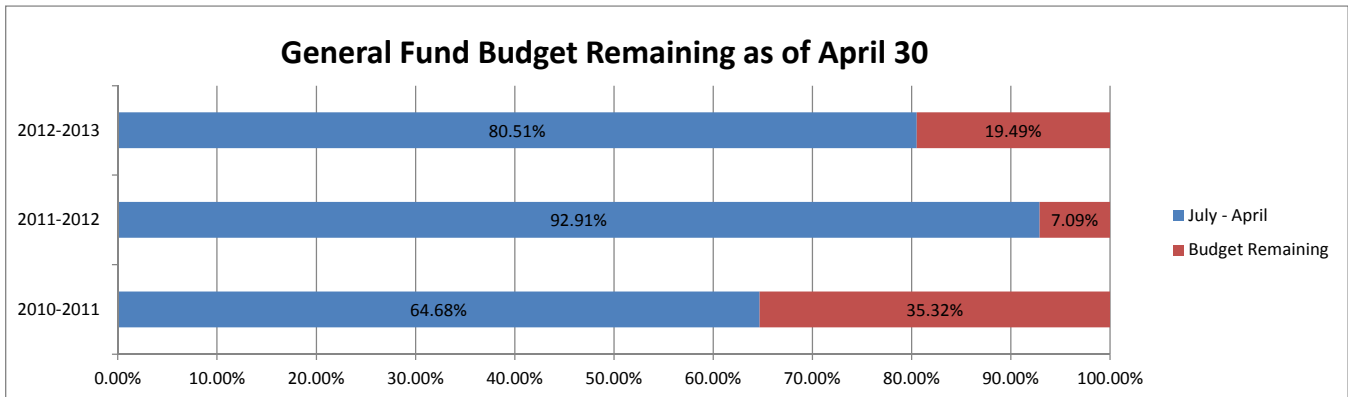
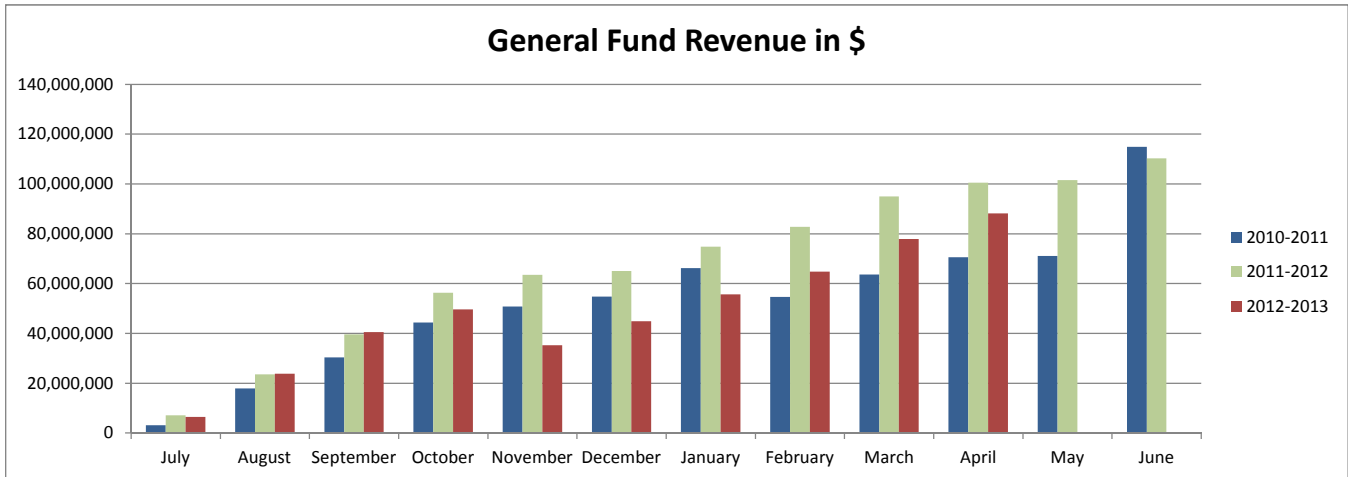


GENERAL FUND CASH AND INVESTMENTS
2011-12 AND 2012-13



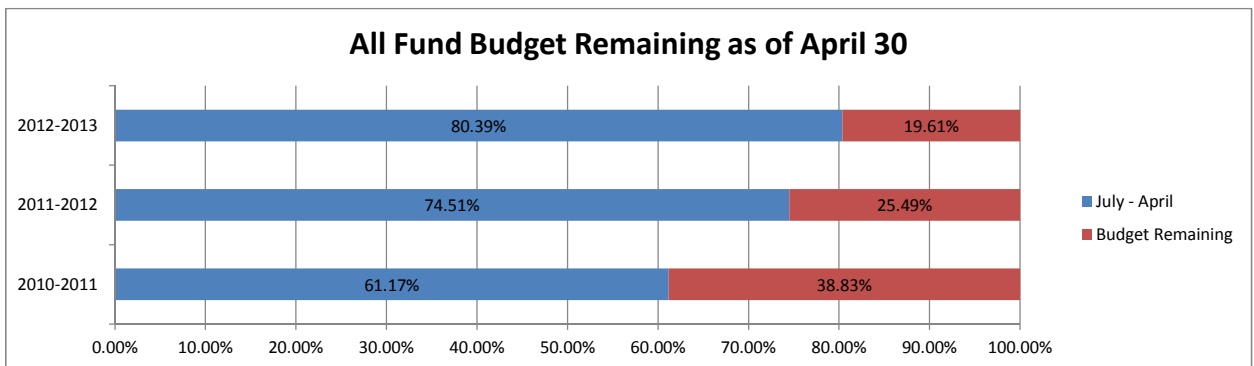
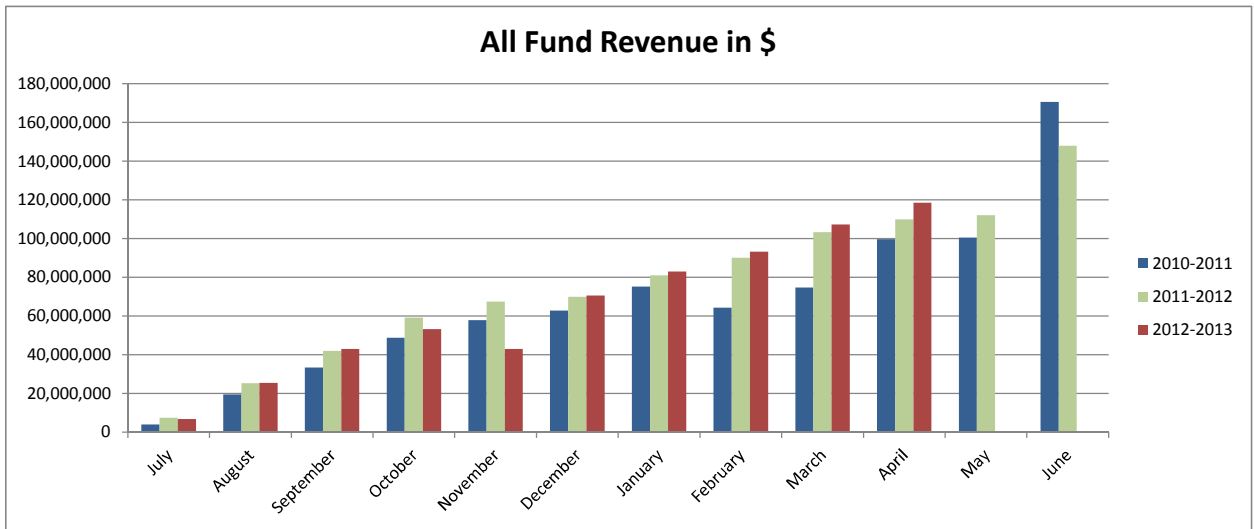
**REVENUE COMPARISON
GENERAL FUND**

	2010-2011		2011-2012		2012-2013	
	\$	%	\$	%	\$	%
July	3,122,179	2.86%	7,093,997	6.62%	6,416,600	5.86%
August	17,936,449	16.44%	23,532,598	21.96%	23,874,618	21.80%
September	30,322,237	27.78%	39,551,743	36.91%	40,538,045	37.02%
October	44,402,827	40.69%	56,355,393	52.59%	49,597,402	45.29%
November	50,842,027	46.59%	63,472,487	59.23%	35,235,834	32.18%
December	54,770,566	50.19%	65,012,573	60.67%	44,832,554	40.94%
January	66,187,965	60.65%	74,806,802	69.13%	55,686,273	50.85%
February	54,620,881	50.05%	82,739,097	79.46%	64,825,144	59.19%
March	63,578,814	58.26%	94,960,790	87.76%	77,846,400	71.09%
April	70,584,775	64.68%	100,543,940	92.91%	88,163,261	80.51%
May	71,023,409	65.08%	101,530,967	93.82%		
June	114,885,450	105.27%	110,320,643	101.95%		
BUDGET	109,133,898	100.00%	108,215,137	100.00%	109,511,368	100.00%



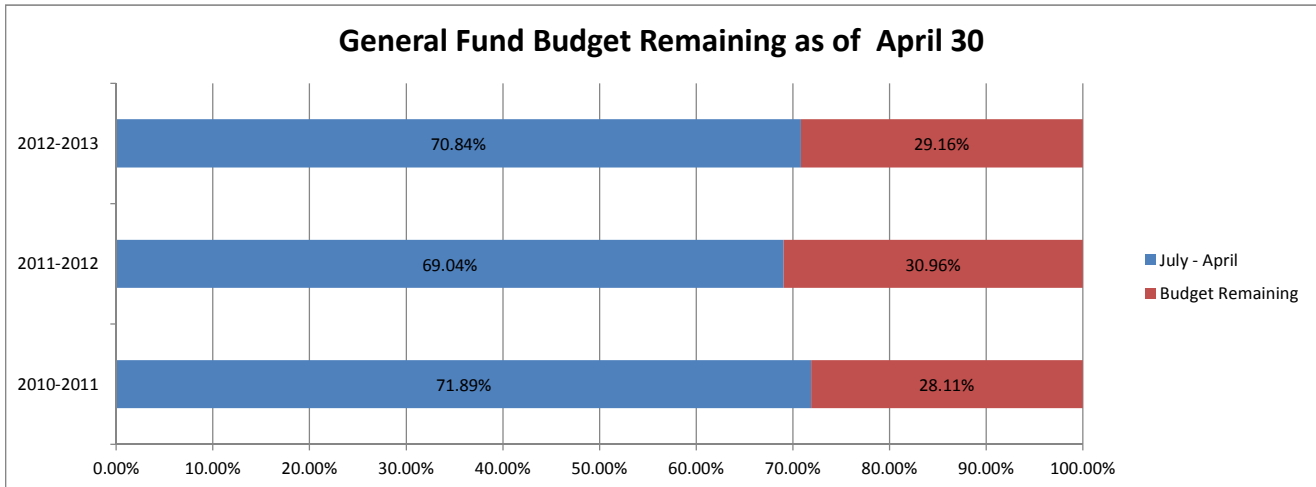
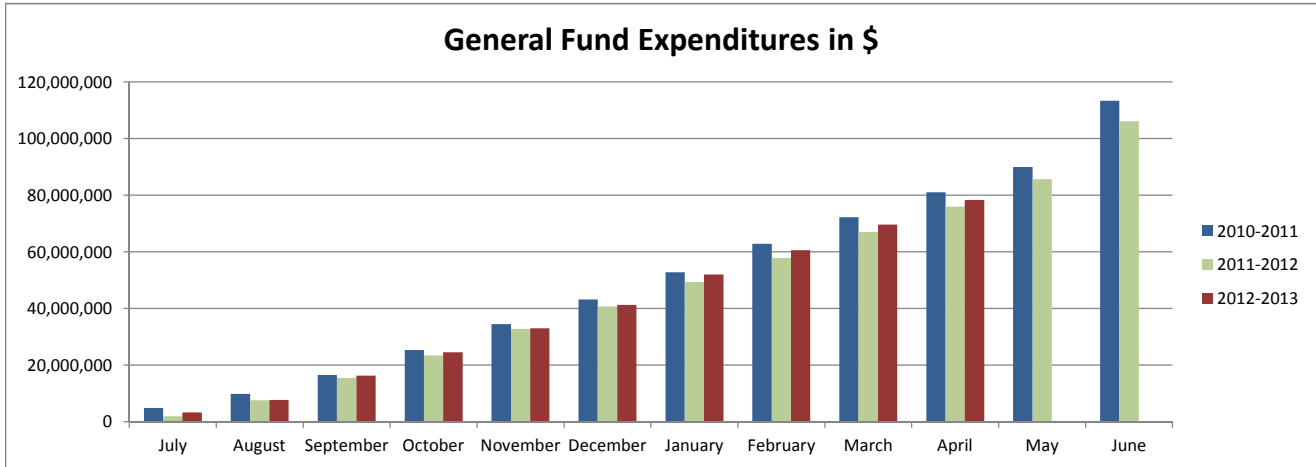
**REVENUE COMPARISON
ALL FUNDS**

	2010-2011		2011-2012		2012-2013	
	\$	%	\$	%	\$	%
July	3,960,044	2.43%	7,383,166	5.12%	6,717,367	4.56%
August	19,404,774	11.90%	25,261,709	17.51%	25,348,903	17.19%
September	33,360,592	20.49%	41,882,133	29.02%	42,917,836	29.11%
October	48,751,886	29.94%	59,133,007	40.97%	53,192,279	36.08%
November	57,799,789	35.49%	67,424,877	46.72%	42,858,382	29.07%
December	62,794,901	38.56%	69,852,511	48.40%	70,557,852	47.86%
January	75,192,383	46.17%	80,977,156	54.91%	83,041,877	56.33%
February	64,338,993	39.51%	90,046,599	61.06%	93,179,692	63.20%
March	74,733,309	45.89%	103,238,821	70.01%	107,347,886	72.82%
April	99,609,270	61.17%	109,880,526	74.51%	118,511,257	80.39%
May	100,463,856	61.69%	112,034,809	75.97%		
June	170,589,680	104.76%	147,941,735	100.32%		
BUDGET	162,845,064	100.00%	147,471,770	100.00%	147,425,062	100.00%



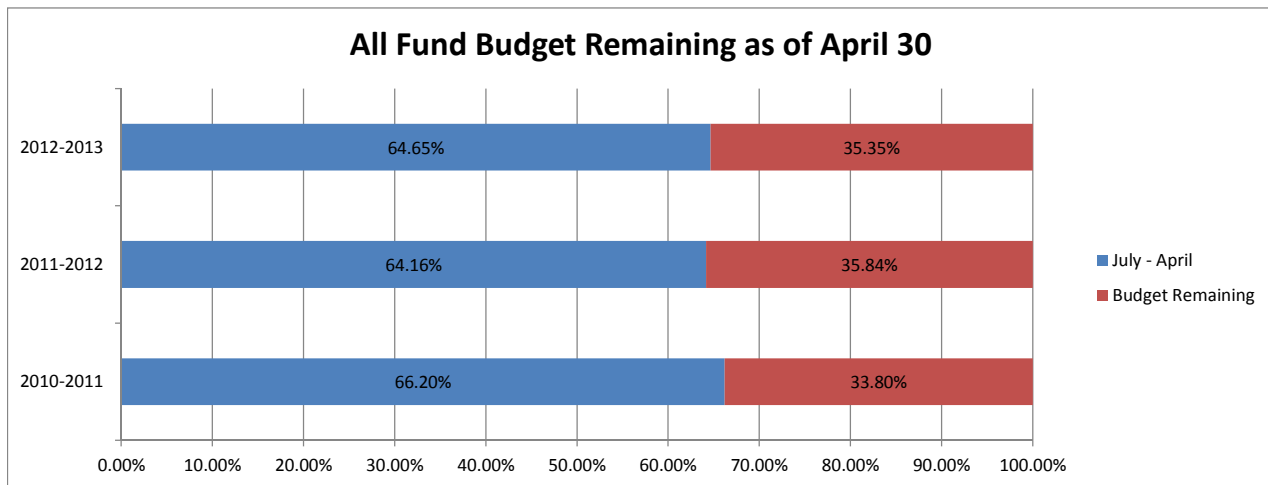
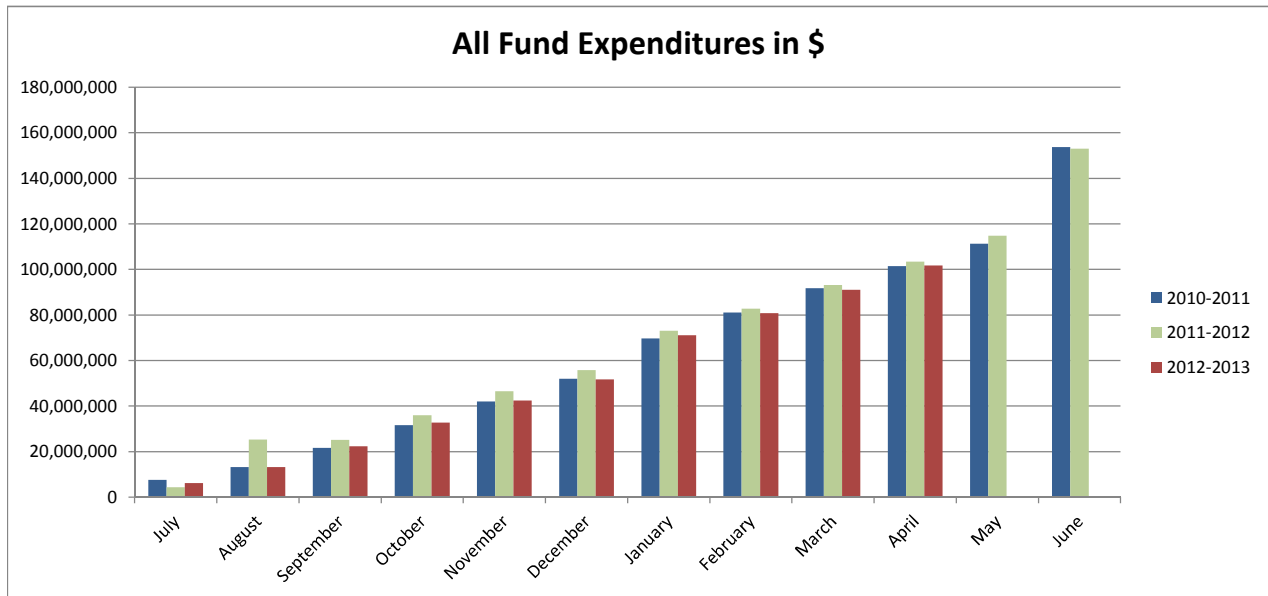
**EXPENDITURE COMPARISON
GENERAL FUND**

	2010-2011		2011-2012		2012-2013	
	\$	%	\$	%	\$	%
July	4,922,278	4.36%	1,920,659	1.75%	3,291,612	2.95%
August	9,854,424	8.74%	7,602,157	6.91%	7,718,161	6.91%
September	16,577,212	14.70%	15,549,941	14.13%	16,257,842	14.55%
October	25,373,519	22.49%	23,463,345	21.32%	24,586,322	22.00%
November	34,477,970	30.57%	32,846,900	29.85%	32,970,837	29.51%
December	43,159,365	38.26%	40,659,617	36.95%	41,323,030	36.98%
January	52,790,539	46.80%	49,371,206	44.87%	52,038,938	46.57%
February	62,902,754	55.76%	57,853,489	52.58%	60,580,030	54.22%
March	72,217,528	64.02%	67,054,177	60.94%	69,662,177	62.35%
April	81,095,423	71.89%	75,967,418	69.04%	78,311,999	70.84%
May	89,930,101	79.72%	85,694,257	77.88%		
June	113,377,017	100.51%	106,139,768	96.46%		
BUDGET	112,801,550	100.00%	110,032,711	100.00%	111,732,524	100.00%



**EXPENDITURE COMPARISON
ALL FUNDS**

	2010-2011		2011-2012		2012-2013	
	\$	%	\$	%	\$	%
July	7,653,209	4.99%	4,443,384	2.80%	6,237,592	3.97%
August	13,296,265	8.68%	25,261,709	17.51%	13,194,220	8.39%
September	21,612,757	14.10%	25,168,247	15.85%	22,408,191	14.25%
October	31,685,546	20.68%	35,939,090	22.64%	32,775,109	20.84%
November	41,975,355	27.39%	46,557,513	29.33%	42,419,942	26.97%
December	51,987,145	33.92%	55,841,757	35.17%	51,677,418	32.86%
January	69,667,002	45.46%	73,137,729	45.38%	71,167,003	45.25%
February	81,081,869	52.91%	82,827,435	51.39%	80,797,834	51.38%
March	91,721,194	59.85%	93,227,208	58.70%	91,013,593	57.87%
April	101,449,986	66.20%	103,394,820	64.16%	101,674,202	64.65%
May	111,236,213	72.59%	114,729,069	71.19%		0.00%
June	153,708,757	100.30%	152,945,362	94.91%		0.00%
BUDGET	153,243,891	100.00%	161,149,725	100.00%	157,261,314	100.00%





Superintendent of Schools

TO: Members, Board of Education Agenda Item II.B.6

FROM: Randall Clegg, superintendent

DATE: May 16, 2013

RE: Board Policy 415: *Mandated Reporting of Maltreatment of Vulnerable Adults*

Recommendation: That the Board of Education approve, on a second reading basis, Board Policy 415: *Mandated Reporting of Maltreatment of Vulnerable Adults*.

As part of the ongoing work to update the Board of Education's governance policies, Board Policy 415: *Mandated Reporting of Maltreatment of Vulnerable Adults* has been reviewed and updated by the Board Policy Committee. This policy will replace Board Policy GBHAB: *Staff Student Relations Mandated Reporting of Neglect or Physical Abuse or Sexual Abuse of Vulnerable Adults*.

BURNSVILLE-EAGAN-SAVAGE SCHOOL DISTRICT

Policy 415 Mandated Reporting of Maltreatment of Vulnerable Adults

I. PURPOSE

The purpose of this policy is to make clear the statutory requirements of school personnel to report suspected maltreatment of vulnerable adults.

II. SCOPE

This applies to all employees of Independent School District 191.

III. DEFINITIONS

A. Abuse— means: (a) An act against a vulnerable adult that constitutes a violation of, an attempt to violate, or aiding and abetting a violation of: (1) assault in the first through fifth degrees as defined in sections 609.221 to 609.224; (2) the use of drugs to injure or facilitate a crime as defined in section 609.235; (3) the solicitation, inducement and promotion of prostitution as defined in section 609.322; and (4) criminal sexual conduct in the first through fifth degrees as defined in sections 609.342 to 609.3451. A violation includes any action that meets the elements of the crime, regardless of whether there is a criminal proceeding or conviction. (b) Conduct which is not an accident or therapeutic conduct as defined in this section, which produces or could reasonably be expected to produce physical pain or injury or emotional distress including, but not limited to, the following: (1) hitting, slapping, kicking, pinching, biting, or corporal punishment of a vulnerable adult; (2) use of repeated or malicious oral, written, or gestured language toward a vulnerable adult or the treatment of a vulnerable adult which would be considered by a reasonable person to be disparaging, derogatory, humiliating, harassing, or threatening; (3) use of any aversive or deprivation procedure, unreasonable confinement, or involuntary seclusion, including the forced separation of the vulnerable adult from other persons against the will of the vulnerable adult or the legal representative of the vulnerable adult; and (4) use of any aversive or deprivation procedures for persons with developmental disabilities or related conditions not authorized under section 245.825. (c) Any sexual contact or penetration as defined in section 609.341, between a facility staff person or a person providing services in the facility and a resident, patient, or client of that facility. (d) The act of forcing, compelling, coercing, or enticing a vulnerable adult against the vulnerable adult’s will to perform services for the advantage of another. Abuse does not include actions specifically excluded by Minn. Stat. § 626.5572, Subd. 2.

B. Caregiver— means an individual or facility who has responsibility for the care of a vulnerable adult as a result of a family relationship, or who has assumed responsibility for all or a portion of the care of a vulnerable adult voluntarily, by contract, or by agreement.

C. Financial Exploitation—means a breach of a fiduciary duty by an actor's unauthorized expenditure of funds entrusted to the actor for the benefit of the vulnerable adult or by an actor's failure to provide food, clothing, shelter, health care, therapeutic conduct or supervision, the failure of which results or is likely to result in detriment to the vulnerable adult. Financial exploitation also includes: the willful use, withholding or disposal of funds or property of a vulnerable adult; the obtaining of services for wrongful profit or advantage which results in detriment to the vulnerable adult; the acquisition of a vulnerable adult's funds or property through undue influence, harassment, duress, deception or fraud; and the use of force,

History: Issued as GBHAB 7/01; revised 12/03, changed to Policy 415 and in review 5/13		
Approved by: Board of Education	Clerk’s Signature:	Date:

coercion or enticement to cause a vulnerable adult to perform services against the vulnerable adult's will for the profit or advantage of another.

- D. *Immediately*—means as soon as possible, but no longer than 24 hours from the time initial knowledge that the incident occurred has been received.
- E. *Maltreatment*—means the neglect, abuse, or financial exploitation of a vulnerable adult.
- F. *Mandated Reporters*—means any school personnel who has reason to believe that a vulnerable adult is being or has been maltreated.
- G. *Neglect*—means the failure or omission by a caregiver to supply a vulnerable adult with care or services, including but not limited to food, clothing, shelter, health care or supervision which is; (1) reasonable and necessary to obtain or maintain the vulnerable adult's physical or mental health or safety, considering the physical and mental capacity or dysfunction of the vulnerable adult; and (2) which is not the result of an accident or therapeutic conduct. Neglect also includes the absence or likelihood of absence of care or services, including but not limited to, food, clothing, shelter, health care, or supervision necessary to maintain the physical and mental health of the vulnerable adult which a reasonable person would deem essential to obtain or maintain the vulnerable adult's health, safety, or comfort considering the physical or mental capacity or dysfunction of the vulnerable adult. Neglect does not include actions specifically excluded in Minn. Stat. § 626.5572, Subd. 17.
- H. *School Personnel*—means professional employees or their delegates of the school district engaged in providing health, educational, social, psychological, law enforcement or other caretaking services of vulnerable adults.
- I. *Vulnerable Adult*—means any person 18 years of age or older who: (1) is a resident or inpatient of a facility; (2) receives services at or from a licensed facility which serves adults as set forth in Minn. Stat. § 626.5572, Subd. 21(a)(2); (3) receives services at or from a licensed home care provider or home care provider service; or (4) regardless of residence or type of service received possesses a mental or emotional dysfunction that impairs the individual's ability to adequately provide the person's own care without assistance or supervision and, because of the dysfunction or infirmity and need for care or services, has an impaired ability to protect the individual's self from maltreatment.

IV. POLICY STATEMENT

School personnel are expected to report suspected maltreatment of vulnerable adults when the school personnel has reason to believe that a vulnerable adult is being or has been maltreated, or who has knowledge that a vulnerable adult has sustained a physical injury which is not reasonably explained.

V. RESPONSIBILITIES

- A. A mandated reporter as defined herein shall immediately report the suspected maltreatment to the designated county entity.
- B. Whenever a mandated reporter, as defined herein, knows or has reason to believe that an individual made an error in the provision of therapeutic conduct to a vulnerable adult which results in injury or harm, which reasonably requires the care of a physician, such information shall be reported immediately to the designated county agency. The mandated reporter also may report a belief that the error did not constitute neglect and why the error does not constitute neglect.

- C. The reporter shall identify the vulnerable adult, the caretaker, the nature and extent of the suspected maltreatment, any evidence of previous maltreatment, the name and address of the reporter, the time, date, and location of the incident and any other information that the reporter believes might be helpful in investigating the suspected maltreatment. A mandated reporter may disclose not public data as defined under Minn. Stat. § 13.02 to the extent necessary to comply with the above reporting requirements.
- D. A person mandated to report suspected maltreatment of a vulnerable adult who negligently or intentionally fails to report is liable for damages caused by the failure. A negligent or intentional failure to report may result in discipline. A mandatory reporter who intentionally fails to make a report, who knowingly provides false or misleading information in reporting or who intentionally fails to provide all the material circumstances surrounding the reported incident may be guilty of a misdemeanor.
- E. Retaliation against a person who makes a good faith report under Minnesota law and this policy or against a vulnerable adult who is named in a report is prohibited.
- F. Any person who intentionally makes a false report under the provisions of applicable Minnesota law or this policy shall be liable in a civil suit for any actual damages suffered by the person or persons so reported and for any punitive damages set by the court or jury. The intentional making of a false report may result in discipline.

The responsibility for investigating reports of suspected maltreatment of a vulnerable adult rests with the entity designated by the county for receiving reports.

VI. EXCLUSIONS

None

VII. CONTACTS

Offices that can be contacted regarding the policy.

<u>Office/Department</u>	<u>Telephone Number</u>
Human Resources	(952) 707-2010

VIII. LEGAL REFERENCES

Listing of relevant Minnesota Statutes and relevant United States Code.

Minn. Stat. 13.02 (Collection, Security, and Dissemination of Records; Definitions)
 Minn. Stat. 245.825 (Aversive and Deprivation Procedures; Licensed Facilities and Services)
 Minn. Stat. 609.221-.224 (Assault)
 Minn. Stat. § 609.234 (Crimes Against the Person)
 Minn. Stat. 609.235 (Use of Drugs to Injure or Facilitate Crime)
 Minn. Stat. 609.322 (Solicitation, Inducement, and Promotion of Prostitution; Sex Trafficking)
 Minn. Stat. 609.341 (Definitions)
 Minn. Stat. 609.342-.3451 (Criminal Sexual Conduct)
 Minn. Stat. § 626.557 (Reporting of Maltreatment of Vulnerable Adults)
 Minn. Stat. § 626.5572 (Definitions)
In re Kleven, 736 N.W.2d 707 (Minn. App. 2007)



Superintendent of Schools

TO: Members, Board of Education Agenda Item II.B.7
FROM: Randall Clegg, superintendent
DATE: May 16, 2013
RE: Board Policy 715: *Purchasing and Bid Requirements*

Recommendation: That the Board of Education approve, on a second reading basis, Board Policy 715: *Purchasing and Bid Requirements*.

As part of the ongoing work to update the Board of Education's governance policies, Board Policy 715: *Purchasing and Bid Requirements* has been reviewed and updated by the Board Policy Committee. This policy will replace the following board policies:

- DJ: *Purchasing*
- DJA: *Purchasing Authority*
- DJC: *Bidding Requirements and Procedures*
- DJF: *Purchasing Procedures*

BURNSVILLE-EAGAN-SAVAGE SCHOOL DISTRICT

Policy 715 Purchasing and Bid Requirements

I. PURPOSE

The purpose of this policy is to ensure maximum return for the tax dollar and integrity in the expenditures of public funds by providing the requirements for competitive bids or quotations as required by Minnesota Statute § 471.345.

II. SCOPE

This policy applies to all district purchases.

III. DEFINITIONS

Contract – agreement entered into for sale or purchase of supplies, materials, equipment or rental thereof, or the construction, alteration, repair or maintenance of real or personal property.

IV. POLICY STATEMENT

The size and complexity of ISD 191 necessitates centralized business functions and procedures. A centralized requisition/purchasing/receiving system shall be utilized for these functions and procedures.

Contracts shall be awarded as required by Minnesota Statute § 471.345. Contracts requiring a sealed bid process will be solicited by public notice as provided by law and must be awarded by the school board. Contracts not requiring sealed bids may be awarded on the basis of sealed bids or by direct negotiation by obtaining two or more quotations and may be approved by the Superintendent or Business Manager.

V. RESPONSIBILITIES

Business Office - Provide oversight and assistance through the purchasing process to ensure Minnesota Statutes are followed. Maintain current purchasing administrative regulations.

VI. EXCLUSIONS

This policy does not apply to agreements to purchase copyrighted materials such as textbooks.

VII. CONTACTS

Offices that can be contacted regarding the policy:

Office/Department

Telephone Number

Business Office

952-707-2055

VIII. LEGAL REFERENCES

Minnesota Statute § 123B.20

Minnesota Statute § 123B.52

Minnesota Statute § 471.345

History: Replaces policies DJ, DJA, DJC, and DJF (all last updated 1/05) 5/13		
Approved by: Board of Education	Clerk's Signature:	Date:



Superintendent of Schools

TO: Members, Board of Education Agenda Item II.B.8

FROM: Randall Clegg, superintendent

DATE: May 16, 2013

RE: Board Policy 803: *Health and Safety*

Recommendation: That the Board of Education approve, on a second reading basis, Board Policy 803: *Health and Safety*.

As part of the ongoing work to update the Board of Education's governance policies, Board Policy 803: *Health and Safety* has been reviewed and updated by the Board Policy Committee. This policy will replace Board Policy EB: *Safety Program*.

BURNSVILLE-EAGAN-SAVAGE SCHOOL DISTRICT

Policy 803 Health and Safety Policy

I. PURPOSE

The purpose of this policy is to provide a safe and healthful environment for employees, students and the public in all school district buildings and on district grounds.

II. SCOPE

This policy is intended to protect the health and safety of employees, students, and visiting public. All employees must follow safe working practices, obey rules and regulations and work in a way that maintains the high safety and health standards developed and sanctioned by the school district.

III. DEFINITIONS

None.

IV. POLICY STATEMENT

The school district's health and safety programs will assist administration, supervisors, and staff in controlling hazards and risks which will minimize employee injuries and illnesses. This policy is designed to encourage all employees to promote the safety of their fellow employees, students, and the public. To accomplish health and safety goals, all administrators and supervisors are responsible and accountable for implementing this policy, and to insure it is followed. The policy of the district is to provide a safe work environment, adequate tools and training, and the necessary personal protective equipment. It is the employee's responsibility to follow the rules of safety as established for their protection and the protection of others, and to use the protective devices provided by the district.

The following written management plans have been established to assist in reducing or eliminating hazards to persons and facilities. The district expects that staff will fulfill their individual responsibilities toward achieving safety excellence and environmental responsiveness by exercising good judgment at all times and abiding by the requirements set forth in the health and safety programs listed below.

- Asbestos
- AWAIR (Safety Committee)
- Bloodborne Pathogens
- Chemical Hygiene (Lab Safety Standards)
- Community Right to Know
- Compressed Gas
- Fire Prevention & Protection
- First Aid/CPR/AED
- Hearing Conservation
- Indoor Air Quality
- Integrated Pest Management
- Lead In Water and Paint
- Lockout/Tag out
- OSHA Inspections & Compliance
- Playground Safety

History: Issued as Policy EB 7/94, revised 3/05, in review as Policy 803 5/13		
Approved by: Board of Education	Clerk's Signature:	Date:

- Personal Protective Equipment
- Aerial Lifts
- Propane Tank Safety
- Industrial Arts Safety Officer

Cross References:

- Radon Respiratory Protection
- Underground and Above Ground Storage Tanks
- Fork Lift Operations
- Hazardous Waste (pharmaceutical waste)
- Confined Space
- Emergency Action Plan
- Employee Right To Know
- Electrical Safety
- Machine Guarding
- Fall Protection
- Respiratory Protection

V. RESPONSIBILITIES

Director of Operations and Properties – maintain written management plans for each of the areas above and to ensure employees have access to these plans.

VI. EXCLUSIONS

None, it is assumed that the policy applies across the school district.

VII. CONTACTS

<u>Office/Department</u>	<u>Telephone Number</u>
Director of Operations and Properties	952-707-2035

VIII. LEGAL REFERENCES

M.S. 123B.57

M.S. 182 (Occupational Health & Safety)



**Agenda II.B.9
May 16, 2013**

To: Members, Board of Education

From: Lisa K. Rider, Executive Director of Business Services

Date: May 10, 2013

Re: Extended Field Trip to England

RECOMMENDATION: THAT THE BOARD OF EDUCATION APPROVE THE EXTENDED FIELD TRIP TO ENGLAND FOR EAGLE RIDGE JUNIOR HIGH SCHOOL NINTH GRADE STUDENTS DURING THE SUMMER OF 2013 AND ALLOW AN EXCEPTION FOR THE FREQUENCY OF THIS TRIP.

The Eagle Ridge Junior High has proposed an optional ninth grade summer trip to England June 13-24, 2013. This is an extension of their studies of William Shakespeare's writing and relevant British history.

Currently, 26 students are registered for the trip with 7 chaperones with completed background checks also registered. Final lists of students, chaperones and phone numbers as well as detailed itinerary will be made available to the Business Office and principal prior to departure.

E.F. Travel, Inc. has been selected to provide the experience. The travel arranger, E.F. Travel, Inc. conforms to our district policy requirements.

Average cost for the trip is around \$3,630.00 per student with spending money additional and determined by individual.

Board Policy IICA states travel outside the continental U.S. should not occur more than once every two years for any particular group, class or organization. This trip has been made each year, for thirteen years with the exception of 2001(9/11). We request an exception to the frequency of travel stated in policy. This proposal is in compliance with Board Policy IICA in all other respects. I recommend the approval of this extended field trip to England for Eagle Ridge Junior High ninth grade students.

TO: Members, Board of Education
Randy Clegg, Superintendent

FROM: Sandy Sweep, Chair

DATE: May 10, 2013

RE: Appointee to Vacant Board Position

Agenda Item III.A
May 16, 2013

Recommendation: That the Board of Education determine, by a simple majority vote of the quorum, an appointee to fill the vacant director's position.

Discussion:

As a result of the resignation of Director Teiken, the ISD 191 Board of Education adopted a resolution at their March 7, 2013, meeting establishing the procedure to be used to fill the vacancy by appointment. Those procedures were followed and eight applicants for the position were interviewed during a public work session immediately following the May 2, 2013, regular board meeting.

Board members will appoint, by a simple majority vote of the quorum, an appointee to fill the vacant director's position during the May 16, 2013, board meeting. A two-round process will be used to determine the appointee. In the first round, each board member will vote for three candidates. The three candidates receiving the most votes from that process will move on to round two. In round two, each board member will vote for just one of these three candidates. The process will continue until a simple majority vote of the quorum is achieved.

TO: Members, Board of Education
Randy Clegg, Superintendent
Agenda Item III.B
May 16, 2013

FROM: Sandy Sweep, Chair

DATE: May 10, 2013

RE: Resolution Filling School Board Vacancy

Recommendation: That the Board of Education adopt the following Resolution filling a school board vacancy by appointment:

WHEREAS, a vacancy exists in the office of school board member with a term expiring the first Monday in January, 2015; and

WHEREAS, the vacancy has occurred on or after the first day to file affidavits of candidacy for the school district general election and less than two years remain in the unexpired term; and

WHEREAS, __ (To be determined) __ meets the qualifications established by Minnesota law to serve as a school board member;

NOW THEREFORE BE IT RESOLVED by the Board of Education of Independent School District No. 191, State of Minnesota, as follows:

Pursuant to Minnesota Statutes, Section 123B.09, Subd. 5, __ (To be determined) __ is hereby appointed to fill the vacancy and shall serve until a successor is elected and qualifies to fill the unexpired part of the term.



**Agenda IV.A.
May 16, 2013**

To: Members, Board of Education

From: Lisa K. Rider, Executive Director of Business Services

Date: May 16, 2013

Re: Approve Premiums and Rates for FY14 Employee Benefits

RECOMMENDATION: That the Board of Education approves the FY14 premiums and rates for employee benefits.

On April 30, 2013 the teachers of ISD 191 authorized the BEA to agree to a move from fully insured to self insured health benefit. MN Statute requires the largest employee group of the school district must agree to a move to self insured health benefit. On May 2, 2013, the Board of Education approved the move from fully insured to self insured health benefit. Therefore steps will move forward to complete final preparation for this change effective July 1, 2013. Below are the premiums/rates for the respective employee benefits for our July 1, 2013 through June 30, 2014 plan years.

Health Self Insured Employee Benefit with Medica:

Family coverage, \$2,000 HRA, full monthly premium of \$1621.04
Single coverage, \$1,000 HRA, full monthly premium of \$647.35

Dental Self Insured Employee Benefit with Delta Dental:

Family coverage full monthly premium of \$89.42
Single coverage full monthly premium of \$34.24

Group Life and AD&D Insurance with Cigna:

New carrier, Benefits will remain the same, Rates are \$0.114 per \$1,000

Supplemental Life and AD&D Insurance with Cigna:

New carrier, Benefits will remain the same, optional coverage
Rates effective July 1, 2013 are varied depending on age

Employer and Employee portion of above premiums and rates are dependent upon contract language covering employee's employment with the district.

BURNSVILLE EAGAN SAVAGE
Independent School District 191
Human Resources

AGENDA ITEM: IV. B

To: Members of the Board of Education
 Superintendent Randy Clegg

From: Stacey Sovine
 Director of Labor Relations

Date: May 16, 2013

RE: **Proposed adoption of the Terms and Conditions of Employment for Confidential Employees of Independent School District 191.**

RECOMMENDATION: THAT THE BOARD OF EDUCATION APPROVE THE PROPOSED REVISIONS AND RE-ADOPT THE UNCHANGED LANGUAGE IN THE 2013 - 2015 TERMS AND CONDITIONS OF EMPLOYMENT FOR THE CONFIDENTIAL EMPLOYEES OF INDEPENDENT SCHOOL DISTRICT #191.

There are 4 Confidential employees. These Terms are reviewed and updated on an bi-annual basis. Positions under these Terms are considered At-Will unless a State License is specifically required under statute. Employees under the Terms receive salary packages in alignment with comparable positions in other units and are in compliance under State Pay Equity regulations.

The major language items include:

- Modifying the language under the insurance to reflect our plan as of July 1st, 2013.
- Removing dated language.

Economic terms include:

Total

- 1% increase on the 2013-2014 and 2014-2015 maximum salary range
- Increased cost \$21,140 (largest portion is 16% increase to insurance premiums).
- MSBA increase is 4.53%

**2011-2013 2013-2015 GENERAL TERMS AND CONDITIONS OF EMPLOYMENT:
CONFIDENTIAL EMPLOYEES**

Purpose. This policy outlines the general terms and conditions of employment for confidential employees (“employee” or “employees”) of Independent School District No. 191, Burnsville (“District” or “School Board”). This policy does not create an express or implied contract between any employee and the District. The School Board may modify this policy at any time, without prior notice, as the Board sees fit. The terms and conditions in this policy will remain in effect until the Board modifies this policy.

Confidential Employees. For purposes of this policy, individuals holding any of the following positions are deemed to be “confidential employees”:

Tier I: Exec. Admin. Assistant (~~Effective 07/01/2012~~), Payroll Supervisor

Tier II: HR Labor Relations Manager, ~~Exec. Admin. Assistant (Ending 06/30/2012)~~

Tier III: HR Employment Specialist

At-Will Employment. The employees covered by this policy are employed on an at-will basis regardless of any statements, representations, procedures, or other policies that may be made or promulgated by the District or its agents or representatives. As a result, the District may discipline or discharge an employee as the District sees fit and for any reason that is not unlawful. The District is not required to show cause when disciplining or discharging an employee. Employees may resign from the District at any time and for any reason. This paragraph does not apply to any employee who is required to hold a license from the Minnesota Department of Education or the Minnesota Board of Teaching.

Performance of Duties. Employees must faithfully perform, at a professional level of competence, the services and duties prescribed by the District, regardless of whether such duties are specifically described in this policy, in a job description, in a notice of assignment, or in another document. Prompt and regular attendance is an essential function of each employee’s job. Employees must also comply with all lawful directives issued by the Superintendent or by any other individual with supervisory authority. In addition, employees must comply with all applicable federal and state laws and with all rules, regulations, and policies established by the District. Employees may not, directly or indirectly, engage or participate in any action or conduct that conflicts in any respect with the interests of the District. Toward that end, employees may not engage or participate in any action or conduct that is inconsistent with their job duties, the basic educational mission of the District, or the desired image of the District.

Notice of Assignment. The District will give each employee an annual notice of assignment containing additional information about the employee’s position, including the following:

(1) the employee’s annual salary or hourly wage; (2) the number of duty days required of the position; and (3) whether the position is “exempt” or “non-exempt” under the Fair Labor Standards Act.

- a. **Basic duty day.** The basic duty day for most full-time employees will be eight hours in length, but employees in an exempt position are expected to work the number of hours necessary to perform their job duties and to meet the professional expectations of their job.
- b. **Overtime.** Hours worked beyond a forty-hour workweek will not constitute overtime and will not result in any overtime pay or any other form of additional compensation for employees who hold an exempt position under the FLSA. Employees who hold a non-exempt position will receive one and one-half (1.5) times their regular rate of pay for all time worked in excess of forty (40) hours per week. Non-Duty days and paid holiday hours will not be counted as hours worked when determining overtime obligations in a given week. Beyond the basic duty day, all employees may be required to attend and participate in meetings and school-sponsored events and activities.
- c. **Modification of assignment.** The Superintendent may reassign an employee or modify an employee’s assignment at any time and for any reason. In addition, the Superintendent may modify an existing job description for an employee’s position or create a new job description at any time.

Individual Contracts. In accordance with Minnesota law, the District will issue an individual contract to each employee who is required to hold a license from the Minnesota Department of Education or the Minnesota Board of Teaching.

Full-Time Employment. For purposes of this policy, a “full-time” employee is one who is assigned to work at least 1400 hours per year according to the notice of assignment issued by the District.

Calendar of Duty Days. After receiving a notice of assignment, each employee must develop a calendar identifying the employee’s duty days and non-duty days. The employee must then submit the calendar to the employee’s supervising administrator for approval. The supervising administrator may require the employee to modify the calendar.

Compensation. The Board will determine the compensation of each employee covered by this policy. For the ~~2011-2012~~ **2013-2014** school year and the ~~2012-2013~~ **2014-2015** school year, the Board will use the following ranges as a guide when determining the compensation of each employee:

	2011-2012 2013-2014 Range		2012-2013 2014-2015 Range	
	Minimum	Maximum	Minimum	Maximum
Tier I	\$65,000	\$70,000	\$65,000	\$70,000

		\$70,700		\$71,400
Tier II	\$62,000	\$67,000 \$67,670	\$62,000	\$67,000 \$68,350
Tier III	\$47,000	\$53,000 \$53,530	\$47,000	\$53,000 \$54,070

Additional Compensation. A separate stipend of \$3,092 shall be paid to the Superintendent Assistant during 2011-2012 year for official Board meeting set-up, minutes, and miscellaneous meeting needs. Special board meetings in excess of 23 per year, shall be compensated at \$100 per meeting, provided the meeting requires significant preparation and time. Beginning 2012-2013 the Superintendent Assistant will be classified as a Tier I employee and will no longer receive the stipend.

Effective July 1, 2010, employees who have completed 14 years of service will receive a stipend of \$900 dollars. Employees who have completed 19 years of service will receive an additional \$900 dollar stipend.

Daily and Hourly Rate of Pay. In the event the District needs to determine a daily rate of pay for an employee, the employee’s annual salary will be divided by the number of duty days assigned to the employee. In the event the District needs to determine an hourly rate of pay for an employee, the employee’s daily rate of pay will be divided by eight hours.

Holidays. In the absence of an emergency or a change in the school calendar, employees are not expected to work on the following paid holidays:

- | | |
|-----------------------|------------------------------|
| 1. New Year’s Eve Day | 6. Thanksgiving Day |
| 2. New Year’s Day | 7. Day after Thanksgiving |
| 3. Memorial Day | 8. Christmas Eve Day |
| 4. Independence Day | 9. Christmas Day |
| 5. Labor Day | 10. One (1) Floating Holiday |

Insurance Benefits. As described below, the District will contribute toward the cost of the premium for certain types of insurance for full-time employees who otherwise qualify for and enroll in the insurance policy, plan, or program. The District will select the insurance policies, plans, and programs. To the extent permitted by law, upon separating from employment with the District a former employee may continue to participate in a group health insurance plan, but such participation will be at the former employee’s sole expense.

- a. **Single Health and Hospitalization Insurance.** The District will contribute an amount equal to 95% of the composite premium for an employee who enrolls the single plan. The composite premium will be based on an insurance plan consisting of a high deductible health care insurance plan with an HRA (Health Reimbursement Account) whereby the 105 plan and a CHP (health insurance account) whereby the in-network deductible is fully paid via the CHP (health insurance account) and 105 plan HRA and the in-network deductible equals the

in-network out of pocket maximum. The remainder of the cost of the plan will be borne by the employee via payroll deduction.

- b. **Dependent Health and Hospitalization Insurance.** The District will contribute an amount equal to 80% of the composite premium for an employee who enrolls in the dependent health insurance plan. The composite premium will be based on ~~an insurance plan consisting of a high deductible~~ a health care insurance plan with an HRA (Health Reimbursement Account) whereby the 405 plan and a CHP (health insurance account) whereby the in-network deductible is fully paid via the CHP (health insurance account) and 105 plan HRA and the in-network deductible equals the in-network out of pocket maximum. The remainder of the cost of the plan will be borne by the employee via payroll deduction.
- c. **Both Spouses Employed.** If an employee and his/her spouse are both employed by the district full-time and are enrolled in dependent coverage, either the husband or the wife will contribute an amount equal to 5% of the single composite premium towards family coverage.
- d. **Dental Insurance.** The District will pay 100% of the premium for single toward single or dependent coverage for a full-time employee who elects to participate in the District's group dental plan.
- e. **Group Term Life Insurance.** The District will pay 100% of the premium for a group term life insurance policy with a death benefit of fifty thousand dollars (\$50,000) for each full-time employee who qualifies for life insurance.
- f. **Long-Term Disability (LTD) Insurance.** Income Protection coverage will be provided each employee at District expense. Disability pay will be governed by the policy in effect. After a confidential employee has been ill or disabled for more than thirty (30) consecutive days, the employee may use sick leave on a fractional basis, together with the income protection plan to equal full salary for an additional sixty (60) days. Maximum of (20) full sick days per illness may be used in this manner, provided the employee has sufficient accumulated days.
- g. **Disclaimer.** No claim or cause of action may be brought against the District for any claim that is not covered or paid by insurance. The District is not insuring or guaranteeing that any particular claim will be paid or covered by any insurance policy, plan, or program, or that any specific amount will be paid out under any policy, plan, or program. Any description of insurance benefits in this policy is intended to be general and informational only and is subject to change in the discretion of the School Board. The eligibility any particular employee and the employee's dependent(s) is governed by the terms of the actual insurance policy, plan, or program. The District's only obligation is to make the premium contributions that are identified in this policy, as it currently is written or as

amended at any time in the future, for full-time employees who otherwise qualify for and enroll in the particular insurance plan or program.

Sick Leave. Each full-time employee will earn sick leave at the rate of seventeen (17) days per school year and may accumulate a maximum of 150 days of sick leave. Part-time employees will earn sick leave on a prorated basis. An employee's use of sick leave is subject to the following conditions:

- a. The Superintendent may allow an employee to use up to five days of annual sick leave in advance of the monthly accrual, but the advance of sick leave will be deducted from subsequent accrual in that year. Any absences due to illness that are in excess of the employee's accumulated sick leave and annual accrual will be without pay.
- b. An employee may use accumulated sick leave whenever he/she is absent due to illness or a serious health condition that prevents his/her attendance or the performance of his/her job duties; to care for a sick or injured child who is eighteen years of age or younger; and for any other reason expressly permitted by state or federal law. An employee may use up to five (5) days of accumulated sick leave to care for a spouse who is suffering from an illness or serious health condition. In addition, an employee may use up to one (1) day of accumulated sick leave per school year to attend the funeral of an individual who is not in the employee's immediate family. Sick leave may not be used to conduct personal business.
- c. If the employee reports being absent due to illness or serious health condition, the District may require the employee to provide a certification from a qualified physician stating that the absence was due to an illness or a serious health condition. The District will make the final determination as to whether the employee is entitled to receive sick leave for a given absence.
- d. Upon separating from employment with the District for any reason, an employee will have no right to receive any compensation for any unused days of accumulated sick leave.
- e. ~~Effective July 1, 2007 through June 30, 2012, confidential employees may exchange (3) unused annual sick days for cash at the end of each fiscal year. One day's pay is the equivalent of 1/261 of annual salary.~~ Effective July 1, 2012, at the end of each fiscal year, employees may exchange (3) unused sick days for 3 days of pay, at their daily rate of pay, contributed into the employee's ~~CHP rollover~~ HRA account.

Bereavement Leave. An employee may take up to five (5) days of paid bereavement leave per year for any death(s) that occurs in the employee's immediate family. For purposes of this Agreement, "immediate family" includes a spouse, children, parents, siblings, grandparents,

grandchildren, and in-laws (mother-in-law, father-in-law, son-in-law, brother-in-law, and sister-in-law). The Superintendent may, in his/her sole discretion, grant up to ten (10) additional days of bereavement leave per school year for reasons such as multiple deaths in the immediate family and out-of-state funerals.

Personal Leave. An employee may take up to three (3) days of paid personal leave each school year. The employee must obtain permission from his/her supervising administrator to take personal leave on a given day. The Superintendent or the supervising administrator may deny any request for personal leave at a given time based upon the Superintendent's or administrator's assessment of the needs of the District. Days of personal leave do not accumulate and will be forfeited if they are not used. Upon separating from employment with the District for any reason, an employee will have no right to receive any compensation for any unused days of personal leave.

Jury Duty. An employee who is called for jury duty will be reimbursed for the difference between the amount paid for serving on the jury and the employee's regular salary during the period of service. To the extent possible, employees will be expected to report or otherwise perform their regular duties when temporarily excused from attending court.

Other Types of Leave. To the extent required by law, the District will grant other types of leave. In addition, the School Board may, in its discretion, grant additional types of leave that are not required by law.

Expense Reimbursement. The District will reimburse employees for mileage and reasonable expenses of job related activities. Employees may be given time to participate in professional conferences and seminars, and will be reimbursed for reasonable expenses associated with attending such conferences and seminars, provided that the conference or seminar was approved in advance by the supervising administrator or the Superintendent. To obtain reimbursement, employees must submit the required forms in accordance with School Board policy.

Tuition Reimbursement. Employees are eligible for up to one thousand dollars (\$1,000) in tuition reimbursement per school year for post-graduate coursework that is germane to their assignment and benefits the District. All coursework must be preapproved by the Executive Director of Human Resources. All employees must submit appropriate documentation to the District showing that the employee earned a grade of B or higher, or a passing grade in a pass/fall system, in order to be eligible for tuition reimbursement.

Flexible Benefit Plan. The District has established a Flexible Benefit Plan under IRS Code 125. Regulations and procedures are available in the Human Resources Office. A School Board policy and accompanying regulations have been developed and will be updated annually to comply with IRS Regulations.

Matching Contribution Eligibility. Employees may participate in a tax- sheltered annuity pursuant to United States Public Law No. 87-370, Minnesota Statutes section 123B.02, subdivision 15, and School District policy. To the extent permitted by federal and state law,

including Minnesota Statutes section 356.24, the District will match up to \$1,700 per year to an approved Minnesota deferred compensation program for an employee who is in his/her first year of employment with the District. Effective July 1, 2012, after the employee has completed one year of service, the District will match up to \$2,000 per year to an approved Minnesota deferred compensation program. Part-time employees will receive a pro-rated contribution to a Minnesota deferred compensation program based on their F.T.E. equivalency as of July 1.

- a. **Employees on Leave.** An employee on an unpaid leave of absence is not eligible to participate in the plan.
- b. **Plain Year Begins July 1.** The annual year for the School District contributions is July 1 through June 30. Changes in District matching amounts must occur on July 1 of each year.
- c. **Employee Application.** Employees must apply to participate in the eligible TSA plan by July 1 for upcoming school year. Once an eligible employee elects to participate in the TSA investment program, the election will remain in effect for that school year and for each subsequent year unless modified by the employee.
- d. **Compliance with Federal and State Laws.** The plan is subject to applicable code provisions of the Minnesota Statutes, IRS Code Section 403(b).
- e. **Enrollment Limited to Participating Companies.** Tax sheltered annuity purchases will be limited to companies approved by the District.
- f. **Maximum District Contribution.** The amount the District contributes to an employee's matching TSA plan may not exceed thirty thousand dollars (\$30,000) during the employee's entire period of employment with the District.

Post-Retirement Health Insurance Benefits Effective July 1, 2010, for each employee hired prior to January 1, 2004, the district will contribute \$2,000 dollars per year to the Minnesota State Retirement System's Post-Retirement Healthcare Savings Plan for a period of seven (7) years after the employee retires, or until the employee becomes eligible for Medicare, whichever occurs first.

Severance:

Upon retiring, an employee hired prior to January 1, 2004, who has completed less than 15 years of district service shall receive an amount equal to two (2) days pay for each year of District service. Employees who have completed 15 years of District service shall receive an amount equal to three (3) days pay for each year of District service upon retirement. Any employee who has completed 20 years of district service shall receive an amount equal to four (4) days pay for each year of District service upon retirement. Calculation shall be based on full years of service and prorated on a regular assignment of eight (8) hours. 50% of the amount of severance will be placed in the Minnesota Post-Retirement Healthcare Savings Plan. The amount shall be paid in a one-time lump sum payment on the last paycheck.

Confidential employees hired after June 1, 2008 are not eligible for severance.

Independent School District No. 191 is an Equal Opportunity Employer and does not discriminate on the basis of race, color, creed, religion, national origin, sex, marital status, disability, status with regard to public assistance, sexual orientation, or age.