

Agenda of Regular Meeting

The Board of Education Waverly Community Schools

A Regular Meeting of the Board of Education of Waverly Community Schools will be held June 15, 2026, beginning at 6:00 PM in the Board Room, 515 Snow Road, Lansing, MI 48917.

The subjects to be discussed or considered or upon which any formal action may be taken are as listed below. Items do not have to be taken in the order shown on this meeting notice.

Unless removed from the consent agenda, items identified within the consent agenda will be acted on at one time.

- I. Call to Order and Pledge to the Flag - President Alicia Guevara

- II. Special Presentations
CACC Scholar Athlete Awards

- III. Correspondence

- IV. Public Comment for Specific Agenda Items Only
Per Board of Education Policy 167.3, each statement made by a participant will be limited to four (4) minutes duration. If an interpreter is used, participants will be limited to eight (8) minutes.

- V. Board Member Comment

- VI. Approval of Agenda and Acceptance of all Reports into Discussion
Recommendation: To request a motion to approve the June 15, 2026 agenda as presented and accept all reports into discussion.

- VII. Approval of Consent Agenda
Items listed below may be approved with one motion unless a board

member requests that an item or items be removed for a separate action.

Regular Meeting Minutes - May 18, 2026
Superintendent's Report - May 18, 2026
Report #25-70, HR Personnel Report

Recommendation: To approve the consent agenda as presented.

VIII. Committee Meetings:

Meet Odd Months - September, November, March, May
Finance & Facilities
Teaching & Learning

Meet Even Months - August, October, December, February, April
Advocacy & Outreach
Special Education

IX. Presentation of Reports

A. For Action - Report #25-71, 2025-26 Budget Amendment Resolutions. 20

Recommendation: To approve 2025-26 General Fund Resolution as presented.

B. For Action - Report #25- 72, 2026-2027 Budget Resolutions 24

Recommendation: To approve the 2026-27 General Fund Resolution, the 2026-27 Debt Retirement Fund Resolution, the 2026-27 Special Revenue Funds Resolution and the 2026-27 Sinking Fund Resolution as presented.

C. For Action - Report #25-73, Certification of Summer Tax Levy 33

Recommendation: To adopt the proposed summer tax levy for the City of Lansing, Delta Township, and Lansing Township as presented.

D. For Action - Report #25-74, K-8 Science Curriculum Adoption, K-4 Handwriting Curriculum Adoption, AP History Textbook Adoption 41

Recommendation: To renew² the Amplify Science curriculum

& resources for grades K-8.

To adopt the Handwriting Without Tears curriculum & resources for grades K-4.

To adopt the "Freedom on My Mind" textbook and resources for the AP African American Studies course.

- E. For Action - Report #25-75, Creation of an Alternative Education School, Separate from Waverly High School 57

Recommendation: To adopt the resolution to allow for the creation of an alternative education school, separate from Waverly High School.

- F. Policies Volume 40.2 60

- G. Behavior Update 61

- X. Superintendent's Report

- XI. Public Comment - Open for District Related Items
Per Board of Education Policy 167.3, each statement made by a participant will be limited to four (4) minutes duration. If an interpreter is used, participants will be limited to eight (8) minutes.

- XII. Other Board Business

- XIII. Adjournment

Minutes of Regular Meeting

The Board of Trustees Waverly Community Schools

Opening of Meeting

The regular monthly meeting of the Waverly Community Schools Board of Education was held on Monday, May 18, 2026 in the Waverly Board of Education Meeting Room, located at 515 Snow Rd., Lansing, MI 48917. President Guevara called the meeting to order at 6:03 PM. The pledge to the flag was led by President Guevara.

Members Present: Alicia Guevara
 Deborah Lopez
 Vince Perkins
 Cathy Pike
 Ty Liggons
 Andrea Torres

Student Representative: Vivian Wolfe

Members Absent: Emily Lenneman

Special Presentations:

Superintendent Mitcham presented a certificate to Xavier Pendergass for his outstanding basketball achievements during his high school career.

Superintendent Mitcham presented a certificate to Waverly Teacher Bridget Lindeman for receiving the Delta Rotary Red Rose Award.

Superintendent Mitcham presented certificates to the Waverly eSports team for winning the MHSEL Spring State Championship for Mario Kart 8. Certificates were presented to LaDanian Lewis, Lakrai Jones, Ethan Rendina-Booker, Gavin Vue and Jayden Murray. Their coach is Waverly teacher Jared Tasch.

Superintendent Mitcham presented a certificate to Marcel Hixon for receiving the CACC Scholar Athlete Award.

Barton Malow gave a construction update presentation.

- Reviewed the roof leaks at the High School.
- The upcoming construction schedules at Winans, Elmwood, Colt and Administration Building.
- Will continue to update the Board of Education regularly on construction status.
- Will investigate a concern of a large leak in the auditorium.

Correspondence:

Emails received by the Board of Education regarding the 2026-27 School of Choice designation.

Public Comment For Agenda Items

The following individuals gave a public comment:

- WEA teacher Kat Kelley-Hart thanked the district and Board of Education for the proposal of replacing the scoring system at the school pool. Updates have been needed for a long time.

Board Member Comment:

Member Pike:

- Attended the High School production of The Wizard of Oz and is very impressed with our students.
- There is a music concert later this week and hopes all can attend to support our performing arts.

Member Perkins:

- Attended the Big Brothers/Big Sisters Breakfast. Would like Waverly participate with them to have our high school students support our elementary students.
- Attended the Wizard of Oz production and very impressed with the new sound system.
- Attended the Senior Salute.
- Thanked High School Principal, Tony Terranova, and HS Teacher, Amber Butler, for organizing the senior walk-through.

Member Lopez:

- Attended the CACC Scholar Athlete award ceremony.
- Attended MASB workshops and will send a summary of those to the board with suggestions of possible changes to the board norms.
- U of M Sparrow Hospital having a graduation ceremony to recognize the Wilson Talent Center students who are completing their program.

Member Liggons:

- Congratulations to all who were honored at the board meeting.
- Participated as a judge at the Waverly High School 5 Minutes Tops competition. 10 students participated, which was the most entries ever received.
- Also attended the Wizard of Oz production.

Member Guevara:

- Attended the CACC Scholar Athlete Award ceremony. It was great to see so many area athletes who are so academically successful.
- The Wizard of Oz production was amazing. So proud of our program.
- Attended the Colt Garden Party. The Colt staff is so dedicated and provide so many opportunities to our students.
- So many end of year activities are happening and a big thank you to the high school staff for working so hard to make the end of year special for the students.

Student Representative Vivian Wolfe:

- Students are noticing the increase in class sizes.
- Have lost support staff who are very important in supporting our students.
- The high school looks very institutional, not personalized.

Member Torres:

- Thanked Superintendent Mitcham for his continued communication to the board (Friday Updates) and always keeping them informed on parent concerns resolutions/outcomes.

Approval Agenda and Accept all Reports into Discussion

President Guevara requested a motion to amend the agenda to remove first reading of the Spring 2026 Policy Volume 40.2 updates.

A motion was presented by Member Lopez and supported by Member Liggons to amend the agenda as presented by President Guevara.

Motion PASSED

Vote: Ayes – 6 ; Nays – 0; Absent – 1, Member Lenneman

A motion was presented by Member Liggons and supported by Member Lopez approve the agenda and accept all reports into discussion.

Motion PASSED

Vote: Ayes – 6 ; Nays – 0; Absent – 1, Member Lenneman

Approval Consent Agenda Items

A motion was presented by Member Lopez and supported by Member Torres to approve the consent agenda as presented.

Motion PASSED

Vote: Ayes – 6 ; Nays – 0; Absent – 1, Member Lenneman

Committee Meetings

- Advocacy & Outreach Chair, Ty Liggons, reviewed the April 2026 Advocacy & Outreach Committee meeting.
- Special Education Chair, Vince Perkins, reviewed the April 2026 Special Education Committee meeting.

Presentation of Reports

For Action – Report #25-60, Ingham ISD 2026-27 Proposed General Education Fund Budget.

A motion was presented by Member Lopez and supported by Member Liggons, to support the 2026-27 IISD budget resolution as presented.

Motion PASSED

Vote: Ayes – 6 ; Nays – 0; Absent – 1, Member Lenneman

For Action – Report #25-61, Colt and Elmwood Furniture Purchase, Phase I

A motion was presented by Member Lopez and supported by Member Perkins to approve the purchase of furniture as presented, in accordance with Board Policy 6320 (Purchasing).

Motion PASSED

Vote: Ayes – 6 ; Nays – 0; Absent – 1, Member Lenneman

For Action – Report #25-62, Construction Grading Permit

A motion was presented by Member Lopez and supported by Member Torres, to approve the construction grading permit between the City of Lansing and Waverly Community Schools.

Motion PASSED

Vote: Ayes – 6 ; Nays – 0; Absent – 1, Member Lenneman

For Action – Report #25-63, Technology Change Order

A motion was presented by Member Liggons and supported by Member Lopez, to approve the change orders for FD Hayes, Amcomm, People Driven Tech and Crescent Digital as presented.

Motion PASSED

Vote: Ayes – 6 ; Nays – 0; Absent – 1, Member Lenneman

For Action – Report #25-64, Technology Equipment Purchase

A motion was presented by Member Perkins and supported by Member Pike to approve the purchase of a new HS pool scoreboard and timing system.

Motion PASSED

Vote: Ayes – 6 ; Nays – 0; Absent – 1, Member Lenneman

For Action – Report #25-65, Bus Purchase

A motion was presented by Member Liggons and supported by Member Lopez to adopt the resolution for participation in the MSBO Bus Purchase Program and approve the purchase of 3 buses from Midwest Transit.

Motion PASSED

Vote: Ayes – 6 ; Nays – 0; Absent – 1, Member Lenneman

For Action – Report #25-66, Chromebook Purchase

A motion was presented by Member Pike and supported by Members Lopez and Perkins to approve the purchase of chromebooks as per the provided summary from Sehi Computer Products, Inc.

Motion PASSED

Vote: Ayes – 6 ; Nays – 0; Absent – 1, Member Lenneman

For Action – Report #25-67, Furniture Purchase – Delta Township

A motion was presented by Member Lopez and supported by Member Liggons to approve the purchase of furniture from DBI, as per the provided summary.

Motion PASSED

Vote: Ayes – 6 ; Nays – 0; Absent – 1, Member Lenneman

For Action – Report #25-68, Construction Award – Administration Building

A motion was presented by Member Lopez and supported by Member Liggons to approve awards to the lowest responsible bidder(s) from the Admin Building Renovation Bid Package.

Motion PASSED

Vote: Ayes – 6 ; Nays – 0; Absent – 1, Member Lenneman

Teaching & Learning – Alternative Education Presentation

Teaching & Learning Director, Chris Huff, and Virtual Education Program Principal, Jeremiah Baynes, gave a presentation on the proposed Waverly Bridge Academy as an additional Waverly educational entity/program. This item will be brought back in June for possible action.

Board members requested the following information before the June 2026 meeting in order make an informed decision on this topic:

- copies of the syllabus to be used for this program, more information on services offered
- services provided by Graduation Alliance for our students
- any additional responsibilities for our current certified support staff
- a proposed contract with costs

For Action – Report #25-69, MHSAA 2026-27 Membership Resolution

A motion was presented by Member Perkins and supported by Member Liggons to approve the 2026-27 MHSAA Membership resolution.

Motion PASSED

Vote: Ayes – 6 ; Nays – 0; Absent – 1, Member Lenneman

Superintendent’s Report/Goals Update:

Superintendent Mitcham:

- Encouraging all staff and students to finish the 2025-26 school year strong.
- Currently in the process of interviewing for the Elmwood Elementary Principal position. Thank you to all staff, community members and students who participated. Their input is very valuable.
- Teacher Appreciation Month – thank you to all of our dedicated staff.
- The Retirement Celebration will be on June 2, 2026 in the Admin Building Boardroom.
- No school on May 22 and May 25, for the Memorial Day holiday.

Member Pike stated she could not find the date of graduation on the website. It was confirmed that it is June 1, 2026.

Public Comment – Open Comment for District Issues

The following individuals gave a public comment:

- Community Member Lisa Parsons, thanked Superintendent Mitcham for responding to her regarding training for coaches. She also voiced concerns regarding teacher communication to parents in a timely manner regarding student behavior and/or issues in the classroom. She requested to be contacted as soon as an issue arises. Ms. Parsons thanked Bernard Colton for his follow-up conversations. Ms. Parsons also suggested educating general education students on the inclusion of special education students in their classroom.
- High School Teacher, Amber Butler, voiced concerns regarding school culture, staff leaving the district and asked the Board of Education to listen to the teachers and their address their ongoing issues and investigate why staff is leaving.

Other Board Business

None

The meeting adjourned at 8:42 pm.

Respectfully submitted,

Vince Perkins, Secretary
aml

Superintendents Report May 18, 2026

Finish Strong

There are 11 ½ days of school left! I just want to take this opportunity to encourage us all to finish strong. There is so much to celebrate from this school year – so much to be proud of! For me, it has been such a great year of getting to know Waverly – The students, our families, our teachers and our community. Thank you to all for your patience as I listen and learn. I am so excited about the days ahead – so much good to come!

Principal Search Update

We are currently in the process of interviewing qualified candidates for both the open principal positions at Elmwood Elementary and East Intermediate. Thank you to all the teachers, parents, administrators, and students who have volunteered their time to be a part of interview committees. Many voices have weighed in on who the next principals will be and because of that, I believe we will find a great fit. We hope to fill both positions by the end of the month.

Teacher Appreciation

This month we have been celebrating staff appreciation in all our buildings in honor of Teacher Appreciation week. Our food service staff has done an amazing job of cooking up delicious breakfast casseroles and pancakes (etc..) for our central office to serve our staff. I have personally taken it upon myself to try to get staff to allow me to put whip cream on everything – I'm batting about 250! I do want to take this moment to publicly thank all our teachers, para educators as well as all building staff for all they do for our students. It is only through your dedication and hard work that we can do anything good for our students – I appreciate every one of you and can't wait to see all that we can do for our students. Thank you all for your service!

Retirement

Speaking of service... This year we are celebrating the retirement of 1 Custodian, 5 Teachers, 2 Food Service employees and 2 Principals. When you add up the years of service these folks have dedicated – 273! Although I am just coming in to the last year of your career, I know enough to know that you leave a huge hole to fill. We appreciate all you have given to this district and to all the students you have impacted along the way. We look forward to celebrating all our retirees here in this boardroom on June 2nd. We hope you will come and allow us to personally thank you for your service.

Calendar

A reminder to all that there will be no school May 22 and May 25 for Memorial Day vacation. There will be half days at Waverly high school June 3-5 for exams, and our last day of school is June 5, which is a half day for everyone.

Construction Update

Colt / Delta • Bulletins a. Bulletins needs to be separated by grant / bond to keep the dollars separate. b. Canopy structural steel – tentatively being issued today 5/7 • RFI's a. RFI #63 – Existing Utility As-Built Information b. RFI #64 – Return Air for RTU-9 c. RFI #65 – RTU 7&8 Supplemental Roof Steel and Duct Route – High Priority d. RFI #66 – Condensate Pipe e. RFI #67 – Fireplace Specifications – High Priority f. RFI #69 – RTU-13 Clearance g. RFI #70 – Roof Curb Mounting – there is an answer for this, just hasn't been written up yet h. RFI #72 – Receptacles in Lobby i. RFI #73 – Area B Addition Roof Demolition • Submittals a. Currently 3 submittals in for review • Construction Update a. Door frames are not being delivered to the job site until next week by May 15 b. Interior work is on hold, waiting for door frames to be able to frame walls c. Gym ceiling is getting framed in within the next week or so d. Cutting roof curbs in for new roof top units – this was finished up this morning e. Masonry is all set around the fireplace location f. Need brick on the columns yet in the addition g. Structural steel is complete except for the columns in the addition h. Exterior framing on the addition has begun i. Concrete floor has been poured in the addition j. Existing playground has been removed k. Storm and water main installation to begin a week before school gets out l. Watermain pipe and storm pipe material should be onsite next week m. Temporary fence getting installed tomorrow, May 8 n. All the window frames have been installed, still working on installing glass o. Need color selection for metal panels in the storefronts -this is in TowerPinkster's court p. Fire riser into the building – this is proceeding with a T&M for installation • This was not picked up by anyone on the project. • It was originally called out for the fire suppression contractors to provide and install it but they all excluded it from their bids because it is not something they typically do. q. Health Department – need to verify drawings were sent in as they showed up to the site and mentioned not having plan review yet. • Barton Malow followed up with an email to TowerPinkster and waiting for an answer r. Waverly to follow up and determine that all documents needed are ready to be turned in for the early childcare side of Colt. • Let Barton Malow know if you need anything from us on that. s. There will be another walkthrough of the space prior to turning over the space, Delta Township to follow up with a rough timeline of when that will be. • Tentatively late June • Construction Issues a. • Moving Plan a. First round of moving happened on the PD day of April 24, got about half a trailer full. b. Next major move out is going to be Saturday, June 6 • Schedule a. Currently schedule shows punchlist for Area B being prior to September 30. b. Phenolic material (Trespa) will not be installed prior to school starting. This is a 4-month lead time following field measurement; this is located at the early childhood entrance. c. Barton

Malow is targeting having all interior work completed on the Colt side prior to school starting. d. Pre-Installation meeting for the fireplace – BMB to get it scheduled with Sara

Winans Elementary • RFI's a. RFI #95 – Area E Skylight – this can be closed b. RFI #96 – Available Fault Current • Submittals a. #468 – Solid Phenolic: Waiting on resubmittal from the contractor • Bulletins a. Updated phasing plan 1. There was concerns about maintaining egress and not being able to adjust the phasing plan. 2. Barton Malow will be moving forward with coordinating with inspectors without the updated phasing plan. 3. This mainly affects the new offices in the courtyard and the kitchen office. Barton Malow doesn't feel this will be a problem with inspectors but need to move forward if Waverly is going to receive occupancy prior to the school year starting. b. Sensory Room Swing and joist repair – Priority (needs to be completed in Summer 26) c. Parking Lot Sign Concrete / Bollard • Construction Update a. Area D addition has its first coat of paint b. Ceilings are installed in the bathrooms and the storage room c. Still need to finish mud on the ceilings in the bathrooms and storage rooms d. Tile installation in the bathrooms begins on Monday, May 11 e. Ceiling grid installation will begin in the kitchen and the server area next week f. Overhead MEP is ongoing in Area D – complete, just a couple roof conductors that need to be completed g. Tectum circles will be delivered to site on June 15 h. Some of the lights will need to be installed with the tectum circles i. Once the tectum circles are completely installed, the remaining lights and flooring can be installed j. Window installation will begin next week k. Masons should be completed with the installation of brick tomorrow, May 8 and will wash the brick next week l. Structural steel is complete as far as we can go right now until demolition begins m. Underground is complete in the courtyard n. Concrete floors have been poured in the courtyard o. Roof for the courtyard should go in next week, dens glass yet this week p. Edge metal installation for area D next week q. Starting to form and scheduling pour for the hallway in area B – Monday, May 11 r. Abatement coordination has been ongoing s. Site restoration is going to begin the week of May 11 t. Site work to begin next week u. Chiller start-up has been completed and ready to be utilized if the building needs it 1. Zone A is large enough to run the entire building, Zone B was saying it was too low on refrigerant even though it was filled to the level that the manufacturer provided. 2. Week of the 14th will be out to test Zone B v. Teacher in one of the classrooms in Area A says she does not have heat in that space 1. BMB to follow up and determine what is going on. BMB thought the controls contractor had already fixed this issues as it has been going on and off the last couple of weeks. • Construction Issues a. • Other Items a. Barton Malow to review the Teacher's lounge to make sure the proper connections are in place for the dishwasher. 1. Advantage Mechanical is going to install when the dishwasher is onsite b. Softball scoreboard power 1. Underground conduit was damaged, there is temporary power ran to make it work right know. There will need to be a permanent fix completed once softball season is complete. c. Flagpole for the softball / baseball fields will be installed

Tuesday or Wednesday next week d. Dumpster location if it gets a dumpster pad – BMB to review the drawings and see what is called out. Currently it is in a location where the company will not dump it and need to determine if the contractor installed the sidewalk correctly. 1. Installed per the drawings, will need to cut the curb and drop the sidewalk or determine a different location. 2. BMB to send in an RFI pertaining to this issue and include a picture of existing conditions. e. Any leaks that we know of? It is watertight but there is some water that is coming in at the resource room (C123). When it rains really bad there is water that comes in through the roof conductor. This issue will be addressed in the upcoming work, but it won't be until Summer 2027. There really isn't a good solution for this until then, might just have to handle the few gallons of water that comes through when a big rain happens. • Moving Plan a. Next major move out is going to be Saturday, June 6 b. Barton Malow is getting concerned that the media center hasn't started packing up yet. This will need to be completed by the last day of school, June 5. • Schedule a. Plan is to have area D addition completed by the end of June b. Trespa panels will not be installed prior to school starting, due to the amount of work that needs to be complete prior to field measuring and the longer lead time for the thicker trespa material. 1. The installation should be able to be done during the school day if it comes to that.

Elmwood Elementary • RFI's a. RFI #40 – IDF Location Elmwood B111 (Past Due) – already moved forward on this b. RFI #41 – New Office Wall Conditions (Past Due) c. RFI #55 – A-Wing Classroom Ceiling Height Conflict (Past Due) – ceiling has to be lowered just want a confirmation on height for all of the ceilings to match. d. RFI #57 – Media Center Receptacles e. RFI #58 – Fire Suppression – Manufacturer Inquiry f. RFI #59 – Exterior Brick Ledge Inquiry – high priority g. RFI #62 – C126 & C127 Fire Rated Frames • Submittals a. Currently update to date on all construction submittals from TowerPinkster. • Bulletins a. Sensory Room Swing b. Parking Lot Sign Concrete / Bollard c. Updated landscaping design • Construction Update a. Masonry is wrapping up interior walls in area A (hallway walls) b. Masonry is also working on face brick on the north and west elevations c. Steel stud contractor is on hold waiting for RFI's – waiting on cafeteria framing but need response to RFI d. Roofers are working on area B, material has been delivered yesterday 5/6 e. Plumbing underground and electrical underground in area B wing f. Inspection is on Tuesday, May 12 for plumbing and electrical underground g. Concrete crew will start once underground is complete h. Steel is wrapping up the canopies on Area A and B just working on detailing. Should be completed by early next week i. j. Working in Area A in over with overhead electrical and mechanical VUVs are being installed and wrapping up the installation of piping and insulation k. All ductwork is in the air for area A l. Fire suppression rough-in is roughly 90% complete in Area A m. Window and skylight material will be showing up next week n. Window installation will begin next week o. Barton Malow does have buy-in from the concrete and masonry contractor to begin the office addition during summer. p. Chiller

will stay in place until cooling season is out for Fall • Construction Issues a. Eyebrow detail – this is an email thread that is going between Barton Malow and Seth. This is a very high priority so that we can field measure for metal panels. This is holding up framing. b. Detail at the top of the wall around the building - Waiting on RFI Response c. Owner utilities – contractor coming out tomorrow to locate the fiber and power. Where the power and the fiber leaves the sign, potentially be able to leave it in place. Barton Malow will put in a RFI to discuss the options once owner utilities are located. Foundation for the office addition d. Look into the piping insulation on the cooling side as it condensates really bad. BMB to review the contract documents to see if there was a unit cost or if the specifications called out including the replacement throughout the entire building. • Other Items a. Logistics Plan for the Main office addition 1. Waverly thinks it would be best to keep bus traffic away from the parent drop off, meaning the busses will still need to use the bus loop for student drop off. 2. Barton Malow to reach out to LD Clark to see if the bus loop can be completed in Summer 26 and leave a base coat of asphalt until addition is complete and then top it out. 3. Waverly is ok utilizing the green belt area inside the bus loop as a laydown area, the existing building sign can be blocked from one side. b. Office Staff in the building – Summer 2026 1. Waverly is going to relocate the office staff, due to the logistics and noise of construction ongoing. c. Barton Malow to get a quote to create multiple office spaces out of the current teachers lounge space. d. Consumer Gas meter has been upgraded e. BW&L confirmed that a new transformer is not needed for the building f. Landscape Estimate requested by Waverly \$82,607 1. Direct construction cost: \$66,170 2. Waiting on a bulletin for this g. New principal coordination will begin once that person is decided after interviews. • Schedule a. Schedule – currently showing the Area A & B addition being completed (without final clean) by the August 10 date for furniture delivery. b. Keep in mind that Barton Malow will continue to evaluate the need for overtime to ensure the schedule doesn't slip for the addition or the interior of the building renovations. 1. If it isn't at any fault to any other contractors, Barton Malow will present a rough estimate of overtime to Evan for approval prior to authorizing overtime. c. Office Addition – Pull ahead to start Summer 2026 1. Zalucha is quoting relocation of existing card reader and Ai phone for the new temporary building entrance. There should also be pricing for additional card reader inside the building to allow staff access past the conference room / new entrance. 2. We will need a temporary door and frame for the new temporary entrance and the door to the conference room / new main entrance. BMB to confirm if we have a temporary door / frame that will work with the card reader. 3. The existing conference room walls are called out on the drawings to go up to the deck but existing is a make-shift temporary walls. BMB will probably put in an RFI pertaining to this and get pricing to replace it in summer 2027. 4. BMB to coordinate temporary fence locations and contractor access with the bus loop still being utilized and communicate that to Waverly.

d. When the office staff is moved into the new addition, potentially will need to relocate the “health” room temporarily so construction can start in the existing office area.

Waverly High School • Bulletins

a. Future mechanical changes: RTU for Warrior room and AHU for kitchen

b. Metal Panel Solution by Pool 1. This has been received, do we want multiple quotes for this bulletin?

c. Robotics Room • Punchlist • Construction Update

a. Egress Vestibule 1. PDT received their inspection, so ceiling tiles can be re-installed 2. SC needs to install a thermostat for the unit 3. Brick staining on exterior building will be completed in summer

b. Bulletin 17 work – Columns in the cafeteria was completed during spring break

c. Top of the ramp egress door swap out – this will have to be scheduled during Summer 2026

d. Barton Malow plans on getting the piping from the sink removed in the office prior to summer.

e. Auditorium pit pump discussion 1. Scope the storm line and see where it goes 2. Leave the pump disconnected from the house lights 3. Request original drawings from TowerPinkster to review what else could be causing the water

• Other Items

a. Auxiliary Gym new RTU 1. Didn’t come with an adaptable curb, waiting to see where that is 2. Temporary heater has been called off and is scheduled for pickup 3. Additional cost – never provided cost for controls or electrical. Barton Malow authorized this as a T&M and will present when the cost is received.

b. Roof leak in Gymnasium 1. Contractor to return in the spring (temps 45 degrees and raising) to conduct the permanent fix at the gym. c. Additional roof leaks 1. Barton Malow had a contractor come out and review the missing caulk and any necessary locations for tuck pointing. They will be out to measure next week and will have a quote prior to May 18. 2. Nova is going to test the water that is getting in near the pool to see if there is chlorine in it as a condensation issue or if it is a water leak still. 3. Barton Malow to schedule a meeting with the roofing contractor for mid next week to discuss current status of everything ahead of the board meeting. 4. BMB trying to determine if the roof membrane is the problem or if there are other factors that is the problem 5. There is water that is getting under the new membrane and getting stuck in between the new and old membranes

i. In this area, the new ISO will need to be replaced as it is saturated. 6. Contractor to provide cost to wrap the parapet walls in the science wing

i. Waverly wants to move forward with completing this work. 7. BMB coordinating getting a contractor out to review roof drains 8. Contractor to provide cost to extend the roof curb 9. Contractor will be ordering additional ceiling tile for the district – Need update on this 10. Science addition has water in the exterior wall, there isn’t any weeps

i. Interior you see paint blistering and water is being trapped between the walls

d. Exhaust fans in pool area 1. Motors have been installed, waiting for Ryan from TowerPinkster to provide some overload information.

e. Metal carpet transitions appear to not be holding up in certain locations 1. The transition at the stairs has been changed out to a rubber one in lieu of the metal one that wasn’t holding but needs to be adjusted.

f. Parking Lot signs 1. Barton Malow to get a unit cost to install the bollard sign post and Waverly will provide locations if it isn’t going to be all of them.

g. Misc. Issues – Evan

emailed Barton Malow from February 3 1. Barton Malow sent out an update on that list early today. 2. Exterior door by the art room was having issues, Kyle is going to adjust the closure.

Waverly Middle School • RFI's a. N/A • Bulletins a. TowerPinkster is issue a bulletin to address the two corridors that haven't been touched yet. The work will include ceilings, flooring, lights, and paint. Waverly to determine if lockers are a necessity to replace or not. 1. Barton Malow hasn't received a bulletin for this yet, which means the work will not be completed during Summer. 2. Once the bulletin comes out Barton Malow will coordinate with the contractors and see how much can get completed during school breaks. Barton Malow would say this work will be completed by the end of Christmas break. 3. Due to having the submittals already for the material used, there shouldn't be a need to send in submittals for anything except lockers if needed. b. Updated Bulletin for kitchen HVAC c. Kitchen / bathroom heating 1. Option 3: Adding a electrical radiant panel inside the bathroom to help during night set back and provide an additional boost of heat. Provide supplemental heat, it would be a ceiling radiant panel. • Punchlist a. TowerPinkster can schedule a punchlist walk of the trespa work • Construction Update a. Perforated panel material is being installed 1. There are some perforated metal panel material that was built wrong, contractor working with the manufacturer for new material. 2. Manufacturer machine broke down so this is taking longer than expected to receive. b. Lights for the north entrance (switch out the lights) are on order c. Trespa is complete except for punchlist items d. Flooring will need to be fixed from the lift e. There appears to be some sidewalk in front of the building that was damaged with JD Candler's lift. Barton Malow is having the conversations with the contractor and will be getting the sidewalk complete. f. There are some drywall repairs / paint that needs to be completed yet g. Lights inside the Trespa have been installed • Other Items a. Electrical inspector is requiring panic hardware on the door for the electrical room to meet code. The existing doors are "hot" so we will not be able to retrofit the existing door. 1. Waiting on material to replace this door. (E120) 2. Barton Malow reached out to Nova about this door and Nova is reviewing if this door is already included in base bid. b. Existing Exhaust Fans 1. BMB has been called out to the building for a roof leak, but it isn't a roof leak. After investigation it appears that water is getting in on the abandoned exhaust fans and / or snow gets piled up at those areas and ends up coming into the building. There are some exhaust fans that are sitting in place and not working located in the hallways. Barton Malow recommends capping those to prevent any water from getting in. 2. There is also an abandoned RTU that has the potential for water to get into the building as well. 3. TowerPinkster to do a survey of unused mechanical equipment and determine the best plan of action to make the building watertight. c. Parking Lot signs 1. Barton Malow to get a unit cost to install the bollard sign post and Waverly will provide locations if it isn't going to be all of them. d. Exterior doors 1. Review all exterior doors to see if the door sweeps are too high or if something is missing on them.

Service Building • Move-Out a. Currently scheduled for the building to be moved out by July 1 • Submittals a. These are being submitted regularly and our target finish for submittals is May 12. • Schedule a. Once contractors receive contracts, Barton Malow will obtain input from contractors on the schedule and make the necessary updates.

Admin Building • Bid Award Schedule: a. Post Bids: May 7 – May 11 b. Award Rec: May 11, 2026 c. Board Meeting: May 18, 2026 • Barton Malow to reach out to Corrigan to see if they would relocate the fire safe that is currently located upstairs to its new location.

Word Walls Status • The word wall still needs to be completed at the following schools: Middle School, High School, Winans Elementary, Elmwood Elementary, and Colt Elementary. • Middle School a. Barton Malow is in conversations with the contractor to get the unapproved word wall removed, wall patched, and new word wall installed. b. If this continues to linger on, Barton Malow will have another contractor complete the work at the contracted contractor expense. • Winans, Elmwood, and Colt a. Need word wall drawing from TowerPinkster 1. TowerPinkster is following up on this

Interior Signage Status • Change order for the raised graphics has been approved and in the signature process • BMB and TowerPinkster creating a document showing the additional signs that were added at both the High School and Middle School for Waverly to review. • Winans, Elmwood, and Colt – still need drawings from TowerPinkster

WAVERLY COMMUNITY SCHOOLS BOARD OF EDUCATION
REGULAR MEETING
June 15, 2026

Report #25-70

Subject: Personnel Report - All individuals listed on this report have completed the required background check

A. Employment – Administrator

<u>Name</u>	<u>Position</u>	<u>Building</u>	<u>Salary</u>	<u>Effective</u>
Trenton Korver	Principal	East Intermediate	\$104,109	August 1, 2026

B. Employment – Certified

<u>Name</u>	<u>Position</u>	<u>Building</u>	<u>Salary</u>	<u>Effective</u>
Ann Coe	Counselor	High School	MA30 Step 14/\$85,613	August 2026
Jessica Sorrells	Apprentice Teacher	High School	\$38,020	August 2026
Chelsea Ott	Apprentice Teacher	Elmwood Ele	\$38,020	August 2026
Jordan Nelson	Apprentice Teacher	East Intermediate	\$38,020	August 2026
Kristina Bales	ELL Teacher	High School	MA Step 13/\$79,244	August 2026

C. Employment – Non-Certified

<u>Name</u>	<u>Position</u>	<u>Building</u>	<u>Salary</u>	<u>Effective</u>
-------------	-----------------	-----------------	---------------	------------------

D. Resignation – Certified

<u>Name</u>	<u>Position</u>	<u>Building</u>	<u>Effective</u>
Danine Hancke	ELL Teacher	High School	6/5/2026
Kellie Bullard	Special Education Teacher	Middle School	6/5/2026
Majlinda Ahmeti	1 st Grade Teacher	Elmwood Elementary	6/5/2026
Sarah Carver	1 st Grade Teacher	Elmwood Elementary	6/5/2026
Shelby Nichoson	1 st Grade Teacher	Winans Elementary	6/5/2026

E. Resignation – Non-Certified

<u>Name</u>	<u>Position</u>	<u>Building</u>	<u>Effective</u>
Mason Mears	Behavior Para Educator	Elmwood Elementary	6/5/2026
Seth Brown	Class C Custodian	High School	6/26/2026
Elise Weiler-Korb	Instructional Para Educator	Winans Elementary	6/6/2026

F. Staff Transfer

<u>Name</u>	<u>From Position</u>	<u>To Position</u>	<u>Effective</u>
Sara Hill	Winans Kindergarten Teacher	Winans 1 st Grade Teacher	August 2026
Sarah Al-Kabour	Elmwood 4 th Grade Teacher	Elmwood 1 st Grade Teacher	August 2026
Lois Chilcote	Elmwood SE Para Educator	Elmwood Instructional Para Educator	August 2026
Sarah Moore	MS History/English Teacher	Middle School SE Teacher	August 2026
Christie Lehman	Colt ECEC Principal	Elmwood Ele Principal	August 2026

G. Retirement – Administration

<u>Name</u>	<u>Position</u>	<u>Building</u>	<u>Effective</u>
-------------	-----------------	-----------------	------------------

H. Retirement – Certified

<u>Name</u>	<u>Position</u>	<u>Building</u>	<u>Effective</u>
-------------	-----------------	-----------------	------------------

I. Retirement – Non-Certified

<u>Name</u>	<u>Position</u>	<u>Building</u>	<u>Effective</u>
-------------	-----------------	-----------------	------------------

J. Termination

<u>Name</u>	<u>Position</u>	<u>Building</u>	<u>Effective</u>
Morgan Nelson	FS Playground Aide	Elmwood Elementary	5/13/2026
Cheyenne Thomas	FS Playground Aide	Elmwood Elementary	5/13/2026

**WAVERLY COMMUNITY SCHOOLS
BOARD OF EDUCATION
REGULAR BOARD MEETING
JUNE 15, 2026**

Report #25-71

FOR ACTION

Subject:

Waverly Community Schools 2025-2026 Budget Amendment Resolution

Recommendation:

The Superintendent recommends the Board of Education approve the following resolution(s):

2025-26 General Fund Resolution with revenues/transfers-in of \$49,640,631 and expenditures/transfers-out of \$51,098,355

Statement of Purpose:

The chief administrative officer is required to provide the school board such information as the board requires for proper consideration of the recommended budget. (MCL 141.434)

Budget Impact:

The projected General Fund balance as of June 30, 2026 is estimated at \$9,335,511, or 18.7% of current year operating expenditures.

Historical Perspective:

The budget is amended as needed throughout the year in accordance with the Uniform Budgeting and Accounting Act.

Discussion of Options:

The Board may adopt the resolution, reject the resolution, or table the resolution for further discussion.

Rationale for Recommendation:

In accordance with the Uniform Budgeting and Accounting Act, when revenues are going to be less than estimated or expenditures are going to be greater than estimated, the Superintendent is to make a recommendation to reduce expenditures or increase the amount of fund balance available to appropriate for current year expenditures.

Strategic Plan Reference:

Waverly Community School's mission is to educate and prepare students to achieve their academic best, develop character, become lifelong learners, and contribute as citizens of our global society by committing ourselves to excellence in education characterized by a safe, caring and equitable learning environment; rigorous curriculum; quality instruction; and respect for diversity in partnership with families and our entire community.

GENERAL FUND APPROPRIATIONS
Resolution for Adoption by
The Waverly Community Schools Board of Education

RESOLVED that this resolution shall be the revised general appropriations of Waverly Community Schools for the 2025-26 fiscal year; a resolution to make appropriations; to provide for the expenditure of the appropriations; and to provide for the disposition of all revenue received by the Waverly Community Schools.

BE IT FURTHER RESOLVED, that the total revenues and unappropriated fund balance estimated to be available for appropriation in the General Fund of the school district for fiscal year 2025-26 which includes 18.0000 operating mills to be levied on all property, except principal residence and other property exempted by law and 1.8842 supplemental (hold harmless) operating mills on all principal residences, qualified agricultural property, qualified forest property, industrial personal property and commercial personal property not otherwise exempted by law of ad valorem taxes to be used for operating purposes is as follows:

Revenue:

Local	\$10,732,042
State	32,834,447
Federal	971,985
Other Financing Sources	5,102,157
Total Revenue	\$49,640,631
Total Fund Balance, July 1 Available to Appropriate	\$10,043,259
Total Available to Appropriate	\$59,683,890

BE IT FURTHER RESOLVED, that \$51,098,355 of the total available to appropriate in the general fund is hereby appropriated in the amounts and for the purposes set forth below:

Expenditures:

Instruction	
Basic Programs	\$17,857,360
Added Needs	10,083,918
Support Services	
Pupil Support	3,857,490
Instructional Staff Support	3,185,651
General Administration	626,625
School Administration	3,369,856
Business Services	927,931
Operations and Maintenance	5,336,709
Transportation	1,769,314
Central Support	1,795,248
Other Support	1,160,311
Community Activities	-0-
Welfare Activities	-0-
Nonpublic Schools	10,073
Payments to Other Public Schools	-0-
Facilities Acquisitions and Debt Service	17,869
Other Financing Uses	1,100,000

Total Appropriated

\$51,098,355

BE IT FURTHER RESOLVED, that an amount not to exceed \$1,100,000 of local revenue shall be appropriated as Other Financing Uses and transferred from the General Fund to the Public Improvement Fund and that such funds shall be used for non-routine capital items, including, but not limited to, the construction of new buildings, major remodeling of buildings, and acquisition of equipment and vehicles.

BE IT FURTHER RESOLVED, that no board of education member or employee of the school district shall expend any funds or obligate the expenditure of any funds except pursuant to appropriations made by the board of education and in keeping with the budgetary policy statement hitherto adopted by the board. Changes in the amount appropriated by the board shall require approval of the board.

Ayes: Members

Nays: Members

Resolution declared adopted.

Secretary, Board of Education

The undersigned duly qualified and acting Secretary of the Board of Education of Waverly Community Schools, Ingham, Eaton and Clinton Counties, Michigan, hereby certifies that the foregoing is a true and complete copy of a resolution adopted by the Board of Education at a _____ meeting held on _____, 2026, the original of which resolution is a part of the Board's minutes, and further certifies that notice of the meeting was given to the public under the Open Meetings Act, 1976 PA 267, as amended.

Secretary, Board of Education

Waverly Community Schools
Budget Amendment - General Fund
June 15, 2026

	Revised Budget	Final Budget	Difference (Final - Revised)
Revenue			
Local sources	10,735,568	10,732,042	(3,526)
State sources	32,890,283	32,834,447	(55,836)
Federal sources	988,093	971,985	(16,108)
Intergovernmental	4,977,157	4,977,157	-
Transfers In	125,000	125,000	-
Total revenue	49,716,101	49,640,631	(75,470)
Expenditures			
Current:			
Instruction:			
Basic program	17,114,507	17,067,193	(47,314)
Added needs	9,956,109	9,954,118	(1,991)
Total instruction	27,070,616	27,021,311	(49,305)
Support Services:			
Pupil	3,952,890	3,857,490	(95,400)
Instructional staff	3,139,248	3,112,512	(26,736)
General administration	565,555	626,625	61,070
School administration	3,393,569	3,362,511	(31,058)
Business	715,993	695,993	(20,000)
Operations and maintenance	5,150,287	5,266,260	115,973
Pupil transportation services	1,734,314	1,769,314	35,000
Central	1,242,046	1,242,046	-
Other	326,364	368,048	41,684
Total support services	20,220,265	20,300,798	80,533
Athletics	790,263	790,263	-
Community services	-	-	-
Welfare Activities	-	-	-
Non Publics	10,073	10,073	-
Facility Acquisition	-	-	-
Debt service:			
Principal	-	-	-
Interest	-	-	-
Capital outlay	21,829	21,829	-
Payments to other public schools	1,854,081	1,854,081	-
Total expenditures	49,967,127	49,998,355	31,228
Excess of Revenue (Under)Over Expenditures	(251,026)	(357,724)	(106,698)
Transfers Out	1,100,000	1,100,000	-
Budgeted Change in Fund Balance	(1,351,026)	(1,457,724)	(106,698)
Favorable Expenditure Variance (1.5%)	749,507	749,975	468
Net Change in Fund Balance	(601,519)	(707,748)	(106,229)
Fund Balance - Beginning of year			
	10,043,259	10,043,259	
Fund Balance - End of year			
	9,441,740	9,335,511	
	18.9%	18.7%	

**WAVERLY COMMUNITY SCHOOLS
BOARD OF EDUCATION
REGULAR BOARD MEETING
JUNE 15, 2026**

Report #25-72

FOR ACTION

Subject:

Waverly Community Schools 2026-27 Budget Resolutions

Recommendation:

The Superintendent recommends the Board of Education approve the following resolutions:

The 2026-27 General Fund Resolution with revenues of \$48,995,229 and expenditures of \$50,877,158

The 2026-27 Special Revenue Funds Resolution with revenues of \$3,008,347 and expenditures of \$3,076,989

The 2026-27 Debt Retirement Fund Resolution with revenues of \$7,221,543 and expenditures of \$6,320,388

The 2026-27 Sinking Fund Resolution with revenues of \$1,256,702 and expenditures of \$-0-

Statement of Purpose:

The chief administrative officer is required to provide the school board such information as the board requires for proper consideration of the recommended budget. (MCL 141.434)

Budget Impact:

The projected General Fund balance as of June 30, 2027 is estimated to be \$8,211,490, or 16.3% of current year operating expenditures.

The projected Community Services Fund balance as of June 30, 2027 is estimated to be (\$35,726), or 0% of current year operating expenditures.

The projected Food Service Fund balance as of June 30, 2027 is estimated to be \$306,461, or 14.5% of current year operating expenditures.

The projected Student Activity Fund balance as of June 30, 2027 is estimated to be \$414,517.

The projected Debt Retirement Fund balance as of June 30, 2027 is estimated to be \$2,250,966, or 35.6% of current year debt retirement.

The projected Sinking Fund balance as of June 30, 2027 is estimated to be \$7,874,150

Historical Perspective:

School districts are required to adopt their 2026-27 budget(s) by June 30, 2026 for the fiscal year beginning July 1, 2026. The State of Michigan has not yet passed a budget for the School Aid Fund.

Discussion of Options:

The Board may adopt the resolutions collectively, reject the resolutions collectively, or take action on each individual resolution separately.

Rationale for Recommendation:

The Board of Education has the responsibility of reviewing the budget presented, holding a public hearing, modifying it as necessary, and approving it for implementation prior to the beginning of the fiscal year. (MCL 141.434)

Strategic Plan Reference:

As the heart of the community, our mission is to educate and prepare each student to achieve her or his academic best, develop character, become a lifelong learner, and contribute as a citizen of our global society.

GENERAL FUND APPROPRIATIONS
Resolution for Adoption by
The Waverly Community Schools Board of Education

RESOLVED that this resolution shall be the General appropriations of Waverly Community Schools for the 2026-27 fiscal year; a resolution to make appropriations; to provide for the expenditure of the appropriations; and to provide for the disposition of all revenue received by the Waverly Community Schools.

BE IT FURTHER RESOLVED, that the total revenues and unappropriated fund balance estimated to be available for appropriation in the General Fund of the school district for fiscal year 2026-27 which includes 18.0000 operating mills to be levied on all property, except principal residence and other property exempted by law and 1.6791 supplemental (hold harmless) operating mills on all principal residences, qualified agricultural property, qualified forest property, industrial personal property and commercial personal property not otherwise exempted by law of ad valorem taxes to be used for operating purposes is as follows:

Revenue:

Local	\$10,849,931
State	32,931,368
Federal	911,773
Other Financing Sources	4,302,157
Total Revenue	\$48,995,229
Total Fund Balance, July 1 Available to Appropriate	\$9,335,511
Total Available to Appropriate	\$58,330,740

BE IT FURTHER RESOLVED, that \$50,877,158 of the total available to appropriate in the general fund is hereby appropriated in the amounts and for the purposes set forth below:

Expenditures:

Instruction	
Basic Programs	\$17,705,697
Added Needs	10,455,691
Support Services	
Pupil Support	3,852,094
Instructional Staff Support	2,969,850
General Administration	529,018
School Administration	3,498,926
Business Services	930,074
Operations and Maintenance	5,849,677
Transportation	1,684,525
Central Support	1,879,467
Other Support	1,162,067
Community Activities	-0-
Nonpublic Schools	10,073
Facilities Acquisitions and Debt Service	-0-
Other Financing Uses	350,000
Total Appropriated	\$50,877,158

BE IT FURTHER RESOLVED, that an amount not to exceed \$350,000 of local revenue shall be appropriated as Other Financing Uses and transferred from the General Fund to the Public Improvement Fund and that such funds shall be used for non-routine capital items, including, but not limited to, the construction of new buildings, major remodeling of buildings, and acquisition of equipment and vehicles.

BE IT FURTHER RESOLVED, that no board of education member or employee of the school district shall expend any funds or obligate the expenditure of any funds except pursuant to appropriations made by the board of education and in keeping with the budgetary policy statement hitherto adopted by the board. Changes in the amount appropriated by the board shall require approval of the board.

Ayes: Members

Nays: Members

Resolution declared adopted.

Secretary, Board of Education

The undersigned duly qualified and acting Secretary of the Board of Education of Waverly Community Schools, Ingham, Eaton and Clinton Counties, Michigan, hereby certifies that the foregoing is a true and complete copy of a resolution adopted by the Board of Education at a _____ meeting held on _____, 2026, the original of which resolution is a part of the Board's minutes, and further certifies that notice of the meeting was given to the public under the Open Meetings Act, 1976 PA 267, as amended.

Secretary, Board of Education

SPECIAL REVENUE FUNDS APPROPRIATIONS
Resolution for Adoption by
The Waverly Community Schools Board of Education

RESOLVED that this resolution shall be the Special Revenue appropriations of Waverly Community Schools for the 2026-2027 fiscal year; a resolution to make appropriations; to provide for the expenditure of the appropriations; and to provide for the disposition of all revenue received by Waverly Community Schools.

BE IT FURTHER RESOLVED, that the total revenues and unappropriated fund balance estimated to be available for appropriation in the Special Revenue Funds of the school district for fiscal year 2026-2027 is as follows:

Revenue:	
Local	\$903,347
State	100,000
Federal	2,005,000
Other Financing Sources	-0-
 Total Revenue	 \$3,008,347
 Total Fund Balance, July 1 Available to Appropriate	 \$753,893
 Total Available to Appropriate	 \$3,762,240

BE IT FURTHER RESOLVED, that \$3,076,989 of the total available to appropriate in the Special Revenue Funds is hereby appropriated in the amounts and for the purposes set forth below:

Expenditures:	
Instructional Services	\$11,000
Business Services	37,761
Operations and Maintenance	500
Athletics	71,387
Student Activities	154,911
Food Services	2,077,099
Community Services	599,330
Fund Modifications (Transfers Out)	125,000
 Total Appropriated	 \$3,076,989

BE IT FURTHER RESOLVED, that no board of education member or employee of the school district shall expend any funds or obligate the expenditure of any funds except pursuant to appropriations made by the board of education and in keeping with the budgetary policy statement hitherto adopted by the board. Changes in the amount appropriated by the board shall require approval of the board.

Ayes: Members

Nays: Members

Resolution declared adopted.

Secretary, Board of Education

The undersigned duly qualified and acting Secretary of the Board of Education of _____, Michigan, hereby certifies that the foregoing is a true and complete copy of a resolution adopted by the Board of Education at a _____ meeting held on _____, 2026, the original of which resolution is a part of the Board's minutes, and further certifies that notice of the meeting was given to the public under the Open Meetings Act, 1976 PA 267, as amended.

Secretary, Board of Education

DEBT SERVICE FUNDS APPROPRIATIONS
Resolution for Adoption by
The Waverly Community Schools Board of Education

RESOLVED that this resolution shall be the Debt Retirement appropriations of Waverly Community Schools for the 2026-2027 fiscal year; a resolution to make appropriations; to provide for the expenditure of the appropriations; and to provide for the disposition of all revenue received by Waverly Community Schools.

BE IT FURTHER RESOLVED, that the total revenues and unappropriated fund balance estimated to be available for appropriation in the Debt Service Funds of the school district for fiscal year 2026-2027 which includes 6.40 debt service mills to be levied on all property not otherwise exempted by law is as follows:

Revenue:	
Local sources	\$7,143,893
State sources	77,650
 Total Revenue	 \$7,221,543
 Total Fund Balance, July 1 Available to Appropriate	 \$1,349,811
 Total Available to Appropriate	 \$9,188,472

BE IT FURTHER RESOLVED, that \$6,320,388 of the total available to appropriate in the Debt Service Funds is hereby appropriated in the amounts and for the purposes set forth below:

Expenditures:	
Business Services	700
Principal	\$2,055,000
Interest	\$4,264,688
 Total Appropriated	 \$6,320,388

BE IT FURTHER RESOLVED, that no board of education member or employee of the school district shall expend any funds or obligate the expenditure of any funds except pursuant to appropriations made by the board of education and in keeping with the budgetary policy statement hitherto adopted by the board. Changes in the amount appropriated by the board shall require approval of the board.

Ayes: Members

Nays: Members

Resolution declared adopted.

Secretary, Board of Education

The undersigned duly qualified and acting Secretary of the Board of Education of Waverly Community Schools, Ingham, Eaton and Clinton Counties, Michigan, hereby certifies that the foregoing is a true and complete copy of a resolution adopted by the Board of Education at a _____ meeting held on _____, 2026, the original of which resolution is a part of the Board's minutes, and further certifies that notice of the meeting was given to the public under the Open Meetings Act, 1976 PA 267, as amended.

Secretary, Board of Education

SINKING FUND APPROPRIATIONS
Resolution for Adoption by
The Waverly Community Schools Board of Education

RESOLVED that this resolution shall be the Sinking Fund appropriations of Waverly Community Schools for the 2026-2027 fiscal year; a resolution to make appropriations; to provide for the expenditure of the appropriations; and to provide for the disposition of all revenue received by Waverly Community Schools.

BE IT FURTHER RESOLVED, that the total revenues and unappropriated fund balance estimated to be available for appropriation in the Sinking Fund of the school district for fiscal year 2026-2027 which includes 1.00 sinking fund mills to be levied on all property not otherwise exempted by law is as follows:

Revenue:	
Local sources	\$1,256,702
Total Revenue	\$1,256,702
Total Fund Balance, July 1 Available to Appropriate	\$6,617,448
Total Available to Appropriate	\$7,874,150

BE IT FURTHER RESOLVED, that \$0 of the total available to appropriate in the Sinking Fund is hereby appropriated in the amounts and for the purposes set forth below:

Expenditures:	
Facilities Acquisition, Construction & Improvement	\$-0-
Total Appropriated	\$-0-

BE IT FURTHER RESOLVED, that no board of education member or employee of the school district shall expend any funds or obligate the expenditure of any funds except pursuant to appropriations made by the board of education and in keeping with the budgetary policy statement hitherto adopted by the board. Changes in the amount appropriated by the board shall require approval of the board.

Ayes: Members

Nays: Members

Resolution declared adopted.

Secretary, Board of Education

The undersigned duly qualified and acting Secretary of the Board of Education of Waverly Community Schools, Ingham, Eaton and Clinton Counties, Michigan, hereby certifies that the foregoing is a true and complete copy of a resolution adopted by the Board of Education at a _____ meeting held on _____, 2026, the original of which resolution is a part of the Board's minutes, and further certifies that notice of the meeting was given to the public under the Open Meetings Act, 1976 PA 267, as amended.

Secretary, Board of Education

**WAVERLY COMMUNITY SCHOOLS
BOARD OF EDUCATION
REGULAR MEETING
JUNE 15, 2026**

Report #25-73

FOR ACTION***

Subject:

Certification of Summer Tax Levy – City of Lansing, Delta Township and Lansing Township

Recommendation:

The Superintendent recommends the Board of Education adopt the proposed summer tax levy for the City of Lansing, Delta Township and Lansing Township. A certified copy is affixed to the official minutes of this meeting. A copy of the certification (L-4029) is included in the support materials.

Statement of Purpose:

To certify the tax levy, allowing local taxing units to collect summer taxes for the district.

Budget Impact:

If the certification of tax levy is not adopted, taxing units will not collect summer taxes for the school district, which could impact cash flow and necessitate short-term borrowing.

Historical Perspective:

Section 380.1213 of Michigan School Code provides that the Secretary of the Board of Education file a certified copy of a resolution adopted by the Board, stating the number of mills to be levied on taxable properties within the school district. This certification is to be filed with the appropriate township(s) and city clerk(s).

A breakdown of the summer tax levy is as follows:

<u>Operating</u>	<u>Rate</u>	<u>Expires</u>
All – Voted (Hold Harmless)	0.8396	December 31, 2032
Commercial Personal – Voted	3.8396	December 31, 2032
Non-Home – Voted	8.1604	December 31, 2032
 <u>2022 Building and Site Debt (2021)</u>		
All	1.6000	December 31, 2051
 <u>2024 Building and Site Debt (2021)</u>		
All	1.6000	December 31, 2053
 <u>2025 Sinking Fund</u>		
All	0.5000	December 31, 2035

The summer levy for the City of Lansing, Lansing Township and Delta Township is based upon fifty percent (50%) of the total levy.

Discussion of Options:

The Board may adopt the recommendation as presented, reject the recommendation or could reduce the amount of any of the above levies. Any reduction in tax levy will result in the loss of revenue for the District.

Strategic Plan Reference:

As the heart of the community, our mission is to educate and prepare each student to achieve her or his academic best, develop character, become a life long learner, and contribute as a citizen of our global society.

2026 Tax Rate Request (This form must be completed and submitted on or before September 30, 2026)

MILLAGE REQUEST REPORT TO COUNTY BOARD OF COMMISSIONERS

Carefully read the instructions on page 2.

This form is issued under authority of MCL Sections 211.24e, 211.34 and 211.34d. Filing is mandatory; Penalty applies.

County(ies) Where the Local Government Unit Levies Taxes Ingham County - Lansing Township	2026 Taxable Value of ALL Properties in the Unit as of 05-26-2026 168,215,272
Local Government Unit Requesting Millage Levy Waverly Community Schools	For LOCAL School Districts: 2026 Taxable Value excluding Principal Residence, Qualified Agricultural, Qualified Forest, Industrial Personal and Commercial Personal Properties. "Not yet known"

This form must be completed for each unit of government for which a property tax is levied. Penalty for non-filing is provided under MCL Sec 211.119. The following tax rates have been authorized for levy on the 2026 tax roll.

(1) Source	(2) Purpose of Millage	(3) Date of Election	(4) Original Millage Authorized by Election, Charter, etc.	(5)** 2025 Millage Rate Permanently Reduced by MCL 211.34d "Headlee"	(6) 2026 Current Year "Headlee" Millage Reduction Fraction	(7) 2026 Millage Rate Permanently Reduced by MCL 211.34d "Headlee"	(8) Sec. 211.34 Truth in Assessing or Equalization Millage Rollback Fraction	(9) Maximum Allowable Millage Levy *	(10) Millage Requested to be Levied July 1	(11) Millage Requested to be Levied Dec. 1	(12) Expiration Date of Millage Authorized
Extra Voted	Operating NON-HOME	08/2022	18.4946	18.4946	1.0000	18.4946	1.0000	18.0000	8.1604		12/2032
Hold Harmless Extra Voted	Operating ALL	08/2022	9.3000	9.3000	1.0000	9.3000	1.0000	9.3000	0.8396		12/2032
Extra Voted	2022 Debt DEBT-ALL	05/2021	3.2000	N/A	1.0000	N/A	1.0000	3.2000	1.6000		12/2051
Extra Voted	2024 Debt DEBT-ALL	05/2021	3.2000	N/A	1.0000	N/A	1.0000	3.2000	1.6000		12/2053
Extra Voted	Sinking Fund ALL	11/2025	1.0000	1.0000	1.0000	1.0000	1.0000	1.0000	0.5000		12/2035

Prepared by Justin Hill	Telephone Number (517) 244-1480	Title of Preparer Accountant	Date 5/15/2026
-----------------------------------	---	--	--------------------------

CERTIFICATION: As the representatives for the local government unit named above, we certify that these requested tax levy rates have been reduced, if necessary to comply with the state constitution (Article 9, Section 31), and that the requested levy rates have also been reduced, if necessary, to comply with MCL Sections 211.24e, 211.34 and, for LOCAL school districts which levy a Supplemental (Hold Harmless) Millage, 380.1211(3).

<input type="checkbox"/> Clerk	Signature	Print Name	Date
<input checked="" type="checkbox"/> Secretary			
<input type="checkbox"/> Chairperson	Signature	Print Name	Date
<input checked="" type="checkbox"/> President			

* Under Truth in Taxation, MCL Section 211.24e, the governing body may decide to levy a rate which will not exceed the maximum authorized rate allowed in column 9. The requirements of MCL 211.24e must be met prior to levying an operating levy which is larger than the base tax rate but not larger than the rate in column 9.

** **IMPORTANT:** See instructions on page 2 regarding where to find the millage rate used in column (5).

Local School District Use Only. Complete if requesting millage to be levied. See STC Bulletin 2 of 2026 for instructions on completing this section.	
Total School District Operating Rates to be Levied (HH/Supp and NH Oper ONLY)	Rate ***
For Principal Residence, Qualified Ag, Qualified Forest and Industrial Personal	0.8396
For Commercial Personal	3.8396
For all Other	9.0000

*** FOR JULY 1 LEVY

2026 Tax Rate Request (This form must be completed and submitted on or before September 30, 2026)

MILLAGE REQUEST REPORT TO COUNTY BOARD OF COMMISSIONERS

Carefully read the instructions on page 2.

This form is issued under authority of MCL Sections 211.24e, 211.34 and 211.34d. Filing is mandatory; Penalty applies.

County(ies) Where the Local Government Unit Levies Taxes Eaton County - Delta Township	2026 Taxable Value of ALL Properties in the Unit as of 05-26-2026 792,804,416
Local Government Unit Requesting Millage Levy Waverly Community Schools	For LOCAL School Districts: 2026 Taxable Value excluding Principal Residence, Qualified Agricultural, Qualified Forest, Industrial Personal and Commercial Personal Properties. "Not yet known"

This form must be completed for each unit of government for which a property tax is levied. Penalty for non-filing is provided under MCL Sec 211.119. The following tax rates have been authorized for levy on the 2026 tax roll.

(1) Source	(2) Purpose of Millage	(3) Date of Election	(4) Original Millage Authorized by Election, Charter, etc.	(5)** 2025 Millage Rate Permanently Reduced by MCL 211.34d "Headlee"	(6) 2026 Current Year "Headlee" Millage Reduction Fraction	(7) 2026 Millage Rate Permanently Reduced by MCL 211.34d "Headlee"	(8) Sec. 211.34 Truth in Assessing or Equalization Millage Rollback Fraction	(9) Maximum Allowable Millage Levy *	(10) Millage Requested to be Levied July 1	(11) Millage Requested to be Levied Dec. 1	(12) Expiration Date of Millage Authorized
Extra Voted	Operating NON-HOME	08/2022	18.4946	18.4946	1.0000	18.4946	1.0000	18.0000	8.1604		12/2032
Hold Harmless Extra Voted	Operating ALL	08/2022	9.3000	9.3000	1.0000	9.3000	1.0000	9.3000	0.8396		12/2032
Extra Voted	2022 Debt DEBT-ALL	05/2021	3.2000	N/A	1.0000	N/A	1.0000	3.2000	1.6000		12/2051
Extra Voted	2024 Debt DEBT-ALL	05/2021	3.2000	N/A	1.0000	N/A	1.0000	3.2000	1.6000		12/2053
Extra Voted	Sinking Fund ALL	11/2025	1.0000	1.0000	1.0000	1.0000	1.0000	1.0000	0.5000		12/2035

Prepared by Justin Hill	Telephone Number (517) 244-1480	Title of Preparer Accountant	Date 5/15/2026
-----------------------------------	---	--	--------------------------

CERTIFICATION: As the representatives for the local government unit named above, we certify that these requested tax levy rates have been reduced, if necessary to comply with the state constitution (Article 9, Section 31), and that the requested levy rates have also been reduced, if necessary, to comply with MCL Sections 211.24e, 211.34 and, for LOCAL school districts which levy a Supplemental (Hold Harmless) Millage, 380.1211(3).

<input type="checkbox"/> Clerk	Signature	Print Name	Date
<input checked="" type="checkbox"/> Secretary			
<input type="checkbox"/> Chairperson	Signature	Print Name	Date
<input checked="" type="checkbox"/> President			

* Under Truth in Taxation, MCL Section 211.24e, the governing body may decide to levy a rate which will not exceed the maximum authorized rate allowed in column 9. The requirements of MCL 211.24e must be met prior to levying an operating levy which is larger than the base tax rate but not larger than the rate in column 9.

** **IMPORTANT:** See instructions on page 2 regarding where to find the millage rate used in column (5).

Local School District Use Only. Complete if requesting millage to be levied. See STC Bulletin 2 of 2026 for instructions on completing this section.	
Total School District Operating Rates to be Levied (HH/Supp and NH Oper ONLY)	Rate ***
For Principal Residence, Qualified Ag, Qualified Forest and Industrial Personal	0.8396
For Commercial Personal	3.8396
For all Other	9.0000

*** FOR JULY 1 LEVY

2026 Tax Rate Request (This form must be completed and submitted on or before September 30, 2026)

MILLAGE REQUEST REPORT TO COUNTY BOARD OF COMMISSIONERS

Carefully read the instructions on page 2.

This form is issued under authority of MCL Sections 211.24e, 211.34 and 211.34d. Filing is mandatory; Penalty applies.

County(ies) Where the Local Government Unit Levies Taxes Ingham County - City of Lansing	2026 Taxable Value of ALL Properties in the Unit as of 05-26-2026 3,195,316
Local Government Unit Requesting Millage Levy Waverly Community Schools	For LOCAL School Districts: 2026 Taxable Value excluding Principal Residence, Qualified Agricultural, Qualified Forest, Industrial Personal and Commercial Personal Properties. "Not yet known"

This form must be completed for each unit of government for which a property tax is levied. Penalty for non-filing is provided under MCL Sec 211.119. The following tax rates have been authorized for levy on the 2026 tax roll.

(1) Source	(2) Purpose of Millage	(3) Date of Election	(4) Original Millage Authorized by Election, Charter, etc.	(5)** 2025 Millage Rate Permanently Reduced by MCL 211.34d "Headlee"	(6) 2026 Current Year "Headlee" Millage Reduction Fraction	(7) 2026 Millage Rate Permanently Reduced by MCL 211.34d "Headlee"	(8) Sec. 211.34 Truth in Assessing or Equalization Millage Rollback Fraction	(9) Maximum Allowable Millage Levy *	(10) Millage Requested to be Levied July 1	(11) Millage Requested to be Levied Dec. 1	(12) Expiration Date of Millage Authorized
Extra Voted	Operating NON-HOME	08/2022	18.4946	18.4946	1.0000	18.4946	1.0000	18.0000	8.1604		12/2032
Hold Harmless Extra Voted	Operating ALL	08/2022	9.3000	9.3000	1.0000	9.3000	1.0000	9.3000	0.8396		12/2032
Extra Voted	2022 Debt DEBT-ALL	05/2021	3.2000	N/A	1.0000	N/A	1.0000	3.2000	1.6000		12/2051
Extra Voted	2024 Debt DEBT-ALL	05/2021	3.2000	N/A	1.0000	N/A	1.0000	3.2000	1.6000		12/2053
Extra Voted	Sinking Fund ALL	11/2025	1.0000	1.0000	1.0000	1.0000	1.0000	1.0000	0.5000		12/2035

Prepared by Justin Hill	Telephone Number (517) 244-1480	Title of Preparer Accountant	Date 5/15/2026
-----------------------------------	---	--	--------------------------

CERTIFICATION: As the representatives for the local government unit named above, we certify that these requested tax levy rates have been reduced, if necessary to comply with the state constitution (Article 9, Section 31), and that the requested levy rates have also been reduced, if necessary, to comply with MCL Sections 211.24e, 211.34 and, for LOCAL school districts which levy a Supplemental (Hold Harmless) Millage, 380.1211(3).

<input type="checkbox"/> Clerk	Signature	Print Name	Date
<input checked="" type="checkbox"/> Secretary			
<input type="checkbox"/> Chairperson	Signature	Print Name	Date
<input checked="" type="checkbox"/> President			

* Under Truth in Taxation, MCL Section 211.24e, the governing body may decide to levy a rate which will not exceed the maximum authorized rate allowed in column 9. The requirements of MCL 211.24e must be met prior to levying an operating levy which is larger than the base tax rate but not larger than the rate in column 9.

** **IMPORTANT:** See instructions on page 2 regarding where to find the millage rate used in column (5).

Local School District Use Only. Complete if requesting millage to be levied. See STC Bulletin 2 of 2026 for instructions on completing this section.	
Total School District Operating Rates to be Levied (HH/Supp and NH Oper ONLY)	Rate ***
For Principal Residence, Qualified Ag, Qualified Forest and Industrial Personal	0.8396
For Commercial Personal	3.8396
For all Other	9.0000

*** FOR JULY 1 LEVY

2026 Tax Rate Request (This form must be completed and submitted on or before September 30, 2026)

MILLAGE REQUEST REPORT TO COUNTY BOARD OF COMMISSIONERS

Carefully read the instructions on page 2.

This form is issued under authority of MCL Sections 211.24e, 211.34 and 211.34d. Filing is mandatory; Penalty applies.

County(ies) Where the Local Government Unit Levies Taxes Eaton County - City of Lansing	2026 Taxable Value of ALL Properties in the Unit as of 05-26-2026 4,000
Local Government Unit Requesting Millage Levy Waverly Community Schools	For LOCAL School Districts: 2026 Taxable Value excluding Principal Residence, Qualified Agricultural, Qualified Forest, Industrial Personal and Commercial Personal Properties. "Not yet known"

This form must be completed for each unit of government for which a property tax is levied. Penalty for non-filing is provided under MCL Sec 211.119. The following tax rates have been authorized for levy on the 2026 tax roll.

(1) Source	(2) Purpose of Millage	(3) Date of Election	(4) Original Millage Authorized by Election, Charter, etc.	(5)** 2025 Millage Rate Permanently Reduced by MCL 211.34d "Headlee"	(6) 2026 Current Year "Headlee" Millage Reduction Fraction	(7) 2026 Millage Rate Permanently Reduced by MCL 211.34d "Headlee"	(8) Sec. 211.34 Truth in Assessing or Equalization Millage Rollback Fraction	(9) Maximum Allowable Millage Levy *	(10) Millage Requested to be Levied July 1	(11) Millage Requested to be Levied Dec. 1	(12) Expiration Date of Millage Authorized
Extra Voted	Operating NON-HOME	08/2022	18.4946	18.4946	1.0000	18.4946	1.0000	18.0000	8.1604		12/2032
Hold Harmless Extra Voted	Operating ALL	08/2022	9.3000	9.3000	1.0000	9.3000	1.0000	9.3000	0.8396		12/2032
Extra Voted	2022 Debt DEBT-ALL	05/2021	3.2000	N/A	1.0000	N/A	1.0000	3.2000	1.6000		12/2051
Extra Voted	2024 Debt DEBT-ALL	05/2021	3.2000	N/A	1.0000	N/A	1.0000	3.2000	1.6000		12/2053
Extra Voted	Sinking Fund ALL	11/2025	1.0000	1.0000	1.0000	1.0000	1.0000	1.0000	0.5000		12/2035

Prepared by Justin Hill	Telephone Number (517) 244-1480	Title of Preparer Accountant	Date 5/15/2026
-----------------------------------	---	--	--------------------------

CERTIFICATION: As the representatives for the local government unit named above, we certify that these requested tax levy rates have been reduced, if necessary to comply with the state constitution (Article 9, Section 31), and that the requested levy rates have also been reduced, if necessary, to comply with MCL Sections 211.24e, 211.34 and, for LOCAL school districts which levy a Supplemental (Hold Harmless) Millage, 380.1211(3).

<input type="checkbox"/> Clerk	Signature	Print Name	Date
<input checked="" type="checkbox"/> Secretary			
<input type="checkbox"/> Chairperson	Signature	Print Name	Date
<input checked="" type="checkbox"/> President			

* Under Truth in Taxation, MCL Section 211.24e, the governing body may decide to levy a rate which will not exceed the maximum authorized rate allowed in column 9. The requirements of MCL 211.24e must be met prior to levying an operating levy which is larger than the base tax rate but not larger than the rate in column 9.

** **IMPORTANT:** See instructions on page 2 regarding where to find the millage rate used in column (5).

Local School District Use Only. Complete if requesting millage to be levied. See STC Bulletin 2 of 2026 for instructions on completing this section.	
Total School District Operating Rates to be Levied (HH/Supp and NH Oper ONLY)	Rate ***
For Principal Residence, Qualified Ag, Qualified Forest and Industrial Personal	0.8396
For Commercial Personal	3.8396
For all Other	9.0000

*** FOR JULY 1 LEVY

2026 SUMMARY OF SINKING FUND LEVY *

WAVERLY COMMUNITY SCHOOLS

		WAVERLY SINKING FUND LEVY (One-half year rate)
Assessing Unit	2026 Total Taxable Valuation	November 2036 0.5000
Lansing Township	168,215,272	\$84,107.64
City of Lansing - Ingham	3,195,316	\$1,597.66
City of Lansing - Ingham	4,000	\$2.00
Delta Township	792,804,416	\$396,402.21
TOTAL SUMMER SINKING FUND LEVY	964,219,004	\$482,109.51

* Note: This property tax levy information is for Sinking Fund ONLY. Refer to L-4029 for operating levy.

2026 SUMMARY OF ESTIMATED SUMMER DEBT LEVY *

WAVERLY COMMUNITY SCHOOLS

<u>Assessing Unit</u>	WAVERLY DEBT LEVY (One-half year rate)			
	2026 Total Taxable Valuation	2022 Debt (B&S) (2021) <u>1.6000</u>	2024 Debt (B&S) (2021) <u>1.6000</u>	Total Summer Debt <u>3.2000</u>
Lansing Township	168,215,272	\$269,144.44	\$269,144.44	\$538,288.88
City of Lansing - Ingham	3,195,316	\$5,112.51	\$5,112.51	\$10,225.02
City of Lansing - Eaton	4,000	\$6.40	\$6.40	\$12.80
Delta Township	792,804,416	\$1,268,487.07	\$1,268,487.07	\$2,536,974.14
TOTAL SUMMER DEBT	<u>964,219,004</u>	<u>\$1,542,750.42</u>	<u>\$1,542,750.42</u>	<u>\$3,085,500.84</u>

* Note: This property tax levy information is for Debt ONLY. Refer to L-4029 for operating levy.

**INGHAM INTERMEDIATE SCHOOL DISTRICT
TAXABLE VALUATIONS**

Please Note:

These figures are the ad valorem tax roll.
They include amounts that will be diverted
due to TIFA/DDA/LDFA.

DISTRICT: WAVERLY SCHOOLS

The Non-Homestead numbers below are for Headlee calculation only!
Different Non-Homestead numbers may be used for property tax bills.

<u>ASSESSMENT UNIT</u>	<u>2025 TAXABLE</u>	<u>2025 LOSSES</u>	<u>2026 ADDITIONS</u>	<u>TOTAL 2026 TAXABLE</u>
Lansing Township	161,694,174	1,129,442	2,056,383	168,215,272
Non-Homestead	76,845,673	183,039	795,519	79,461,259
Lansing City-Ingham	3,053,788	19,600	1,500	3,195,316
Non-Homestead	340,324	7,700	1,500	421,149
Watertown Township	91,301,836	45,627	632,350	93,029,636
Non-Homestead	57,887,573	0	500,000	59,303,056
Eaton County Total	809,754,392	7,029,924	32,792,513	838,947,203
Non-Homestead	358,871,601	1,839,461	10,349,400	367,346,120
Delta Township	764,730,436	5,694,691	30,912,113	792,804,416
Non-Homestead	326,505,722	1,562,628	8,842,700	333,402,474
Windsor Township	45,023,956	1,335,233	1,876,400	46,138,787
Non-Homestead	32,365,879	276,833	1,502,700	33,939,646
Lansing City - Eaton	0	0	4,000	4,000
Non-Homestead	0	0	4,000	4,000
TOTAL All Property	1,065,804,190	8,224,593	35,482,746	1,103,387,427
Total Non-Homestead	493,945,171	2,030,200	11,646,419	506,531,584

	<u>All Property</u>		<u>Non-Homestead Property</u>	
Percentage of Overall Increase	3.5263%		2.5481%	
Increase on Existing	0.9763%		0.6038%	
2026 Base Tax Rate Fraction	0.9903	Truth in Taxation	0.9940	Truth in Taxation
2026 Millage Reduction Fraction	1.0171	Headlee	1.0208	Headlee
		(Cap = 1.0000)		(Cap = 1.0000)

**WAVERLY COMMUNITY SCHOOLS
REGULAR BOARD MEETING
REGULAR MEETING
June 15, 2026**

Report #25-74

FOR ACTION

Subject:

Waverly Community Schools K-8 Science Curriculum Adoption
Waverly Community Schools K-4 Handwriting Curriculum Adoption
Waverly Community Schools AP African American History Textbook Adoption

Recommendation:

The Superintendent recommends the Board of Education renews the Amplify Science curriculum and resources for grades K-8.
The Superintendent recommends the Board of Education adopts the Handwriting Without Tears curriculum and resources for grades K-4.
The Superintendent recommends the Board of Education adopts the “Freedom on My Mind” textbook and resources for the AP African American Studies course.

Statement of Purpose:

The District’s current subscription for Science Curricula K-8 expires June 30, 2026. Since adopting this curriculum state assessment scores have risen and the school administrators recommend continuing with the program.
The District K-4 Literacy Team has identified writing instruction as a goal based on student performance. Research demonstrates that handwriting is a critical skill that improves overall writing ability. There is no formal handwriting curricula currently.
An AP African American History course at Waverly High School was approved by the Board in 2025. Course requests this spring reached 60 students and WHS will conduct this course next fall. A textbook, aligned to the College Board and AP test, is required.

Budget Impact:

\$284,035.00

Discussion of Options:

The Board may adopt the recommendation as presented or reject the recommendation. This report will be presented to the Board of Education for action at the July meeting to allow obtainment of materials before the 2026-2027 School Year

Strategic Plan Reference:

Goal 1: We will create safe, predictable, consistent, and equitable learning environments in which all students thrive academically, socially, and emotionally.
Objective 3: Adapt instructions and curriculum to ensure that the needs of all students are met



WAVERLY

COMMUNITY SCHOOLS

Pride. Tradition. Excellence.

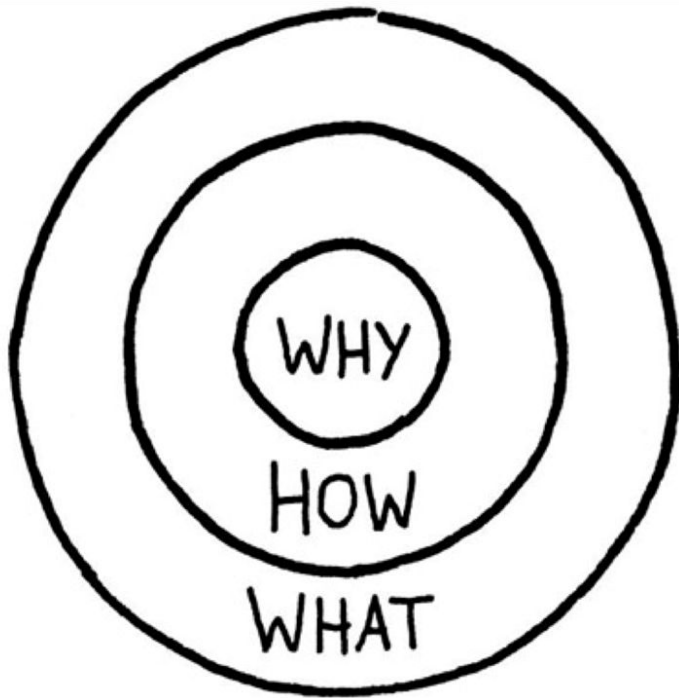
42

Curriculum Adoptions (Preview)

June, 2025

- ***K-8 Science***
- ***AP African-American Studies***
- ***K-4 Handwriting***

Amplify Science



- Current Curricula, K-8
- Significant commitment and investment to implementation '21-22 (two instructional coaches)
- Paired to ELA scope and sequence

44

Amplify Science

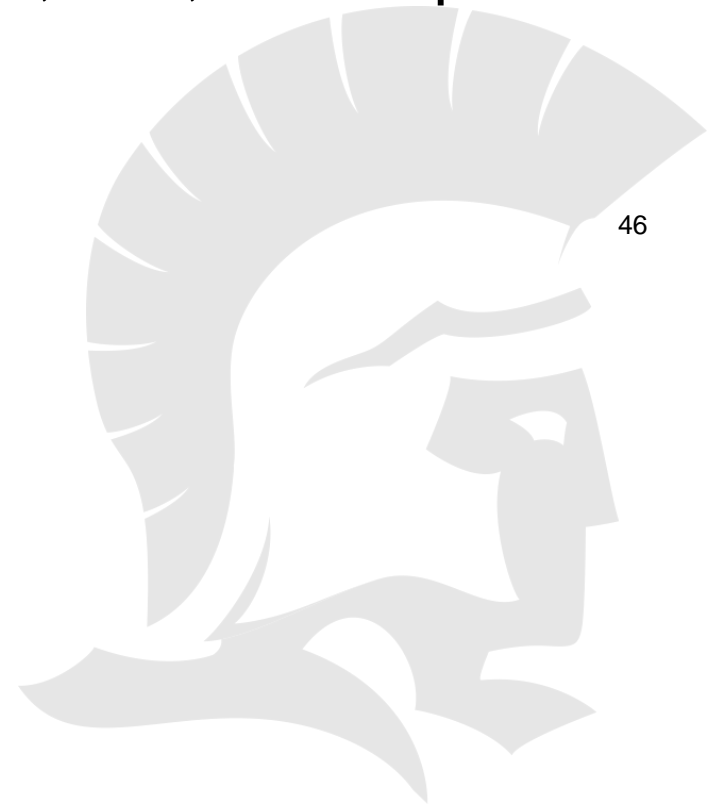
Location	School Year	Demographic	% Met Benchmark M-STEP - Science (All Grades)					
Waverly Community Schools	2024-25	All Students/Staff	19.8%					
Waverly Community Schools	2023-24	All Students/Staff	23.8%					
Waverly Community Schools	2022-23	All Students/Staff	23.3%					
Waverly Community Schools	2021-22	All Students/Staff	24.5%					
Waverly Community Schools	2020-21	All Students/Staff *						
Waverly Community Schools	2015-16	All Students/Staff	18.5%					
Waverly Community Schools	2014-15	All Students/Staff	20.5%					45

Amplify



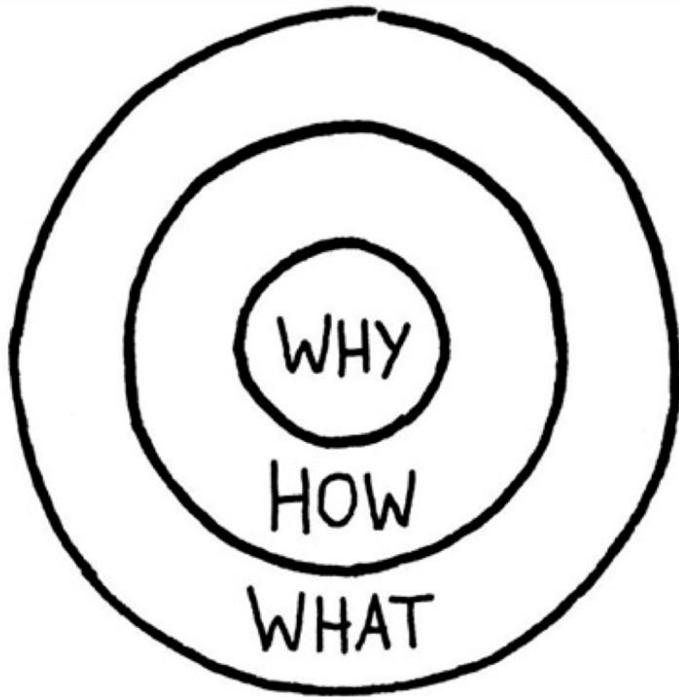
Amplify Science

6 year renewal, including Workbooks, Kits, Online platform:
\$241,383.00



46

AP African-American Studies (APPAS)



- Approved by BOE in 24-25
- 60 Course Requests for 25-26
- First time taught at WHS
- Instructor previously taught this course a former school

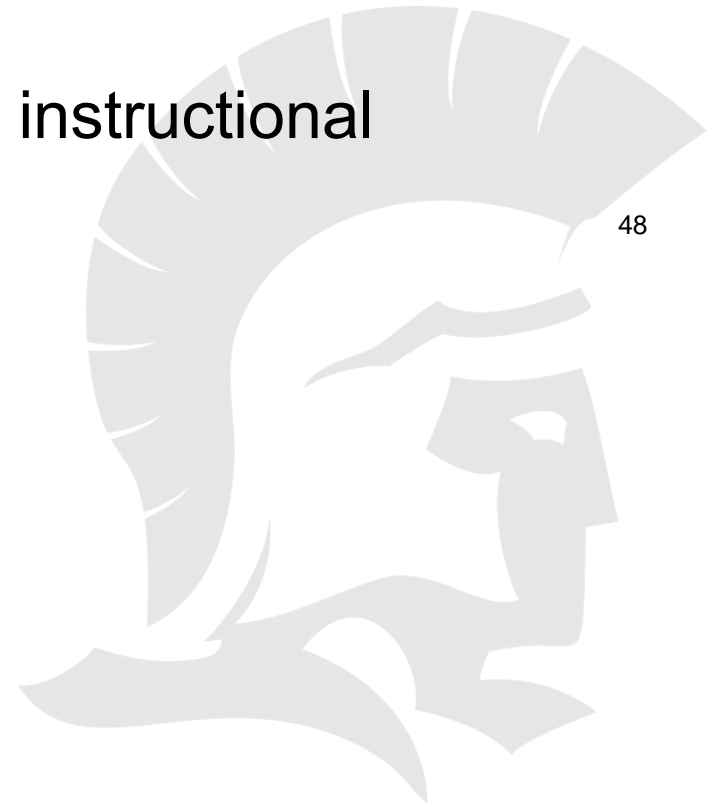
47

APAAS Adoption

Cat Weaver & HS Administration
Attended AP Summer Institute 2025

College Board

Rigorous criteria for syllabus, instructional
strategies, and materials

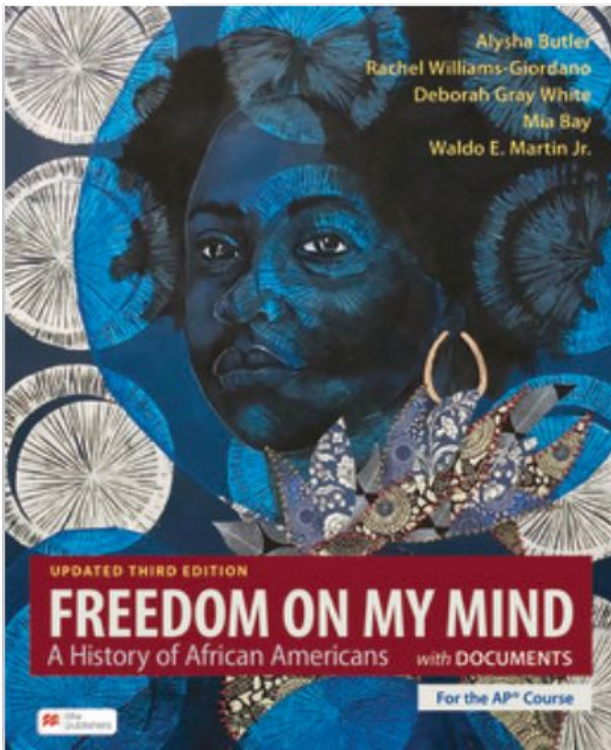


48

APAAS Adoption

Textbook:

Freedom on my Mind: A History of African American, with documents, updated for the AP Course



Original textbook written for the AP African American Studies course.

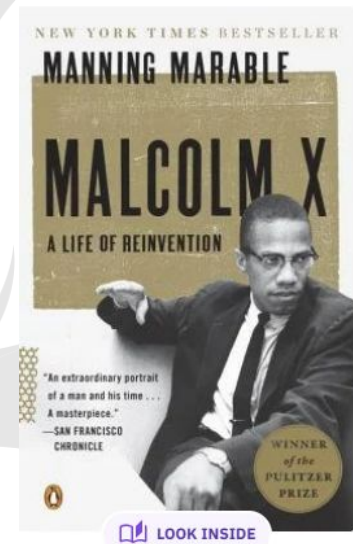
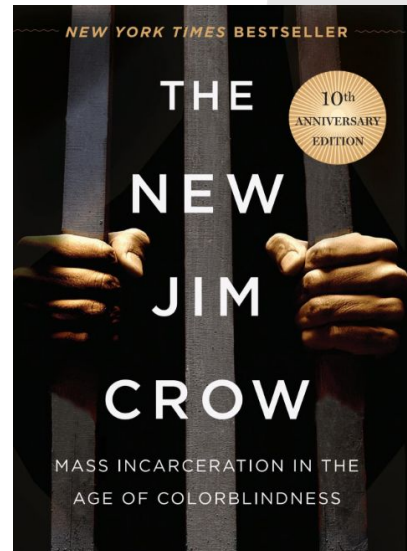
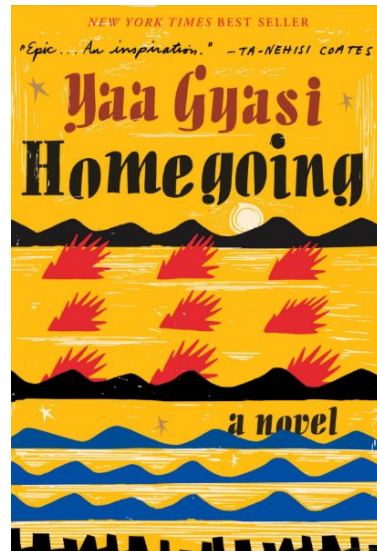
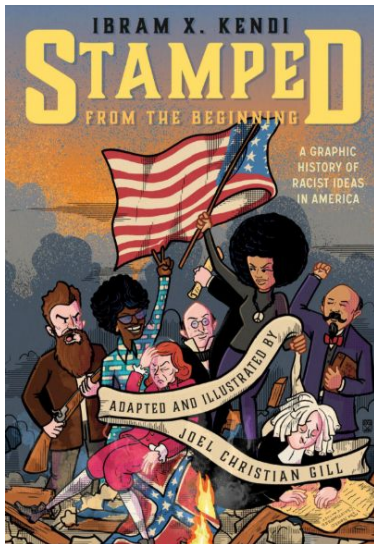
49

Develop source analysis and argumentation skills with AP Working with Sources document collections, AP Skill Workshops, and integrated AP Exam practice.

APAAS Adoption

Summer/Extension Reading Options: based on 4 foundational pillars of APAAS:

- Origins of African Diaspora
- Freedom, Enslavement and Resistance
- The Practice of Freedom
- Movements and Debates

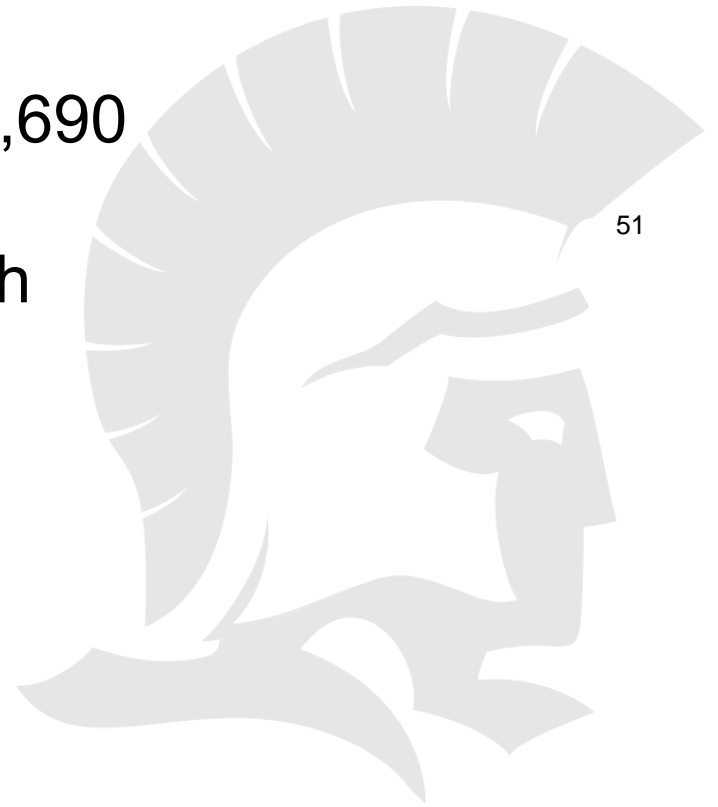


50

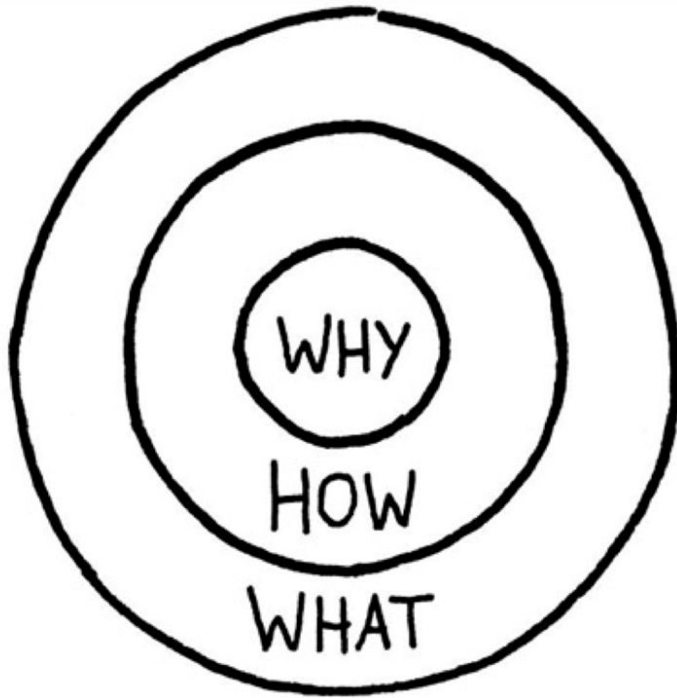
APAAS Adoption

Textbooks & support materials: \$10,690

Summer reading novels: \$5-25 each



Handwriting without Tears



- Compliment Writing goal of 26-27
- Aligned to current Curricula
- Handwriting PreK-2, Cursive 3rd-5th
- Aligned to Science of Reading⁵²
- Include Spanish versions

2010 Meta-analysis: Writing + Reading **+15-20%** on comprehensive assessments vs Reading only

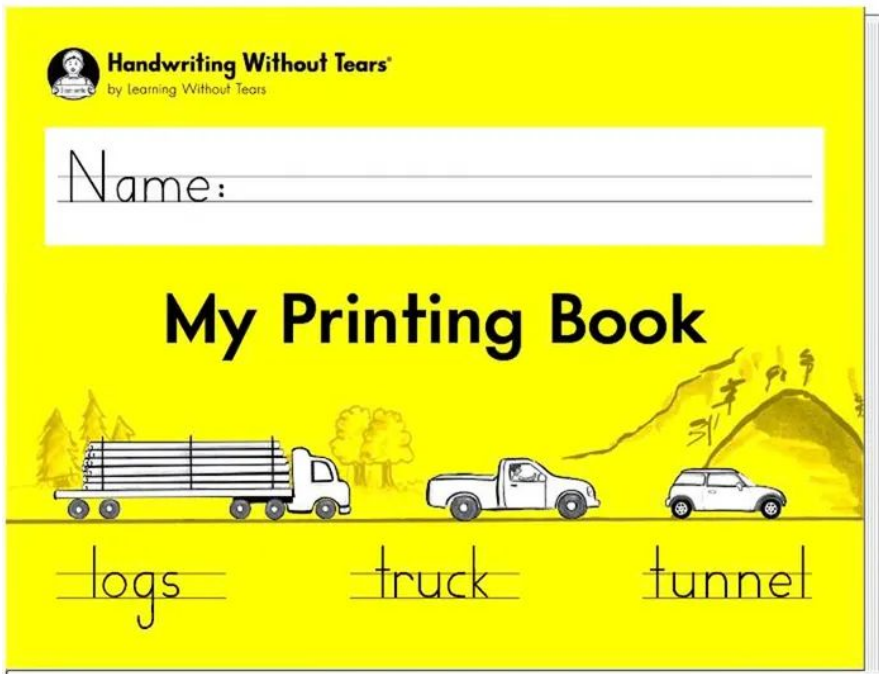
Handwriting Without Tears

District Literacy Team

- Meets Bi-Monthly
- Instructional Coaches, Interventionists, SE teachers, Administrators, IISD staff
- Continually reviewing practices and results
- Identified foundational writing as an area of improvement
- Partner with MSU, Ingham ISD for training, assessment, and progress monitoring

53

Handwriting Without Tears

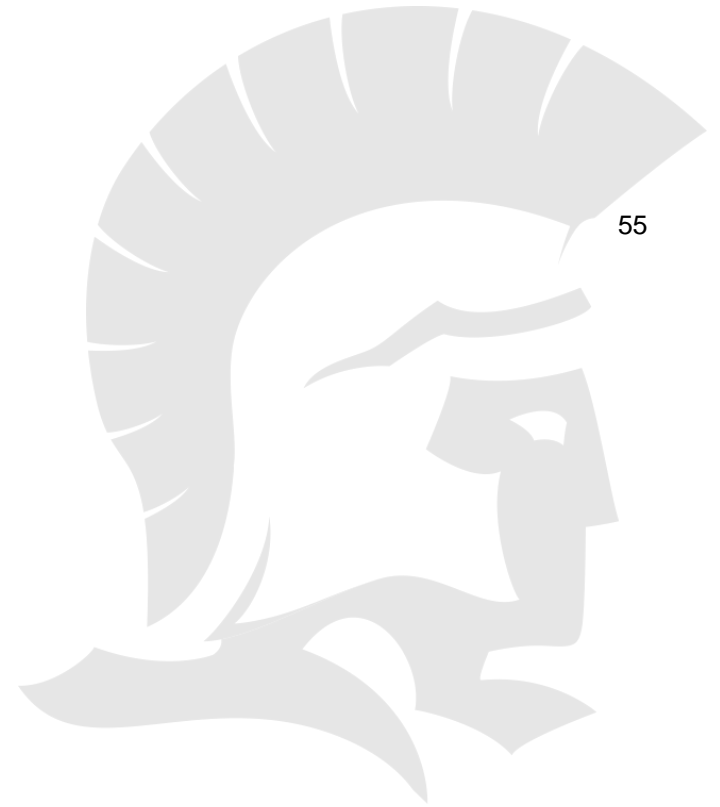


Includes Spanish
Versions
Music

54

Handwriting Without Tears

Workbooks, Kits, & PD: \$31,962



The number one factor affecting student achievement is a guaranteed and viable curriculum.

~Robert Marzano

56

**WAVERLY COMMUNITY SCHOOLS
REGULAR BOARD MEETING
REGULAR MEETING
June 15, 2026**

Report #25-75

FOR ACTION

Subject:

Resolution to expand the current Virtual Alternative Education program

Recommendation:

The Superintendent recommends the Board of Education adopts the resolution to allow for the creation of an Alternative Education school, separate from Waverly High School

Statement of Purpose:

Waverly High School has been using the Graduation Alliance Drop Out Recovery and Prevention program for the past two years, among three other approaches. The Graduation Alliance approach has proven to be successful, meeting over 80% of the Graduation Alliance benchmarks. Graduation Alliance's global average is 46%, whereas the average success rate of Alternative Education programs is 36%. By allowing the Alternative Education program to become a separate school from Waverly High School, opportunities to serve out-of-district students is expanded, and the data from the program is no longer attributed to Waverly High School.

Budget Impact:

No impact under current format. There is a potential for a positive impact on the budget if enrollment can be increased

Discussion of Options:

The Board may adopt the recommendation as presented or reject the recommendation.

Strategic Plan Reference:

Goal 1: We will create safe, predictable, consistent, and equitable learning environments in which all students thrive academically, socially, and emotionally.

Objective 3: Adapt instructions and curriculum to ensure that the needs of all students are met

RESOLUTION BY THE WAVERLY COMMUNITY SCHOOLS BOARD OF EDUCATION

SUBJECT: Formal expansion of the current Virtual Alternative Education program at Waverly High School

WHEREAS, the Board of Education of the Waverly Community Schools (hereinafter, "the District") is authorized under the Revised School Code (Act 451 of 1976), MCL 380.11a, and mandated by Board Policy po2451, to establish, locate, and operate schools and adopt courses of study; and

WHEREAS, a comprehensive review of district data indicates a significant and persistent need for a dedicated alternative education program to serve students whose unique academic and social-emotional needs are not met by the traditional high school structure; and

WHEREAS, the most resource-efficient and universally accessible program for the intended at-risk student population would be a fully virtual platform through the currently utilized platform with Graduation Alliance

NOW, THEREFORE, BE IT RESOLVED BY THE BOARD OF EDUCATION OF THE WAVERLY COMMUNITY SCHOOLS:

SECTION 1: ESTABLISHMENT OF NEW ENTITY

1. The Board of Education hereby formally establishes and authorizes the operation of an expansion of the current alternative education school program, to be known as the Waverly BRIDGE Academy.
2. The program shall serve students in Grades 9 through 12 and shall operate as a distinct alternative program—administratively separate from the high school and completely virtual.
3. The BRIDGE shall commence student instruction beginning with the Fall semester of the 2026-2027 school year.

SECTION 2: CURRICULUM, INSTRUCTIONAL MODEL, AND ACCOUNTABILITY

1. The Board formally approves the courses of study and curriculum for Waverly BRIDGE Academy, which shall be designed to meet or exceed all requirements of the Michigan Merit Curriculum (MMC).
2. The School shall implement a virtual instructional model, supported by a trauma-informed approach, to provide personalized pathways for credit accrual and social-emotional growth.
3. The Superintendent shall report to the Board annually on the BRIDGE's performance against key accountability metrics for its target population, including: efficacy rates, credit completion percentages, reduction in chronic absenteeism at Waverly High School.

SECTION 3: ADMINISTRATIVE AUTHORIZATION AND MDE COMPLIANCE

1. The Superintendent and/or their designee are hereby authorized to execute all necessary administrative actions to establish the Waverly BRIDGE Academy, including but not limited to:
 - a) Requesting a New Entity Code for the Waverly BRIDGE Academy from the Center for Educational Performance and Information (CEPI) for the purpose of accurate data reporting and securing State Aid (FTE) membership funding.
 - b) Applying to the Michigan Department of Education (MDE) for all necessary waivers, specifically a Seat Time Waiver and/or an Hours and Days Waiver (MCL 388.1701 Section 101(9)), to permit the operation of the Program's flexible instructional Schedule.

SECTION 4: RESOURCE COMMITMENT AND FACILITY NOTE

1. The Board approves the staffing model which includes a Program Administrator and dedicated support services: .2/.4 counselor and a .2/.4 special education provider.
2. The Board notes that because the Program will be housed within the existing, MDE-approved Waverly High School facility, no new facility approvals under Act 306 of 1937 are immediately required, but all relevant internal safety protocols and codes must be adhered to.

RESOLVED, ADOPTED, AND APPROVED this [_____] day of [_____], 2026 by the Board of Education of the Waverly Community Schools.

Members Yes:

Members No:

Approved: _____
Board of Education Secretary

Date

**WAVERLY COMMUNITY SCHOOLS
BOARD OF EDUCATION
REGULAR BOARD MEETING
June 15, 2026**

SUBJECT: POLICY – First Reading

RECOMMENDATION:

The Superintendent recommends the Board of Education move the policy updates listed below to second reading.

Policy 0100 – Revised	Bylaw Definitions
Policy 1410 – New	Staff Ethics
Policy 3120.09/4120.09	Renumbered/Rescind – Volunteers
Policy 8120.08	Renumbered/Revised for Policies 3120.09 & 4120.09
Policy 4210 – New	Staff Ethics
Policy 5136 – Replacement	Wireless Communication Devices (WCDs)
Policy 6320 – Revised	Purchasing
Policy 6325 – Revised	Procurement – Federal Grants/Funds
Policy 8402 – Revised	Emergency Operations Plan
Policy 8655 – New	Specialized Transportation for Students with IEPs



WAVERLY

COMMUNITY SCHOOLS

Pride. Tradition. Excellence.

Behavior Initiative: June Update

The Team

Chelsea Ott- WHS

Diane Cardenas-Johnson- WHS

Cat Weaver- WHS

Nate Jarvie- WMS

Eddie Saade- WMS

Nellie Jurgess- East

Gail Schupback- East

Trenton Korver- East/HS

Jill Werner- Elmwood (rotating)

Madi Ring- Elmwood (rotating)

Katie Terranove- Elmwood (rotating)

Olivia Mears- Winans

Becca Barnell- Colt

Becky Hager- Elmwood

Jekeia Murphy- WHS

Josh Cooper- Ingham ISD

Glenn Mitcham- District

Tiffany Wright- District

Shawn Lewis- District

Chris Huff- District

Kristen Hood- District

Kelly Ryder- District

Alex Bradford- District

Melissa Dinkins- District

+ “Waverly Peace Warriors” student group

62

March Update

- Presented the findings of the WCS Behavior Action Team's **Needs Assessment** and **Root Cause Analysis**
- Defined specific **behavioral metrics** and **academic metrics** that will serve as Success Indicators
- Delivered a verified data report of the **current baseline marks** to provide a clear starting point for 2026/2027 growth targets



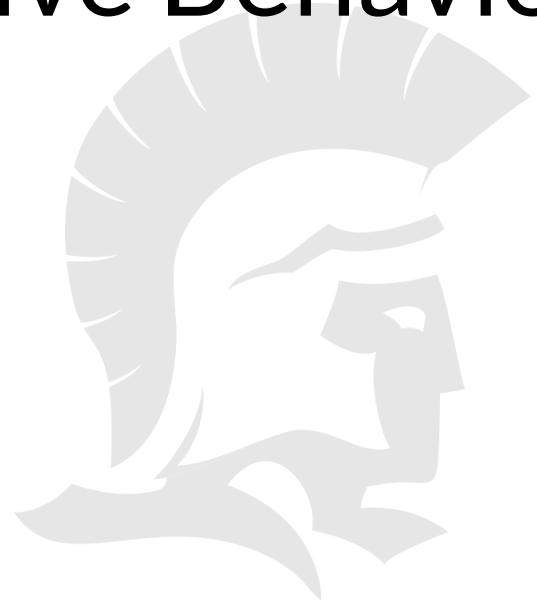
June Update

- Present a finalized set of **SMART goals** that link behavioral interventions to specific, projected increases in student achievement.
- Detail the **evidence-based strategies** and professional development plans selected to address the root causes identified in the March assessment.
- Provide a final **status report** on the Behavior Action Team's initial rollout and activities.



Targeted Behaviors

- Physically Aggressive Behavior
- Disruption
- Defiance



65

Needs Assessment Results

Prioritized Contributing factors:

- Lack of fidelity in SEL Instruction
- Missed opportunities for relationship-building & sense of belonging
- Inconsistent Behavior Management Systems
- Weak Tier 1

66



Action Planning

Develop Theory of Action: *Which contributing factors will yield the greatest impact?*



“If... Then...So That”

IF we....

Teach students **Problem-Solving skills**

Teach students **Executive Functioning skills**

Teach students **verbal skills**

Implement more **engaging instructional strategies**

Prioritize **staff well-being**

Increase a sense of **trust** between students and adults

Increase a sense of **belonging** among students

Train staff to **avoid power struggles** between students and adults

68

IF we....

Apply proactive and consistent **systems of support**

Define **clear behavior expectations**

Establish **consistent progression of supports and consequences**

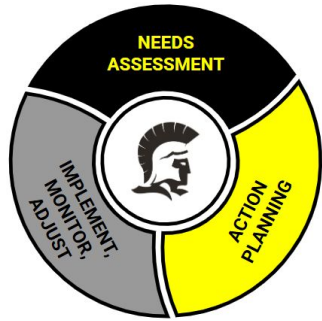
Apply **effective responses** to unexpected behaviors

Provide a more **robust level of training**

Reduce the impact of Implicit Bias

THEN... we will see reduction in target behaviors

69



Action Planning

Define measurable Outcomes

- SMART Goals
- How will we monitor progress towards desired outcomes?



SMART Goal

WCS will implement Tier 1 systems for social-emotional instruction, relationship building, and behavior management to achieve a 20% reduction in high priority behaviors by June 2027

71



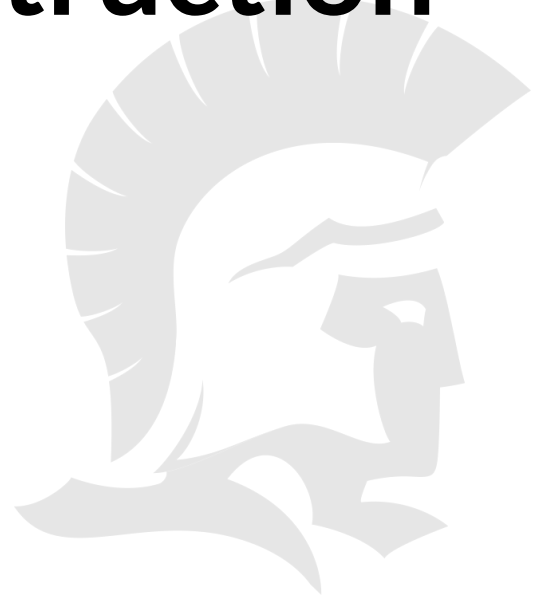
Action Planning

Select Strategies

- Consult research
- Observe exemplars
- Choose strategies with the best chance of success



Explicit SEL Instruction



73

Strategy

WCS will implement Tier 1 SEL Instruction district-wide

Activities

- Adopt District-wide “Theory of Behavior
- Adopt Core SEL Curriculum District-wide in order to establish common language and overall SEL framework
- Embed SEL instruction into classroom instruction Prek-12 & protect that time in the calendar
- Increase Health Education in 6th Grade by 50%
- Health 8 Class offering in 26-27

74

Strategy

All WCS teachers will implement Tier 1 Engagement Strategies district-wide

Activities

- Each building will prioritize 3-5 specific Engagement Strategies
- Using the Teacher Evaluation Tool, Engagement Indicators ("look-for's") highlighted, demonstrated, and rehearsed at New Teacher Orientation, Mentor/Mentee Training, staff meetings, and PD sessions
- Instructional Coaching aligned to selected engagement strategies

75

Strategy

WCS will embed staff wellness into Professional Learning

Activities

- Reinsate District Wellness Commitee
- Implement a Wellness Inventory tool to identify staff wellness gaps
- Dedicate staff wellness sessions within the PD Days
- Consistent and planned wellness activities district-wide
- Establish debrief protocol after significant events
- Healthy Boundaries PR Campaign

76

Strengthen Relationships & Sense of Belonging



77

Strategy

WCS will train all staff in de-escalation strategies and Trauma-Informed Practices

Activities

- Embed De-Escalation Strategies into PD agendas
- Embed Trauma-Informed Practices into PD agendas
- Leverage consultation of Dr. Stephanie Grant
- Use Trauma-Informed TFI to identify gaps and priorities

78

Strategy

WCS will adopt a relationship building framework at each school building

Activities

- Community Building will be the focus of the first two weeks of school
- Development of Relationship-building lesson plans
- Rehearse routines
- Promote classroom/hallway decor that reflect our students
- Leverage Culturally Responsive approaches

79

Strategy

WCS will become “Phone away for the Day”

Activities

- Implement Yondr pouches at WMS, WHS

Consistent Tier 1 Behavior Management Systems



81

Strategy

Classroom Management plans will be developed by all teaching staff

Activities

- Routine Building the primary of the first two weeks of school
- CHAMPS Training at New Teacher Orientation
- Classroom Management strategies embed into Mentor/Mentee professional growth series

82

Strategy

WCS will produce, distribute, and train staff on Tier 1 Behavior Intervention Strategies

Activities

- Adopt a district-wide “Theory of Behavior”
- Support staff in implementing Tier 1 Behavior interventions
- Align SCOC to Tier 1, Tier 2, Tier 3 interventions

83

Strategy

WCS will produce district-wide behavior expectations

Activities

- Use SW [PBIS TFI](#) at each building to identify gaps in Tier 1 Behavior Management Systems
- Publish uniform Behavior Management Handbooks for all buildings
- Clear protocol for Discipline Referrals established
- Protocol for data usage established

84

Strategy

WCS will produce district-wide responses to SCOC offenses

Activities

- Adopt district-wide Behavior/Response rubric of outcomes
- Training on Inclusionary Practices
- Leverage Implicit Bias Awareness

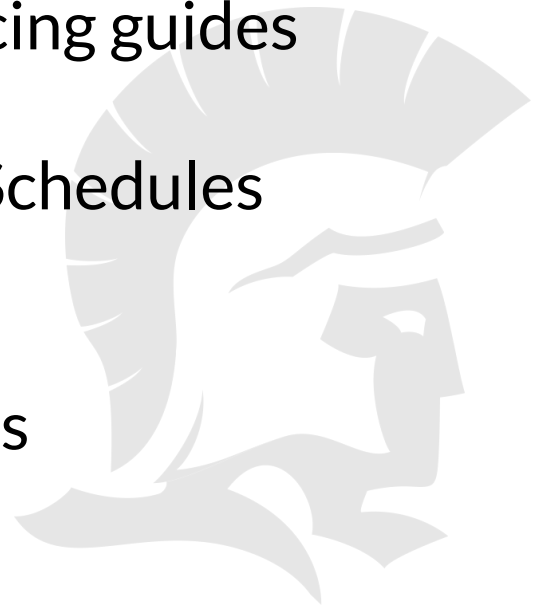
Progress Monitoring and Benchmarks



86

Artifacts and Deliverables

- Professional Development and Training
- Behavior Management Handbooks
- SEL Curriculum, lessons, and pacing guides
- Fidelity Inventories
- Meeting Agendas, Calendars & Schedules
- Communications & Signage
- Observation notes
- Guidance documents & protocols



Data-Driven Measures

- Teacher Evaluation ratings in targeted realms
 - Classroom Management
 - Relationships
 - Joy & Engagement
- **SWIS behavior referrals**

Behavior	# of Referrals 25-26 School Year	20% reduction (26-27 goal) =
Physically Aggressive Behavior (Major)	792	< 634
Disruption (Major and Minor)	1170	< 936
Defiance (Major and Minor)	1252	< 1002



Implement, Monitor & Adjust

Implementation

- Follow the plan
- Communication & Train
- Obtain Resources
- Monitor for fidelity
- Adjust when measures not met
- Begin building Tier 2 & 3

'26-'27

89



Implement, Monitor & Adjust

Evaluate

- Are the strategies working?
- What changes need to be made to be more successful?

'26-'27 &
beyond

90

Waverly Community Schools Action Plan for Behavior

WCS will implement Tier 1 systems for social-emotional instruction, relationship building, and behavior management to achieve a 20% reduction in high priority behaviors by June 2027

Explicit Social/Emotional Instruction

Theories of Action		
If we...	Then...	So That...
Teach students Problem-Solving skills	they will utilize step-by-step strategies to resolve interpersonal conflicts rather than reacting impulsively	There will be a reduction of student behaviors that result in SWIS referrals for Physically Aggressive Behavior, Defiance, and Disruption
Teach students Executive Functioning skills	Students will demonstrate improved organization and task initiation	
Teach students verbal skills	Students will use these specific verbal tools to advocate for themselves in high-stress moments	
Implement more engaging instructional strategies	Students will be more cognitively invested in their tasks, significantly reducing the boredom and frustration that often trigger off-task behavior	
Prioritize staff well-being	Staff will be more energized to engage in student well-being	

