

**Regular School Board Meeting
Monday, February 22, 2021, 7:00 PM
Pipestone Area Schools
MS/HS Auditorium
1401 7th St SW
Pipestone, MN 56164**

AGENDA

- 1. Call to Order**
- 2. Pledge of Allegiance**
- 3. Approval of Agenda**
 - 1. Additions**
 - 1. Closed Session - Discuss Negotiations Strategies (4)**
 - 2. Troy Bouman, Head Softball (7.3.2)**
 - 3. Robert Petersen, Assistant Softball (7.3.3)**
 - 4. Mitchel Carson, Assistant Baseball (7.3.4)**
 - 5. Steve Rops, Head Boys Golf (7.3.5)**
 - 6. Grant Everson, Jr High Golf (7.3.6)**
 - 7. Ed Gustafson, Head Boys Tennis (7.3.7)**
 - 8. Mark Moeller, Assistant Track (7.3.8)**
 - 9. Todd Texley, Assistant Track (7.3.9)**
 - 10. Evelyn Klein, Assistant Track (7.3.10)**
 - 11. Jake Evans, Jr High Track (7.3.11)**
 - 12. Spring Sports Volunteers (7.6)**
 - 13. Approve Achievement and Integration FY22 Budget (12.2)**
 - 14. Approve CTL Contract for Melany Wellnitz (12.3)**
 - 15. Approve Principals Contract for Cory Strasser and Toni Baartman (12.4)**
- 4. Closed Session - Discuss Negotiations Strategies**
- 5. Public Forum**
- 6. Presentation**
- 7. Consent Agenda**
 - 1. Approve Minutes of the Regular School Board Meeting of January 25, 2021** **3**
 - 2. Approve Minutes from the Work Session Meeting of January 25, 2021** **7**
 - 3. Approval of Contracts and/or Work Agreements**
 - 1. Jennifer Miller, Paraprofessional**
 - 2. Troy Bouman, Head Softball**
 - 3. Robert Petersen, Assistant Softball**
 - 4. Mitchel Carson, Assistant Baseball**
 - 5. Steve Rops, Head Boys Golf**
 - 6. Grant Everson, Jr High Golf**
 - 7. Ed Gustafson, Head Boys Tennis**
 - 8. Mark Moeller, Assistant Track**
 - 9. Todd Texley, Assistant Track**
 - 10. Evelyn Klein, Assistant Track**
 - 11. Jake Evans, Jr High Track**
 - 4. Approval of Gifts to the School**
 - 1. Christ the King Lutheran Church, Donation of \$100.00 to the Wellness Room** **9**
 - 5. Approve New Subs to the District** **10**
 - 6. Spring Sports Volunteers** **11**
- 8. Financials**

1. Review Elementary Building Budget Year-to-Date	12
1. Review New Elementary Building Bills	13
2. Approve Treasurer's Report for Elementary Building Bond	16
2. Review of Budget Year-to-Date	17
3. Approve Treasurer's Report for January	18
4. Approve Regular Bills for February 2021	19
9. Board Forum/Information	
1. Board Reports and Updates	
10. Administrator's Report	
1. Superintendent's Board Report - Enrollment, Minnesota School Board Recognition Week	43
2. Principal's Board Report	
3. Director of Curriculum, Teaching, and Learning Board Report	
11. Discussion Items	
1. First Reading of Policy 504, Student Dress and Appearance	48
2. ISG Maintenance Consult	50
3. Closing Brown and Hill Elementary Schools - Set Date, Time, and Location of Public Hearings	
12. Board Action	
1. Approve Policy 213 - School Board Committees	57
2. Approve Achievement and Integration FY22 Budget	61
3. Approve CTL Contract for Melany Wellnitz	
4. Approve Principals Contract for Cory Strasser and Toni Baartman	
13. Adjournment	

Minutes of the Regular School Board Meeting

Pipestone Area Schools

A Regular School Board Meeting of the Board of Trustees of Pipestone Area Schools was held Monday, January 25, 2021 beginning at 7:00PM in the MS/HS Auditorium.

Members Present: Chairman Jeff Baatz; Directors Brad Carson, Katie Wiese, Randy Erdman, Amy Nelson, and Chrissy DeBates. Absent – Lance Oye. Also present – Ex-Officio Kevin Enerson, Jacque Kennedy, Cory Strasser, Toni Baartman, Melany Wellnitz and Deb Peschon.

Visitors Present: Kyle Kuphal, Amy Willey, Branden Willey, and Jennifer Dunn.

Call to Order: Chairman Baatz called the meeting to order at 7:00 PM

Pledge of Allegiance

Approval of Agenda

Additions:

Scott Rudie, Technology Technician

Motion by Erdman, second by Wiese, approved the agenda as presented. Motion carried unanimously.

Public Forum - None

Presentation - None

Consent Agenda

Approve Minutes of the Regular School Board Meeting of December 21, 2020:

Approve Minutes from the Organizational Meeting of January 4, 2021:

Approval of Gifts to the School:

Arrow Booster Club, Donation of \$150.00 for Girls Tennis Team Banner

Claudia Appeldorn, Donation of \$500.00 to the Wellness Room

Christ the King Lutheran Church, Donation of \$100.00 to the Wellness Room

Bomgaars, Donation of \$150.00 to the Wellness Room

Dahl Motors, Donation of \$150.00 to the Wellness Room

Bernard & Mary Stoel, Donation of \$68.42 to Meinders Library for Books

Lyle & Marjorie Oye, Donation of \$15.00 to Meinders Library for Books

Student, Donation of \$5.00 to Lunch Accounts

Letter of Resignation from Kristin Brockberg, Community Ed Assistant:

Scott Rudie, Technology Technician:

Baatz thanked the businesses and individuals for their generous donations. Motion by DeBates, second by Wiese, approved all items in the Consent Agenda. Motion carried unanimously.

Financials

Review Elementary Building Budget Year-to-Date: The elementary building budget year-to-date shows expenditures as of January 31, 2021 at \$18,084,767.23. This was non-action.

Review New Elementary Building Bills: New elementary building bills paid through January 18, 2021 totaled \$1,565,918.96. These bills are for review only and are included in the regular monthly bills.

Approve Treasurer's Report for Elementary Building Bond: The treasurer's report on the elementary building bond for month ended December 31, 2020 shows a cash balance of \$12,279,190.34. Motion by Erdman, second by Carson, approved the treasurer's report. Motion carried unanimously.

Review of Budget Year-to-Date: The budget year-to-dates shows expenditures as of January 20, 2021 at \$6,837,872.89 or 49%. This is non-action. The amended budget year-to-date shows expenditures as of January 20, 2021 at \$6,837,872.89 or 47%. This reflects the FY21 budget amendments.

Approve Treasurer's Report for December: The treasurer's report for month ended December 31, 2020 has a cash balance of \$7,590,373.30. Motion by Wiese, second by Erdman, approved the treasurer's report.

Approve Payment of Regular Bills for January: Bills paid through January 19, 2021 totaled \$2,007,435.81. Motion by Carson, second by DeBates, approved payment of the regular monthly bills. Motion carried

unanimously.

Approve High School Activity Bills for January: High school activity bills paid through January 19, 2021 totaled \$21,680.84. Motion by Wiese, second by Erdman, approved payment of the bills. Motion carried unanimously.

FY21 Budget Amendment: Motion by Carson, second by Erdman, approved the budget amendments for FY21. Motion carried unanimously.

Board Forum/Information

Board Reports and Updates: The Negotiations Committee met and have tentative agreements with the paraprofessionals, secretaries, custodians, accounts payable, principals and curriculum director. The Facility Steering Committee met and toured the new elementary building.

Administrator's Report

Superintendent's Board Report - Enrollment, Paraprofessional Recognition Week, and MSHSL Financial

Advisory Committee: January enrollment is 1091. This week is Paraprofessional Recognition Week and Enerson thanked the paras for all the work they do in serving our students. The MSHSL has put together a financial advisory committee and are asking for appointments from around the state to that. Southwest Minnesota has at least three superintendents who have asked to serve on the committee.

Principal's Board Report: Strasser acknowledged Paraprofessional Recognition Week and stated they do a great job supporting our students needs. He will be looking at starting registration for students in the next few weeks. Strasser met with prom advisors and they are working with the prom committee as they want to make sure they can do everything they can to have some type of prom. Baartman reported things are going well at the elementary schools and discussion is being held in regards to kindergarten roundup and conferences.

Director of Curriculum, Teaching, and Learning Board Report: Screening for winter FastBridge was wrapped up last week. In grades K-8, 719 students were screened in the district and distance learning students were screened virtually. Wellnitz is meeting with grade level teams to review the data.

Discussion Items

Learning Model: Wiese voiced concerns on needing to get students back in school, and feels like we need to keep moving forward. Enerson stated in the Big South Conference there are a lot of schools going back to in person. He wanted to see how it goes with sixth grade and evaluation by the 4th quarter.

Board Action

Approve Policy 213 - School Board Committees; Policy 401 - Equal Employment Opportunity; Policy 402 - Disability Nondiscrimination Policy, and Policy 521 - Student Disability Nondiscrimination:

Motion by Baatz, second by Erdman, to approve Policies 401, 402, and 521 as presented, and to send Policy 213 to the Policy Committee to address Negotiations Committee. Motion carried unanimously.

Pat Weets - Mayor Appointee to Public Library Board: Motion by Wiese, second by Carson, approved Pat Weets as the Mayor appointee to the Public Library Board. Motion carried unanimously.

Approve Facilities Agreement with Minnesota West Community Technical College: Motion by DeBates, second by Nelson, approved the Facilities Agreement with Minnesota West Community and Technical College. Motion carried unanimously.

Approve Contract for PAESP – Paraprofessionals: Motion by Wiese, second by Carson, approved the contract for PAESP-Paraprofessionals. Motion carried unanimously.

Approve Contract for PAESP - Custodians, Secretaries, and AP: Motion by DeBates, second by Erdman, approved the contract for PAESP-Custodians, Secretaries, and AP. Motion carried unanimously.

Approve CTL Contract for Melany Wellnitz: Discussion was held. Motion by Erdman, second by Nelson, approved the contract for Wellnitz. Motion failed due to a tie (3-3) with Wiese, DeBates, and Carson opposing.

Approve Principal Contract for Toni Baartman and Cory Strasser: Discussion was held. Motion by Erdman, second by Nelson, approved the contracts for Baartman and Strasser. Motion failed due to a tie (3-3) with Wiese, DeBates and Carson opposing.

Approve Weight/Fitness Furnishings & Wrestling Mat: Motion by Wiese, second by Carson approved the proposals from Push-Pedal-Pull for weight/fitness furnishings and Resilite for wrestling mat. Motion carried

unanimously.

Adjournment

Motion by Wiese, second by Carson, to adjourn the meeting at 8:07 PM. Motion carried unanimously.

/s/ Jeff Baatz

Jeff Baatz, Chairman

/s/ Katie Wiese

Katie Wiese, Clerk

Approved and dated by the board February 22, 2021.

Submitted, Deb Peschon

ISD #2689 School Board

January 25, 2021

SUMMARY OF MINUTES OF THE REGULAR SCHOOL BOARD MEETING OF INDEPENDENT SCHOOL DISTRICT #2689, PIPESTONE COUNTY, PIPESTONE, MINNESOTA

A regular meeting of the School Board, ISD #2689, was held in the MS/HS Auditorium on January 25, 2021 at 7:00 p.m.

The following members were present: Jeff Baatz, Katie Wiese, Amy Nelson, Brad Carson, Chrissy DeBates, and Randy Erdman. Absent – Lance Oye. Also present: Ex-Officio Kevin Enerson; Jacque Kennedy, Melany Wellnitz, Cory Strasser, Toni Baartman, Deb Peschon, Kyle Kuphal, Jennifer Dunn, Amy Willey, and Branden Willey.

Chairman Baatz called the meeting to order. The Pledge of Allegiance was recited. Motion by Erdman, second by Wiese, approved the agenda as presented. Motion carried unanimously. There were no visitors to address the board and no presentations. Motion by DeBates, second by Wiese, approve all items in the Consent Agenda. Items approved were the minutes of the regular school board meeting of December 21, 2020; minutes from the organizational meeting of January 4, 2021; gifts from Arrow Booster Club, Donation of \$150.00 for girl's tennis team banner, Claudia Appeldorn, Donation of \$500.00 to the wellness room, Christ the King Lutheran Church, Donation of \$100.00 to the wellness room, Bomgaars, Donation of \$150.00 to the wellness room, Dahl Motors, Donation of \$150.00 to the wellness room, Bernard & Mary Stoel, Donation of \$68.42 to Meinders Library for books, Lyle & Marjorie Oye, Donation of \$15.00 to Meinders Library for books, and Student, Donation of \$5.00 to lunch accounts; letter of resignation from Kristin Brockberg, Community Ed Assistant, and contract for Scott Rudie, technology technician.

Financials - The elementary building budget year-to-date shows expenditures as of January 31, 2021 at \$18,084,767.23. This was non-action. New elementary building bills paid through January 18, 2021 totaled \$1,565,918.96. These bills are for review only and are included in the regular monthly bills. The treasurer's report on the elementary building bond for month ended December 31, 2020 shows a cash balance of \$12,279,190.34. Motion by Erdman, second by Carson, approved the treasurer's report. Motion carried unanimously. The budget year-to-date shows expenditures as of January 20, 2021 at \$6,837,872.89 or 49%. This is non-action. The amended budget year-to-date shows expenditures as of January 20, 2021 at \$6,837,872.89 or 47%. This reflects the FY21 budget amendments. The treasurer's report for month ended December 31, 2020 has a cash balance of \$7,590,373.30. Motion by Wiese, second by Erdman, approved the treasurer's report. Bills paid through January 19, 2021 totaled \$2,007,435.81. Motion by Carson, second by DeBates, approved payment of the regular monthly bills. Motion carried unanimously. High school activity bills paid through January 19, 2021 totaled \$21,680.84. Motion by Wiese, second by Erdman, approved payment of the bills. Motion carried unanimously. Motion by Carson, second by Erdman, approved the budget amendments for FY21. Motion carried unanimously. Board and administrative reports were given. January enrollment is 1091.

In Discussion the board talked about the Learning Model.

Board Action - Motion by Baatz, second by Erdman, to approve policies 401, 402, and 521 as presented, and to send policy 213 to the Policy Committee to address Negotiations Committee. Motion carried unanimously. Motion by Wiese, second by Carson, approved Pat Weets as the Mayor appointee to the Public Library Board. Motion carried unanimously. Motion by DeBates, second by Nelson, approved the Facilities Agreement with Minnesota West Community and Technical College. Motion carried unanimously. Motion by Wiese, second by Carson, approved the contract for PAESP-Paraprofessionals. Motion carried unanimously. Motion by DeBates, second by Erdman, approved the contract for PAESP-Custodians, Secretaries, and AP. Motion carried unanimously. Motion by Erdman, second by Nelson, approved the contract for Wellnitz. Motion failed due to a tie (3-3) with Wiese, DeBates, and Carson opposing. Motion by Erdman, second by Nelson, approved the contracts for Baartman and Strasser. Motion failed due to a tie (3-3) with Wiese, DeBates and Carson opposing. Motion by Wiese, second by Carson approved the proposals from Push-Pedal-Pull for weight/fitness furnishings and Resilite for wrestling mat. Motion carried unanimously.

Motion by Wiese, second by Carson, to adjourn the meeting at 8:07 PM. Motion carried unanimously.

Dated: January 25, 2021. Approved and dated by the board February 22, 2021.

Attest: Deb Peschon, Recording Secretary

Minutes of the Work Session Meeting Pipestone Area Schools

A Work Session Meeting of the Board of Trustees of Pipestone Area Schools was held Monday, January 25, 2021 beginning at 8:15 PM in the MS/HS Auditorium.

Members Present: Chairman Jeff Baatz; Directors Brad Carson, Katie Wiese, Randy Erdman, Amy Nelson, and Chrissy DeBates. Absent – Lance Oye. Also present – Ex-Officio Kevin Enerson, Cory Strasser, Toni Baartman, Melany Wellnitz and Deb Peschon.

Visitors Present: Kyle Kuphal.

Call to Order: Chairman Baatz called the meeting to order at 8:15 PM

Approval of Agenda: Motion by Wiese, second by DeBates, approved the agenda as presented. Motion carried unanimously.

Culture and Climate Survey: The survey results were reviewed and the action that came out of it is the Negotiations Committee would speak with administration and exclusive teacher representatives for their perspective. This information will be discussed quarterly at work session meetings.

Goals Updates: Enerson asked the board if they wanted to update anything to the goals from the timeline provided. They need to continue to have discussions on the culture and climate goal, with clearer expectations and goals that we want to accomplish. At the organizational meeting in January, quarterly check ins were added to the meeting schedule.

Adjourn: Motion by Wiese, second by Nelson, to adjourn the meeting at 9:06 PM. Motion carried unanimously.

/s/ Jeff Baatz _____
Jeff Baatz, Chairman

/s/ Katie Wiese _____
Katie Wiese, Clerk

Approved and dated by the board February 22, 2021
Submitted, Deb Peschon

ISD #2689 School Board

January 25, 2021

SUMMARY OF MINUTES OF THE WORK SESSION MEETING OF INDEPENDENT SCHOOL DISTRICT #2689, PIPESTONE COUNTY, PIPESTONE, MINNESOTA

A work session meeting of the School Board, ISD #2689, was held in the MS/HS Auditorium on January 25, 2021 at 8:15 p.m.

The following members were present: Jeff Baatz, Katie Wiese, Amy Nelson, Brad Carson, Chrissy DeBates, and Randy Erdman. Absent – Lance Oye. Also present: Ex-Officio Kevin Enerson, Melany Wellnitz, Cory Strasser, Toni Baartman, Deb Peschon, Kyle Kuphal, and Jennifer Dunn. Chairman Baatz called the meeting to order at 8:15 PM. Motion by Wiese, second by DeBates, approved the agenda as presented. Motion carried unanimously. The survey results were reviewed and the action that came out of it is the Negotiations Committee would speak with administration and exclusive teacher representatives for their perspective. This information will be discussed quarterly at work session meetings. Enerson asked the board if they wanted to update anything to the goals from the timeline provided. They need to continue to have discussions on the culture and climate goal, with clearer expectations and goals that we want to accomplish. At the organizational meeting in January, quarterly check ins were added to the meeting schedule.

Motion by Wiese, second by Nelson, to adjourn the meeting at 9:06 PM. Motion carried unanimously.

Dated January 25, 2021. Approved and dated by the board February 22, 2021.

Attest: Deb Peschon, Recording Secretary

Independent School District No. 2689
Pipestone, Minnesota 56164

28776

Date 1-28-21

Received of Christ the King Lutheran Amount \$ 100-

For Donation to Wellness Room

Code	Amount	Description
	100-	check

Signed [Signature]

THIS CHECK IS VOID WITHOUT THE SAFETY FEATURES LISTED ON THE BACK

Apply to account: **CTK - - CHRIST THE KING LUTHERAN CHURCH**

19012192031

CHRIST THE KING LUTHERAN CHURCH
PO Box 682
PIPESTONE, MN 56164-2227

78-844
0914

DATE
01/19/2021

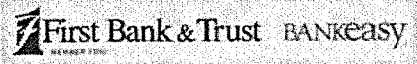
0006601546

First Bank & Trust
P.O. Box 5057
Brookings SD 57006-5057

AMOUNT

****\$100.00**

PAY **(ONE HUNDRED DOLLARS AND NO/100)**
TO THE **PAS WELLNESS ROOM**
ORDER OF



Signature on File -
account holder has pre-approved this check
Void After 90 Days

⑈0006601546⑈ ⑆091408446⑆ 115887⑈

New Subs to the District – February 2021

Maya Bledsoe – Para and Teacher Sub

Peschon, Deb

From: Zollner, Rick
Sent: Thursday, February 18, 2021 9:03 AM
To: Peschon, Deb
Subject: volunteer coaches

I am recommending the following as volunteer coaches.

Jenninges Wallace – Track and Field

Colin Hoppe – Boys Tennis

Tom Kelly – Baseball (this one is a joke – ha ha)

Thanks, Rick

Kraus-Anderson			
Funding			
		2/10/2021	Balance
Description			
Project Funds Available	\$28,281,962.19		Per Piper Jaffray
Parking lot Abatement Funding	\$0.00		TBD
Food Service Funding	\$400,000.00	(\$23,417.50)	\$376,582.50
LTFM Funding	\$200,000.00		
Project Bond Interest Earnings	\$515,000.00		Projection
Total Available	\$29,396,962.19		
			2/10/2021
Construction Cost Budget	Budget	Expenditures	Balance
Current Construction Value(Subcontracts)	\$21,666,669.50	(\$16,015,258.23)	\$5,651,411.27
Project General Conditions&Reimbursables	\$860,616.00	(\$286,584.80)	\$574,031.20
Kraus Anderson Site Services	\$1,217,849.00	(\$731,802.36)	\$486,046.64
Construction Contingency	\$533,541.88	\$0.00	\$533,541.88
Kraus Anderson Construction Management Fee	\$474,903.00	(\$220,304.00)	\$254,599.00
Total Construction Budget	\$24,753,579.38	(\$17,253,949.39)	\$7,499,629.99
Soft Cost Budget	Budget	Expenditures	Balance
A/E Fees(ISG)including 7% of Construction Contingency	\$1,802,522.47	(\$1,788,320.22)	\$14,202.25
A/E Additional Services(Added Scope Design)\$20,000 included in line above	\$100,871.50	(\$37,850.50)	\$63,021.00
A/E Contingency Budget	\$74,799.34	\$0.00	\$74,799.34
Building Permit Plan Review	\$111,253.00	(\$111,225.59)	\$27.41
SAC/WAC Costs	\$0.00	\$0.00	\$0.00
Geotechnical Survey Report	\$11,810.00	(\$11,810.00)	\$0.00
Special Inspections Testing	\$79,243.00	(\$35,953.50)	\$43,289.50
Commissioning/Test and Balance	\$25,400.00	(\$6,132.00)	\$19,268.00
Plans Production/Distribution	\$10,000.00	(\$1,147.50)	\$8,852.50
Total Soft Cost Budget	\$2,215,899.31	(\$1,992,439.31)	\$223,460.00
Owner Cost Budget	Budget	Expenditures	Balance
Telecommunications Tower Removal	\$9,825.00	(\$9,425.80)	\$399.20
Initial Surveying(Set Controls and Benchmarks)	\$5,000.00	(\$1,800.00)	\$3,200.00
Loan expenses or bonding costs	\$106,956.50	(\$73,456.50)	\$33,500.00
Furniture Fixtures and Equipment	\$918,000.00	(\$193,635.22)	\$724,364.78
Technology Equipment	\$600,000.00	(\$201,364.95)	\$398,635.05
Decommission Hill and Brown Schools	\$625,000.00	(\$15,000.00)	\$610,000.00
Legal Fees	\$40,000.00	(\$33,000.00)	\$7,000.00
Mis Owner Expense	\$105,000.00	(\$32,718.97)	\$72,281.03
Builders Risk Insurance	\$17,702.00	(\$17,702.00)	\$0.00
Total Owner Cost Budget	\$2,427,483.50	(\$578,103.44)	\$1,849,380.06
Total Project Costs	\$29,396,962.19	(\$19,824,492.14)	\$9,572,470.05

Pipestone Area Schools ISD #2689
Voucher Detail Report by Voucher Number

Batch	Vo	St Ty Description	SKU Code	PO No	Loc	L	Fd	Org	Pro	Crs	Fin	O/S	Prd	Dist %	Units	Rate	Disc %	Amount	
1	9777	KRAUS-ANDERSON CONSTRUCTION COMPANY																	
	88235	Consult & Serv.fees, SITE SERV																	
		P I Consult & Serv.fees, SITE SERVICE			101	E	06	005	870	000	000	305	202108	100.00%	1.00	151,920.91	100.00%	151,920.91	
		Consult & Serv.fees			101	E	06	005	870	000	000	305	202108	100.00%	1.00	0.00	100.00%	0.00	
																		Voucher Total	151,920.91
1	9749	ACTIVE HEATING INC																	
	88246	Build Acq/Construct																	
		P I Build Acq/Construct			101	E	06	005	870	000	000	520	202108	100.00%	1.00	72,295.00	100.00%	72,295.00	
																		Voucher Total	72,295.00
1	9750	AMERICAN STRUCTURAL METALS INC																	
	88247	Build Acq/Construct																	
		P I Build Acq/Construct			101	E	06	005	870	000	000	520	202108	100.00%	1.00	20,162.80	100.00%	20,162.80	
																		Voucher Total	20,162.80
1	9751	CORNERSTONE PLASTERING AND DRYWALL INC																	
	88248	Build Acq/Construct																	
		P I Build Acq/Construct			101	E	06	005	870	000	000	520	202108	100.00%	1.00	65,573.75	100.00%	65,573.75	
																		Voucher Total	65,573.75
1	8987	DALSIN INC																	
	88249	Build Acq/Construct																	
		P I Build Acq/Construct			101	E	06	005	870	000	000	520	202108	100.00%	1.00	45,454.65	100.00%	45,454.65	
																		Voucher Total	45,454.65
1	9752	DOOM AND CUYPERS CONSTRUCTION INC																	
	88250	Build Acq/Construct																	
		P I Build Acq/Construct			101	E	06	005	870	000	000	520	202108	100.00%	1.00	66,274.98	100.00%	66,274.98	
																		Voucher Total	66,274.98
1	9753	FARGO GLASS AND PAINT COMPANY																	
	88251	Build Acq/Construct																	
		P I Build Acq/Construct			101	E	06	005	870	000	000	520	202108	100.00%	1.00	43,458.70	100.00%	43,458.70	
																		Voucher Total	43,458.70
1	9754	F.M. ACOUSTICAL TILE INC																	
	88252	Build Acq/Construct																	
		P I Build Acq/Construct			101	E	06	005	870	000	000	520	202108	100.00%	1.00	30,700.20	100.00%	30,700.20	
																		Voucher Total	30,700.20

Pipestone Area Schools ISD #2689
Voucher Detail Report by Voucher Number

Batch	Vo	St Ty	Description	SKU Code	PO No	Loc	L	Fd	Org	Pro	Crs	Fin	O/S	Prd	Dist %	Units	Rate	Disc %	Amount			
1	7376		H & B SPECIALIZED PRODUCTS, IN																			
	88253		Build Acq/Construct																			
		P I	Build Acq/Construct			101	E	06	005	870	000	000	520	202108	100.00%	1.00	75,577.25	100.00%	75,577.25			
																				Voucher Total	75,577.25	
1	9755		HANDER INC PLUMBING AND HEATING																			
	88254		Build Acq/Construct																			
		P I	Build Acq/Construct			101	E	06	005	870	000	000	520	202108	100.00%	1.00	191,651.75	100.00%	191,651.75			
																					Voucher Total	191,651.75
1	5263		MIDWESTERN MECHANICAL INC.																			
	88255		Build Acq/Construct																			
		P I	Build Acq/Construct			101	E	06	005	870	000	000	520	202108	100.00%	1.00	5,177.16	100.00%	5,177.16			
																					Voucher Total	5,177.16
1	9761		RUSTADS FLOORING AND SLEEP CENTER LLC																			
	88256		Build Acq/Construct																			
		P I	Build Acq/Construct			101	E	06	005	870	000	000	520	202108	100.00%	1.00	17,575.00	100.00%	17,575.00			
																					Voucher Total	17,575.00
1	9739		SCHUMACHER ELEVATOR COMPANY																			
	88257		Build Acq/Construct																			
		P I	Build Acq/Construct			101	E	06	005	870	000	000	520	202108	100.00%	1.00	20,159.00	100.00%	20,159.00			
																					Voucher Total	20,159.00
1	9763		SPARTAN STEEL ERECTORS INC																			
	88258		Build Acq/Construct																			
		P I	Build Acq/Construct			101	E	06	005	870	000	000	520	202108	100.00%	1.00	20,243.75	100.00%	20,243.75			
																					Voucher Total	20,243.75
1	9908		STEINBRECHER PAINTING COMPANY																			
	88259		Build Acq/Construct																			
		P I	Build Acq/Construct			101	E	06	005	870	000	000	520	202108	100.00%	1.00	25,745.00	100.00%	25,745.00			
																					Voucher Total	25,745.00
1	9764		THOMPSON ELECTRIC COMPANY																			
	88260		Build Acq/Construct																			
		P I	Build Acq/Construct			101	E	06	005	870	000	000	520	202108	100.00%	1.00	202,928.50	100.00%	202,928.50			
																					Voucher Total	202,928.50

Pipestone Area Schools ISD #2689
Voucher Detail Report by Voucher Number

Batch	Vo	St Ty Description	SKU Code	PO No	Loc	L	Fd	Org	Pro	Crs	Fin	O/S	Prd	Dist %	Units	Rate	Disc %	Amount		
1	9765	TMI CORPORATION																		
	88261	Build Acq/Construct																		
		P I Build Acq/Construct			101	E	06	005	870	000	000	520	202108	100.00%	1.00	227,925.90	100.00%	227,925.90		
																		Voucher Total	227,925.90	
1	6401	TRANE																		
	88262	Build Acq/Construct																		
		P I Build Acq/Construct			101	E	06	005	870	000	000	520	202108	100.00%	1.00	17,641.18	100.00%	17,641.18		
																			Voucher Total	17,641.18
1	9756	INNOVATIVE BUILDING CONCEPTS LLC																		
	88263	Build Acq/Construct																		
		P I Build Acq/Construct			101	E	06	005	870	000	000	520	202108	100.00%	1.00	105,687.50	100.00%	105,687.50		
																			Voucher Total	105,687.50
1	9278	ISG																		
	88296	Consult & Serv.fees																		
		P I Consult & Serv.fees			101	E	06	005	870	000	000	305	202108	100.00%	1.00	6,488.00	100.00%	6,488.00		
																			Voucher Total	6,488.00
1	9467	SHI INTERNATIONAL CORP.		17335																
	88300	Interactive Displays Digital Signage New Ele MP																		
		P I Interactive Displays Digital Signage New Ele MP			101	E	06	005	870	000	000	555	202108	100.00%	1.00	87,579.00	100.00%	87,579.00		
																			Voucher Total	87,579.00
1	9467	SHI INTERNATIONAL CORP.																		
	88301	Technology Equipment																		
		P I Technology Equipment			101	E	06	005	870	000	000	555	202108	100.00%	1.00	5,333.00	100.00%	5,333.00		
																			Voucher Total	5,333.00
																			Report Total	1,505,552.98

INDEPENDENT SCHOOL DISTRICT NO. 2689							
PIPESTONE AREA SCHOOLS							
ELEMENTARY SCHOOL BUILDING BONDS							
FOR THE MONTH ENDED JANUARY 31,2021							
FUNDS	FUND NUMBER	CASH BALANCE BEGINNING OF MONTH	NET CASH ACTIVITY		CASH BALANCE END OF MONTH	ADJUSTMENTS	CASH BALANCE END OF MONTH FY21
ELEMENTARY SCHOOL BOND	06	\$12,279,190.34	(\$2,454.78)		\$12,276,735.56		\$12,276,735.56
TOTAL		\$12,279,190.34	(\$2,454.78)		\$12,276,735.56	\$0.00	\$12,276,735.56
RECONCILEMENT OF TREASURE'S BALANCE WITH BANKS							
DESCRIPTION	ACCOUNT NUMBER	CURRENT RATE OF INTEREST	BALANCE PER BANK STATEMENT	OUTSTANDING CHECKS	OUTSTANDING DEPOSITS	OTHER RECONCILING ITEMS	BALANCE PER TREASURER'S BOOKS
MNTRUST		0.03%	\$1,020,986.48	\$0.00	\$0.00	\$0.00	\$1,020,986.48
MNTRUST TERM SERIES		1.54%	\$0.00	\$0.00	\$0.00	\$0.00	\$0.00
SECURITY(BONDS OR TREASURY NOTES)		Various	\$2,744,749.08	\$0.00	\$0.00	\$0.00	\$2,744,749.08
CERTIFICATES OF DEPOSIT		Various	\$8,511,000.00	\$0.00	\$0.00	\$0.00	\$8,511,000.00
TOTAL			\$12,276,735.56	\$0.00	\$0.00	\$0.00	\$12,276,735.56
						Signed	Jacque Kennedy

Budget Presentation to the Board					
Expenditures as of 02/17/2021		FY2021			
General Fund				2/17/2021	Year to
Classification	Code	FY21 REV	Year to Date	Date	%
Administrative Salaries	110	\$538,902.00	\$337,315.44		63%
Teacher Salaries	140	\$4,444,459.00	\$2,305,303.66		52%
Non-Licensed Classroom Personnel	141	\$190,673.00	\$80,945.64		42%
Licensed Instructional Support Personnel	143	\$0.00	\$0.00		0%
Non-License Instructional Support Personnel	144	\$18,522.00	\$14,756.01		80%
Substitute Salaries	145	\$135,316.07	\$28,739.38		21%
Substitute Non-Licensed Classroom Salaries	146	\$45,000.00	\$6,608.46		15%
Language Pathologist	152	\$74,483.00	\$37,241.52		50%
School Nurse	154	\$55,930.00	\$36,836.20		66%
Certified Paraprofessional	161	\$420,663.00	\$169,884.99		40%
Certified One-to-One Paraprofessional	162	\$213,267.00	\$100,436.72		47%
School Counselor	165	\$143,332.00	\$64,106.32		45%
Non-Instructional Support	170	\$713,044.00	\$413,342.41		58%
DAPE Specialist	174	\$56,000.00	\$0.00		0%
Other Salary Payment	185	\$361,776.00	\$153,165.29		42%
Severance	191	\$23,979.00	\$0.00		0%
Third Party Pay Expense Salaries	195	\$0.00	\$0.00		
FICA	210	\$562,483.00	\$270,751.23		48%
PERA	214	\$120,932.00	\$60,809.00		50%
TRA	218	\$465,800.00	\$230,232.68		49%
Health Insurance	220	\$552,970.00	\$331,906.89		60%
Life Insurance	230	\$5,574.00	\$2,968.30		53%
Dental Insurance	235	\$1,115.00	\$721.60		65%
Long Term Disability	240	\$336.00	\$224.16		67%
TSA Match	250	\$89,225.00	\$43,459.20		49%
Employer Sponsored HSA's	251	\$80,296.00	\$57,091.20		71%
Workmens Comp	270	\$49,069.00	\$20,552.55		42%
Unemployment Compensation	280	\$5,000.00	\$0.00		0%
Other Post-Employment Benefits	291	\$66,928.00	\$0.00		0%
Third Party Pay Benefits	295	\$0.00	\$0.00		
Total Salaries and Fringe		\$9,435,074.07	\$4,767,398.85		51%
Other Employee Benefits	299	\$0.00	\$0.00		#DIV/0!
Fed Sub Awards Under \$25,000	303	\$37,364.00	\$28,500.00		76%
Fed Sub Awards Over \$25,000	304	\$15,160.00	\$6,160.00		41%
Consulting and Servicing Fees	305	\$143,177.64	\$95,391.94		67%
School Resource Officer	310	\$45,000.00	\$22,500.00		50%
Services Purchased from Coop	316	\$132,714.32	\$66,794.22		50%
Computer and Technology Services	319	\$0.00	\$0.00		#DIV/0!
Communications/Phone	320	\$52,877.00	\$18,694.56		35%
Postage and Express	329	\$8,735.00	\$3,861.81		44%
Utility Services	330	\$287,308.00	\$145,849.10		51%
Property Insurance	340	\$97,821.00	\$97,646.57		100%
Repairs and Maintenance	350	\$85,097.00	\$68,936.99		81%
Transportation	360	\$1,150,053.00	\$572,333.30		50%
Travel	366	\$106,577.00	\$48,338.57		45%
Entry Fees/Student Travel	369	\$49,725.00	\$1,182.57		2%
Rentals and Leases	370	\$73,616.00	\$56,674.50		77%
Third Party Reimbursement Services	385	\$0.00	\$0.00		0%
To Other MN School Districts	390	\$103,685.00	\$58,679.05		57%
To Out of State Districts	392	\$62,200.00	\$25,262.95		41%
Special Ed Contracted Services	393	\$263,450.00	\$84,896.15		32%
To Non-Ed Agency	394	\$175,100.00	\$88,336.46		50%
Spec Ed Salary Purchased from Co-op	396	\$358,243.00	\$328,508.43		92%
Spec Ed Benefits Purchased from Co-op	397	\$62,251.00	\$31,275.41		50%
Charge Back	398	\$0.00	\$0.00		0%
General Supplies	401	\$206,773.52	\$147,641.65		71%
Non instructional Computer Software	405	\$62,330.00	\$41,615.73		67%
Instructional Software License	406	\$62,807.62	\$55,736.37		89%
Instructional Supplies	430	\$174,346.06	\$94,553.48		54%
Individualized Materials	433	\$25,923.44	\$20,044.01		77%
Fuel for Buildings	440	\$91,684.00	\$30,944.08		34%
Noninstructional Tech Supplies	455	\$7,300.00	\$6,576.86		90%
Instructional Tech Supplies	456	\$14,961.00	\$14,688.58		98%
Textbooks/Workbooks	460	\$84,948.78	\$47,095.75		55%
Standarized Tests	461	\$0.00	\$2,320.00		#DIV/0!
Non-Instructional Tech Devices	465	\$11,868.36	\$11,621.16		98%
Instructional Technology Devices	466	\$246,406.00	\$246,041.87		100%
Library Books	470	\$17,800.00	\$12,931.15		73%
Audio Visual Aids	480	\$0.00	\$0.00		0%
Electronic Format	485	\$2,600.00	\$0.00		0%
Capital Non-Instruction Tech Software	505	\$8,500.00	\$8,500.00		100%
Site or Grounds Acquisition	510	\$15,000.00	\$12,990.00		87%
Building Acquisition and Construction	520	\$306,594.00	\$231,635.11		76%
Equipment Purchased	530	\$217,300.78	\$215,356.77		99%
Special Education Equipment	533	\$5,000.00	\$4,848.10		97%
Charge Back Tennis Courts	545	\$0.00	\$0.00		#DIV/0!
Eligible Pupil Transportation	548	\$0.00	\$0.00		0%
Vehicles Purchased	550	\$0.00	\$0.00		#DIV/0!
Non-Instructional Technology Hardware	555	\$83,667.48	\$78,630.66		94%
Capitalized Instructional Technology Hardware	556	\$0.00	\$0.00		#DIV/0!
Principal on Capital Lease	580	\$73,000.00	\$73,000.00		100%
Interest on Capital Lease	581	\$19,357.00	\$19,369.52		100%
Dues and Memberships	820	\$25,671.00	\$25,455.85		99%
Taxes and Special Assessments	896	\$1,250.00	\$0.00		0%
Affordable Care Act Penalties	897	\$8,000.00	\$0.00		0%
Miscellaneous Other Expenses	899	\$5,000.00	\$410.77		8%
Contingency		\$100,000.00	\$0.00		0%
Total		\$14,623,317.07	\$8,019,228.90		55%
The prior year to date percentage was 57%					

INDEPENDENT SCHOOL DISTRICT NO. 2689									
PIPESTONE AREA SCHOOLS									
TREASURER'S REPORT TO SCHOOL BOARD									
FOR THE MONTH ENDED JANUARY 31, 2021									
FUNDS	FUND NUMBER	CASH BALANCE BEGINNING OF MONTH	NET CASH ACTIVITY			CASH BALANCE END OF MONTH	ADJUSTMENTS	CASH BALANCE END OF MONTH FY21	CASH BALANCE END OF MONTH FY20
GENERAL FUND	01,03,05	\$5,450,301.68	\$245,170.02			\$5,695,471.70		\$5,695,471.70	\$4,932,851.48
FOOD SERVICE FUND	02	\$648,125.52	(\$29,796.68)			\$618,328.84		\$618,328.84	\$549,655.34
COMMUNITY SERVICE FUND	04	\$363,670.00	(\$10,178.53)			\$353,491.47		\$353,491.47	\$387,786.42
TOTAL OPERATING FUNDS		\$6,462,097.20	\$205,194.81			\$6,667,292.01		\$6,667,292.01	\$5,870,293.24
BUILDING FUND	06	(\$270,222.49)	(\$1,855,503.54)			(\$2,125,726.03)		(\$2,125,726.03)	(\$276,439.42)
DEBT SERVICE FUND	07	\$1,398,153.59	(\$871,754.59)			\$526,399.00		\$526,399.00	\$1,825,183.64
AGENCY FUND	09	\$345.00	\$0.00			\$345.00		\$345.00	\$345.00
CERTIFICATES OF DEPOSIT		\$0.00						\$0.00	\$0.00
TOTAL		\$7,590,373.30	(\$2,522,063.32)			\$5,068,309.98	\$0.00	\$5,068,309.98	\$7,419,382.46
RECONCILEMENT OF TREASURE'S BALANCE WITH BANKS									
DESCRIPTION	ACCOUNT NUMBER	CURRENT RATE OF INTEREST	BALANCE PER BANK STATEMENT	OUTSTANDING CHECKS	OUTSTANDING DEPOSITS	OTHER RECONCILING ITEMS	BALANCE PER TREASURER'S BOOKS	BALANCE PER TREASURER'S BOOKS	
FIRST NATIONAL BANK-PAYROLL	200563	0.05%	\$123,760.41	(\$126.28)	\$0.00	\$0.00	\$123,634.13	\$85,372.80	
FIRST NATIONAL BANK-MM	808263	0.08%	\$289,240.11	\$0.00	\$0.00	\$0.00	\$289,240.11	\$559,775.85	
FIRST F&M-MM	4534150062	0.08%	\$819,706.30	(\$508,715.79)	\$55,466.14	\$0.00	\$366,456.65	\$286,124.45	
MNTrust	6770	0.03%	\$2,809,137.72	\$0.00	\$0.00	\$0.00	\$2,809,137.72	\$2,030,721.89	
TOTAL			\$4,041,844.54	(\$508,842.07)	\$55,466.14	\$0.00	\$3,588,468.61	\$2,961,994.99	
CERTIFICATES OF DEPOSIT	CD #	Date Purchased	Maturity Date	Maturity Period	Interest Rate		Dollar Amount	Dollar Amount	
Savings Deposit Acct Bank of China		1/31/2021			0.050%		\$53.90		
BMW Bank North America		11/22/2019	11/22/2021	24 Months	1.603%		\$247,468.97		
State Bank of India		11/27/2019	11/29/2021	24 Months	1.702%		\$247,718.50		
Farmers and Merchants Union Bank		5/17/2019	5/17/2021	24 Months	2.389%		\$238,500.00		
East Boston Savings Bank		3/9/2020	1/25/2022	22 Months	0.649%		\$246,900.00		
Bank 7		10/14/2020	1/24/2022	15 Mpnths	0.104%		\$249,600.00		
Servisfirst Bank		10/14/2020	4/14/2022	18 Months	0.100%		\$249,600.00		
Total							\$1,479,841.37	\$4,457,387.47	
Grand Total							\$5,068,309.98	\$7,419,382.46	
						Signed	Jacque Kennedy		

Pipestone Area Schools ISD #2689 Detail Payment Register By Check

Co	Bank	Check No	Code	Rcd	Vendor	Pmt/Void Date	Pmt Type		
2689	FIN	62310	6528		EDUCATORS BENEFIT CONSULTANTS, LLC		Check		
				B 01	215 085	Medical Flex		\$75.00	
				B 01	215 086	Flex Dependent Care		\$541.66	
PO#:	Voucher #:	88074	Invoice	Invoice No:	M2021070	1/20/2021	Paid Amt:	\$616.66	
							Check Amount:	\$616.66	
2689	FIN	62311	7353		JACK OF TRADES		Check		
				E 06	005 870 000 000 305	Consult & Serv.fees, MOVED TREES		\$300.00	
PO#:	Voucher #:	88090	Invoice	Invoice No:	2020110902	1/20/2021	Paid Amt:	\$300.00	
							Check Amount:	\$300.00	
2689	FIN	62312	8402		LEGALSHIELD		Check		
				B 01	215 037	LGL-ID		\$157.40	
				B 01	215 038	LGL-Sheild		\$13.95	
PO#:	Voucher #:	88082	Invoice	Invoice No:	M2021070	1/20/2021	Paid Amt:	\$171.35	
							Check Amount:	\$171.35	
2689	FIN	62313	4867		MN CHILD SUPPORT PAYMENT CTR		Check		
				B 01	215 029	Child Support		\$95.00	
PO#:	Voucher #:	88083	Invoice	Invoice No:	M2021070	1/20/2021	Paid Amt:	\$95.00	
							Check Amount:	\$95.00	
2689	FIN	62314	6424		PAESP		Check		
				B 01	215 043	PAE Supp Prof Dues		\$1,275.73	
PO#:	Voucher #:	88084	Invoice	Invoice No:	M2021070	1/20/2021	Paid Amt:	\$1,275.73	
							Check Amount:	\$1,275.73	
2689	FIN	62315	01253		PJE		Check		
				B 01	215 040	Pipestone Ed. Assoc. Dues		\$6,950.35	
PO#:	Voucher #:	88086	Invoice	Invoice No:	M2021070	1/20/2021	Paid Amt:	\$6,950.35	
							Check Amount:	\$6,950.35	
2689	FIN	62316	9599		TX CHILD SUPPORT SDU		Check		
				B 01	215 029	Child Support		\$47.52	
PO#:	Voucher #:	88073	Invoice	Invoice No:	M2021070	1/20/2021	Paid Amt:	\$47.52	
							Check Amount:	\$47.52	
2689	FIN	62317	7348		Madison National Life		Check		
				B 01	215 032	Employer Paid Life		\$459.94	
				B 01	215 033	Supplemental Life		\$139.40	
				B 01	215 031	LTD		\$785.71	
PO#:	Voucher #:	88092	Invoice	Invoice No:	M2021070	1/20/2021	Paid Amt:	\$1,385.05	
							Check Amount:	\$1,385.05	

Pipestone Area Schools ISD #2689 Detail Payment Register By Check

Co	Bank	Check No	Code	Rcd	Vendor	Pmt/Void Date	Pmt Type		
2689	FIN	62318	01252		NCPERS Group Life Ins		Check		
				B 01	215 034	UNIT NUMBER: 203411		\$48.00	
	PO#:	Voucher #:	88093	Invoice	Invoice No: M2021070	1/20/2021	Paid Amt:	\$48.00	
							Check Amount:	\$48.00	
2689	FIN	62319	9480		MINNESOTA PUBLIC EMPLOYEE INSURANCE PROGRAM(PEIP)		Check		
				B 01	215 030	Health Ins. Feb Coverage Inv #1040346		\$70,200.70	
	PO#:	Voucher #:	88094	Invoice	Invoice No: M2021070	1/20/2021	Paid Amt:	\$70,200.70	
							Check Amount:	\$70,200.70	
2689	FIN	62320	7068		AMERITAS LIFE INSURANCE CORP.		Check		
				B 01	215 045	AMERITAS Vision Ins January Coverage		\$772.72	
	PO#:	Voucher #:	88096	Invoice	Invoice No: M2021070	1/20/2021	Paid Amt:	\$772.72	
							Check Amount:	\$772.72	
2689	FIN	62321	7067		DELTA DENTAL		Check		
				B 01	215 044	Dental Ins Inv # CNS0000620660		\$2,003.60	
	PO#:	Voucher #:	88097	Invoice	Invoice No: M2021070	1/20/2021	Paid Amt:	\$2,003.60	
							Check Amount:	\$2,003.60	
2689	FIN	62322	5249		VISA		Check		
				E 01	300 331 172 830 433	Individualized Mat.		\$35.88	
				E 01	300 301 501 830 433	Individualized Mat.		\$143.96	
				E 01	300 258 233 000 820	Dues & Membership		\$145.00	
				E 01	300 258 233 000 430	Instructional Supply		\$127.11	
				E 01	300 260 172 000 430	Instructional Supply		\$15.92	
				E 04	005 591 000 000 370	Rentals & Leases		\$119.00	
				E 01	207 203 172 000 406	Instructional Software License		\$10.00	
				E 02	005 770 000 151 401	General Supplies COVID, DISBURSEMENT O		\$53.42	
				E 01	005 810 000 000 401	General Supplies		\$35.86	
				E 01	005 810 000 000 401	General Supplies		\$5.87	
				E 01	300 296 209 000 430	Instructional Supply		\$61.95	
				E 01	300 640 172 316 366	MS/HS Staff Development		\$428.00	
				E 01	300 331 172 830 433	Individualized Mat.		\$50.00	
				E 01	300 211 000 151 430	Instructional Supply		\$11.50	
				E 01	300 219 173 317 406	Instructional Software License		\$163.91	
				E 01	300 256 000 151 430	Instructional Supply		\$11.50	
				E 01	300 292 000 000 401	General Supplies		\$1,095.50	
				E 01	300 294 200 000 366	Travel, ZOLLNER		\$320.80	
				E 01	300 301 501 830 433	Individualized Mat.		\$27.94	
	PO#:	Voucher #:	88100	Invoice	Invoice No: 7419	20 1/21/2021	Paid Amt:	\$2,863.12	
							Check Amount:	\$2,863.12	

Pipestone Area Schools ISD #2689 Detail Payment Register By Check

Co	Bank	Check No	Code	Rcd	Vendor	Pmt/Void Date	Pmt Type		
2689	FIN	62323	5249		VISA		Check		
				E 04	005 249 000 321 366	Travel, DR. ED		\$51.24	
PO#:	Voucher #:	88101	Invoice	Invoice No:	7427	1/21/2021	Paid Amt:	\$51.24	
							Check Amount:	\$51.24	
2689	FIN	62324	5249		VISA		Check		
				E 01	300 292 000 000 366	Travel, ZOLLNER		\$37.13	
PO#:	Voucher #:	88102	Invoice	Invoice No:	7401	1/21/2021	Paid Amt:	\$37.13	
							Check Amount:	\$37.13	
2689	FIN	62325	5249		VISA		Check		
				E 01	005 605 150 000 456	Instructional Tech Supplies		\$399.99	
				E 01	005 605 150 000 455	NonInstructional Tech Supplies		\$72.60	
				E 06	005 870 000 000 555	Technology Equipment		\$854.87	
PO#:	Voucher #:	88103	Invoice	Invoice No:	4844	1/21/2021	Paid Amt:	\$1,327.46	
							Check Amount:	\$1,327.46	
2689	FIN	62326	00063		CITY OF PIPESTONE		Check		
				E 01	103 810 183 000 330	Utilities - Water/Sewer		\$245.35	
				E 01	102 810 183 000 330	Utilities - Water/Sewer		\$380.44	
				E 01	102 810 182 000 330	Utilities - Water/Sewer		\$175.00	
				E 01	005 810 183 000 330	Utilities Paulsen Field		\$71.85	
				E 01	300 810 183 000 330	Utilities - Water/Sewer		\$57.25	
				E 01	300 810 183 000 330	Utilities - Water/Sewer		\$606.16	
				E 01	103 810 182 000 330	Utility Services		\$175.00	
				E 01	300 810 182 000 330	Utility Services		\$350.00	
				E 01	300 810 182 000 330	Utility Services		\$885.90	
PO#:	Voucher #:	88104	Invoice	Invoice No:	01/22/2021	1/21/2021	Paid Amt:	\$2,946.95	
							Check Amount:	\$2,946.95	
2689	FIN	62327	5782		CENTERPOINT ENERGY		Check		
				E 01	103 810 000 000 440	Fuel For Buildings, DEC 2020		\$1,697.54	
				E 01	102 810 000 000 440	Fuel For Buildings, DEC 2020		\$2,391.66	
				E 01	300 810 000 000 440	Fuel For Buildings, DEC 2020		\$5,364.10	
PO#:	Voucher #:	88119	Invoice	Invoice No:	8000015159-9	1/25/2021	Paid Amt:	\$9,453.30	
							Check Amount:	\$9,453.30	
2689	FIN	62328	9926		DTB SYSTEMS		Check		
				E 06	005 870 000 000 520	Build Acq/Construct		\$13,307.50	
PO#:	Voucher #:	88109	Invoice	Invoice No:	4000B	1/25/2021	Paid Amt:	\$13,307.50	
							Check Amount:	\$13,307.50	
2689	FIN	62329	5168		J. W. PEPPER & SON, INC.		Check		
				E 01	300 258 233 000 430	Item# 11219785 Havana Nights (flex instrumer		\$80.00	

Pipestone Area Schools ISD #2689 Detail Payment Register By Check

Co	Bank	Check No	Code	Rcd	Vendor	Pmt/Void Date	Pmt Type
2689	FIN	62329	5168		J. W. PEPPER & SON, INC.		Check
				E 01	300 258 233 000 430	Item#11001399 Extraordinary Machines of Clo	\$68.00
				E 01	300 258 233 000 430	Item#2265874 Imperium by Michael Sweeney	\$45.00
				E 01	300 258 233 000 430	Item#10739087 Nostalgia by Rossano Galante	\$58.00
				E 01	300 258 233 000 430	Item#10518332 88 Ave. B by Dan Torosian	\$45.00
				E 01	300 258 233 000 430	Item#10311511 At the Oasis by Andy Farber	\$48.00
				E 01	300 258 233 000 430	Freight	\$9.99
	PO#: 17301	Voucher #:	88108	Invoice	Invoice No: 362950887	1/25/2021	Paid Amt: \$353.99
							Check Amount: \$353.99
2689	FIN	62330	01179		RATWIK ROSZAK & MALONEY PA		Check
				E 01	005 010 113 000 305	Consult & Serv.fees	\$1,774.50
	PO#:	Voucher #:	88110	Invoice	Invoice No: 01/22/2021	1/25/2021	Paid Amt: \$1,774.50
							Check Amount: \$1,774.50
2689	FIN	62331	9366		SYNCB/AMAZON		Check
				E 01	300 050 172 000 401	General Supplies	\$53.97
				E 01	300 331 172 830 433	Individualized Mat.	\$35.99
				E 01	300 256 173 000 401	General Supplies	\$15.95
				E 01	300 256 173 302 460	Textbooks/Workbooks	\$45.35
				E 01	300 050 172 000 455	NonInstructional Tech Supplies	\$106.18
				E 01	300 710 172 000 455	NonInstructional Tech Supplies	\$106.18
	PO#:	Voucher #:	88111	Invoice	Invoice No: 01/22/2021	1/25/2021	Paid Amt: \$363.62
							Check Amount: \$363.62
2689	FIN	62332	8925		VAST BROADBAND		Check
				E 04	005 582 000 344 320	Communications/Phone, 1/2-2/11	\$109.95
	PO#:	Voucher #:	88117	Invoice	Invoice No: 016458601	1/25/2021	Paid Amt: \$109.95
				E 01	300 810 000 000 320	Communications/Phone, 1/2-2/11	\$1,784.64
	PO#:	Voucher #:	88118	Invoice	Invoice No: 000459101	1/25/2021	Paid Amt: \$1,784.64
							Check Amount: \$1,894.59
2689	FIN	62333	7716		VERIZON WIRELESS		Check
				E 01	300 810 000 000 320	Communications/Phone, 1/9-2/8	\$346.17
	PO#:	Voucher #:	88115	Invoice	Invoice No: 982981850-00001	1/25/2021	Paid Amt: \$346.17
				E 01	300 810 000 000 320	Communications/Phone 01/-2/8	\$39.59
	PO#:	Voucher #:	88116	Invoice	Invoice No: 982981850-00002	1/25/2021	Paid Amt: \$39.59
							Check Amount: \$385.76
2689	FIN	62334	9738		ALLEN VANBEEK		Check
				E 01	300 294 201 000 305	Consult & Serv.fees, BB 1/29/21	\$110.00
	PO#:	Voucher #:	88121	Invoice	Invoice No: 01/25/2021	1/25/2021	Paid Amt: \$110.00
							Check Amount: \$110.00

Pipestone Area Schools ISD #2689 Detail Payment Register By Check

Co	Bank	Check No	Code	Rcd	Vendor	Pmt/Void Date	Pmt Type		
2689	FIN	62335	9110		DENNIS BECKER		Check		
				E 01	300 294 201 000 305	Consult & Serv.fees, BB 1/29/21		\$110.00	
	PO#:	Voucher #:	88122	Invoice	Invoice No: 01/25/2021	1/25/2021	Paid Amt:	\$110.00	
							Check Amount:	\$110.00	
2689	FIN	62336	9162		JON WENDT		Check		
				E 01	300 294 201 000 305	Consult & Serv.fees, BB 1/29/21		\$110.00	
	PO#:	Voucher #:	88120	Invoice	Invoice No: 01/25/2021	1/25/2021	Paid Amt:	\$110.00	
							Check Amount:	\$110.00	
2689	FIN	62337	9724		COREY KASTNER		Check		
				E 01	300 294 201 000 305	Consult & Serv.fees, BB 1/25/21		\$110.00	
	PO#:	Voucher #:	88125	Invoice	Invoice No: 01/25/2021	1/25/2021	Paid Amt:	\$110.00	
							Check Amount:	\$110.00	
2689	FIN	62338	9726		GREG ATHERTON		Check		
				E 01	300 294 201 000 305	Consult & Serv.fees, BB 1/25/21		\$110.00	
	PO#:	Voucher #:	88124	Invoice	Invoice No: 01/25/2021	1/25/2021	Paid Amt:	\$110.00	
							Check Amount:	\$110.00	
2689	FIN	62339	9725		JEFF TENNAPEL		Check		
				E 01	300 294 201 000 305	Consult & Serv.fees, BB 1/25/21		\$110.00	
	PO#:	Voucher #:	88123	Invoice	Invoice No: 01/25/2021	1/25/2021	Paid Amt:	\$110.00	
							Check Amount:	\$110.00	
2689	FIN	62340	8470		BRIAN DANKS		Check		
				E 01	300 294 210 000 305	Consult & Serv.fees, WR 1/26/21		\$250.00	
	PO#:	Voucher #:	88126	Invoice	Invoice No: 01/25/2021	1/25/2021	Paid Amt:	\$250.00	
							Check Amount:	\$250.00	
2689	FIN	62341	8831		TRAVIS CHRISTENSON		Check		
				E 01	300 294 210 000 305	Consult & Serv.fees, WR 1/26/21		\$250.00	
	PO#:	Voucher #:	88127	Invoice	Invoice No: 01/25/2021	1/25/2021	Paid Amt:	\$250.00	
							Check Amount:	\$250.00	
2689	FIN	62343	5983		SIOUX VALLEY ENERGY		Check		
				E 01	300 810 184 000 330	Utilities - Electricity, DEC 2020		\$15,646.00	
	PO#:	Voucher #:	88128	Invoice	Invoice No: 7058684000	1/25/2021	Paid Amt:	\$15,646.00	
							Check Amount:	\$15,646.00	
2689	FIN	62344	6855		Baker & Taylor Books		Check		
				E 04	005 591 000 000 470	Library Books		\$436.16	
	PO#:	Voucher #:	88129	Invoice	Invoice No: 2035679799	1/25/2021	Paid Amt:	\$436.16	
				E 04	005 591 000 000 470	Library Books	23	\$113.56	
	PO#:	Voucher #:	88130	Invoice	Invoice No: 2035695237	1/25/2021	Paid Amt:	\$113.56	
							Check Amount:	\$549.72	

Pipestone Area Schools ISD #2689 Detail Payment Register By Check

Co	Bank	Check No	Code	Rcd	Vendor	Pmt/Void Date	Pmt Type		
2689	FIN	62345	00256		HILLYARD INC/ SIOUX FALLS		Check		
				E 01	005 810 000 000 401	General Supplies		\$416.84	
	PO#:	Voucher #:	88133	Invoice	Invoice No: 604203093	1/26/2021	Paid Amt:	\$416.84	
							Check Amount:	\$416.84	
2689	FIN	62346	9790		KURITA AMERICAN INC.		Check		
				E 01	005 810 000 000 401	General Supplies		\$190.00	
	PO#:	Voucher #:	88132	Invoice	Invoice No: 572931	1/26/2021	Paid Amt:	\$190.00	
							Check Amount:	\$190.00	
2689	FIN	62347	9576		PREMIER FURNITURE AND EQUIPMENT		Check		
				E 01	300 810 000 000 350	Repair&maint Service		\$1,458.24	
	PO#:	Voucher #:	88131	Invoice	Invoice No: 3485	1/26/2021	Paid Amt:	\$1,458.24	
							Check Amount:	\$1,458.24	
2689	FIN	62348	00256		HILLYARD INC/ SIOUX FALLS		Check		
				E 01	005 810 000 151 401	General Supplies ESSER, DISINFECTANT		\$774.00	
	PO#:	Voucher #:	88134	Invoice	Invoice No: 604203095	1/26/2021	Paid Amt:	\$774.00	
				E 01	005 810 000 151 530	Equipment Purchased, RIDING VACUUM COV		\$16,184.00	
	PO#:	Voucher #:	88135	Invoice	Invoice No: 604203092	1/26/2021	Paid Amt:	\$16,184.00	
							Check Amount:	\$16,958.00	
2689	FIN	62349	6458		HUBERT COMPANY LLC		Check		
				E 02	005 770 000 151 401	SEE ATTACHED		\$59.96	
				E 02	005 770 000 151 401	Freight		\$5.26	
	PO#: 17339	Voucher #:	88136	Invoice	Invoice No: 272273B1	1/26/2021	Paid Amt:	\$65.22	
				E 02	005 770 000 151 401	SEE ATTACHED		\$163.75	
				E 02	005 770 000 151 401	SHIPPING		\$17.46	
	PO#: 17337	Voucher #:	88137	Invoice	Invoice No: 265570B2	1/26/2021	Paid Amt:	\$181.21	
							Check Amount:	\$246.43	
2689	FIN	62350	9518		INNOVATIVE OFFICE SOLUTIONS LLC		Check		
				E 01	207 203 172 000 430	Instructional Supply		\$1.70	
	PO#:	Voucher #:	88138	Invoice	Invoice No: 3029322	1/26/2021	Paid Amt:	\$1.70	
				E 01	300 212 172 000 430	Instructional Supply		\$10.00	
	PO#:	Voucher #:	88139	Invoice	Invoice No: 3028895	1/26/2021	Paid Amt:	\$10.00	
							Check Amount:	\$11.70	
2689	FIN	62351	9723		AMERICAN ENGINEERING TESTING INC		Check		
				E 06	005 870 000 000 305	Consult & Serv.fees		\$1,887.00	
	PO#:	Voucher #:	88148	Invoice	Invoice No: 1302473	1/26/2021	Paid Amt:	\$1,887.00	
							Check Amount:	\$1,887.00	

Pipestone Area Schools ISD #2689 Detail Payment Register By Check

Co	Bank	Check No	Code	Rcd	Vendor	Pmt/Void Date	Pmt Type		
2689	FIN	62352	5949		CDW GOVERNMENT, INC.		Check		
				E 01 005 020 000 000 401	General Supplies			\$130.50	
	PO#:	Voucher #:	88144	Invoice	Invoice No: 6918207	1/26/2021	Paid Amt:		\$130.50
				E 01 005 605 150 000 455	NonInstructional Tech Supplies			\$208.30	
	PO#:	Voucher #:	88145	Invoice	Invoice No: 6932746	1/26/2021	Paid Amt:		\$208.30
				E 01 005 605 150 000 455	NonInstructional Tech Supplies			\$421.25	
	PO#:	Voucher #:	88146	Invoice	Invoice No: 6928909	1/26/2021	Paid Amt:		\$421.25
							Check Amount:		\$760.05
2689	FIN	62353	00276		XCEL ENERGY		Check		
				E 01 005 810 184 000 330	Electricity - Paulsen Field, PAULSON FIELD			\$579.15	
	PO#:	Voucher #:	88147	Invoice	Invoice No: 51-6709448-8	1/26/2021	Paid Amt:		\$579.15
							Check Amount:		\$579.15
2689	FIN	62354	7390		BLICK ART MATERIALS		Check		
				E 01 300 230 172 000 430	Instructional Supply			\$11.85	
	PO#:	Voucher #:	88158	Invoice	Invoice No: 5486933	1/27/2021	Paid Amt:		\$11.85
							Check Amount:		\$11.85
2689	FIN	62355	5949		CDW GOVERNMENT, INC.		Check		
				E 01 300 260 172 000 430	Instructional Supply			\$730.43	
	PO#:	Voucher #:	88151	Invoice	Invoice No: 6749154	1/27/2021	Paid Amt:		\$730.43
							Check Amount:		\$730.43
2689	FIN	62356	3512		CHILDRENS CARE HOSP & SCHOOL		Check		
				E 01 100 411 000 000 392	to Out-of-State Dist			\$1,095.84	
				E 01 100 411 000 740 393	Sp Ed Contr Svcs Pup			\$3,704.16	
				E 01 102 411 000 000 392	to Out-of-State Dist			\$1,095.84	
				E 01 102 411 000 740 393	Sp Ed Contr Svcs Pup			\$5,855.66	
	PO#:	Voucher #:	88167	Invoice	Invoice No: 30000944	1/27/2021	Paid Amt:		\$11,751.50
							Check Amount:		\$11,751.50
2689	FIN	62357	6528		EDUCATORS BENEFIT CONSULTANTS, LLC		Check		
				B 01 215 085	Medical Flex			\$137.00	
	PO#:	Voucher #:	88168	Invoice	Invoice No: 17404	1/27/2021	Paid Amt:		\$137.00
							Check Amount:		\$137.00
2689	FIN	62358	9802		HDI RAILING SYSTEMS		Check		
				E 06 005 870 000 000 520	Build Acq/Construct			\$7,933.00	
	PO#:	Voucher #:	88152	Invoice	Invoice No: 11495	1/27/2021	Paid Amt:		\$7,933.00
							Check Amount:		\$7,933.00
2689	FIN	62359	6458		HUBERT COMPANY LLC	25	Check		
				E 02 005 770 000 151 401	SEE ATTACHED			\$647.98	
	PO#: 17337	Voucher #:	88159	Invoice	Invoice No: 265570B1	1/27/2021	Paid Amt:		\$647.98

Pipestone Area Schools ISD #2689 Detail Payment Register By Check

Co	Bank	Check No	Code	Rcd	Vendor	Pmt/Void Date	Pmt Type		
2689	FIN	62359	6458		HUBERT COMPANY LLC		Check		
				E 02 005 770 000 151 401	General Supplies COVID			\$414.40	
	PO#:	Voucher #:	88160	Invoice	Invoice No: 272273	1/27/2021	Paid Amt:		\$414.40
				E 02 005 770 000 151 401	General Supplies COVID			\$9.12	
	PO#:	Voucher #:	88161	Invoice	Invoice No: 179167B1	1/27/2021	Paid Amt:		\$9.12
							Check Amount:		\$1,071.50
2689	FIN	62360	5546		INNOVATIVE OFFICE SOLUTIONS		Check		
				E 01 005 110 000 000 401	General Supplies			\$96.90	
	PO#:	Voucher #:	88150	Invoice	Invoice No: 3124863	1/27/2021	Paid Amt:		\$96.90
							Check Amount:		\$96.90
2689	FIN	62361	7931		JOHNSON CONTROLS		Check		
				E 06 005 870 000 000 520	Build Acq/Construct			\$14,939.21	
	PO#:	Voucher #:	88162	Invoice	Invoice No: 1-100546122703	1/27/2021	Paid Amt:		\$14,939.21
							Check Amount:		\$14,939.21
2689	FIN	62362	5602		Mid States Audio Inc		Check		
				E 06 005 870 000 000 555	Technology Equipment			\$87,067.50	
	PO#:	Voucher #:	88153	Invoice	Invoice No: 31327	1/27/2021	Paid Amt:		\$87,067.50
							Check Amount:		\$87,067.50
2689	FIN	62363	8610		MINNESOTA WEST		Check		
				E 01 300 211 000 000 305	Consult & Serv.fees, SPRING 2021			\$10,000.00	
	PO#:	Voucher #:	88154	Invoice	Invoice No: 00261237	1/27/2021	Paid Amt:		\$10,000.00
				E 01 300 211 966 000 390	to Other MN District, SPRING 2021			\$2,800.00	
	PO#:	Voucher #:	88165	Invoice	Invoice No: 00261261	1/27/2021	Paid Amt:		\$2,800.00
							Check Amount:		\$12,800.00
2689	FIN	62364	01812	01812	Penworthy Company		Check		
				E 01 103 620 591 302 470	Library Books			\$759.05	
	PO#:	Voucher #:	88157	Invoice	Invoice No: 0568746-IN	1/27/2021	Paid Amt:		\$759.05
							Check Amount:		\$759.05
2689	FIN	62365	4626		PIPESTONE CO. TRANSIT		Check		
				E 01 103 401 000 723 360	Transp Cntrt W/Public			\$30.00	
	PO#:	Voucher #:	88166	Invoice	Invoice No: 01/27/2021	1/27/2021	Paid Amt:		\$30.00
							Check Amount:		\$30.00
2689	FIN	62366	9576		PREMIER FURNITURE AND EQUIPMENT		Check		
				E 02 005 770 000 701 401	High School Cafeteria FF&E			\$34,730.25	
	PO#: 17334	Voucher #:	88156	Invoice	Invoice No: 3446	1/27/2021	Paid Amt:		\$34,730.25
							Check Amount:		\$34,730.25

Pipestone Area Schools ISD #2689 Detail Payment Register By Check

Co	Bank	Check No	Code	Rcd	Vendor	Pmt/Void Date	Pmt Type		
2689	FIN	62368	9772		QUESTIONS & SOLUTIONS ENGINEERING INC		Check		
				E 06	005 870 000 000 305 Professional Commissioning Services			\$852.00	
		PO#: 17014	Voucher #: 88149	Invoice	Invoice No: 2012073	1/27/2021	Paid Amt:	\$852.00	
							Check Amount:	\$852.00	
2689	FIN	62369	6429		ROCK CO. FAMILY SERVICE AGENCY		Check		
				E 01	005 020 000 000 820 Dues & Membership			\$50.00	
		PO#:	Voucher #: 88164	Invoice	Invoice No: 01/26/2021	1/27/2021	Paid Amt:	\$50.00	
							Check Amount:	\$50.00	
2689	FIN	62370	9521		SCHOOL PERCEPTIONS L.L.C.		Check		
				E 01	005 010 000 000 305 Consult & Serv.fees			\$3,050.00	
		PO#:	Voucher #: 88163	Invoice	Invoice No: 4157	1/27/2021	Paid Amt:	\$3,050.00	
							Check Amount:	\$3,050.00	
2689	FIN	62371	9576		PREMIER FURNITURE AND EQUIPMENT		Check		
				E 06	005 870 000 000 530 New Elementary School FF&E			\$187,443.50	
		PO#: 17333	Voucher #: 88155	Invoice	Invoice No: 3447	1/27/2021	Paid Amt:	\$187,443.50	
							Check Amount:	\$187,443.50	
2689	FIN	62372	9957		SIDELINE POWER		Check		
				E 01	300 294 203 000 401 General Supplies			\$2,645.00	
		PO#:	Voucher #: 88169	Invoice	Invoice No: 5174	1/27/2021	Paid Amt:	\$2,645.00	
							Check Amount:	\$2,645.00	
2689	FIN	62373	8676		TELELANGUAGE, INC		Check		
				E 01	103 203 000 000 394 to Non-Ed Agency			\$20.64	
		PO#:	Voucher #: 88170	Invoice	Invoice No: TL122984	1/27/2021	Paid Amt:	\$20.64	
							Check Amount:	\$20.64	
2689	FIN	62374	6333		FIRST BANK & TRUST		Check		
				E 01	005 850 000 000 581 Interest on Capital Lease			\$9,116.27	
		PO#:	Voucher #: 88171	Invoice	Invoice No: 20170725	1/27/2021	Paid Amt:	\$9,116.27	
							Check Amount:	\$9,116.27	
2689	FIN	62375	8510		CASSONRA WHIPPLE		Check		
				E 01	300 211 180 000 401 General Supplies			\$92.96	
		PO#:	Voucher #: 88172	Invoice	Invoice No: 01/28/2021	1/28/2021	Paid Amt:	\$92.96	
							Check Amount:	\$92.96	
2689	FIN	62376	7469		AMERICAN FENCE COMPANY INC		Check		
				E 01	005 865 000 384 520 Build Acq/Construct			\$10,000.00	
		PO#:	Voucher #: 88180	Invoice	Invoice No: 28076	1/29/2021	Paid Amt:	\$10,000.00	
							Check Amount:	\$10,000.00	

Pipestone Area Schools ISD #2689 Detail Payment Register By Check

Co	Bank	Check No	Code	Rcd	Vendor	Pmt/Void Date	Pmt Type		
2689	FIN	62377	7429		BROAD REACH BOOKS		Check		
				E 01	103 620 591 302 470	Library Books		\$105.83	
	PO#:	Voucher #:	88174	Invoice	Invoice No: ARU0315019	1/29/2021	Paid Amt:	\$105.83	
							Check Amount:	\$105.83	
2689	FIN	62378	5949		CDW GOVERNMENT, INC.		Check		
				E 01	300 810 150 000 555	Technology Equipment		\$2,268.48	
	PO#:	Voucher #:	88177	Invoice	Invoice No: 6925559	1/29/2021	Paid Amt:	\$2,268.48	
				E 01	300 810 150 000 555	Technology Equipment		\$2,445.00	
	PO#:	Voucher #:	88178	Invoice	Invoice No: 7054233	1/29/2021	Paid Amt:	\$2,445.00	
				E 01	005 020 000 000 465	Non-Instructional Tech Devices		\$46.67	
	PO#:	Voucher #:	88179	Invoice	Invoice No: 7014643	1/29/2021	Paid Amt:	\$46.67	
							Check Amount:	\$4,760.15	
2689	FIN	62379	5347		CONTINENTAL CLAY CO.		Check		
				E 01	300 230 172 000 430	BWC12 Hydra Banding Wheel - Medium		\$26.00	
				E 01	300 230 172 000 430	GAHF1P HF1: Black Pint		\$13.86	
				E 01	300 230 172 000 430	GAHF55P HF55: Coral Gloss Pint		\$27.00	
				E 01	300 230 172 000 430	GAHF11P HF11: White Pint		\$13.86	
				E 01	300 230 172 000 430	GAHF10P HF10: Clear Pint		\$13.86	
				E 01	300 230 172 000 430	GAHF161P Bright Yellow		\$23.40	
				E 01	300 230 172 000 430	Freight		\$10.59	
	PO#: 17340	Voucher #:	88175	Invoice	Invoice No: 000152925	1/29/2021	Paid Amt:	\$128.57	
							Check Amount:	\$128.57	
2689	FIN	62380	7971		KNOWBUDDY RESOURCES		Check		
				E 01	103 620 591 302 470	Library Books		\$179.59	
	PO#:	Voucher #:	88173	Invoice	Invoice No: ARU0315031	1/29/2021	Paid Amt:	\$179.59	
							Check Amount:	\$179.59	
2689	FIN	62381	6985		SMART APPLE U.S.		Check		
				E 01	102 620 591 302 470	Library Books		\$227.48	
	PO#:	Voucher #:	88176	Invoice	Invoice No: ARU0314653	1/29/2021	Paid Amt:	\$227.48	
							Check Amount:	\$227.48	
2689	FIN	62382	9963		2080 MEDIA INC		Check		
				E 01	005 292 000 000 405	PIXELOT FEE FOR LIVE TRANSMISSION 20		\$3,000.00	
	PO#:	Voucher #:	88181	Invoice	Invoice No: 1140	2/1/2021	Paid Amt:	\$3,000.00	
				E 01	005 292 000 000 405	PIXELOT REVENUE SHARING FEE		\$1,500.00	
	PO#:	Voucher #:	88182	Invoice	Invoice No: 213	2/1/2021	Paid Amt:	\$1,500.00	
				E 01	005 292 000 000 405	PIXELOT HARDWARE & SOFTWARE		\$2,500.00	
	PO#:	Voucher #:	88183	Invoice	Invoice No: 1260	2/1/2021	Paid Amt:	\$2,500.00	
							Check Amount:	\$7,000.00	

Pipestone Area Schools ISD #2689 Detail Payment Register By Check

Co	Bank	Check No	Code	Rcd	Vendor	Pmt/Void Date	Pmt Type		
2689	FIN	62383	00276		XCEL ENERGY		Check		
				E 01	102 810 184 000 330	Utilities/Electricity, JAN 2021		\$1,396.00	
				E 01	103 810 184 000 330	Utilities/Electricity, JAN 2021		\$1,096.56	
PO#:	Voucher #:	88184	Invoice	Invoice No:	51-6323555-0	2/1/2021	Paid Amt:	\$2,492.56	
							Check Amount:	\$2,492.56	
2689	FIN	62384	9162		JON WENDT		Check		
				E 01	300 294 201 000 305	Consult & Serv.fees, BB 02/02/2021		\$110.00	
PO#:	Voucher #:	88187	Invoice	Invoice No:	02/01/2021	2/1/2021	Paid Amt:	\$110.00	
							Check Amount:	\$110.00	
2689	FIN	62385	8707		LARRY ANDERSON		Check		
				E 01	300 294 201 000 305	Consult & Serv.fees, BB 02/02/2021		\$110.00	
PO#:	Voucher #:	88185	Invoice	Invoice No:	02/01/2021	2/1/2021	Paid Amt:	\$110.00	
							Check Amount:	\$110.00	
2689	FIN	62386	8978		LYLE KRAMER		Check		
				E 01	300 294 201 000 305	Consult & Serv.fees, BB 02/02/2021		\$110.00	
PO#:	Voucher #:	88186	Invoice	Invoice No:	02/01/2021	2/1/2021	Paid Amt:	\$110.00	
							Check Amount:	\$110.00	
2689	FIN	62387	9731		LEEANN STEEN		Check		
				E 01	300 296 205 000 305	Consult & Serv.fees, GYMNASTICS 02/04/21		\$130.00	
PO#:	Voucher #:	88190	Invoice	Invoice No:	02/01/2021	2/1/2021	Paid Amt:	\$130.00	
							Check Amount:	\$130.00	
2689	FIN	62388	8853		LINDSAY BURTZEL		Check		
				E 01	300 296 205 000 305	Consult & Serv.fees, GYMNASTICS 02/04/21		\$130.00	
PO#:	Voucher #:	88189	Invoice	Invoice No:	02/01/2021	2/1/2021	Paid Amt:	\$130.00	
							Check Amount:	\$130.00	
2689	FIN	62389	9219		SHANNON ANDREA		Check		
				E 01	300 296 205 000 305	Consult & Serv.fees, GYMNASTICS 02/04/21		\$130.00	
PO#:	Voucher #:	88188	Invoice	Invoice No:	02/01/2021	2/1/2021	Paid Amt:	\$130.00	
							Check Amount:	\$130.00	
2689	FIN	62390	5630		STEPHANIE GORDON		Check		
				E 01	300 296 205 000 305	Consult & Serv.fees, GYMNASTICS 02/04/21		\$230.16	
PO#:	Voucher #:	88191	Invoice	Invoice No:	02/01/2021	2/1/2021	Paid Amt:	\$230.16	
							Check Amount:	\$230.16	
2689	FIN	62391	8470		BRIAN DANKS		Check		
				E 01	300 294 210 000 305	Consult & Serv.fees, WR 02/05/2021		\$275.00	
PO#:	Voucher #:	88192	Invoice	Invoice No:	02/01/2021	29 2/1/2021	Paid Amt:	\$275.00	
							Check Amount:	\$275.00	

Pipestone Area Schools ISD #2689 Detail Payment Register By Check

Co	Bank	Check No	Code	Rcd	Vendor	Pmt/Void Date	Pmt Type
2689	FIN	62392	9430		CAMILLE SNOBL		Check
				E 01	300 294 210 000 305	Consult & Serv.fees, WR	\$150.40
						02/01/2021	
PO#:	Voucher #:	88195	Invoice		Invoice No: 02/01/2021	2/1/2021	Paid Amt: \$150.40
							Check Amount: \$150.40
2689	FIN	62393	00224		LUDOLPH BUS INCORPORATED		Check
				E 03	005 760 000 720 360	Transp Cntrt W/Public Reg	\$73,135.00
PO#:	Voucher #:	88193	Invoice		Invoice No: 1875	2/1/2021	Paid Amt: \$73,135.00
							Check Amount: \$73,135.00
2689	FIN	62394	00224		LUDOLPH BUS INCORPORATED		Check
				E 03	005 760 000 723 360	Transp Cntrt W/Public Handicap	\$21,808.53
				E 03	005 760 000 713 360	Transp Cntrt W/Public, LAKE BENTON & OUT	\$2,786.94
				E 01	300 294 201 733 360	Transp Cntrt W/Public BB	\$989.87
				E 01	300 296 201 733 360	Transp Cntrt W/Public GBB Travel	\$154.77
				E 01	300 420 000 723 360	Transp Cntrt W/Public, BOWLING	\$161.02
PO#:	Voucher #:	88194	Invoice		Invoice No: 1876	2/1/2021	Paid Amt: \$25,901.13
							Check Amount: \$25,901.13
2689	FIN	62395	00224		LUDOLPH BUS INCORPORATED		Check
				E 01	300 294 201 733 360	Transp Cntrt W/Baseball, BB	\$649.00
				E 01	300 296 201 733 360	Transp Cntrt W/Public GBB Travel	\$1,957.52
				E 01	300 296 205 733 360	Transp Cntrt W/Public, GYMNASTICS	\$1,947.00
				E 01	300 294 210 733 360	Transp Cntrt W/Public	\$1,552.03
PO#:	Voucher #:	88196	Invoice		Invoice No: 4067	2/1/2021	Paid Amt: \$6,105.55
							Check Amount: \$6,105.55
2689	FIN	62396	4661		DVS RENEWAL		Check
				E 01	005 810 000 000 820	Dues & Membership, PLATE #CKT9128	\$30.25
PO#:	Voucher #:	88197	Invoice		Invoice No: 00-024106867	2/3/2021	Paid Amt: \$30.25
							Check Amount: \$30.25
2689	FIN	62397	4661		DVS RENEWAL		Check
				E 01	005 810 000 000 820	Dues & Membership 2003 CHEV SEL	\$114.25
PO#:	Voucher #:	88198	Invoice		Invoice No: 00-24688469	2/3/2021	Paid Amt: \$114.25
							Check Amount: \$114.25
2689	FIN	62400	8426		BENNET OFFICE TECHNOLOGIES		Check
				E 04	005 591 000 000 370	Rentals & Leases, 1/1-1/31	\$20.27
PO#:	Voucher #:	88214	Invoice		Invoice No: 313256	2/4/2021	Paid Amt: \$20.27
							Check Amount: \$20.27

Pipestone Area Schools ISD #2689 Detail Payment Register By Check

Co	Bank	Check No	Code	Rcd	Vendor	Pmt/Void Date	Pmt Type		
2689	FIN	62401	3920		CENTER POINT INC.		Check		
				E 04	005 591 000 000 470	Library Books		\$180.36	
	PO#:	Voucher #:	88215	Invoice	Invoice No: 1815886	2/4/2021	Paid Amt:	\$180.36	
							Check Amount:	\$180.36	
2689	FIN	62402	00063		CITY OF PIPESTONE		Check		
				E 01	005 810 000 000 350	Repair&maint Service, SANDING LOTS JAN. :		\$1,435.00	
	PO#:	Voucher #:	88199	Invoice	Invoice No: 30515	2/4/2021	Paid Amt:	\$1,435.00	
							Check Amount:	\$1,435.00	
2689	FIN	62403	6458		HUBERT COMPANY LLC		Check		
				E 02	005 770 000 151 401	60257 CAMBRO CAMWARMER		\$2,192.00	
				E 02	005 770 000 151 401	Freight		\$74.28	
	PO#: 17343	Voucher #:	88206	Invoice	Invoice No: 281878	2/4/2021	Paid Amt:	\$2,266.28	
							Check Amount:	\$2,266.28	
2689	FIN	62404	6880		ITC		Check		
				E 01	006 810 000 000 320	Communications/Phone, FEB.2021		\$39.64	
	PO#:	Voucher #:	88203	Invoice	Invoice No: 11235772	2/4/2021	Paid Amt:	\$39.64	
							Check Amount:	\$39.64	
2689	FIN	62405	9790		KURITA AMERICAN INC.		Check		
				E 01	005 810 000 000 401	General Supplies, BOILER CHEMICALS		\$818.00	
	PO#:	Voucher #:	88201	Invoice	Invoice No: 575912	2/4/2021	Paid Amt:	\$818.00	
							Check Amount:	\$818.00	
2689	FIN	62406	6836		Midwest Alarm		Check		
				E 02	005 770 000 701 350	Repair&maint Service		\$468.93	
	PO#:	Voucher #:	88216	Invoice	Invoice No: 271198	2/4/2021	Paid Amt:	\$468.93	
							Check Amount:	\$468.93	
2689	FIN	62407	7865		MUSIC STREET		Check		
				E 01	300 258 233 000 401	General Supplies		\$39.00	
	PO#:	Voucher #:	88208	Invoice	Invoice No: 96872	2/4/2021	Paid Amt:	\$39.00	
				E 01	300 258 233 000 401	General Supplies		\$37.95	
	PO#:	Voucher #:	88209	Invoice	Invoice No: 96654	2/4/2021	Paid Amt:	\$37.95	
				E 01	300 258 233 000 401	General Supplies		\$78.00	
	PO#:	Voucher #:	88210	Invoice	Invoice No: 96972	2/4/2021	Paid Amt:	\$78.00	
							Check Amount:	\$154.95	
2689	FIN	62408	6678		NDR CABLES & NETWORKS		Check		
				E 01	005 605 150 000 455	NonInstructional Tech Supplies		\$119.52	
	PO#:	Voucher #:	88204	Invoice	Invoice No: 13489	2/4/2021	Paid Amt:	\$119.52	
							Check Amount:	\$119.52	

Pipestone Area Schools ISD #2689 Detail Payment Register By Check

Co	Bank	Check No	Code	Rcd	Vendor	Pmt/Void Date	Pmt Type		
2689	FIN	62409	5969		RIDDELL/ALL AMERICAN SPORTS		Check		
				E 01	300 294 203 000 401	General Supplies		\$1,313.02	
	PO#:	Voucher #:	88212	Invoice	Invoice No: 951316456	2/4/2021	Paid Amt:	\$1,313.02	
							Check Amount:	\$1,313.02	
2689	FIN	62410	00890		STOUT & EVINK		Check		
				E 02	005 770 000 701 350	Repair&maint Service, KITCHEN		\$121.94	
	PO#:	Voucher #:	88200	Invoice	Invoice No: 91277	2/4/2021	Paid Amt:	\$121.94	
				E 01	300 865 000 381 520	Build Acq/Construct		\$1,986.31	
	PO#:	Voucher #:	88211	Invoice	Invoice No: 91475	2/4/2021	Paid Amt:	\$1,986.31	
							Check Amount:	\$2,108.25	
2689	FIN	62411	6446		TRANE		Check		
				E 01	300 810 000 000 401	General Supplies, HEATING & COOLING CHE		\$1,084.70	
	PO#:	Voucher #:	88202	Invoice	Invoice No: 311443738	2/4/2021	Paid Amt:	\$1,084.70	
							Check Amount:	\$1,084.70	
2689	FIN	62412	8643		WINDFALL		Check		
				E 01	103 620 591 302 470	Library Books		\$135.16	
	PO#:	Voucher #:	88207	Invoice	Invoice No: ARU0314697	2/4/2021	Paid Amt:	\$135.16	
							Check Amount:	\$135.16	
2689	FIN	62413	00425		SOJOS SPORTSWEAR		Check		
				E 01	300 291 229 000 401	General Supplies		\$168.00	
	PO#:	Voucher #:	88217	Invoice	Invoice No: 02/04/2021	2/4/2021	Paid Amt:	\$168.00	
							Check Amount:	\$168.00	
2689	FIN	62414	6855		Baker & Taylor Books		Check		
				E 04	005 591 000 000 470	Library Books		\$101.59	
	PO#:	Voucher #:	88213	Invoice	Invoice No: 2035715271	2/4/2021	Paid Amt:	\$101.59	
							Check Amount:	\$101.59	
2689	FIN	62415	6947		HORIZON SOFTWARE INTERNATIONAL		Check		
				E 02	005 770 000 701 405	Non Instructional Comp Softwar		\$3,555.00	
	PO#:	Voucher #:	88218	Invoice	Invoice No: 02/05/2021	2/4/2021	Paid Amt:	\$3,555.00	
							Check Amount:	\$3,555.00	
2689	FIN	62416	9074		A-OX WELDING SUPPLY INC		Check		
				E 01	300 301 501 830 433	Individualized Mat.		\$326.30	
	PO#:	Voucher #:	88225	Invoice	Invoice No: 01166094	2/8/2021	Paid Amt:	\$326.30	
				E 01	300 301 501 830 433	Individualized Mat.		\$502.89	
	PO#:	Voucher #:	88226	Invoice	Invoice No: 01165176	2/8/2021	Paid Amt:	\$502.89	
				E 01	300 301 501 830 433	Individualized Mat. 32		\$128.76	
	PO#:	Voucher #:	88227	Invoice	Invoice No: 0024401	2/8/2021	Paid Amt:	\$128.76	
							Check Amount:	\$957.95	

Pipestone Area Schools ISD #2689
Detail Payment Register By Check

Co	Bank	Check No	Code	Rcd	Vendor	Pmt/Void Date	Pmt Type		
2689	FIN	62417	6855		Baker & Taylor Books		Check		
				E 04	005 591 000 000 470	Library Books		\$95.00	
	PO#:	Voucher #:	88221	Invoice	Invoice No: 2035733932	2/8/2021	Paid Amt:	\$95.00	
							Check Amount:	\$95.00	
2689	FIN	62418	5949		CDW GOVERNMENT, INC.		Check		
				E 01	005 605 150 000 455	NonInstructional Tech Supplies		\$34.56	
	PO#:	Voucher #:	88220	Invoice	Invoice No: 7474685	2/8/2021	Paid Amt:	\$34.56	
							Check Amount:	\$34.56	
2689	FIN	62419	00096		EDGERTON CHRISTIAN ELEM		Check		
				E 03	005 760 000 720 360	Transp Cntrt W/Public Reg, JAN 2021		\$2,419.20	
	PO#:	Voucher #:	88223	Invoice	Invoice No: 02/05/2021	2/8/2021	Paid Amt:	\$2,419.20	
							Check Amount:	\$2,419.20	
2689	FIN	62420	01622		PEPSI-COLA BOTTLING CO.		Check		
				E 01	300 211 180 000 401	General Supplies		\$56.00	
	PO#:	Voucher #:	88222	Invoice	Invoice No: 02462406	2/8/2021	Paid Amt:	\$56.00	
							Check Amount:	\$56.00	
2689	FIN	62421	00300		PIPESTONE PUBLISHING CO INC		Check		
				E 01	005 010 000 000 305	Consult & Serv.fees, JAN 2021		\$1,233.63	
	PO#:	Voucher #:	88224	Invoice	Invoice No: 02/08/2021	2/8/2021	Paid Amt:	\$1,233.63	
							Check Amount:	\$1,233.63	
2689	FIN	62422	3697		SW/WC SERVICE COOPERATIVE		Check		
				E 01	005 605 000 000 316	Tech Services Purchased Coop, DEC 2020		\$7,738.00	
	PO#:	Voucher #:	88219	Invoice	Invoice No: 65880	2/8/2021	Paid Amt:	\$7,738.00	
							Check Amount:	\$7,738.00	
2689	FIN	62423	9595		BOB DOLAN		Check		
				E 01	300 296 201 000 305	Consult & Serv.fees, 2/9/2021		\$110.00	
	PO#:	Voucher #:	88229	Invoice	Invoice No: 02/08/2021	2/8/2021	Paid Amt:	\$110.00	
							Check Amount:	\$110.00	
2689	FIN	62424	9945		EDWARD WATTS		Check		
				E 01	300 296 201 000 305	Consult & Serv.fees, 2/9/2021		\$110.00	
	PO#:	Voucher #:	88228	Invoice	Invoice No: 02/08/2021	2/8/2021	Paid Amt:	\$110.00	
							Check Amount:	\$110.00	
2689	FIN	62425	9594		IAN WYFFELS		Check		
				E 01	300 296 201 000 305	Consult & Serv.fees, 2/9/2021		\$110.00	
	PO#:	Voucher #:	88230	Invoice	Invoice No: 02/08/2021	2/8/2021	Paid Amt:	\$110.00	
							Check Amount:	\$110.00	

Pipestone Area Schools ISD #2689 Detail Payment Register By Check

Co	Bank	Check No	Code	Rcd	Vendor	Pmt/Void Date	Pmt Type		
2689	FIN	62426	8470		BRIAN DANKS		Check		
				E 01	300 294 210 000 305	Consult & Serv.fees, WR 2/12/2021		\$275.00	
PO#:	Voucher #:	88231	Invoice		Invoice No: 02/08/2021	2/8/2021	Paid Amt:	\$275.00	
							Check Amount:	\$275.00	
2689	FIN	62427	9944		CHRISTOPHER BRETT WOLF		Check		
				E 01	300 294 210 000 305	Consult & Serv.fees, WR		\$148.16	
PO#:	Voucher #:	88232	Invoice		Invoice No: 02/08/2021	2/8/2021	Paid Amt:	\$148.16	
							Check Amount:	\$148.16	
2689	FIN	62428	00644		ST LEOS CATHOLIC CHURCH		Check		
				E 01	300 296 201 000 370	Rentals & Leases, GB (PRACTICE)		\$207.50	
PO#:	Voucher #:	88233	Invoice		Invoice No: 02/08/2021	2/8/2021	Paid Amt:	\$207.50	
							Check Amount:	\$207.50	
2689	FIN	62429	8426		BENNET OFFICE TECHNOLOGIES		Check		
				E 01	005 110 000 000 370	Rentals & Leases, 1/1-1/31		\$4,222.80	
PO#:	Voucher #:	88234	Invoice		Invoice No: 313255	2/8/2021	Paid Amt:	\$4,222.80	
							Check Amount:	\$4,222.80	
2689	FIN	62430	9777		KRAUS-ANDERSON CONSTRUCTION COMPANY		Check		
				E 06	005 870 000 000 305	Consult & Serv.fees, SITE SERVICE		\$151,920.91	
				E 06	005 870 000 000 305	Consult & Serv.fees		\$0.00	
PO#:	Voucher #:	88235	Invoice		Invoice No: KA44751	2/8/2021	Paid Amt:	\$151,920.91	
							Check Amount:	\$151,920.91	
2689	FIN	62431	3697		SW/WC SERVICE COOPERATIVE		Check		
				E 01	005 640 173 316 366	Curriculum Staff Development		\$12.00	
PO#:	Voucher #:	88236	Invoice		Invoice No: 65805	2/8/2021	Paid Amt:	\$12.00	
				E 01	005 411 000 740 396	Special Ed Purchased From Dist, AUTISM SUI		\$4,052.91	
				E 01	005 411 000 740 397	Sp Ed Benefits Purchased, AUTISM		\$1,377.99	
				E 01	005 411 000 740 366	Travel, AUTISM		\$2,344.10	
				E 01	005 408 000 740 396	Special Ed Purchased From Dist, BEHAVIOR /		\$3,755.96	
				E 01	005 408 000 740 397	Sp Ed Benefits Purchased, BEHAVIOR ANALY		\$1,277.03	
				E 01	005 408 000 740 366	Travel, BEHAVIOR ANALYST		\$1,430.01	
				E 01	100 412 000 740 396	Special Ed Purchased From Dist, ECSE		\$2,219.08	
				E 01	100 412 000 740 396	Special Ed Purchased From Dist, ECSE		\$887.67	
				E 01	100 412 000 740 396	Special Ed Purchased From Dist, ECSE		\$4,438.33	
				E 01	005 730 000 000 390	to Other MN District, MENTAL HEALTH SERVI		\$1,292.12	
				E 01	005 404 000 740 396	to Other MN District, OCCUPATIONAL THERA		\$15,655.82	
				E 01	005 404 000 740 397	Sp Ed Benefits Purchased, OT		\$5,322.98	
				E 01	005 404 000 740 366	Travel, OT		\$3,021.20	
				E 01	005 420 000 740 396	Special Ed Purchased From Dist, SCHOOL, S		\$17,707.33	

Pipestone Area Schools ISD #2689 Detail Payment Register By Check

Co	Bank	Check No	Code	Rcd	Vendor	Pmt/Void Date	Pmt Type
2689	FIN	62431	3697		SW/WC SERVICE COOPERATIVE		Check
				E 01 005 420 000 740 396	Special Ed Purchased From Dist,SOCIAL WOR	\$6,857.67	
				E 01 005 420 000 740 397	Special Ed Purchased From Dist,SOCIAL	\$2,331.61	
				E 01 005 420 000 740 366	WOR Special Ed Purchased From Dist,SOCIA	\$3,299.69	
				E 01 005 740 000 000 390	SOCIAL WORKER	\$15,895.04	
				E 01 005 401 000 740 396	Special Ed Purchased From Dist, SPEECH	\$6,520.66	
				E 01 005 401 000 740 396	Special Ed Purchased From Dist, SPEECH	\$14,171.67	
				E 01 005 405 000 740 396	Special Ed Purchased From Dist, TEACHER O	\$2,165.00	
PO#:	Voucher #:	88240	Invoice	Invoice No: 65988		2/8/2021	Paid Amt: \$116,023.87
			E 01 300 211 000 000 394	to Non-Ed Agency, ALC & STRSS TUITION		\$1,474.59	
PO#:	Voucher #:	88241	Invoice	Invoice No: 65787		2/8/2021	Paid Amt: \$1,474.59
			E 01 300 211 000 000 394	to Non-Ed Agency, ALC TUITION		\$731.00	
PO#:	Voucher #:	88242	Invoice	Invoice No: 65925		2/8/2021	Paid Amt: \$731.00
			E 01 005 110 000 000 316	Data Processing Svcs		\$300.00	
PO#:	Voucher #:	88243	Invoice	Invoice No: 65850		2/8/2021	Paid Amt: \$300.00
			E 01 005 110 000 000 401	General Supplies, W-9 ENVELOPES		\$31.00	
PO#:	Voucher #:	88244	Invoice	Invoice No: 65931		2/8/2021	Paid Amt: \$31.00
			E 01 005 850 000 000 390	to Other MN District, 2ND QUARTER LEARNII		\$11,914.00	
PO#:	Voucher #:	88245	Invoice	Invoice No: 65772		2/8/2021	Paid Amt: \$11,914.00
Check Amount:							\$130,486.46
2689	FIN	62432	9749		ACTIVE HEATING INC		Check
				E 06 005 870 000 000 520	Build Acq/Construct	\$72,295.00	
PO#:	Voucher #:	88246	Invoice	Invoice No: 02/09/2021		2/9/2021	Paid Amt: \$72,295.00
Check Amount:							\$72,295.00
2689	FIN	62433	9750		AMERICAN STRUCTURAL METALS INC		Check
				E 06 005 870 000 000 520	Build Acq/Construct	\$20,162.80	
PO#:	Voucher #:	88247	Invoice	Invoice No: 02/09/2021		2/9/2021	Paid Amt: \$20,162.80
Check Amount:							\$20,162.80
2689	FIN	62434	9751		CORNERSTONE PLASTERING AND DRYWALL INC		Check
				E 06 005 870 000 000 520	Build Acq/Construct	\$65,573.75	
PO#:	Voucher #:	88248	Invoice	Invoice No: 02/09/2021		2/9/2021	Paid Amt: \$65,573.75
Check Amount:							\$65,573.75
2689	FIN	62435	8987		DAL SIN INC		Check
				E 06 005 870 000 000 520	Build Acq/Construct	\$45,454.65	
PO#:	Voucher #:	88249	Invoice	Invoice No: 02/08/2021		2/9/2021	Paid Amt: \$45,454.65
Check Amount:							\$45,454.65

Pipestone Area Schools ISD #2689 Detail Payment Register By Check

Co	Bank	Check No	Code	Rcd	Vendor	Pmt/Void Date	Pmt Type		
2689	FIN	62436	9752		DOOM AND CUYPERS CONSTRUCTION INC		Check		
				E 06 005 870 000 000 520	Build Acq/Construct			\$66,274.98	
	PO#:	Voucher #:	88250	Invoice	Invoice No: 02/09/2021	2/9/2021	Paid Amt:	\$66,274.98	
							Check Amount:	\$66,274.98	
2689	FIN	62437	9754		F.M. ACOUSTICAL TILE INC		Check		
				E 06 005 870 000 000 520	Build Acq/Construct			\$30,700.20	
	PO#:	Voucher #:	88252	Invoice	Invoice No: 02/09/2021	2/9/2021	Paid Amt:	\$30,700.20	
							Check Amount:	\$30,700.20	
2689	FIN	62438	9753		FARGO GLASS AND PAINT COMPANY		Check		
				E 06 005 870 000 000 520	Build Acq/Construct			\$43,458.70	
	PO#:	Voucher #:	88251	Invoice	Invoice No: 02/09/2021	2/9/2021	Paid Amt:	\$43,458.70	
							Check Amount:	\$43,458.70	
2689	FIN	62439	7376		H & B SPECIALIZED PRODUCTS, IN		Check		
				E 06 005 870 000 000 520	Build Acq/Construct			\$75,577.25	
	PO#:	Voucher #:	88253	Invoice	Invoice No: 02/09/2021	2/9/2021	Paid Amt:	\$75,577.25	
							Check Amount:	\$75,577.25	
2689	FIN	62440	9755		HANDER INC PLUMBING AND HEATING		Check		
				E 06 005 870 000 000 520	Build Acq/Construct			\$191,651.75	
	PO#:	Voucher #:	88254	Invoice	Invoice No: 02/09/2021	2/9/2021	Paid Amt:	\$191,651.75	
							Check Amount:	\$191,651.75	
2689	FIN	62441	5263		MIDWESTERN MECHANICAL INC.		Check		
				E 06 005 870 000 000 520	Build Acq/Construct			\$5,177.16	
	PO#:	Voucher #:	88255	Invoice	Invoice No: 02/09/2021	2/9/2021	Paid Amt:	\$5,177.16	
							Check Amount:	\$5,177.16	
2689	FIN	62442	9761		RUSTADS FLOORING AND SLEEP CENTER LLC		Check		
				E 06 005 870 000 000 520	Build Acq/Construct			\$17,575.00	
	PO#:	Voucher #:	88256	Invoice	Invoice No: 02/09/2021	2/9/2021	Paid Amt:	\$17,575.00	
							Check Amount:	\$17,575.00	
2689	FIN	62443	9739		SCHUMACHER ELEVATOR COMPANY		Check		
				E 06 005 870 000 000 520	Build Acq/Construct			\$20,159.00	
	PO#:	Voucher #:	88257	Invoice	Invoice No: 02/09/2021	2/9/2021	Paid Amt:	\$20,159.00	
							Check Amount:	\$20,159.00	
2689	FIN	62444	9763		SPARTAN STEEL ERECTORS INC		Check		
				E 06 005 870 000 000 520	Build Acq/Construct			\$20,243.75	
	PO#:	Voucher #:	88258	Invoice	Invoice No: 02/09/2021	2/9/2021	Paid Amt:	\$20,243.75	
							Check Amount:	\$20,243.75	

Pipestone Area Schools ISD #2689 Detail Payment Register By Check

Co	Bank	Check No	Code	Rcd	Vendor	Pmt/Void Date	Pmt Type
2689	FIN	62445	9908		STEINBRECHER PAINTING COMPANY		Check
				E 06 005 870 000 000 520	Build Acq/Construct	\$25,745.00	
	PO#:	Voucher #:	88259	Invoice	Invoice No: 02/09/2021	2/9/2021	Paid Amt: \$25,745.00
							Check Amount: \$25,745.00
2689	FIN	62446	9764		THOMPSON ELECTRIC COMPANY		Check
				E 06 005 870 000 000 520	Build Acq/Construct	\$202,928.50	
	PO#:	Voucher #:	88260	Invoice	Invoice No: 02/09/2021	2/9/2021	Paid Amt: \$202,928.50
							Check Amount: \$202,928.50
2689	FIN	62447	9765		TMI CORPORATION		Check
				E 06 005 870 000 000 520	Build Acq/Construct	\$227,925.90	
	PO#:	Voucher #:	88261	Invoice	Invoice No: 02/09/2021	2/9/2021	Paid Amt: \$227,925.90
							Check Amount: \$227,925.90
2689	FIN	62448	6401		TRANE		Check
				E 06 005 870 000 000 520	Build Acq/Construct	\$17,641.18	
	PO#:	Voucher #:	88262	Invoice	Invoice No: 02/21/2021	2/9/2021	Paid Amt: \$17,641.18
							Check Amount: \$17,641.18
2689	FIN	62449	9756		INNOVATIVE BUILDING CONCEPTS LLC		Check
				E 06 005 870 000 000 520	Build Acq/Construct	\$105,687.50	
	PO#:	Voucher #:	88263	Invoice	Invoice No: 02/09/2021	2/9/2021	Paid Amt: \$105,687.50
							Check Amount: \$105,687.50
2689	FIN	62450	4626		PIPESTONE CO. TRANSIT		Check
				E 01 300 211 000 733 360	Transp Cntrt W/Public	\$30.00	
	PO#:	Voucher #:	88264	Invoice	Invoice No: 02/09/2021	2/9/2021	Paid Amt: \$30.00
							Check Amount: \$30.00
2689	FIN	62451	00256		HILLYARD INC/ SIOUX FALLS		Check
				E 01 005 810 000 000 401	General Supplies	\$224.05	
	PO#:	Voucher #:	88266	Invoice	Invoice No: 604219332	2/9/2021	Paid Amt: \$224.05
							Check Amount: \$224.05
2689	FIN	62452	7255		NATIONAL RECOGNITION PRODUCTS		Check
				E 01 300 211 172 000 401	General Supplies, TASSEL & CAPS	\$1,023.00	
	PO#:	Voucher #:	88267	Invoice	Invoice No: 4557756	2/10/2021	Paid Amt: \$1,023.00
							Check Amount: \$1,023.00
2689	FIN	62453	6678		NDR CABLES & NETWORKS		Check
				E 01 005 605 150 000 455	NonInstructional Tech Supplies	\$49.54	
	PO#:	Voucher #:	88268	Invoice	Invoice No: 13494	2/10/2021	Paid Amt: \$49.54
							Check Amount: \$49.54

Pipestone Area Schools ISD #2689 Detail Payment Register By Check

Co	Bank	Check No	Code	Rcd	Vendor	Pmt/Void Date	Pmt Type		
2689	FIN	62454	01262		SUBSCRIPTION SERVICES-AMERICA		Check		
				E 04	005 591 000 000 475 Periodicals			\$397.75	
	PO#:	Voucher #:	88269	Invoice	Invoice No: 5055023	2/10/2021	Paid Amt:	\$397.75	
							Check Amount:	\$397.75	
2689	FIN	62455	3697		SW/WC SERVICE COOPERATIVE		Check		
				E 01	005 110 000 151 465 DELL LAPTOP			\$1,587.84	
				E 01	005 720 000 151 465 DELL LAPTOP			\$1,587.84	
	PO#: 17329	Voucher #:	88270	Invoice	Invoice No: 65893	2/10/2021	Paid Amt:	\$3,175.68	
							Check Amount:	\$3,175.68	
2689	FIN	62456	6780		DENNY'S NAPA OF PIPESTONE		Check		
				E 01	005 810 000 000 401 General Supplies			\$39.90	
	PO#:	Voucher #:	88273	Invoice	Invoice No: 184473	2/10/2021	Paid Amt:	\$39.90	
							Check Amount:	\$39.90	
2689	FIN	62457	5918		JO SCHNEEKLOTH		Check		
				E 01	300 296 205 000 305 Consult & Serv.fees, GYMNASTICS 2/15/2021			\$150.00	
	PO#:	Voucher #:	88276	Invoice	Invoice No: 02/10/2021	2/10/2021	Paid Amt:	\$150.00	
							Check Amount:	\$150.00	
2689	FIN	62458	6406		LAWSON PRODUCTS, INC.		Check		
				E 01	005 810 000 000 401 General Supplies			\$475.90	
	PO#:	Voucher #:	88272	Invoice	Invoice No: 9308183728	2/10/2021	Paid Amt:	\$475.90	
							Check Amount:	\$475.90	
2689	FIN	62459	9228		LUANN'S GAS & MORE		Check		
				E 01	005 810 190 000 366 Travel Custodial			\$40.78	
	PO#:	Voucher #:	88271	Invoice	Invoice No: 02/10/2021	2/10/2021	Paid Amt:	\$40.78	
							Check Amount:	\$40.78	
2689	FIN	62460	9582		MATRACA HANSON		Check		
				E 01	300 296 205 000 305 Consult & Serv.fees, GYMNASTICS 2/15/2021			\$150.00	
	PO#:	Voucher #:	88274	Invoice	Invoice No: 02/10/2021	2/10/2021	Paid Amt:	\$150.00	
							Check Amount:	\$150.00	
2689	FIN	62461	9959		REBECCA SINN		Check		
				E 01	300 296 205 000 305 Consult & Serv.fees, GYMNASTICS 2/15/2021			\$150.00	
	PO#:	Voucher #:	88277	Invoice	Invoice No: 02/10/2021	2/10/2021	Paid Amt:	\$150.00	
							Check Amount:	\$150.00	
2689	FIN	62462	5630		STEPHANIE GORDON		Check		
				E 01	300 296 205 000 305 Consult & Serv.fees, GYMNASTICS 2/15/2021			\$250.16	
	PO#:	Voucher #:	88275	Invoice	Invoice No: 02/10/2021	38 2/10/2021	Paid Amt:	\$250.16	
							Check Amount:	\$250.16	

Pipestone Area Schools ISD #2689 Detail Payment Register By Check

Co	Bank	Check No	Code	Rcd	Vendor	Pmt/Void Date	Pmt Type
2689	FIN	62463	9731		LEEANN STEEN		Check
				E 01	300 296 205 000 305	Consult & Serv.fees, GYMNASTICS 2/18/2021	\$300.16
PO#:	Voucher #:	88279	Invoice		Invoice No: 02/10/2021	2/10/2021	Paid Amt: \$300.16
							Check Amount: \$300.16
2689	FIN	62464	8853		LINDSAY BURTZEL		Check
				E 01	300 296 205 000 305	Consult & Serv.fees, GYMNASTICS 2/18/2021	\$200.00
PO#:	Voucher #:	88278	Invoice		Invoice No: 02/10/2021	2/10/2021	Paid Amt: \$200.00
							Check Amount: \$200.00
2689	FIN	62465	7456		SABRINA WOOTERS		Check
				E 01	300 296 205 000 305	Consult & Serv.fees, GYMNASTICS 2/18/2021	\$200.00
PO#:	Voucher #:	88280	Invoice		Invoice No: 02/10/2021	2/10/2021	Paid Amt: \$200.00
							Check Amount: \$200.00
2689	FIN	62469	9958		FRED PERKINS		Check
				E 01	300 296 201 000 305	Consult & Serv.fees, GB 02/16/2021	\$110.00
PO#:	Voucher #:	88285	Invoice		Invoice No: 02/10/2021	2/10/2021	Paid Amt: \$110.00
							Check Amount: \$110.00
2689	FIN	62470	9965		JERRY PYTLESKI		Check
				E 01	300 296 201 000 305	Consult & Serv.fees, GB 02/16/2021	\$110.00
PO#:	Voucher #:	88286	Invoice		Invoice No: 02/10/2021	2/10/2021	Paid Amt: \$110.00
							Check Amount: \$110.00
2689	FIN	62471	9462		MARK ZALME		Check
				E 01	300 296 201 000 305	Consult & Serv.fees, GB 02/16/2021	\$110.00
PO#:	Voucher #:	88284	Invoice		Invoice No: 02/10/2021	2/10/2021	Paid Amt: \$110.00
							Check Amount: \$110.00
2689	FIN	62475	3763		AUTOMATIC BUILDING CONTROLS		Check
				E 01	300 865 000 363 350	Repair&maint Service	\$240.00
				E 01	103 865 000 363 350	Repair&maint Service	\$240.00
				E 01	102 865 000 363 350	Repair&maint Service	\$240.00
				E 01	300 865 000 363 350	Repair&maint Service	\$480.00
PO#:	Voucher #:	88298	Invoice		Invoice No: 177740	2/11/2021	Paid Amt: \$1,200.00
							Check Amount: \$1,200.00
2689	FIN	62476	6541		DEPARTMENT OF PUBLIC SAFETY		Check
				E 01	005 865 000 349 305	Consult & Serv.fees,	\$25.00
PO#:	Voucher #:	88291	Invoice		Invoice No: 5907500302020M114353	2/11/2021	Paid Amt: \$25.00
							Check Amount: \$25.00

Pipestone Area Schools ISD #2689 Detail Payment Register By Check

Co	Bank	Check No	Code	Rcd	Vendor	Pmt/Void Date	Pmt Type		
2689	FIN	62477	9434		INTERNATIONAL ACADEMY OF SCIENCE		Check		
				E 01	006 211 172 000 456	Instructional Tech Supplies		\$136.00	
	PO#:	Voucher #:	88297	Invoice	Invoice No: 78601	2/11/2021	Paid Amt:	\$136.00	
							Check Amount:	\$136.00	
2689	FIN	62478	9278		ISG		Check		
				E 06	005 870 000 000 305	Consult & Serv.fees		\$6,488.00	
	PO#:	Voucher #:	88296	Invoice	Invoice No: 70149	2/11/2021	Paid Amt:	\$6,488.00	
							Check Amount:	\$6,488.00	
2689	FIN	62479	01140		JERS ELECTRIC INC		Check		
				E 01	005 810 000 000 350	Repair&maint Service		\$1,199.10	
	PO#:	Voucher #:	88290	Invoice	Invoice No: 2724	2/11/2021	Paid Amt:	\$1,199.10	
							Check Amount:	\$1,199.10	
2689	FIN	62480	01836		LUVERNE HIGH SCHOOL		Check		
				E 01	300 291 220 000 369	Entry Fees/Student Travel, SPEECH		\$80.00	
	PO#:	Voucher #:	88292	Invoice	Invoice No: 02/11/2021	2/11/2021	Paid Amt:	\$80.00	
							Check Amount:	\$80.00	
2689	FIN	62481	5505		MARK'S GENERAL MACHINE		Check		
				E 01	300 865 000 381 520	Build Acq/Construct		\$190.00	
	PO#:	Voucher #:	88299	Invoice	Invoice No: 80579	2/11/2021	Paid Amt:	\$190.00	
							Check Amount:	\$190.00	
2689	FIN	62482	9467		SHI INTERNATIONAL CORP.		Check		
				E 06	005 870 000 000 555	Interactive Displays Digital Signage New Elem		\$87,579.00	
	PO#: 17335	Voucher #:	88300	Invoice	Invoice No: B12985718	2/11/2021	Paid Amt:	\$87,579.00	
				E 06	005 870 000 000 555	Technology Equipment		\$5,333.00	
	PO#:	Voucher #:	88301	Invoice	Invoice No: B12962589	2/11/2021	Paid Amt:	\$5,333.00	
							Check Amount:	\$92,912.00	
2689	FIN	62483	5983		SIOUX VALLEY ENERGY		Check		
				E 01	300 810 184 000 330	Utilities - Electricity JAN 2021		\$15,342.00	
	PO#:	Voucher #:	88294	Invoice	Invoice No: 7058684000	2/11/2021	Paid Amt:	\$15,342.00	
							Check Amount:	\$15,342.00	
2689	FIN	62484	00361		SOUTHWEST MN STATE UNIVERSITY		Check		
				E 01	300 211 966 000 394	PSEO, WINTER 2021		\$3,300.00	
	PO#:	Voucher #:	88295	Invoice	Invoice No: 00225909	2/11/2021	Paid Amt:	\$3,300.00	
							Check Amount:	\$3,300.00	
2689	FIN	62485	3537		WORTHINGTON HIGH SCHOOL		Check		
				E 01	300 291 220 000 369	Entry Fees/Student Travel, SPEECH		\$59.00	
	PO#:	Voucher #:	88293	Invoice	Invoice No: 02/11/2021	2/11/2021	Paid Amt:	\$59.00	
							Check Amount:	\$59.00	

Pipestone Area Schools ISD #2689 Detail Payment Register By Check

Co	Bank	Check No	Code	Rcd	Vendor	Pmt/Void Date	Pmt Type		
2689	FIN	62486	9162		JON WENDT		Check		
				E 01	300 296 201 000 305	Consult & Serv.fees, GB 02/16/2021		\$110.00	
	PO#:	Voucher #:	88302	Invoice	Invoice No:	02/11/2021		2/11/2021	
							Paid Amt:	\$110.00	
							Check Amount:	\$110.00	
2689	FIN	62487	9967		ANTHONY AXFORD		Check		
				E 01	300 294 210 000 305	Consult & Serv.fees, WR 02/20/2021		\$249.28	
	PO#:	Voucher #:	88303	Invoice	Invoice No:	02/16/2021		2/16/2021	
							Paid Amt:	\$249.28	
							Check Amount:	\$249.28	
2689	FIN	62488	8470		BRIAN DANKS		Check		
				E 01	300 294 210 000 305	Consult & Serv.fees, WR 02/20/2021		\$225.00	
	PO#:	Voucher #:	88304	Invoice	Invoice No:	02/16/2021		2/16/2021	
							Paid Amt:	\$225.00	
							Check Amount:	\$225.00	
2689	FIN	62489	9738		ALLEN VANBEEK		Check		
				E 01	300 294 201 000 305	Consult & Serv.fees, GB 02/16/2021		\$85.00	
	PO#:	Voucher #:	88305	Invoice	Invoice No:	02/16/2021		2/16/2021	
							Paid Amt:	\$85.00	
							Check Amount:	\$85.00	
2689	FIN	62490	9463		BRETT SANOW		Check		
				E 01	300 296 201 000 305	Consult & Serv.fees, GB 02/16/2021		\$135.00	
	PO#:	Voucher #:	88306	Invoice	Invoice No:	02/16/2021		2/16/2021	
							Paid Amt:	\$135.00	
							Check Amount:	\$135.00	
2689	FIN	62491	9968		KRISTA FRUECHTE		Check		
				R 02	005 000 000 701 601	Sales to Pupils, LUNCH REFUND		\$506.90	
	PO#:	Voucher #:	88307	Invoice	Invoice No:	02/16/2021		2/16/2021	
							Paid Amt:	\$506.90	
							Check Amount:	\$506.90	
2689	FIN	62492	8853		LINDSAY BURTZEL		Check		
				E 01	300 296 205 000 305	Consult & GYMNASTICS 02/16/2021		\$160.00	
	PO#:	Voucher #:	88309	Invoice	Invoice No:	02/16/2021		2/16/2021	
							Paid Amt:	\$160.00	
							Check Amount:	\$160.00	
2689	FIN	62493	7456		SABRINA WOOTERS		Check		
				E 01	300 296 205 000 305	Consult & GYMNASTICS 02/16/2021		\$160.00	
	PO#:	Voucher #:	88308	Invoice	Invoice No:	02/16/2021		2/16/2021	
							Paid Amt:	\$160.00	
							Check Amount:	\$160.00	
2689	FIN	62494	5782		CENTERPOINT ENERGY		Check		
				E 01	103 810 000 000 440	Fuel For Buildings, JAN 2021		\$1,629.13	
				E 01	102 810 000 000 440	Fuel For Buildings, JAN 2021		\$2,224.73	
				E 01	300 810 000 000 440	Fuel For Buildings, JAN 2021		\$5,162.57	
	PO#:	Voucher #:	88316	Invoice	Invoice No:	8000015159-9		2/17/2021	
							Paid Amt:	\$9,016.43	
							Check Amount:	\$9,016.43	

Pipestone Area Schools ISD #2689 Detail Payment Register By Check

Co	Bank	Check No	Code	Rcd	Vendor	Pmt/Void Date	Pmt Type		
2689	FIN	62495	4939		FIRST LUTHERAN CHURCH		Check		
				E 01	005 582 000 344 370	Rentals & Leases, MARCH 2021		\$2,400.00	
PO#:	Voucher #:	88313	Invoice		Invoice No: 02/17/2021	2/17/2021	Paid Amt:	\$2,400.00	
							Check Amount:	\$2,400.00	
2689	FIN	62496	9731		LEEANN STEEN		Check		
				E 01	300 296 205 000 305	Consult & GYMNASTICS 02/16/2021		\$270.16	
PO#:	Voucher #:	88310	Invoice		Invoice No: 02/16/2021	2/17/2021	Paid Amt:	\$270.16	
							Check Amount:	\$270.16	
2689	FIN	62497	01300		PIPESTONE CO. MEDICAL CENTER		Check		
				E 01	103 420 000 740 394	to Non-Ed Agency, JAN 2021		\$2,777.40	
PO#:	Voucher #:	88314	Invoice		Invoice No: PI PIP JAS S	2/17/2021	Paid Amt:	\$2,777.40	
							Check Amount:	\$2,777.40	
2689	FIN	62498	9366		SYNCB/AMAZON		Check		
				E 01	103 203 171 000 466	Instructional Technology Devic		\$52.68	
				E 01	300 331 000 830 433	Individualized Mat.		\$29.88	
				E 01	300 050 172 000 401	General Supplies		\$7.43	
				E 01	005 810 000 000 401	General Supplies		\$628.01	
				E 01	300 301 501 830 433	Individualized Mat.		\$26.99	
				E 01	300 291 220 000 401	General Supplies		\$152.95	
				E 04	005 591 000 000 470	Library Books		\$241.42	
				E 01	005 219 173 317 430	Instructional Supply		\$318.00	
				E 01	207 050 172 000 401	General Supplies		\$56.86	
PO#:	Voucher #:	88315	Invoice		Invoice No: 6045787810217568	2/17/2021	Paid Amt:	\$1,514.22	
							Check Amount:	\$1,514.22	
2689	FIN	62499	8925		VAST BROADBAND		Check		
				E 01	300 810 000 000 320	Communications/Phone, 2/12/21-03/11/2021		\$229.90	
PO#:	Voucher #:	88311	Invoice		Invoice No: 016458601	2/17/2021	Paid Amt:	\$229.90	
				E 01	300 810 000 000 320	Communications/Phone, 2/12/21-03/11/2021		\$1,770.48	
PO#:	Voucher #:	88312	Invoice		Invoice No: 000459101	2/17/2021	Paid Amt:	\$1,770.48	
							Check Amount:	\$2,000.38	
2689	FIN	62500	9372		SPARKLE CAR WASH		Check		
				E 01	005 810 000 000 350	Repair&maint Service		\$22.50	
PO#:	Voucher #:	88317	Invoice		Invoice No: 221182	2/17/2021	Paid Amt:	\$22.50	
							Check Amount:	\$22.50	
								Report Total:	\$2,381,449.65

Enrollment		ECSE	K	1	2	3	4	5	6	7	8	9	10	11	12	Colony	Total	School Readiness
	2012-2013	45	96	96	87	86	83	72	94	69	75	98	87	78	70	24	1160	35
	2013-2014	36	90	87	92	86	87	82	78	99	65	87	84	77	73	22	1145	34
	2014-2015	30	89	88	85	92	79	90	86	71	104	69	73	79	77	25	1137	47
	2015-2016	28	90	86	86	86	100	82	92	86	67	111	61	80	73	19	1147	43
	2016-2017	31	96	80	88	80	83	99	82	93	78	78	103	57	73	19	1140	45
	2017-2018	30	95	92	73	84	79	86	103	86	84	88	71	101	54	17	1143	95
	2018-2019	36	103	74	86	73	79	81	82	101	80	88	85	71	99	18	1156	92
	2019-2020	28	107	91	73	84	69	83	81	81	102	87	86	79	65	15	1131	81
	2020-2021	30	82	80	79	71	82	77	75	80	77	110	81	75	82	14	1095	66
January																		
	2005-2006	28	69	73	76	85	87	83	98	91	103	100	86	106	89	28	1225	33
	2006-2007	32	91	65	75	77	89	82	81	97	95	108	84	88	103	25	1192	32
	2007-2008	35	86	94	60	76	79	90	87	85	95	101	99	87	83	26	1183	33
	2008-2009	38	92	74	96	70	76	84	91	87	79	95	98	93	81	24	1178	34
	2009-2010	35	105	86	72	93	63	77	84	87	77	89	84	94	91	24	1161	36
	2010-2011	40	106	86	85	70	90	70	77	84	88	88	75	79	90	22	1150	36
	2011-2012	38	98	91	83	88	72	93	69	76	83	99	85	78	79	22	1154	35
	2012-2013	44	95	95	86	85	82	74	94	69	73	97	87	77	69	24	1151	35
	2013-2014	37	90	86	93	84	90	81	78	98	63	86	85	80	75	22	1148	34
	2014-2015	32	88	87	85	93	79	89	85	72	104	68	73	80	78	24	1137	48
	2015-2016	30	89	88	86	86	99	83	95	86	68	109	62	80	73	19	1153	43
	2016-2017	31	96	79	86	79	83	99	82	93	77	78	106	57	72	19	1137	66
	2017-2018	33	94	92	73	83	79	84	104	86	82	88	71	99	52	17	1137	92
	2018-2019	36	102	74	86	74	79	82	82	103	81	88	85	71	97	18	1158	94
	2019-2020	28	109	90	71	83	70	82	81	82	103	87	85	79	65	15	1130	79
	2020-2021	31	84	80	78	70	83	77	76	80	76	110	78	75	79	14	1091	68
February																		
	2005-2006	29	67	74	74	85	86	83	99	91	103	101	84	105	88	28	1224	33
	2006-2007	38	91	63	76	78	88	81	79	96	95	108	84	89	106	25	1197	32
	2007-2008	36	86	94	60	76	80	89	87	87	95	101	98	88	79	26	1182	33
	2008-2009	42	93	73	95	67	75	83	88	86	80	97	96	95	81	26	1177	34
	2009-2010	38	100	86	71	92	63	77	84	88	76	92	81	96	91	24	1159	37
	2010-2011	40	105	83	85	70	91	71	75	84	88	88	75	79	90	22	1146	36
	2011-2012	41	98	89	81	89	72	93	71	76	83	100	86	78	76	22	1155	36

Enrollment		ECSE	K	1	2	3	4	5	6	7	8	9	10	11	12	Colony	Total	School Readiness
	2012-2013	45	95	95	86	86	82	75	95	69	73	96	87	76	67	24	1151	35
	2013-2014	37	89	87	91	83	88	80	77	98	63	85	86	73	78	22	1137	34
	2014-2015	32	88	88	85	93	79	89	84	71	103	68	75	77	78	24	1134	48
	2015-2016	30	91	89	86	86	100	83	96	86	68	110	63	80	75	19	1162	43
	2016-2017	32	96	79	85	80	82	97	81	91	79	77	109	53	70	19	1130	66
	2017-2018	33	95	91	73	85	80	86	103	87	82	90	72	97	53	17	1144	93
	2018-2019	37	102	74	86	74	79	81	82	103	80	92	82	68	98	18	1156	94
	2020-2021	30	108	88	71	84	70	82	81	81	103	85	84	79	65	15	1126	79
	2021-2022	33	84	81	79	69	83	76	77	81	76	109	77	75	76	14	1090	72
March																		
	2005-2006	29	69	74	74	85	87	83	101	92	105	101	85	104	88	28	1220	33
	2006-2007	41	92	63	77	78	87	81	79	96	94	109	84	86	106	25	1198	32
	2007-2008	36	84	94	60	77	81	90	88	87	95	100	96	89	79	26	1182	33
	2008-2009	44	92	74	95	66	76	83	88	85	80	98	95	96	80	26	1178	35
	2009-2010	43	99	86	70	92	62	77	84	86	76	89	81	97	92	24	1158	35
	2010-2011	41	106	83	85	69	91	71	75	83	88	90	75	79	90	22	1148	34
	2011-2012	42	100	88	83	89	73	93	71	77	84	99	86	79	76	22	1162	34
	2012-2013	45	95	96	85	86	82	75	95	69	72	96	86	76	66	24	1148	35
	2013-2014	37	91	87	91	83	88	80	76	98	64	85	86	75	78	22	1141	34
	2014-2015	33	88	86	86	94	79	90	84	71	103	67	75	78	77	24	1135	49
	2015-2016	28	90	89	84	86	101	83	95	84	68	108	60	80	75	18	1149	42
	2016-2017	34	96	79	86	82	82	97	81	91	79	77	111	53	72	19	1139	71
	2017-2018	33	95	91	72	85	79	86	102	84	82	90	72	97	52	17	1137	93
	2018-2019	38	102	74	86	74	79	81	82	103	79	92	80	68	98	18	1154	93
	2019-2020	31	102	88	71	84	70	82	81	81	103	85	85	79	67	15	1124	79
April																		
	2005-2006	30	69	73	74	84	88	83	101	93	105	101	85	104	88	28	1219	33
	2006-2007	38	92	63	78	79	89	83	80	96	93	108	84	86	107	25	1201	32
	2007-2008	35	85	94	60	78	81	90	87	86	95	101	96	87	79	26	1180	33
	2008-2009	46	92	75	93	65	75	83	87	82	80	99	94	96	80	24	1171	35
	2009-2010	47	99	86	70	92	61	77	82	86	75	88	81	96	92	24	1156	35
	2010-2011	41	105	83	85	69	91	71	76	84	87	91	75	80	90	24	1152	34
	2011-2012	43	100	90	83	90	74	91	70	77	84	98	85	77	76	22	1160	34
	2012-2013	50	95	96	85	85	81	74	95	69	72	96	86	76	65	24	1149	35

Enrollment		ECSE	K	1	2	3	4	5	6	7	8	9	10	11	12	Colony	Total	School Readiness
August	2016-2017	20	97	78	89	82	82	99	82	93	80	81	105	57	83	19	1147	45
	2017-2018	26	101	91	75	86	82	86	103	84	87	91	73	104	56	17	1162	
	2018-2019	30	105	76	90	71	85	79	86	103	81	85	95	69	96	18	1169	90
	2019-2020	22	109	87	74	86	73	80	83	80	105	83	89	78	73	15	1137	73
	2020-2021	25	86	79	79	69	84	73	78	81	79	108	86	80	83	14	1104	67
September	2004-2005	18	80	78	81	85	80	85	100	106	92	93	108	95	95	27	1243	
	2005-2006	16	69	70	71	84	86	80	95	94	105	103	90	112	90	28	1211	33
	2006-2007	19	96	61	77	77	85	83	81	100	93	111	86	91	106	25	1191	32
	2007-2008	37	82	92	59	74	78	93	82	84	97	103	101	88	84	23	1177	32
	2008-2009	28	91	77	93	71	77	85	89	85	82	95	99	94	85	24	1175	34
	2009-2010	29	104	84	75	93	65	81	89	87	79	89	91	96	92	24	1178	35
	2010-2011	35	108	86	85	71	93	70	79	84	90	91	75	81	90	22	1160	33
	2011-2012	33	98	94	82	88	72	90	70	77	83	98	86	79	80	22	1152	34
	2012-2013	36	96	93	87	81	83	76	94	69	75	97	90	80	71	24	1152	34
	2013-2014	41	89	88	96	87	91	80	78	97	64	79	91	77	74	22	1154	34
	2014-2015	31	89	87	85	94	82	92	84	73	108	71	75	77	78	24	1150	46
	2015-2016	28	88	85	85	87	100	82	93	87	68	112	64	79	73	19	1150	37
	2016-2017	24	100	79	90	79	84	100	82	93	79	80	105	57	76	19	1147	42 (plus 16 in ECSE)
	2017-2018	28	96	92	73	85	80	86	103	84	88	91	72	101	56	17	1152	90
	2018-2019	35	102	74	86	72	82	79	82	98	79	88	86	73	97	18	1151	95
	2019-2020	25	105	88	73	83	68	83	80	78	107	87	86	79	67	15	1124	78
	2020-2021	25	83	77	78	69	84	75	78	80	76	108	81	77	83	14	1088	63
October																		
(MARSS)	2005-2006	17	69	70	73	84	86	80	95	93	103	103	91	113	90	28	1217	33
	2006-2007	21	95	63	77	77	87	81	82	100	94	111	86	90	104	25	1193	32
	2007-2008	30	85	91	59	74	79	94	84	85	96	102	100	88	85	23	1175	32
	2008-2009	32	92	75	93	69	78	84	90	83	81	95	100	95	82	24	1173	34
	2009-2010	32	104	84	73	93	64	79	86	87	78	89	89	94	91	24	1167	35
	2010-2011	33	107	85	85	71	89	69	79	83	89	89	74	78	89	22	1142	34
	2011-2012	33	98	93	81	87	72	91	69	77	83	99	87	78	79	22	1149	35

Enrollment		ECSE	K	1	2	3	4	5	6	7	8	9	10	11	12	Colony	Total	School Readiness
	2012-2013	38	95	93	87	81	82	75	93	69	74	97	89	79	72	24	1148	34
	2013-2014	37	89	88	94	87	88	81	79	98	65	86	88	81	73	22	1156	34
	2014-2015	31	89	87	86	94	82	91	85	73	106	72	73	77	78	24	1148	47
	2015-2016	29	88	85	85	85	100	81	91	87	68	111	62	80	72	20	1144	39
	2016-2017	26	99	80	88	79	84	100	81	92	78	80	104	56	75	19	1141	46 (Sped included)
	2017-2018	28	95	92	73	85	80	85	102	86	84	91	72	101	54	17	1145	93
	2018-2019	33	100	74	86	72	80	79	81	97	77	88	84	72	95	18	1136	93
	2019-2020	25	104	89	73	83	68	83	78	78	104	85	84	79	65	15	1113	78
	2020-2021	27	83	79	77	71	84	76	79	80	75	107	81	76	80	14	1089	66
November																		
	2005-2006	17	68	72	75	84	87	81	97	93	103	99	86	109	90	28	1211	33
	2006-2007	32	93	64	76	76	88	82	81	99	93	109	83	90	102	25	1193	32
	2007-2008	32	88	92	60	75	79	94	85	85	96	100	99	87	83	26	1181	33
	2008-2009	36	91	76	94	68	78	84	90	84	80	94	101	95	81	24	1176	34
	2009-2010	34	105	86	73	94	65	78	85	88	77	89	86	95	92	24	1171	35
	2010-2011	32	108	86	86	71	90	69	78	83	89	87	75	78	91	22	1145	34
	2011-2012	33	98	92	82	88	72	91	67	77	82	98	85	78	79	22	1144	35
	2012-2013	45	94	94	86	82	82	73	95	69	74	97	87	78	71	24	1151	34
	2013-2014	36	90	87	94	87	88	80	78	98	66	86	88	82	73	22	1155	34
	2014-2015	30	88	88	86	92	80	90	86	73	106	71	74	78	78	24	1144	47
	2015-2016	26	90	86	85	86	100	82	92	86	67	111	62	79	73	20	1145	43
	2016-2017	30	96	80	89	79	82	98	81	92	78	79	103	54	73	19	1133	44 (Sped Inc)
	2017-2018	29	97	93	73	85	80	86	102	86	84	90	71	101	54	17	1148	95
	2018-2019	34	101	74	87	73	80	80	80	100	78	87	84	71	97	18	1144	90
	2019-2020	26	106	92	73	84	69	84	82	81	103	87	86	79	65	15	1132	78
	2020-2021	28	82	81	79	71	84	77	77	80	77	108	81	76	82	14	1097	66
December																		
	2005-2006	27	68	72	76	84	87	82	98	92	103	98	86	110	90	28	1223	33
	2006-2007	31	92	65	76	76	88	82	80	97	93	109	84	89	102	25	1189	32
	2007-2008	31	88	93	60	75	79	92	85	84	95	100	99	87	83	26	1177	33
	2008-2009	38	92	74	95	70	78	84	89	86	79	94	100	95	81	24	1179	34
	2009-2010	35	106	86	74	93	64	76	85	87	76	88	86	94	91	24	1165	35
	2010-2011	33	107	86	86	70	90	69	78	83	89	86	75	78	89	22	1141	35
	2011-2012	35	97	92	83	88	71	91	69	77	82	98	85	78	79	22	1147	35

504 STUDENT DRESS AND APPEARANCE

I. PURPOSE

The purpose of this policy is to enhance the education of students by establishing expectations of dress and grooming that are related to educational goals and community standards.

II. GENERAL STATEMENT OF POLICY

- A. The policy of the school district is to encourage students to be dressed appropriately for school activities and in keeping with community standards. This is a joint responsibility of the student and the student's parent(s) or guardian(s).
- B. Appropriate clothing includes, but is not limited to, the following:
1. Clothing appropriate for the weather.
 2. Clothing that does not create a health or safety hazard.
 3. Clothing appropriate for the activity (i.e., physical education or the classroom).
- C. Inappropriate clothing includes, but is not limited to, the following:
1. "Short shorts," skimpy tank tops, tops that expose the midriff, and other clothing that is not in keeping with community standards.
 2. Clothing bearing a message that is lewd, vulgar, or obscene.
 3. Apparel promoting products or activities that are illegal for use by minors.
 4. Objectionable emblems, badges, symbols, signs, words, objects or pictures on clothing or jewelry communicating a message that is racist, sexist, or otherwise derogatory to a protected minority group, evidences gang membership or affiliation, or approves, advances, or provokes any form of religious, racial, or sexual harassment and/or violence against other individuals as defined in MSBA/MASA Model Policy 413.
 5. Any apparel or footwear that would damage school property.
- D. Headgear, including hats or head coverings, ~~are not allowed in the building except with the approval of the building principal (i.e., student undergoing chemotherapy, medical situations, student religious practice or belief).~~ **will be determined at each**

site through student handbook codes of conduct.

- E. The intention of this policy is not to abridge the rights of students to express political, religious, philosophical, or similar opinions by wearing apparel on which such messages are stated. Such messages are acceptable as long as they are not lewd, vulgar, obscene, defamatory, profane, or do not advocate violence or harassment against others.
- F. “Gang,” as defined in this policy, means any ongoing organization, association, or group of three or more persons, whether formal or informal, having as one of its primary activities the commission of one or more criminal acts, which has an identifiable name or identifying sign or symbol, and whose members individually or collectively engage in or whose members engaged in a pattern of criminal gang activity. “Pattern of gang activity” means the commission, attempt to commit, conspiring to commit, or solicitation of two or more criminal acts, provided the criminal acts were committed on separate dates or by two or more persons who are members of or belong to the same criminal street gang.

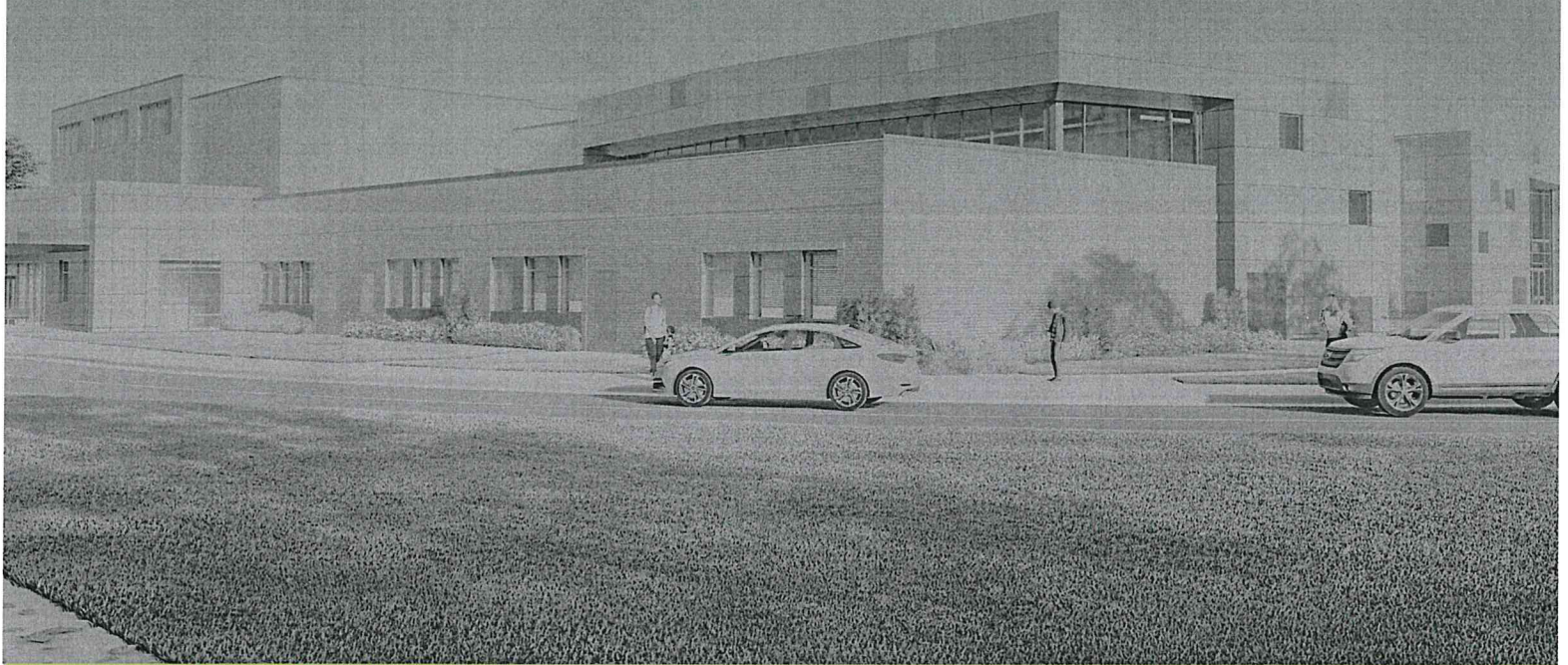
III. PROCEDURES

- A. When, in the judgment of the administration, a student’s appearance, grooming, or mode of dress interferes with or disrupts the educational process or school activities, or poses a threat to the health or safety of the student or others, the student will be directed to make modifications or will be sent home for the day. Parents/guardians will be notified.
- B. The administration may recommend a form of dress considered appropriate for a specific event and communicate the recommendation to students and parents/guardians.
- C. Likewise, an organized student group may recommend a form of dress for students considered appropriate for a specific event and make such recommendation to the administration for approval.

Legal References: U. S. Const., amend. I
Tinker v. Des Moines Indep. Sch. Dist., 393 U.S. 503, 89 S.Ct. 733, 21 L.Ed.2d 731 (1969)
B.W.A. v. Farmington R-7 Sch. Dist., 554 F.3d 734 (8th Cir. 2009)
Lowry v. Watson Chapel Sch. Dist., 540 F.3d 752 (8th Cir. 2008)
Stephenson v. Davenport Cmty. Sch. Dist., 110 F.3d 1303 (8th Cir. 1997)
B.H. ex rel. Hawk v. Easton Area School Dist., 725 F.3d 293 (3rd Cir. 2013)
D.B. ex rel. Brogdon v. Lafon, 217 Fed.Appx. 518 (6th Cir. 2007)
Hardwick v. Heyward, 711 F.3d 426 (4th Cir. 2013)
Madrid v. Anthony, 510 F.Supp.2d 425 (S.D. Tex. 2007)
McIntire v. Bethel School, Indep. Sch. Dist. No. 3, 804 F.Supp. 1415 (W.D. Okla. 1992)
Hicks v. Halifax County Bd. of Educ., 93 F.Supp.2d 649 (E.D. N.C. 1999)
Olesen v. Bd. of Educ. of Sch. Dist. No. 228, 676 F.Supp. 820 (N.D. Ill. 1987)

PIPESTONE AREA SCHOOLS

HOME OF THE ARROWS



Proposal for Facility Operations and Maintenance Plan Development



FOR:

Kevin Enerson
Superintendent

Pipestone Area School
1401 7th Street Southwest
Pipestone, MN 56164

507.562.6068

kevin.enerson@pas.k12.mn.us



FROM:

Kevin Hildebrandt, CPE, CPS
*Facilities Management and
Planning Strategist*

ISG
115 East Hickory Street + Suite 300
Mankato, MN 56001

507.387.6651

Kevin.Hildebrandt@ISGInc.com

Josh Muckenhirn, AIA
Architect

ISG
101 South Reid Street + Suite 202
Sioux Falls, SD 57103

605.274.6401

Josh.Muckenhirn@ISGInc.com

January 13, 2021

Kevin Enerson
Superintendent
Pipestone Area Schools
1401 7th Street Southwest
Pipestone, MN 56164
507.562.6068
kevin.enerson@pas.k12.mn.us

300+
EMPLOYEES

43
STATES LICENSED

Zweig Group
HOT FIRM LIST FOR 2020

Top 500
2020 ENR FIRM

RE: Request for Facility Operations and
Maintenance Plan Development
Pipestone, Minnesota



Kevin,

Pipestone Area Schools (the District) and ISG have had a long and dedicated relationship. From the planning for the maintenance and improvement of the District's facilities through facility assessments of the high school, middle school, and elementary school, to designing the new elementary school, and construction projects, your ISG team has been committed to creating environments that inspire growth and success. As the District now examines how to best care for the newly designed facilities, ISG stands ready to continue to provide responsive expertise through the following scope of services.

SCOPE OF SERVICES

Consulting and Analysis Plan

ISG will analyze your new and updated facility and grounds and consult with the district with recommendations for Pipestone Area Schools. The plan will include:

- Grounds staffing and maintenance plan
- Cleaning staffing and schedule plan
- Maintenance plan, including a service schedule of all HVAC equipment with a complete list and schedule for filter changes
- Three (3) site visits to work with staff

COMPENSATION

ISG proposes to provide the scope of services described within this proposal for the lump sum of **\$6,750**.

Reimbursable Expenses

Anticipated reimbursable expenses such as travel time, mileage expenses, and printing costs are included within the compensation listed above.



ISG looks forward to the opportunity to continue partnering with Pipestone Area Schools by providing long-term support for maintenance of its facilities. The following pages are a snapshot of the firm and team's experience. Please contact us if you have any questions or if there is any additional information we can provide. We look forward to providing response services and focused solutions in support of Pipestone Area School's bright future.

Sincerely,

Kevin Hildebrandt, CPE, CPS
Facilities Management and Planning Strategist

Josh Muckenhirn, AIA
Architect

ACKNOWLEDGMENT OF ACCEPTANCE

Accepted this _____ day of _____, 2021.

Name: _____

Title: _____

Signature: _____

This proposal is valid for 30 days.

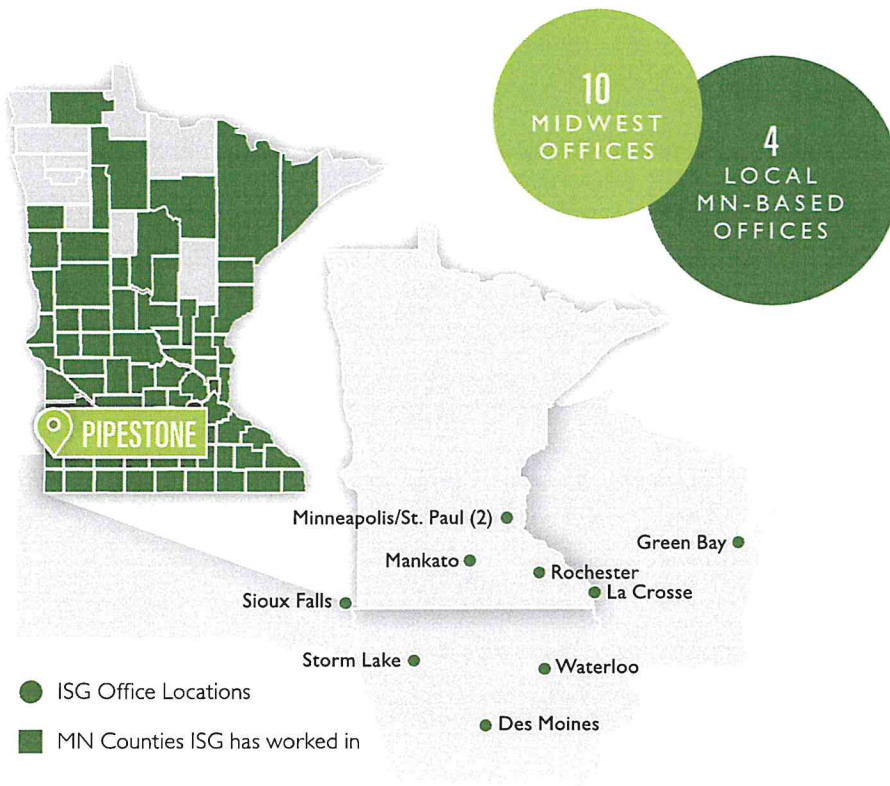
ISG Firm Overview

TRUE EXPERTISE + WORKING INGENUITY

ISG has a rich history, that extends over 47 years, of building trusting relationships with clients, stakeholders, and the community. As a multi-disciplinary firm that is 100 percent owned by employees, ISG serves numerous business units and fosters strong collaboration between all disciplines, providing clients a diverse knowledge base, high level of creativity, and broad perspective. ISG's business philosophy is centered around building relationships and constantly adding value through new and creative technologies, professionals, and ideas. ISG's flexibility makes it possible; our focus and innovative solutions make it happen.

PREK-12 EDUCATION SPECIALTIES

- Early Childhood Learning + Learning Centers
- ESTEM + ESTEAM Integration
- Elementary, Middle, and High Schools
- Fields + Athletic Complexes
- Health, Wellness, and Athletic Recreation
- Maintenance Facilities
- Performing Arts + Auditoriums
- Science Centers
- Transportation + Pavement Management



TECHNICAL EXPERTISE



- **Architecture**
 - Architecture
 - Landscape Architecture
 - Interior Design
- **Engineering**
 - Civil
 - Electrical
 - Land Survey
 - Mechanical
 - Structural
 - Technology
 - Telecommunications
 - Transportation
 - Water Resources
- **Environmental**
 - Assessments + Review
 - Geographic Information Systems
 - Permitting + Compliance
 - Planning + Feasibility
 - Testing + Monitoring
- **Planning**
 - Administration + Production Management
 - GIS
 - Planning
 - Visualization
- **Shared Services**
 - Finance + Accounting
 - IT
 - Marketing
 - Talent Engagement

32
YEARS OF
PREK-12 EXPERIENCE

300+
PREK-12 PROJECTS
SINCE 2017

115
FACILITY ASSESSMENTS
SINCE 2017

Project Team

DYNAMIC TEAM + DIRECT EXPERTISE

ISG's education market expertise is backed by a group of responsive, creative, and resourceful professionals who work as a specialty team dedicated to providing sophisticated strategies and cost-effective design solutions. The ISG team will provide convenient service and a first-hand understanding of Pipestone Area Schools.

Partnering with ISG means gaining an extension of your team as a committed resource and advocate. ISG is dedicated to helping the District navigate current and future challenges in ways that protect its important investments. Using this approach, ISG will serve as a dedicated partner bringing impactful results to the Pipestone community.



YOUR TEAM



Kevin Hildebrandt, CPE, CPS
Facilities Management and Planning Strategist



Josh Muckenhirn, AIA
Architect



Justin Steffl
Senior Project Manager

LISTEN FIRST APPROACH

- 1 LISTEN**
Listen to the ideas, concerns, and perspectives of each dynamic team of invested stakeholders
- 2 ASK**
Ask the right questions to earn trust and establish a clear vision for every project
- 3 UNDERSTAND**
Understand what matters most to the success of each project's schedule, design, and overall user and community impact
- 4 RESPOND**
Respond with design and project management solutions that reflect user values and beliefs

VALUES

Empathy

We strive to see things from your perspective, and provide expertise and advice to improve your condition.

Relationships

Relationships are at our core. We learn more when we listen, and we deliver better results from those two-way, connected relationships.

True + Responsive Expertise

The original, simple foundation to our success dating back to 1973.

Aspirations

All of us have them, and they can be different, but as a firm, we are the sum of our collective aspirations.

Contextual Design

We have developed an ISG process to deliver quality solutions that meet or exceed a client's vision. Context is merely taking in all of the factors beyond four walls - site, community, image, goals, future, connectivity, etc.

Alternative Analysis

Alternative analysis requires one option to always be what the client asks, but two more that may enhance or alter their way of thinking. It's a unique balance between empathy and expertise, driven by context and the client.

Better Decisions, Faster

Develop consensus sooner. Draw a sketch, investigate an idea, and agree before committing big resources on an errant path; we seek to foster a better decisions mentality mindset.



Kevin Hildebrandt, CPE, CPS
*Facilities Management and
 Planning Strategist*

A facilities planning and operations specialist, Kevin brings nearly 40 years of experience to organizational campuses and educational projects. Through certifications from the Association of Facility Engineering (AFE), Kevin's noted designations include Certified Plant Engineer (CPE) and Certified Professional Supervisor (CPS). Prior to his work for ISG, Kevin spent 20 years as the Director of Buildings and Grounds for Faribault Public Schools.

Throughout his career working for public schools, Kevin managed over \$100 million in construction projects ranging from small remodels to deferred maintenance projects to new construction. As a previous long-standing partner and client, Kevin provides boots-on-the-ground perspective into the day-to-day operations of client sites and facilities to help solve challenging budget, operational, and long-term planning needs.

EDUCATION

Riverland Community College
Austin, MN

PROJECT EXPERIENCE

Pipestone Area Schools
Pipestone, MN

Faribault Public Schools
Faribault, MN

Springfield Public Schools
Springfield, MN

Canby Public Schools
Canby, MN



Josh Muckenhirn, AIA
Architect

A natural leader with a breadth of experience serving K-12 education partners across the Midwest, Josh has proved an invaluable member of any project team. Inquisitive and goal-oriented, he asks the right questions early on, synchronizing vision, and streamlining communication to ensure optimal learning spaces that fit each unique community's needs.

Supported by a background in Environmental Design, Josh is well versed in sustainable design and able to assess and implement responsible solutions that slash a school's long-term cost, as well as footprint.

EDUCATION

Bachelor of Science in
 Environmental Design;
 Master of Architecture,
 North Dakota State University
Fargo, ND

PROJECT EXPERIENCE

Pipestone Elementary School
Pipestone, MN

MNSU Mankato Sports Dome
Mankato, MN

Centerville School District*
Centerville, SD

Elk Point-Jefferson
 School District*
Elk Point, SD

**Currently in design phase*



Justin Steffl
Senior Project Manager

As a senior project manager, Justin's efforts are focused on leading projects through the entire process, beginning with the early design phase and continuing with construction administration through close-out and warranty follow-up. On many projects, he is the direct liaison between the owner and the design team and is responsible for ensuring the project stays within budget and on schedule. Justin also coordinates between multiple in-house disciplines to manage project scheduling and execution, conduct field observations and document reviews for accuracy, and administer construction contracts.

Having served as construction administrator for a number of education projects throughout the Midwest, Justin is familiar with effective phasing and coordination strategies that will make the District's project a fulfilling experience.

EDUCATION

Associate of Applied Science in
 Architectural Drafting,
 South Central College
North Mankato, MN

PROJECT EXPERIENCE

Pipestone Area Schools
Pipestone, MN

Saint Peter High School
Saint Peter, MN

Mankato Area Public Schools
Mankato, MN

Southland School District
Adams, MN

EXPERTISE

Architecture
Engineering
Environmental
Planning

WORK

Commercial
Education
Energy
Food + Industrial
Government + Cultural
Healthcare
Housing
Mining
Public Works
Sports + Recreation
Transportation
Water



Mankato, MN
Minneapolis/St. Paul, MN
Rochester, MN
Des Moines, IA
Storm Lake, IA
Waterloo, IA
Green Bay, WI
La Crosse, WI
Sioux Falls, SD

ISGInc.com

On January 12, 2017, ISG formally announced its transition of firm ownership to a 100% employee stock ownership plan (ESOP). As a multi-disciplinary firm that started 47+ years ago, ISG has since grown to be a Top 500 Design Firm as recognized by Engineering News-Record (ENR), a Zweig Group Hot Firm, and PSMJ Circle of Excellence recipient, illustrating the progressive increase in talent, expertise, and market share.



Adopted: 6/27/96
Revised: 12/19/2016
Revised: 1/29/2018
Revised: 1/28/2019
Revised: 2-22-2021

PAS Policy 213
Orig. 1996
Rev. 2007

213 SCHOOL BOARD COMMITTEES

I. PURPOSE

The purpose of this policy is to provide for the structure and the operation of committees or subcommittees of the school board.

II. GENERAL STATEMENT OF POLICY

- A. It is the policy of the school board to designate school board committees or subcommittees when it is determined that a committee process facilitates the mission of the school board.
- B. The school board has determined that certain permanent standing committees, as described in this policy, do facilitate the operation of the school board and the school district.
- C. A school board committee or subcommittee will be formed by school board resolution which shall outline the duties and purpose of the committee or subcommittee.
- D. A committee or subcommittee is advisory in nature and has only such authority as specified by the school board.
- E. The school board will receive reports or recommendations from a committee or subcommittee for consideration. The school board, however, retains the right and has the duty to make all final decisions related to such reports or recommendations.
- F. The school board also may establish such ad hoc committees for specific purposes as it deems appropriate.
- G. The school board reserves the right to limit, create or abolish any standing or ad hoc committee as it deems appropriate.
- H. A committee of the school board shall not appoint a subcommittee of that committee without approval of the school board.

III. APPOINTMENT OF COMMITTEES

- A. The school board hereby appoints the following standing committees:
 - 1. Finance/Budget
 - 2. Policy
 - 3. Facilities/Building and Grounds.
 - 4. Negotiations Committee(s) for various employee groups, individuals, and contracted services.
 - 5. Calendar
- B. The school board will establish, by resolution, for each standing or ad hoc committee the number of members, the term and the charge or mission of each such committee.
- C. The school board chair shall appoint the members of each standing or ad hoc committee and designate the chair thereof.

IV. PROCEDURES FOR SCHOOL BOARD COMMITTEES

- A. All meetings of committees or subcommittees shall be open to the public in compliance with the Open Meeting Law, and notice shall be given as prescribed by law.
- B. A committee or subcommittee shall act only within the guidelines and mission established for that committee or subcommittee by the school board.
- C. Actions of a committee or subcommittee shall be by majority vote and be consistent with the governing rules of the school board.
- D. The committee or subcommittee shall designate a secretary who will record the minutes of actions of the school board committee.
- E. The power of a committee or subcommittee of the school board is advisory only and is limited to making recommendations to the school board.
- F. A committee or subcommittee of the school board shall, when appropriate, clarify in any dealings with the public that its powers are only advisory to the school board.

V. SCOPE OF SCHOOL BOARD COMMITTEES

The following information outlines the general responsibilities of each Board Committee and number of members to be assigned. Additional duties may be assigned by the Board Chair.

A. Finance/Budget – 3 members

1. Meet with the Superintendent of Schools and Business Manager to review and provide direction in establishing and monitoring the School District budget.
2. Discuss and Review:
 - a. Necessary budget adjustments;
 - b. The establishment of the annual levy;
 - c. The audit report; and
 - d. Other financial topics as they arise.

B. Negotiations/Personnel – 3 members

1. Work with the Superintendent on the negotiations of all public employee bargaining units and all individual or group contracts that are not organized bargaining units under the supervision of the School Board.
2. This committee will serve **two-year terms**. They will be appointed in January of the odd-numbered years and serve through December of the next even-numbered year or through the completion of the current negotiation period. **In the event a vacancy occurs due to an election, the board chair will fill the position through appointment.**
3. Review proposals from the Superintendent and Administrative Team related to the staffing of the School District.
4. Discuss and review:
 - a. Contract interpretation issues;
 - b. Operating procedures which impact personnel;
 - c. Job descriptions of personnel of the School District;
 - d. Hiring and evaluation process; and
 - e. Other personnel topics as they arise.

C. Facilities/Buildings and Grounds – 3 members plus staff and community as requested

1. Discuss and review matters relative to the district's facilities and 10-Year Maintenance Plan.
2. This committee shall provide consultation regarding district long range facilities planning to the entire board.

D. Policy – 3 members

1. Work with the Superintendent in reviewing all School Board policies at least once every four years.
2. The Superintendent shall develop a system for this review, addressing approximately one-fourth of the policies annually.
3. Work with the Superintendent of Schools in advising the School Board on the need for additional policies and revisions due to legislative changes.

E. Calendar Committee – 2 members

1. Work with the Superintendent in developing the school district calendar for the upcoming school year and the tentative calendar for the school year two years in the future.
2. Review possible revisions to the school calendar on an as needed basis.

F. Facility Steering Committee — 3 members plus staff and community as requested.

1. Provide consultation regarding the bond referendum for a new elementary school and facility improvements.
2. Review and Monitor progress of construction including:
 - Budget
 - Construction Manager Communications
 - Advise full board of any changes that may be required
3. Make recommendation to the full board regarding any items that need to be addressed during the scope of the project.

G. Other Committee Assignments

1. Activities Advisory – 1 member
2. Legislative Liaison – 1 member
3. Community Library School Board Appointee – 1 member
4. World’s Best Workforce – 1 member

Legal References: Minn. Stat. Ch. 13D (Open Meeting Law)



Use this workbook to list proposed expenditures of FY 2022 Achievement Integration (A&I) revenue. All expenditures must support strategies in your district's MDE-approved A&I plan. Each worksheet has a column where you will explain how each line item is intended to fund a strategy. **Please use the instructions in the prior tab of this workbook.** For details on budget requirements, see the A&I Budget Guide on the A&I webpage.

District Name: Pipstone Area Schools

District ISD Number: 2689

Superintendent: Kevin Enerson

Partnering Districts: Edgerton Public Schools

Fiscal and program staff should work together to complete this budget. Please list those staff members below. Both will be contacted if changes or more detail is needed for budget approval or changes.

Program Staff: Melany Wellnitz

Fiscal Staff: Jacque Kennedy

Phone: 507-562-6015

Phone: 507-562-6072

Email: Melany.wellnitz@pas.k12.mn.us

Email: Jacque.kennedy@pas.k12.mn.us

If you have been notified by MDE that your district has one or more *Racially Identifiable Schools*, please list those schools here:

Find the amount of Achievement and Integration (A&I) revenue your district may be eligible to receive in FY 2022 and enter it below. See lines 12 and 13 in your district's Integration Revenue Reports listed online in the Minnesota Funding Reports. These are estimates based on enrollment projections and A&I funding formulas. These estimates will be adjusted to reflect actual FY22 enrollment. Directions for finding Integration Revenue reports online are posted to the A&I website.

Total Estimated Initial Revenue (FIN 313)	\$	98,355.29
Total Estimated Incentive Revenue (FIN 318)	\$	11,570.00
TOTAL A&I REVENUE	\$	109,925.29

CERTIFICATION STATEMENT

We certify that the budget information submitted for our school district to the Minnesota Department of Education (MDE) is an accurate and complete representation of the fiscal year 2022 Achievement & Integration budget as approved by the school board.

Board Approval Date 22-Feb-21

School Board Chair _____ **Date** _____

Superintendent _____ **Date** _____

This certification statement is not required in legislation or by the Minnesota Department of Education.

FOR MDE USE ONLY

Approved Initial Revenue: _____ **Approved Incentive Revenue:** _____

MDE Approval: _____ **Date:** _____

**FY 2022 Achievement and Integration Budget
Expenditure Summary**

District Number:

2689

District Name:

Pipstone Area Schools

Proposed Budget			Actual Expenditures		
		Proposed Budget Ratios			Actual Budget Ratios
Direct Services to Students must equal at least 80% of total revenue	\$109,925.00	100.00%	DSS At least 80% of total expenditures	\$0.00	#DIV/0!
Professional Development may equal no more than 20% of total revenue	\$0.00	0.00%	Professional Development No more than 20% of total expenditures	\$0.00	#DIV/0!
Administrative/Indirect may equal no more than 10% of total revenue	\$0.00	0.00%	Admin/Indirect No more than 10% of total expenditures	\$0.00	#DIV/0!
Total Proposed Revenue:	\$109,925.00		Total Revenue Expended:	\$0.00	
Total Amount Proposed FIN 313	\$98,355.00		Improvement Planning Expenditures	0%	#REF!
Total Amount Proposed FIN 318	\$11,570.00		Districts must use up to 20% of integration revenue to implement an improvement plan (Minn. Stat. 124D.862 subd. 8 (c) 2).		

Amending Line Items To amend line items in this budget after it's been approved by MDE, strike the approved dollar amt and related budget narrative. Insert a row below the line you want to change (make sure the new row is *above* the total revenue line). Add a new dollar amt and narrative to the row you just added. Then highlight both lines with the color highlight function. Explain the change in the comments box at the bottom of the tab.

UFARS Corrections You do not need to submit an amended budget to MDE in order correct UFARS codes. Instead, make UFARS corrections when you submit your Actual Expenditure report. Add a note to explain the correction. See the A&I Gudget Guide for more details on when to amend your MDE-approved budget.

Comments:

District Number: 2689

District Name: Pipestone Area Schools

80% Direct Services to Students

List proposed **FIN 313** expenditures for Direct Student Services below. At least 80% of a district's proposed expenditures must be used for strategies in a district's MDE-approved A&I plan that provide direct services to students. Read the A&I Budget Guide on the MDE website for details.

UFARS Title	UFARS Code Required				Budgeted Amount	Actual Amt	Budget Narrative - Which strategy in your A&I plan does each line item support and how?	
	ORG	PROG	FIN	OBJ				Strategy # and Name
Add the UFARS Code title from the UFARS manual to provide a short hand description of proposed expenditures.					List the total amount budgeted for this line item.	Resubmit this budget with actual FY22 expenditures by 12/1/22.	Use this column to describe what will be purchased to implement your A&I strategies, i.e. food, transportation, salary costs, etc. Your brief description should make it clear how the expenditure will help implement the strategy. <i>Do not copy the strategy description from your plan.</i>	
Math Specialist Salary	103	203	313	140	\$62,136.00		Math Specialist to co-teach in all math classrooms throughout the year and work with teachers to align and implement math standards. Coordinate and plan integration activities for Edgerton and Pipestone.	Intervention #1 Math Specialist
Interventionist Salary			313		\$36,219.00		A teacher to work with students in need of additional interventions to master grade level math skills. Will support integration activities for students from Edgerton and Pipestone.	Intervention #2 Interventionist
FIN 313 TOTAL					\$98,355.00	\$0.00		

Insert lines **above** the **FIN 313 TOTAL** line to include those dollar amounts in proposed and approved revenue totals.

Improvement Funding Copy line items for improvement strategies and paste them into the Direct Student Services section of the Improvement Planning tab.

Comments:

District Number: 2689

District Name: Pipstone Area Schools

80% Direct Services to Students

List proposed **FIN 313** expenditures for Direct Student Services below. At least 80% of a district's proposed expenditures must be used for strategies in a district's MDE-approved A&I plan that provide direct services to students. Read the A&I Budget Guide on the MDE website for details.

UFARS Title	UFARS Code Required				Budgeted Amount	Actual Amt	Budget Narrative - Which strategy in your A&I plan does each line item support and how?	Strategy # and Name
	ORG	PROG	FIN	OBJ				
Add the UFARS Code title from the UFARS manual to provide a short hand description of proposed expenditures.					List the total amount budgeted for this line item.	Resubmit this budget with actual FY22 expenditures by 12/1/22.	Use this column to describe what will be purchased to implement your A&I strategies, i.e. food, transportation, salary costs, etc. Your brief description should make it clear how the expenditure will help implement the strategy. <i>Do not copy the strategy description from your plan.</i>	
Math Specialist Salary	103	203	313	140	\$62,136.00		Math Specialist to co-teach in all math classrooms throughout the year and work with teachers to align and implement math standards. Coordinate and plan integration activities for Edgerton and Pipestone.	Intervention #1 Math Specialist
Interventionist Salary			313		\$36,219.00		A teacher to work with students in need of additional interventions to master grade level math skills. Will support integration activities for students from Edgerton and Pipestone.	Intervention #2 Interventionist
FIN 313 TOTAL					\$98,355.00	\$0.00		

Insert lines **above** the FIN 313 TOTAL line to include those dollar amounts in proposed and approved revenue totals.

Improvement Funding Copy line items for improvement strategies and paste them into the Direct Student Services section of the Improvement Planning tab.

Comments: