



Excellence. For each and every student.

**BOARD OF EDUCATION**

Working Meeting - May 20, 2024 - 4:00 PM  
Creekside  
16000 41st Ave N.  
Plymouth, MN 55446

---

**AGENDA**

1. **ROLL CALL/CALL TO ORDER**
  - A. **Finance and Operation Reports**
    1. Enrollment, Housing Study and Attendance Area Review Process (45 minutes) 2
  - B. **Human Resource Services Reports**
    1. Human Resources Policies for Review and Consideration (15 minutes) 22
  - C. **Superintendent's Reports**
  - D. **Teaching and Learning Reports**
2. **ADJOURN**

School Board  
Worksession

**Boundary  
Adjustment  
Process**

May 20, 2024

**TEAMWORKS**<sup>7</sup>  
EDUCATION LEADERSHIP SOLUTIONS



# Agenda

- Welcome and Introductions
- Introduction to TeamWorks
- Overview of School Analytics
- Overview of Boundary Adjustment Process
- Questions, comments and insights



Hello  
my name is

Dr. Ray Queener

TEAMWORKS  
EDUCATION LEADERSHIP SOLUTIONS

Hello  
my name is

Hello  
my name is

Hello  
my name is

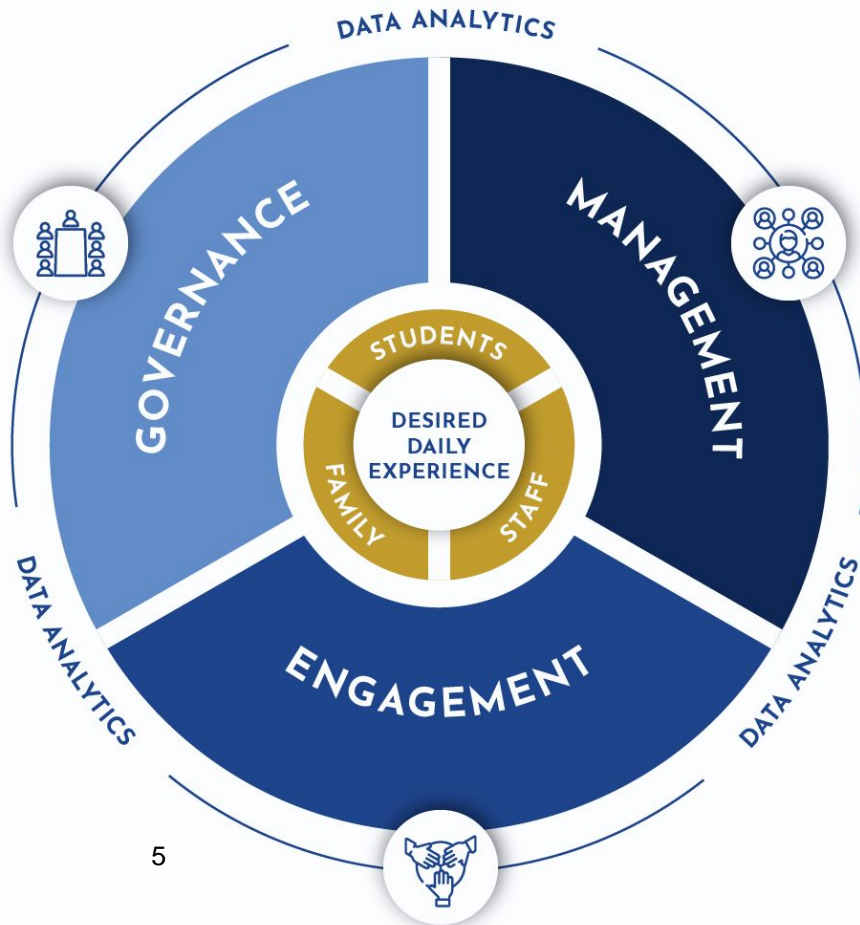
Hello  
my name is

# EDUCATION LEADERSHIP SOLUTIONS

Directional ambiguity to clarity through excellence in governance, management, and engagement.

SCHOOL BOARD DEVELOPMENT  
LEADERSHIP DEVELOPMENT  
STRATEGIC CHANGE  
EXECUTIVE COACHING

DEMOGRAPHIC AND ENROLLMENT SERVICES  
GUIDING CHANGE  
TARGETED SUPPORT



# School Analytics

---

# School Analytics

---

- Historical and 5-Year projected demographic trends across the district
- Resident birth analysis
- Historical enrollment trends and 10-Year enrollment projections
- Facility utilization analysis for each school in the district
- Student socio-economic analysis
- Market share analysis
- Housing analysis
- Customization and 1 year access to Online Data Tool and Services

# Boundary Adjustment Process

---

# Boundary Adjustment Process

---

- Decision Making FrameWork for overall mapping of participation, roles, relationships, sequence, and timing
- Guiding Change FrameWork for process parameters of the Why (current reality), the What (results of options), and the Not How (unacceptable means)
- Whole System View FrameWork for situational assessment of three areas of Resources/Services, Structures/Linkages, and Culture/Identity/Story

# Boundary Adjustment Process

---

- Use of the TW School Analytics Services and our Strategic Enrollment Projection process
- A Guiding Change document for the process, developed by administration, and approved by the School Board
- A Design Team of key administrators and staff (12-15) who develop Options for public consultation and refine Options based on that consultation
- An Input Team of parents and staff (25-40) who provide representation in the consultative process
- Diverse parent, staff, and public input through both participation at meeting of Input Teams, as well as on-line input through designed Meeting Packets
- Quality, consistent, and timely district communications engagement and support throughout the process with designed communications for the 1) “Down and In” (schools and staff) and 2) “Up and Out” (Board and public)

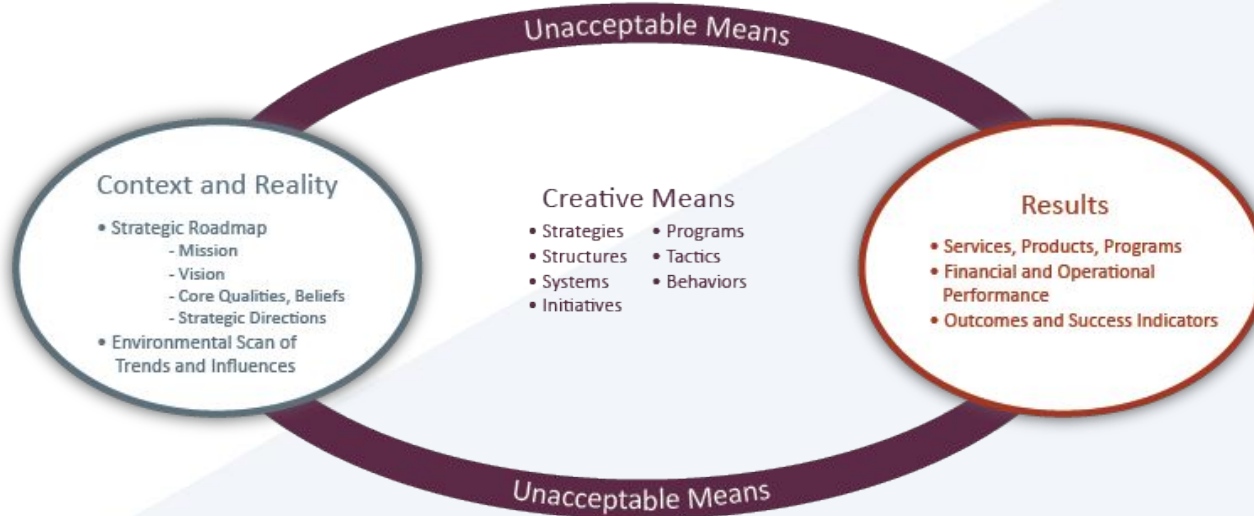
PHASE	STEP	DELIVERABLES	TIME ESTIMATE
<b>Plan</b>	<ul style="list-style-type: none"> <li>● Map out Process roles, responsibilities, sequence, and timing</li> <li>● Choice makers and areas of responsibility <ul style="list-style-type: none"> <li>○ Design Team members and schedule</li> <li>○ Input Team members and schedule</li> <li>○ Communications strategies and schedule</li> </ul> </li> <li>● Develop DRAFT Guiding Change document for Board review</li> <li>● Stakeholder Interest / Influence Mapping</li> </ul>	Decision Making Report of roles, responsibilities, schedule, and sequence Communications strategies and schedule Guiding Change document Process Interest/Influence Report	½ day 1 consultant
<b>Modeling and Design (Phase I)</b>	<ul style="list-style-type: none"> <li>● Level 1 Modeling to Guiding Change document (Options) for Elementary and Middle Schools</li> <li>● Long term design options for internal information</li> <li>● Design Team initial orientation and design meetings</li> </ul>	TW SAS Level 1 Modeling Online Design Team Reports and support	(2) 3-hour meetings
<b>Modeling and Design (Phase II)</b>	<ul style="list-style-type: none"> <li>● Level 2 Modeling to Guiding Change document (Options) for Elementary and Middle Schools</li> <li>● Design Team initial orientation and design meetings</li> </ul>	TW SAS Level 2 Modeling Online Design Team Reports and support	(2) 3-hour meetings

PHASE	STEP	DELIVERABLES	TIME ESTIMATE
<b>Consultation And Refine</b>	<ul style="list-style-type: none"> <li>• (1) 2-hour Input Team meetings over 6 weeks area 1 to be determined in design</li> <li>• (1) 2-hour Input Team meetings over 6 weeks area 2 to be determined in design</li> <li>• (4) 2-hour Design Team Meetings</li> <li>• Level 3, 4, and 5 Modeling of agreed refinements</li> </ul>	(2) Input Team Reports (4) Design Team Reports TW SAS Level 3, 4, 5 Modeling Online (additional modeling as needed using base rate of \$1,400 per day)	½ day ½ day 2.0 days
<b>Finalize and Approve</b>	<ul style="list-style-type: none"> <li>• (1) Design Team Presentation Prep Meeting</li> <li>• Board Work Session(s) and Business Meeting Support</li> </ul>	Board Presentation Outline	0.5 day 1.0 day
<b>Support</b>	<ul style="list-style-type: none"> <li>• In-person and distance support to Administration and Board across above Steps</li> </ul>		Up to 1.0 day or 8 hours cumulative
<b>Implement and Refine Support</b>	<ul style="list-style-type: none"> <li>• In-person and distance support to Administration and Board across above Steps</li> </ul>		Up to 1.0 day or 8 hours cumulative

Part of the FrameWorks Series

Used For:

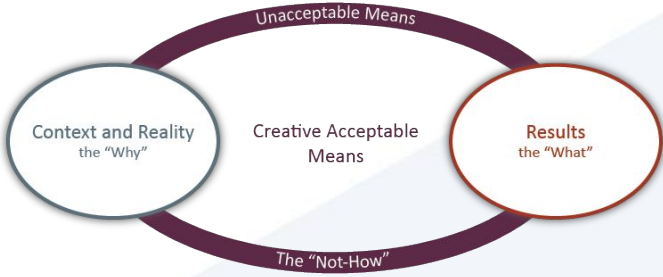
- Governance and Operational Leadership
- Establishing Boundaries for Creative Work
  - Clarity of Roles, Responsibilities, Boundaries



**Wayzata Public Schools**

**Guiding Change Document for the  
2025-26 Attendance Area Development**

**May/June 2024**



<b>The Why</b> <i>Our Current Reality</i>	<b>The Not How</b> <i>Our Unacceptable Means of achieving the Results</i>	<b>The What</b> <i>Our Desired Results from Any Option</i>
<ul style="list-style-type: none"> <li>•</li> <li>•</li> <li>•</li> </ul>	<ol style="list-style-type: none"> <li>1. Knowingly violate law, policy, or agreements</li> <li>2.</li> <li>3.</li> </ol>	<ol style="list-style-type: none"> <li>A.</li> <li>B.</li> <li>C.</li> </ol>

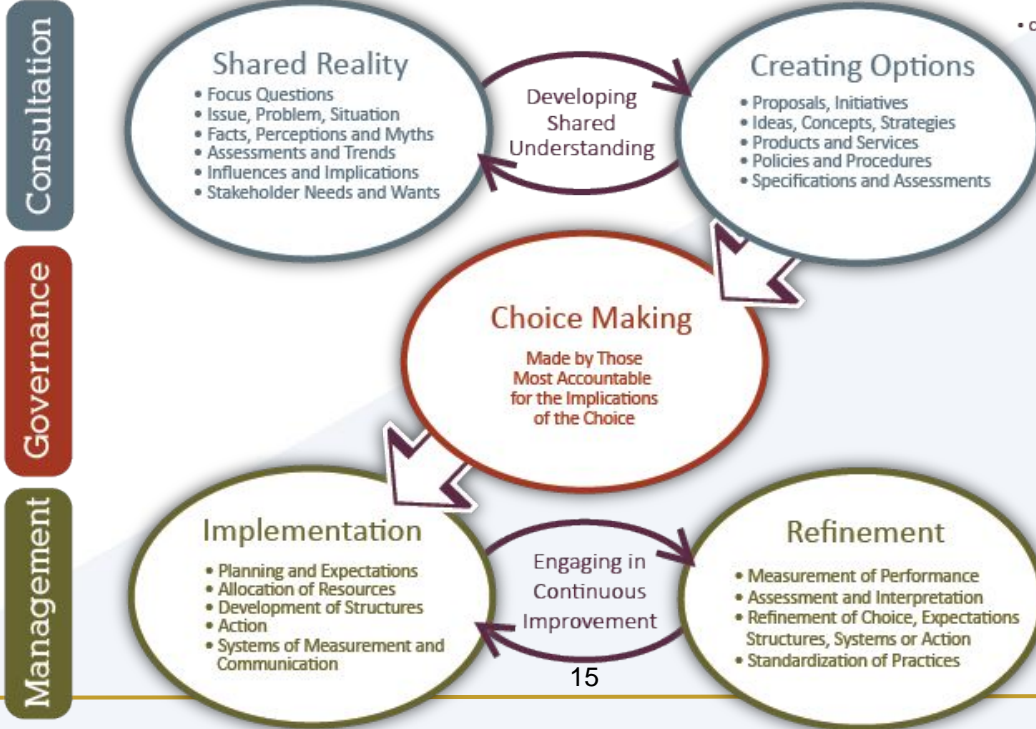


## Decision Making

Part of the FrameWorks Series

Used For:

- Choice Making
- Managing Participant's Time and Roles
- Clarification of Authority

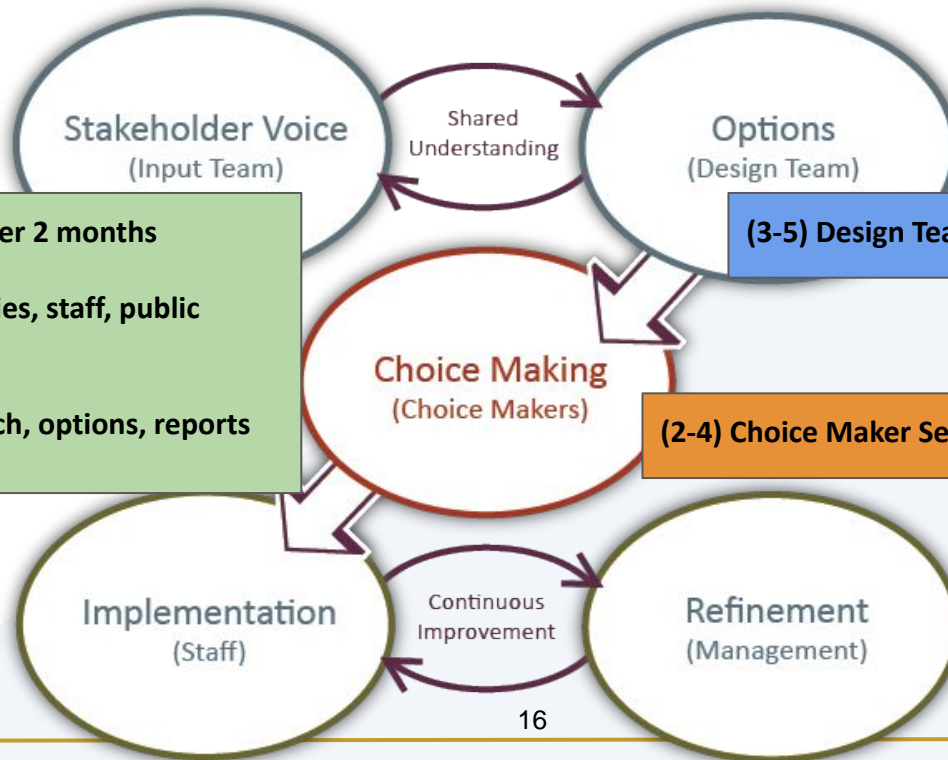


## Decision Making

Part of the FrameWorks Series

Used For:

- Choice Making
- Managing Participant's Time and Roles
- Clarification of Authority



**(2-4) Input Team Meetings over 2 months**

Online participation for families, staff, public through meeting packets

WPS Website page for research, options, reports and schedule

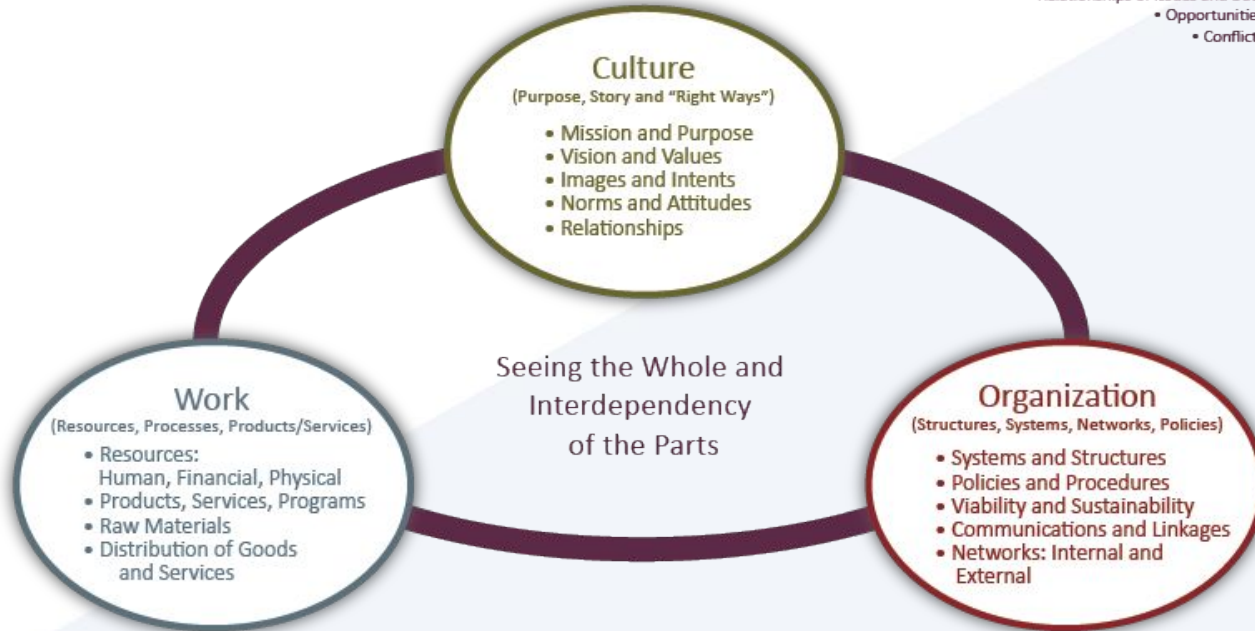
**(3-5) Design Team Meetings over 2 months**

**(2-4) Choice Maker Sessions over 2-3 months**

Part of the FrameWorks Series

Used For Assessment of:

- Situations “In the Moment”
- Relationships of Issues and Data
  - Opportunities
  - Conflicts



# Boundary Adjustment Process

---

- Comprehensive data analytics to support process
- Open process (transparent)
- Engagement from interested parties
- Communication of key steps and engagement

Comments,  
questions,  
insights?



# Thank You!

---

## Contact Information:

**Dr. Ray Queener**

Owner and Principal Consultant

ray@teamworks4ed.com

651.336.4015

teamworks4ed.com

# TEAMWORKS<sup>7</sup>

---

EDUCATION LEADERSHIP SOLUTIONS



## 401 EQUAL EMPLOYMENT OPPORTUNITY

### I. PURPOSE

The purpose of this policy is to provide equal employment opportunity for all applicants for school district employment and school district employees.

### II. GENERAL STATEMENT OF POLICY

- A. The school district will provide equal employment opportunity for all applicants and employees. The School District does not unlawfully discriminate on the basis of race, color, creed, religion, national origin, sex, gender, marital status, status with regard to public assistance, disability, sexual orientation, including gender identity or expression, age, family care leave status, or veteran status. The School District also makes reasonable accommodations for disabled employees.
- B. The school district prohibits the harassment of any individual for any of the categories listed above. For information about the types of conduct that constitute impermissible harassment, and the school district's internal procedures for addressing complaints of harassment, please refer to the school district's policy on harassment and violence.
- C. This policy applies to all areas of employment including hiring, discharge, promotion, compensation, facilities or privileges of employment.
- D. It is the responsibility of every school district employee to follow this policy.
- E. Any person having any questions regarding this policy should contact the Executive Director of Human Resources.

**Legal References:** Minn. Stat. Ch. 363A (Minnesota Human Rights Act)  
29 U.S.C. § 621 *et seq.* (Age Discrimination in Employment Act)  
29 U.S.C. § 2615 *et seq.* (Family and Medical Leave Act)  
29 U.S.C. § 4211 *et seq.* (Employment and Training of Veterans)  
29 U.S.C. § 4301 *et seq.* (Employment and Reemployment Rights of Members of the Uniformed Services)  
42 U.S.C. § 2000e *et seq.* (Title VII of the Civil Rights Act)  
42 U.S.C. § 12101 *et seq.* (Equal Opportunity for Individuals with Disabilities)

**WAYZATA PUBLIC SCHOOLS**

**Independent School District 284**

**Wayzata, Minnesota**

**ADOPTED:** February 10, 1969

**AMENDED:** June 21, 1973

**AMENDED:** March 31, 1975

**AMENDED:** December 8, 1986

**AMENDED:** May 10, 2004

**AMENDED:** November 13, 2006

**AMENDED:** July 11, 2016

**LAST REVIEWED:** July 11, 2016

**Update:**

**403 413 HARASSMENT AND VIOLENCE POLICY**

**I. PURPOSE**

The purpose of this policy is to maintain a learning and working environment that is free from harassment and violence on the basis of race, color, creed, religion, national origin, sex, gender, age, marital status, familial status, status with regard to public assistance, sexual orientation, or disability. (Protected Class) All forms of harassment and violence on the basis of the afore-mentioned are strictly prohibited.

The purpose of this policy is to maintain a learning and working environment free from harassment and violence on the basis of race, color, creed, religion, national origin, sex, age, marital status, familial status, status with regard to public assistance, sexual orientation, or disability (Protected Class).

**II. GENERAL STATEMENT OF POLICY**

- A. It shall be a violation of this policy for any student, teacher, administrator or other school district personnel of the district to harass a student, teacher, administrator or other school district personnel or groups of students, teachers, administrators or other school district personnel through conduct or communication; or to inflict, threaten to inflict, or attempt to inflict violence based on a person's race, color, creed, religion, national origin, sex, gender, age, marital status, familial status, status with regard to public assistance, sexual orientation, or disability. (Protected class)
- B. For purposes of this policy, "school district personnel" includes School Board members, school employees, agents, volunteers, contractors or persons subject to the supervision and control of the district.
- C. The district will act to investigate all complaints, either formal or informal, verbal or written, of harassment or violence based on a person's (or group's) race, color, creed, religion, national origin, sex, gender, age, marital status, familial status, status with regard to public assistance, sexual orientation, or disability; and to discipline or take appropriate action against any student, teacher, administrator or other school district personnel who is found to have violated this policy.

**DEFINITIONS (All new to our policy - Used to be our regulations)**

- A. "Assault" is:
  - 1. an act done with intent to cause fear in another of immediate bodily harm or death;
  - 2. the intentional infliction of or attempt to inflict bodily harm upon another; or
  - 3. the threat to do bodily harm to another with present ability to carry out the threat.

- B. "Harassment" prohibited by this policy consists of physical or verbal conduct, including, but not limited to, electronic communications, relating to an individual's or group of individuals' race, color, creed, religion, national origin, sex, age, marital status, familial status, status with regard to public assistance, sexual orientation, including gender identity or expression, or disability, when the conduct:
1. has the purpose or effect of creating an intimidating, hostile, or offensive working or academic environment;
  2. has the purpose or effect of substantially or unreasonably interfering with an individual's work or academic performance; or
  3. otherwise adversely affects an individual's employment or academic opportunities.
- C. "Immediately" means as soon as possible but in no event longer than 24 hours.
- D. Protected Classifications; Definitions
1. "Disability" means, with respect to an individual who
    - a. a physical sensory or mental impairment that materially limits one or more major life activities of such individual;
    - b. has a record of such an impairment; or
    - c. is regarded as having such an impairment.
  2. "Familial status" means the condition of one or more minors being domiciled with:
    - a. their parent or parents or the minor's legal guardian; or
    - b. the designee of the parent or parents or guardian with the written permission of the parent or parents or guardian. The protections afforded against harassment or discrimination on the basis of family status apply to any person who is pregnant or is in the process of securing legal custody of an individual who has not attained the age of majority.
  3. "Marital status" means whether a person is single, married, remarried, divorced, separated, or a surviving spouse and, in employment cases, includes protection against harassment or discrimination on the basis of the identity, situation, actions, or beliefs of a spouse or former spouse.
  4. "National origin" means the place of birth of an individual or of any of the individual's lineal ancestors.
  5. "Sex" includes, but is not limited to, pregnancy, childbirth, and disabilities related to pregnancy or childbirth.
  6. "Sexual orientation" means to whom someone is, or is perceived of as being, emotionally, physically, or sexually attracted to based on sex or gender identity. A person may be attracted to men, women, both, neither, or to people who are genderqueer, androgynous, or have other gender identities.
  7. "Status with regard to public assistance" means the condition of being a recipient of federal, state, or local assistance, including medical assistance, or of being a tenant receiving federal, state, or local subsidies, including rental assistance or rent supplements.

E. "Remedial response" means a measure to stop and correct acts of harassment or violence, prevent acts of harassment or violence from recurring, and protect, support, and intervene on behalf of a student who is the target or victim of acts of harassment or violence.

F. Sexual Harassment; Definition

1. Sexual harassment includes unwelcome sexual advances, requests for sexual favors, sexually motivated physical conduct, or other verbal or physical conduct or communication of a sexual nature when:
  - a. submission to that conduct or communication is made a term or condition, either explicitly or implicitly, of obtaining employment or an education; or
  - b. submission to or rejection of that conduct or communication by an individual is used as a factor in decisions affecting that individual's employment or education; or
  - c. that conduct or communication has the purpose or effect of substantially interfering with an individual's employment or education, or creating an intimidating, hostile, or offensive employment or educational environment.
2. Sexual harassment may include, but is not limited to:
  - a. unwelcome verbal harassment or abuse;
  - b. unwelcome pressure for sexual activity;
  - c. unwelcome, sexually motivated, or inappropriate patting, pinching, or physical contact, other than necessary restraint of student(s) by teachers, administrators, or other school district personnel to avoid physical harm to persons or property;
  - d. unwelcome sexual behavior or words, including demands for sexual favors, accompanied by implied or overt threats concerning an individual's employment or educational status;
  - e. unwelcome sexual behavior or words, including demands for sexual favors, accompanied by implied or overt promises of preferential treatment with regard to an individual's employment or educational status; or
  - f. unwelcome behavior or words directed at an individual because of sexual orientation, including gender identity or expression.

G. Sexual Violence; Definition

1. Sexual violence is a physical act of aggression or force or the threat thereof that involves the touching of another's intimate parts or forcing a person to touch any person's intimate parts. Intimate parts, as defined in Minnesota Statutes, section 609.341, includes the primary genital area, groin, inner thigh, buttocks, or breast, as well as the clothing covering these areas.
2. Sexual violence may include, but is not limited to:
  - a. touching, patting, grabbing, or pinching another person's intimate parts
  - b. coercing, forcing, or attempting to coerce or force the touching of anyone's intimate parts;

- c. coercing, forcing, or attempting to coerce or force sexual intercourse or a sexual act on another; or
- d. threatening to force or coerce sexual acts, including the touching of intimate parts or intercourse, on another.

H. Violence; Definition

Violence prohibited by this policy is a physical act of aggression or assault upon another or group of individuals because of, or in a manner reasonably related to an individual's Protected Class.

**IV. REPORTING PROCEDURES**

- A. Any person who believes he or she has been the target or victim of harassment or violence on the basis of Protected Class by a student, teacher, administrator, or other school district personnel, or any person with knowledge or belief of conduct which may constitute harassment or violence prohibited by this policy toward a student, teacher, administrator, or other school district personnel or group of students, teachers, administrators, or other school district personnel should report the alleged acts immediately to an appropriate school district official designated by this policy. A person may report conduct that may constitute harassment or violence anonymously. However, the school district may not rely solely on an anonymous report to determine discipline or other remedial responses.
- B. The school district encourages the reporting party or complainant to use the report form available from the principal or building supervisor of each building or available from the school district office, but oral reports shall be considered complaints as well.
- C. Nothing in this policy shall prevent any person from reporting harassment or violence directly to a school district human rights officer or to the superintendent. If the complaint involves the building report taker, the complaint shall be made or filed directly with the superintendent or the school district human rights officer by the reporting party or complainant.
- D. In Each School Building. The building principal, the principal's designee, or the building supervisor (hereinafter the "building report taker") is the person responsible for receiving oral or written reports of harassment or violence prohibited by this policy at the building level. Any adult school district personnel who receives a report of harassment or violence prohibited by this policy shall inform the building report taker immediately. If the complaint involves the building report taker, the complaint shall be made or filed directly with the superintendent or the school district human rights officer by the reporting party or complainant. The building report taker shall ensure that this policy and its procedures, practices, consequences, and sanctions are fairly and fully implemented and shall serve as a primary contact on policy and procedural matters.
- E. A teacher, school administrator, volunteer, contractor, or other school employee shall be particularly alert to possible situations, circumstances, or events that might include acts of harassment or violence. Any such person who witnesses, observes, receives a report of, or has other knowledge or belief of conduct that may constitute harassment or violence shall make reasonable efforts to address and resolve the harassment or violence and shall inform the building report taker immediately. School district personnel who fail to inform the building report taker of conduct that may constitute harassment or violence or who fail to make reasonable efforts to address and resolve the harassment or violence in a timely manner may be subject to disciplinary action.
- F. Upon receipt of a report, the building report taker must notify the school district human rights officer immediately, without screening or investigating the report. The building report taker may request, but may not insist upon, a written complaint. A written statement of the facts alleged will be forwarded as soon as practicable by the building report taker to the human rights officer. If the report was given verbally, the building report taker shall personally reduce it to written form within

24 hours and forward it to the human rights officer. Failure to forward any harassment or violence report or complaint as provided herein may result in disciplinary action against the building report taker.

- G. In the District. The school board hereby designates the Executive Director of Human Resources as the school district human rights officer(s) to receive reports or complaints of harassment or violence prohibited by this policy. If the complaint involves a human rights officer, the complaint shall be filed directly with the superintendent.
- H. The school district shall conspicuously post the name of the human rights officer(s), including mailing addresses and telephone numbers.
- I. Submission of a good faith complaint or report of harassment or violence prohibited by this policy will not affect the complainant or reporter's future employment, grades, work assignments, or educational or work environment.
- J. Use of formal reporting forms is not mandatory.
- K. Reports of harassment or violence prohibited by this policy are classified as private educational and/or personnel data and/or confidential investigative data and will not be disclosed except as permitted by law.
- L. The school district will respect the privacy of the complainant(s), the individual(s) against whom the complaint is filed, and the witnesses as much as possible, consistent with the school district's legal obligations to investigate, to take appropriate action, and to comply with any discovery or disclosure obligations.
- M. Retaliation against a victim, good faith reporter, or a witness of violence or harassment is prohibited.
- N. False accusations or reports of violence or harassment against another person are prohibited.
- O. A person who engages in an act of violence or harassment, reprisal, retaliation, or false reporting of violence or harassment, or permits, condones, or tolerates violence or harassment shall be subject to discipline or other remedial responses for that act in accordance with the school district's policies and procedures.

Consequences for students who commit, or are a party to, prohibited acts of violence or harassment or who engage in reprisal or intentional false reporting may range from remedial responses or positive behavioral interventions up to and including suspension and/or expulsion.

Consequences for employees who permit, condone, or tolerate violence or harassment or engage in an act of reprisal or intentional false reporting of violence or harassment may result in disciplinary action up to and including termination or discharge.

Consequences for other individuals engaging in prohibited acts of violence or harassment may include, but not be limited to, exclusion from school district property and events and/or termination of services and/or contracts.

## V. INVESTIGATION

- A. By authority of the school district, the human rights officer, within three (3) days of the receipt of a report or complaint alleging harassment or violence prohibited by this policy, shall undertake or authorize an investigation. The investigation may be conducted by school district officials or by a third party designated by the school district.

- B. The investigation may consist of personal interviews with the complainant, the individual(s) against whom the complaint is filed, and others who may have knowledge of the alleged incident(s) or circumstances giving rise to the complaint. The investigation may also consist of any other methods and documents deemed pertinent by the investigator.
- C. In determining whether alleged conduct constitutes a violation of this policy, the school district should consider the surrounding circumstances, the nature of the behavior, past incidents or past or continuing patterns of behavior, the relationships between the parties involved, and the context in which the alleged incidents occurred. Whether a particular action or incident constitutes a violation of this policy requires a determination based on all the facts and surrounding circumstances.
- D. In addition, the school district may take immediate steps, at its discretion, to protect the target or victim, the complainant, and students, teachers, administrators, or other school district personnel pending completion of an investigation of alleged harassment or violence prohibited by this policy.
- E. The alleged perpetrator of the act(s) of harassment or violence shall be allowed the opportunity to present a defense during the investigation or prior to the imposition of discipline or other remedial responses.
- F. The investigation will be completed as soon as practicable. The school district human rights officer shall make a written report to the superintendent upon completion of the investigation. If the complaint involves the superintendent, the report may be filed directly with the school board. The report shall include a determination of whether the allegations have been substantiated as factual and whether they appear to be violations of this policy.

**VI. SCHOOL DISTRICT ACTION**

- A. Upon completion of an investigation that determines a violation of this policy has occurred, the school district will take appropriate action. Such action may include, but is not limited to, warning, suspension, exclusion, expulsion, transfer, remediation, termination, or discharge. Disciplinary consequences will be sufficiently severe to try to deter violations and to appropriately discipline prohibited behavior. School district action taken for violation of this policy will be consistent with requirements of applicable collective bargaining agreements, Minnesota and federal law, and applicable school district policies and regulations.
- B. The school district is not authorized to disclose to a victim private educational or personnel data regarding an alleged perpetrator who is a student or employee of the school district. School officials will notify the targets or victims and alleged perpetrators of harassment or violence, the parent(s) or guardian(s) of targets or victims of harassment or violence and the parent(s) or guardian(s) of alleged perpetrators of harassment or violence who have been involved in a reported and confirmed harassment or violence incident of the remedial or disciplinary action taken, to the extent permitted by law.
- C. In order to prevent or respond to acts of harassment or violence committed by or directed against a child with a disability, the school district shall, where determined appropriate by the child's individualized education program (IEP) or Section 504 team, allow the child's IEP or Section 504 plan to be drafted to address the skills and proficiencies the child needs as a result of the child's disability to allow the child to respond to or not to engage in acts of harassment or violence.

**VII. RETALIATION OR REPRISAL**

The school district will discipline or take appropriate action against any student, teacher, administrator, or other school district personnel who commits an act of reprisal or who retaliates against any person who asserts, alleges, or makes a good faith report of alleged harassment or violence prohibited by this policy, who testifies, assists, or participates in an investigation of retaliation or alleged harassment or violence, or

who testifies, assists, or participates in a proceeding or hearing relating to such harassment or violence. Retaliation includes, but is not limited to, any form of intimidation, reprisal, harassment, or intentional disparate treatment. Disciplinary consequences will be sufficiently severe to deter violations and to appropriately discipline the individual(s) who engaged in the harassment or violence. Remedial responses to the harassment or violence shall be tailored to the particular incident and nature of the conduct.

**VIII. RIGHT TO ALTERNATIVE COMPLAINT PROCEDURES**

These procedures do not deny the right of any individual to pursue other avenues of recourse which may include filing charges with the Minnesota Department of Human Rights or another state or federal agency, initiating civil action, or seeking redress under state criminal statutes and/or federal law.

**IX. HARASSMENT OR VIOLENCE AS ABUSE**

- A. Under certain circumstances, alleged harassment or violence may also be possible abuse under Minnesota law. If so, the duties of mandatory reporting under Minnesota Statutes, chapter 260E may be applicable.
- B. Nothing in this policy will prohibit the school district from taking immediate action to protect victims of alleged harassment, violence, or abuse.

**X. DISSEMINATION OF POLICY AND TRAINING**

- A. This policy shall be conspicuously posted throughout each school building in areas accessible to students and staff members.
- B. This policy shall be given to each school district employee and independent contractor who regularly interacts with students at the time of initial employment with the school district.
- C. This policy shall appear in the student handbook.
- D. The school district will develop a method of discussing this policy with students and employees.
- E. The school district may implement violence prevention and character development education programs to prevent and reduce policy violations. Such programs may offer instruction on character education including, but not limited to, character qualities such as attentiveness, truthfulness, respect for authority, diligence, gratefulness, self-discipline, patience, forgiveness, respect for others, peacemaking, resourcefulness, and/or sexual abuse prevention.
- F. This policy shall be reviewed at least annually for compliance with state and federal law.

**Legal References:** Minn. Stat. § 120B.232 (Character Development Education)  
Minn. Stat. § 120B.234 (Child Sexual Abuse Prevention Education)  
Minn. Stat. § 121A.03, Subd. 2 (Sexual, Religious, and Racial Harassment and Violence Policy)  
Minn. Stat. § 121A.031 (School Student Bullying Policy)  
Minn. Stat. Ch. 363A (Minnesota Human Rights Act)  
Minn. Stat. § 609.341 (Definitions)  
Minn. Stat. Ch. 260E (Reporting of Maltreatment of Minors)  
20 U.S.C. §§ 1681-1688 (Title IX of the Education Amendments of 1972)  
29 U.S.C. § 621 *et seq.* (Age Discrimination in Employment Act)  
29 U.S.C. § 794 (Section 504 of the Rehabilitation Act of 1973)  
42 U.S.C. § 1983 (Civil Action for Deprivation of Rights)  
42 U.S.C. § 2000d *et seq.* (Title VI of the Civil Rights Act of 1964)  
42 U.S.C. § 2000e *et seq.* (Title VII of the Civil Rights Act)

**WAYZATA PUBLIC SCHOOLS**

**Independent School District 284**

**Wayzata, Minnesota**

42 U.S.C. § 12101 *et seq.* (Americans with Disabilities Act)

***Cross References:***

MSBA/MASA Model Policy 102 (Equal Educational Opportunity)  
MSBA/MASA Model Policy 401 (Equal Employment Opportunity)  
MSBA/MASA Model Policy 402 (Disability Nondiscrimination Policy)  
MSBA/MASA Model Policy 403 (Discipline, Suspension, and Dismissal of School District Employees)  
MSBA/MASA Model Policy 406 (Public and Private Personnel Data)  
MSBA/MASA Model Policy 414 (Mandated Reporting of Child Neglect or Physical or Sexual Abuse)  
MSBA/MASA Model Policy 415 (Mandated Reporting of Maltreatment of Vulnerable Adults)  
MSBA/MASA Model Policy 506 (Student Discipline)  
MSBA/MASA Model Policy 514 (Bullying Prohibition Policy)  
MSBA/MASA Model Policy 515 (Protection and Privacy of Pupil Records)  
MSBA/MASA Model Policy 521 (Student Disability Nondiscrimination)  
MSBA/MASA Model Policy 522 (Title IX Sex Nondiscrimination, Grievance Procedures and Process)  
MSBA/MASA Model Policy 524 (Internet Acceptable Use and Safety Policy)  
MSBA/MASA Model Policy 525 (Violence Prevention)  
MSBA/MASA Model Policy 526 (Hazing Prohibition)  
MSBA/MASA Model Policy 528 (Student Parental, Family, and Marital Status Nondiscrimination)

***Legal References:***

Minn. Stat. § 120B.232 (Character Development Education)  
Minn. Stat. § 121A.03, Subd. 2 (Sexual, Religious, and Racial Harassment and Violence Policy)  
Minn. Stat. § 121A.031 (School Student Bullying Policy)  
Minn. Stat. Ch. 363A (Minnesota Human Rights Act)  
Minn. Stat. § 609.341 (Definitions)  
Minn. Stat. § 626.556 *et seq.* (Reporting of Maltreatment of Minors )  
20 U.S.C. §§ 1681-1688 (Title IX of the Education Amendments of 1972)  
29 U.S.C. § 621 *et seq.* (Age Discrimination in Employment Act)  
29 U.S.C. § 794 (Rehabilitation Act of 1973, § 504)  
42 U.S.C. § 1983 (Civil Action for Deprivation of Rights)  
42 U.S.C. § 2000d *et seq.* (Title VI of the Civil Rights Act of 1964)  
42 U.S.C. § 2000e *et seq.* (Title VII of the Civil Rights Act)  
42 U.S.C. § 12101 *et seq.* (Americans with Disabilities Act)

**ADOPTED:** March 10, 1986

**AMENDED:** September 16, 1991

**AMENDED:** September 13, 1993

**AMENDED:** July 11, 1994

**AMENDED:** December 11, 1995

**AMENDED:** May 14, 2001

**AMENDED:** July 12, 2004

**AMENDED:** September 10, 2007

**WAYZATA PUBLIC SCHOOLS**

**Independent School District 284**

**Wayzata, Minnesota**

**AMENDED:** August 11, 2014

**AMENDED:** July 11, 2016

**LAST REVIEWED:** September 11, 2017