

WAYZATA PUBLIC SCHOOLS

Independent School District 284
Wayzata, Minnesota

BOARD OF EDUCATION

Regular Meeting - December 13, 2010 - 7:00 PM
District Administration Building
210 County Rd. 101, N, Plymouth, MN

AGENDA

1.	CALL TO ORDER/ROLL CALL	3
2.	APPROVAL OF AGENDA AND CONSENT AGENDA ITEMS	4
	A. Approval of Minutes	
	1. Regular Meeting - November 9, 2010	5
	B. School Board Member Compensation 2011	14
	C. Finance and Business Recommendations	15
	D. Human Resource Recommendations	28
	E. OPEB Trust Investment Policy Statement	31
	F. CONTRACT AWARD - Turning Point Technologies, LLC	50
3.	STUDENT CURRICULUM PRESENTATION - Sunset Hill Elementary	
	A. Sunset Hill Against Hunger	52
4.	RECOGNITIONS	
	A. Wayzata Public Schools 2010-2011 Retirees	53
	B. December Employee of the Month - Gleason Lake Elementary - Dan Roth	54
	C. 2010 Assistant Track and Field Coach of the Year	55
	D. Blue Ribbon School - Greenwood Elementary	56
	E. WHS Boys' Cross Country Team 2010 State Championship	57
5.	REPORTS FROM ORGANIZATIONS	
	A. Student Council - Lauren Stufft - Vice President	58
6.	SUPERINTENDENT'S REPORTS AND RECOMMENDATIONS	
	A. Superintendent	59
	B. Teaching and Learning	
	1. Approval of Sunset Hill Elementary Site Plan Overview - K. Keffeler	60
	C. Finance and Business Services	
	1. Monthly Financial Reports	83
	2. Comprehensive Annual Financial Report for Fiscal Year Ending June 30, 2010	91
	3. Truth in Taxation Presentation	92
	4. Certification of 2010 Payable 2011 Property Tax Levy	105
	5. Approval of Open Enrollment Non-Resident Agreement	107
	D. Human Resource Services	109
7.	OTHER BOARD ACTION	
	A. Approval of 2011-2012 Legislative Action Committee Platform	110
8.	AUDIENCE OPPORTUNITY TO ADDRESS SCHOOL BOARD	113
9.	BOARD REPORTS	
10.	NEW BUSINESS	
11.	ADJOURN	114

WAYZATA PUBLIC SCHOOLS

Independent School District 284
Wayzata, Minnesota

MISSION

Our Core Purpose:

The mission of Wayzata Public Schools is to ensure a world-class education that prepares each and every student to thrive today and excel tomorrow in an ever-changing global society.

VISION

What We Intend to Create and Experience:

The vision of Wayzata Public Schools is to be a model of excellence where all students discover their unique talents, develop a love and tenacity for learning and demonstrate confidence and capacity for success through:

Exceptional Student Learning, Experiences and Relationships:

- High achievement by each and every student—no exceptions, no excuses;
- Content-rich, rigorous and personalized education;
- Meaningful relationships with teachers, staff, mentors and peers in a welcoming, nurturing and safe environment where all are valued for who they are and the contributions they make.

Community Trust, Confidence and Partnership:

- Comprehensive learning opportunities meeting diverse learner needs and community aspirations;
- Committed to being the first choice for students and families;
- Maintaining the highest levels of satisfaction and pride by staff, parents and community.

Operational Excellence:

- Attraction, development and retention of exemplary, creative and engaged employees;
- Accountability by all staff for individual and collective performance;
- Effective and efficient use of time and human, financial and physical resources;
- Culture of continuous improvement and responsive innovation;
- High performing district governance, management and partnerships.

WAYZATA PUBLIC SCHOOLS
Independent School District 284
Wayzata, Minnesota

BOARD OF EDUCATION

Regular Meeting – December 13, 2010

AGENDA ITEM: 1. CALL TO ORDER/ROLL CALL

COMMENTS BY: Board Chair Peterson

Susan Droegemueller, Board Clerk, will call the roll:

	<u>PRESENT</u>	<u>ABSENT</u>
Ms. Linda A. Cohen	_____	_____
Ms. Susan Hayes Droegemueller	_____	_____
Ms. Susan Gaither	_____	_____
Ms. Patricia L. Gleason	_____	_____
Mr. Jay A. Hesby	_____	_____
Mr. John A. Moroz	_____	_____
Ms. Carter G. Peterson	_____	_____
Dr. Chace B. Anderson, Ex Officio	_____	_____

WAYZATA PUBLIC SCHOOLS
Independent School District 284
Wayzata, Minnesota

BOARD OF EDUCATION

Regular Meeting – December 13, 2010

AGENDA SECTION: 2. APPROVAL OF AGENDA AND CONSENT AGENDA ITEMS

ITEM: _____

COMMENTS BY: Board Chair Peterson

Consent Agenda items are considered to be routine in nature and will be enacted by one motion. There will be no separate discussion of these items unless a Board member or citizen so requests, in which event the item will be removed as a Consent Agenda item and addressed. Consent Agenda Items are as follows:

- A. Approval of Minutes
 - 1. Regular Meeting – November 8, 2010
- B. School Board Member Compensation 2011
- C. Finance and Business Recommendations
- D. Human Resource Recommendations
- E. OPEB Trust Investment Policy Statement
- F. CONTRACT AWARD – Turning Point Technologies, LLC

RECOMMENDED ACTION: Approve the agenda as presented (amended) and the Consent Agenda items as recommended.

Motion by: _____ Yes _____ Passed _____

Second by: _____ No _____ Failed _____

Abstentions _____

WAYZATA PUBLIC SCHOOLS
Independent School District 284
Wayzata, Minnesota

BOARD OF EDUCATION

Regular Meeting – December 13, 2010

AGENDA SECTION: 2. APPROVAL OF AGENDA AND CONSENT AGENDA ITEMS

ITEM: A. Approval of Minutes

COMMENTS BY: Board Clerk Droegemueller

1. Regular Meeting – November 8, 2010

Enclosed for Board review and approval are the minutes of the Regular Board Meeting of November 8, 2010.

RECOMMENDED ACTION: Approve the minutes of the Regular Board Meeting of November 8, 2010.

Motion by: _____ Yes _____ Passed _____

Second by: _____ No _____ Failed _____

Abstentions _____

WAYZATA PUBLIC SCHOOLS
Independent School District 284
Wayzata, Minnesota

Official Minutes of Regular Meeting

November 8, 2010

The Board of Education Wayzata Public Schools

A Regular meeting of the Board of Education of Wayzata Public Schools was held November 8, 2010, beginning at 6:00 PM at Wayzata City Hall, 600 Rice Street, Wayzata, MN, pursuant to due notice. The meeting was broadcast live on cable television Plymouth Channel 22 (Comcast) and Wayzata Channel 19 (Mediacom), and delayed broadcast on Minnetonka Channel 17 (Time Warner).

1. **CALL TO ORDER/ROLL CALL**

The meeting was called to order by Board Chair, Carter Peterson, and Susan Droegemueller, Board Clerk, called the roll. The following School Board members were present: Ms. Linda A. Cohen, Ms. Susan H. Droegemueller, Ms. Susan Gaither, Ms. Patricia L. Gleason, Mr. Jay A. Hesby, Ms. Carter G. Peterson, and Dr. Chace B. Anderson, Superintendent of Schools and Ex Officio member of the School Board. School Board members absent: Mr. John A. Moroz.

Call to Order
Roll Call

Others Present: John Sucansky, Annie Doughty, Jill Johnson, Jim Westrum, Jodi Olson, Colleen Erickson, Connie Leuer, Jim Leuer, Kristin Tollison, Bob Wittman, Paul Hahn, Greg Gibson, Susan Sommerfeld, Clark Doten, Scott McLaughlin, Dan Roberts, John Batalden, and Judi Rovang, .

2. **APPROVAL OF AGENDA AND CONSENT AGENDA ITEMS**

Consent Agenda items are considered to be routine in nature and will be enacted by one motion. There will be no separate discussion of these items unless a Board member or citizen so requests, in which event the item will be removed as a Consent Agenda item and addressed.

Agenda and
Consent
Agenda

A motion was made by Ms. Patricia Gleason and seconded by Ms. Linda Cohen to approve the agenda and the consent agenda items as presented. The motion passed unanimously.

Consent Agenda Items were as follows:

- A. Approval of Minutes
Approved the official minutes of:
1. Regular Meeting – October 11, 2010
 2. Special Meeting – October 25, 2010
- B. Finance and Business Recommendations
Authorized the following disbursements:

Minutes

Finance and
Business
Recommendations

- General Checking Account – October 2010 \$ 3,234,508.62
- Wire Transfer – September 2010 \$ 30,372,750.00

Accepted donations from the following:

Gifts

Amount	Donated By	Purpose
\$ 5.50	Gleason Lake Elementary PTA	Scholarship for First Grade Field Trip
26.40	Coca-Cola Refreshments	Commission paid for 13 cases of product sold at Gleason Lake Elementary
117.00	Karl Hoffman, Mark Ryshavy and Wells Fargo Educational Matching Program	Wells Fargo Community Support Campaign
136.50	Karl Hoffman, Mark Ryshavy and Wells Fargo Educational Matching Program	Wells Fargo Community Support Campaign
137.20	Denise Dau and Katrina Hou and Wells Fargo Educational Matching Program	Wells Fargo Community Support Campaign
140.00	Randall Scheafer and Wells Fargo Educational Matching Program	Wells Fargo Community Support Campaign
400.00	Plymouth Creek Elementary PTA	Office Supplies
4,884.51	Target	Take Charge Education Program – support Gleason Lake Elementary
33,233.94	Greenwood Elementary PTA	Mobile Computer Lab, 30 laptops w/cart
\$39,081.05		

- C. Approval of State of Minnesota Grant Agreement for the Facility Cost Share Project
Approved the Agreement for the Facility Cost Share Project Grant Award of \$150,000.00.

Approval of State of Minnesota Grant Agreement for the Facility Cost Share Project

Wayzata ISD 284 has been awarded a State of Minnesota Facility Cost Share Project Grant for \$150,000.00. This is a competitive grant with the Office of Energy Security funded by the American Recovery and Reinvestment Act (ARRA) of 2009, and administered through the State of Minnesota. The District will match the grant award with \$150,000.00 of local resources to make energy efficiency improvements in lighting upgrades at three of its elementary buildings; Kimberly Lane, Plymouth Creek, and Gleason Lake Elementary Schools.

- D. Human Resource Recommendations
Approved the following Human Resource Actions as recommended:

Human Resource Recommendations

Employment

Employment

Demae DeRocher – 4 Hour – 12 month Secretary – Central Middle Research & Eval. – Open Position
Demae DeRocher – 3.75 Hour Culinary Express – Central Middle – Resignation – Karen Rudin
Jana Lewis - .6 Counselor – West Middle – Resignation – Becky Paurus
Beth Schoolman – 2.75 Hour Paraprofessional – Greenwood – Transfer – Heidie Thompson

Brandon Smith – 4 Hour Special Ed Paraprofessional – Oakwood – New Position

Disability/Child Care Leave of Absence

Disability Leave of Absence

Amy Campbell – High School Science Teacher has requested a childcare leave of absence for the birth of her baby which is due May 18, 2011. She is requesting a disability leave followed by a childcare leave of absence through the end of the 2010-2011 school year.

Angela Henry – Vision 21 Teacher at Oakwood Elementary School has requested a childcare leave of absence for the birth of her baby which is due February 24, 2011. She is requesting a disability leave followed by a childcare leave of absence through April 8, 2011.

Jennifer Landy – High School Counselor has requested a childcare leave of absence for the birth of her baby which is due April 23, 2011. She is requesting a disability leave followed by a childcare leave of absence through the end of the 2010-2011 school year.

Renee Wenberg – 4th Grade Teacher at Birchview Elementary School has requested a childcare leave of absence for the birth of her baby which is due March 1, 2011. She is requesting a six-week disability leave of absence.

Leave of Absence Without Pay

Leave of Absence Without Pay

Vaira Druva – Vision 21 Teacher at Plymouth Creek Elementary School has requested to rescind her leave of absence without pay from December 20, 2010 through January 7, 2011.

Elizabeth Denn – 1st Grade Teacher at Sunset Hill Elementary School has requested a leave of absence without pay from November 12, 2010 through the end of the 2010-1022 school year.

Contract Modification

Contract Modification

Julie Abler – Special Ed Para – Central Middle School – Contract Ended October 15, 2010

Amy Naleid – Related Service Provider – Greenwood Elementary – From .7 to .8 FTE

Resignation

Resignation

Sarah Bowen – Related Services Provider currently on leave of absence has resigned her position effective October 20, 2010.

Becky Paurus – West Middle School Counselor has resigned her position effective October 20, 2010.

3. **STUDENT CURRICULUM PRESENTATION**

Student Curriculum Presentation

A. **West Middle School Science Presentation**

Susan Sommerfeld, principal at West Middle School, introduced Dan Roberts and Scott McLaughlin, science teachers at West Middle School, and some of their 8th grade students who guided the School Board members in an experiment that demonstrates the formation of clouds. After the experiment, the students conducted a demonstration that helped explain why clouds form.

4.

RECOGNITIONS

Recognitions

A. November Employees of the Month – WHS – John Batalden and Judi Rovang
John Batalden, counselor at Wayzata High School, was recognized as one of the November employees of the month. John was recently recognized for 30 years of service in District 284. John is truly the biggest advocate for students; he consistently strives to create a positive high school experience for each of them. John exemplifies the ideal school counselor. He is authentic and makes an impact on those who are fortunate enough to know him. He readily shares his experiences and wisdom with his colleagues, allowing them to grow professionally and personally. John thanked his colleagues and counseling office staff for nominating him and thanked everyone for this honor. He stated he was “blessed to have worked with wonderful students, supportive parents, highly qualified colleagues and administration,” and also thanked his wife and children for their support.

November
Employees of the
Month

Judi Rovang, paraprofessional at Wayzata High School, was also recognized as one of the November employees of the month. Judi always puts her best foot forward when responding to anyone who comes into the main office. She is patient, calm, respectful and professional. She goes above and beyond to help everyone whether it is a student, parent or staff member. Judi truly is the epitome of customer service. She always responds with a smile and has a great sense of humor. Judi is also the “glue” that holds the 2nd floor office together. She is always willing to pitch in anytime she is asked and is a real team player. Judi plays a vital part to keep the high school running “like a fine tuned machine.” Judi stated, “Thank you very much for this honor, I am privileged to work in this District. Our office is a team project and a welcoming place to work. Thank you very much!”

B. Wayzata Youth Hockey and Arena
 Mr. Greg Gibson, president of the Wayzata Youth Hockey Association, and Mr. Paul Hahn, Board member of the (WYHA), were present to make a contribution of \$50,000 over the next two years towards the final cost of the indoor ice melting pit at the Wayzata Ice Arena located at Central Middle School. They presented a check for \$25,000 and will present the final \$25,000 in November 2011. The project was completed during the past summer and is a safety enhancement for the arena that allows the Zamboni to empty its contents in the safety of the arena. Greg thanked the School Board for 40 years of its cooperative relationship with Wayzata Public Schools, and also acknowledged the hard work of District employees, Jim Leuer and Kristin Tollison.

Wayzata Youth
Hockey and
Arena

C. ACT Perfect Score
 Amy Wen, a senior at Wayzata High School, was recognized for earning a perfect score of 36 on the ACT exam. Amy is one of four students to earn a perfect score on the ACT exam this year. The other three students, Samantha Carter, Michael Neaton and Lauren Urke, were recognized for their achievement at the October Regular Board Meeting. During her time at WHS, Amy has participated in the Knowledge Masters Open, the Science Olympiad and Trojan Leadership Council. She also performs trumpet in the symphonic band and played in the marching band in 10th and 11th grade. She completed a summer internship in 2009 for the Tianjin Association of Chinese Enterprises with

English translations. During this recent summer, Amy traveled to Taiwan where she taught English. She has applied to 10 colleges and universities and her top choices include Stanford, Northwestern and Washington University in St. Louis, Missouri. She is interested in pursuing a biology or science related major but is undecided for future career choices.

5. **REPORTS FROM ORGANIZATIONS**

Reports from Organizations

This section of the agenda provides an opportunity for parent, teacher, and/or student associations/organizations to provide the School Board with reports/updates.

Student Council – Lauren Stufft

Student Council

Senior Lauren Stufft gave a report/update on WHS student activities.

6. **SUPERINTENDENT’S REPORTS AND RECOMMENDATIONS**

Superintendent’s Reports and Recommendations

A. Superintendent

Superintendent

1. **Resolution – American Education Week – November 14-20, 2010**

NEA’s 89th annual American Education Week (AEW) spotlights the importance of providing every child in America with a quality public education, and the need for everyone to do his or her part in making public schools great.

Great Public Schools: A Basic Right and our Responsibility reflects the Association’s calling upon America to provide students with quality public schools so that they can grow, prosper, and achieve in the 21st century.

A motion was made by Ms. Patricia Gleason and seconded by Ms. Linda Cohen to adopt the RESOLUTION-AMERICAN EDUCATION WEEK – November 14-20, 2010. A roll call vote was taken, and the following voted in favor thereof: Ms. Drogemueller, Ms. Gaither, Ms. Gleason, Mr. Hesby, Ms. Cohen, and Ms. Peterson; and the following voted against the same: No one, whereas the motion passed on a 6-0 vote with Mr. Moroz being absent.

2. **Board Policies and Regulations – Annual Review – No Changes**

Board Policies and Regulations – Annual Review

a. Board Policy and Regulation 403 and 403-R – “Harassment and Violence” – Second Reading and Adoption

A motion was made by Ms. Patricia Gleason and seconded by Ms. Linda Cohen to accept for second reading and adoption the recommendation of no changes to Board Policy and Regulations 403 and 403-R – “Harassment and Violence.” The motion passed unanimously.

b. Board Policy and Regulation 415 and 415-R – “Mandated Reporting of Child Neglect or Physical or Sexual Abuse” – Second Reading and Adoption

A motion was made by Ms. Patricia Gleason and seconded by Ms. Linda Cohen to accept for second reading and adoption the recommendation of no changes to Board Policy and Regulations 415 and 415-R – “Mandated Reporting of Child

Neglect or Physical or Sexual Abuse.” The motion passed unanimously.

- c. Board Policy and Regulation 416 and 416-R – “Family and Medical Leave” – First Reading

A motion was made by Ms. Patricia Gleason and seconded by Mr. Jay Hesby to waive the second reading and adopt Board Policy & Regulations 416 and 416-R – “Family and Medical Leave.” The motion passed unanimously.

B. Teaching and Learning

Teaching and Learning

1. Approval of West Middle School Site Plan

Susan Sommerfeld, principal, Clark Doten, associate principal, and members of the West Middle School Site Council presented their proposed 2010-2012 site plan to the School Board. They also attended the October 25 Board Work Session to preview the agreement between West Middle School and the School Board, answer questions, and accept suggestions.

A motion was made by Mr. Jay Hesby and seconded by Ms. Linda Cohen to approve the Site Plan for 2010-2012 between West Middle School and the Board of Education as recommended. The motion passed unanimously.

C. Finance and Business Services

Finance and Business Services

1. Monthly Financial Reports

The School Board received the following monthly financial reports for review and information:

- Student Activity Fund Report of September 30, 2010.

The Monthly Financial Report details fund and budget status data as of June 30, 2010 will be reported once the June 30, 2010 audit is complete.

No Board action was required.

2. Elementary (Greenwood & Kimberly Lane) Attendance Boundary Adjustment

Resident student enrollment at Kimberly Lane Elementary continues to exceed the projections used by the School Boundary Task Force in making their boundary adjustment recommendations in 2006. Current and projected resident enrollment at Kimberly Lane creates the need to make an administrative elementary boundary adjustment for the current and future years, effective November 8, 2010. Although resident enrollment growth within the current Kimberly Lane attendance area has been slightly lower than projected. This shift should help to stabilize enrollments at both Kimberly Lane and at Greenwood Elementary.

The administration, in conjunction with our demographer, Hazel Reinhardt, and with the support of a GIS mapping system from NCompass Technologies, has reviewed current and projected enrollment data from our

three northern elementary schools. We have also reviewed projected housing development information from the cities of Plymouth and Maple Grove, along with information from the developers. This process has resulted in a recommendation to reassign three census areas from Kimberly Lane Elementary to Greenwood Elementary to prevent potential overcrowding and to stabilize enrollment at both Kimberly Lane and Greenwood Elementary schools. Plymouth Creek’s enrollment is projected to remain stable.

A motion was made by Ms. Linda Cohen and seconded by Ms. Susan Gauthier to approve the reassignment of the attendance boundaries for Kimberly Lane and Greenwood Elementary Schools, as presented by Mr. Westrum, for current and future years, effective November 8, 2010. The motion passed unanimously.

D. Human Resource Services
 There were no items for this section. Human Resource Services

7. OTHER BOARD ACTION
 There were no items for this section. Other Board Action

8. AUDIENCE OPPORTUNITY TO ADDRESS SCHOOL BOARD
 This section of the agenda provides an opportunity for those who have called and placed their names on the list and for members of the audience to address the School Board. Audience Opportunity to Address School Board

No one came forward to address the Board.

9. BOARD REPORTS
 There were not items for this section. Board Reports

10. NEW BUSINESS
 There was no new business. New Business

11. NATIONAL MERIT SCHOLARSHIP SEMI-FINALISTS AND ESTEEMED TEACHERS

Thirty-five Wayzata High School senior were recognized for being selected as 2010-11 National Merit Scholarship semifinalists. The teachers they selected as their esteemed teachers were also recognized for “having the most positive formative influence” on them as learners in the Wayzata Public Schools. Superintendent Anderson introduced each student and Sue Iverson, Vision 21 Director, presented them with a personalized medal for recognition of their hard work and dedication in achieving National Merit Scholarship semifinalist status. The students, in turn, introduced their choice(s) for Esteemed Teacher and presented them with a picture frame.

The following students were recognized for having achieved National Merit Scholarship Status: **Rohit Agrawal, MoHamad Arkef, Lauren Urke, Sam Cady, Samantha Carter, Eddie Chen, Kelley Chen, Chris Chin, Aakash Desphande, Mirand Ehrlich, Mark Engelmann, Brooks Flugaur-Leavitt, Hari Ganti, Swathi Jayavel, Sarah Jensen, Ben (Kathleen) Jiang, Larry Lee, Lina Li, Yubo (Richard) Lu, Patrick Nelson, David Ottman, Drew Page, Divya Palanisamy, Melissa Radermacher, Ganesh Raman, Brett Schnobrich, Abhishek Srivastava, Jenna Blake, Ben Wedin,**

Amy Wen, Charles Wusands, Lewin Xue, Meiqin Zhou, Brian Tu, and Gaurav Singh.

The following teachers were recognized for being chosen as an esteemed teacher: **John Batalden, Jill Baumtrog, Sarah Bennett, Dixie Boschee, Seth Brown, Tami Corder, Meaghan Decker, Ross Downing, Mary Dvorak, Joel Ellingson, Dave Elmhirst, Jenny Eutice, Mark Gitch, Katie Gjevre, Dan Goodrich, Jodi Grack, Suzanne Graft (posthumously), Clarice Hagen, Elizabeth Hansen, Leslie Hanson, Mark Herold, Karen Hibbs, Nate Holland, Kristin Hoppesch, Barbara Hughes, Sue Iverson, Doug Johnson, Mark Johnston, Tom Kilkelly, Catherine Kinzeler, Betty Kochaver, Katherine Kottke, Tika Kude, Jeanne Kuhne, Tom Larsen, Elyssa McIntyre, Bob Meink, Curtis Miller, Jeff Miller, Gretchen Minnick, Dave Motes, Dan Nielsen, Steve O'Neill, Kristen Pfeffer, Dick Pritchard, Jeff Prondzinski, Mike Richards, Sarah Rudell-Beach, Gail Sarff, Matt Scheidler, Lindsay Seim, Tyler Shepard, Kathy Simson, Bill Skerbitz, Mark Sullwold, Leslie Swiggum, Bill Vieth, Barbara Warden, Chip Williams, and Curt Wyffels.**

12. **ADJOURN**

Adjourn

There being no additional business before the School Board, a motion was made by Mr. Jay Hesby and seconded by Ms. Linda Cohen to adjourn the meeting. The motion passed unanimously. Ms. Carter G. Peterson, Board Chair, adjourned the meeting at 8:51 p.m.

Upon approval by the School Board, complete minutes will be available at the District Administration Building, 210 County Road 101 North, Plymouth, on the District website, at all School Media Centers, and at the Public Libraries in Plymouth, Wayzata, and Ridgedale.

INDEPENDENT SCHOOL DISTRICT 284
SUSAN HAYES DROEGEMUELLER, SCHOOL BOARD CLERK

Carter G. Peterson
School Board Chair

Susan Hayes Droegemueller
School Board Clerk

Attachments:

Minutes
Resolution

WAYZATA PUBLIC SCHOOLS
Independent School District 284
Wayzata, Minnesota

BOARD OF EDUCATION

Regular Meeting – December 13, 2010

AGENDA SECTION: 2. APPROVAL OF AGENDA AND CONSENT AGENDA ITEMS

ITEM: B. School Board Member Compensation 2010

COMMENTS BY: Board Chair Peterson

In accordance with Board Policy 220 “Board Member Compensation and Expense”, it is recommended that for 2011, the Wayzata School Board continue to be compensated at the following monthly rates:

School Board Director	\$360
School Board Chair	\$425

In addition, for special meetings and work sessions scheduled on days other than regular meeting and work session days, compensation will continue at:

\$50 per attending Board member

RECOMMENDED ACTION: Approve School Board Members’ compensation for 2011 as recommended.

Motion by: _____ Yes _____ Passed _____

Second by: _____ No _____ Failed _____

Abstentions _____

WAYZATA PUBLIC SCHOOLS
Independent School District 284
Wayzata, Minnesota

BOARD OF EDUCATION

Regular Meeting – December 13, 2010

AGENDA SECTION: 2. APPROVAL OF AGENDA AND CONSENT AGENDA ITEMS

ITEM: C. Finance and Business Services

COMMENTS BY: Mr. Westrum

Finance and Business Recommendations

These routine items are presented for Board of Education review and approval through a single consent motion.

Monthly Bills

The attached lists itemize claims for which the Board of Education is requested to authorize payment.

General Checking Account for November 2010	\$ 3,186,721.08
Wire Transfer for October 2010	\$ 27,841,972.00

RECOMMENDED ACTION: Authorize payment as recommended.

Gifts

The District has received the following gifts, which are in compliance with current District policy and guidelines:

Amount	Donated By	Purpose
\$ 10.00	Vernon and Kay Palm	Magazine Drive Fundraiser
16.50	Gleason Lake Elementary PTA	3- 1 st Grade Scholarships
25.00	Doug and Susan Raither	Student Supply Needs
35.00	Wells Fargo	Educational Matching Gift Program
40.00	Glenn Seagar	Donation
60.00	Gleason Lake Elementary PTA	4 Kindergarten Scholarships
60.00	Gleason Lake Elementary PTA	6 – 5 th Grade Scholarships
65.00	Gleason Lake Elementary PTA	5 – 4 th Grade Scholarships
71.96	East Middle PTA	Supplies for Publishing Center

100.00	Kieth Bradock and RMG/Alerius Financial	"Refer a friend. Build your community." Campaign
100.00	Charlie and Nicole Prescott and RMG/Alerius Financial	"Refer a friend. Build your community." Campaign
100.00	Mark and Ann Feitel and RMG/Alerius Financial	"Refer a friend. Build your community." campaign
106.15	Qwest, Inc.	One Percent Back to School Program
136.50	Karl Hoffmann, Mark Ryshavy and Wells Fargo	Educational Matching Gift Program
137.20	Denise Hau, Karina Hou and Wells Fargo	Educational Matching Gift Program
140.00	Randall W. Schaefer and Wells Fargo	Educational Matching Gift Program
225.00	Plymouth Creek Elementary PTA	Classroom Calculators
300.00	Erik and Tanya Ravnholdt, Ninel Zamanskaya, Steve London and RMG/Alerius	"Refer a friend. Build your community." campaign
927.14	Anchor Bank	Frames for the Esteemed Teacher Program
3,000.00	Greenwood Elementary PTA	Media and Technology Supplies
25,000.00	Wayzata Youth Hockey Association	Future improvements to the ice arena.
\$30,655.45		

RECOMMENDED ACTION: Approve the above listed gifts to be used as designated.

Motion by: _____ Yes _____ Passed _____

Second by: _____ No _____ Failed _____

Abstentions _____

WAYZATA PUBLIC SCHOOLS				
MONTHLY CHECK DISBURSEMENT SUMMARY				
NOVEMBER 2010				
CHECK	VENDOR	DESCRIPTION	DATE	AMOUNT
360127	FIRST STUDENT, INC	TRANSPORTATION	11/16/2010	544,941.47
360398	MN TEACHERS RETIREMENT ASSN	PAYROLL ACCRUAL	11/30/2010	224,834.60
360082	MN TEACHERS RETIREMENT ASSN	PAYROLL ACCRUAL	11/15/2010	224,507.56
360297	UPPER LAKE FOODS	GROCERIES	11/18/2010	131,108.76
360401	PUBLIC EMPLOYEES RETIREMENT ASSN	PAYROLL ACCRUAL	11/30/2010	118,410.13
360346	MASTER MECHANICAL INC	CMS-ICE MELT PIT PROJ#10-078.00 #1	11/23/2010	114,438.00
360084	PUBLIC EMPLOYEES RETIREMENT ASSN	PAYROLL ACCRUAL	11/15/2010	108,506.13
359927	XCEL ENERGY	MONTHLY SERVICE	11/4/2010	104,606.30
360357	CITY OF PLYMOUTH - FINANCE DEPT	SCHOOL RESOURCE OFFICERS 1ST 1/2 YR	11/23/2010	97,609.70
360389	FIDELITY INVESTMENTS	PAYROLL ACCRUAL	11/30/2010	88,851.62
360073	FIDELITY INVESTMENTS	PAYROLL ACCRUAL	11/15/2010	87,779.89
360374	TIES	ANNUAL INTERNET SERVICE	11/23/2010	61,850.00
360142	GENERAL SHEET METAL	EMS-AIR QUAL UPGRADES-#9 MDE#51389	11/16/2010	51,703.30
360403	WAYZATA EDUCATION ASSN	PAYROLL ACCRUAL	11/30/2010	49,648.57
360086	WAYZATA EDUCATION ASSN	PAYROLL ACCRUAL	11/15/2010	49,492.08
359864	GENERAL SHEET METAL	EMS-AIR QUAL UPGRADES-#8 MDE#51389	11/4/2010	45,141.00
360076	ING	PAYROLL ACCRUAL	11/15/2010	44,402.39
360392	ING	PAYROLL ACCRUAL	11/30/2010	44,285.71
359944	COMMERCIAL SYSTEMS LLC	OW-CEIL PROJECT APP#3	11/9/2010	29,678.78
360377	US ENERGY SERVICES, INC	ENERGY-OCT 10	11/23/2010	27,243.87
360170	MASTER MECHANICAL INC	ICE MELT PIT	11/16/2010	22,234.00
359779	HASTINGS CO-OP CREAMERY CO	DAIRY PRODUCTS	11/2/2010	21,840.35
360314	CDW GOVERNMENT, INC	6 BUTTON VOIP PHONES	11/23/2010	20,142.66
360147	HASTINGS CO-OP CREAMERY CO	DAIRY PRODUCTS	11/16/2010	20,001.23
359921	TWELL ENVIRONMENTAL INC	EMS-ASBESTOS ABATEMENT MDE#51374	11/4/2010	18,425.00
359987	REGION 5AA	FOOTBALL GATE RECEIPTS	11/9/2010	18,022.00
359946	DONLAR CONSTRUCTION	HS-ATH ENTRY REMODEL #3	11/9/2010	16,813.10
360078	MET LIFE	PAYROLL ACCRUAL	11/15/2010	16,753.19
359976	MINNETONKA TRANSPORTATION INC	TRANSPORTATION	11/9/2010	16,651.11
360317	COLLINS ELECTRICAL SYSTEM	SH-PA SYSTEM	11/23/2010	16,165.00
360313	CDW	CONSULT-NETWORK 10/10	11/23/2010	15,975.00
360394	MET LIFE	PAYROLL ACCRUAL	11/30/2010	15,663.61
360216	SPUNKMEYER INC., OTIS	GROCERIES-HS-11/11/10	11/16/2010	15,407.46
360387	AMERICAN CENTURY	PAYROLL ACCRUAL	11/30/2010	15,269.15
360071	AMERICAN CENTURY	PAYROLL ACCRUAL	11/15/2010	15,194.15
360140	FIRST STUDENT, INC	ATH-TRANSPORTATION	11/16/2010	14,749.71
360237	YOUTH ENRICHMENT LEAGUE	CED-PROF SERV	11/16/2010	14,354.00
360113	DIVERSIFIED SNACK DISTRIBUTION INC	SNACKS	11/16/2010	14,219.37
360343	LIFE INSURANCE CO OF NORTH AMERICA	PAYROLL ACCRUAL	11/23/2010	13,648.04
359740	LIFE INSURANCE CO OF NORTH AMERICA	INS TRACKING BILLING	11/2/2010	13,483.84
360070	XEROX CORPORATION	WHS ATHLETICS COPIER BLANKET	11/11/2010	13,471.18
359882	LOW VOLTAGE CONTRACTORS	BV-FIRE ALARM UPGRADE,DESIGN FEE	11/4/2010	13,000.00
360229	TRIO SUPPLY CO	SERVING SUPPLIES	11/16/2010	12,547.72
360235	WEST LUTHERAN HIGH SCHOOL	GUIDANCE SERVICES AUG 10-OCT 10	11/16/2010	12,541.00
360195	CITY OF PLYMOUTH - FINANCE DEPT	WATER	11/16/2010	12,539.39
359916	STOREFRONT GROUP	CONT SERV-7/10	11/4/2010	12,500.01
360402	SCHOOL SERVICE EMPLOYEES	PAYROLL ACCRUAL	11/30/2010	12,366.21
360085	SCHOOL SERVICE EMPLOYEES	PAYROLL ACCRUAL	11/15/2010	12,332.32
360300	WEST LUTHERAN HIGH SCHOOL	TEXTBK REIMBURSEMENT	11/18/2010	12,109.35
359760	COMMERCIAL DOOR SYSTEMS, INC	EMS-RESTRM UPGRADES	11/2/2010	10,163.47
359981	NORTHERN ESCROW INC	GENCON CONST-PROJ#211425	11/9/2010	9,732.50
360161	LARSON ALLEN LLP	SERVICE THRU 10/10, AUDIT	11/16/2010	9,500.00
360104	COMMERCIAL DOOR SYSTEMS, INC	WMS-DR & HDWR UPGRADES	11/16/2010	8,766.33
360252	FIRST STUDENT, INC	TRANSPORTATION	11/18/2010	8,505.77
359999	WOLD ARCHITECTS AND ENGINEERS	OW-BOILER STUDY	11/9/2010	8,353.75
360284	REDEEMER LUTHERAN CHURCH & SCHOOL	REIMBURSE	11/18/2010	8,024.22
360233	WASTE MANAGEMENT-BLAINE	SERVICE	11/16/2010	7,944.48
360258	HANUS ENTERPRISES,LLP	FACILITY LEASE AGREEMENT	11/18/2010	7,611.00
359746	ATHLETICA/SPORT SYSTEMS UNLIMITED	HOCKEY BOARDS	11/2/2010	7,548.00
360043	OSP INC/OUT SOURCE PROJECTS	SEC HPN WEST PERKINS CONSORTIUM	11/11/2010	7,388.33
360099	CENTER FOR EFFICIENT SCHOOL OPERATIONS	TRANSPORTATION	11/16/2010	7,000.00
360265	LIFE INSURANCE CO OF NORTH AMERICA	PAYROLL ACCRUAL	11/18/2010	6,818.62
360307	APPLE INC	SERVER	11/23/2010	6,601.95

360092	BIX PRODUCE CO	GROCERIES	11/16/2010	6,201.81
360111	DALCO CORP	OW,WMS,CMS-FLOOR SUPPLIES	11/16/2010	6,177.92
360000	WOLD ARCHITECTS AND ENGINEERS	FAC ANALYSIS-PROJ#102214	11/9/2010	5,918.62
359993	TARGET COMMERCIAL INTERIORS	MATS	11/9/2010	5,744.16
360349	MN STATE HIGH SCHOOL LEAGUE	FB-ST SEMI-FINAL PRE-SALE TICKETS	11/23/2010	5,668.00
360325	FIRST STUDENT, INC	HS-TRANSPORT	11/23/2010	5,649.70
360226	TEAM PERSONNEL SERVICES INC	PROF SERVICE	11/16/2010	5,616.00
359923	WAYZATA COMMUNITY CHURCH	LEASE	11/4/2010	5,296.26
360126	FIRST STUDENT, INC	FUEL ESCALATION-REG 10/10	11/16/2010	5,131.88
359739	LIFE INSURANCE CO OF NORTH AMERICA	INS TRACKING BILLING	11/2/2010	5,024.44
359880	LIFETIME FITNESS, INC.	LOCKER RM RENTAL	11/4/2010	4,919.30
359970	KARGES-FAULCONBRIDGE, INC	EMS-PROF SERV 10/31/10	11/9/2010	4,849.30
360112	DENNY'S 5TH AVENUE BAKERY	GROCERIES	11/16/2010	4,684.37
360158	INSPEC, INC.	WATER TESTS 2010	11/16/2010	4,406.25
360311	BULLIS INSURANCE AGENCY LLC	RENEW ENTITY CRIME POLICY	11/23/2010	4,364.00
360046	RIVERPORT INS CO	DEDUCTIBLE BILLING STATEMENT	11/11/2010	4,218.88
360192	CITY OF PLYMOUTH - FINANCE DEPT	FUEL USAGE-OCT 10	11/16/2010	3,987.22
360301	WEST METRO LEARNING CONNECTIONS, INC	CONT SERV	11/18/2010	3,900.00
360221	STATE SUPPLY CO, INC.	HS-MECH IMPROVE-VALVES	11/16/2010	3,855.86
359985	PUMP & METER SERVICE, INC	WMS-UNDERGRD STORAGE REPAIR	11/9/2010	3,850.00
360107	COMMERCIAL KITCHEN SERVICES	KITCHEN APPLIANCES & PARTS	11/16/2010	3,724.76
360272	MILLER 32ND AVE, LLC	RENT & TAXES	11/18/2010	3,693.89
360256	H & B SPECIALIZED PRODUCTS	HS-POOL BLEACHERS	11/18/2010	3,542.00
359806	NATL URBAN ALLIANCE	SH-STAFF DEV DAY	11/2/2010	3,500.00
360189	NORTHERN SPECIALTIES INC	GREENHOUSE PROJECT	11/16/2010	3,400.00
359799	MCFARLAND CONSTRUCTION CO	EMS-HEALTH OFF REMODEL	11/2/2010	3,335.00
360429	KLERITEC	ATH-MED SUPPLIES	11/30/2010	3,256.92
360282	PROFESSIONAL INTERPRETING	CONT SERV	11/18/2010	3,249.40
359932	AIRPORT TAXI, INC (WAS AIRPORT,PIONEER&TOWN)	TRANSPORTATION	11/9/2010	3,228.42
359974	LILLIE, KEVIN	SH-PAINT	11/9/2010	3,200.00
360190	PAMS LUNCHROOM LLC	SERVICE	11/16/2010	3,194.00
359828	STATE SUPPLY CO, INC.	GW-PLUMBING UPGRADES	11/2/2010	3,166.90
359943	COMMERCIAL DOOR SYSTEMS, INC	KL-DRS & HDWR	11/9/2010	3,070.85
360144	GURSTEL, STALOCH & CHARGO, PA	GARNISH PAYROLL	11/16/2010	2,951.92
360095	BROWN'S ICE CREAM CO	GROCERIES	11/16/2010	2,850.73
360178	MINVALCO	GW-UNIVENTS	11/16/2010	2,843.20
360188	NOBIGROUP INC	PROF SERVICE	11/16/2010	2,840.02
359915	STAHL, BARBARA	CONT SERV	11/4/2010	2,790.00
360001	YOUTH FRONTIERS, INC	EMS-BALANCE 7TH GR RETREAT	11/9/2010	2,790.00
360416	CORPORATE HEALTH SYSTEMS INC	FLEX PROCESS NOV 2010	11/30/2010	2,765.28
359761	CORPORATE HEALTH SYSTEMS INC	FLEX PROCESS OCT 2010	11/2/2010	2,753.31
359988	RESEARCH FOR BETTER TEACHING, INC	GW-PROF DEV TRAINING	11/9/2010	2,750.00
360145	HALLBERG ENGINEERING	EMS-PROF SERV 10/10 MDE#51390	11/16/2010	2,697.31
360061	VEBEROD GEM GALLERY	HS-SUPPLIES	11/11/2010	2,618.70
359964	HOME DEPOT/GECF	HVAC-SUPPLIES	11/9/2010	2,576.43
360447	PEPPER & SON INC., J. W.	WMS-BAND SUPPLIES	11/30/2010	2,570.90
359879	LIFESPAN	TUITION	11/4/2010	2,555.00
359931	AIR PURIFICATION & ENERGY CONSERVATION	SH-FILTERS	11/9/2010	2,552.73
360417	DAVE'S SPORT SHOP	ATH-B H EQUIPMENT	11/30/2010	2,536.50
360202	REINHARDT, HAZEL	PROF SERVICE	11/16/2010	2,500.00
360299	WACHHOLZ, ANDREA	CONT SERV	11/18/2010	2,436.00
359991	STATE SUPPLY CO, INC.	EMS-POOL PUMP	11/9/2010	2,426.14
359994	TENNIS WEST	GL-FENCE & GATE	11/9/2010	2,372.00
360079	MN CHILD SUPPORT - PAYMENT CTR	PAYROLL ACCRUAL	11/15/2010	2,361.94
360395	MN CHILD SUPPORT - PAYMENT CTR	PAYROLL ACCRUAL	11/30/2010	2,358.27
359996	TRI-K SERVICES/SPORTS	FIELD UPGRADES	11/9/2010	2,220.00
359919	TERRELL, RAYMOND	PROF SERVICE	11/4/2010	2,000.00
360382	WESTONKA ELECTRIC	SP ED-SMART BRD	11/23/2010	1,995.00
360328	GENERAL SHEET METAL	EMS-IAQ UPGRADES-STAFF KITCHEN	11/23/2010	1,988.00
360101	COLLEGE TOWN PIZZA INC #1937	PIZZA	11/16/2010	1,964.75
359753	BRYAN ROCK PRODUCTS	UPGRADE FIELDS	11/2/2010	1,937.43
360459	VANDEPUTTE, GRETCHEN	CED-FALL BOOT CAMP #1	11/30/2010	1,856.40
360338	ISCORP (INTEGRATED OFFICE SYSTEMS CORP)	SERV BUREAU SUBSCRIPTION FEE	11/23/2010	1,800.00
359924	WAYZATA COMMUNITY CHURCH	SCHOOL READINESS PRESCHOOL TUITION	11/4/2010	1,764.00
360353	ORANGE TREE EMPLOYMENT SCREENING	PROF SERV	11/23/2010	1,720.00
359757	COLLINS ELECTRICAL SYSTEM	GL-PA SYSTEMS	11/2/2010	1,695.00
359812	ORANGE TREE EMPLOYMENT SCREENING	PROF SERV	11/2/2010	1,659.00
360117	DVM PIZZA, INC	PIZZA	11/16/2010	1,624.00
360087	AIRPORT TAXI, INC	TRANSPORTATION	11/16/2010	1,596.90
360125	FIRST STUDENT, INC	FUEL ESCALATION-SP ED 10/10	11/16/2010	1,575.27

360379	WACHHOLZ, ANDREA	CONT SERV	11/23/2010	1,575.00
360302	WHOLE LEARNING SCHOOL, THE	TEXTBK REIMBURSEMENT	11/18/2010	1,523.88
359971	LAJ CONSULTING, LLC	PROF SERVICE	11/9/2010	1,500.00
360358	PLYMOUTH CREEK CTR	ATH-DOME RENTAL G S	11/23/2010	1,432.00
360327	GENERAL ASP	PROF SERV	11/23/2010	1,425.00
359819	ROOT-O-MATIC	GW-SERVICE	11/2/2010	1,424.00
360167	LOFFLER COMPANIES, INC	EC/WSEI COPIER BLANKET	11/16/2010	1,409.95
360108	CTB, INC	GW-ADD'L STUDENT LOCKERS	11/16/2010	1,405.82
359846	WOLF RIDGE ENVIRONMENTAL	CMS-CALENDAR SALES	11/2/2010	1,400.00
360191	PIERRE FOODS, INC.	GROCERIES-CUST#1585168	11/16/2010	1,391.20
360230	TROPICANA CHILLED DSD	BEVERAGES-CUST#124737	11/16/2010	1,379.60
360172	MCCARTNEY, SHARON	PF SPANISH CLASSES	11/16/2010	1,347.50
360428	KIDCREATE STUDIO	CED-TOY FACTORY SH,OW,GL	11/30/2010	1,320.00
359899	PETERSON, JOANNE	BEAD CREW	11/4/2010	1,294.20
359841	WAYZATA, CITY OF	WATER/SEWER	11/2/2010	1,275.46
360370	SWANSON EXCAVATING, DENNIS	CMS-SERVICE MDE#51325	11/23/2010	1,250.00
359758	COMMAND CENTER INC	SERVICE	11/2/2010	1,228.80
360187	NEXT DAY GOURMET/SUPERIOR PRODUCTS	WMS-SUPPLIES	11/16/2010	1,226.82
359920	THINKING MAPS, INC	CMS-STAFF DEV MATERIALS	11/4/2010	1,192.50
360264	LANDS BEST FOODS, LLC	GROCERIES	11/18/2010	1,189.31
359905	PROFESSIONAL INTERPRETING	CONT SERV	11/4/2010	1,186.20
359898	PEPPER & SON INC., J. W.	WMS-BAND SUPPLIES	11/4/2010	1,181.84
359897	ON SITE SANITATION	ATH-SANITATION UNITS	11/4/2010	1,180.00
359979	NATL URBAN ALLIANCE	OW- NUA WORKSHOP 11/12/10	11/9/2010	1,167.00
360276	NATL URBAN ALLIANCE	SH-STAFF DEV 11/12/10	11/18/2010	1,167.00
360278	CITY OF PLYMOUTH - FINANCE DEPT	ATH-OFFICERS 9/24/10	11/18/2010	1,149.72
360378	VOSS LIGHTING	INVENTORY LAMPS	11/23/2010	1,100.40
359872	KELLY SERVICES, INC.	CONT SERV	11/4/2010	1,078.44
360143	GRAINGER INC., W. W.	KL-SUPPLIES	11/16/2010	1,073.32
360436	LUM, JASON	CED-PROF SERV	11/30/2010	1,050.00
360356	PEPPER & SON INC., J. W.	WMS-BAND SUPPLIES	11/23/2010	1,041.25
359843	WESTONKA ELECTRIC	WMS-STAGE LIGHTING	11/2/2010	1,035.00
359989	SCHOOL SPECIALTY	PC SUPPLIES	11/9/2010	1,033.98
359941	COMMAND CENTER INC	SERVICE	11/9/2010	1,004.80
359801	MEDINA ENTERTAINMENT CTR	HS-BOWLING CLASSES	11/2/2010	1,000.00
360020	HARVEY, JILIEEN	DEPOSIT CONF 12/10	11/11/2010	1,000.00
359755	CMI REFRIGERATION	ATH-ICE MACHINE-TRAIN RM	11/2/2010	982.58
360062	WESTRUM, JAMES	REIMBURSE	11/11/2010	973.61
360450	PILATES MN	CED-PROF SERV	11/30/2010	940.50
360197	QUALITY BLENDING	HS-SERV AGREE 11/10	11/16/2010	940.00
360153	HILL CO, ROBERT B.	PC-SALT	11/16/2010	927.70
360234	WAYZATA HIGH SCHOOL SENIOR CLASS PARTY	PARENT VOLUNTEER HRS	11/16/2010	925.00
360010	EDINA HISTORICAL SOCIETY-OLD CAHILL SCH	GL-2nd GR FIELD TRIP 12/10	11/11/2010	900.00
360211	SHAMROCK GROUP	SNACKS-CUST#3293	11/16/2010	880.00
359803	MINVALCO	KL-MECH IMPROVEMENTS	11/2/2010	855.20
360175	MESSERLI & KRAMER, PA	GARNISH PAYROLL	11/16/2010	844.63
360335	HERC-U-LIFT, INC	RENT-SNORKEL	11/23/2010	841.60
359840	WATER SPECIALTY OF MN, INC	WMS-POOL SUPPLIES	11/2/2010	833.23
360381	WAYZATA, CITY OF	FOOD LICENSE & ALA CARTE FEES 10-11	11/23/2010	830.00
359894	MN SAFETY COUNCIL	CED-CLASS 10/6/10	11/4/2010	819.00
360199	RAUSCH, STURM, ISRAEL & HORNICK, S.C.	GARNISH PAYROLL	11/16/2010	800.60
359906	PUMP & METER SERVICE, INC	GL-UST REPAIRS MDE#51338	11/4/2010	784.30
359762	DAZZLE ME JEWELS	BEAD CREW	11/2/2010	782.85
360124	FIRE CONTROL INC	KL-KITCHEN HOOD INSPECT MDE#51385	11/16/2010	771.25
359903	POWERFUL LEARNING CONCEPTS	CONT SERV	11/4/2010	770.00
360059	VALSPAR PAINT	HS STADIUM-SUPPLIES	11/11/2010	764.54
360149	HI-TECH REFRIGERATION	SH-THERMOSTAT	11/16/2010	763.01
359887	MERZER, SHEILA	CONT SERV	11/4/2010	750.00
359741	AIR PURIFICATION & ENERGY CONSERVATION	GL-FILTERS	11/2/2010	723.79
360088	ANDERSEN INC., EARL F.	CMS,OW-SIGNS	11/16/2010	702.00
359893	MN MINORITY EDUC PARTNERSHIP INC	CONFERENCE REGISTRATION	11/4/2010	700.00
359922	US ENERGY SERVICES, INC	ENERGY-OCT 10	11/4/2010	700.00
360266	LORENZ BUS CO	ATH TRANSPORTATION	11/18/2010	688.98
360148	HERC-U-LIFT, INC	RENT-LIFT	11/16/2010	665.00
359977	MINVALCO	SH-VEST HEATER	11/9/2010	658.80
360207	ROSE LAW FIRM PLLC	GARNISH PAYROLL	11/16/2010	652.05
359928	YOGASTUDIO	CED-PROF SERV	11/4/2010	651.95
360225	TAYLOR, LYNN	REIMBURSE	11/16/2010	648.00
359821	SCHINDLER ELEVATOR CORP	HS-SERVICE	11/2/2010	647.57
360220	STATE OF MN-DEPT LABOR & INDUSTRY	GW-BOILER LICENSE	11/16/2010	645.00

360254	GJORAAS, DEB	CONT SERV-9/10,10/10	11/18/2010	640.00
359773	FILTRATION SYSTEMS INC	EMS-FILTERS	11/2/2010	633.54
360261	HOY, JUDITH	CONT SERV	11/18/2010	610.00
360181	MN STATE HIGH SCHOOL LEAGUE	FB-ST QUARTER FINAL PRE-SALE TICKETS	11/16/2010	609.00
360333	HARTZLER, BELINDA	REIMBURSE	11/23/2010	608.25
359886	MC DONALD'S	BV-5TH GRADE FIELD TRIP LUNCH	11/4/2010	603.37
360180	MN HIGH SCHOOL QUIZ BOWL	ENTRY FEE - 3 TEAMS	11/16/2010	600.00
359969	INTERMEDIATE DIST 287	LEGAL SERVICES	11/9/2010	592.90
360289	TEAM SPORTING GOODS, INC	ATH-H VESTS	11/18/2010	592.54
360100	COCA-COLA REFRESHMENTS	POP DELIVERY	11/16/2010	585.00
359776	GOLDEN VALLEY SUPPLY CO	ARENA UPGRADES	11/2/2010	577.50
360411	BLACK AND DECKER	CMS-EQUIPMENT REPAIR	11/30/2010	577.26
360320	FILDES, LORI	REIMBURSE	11/23/2010	575.22
360150	HIGHLAND PK SR HIGH SPEECH & DEBATE BOOSTERS	DEBATE TOURN	11/16/2010	570.00
360169	MAIL FINANCE (FORMERLY NEOPOST)	DAB MAIL MACHINE LEASE	11/16/2010	567.96
360354	PARALLEL TECHNOLOGIES INC	EMS-CABLE ADD	11/23/2010	565.93
360120	ENVIROBATE	EMS-ASBESTOS GLUE ABATEMENT	11/16/2010	558.84
359951	GRAINGER INC., W. W.	SH-REPLACE VEST HEAT	11/9/2010	545.86
359851	ARNAGE SECURITY SERVICES LLC	ATH-SECURITY SERV	11/4/2010	540.00
359810	NEOPOST INC.	SUPPLIES-MAIL MACHINE	11/2/2010	533.89
360022	ISD #284	TO ACTIVITY ACCT TO CORRECT ERROR	11/11/2010	530.31
360115	DRYWALL SUPPLY	KL OFFICE SUPPLIES	11/16/2010	529.32
360308	ATHLETICA/SPORT SYSTEMS UNLIMITED	ARENA-MAINTENANCE	11/23/2010	522.00
360050	SHORT, ERIC	REIMBURSE	11/11/2010	521.00
360102	COMMAND CENTER INC	SERVICE	11/16/2010	512.00
359883	MARS CO, W. P. & R.S.	CSF-PERSONAL PROTECTIVE EQUIP	11/4/2010	511.17
360352	OFFICE OF ENTERPRISE TECHNOLOGY	VOICE SERV THRU 10/31/10	11/23/2010	509.22
359948	FERGUSON ENTERPRISES, INC #1657	SH-SUPPLIES	11/9/2010	508.96
360336	HI-TECH REFRIGERATION	OWHB-REFRIG REPAIR	11/23/2010	507.32
359813	PARALLEL TECHNOLOGIES INC	SP ED CONNNECTION	11/2/2010	506.61
359857	EDUCATION TO GO	CED-PROF SERV	11/4/2010	500.75
360005	ANTHOLOGIE, LLC	PROF SERV	11/11/2010	500.00
360369	STAR TRIBUNE	TECH-AD	11/23/2010	490.00
359783	J & J GLASS & GLAZING INC	PC-REPLACE GLASS	11/2/2010	485.00
360003	ANDERSEN INC., EARL F.	GL-IMPACT MATS MDE#51327	11/11/2010	485.00
360224	STUDY ISLAND	VISION 21 SOFTWARE	11/16/2010	463.00
359747	B & B ASSOCIATES/CRYSTAL	BOILER CLASSES	11/2/2010	460.00
360425	HOWARD COMPUTER TRAINING LLC	CED-PROF SERV	11/30/2010	459.00
359885	MCCARTHY, CYNTHIA	CONT SERV-9/10	11/4/2010	455.00
359802	MIDWEST EDUCATIONAL CONSULTANTS	WORKSHOP	11/2/2010	450.00
359910	SANDINO, JEFF	CED-CLASS INSTRUCTION	11/4/2010	450.00
360426	INTERMEDIATE DIST 287	DEST IMAG TRAINING-11/13/10	11/30/2010	450.00
360090	ARNAGE SECURITY SERVICES LLC	ATH-SECURITY SERVICE	11/16/2010	445.50
359833	TRANS-MISSISSIPPI BIOLOGICAL	SCIENCE CENTER SUPPLIES	11/2/2010	444.91
359866	HANUS ENTERPRISES,LLP	FACILITY LEASE AGREEMENT	11/4/2010	444.00
360268	MARGET, DONNA	REIMBURSE	11/18/2010	441.90
359772	FERGUSON ENTERPRISES, INC #1657	SH-SUPPLIES	11/2/2010	441.27
359797	MAAS, RENE	REIMBURSE	11/2/2010	440.76
360247	FELTY, TIFFANY	REIMBURSE	11/18/2010	423.30
360109	CUB FOODS	GROCERIES-CUST#27	11/16/2010	410.47
359815	PEPSI-COLA	POP DELIVERY	11/2/2010	410.46
360456	SUN NEWSPAPERS	BD OF ED PUBLISHED MINUTES	11/30/2010	400.40
360185	NATIONAL GEOGRAPHIC SCHOOL PUBLISHING	GW- SUBSCRIPTION	11/16/2010	399.74
359968	INPRO CORP	EMS-HEALTH OFFICE REMODEL	11/9/2010	398.00
360359	PROFESSIONAL INTERPRETING	CONT SERV	11/23/2010	395.20
360406	ARTISTIC MOMENTS	CED-PROF SERV	11/30/2010	390.00
359982	ORANGE TREE EMPLOYMENT SCREENING	PROF SERV	11/9/2010	386.00
359896	NOVAK, JANICE	PROF SERV	11/4/2010	380.00
360212	SIGN PRODUCERS, INC.	SIGNS-WMS	11/16/2010	375.00
360227	TEAM SPORTING GOODS, INC	ATH-TIMER	11/16/2010	360.59
359839	WASHINGTON HIGH SCHOOL	HS-DEBATE	11/2/2010	360.00
359818	QUALITY BLENDING	HS-SUPPLIES	11/2/2010	359.60
359997	VIKING ELECTRIC SUPPLY, INC	SUPPLIES	11/9/2010	359.40
360423	HANLEY, DARCY	REIMBURSE	11/30/2010	357.25
360116	DUNN BROS COFFEE DBA ESPRESSO DUNN RIGHT	HS-COFFEE	11/16/2010	351.50
359796	LUTHY SANDBLASTING & PAINTING INC	REPAIR GOALS	11/2/2010	350.00
360011	EDUCATIONAL DESIGN, LLC	MEMBERSHIP	11/11/2010	345.00
359978	NASCO-FORT ATKINSON	HS-SUPPLIES	11/9/2010	338.47
360424	HENN CNTY INFO TECHNOLOGY	SERV-7 D20CES 10/10-12/10	11/30/2010	336.00
360351	NELSON, LEANNA	REIMBURSE	11/23/2010	335.19

360242	BETHKE, FREDERIK	HS-INSTRUMENT REPAIR	11/18/2010	333.82
359936	ARTISTIC MOMENTS	CED-PROF SERV	11/9/2010	330.00
360365	SHERWOOD, JAIME	REIMBURSE	11/23/2010	322.53
360331	GOPHER STATE ONE-CALL INC	SERVICE	11/23/2010	322.35
359935	ANDERSEN INC., EARL F.	SIGNS	11/9/2010	316.80
360053	STAPLES (FORMERLY CORP EXPRESS)	KL-FURN INSTALL	11/11/2010	307.44
359926	WESTONKA ELECTRIC	CMS-HEAD END RM	11/4/2010	305.00
360159	INTERQUEST DETECTION CANINES OF MN	HALF DAY SERVICE 10/20	11/16/2010	303.00
360380	WAGNER, MICHELLE	TECH-PROF SERV	11/23/2010	300.00
359822	SCIENCE EXPLORERS	CED-GW 10/10	11/2/2010	297.00
359775	BARR, JANELLE	REIMBURSE	11/2/2010	293.46
360372	THREE RIVERS PARK DISTRICT	SH-GR 4 FIELD TRIP	11/23/2010	291.00
360371	SWENSON, AMY	REIMBURSE	11/23/2010	286.70
360441	MORTENSON, SALLY K	CED-PROF SERV	11/30/2010	285.00
360171	MATEJCEK, TERRIANN	CED-PROF SERV	11/16/2010	280.00
360263	KIDCREATE STUDIO	TOY FACTORY 11/10 BV	11/18/2010	280.00
360421	DOOLEY, CHERYL	SPEAKER HONORARIUM	11/30/2010	280.00
360368	SOHONI, ANEESH	REIMBURSE	11/23/2010	278.45
359771	EXCEL IMAGES	SH-CLASS T-SHIRTS	11/2/2010	277.55
360228	TESSMAN SEED CO	DIST-SUPPLIES	11/16/2010	276.00
360080	MN DEPT OF REVENUE	PAYROLL ACCRUAL	11/15/2010	275.00
360396	MN DEPT OF REVENUE	PAYROLL ACCRUAL	11/30/2010	275.00
359938	ATHLETICA/SPORT SYSTEMS UNLIMITED	SUPPLIES	11/9/2010	273.50
359855	CTR APPLIED RESEARCH MUSICAL UNDERSTANDNG	BOOKS-STUDY GROUP	11/4/2010	273.00
360231	TSBL DISTRIBUTING/TAYLOR SALES	GROCERIES-CUST#300030	11/16/2010	270.00
360285	SCHAEFBAUER, RODGER	REIMBURSE	11/18/2010	265.05
360293	UNITED HARDWARE DISTRIBUTING CO	SUPPLIES BEAD CREW	11/18/2010	263.70
359868	HRICKO, SANDRA	REIMBURSE	11/4/2010	263.36
360337	ICOPINI, NANCY	REIMBURSE	11/23/2010	261.75
360405	ALTMAYER, ROXANNE	CED-PROF SERV	11/30/2010	261.00
360008	BUSHNELL SR, MICHAEL	REIMBURSE	11/11/2010	260.50
360344	LOW VOLTAGE CONTRACTORS	HS-FIRE ALARM REPAIR MDE#51388	11/23/2010	260.00
360312	BULLIS INSURANCE AGENCY LLC	CICC-GEN LIAB POL#CAP5160102	11/23/2010	257.00
359863	GASCH, BOB	SH-PLY HIST SOC-STORY TELLING 2 DAYS	11/4/2010	250.00
360217	STATE NEGOTIATORS	ANNUAL DUES	11/16/2010	250.00
360040	NEFF COMPANY	ATH-PINS, ETC	11/11/2010	249.08
360273	MN ASSN OF SPECIAL EDUCATORS (MASE)	CONFERENCE	11/18/2010	249.00
360122	FERGUSON ENTERPRISES, INC #1657	PC-SUPPLIES	11/16/2010	246.82
360007	BROWN, JULIA	REIMBURSE	11/11/2010	240.00
359834	TRIARCO	PC SUPPLIES	11/2/2010	235.76
360442	MOTOROLA	RADIO REPAIR	11/30/2010	234.00
359814	PEARSON, KATHARINE	REIMBURSE	11/2/2010	230.51
359807	NEAL SLATE CO, W E	HS-SP ED REMODEL	11/2/2010	230.40
360262	ISD #284	HS-TRANSFER TO ACTIVITY FUNDS	11/18/2010	230.00
360162	LARSON CO, J. H.	BV-LIGHTING	11/16/2010	229.30
360176	MIDWEST AUDIO VISUAL	CUL EXP-REPAIR	11/16/2010	229.00
360355	PEG'S COUNTRYSIDE CATERING	GL-STAFF BREAKFAST	11/23/2010	227.50
359852	ASSN FOR SUPERVISION & CURR. DEV.	EMS-MEMBERSHIP 10-11	11/4/2010	219.00
360407	ASSN FOR SUPERVISION & CURR. DEV.(ASCD)	MEMBERSHIP	11/30/2010	219.00
360390	GENE KELLY TRUST ACCOUNT	PAYROLL ACCRUAL	11/30/2010	216.20
359811	NOYED, ROBERT	REIMBURSE	11/2/2010	215.80
360243	BUREAU OF EDUCATION & RESEARCH	SEMINAR	11/18/2010	215.00
360016	GIBSON, JANE	REIMBURSE	11/11/2010	214.50
359908	ROGERS, JUDY	REIMBURSE	11/4/2010	209.38
359878	LETTERMEN SPORTS	ATH-GOLF PATCH	11/4/2010	206.50
360214	SOMMERFELD, TIMOTHY	REIMBURSE	11/16/2010	205.00
360448	PERRON, NANCY	REIMBURSE	11/30/2010	201.25
360383	WHEELER, SALLY	REIMBURSE	11/23/2010	200.30
359998	WEST SIDE REDI MIX, INC	CMS-CEMENT-LOT IMP-X WALK SIGN	11/9/2010	200.00
360204	RICHARDSON, JAN	SH-GUIDED READING BOOKS	11/16/2010	200.00
360155	HOWARD, KATHRYN	SUPPLIES	11/16/2010	199.89
360288	STAFF DEVELOPMENT FOR EDUCATOR	WORKSHOP	11/18/2010	199.00
359871	JOHNSON, SALLY	REIMBURSE	11/4/2010	196.50
360435	LITTEKEN, ROSA	REIMBURSE	11/30/2010	194.96
360384	ZEMLIN, LYNN	REIMBURSE	11/23/2010	194.19
359769	ENDSLEY, WILL	SERVICE	11/2/2010	194.00
360275	MN SWIM COACHES ASSN	ATH-G SWIM AWARD FEE	11/18/2010	190.00
360458	TREWICK, MICHAEL	REIMBURSE	11/30/2010	188.75
359780	HIGHWAY 55 RENTAL & SALES INC	GL-STUMP GRINDER	11/2/2010	186.10
360205	RIVERPORT INS CO	POL#PSP0102200 FORD INS	11/16/2010	186.00

359859	ENVIROMENTAL PROPERTY AUDIT, INC	GW-ASBESTOS REMOVAL	11/4/2010	185.00
359902	POSTMASTER	PERMIT FEE RENEWAL	11/4/2010	185.00
359816	PHILLIPS, WADE	REIMBURSE	11/2/2010	184.40
359865	GRISMER, SYLVIA	REIMBURSE	11/4/2010	183.60
359832	TARGET COMMERCIAL INTERIORS	OW-CAFE REPAIRS	11/2/2010	182.00
360021	HERC-U-LIFT, INC	CMS-PROTECTION EQUIPMENT	11/11/2010	182.00
360310	BORDWELL, DANIEL	REIMBURSE	11/23/2010	181.92
360350	MP NEXLEVEL LLC	SERVICE	11/23/2010	181.55
360013	GALE, CHRISTA	REIMBURSE	11/11/2010	180.35
360036	MN STATE HIGH SCHOOL LEAGUE	ATH-FB CERTIFICATES	11/11/2010	180.00
360363	RUDELL BEACH, SARAH	REIMBURSE	11/23/2010	178.83
359925	WEST, DEBORAH	REIMBURSE	11/4/2010	177.35
359826	SPIRITWEAR USA	CED-SUMMER YOUTH T-SHIRTS	11/2/2010	174.10
360023	JAHN, ERIC	REIMBURSE	11/11/2010	172.77
359845	WILLAR, DAWN	REIMBURSE	11/2/2010	170.74
360269	MATH MASTERS OF MN	MATH CHALLENGE COMPETITION	11/18/2010	170.00
360283	RAMIREZ, MELISSA	REIMBURSE	11/18/2010	169.32
360096	BUCHMAN, SANDRA	REIMBURSE	11/16/2010	164.60
359930	ACE SUPPLY CO, INC	EMS-OFFICE REMODEL	11/9/2010	162.17
360373	TIBESAR, NICHOLAS	REIMBURSE	11/23/2010	160.48
359875	LARSON, SARA	REIMBURSE	11/4/2010	160.25
360291	TRANS-MISSISSIPPI BIOLOGICAL	SCIENCE CENTER SUPPLIES	11/18/2010	160.18
360045	RAINBOW PARTY ARTS	GWHB-FACE PAINTING	11/11/2010	160.00
360110	CULLIGAN - METRO	HS-SERV-SOFTENER	11/16/2010	160.00
360367	SOCIETY FOR HUMAN RESOURCE MGMT	MEMBERSHIP	11/23/2010	160.00
360443	NEIL, KAREN	REIMBURSE	11/30/2010	158.25
359849	1ST LINE/LEEWES VENTURES LLC	EMS-POPCORN	11/4/2010	155.00
360198	R & R SPECIALTIES, INC.	ARENA-SUPPLIES	11/16/2010	153.80
360408	BEHRMAN, JANE	REIMBURSE	11/30/2010	151.24
359763	DEEP ROCK WATER CO	BOTTLE WATER & SERVICE	11/2/2010	150.69
360238	AIRPORT TAXI, INC	TRANSPORTATION	11/18/2010	150.60
360168	LOVISOLO, ELIZABETH	SUPPLIES & STAMPS	11/16/2010	150.07
360032	MN 9TH GR. WRESTLING LEAGUE	HS-ENTRY FEE	11/11/2010	150.00
360271	MERZER, SHEILA	CONT SERV	11/18/2010	150.00
360348	MERZER, SHEILA	CONT SERV	11/23/2010	150.00
360141	FOLLETT SOFTWARE CO	MEDIA SUPPLIES	11/16/2010	146.08
360259	HARRIS, PATRICIA	REIMBURSE	11/18/2010	145.85
359804	MITSCH, BONNIE	REIMBURSE	11/2/2010	145.00
360209	SARA LEE BAKERY GROUP/EARTHGRAINS	BREADS	11/16/2010	143.80
359945	DEMARAIS, LYNN	SUPPLIES	11/9/2010	143.51
359966	IMPACT MAILING	MAILING LIST	11/9/2010	142.97
360114	DOUGHTY, ROSANNE	REIMBURSE	11/16/2010	142.58
359817	PLATT, SALLY	REIMBURSE	11/2/2010	140.00
360298	VOLLENDORF, AMY	REIMBURSE	11/18/2010	137.83
359965	ICE, KRISTA	REIMBURSE	11/9/2010	137.60
360026	KEMMETMUELLER PHOTOGRAPHY	ATH-PROF SERV	11/11/2010	137.50
360208	RUCHTI, JULIE	REIMBURSE	11/16/2010	136.43
359831	SULLIVAN'S UTILITY SERVICES, INC	HS-SERVICE	11/2/2010	135.00
360074	GENE KELLY TRUST ACCOUNT	PAYROLL ACCRUAL	11/15/2010	134.15
359907	RIES, CAROLE	REIMBURSE	11/4/2010	133.73
360160	KD & COMPANY	BV-LOT PROJECT	11/16/2010	133.48
360146	HART, ALLISON	REIMBURSE	11/16/2010	133.30
360018	GUNDERSON, JEANETTE	REIMBURSE	11/11/2010	132.90
359889	MILL CITY SIGN	HS-SIGN RENTAL	11/4/2010	130.00
360182	MN STRING & ORCHESTRA TEACHERS ASSN	CMS-7TH GR ORCHESTRA FESTIVAL	11/16/2010	130.00
360183	MN STRING & ORCHESTRA TEACHERS ASSN	CMS-8TH GR ORCHESTRA FESTIVAL	11/16/2010	130.00
359767	E.L.REINHARDT CO, INC	SUPPLIES	11/2/2010	129.21
360318	DEWITT, ROBERT	REIMBURSE	11/23/2010	129.01
360415	CHAPMAN, DON	OFFICIAL	11/30/2010	129.00
360438	MANNIN, MIKE	OFFICIAL	11/30/2010	129.00
359929	ZIMMERMANN, ANDREA	BEAD CREW	11/4/2010	127.35
359745	AUCHE, TARIQ	OFFICIAL	11/2/2010	127.00
359848	ZOUAD, BADREDDINE	OFFICIAL	11/2/2010	127.00
360033	MN DEPT OF COMMERCE	HEALTH PLAN CERT 10-11	11/11/2010	125.00
360029	MAX, BONNIE	REIMBURSE	11/11/2010	124.97
360260	HINNENKAMP, ADAM	REIMBURSE	11/18/2010	124.85
360412	BLEVINS, JENNIFER	REIMBURSE	11/30/2010	122.50
359858	ELITE SPORTSWEAR, L.P.	ATH-GYMNASTICS LEOTARD	11/4/2010	121.43
360200	RAWSKI, ANNETTE	REIMBURSE	11/16/2010	121.25
359784	JOHNSON, BONNIE	REIMBURSE	11/2/2010	121.20

359844	WIKMAN, JEAN	REIMBURSE	11/2/2010	120.95
360277	ONE MORE STORY, INC	OW-SUBSCRIPTION	11/18/2010	120.00
360334	HEICHERT, MICHAEL	OFFICIAL	11/23/2010	119.00
360316	COLE, CANDY	OFFICIAL	11/23/2010	118.00
360375	TOLLISON, KRISTIN	REIMBURSE	11/23/2010	114.43
360452	SCHOLASTIC CLASSROOM MAGAZINES	CMS-SUPPLIES	11/30/2010	114.11
359785	JOHNSON, PAMELA	REIMBURSE	11/2/2010	113.50
360077	IRS CENTER - UNITED STATES TREASURY	PAYROLL ACCRUAL	11/15/2010	112.50
360393	IRS CENTER - UNITED STATES TREASURY	PAYROLL ACCRUAL	11/30/2010	112.50
360329	GILDEMEISTER, BETH	REIMBURSE	11/23/2010	110.50
359789	KOVACS, KRISTIN	REIMBURSE	11/2/2010	109.82
360341	LABARGE, LACEY	REIMBURSE	11/23/2010	109.70
360253	FIRST STUDENT, INC	TRANSPORTATION	11/18/2010	109.30
360453	SKOGHEIM, DEBRA	REIMBURSE	11/30/2010	106.85
359995	TOLL GAS & WELDING SUPPLY	HVAC-SUPPLIES	11/9/2010	106.00
359756	COLEMAN, BETTY	REFUND	11/2/2010	105.00
360240	ARMSTRONG HIGH SCHOOL	ATHLETIC ENTRY FEE	11/18/2010	105.00
359837	VALENCOUR, ROSEMARIE	REIMBURSE	11/2/2010	104.97
360157	INGRAM LIBRARY SERVICES	BOOKS	11/16/2010	104.75
360246	DILLEY, JODI	REIMBURSE	11/18/2010	103.98
359934	ANDERSON, BRAD	REIMBURSE	11/9/2010	103.95
360163	LEARNING RESOURCES, INC	SH-MISC.	11/16/2010	103.92
360239	ALLINA HOSPITALS&CLINICS/OCCMED	HEALTH #70001383 9/30/10	11/18/2010	103.50
360413	BOCKSELL, ELAINE	REIMBURSE	11/30/2010	103.27
359940	COCA-COLA REFRESHMENTS	POP DELIVERY	11/9/2010	103.20
360083	NEW YORK LIFE	PAYROLL ACCRUAL	11/15/2010	102.25
360399	NEW YORK LIFE	PAYROLL ACCRUAL	11/30/2010	102.25
360015	CONNOY, RENAE	REIMBURSE	11/11/2010	102.15
360432	LEE, ANDREA	CED-PROF SERV	11/30/2010	102.00
360360	RINGATE, NICOLE	REIMBURSE	11/23/2010	101.23
360031	MISURACO, NICOLE	REIMBURSE	11/11/2010	101.06
360451	RUDOW, DAVID	REFUND	11/30/2010	100.70
360287	SOFTER WARE	CED-WEBLINK 10/10	11/18/2010	100.45
359983	PETERSON, JAMES	REIMBURSE	11/9/2010	100.40
360433	LELAND, TONI	REIMBURSE	11/30/2010	100.04
359850	ALLEGRA PRINT & IMAGING	ATH-G CC POSTERS	11/4/2010	100.00
360245	DEWITT, ROBERT	REIMBURSE	11/18/2010	100.00
360427	INTERMEDIATE DIST 287	FRIDAY FORUM-10/11	11/30/2010	100.00
359874	LABARGE, LACEY	REIMBURSE	11/4/2010	99.45
360460	WIER, COLLEEN	REIMBURSE	11/30/2010	98.85
359836	TUURA, LARRY	REIMBURSE	11/2/2010	98.10
360422	HACKLEY, HOLLY	REFUND	11/30/2010	98.00
359742	ANDERSON, MARY	REIMBURSE	11/2/2010	96.70
360002	ALL STRINGS ATTACHED	CMS-ORCH SUPPLIES	11/11/2010	95.60
360093	BODINE, DAVID	REIMBURSE	11/16/2010	95.40
359744	AOUCHE, NOURDDINE	OFFICIAL	11/2/2010	95.25
360177	MINNESOTA QUIZ BOWL ALLIANCE	ENTRY FEE	11/16/2010	95.00
360404	ALLINA HOSPITALS&CLINICS/OCCMED	HEALTH #70009265 10/31/10	11/30/2010	95.00
360121	ERS DIGITAL	GL-LIGHTS	11/16/2010	93.59
359881	LOFTON, GABRIEL	REIMBURSE	11/4/2010	93.32
360414	CCH INC	TAX GUIDE	11/30/2010	92.50
360434	LIDSKY, AMY	REIMBURSE	11/30/2010	90.73
360306	ANDERSON, PATRICIA	REIMBURSE	11/23/2010	90.51
360292	TURNQUIST, SARAH	REIMBURSE	11/18/2010	90.00
359895	NIELSEN, DAN	REIMBURSE	11/4/2010	89.97
360340	KEFFELER, KAREN	REIMBURSE	11/23/2010	88.60
359939	CITI-CARGO & STORAGE	DOME STORAGE	11/9/2010	87.00
360019	HANRAHAN, MARGARET	REIMBURSE	11/11/2010	86.76
360420	DEWITT, ROBERT	REIMBURSE	11/30/2010	85.92
359891	MN HISTORICAL SOCIETY	WORKSHOP	11/4/2010	85.00
360024	JOHNSON, JERI	REIMBURSE	11/11/2010	84.75
360286	SMITH, HAZEL	REIMBURSE	11/18/2010	84.13
360035	MN SCHOOL BOARDS ASSN - INSURANCE TRUST	DEDUCTIBLE BILLING STATEMENT	11/11/2010	82.72
359805	MURPHY, COLLEEN	REIMBURSE	11/2/2010	82.50
359743	ANDERSON, PETER	OFFICIAL	11/2/2010	81.00
359830	STEPHAN, THOMAS	OFFICIAL	11/2/2010	81.00
359947	DROUCHES, GEORGE	OFFICIAL	11/9/2010	81.00
359949	FRANTA, TOM	OFFICIAL	11/9/2010	81.00
359972	LARKIN, PETER	OFFICIAL	11/9/2010	81.00
359980	NICKLEBY, JASON	OFFICIAL	11/9/2010	81.00

359990	SPENCER, RICKY	OFFICIAL	11/9/2010	81.00
360267	MAKI, MARY	REIMBURSE	11/18/2010	80.00
360304	A & H SERVICES	RADIO ENGRAVING	11/23/2010	80.00
359820	SANDMEIER, HEIDI	REIMBURSE	11/2/2010	79.99
360270	MATTIOLI, VALERIE	REIMBURSE	11/18/2010	79.60
359890	MILLER, JANET	REIMBURSE	11/4/2010	78.45
359774	GALLAGHER, CYNTHIA	REIMBURSE	11/2/2010	77.68
360097	BUDKE, MEGAN	REIMBURSE	11/16/2010	77.41
360342	LIDSKY, AMY	SUPPLIES	11/23/2010	75.69
359900	PETERSON, LINDA	BEAD CREW	11/4/2010	75.60
360030	MERZ, IRENE	REIMBURSE	11/11/2010	75.15
359901	PLYMOUTH HISTORICAL SOCIETY	SH-GR 2 FIELD TRIP	11/4/2010	75.00
359984	PLYMOUTH HISTORICAL SOCIETY	OW-DONATION	11/9/2010	75.00
360339	IVERSON, SUE	GAS-ACTIVITY BUS	11/23/2010	74.87
360039	MYRIN, LESLIE	REIMBURSE	11/11/2010	74.16
360431	KUENDIG, WILLIAM III	REIMBURSE	11/30/2010	73.79
359914	SHELDON, TINA	REIMBURSE	11/4/2010	72.50
359770	ESS BROS. & SONS, INC	FOUND SUPPLIES	11/2/2010	71.61
359798	MARGET, DONNA	REIMBURSE	11/2/2010	70.24
360027	KESSLER, MARIANNA	REIMBURSE	11/11/2010	69.99
359867	HOME DEPOT/GEFC	HS-SUPPLIES	11/4/2010	68.78
359791	LANDY, JENNIFER	REIMBURSE	11/2/2010	68.50
359853	BERG, CARRIE	BEAD CREW	11/4/2010	68.40
360048	SCHRADER, DIANE	REIMBURSE	11/11/2010	68.05
360362	ROLSTAD, KELLI	OFFICIAL	11/23/2010	66.00
360017	GOSEN, CAROLINE	REIMBURSE	11/11/2010	65.92
359838	VIKING ELECTRIC SUPPLY, INC	SUPPLIES	11/2/2010	65.63
359952	HEMMAH, KATY	REIMBURSE	11/9/2010	65.55
359778	HARREN, KIMBERLY	REIMBURSE	11/2/2010	65.20
360012	FISCHER, PHYLLIS	REIMBURSE	11/11/2010	65.10
360309	BLOOM, PATRICIA	REIMBURSE	11/23/2010	65.00
359781	HILL CO, ROBERT B.	CMS-SALT	11/2/2010	63.40
359751	BOSE, THOMAS	OFFICIAL	11/2/2010	63.00
359765	DEMORRETT, JAMES	OFFICIAL	11/2/2010	63.00
359873	KEMMETMUELLER PHOTOGRAPHY	ATH-AD SOC POSTERS	11/4/2010	62.50
360255	GUSTAFSON, BRAD	REIMBURSE	11/18/2010	61.61
359877	LEE, ANDREA	CED-PROF SERV	11/4/2010	61.20
360091	BERGIN FRUIT AND NUT COMPANY	GROCERIES	11/16/2010	60.75
360025	KEIL, LINDSEY	REIMBURSE	11/11/2010	60.55
360444	PCS REVENUE CONTROL SYSTEMS, INC	TOUCH SCREEN PROJECT	11/30/2010	60.50
359809	NELSON, SHELLY	REIMBURSE	11/2/2010	60.30
359786	JONES, ADAM	OFFICIAL	11/2/2010	60.00
359824	SMITH, COREY	OFFICIAL	11/2/2010	60.00
359825	SORENSEN, MATT	OFFICIAL	11/2/2010	60.00
360241	AUTISM SOCIETY OF MN	CONFERENCE	11/18/2010	60.00
360440	MOFFETT, LAURA	REIMBURSE	11/30/2010	60.00
359909	RUNYON, NANCY	REIMBURSE	11/4/2010	59.90
359992	STEP SAVER INC	HS-SALT	11/9/2010	59.48
360089	ANDERSON, TERESA	REIMBURSE	11/16/2010	58.85
359754	BURDICK, CHERYL	REIMBURSE	11/2/2010	58.37
360051	SKALLAND, AMANDA	REIMBURSE	11/11/2010	58.25
359911	SCHWAB VOLLHABER LUBRATT INC	EMS-FIRE DAMPER PARTS	11/4/2010	58.00
359917	TAUER, DENISE	BEAD CREW	11/4/2010	56.70
359768	ECKROTH MUSIC	WMS-BAND SUPPLIES	11/2/2010	56.65
359973	LARSON CO, J. H.	CMS-LIGHTING	11/9/2010	55.69
360037	MN STATE HIGH SCHOOL LEAGUE	TEAM MEDALS	11/11/2010	55.00
359748	BECKMAN, CHRIS	OFFICIAL	11/2/2010	54.00
359800	MCKUSICK, JON	OFFICIAL	11/2/2010	54.00
359856	DEHN, SCOTT	OFFICIAL	11/4/2010	54.00
359912	SELEEN, KEITH	OFFICIAL	11/4/2010	54.00
359950	GERBER, STEVEN	OFFICIAL	11/9/2010	54.00
359975	MCKUSICK, JON	OFFICIAL	11/9/2010	54.00
360014	GERBER, STEVEN	OFFICIAL	11/11/2010	54.00
360063	WINCEK, JACQUELINE	OFFICIAL	11/11/2010	54.00
359792	LAROCHE, COURTNEY	REIMBURSE	11/2/2010	53.47
360332	HAERLE, SARAH	REIMBURSE	11/23/2010	53.26
359750	BLASKO, THEODORE	OFFICIAL	11/2/2010	52.00
360454	SMITH, CLAYTON	OFFICIAL	11/30/2010	52.00
360290	TOLLE, BONNIE	REIMBURSE	11/18/2010	50.80
359888	METRO ECSU-REGION 11 IDS #920	WORKSHOP	11/4/2010	50.00

359892	MN HISTORICAL SOCIETY	WORKSHOP	11/4/2010	50.00
360004	ANDERSON, PATTI	CED-PRESENTATION	11/11/2010	50.00
360034	MN MIDDLE SCHOOL ASSN	CONFERENCE REGISTRATION	11/11/2010	50.00
359790	LABODA, JANEL	REFUND	11/2/2010	49.00
360345	MARGET, DONNA	REIMBURSE	11/23/2010	48.57
360244	CHURNESSE, PAULETTE	REIMBURSE	11/18/2010	48.55
359953	HENN, PAULA	REIMBURSE	11/9/2010	47.74
360223	STINSON, MICHELE	REIMBURSE	11/16/2010	47.47
359862	FREDBERG, JANE	BEAD CREW	11/4/2010	47.25
360326	FRAWLEY, KAREN	SUPPLIES	11/23/2010	47.22
360041	NELSON, SHELLY	REIMBURSE	11/11/2010	45.63
360366	SHORT, ERIC	REIMBURSE	11/23/2010	45.09
360009	DESAULNIERS, LINDA	REIMBURSE	11/11/2010	45.00
360052	ST CYR, JUDITH	REIMBURSE	11/11/2010	43.99
360056	TOTMAN, GISELE	REIMBURSE	11/11/2010	43.15
360455	STANGLER, MICHELLE	REIMBURSE	11/30/2010	42.85
360203	RICE, MICHAEL	REIMBURSE	11/16/2010	42.65
360028	KOPECKY, KATHLEEN	REIMBURSE	11/11/2010	41.60
359808	NELSON, JERROD	TEAM TRAINING	11/2/2010	41.10
360376	TRAYNOR, JASON	REIMBURSE	11/23/2010	41.02
360361	ROBINSON, DIANE	REIMBURSE	11/23/2010	40.95
360047	ROSEMOUNT HIGH SCHOOL	HS-DEBATE 11/10	11/11/2010	40.00
359835	TURNQUIST, SARAH	REIMBURSE	11/2/2010	39.98
359787	KIPLINGER'S RETIREMENT REPORT	SUBSCRIPTION-1 YR	11/2/2010	39.95
360049	SCHUMACHER, MICHAEL	REIMBURSE	11/11/2010	39.92
360201	REEVE, JAMES	REIMBURSE	11/16/2010	39.22
360184	MYERS, SARAJANE	REFUND	11/16/2010	39.20
360315	CHRISTENSON, ERIK	REIMBURSE	11/23/2010	39.16
360236	WILLIAMS, CARRI	REIMBURSE	11/16/2010	39.00
360057	TRAYNOR, JASON	REIMBURSE	11/11/2010	38.64
360409	BERGREN, ELIZABETH	CED-PROF SERV	11/30/2010	38.00
359860	FALLS, DENISE	REIMBURSE	11/4/2010	37.95
360044	PADJEN, AMANDA	REIMBURSE	11/11/2010	37.15
360319	EUGENE, SAMARA	REIMBURSE	11/23/2010	37.04
360430	KOSKELA, SARA	REIMBURSE	11/30/2010	36.33
359847	WONG, MARGARET	REIMBURSE	11/2/2010	35.15
359749	BERNDT, AARON	REIMBURSE	11/2/2010	35.00
360179	MN DEPT OF HEALTH ENVIRONMT HEALTH DIV	FOOD MGR CERTIFICATION	11/16/2010	35.00
360274	MN STATE HIGH SCHOOL LEAGUE	ATH-HOCKEY RULE BKS	11/18/2010	35.00
360439	MN DEPT OF HEALTH ENVIRONMENTAL HEALTH DIV	SH HB-HOSPITALITY FEE	11/30/2010	35.00
359795	LIBBY, CHAD	REIMBURSE	11/2/2010	34.95
359876	LATTERELL, MARSHALL	REIMBURSE	11/4/2010	34.15
359954	HERRSCHER, JESSI	REIMBURSE	11/9/2010	33.96
360118	EAGLE MOULDINGS	KL-SUPPLIES	11/16/2010	33.52
360213	SIMON, KIERA	REFUND	11/16/2010	33.00
360449	PIERSON, REBECCA	REIMBURSE	11/30/2010	33.00
360386	ZYLLA, CASEY	REIMBURSE	11/23/2010	32.94
360054	STORTI, ALLISON	REIMBURSE	11/11/2010	32.70
359764	DEITERING, KATIE	REIMBURSE	11/2/2010	30.87
360174	MCFARLAND, MARGIE	REFUND	11/16/2010	30.60
360173	MCCOY, NANCY	SUPPLIES	11/16/2010	29.75
360305	AMERICAN MESSAGING	PAGER SERVICE	11/23/2010	29.67
360210	SCHMIDT, DONALD	REFUND	11/16/2010	29.00
360119	ECOLAB EQUIPMENT CARE	MS-SUPPLIES	11/16/2010	28.96
359823	SHIFFLER EQUIPMENT SALES, INC	KL-FLAGS	11/2/2010	28.11
359829	STENDAL, STEPHANIE	REIMBURSE	11/2/2010	28.00
359777	HALVORSON, REBECCA	REIMBURSE	11/2/2010	27.49
360156	HUBERT CO	SUPPLIES	11/16/2010	27.44
360330	GITCH, MARK	REIMBURSE	11/23/2010	26.75
360055	TORDEUR, SCOTT	REIMBURSE	11/11/2010	25.31
359918	TELFORD, GABRIELLE	BEAD CREW	11/4/2010	25.20
359870	ISD #112 - CHASKA SCHOOLS	WORKSHOP	11/4/2010	25.00
359782	INGWALDSON, LAUREN	REIMBURSE	11/2/2010	24.99
360364	SEHLIN-GONEAU, BRENDA	REIMBURSE	11/23/2010	23.95
359967	INGWALDSON, LAUREN	REIMBURSE	11/9/2010	23.87
359933	AMERICAN MESSAGING	MESSAGING SERVICE	11/9/2010	23.29
360098	CAMPBELL, OLGA	REIMBURSE	11/16/2010	23.20
360215	SOULE, BETTY	REFUND	11/16/2010	22.90
360094	BRENNAN, M.	REFUND 25	11/16/2010	21.60
360151	HILL, KATHRYN	REIMBURSE	11/16/2010	21.21

**WAYZATA PUBLIC SCHOOLS
WIRE TRANSFER,EFT AND ACH ACTIVITY
OCTOBER 2010**

FROM	TO	DATE	AMOUNT
Wells Fargo-Checking	Wells Fargo-Payroll	Multiple	\$4,120,893
Wells Fargo-Checking	Federal P/R Taxes	10/1/2010	\$675,171
	Federal P/R Taxes	10/18/2010	\$705,644
Wells Fargo-Checking	State P/R Taxes (MN)	10/1/2010	\$111,639
	State P/R Taxes (MN)	10/18/2010	\$116,448
Wells Fargo-Checking	Delta Dental - Dental Claims	Multiple	\$57,761
Wells Fargo-Checking	Preferred One - Health Claims	Multiple	\$800,859
Wells Fargo-Checking	Wells Fargo Commercial Card - Purchase Card Program	10/4/2010	\$641,557
Wells Fargo-Checking	Corporate Health Systems - Flex Benefits	Multiple	\$87,354
Wells Fargo-Checking	Preferred One - Broker/Reinsurance Fees	10/14/2010	\$74,884
Wells Fargo-Checking	MN Department of Revenue - Sales & Use Tax Payment	10/21/2010	\$3,019
Wells Fargo-Checking	Neopost - Replenish Postage Meter	10/28/2010	\$10,000
Wells Fargo-Checking	MN State Retirement System - 457 Plan/HSA Contributions	Multiple	\$6,209
MN Trust/PMA	Wells Fargo-Checking - Investment/Operating Funds	Multiple	\$10,000,000
State of Minnesota	PMA/MN Trust - State Aid Payments	Multiple	\$9,391,153
MSDLAF	Wells Fargo-Checking - Investment/Operating Funds	10/1/2010	\$1,000,000
District Retirees	Wells Fargo-Checking - Health Insurance Premiums	10/27/2010	\$39,381
TOTAL ACTIVITY - OCTOBER 2010			<u>\$27,841,972</u>

WAYZATA PUBLIC SCHOOLS
Independent School District 284
Wayzata, Minnesota

BOARD OF EDUCATION

Regular Meeting – December 13, 2010

AGENDA SECTION: 2. APPROVAL OF AGENDA AND CONSENT AGENDA ITEMS

ITEM: D. Human Resource Recommendations

COMMENTS BY: Ms. Annie Doughty

Employment

Amy Daley 3 Hour Special Ed Paraprofessional Oakwood
New Position

Aaron Davis 3 Hour Special Ed Paraprofessional Central Middle
Non-Renew

Jennifer Huwe Technology Manager – Support & Central Middle
New Position Information Systems

Camry Monson 1.0 Reading Recovery/Literacy Teacher Kimberly Lane
Leave of Absence

Cynthia Moy 3 Hour Special Ed Paraprofessional Oakwood
New Position

Tiffany Seamans 5 Hour Paraprofessional Plymouth Creek
Resignation – Nancy H. Anderson

Contract Modification

Allison Hart Transfer to West Middle, Vocal Music From .625 to 1.0
2010-2011 only

Beth van Orsow 1st Grade, Sunset Hill (.5 LTR) From .5 to 1.0
Leave of Absence – Elizabeth Denn

Disability/Child Care Leave of Absence

Sara Gammack, 1st Grade Teacher at Birchview Elementary School, has requested a childcare leave of absence for the birth of her baby which is due April 18, 2011. She is requesting a disability leave followed by a childcare leave of absence through the end of the 2010-2011 school year.

Mary-Rose Granlund, Social Worker at Central Middle School, has requested a childcare leave of absence for the birth of her baby which is due May 11, 2011. She is requesting a

disability leave followed by a childcare leave of absence through the end of the 2010-2011 school year.

Human Resource Services Recommendations
December 13, 2010 – Regular Meeting
Page 2

Kathryn Howard, Kindergarten Teacher at Sunset Hill Elementary School, has requested a childcare leave of absence for the birth of her baby which is due April 11, 2011. She is requesting a disability leave followed by a childcare leave of absence through the end of the 2010-2011 school year.

Candice Ledman, High School ALC Teacher, has requested a childcare leave of absence for the birth of her baby which is due June 4, 2011. She is requesting a disability leave followed by a childcare leave of absence through the end of the 2010-2011 school year. She is also requesting a leave of absence from August 29 through November 11, 2011.

Genelle Weinbrenner, 3rd Grade Teacher at Greenwood Elementary School, has requested a childcare leave of absence for the birth of her baby which is due May 2, 2011. She is requesting a disability leave followed by a childcare leave of absence through the end of the 2010-2011 school year.

Leave of Absence Without Pay

Sheryl Butler, Special Ed Paraprofessional at Central Middle School, has requested a leave of absence without pay from January 3, 2011 through the end of the 2010-2011 school year.

Marc Prepeluh, Physical Education Teacher at Birchview and Gleason Lake Elementary Schools, has requested a leave of absence from February 14-18, 2011. He will use two personal days and three days without pay.

Retirement

Steve Gustafson, Technology Specialist at Kimberly Lane Elementary School, has announced his retirement effective June 10, 2011. Mr. Gustafson has been employed by the District since 1988.

Bonnie Max, Culinary Express at Wayzata High School, has announced her retirement effective December 31, 2010. Ms. Max has been employed by the District since 1984.

Resignation

Nancy H. Anderson, Paraprofessional at Plymouth Creek, has submitted her resignation effective December 3, 2010.

Dan Daly, Counselor at Central Middle School, has submitted his resignation effective January 7, 2011.

Stacy Klage, Paraprofessional at Greenwood, has submitted her resignation effective December 22, 2010.

RECOMMENDED ACTION: Approve the Human Resource Actions as recommended.

Motion by: _____ Yes _____ Passed _____

Second by: _____ No _____ Failed _____

Abstentions ³⁰ _____

WAYZATA PUBLIC SCHOOLS
Independent School District 284
Wayzata, Minnesota

BOARD OF EDUCATION

Regular Meeting – December 13, 2010

AGENDA SECTION: 2. APPROVAL OF AGENDA AND CONSENT AGENDA ITEMS

ITEM: E. OPEB Trust Investment Policy Statement

COMMENTS BY: Mr. Westrum

The District established an Other Post-Employment Benefit (OPEB) Trust and appointed an OPEB Custodian, a Trustee and a Financial Investment Advisor at its May 11, 2009 school board meeting. The School Board also established a trust oversight committee and approved an Investment Policy Statement to fulfill its fiduciary responsibilities in regards to the management and safeguarding of OPEB Trust assets.

In conjunction with the annual review of the OPEB trust, the OPEB Trust Oversight Committee completed its review and subsequent adoption of best practices in trust oversight and management as described in the publication, "Prudent Practices for Investment Stewards and Investment Advisors."

Within this publication, best practices advise a fiduciary to annually review its Investment Policy Statement and amend it as necessary. The attached Investment Policy Statement (IPS) is submitted for consideration and approval by the School Board. This IPS has been modified to include additional guidance and practices as recommended by the committee.

RECOMMENDED ACTION: Approve the attached INVESTMENT POLICY STATEMENT FOR INDEPENDENT SCHOOL DISTRICT 284 OTHER POST EMPLOYMENT BENEFITS (OPEB) TRUST, dated November 15, 2010.OPEB Trust Policy Statement.

Motion by: _____ Yes _____ Passed _____

Second by: _____ No _____ Failed _____

Abstentions _____

INVESTMENT POLICY STATEMENT

FOR

INDEPENDENT SCHOOL DISTRICT 284

OTHER POST EMPLOYMENT BENEFITS (OPEB) TRUST

TABLE OF CONTENTS

SECTION PAGE

Background	3
Scope	3
Purpose.....	3
Investment Authority.....	4
Statement of Investment Objectives	5
Investment Guidelines	6
Time Horizon Liquidity and Diversification Asset Allocation Rebalancing Philosophy Risk Tolerance Performance Expectations.....	7
Selection of Investment Managers	8
Guidelines for Portfolio Holdings	9
Pooled Vehicles Cash Equivalents Equities Fixed Income REITs Inflation Hedge Prohibited Securities Safekeeping.....	10
Control Procedures	11
Review of Investment Objectives Review of Investment Performance Voting of Proxies.....	11
Adoption of Investment Policy Statement	12

Background

The Independent School District 284 (the "District") has established the Independent School District 284 Other Post-Employment Benefits Trust (the "Trust"). The Trust is intended to provide for funding of non-pension post-employment benefits ("OPEB") for employees who meet the age and service requirements outlined in the District's plan documents. The main investment objective of the Trust is to achieve long-term growth of Trust assets by maximizing long-term rate of return on investments and minimizing risk of loss to fulfill the District's current and long-term OPEB obligations.

Scope

This Investment Policy Statement (the "Policy") reflects investment policy, objectives and constraints of the Trust.

Purpose

The purpose of the Policy is to state in a written document the overall investment objectives of the Trust, the methodology for choosing and overseeing the investments, and the evaluation measures used to evaluate the Trust's investments. The Trust's investment program is defined in the Policy to achieve the following:

1. Establish an OPEB Oversight Committee (the "Trust Committee") appointed by the governing body ("School Board") of District to oversee certain policies and procedures related to the operation and administration of the Trust.
2. Document investment objectives, performance expectations and investment guidelines for Trust assets.
3. Establish an appropriate investment strategy for managing all Trust assets, including an investment time horizon, risk tolerance ranges and asset allocation to provide sufficient diversification and overall return over the long-term time horizon of the Trust.
4. Establish investment guidelines to control overall risk and liquidity.
5. Establish formalized periodic performance reporting requirements that will effectively monitor investment results and ensure that the investment policy is being followed.
6. Demonstrate that the Trust Committee is fulfilling its fiduciary responsibilities in the management of the investments of the Trust solely in the interests of participants and beneficiaries of the Trust.
7. Comply with all fiduciary, prudence, due diligence and legal requirements for Trust assets.
8. Conform to best practices of peers and as indicated in leading policy standards recommended by the Uniform Management of Public Employee Retirement Systems Act (MPERS), the Uniform Prudent Investor Act (UPIA), and the Employee Retirement Income Securities Act (ERISA).

This Policy has been prepared after consideration by the School Board and Trust Committee of the financial implications of a wide range of policies, and describes the prudent investment process that the School Board and Trust Committee deems appropriate. This Policy is intended to be dynamic in nature and will be amended or revised periodically as needed.

Investment Authority

The School Board has appointed the Trust Committee to oversee certain policies and procedures related to the operation and administration of the Trust. The ten member Trust Committee is comprised of three school board members of the District, the Superintendent, the Executive Director of Finance and Business, two members of the District's business office, one member of the Wayzata Education Association, and two members of the District's Citizen Financial Advisory Council. These Trust Committee members shall be required to understand the fiduciary duties and responsibilities associated with their appointment.

As fiduciaries under the Trust, the primary responsibilities of the members of the Trust Committee are to:

1. Prepare and maintain this Investment Policy Statement.
2. Ensure prudent diversification of the portfolio's assets to meet an agreed upon risk/return profile.
3. Ensure prudently selection investment options.
4. Control and account for all investment, record keeping and administrative expenses associated with the Trust.
5. Monitor and supervise all service vendors and investment options.
6. Comply with By-Laws and Operating Procedures for the OPEB Oversight Committee.
7. Periodically consider the underlying OPEB liability and the relevance of the investment program objectives to funding the current and future liability.
8. Avoid prohibited transactions and conflicts of interest.

The Trust Committee will have authority to implement the investment policy and guidelines in the best interest of the Trust to best satisfy the purposes of the Trust. In implementing the Policy, the Trust Committee believes it may delegate certain functions to:

1. An investment advisor to assist the Trust Committee in the investment process and to maintain compliance with the Policy. The investment advisor may assist in establishing investment policy, objectives, and guidelines; selecting investment managers; reviewing such managers over time; measuring and evaluating investment performance; and other tasks as deemed appropriate. The investment advisor may also select investment managers with discretion to purchase, sell, or hold specific securities that will be used to meet the Trust's investment objectives. The investment advisor must be registered with the Securities and Exchange Commission.
2. A custodian to physically maintain possession of securities owned by the Trust, collect dividend and interest payments, redeem maturing securities, and effect receipt and delivery following purchases and sales, among other duties. The custodian may also perform regular accounting of all assets owned, purchased, or sold, as well as movement of assets into and out of the Trust.
3. A trustee, such as a bank trust department to be trustee, to assume fiduciary responsibility for the administration of Trust assets.
4. Additional specialists such as attorneys, auditors, actuaries, retirement plan consultants, and others to assist the Trust Committee in meeting its responsibilities and obligations to administer Trust assets prudently.

Appendix A provides By-Laws and Operating Procedures for the OPEB Oversight Committee.

Statement of Investment Objectives

The investment objectives of the Trust are as follows:

1. To invest assets of the Trust in a manner consistent with the following fiduciary standards:
 - (a) all transactions undertaken must be for the sole interest of Trust beneficiaries and defray reasonable expenses in a prudent manner, and
 - (b) assets are to be diversified in order to minimize the impact of large losses from individual investments.
2. To provide for funding and anticipated withdrawals on a continuing basis for payment of OPEB benefits and related expenses.
3. To conserve and enhance the value of Trust assets in real terms through asset appreciation and income generation, while maintaining a moderate investment risk profile.
4. To minimize principal fluctuations over the Time Horizon (as defined below).
5. To achieve a long-term level of return commensurate with contemporary economic conditions and equal to or exceeding the investment objective set forth in the Policy under the section labeled "Performance Expectations".

Investment Guidelines

Time Horizon

The Trust's investment objectives are based on a 15-year investment horizon. Interim fluctuations should be viewed with appropriate perspective. The Trust Committee has adopted a long-term investment horizon such that the chances and duration of investment losses are carefully weighed against the long-term potential for appreciation of assets.

Liquidity and Diversification

In general, the Trust will hold up to six months of protected liquidity needs for Trust expenses in cash. The protected liquidity needs assets will always be held exclusively in cash equivalent investments. The remaining assets will be invested in longer-term securities. Investments shall be diversified with the intent to minimize the risk of investment losses. Consequently, the total portfolio will be constructed and maintained to provide prudent diversification with regard to the concentration of holdings in individual issues, issuers, countries, governments or industries.

Asset Allocation

The Trust Committee believes that to achieve the greatest likelihood of meeting the Trust's investment objectives and the best balance between risk and return for optimal diversification, the Trust should allocate assets into two broad classes called Investment Assets and Liquidity Assets. The Investment Assets will be invested in accordance with the targets for each asset class as follows to achieve an average total annual rate of return that is equal to or greater than the Trust's actuarial discount rate as described in the section titled "Performance Expectations". The Liquidity Assets will be held in cash equivalent investments and used to pay for benefits and Trust expenses.

<u>Investment Assets</u>			
<u>Asset Classes</u>		<u>Asset Weightings</u>	
		<u>Range</u>	<u>Target</u>
	Domestic Equity	23% -43%	33%
	International Equity	11%-31%	21%
	REITs	0% -10%	6%
	Inflation Hedge	0% -10%	0%
	Fixed Income	25% -65%	40%
	Cash Equivalent	0% -50%	0% (See note below)
<u>Liquidity Assets</u>			
<u>Asset Classes</u>		<u>Asset Weightings</u>	
		<u>Range</u>	<u>Target</u>
	Cash Equivalent	0-100%	100%

The investment managers shall have discretion to temporarily invest a portion of the assets in cash equivalents when they deem it appropriate. The managers will be evaluated against their peers on the performance of the total funds under their direct management.

Rebalancing Philosophy

The asset allocation range established by the Policy represents a long-term perspective. As such, rapid unanticipated market shifts or changes in economic conditions may cause the asset mix to fall outside the Policy ranges. When these divergences occur, the investment advisor will rebalance the asset mix to its appropriate targets and ranges. Similarly, if the cash requirement to handle liquidity needs falls to a level where near-term distributions (over the following six months or less) cannot be met and no contributions are anticipated, the investment advisor will rebalance the fund to its appropriate targets and ranges.

When the investment advisor is notified of new contributions, the investment advisor will review the Trust allocation and fill the liquidity allocation first and the remaining investment allocations last.

Risk Tolerance

The Trust will be managed in a style that seeks to minimize principal fluctuations over the established Time Horizon and that is consistent with the Trust's investment objectives.

Performance Expectations

Over the long-term, a rolling five year period, the performance objective for Trust assets will be to achieve an average total annual rate of return that is appropriate for the asset allocation strategy as stated in the Asset Guidelines included in this investment policy statement, currently expected at 6-7% annual return. Additionally, it is expected that the annual rate of return on Trust assets will be commensurate with the then prevailing investment environment. Measurement of this return expectation will be judged by reviewing returns in the context of industry standard benchmarks, peer universe comparisons for individual Trust investments and blended benchmark comparisons for the Trust in its entirety.

Selection of Investment Managers

The investment advisor shall prudently select appropriate investment managers to manage the assets of the Trust. Managers must meet the following criteria:

- The investment manager must be a bank, insurance company, or investment adviser as defined by the Investment Advisers Act of 1940.
- With respect to Trust assets invested in a mutual fund, the Manager must provide historical quarterly performance data for the mutual fund compliant with Securities Exchange Commission ("SEC") and National Association of Securities Dealers ("NASD") standards.
- The investment manager must provide historical quarterly performance data compliant with Global Investment Performance Standards (GIPS®), calculated on a time-weighted basis, based on a composite of all fully discretionary accounts of similar investment style and reported net of fees.
- The investment manager must provide detailed information on history of the firm, key personnel, support personnel, key clients, and fee schedule (including most favored nation clauses). This information can be a copy of a recent Request for Proposal (RFP) completed by the manager.
- The investment manager must clearly articulate the investment strategy that will be followed and document that the strategy has been successfully adhered to over time.
- The investment manager for portfolios other than Pooled Vehicles (see Guidelines for Portfolio Holdings) must confirm that it has received, understands and will adhere to the policy and any manager specific policies by signing a consent form provided to the investment manager prior to investment of Trust assets.

Guidelines for Portfolio Holdings

The investment advisor shall make every effort to prudently select funds that follow the guidelines listed below.

Pooled Vehicles

Every effort shall be made, to the extent practical, prudent and appropriate, to select commingled funds and/or mutual funds that have investment objectives and policies that are consistent with the Policy (as outlined in following sub-sections of the "Guidelines for Portfolio Holdings"). However, given the nature of commingled funds and mutual funds, it is recognized that there may be deviations between the Policy and the objectives of these pooled vehicles. A commingled fund or mutual fund will not be included in Trust portfolio unless it complies with the Investment Company Act of 1940's diversification requirement.

Cash Equivalents

Cash equivalents shall be held in funds complying with Rule 2(a)-7 of the Investment Company Act of 1940.

Equities

Pooled equity vehicles shall comply with the diversification rules outlined in the Investment Company Act of 1940. No more than 5% of the total stock portfolio valued at market may be invested in the common stock of anyone corporation. Ownership of the shares of one company shall not exceed 2% of those outstanding. Not more than 25% of stock valued at market may be held in anyone industry category. Other than these constraints, there are no quantitative guidelines suggested as to issues, industry or individual security diversification. However, prudent diversification standards should be developed and maintained by the investment manager(s).

The overall non-U.S. equity allocation should include a diverse global mix that is comprised of the stocks of companies from multiple regions and sectors. The emerging markets exposure as defined by Morgan Stanley Capital International Inc. ("MSCI") should be limited to 35% of the non-U.S. portion of the portfolio.

In order to maintain an effective money management structure that is style neutral, the target growth to value allocation in all market capitalizations is one-to-one. However, in no case will the growth to value allocation for market capitalizations exceed two-to-one. Conversely, value shall not exceed growth by the same ratio.

Fixed Income

Fixed income investments shall be high quality pooled vehicles with a preponderance of the investments in (1) U.S. Treasury, federal agencies and U.S. Government guaranteed obligations, and (2) investment grade corporate issues including convertibles.

Fixed income securities of anyone issuer shall not exceed 5% of the total bond portfolio at time of purchase. The 5% limitation does not apply to issues of the U.S. Treasury or other Federal Agencies. The overall rating of the fixed income assets shall be at least "A", based on the rating of one of the three rating agencies (Fitch, Moody's or Standard & Poor's). In cases where the yield spread adequately compensates for additional risk, securities where two of the three rating agencies (Fitch, Moody's or Standard & Poor's) have average BB-ratings, can be purchased up to a maximum of 10% of total market value of fixed income securities.

Active bond management is encouraged and may require transactions that will temporarily lower the return or change the maturity of the portfolio in anticipation of market changes.

REITs

Real estate assets will be held in pooled vehicles, primarily holding Real Estate Investment Trusts and Servicing companies.

Inflation Hedge

Inflation hedging assets will include pooled vehicles holding among other assets: Treasury Inflation Protected Securities ("TIPS"), commodities or commodity contracts, index-linked derivative contracts, the equity of companies in businesses thought to hedge inflation.

Prohibited Investments

The following investments and transactions are not authorized and shall not be purchased: letter stock and other unregistered securities, direct commodities or commodity contracts, short sales, margin transactions, private placements (with the exception of Rule 144A securities), venture capital funds, private equity, or hedge funds. Derivatives, options or futures for the purpose of portfolio leveraging are prohibited. Neither direct real estate equity nor natural resource properties such as oil, gas or timber may be held except by purchase of publicly traded securities or within Pooled Vehicles, except for existing real estate holdings. The purchase of collectibles is also prohibited.

Safekeeping

All securities shall be held by a custodian approved by the District and in consultation with the investment advisor for safekeeping of Trust assets. The custodian shall produce statements on a monthly basis, listing the name and value of all assets held, and the dates and nature of all transactions in accordance with the terms in the Trust Agreement. Assets of the Trust held as liquidity or investment reserves shall, at all times, be invested in interest-bearing accounts.

Control Procedures

Review of Investment Objectives

The investment advisor shall review annually the appropriateness of the Policy for achieving the Trust's stated objectives. It is not expected that the Policy will change frequently. In particular, short-term changes in the financial markets should not require an adjustment in the investment policy.

Review of Investment Performance

The investment advisor shall report on a quarterly basis to the Trust Committee to review the total Trust investment performance. In addition, the investment advisor will be responsible for keeping the Trust Committee advised of any material change in investment strategy, investment managers, and other pertinent information potentially affecting performance of the Trust.

The investment advisor shall compare the investment results on a quarterly basis to appropriate benchmarks, as well as market index returns in both equity and debt markets. Examples of benchmarks and indexes that will be used include the S&P 500 Index for large cap equities, Russell 2000 Index for small cap equities, MSCI Europe, Australia, and Far East Index (EAFE) for international equities, Barclays Capital Aggregate Bond Index for fixed income securities, and the U.S. 91 Day T -bill Index for cash equivalents.

Voting of Proxies

Investment manager(s) are expected to be aware of corporate provisions that may adversely affect stockholdings, including but not limited to "golden parachutes," "super majorities," "poison pills," "fair price" provisions, staggered boards of directors, and other tactics. Proxies should be vigorously voted with the interest of preserving or enhancing the security's value.

The investment manager(s) of a commingled funds or mutual fund that holds the assets of the Trust along with assets of other funds with conflicting proxy voting policies must reconcile the conflicting policies to the extent possible, and, if necessary, to the extent legally permissible, vote the proxies to reflect the policies in proportion to each fund's interest in the pooled fund.

The Trust Committee will vote the proxies of the mutual or commingled funds as necessary and appropriate.

Review of Trustee/Custodian Reports

The custodian shall produce statements on a monthly basis and certify that it is fulfilling its role to (1) hold securities and other assets for safekeeping, (2) report on holdings and transactions, (3) collect interest and dividends, and (4) effect settlement of trades. In consideration of a custody fee, the Trustee shall agree to act as a custodian to the Trust and hold Trust assets in a separate account in the name of the Trust, in accordance with the Trust Agreement.

Investment Policy Review

The Trust Committee will review this Policy at least annually to determine whether stated investment objectives are still relevant and the continued feasibility of achieving the same. It is not expected that the Policy will change frequently. In particular, short-term changes in the financial markets should not require adjustments to the Investment Policy Statement.

The Trust Committee will measure the Trust assets and compare them to the underlying OPEB liability at least annually. The purpose of this comparison is to determine whether the stated investment objectives are still relevant in consideration of the underlying current and future OPEB liability.

Adoption of Investment Policy Statement

Any changes and exceptions to the Policy will be made in writing by the Trust Committee and recommended to the School Board of Independent School District 284 for ratification and approval. Once adopted, changes and exceptions will be delivered to each investment manager, as appropriate, by the investment advisor.

Approved by the Independent School District 284 District OPEB Oversight Committee:

Resolved by:

Approved by the Independent School District 284 School Board:

Resolved by:

Appendix A

Section I: Formation of the OPEB Oversight Committee

1.1 Functions of the OPEB Oversight Committee

The OPEB Oversight Committee (“Trust Committee”) shall perform the functions of an investment fiduciary responsible for the prudent management of the Trust assets (“Portfolio”). The Trust Committee will comply with all applicable fiduciary, prudence, and due diligence requirements experienced investment professionals would utilize; and with all applicable laws, rules, and regulations that may impact the Portfolio. The Trust Committee shall have the exclusive authority to establish, execute and interpret an investment policy statement for the Portfolio. The Trust Committee shall be responsible for the selection and retention of professional advisors to the Portfolio, which may include, but not necessarily be limited to, Investment Managers, an Investment Advisor, custodians, attorneys, accountants, and clerical staff.

1.2 Definition of a Fiduciary

A fiduciary is defined as a person who has the legal and/or implied moral responsibility to manage the assets of another person. A fiduciary must act solely in the best interests of that person. The Trust Committee is subject to certain duties and responsibilities, including, but not limited to:

1. Know the standards, laws, and trust provisions that impact the investment process of the Portfolio
2. Prudently diversify the Portfolio within an appropriate and specific risk/return profile, consistent with the Portfolio’s prevailing investment objectives.
3. Prepare, execute, and maintain an investment policy statement
4. Have investment decisions made by prudent experts
5. Control and account for all investment-related expenses
6. Monitor the activities of all investment-related service vendors
7. Avoid conflicts of interest and prohibited transactions

1.3 Establishment of Trust Committee

The Trust Committee shall consist of such number of individuals as are appointed by the School Board of the Wayzata Independent School District 284. Any member of the Trust Committee may resign, and his or her successor, if any, shall be appointed by the Chairperson. Each Trust Committee member will acknowledge the acceptance of appointment to the Trust Committee in writing. No Trust Committee member shall have the authority to bind the Trust Committee in any contract or endeavor without the expressed written authority of the majority of the Trust Committee members.

1.4 Establishment of Officers

The Trust Committee shall have an office of Chairperson and a Secretary as appointed by the School Board of the Wayzata Public School District 284. The Chairperson shall be responsible for the conduct of all the meetings of the Trust Committee and shall have voting rights the same as any other Trust Committee member. The Chairperson shall perform such other duties as the Trust Committee may assign, and shall be the designated Agent for service of legal process. The Secretary shall be responsible for keeping minutes of the transactions of the Trust Committee and shall be the official custodian of records of the Trust Committee. The Secretary, together with the Chairperson, shall execute all official contracts of the Trust Committee. The Secretary shall compile Trust Committee agendas. The Chairperson and Secretary are authorized by the Trust Committee to execute any instruments necessary for the Trust Committee to conduct business.

1.5 Disclosure and Conflict of Interest

Notwithstanding any provision of law, no Trust Committee member shall vote or participate in a determination of any matter in which the Trust Committee member shall receive a special private gain. Trust Committee members have a duty of loyalty that precludes them from being influenced by motives other than the accomplishment of the purposes of the Portfolio. Trust Committee members, in the performance of their duties, must conform and act pursuant to the documents and instruments establishing and governing the Portfolio.

Trust Committee members recognize that all Trust transactions and selections are to be based on the integrity and competence of the parties with whom the Trust is dealing and upon financial merit and benefit to Trust participants and their beneficiaries, and not on personal relationships. Trust Committee members shall never act where there may be a conflict of interest or appearance of conflict of interest. They realize they occupy special positions of fiduciary trust and confidence such that each member must studiously and conscientiously avoid any reasonable appearance of conflict. A conflict of interest is understood to be presented in a situation wherein a relationship exists which could reasonably be expected to diminish independence or judgment in performance of official responsibilities as a Trust Committee member. Accordingly, a Trust Committee member shall not engage in conduct that constitutes or involves a conflict of interest. It is the Trust Committee member's duty to determine if a potential conflict of interest exists, to avoid the conflict, if possible, or, where applicable, to disclose a conflict. If a Trust Committee member determines that a conflict of interest or potential conflict of interest exists, that individual shall have an obligation to recuse themselves from participating in the matter. The Trust Committee member shall disclose the reason for any such recusal.

Section II: Meetings

2.1 Attendance at Board Meetings

The Trust Committee shall set its own schedule of meetings. Special meetings may be called by the Chairperson or by a majority of the Trust Committee members. The Trust Committee shall meet at least once each quarter. Notices of meetings shall not be required if waived by all members of the Trust Committee. In recognition of the importance of the work of the Trust Committee, regular attendance at the Trust Committee meetings is expected from all members. Any member who fails to attend two consecutive meetings of the Trust Committee without an excuse acceptable to the other Trust Committee members shall be deemed to have resigned from the Trust Committee. A majority of the members of the Trust Committee at the time in office shall constitute a quorum for the transaction of business. The action of the Trust Committee shall be determined by the vote or other affirmative expression by the majority of its members in attendance where a quorum is present.

2.2 Agendas and Other Meeting Materials

An agenda shall be prepared for each regular and special meeting of the Trust Committee. The agenda shall set forth those items upon which the Trust Committee anticipates taking action or discussing. Each agenda item shall have attached backup material necessary for discussion or action by the Trust Committee. A copy of the agenda and backup material shall be furnished to each Trust Committee member prior to commencement of the meeting. Full and complete minutes detailing records of deliberations and decisions shall be maintained and held by the Secretary. The Secretary shall record all acts and determinations of the Trust Committee, and all such records shall be preserved in the custody of the Secretary. Such record and documents shall be open at all times for inspection by Trust Committee members or for the purpose of making copies by any person designated by the School Board of the Wayzata Independent School District 284.

2.3 Rules of Order

In recognition of the importance of accomplishing the objectives of the Trust Committee in a most orderly fashion, the Trust Committee may establish rules of order or bylaws for the conduct of its meetings.

2.4 Appearance before the Trust Committee

All persons who are scheduled to make appearances before the Trust Committee shall be scheduled through the Secretary, and the Trust Committee may establish the time limits established for such meetings. Appearances before the Trust Committee may be in person or through a representative. All communications with the Trust Committee shall either be in writing to the Secretary, teleconference, or by personal appearance at a Trust Committee meeting.

Chairperson

Appendix B – Fiduciary Acknowledgement Letter

Subject: Appointment to OPEB Oversight Committee

Dear (Fiduciary):

You are hereby appointed to serve as a member of the OPEB Oversight Committee. As you will be serving as a fiduciary with specific duties and responsibilities which are outlined in the attached handbook, please become familiar with the contents and inform me of any questions and/or concerns you may have regarding your role.

In order to be a successful member of the OPEB Oversight Committee, you should note the following:

- It does not require extensive experience in securities analysis or portfolio management, but it does require a personal interest in understanding the basics of capital markets.
- It requires a sincere commitment to develop a consensus formulation of goals and objectives with your fellow committee members; the discipline to develop and follow long-term investment policies; the patience to evaluate events calmly in the context of long-term trends; and an understanding of personal and organizational strengths and weaknesses to determine when delegation and outsourcing is more appropriate.
- Most importantly, it requires the ability to get the right things done, otherwise known as effective management. A prudent investment process facilitates effective management by distinguishing important from unimportant tasks.

Please acknowledge receipt of this letter and your understanding of your fiduciary duties and responsibilities by signing and returning the attached Acceptance Letter to me.

Sincerely,

Chair

School Board of the Wayzata Public School District 284

Enclosure: *Prudent Practices for Investment Stewards* handbook

Appendix C – Fiduciary Acceptance Letter

Subject: Appointment to OPEB Oversight Committee

Dear Chairperson Peterson

I hereby accept my appointment to serve as a member of the OPEB Oversight Committee. I understand the fiduciary duties and responsibilities associated with my appointment.

Sincerely,

(Fiduciary)

WAYZATA PUBLIC SCHOOLS
Independent School District 284
Wayzata, Minnesota

BOARD OF EDUCATION

Regular Meeting – December 13, 2010

AGENDA SECTION: 2. APPROVAL OF AGENDA AND CONSENT AGENDA ITEMS

ITEM: F. CONTRACT AWARD – Turning Point Technologies, LLC

COMMENTS BY: Mr. Westrum

The District performed a request for proposal in early 2010 and selected Turning Point Technologies, LLC, for student support software. In addition to this software, it was determined necessary through the district technology plan to utilize student response devices.

Attached is the documentation that explains the rational leading to the selection of Turning Point Technologies, LLC, to purchase student response devices. The total cost of these response cards is \$142,800. This purchase is within budget. This recommendation is to award the purchase of student response devices to Turning Point Technologies, LLC, in the amount of \$142,800, as a sole source vendor according to Minnesota State Statute 471.36, as a “non-competitive type of equipment and supplies”.

RECOMMENDED ACTION: Approve the attached purchase from Turning Point Technologies, LLC.

Motion by: _____ Yes _____ Passed _____

Second by: _____ No _____ Failed _____

Abstentions _____



255 W. Federal Street • Youngstown, OH 44503 • Phone: 330-746-3015 • Toll-Free: 866-746-3015 • Fax: 330-884-6065

March 10,2010

To Whom it May Concern:

This document is to affirm Turning Technologies, LLC as the sole source supplier and distributor for Turning Technologies, LLC and Responsive Innovations, LLC products.

Specifically Turning Technologies, LLC is the owner/author of and exclusively distributes TurningPoint Interactive Software and ResponseWare. Turning Technologies, LLC is also the exclusive United States distributor of ResponseCard Student Response Keypad Devices. These products and their functionality are protected by copyright and by U.S. Patent Law. Therefore we at Turning Technologies, LLC attest to the following claims.

1. TurningPoint is the only software available in the marketplace that includes the capabilities of TurningPoint natively integrated into Microsoft PowerPoint and Microsoft Office Suite.
2. ResponseWare is the only student response software application that can communicate seamlessly with TurningPoint software.
3. ResponseCard Student Response Devices are the only credit card style and size response devices currently available in the United States and the only credit card sized response devices that can communicate with TurningPoint software.

Please contact me directly if you have any other questions or require any more specific information.

Thank you for your interest in TurningPoint!

Best Regards,

A handwritten signature in black ink that reads "Brad Gant". The signature is written in a cursive, slightly slanted style.

Brad Gant
VP of Sales

www.TurningTechnologies.com

WAYZATA PUBLIC SCHOOLS
Independent School District 284
Wayzata, Minnesota

BOARD OF EDUCATION

Regular Meeting – December 13, 2010

AGENDA SECTION: 3. STUDENT CURRICULUM PRESENTATION

ITEM: A. Sunset Hill Against Hunger

COMMENTS BY: Dr. Jill Johnson

With us this evening is Katie Pearson, teacher at Sunset Hill Elementary, and selected students who will talk about the school's service project on December 21st with an organization called Impact Lives. The service project is called "Sunset Hill Against Hunger." Ms. Pearson will introduce the students.

WAYZATA PUBLIC SCHOOLS
Independent School District 284
Wayzata, Minnesota

BOARD OF EDUCATION

Regular Meeting – December 13, 2010

AGENDA SECTION: 4. RECOGNITIONS

ITEM: A. Wayzata Public Schools 2010-2011 Retirees

COMMENTS BY: Superintendent Anderson

Tonight we would like to recognize the following employees who announced their retirements in 2010. We would like to thank them for their years of service to Wayzata Public Schools and wish them well in their future endeavors.

<u>Name</u>	<u>Position/Location</u>	<u>Years of Service</u>
Steve Gustafson	Technology Teacher, Kimberly Lane	23 Years
Bonnie Max	Culinary Express, High School	25 Years

WAYZATA PUBLIC SCHOOLS
Independent School District 284
Wayzata, Minnesota

BOARD OF EDUCATION

Regular Meeting – November 8, 2010

AGENDA SECTION: 4. RECOGNITIONS

ITEM: B. Employee of the Month - December

COMMENTS BY: Superintendent Anderson

Gleason Lake is proud to announce **Dan Roth** as the District Employee of the Month. Dan has been with the district for the past 13 years and during this time he spent 10 years teaching third grade and for the past 3 years has been Gleason Lake's technology specialist. Dan is a kind, patient and calm educator who has been instrumental in integrating technology into various content areas. He continually encourages the technology advances and always provides support, leadership and direction. All students and staff truly benefit from his knowledge and expertise. As you walk by Dan's classroom, the students are energized and engaged in the learning activities. When perspective parents visit Dan's computer lab he always greets them with a smile and lets them know he is proud to have three children who are part of the Wayzata School District, acknowledging that this has been a great place for his family.

Dan's commitment to Gleason Lake reaches beyond the computer lab. He has a leading role on multiple professional committees and works daily to make Gleason Lake a better place for both students and staff. Dan has facilitated an academy study group and taught an academy technology class. His committed leadership and guidance is evident and greatly appreciated.

Dan shows genuine respect and concern for all students, parents and staff at Gleason Lake. We appreciate Dan for his positive attitude, influential behavior and true dedication and commitment to education. Dan is very deserving of this recognition and we congratulate him as the Wayzata Employee of the Month.

WAYZATA PUBLIC SCHOOLS

Independent School District 284

Wayzata, Minnesota

BOARD OF EDUCATION

Regular Meeting – December 13, 2010

AGENDA SECTION: 4. RECOGNITIONS

ITEM: C. 2010 Assistant Track and Field Coach of the Year

COMMENTS BY: Superintendent Anderson

The School Board would like to recognize Bill Miles, the assistant track and field coach at Wayzata High School, for being named the 2010 Minnesota Class AA Assistant State Track and Field Coach of the Year.

This award is presented to Bill by the track and field coaches association for his outstanding coaching during the 2010 season and in recognition of his success during the 40 years he has coached track and field. Bill coaches the boys' distance runners. His runners have had success breaking school records, winning conference and section championships, and placing highly at the state meet.

Bill will be presented his award on January 28, 2011 during the Minnesota Track and Field Coaches' Association annual banquet. Congratulations Bill!

WAYZATA PUBLIC SCHOOLS

Independent School District 284

Wayzata, Minnesota

BOARD OF EDUCATION

Regular Meeting – December 13, 2010

AGENDA SECTION: 4. RECOGNITIONS

ITEM: D. Blue Ribbon School – Greenwood Elementary

COMMENTS BY: Superintendent Anderson

Greenwood Elementary School was recently named a 2010 National Blue Ribbon School. They were one of six K-12 schools in Minnesota honored this year. The award honors public and private elementary, middle and high schools whose students achieve at very high levels or have made significant progress and helped close gaps in achievement especially among disadvantaged and minority students.

This award recognizes the hard work of staff under the direction of former building principal Ginny Clark. Brad Gustafson, current principal, as well as Ginny Clark and Vision 21 teacher Sue Bradsher traveled to the national ceremony in Washington, D.C. in November.

Tonight the board would like to congratulate principals Ginny Clark and Brad Gustafson and the entire staff at Greenwood Elementary.

WAYZATA PUBLIC SCHOOLS

Independent School District 284

Wayzata, Minnesota

BOARD OF EDUCATION

Regular Meeting – December 13, 2010

AGENDA SECTION: 4. RECOGNITIONS

ITEM: E. WHS Boys' Cross Country Team 2010 State Champions

COMMENTS BY: Superintendent Anderson

The School Board would like to recognize the Wayzata High School Boys' Cross Country Team for its win at the 2010-11 State Championship.

This is the team's third state championship in the past four years. The team also qualified for the seven state Heartland Regional Competition, which it won November 14 by defeating six other state championship teams from the Midwest. With the win, the WHS team qualified for the national competition which was held December 4 in Portland Oregon. Seven students from the team were flown out to this competition by Nike. The team earned ninth place out of 22 teams at the national competition with a total time of 1:28:09 and an average time of 17:37.8

Members of the 2010-11 State Championship Team include: Seniors, Steven Donahue, John Emmons, Mark Harries, Nate Heintzeman, Karl Kabarowski, Andrew Long, Adam Moline, Brian Unekis and Preston White; Juniors, Joe Meister and Josh Thorson; Sophomore, Derek Peterson; and Freshman, Aaron Breyer.

The team is coached by Bill Miles, Chad Bartels, Aaron Berndt, Brandon Heebink, Eric Jahn, Ross Nelson, Steve O'Neill and Mark Popp. Congratulations!

WAYZATA PUBLIC SCHOOLS
Independent School District 284
Wayzata, Minnesota

BOARD OF EDUCATION

Regular Meeting – December 13, 2010

AGENDA SECTION: 5. REPORTS FROM ORGANIZATIONS

ITEM: A. Student Council

COMMENTS BY: Board Chair Peterson

This section of the agenda provides an opportunity for parent, teacher, and/or student associations/organizations to provide the School Board with reports/updates.

Lauren Stufft, Student Council Vice President, will report on student activity at WHS.

WAYZATA PUBLIC SCHOOLS
Independent School District 284
Wayzata, Minnesota

BOARD OF EDUCATION

Regular Meeting – December 13, 2010

AGENDA SECTION: 6. SUPERINTENDENT’S REPORTS AND RECOMMENDATIONS

ITEM: A. Superintendent

COMMENTS BY: Superintendent Anderson

There are no items for this section.

WAYZATA PUBLIC SCHOOLS
Independent School District 284
Wayzata, Minnesota

BOARD OF EDUCATION

Regular Meeting – December 13, 2010

AGENDA SECTION: 6. SUPERINTENDENT’S REPORTS AND RECOMMENDATIONS

ITEM: B. Teaching and Learning

COMMENTS BY: Dr. Jill Johnson

1. Approval of Sunset Hill Elementary School Site Plan

It is a pleasure to have members of Sunset Hill Elementary School Site Council with us this evening to present their proposed 2010-2012 site plan. Karen Keffeler, principal, and members of the Site Council attended the November 22 Board Work Session to preview the agreement, answer questions, and accept suggestions.

The proposed plan has been reviewed by the Superintendent, Executive Directors of Teaching and Learning, Finance & Business, Human Resources, and by the Wayzata Education Association leadership to ensure compliance with statutes, contracts, policies, and administrative regulations.

As the plan has been found to be in compliance, it is hereby recommended for School Board approval. We congratulate the Sunset Hill Elementary School Site Plan team for their fine work on this collaborative process.

Ms. Keffeler will introduce members of the team and discuss highpoints of the Site Plan.

RECOMMENDED ACTION: Approve the Site Plan for 2010 – 2012 between Sunset Hill Elementary School and the Board of Education as recommended.

Motion by: _____ Yes _____ Passed _____

Second by: _____ No _____ Failed _____

Abstentions _____

Sunset Hill Elementary School School Improvement Plan November 22, 2010

School Improvement Plan Subcommittees

Building Leadership/Equity

Laurie Lindquist, Chair
Katie Howard
Jill Gottlieb
Erik van Koeverden
Lesya Parekh
Andrew Worth
Kalie Gross
Sam Bass
Amy Schmidt
Sue Petersen

Collaborative Inquiry Data Team

Laurie Lindquist
Kalie Gross
Liz Denn
David Wiegert
Erik van Koeverden
Chip Brofford
Andrew Worth

Section 1: Executive Summary-Sunset Hill Elementary School

Teaching students the elements of reading is key at the elementary level, as it is the foundation for future learning. Research reports that students must be at grade level in reading by the end of third grade or be at risk of continually being behind their peers. Sunset Hill Elementary embraces that challenge each and every day. Teachers continue to look for best practices to reach each learner. The passion is evident as teachers embed new strategies learned through a number of professional development opportunities during the last few years that have accelerated student progress. School wide professional development has changed the culture of our building to one of teamwork, common language and better understanding of our students.

We believe we have found four major initiatives to help us on our journey—Professional Learning Communities, Positive Behavior Interventions and Supports, our work with the National Urban Alliance, and incorporating differentiated reading instruction into our language arts block. While these are all very different in their focus, they have given us many lenses through which we view our work, and it all comes together when we talk about student learning.

We are pleased to share our school improvement focus, and this document summarizes our goals and plans for the 2010-2011 school year. Also included are data about our school during the last five years. It is important to see where we have been when we look forward to where we are going.

Section 2: Academic School Improvement Initiatives

Focus Area: Q-Comp SIP Goals 2010-2011 Reading:

The AYP Index Rate in the area of Reading for all students in grades 3-5 at Sunset Hill will increase from 91.46 to 92.46.

Highlights of action plan for Reading Goal: Students will focus on improving reading strategies using text at their level for optimal growth.

Focus Area: Equity SIP Goals 2010-2011 Reading:

In the spring of 2011, 72% of our African American students in grades 3-5 will be proficient in the area of reading as measured by the MCA II reading test.

Highlights of action plan for Reading Goal: African-American students at Sunset Hill had a 68% proficiency level on the 2010 Reading MCAII. Students will continue to improve their proficiency in the area of reading by improving reading strategies using text at their level.

Section 3: Other School Improvement Initiatives

Focus Area: SIP Goals 2010-2011 Other Area:

The percentage of all students in grades 3-5 at Sunset Hill Elementary who achieve or exceed their individual RIT score growth target on the reading NWEA MAP will increase from 75.1% in spring 2010 to 85% in spring 2011, with growth being measured from Fall 2009 to Spring 2010.

Highlights of action plan for Other Area: The overall MAP growth of our students has increased by 13.1% over the last 3 years. We are confident that the teaching strategies we are incorporating into the classroom, combined with the work in our PLCs will allow students to show more growth than in past years. Teachers will focus on students learning and mastering state standards through the use of the curriculum and focused teaching and learning strategies. The unit benchmarks and common formative assessments developed by teams will monitor student learning and inform instruction.

Section 4: Professional Development Initiatives

Highlights of action plan for Professional Development:

Research has shown that students make the most growth in reading when they read documents at their reading level. In order for this to happen on a regular basis, teachers need to differentiate their instruction and materials according to student needs. In the Summer of 2009, teachers at Sunset Hill read

the book The Daily 5 by Boushey and Moser. This book gave teachers strategies to modify their classroom techniques in order to meet with small groups of students for specific strategy instruction. In the summer of 2010, teachers read the sequel The Café, to further their knowledge in this area. The Café strategy gives teachers a model for conferencing with students and keeping track of formative data. Staff engaged in an AWE class in August and September, taught by Jane Reynolds, Katie Howard and Krista Ice. The goal of the class was to learn more about the strategy and plan as grade levels as to how to incorporate this model into the district curriculum. Teachers use a combination of curriculum materials and student selected text to work with students both as a whole group and in flexible small groups according to student needs in the area of reading.

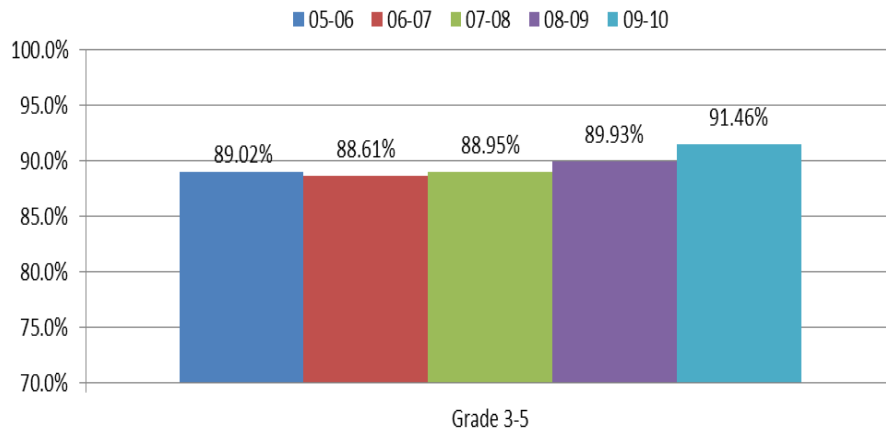
Many teachers were at professional development opportunities during the summer to learn techniques for examining data in Professional Learning Communities (PLC). Teachers have begun to deepen their understanding and use of data in order to guide instruction. Data is used as a formative tool more often, with teachers engaging the Using Data Process of collaborative inquiry, and having more focused curricular discussions about student needs. “Teachers in gap-closing schools use assessments more often, use data more frequently and work collaboratively to analyze and act upon the data” (DuFour et. al, 2006 p. 150). The goal is to answer the driving questions of PLCs:

- What is it we want our students to learn?
- How will we know when they have learned it?
- What will we do if they haven’t learned it?
- What will we do if they already know it?

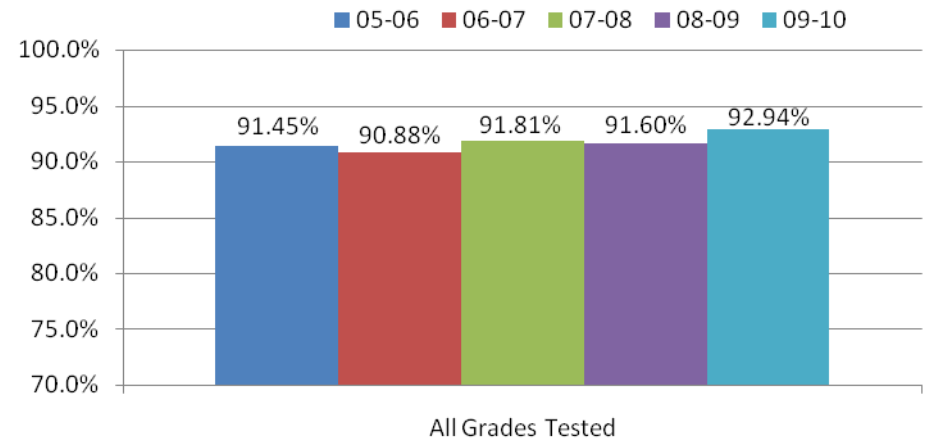
Sunset Hill will continue the vision of NUA, working to engage all students in High Intellectual Performance (HIP). Teachers have learned many strategies from our NUA mentor, and we will continue to learn new ways to go deeper into the strategies to get students to think about their thinking (metacognition). Strategies will allow students to use and gain background knowledge that is necessary for new learning to embed into the brain.

Positive Behavior Interventions and Supports (PBIS) is a program that teaches students expected behaviors. Staff continue to study and work as a team to develop common language around behavior and best ways to recognize students when they practice what they have learned. Discipline reports are tracked and reported to staff on a regular basis for reflection and problem solving. The recent addition of a behavior interventionist who is able to work with teachers and students one-on-one will improve and enhance interventions, with the ultimate goal being student behavioral and academic success.

Sunset Hill School Trend Data for:
Index Rate from 2010 Reading AYP Report



Wayzata School District Trend Data for:
Index Rate from 2010 Reading AYP Report



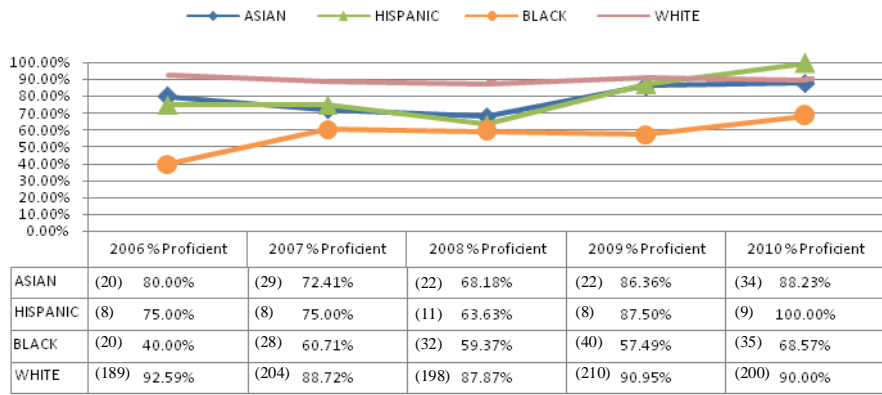
The overall AYP Index Rate in the area of Reading for Sunset Hill has increased by 2.44% in the last five years. The overall AYP Index Rate in the area of Reading for the District has increased by 1.49% in the last five years.

While these increases may seem small, one cannot tell the whole story from one set of trend data. As we look deeper into the last 6 years at Sunset Hill, we see dramatic changes in our demographics. Our enrollment has increased by 100 students. Our demographics for LEP students, students with IEPs, students who qualify for free/reduced lunch have increased, and our population of students has become more ethnically diverse. While some schools experience a drop in student success when faced with changes such as these, we see our 2.44% as an accomplishment, and celebrate the fact that we are raising our proficiency levels at a rate higher than district average.

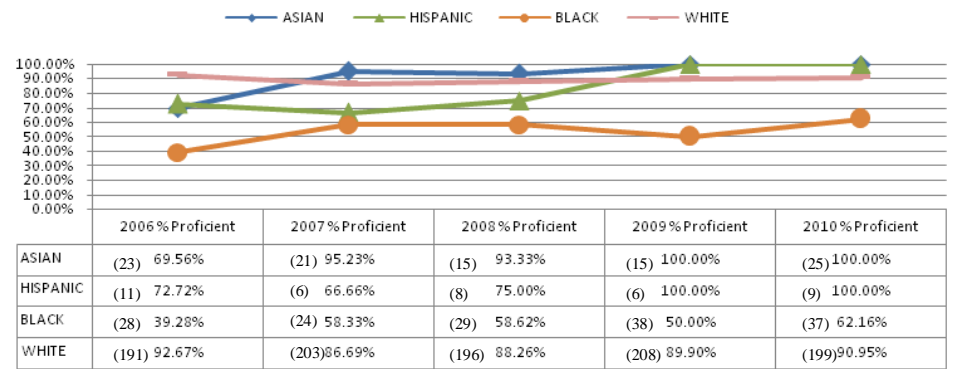
Staff demographics have changed as well. When looking at teacher data, we find that 47% of them were hired within the last 6 years, and almost half of those teachers had less than 2 years experience. Teachers also work on their own learning, as 74% of the teaching staff now hold a Master's degree. We can be proud of the work we continue to do to help all of our students be successful.

Section 6: Equity Action Plan Data

Sunset Hill Elementary School MCA II Reading Trenda Data by Ethnicity



Sunset Hill Elementary School MCA II Math Trenda Data by Ethnicity



- From 2006-2010 in the area of Reading, Black students have increased their proficiency level 28.57%, Asian students 8.23%, and Hispanic students 25%, while white students have decreased their proficiency 2.49%
- From 2006-2010, the achievement gap between black and white students in the area of reading decreased from 52.5% to 21.43%.
- From 2006-2010 in the area of Math, Black students have increased their proficiency level 22.88%, Asian students 30.44%, and Hispanic students 27.28%, while white students have decreased their proficiency 1.72%
- From 2006-2010, the achievement gap between black and white students in the area of math decreased from 53.39% to 28.79%

When the question “What are the causes of continued high proficiency levels while closing the achievement gap?” was posed, a number of hypotheses were offered. During these past four years, a number of initiatives have had an effect on teaching and learning.

1. The formation of NUA cohorts V, VI and VII have given 30 staff members the opportunity to learn new and engaging teaching strategies to reach each and every learner. Students are moving from grade level to grade level using the same strategies, which allows students to focus on new content. Teachers have also learned the importance of building background knowledge, which makes it easier for students to learn concepts.
2. The incorporation of Positive Behavior Interventions and Supports (PBIS) has given staff and students a common language about our school’s behavioral expectations. Teaching students the specific skills needed for behavioral success ultimately gives teachers more time for teaching, and students more time for learning. Teachers are giving specific, positive praise to students, who then understand how they are behaving can affect the climate of the entire school. A peaceful school is a higher achieving school (Horner, Sugei, et. al., in press).
3. Teachers are giving more focus to individual student mastery of curriculum. When they are able to instruct on a more individual level, students are mastering the standards at a higher rate. Students spending more time on text that is at their instructional level are able to learn more than when they work with text that is too hard or too easy.
4. Teachers at Sunset Hill have made it a priority to work as a team in order to meet the needs of our students. Grade level teams are developing common formative

assessments to help guide their instruction. They are using assessment data to track student success.

Research shared by Rick DuFour at the August 2010 PLC Summit in Minneapolis stated that the single biggest difference between lower and higher performing schools with similar demographics is that higher performing schools were incorporating the practice of teachers working as PLCs.

Section 7: Basic Demographic Information	School Year 2004-2005	School Year 2005-2006	School Year 2006-2007	School Year 2007-2008	School Year 2008-2009	School Year 2009-2010	Current School Year 2010-2011
AYP Attendance rate (%)	97.0%	96.15%	95.93%	96.61%	96.24%	95.88%	
Mobility Rate							
Student Population (#)	481	516	557	553	568	583	584
Free and Reduced Price Lunch (%)	17.0% N=83	21.0% N=111	22.0% N=125	26.0% N=142	25.0% N=140	29.0% N=170	21.4%
Limited English Proficient (LEP) (%)	3.0% N=16	5.0% N=26	5.0% N=29	5.0% N=29	7.0% N=37	6.0% N=34	3.77%
Special Education (%)	8.0% N=37	10.0% N=50	8.0% N=47	8.0% N=46	12.0% N=67	11.0% N=66	11.64%
White, Non-Hispanic (%)	81.7% N=393	77.5% N=400	77.0% N=429	75.6% N=418	73.6% N=418	69.3% N=404	66.3% N=
Black Non-Hispanic (%)	8.5% N=41	10.9% N=56	9.9% N=55	11.4% N=63	12.9% N=73	13.4% N=78	15.1% N=
Hispanic (%)	4.4% N=21	4.3% N=22	4.0% N=22	3.6% N=20	4.0% N=23	4.5% N=26	5.2% N=
Native American or Alaskan Native (%)	0.4% N=2	0.2% N=1	0.2% N=1	0.4% N=2	0.2% N=1	0.5% N=3	0.01% N=
Asian/Pacific Islander (%)	5.0% N=24	7.2% N=37	9.0% N=50	9.0% N=50	9.3% N=53	12.4% N=72	13% N=

Sunset Hill has experienced steady increases in both total enrollment and diversity since 2003. The population of students of color has increased 80%, and our overall school population has increased 21%.

Schools experiencing a rapid increase in economic and ethnic diversity can experience new challenges in the areas of student achievement and discipline. This is not the case at Sunset Hill. Our teachers have always been passionate about meeting the needs of all students, and building meaningful relationships with them. They also recognized the challenges of a more diverse student population and were searching for answers to their questions. The addition of professional development through NUA has strengthened our practice, enhanced our repertoire of teaching strategies, and affirmed our belief that students who feel connected to their teachers and school are more successful overall.

Section 8: Parent Conference Info	Fall 2010			Spring 2011		
	Total # of Students	# of Students	% of Students	Total # of Students	# of Students	% of Students
Overall	562	555	98.8%			
Black	90	71	78.9%			
Hispanic	24	19	79.2%			
White	404	398	98.5%			
Asian	48	46	95.3%			
Low Income						
IEP	42	38	90.5%			
LEP	27	24	88.9%			

Section 9: Discipline as of 06/10/10	Total # of Student Population	Total % of Student Population	Total # of Students w/Referrals (% of cell)	Referrals		Suspensions		Expulsions	
				# of Occurrences	% of Occurrences	# of Occurrences	% of Occurrences	# of Occurrences	% of Occurrences
Overall	583	100%		415		10		0	
Black	78	13.4%	33 (42%)	117	28%	4	40%		
Hispanic	26	4.5%	9 (35%)	29	7%	0			
White	404	69.3%	100 (25%)	252	61%	6	60%		
Asian	72	12.4%	5 (7%)	17	4%				
Low Income	169	29%							
IEP	64	11%	16 (25%)	75	18%	6	60%		
LEP	34	6%							

As a PBIS school, we are able to track discipline demographics using the School Wide Information System (SWIS). It is a web-based program that tracks student referrals. While discipline data has many variables (teacher tolerance, under/over reporting), we gain useful information. First, it is important to note that over 87% of our students received 0-1 referrals last year. Next, while Sunset Hill houses the district's setting III EBD program, the number of out-of-school suspensions was just 10 days total. Lastly, we are closely examining the discipline data by ethnicity. We see a higher proportion of black students with referrals than their overall percentage in the building. PBIS teaches that all behavior—positive and negative-- happens for a reason. Our task is to work with students to find the reasons behind these negative behaviors, so as to lower the occurrence. When we are meeting the needs of students, the proclivity for misbehavior is decreased.

Section 12: Glossary of Terms

NWEA (MAP): Northwest Evaluation Association – Measures of Academic Progress

RIT score: The student's overall scale score on the NWEA MAP assessment. **Rasch Unit**, honoring George Rasch, the Danish mathematician who developed the underlying theory for this type of measurement. The RIT Scale is a curriculum scale developed by NWEA that uses the individual item difficulty values to estimate student achievement. Advantages to the RIT Scale are that it can relate the numbers on the scale directly to the difficulty of items on the tests and it is equal interval. Equal interval means that the difference between scores is the same regardless of whether a student is at the top, bottom or middle of the RIT Scale, and it has the same meaning regardless of grade level.

Targeted Growth: The individual growth targets are defined as the average amount of RIT growth observed for students in the latest NWEA norming study who started the year with the same RIT score as the individual student. The NWEA last normed their data in 2008.

MCA II: The Minnesota Comprehensive Assessments (MCAs) are the state tests that help districts measure student progress toward Minnesota's academic standards and meet the requirements of No Child Left Behind. The reading and mathematics tests are used to determine whether schools and districts have made adequate yearly progress (AYP) toward all students being proficient in 2014. Reading and mathematics tests are given in grades 3-8, 10 and 11. Science tests are given in grades 5 and 8 and once in high school, depending on when students complete their life sciences curriculum.

AYP: Annual Yearly Progress

IEP: Individual Education Plan- An IEP is developed to meet the needs of our special education students.

MTAS: The Minnesota Test of Academic Skills (MTAS), an alternate assessment based on alternate achievement standards, is for students with the most significant cognitive disabilities. The MCA-Modified, an alternate assessment, based on modified achievement standards, is for a small group of students whose disability precludes them from achieving grade-level proficiency. The first operational administration of the MCA-Modified is spring 2011.

NUA: The National Urban Alliance is an organization founded on a belief in the capacity of all public school children to achieve the high intellectual performances demanded by our ever changing global community. Their focus is teacher and administrator quality through professional development which incorporates current

research from cognitive neuroscience on learning, teaching, and leading. They partner with school districts to support the building of their capacity to advocate community-wide responsibility for realizing the learning potential of its children (<http://www.nuatc.org/TESTONE/aboutus.html>).

PBIS:Improving student academic and behavior outcomes is about ensuring all students have access to the most effective and accurately implemented instructional and behavioral practices and interventions possible. SWPBS provides an operational framework for achieving these outcomes. More importantly, SWPBS is NOT a curriculum, intervention, or practice, but IS a decision making framework that guides selection, integration, and implementation of the best evidence-based academic and behavioral practices for improving important academic and behavior outcomes for all students. (http://www.pbis.org/school/what_is_swpbs.aspx).

Sunset Hill Elementary School Improvement Plan 2010-2011

November 22, 2010

**A Model of Excellence Among
Learning Communities**

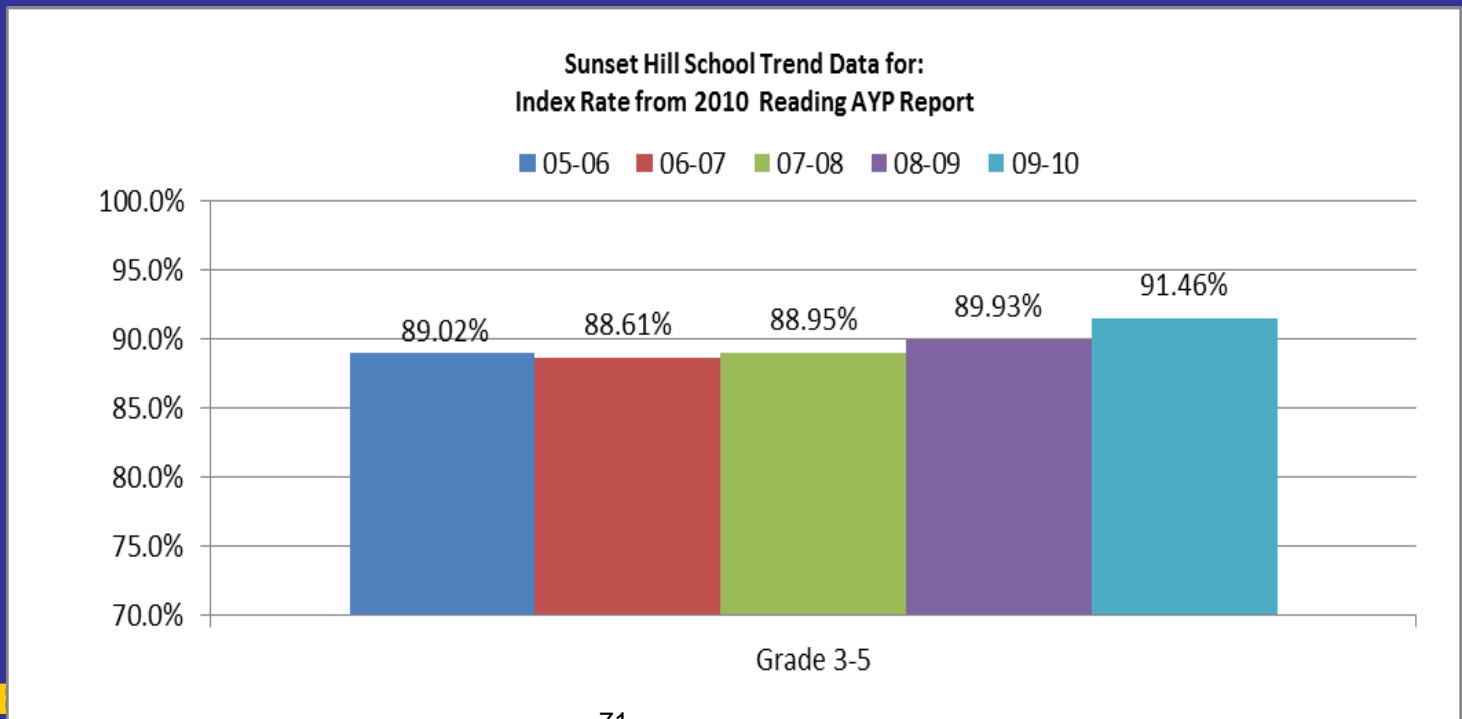
Read, Read, Read!



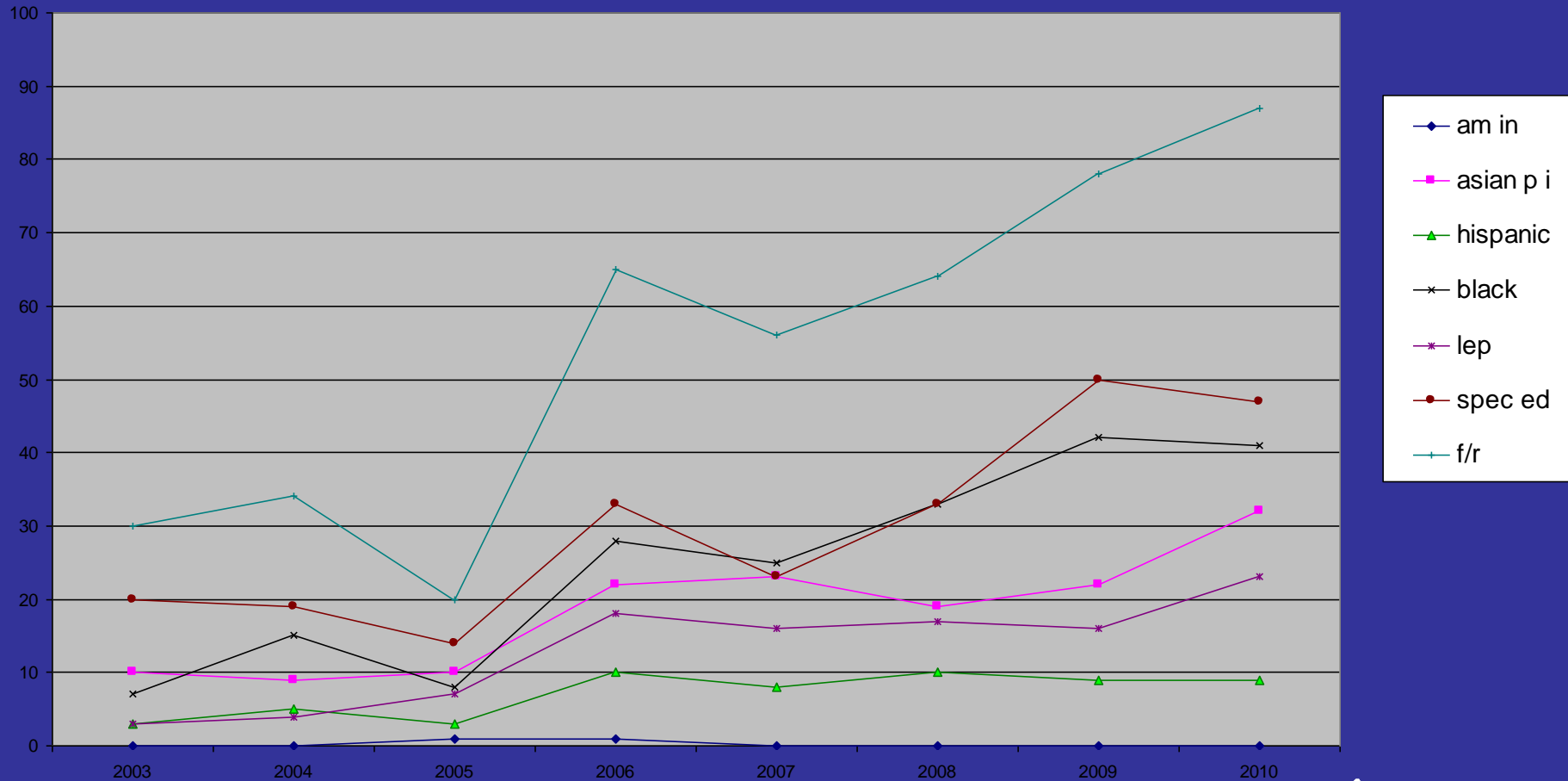
A Model of Excellence Among Learning Communities

Q Comp Academic Achievement Goal

- ★ The AYP Index Rate in the area of Reading for all students in grades 3-5 at Sunset Hill will increase from 91.46 to 92.46.



Our Changing Demographics

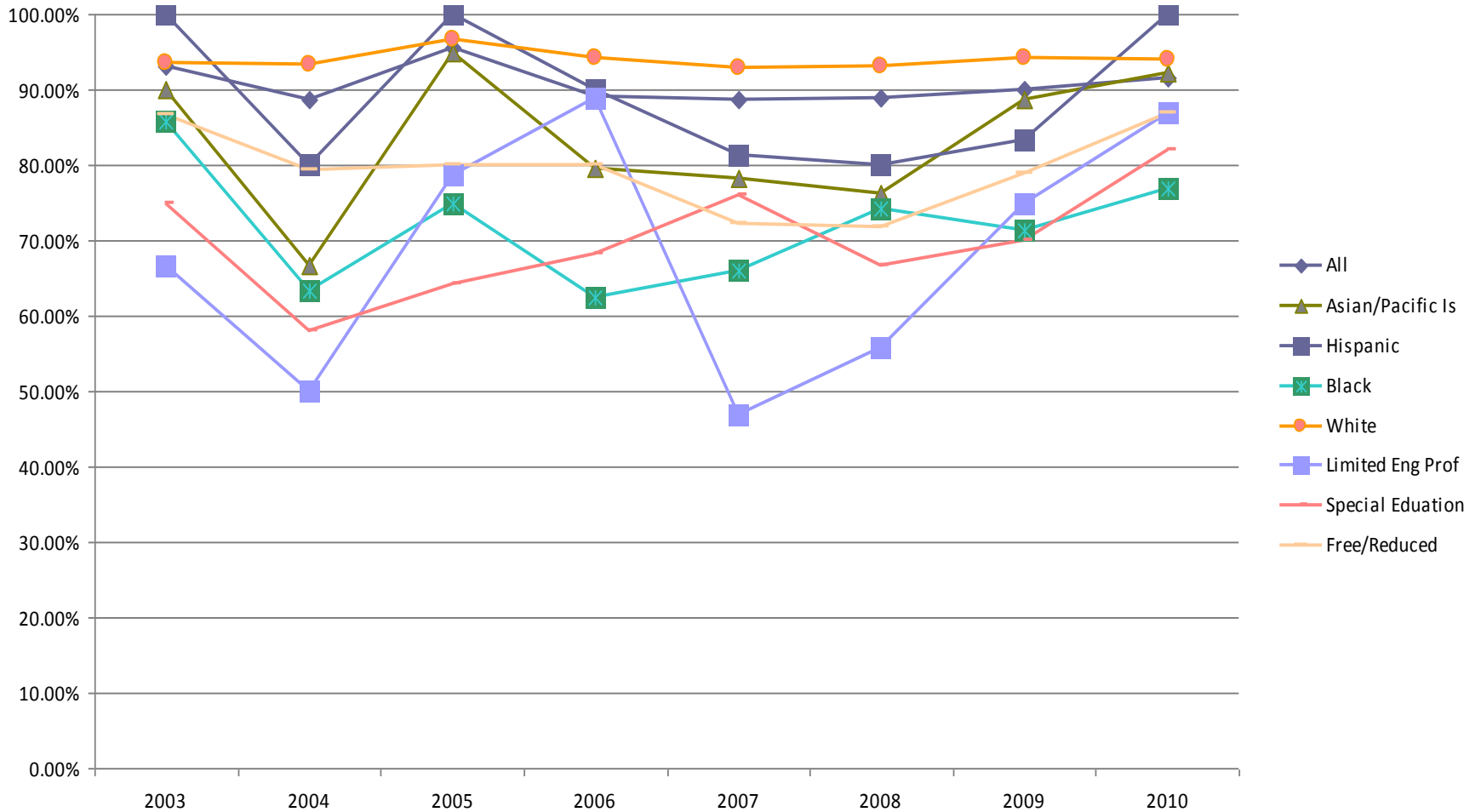


**A Model of Excellence Among
Learning Communities**

72

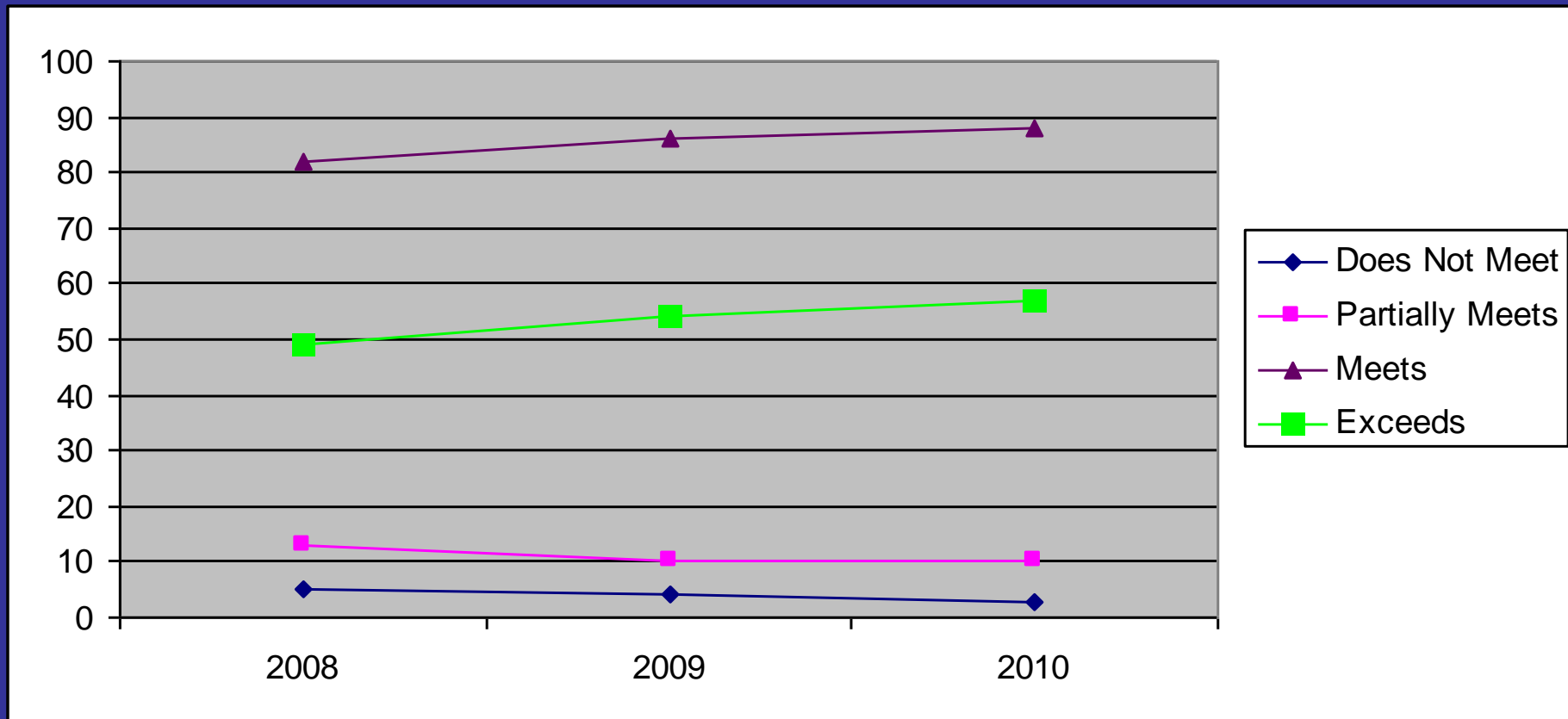
Wayzata Public Schools

Sunset Hill Elementary School AYP Index Rate Trend Data



**A Model of Excellence Among
Learning Communities**

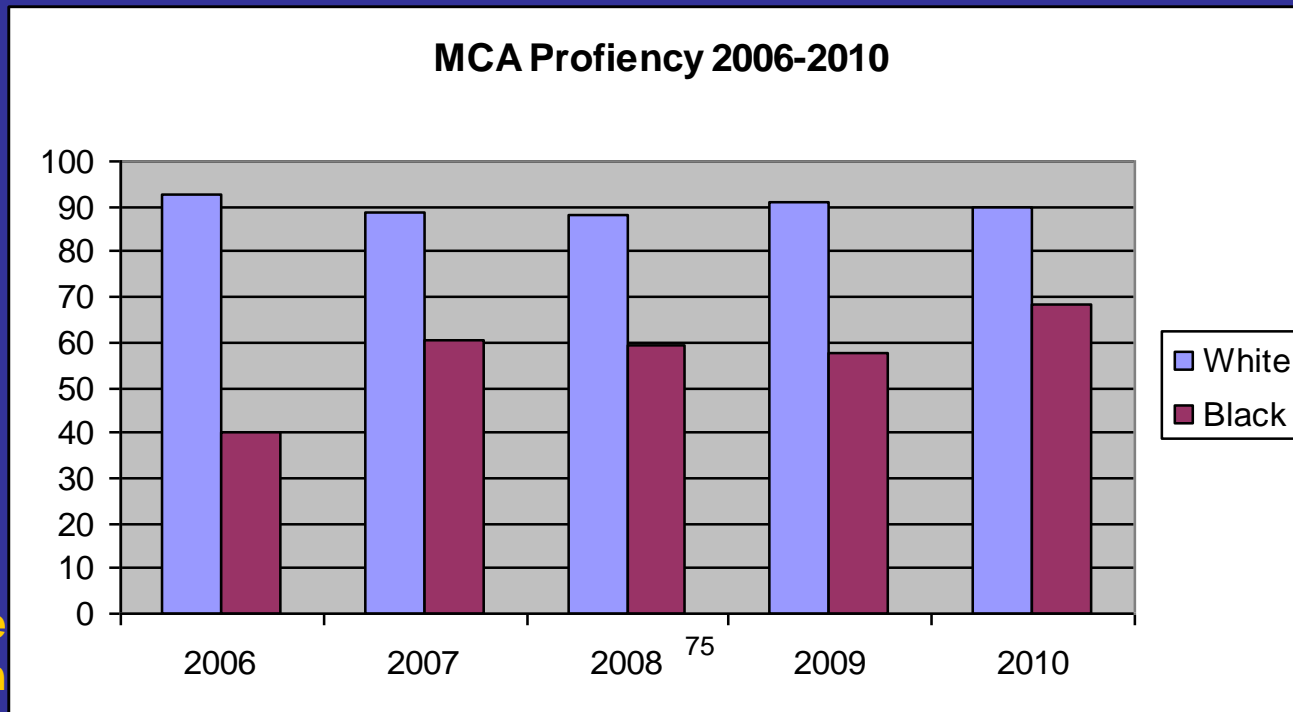
MCAI Reading Results



**A Model of Excellence Among
Learning Communities**

Elementary Equity Goal

- ★ In the spring of 2011, 72% of our African American students in grades 3-5 will be proficient in the area of reading as measured by the MCA II reading test.



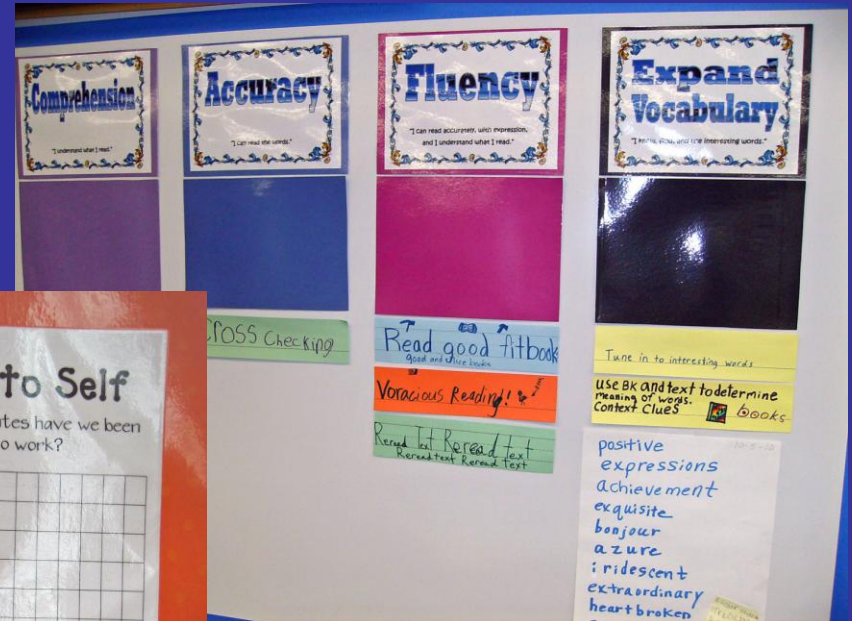
Camp Sunset

- ★ **47 Students Grades Kindergarten-4**
- ★ **21 Staff**
- ★ **18 Days**
- ★ **Feedback was overwhelmingly positive from parents, students and staff.**
- ★ **Data support student learning retention, especially Kindergarten and first grade.**

Growth Goal

- ★ **The percentage of all students in grades 3-5 at Sunset Hill Elementary who achieve or exceed their individual RIT score growth target on the reading NWEA MAP will increase from 75.1% in spring 2010 to 85% in spring 2011, with growth being measured from Fall 2009 to Spring 2010.**

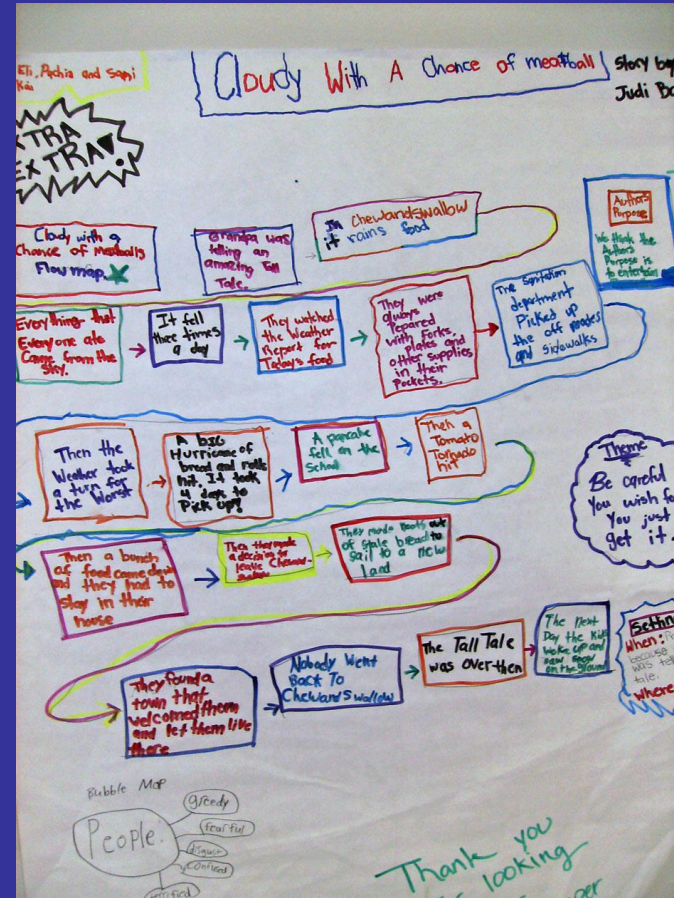
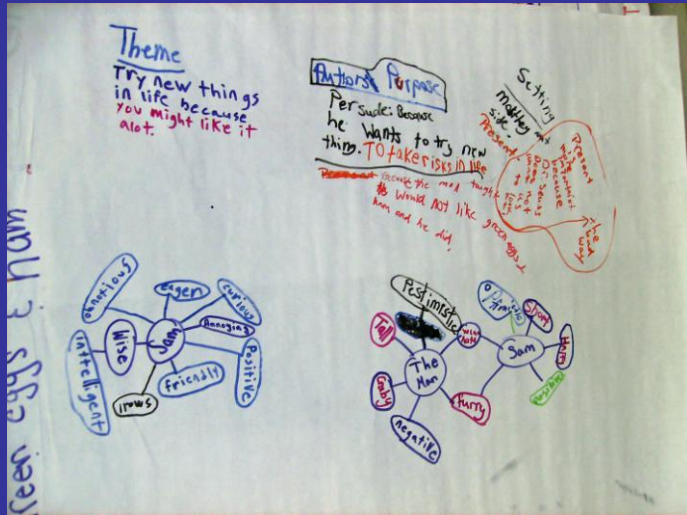
The Café



A Model of Excellence Am Learning Communities

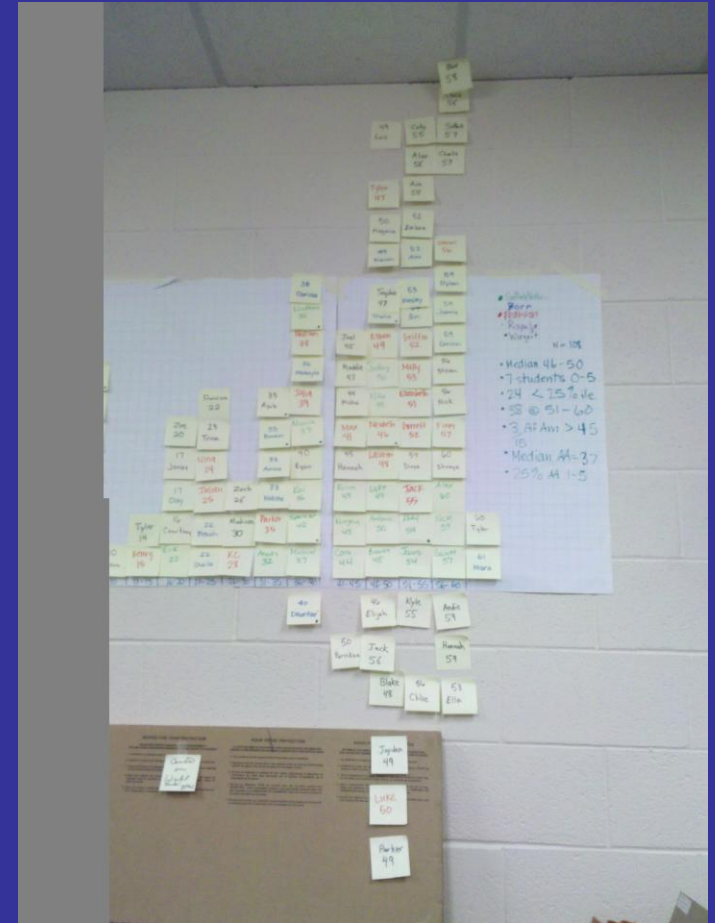
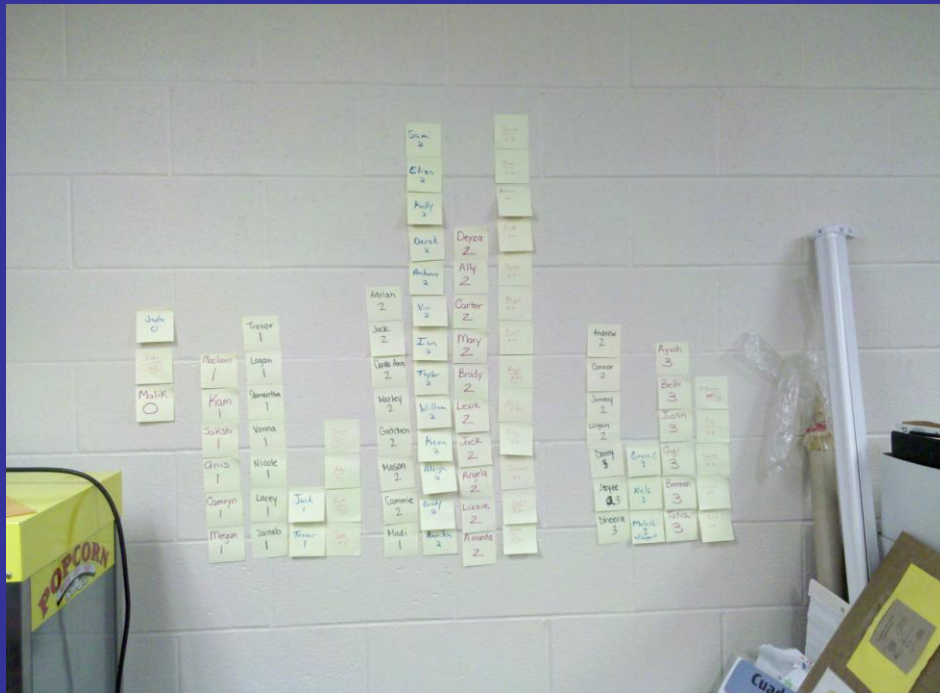
yzata Public Schools

Strategies from NUA



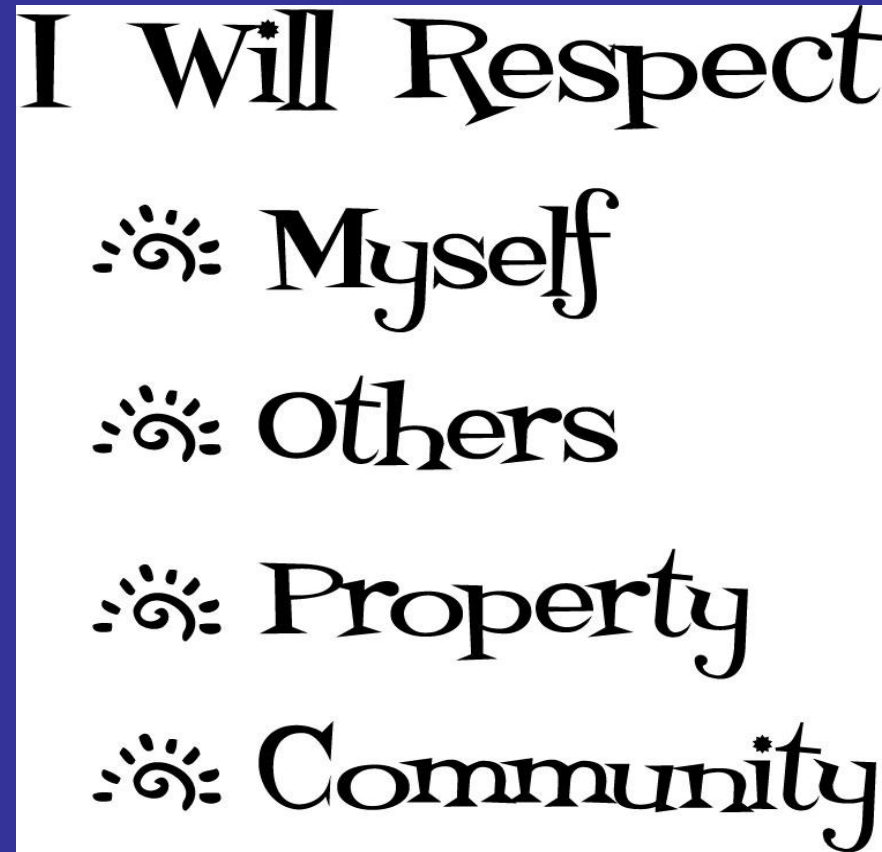
A Model of Excellence Among Learning Communities

Using Data to Inform Instruction



A Model of Excellence Among Learning Communities

PBIS



A Model of Excellence Among
Learning Communities

Success For All



**A Model of Excellence Among
Learning Communities**

WAYZATA PUBLIC SCHOOLS
Independent School District 284
Wayzata, Minnesota

BOARD OF EDUCATION

Regular Meeting – December 13, 2010

AGENDA SECTION: 6. SUPERINTENDENT’S REPORTS AND RECOMMENDATIONS

ITEM: C. Finance and Business Services

COMMENTS BY: Mr. Westrum

1. Monthly Financial Reports

Enclosed for School Board review and information is the following financial report:

- Student Activity Fund Report of October 31, 2010.

The Monthly Financial Report details fund and budget status data as of June 30, 2010 will be reported once the June 30, 2010 audit is complete.

No School Board action is required.

Wayzata Public Schools											
Student Activity Fund Summary											
October 2010											
PROGRAM/LOCATION : MISCELLANEOUS											
<i>Fund</i>	<i>Type</i>	<i>Org</i>	<i>Prg</i>	<i>Crs</i>	<i>Fin</i>	<i>Obj/Src</i>	<i>Account Name</i>	Balance as Of <i>06/30/10</i>	FY'2010/11 Revenue	FY'2010/11 Expend	Balance as Of <i>10/31/10</i>
21	E/R	018	000	000	000	899/099	AD BUILDING	1,580.00	490.62	342.99	1,727.63
21	R	018	000	000	000	092	INTEREST/BANK CHARGES	-	1,518.67	0.00	1,518.67
TOTAL MISCELLANEOUS									2,009.29	342.99	3,246.30

Wayzata Public Schools											
Student Activity Fund Summary											
October 2010											
PROGRAM/LOCATION : WAZATA HIGH SCHOOL											
Fund	Type	Org	Prg	Cr	Fin	Obj/Src	Account Name	Balance as Of 06/30/10	FY'2010/11 Revenue	FY'2010/11 Expend	Balance as Of 10/31/10
21	E/R	251	280	001	000	899/099	DRAMA/WAYZATA PLAYERS	(6,217.16)	7,134.95	8,513.58	(7,595.79)
21	E/R	251	280	003	000	899/099	WAYAKO	67,976.10	130,671.12	167,222.73	31,424.49
21	E/R	251	280	005	000	899/099	CERAMICS	393.92	120.00	0.00	513.92
21	E/R	251	280	007	000	899/099	CHEERLEADERS	2,952.60	2,742.45	2,736.48	2,958.57
21	E/R	251	280	008	000	899/099	CHOIR	22,063.13	50,474.42	66,502.02	6,035.53
21	E/R	251	280	009	000	899/099	DANCELIN	17,755.32	1,198.56	8,685.28	10,268.60
21	E/R	251	280	012	000	899/099	HS-CLASS OF 2010	-	0.00	0.00	-
21	E/R	251	280	015	000	899/099	CLASS OF 2011	-	0.00	0.00	-
21	E/R	251	280	016	000	899/099	ACTIVITY SUPPORT	57,100.17	23,423.09	15,738.87	64,784.39
21	E/R	251	280	017	000	899/099	DECA	19,925.18	(15.00)	877.95	19,032.23
21	E/R	251	280	018	000	899/099	HS-FENCING		0.00	0.00	-
21	E/R	251	280	019	000	899/099	FRENCH	(208.44)	447.00	0.00	238.56
21	E/R	251	280	020	000	899/099	GERMAN	(769.76)	8,000.00	(1,247.00)	8,477.24
21	E/R	251	280	021	000	899/099	LETTERMAN	40,549.13	25,455.72	9,030.76	56,974.09
21	E/R	251	280	022	000	899/099	FINE ARTS	(5,046.88)	5,050.00	0.00	3.12
21	E/R	251	280	023	000	899/099	LOCK DEPOSIT	17,371.60	0.00	10,500.00	6,871.60
21	E/R	251	280	024	000	899/099	BAND	23,286.07	11,235.00	24,239.38	10,281.69
21	E/R	251	280	025	000	899/099	SMOKING FINES	568.07	42.00	0.00	610.07
21	E/R	251	280	026	000	899/099	NATIONAL HONOR	10,285.91	1,560.00	667.96	11,177.95
21	E/R	251	280	027	000	899/099	STUDENT SERVICES	6,523.75	0.00	373.35	6,150.40
21	E/R	251	280	028	000	899/099	ORCHESTRA	9,454.63	1,610.00	2,357.81	8,706.82
21	E/R	251	280	030	000	899/099	STUDENT COUNCIL	5,090.82	15,803.71	9,664.98	11,229.55
21	E/R	251	280	031	000	899/099	SPANISH	2,168.72	0.00	889.29	1,279.43
21	E/R	251	280	035	000	899/099	MUSICAL-BAL OF 4269.75 ROLLED INTO 001 WAYZA		0.00	35.00	(35.00)
21	E/R	251	280	037	000	899/099	RARE	1,019.26	1,000.00	0.00	2,019.26
21	E/R	251	280	038	000	899/099	SCHOLARSHIPS	367.60	3,093.88	755.29	2,706.19
21	E/R	251	280	039	000	899/099	THEATRE ARTS	5,274.77	1,168.00	1,409.93	5,032.84
21	E/R	251	280	040	000	899/099	BUSINESS PROFESS(BPA)	4,528.92	4,149.00	4,527.50	4,150.42
21	E/R	251	280	042	000	899/099	SKILLS USA	800.60	1,000.00	130.26	1,670.34
21	E/R	251	280	043	000	899/099	ART CLUB	271.14	383.00	0.00	654.14
21	E/R	251	280	044	000	899/099	LINK 4	14,991.67	50.00	2,377.33	12,664.34
21	E/R	251	280	045	000	899/099	BPA/DECA		0.00	0.00	-
21	E/R	251	280	047	000	899/099	HIGH MILEAGE TEAM	847.23	1,000.00	0.00	1,847.23
21	E/R	251	280	048	000	899/099	Y.E.S.	412.98	3,000.00	0.00	3,412.98
21	E/R	251	280	049	000	899/099	CREATIVE WRITING	(1,123.54)	1,483.00	0.00	359.46
21	E/R	251	280	050	000	899/099	DECA - SPIRITWARE	24,277.51	7,391.18	5,348.62	26,320.07
21	E/R	251	280	051	000	899/099	V21 - ACTIVITY SUPPORT	7,571.70	1,000.00	0.00	8,571.70
21	E/R	251	280	052	000	899/099	ROBOTICS TEAM	4,363.94	1,265.00	432.99	5,195.95
21	E/R	251	280	053	000	899/099	SHOW STOPPERS	1,600.61	11,446.19	9,550.47	3,496.33
21	E/R	251	280	054	000	899/099	FASHION CLUB		0.00	0.00	-
21	E/R	251	280	055	000	899/099	CHINESE CLUB	528.60	0.00	0.00	528.60
21	E/R	251	280	056	000	899/099	LAKER'S BKST NOOK	754.31	81.00	485.00	350.31
21	E/R	251	280	057	000	899/099	FESTIVAL OF NATIONS	1,965.99	1,112.00	0.00	3,077.99
21	E/R	251	280	058	000	899/099	FRESHMAN RETREAT(NEW)	56.66	6,448.00	3,037.46	3,467.20
21	E/R	251	280	248	000	899/099	DCD SERVICE LEARNING	447.70	0.00	0.00	447.70
TOTAL WAZATA HIGH SCHOOL								360,180.53	330,023.27	354,843.29	335,360.51

Wayzata Public Schools
Student Activity Fund Summary
October 2010

PROGRAM/LOCATION : WEST MIDDLE SCHOOL

<i>Fund</i>	<i>Type</i>	<i>Org</i>	<i>Prg</i>	<i>Crs</i>	<i>Fin</i>	<i>Obj/Src</i>	<i>Account Name</i>	Balance as Of 06/30/10	FY'2010/11 Revenue	FY'2010/11 Expend	Balance as Of 10/31/10
21	E/R	351	280	201	000	899/099	BAND	249.71	0.00	0.00	249.71
21	E/R	351	280	202	000	899/099	CHOIR	240.41	15.00	0.00	255.41
21	E/R	351	280	203	000	899/099	STUDENT SERVICES	5,026.25	338.00	3,270.61	2,093.64
21	E/R	351	280	209	000	899/099	STUDENT COUNCIL	(381.47)	717.00	0.00	335.53
21	E/R	351	280	212	000	899/099	YEARBOOK	(3,646.20)	2,735.50	(976.20)	65.50
21	E/R	351	280	213	000	899/099	THEATER	24,752.13	0.00	3,152.53	21,599.60
21	E/R	351	280	214	000	899/099	BOYS NIGHT OUT	649.32	0.00	0.00	649.32
21	E/R	351	280	215	000	899/099	DAY ONE	546.25	0.00	338.25	208.00
21	E/R	351	280	216	000	899/099	WEST WING		0.00	0.00	-
TOTAL WEST MIDDLE SCHOOL								27,436.40	3,805.50	5,785.19	25,456.71

PROGRAM/LOCATION : EAST MIDDLE SCHOOL

<i>Fund</i>	<i>Type</i>	<i>Org</i>	<i>Prg</i>	<i>Crs</i>	<i>Fin</i>	<i>Obj/Src</i>	<i>Account Name</i>	Balance as Of 06/30/10	FY'2010/11 Revenue	FY'2010/11 Expend	Balance as Of 10/31/10
21	E/R	352	280	100	000	899/099	STUDENT SERVICES	13,541.10	4,465.00	2,975.86	15,030.24
21	E/R	352	280	102	000	899/099	LOCKERS	-	0.00	0.00	-
21	E/R	352	280	104	000	899/099	BAND	1,188.24	0.00	192.73	995.51
21	E/R	352	280	105	000	899/099	STUDENT COUNCIL	1,622.80	524.50	342.08	1,805.22
21	E/R	352	280	107	000	899/099	VARIETY FUND	5,360.27	0.00	498.50	4,861.77
TOTAL EAST MIDDLE SCHOOL								21,712.41	4,989.50	4,009.17	22,692.74

Wayzata Public Schools
Student Activity Fund Summary
October 2010

PROGRAM/LOCATION : BIRCHVIEW											
<i>Fund</i>	<i>Type</i>	<i>Org</i>	<i>Prg</i>	<i>Crs</i>	<i>Fin</i>	<i>Obj/Src</i>	<i>Account Name</i>	Balance as Of <i>06/30/10</i>	FY'2010/11 Revenue	FY'2010/11 Expend	Balance as Of <i>10/31/10</i>
21	E/R	404	280	251	000	899/099	STUDENT SERV - K	674.13	0.00	0.00	674.13
21	E/R	404	280	253	000	899/099	STUDENT SERV - GR 1	149.05	83.00	424.32	(192.27)
21	E/R	404	280	254	000	899/099	STUDENT SERV - GR 2	219.31	612.40	934.68	(102.97)
21	E/R	404	280	255	000	899/099	STUDENT SERV - GR 3	(20.61)	1,089.00	876.67	191.72
21	E/R	404	280	256	000	899/099	STUDENT SERV - GR 4	72.01	240.00	630.42	(318.41)
21	E/R	404	280	257	000	899/099	STUDENT SERV - GR 5	1,038.02	995.00	1,103.79	929.23
21	E/R	404	280	259	000	899/099	STUDENT COUNCIL	1,387.39	0.00	0.00	1,387.39
21	E/R	404	280	260	000	899/099	STUDENT SERV - GENERAL	703.47	0.00	0.00	703.47
21	E/R	404	280	261	000	899/099	MEDIA	1,030.41	0.00	0.00	1,030.41
TOTAL BIRCHVIEW								5,253.18	3,019.40	3,969.88	4,302.70
PROGRAM/LOCATION : GREENWOOD											
<i>Fund</i>	<i>Type</i>	<i>Org</i>	<i>Prg</i>	<i>Crs</i>	<i>Fin</i>	<i>Obj/Src</i>	<i>Account Name</i>	Balance as Of <i>06/30/10</i>	FY'2010/11 Revenue	FY'2010/11 Expend	Balance as Of <i>10/31/10</i>
21	E/R	406	280	307	000	899/099	KINDERGARTEN	733.42	1,070.50	304.02	1,499.90
21	E/R	406	280	311	000	899/099	MEDIA	653.79	0.00	258.21	395.58
21	E/R	406	280	312	000	899/099	STUDENT SERVICES	4,144.47	208.80	317.32	4,035.95
TOTAL GREENWOOD								5,531.68	1,279.30	879.55	5,931.43

Wayzata Public Schools
Student Activity Fund Summary
October 2010

PROGRAM/LOCATION : OAKWOOD											
<i>Fund</i>	<i>Type</i>	<i>Org</i>	<i>Prg</i>	<i>Crs</i>	<i>Fin</i>	<i>Obj/Src</i>	<i>Account Name</i>	Balance as Of <i>06/30/10</i>	FY'2010/11 Revenue	FY'2010/11 Expend	Balance as Of 10/31/10
21	E/R	407	280	469	000	899/099	STUDENT COUNCIL	1,145.38	0.00	59.34	1,086.04
21	E/R	407	280	474	000	899/099	STUDENT SERV - GENERAL	7,654.61	0.00	0.00	7,654.61
21	E/R	407	280	476	000	899/099	CHESS CLUB	792.27	128.15	0.00	920.42
Total Oakwood Elementary								9,592.26	128.15	59.34	9,661.07
PROGRAM/LOCATION : SUNSET HILL											
<i>Fund</i>	<i>Type</i>	<i>Org</i>	<i>Prg</i>	<i>Crs</i>	<i>Fin</i>	<i>Obj/Src</i>	<i>Account Name</i>	Balance as Of <i>06/30/10</i>	FY'2010/11 Revenue	FY'2010/11 Expend	Balance as Of 10/31/10
21	E/R	408	280	572	000	899/099	STUDENT SERVICES	4,112.82	5,445.43	6,780.46	2,777.79
21	E/R	408	280	573	000	899/099	STUDENT COUNCIL		0.00	0.00	-
21	E/R	408	280	574	000	899/099	PENCIL MACHINE/STORE	1,480.40	0.00	620.51	859.89
TOTAL SUNSET HILL								5,593.22	5,445.43	7,400.97	3,637.68
PROGRAM/LOCATION : PLYMOUTH CREEK											
<i>Fund</i>	<i>Type</i>	<i>Org</i>	<i>Prg</i>	<i>Crs</i>	<i>Fin</i>	<i>Obj/Src</i>	<i>Account Name</i>	Balance as Of <i>06/30/10</i>	FY'2010/11 Revenue	FY'2010/11 Expend	Balance as Of 10/31/10
21	E/R	410	280	533	000	899/099	STUDENT SERVICES	22,702.38	5,233.38	2,026.70	25,909.06
TOTAL PLYMOUTH CREEK								22,702.38	5,233.38	2,026.70	25,909.06

Wayzata Public Schools
Student Activity Fund Summary
October 2010

PROGRAM/LOCATION : GLEASON LAKE

							Balance as Of	FY'2010/11	FY'2010/11	Balance as Of	
<i>Fund</i>	<i>Type</i>	<i>Org</i>	<i>Prg</i>	<i>Crs</i>	<i>Fin</i>	<i>Obj/Src</i>	<i>Account Name</i>	<i>06/30/10</i>	<i>Revenue</i>	<i>Expend</i>	<i>10/31/10</i>
21	E/R	411	280	352	000	899/099	STUDENT SERVICES	4,492.21	0.00	715.50	3,776.71
21	E/R	411	280	354	000	899/099	STUDENT COUNCIL	879.58	0.00	0.00	879.58
21	E/R	411	280	358	000	899/099	MEDIA			0.00	-
TOTAL GLEASON LAKE								5,371.79	-	715.50	4,656.29

PROGRAM/LOCATION : KIMBERLY LANE

							Balance as Of	FY'2010/11	FY'2010/11	Balance as Of	
<i>Fund</i>	<i>Type</i>	<i>Org</i>	<i>Prg</i>	<i>Crs</i>	<i>Fin</i>	<i>Obj/Src</i>	<i>Account Name</i>	<i>06/30/10</i>	<i>Revenue</i>	<i>Expend</i>	<i>10/31/10</i>
21	E/R	412	280	401	000	899/099	STUDENT COUNCIL	2,065.24	0.00	0.00	2,065.24
21	E/R	412	280	403	000	899/099	GJESTVANG	299.35	490.00	0.00	789.35
21	E/R	412	280	404	000	899/099	CARLSON	505.60	420.00	0.00	925.60
21	E/R	412	280	405	000	899/099	SPRAQUE	447.24	635.00	45.03	1,037.21
21	E/R	412	280	410	000	899/099	STUDENT SERV - GR 1		0.00	0.00	-
21	E/R	412	280	414	000	899/099	STUDENT SERV - GR 2		0.00	0.00	-
21	E/R	412	280	417	000	899/099	MARVIN/FRICKE	485.95	0.00	0.00	485.95
21	E/R	412	280	419	000	899/099	STUDENT SERV - GR 4		0.00	0.00	-
21	E/R	412	280	424	000	899/099	STUDENT SERV - GR 5	400.87	0.00	0.00	400.87
21	E/R	412	280	430	000	899/099	MEDIA	633.21	0.00	0.00	633.21
21	E/R	412	280	431	000	899/099	STUDENT SERVICES	10,728.34	7,230.09	0.00	17,958.43
TOTAL KIMBERLY LANE								15,565.80	8,775.09	45.03	24,295.86

GRAND TOTAL

690,831.78 472,926.65 526,462.53 638,875.90

WAYZATA PUBLIC SCHOOLS

Independent School District 284
Wayzata, Minnesota

BOARD OF EDUCATION

Regular Meeting – December 13, 2010

AGENDA SECTION: 6. SUPERINTENDENT’S REPORTS AND RECOMMENDATIONS

ITEM: C. Finance and Business Services

COMMENTS BY: Mr. Westrum

2. Comprehensive Annual Financial Report for Fiscal Year Ending June 30, 2010

The annual audit has been completed by the auditing firm of Larson, Allen, Weishair & Co., LLP. We are pleased to have with us this evening Rachel Flanders, Principal with Larson - Allen. Ms. Flanders will highlight the following reports and answer questions:

- 1) Comprehensive Annual Financial Report for Fiscal Year Ending June 30, 2010.
- 2) Executive Audit Summary, June 30, 2010.
- 3) Schedule of Expenditures of Federal Awards and Reports of Independent Certified Public Accountants and Other Required Reports, June 30, 2010.

Some portion of the unreserved fund balance is normally designated for specific purposes. The auditors have asked that this designation be formalized, as follows, for the unreserved fund balance as of June 30, 2010:

▪ Designated for Dome Escrow -	364,500
▪ Designated for Oakwood Escrow -	1,370,792
▪ Designated for Reemployment Insurance -	298,911
▪ Designated for One Time Capital Transfer -	588,935
▪ Designated for Q-Compensation-	174,745
▪ Designated for Site Carryover -	1,149,883

RECOMMENDED ACTION: Accept the Comprehensive Annual Report for the Fiscal Year Ending June 30, 2010, the Executive Audit Summary prepared by Larson, Allen, Weishair & Co., LLP and the Schedule of Expenditures of Federal Awards and Reports of Independent Certified Public Accountants and Other Required Reports for the Year Ending, June 30, 2010. Further, designate the amount of \$3,947,766 in the unreserved fund balance as of June 30, 2010 to be used for specific purposes noted above.

Motion by: _____ Yes _____ Passed _____

Second by: _____ No _____ Failed _____

91
Abstentions _____

WAYZATA PUBLIC SCHOOLS

Independent School District 284
Wayzata, Minnesota

BOARD OF EDUCATION

Regular Meeting – December 13, 2010

AGENDA SECTION: 6. SUPERINTENDENT’S REPORTS AND RECOMMENDATIONS

ITEM: C. Finance and Business Services

COMMENTS BY: Mr. Westrum

3. Truth in Taxation Presentation

School districts are required to meet the Truth in Taxation requirements for levy year 2010, taxes payable 2011. While school districts are no longer required to hold a separate Truth in Taxation hearing, they are required to discuss the payable 2011 levy and the current year budget at a regularly scheduled board meeting.

Truth in Taxation requirements are as follows:

- On or before September 30, 2010, each school district must adopt a proposed 2010 payable 2011 property tax levy and certify and submit it to the county auditor.
- The county auditor mails parcel specific tax notices to each property owner in the district.
- The school district is required to discuss the payable 2011 levy and current year budget.
- The public is given time to speak.
- The school board must adopt a final levy by December 28, 2010.



Truth-in-Taxation Presentation for Taxes Payable in 2011

Wayzata Public Schools

December 13, 2010

**Notice of
Proposed Property Taxes
Independent School District 284**

The Wayzata Independent School District 284 will include in its regularly scheduled meeting a presentation on its current budget and on the amount of property taxes it is proposing to collect in 2011 to pay for a portion of the costs of the district for the 2011 - 2012 school year.

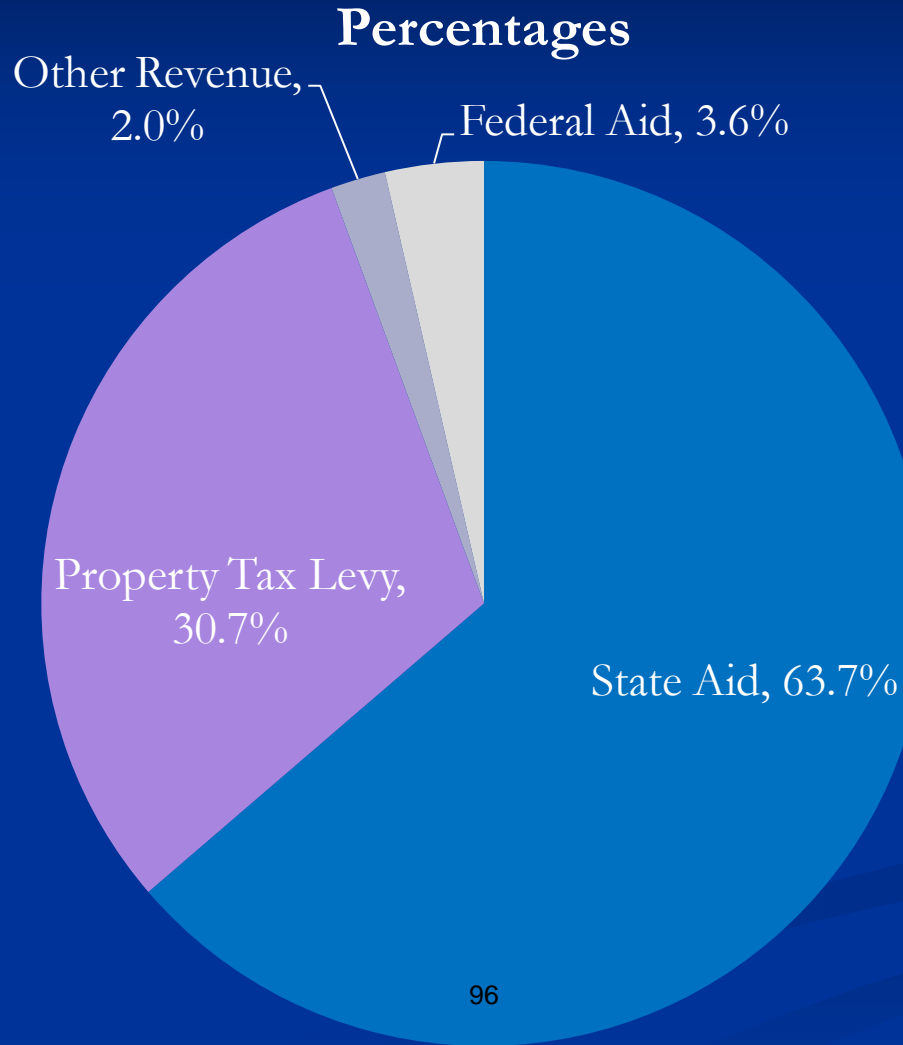
**Attend the Regularly Scheduled School Board Meeting
All residents of the school district are invited to attend the Board Meeting to express their opinions on the current budget and on the proposed amount of 2011 property taxes. The meeting and presentation will be held on:**

**Monday, December 13, 2010 at 7:00 p.m.
Wayzata City Hall
600 Rice Street
Wayzata⁹⁴**

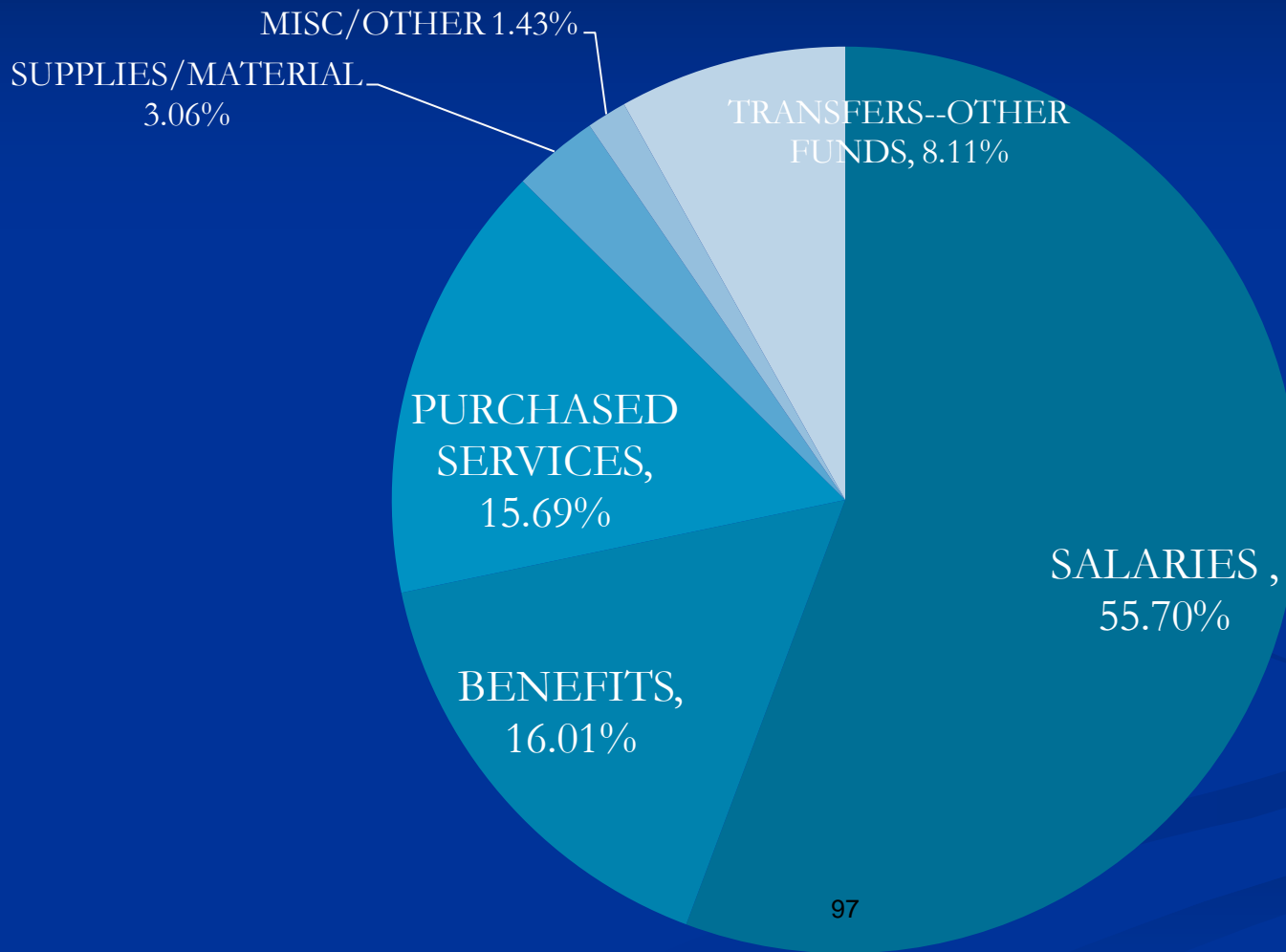
2010-2011 Budget

FUND	REVENUE	EXPENDITURES
General Fund	\$111,428,483	\$112,791,729
Health & Safety	3,377,107	3,194,275
Food Service	4,939,218	5,024,058
Community Svc.	7,516,861	7,606,896
Construction	8,505,715	7,502,515
Debt Service	10,472,007	10,336,474
TOTAL	\$146,239,391	\$146,455,947

Budget Basics – Revenue Sources

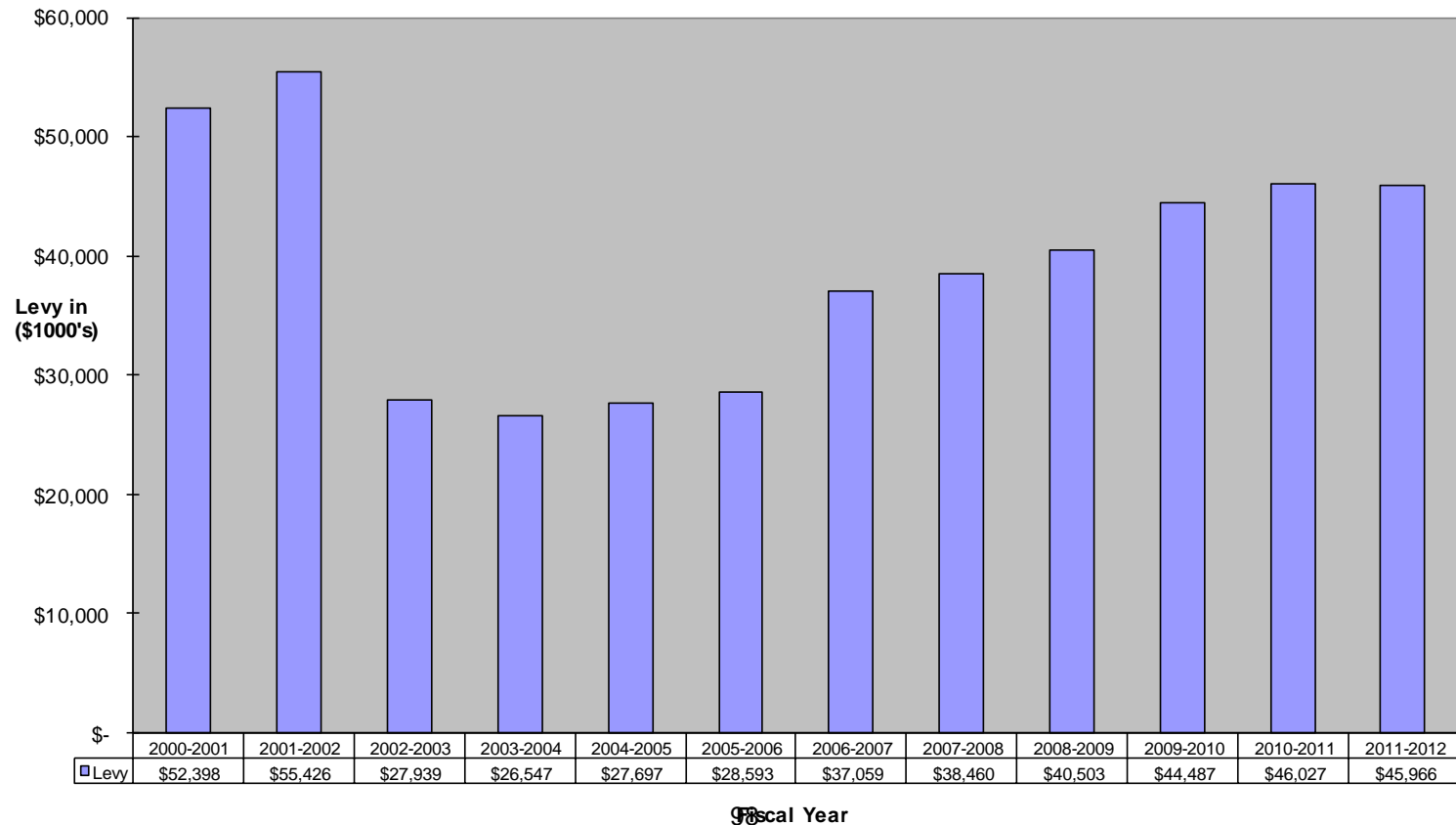


Budget Basics – Expenditures



Property Tax Levy History

Property Tax levy Historical Trends
All funds



Tax base compresses but is stabilized by continued growth

- The total market value of taxable property in the district declined 3.4%, to \$10.6 billion from \$11.0 billion.
- Included in this market value of taxable property is \$114.2 million of new construction, primarily in the northern parts of the district.
- The total tax capacity of taxable property in the district declined 4.1%, to \$118.4 million from 123.3 million.

The Proposed Tax Levy

- 2011 Proposed Levy: \$45,966,047
- 2010 Certified Levy: \$46,026,905
- Decrease: \$60,858, or 0.13%

**Wayzata Public Schools
Property Tax Levy Pay - Current and Prior 2 years**



Effect on Taxpayers

- Expect a slight decrease of 2% in school taxes
- Residential homestead property values are expected to decline for most existing homes, with a district-wide average decline of 6.1%
- If value of a property increases or does not decrease near the district-wide average, the property's taxes may increase
- Commercial and lakeshore property values may see similar trends to residential homestead properties discussed above

Changes from Last Year

- Largest change in the General fund levy is Health and Safety Program reimbursement for Indoor Air Quality Improvements at West Middle School and lease levy authority for instructional space
- Interest Earnings (offset) increased for Debt Service Levy

Truth-in-Taxation Presentation for Taxes Payable in 2011

Discussion and Opportunity for the Public to
comment.

WAYZATA PUBLIC SCHOOLS

Independent School District 284
Wayzata, Minnesota

BOARD OF EDUCATION

Regular Meeting – December 13, 2010

AGENDA SECTION: 6. SUPERINTENDENT’S REPORTS AND RECOMMENDATIONS

ITEM: C. Finance and Business Services

COMMENTS BY: Mr. Westrum

4. Certification of 2010 Payable 2011 Tax Levy

The Administration recommends certification of the 2010 Payable 2011 Property Tax Levy in the amount of \$45,966,047.43. This is a decrease of \$60,858 compared to last year’s levy.

General Fund – Referendum Market Value – Voter Approved	\$17,971,992.13
General Fund – Referendum Market Value – Other	960,219.81
General Fund – Net Tax Capacity – Voter Approved	5,669,023.00
General Fund – Net Tax Capacity – Other	9,273,598.57
Community Service Fund	1,488,405.30
Debt Service Fund	10,021,766.62
OPEB Pension	<u>581,042.00</u>
Total Certified Levy	\$45,966,047.43

Attached is the certification form which must be submitted to Hennepin County.

RECOMMENDED ACTION: Approve and authorize the Board Clerk to sign the attached final 2010 Payable 2011 Levy for Independent School District 284:

Motion by: _____ Yes _____ Passed _____

Second by: _____ No _____ Failed _____

Abstentions _____

Minnesota Department of Education
Levy Limitation and Certification Report
2010 Payable 2011

District Number-Type: 0284-01
District Name: WAYZATA PUBLIC SCHOOL DISTRICT
Home County: HENNEPIN

Date Printed: 12/9/10
Limits Updated: 11/18/10
Certified Submitted: 12/9/10

	LIMIT	PROPOSED	CERTIFIED
SUBTOTALS BY LEVY CATEGORY			
GENERAL - RMV VOTER - JOBZ EXEMPT	17,971,992.13	17,971,992.13	17,971,992.13
GENERAL - RMV OTHER - JOBZ EXEMPT	960,219.81	960,219.81	960,219.81
GENERAL - NTC VOTER - JOBZ EXEMPT	5,669,023.00	5,669,023.00	5,669,023.00
GENERAL - NTC OTHER - JOBZ EXEMPT	9,363,598.57	9,363,598.57	9,273,598.57
COMMUNITY SERVICE - NTC OTHER - JOBZ EXEMPT	1,488,405.30	1,488,405.30	1,488,405.30
GENERAL DEBT - NTC VOTER - JOBZ NONEXEMPT	9,420,076.62	9,420,076.62	9,420,076.62
GENERAL DEBT - NTC OTHER - JOBZ NONEXEMPT	601,690.00	601,690.00	601,690.00
OPEB DEBT - NTC VOTER - JOBZ NONEXEMPT	0.00	0.00	0.00
OPEB DEBT - NTC OTHER - JOBZ NONEXEMPT	581,042.00	581,042.00	581,042.00
SUBTOTALS BY FUND			
GENERAL FUND	33,964,833.51	33,964,833.51	33,874,833.51
COMMUNITY SERVICES FUND	1,488,405.30	1,488,405.30	1,488,405.30
GENERAL DEBT SERVICE FUND	10,021,766.62	10,021,766.62	10,021,766.62
OPEB/PENSION DEBT SERVICE FUND	581,042.00	581,042.00	581,042.00
SUBTOTALS BY TAX BASE			
REFERENDUM MARKET VALUE	18,932,211.94	18,932,211.94	18,932,211.94
NET TAX CAPACITY	27,123,835.49	27,123,835.49	27,033,835.49
SUBTOTALS BY TRUTH IN TAXATION CATEGORY			
VOTER APPROVED	33,061,091.75	33,061,091.75	33,061,091.75
OTHER	12,994,955.68	12,994,955.68	12,904,955.68
TOTAL LEVY			
TOTAL LEVY	46,056,047.43	46,056,047.43	45,966,047.43

The school district must submit the completed original of this form to the home county auditor by December 29, 2010. A duplicate form must be submitted to Minnesota Department of Education, Program Finance Division, 1500 Highway 36 West, Roseville, MN 55113, by January 7, 2011.

The certified levy listed above is the levy voted by the school board for taxes payable in 2011.

Signature of School Board Clerk _____

Date of Certification _____

WAYZATA PUBLIC SCHOOLS

Independent School District 284
Wayzata, Minnesota

BOARD OF EDUCATION

Regular Meeting – December 13, 2010

AGENDA SECTION: 6. APPROVAL OF AGENDA AND CONSENT AGENDA ITEMS

ITEM: C. Finance and Business Services

COMMENTS BY: Mr. Westrum

5. Open Enrollment Non-Resident Agreement

According to Minnesota Statute 124D.03, Subdivision 2, "A Board may, by resolution, limit the enrollment for nonresident pupils in its schools or program according to this section to a number not less than the lesser of:

- 1) One percent of the total enrollment at each grade level in the district; or
- 2) The number of district's residents at that grade level enrolled in a non-resident district according to this section."

Revisions to 2010-2011 Guidelines for Resident students who Move Out of the District (Effective 12-14-10):

Students whose parent or guardian moves to another district will have the option to continue attending Wayzata Schools until the end of the school year.

Students in grades 11 or 12 whose parent or guardian moves to another district will have the option to continue through graduation under Minnesota Statute 124D.08, Subdivision 3.

Open Enrollment Guidelines for 2011-2012:

For school year 2011-2012, the following guidelines are recommended:

- Close open enrollment at grades 1-12

At the **high school**, close any grade whose population exceeds 800 or close all grade levels if the total enrollment of the building exceeds 3200.

At the **middle school**, close any grade that exceeds 800.

At the **elementary school**, Grades 1-5, close any grade where the district-wide enrollment exceeds 750. If grade 1-5 enrollment is below a district-wide enrollment of 750, open enrollment may still be closed in an individual building if the total enrollment in that building is at or exceeds its capacity or has total enrollment of 750 or greater.

- Limit kindergarten open enrollment to a district-wide total not to exceed 700 students, as determined on February 15, 2011.
- Accept Kindergarten siblings into an elementary building where an older sibling in grades K-4 is currently attending.
- Accept new Kindergarten students applying under the Choice Is Yours program into the district ahead of other new kindergarten students.
- At **kindergarten**, close open enrollment if the total district-wide enrollment exceeds 700. If kindergarten enrollment is below a district-wide enrollment of 700, open enrollment may still be closed in an individual building if the total enrollment in that building is at or exceeds its capacity or has a total enrollment of 750 or greater.
- If applications for open enrollment exceed available spaces, selection will be made by lottery.

Recommended Guidelines for 2011-2012 Resident Students who Move Out of the District:

- Students whose parent or guardian move to another district will be subject to enrollment options using the following guidelines:
 - Move out over the summer; student will attend their new resident school for summer school and/or fall semester.
 - Move out during the first semester; student will have the option to complete the semester at Wayzata, and will then attend their new resident school second semester.
 - Move out during the second semester; student will have the option to complete the semester at Wayzata, and will then attend their new resident school for summer school and/or fall semester.

RECOMMENDED ACTION: Approve the recommendation to revise guidelines for 2010-2011 for resident students moving out of the district. Such students will be allowed to continue until the end of the school year and students in grades 11 or 12 will be allowed to graduate from Wayzata Public Schools. Further, approve the recommendation to close open enrollment for 2011-2012 in grades 1-12 and limit open enrollment in kindergarten; not to exceed a district-wide total of 700 students, as determined on February 15, 2011. Further, approve the guidelines for 2011-2012 resident students whereby: 1) those who move out of the district during the summer will attend their new resident school; and 2) those who move out of the district during the school year will have the option to complete the remainder of the current semester in Wayzata Public Schools.

Motion by: _____ Yes _____ Passed _____

Second by: _____ No _____ Failed _____

Abstentions _____

WAYZATA PUBLIC SCHOOLS
Independent School District 284
Wayzata, Minnesota

BOARD OF EDUCATION

Regular Meeting – December 13, 2010

AGENDA SECTION: 6. SUPERINTENDENT’S REPORTS AND RECOMMENDATIONS

ITEM: D. Human Resource Services

COMMENTS BY: Ms. Doughty

There are no items for this section.

WAYZATA PUBLIC SCHOOLS
Independent School District 284
Wayzata, Minnesota

BOARD OF EDUCATION

Regular Meeting – December 13, 2010

AGENDA SECTION: 7. OTHER BOARD ACTION

ITEM: A. Approval of 2011 Legislative Action Committee Platform

COMMENTS BY: Board Chair Peterson

The 2011 LAC Platform will be presented to the Board for approval.

Motion by: _____ Yes _____ Passed _____

Second by: _____ No _____ Failed _____

Abstentions _____



Legislative Action Committee – 2011 Platform (DRAFT – December 10, 2010)

While the Governor and legislators must solve the budget deficit, there are also opportunities to discuss and develop a long-term strategic vision for E-12 education in Minnesota. We believe strongly that the work of the Legislature must include short-term problem solving and long-term planning. Now is the time to think beyond the immediate problems and chart a vision that will have a long-lasting impact on our schools. To that end, the Wayzata Public Schools Legislative Action Committee (LAC) has organized its 2011 Legislative Platform in two sections: short-term priorities and priorities for the state’s long-term E-12 education vision.

Short-term Priorities

For the 2011 Legislative Session, we urge the Legislature and Governor to:

- ★ **Support legislation to allow Wayzata Public Schools to qualify early for the state’s alternative facilities program**
- ★ **Support legislation to preserve E-12 education funding and make the investment in students a top priority in the budgeting process**
- ★ **Establish a plan to incrementally pay back the aid payment shift rather than returning to the 90/10 payment formula in two years**
- ★ **Maintain support and funding for the state’s alternative compensation (QComp) program**
- ★ **Reduce the need for school districts to pay for the excess cost of special education programs by having the state pay its full share of special education costs**
- ★ **Oppose any legislation that would reduce state funding for districts with undesignated fund balances above a specified amount**
- ★ **Oppose any mandatory statewide school employee health insurance pool**

Priorities for the State's Long-term E-12 Education Vision

All successful public and private organizations can point to a clearly articulated, long-term vision as a critical aspect of their success. The same long-term vision is needed for E-12 education in Minnesota. The state needs the Governor and Legislature to lead a broad cross-section of stakeholders in a process to develop the desired future for E-12 education and step beyond the political disagreement that stifles innovation, reform and transformational change. The platform items noted below are meant to stimulate thinking on what change is needed and why a clearly articulated vision will help our state's education system prepare for the future. To this end, we urge the Legislature and Governor to:

- ★ **Reform E-12 education funding system** to provide adequate and stable funding, fully fund the basic instructional needs of all students, and reduce the dependence on operating levies to fund district operations
- ★ **Allow local school boards to generate and spend** financial resources to best meet local needs
- ★ **Continue to support the teacher alternative compensation (QComp)** program and explore other innovative strategies to build the skills of all teachers
- ★ **Recognize the reality of higher labor costs** in the metro area and implement the location equity index or similar provision to help districts pay for these increased costs
- ★ **Address the maintenance of effort provision** on special education and other areas to allow more local control
- ★ **Encourage and reward innovative reform initiatives** that focus on better meeting the needs of all students and closing the achievement gap
- ★ **Invest more in our state's youngest learners** by increasing funding for programs and services for children ages birth-K and their families; and allow flexibility for districts to use other funding to direct toward early childhood programs

The 2011 Legislative Platform was approved by the Wayzata Public Schools Board and its Legislative Action Committee (LAC).

WAYZATA PUBLIC SCHOOLS
Independent School District 284
Wayzata, Minnesota

BOARD OF EDUCATION

Regular Meeting – December 13, 2010

AGENDA SECTION: 8. AUDIENCE OPPORTUNITY TO ADDRESS SCHOOL BOARD

ITEM: _____

COMMENTS BY: Board Chair Peterson

This section of the agenda provides an opportunity for members of the audience to address the School Board.

WAYZATA PUBLIC SCHOOLS
Independent School District 284
Wayzata, Minnesota

BOARD OF EDUCATION

Regular Meeting – December 13, 2010

AGENDA SECTION: _____

ITEM: _____

COMMENTS BY: Board Chair Peterson

9. Board Reports

10. New Business

This section of the agenda provides an opportunity for Board members and/or the Superintendent to bring up any items of new business.

11. Adjourn

If there is no additional business before the School Board, the Chair will call for a motion to adjourn the meeting.

Motion by: _____ Yes _____ Passed _____

Second by: _____ No _____ Failed _____

Abstentions _____