

Early Learning Report

February 2026



Early Learning Programs

Family Engagement

- Pyramid Framework Sessions- Supporting early childhood social & emotional development
- Early Learners Calming Strategies- Feb. 6 @ 12:30
- Resources have been provided to families to support social & emotional developmental skills at home.

Professional Development

- Leadership Coaching for the Director occurs monthly through Learn & Grow, Alaska's Quality Recognition & improvement Systems
- PLC- Jan. 12: Music for developing language and literacy
- PLC- Feb. 2: Monitoring progress and development
- SCAAEY Conference (Anchorage): Feb. 19-21
- Coaching and Classroom Action Planning- In Progress

Assessment

- In Progress: TSG- Progress Monitoring Checkpoint #2
- Focused student observations on Alphabet and Numeracy knowledge

Curriculum Review

- Currently In Progress
- Committee- EC Director, 2 PK Educators, Director of Assessment
- Seeking a comprehensive program, which includes all domains of early learning. Strongly embedded social/emotional components within daily activities. With emphasis on playful, hands-on learning for whole child development.
- If you'd like to explore those for Considerations, click the image for each curriculum.
- Team mtg notes are shared with all PK educators for additional insight.
- Committee Mtg Decision-Feb. 27th
- Procurement Timeframe- Early March

Grant Management

- Anticipating the release of a new Pre-Elementary grant application and already outlining goals, initiatives and projects to enhance current operations and continue our journey of high-quality programming for early childhood.
- Analyzing budgets and preparing for 2nd semester projects.
- Early Literacy Bags to be assembled and shipped the week of Feb. 23rd. Providing access to engaging, early literacy materials Birth to PK!



frogstreet

The Creative Curriculum[®]
for Preschool

Enrollment Updates

PVL- 2
LAK- 5
LAG- 2
IGI- 2
NON- 2
NEW- 3
PTA- 6
KHK- 1 (Newly Opened!)



Early Learning Report

February 2026



Joyful Learning Through Play



Engaged learning in STEM, peer collaboration, and imaginative play!



Developing critical cognitive & motor skills: spatial awareness, reasoning, problem solving and persistence!



Virtual Music Classes: strengthening neural connections, language & literacy skills and physical coordination!



Sharing local treats: Octopus = Yum!



Sorting, Classifying, Patterns, Counting, oh my!



Social/Emotional: sharing, taking turns, developing strong language & friendship skills!





CLSD Grant Updates

February 2026

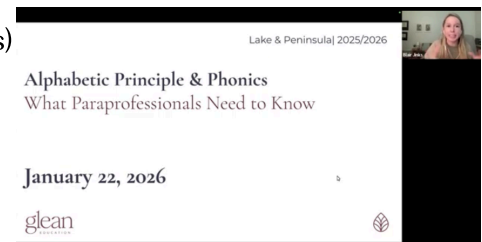


CLSD Grant Milestones

- Leadership Coaching (Glean): Feb. 3rd
- Mentoring Team Mtg: Feb. 5th- Monthly check in with each Mentor & collaboration time.
- CLSD CoP (Glean & DEED): Feb. 24th District literacy plan work session. Welcome to Join!
- Jan. Literacy Newsletter- Released!
- Family engagement events: District wide, to begin in Feb. with an Olympics theme!
- Amplify Tutoring in place at most sites, with positive teacher and student feedback.
- REWARDS- pilot roll out 2nd semester
- Strong intervention systems in place for elementary, striving to replicate practices for middle and secondary grades with newly available resources.
- Science of Reading Symposium (May 1-3)- Planning for in-person participation is in progress.

Paraprofessional Literacy Training Series

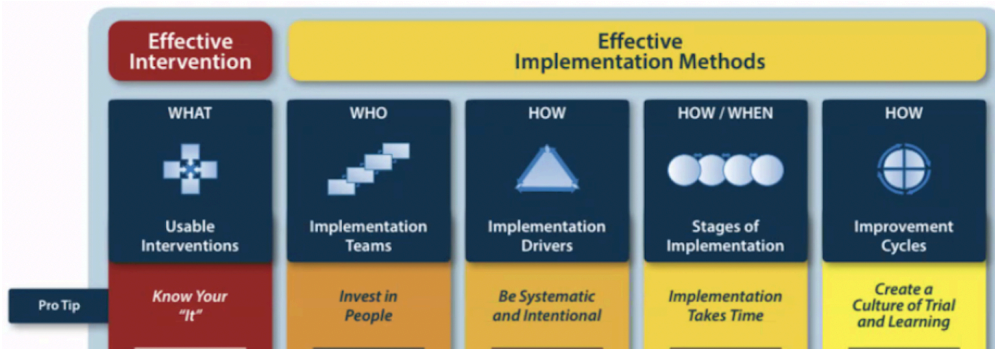
- Training #3: Jan. 22nd- Understanding Alphabetic Principle (9 participants)
- Training #4: Feb. 12th- Early Phonics & Explicit Instruction
- Building capacity within our multi-level classrooms through intentional paraprofessional monthly training sessions.
- Provided by Glean Education



Glean- Leadership Team & Literacy Consulting

Intended to enhance leadership team foundational knowledge in effective literacy instruction & best practices and assist with analyzing current practices while seeking solutions for areas of improvement.

- Data Reflection (DIBELS-M.O.Y): What do we see? What does the data suggest about literacy learning? What are the implications for instruction and intervention?
- Where positive student outcomes occurred, discussed how to replicate what's working well.
- We also discussed the importance of determining how to move students from Far below (red) to Below (yellow) for greater overall impact on literacy skills development.
- Will revisit the significance of developing SMART goals- Specific, Measurable, Achievable, Timeframe.



Questions.... Contact:

Moon McCarley-CLSD Coordinator,
Family Engagement, PLC Facilitator

Amber Kresl- CLSD Grant Manager
& Mentoring Program Lead

CLSD Grant Priorities

- Differentiating Student-Focused Readiness through Structured Literacy and MTSS
- Building Staff Capacity through Literacy -Focused PD
- Fostering & Sustaining Family/Community Partnerships
- Monitoring student data to improve positive student outcomes in literacy development