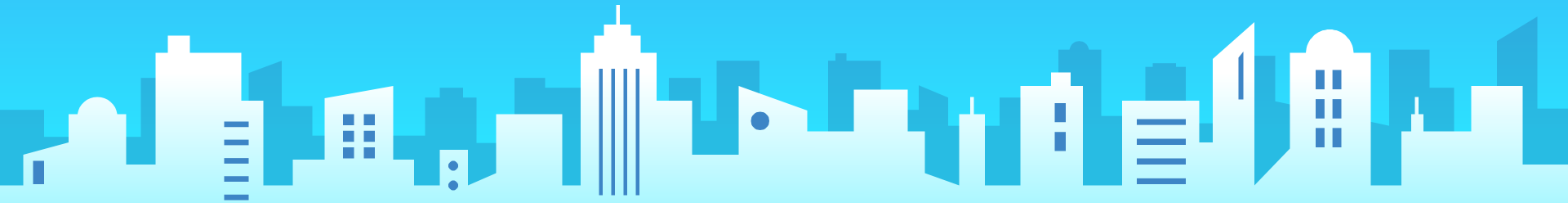




Return to Learn

**Bloomington School District 13's
Adaptive Plan for the
2020-2021 School Year**



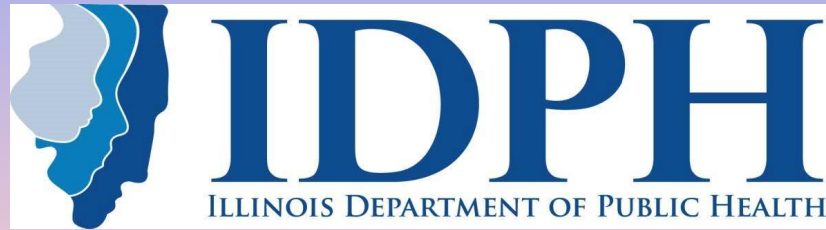
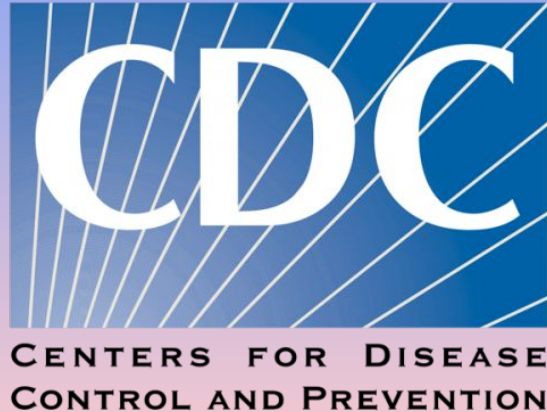
Restore Illinois Plan Overview

RESTORE ILLINOIS

A Public Health Approach To Safely Reopen Our State

Phase 1 Rapid Spread	Phase 2 Flattening	Phase 3 Recovery	Phase 4 Revitalization	Phase 5 Illinois Restored
<p>Strict stay at home and social distancing guidelines are put in place, and only essential businesses remain open.</p> <p>Every region has experienced this phase once already and could return to it if mitigation efforts are unsuccessful.</p>	<p>Non-essential retail stores reopen for curb-side pickup and delivery.</p> <p>Illinoisans are directed to wear a face covering when outside the home and can begin enjoying additional outdoor activities like golf, boating & fishing while practicing social distancing.</p>	<p>Manufacturing, offices, retail, barbershops and salons can reopen to the public with capacity and other limits and safety precautions.</p> <p>Gatherings of 10 people or fewer are allowed.</p> <p>Face coverings and social distancing are the norm.</p>	<p>Gatherings of 50 people or fewer are allowed, restaurants and bars reopen, travel resumes, child care and schools reopen under guidance from the Illinois Department of Public Health.</p> <p>Face coverings and social distancing are the norm.</p>	<p>The economy fully reopens with safety precautions continuing.</p> <p>Conventions, festivals and large events are permitted, and all businesses, schools and places of recreation can open with new safety guidance and procedures.</p>

Other Resource and Regulatory Agencies Used In the Development of the Plan

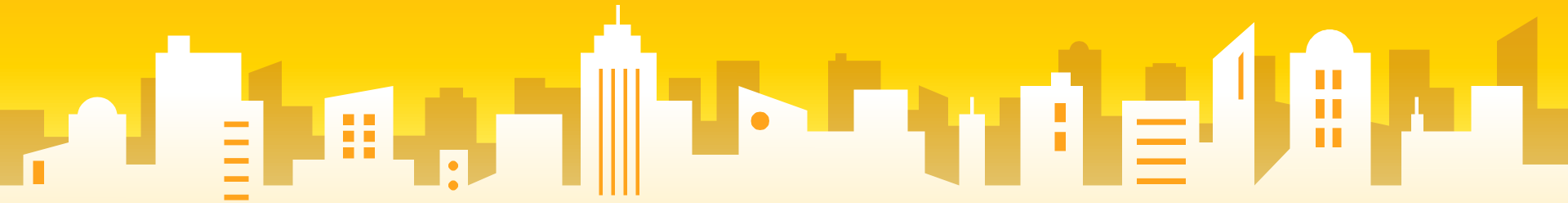


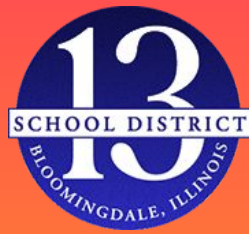
**Illinois
State Board of
Education**

Rapid Spread/Flattening Phases 1 and 2 - Restore Illinois



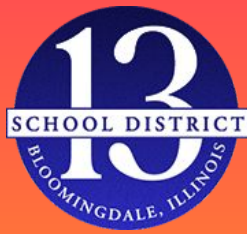
: Remote Learning Plan





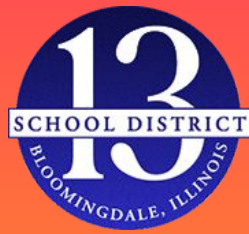
Remote Learning Focus Topics

- 1. Calendar & Scheduling**
- 2. Attendance & Engagement**
- 3. Health & Safety**
- 4. Communication & Feedback**
- 5. Delivery of Instruction**
- 6. Student Assessment**
- 7. Diverse Learners**
- 8. Professional Support**



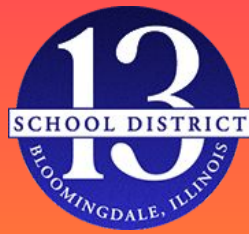
Calendar & Schedule

- 1. Remote Learning school days consists of:**
 - a. 5 hours of instruction for grades 1st through 8th**
 - b. 2.5 hours for EC & Kindergarten**
- 2. Remote Calendar is Identical to In-Person Calendar**
- 3. Remote Learning daily schedules match In-Person daily schedules for each building.**



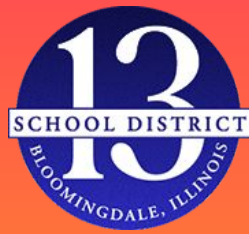
Attendance & Engagement

- 1. Virtual attendance is required during the school day**
- 2. Attendance will be recorded similarly to In-Person**
- 3. Engagement will be rated by families.**



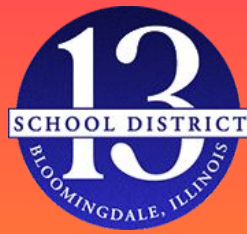
Health & Safety

- 1. Social Emotional Check-ins will be documented weekly**
- 2. Student device usage will be monitored off-site**
- 3. Appropriate use expectations and technology guidelines will be updated**



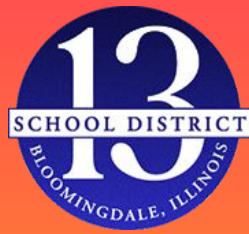
Communication & Feedback

- 1. Single weekly communication from District Office**
- 2. Single weekly communication from Building**
- 3. Weekly guide from each grade level (Elementary & Middle School) provided from each team.**
- 4. Classroom Teachers will communicate via email with parents of grades EC-Third, and with parent & student for grades Fourth - Eighth.**



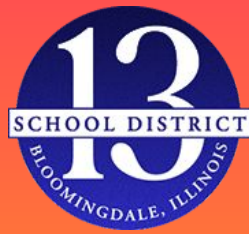
Delivery of Instruction

- 1. Classrooms will be available for teachers to utilize when conducting remote learning.**
- 2. Synchronous instruction can be delivered using resources, tools and connectivity available to them in their classrooms.**
- 3. Templates used for daily/weekly assignments.**
- 4. Dedicated time for exchange of learning materials & resources.**



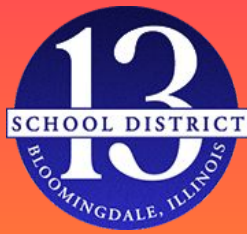
Student Assessment

- 1. Focus assessment on 1:1 assessments as much as possible**
- 2. Use of formative and summative assessments will continue to be used**
- 3. A virtual process will be used to continue leveled reading assessment to guide instruction.**



Diverse Learners

- 1. Adjust curricular expectations based on student learning needs**
- 2. Special Education, ELL support, Accelerated services would be in place from the start of the year**
- 3. Increased time for brain breaks**



Professional Support

- 1. Consistent organization of Learning Management Systems**
- 2. Interventionists maintain their own LMS spaces**
- 3. Ongoing training for staff on remote learning processes**
- 4. Support for parents to navigate student work**

Recovery

Phase 3 - Restore Illinois



: Hybrid/Blended Learning Plan





A Hybrid/Blended Learning Plan means

- **The District can have 9 students in a classroom**
- **The District requires everyone to wear Personal Protective Equipment**
- **The District requires staff and students to self certify their health**
- **The District delivers synchronous learning to all students on the same schedule**
- **The District does not transport students to or from school**
- **The District does not offer extra curricular activities**
- **The District does not offer before/after school programming**



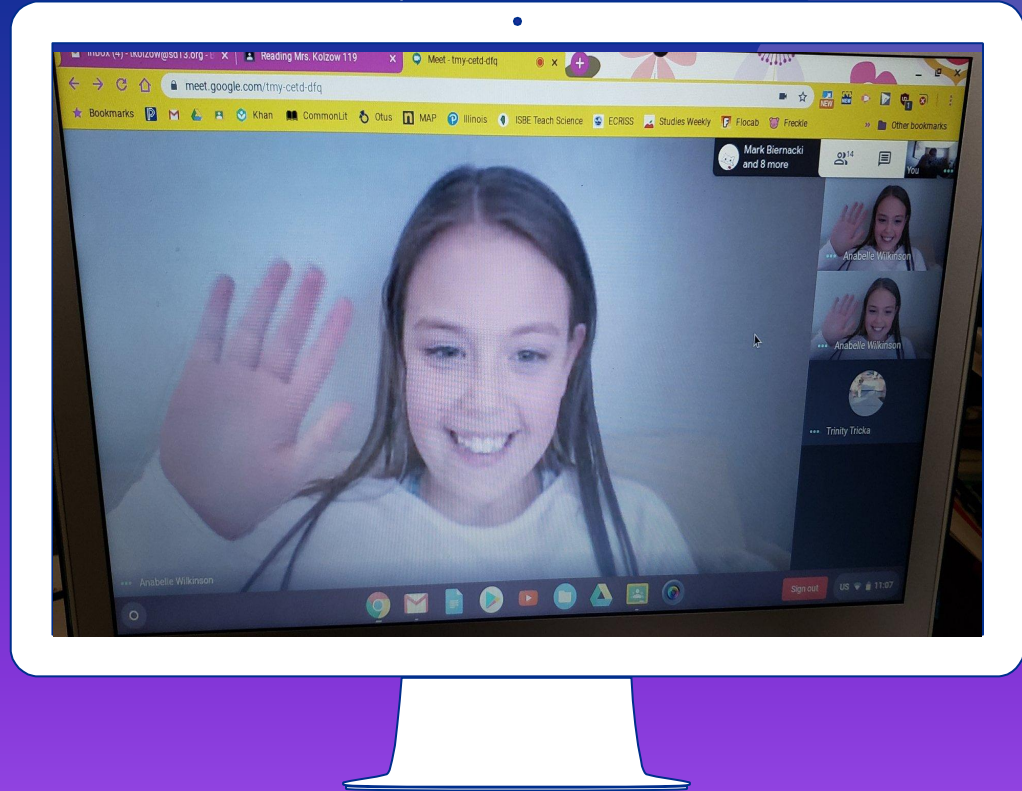


Students

With the greatest academic recovery needs as identified in data will be eligible for in person instruction in this phase.

Most students

Will be engaged remotely in instruction, likely through synchronous delivery with those in the classroom.

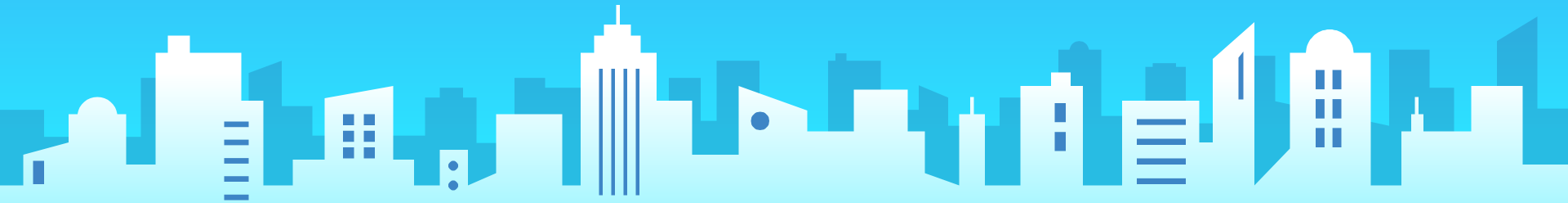


Revitalization

Phase 4 - Restore Illinois



: In Person Learning Plan (with Modifications)



In Person Learning (with Modifications) means

- ❖ The District can accommodate 10-14 students per classroom
- ❖ The District requires everyone to wear Personal Protective Equipment
- ❖ The District requires staff and students to self certify their health
- ❖ The District will need to run an A/B schedule

How the A/B Schedule works

	Monday	Tuesday	Wednesday	Thursday	Friday
GROUP A (50%)	<i>IN PERSON</i>	REMOTE	REMOTE	<i>IN PERSON</i>	REMOTE
GROUP B (50%)	REMOTE	<i>IN PERSON</i>	REMOTE	REMOTE	<i>IN PERSON</i>

HEALTH & SAFETY

- ❖ Daily Temperature and Symptom Checks
- ❖ Masks worn indoors at all times by students and staff
- ❖ Social Distancing of 6 ft.
- ❖ Frequent hand washing / hand sanitizer use
- ❖ Frequent cleaning of shared spaces

SCHOOL DAY - IN PERSON

MIDDLE SCHOOL

- ❖ Hours: 8:30AM - 3:30PM
- ❖ Class size: 10-11 students
- ❖ Periods: 7 Classes (50min each)
 - ELA Block, Math, Science, Social Studies, Health, Acceleration
- ❖ Student Lunch:
 - 32 minutes (approx)
 - 3 Separate Grade Level Lunch periods
 - 40 students per lunchroom (approx)

ELEMENTARY SCHOOL

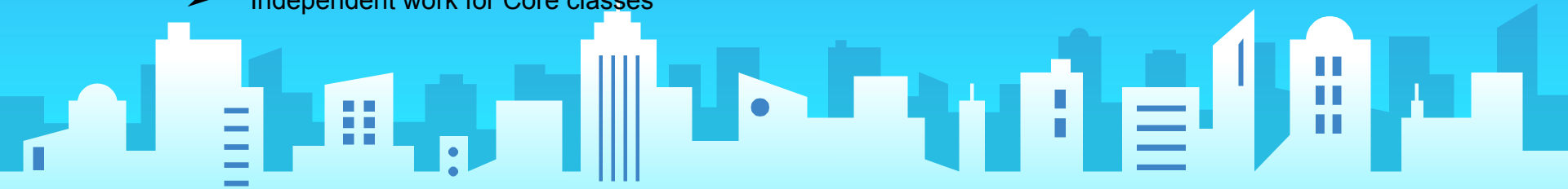
- ❖ Hours: 8:40AM - 3:30PM
 - Kindergarten 8:30-11:30AM, 12:30-3:30PM
- ❖ Class size: 10-12 students
- ❖ Periods:
- ❖ Student Lunch & Recess:
 - In classrooms
 - Possibility for 20 minute recess
 - Para designated for each classroom

SCHOOL DAY - REMOTE

MIDDLE SCHOOL

- ❖ Hours: 8:30 - 3:30 (approx)
- ❖ Monday, Tuesday, Thursday, Friday:
 - Follow In-Person bell schedule for ELA, Math, SS, SCI & Health (5 hours)
 - Combination of synchronized learning & independent activities.
- ❖ **Wednesday:**
 - Remote learning activities (5 hours)
 - Exploratory Courses (Scheduled time)
 - Independent PE & Library activities
 - Independent work for Core classes

ELEMENTARY SCHOOL

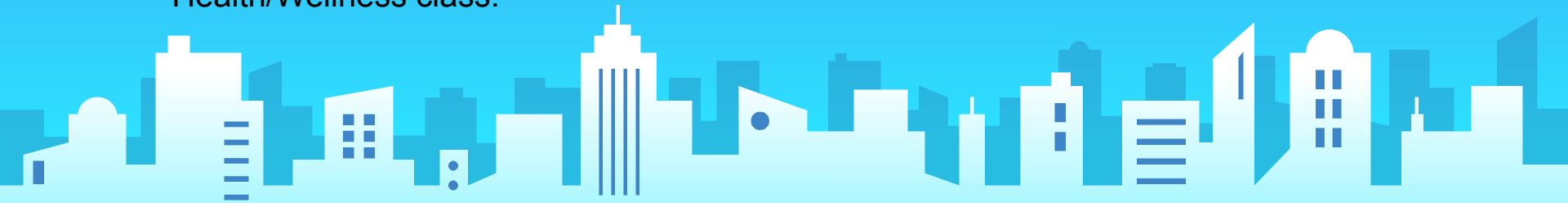


STUDENT SUPPORT SERVICES

MIDDLE SCHOOL

- ❖ Special Education Resource, Math & Reading Interventions, and related services will be provided primarily during the Acceleration period.
- ❖ Social-Emotional activities will be primarily blended into the Health/Wellness class.

ELEMENTARY SCHOOL



Westfield Group A Sample Schedule

	Monday & Thursday	Wednesday		Tuesday & Friday
Period	A (In-person)	Remote	Period	A (Remote)
0	ARRIVAL PROCEDURES	Combination of <u>New</u> Exploratory course work and PE activities assigned & independent work on previously assigned Core class work Exploratory Teachers available for communication. Core teachers Planning Time	0	
1	ELA		1	ELA
2	ELA		2	ELA
3	ACCELERATION		3	BREAK
4	MATH		4	MATH
5	LUNCH		5	BREAK
6	SCIENCE		6	SCIENCE
7	HEALTH		7	HEALTH
8	SOCIAL STUDIES		8	SOCIAL STUDIES
	DISMISSAL			

TRANSITIONS & DISTANCING

MIDDLE SCHOOL

- ❖ Bathroom usage
 - Designated Grade Level bathrooms
 - One student per classroom at a time
 - Hallway supervision
- ❖ Passing Periods
 - Staggered Grade Level schedules
- ❖ Lunch
 - 3 Lunch Periods
 - 2 spaces used each period
 - Cleaning between groups

ELEMENTARY SCHOOL

- ❖ Bathroom usage
 - Grade level assigned
- ❖ Passing Periods
 - Reduced as much as possible
- ❖ Lunch
 - Restricted to the classroom

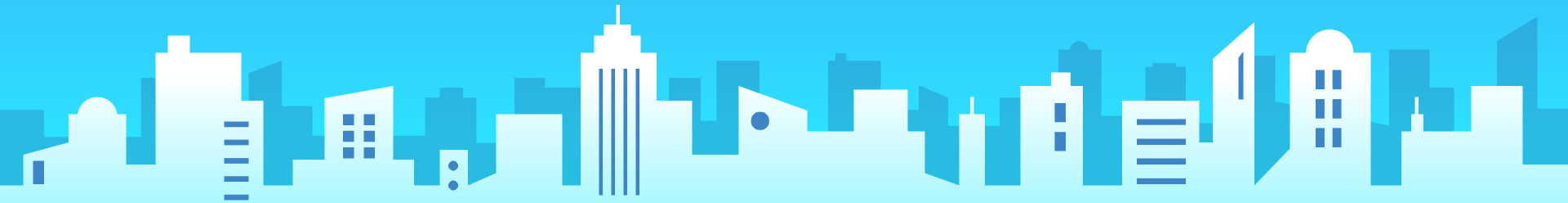
STUDENT GROUPINGS

MIDDLE SCHOOL

- ❖ Approx. 10-11 students in each class
- ❖ Limited transitions for students
- ❖ Some teachers may switch rooms occasionally
- ❖ Passing periods (3 min) when movement is needed. Staggered for each grade level.

ELEMENTARY SCHOOL

- ❖ Approx. 10-12 students in each class
- ❖ Students remain in specified classrooms
- ❖ Some teachers may switch rooms occasionally

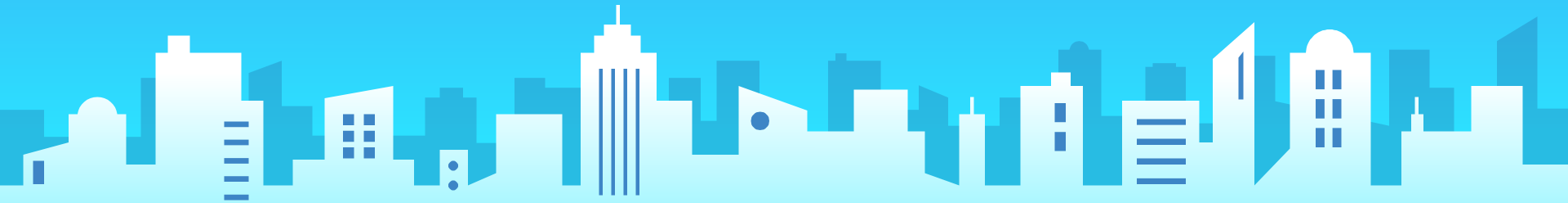


ARRIVAL & DISMISSAL

- ❖ Arrival and dismissal procedures will be set at each school. More information on updated procedures will be sent by your school principal prior to the start of the school year.
- ❖ Transportation information, including new procedures from First Student will be shared in the coming weeks.
- ❖ Expect slightly staggered arrival & dismissal times

TEACHING & LEARNING

- ❖ Students K-8 will be taught a full curriculum based on Common Core State Standards, some taught in school and some taught remotely.
- ❖ Students will be assessed on all curriculum delivered.
- ❖ First 2 weeks, increased focus on making connections, building relationships, and SEL activities.



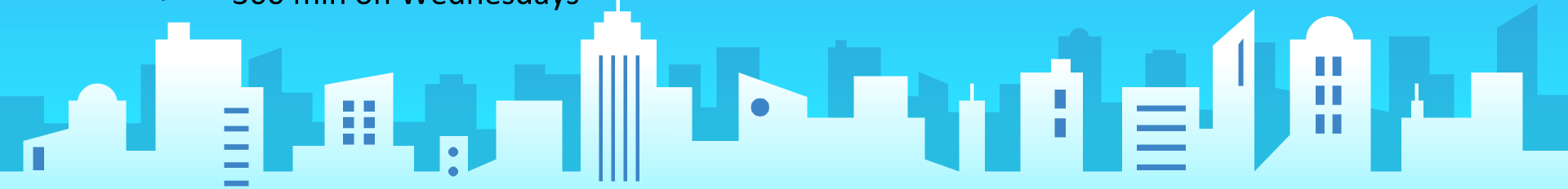
INSTRUCTIONAL MINUTES

MIDDLE SCHOOL

- ❖ Core Teachers (1200 min. Total)
 - 300 minutes each on Mon., Tues., Thurs., & Fri. (1200)
 - 0 minutes on Wednesdays

- ❖ Exploratory Teachers (1200 min. Total)
 - 225 minutes each on Mon., Tues., Thurs., & Fri. (900)
 - 300 min on Wednesdays

ELEMENTARY SCHOOL



EXTRA-CURRICULARS

MIDDLE SCHOOL

- ❖ Clubs: Possibly operate on a staggered schedule for A/B students if able to adhere to all safety guidelines.
- ❖ Athletics: Determined on an individual basis for each sport, dependant upon IHSA regulations, IDPH safety guidelines, and NWDAC (Athletic conference) recommendations.

ELEMENTARY SCHOOL

- ❖ No After School programs from outside D13 sources (Mr. Science, etc.)
- ❖ Club offerings will be evaluated at the start of the year

Illinois Restored

Phase 5 - Restore Illinois



**: Return to Schools
Without Restrictions**

Only A Vaccination

will permit the District to reopen without masks, social distancing, and other protective measures in place.





Parents and Guardians Will be given two choices:

In person instruction (with modifications)

Or

100% remote learning instruction



Staff Members
Will be given multiple choices as well:

Report to roles as needed by the District

Or

Other choices as determined by individual circumstances