

ECS Midwest, LLC

Proposal for Subsurface Exploration and Geotechnical
Engineering Services

Center Cass School District Parking Lot Replacement

699 Plainfield Road
Downers Grove, DuPage County, Illinois

ECS Proposal No. 16:25710-GP

November 25, 2025





ECS MIDWEST, LLC

Geotechnical • Construction Materials • Environmental • Facilities

November 25, 2025

Ms. Jessalyn Kelly
Wold Architects and Engineers
220 North Smith Street
Suite 310
Palatine, Illinois 60067

Email: jkelly@woldae.com

ECS Proposal No. 16:25710-GP

Reference: Proposal for Subsurface Exploration and Geotechnical Engineering Services
Center Cass School District Parking Lot Replacement
699 Plainfield Road
Downers Grove, DuPage County, Illinois

Dear Ms. Kelly:

As requested, ECS Midwest, LLC (ECS) is pleased to provide the following **lump sum** proposal for subsurface exploration and geotechnical engineering services for the above referenced project. Our understanding of the project is based on our review of the following information:

- RFP email from Jessalyn Kelly of Wold Architects and Engineers on November 20, 2025
- Soil Boring Location Exhibit, Sheet No. CSK-01, prepared by Eriksson Engineering Associates, Inc. dated October 10, 2025

This proposal outlines our understanding of the project, the proposed scope of services, activity schedule, fees, and authorization requirement.

ECS COMPANY INFORMATION AND EXPERIENCE

COMPANY: ECS Midwest, LLC is part of the ECS group of companies that was founded in 1988. There are 6 primary operating companies in the ECS group with 80+ offices. ECS is a leader in geotechnical, environmental, construction materials, and facilities engineering.

PEOPLE: ECS employs a total staff of around 3,000 people, including registered professional engineers and geologists, certified laboratory technicians, construction inspectors, field engineers, computer specialists and support personnel.

1575 BARCLAY BOULEVARD, BUFFALO GROVE, IL 60089 • T: (847) 279-0366 • F: (877) 694-8710

ECS Florida, LLC • ECS Mid-Atlantic, LLC • ECS Midwest, LLC • ECS Pacific, Inc. • ECS Southeast, LLC • ECS Southwest, LLP
ECS New York Engineering, PLLC – An Associate of ECS Group of Companies • www.ecslimited.com

“ONE FIRM. ONE MISSION.”

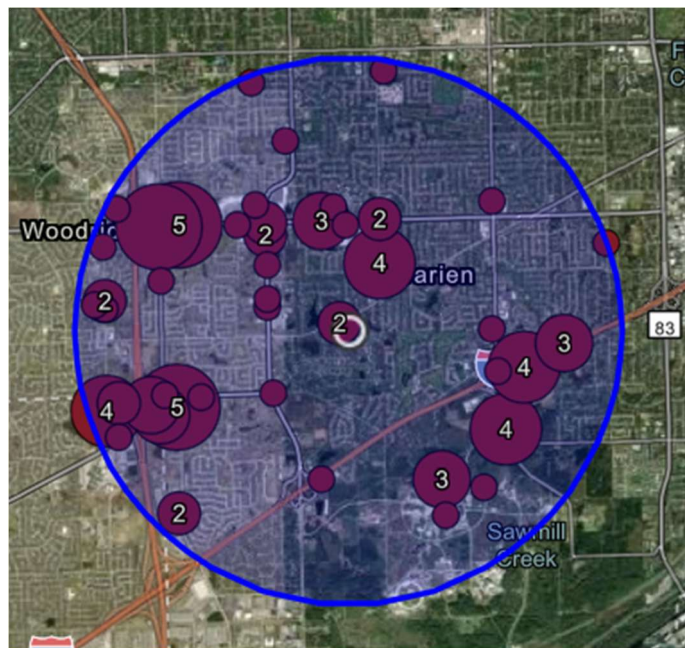
VALUE: Our size enables us to be highly responsive to meet project schedule requirements and have testing equipment ready for field explorations and laboratory testing. In addition, we can maintain consistent staffing levels to respond to fast-paced project requirements. The professional staffs at ECS are dedicated to providing responsive and reliable services. Our current initiatives with regard to generating timely reports are truly innovative in the consulting industry. As a culture of doers, we roll up our sleeves and use our skills to help solve problems. We hustle.

ACCOMPLISHMENT: The employees of ECS are proud to be ranked among the Top 100 Design Firms by ENR. Hard work and dedication to serving our clients has allowed ECS to become one of the largest consulting firms in the country.

SAFETY: ECS understands that the best safety cultures are driven by employee commitment, not just compliance. Safety has been and continues to be a priority at ECS. In 2010, we launched a new initiative to ingrain safety as a core value and integral part of our culture. Our Behavior Based Safety process known as STAR places safety at the forefront of everything we do.

EXPERIENCE: ECS also maintains a database of subsurface and project specific data for each project completed. The database also includes geotechnical reports performed by other consultants that have been provided to us by clients.

The red circles on the map below represent past geotechnical studies in our database in the vicinity of the project. As you can see there are number of projects in the vicinity of your project.



PROJECT BACKGROUND INFORMATION

In preparing this proposal, we have reviewed the information provided and discussed the overall project with your firm. We have also reviewed the available geologic and geotechnical information in our files in vicinity of the site.

Existing Site Conditions

The project site is located at 699 Plainfield Road in Downers Grove, DuPage County, Illinois. The existing site includes a school campus with two building complexes, associated pavements (parking spaces and drives) and landscape areas. The terrain across the site is relatively level with existing elevations ranging from approximately EL. 745 feet to EL. 751 feet.

Project Description

We understand the proposed project will include a pavement replacement project. Based on proposed boring locations provided by Wold, it appears that stormwater detention basins will be added at the northeast and northwest parts of the site. The depths of the proposed basins were not available at the time of this proposal. In addition, the final pavement grades were not available at the time of this proposal; however, we anticipate maximum cuts and fills will be on the order of 2 feet to reach design grades. In addition, traffic loading conditions were not available. Based on our experience, we have assumed the traffic loading conditions for the structure are as follows:

- 10 school buses in and out each day
- 150 passenger cars in and out each day
- Design life of proposed pavements = 20 years

Please note that a topographic drawing and grading plan was not available at the time of this proposal. ECS should be provided with topographic drawings and a grading plan prior to initiating our services to review our proposed depth of borings regarding actual cut/fill depths and make changes to our proposed scope and fee as necessary.

SCOPE OF SERVICES

Our integrated services will include drilling borings by drilling crews based on instructions provided by ECS. Our services will also include laboratory testing of representative soil samples, and engineering analyses presented in a site-specific engineering report.

Utility Clearance

Per state law, our drilling subcontractor will contact JULIE, Inc. the public utility to locate underground utilities at the site. Typically, JULIE, Inc. will not locate utilities beyond the point of distribution (meters or gauge points) on private property. The risk of hitting utilities that JULIE, Inc. did not mark can be reduced by engaging a private utility locating service. The risks include hitting gas lines, electrical lines, fiber optic lines, and many other utility service lines. This can result in electrocution, gas leaks or explosions, loss of services to businesses as well as tremendous costs for lost business, interruption of service, and repair along with potential legal liability.

We **have** included the cost of a private utility line locator in our “Base Services”. Private utility locator services can aid in identifying utilities that incorporate significant iron content in the conduit materials. However, utilities without significant ferrous (iron) content are more difficult to detect. These include most sanitary sewer alignments, copper or PVC water lines, fiber optic lines without tracer ribbons, copper electric lines with no surface exposure, drainage tiles/pipes, irrigation lines, etc.

Using a private utility locator does not guarantee that all utilities will be identified. However, this service lowers the risk and potential liability of the client while also protecting the safety of our field exploration crews.

We will coordinate our exploration locations around marked utilities and utilities pointed out to us by the owner/client. However, we will not be responsible for any utilities not marked or not pointed out to us by the landowner or client.

Site Access

Based on our review of available aerial imagery from Google Earth Pro, the site appears to be accessible to drilling equipment. Regarding site access, we have made the following assumptions:

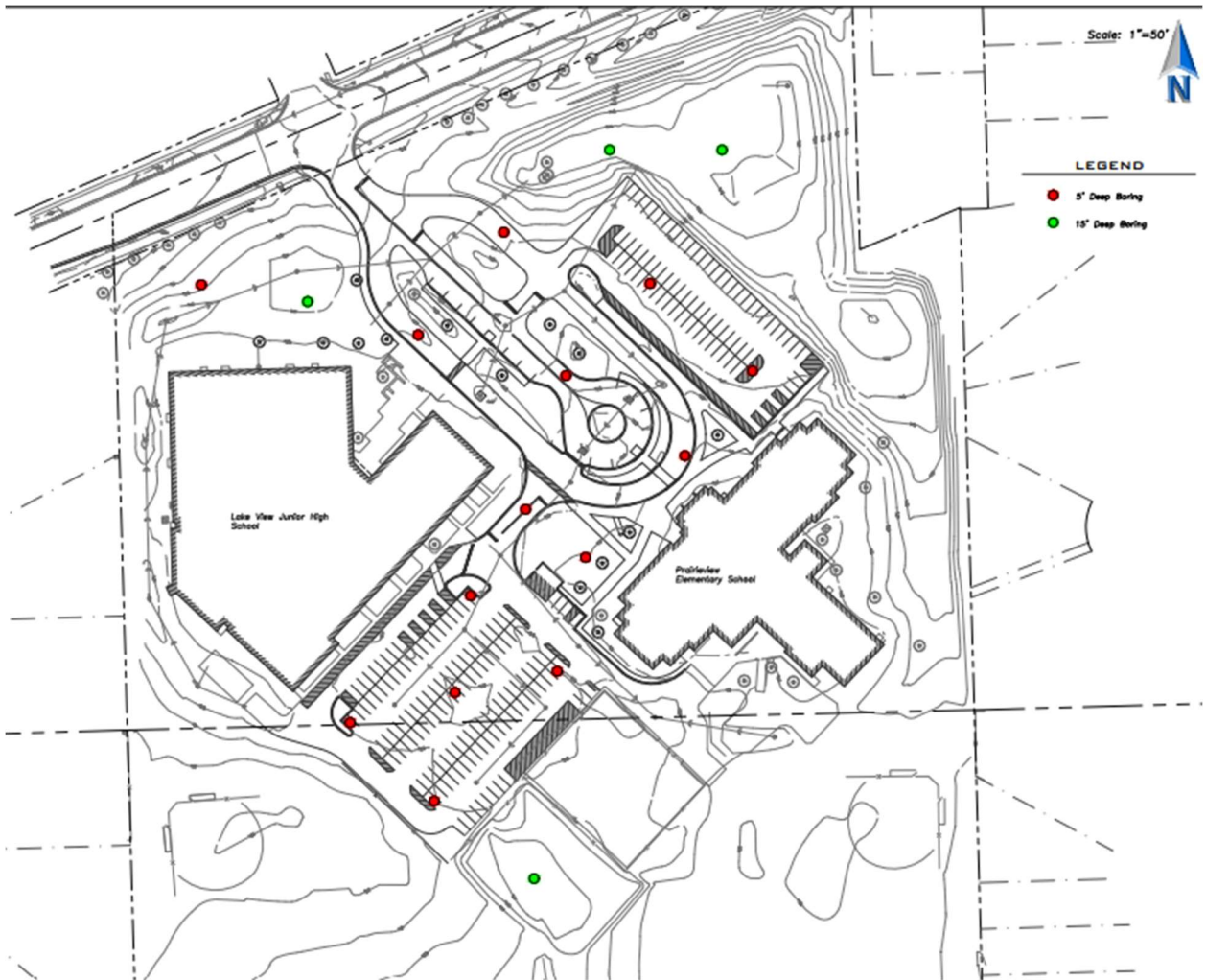
- This proposal assumes that no special permits or work outside of normal working hours will be required.
- Landowner notification will be provided by the client. ECS will work with the project team in providing site access diagrams for the drill rig as needed, but actual coordination with landowners to obtain access permission will be provided by the client.
- Parking within the work areas will be blocked off prior to our arrival. ECS cannot be held responsible for damage to, nor the cleanliness of, vehicles not moved from the work area.
- Traffic control (signage, flaggers, arrow boards, etc.) is not required for drilling on or near existing streets or roadways.

Field Exploration

ECS proposes to perform the following in general accordance with the local standards and practices listed:

- a. Field locate the test locations by handheld GPS unit / taping and pacing from existing site features / available plans. Elevations will be interpolated from the plans provided/or referenced from published topographical maps.
- b. Obtain a public utility locate ticket for location of underground lines. See further information in the Utility Clearance section above.
- c. Mobilize a truck-mounted drilling rig to the site.

- d. Perform soil test borings (ASTM 1586/1587 Standard and/or Continuous Sampling) at the approximate locations shown on the figure below.



BORINGS	PROPOSED STRUCTURE /SITE FEATURE	PROPOSED DRILLING	TOTAL LINEAR FEET OF DRILLING
Four (4) Green Circles	Stormwater Detention	4 SPT* Borings @ 15 ft deep	60
Fourteen (14) Red Circles	Pavement Reconstruction	14 SPT* Borings @ 15 ft deep	70
		Total Drilling Footage	130

*Standard Penetration Test

- e. Measure the depth of groundwater within each exploration location at the time of drilling and prior to backfilling.

The explorations will be extended to the depths listed above or to mechanical refusal (shallow rock or other impenetrable obstructions), whichever occurs first. Please note that a minimum charge of 10 feet will apply to each location terminated at a depth less than 10 feet.

Site Departure Conditions

Upon completion of subsurface exploration, we will backfill each of the locations with the soil removed and mound the excess spoils back up over the test location. In pavement areas, we will patch the asphalt or concrete surface with cold mix asphalt patch or quick setting concrete of an equivalent or greater thickness. Some post drilling settlement of the boreholes should be expected and may require future maintenance to repair any settlement and prevent a tripping hazard. This maintenance is not included in our scope of services or fees. No other restoration will be provided. ECS will not be responsible for restoration of, but not limited to the following: grass, shrubs, trees, flower beds, or ruts caused by drilling operations. The client must communicate areas that must not be disturbed in advance of field operations.

Typically, we will not provide site repairs beyond what is outlined above unless specifically contracted. Alternatively, we will remove excess spoils from job sites and dispose of them in an approved manner for a negotiated fee.

Please note that some disturbance to off-pavement, gravel-covered, grass-covered areas, including the possible cutting of trees, or running over of brush and understory in wooded areas might occur. We will attempt to limit such disturbance; however, we have not budgeted for site repairs including filling of tire ruts, seeding of lawn areas, replacement of bushes or the planting of trees, etc. If necessary, additional site repairs can be provided at an additional cost.

Laboratory Testing

Upon completion of field exploration operations, the samples will be returned to our laboratory for further identification, visual classification, and testing. Laboratory testing may include the following:

Laboratory Test	Quantity
Natural Moisture Content and Hand Penetrometer Testing	Each cohesive soil sample

CCDD Testing

ECS will perform CCDD testing on soil samples obtained from the soil borings. Illinois Public Act 96-1416 amended the Environmental Protection Act regarding the management of Clean Construction and Demolition Debris (CCDD). The law has created a state tipping fee for CCDD disposal and provides additional standards for materials being accepted at CCDD facilities and cleans soil-only fill sites. For most sites, prior to landfill acceptance of any soils generated from construction activities, certification from a licensed professional engineer or geologist that the soil is uncontaminated is required.

In an effort to determine what landfill (CCDD or non-CCDD) will be able to accept soils generated from future construction activities and to assist you in determining approximate costs for future soil disposal activities, soil samples obtained during the geotechnical exploration exhibiting the greatest potential for possible impacts (visual, olfactory, PID readings, etc.) will be analyzed. Note that pre-sampling soils for compliance with the law will also assist in accommodating same day “dig and haul activities” and should reduce overall costs and the potential for delays associated with soil disposal activities. If the soil is determined to be non-impacted, ECS will provide the IEPA Uncontaminated Soil Certification Form (LPC-663) and certification by our P.E. that the soil is not contaminated. Please note that if the soils are found to be impacted additional analyses (specific to the appropriate landfill that can accept impacted soils) may be required prior to acceptance. Additionally, it should be noted that the landfill (CCDD or other) will make the final determination on whether or not they will choose to accept the waste and may request additional analysis prior to acceptance. The cost to perform this service will be \$2,000 for the first sample and \$1,400 for each additional sample. **ECS has estimated four (4) samples for the project site (total= \$6,200).**

Engineering Report

Upon completion of the field exploration, laboratory testing, and engineering analyses, we will prepare a written engineering report that will include:

- a. A review of published soils mapping and/or geologic information.
- b. Observations from our site reconnaissance and personnel on the drill rig, including current site conditions, surface drainage features, and surface topographic conditions, and/or available satellite imagery.
- c. A description of the field exploration and laboratory tests performed.
- d. A site location diagram and a field exploration diagram.
- e. Final logs of the soil borings in accordance with industry standard practices for geotechnical engineering. Elevations will be interpolated from civil drawings or referenced from topographic information that you supply.
- f. The results of the laboratory tests will be plotted on the final exploration logs and/or included on separate test report pages.
- g. Discussion of the subsurface materials encountered along with groundwater conditions observed.
- h. Subsurface cross sections/profiles may be included that graphically represent the subsurface conditions.
- i. Evaluation of the on-site soil characteristics and a discussion of their suitability for reuse as engineered fill to support grade slabs and pavements. We will also include compaction recommendations and suitable material guidelines.
- j. Recommended preliminary flexible pavement (asphalt) and rigid pavement (concrete) based on estimated CBR values and estimated traffic loading.
- k. General recommendations for construction of stormwater detention basins
- l. Estimated seasonal high groundwater level at proposed detention basins
- m. Recommendations for additional subsurface exploration, laboratory testing, and/or consultation that may be required to complete the geotechnical assessment and engineering recommendations.

OPTIONAL SERVICES

In addition to the scope of services described above, we can incorporate additional services to benefit your project greatly. We have provided a summary of each optional service below for your consideration. If you would like us to perform any of the optional services listed below, please indicate so in the space provided on the Proposal Acceptance page.

Infiltration Testing

ECS can perform in situ infiltration tests for the determination of subsoil hydraulic conductivity for implementation of the proposed subsoil underdrain in proposed locations. These tests can be performed in the proposed stormwater detention areas. The infiltration test will be performed in general accordance with the current Chicago Storm Water Management Ordinance (Single Ring Infiltrometer). We propose the tests will be performed at depth to match the bottom of the proposed basins. Ideally, the tests should be performed at two (2) feet below existing grade. The tests will be performed concurrently with the soil boring exploration. The cost is \$1,000 for the first test and \$900 for each additional test.

FEE

ECS will provide the services outlined in this proposal ("Base Services") for a lump sum fee of **\$ 13,700** (\$7,500 geotechnical + \$6,200 CCDD – four samples), plus any optional services authorized. **This fee is based on the application of the Illinois Prevailing Wage Act to the drilling personnel.**

Our fee assumes that the site is accessible based upon our assumptions detailed in this proposal. If additional services are requested or required based on differing site conditions, we will contact you for verbal and written authorization to proceed with the additional services.

SCHEDULE

Our ability to access the site and perform the field exploration may be impacted by precipitation, excessive temperatures, or other atmospheric conditions. Field exploration will be performed during normal business hours Monday through Friday. If work needs to be performed at night or on weekends, there will be an additional fee.

We have assumed that the client will assist in accessing the site (with the current site owners/occupants). We anticipate the following project schedule:

TASK	APPROXIMATE SCHEDULE
Mobilization	About 2 to 3 weeks
Field Exploration	About 2 days
Laboratory Testing	3 to 5 days
Engineering Report	About 2 weeks
Total	5 to 6 weeks

If there is a specific due date for the report, please let us know. Verbal comments on findings can be provided within 10 days of completion of the borings, if requested.

CLOSING

Our “Terms and Conditions of Service,” are an integral part of our proposal. If other services are required because of unexpected field conditions, or because of a request for additional services, they will be invoiced in accordance with our current Fee Schedule. Before modifying or expanding the extent of our exploration program, we will contact you for your review and authorization.

Our insurance carrier requires that we receive written authorization prior to initiation of work and a signed contract prior to the release of any work product. This letter is the agreement for our services. If notice to proceed is provided verbally, through email, or by other means, the Client is bound by the terms and conditions attached to this proposal.

Your acceptance of this proposal may be indicated by signing and returning a copy of this proposal to us. We are pleased to have this opportunity to offer our services and look forward to working with you on the project.

Respectfully submitted,

ECS MIDWEST, LLC



David T Lewandowski, P.E.
Geotechnical Associate Principal
DTLewandowski@ecslimited.com



Alagaiya Veeramani, P.E.
Subsidiary Dir of Geotechnical Services
aveeramani@ecslimited.com

Enclosures: Proposal Acceptance Sheet
Terms and Conditions of Service

PROPOSAL ACCEPTANCE

Proposal No.: 16:25710-GP
 Scope of Work: Subsurface Exploration and Geotechnical Engineering Services
 Project: Center Cass School District Parking Lot Replacement
 Location: 699 Plainfield Road, Downers Grove, DuPage County, Illinois
 Base Services: **\$ 13,700 (includes Prevailing Wages for driller and four CCDD samples)**

Client Signature: _____ Date: _____
 Printed Name: _____ Title: _____

Optional Services

Infiltration Test (\$1,000 first sample):	<input type="checkbox"/> Yes	<input type="checkbox"/> No
Infiltration Test (\$900 per each additional sample):	<input type="checkbox"/> Yes	<input type="checkbox"/> No

Please complete this page and return one copy of this proposal to ECS to indicate acceptance of this proposal and to initiate work on the above-referenced project. The Client's signature above also indicates that he/she has read or has had the opportunity to read the accompanying Terms and Conditions of Service and agrees to be bound by such Terms and Conditions of Service.

BILLING INFORMATION

(please print or type)

Contact Person: _____
 Telephone No. of Contact Person: _____
 Email of Contact Person: _____
 Party Responsible for Payment: _____
 Company Name: _____
 Billing Address: _____
 Telephone Number: _____
 Accounts Payable Email Address: _____
 Client Project/Account Number: _____
 Special Conditions for Invoices: _____

ECS offers a full array of services to assist you with *all* phases of your project, including but not limited to:

- Phase I, II and III Environmental Site Assessments	- Third Party Mechanical, Electrical, Plumbing Inspections Services	- Building Envelope, Roofing, and Waterproofing Consultation
- Wetlands Delineations	- Construction Materials Testing and Special Inspections	- Specialty Materials and Forensics Testing
- Asbestos/Lead Paint Services	- LEED® Consulting Services	- Monitoring Services
- Indoor Air Quality/Mold Services	- Geo-Structural Design	- Pre- and Post-Construction Condition Assessments
- Natural Resources		
- Groundwater Remediation		



ECS Midwest, LLC TERMS AND CONDITIONS OF SERVICE

The professional services ("Services") to be provided by ECS Midwest, LLC ("ECS") pursuant to the Proposal shall be provided in accordance with these Terms and Conditions of Service ("Terms"), including any addenda as may be incorporated or referenced in writing shall form the Agreement between ECS and Client.

1.0 INDEPENDENT CONSULTANT STATUS - ECS shall serve as an independent professional consultant to CLIENT for Service on the Project, identified above, and shall have control over, and responsibility for, the means and methods for providing the Services identified in the Proposal, including the retention of Subcontractors and Subconsultants

2.0 SCOPE OF SERVICES - It is understood that the fees, reimbursable expenses and time schedule defined in the Proposal are based on information provided by CLIENT and/or CLIENT'S contractors and consultants. CLIENT acknowledges that if this information is not current, is incomplete or inaccurate, if conditions are discovered that could not be reasonably foreseen, or if CLIENT orders additional services, the scope of services will change, even while the Services are in progress.

3.0 STANDARD OF CARE

3.1 In fulfilling its obligations and responsibilities enumerated in the Proposal, ECS shall be expected to comply with and its performance evaluated in light of the standard of care expected of professionals in the industry performing similar services on projects of like size and complexity at that time in the region (the "Standard of Care"). Nothing contained in the Proposal, the agreed-upon scope of Services, these Terms and Conditions of Service or any ECS report, opinion, plan or other document prepared by ECS shall constitute a warranty or guaranty of any nature whatsoever.

3.2 CLIENT understands and agrees that ECS will rely on the facts learned from data gathered during performance of Services as well as those facts provided by the CLIENT. CLIENT acknowledges that such data collection is limited to specific areas that are sampled, bored, tested, observed and/or evaluated. Consequently, CLIENT waives any and all claims based upon erroneous facts provided by the CLIENT, facts subsequently learned or regarding conditions in areas not specifically sampled, bored, tested, observed or evaluated by ECS.

3.3 If a situation arises that causes ECS to believe compliance with CLIENT'S directives would be contrary to sound engineering practices, would violate applicable laws, regulations or codes, or will expose ECS to legal claims or charges, ECS shall so advise CLIENT. If ECS' professional judgment is rejected, ECS shall have the right to terminate its Services in accordance with the provisions of Section 25.0, below.

3.4 If CLIENT decides to disregard ECS' recommendations with respect to complying with applicable Laws or Regulations, ECS shall determine if applicable law requires ECS to notify the appropriate public officials. CLIENT agrees that such determinations are ECS' sole right to make.

4.0 CLIENT DISCLOSURES

4.1 Where the Scope of Services requires ECS to penetrate a Site surface, CLIENT shall furnish and/or shall direct CLIENT'S consultant(s) or agent(s) to furnish ECS information identifying the type and location of utility lines and other man-made objects known, suspected, or assumed to be located beneath or behind the Site's surface. ECS shall be entitled to rely on such information for completeness and accuracy without further investigation, analysis, or evaluation.

4.2 "Hazardous Materials" shall include but not be limited to any substance that poses or may pose a present or potential hazard to human health or the environment whether contained in a product, material, by-product, waste, or sample, and whether it exists in a solid, liquid, semi-solid or gaseous form. CLIENT shall notify ECS of any known, assumed, or suspected regulated, contaminated, or other similar Hazardous Materials that may exist at the Site prior to ECS mobilizing to the Site.

4.3 If any Hazardous Materials are discovered, or are reasonably suspected by ECS after its Services begin, ECS shall be entitled to amend the scope of Services and adjust its fees to reflect the additional work or personal protective equipment and/or safety precautions required by the existence of such Hazardous Materials.

5.0 INFORMATION PROVIDED BY OTHERS - CLIENT waives, releases and discharges ECS from and against any claim for damage, injury or loss allegedly arising out of or in connection with errors, omissions, or inaccuracies in documents and other information in any form provided to ECS by CLIENT or CLIENT'S agents, contractors, or consultants, including such information that becomes incorporated into ECS documents.

6.0 CONCEALED RISKS - CLIENT acknowledges that special risks are inherent in sampling, testing and/or evaluating concealed conditions that are hidden from view and/or neither readily apparent nor easily accessible, e.g., subsurface conditions, conditions behind a wall, beneath a floor, or above a ceiling. Such circumstances require that certain assumptions be made regarding existing conditions, which may not be verifiable without expending additional sums of money or destroying otherwise adequate or serviceable portions of a building or component thereof. Accordingly, ECS shall not be responsible for the verification of such conditions unless verification can be made by simple visual observation. Client agrees to bear any and all costs, losses, damages and expenses (including, but not limited to, the cost of ECS' Additional Services) in any way arising from or in connection with the existence or discovery of such concealed or unknown conditions.

7.0 RIGHT OF ENTRY/DAMAGE RESULTING FROM SERVICES

7.1 CLIENT warrants that it possesses the authority to grant ECS right of entry to the Site for the performance of Services. CLIENT hereby grants ECS and its subcontractors and/or agents, the right to enter from time to time onto the property in order for ECS to perform its Services. CLIENT agrees to indemnify and hold ECS harmless from any claims arising from allegations that ECS trespassed or lacked authority to access the Site.

7.2 CLIENT warrants that it possesses all necessary permits, licenses and/or utility clearances for the Services to be provided by ECS except where ECS' Proposal explicitly states that ECS will obtain such permits, licenses, and/or utility clearances.

7.3 ECS will take reasonable precautions to limit damage to the Site and its improvements during the performance of its Services. CLIENT understands that the use of exploration, boring, sampling, or testing equipment may cause minor, but common, damage to the Site. The correction and restoration of such common damage is CLIENT'S responsibility unless specifically included in ECS' Proposal.

7.4 CLIENT agrees that it will not bring any claims for liability or for injury or loss against ECS arising from (i) procedures associated with the exploration, sampling or testing activities at the Site, (ii) discovery of Hazardous Materials or suspected Hazardous Materials, or (iii) ECS' findings, conclusions, opinions, recommendations, plans, and/or specifications related to discovery of contamination.

8.0 UNDERGROUND UTILITIES

8.1 ECS shall exercise the Standard of Care in evaluating client-furnished information as well as information readily and customarily available from public utility locating services (the "Underground Utility Information") in its effort to identify underground utilities. The extent of such evaluations shall be at ECS' sole discretion.

8.2 CLIENT recognizes that the Underground Utility Information provided to or obtained by ECS may contain errors or be incomplete. CLIENT understands that ECS may be unable to identify the locations of all subsurface utility lines and man-made features.

8.3 CLIENT waives, releases, and discharges ECS from and against any claim for damage, injury or loss allegedly arising from or related to subterranean structures (pipes, tanks, cables, or other utilities, etc.) which are not called to ECS' attention in writing by CLIENT, not correctly shown on the Underground Utility Information and/or not properly marked or located by the utility owners, governmental or quasi-governmental locators, or private utility locating services as a result of ECS' or ECS' subcontractor's request for utility marking services made in accordance with local industry standards.

9.0 SAMPLES

9.1 Soil, rock, water, building materials and/or other samples and sampling by-products obtained from the Site are and remain the property of CLIENT. Unless other arrangements are requested by CLIENT and mutually agreed upon by ECS in writing, ECS will retain samples not consumed in laboratory testing for up to sixty (60) calendar days after the issuance of any document containing data obtained from such samples. Samples consumed by laboratory testing procedures will not be stored.

9.2 Unless CLIENT directs otherwise, and excluding those issues covered in Section 10.0, CLIENT authorizes ECS to dispose of CLIENT'S non-hazardous samples and sampling or testing process by-products in accordance with applicable laws and regulations.

10.0 ENVIRONMENTAL RISKS

10.1 When Hazardous Materials are known, assumed, suspected to exist, or discovered at the Site, ECS will endeavor to protect its employees and address public health, safety, and environmental issues in accordance with the Standard of Care. CLIENT agrees to compensate ECS for such efforts.

10.2 When Hazardous Materials are known, assumed, or suspected to exist, or discovered at the Site, ECS and/or ECS' subcontractors will exercise the Standard of Care in containerizing and labeling such Hazardous Materials in accordance with applicable laws and regulations, and will leave the containers on Site. CLIENT is responsible for the retrieval, removal, transport and disposal of such contaminated samples, and sampling process byproducts in accordance with applicable law and regulation.

10.3 Unless explicitly stated in the Scope of Services, ECS will neither subcontract for nor arrange for the transport, disposal, or treatment of Hazardous Materials. At CLIENT'S written request, ECS may assist CLIENT in identifying appropriate alternatives for transport, off-site treatment, storage, or disposal of such substances, but CLIENT shall be solely responsible for the final selection of methods and firms to provide such services. CLIENT shall sign all manifests for the disposal of substances affected by contaminants and shall otherwise exercise prudence in arranging for lawful disposal.

10.4 In those instances where ECS is expressly retained by CLIENT to assist CLIENT in the disposal of Hazardous Materials, samples, or wastes as part of the Proposal, ECS shall do so only as CLIENT'S agent (notwithstanding any other provision of this AGREEMENT to the contrary). ECS will not assume the role of, nor be considered a generator, storer, transporter, or disposer of Hazardous Materials.

10.5 Subsurface sampling may result in unavoidable cross-contamination of certain subsurface areas, as when a probe or excavation/boring device moves through a contaminated zone and links it to an aquifer, underground stream, pervious soil stratum, or other hydrous body not previously contaminated, or connects an uncontaminated zone with a contaminated zone. Because sampling is an essential element of the Services indicated herein, CLIENT agrees this risk cannot be eliminated. Provided such services were performed in accordance with the Standard of Care, CLIENT waives, releases and discharges ECS from and against any claim for damage, injury, or loss allegedly arising from or related to such cross-contamination.

10.6 CLIENT understands that a Phase I Environmental Site Assessment (ESA) is conducted solely to permit ECS to render a professional opinion about the likelihood of the site having a Recognized Environmental Condition on, in, beneath, or near the Site at the time the Services are conducted. No matter how thorough a Phase I ESA study may be, findings derived from its conduct are highly limited and ECS cannot know or state for an absolute fact that the Site is unaffected or adversely affected by one or more Recognized Environmental Conditions. CLIENT represents and warrants that it understands the limitations associated with Phase I ESAs.

11.0 OWNERSHIP OF DOCUMENTS

- 11.1 ECS shall be deemed the author and owner (or licensee) of all documents, technical reports, letters, photos, boring logs, field data, field notes, laboratory test data, calculations, designs, plans, specifications, reports, or similar documents and estimates of any kind furnished by it [the "Documents of Service"] and shall retain all common law, statutory and other reserved rights, including copyrights. CLIENT shall have a limited, non-exclusive license to use copies of the Documents of Service provided to it in connection with the Project for which the Documents of Service are provided until the completion of the Project.
- 11.2 ECS' Services are performed and Documents of Service are provided for the CLIENT'S sole use. CLIENT understands and agrees that any use of the Documents of Service by anyone other than the CLIENT, its licensed consultants and its contractors is not permitted. CLIENT further agrees to indemnify and hold ECS harmless for any errors, omissions or damage resulting from its contractors' use of ECS' Documents of Service.
- 11.3 CLIENT agrees to not use ECS' Documents of Service for the Project if the Project is subsequently modified in scope, structure or purpose without ECS' prior written consent. Any reuse without ECS' written consent shall be at CLIENT'S sole risk and without liability to ECS or to ECS' subcontractor(s). CLIENT agrees to indemnify and hold ECS harmless for any errors, omissions or damage resulting from its use of ECS' Documents of Service after any modification in scope, structure or purpose.
- 11.4 CLIENT agrees to not make any modification to the Documents of Service without the prior written authorization of ECS. To the fullest extent permitted by law, CLIENT agrees to indemnify, defend, and hold ECS harmless from any damage, loss, claim, liability or cost (including reasonable attorneys' fees and defense costs) arising out of or in connection with any unauthorized modification of the Documents of Service by CLIENT or any person or entity that acquires or obtains the Documents of Service from or through CLIENT. CLIENT represents and warrants that the Documents of Service shall be used only as submitted by ECS.

12.0 SAFETY

- 12.1 Unless expressly agreed to in writing in its Proposal, CLIENT agrees that ECS shall have no responsibility whatsoever for any aspect of site safety other than for its own employees. Nothing herein shall be construed to relieve CLIENT and/or its contractors, consultants or other parties from their responsibility for site safety. CLIENT also represents and warrants that the General Contractor is solely responsible for Project site safety and that ECS personnel may rely on the safety measures provided by the General Contractor.
- 12.2 In the event ECS assumes in writing limited responsibility for specified safety issues, the acceptance of such responsibilities does not and shall not be deemed an acceptance of responsibility for any other non-specified safety issues, including, but not limited to those relating to excavating, trenching, shoring, drilling, backfilling, blasting, or other construction activities.

13.0 CONSTRUCTION TESTING AND REMEDIATION SERVICES

- 13.1 CLIENT understands that construction testing and observation services are provided in an effort to reduce, but cannot eliminate, the risk of problems arising during or after construction or remediation. CLIENT agrees that the provision of such Services does not create a warranty or guarantee of any type.
- 13.2 Monitoring and/or testing services provided by ECS shall not in any way relieve the CLIENT'S contractor(s) from their responsibilities and obligations for the quality or completeness of construction as well as their obligation to comply with applicable laws, codes, and regulations.
- 13.3 ECS has no responsibility whatsoever for the means, methods, techniques, sequencing or procedures of construction selected, for safety precautions and programs incidental to work or services provided by any contractor or other consultant. ECS does not and shall not have or accept authority to supervise, direct, control, or stop the work of any contractor or consultant or any of their subcontractors or subconsultants.
- 13.4 ECS strongly recommends that CLIENT retain ECS to provide construction monitoring and testing services on a full time basis to lower the risk of defective or incomplete Work being installed by CLIENT'S contractor(s). If CLIENT elects to retain ECS on a part time basis for any aspect of construction monitoring and/or testing, CLIENT accepts the risks that a lower level of construction quality may occur and that defective or incomplete work may result and not be detected by ECS' part time monitoring and testing. Unless the CLIENT can show that the error or omission is contained in ECS' reports, CLIENT waives, releases and discharges ECS from and against any other claims for errors, omissions, damages, injuries, or loss alleged to arise from defective or incomplete work that was monitored or tested by ECS on a part time basis. Except as set forth in the preceding sentence, CLIENT agrees to indemnify and hold ECS harmless from all damages, costs, and attorneys' fees, for any claims alleging errors, omissions, damage, injury or loss allegedly resulting from Work that was monitored or tested by ECS on a part time basis.

- 14.0 **CERTIFICATIONS** - CLIENT may request, or governing jurisdictions may require, ECS to provide a "certification" regarding the Services provided by ECS. Any "certification" required of ECS by the CLIENT or jurisdiction(s) having authority over some or all aspects of the Project shall consist of ECS' inferences and professional opinions based on the limited sampling, observations, tests, and/or analyses performed by ECS at discrete locations and times. Such "certifications" shall constitute ECS' professional opinion of a condition's existence, but ECS does not guarantee that such condition exists, nor does it relieve other parties of the responsibilities or obligations such parties have with respect to the possible existence of such a condition. CLIENT agrees it cannot make the resolution of any dispute with ECS or payment of any amount due to ECS contingent upon ECS signing any such "certification."

15.0 BILLINGS AND PAYMENTS

- 15.1 Billings will be based on the unit rates, plus travel costs, and other reimbursable expenses as stated in the Professional Fees section of the Proposal. Any Estimate of Professional Fees stated in these Terms shall not be considered as a not-to-exceed or lump sum amount unless otherwise explicitly stated. CLIENT understands and agrees that even if ECS agrees to a lump sum or not-to-exceed amount, that amount shall be limited to number of hours, visits, trips, tests, borings, or samples stated in the Proposal.
- 15.2 CLIENT agrees that all Professional Fees and other unit rates shall be adjusted annually to account for inflation based on the most recent 12-month average of the Consumer Price Index (CPI-U) for all items as established by www.bls.gov when the CPI-U exceeds an annual rate of 2.0%.
- 15.3 Should ECS identify a Changed Condition(s), ECS shall notify the CLIENT of the Changed Condition(s). ECS and CLIENT shall promptly and in good faith negotiate an amendment to the Scope of Services, Professional Fees, and time schedule.
- 15.4 CLIENT recognizes that time is of the essence with respect to payment of ECS' invoices, and that timely payment is a material consideration for this agreement. All payment shall be in U.S. funds drawn upon U.S. banks and in accordance with the rates and charges set forth in the Professional Fees. Invoices are due and payable upon receipt.
- 15.5 If CLIENT disputes all or part of an invoice, CLIENT shall provide ECS with written notice stating in detail the facts of the dispute within fifteen (15) calendar days of the invoice. CLIENT agrees to pay the undisputed amount of such invoice promptly.
- 15.6 ECS reserves the right to charge CLIENT an additional charge of one-and-one-half (1.5) percent (or the maximum percentage allowed by Law, whichever is lower) of the invoiced amount per month for any payment received by ECS more than thirty (30) calendar days from the date of the invoice, excepting any portion of the invoiced amount in dispute. All payments will be applied to accrued interest first and then to the unpaid principal amount. Payment of invoices shall not be subject to unilateral discounting or set-offs by CLIENT.
- 15.7 CLIENT agrees that its obligation to pay for the Services is not contingent upon CLIENT'S ability to obtain financing, zoning, approval of governmental or regulatory agencies, permits, final adjudication of a lawsuit, CLIENT'S successful completion of the Project, settlement of a real estate transaction, receipt of payment from CLIENT'S client, or any other event unrelated to ECS provision of Services. Retainage shall not be withheld from any payment, nor shall any deduction be made from any invoice on account of penalty, liquidated damages, or other sums incurred by CLIENT. It is agreed that all costs and legal fees including actual attorney's fees, and expenses incurred by ECS in obtaining payment under this Agreement, in perfecting or obtaining a lien, recovery under a bond, collecting any delinquent amounts due, or executing judgments, shall be reimbursed by CLIENT.
- 15.8 Unless CLIENT has provided notice to ECS in accordance with Section 16.0 of these Terms, payment of any invoice by the CLIENT shall mean that the CLIENT is satisfied with ECS' Services and is not aware of any defects in those Services.

16.0 DEFECTS IN SERVICE

- 16.1 CLIENT, its personnel, its consultants, and its contractors shall promptly inform ECS during active work on any project of any actual or suspected defects in the Services so to permit ECS to take such prompt, effective remedial measures that in ECS' opinion will reduce or eliminate the consequences of any such defective Services. The correction of defects attributable to ECS' failure to perform in accordance with the Standard of Care shall be provided at no cost to CLIENT. However, ECS shall not be responsible for the correction of any deficiency attributable to CLIENT-furnished information, the errors, omissions, defective materials, or improper installation of materials by CLIENT's personnel, consultants or contractors, or work not observed by ECS. CLIENT shall compensate ECS for the costs of correcting such defects.
- 16.2 Modifications to reports, documents and plans required as a result of jurisdictional reviews or CLIENT requests shall not be considered to be defects. CLIENT shall compensate ECS for the provision of such Services.

17.0 INSURANCE - ECS represents that it and its subcontractors and subconsultants maintain Workers Compensation insurance, and that ECS is covered by general liability, automobile and professional liability insurance policies in coverage amounts it deems reasonable and adequate. ECS shall furnish certificates of insurance upon request. The CLIENT is responsible for requesting specific inclusions or limits of coverage that are not present in ECS insurance package. The cost of such inclusions or coverage increases, if available, will be at the expense of the CLIENT.

18.0 LIMITATION OF LIABILITY

- 18.1 **CLIENT AGREES TO ALLOCATE CERTAIN RISKS ASSOCIATED WITH THE PROJECT BY LIMITING ECS' TOTAL LIABILITY TO CLIENT ARISING FROM ECS' PROFESSIONAL LIABILITY, I.E. PROFESSIONAL ACTS, ERRORS, OR OMISSIONS AND FOR ANY AND ALL CAUSES INCLUDING NEGLIGENCE, STRICT LIABILITY, BREACH OF CONTRACT, OR BREACH OF WARRANTY, INJURIES, DAMAGES, CLAIMS, LOSSES, EXPENSES, OR CLAIM EXPENSES (INCLUDING REASONABLE ATTORNEY'S FEES) RELATING TO PROFESSIONAL SERVICES PROVIDED UNDER THIS AGREEMENT TO THE FULLEST EXTENT PERMITTED BY LAW. THE ALLOCATION IS AS FOLLOWS.**
- 18.1.1 If the proposed fees are \$10,000 or less, ECS' total aggregate liability to CLIENT shall not exceed \$20,000, or the total fee received for the services rendered, whichever is greater.
- 18.1.2 If the proposed fees are in excess of \$10,000, ECS' total aggregate liability to CLIENT shall not exceed \$50,000, or two (2) times the total fee for the services rendered, whichever is greater.
- 18.2 CLIENT agrees that ECS shall not be responsible for any injury, loss or damage of any nature, including bodily injury and property damage, arising directly or indirectly, in whole or in part, from acts or omissions by the CLIENT, its employees, agents, staff, consultants, contractors, or subcontractors to the extent such injury, damage, or loss is caused by acts or omissions of CLIENT, its employees, agents, staff, consultants, contractors, subcontractors or person/entities for whom CLIENT is legally liable.
- 18.3 CLIENT agrees that ECS' liability for all non-professional liability arising out of this agreement or the services provided as a result of the Proposal be limited to \$500,000.

19.0 INDEMNIFICATION

- 19.1 Subject Section 18.0, ECS agrees to hold harmless and indemnify CLIENT from and against damages arising from ECS' negligent performance of its Services, but only to the extent that such damages are found to be caused by ECS' negligent acts, errors or omissions, (specifically excluding any damages caused by any third party or by the CLIENT.) ECS does not waive any limitations it may have on its liability under the Illinois Workers Compensation Act, or any other statute.
- 19.2 To the fullest extent permitted by Law, CLIENT agrees to indemnify, and hold ECS harmless from and against any and all liability, claims, damages, demands, fines, penalties, costs and expenditures (including reasonable attorneys' fees and costs of litigation defense and/or settlement) ["Damages"] caused in whole or in part by the negligent acts, errors, or omissions of the CLIENT or CLIENT'S employees, agents, staff, contractors, subcontractors, consultants, and clients, provided such Damages are attributable to: (a) the bodily injury, personal injury, sickness, disease and/or death of any person; (b) the injury to or loss of value to tangible personal property; or (c) a breach of these Terms. The foregoing indemnification shall not apply to the extent such Damage is found to be caused by the sole negligence, errors, omissions or willful misconduct of ECS.
- 19.3 It is specifically understood and agreed that in no case shall ECS be required to pay an amount of Damages disproportional to ECS' culpability. **IF CLIENT IS A HOMEOWNER, HOMEOWNERS' ASSOCIATION, CONDOMINIUM OWNER, CONDOMINIUM OWNER'S ASSOCIATION, OR SIMILAR RESIDENTIAL OWNER, ECS RECOMMENDS THAT CLIENT RETAIN LEGAL COUNSEL BEFORE ENTERING INTO THIS AGREEMENT TO EXPLAIN CLIENT'S RIGHTS AND OBLIGATIONS HEREUNDER, AND THE LIMITATIONS, AND RESTRICTIONS IMPOSED BY THIS AGREEMENT. CLIENT AGREES THAT FAILURE OF CLIENT TO RETAIN SUCH COUNSEL SHALL BE A KNOWING WAIVER OF LEGAL COUNSEL AND SHALL NOT BE ALLOWED ON GROUNDS OF AVOIDING ANY PROVISION OF THIS AGREEMENT.**
- 19.4 **IF CLIENT IS A RESIDENTIAL BUILDER OR RESIDENTIAL DEVELOPER, CLIENT SHALL INDEMNIFY AND HOLD HARMLESS ECS AGAINST ANY AND ALL CLAIMS OR DEMANDS DUE TO INJURY OR LOSS INITIATED BY ONE OR MORE HOMEOWNERS, UNIT-OWNERS, OR THEIR HOMEOWNER'S ASSOCIATION, COOPERATIVE BOARD, OR SIMILAR GOVERNING ENTITY AGAINST CLIENT WHICH RESULTS IN ECS BEING BROUGHT INTO THE DISPUTE.**
- 19.5 **IN NO EVENT SHALL THE DUTY TO INDEMNIFY AND HOLD ANOTHER PARTY HARMLESS UNDER THIS SECTION 19.0 INCLUDE THE DUTY TO DEFEND.**

20.0 CONSEQUENTIAL DAMAGES

- 20.1 CLIENT shall not be liable to ECS and ECS shall not be liable to CLIENT for any consequential damages incurred by either due to the fault of the other or their employees, consultants, agents, contractors or subcontractors, regardless of the nature of the fault or whether such liability arises in breach of contract or warranty, tort, statute, or any other cause of action. Consequential damages include, but are not limited to, loss of use and loss of profit.
- 20.2 ECS shall not be liable to CLIENT, or any entity engaged directly or indirectly by CLIENT, for any liquidated damages due to any fault, or failure to act, in part or in total by ECS, its employees, agents, or subcontractors.

21.0 SOURCES OF RECOVERY

- 21.1 All claims for damages related to the Services provided under this agreement shall be made against the ECS Entity contracting with the CLIENT for the Services, and no other person or entity. CLIENT agrees that it shall not name any affiliated entity including parent, peer, or subsidiary entity or any individual officer, director, or employee of ECS, specifically including its professional engineers and geologists.
- 21.2 In the event of any dispute or claim between CLIENT and ECS arising out of in connection with the Project and/or the Services, CLIENT and ECS agree that they will look solely to each other for the satisfaction of any such dispute or claim. Moreover, notwithstanding anything to the contrary contained in any other provision herein, CLIENT and ECS' agree that their respective shareholders, principals, partners, members, agents, directors, officers, employees, and/or owners shall have no liability whatsoever arising out of or in connection with the Project and/or Services provided hereunder. In the event CLIENT brings a claim against an affiliated entity, parent entity, subsidiary entity, or individual officer, director or employee in contravention of this Section 21, CLIENT agrees to hold ECS harmless from and against all damages, costs, awards, or fees (including attorneys' fees) attributable to such act.

22.0 THIRD PARTY CLAIMS EXCLUSION - CLIENT and ECS agree that the Services are performed solely for the benefit of the CLIENT and are not intended by either CLIENT or ECS to benefit any other person or entity. To the extent that any other person or entity is benefited by the Services, such benefit is purely incidental and such other person or entity shall not be deemed a third party beneficiary to the AGREEMENT. No third-party shall have the right to rely on ECS' opinions rendered in connection with ECS' Services without written consent from both CLIENT and ECS, which shall include, at a minimum, the third-party's agreement to be bound to the same Terms and Conditions contained herein and third-party's agreement that ECS' Scope of Services performed is adequate.

23.0 DISPUTE RESOLUTION

- 23.1 In the event any claims, disputes, and other matters in question arising out of or relating to these Terms or breach thereof (collectively referred to as "Disputes"), the parties shall promptly attempt to resolve all such Disputes through executive negotiation between senior representatives of both parties familiar with the Project. The parties shall arrange a mutually convenient time for the senior representative of each party to meet. Such meeting shall occur within fifteen (15) days of either party's written request for executive negotiation or as otherwise mutually agreed. Should this meeting fail to result in a mutually agreeable plan for resolution of the Dispute, CLIENT and ECS agree that either party may bring litigation.

- 23.2 CLIENT shall make no claim (whether directly or in the form of a third-party claim) against ECS unless CLIENT shall have first provided ECS with a written certification executed by an independent engineer licensed in the jurisdiction in which the Project is located, reasonably specifying each and every act or omission which the certifier contends constitutes a violation of the Standard of Care. Such certificate shall be a precondition to the institution of any judicial proceeding and shall be provided to ECS thirty (30) days prior to the institution of such judicial proceedings.

- 23.3 Litigation shall be instituted in a court of competent jurisdiction in the county or district in which ECS' office contracting with the CLIENT is located. The parties agree that the law applicable to these Terms and the Services provided pursuant to the Proposal shall be the laws of the Commonwealth of Virginia, but excluding its choice of law rules. Unless otherwise mutually agreed to in writing by both parties, CLIENT waives the right to remove any litigation action to any other jurisdiction. Both parties agree to waive any demand for a trial by jury.

24.0 CURING A BREACH

- 24.1 A party that believes the other has materially breached these Terms shall issue a written cure notice identifying its alleged grounds for termination. Both parties shall promptly and in good faith attempt to identify a cure for the alleged breach or present facts showing the absence of such breach. If a cure can be agreed to or the matter otherwise resolved within thirty (30) calendar days from the date of the termination notice, the parties shall commit their understandings to writing and termination shall not occur.

- 24.2 Either party may waive any right provided by these Terms in curing an actual or alleged breach; however, such waiver shall not affect future application of such provision or any other provision.

25.0 TERMINATION

- 25.1 CLIENT or ECS may terminate this agreement for breach or these terms, non-payment, or a failure to cooperate. In the event of termination, the effecting party shall so notify the other party in writing and termination shall become effective fourteen (14) calendar days after receipt of the termination notice.

- 25.2 Irrespective of which party shall effect termination, or the cause therefore, ECS shall promptly render to CLIENT a final invoice and CLIENT shall immediately compensate ECS for Services rendered and costs incurred including those Services associated with termination itself, including without limitation, demobilizing, modifying schedules, and reassigning personnel.

26.0 TIME BAR TO LEGAL ACTION - Unless prohibited by law, and notwithstanding any Statute that may provide additional protection, CLIENT and ECS agree that a lawsuit by either party alleging a breach of this agreement, violation of the Standard of Care, non-payment of invoices, or arising out of the Services provided hereunder, must be initiated in a court of competent jurisdiction no more than two (2) years from the time the party knew, or should have known, of the facts and conditions giving rise to its claim, and shall under no circumstances shall such lawsuit be initiated more than three (3) years from the date of substantial completion of ECS' Services.

27.0 ASSIGNMENT - CLIENT and ECS respectively bind themselves, their successors, assigns, heirs, and legal representatives to the other party and the successors, assigns, heirs and legal representatives of such other party with respect to all covenants of these Terms. Neither CLIENT nor ECS shall assign these Terms, any rights thereunder, or any cause of action arising therefrom, in whole or in part, without the written consent of the other. Any purported assignment or transfer, except as permitted above, shall be deemed null, void and invalid, the purported assignee shall acquire no rights as a result of the purported assignment or transfer and the non-assigning party shall not recognize any such purported assignment or transfer.

28.0 SEVERABILITY - Any provision of these Terms later held to violate any law, statute, or regulation, shall be deemed void, and all remaining provisions shall continue in full force and effect. CLIENT and ECS shall endeavor to quickly replace a voided provision with a valid substitute that expresses the intent of the issues covered by the original provision.

29.0 SURVIVAL - All obligations arising prior to the termination of the agreement represented by these Terms and all provisions allocating responsibility or liability between the CLIENT and ECS shall survive the substantial completion of Services and the termination of the agreement.

30.0 TITLES; ENTIRE AGREEMENT

- 30.1 The titles used herein are for general reference only and are not part of the Terms and Conditions.
- 30.2 These Terms and Conditions of Service together with the Proposal, including all exhibits, appendices, and other documents appended to it, constitute the entire agreement between CLIENT and ECS. CLIENT acknowledges that all prior understandings and negotiations are superseded by this agreement.
- 30.3 CLIENT and ECS agree that subsequent modifications to the agreement represented by these shall not be binding unless made in writing and signed by authorized representatives of both parties.
- 30.4 All preprinted terms and conditions on CLIENT'S purchase order, Work Authorization, or other service acknowledgement forms, are inapplicable and superseded by these Terms and Conditions of Service.
- 30.5 CLIENT's execution of a Work Authorization, the submission of a start work authorization (oral or written) or issuance of a purchase order constitutes CLIENT's acceptance of this Proposal and its agreement to be fully bound the foregoing Terms. If CLIENT fails to provide ECS with a signed copy of these Terms or the attached Work Authorization, CLIENT agrees that by authorizing and accepting the services of ECS, it will be fully bound by these Terms as if they had been signed by CLIENT



ECS MIDWEST, LLC

Geotechnical • Construction Materials • Environmental • Facilities

"One Firm. One Mission."

November 24, 2025

Jessalyn Kelly
Associate
Wold Architects and Engineers
220 North Smith Street, Suite 310
Palatine, IL 60067

ECS Proposal No. 25714-CP

Reference: Construction Materials Testing and Observation Services, Center Cass School District 66,
699 Plainfield Road, Downers Grove, Illinois

Dear Ms. Kelly:

ECS Midwest, LLC is pleased to submit this unit rate proposal for construction monitoring and testing services at the above referenced project. We understand our services will generally include observation and testing related to earthwork, concrete, asphalt and coring. We have included a basic scope of services with this letter, which is typical of materials testing services required for a project of this size and magnitude. Our estimated budget is based on the information provided and the number of site visits have been estimated based on your budget requirements. Visits above and beyond those estimated here-in will be billed in accordance the Fee Schedule listed below.

The services described above would be rendered portal-to-portal from our office in Bridgeview, Illinois. Our unit rates are based on a normal 8-hour workday, Monday through Friday, between normal business hours of 7:00 a.m. to 3:30 p.m. Overtime beyond 40 hours/week, outside normal hours and will be invoiced at a rate of 1.5 times the normal hourly rate indicated. Services on Sundays and Holidays will be invoice and 2.0 times the normal hourly rates indicated. All site visits will be subject to a 4-hour minimum and travel related charges will apply. ECS technicians are represented by IUOE Local 150. As such, for time on-site greater than 4 hours, an 8-hour minimum and travel related charges will apply. A minimum charge of \$300 will be assessed for same day cancellations.

Our insurance carrier requires that we receive written authorization prior to initiation of work. This letter is the agreement for services. Your acceptance of this proposal may be indicated by signing and returning one copy to us. Issuance of a purchase order, or other types of notices to proceed (verbal, written or electronic), implicitly acknowledges acceptance of the Terms and Conditions of Service and this proposal. We are pleased to have this opportunity to offer our services and look forward to continuing our work with you on the project.

Respectfully,
ECS MIDWEST, LLC

Jason Peters
Project Manager

Jay Naik, P.E.
Assistant Branch Manager

Enclosures: Acceptance Form, General Conditions of Service, Fee Schedule, Estimated Budget

ECS MIDWEST, LLC

PROPOSAL ACCEPTANCE

Proposal No.: 16:25714-CP
Scope of Work: Construction Materials Testing
Location: Center Cass School District 66
699 Plainfield Road
Downers Grove, IL 60516

Client Signature: _____ Date: _____

Please complete this page and return one copy of this proposal to ECS Midwest, LLC to indicate acceptance of this proposal and to initiate work on the above-referenced project. The Client's signature above also indicates that he/she has read or has had the opportunity to read the accompanying General Conditions of Service and agrees to be bound by such General Conditions of Service.

BILLING INFORMATION

(Please Print or Type)

Name of Client:	_____
Name of Contact Person:	_____
Telephone No. Of Contact Person:	_____
Party Responsible for Payment:	_____
Company Name:	_____
Person/Title	_____
Department:	_____
Billing Address:	_____

Telephone Number:	_____
Fax Number:	_____
E-mail Address:	_____
Client Project/Account Number	_____
Special Conditions for Invoice	_____
Submittal and Approval	_____

ECS MIDWEST, LLC

TERMS AND CONDITIONS OF SERVICE

The professional services (the "Services") to be provided by ECS MIDWEST, LLC ("ECS") pursuant to the Proposal shall be provided in accordance with these Terms and Conditions of Service ("Terms"), including any addenda as may be incorporated or referenced in writing shall form the Agreement between ECS and Client.

1.0 INDEPENDENT CONSULTANT STATUS - ECS shall serve as an independent professional consultant to CLIENT for Service on the Project, identified above, and shall have control over, and responsibility for, the means and methods for providing the Services identified in the Proposal, including the retention of Subcontractors and Sub-consultants

2.0 SCOPE OF SERVICES - It is understood that the fees, reimbursable expenses and time schedule defined in the Proposal are based on information provided by CLIENT and/or CLIENT'S contractors and consultants. CLIENT acknowledges that if this information is not current, is incomplete or inaccurate, if conditions are discovered that could not be reasonably foreseen, or if CLIENT orders additional services, the scope of services will change, even while the Services are in progress.

3.0 STANDARD OF CARE

3.1 In fulfilling its obligations and responsibilities enumerated in the Proposal, ECS shall be expected to comply with and its performance evaluated in light of the standard of care expected of professionals in the industry performing similar services on projects of like size and complexity at that time in the region (the "Standard of Care"). Nothing contained in the Proposal, the agreed-upon scope of Services, these Terms and Conditions of Service or any ECS report, opinion, plan or other document prepared by ECS shall constitute a warranty or guaranty of any nature whatsoever.

3.2 CLIENT understands and agrees that ECS will rely on the facts learned from data gathered during performance of Services as well as those facts provided by the CLIENT. CLIENT acknowledges that such data collection is limited to specific areas that are sampled, bored, tested, observed and/or evaluated. Consequently, CLIENT waives any and all claims based upon erroneous facts provided by the CLIENT, facts subsequently learned or regarding conditions in areas not specifically sampled, bored, tested, observed or evaluated by ECS.

3.3 If a situation arises that causes ECS to believe compliance with CLIENT'S directives would be contrary to sound engineering practices, would violate applicable laws, regulations or codes, or will expose ECS to legal claims or charges, ECS shall so advise CLIENT. If ECS' professional judgment is rejected, ECS shall have the right to terminate its Services in accordance with the provisions of Section 25.0, below.

3.4 If CLIENT decides to disregard ECS' recommendations with respect to complying with applicable Laws or Regulations, ECS shall determine if applicable law requires ECS to notify the appropriate public officials. CLIENT agrees that such determinations are ECS' sole right to make.

4.0 CLIENT DISCLOSURES

4.1 Where the Scope of Services requires ECS to penetrate a Site surface, CLIENT shall furnish and/or shall direct CLIENT'S consultant(s) or agent(s) to furnish ECS information identifying the type and location of utility lines and other man-made objects known, suspected, or assumed to be located beneath or behind the Site's surface. ECS shall be entitled to rely on such information for completeness and accuracy without further investigation, analysis, or evaluation.

4.2 "Hazardous Materials" shall include but not be limited to any substance that poses or may pose a present or potential hazard to human health or the environment whether contained in a product, material, by-product, waste, or sample, and whether it exists in a solid, liquid, semi-solid or gaseous form. CLIENT shall notify ECS of any known, assumed, or suspected regulated, contaminated, or other similar Hazardous Materials that may exist at the Site prior to ECS mobilizing to the Site.

4.3 If any Hazardous Materials are discovered, or are reasonably suspected by ECS after its Services begin, ECS shall be entitled to amend the scope of Services and adjust its fees to reflect the additional work or personal protective equipment and/or safety precautions required by the existence of such Hazardous Materials.

5.0 INFORMATION PROVIDED BY OTHERS - CLIENT waives, releases and discharges ECS from and against any claim for damage, injury or loss allegedly arising out of or in connection with errors, omissions, or inaccuracies in documents and other information in any form provided to ECS by CLIENT or CLIENT's agents, contractors, or consultants, including such information that becomes incorporated into ECS documents.

6.0 CONCEALED RISKS - CLIENT acknowledges that special risks are inherent in sampling, testing and/or evaluating concealed conditions that are hidden from view and/or neither readily apparent nor easily accessible, e.g., subsurface conditions, conditions behind a wall, beneath a floor, or above a ceiling. Such circumstances require that certain assumptions be made regarding existing conditions, which may not be verifiable without expending additional sums of money or destroying otherwise adequate or serviceable portions of a building or component thereof. Accordingly, ECS shall not be responsible for the verification of such conditions unless verification can be made by simple visual observation. Client agrees to bear any and all costs, losses, damages and expenses (including, but not limited to, the cost of ECS' Additional Services) in any way arising from or in connection with the existence or discovery of such concealed or unknown conditions.

7.0 RIGHT OF ENTRY/DAMAGE RESULTING FROM SERVICES

7.1 CLIENT warrants that it possesses the authority to grant ECS right of entry to the Site for the performance of Services. CLIENT hereby grants ECS and its subcontractors and/or agents, the right to enter from time to time onto the property in order for ECS to perform its Services. CLIENT agrees to indemnify and hold ECS harmless from any claims arising from allegations that ECS trespassed or lacked authority to access the Site.

7.2 CLIENT warrants that it possesses all necessary permits, licenses and/or utility clearances for the Services to be provided by ECS except where ECS' Proposal explicitly states that ECS will obtain such permits, licenses, and/or utility clearances.

7.3 ECS will take reasonable precautions to limit damage to the Site and its improvements during the performance of its Services. CLIENT understands that the use of exploration, boring, sampling, or testing equipment may cause minor, but common, damage to the Site. The correction and restoration of such common damage is CLIENT'S responsibility unless specifically included in ECS' Proposal.

7.4 CLIENT agrees that it will not bring any claims for liability or for injury or loss against ECS arising from (i) procedures associated with the exploration, sampling or testing activities at the Site, (ii) discovery of Hazardous Materials or suspected Hazardous Materials, or (iii) ECS' findings, conclusions, opinions, recommendations, plans, and/or specifications related to discovery of contamination.

8.0 UNDERGROUND UTILITIES

8.1 ECS shall exercise the Standard of Care in evaluating client-furnished information as well as information readily and customarily available from public utility locating services (the "Underground Utility Information") in its effort to identify underground utilities. The extent of such evaluations shall be at ECS' sole discretion.

8.2 CLIENT recognizes that the Underground Utility Information provided to or obtained by ECS may contain errors or be incomplete. CLIENT understands that ECS may be unable to identify the locations of all subsurface utility lines and man-made features.

8.3 CLIENT waives, releases, and discharges ECS from and against any claim for damage, injury or loss allegedly arising from or related to subterranean structures (pipes, tanks, cables, or other utilities, etc.) which are not called to ECS' attention in writing by CLIENT, not correctly shown on the Underground Utility Information and/or not properly marked or located by the utility owners, governmental or quasi-governmental locators, or private utility locating services as a result of ECS' or ECS' subcontractor's request for utility marking services made in accordance with local industry standards.

9.0 SAMPLES

9.1 Soil, rock, water, building materials and/or other samples and sampling by-products obtained from the Site are and remain the property of CLIENT. Unless other arrangements are requested by CLIENT and mutually agreed upon by ECS in writing, ECS will retain samples not consumed in laboratory testing for up to sixty (60) calendar days after the issuance of any document containing data obtained from such samples. Samples consumed by laboratory testing procedures will not be stored.

9.2 Unless CLIENT directs otherwise, and excluding those issues covered in Section 10.0, CLIENT authorizes ECS to dispose of CLIENT'S non-hazardous samples and sampling or testing process by-products in accordance with applicable laws and regulations.

10.0 ENVIRONMENTAL RISKS

10.1 When Hazardous Materials are known, assumed, suspected to exist, or discovered at the Site, ECS will endeavor to protect its employees and address public health, safety, and environmental issues in accordance with the Standard of Care. CLIENT agrees to compensate ECS for such efforts.

10.2 When Hazardous Materials are known, assumed, or suspected to exist, or discovered at the Site, ECS and/or ECS' subcontractors will exercise the Standard of Care in containerizing and labeling such Hazardous Materials in accordance with applicable laws and regulations, and will leave the containers on Site. CLIENT is responsible for the retrieval, removal, transport and disposal of such contaminated samples, and sampling process byproducts in accordance with applicable law and regulation.

10.3 Unless explicitly stated in the Scope of Services, ECS will neither subcontract for nor arrange for the transport, disposal, or treatment of Hazardous Materials. At CLIENT'S written request, ECS may assist CLIENT in identifying appropriate alternatives for transport, off-site treatment, storage, or disposal of such substances, but CLIENT shall be solely responsible for the final selection of methods and firms to provide such services. CLIENT shall sign all manifests for the disposal of substances affected by contaminants and shall otherwise exercise prudence in arranging for lawful disposal.

10.4 In those instances where ECS is expressly retained by CLIENT to assist CLIENT in the disposal of Hazardous Materials, samples, or wastes as part of the Proposal, ECS shall do so only as CLIENT'S agent (notwithstanding any other provision of this AGREEMENT to the contrary). ECS will not assume the role of, nor be considered a generator, storer, transporter, or disposer of Hazardous Materials.

10.5 Subsurface sampling may result in unavoidable cross-contamination of certain subsurface areas, as when a probe or excavation/boring device moves through a contaminated zone and links it to an aquifer, underground stream, pervious soil stratum, or other hydrous body not previously contaminated, or connects an uncontaminated zone with a contaminated zone. Because sampling is an essential element of the Services indicated herein, CLIENT agrees this risk cannot be eliminated. Provided such services were performed in accordance with the Standard of Care, CLIENT waives, releases and discharges ECS from and against any claim for damage, injury, or loss allegedly arising from or related to such cross-contamination.

10.6 CLIENT understands that a Phase I Environmental Site Assessment (ESA) is conducted solely to permit ECS to render a professional opinion about the likelihood of the site having a Recognized Environmental Condition on, in, beneath, or near the Site at the time the Services are conducted. No matter how thorough a Phase I ESA study may be, findings derived from its conduct are highly limited and ECS cannot know or state for an absolute fact that the Site is unaffected or adversely affected by one or more Recognized Environmental Conditions. CLIENT represents and warrants that it understands the limitations associated with Phase I ESAs.

11.0 OWNERSHIP OF DOCUMENTS

- 11.1 ECS shall be deemed the author and owner (or licensee) of all documents, technical reports, letters, photos, boring logs, field data, field notes, laboratory test data, calculations, designs, plans, specifications, reports, or similar documents and estimates of any kind furnished by it [the "Documents of Service"] and shall retain all common law, statutory and other reserved rights, including copyrights. CLIENT shall have a limited, non-exclusive license to use copies of the Documents of Service provided to it in connection with the Project for which the Documents of Service are provided until the completion of the Project.
- 11.2 ECS' Services are performed and Documents of Service are provided for the CLIENT'S sole use. CLIENT understands and agrees that any use of the Documents of Service by anyone other than the CLIENT, its licensed consultants and its contractors is not permitted. CLIENT further agrees to indemnify and hold ECS harmless for any errors, omissions or damage resulting from its contractors' use of ECS' Documents of Service.
- 11.3 CLIENT agrees to not use ECS' Documents of Service for the Project if the Project is subsequently modified in scope, structure or purpose without ECS' prior written consent. Any reuse without ECS' written consent shall be at CLIENT'S sole risk and without liability to ECS or to ECS' subcontractor(s). CLIENT agrees to indemnify and hold ECS harmless for any errors, omissions or damage resulting from its use of ECS' Documents of Service after any modification in scope, structure or purpose.
- 11.4 CLIENT agrees to not make any modification to the Documents of Service without the prior written authorization of ECS. To the fullest extent permitted by law, CLIENT agrees to indemnify, defend, and hold ECS harmless from any damage, loss, claim, liability or cost (including reasonable attorneys' fees and defense costs) arising out of or in connection with any unauthorized modification of the Documents of Service by CLIENT or any person or entity that acquires or obtains the Documents of Service from or through CLIENT. CLIENT represents and warrants that the Documents of Service shall be used only as submitted by ECS.

12.0 SAFETY

- 12.1 Unless expressly agreed to in writing in its Proposal, CLIENT agrees that ECS shall have no responsibility whatsoever for any aspect of site safety other than for its own employees. Nothing herein shall be construed to relieve CLIENT and/or its contractors, consultants or other parties from their responsibility for site safety. CLIENT also represents and warrants that the General Contractor is solely responsible for Project site safety and that ECS personnel may rely on the safety measures provided by the General Contractor.
- 12.2 In the event ECS assumes in writing limited responsibility for specified safety issues, the acceptance of such responsibilities does not and shall not be deemed an acceptance of responsibility for any other non-specified safety issues, including, but not limited to those relating to excavating, trenching, shoring, drilling, backfilling, blasting, or other construction activities.

13.0 CONSTRUCTION TESTING AND REMEDIATION SERVICES

- 13.1 CLIENT understands that construction testing and observation services are provided in an effort to reduce, but cannot eliminate, the risk of problems arising during or after construction or remediation. CLIENT agrees that the provision of such Services does not create a warranty or guarantee of any type.
- 13.2 Monitoring and/or testing services provided by ECS shall not in any way relieve the CLIENT'S contractor(s) from their responsibilities and obligations for the quality or completeness of construction as well as their obligation to comply with applicable laws, codes, and regulations.
- 13.3 ECS has no responsibility whatsoever for the means, methods, techniques, sequencing or procedures of construction selected, for safety precautions and programs incidental to work or services provided by any contractor or other consultant. ECS does not and shall not have or accept authority to supervise, direct, control, or stop the work of any contractor or consultant or any of their subcontractors or sub-consultants.
- 13.4 ECS strongly recommends that CLIENT retain ECS to provide construction monitoring and testing services on a full time basis to lower the risk of defective or incomplete Work being installed by CLIENT'S contractor(s). If CLIENT elects to retain ECS on a part time basis for any aspect of construction monitoring and/or testing, CLIENT accepts the risks that a lower level of construction quality may occur and that defective or incomplete work may result and not be detected by ECS' part time monitoring and testing. Unless the CLIENT can show that the error or omission is contained in ECS' reports, CLIENT waives, releases and discharges ECS from and against any other claims for errors, omissions, damages, injuries, or loss alleged to arise from defective or incomplete work that was monitored or tested by ECS on a part time basis. Except as set forth in the preceding sentence, CLIENT agrees to indemnify and hold ECS harmless from all damages, costs, and attorneys' fees, for any claims alleging errors, omissions, damage, injury or loss allegedly resulting from Work that was monitored or tested by ECS on a part time basis.

- 14.0 **CERTIFICATIONS** - CLIENT may request, or governing jurisdictions may require, ECS to provide a "certification" regarding the Services provided by ECS. Any "certification" required of ECS by the CLIENT or jurisdiction(s) having authority over some or all aspects of the Project shall consist of ECS' inferences and professional opinions based on the limited sampling, observations, tests, and/or analyses performed by ECS at discrete locations and times. Such "certifications" shall constitute ECS' professional opinion of a condition's existence, but ECS does not guarantee that such condition exists, nor does it relieve other parties of the responsibilities or obligations such parties have with respect to the possible existence of such a condition. CLIENT agrees it cannot make the resolution of any dispute with ECS or payment of any amount due to ECS contingent upon ECS signing any such "certification."

15.0 BILLINGS AND PAYMENTS

- 15.1 Billings will be based on the unit rates, plus travel costs, and other reimbursable expenses as stated in the Professional Fees section of the Proposal. Any Estimate of Professional Fees stated in these Terms shall not be considered as a not-to-exceed or lump sum amount unless otherwise explicitly stated. CLIENT understands and agrees that even if ECS agrees to a lump sum or not-to-exceed amount, that amount

shall be limited to number of hours, visits, trips, tests, borings, or samples stated in the Proposal.

- 15.2 CLIENT agrees that all Professional Fees and other unit rates shall be adjusted annually to account for inflation based on the most recent 12-month average of the Consumer Price Index (CPI-U) for all items as established by www.bls.gov when the CPI-U exceeds an annual rate of 2.0%.
- 15.3 Should ECS identify a Changed Condition(s), ECS shall notify the CLIENT of the Changed Condition(s). ECS and CLIENT shall promptly and in good faith negotiate an amendment to the Scope of Services, Professional Fees, and time schedule.
- 15.4 CLIENT recognizes that time is of the essence with respect to payment of ECS' invoices, and that timely payment is a material consideration for this agreement. All payment shall be in U.S. funds drawn upon U.S. banks and in accordance with the rates and charges set forth in the Professional Fees. Invoices are due and payable upon receipt.
- 15.5 If CLIENT disputes all or part of an invoice, CLIENT shall provide ECS with written notice stating in detail the facts of the dispute within fifteen (15) calendar days of the invoice. CLIENT agrees to pay the undisputed amount of such invoice promptly.
- 15.6 ECS reserves the right to charge CLIENT an additional charge of one-and-one-half (1.5) percent (or the maximum percentage allowed by Law, whichever is lower) of the invoiced amount per month for any payment received by ECS more than thirty (30) calendar days from the date of the invoice, excepting any portion of the invoiced amount in dispute. All payments will be applied to accrued interest first and then to the unpaid principal amount. Payment of invoices shall not be subject to unilateral discounting or set-offs by CLIENT.
- 15.7 CLIENT agrees that its obligation to pay for the Services is not contingent upon CLIENT'S ability to obtain financing, zoning, approval of governmental or regulatory agencies, permits, final adjudication of a lawsuit, CLIENT'S successful completion of the Project, settlement of a real estate transaction, receipt of payment from CLIENT'S client, or any other event unrelated to ECS provision of Services. Retainage shall not be withheld from any payment, nor shall any deduction be made from any invoice on account of penalty, liquidated damages, or other sums incurred by CLIENT. It is agreed that all costs and legal fees including actual attorney's fees, and expenses incurred by ECS in obtaining payment under this Agreement, in perfecting or obtaining a lien, recovery under a bond, collecting any delinquent amounts due, or executing judgments, shall be reimbursed by CLIENT.
- 15.8 Unless CLIENT has provided notice to ECS in accordance with Section 16.0 of these Terms, payment of any invoice by the CLIENT shall mean that the CLIENT is satisfied with ECS' Services and is not aware of any defects in those Services.

16.0 DEFECTS IN SERVICE

- 16.1 CLIENT, its personnel, its consultants, and its contractors shall promptly inform ECS during active work on any project of any actual or suspected defects in the Services so to permit ECS to take such prompt, effective remedial measures that in ECS' opinion will reduce or eliminate the consequences of any such defective Services. The correction of defects attributable to ECS' failure to perform in accordance with the Standard of Care shall be provided at no cost to CLIENT. However, ECS shall not be responsible for the correction of any deficiency attributable to CLIENT-furnished information, the errors, omissions, defective materials, or improper installation of materials by CLIENT's personnel, consultants or contractors, or work not observed by ECS. CLIENT shall compensate ECS for the costs of correcting such defects.
- 16.2 Modifications to reports, documents and plans required as a result of jurisdictional reviews or CLIENT requests shall not be considered to be defects. CLIENT shall compensate ECS for the provision of such Services.

- 17.0 **INSURANCE** - ECS represents that it and its subcontractors and subconsultants maintain Workers Compensation insurance, and that ECS is covered by general liability, automobile and professional liability insurance policies in coverage amounts it deems reasonable and adequate. ECS shall furnish certificates of insurance upon request. The CLIENT is responsible for requesting specific inclusions or limits of coverage that are not present in ECS insurance package. The cost of such inclusions or coverage increases, if available, will be at the expense of the CLIENT.

18.0 LIMITATION OF LIABILITY

- 18.1 **CLIENT AGREES TO ALLOCATE CERTAIN RISKS ASSOCIATED WITH THE PROJECT BY LIMITING ECS' TOTAL LIABILITY TO CLIENT ARISING FROM ECS' PROFESSIONAL LIABILITY, I.E. PROFESSIONAL ACTS, ERRORS, OR OMISSIONS AND FOR ANY AND ALL CAUSES INCLUDING NEGLIGENCE, STRICT LIABILITY, BREACH OF CONTRACT, OR BREACH OF WARRANTY, INJURIES, DAMAGES, CLAIMS, LOSSES, EXPENSES, OR CLAIM EXPENSES (INCLUDING REASONABLE ATTORNEY'S FEES) RELATING TO PROFESSIONAL SERVICES PROVIDED UNDER THIS AGREEMENT TO THE FULLEST EXTENT PERMITTED BY LAW. THE ALLOCATION IS AS FOLLOWS.**
- 18.1.1 If the proposed fees are \$10,000 or less, ECS' total aggregate liability to CLIENT shall not exceed \$20,000, or the total fee received for the services rendered, whichever is greater.
- 18.1.2 If the proposed fees are in excess of \$10,000, ECS' total aggregate liability to CLIENT shall not exceed \$50,000, or two (2) times the total fee for the services rendered, whichever is greater.
- 18.2 CLIENT agrees that ECS shall not be responsible for any injury, loss or damage of any nature, including bodily injury and property damage, arising directly or indirectly, in whole or in part, from acts or omissions by the CLIENT, its employees, agents, staff, consultants, contractors, or subcontractors to the extent such injury, damage, or loss is caused by acts or omissions of CLIENT, its employees, agents, staff, consultants, contractors, subcontractors or person/entities for whom CLIENT is legally liable.
- 18.3 CLIENT agrees that ECS' liability for all non-professional liability arising out of this agreement or the services provided as a result of the Proposal be limited to \$500,000.

19.0 INDEMNIFICATION

- 19.1 Subject Section 18.0, ECS agrees to hold harmless and indemnify CLIENT from and against damages arising from ECS' negligent performance of its Services, but only to the extent that such damages are found to be caused by ECS' negligent acts, errors or omissions, (specifically excluding any damages caused by any third party or by the

CLIENT.) ECS does not waive any limitations it may have on its liability under the Illinois Workers Compensation Act, or any other statute.

- 19.2 To the fullest extent permitted by Law, CLIENT agrees to indemnify, and hold ECS harmless from and against any and all liability, claims, damages, demands, fines, penalties, costs and expenditures (including reasonable attorneys' fees and costs of litigation defense and/or settlement) ["Damages"] caused in whole or in part by the negligent acts, errors, or omissions of the CLIENT or CLIENT'S employees, agents, staff, contractors, subcontractors, consultants, and clients, provided such Damages are attributable to: (a) the bodily injury, personal injury, sickness, disease and/or death of any person; (b) the injury to or loss of value to tangible personal property; or (c) a breach of these Terms. The foregoing indemnification shall not apply to the extent such Damage is found to be caused by the sole negligence, errors, omissions or willful misconduct of ECS.

- 19.3 It is specifically understood and agreed that in no case shall ECS be required to pay an amount of Damages disproportional to ECS' culpability. **IF CLIENT IS A HOMEOWNER, HOMEOWNERS' ASSOCIATION, CONDOMINIUM OWNER, CONDOMINIUM OWNER'S ASSOCIATION, OR SIMILAR RESIDENTIAL OWNER, ECS RECOMMENDS THAT CLIENT RETAIN LEGAL COUNSEL BEFORE ENTERING INTO THIS AGREEMENT TO EXPLAIN CLIENT'S RIGHTS AND OBLIGATIONS HEREUNDER, AND THE LIMITATIONS, AND RESTRICTIONS IMPOSED BY THIS AGREEMENT. CLIENT AGREES THAT FAILURE OF CLIENT TO RETAIN SUCH COUNSEL SHALL BE A KNOWING WAIVER OF LEGAL COUNSEL AND SHALL NOT BE ALLOWED ON GROUNDS OF AVOIDING ANY PROVISION OF THIS AGREEMENT.**

- 19.4 **IF CLIENT IS A RESIDENTIAL BUILDER OR RESIDENTIAL DEVELOPER, CLIENT SHALL INDEMNIFY AND HOLD HARMLESS ECS AGAINST ANY AND ALL CLAIMS OR DEMANDS DUE TO INJURY OR LOSS INITIATED BY ONE OR MORE HOMEOWNERS, UNIT-OWNERS, OR THEIR HOMEOWNER'S ASSOCIATION, COOPERATIVE BOARD, OR SIMILAR GOVERNING ENTITY AGAINST CLIENT WHICH RESULTS IN ECS BEING BROUGHT INTO THE DISPUTE.**

- 19.5 **IN NO EVENT SHALL THE DUTY TO INDEMNIFY AND HOLD ANOTHER PARTY HARMLESS UNDER THIS SECTION 19.0 INCLUDE THE DUTY TO DEFEND.**

20.0 CONSEQUENTIAL DAMAGES

- 20.1 CLIENT shall not be liable to ECS and ECS shall not be liable to CLIENT for any consequential damages incurred by either due to the fault of the other or their employees, consultants, agents, contractors or subcontractors, regardless of the nature of the fault or whether such liability arises in breach of contract or warranty, tort, statute, or any other cause of action. Consequential damages include, but are not limited to, loss of use and loss of profit.

- 20.2 ECS shall not be liable to CLIENT, or any entity engaged directly or indirectly by CLIENT, for any liquidated damages due to any fault, or failure to act, in part or in total by ECS, its employees, agents, or subcontractors.

21.0 SOURCES OF RECOVERY

- 21.1 All claims for damages related to the Services provided under this agreement shall be made against the ECS Entity contracting with the CLIENT for the Services, and no other person or entity. CLIENT agrees that it shall not name any affiliated entity including parent, peer, or subsidiary entity or any individual officer, director, or employee of ECS, specifically including its professional engineers and geologists.

- 21.2 In the event of any dispute or claim between CLIENT and ECS arising out of in connection with the Project and/or the Services, CLIENT and ECS agree that they will look solely to each other for the satisfaction of any such dispute or claim. Moreover, notwithstanding anything to the contrary contained in any other provision herein, CLIENT and ECS' agree that their respective shareholders, principals, partners, members, agents, directors, officers, employees, and/or owners shall have no liability whatsoever arising out of or in connection with the Project and/or Services provided hereunder. In the event CLIENT brings a claim against an affiliated entity, parent entity, subsidiary entity, or individual officer, director or employee in contravention of this Section 21, CLIENT agrees to hold ECS harmless from and against all damages, costs, awards, or fees (including attorneys' fees) attributable to such act.

- 22.0 **THIRD PARTY CLAIMS EXCLUSION** - CLIENT and ECS agree that the Services are performed solely for the benefit of the CLIENT and are not intended by either CLIENT or ECS to benefit any other person or entity. To the extent that any other person or entity is benefited by the Services, such benefit is purely incidental and such other person or entity shall not be deemed a third party beneficiary to the AGREEMENT. No third-party shall have the right to rely on ECS' opinions rendered in connection with ECS' Services without written consent from both CLIENT and ECS, which shall include, at a minimum, the third-party's agreement to be bound to the same Terms and Conditions contained herein and third-party's agreement that ECS' Scope of Services performed is adequate.

23.0 DISPUTE RESOLUTION

- 23.1 In the event any claims, disputes, and other matters in question arising out of or relating to these Terms or breach thereof (collectively referred to as "Disputes"), the parties shall promptly attempt to resolve all such Disputes through executive negotiation between senior representatives of both parties familiar with the Project. The parties shall arrange a mutually convenient time for the senior representative of each party to meet. Such meeting shall occur within fifteen (15) days of either party's written request for executive negotiation or as otherwise mutually agreed.

Should this meeting fail to result in a mutually agreeable plan for resolution of the Dispute, CLIENT and ECS agree that either party may bring litigation.

- 23.2 CLIENT shall make no claim (whether directly or in the form of a third-party claim) against ECS unless CLIENT shall have first provided ECS with a written certification executed by an independent engineer licensed in the jurisdiction in which the Project is located, reasonably specifying each and every act or omission which the certifier

contends constitutes a violation of the Standard of Care. Such certificate shall be a precondition to the institution of any judicial proceeding and shall be provided to ECS thirty (30) days prior to the institution of such judicial proceedings.

- 23.3 Litigation shall be instituted in a court of competent jurisdiction in the county or district in which ECS' office contracting with the CLIENT is located. The parties agree that the law applicable to these Terms and the Services provided pursuant to the Proposal shall be the laws of the Commonwealth of Virginia, but excluding its choice of law rules. Unless otherwise mutually agreed to in writing by both parties, CLIENT waives the right to remove any litigation action to any other jurisdiction. Both parties agree to waive any demand for a trial by jury.

24.0 CURING A BREACH

- 24.1 A party that believes the other has materially breached these Terms shall issue a written cure notice identifying its alleged grounds for termination. Both parties shall promptly and in good faith attempt to identify a cure for the alleged breach or present facts showing the absence of such breach. If a cure can be agreed to or the matter otherwise resolved within thirty (30) calendar days from the date of the termination notice, the parties shall commit their understandings to writing and termination shall not occur.

- 24.2 Either party may waive any right provided by these Terms in curing an actual or alleged breach; however, such waiver shall not affect future application of such provision or any other provision.

25.0 TERMINATION

- 25.1 CLIENT or ECS may terminate this agreement for breach or these terms, non-payment, or a failure to cooperate. In the event of termination, the effecting party shall so notify the other party in writing and termination shall become effective fourteen (14) calendar days after receipt of the termination notice.

- 25.2 Irrespective of which party shall effect termination, or the cause therefore, ECS shall promptly render to CLIENT a final invoice and CLIENT shall immediately compensate ECS for Services rendered and costs incurred including those Services associated with termination itself, including without limitation, demobilizing, modifying schedules, and reassigning personnel.

- 26.0 **TIME BAR TO LEGAL ACTION** - Unless prohibited by law, and notwithstanding any Statute that may provide additional protection, CLIENT and ECS agree that a lawsuit by either party alleging a breach of this agreement, violation of the Standard of Care, non-payment of invoices, or arising out of the Services provided hereunder, must be initiated in a court of competent jurisdiction no more than two (2) years from the time the party knew, or should have known, of the facts and conditions giving rise to its claim, and shall under no circumstances shall such lawsuit be initiated more than three (3) years from the date of substantial completion of ECS' Services.

- 27.0 **ASSIGNMENT** - CLIENT and ECS respectively bind themselves, their successors, assigns, heirs, and legal representatives to the other party and the successors, assigns, heirs and legal representatives of such other party with respect to all covenants of these Terms. Neither CLIENT nor ECS shall assign these Terms, any rights thereunder, or any cause of action arising therefrom, in whole or in part, without the written consent of the other. Any purported assignment or transfer, except as permitted above, shall be deemed null, void and invalid, the purported assignee shall acquire no rights as a result of the purported assignment or transfer and the non-assigning party shall not recognize any such purported assignment or transfer.

- 28.0 **SEVERABILITY** - Any provision of these Terms later held to violate any law, statute, or regulation, shall be deemed void, and all remaining provisions shall continue in full force and effect. CLIENT and ECS shall endeavor to quickly replace a voided provision with a valid substitute that expresses the intent of the issues covered by the original provision.

- 29.0 **SURVIVAL** - All obligations arising prior to the termination of the agreement represented by these Terms and all provisions allocating responsibility or liability between the CLIENT and ECS shall survive the substantial completion of Services and the termination of the agreement.

30.0 TITLES; ENTIRE AGREEMENT

- 30.1 The titles used herein are for general reference only and are not part of the Terms and Conditions.

- 30.2 These Terms and Conditions of Service together with the Proposal, including all exhibits, appendixes, and other documents appended to it, constitute the entire agreement between CLIENT and ECS. CLIENT acknowledges that all prior understandings and negotiations are superseded by this agreement.

- 30.3 CLIENT and ECS agree that subsequent modifications to the agreement represented by these shall not be binding unless made in writing and signed by authorized representatives of both parties.

- 30.4 All preprinted terms and conditions on CLIENT'S purchase order, Work Authorization, or other service acknowledgement forms, are inapplicable and superseded by these Terms and Conditions of Service.

- 30.5 CLIENT's execution of a Work Authorization, the submission of a start work authorization (oral or written) or issuance of a purchase order constitutes CLIENT's acceptance of this Proposal and its agreement to be fully bound the foregoing Terms. If CLIENT fails to provide ECS with a signed copy of these Terms or the attached Work Authorization, CLIENT agrees that by authorizing and accepting the services of ECS, it will be fully bound by these Terms as if they had been signed by CLIENT.

< END OF TERMS AND CONDITIONS OF SERVICE

FEE SCHEDULE/SCOPE

Parking Rehabilitation

	<u>Unit Rate</u>
1. Soils/Materials Technician	\$ 120.00/hour
2. Trip Charge	\$ 60.00/trip
3. Asphalt Coring	\$ 1,100.00/each
4. Modified Proctor ASTM D1557	\$ 175.00/test
5. Nuclear Gauge	\$ 25.00/day
6. Project Engineer	\$ 175.00/hour
7. Principal Engineer	\$ 210.00/hour
8. Secretary	\$ 65.00/hour
9. Compressive Strength, Concrete Cylinders	\$ 20.00/each

The services described in this proposal would be rendered portal-to-portal from our office in Bridgeview, Illinois, with a trip charge of \$60 and 1 hour of travel round-trip charged as travel-related expenses to normalize our travel to the project site. Our unit rates are based on a normal 8-hour workday, Monday through Friday, between normal business hours of 7:00 a.m. to 3:30 p.m. **Overtime beyond 8 hours/day, outside normal hours and on Saturdays will be invoiced at a rate of 1.5 times the normal hourly rate indicated above. Hours on Sundays and Holidays will be invoiced at a rate of 2.0 times the normal hourly rate indicated above. Since it is difficult for us to estimate the amount of weekend work on a project of this duration, we would consider work on weekends or holidays an extra to the contract. A \$300.00 charge will be assessed for same day cancellations.**

All site visits will be subject to a 4 hour minimum plus the above noted travel related charges will apply (travel time and mileage). ECS technicians are represented by IUOE Local 150. As such, for time on-site greater than 4 hours, an 8 hour minimum and travel related charges will apply. Scheduling should occur prior to 4:00 p.m. on the day before services are required.

FEE SCHEDULE/SCOPE

SCOPE OF SERVICES**A. Earthwork:**

1. Perform appropriate laboratory testing on materials proposed for use as slab-on-grade base course in accordance with project specifications. Testing may include:
 - Proctor Moisture Density Relationships ASTM D-698, D-1557
2. Observe excavation operations to document removal of unsuitable materials including debris, unsuitable soils, and topsoil.
3. Observe placement of slab-on-grade base course material to test compliance with project requirements. Perform in-place density tests as required by project specifications, and test each lift for compaction.
4. Where deficiencies are noted during fill placement, suggest and observe remedial actions, including reworking and re-compacting of materials.
5. Document that dimensions of foundation elements and report compliance with design specifications and approved drawings.
6. Document the bearing conditions of soils at foundation element subgrades.
7. Provide documentation of events in the field and notify the appropriate persons upon recognition of deficiencies.

B. Cast-in-Place Concrete:

1. Test and report concrete for compliance with the provisions of ACI 318, 301, 214, 304, 305 and 306, local building codes, generally accepted construction practices, and specific project requirements.
2. Observe placement of reinforcing steel and document proper size, grade, spacing cover, cleanliness, length, location and type of splices, and report compliance with project plans and specifications.
3. Observe placement of concrete and document procedures with regard to forming, vibration, and curing.
4. Sample concrete at the frequency stated in the project specifications and perform the following tests and functions:
 - Confirm mix design
 - Slump
 - Air Content
 - Temperature
 - Batch-to-placement time
 - Cast test cylinders

Sampling, testing, and curing of specimens in the field shall be performed in accordance with applicable ASTM guidelines and project requirements. Additional tests shall be performed as needed in the event deficiencies are encountered. Compliance with extreme weather procedures will also be documented.

5. Cure and test concrete cylinders in the laboratory as directed by the project specifications and in accordance with ACI 318, ASTM C-31 and C-39.
6. Provide documentation of events in the field and notify the appropriate persons upon recognition of deficiencies.

C. Bituminous Concrete:

1. Observe proof rolling of exposed subgrade and/or aggregate subbase material and suggest and observe corrective action at excessively soft areas prior to placement of bituminous concrete.
2. Observe placement, rolling operations and temperature of paving mixture at time of placement.
3. Perform appropriate measurements and tests to document of bituminous concrete density using a nuclear density gauge. Materials theoretical maximum density "Big D" value to be

FEE SCHEDULE/SCOPE

provided by the paving contractor or material supplier for our use in calculating the percent compaction.

4. Observe of bituminous concrete thickness during paving operations before and after compaction.
5. Provide testing services at the asphalt batch plant, if required;
6. Provide documentation of events in the field and notify the appropriate persons upon recognition of deficiencies.
7. Core the existing asphalt for thickness.

D. Routine Project Management and Reporting:

1. Routine coordination of services with the project team and ECS field personnel.
2. Report preparation, review and submittal of Field and Material Test Reports by ECS Project Managers and Principal Engineers.
3. Administrative Services associated with invoices, pay applications, waivers, certified payroll and transmittal of reports.

ECS MIDWEST, LLC

FEE SCHEDULE/SCOPE

BASE SERVICES					
PARKING REHABILITATION	Quantity		Total Units	Rate Units	Fee
Soils/Materials Technician - Proofroll	4 visits	5 hours/visit	20 hours	\$120.00 / hour	\$ 2,400.00
Soils/Materials Technician - Compaction	3 visits	5 hours/visit	15 hours	\$120.00 / hour	\$ 1,800.00
Soils/Materials Technician - Asphalt	8 visits	8 hours/visit	64 hours	\$120.00 / hour	\$ 7,680.00
Soils/Materials Technician - Concrete	8 visits	5 hours/visit	40 hours	\$120.00 / hour	\$ 4,800.00
Asphalt Coring			1	\$1,100.00 / each	\$ 1,100.00
Trip Charge			24 trips	\$60.00 / trip	\$ 1,440.00
Modified Proctor ASTM D1557			2 tests	\$175.00 / test	\$ 350.00
Nuclear Gauge			11 days	\$25.00 / day	\$ 275.00
Compressive Strength, Concrete Cylinders	8 sets	5 samples/set	40 samples	\$20.00 / each	\$ 800.00
Project Engineer			6 hours	\$175.00 / hour	\$ 1,050.00
Principal Engineer			3 hours	\$210.00 / hour	\$ 630.00
Secretary			3 hours	\$65.00 / hour	\$ 195.00
Parking Rehabilitation Subtotal:					\$ 22,520.00
ESTIMATED TOTAL FEES:					\$ 22,520.00