

**School Start Times
Study Overview
10-12-20**



EDEN PRAIRIE SCHOOLS

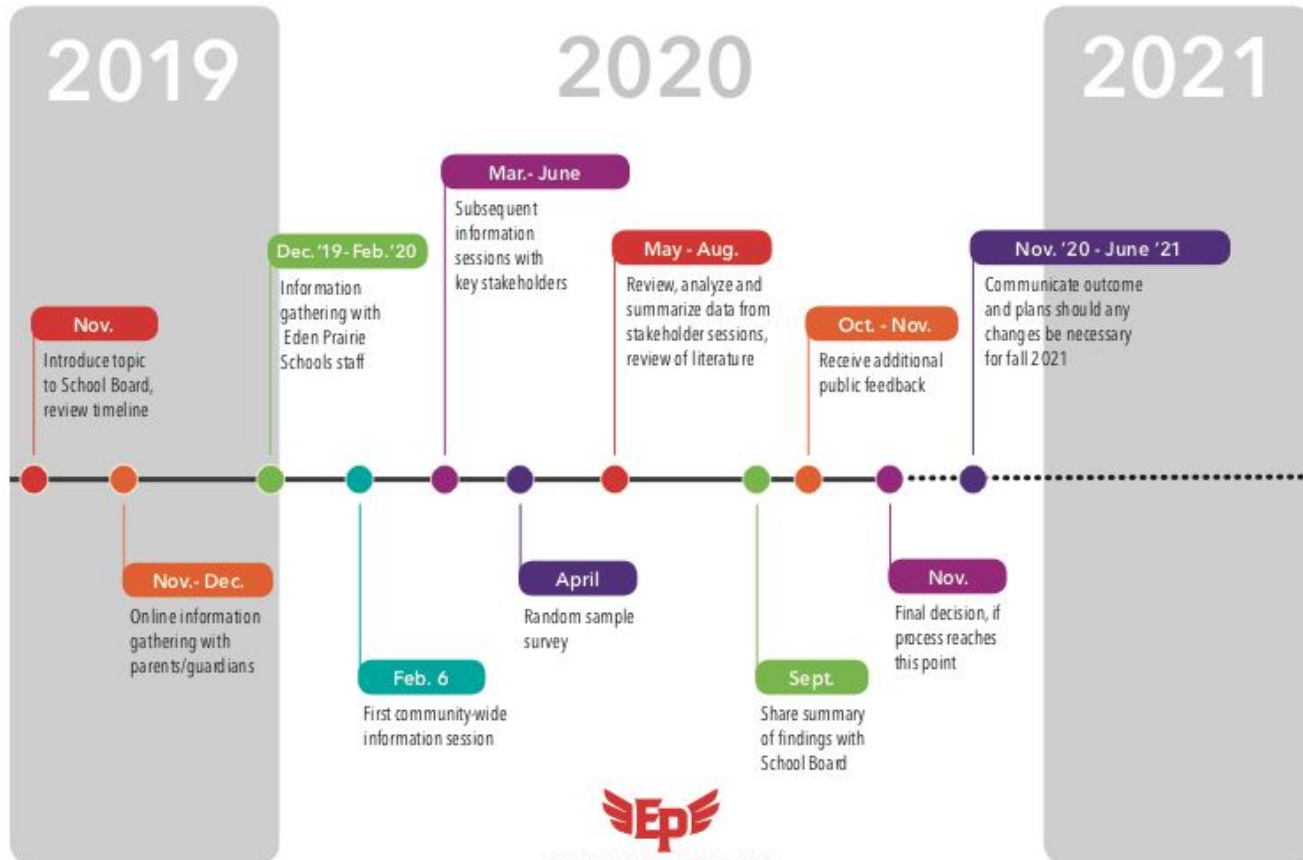
Inspiring each student every day

Agenda

- Overview of Process
- Current Status
- Next Steps

SCHOOL SCHEDULES TIMELINE

Version: November 2019



EDEN PRAIRIE SCHOOLS
Inspiring each student every day

Outline of the process



- Staff Input
 - Meetings with all schools, units & departments
- Parent/Guardian Surveys
- Community Meetings
 - 3 Community Meetings
 - Metro Area Experts
- 17 Member Taskforce

Staff Input



- 800 + qualitative data points collected from staff
- Data points analyzed to extrapolate themes:
 - Impact on activities/athletics
 - Childcare
 - Parent/Teacher Schedules

Surveys & Community Meetings



- Parent/Guardian Survey
- World Cafe' & Virtual Zoom Sessions
 - Dr. Conrad Iber, Fairview Health
 - Dr. Kyla Wahlstrom, U of M
 - Activities Directors:
 - Tom Bauman, Buffalo-Hanover-Montrose
 - Jaime Sherwood, Wayzata
 - Chad Eiken, MN Sleep Society

Taskforce



- 17 members: parents, teachers, community members, administrators
 - Transportation and Childcare Overview
 - Review of Staff Feedback
 - Review of Parent/Guardian Feedback
 - Review & Overview of Elementary Research
 - Review of 2017, 2018 & 2020 Community Survey Data

Next Steps

- Task Force Executive Summary & Recommendation
- Submission to the Superintendent
- Superintendent Considers Recommendations and Gets Clarifications
- Decision and Communication: Late Fall/Early Winter

THANK YOU



EDEN PRAIRIE SCHOOLS
Inspiring each student every day