

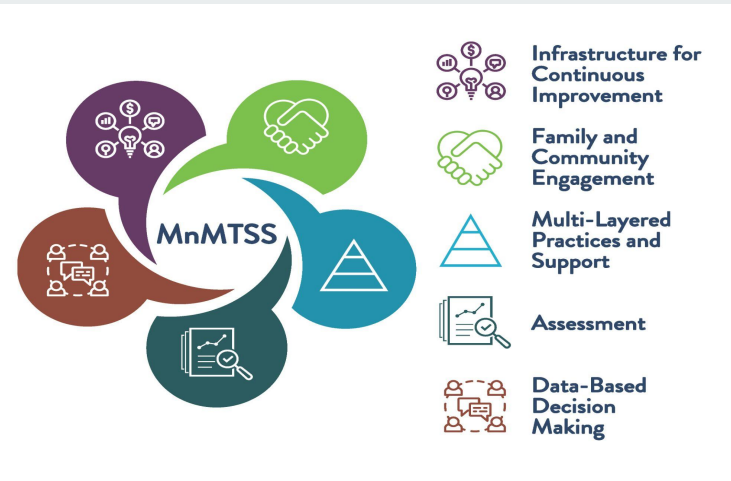
SEB MTSS Progress Monitoring Update

COW Meeting 11/15/23

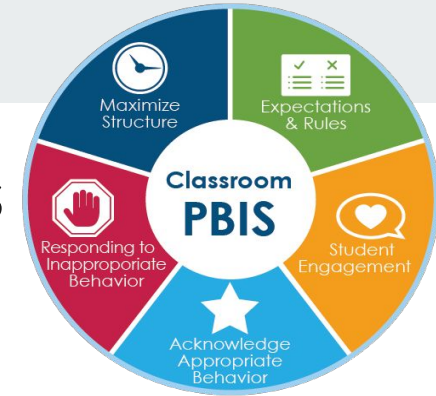
Presentation by:

Callie DeVriendt - Mental Health & Social
Emotional Behavioral Multi Tiered
System of Supports Coordinator

Jacob Laurent - Climate Coordinator



PBIS & Work w/SEB MTSS Coordinators



- ❑ PBIS Cohort Trainings -
 - ❑ Refresher completed for old PBIS schools (6 sites)
 - ❑ 2 Initial PBIS cohort trainings completed for new PBIS schools (3 more to go)
- ❑ Bi-weekly meetings with SEB MTSS Coords
 - ❑ Tiered Fidelity Inventory w/ Culturally Responsive Field Guide & Climate Surveys were completed in October. Awaiting compiled data since survey windows just closed.
 - ❑ Attendance Campaign
 - ❑ Bus incidents/referrals & positive reinforcement to address this
 - ❑ Behavior Response Plans Revisited
 - ❑ Data review & EduClimber Training (data warehouse)
 - ❑ Exploring partnership with site PBIS and KeyZone



Upcoming Professional Development/Trainings

Social Thinking Tier 2 Curriculum training scheduled (3 hours virtual)

- ☐ 11/28/2023

December 4th PD Day:

- ☐ Tier 2 SEB MTSS Training for all staff (primary focus on tier 2A menu of interventions)
- ☐ Restorative Practices Training on fundamentals of RP & community building circle overview
 - ☐ LPMS will conduct a more advanced training for that site on RP

Restorative Practices Circle Training scheduled for up to 30 people

- ☐ January 9th & 10th 2024 (2 Day):

PBIS cohort trainings upcoming:

- ☐ 11/29/2023
- ☐ 1/16/2024
- ☐ 2/15/2024



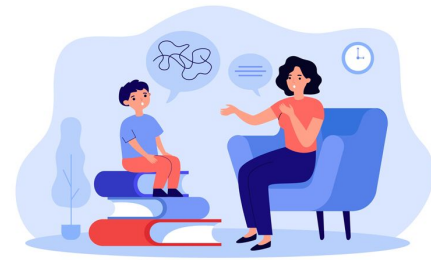
SEL: Second Step & BASE (Tier 1 SEL Curriculum)

- Second Step is a Pre-K-8th grade social emotional learning curriculum
 - Year 3 of 5 year commitment (ESSER funded) for Second Step digital curriculum
 - Year 2 completion data (goal 85%)
 - Elementary = 91.7%; Middle = 85.8%
- Purchased Second Step posters and staff lanyards, Spanish posters, bullying prevention kits for elementary, and after-school time kits for Keyzone
- In process of exploring translation of all 120 Elementary 2nd Step lessons into Ojibwe
- Purchased SEL curriculum for East H.S. for 3 years - BASE Education. (Project AWARE funded) In process of planning the rollout for second half of school year.



Project AWARE

- ❑ Conducted first SHAPE assessment of the year. SHAPE measures our success with building a more comprehensive mental health system. In comparing scores from last year to this year, scores have increased, particularly around development of Tiers 1 & 2.
- ❑ Purchased additional calming kits for classrooms and distributed where needed
- ❑ Navigating a variety of situations with community mental health and SEB MTSS related partnerships. Including expansion of services and troubleshooting barriers.
- ❑ Retrained Social Workers, Counselors and Principals on our suicide risk protocol. Developed protocol related to the new 988 mental health crisis line number.
- ❑ Youth Mental Health First Aid training in planning process (3 trainings before February)



Project AWARE Mental Health Referral Data

Referral Numbers to On-Site (Co-Located) Therapy Providers:

From July 1st-September 30th 2023 (Summer through 1st month of school 2023):

- 84 mental health referrals were made to co-located therapy providers district wide
- 38 students went on to receive services & 54 were still pending by October 1st
- 231 students district wide were actively receiving therapy services on site by October 1st

Last School Year from June 2022-July 1st 2023:

- 471 students district wide were referred to mental health co-located therapy services



Other SEB MTSS Updates and Goals for 23-24

- Update Discipline Policy
- SEB MTSS Handbook Development
- SAEBRS universal screening
- Safe Harbor & Trafficking Protocol
- Key Zone & after school time collaboration with PBIS
- Transition Process for upper level care
- Increased gen ed CPI Training/non violent crisis intervention
- Gender Regulation (June 15th) & continued updates to Student Records Form
- Second Step Bullying Prevention Kits
- Pathways for intensive drug and substance treatment
- Risk Mitigation, Crisis Recovery
- MOUs with a dozen partners