



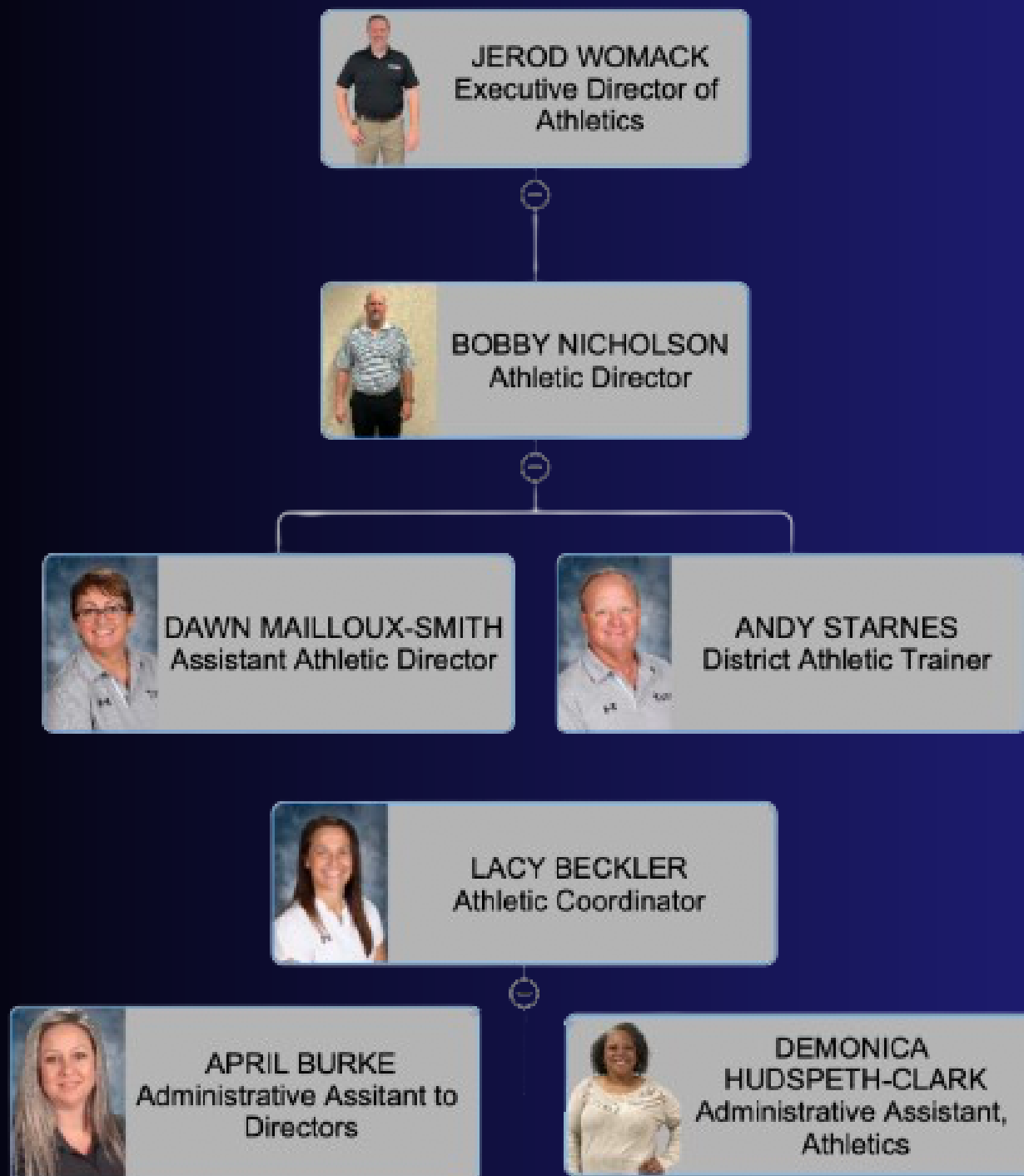
MANSFIELD ISD
ATHLETICS

Systems Report 2024

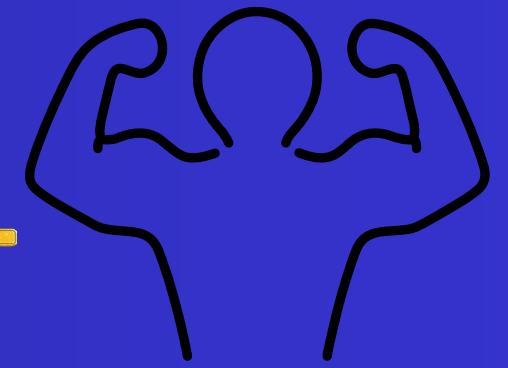


our DEPARTMENT

organizational chart



+

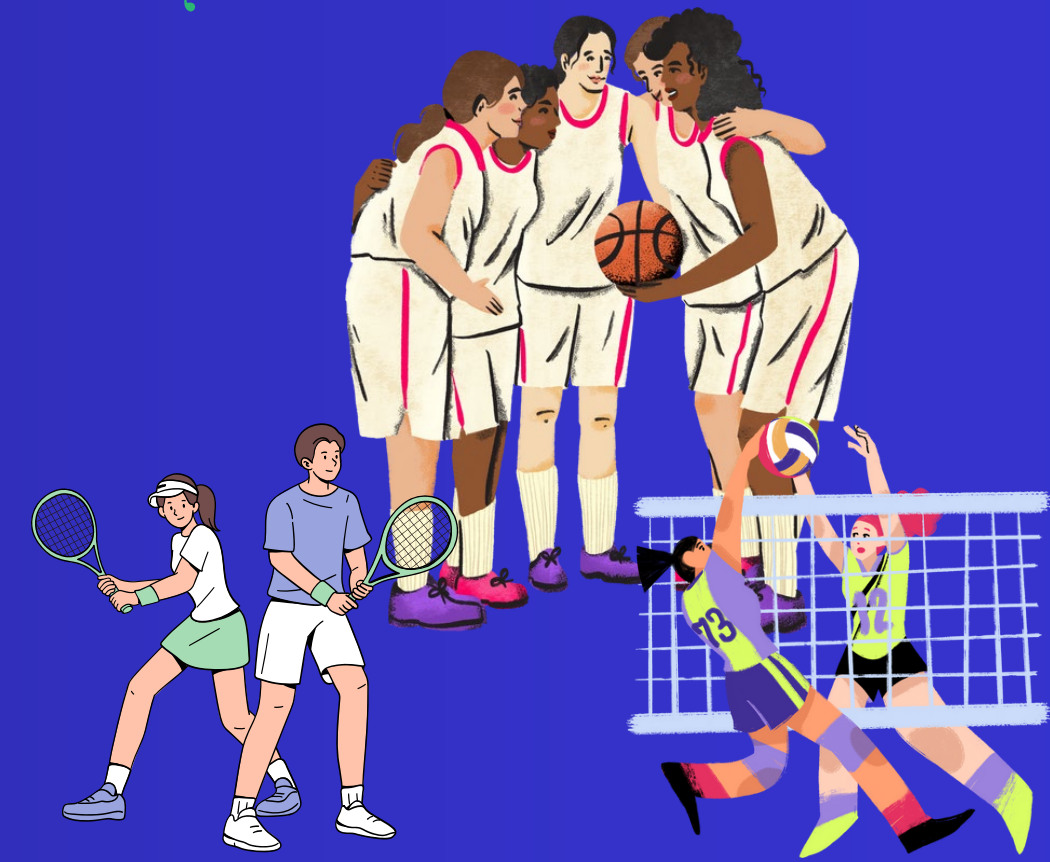


MENTALLY PHYSICALLY

COACHES

GROW

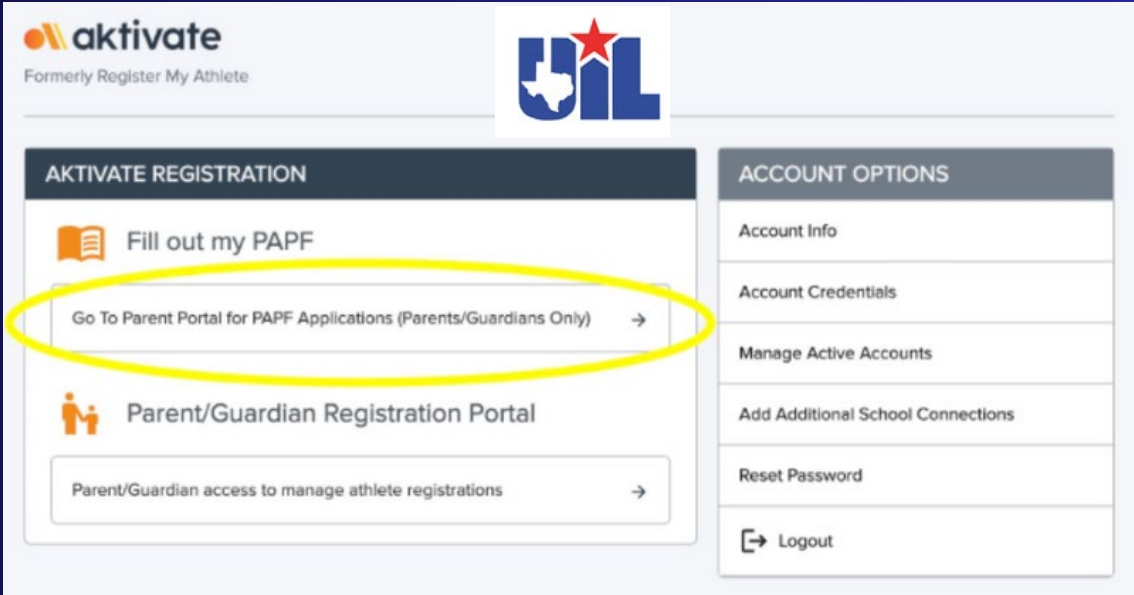
ATHLETES



DEPARTMENT ROLES



SCHEDULING



UIL COMPLIANCE



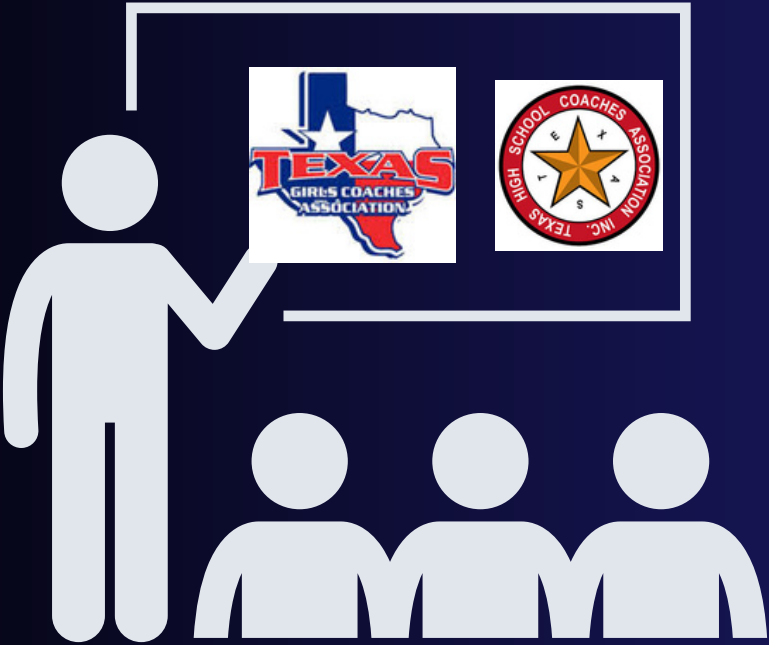
BUDGET MANAGEMENT



WORKING WITH PRINCIPALS TO EMPLOY THE BEST



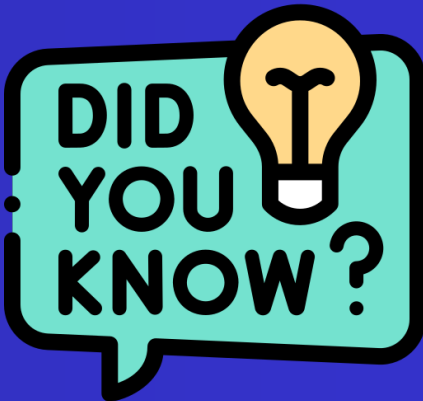
FACILITY MAINTENANCE AND IMPROVEMENTS



COACHES CONTINUING EDUCATION AND EVALUATION



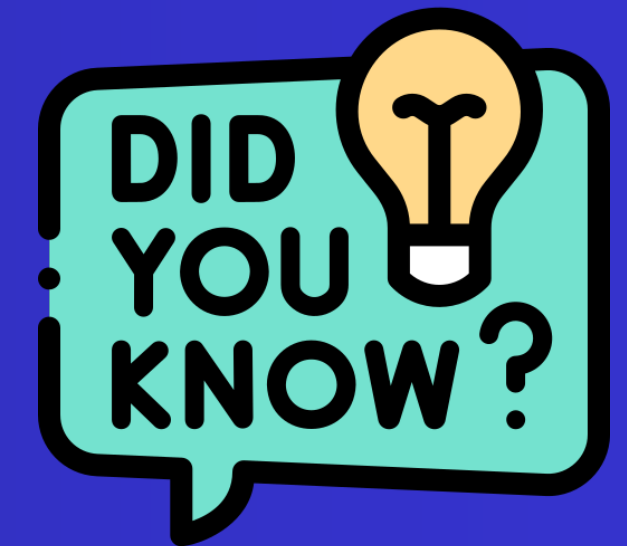
SPORTSMANSHIP



Rank One & Mascot Media automatically sync to display game information to MISD Fans



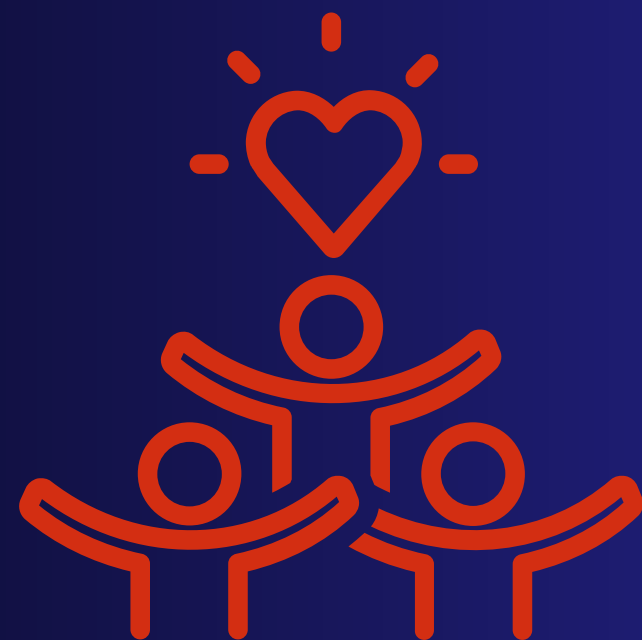
SYSTEMS THAT MATTER



That MISD Athletics has a 100% Graduation Rate?



DEPARTMENTAL STRENGTHS



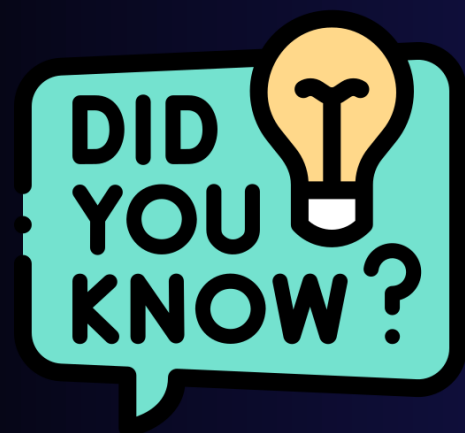
UNIFICATION



DEDICATED STAFF



QUALITY FACILITIES



MISD ATHLETICS

95%

STAFF RETENTION RATE



Methodist
MANSFIELD MEDICAL CENTER

STRATEGIC PARTNERSHIPS



COMMUNITY SUPPORT

ACADEMIC SYSTEMS INTEGRITY

Graduation rate = 100%

Passing rate > 90%

A Honor Roll > 20%

A/B Honor Roll > than 30%

Community service > 20,000

Coaches committed to
teaching a minimum of one
character lesson per week

DISTRICT TOTALS	92.2%	87.3%	83.6%	87.2%	DISTRICT %
Total Number of Athletes	5,973	5,964	5,648	4,741	87.56549064
Total Number of Athletes Passing	5,508	5,206	4,722	4,132	

1.2 A HONOR ROLL	1st Six Wks	2nd Six Wks	3rd Six Wks	4th Six Wks
DISTRICT TOTALS	1303	1199	1116	985
1.2 A/B HONOR ROLL	1st Six Wks	2nd Six Wks	3rd Six Wks	4th Six Wks
DISTRICT TOTALS	2024	1851	1631	1283

A Honor Roll Currently 30.7%

A/B Honor Roll Currently 28.8%


Mansfield ISD CUP



MISD Middle School Cup Data				
COMPETITION	Team pts	Individual Pts	TOTALS	
Jobe	162	384	546	
Worley	164	331	495	
Wester	161	594	755	
Coble	120	197	317	
Danny Jones	304	462	766	
McKinzey	167	464	631	
TA Howard	14	62	76	
Academics	Passing Rate	A Honor Roll	A/B Honor Roll	TOTALS
Jobe	82.2	15.4	28.9	126.5
Worley	85.3	21.4	29.2	135.9
Wester	90.9	22.2	35.5	148.6
Coble	76.3	6.7	22.3	105.3
Danny Jones	87.9	19.2	32.8	139.9
McKinzey	87.5	14	30.5	132
TA Howard	80.4	5.7	22.5	108.6
Community Service	Total / 10			
Jobe	94			
Worley	409			
Wester	635			
Coble	475			
Danny Jones	1132			
McKinzey	860			
TA Howard	524			



MISD High School Cup							
SUCCESS	Team Championships Pts	Individual Champions Pts	Team Post Season Pts	Individual Post Season Pts	Individual Honors #	TOTAL	
Lake Ridge	0	117	33	294	36	480	
Legacy	3	21	33	123	121	301	
Mansfield	13	124	56	341	305	839	
Summit	8	19	32	216	178	453	
Timberview	22	84	29	278	245	658	
Academics	Passing Rate	Graduation Rate 100%	A Honor Roll %	A/B Honor Roll %	Academic All District	Academic All State	TOTAL
Lake Ridge	83.4	100	23.1	35.4	172	54.0	467.9
Legacy	90.1	100	23.4	30	108	43	395
Mansfield	90.6	100	18.7	36.2	214	109	568.5
Summit	87.3	100	16.9	28.5	116	30	378.7
Timberview	86.2	100	19.5	32	112	30	379.7
Comm Svc.	total /10						
Lake Ridge	2496						
Legacy	2560						
Mansfield	4289						
Summit	4062						
Timberview	2228						

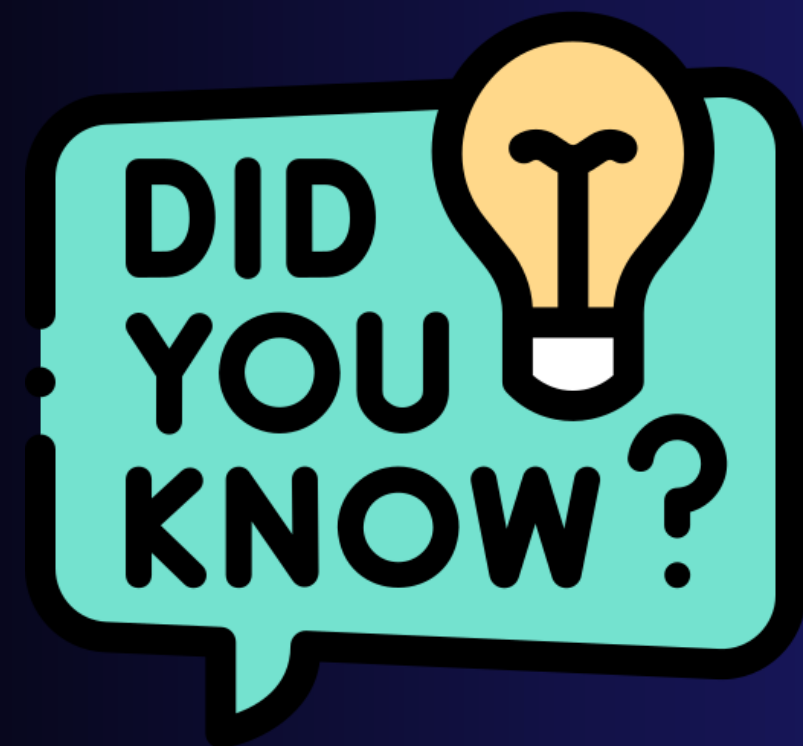




MISD ATHLETIC SCORECARD - [2021-2030] VISION 2030

1. Athlete Academic Success									
#	Key Strategic Measure	5 Year Goal	Base Line 20-21	Actual Data					Status
				21-22	22-23	23-24	24-25	25-26	
1.1	Passing Rate	90%	84.6%	86.8%	86.2%				
1.2	A Honor Roll	20%	New	17.4%	18.1%				
1.3	A/B Honor Roll	30%	New	27.7%	28.7%				
1.4	Graduation Rate (4 yr)	100%	99.2%	100.0%	100.0%				
2. Athlete Participation									
#	Key Strategic Measure	5 Year Goal	Base Line 20-21	Actual Data					Status
				21-22	22-23	23-24	24-25	25-26	
2.1	Total Athletes by Grade	7500	6,373	6,620	6,805				
a.	Middle School	3600	2,831	2,992	2,859				
	7th	1900	1,604	1,555	1,523				
	8th	1700	1,227	1,437	1,336				
	% of MS students participating	60%	48.7%	51.6%	58.8%				
b.	High School	3900	3,542	3,628	3,946				
	9th	1200	1,036	1,177	1,200				
	10th	1100	970	902	1,074				
	11th	900	887	839	852				
	12th	700	649	710	820				
	% of HS students participating	40%	31.0%	31.5%	34.5%				
c.	Ttl % of student participating	50%	37.0%	38.3%	41.7%				
2.2	Total Athletes by Sport	8,800	6,958	8,196	8,259				
	7th-8th	4,500	3,056	4,087	4,053				
	9th-12th	4,300	3,902	4,109	4,206				
2.3	Retention of Athletes	95.0%	95.2%	95.7%	94.9%				
3. Athletic Personnel									
#	Key Strategic Measure	5 Year Goal	Base Line 20-21	Actual Data					Status
				21-22	22-23	23-24	24-25	25-26	
3.1	100% Staffing	100.0%	99.3%	98.2%	99.3%				
3.2	Retention of coaches	95.0%	88.7%	85.0%	88.5%				
4. Community Involvement									
#	Key Strategic Measure	5 Year Goal	Base Line 20-21	Actual Data					Status
				21-22	22-23	23-24	24-25	25-26	
4.1	Community Service	20,000	5,080	14,812	18,904				
5. Athlete Safety									
#	Key Strategic Measure	5 Year Goal	Base Line 20-21	Actual Data					Status
				21-22	22-23	23-24	24-25	25-26	
5.1	Coaches' Compliance	100%	100.0%	100.0%	100.0%				
5.2	Emergency Action Plan	100%	100.0%	82.9%	100.0%				
5.3	Concussions	75	62	112	167				
5.4	ACL Tears	15	14	26	28				
		Met or Exceed 5 Year Goal	On Track Towards Meeting Goal w/ Positive Trend	Did Not Achieve Yearly Goal-Improvement Effort Suggested	Current Progress Did Not Achieve Goal-Improvement Effort Required				

Awarded for Campus Merit in Athletic and Academic Performance

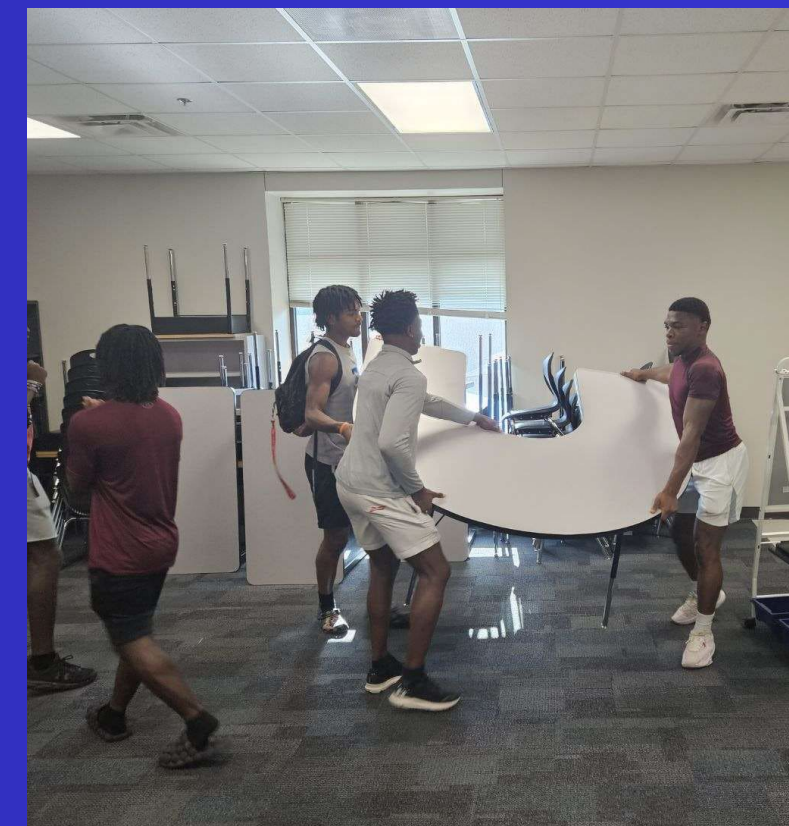


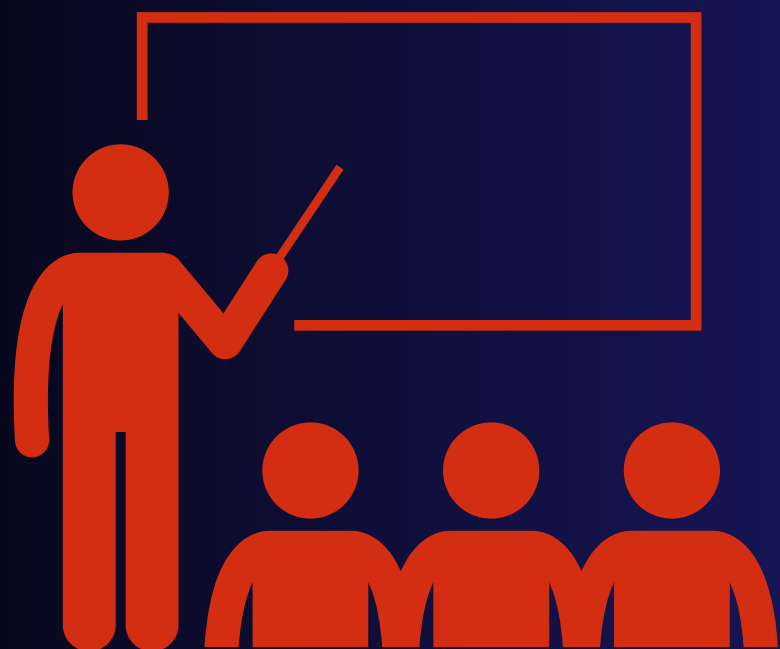
MISD ATHLETES
COMPLETED
THOUSANDS
OF COMMUNITY
SERVICE HOURS
LAST YEAR

18,904

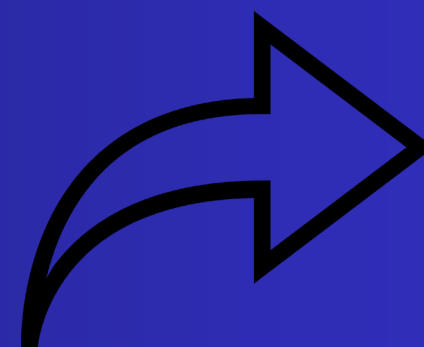
COMMUNITY SERVICE

4.1 Community Service	FALL	SPRING	TOTAL
A. Mansfield	2,475	1,814	4,289
B. Summit	2,308	1,754	4,062
C. Timberview	1,449	779	2,228
D. Legacy	1,561	999	2,560
E. Lake Ridge	1,654	842	2,496
F. Worley	307	102	409
G. Howard	380	144	524
H. Wester	295	340	635
I. Danny Jones	387	745	1,132
J. Coble	238	237	475
K. Jobe	94	0	94
L. McKinzey	295	565	860
DISTRICT TOTALS	11,148	7,756	18,904





Improved Professional
Development



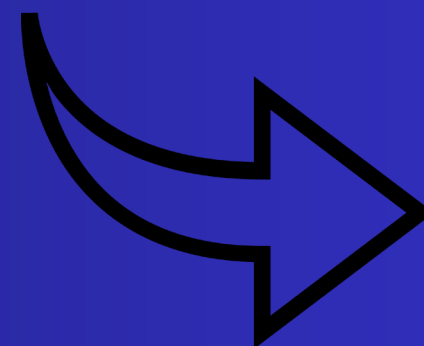
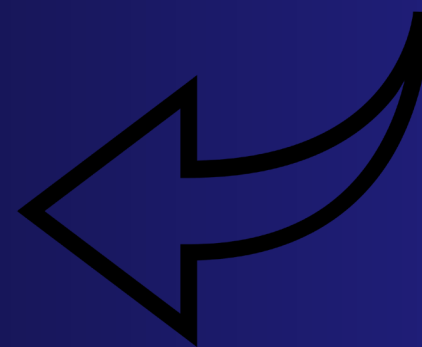
“JASON ‘S WITH JEROD”



Improved Community &
Campus Engagement



Updated Systems for
Evaluation



Continuous Data/Analytics Collection to Drive
Change and Improvement

