

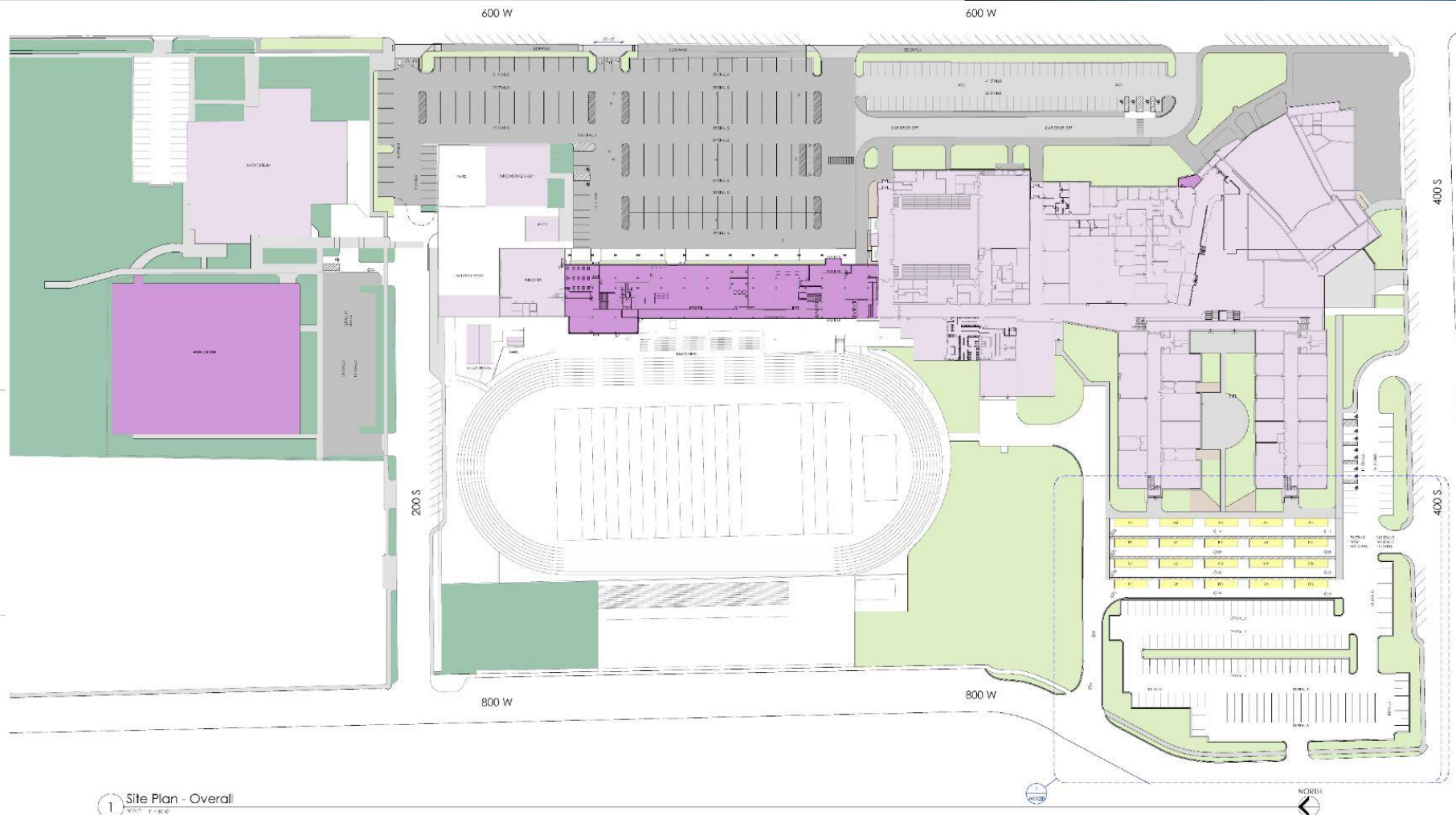


BESD Large Capital Projects Update

14 January, 2026

BEHS Addition

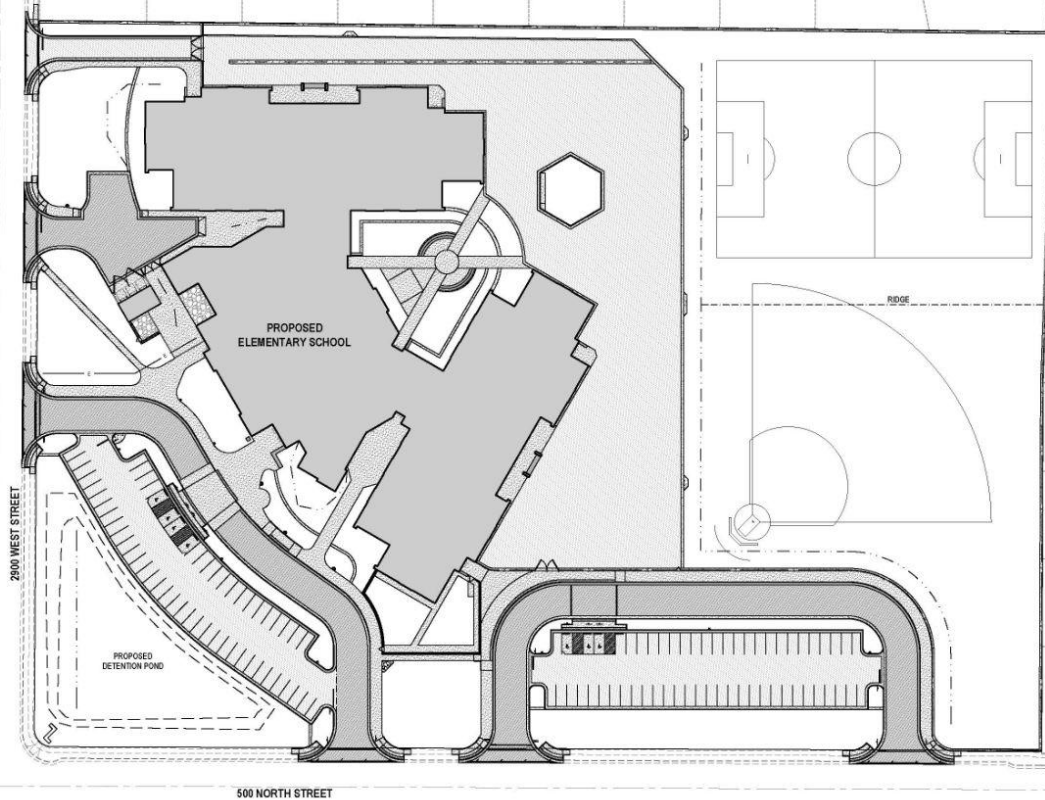
- Replace current CTE wing with a 3 story building connected to the main building
- Construct a PE facility in the current grass soccer field with turf and classrooms
- Remodel portions in current school
- New bus drop off/pick up on west side
- Estimated completion winter 27-28
- Current Cost Estimate, \$50 Million



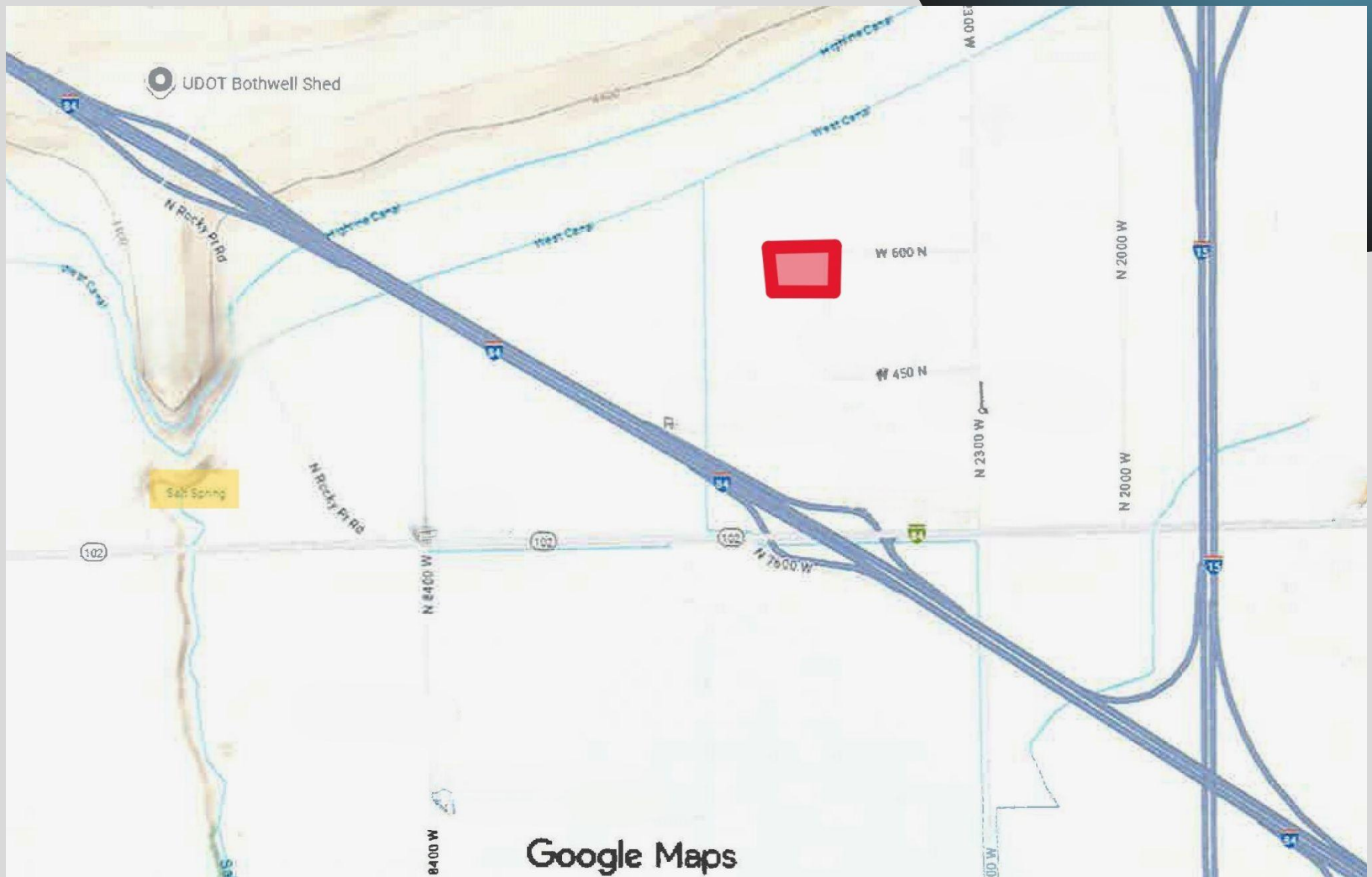
BRHS Addition

- Purchase/trade for seminary building
- 2 story building on north connected to the main
- PE facility south of Baseball, gym/classrooms
- Move Softball to reduce campus congestion
- Bus drop off/pick up northwest corner
- PE/Practice field to replace current softball
- Estimated completion spring/summer 2028
- Current Cost Estimate, \$57 Million (not as far along as BEHS, working to bring this cost down)





- New Elementary School
- Estimated Completion for Fall 2028
- Cost Estimate \$38 Million



Google Maps

Discovery Addition

- Addition to the north east
- 12 classrooms and a commons area
- Additional gym
- Current design is approximately 28,000 sf
- Separate loops for car and bus drop-off/pick-up
- 142 parking stalls, 10+ busses, 20 car queue
- Hoping to be ready for Fall of 2027
- Estimated cost, \$13 Million

