



# 2023-24 Local Service Plan

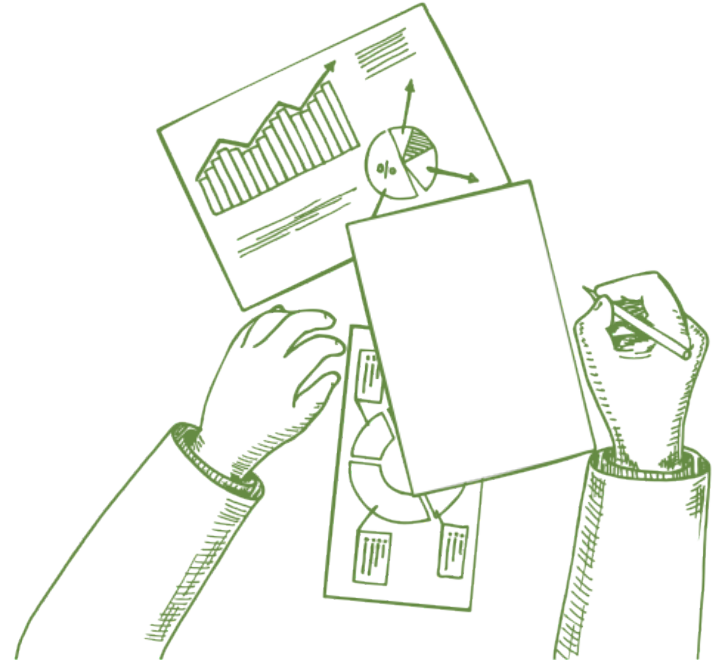
A framework for our partnership with school districts in Clatsop, Columbia, Tillamook and Washington counties

# School Board Role

ORS 334.175

Each year an Education Service District's Local Service Plan must be:

1. adopted by the board of the education service district
2. approved on or before March 1 by resolution of two-thirds of the component school districts that have at least a majority of the pupils



# Navigating the Local Service Plan Document

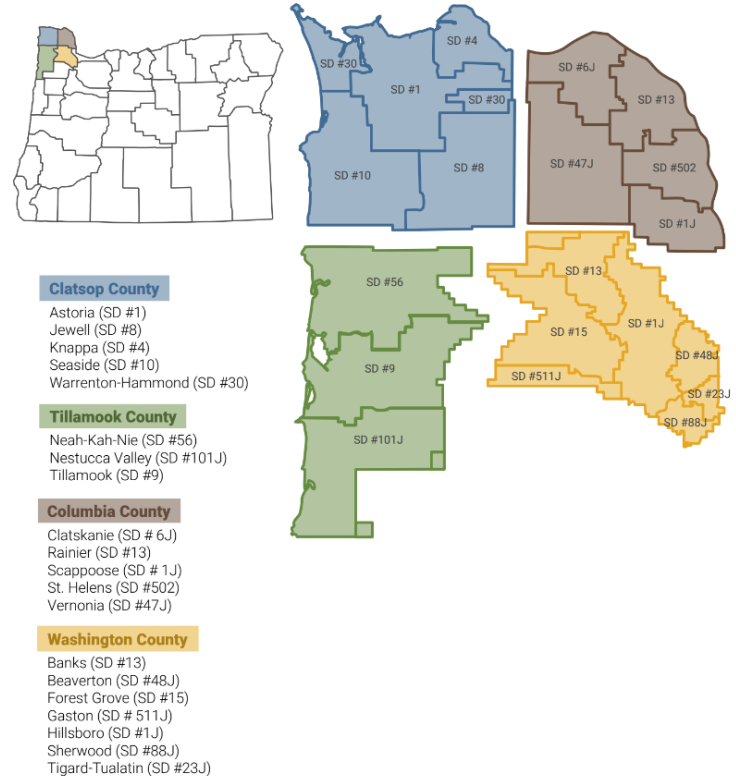
- P. 10 - List of core services
- P. 13 - List of menu services
- P. 24. - SSA technical assist. plan
- **P. 28 - Board resolution/action**
- P. 29 - Grant and value-add services
- P. 34 - LSP financial summary
- P. 37 - Summary of current services your district is receiving



# About Northwest Regional Education Service District

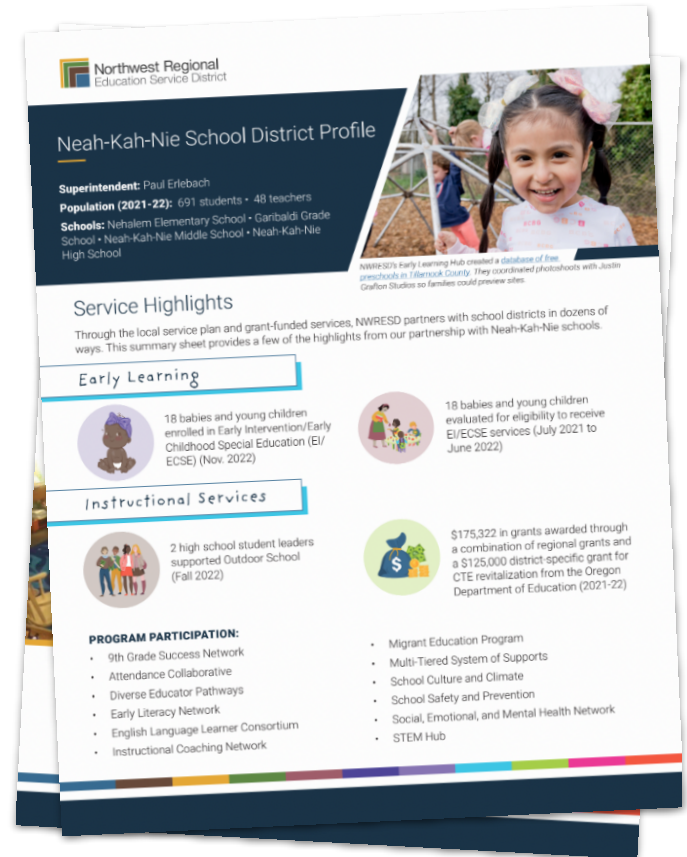
- Largest of Oregon's 19 education service districts
- \$71,683,364 in annual grant revenue
- Vision: Every student educated, equipped and inspired to achieve their full potential and enrich their communities.

## Service Area



# Ways We're Working Together to Support Neah-Kah-Nie Kids (P. 37)

- **Administration**
- **Early Learning:** 18 EI/ECSE evals, 18 enrolled in EI/ECSE, EL Hub, etc.
- **Instruction:** grant writing (e.g. \$125k CTE revitalization), professional learning, migrant education program, ELL consortium, STEM Hub, etc.
- **Special education:** 11 specialists support the district, e.g. occupational therapy, audiology, school psychology, etc.
- **Technology:** Support, apps, security, etc.





# About the 2023-24 Local Service Plan



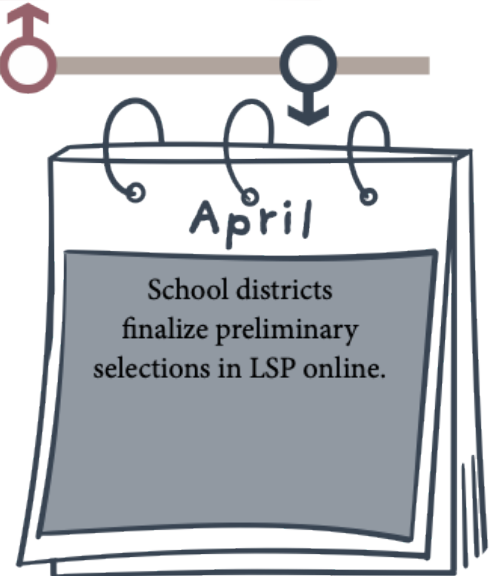
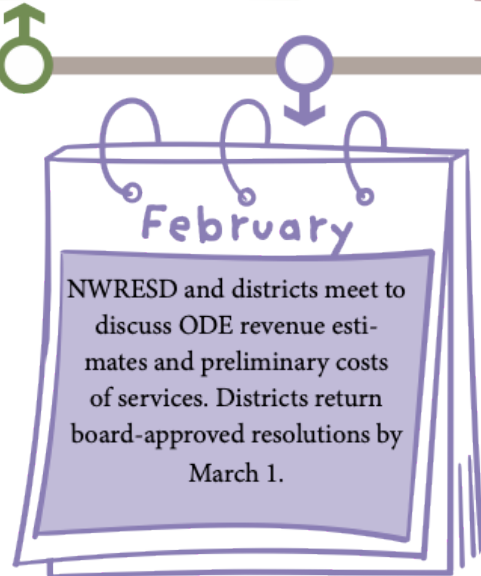
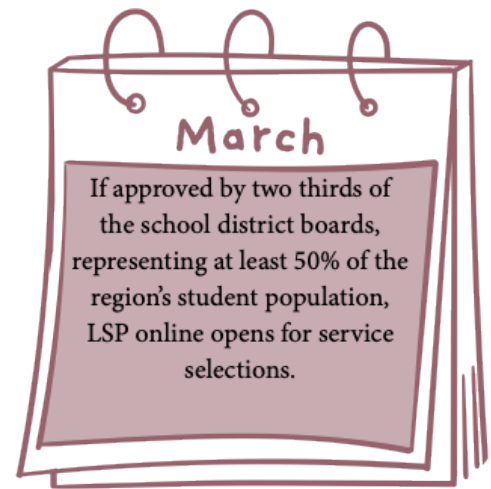
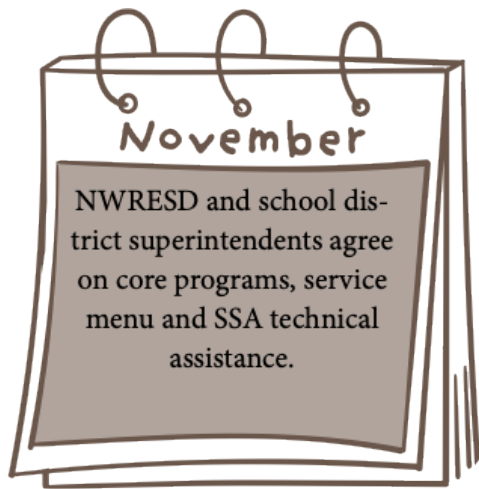
90% of the SSF formula for education service districts is allocated to school districts

10% of SSF formula for ESDs funds operations

75% of school district allocations go to individual school district accounts

25% of school district allocations are spent on core services, i.e. shared services





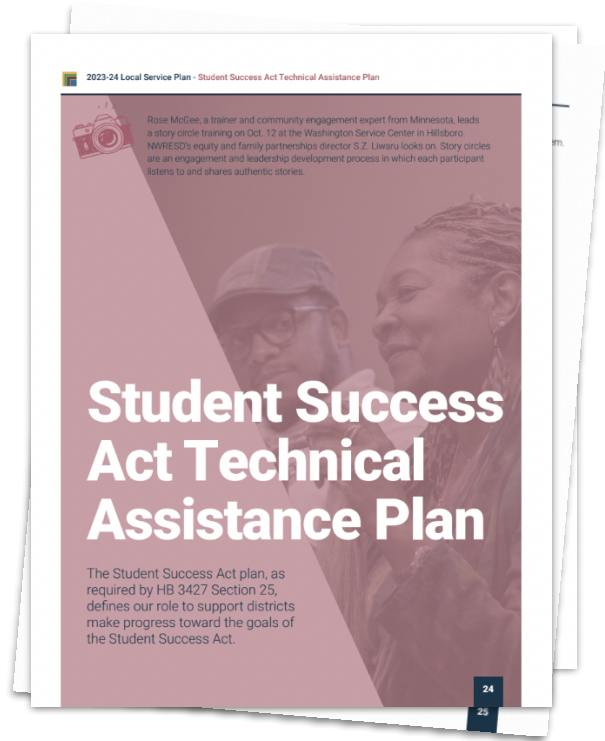




P. 10



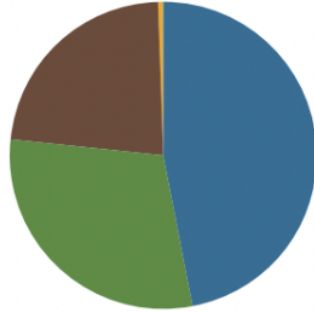
P. 13



P. 24

# Core Services

These estimates are based on a \$9.5 billion State School Fund. Estimates for Beaverton and Hillsboro are based on a 3% rollup.



## Core Services: \$4,965,969

- Technology: \$2,827,785
- County Allocations: \$1,791,099
- Instruction: \$1,377,428
- Miscellaneous: \$26,546

## Beaverton and Hillsboro School Districts:

- Regional Innovations: \$666,326
- Professional Development: \$370,743



**Total Core Services: \$6,003,037**

# County Allocations



Clatsop County

\$291,680



Columbia County

\$358,377



Tillamook County

\$238,651

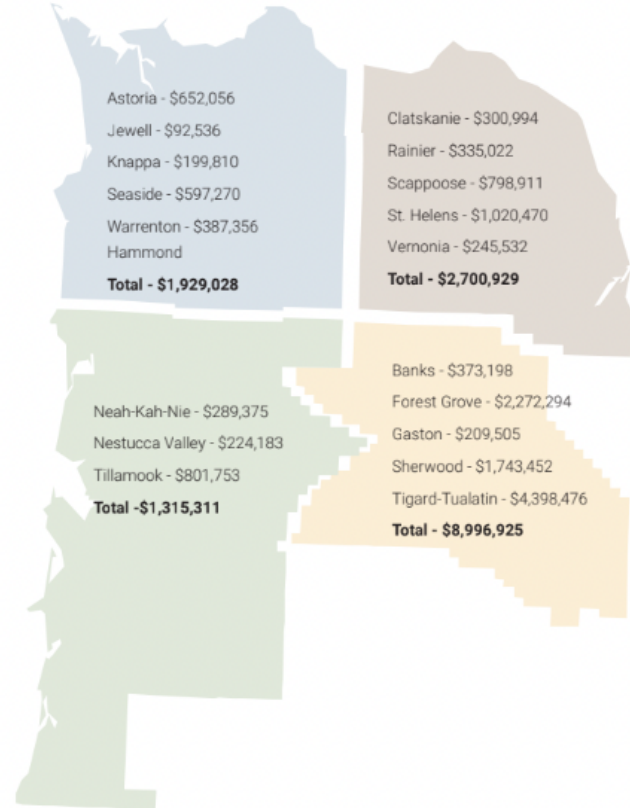


Washington County

\$902,391

# Service Credits

These estimates are based on a \$9.5 billion State School Fund.



## Core Services (P. 10)

- County Allocations
- Emergency Closure Network
- Grant Management
- Regional Innovations and Professional Learning
- Cybersecurity Services
- Forecast 5
- Help Desk
- Library Services (Follett Destiny Library, Resource Manager and Textbook)
- Network Security Services
- Network Services
- Restraint & Seclusion
- Application Development
- Technical Engineering Cooperative

# Service Menu (P. 13)

## Administration

- Communications
- Fiscal Services
- Medicaid Reimbursements
- Spanish Language Interpretation and Translation
- Substitute Services

## Early Learning

- Early Intervention/Early Childhood Special Education (EI/ECSE) Evaluations
- EI/ECSE Transportation

## Instruction

- Attendance Services
- Cascade Education Corps
- Diverse Educator Pathways
- Grant Management
- Ion MTSS Software
- Oregon Virtual Education (ORVED)
- Reengagement Services
- Willamette Promise

## K-12 Special Education

- Audiology
- Autism Spectrum Disorder (ASD) Services
- Behavioral Support Consultation
- Blind Visually Impaired (BVI) Student Services
- Deaf and Hard of Hearing Services
- Nursing Services
- Occupational Therapy (OT) Services
- Physical Therapy (PT) Services
- Regional Equipment Center
- School Psychology Services
- Speech-Language Pathology Services
- Social Emotional Learning Schools

## Technology

- Attendance Reconnection System
- Canvas Learning Management System
- Criminal Background Check System
- District Level Technology Purchasing
- Help Desk
- Learning360 Streaming Video
- Oregon Data Suite
- ORSpEd
- Public School Works
- Restraint and Seclusion
- School ERP Pro (formerly Infinite Visions)
- Synergy Student Information System
- Technical Engineering Cooperative

# Student Success Act Technical Assistance Plan (P. 24)

- 9th Grade Success Network
- Attendance Collaboratives and Professional Learning
- Communications
- Community Engagement and Family Partnerships
- Early Literacy Network
- Instructional Coaching Network
- MTSS Coaching
- Research, Assessment and Evaluation
- School Culture and Climate
- Social, Emotional and Mental Health Services

# Thank you!

Questions?



Proposed Motion:

*I move to approve Resolution #\_\_\_ approving the 2023-24 NWRESD Local Service Plan, as presented.*