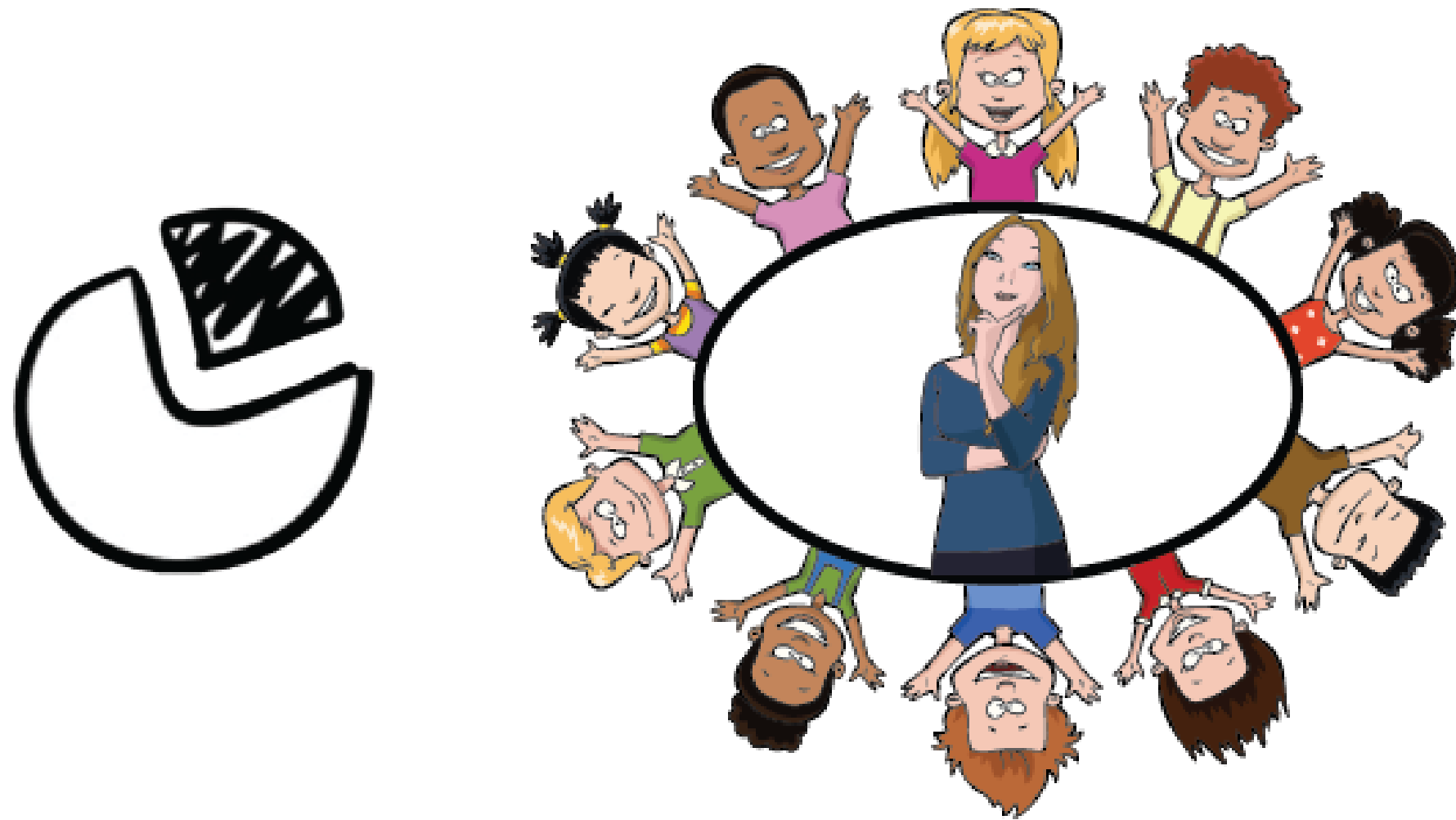




# School Counselor Use of Time Analysis (SCUTA)

 Student Services Department  
February 26, 2024



# **With SCUTA school counselors can:**

- **Maintain a log of their work and activities**
- **Classify their work into ASCA delivery domains**
- **Access statistical reports that analyze use of time data**
- **Maintain notes about their activities**
- **Access a glossary defining individual topics/activities of most school counselors**

# FSPS District Scorecard



## 4. Student Success Plans

4.1 Number of students who successfully complete a CTE program of study

4.2 Percent of students who have a 4 year student success plan in the 8th grade

4.3 Percent of time spent scheduling with students in grades 6-12 per SCUTA

# SCUTA Topic Tasks Card

Elementary.

Secondary.



# Appraisal and Advisement

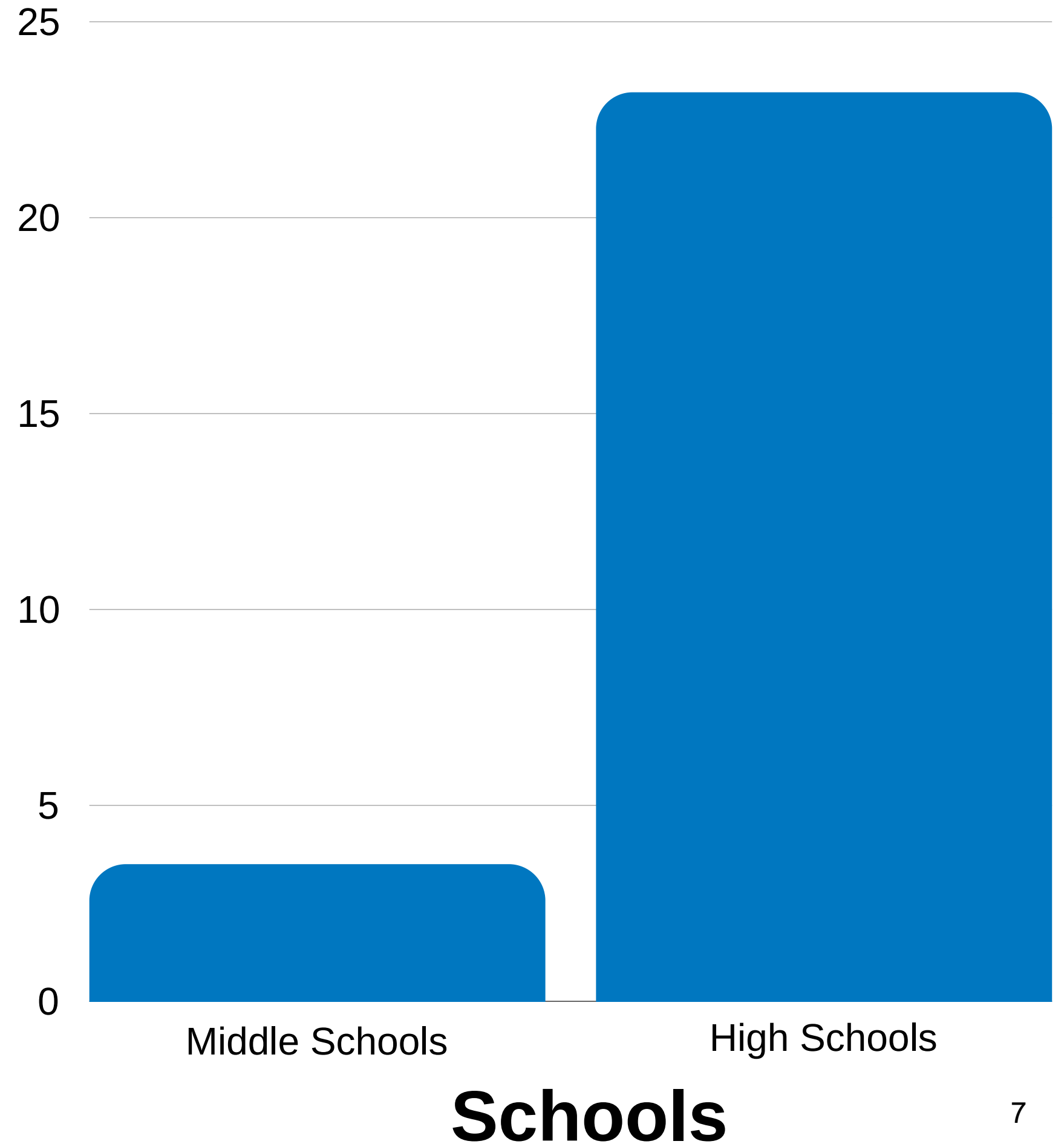
- Scheduling without a student present
  - Student Record Review
    - Schedule/Course Selection
- Scheduling with a student
  - Academic Career Plan (SSP)
    - Schedule/Course Selection

# Instruction

- **Classroom Guidance (Academic Scheduling)**
  - **Career Development**

# Appraisal & Advisement Data

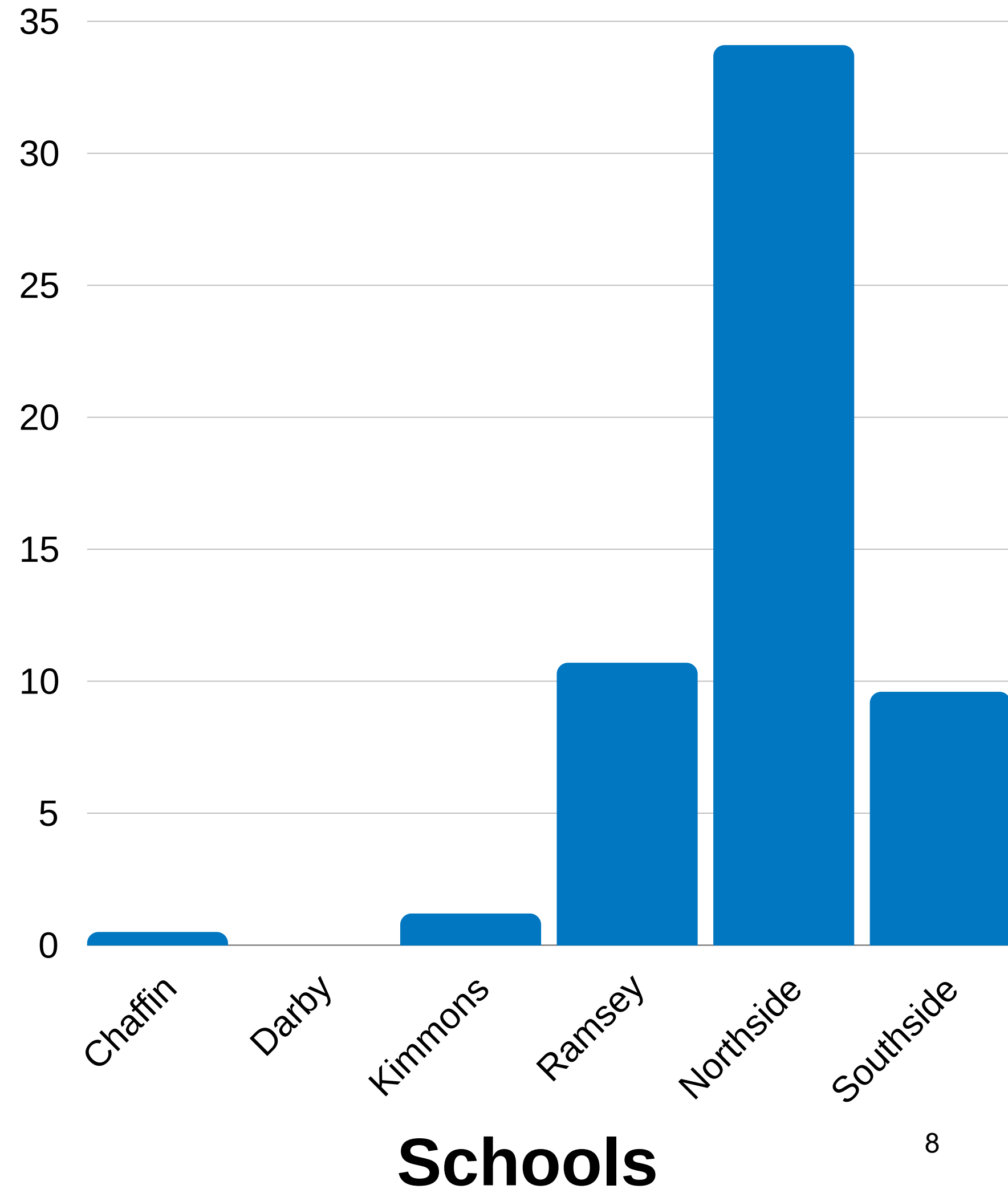
**Percent  
of  
Time  
Spent**





# Appraisal & Advisement Data

**Percent  
of  
Time  
Spent**



# How we communicate with SCUTA

## DARBY MIDDLE SCHOOL

Cherri Byford, M.S. NBCT  
Cassidy Hodge, M.S. NBCT

### SCHOOL COUNSELING PROGRAM MID YEAR REPORT

#### SCHOOL COUNSELING PROGRAM VISION STATEMENT

Providing a comprehensive, equitable, and data-driven school counseling program for all students. School counselors engage with students in academic, career, and social emotional learning to empower them to learn and grow to ultimately make a positive impact in their culturally diverse community. Program development is driven by collaboration with stakeholders to identify student needs through data and consulting with administrators to foster student success. This allows us to close achievement, opportunity and attainment gaps to ensure successful outcomes, equity and sustainable positive long range results for all students.

#### SCHOOL COUNSELING PROGRAM MISSION STATEMENT

All Darby Middle School students are high school graduates prepared to achieve their post-secondary goals and endeavors. They are equipped with the skills necessary to grow, learn and take on the challenges of a diverse and rapidly changing world. Students are competent, resilient, and responsible individuals who appreciate the differences in others and value the impact of utilizing positive social and emotional coping strategies. As graduates, they will "lead the way" in the greater Fort Smith area, competent in their academic, career and social emotional skills to make a positive impact on their community.

#### School at a Glance

2023-2024

Grade Levels: 6-8

Enrollment: 720

Socioeconomically Disadvantaged: 86%

English Language Learners: 26%

Students with Disabilities: 15%

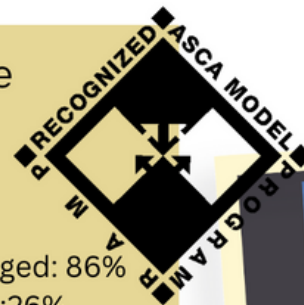
Hispanic: 50%

White: 29%

African American: 10%

Two or More Races: 8%

**RANGERS**



Darby Middle School

Individual  
Counseling

**348**

Small Group  
Sessions

**41**

Classroom  
Lessons

**61**

School Based  
Mental Health  
Referrals

**21**

Crisis  
Interventions

**24**

**107**

CLASSROOM  
LESSONS  
DELIVERED



**32**

SMALL GROUP  
SESSIONS



**219**

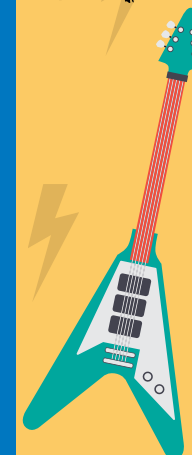
INDIVIDUAL  
SESSIONS

ALL ABOUT YOUR  
**SCHOOL  
COUNSELING  
PROGRAM**

#NSCW2024

**47**

CRISIS  
INTERVENTIONS



**39**

STUDENTS ON  
SCHOOL BASED  
THERAPY ROSTER



NONE OF THIS  
WOULD BE POSSIBLE  
WITHOUT YOUR  
SUPPORT AND  
COLLABORATION!  
THANK YOU!



QUESTIONS?