

Duluth Public Schools

Accountability Update

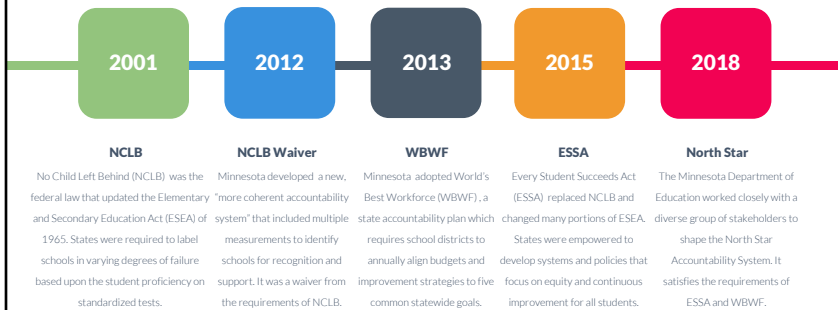
Tawmyea Lake, PhD, NCSP
Director of Assessment and Evaluation
September 2018 Education Committee Meeting

Purpose of Today

Provide an overview of:

- North Star Accountability System
- Initial district results
- Next steps / Preview of October Ed Committee meeting

Accountability in Minnesota: A Brief History



North Star Accountability System: General Information

- Purpose: Identify schools and districts for support under Every Student Succeeds Act (ESSA) and World's Best Workforce (WBWF)
- Replaces Multiple Measurements Rating (MMR), Adequate Yearly Progress (AYP) and Annual Measurable Achievement Objectives (AMAO) systems from No Child Left Behind (NCLB) and Minnesota's NCLB Waiver
- Uses several indicators grouped into three stages
- Focuses on equity, changes the lens

North Star Accountability System: Levels of Support

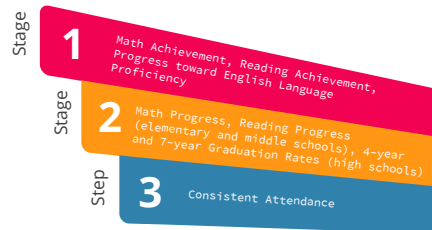
- Two levels of support
 - (1) Comprehensive
 - Lowest 5% of Title I schools
 - Any public high school with a 4-year grad rate below 67% (overall or any student group)
 - On-going, on-site technical assistance from the Regional Centers of Excellence (RCE)

North Star Accountability System: Levels of Support

- Two levels of support
 - (2) Targeted
 - Schools where student groups perform below performance thresholds in at least one indicator in each stage
 - Mostly district support, with professional development opportunities from Regional Centers of Excellence (RCEs)

North Star Accountability System: Stages of Identification

3 STAGES IN THE IDENTIFICATION PROCESS

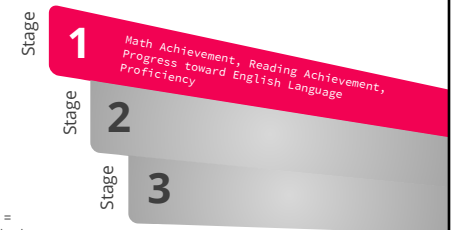


North Star Accountability System: Stage 1

STAGE 1

Math Achievement and Reading Achievement = Percentage of students who meet or exceed the standards on MCA or MTAS.

Progress toward English Language Proficiency = Students' growth on the ACCESS compared to growth required to be on track to achieving English language proficiency.

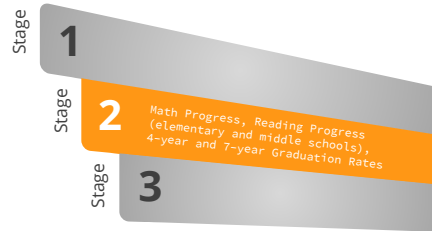


North Star Accountability System: Stage 2

**STAGE
2**

Academic Progress = Students' increase in learning relative to grade-level standards, as measured by MCA and MTAS.

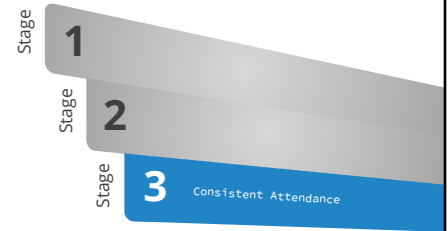
Graduation Rate = 4-year and 7-year graduation rates.



North Star Accountability System: Stage 3

**STAGE
3**

Consistent Attendance - Percentage of students who attend school more than 90% of school days. Consistent attendance is the opposite of chronic absenteeism, which is defined as missing 10% or more of school days.



North Star Accountability System: Schools Identified for Support

Schools	Stage 1			Stage 2				Stage 3	Level of Support
	Math Achievement	Reading Achievement	EL Progress	Math Progress	Reading Progress	4-Year Grad Rate	7-Year Grad Rate	Consistent Attendance	
Congdon	SpEd	SpEd						SpEd	Targeted
Myers-Wilkins	SpEd	SpEd			SpEd			SpEd	Targeted
Piedmont	SpEd Two or More	SpEd		SpEd	SpEd Two or More			SpEd Two or More	Targeted
Stowe	SpEd FRL	SpEd			SpEd FRL			SpEd FRL	Targeted
Denfeld						SpEd FRP			Comprehensive
ALC						All White FRL			Comprehensive

North Star Accountability System: Schools Identified for Recognition

Schools	Specific Area
Lakewood	Math Progress Students who receive free or reduced price lunch
Lester Park	Reading Progress Overall
Ordean East	Reading Progress Hispanic

Reminders

- Broad overview, layers of analysis
- Many ways to report the data, depending on purpose
 - Data included here used for North Star Accountability
 - Definitions of the measures vary
 - Which students are included in the groups vary

Next Steps

- Analyze data with district level teams to guide continuous improvement efforts
- Schools use data to update Comprehensive Needs Assessments, updating goals and action plans
- Present additional information at October Education Committee

Appendices:
North Star Data
(to be added)