

**May 2018**

Derby Public Schools

# Performance Dashboard

---

## Derby Middle School

William Vitelli, Principal

*“People without information cannot act. People with information cannot help but act.”*

*Ken Blanchard*

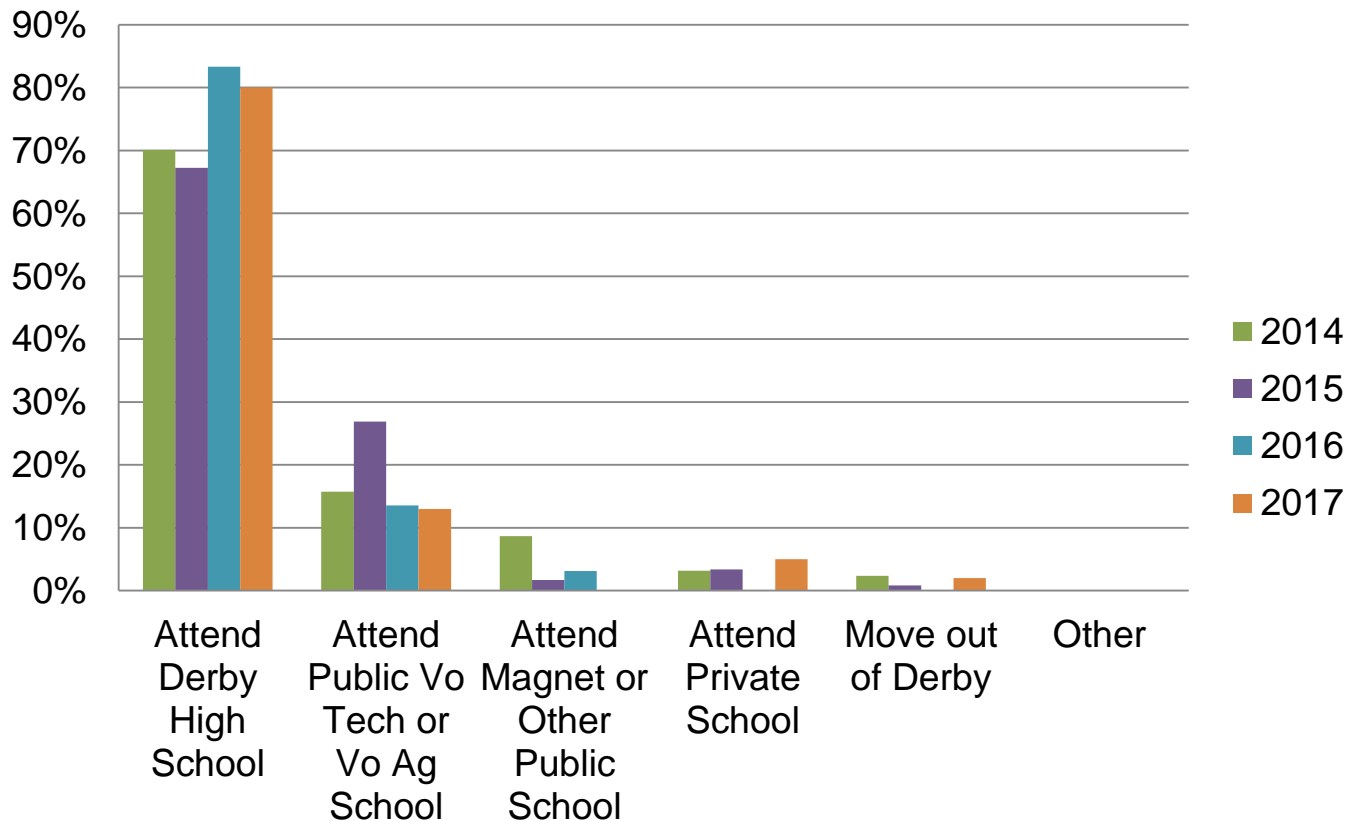


### Promotion: Percent of students promoted

Derby Middle School

	6	7	8
<b>June 2017</b>	100%	93%	97%
<b>June 2016</b>	100%	100%	98%
<b>June, 2015</b>	100%	100%	98%
<b>June, 2014</b>	100%	100%	100%
<b>June, 2013</b>	99%	99%	99%

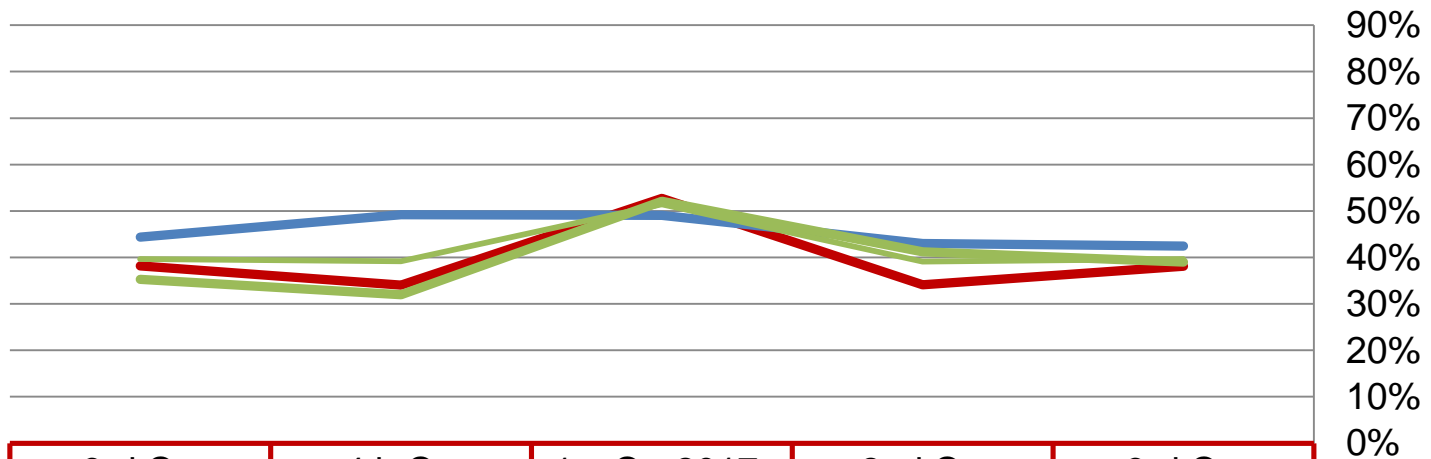
### Post DMS Plans Percent of graduates who plan to:



# Quarterly Data

## High Grades

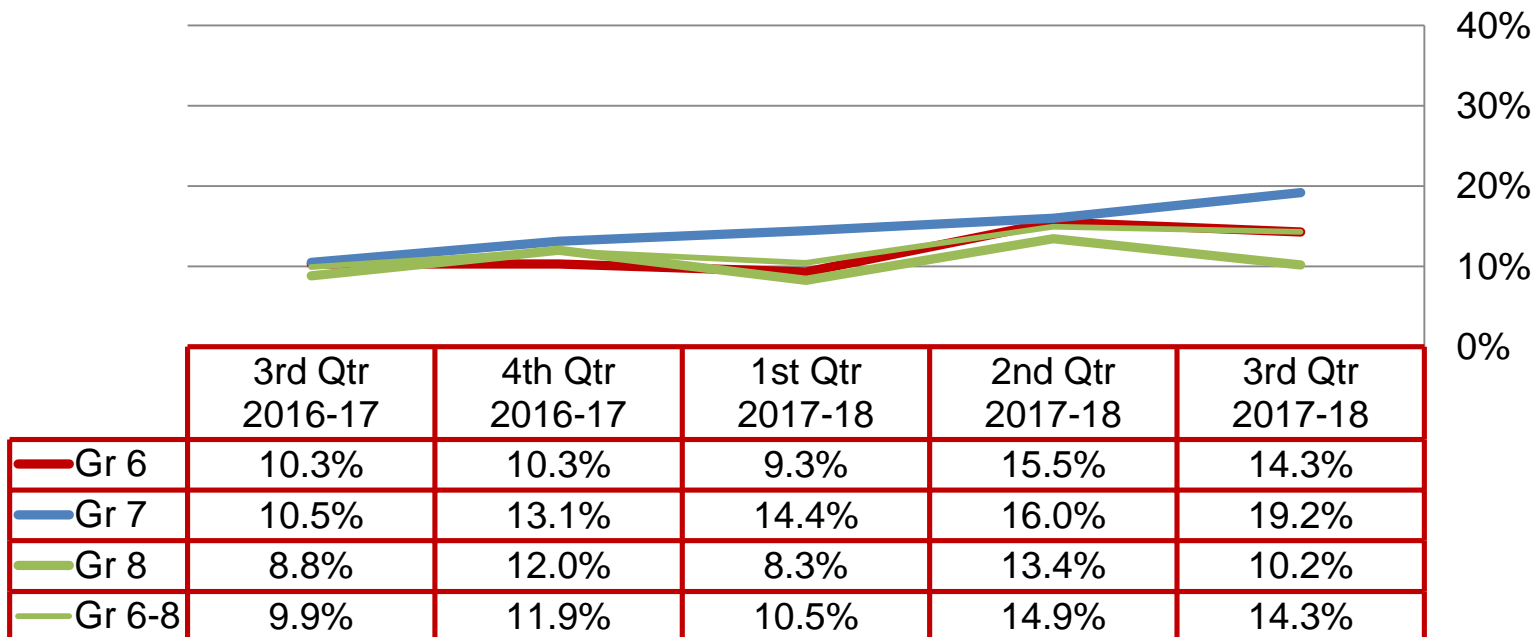
Percent of students earning 80 or above in all courses and no unsatisfactory mark in citizenship:



	3rd Qtr 2016-17	4th Qtr 2016-17	1st Qtr 2017- 18	2nd Qtr 2017-18	3rd Qtr 2017-18
Gr 6	38.1%	34.0%	52.7%	34.1%	38.1%
Gr 7	44.4%	49.2%	49.0%	43.0%	42.4%
Gr 8	35.3%	32.0%	52.1%	41.2%	39.0%
Gr 6-8	39.6%	39.2%	51.4%	39.1%	39.7%

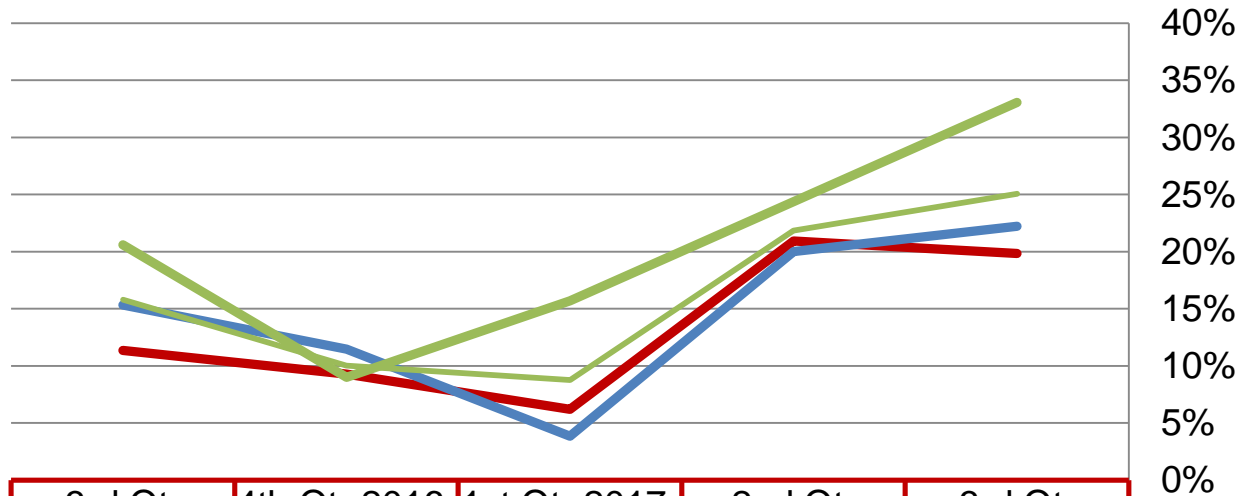
# Quarterly Data

Failing Grades Percent of students with at least one course below 65%:



# Quarterly Data

Failing Grades Percent of students with at least two courses below 65%:



	3rd Qtr 2016-17	4th Qtr 2016-17	1st Qtr 2017-18	2nd Qtr 2017-18	3rd Qtr 2017-18
Gr 6	11.3%	9.3%	6.2%	20.9%	19.8%
Gr 7	15.3%	11.5%	3.8%	20.0%	22.2%
Gr 8	20.6%	9.0%	15.7%	24.4%	33.1%
Gr 6-8	15.8%	10.0%	8.8%	21.8%	25.1%

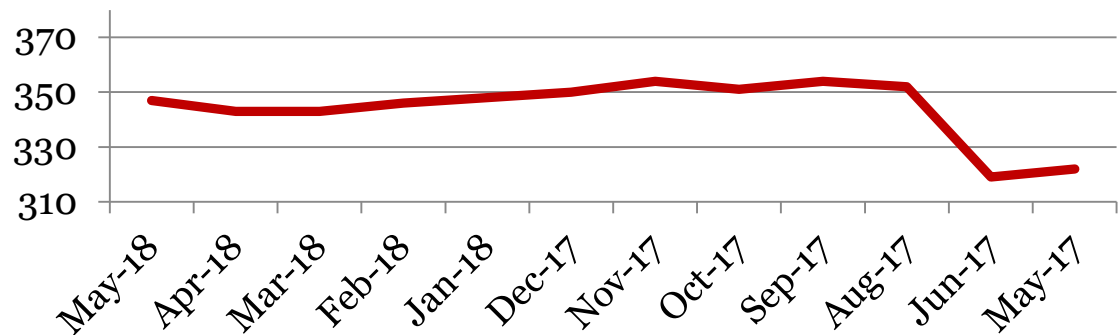
# Monthly Data

Derby Middle School

## Enrollment – 1<sup>st</sup> of the month

	6	7	8	Total
<b>May-18</b>	126	104	117	<b>347</b>
<b>Apr-18</b>	126	99	118	<b>343</b>
<b>Mar-18</b>	126	99	118	<b>343</b>
<b>Feb-18</b>	128	98	120	<b>346</b>
<b>Jan-18</b>	129	100	119	<b>348</b>
<b>Dec-17</b>	129	102	119	<b>350</b>
<b>Nov-17</b>	129	104	121	<b>354</b>
<b>Oct-17</b>	127	103	121	<b>351</b>
<b>Sep-17</b>	129	104	121	<b>354</b>
<b>Aug-17</b>	128	103	121	<b>352</b>
<b>Jun-17</b>	97	122	100	<b>319</b>
<b>May-17</b>	97	124	101	<b>322</b>

## Total School Enrollment

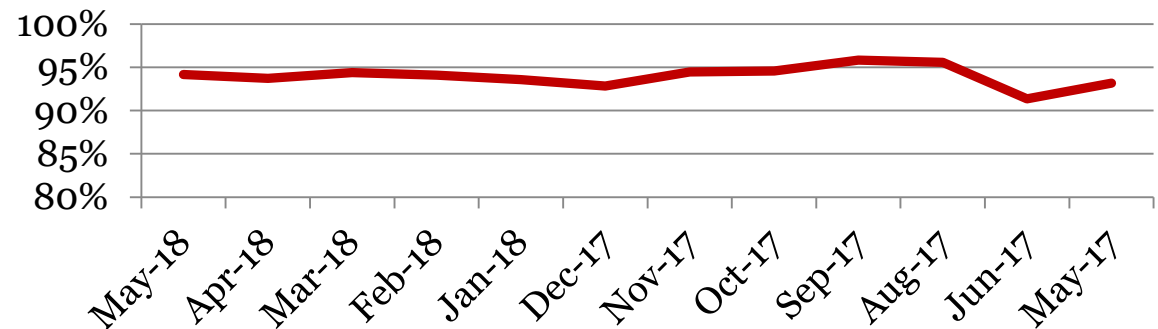


## Attendance – Students

Average daily percent present:

	6	7	8	Total
<b>May-18</b>	94.7	92.8	94.8	<b>94.1</b>
<b>Apr-18</b>	94.5	94.1	92.5	<b>93.7</b>
<b>Mar-18</b>	93.4	95.5	94.5	<b>94.4</b>
<b>Feb-18</b>	93.8	95.1	93.5	<b>94.1</b>
<b>Jan-18</b>	94.1	94.4	92.3	<b>93.6</b>
<b>Dec-17</b>	93.4	93.2	91.9	<b>92.8</b>
<b>Nov-17</b>	94.9	93.6	94.7	<b>94.4</b>
<b>Oct-17</b>	95.7	94.8	93.1	<b>94.6</b>
<b>Sep-17</b>	96.7	95.6	95.1	<b>95.8</b>
<b>Aug-17</b>	96.7	94.2	95.5	<b>95.6</b>
<b>Jun-17</b>	92.6	93.7	87.2	<b>91.3</b>
<b>May-17</b>	92.8	93.9	92.7	<b>93.2</b>

**Total Student Attendance**



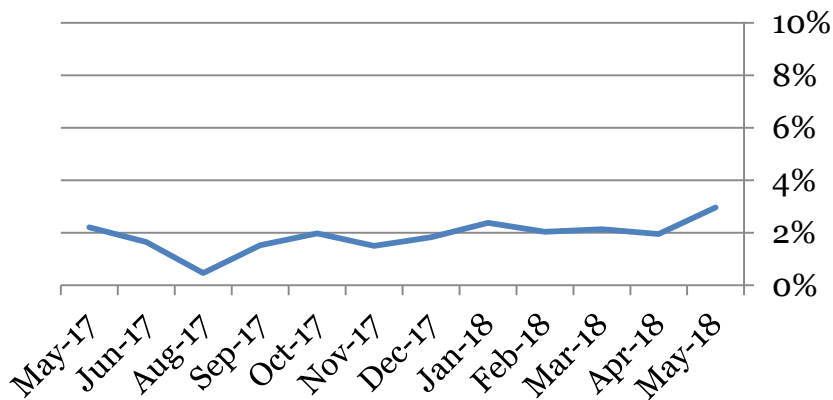
Tardies Average daily percent tardy:

	6	7	8	Total
May-18	3	3	4	3
Apr-18	2	2	2	2
Mar-18	2	2	2	2
Feb-18	2	2	2	2
Jan-18	2	3	3	2
Dec-17	2	2	2	2
Nov-17	0	2	2	1
Oct-17	2	2	2	2
Sep-17	1	2	2	2
Aug-17	0	1	0	0
Jun-17	1	2	2	2
May-17	2	2	3	2

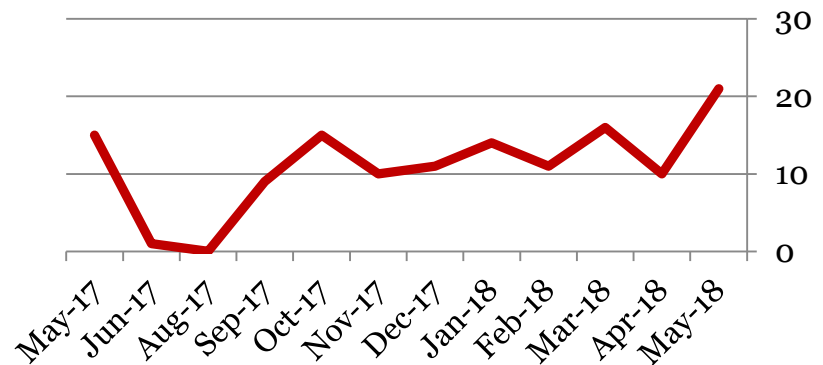
Number of students tardy 5 or more days:

	6	7	8	Total
May-18	5	7	9	21
Apr-18	5	3	2	10
Mar-18	4	5	7	16
Feb-18	3	5	3	11
Jan-18	2	6	6	14
Dec-17	2	6	3	11
Nov-17	5	1	4	10
Oct-17	4	6	5	15
Sep-17	1	4	4	9
Aug-17	0	0	0	0
Jun-17	0	1	0	1
May-17	6	5	4	15

**Total Student Tardies**



**# Students over Threshold**



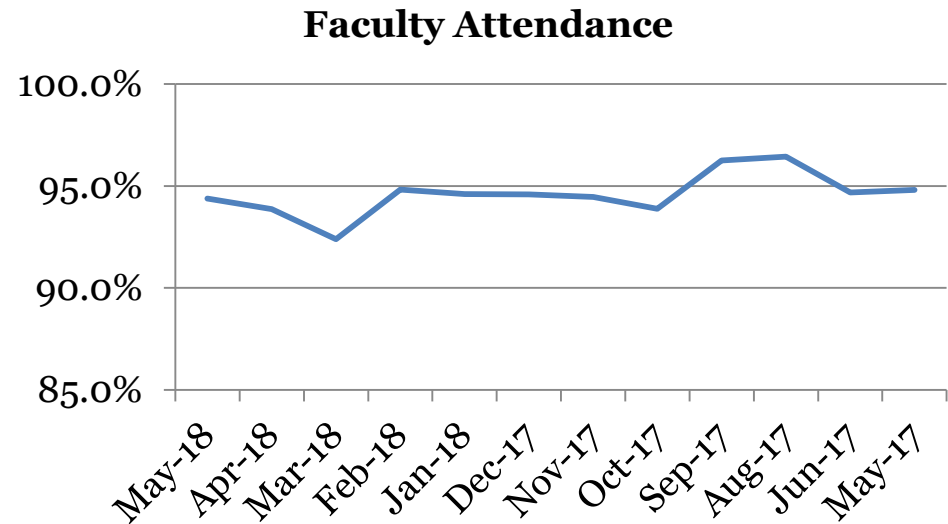


## Attendance – Faculty

Average daily percent present:

Derby Middle School

	Total
May-18	94.4
Apr-18	93.9
Mar-18	91.8
Feb-18	95.1
Jan-18	94.6
Dec-17	94.6
Nov-17	94.5
Oct-17	93.9
Sep-17	96.3
Aug-17	96.4
Jun-17	94.7
May-17	94.8



*\*This indicator reflects certified staff and does not include absences created by class trips, professional development, workman's comp and FMLA. However % may be reduced due to long term illness beyond FMLA.*

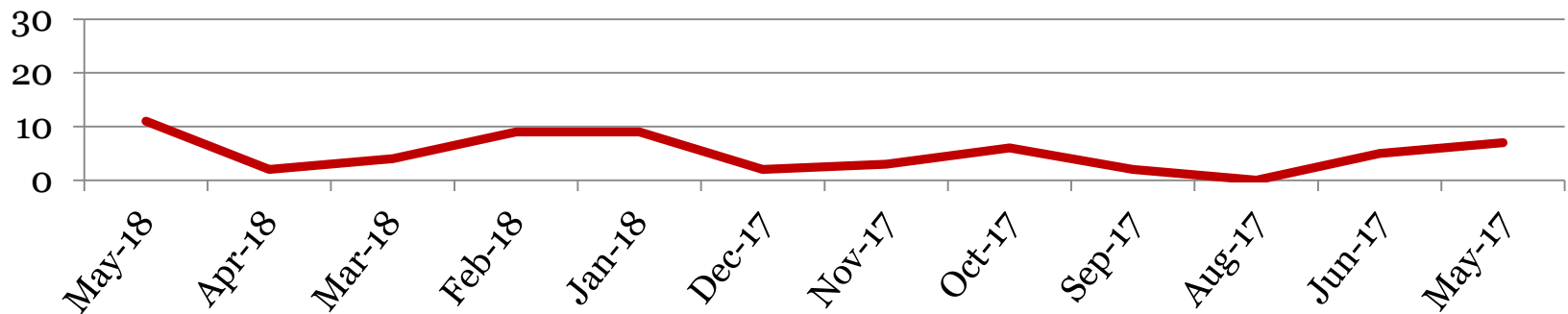
## Suspensions – Out of School

Derby Middle School

Number of student suspensions (total days of suspension):

	6		7		8		Total	
<b>May-18</b>	5	(8)	4	(7)	2	(6)	<b>11</b>	<b>(21)</b>
<b>Apr-18</b>	1	(10)	1	(1)	0	(0)	<b>2</b>	<b>(11)</b>
<b>Mar-18</b>	2	(6)	2	(4)	0	(0)	<b>4</b>	<b>(10)</b>
<b>Feb-18</b>	4	(16)	2	(4)	3	(6)	<b>9</b>	<b>(26)</b>
<b>Jan-18</b>	4	(7)	2	(6)	3	(5)	<b>9</b>	<b>(18)</b>
<b>Dec-17</b>	0	(0)	0	(0)	2	(4)	<b>2</b>	<b>(4)</b>
<b>Nov-17</b>	2	(12)	1	(3)	0	(0)	<b>3</b>	<b>(15)</b>
<b>Oct-17</b>	4	(7)	1	(10)	1	(5)	<b>6</b>	<b>(22)</b>
<b>Sep-17</b>	0	(0)	2	(4)	0	(0)	<b>0</b>	<b>(4)</b>
<b>Aug-17</b>	0	(0)	0	(0)	0	(0)	<b>0</b>	<b>(0)</b>
<b>Jun-17</b>	3	(11)	1	(2)	1	(10)	<b>5</b>	<b>(23)</b>
<b>May-17</b>	4	(14)	3	(16)	0	(0)	<b>7</b>	<b>(30)</b>

**Total Out of School Suspensions**



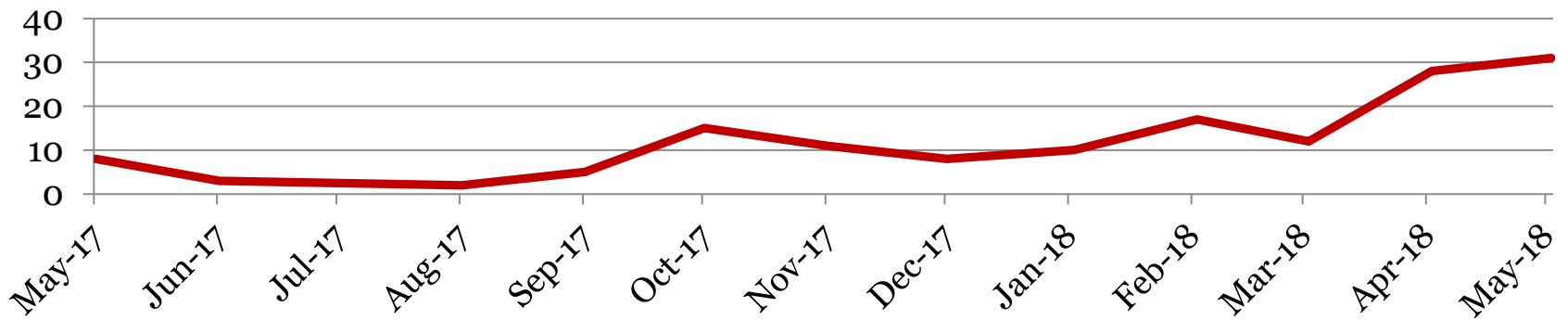
## Suspensions – In School

Derby Middle School

Number of student suspensions (total days of suspension):

	6		7		8		Total	
<b>May-18</b>	10	(14)	6	(12)	15	(20)	<b>31</b>	<b>(46)</b>
<b>Apr-18</b>	5	(9)	7	(12)	16	(24)	<b>28</b>	<b>(45)</b>
<b>Mar-18</b>	3	(6)	5	(5)	4	(6)	<b>12</b>	<b>(17)</b>
<b>Feb-18</b>	5	(9)	3	(7)	9	(16)	<b>17</b>	<b>(32)</b>
<b>Jan-18</b>	6	(11)	1	(1)	3	(5)	<b>10</b>	<b>(17)</b>
<b>Dec-17</b>	2	(3)	2	(2)	4	(8)	<b>8</b>	<b>(13)</b>
<b>Nov-17</b>	4	(6)	2	(4)	5	(13)	<b>11</b>	<b>(23)</b>
<b>Oct-17</b>	4	(8)	6	(11)	5	(11)	<b>15</b>	<b>(30)</b>
<b>Sep-17</b>	0	(0)	4	(12)	1	(1)	<b>5</b>	<b>(13)</b>
<b>Aug-17</b>	0	(0)	2	(4)	0	(0)	<b>2</b>	<b>(4)</b>
<b>Jun-17</b>	0	(0)	2	(3)	1	(2)	<b>3</b>	<b>(5)</b>
<b>May-17</b>	2	(3)	5	(12)	1	(3)	<b>8</b>	<b>(18)</b>

**Total In School Suspensions**



## Newly Enrolled Students

	<b>6</b>	<b>7</b>	<b>8</b>	<b>Total</b>
<b>May-18</b>	0	0	0	<b>0</b>
<b>Apr-18</b>	0	6	0	<b>6</b>
<b>Mar-18</b>	0	0	0	<b>0</b>
<b>Feb-18</b>	0	3	1	<b>4</b>
<b>Jan-18</b>	0	0	2	<b>2</b>
<b>Dec-17</b>	0	0	1	<b>1</b>
<b>Nov-17</b>	1	0	0	<b>1</b>
<b>Oct-17</b>	2	1	0	<b>3</b>
<b>Sep-17</b>	0	3	1	<b>4</b>
<b>Aug-17</b>	10	14	8	<b>32</b>
<b>Jun-17</b>	0	0	0	<b>0</b>
<b>May-17</b>	0	0	0	<b>0</b>

## Departing Students

Students who have left the school during the month for any reason:

	6	7	8	Total
<b>May-18</b>	0	2	0	<b>2</b>
<b>Apr-18</b>	0	0	1	<b>1</b>
<b>Mar-18</b>	0	0	0	<b>0</b>
<b>Feb-18</b>	2	2	2	<b>6</b>
<b>Jan-18</b>	0	2	0	<b>2</b>
<b>Dec-17</b>	1	1	0	<b>2</b>
<b>Nov-17</b>	0	2	0	<b>2</b>
<b>Oct-17</b>	0	0	0	<b>0</b>
<b>Sep-17</b>	2	4	1	<b>7</b>
<b>Aug-17</b>	6	8	7	<b>21</b>
<b>Jun-17</b>	2	0	0	<b>2</b>
<b>May-17</b>	0	1	0	<b>1</b>