

# Summer Scholars & ESY

A Summer School  
Experience





## OFFERINGS

- Preschool
- Jumpstart to Kindergarten
- Academics (incoming grades 1-8)
- Specials (wellness and art)
- Extended School Year (prek-8)



## SCHEDULE

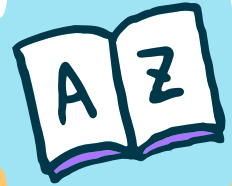
- June 11 - July 2
- No school June 19
- 8:15AM - 12 PM
- Monday - Friday



# COST

Tuition: \$400/student

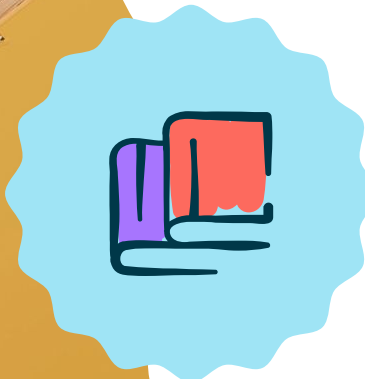
Transportation: \$100 single; \$150 per family





# STAFF

- 8 Classroom Teachers
- 2 Special Teachers
- 4 Learning Behavior Specialists
- 8 Paraprofessionals
- 1 Occupational Therapist
- 1 School Psychologist
- 1 Speech Pathologist
- 1 School Nurse
- 1 Secretary



# CONTACT

T

Kathleen Turner Kwak

[kturner@lb65.org](mailto:kturner@lb65.org)

847-234-9405 ext. 4003

