

APPROVED FOR FABRICATION

APPROVED
 APPROVED AS NOTED
 RESUBMIT

COMPANY: _____
 BY: _____ DATE: _____

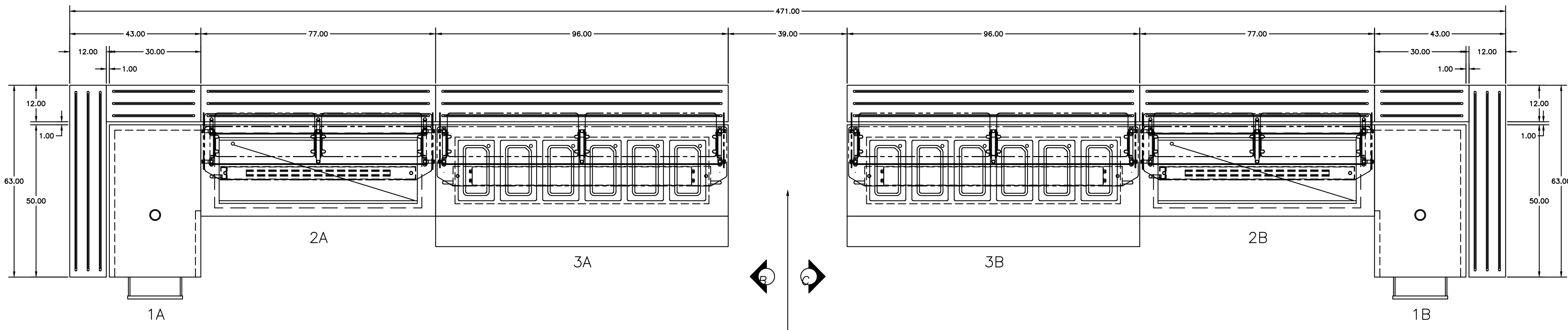
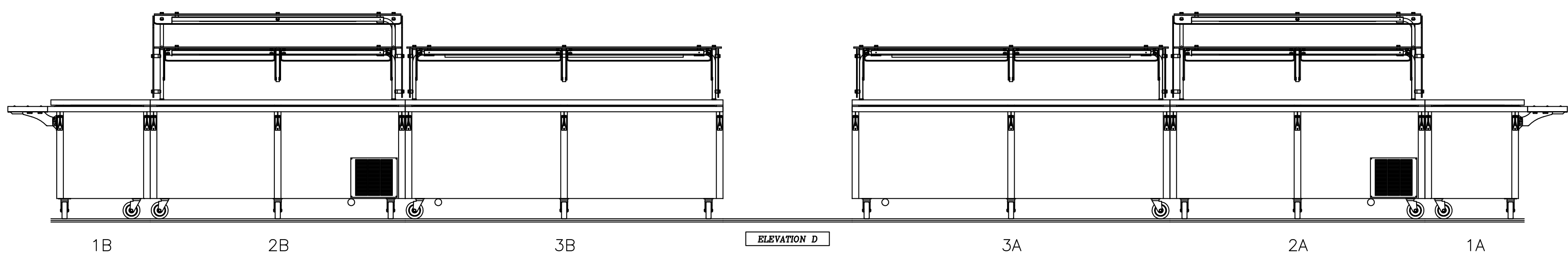
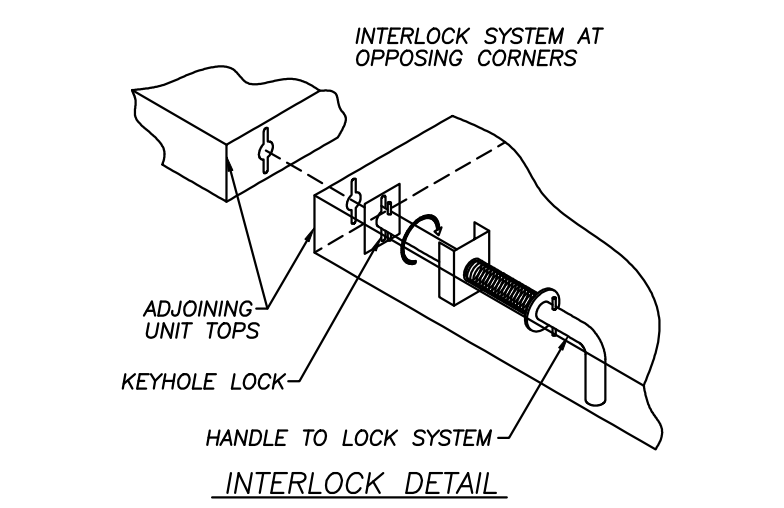
****ELECTRICAL NOTICE****

APPROVER OF FABRICATION AS DRAWN HEREIN ACKNOWLEDGES THE ELECTRICAL SPECIFICATIONS DEPICTED AND/OR NOTED CANNOT BE MODIFIED ONCE MANUFACTURING HAS BEGUN. APPROVER ACKNOWLEDGES THAT ANY ALTERATIONS OF THE EQUIPMENT AFTER MANUFACTURING WILL VOID ALL WARRANTIES AND UL CERTIFICATION ON SAID EQUIPMENT. ANY EQUIPMENT ALTERED AFTER MANUFACTURING WILL BE SUBJECT TO UL REVIEW AND APPROVAL AT OWNER'S EXPENSE.

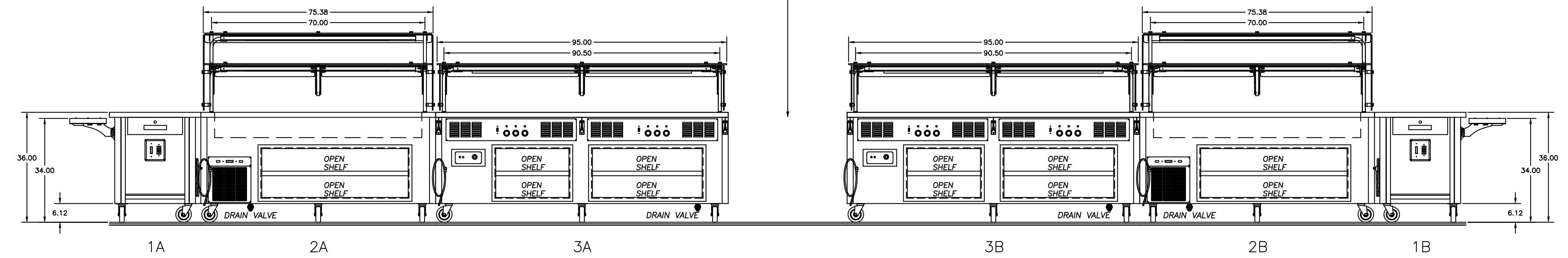
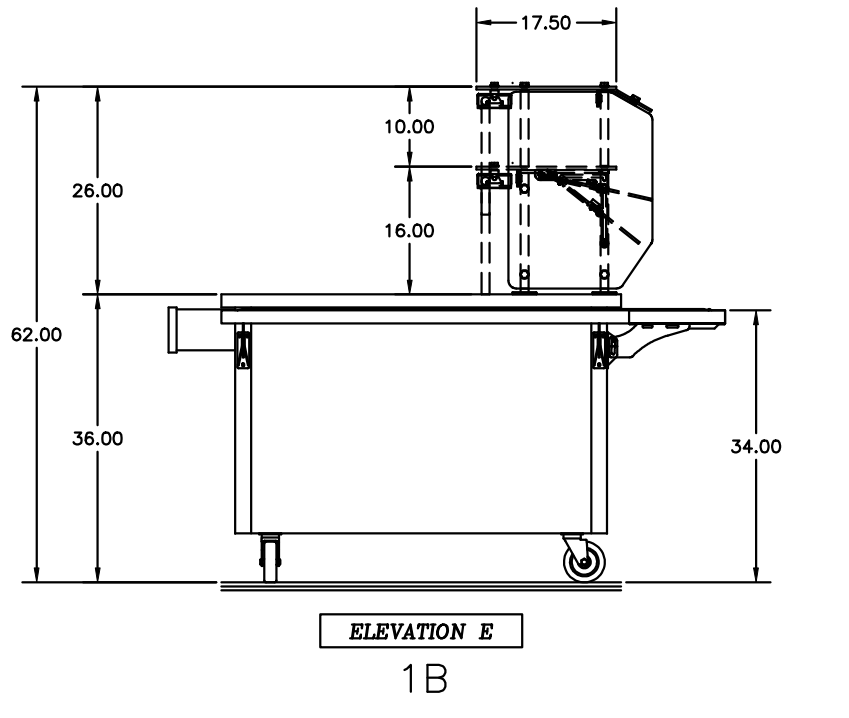
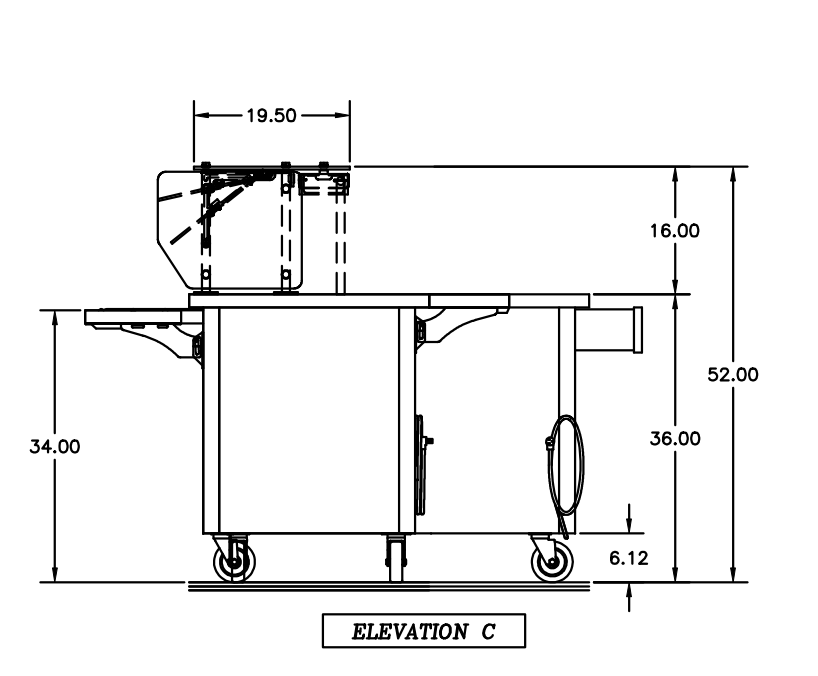
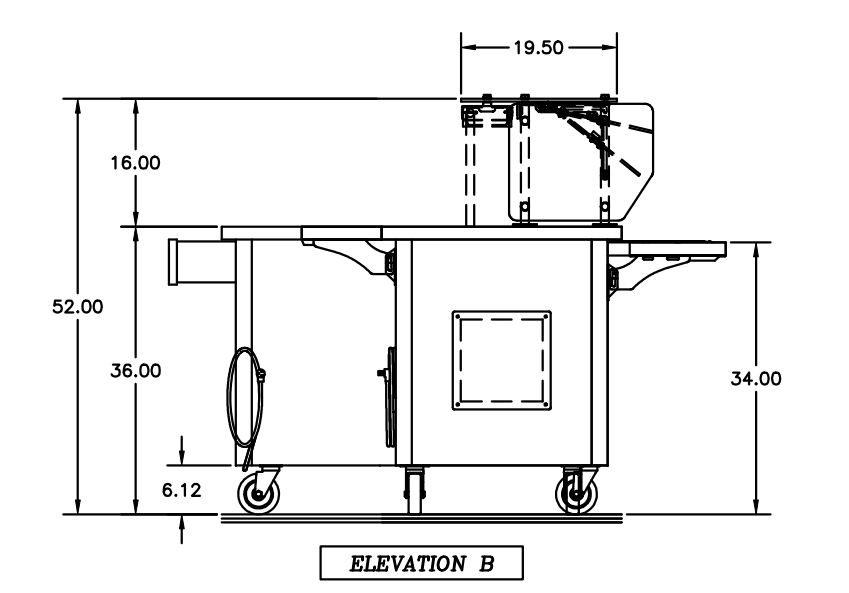
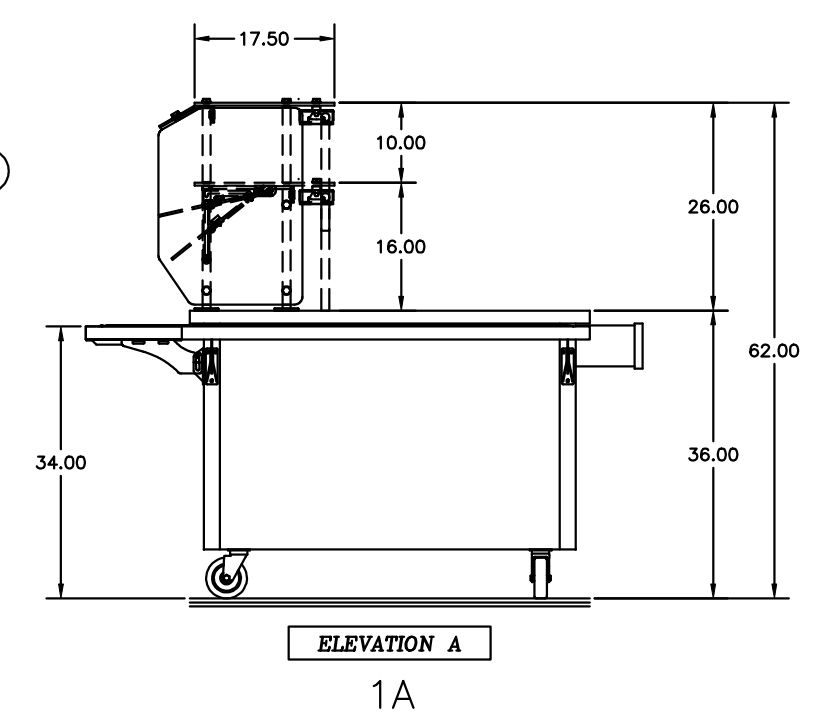
If you are placing equipment into an area which has certain standards or codes other than those normally accepted in the food - service industry (OSF, UL, etc.) Delfield must be advised of those specifications in detail before fabrication of the equipment in order that we may quote additional costs. If any failure to notify The Delfield Company before fabrication releases us from any obligation to modify our standards without any additional charges.

Shelleysteel

- NOTES:**
- * TOPS ARE TO BE 14 GAUGE S/S
 - * PROVIDE INTERLOCKS AS REQUIRED
 - * ALL STANDARD LOCKING POLYURETHANE CASTERS
 - * CORDS STANDARD WITH 90° PLUGS
 - * UNITS SPECIFIED WITH DRAINS TO HAVE GATE VALVE AND GARDEN HOSE HOOK UP
 - * WHEN TRAY SLIDE/WORK SHELF BRACKETS ARE USED: FOLD DOWN BRACKETS ARE STANDARD UNLESS OTHERWISE REQUESTED
 - * ALL 120 VOLT RECEPTACLES (15 AND 20 AMP) WILL BE GFCI PROTECTED DUPLEXES
- ENVIRONMENTALLY FRIENDLY INSULATION**
- * KYOTO PROTOCOL COMPLIANT
 - * NON O.D.P. (OZONE DEPLETION POTENTIAL)
 - * NON G.W.P. (GLOBAL WARMING POTENTIAL)
 - * POLYURETHANE INSULATION
- * SHELLEYSTEEL (LAMINATED): PROVIDE ANGULAR FRAME BASES WITH LAMINATE SIDE PANELS
- * MANUFACTURER: *VERIFY*
- * MODEL: *VERIFY*
- * FINISH: *VERIFY*
- * DESCRIPTION: *VERIFY*
- * GRAIN DIRECTION: *VERIFY*



EMPTY SPACE EQUIPMENT BY OTHERS



SKU NO. 000-40014FBN1
 MODEL NO. SC5-50 ITEM NO. 1A
 -CASHIER COUNTER
 -3 IN. DIAMETER HOLE WITH GROMMET IN TOP
 -S/S SHELF AND LOCKING DRAWER
 -C1 120V-15A DUPLEX (GFCI) RECEPTACLE, NEMA #5-15R WITH 100A BREAKER
 -**CORD AND PLUG INFORMATION**
 -NEMA ND 5-15 PLUG WITH 9FT CORD IISV-60C-1PH-100A
 -C2 S/S CONSTRUCTED ROLLED "V" TRAY SLIDE
 -MOUNTED ON FOLD-DOWN BRACKETS

SKU NO. 000-40014FBN2
 MODEL NO. SC5C-74-BPI ITEM NO. 2A
 -COLD PAN SERVING COUNTER
 -4500 BY 2162 BY 700 MECH. COOLED COLD PAN WITH DRAIN
 -4" DEEP PANS BY OTHERS
 IISV-60C-1PH-32A-1/4HP
 -**CORD AND PLUG INFORMATION**
 -NEMA ND 5-15 PLUG WITH 9FT CORD IISV-60C-1PH-354A
 -S/S CONSTRUCTED ROLLED "V" TRAY SLIDE
 -MOUNTED ON FOLD-DOWN BRACKETS

SKU NO. 000-40014FBN3
 MODEL NO. SC5C-74-BPI ITEM NO. 3A
 -HEATED SERVING COUNTER
 -ELECTRIC WET OR DRY HOT FOOD TABLE WITH DRAINS AND MANIFOLD
 200/230V-60C-1PH-350A
 -**CORD AND PLUG INFORMATION**
 -NEMA ND 14-60 PLUG WITH 9FT CORD I20V/200V-200V-60C-1PH-43.3A
 -S/S CONSTRUCTED ROLLED "V" TRAY SLIDE
 -MOUNTED ON FOLD-DOWN BRACKETS
 -S/S CONSTRUCTED WORKSHELF
 -MOUNTED ON FOLD-DOWN BRACKETS

SKU NO. 000-CCAI4FBN3
 MODEL NO. DCF5FS ITEM NO. FS-3A
 -SINGLE TIER SINGLE SERVICE FLEXIBLE FOOD SHIELD
 -TOP TIER FIXED SNEEZEGUARD FRONT
 -BOTTOM TIER CONVERTS TO THREE POSITIONS
 -SUPPORTS WITH S/S FINISH AND MOUNTING HARDWARE
 -0.38 TEMPERED GLASS TOP
 -0.25 TEMPERED GLASS FRONT AND ENDS
 -C2 4800 LED LIGHT (120V-016A EACH)

SKU NO. 000-40014FBN3
 MODEL NO. SH-6-NU ITEM NO. 3B
 -HEATED SERVING COUNTER
 -ELECTRIC WET OR DRY HOT FOOD TABLE WITH DRAINS AND MANIFOLD
 200/230V-60C-1PH-350A
 -**CORD AND PLUG INFORMATION**
 -NEMA ND 14-60 PLUG WITH 9FT CORD I20V/200V-200V-60C-1PH-43.3A
 -S/S CONSTRUCTED ROLLED "V" TRAY SLIDE
 -MOUNTED ON FOLD-DOWN BRACKETS
 -S/S CONSTRUCTED WORKSHELF
 -MOUNTED ON FOLD-DOWN BRACKETS

SKU NO. 000-CCAI4FBN3
 MODEL NO. DCF5FS ITEM NO. FS-3B
 -SINGLE TIER SINGLE SERVICE FLEXIBLE FOOD SHIELD
 -TOP TIER FIXED SNEEZEGUARD FRONT
 -BOTTOM TIER CONVERTS TO THREE POSITIONS
 -SUPPORTS WITH S/S FINISH AND MOUNTING HARDWARE
 -0.38 TEMPERED GLASS TOP
 -0.25 TEMPERED GLASS FRONT AND ENDS
 -INSTALL C1 72" HATCO GRSAL-72 (120V-10.5A)

SKU NO. 000-40014FBN5
 MODEL NO. SC5C-74-BPI ITEM NO. 2B
 -COLD PAN SERVING COUNTER
 -4500 BY 2162 BY 700 MECH. COOLED COLD PAN WITH DRAIN
 -4" DEEP PANS BY OTHERS
 IISV-60C-1PH-32A-1/4HP
 -**CORD AND PLUG INFORMATION**
 -NEMA ND 5-15 PLUG WITH 9FT CORD IISV-60C-1PH-354A
 -S/S CONSTRUCTED ROLLED "V" TRAY SLIDE
 -MOUNTED ON FOLD-DOWN BRACKETS

SKU NO. 000-40014FBN6
 MODEL NO. SC5-50 ITEM NO. 1B
 -CASHIER COUNTER
 -3 IN. DIAMETER HOLE WITH GROMMET IN TOP
 -S/S SHELF AND LOCKING DRAWER
 -C1 120V-15A DUPLEX (GFCI) RECEPTACLE, NEMA #5-15R WITH 100A BREAKER
 -**CORD AND PLUG INFORMATION**
 -NEMA ND 5-15 PLUG WITH 9FT CORD IISV-60C-1PH-100A
 -C2 S/S CONSTRUCTED ROLLED "V" TRAY SLIDE
 -MOUNTED ON FOLD-DOWN BRACKETS

SKU NO. 000-CCAI4FBN5
 MODEL NO. DCF5FS ITEM NO. FS-2B
 -DOUBLE TIER SINGLE SERVICE FLEXIBLE FOOD SHIELD
 -TOP TIER FIXED SNEEZEGUARD FRONT
 -BOTTOM TIER CONVERTS TO THREE POSITIONS
 -SUPPORTS WITH S/S FINISH AND MOUNTING HARDWARE
 -0.38 TEMPERED GLASS TOP
 -0.25 TEMPERED GLASS FRONT AND ENDS
 -INSTALL C1 72" HATCO GRSAL-72 (120V-10.5A)

DATE:	
BY:	
REV:	
1	
2	
3	
4	
5	

JOB NAME:
 WALDO MIDDLE SCHOOL
 DEALER:
 WWW.DELFIELD.COM
 980 S. ISABELLA RD.
 MT. PLEASANT, MT. 48868
 (989) 773-7981 • 800-233-8821
 THIS DRAWING IS THE PROPERTY OF DELFIELD AND IS NOT TO BE REPRODUCED OR USED IN ANY MANNER WITHOUT THE EXPRESS WRITTEN CONSENT OF DELFIELD.

Delfield

DRAWN BY: DH
 APPROVED BY: K. SAILSBURY
 DATE: 7/1/25
 SHEET NUMBER: 1885991_001A
 SCALE: 1/2" = 1'-0"

